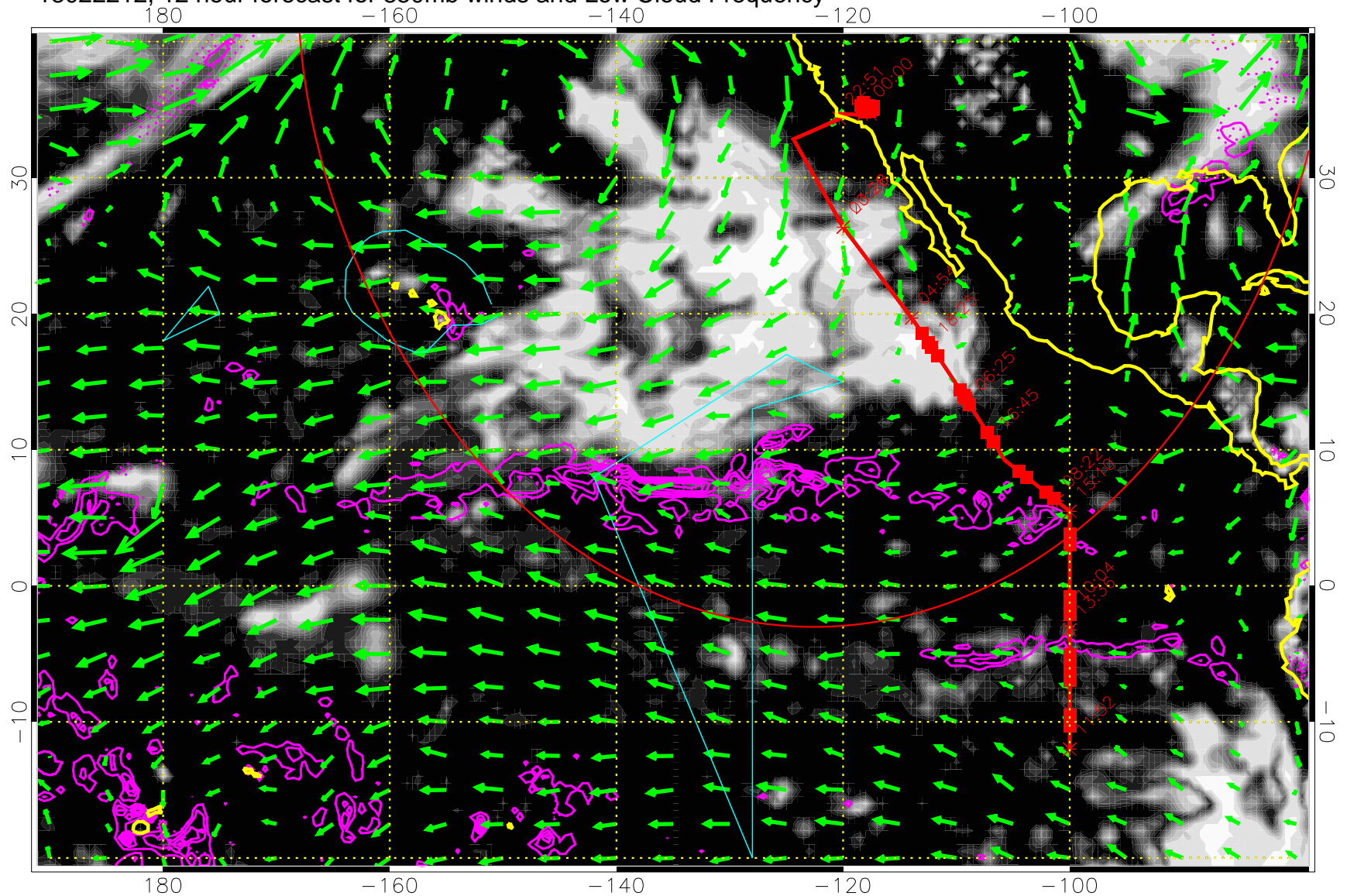


13022212, 12 hour forecast for 850mb winds and Low Cloud Frequency

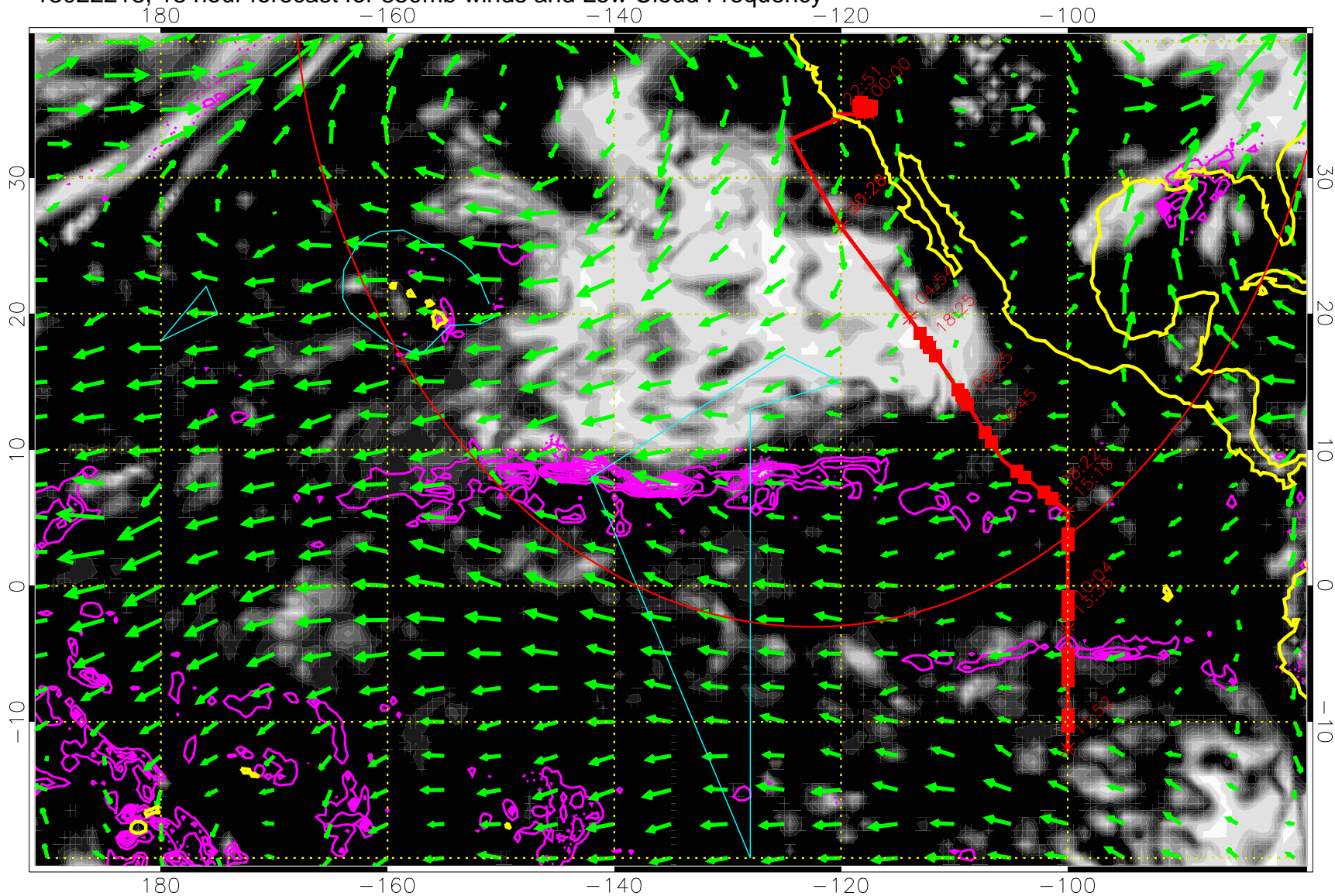


Precip (tot dot, conv sol) past 6 hrs 6 kg/m2 contours, min 4

→ 30 m/s

Range ring of 4055 km -- 13 hours GH round trip

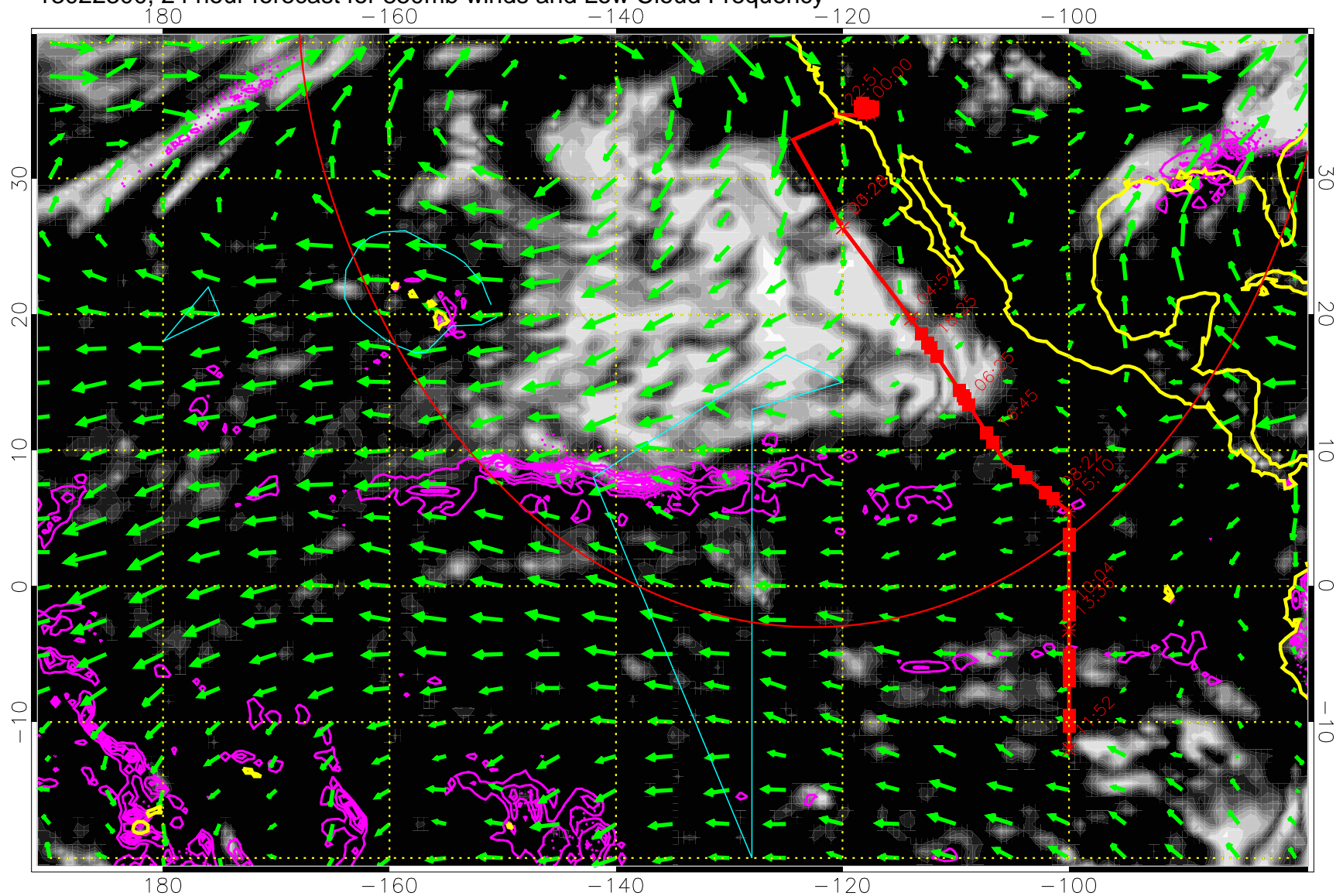
13022218, 18 hour forecast for 850mb winds and Low Cloud Frequency



Precip (tot dot, conv sol) past 6 hrs 6 kg/m2 contours, min 4

→ 30 m/s
Range ring of 4055 km -- 13 hours GH round trip

13022300, 24 hour forecast for 850mb winds and Low Cloud Frequency

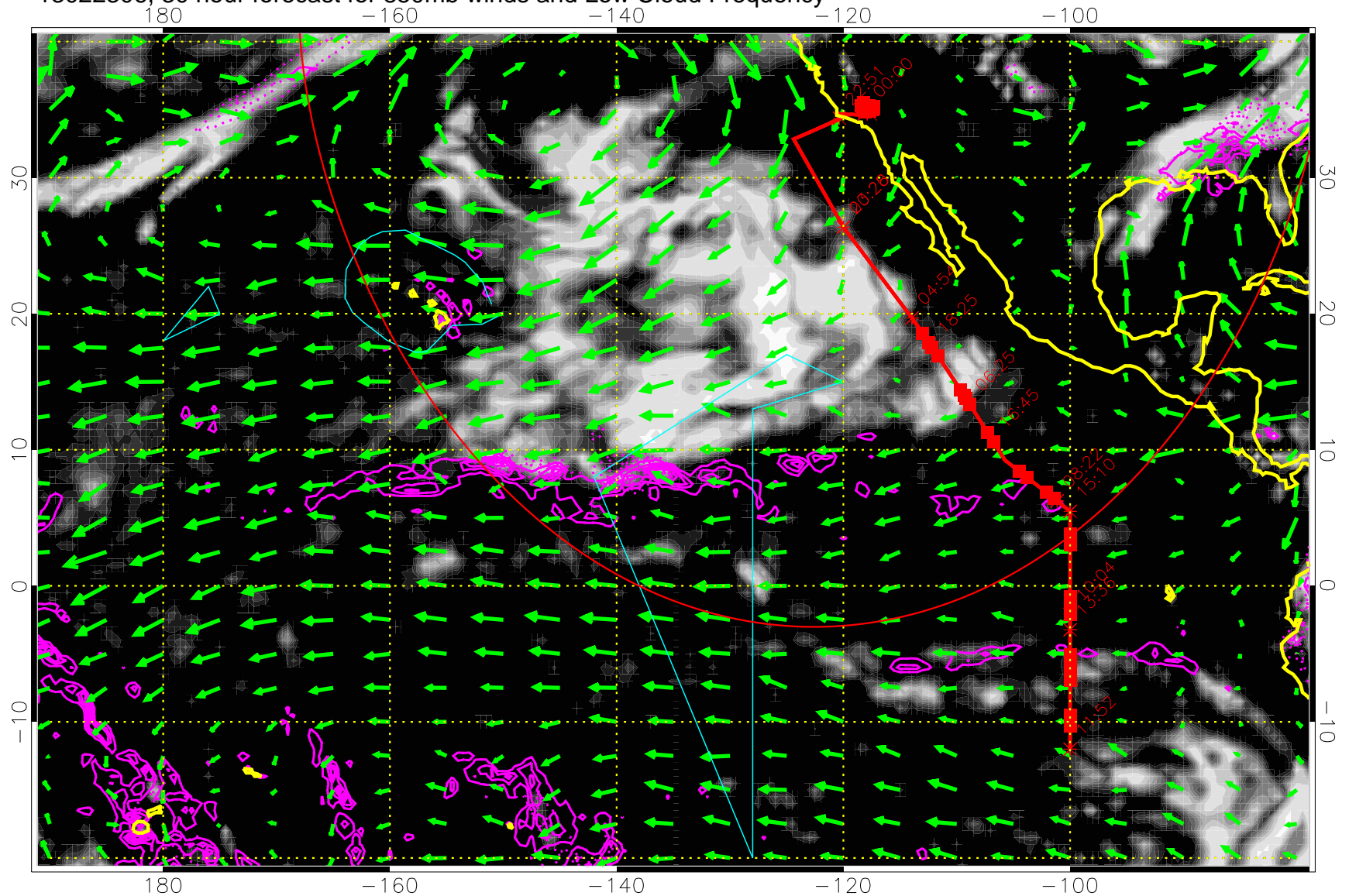


Precip (tot dot, conv sol) past 6 hrs 6 kg/m2 contours, min 4

→ 30 m/s

Range ring of 4055 km -- 13 hours GH round trip

13022306, 30 hour forecast for 850mb winds and Low Cloud Frequency



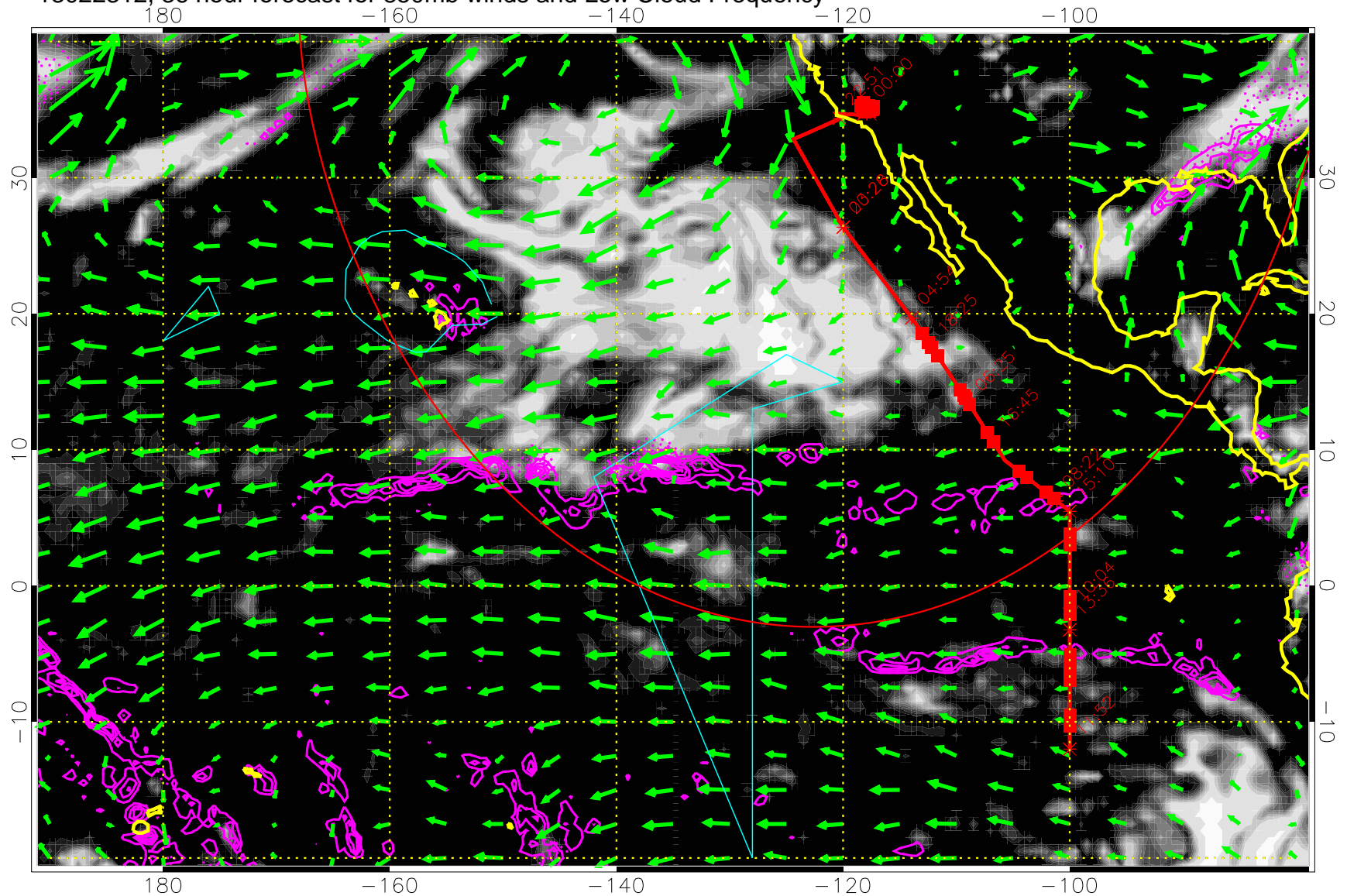
0.0 0.2 0.4 0.6 0.8 1.0
Low Cloud Frequency

Precip (tot dot, conv sol) past 6 hrs 6 kg/m2 contours, min 4

→ 30 m/s

Range ring of 4055 km -- 13 hours GH round trip

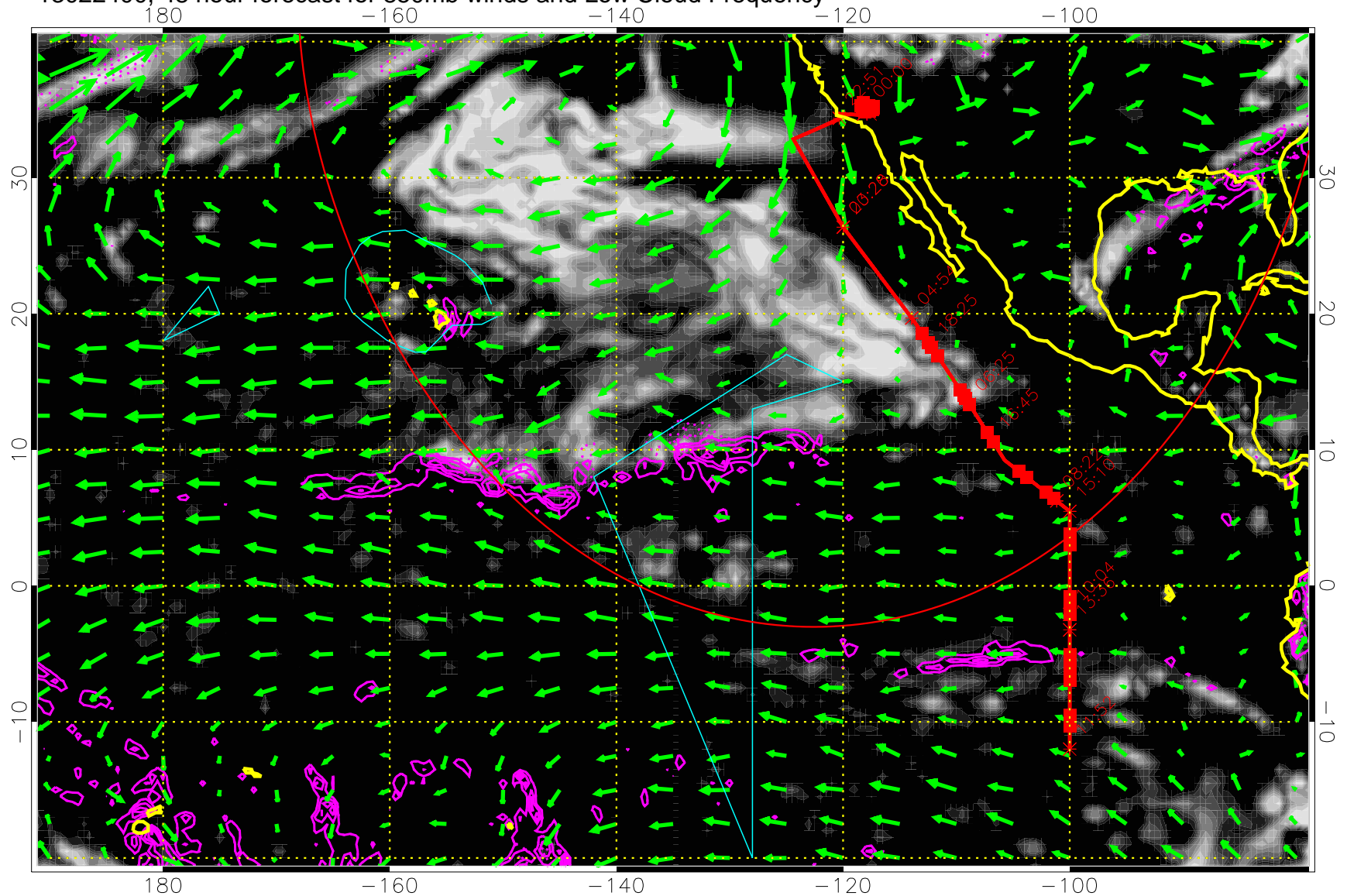
13022312, 36 hour forecast for 850mb winds and Low Cloud Frequency



Precip (tot dot, conv sol) past 6 hrs 6 kg/m2 contours, min 4

→ 30 m/s
Range ring of 4055 km -- 13 hours GH round trip

13022400, 48 hour forecast for 850mb winds and Low Cloud Frequency

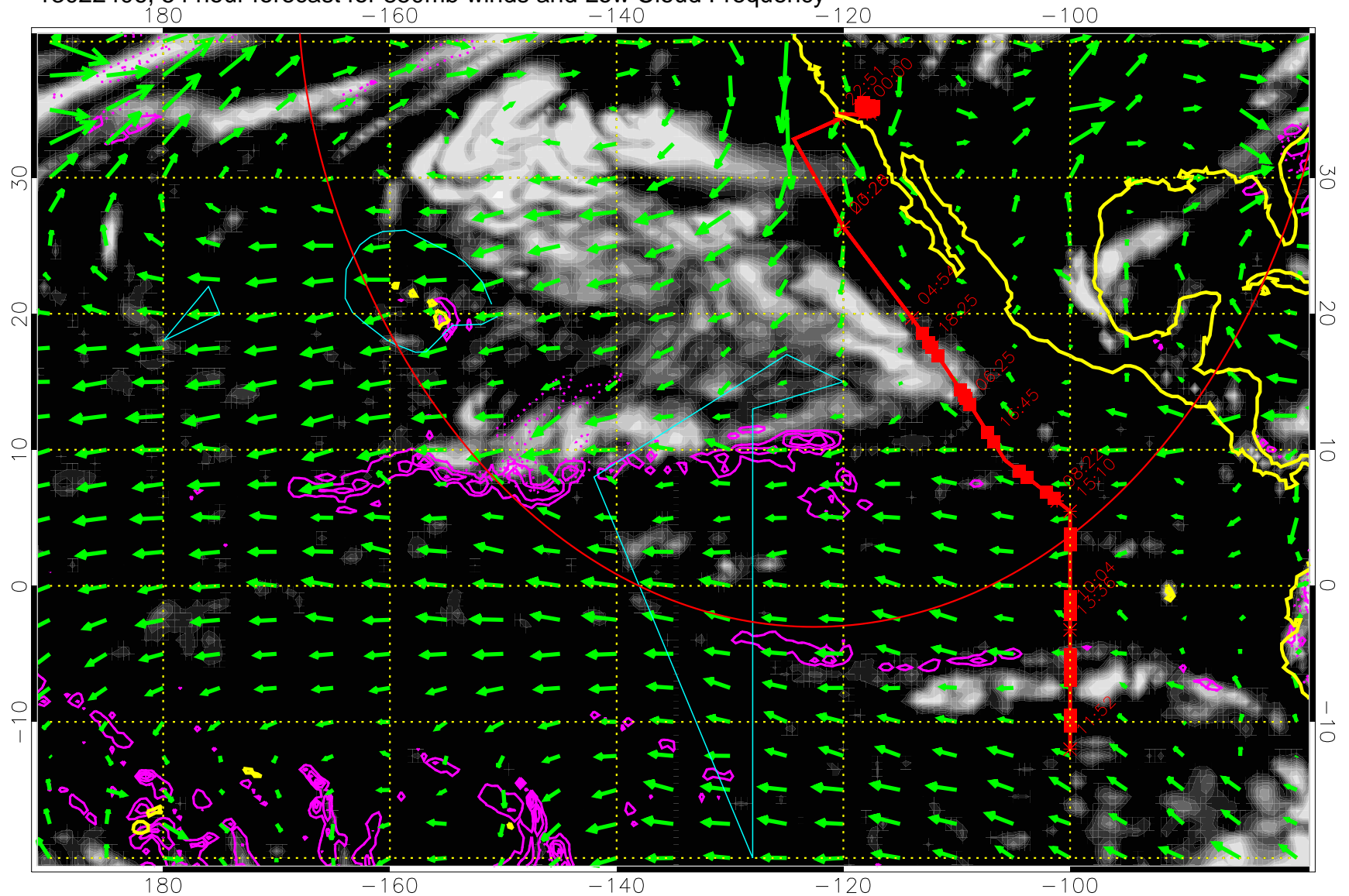


Precip (tot dot, conv sol) past 6 hrs 6 kg/m2 contours, min 4

→ 30 m/s

Range ring of 4055 km -- 13 hours GH round trip

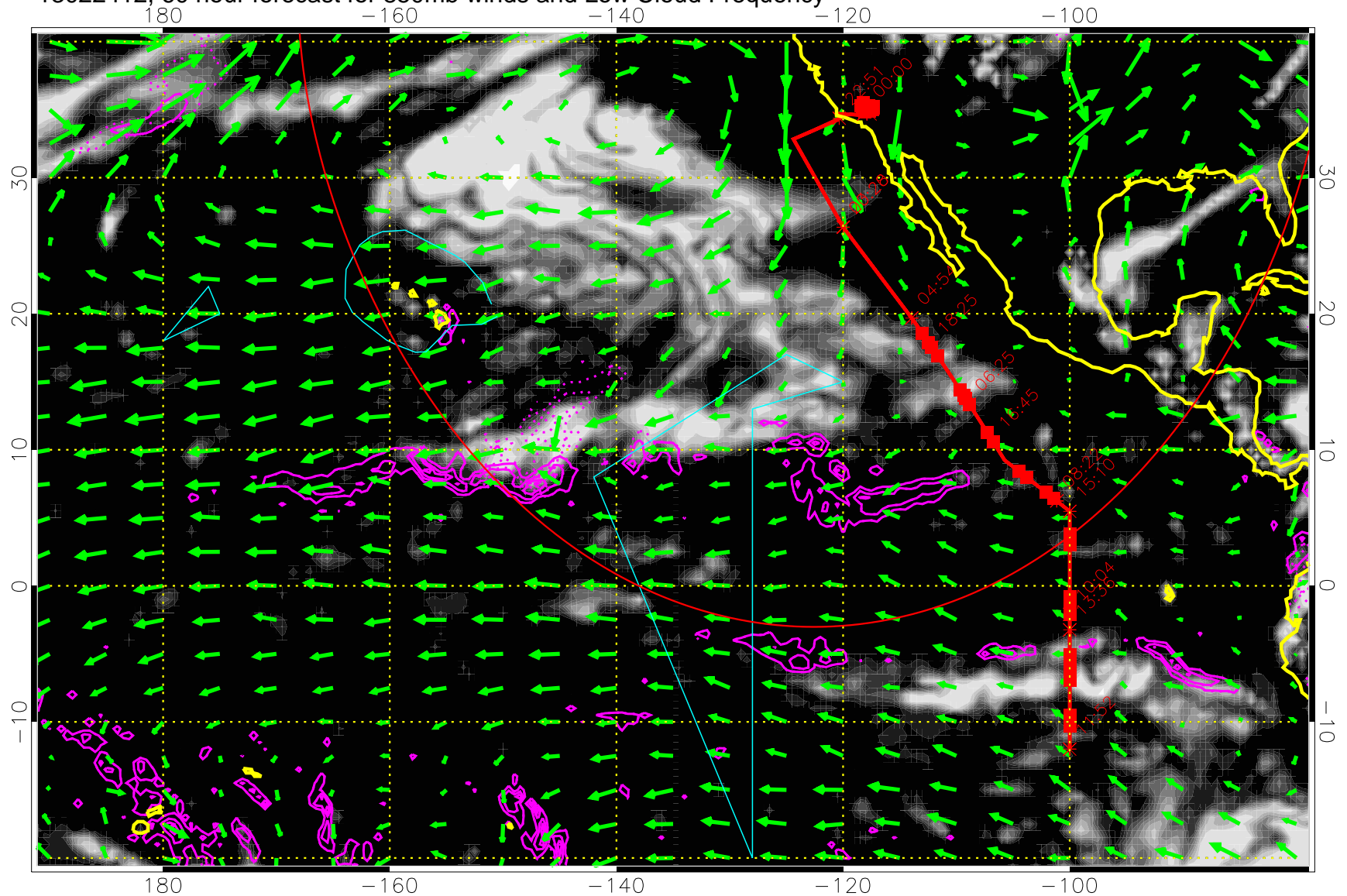
13022406, 54 hour forecast for 850mb winds and Low Cloud Frequency



Precip (tot dot, conv sol) past 6 hrs 6 kg/m2 contours, min 4

→ 30 m/s
Range ring of 4055 km -- 13 hours GH round trip

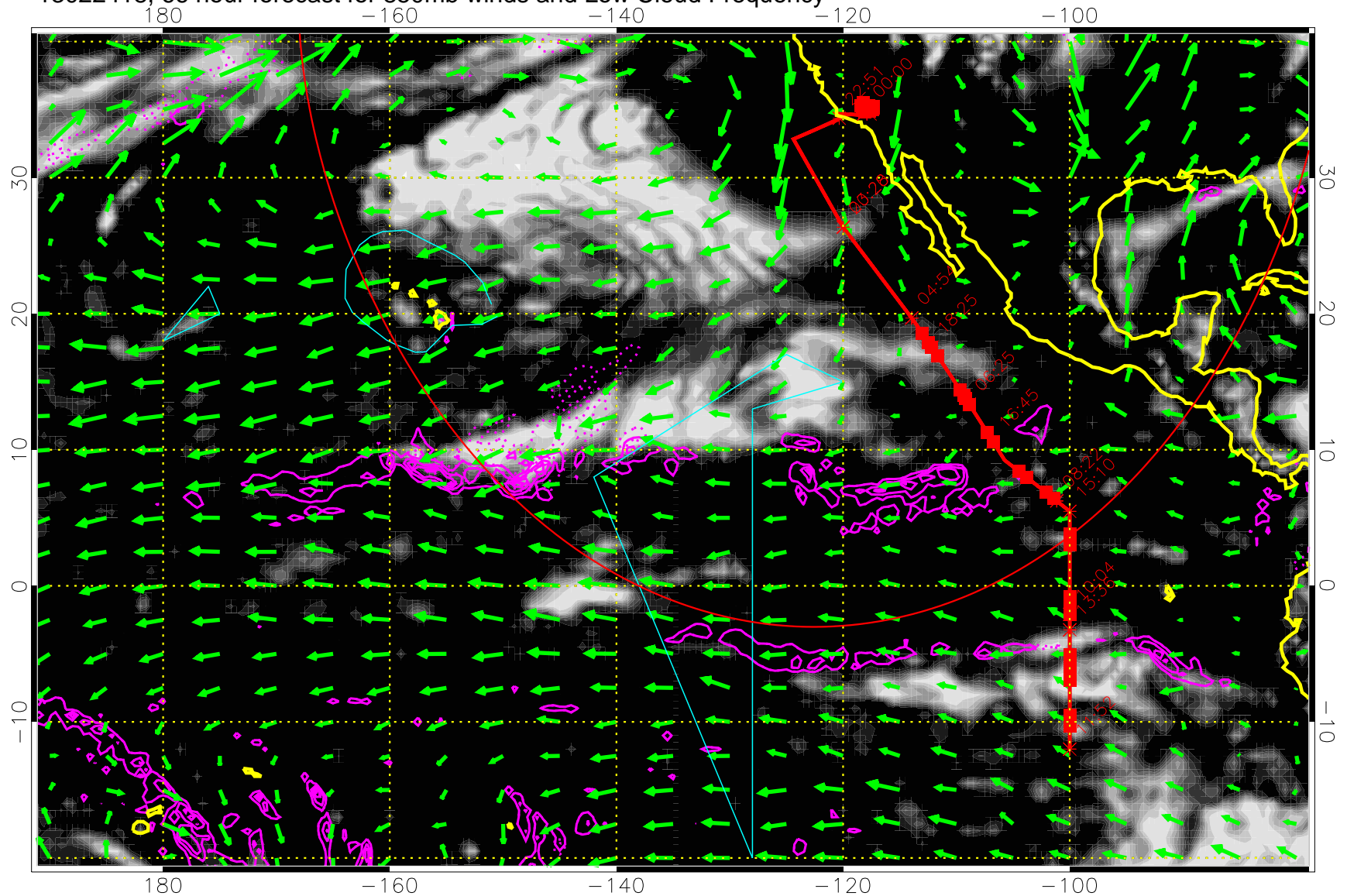
13022412, 60 hour forecast for 850mb winds and Low Cloud Frequency



Precip (tot dot, conv sol) past 6 hrs 6 kg/m2 contours, min 4

→ 30 m/s
Range ring of 4055 km -- 13 hours GH round trip

13022418, 66 hour forecast for 850mb winds and Low Cloud Frequency

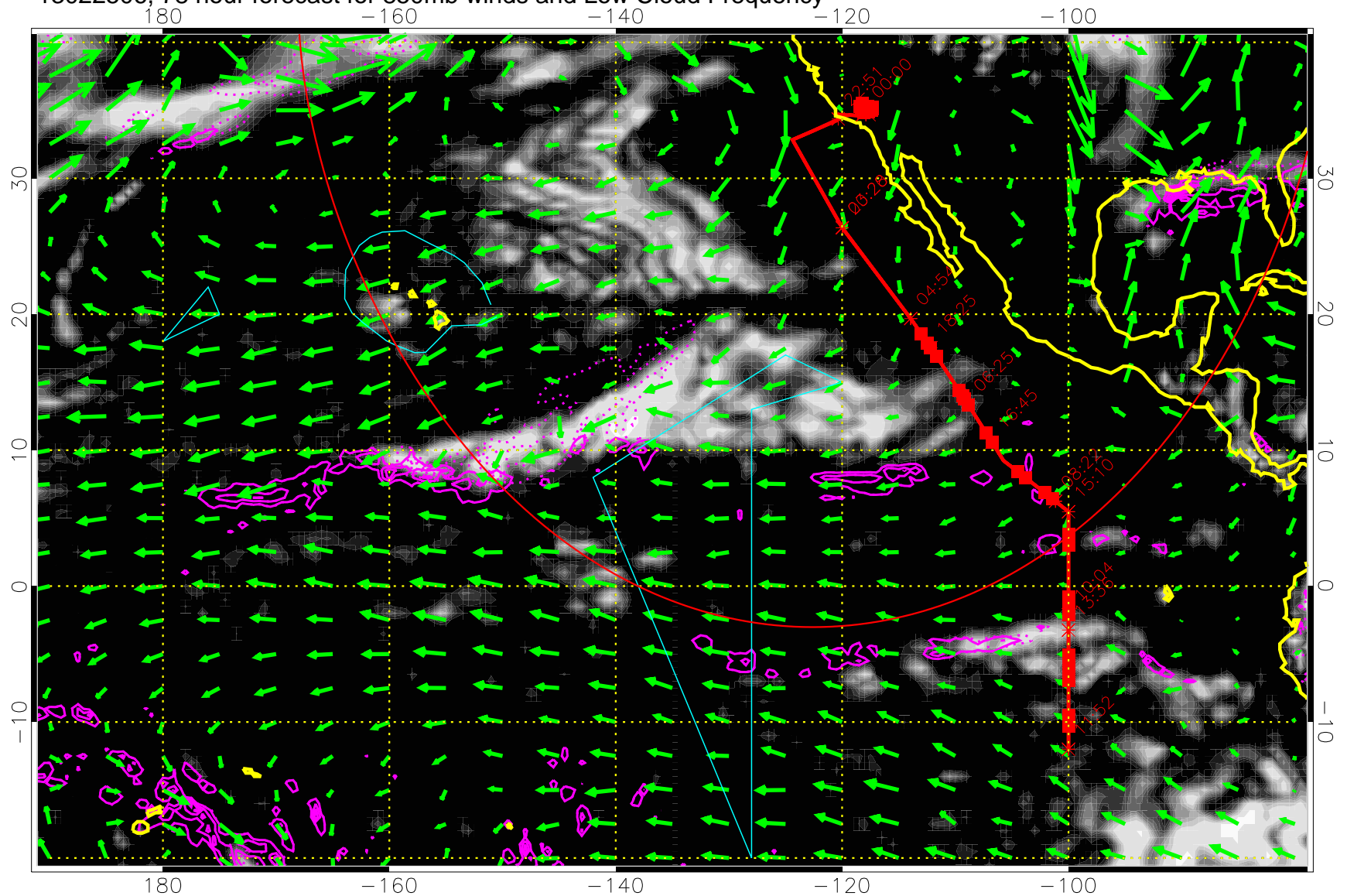


Precip (tot dot, conv sol) past 6 hrs 6 kg/m2 contours, min 4

→ 30 m/s

Range ring of 4055 km -- 13 hours GH round trip

13022506, 78 hour forecast for 850mb winds and Low Cloud Frequency



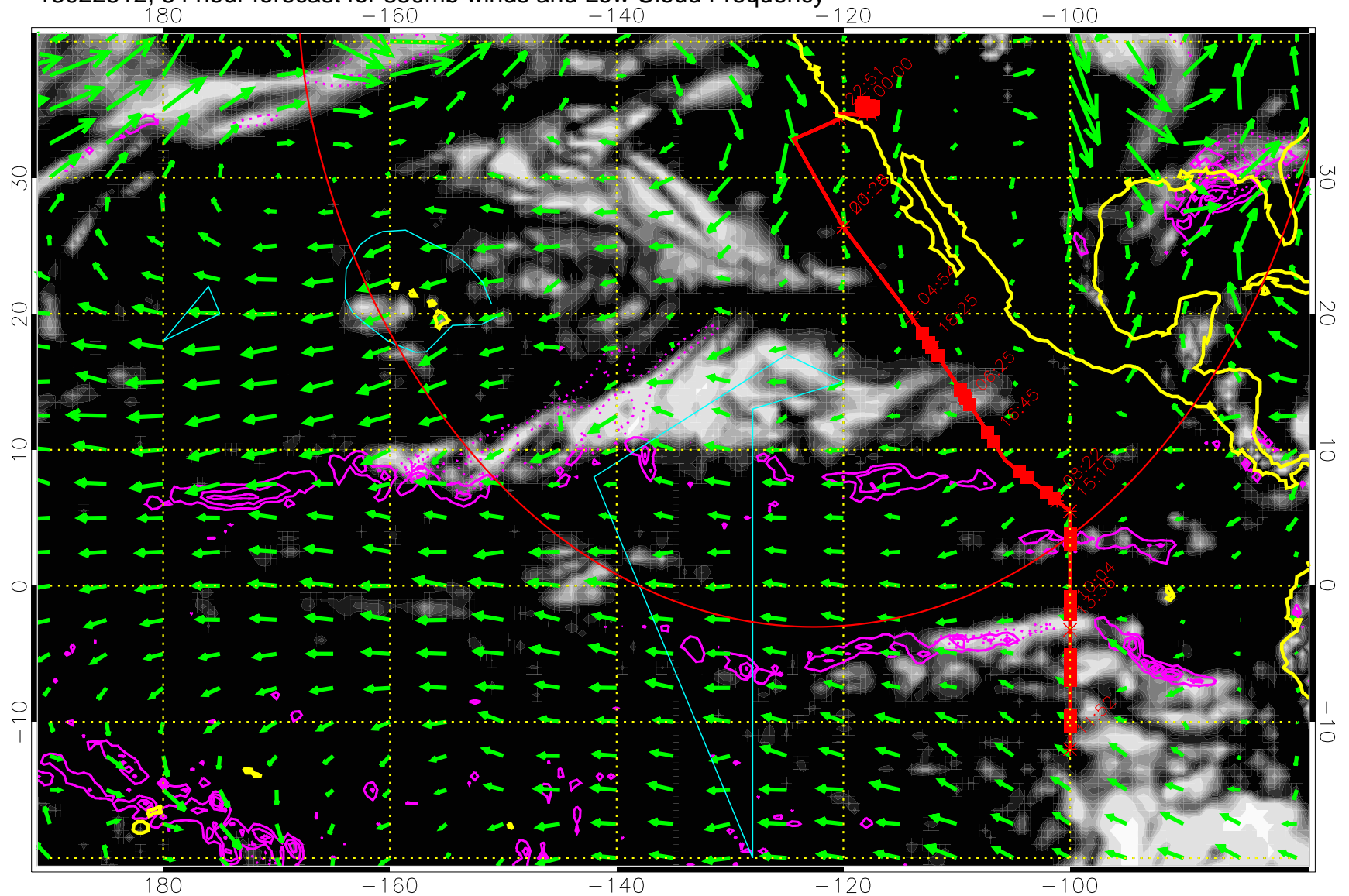
0.0 0.2 0.4 0.6 0.8 1.0
Low Cloud Frequency

Precip (tot dot, conv sol) past 6 hrs 6 kg/m2 contours, min 4

→ 30 m/s

Range ring of 4055 km -- 13 hours GH round trip

13022512, 84 hour forecast for 850mb winds and Low Cloud Frequency

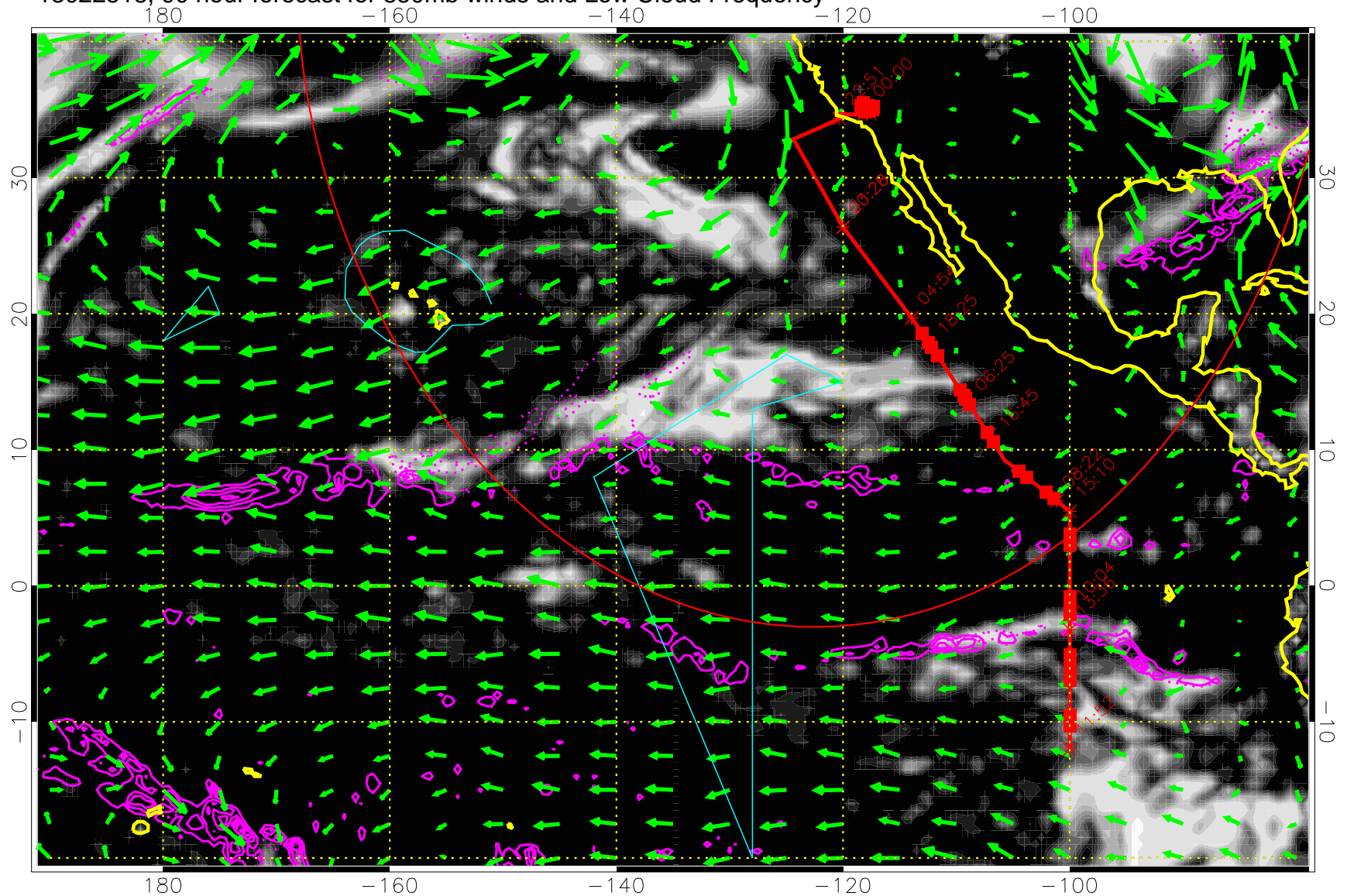


Precip (tot dot, conv sol) past 6 hrs 6 kg/m2 contours, min 4

→ 30 m/s

Range ring of 4055 km -- 13 hours GH round trip

13022518, 90 hour forecast for 850mb winds and Low Cloud Frequency

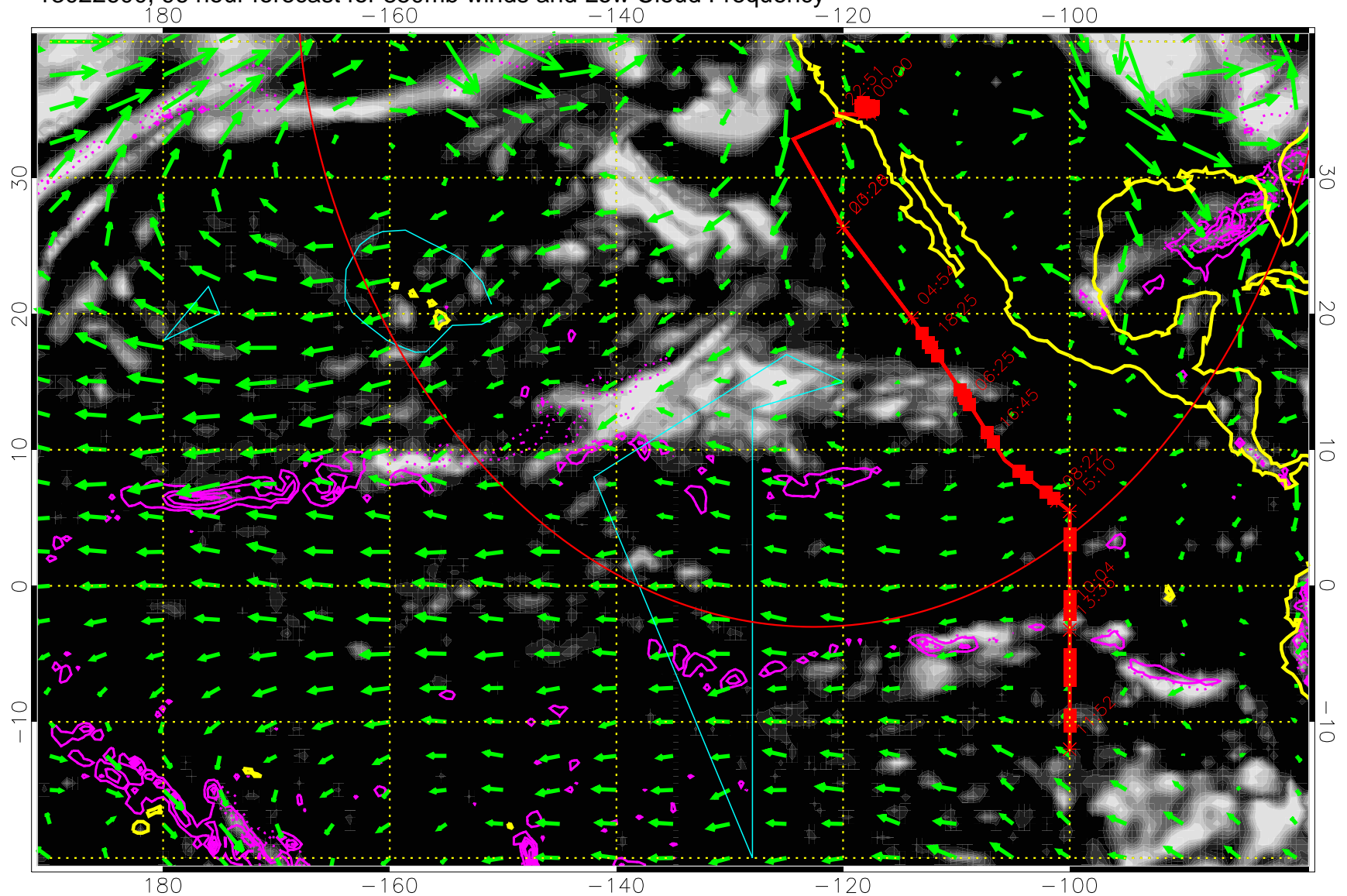


Precip (tot dot, conv sol) past 6 hrs 6 kg/m2 contours, min 4

→ 30 m/s

Range ring of 4055 km -- 13 hours GH round trip

13022600, 96 hour forecast for 850mb winds and Low Cloud Frequency



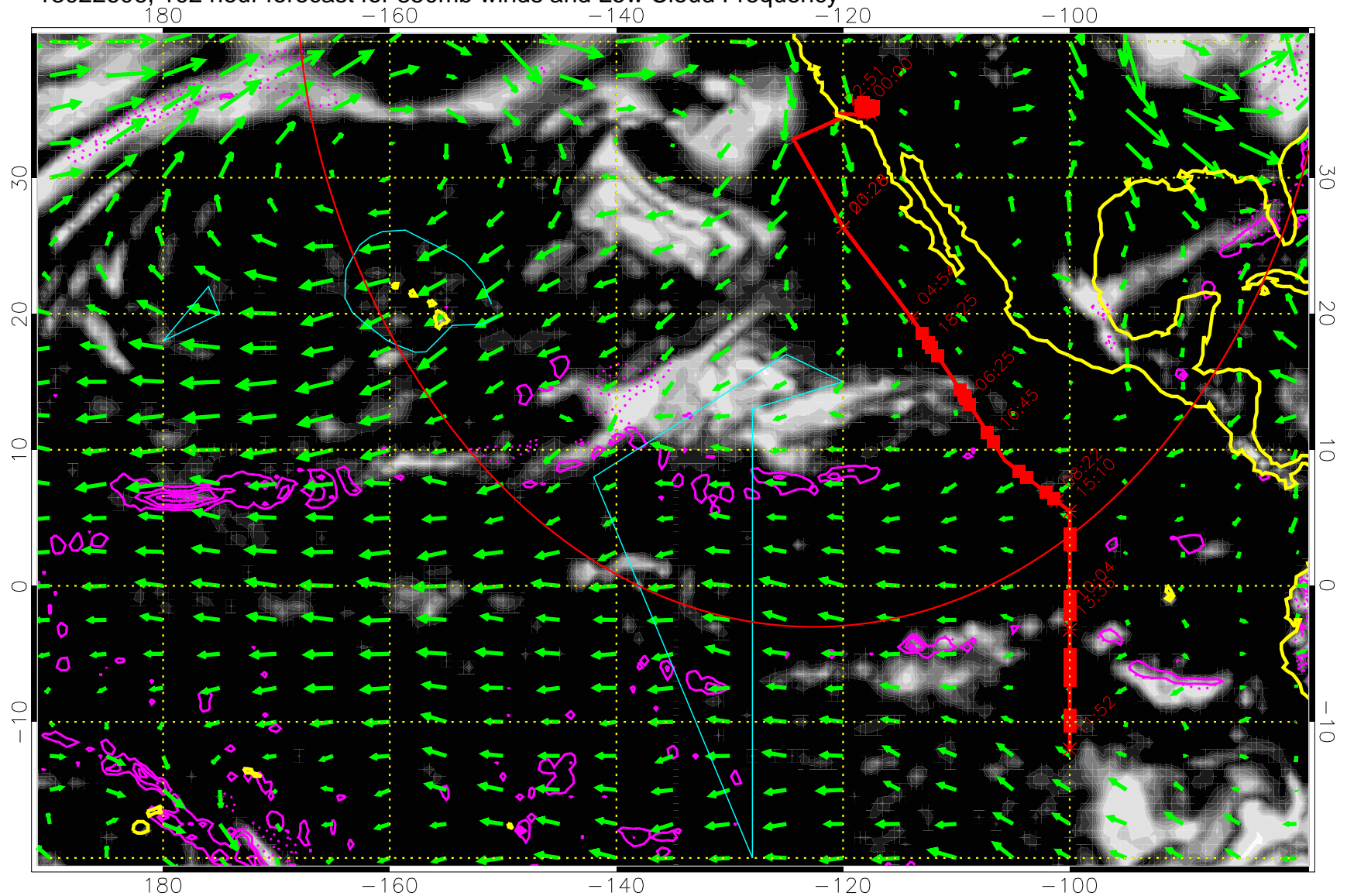
0.0 0.2 0.4 0.6 0.8 1.0
Low Cloud Frequency

Precip (tot dot, conv sol) past 6 hrs 6 kg/m2 contours, min 4

→ 30 m/s

Range ring of 4055 km -- 13 hours GH round trip

13022606, 102 hour forecast for 850mb winds and Low Cloud Frequency

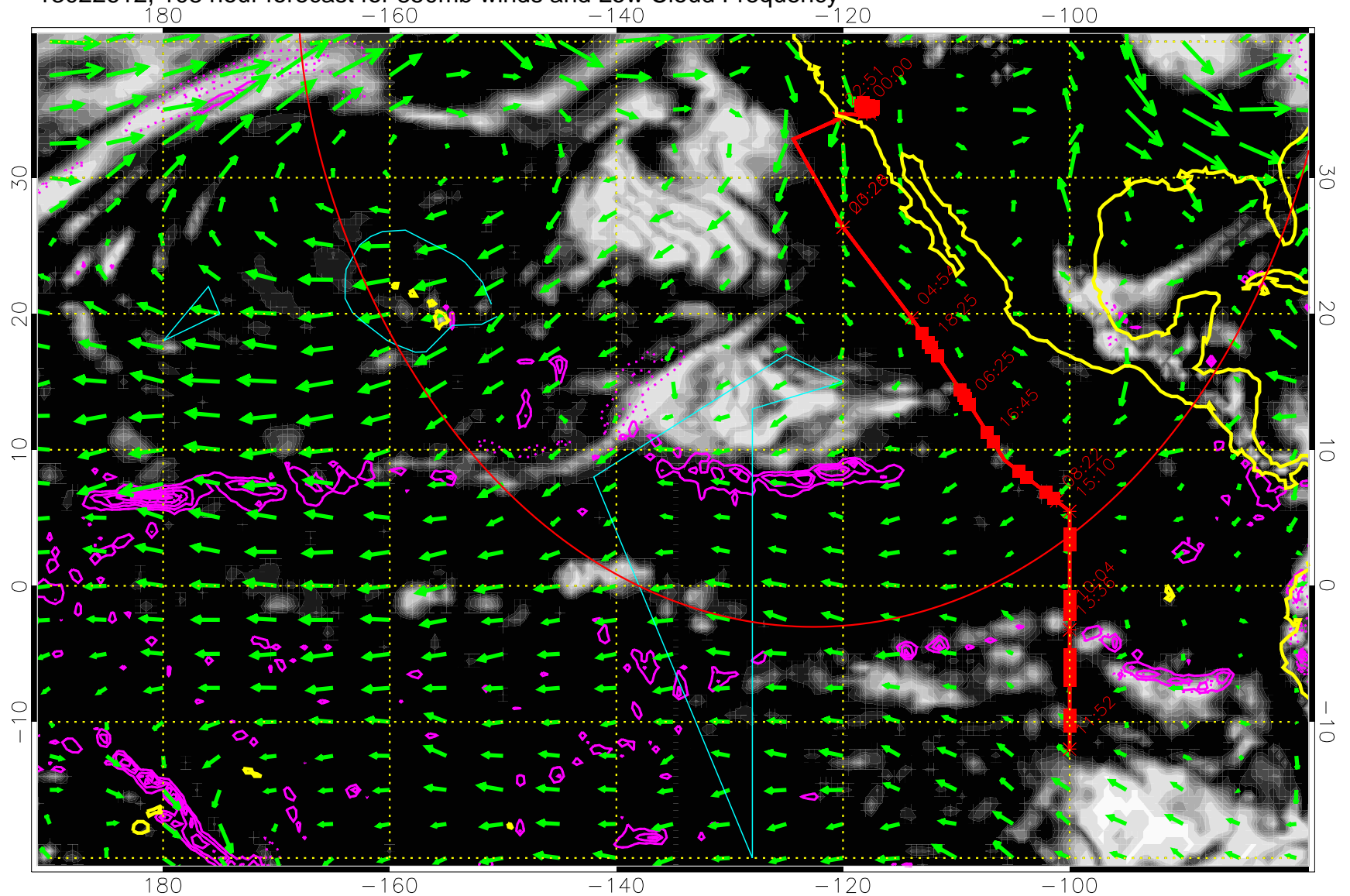


Precip (tot dot, conv sol) past 6 hrs 6 kg/m2 contours, min 4

→ 30 m/s

Range ring of 4055 km -- 13 hours GH round trip

13022612, 108 hour forecast for 850mb winds and Low Cloud Frequency



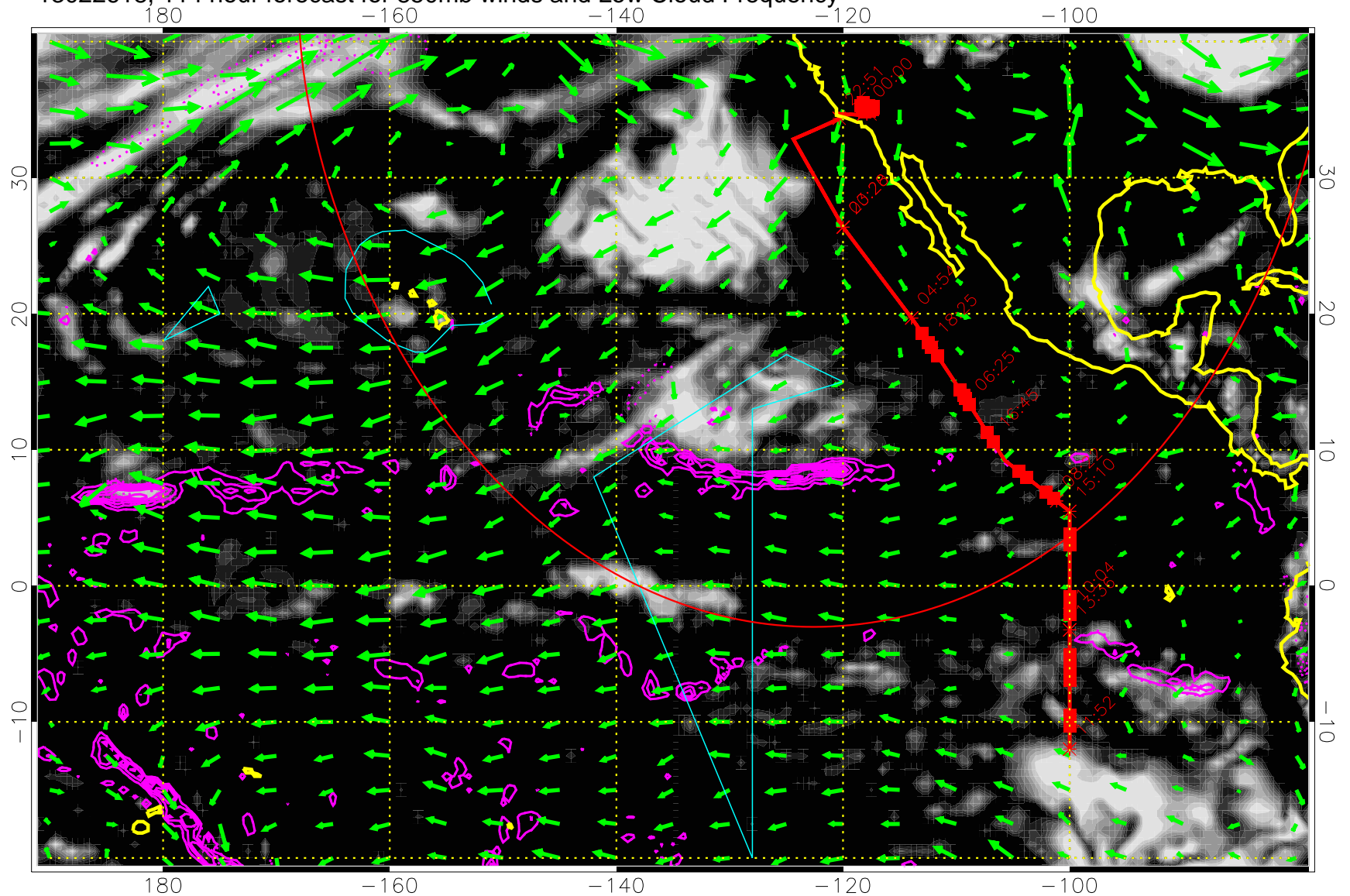
Low Cloud Frequency

Precip (tot dot, conv sol) past 6 hrs 6 kg/m2 contours, min 4

→ 30 m/s

Range ring of 4055 km -- 13 hours GH round trip

13022618, 114 hour forecast for 850mb winds and Low Cloud Frequency



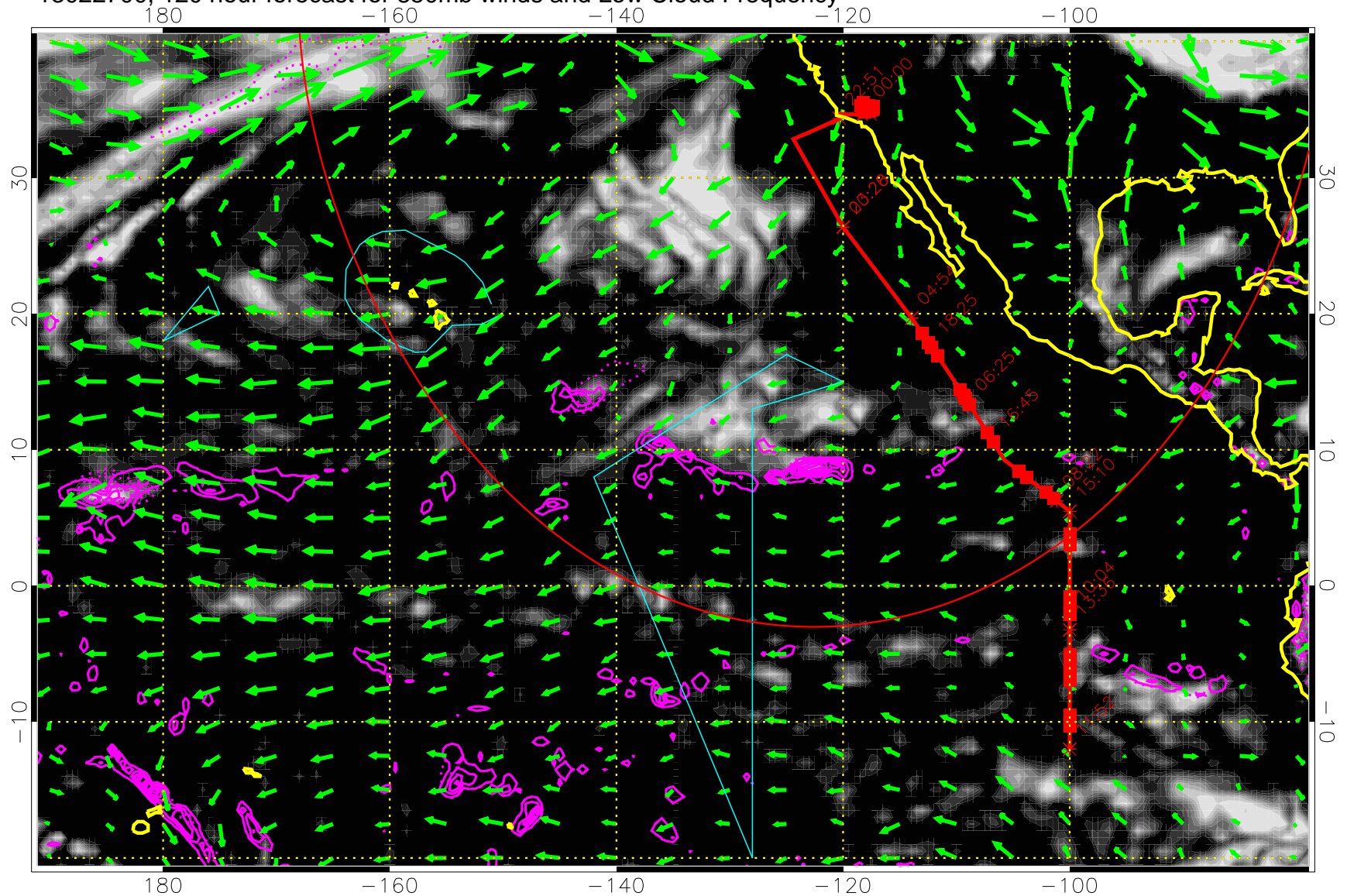
0.0 0.2 0.4 0.6 0.8 1.0
Low Cloud Frequency

Precip (tot dot, conv sol) past 6 hrs 6 kg/m2 contours, min 4

→ 30 m/s

Range ring of 4055 km -- 13 hours GH round trip

13022700, 120 hour forecast for 850mb winds and Low Cloud Frequency



Precip (tot dot, conv sol) past 6 hrs 6 kg/m2 contours, min 4

→ 30 m/s
Range ring of 4055 km -- 13 hours GH round trip