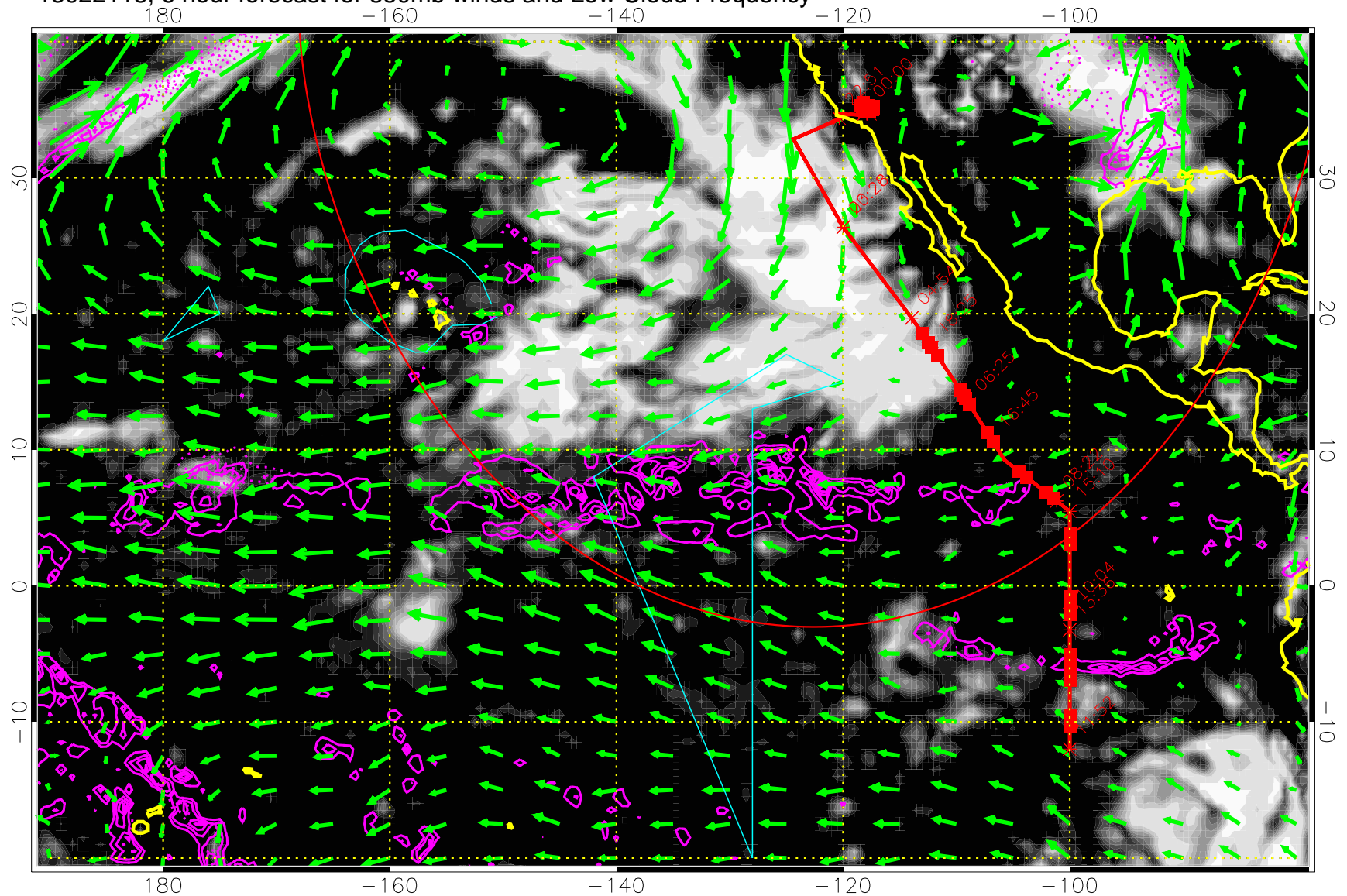


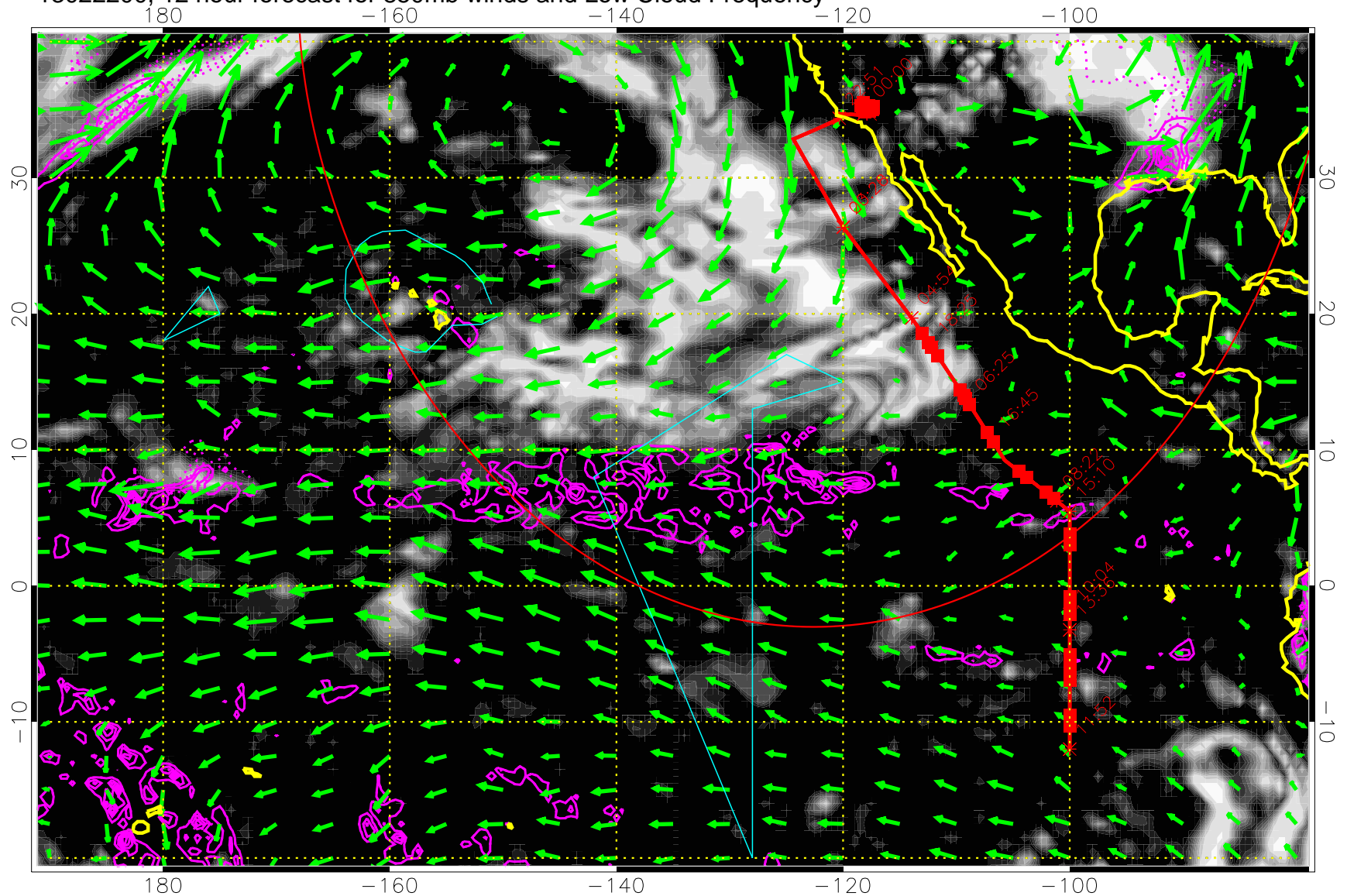
13022118, 6 hour forecast for 850mb winds and Low Cloud Frequency



Precip (tot dot, conv sol) past 6 hrs 6 kg/m2 contours, min 4

→ 30 m/s
Range ring of 4055 km -- 13 hours GH round trip

13022200, 12 hour forecast for 850mb winds and Low Cloud Frequency

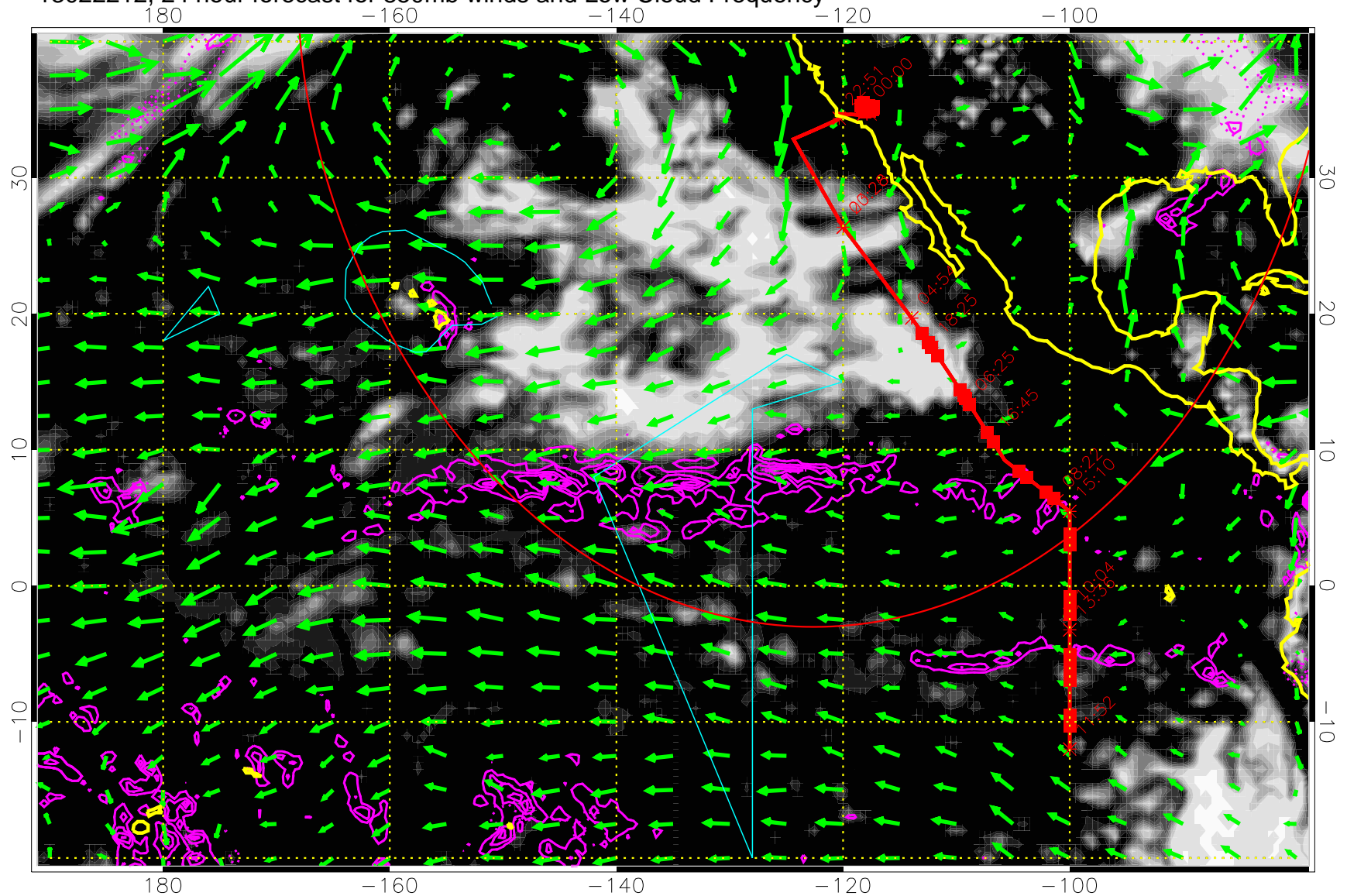


Precip (tot dot, conv sol) past 6 hrs 6 kg/m2 contours, min 4

→ 30 m/s

Range ring of 4055 km -- 13 hours GH round trip

13022212, 24 hour forecast for 850mb winds and Low Cloud Frequency

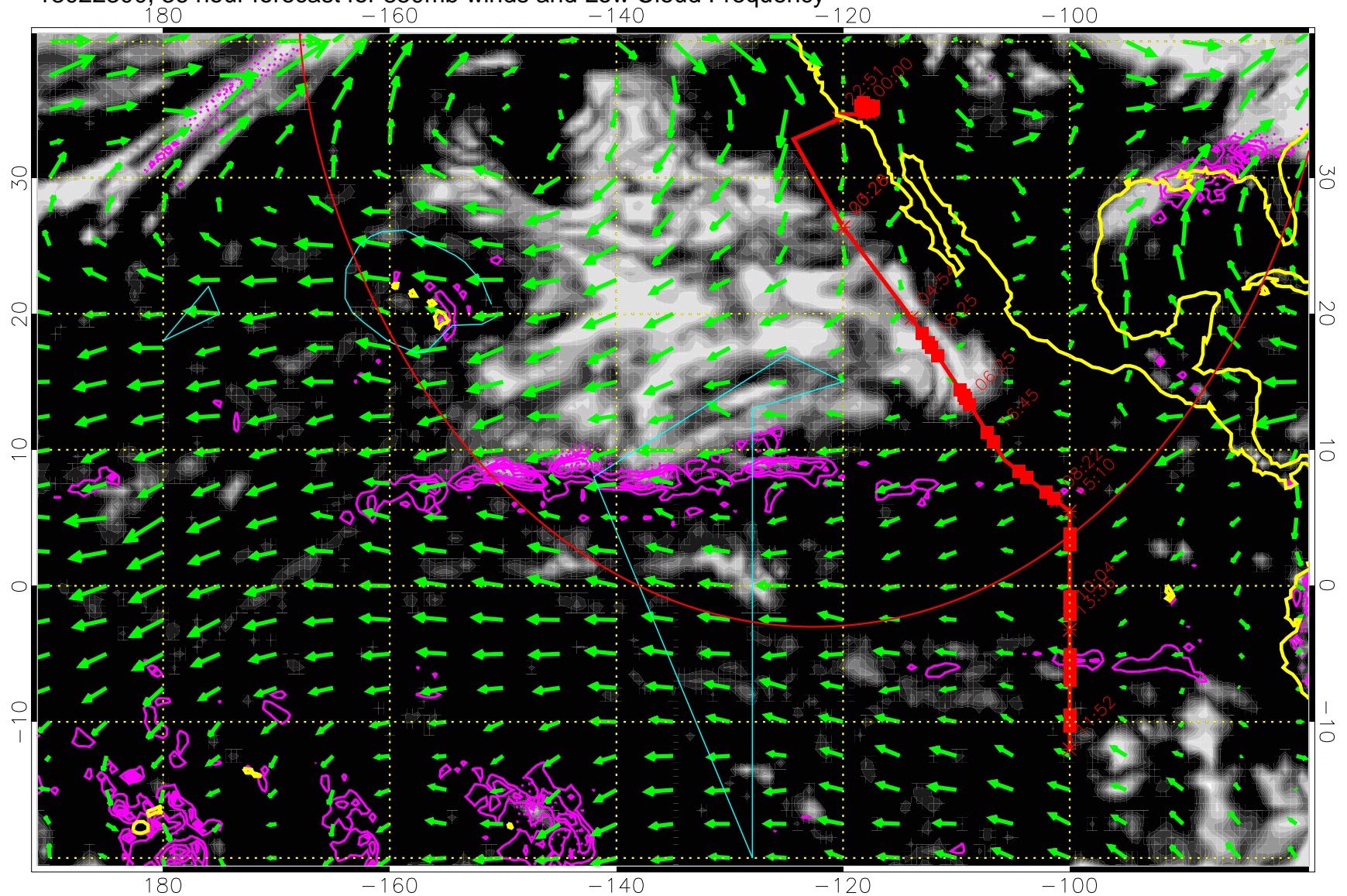


Precip (tot dot, conv sol) past 6 hrs 6 kg/m2 contours, min 4

→ 30 m/s

Range ring of 4055 km -- 13 hours GH round trip

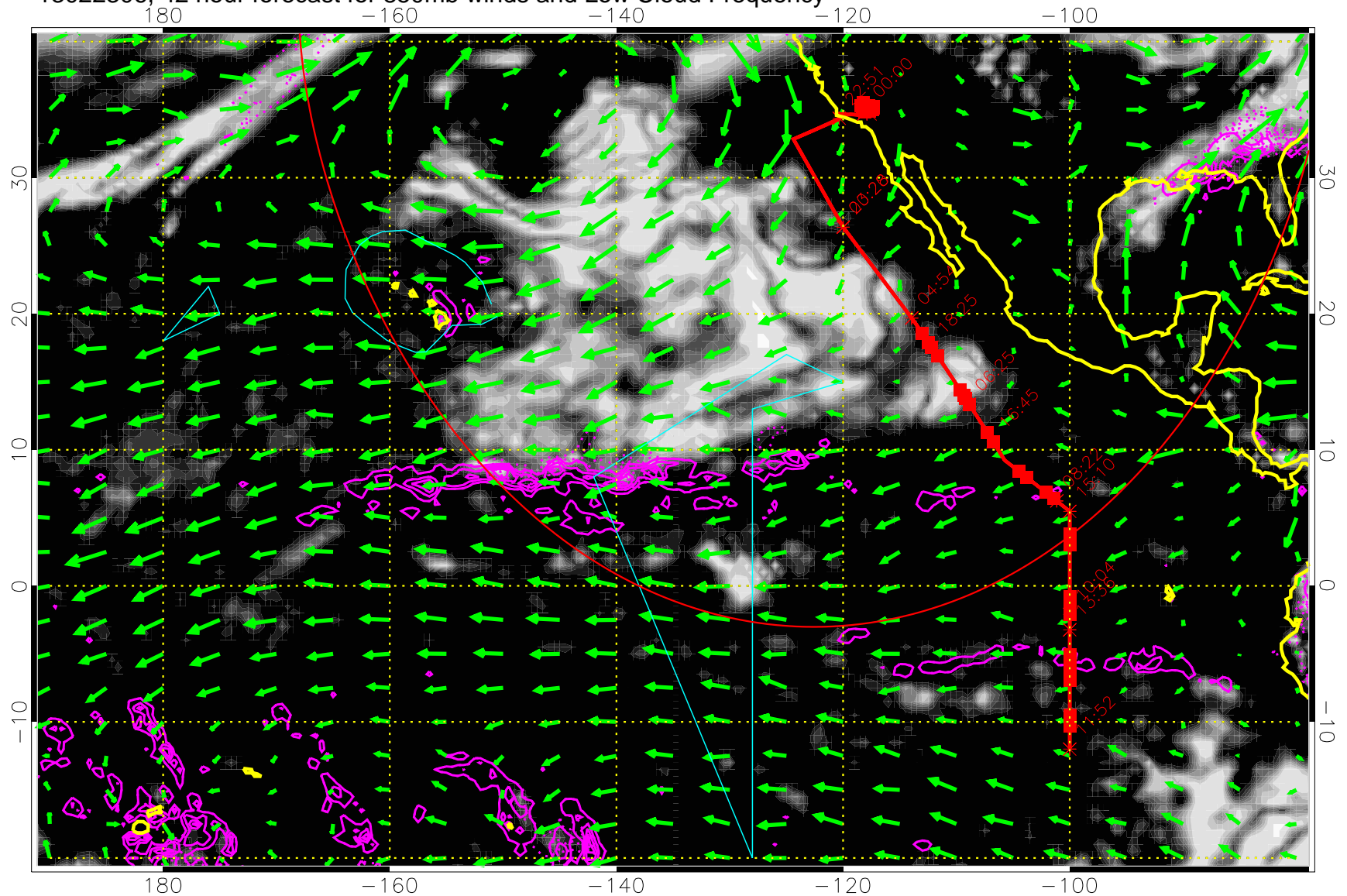
13022300, 36 hour forecast for 850mb winds and Low Cloud Frequency



Precip (tot dot, conv sol) past 6 hrs 6 kg/m2 contours, min 4

→ 30 m/s
Range ring of 4055 km -- 13 hours GH round trip

13022306, 42 hour forecast for 850mb winds and Low Cloud Frequency

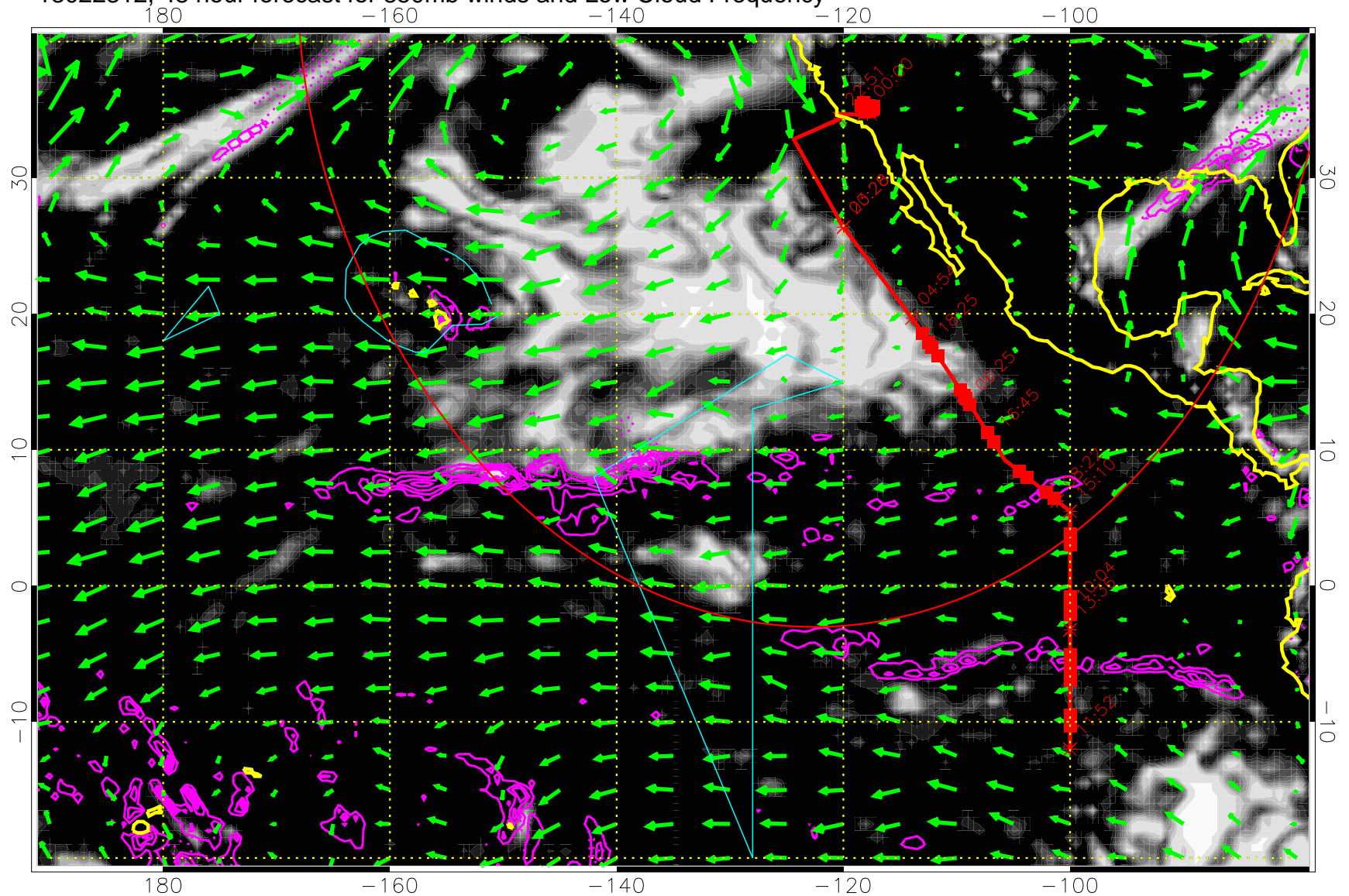


Precip (tot dot, conv sol) past 6 hrs 6 kg/m2 contours, min 4

→ 30 m/s

Range ring of 4055 km -- 13 hours GH round trip

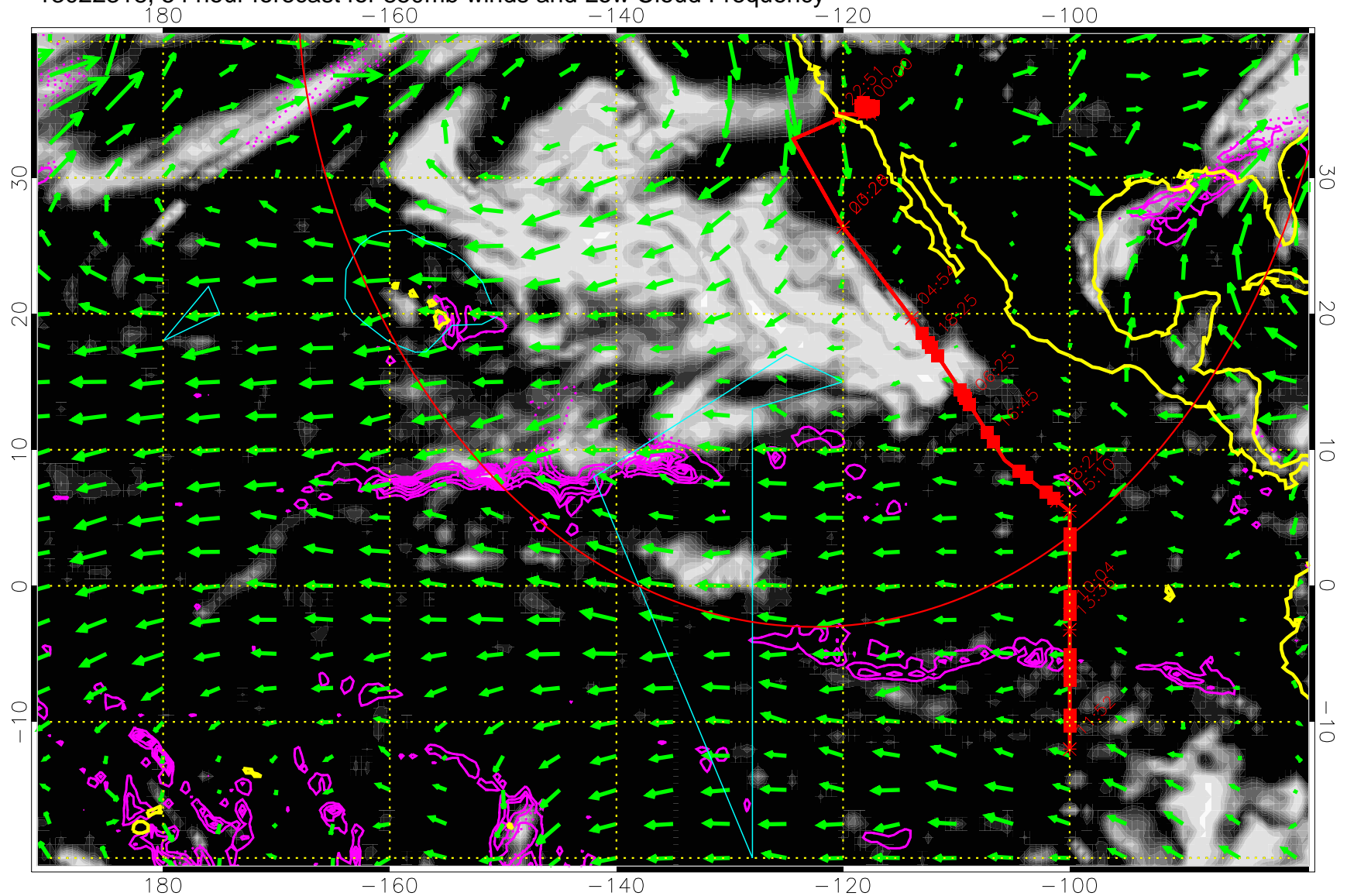
13022312, 48 hour forecast for 850mb winds and Low Cloud Frequency



Precip (tot dot, conv sol) past 6 hrs 6 kg/m² contours, min 4

→ 30 m/s
Range ring of 4055 km -- 13 hours GH round trip

13022318, 54 hour forecast for 850mb winds and Low Cloud Frequency

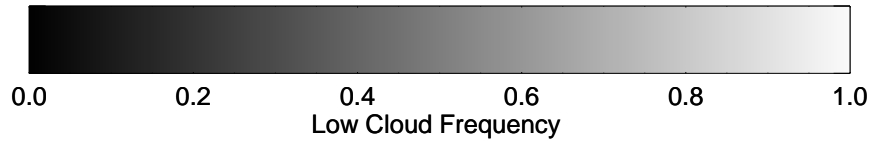
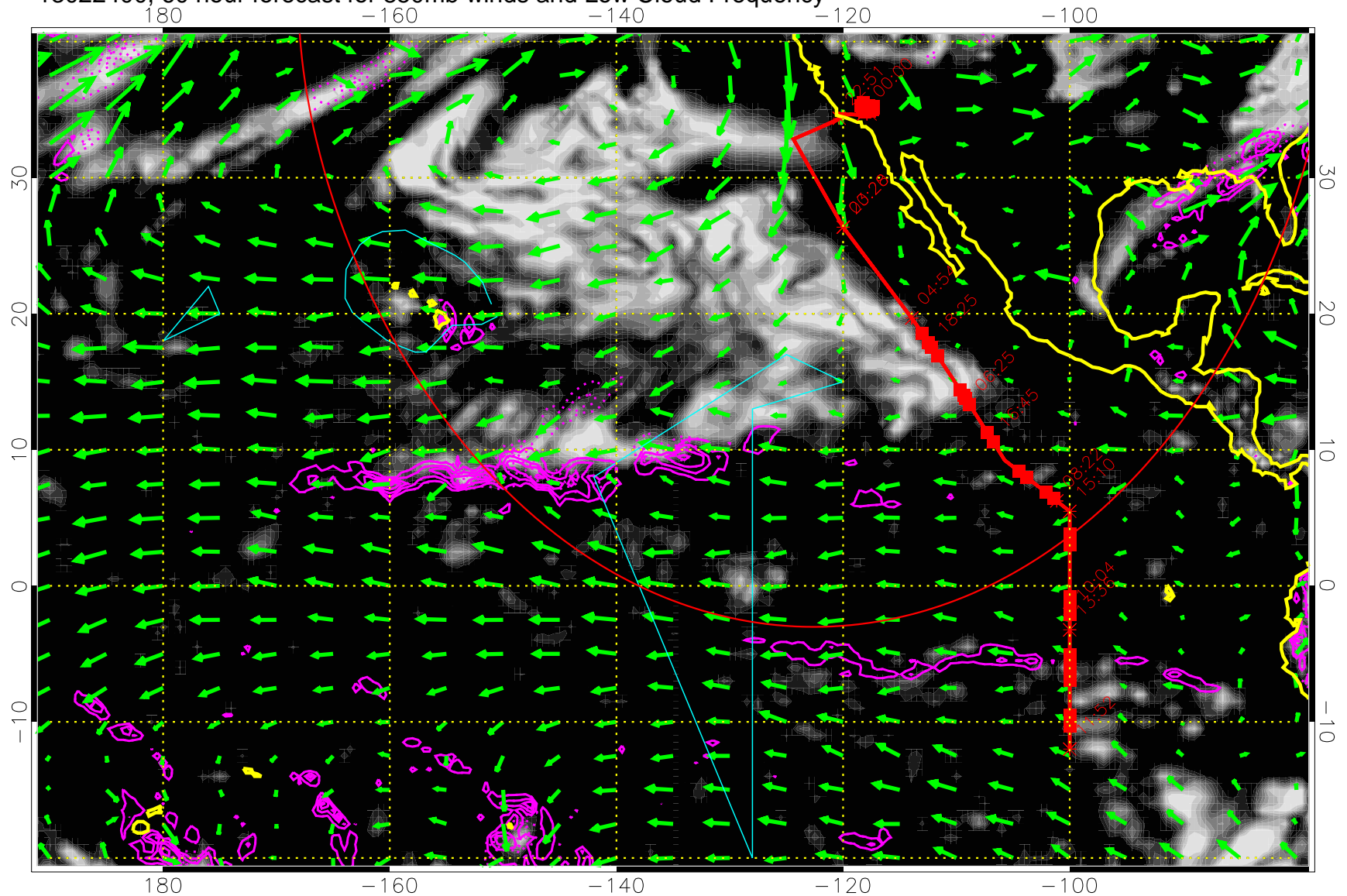


Precip (tot dot, conv sol) past 6 hrs 6 kg/m2 contours, min 4

→ 30 m/s

Range ring of 4055 km -- 13 hours GH round trip

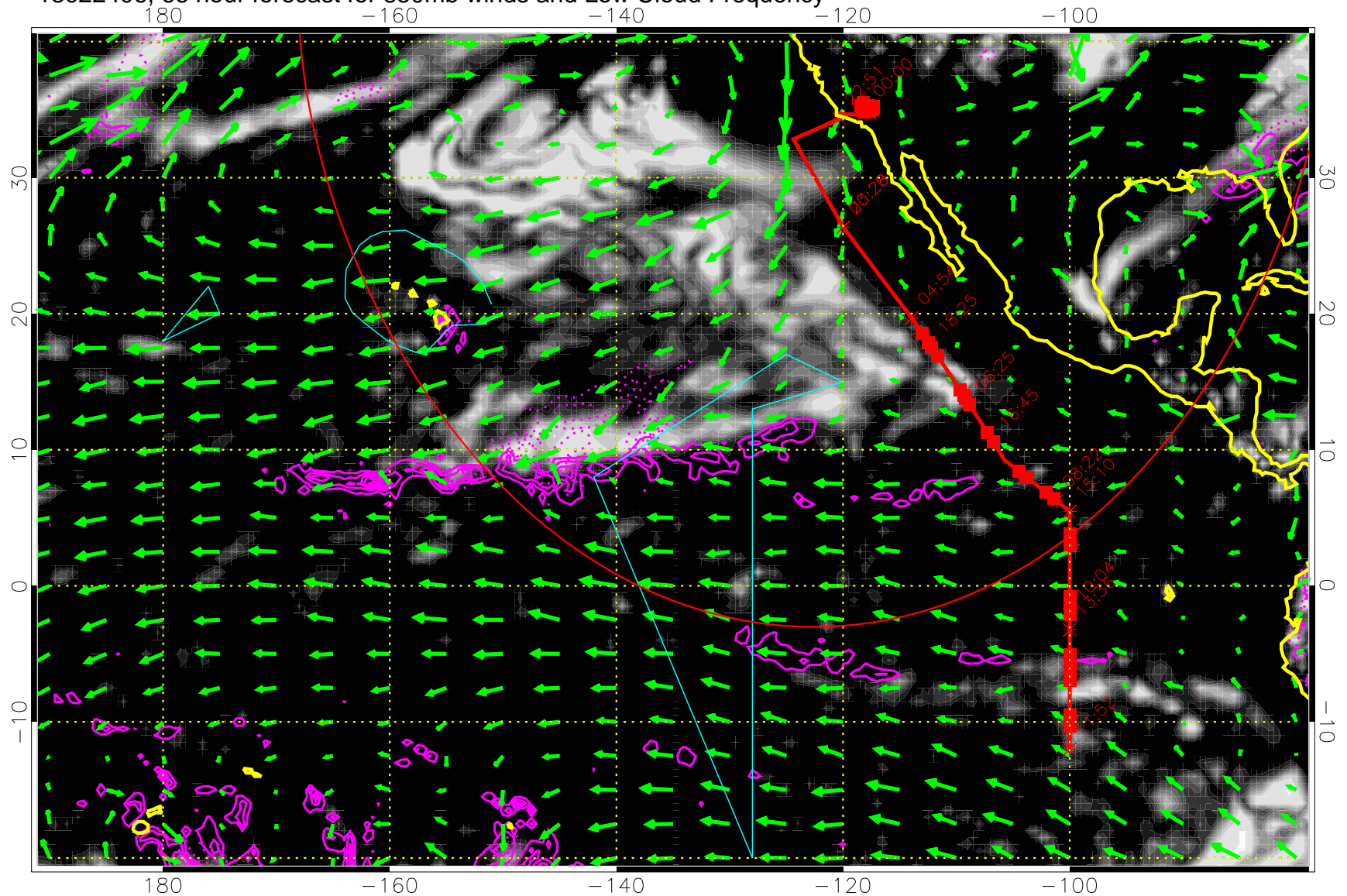
13022400, 60 hour forecast for 850mb winds and Low Cloud Frequency



Precip (tot dot, conv sol) past 6 hrs 6 kg/m2 contours, min 4

→ 30 m/s
Range ring of 4055 km -- 13 hours GH round trip

13022406, 66 hour forecast for 850mb winds and Low Cloud Frequency

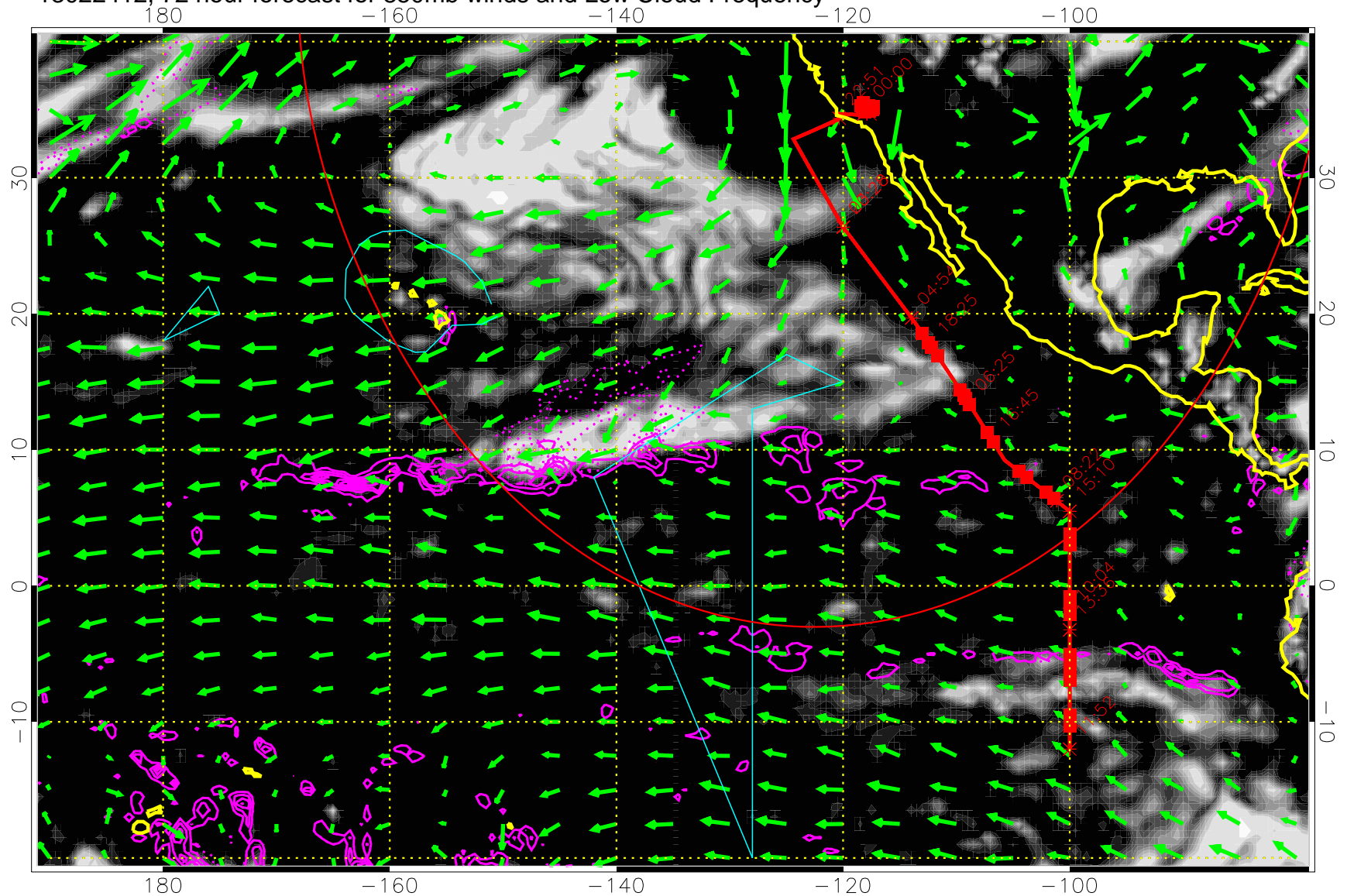


Precip (tot dot, conv sol) past 6 hrs 6 kg/m2 contours, min 4

→ 30 m/s

Range ring of 4055 km -- 13 hours GH round trip

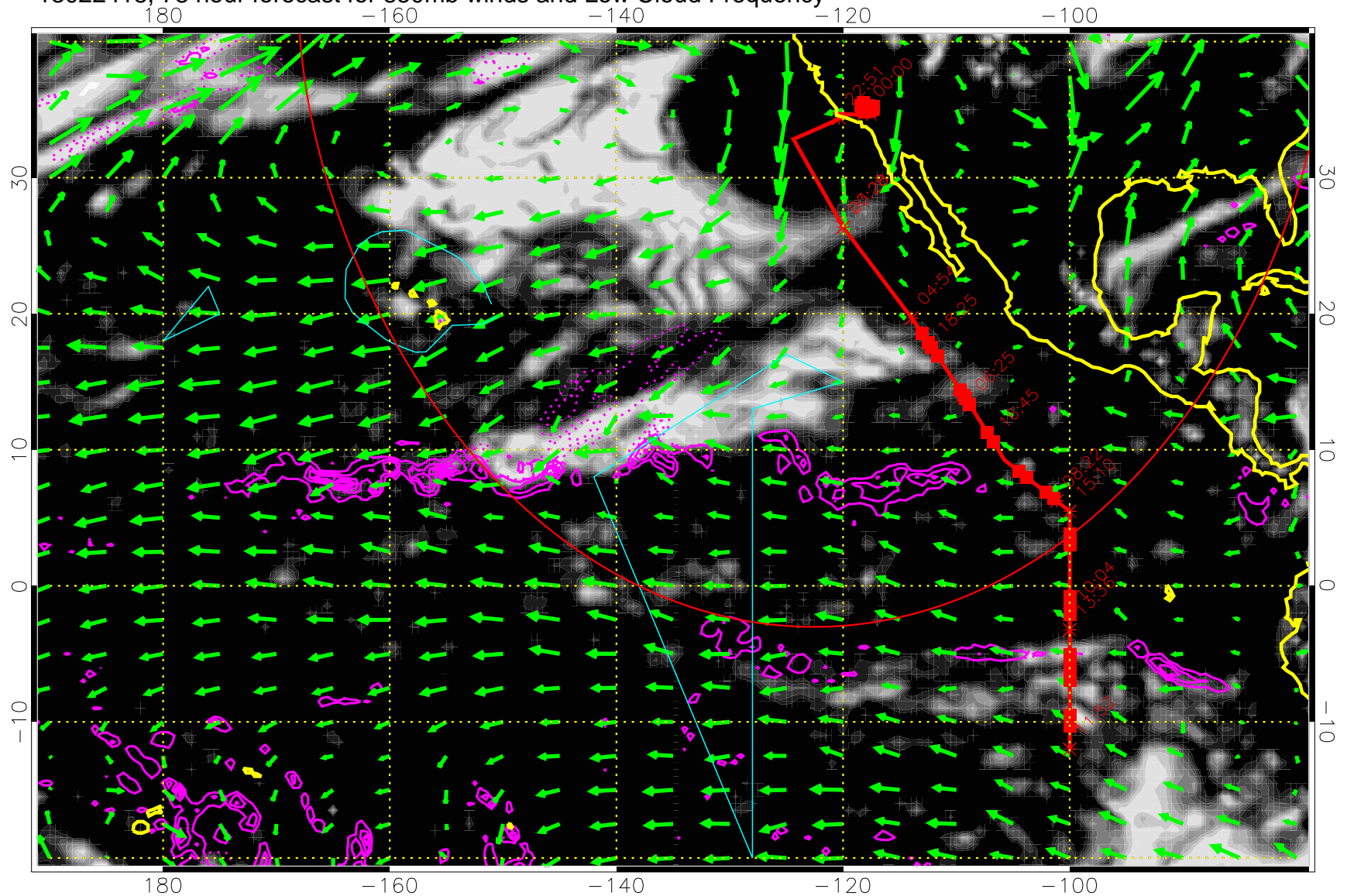
13022412, 72 hour forecast for 850mb winds and Low Cloud Frequency



Precip (tot dot, conv sol) past 6 hrs 6 kg/m2 contours, min 4

→ 30 m/s
Range ring of 4055 km -- 13 hours GH round trip

13022418, 78 hour forecast for 850mb winds and Low Cloud Frequency

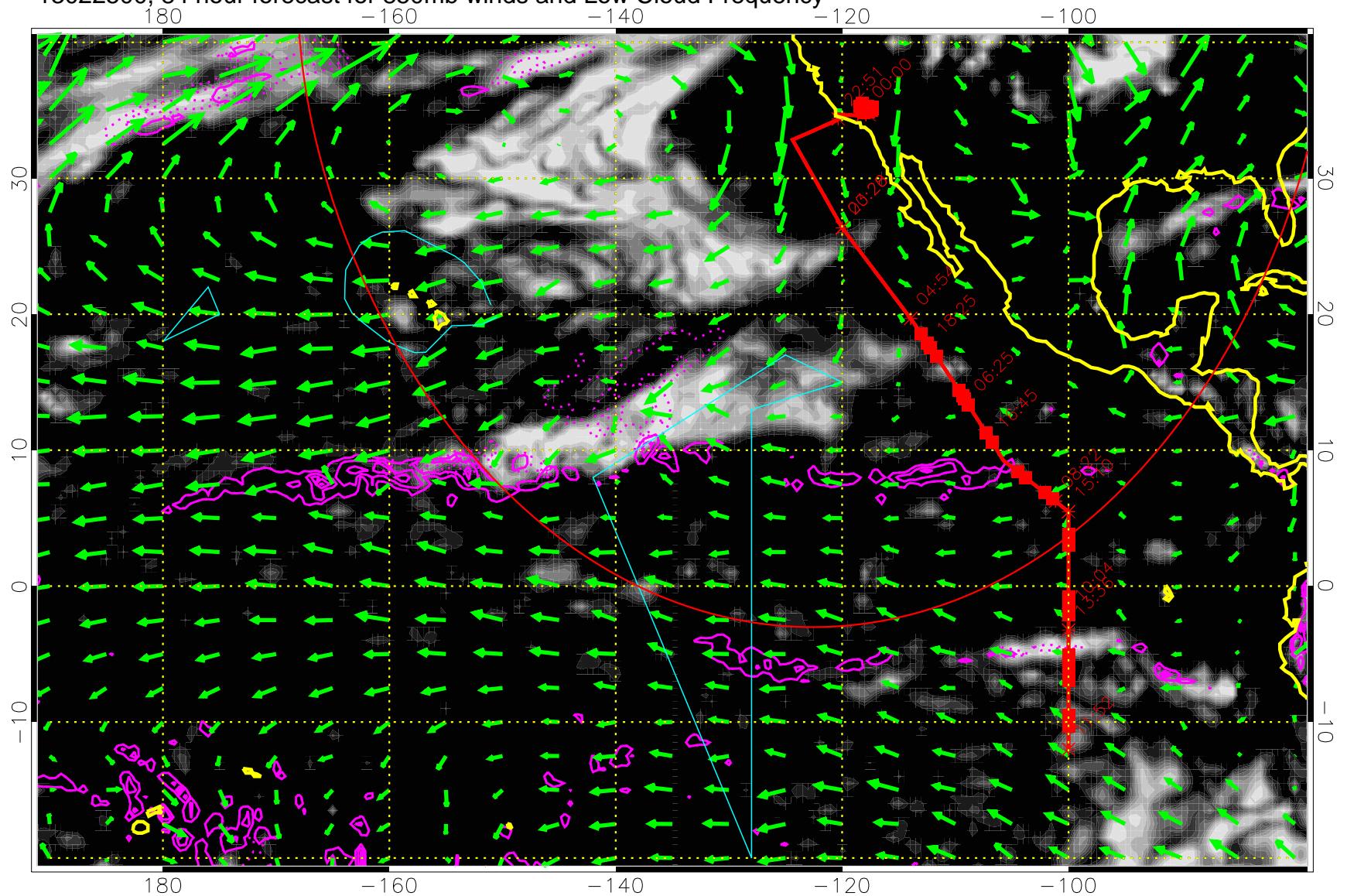


Precip (tot dot, conv sol) past 6 hrs 6 kg/m2 contours, min 4

→ 30 m/s

Range ring of 4055 km -- 13 hours GH round trip

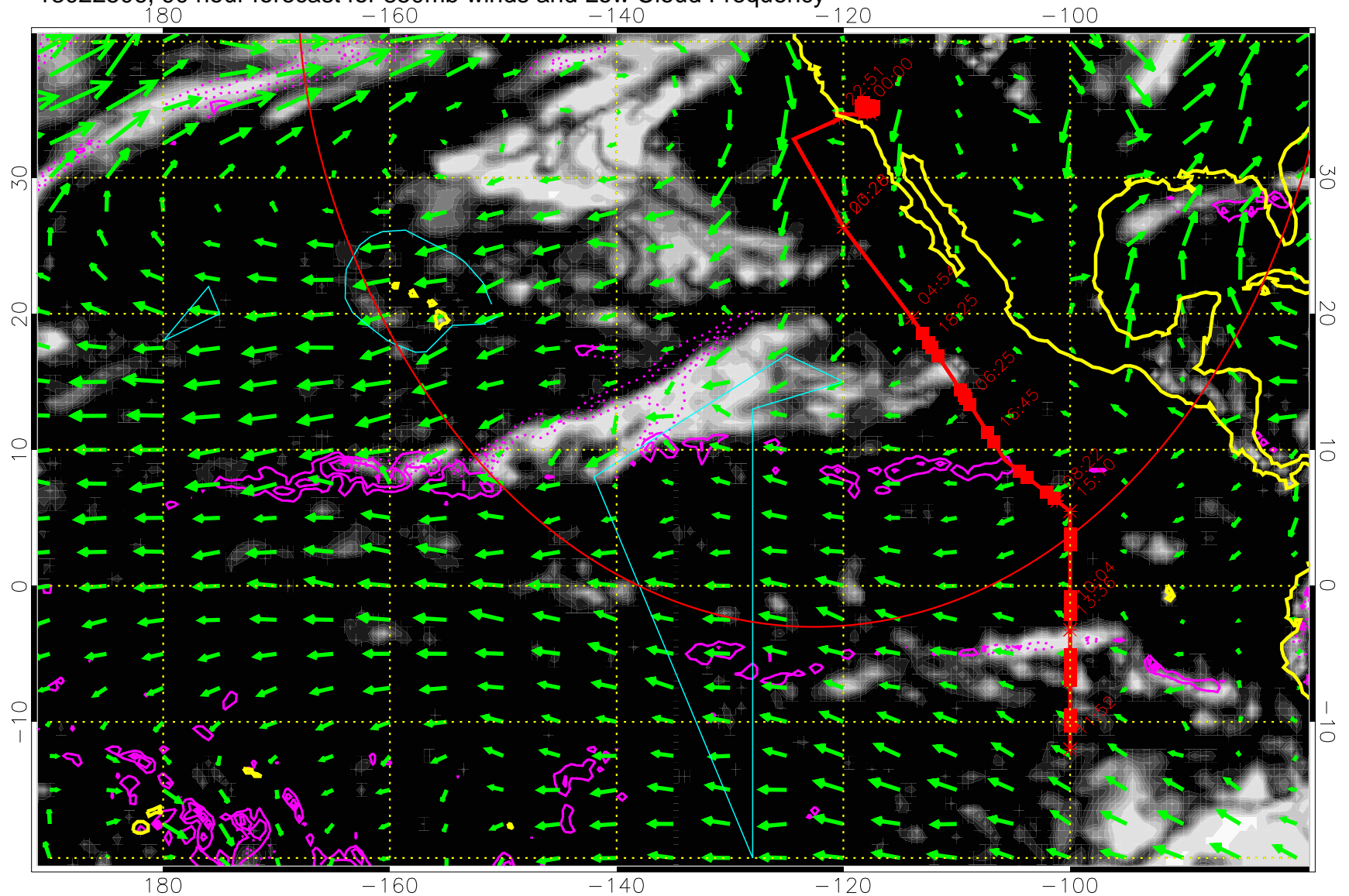
13022500, 84 hour forecast for 850mb winds and Low Cloud Frequency



Precip (tot dot, conv sol) past 6 hrs 6 kg/m2 contours, min 4

→ 30 m/s
Range ring of 4055 km -- 13 hours GH round trip

13022506, 90 hour forecast for 850mb winds and Low Cloud Frequency

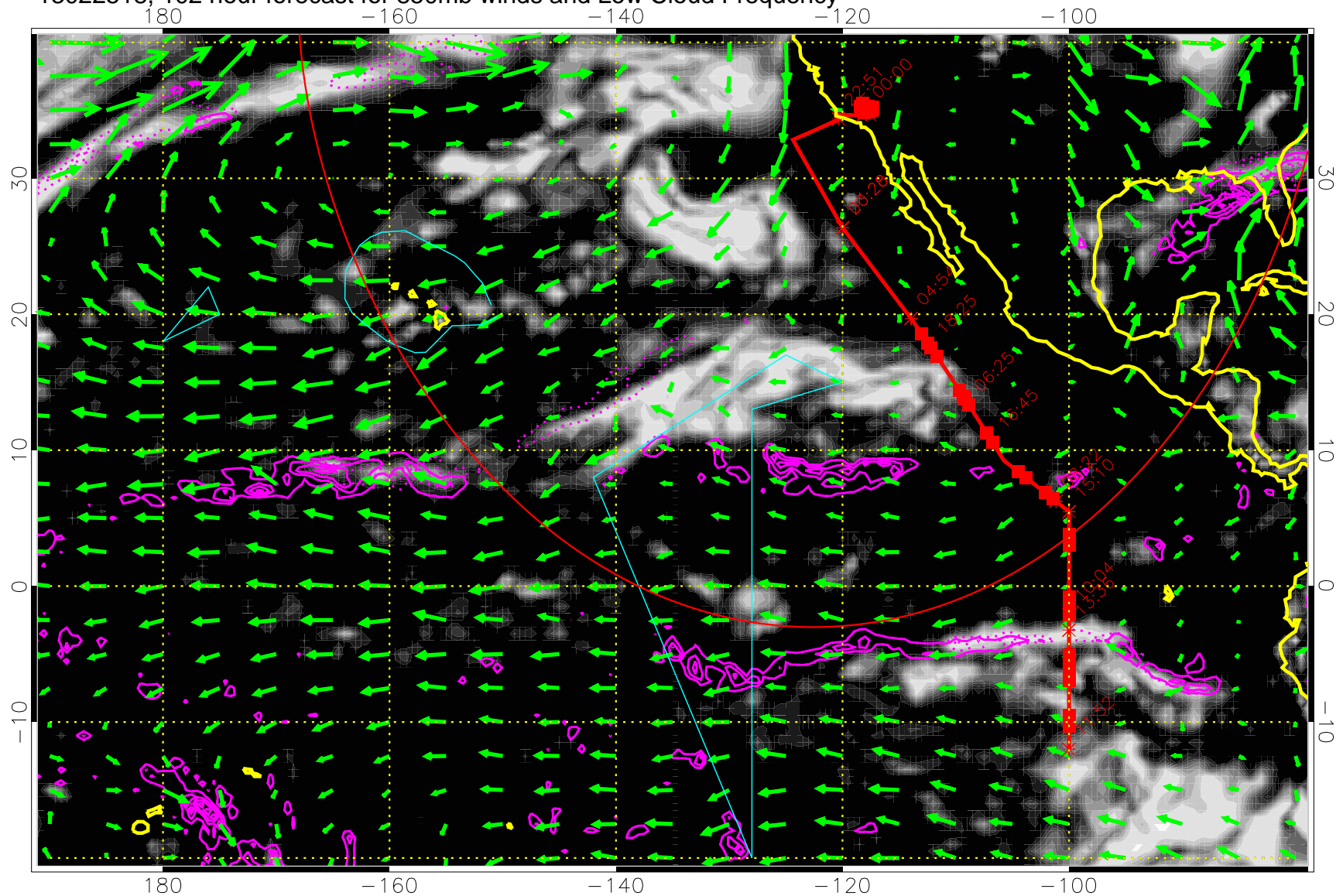


Precip (tot dot, conv sol) past 6 hrs 6 kg/m2 contours, min 4

→ 30 m/s

Range ring of 4055 km -- 13 hours GH round trip

13022518, 102 hour forecast for 850mb winds and Low Cloud Frequency

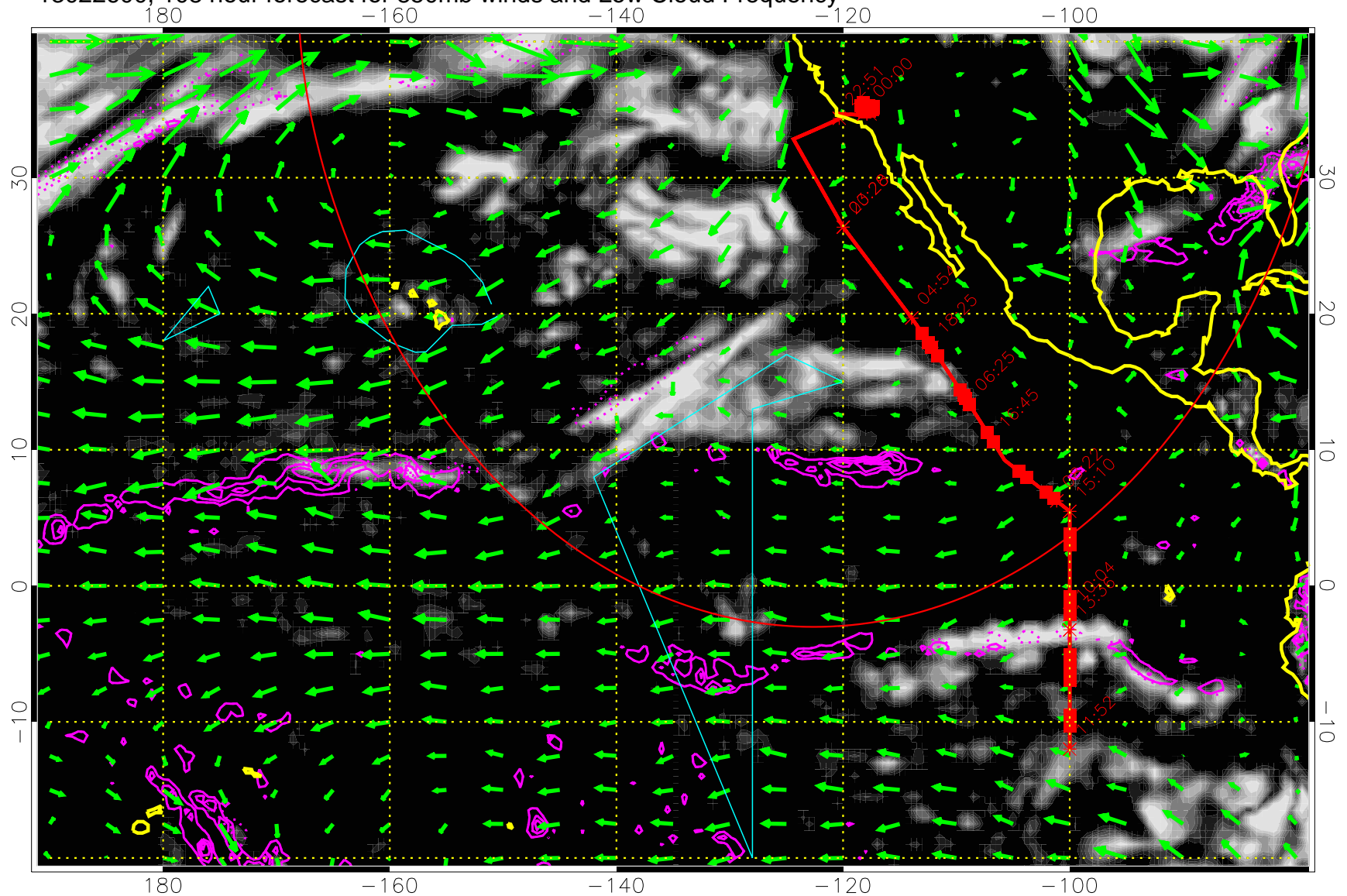


Precip (tot dot, conv sol) past 6 hrs 6 kg/m2 contours, min 4

→ 30 m/s

Range ring of 4055 km -- 13 hours GH round trip

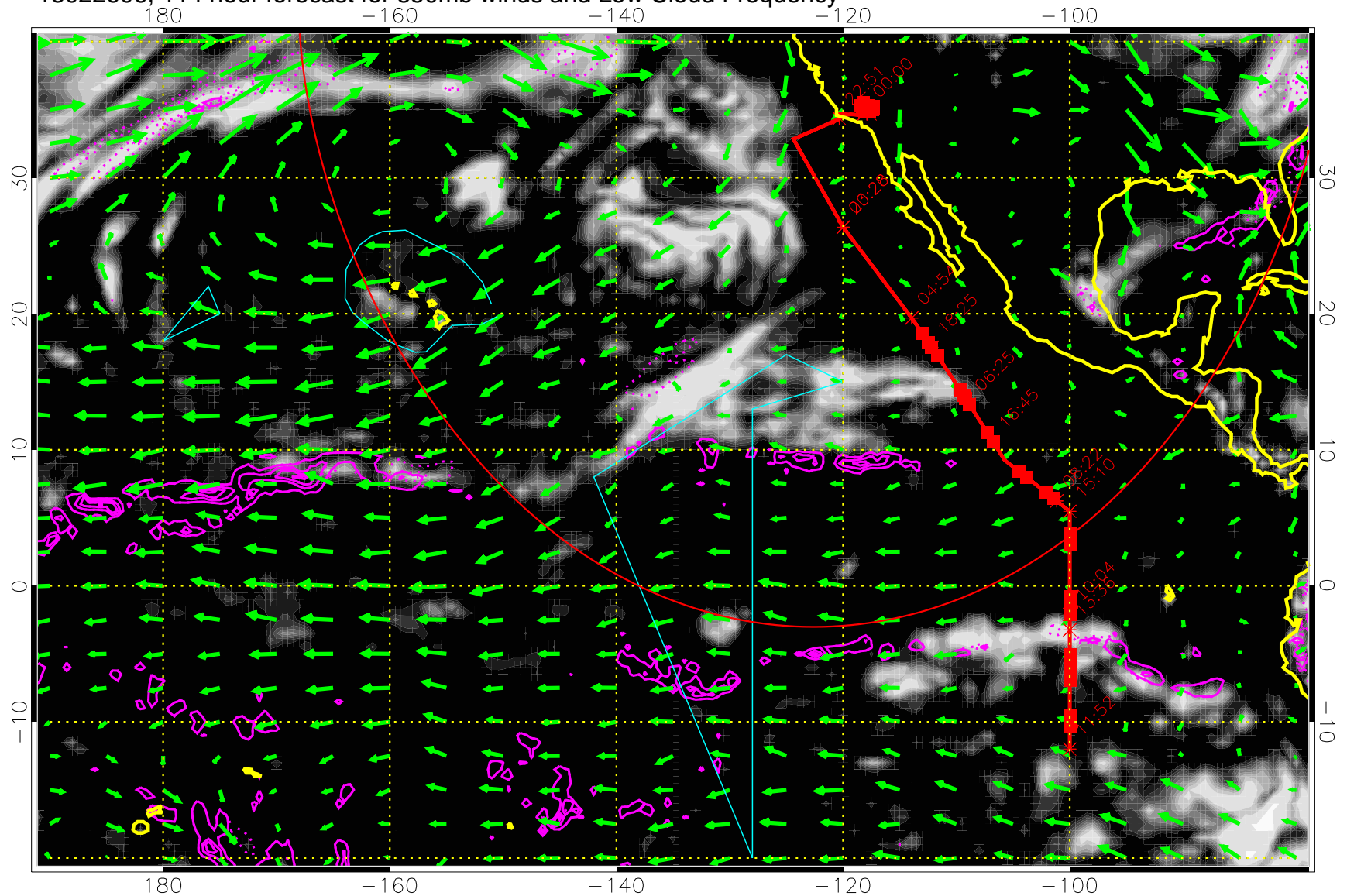
13022600, 108 hour forecast for 850mb winds and Low Cloud Frequency



Precip (tot dot, conv sol) past 6 hrs 6 kg/m2 contours, min 4

→ 30 m/s
Range ring of 4055 km -- 13 hours GH round trip

13022606, 114 hour forecast for 850mb winds and Low Cloud Frequency

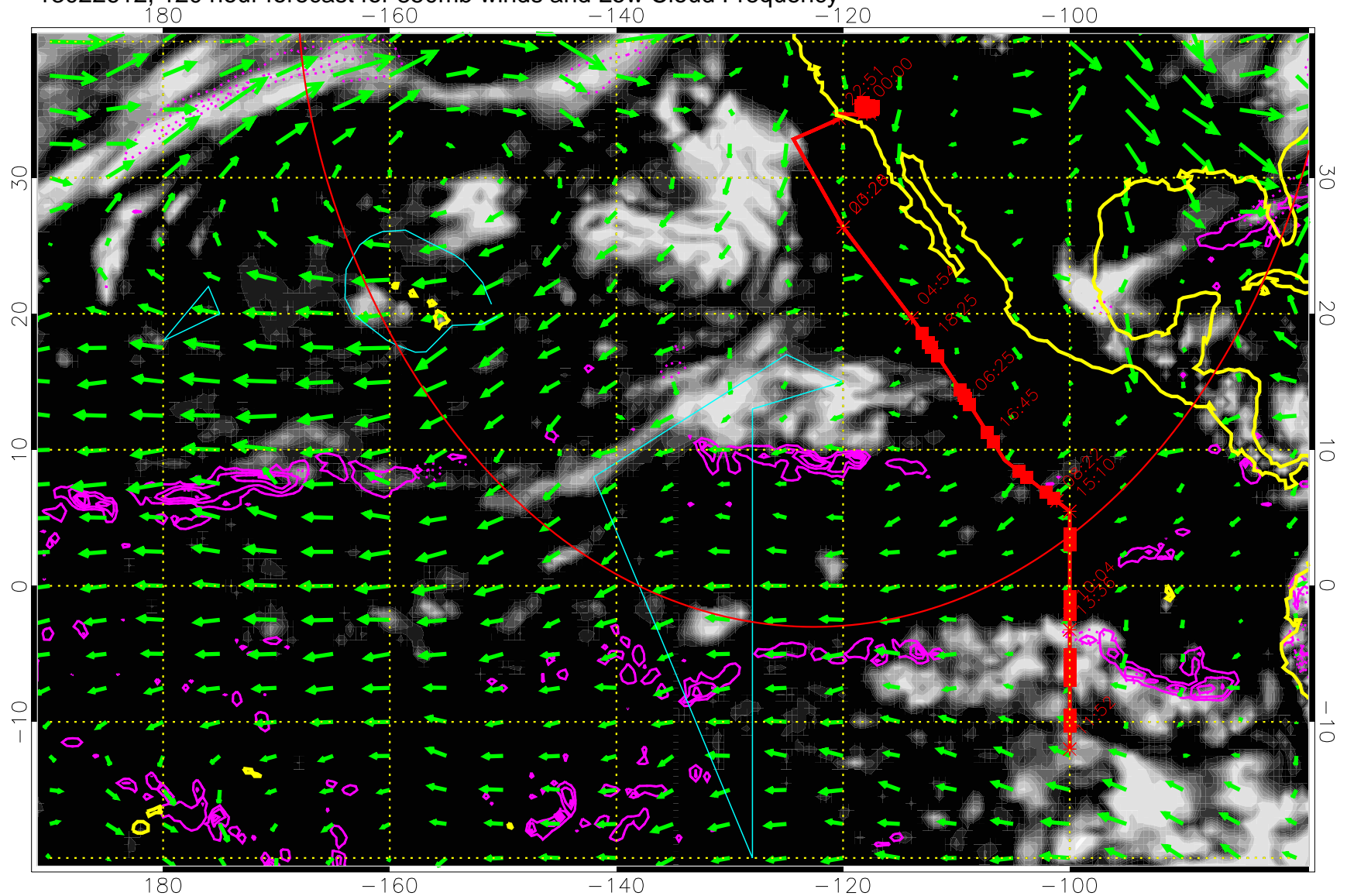


Precip (tot dot, conv sol) past 6 hrs 6 kg/m2 contours, min 4

→ 30 m/s

Range ring of 4055 km -- 13 hours GH round trip

13022612, 120 hour forecast for 850mb winds and Low Cloud Frequency



Precip (tot dot, conv sol) past 6 hrs 6 kg/m2 contours, min 4