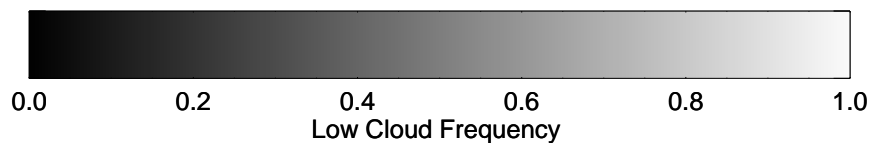
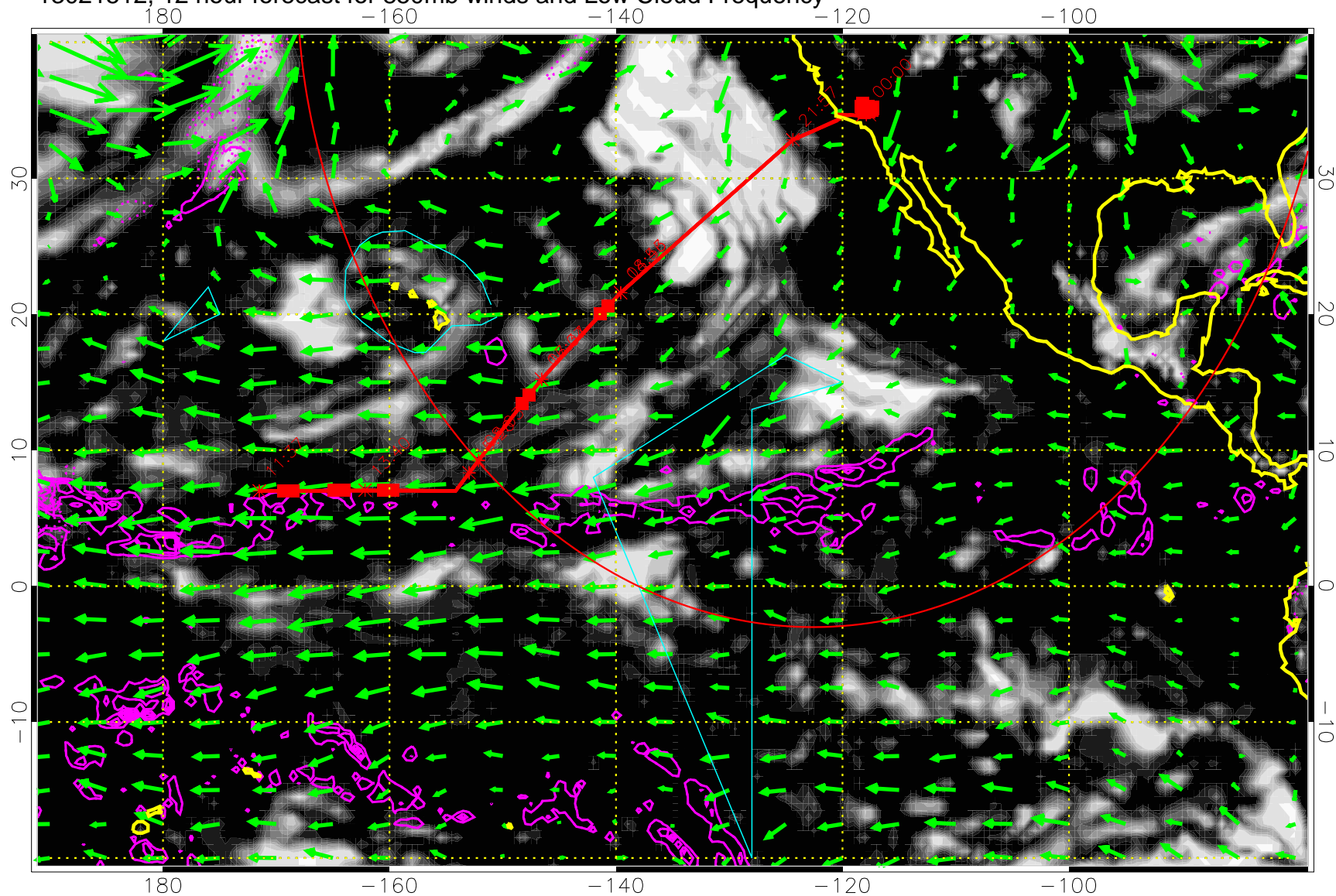


13021512, 12 hour forecast for 850mb winds and Low Cloud Frequency

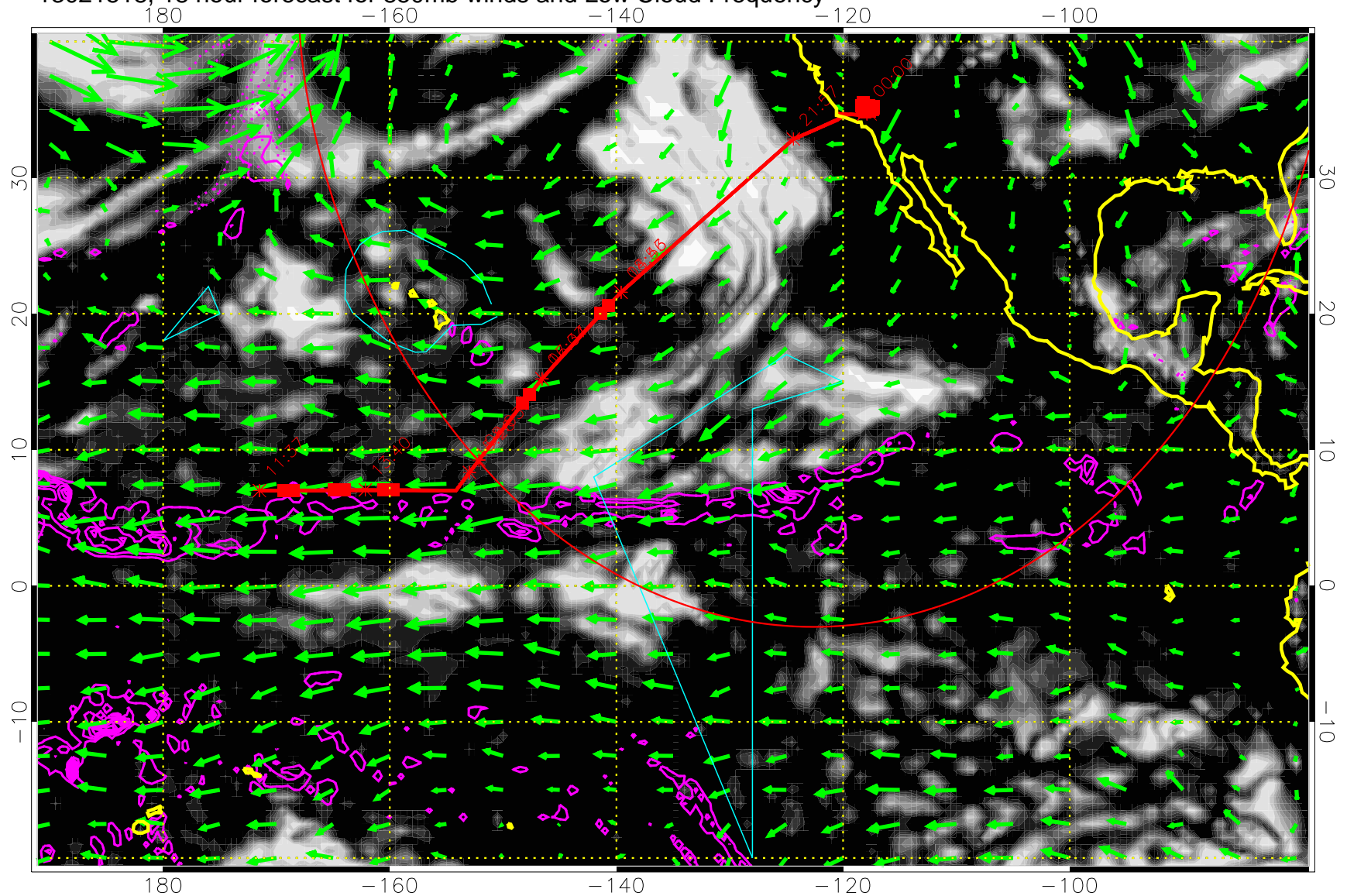


Precip (tot dot, conv sol) past 6 hrs 6 kg/m2 contours, min 4

→ 30 m/s

Range ring of 4055 km -- 13 hours GH round trip

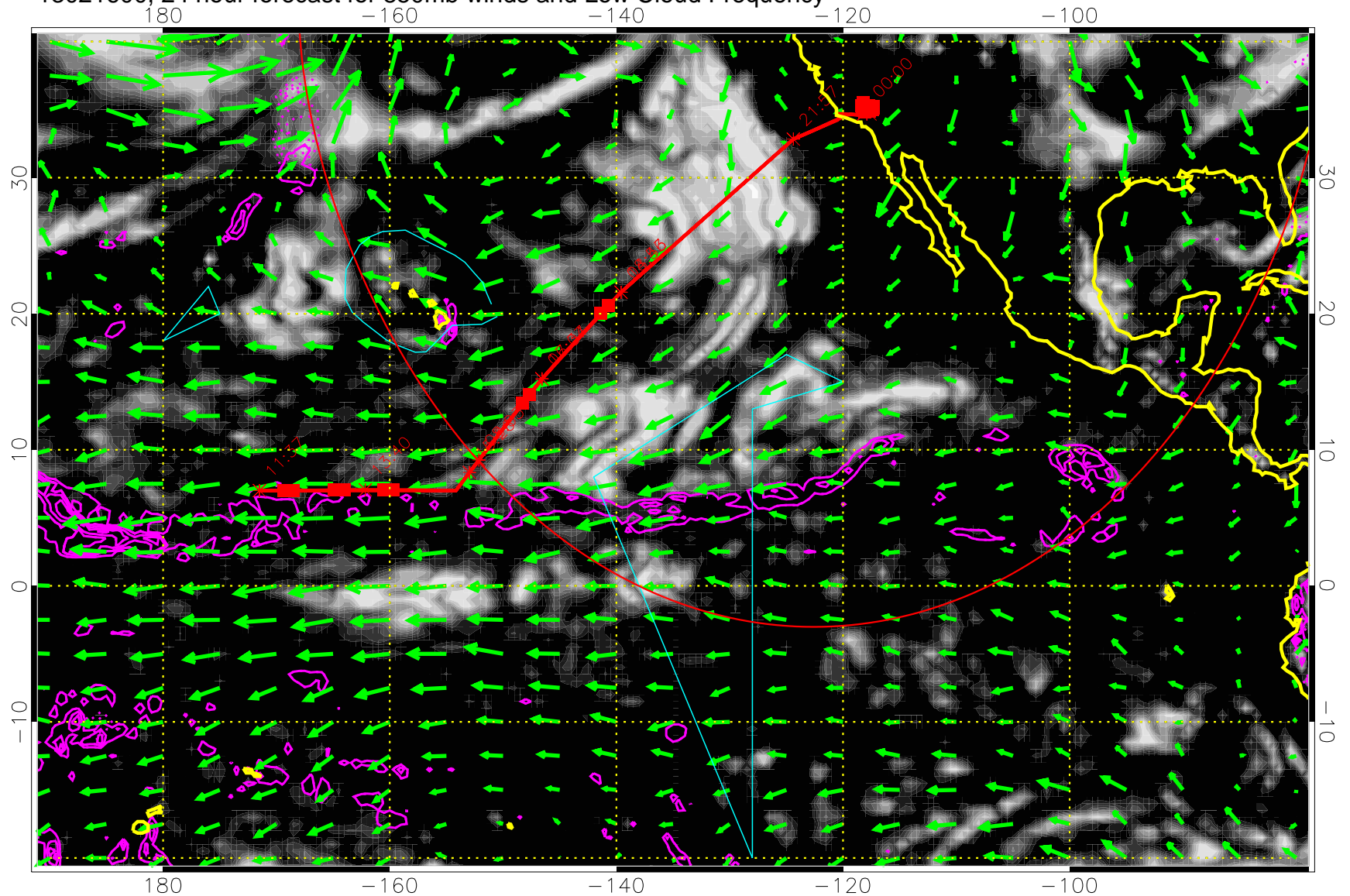
13021518, 18 hour forecast for 850mb winds and Low Cloud Frequency



Precip (tot dot, conv sol) past 6 hrs 6 kg/m2 contours, min 4

→ 30 m/s  
Range ring of 4055 km -- 13 hours GH round trip

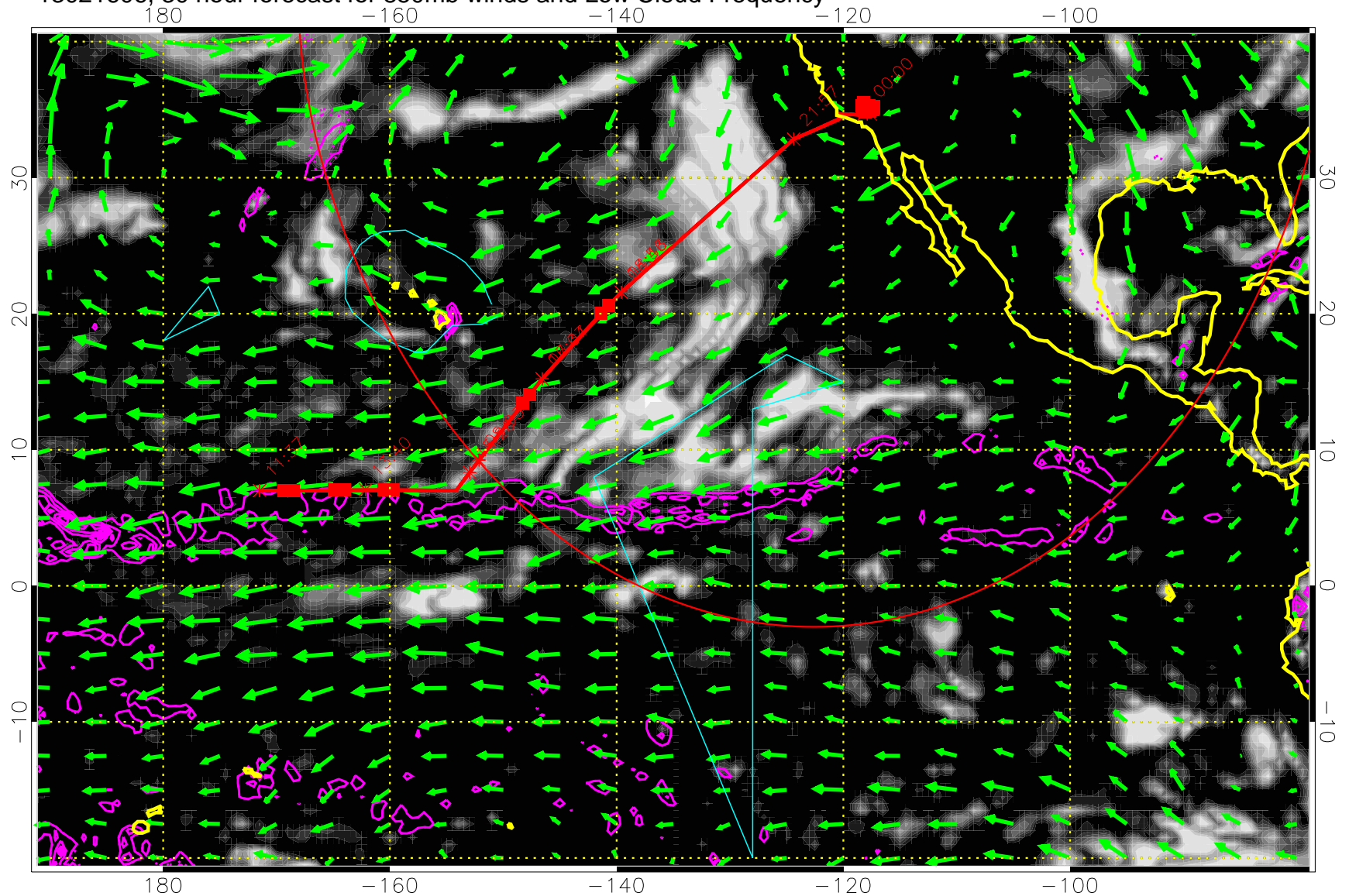
13021600, 24 hour forecast for 850mb winds and Low Cloud Frequency



Precip (tot dot, conv sol) past 6 hrs 6 kg/m2 contours, min 4

→ 30 m/s  
Range ring of 4055 km -- 13 hours GH round trip

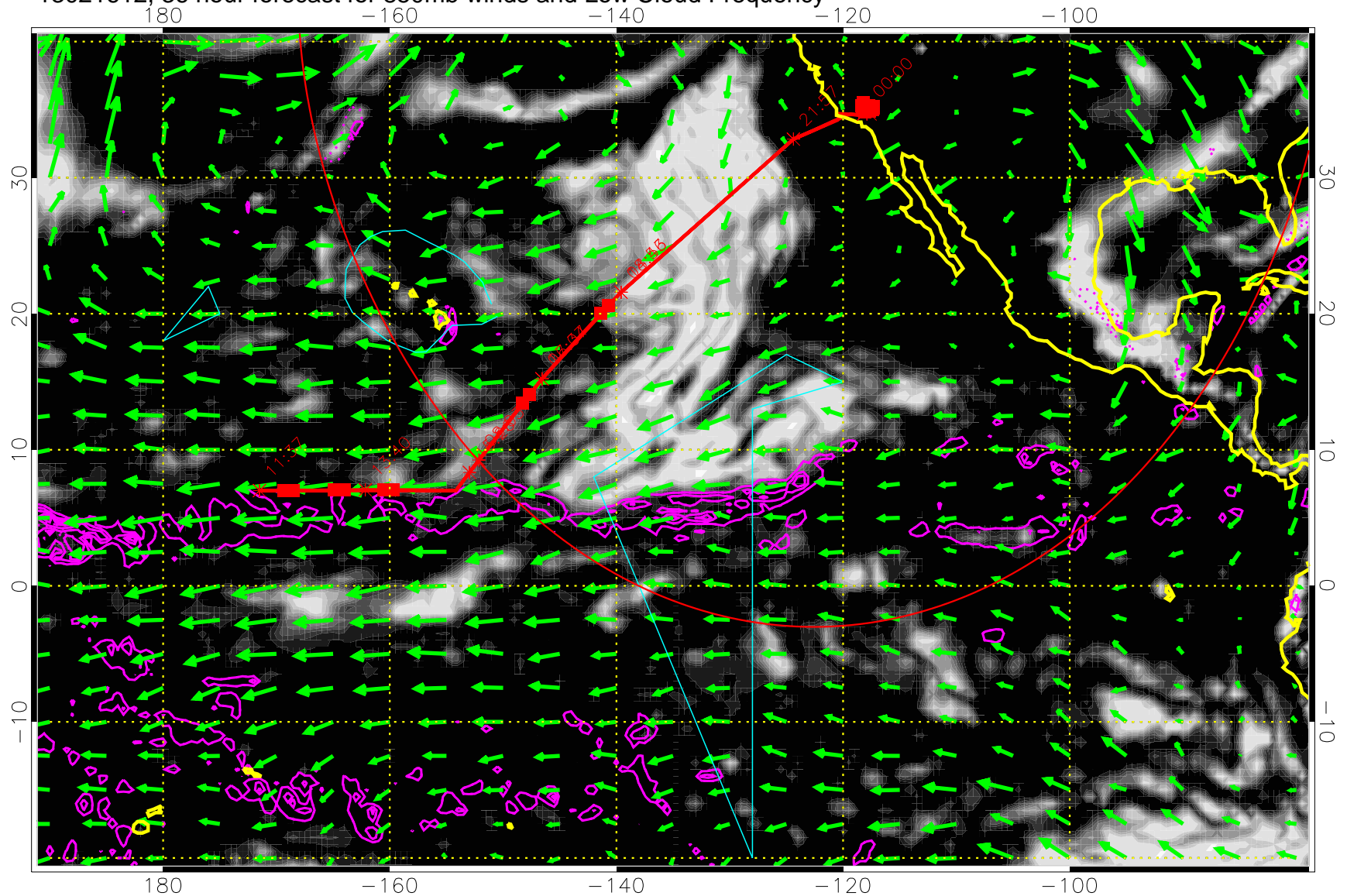
13021606, 30 hour forecast for 850mb winds and Low Cloud Frequency



Precip (tot dot, conv sol) past 6 hrs 6 kg/m2 contours, min 4

→ 30 m/s  
Range ring of 4055 km -- 13 hours GH round trip

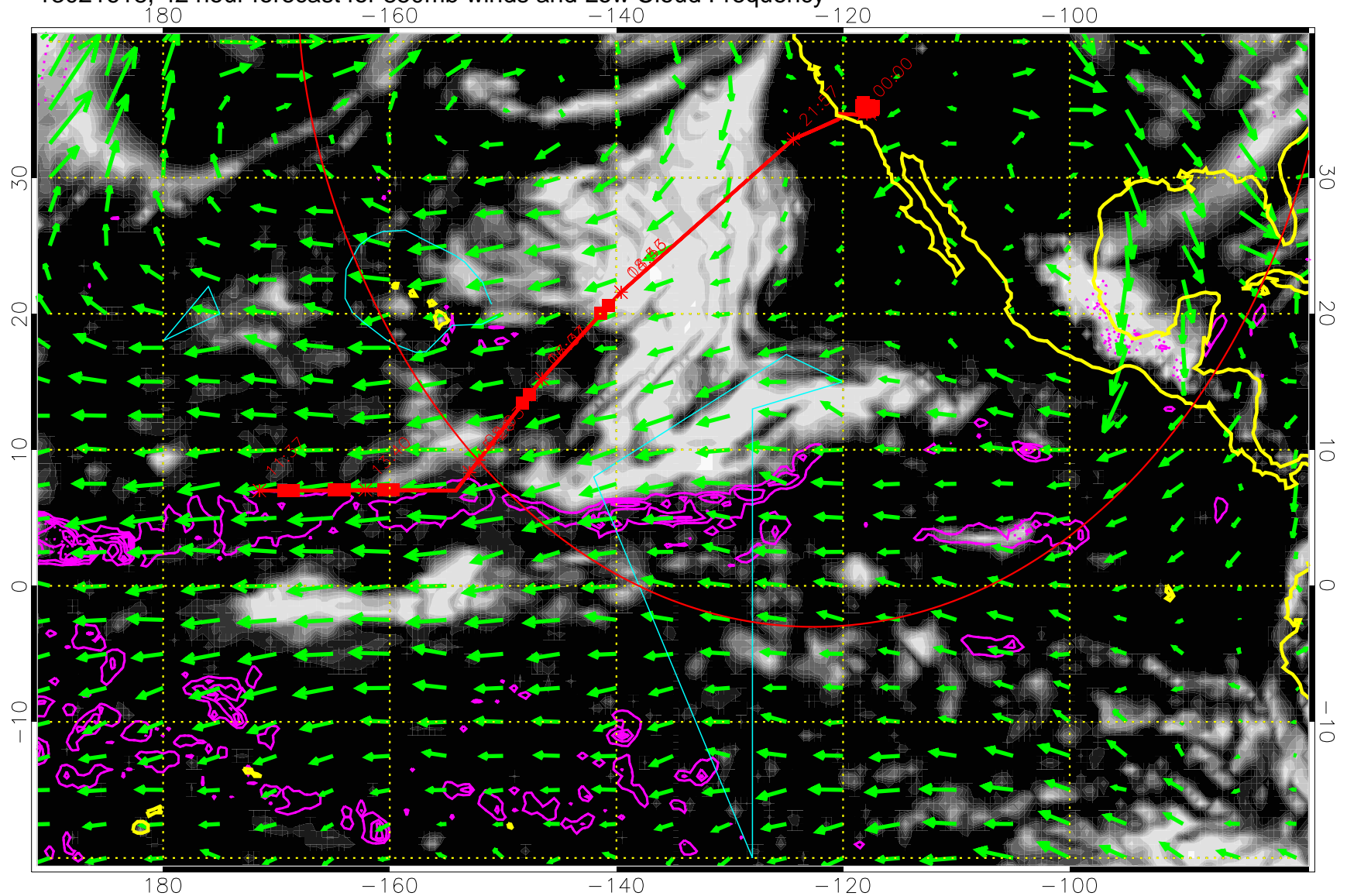
13021612, 36 hour forecast for 850mb winds and Low Cloud Frequency



Precip (tot dot, conv sol) past 6 hrs 6 kg/m2 contours, min 4

→ 30 m/s  
Range ring of 4055 km -- 13 hours GH round trip

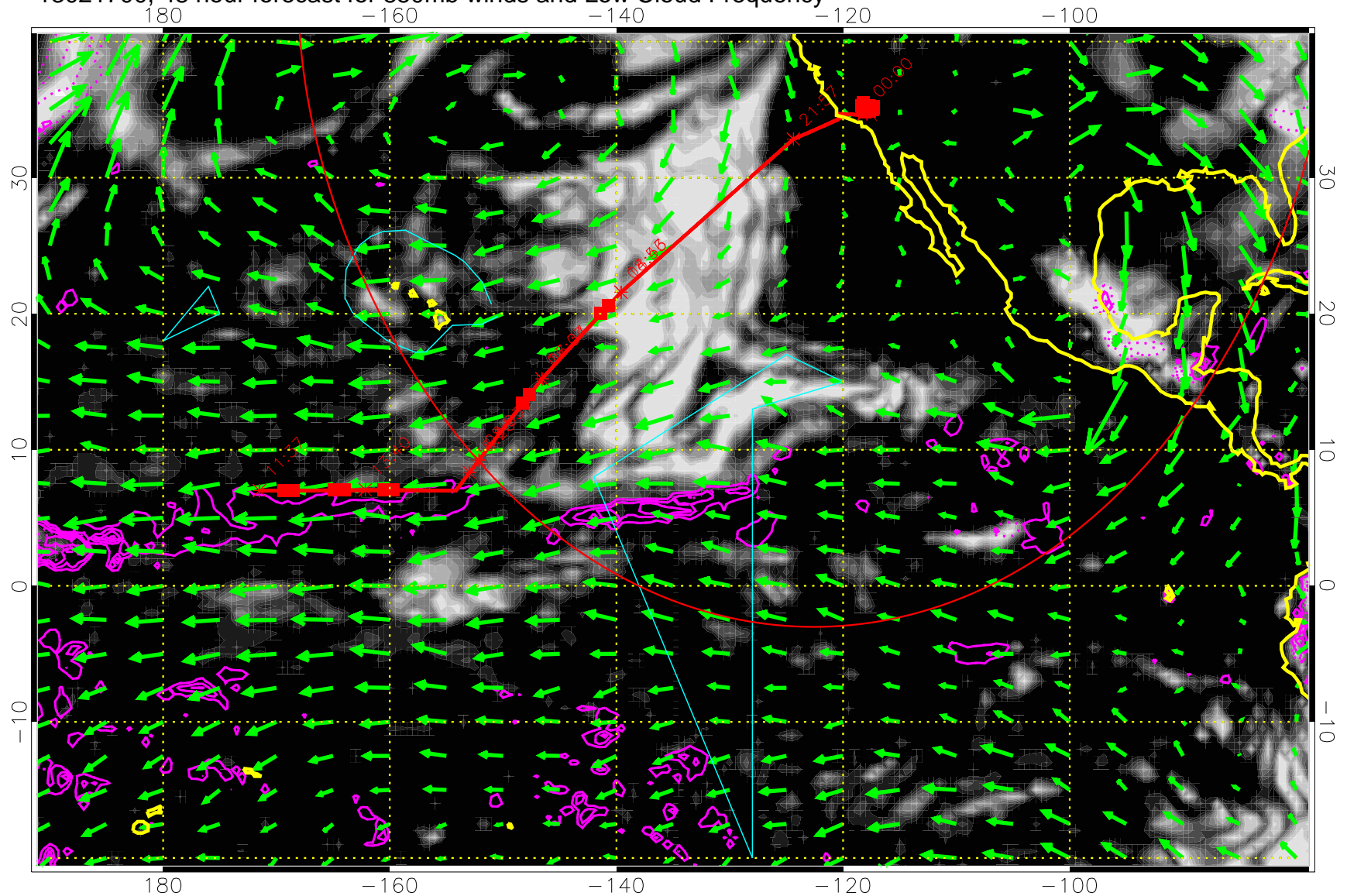
13021618, 42 hour forecast for 850mb winds and Low Cloud Frequency



Precip (tot dot, conv sol) past 6 hrs 6 kg/m2 contours, min 4

→ 30 m/s  
Range ring of 4055 km -- 13 hours GH round trip

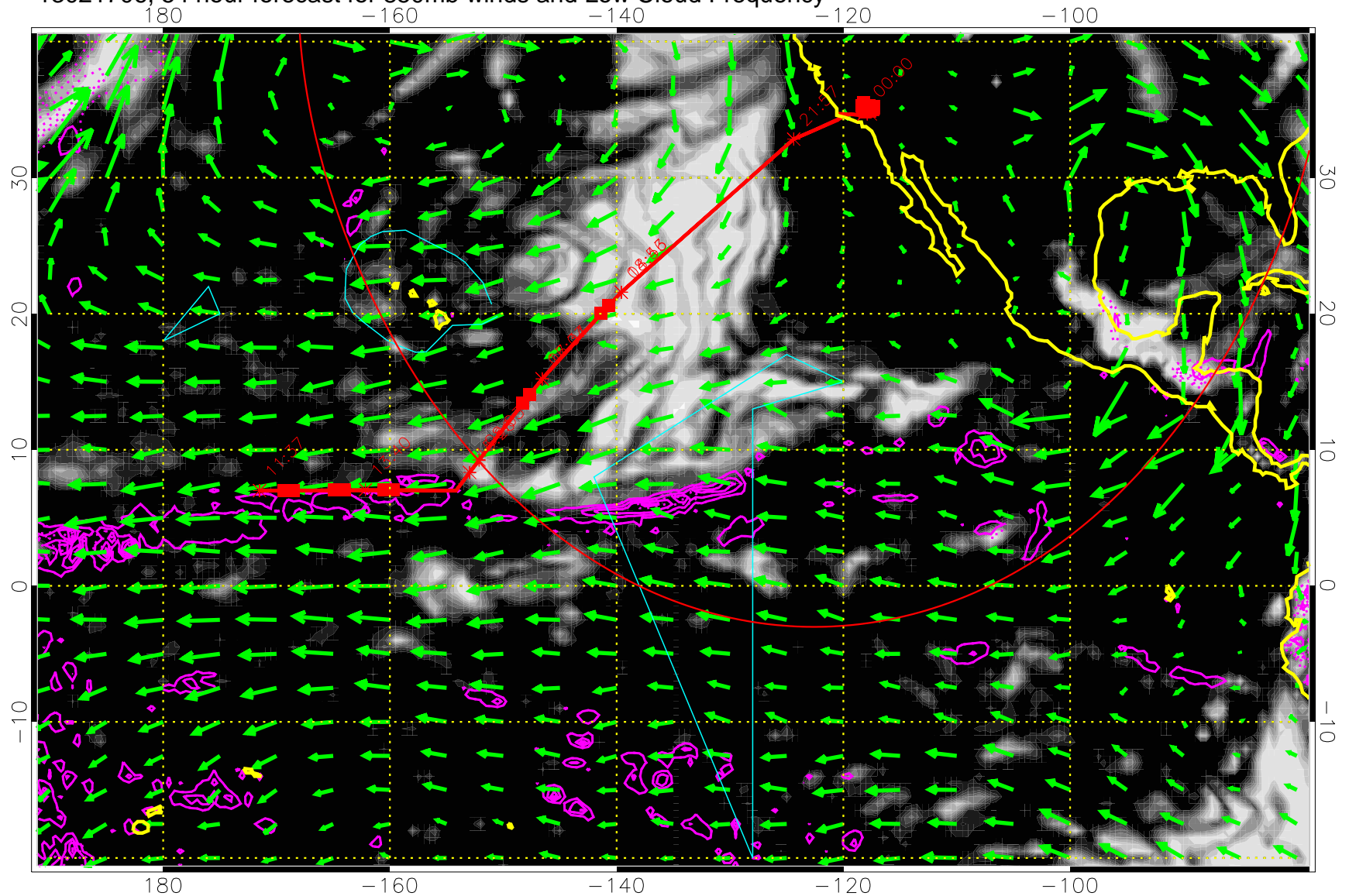
13021700, 48 hour forecast for 850mb winds and Low Cloud Frequency



Precip (tot dot, conv sol) past 6 hrs 6 kg/m2 contours, min 4

→ 30 m/s  
Range ring of 4055 km -- 13 hours GH round trip

13021706, 54 hour forecast for 850mb winds and Low Cloud Frequency

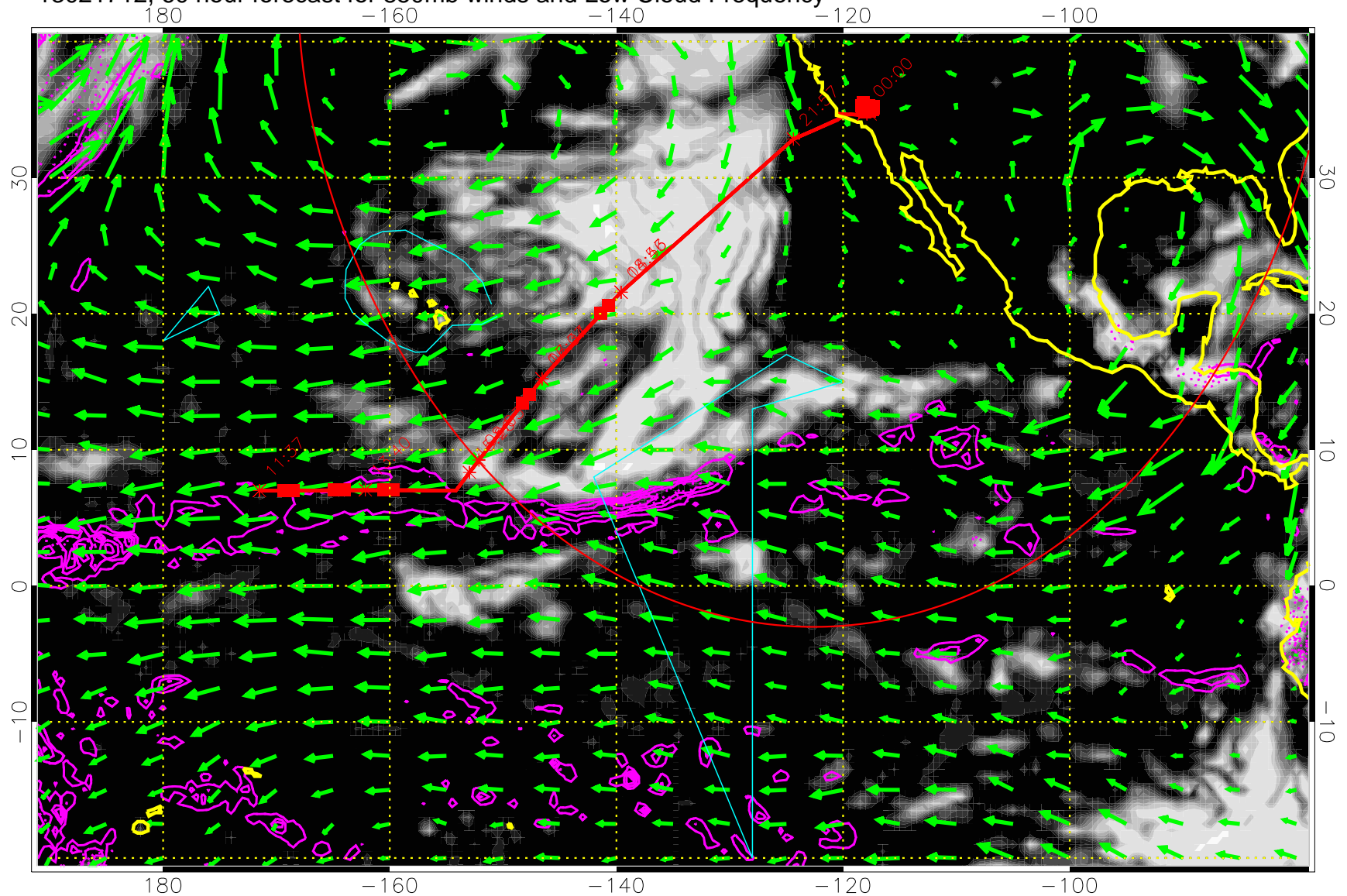


Precip (tot dot, conv sol) past 6 hrs 6 kg/m2 contours, min 4

→ 30 m/s  
Range ring of 4055 km -- 13 hours GH round trip



13021712, 60 hour forecast for 850mb winds and Low Cloud Frequency

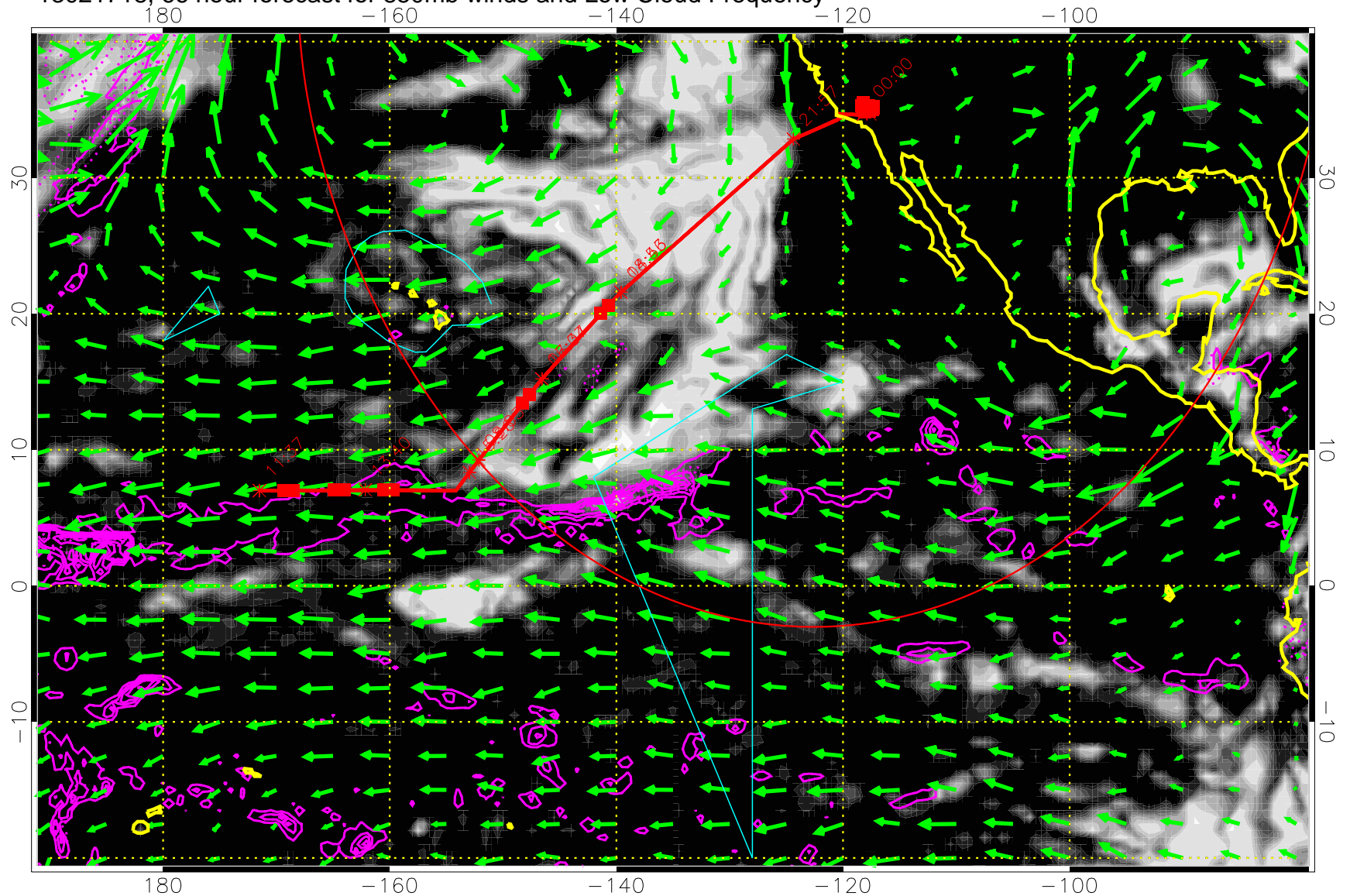


Precip (tot dot, conv sol) past 6 hrs 6 kg/m2 contours, min 4

→ 30 m/s

Range ring of 4055 km -- 13 hours GH round trip

13021718, 66 hour forecast for 850mb winds and Low Cloud Frequency



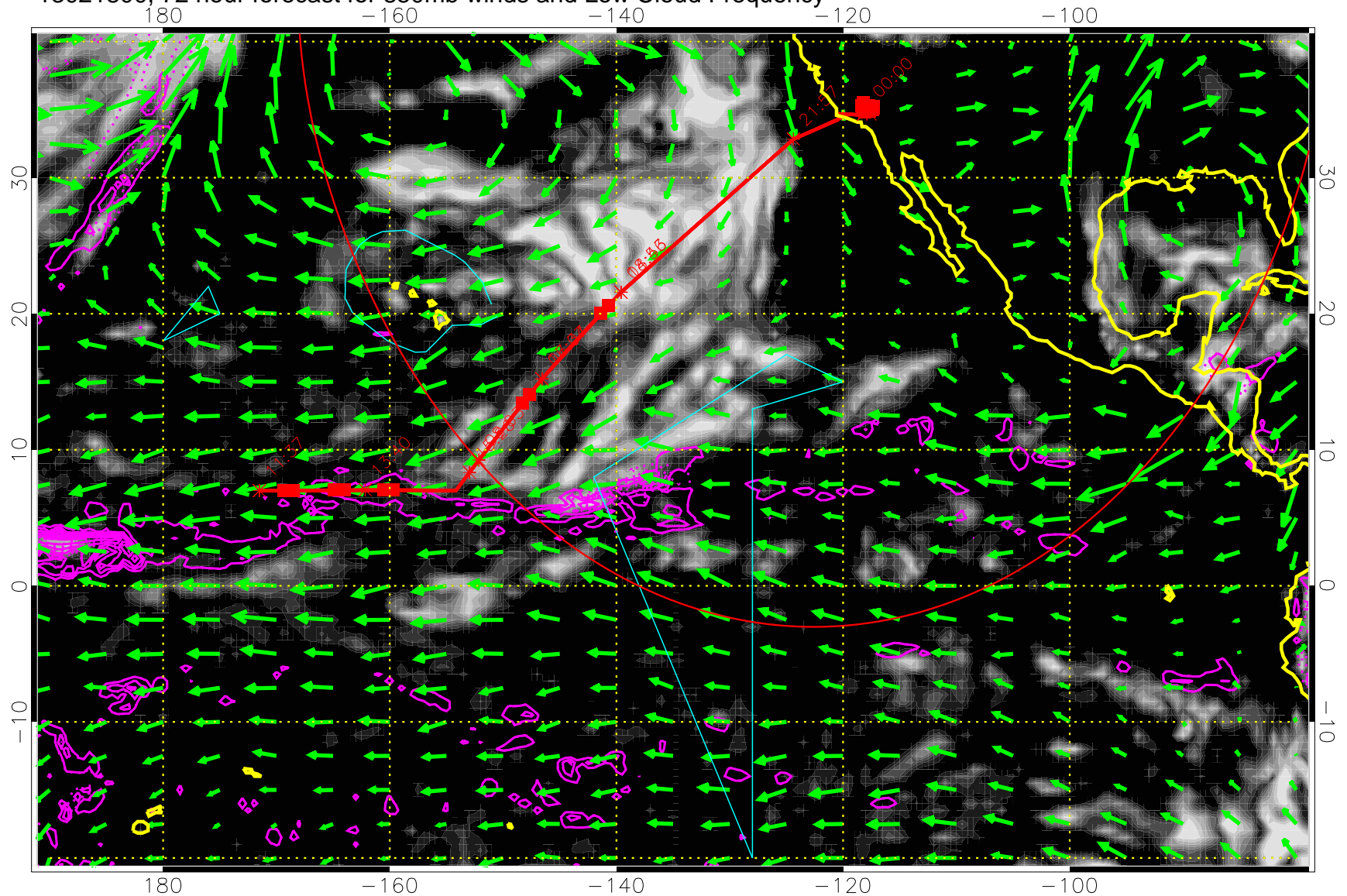
0.0 0.2 0.4 0.6 0.8 1.0  
Low Cloud Frequency

Precip (tot dot, conv sol) past 6 hrs 6 kg/m2 contours, min 4

→ 30 m/s

Range ring of 4055 km -- 13 hours GH round trip

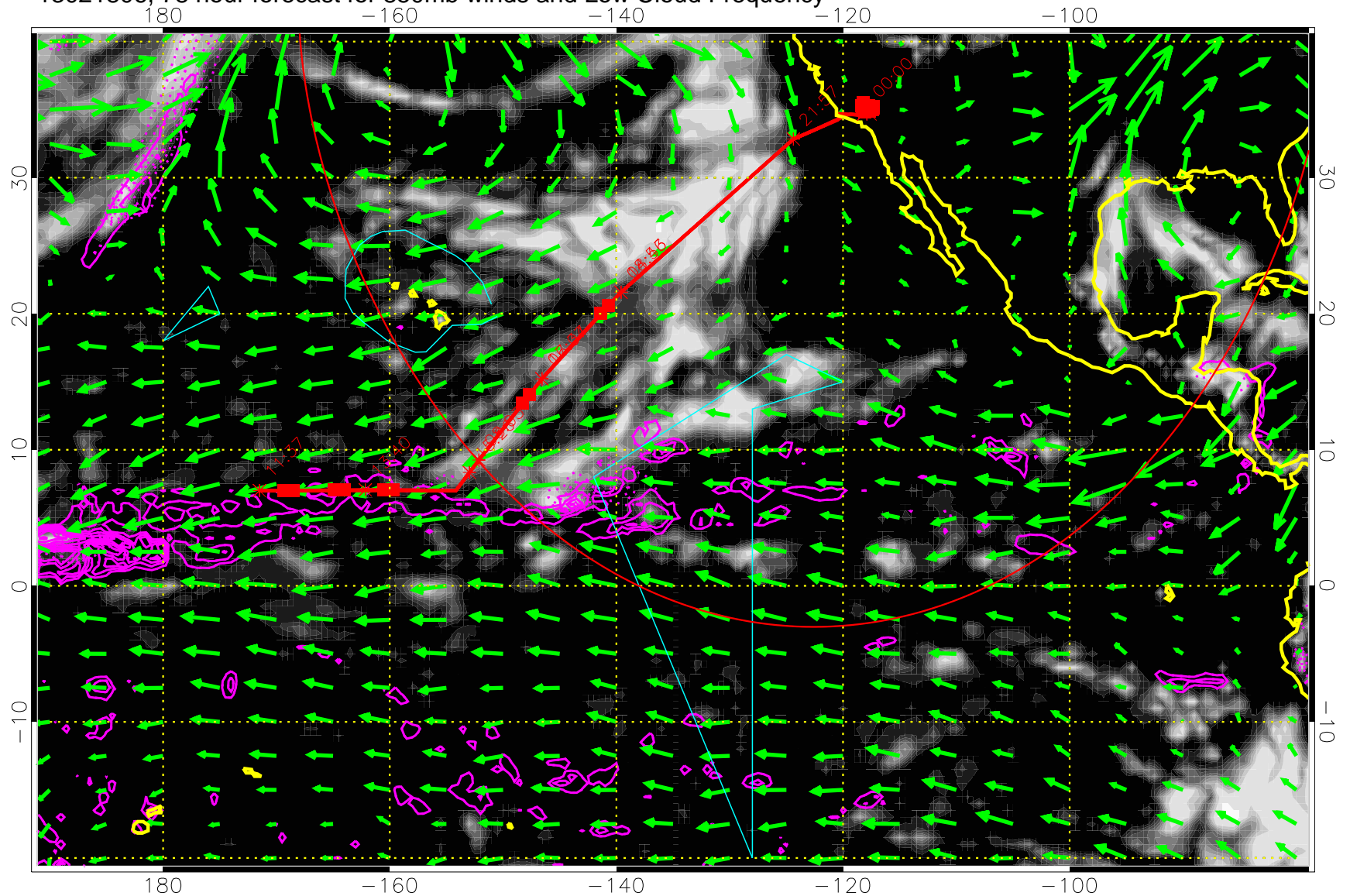
13021800, 72 hour forecast for 850mb winds and Low Cloud Frequency



Precip (tot dot, conv sol) past 6 hrs 6 kg/m2 contours, min 4

→ 30 m/s  
Range ring of 4055 km -- 13 hours GH round trip

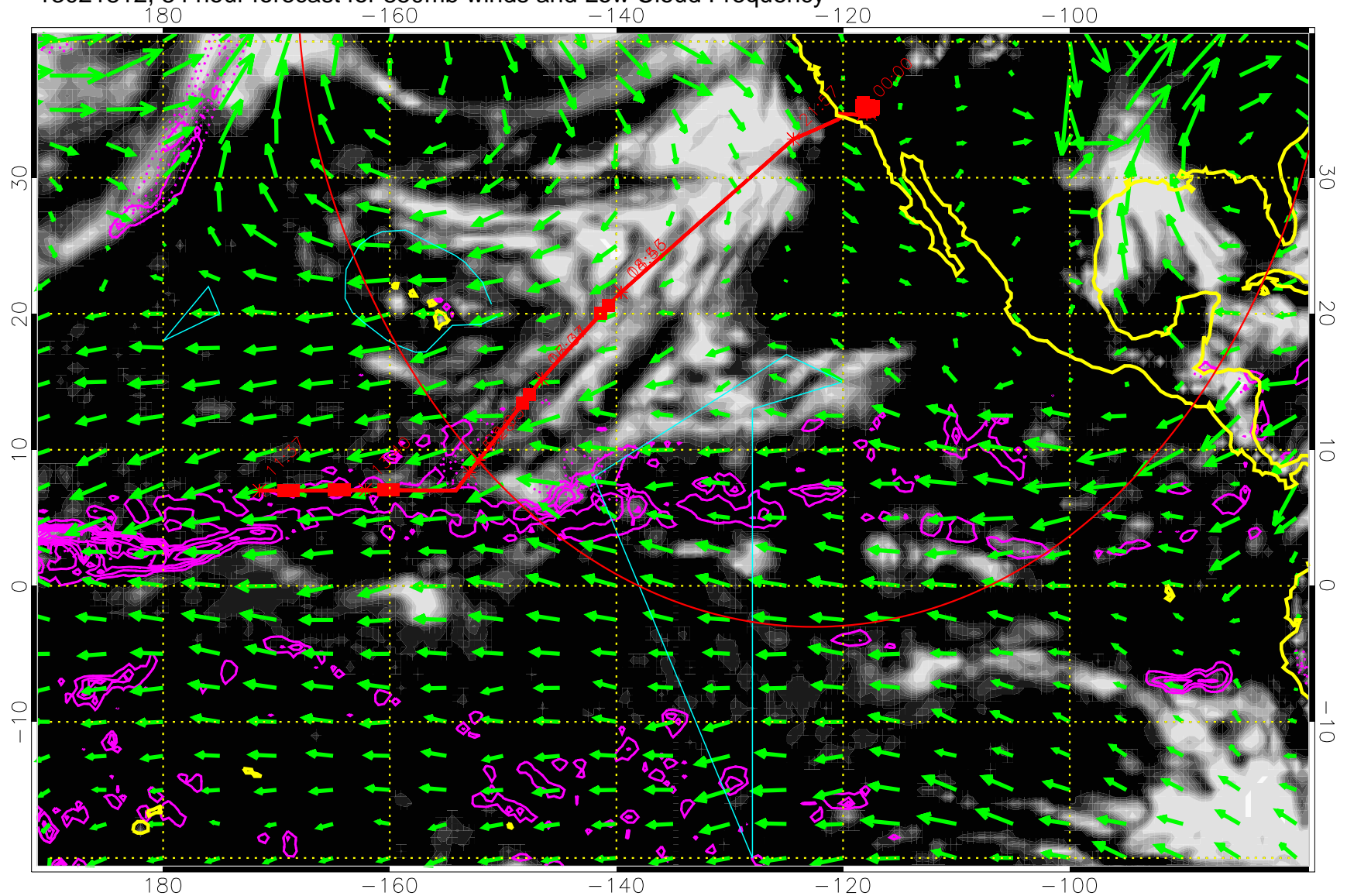
13021806, 78 hour forecast for 850mb winds and Low Cloud Frequency



Precip (tot dot, conv sol) past 6 hrs 6 kg/m2 contours, min 4

→ 30 m/s  
Range ring of 4055 km -- 13 hours GH round trip

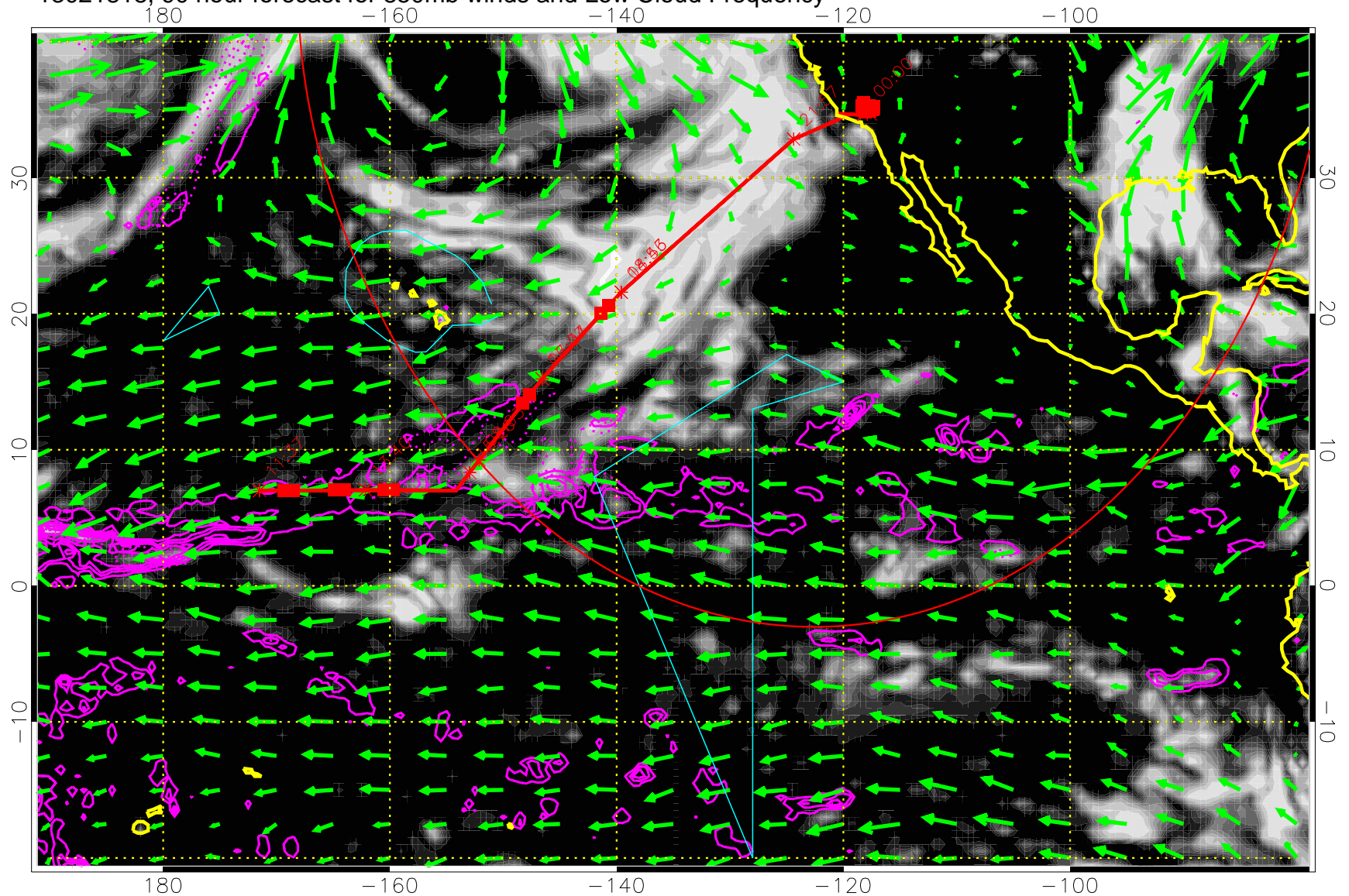
13021812, 84 hour forecast for 850mb winds and Low Cloud Frequency



Precip (tot dot, conv sol) past 6 hrs 6 kg/m2 contours, min 4

→ 30 m/s  
Range ring of 4055 km -- 13 hours GH round trip

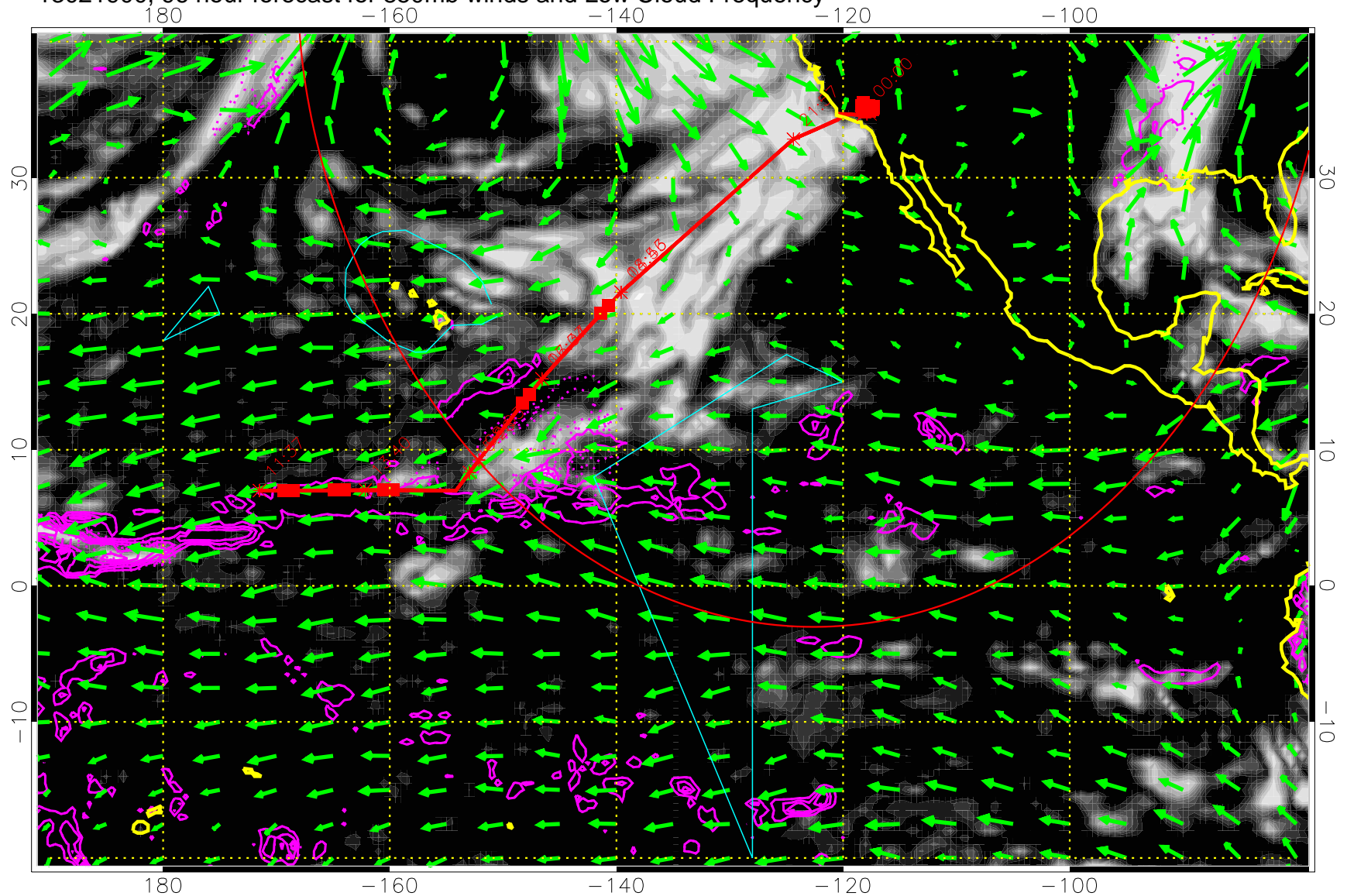
13021818, 90 hour forecast for 850mb winds and Low Cloud Frequency



Precip (tot dot, conv sol) past 6 hrs 6 kg/m2 contours, min 4

→ 30 m/s  
Range ring of 4055 km -- 13 hours GH round trip

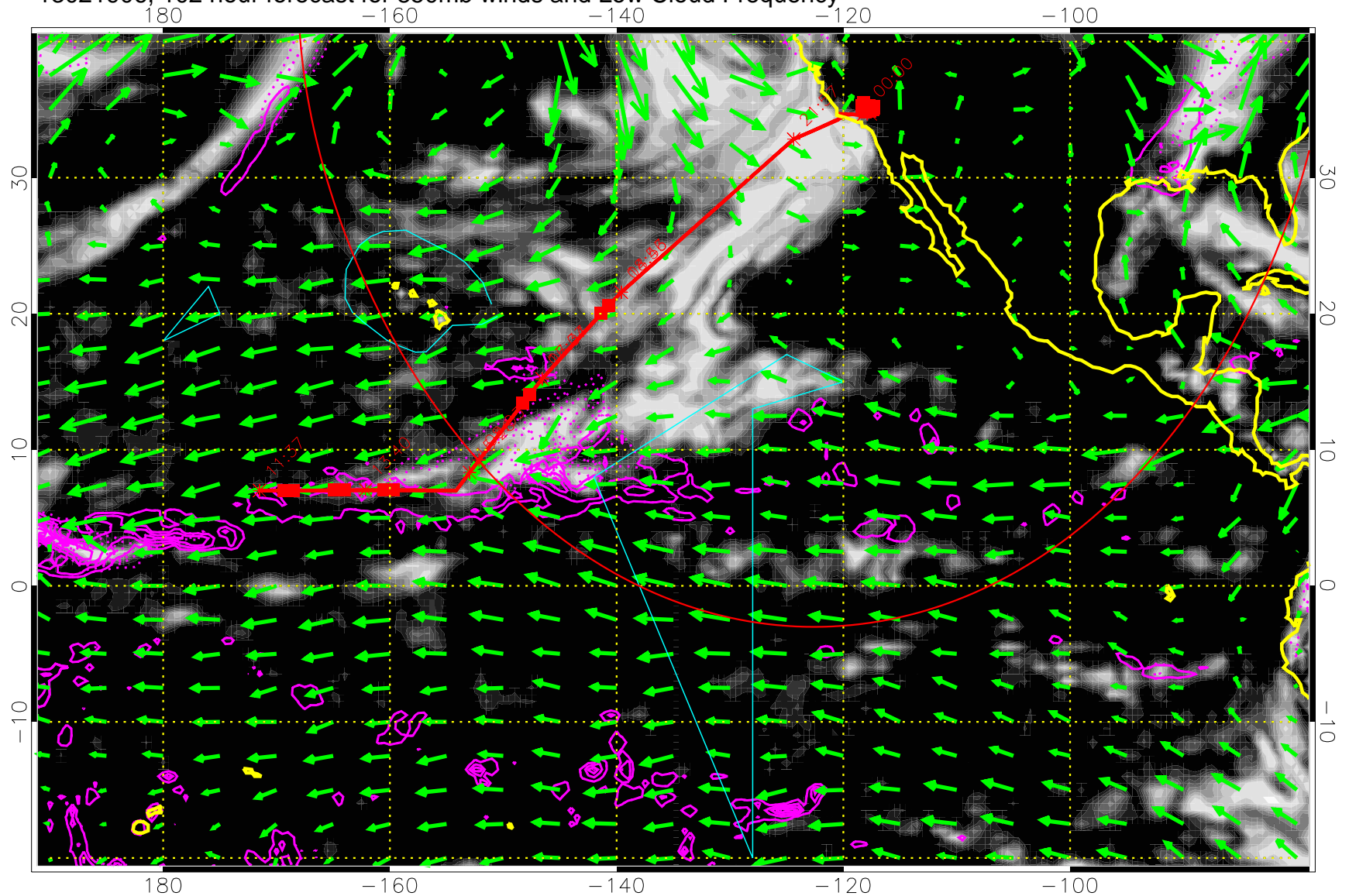
13021900, 96 hour forecast for 850mb winds and Low Cloud Frequency



Precip (tot dot, conv sol) past 6 hrs 6 kg/m2 contours, min 4

→ 30 m/s  
Range ring of 4055 km -- 13 hours GH round trip

13021906, 102 hour forecast for 850mb winds and Low Cloud Frequency



Low Cloud Frequency

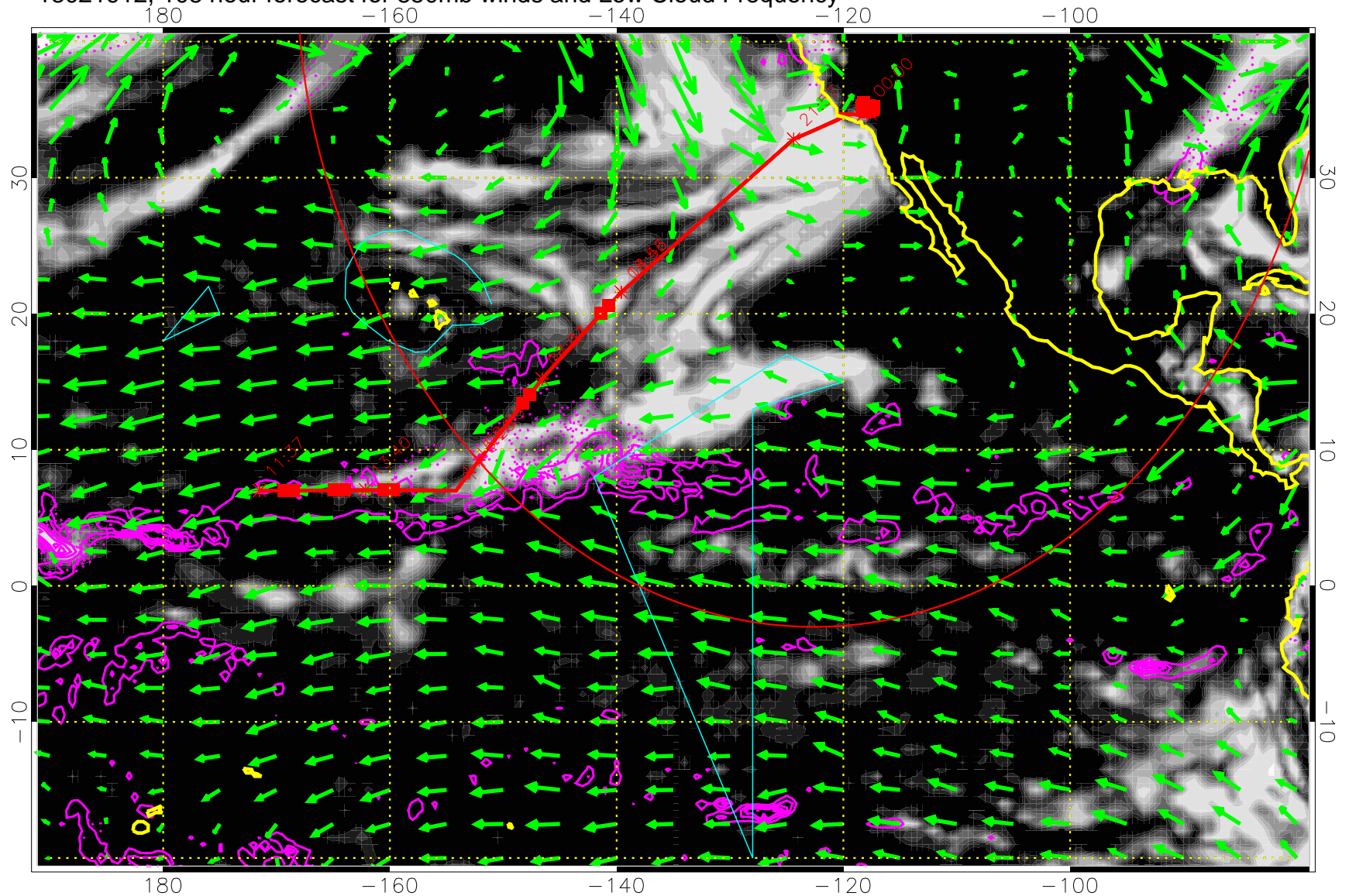
Precip (tot dot, conv sol) past 6 hrs 6 kg/m2 contours, min 4

→ 30 m/s

Range ring of 4055 km -- 13 hours GH round trip



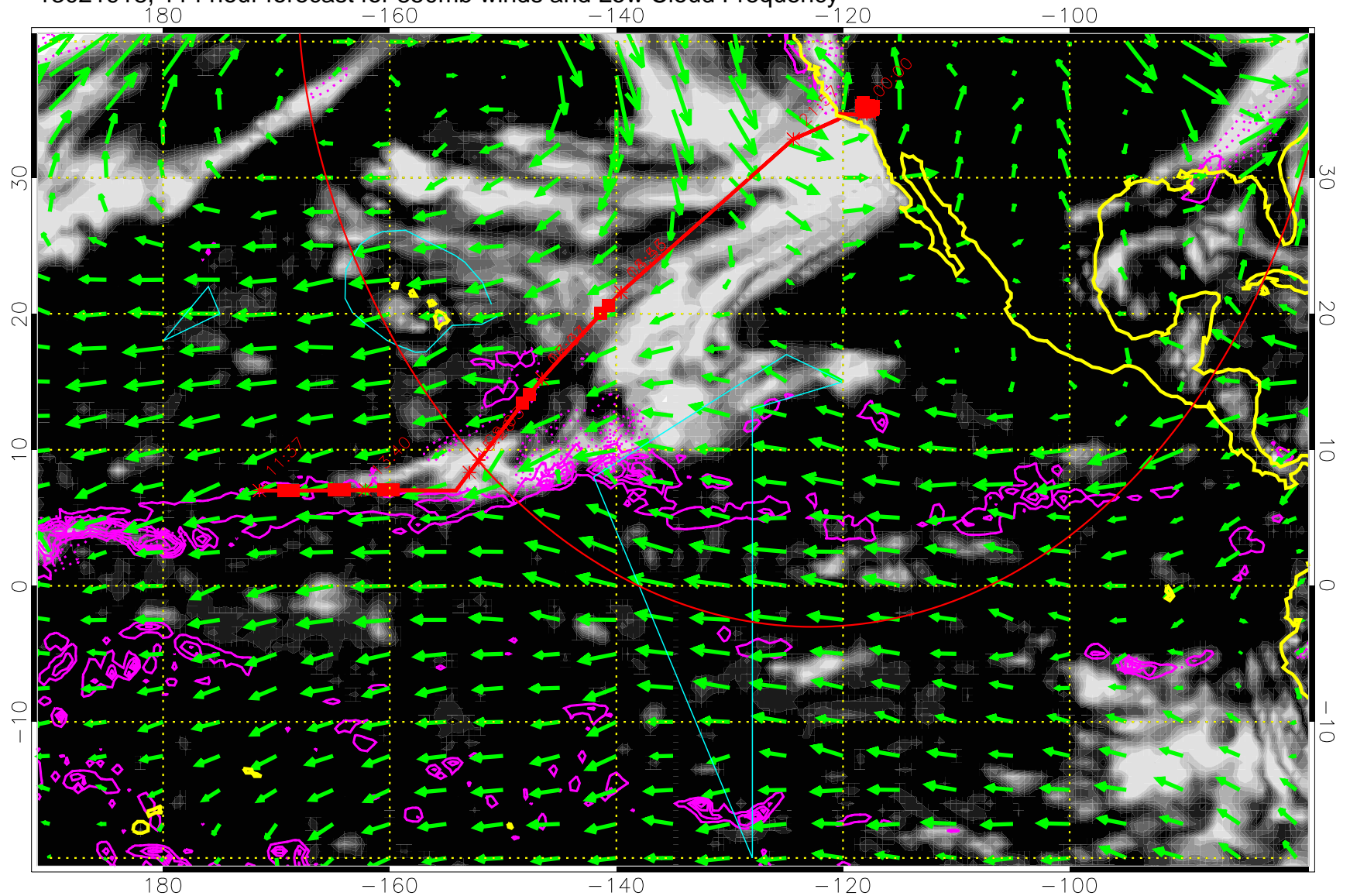
13021912, 108 hour forecast for 850mb winds and Low Cloud Frequency



Precip (tot dot, conv sol) past 6 hrs 6 kg/m2 contours, min 4

→ 30 m/s  
Range ring of 4055 km -- 13 hours GH round trip

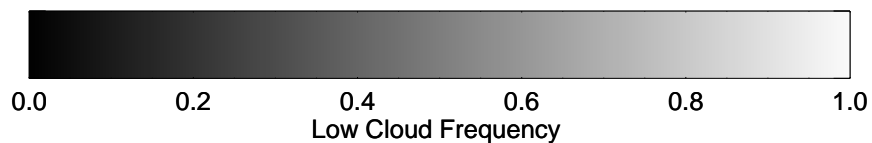
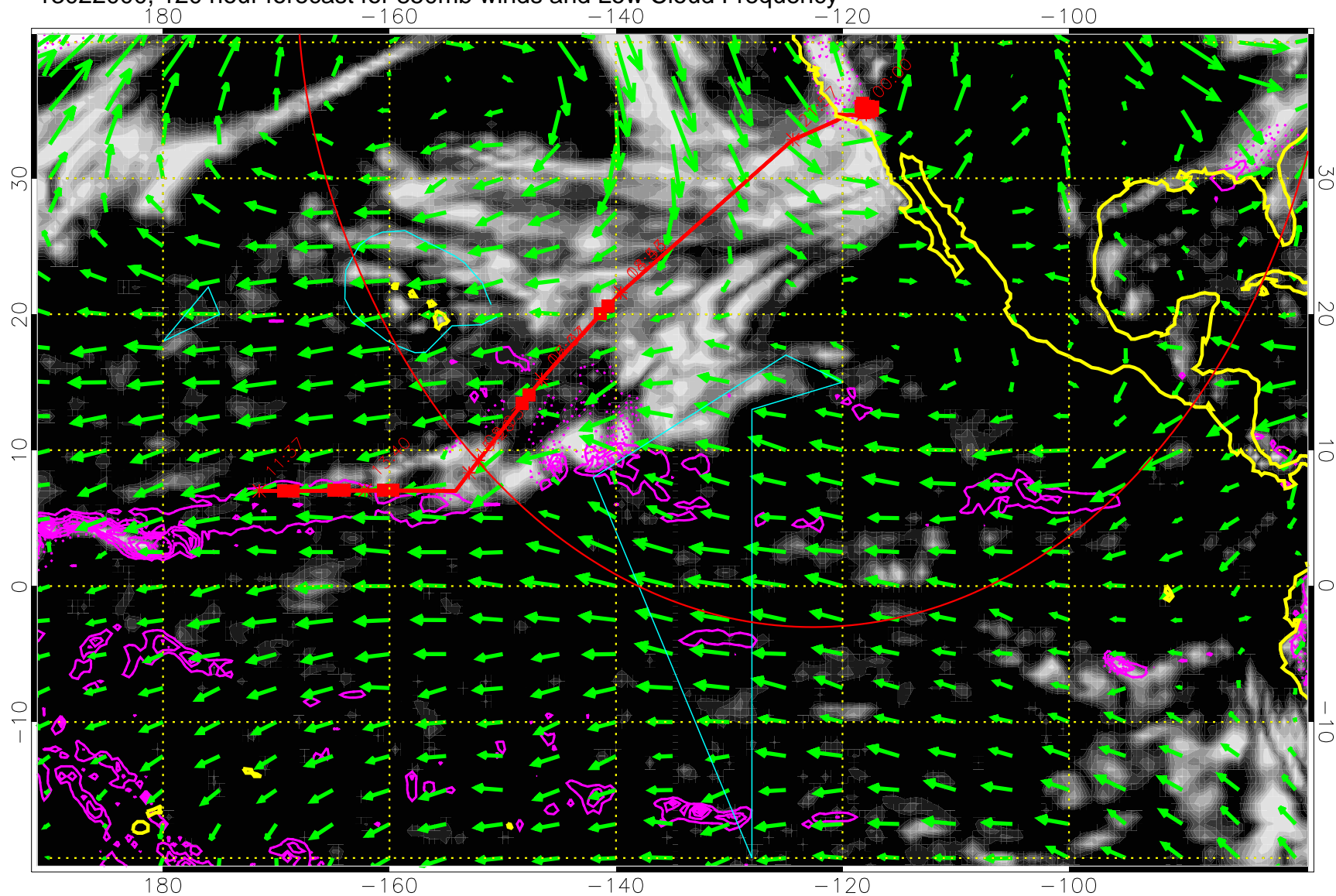
13021918, 114 hour forecast for 850mb winds and Low Cloud Frequency



Precip (tot dot, conv sol) past 6 hrs 6 kg/m2 contours, min 4

→ 30 m/s  
Range ring of 4055 km -- 13 hours GH round trip

13022000, 120 hour forecast for 850mb winds and Low Cloud Frequency



Precip (tot dot, conv sol) past 6 hrs 6 kg/m2 contours, min 4

→ 30 m/s

Range ring of 4055 km -- 13 hours GH round trip