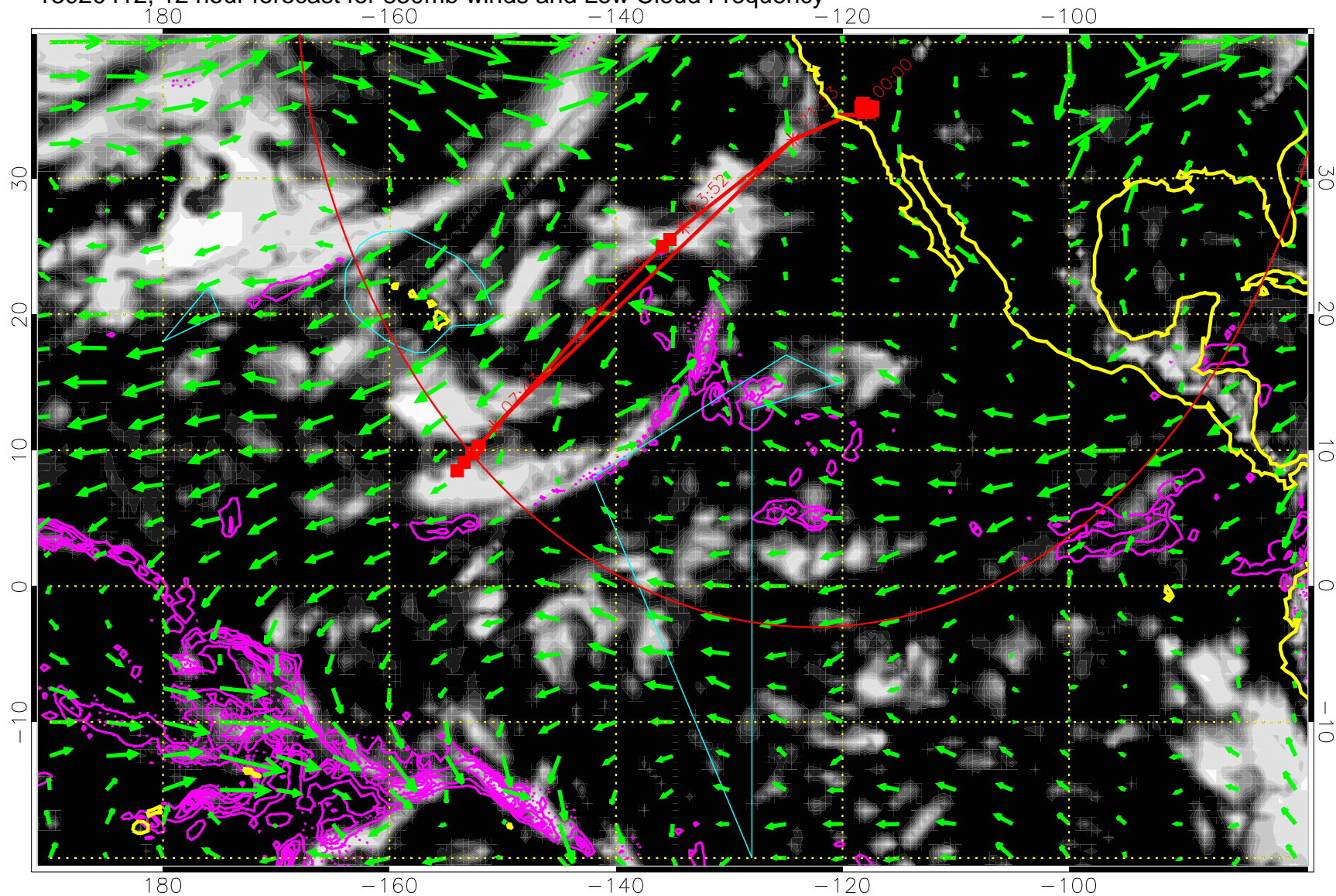


13020412, 12 hour forecast for 850mb winds and Low Cloud Frequency

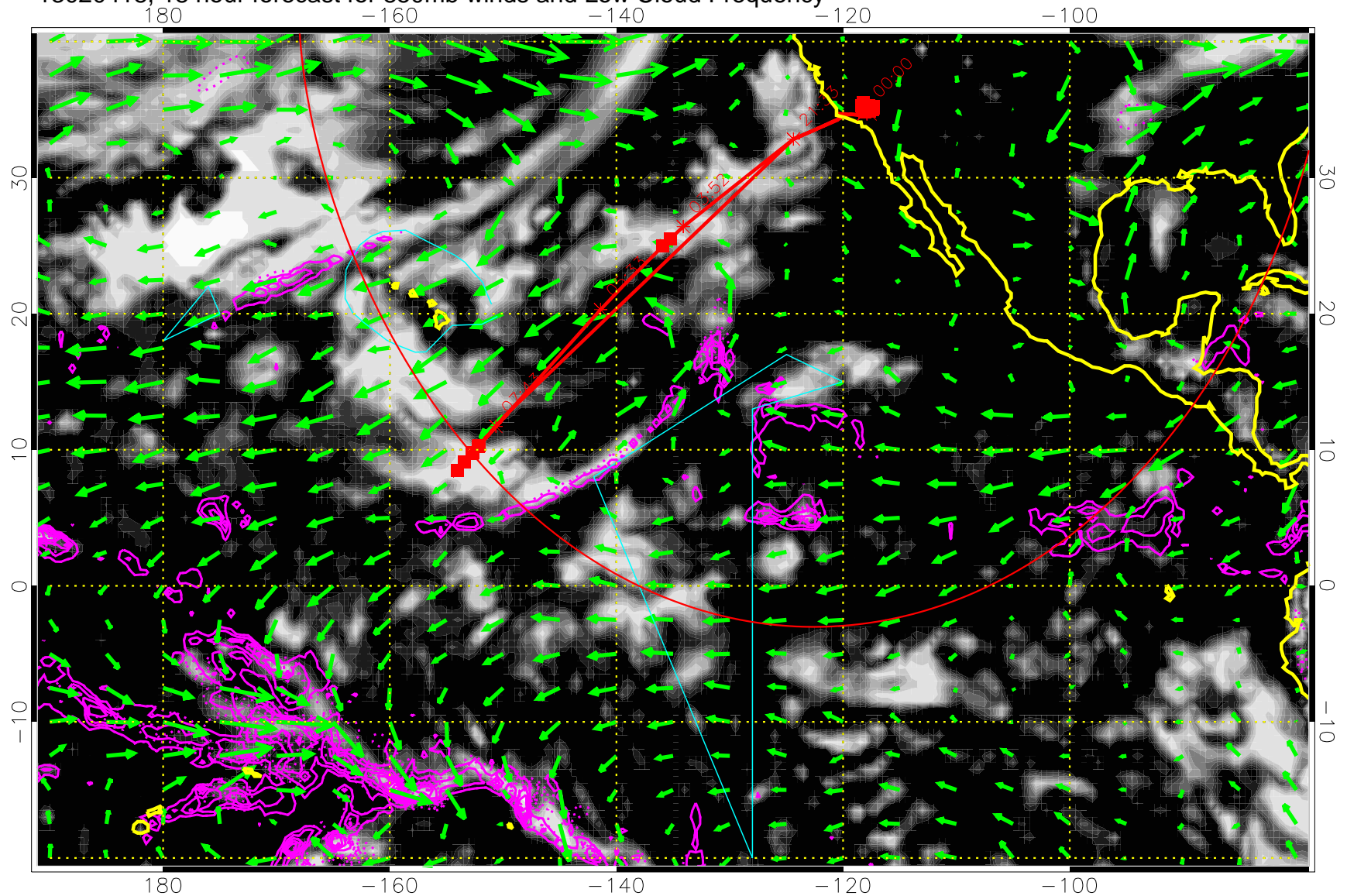


Precip (tot dot, conv sol) past 6 hrs 6 kg/m2 contours, min 4

→ 30 m/s

Range ring of 4055 km -- 13 hours GH round trip

13020418, 18 hour forecast for 850mb winds and Low Cloud Frequency

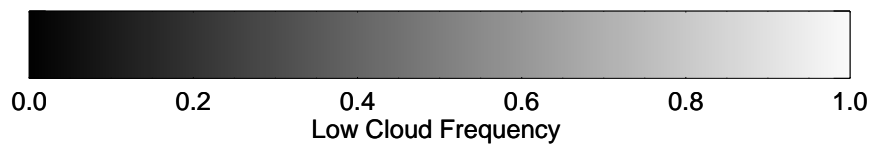
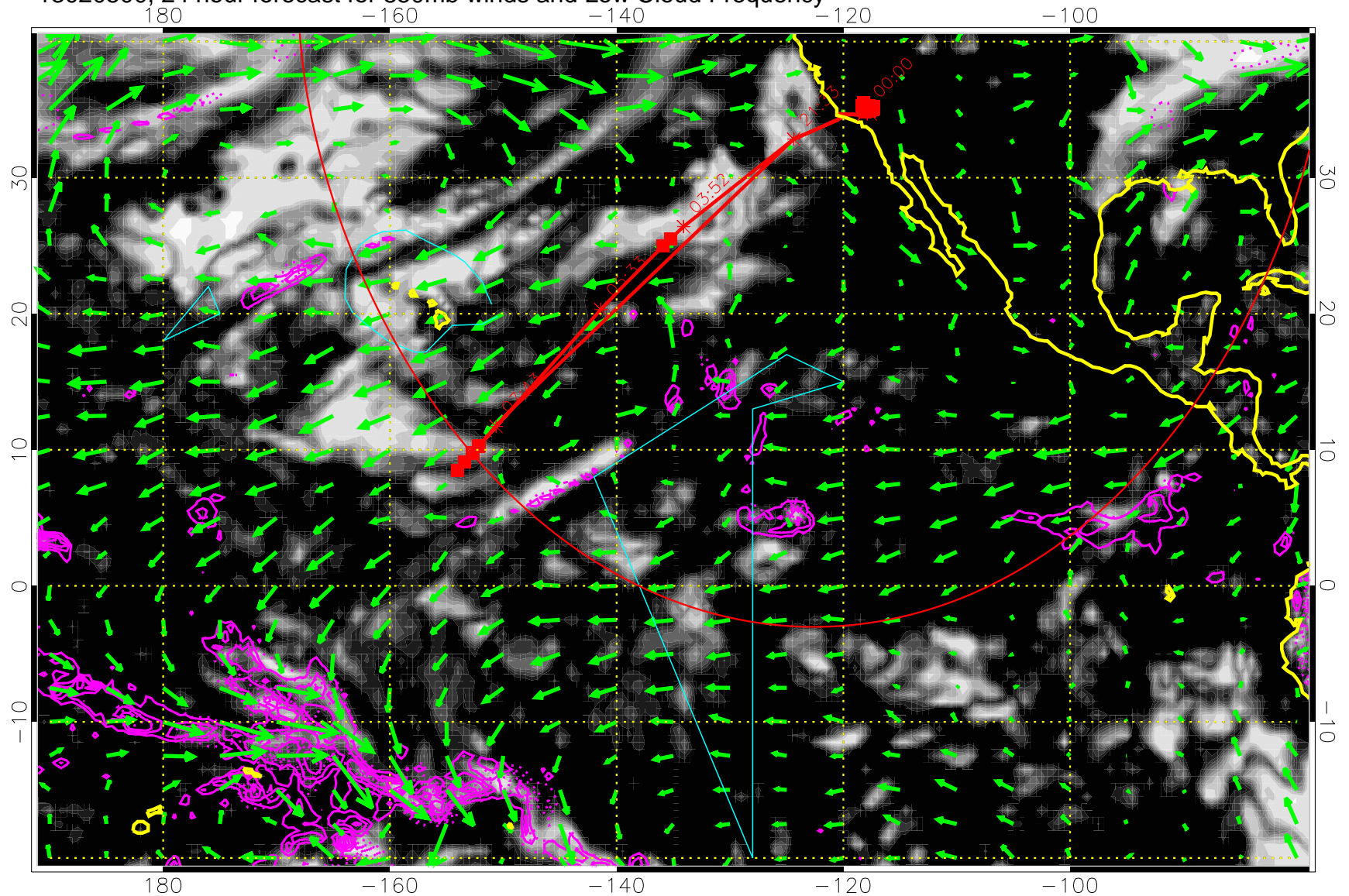


Precip (tot dot, conv sol) past 6 hrs 6 kg/m2 contours, min 4

→ 30 m/s

Range ring of 4055 km -- 13 hours GH round trip

13020500, 24 hour forecast for 850mb winds and Low Cloud Frequency

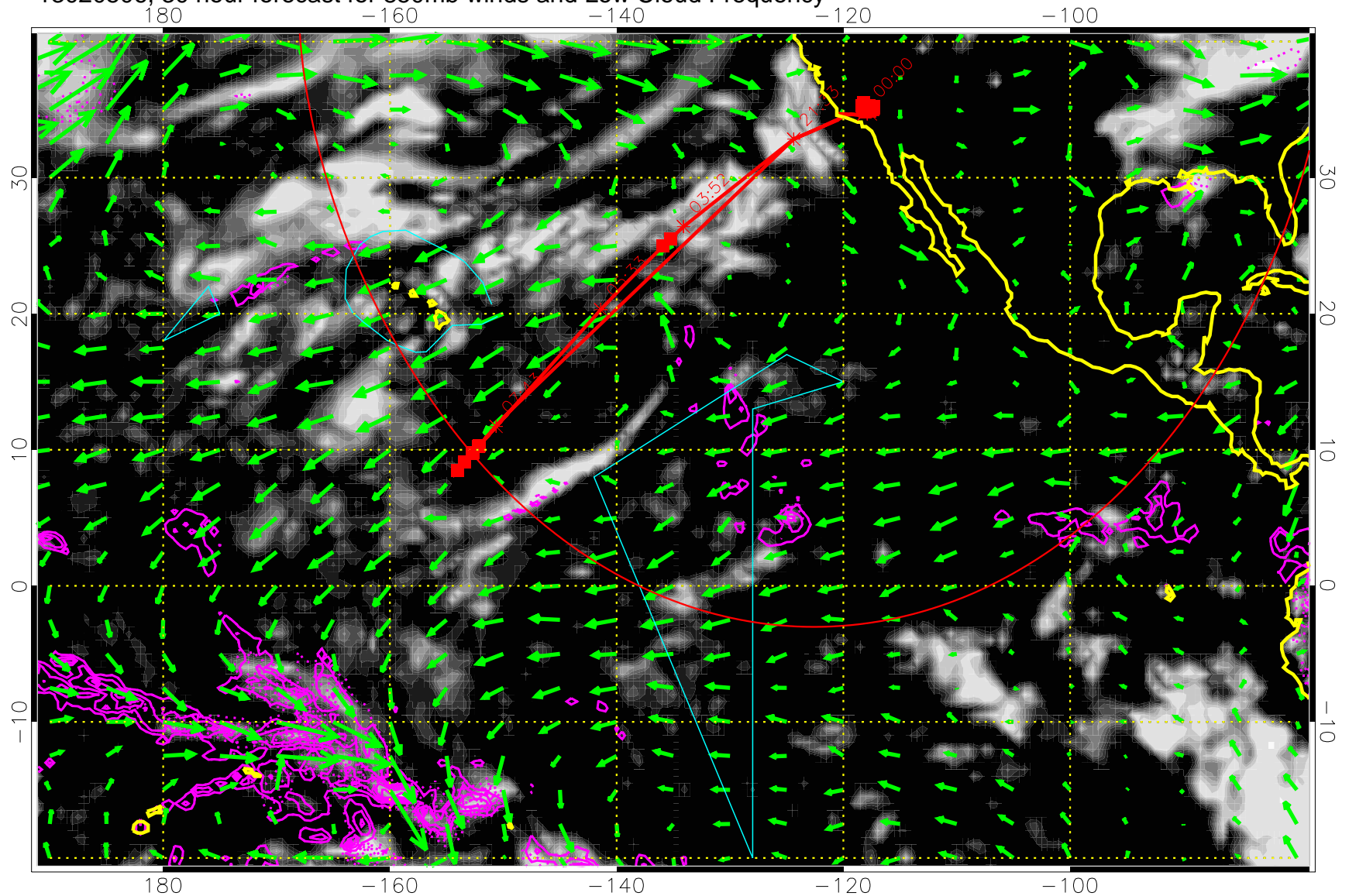


Precip (tot dot, conv sol) past 6 hrs 6 kg/m² contours, min 4

→ 30 m/s

Range ring of 4055 km -- 13 hours GH round trip

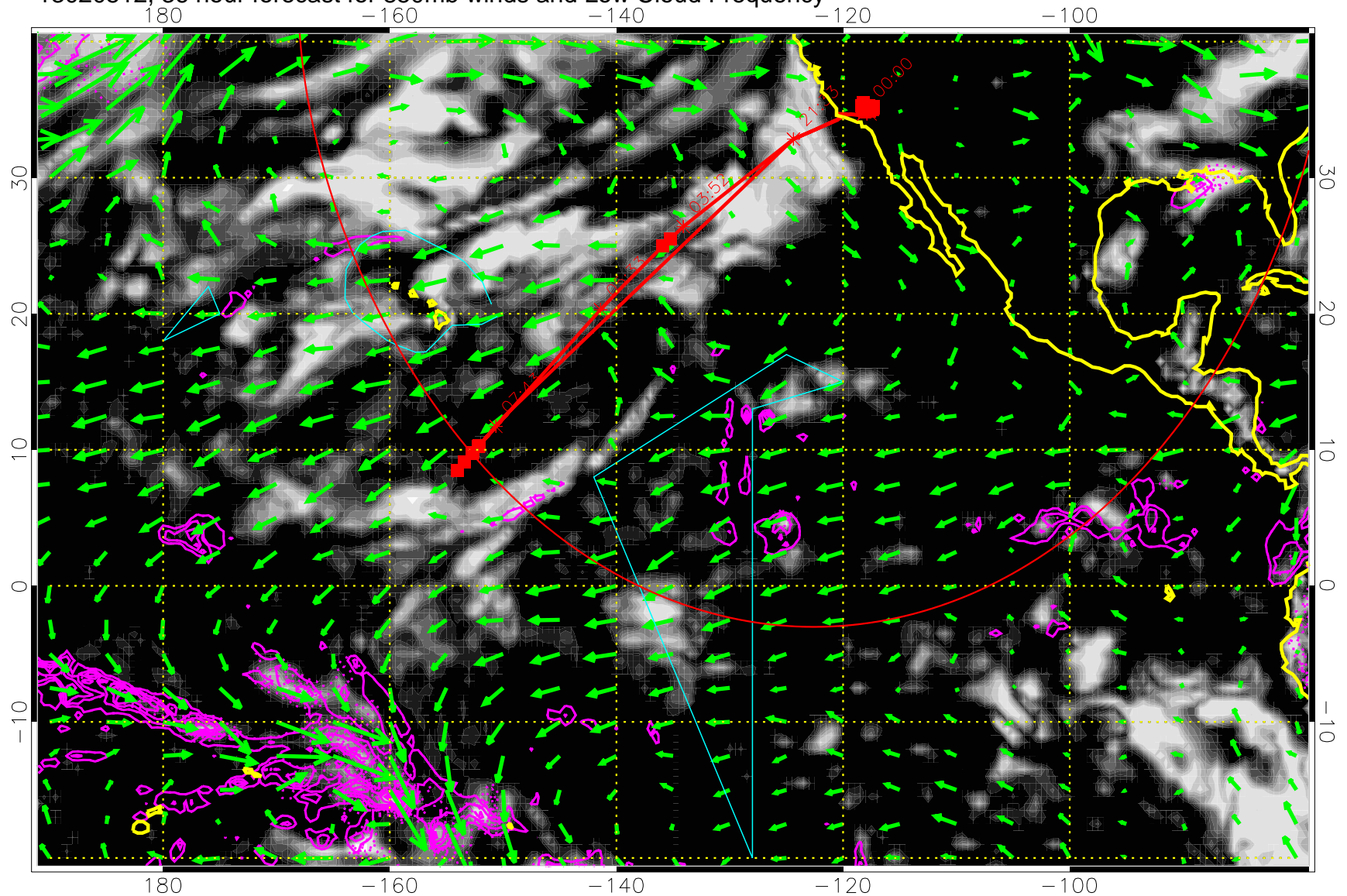
13020506, 30 hour forecast for 850mb winds and Low Cloud Frequency



Precip (tot dot, conv sol) past 6 hrs 6 kg/m² contours, min 4

→ 30 m/s
Range ring of 4055 km -- 13 hours GH round trip

13020512, 36 hour forecast for 850mb winds and Low Cloud Frequency



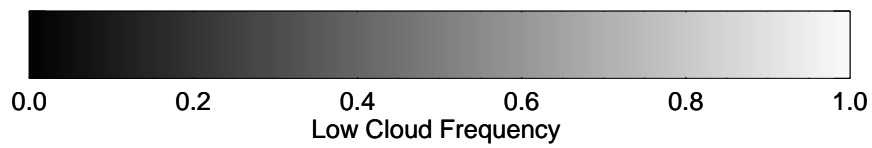
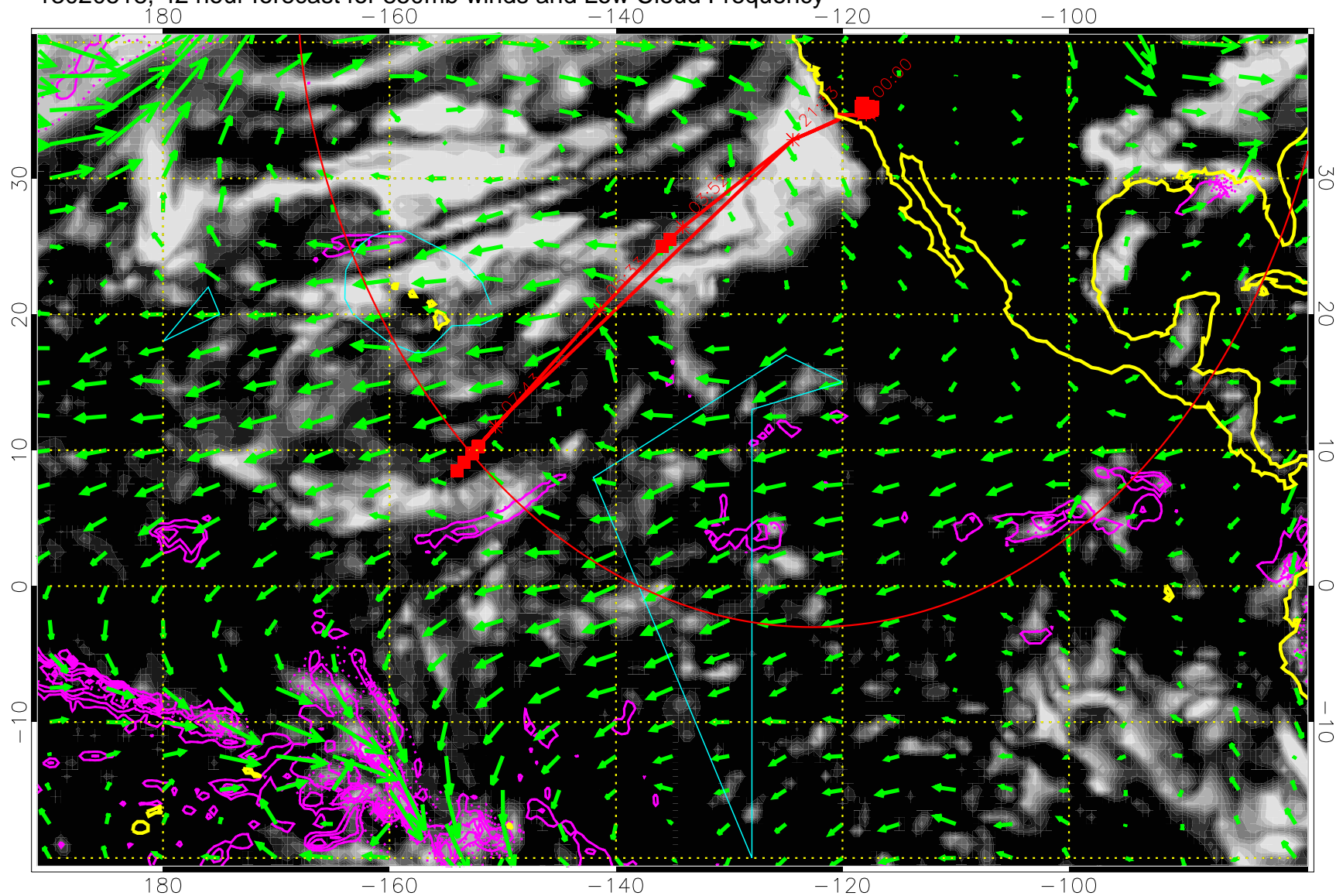
0.0 0.2 0.4 0.6 0.8 1.0
Low Cloud Frequency

Precip (tot dot, conv sol) past 6 hrs 6 kg/m2 contours, min 4

→ 30 m/s

Range ring of 4055 km -- 13 hours GH round trip

13020518, 42 hour forecast for 850mb winds and Low Cloud Frequency

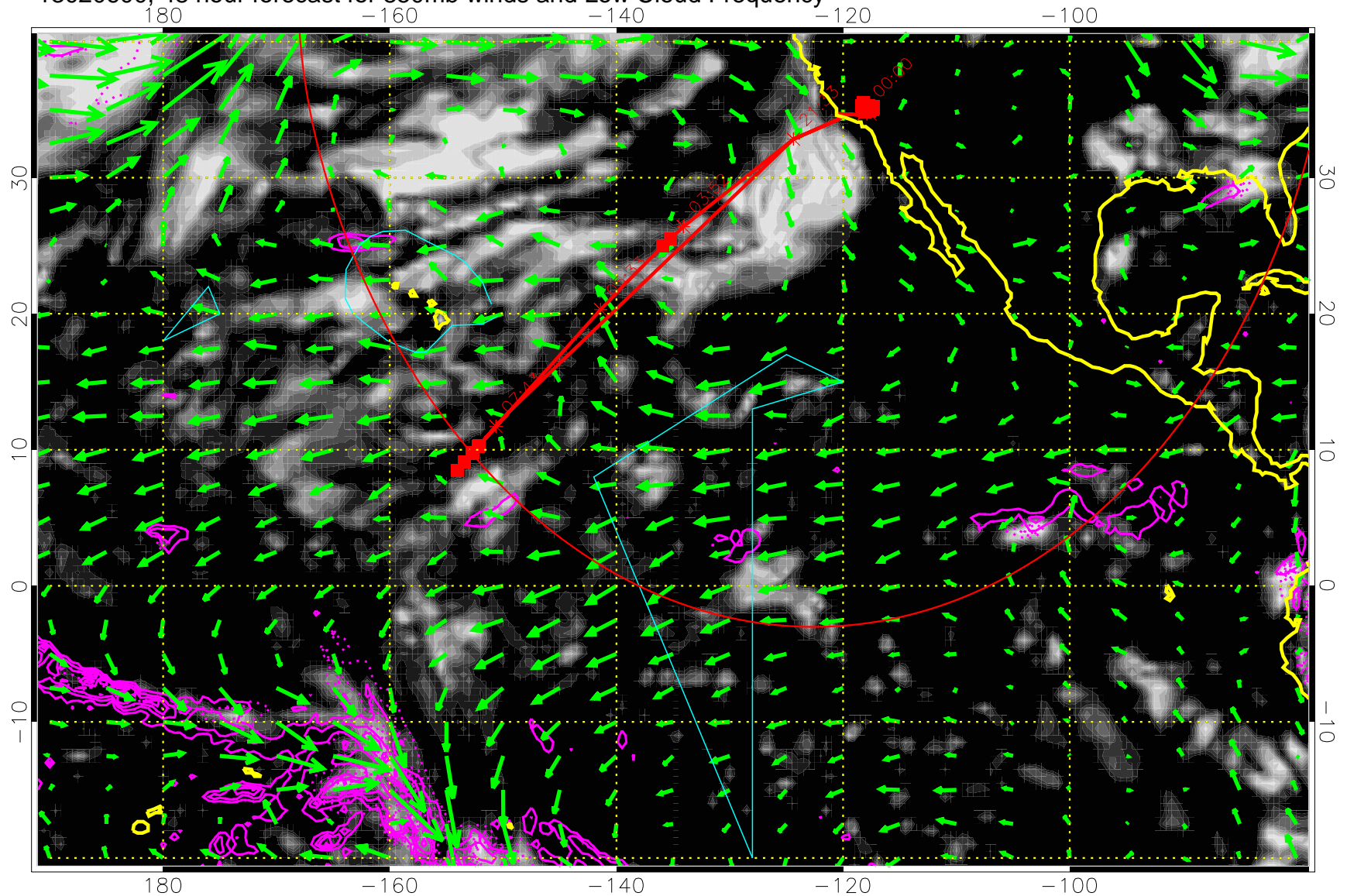


Precip (tot dot, conv sol) past 6 hrs 6 kg/m2 contours, min 4

→ 30 m/s

Range ring of 4055 km -- 13 hours GH round trip

13020600, 48 hour forecast for 850mb winds and Low Cloud Frequency

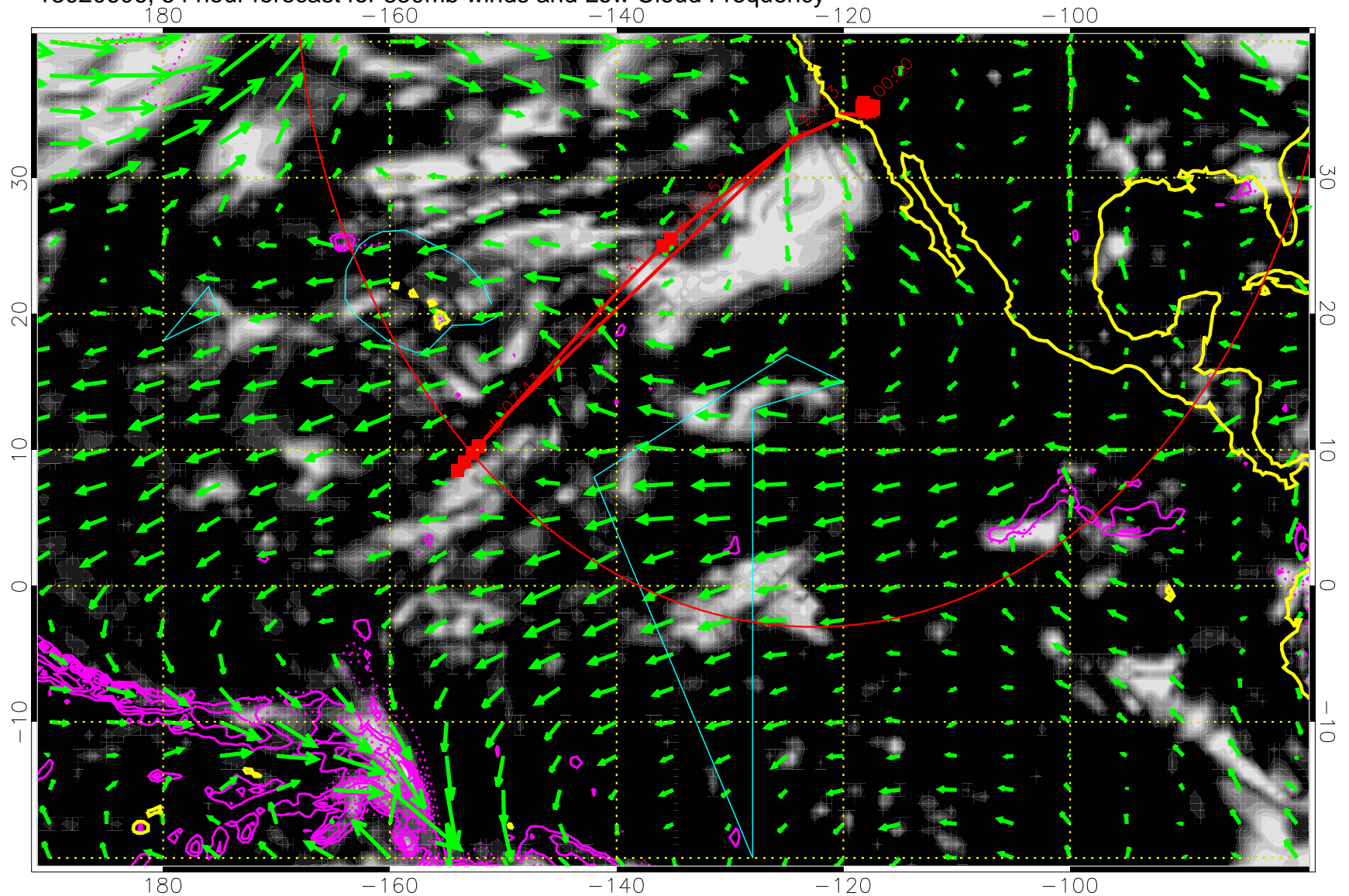


Precip (tot dot, conv sol) past 6 hrs 6 kg/m2 contours, min 4

→ 30 m/s

Range ring of 4055 km -- 13 hours GH round trip

13020606, 54 hour forecast for 850mb winds and Low Cloud Frequency

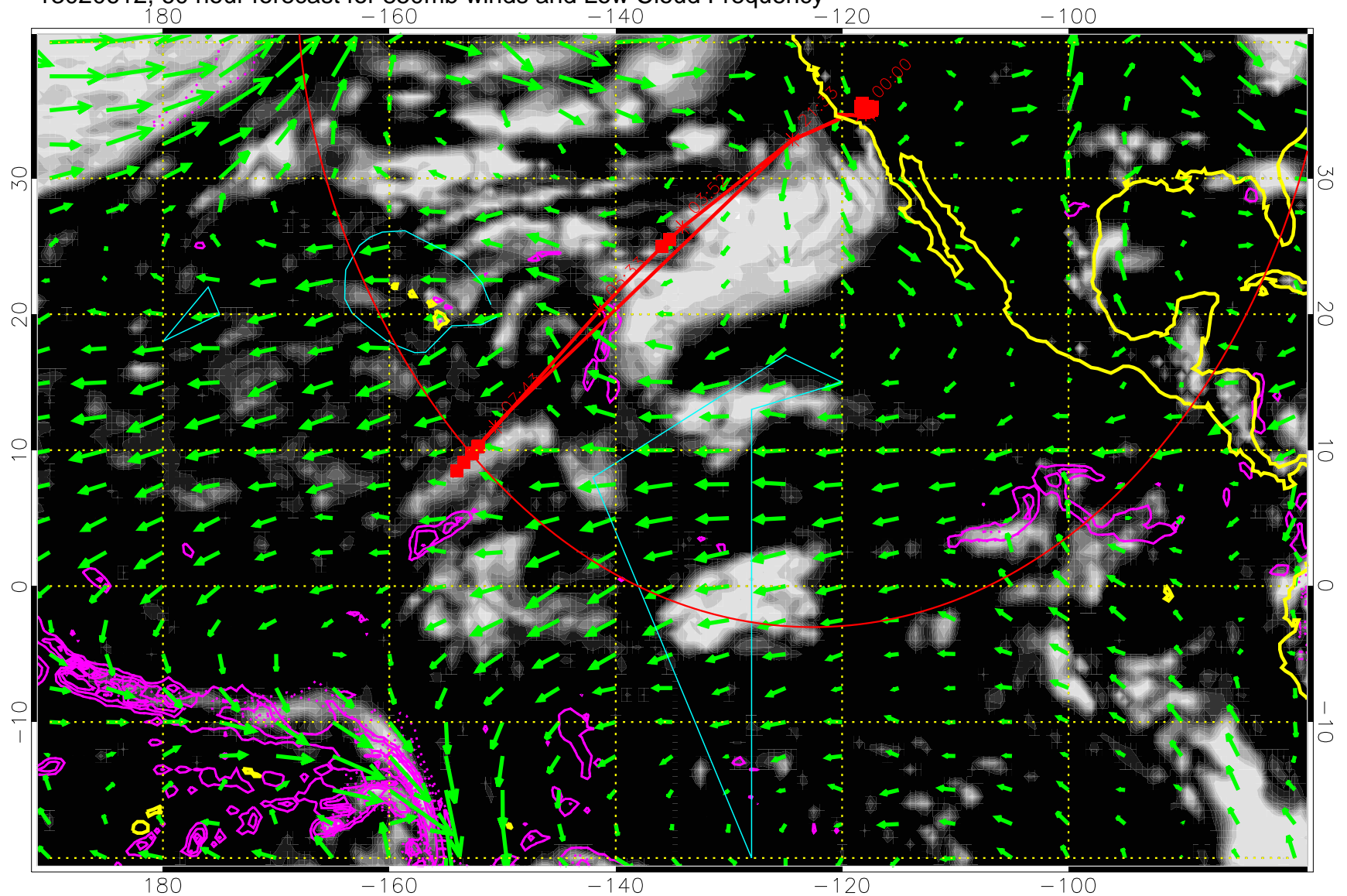


Precip (tot dot, conv sol) past 6 hrs 6 kg/m2 contours, min 4

→ 30 m/s

Range ring of 4055 km -- 13 hours GH round trip

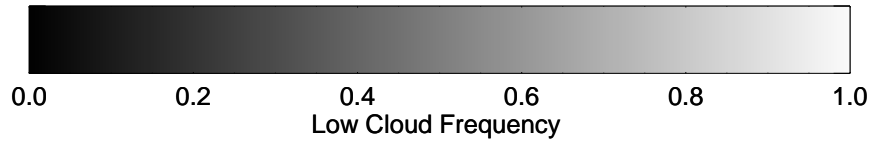
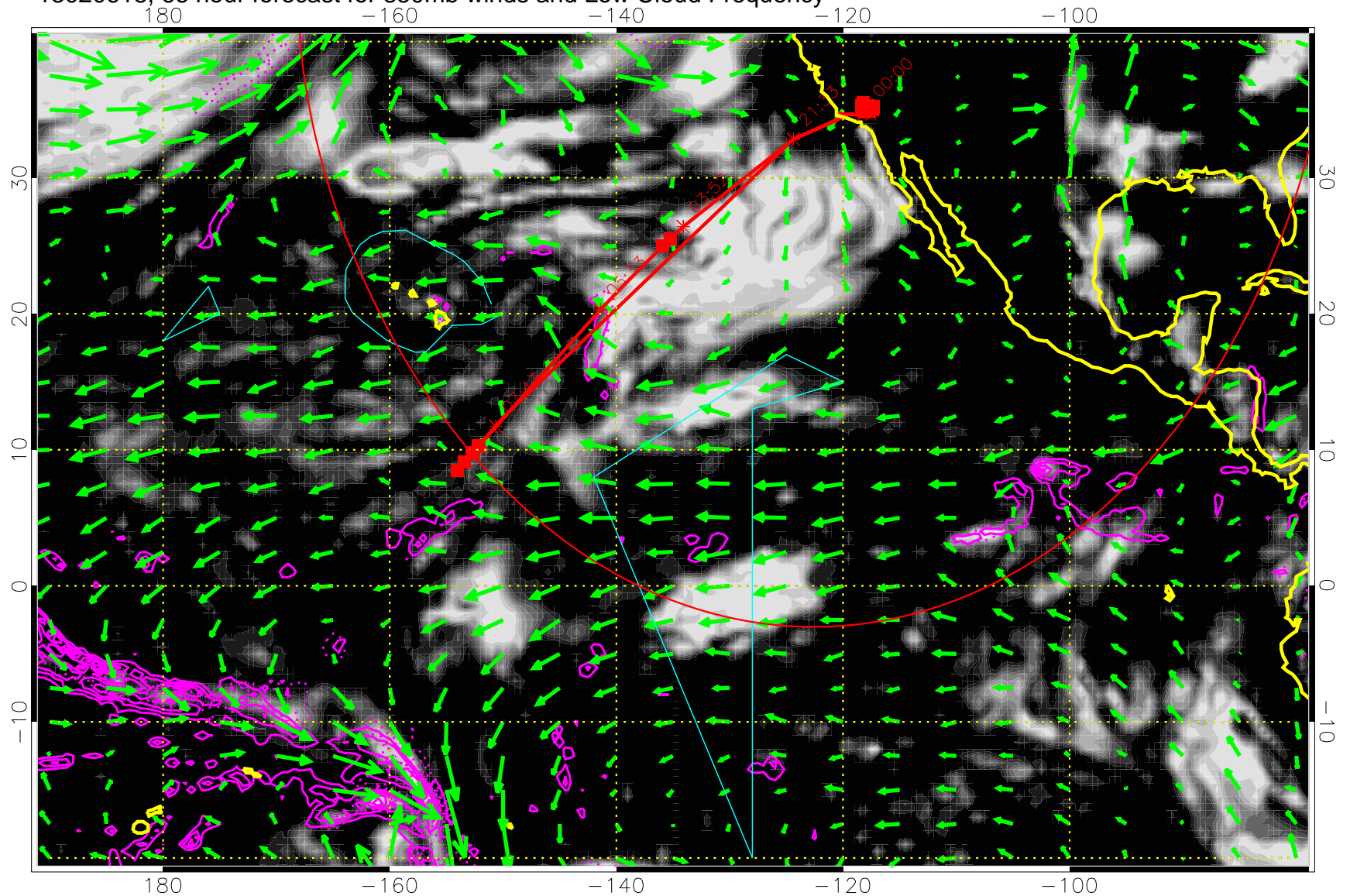
13020612, 60 hour forecast for 850mb winds and Low Cloud Frequency



Precip (tot dot, conv sol) past 6 hrs 6 kg/m2 contours, min 4

→ 30 m/s
Range ring of 4055 km -- 13 hours GH round trip

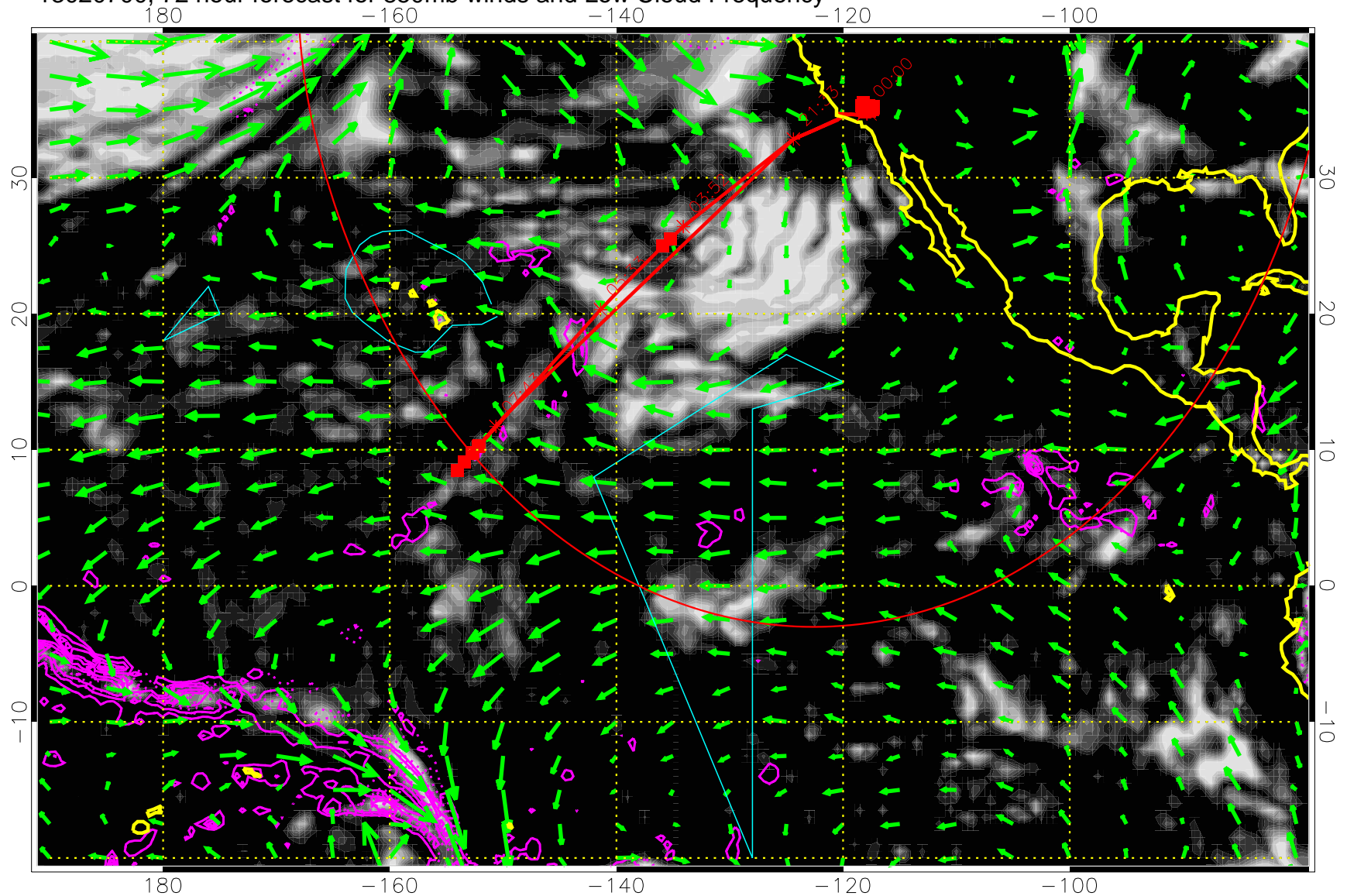
13020618, 66 hour forecast for 850mb winds and Low Cloud Frequency



Precip (tot dot, conv sol) past 6 hrs 6 kg/m2 contours, min 4

→ 30 m/s
Range ring of 4055 km -- 13 hours GH round trip

13020700, 72 hour forecast for 850mb winds and Low Cloud Frequency

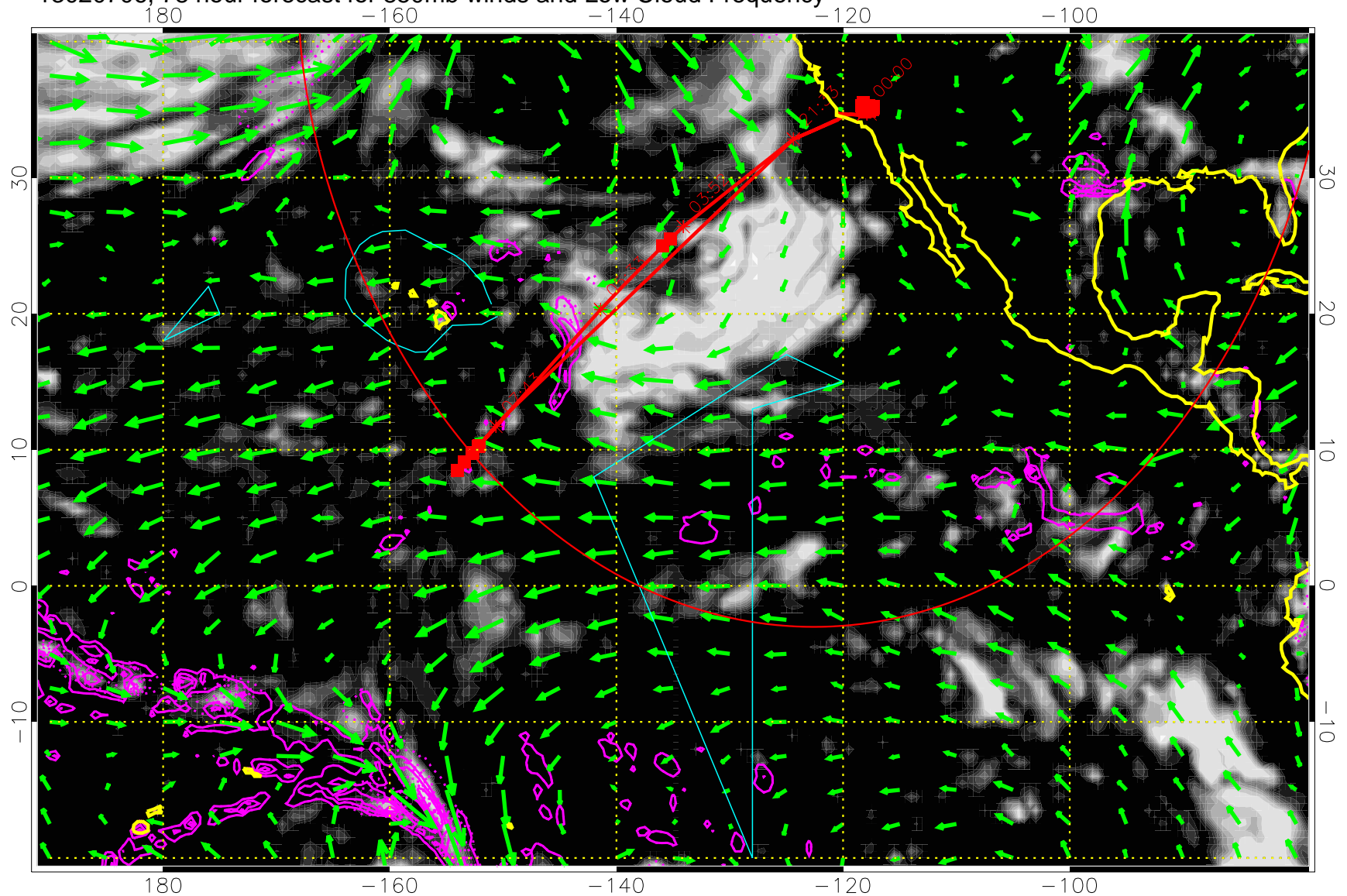


Precip (tot dot, conv sol) past 6 hrs 6 kg/m2 contours, min 4

→ 30 m/s

Range ring of 4055 km -- 13 hours GH round trip

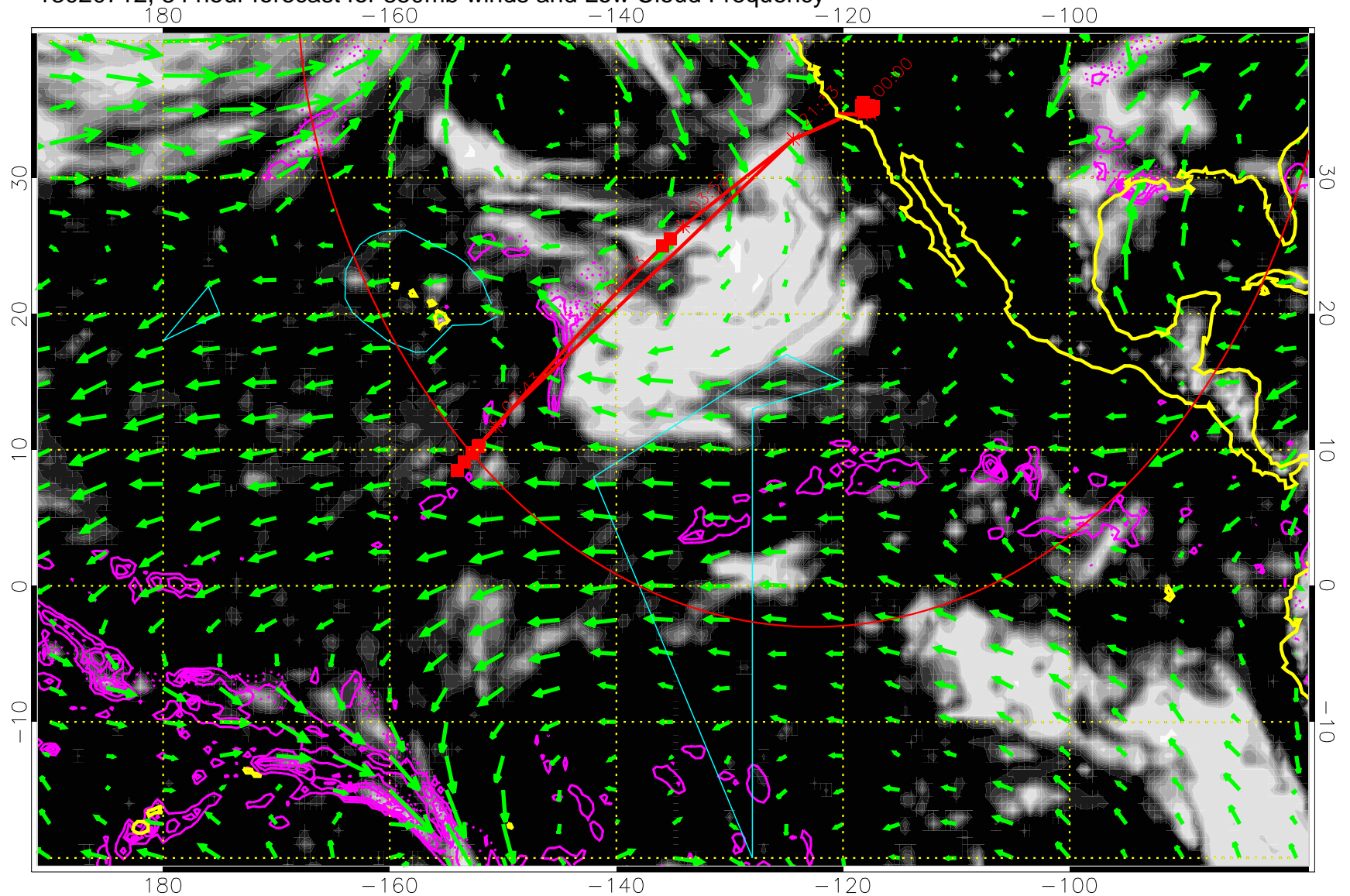
13020706, 78 hour forecast for 850mb winds and Low Cloud Frequency



Precip (tot dot, conv sol) past 6 hrs 6 kg/m2 contours, min 4

→ 30 m/s
Range ring of 4055 km -- 13 hours GH round trip

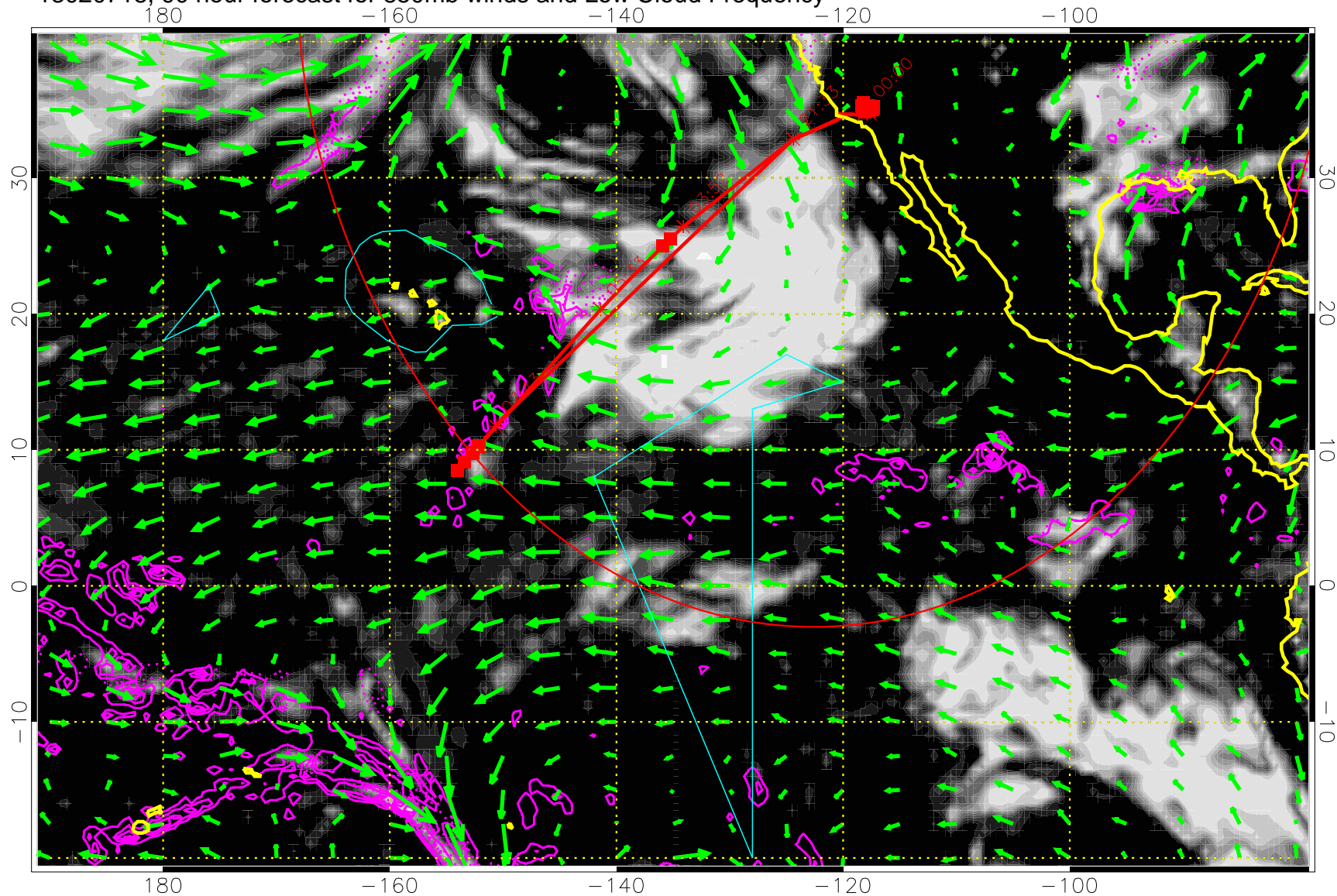
13020712, 84 hour forecast for 850mb winds and Low Cloud Frequency



Precip (tot dot, conv sol) past 6 hrs 6 kg/m2 contours, min 4

→ 30 m/s
Range ring of 4055 km -- 13 hours GH round trip

13020718, 90 hour forecast for 850mb winds and Low Cloud Frequency

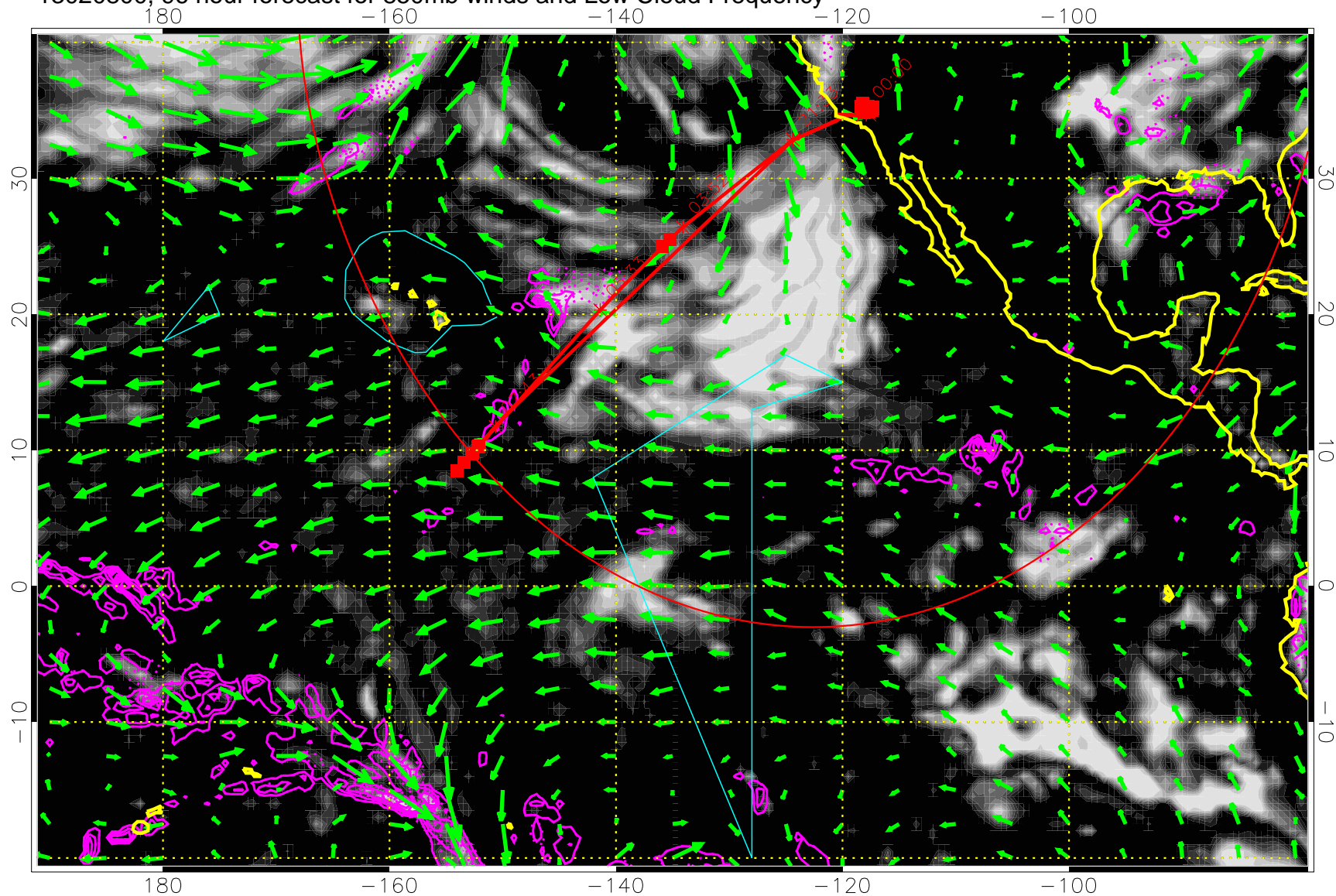


Precip (tot dot, conv sol) past 6 hrs 6 kg/m2 contours, min 4

→ 30 m/s

Range ring of 4055 km -- 13 hours GH round trip

13020800, 96 hour forecast for 850mb winds and Low Cloud Frequency

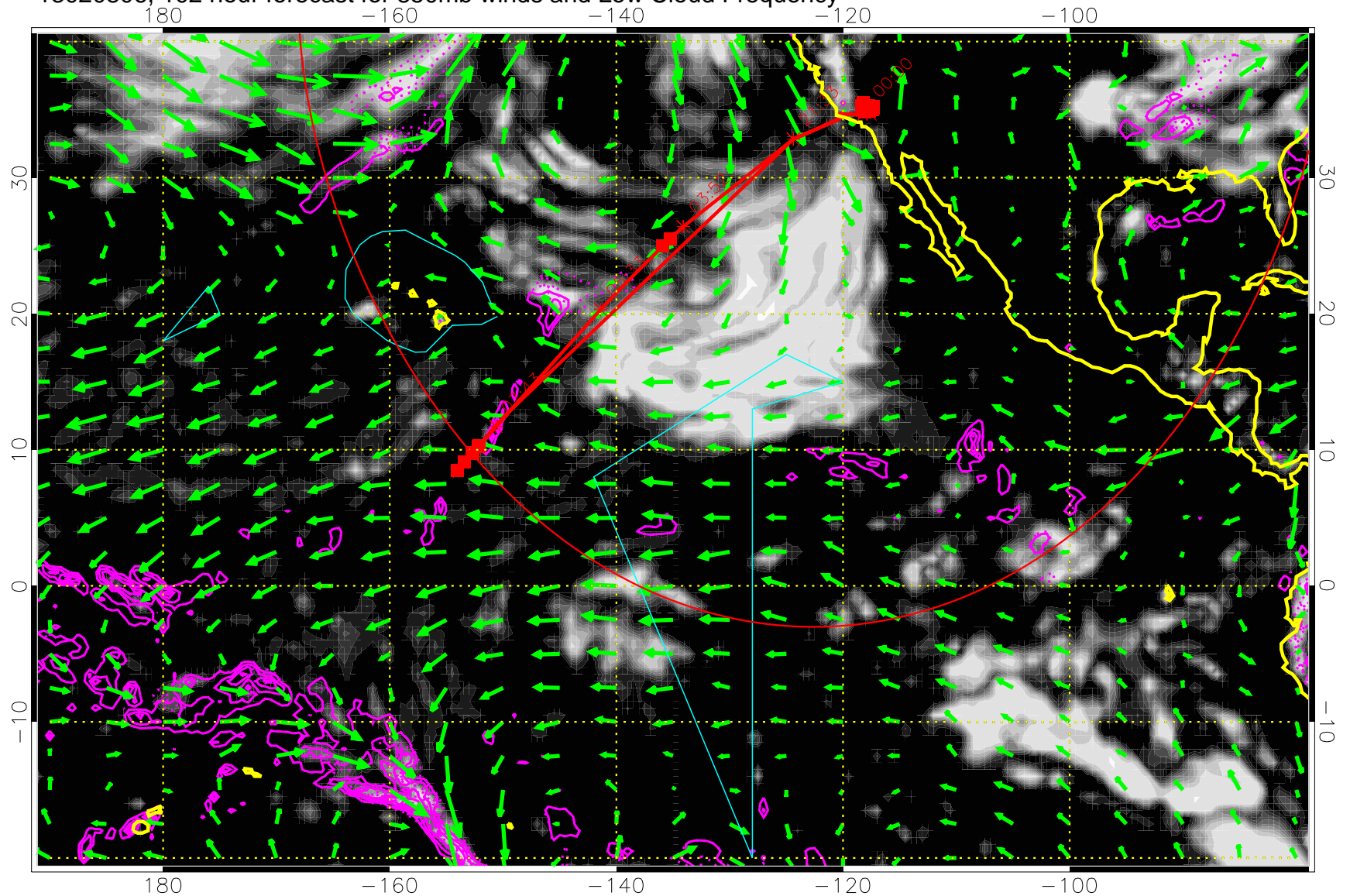


Precip (tot dot, conv sol) past 6 hrs 6 kg/m2 contours, min 4

→ 30 m/s

Range ring of 4055 km -- 13 hours GH round trip

13020806, 102 hour forecast for 850mb winds and Low Cloud Frequency

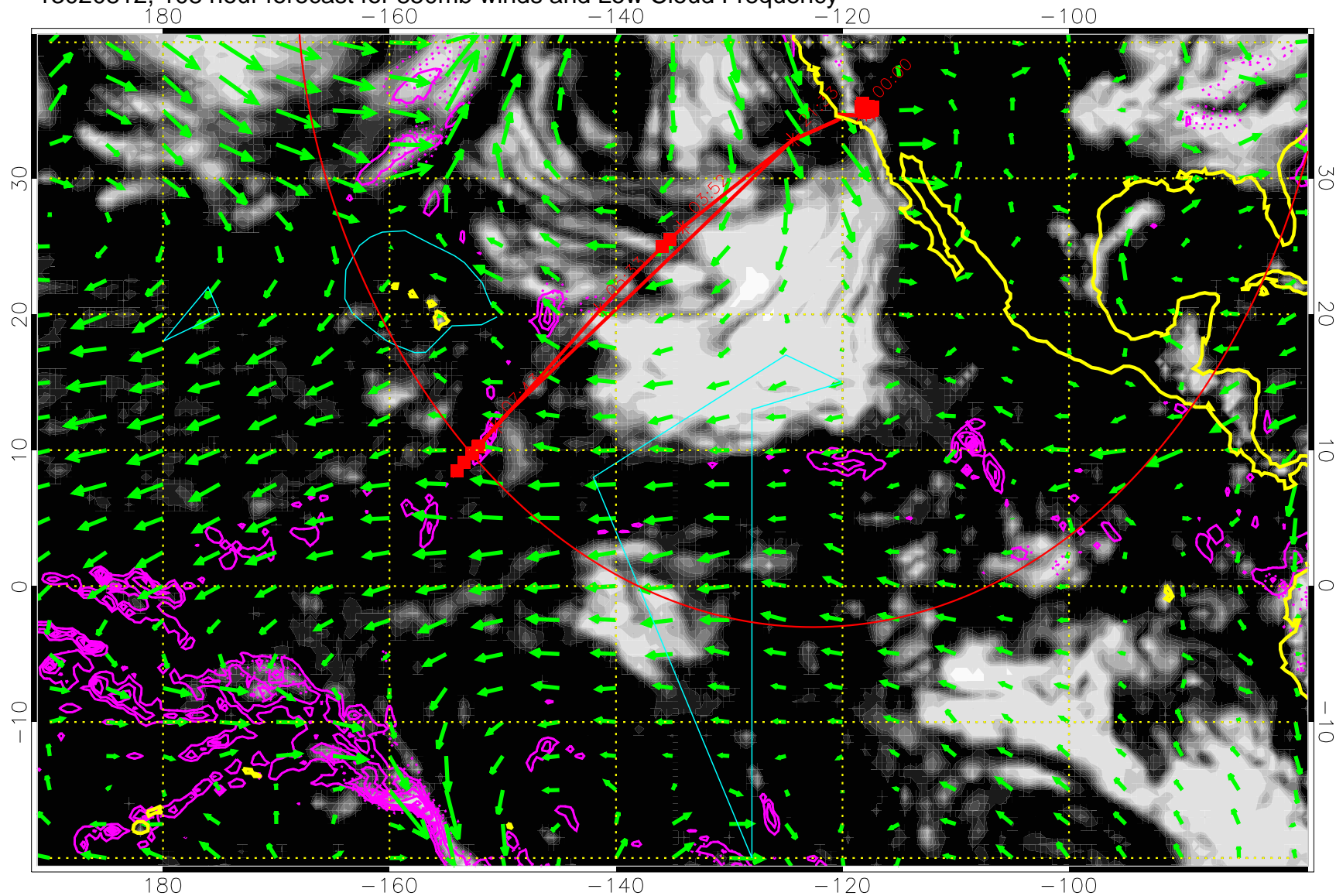


Precip (tot dot, conv sol) past 6 hrs 6 kg/m2 contours, min 4

→ 30 m/s

Range ring of 4055 km -- 13 hours GH round trip

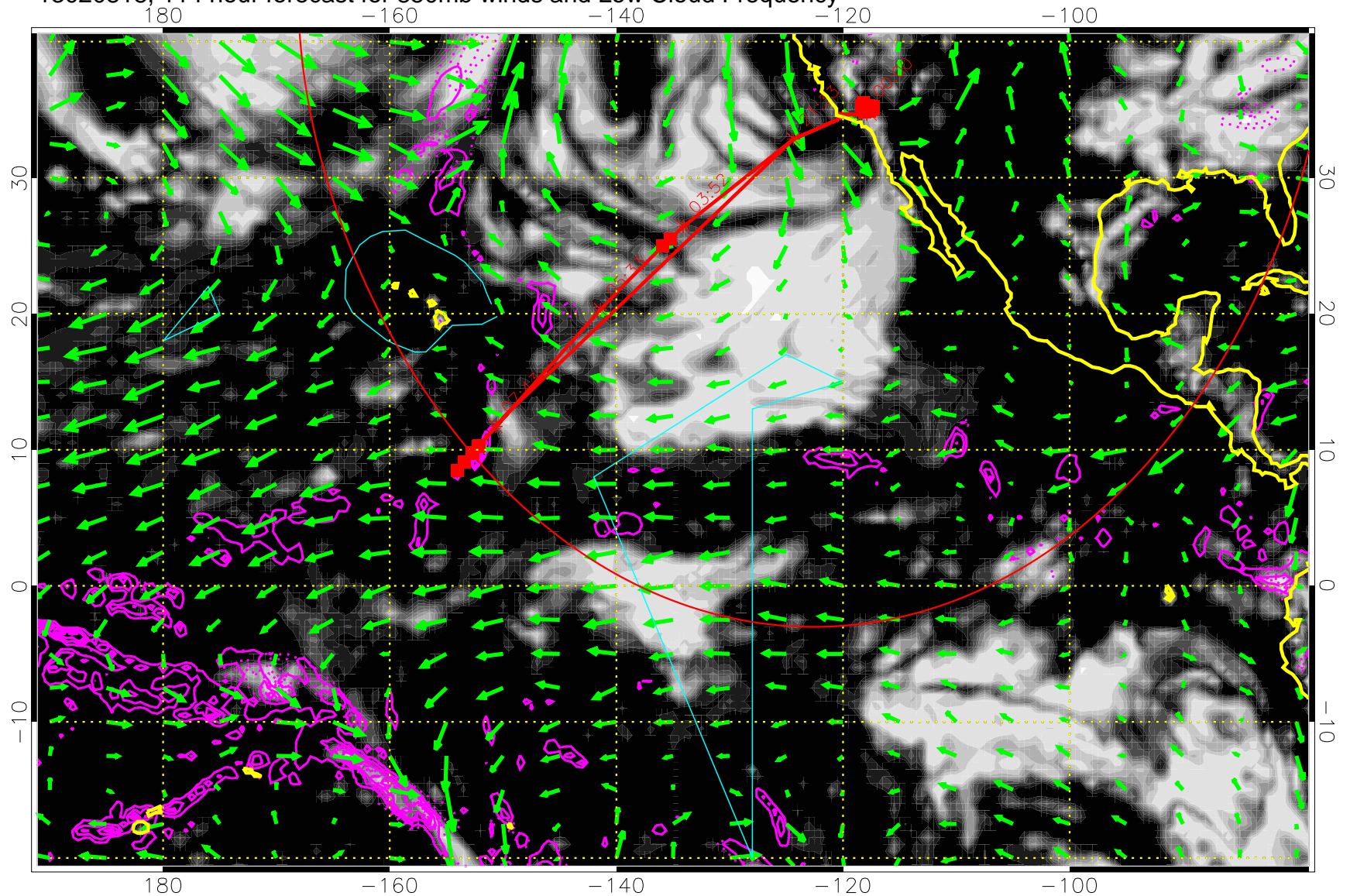
13020812, 108 hour forecast for 850mb winds and Low Cloud Frequency



Precip (tot dot, conv sol) past 6 hrs 6 kg/m2 contours, min 4

→ 30 m/s
Range ring of 4055 km -- 13 hours GH round trip

13020818, 114 hour forecast for 850mb winds and Low Cloud Frequency

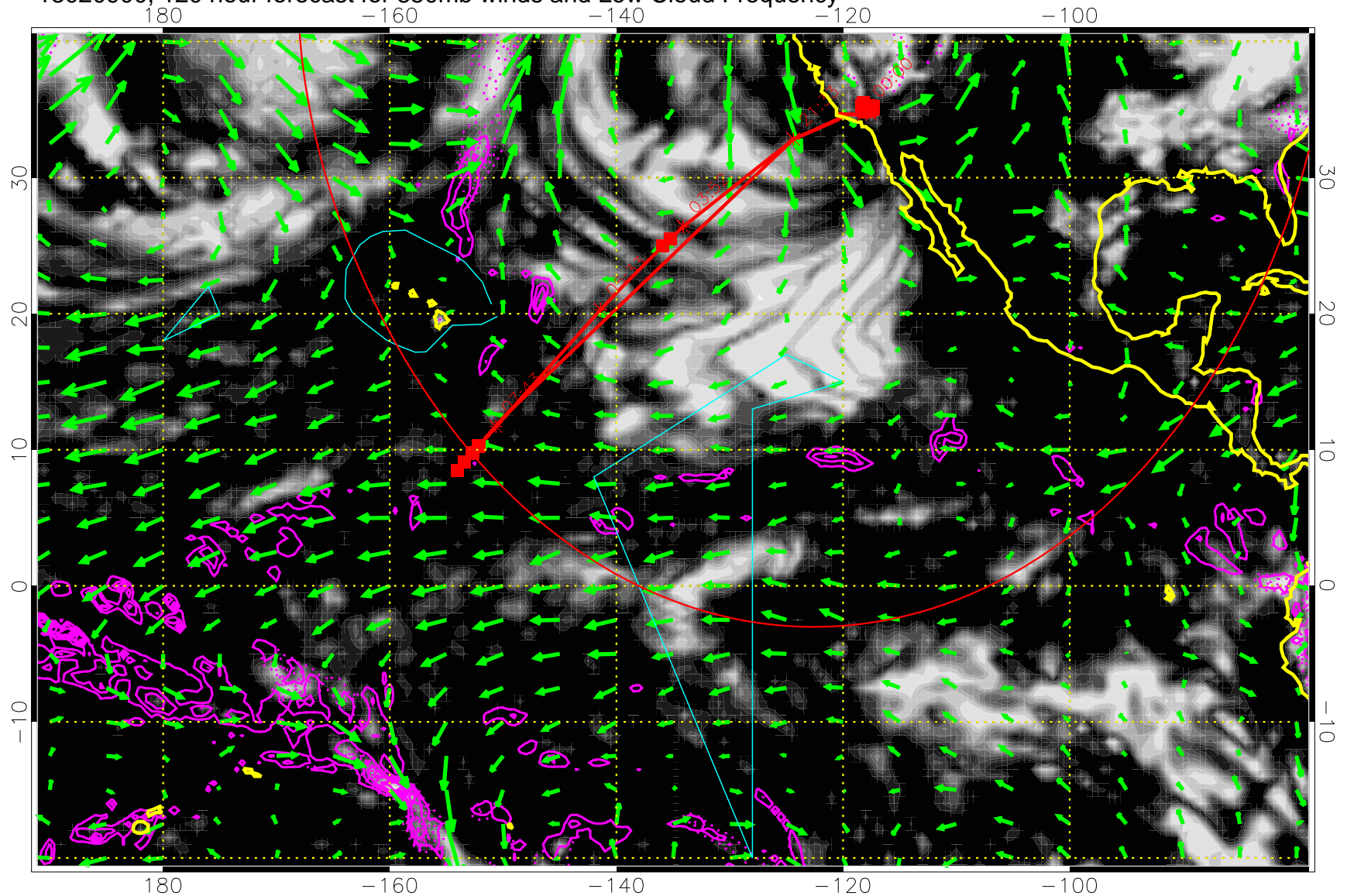


Precip (tot dot, conv sol) past 6 hrs 6 kg/m2 contours, min 4

→ 30 m/s

Range ring of 4055 km -- 13 hours GH round trip

13020900, 120 hour forecast for 850mb winds and Low Cloud Frequency



Precip (tot dot, conv sol) past 6 hrs 6 kg/m² contours, min 4

→ 30 m/s
Range ring of 4055 km -- 13 hours GH round trip