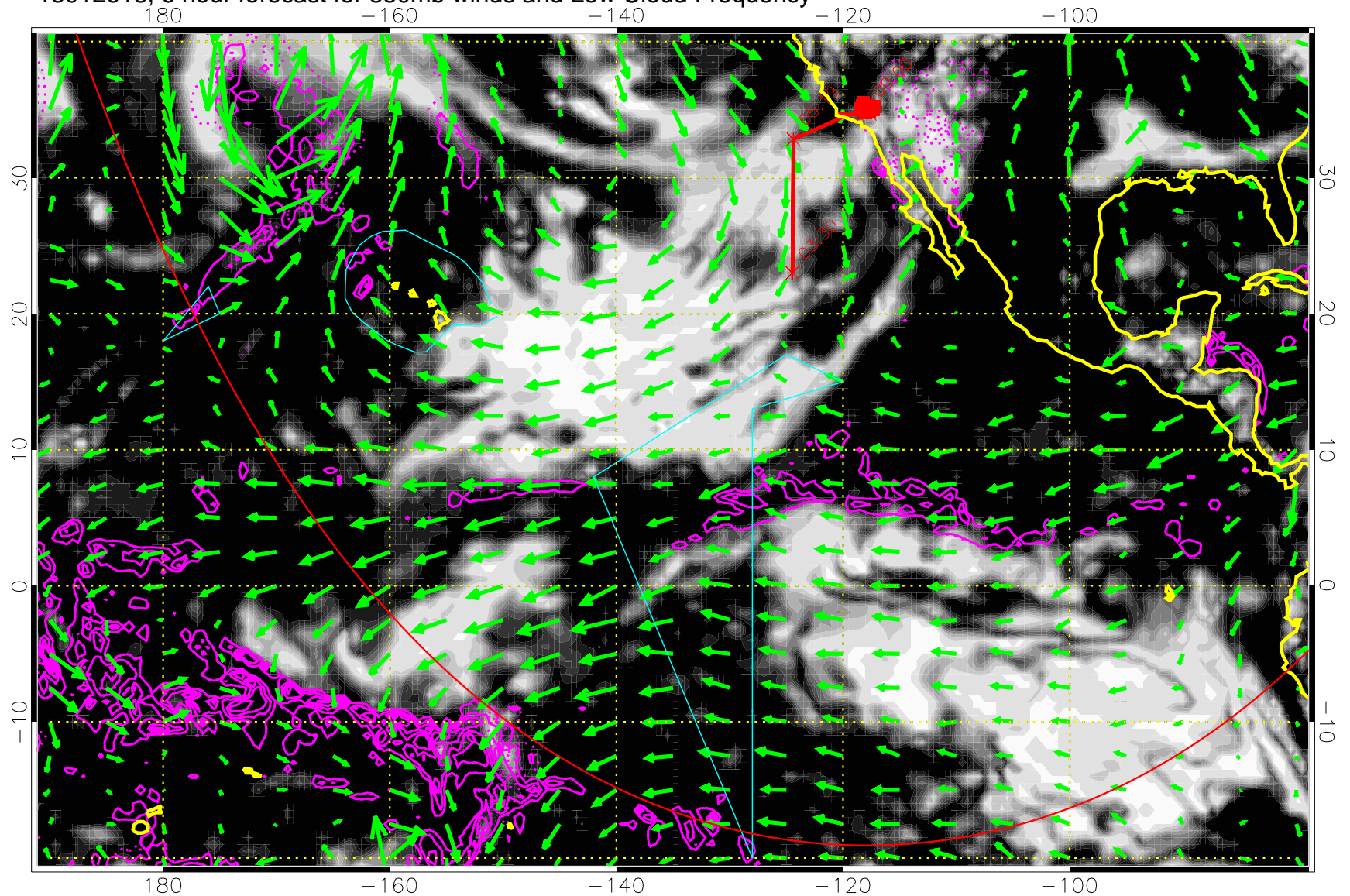


13012618, 6 hour forecast for 850mb winds and Low Cloud Frequency



0.0 0.2 0.4 0.6 0.8 1.0  
Low Cloud Frequency

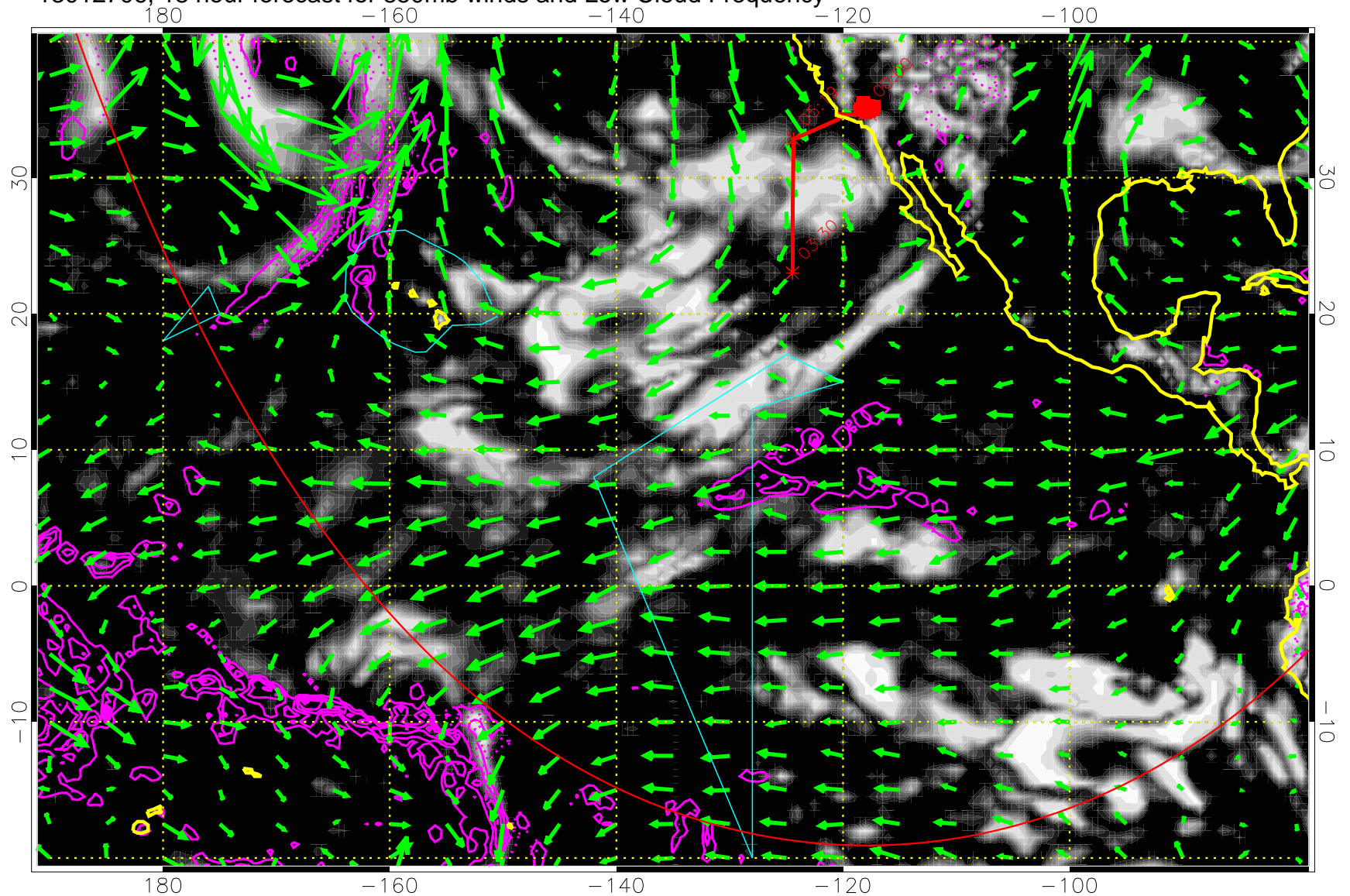
Precip (tot dot, conv sol) past 6 hrs 6 kg/m2 contours, min 4

→ 30 m/s

Range ring of 6000 km -- 19 hours GH round trip



13012706, 18 hour forecast for 850mb winds and Low Cloud Frequency

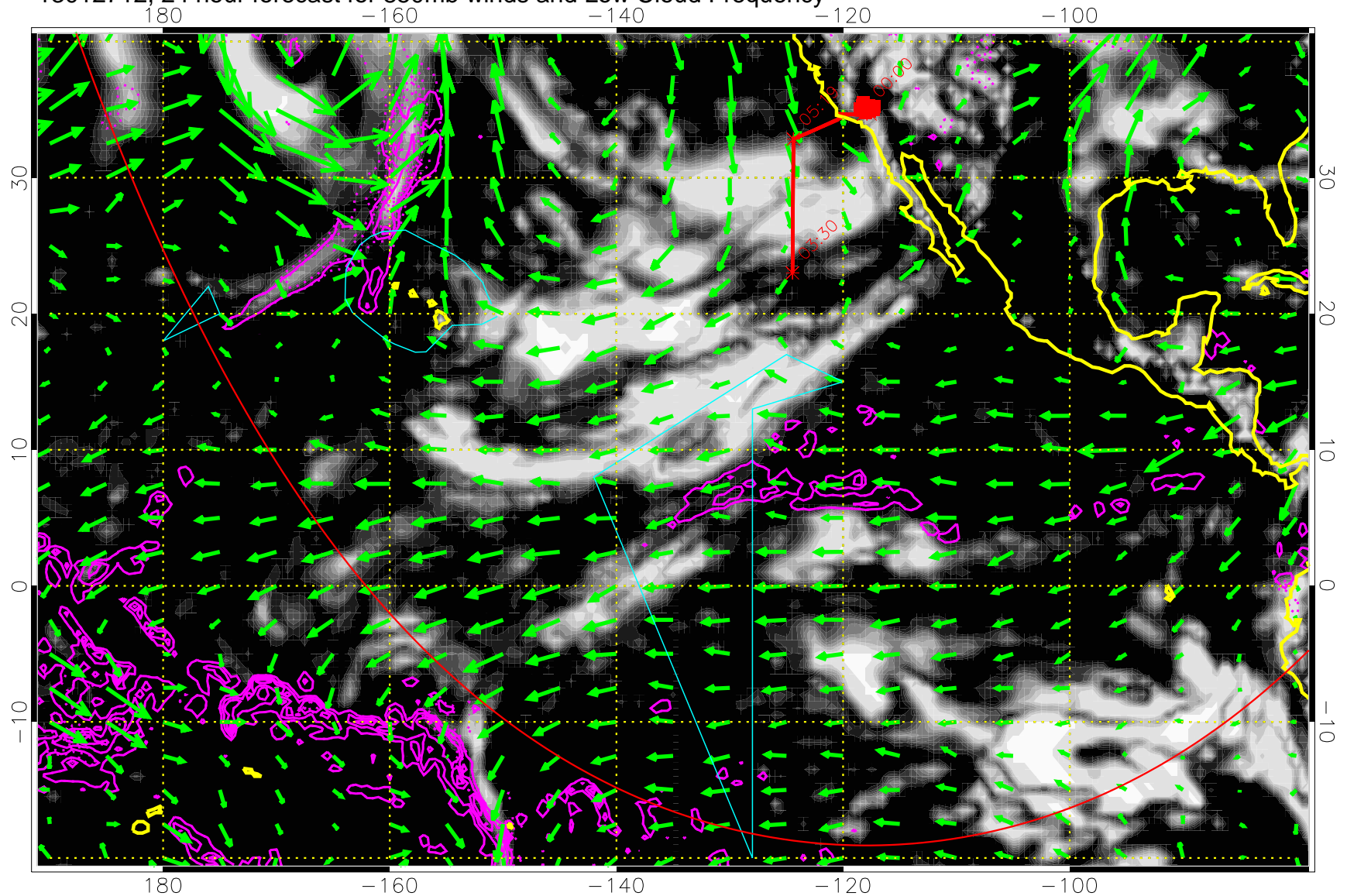


Precip (tot dot, conv sol) past 6 hrs 6 kg/m2 contours, min 4

→ 30 m/s

Range ring of 6000 km -- 19 hours GH round trip

13012712, 24 hour forecast for 850mb winds and Low Cloud Frequency



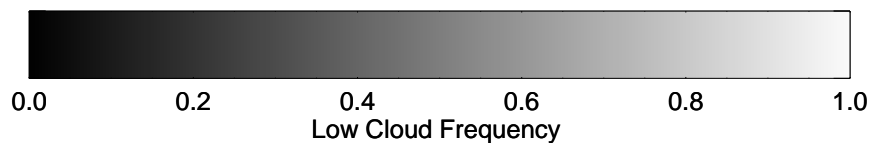
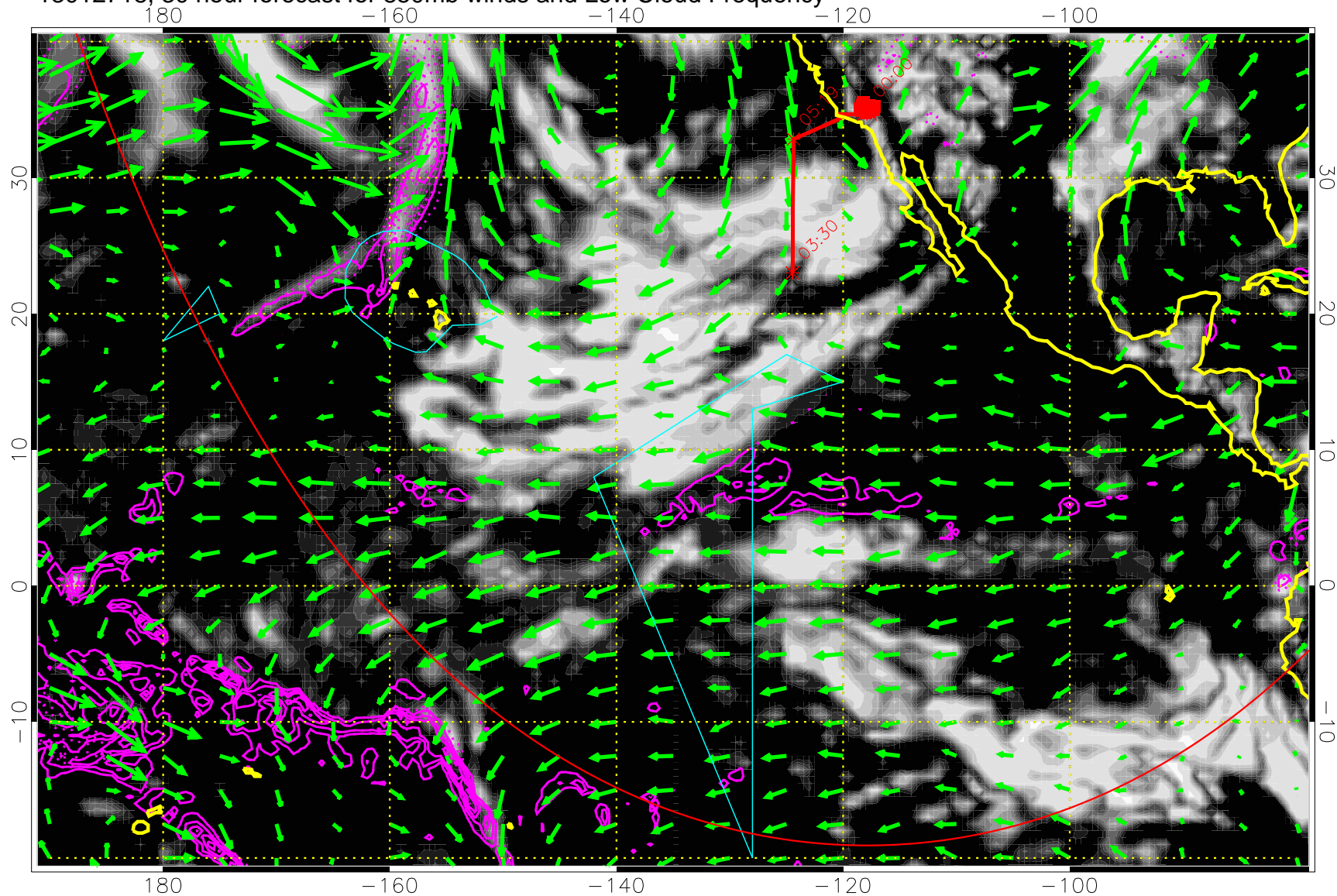
0.0 0.2 0.4 0.6 0.8 1.0  
Low Cloud Frequency

Precip (tot dot, conv sol) past 6 hrs 6 kg/m2 contours, min 4

→ 30 m/s

Range ring of 6000 km -- 19 hours GH round trip

13012718, 30 hour forecast for 850mb winds and Low Cloud Frequency

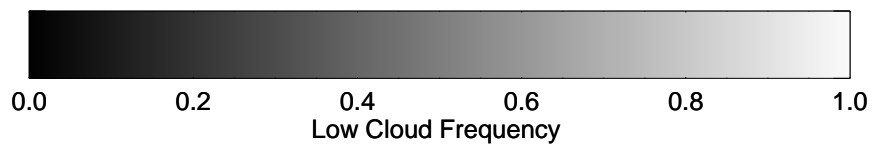
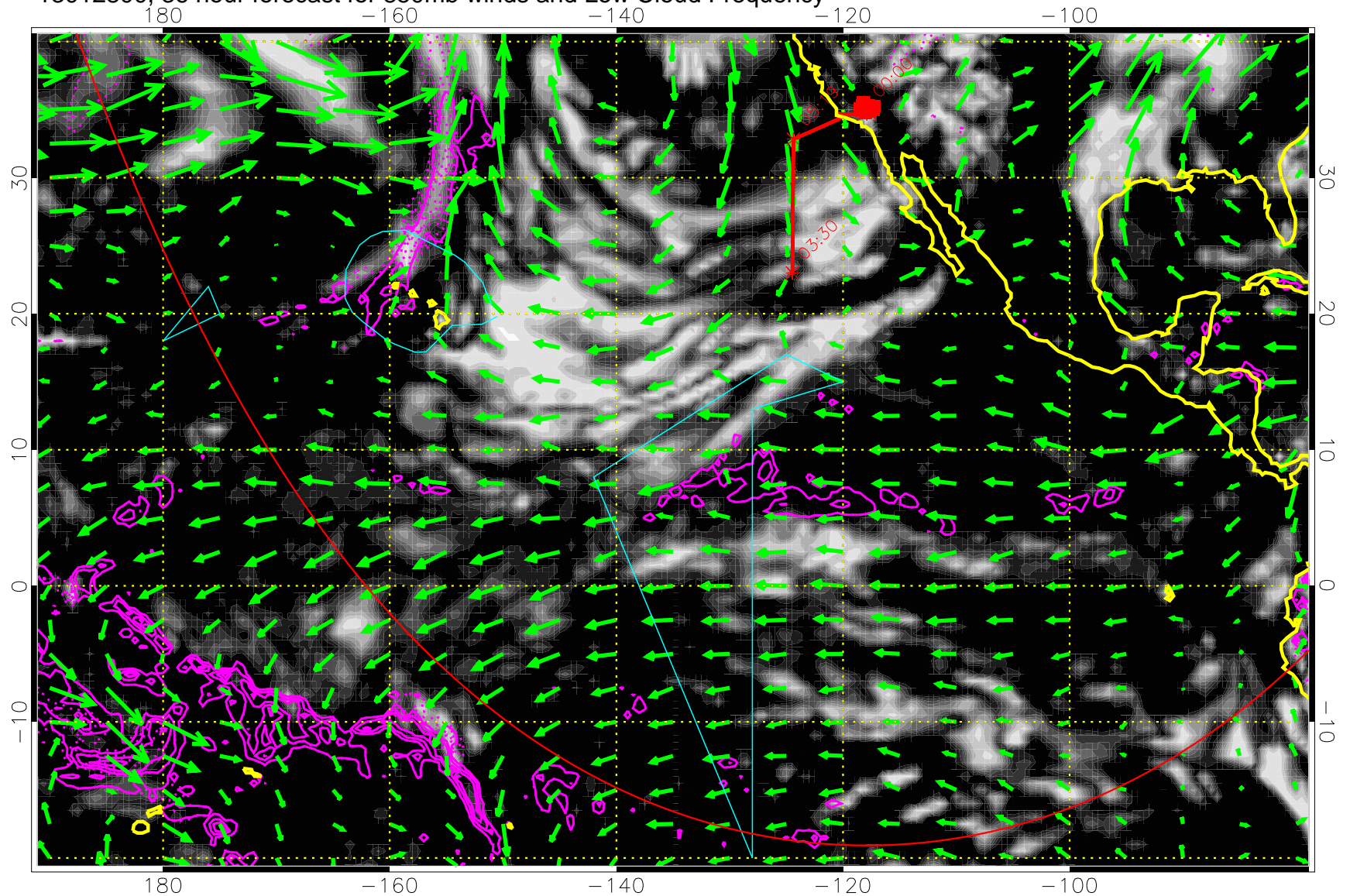


Precip (tot dot, conv sol) past 6 hrs 6 kg/m<sup>2</sup> contours, min 4

→ 30 m/s

Range ring of 6000 km -- 19 hours GH round trip

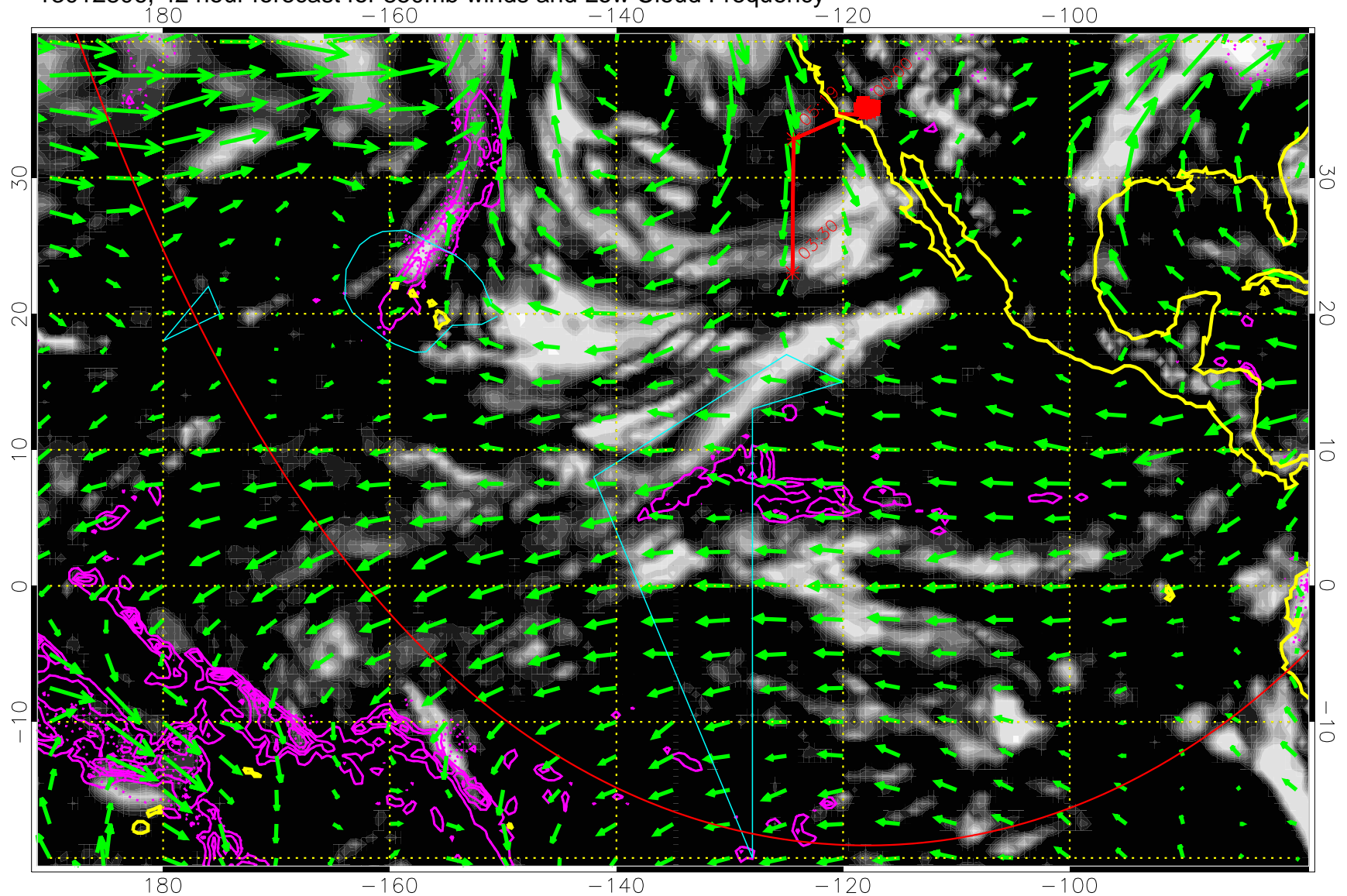
13012800, 36 hour forecast for 850mb winds and Low Cloud Frequency



Precip (tot dot, conv sol) past 6 hrs 6 kg/m<sup>2</sup> contours, min 4

→ 30 m/s  
Range ring of 6000 km -- 19 hours GH round trip

13012806, 42 hour forecast for 850mb winds and Low Cloud Frequency

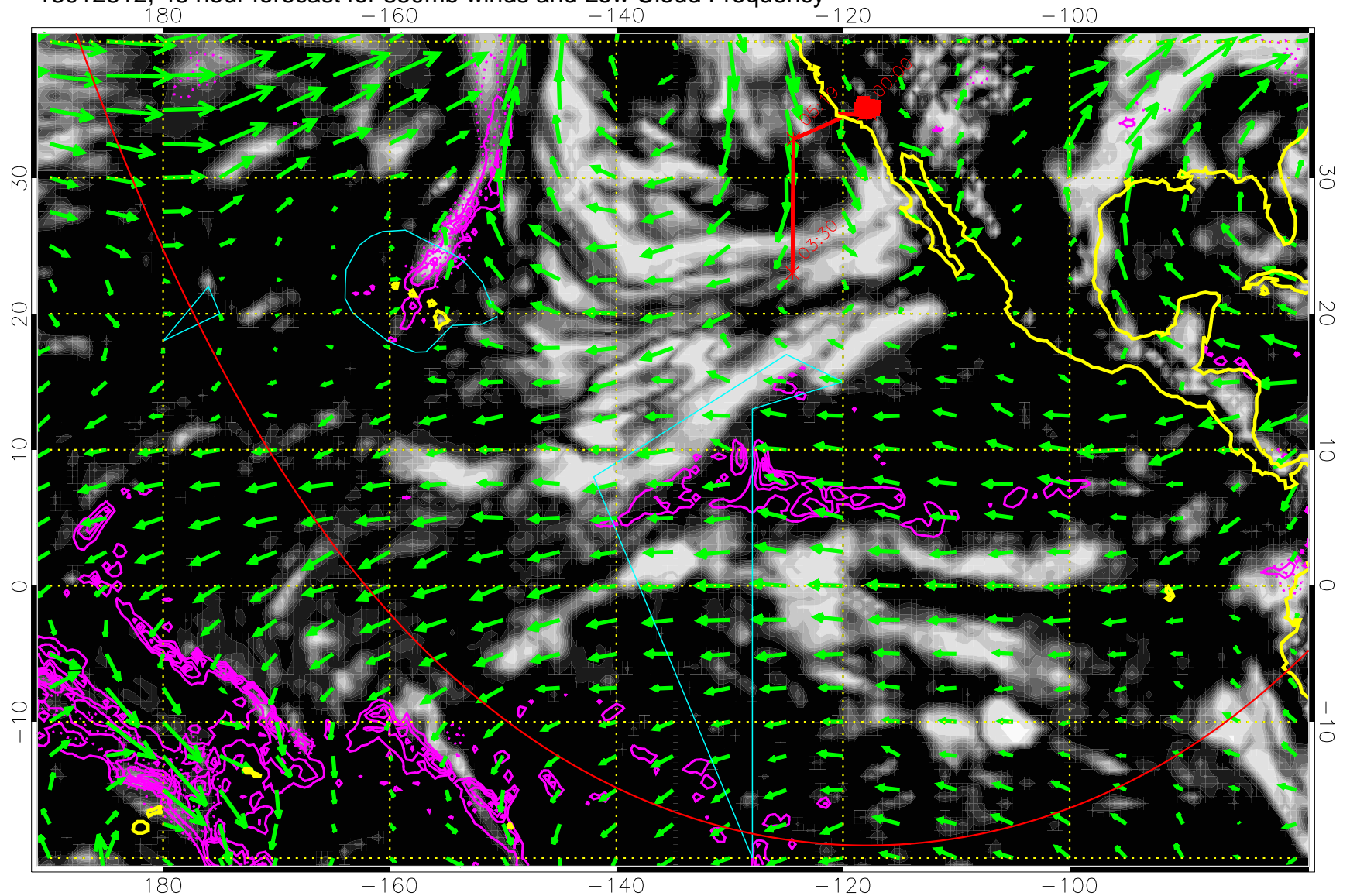


Precip (tot dot, conv sol) past 6 hrs 6 kg/m2 contours, min 4

→ 30 m/s

Range ring of 6000 km -- 19 hours GH round trip

13012812, 48 hour forecast for 850mb winds and Low Cloud Frequency



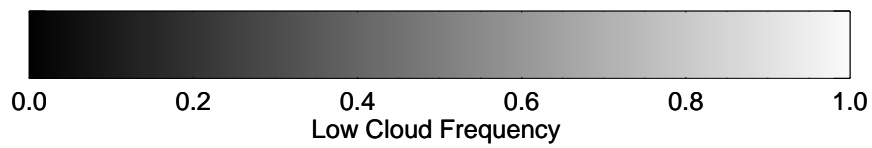
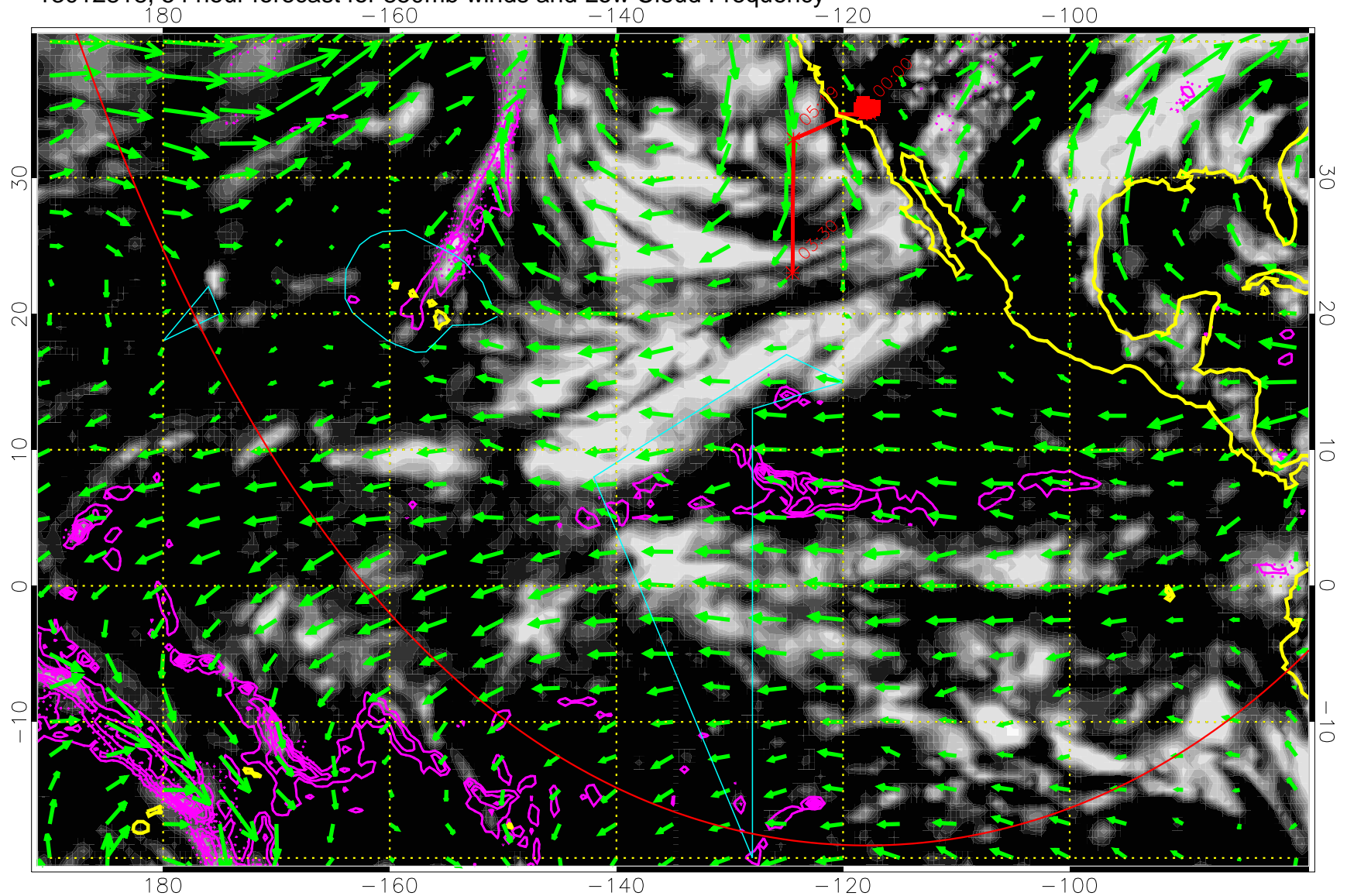
Precip (tot dot, conv sol) past 6 hrs 6 kg/m2 contours, min 4

→ 30 m/s

Range ring of 6000 km -- 19 hours GH round trip



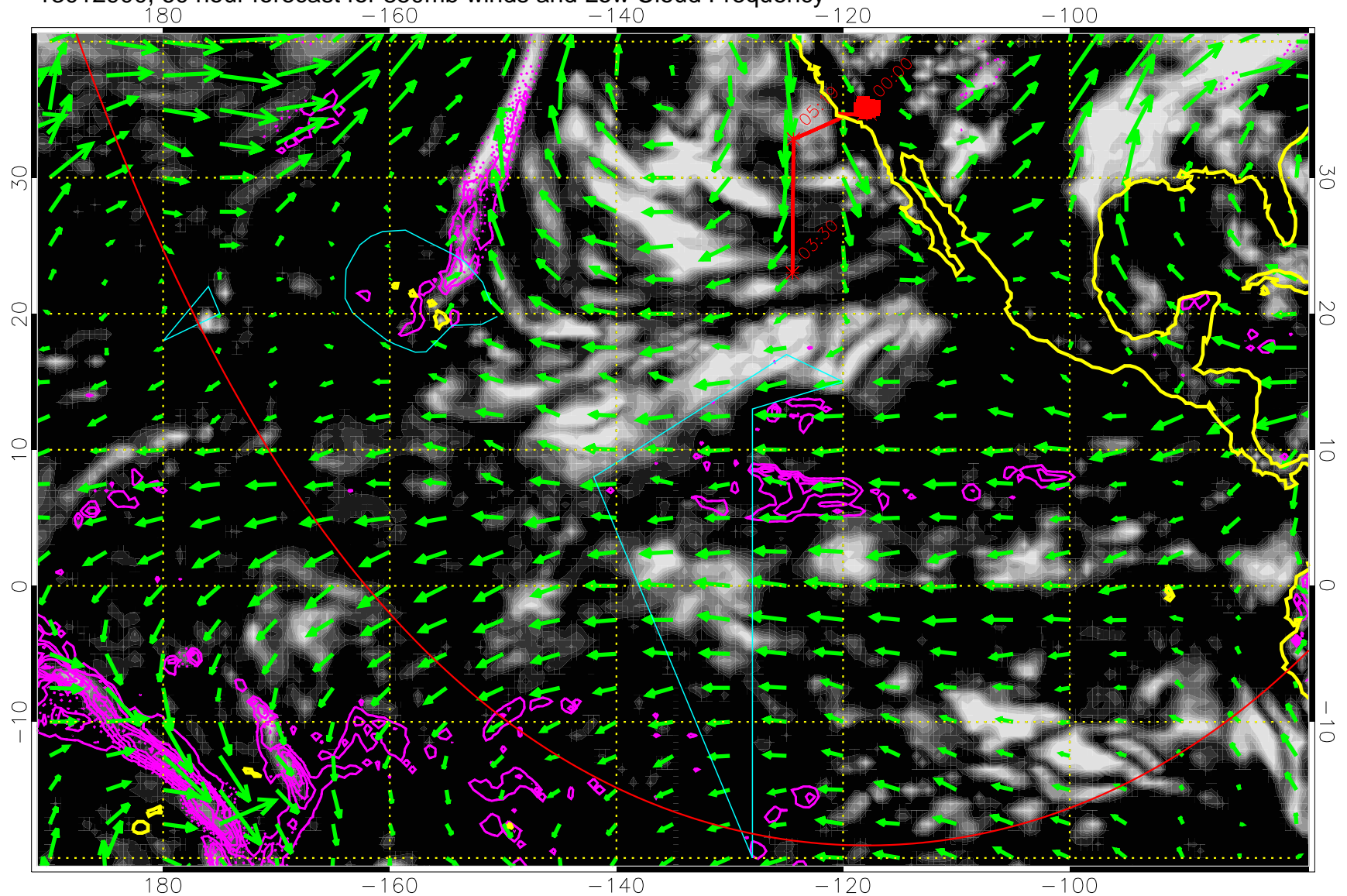
13012818, 54 hour forecast for 850mb winds and Low Cloud Frequency



Precip (tot dot, conv sol) past 6 hrs 6 kg/m2 contours, min 4

→ 30 m/s  
Range ring of 6000 km -- 19 hours GH round trip

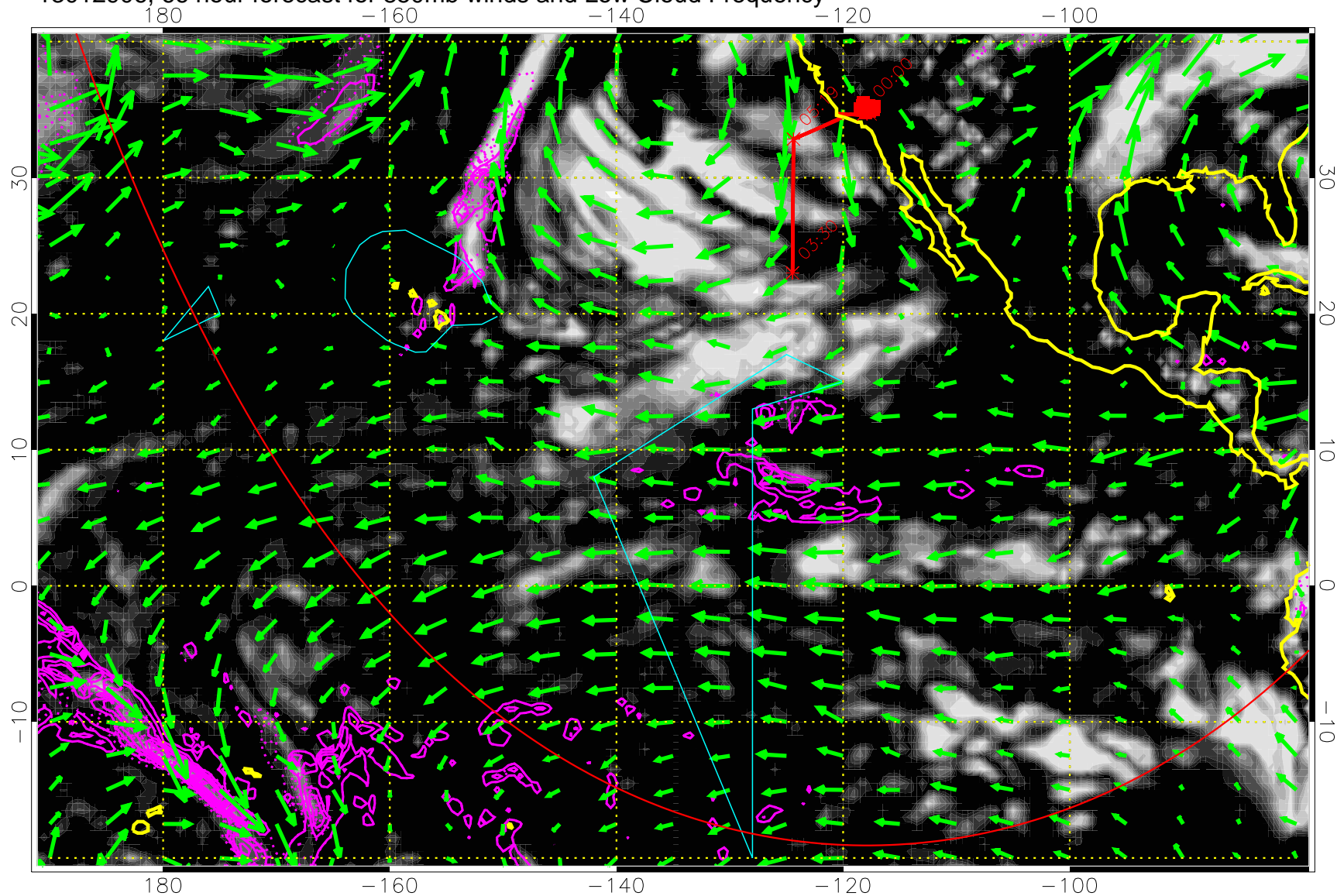
13012900, 60 hour forecast for 850mb winds and Low Cloud Frequency



Precip (tot dot, conv sol) past 6 hrs 6 kg/m2 contours, min 4

→ 30 m/s  
Range ring of 6000 km -- 19 hours GH round trip

13012906, 66 hour forecast for 850mb winds and Low Cloud Frequency

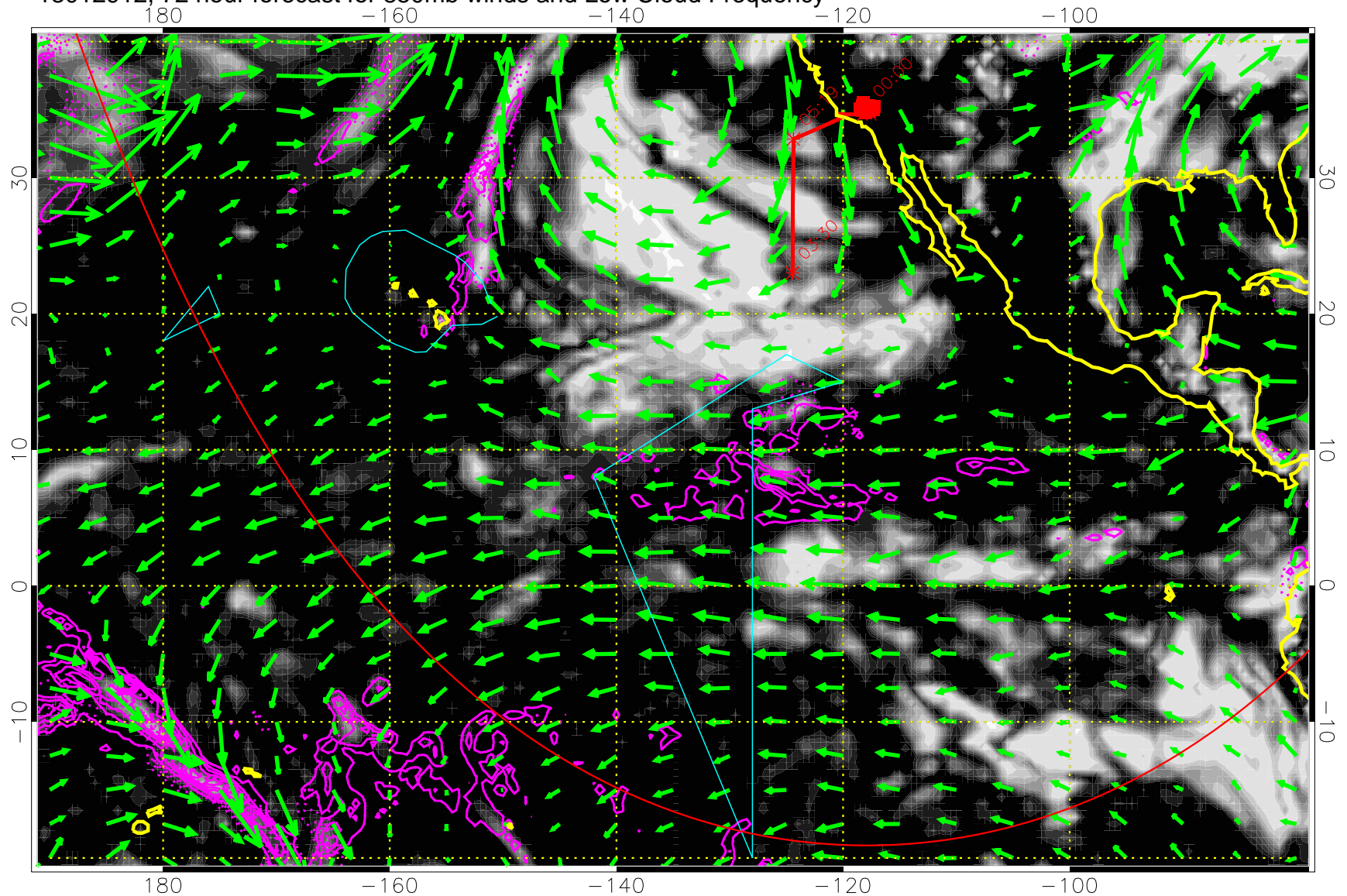


Precip (tot dot, conv sol) past 6 hrs 6 kg/m2 contours, min 4

→ 30 m/s

Range ring of 6000 km -- 19 hours GH round trip

13012912, 72 hour forecast for 850mb winds and Low Cloud Frequency

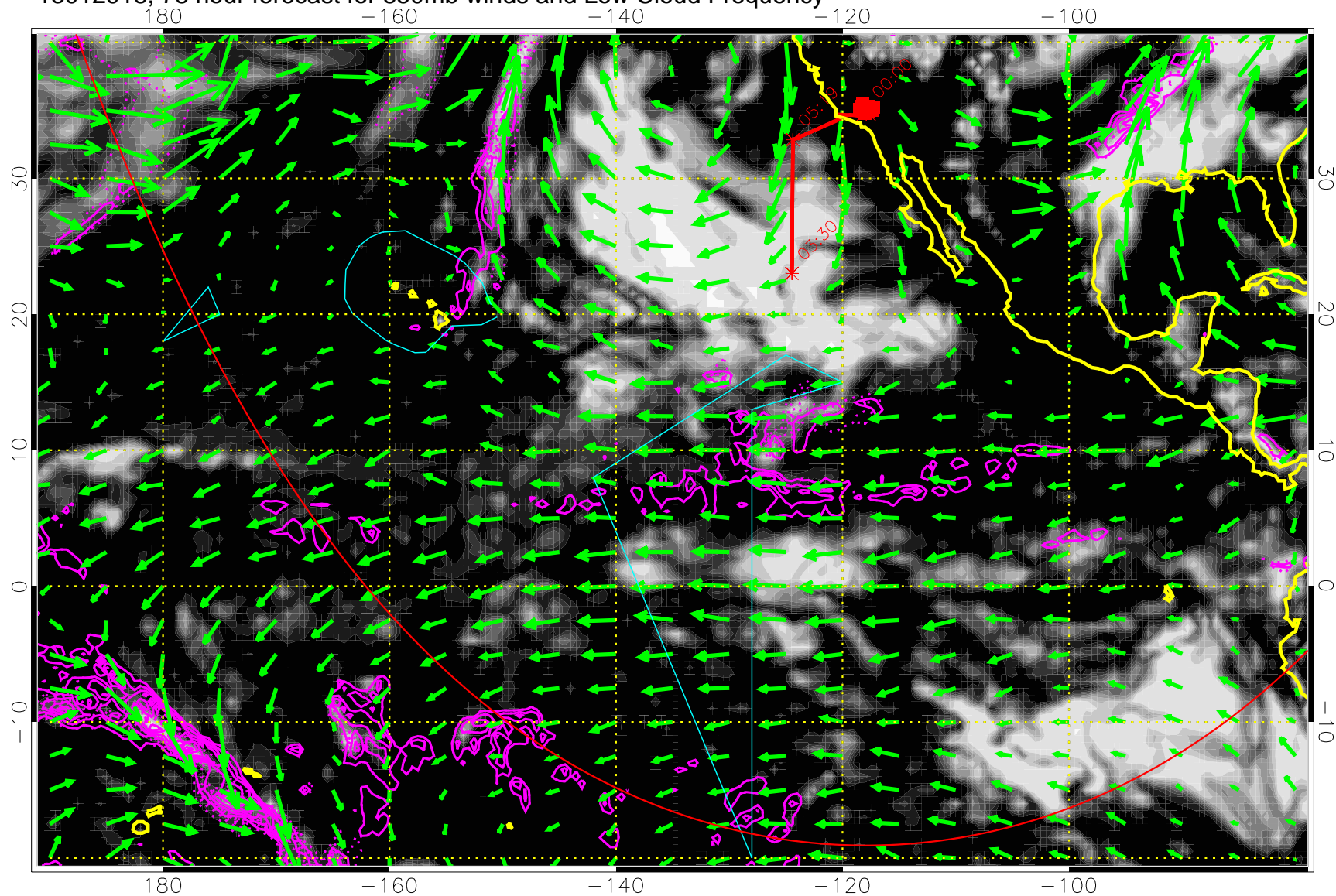


Precip (tot dot, conv sol) past 6 hrs 6 kg/m2 contours, min 4

→ 30 m/s

Range ring of 6000 km -- 19 hours GH round trip

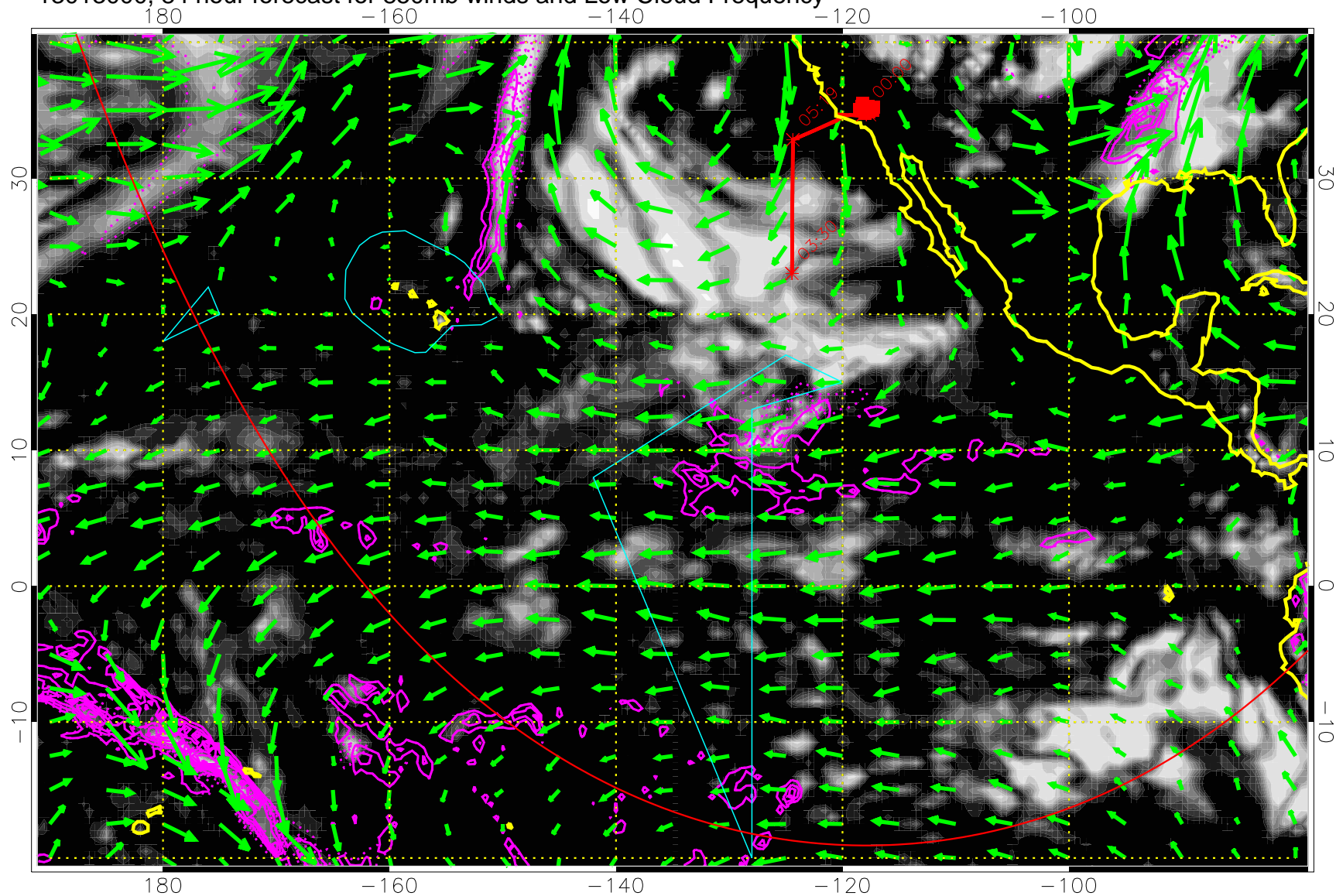
13012918, 78 hour forecast for 850mb winds and Low Cloud Frequency



Precip (tot dot, conv sol) past 6 hrs 6 kg/m2 contours, min 4

→ 30 m/s  
Range ring of 6000 km -- 19 hours GH round trip

13013000, 84 hour forecast for 850mb winds and Low Cloud Frequency

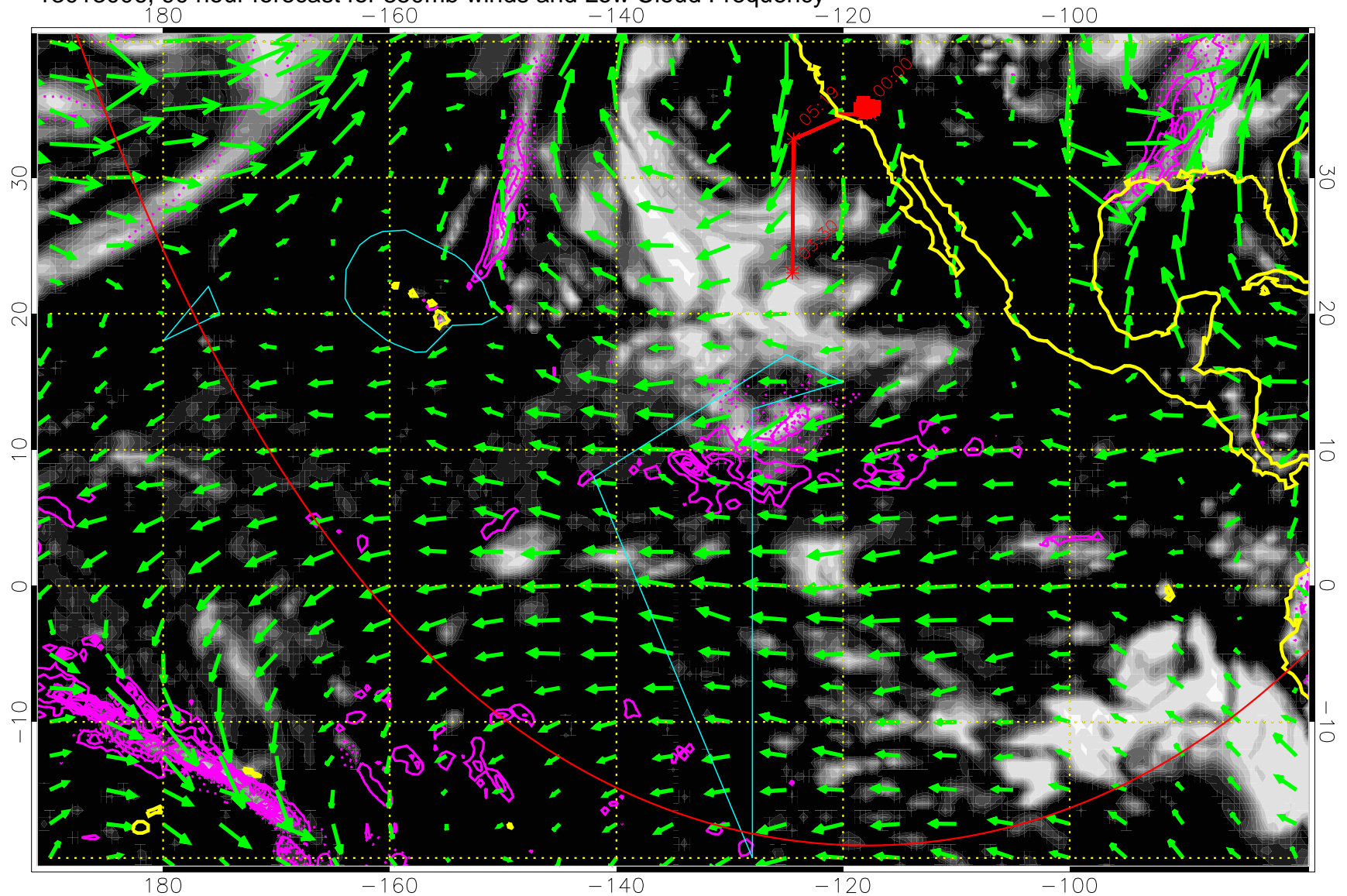


Precip (tot dot, conv sol) past 6 hrs 6 kg/m2 contours, min 4

→ 30 m/s

Range ring of 6000 km -- 19 hours GH round trip

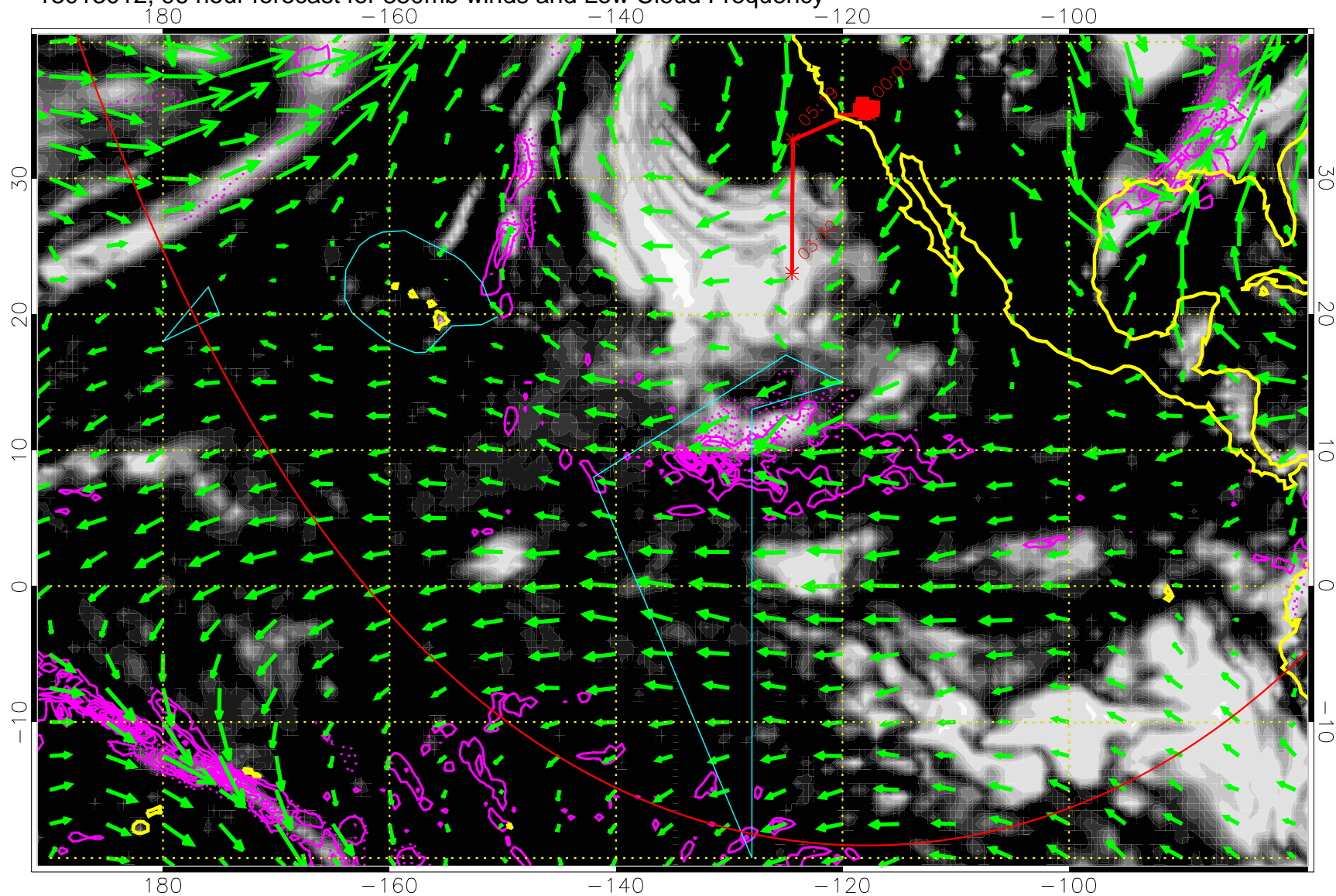
13013006, 90 hour forecast for 850mb winds and Low Cloud Frequency



Precip (tot dot, conv sol) past 6 hrs 6 kg/m2 contours, min 4

→ 30 m/s  
Range ring of 6000 km -- 19 hours GH round trip

13013012, 96 hour forecast for 850mb winds and Low Cloud Frequency



0.0 0.2 0.4 0.6 0.8 1.0  
Low Cloud Frequency

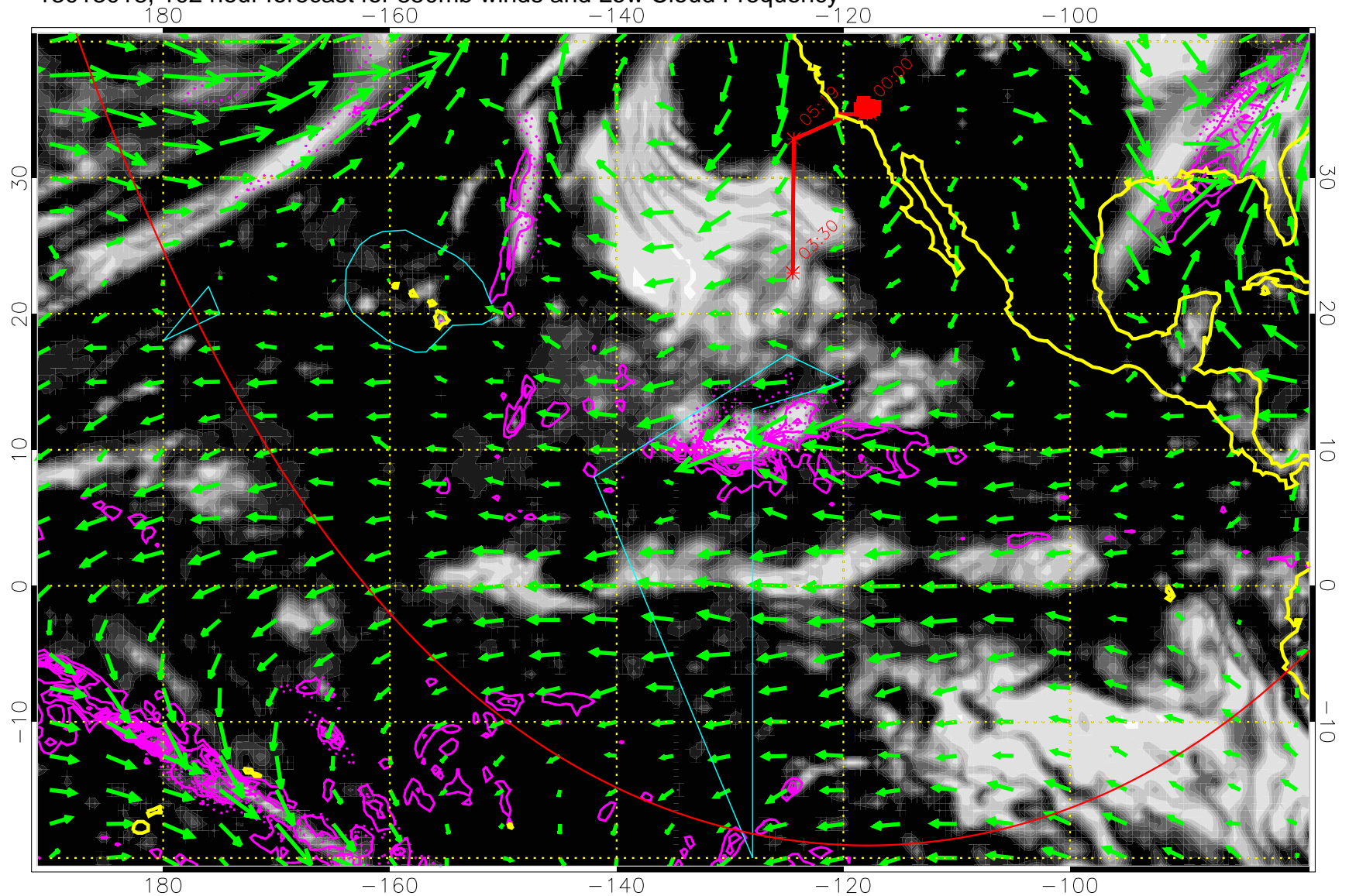
Precip (tot dot, conv sol) past 6 hrs 6 kg/m2 contours, min 4

→ 30 m/s

Range ring of 6000 km -- 19 hours GH round trip



13013018, 102 hour forecast for 850mb winds and Low Cloud Frequency



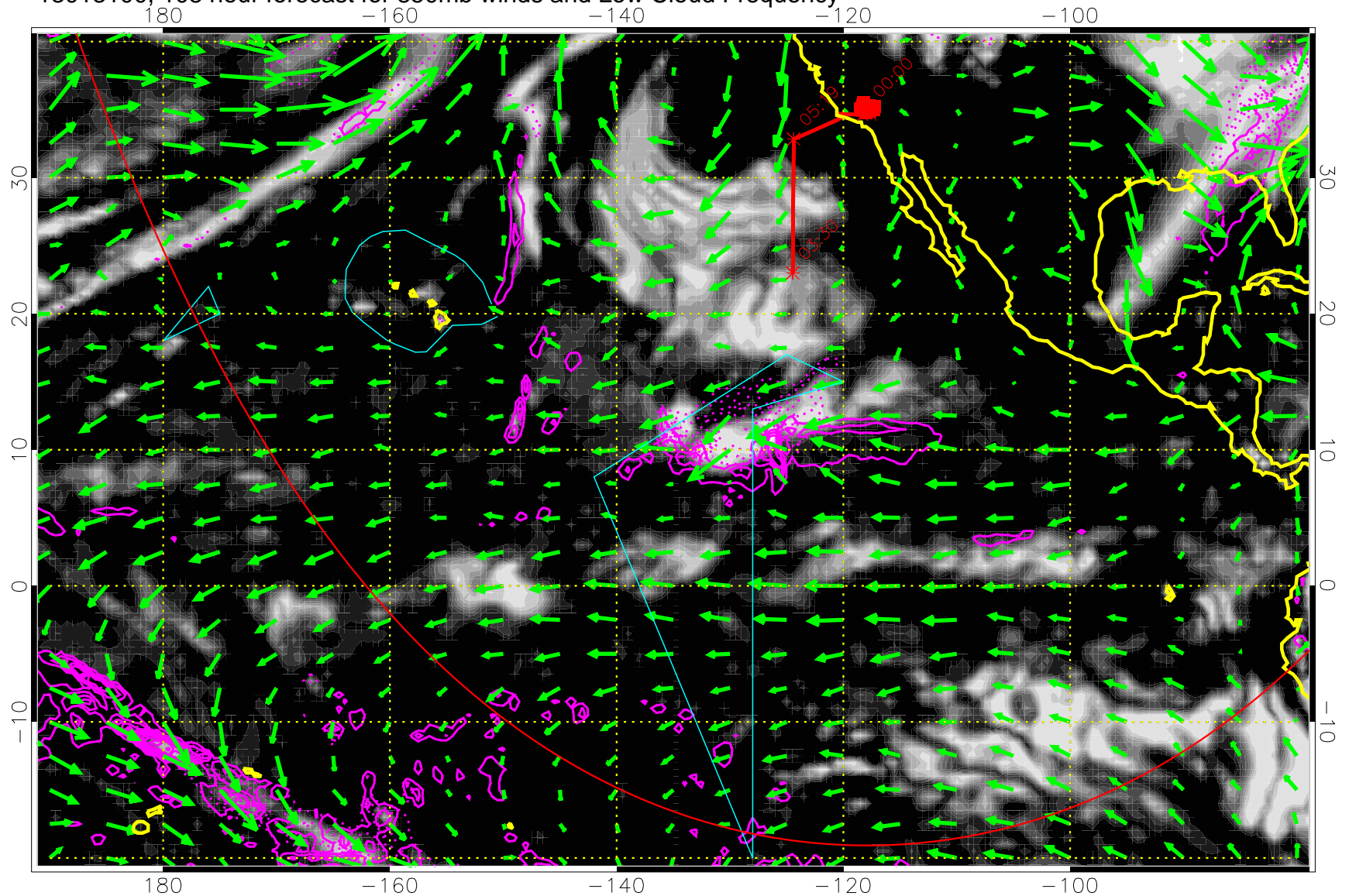
Low Cloud Frequency

Precip (tot dot, conv sol) past 6 hrs 6 kg/m2 contours, min 4

→ 30 m/s

Range ring of 6000 km -- 19 hours GH round trip

13013100, 108 hour forecast for 850mb winds and Low Cloud Frequency

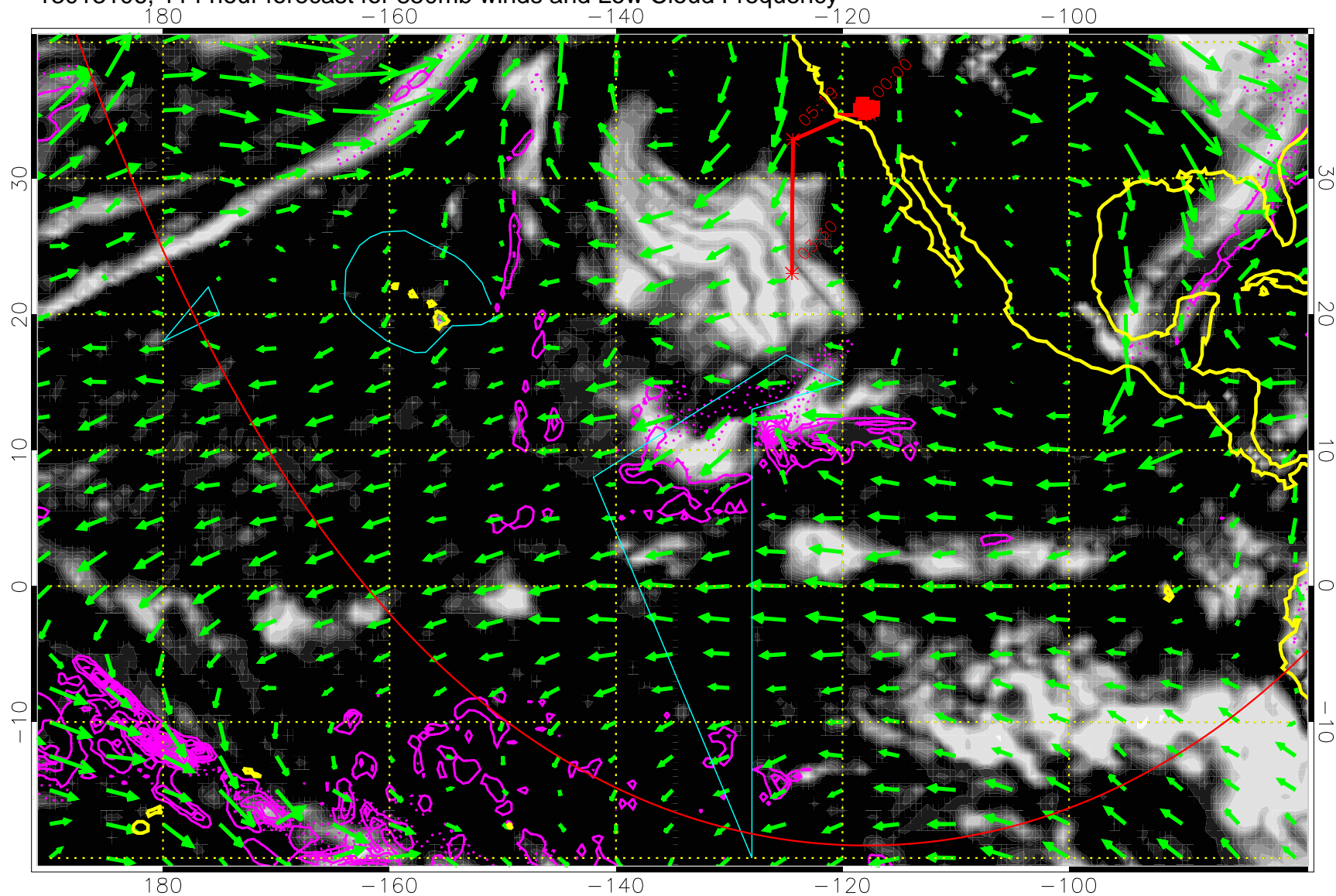


Precip (tot dot, conv sol) past 6 hrs 6 kg/m2 contours, min 4

→ 30 m/s

Range ring of 6000 km -- 19 hours GH round trip

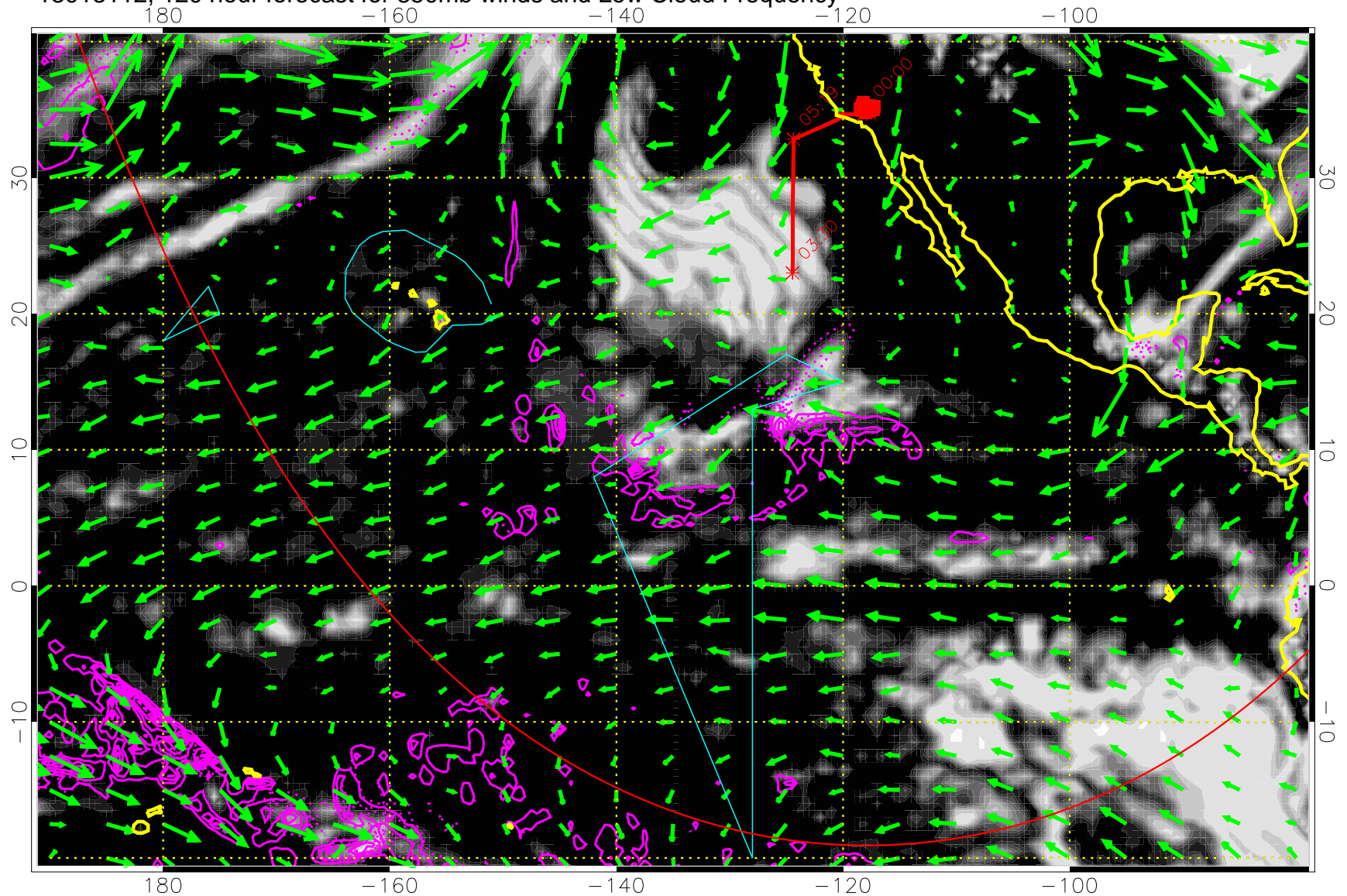
13013106, 114 hour forecast for 850mb winds and Low Cloud Frequency



Precip (tot dot, conv sol) past 6 hrs 6 kg/m2 contours, min 4

→ 30 m/s  
Range ring of 6000 km -- 19 hours GH round trip

13013112, 120 hour forecast for 850mb winds and Low Cloud Frequency



Precip (tot dot, conv sol) past 6 hrs 6 kg/m2 contours, min 4

→ 30 m/s  
Range ring of 6000 km -- 19 hours GH round trip