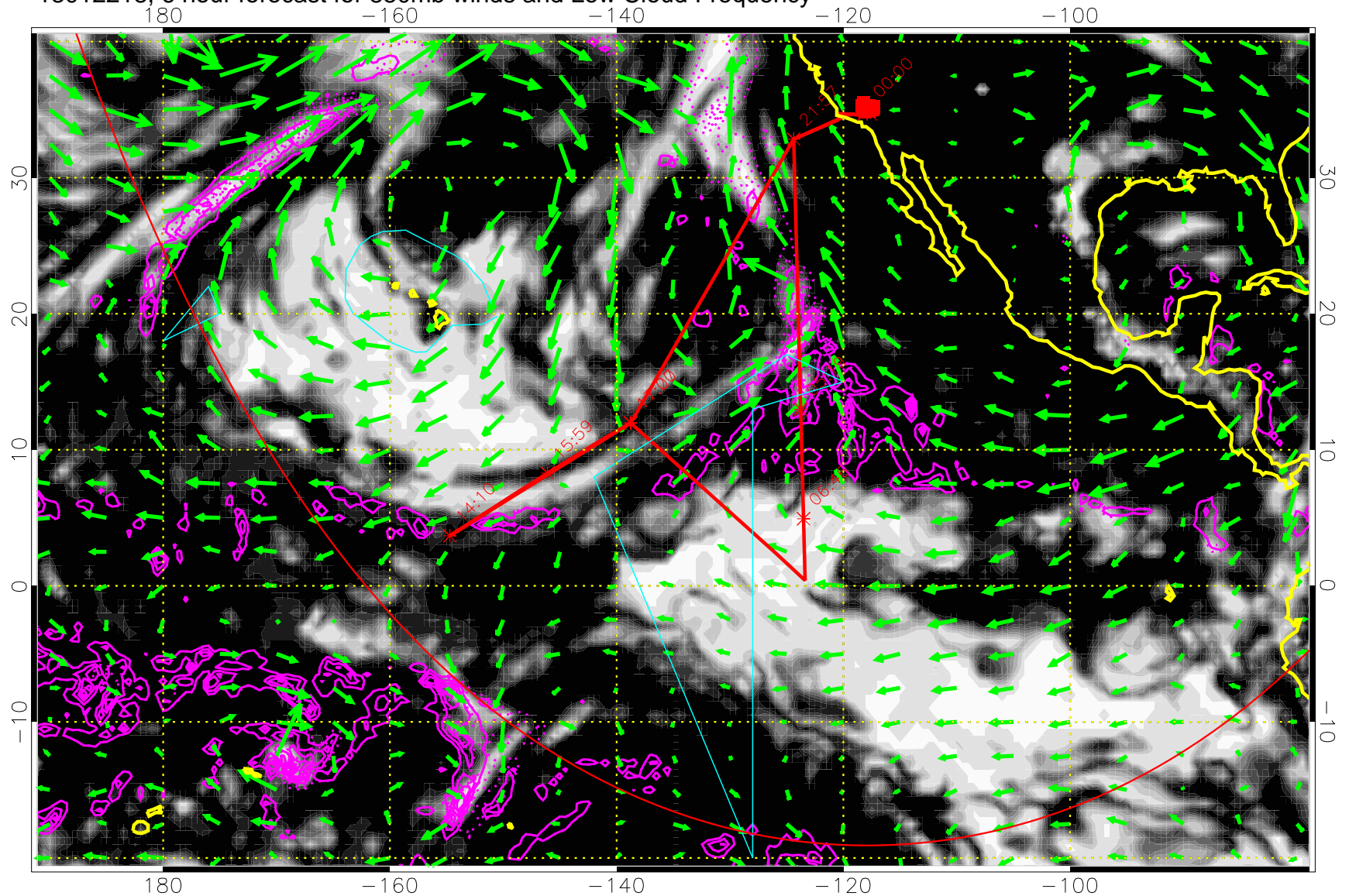


13012218, 6 hour forecast for 850mb winds and Low Cloud Frequency

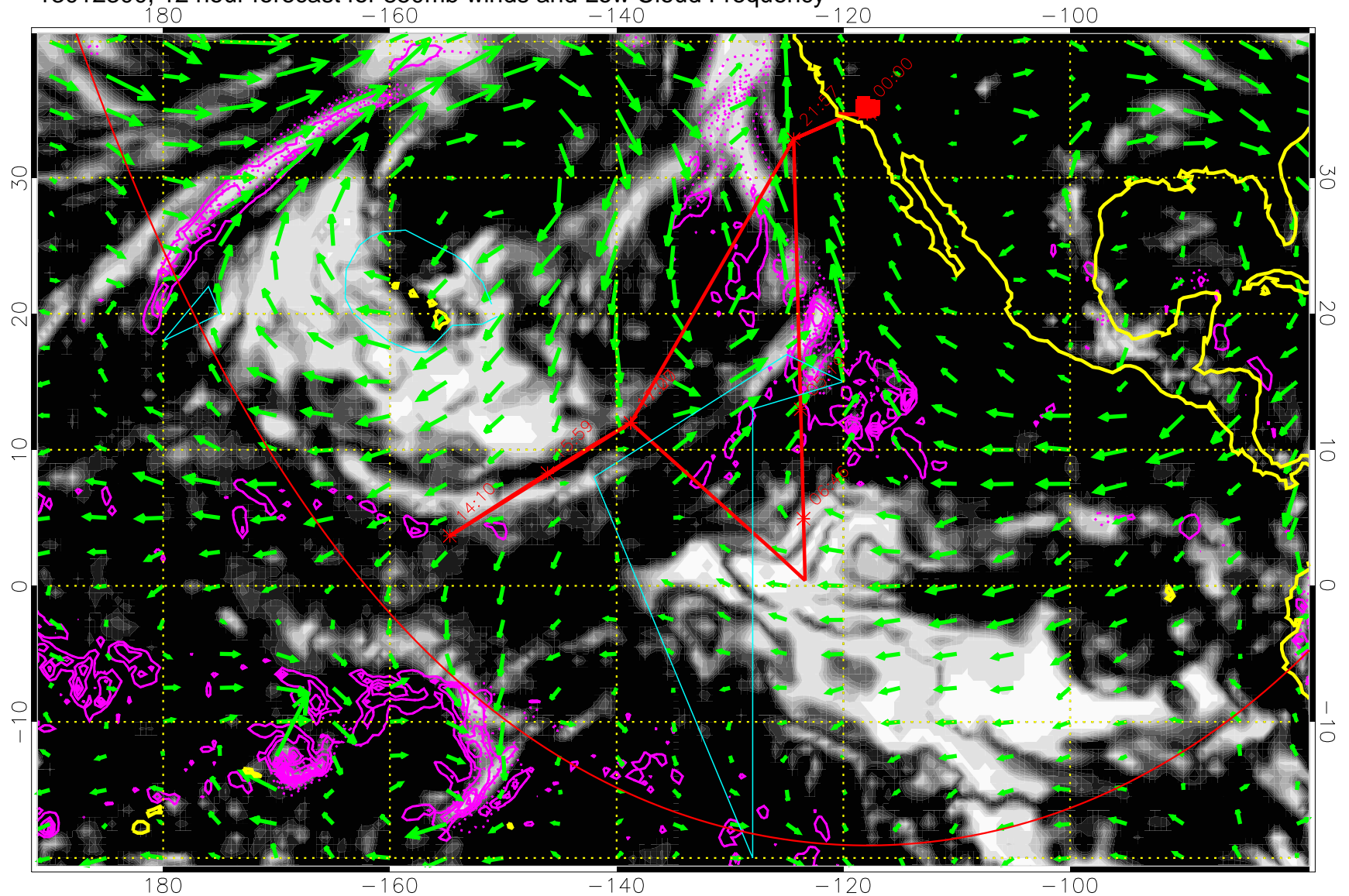


Precip (tot dot, conv sol) past 6 hrs 6 kg/m2 contours, min 4

→ 30 m/s

Range ring of 6000 km -- 19 hours GH round trip

13012300, 12 hour forecast for 850mb winds and Low Cloud Frequency

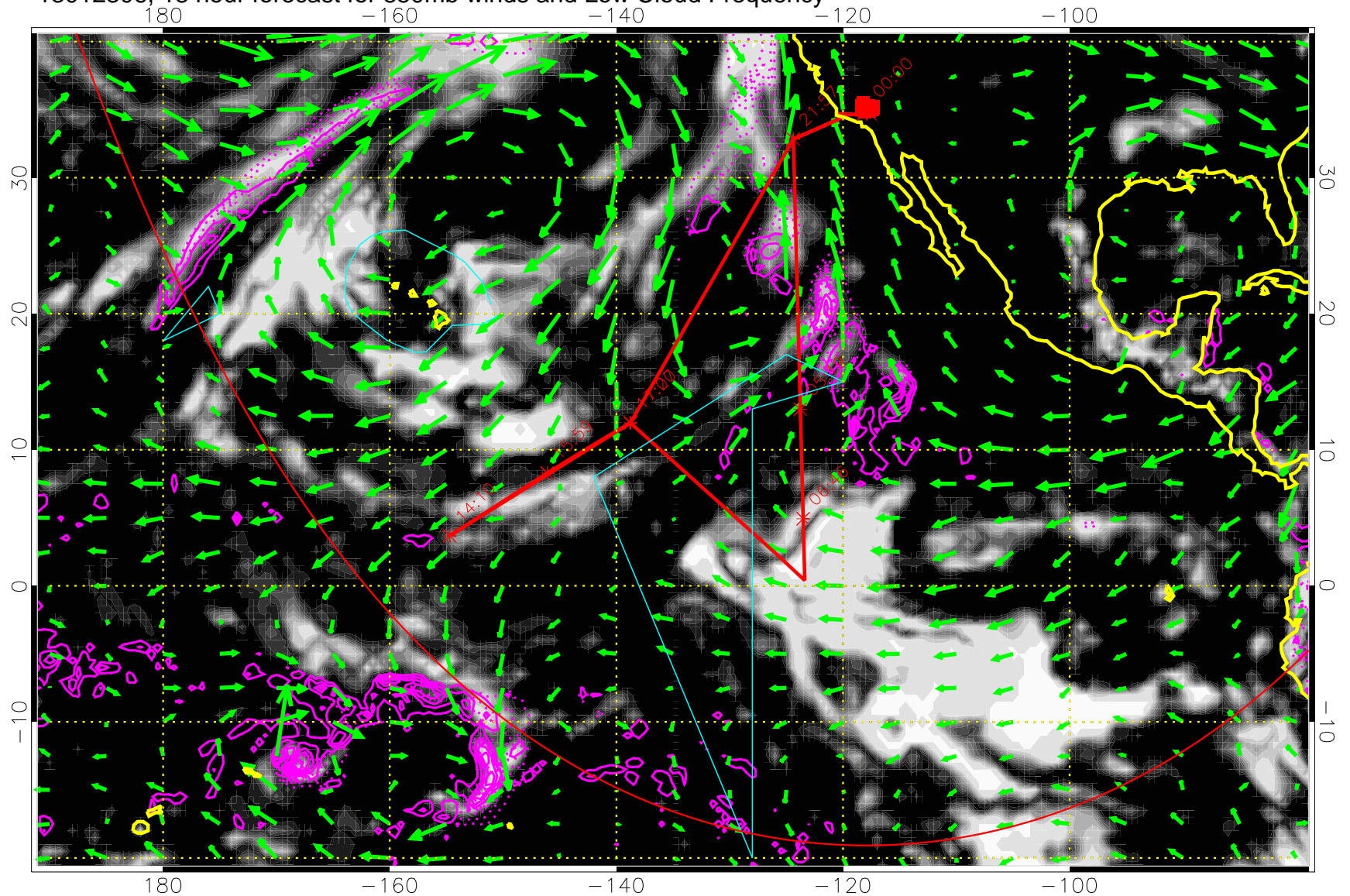


Precip (tot dot, conv sol) past 6 hrs 6 kg/m2 contours, min 4

→ 30 m/s

Range ring of 6000 km -- 19 hours GH round trip

13012306, 18 hour forecast for 850mb winds and Low Cloud Frequency

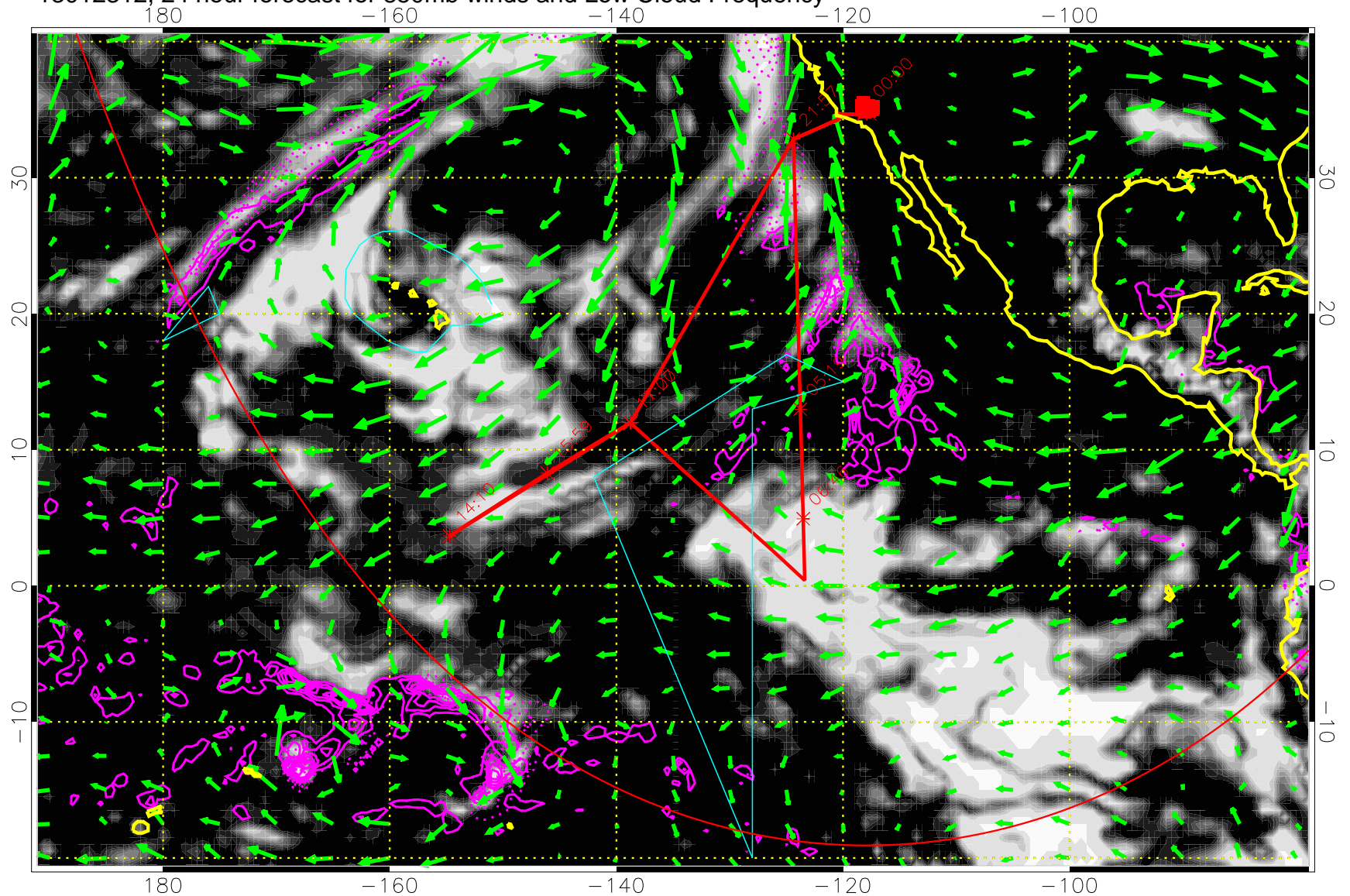


Precip (tot dot, conv sol) past 6 hrs 6 kg/m2 contours, min 4

→ 30 m/s

Range ring of 6000 km -- 19 hours GH round trip

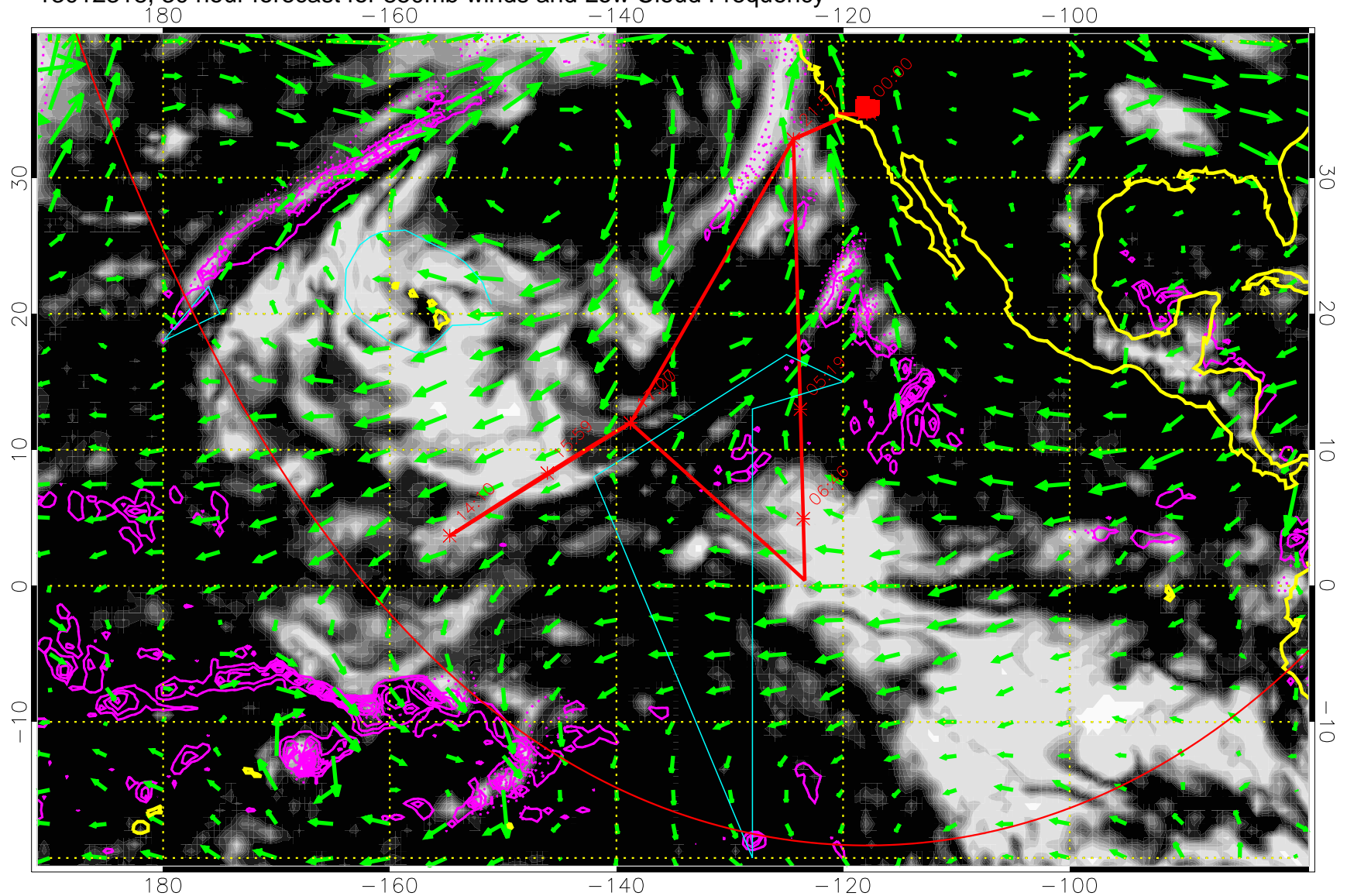
13012312, 24 hour forecast for 850mb winds and Low Cloud Frequency



Precip (tot dot, conv sol) past 6 hrs 6 kg/m2 contours, min 4

→ 30 m/s
Range ring of 6000 km -- 19 hours GH round trip

13012318, 30 hour forecast for 850mb winds and Low Cloud Frequency



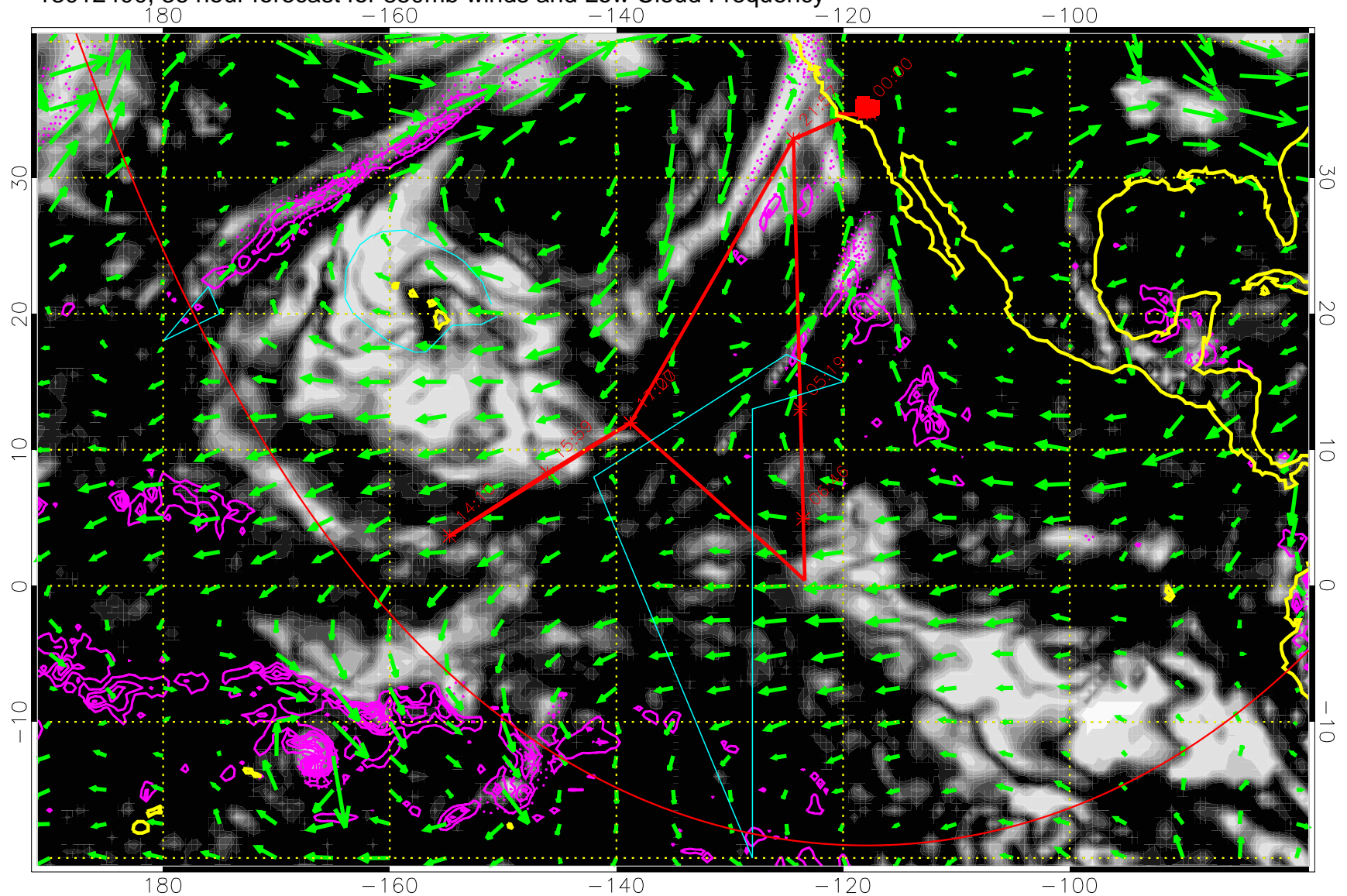
Precip (tot dot, conv sol) past 6 hrs 6 kg/m2 contours, min 4

0.0 0.2 0.4 0.6 0.8 1.0
Low Cloud Frequency

→ 30 m/s

Range ring of 6000 km -- 19 hours GH round trip

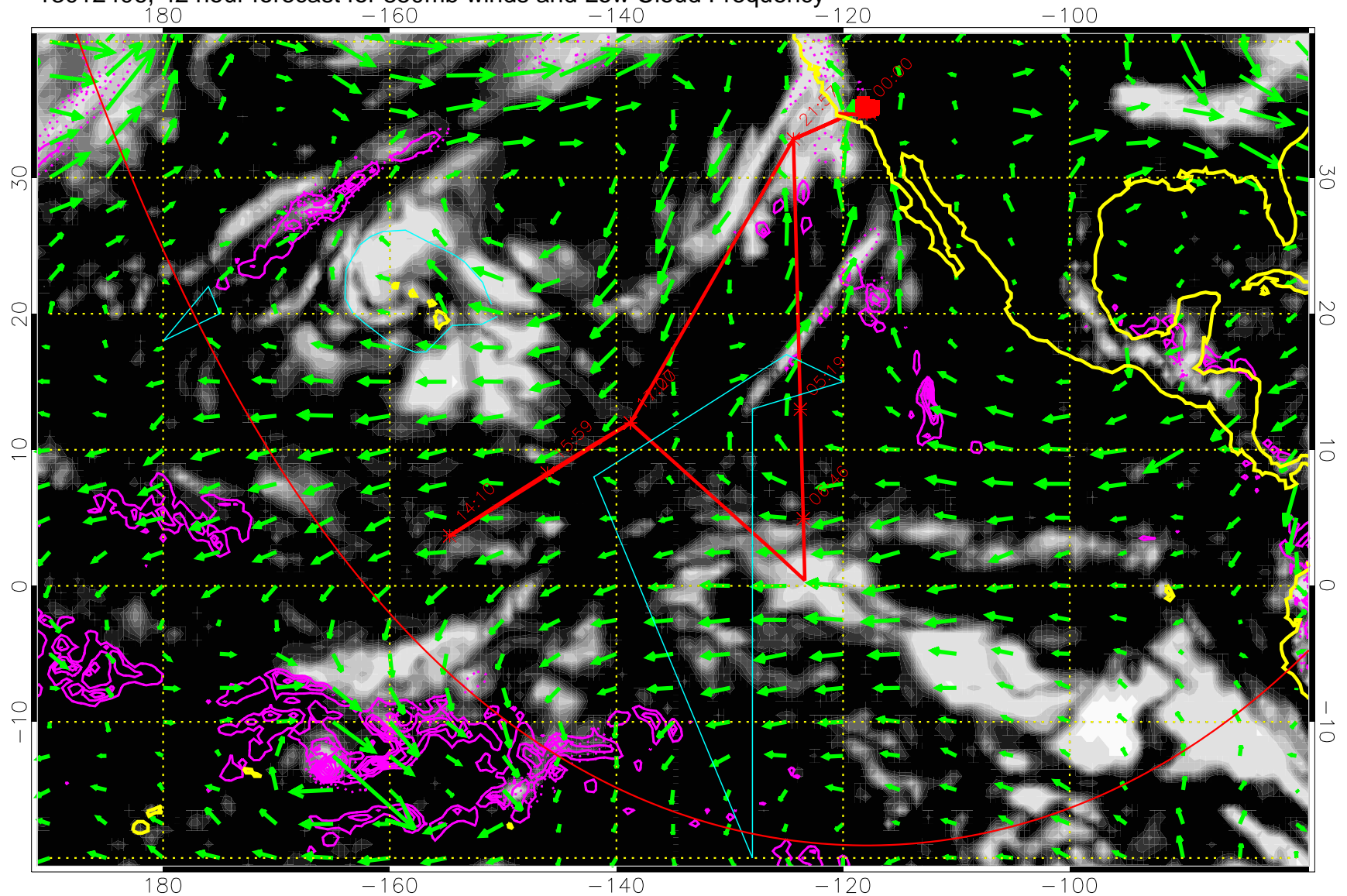
13012400, 36 hour forecast for 850mb winds and Low Cloud Frequency



Precip (tot dot, conv sol) past 6 hrs 6 kg/m2 contours, min 4

→ 30 m/s
Range ring of 6000 km -- 19 hours GH round trip

13012406, 42 hour forecast for 850mb winds and Low Cloud Frequency



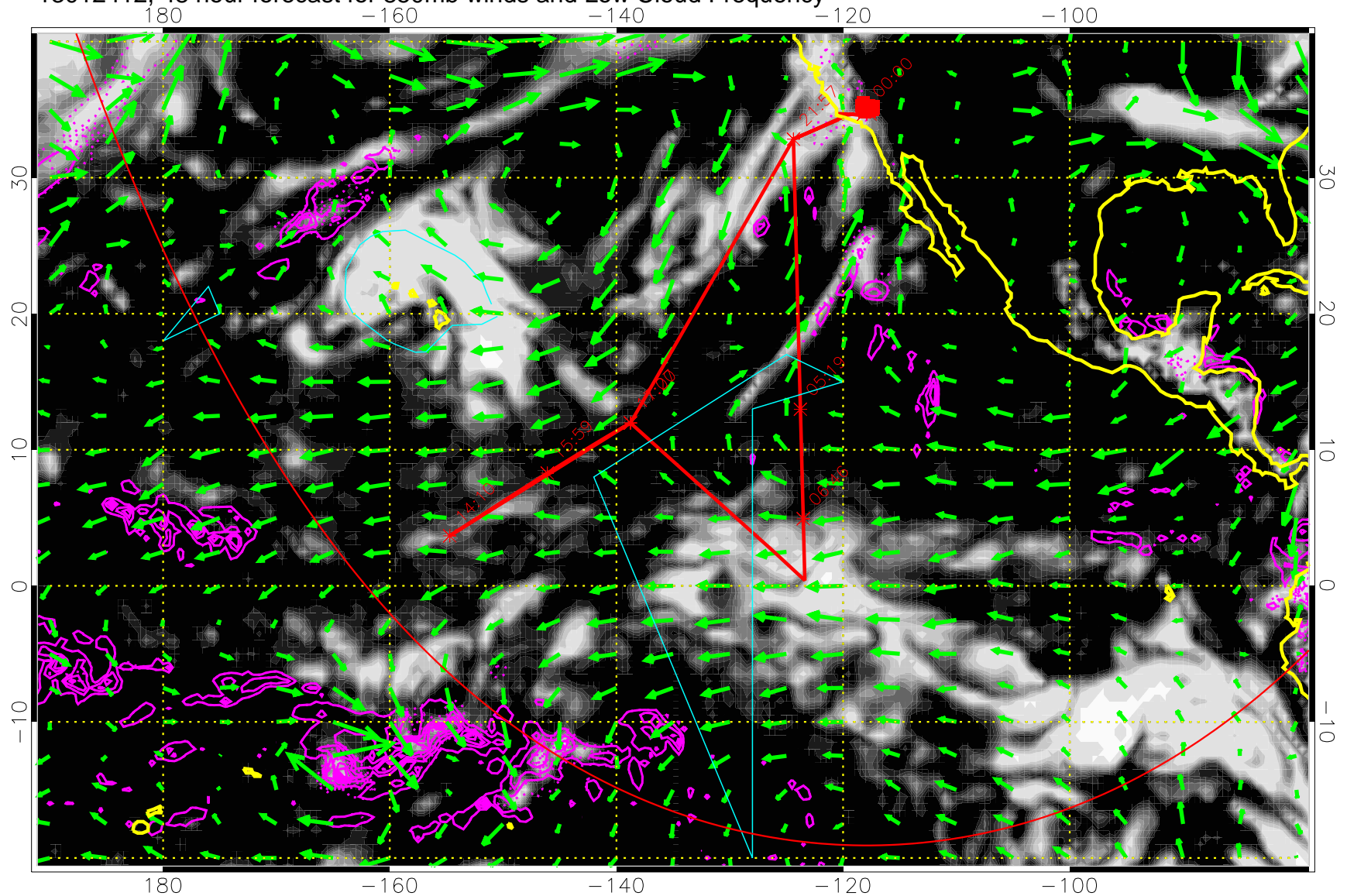
0.0 0.2 0.4 0.6 0.8 1.0
Low Cloud Frequency

Precip (tot dot, conv sol) past 6 hrs 6 kg/m2 contours, min 4

→ 30 m/s

Range ring of 6000 km -- 19 hours GH round trip

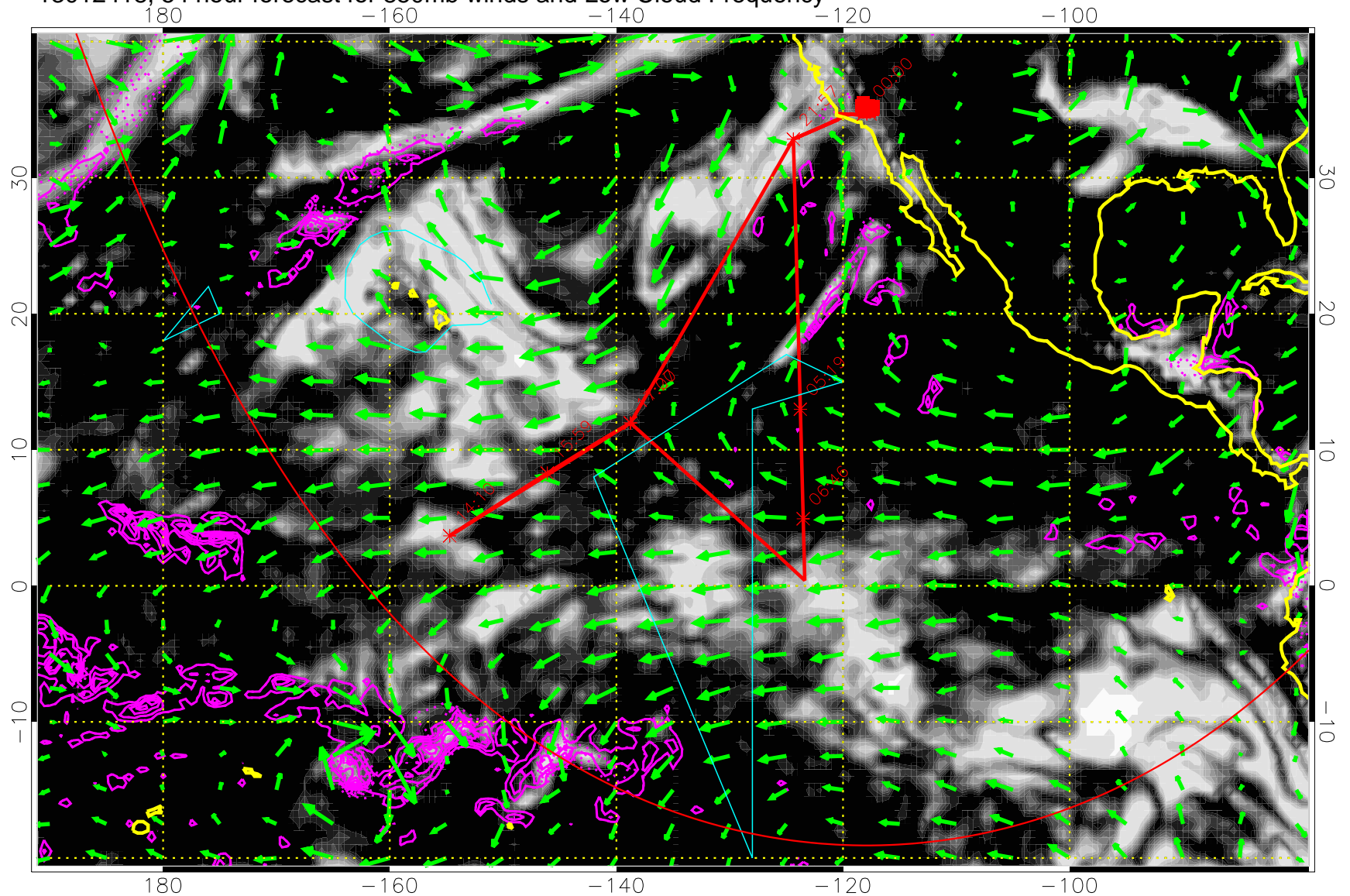
13012412, 48 hour forecast for 850mb winds and Low Cloud Frequency



Precip (tot dot, conv sol) past 6 hrs 6 kg/m2 contours, min 4

→ 30 m/s
Range ring of 6000 km -- 19 hours GH round trip

13012418, 54 hour forecast for 850mb winds and Low Cloud Frequency

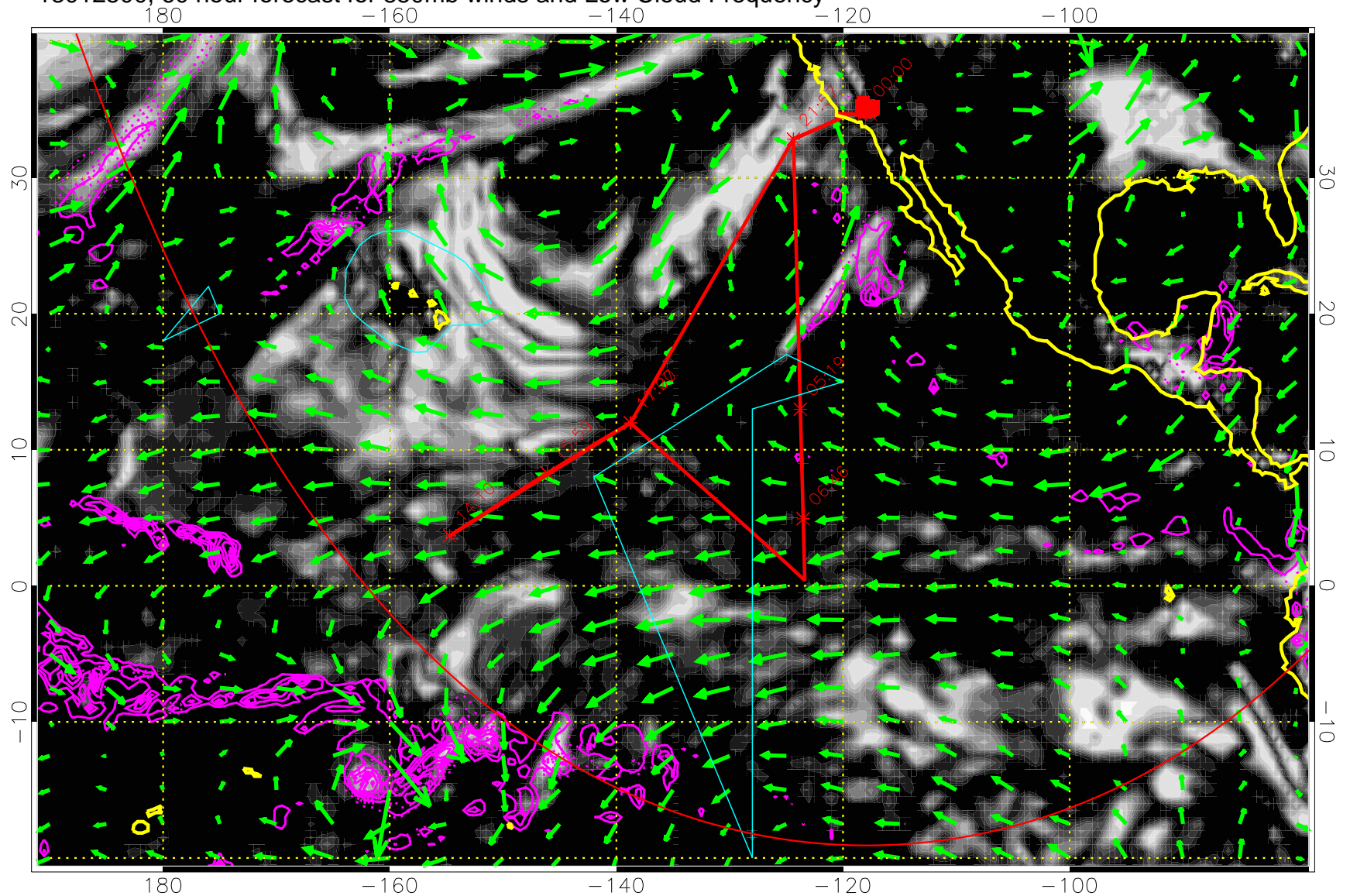


Precip (tot dot, conv sol) past 6 hrs 6 kg/m2 contours, min 4

→ 30 m/s

Range ring of 6000 km -- 19 hours GH round trip

13012500, 60 hour forecast for 850mb winds and Low Cloud Frequency

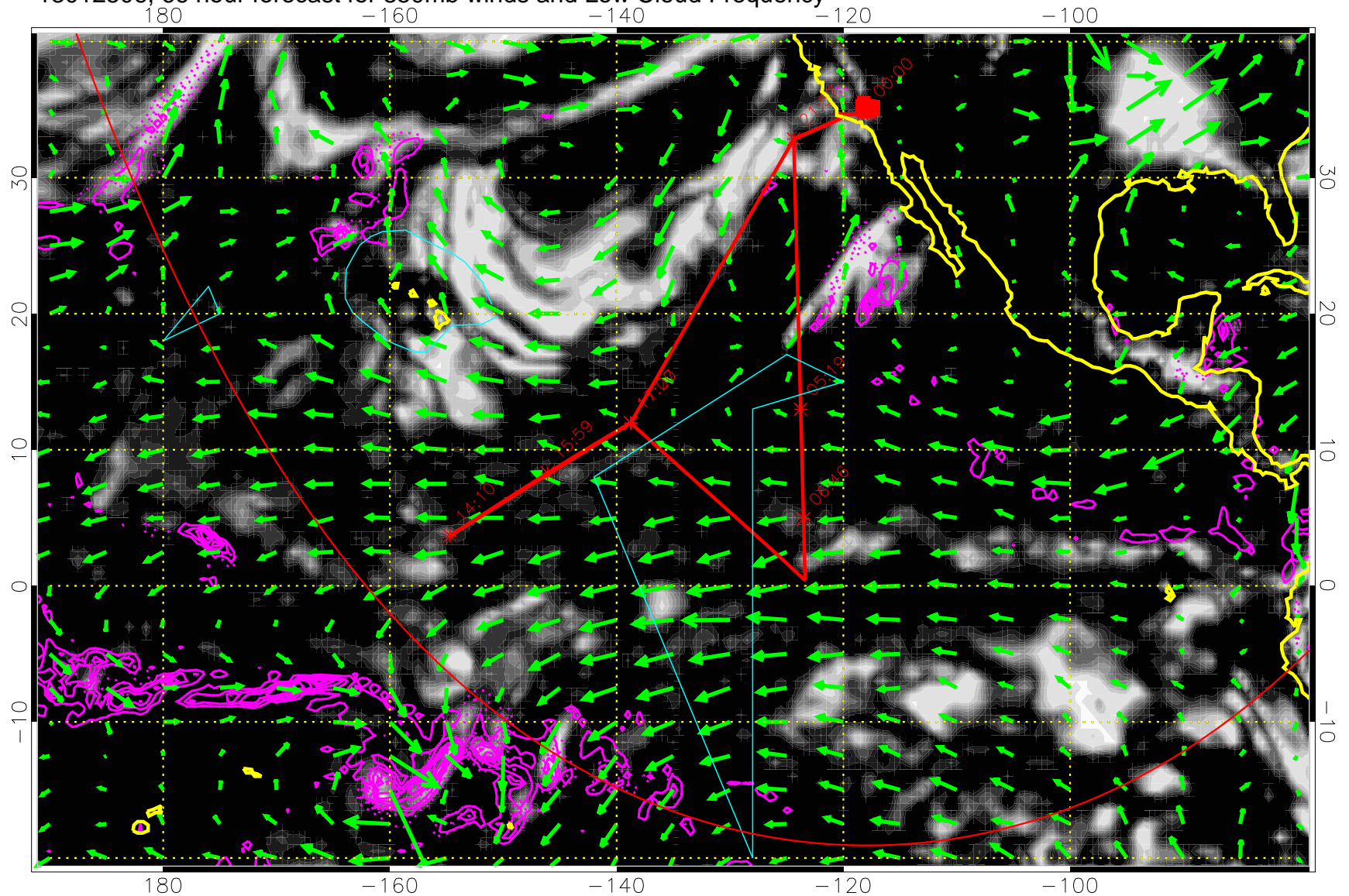


Precip (tot dot, conv sol) past 6 hrs 6 kg/m2 contours, min 4

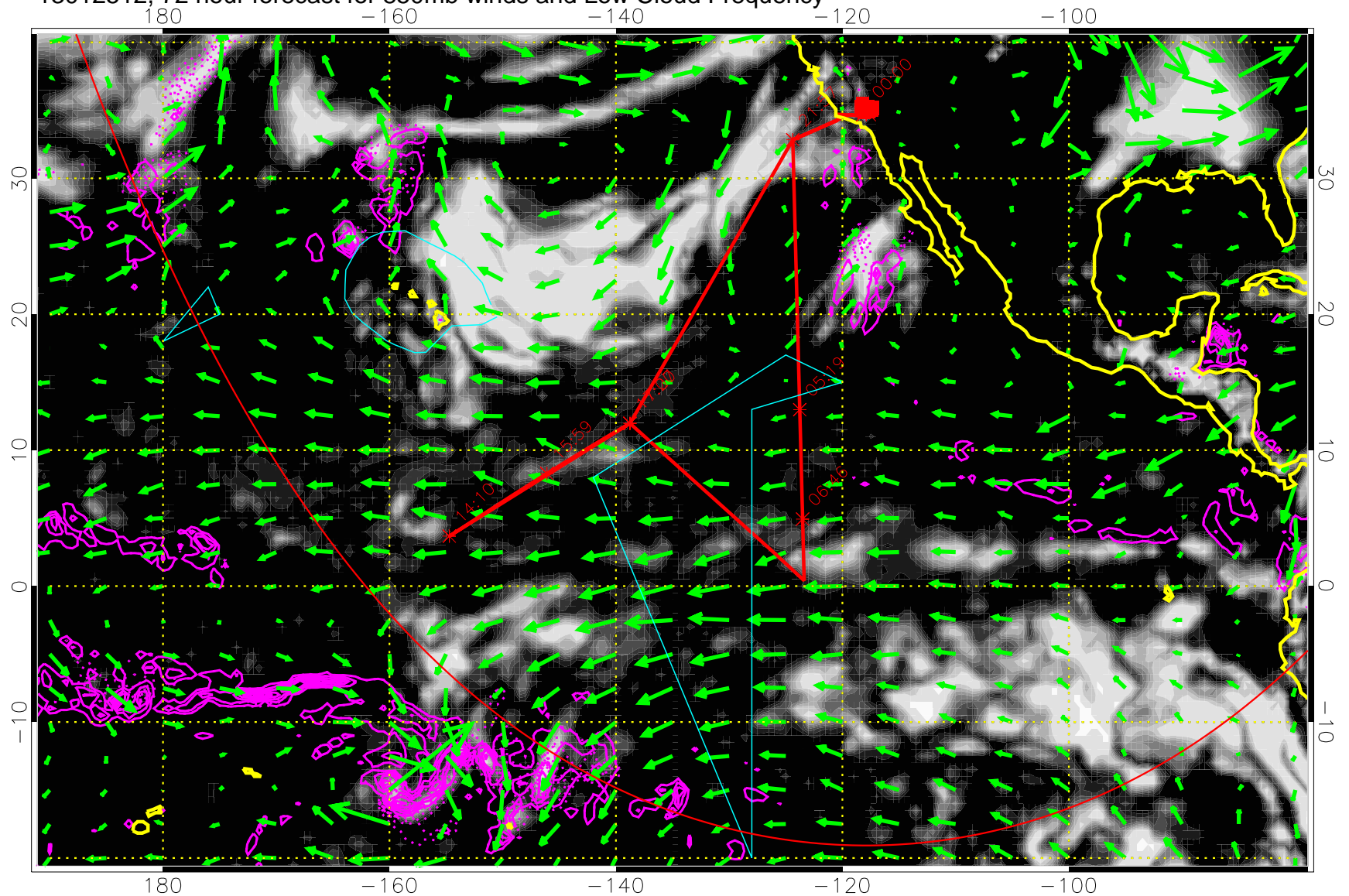
→ 30 m/s

Range ring of 6000 km -- 19 hours GH round trip

13012506, 66 hour forecast for 850mb winds and Low Cloud Frequency



13012512, 72 hour forecast for 850mb winds and Low Cloud Frequency

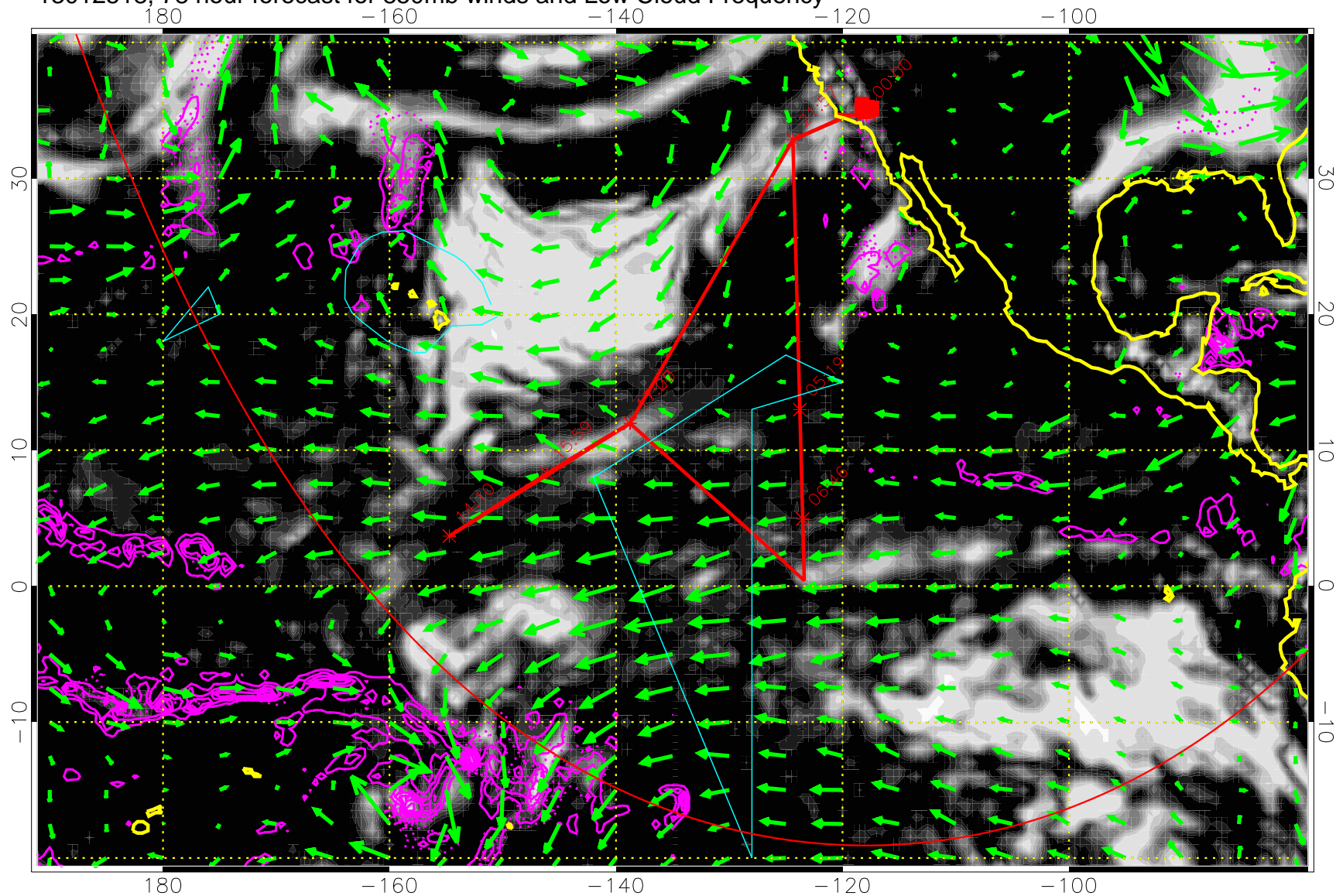


Precip (tot dot, conv sol) past 6 hrs 6 kg/m2 contours, min 4

→ 30 m/s

Range ring of 6000 km -- 19 hours GH round trip

13012518, 78 hour forecast for 850mb winds and Low Cloud Frequency

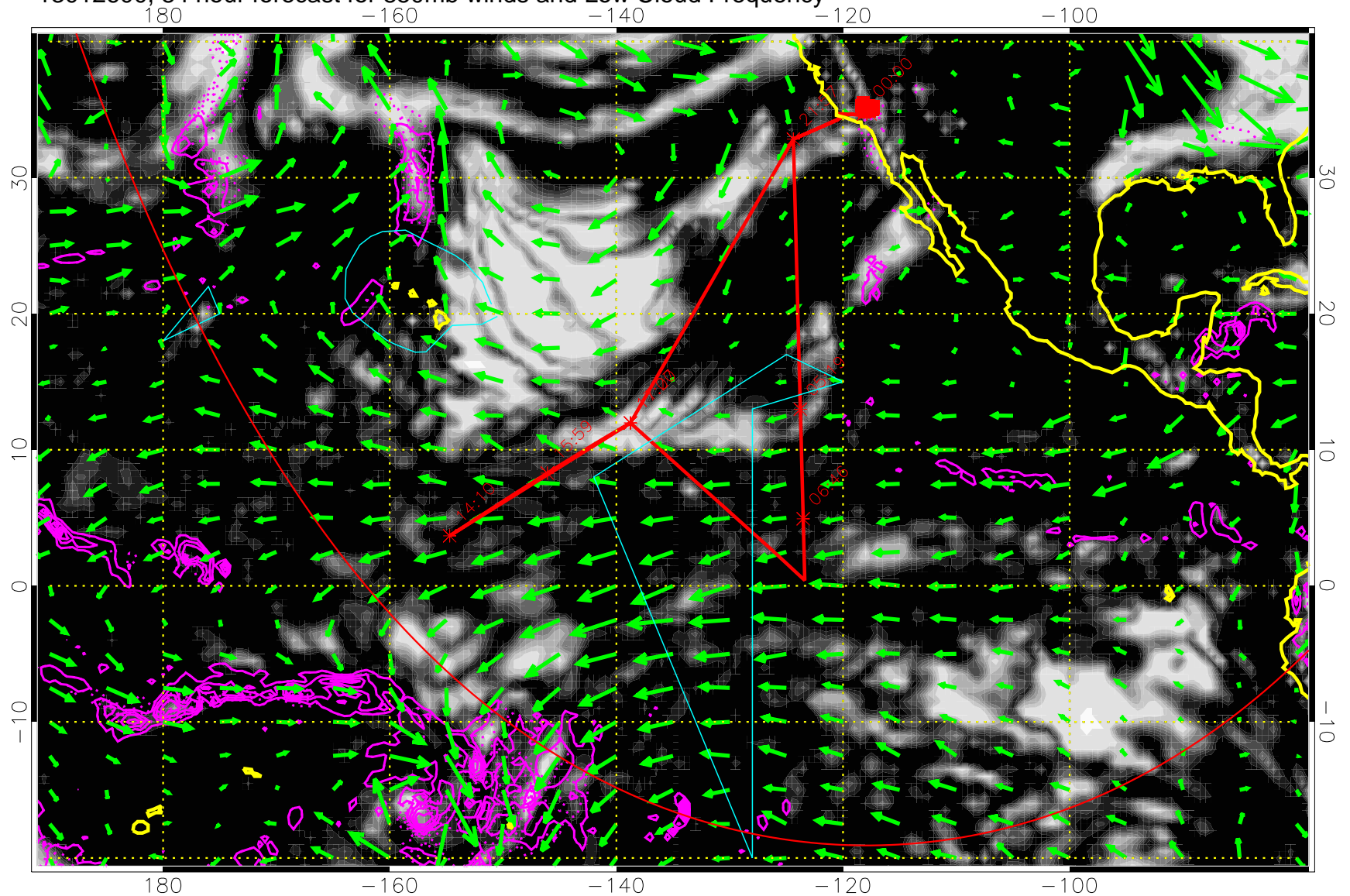


Precip (tot dot, conv sol) past 6 hrs 6 kg/m2 contours, min 4

→ 30 m/s

Range ring of 6000 km -- 19 hours GH round trip

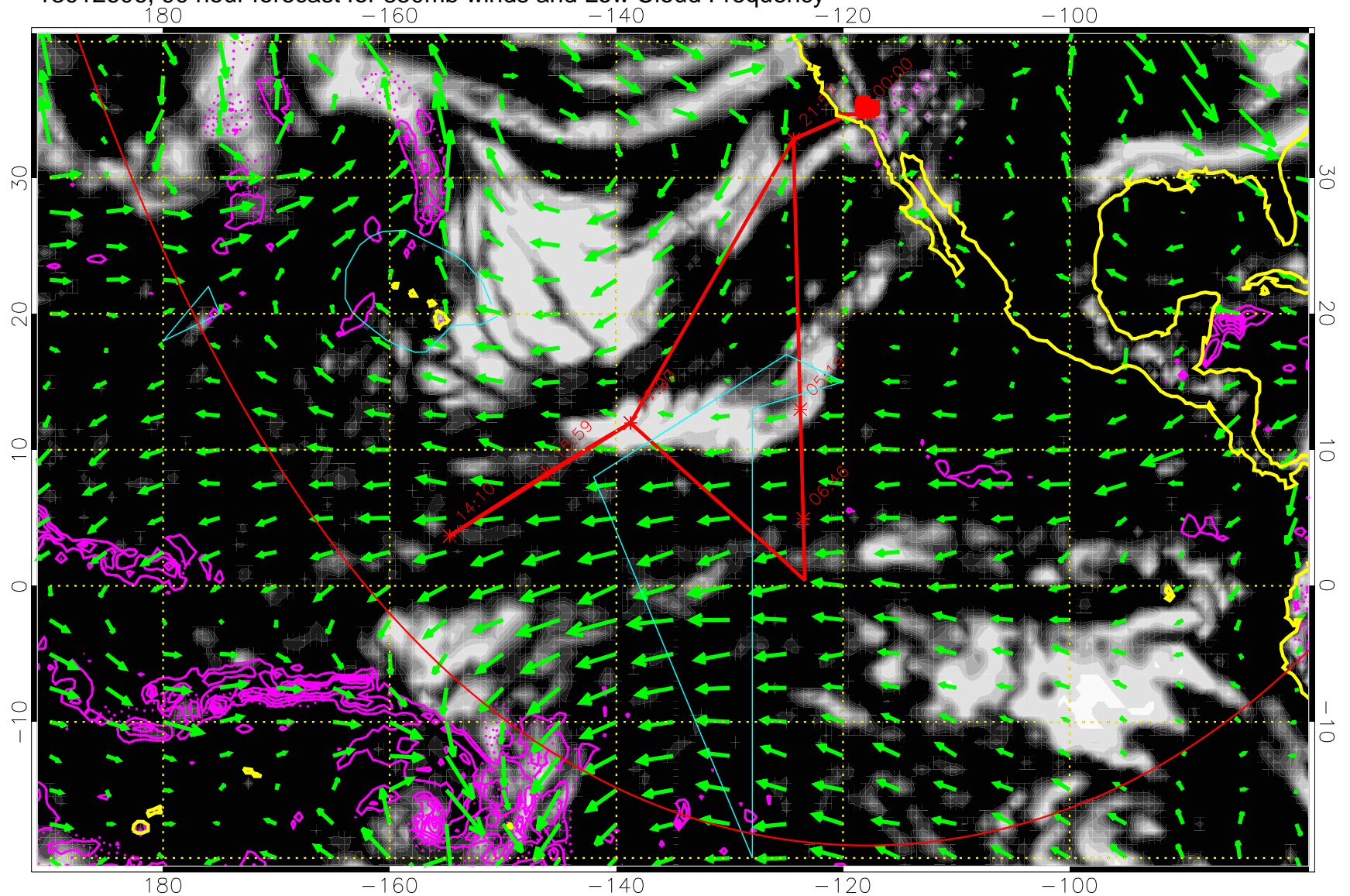
13012600, 84 hour forecast for 850mb winds and Low Cloud Frequency



Precip (tot dot, conv sol) past 6 hrs 6 kg/m2 contours, min 4

→ 30 m/s
Range ring of 6000 km -- 19 hours GH round trip

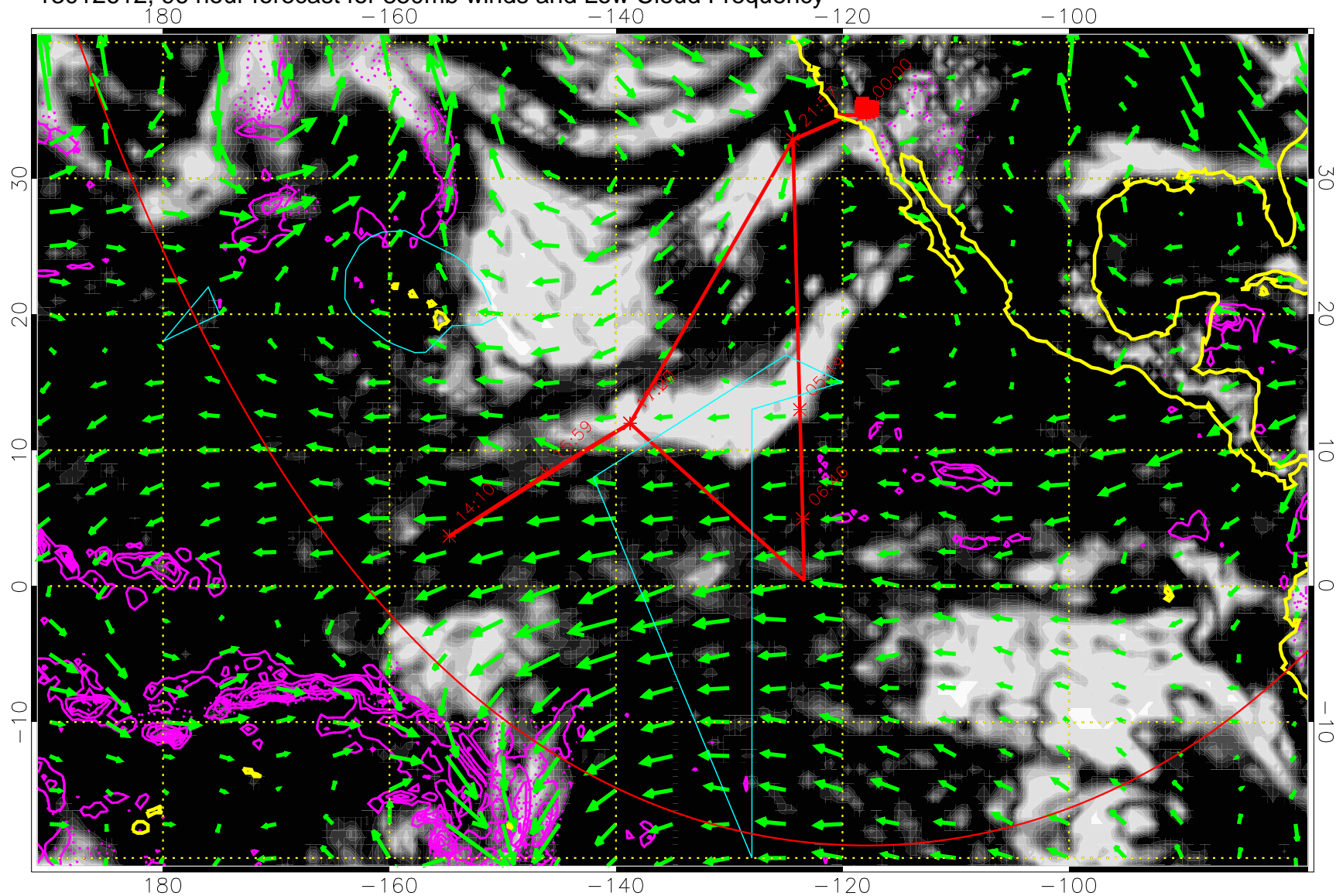
13012606, 90 hour forecast for 850mb winds and Low Cloud Frequency



Precip (tot dot, conv sol) past 6 hrs 6 kg/m2 contours, min 4

→ 30 m/s
Range ring of 6000 km -- 19 hours GH round trip

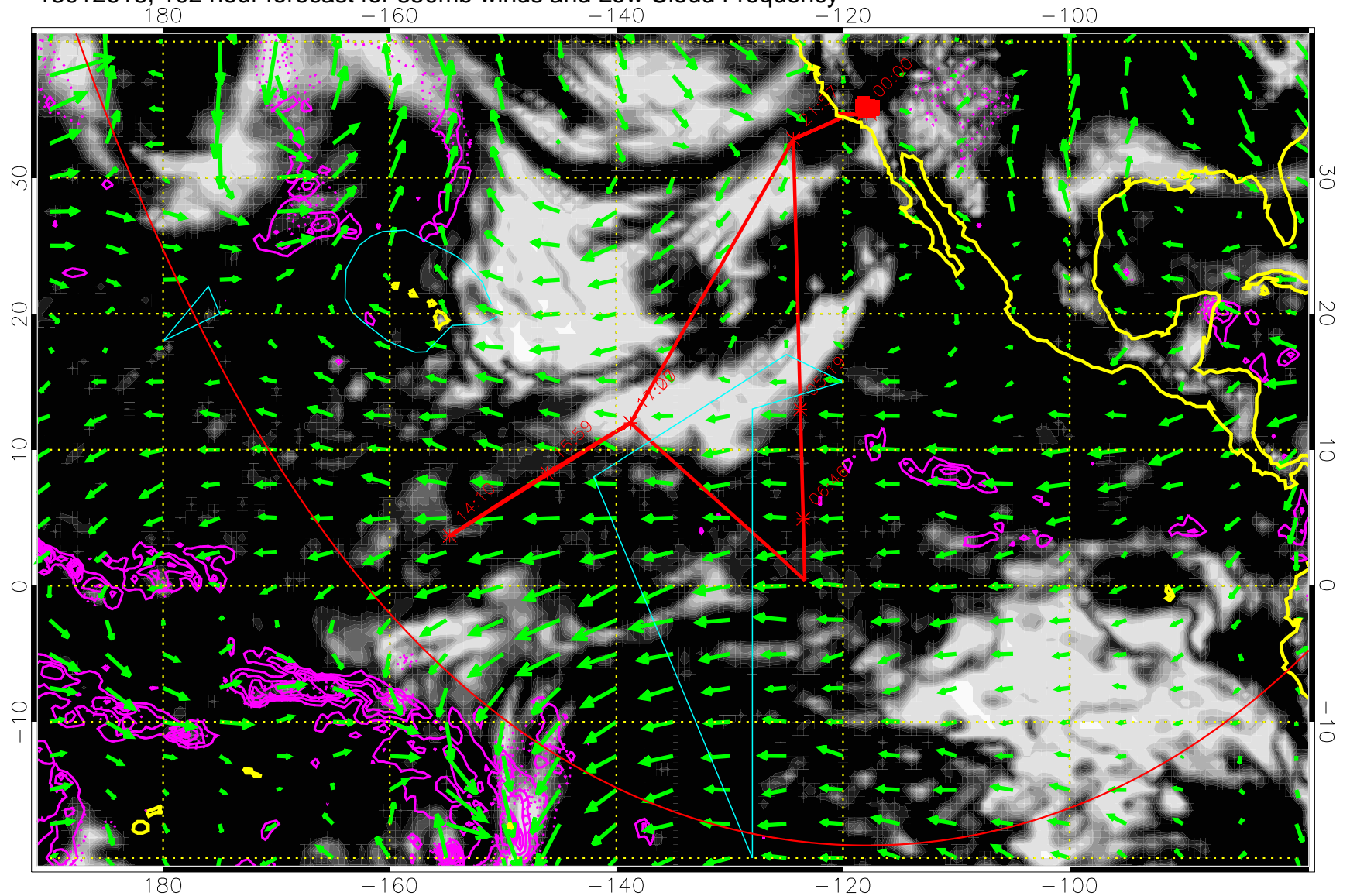
13012612, 96 hour forecast for 850mb winds and Low Cloud Frequency



Precip (tot dot, conv sol) past 6 hrs 6 kg/m2 contours, min 4

→ 30 m/s
Range ring of 6000 km -- 19 hours GH round trip

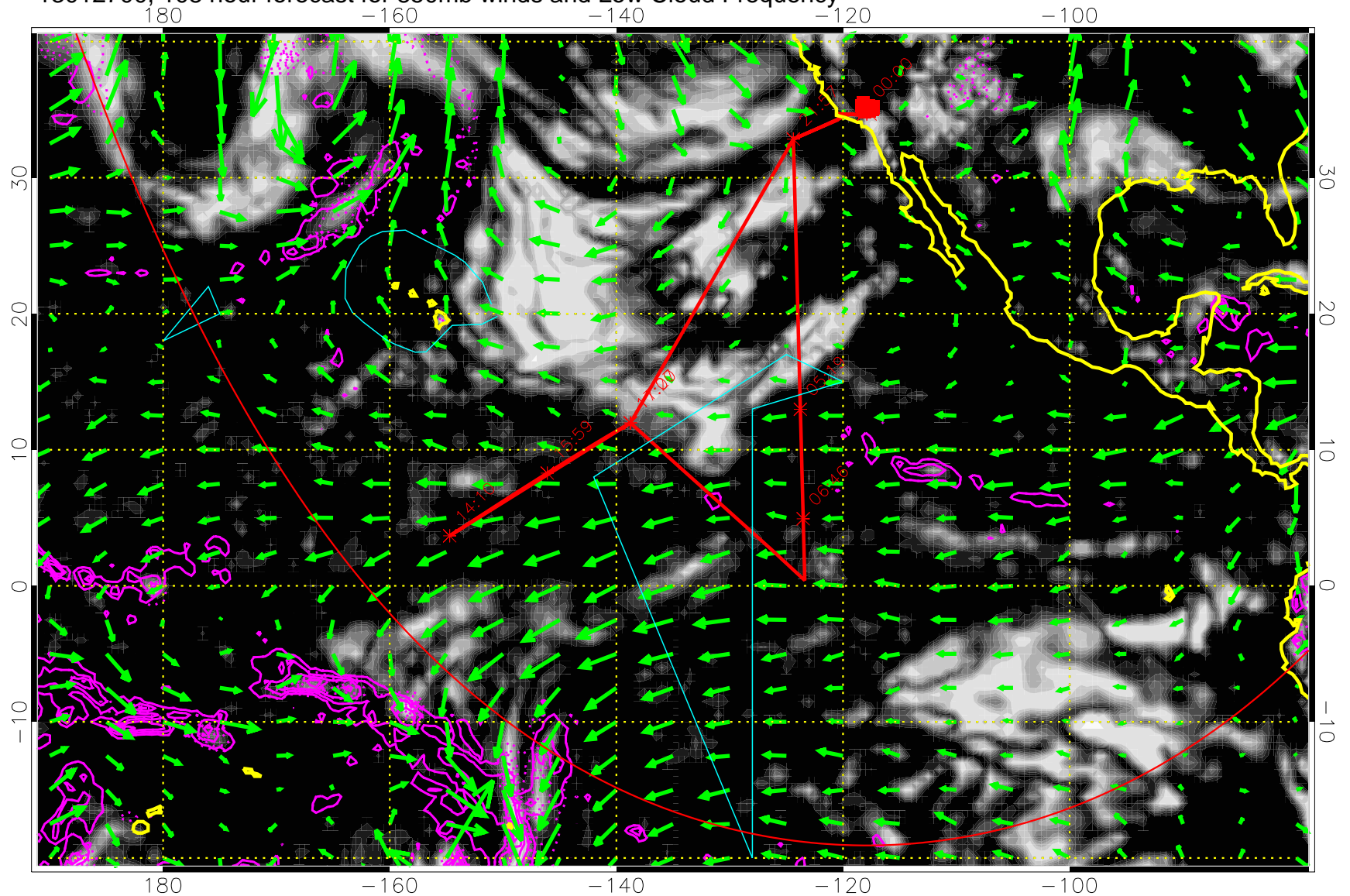
13012618, 102 hour forecast for 850mb winds and Low Cloud Frequency



Precip (tot dot, conv sol) past 6 hrs 6 kg/m2 contours, min 4

→ 30 m/s
Range ring of 6000 km -- 19 hours GH round trip

13012700, 108 hour forecast for 850mb winds and Low Cloud Frequency

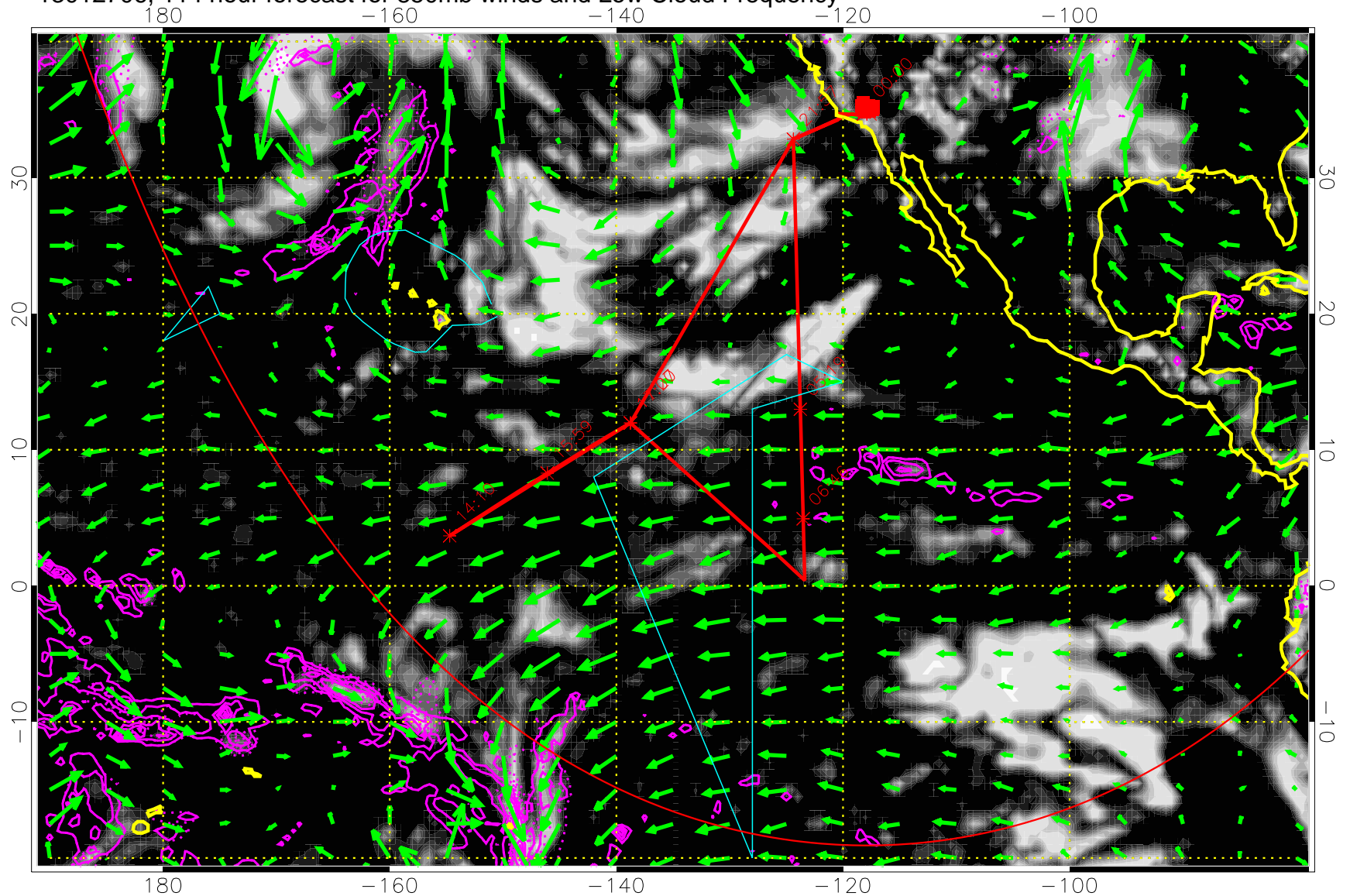


Precip (tot dot, conv sol) past 6 hrs 6 kg/m2 contours, min 4

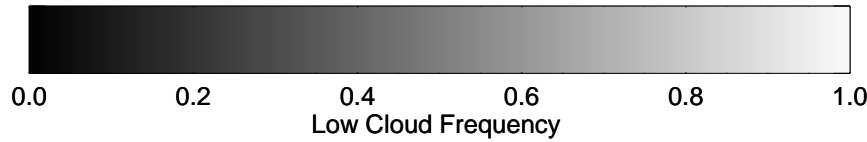
→ 30 m/s

Range ring of 6000 km -- 19 hours GH round trip

13012706, 114 hour forecast for 850mb winds and Low Cloud Frequency



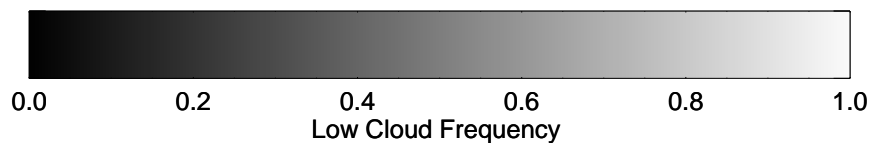
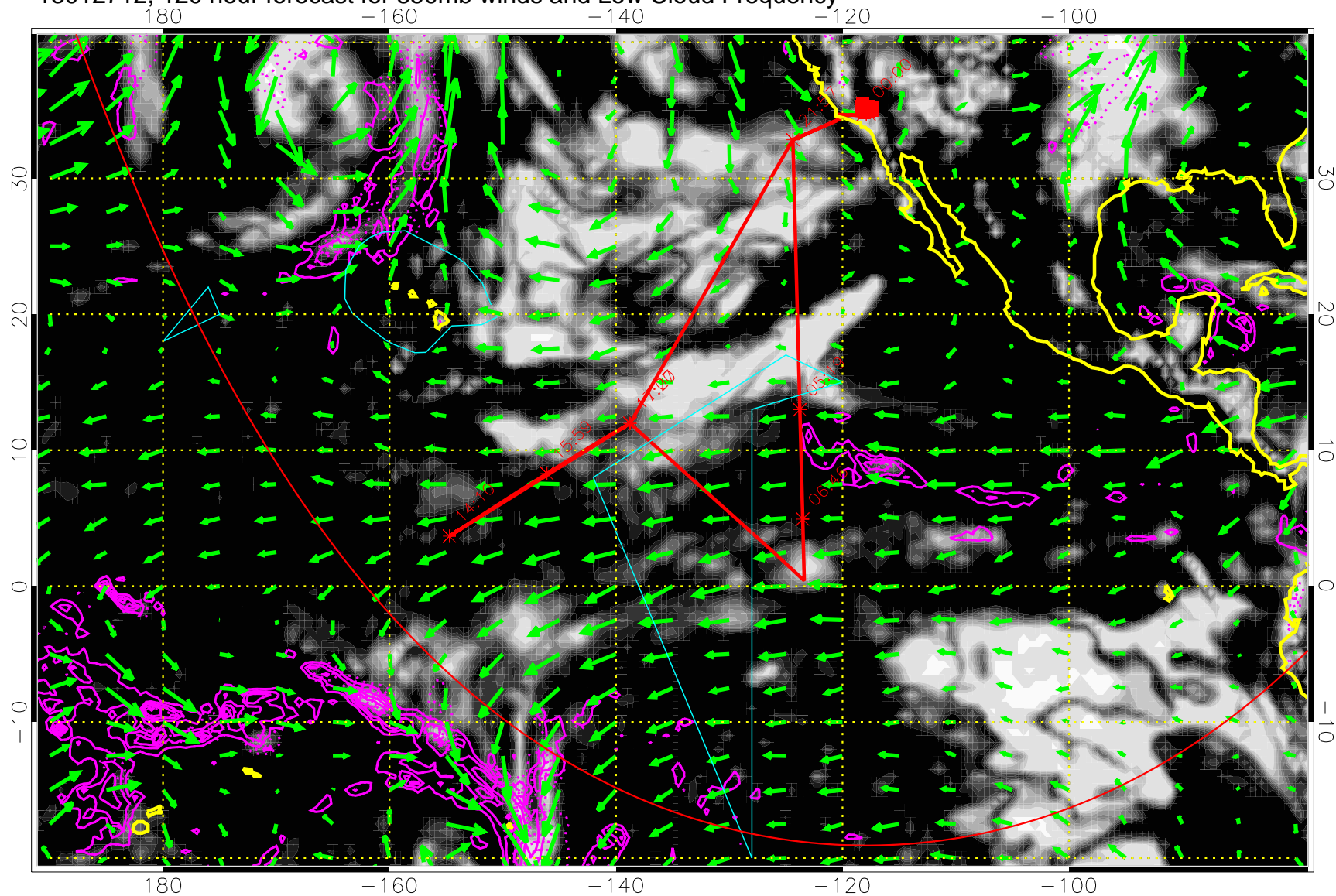
Precip (tot dot, conv sol) past 6 hrs 6 kg/m2 contours, min 4



→ 30 m/s

Range ring of 6000 km -- 19 hours GH round trip

13012712, 120 hour forecast for 850mb winds and Low Cloud Frequency



Precip (tot dot, conv sol) past 6 hrs 6 kg/m2 contours, min 4

→ 30 m/s

Range ring of 6000 km -- 19 hours GH round trip