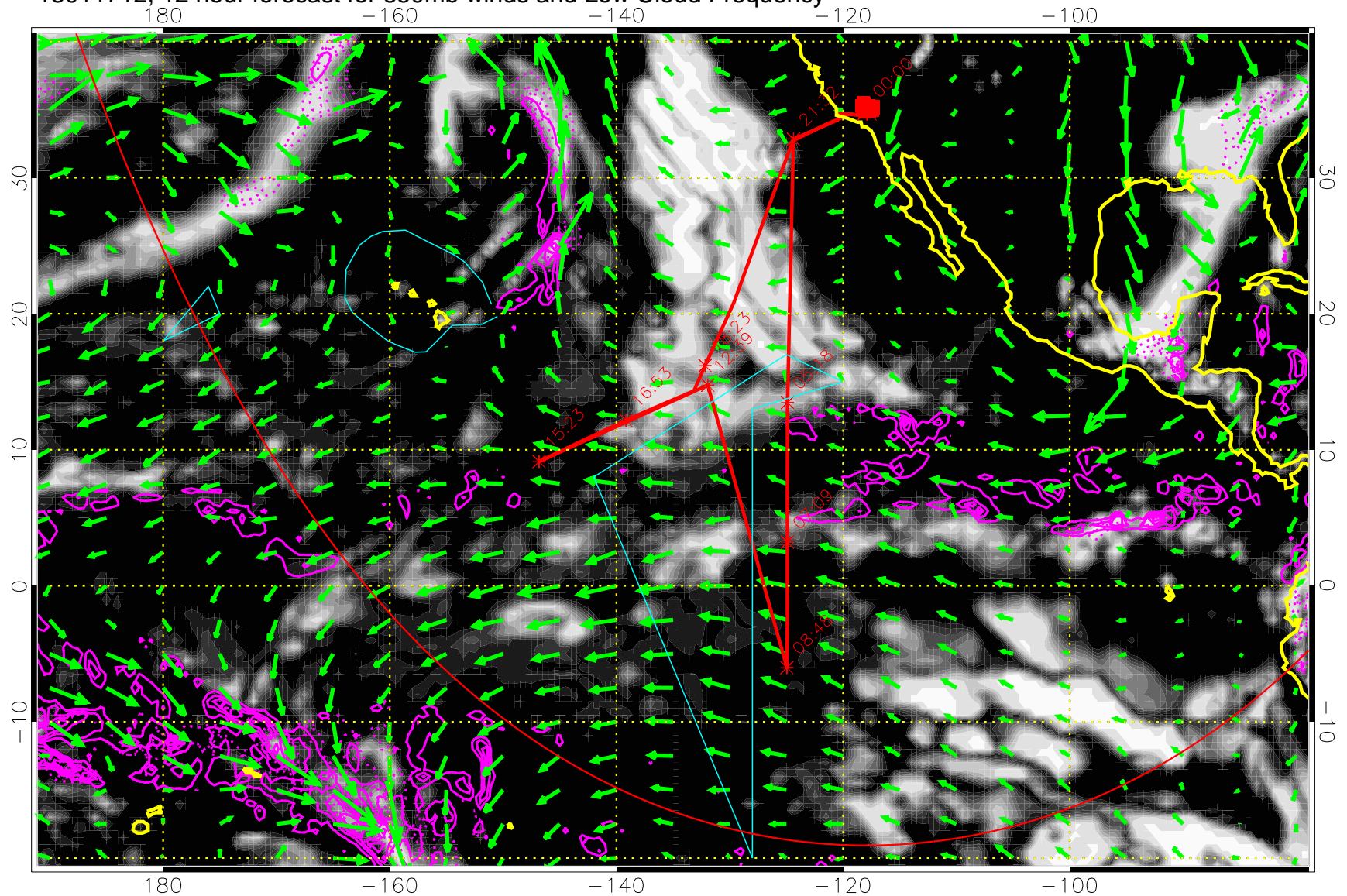


13011712, 12 hour forecast for 850mb winds and Low Cloud Frequency



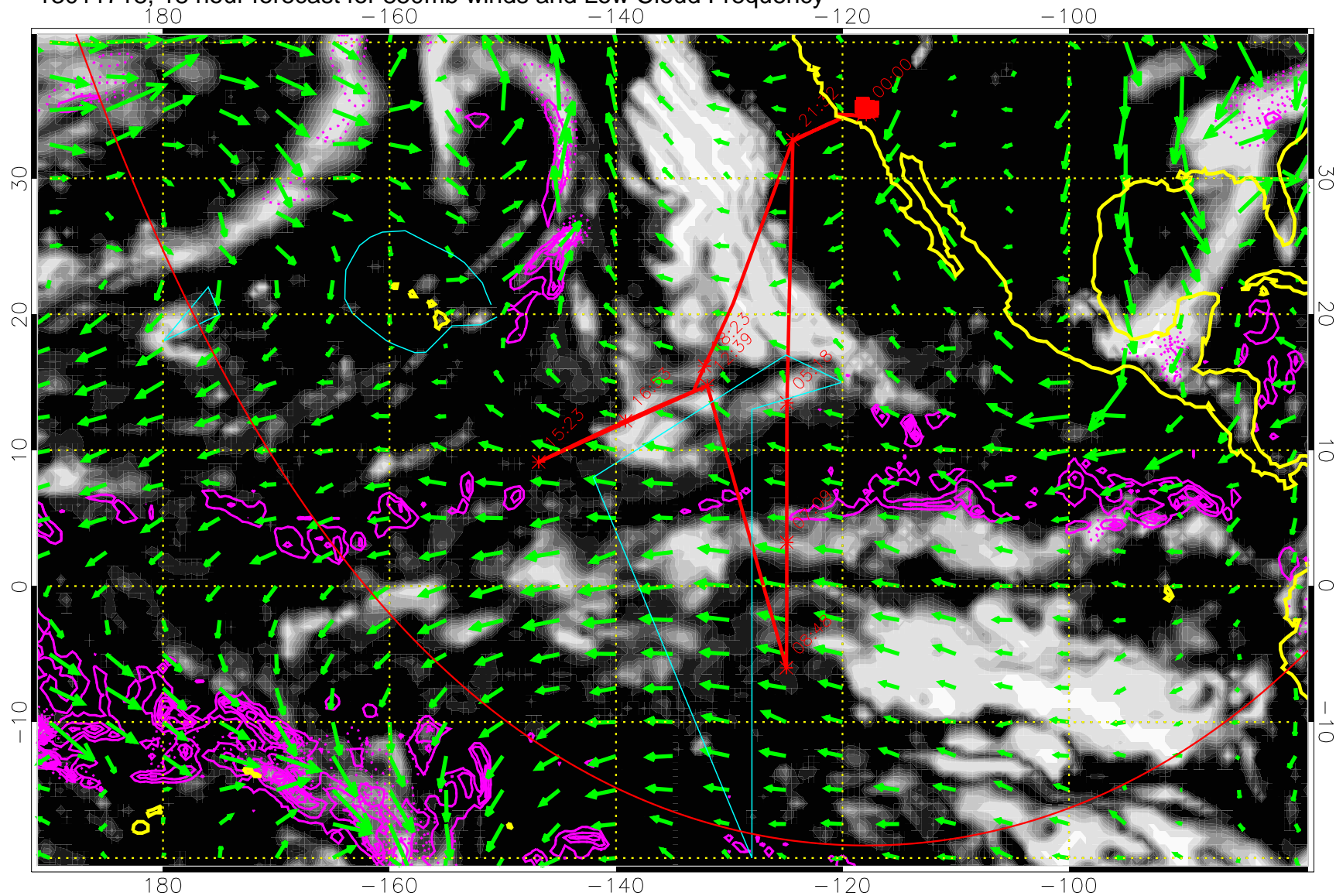
Precip (tot dot, conv sol) past 6 hrs 6 kg/m2 contours, min 4

0.0 0.2 0.4 0.6 0.8 1.0
Low Cloud Frequency

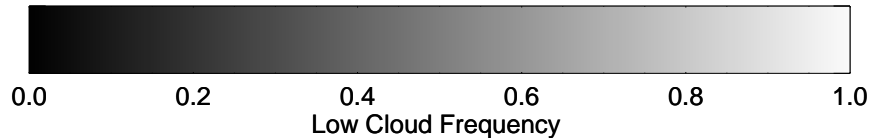
→ 30 m/s

Range ring of 6000 km -- 19 hours GH round trip

13011718, 18 hour forecast for 850mb winds and Low Cloud Frequency



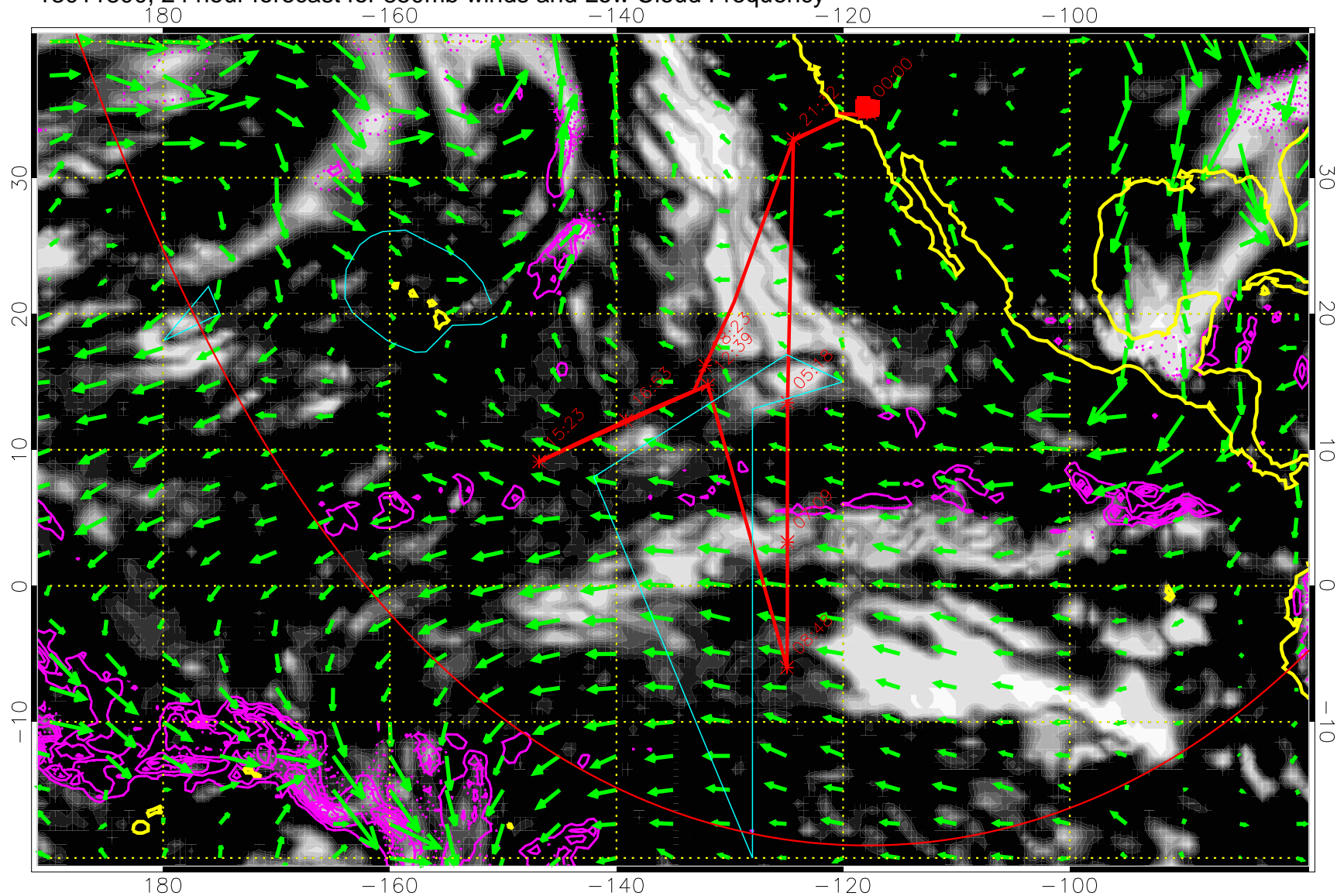
Precip (tot dot, conv sol) past 6 hrs 6 kg/m2 contours, min 4



→ 30 m/s

Range ring of 6000 km -- 19 hours GH round trip

13011800, 24 hour forecast for 850mb winds and Low Cloud Frequency

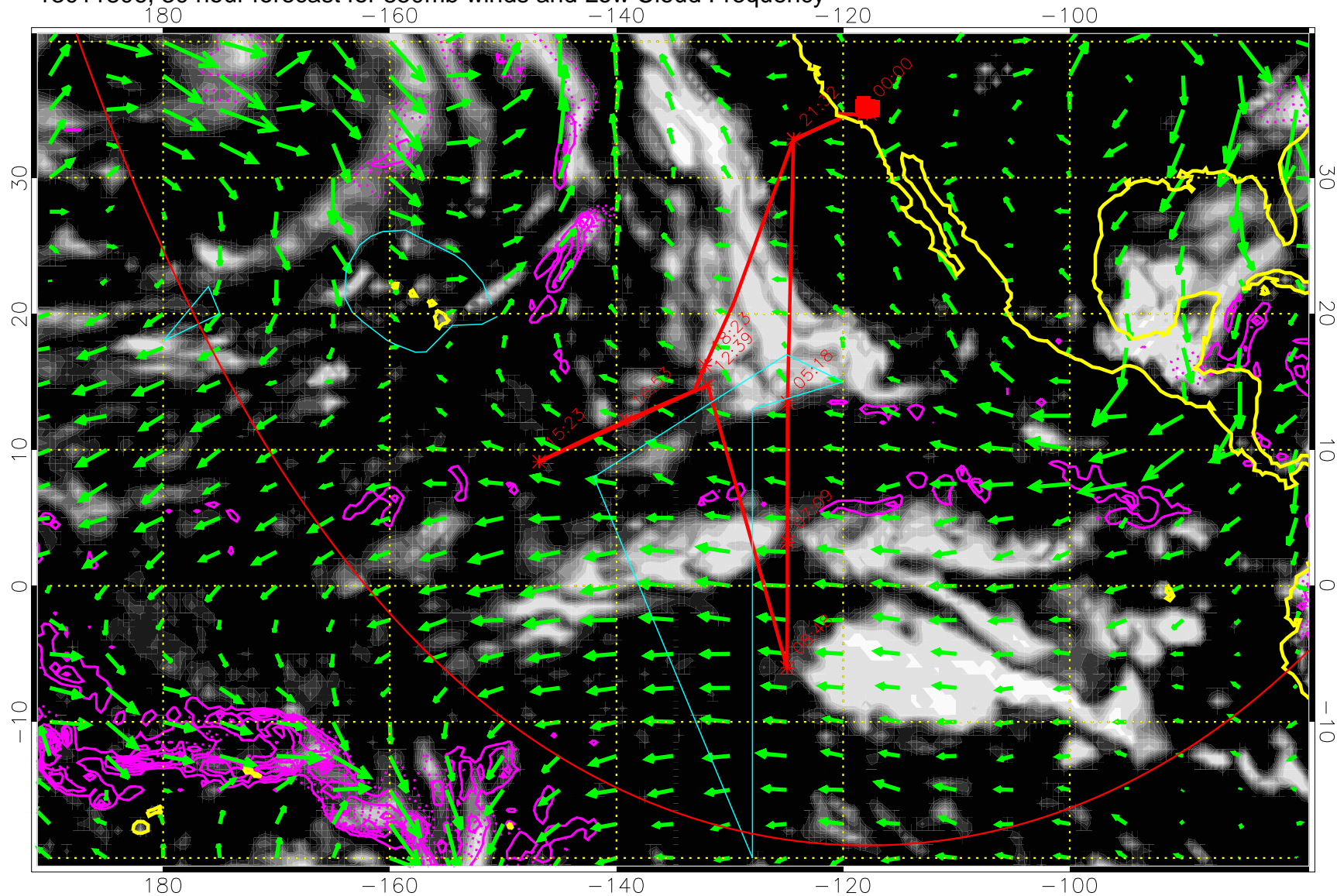


Precip (tot dot, conv sol) past 6 hrs 6 kg/m2 contours, min 4

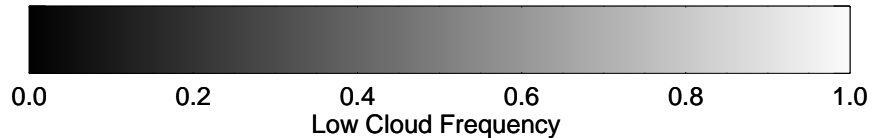
→ 30 m/s

Range ring of 6000 km -- 19 hours GH round trip

13011806, 30 hour forecast for 850mb winds and Low Cloud Frequency



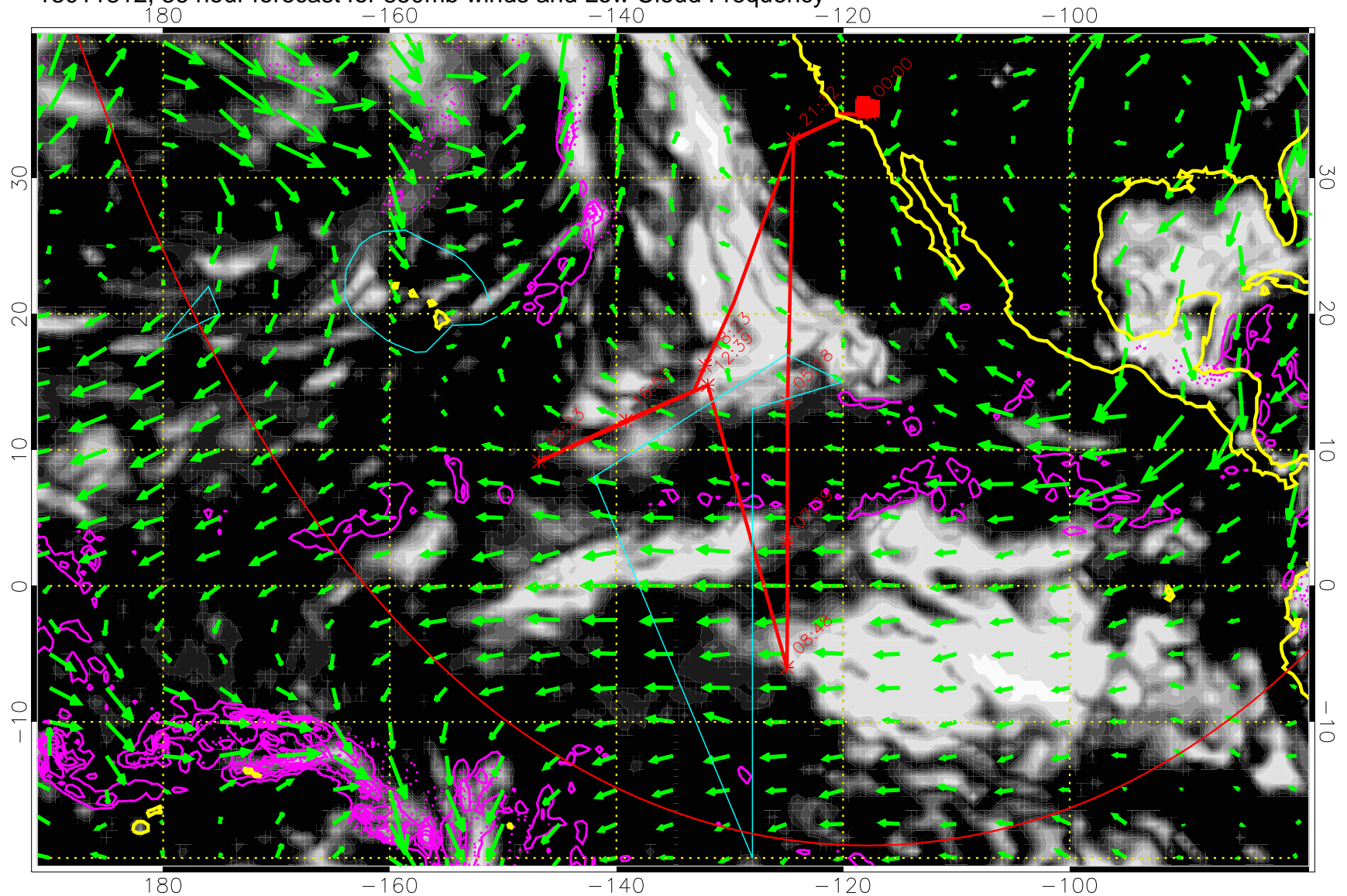
Precip (tot dot, conv sol) past 6 hrs 6 kg/m2 contours, min 4



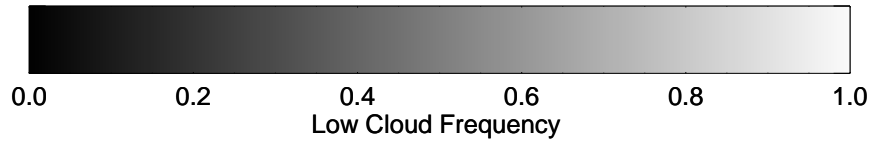
→ 30 m/s

Range ring of 6000 km -- 19 hours GH round trip

13011812, 36 hour forecast for 850mb winds and Low Cloud Frequency



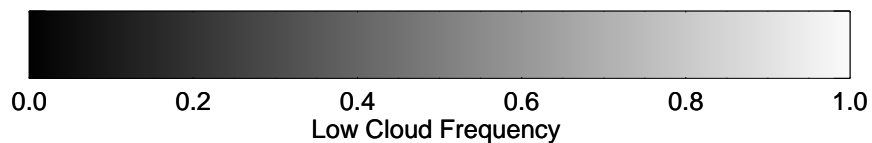
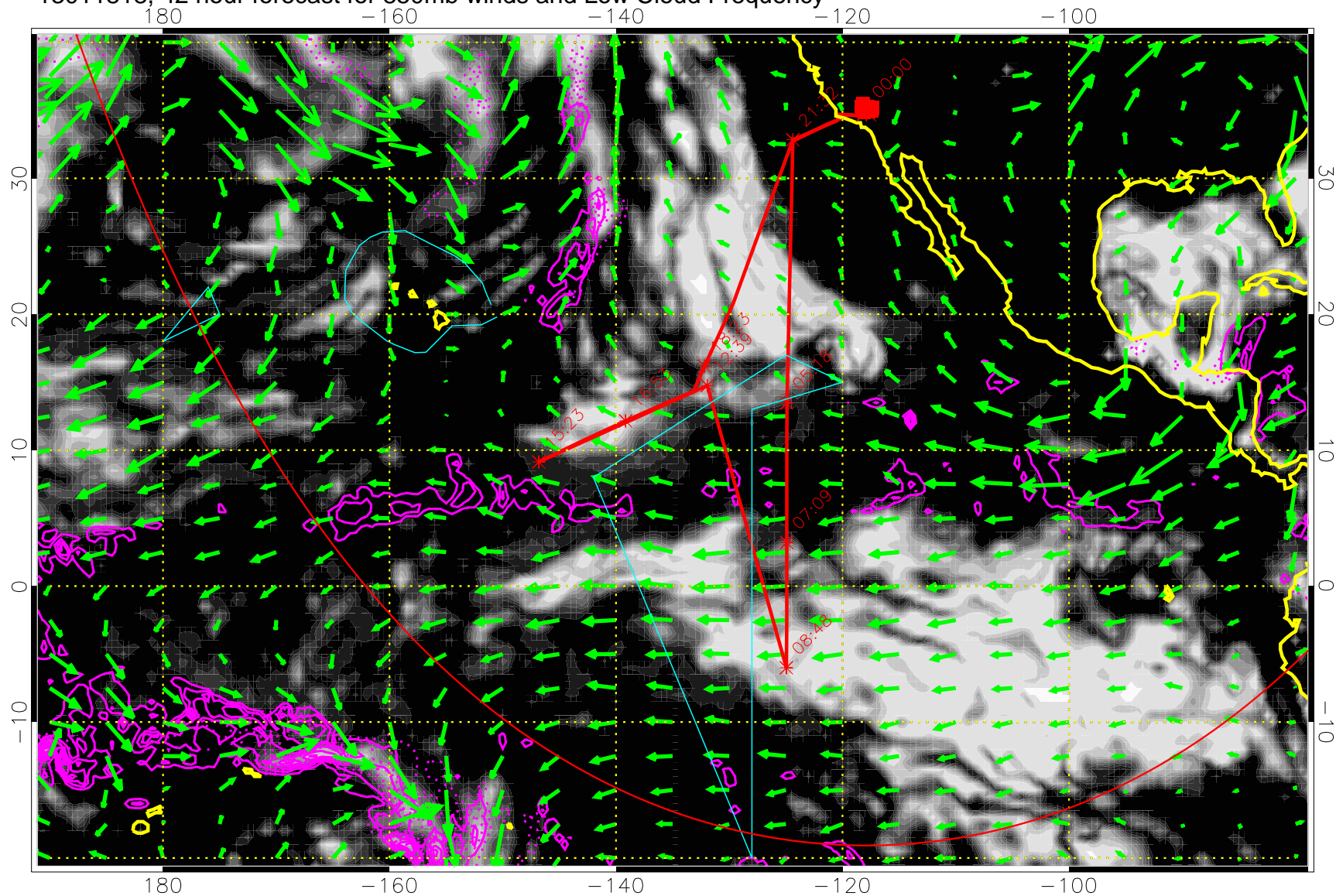
Precip (tot dot, conv sol) past 6 hrs 6 kg/m2 contours, min 4



→ 30 m/s

Range ring of 6000 km -- 19 hours GH round trip

13011818, 42 hour forecast for 850mb winds and Low Cloud Frequency

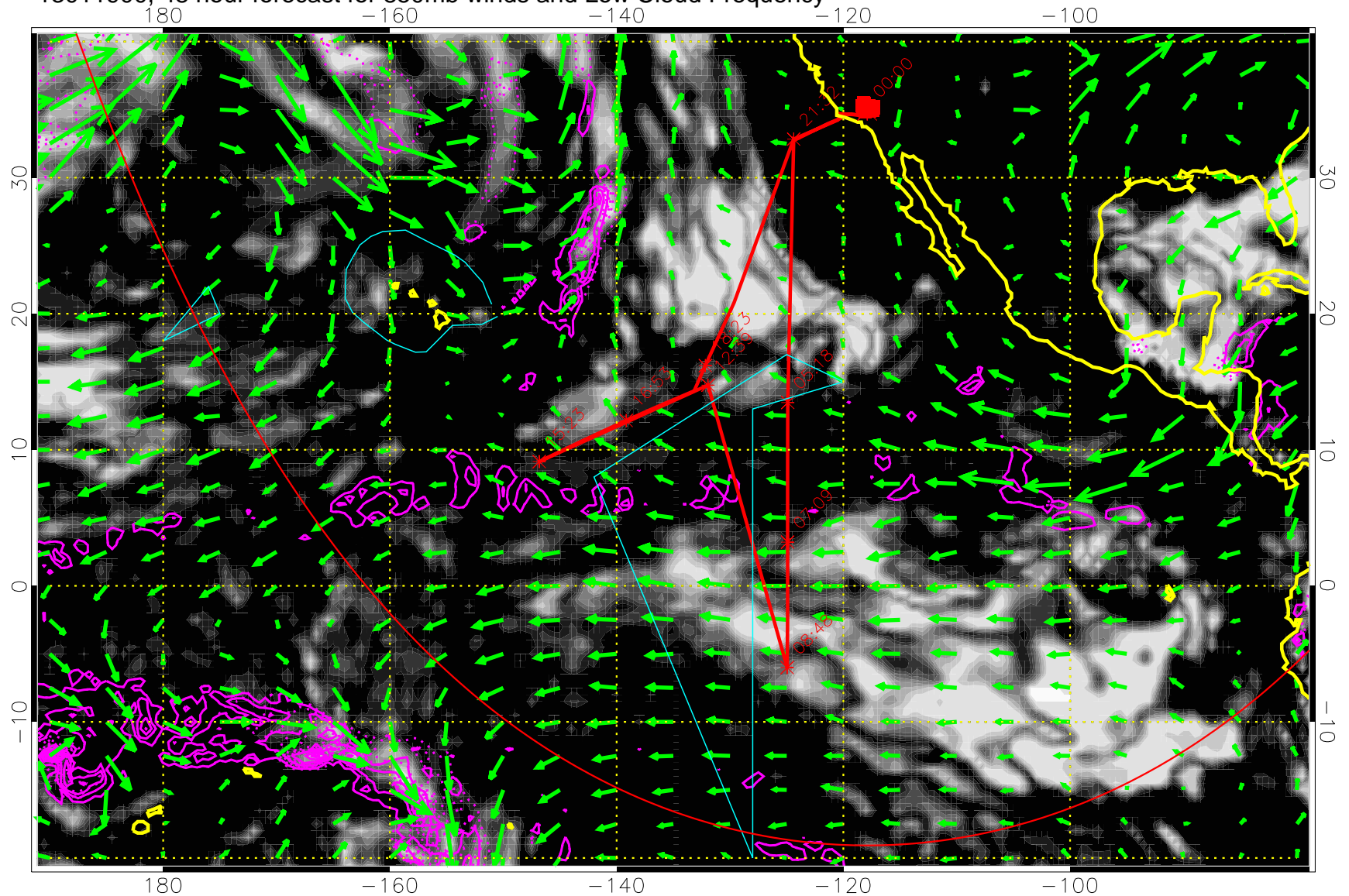


Precip (tot dot, conv sol) past 6 hrs 6 kg/m² contours, min 4

→ 30 m/s

Range ring of 6000 km -- 19 hours GH round trip

13011900, 48 hour forecast for 850mb winds and Low Cloud Frequency

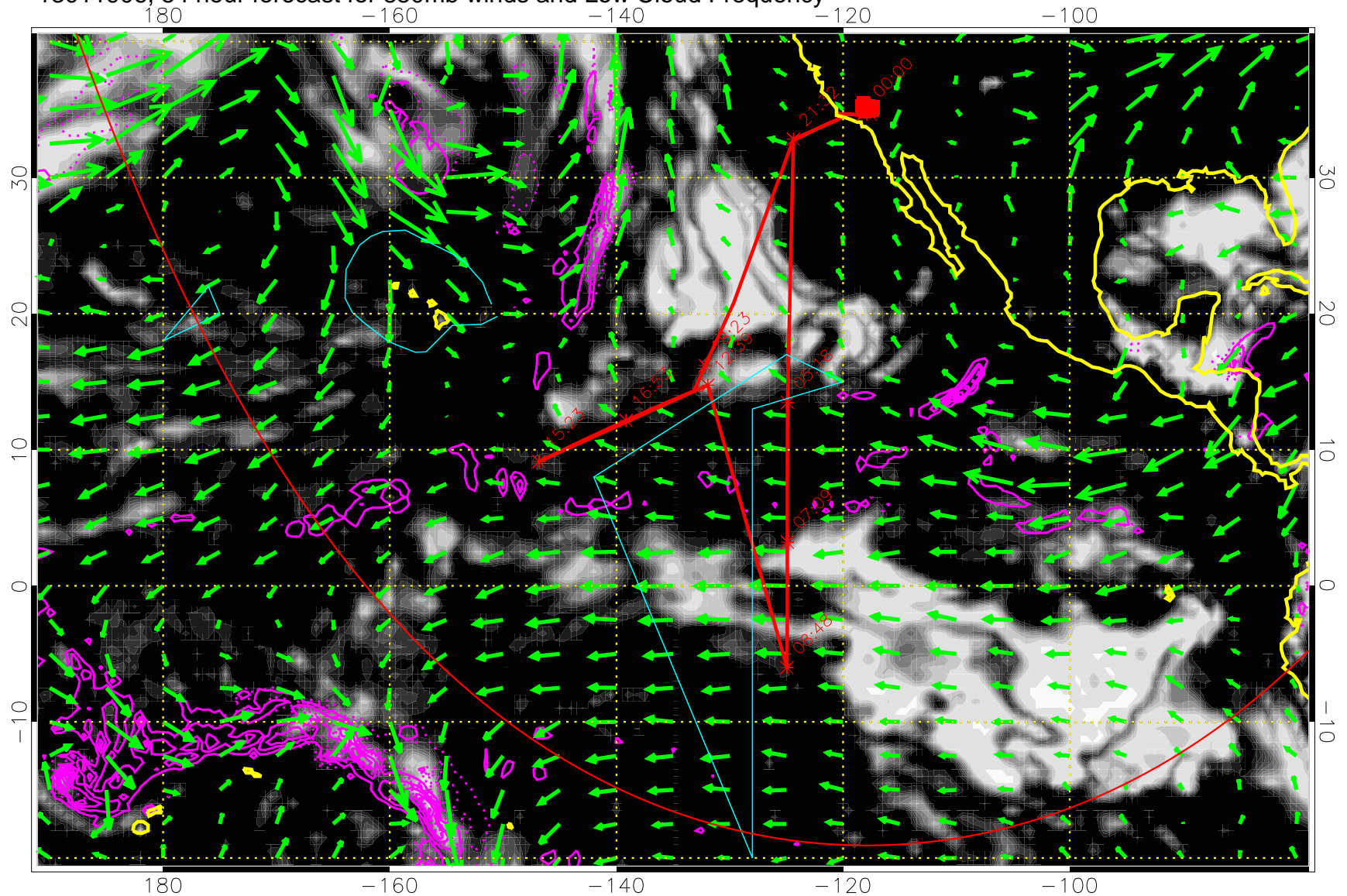


Precip (tot dot, conv sol) past 6 hrs 6 kg/m2 contours, min 4

→ 30 m/s

Range ring of 6000 km -- 19 hours GH round trip

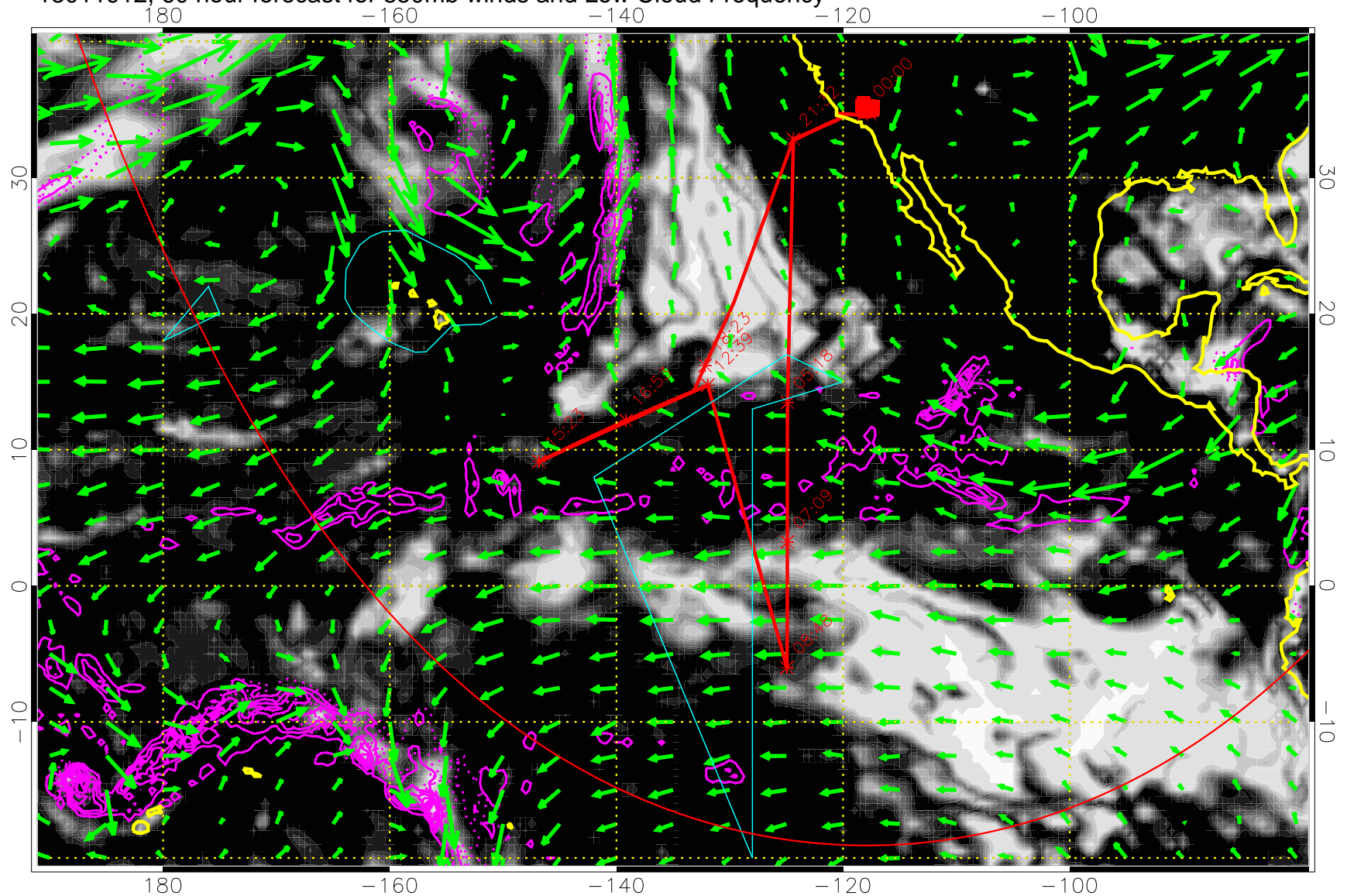
13011906, 54 hour forecast for 850mb winds and Low Cloud Frequency



Precip (tot dot, conv sol) past 6 hrs 6 kg/m2 contours, min 4

→ 30 m/s
Range ring of 6000 km -- 19 hours GH round trip

13011912, 60 hour forecast for 850mb winds and Low Cloud Frequency



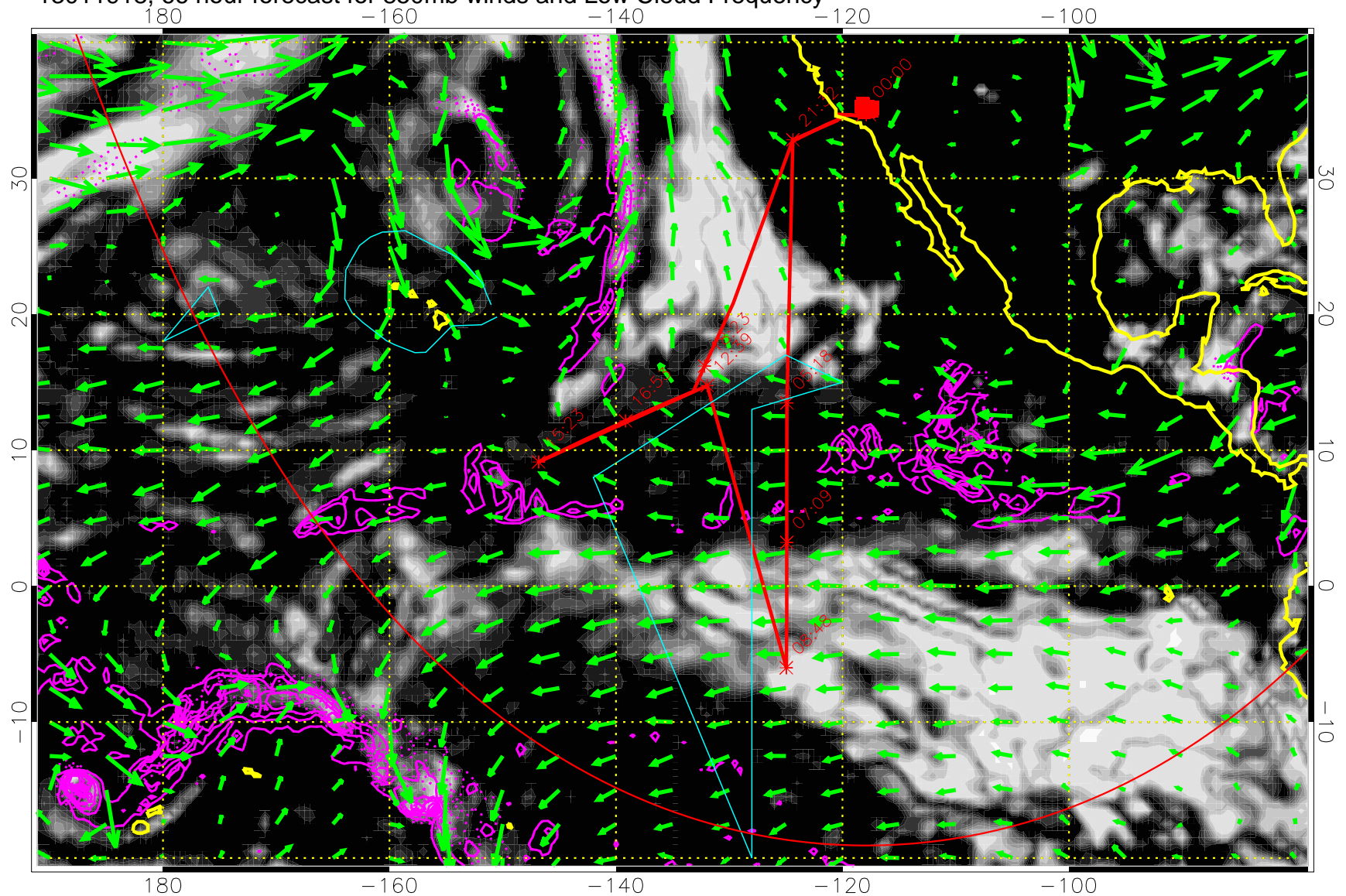
0.0 0.2 0.4 0.6 0.8 1.0
Low Cloud Frequency

Precip (tot dot, conv sol) past 6 hrs 6 kg/m2 contours, min 4

→ 30 m/s

Range ring of 6000 km -- 19 hours GH round trip

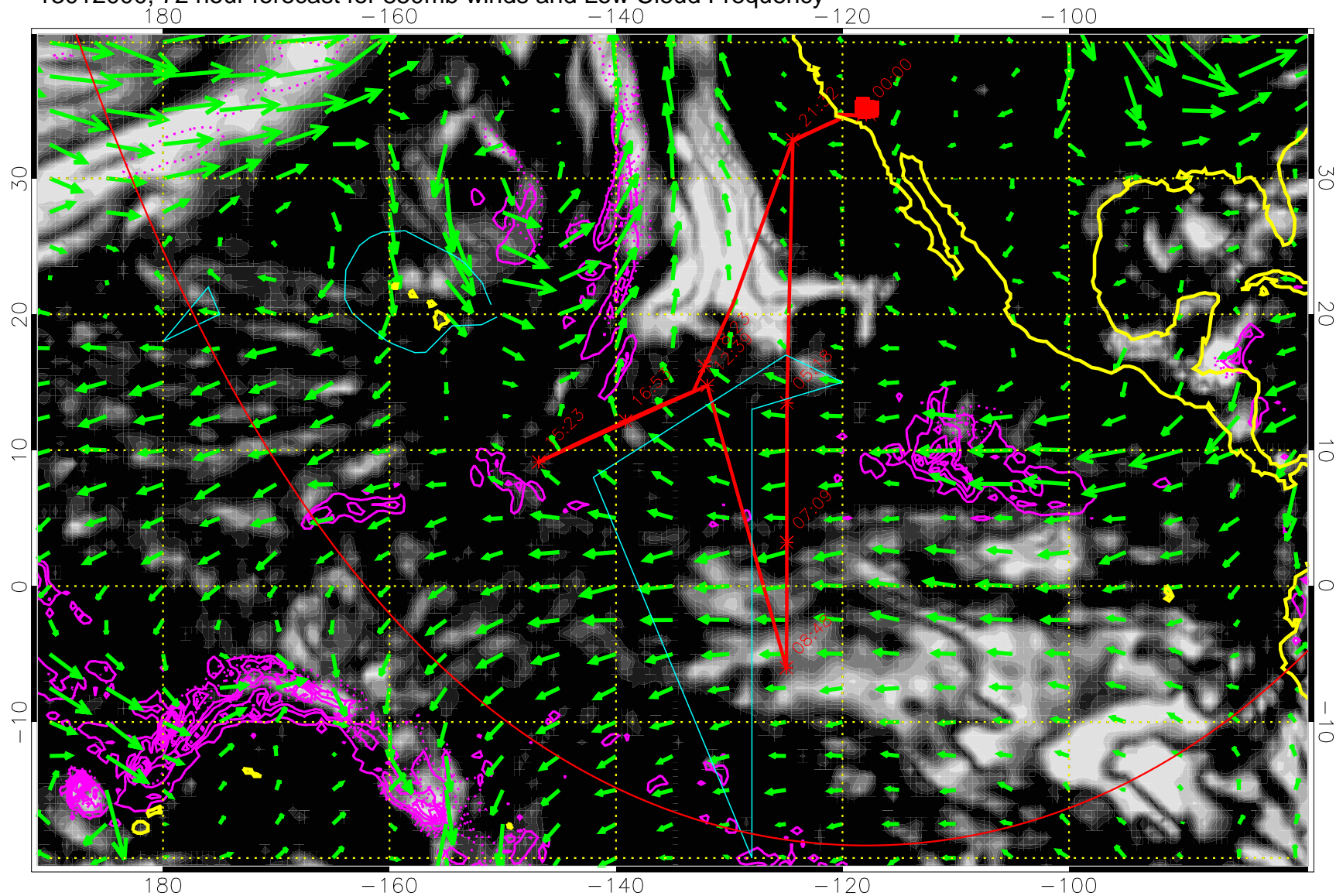
13011918, 66 hour forecast for 850mb winds and Low Cloud Frequency



Precip (tot dot, conv sol) past 6 hrs 6 kg/m2 contours, min 4

→ 30 m/s
Range ring of 6000 km -- 19 hours GH round trip

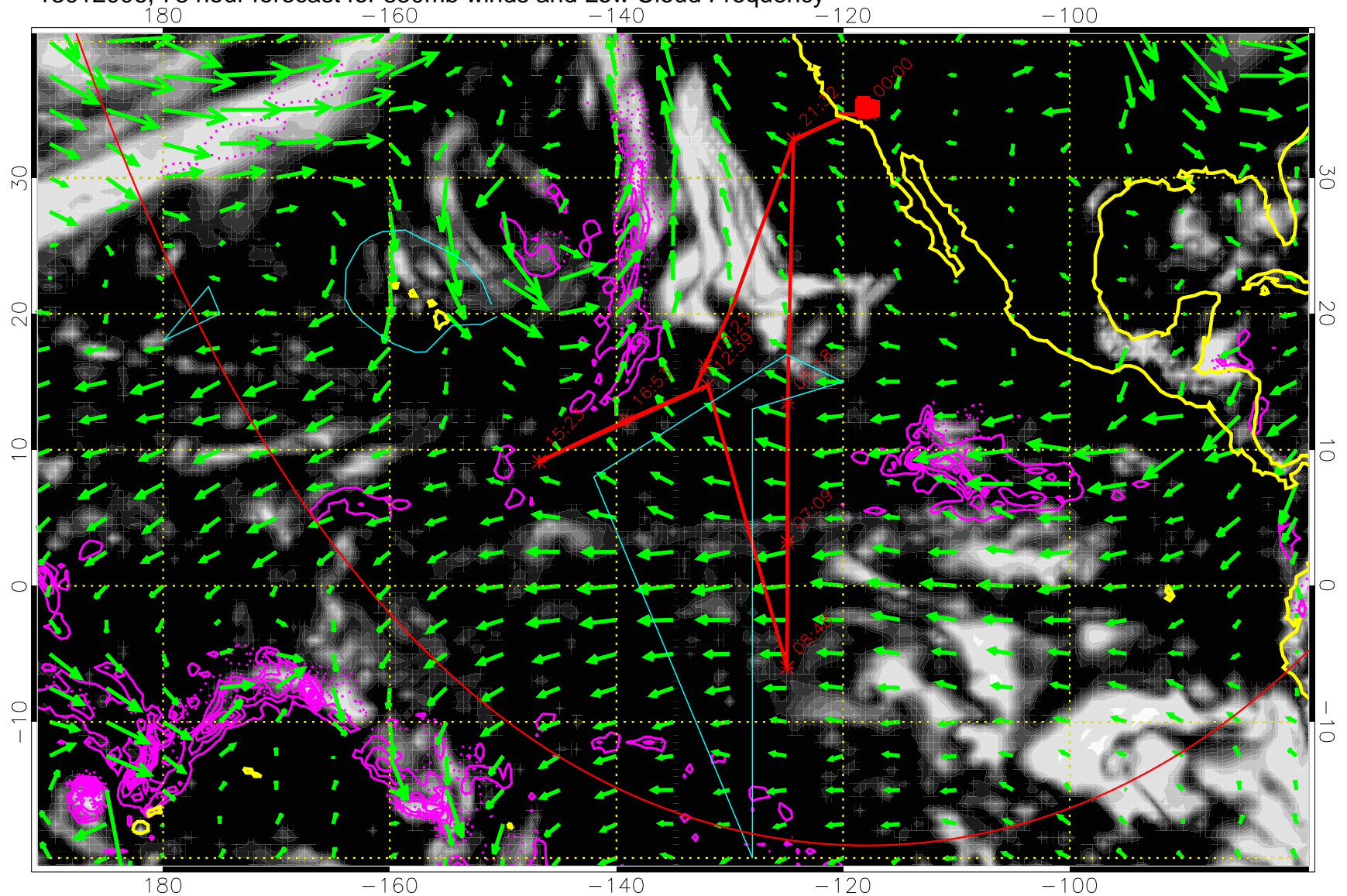
13012000, 72 hour forecast for 850mb winds and Low Cloud Frequency



Precip (tot dot, conv sol) past 6 hrs 6 kg/m2 contours, min 4

→ 30 m/s
Range ring of 6000 km -- 19 hours GH round trip

13012006, 78 hour forecast for 850mb winds and Low Cloud Frequency

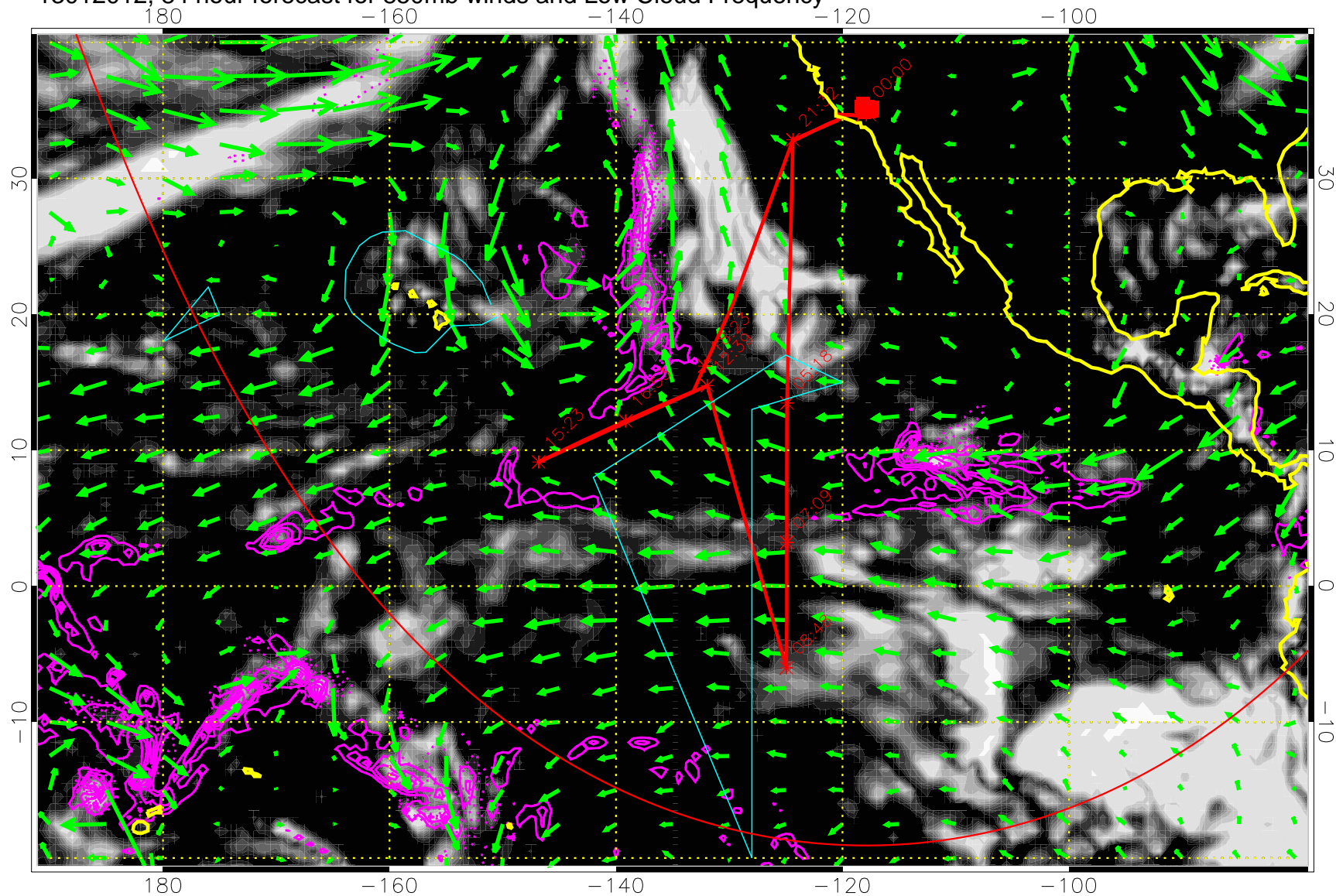


Precip (tot dot, conv sol) past 6 hrs 6 kg/m2 contours, min 4

→ 30 m/s

Range ring of 6000 km -- 19 hours GH round trip

13012012, 84 hour forecast for 850mb winds and Low Cloud Frequency

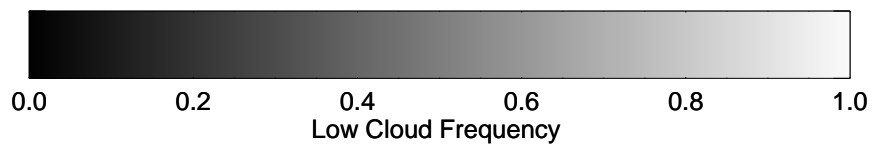
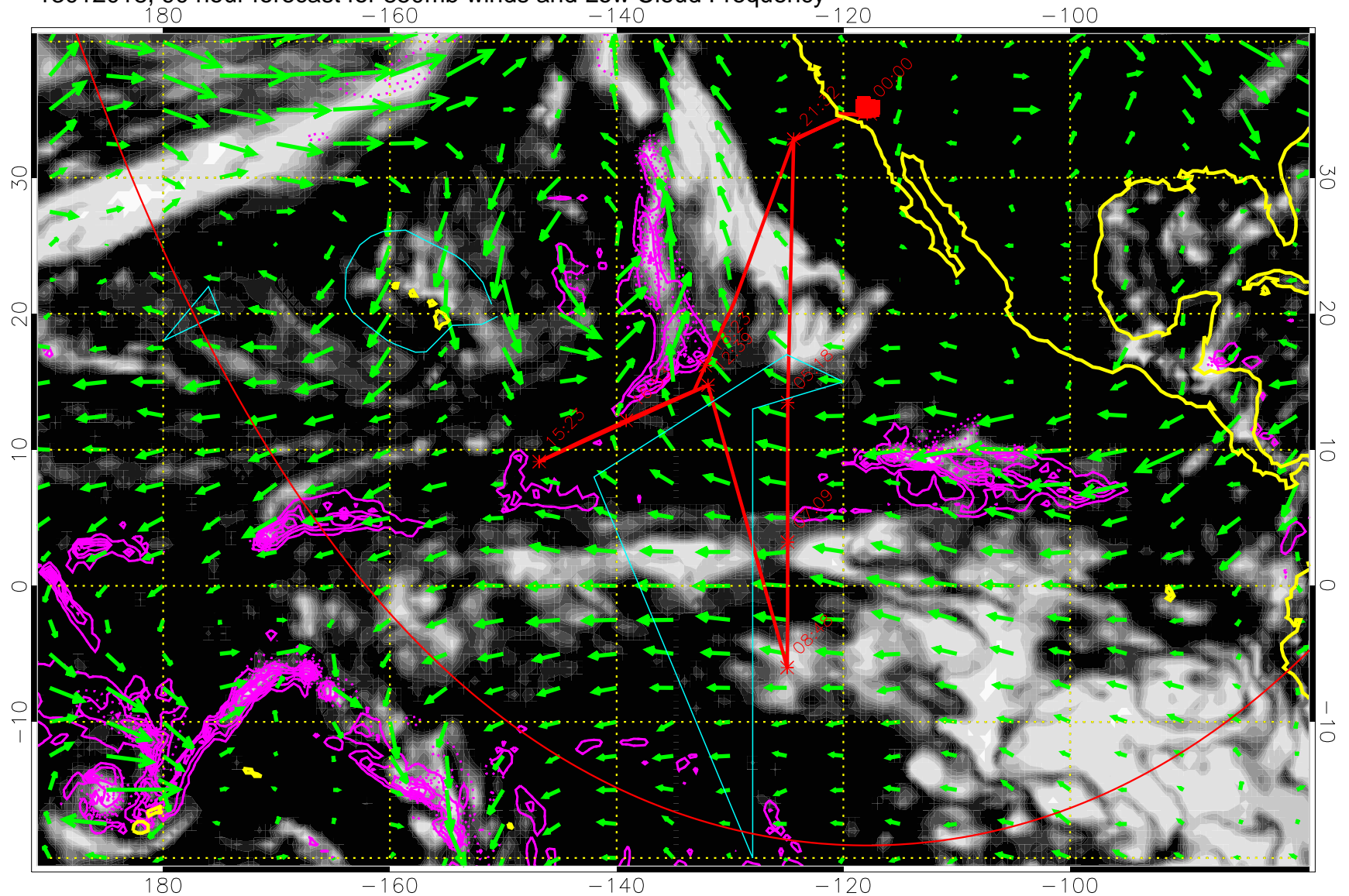


Precip (tot dot, conv sol) past 6 hrs 6 kg/m2 contours, min 4

→ 30 m/s

Range ring of 6000 km -- 19 hours GH round trip

13012018, 90 hour forecast for 850mb winds and Low Cloud Frequency

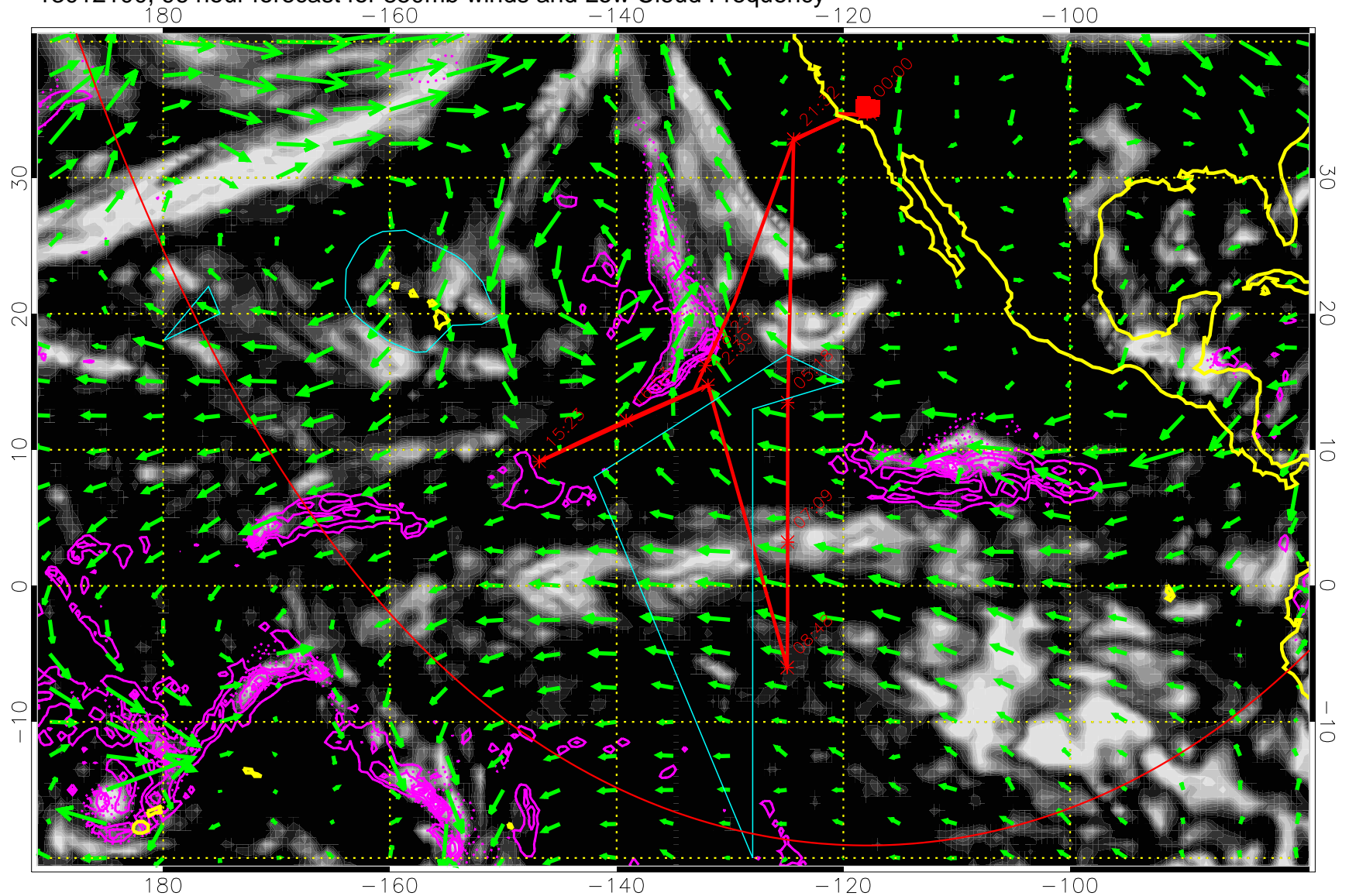


Precip (tot dot, conv sol) past 6 hrs 6 kg/m2 contours, min 4

→ 30 m/s

Range ring of 6000 km -- 19 hours GH round trip

13012100, 96 hour forecast for 850mb winds and Low Cloud Frequency



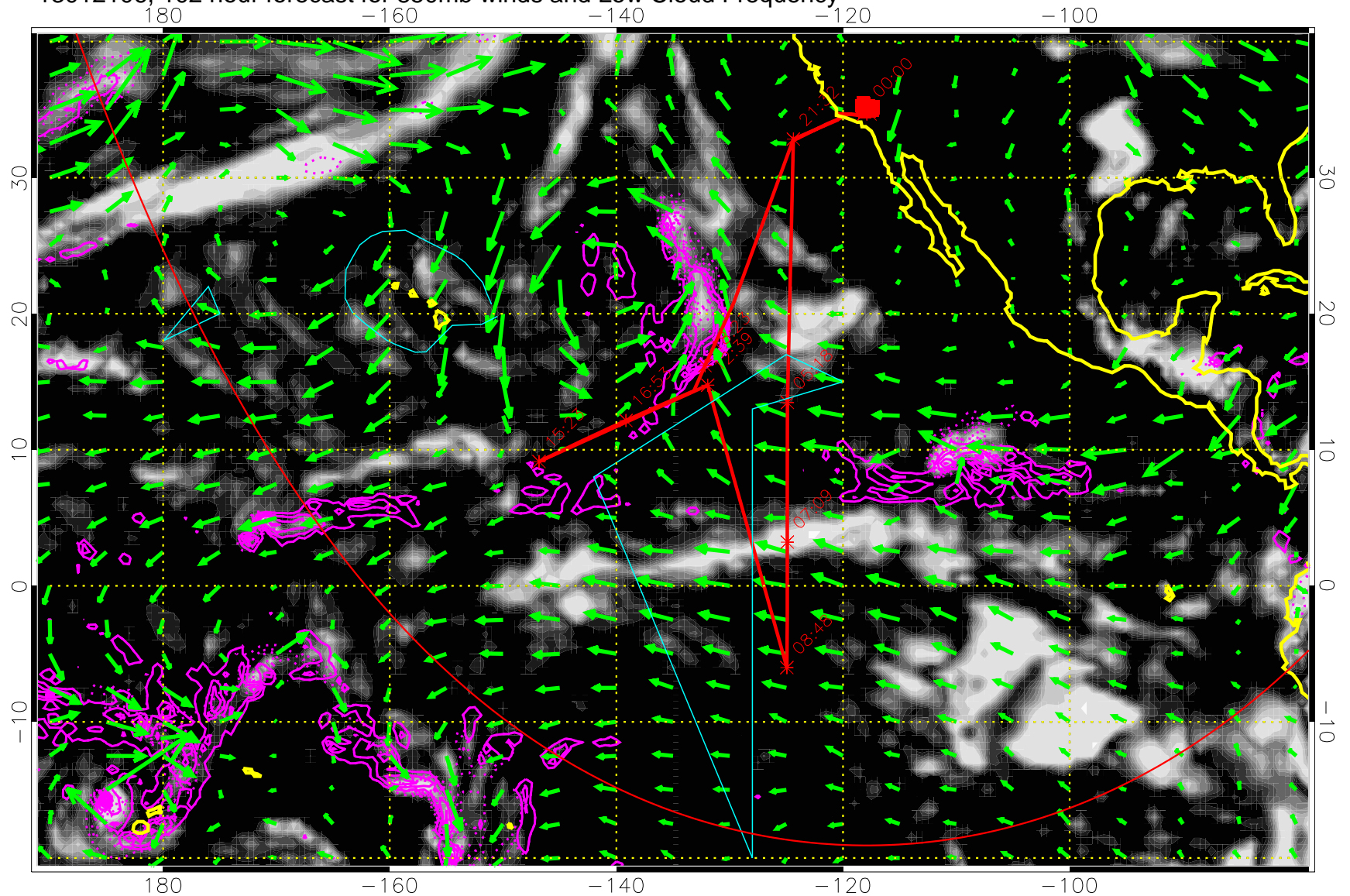
0.0 0.2 0.4 0.6 0.8 1.0
Low Cloud Frequency

Precip (tot dot, conv sol) past 6 hrs 6 kg/m2 contours, min 4

→ 30 m/s

Range ring of 6000 km -- 19 hours GH round trip

13012106, 102 hour forecast for 850mb winds and Low Cloud Frequency

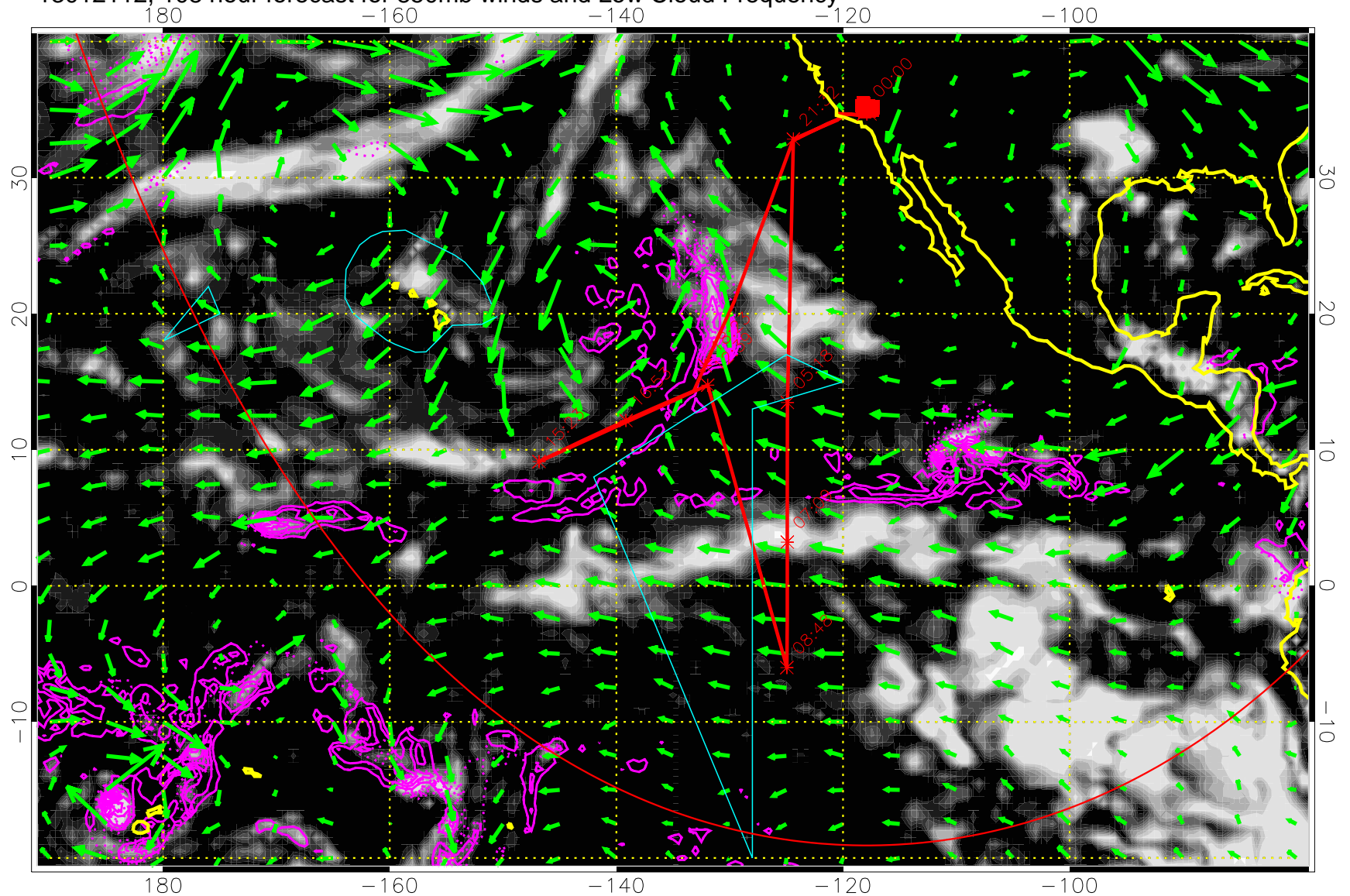


Precip (tot dot, conv sol) past 6 hrs 6 kg/m2 contours, min 4

→ 30 m/s

Range ring of 6000 km -- 19 hours GH round trip

13012112, 108 hour forecast for 850mb winds and Low Cloud Frequency

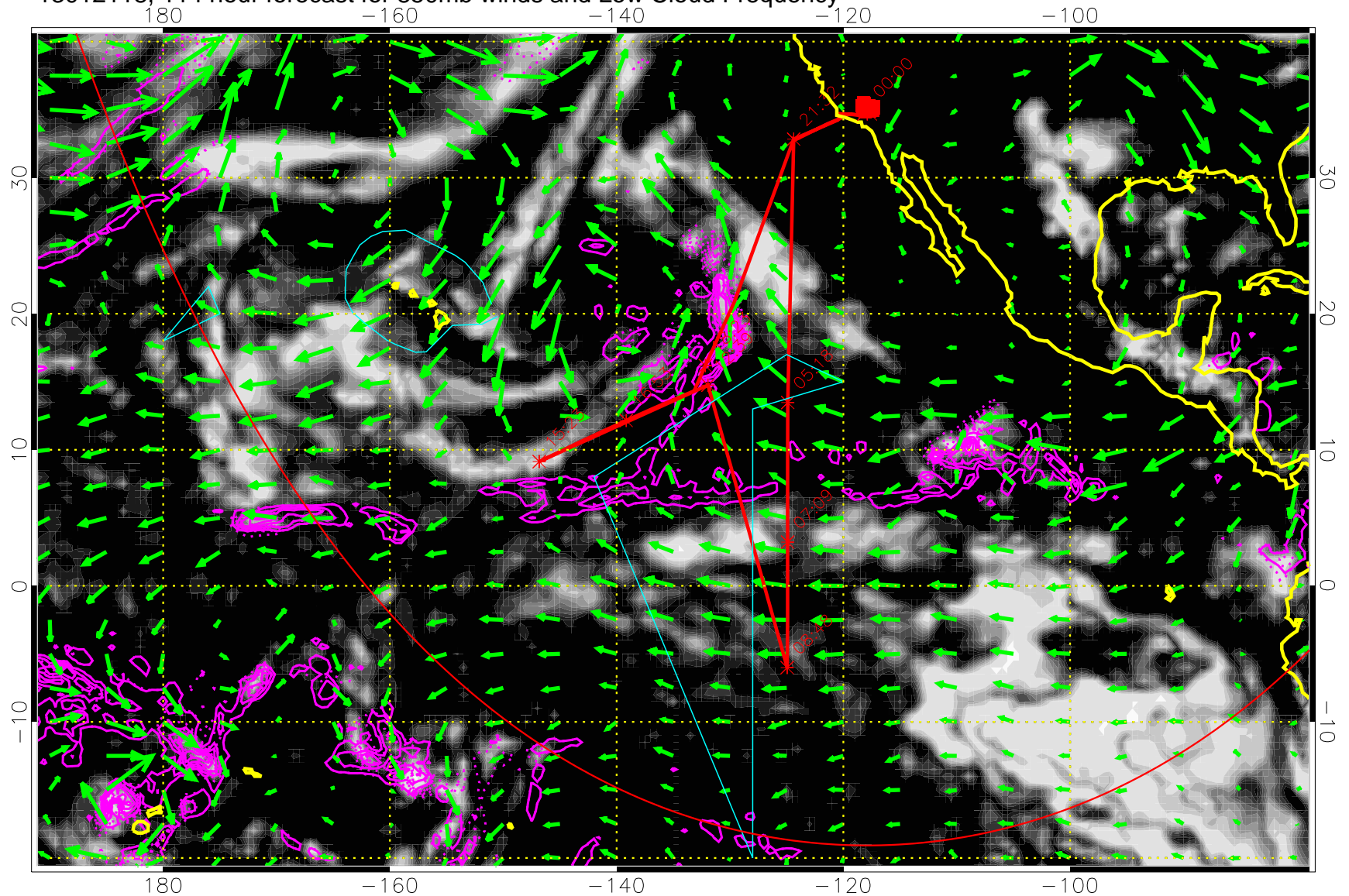


Precip (tot dot, conv sol) past 6 hrs 6 kg/m2 contours, min 4

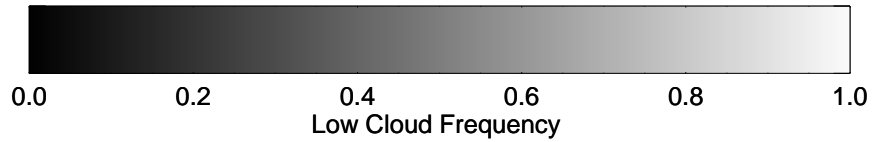
→ 30 m/s

Range ring of 6000 km -- 19 hours GH round trip

13012118, 114 hour forecast for 850mb winds and Low Cloud Frequency



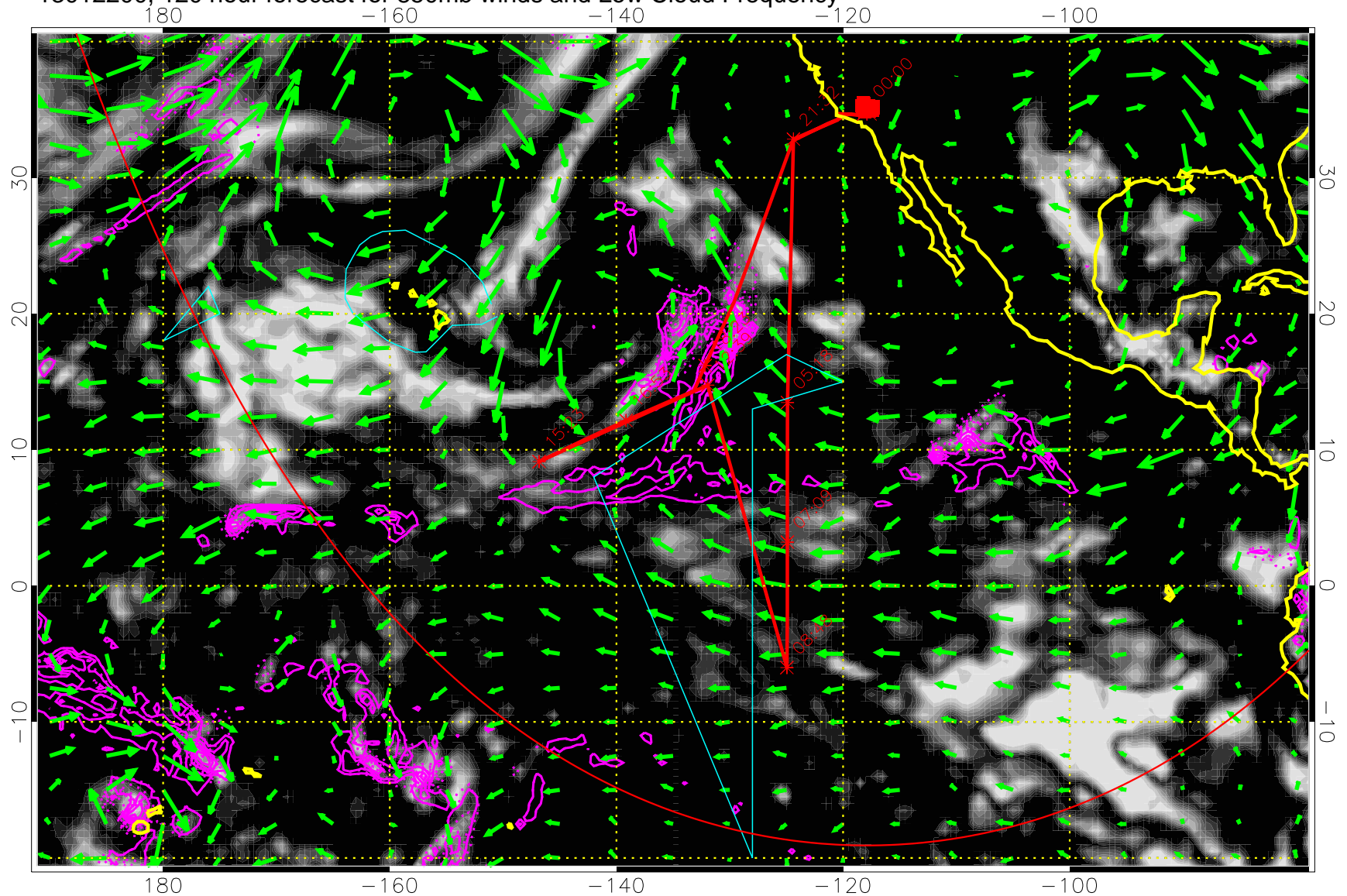
Precip (tot dot, conv sol) past 6 hrs 6 kg/m2 contours, min 4



→ 30 m/s

Range ring of 6000 km -- 19 hours GH round trip

13012200, 120 hour forecast for 850mb winds and Low Cloud Frequency



Precip (tot dot, conv sol) past 6 hrs 6 kg/m2 contours, min 4

→ 30 m/s

Range ring of 6000 km -- 19 hours GH round trip