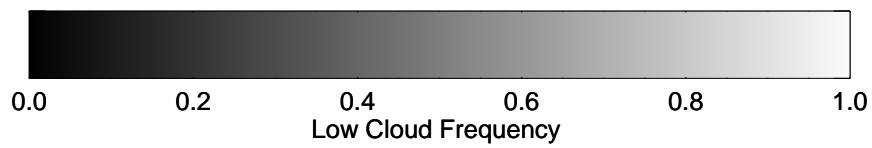
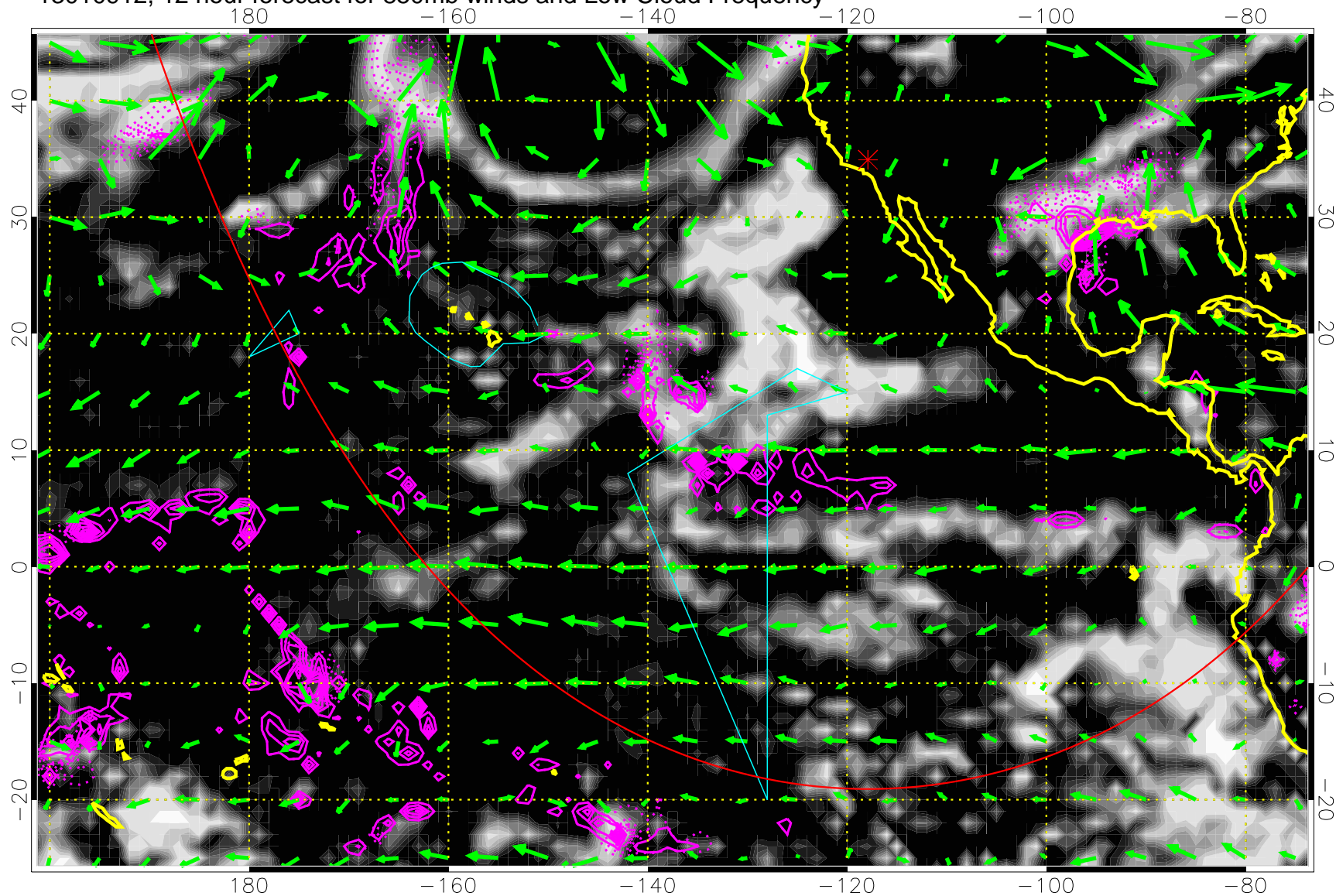


13010912, 12 hour forecast for 850mb winds and Low Cloud Frequency

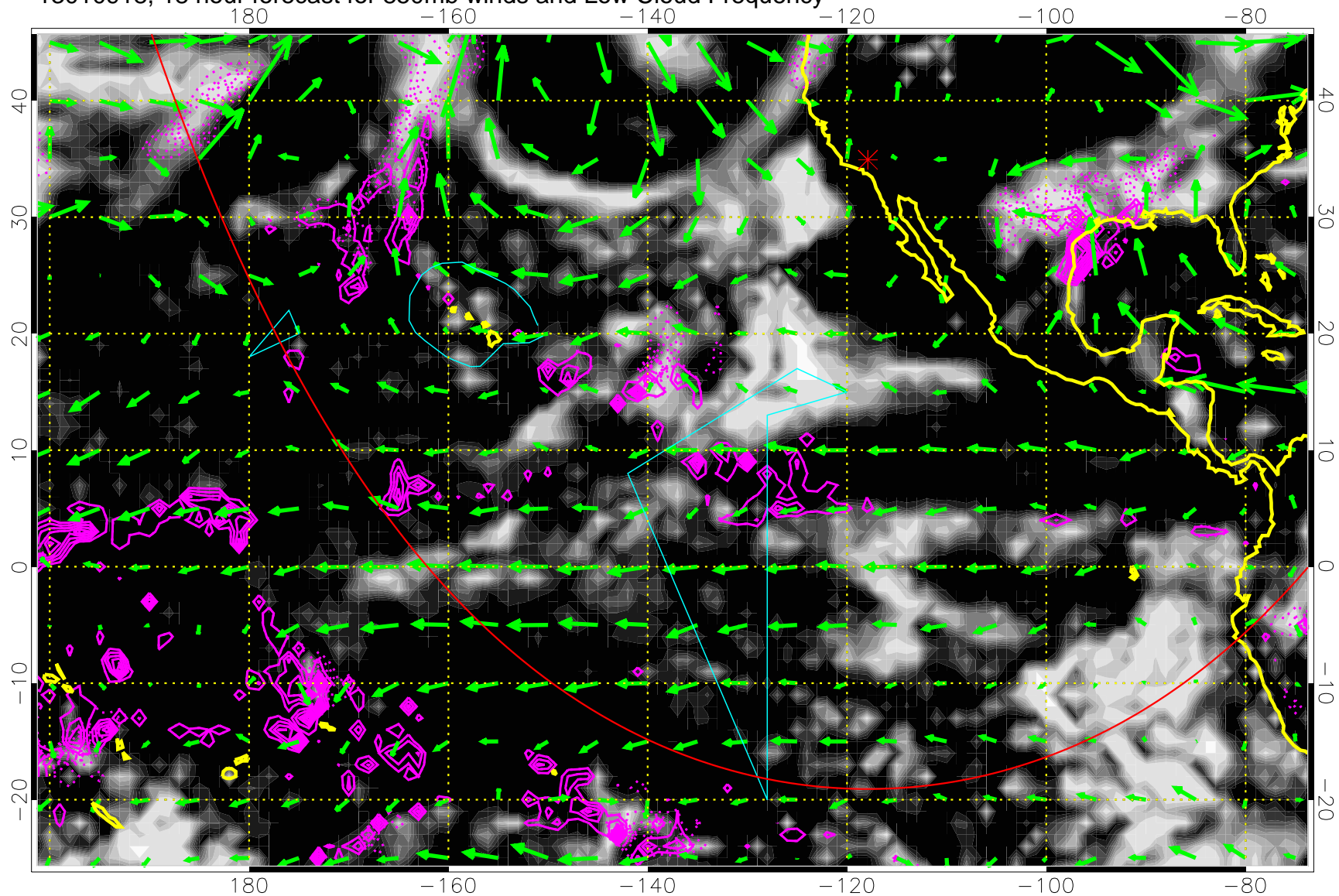


Precip (tot dotted, conv solid) past 6 hours 4 kg/m² contours

→ 20 m/s

Range ring of 6000 km -- 19 hours GH round trip

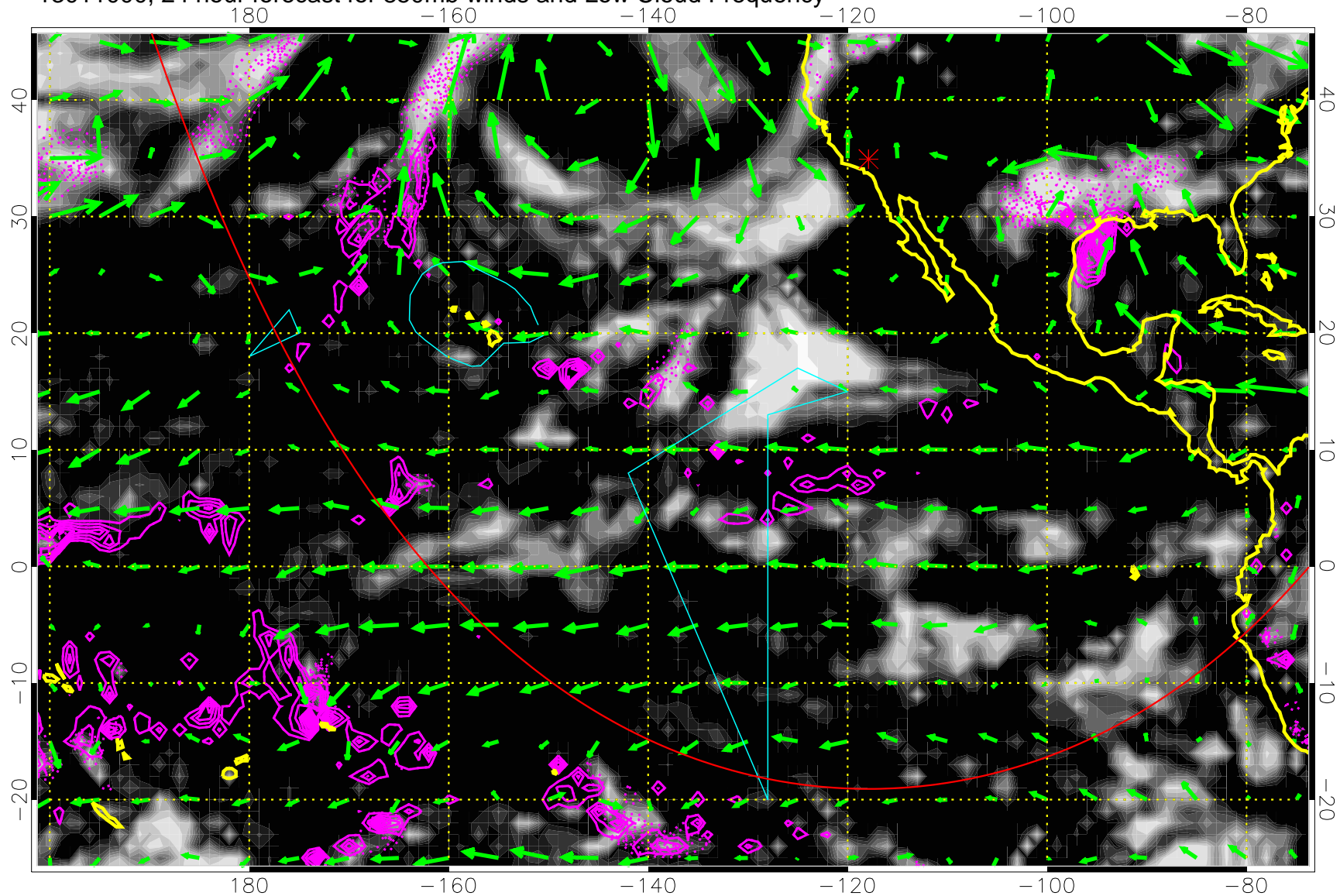
13010918, 18 hour forecast for 850mb winds and Low Cloud Frequency



Precip (tot dotted, conv solid) past 6 hours 4 kg/m² contours

→ 20 m/s
Range ring of 6000 km -- 19 hours GH round trip

13011000, 24 hour forecast for 850mb winds and Low Cloud Frequency

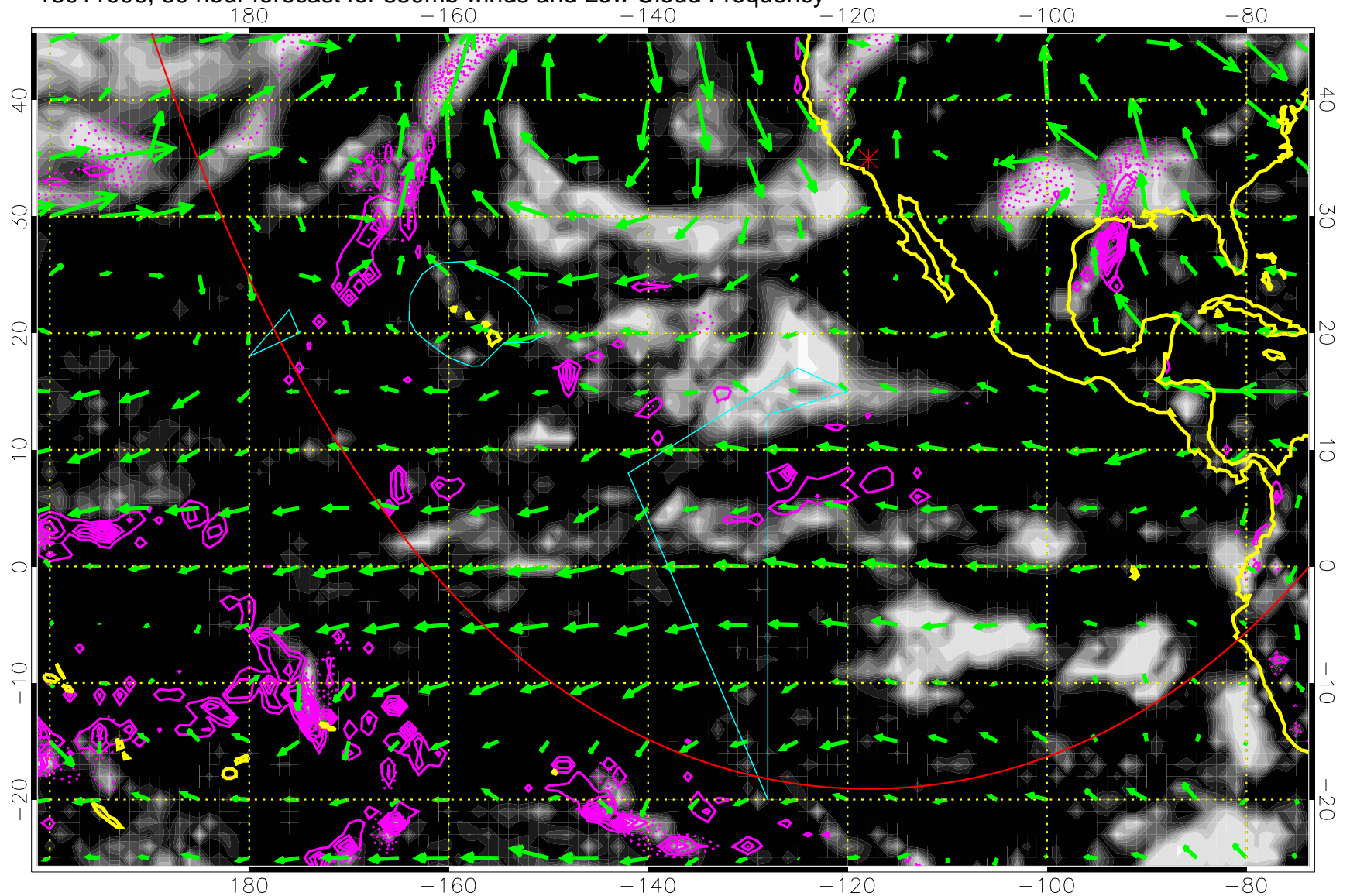


Precip (tot dotted, conv solid) past 6 hours 4 kg/m² contours

→ 20 m/s

Range ring of 6000 km -- 19 hours GH round trip

13011006, 30 hour forecast for 850mb winds and Low Cloud Frequency

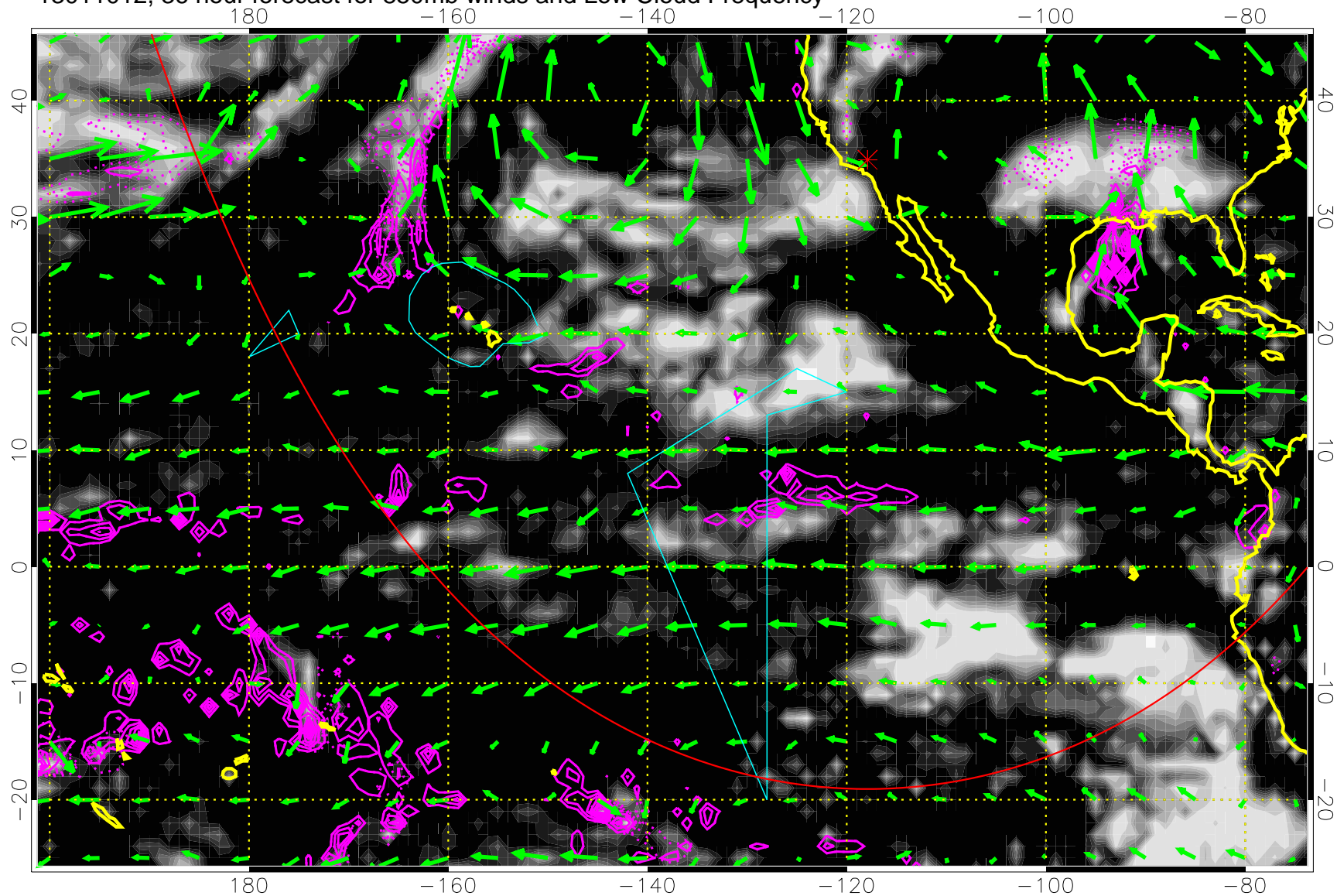


Precip (tot dotted, conv solid) past 6 hours 4 kg/m² contours

→ 20 m/s

Range ring of 6000 km -- 19 hours GH round trip

13011012, 36 hour forecast for 850mb winds and Low Cloud Frequency

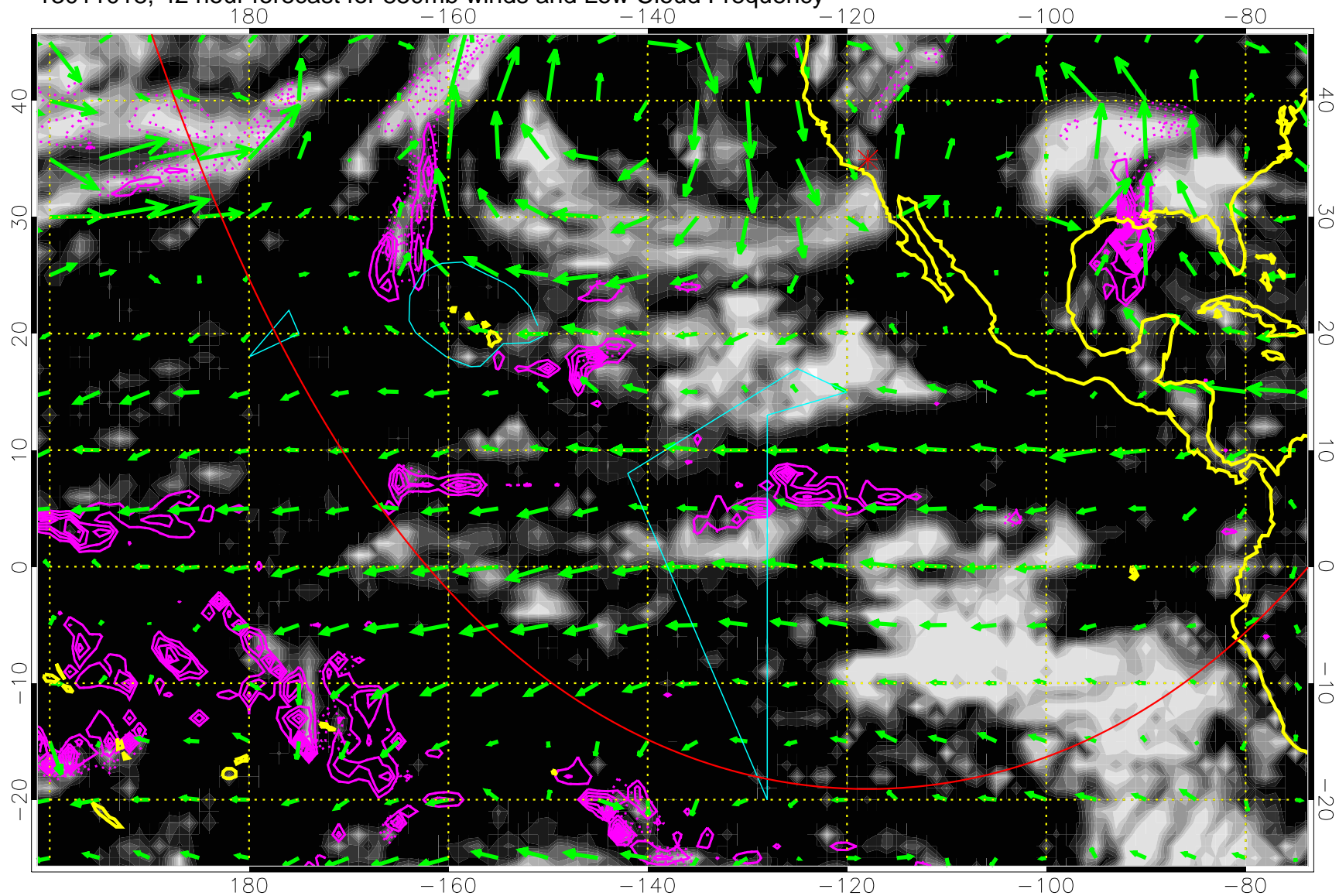


Precip (tot dotted, conv solid) past 6 hours 4 kg/m² contours

→ 20 m/s

Range ring of 6000 km -- 19 hours GH round trip

13011018, 42 hour forecast for 850mb winds and Low Cloud Frequency

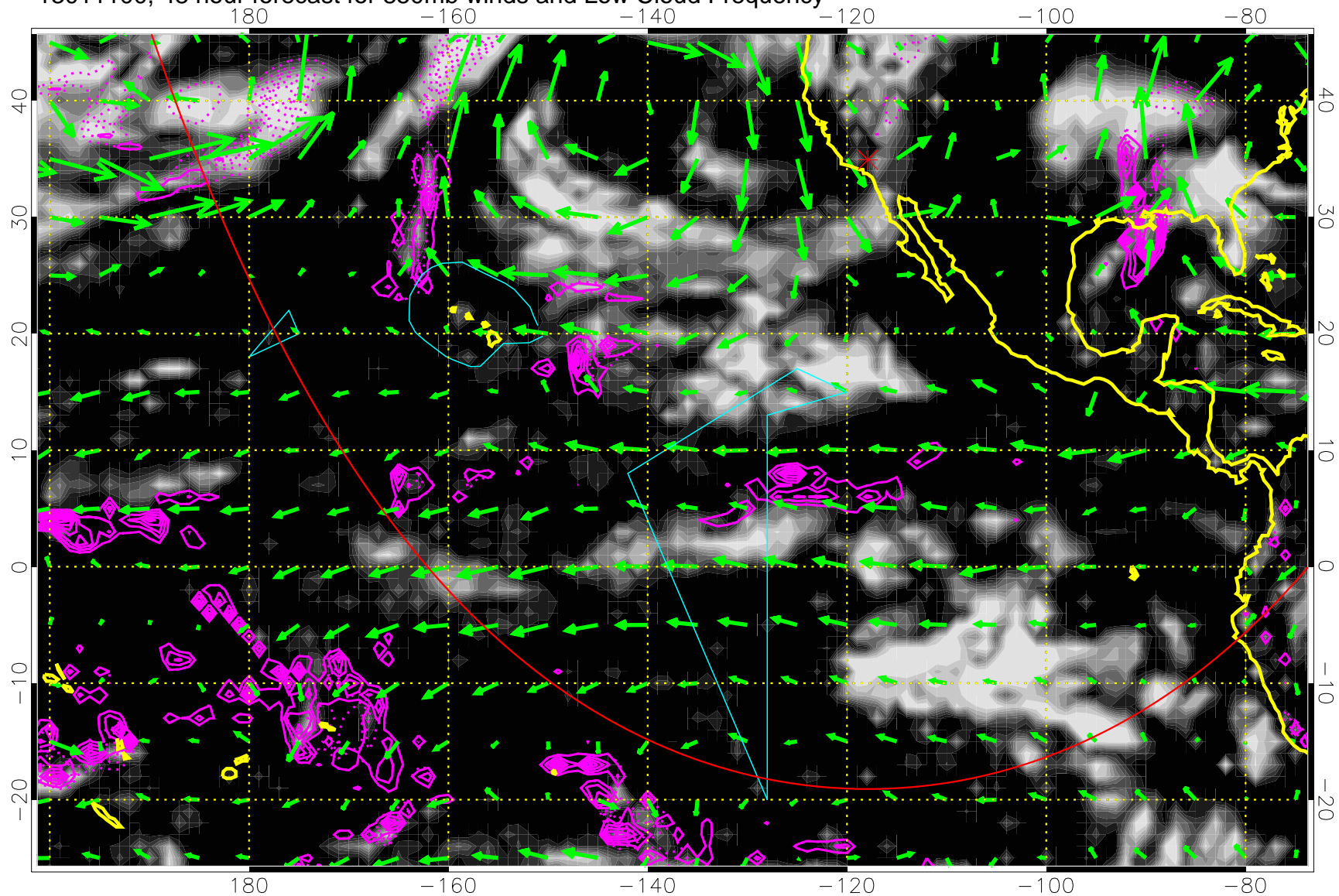


Precip (tot dotted, conv solid) past 6 hours 4 kg/m² contours

→ 20 m/s

Range ring of 6000 km -- 19 hours GH round trip

13011100, 48 hour forecast for 850mb winds and Low Cloud Frequency

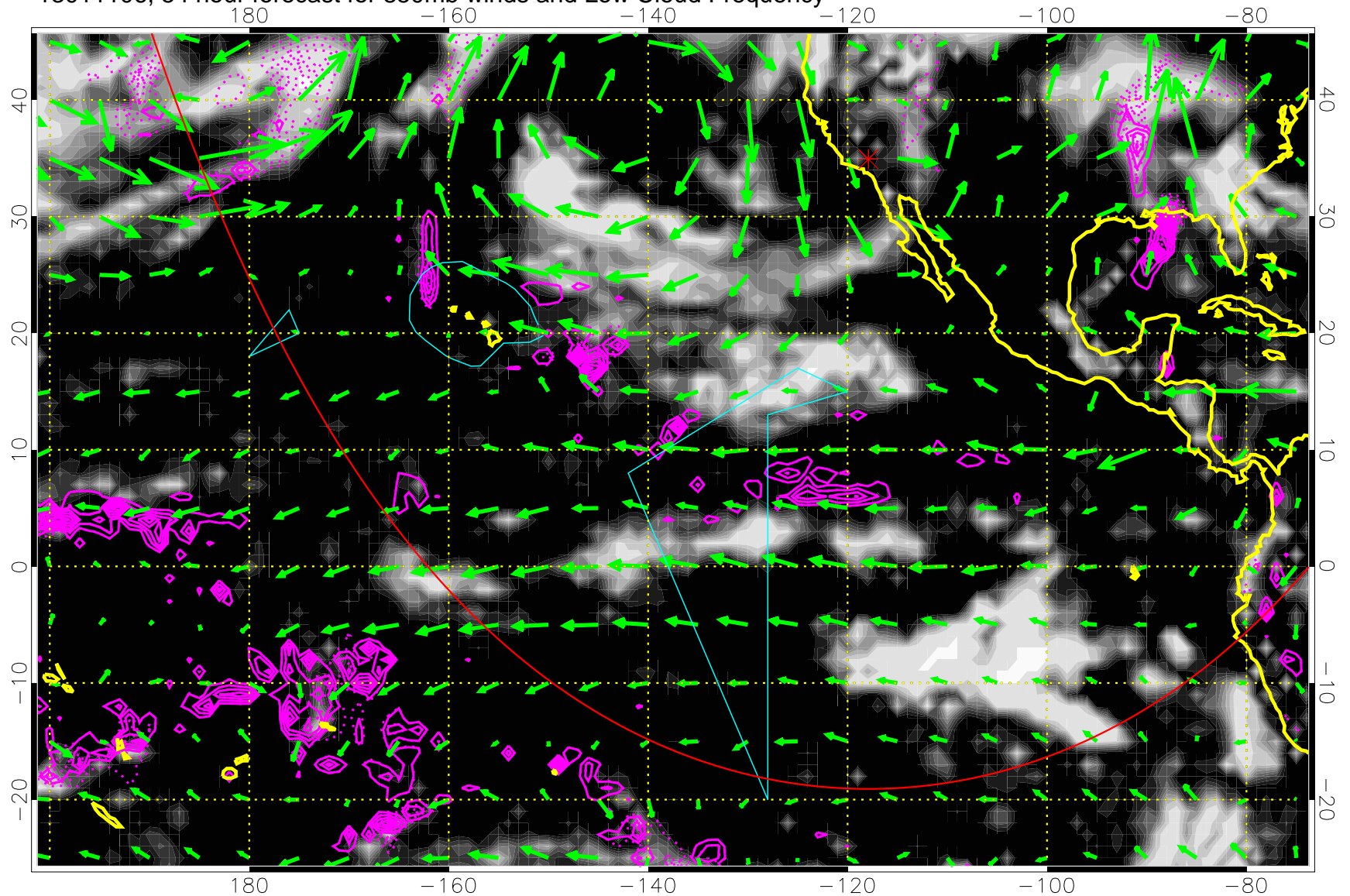


Precip (tot dotted, conv solid) past 6 hours 4 kg/m² contours

→ 20 m/s

Range ring of 6000 km -- 19 hours GH round trip

13011106, 54 hour forecast for 850mb winds and Low Cloud Frequency

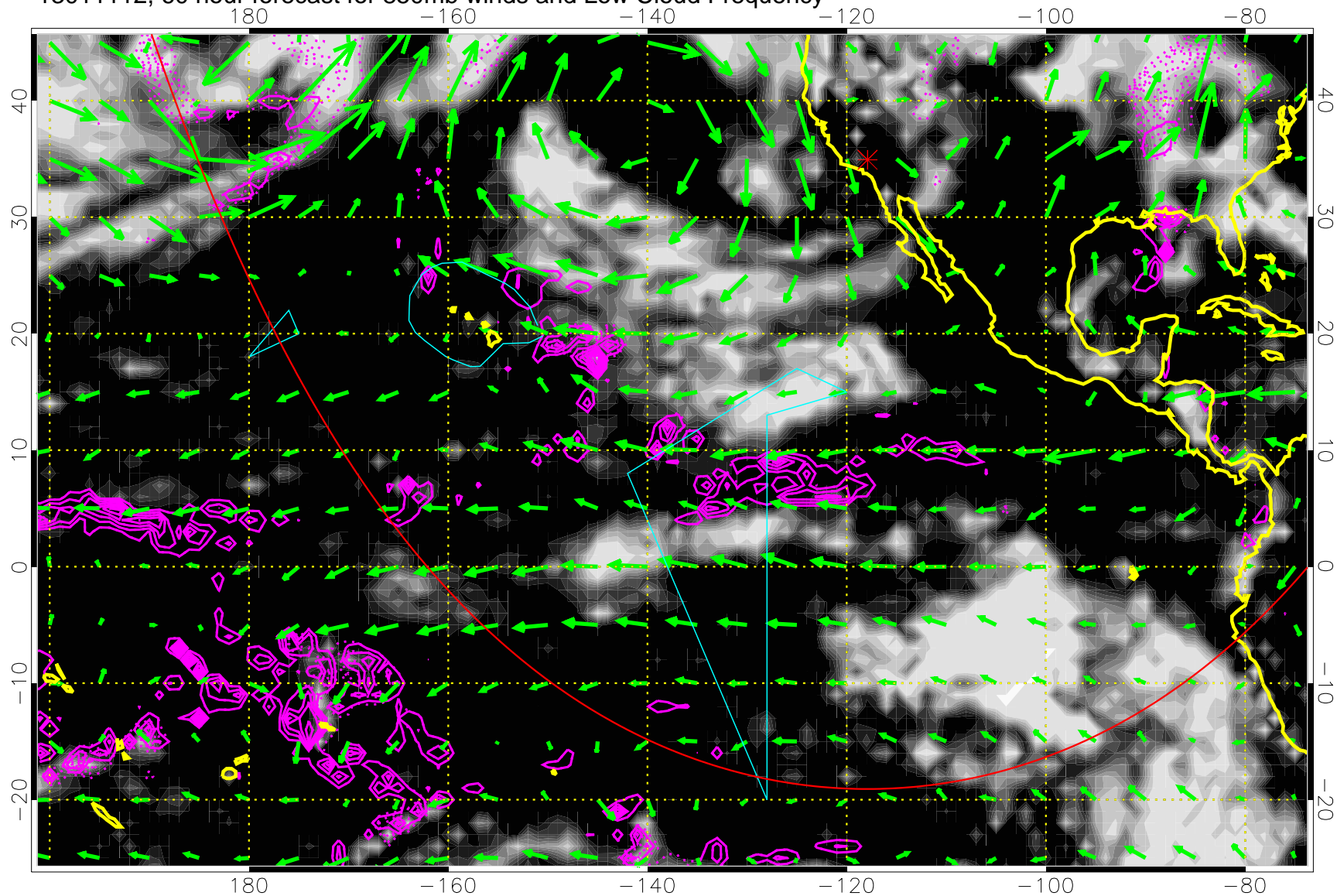


Precip (tot dotted, conv solid) past 6 hours 4 kg/m² contours

→ 20 m/s

Range ring of 6000 km -- 19 hours GH round trip

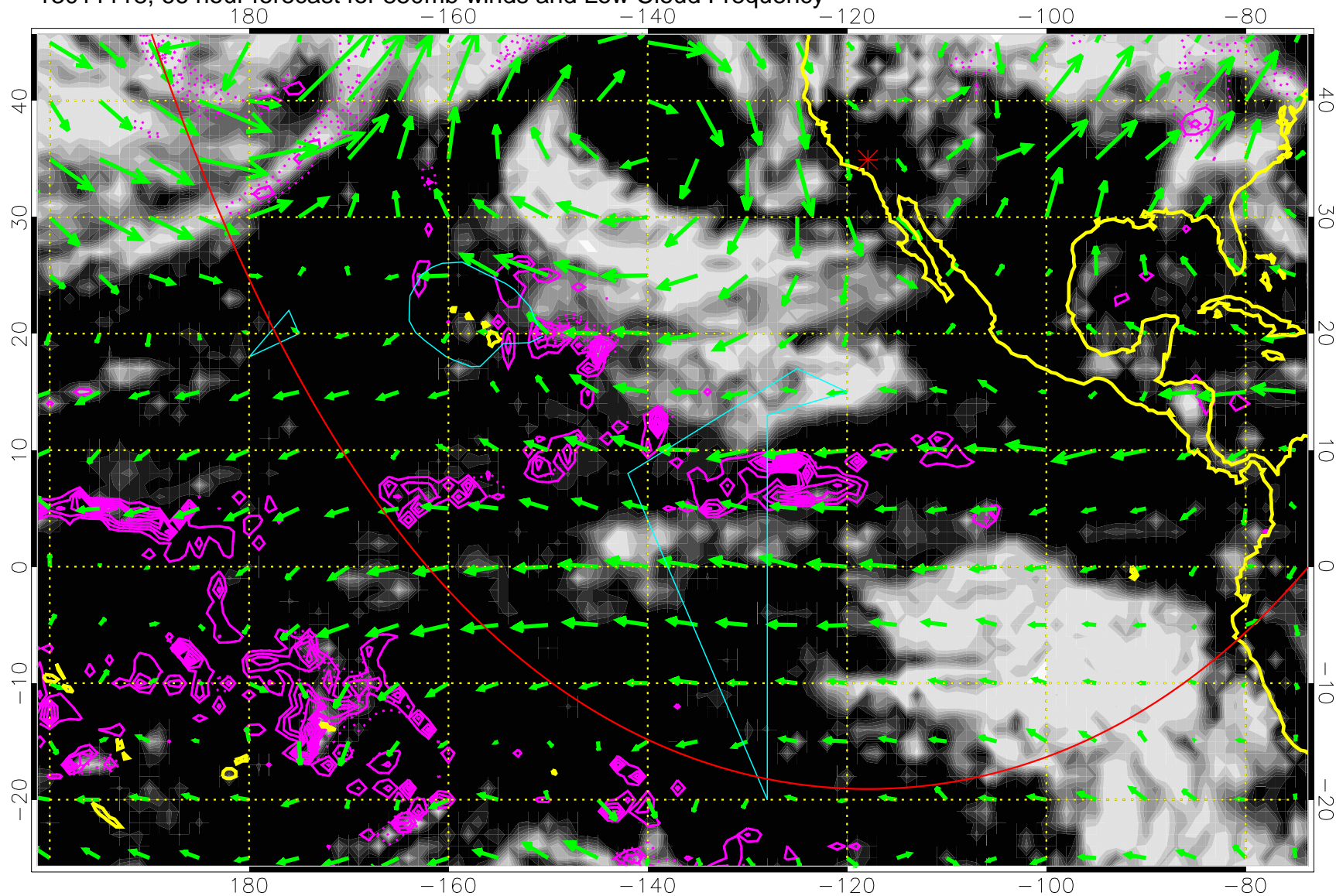
13011112, 60 hour forecast for 850mb winds and Low Cloud Frequency



Precip (tot dotted, conv solid) past 6 hours 4 kg/m² contours

→ 20 m/s
Range ring of 6000 km -- 19 hours GH round trip

13011118, 66 hour forecast for 850mb winds and Low Cloud Frequency

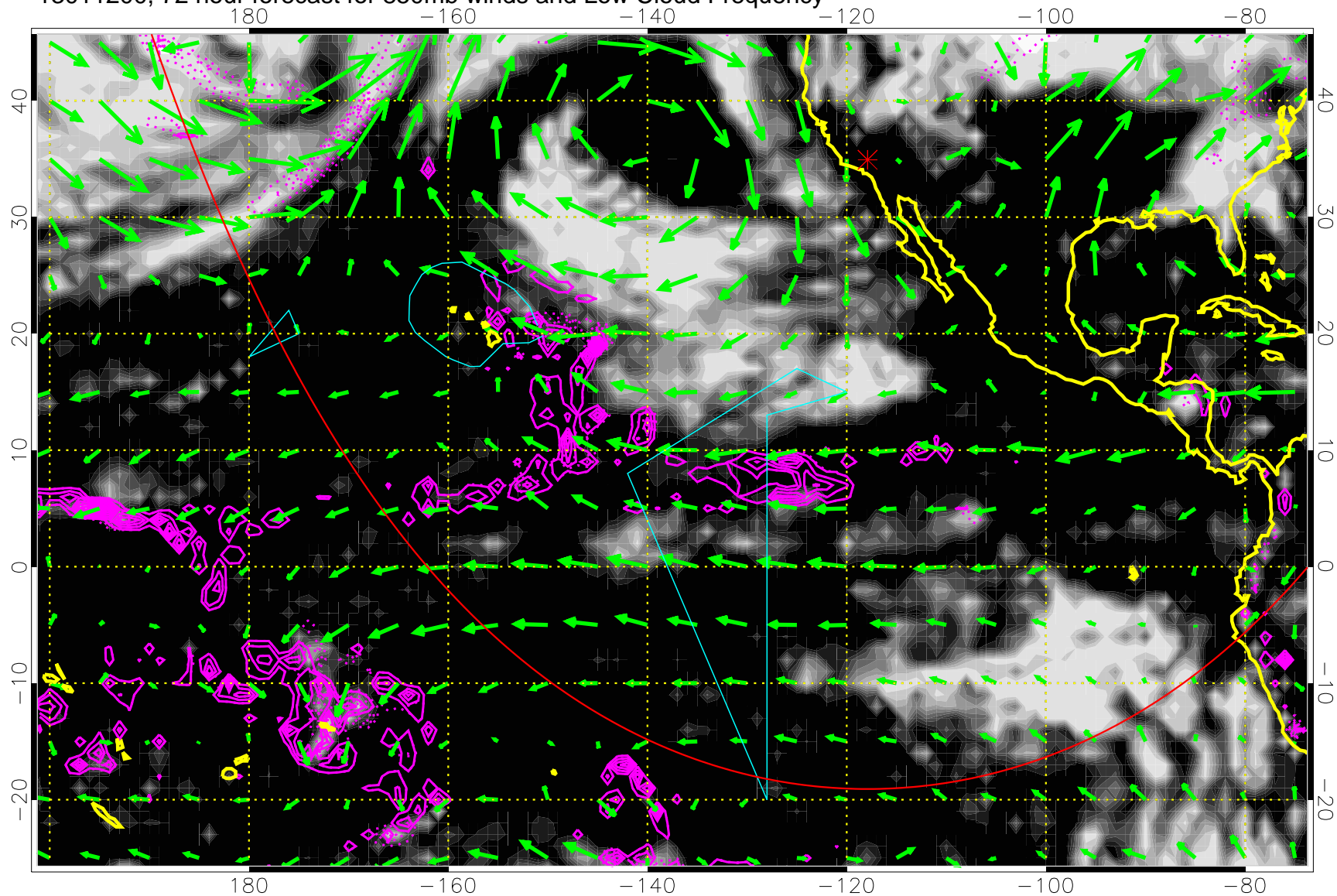


Precip (tot dotted, conv solid) past 6 hours 4 kg/m² contours

→ 20 m/s

Range ring of 6000 km -- 19 hours GH round trip

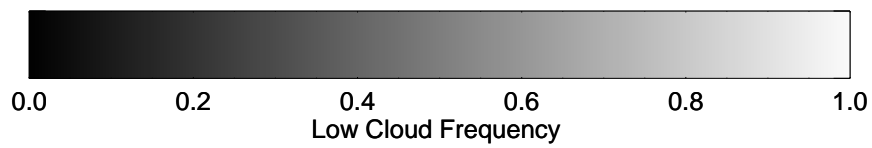
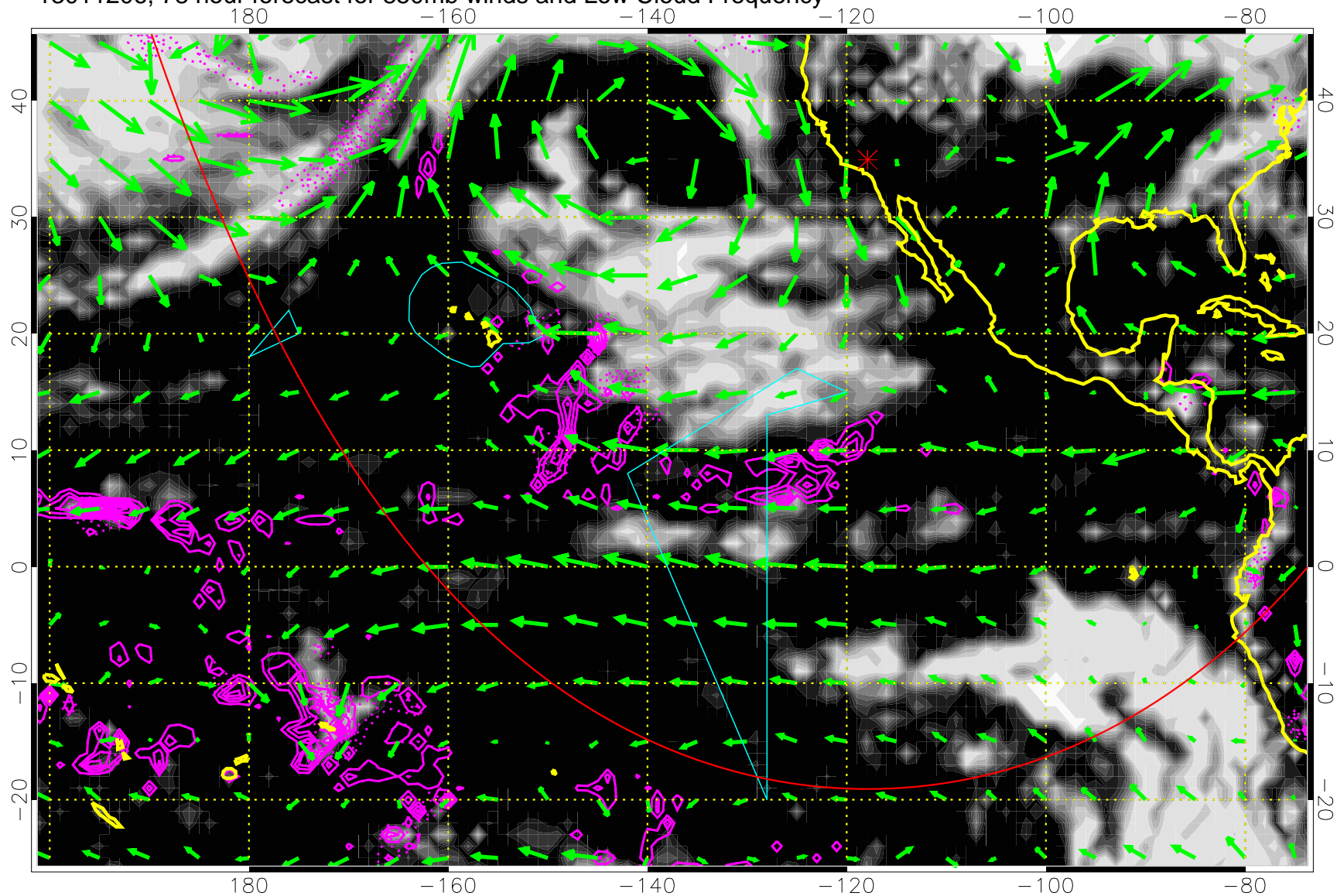
13011200, 72 hour forecast for 850mb winds and Low Cloud Frequency



Precip (tot dotted, conv solid) past 6 hours 4 kg/m² contours

→ 20 m/s
Range ring of 6000 km -- 19 hours GH round trip

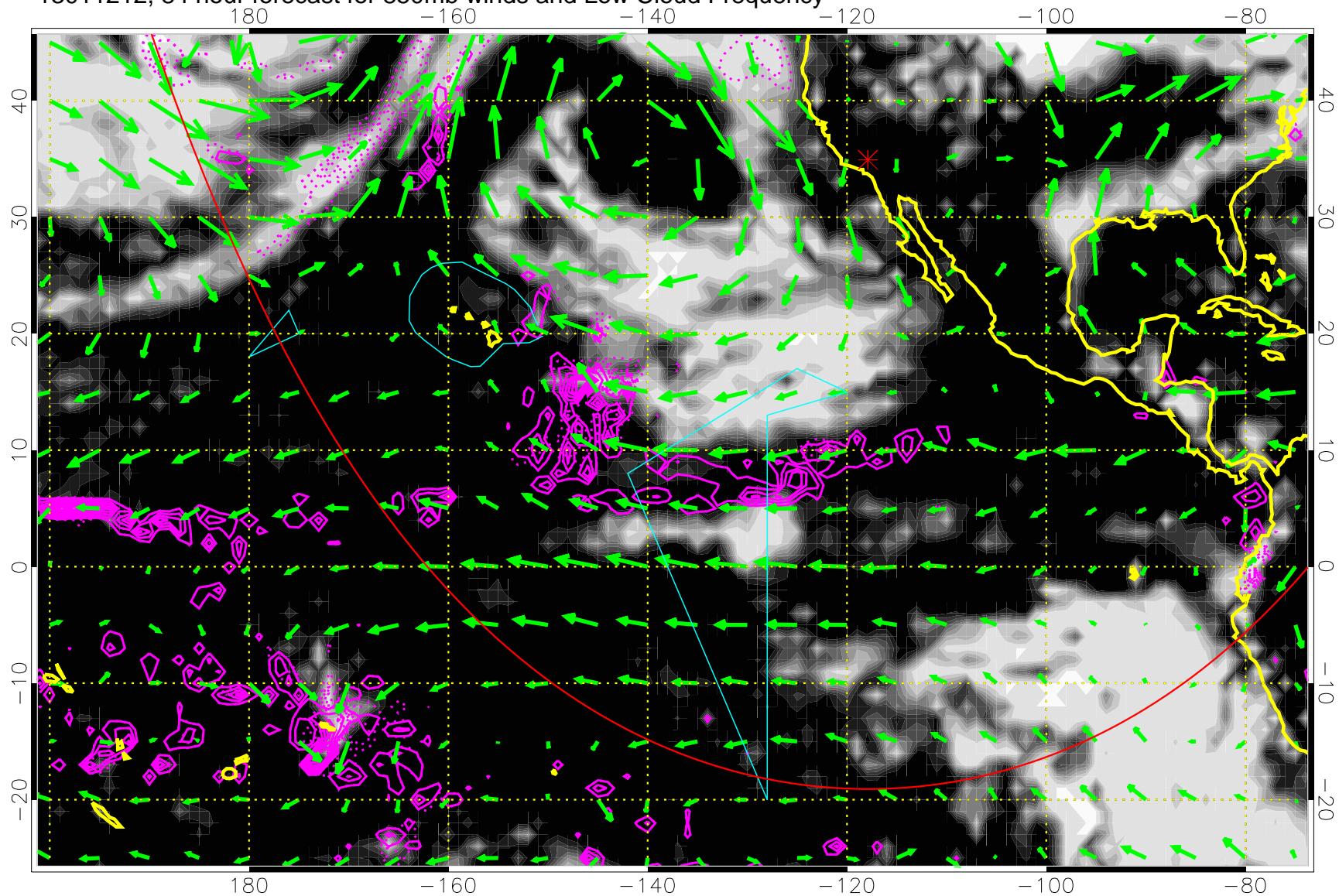
13011206, 78 hour forecast for 850mb winds and Low Cloud Frequency



Precip (tot dotted, conv solid) past 6 hours 4 kg/m² contours

→ 20 m/s
Range ring of 6000 km -- 19 hours GH round trip

13011212, 84 hour forecast for 850mb winds and Low Cloud Frequency

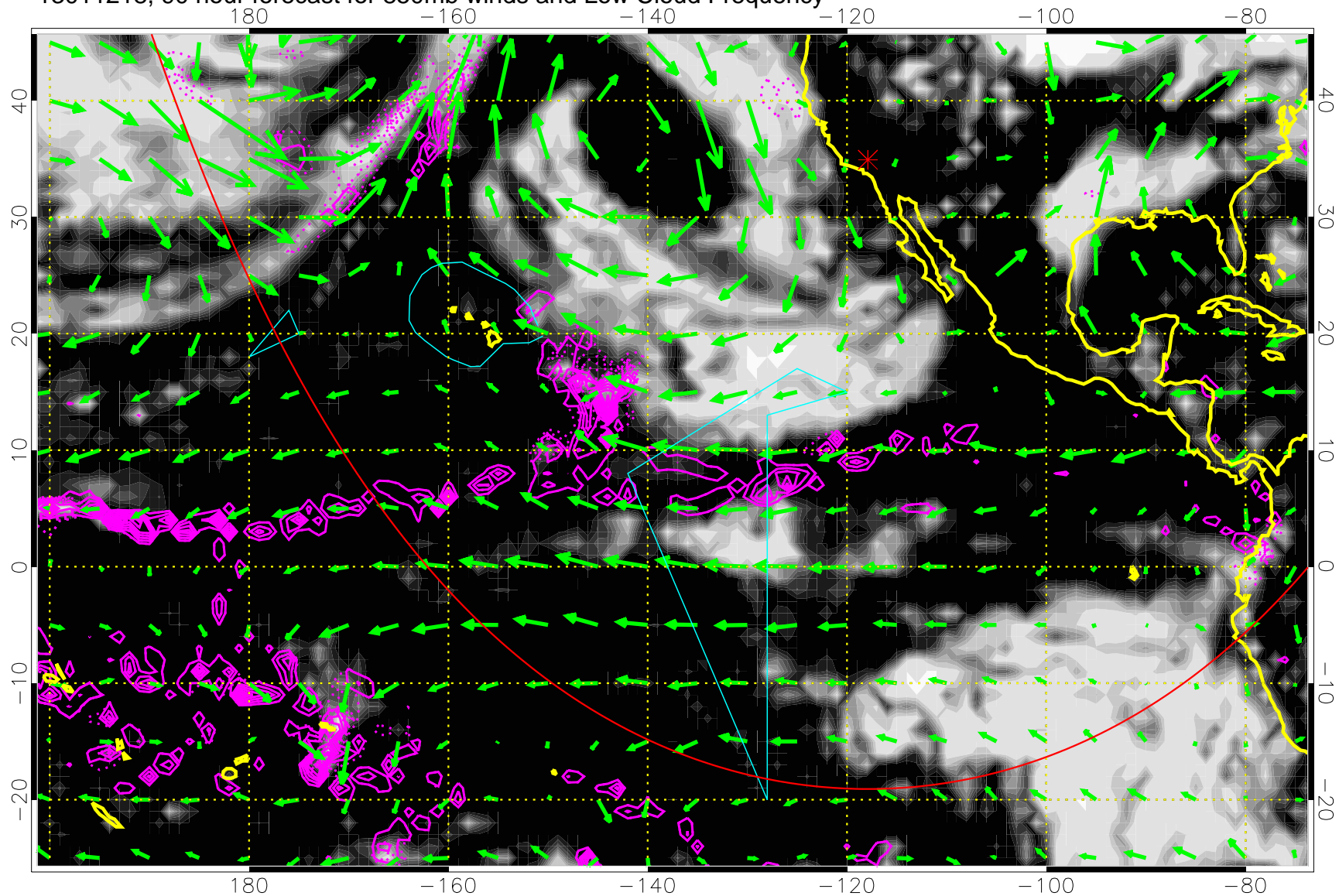


Precip (tot dotted, conv solid) past 6 hours 4 kg/m² contours

→ 20 m/s

Range ring of 6000 km -- 19 hours GH round trip

13011218, 90 hour forecast for 850mb winds and Low Cloud Frequency

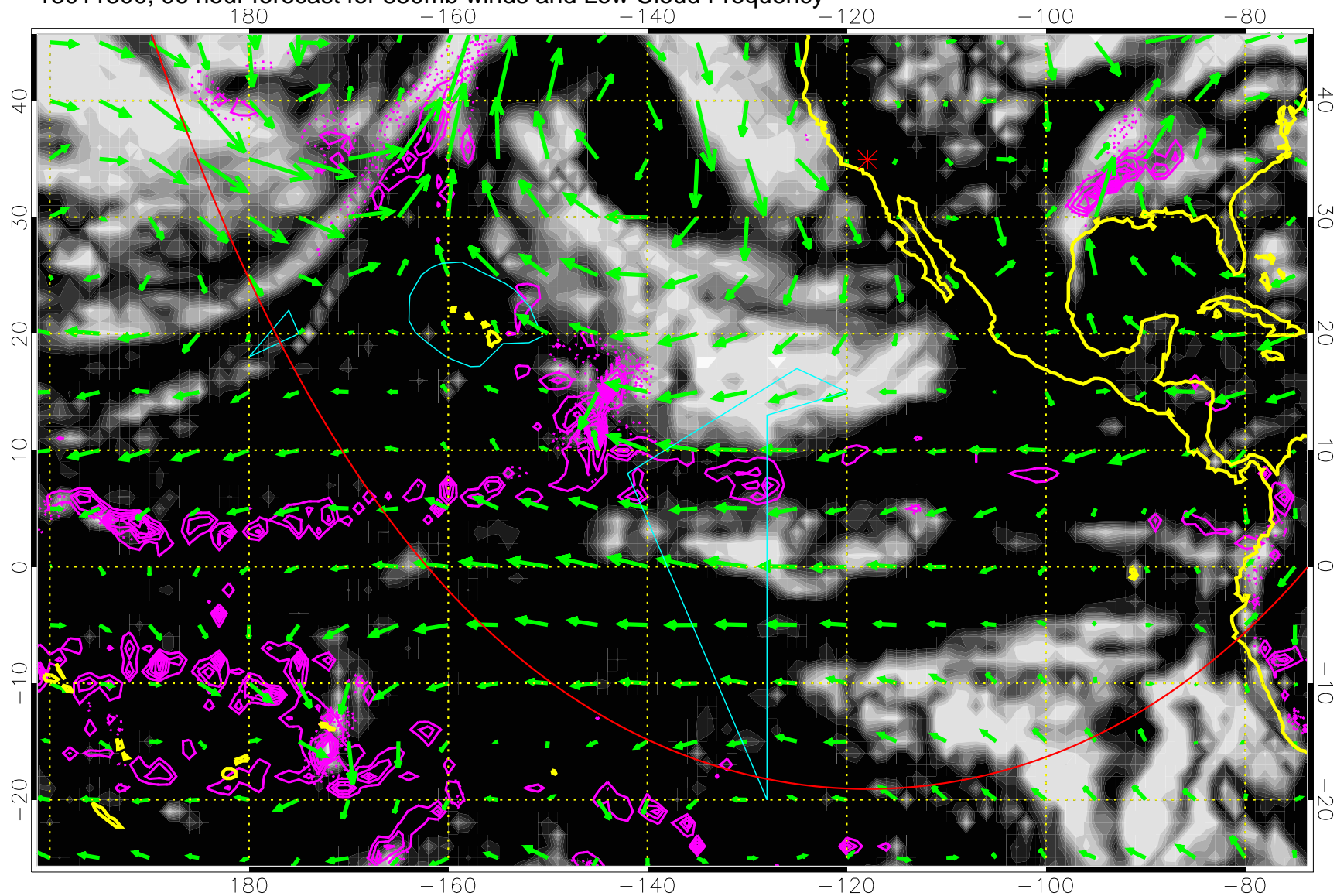


Precip (tot dotted, conv solid) past 6 hours 4 kg/m² contours

→ 20 m/s

Range ring of 6000 km -- 19 hours GH round trip

13011300, 96 hour forecast for 850mb winds and Low Cloud Frequency

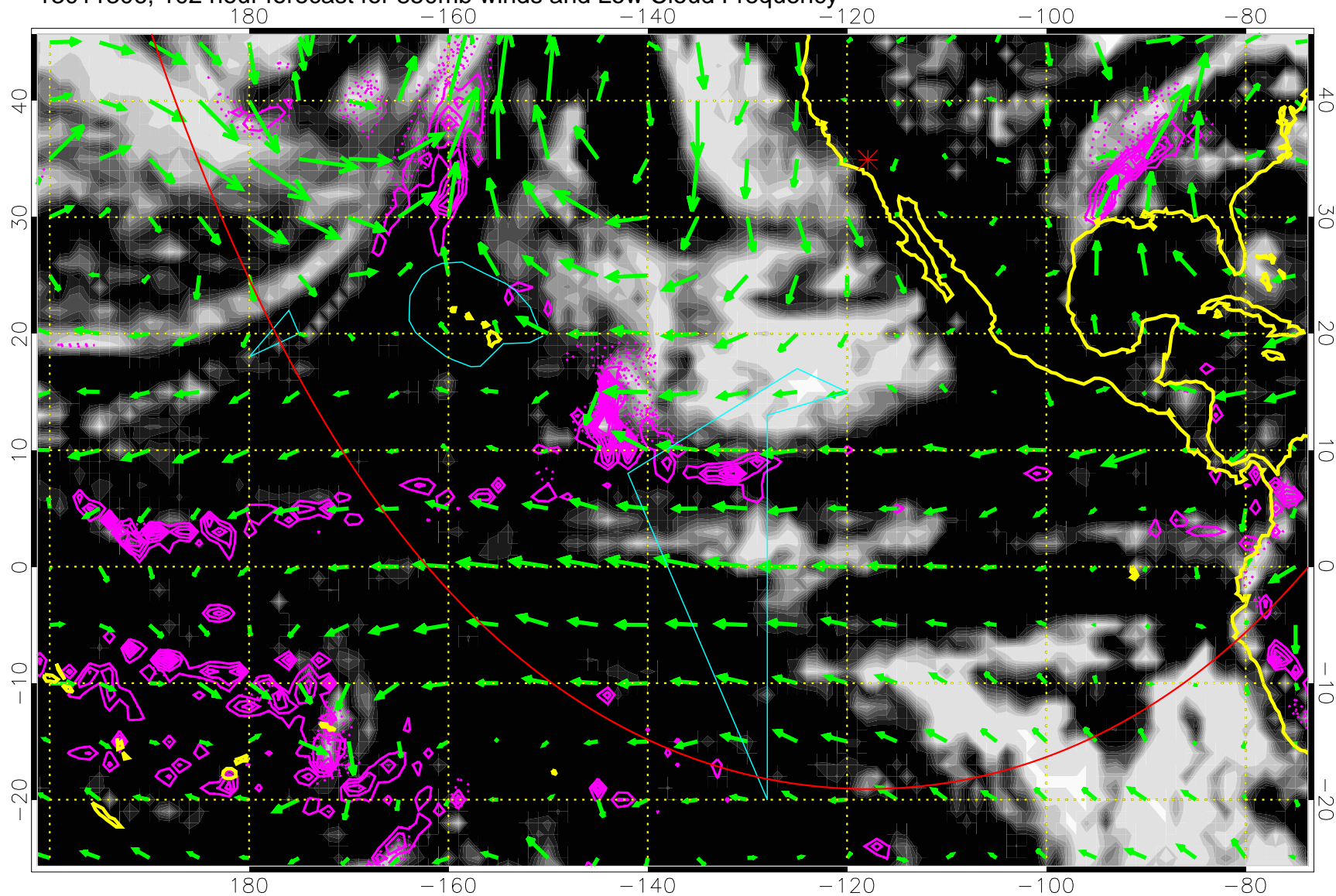


Precip (tot dotted, conv solid) past 6 hours 4 kg/m² contours

→ 20 m/s

Range ring of 6000 km -- 19 hours GH round trip

13011306, 102 hour forecast for 850mb winds and Low Cloud Frequency

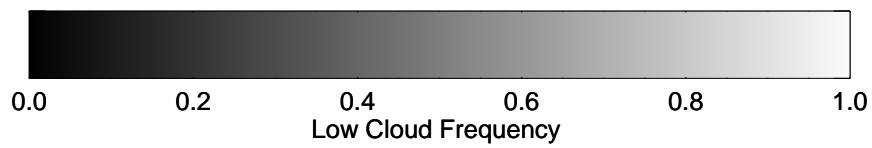
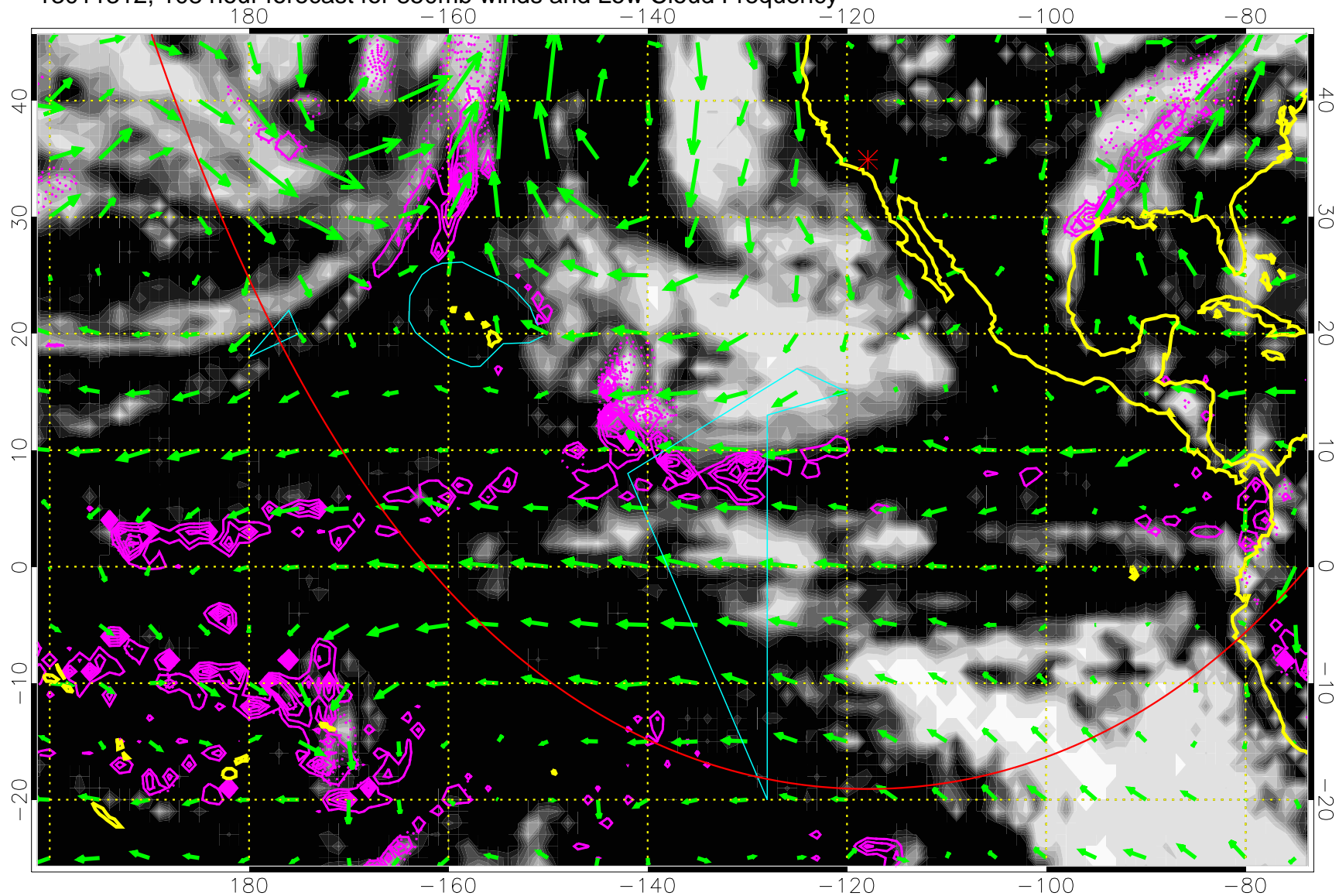


Precip (tot dotted, conv solid) past 6 hours 4 kg/m² contours

→ 20 m/s

Range ring of 6000 km -- 19 hours GH round trip

13011312, 108 hour forecast for 850mb winds and Low Cloud Frequency

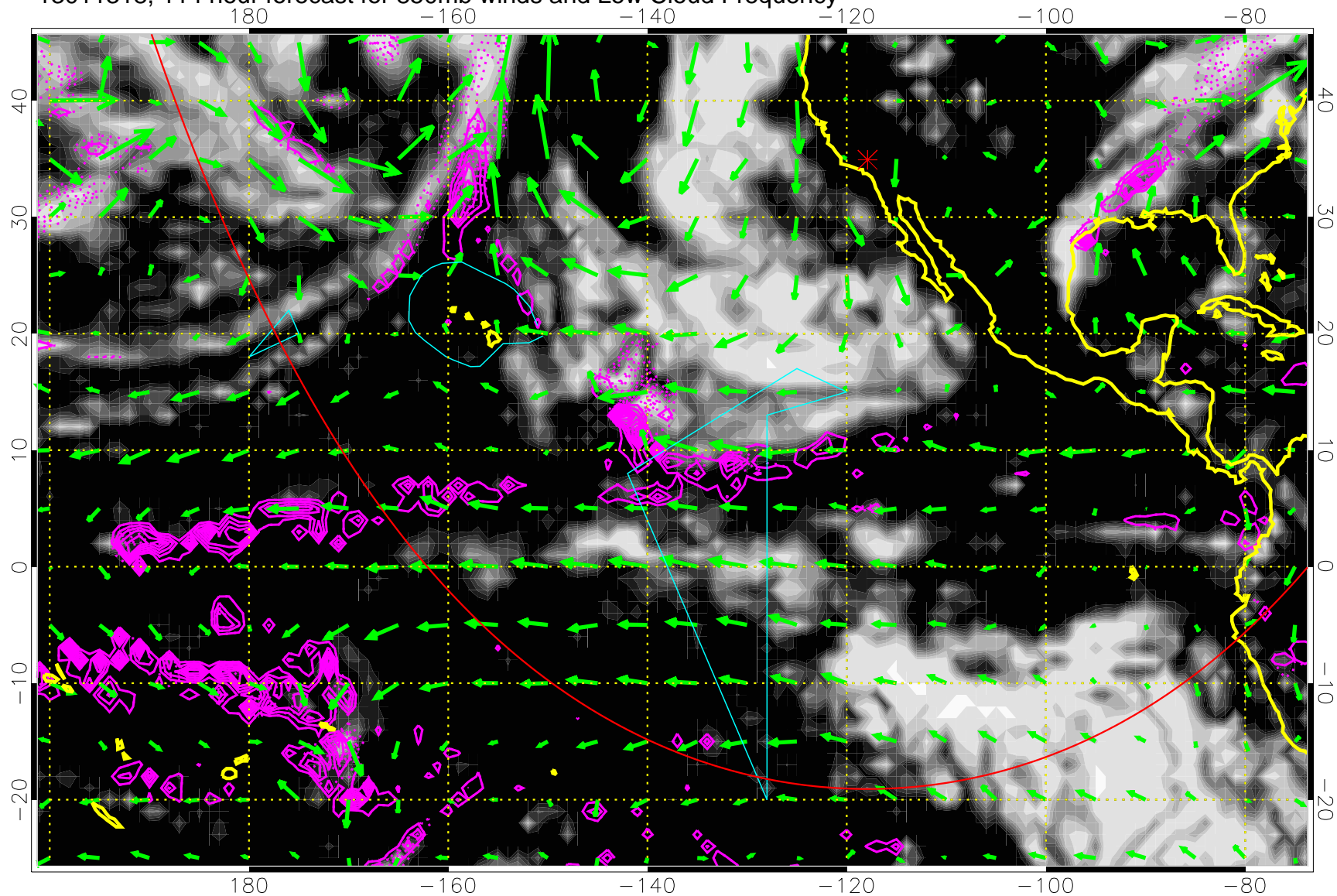


Precip (tot dotted, conv solid) past 6 hours 4 kg/m2 contours

→ 20 m/s

Range ring of 6000 km -- 19 hours GH round trip

13011318, 114 hour forecast for 850mb winds and Low Cloud Frequency



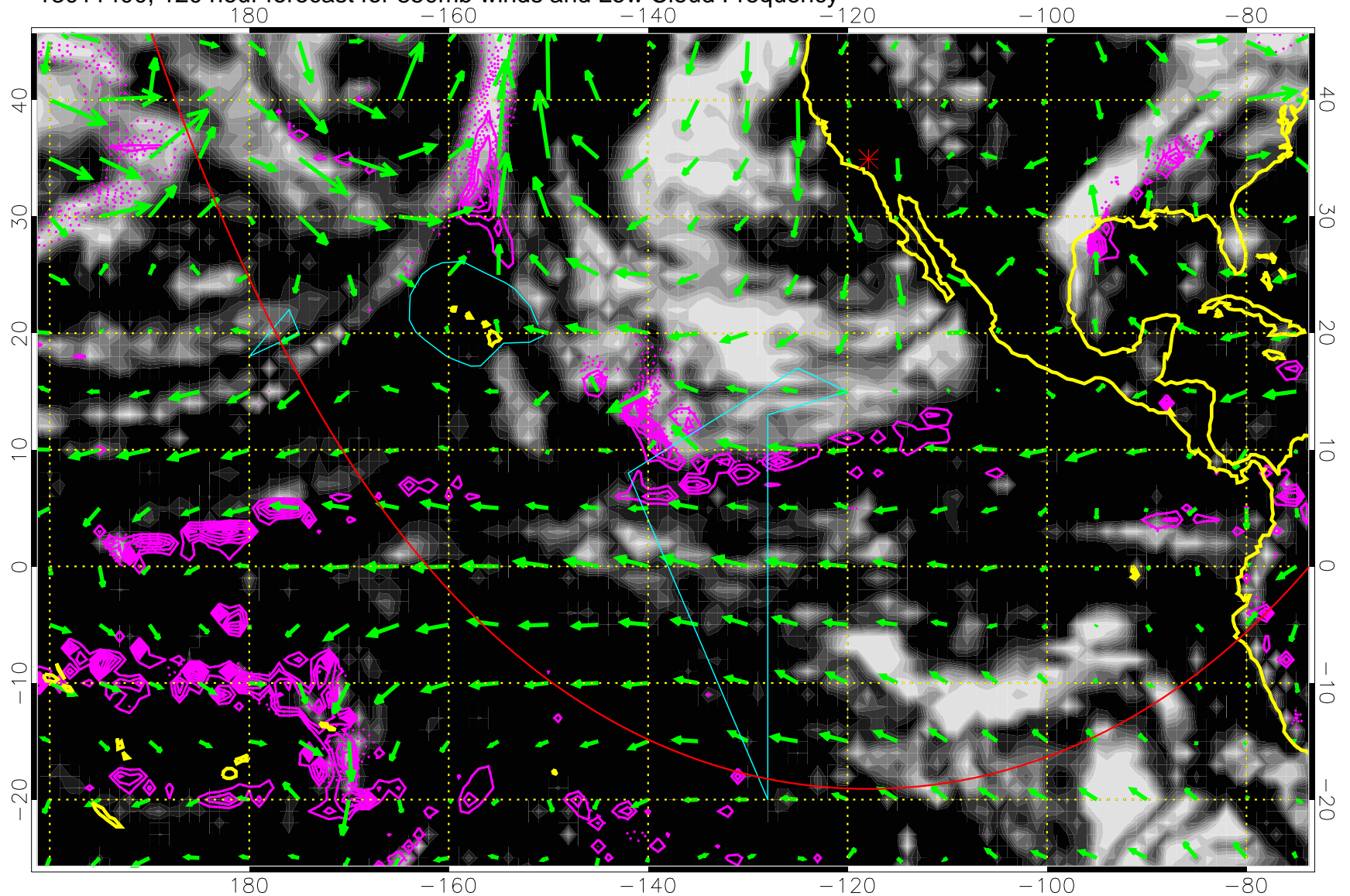
Precip (tot dotted, conv solid) past 6 hours 4 kg/m² contours

→ 20 m/s

Range ring of 6000 km -- 19 hours GH round trip

0.0 0.2 0.4 0.6 0.8 1.0
Low Cloud Frequency

13011400, 120 hour forecast for 850mb winds and Low Cloud Frequency



Precip (tot dotted, conv solid) past 6 hours 4 kg/m² contours

→ 20 m/s

Range ring of 6000 km -- 19 hours GH round trip