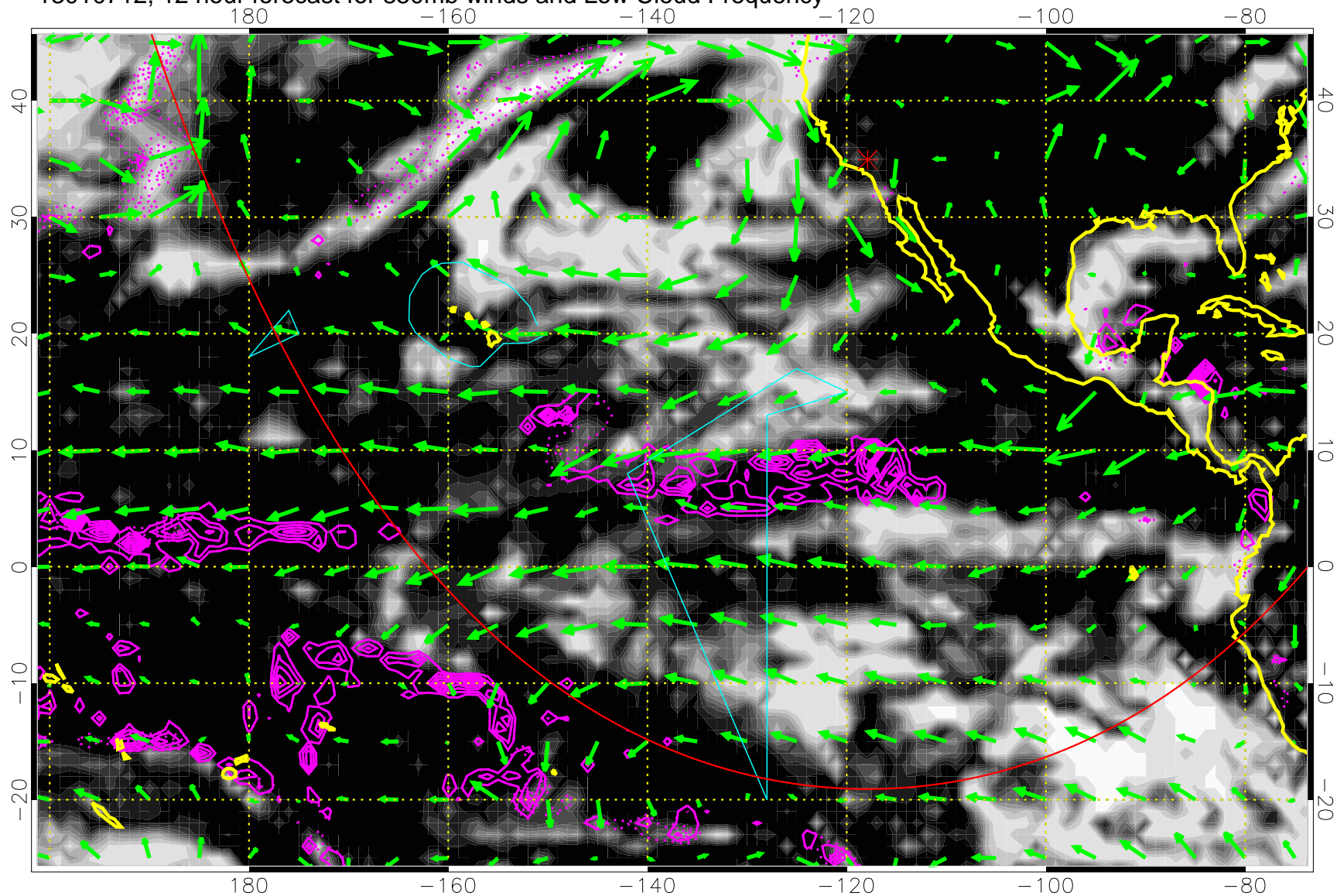


13010712, 12 hour forecast for 850mb winds and Low Cloud Frequency

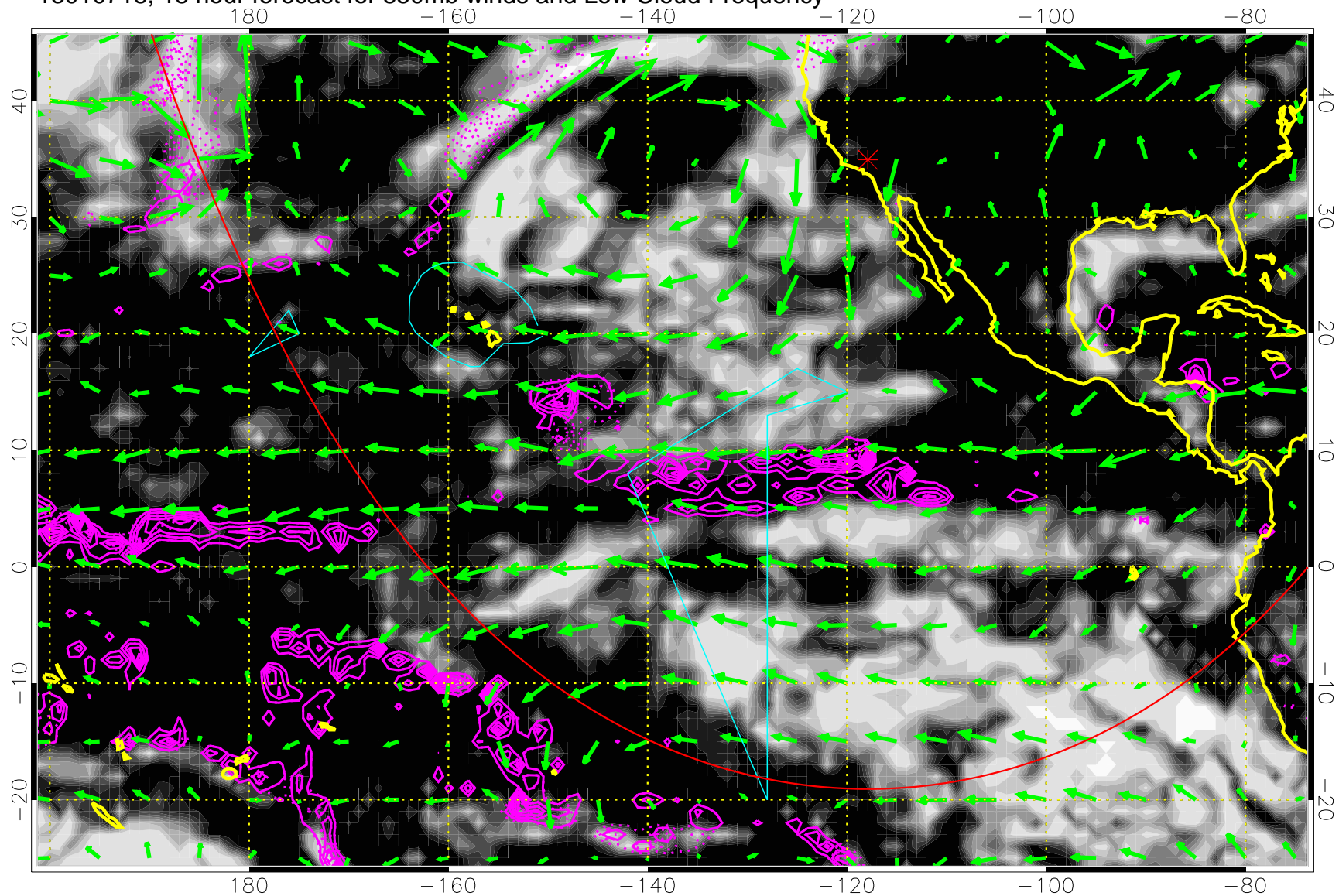


Precip (tot dotted, conv solid) past 6 hours 4 kg/m² contours

→ 20 m/s

Range ring of 6000 km -- 19 hours GH round trip

13010718, 18 hour forecast for 850mb winds and Low Cloud Frequency

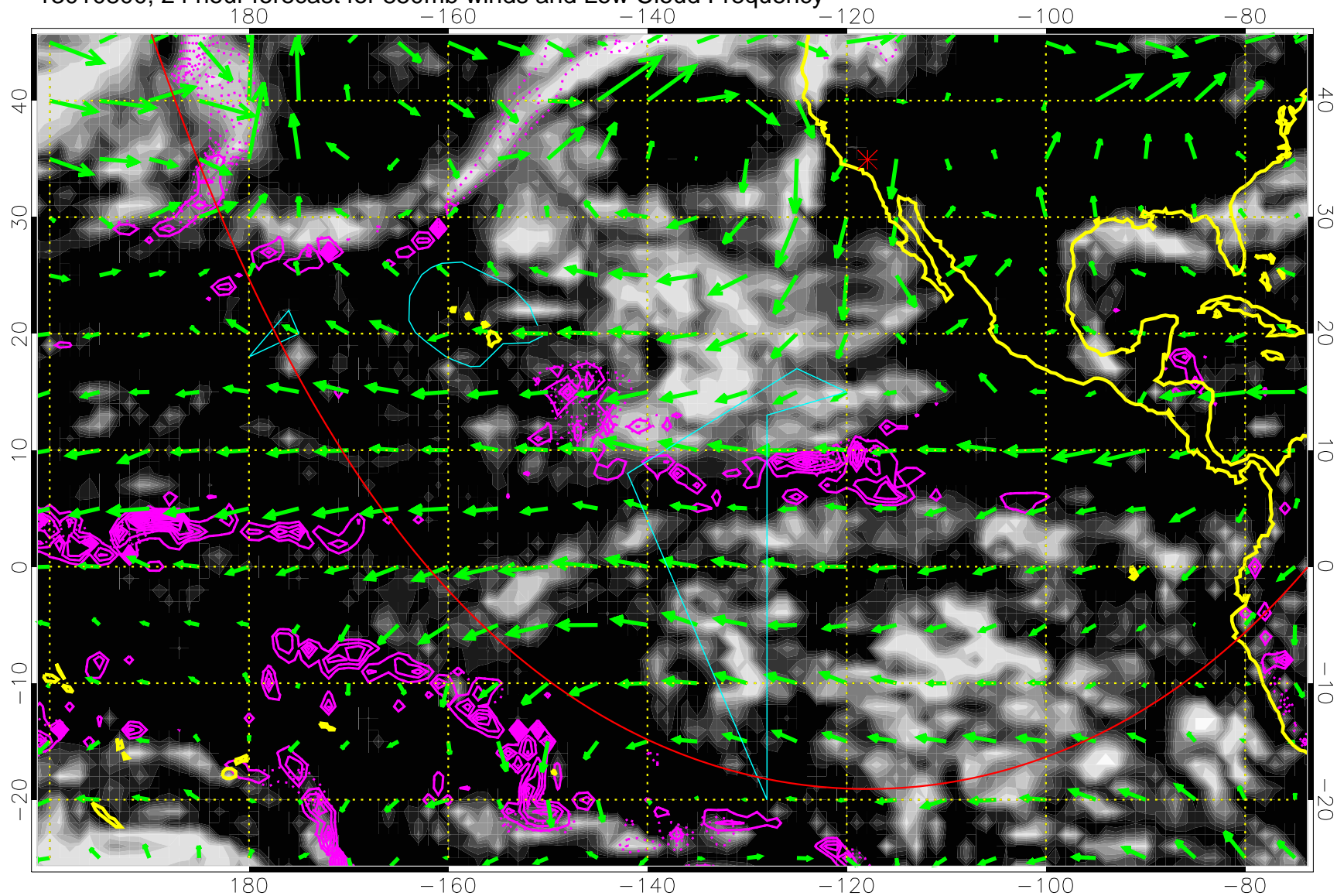


Precip (tot dotted, conv solid) past 6 hours 4 kg/m² contours

→ 20 m/s

Range ring of 6000 km -- 19 hours GH round trip

13010800, 24 hour forecast for 850mb winds and Low Cloud Frequency

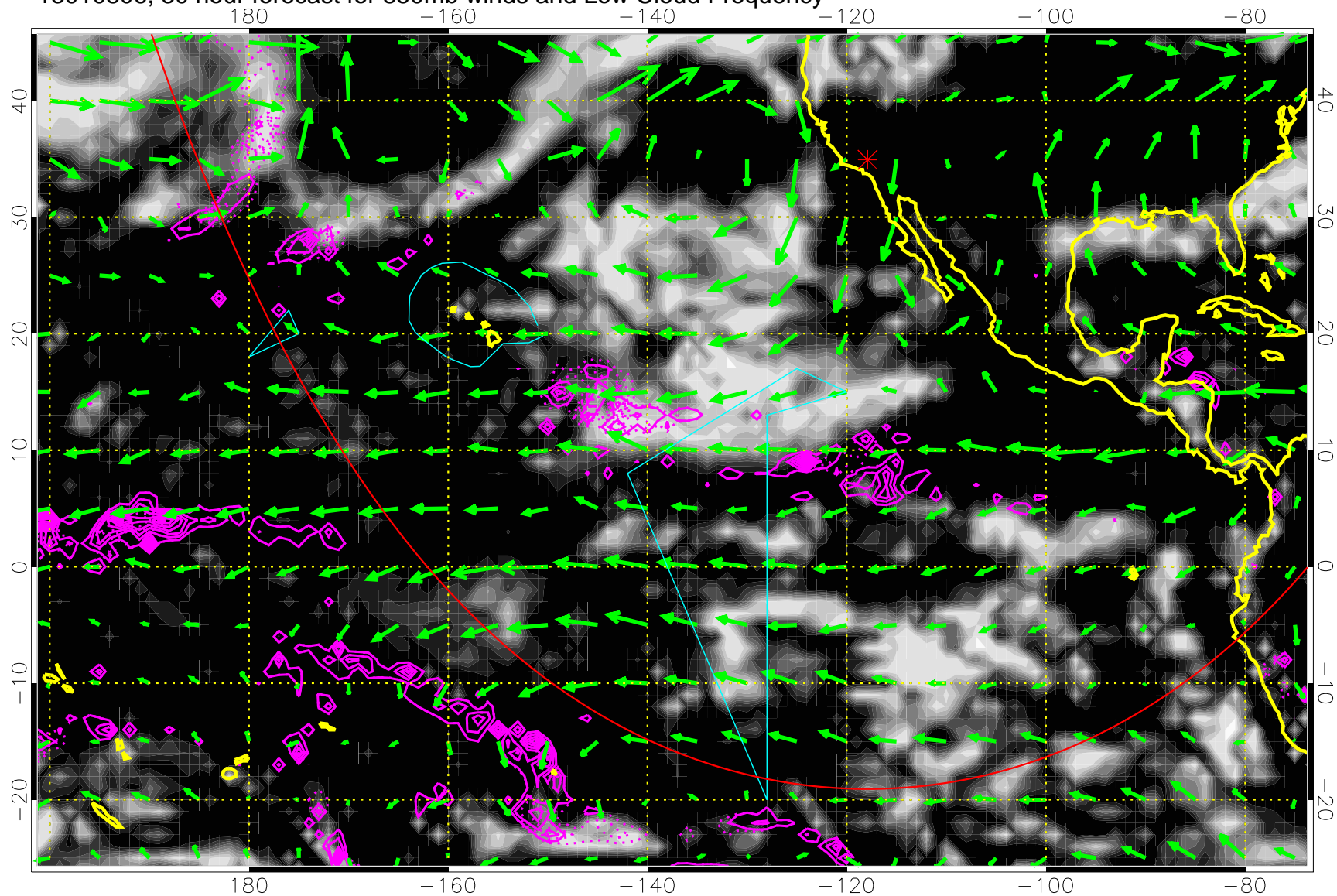


Precip (tot dotted, conv solid) past 6 hours 4 kg/m² contours

→ 20 m/s

Range ring of 6000 km -- 19 hours GH round trip

13010806, 30 hour forecast for 850mb winds and Low Cloud Frequency

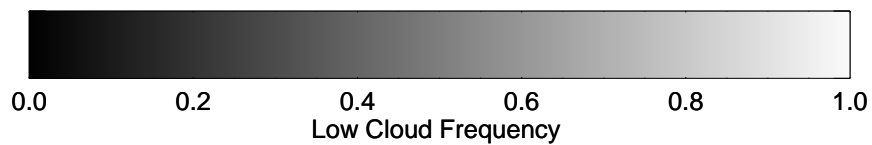
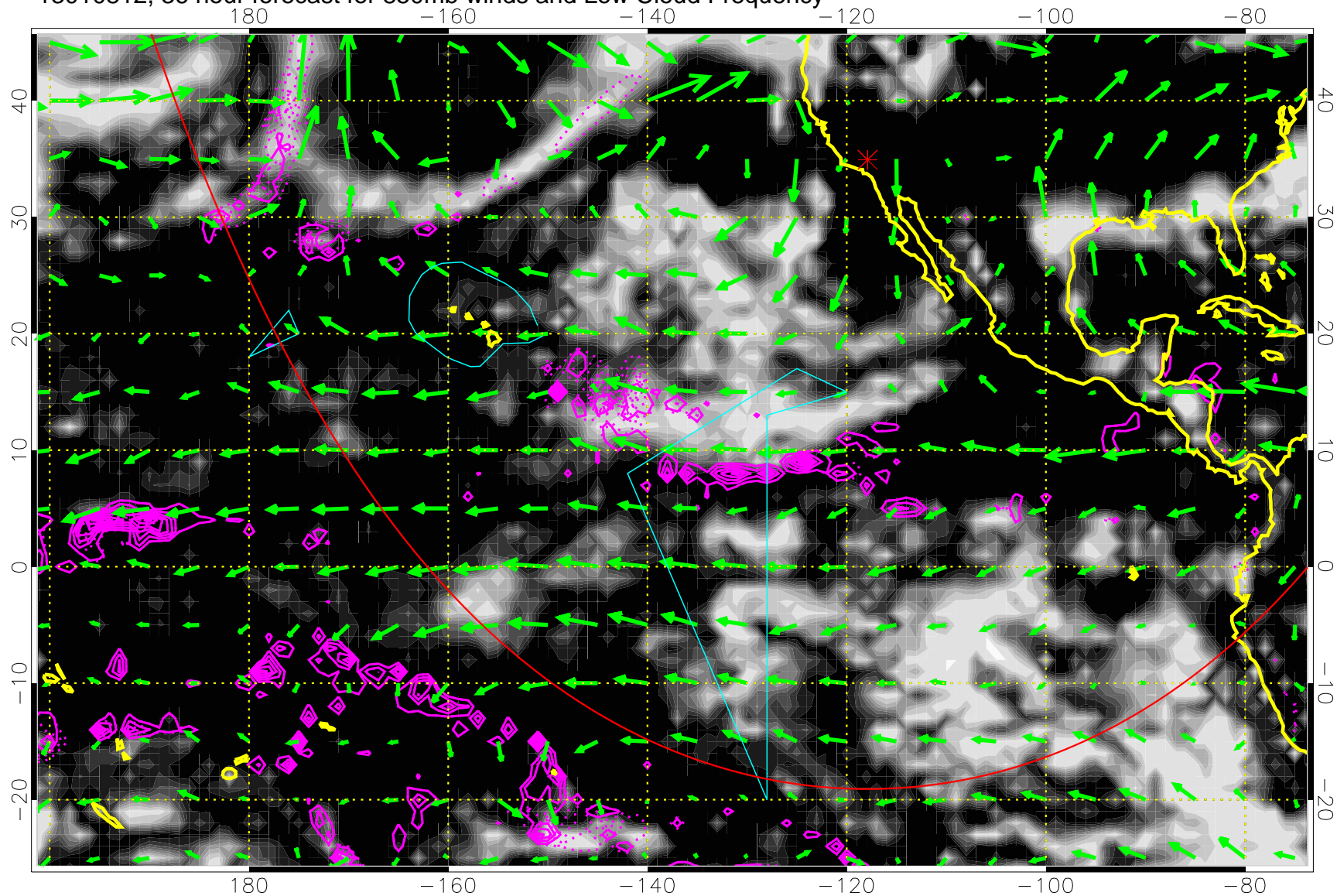


Precip (tot dotted, conv solid) past 6 hours 4 kg/m² contours

→ 20 m/s

Range ring of 6000 km -- 19 hours GH round trip

13010812, 36 hour forecast for 850mb winds and Low Cloud Frequency

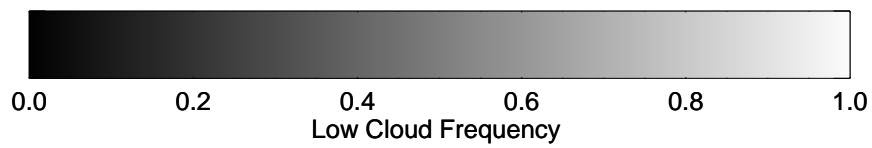
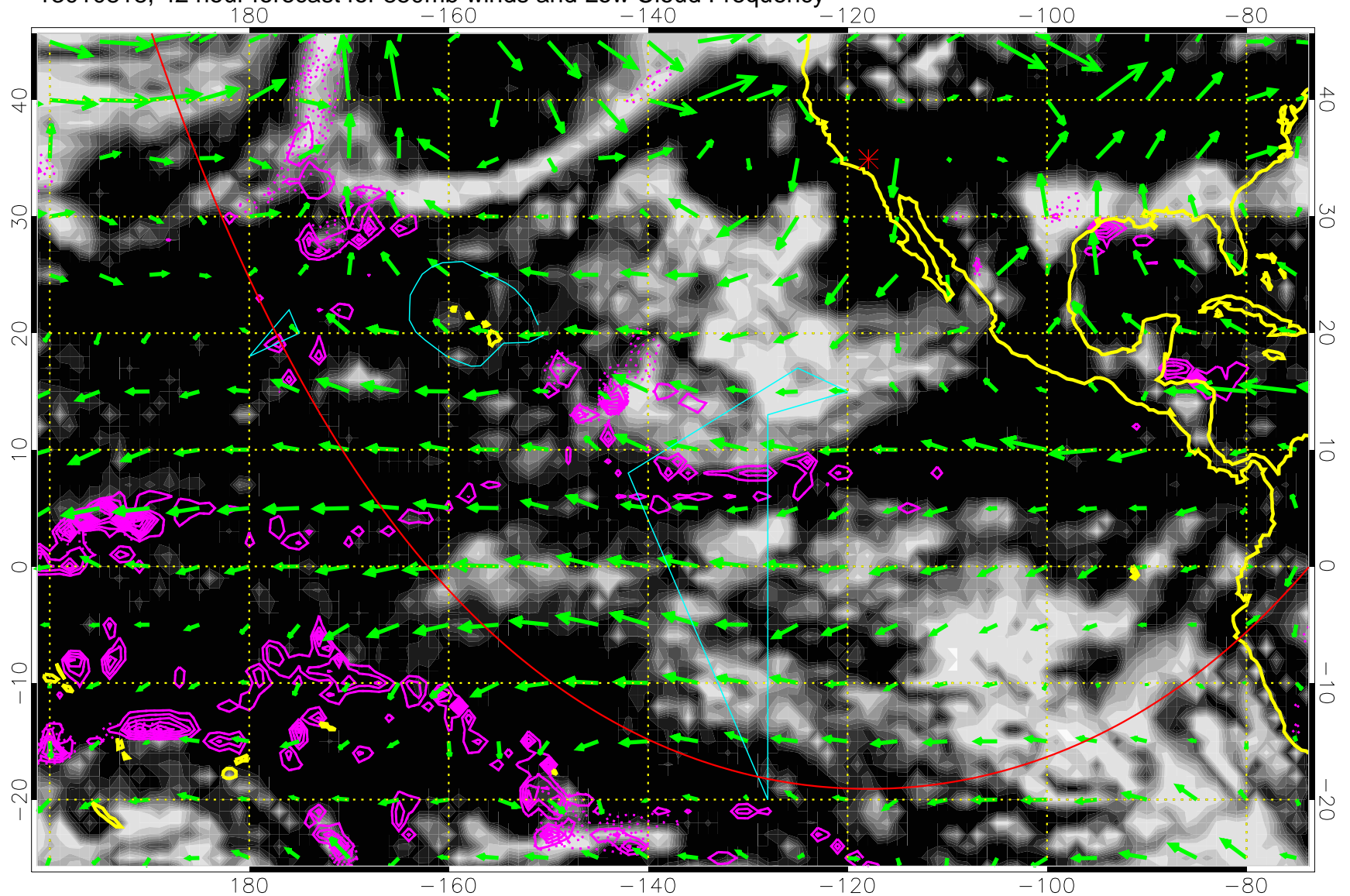


Precip (tot dotted, conv solid) past 6 hours 4 kg/m2 contours

→ 20 m/s

Range ring of 6000 km -- 19 hours GH round trip

13010818, 42 hour forecast for 850mb winds and Low Cloud Frequency

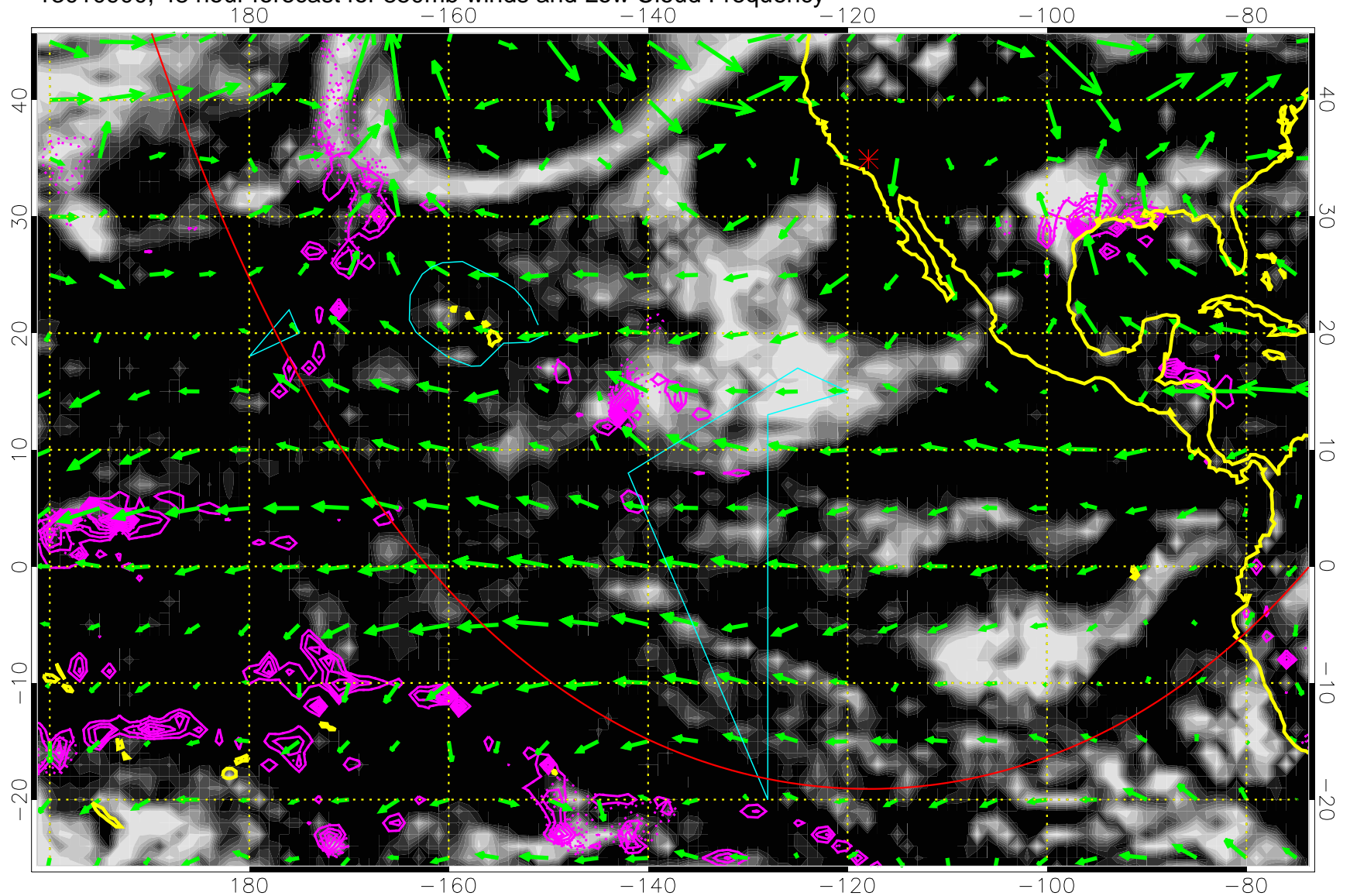


Precip (tot dotted, conv solid) past 6 hours 4 kg/m² contours

→ 20 m/s

Range ring of 6000 km -- 19 hours GH round trip

13010900, 48 hour forecast for 850mb winds and Low Cloud Frequency

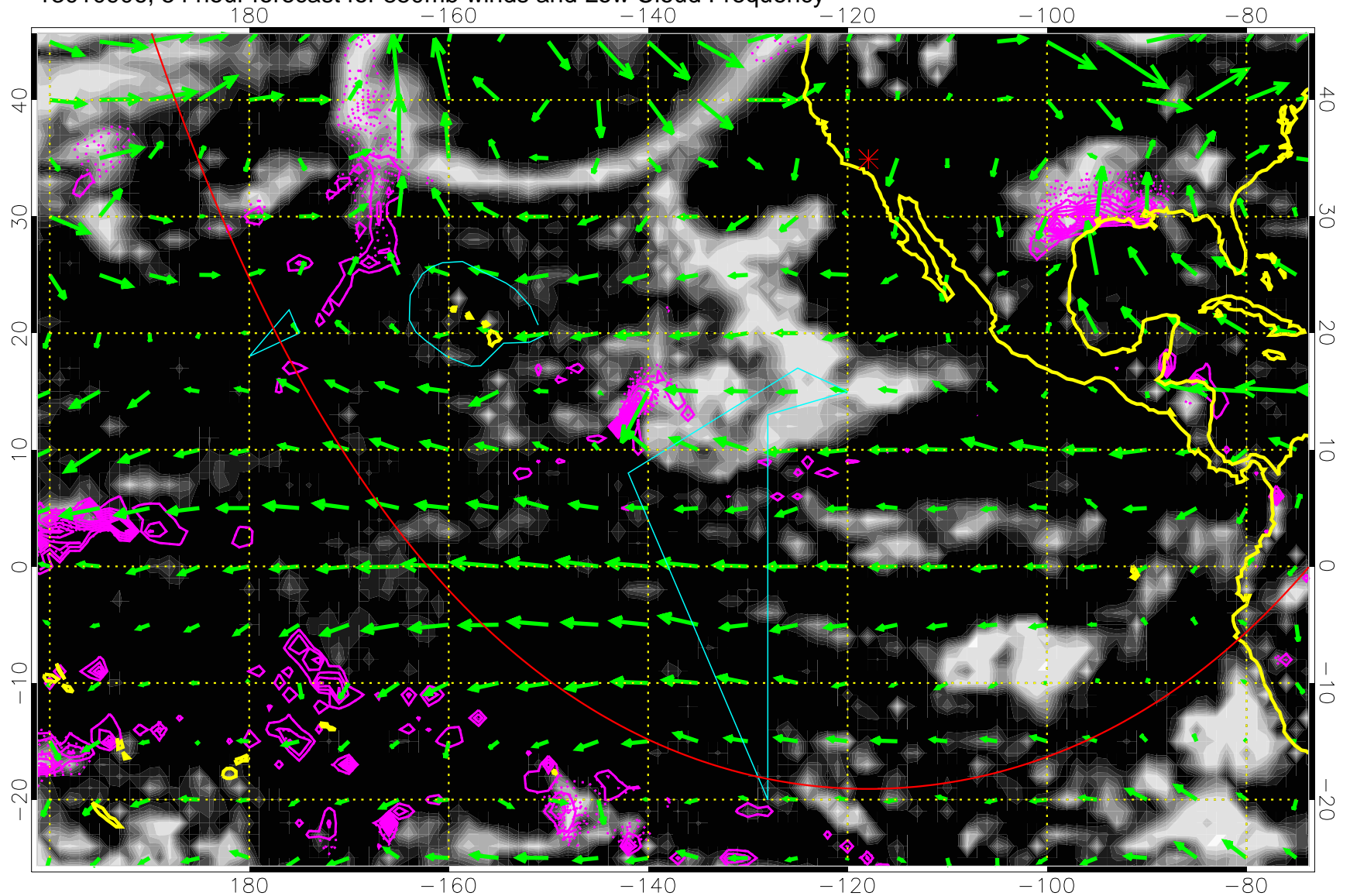


Precip (tot dotted, conv solid) past 6 hours 4 kg/m² contours

→ 20 m/s

Range ring of 6000 km -- 19 hours GH round trip

13010906, 54 hour forecast for 850mb winds and Low Cloud Frequency

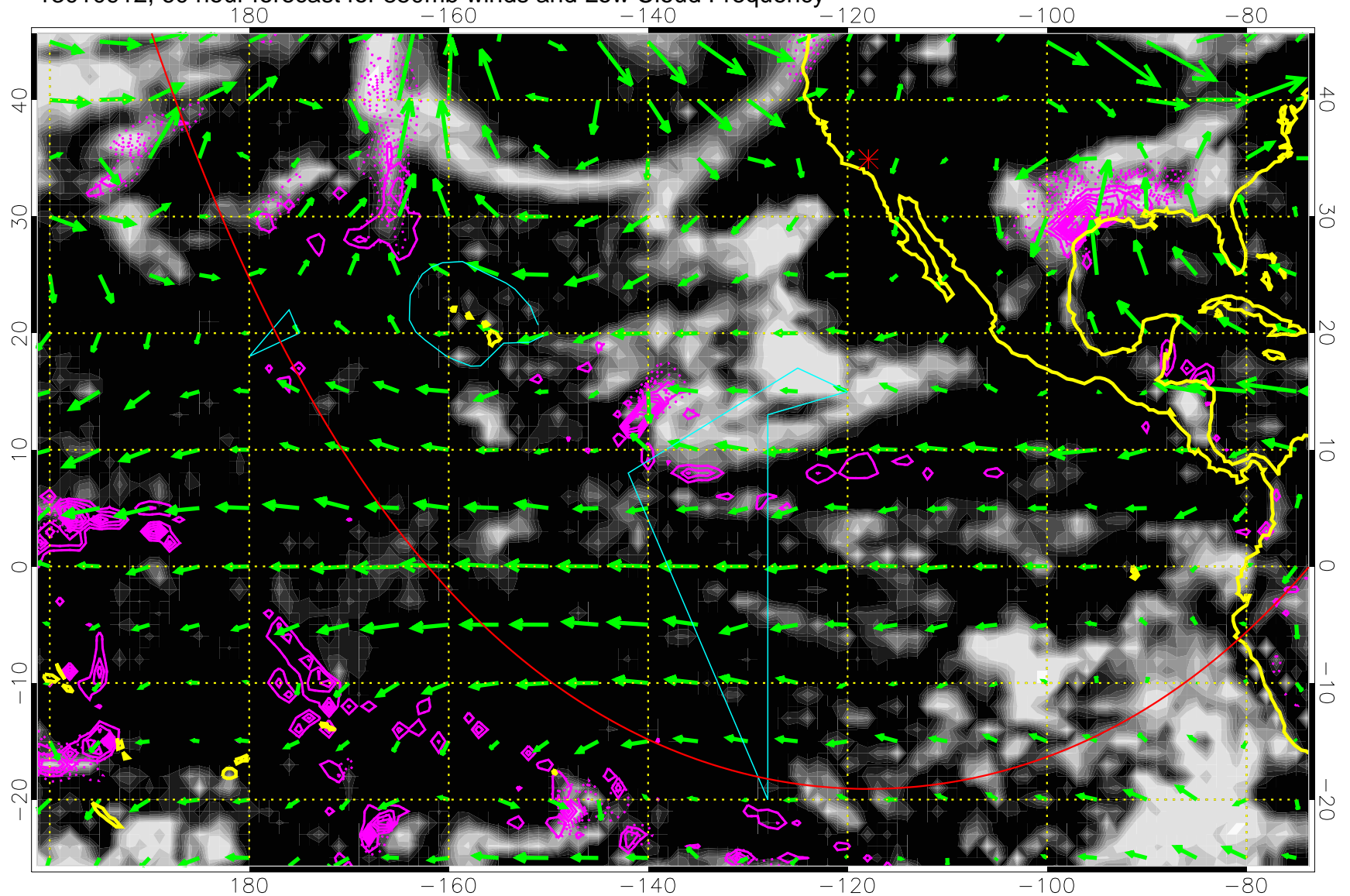


Precip (tot dotted, conv solid) past 6 hours 4 kg/m² contours

→ 20 m/s

Range ring of 6000 km -- 19 hours GH round trip

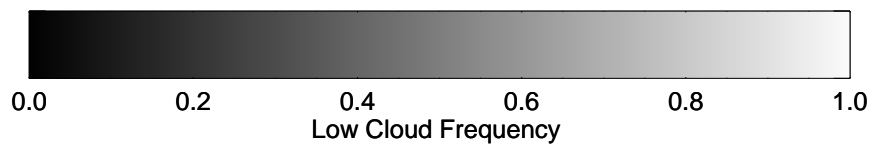
13010912, 60 hour forecast for 850mb winds and Low Cloud Frequency



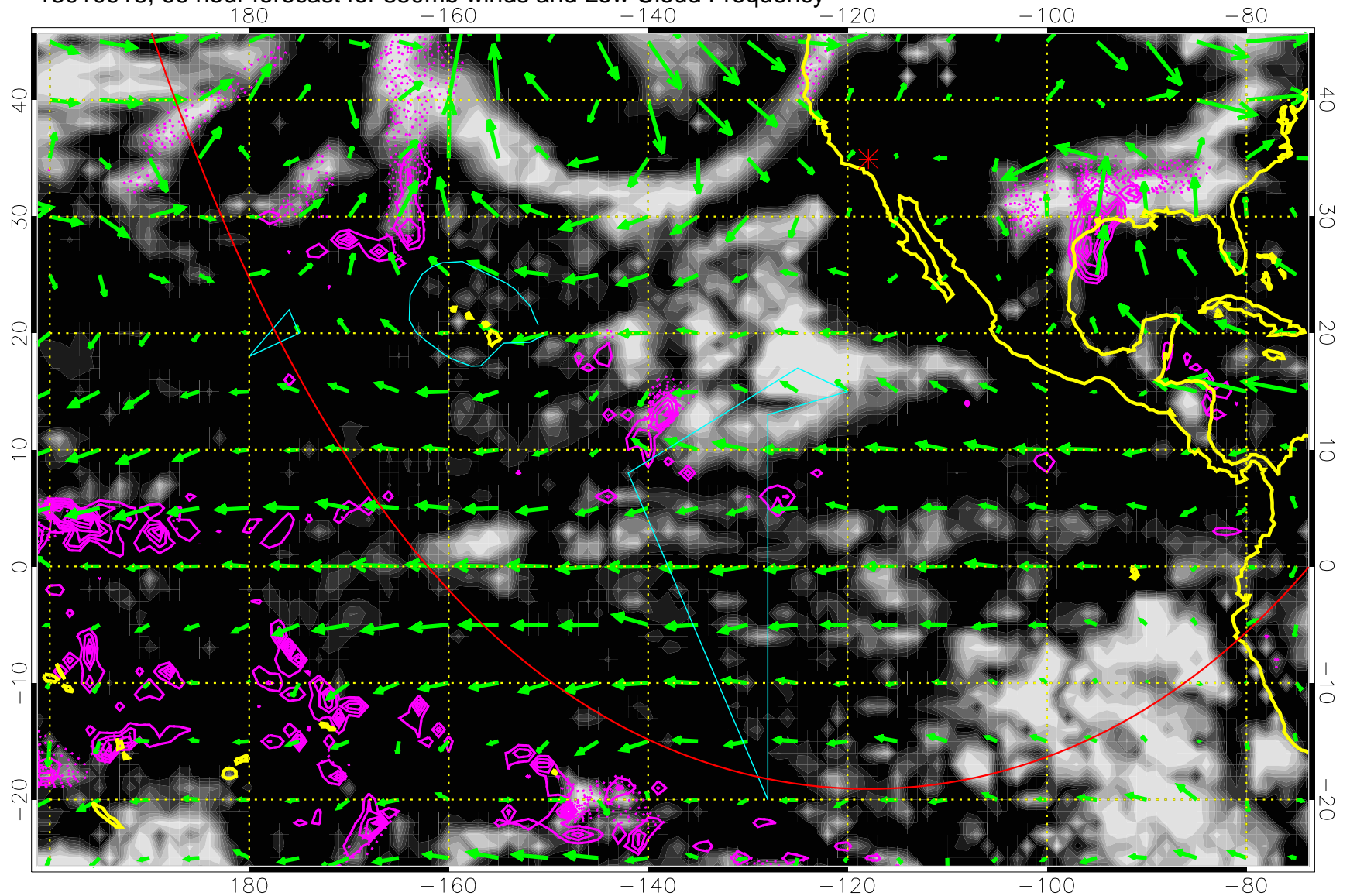
Precip (tot dotted, conv solid) past 6 hours 4 kg/m² contours

→ 20 m/s

Range ring of 6000 km -- 19 hours GH round trip



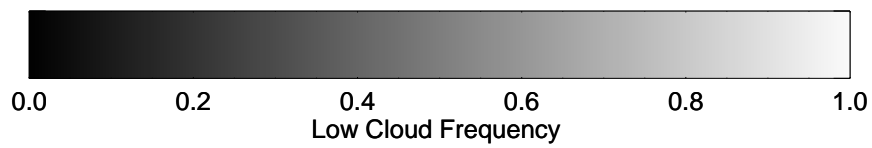
13010918, 66 hour forecast for 850mb winds and Low Cloud Frequency



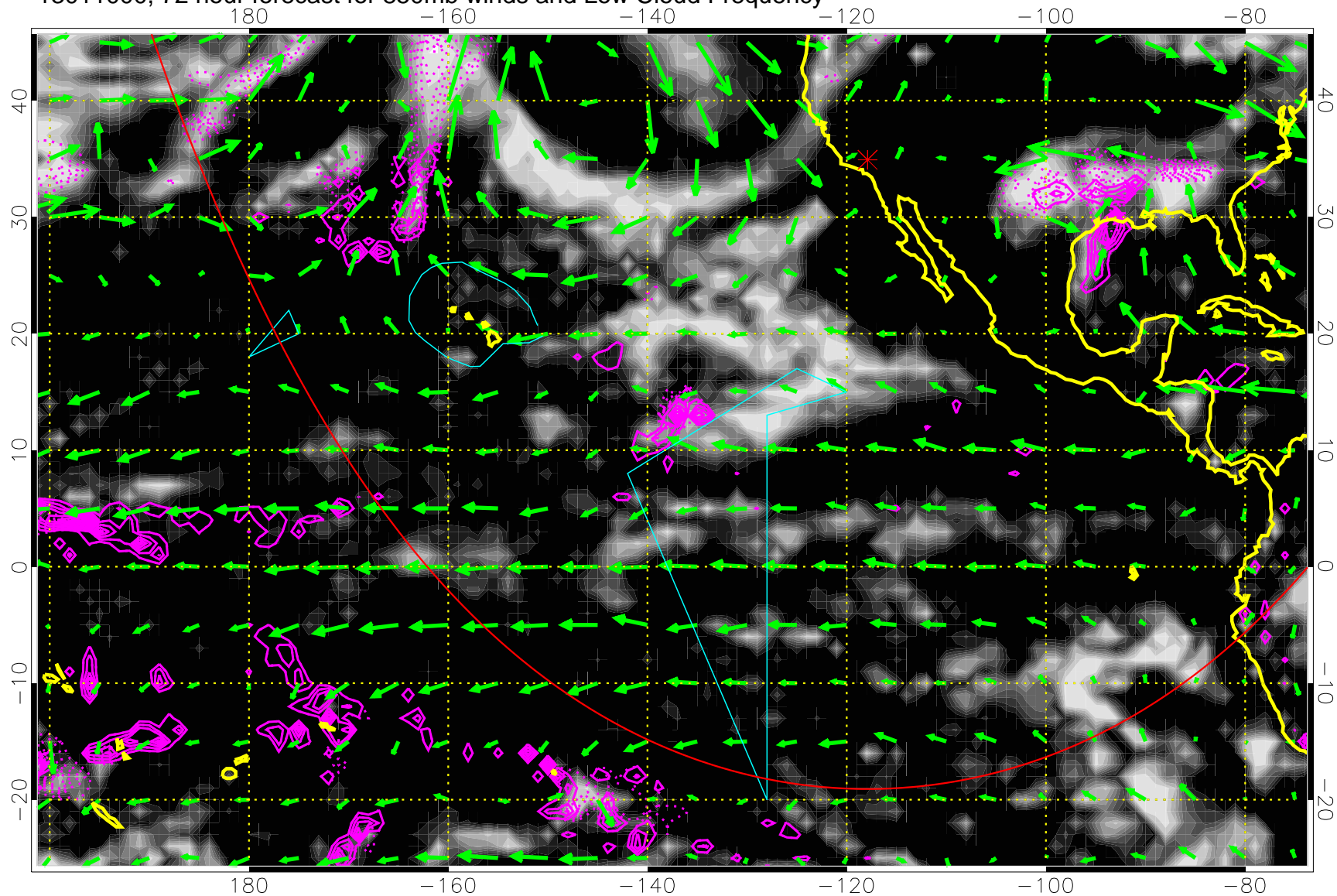
Precip (tot dotted, conv solid) past 6 hours 4 kg/m² contours

→ 20 m/s

Range ring of 6000 km -- 19 hours GH round trip



13011000, 72 hour forecast for 850mb winds and Low Cloud Frequency

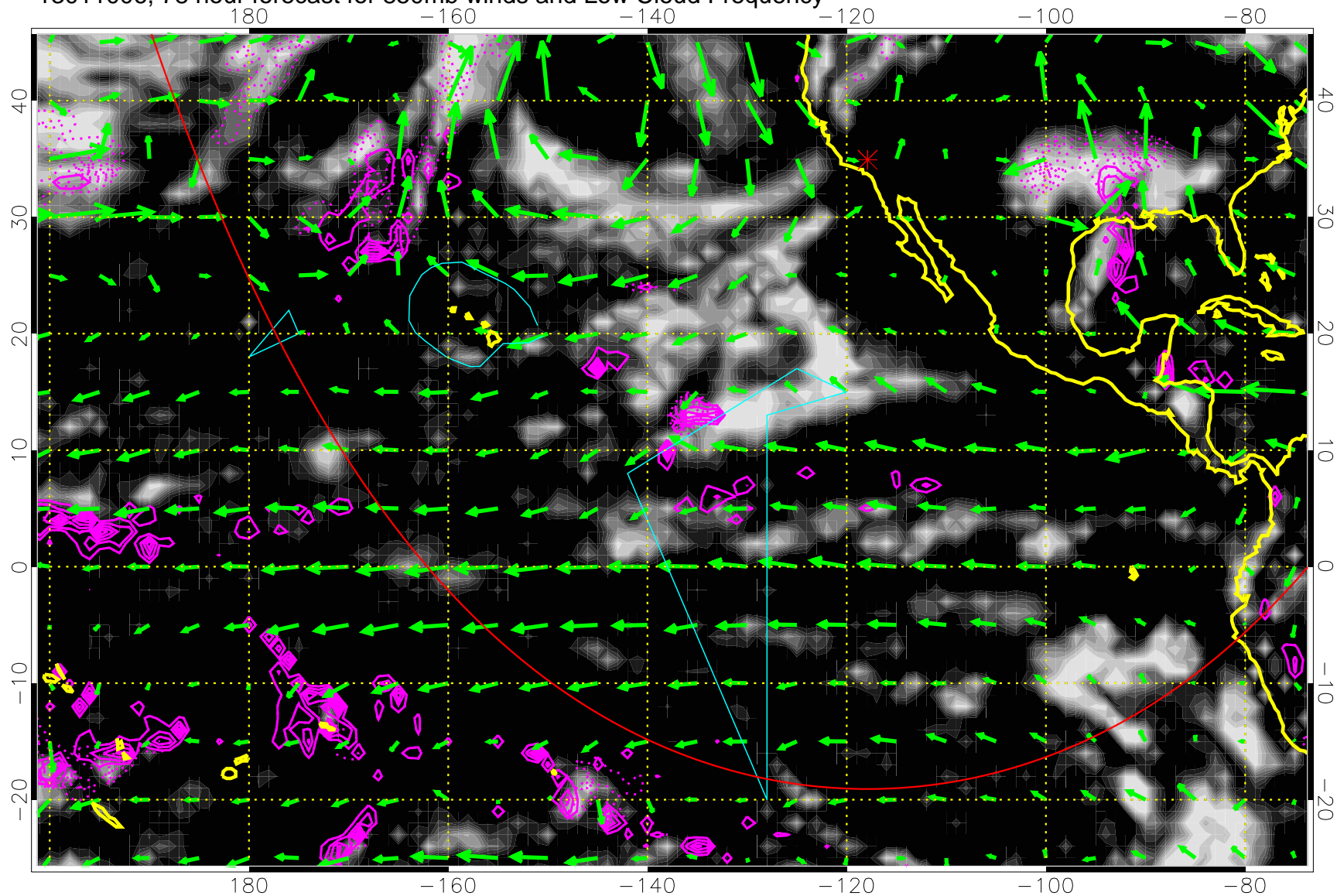


Precip (tot dotted, conv solid) past 6 hours 4 kg/m² contours

→ 20 m/s

Range ring of 6000 km -- 19 hours GH round trip

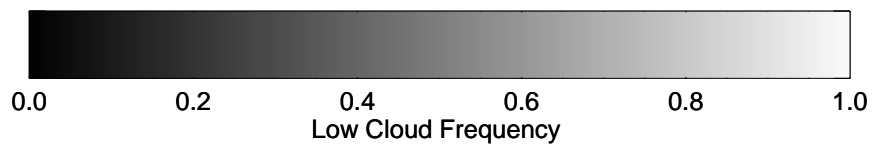
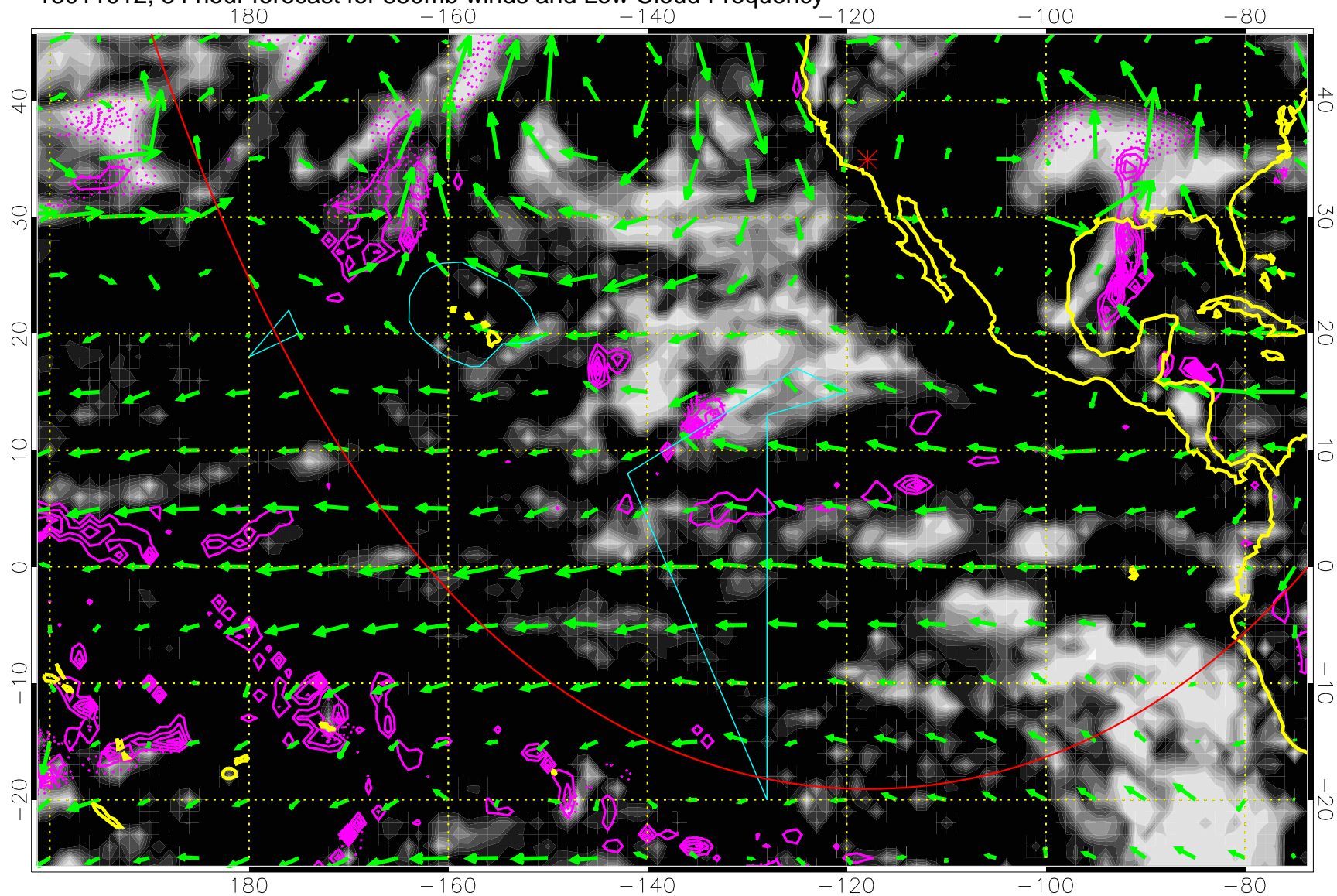
13011006, 78 hour forecast for 850mb winds and Low Cloud Frequency



Precip (tot dotted, conv solid) past 6 hours 4 kg/m² contours

→ 20 m/s
Range ring of 6000 km -- 19 hours GH round trip

13011012, 84 hour forecast for 850mb winds and Low Cloud Frequency

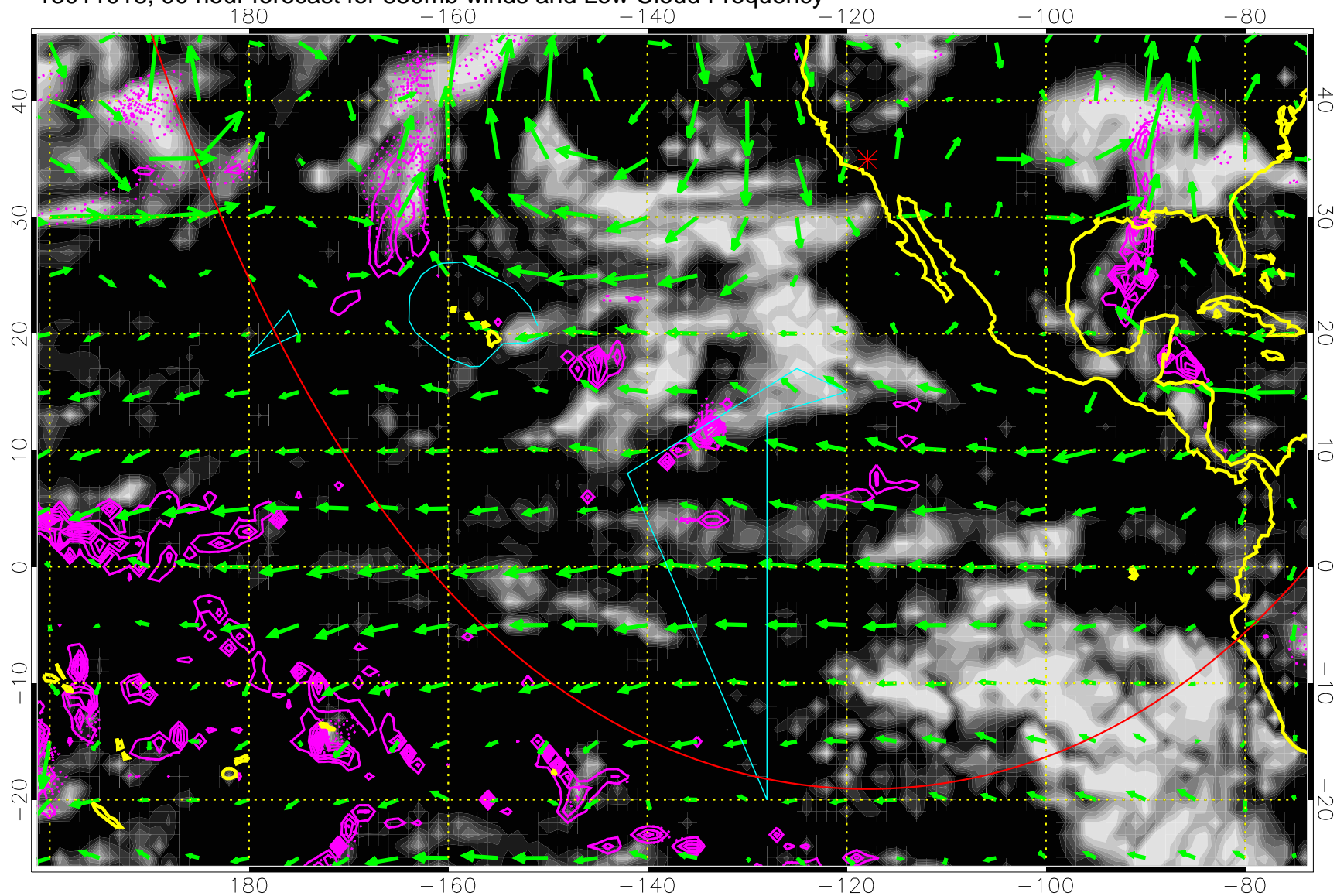


Precip (tot dotted, conv solid) past 6 hours 4 kg/m² contours

→ 20 m/s

Range ring of 6000 km -- 19 hours GH round trip

13011018, 90 hour forecast for 850mb winds and Low Cloud Frequency

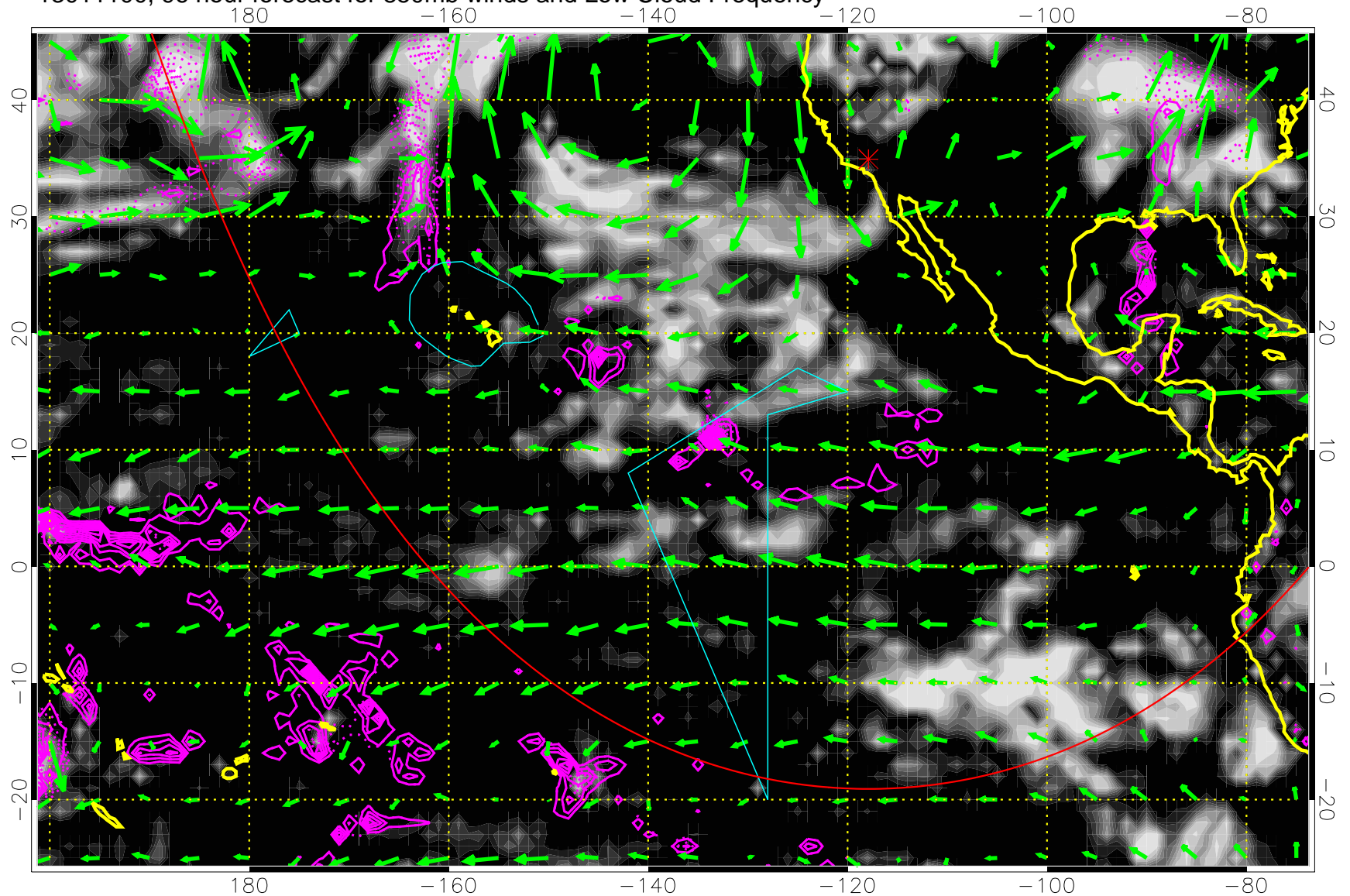


Precip (tot dotted, conv solid) past 6 hours 4 kg/m² contours

→ 20 m/s

Range ring of 6000 km -- 19 hours GH round trip

13011100, 96 hour forecast for 850mb winds and Low Cloud Frequency

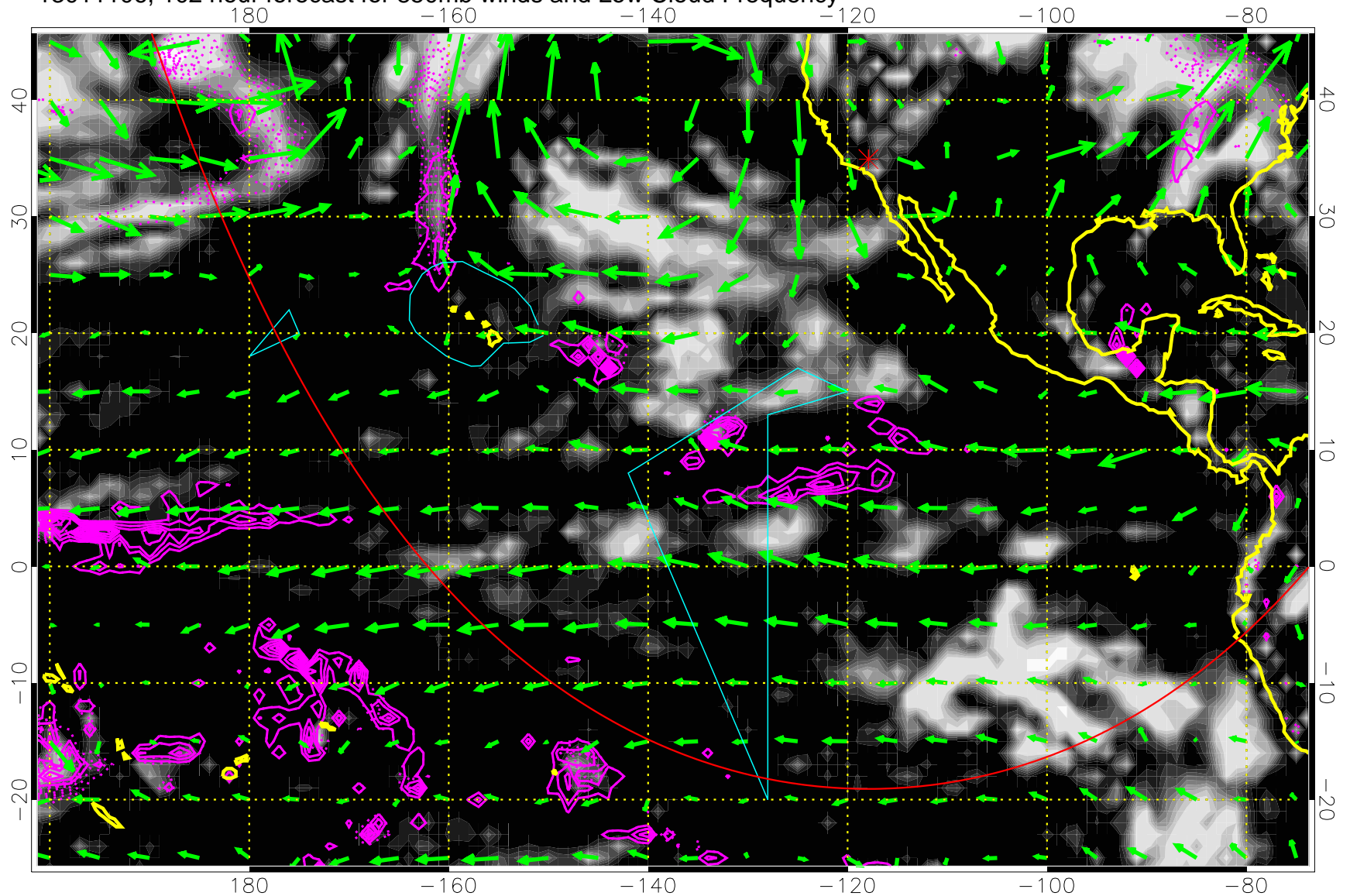


Precip (tot dotted, conv solid) past 6 hours 4 kg/m² contours

→ 20 m/s

Range ring of 6000 km -- 19 hours GH round trip

13011106, 102 hour forecast for 850mb winds and Low Cloud Frequency

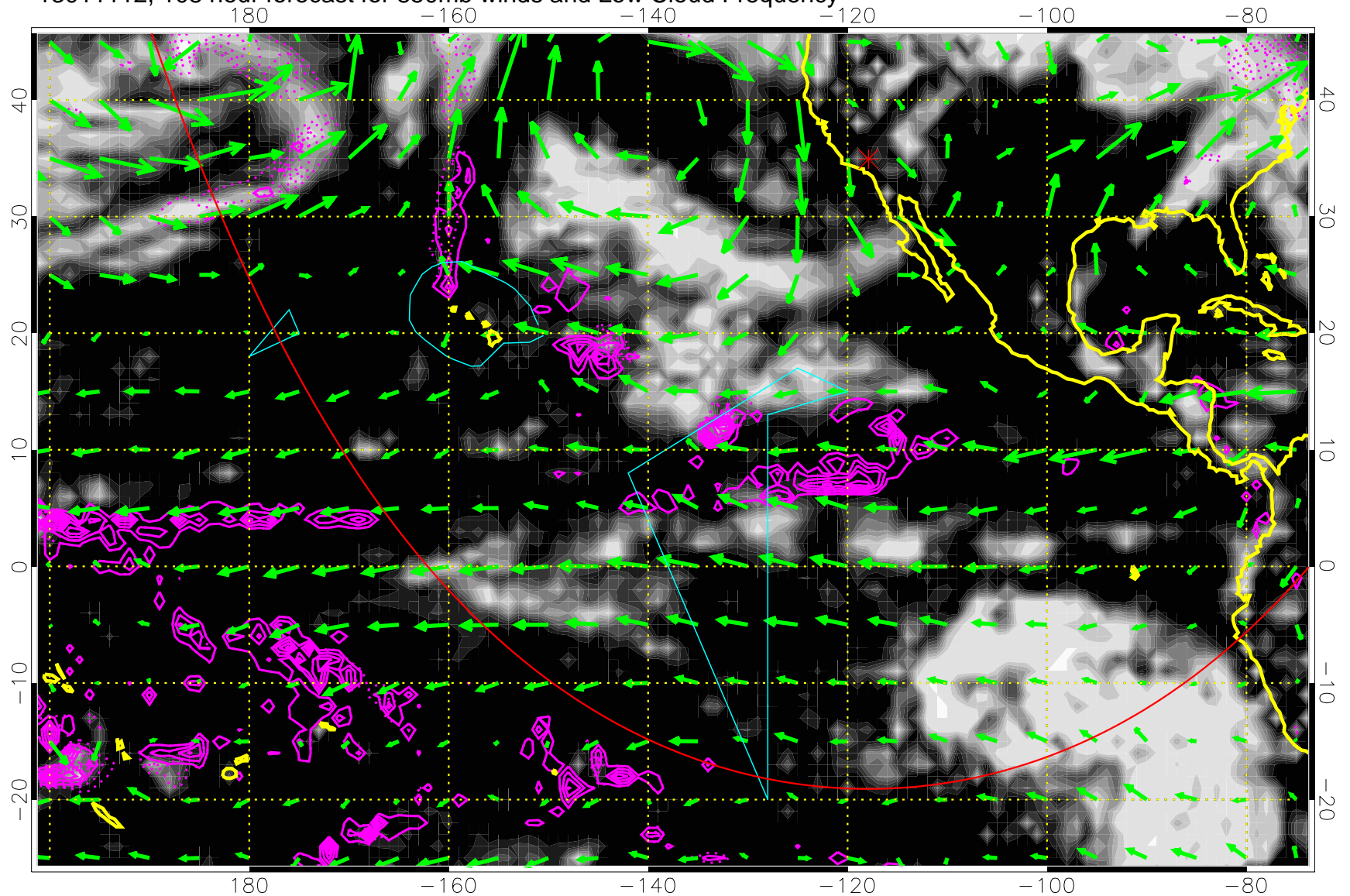


Precip (tot dotted, conv solid) past 6 hours 4 kg/m² contours

→ 20 m/s

Range ring of 6000 km -- 19 hours GH round trip

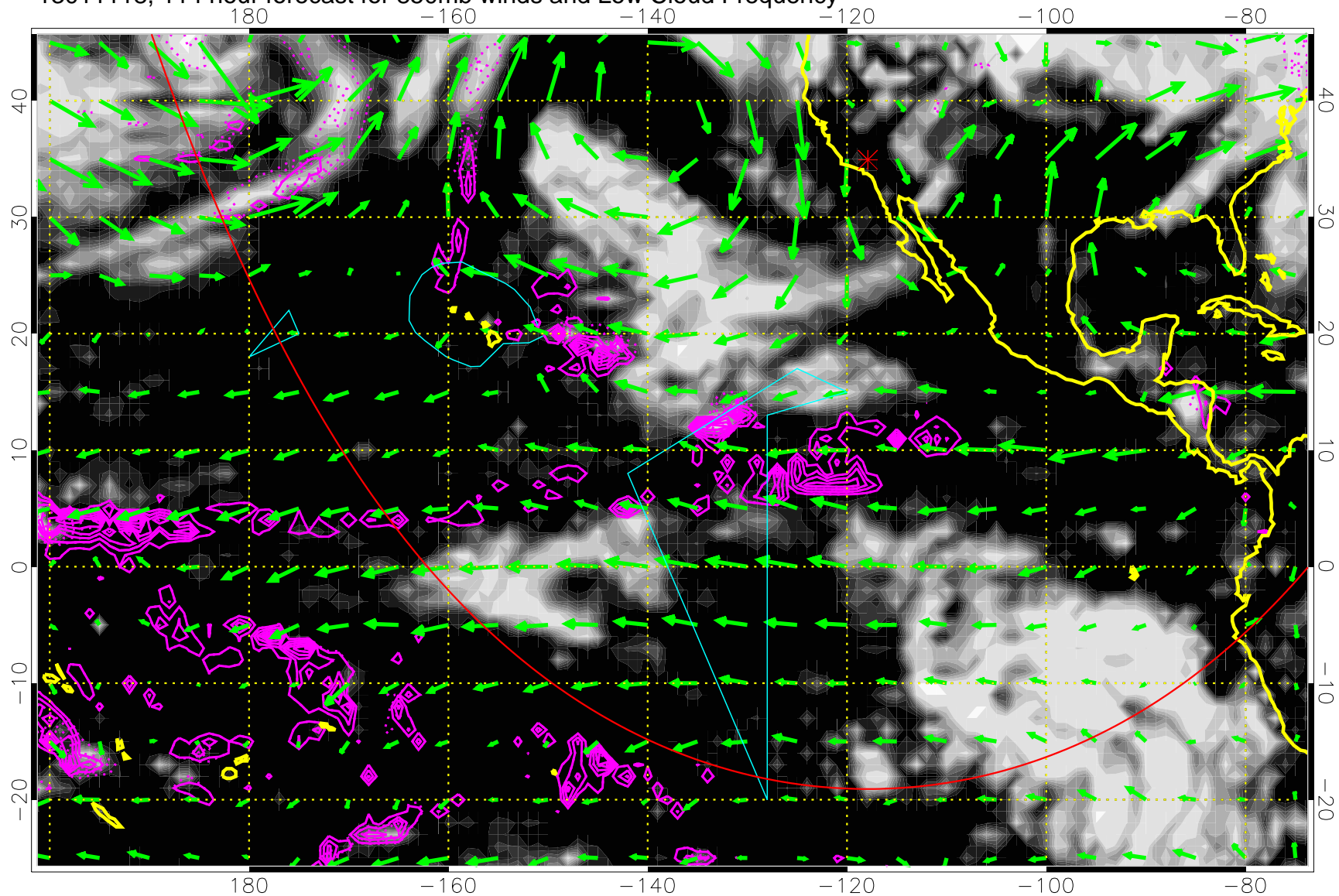
13011112, 108 hour forecast for 850mb winds and Low Cloud Frequency



Precip (tot dotted, conv solid) past 6 hours 4 kg/m² contours

→ 20 m/s
Range ring of 6000 km -- 19 hours GH round trip

13011118, 114 hour forecast for 850mb winds and Low Cloud Frequency

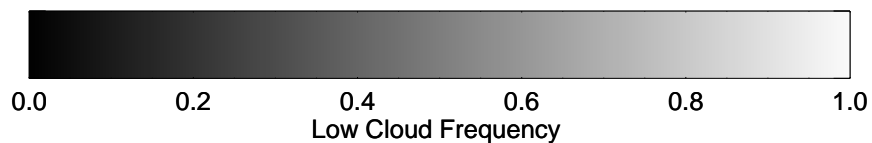
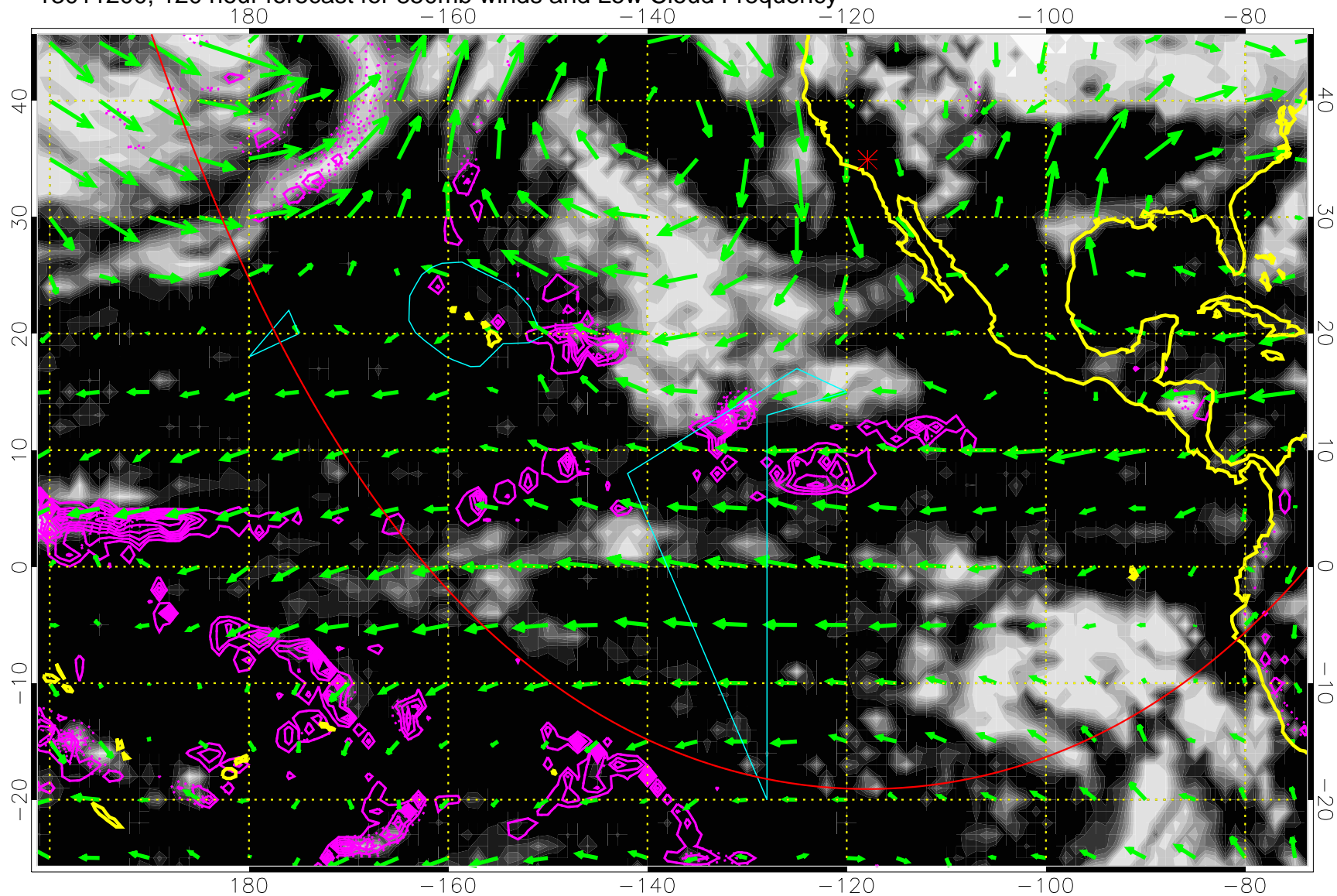


Precip (tot dotted, conv solid) past 6 hours 4 kg/m² contours

→ 20 m/s

Range ring of 6000 km -- 19 hours GH round trip

13011200, 120 hour forecast for 850mb winds and Low Cloud Frequency



Precip (tot dotted, conv solid) past 6 hours 4 kg/m² contours

→ 20 m/s

Range ring of 6000 km -- 19 hours GH round trip