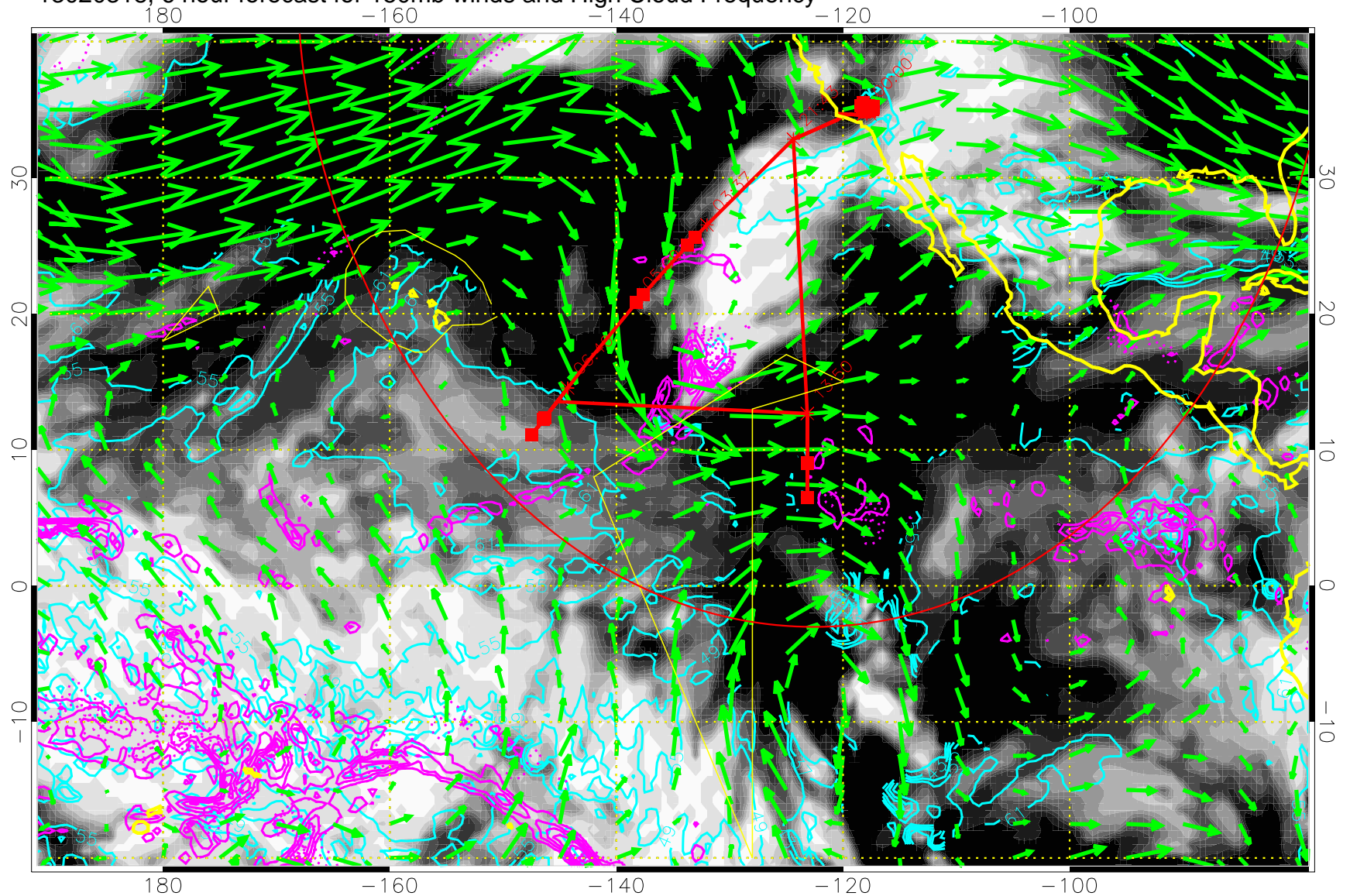


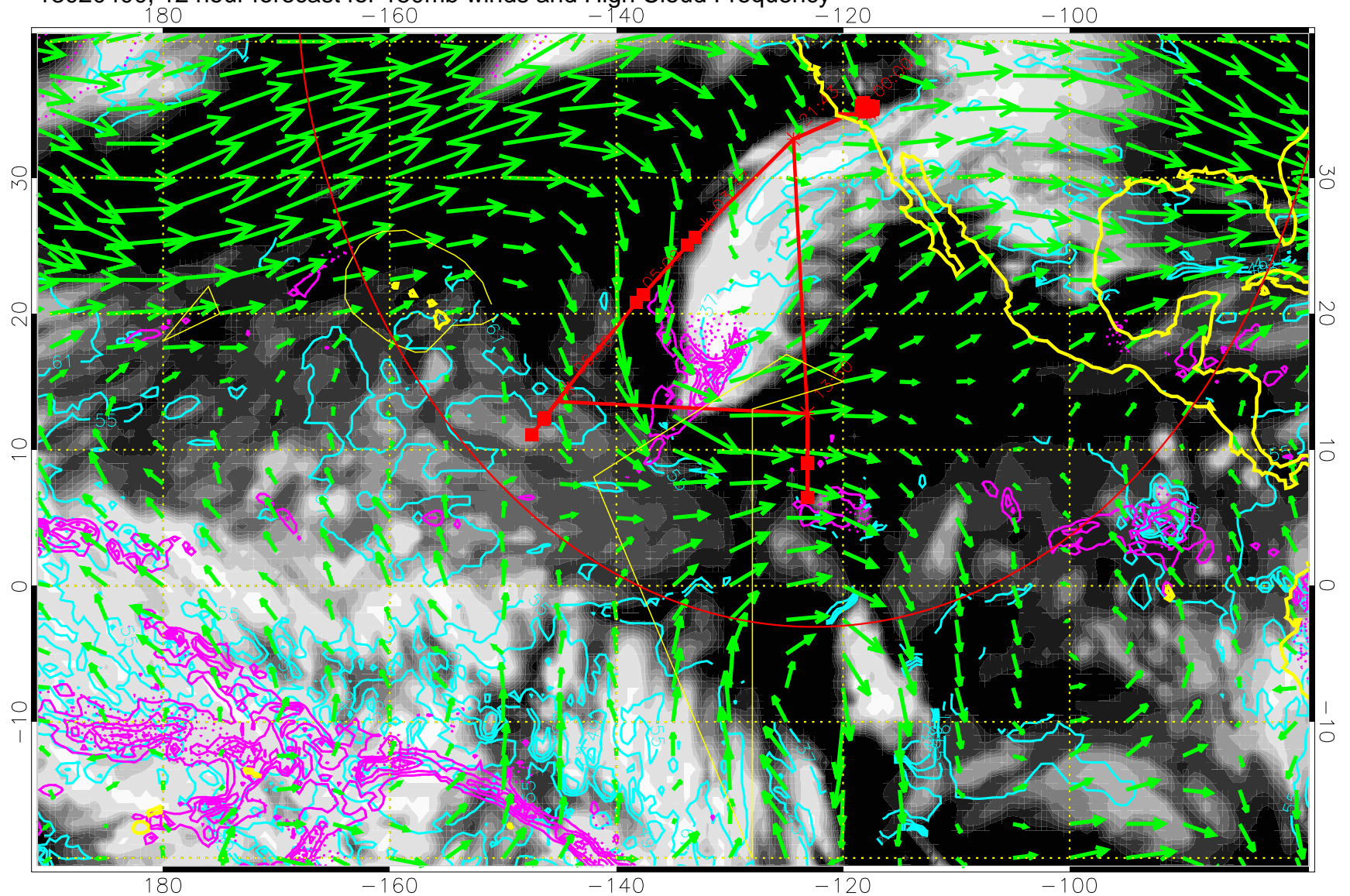
13020318, 6 hour forecast for 150mb winds and High Cloud Frequency



High Cloud Altitude from 37 kft at 6 kft intervals
Precip (tot dot, conv sol) past 6 hrs 6 kg/m2 contours, min 4

→ 50 m/s
Range ring of 4055 km -- 13 hours GH round trip

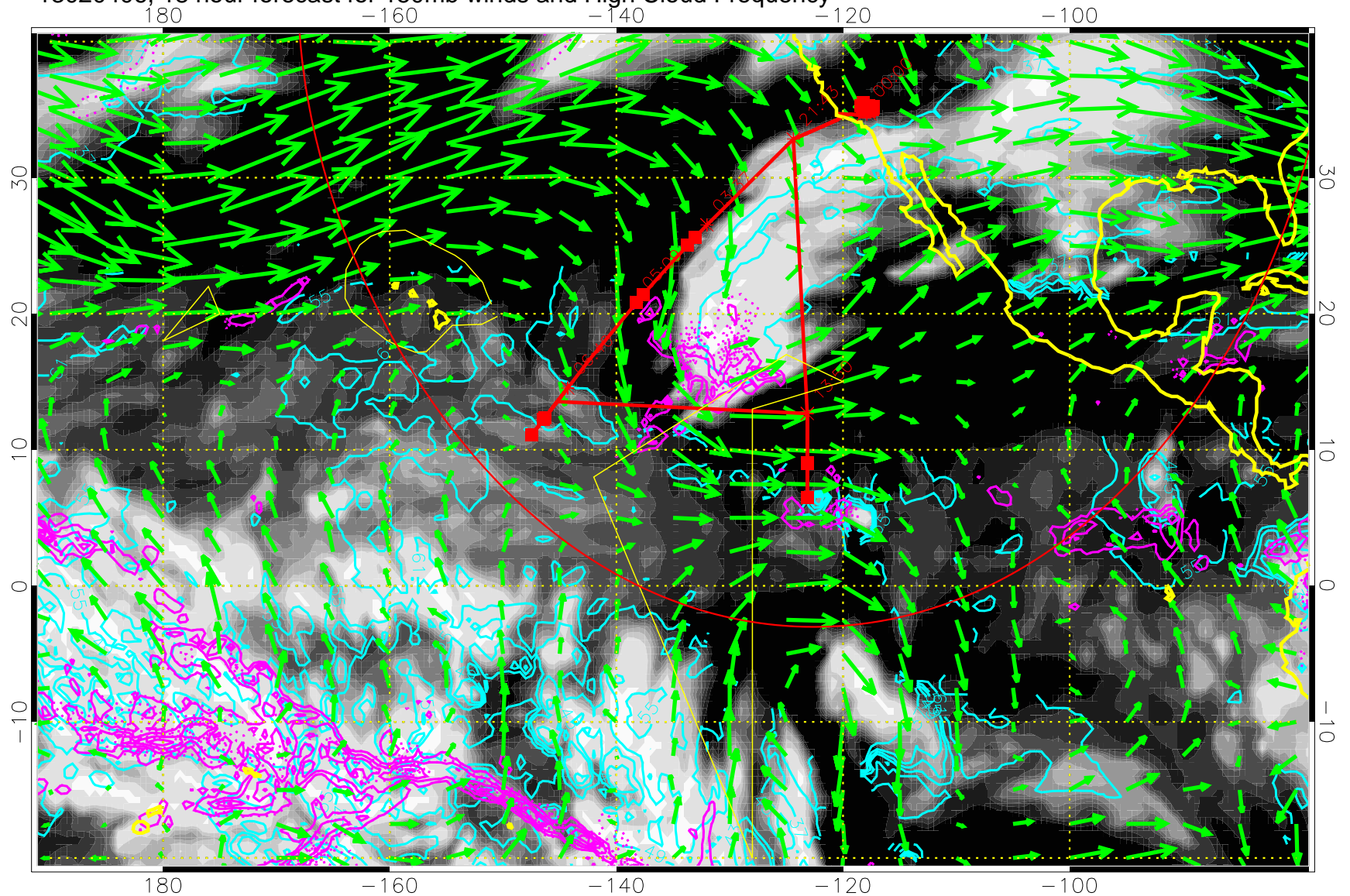
13020400, 12 hour forecast for 150mb winds and High Cloud Frequency



High Cloud Altitude from 37 kft at 6 kft intervals
Precip (tot dot, conv sol) past 6 hrs 6 kg/m2 contours, min 4

→ 50 m/s
Range ring of 4055 km -- 13 hours GH round trip

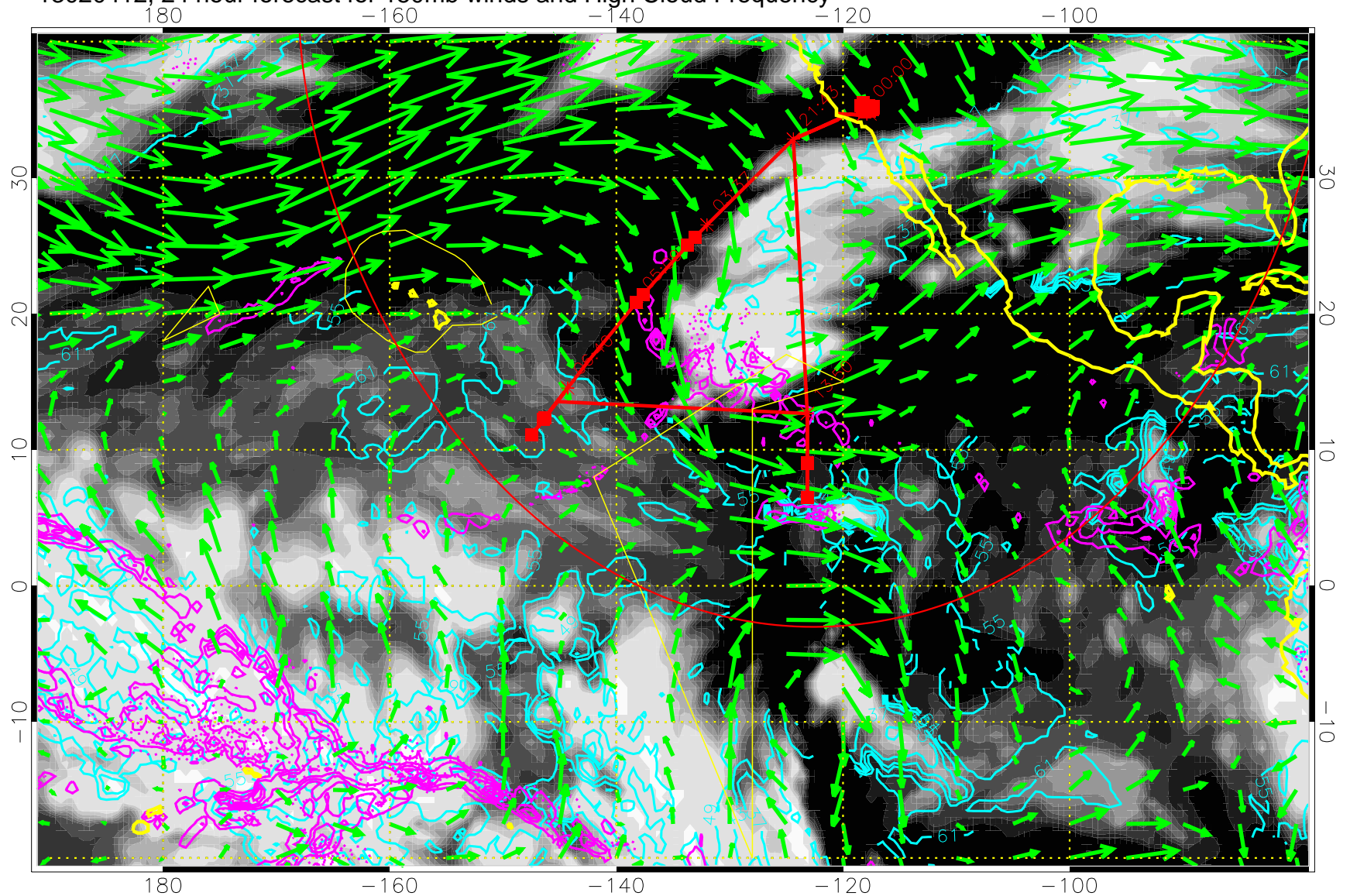
13020406, 18 hour forecast for 150mb winds and High Cloud Frequency



High Cloud Altitude from 37 kft at 6 kft intervals
Precip (tot dot, conv sol) past 6 hrs 6 kg/m2 contours, min 4

→ 50 m/s
Range ring of 4055 km -- 13 hours GH round trip

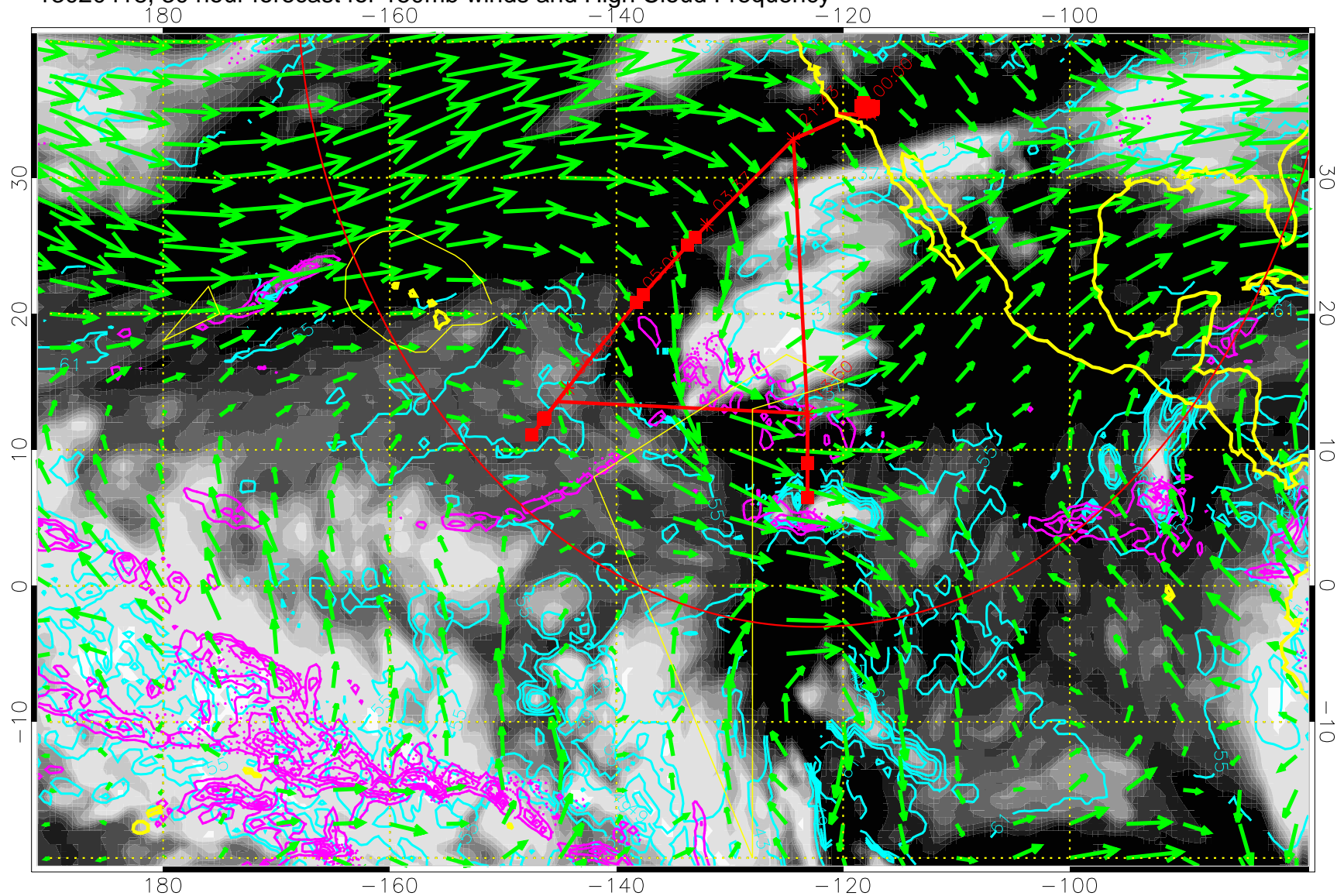
13020412, 24 hour forecast for 150mb winds and High Cloud Frequency



High Cloud Altitude from 37 kft at 6 kft intervals
Precip (tot dot, conv sol) past 6 hrs 6 kg/m2 contours, min 4

→ 50 m/s
Range ring of 4055 km -- 13 hours GH round trip

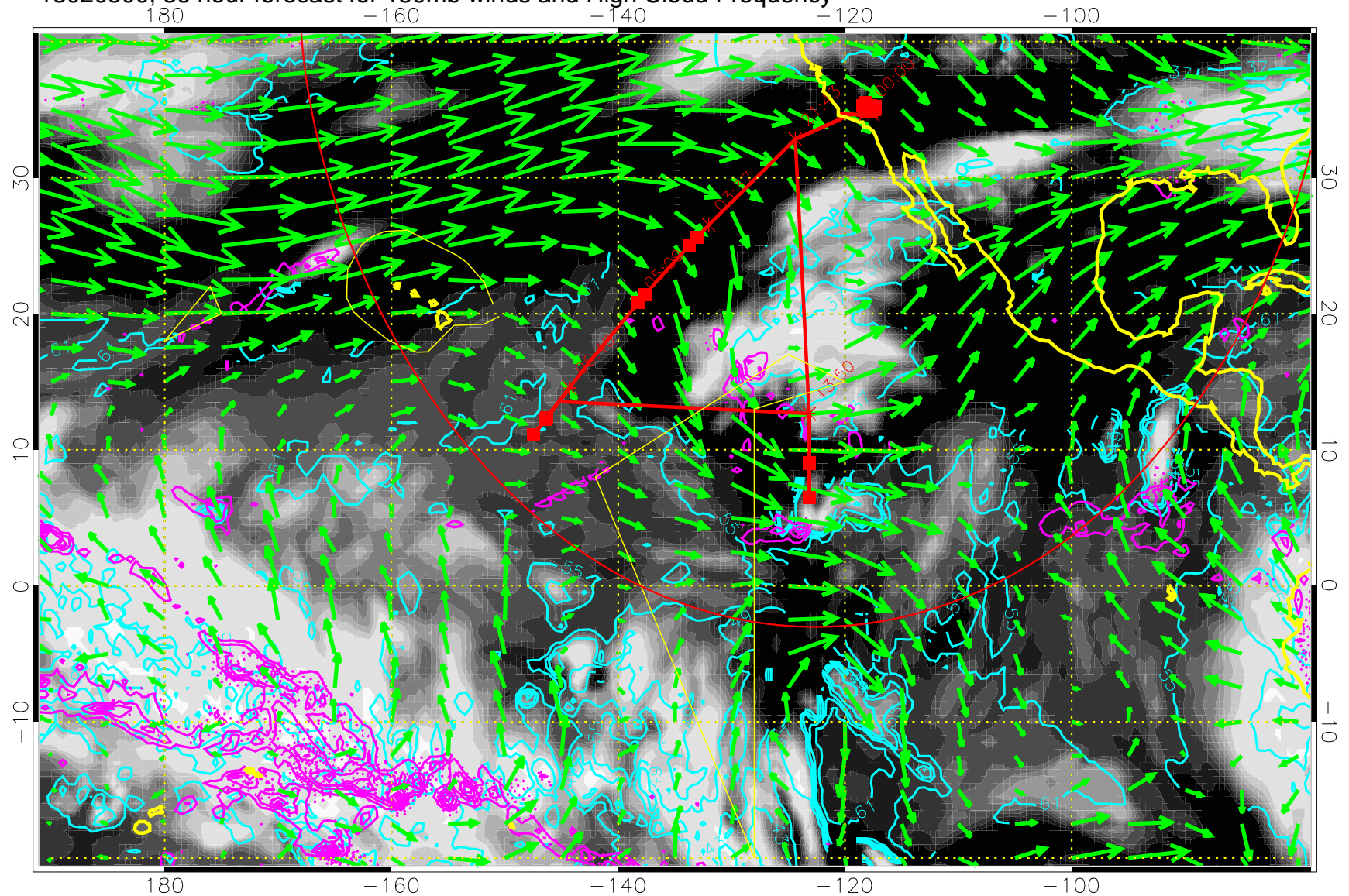
13020418, 30 hour forecast for 150mb winds and High Cloud Frequency



High Cloud Altitude from 37 kft at 6 kft intervals
Precip (tot dot, conv sol) past 6 hrs 6 kg/m2 contours, min 4

→ 50 m/s
Range ring of 4055 km -- 13 hours GH round trip

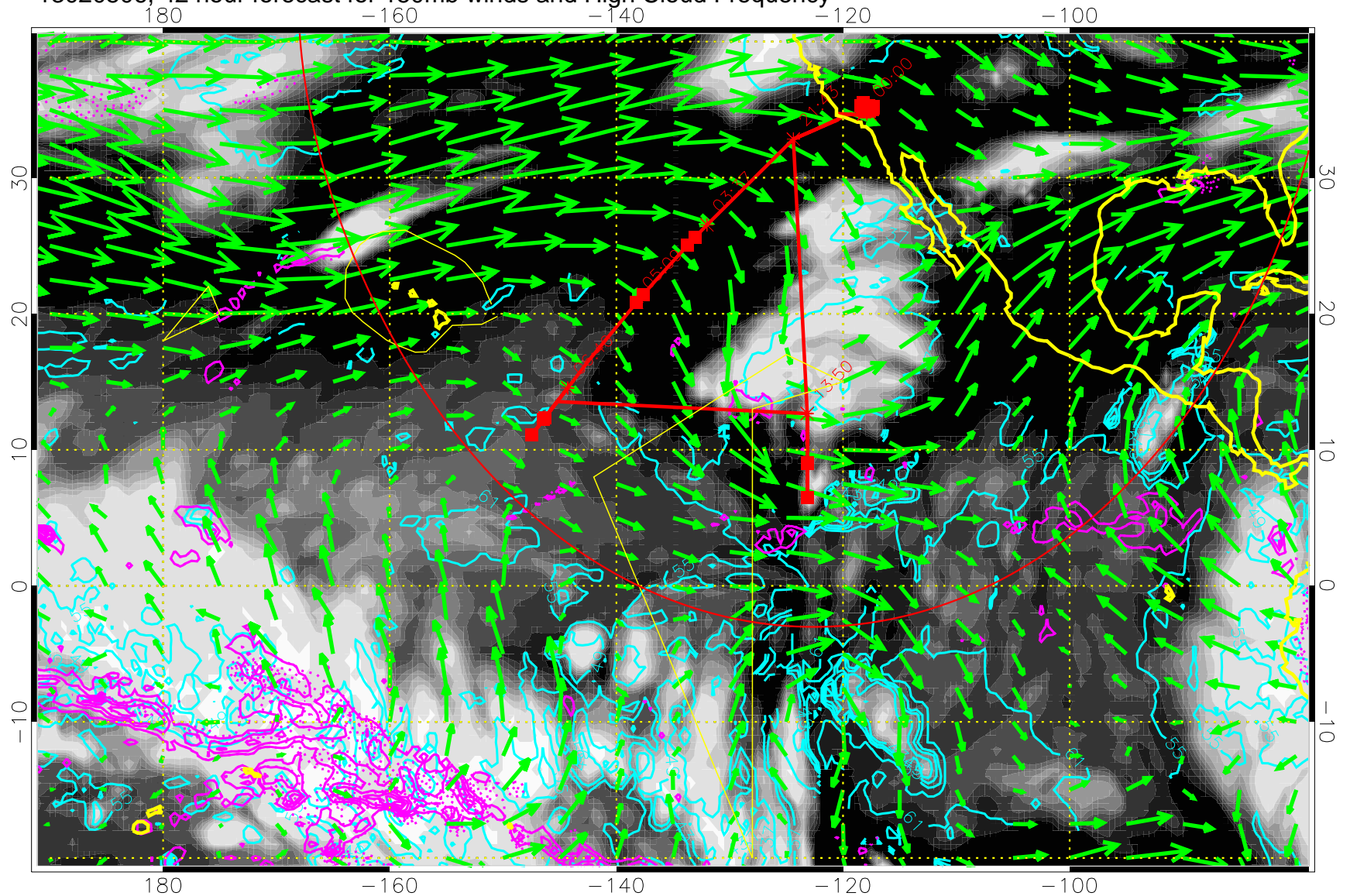
13020500, 36 hour forecast for 150mb winds and High Cloud Frequency



High Cloud Altitude from 37 kft at 6 kft intervals
Precip (tot dot, conv sol) past 6 hrs 6 kg/m2 contours, min 4

→ 50 m/s
Range ring of 4055 km -- 13 hours GH round trip

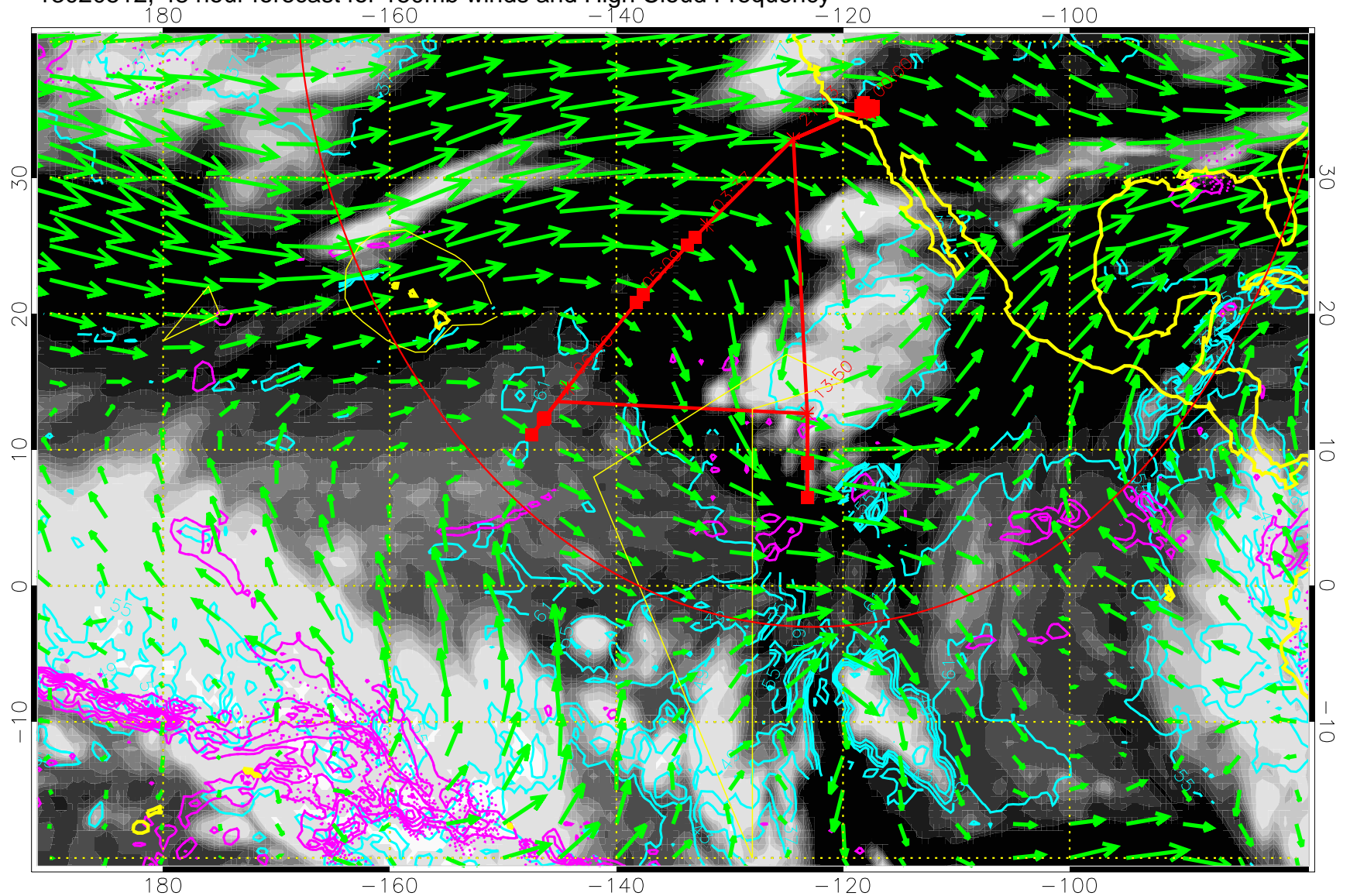
13020506, 42 hour forecast for 150mb winds and High Cloud Frequency



High Cloud Altitude from 37 kft at 6 kft intervals
Precip (tot dot, conv sol) past 6 hrs 6 kg/m2 contours, min 4

→ 50 m/s
Range ring of 4055 km -- 13 hours GH round trip

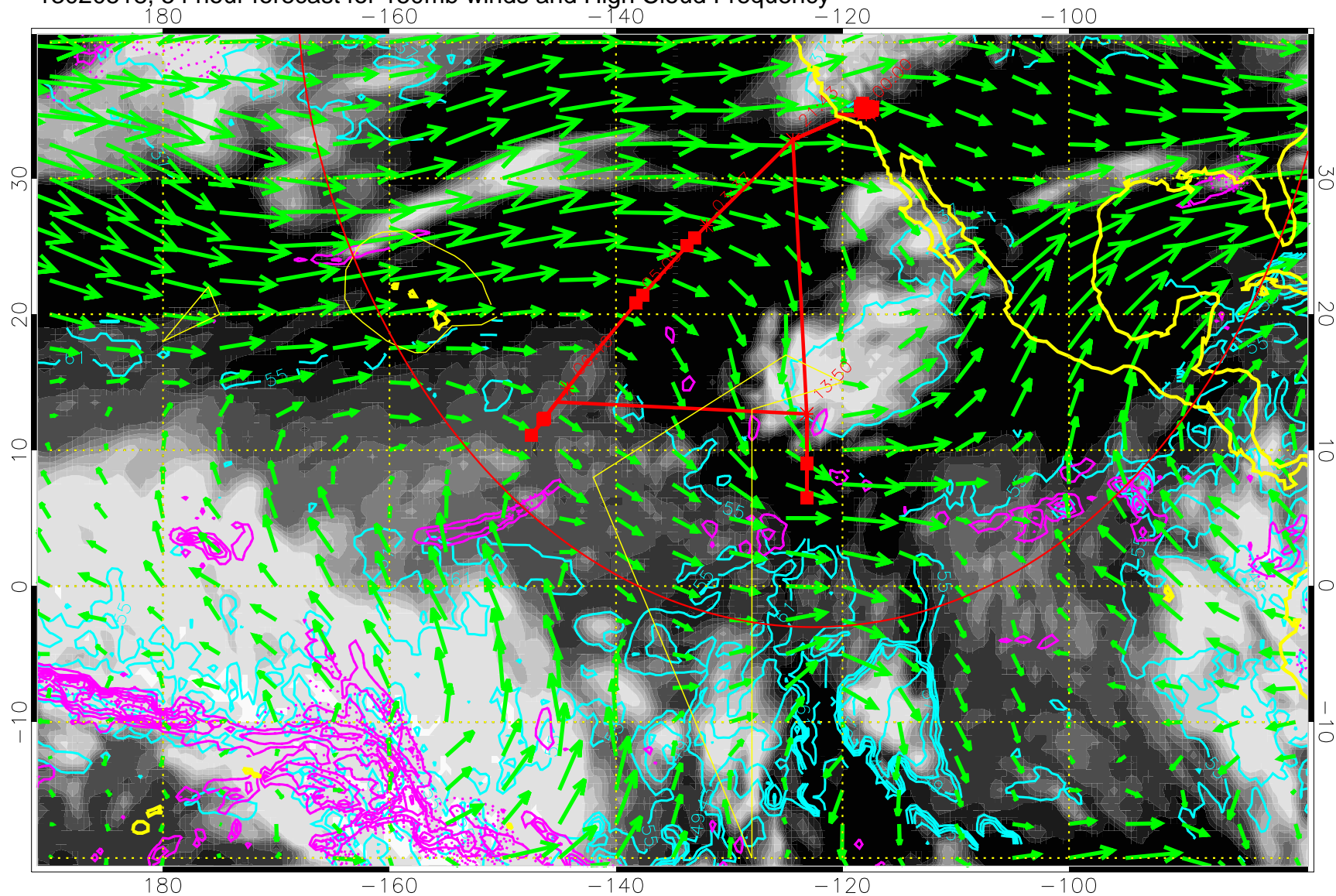
13020512, 48 hour forecast for 150mb winds and High Cloud Frequency



High Cloud Altitude from 37 kft at 6 kft intervals
Precip (tot dot, conv sol) past 6 hrs 6 kg/m2 contours, min 4

→ 50 m/s
Range ring of 4055 km -- 13 hours GH round trip

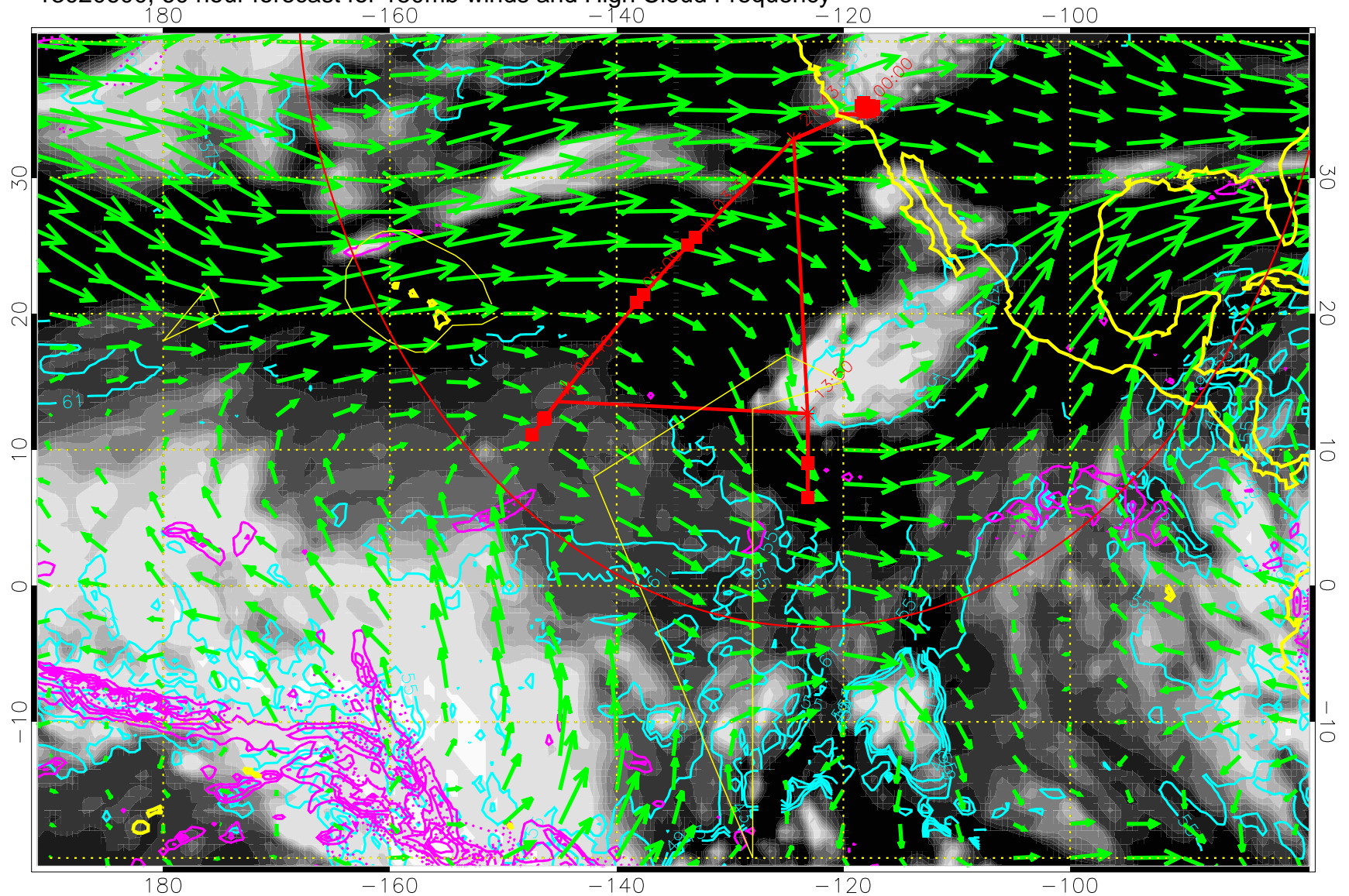
13020518, 54 hour forecast for 150mb winds and High Cloud Frequency



High Cloud Altitude from 37 kft at 6 kft intervals
Precip (tot dot, conv sol) past 6 hrs 6 kg/m2 contours, min 4

→ 50 m/s
Range ring of 4055 km -- 13 hours GH round trip

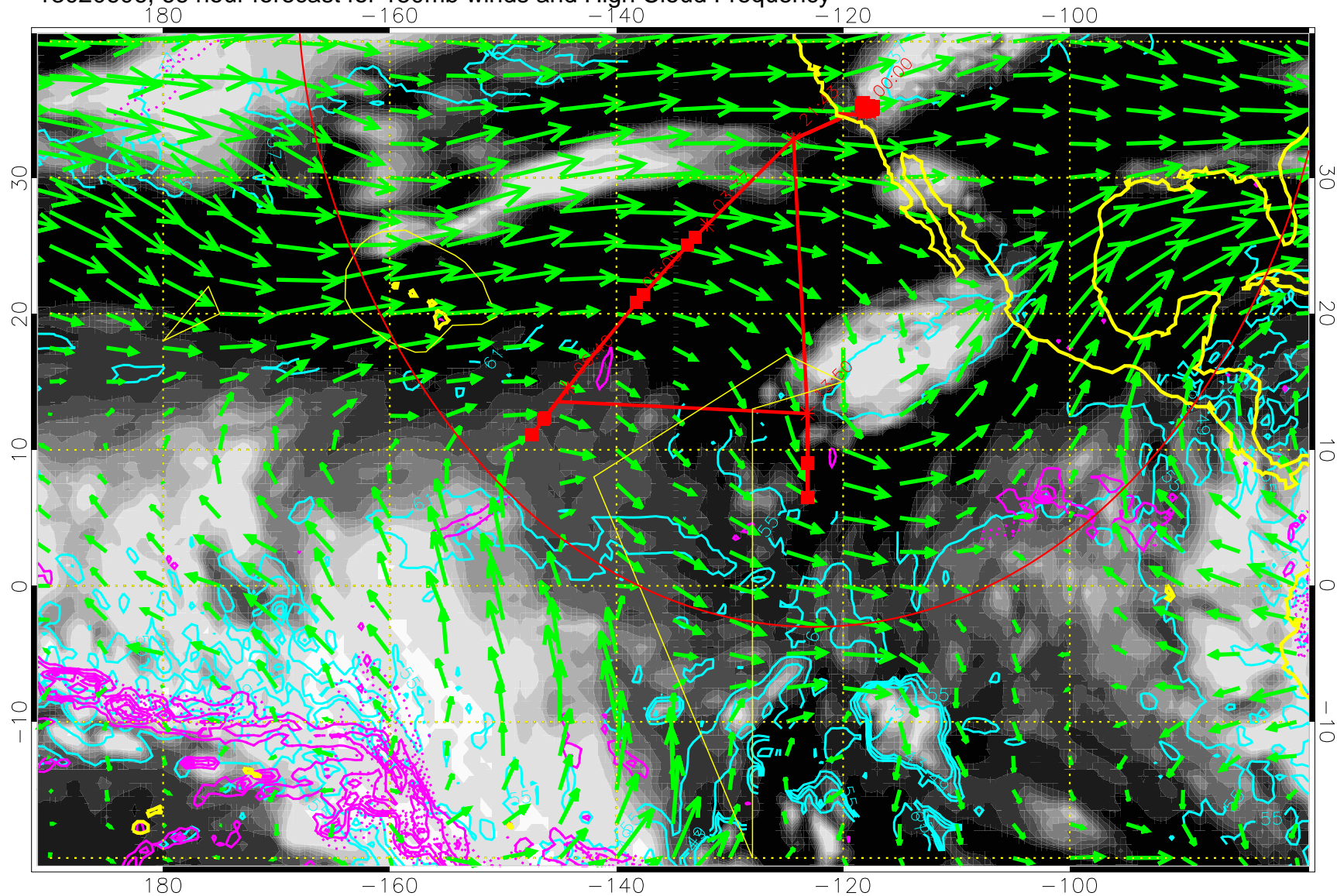
13020600, 60 hour forecast for 150mb winds and High Cloud Frequency



High Cloud Altitude from 37 kft at 6 kft intervals
Precip (tot dot, conv sol) past 6 hrs 6 kg/m2 contours, min 4

→ 50 m/s
Range ring of 4055 km -- 13 hours GH round trip

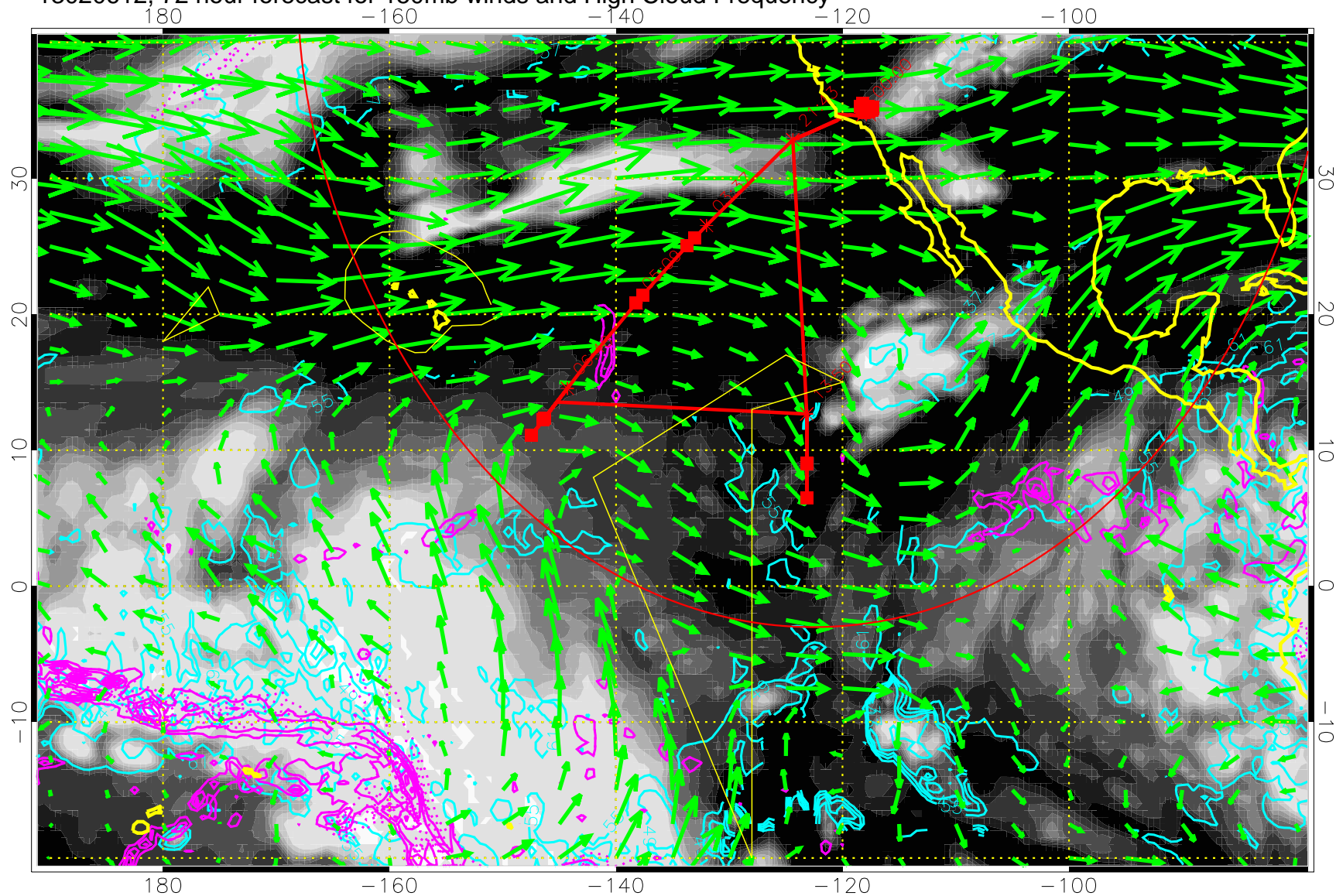
13020606, 66 hour forecast for 150mb winds and High Cloud Frequency



High Cloud Altitude from 37 kft at 6 kft intervals
Precip (tot dot, conv sol) past 6 hrs 6 kg/m2 contours, min 4

→ 50 m/s
Range ring of 4055 km -- 13 hours GH round trip

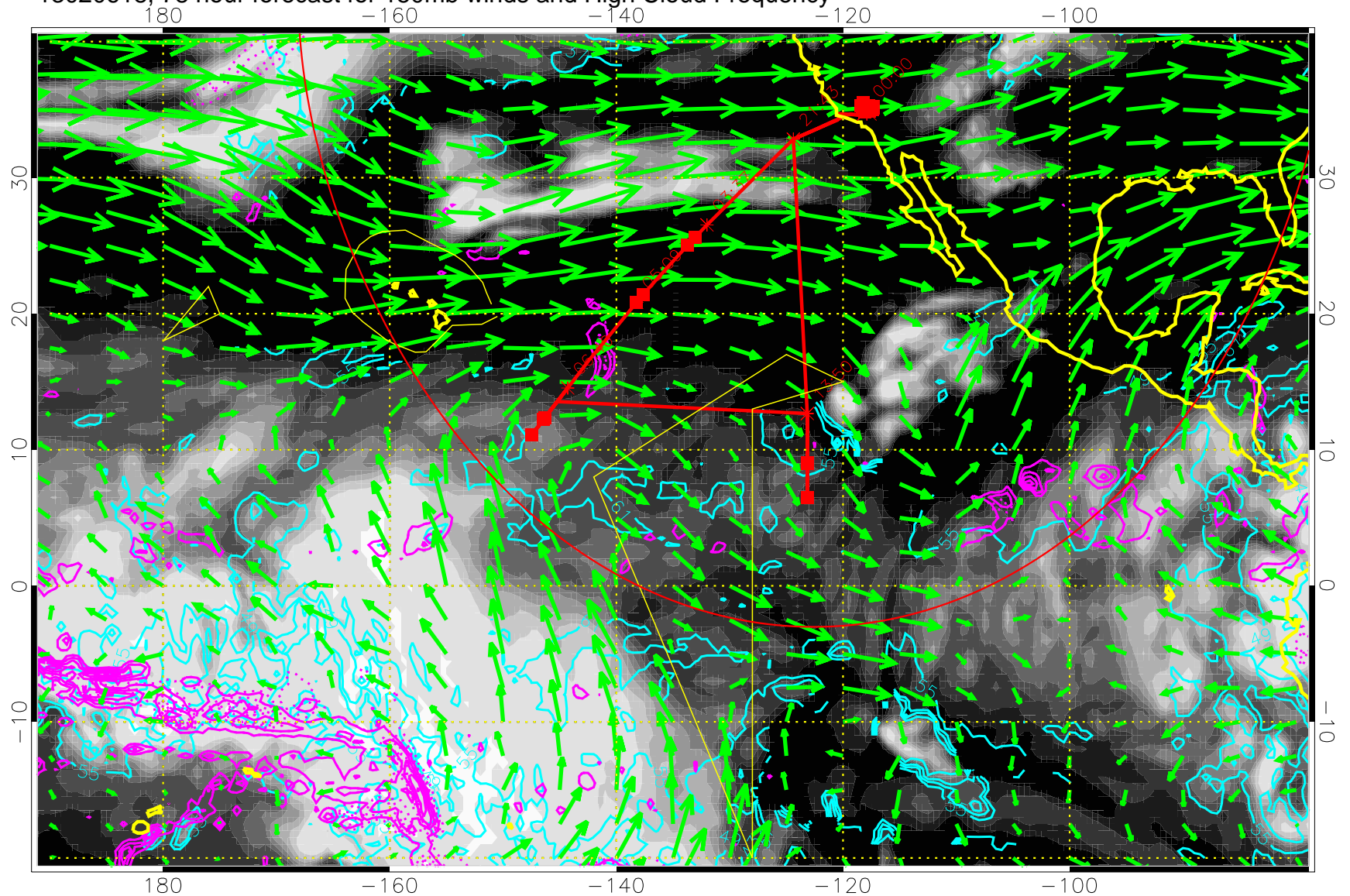
13020612, 72 hour forecast for 150mb winds and High Cloud Frequency



High Cloud Altitude from 37 kft at 6 kft intervals
Precip (tot dot, conv sol) past 6 hrs 6 kg/m2 contours, min 4

→ 50 m/s
Range ring of 4055 km -- 13 hours GH round trip

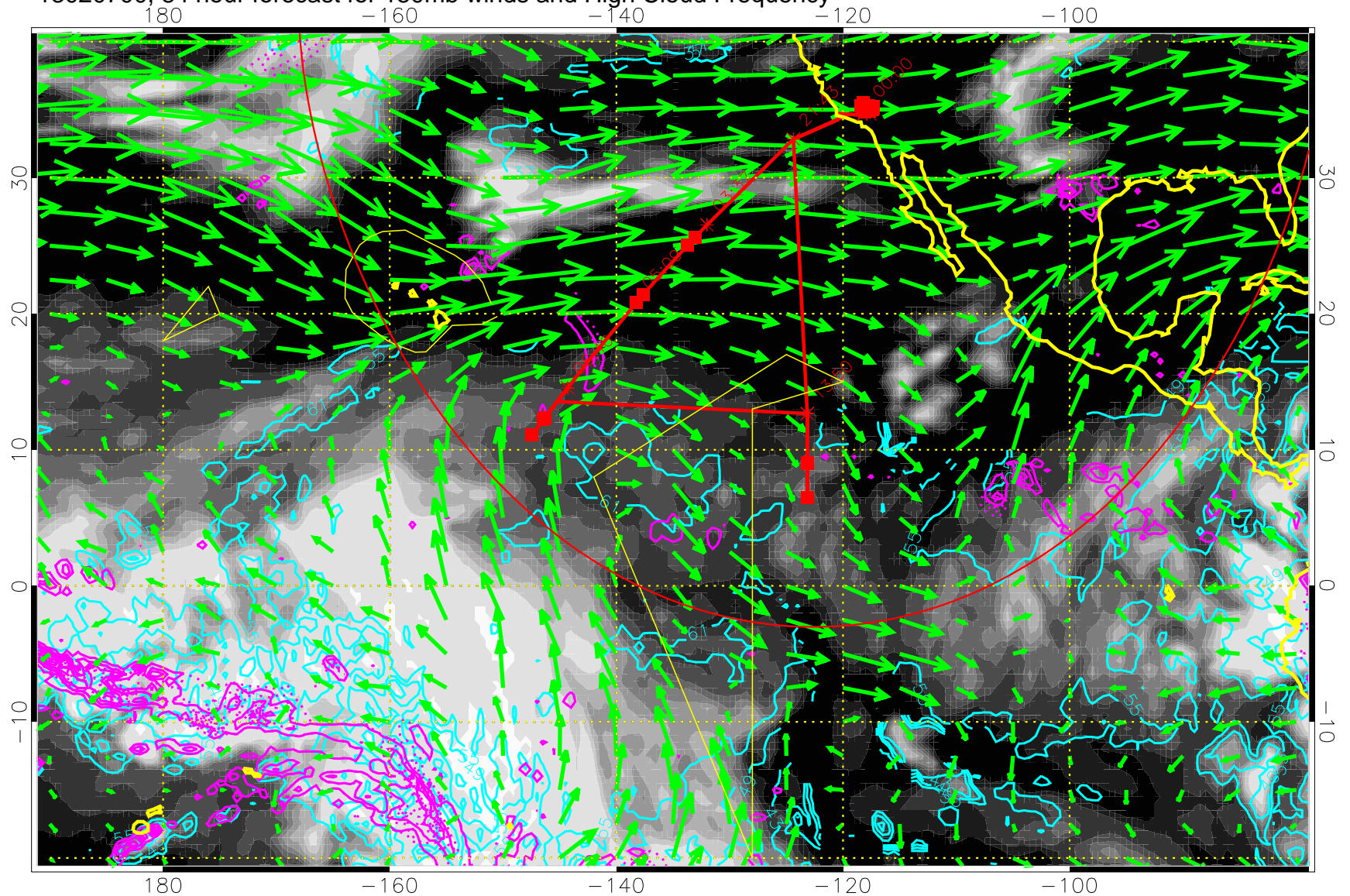
13020618, 78 hour forecast for 150mb winds and High Cloud Frequency



High Cloud Altitude from 37 kft at 6 kft intervals
Precip (tot dot, conv sol) past 6 hrs 6 kg/m2 contours, min 4

→ 50 m/s
Range ring of 4055 km -- 13 hours GH round trip

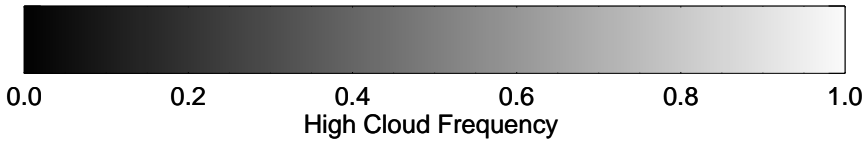
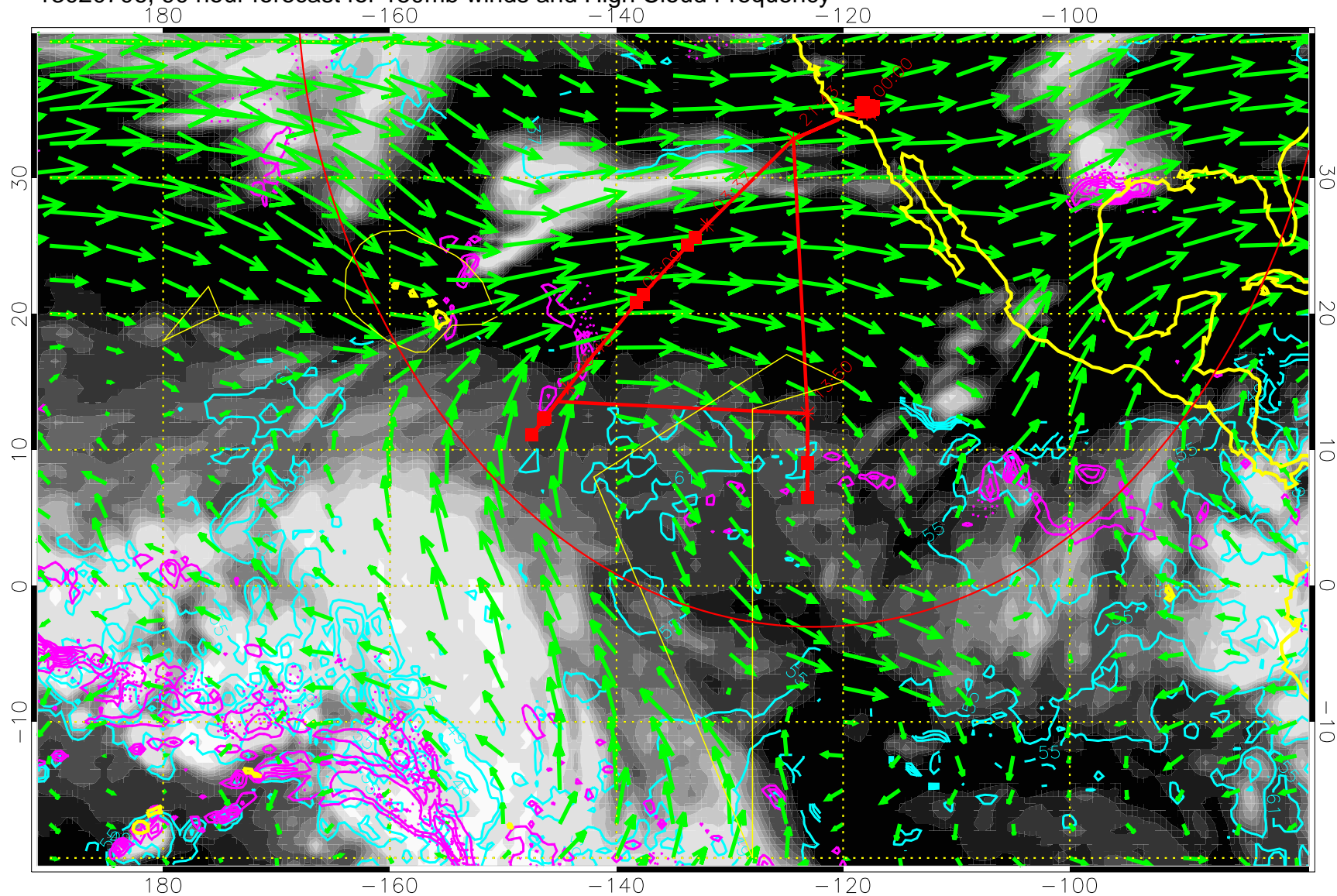
13020700, 84 hour forecast for 150mb winds and High Cloud Frequency



High Cloud Altitude from 37 kft at 6 kft intervals
Precip (tot dot, conv sol) past 6 hrs 6 kg/m2 contours, min 4

→ 50 m/s
Range ring of 4055 km -- 13 hours GH round trip

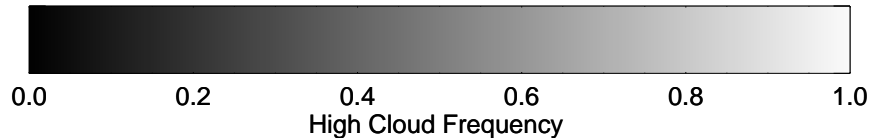
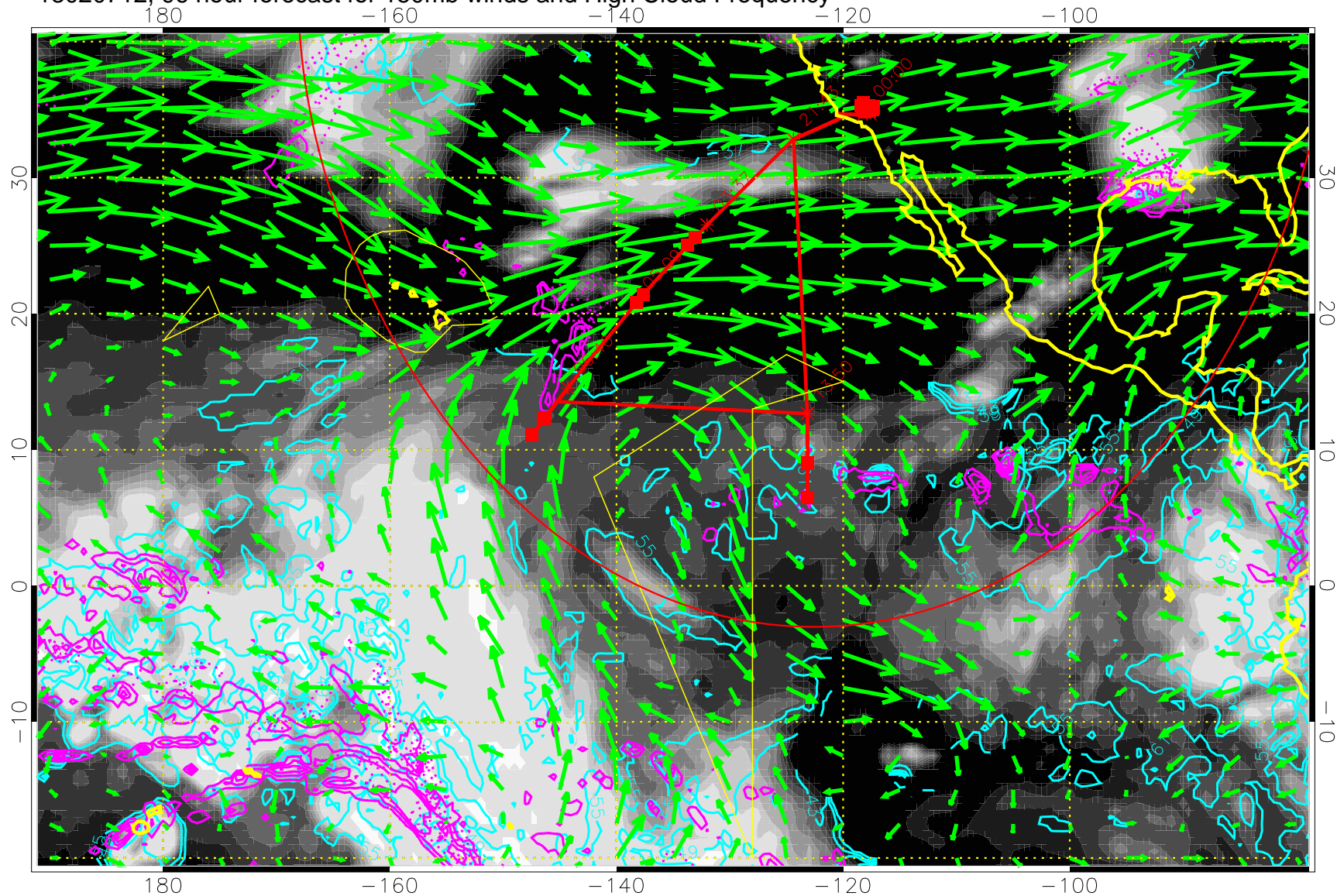
13020706, 90 hour forecast for 150mb winds and High Cloud Frequency



High Cloud Altitude from 37 kft at 6 kft intervals
Precip (tot dot, conv sol) past 6 hrs 6 kg/m2 contours, min 4

→ 50 m/s
Range ring of 4055 km -- 13 hours GH round trip

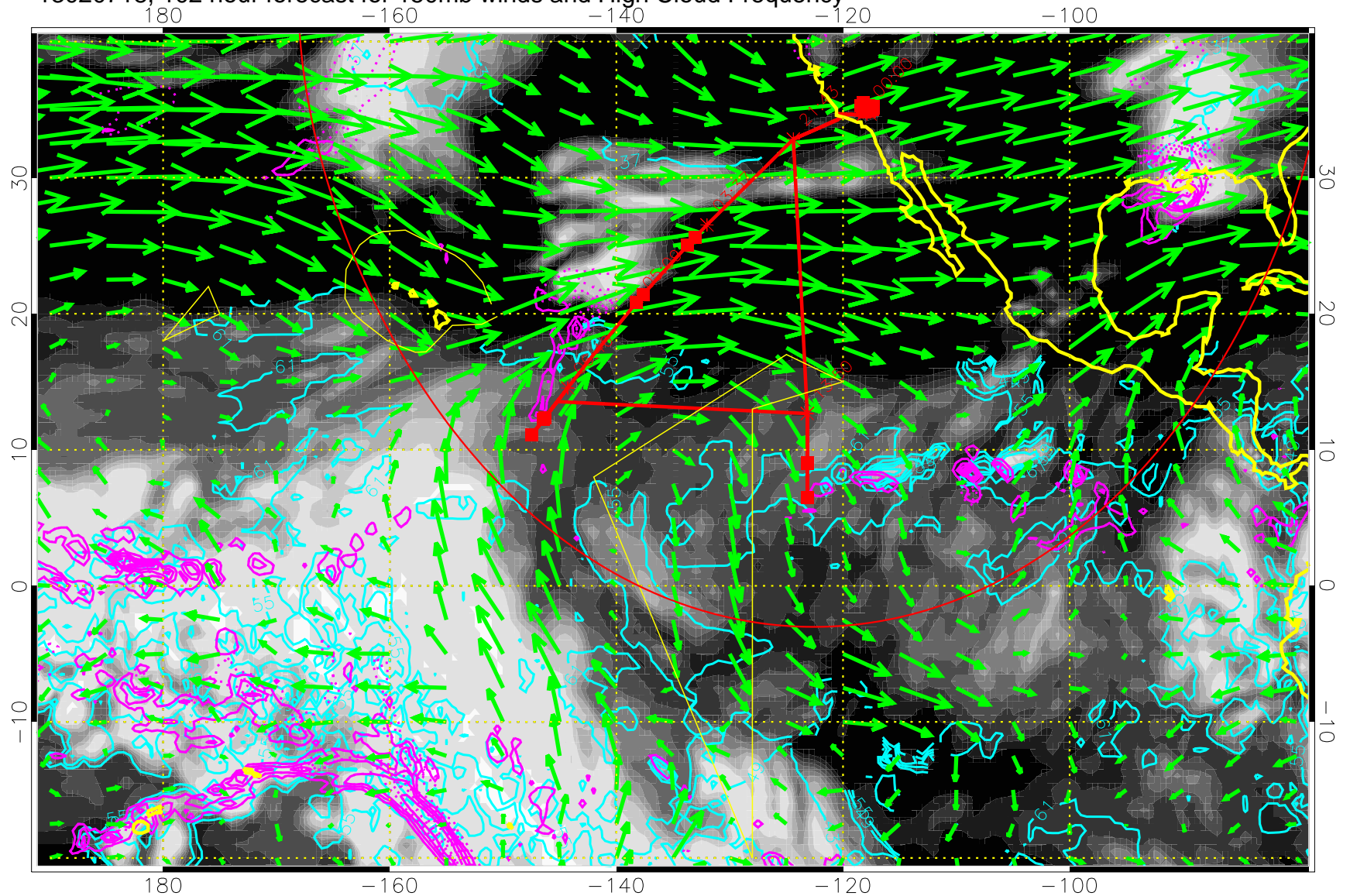
13020712, 96 hour forecast for 150mb winds and High Cloud Frequency



High Cloud Altitude from 37 kft at 6 kft intervals
Precip (tot dot, conv sol) past 6 hrs 6 kg/m2 contours, min 4

→ 50 m/s
Range ring of 4055 km -- 13 hours GH round trip

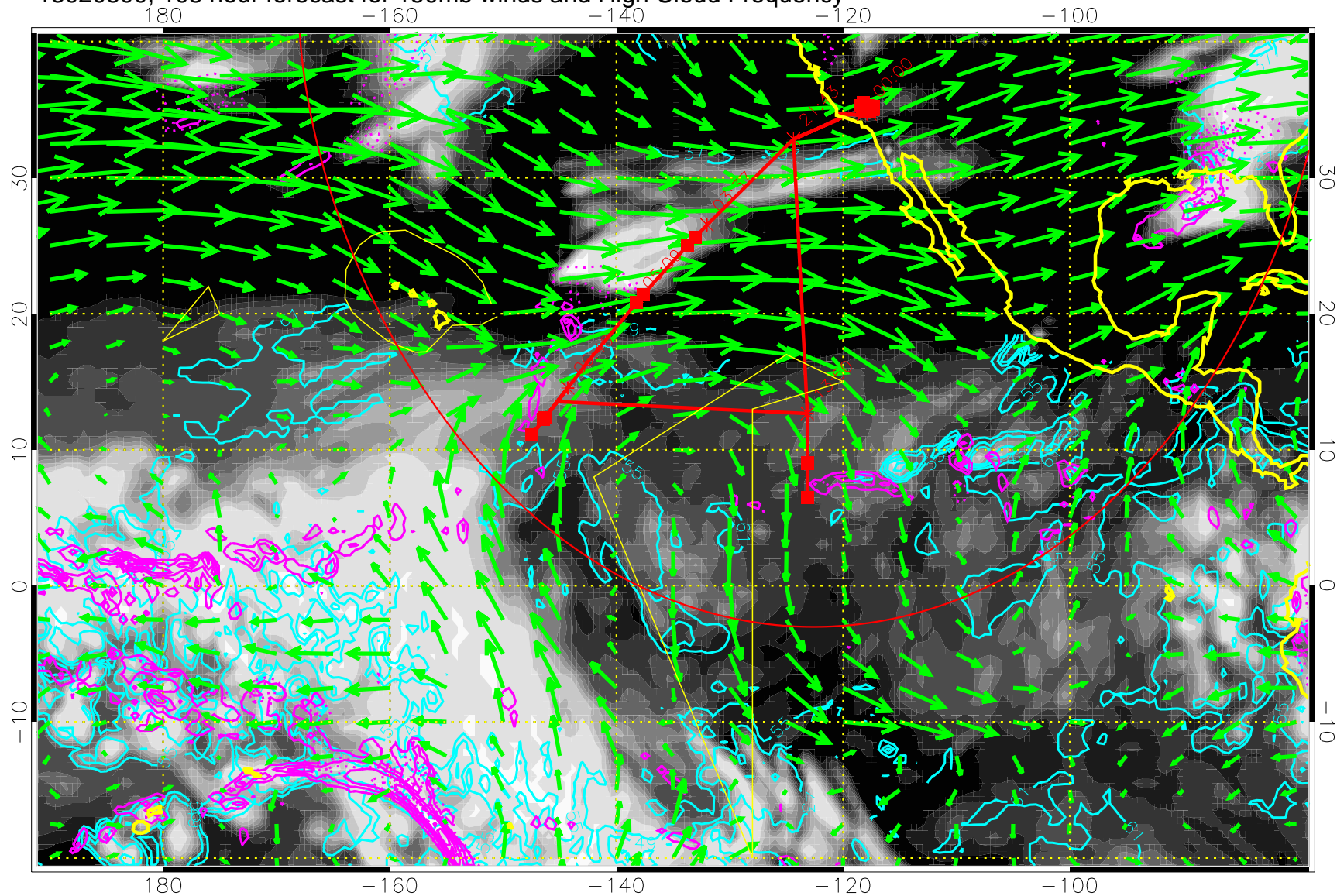
13020718, 102 hour forecast for 150mb winds and High Cloud Frequency



High Cloud Altitude from 37 kft at 6 kft intervals
Precip (tot dot, conv sol) past 6 hrs 6 kg/m2 contours, min 4

→ 50 m/s
Range ring of 4055 km -- 13 hours GH round trip

13020800, 108 hour forecast for 150mb winds and High Cloud Frequency

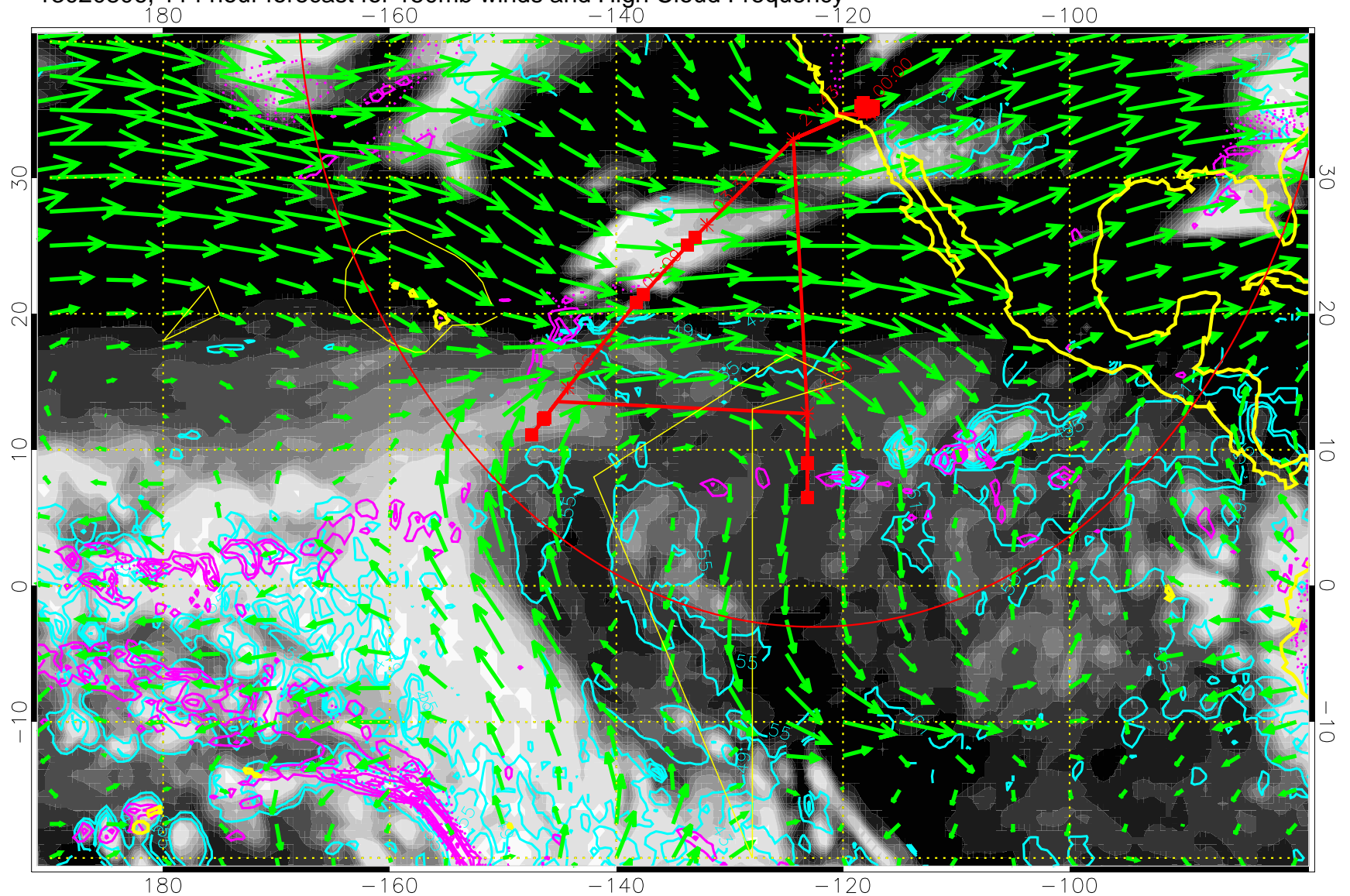


High Cloud Altitude from 37 kft at 6 kft intervals
Precip (tot dot, conv sol) past 6 hrs 6 kg/m2 contours, min 4

→ 50 m/s

Range ring of 4055 km -- 13 hours GH round trip

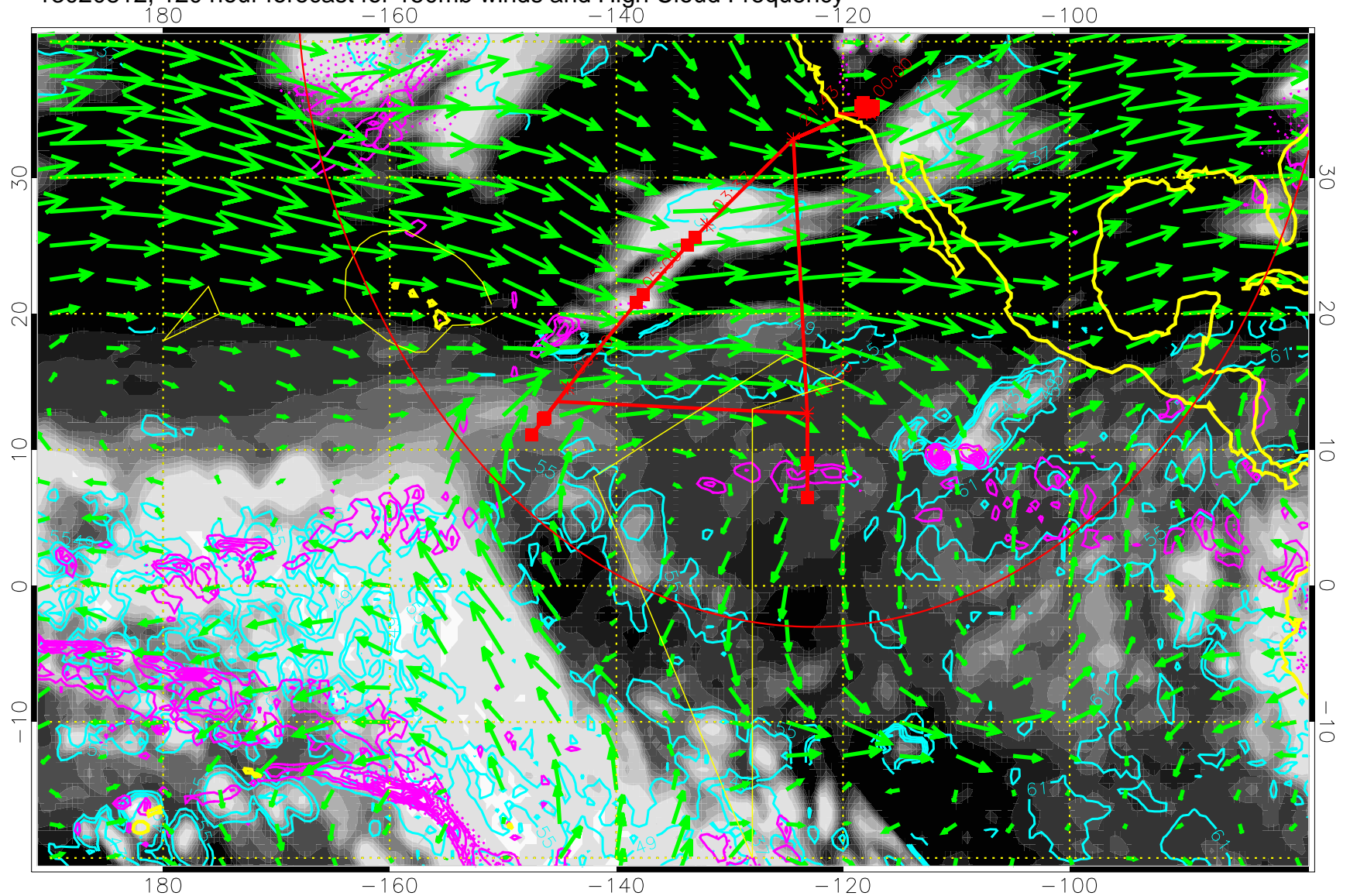
13020806, 114 hour forecast for 150mb winds and High Cloud Frequency



High Cloud Altitude from 37 kft at 6 kft intervals
Precip (tot dot, conv sol) past 6 hrs 6 kg/m2 contours, min 4

→ 50 m/s
Range ring of 4055 km -- 13 hours GH round trip

13020812, 120 hour forecast for 150mb winds and High Cloud Frequency



High Cloud Altitude from 37 kft at 6 kft intervals
Precip (tot dot, conv sol) past 6 hrs 6 kg/m2 contours, min 4

→ 50 m/s
Range ring of 4055 km -- 13 hours GH round trip