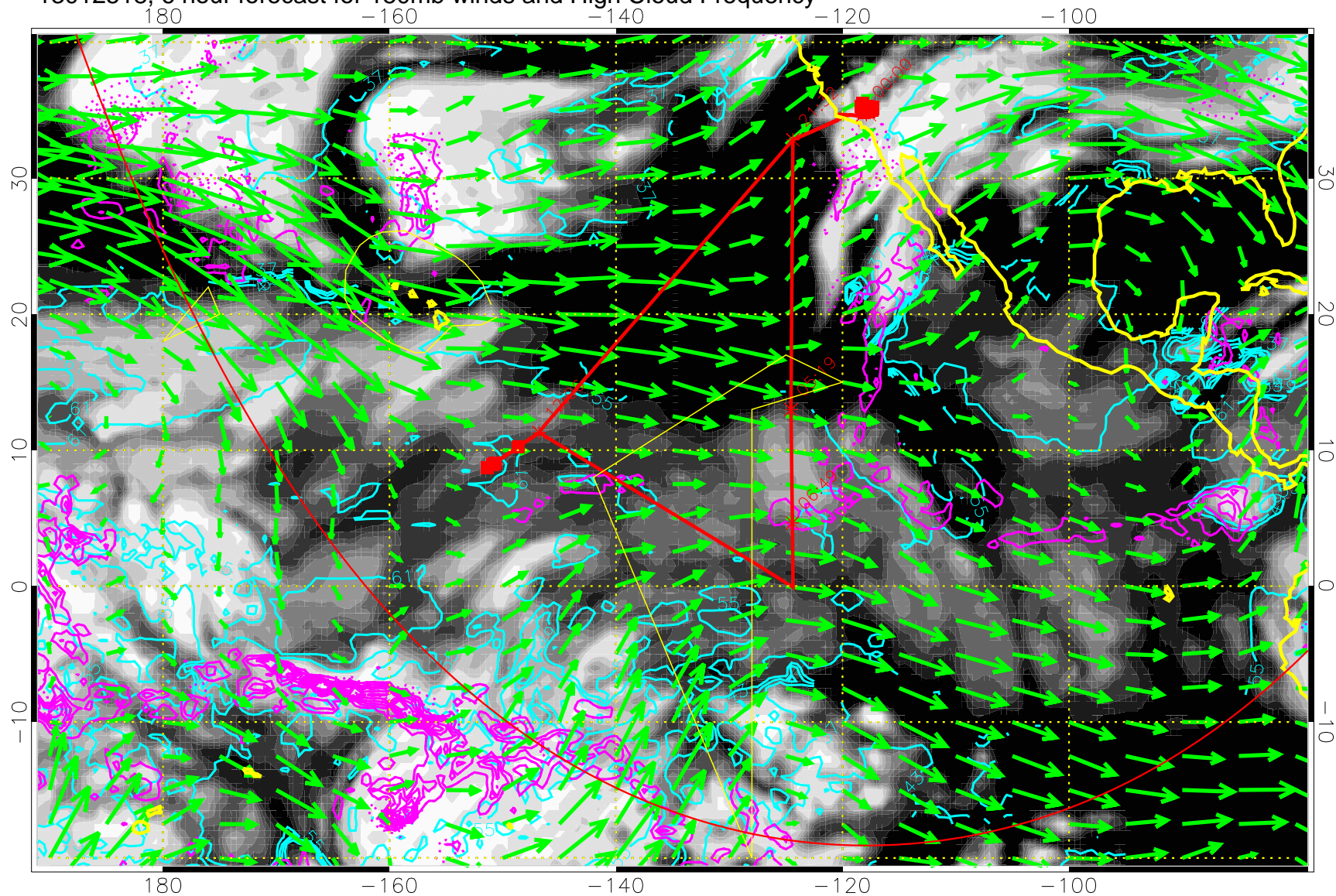


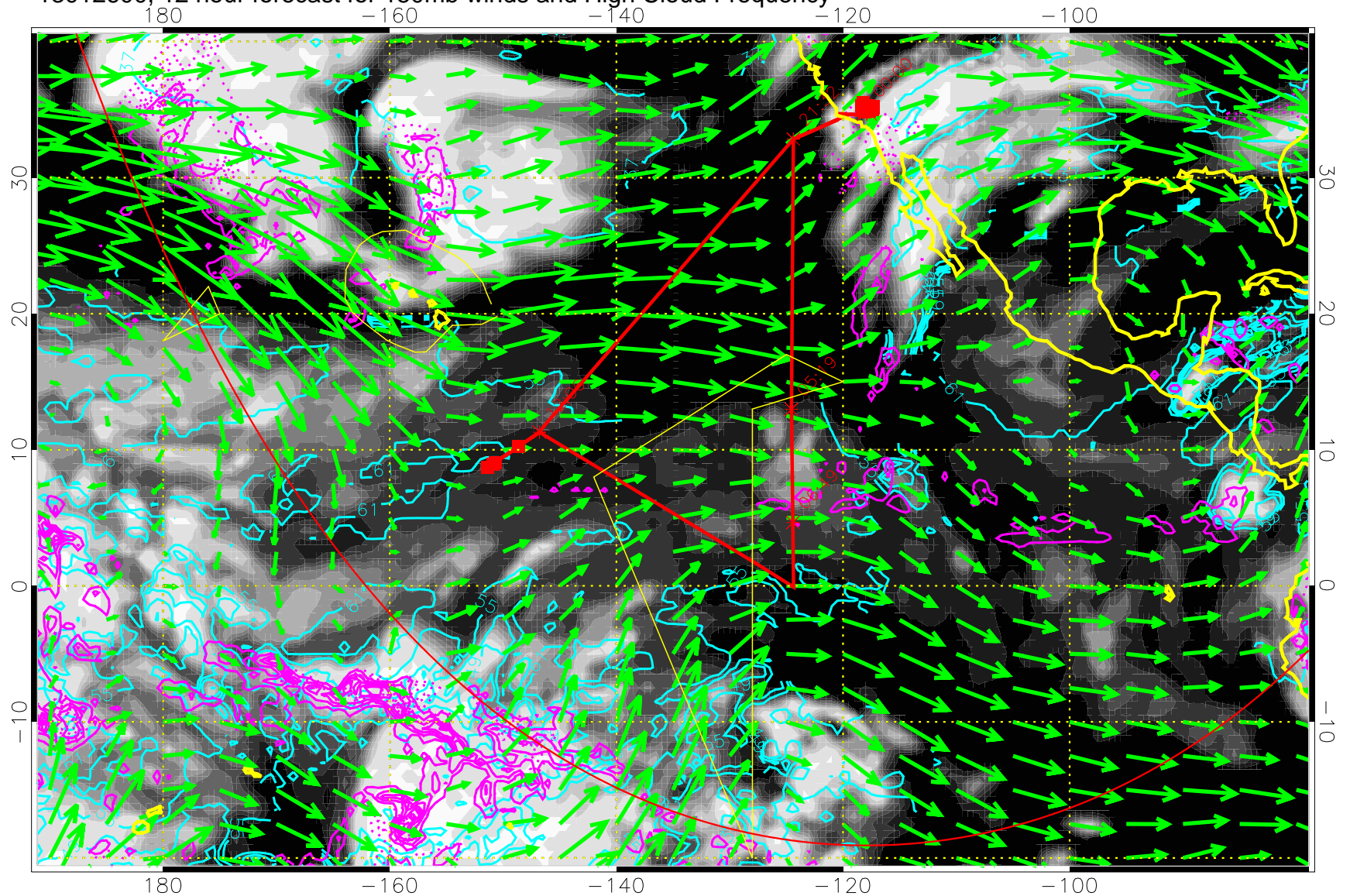
13012518, 6 hour forecast for 150mb winds and High Cloud Frequency



High Cloud Altitude from 37 kft at 6 kft intervals
Precip (tot dot, conv sol) past 6 hrs 6 kg/m2 contours, min 4

→ 50 m/s
Range ring of 6000 km -- 19 hours GH round trip

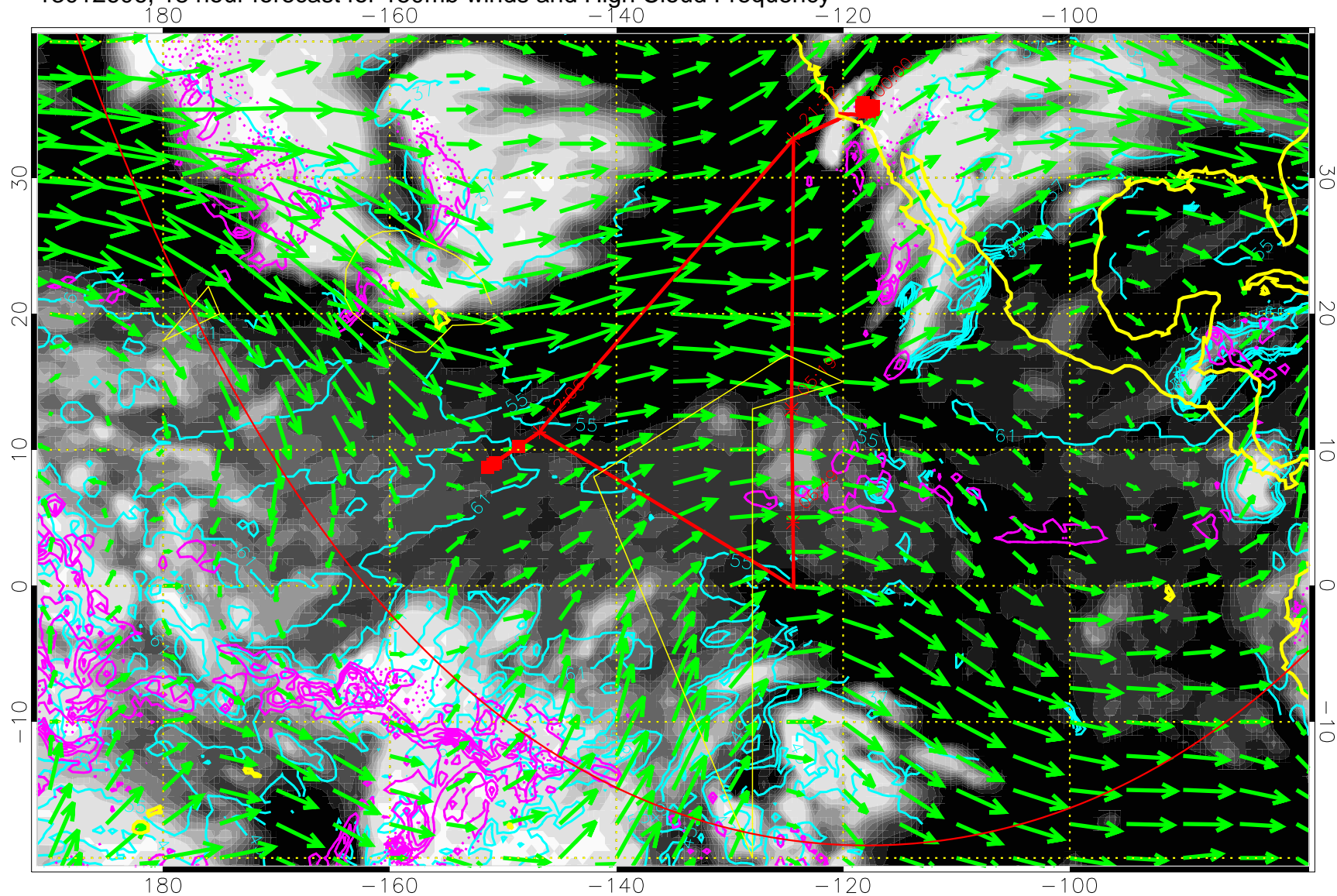
13012600, 12 hour forecast for 150mb winds and High Cloud Frequency



High Cloud Altitude from 37 kft at 6 kft intervals
Precip (tot dot, conv sol) past 6 hrs 6 kg/m2 contours, min 4

→ 50 m/s
Range ring of 6000 km -- 19 hours GH round trip

13012606, 18 hour forecast for 150mb winds and High Cloud Frequency

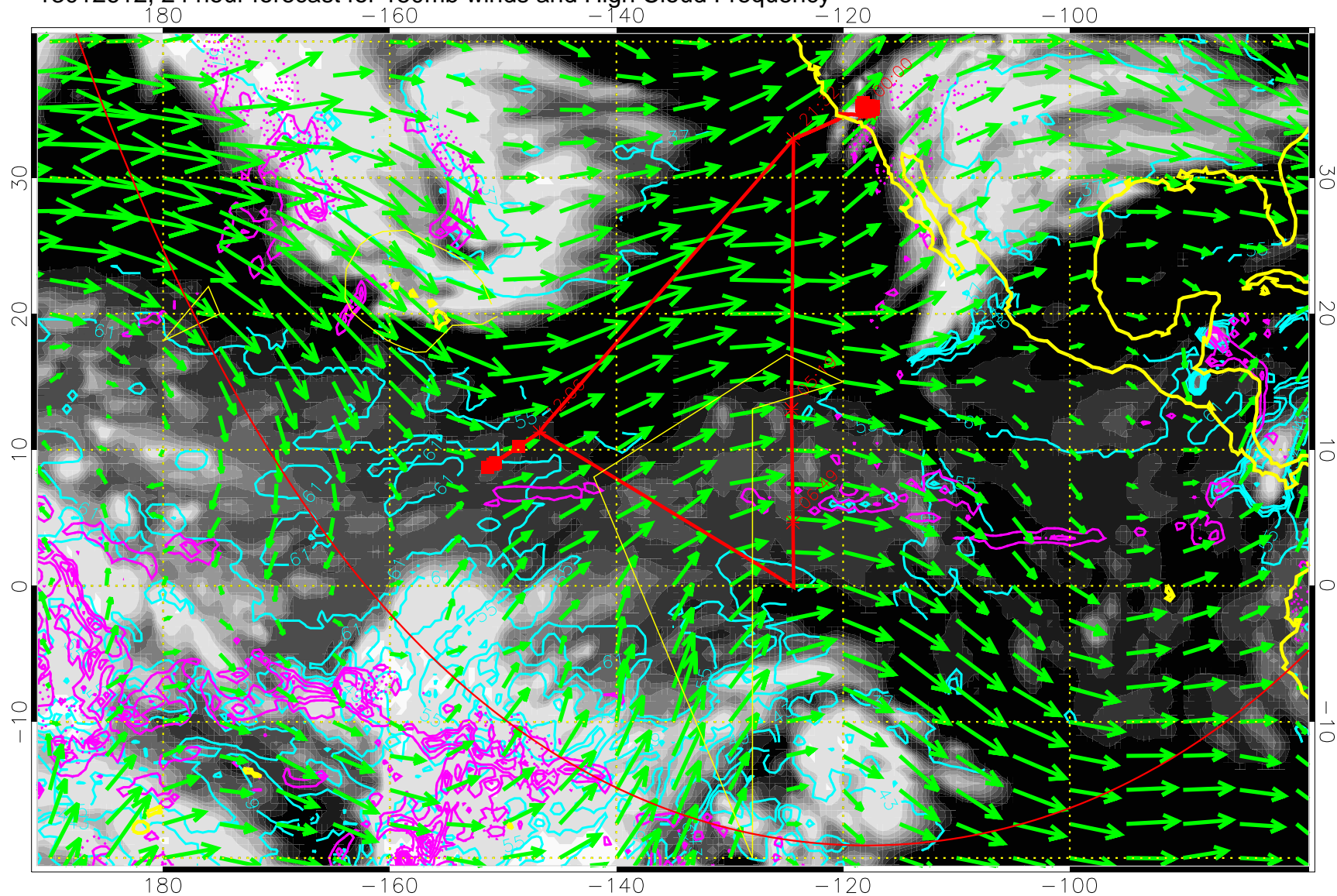


High Cloud Altitude from 37 kft at 6 kft intervals
Precip (tot dot, conv sol) past 6 hrs 6 kg/m2 contours, min 4

→ 50 m/s

Range ring of 6000 km -- 19 hours GH round trip

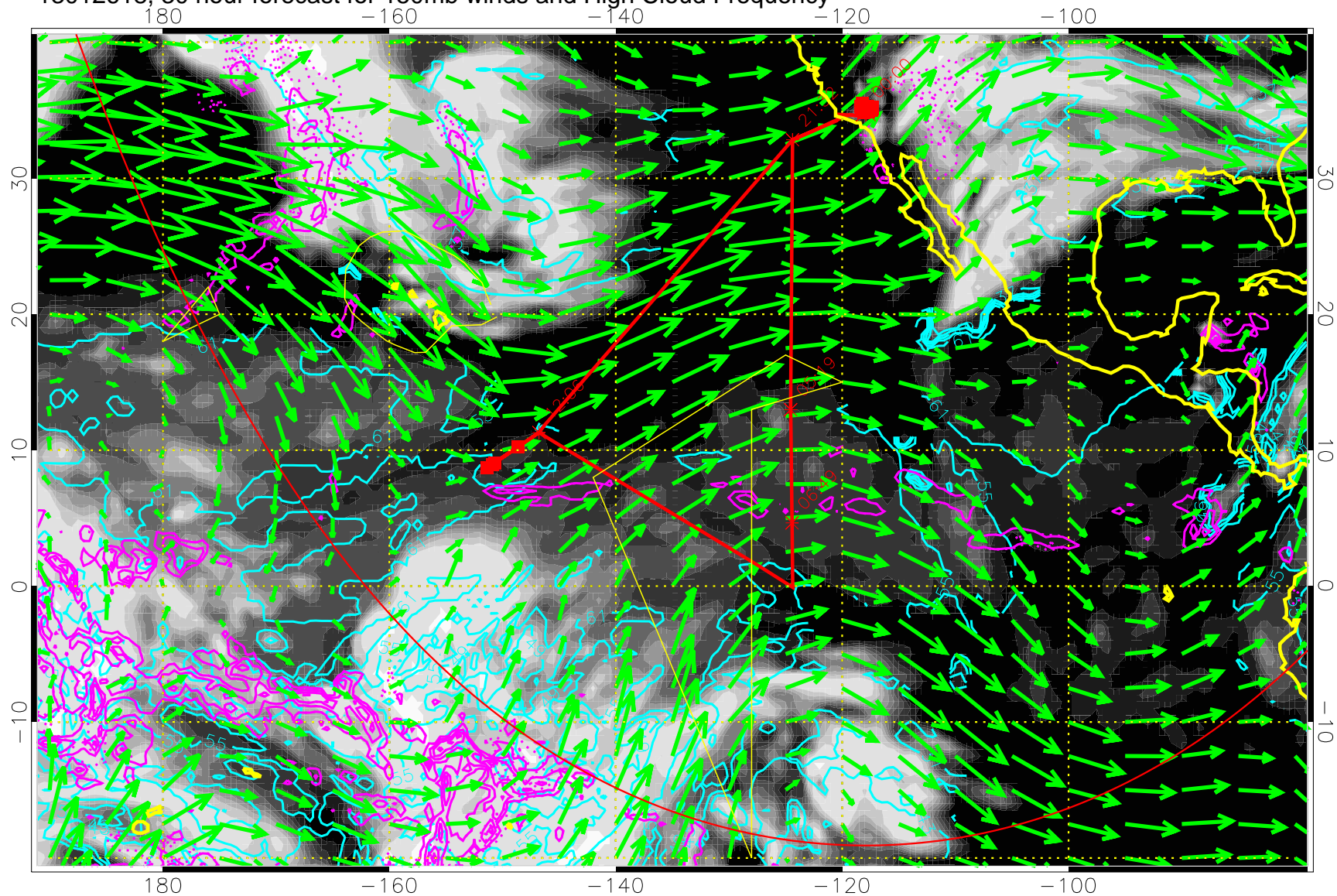
13012612, 24 hour forecast for 150mb winds and High Cloud Frequency



High Cloud Altitude from 37 kft at 6 kft intervals
Precip (tot dot, conv sol) past 6 hrs 6 kg/m2 contours, min 4

→ 50 m/s
Range ring of 6000 km -- 19 hours GH round trip

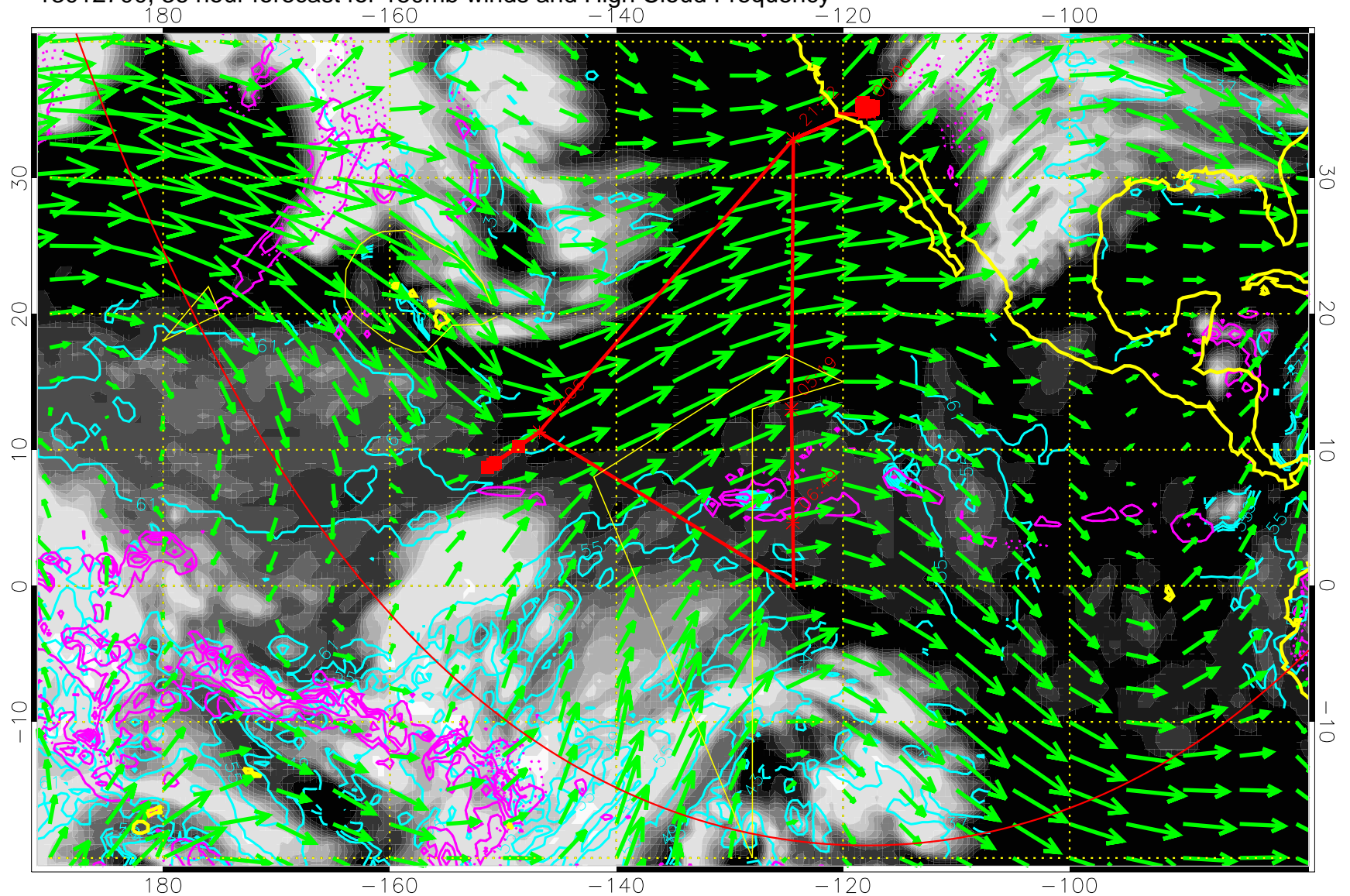
13012618, 30 hour forecast for 150mb winds and High Cloud Frequency



High Cloud Altitude from 37 kft at 6 kft intervals
Precip (tot dot, conv sol) past 6 hrs 6 kg/m² contours, min 4

→ 50 m/s
Range ring of 6000 km -- 19 hours GH round trip

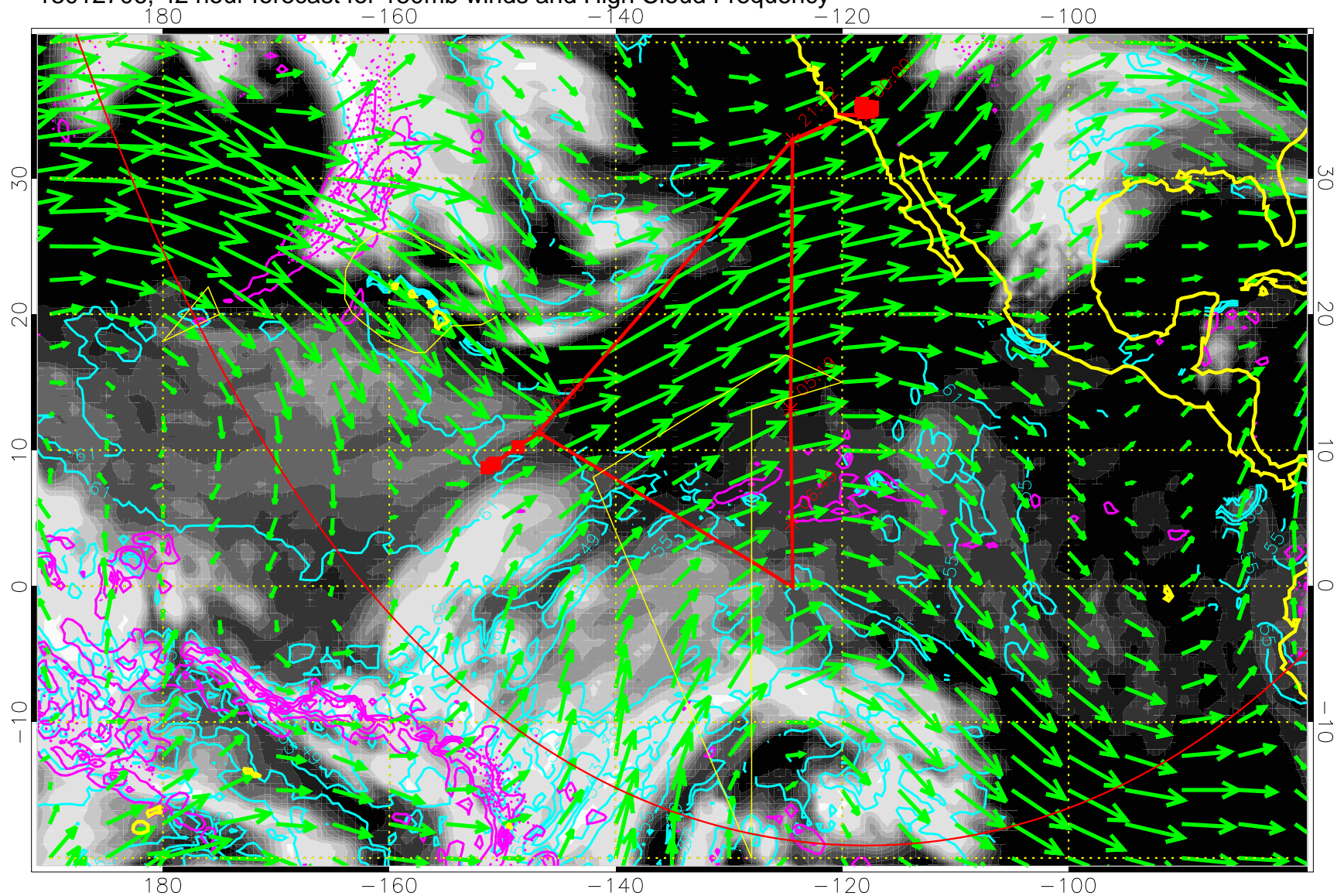
13012700, 36 hour forecast for 150mb winds and High Cloud Frequency



High Cloud Altitude from 37 kft at 6 kft intervals
Precip (tot dot, conv sol) past 6 hrs 6 kg/m2 contours, min 4

→ 50 m/s
Range ring of 6000 km -- 19 hours GH round trip

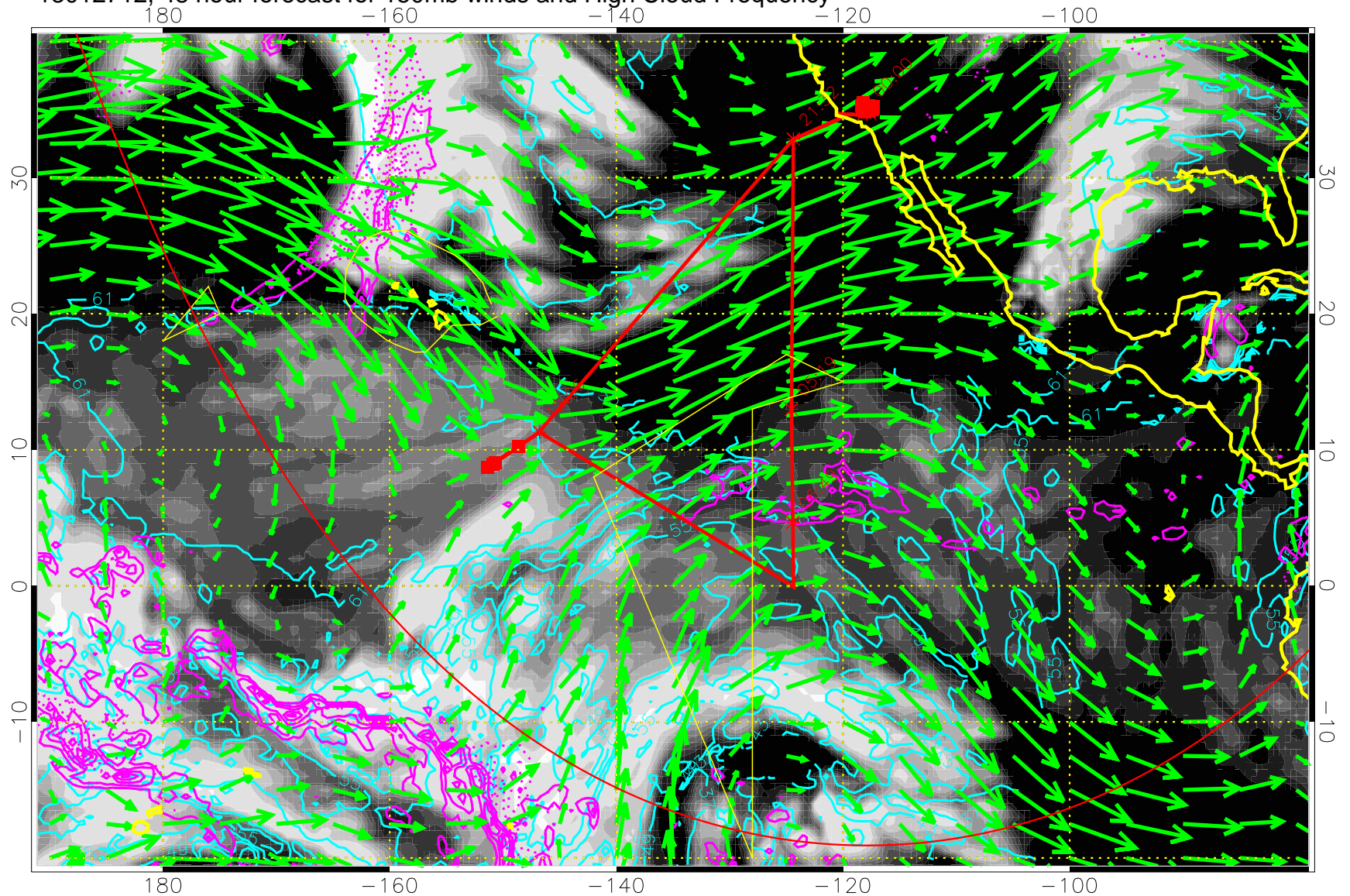
13012706, 42 hour forecast for 150mb winds and High Cloud Frequency



High Cloud Altitude from 37 kft at 6 kft intervals
Precip (tot dot, conv sol) past 6 hrs 6 kg/m2 contours, min 4

→ 50 m/s
Range ring of 6000 km -- 19 hours GH round trip

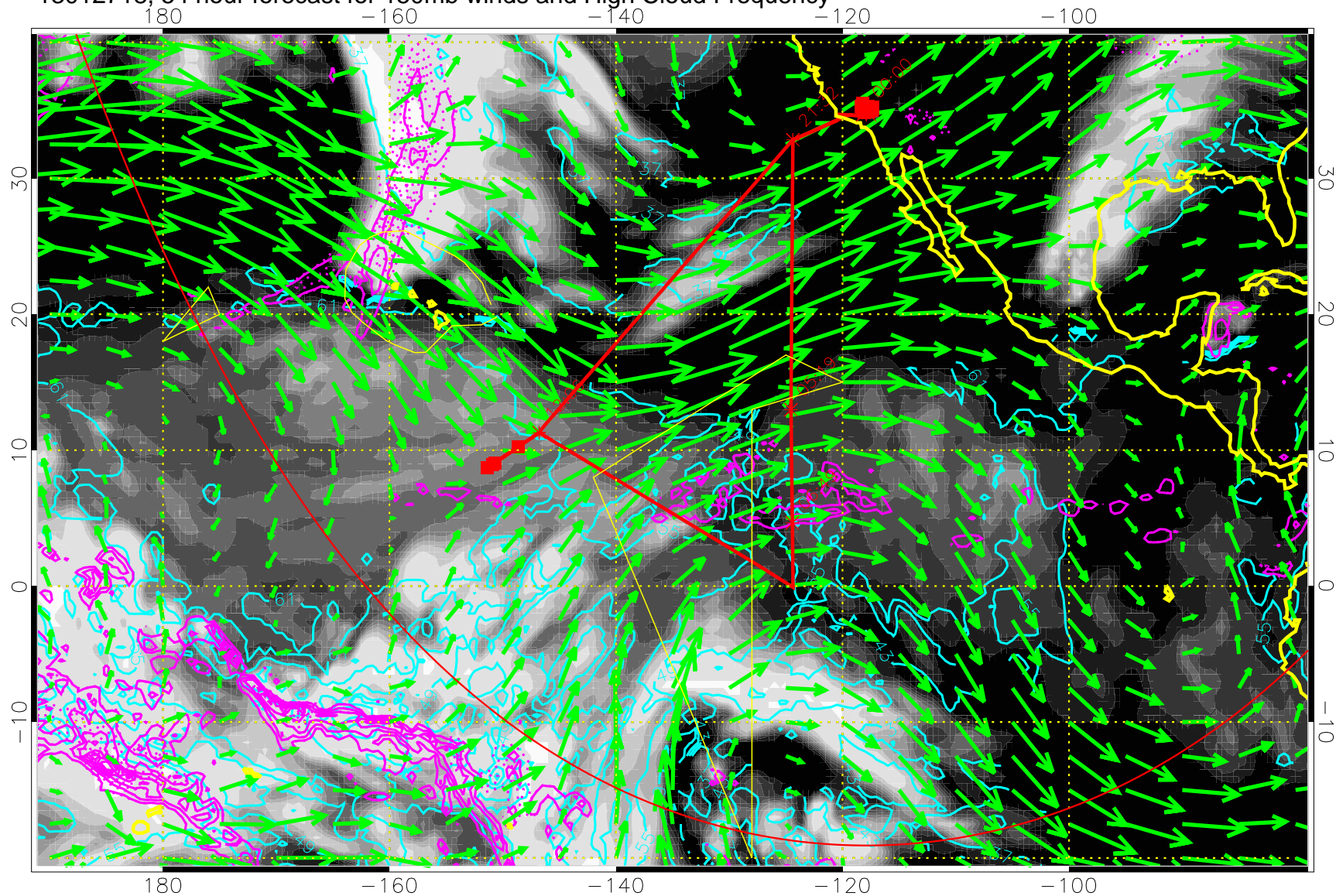
13012712, 48 hour forecast for 150mb winds and High Cloud Frequency



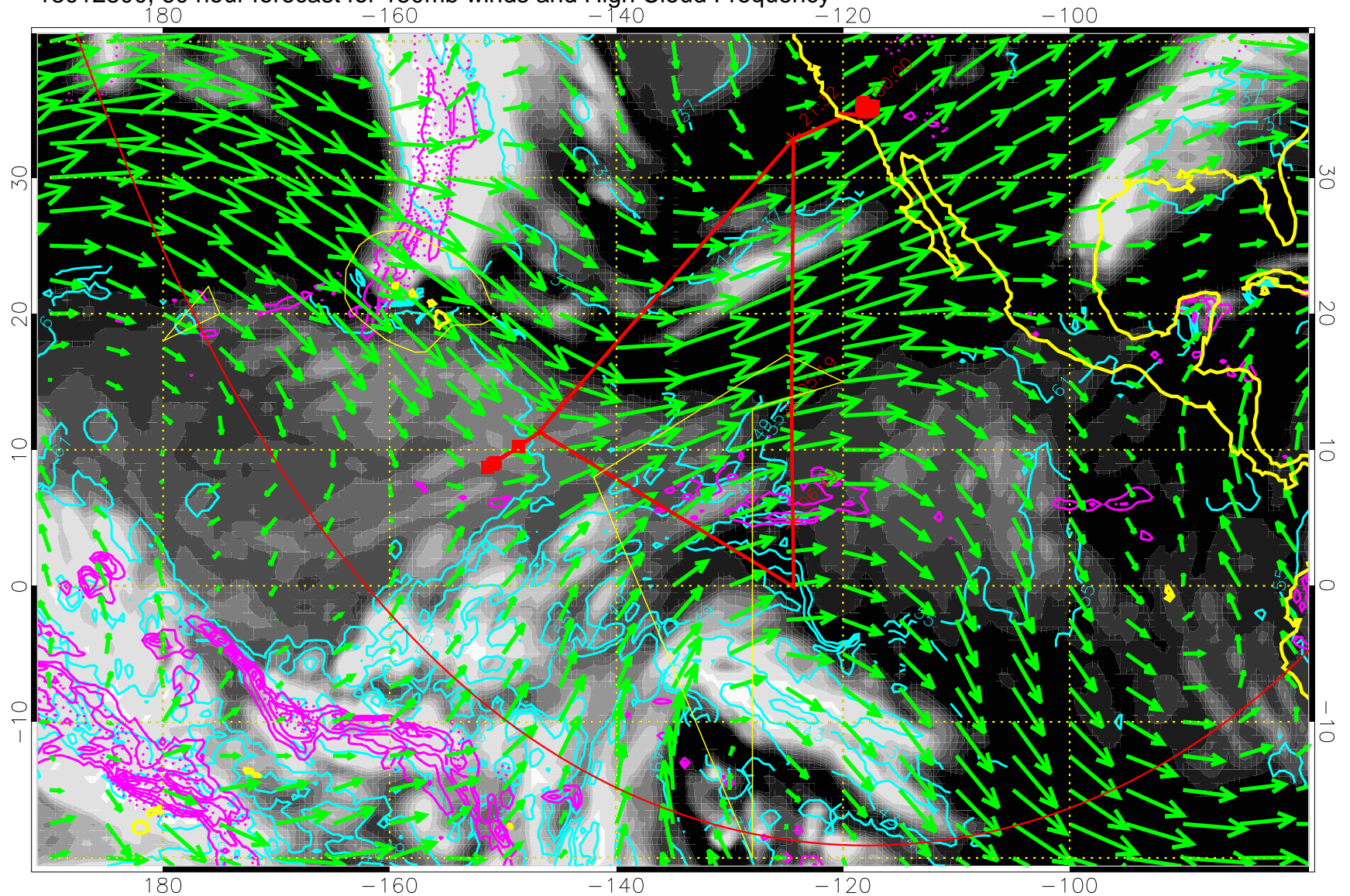
High Cloud Altitude from 37 kft at 6 kft intervals
Precip (tot dot, conv sol) past 6 hrs 6 kg/m² contours, min 4

→ 50 m/s
Range ring of 6000 km -- 19 hours GH round trip

13012718, 54 hour forecast for 150mb winds and High Cloud Frequency



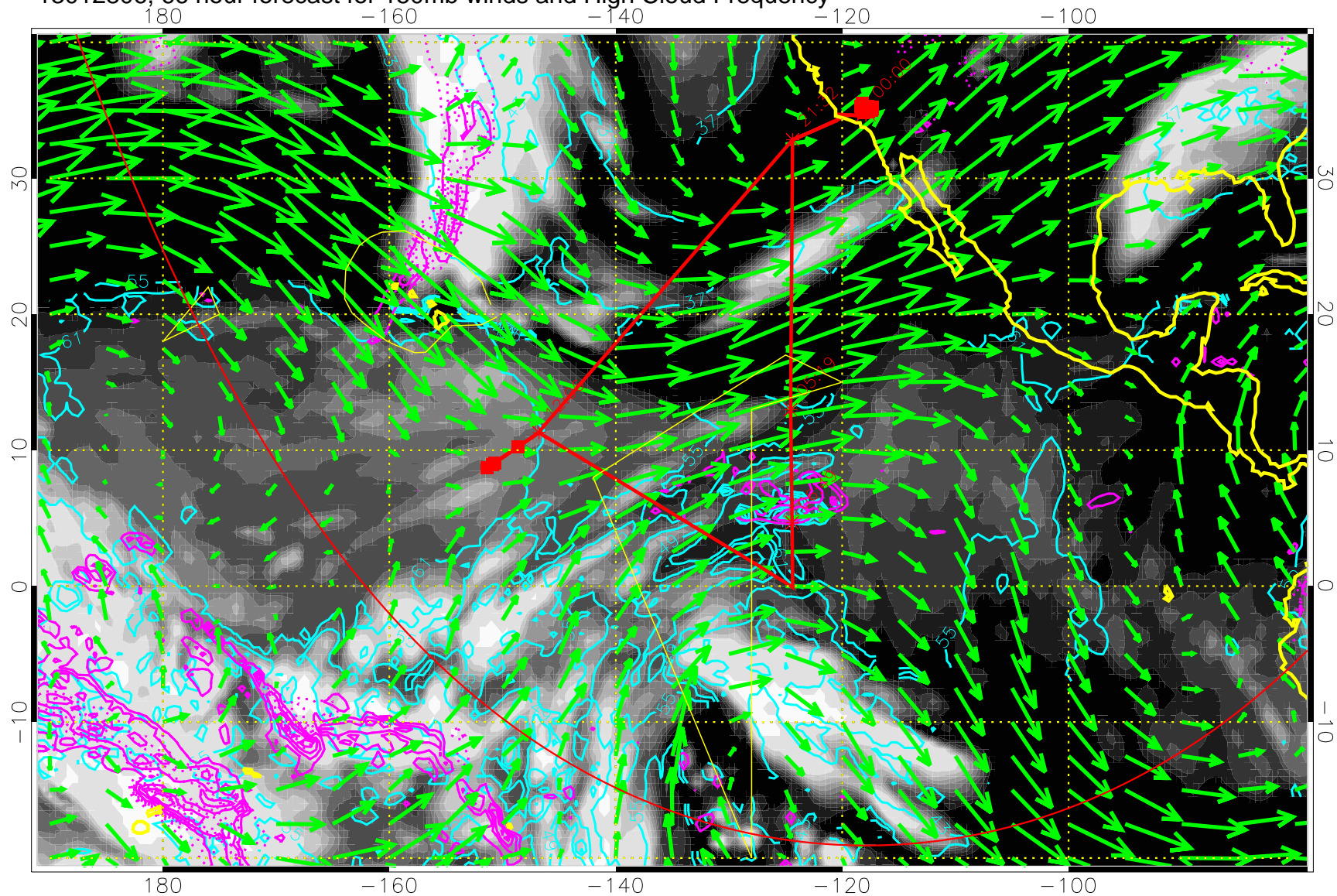
13012800, 60 hour forecast for 150mb winds and High Cloud Frequency



High Cloud Altitude from 37 kft at 6 kft intervals
Precip (tot dot, conv sol) past 6 hrs 6 kg/m2 contours, min 4

→ 50 m/s
Range ring of 6000 km -- 19 hours GH round trip

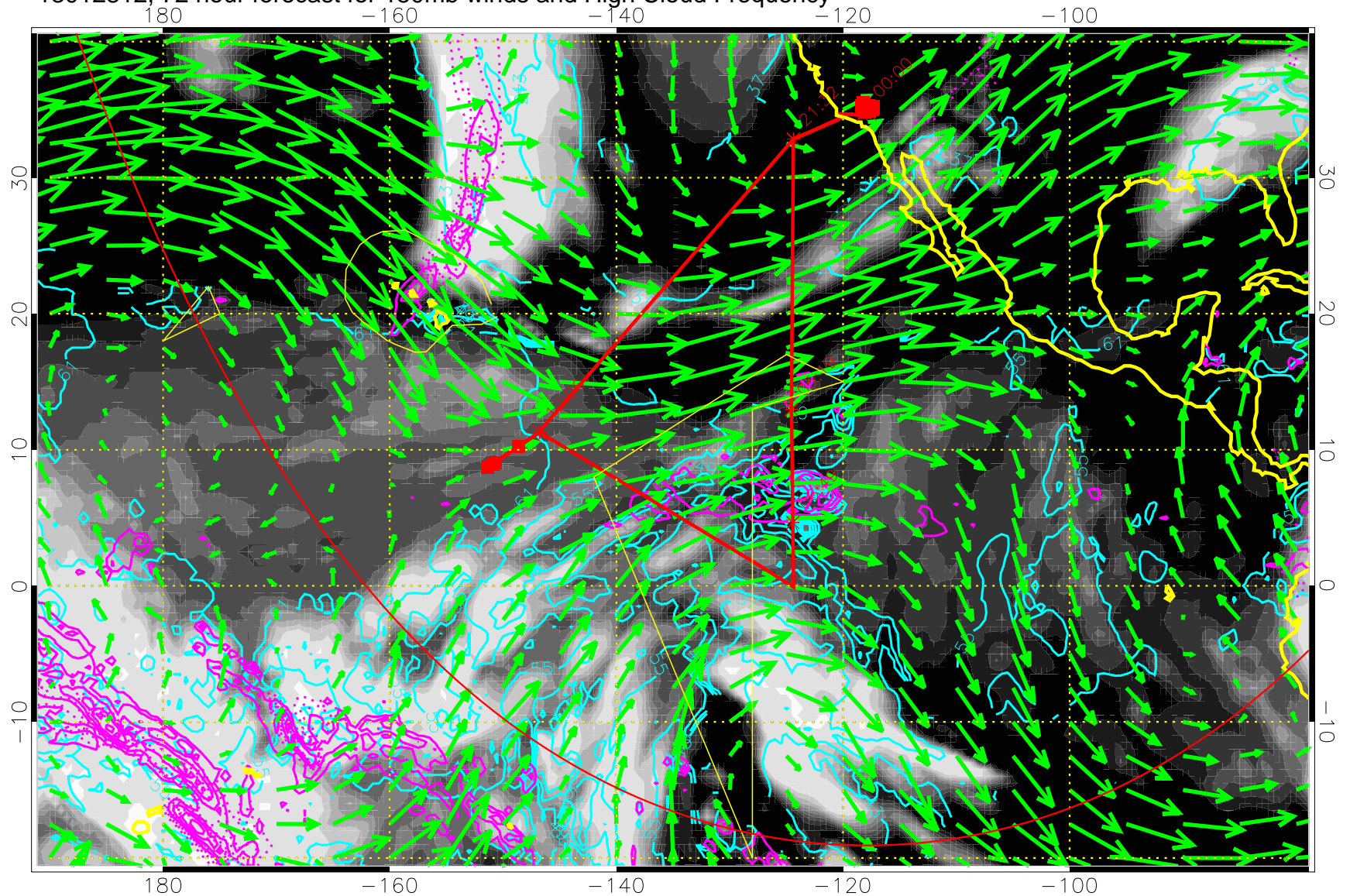
13012806, 66 hour forecast for 150mb winds and High Cloud Frequency



High Cloud Altitude from 37 kft at 6 kft intervals
Precip (tot dot, conv sol) past 6 hrs 6 kg/m2 contours, min 4

→ 50 m/s
Range ring of 6000 km -- 19 hours GH round trip

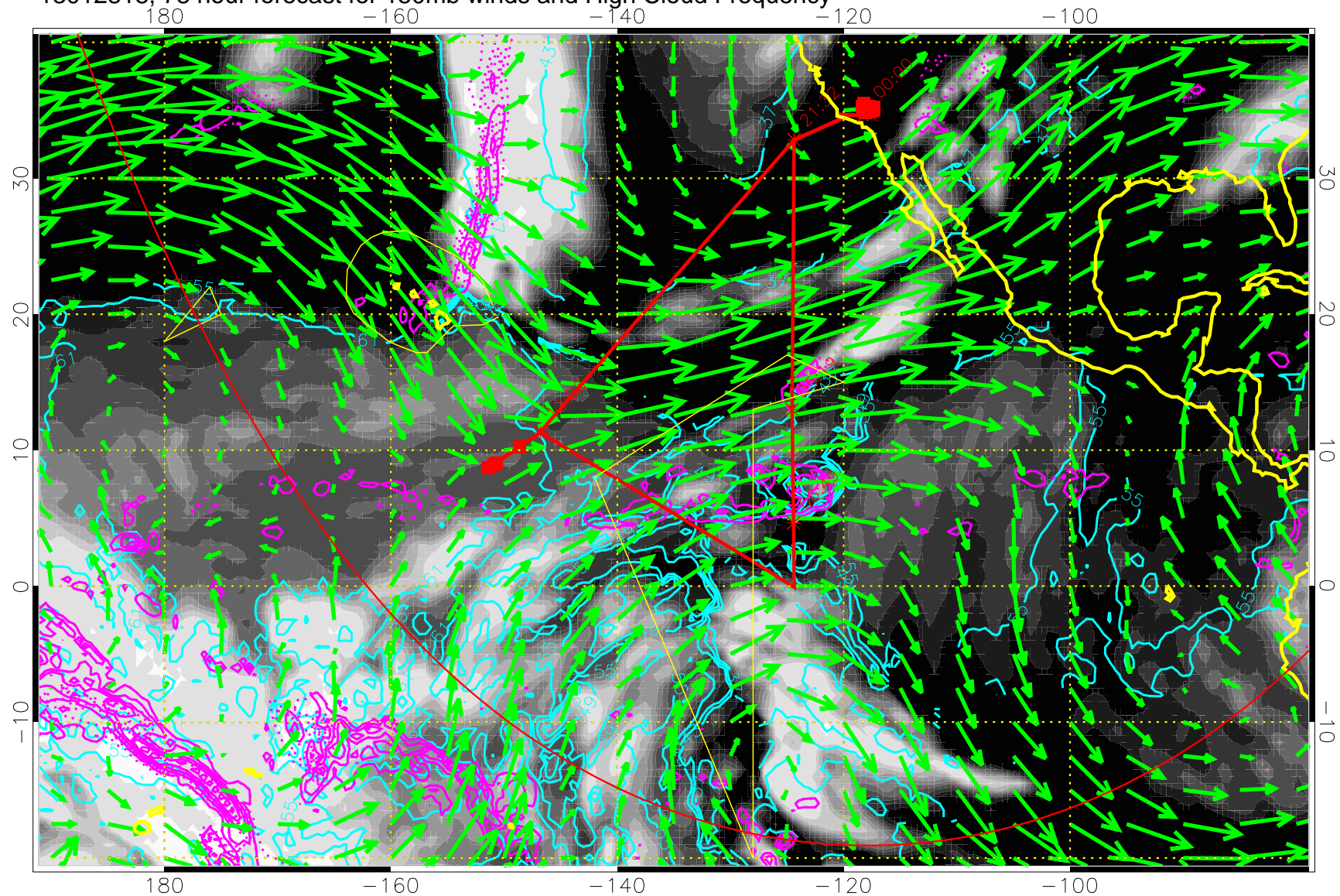
13012812, 72 hour forecast for 150mb winds and High Cloud Frequency



High Cloud Altitude from 37 kft at 6 kft intervals
Precip (tot dot, conv sol) past 6 hrs 6 kg/m² contours, min 4

→ 50 m/s
Range ring of 6000 km -- 19 hours GH round trip

13012818, 78 hour forecast for 150mb winds and High Cloud Frequency

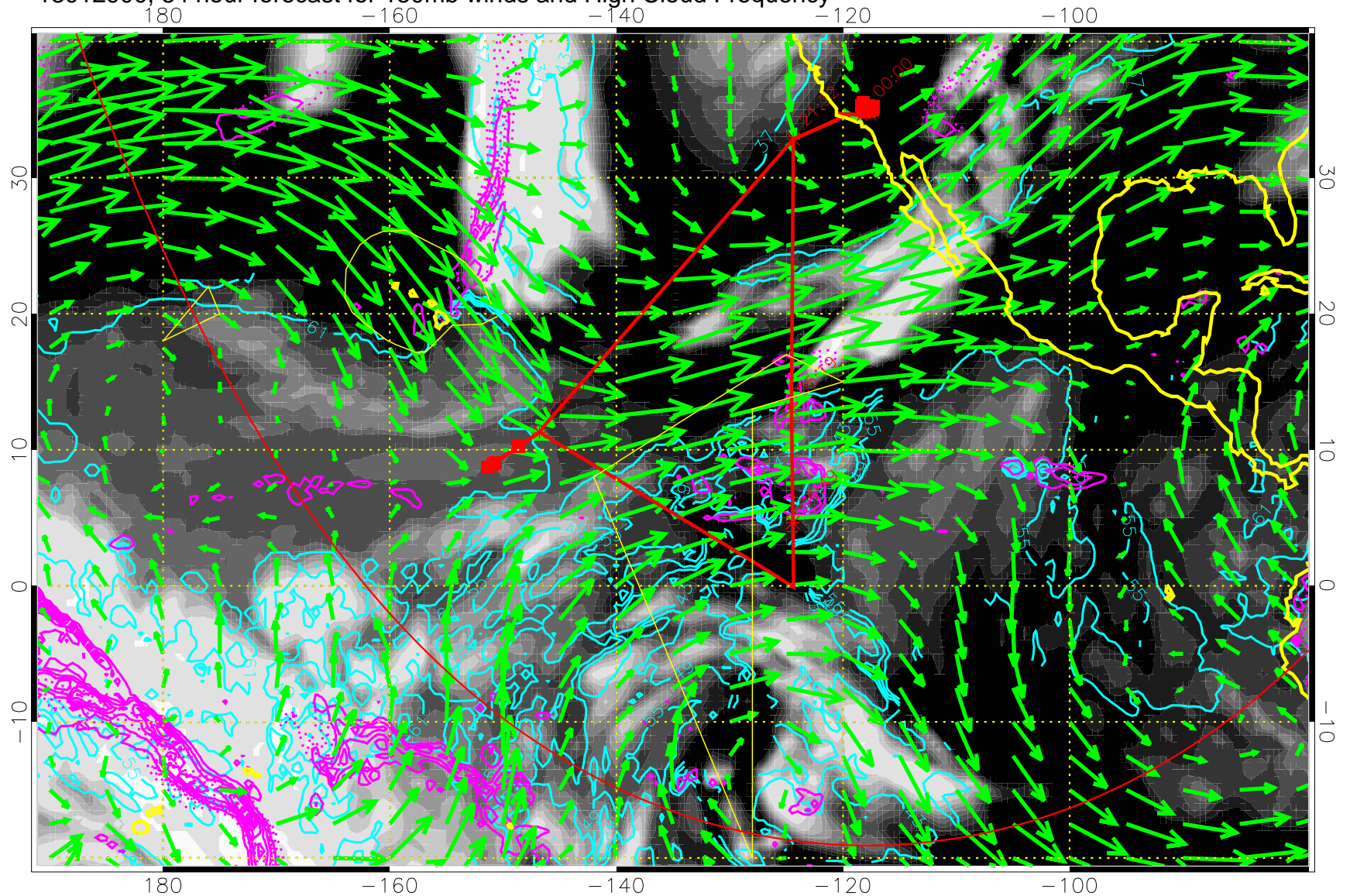


High Cloud Altitude from 37 kft at 6 kft intervals
Precip (tot dot, conv sol) past 6 hrs 6 kg/m² contours, min 4

→ 50 m/s

Range ring of 6000 km -- 19 hours GH round trip

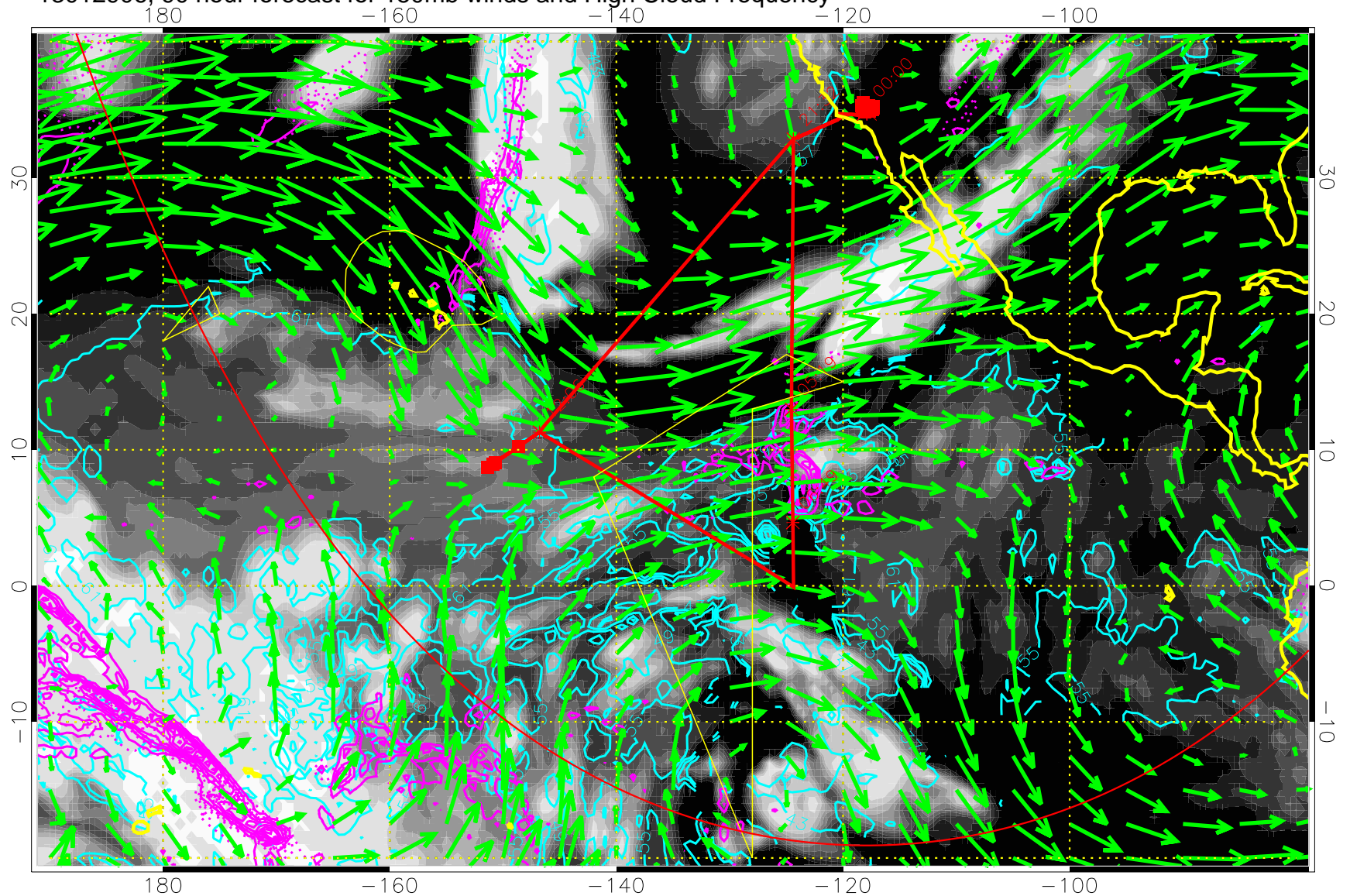
13012900, 84 hour forecast for 150mb winds and High Cloud Frequency



High Cloud Altitude from 37 kft at 6 kft intervals
Precip (tot dot, conv sol) past 6 hrs 6 kg/m2 contours, min 4

→ 50 m/s
Range ring of 6000 km -- 19 hours GH round trip

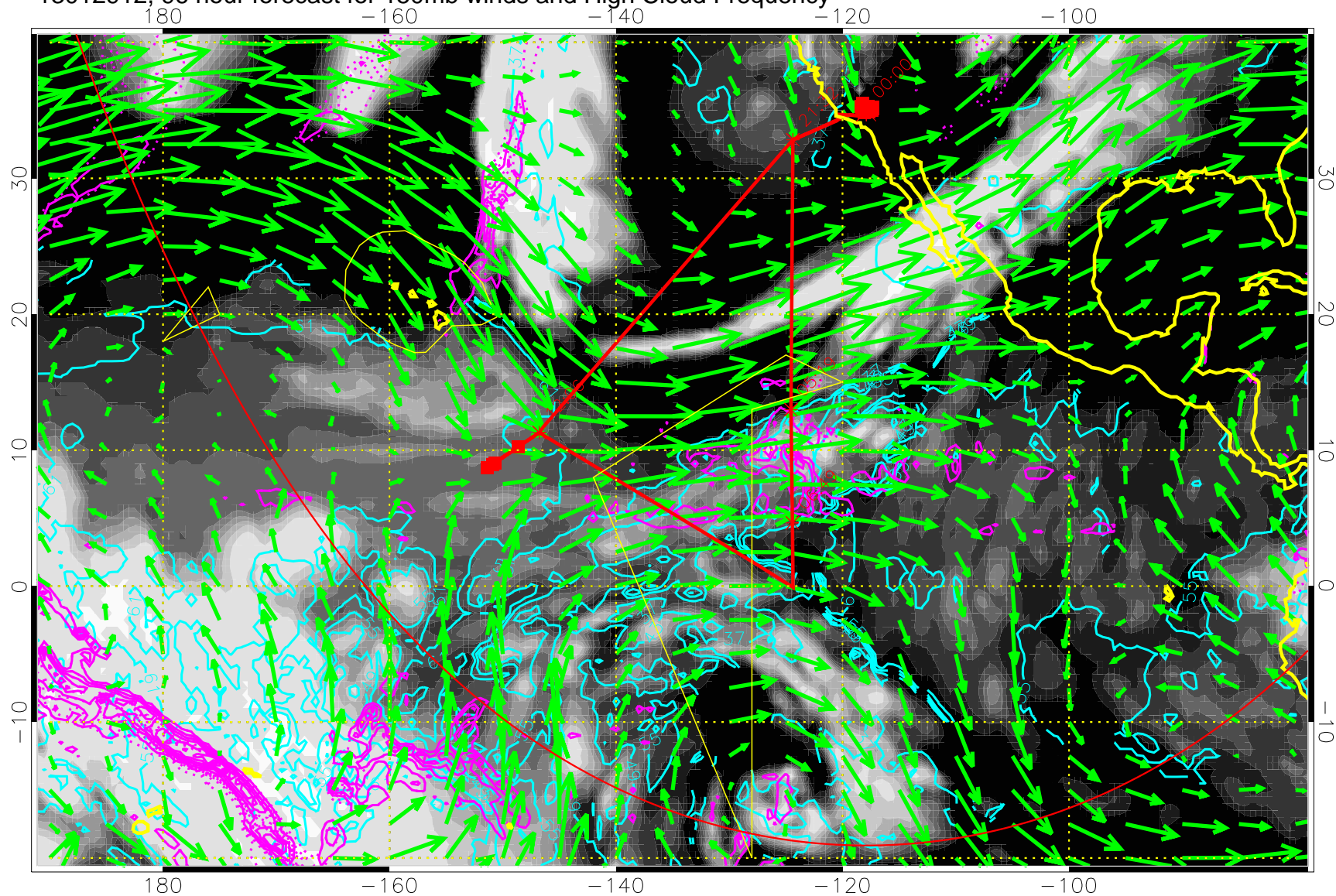
13012906, 90 hour forecast for 150mb winds and High Cloud Frequency



High Cloud Altitude from 37 kft at 6 kft intervals
Precip (tot dot, conv sol) past 6 hrs 6 kg/m² contours, min 4

→ 50 m/s
Range ring of 6000 km -- 19 hours GH round trip

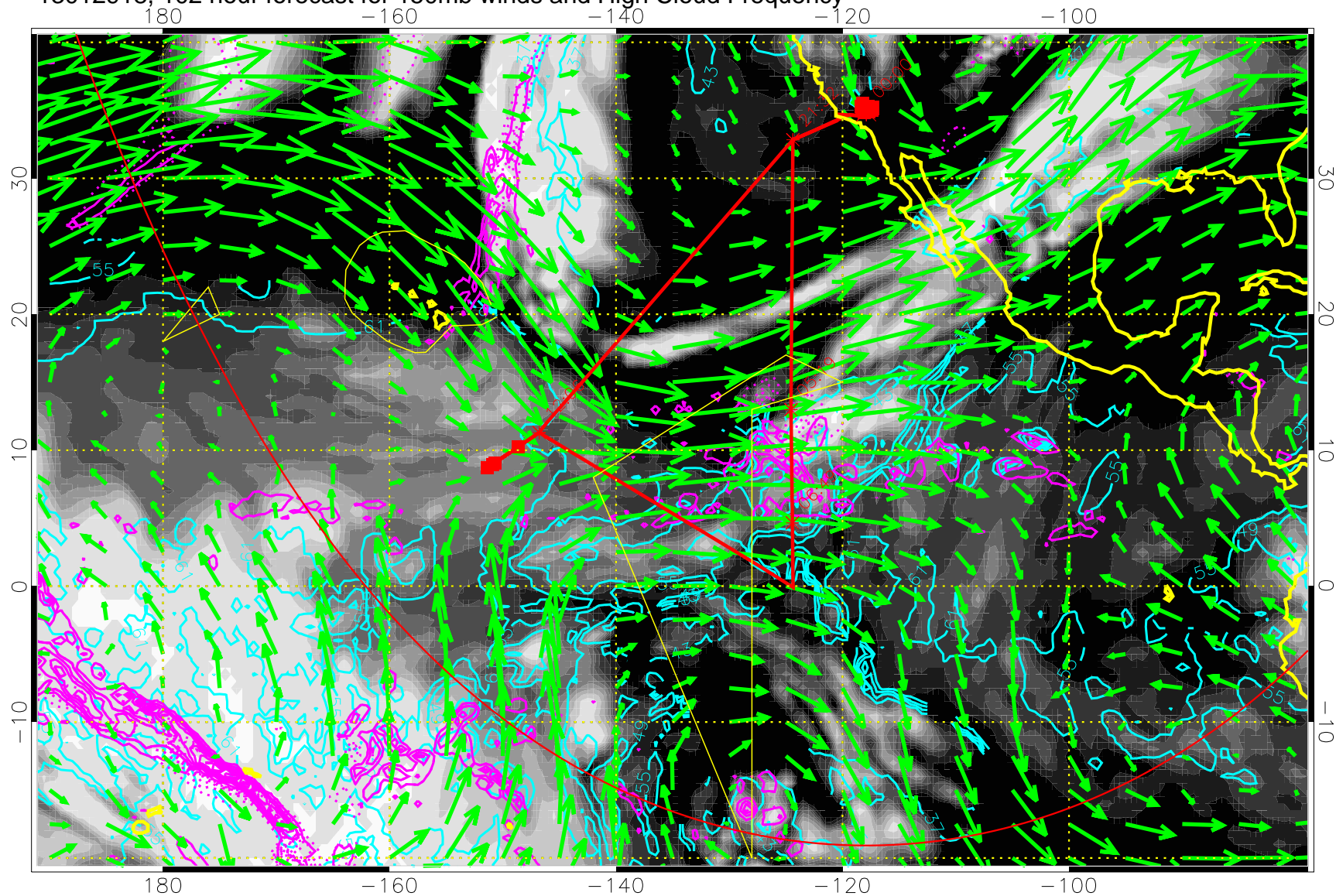
13012912, 96 hour forecast for 150mb winds and High Cloud Frequency



High Cloud Altitude from 37 kft at 6 kft intervals
Precip (tot dot, conv sol) past 6 hrs 6 kg/m2 contours, min 4

→ 50 m/s
Range ring of 6000 km -- 19 hours GH round trip

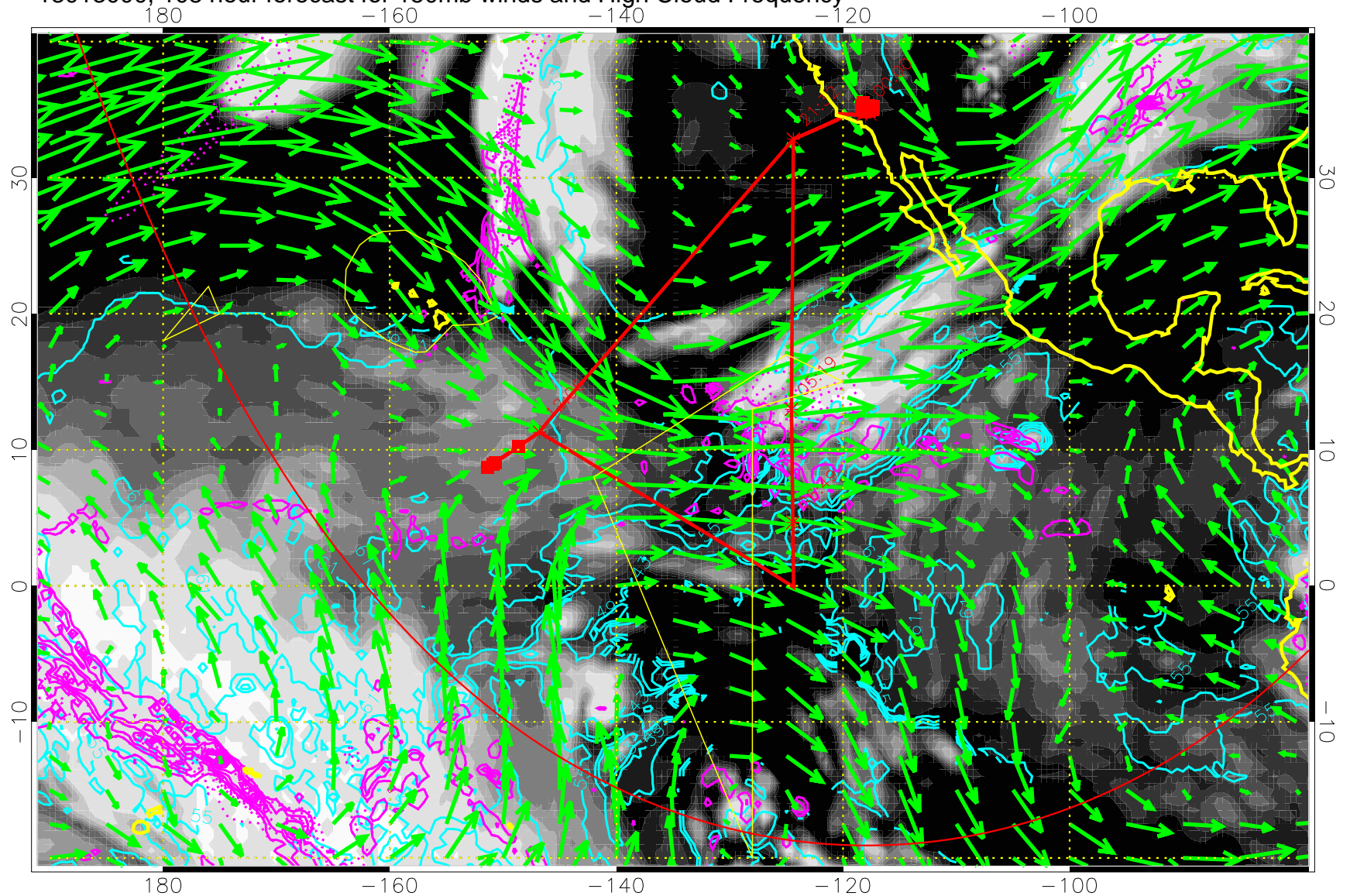
13012918, 102 hour forecast for 150mb winds and High Cloud Frequency



High Cloud Altitude from 37 kft at 6 kft intervals
Precip (tot dot, conv sol) past 6 hrs 6 kg/m² contours, min 4

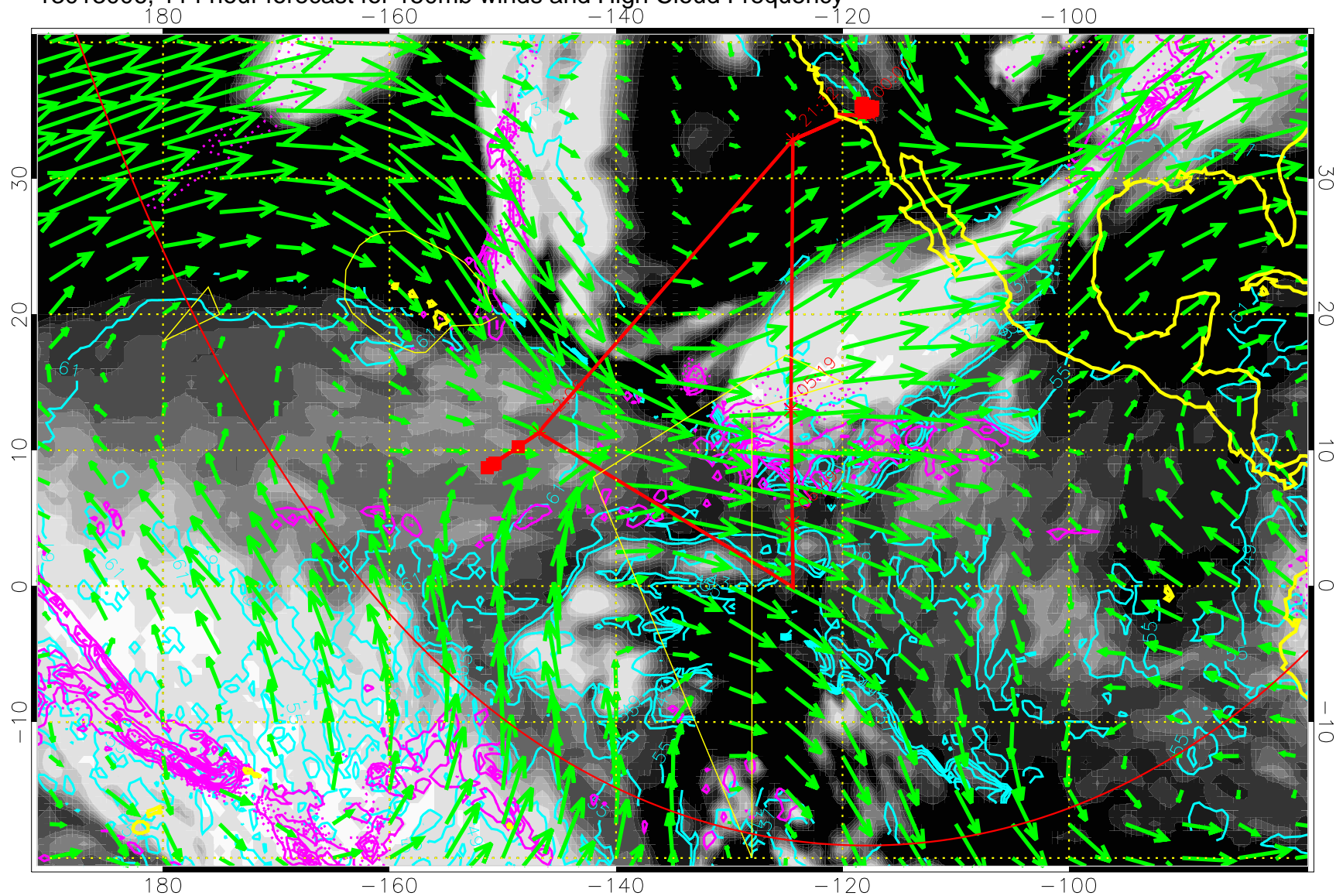
→ 50 m/s
Range ring of 6000 km -- 19 hours GH round trip

13013000, 108 hour forecast for 150mb winds and High Cloud Frequency



- High Cloud Altitude from 37 kft at 6 kft intervals
- Precip (tot dot, conv sol) past 6 hrs 6 kg/m2 contours, min 4
- 50 m/s
- Range ring of 6000 km -- 19 hours GH round trip

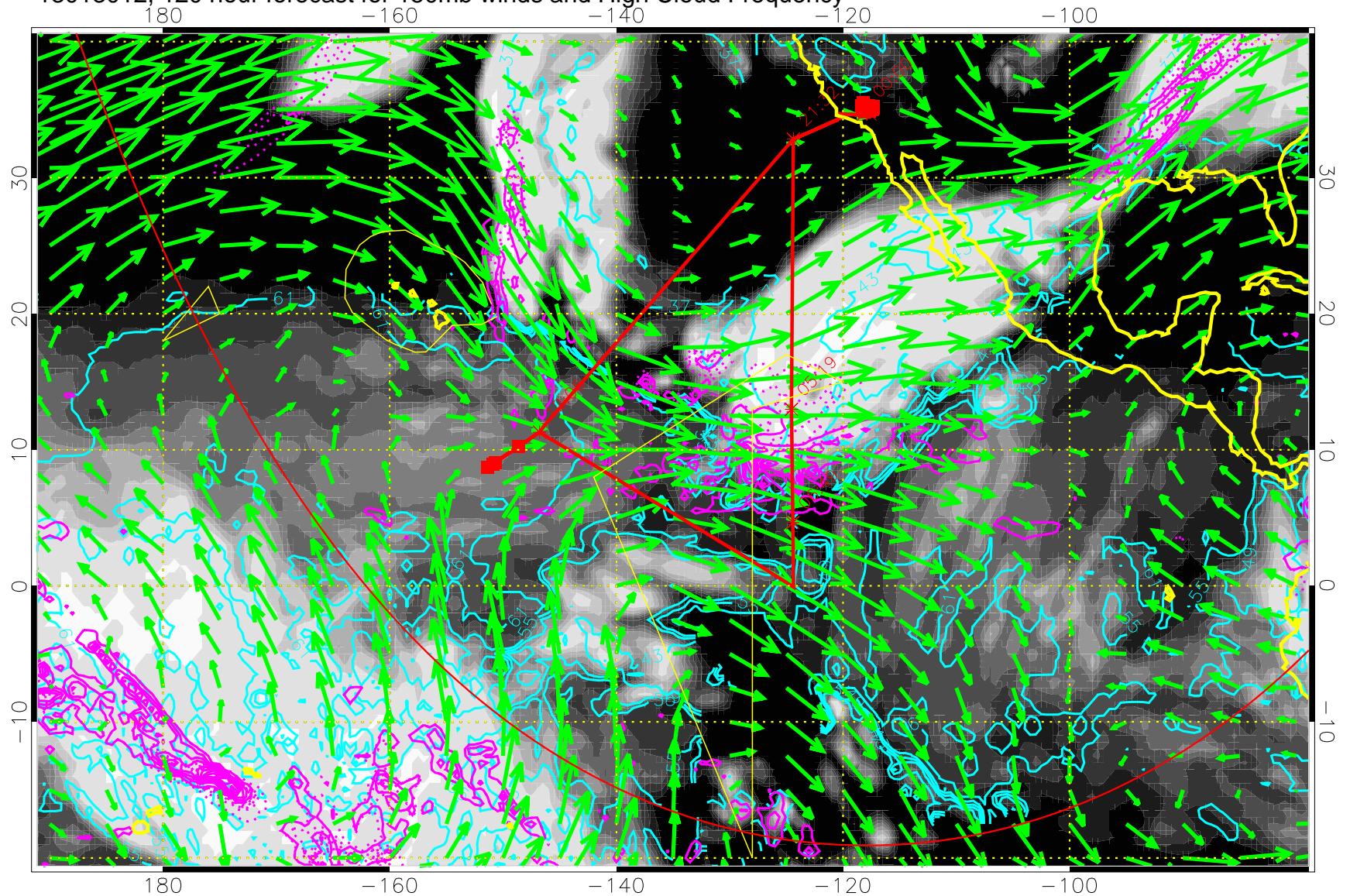
13013006, 114 hour forecast for 150mb winds and High Cloud Frequency



High Cloud Altitude from 37 kft at 6 kft intervals
Precip (tot dot, conv sol) past 6 hrs 6 kg/m2 contours, min 4

→ 50 m/s
Range ring of 6000 km -- 19 hours GH round trip

13013012, 120 hour forecast for 150mb winds and High Cloud Frequency



High Cloud Altitude from 37 kft at 6 kft intervals
Precip (tot dot, conv sol) past 6 hrs 6 kg/m2 contours, min 4

→ 50 m/s
Range ring of 6000 km -- 19 hours GH round trip