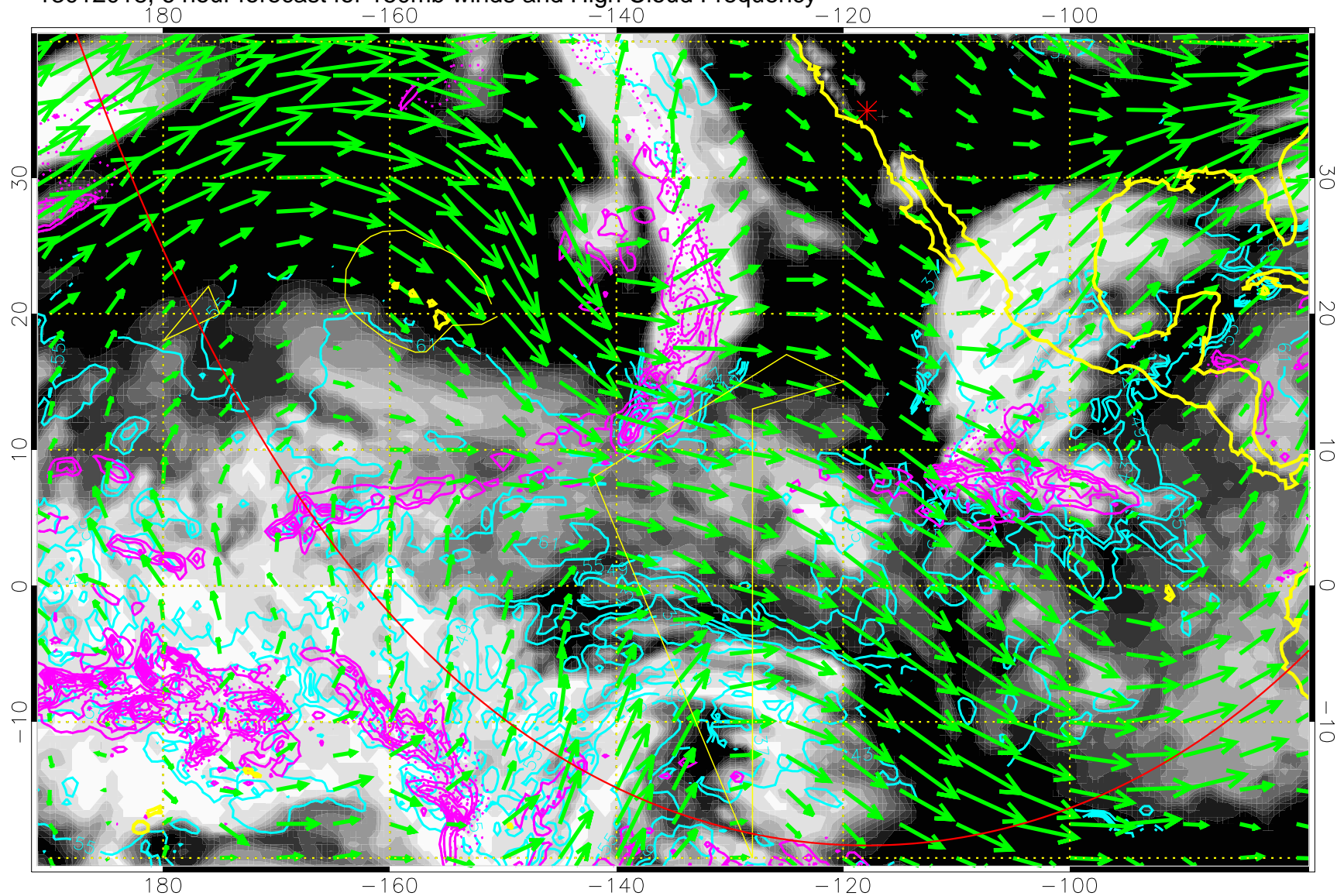


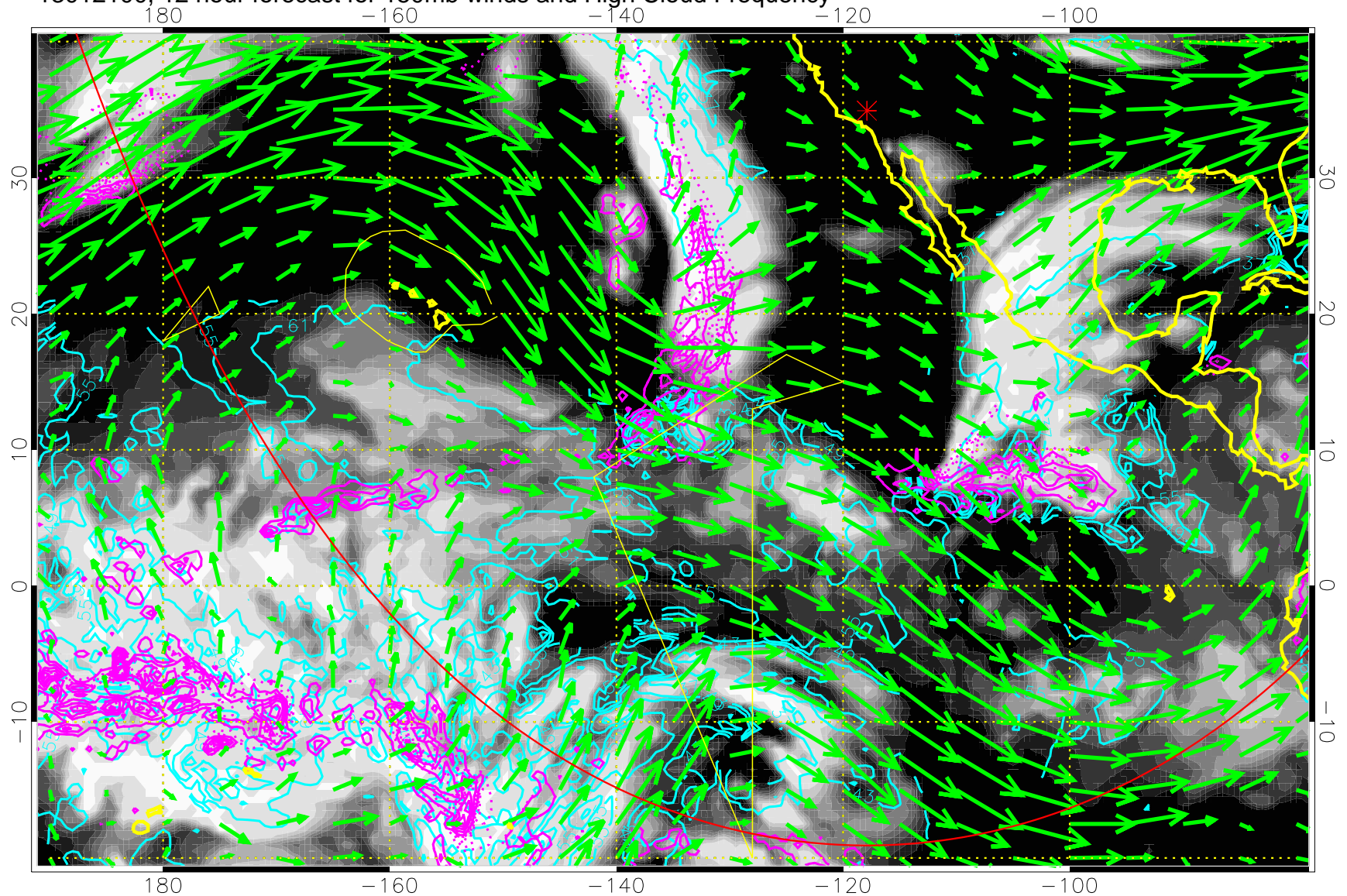
13012018, 6 hour forecast for 150mb winds and High Cloud Frequency



High Cloud Altitude from 37 kft at 6 kft intervals  
Precip (tot dot, conv sol) past 6 hrs 6 kg/m2 contours, min 4

→ 50 m/s  
Range ring of 6000 km -- 19 hours GH round trip

13012100, 12 hour forecast for 150mb winds and High Cloud Frequency

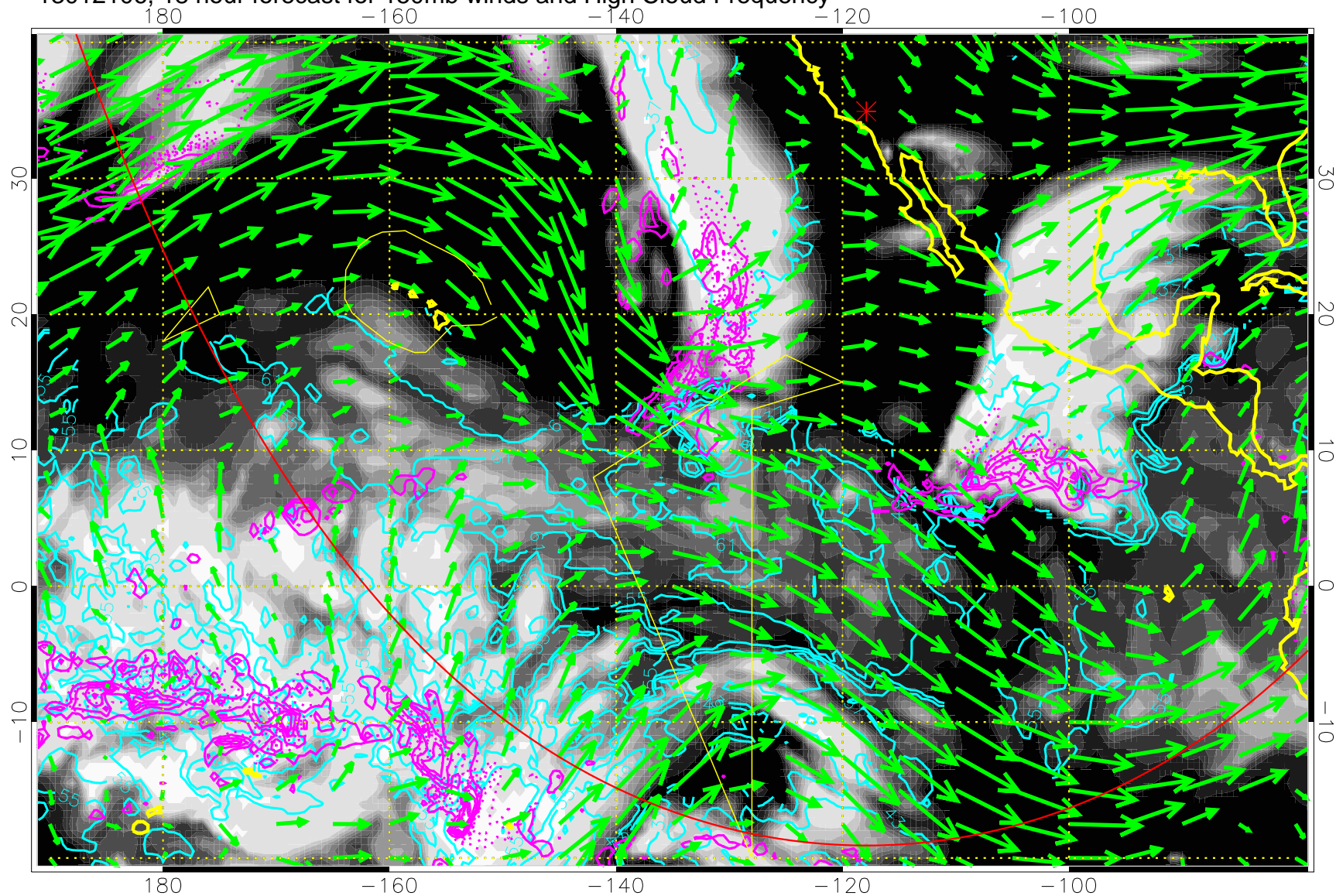


High Cloud Altitude from 37 kft at 6 kft intervals  
Precip (tot dot, conv sol) past 6 hrs 6 kg/m2 contours, min 4

→ 50 m/s  
Range ring of 6000 km -- 19 hours GH round trip



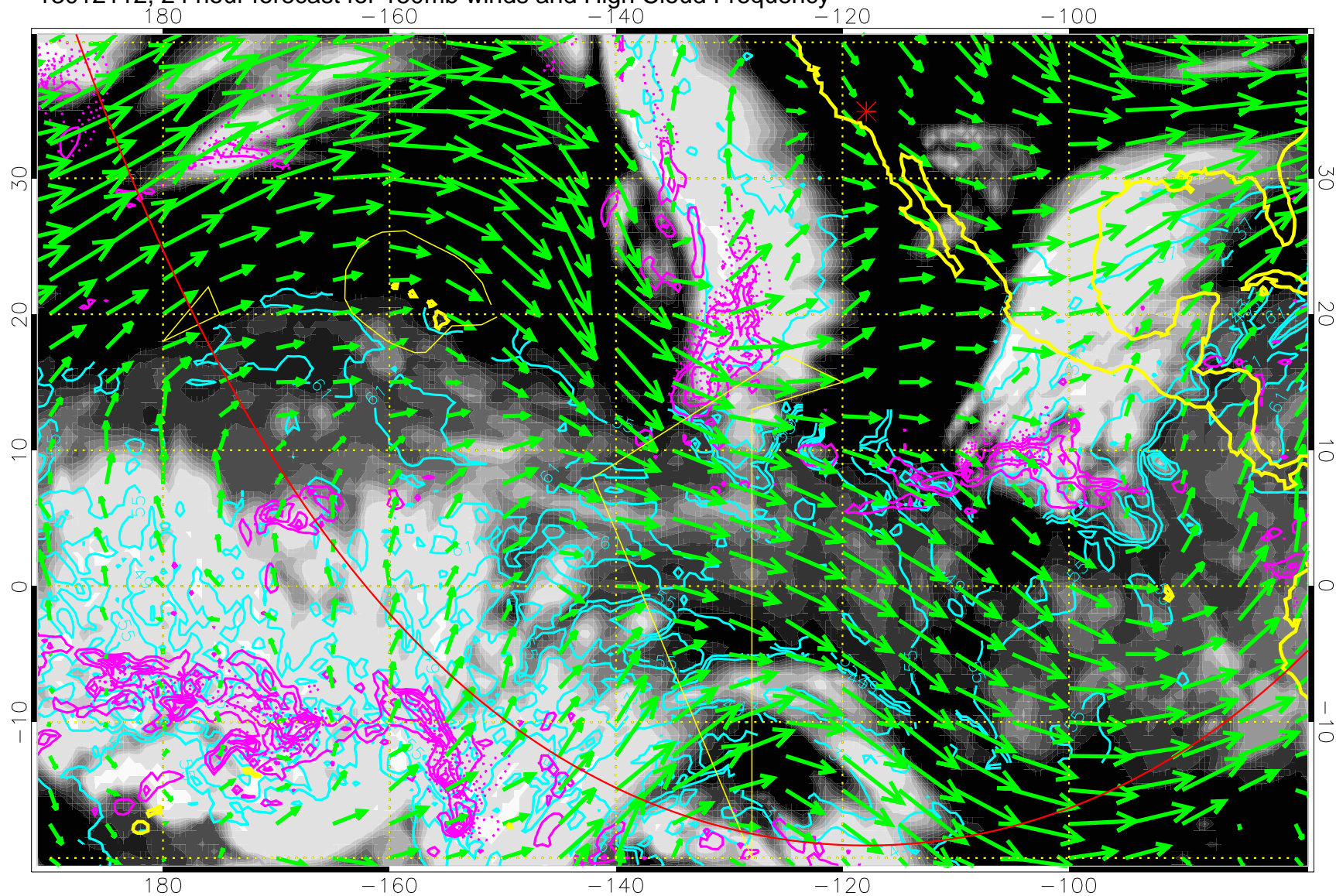
13012106, 18 hour forecast for 150mb winds and High Cloud Frequency



High Cloud Altitude from 37 kft at 6 kft intervals  
Precip (tot dot, conv sol) past 6 hrs 6 kg/m2 contours, min 4

→ 50 m/s  
Range ring of 6000 km -- 19 hours GH round trip

13012112, 24 hour forecast for 150mb winds and High Cloud Frequency

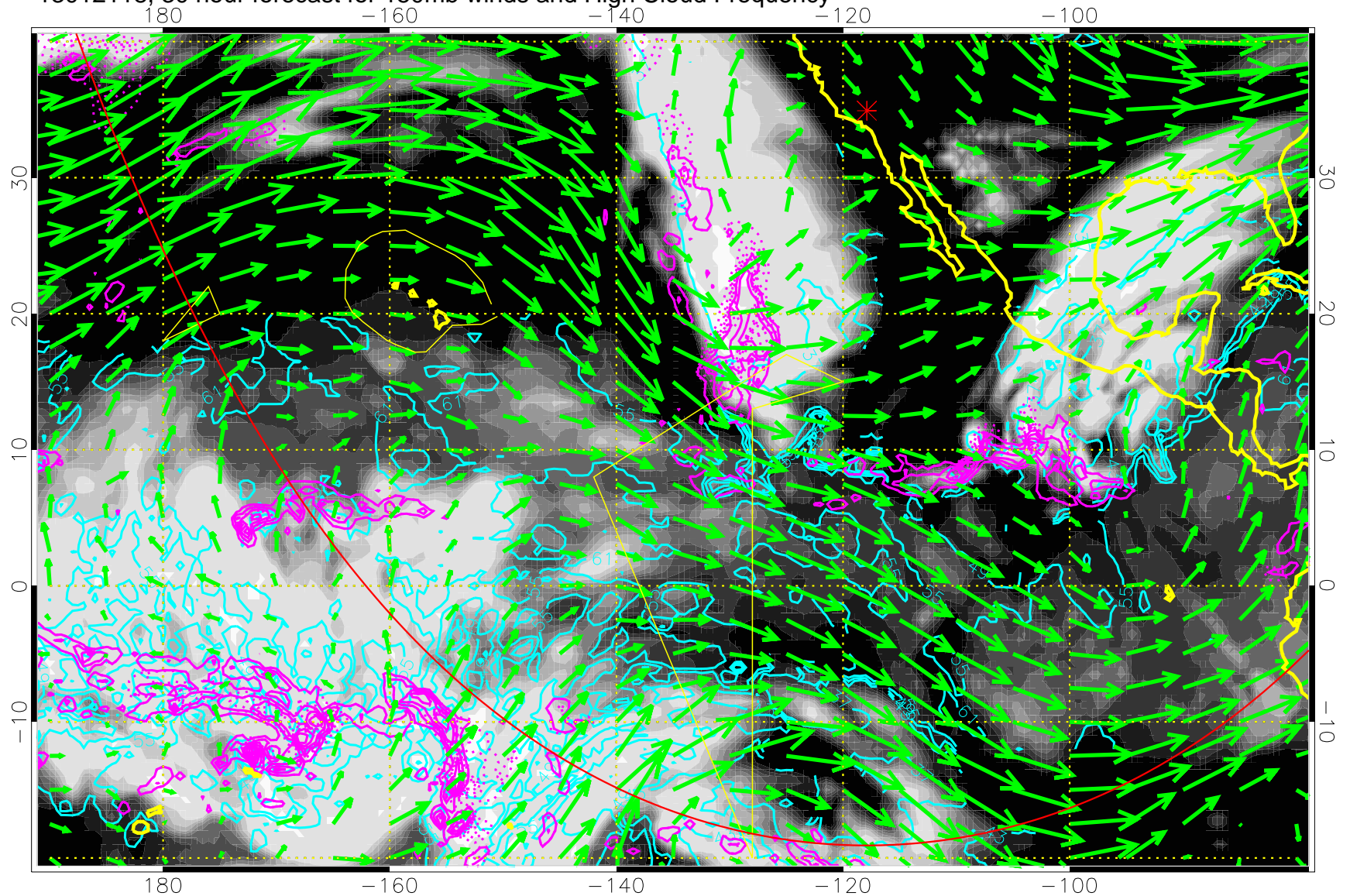


High Cloud Altitude from 37 kft at 6 kft intervals  
Precip (tot dot, conv sol) past 6 hrs 6 kg/m2 contours, min 4

→ 50 m/s  
Range ring of 6000 km -- 19 hours GH round trip



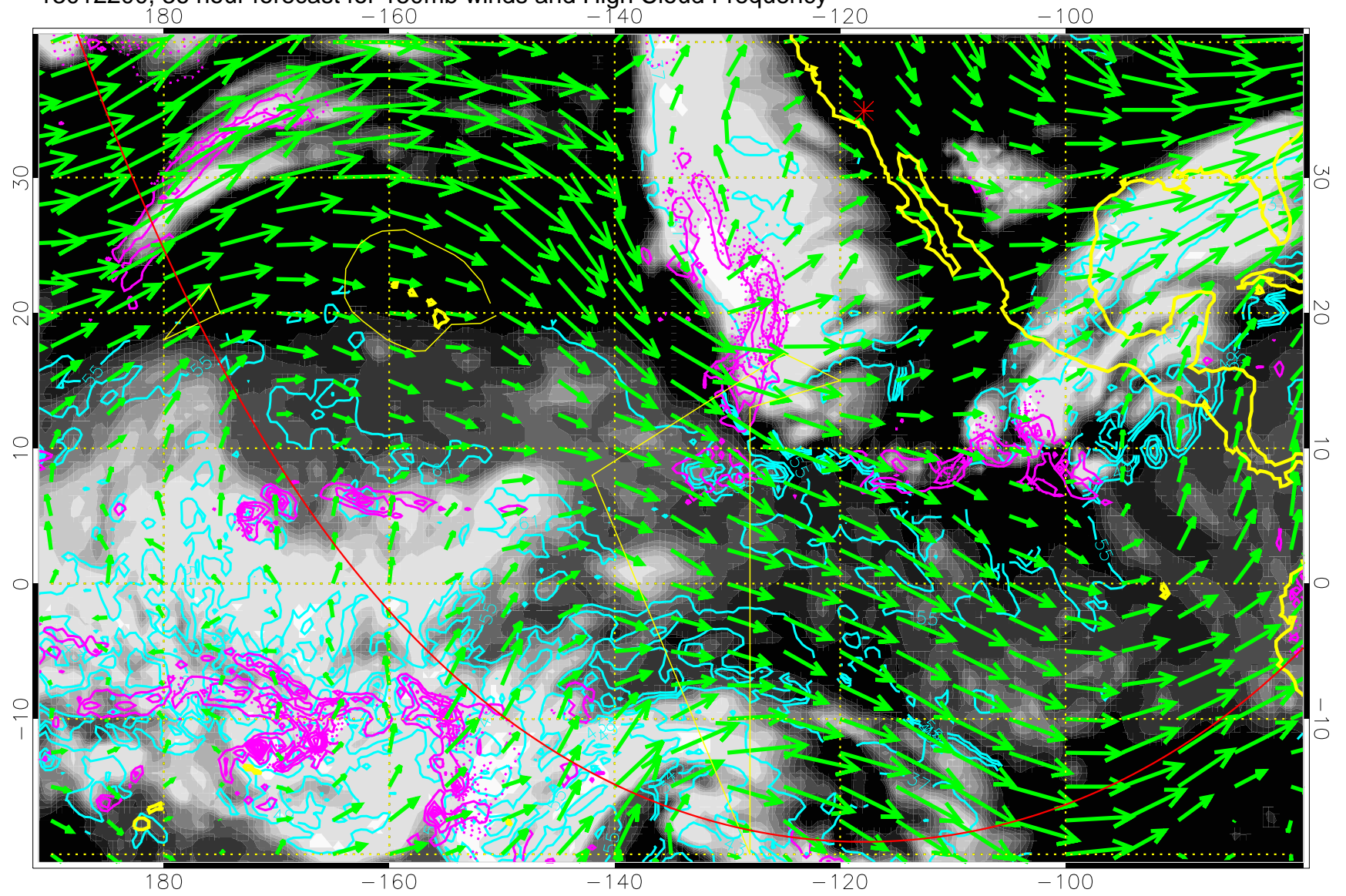
13012118, 30 hour forecast for 150mb winds and High Cloud Frequency



High Cloud Altitude from 37 kft at 6 kft intervals  
Precip (tot dot, conv sol) past 6 hrs 6 kg/m2 contours, min 4

→ 50 m/s  
Range ring of 6000 km -- 19 hours GH round trip

13012200, 36 hour forecast for 150mb winds and High Cloud Frequency

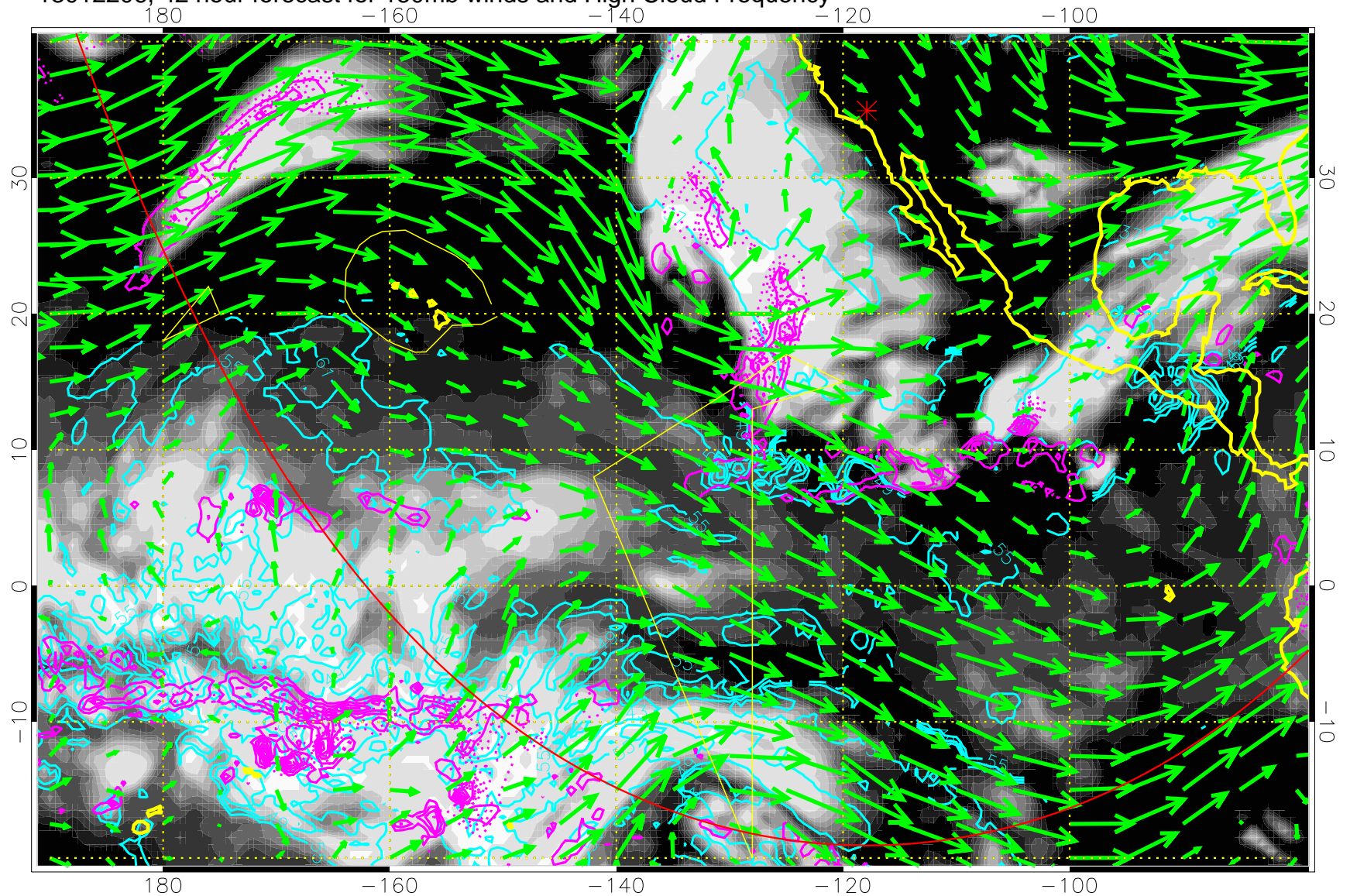


High Cloud Altitude from 37 kft at 6 kft intervals  
Precip (tot dot, conv sol) past 6 hrs 6 kg/m2 contours, min 4

→ 50 m/s  
Range ring of 6000 km -- 19 hours GH round trip



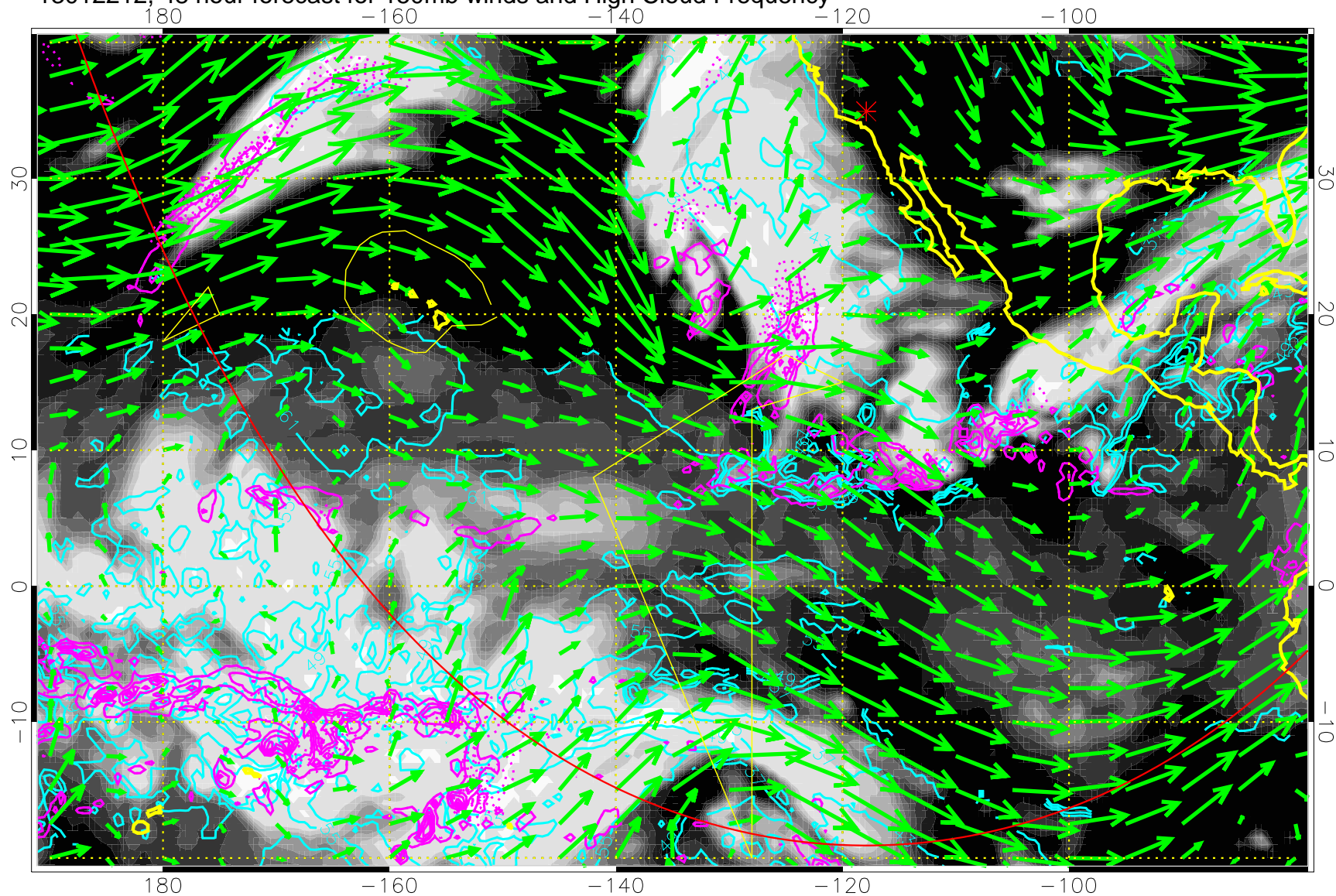
13012206, 42 hour forecast for 150mb winds and High Cloud Frequency



High Cloud Altitude from 37 kft at 6 kft intervals  
Precip (tot dot, conv sol) past 6 hrs 6 kg/m<sup>2</sup> contours, min 4

→ 50 m/s  
Range ring of 6000 km -- 19 hours GH round trip

13012212, 48 hour forecast for 150mb winds and High Cloud Frequency



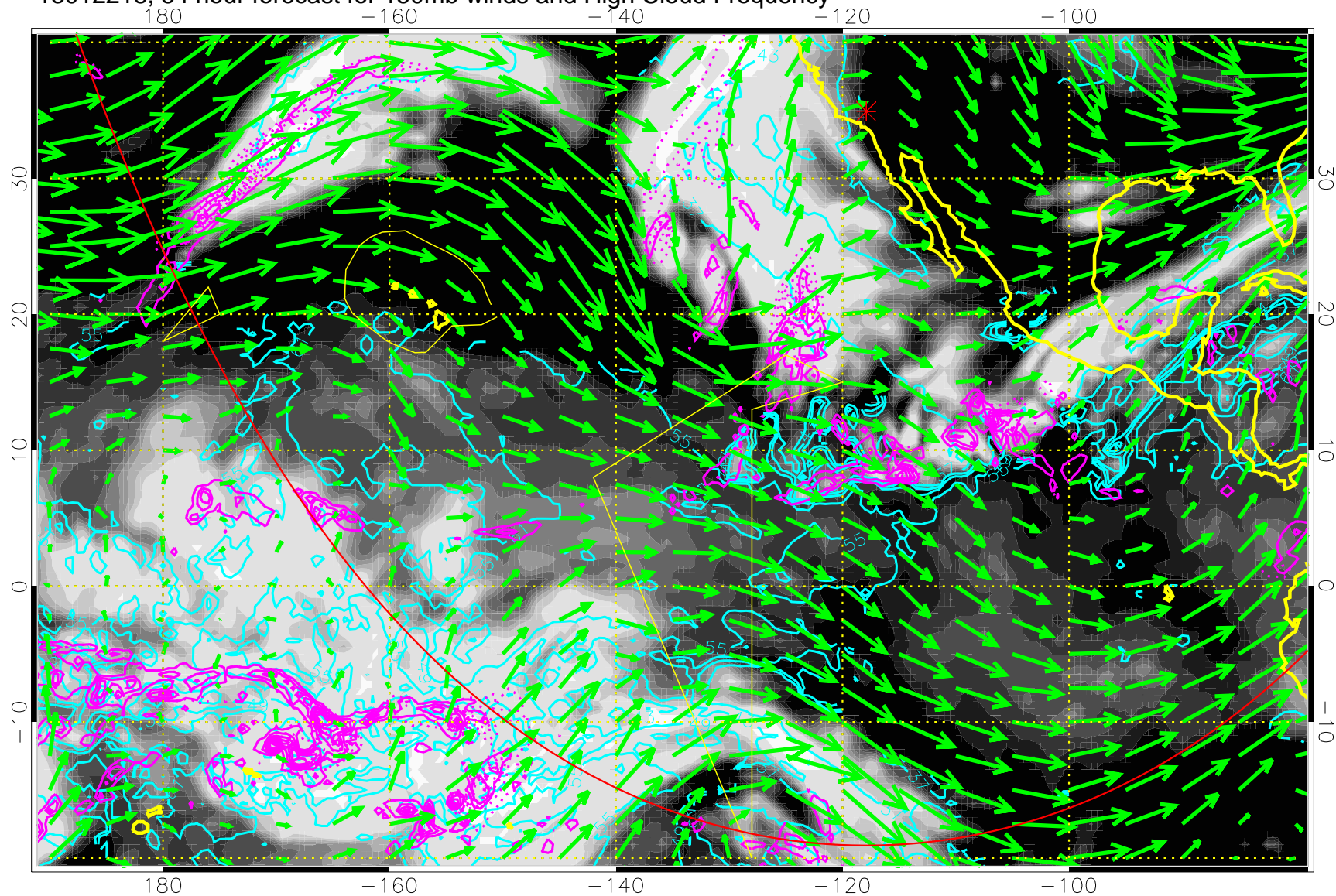
High Cloud Altitude from 37 kft at 6 kft intervals  
Precip (tot dot, conv sol) past 6 hrs 6 kg/m2 contours, min 4

→ 50 m/s

Range ring of 6000 km -- 19 hours GH round trip



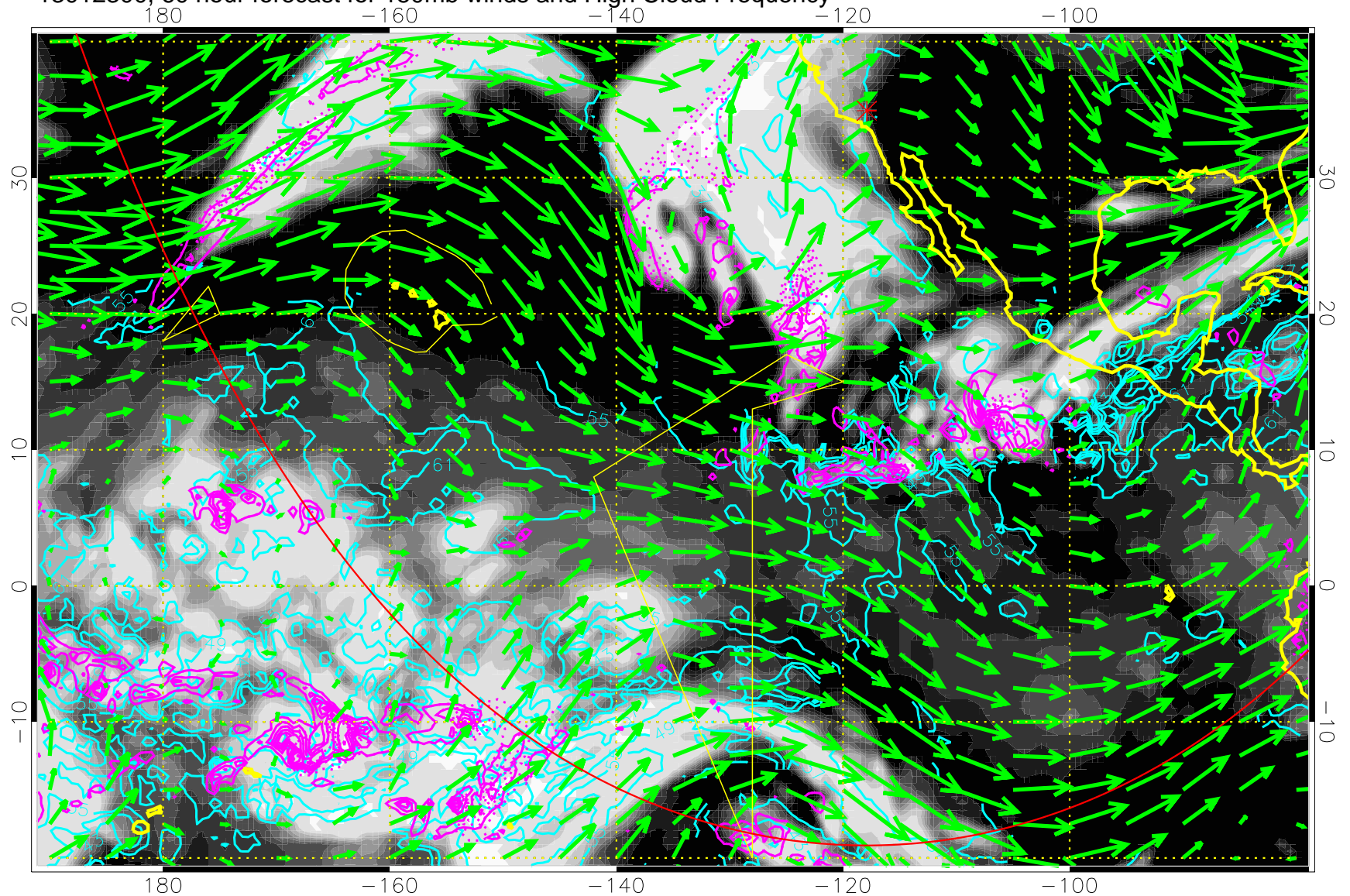
13012218, 54 hour forecast for 150mb winds and High Cloud Frequency



High Cloud Altitude from 37 kft at 6 kft intervals  
Precip (tot dot, conv sol) past 6 hrs 6 kg/m2 contours, min 4

→ 50 m/s  
Range ring of 6000 km -- 19 hours GH round trip

13012300, 60 hour forecast for 150mb winds and High Cloud Frequency

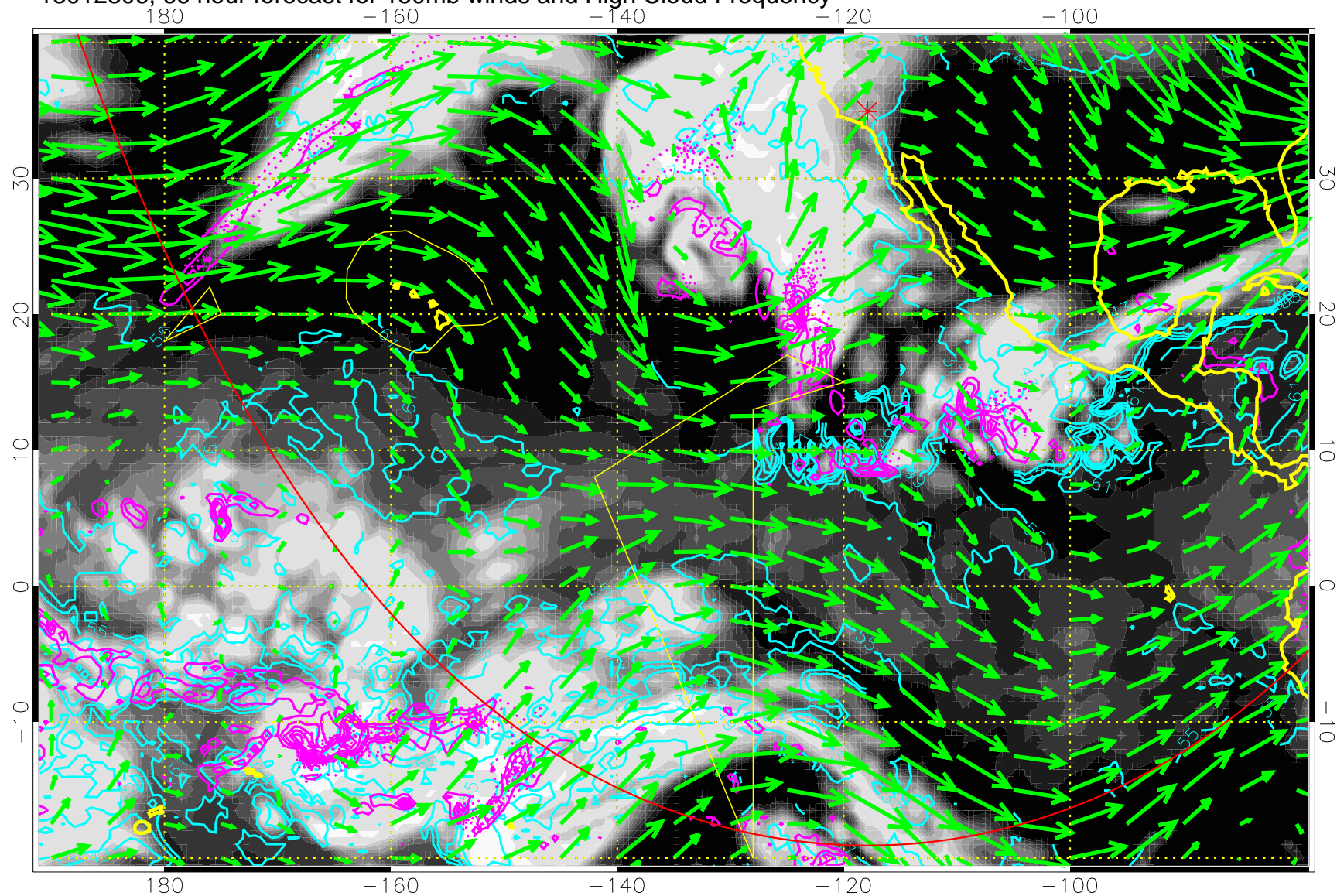


High Cloud Altitude from 37 kft at 6 kft intervals  
Precip (tot dot, conv sol) past 6 hrs 6 kg/m2 contours, min 4

→ 50 m/s  
Range ring of 6000 km -- 19 hours GH round trip



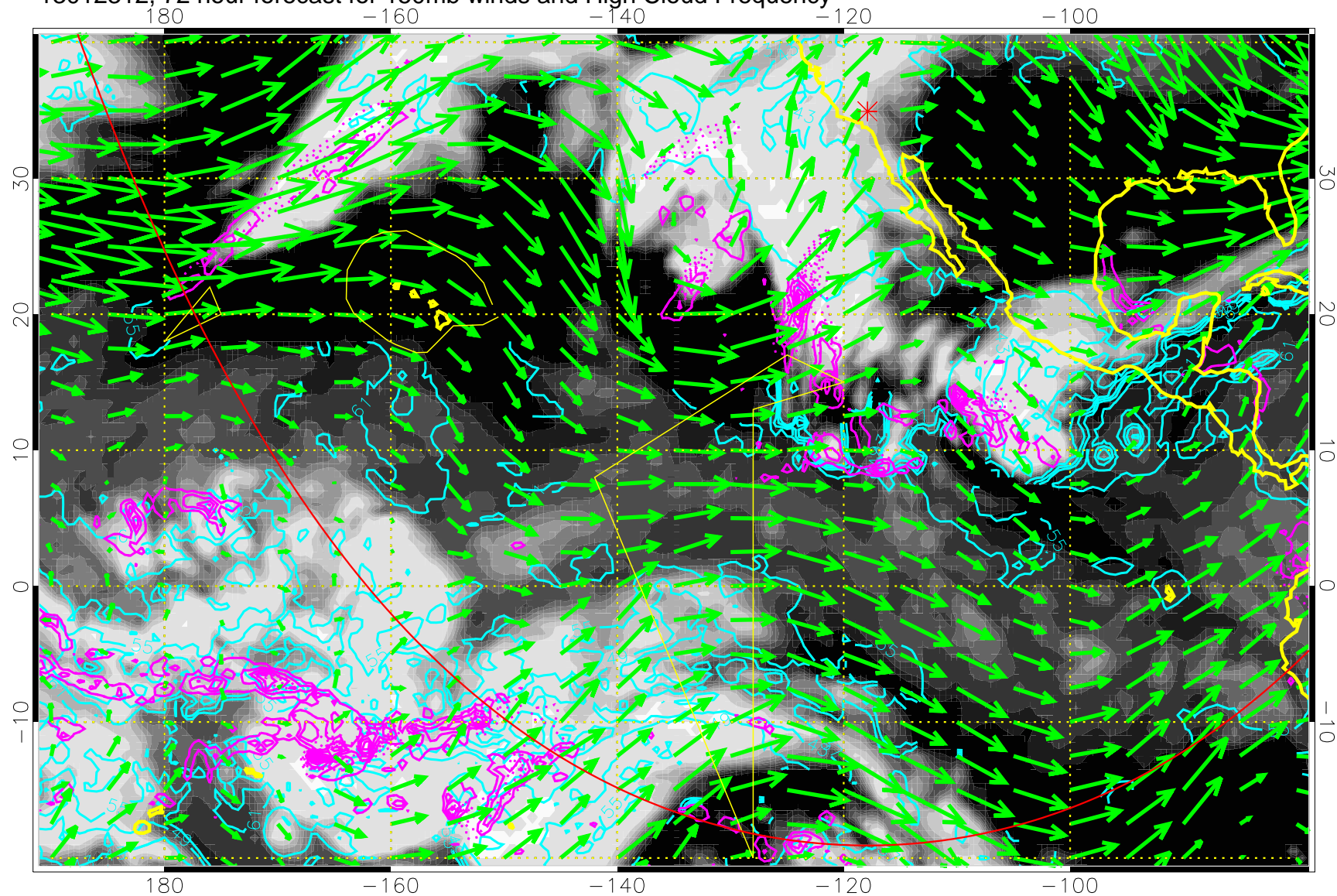
13012306, 66 hour forecast for 150mb winds and High Cloud Frequency



High Cloud Altitude from 37 kft at 6 kft intervals  
Precip (tot dot, conv sol) past 6 hrs 6 kg/m2 contours, min 4

→ 50 m/s  
Range ring of 6000 km -- 19 hours GH round trip

13012312, 72 hour forecast for 150mb winds and High Cloud Frequency

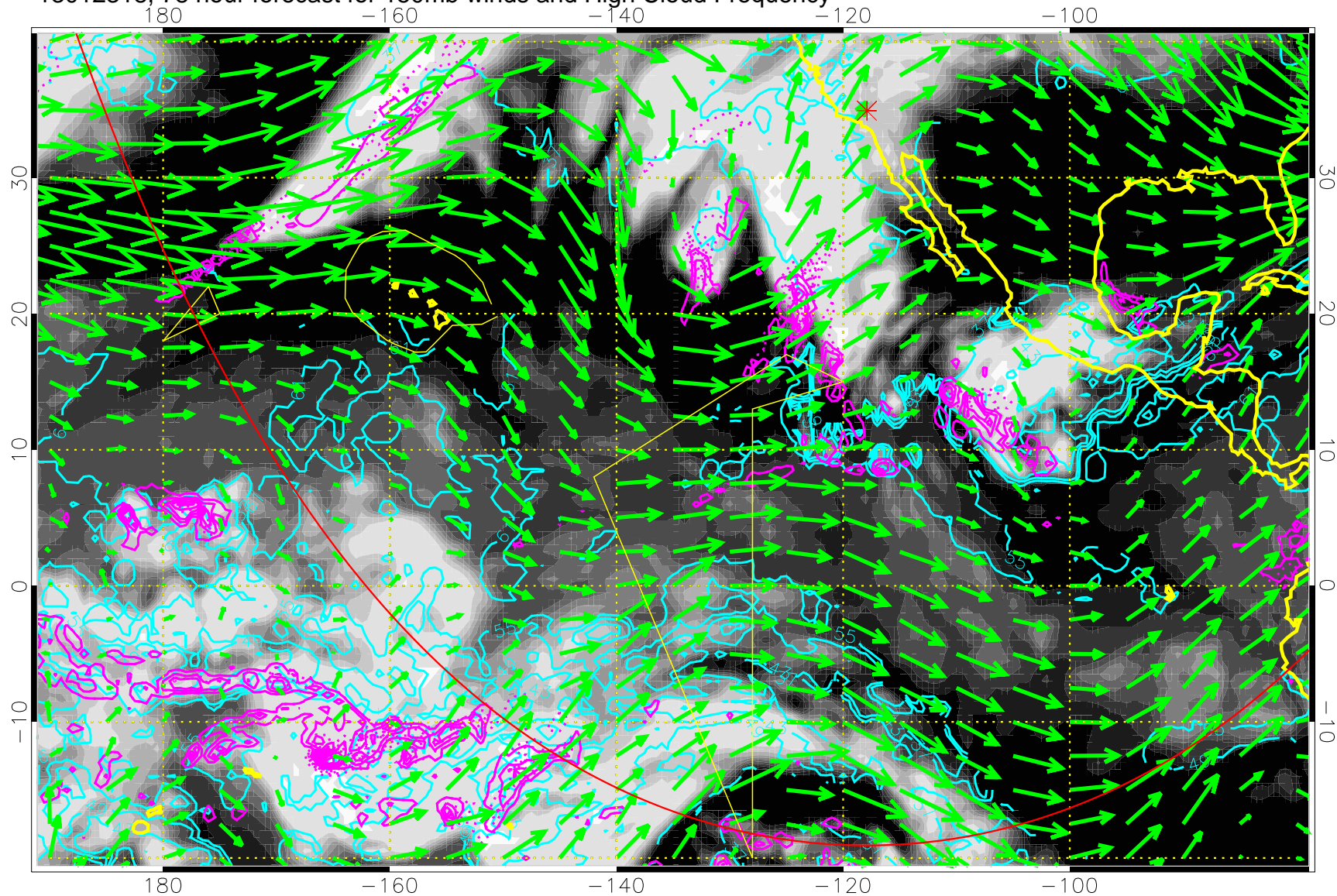


High Cloud Altitude from 37 kft at 6 kft intervals  
Precip (tot dot, conv sol) past 6 hrs 6 kg/m2 contours, min 4

→ 50 m/s  
Range ring of 6000 km -- 19 hours GH round trip



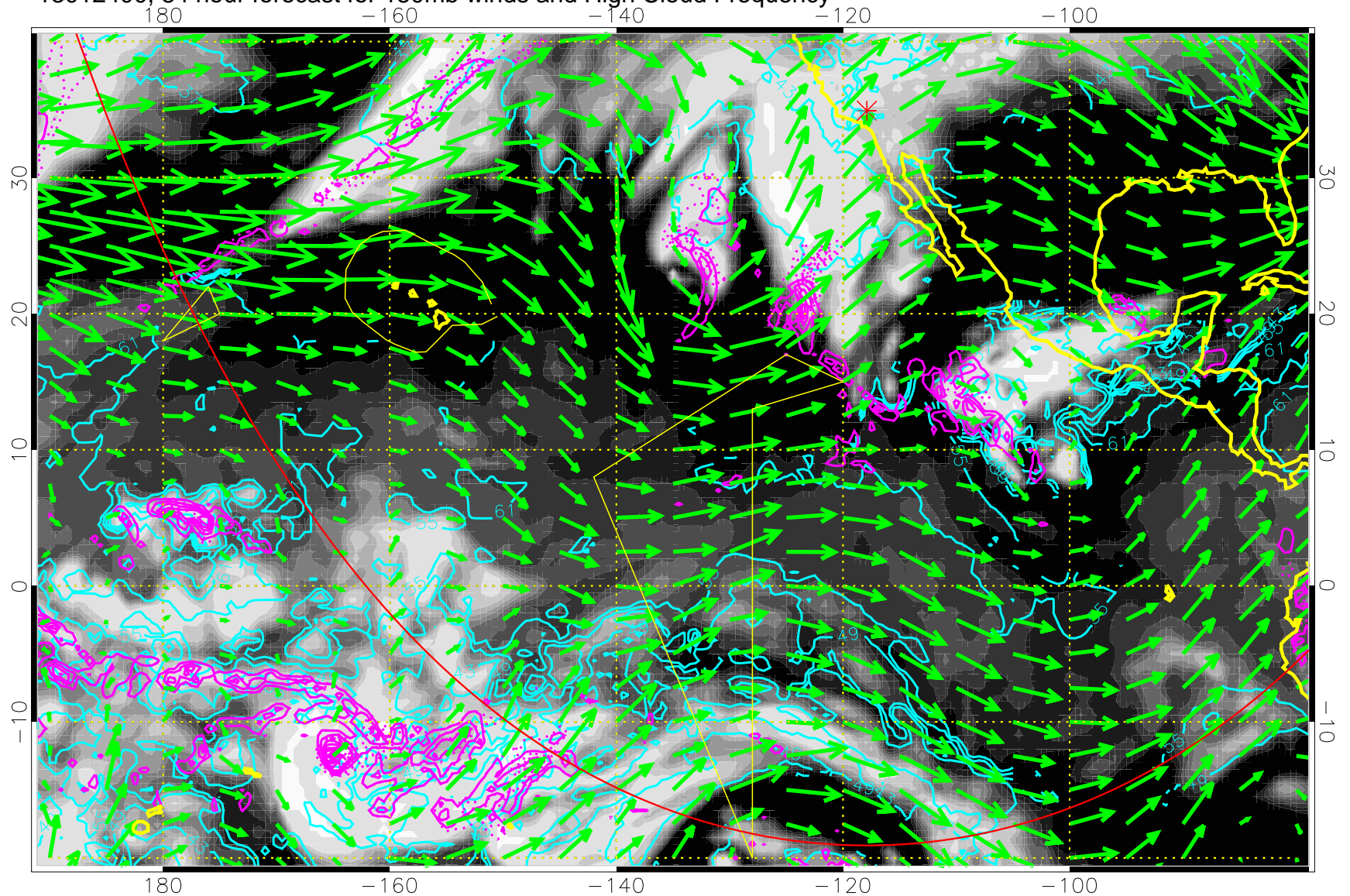
13012318, 78 hour forecast for 150mb winds and High Cloud Frequency



High Cloud Altitude from 37 kft at 6 kft intervals  
Precip (tot dot, conv sol) past 6 hrs 6 kg/m2 contours, min 4

→ 50 m/s  
Range ring of 6000 km -- 19 hours GH round trip

13012400, 84 hour forecast for 150mb winds and High Cloud Frequency

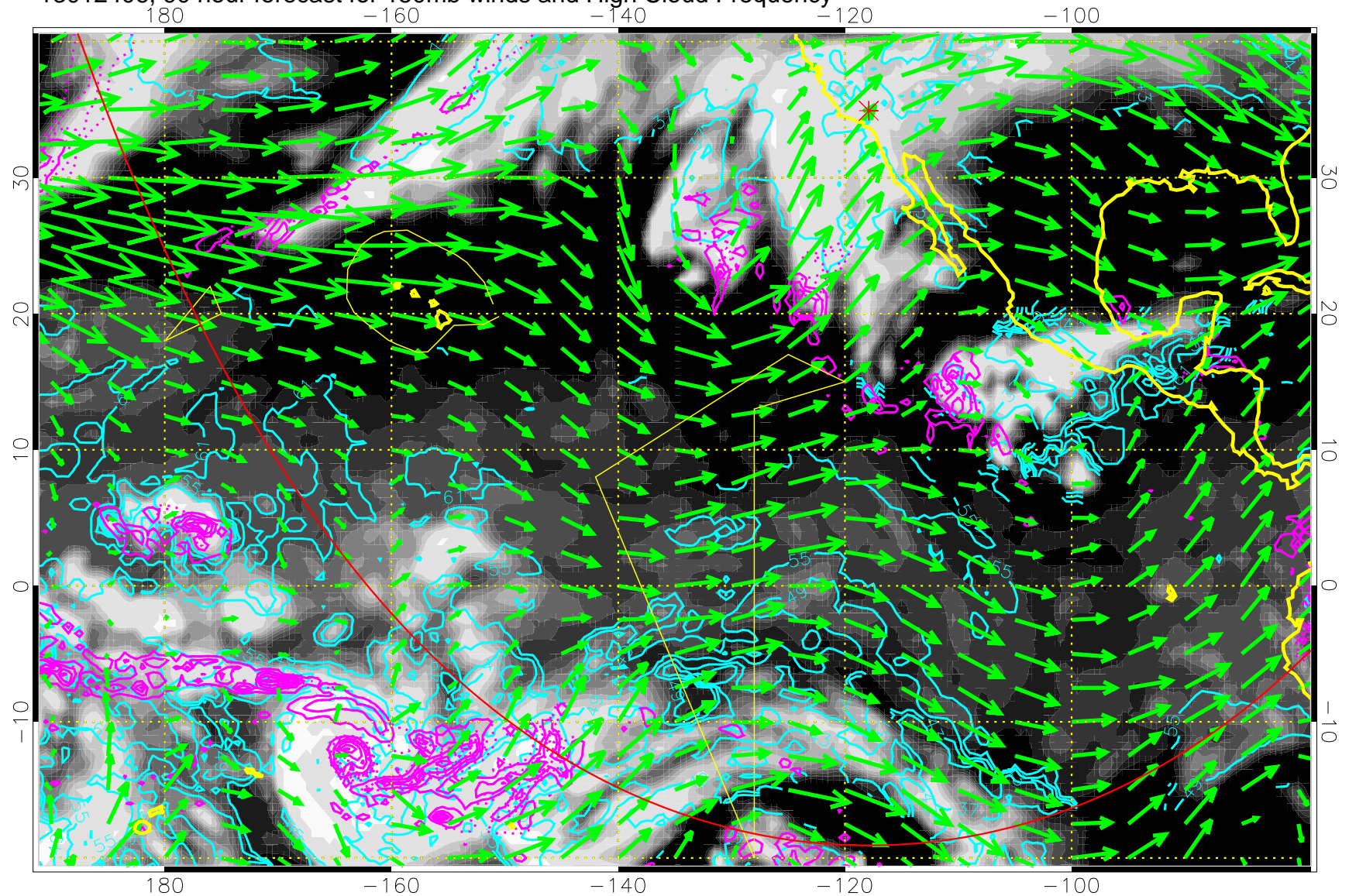


High Cloud Altitude from 37 kft at 6 kft intervals  
Precip (tot dot, conv sol) past 6 hrs 6 kg/m<sup>2</sup> contours, min 4

→ 50 m/s  
Range ring of 6000 km -- 19 hours GH round trip



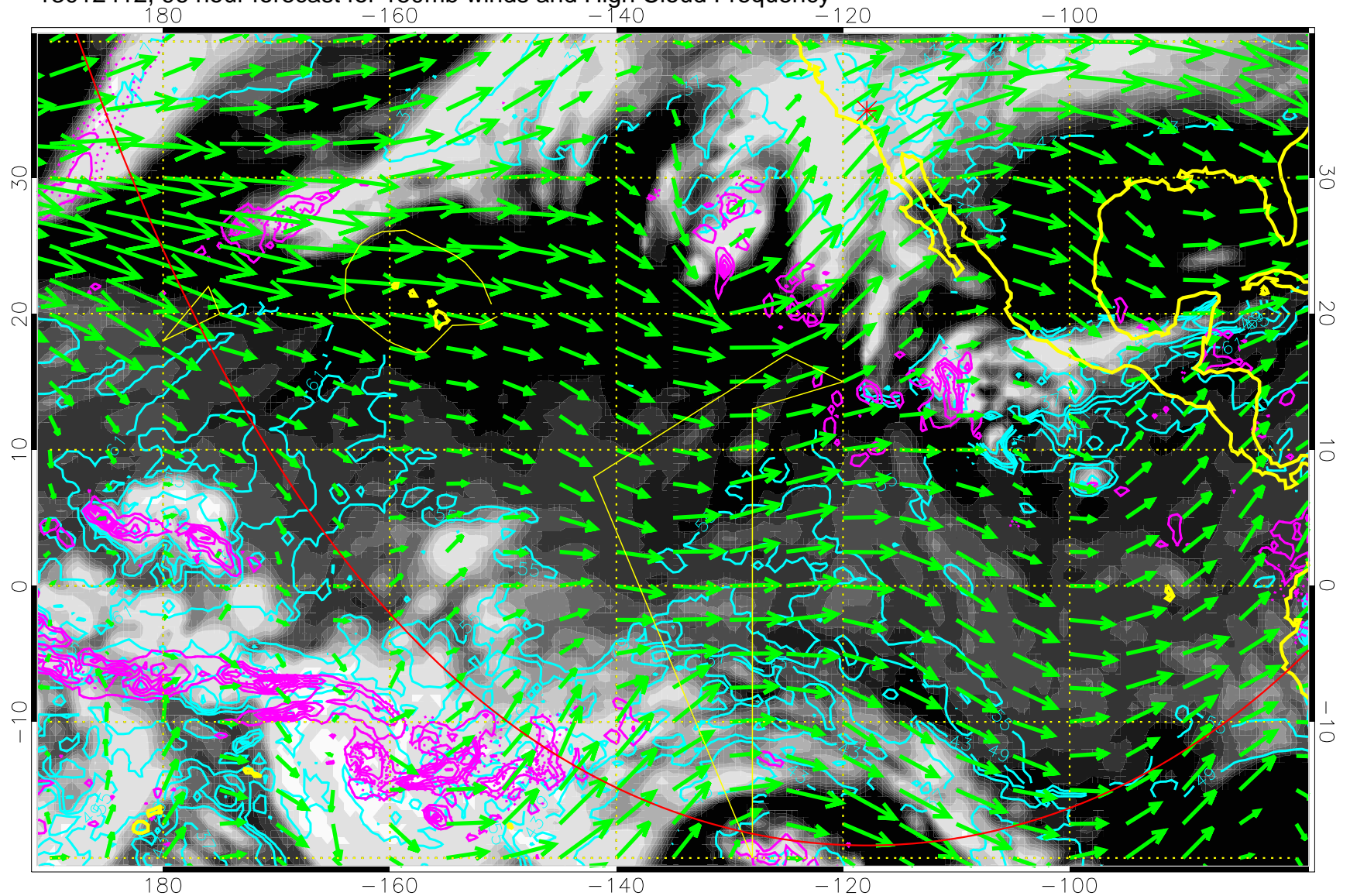
13012406, 90 hour forecast for 150mb winds and High Cloud Frequency



High Cloud Altitude from 37 kft at 6 kft intervals  
Precip (tot dot, conv sol) past 6 hrs 6 kg/m2 contours, min 4

→ 50 m/s  
Range ring of 6000 km -- 19 hours GH round trip

13012412, 96 hour forecast for 150mb winds and High Cloud Frequency

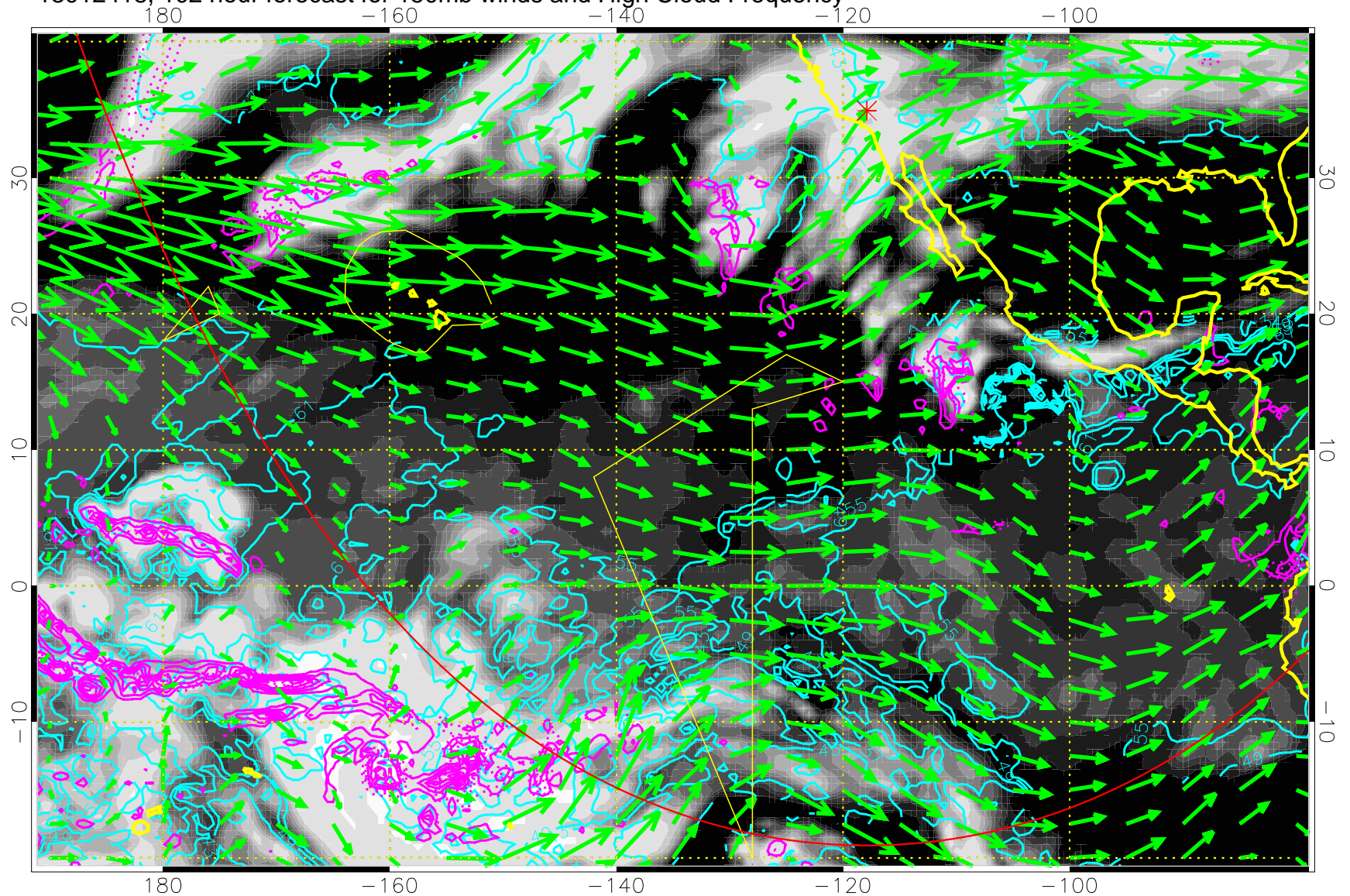


High Cloud Altitude from 37 kft at 6 kft intervals  
Precip (tot dot, conv sol) past 6 hrs 6 kg/m2 contours, min 4

→ 50 m/s  
Range ring of 6000 km -- 19 hours GH round trip



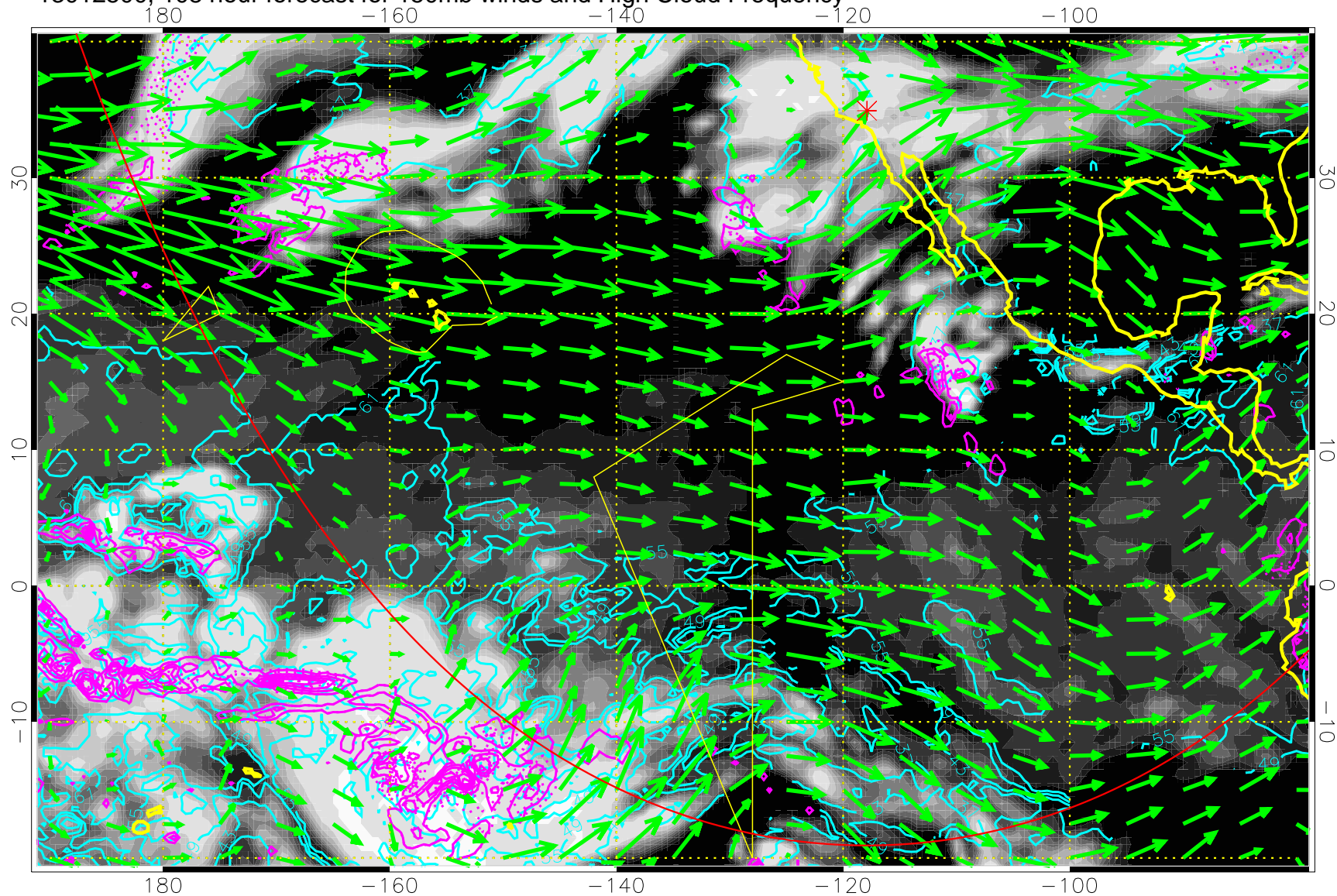
13012418, 102 hour forecast for 150mb winds and High Cloud Frequency



High Cloud Altitude from 37 kft at 6 kft intervals  
Precip (tot dot, conv sol) past 6 hrs 6 kg/m2 contours, min 4

→ 50 m/s  
Range ring of 6000 km -- 19 hours GH round trip

13012500, 108 hour forecast for 150mb winds and High Cloud Frequency

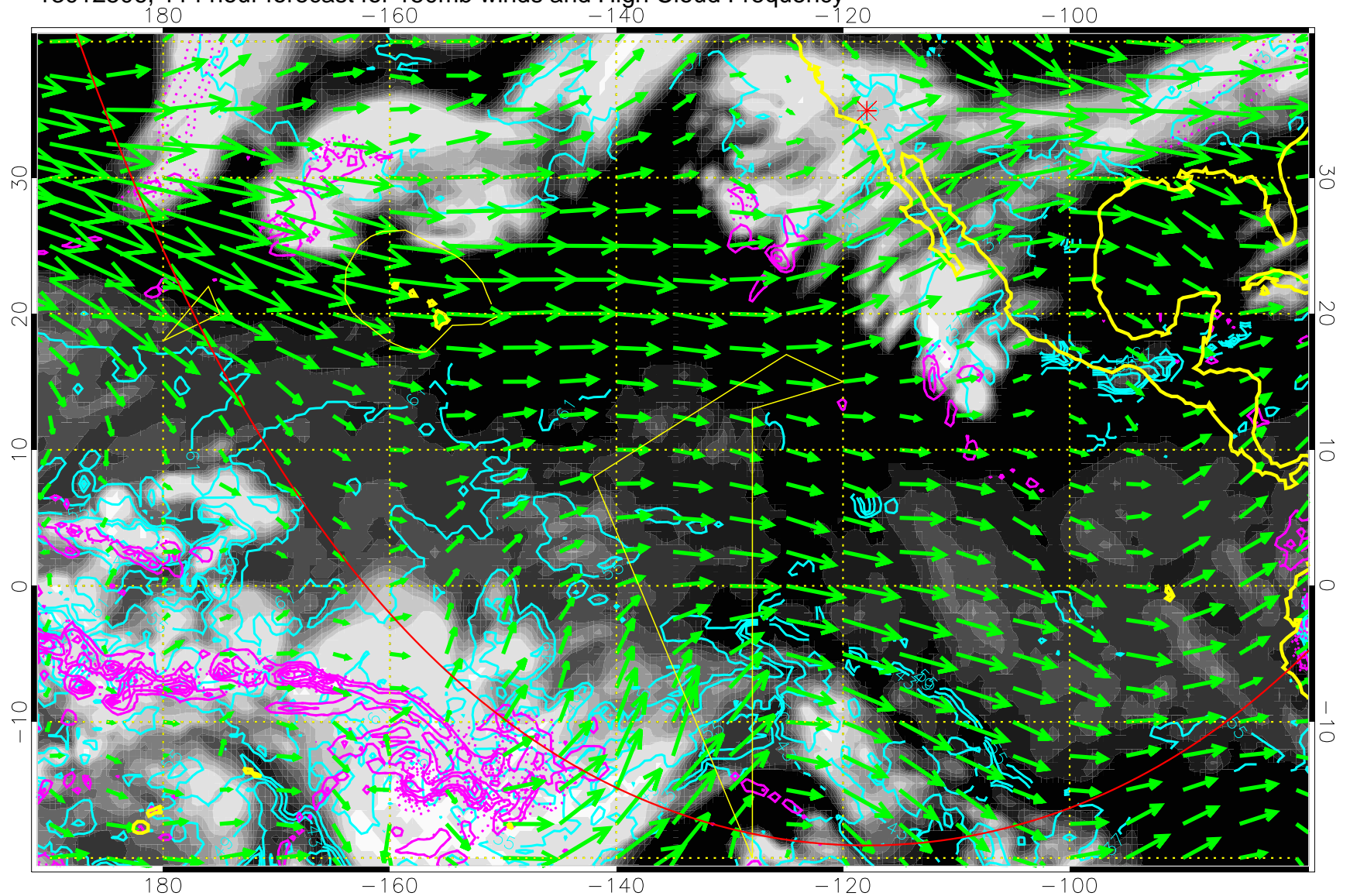


High Cloud Altitude from 37 kft at 6 kft intervals  
Precip (tot dot, conv sol) past 6 hrs 6 kg/m<sup>2</sup> contours, min 4

→ 50 m/s  
Range ring of 6000 km -- 19 hours GH round trip



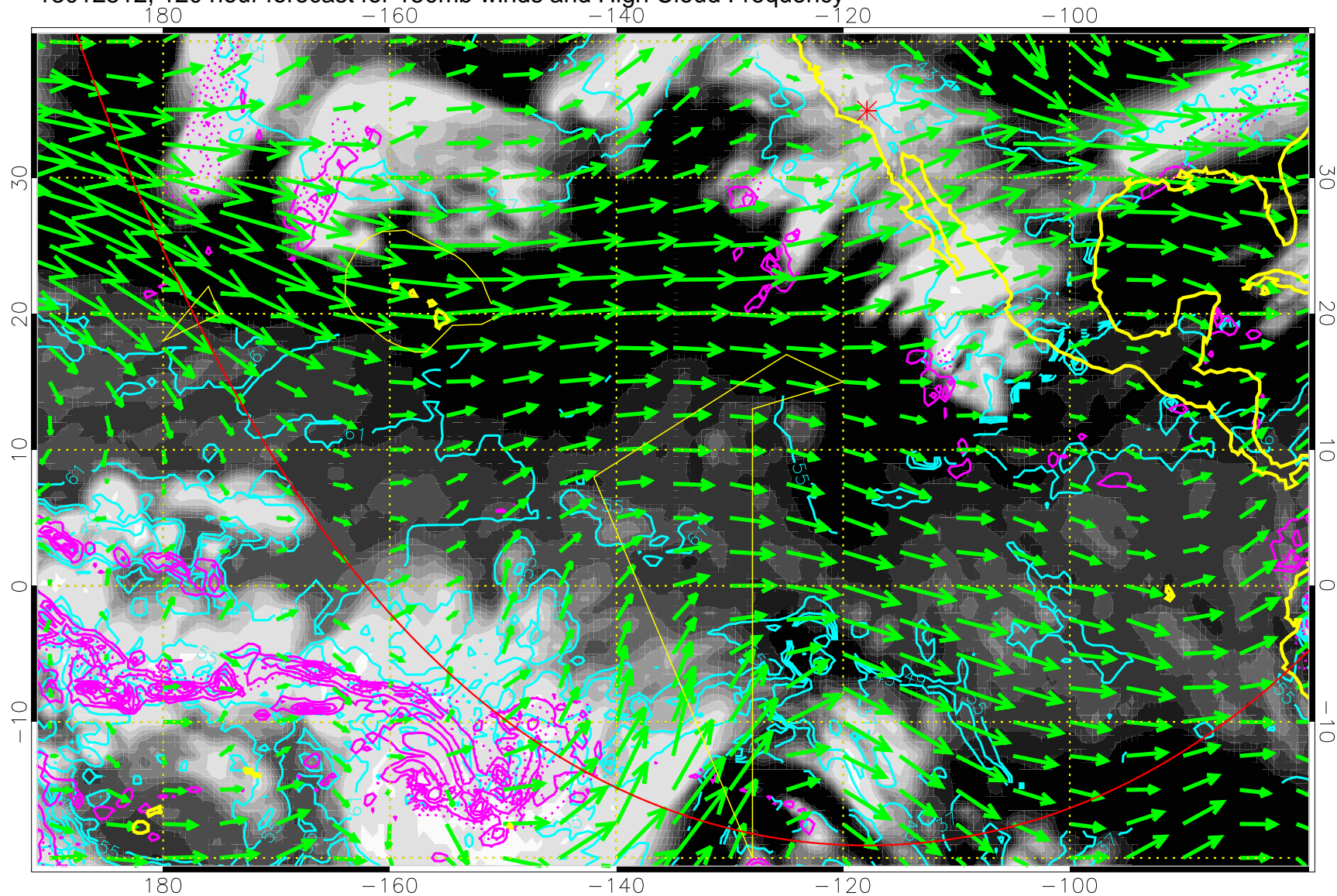
13012506, 114 hour forecast for 150mb winds and High Cloud Frequency



High Cloud Altitude from 37 kft at 6 kft intervals  
Precip (tot dot, conv sol) past 6 hrs 6 kg/m2 contours, min 4

→ 50 m/s  
Range ring of 6000 km -- 19 hours GH round trip

13012512, 120 hour forecast for 150mb winds and High Cloud Frequency



High Cloud Altitude from 37 kft at 6 kft intervals  
Precip (tot dot, conv sol) past 6 hrs 6 kg/m2 contours, min 4

→ 50 m/s  
Range ring of 6000 km -- 19 hours GH round trip