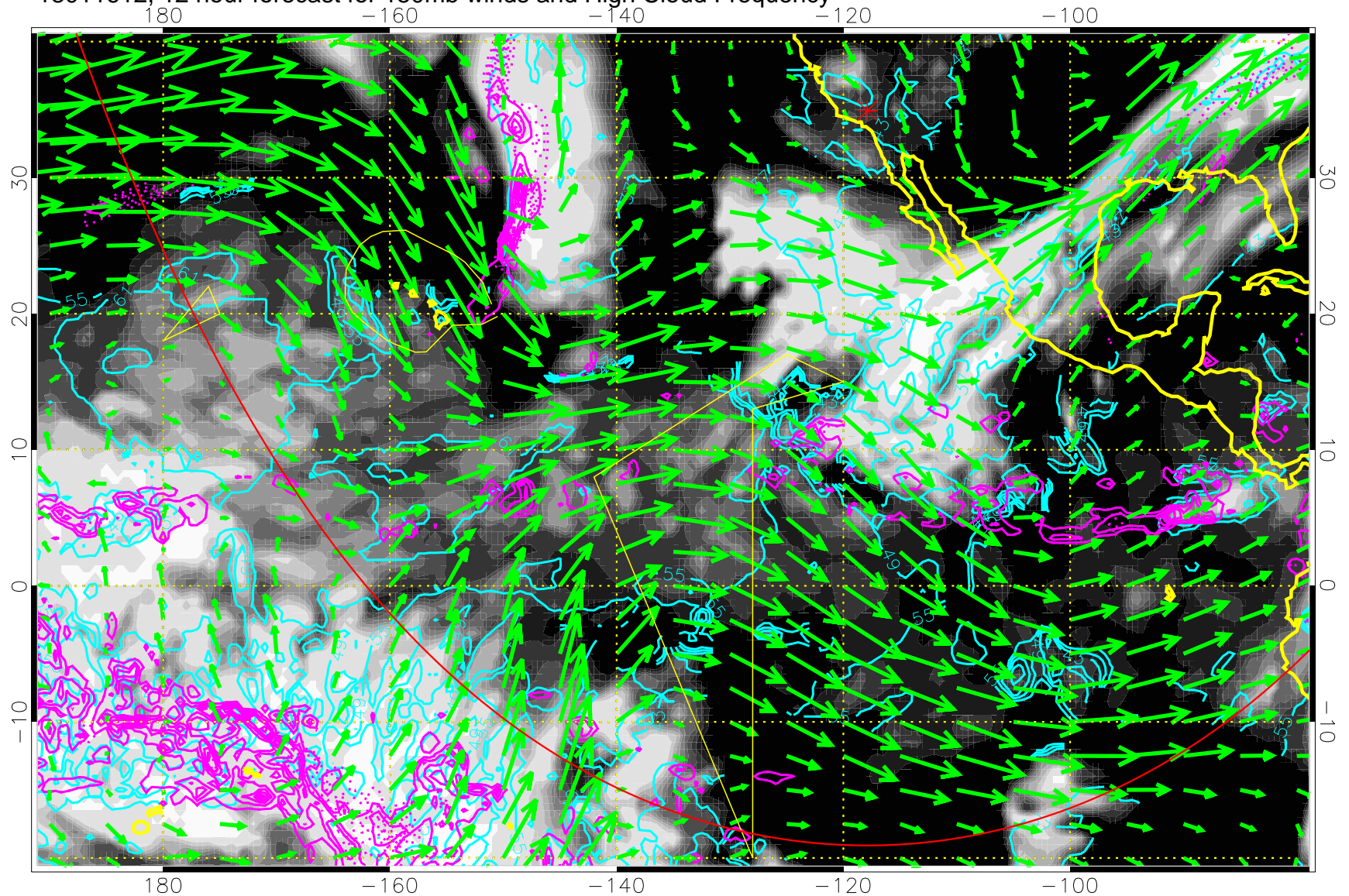


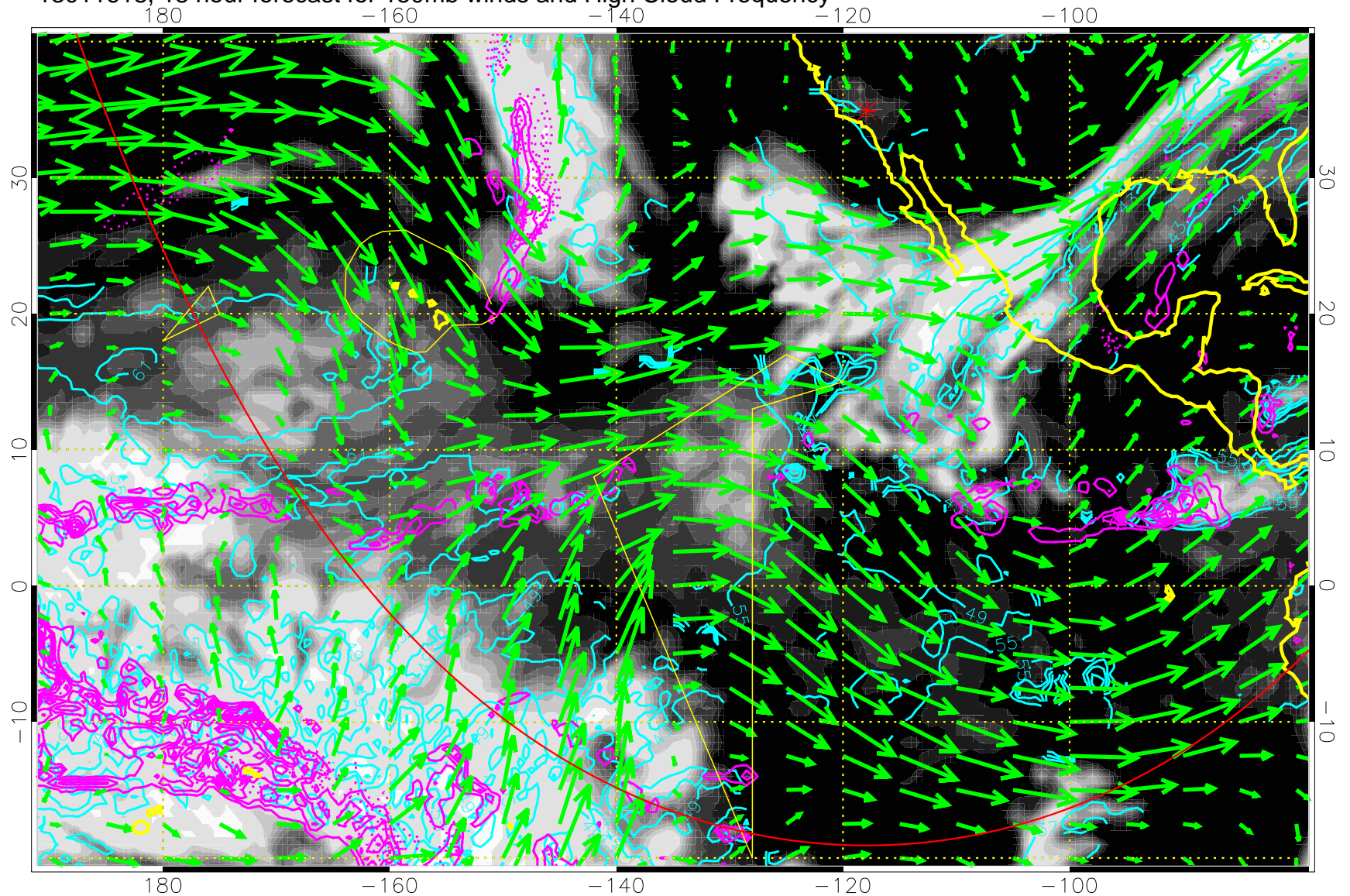
13011612, 12 hour forecast for 150mb winds and High Cloud Frequency



High Cloud Altitude from 37 kft at 6 kft intervals
Precip (tot dot, conv sol) past 6 hrs 6 kg/m2 contours, min 4

→ 50 m/s
Range ring of 6000 km -- 19 hours GH round trip

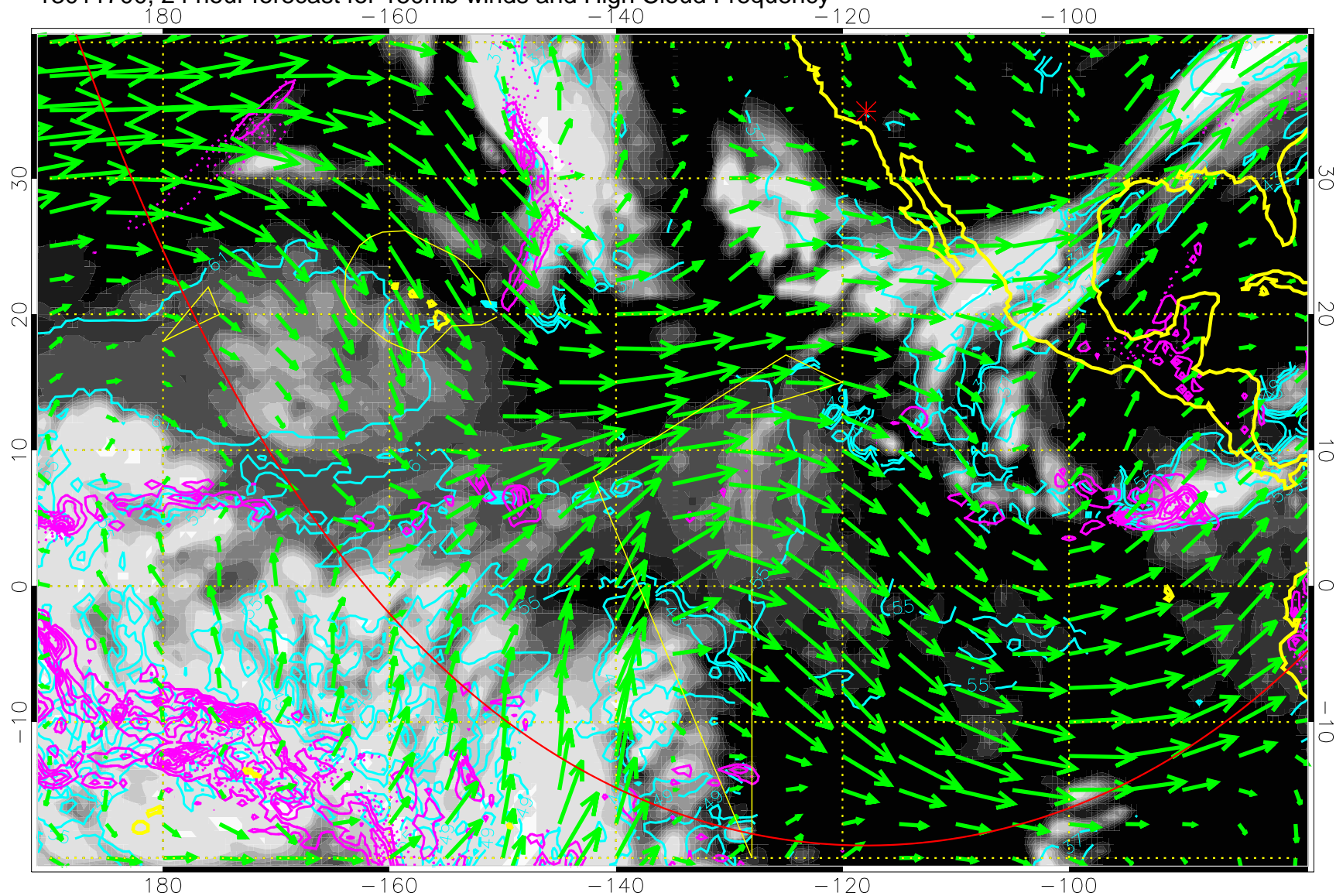
13011618, 18 hour forecast for 150mb winds and High Cloud Frequency



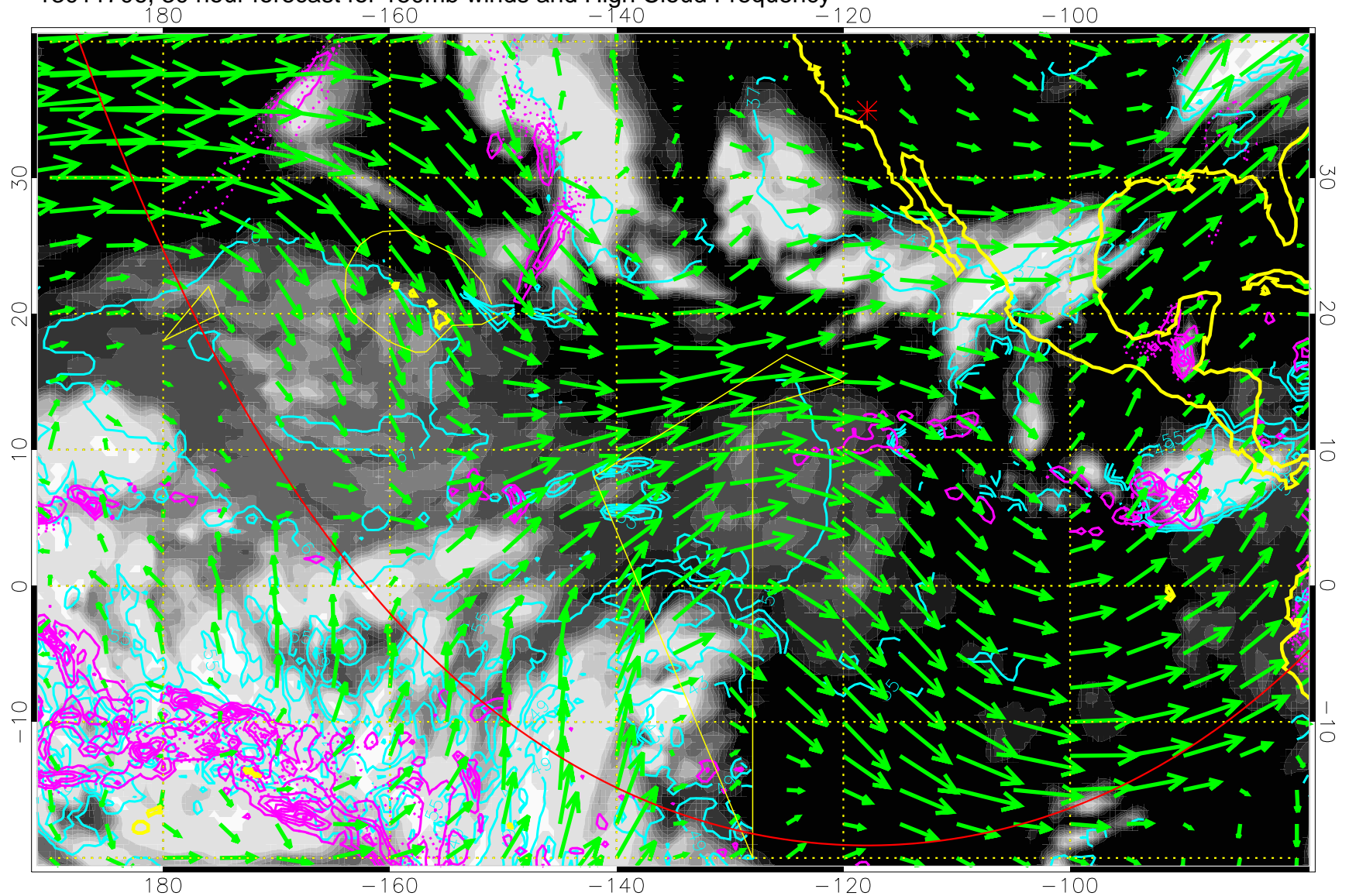
High Cloud Altitude from 37 kft at 6 kft intervals
Precip (tot dot, conv sol) past 6 hrs 6 kg/m2 contours, min 4

→ 50 m/s
Range ring of 6000 km -- 19 hours GH round trip

13011700, 24 hour forecast for 150mb winds and High Cloud Frequency



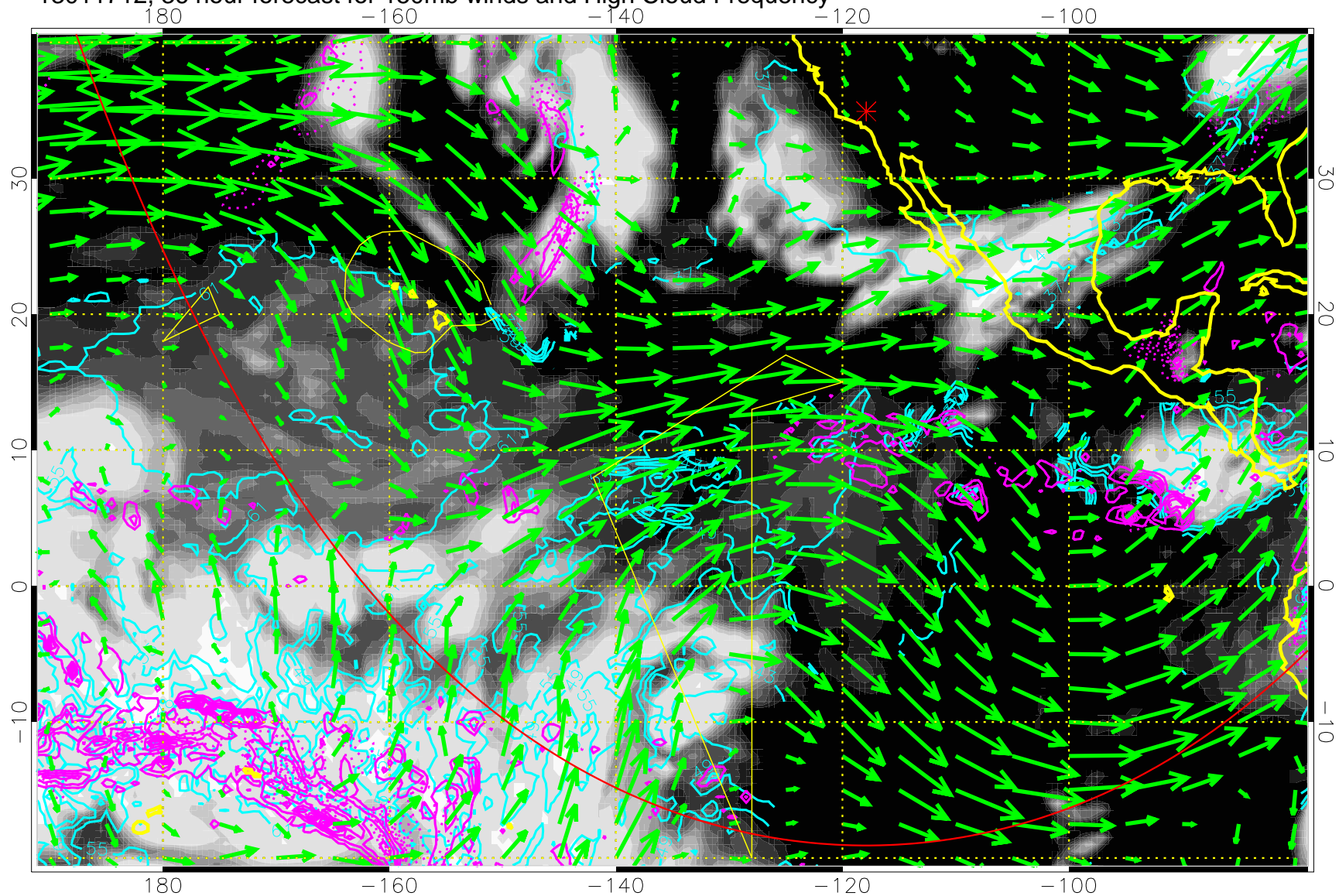
13011706, 30 hour forecast for 150mb winds and High Cloud Frequency



High Cloud Altitude from 37 kft at 6 kft intervals
Precip (tot dot, conv sol) past 6 hrs 6 kg/m2 contours, min 4

→ 50 m/s
Range ring of 6000 km -- 19 hours GH round trip

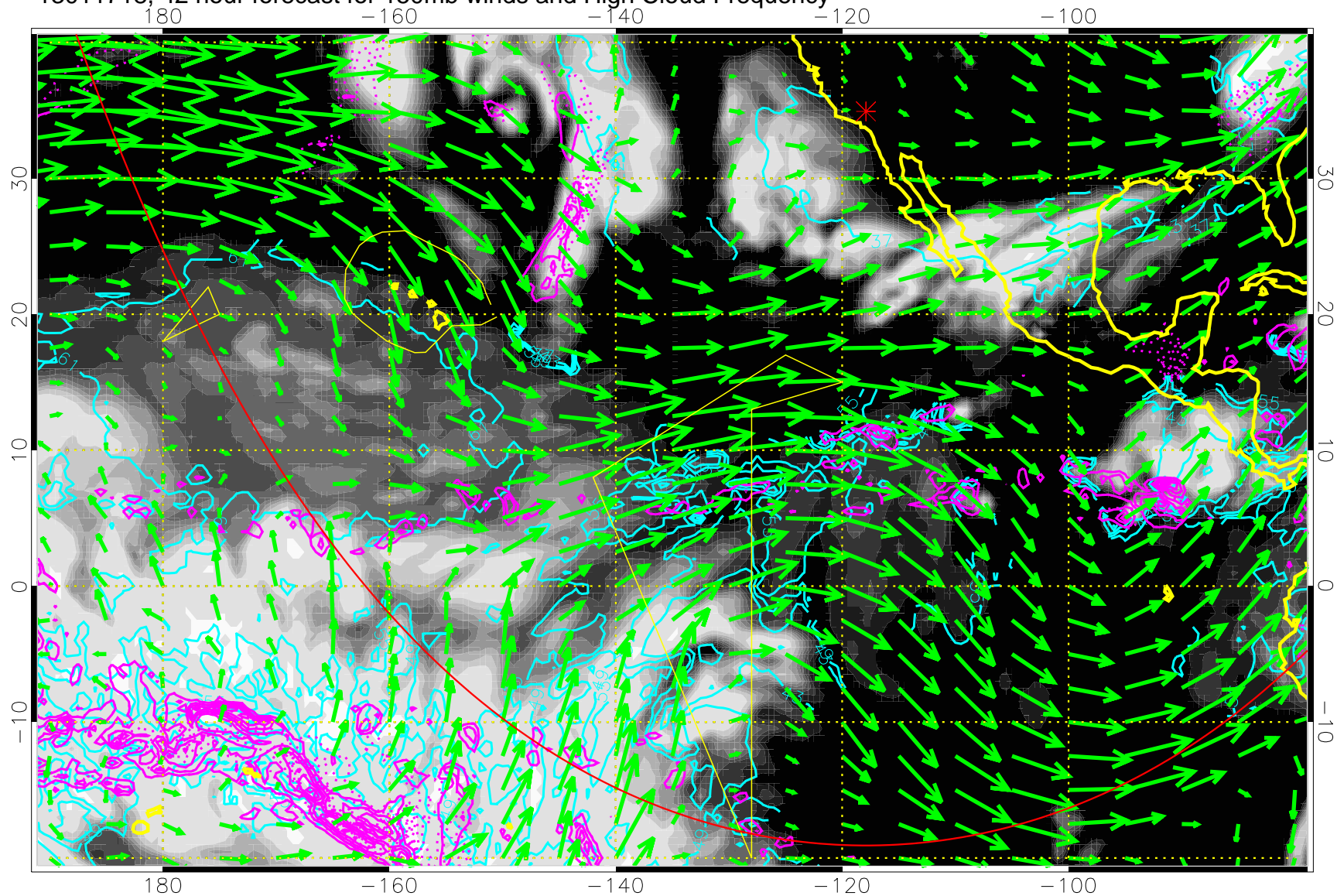
13011712, 36 hour forecast for 150mb winds and High Cloud Frequency



High Cloud Altitude from 37 kft at 6 kft intervals
Precip (tot dot, conv sol) past 6 hrs 6 kg/m2 contours, min 4

→ 50 m/s
Range ring of 6000 km -- 19 hours GH round trip

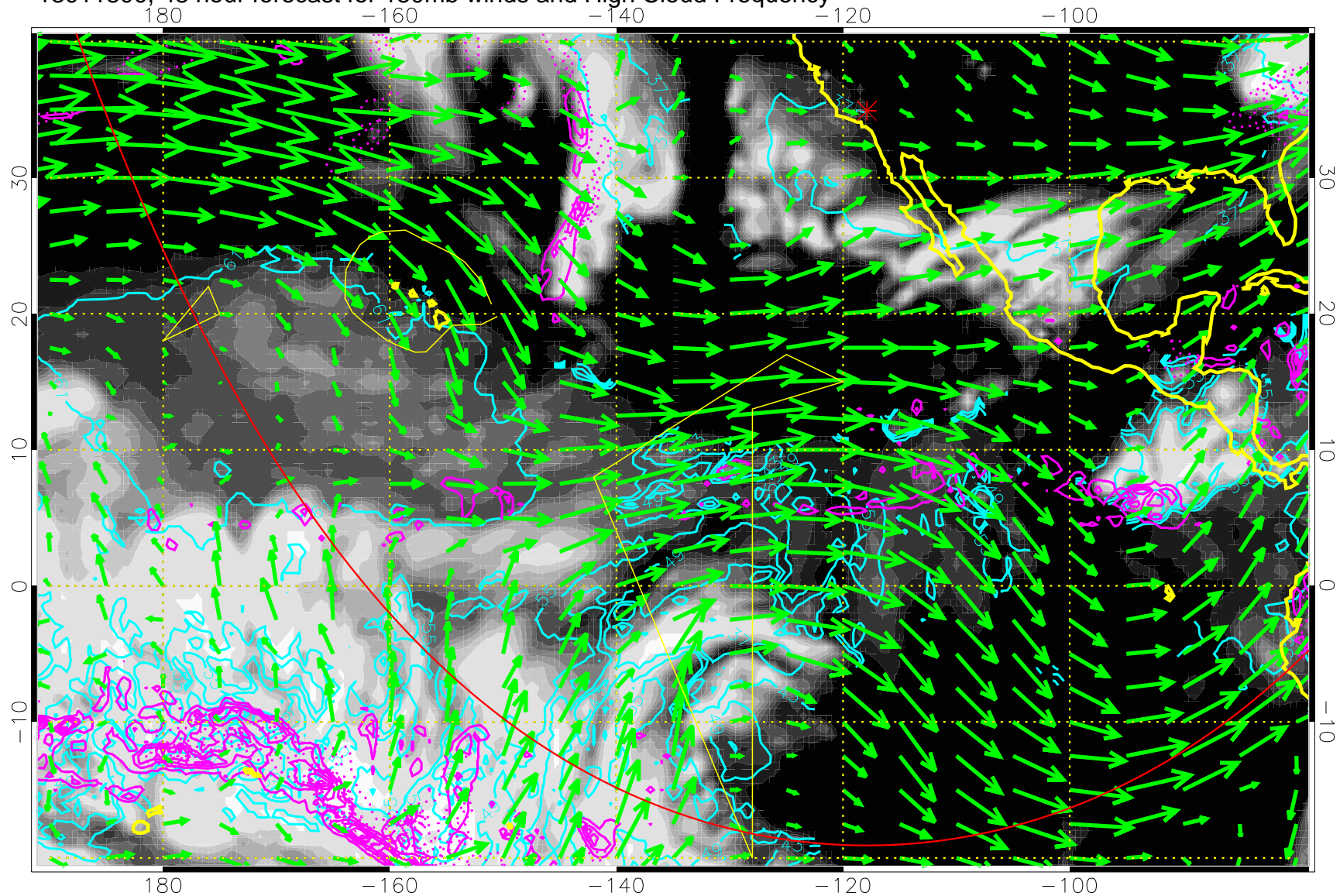
13011718, 42 hour forecast for 150mb winds and High Cloud Frequency



High Cloud Altitude from 37 kft at 6 kft intervals
Precip (tot dot, conv sol) past 6 hrs 6 kg/m² contours, min 4

→ 50 m/s
Range ring of 6000 km -- 19 hours GH round trip

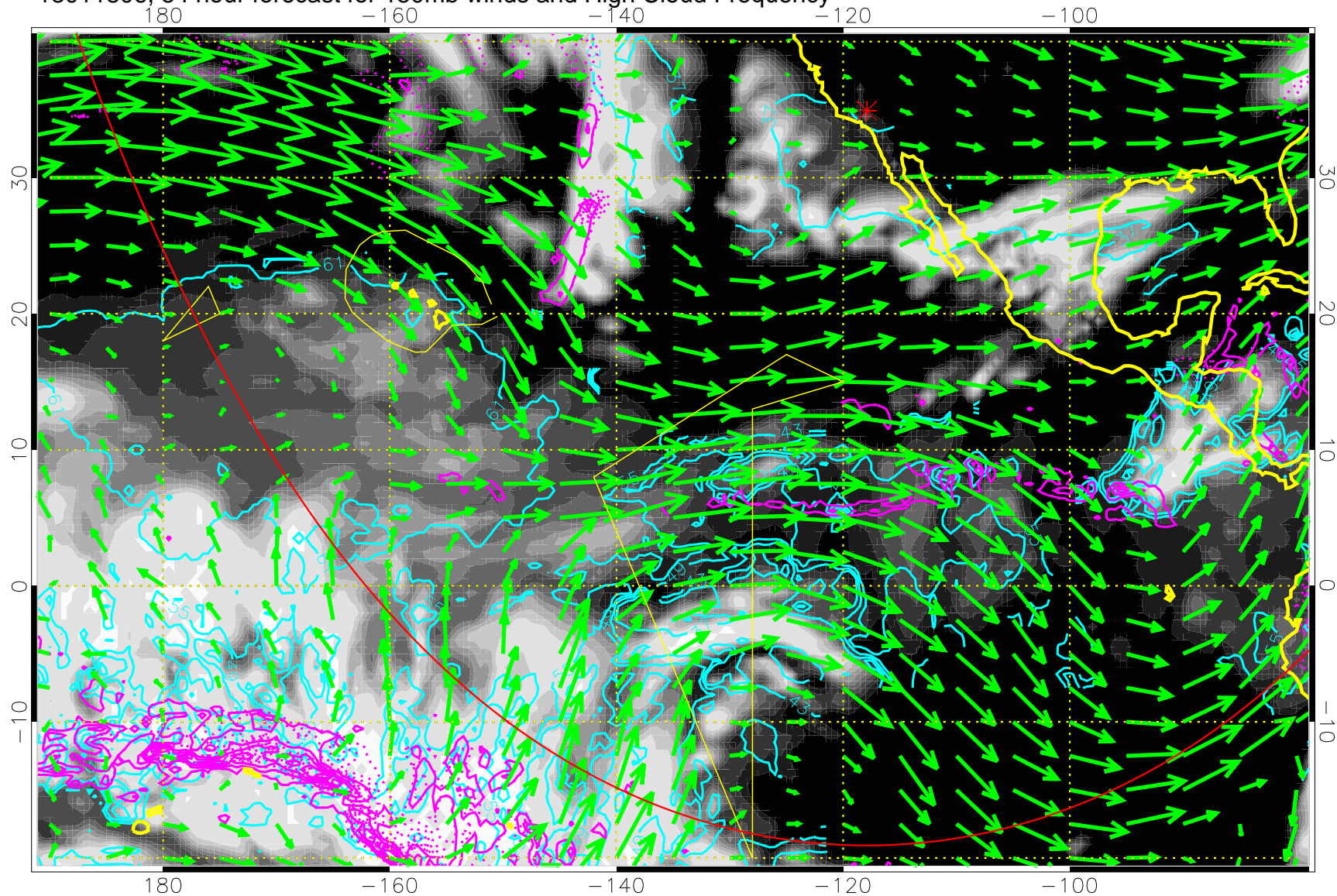
13011800, 48 hour forecast for 150mb winds and High Cloud Frequency



High Cloud Altitude from 37 kft at 6 kft intervals
Precip (tot dot, conv sol) past 6 hrs 6 kg/m2 contours, min 4

→ 50 m/s
Range ring of 6000 km -- 19 hours GH round trip

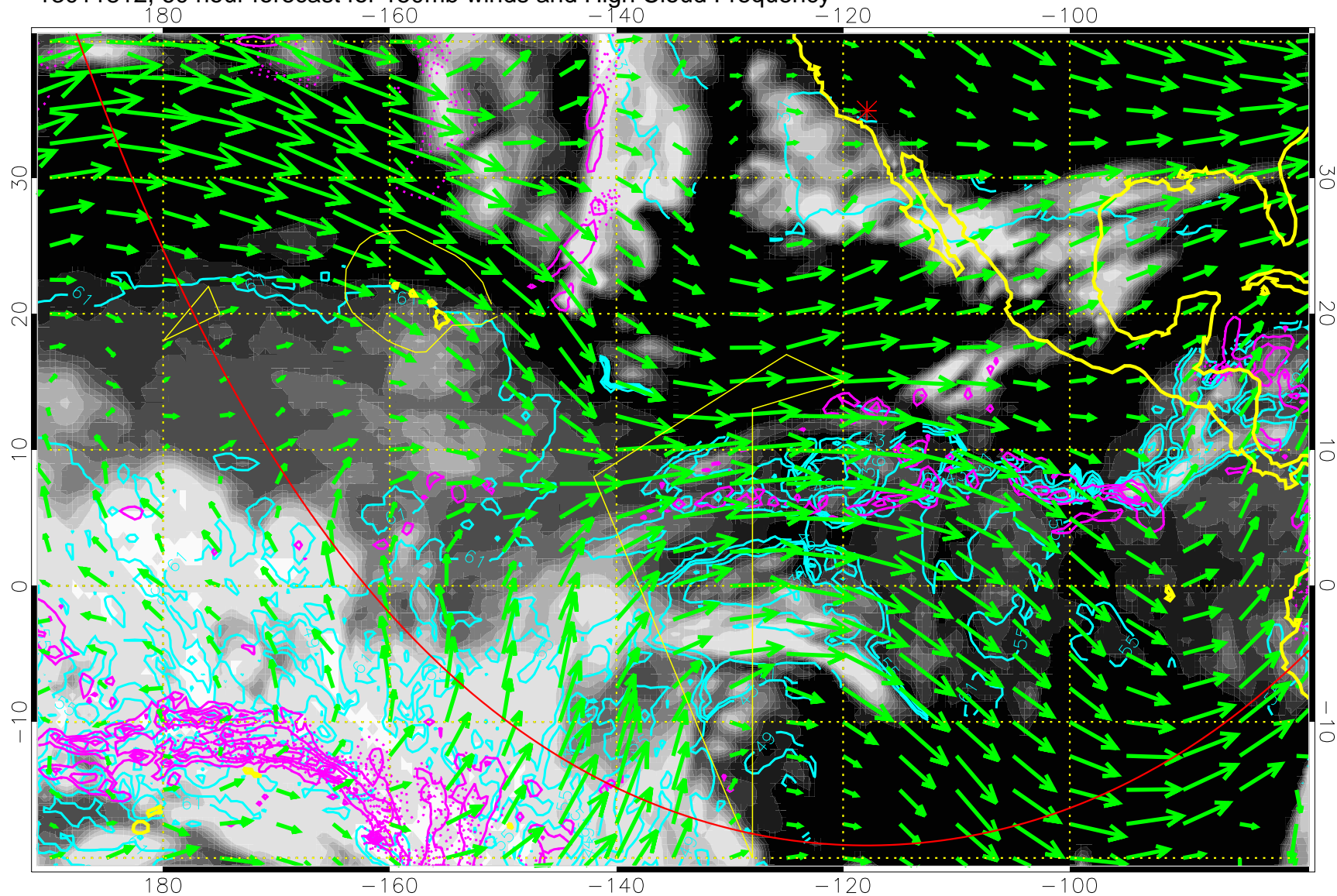
13011806, 54 hour forecast for 150mb winds and High Cloud Frequency



High Cloud Altitude from 37 kft at 6 kft intervals
Precip (tot dot, conv sol) past 6 hrs 6 kg/m2 contours, min 4

→ 50 m/s
Range ring of 6000 km -- 19 hours GH round trip

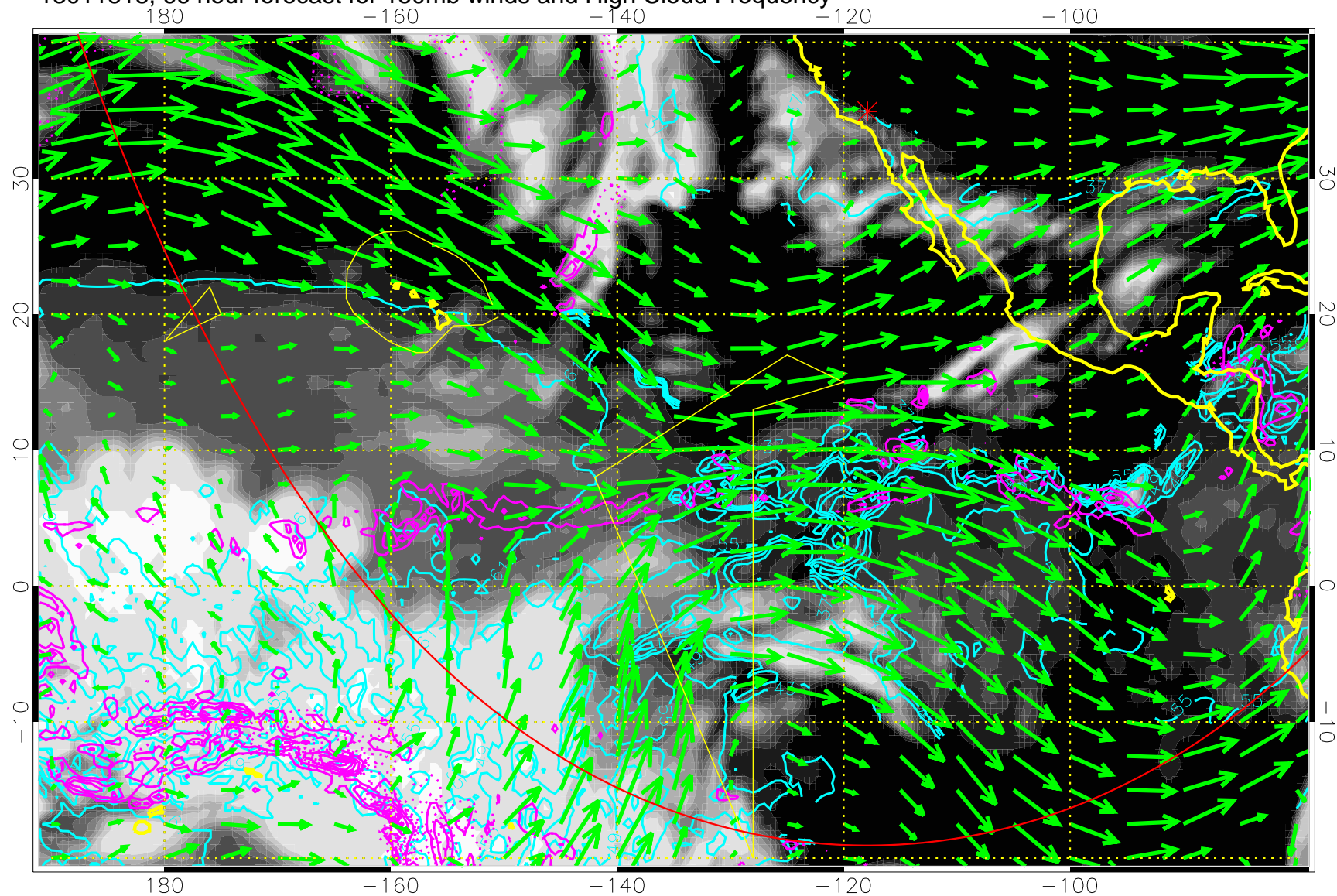
13011812, 60 hour forecast for 150mb winds and High Cloud Frequency



High Cloud Altitude from 37 kft at 6 kft intervals
Precip (tot dot, conv sol) past 6 hrs 6 kg/m2 contours, min 4

→ 50 m/s
Range ring of 6000 km -- 19 hours GH round trip

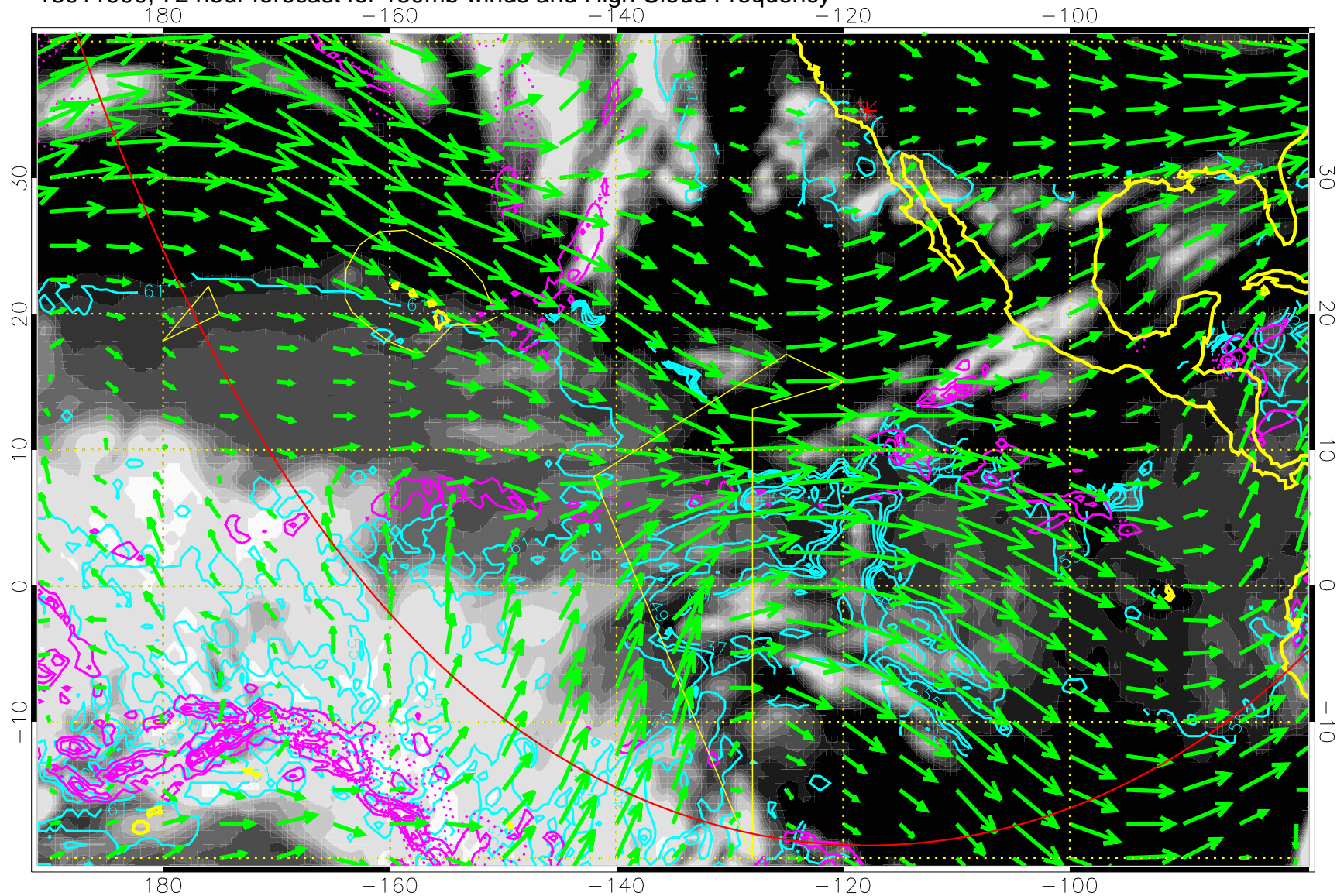
13011818, 66 hour forecast for 150mb winds and High Cloud Frequency



High Cloud Altitude from 37 kft at 6 kft intervals
Precip (tot dot, conv sol) past 6 hrs 6 kg/m2 contours, min 4

→ 50 m/s
Range ring of 6000 km -- 19 hours GH round trip

13011900, 72 hour forecast for 150mb winds and High Cloud Frequency

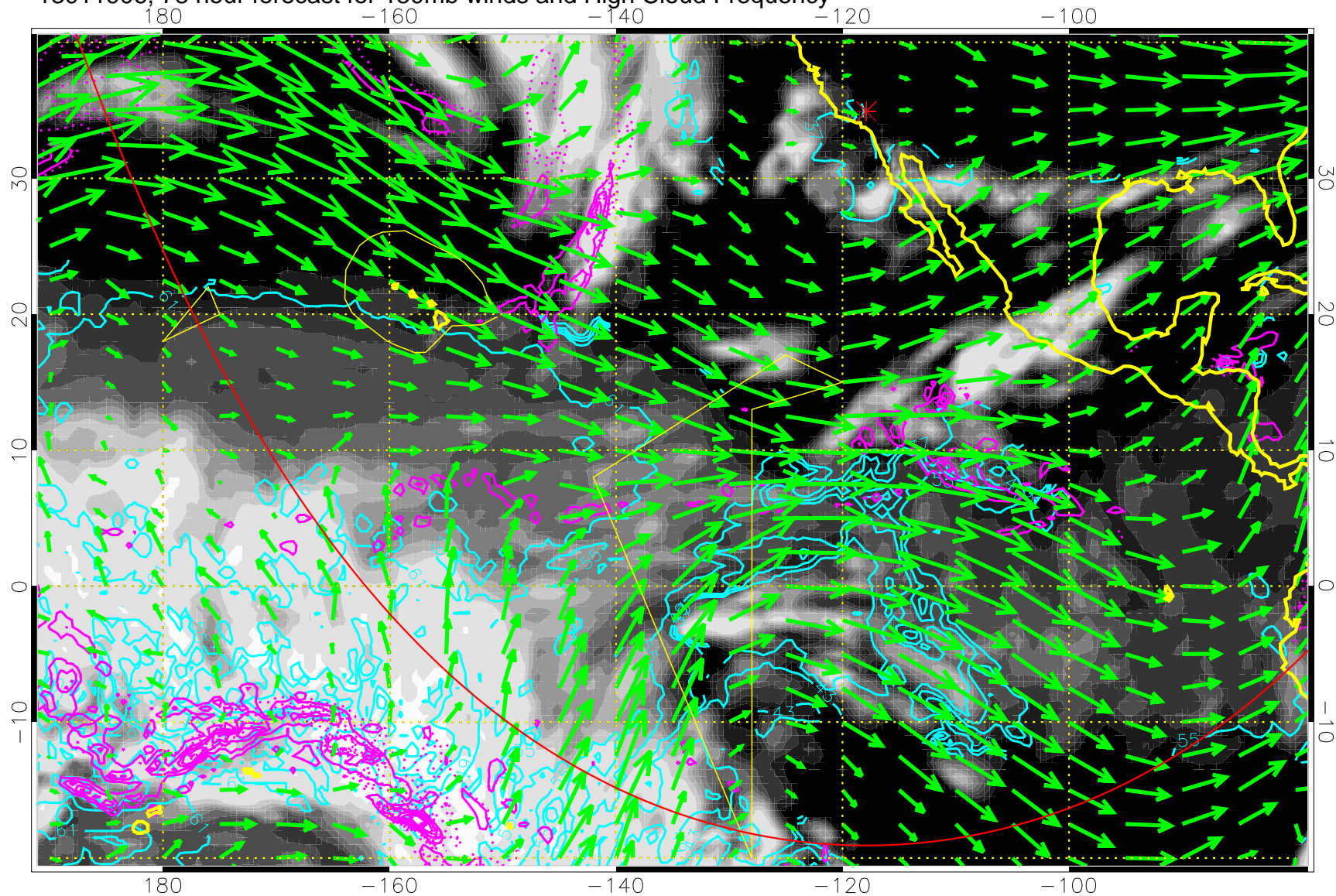


High Cloud Altitude from 37 kft at 6 kft intervals
Precip (tot dot, conv sol) past 6 hrs 6 kg/m2 contours, min 4

→ 50 m/s

Range ring of 6000 km -- 19 hours GH round trip

13011906, 78 hour forecast for 150mb winds and High Cloud Frequency

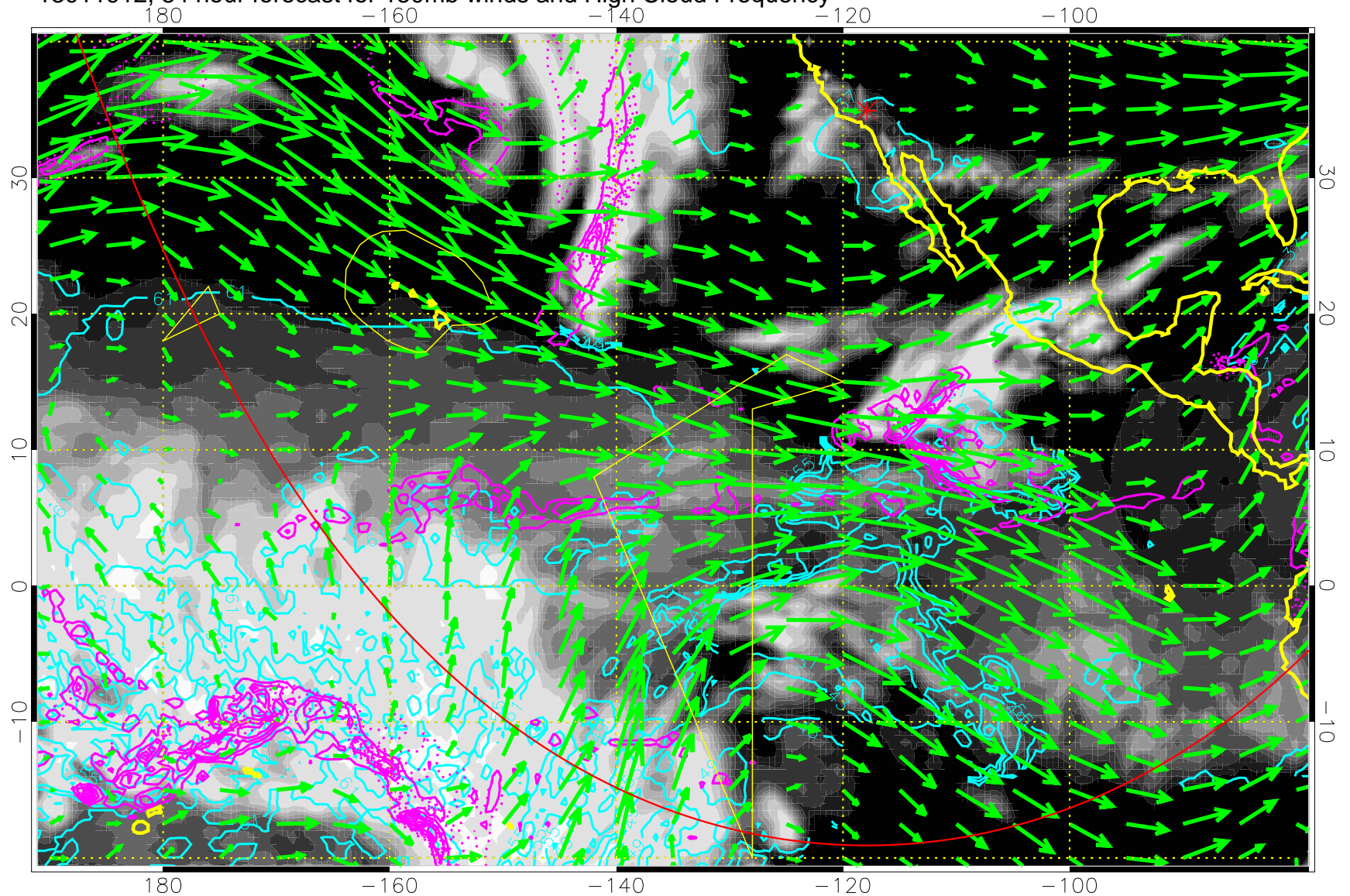


High Cloud Altitude from 37 kft at 6 kft intervals
Precip (tot dot, conv sol) past 6 hrs 6 kg/m2 contours, min 4

→ 50 m/s

Range ring of 6000 km -- 19 hours GH round trip

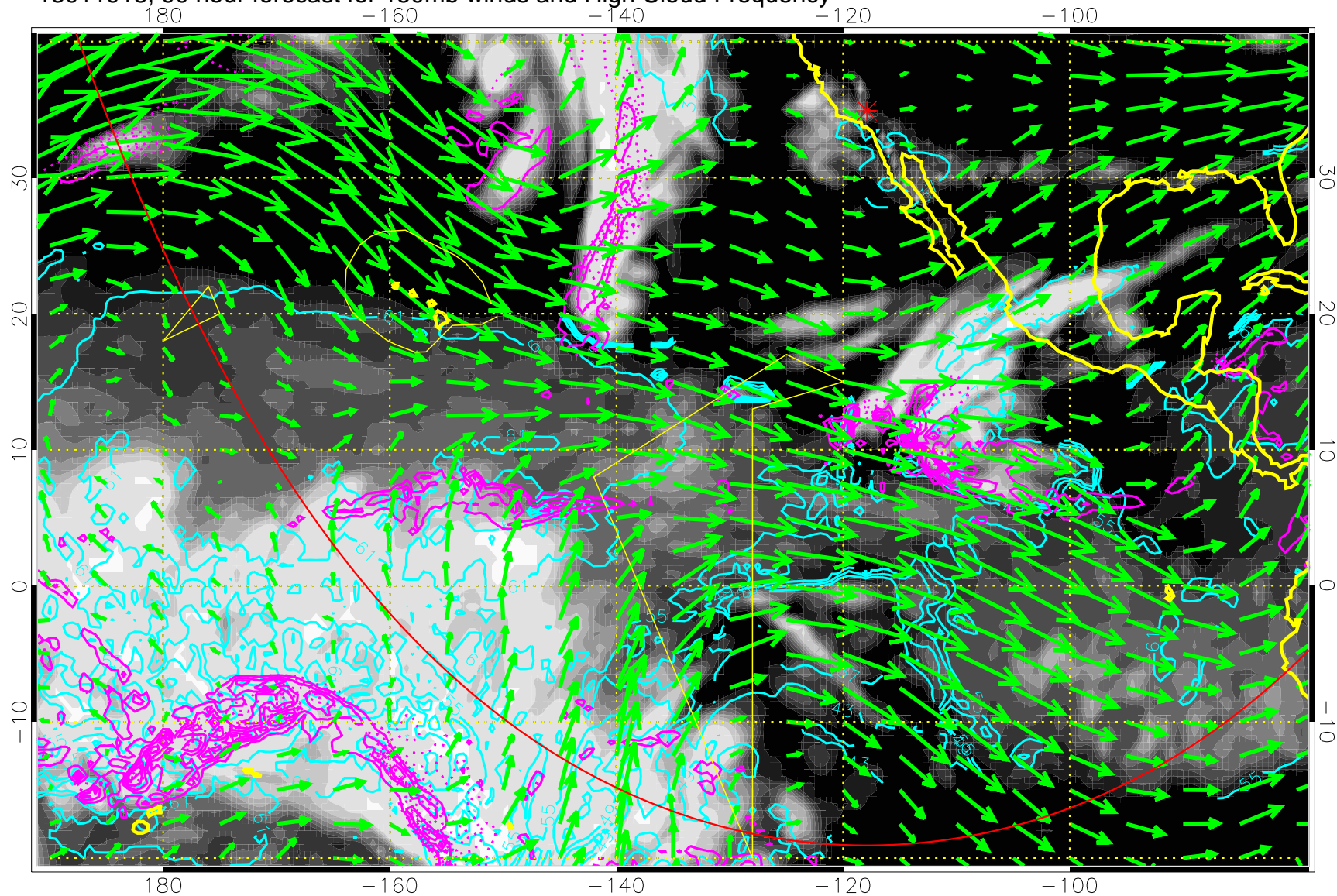
13011912, 84 hour forecast for 150mb winds and High Cloud Frequency



High Cloud Altitude from 37 kft at 6 kft intervals
Precip (tot dot, conv sol) past 6 hrs 6 kg/m² contours, min 4

→ 50 m/s
Range ring of 6000 km -- 19 hours GH round trip

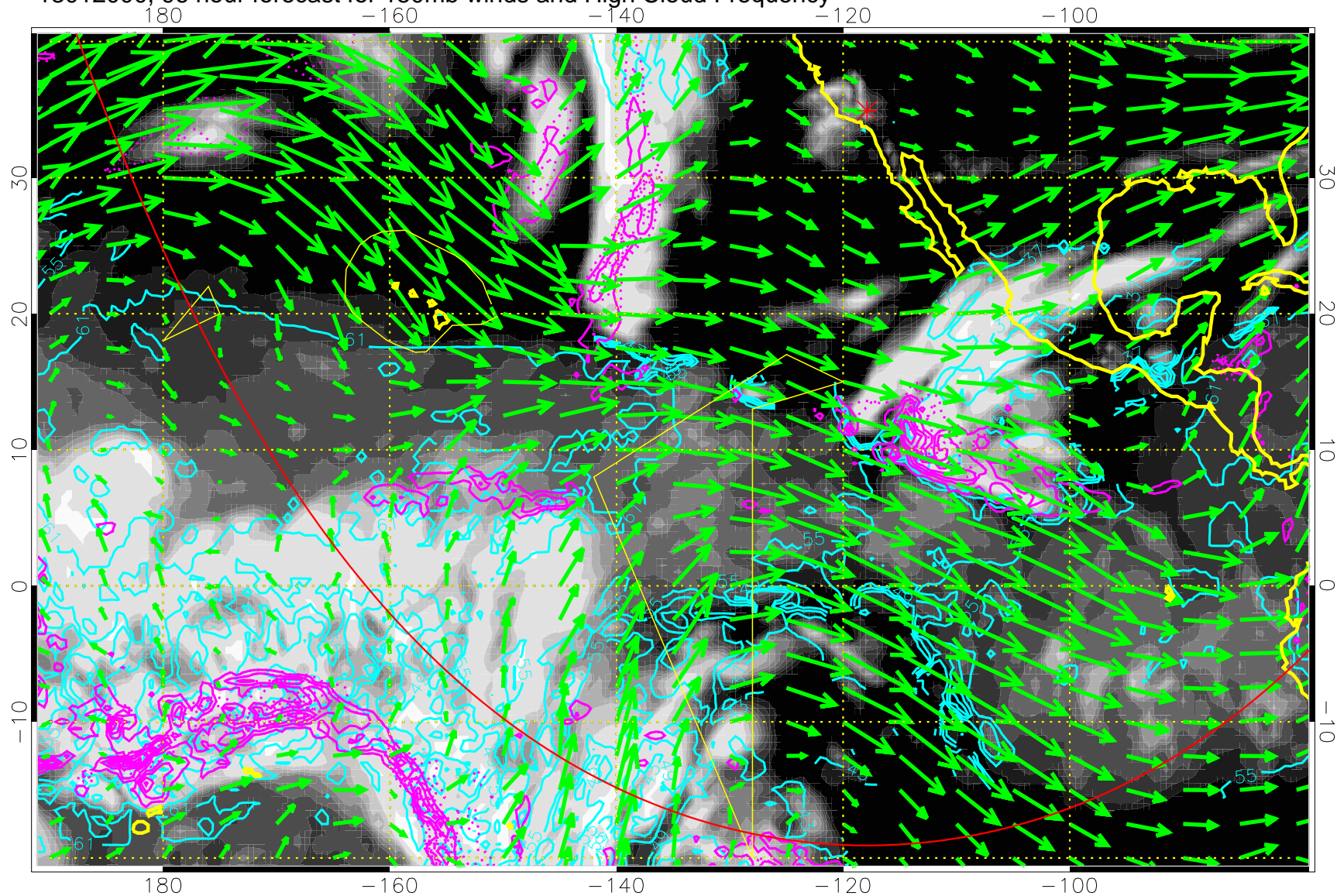
13011918, 90 hour forecast for 150mb winds and High Cloud Frequency



High Cloud Altitude from 37 kft at 6 kft intervals
Precip (tot dot, conv sol) past 6 hrs 6 kg/m2 contours, min 4

→ 50 m/s
Range ring of 6000 km -- 19 hours GH round trip

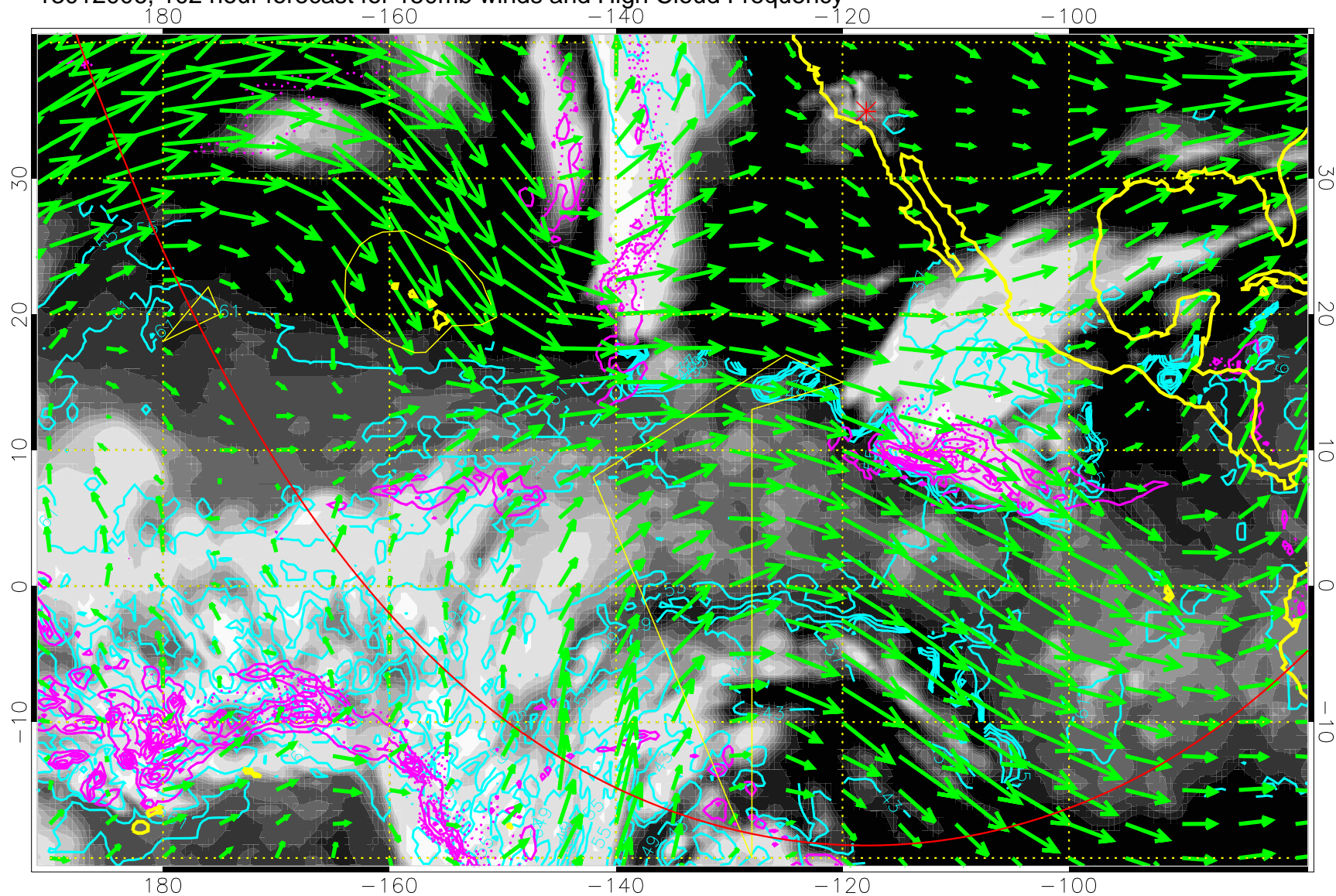
13012000, 96 hour forecast for 150mb winds and High Cloud Frequency



High Cloud Altitude from 37 kft at 6 kft intervals
Precip (tot dot, conv sol) past 6 hrs 6 kg/m2 contours, min 4

→ 50 m/s
Range ring of 6000 km -- 19 hours GH round trip

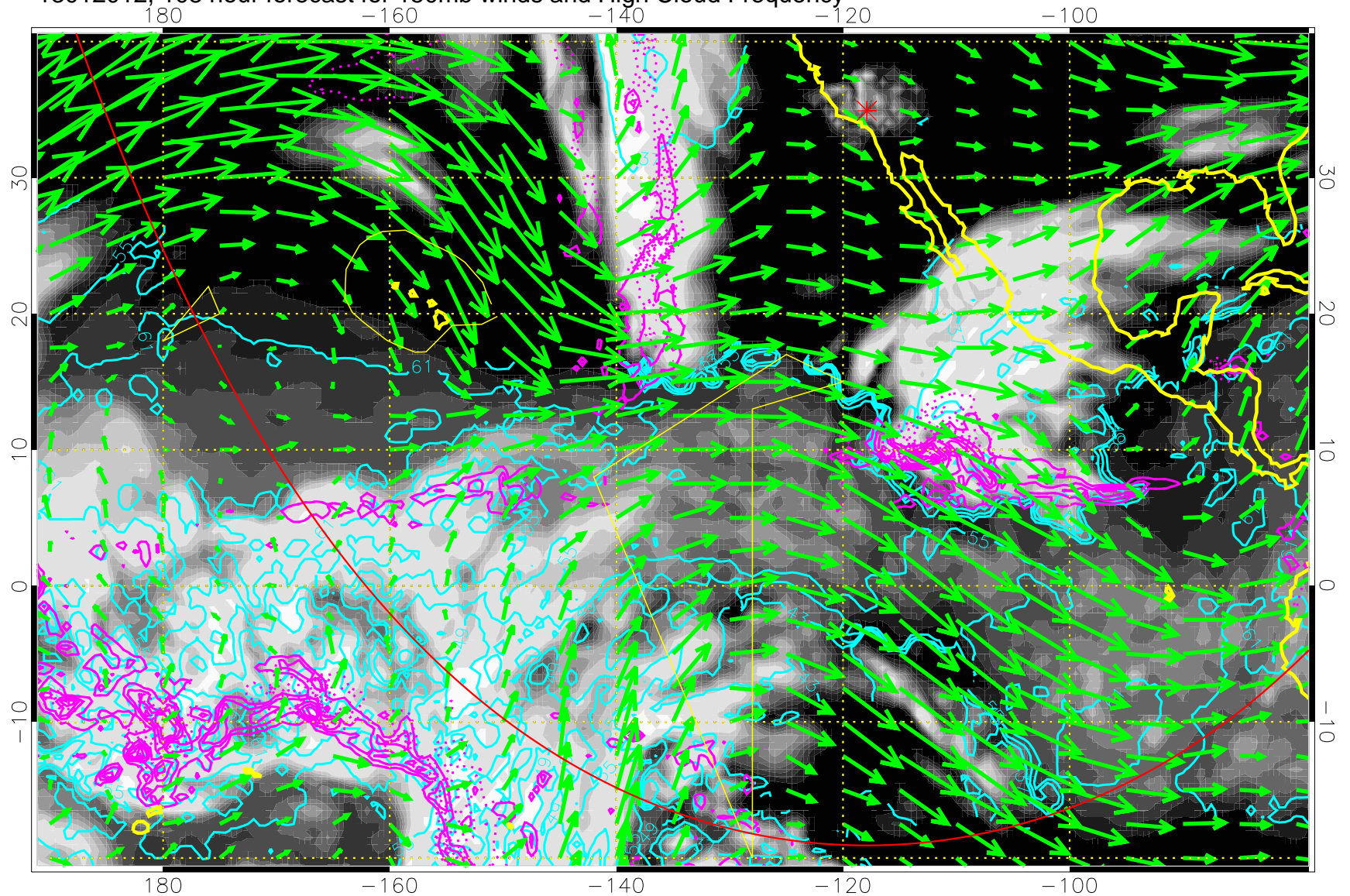
13012006, 102 hour forecast for 150mb winds and High Cloud Frequency



High Cloud Altitude from 37 kft at 6 kft intervals
Precip (tot dot, conv sol) past 6 hrs 6 kg/m2 contours, min 4

→ 50 m/s
Range ring of 6000 km -- 19 hours GH round trip

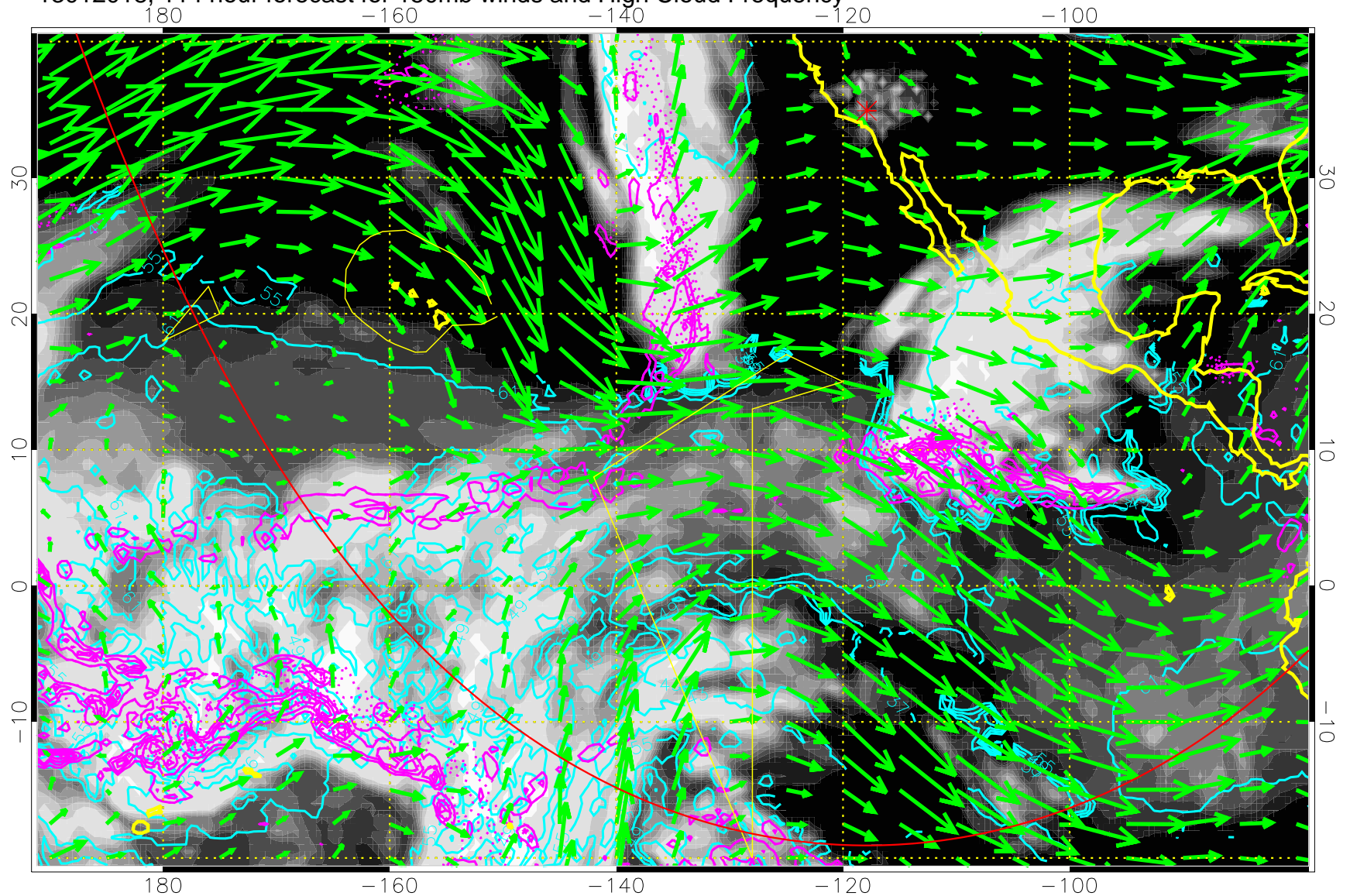
13012012, 108 hour forecast for 150mb winds and High Cloud Frequency



High Cloud Altitude from 37 kft at 6 kft intervals
Precip (tot dot, conv sol) past 6 hrs 6 kg/m2 contours, min 4

→ 50 m/s
Range ring of 6000 km -- 19 hours GH round trip

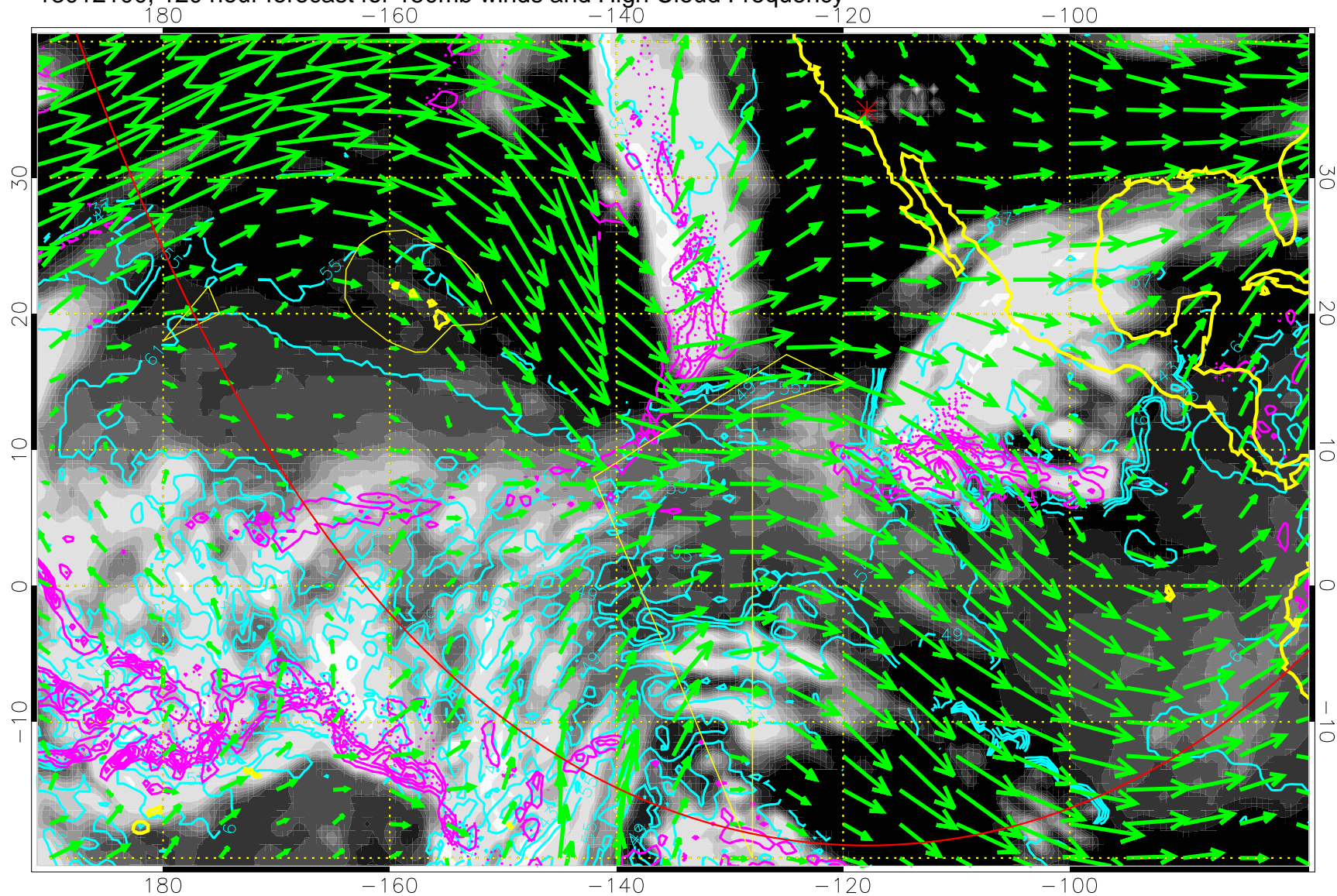
13012018, 114 hour forecast for 150mb winds and High Cloud Frequency



High Cloud Altitude from 37 kft at 6 kft intervals
Precip (tot dot, conv sol) past 6 hrs 6 kg/m2 contours, min 4

→ 50 m/s
Range ring of 6000 km -- 19 hours GH round trip

13012100, 120 hour forecast for 150mb winds and High Cloud Frequency



High Cloud Altitude from 37 kft at 6 kft intervals
Precip (tot dot, conv sol) past 6 hrs 6 kg/m2 contours, min 4

→ 50 m/s
Range ring of 6000 km -- 19 hours GH round trip