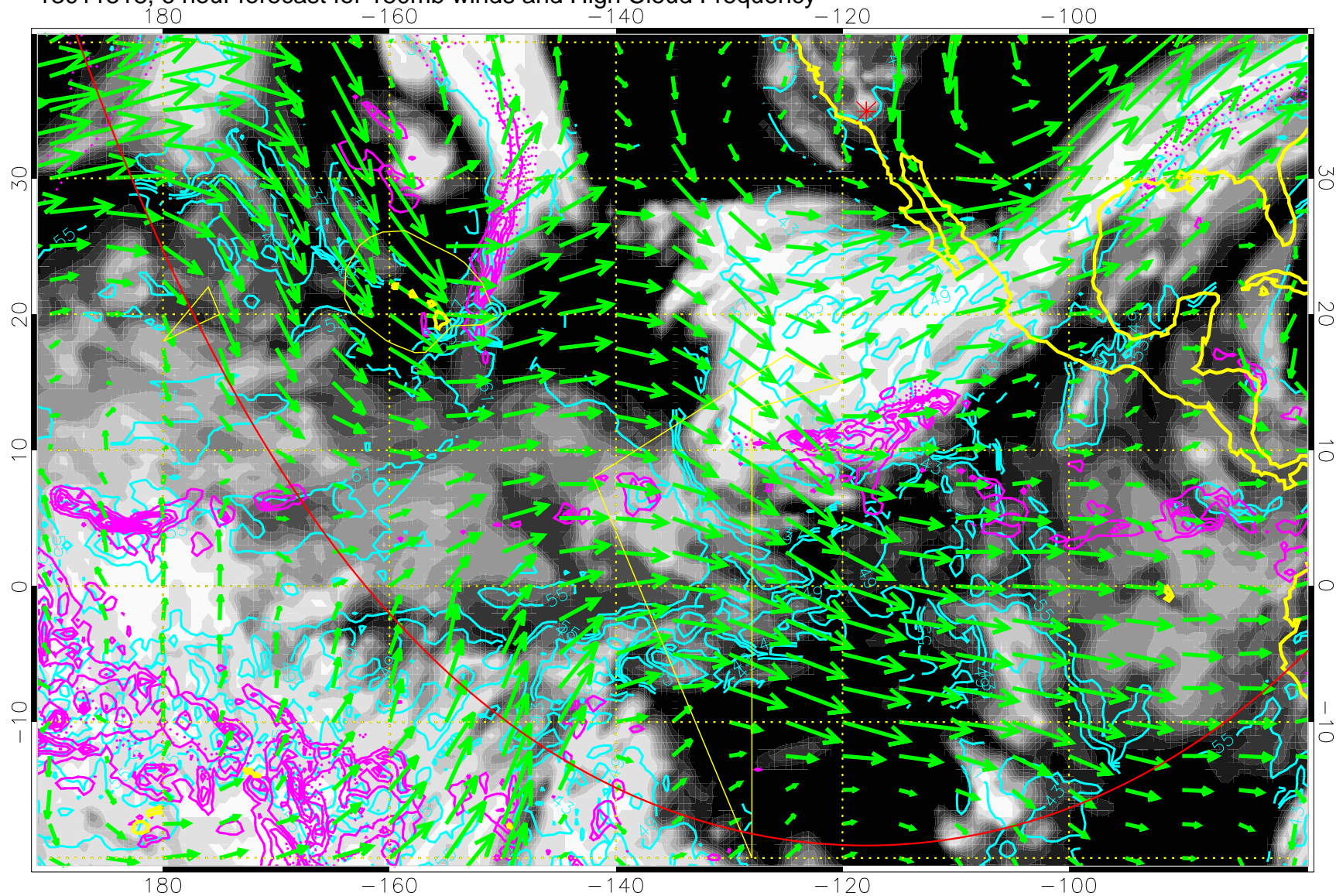


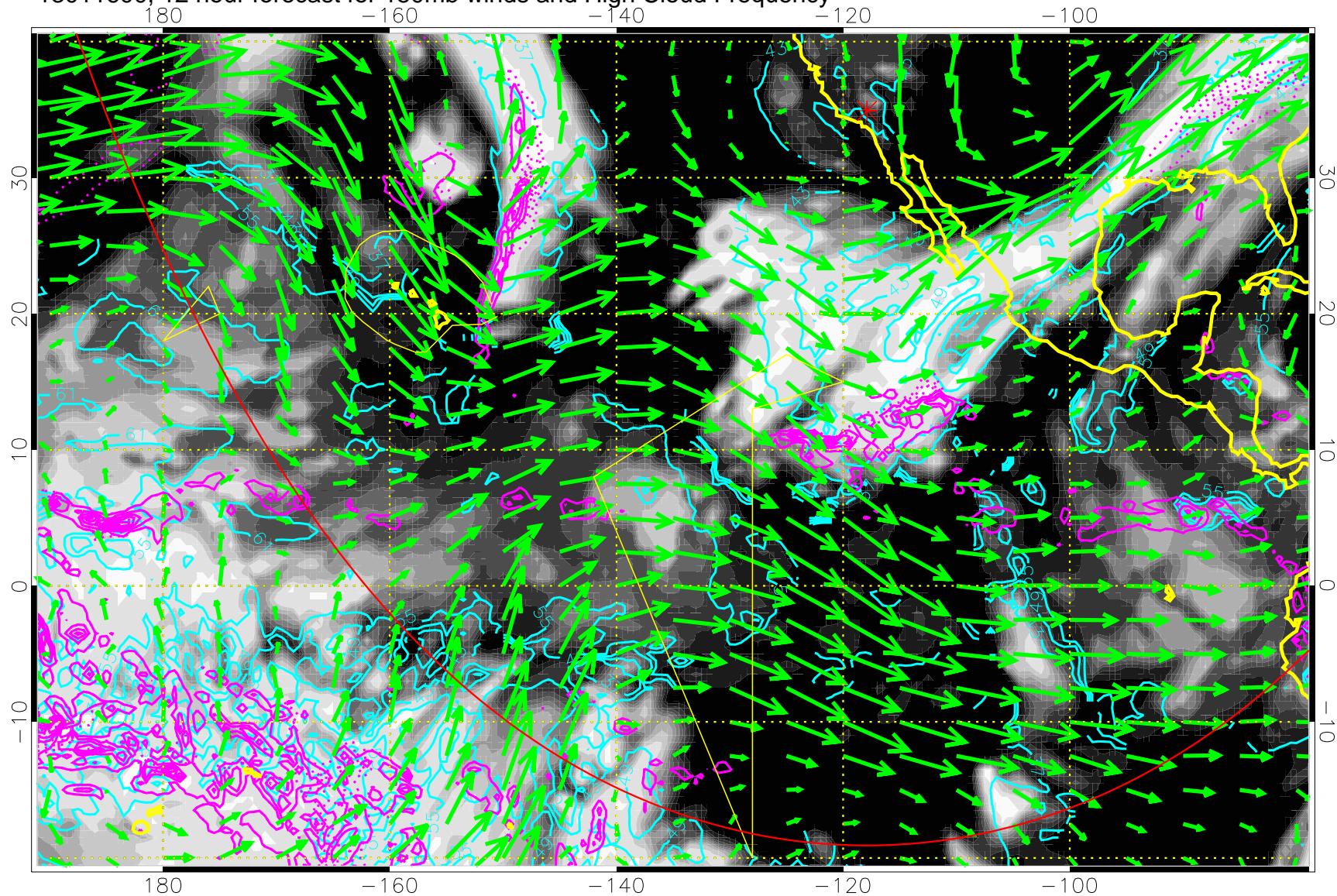
13011518, 6 hour forecast for 150mb winds and High Cloud Frequency



High Cloud Altitude from 37 kft at 6 kft intervals
Precip (tot dot, conv sol) past 6 hrs 6 kg/m2 contours, min 4

→ 50 m/s
Range ring of 6000 km -- 19 hours GH round trip

13011600, 12 hour forecast for 150mb winds and High Cloud Frequency

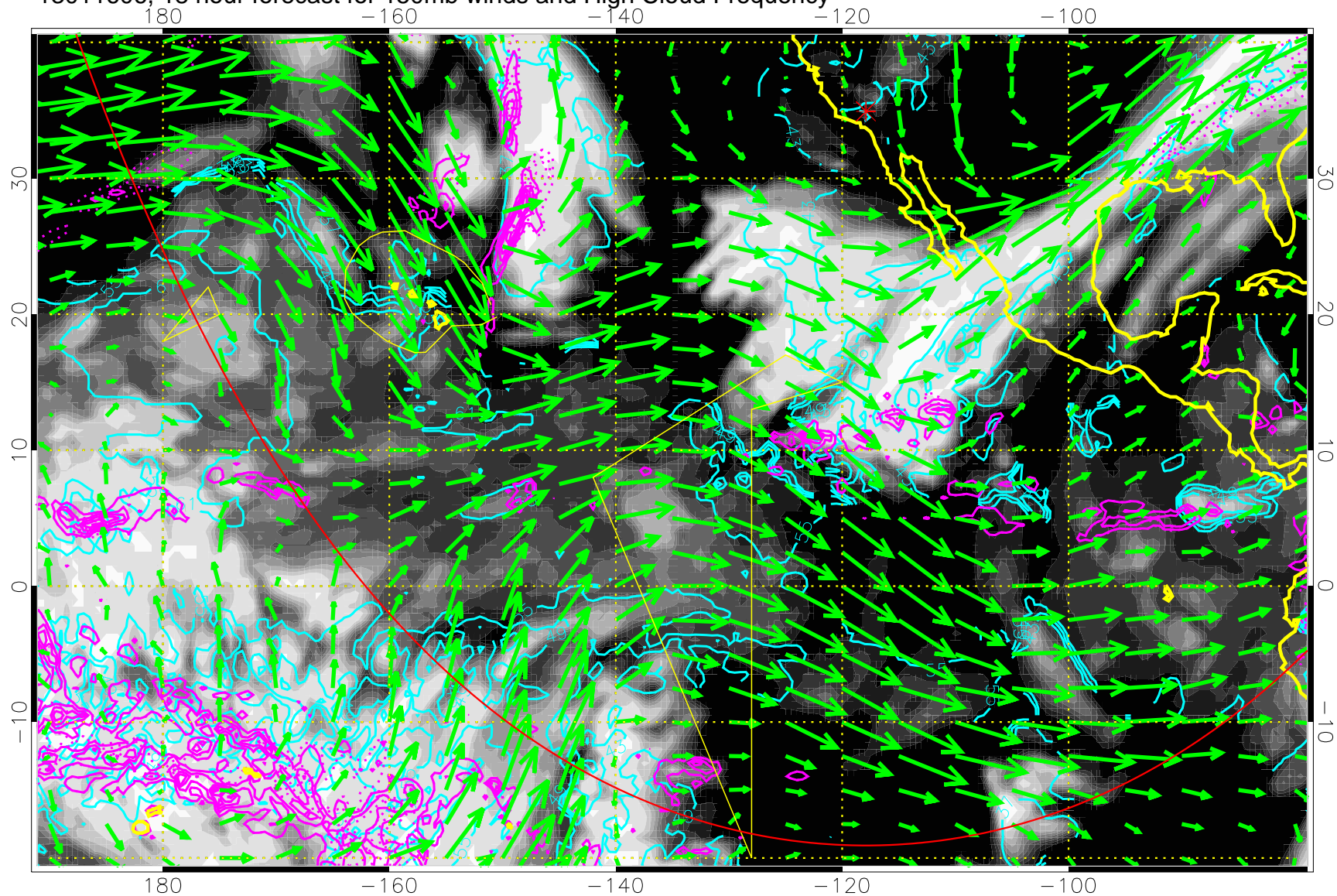


High Cloud Altitude from 37 kft at 6 kft intervals
Precip (tot dot, conv sol) past 6 hrs 6 kg/m2 contours, min 4

→ 50 m/s

Range ring of 6000 km -- 19 hours GH round trip

13011606, 18 hour forecast for 150mb winds and High Cloud Frequency

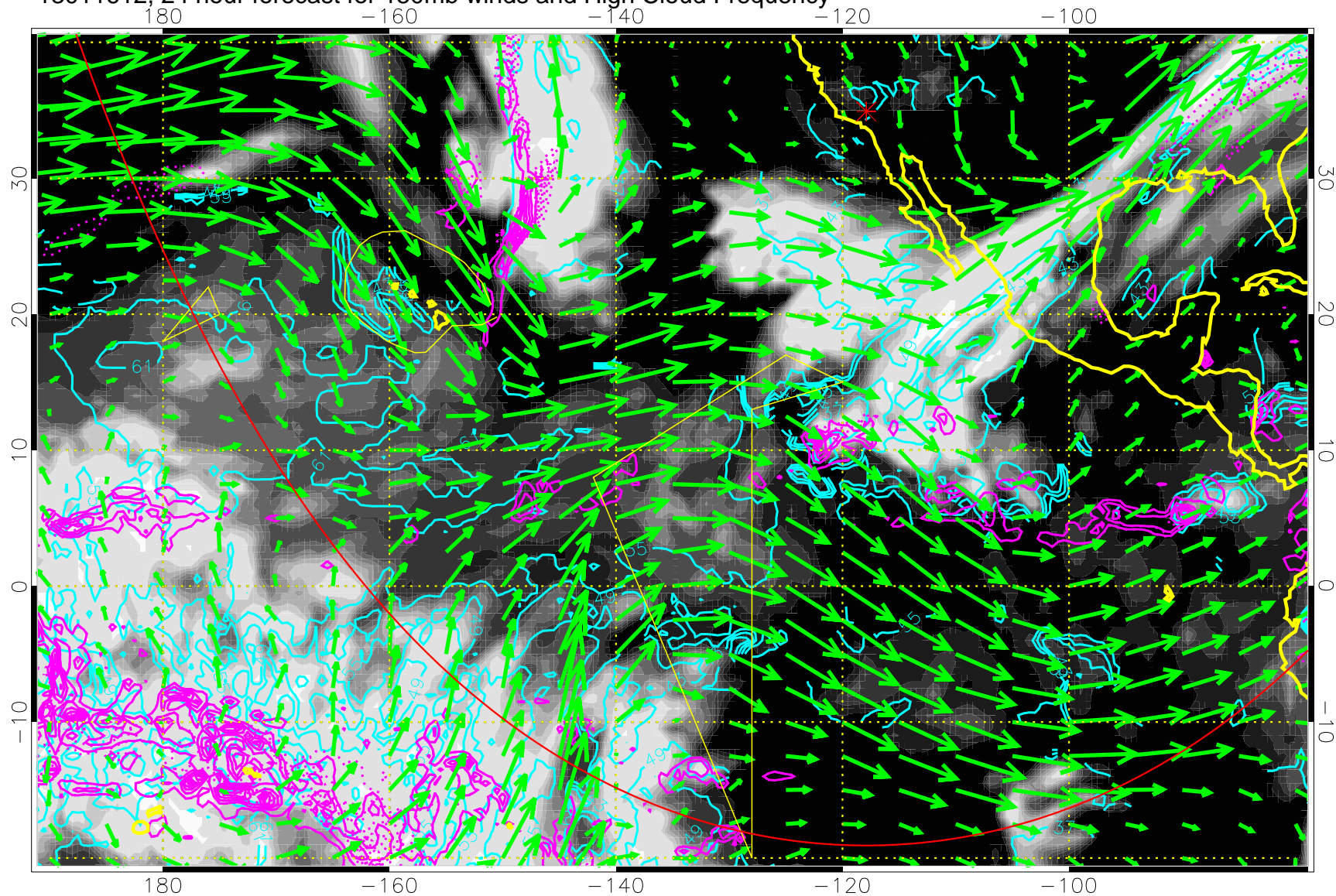


High Cloud Altitude from 37 kft at 6 kft intervals
Precip (tot dot, conv sol) past 6 hrs 6 kg/m² contours, min 4

→ 50 m/s

Range ring of 6000 km -- 19 hours GH round trip

13011612, 24 hour forecast for 150mb winds and High Cloud Frequency

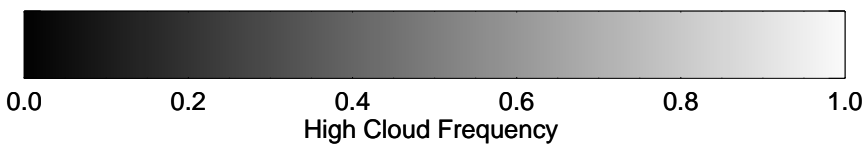
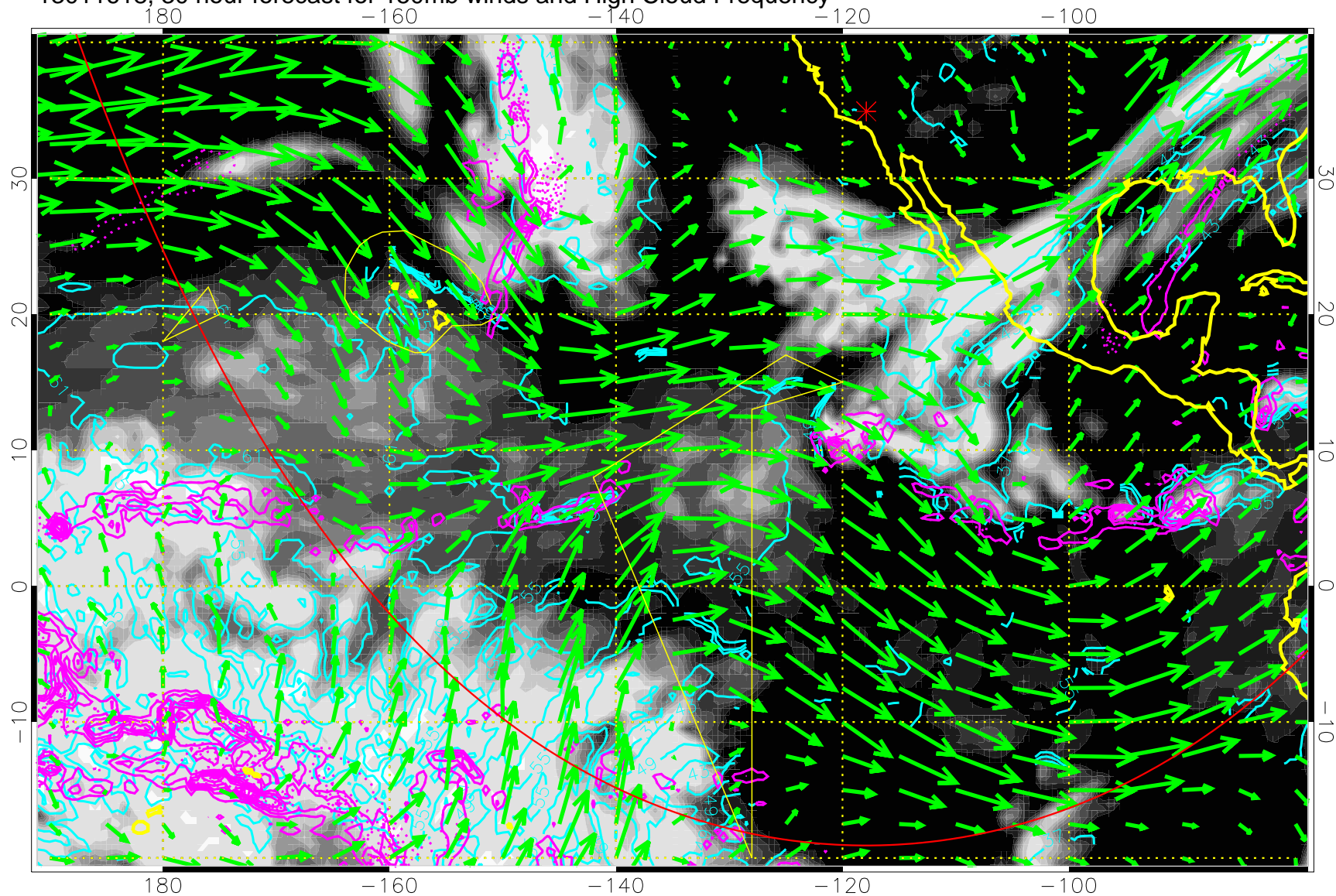


High Cloud Altitude from 37 kft at 6 kft intervals
Precip (tot dot, conv sol) past 6 hrs 6 kg/m2 contours, min 4

→ 50 m/s

Range ring of 6000 km -- 19 hours GH round trip

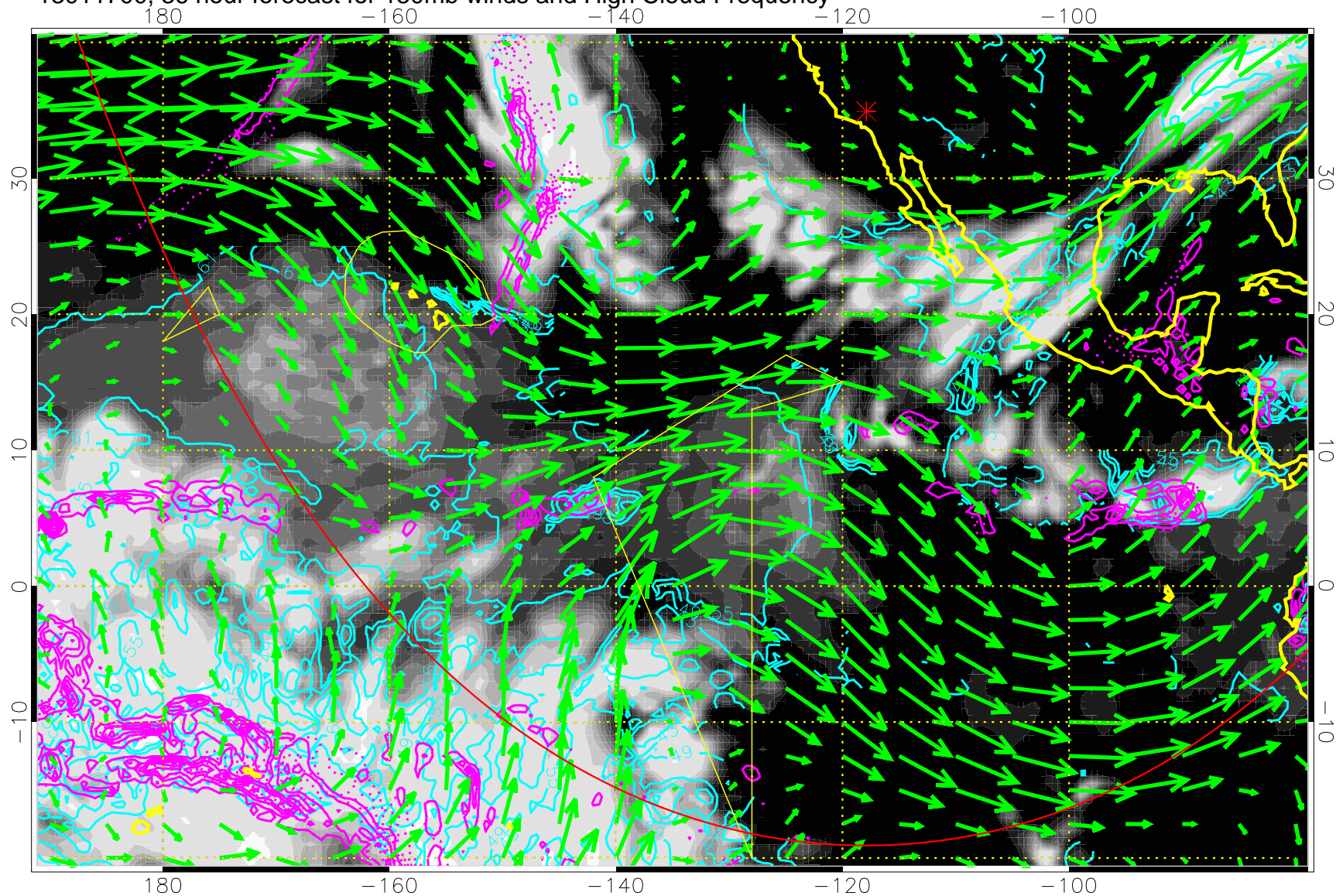
13011618, 30 hour forecast for 150mb winds and High Cloud Frequency



High Cloud Altitude from 37 kft at 6 kft intervals
Precip (tot dot, conv sol) past 6 hrs 6 kg/m2 contours, min 4

→ 50 m/s
Range ring of 6000 km -- 19 hours GH round trip

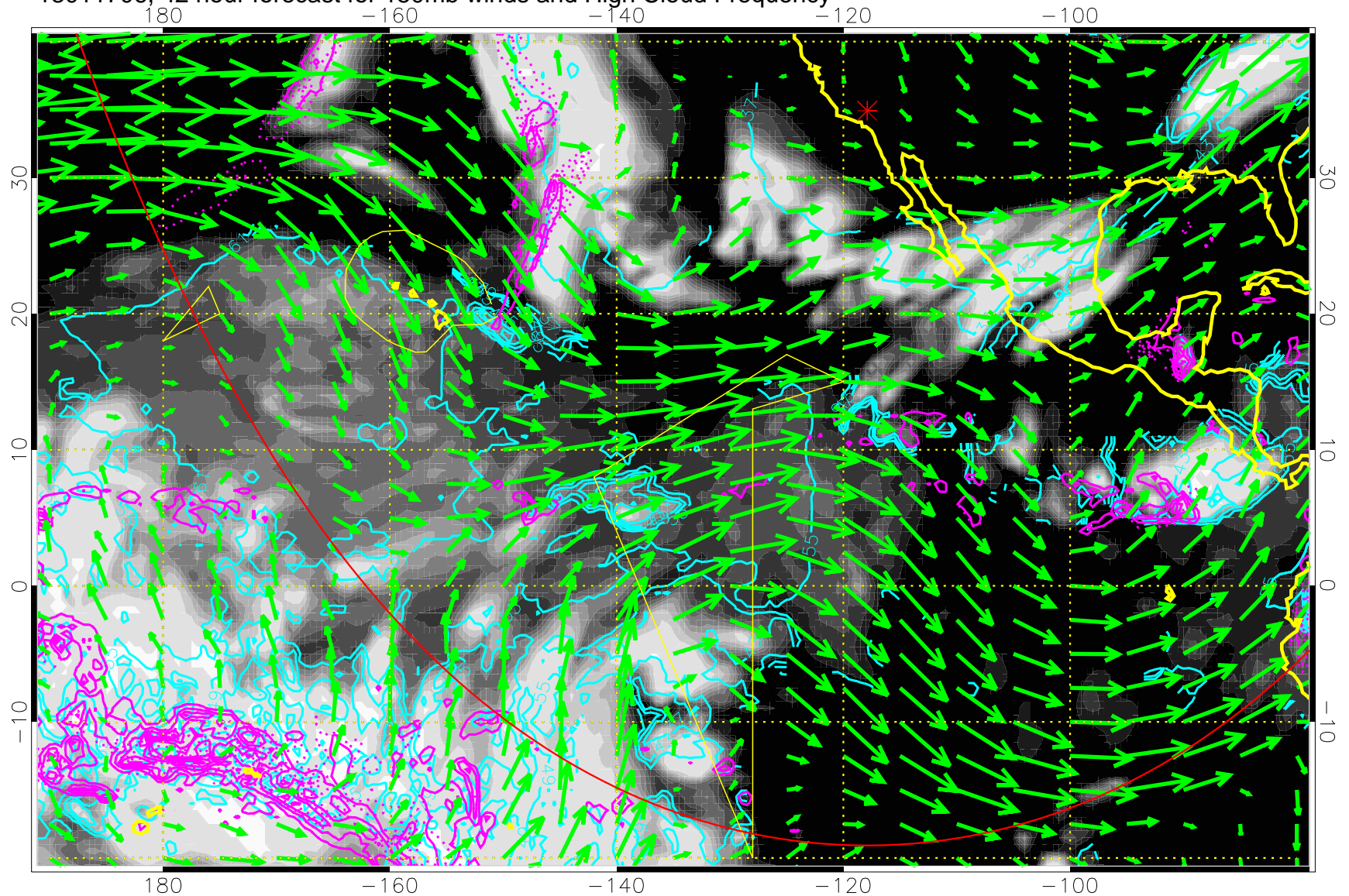
13011700, 36 hour forecast for 150mb winds and High Cloud Frequency



High Cloud Altitude from 37 kft at 6 kft intervals
Precip (tot dot, conv sol) past 6 hrs 6 kg/m2 contours, min 4

→ 50 m/s
Range ring of 6000 km -- 19 hours GH round trip

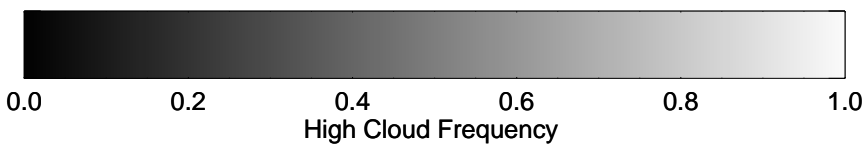
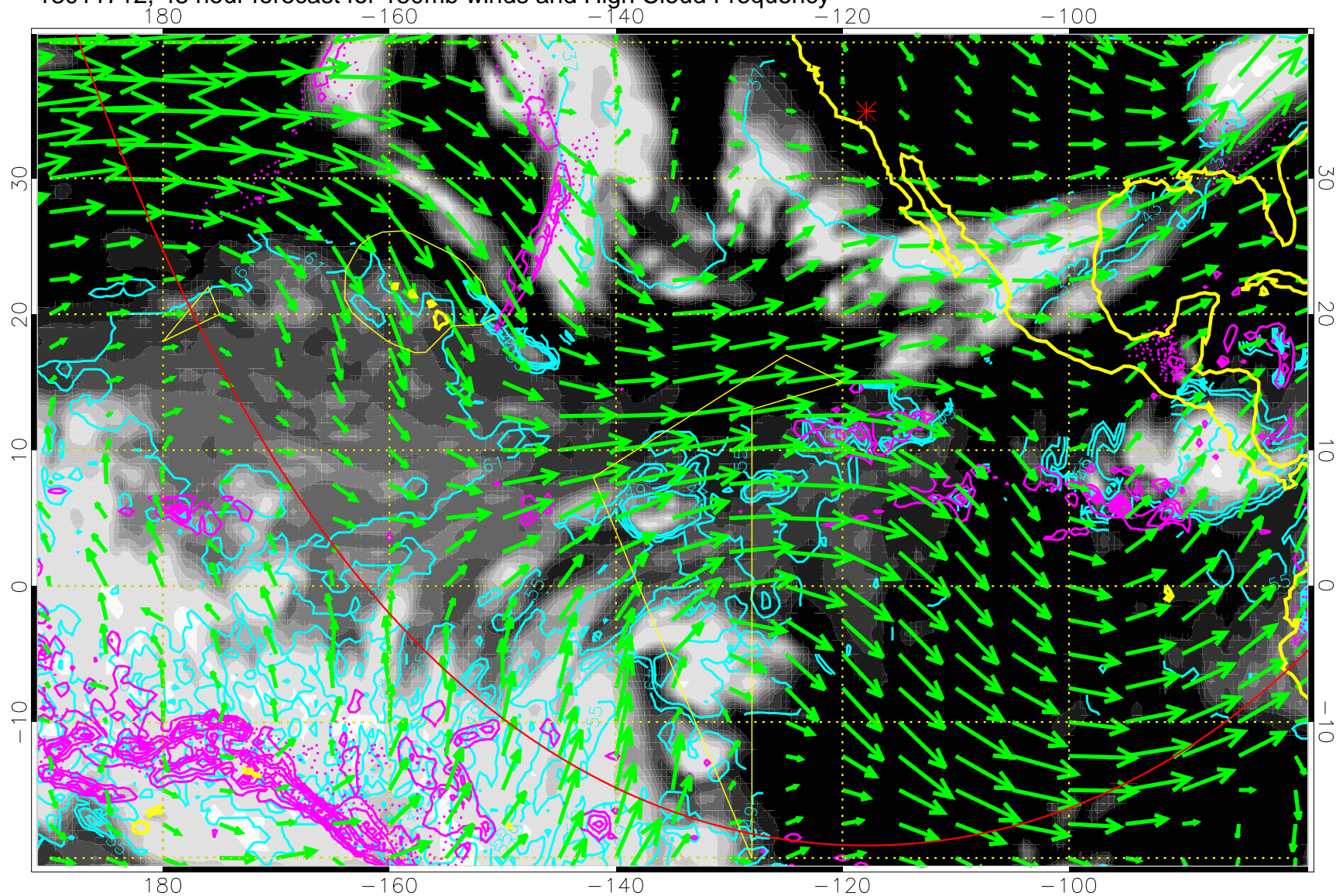
13011706, 42 hour forecast for 150mb winds and High Cloud Frequency



High Cloud Altitude from 37 kft at 6 kft intervals
Precip (tot dot, conv sol) past 6 hrs 6 kg/m2 contours, min 4

→ 50 m/s
Range ring of 6000 km -- 19 hours GH round trip

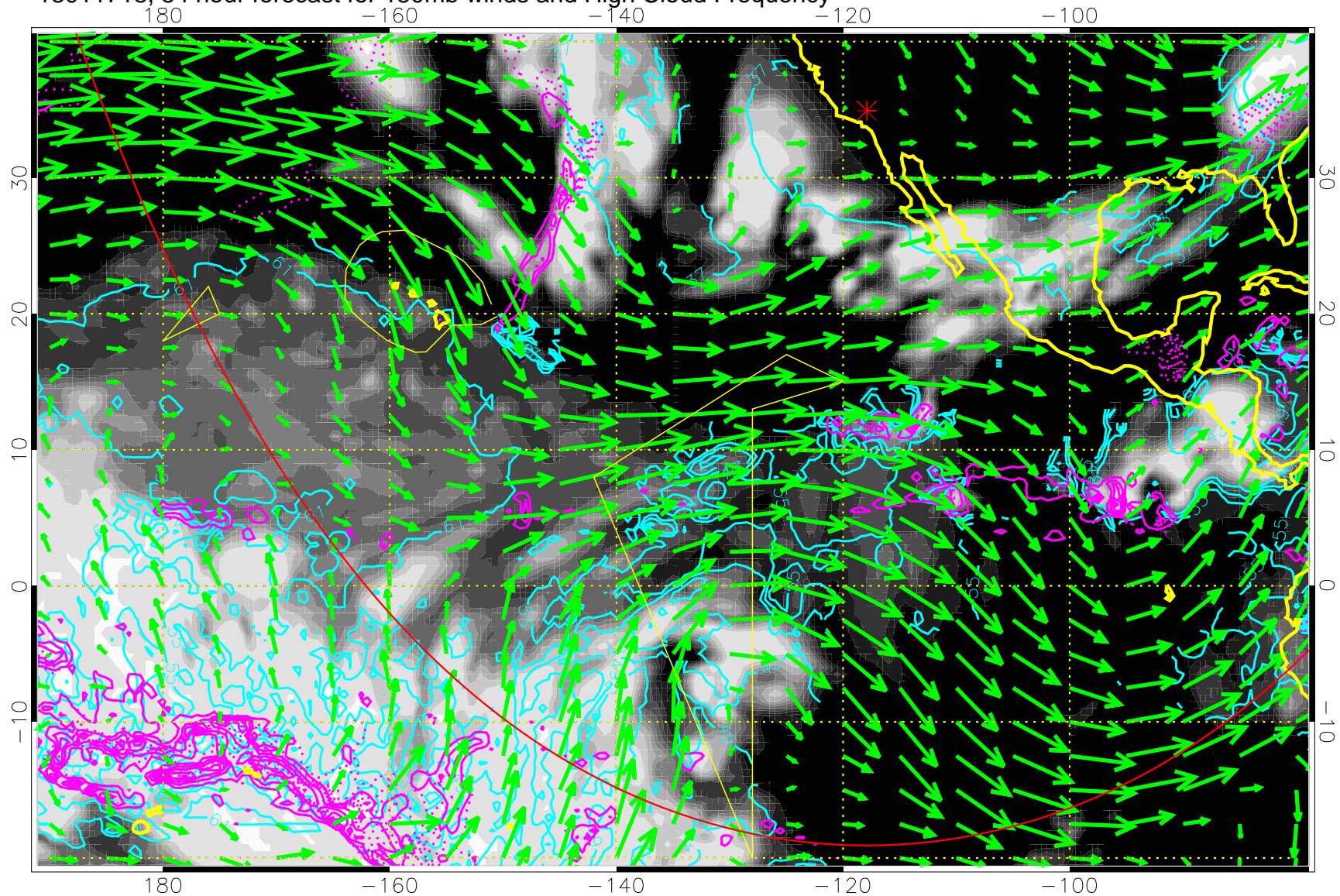
13011712, 48 hour forecast for 150mb winds and High Cloud Frequency



High Cloud Altitude from 37 kft at 6 kft intervals
Precip (tot dot, conv sol) past 6 hrs 6 kg/m2 contours, min 4

→ 50 m/s
Range ring of 6000 km -- 19 hours GH round trip

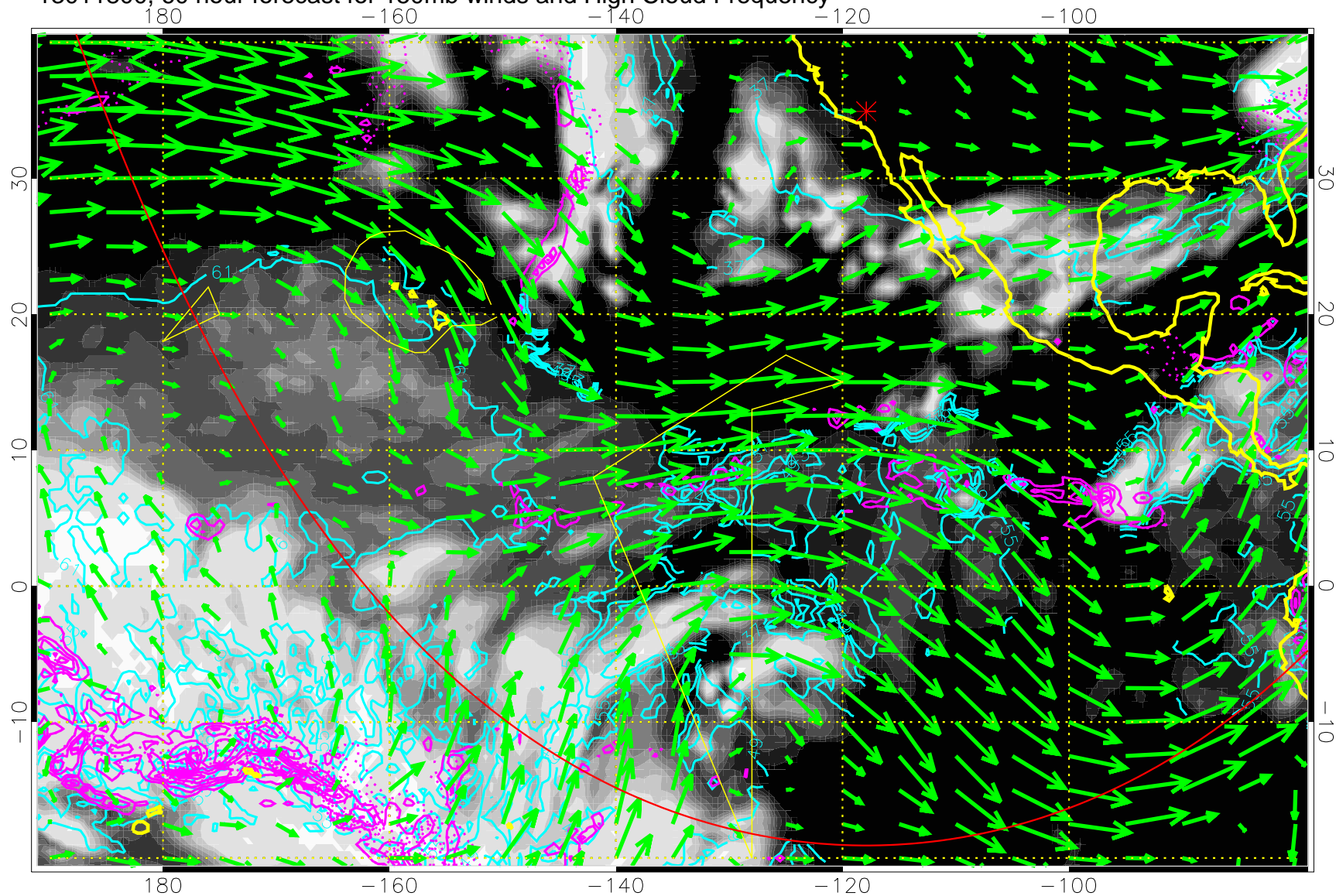
13011718, 54 hour forecast for 150mb winds and High Cloud Frequency



High Cloud Altitude from 37 kft at 6 kft intervals
Precip (tot dot, conv sol) past 6 hrs 6 kg/m2 contours, min 4

→ 50 m/s
Range ring of 6000 km -- 19 hours GH round trip

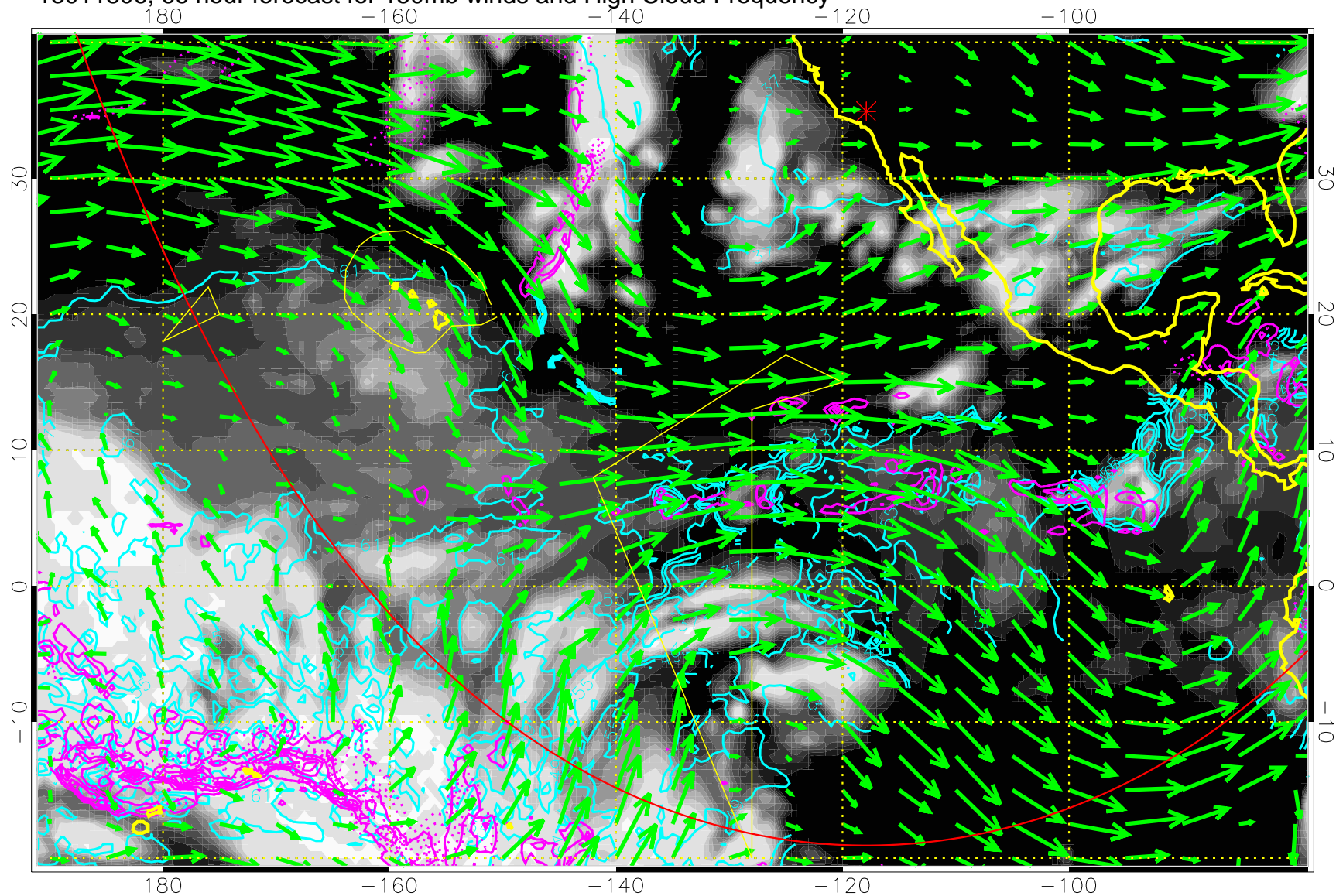
13011800, 60 hour forecast for 150mb winds and High Cloud Frequency



High Cloud Altitude from 37 kft at 6 kft intervals
Precip (tot dot, conv sol) past 6 hrs 6 kg/m2 contours, min 4

→ 50 m/s
Range ring of 6000 km -- 19 hours GH round trip

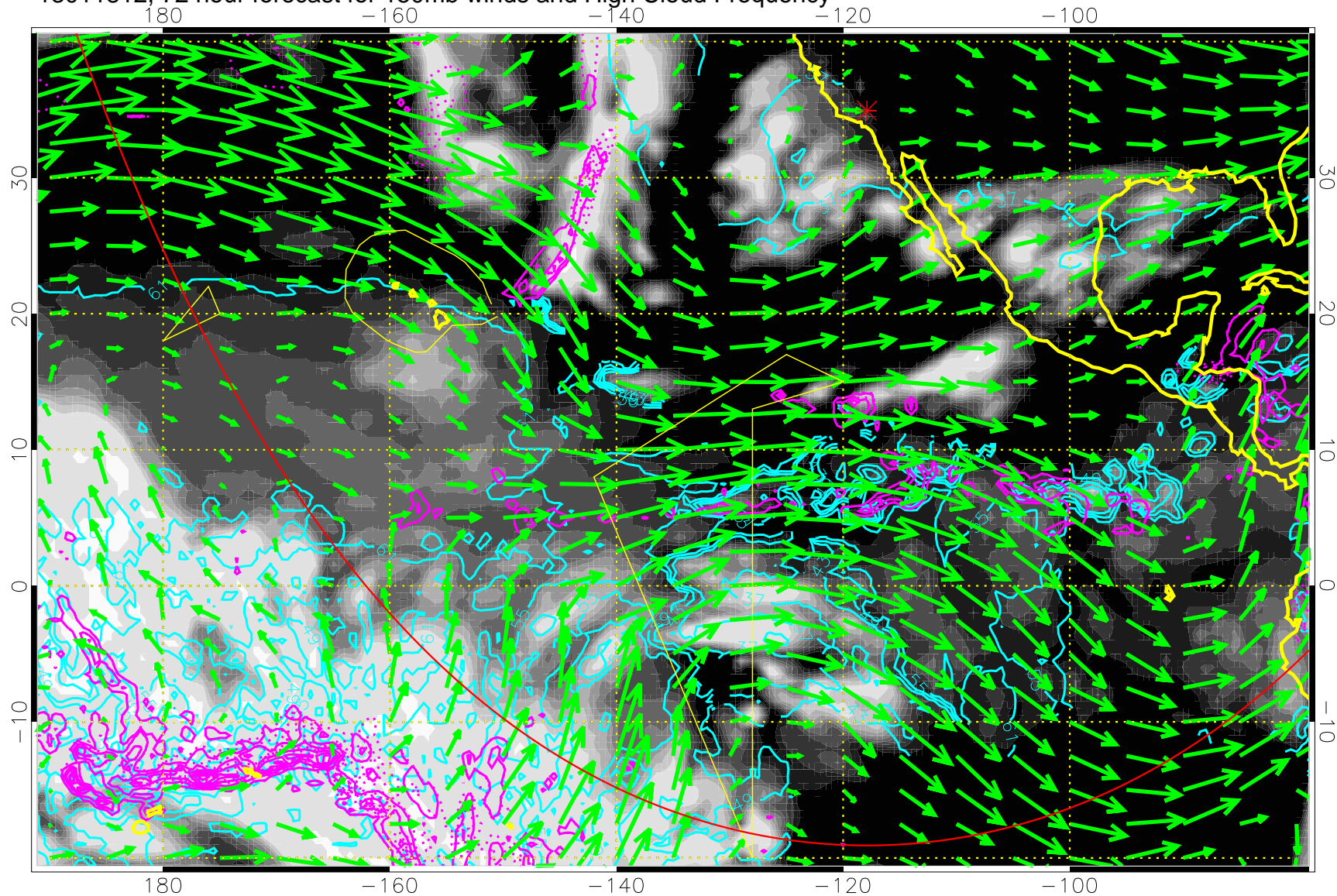
13011806, 66 hour forecast for 150mb winds and High Cloud Frequency



High Cloud Altitude from 37 kft at 6 kft intervals
Precip (tot dot, conv sol) past 6 hrs 6 kg/m² contours, min 4

→ 50 m/s
Range ring of 6000 km -- 19 hours GH round trip

13011812, 72 hour forecast for 150mb winds and High Cloud Frequency

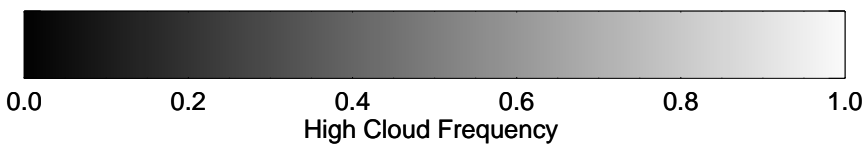
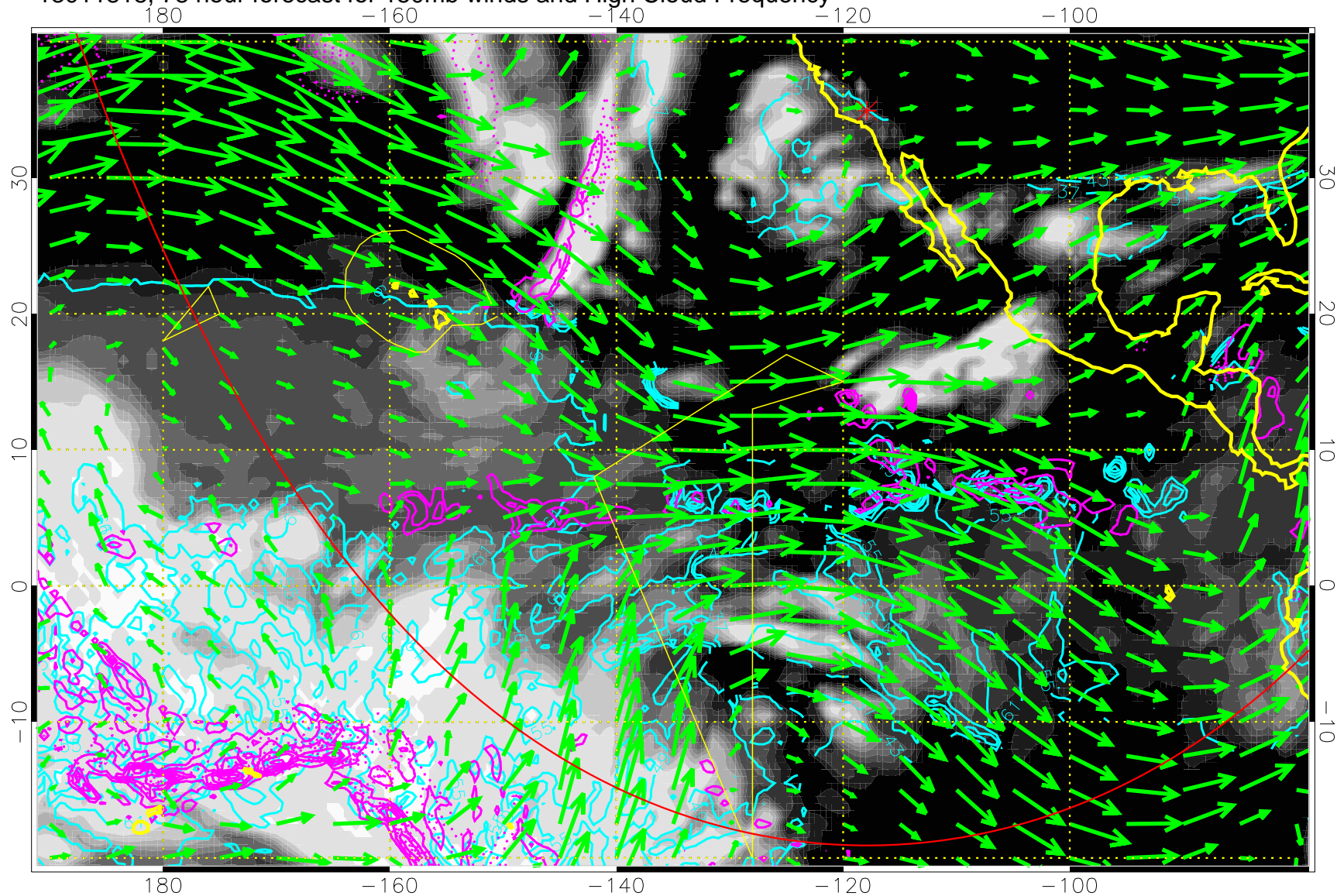


High Cloud Altitude from 37 kft at 6 kft intervals
Precip (tot dot, conv sol) past 6 hrs 6 kg/m2 contours, min 4

→ 50 m/s

Range ring of 6000 km -- 19 hours GH round trip

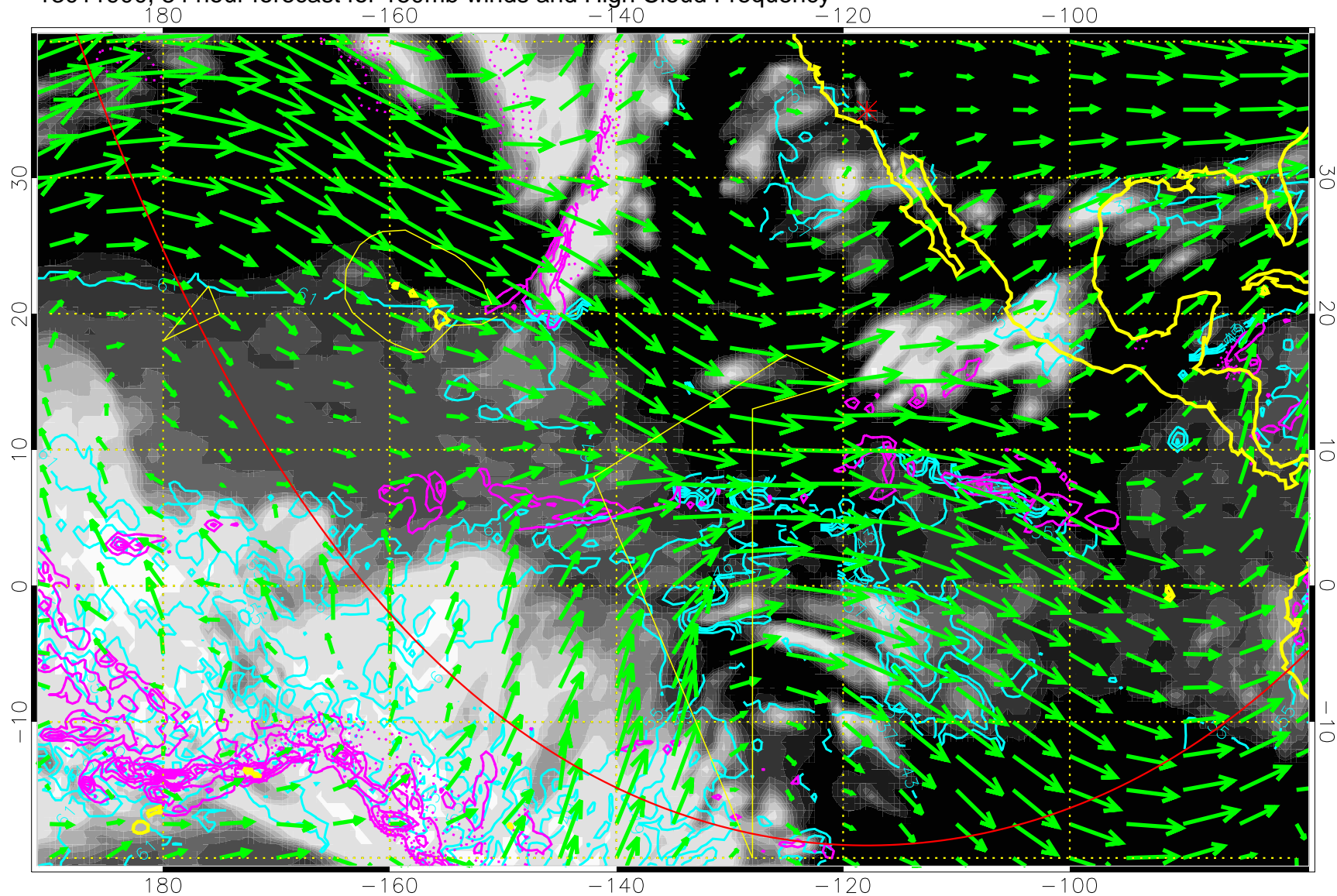
13011818, 78 hour forecast for 150mb winds and High Cloud Frequency



High Cloud Altitude from 37 kft at 6 kft intervals
Precip (tot dot, conv sol) past 6 hrs 6 kg/m2 contours, min 4

→ 50 m/s
Range ring of 6000 km -- 19 hours GH round trip

13011900, 84 hour forecast for 150mb winds and High Cloud Frequency

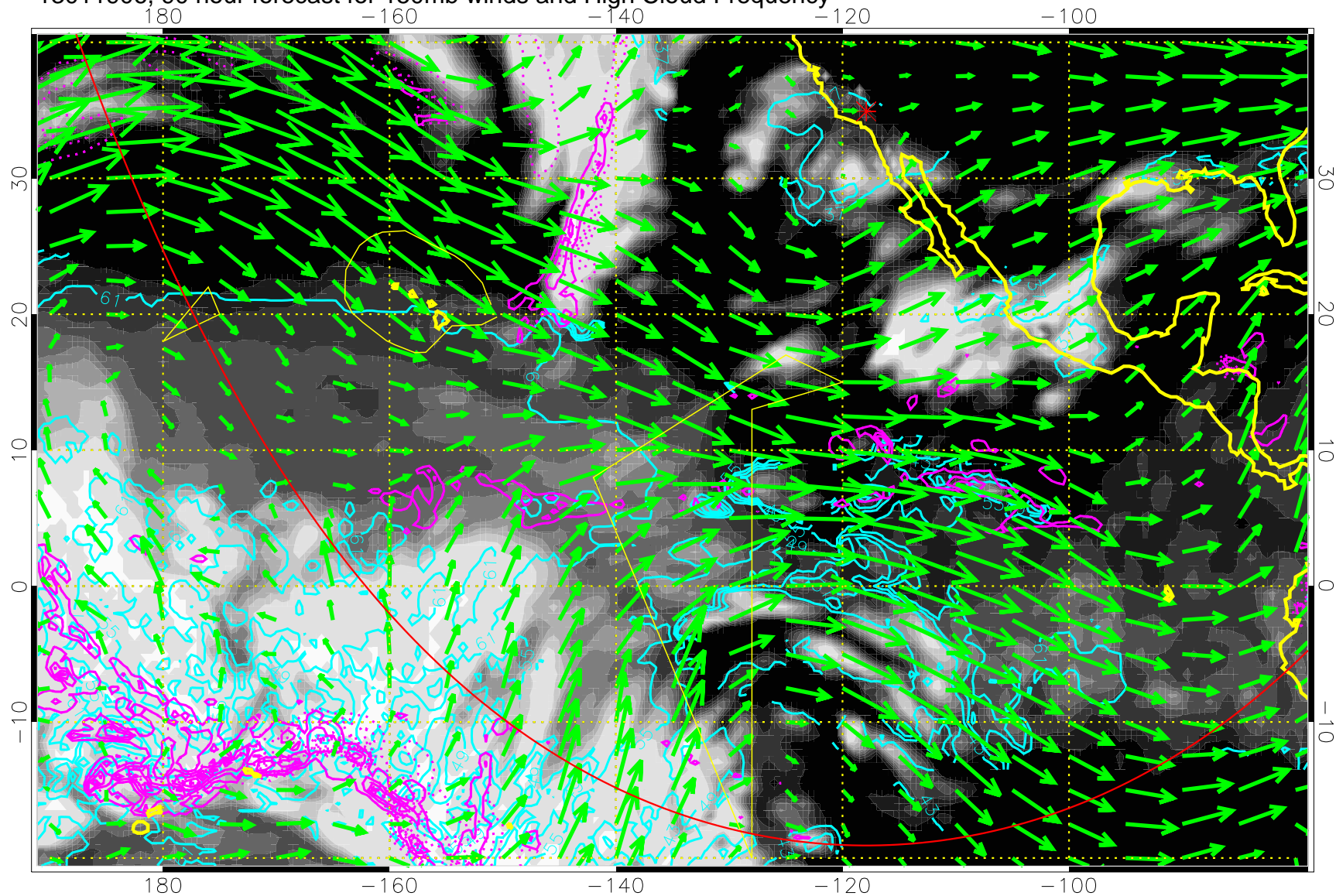


High Cloud Altitude from 37 kft at 6 kft intervals
Precip (tot dot, conv sol) past 6 hrs 6 kg/m2 contours, min 4

→ 50 m/s

Range ring of 6000 km -- 19 hours GH round trip

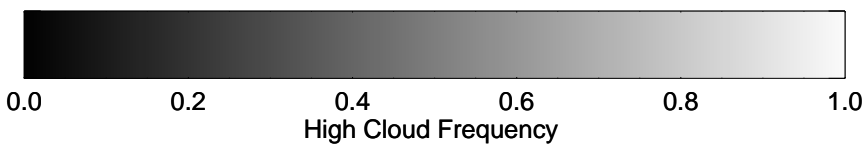
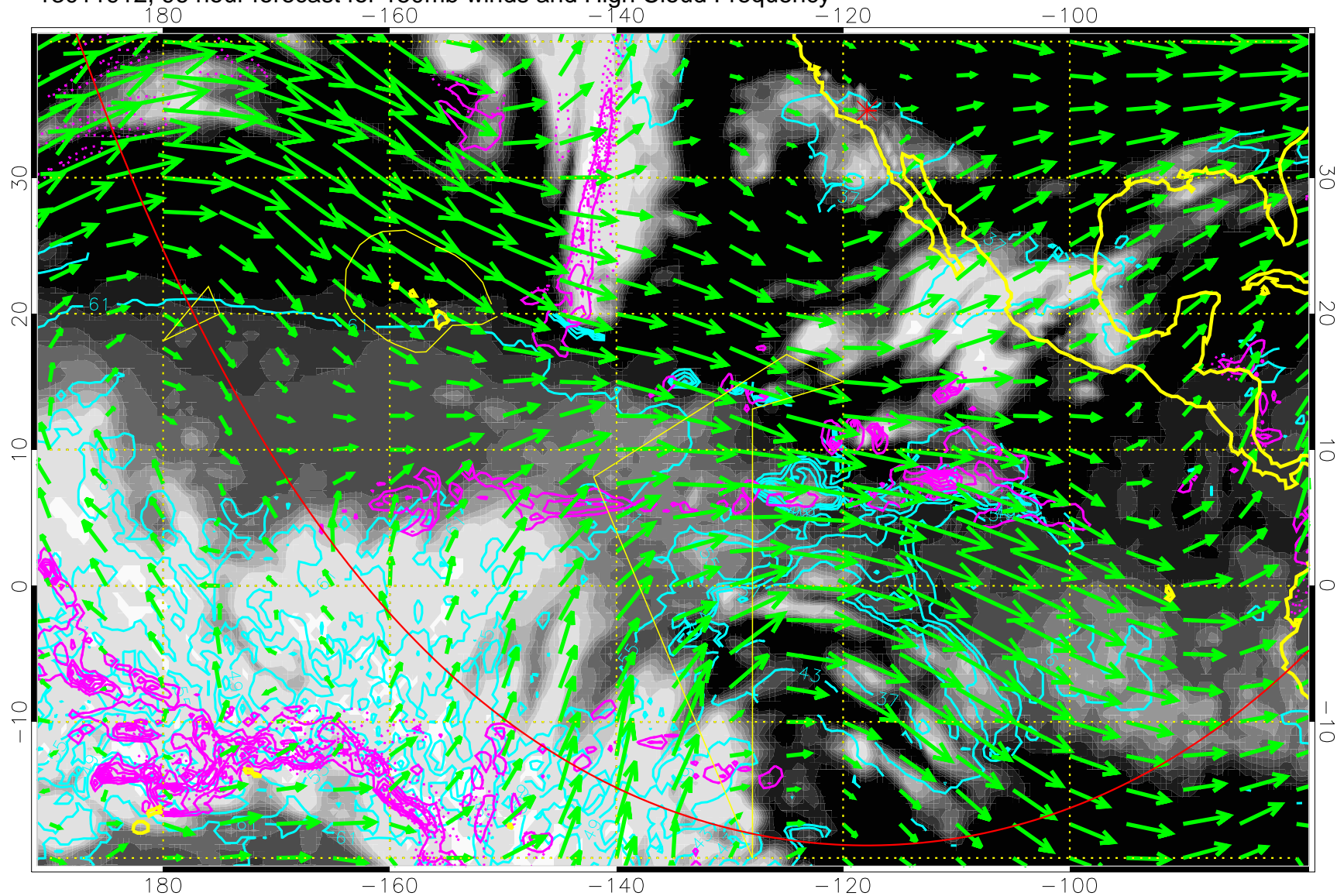
13011906, 90 hour forecast for 150mb winds and High Cloud Frequency



High Cloud Altitude from 37 kft at 6 kft intervals
Precip (tot dot, conv sol) past 6 hrs 6 kg/m2 contours, min 4

→ 50 m/s
Range ring of 6000 km -- 19 hours GH round trip

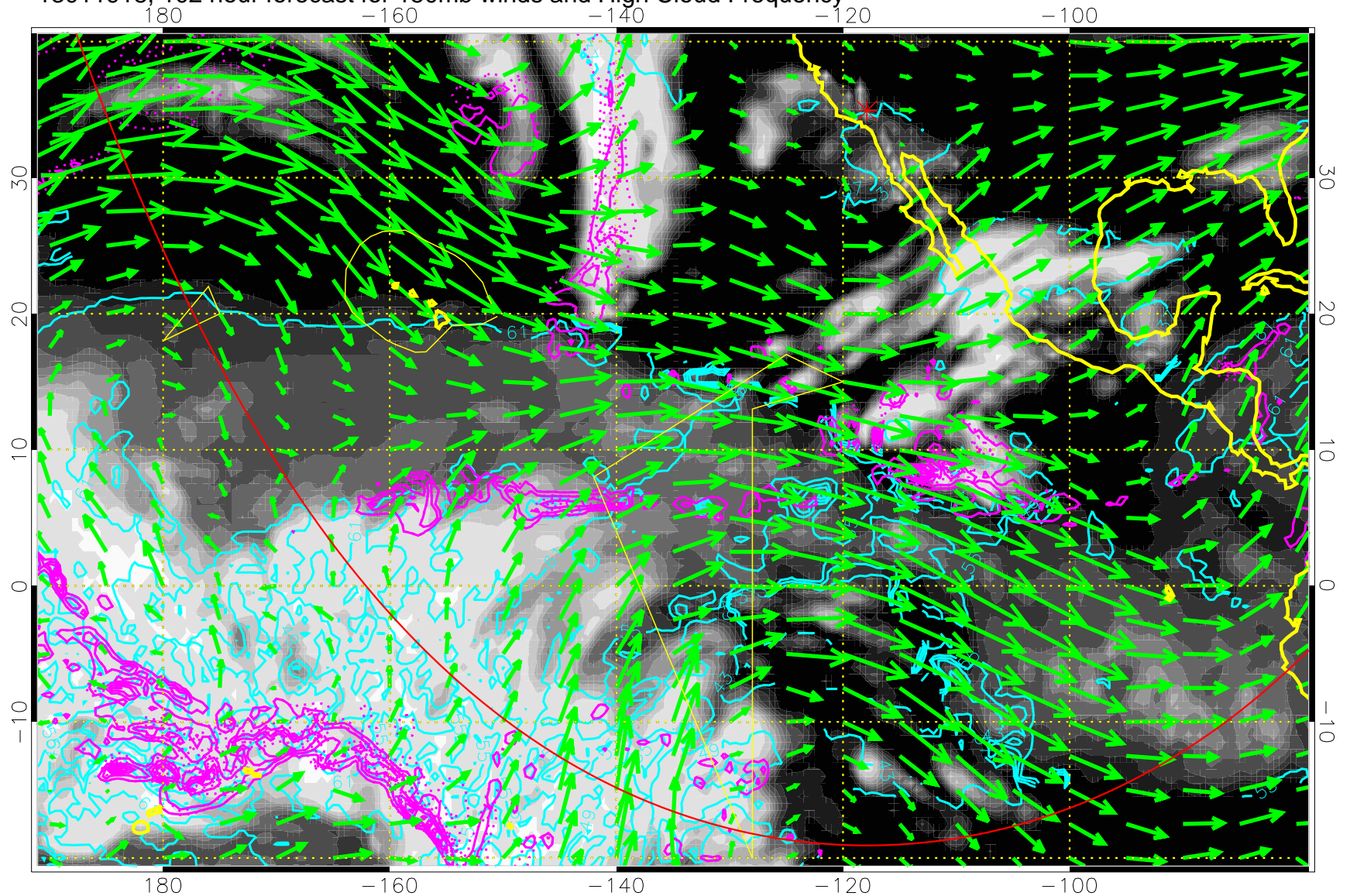
13011912, 96 hour forecast for 150mb winds and High Cloud Frequency



High Cloud Altitude from 37 kft at 6 kft intervals
Precip (tot dot, conv sol) past 6 hrs 6 kg/m2 contours, min 4

→ 50 m/s
Range ring of 6000 km -- 19 hours GH round trip

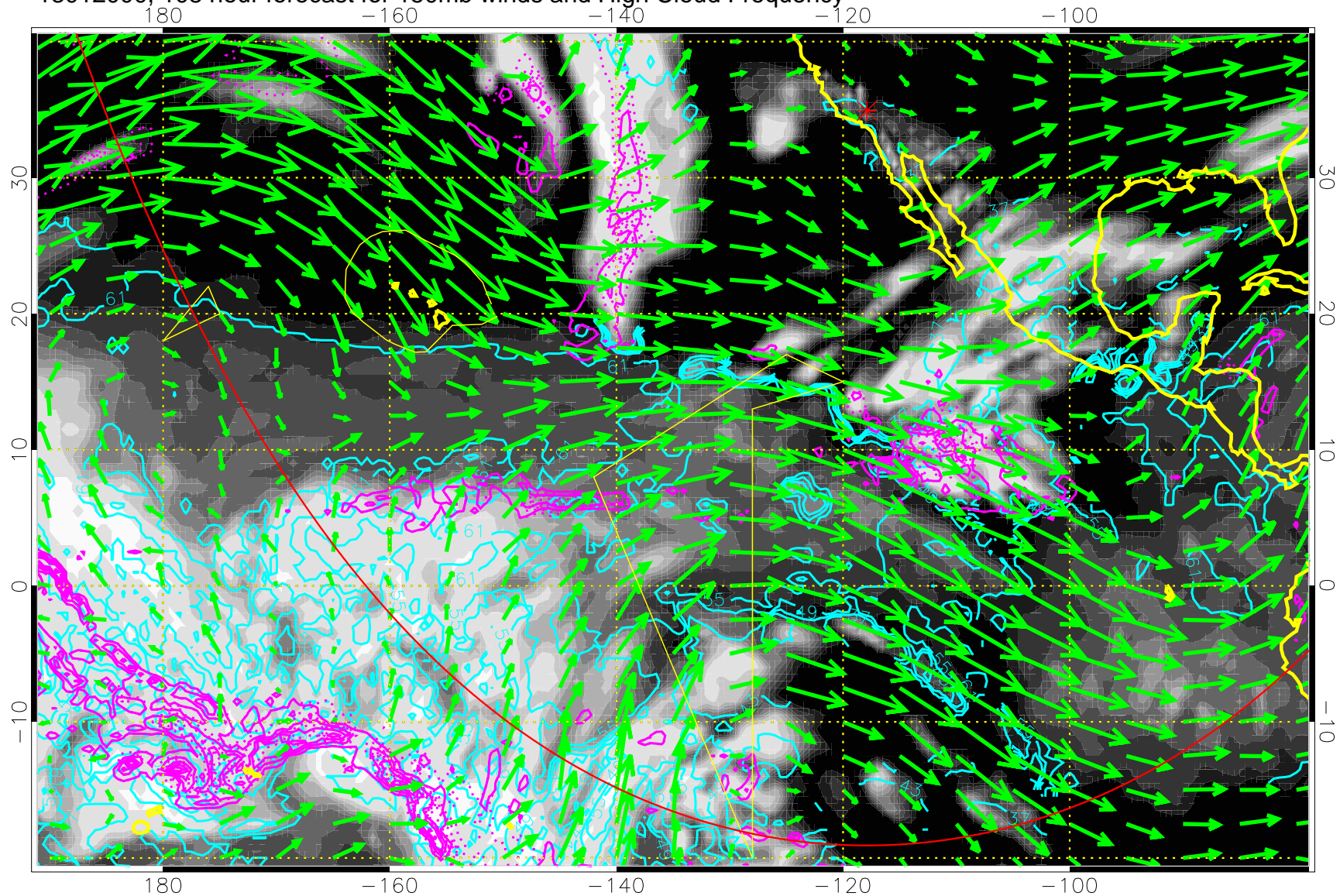
13011918, 102 hour forecast for 150mb winds and High Cloud Frequency



High Cloud Altitude from 37 kft at 6 kft intervals
Precip (tot dot, conv sol) past 6 hrs 6 kg/m² contours, min 4

→ 50 m/s
Range ring of 6000 km -- 19 hours GH round trip

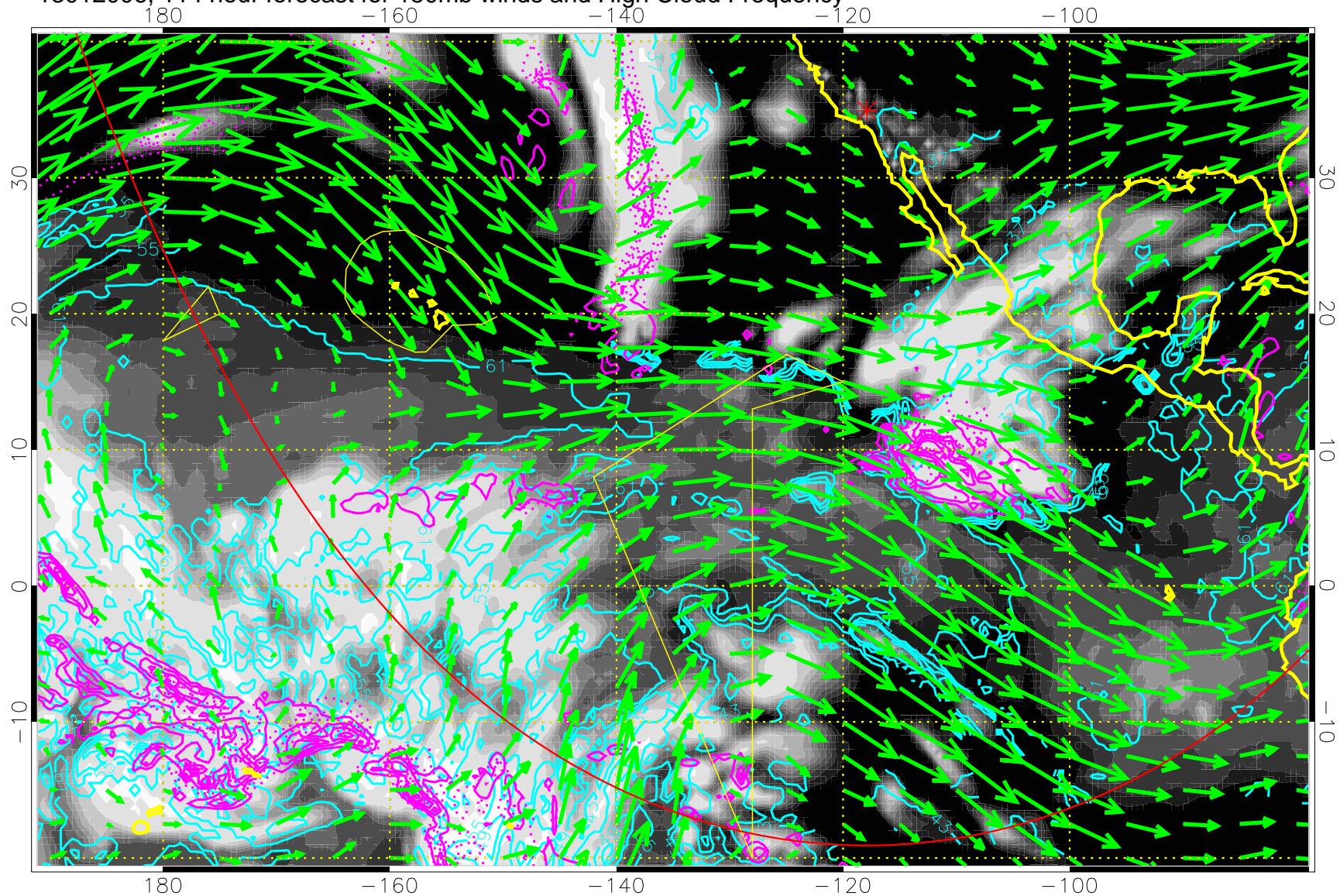
13012000, 108 hour forecast for 150mb winds and High Cloud Frequency



High Cloud Altitude from 37 kft at 6 kft intervals
Precip (tot dot, conv sol) past 6 hrs 6 kg/m2 contours, min 4

→ 50 m/s
Range ring of 6000 km -- 19 hours GH round trip

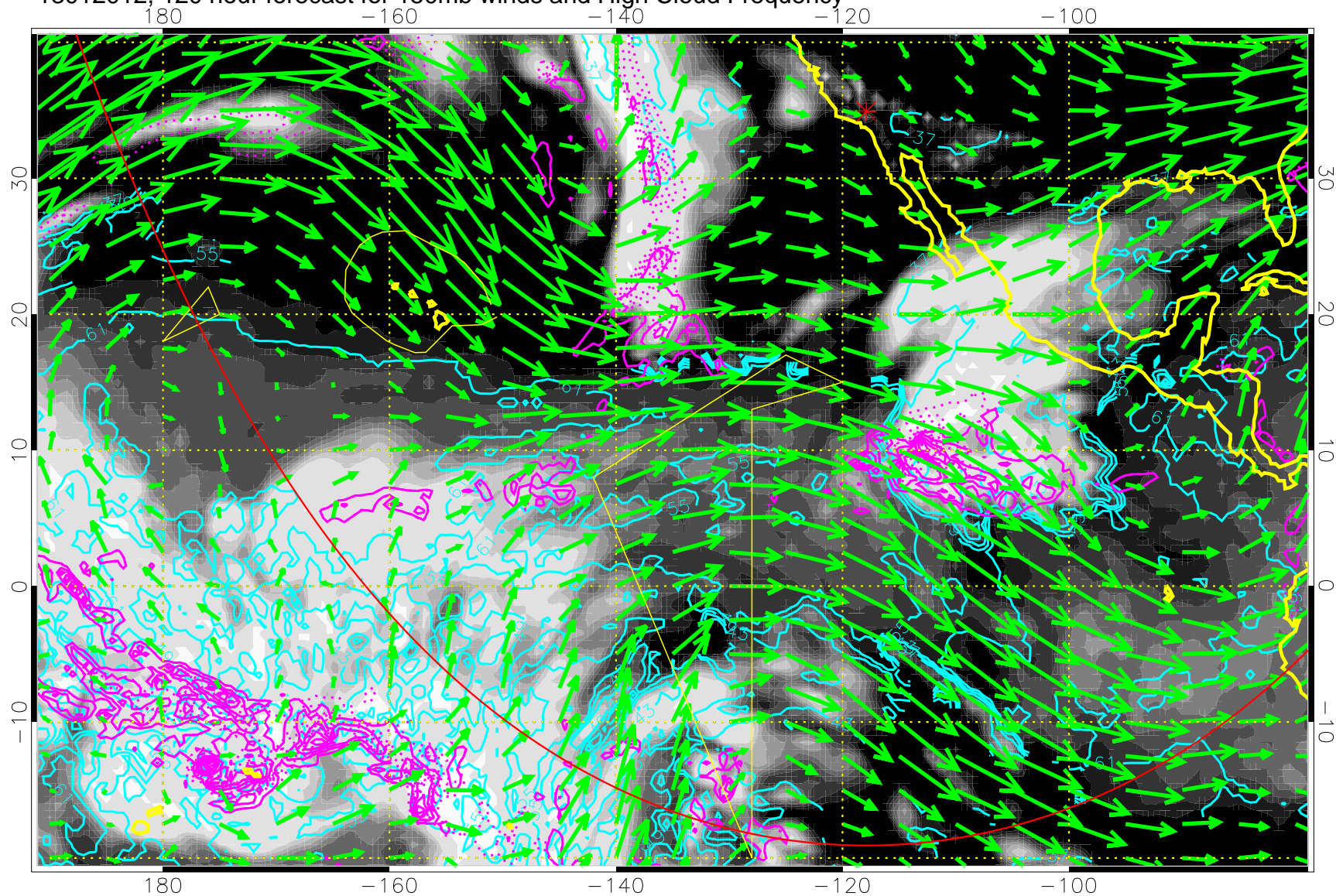
13012006, 114 hour forecast for 150mb winds and High Cloud Frequency



High Cloud Altitude from 37 kft at 6 kft intervals
Precip (tot dot, conv sol) past 6 hrs 6 kg/m2 contours, min 4

→ 50 m/s
Range ring of 6000 km -- 19 hours GH round trip

13012012, 120 hour forecast for 150mb winds and High Cloud Frequency



High Cloud Altitude from 37 kft at 6 kft intervals
Precip (tot dot, conv sol) past 6 hrs 6 kg/m2 contours, min 4

→ 50 m/s
Range ring of 6000 km -- 19 hours GH round trip