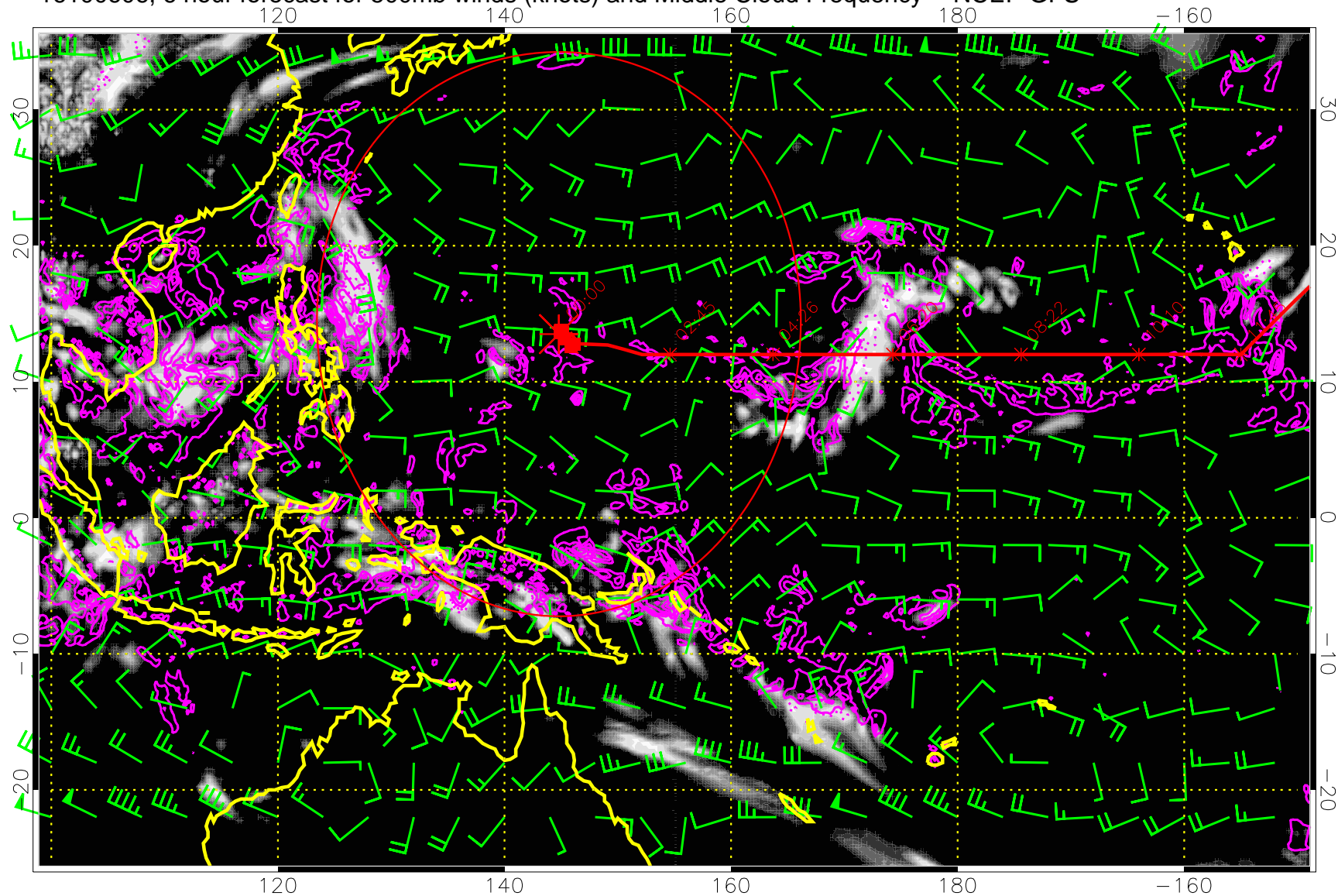
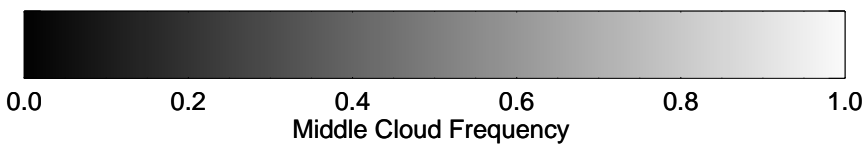


16100606, 6 hour forecast for 500mb winds (knots) and Middle Cloud Frequency -- NCEP GFS



15:53

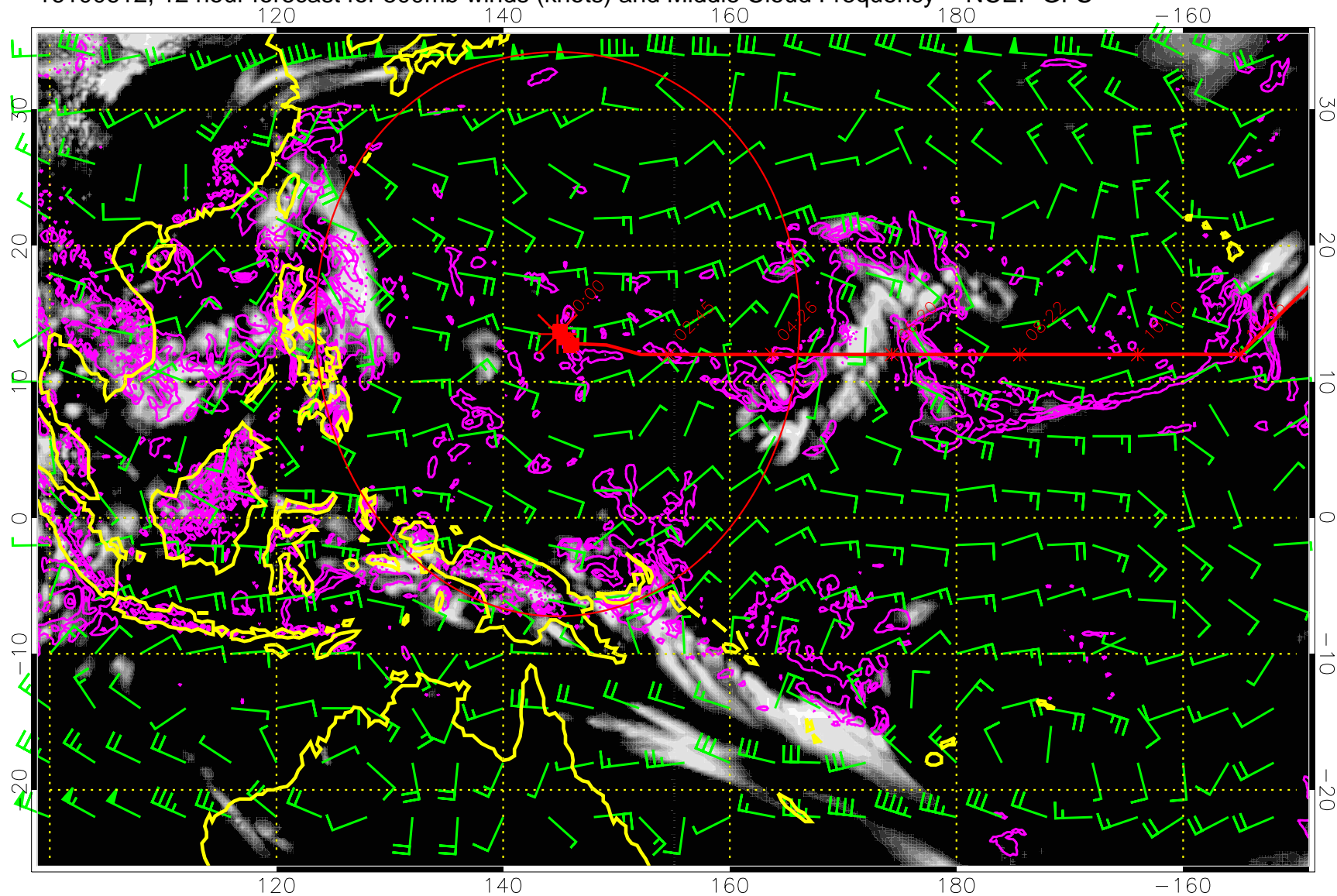
13:53



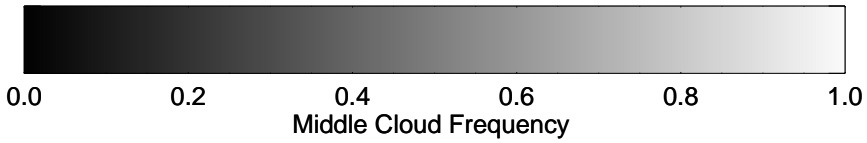
Precip (tot dot, conv sol) mm/day 40 mm/day contours, min 20

Range ring of 2304 km

16100612, 12 hour forecast for 500mb winds (knots) and Middle Cloud Frequency -- NCEP GFS



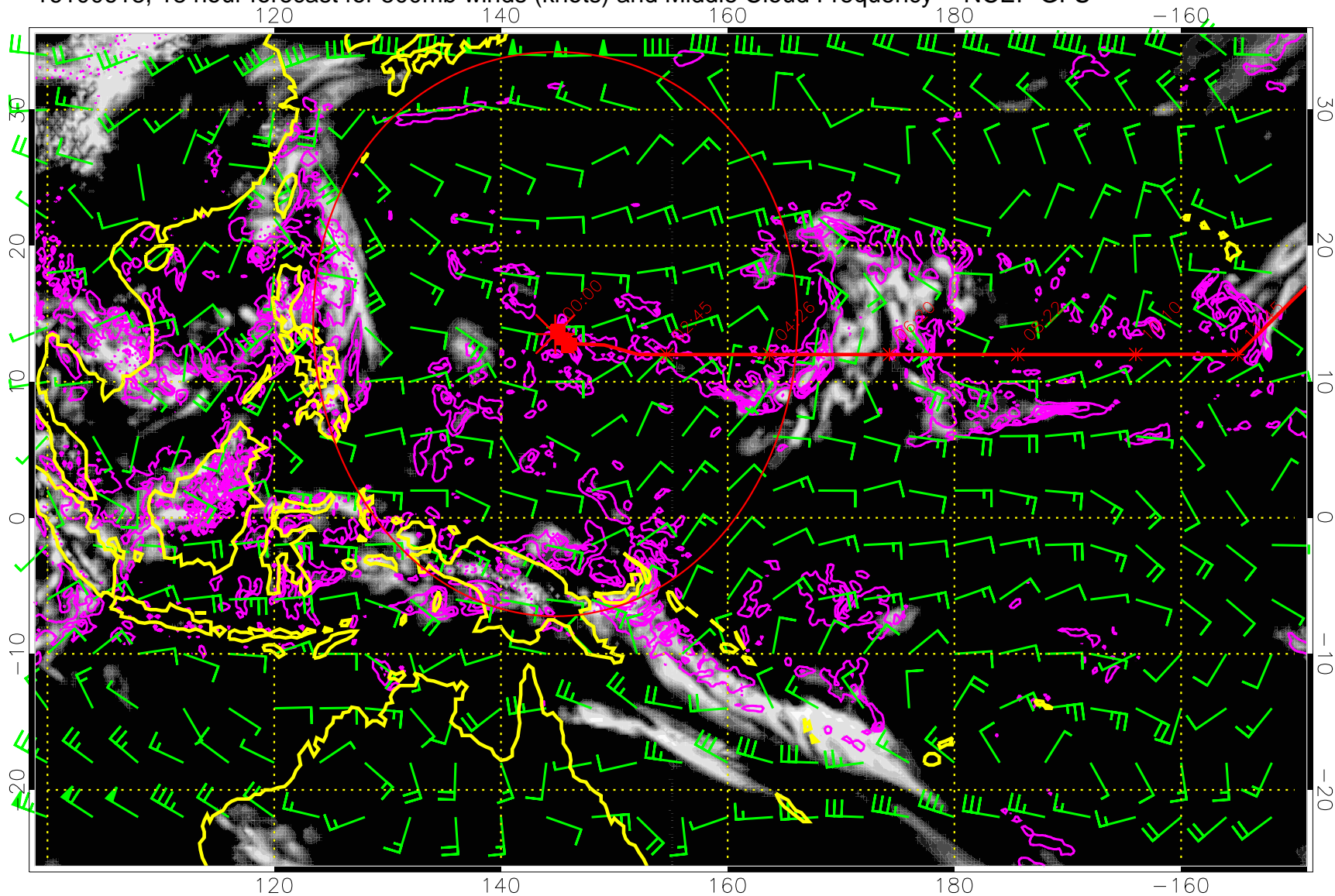
15:53
13:53



Precip (tot dot, conv sol) mm/day 40 mm/day contours, min 20

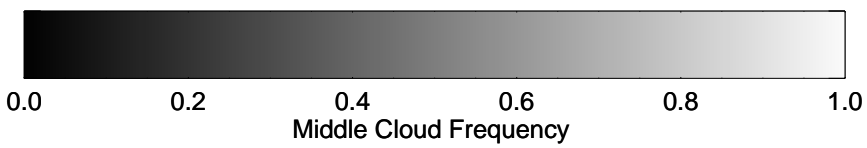
Range ring of 2304 km

16100618, 18 hour forecast for 500mb winds (knots) and Middle Cloud Frequency -- NCEP GFS



15:53

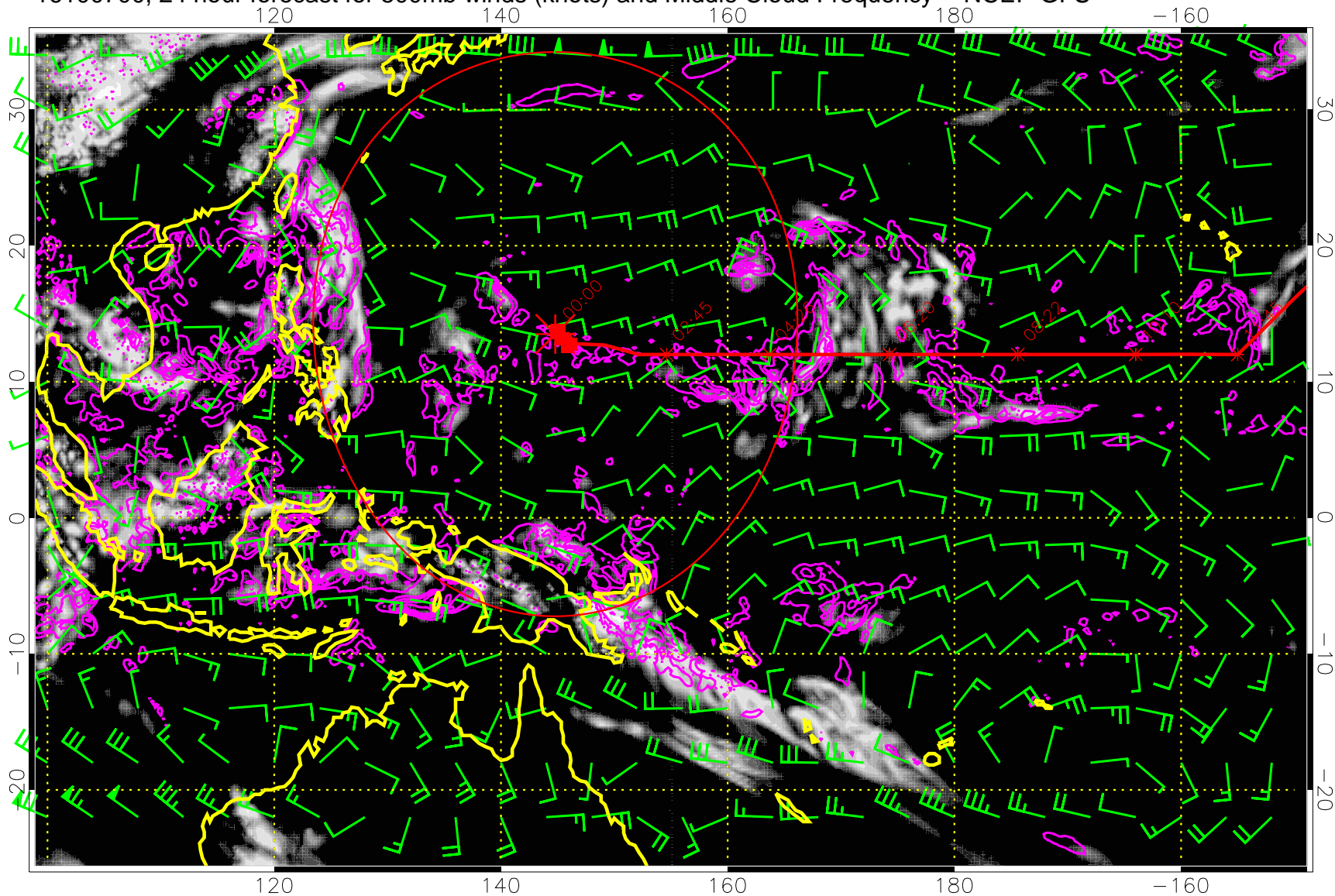
13:53



Precip (tot dot, conv sol) mm/day 40 mm/day contours, min 20

Range ring of 2304 km

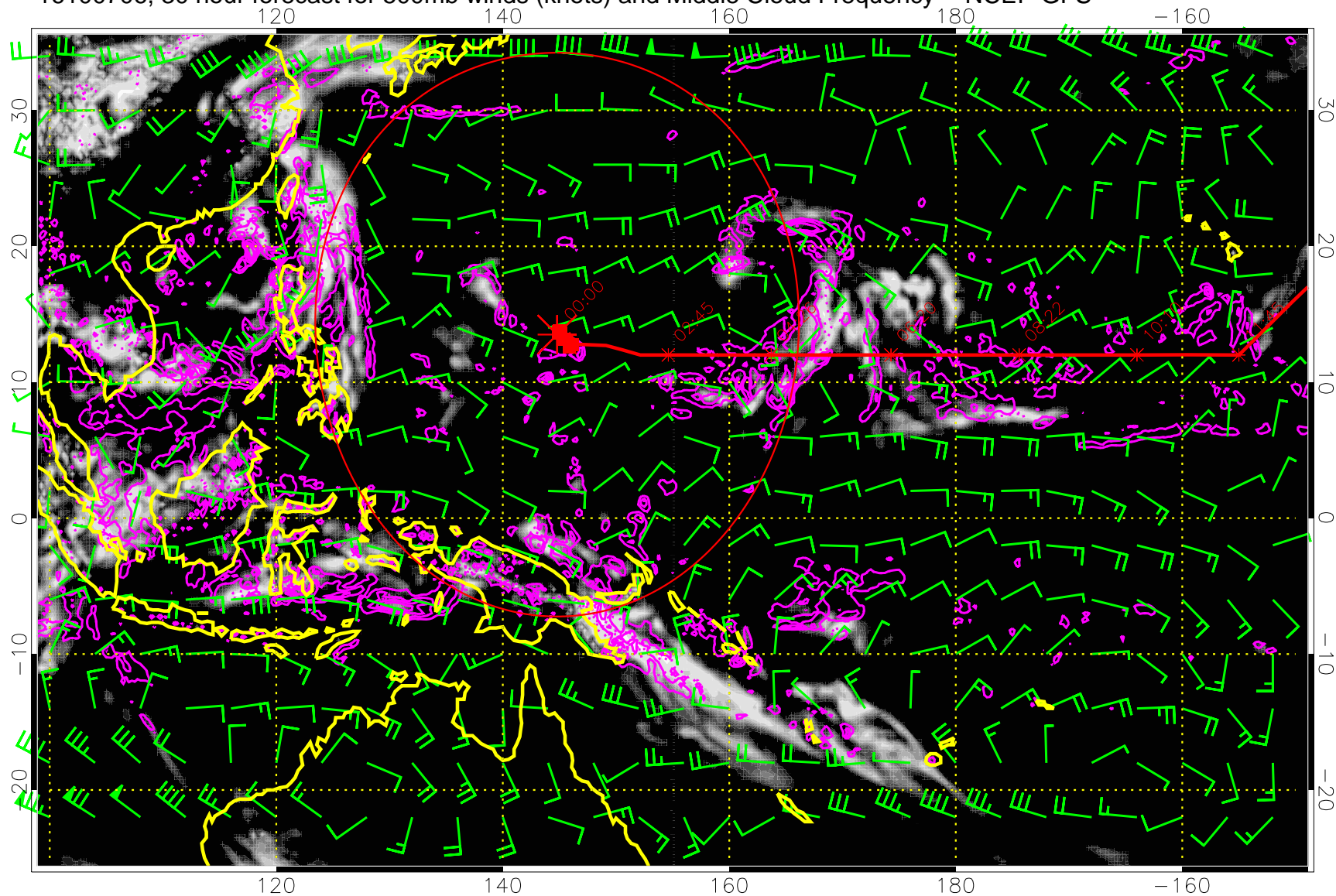
16100700, 24 hour forecast for 500mb winds (knots) and Middle Cloud Frequency -- NCEP GFS



Precip (tot dot, conv sol) mm/day 40 mm/day contours, min 20

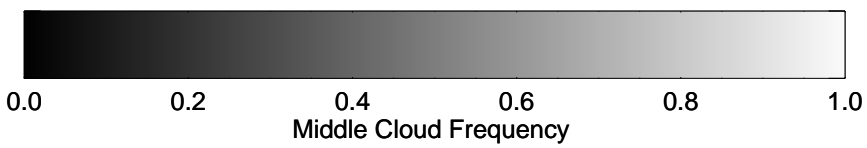
Range ring of 2304 km

16100706, 30 hour forecast for 500mb winds (knots) and Middle Cloud Frequency -- NCEP GFS



15:53

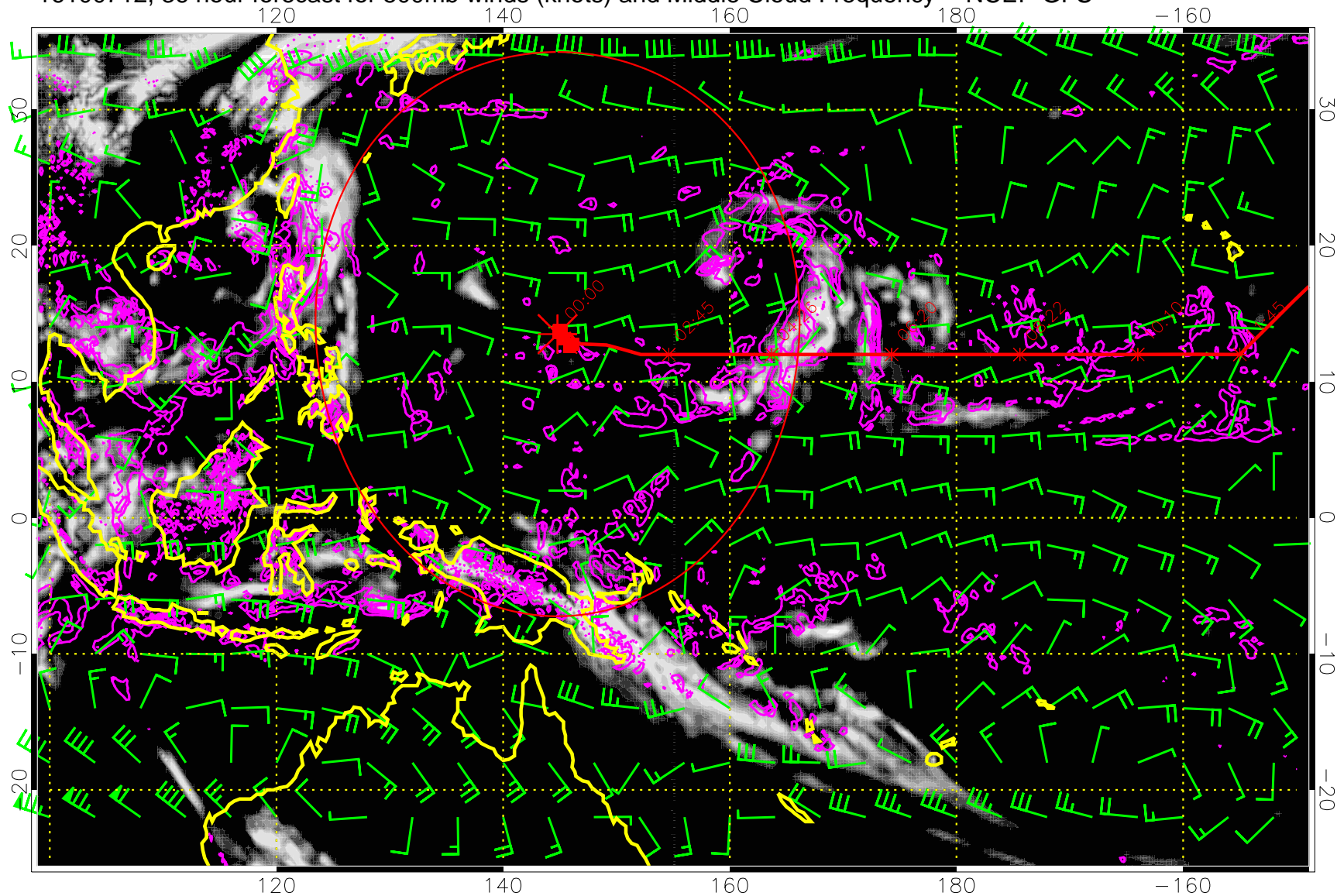
13:53



Precip (tot dot, conv sol) mm/day 40 mm/day contours, min 20

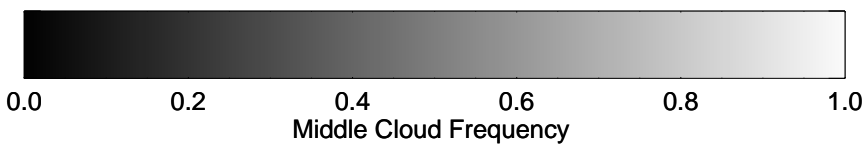
Range ring of 2304 km

16100712, 36 hour forecast for 500mb winds (knots) and Middle Cloud Frequency -- NCEP GFS



15:53

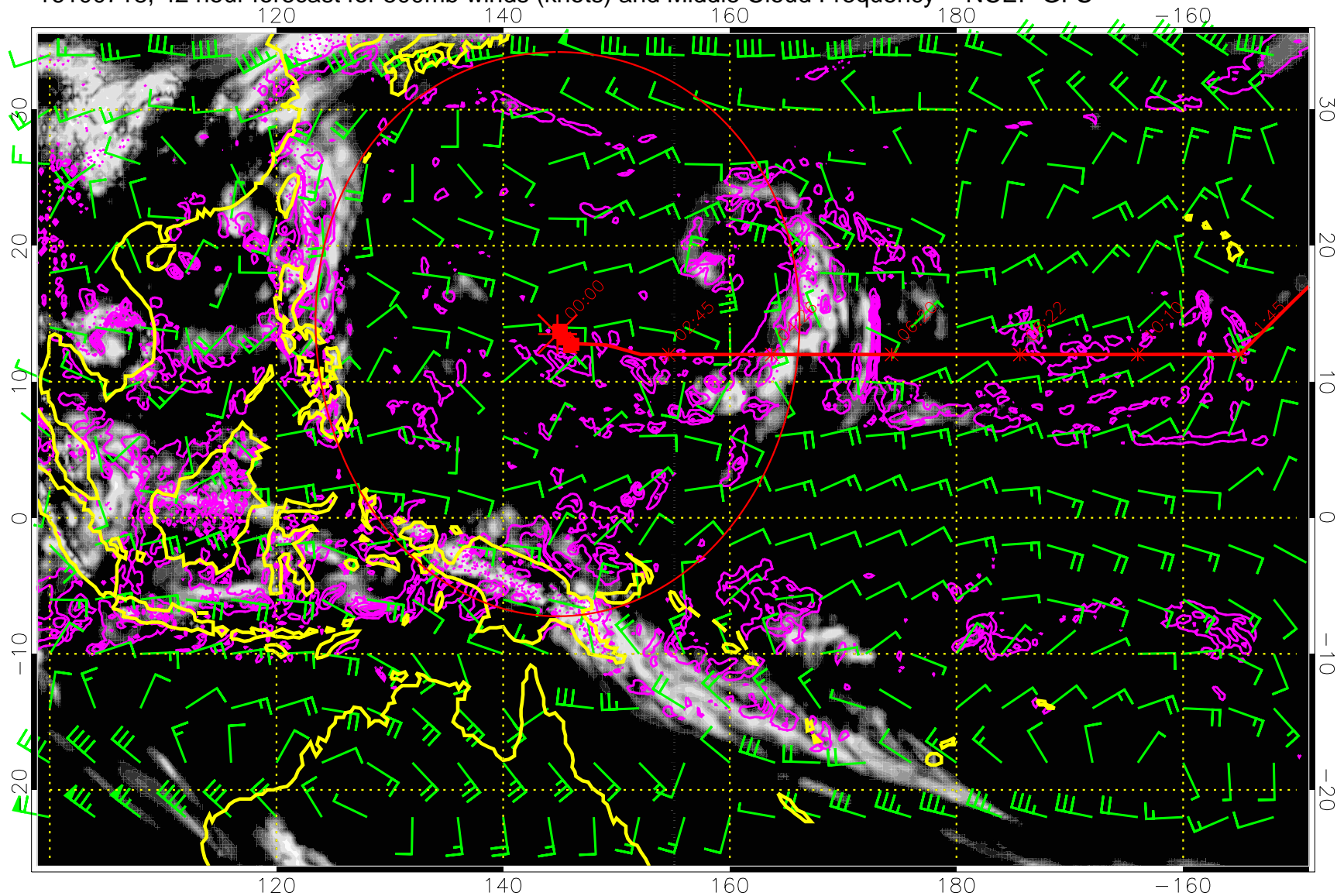
13:53



Precip (tot dot, conv sol) mm/day 40 mm/day contours, min 20

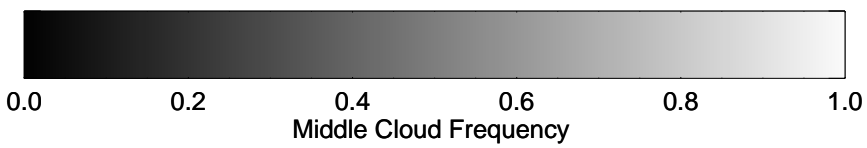
Range ring of 2304 km

16100718, 42 hour forecast for 500mb winds (knots) and Middle Cloud Frequency -- NCEP GFS



15:53

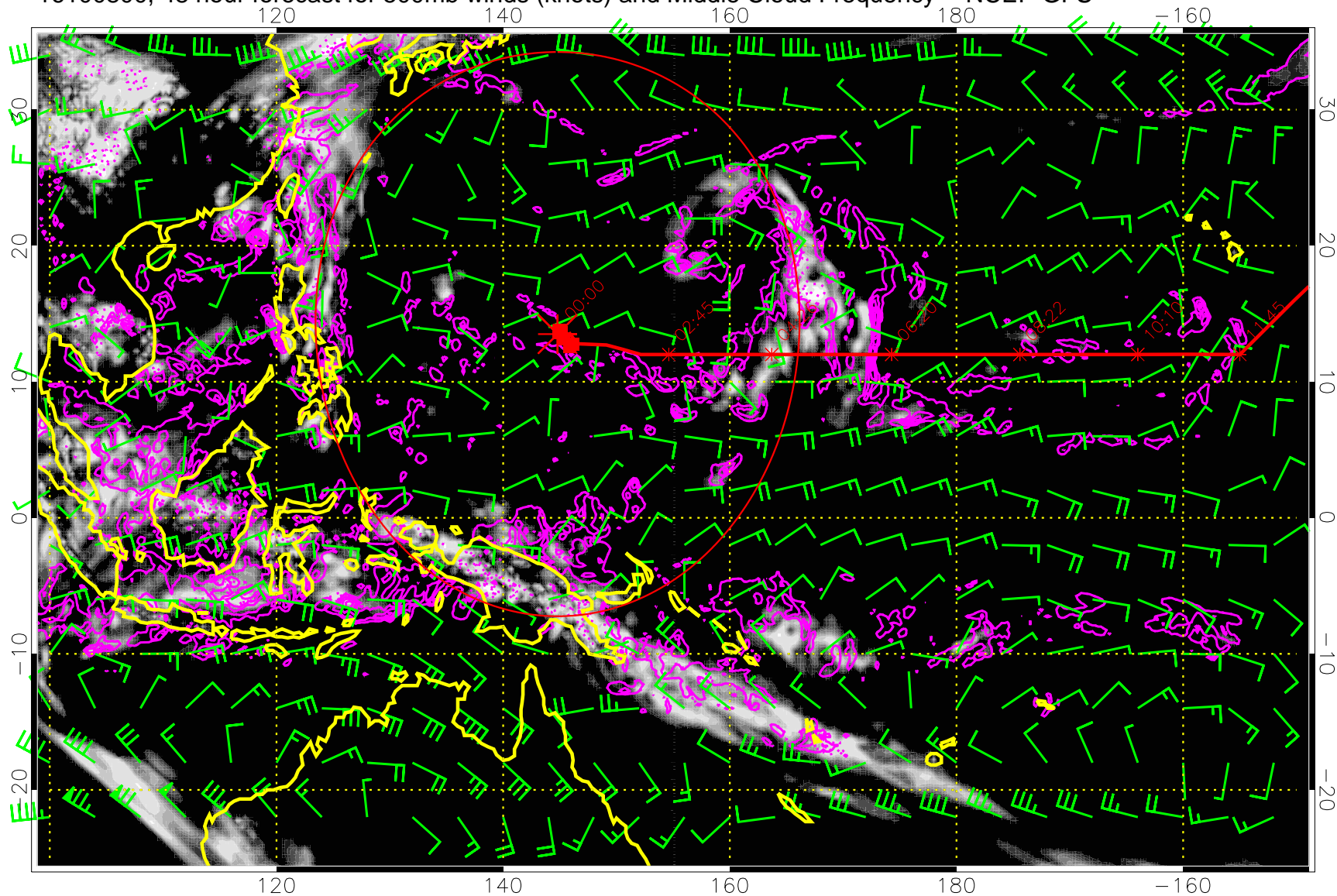
13:53



Precip (tot dot, conv sol) mm/day 40 mm/day contours, min 20

Range ring of 2304 km

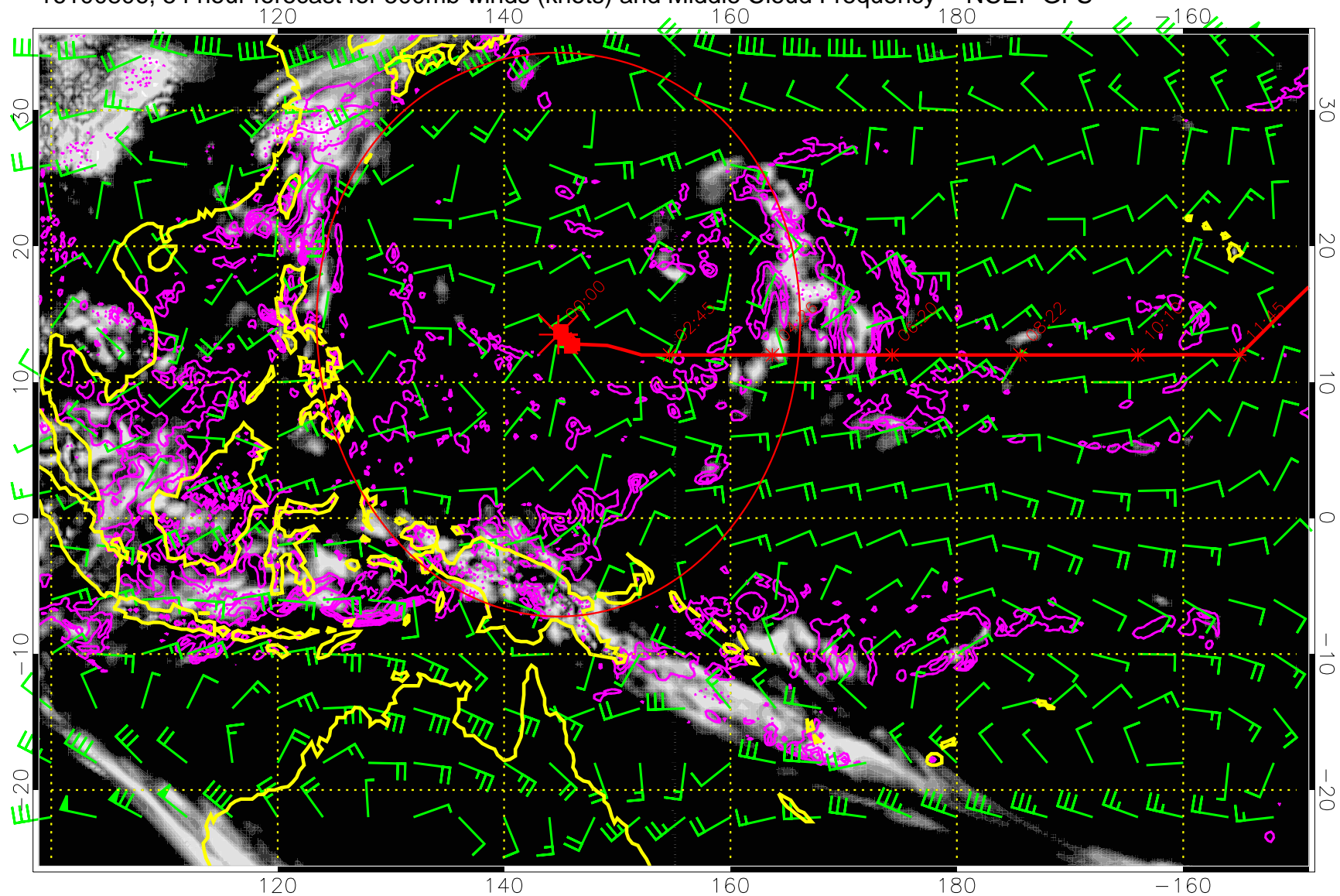
16100800, 48 hour forecast for 500mb winds (knots) and Middle Cloud Frequency -- NCEP GFS



Precip (tot dot, conv sol) mm/day 40 mm/day contours, min 20

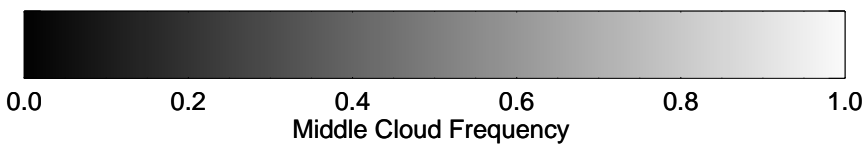
Range ring of 2304 km

16100806, 54 hour forecast for 500mb winds (knots) and Middle Cloud Frequency -- NCEP GFS



15:53

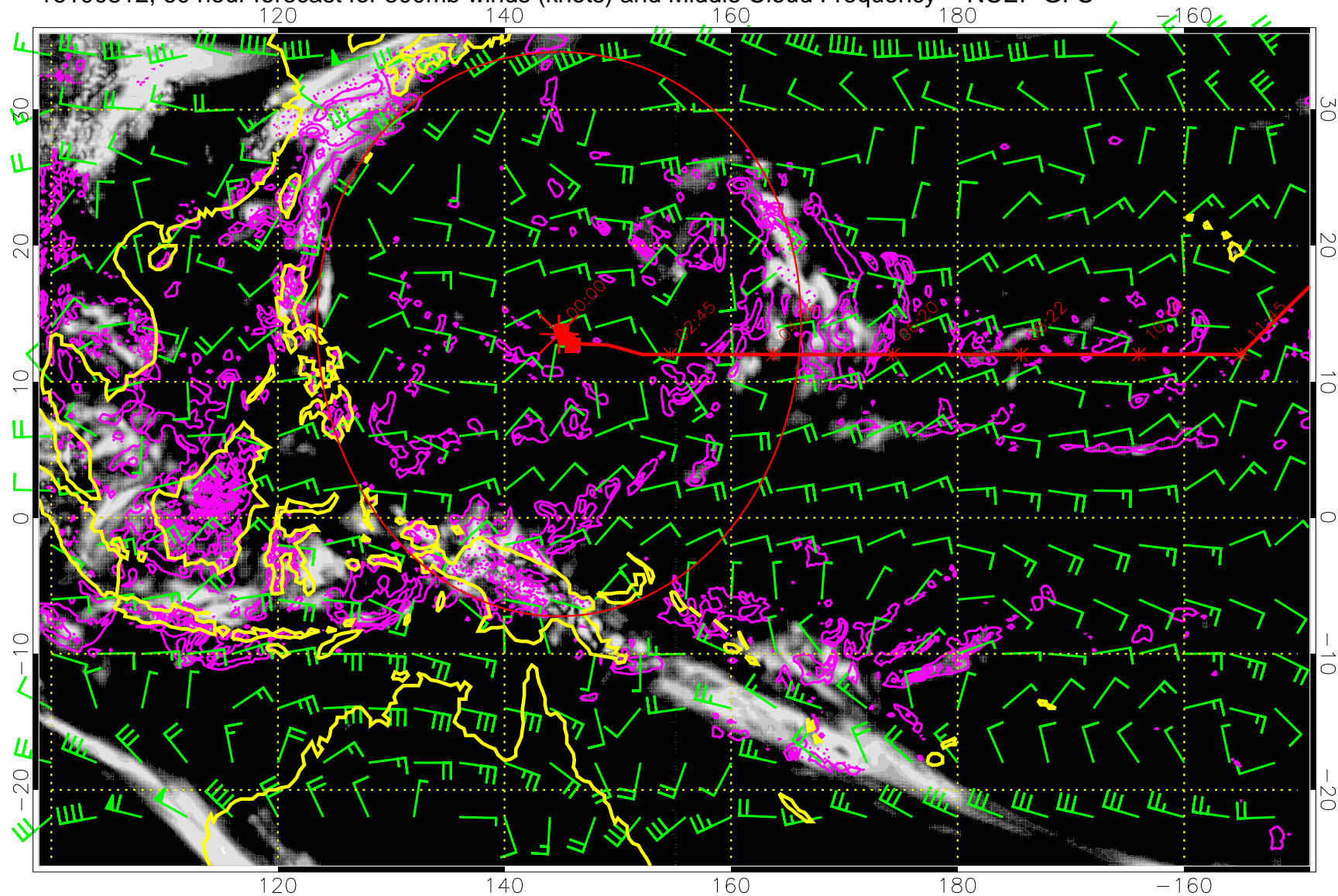
13:53



Precip (tot dot, conv sol) mm/day 40 mm/day contours, min 20

Range ring of 2304 km

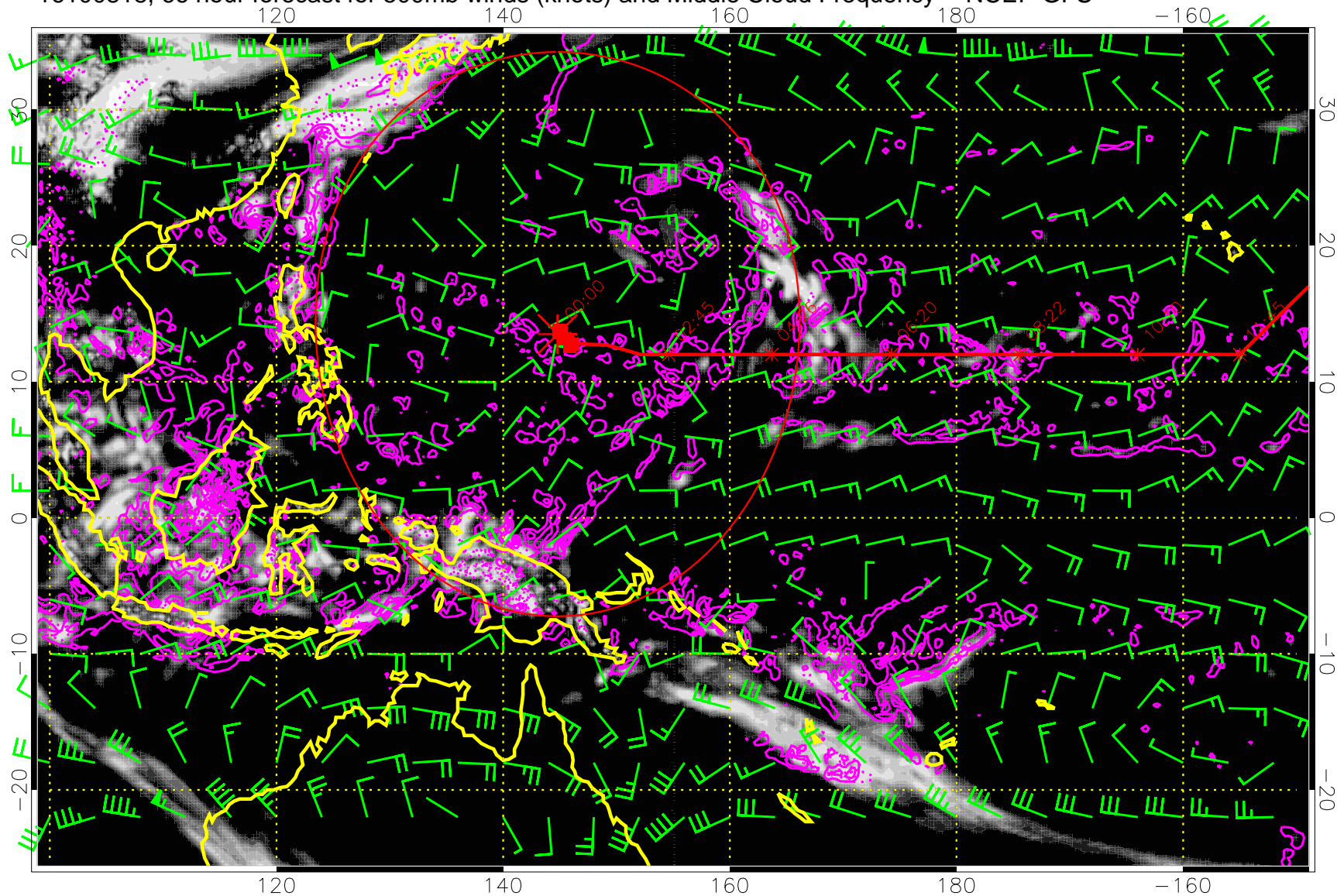
16100812, 60 hour forecast for 500mb winds (knots) and Middle Cloud Frequency -- NCEP GFS



Precip (tot dot, conv sol) mm/day 40 mm/day contours, min 20

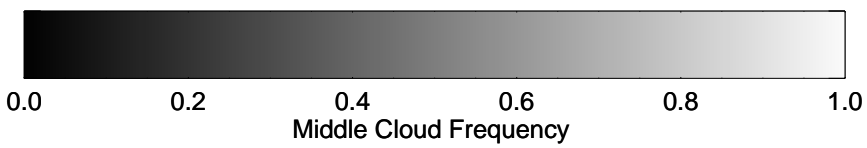
Range ring of 2304 km

16100818, 66 hour forecast for 500mb winds (knots) and Middle Cloud Frequency -- NCEP GFS



13:53

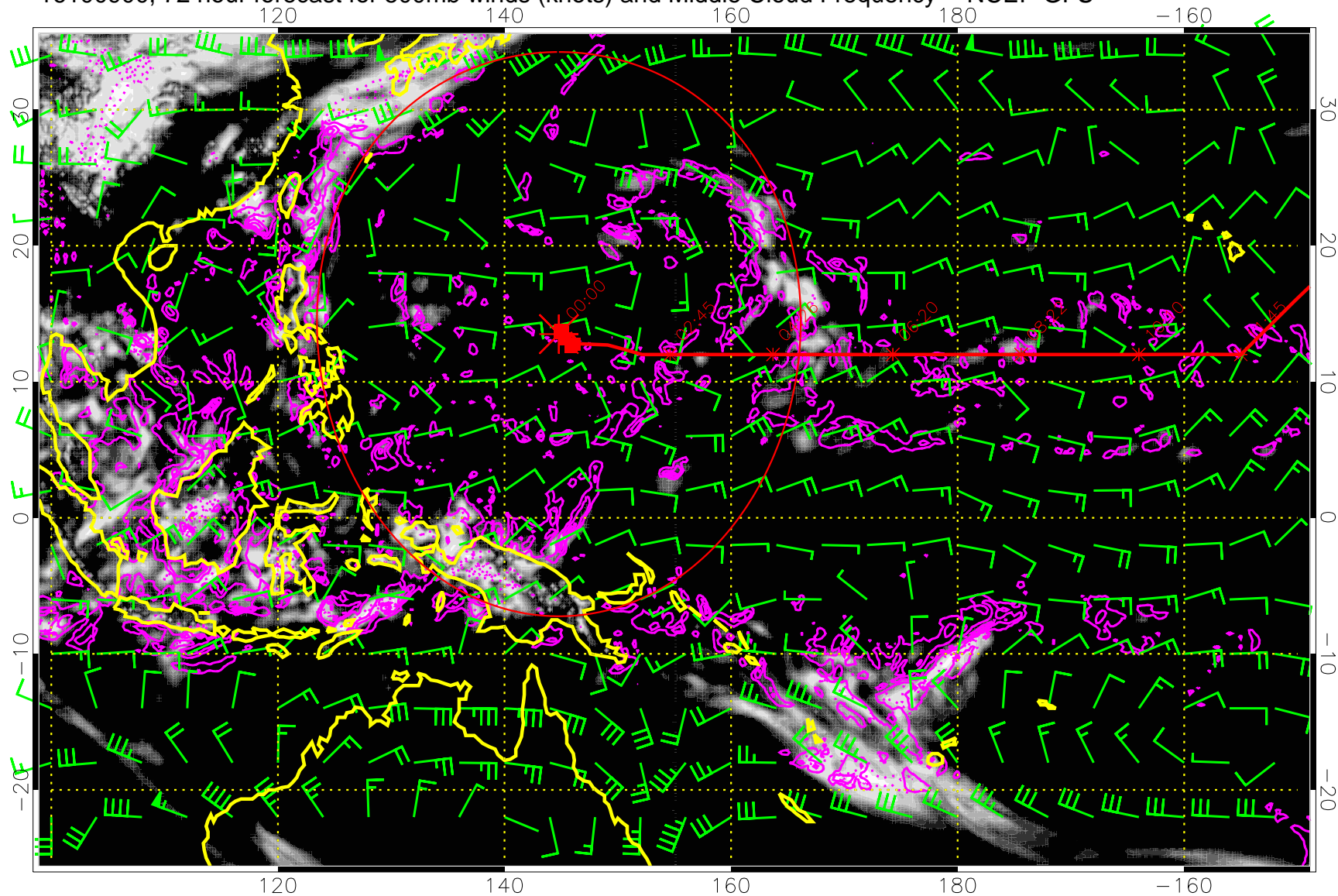
15:53



Precip (tot dot, conv sol) mm/day 40 mm/day contours, min 20

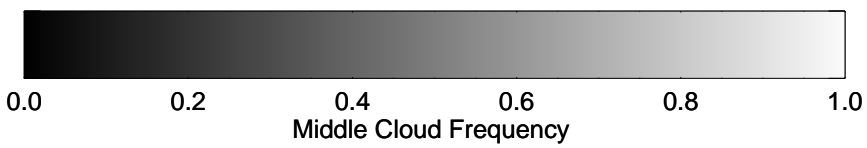
Range ring of 2304 km

16100900, 72 hour forecast for 500mb winds (knots) and Middle Cloud Frequency -- NCEP GFS



15:53

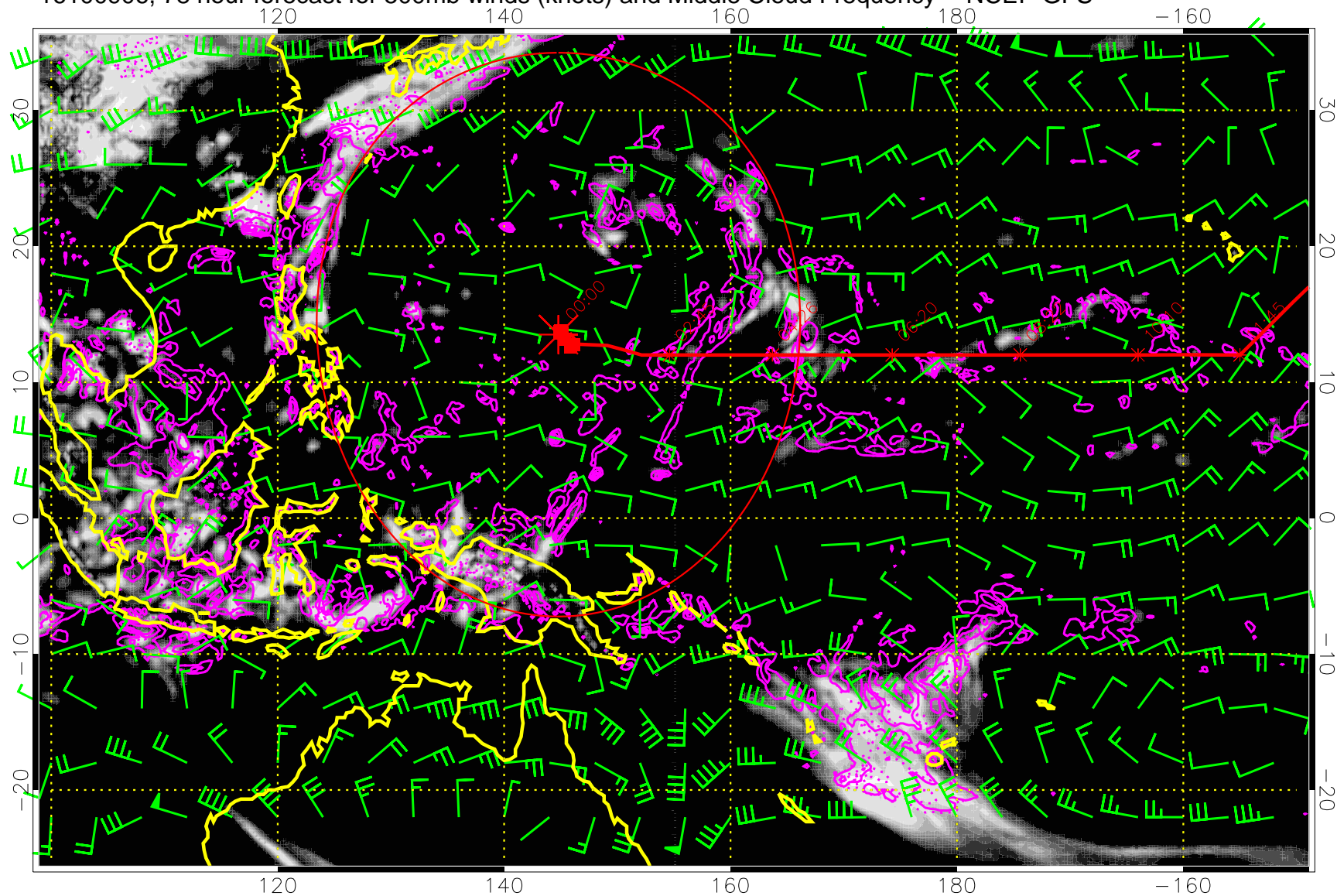
13:53



Precip (tot dot, conv sol) mm/day 40 mm/day contours, min 20

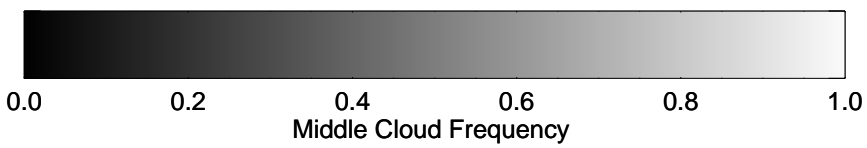
Range ring of 2304 km

16100906, 78 hour forecast for 500mb winds (knots) and Middle Cloud Frequency -- NCEP GFS



15:53

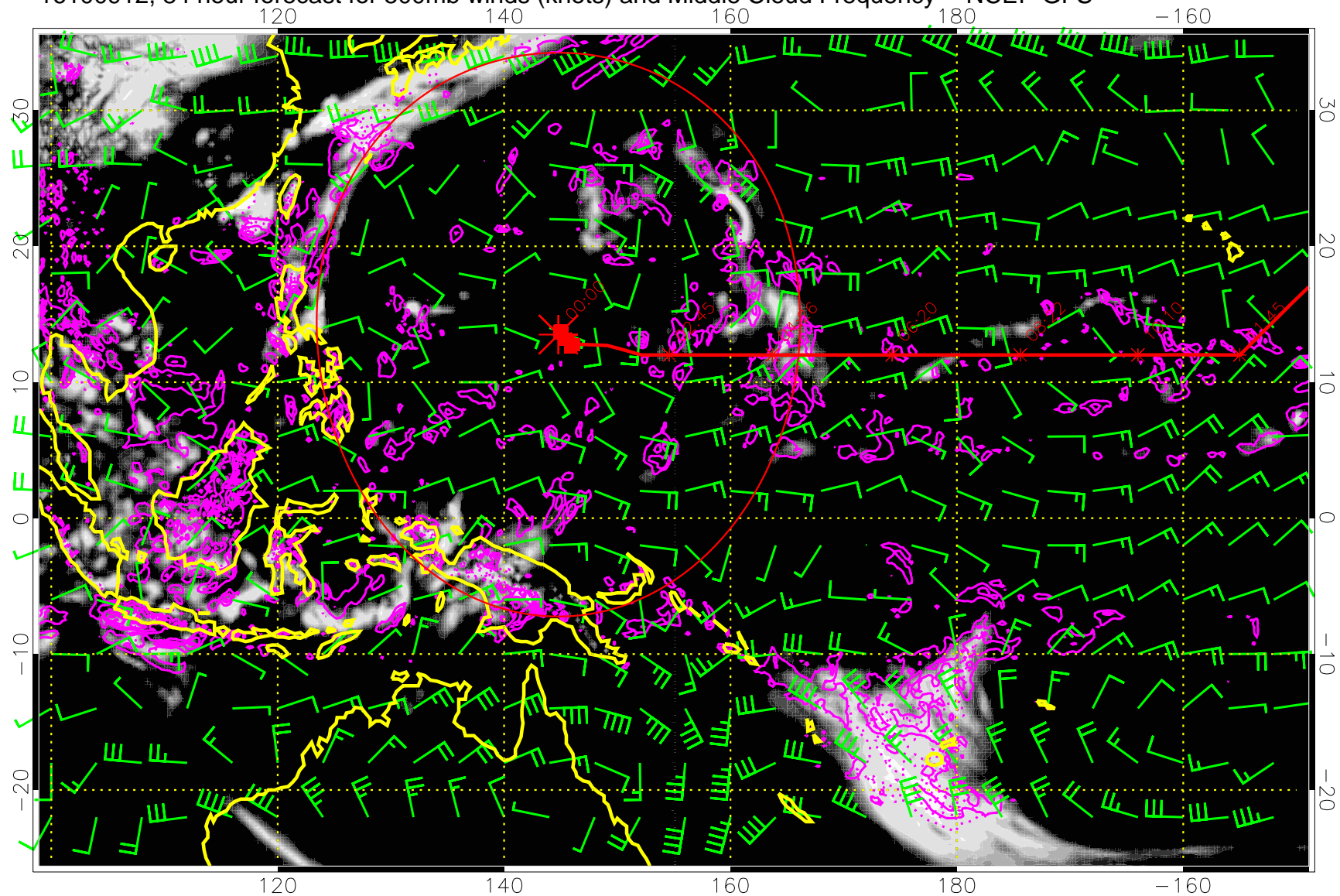
13:53



Precip (tot dot, conv sol) mm/day 40 mm/day contours, min 20

Range ring of 2304 km

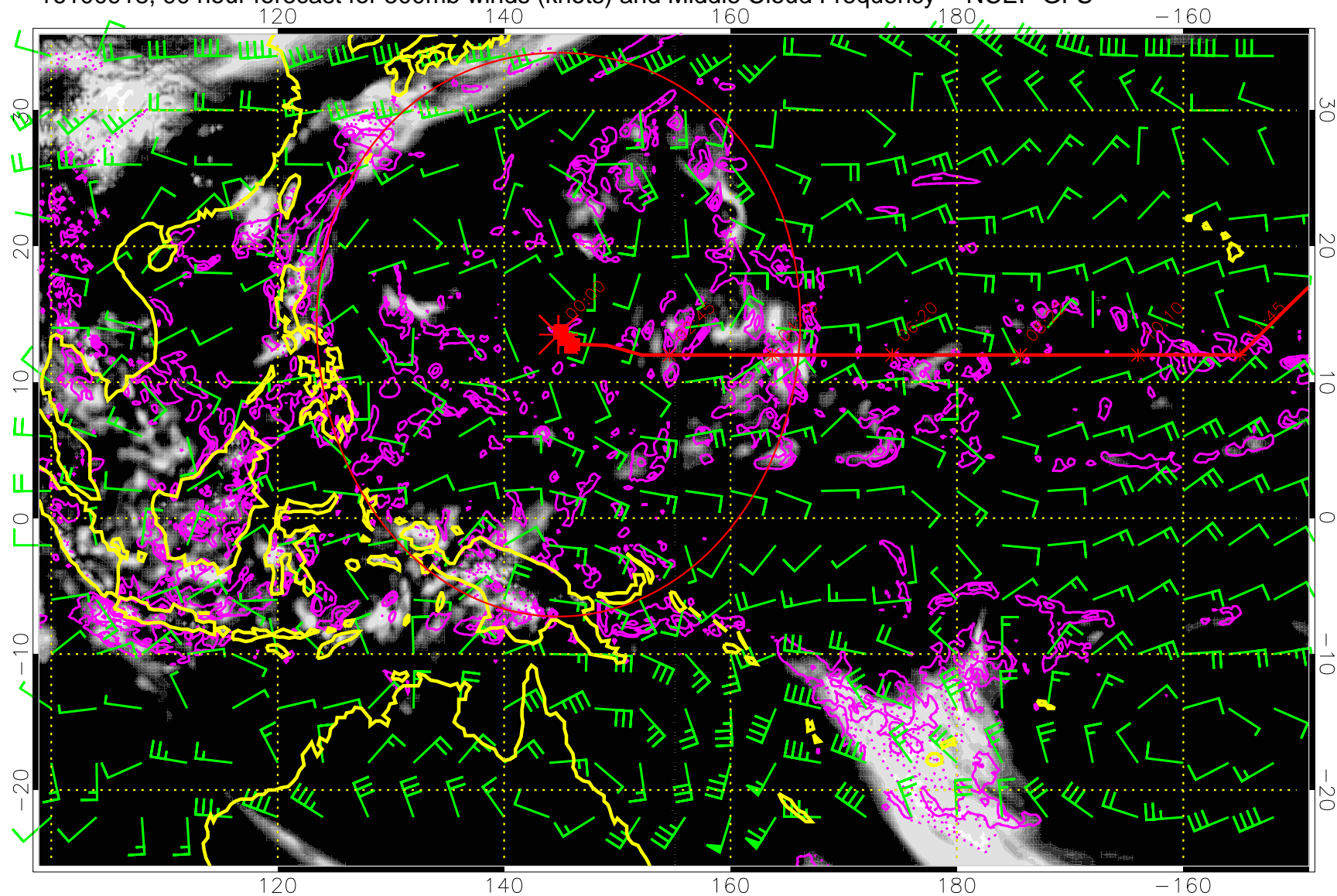
16100912, 84 hour forecast for 500mb winds (knots) and Middle Cloud Frequency -- NCEP GFS



Precip (tot dot, conv sol) mm/day 40 mm/day contours, min 20

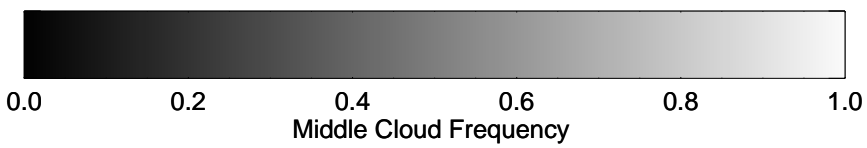
Range ring of 2304 km

16100918, 90 hour forecast for 500mb winds (knots) and Middle Cloud Frequency -- NCEP GFS



15:53

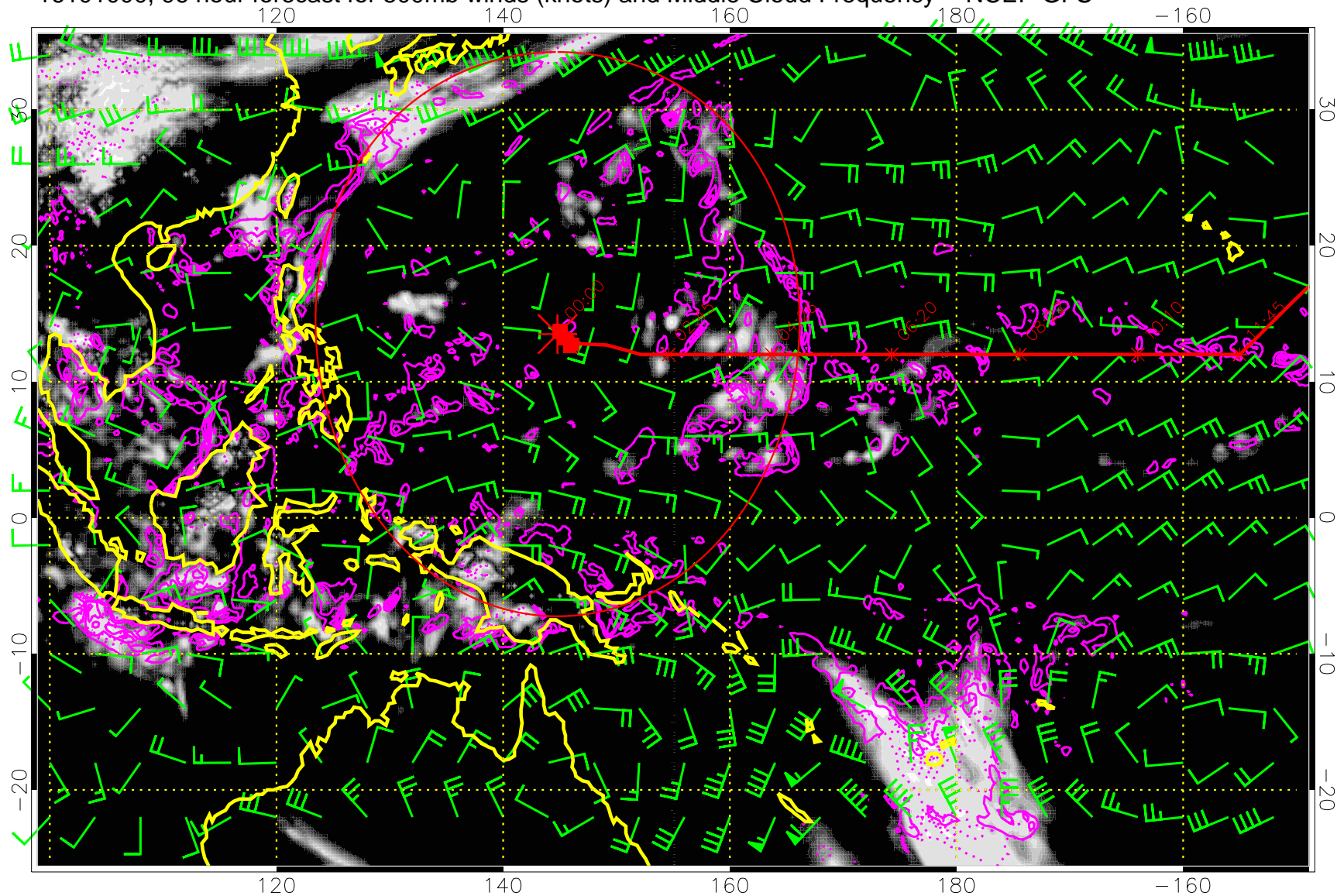
13:53



Precip (tot dot, conv sol) mm/day 40 mm/day contours, min 20

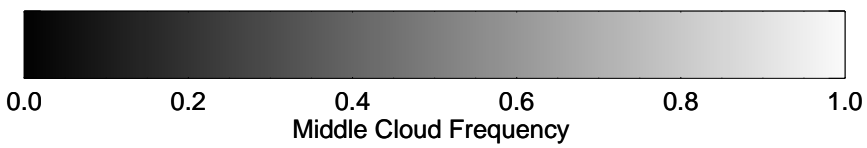
Range ring of 2304 km

16101000, 96 hour forecast for 500mb winds (knots) and Middle Cloud Frequency -- NCEP GFS



15:53

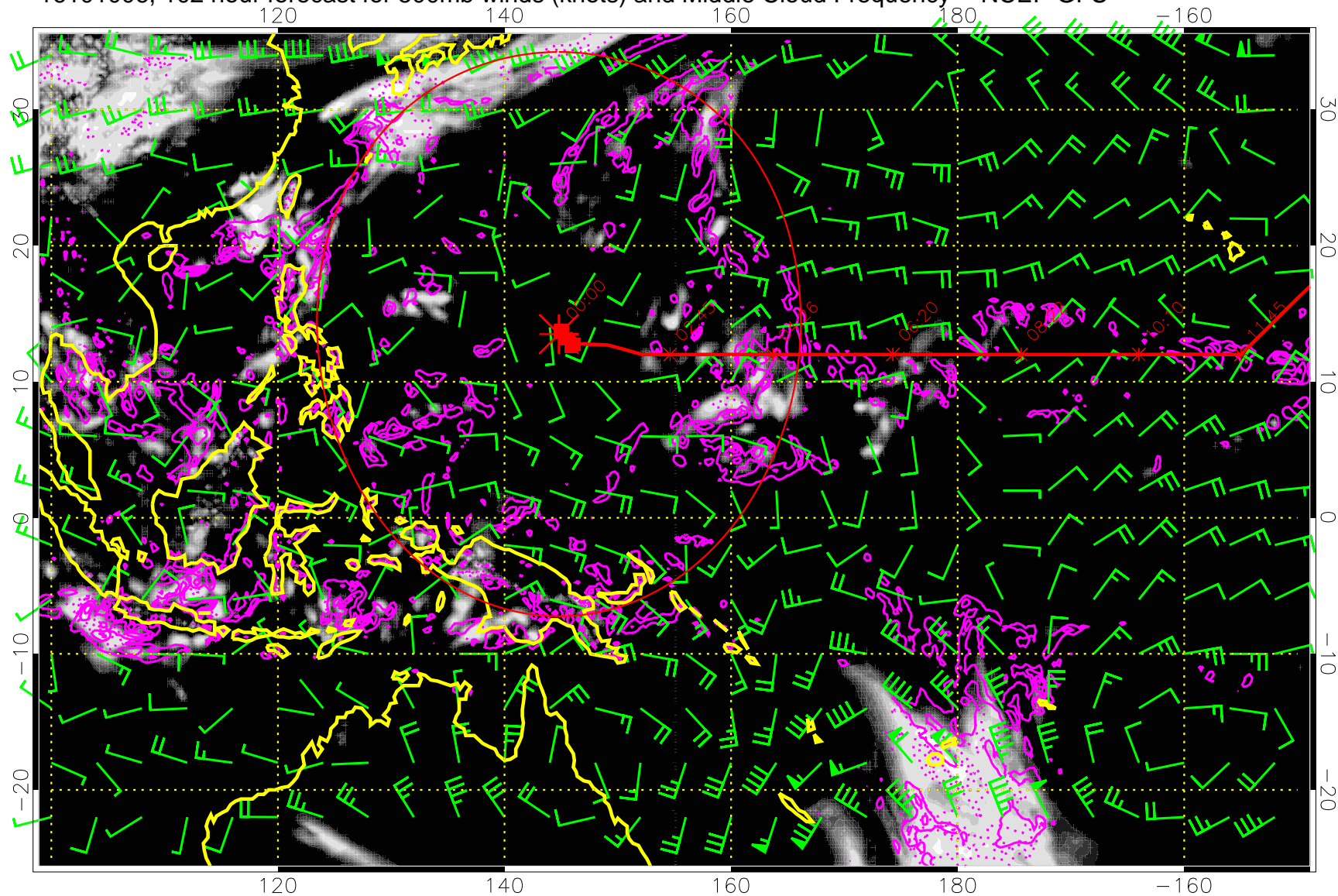
13:53



Precip (tot dot, conv sol) mm/day 40 mm/day contours, min 20

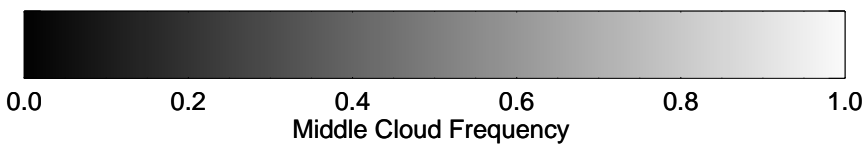
Range ring of 2304 km

16101006, 102 hour forecast for 500mb winds (knots) and Middle Cloud Frequency -- NCEP GFS



15:53

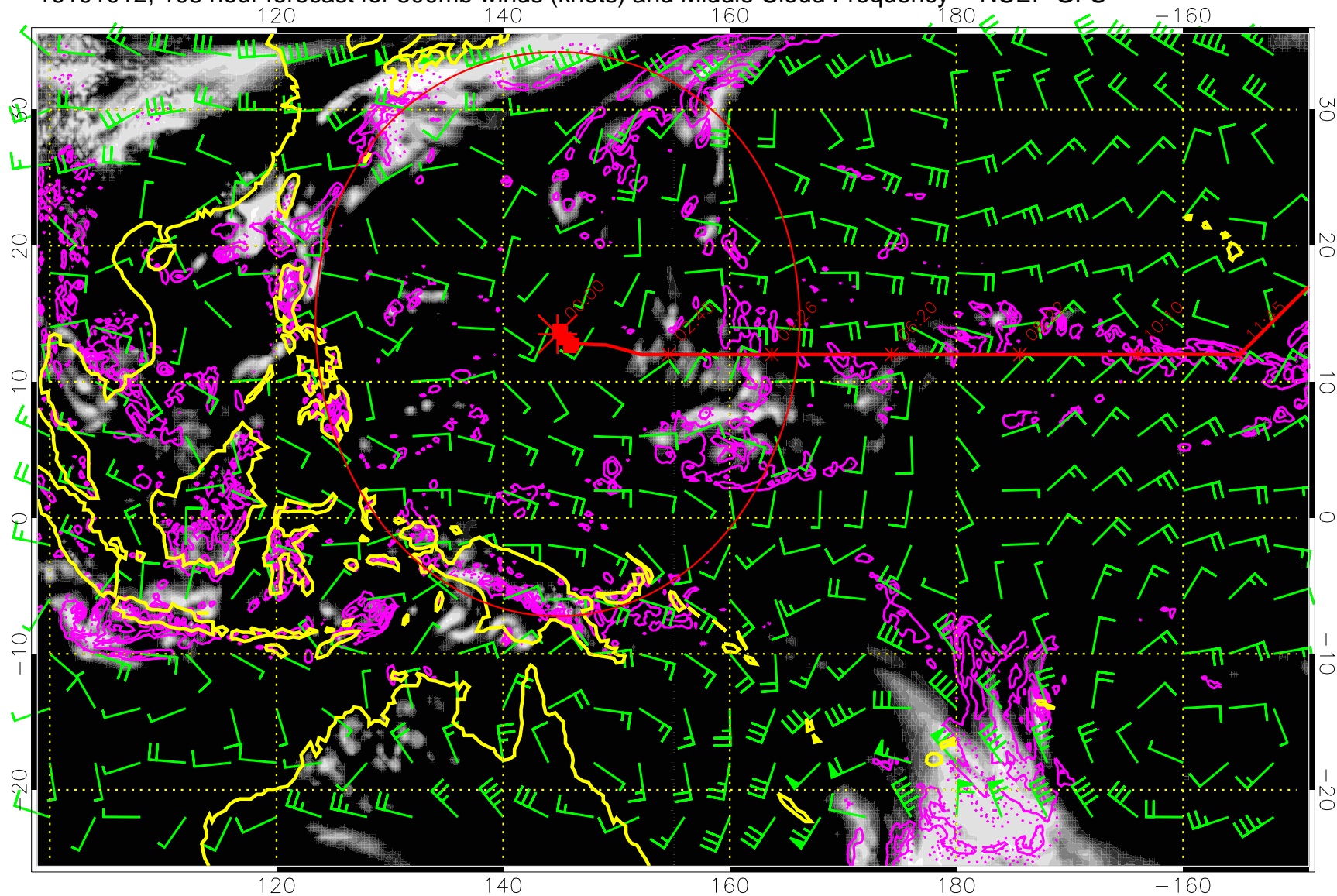
13:53



Precip (tot dot, conv sol) mm/day 40 mm/day contours, min 20

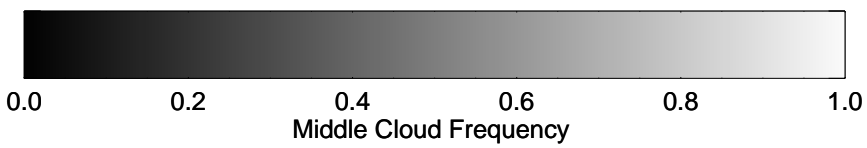
Range ring of 2304 km

16101012, 108 hour forecast for 500mb winds (knots) and Middle Cloud Frequency -- NCEP GFS



15:53

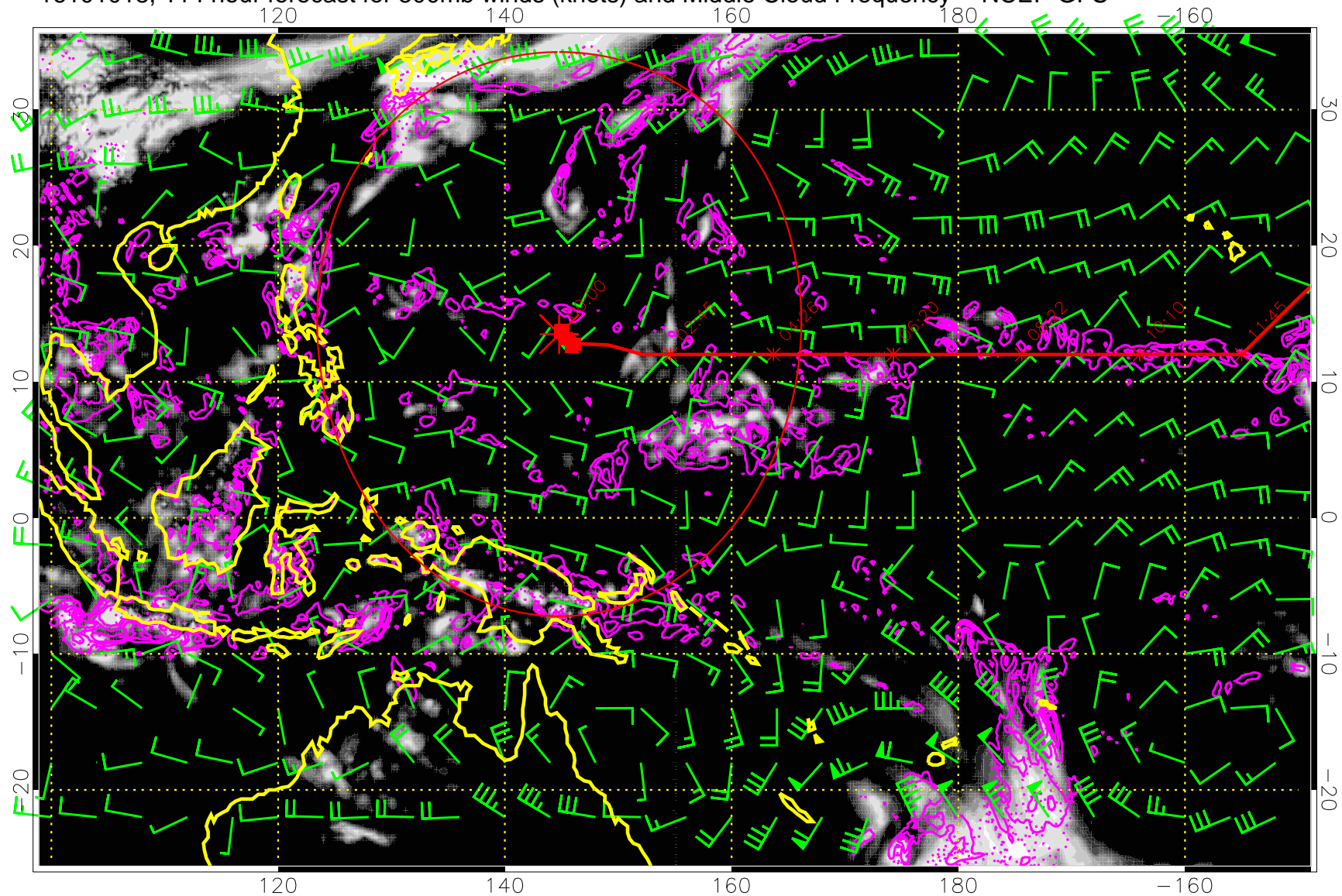
13:53



Precip (tot dot, conv sol) mm/day 40 mm/day contours, min 20

Range ring of 2304 km

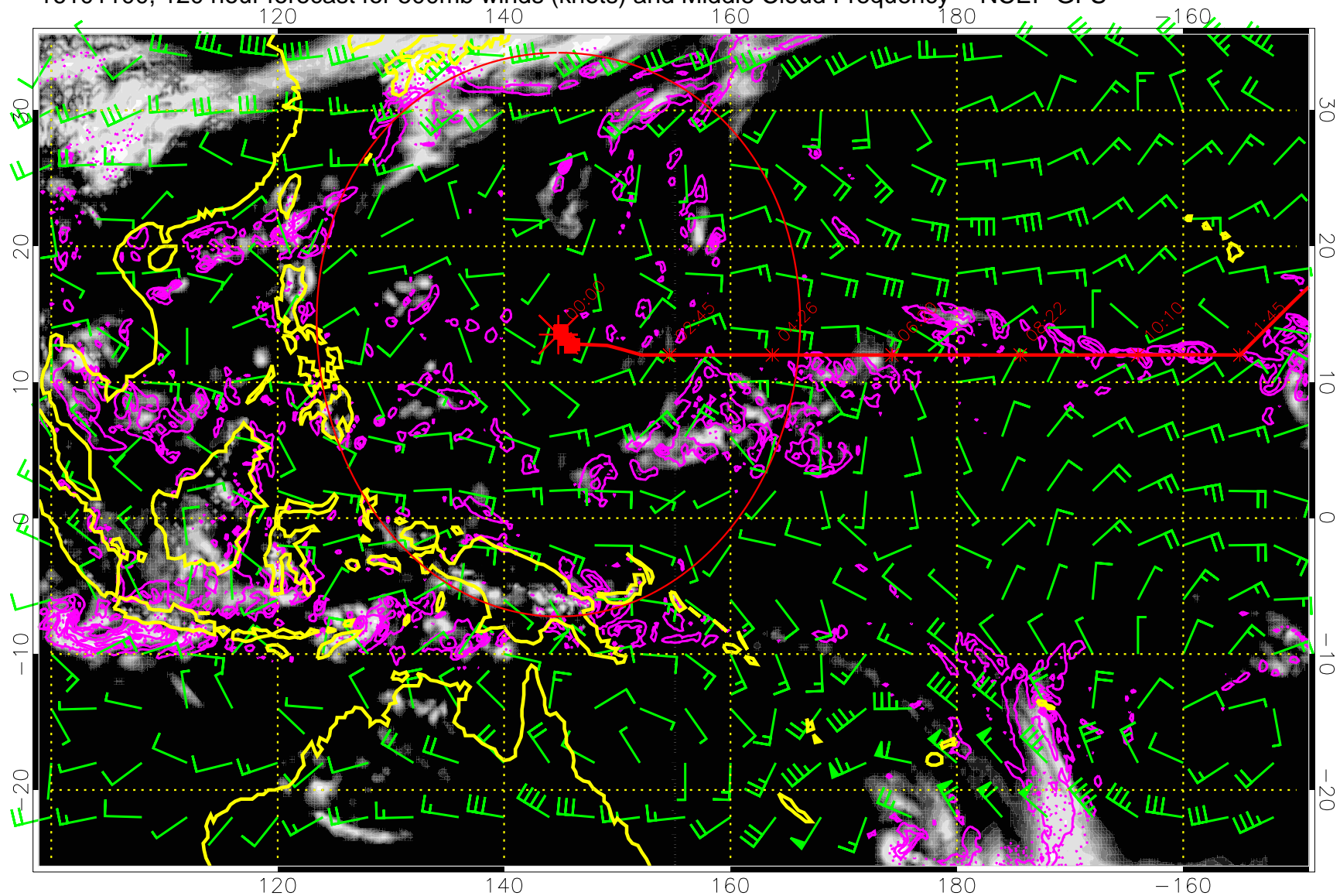
16101018, 114 hour forecast for 500mb winds (knots) and Middle Cloud Frequency -- NCEP GFS



Precip (tot dot, conv sol) mm/day 40 mm/day contours, min 20

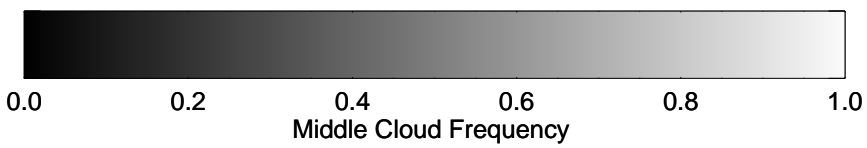
Range ring of 2304 km

16101100, 120 hour forecast for 500mb winds (knots) and Middle Cloud Frequency -- NCEP GFS



15:53

13:53



Precip (tot dot, conv sol) mm/day 40 mm/day contours, min 20

Range ring of 2304 km