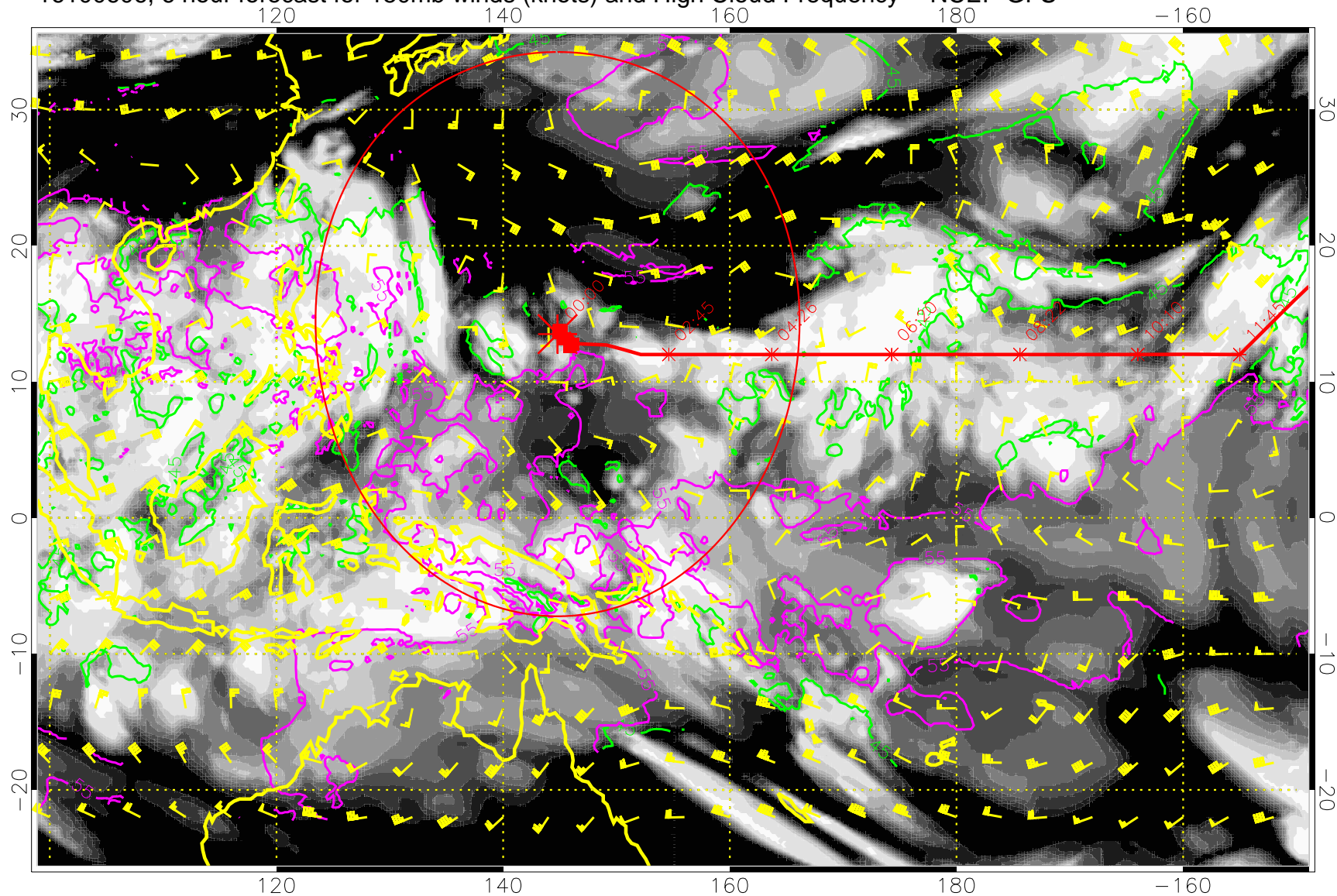
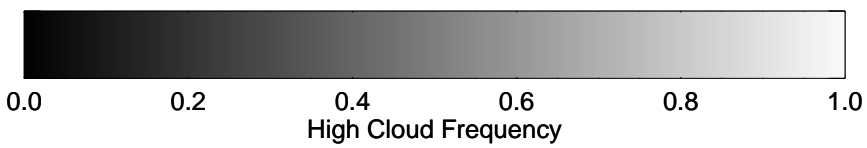


16100606, 6 hour forecast for 150mb winds (knots) and High Cloud Frequency -- NCEP GFS



15:53

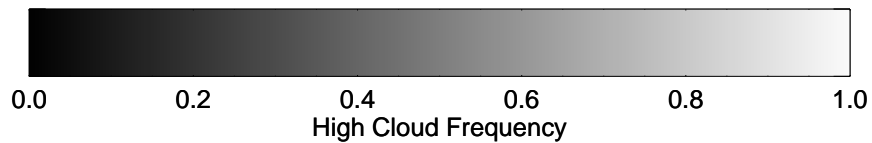
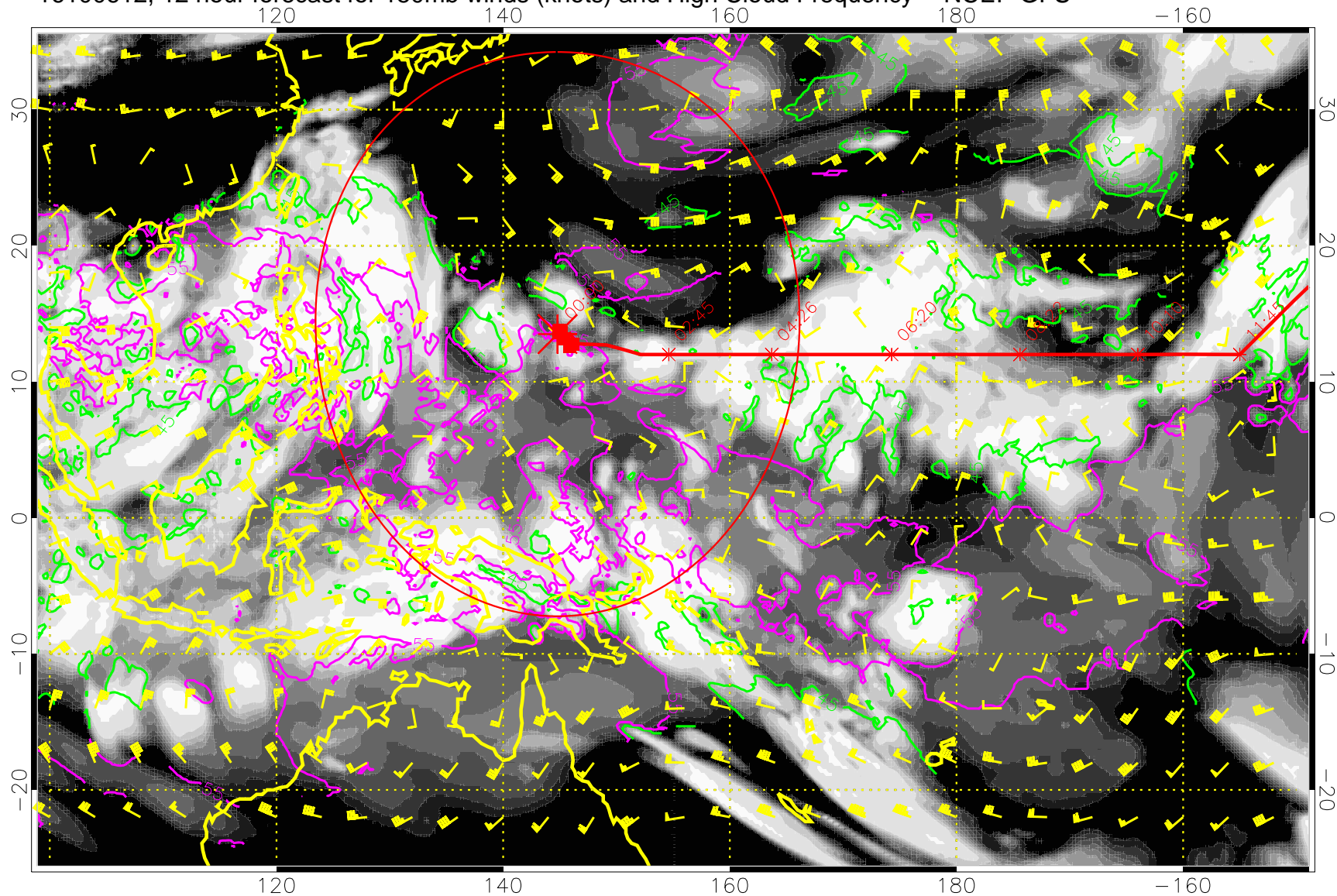
13:53



45 kft
55 kft

Range ring of 2304 km

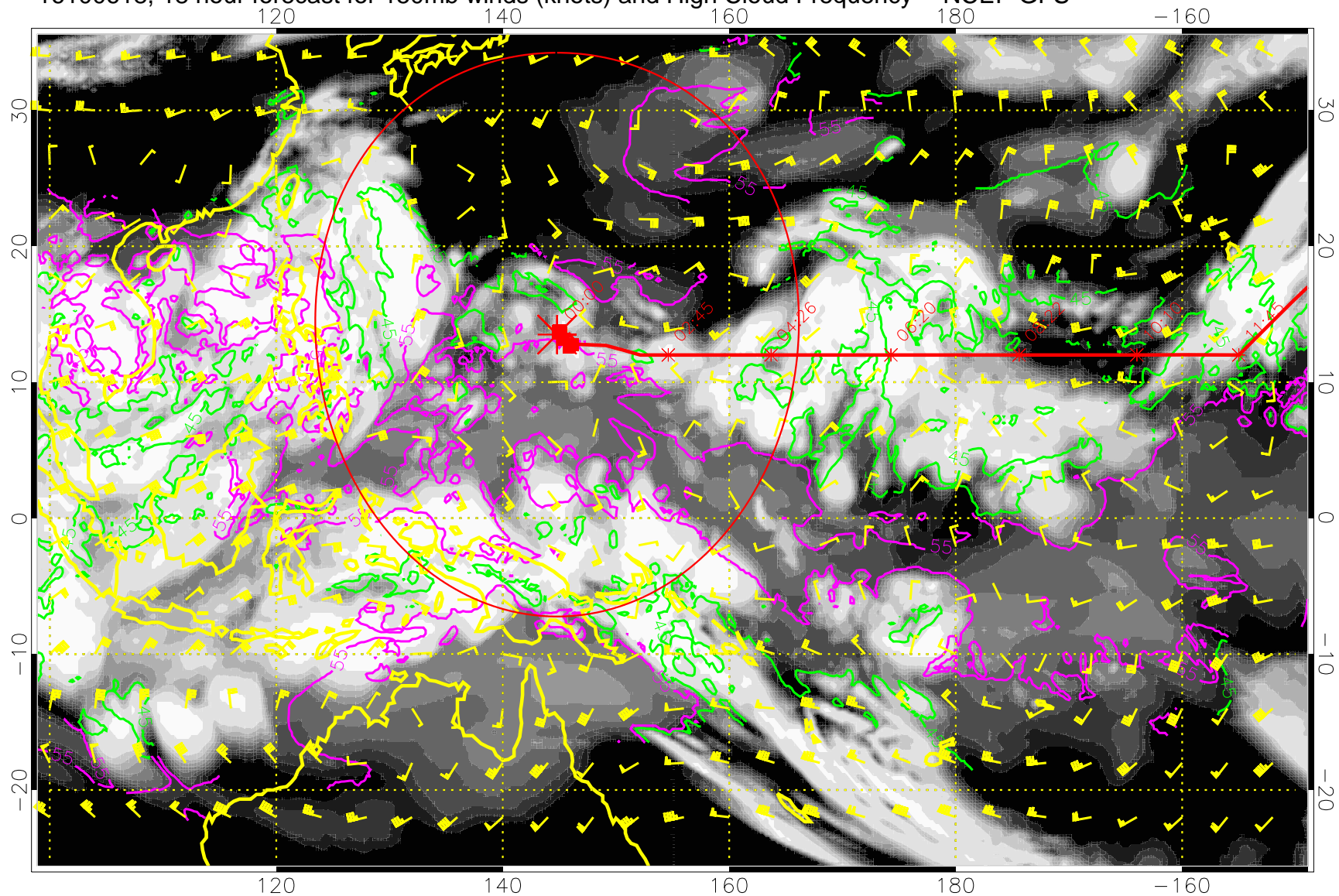
16100612, 12 hour forecast for 150mb winds (knots) and High Cloud Frequency -- NCEP GFS



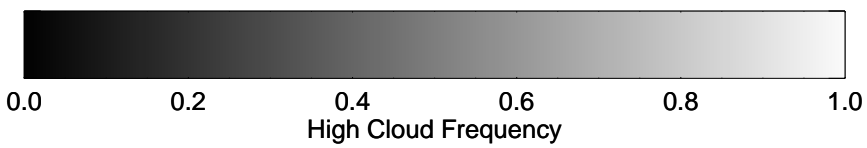
45 kft
55 kft

Range ring of 2304 km

16100618, 18 hour forecast for 150mb winds (knots) and High Cloud Frequency -- NCEP GFS



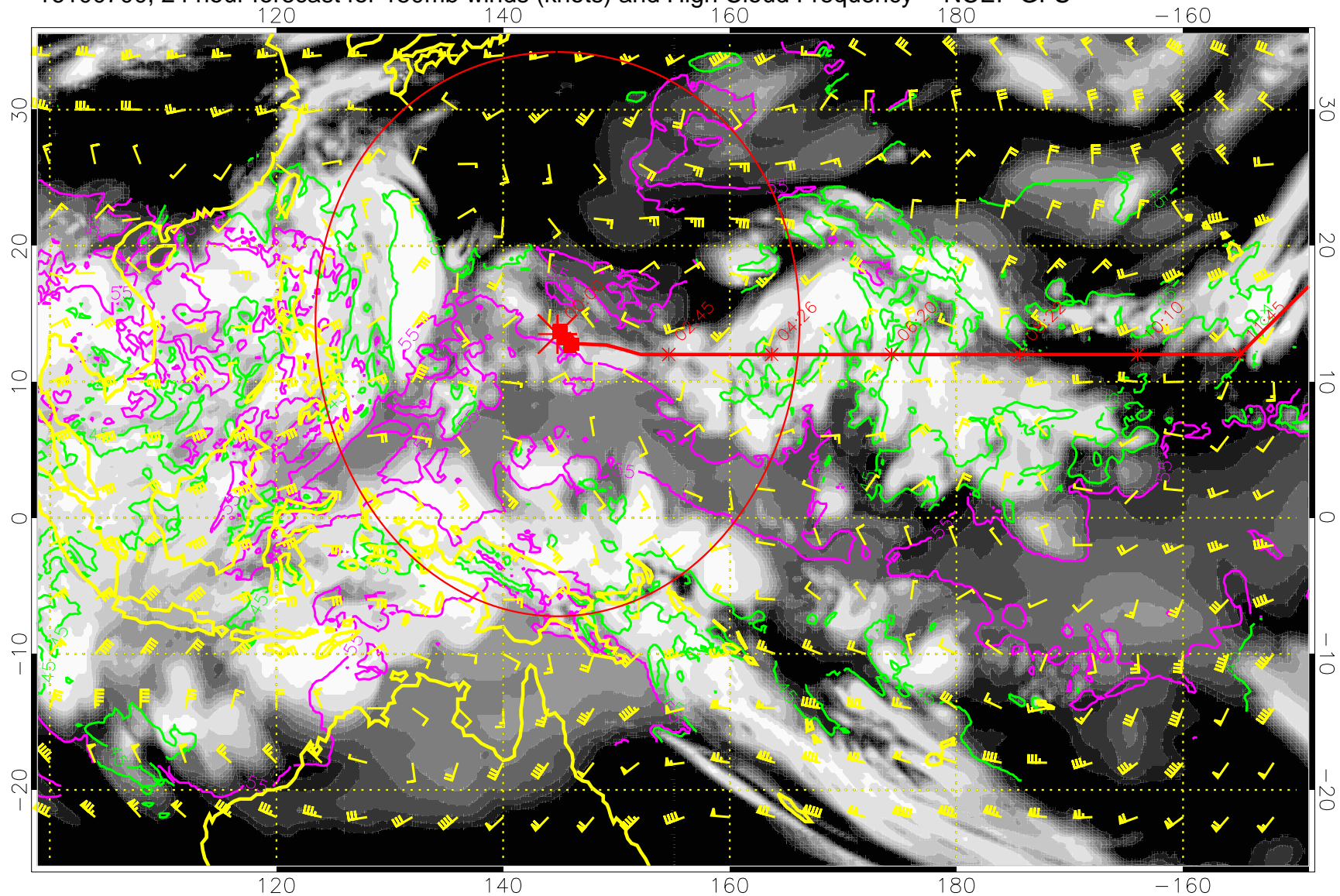
15:53
13:53



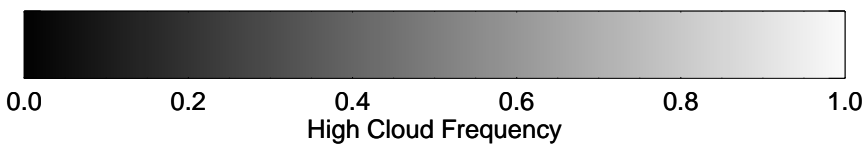
45 kft
55 kft

Range ring of 2304 km

16100700, 24 hour forecast for 150mb winds (knots) and High Cloud Frequency -- NCEP GFS



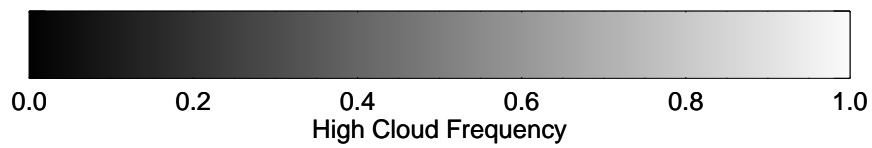
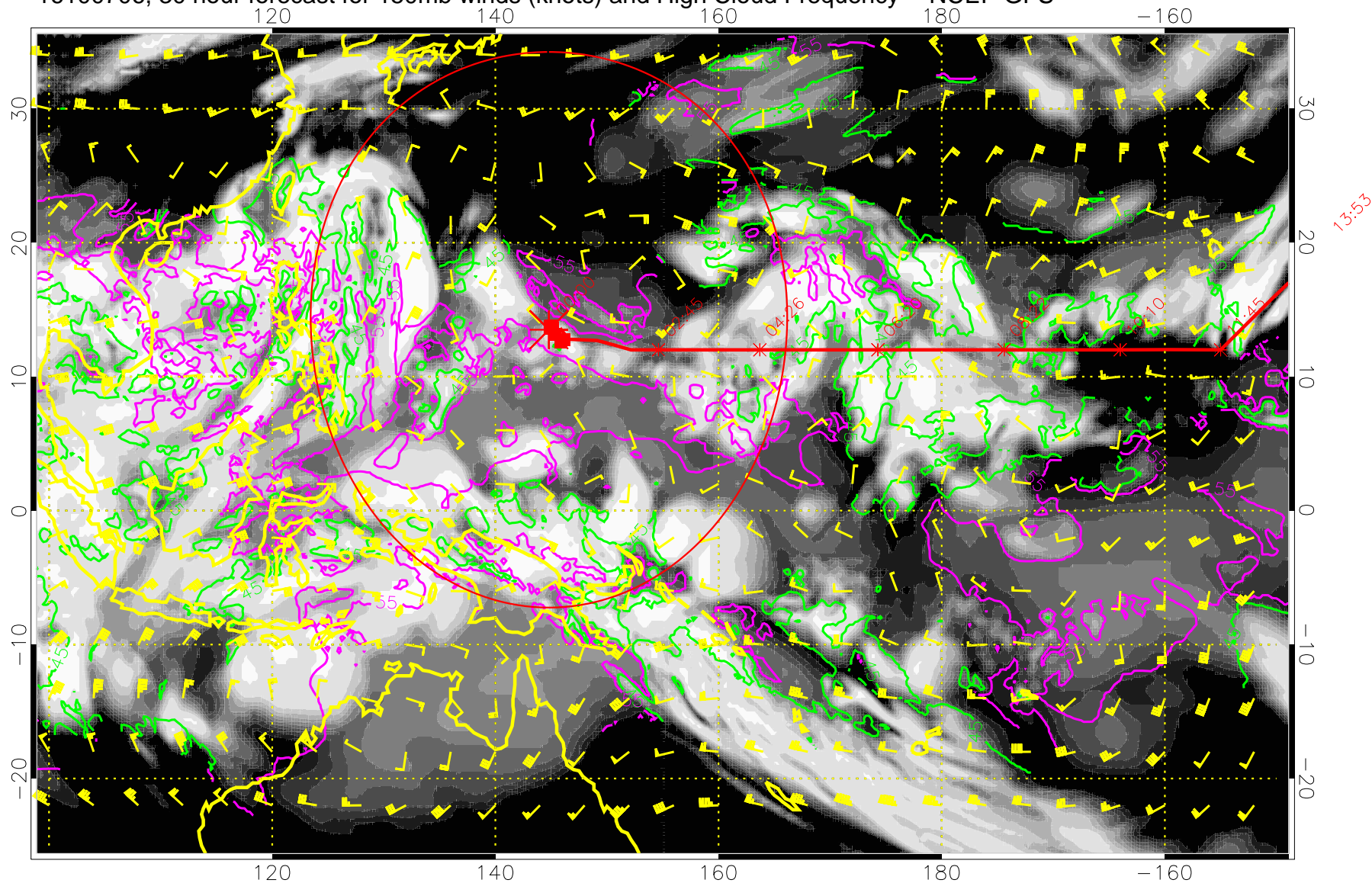
15:53
13:53



45 kft
55 kft

Range ring of 2304 km

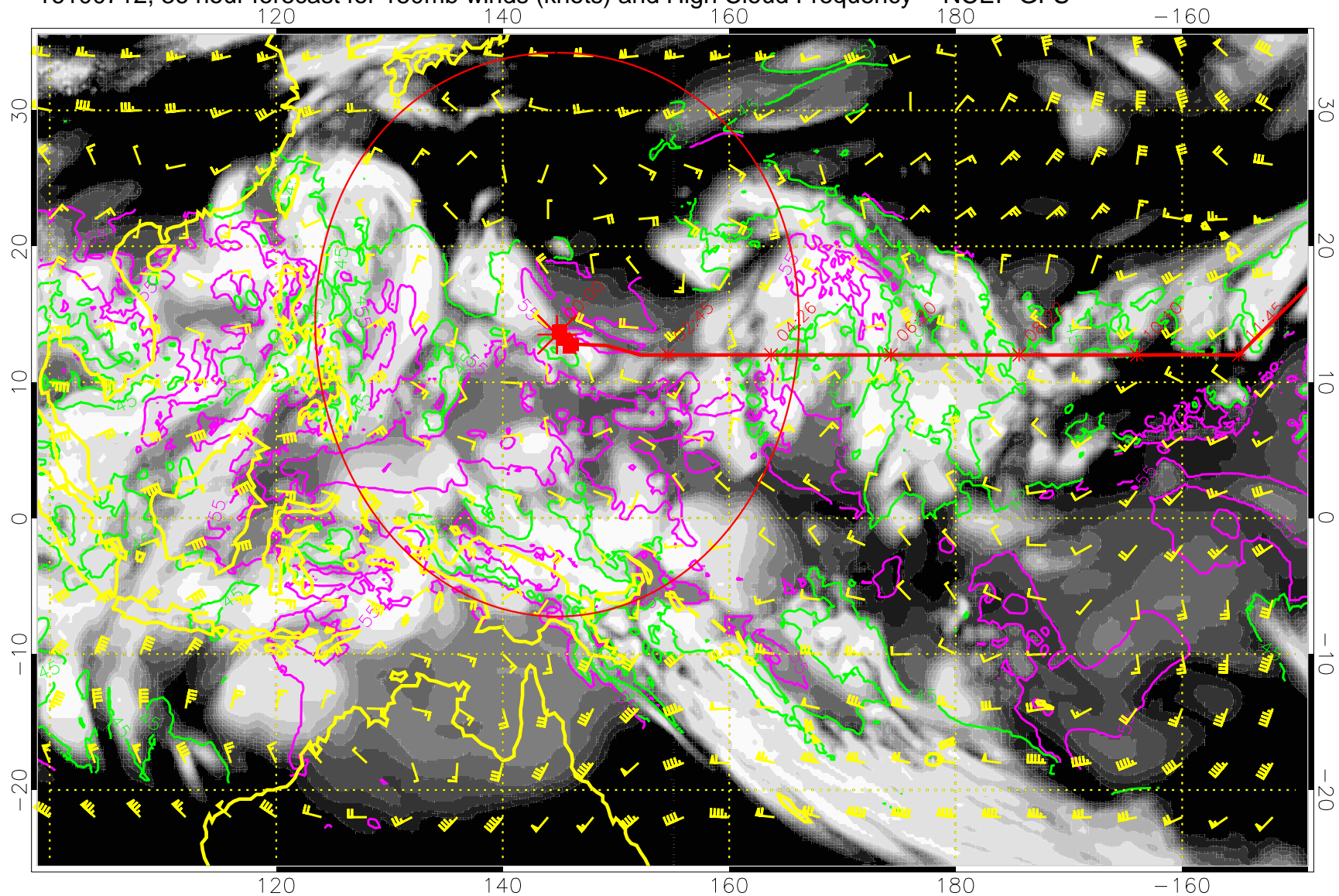
16100706, 30 hour forecast for 150mb winds (knots) and High Cloud Frequency -- NCEP GFS



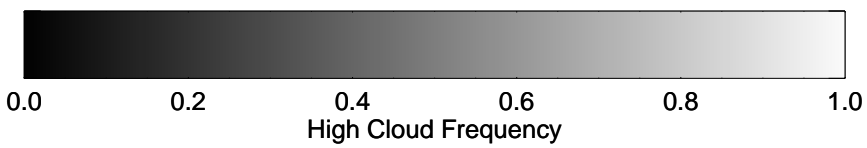
45 kft
55 kft

Range ring of 2304 km

16100712, 36 hour forecast for 150mb winds (knots) and High Cloud Frequency -- NCEP GFS



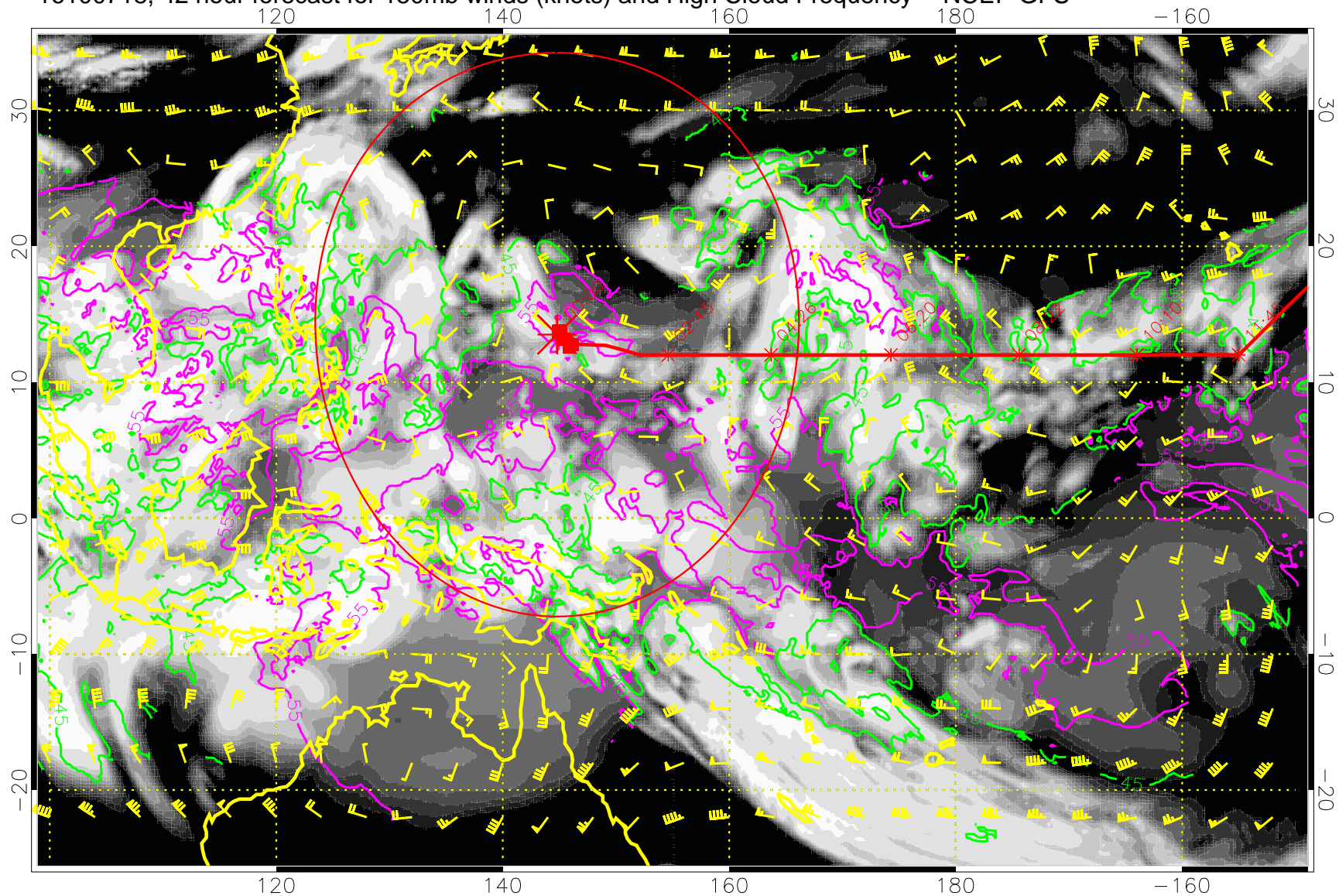
15:53
13:53



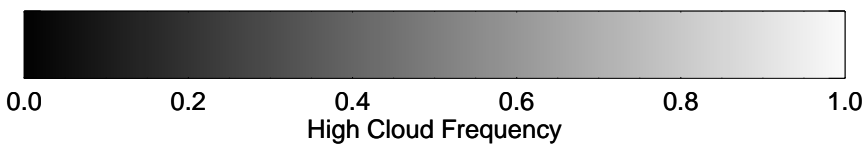
45 kft
55 kft

Range ring of 2304 km

16100718, 42 hour forecast for 150mb winds (knots) and High Cloud Frequency -- NCEP GFS



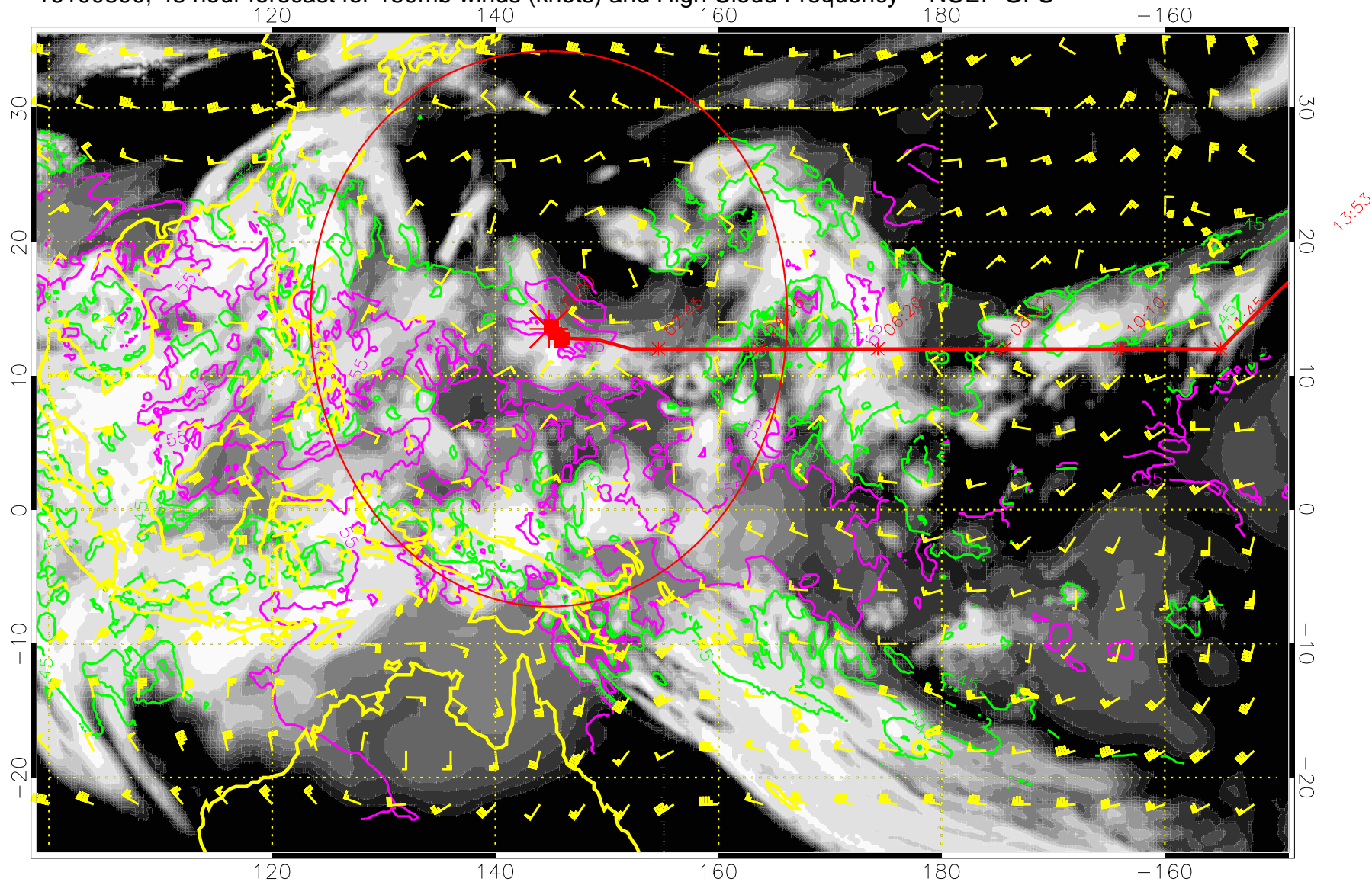
15:53
13:53



45 kft
55 kft

Range ring of 2304 km

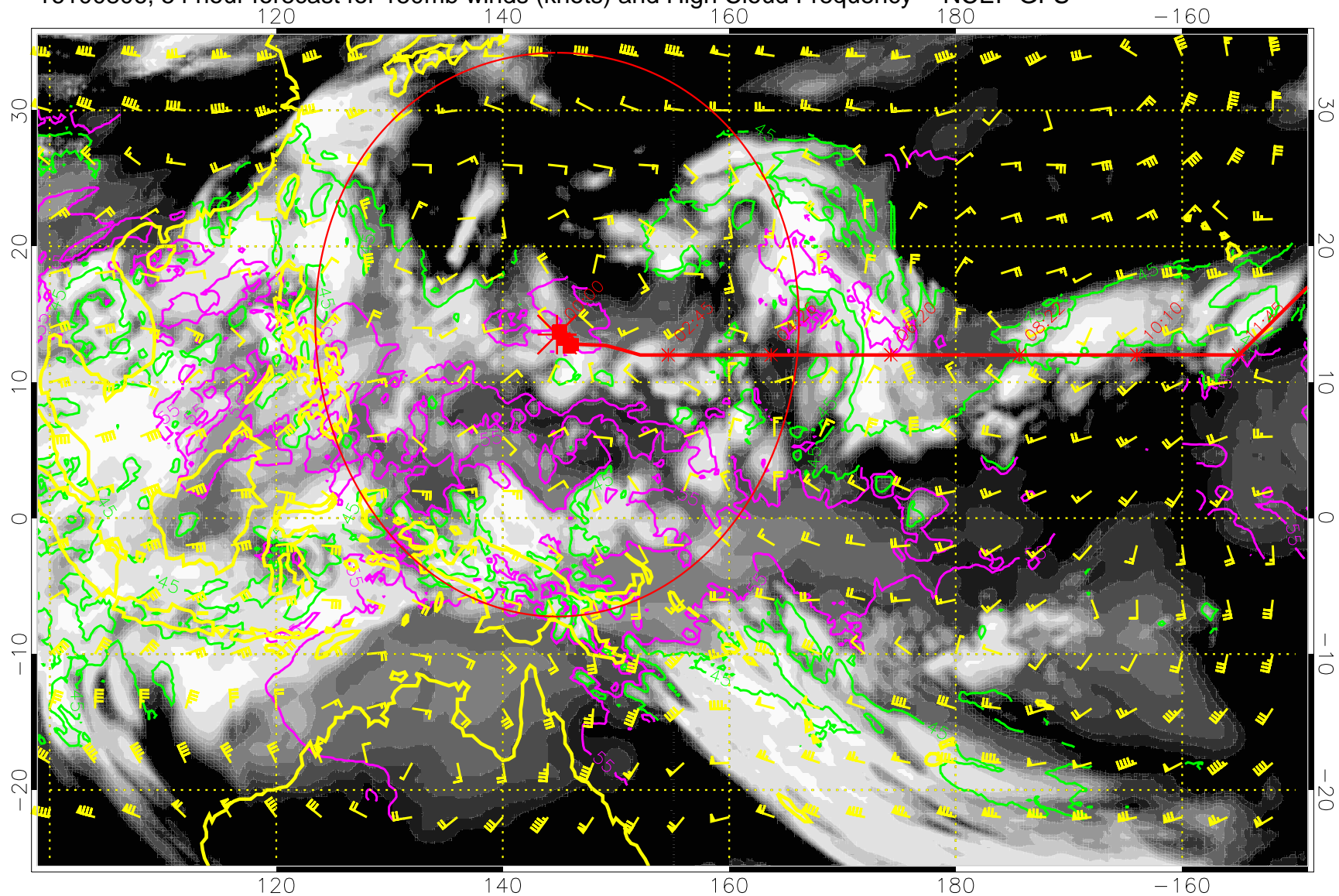
16100800, 48 hour forecast for 150mb winds (knots) and High Cloud Frequency -- NCEP GFS



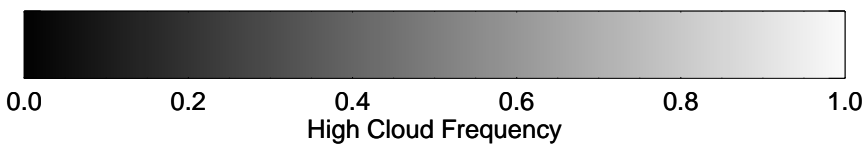
45 kft
55 kft

Range ring of 2304 km

16100806, 54 hour forecast for 150mb winds (knots) and High Cloud Frequency -- NCEP GFS



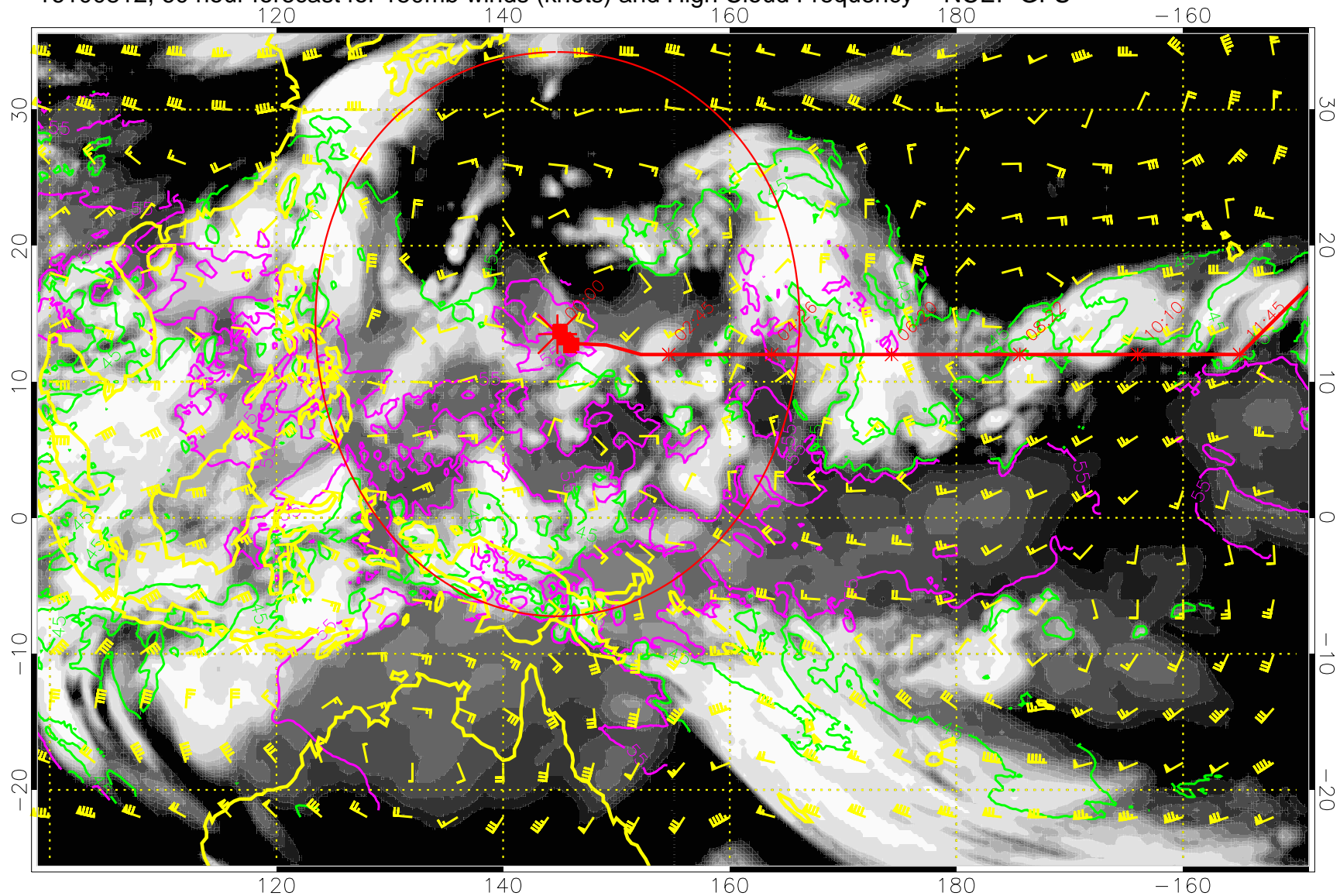
15:53
13:53



45 kft
55 kft

Range ring of 2304 km

16100812, 60 hour forecast for 150mb winds (knots) and High Cloud Frequency -- NCEP GFS



15:53
13:53

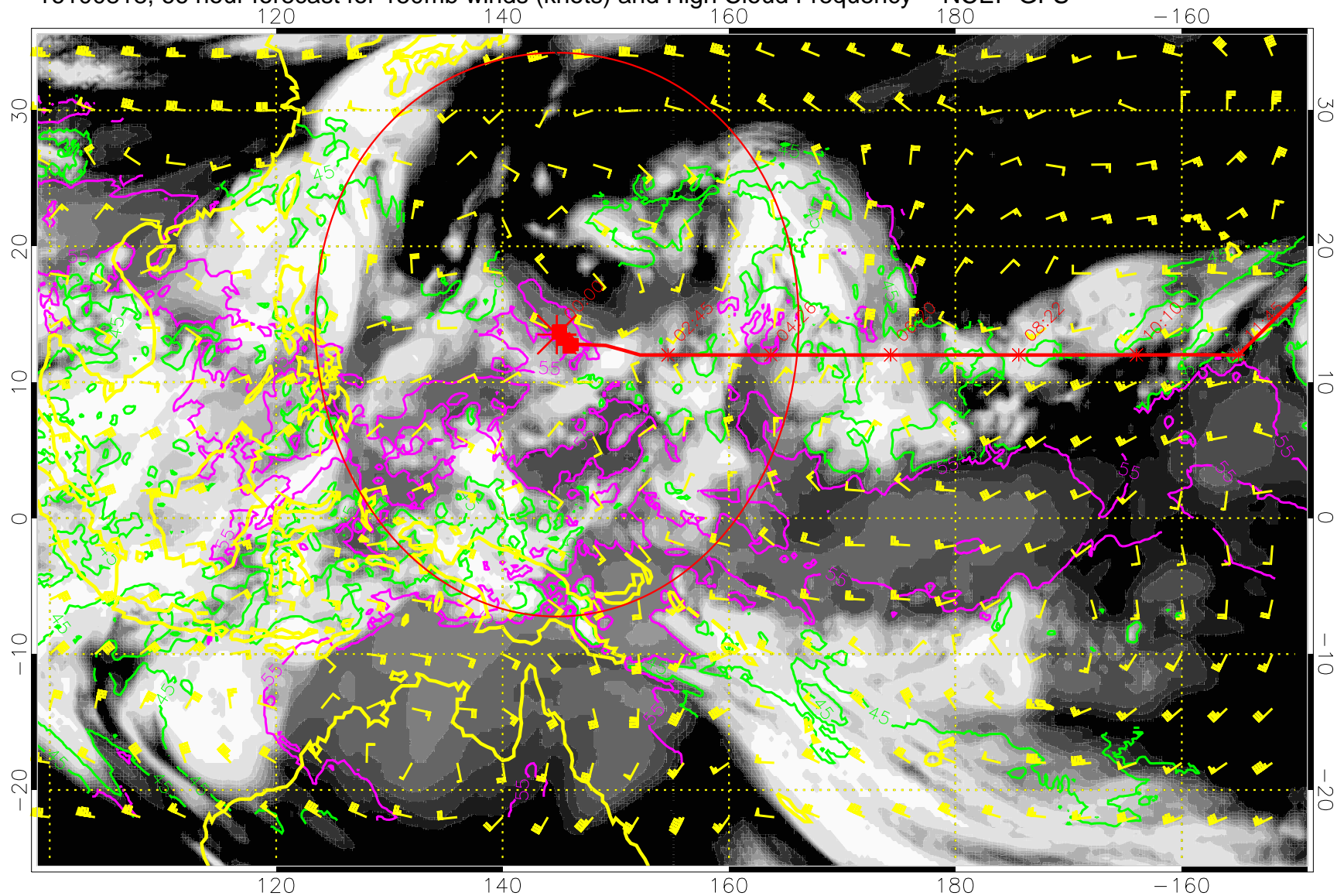


0.0 0.2 0.4 0.6 0.8 1.0
High Cloud Frequency

45 kft
55 kft

Range ring of 2304 km

16100818, 66 hour forecast for 150mb winds (knots) and High Cloud Frequency -- NCEP GFS

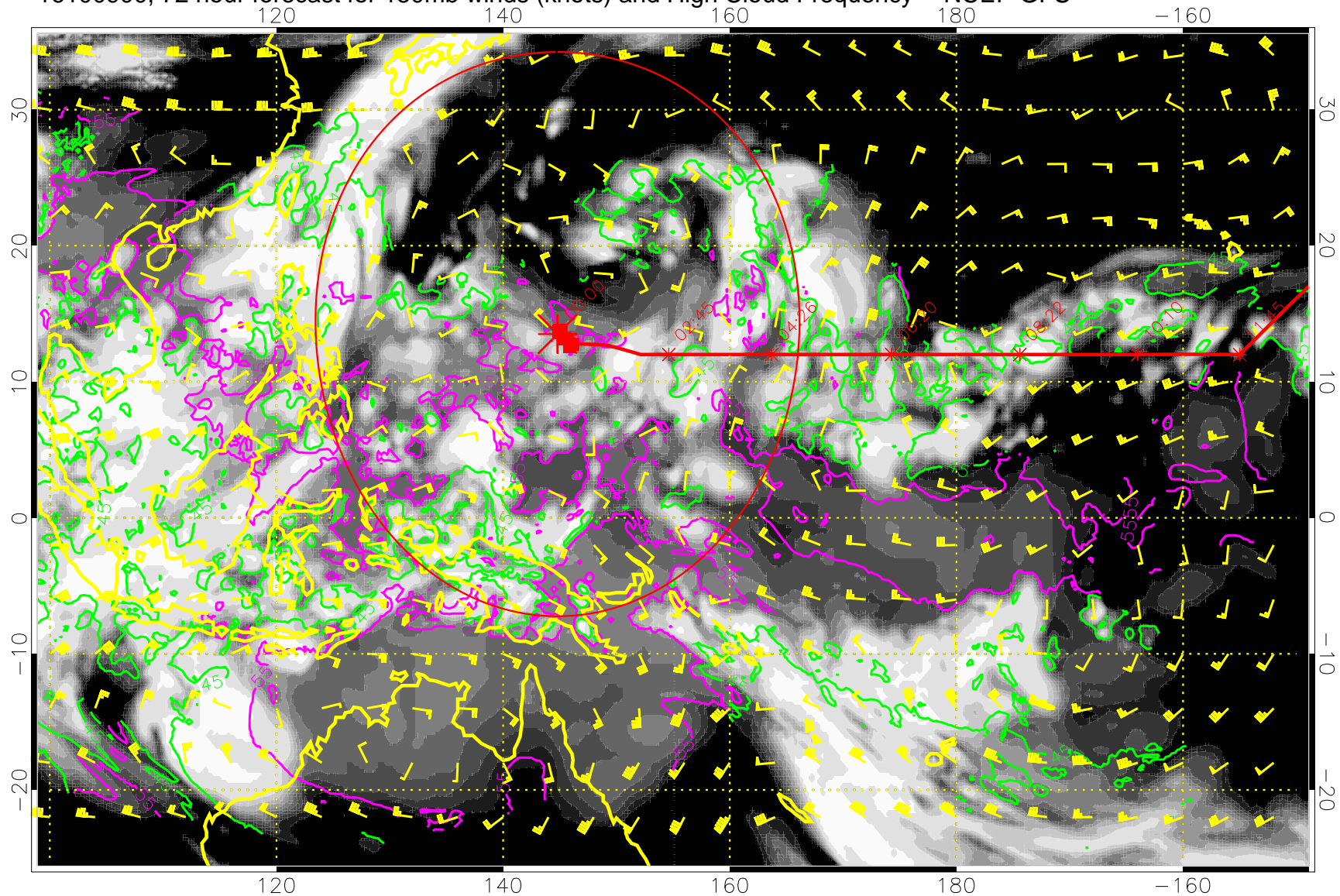


0.0 0.2 0.4 0.6 0.8 1.0
High Cloud Frequency

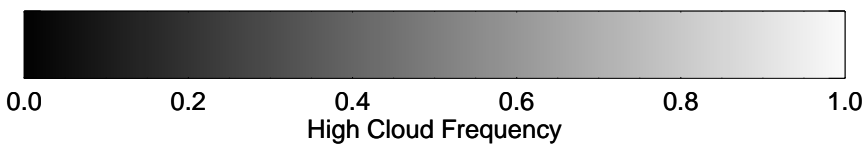
45 kft
55 kft

Range ring of 2304 km

16100900, 72 hour forecast for 150mb winds (knots) and High Cloud Frequency -- NCEP GFS



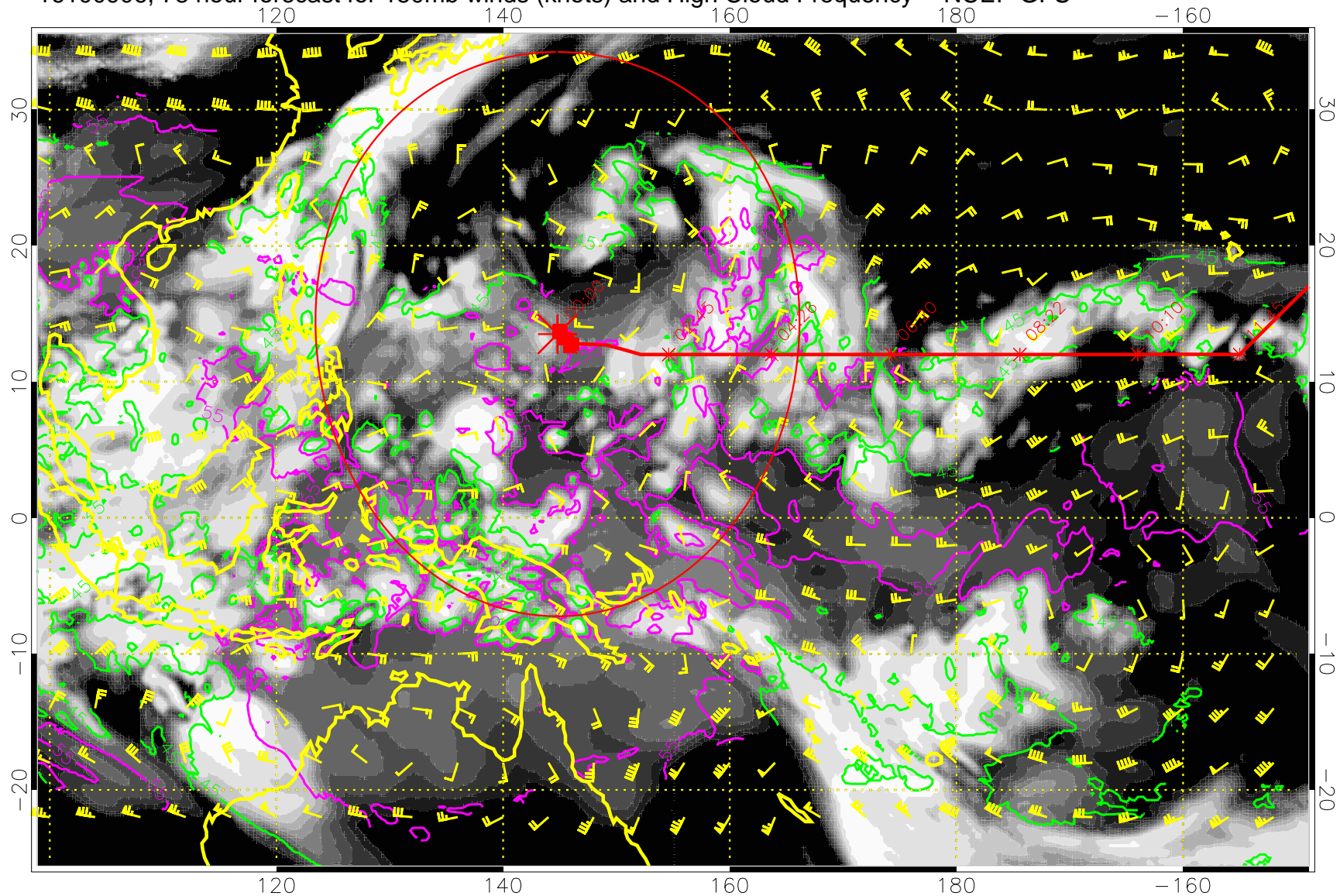
15:53
13:53



45 kft
55 kft

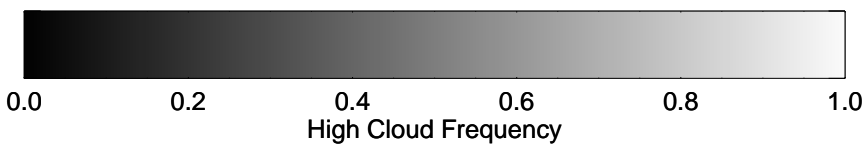
Range ring of 2304 km

16100906, 78 hour forecast for 150mb winds (knots) and High Cloud Frequency -- NCEP GFS



15:53

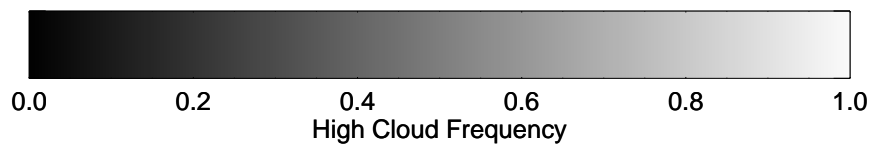
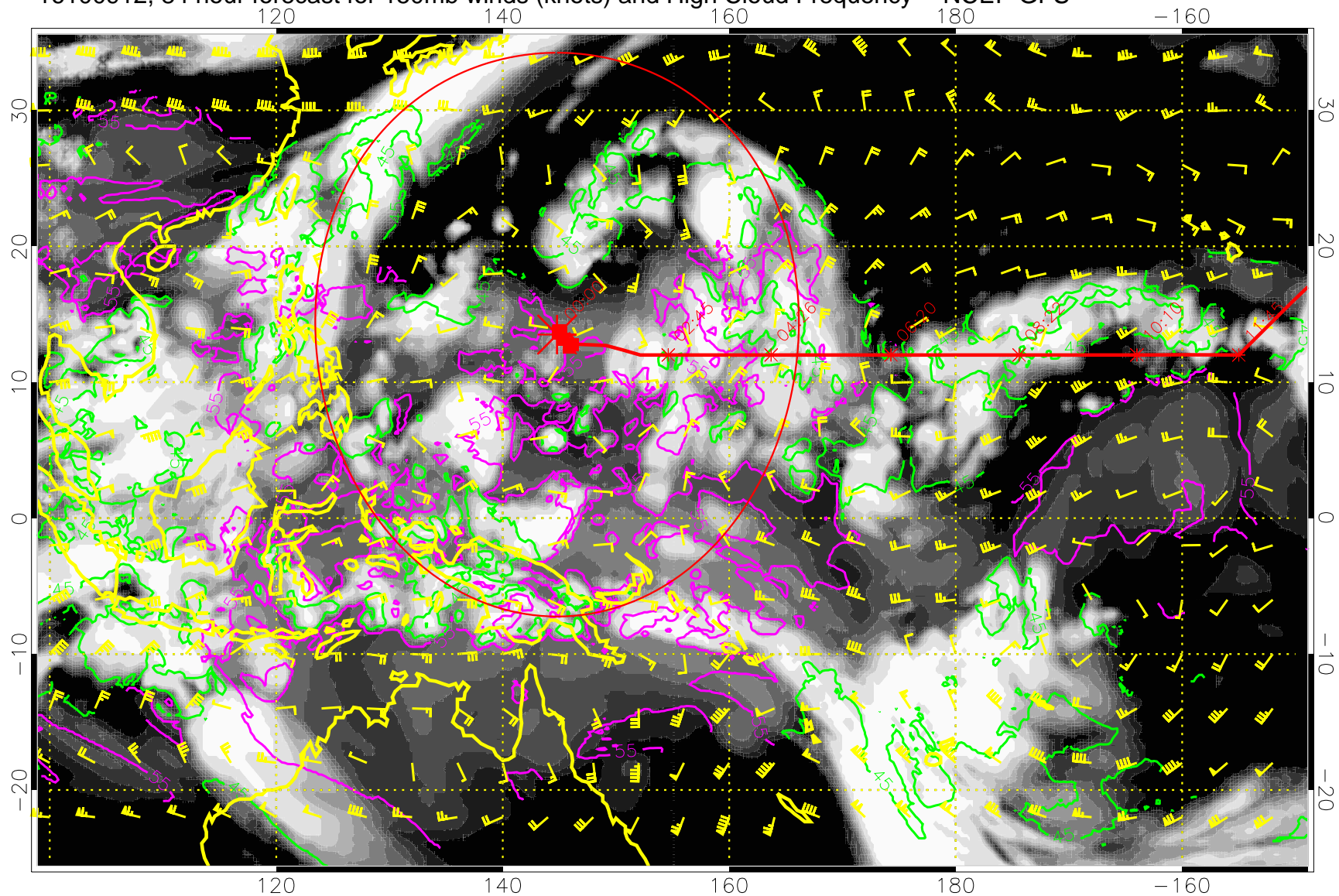
13:53



45 kft
55 kft

Range ring of 2304 km

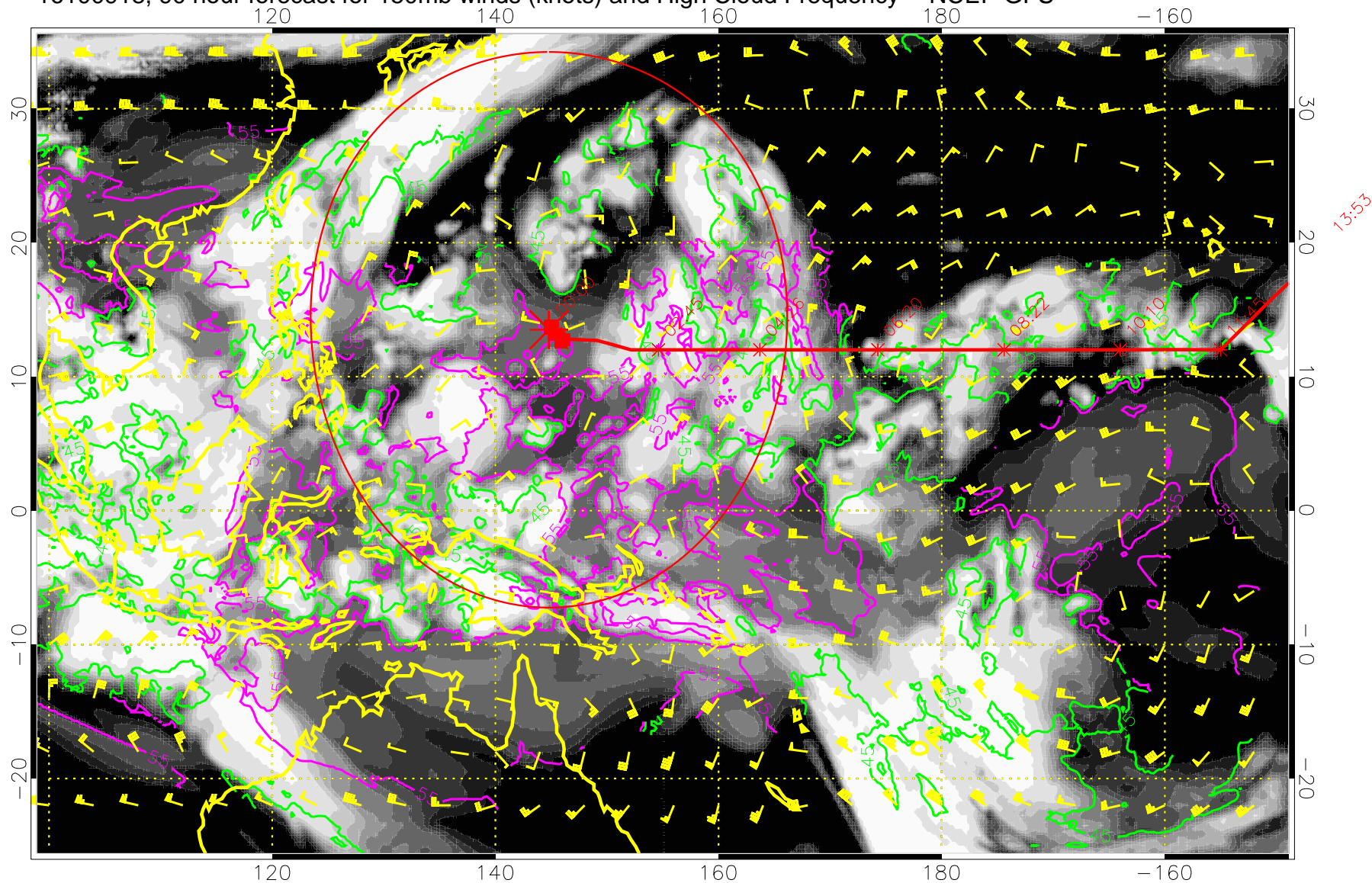
16100912, 84 hour forecast for 150mb winds (knots) and High Cloud Frequency -- NCEP GFS



45 kft
55 kft

Range ring of 2304 km

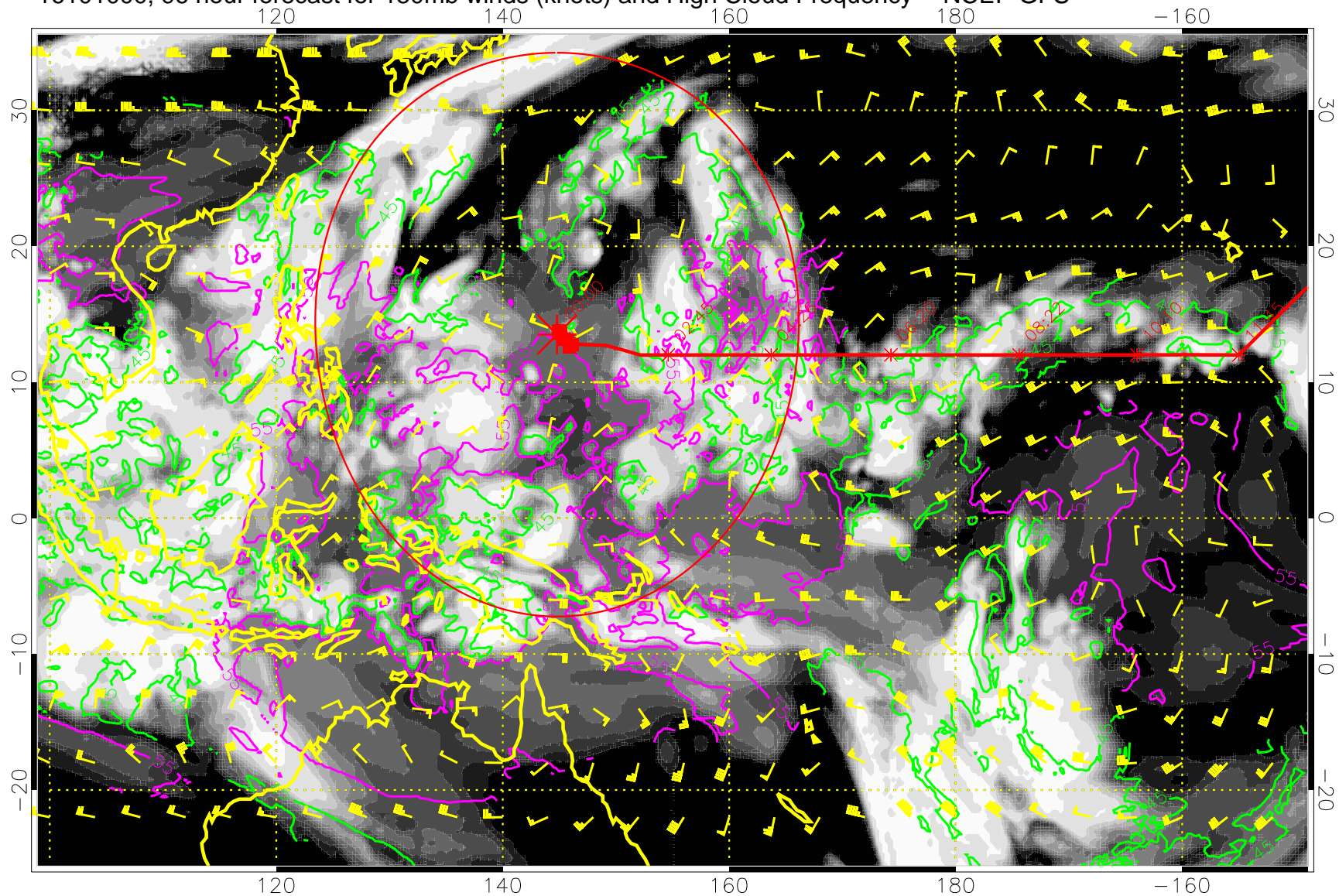
16100918, 90 hour forecast for 150mb winds (knots) and High Cloud Frequency -- NCEP GFS



45 kft
55 kft

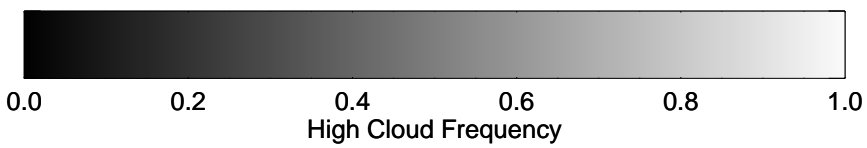
Range ring of 2304 km

16101000, 96 hour forecast for 150mb winds (knots) and High Cloud Frequency -- NCEP GFS



15:53

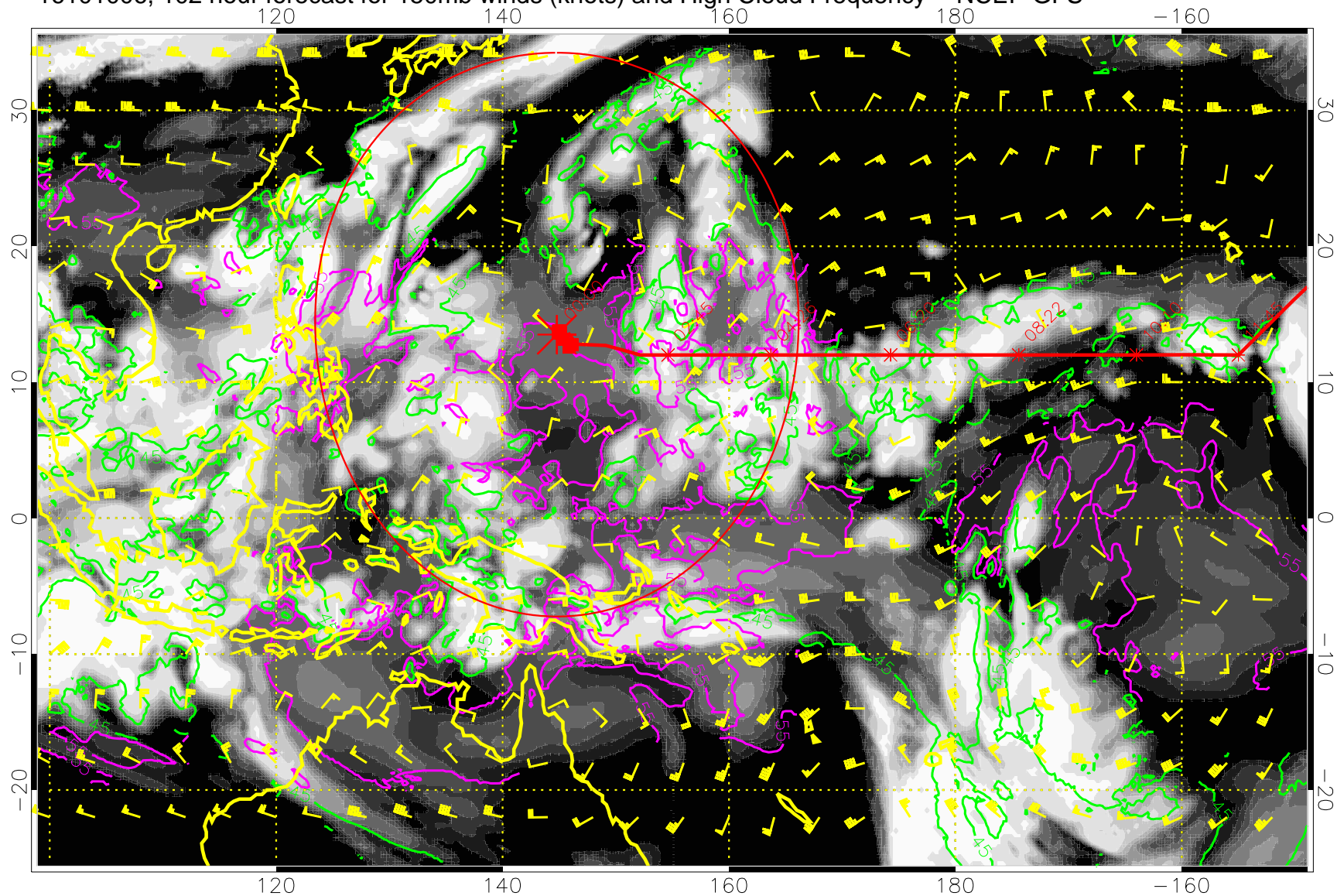
13:53



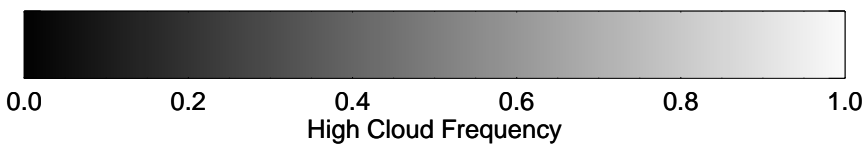
45 kft
55 kft

Range ring of 2304 km

16101006, 102 hour forecast for 150mb winds (knots) and High Cloud Frequency -- NCEP GFS



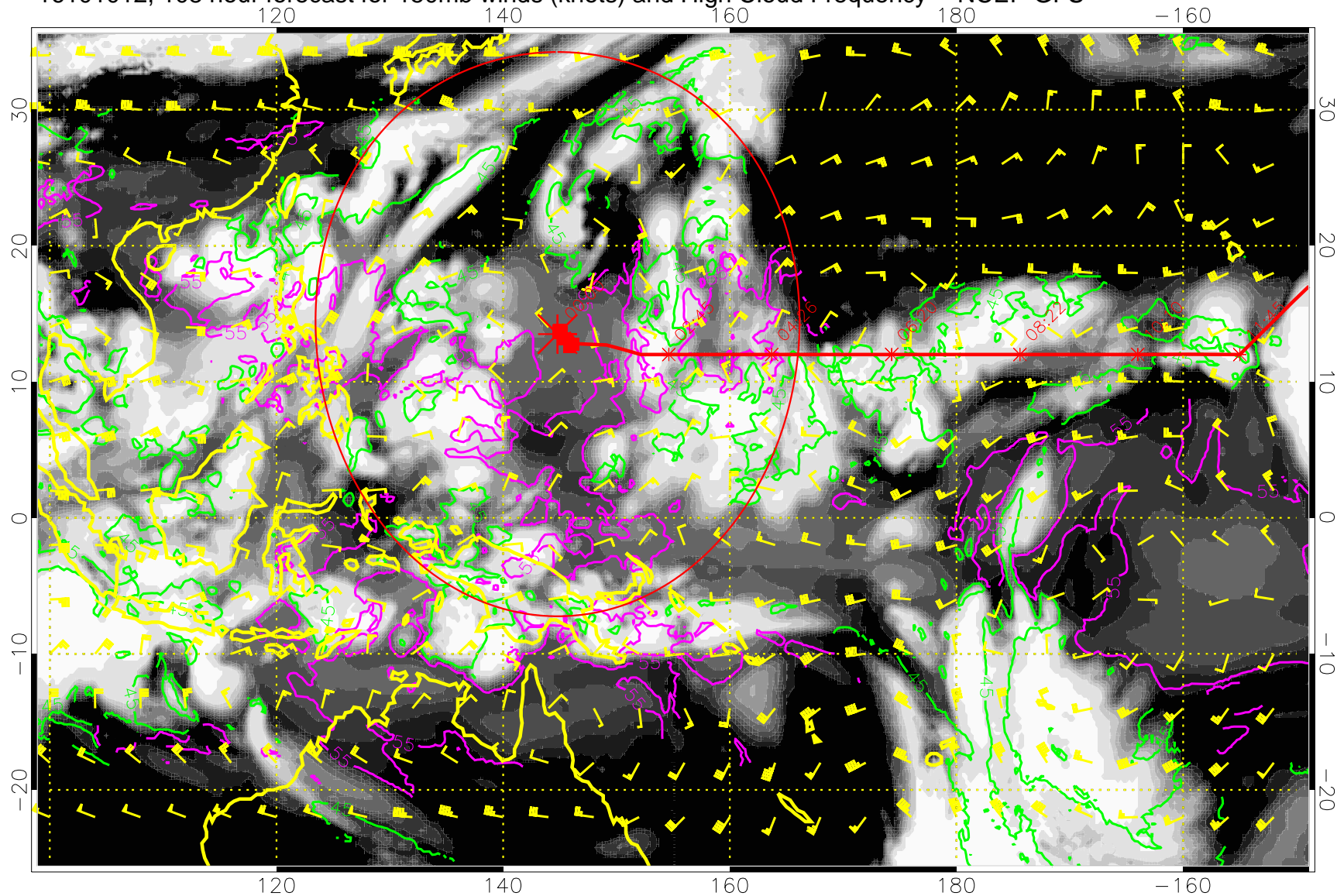
15:53
13:53



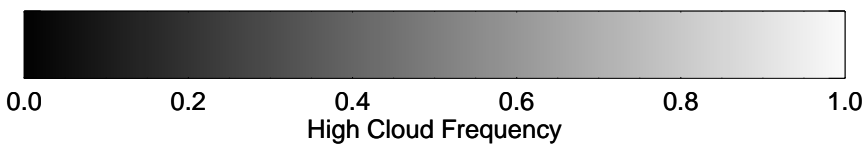
45 kft
55 kft

Range ring of 2304 km

16101012, 108 hour forecast for 150mb winds (knots) and High Cloud Frequency -- NCEP GFS



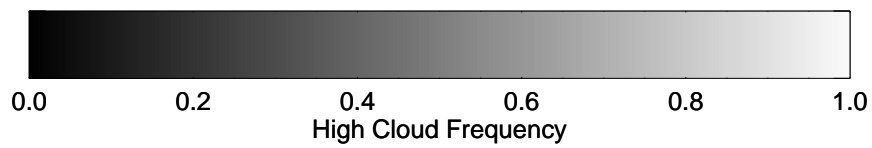
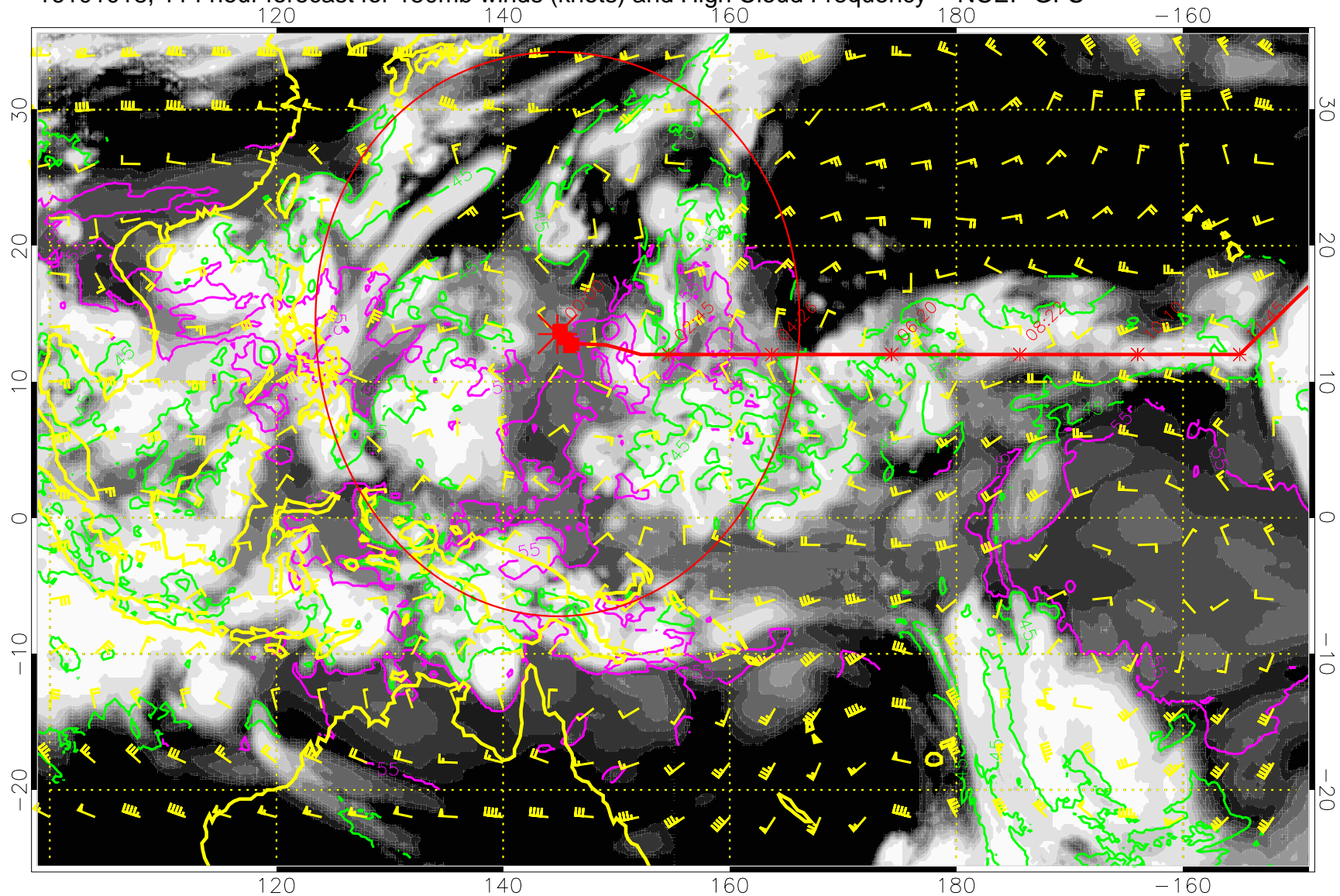
15:53
13:53



45 kft
55 kft

Range ring of 2304 km

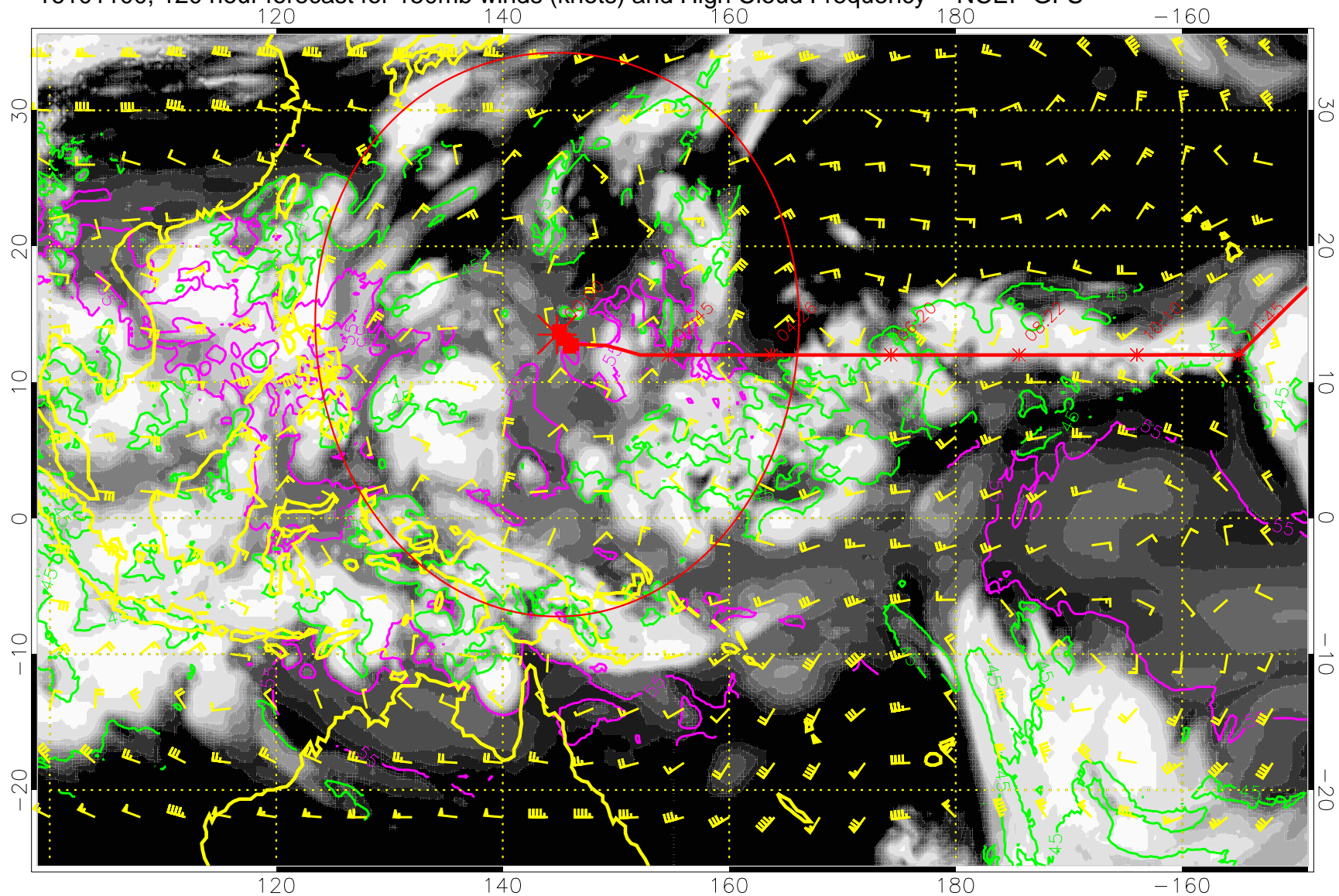
16101018, 114 hour forecast for 150mb winds (knots) and High Cloud Frequency -- NCEP GFS



45 kft
55 kft

Range ring of 2304 km

16101100, 120 hour forecast for 150mb winds (knots) and High Cloud Frequency -- NCEP GFS



15:53

13:53

11:53

09:53

07:53

05:53

03:53

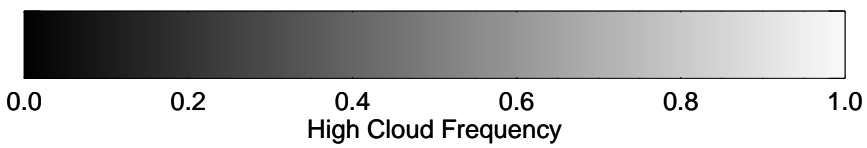
01:53

23:53

21:53

19:53

17:53



45 kft
55 kft

Range ring of 2304 km