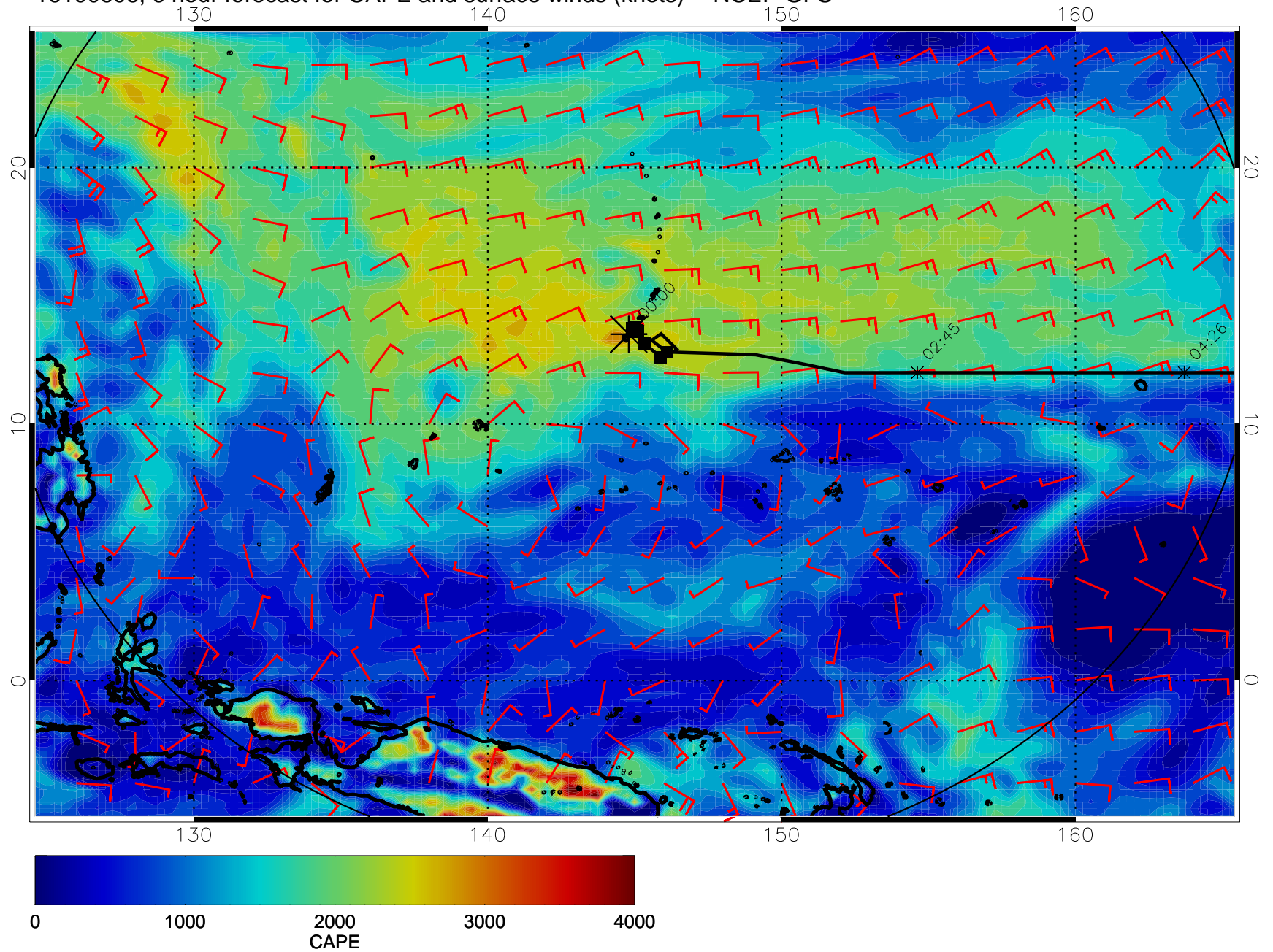
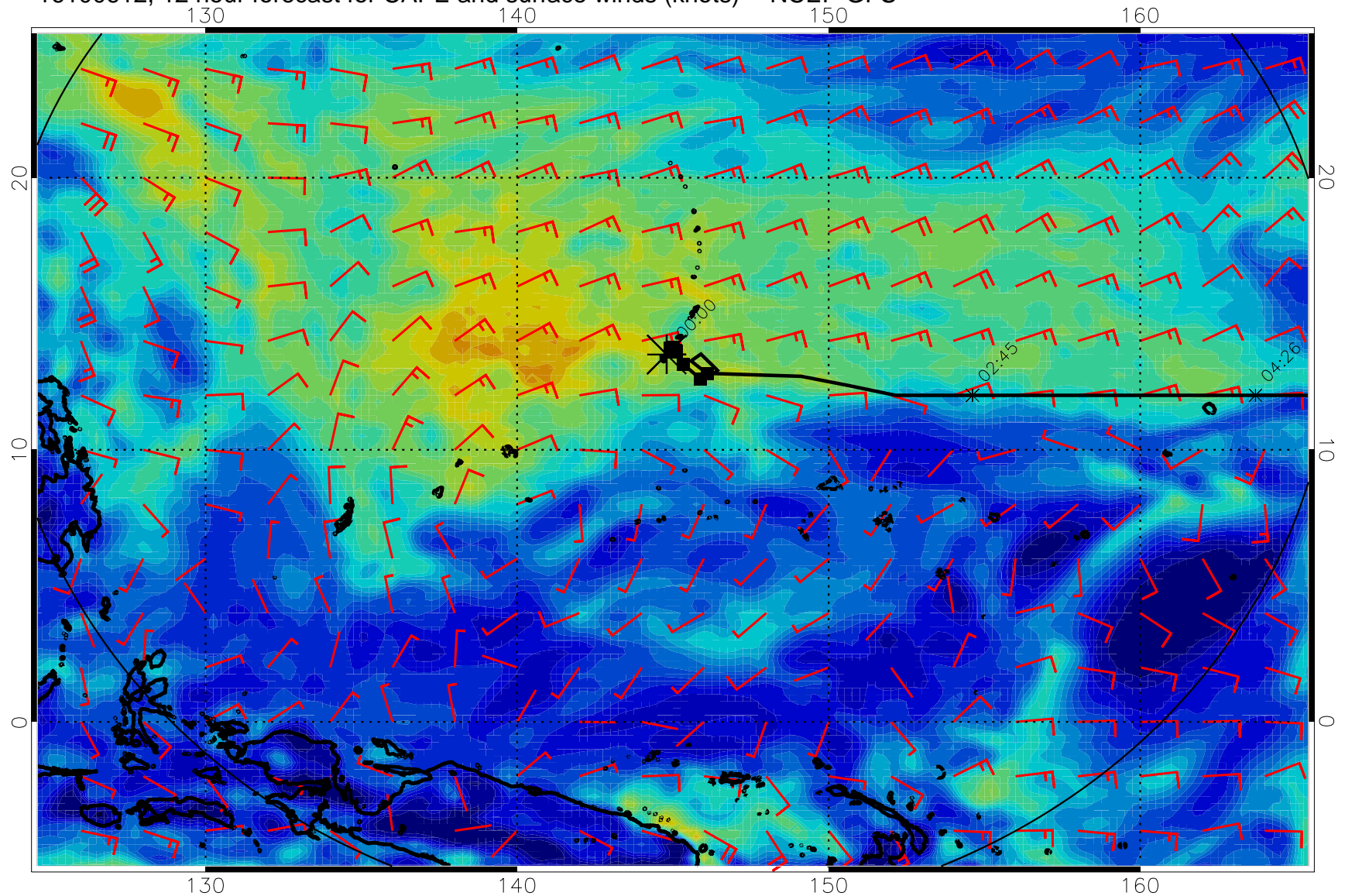


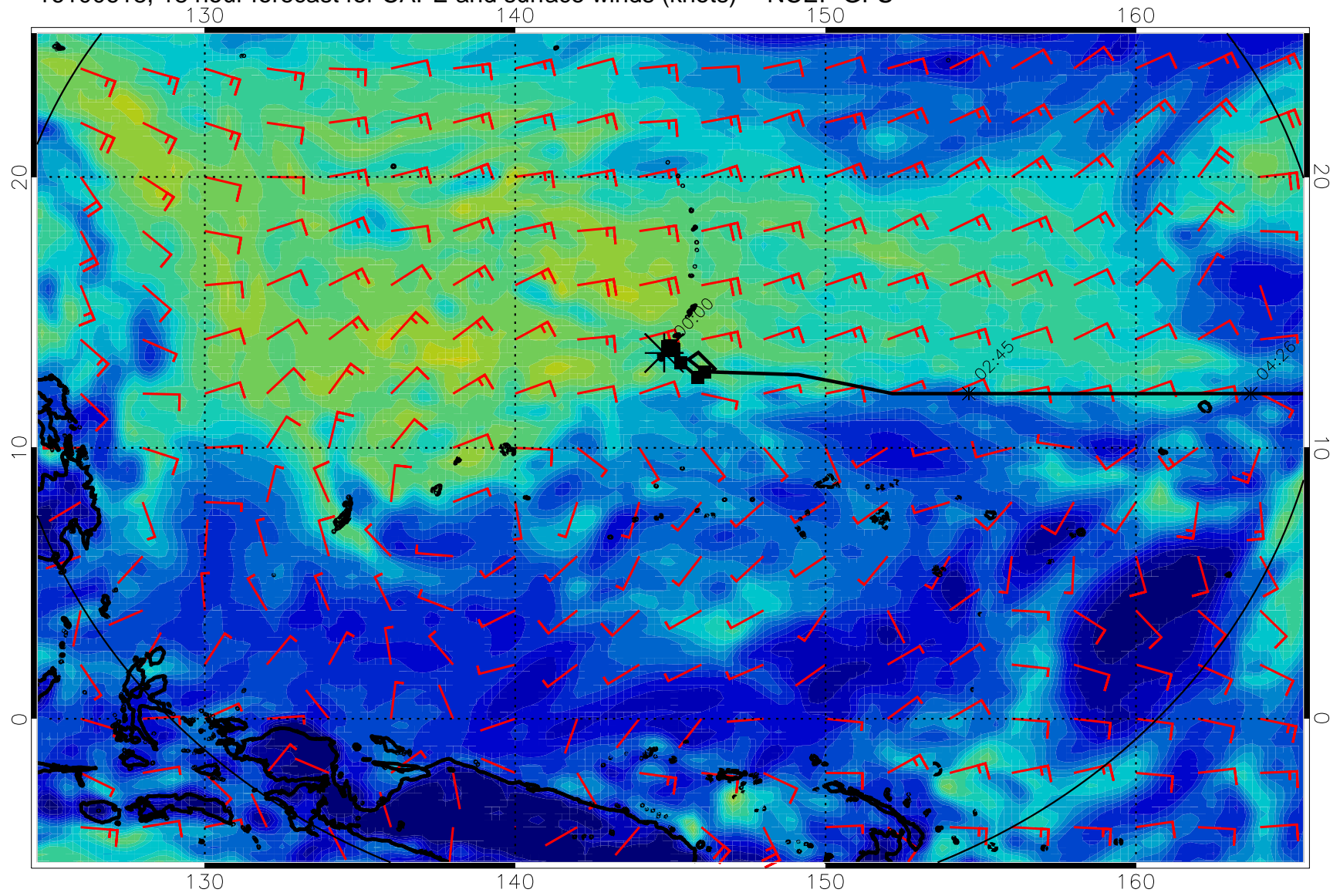
16100606, 6 hour forecast for CAPE and surface winds (knots) -- NCEP GFS



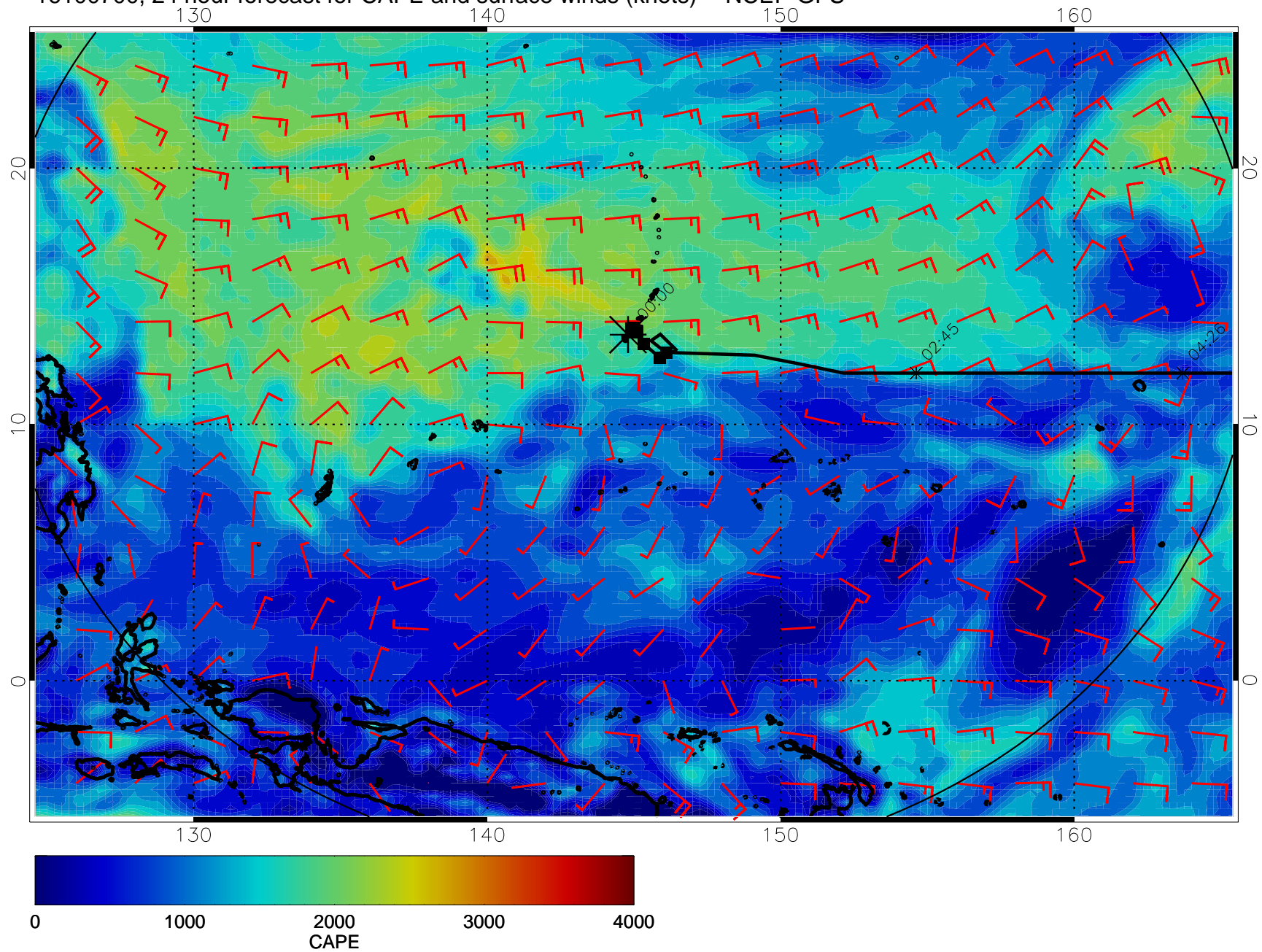
16100612, 12 hour forecast for CAPE and surface winds (knots) -- NCEP GFS



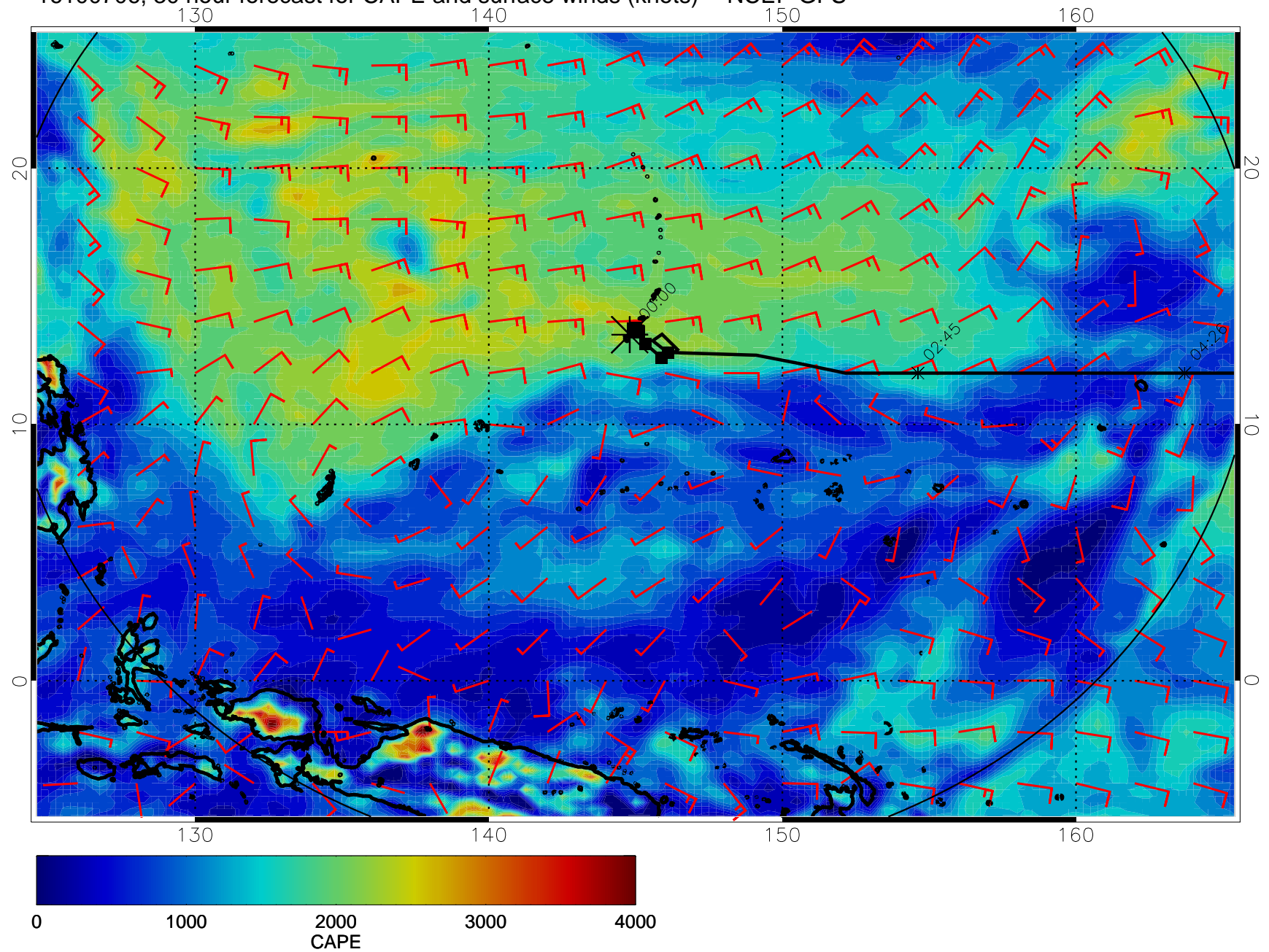
16100618, 18 hour forecast for CAPE and surface winds (knots) -- NCEP GFS



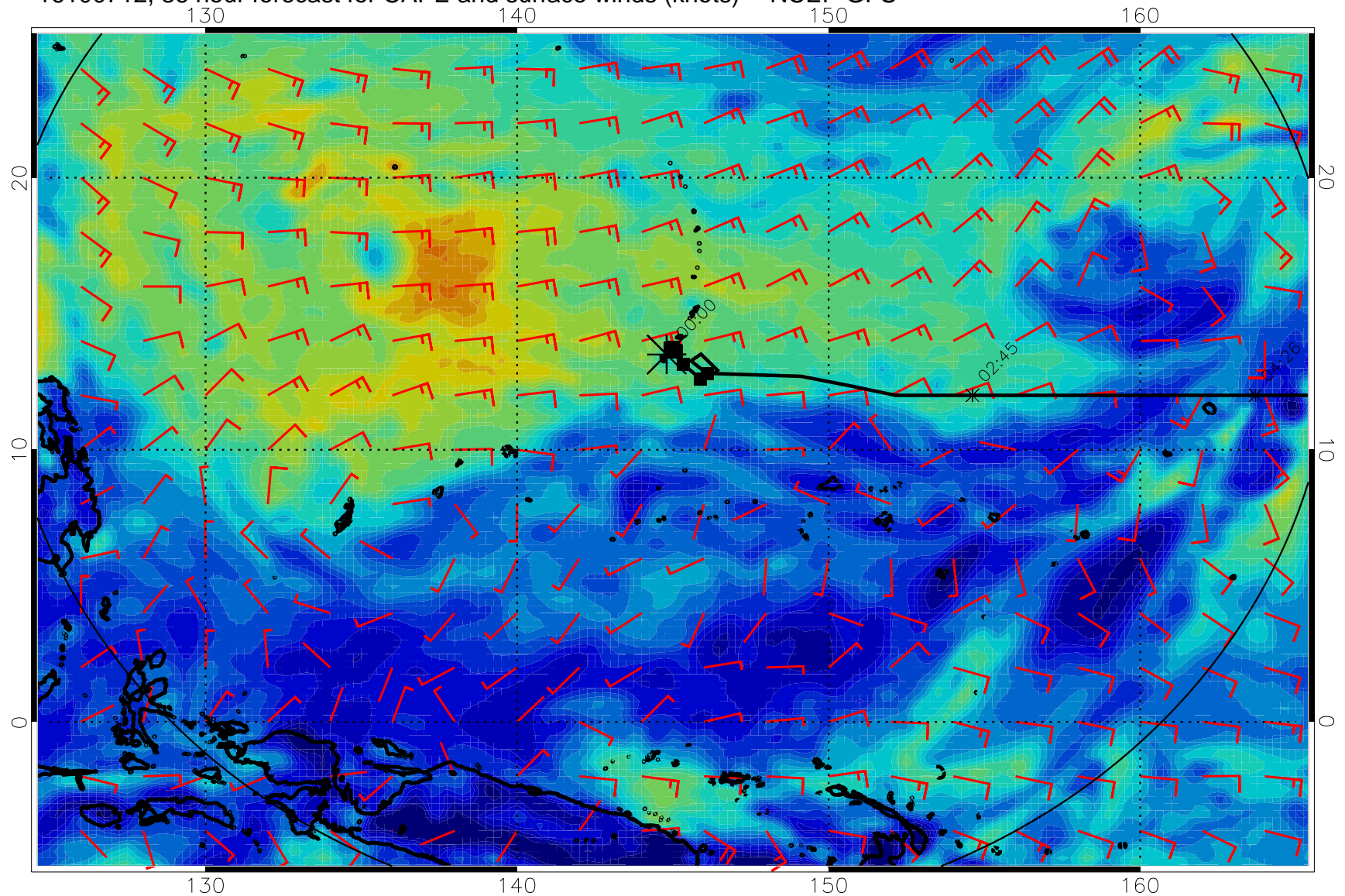
16100700, 24 hour forecast for CAPE and surface winds (knots) -- NCEP GFS



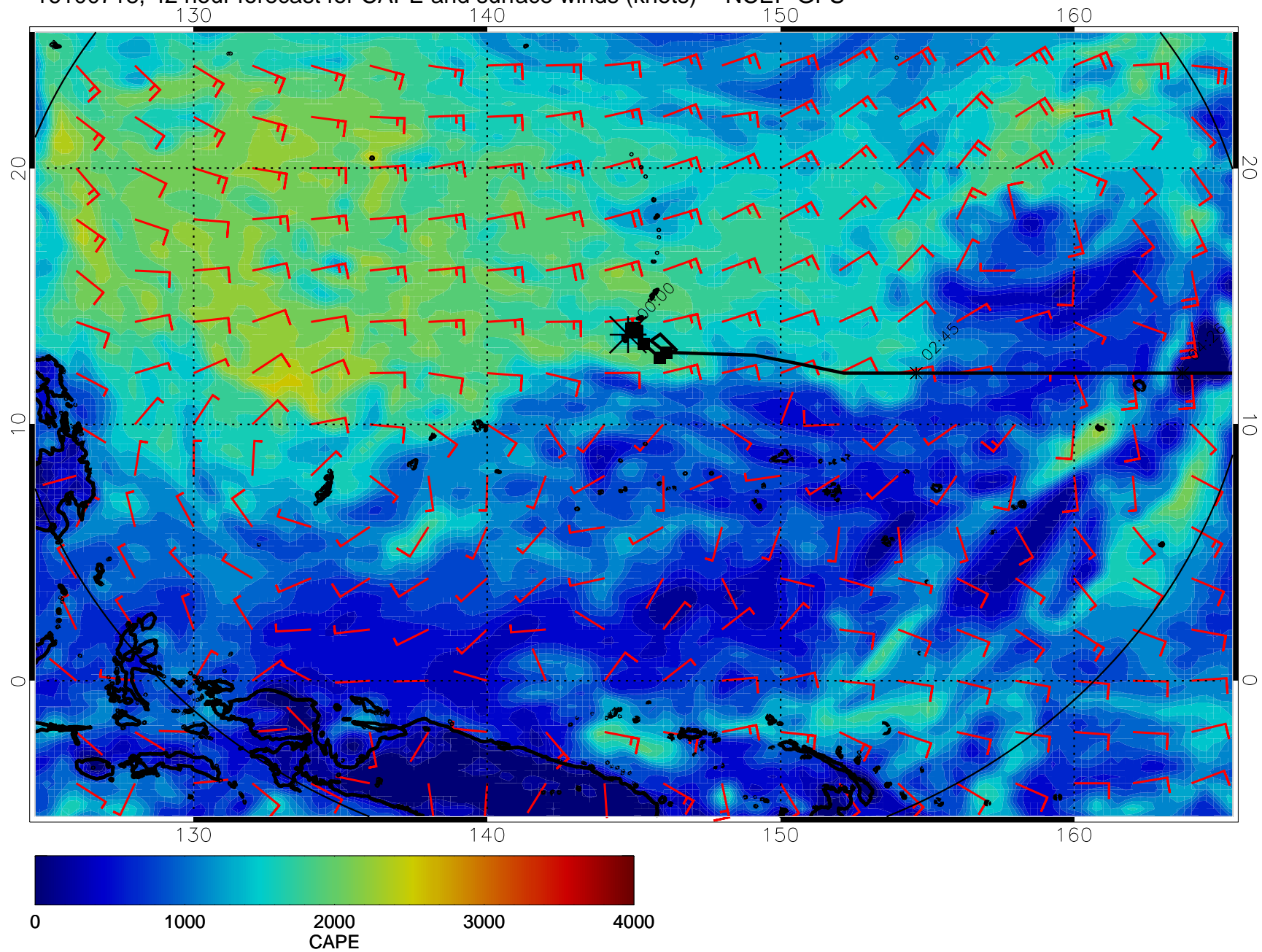
16100706, 30 hour forecast for CAPE and surface winds (knots) -- NCEP GFS



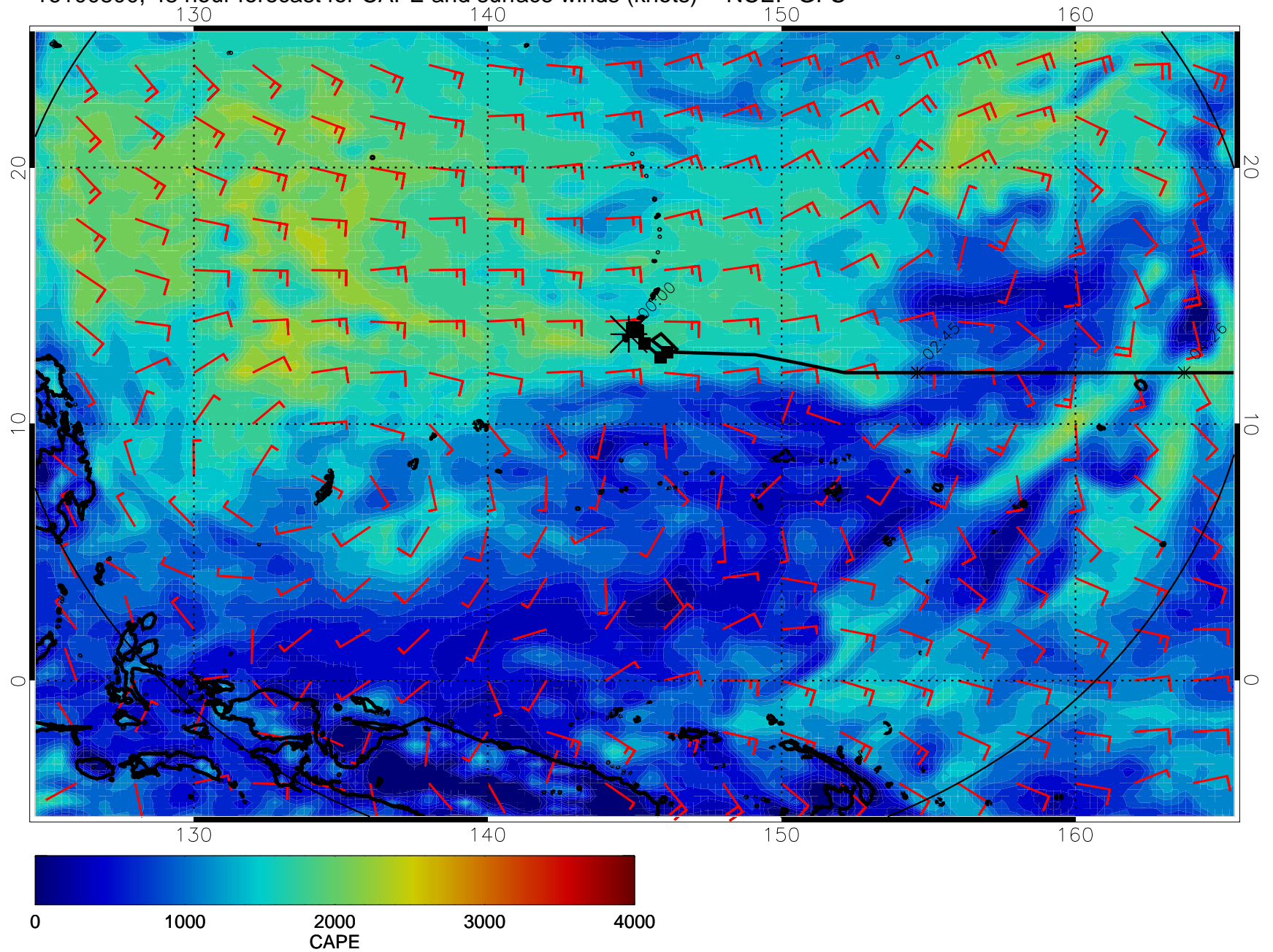
16100712, 36 hour forecast for CAPE and surface winds (knots) -- NCEP GFS



16100718, 42 hour forecast for CAPE and surface winds (knots) -- NCEP GFS

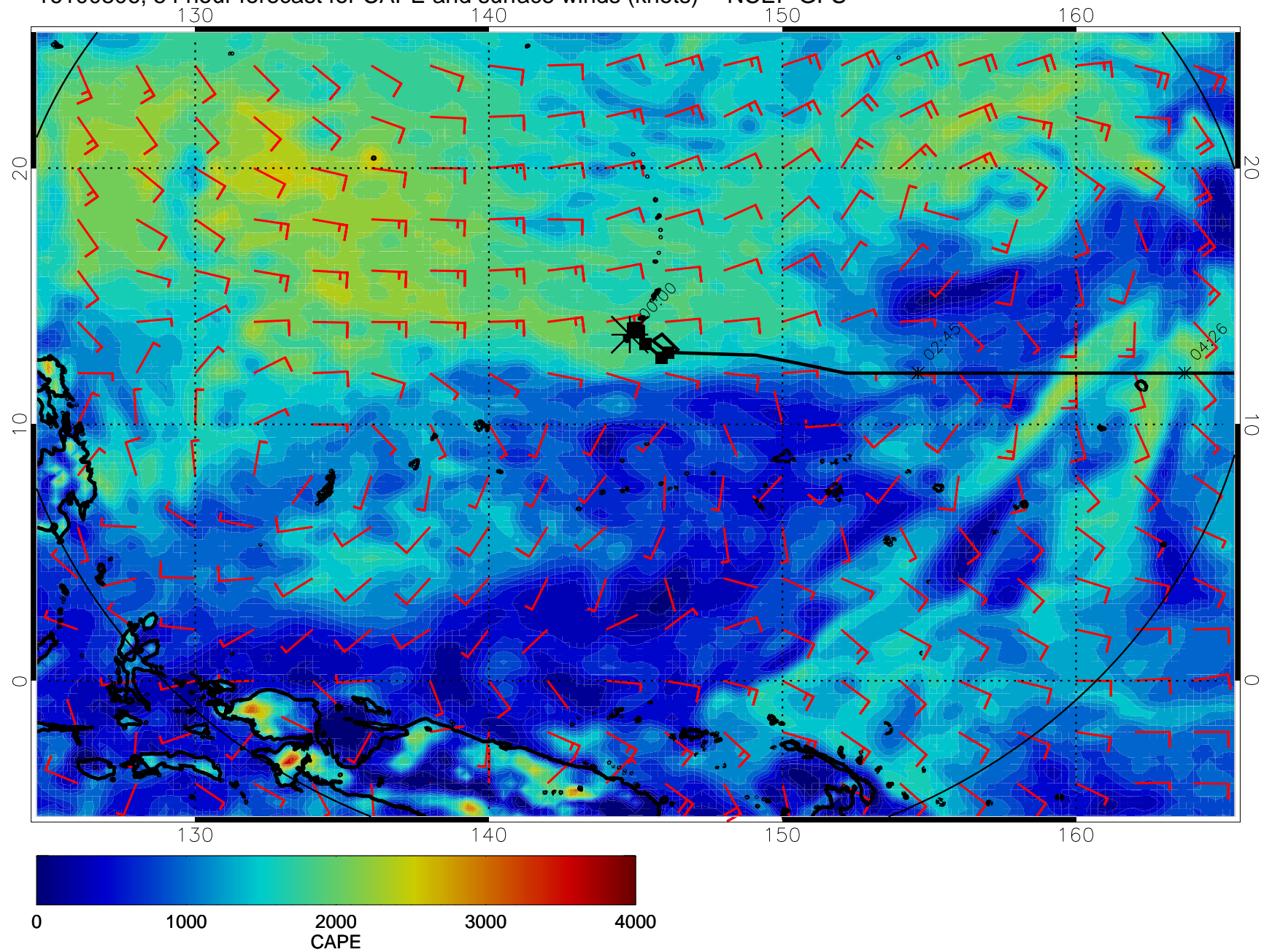


16100800, 48 hour forecast for CAPE and surface winds (knots) -- NCEP GFS

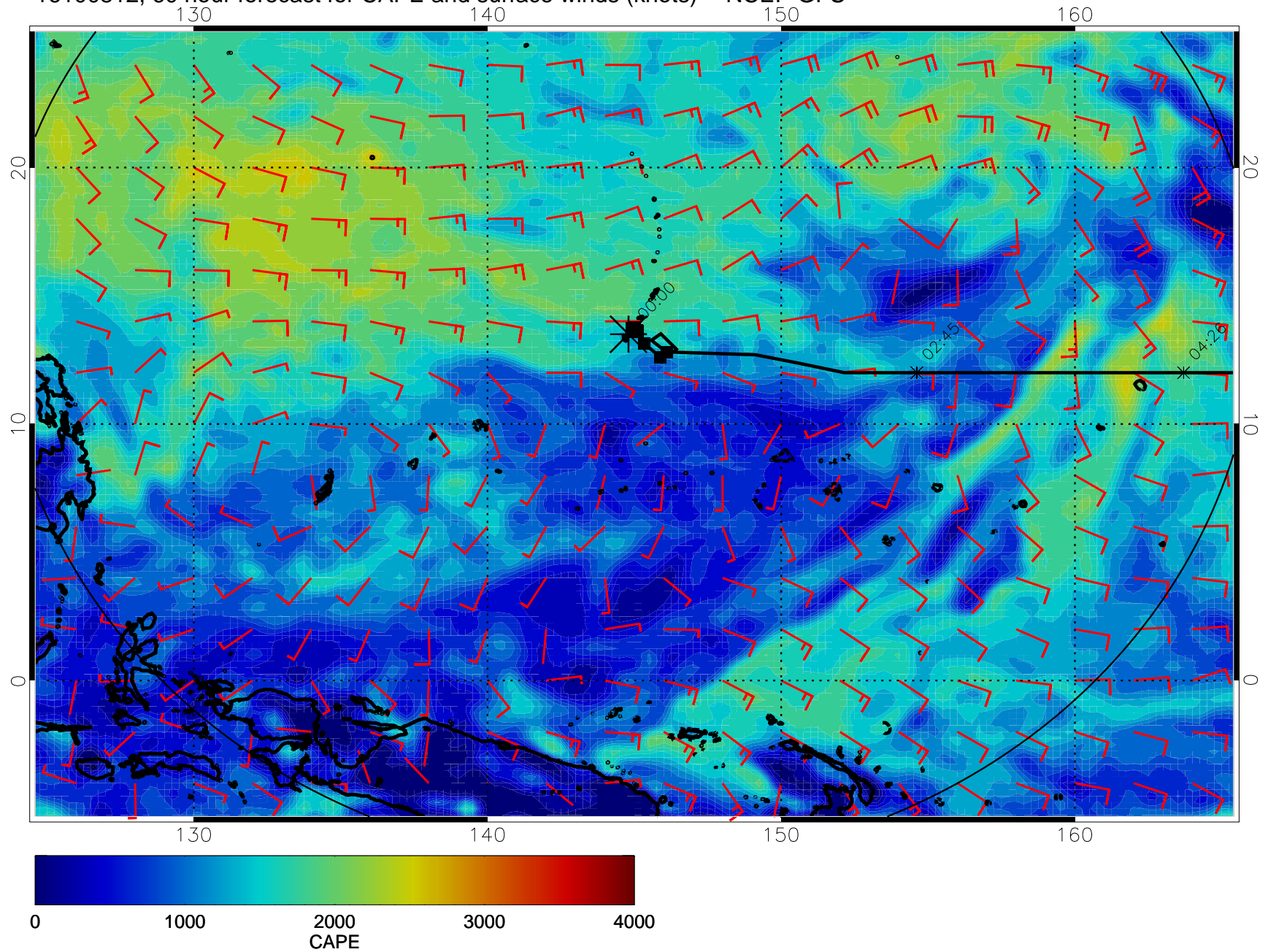




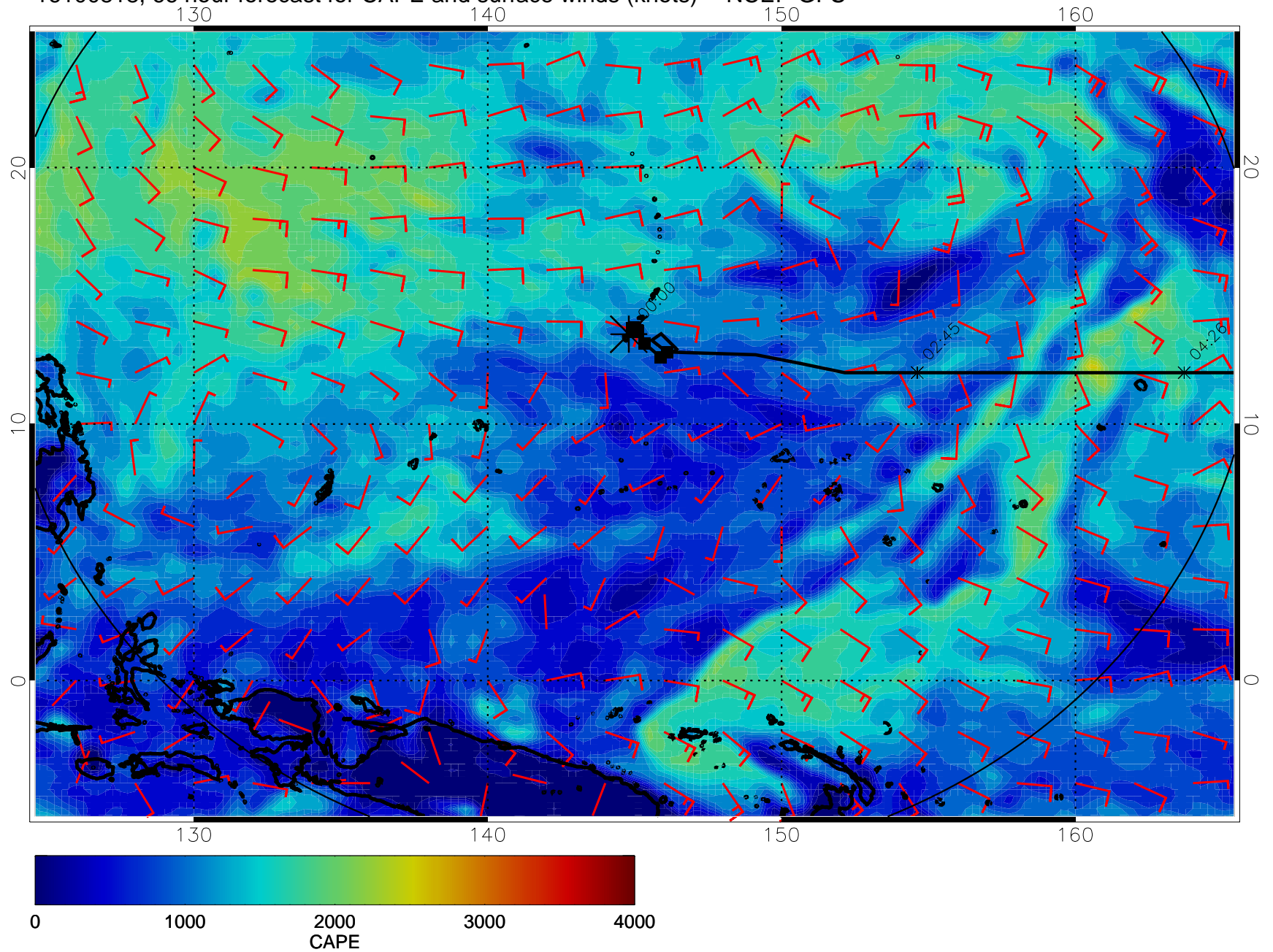
16100806, 54 hour forecast for CAPE and surface winds (knots) -- NCEP GFS



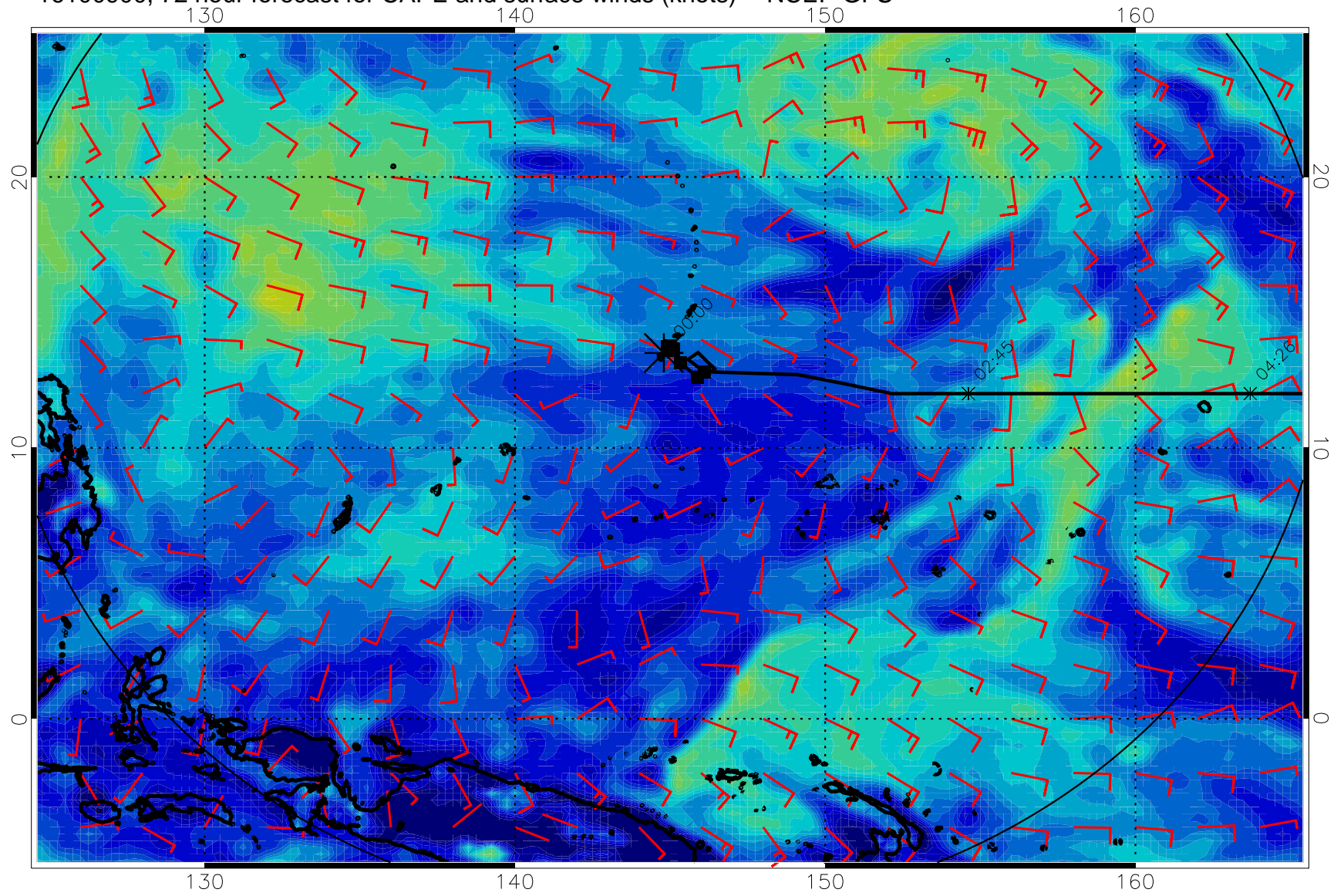
16100812, 60 hour forecast for CAPE and surface winds (knots) -- NCEP GFS



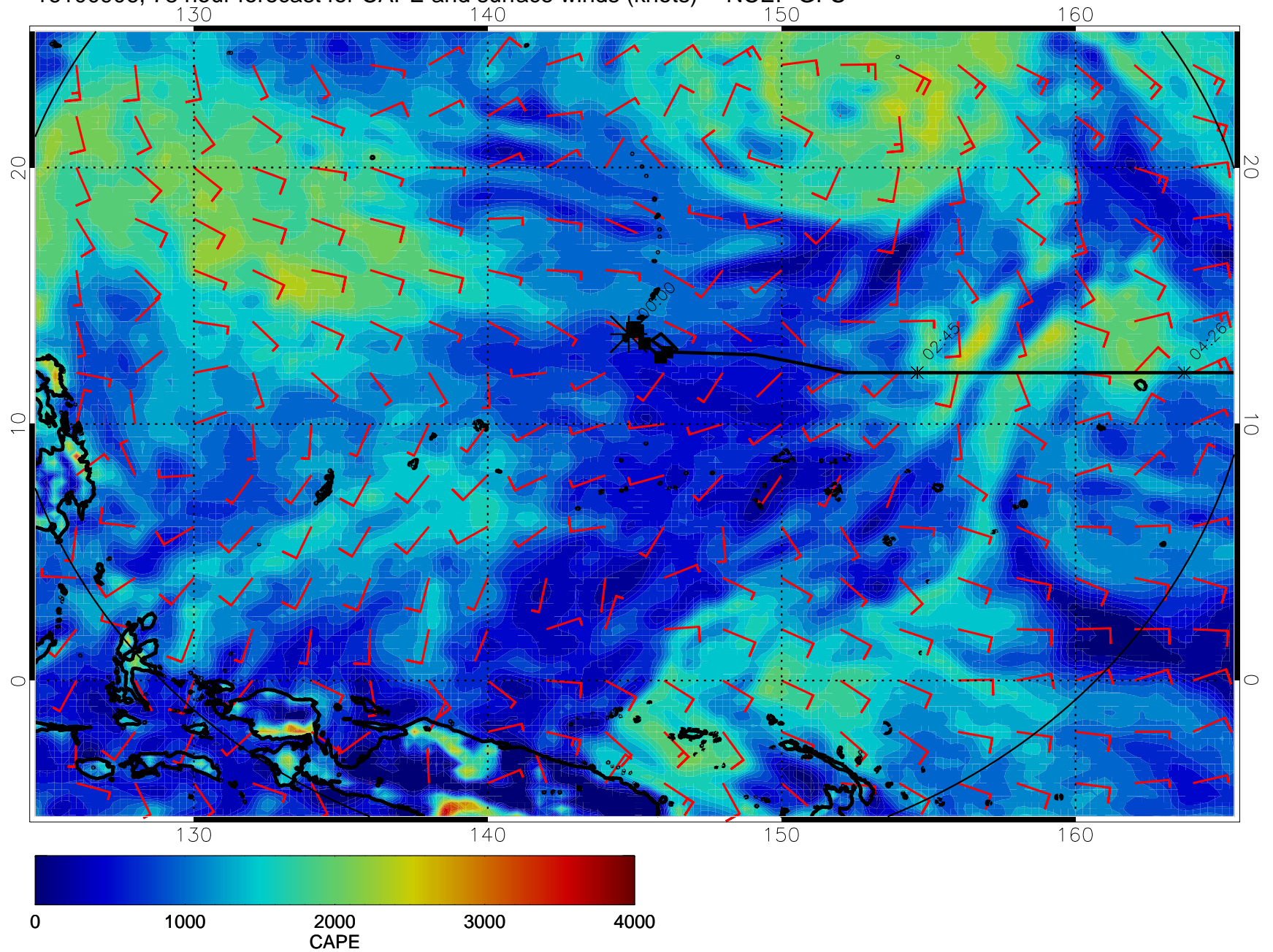
16100818, 66 hour forecast for CAPE and surface winds (knots) -- NCEP GFS



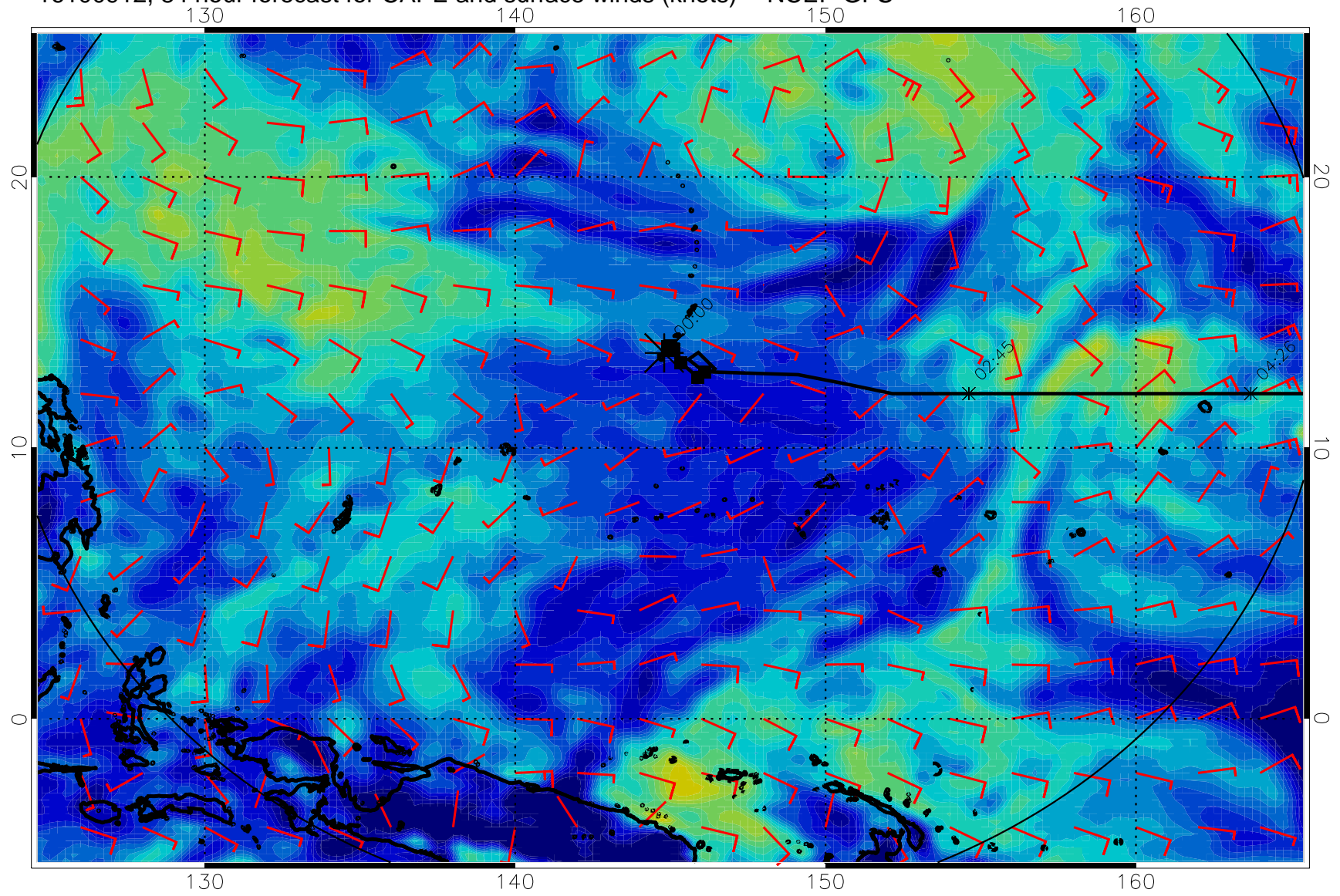
16100900, 72 hour forecast for CAPE and surface winds (knots) -- NCEP GFS



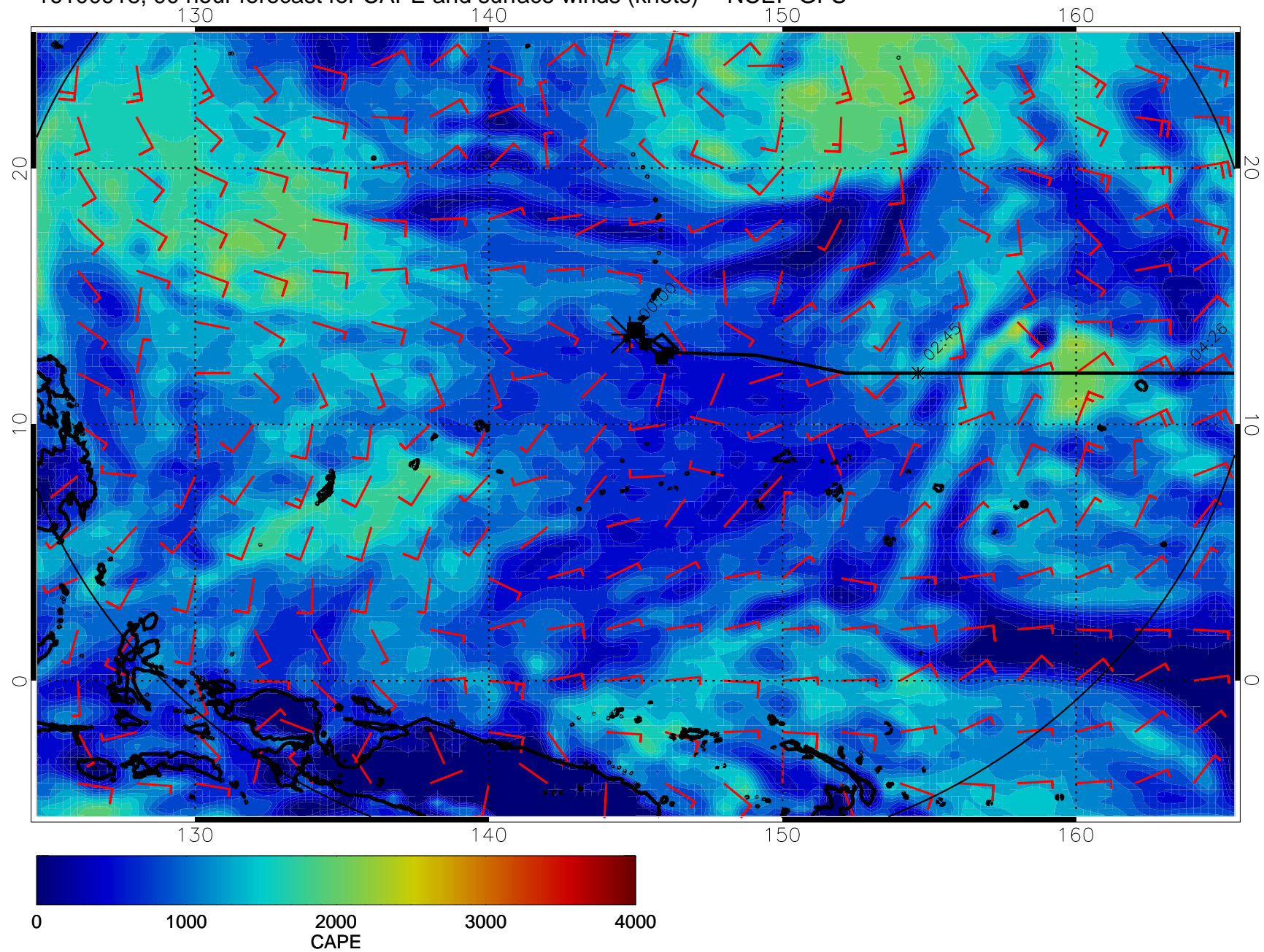
16100906, 78 hour forecast for CAPE and surface winds (knots) -- NCEP GFS



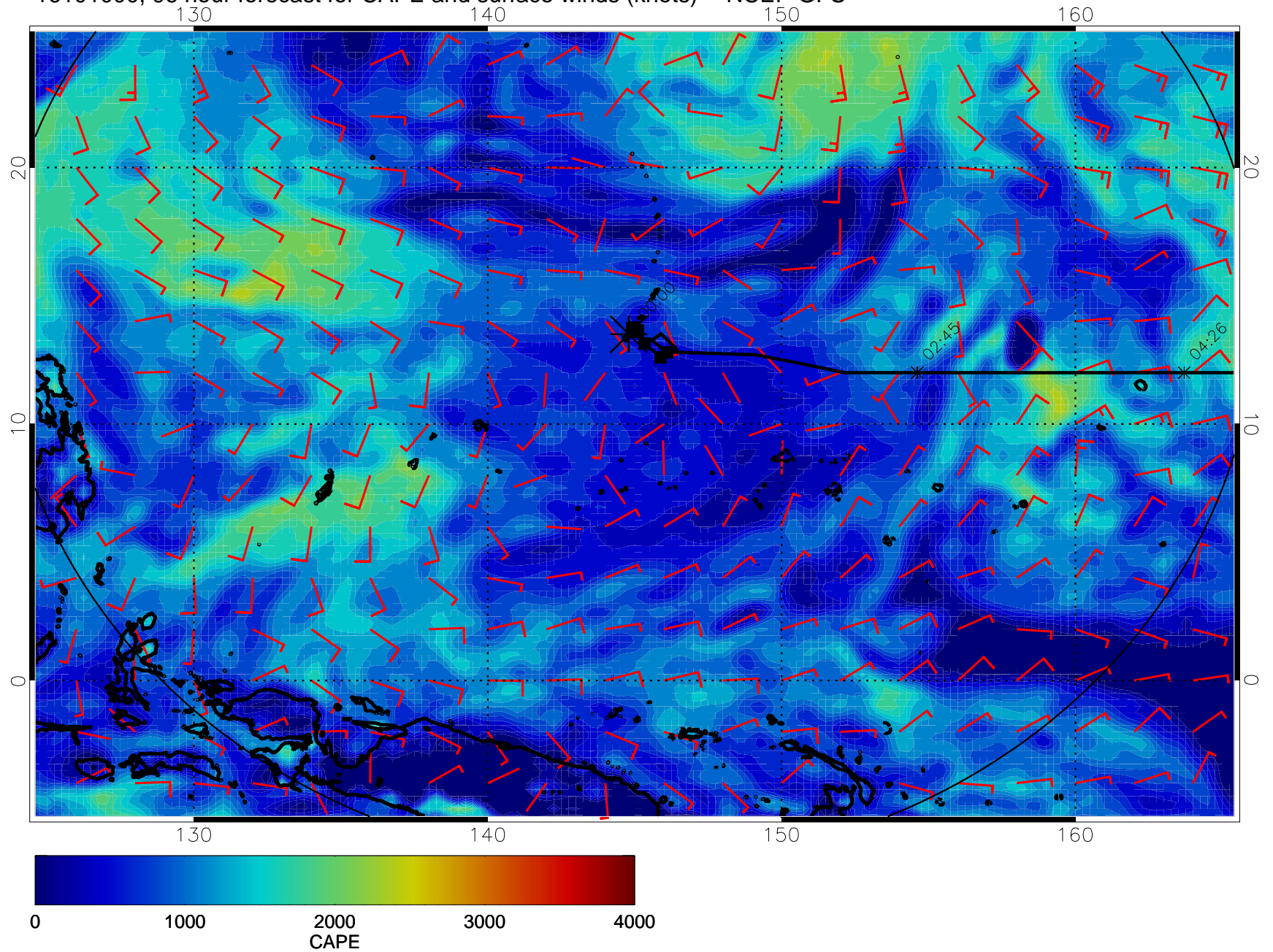
16100912, 84 hour forecast for CAPE and surface winds (knots) -- NCEP GFS



16100918, 90 hour forecast for CAPE and surface winds (knots) -- NCEP GFS

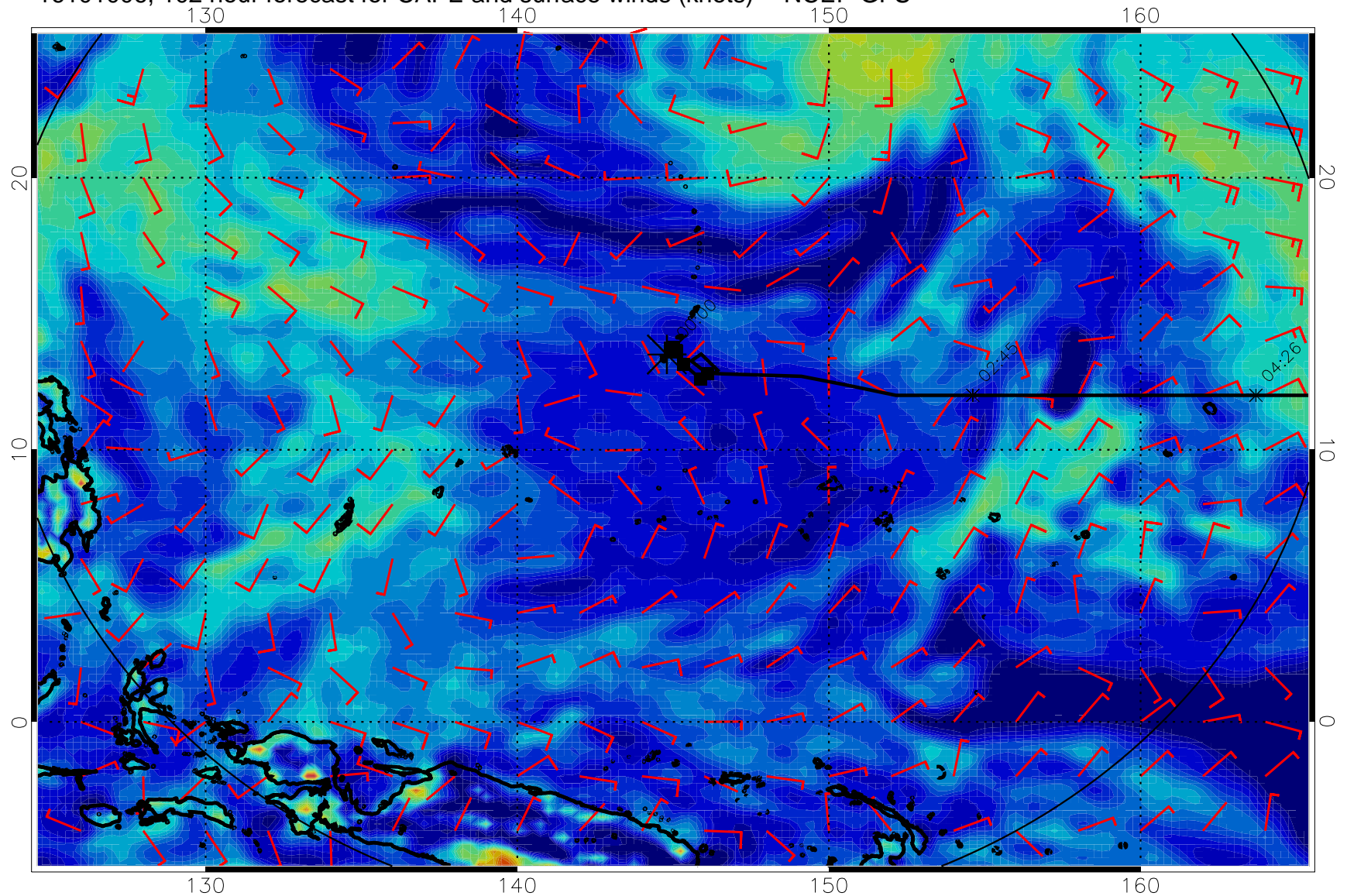


16101000, 96 hour forecast for CAPE and surface winds (knots) -- NCEP GFS

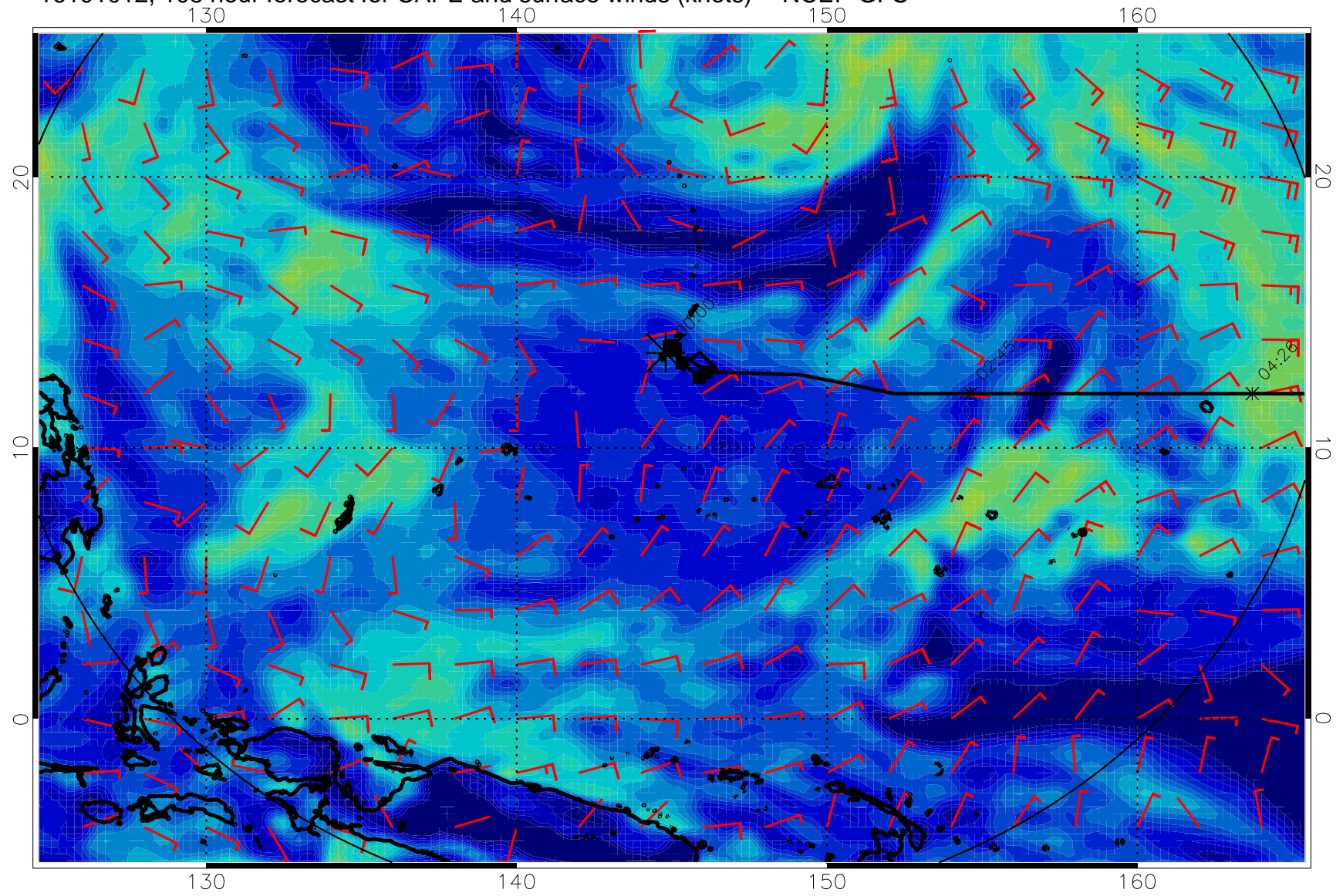




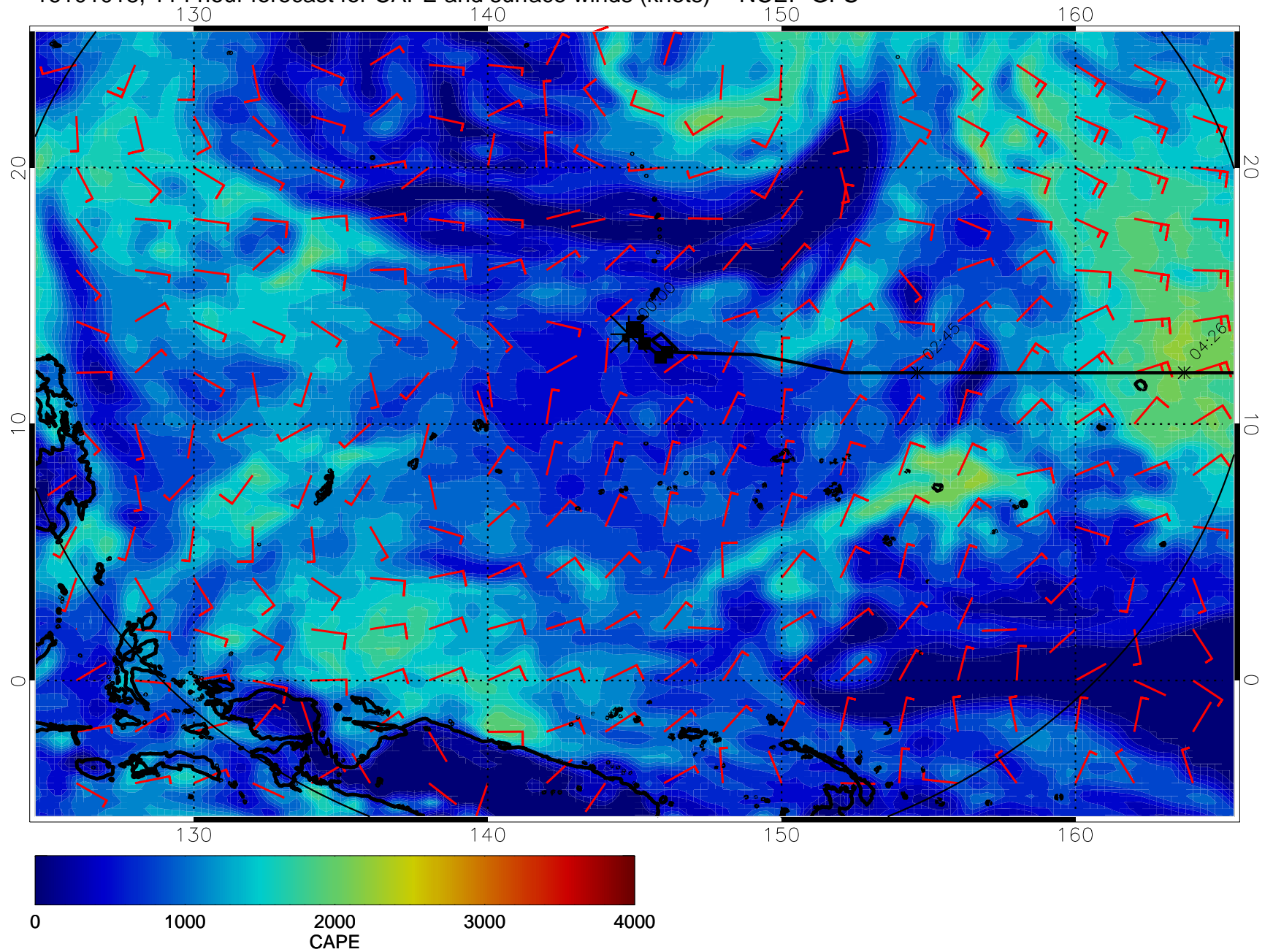
16101006, 102 hour forecast for CAPE and surface winds (knots) -- NCEP GFS



16101012, 108 hour forecast for CAPE and surface winds (knots) -- NCEP GFS



16101018, 114 hour forecast for CAPE and surface winds (knots) -- NCEP GFS



16101100, 120 hour forecast for CAPE and surface winds (knots) -- NCEP GFS

