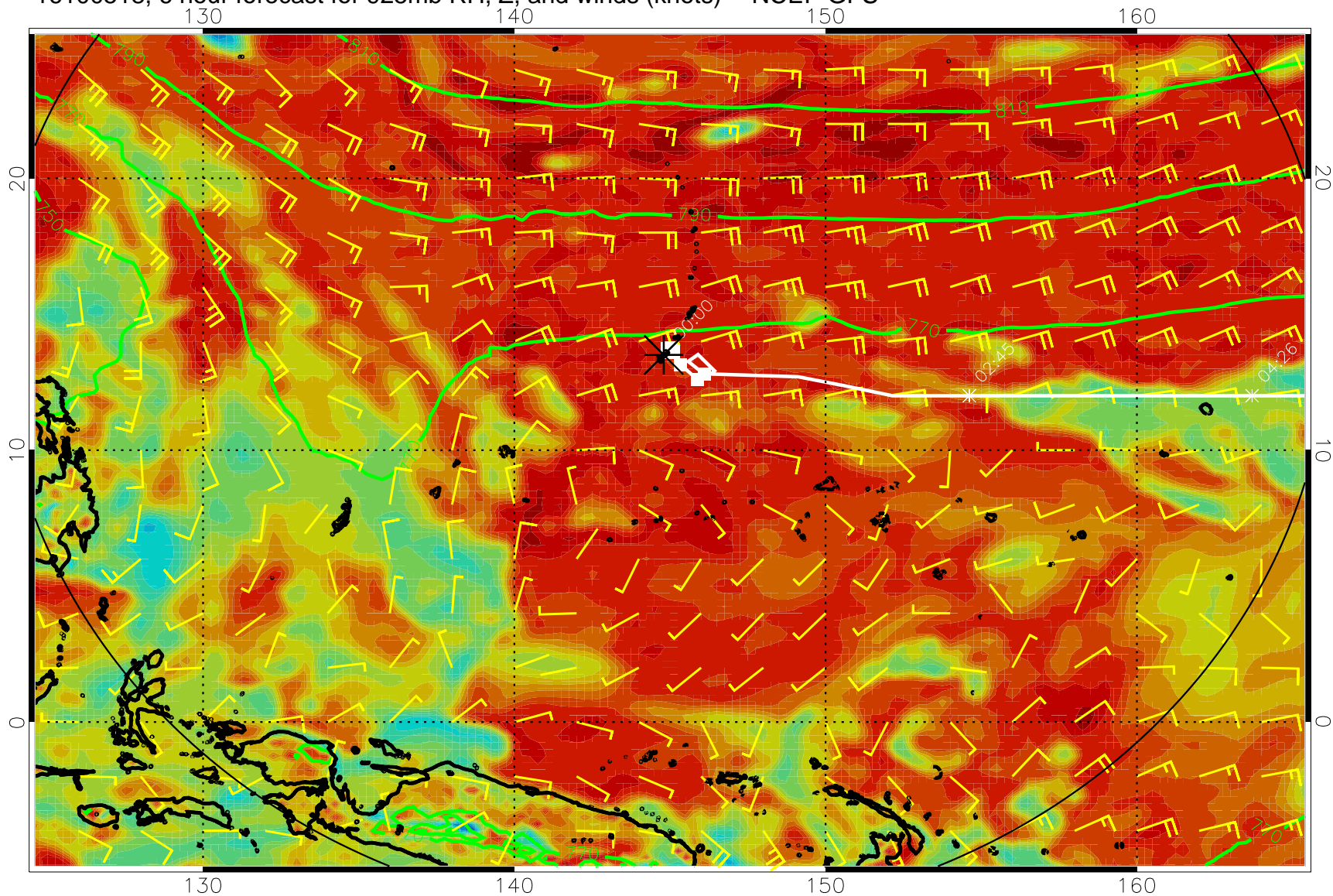
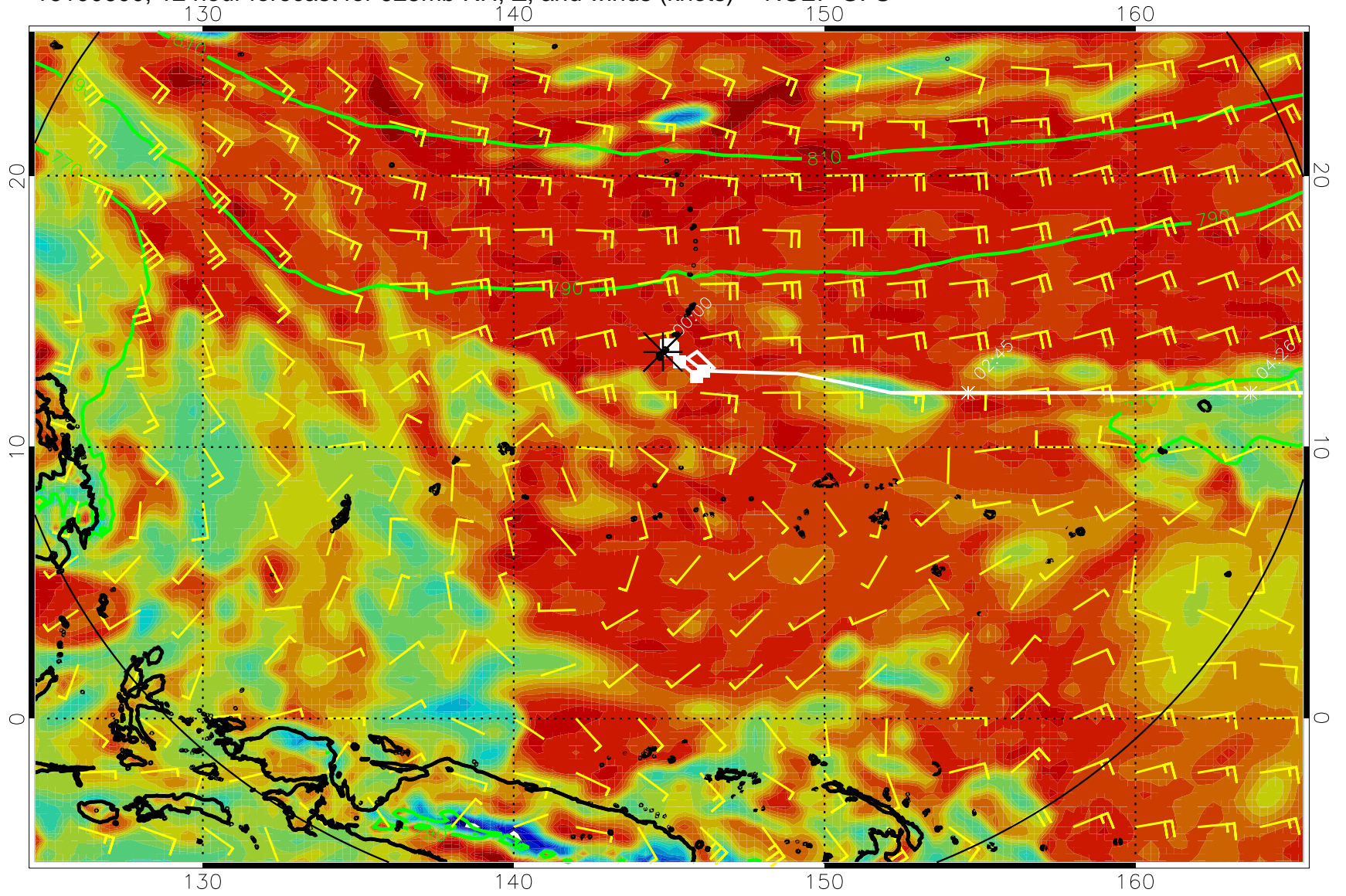


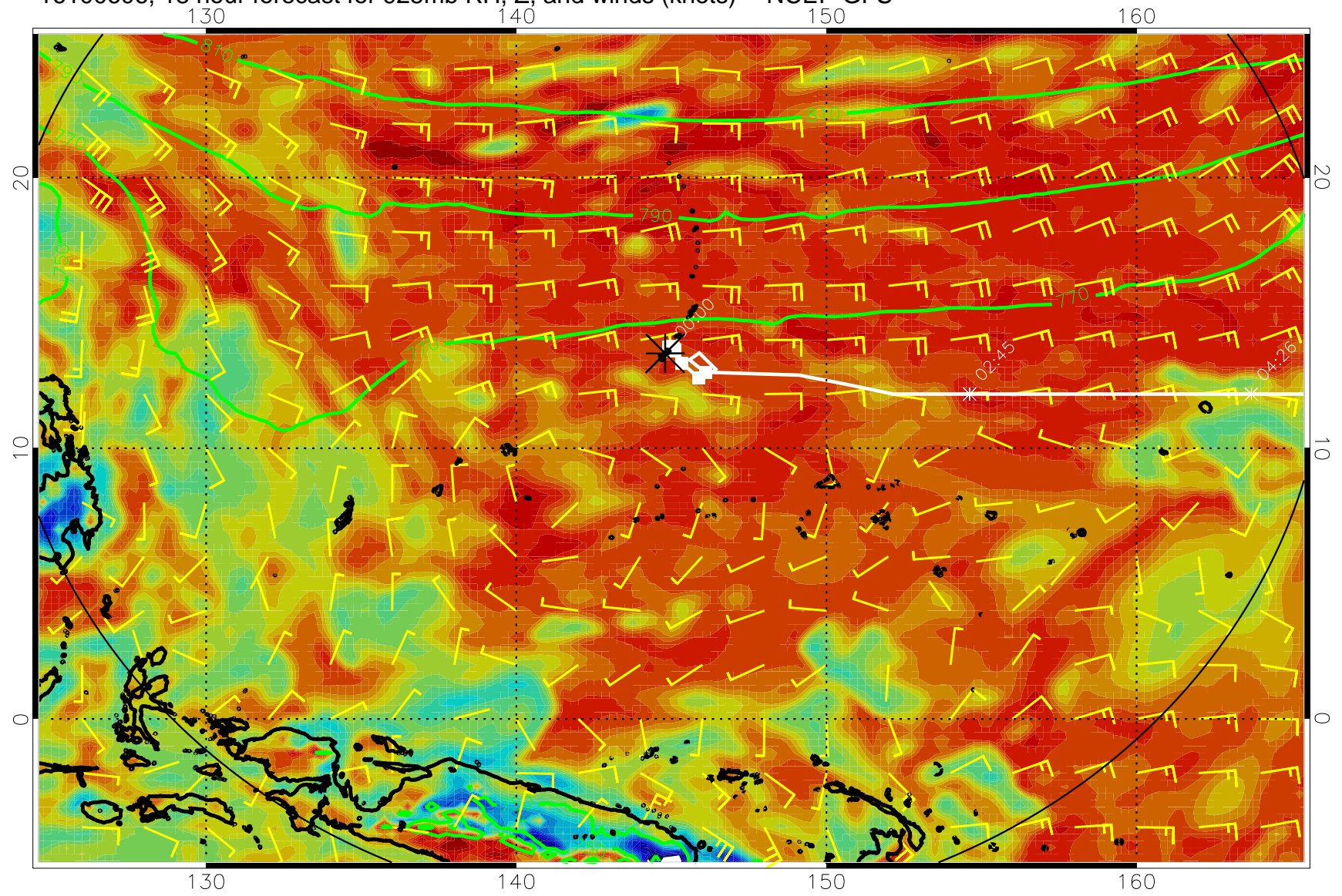
16100518, 6 hour forecast for 925mb RH, Z, and winds (knots) -- NCEP GFS



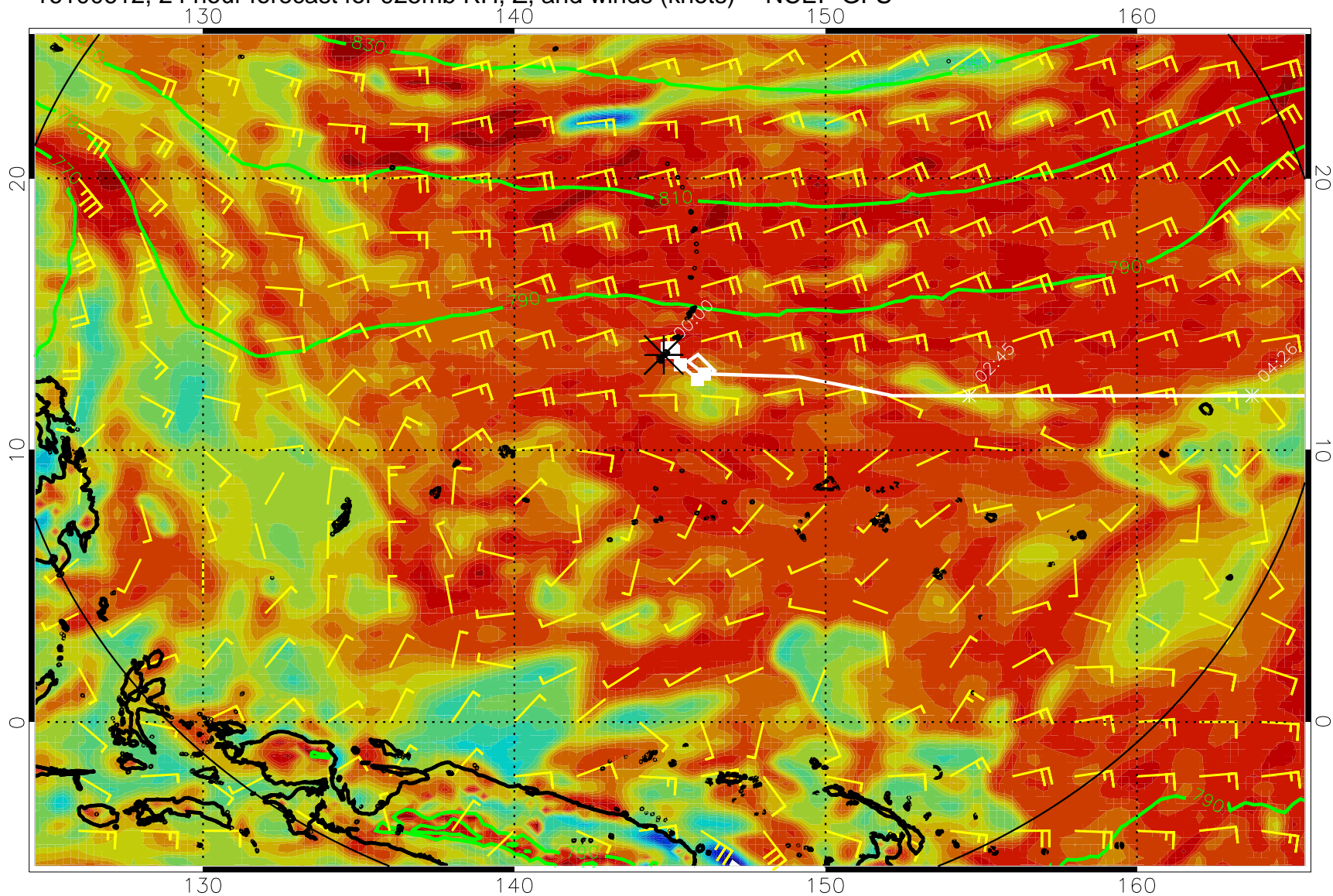
16100600, 12 hour forecast for 925mb RH, Z, and winds (knots) -- NCEP GFS



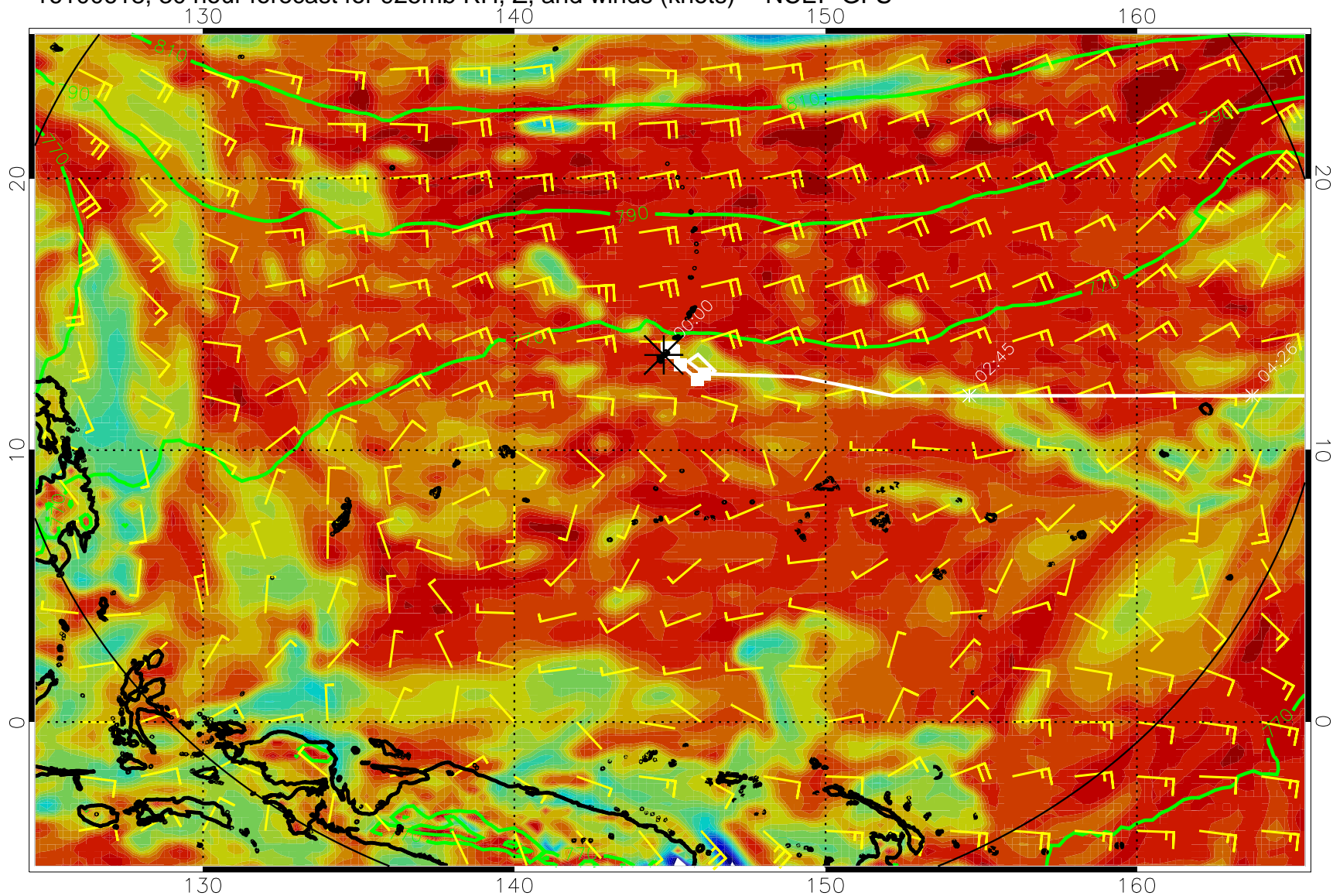
16100606, 18 hour forecast for 925mb RH, Z, and winds (knots) -- NCEP GFS



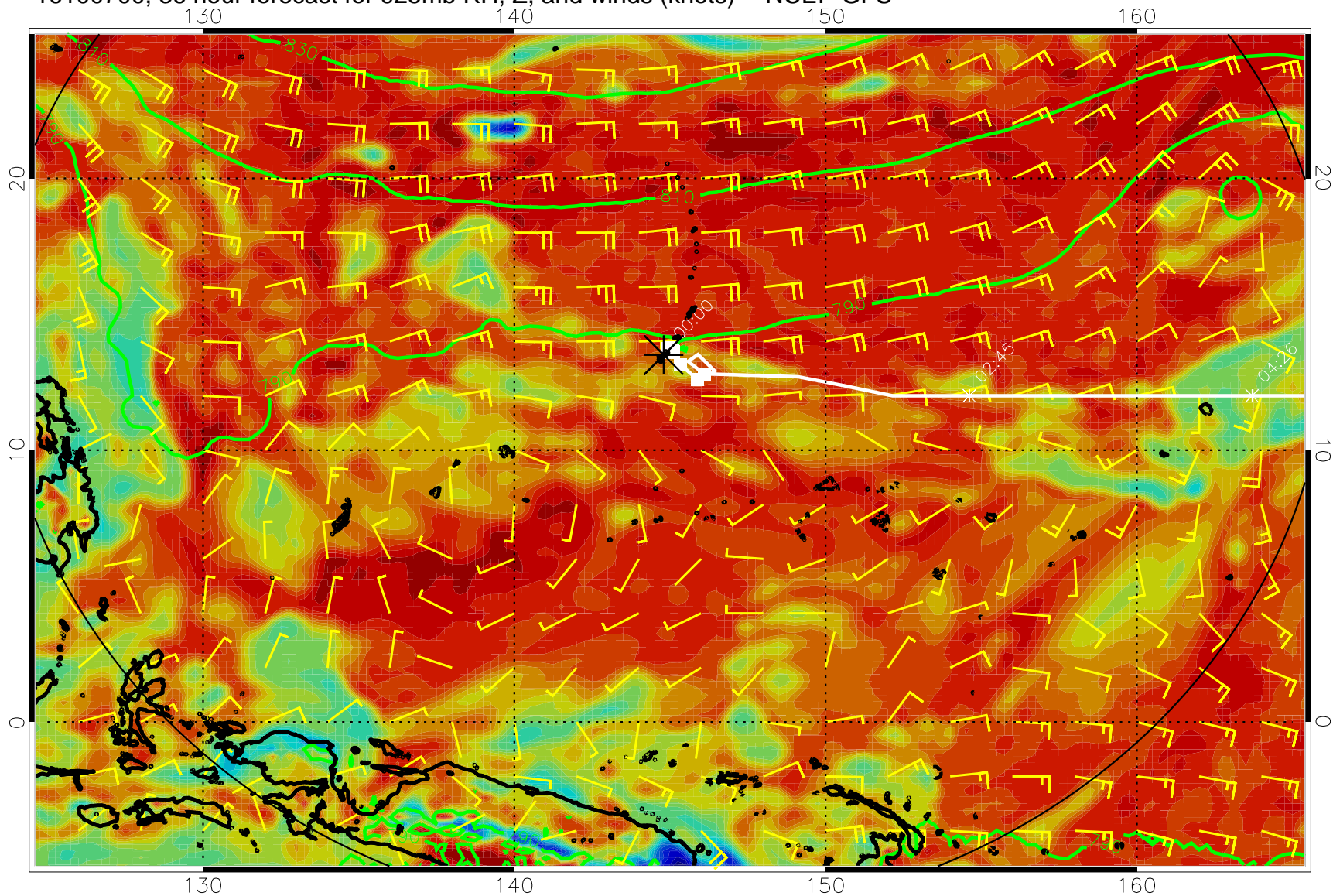
16100612, 24 hour forecast for 925mb RH, Z, and winds (knots) -- NCEP GFS



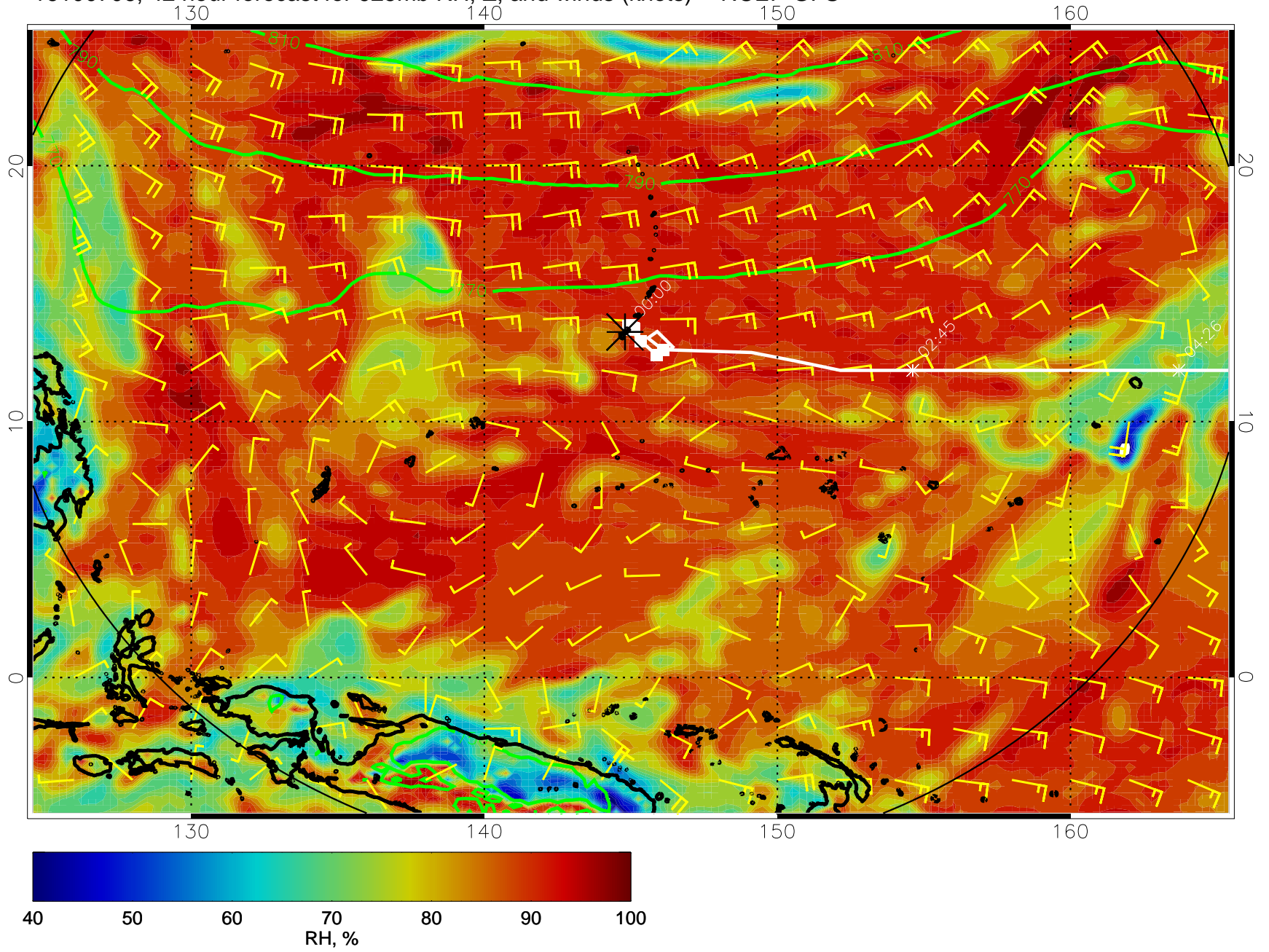
16100618, 30 hour forecast for 925mb RH, Z, and winds (knots) -- NCEP GFS



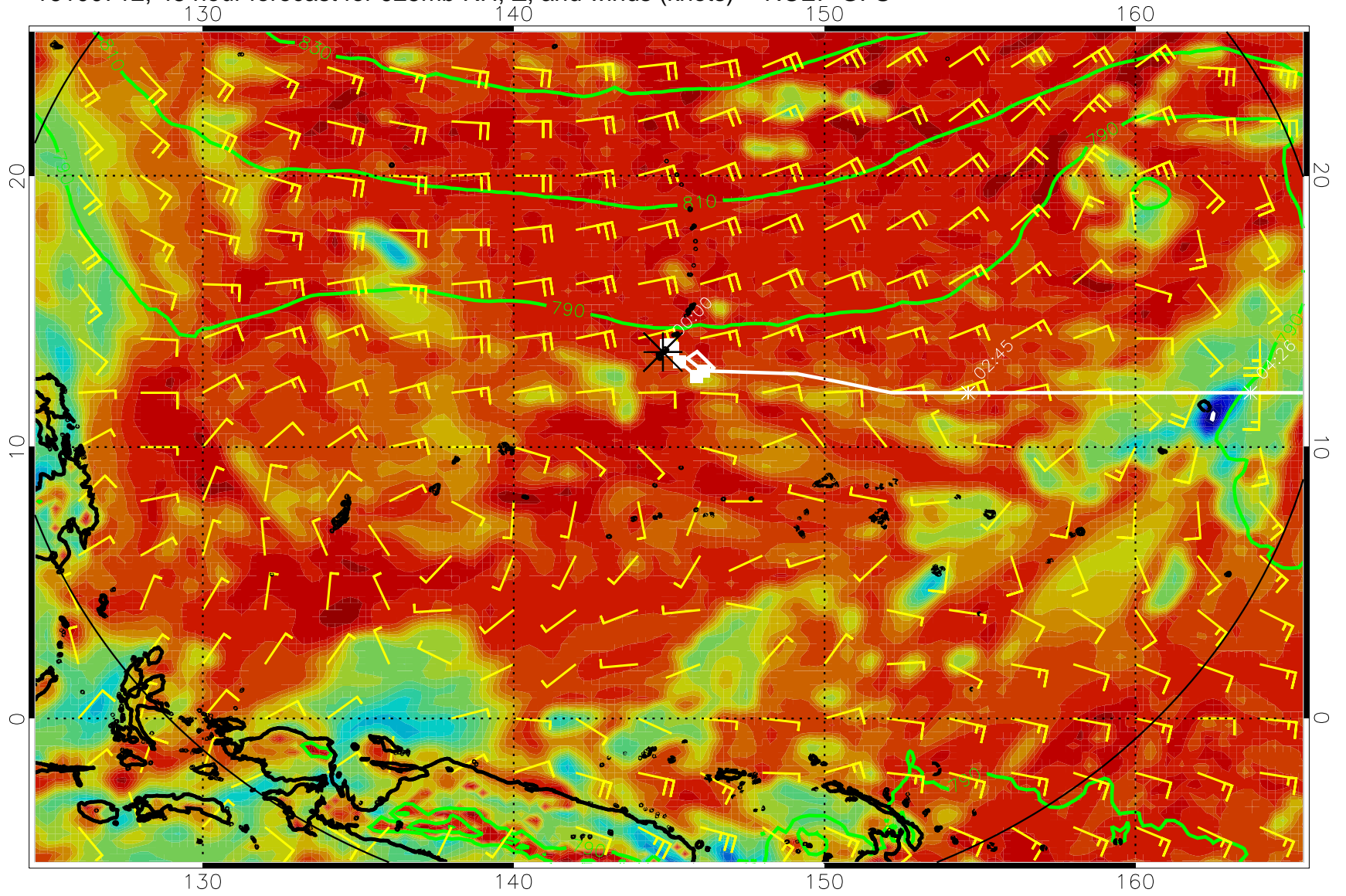
16100700, 36 hour forecast for 925mb RH, Z, and winds (knots) -- NCEP GFS



16100706, 42 hour forecast for 925mb RH, Z, and winds (knots) -- NCEP GFS

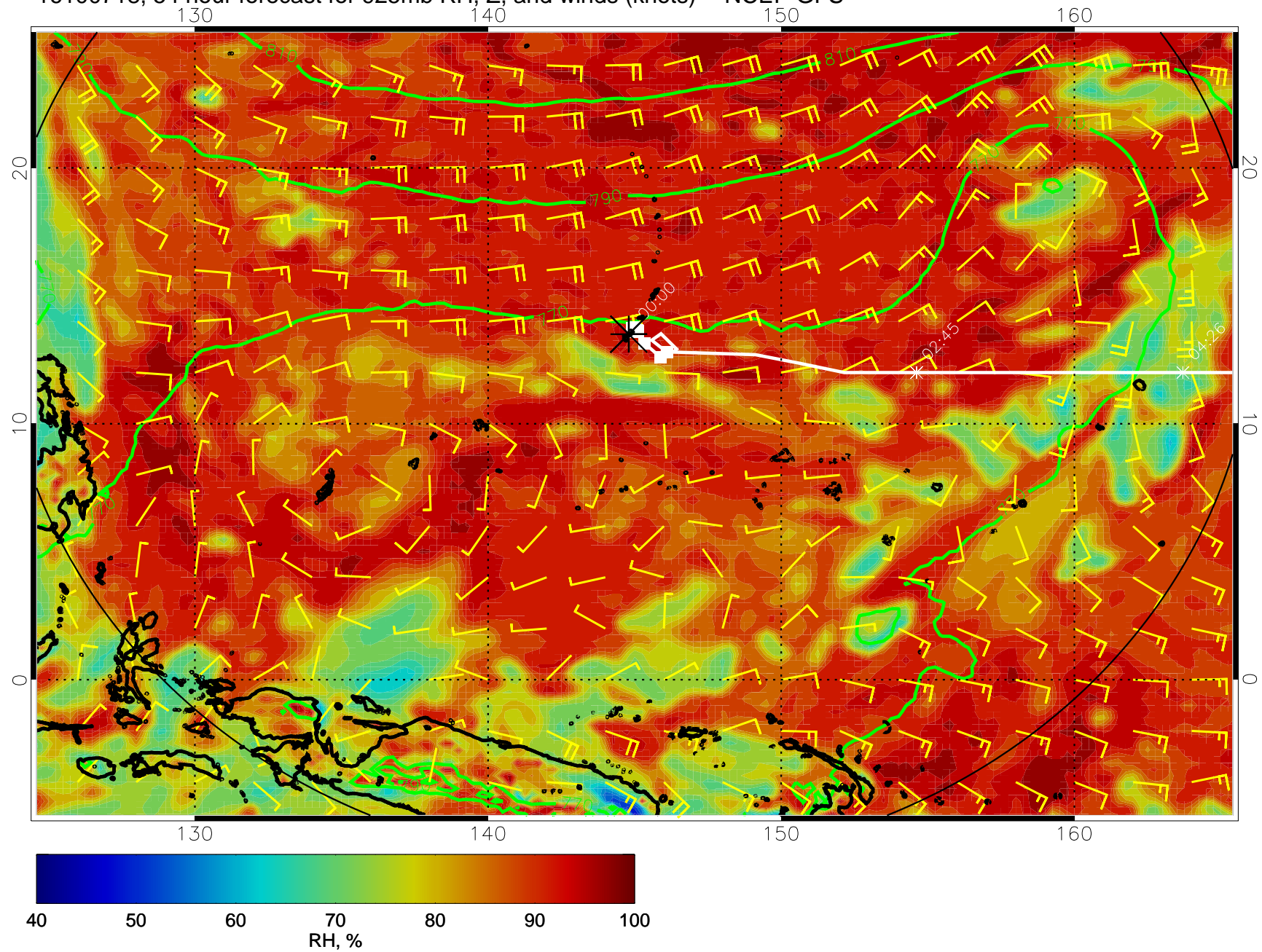


16100712, 48 hour forecast for 925mb RH, Z, and winds (knots) -- NCEP GFS

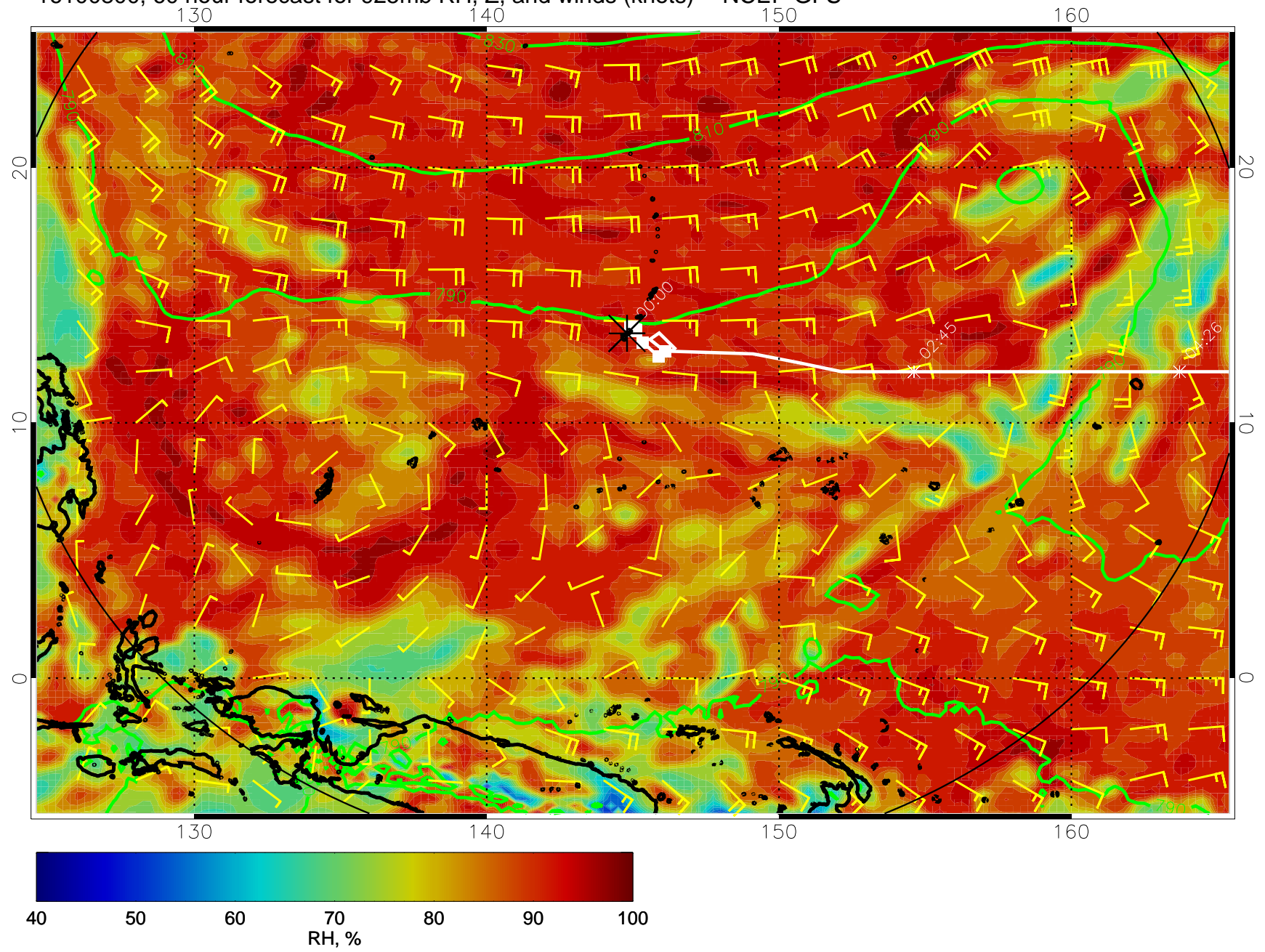




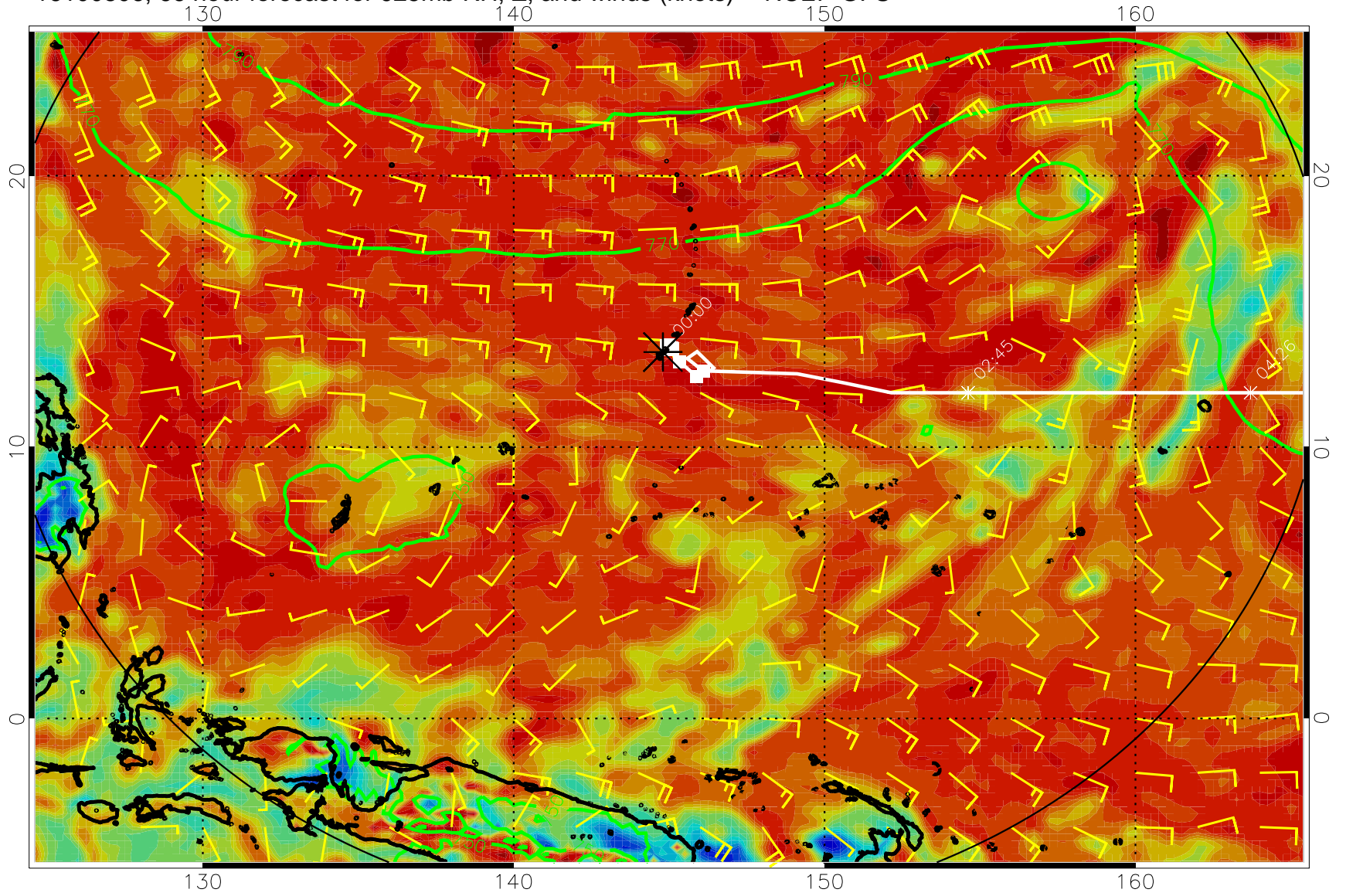
16100718, 54 hour forecast for 925mb RH, Z, and winds (knots) -- NCEP GFS



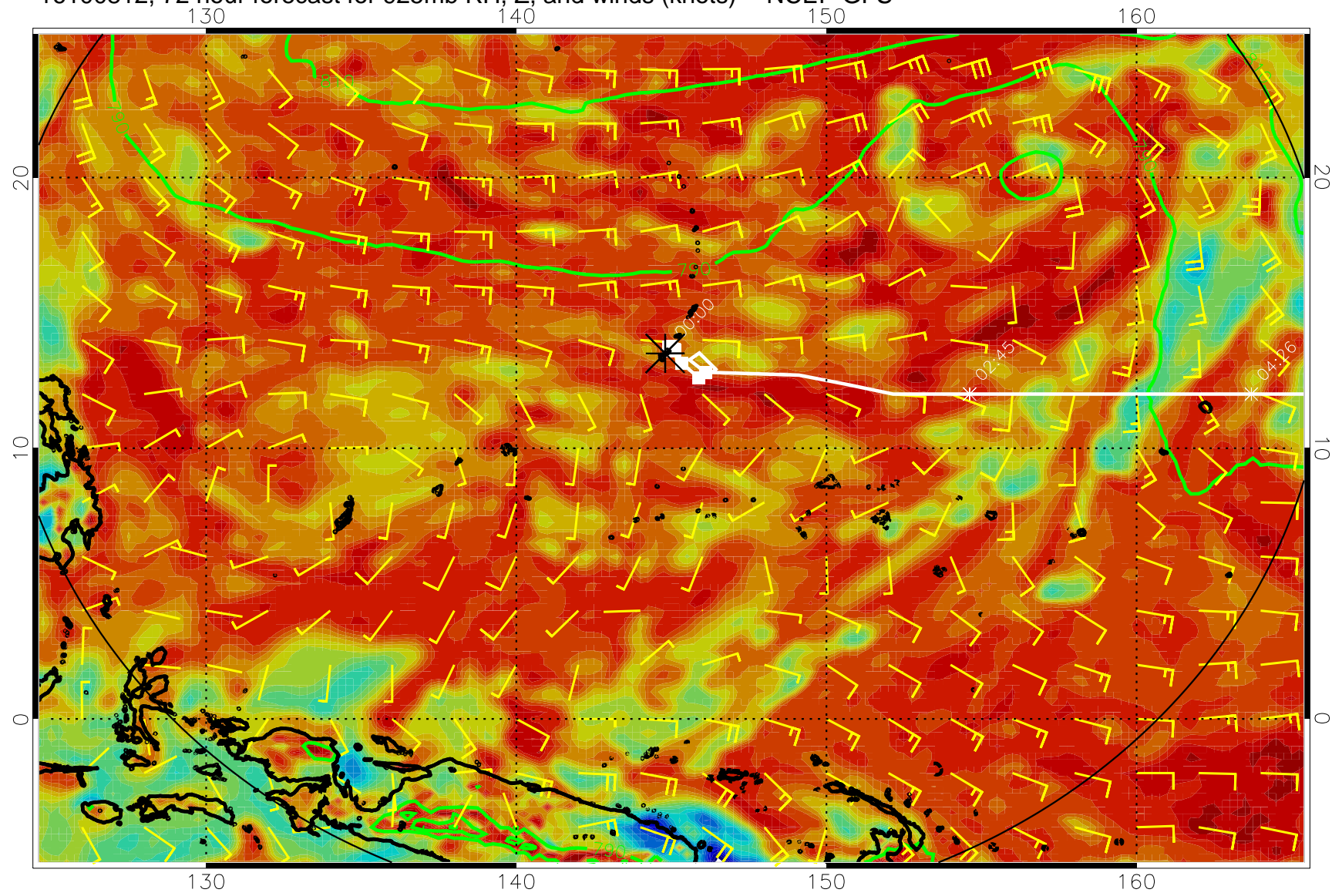
16100800, 60 hour forecast for 925mb RH, Z, and winds (knots) -- NCEP GFS



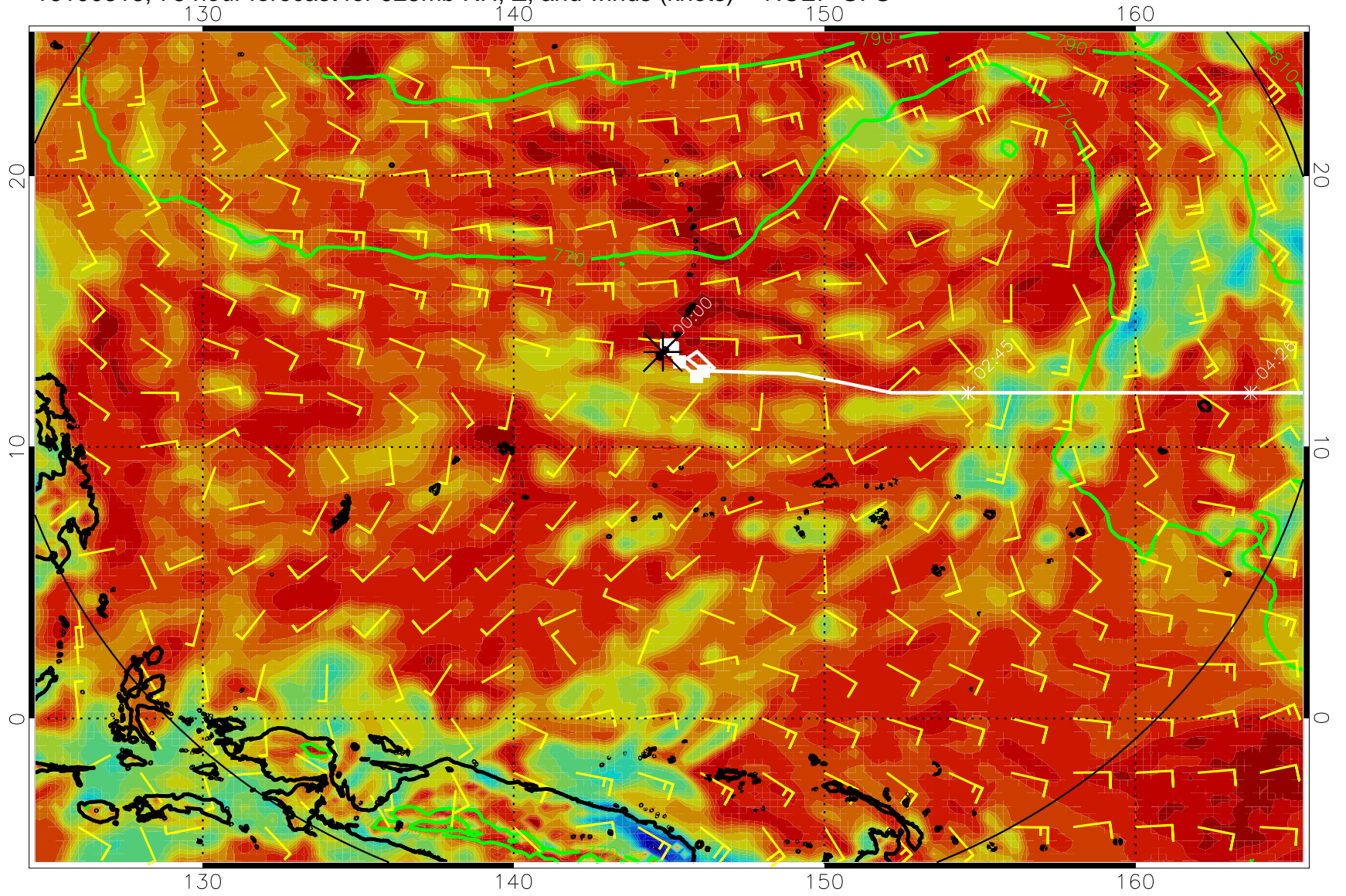
16100806, 66 hour forecast for 925mb RH, Z, and winds (knots) -- NCEP GFS



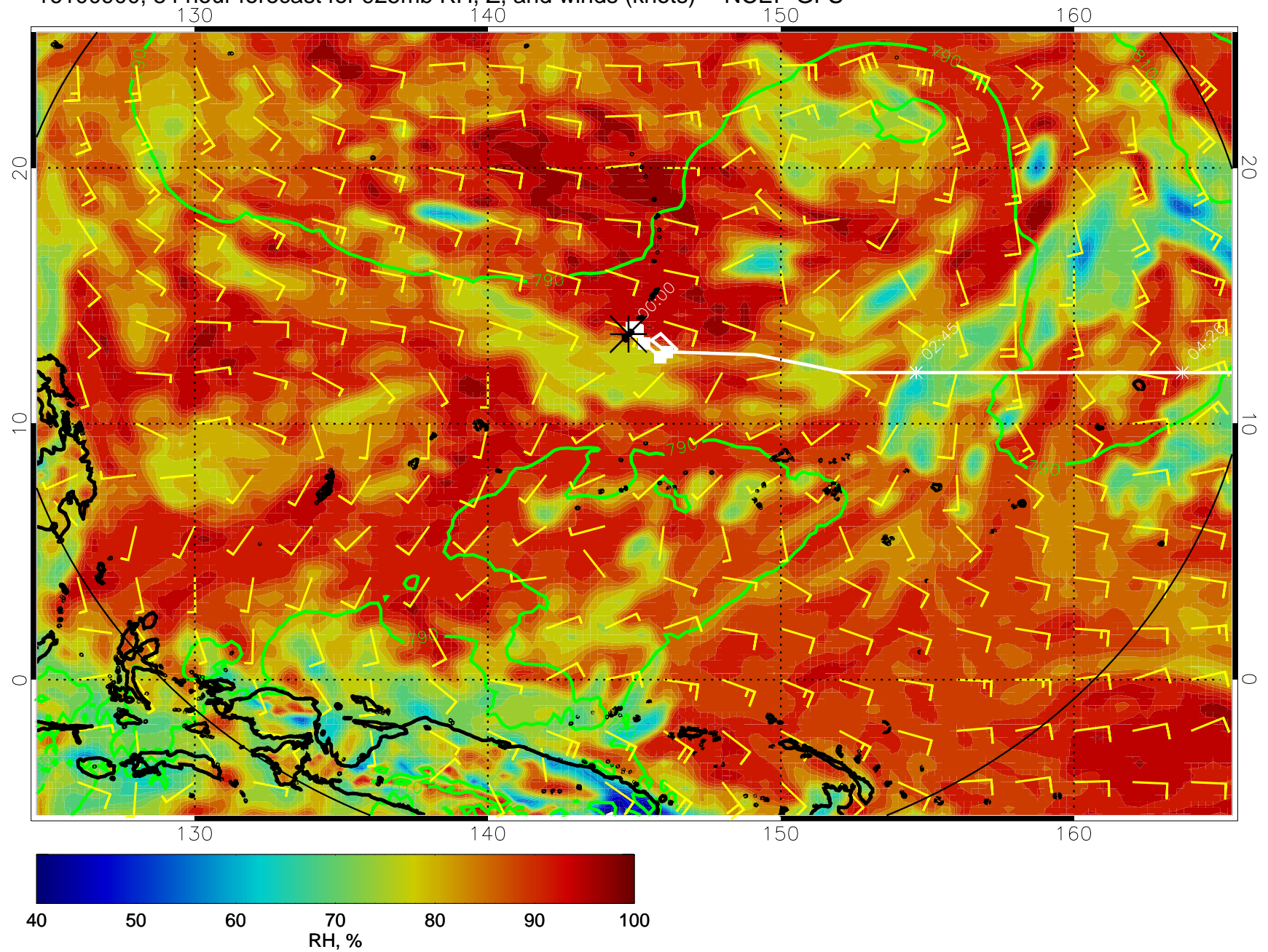
16100812, 72 hour forecast for 925mb RH, Z, and winds (knots) -- NCEP GFS



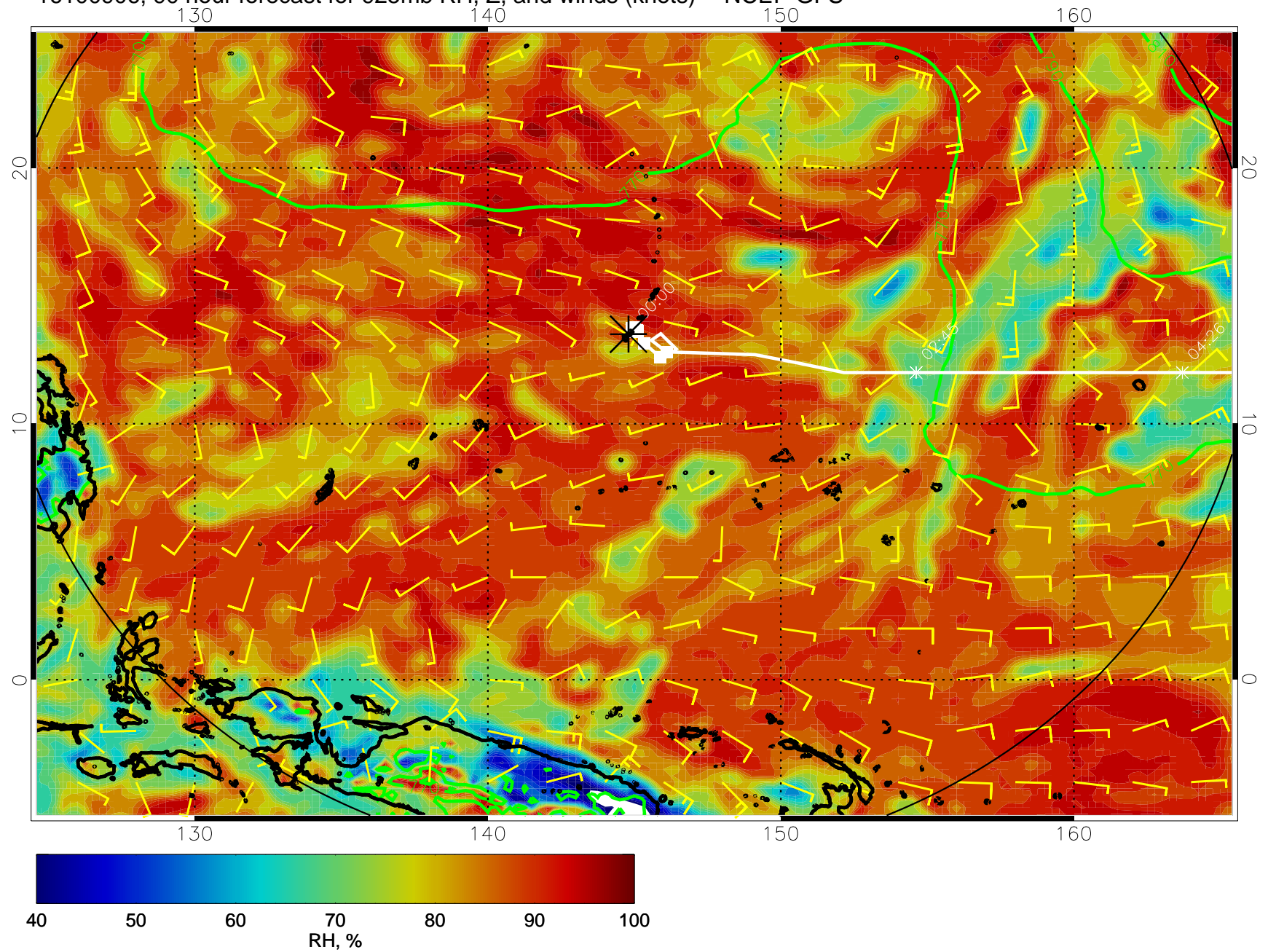
16100818, 78 hour forecast for 925mb RH, Z, and winds (knots) -- NCEP GFS



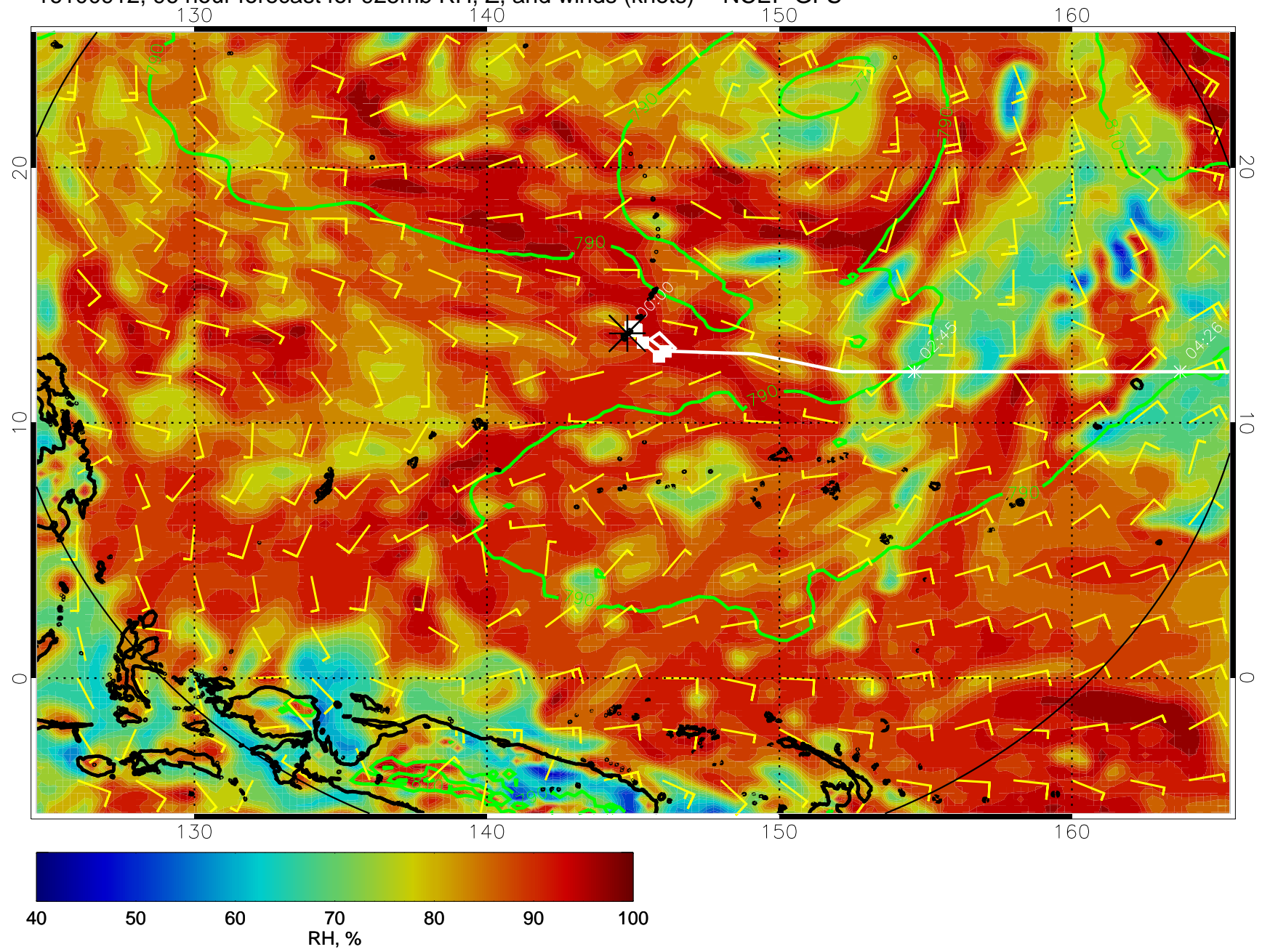
16100900, 84 hour forecast for 925mb RH, Z, and winds (knots) -- NCEP GFS



16100906, 90 hour forecast for 925mb RH, Z, and winds (knots) -- NCEP GFS

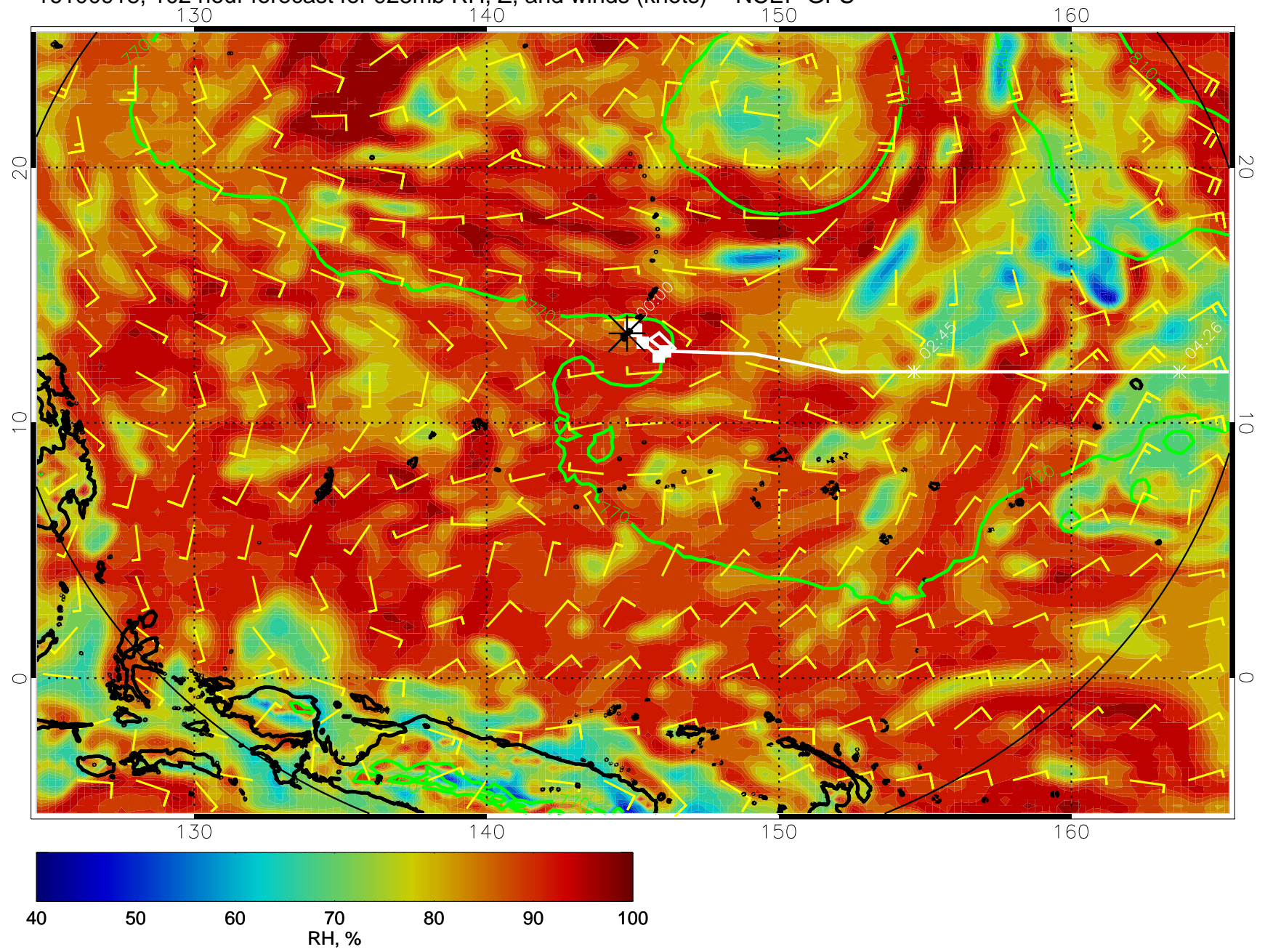


16100912, 96 hour forecast for 925mb RH, Z, and winds (knots) -- NCEP GFS

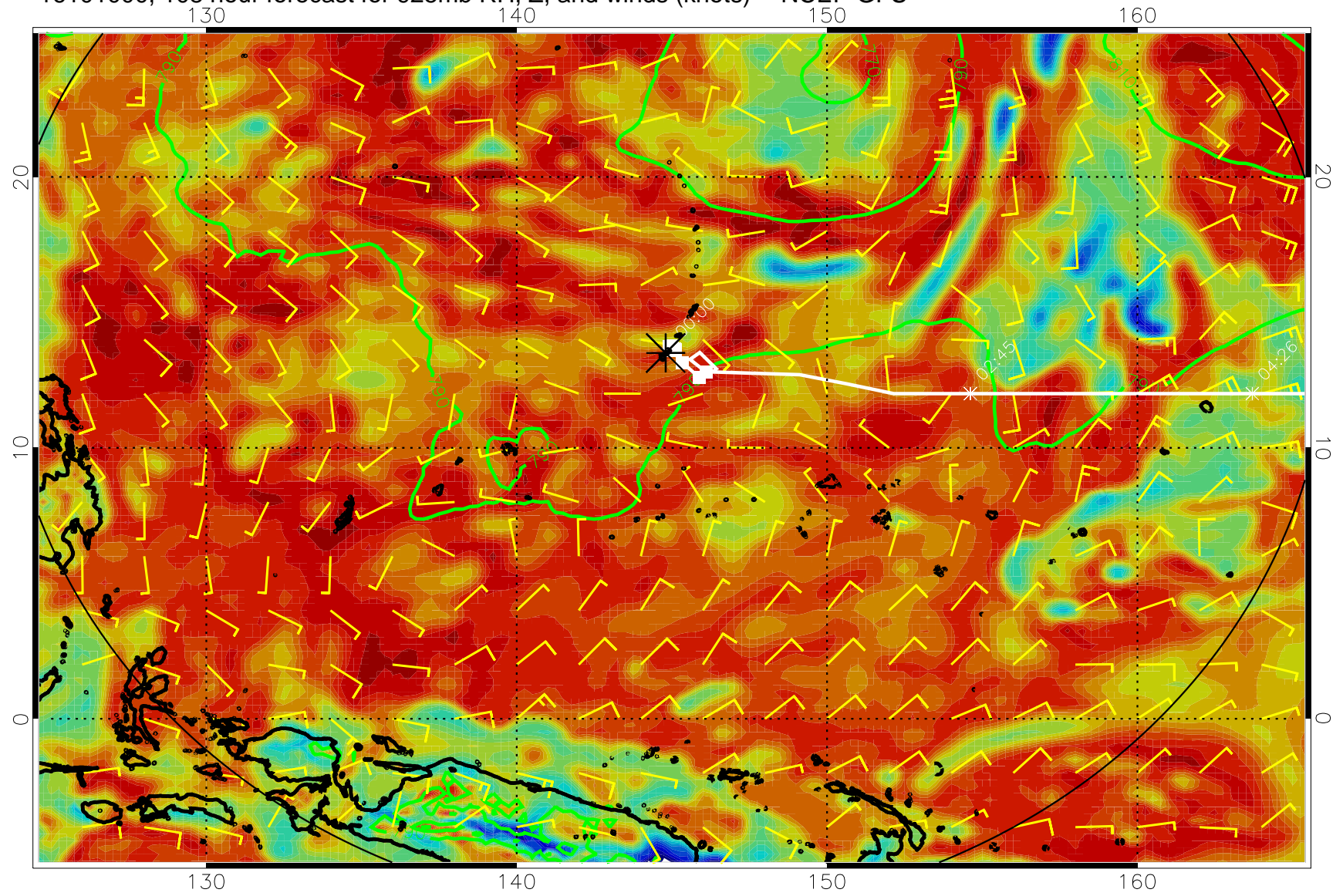




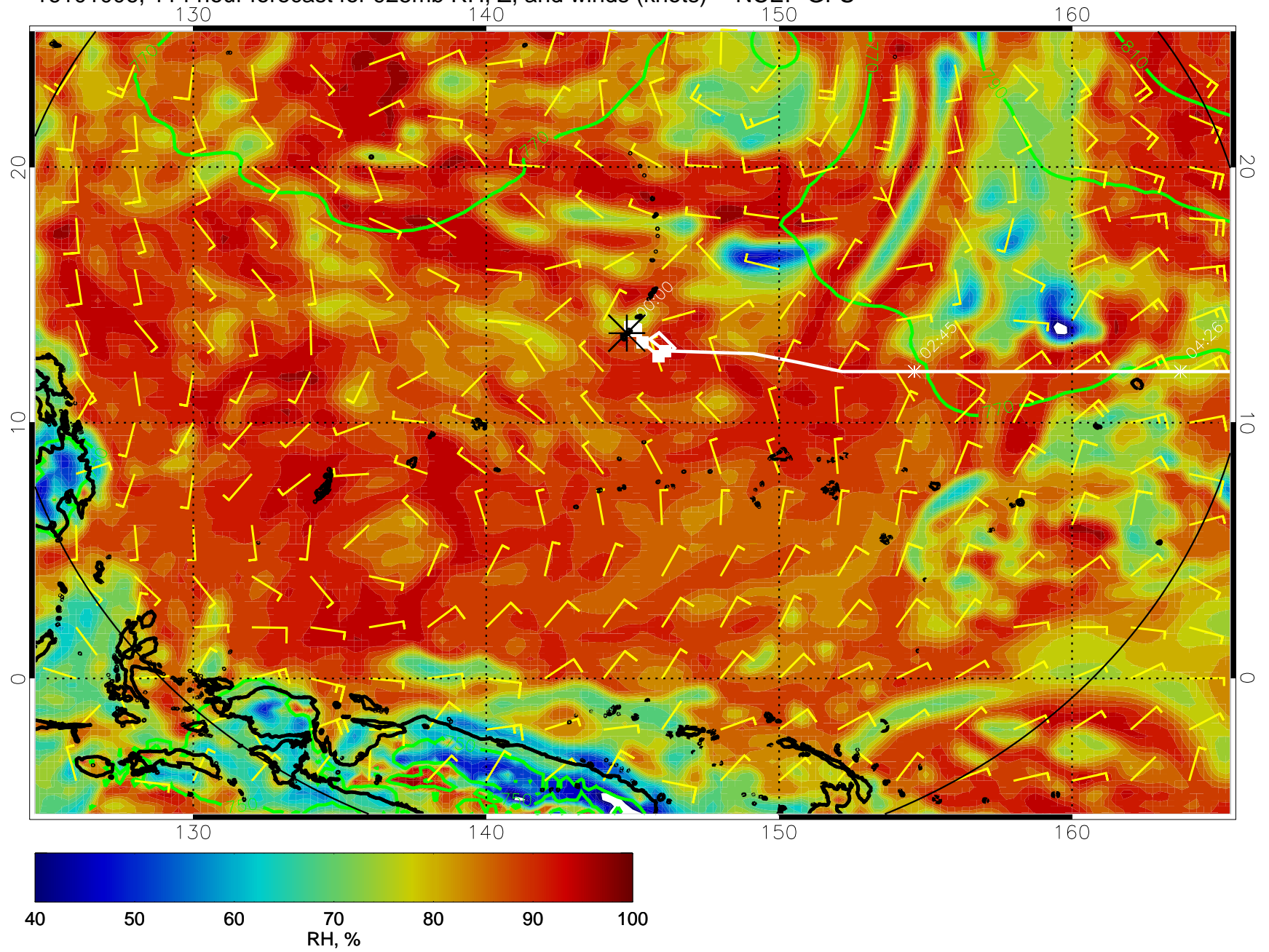
16100918, 102 hour forecast for 925mb RH, Z, and winds (knots) -- NCEP GFS



16101000, 108 hour forecast for 925mb RH, Z, and winds (knots) -- NCEP GFS



16101006, 114 hour forecast for 925mb RH, Z, and winds (knots) -- NCEP GFS



16101012, 120 hour forecast for 925mb RH, Z, and winds (knots) -- NCEP GFS

