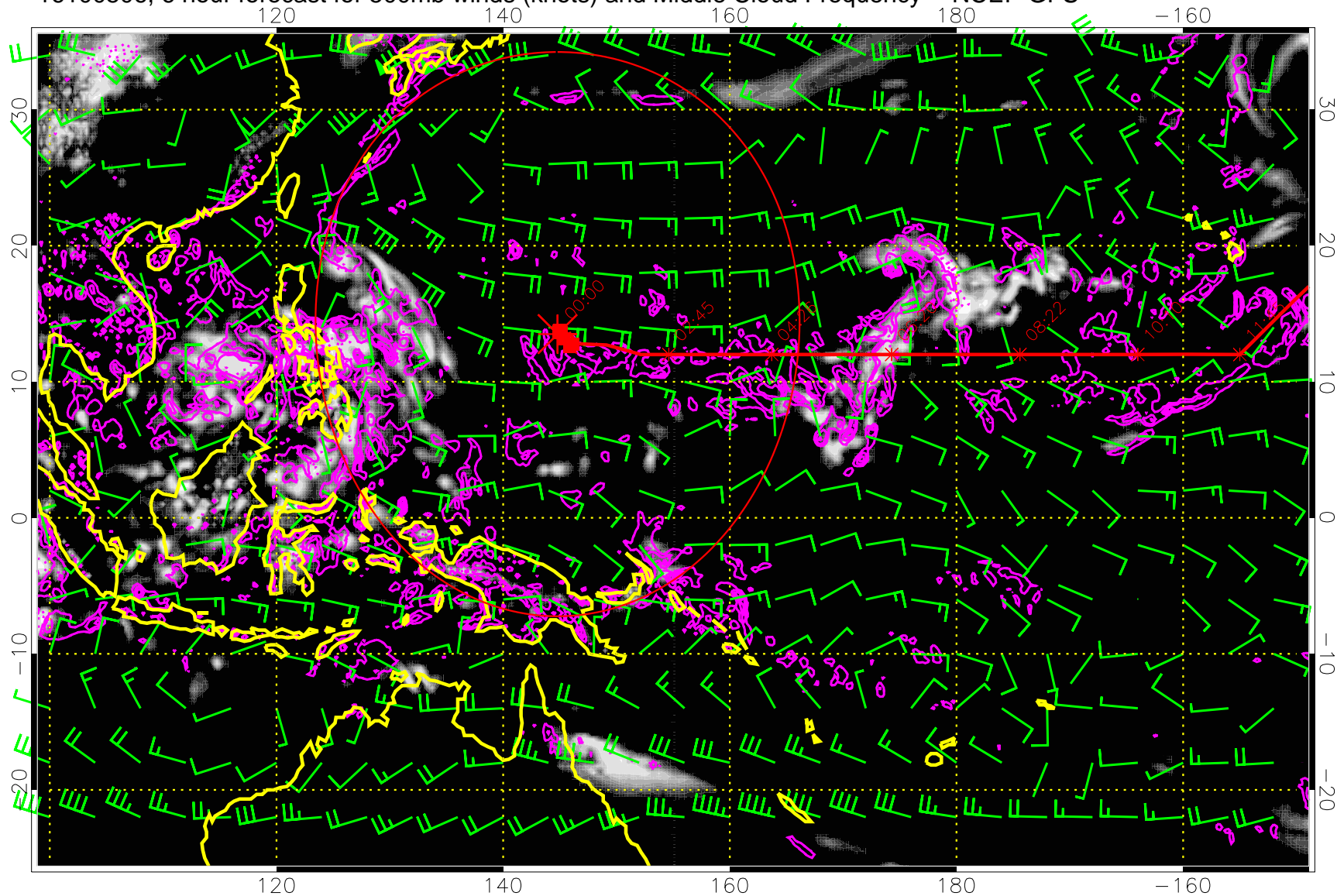


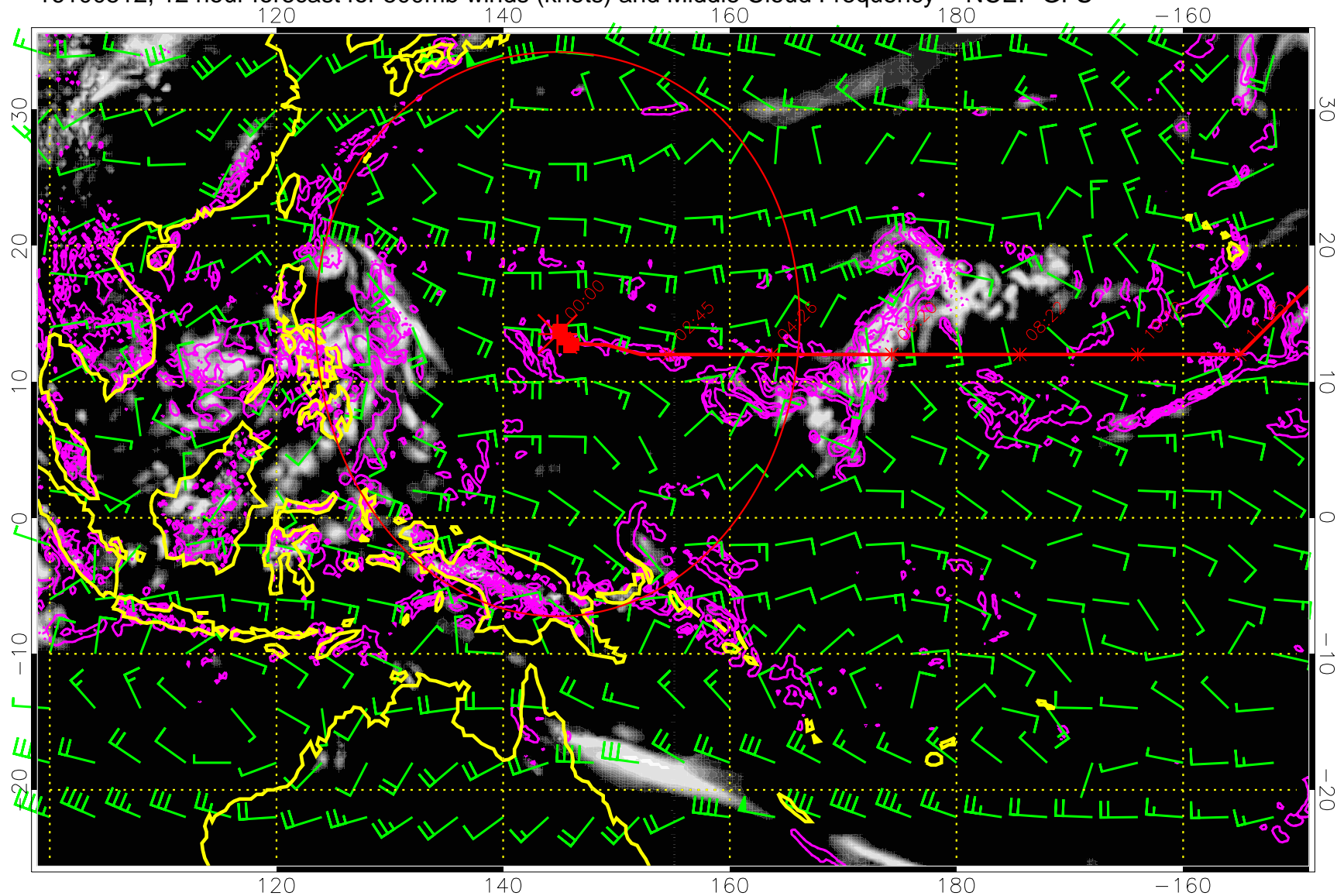
16100506, 6 hour forecast for 500mb winds (knots) and Middle Cloud Frequency -- NCEP GFS



Precip (tot dot, conv sol) mm/day 40 mm/day contours, min 20

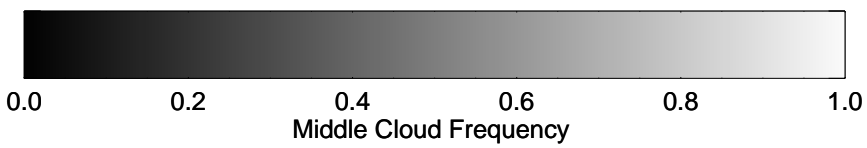
Range ring of 2304 km

16100512, 12 hour forecast for 500mb winds (knots) and Middle Cloud Frequency -- NCEP GFS



15:53

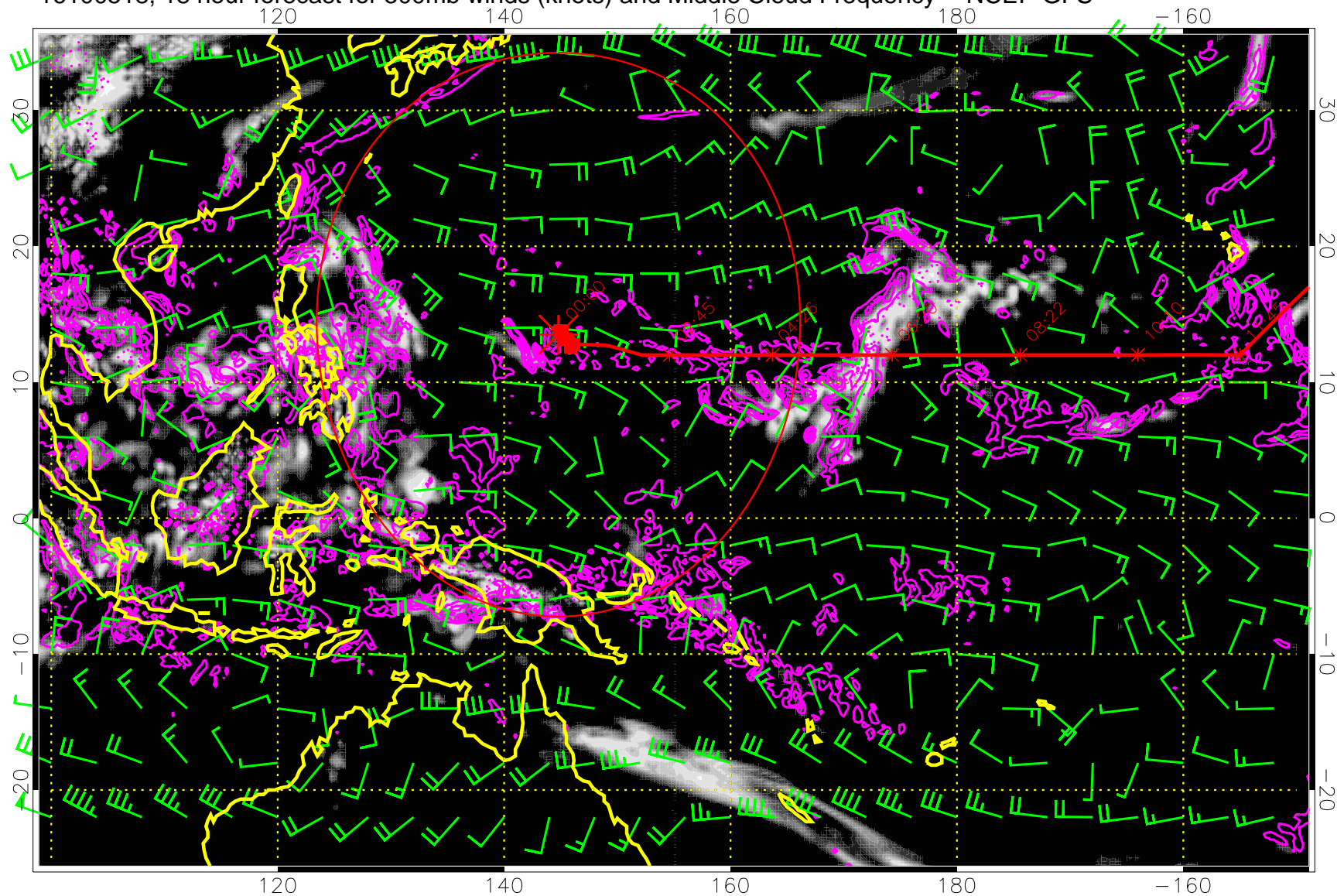
13:53



Precip (tot dot, conv sol) mm/day 40 mm/day contours, min 20

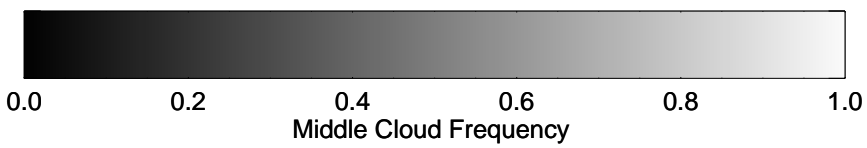
Range ring of 2304 km

16100518, 18 hour forecast for 500mb winds (knots) and Middle Cloud Frequency -- NCEP GFS



15:53

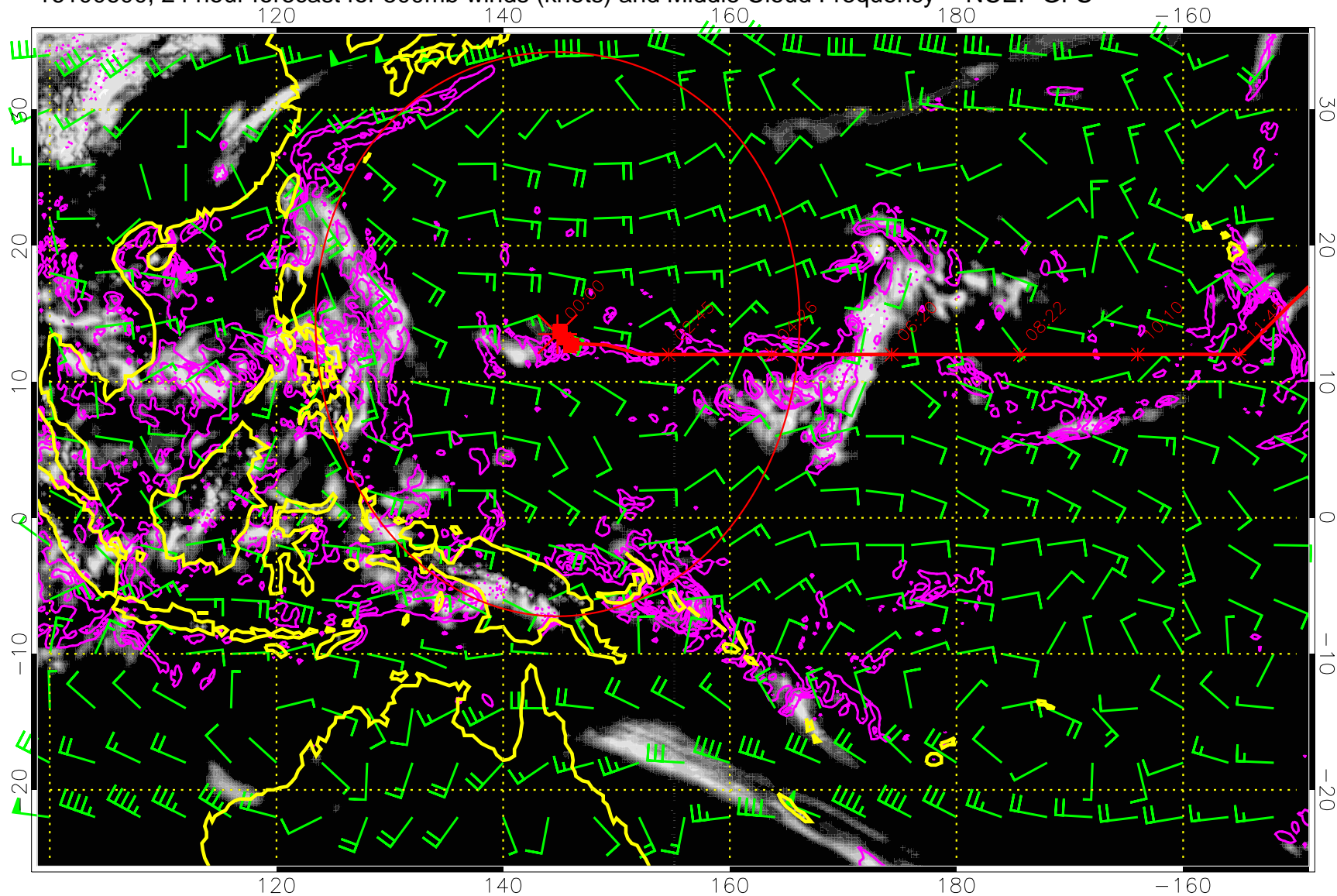
13:53



Precip (tot dot, conv sol) mm/day 40 mm/day contours, min 20

Range ring of 2304 km

16100600, 24 hour forecast for 500mb winds (knots) and Middle Cloud Frequency -- NCEP GFS



15:53

13:53

00:00

05:22

08:22

16:10

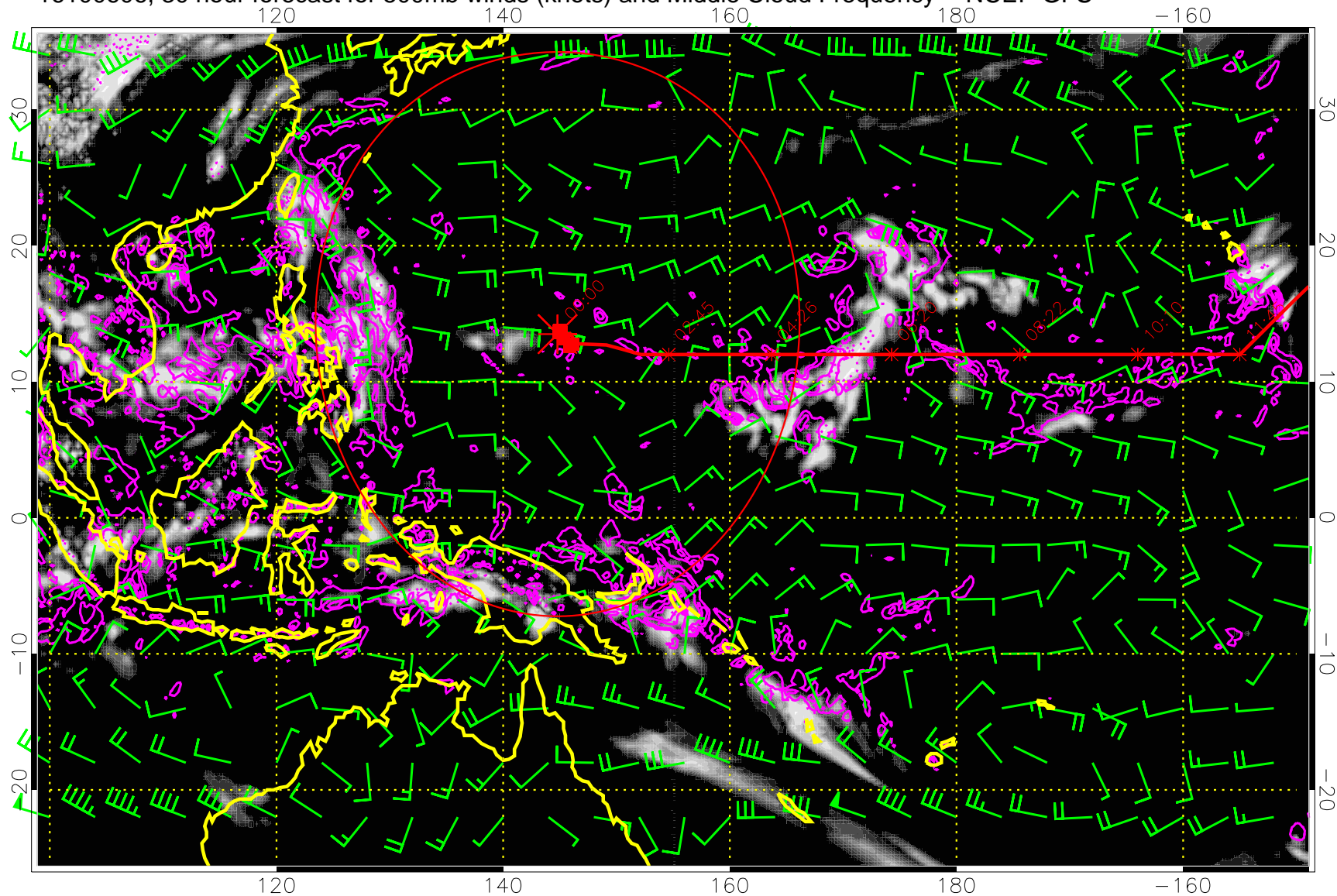


0.0 0.2 0.4 0.6 0.8 1.0
Middle Cloud Frequency

Precip (tot dot, conv sol) mm/day 40 mm/day contours, min 20

Range ring of 2304 km

16100606, 30 hour forecast for 500mb winds (knots) and Middle Cloud Frequency -- NCEP GFS



15:53

13:53



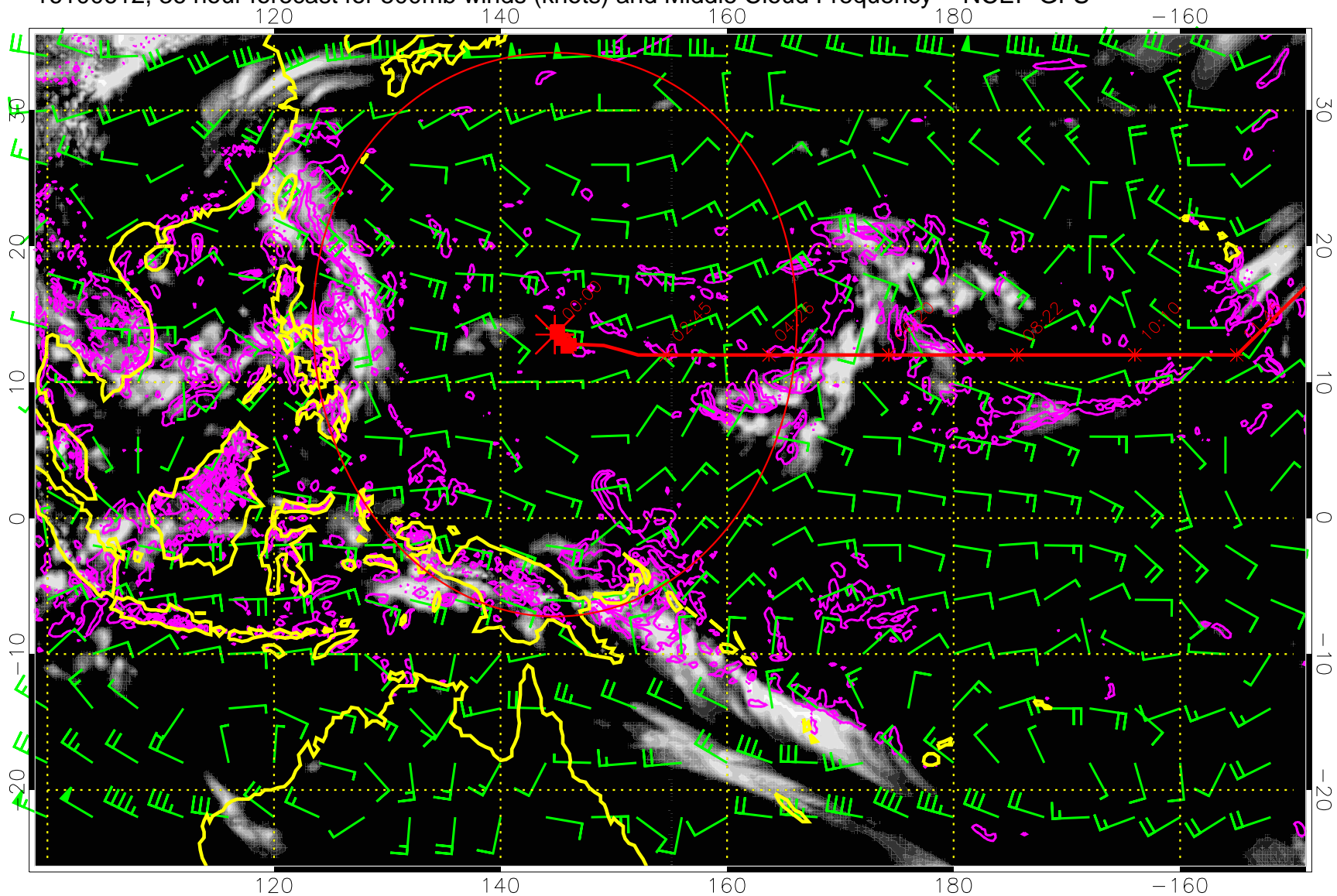
0.0 0.2 0.4 0.6 0.8 1.0

Middle Cloud Frequency

Precip (tot dot, conv sol) mm/day 40 mm/day contours, min 20

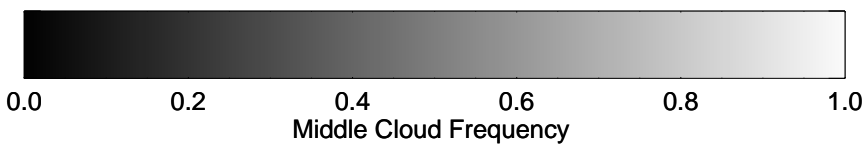
Range ring of 2304 km

16100612, 36 hour forecast for 500mb winds (knots) and Middle Cloud Frequency -- NCEP GFS



15:53

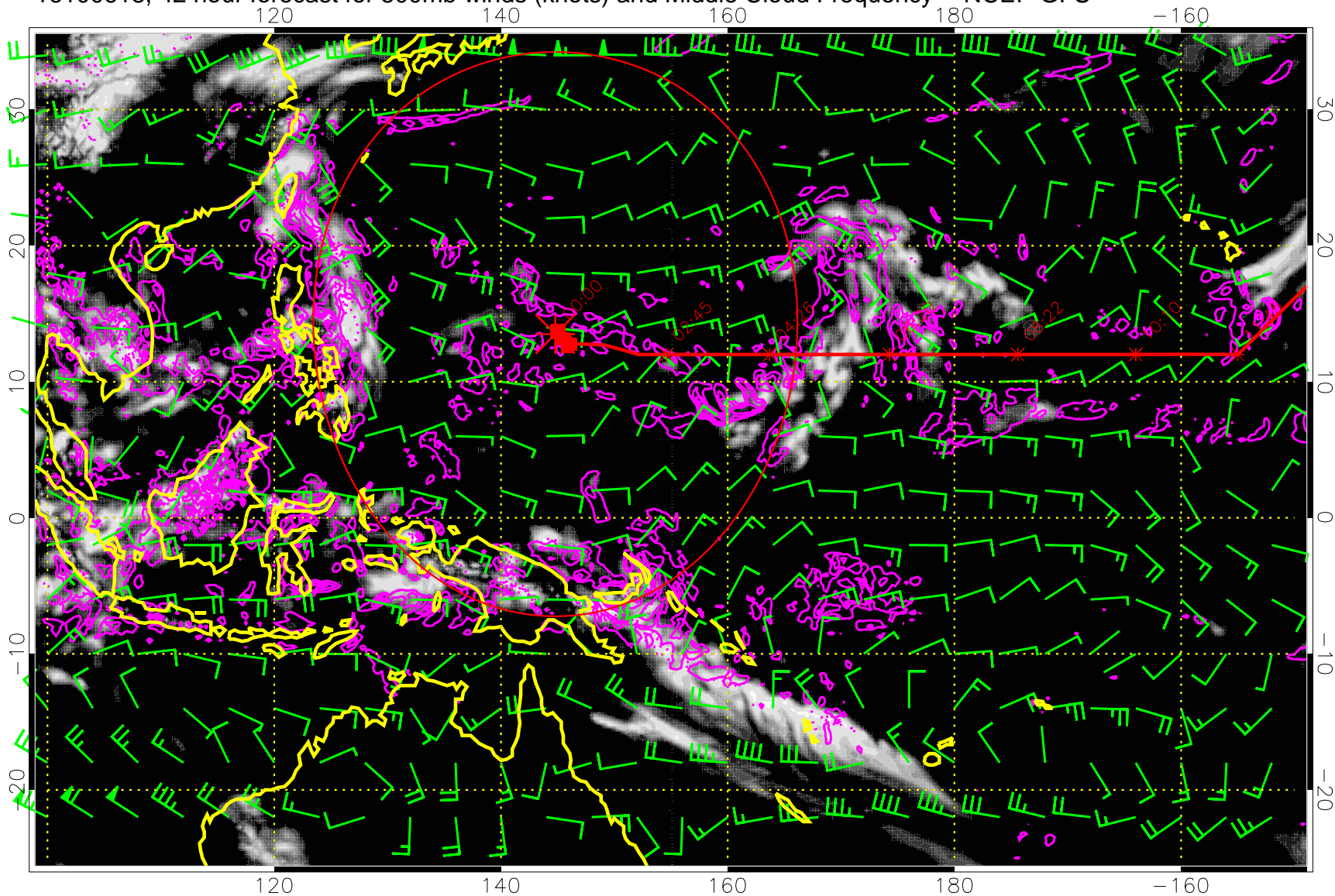
13:53



Precip (tot dot, conv sol) mm/day 40 mm/day contours, min 20

Range ring of 2304 km

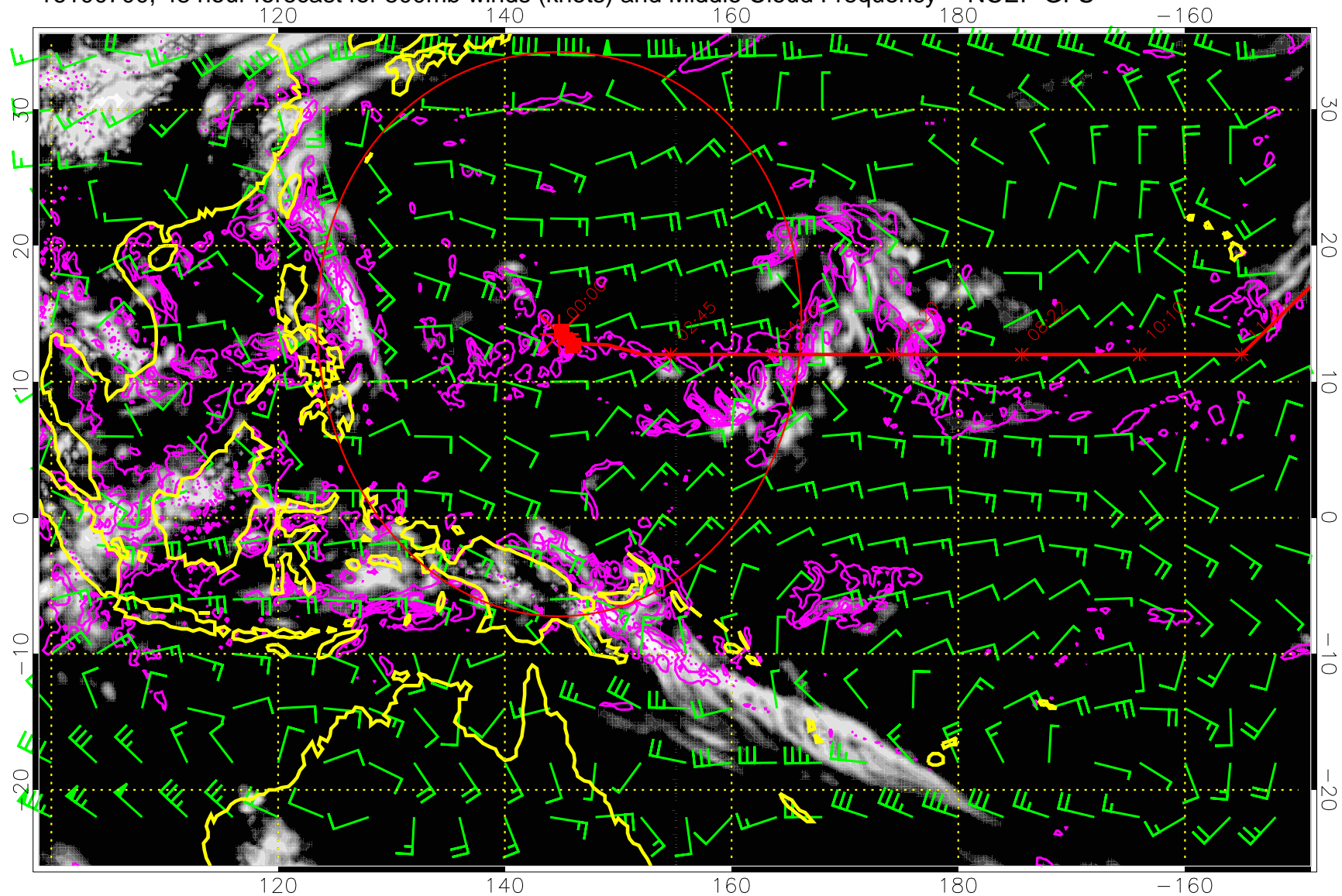
16100618, 42 hour forecast for 500mb winds (knots) and Middle Cloud Frequency -- NCEP GFS



Precip (tot dot, conv sol) mm/day 40 mm/day contours, min 20

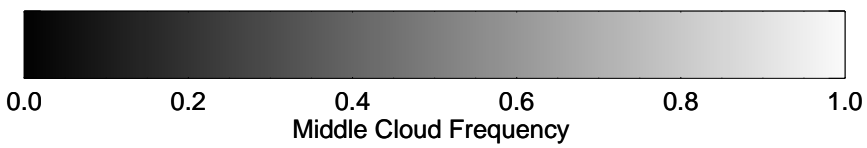
Range ring of 2304 km

16100700, 48 hour forecast for 500mb winds (knots) and Middle Cloud Frequency -- NCEP GFS



15:53

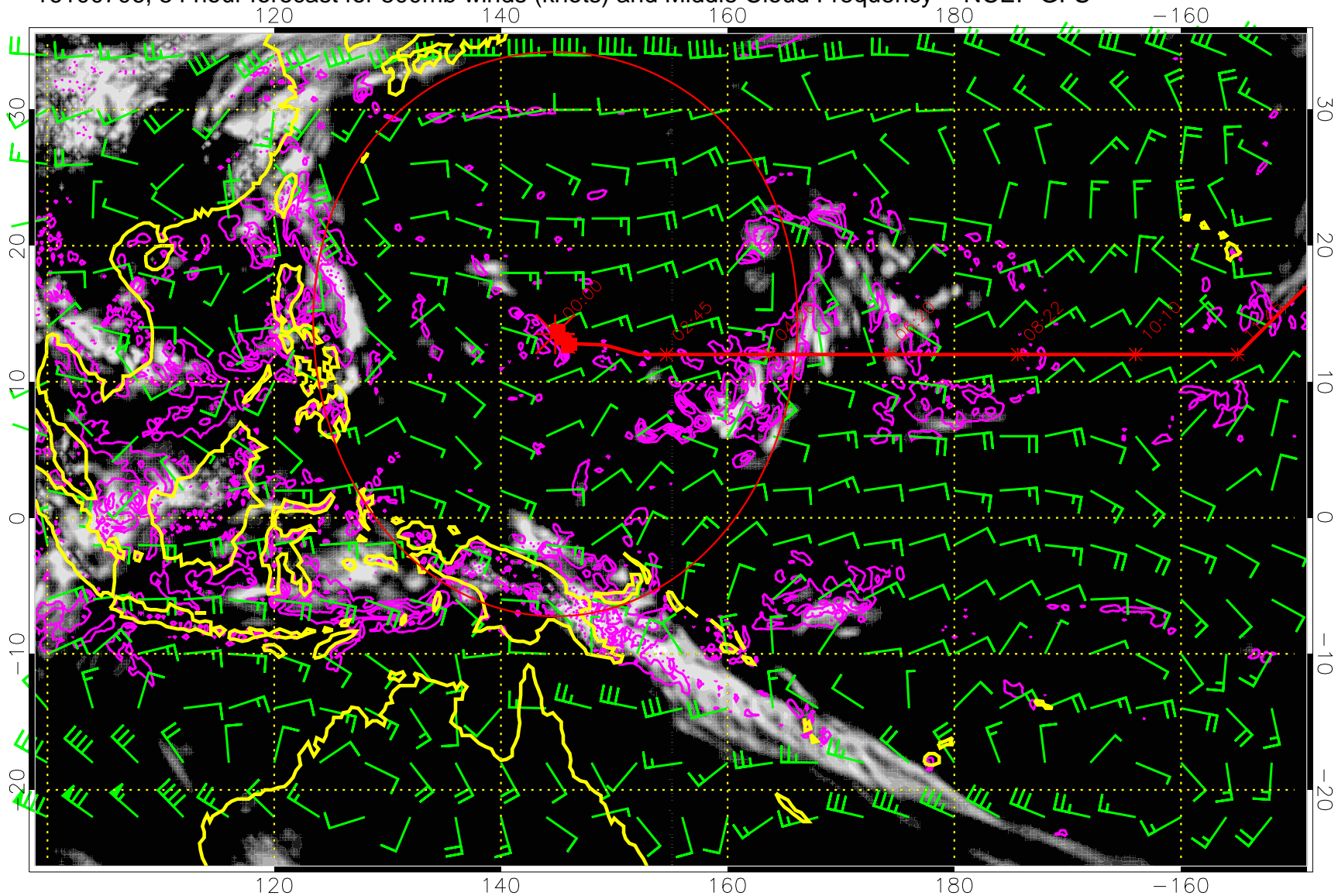
13:53



Precip (tot dot, conv sol) mm/day 40 mm/day contours, min 20

Range ring of 2304 km

16100706, 54 hour forecast for 500mb winds (knots) and Middle Cloud Frequency -- NCEP GFS

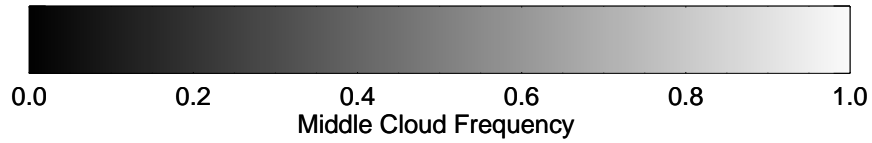
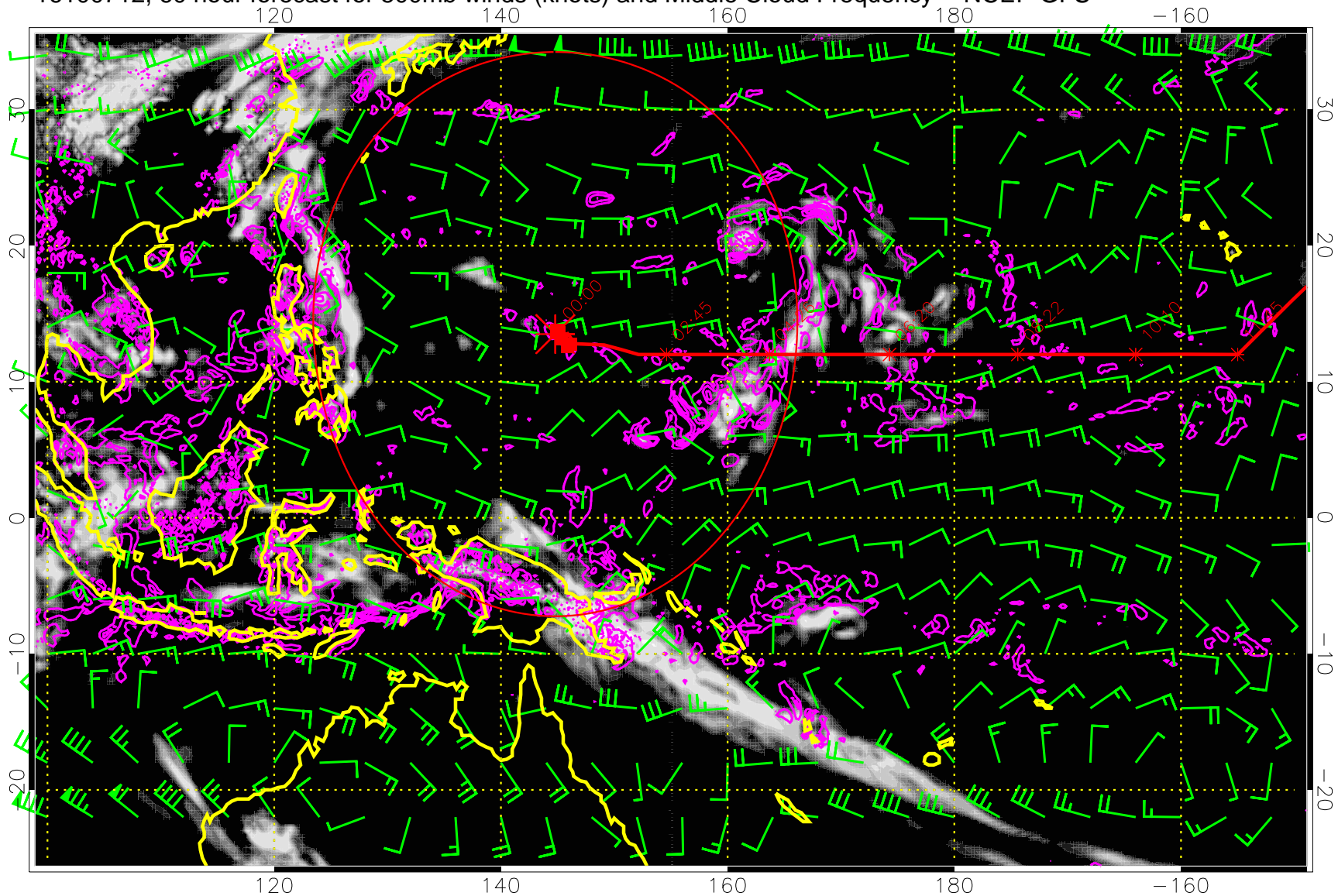


Precip (tot dot, conv sol) mm/day 40 mm/day contours, min 20

0.0 0.2 0.4 0.6 0.8 1.0
Middle Cloud Frequency

Range ring of 2304 km

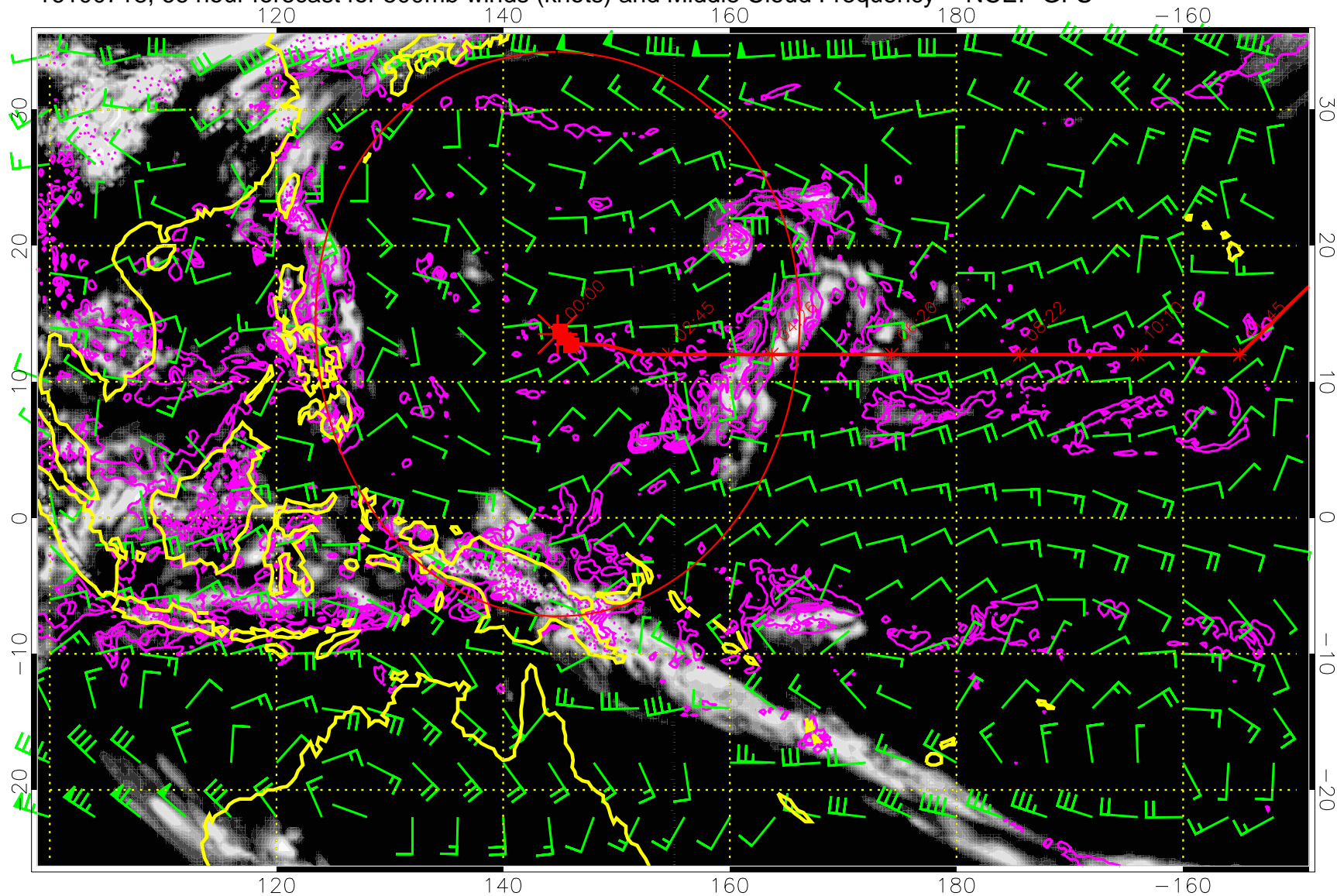
16100712, 60 hour forecast for 500mb winds (knots) and Middle Cloud Frequency -- NCEP GFS



Precip (tot dot, conv sol) mm/day 40 mm/day contours, min 20

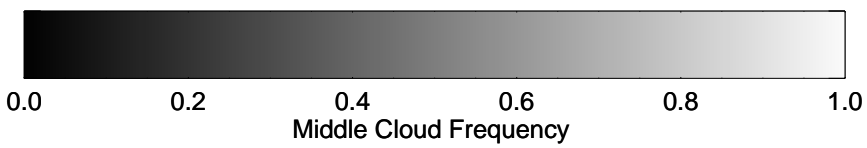
Range ring of 2304 km

16100718, 66 hour forecast for 500mb winds (knots) and Middle Cloud Frequency -- NCEP GFS



15.5

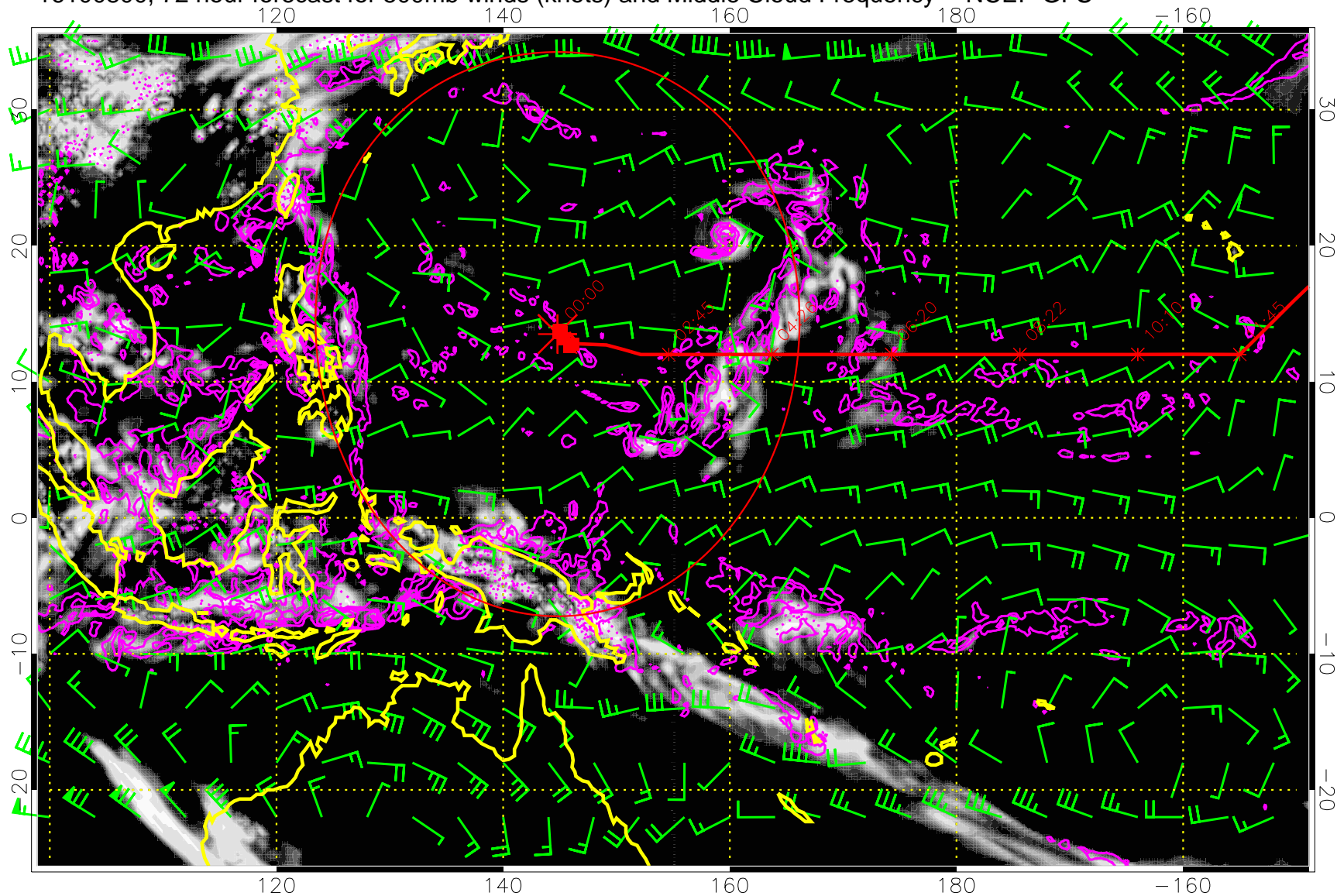
13.53



Precip (tot dot, conv sol) mm/day 40 mm/day contours, min 20

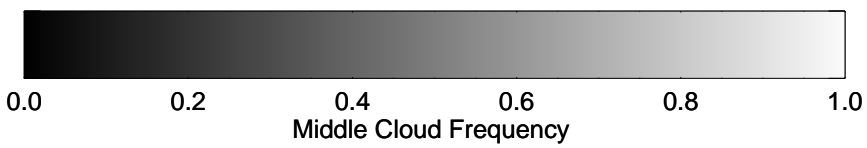
Range ring of 2304 km

16100800, 72 hour forecast for 500mb winds (knots) and Middle Cloud Frequency -- NCEP GFS



15:45

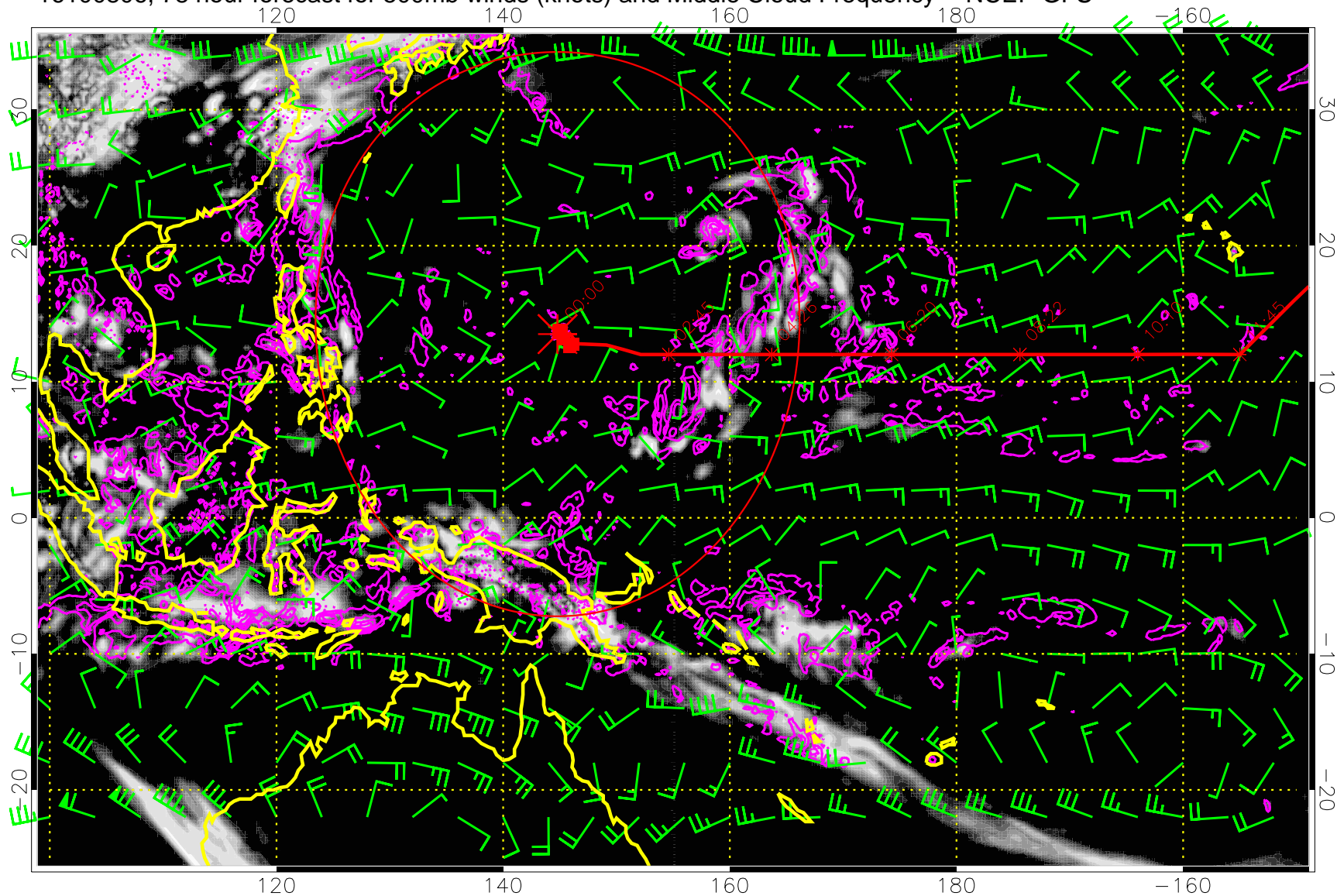
13:53



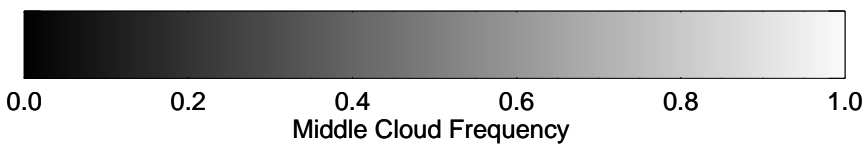
Precip (tot dot, conv sol) mm/day 40 mm/day contours, min 20

Range ring of 2304 km

16100806, 78 hour forecast for 500mb winds (knots) and Middle Cloud Frequency -- NCEP GFS



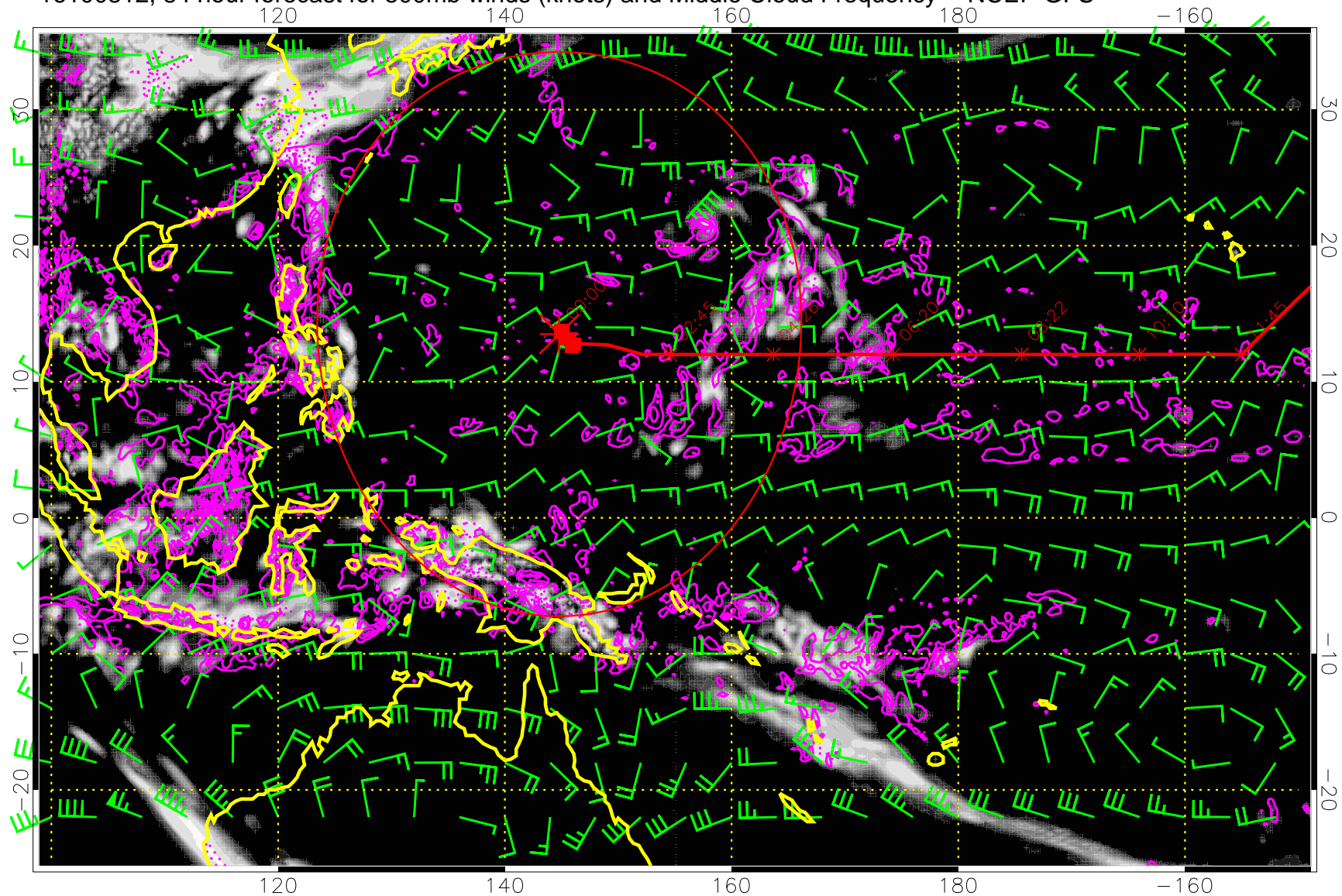
15:53
13:53



Precip (tot dot, conv sol) mm/day 40 mm/day contours, min 20

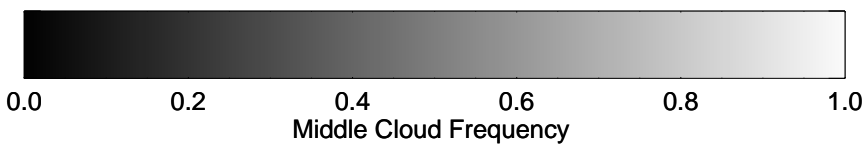
Range ring of 2304 km

16100812, 84 hour forecast for 500mb winds (knots) and Middle Cloud Frequency -- NCEP GFS



15:53

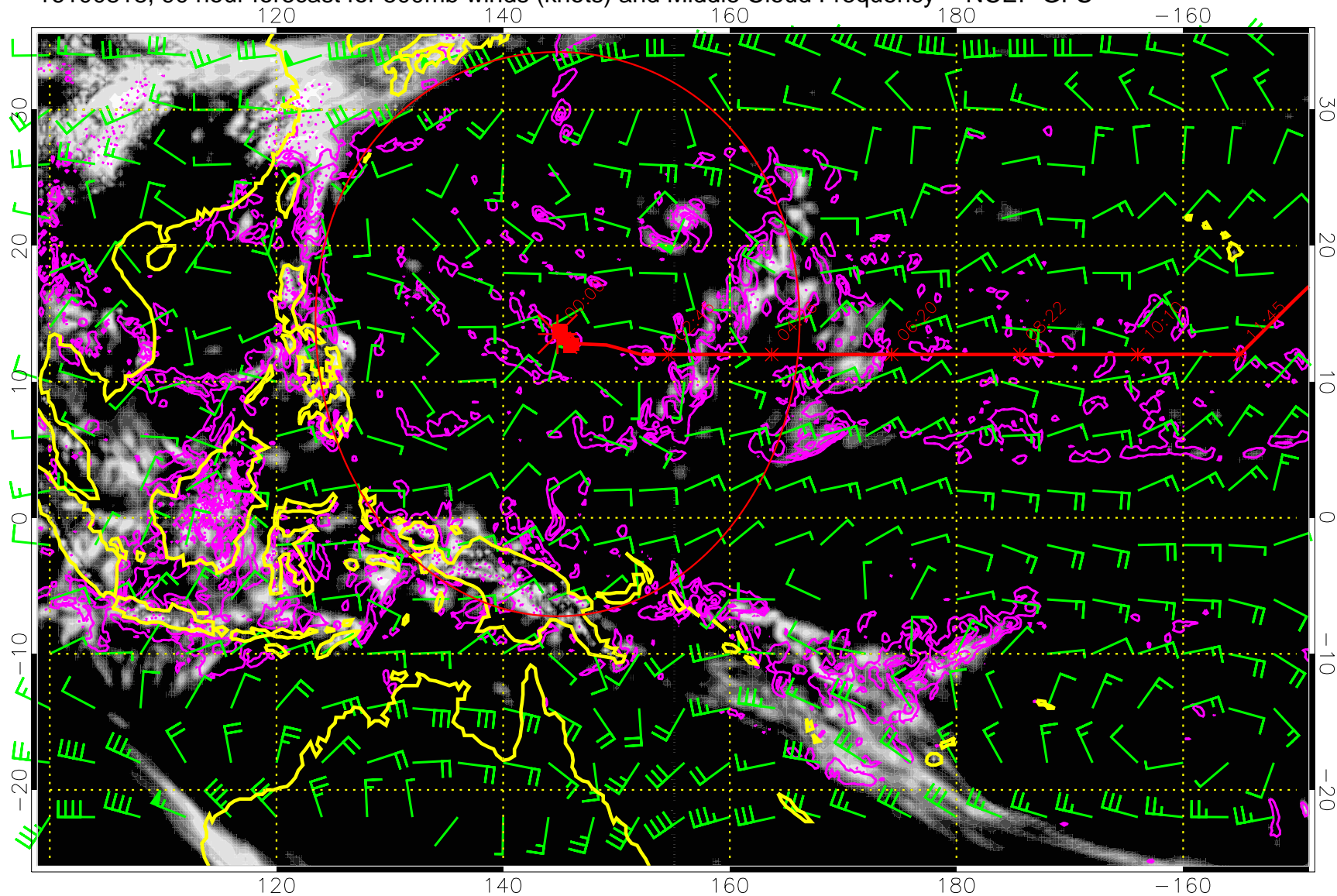
13:53



Precip (tot dot, conv sol) mm/day 40 mm/day contours, min 20

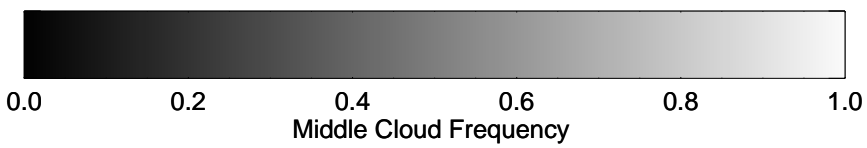
Range ring of 2304 km

16100818, 90 hour forecast for 500mb winds (knots) and Middle Cloud Frequency -- NCEP GFS



15:53

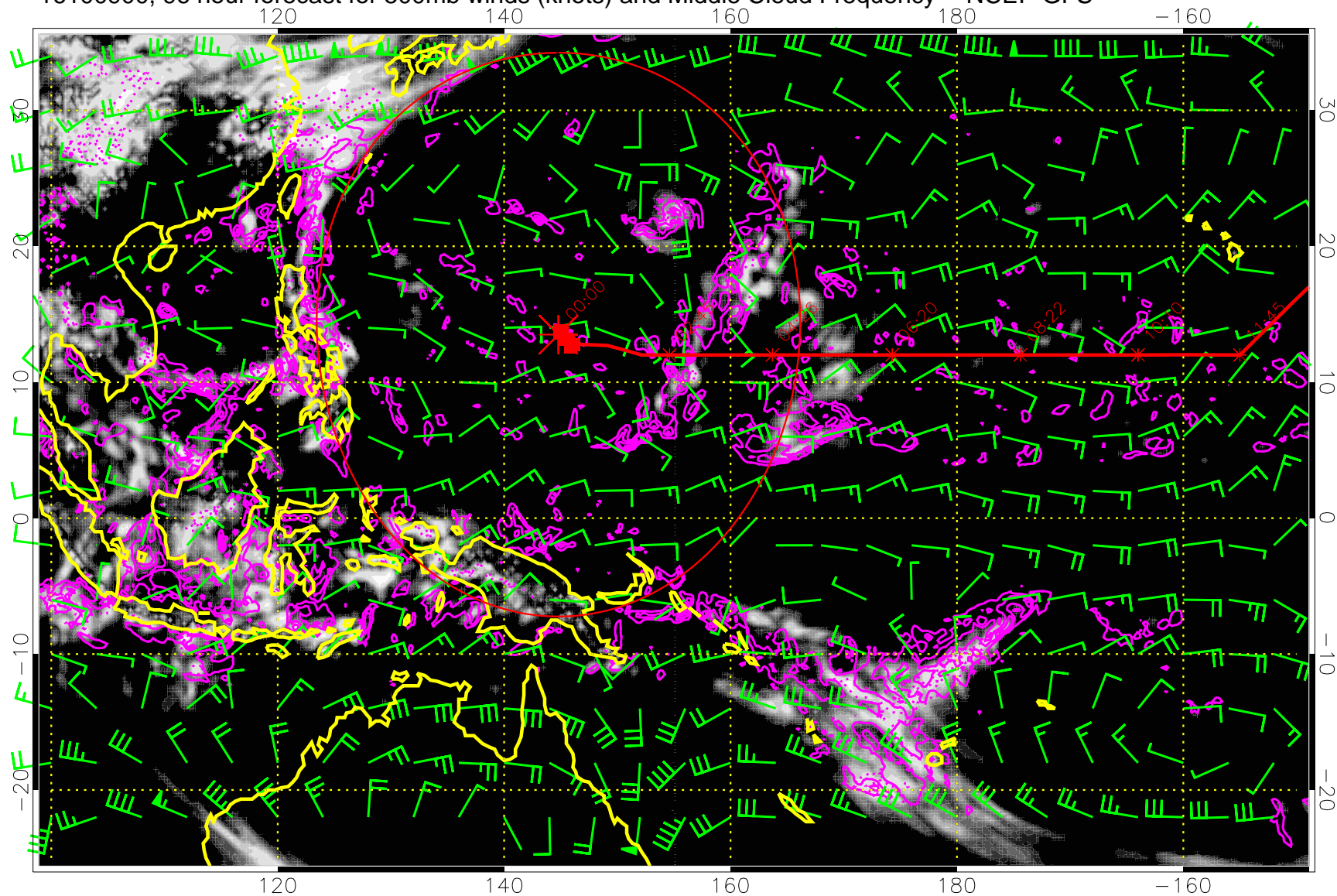
13:53



Precip (tot dot, conv sol) mm/day 40 mm/day contours, min 20

Range ring of 2304 km

16100900, 96 hour forecast for 500mb winds (knots) and Middle Cloud Frequency -- NCEP GFS

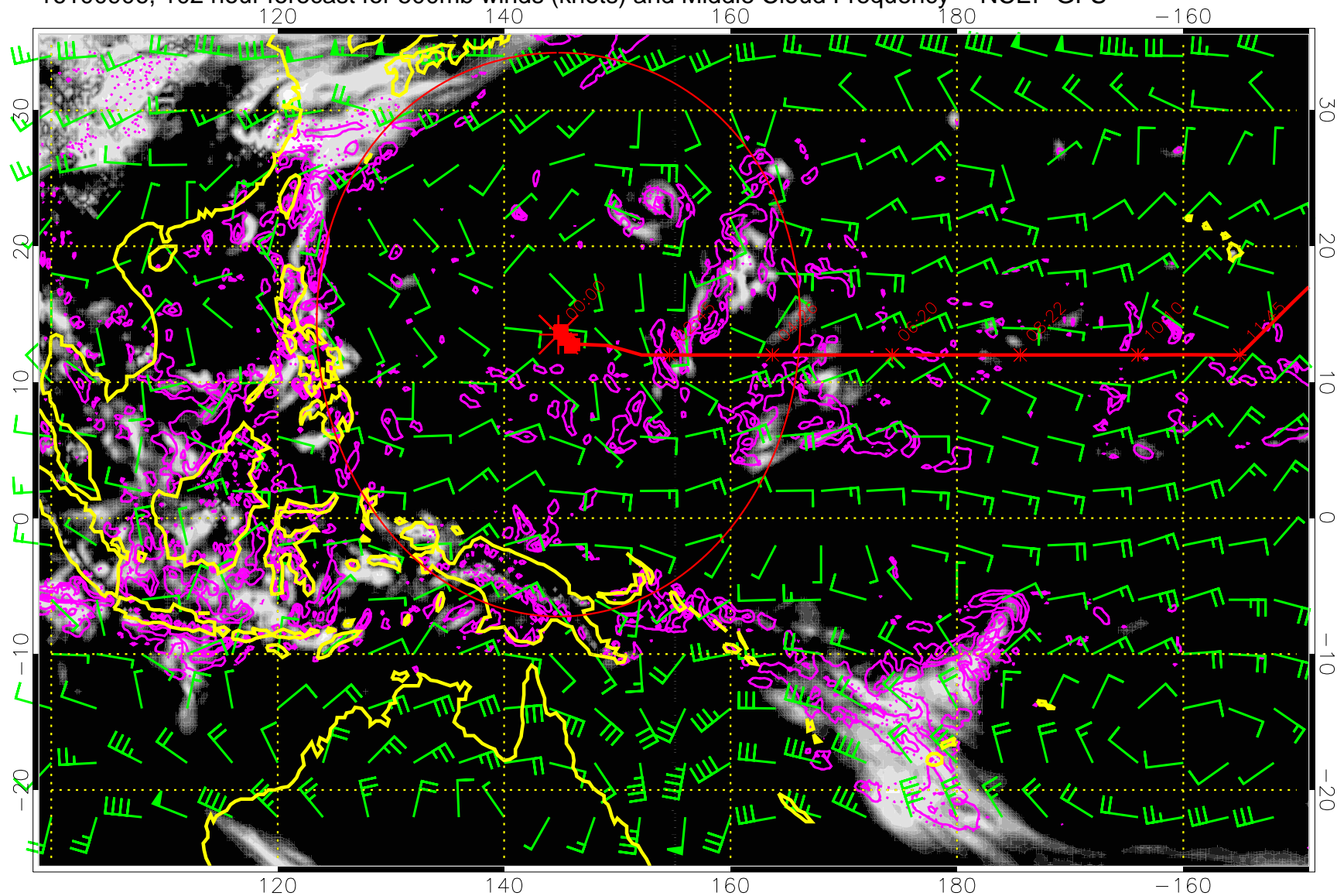


Precip (tot dot, conv sol) mm/day 40 mm/day contours, min 20

0.0 0.2 0.4 0.6 0.8 1.0
Middle Cloud Frequency

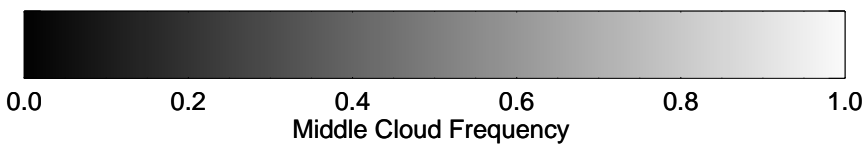
Range ring of 2304 km

16100906, 102 hour forecast for 500mb winds (knots) and Middle Cloud Frequency -- NCEP GFS



15:53

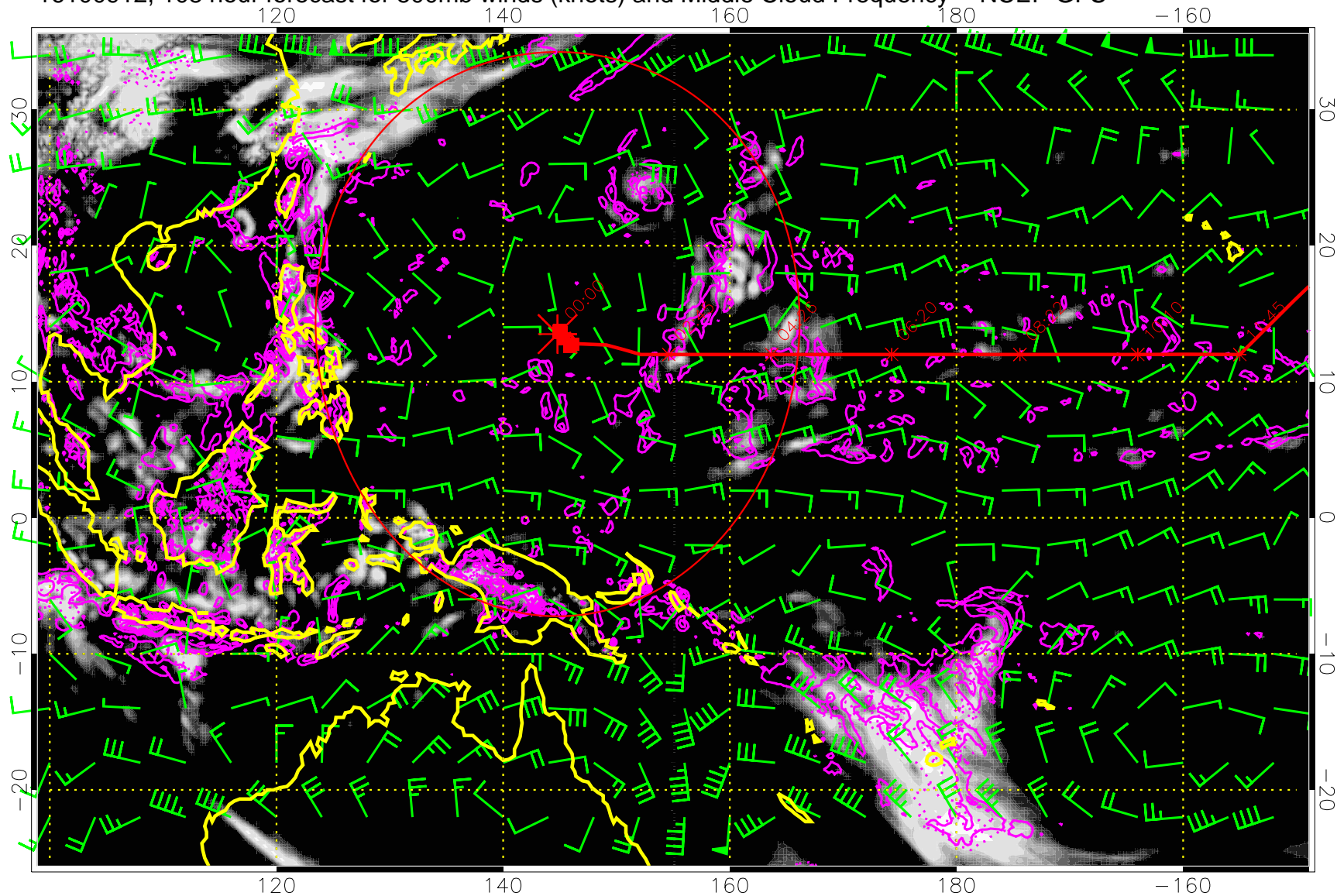
13:53



Precip (tot dot, conv sol) mm/day 40 mm/day contours, min 20

Range ring of 2304 km

16100912, 108 hour forecast for 500mb winds (knots) and Middle Cloud Frequency -- NCEP GFS



15:53
13:53

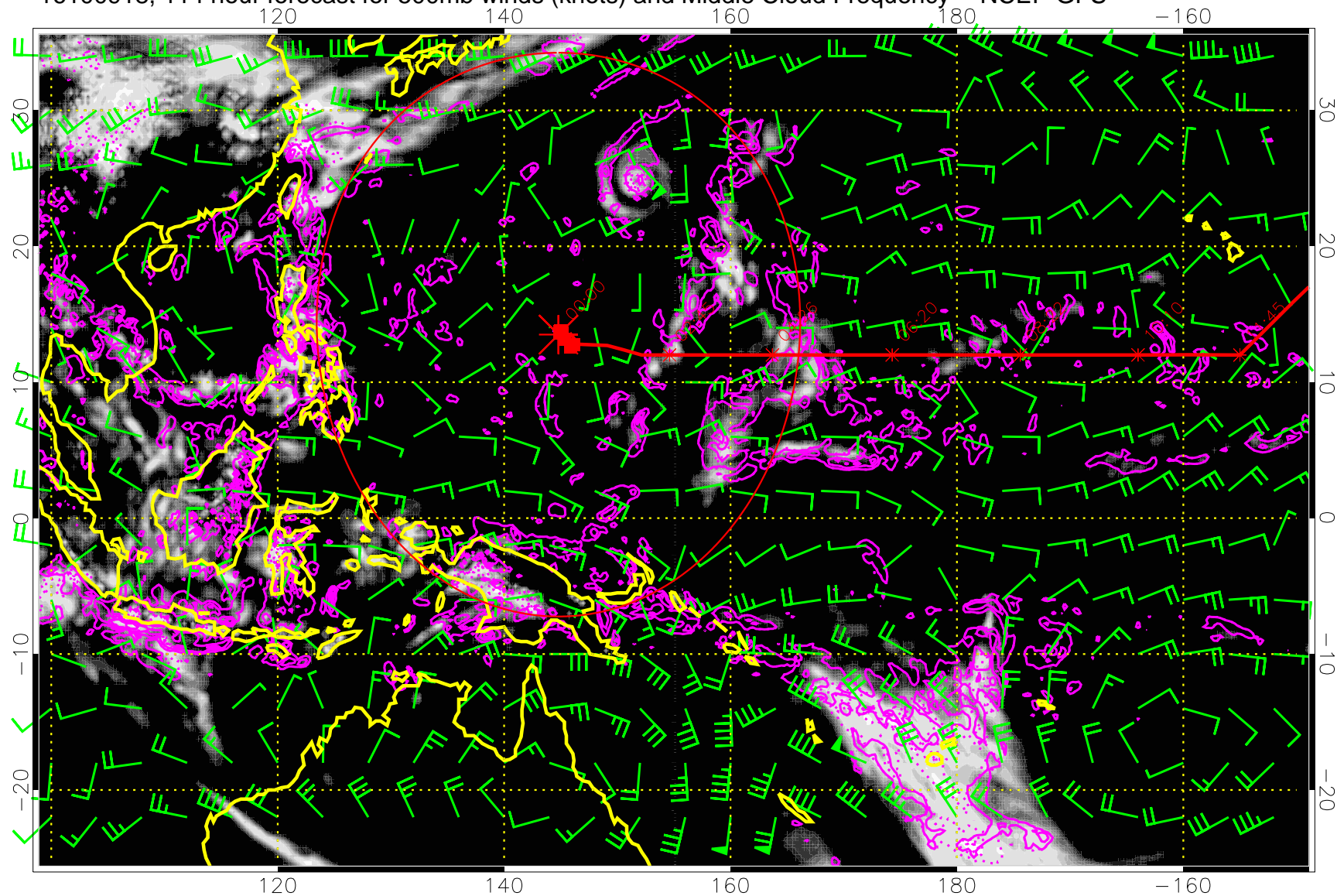


0.0 0.2 0.4 0.6 0.8 1.0
Middle Cloud Frequency

Precip (tot dot, conv sol) mm/day 40 mm/day contours, min 20

Range ring of 2304 km

16100918, 114 hour forecast for 500mb winds (knots) and Middle Cloud Frequency -- NCEP GFS

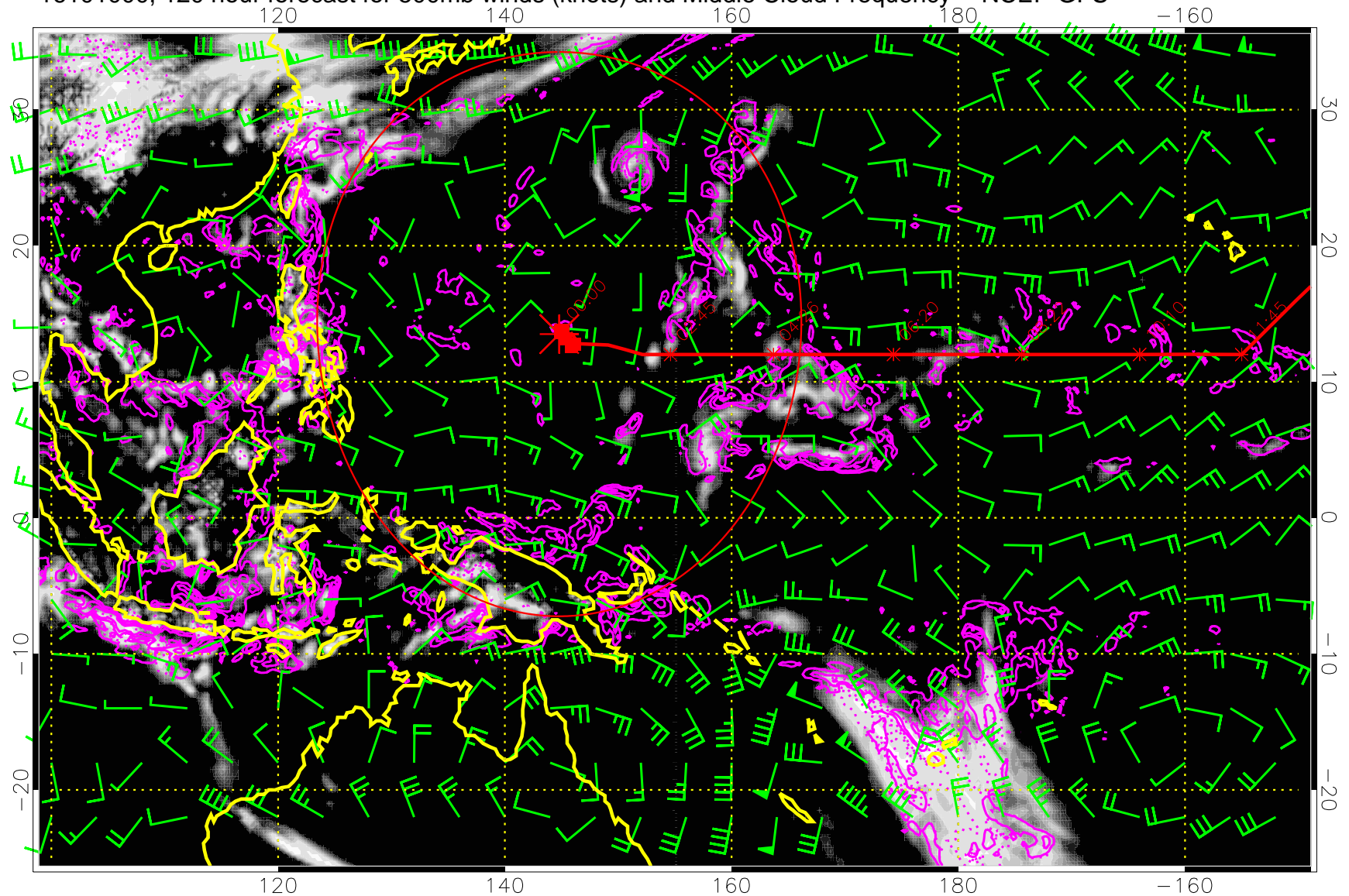


0.0 0.2 0.4 0.6 0.8 1.0
Middle Cloud Frequency

Precip (tot dot, conv sol) mm/day 40 mm/day contours, min 20

Range ring of 2304 km

16101000, 120 hour forecast for 500mb winds (knots) and Middle Cloud Frequency -- NCEP GFS



0.0 0.2 0.4 0.6 0.8 1.0
Middle Cloud Frequency

Precip (tot dot, conv sol) mm/day 40 mm/day contours, min 20

Range ring of 2304 km