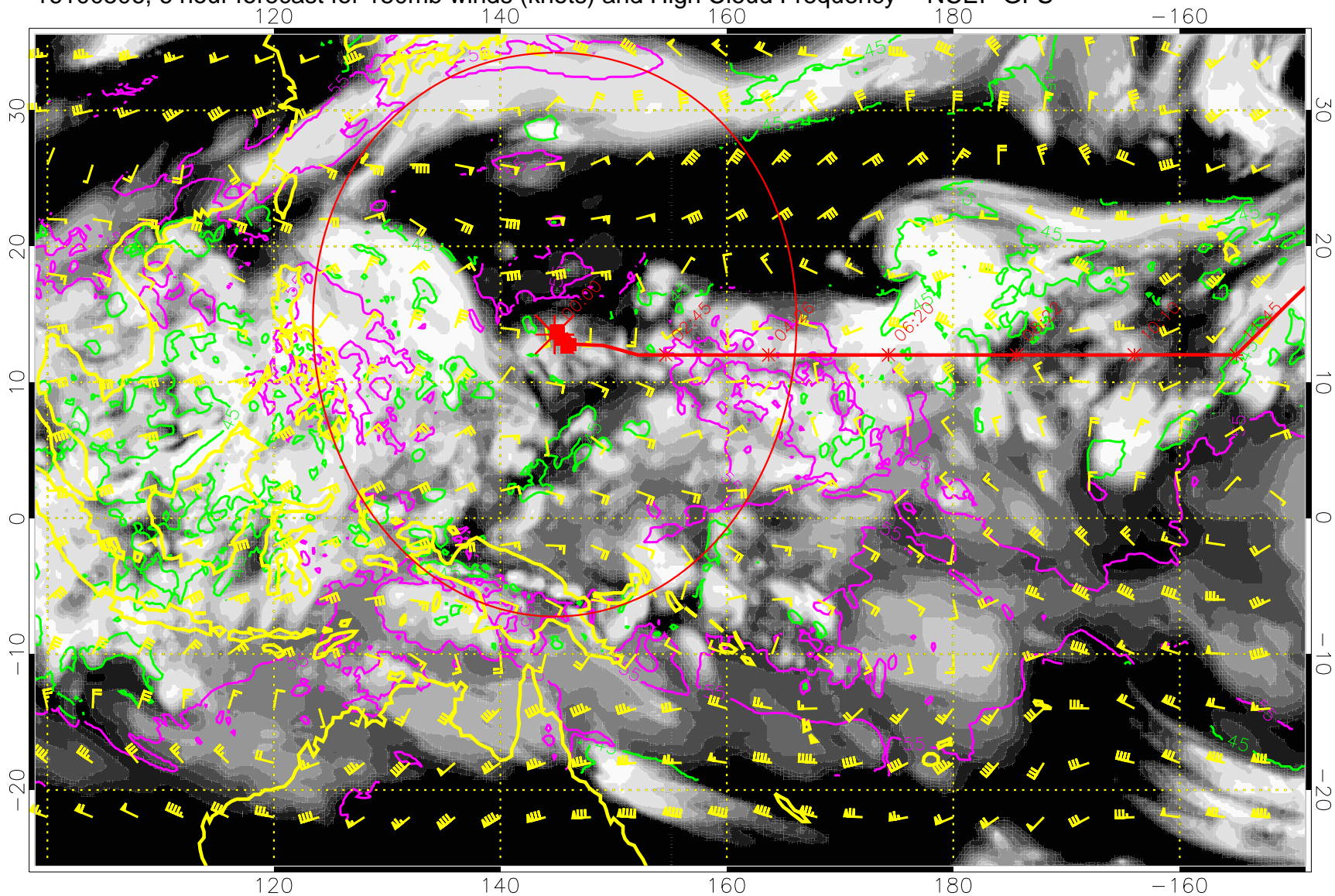


16100506, 6 hour forecast for 150mb winds (knots) and High Cloud Frequency -- NCEP GFS



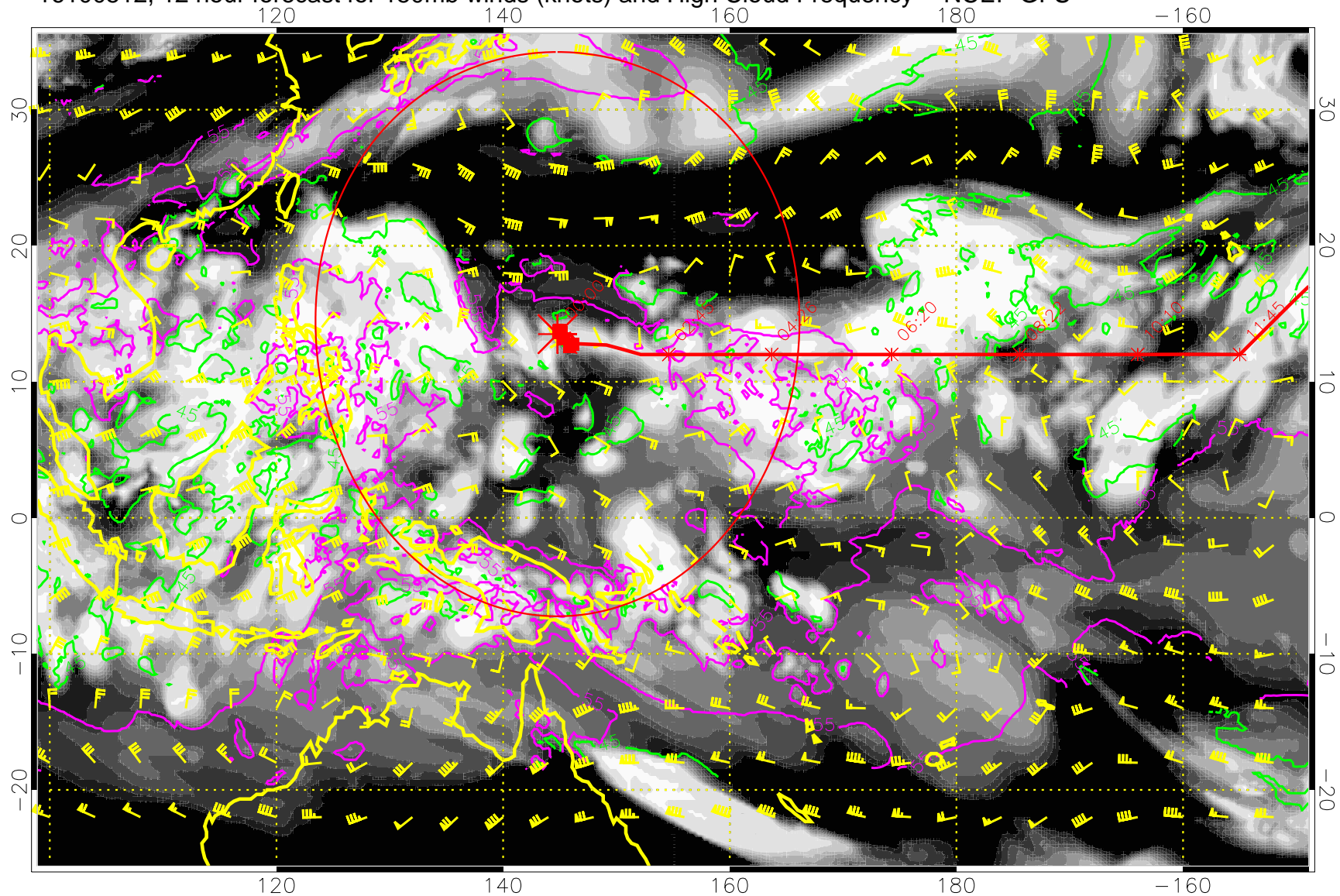
45 kft
55 kft

Range ring of 2304 km

15:55

13:53

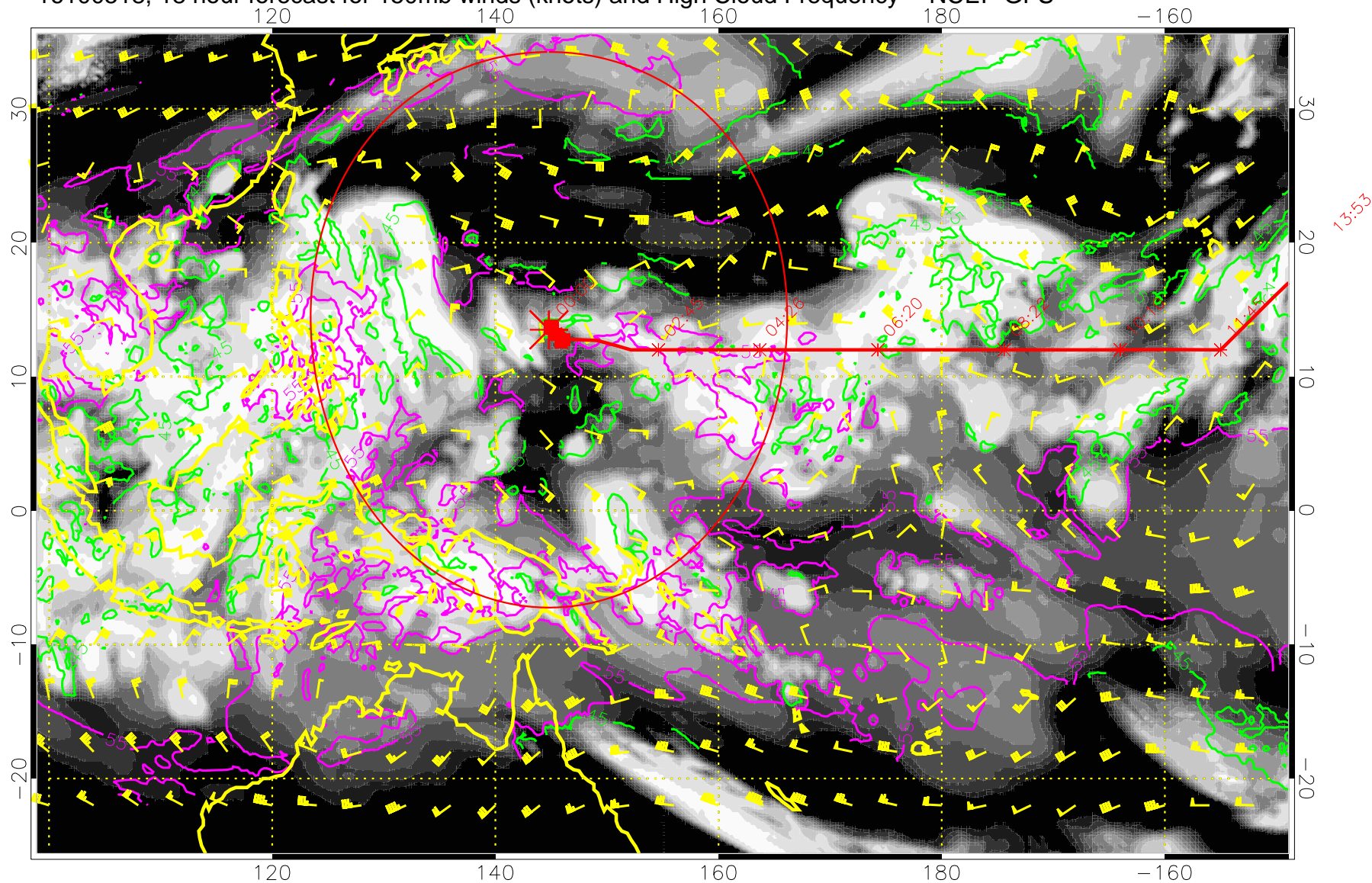
16100512, 12 hour forecast for 150mb winds (knots) and High Cloud Frequency -- NCEP GFS



45 kft
55 kft

Range ring of 2304 km

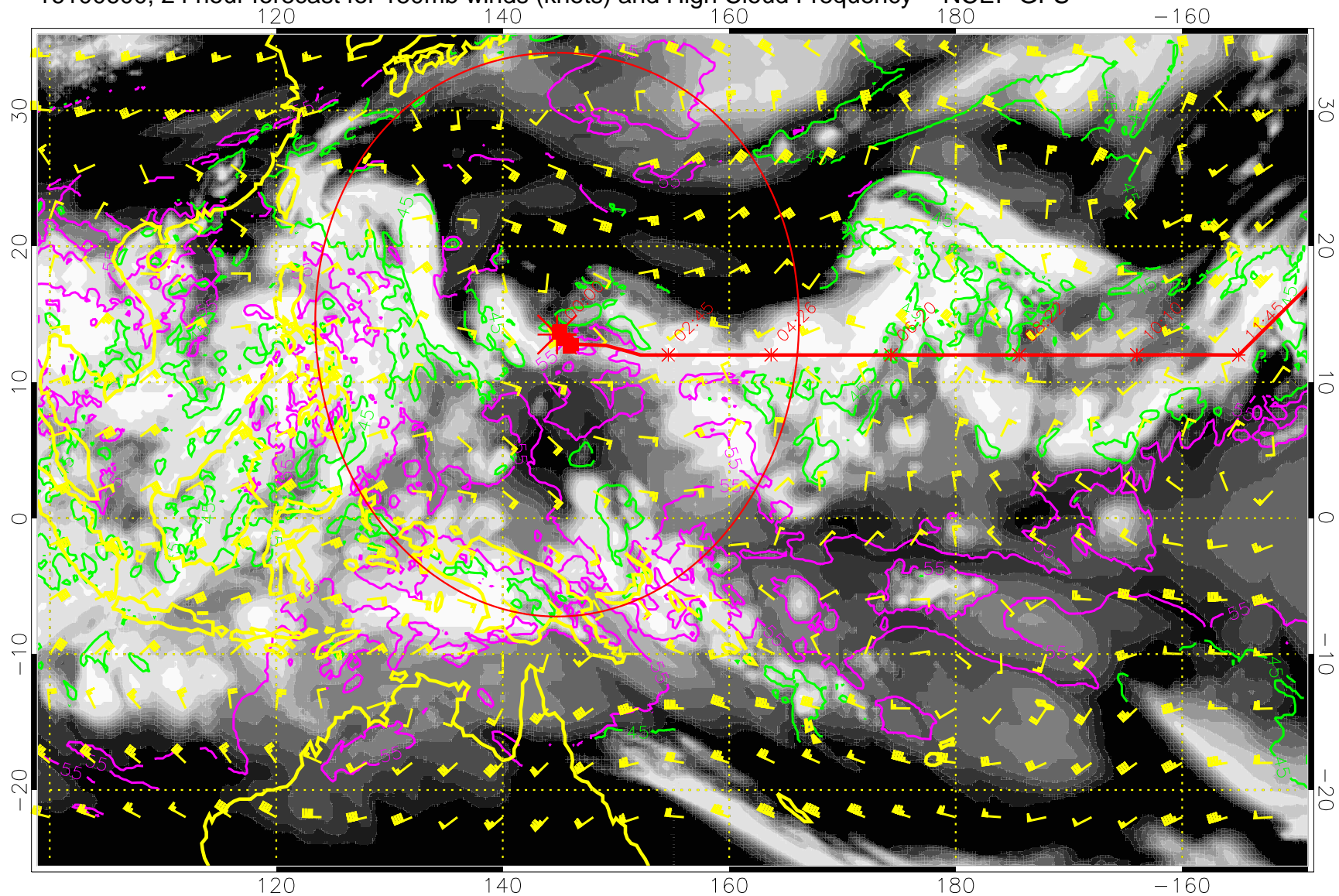
16100518, 18 hour forecast for 150mb winds (knots) and High Cloud Frequency -- NCEP GFS



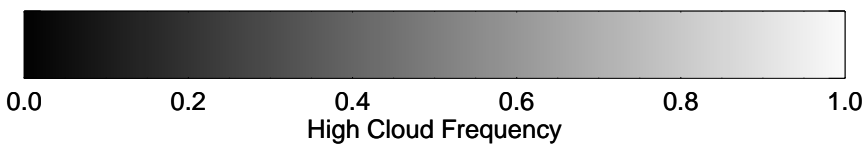
45 kft
55 kft

Range ring of 2304 km

16100600, 24 hour forecast for 150mb winds (knots) and High Cloud Frequency -- NCEP GFS



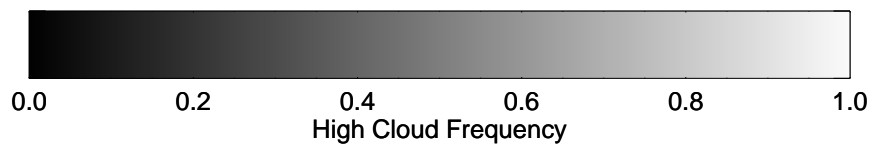
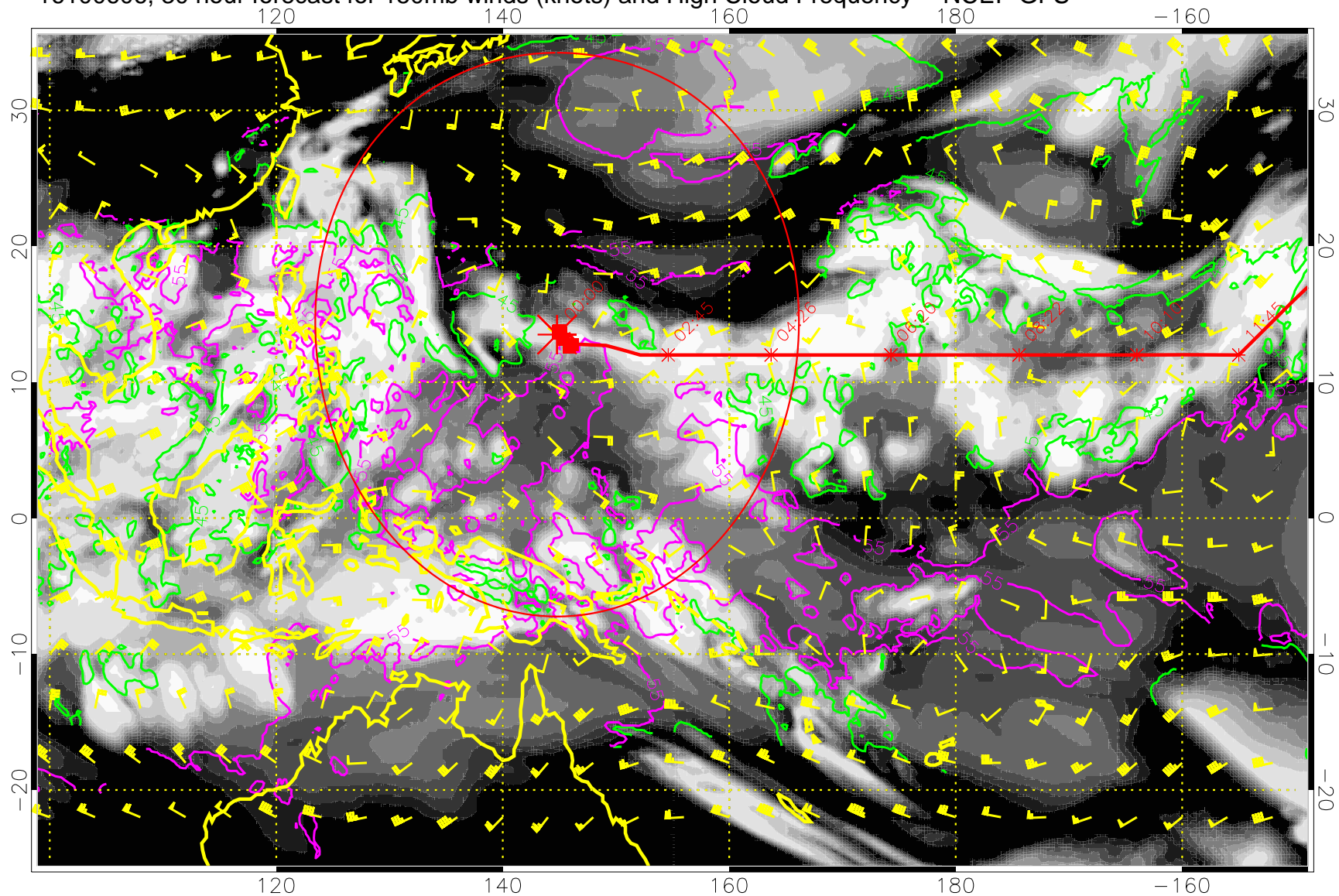
15:53
13:53



45 kft
55 kft

Range ring of 2304 km

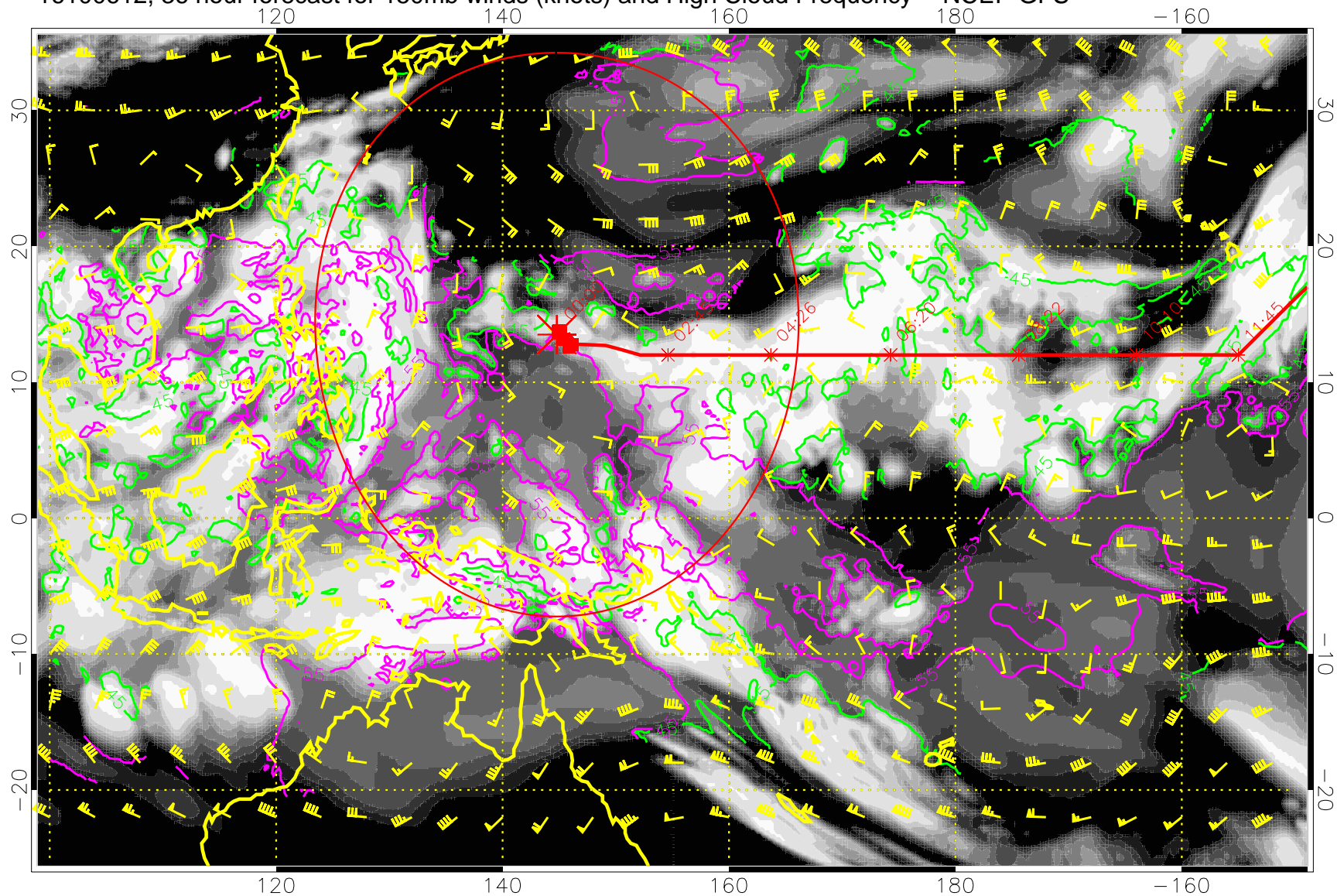
16100606, 30 hour forecast for 150mb winds (knots) and High Cloud Frequency -- NCEP GFS



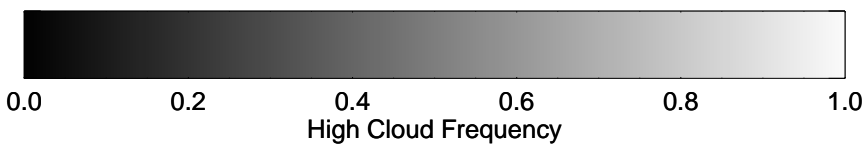
45 kft
55 kft

Range ring of 2304 km

16100612, 36 hour forecast for 150mb winds (knots) and High Cloud Frequency -- NCEP GFS



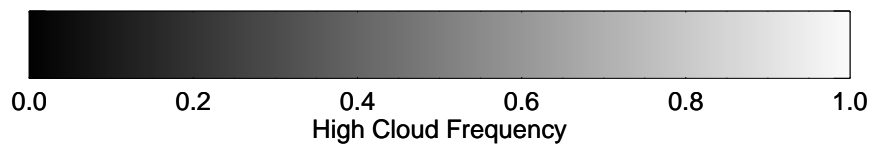
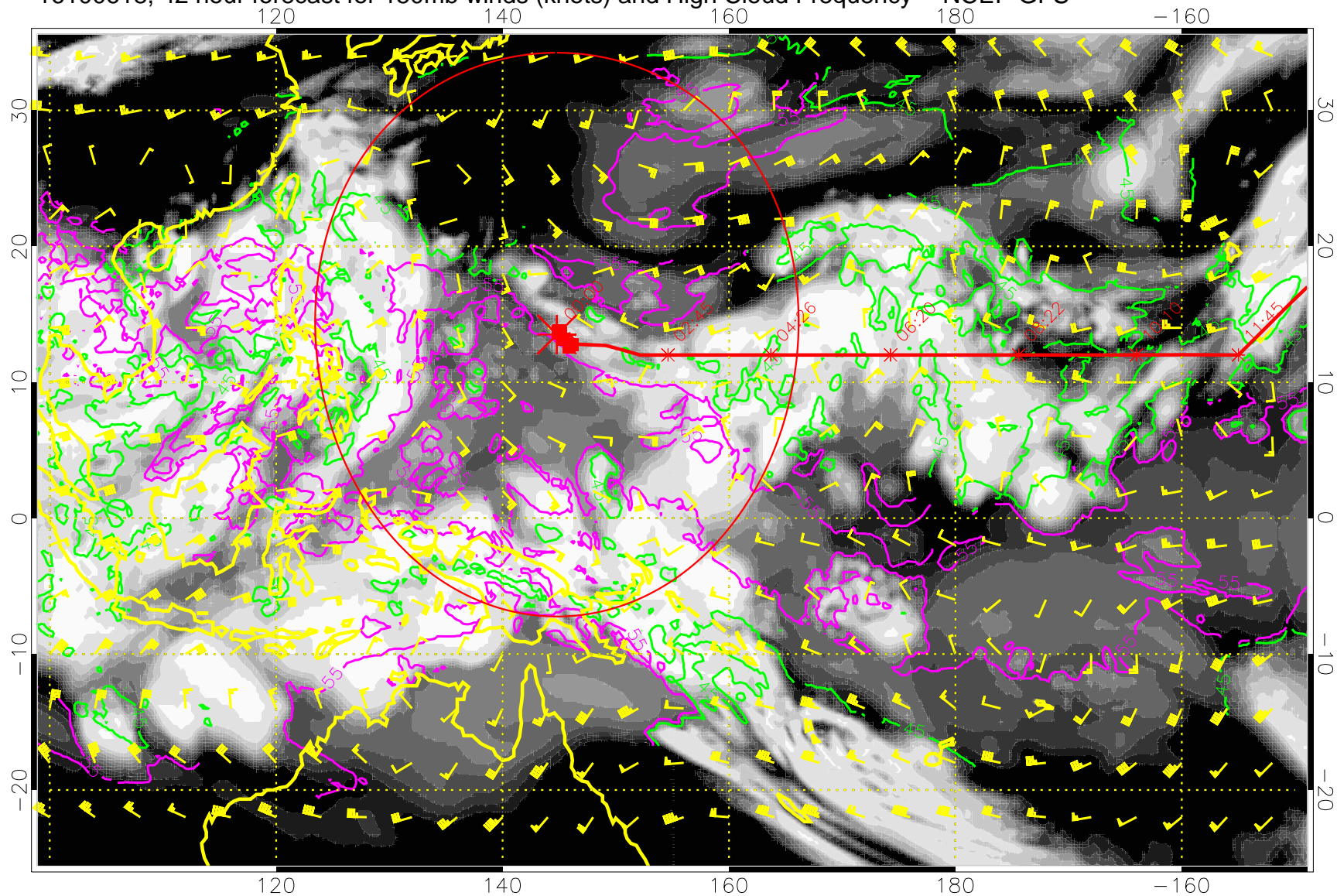
15:53
13:53



45 kft
55 kft

Range ring of 2304 km

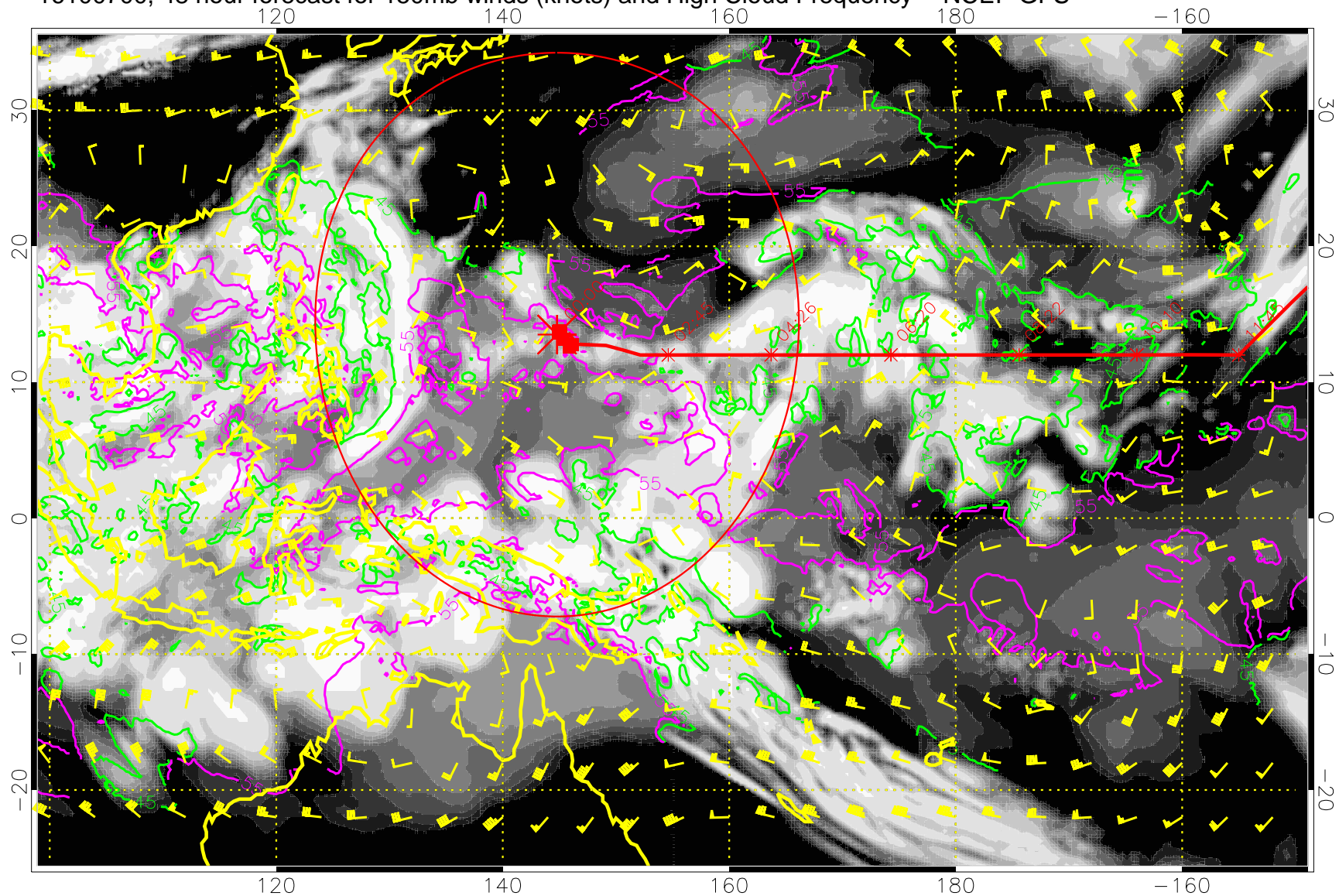
16100618, 42 hour forecast for 150mb winds (knots) and High Cloud Frequency -- NCEP GFS



45 kft
55 kft

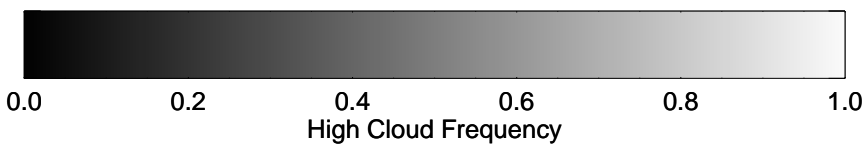
Range ring of 2304 km

16100700, 48 hour forecast for 150mb winds (knots) and High Cloud Frequency -- NCEP GFS



13.53

15.5

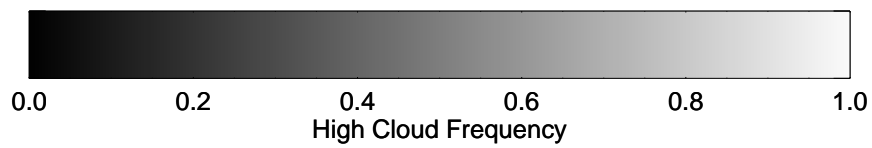
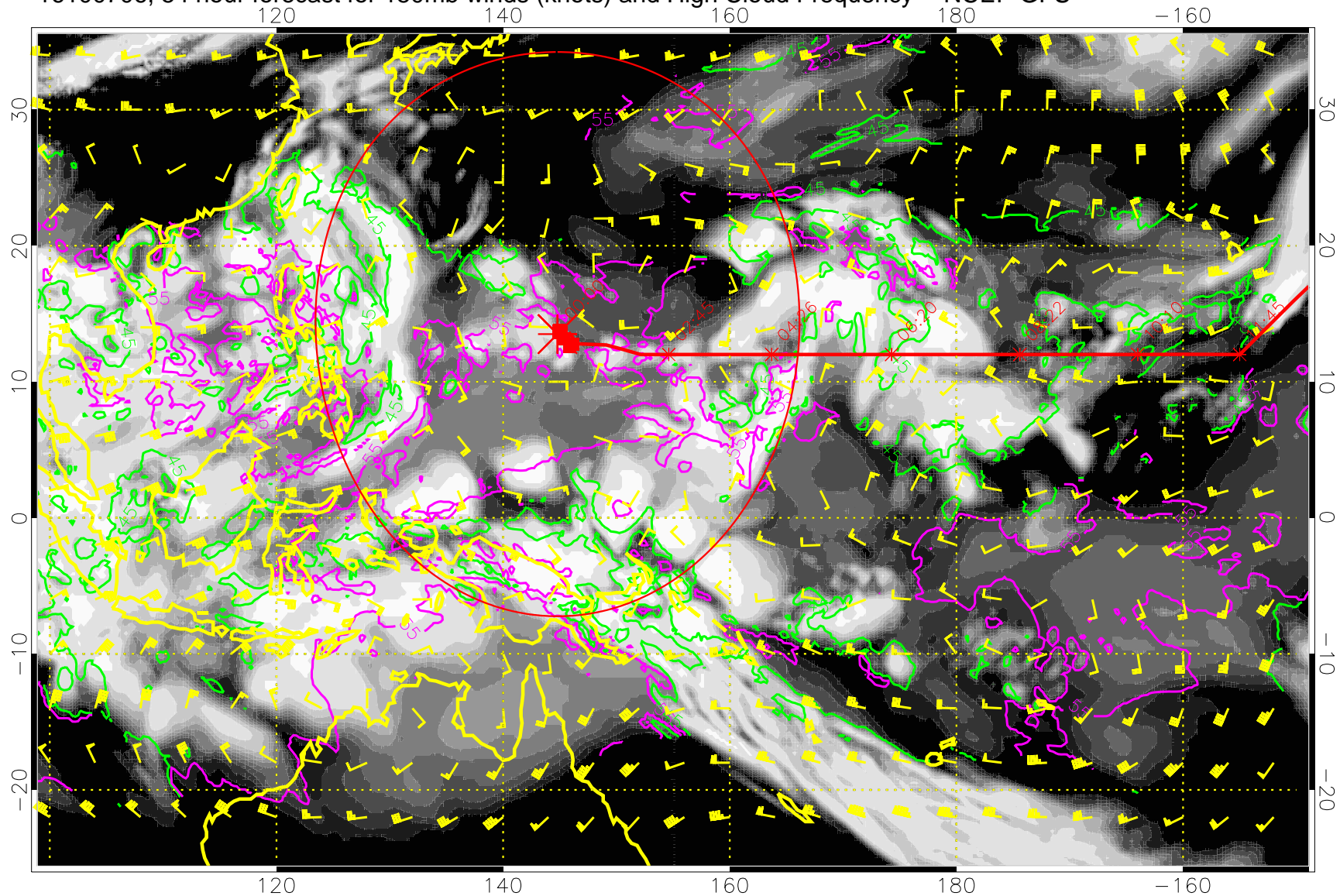


High Cloud Frequency

45 kft
55 kft

Range ring of 2304 km

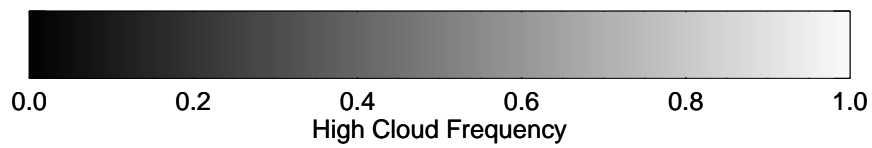
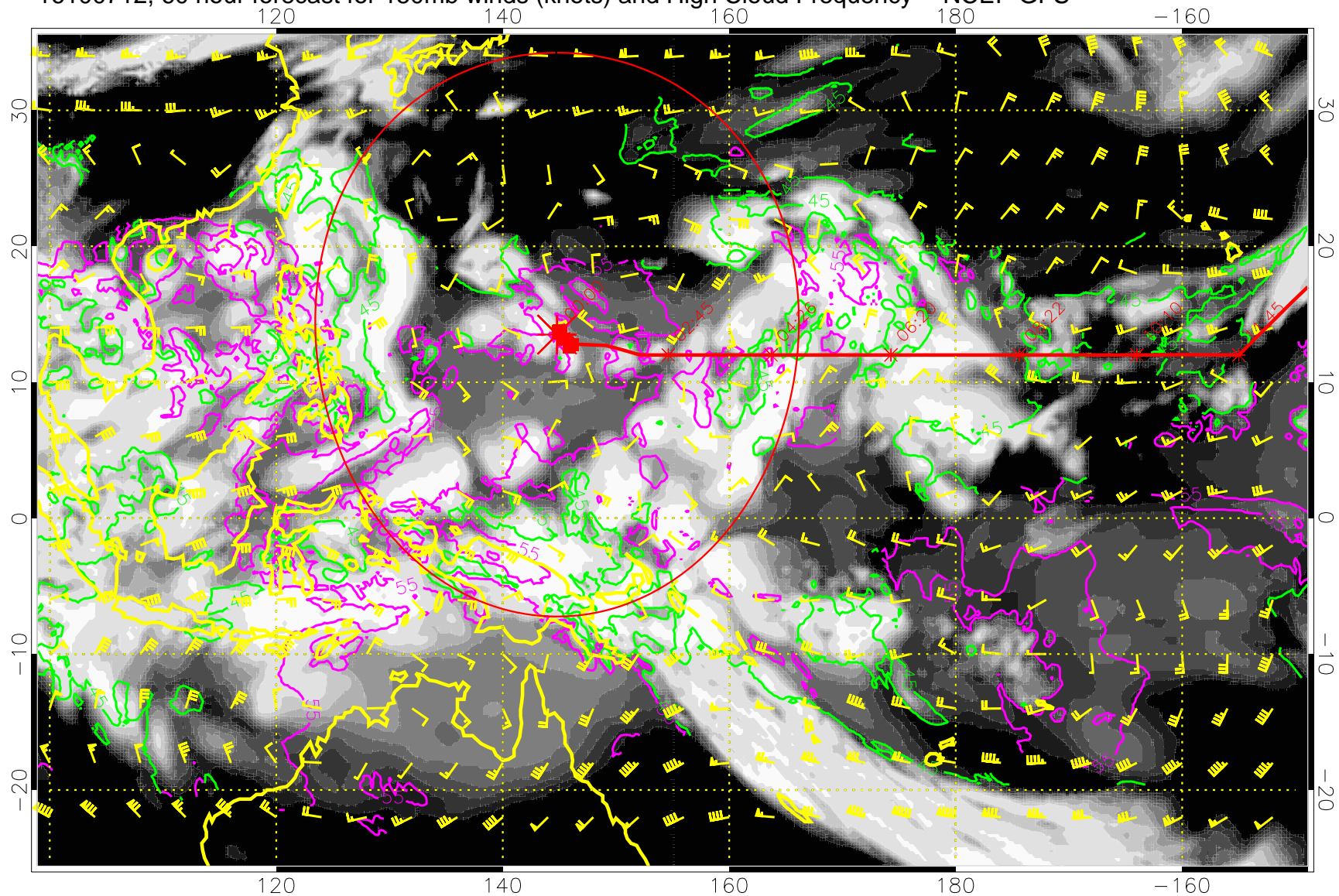
16100706, 54 hour forecast for 150mb winds (knots) and High Cloud Frequency -- NCEP GFS



45 kft
55 kft

Range ring of 2304 km

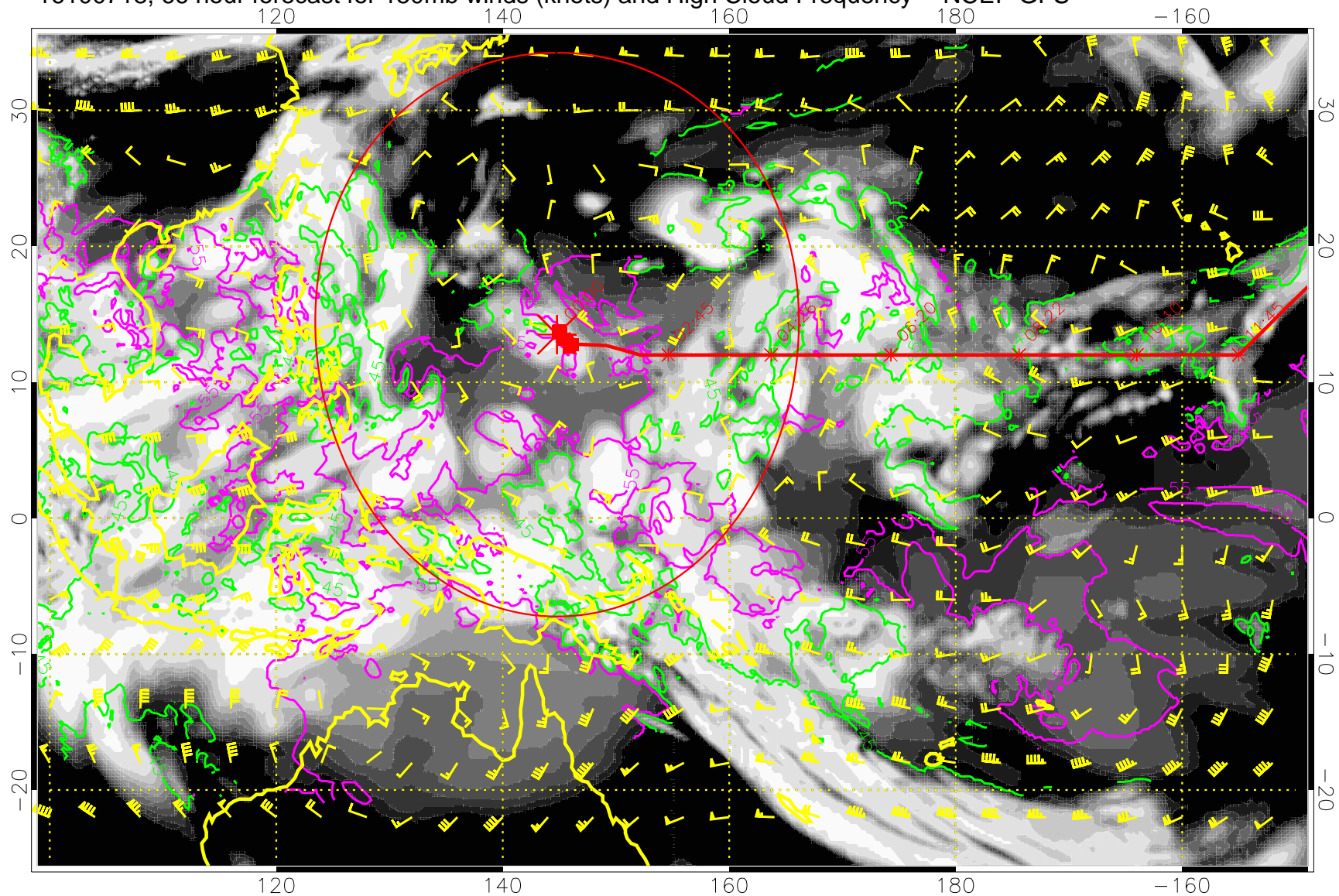
16100712, 60 hour forecast for 150mb winds (knots) and High Cloud Frequency -- NCEP GFS



45 kft
55 kft

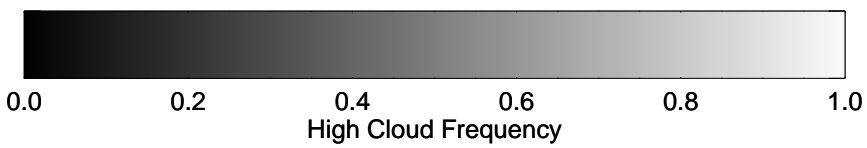
Range ring of 2304 km

16100718, 66 hour forecast for 150mb winds (knots) and High Cloud Frequency -- NCEP GFS



15:53

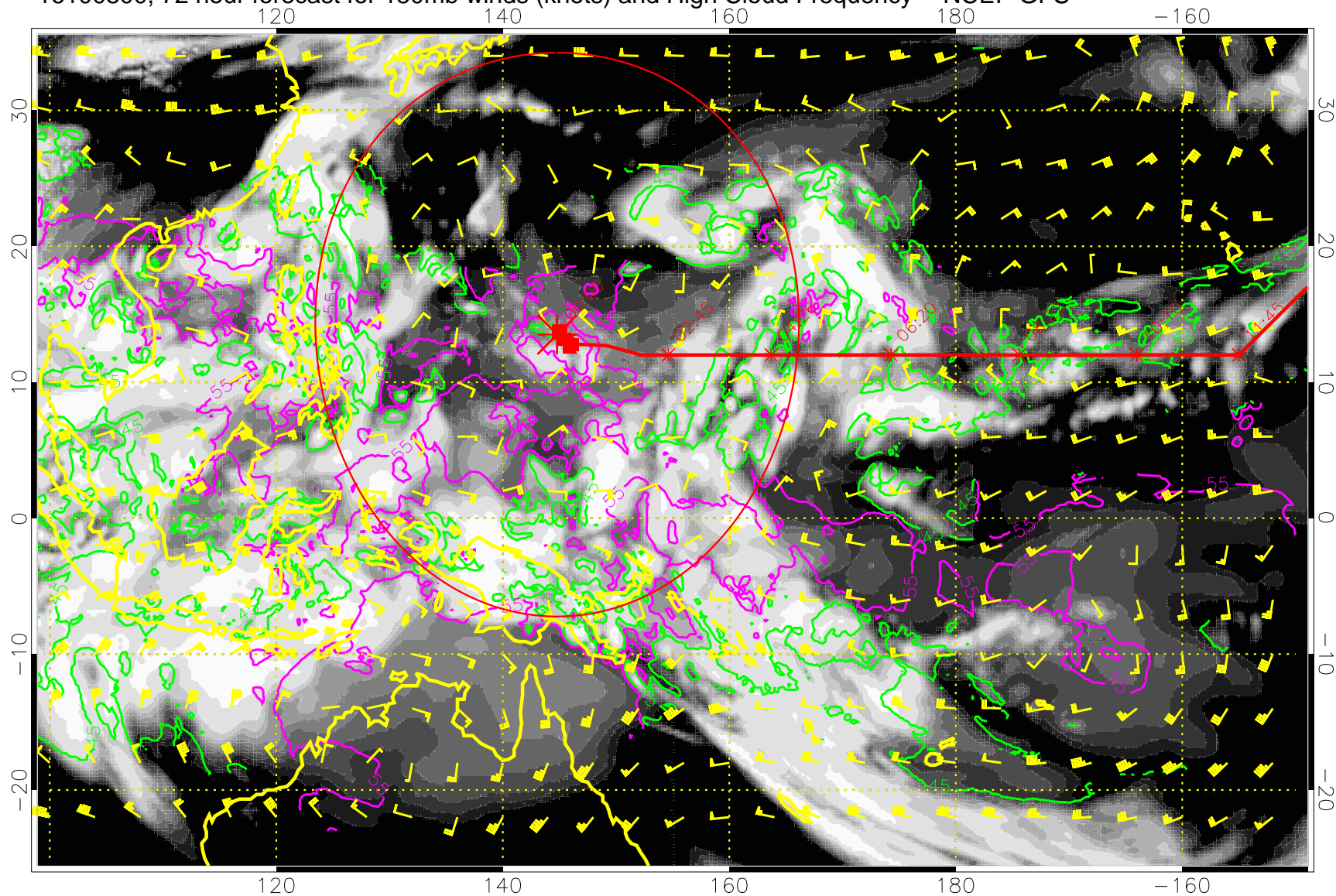
13:53



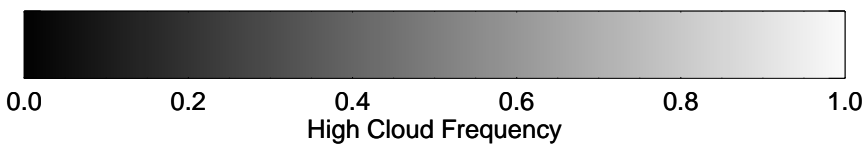
45 kft
55 kft

Range ring of 2304 km

16100800, 72 hour forecast for 150mb winds (knots) and High Cloud Frequency -- NCEP GFS



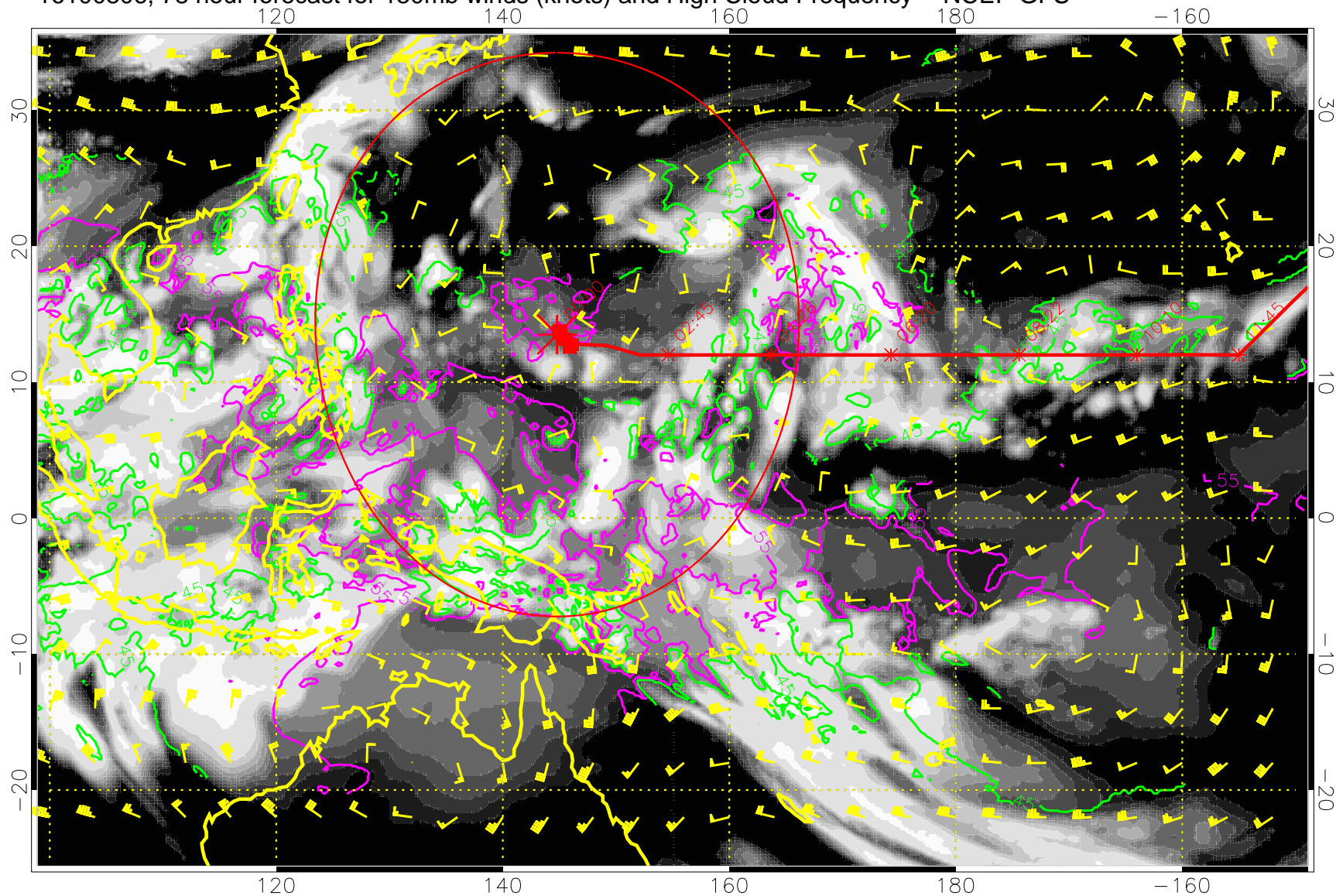
15:53
13:53



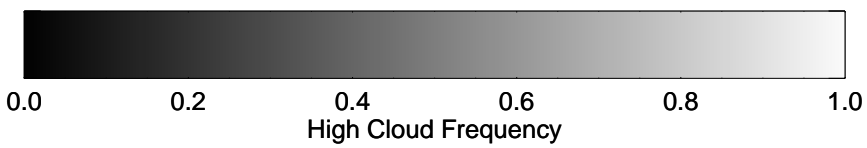
45 kft
55 kft

Range ring of 2304 km

16100806, 78 hour forecast for 150mb winds (knots) and High Cloud Frequency -- NCEP GFS



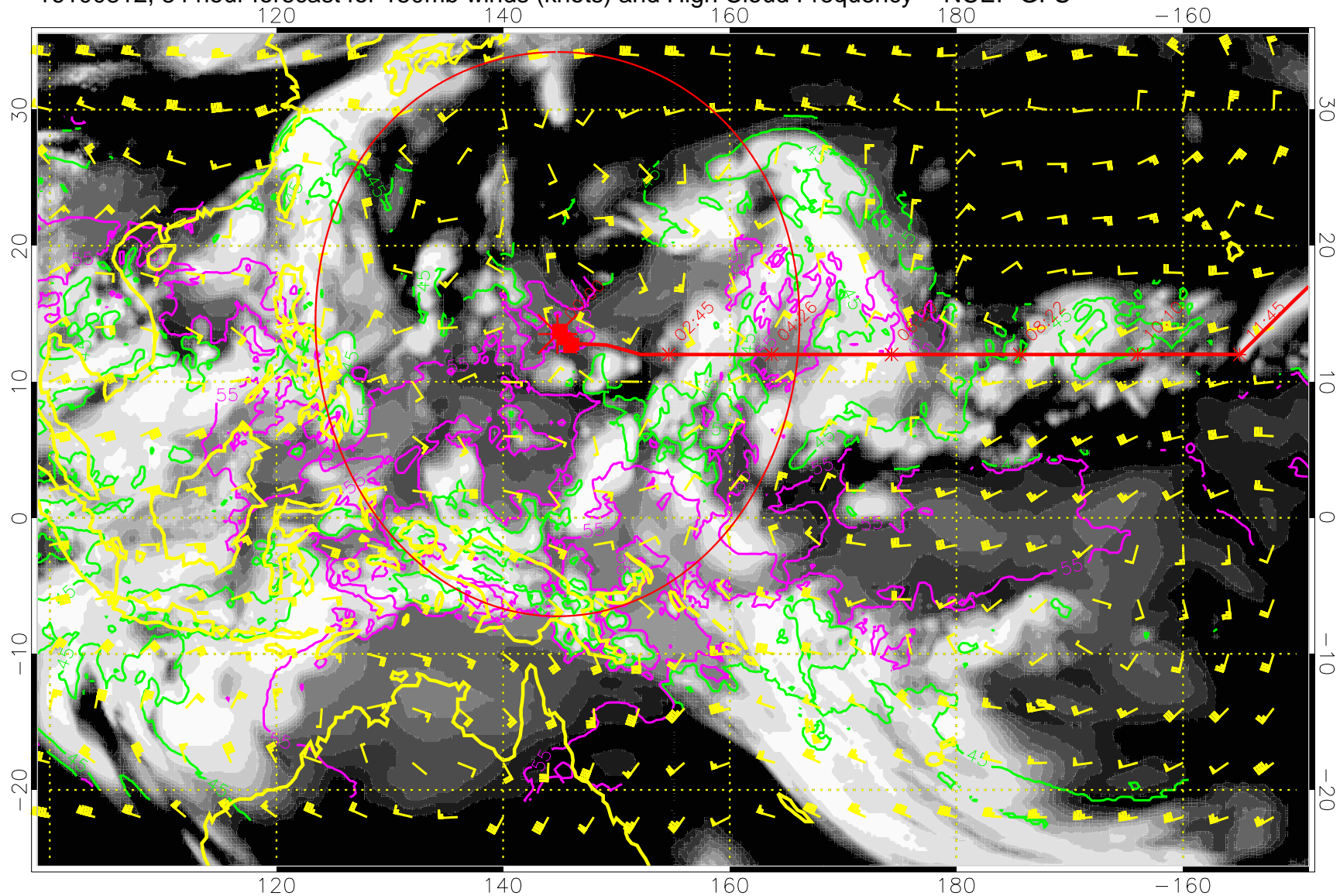
15:53
13:53



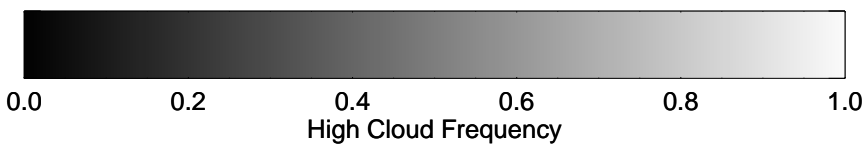
45 kft
55 kft

Range ring of 2304 km

16100812, 84 hour forecast for 150mb winds (knots) and High Cloud Frequency -- NCEP GFS



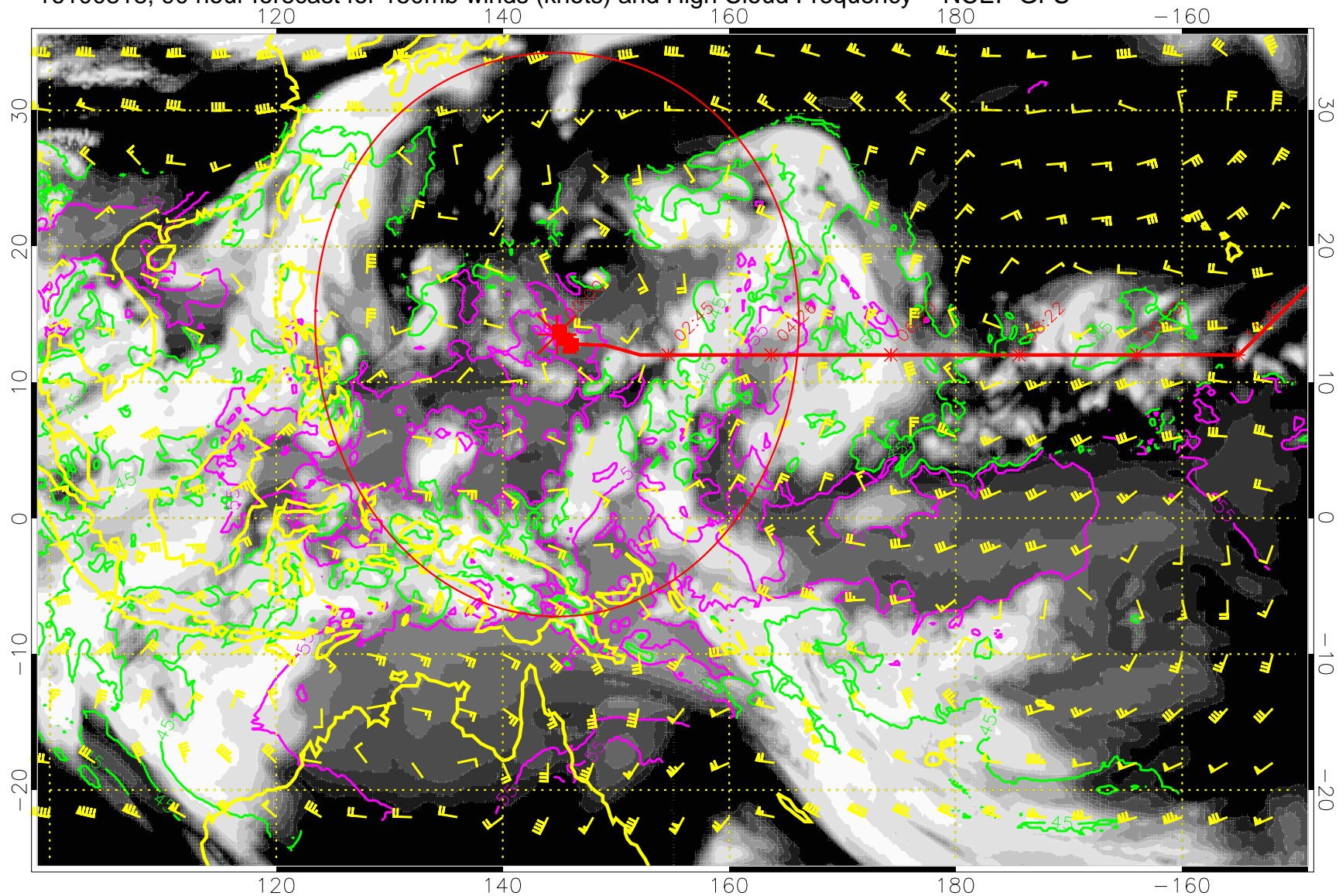
15:53
13:53



45 kft
55 kft

Range ring of 2304 km

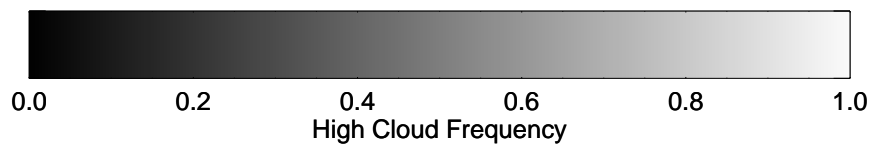
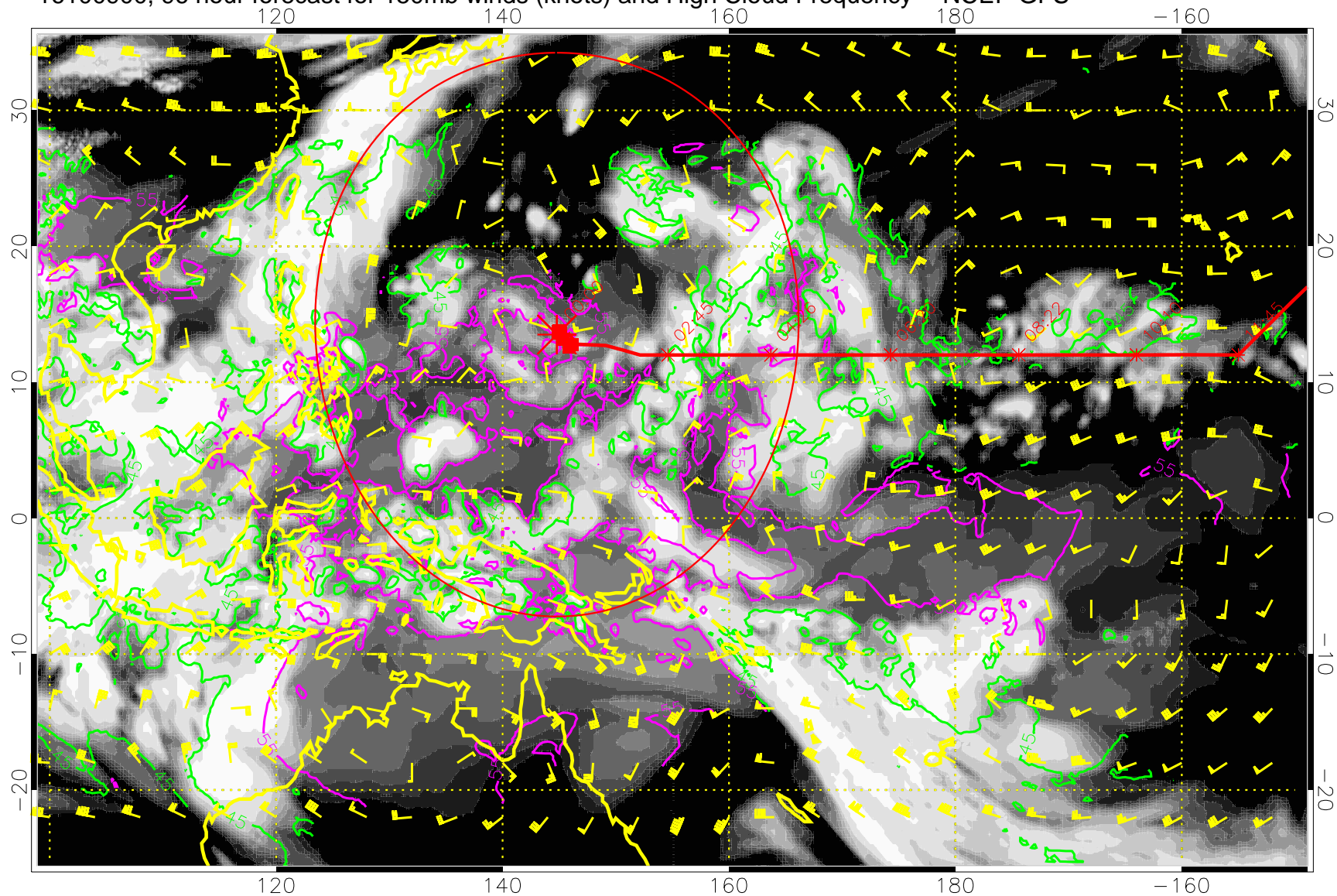
16100818, 90 hour forecast for 150mb winds (knots) and High Cloud Frequency -- NCEP GFS



45 kft
55 kft

Range ring of 2304 km

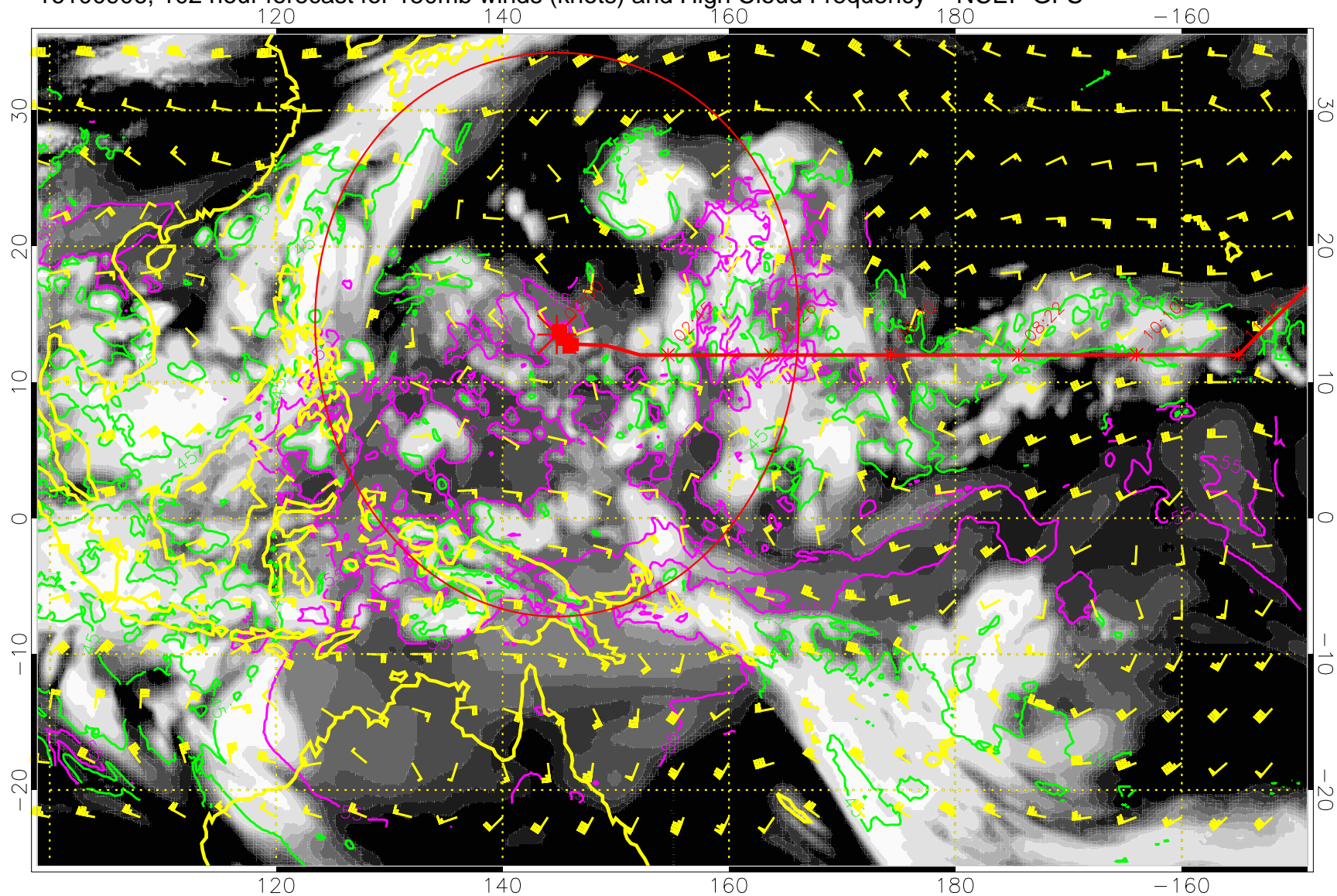
16100900, 96 hour forecast for 150mb winds (knots) and High Cloud Frequency -- NCEP GFS



45 kft
55 kft

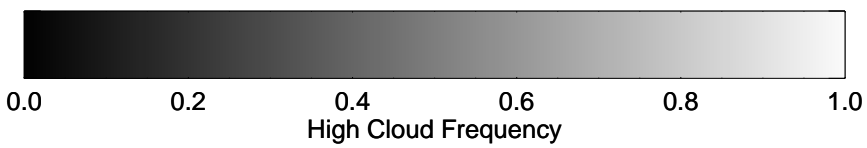
Range ring of 2304 km

16100906, 102 hour forecast for 150mb winds (knots) and High Cloud Frequency -- NCEP GFS



15:53

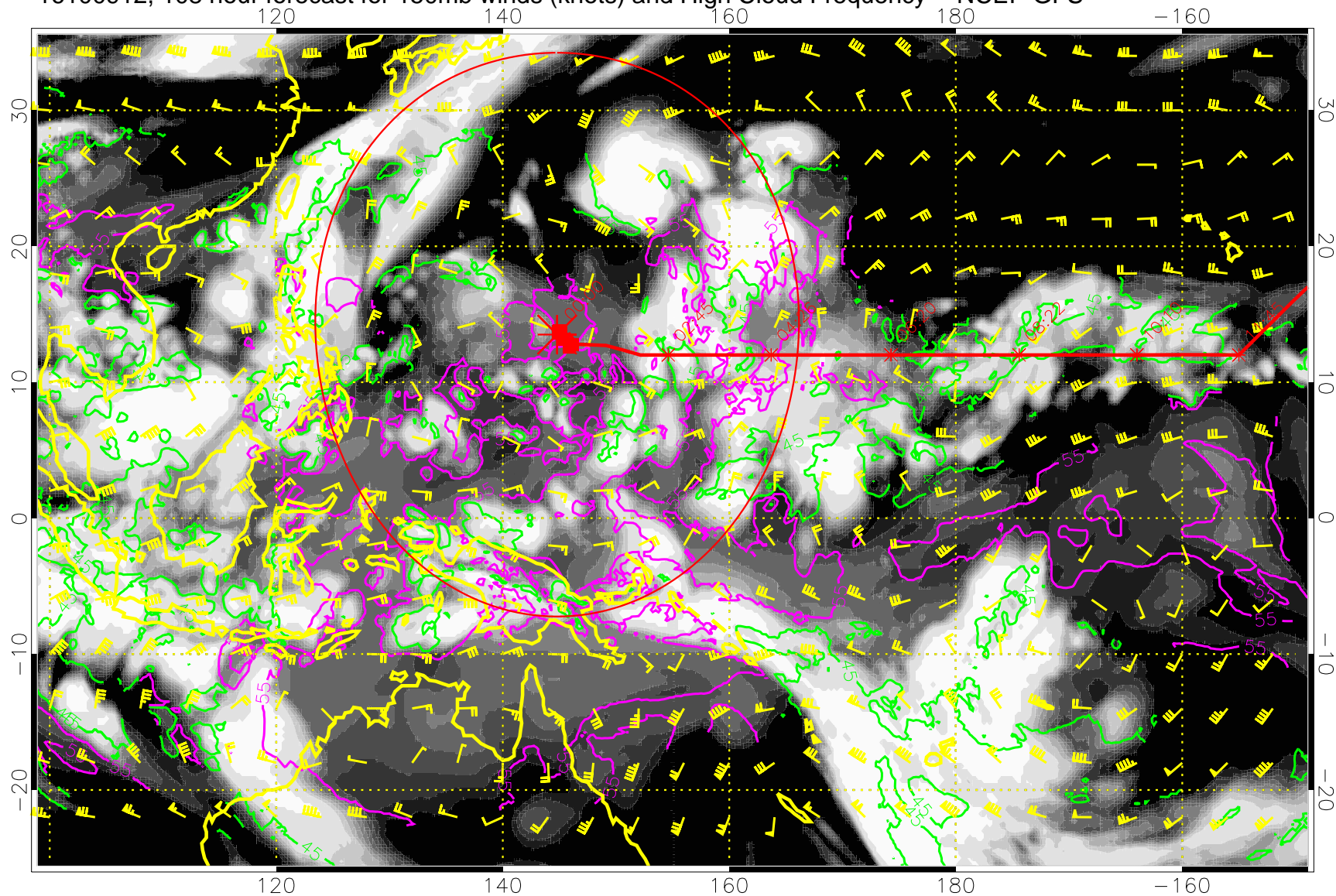
13:53



45 kft
55 kft

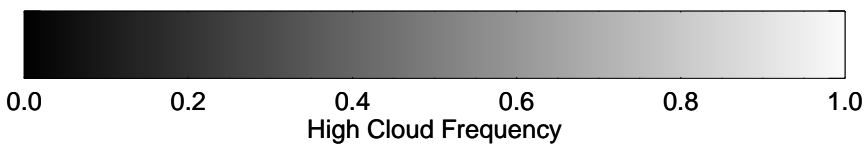
Range ring of 2304 km

16100912, 108 hour forecast for 150mb winds (knots) and High Cloud Frequency -- NCEP GFS



15:53

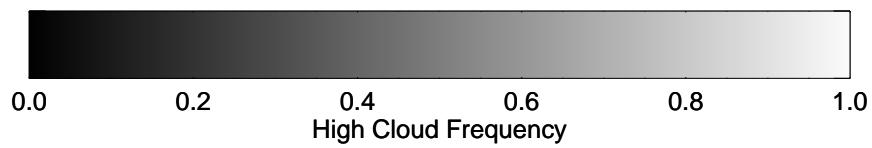
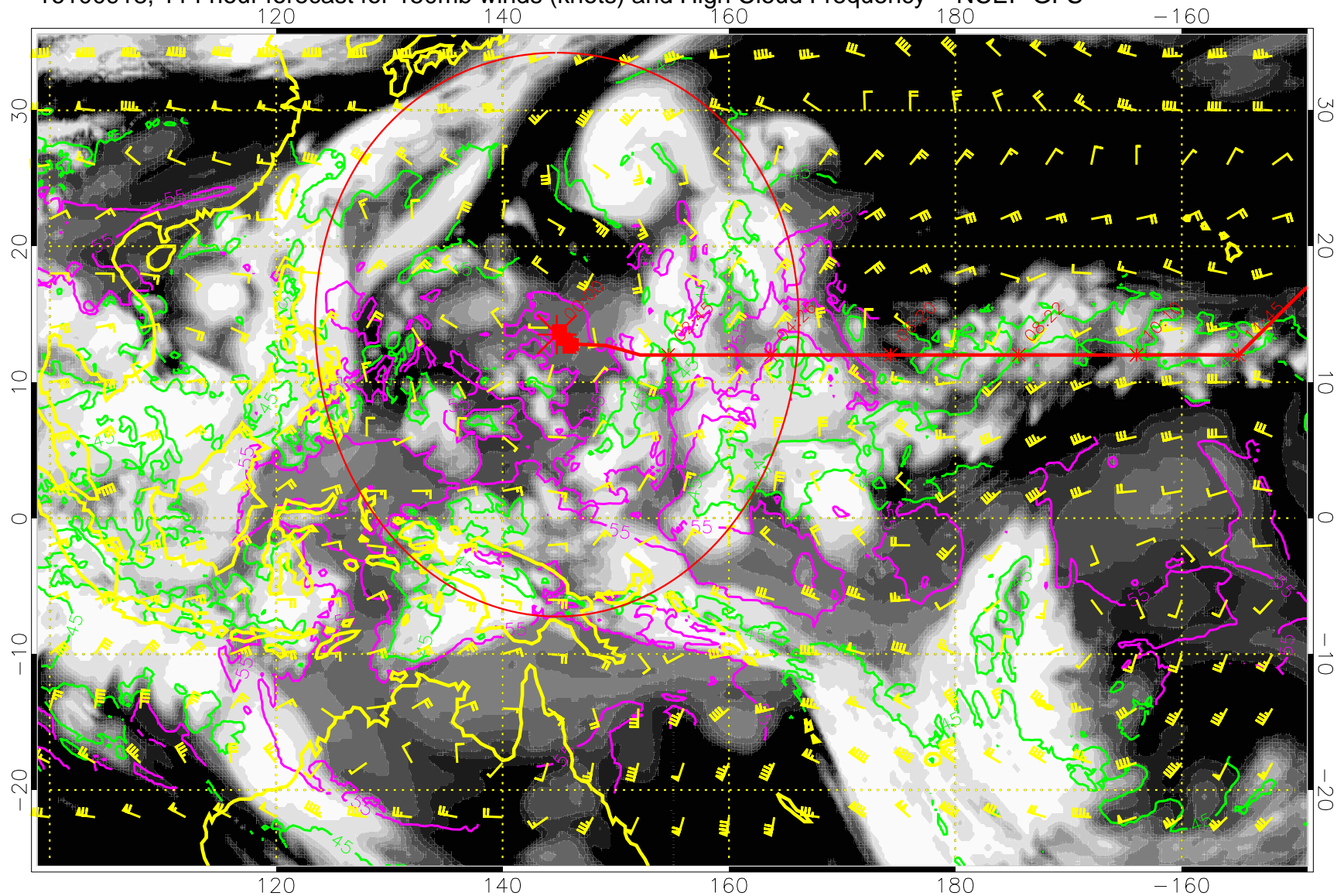
13:53



45 kft
55 kft

Range ring of 2304 km

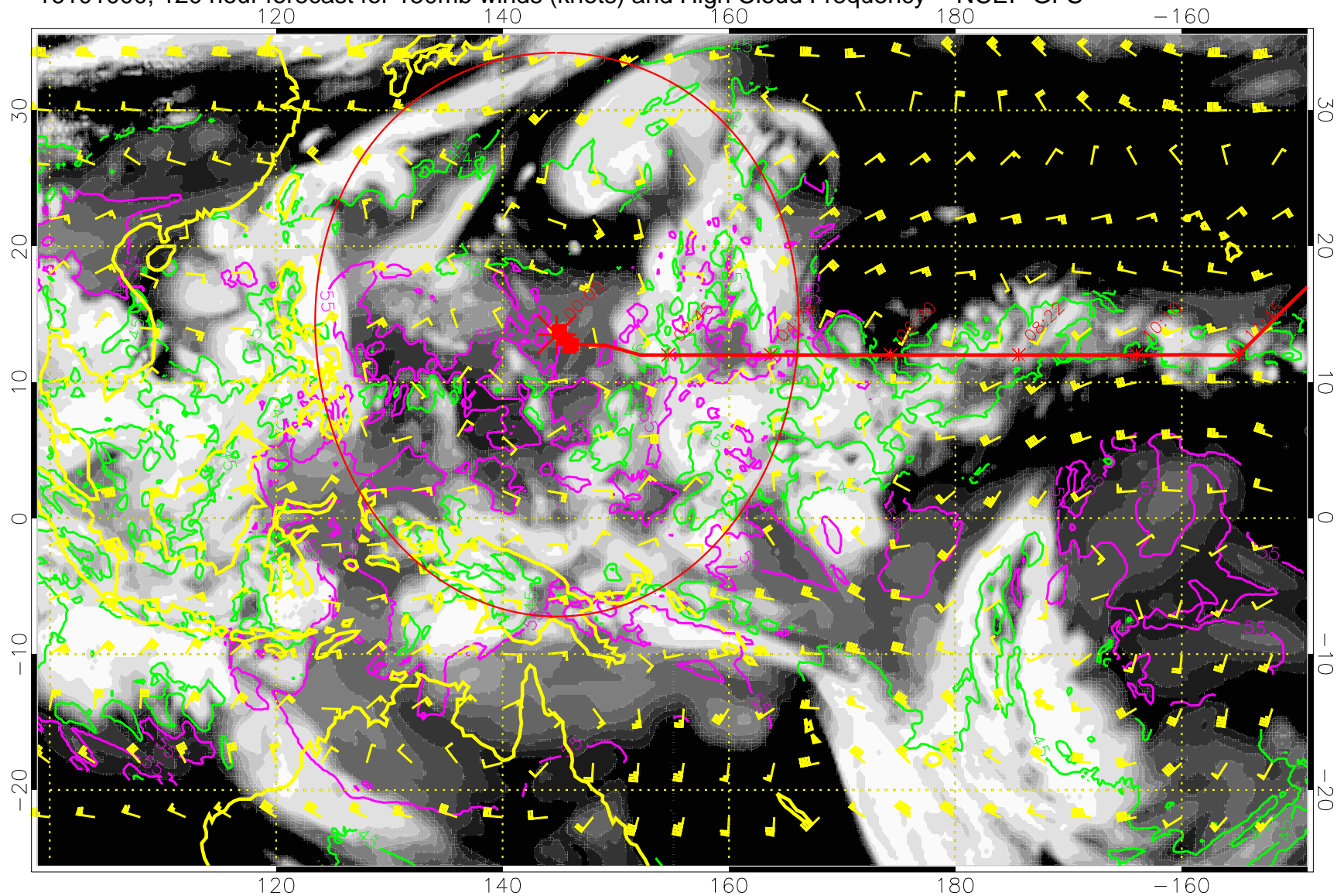
16100918, 114 hour forecast for 150mb winds (knots) and High Cloud Frequency -- NCEP GFS



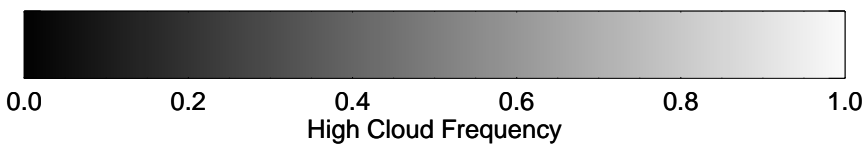
45 kft
55 kft

Range ring of 2304 km

16101000, 120 hour forecast for 150mb winds (knots) and High Cloud Frequency -- NCEP GFS



15:53
13:53



45 kft
55 kft

Range ring of 2304 km