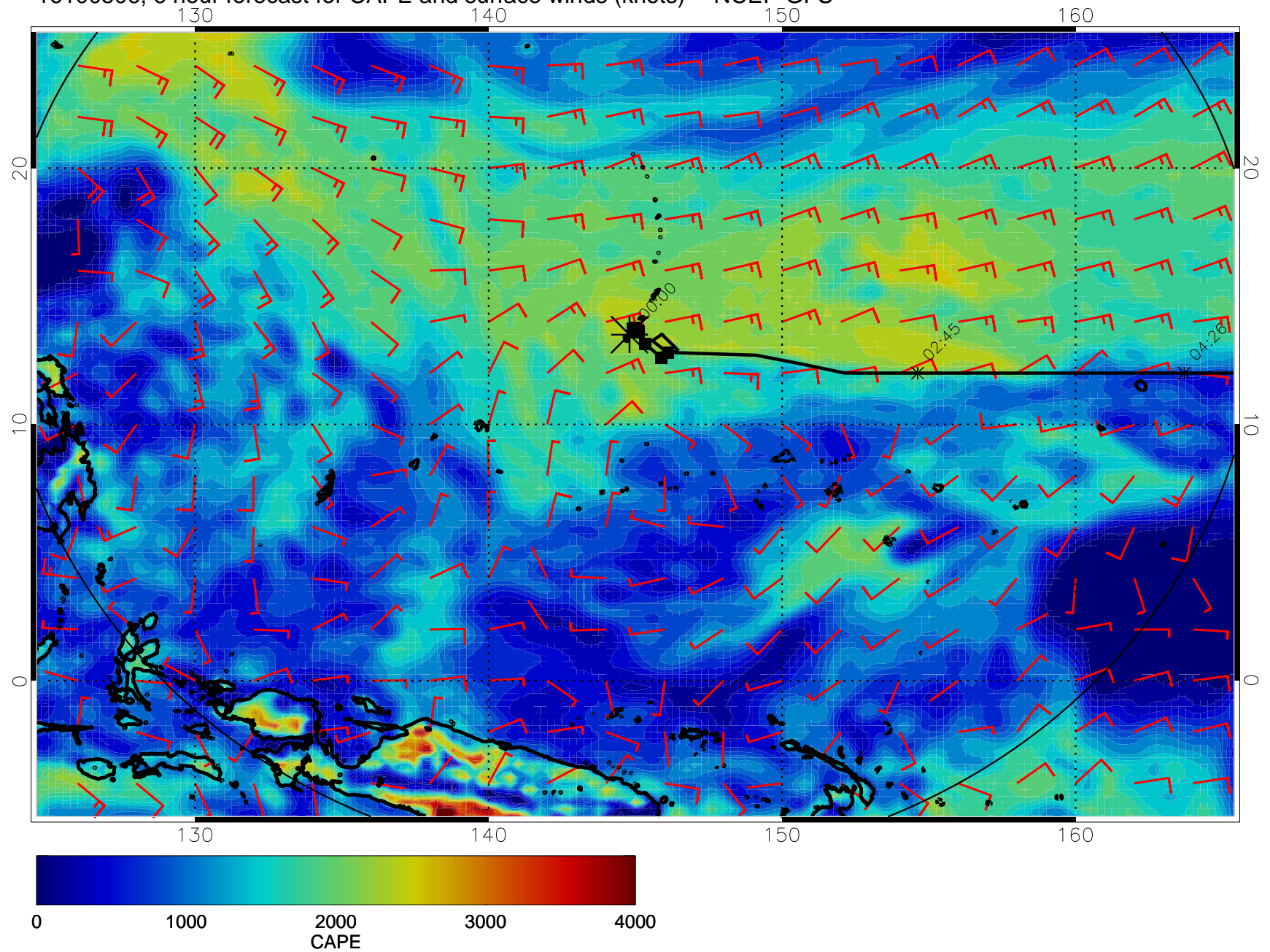
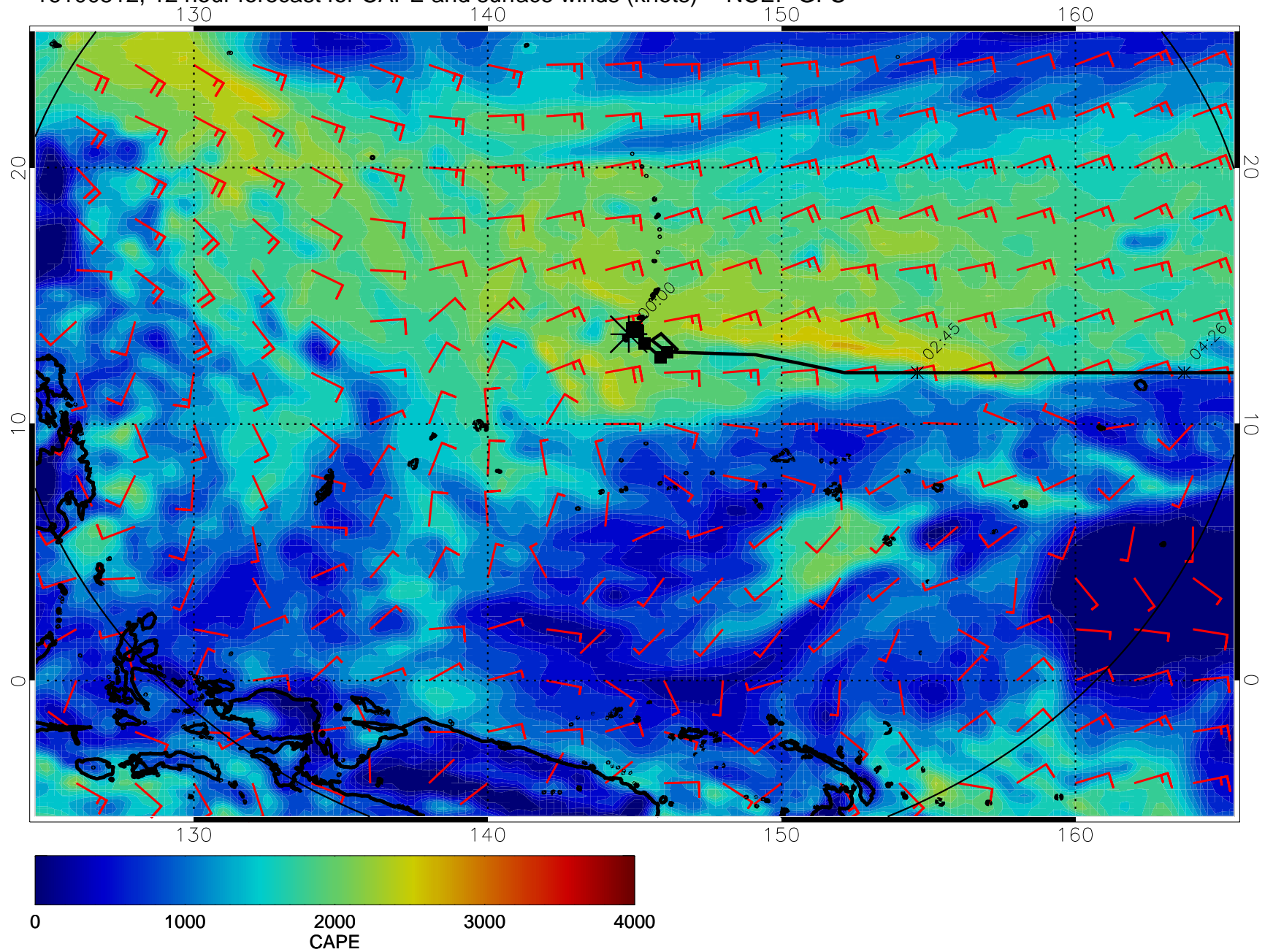


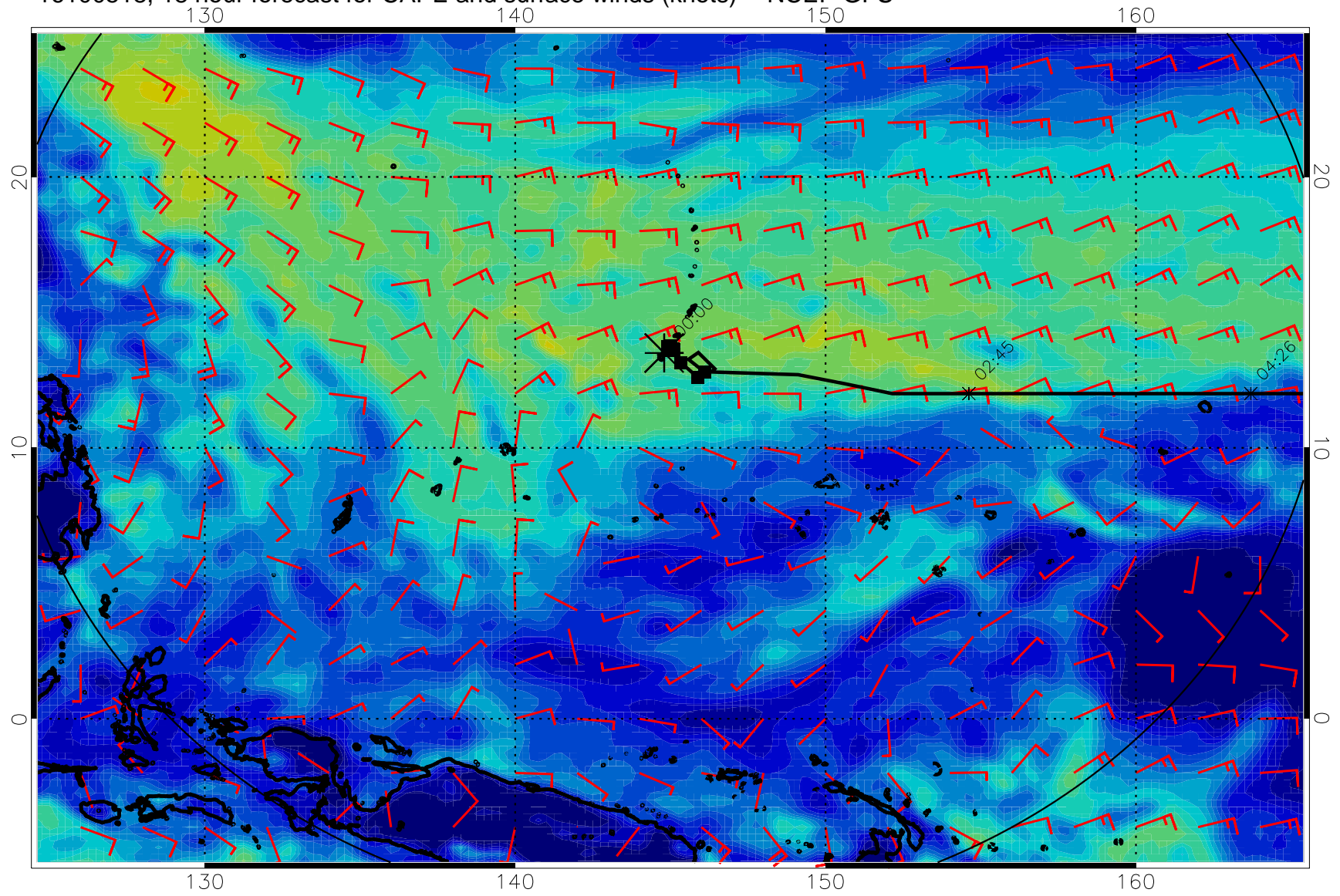
16100506, 6 hour forecast for CAPE and surface winds (knots) -- NCEP GFS



16100512, 12 hour forecast for CAPE and surface winds (knots) -- NCEP GFS

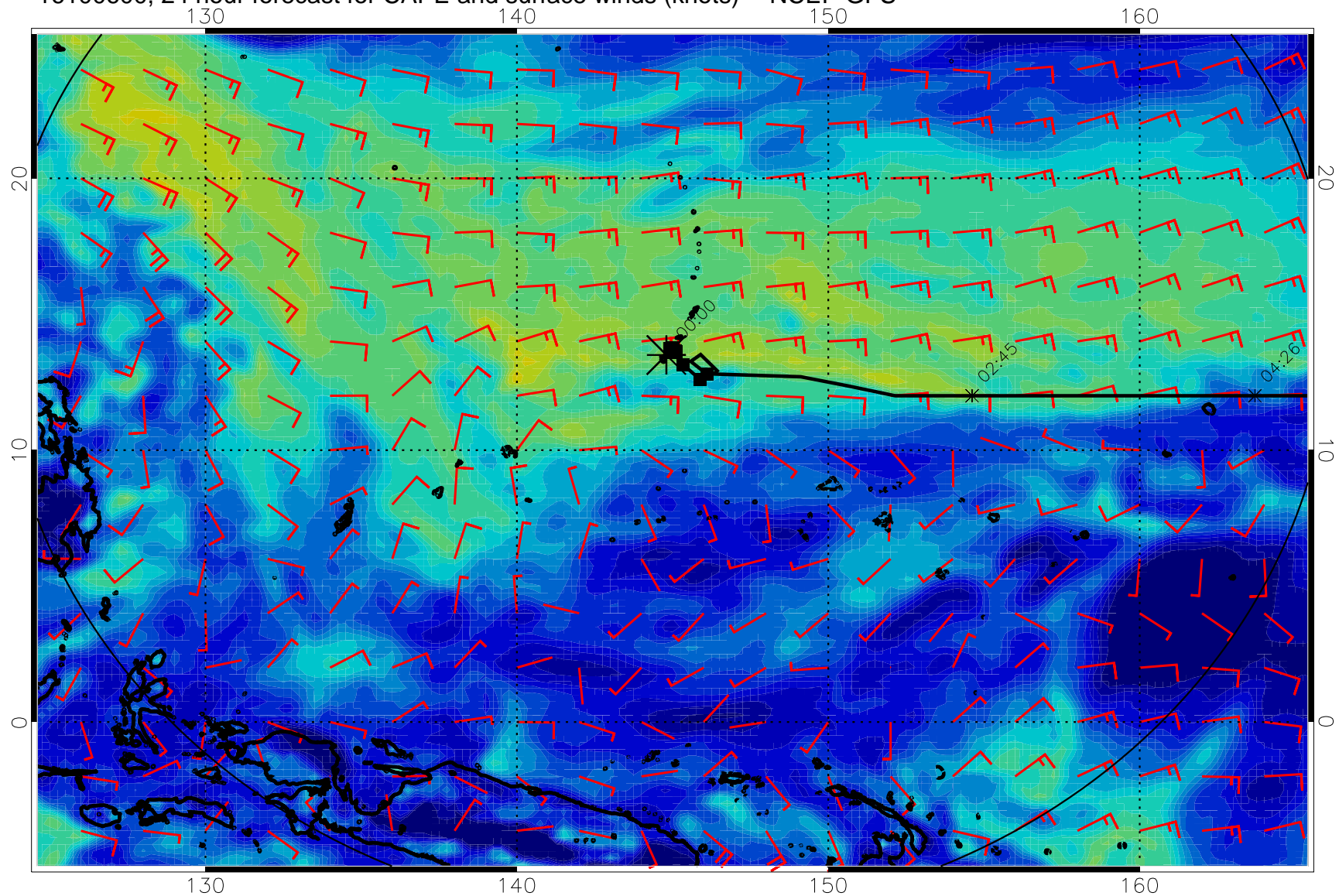


16100518, 18 hour forecast for CAPE and surface winds (knots) -- NCEP GFS



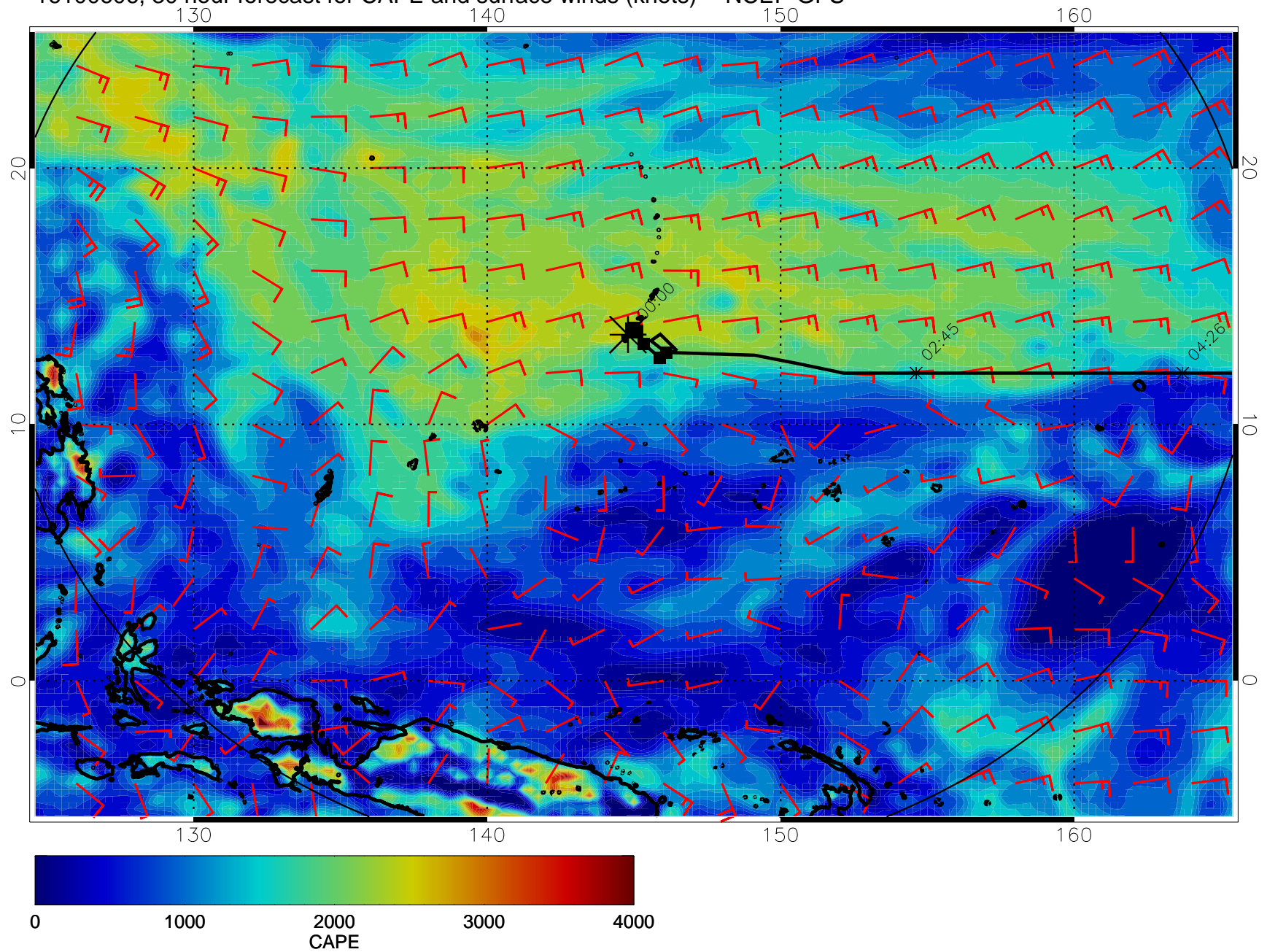


16100600, 24 hour forecast for CAPE and surface winds (knots) -- NCEP GFS

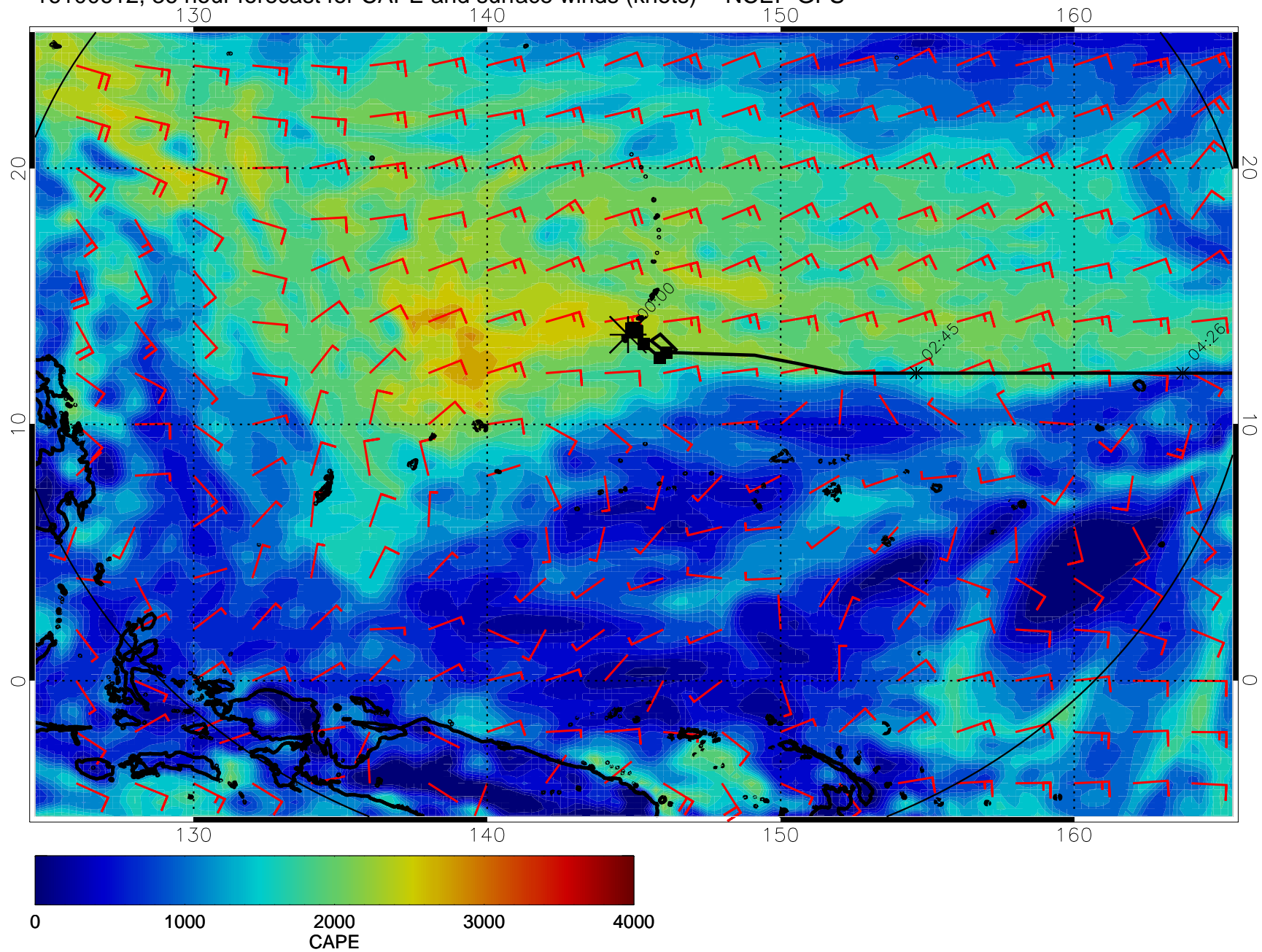




16100606, 30 hour forecast for CAPE and surface winds (knots) -- NCEP GFS

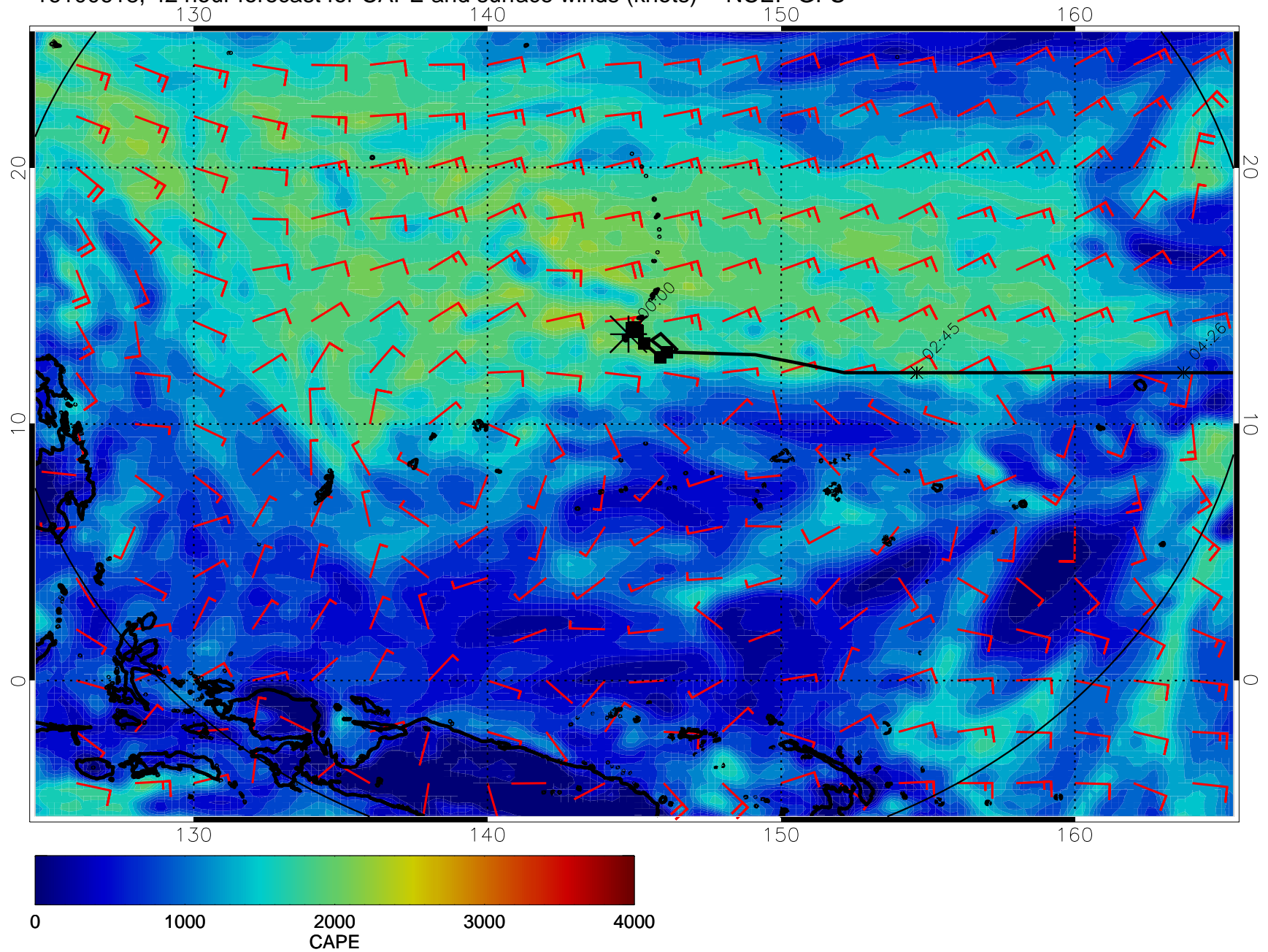


16100612, 36 hour forecast for CAPE and surface winds (knots) -- NCEP GFS



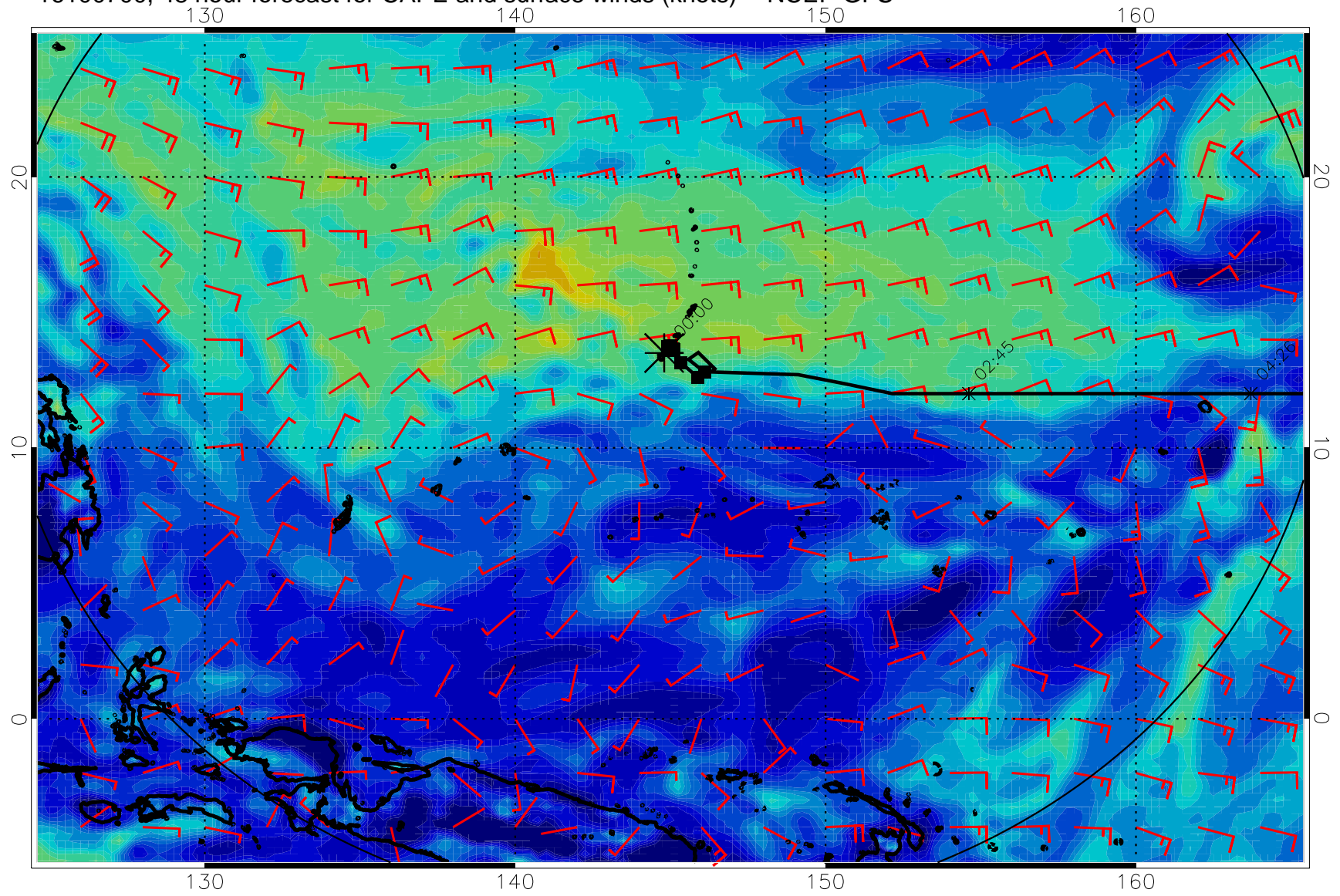


16100618, 42 hour forecast for CAPE and surface winds (knots) -- NCEP GFS

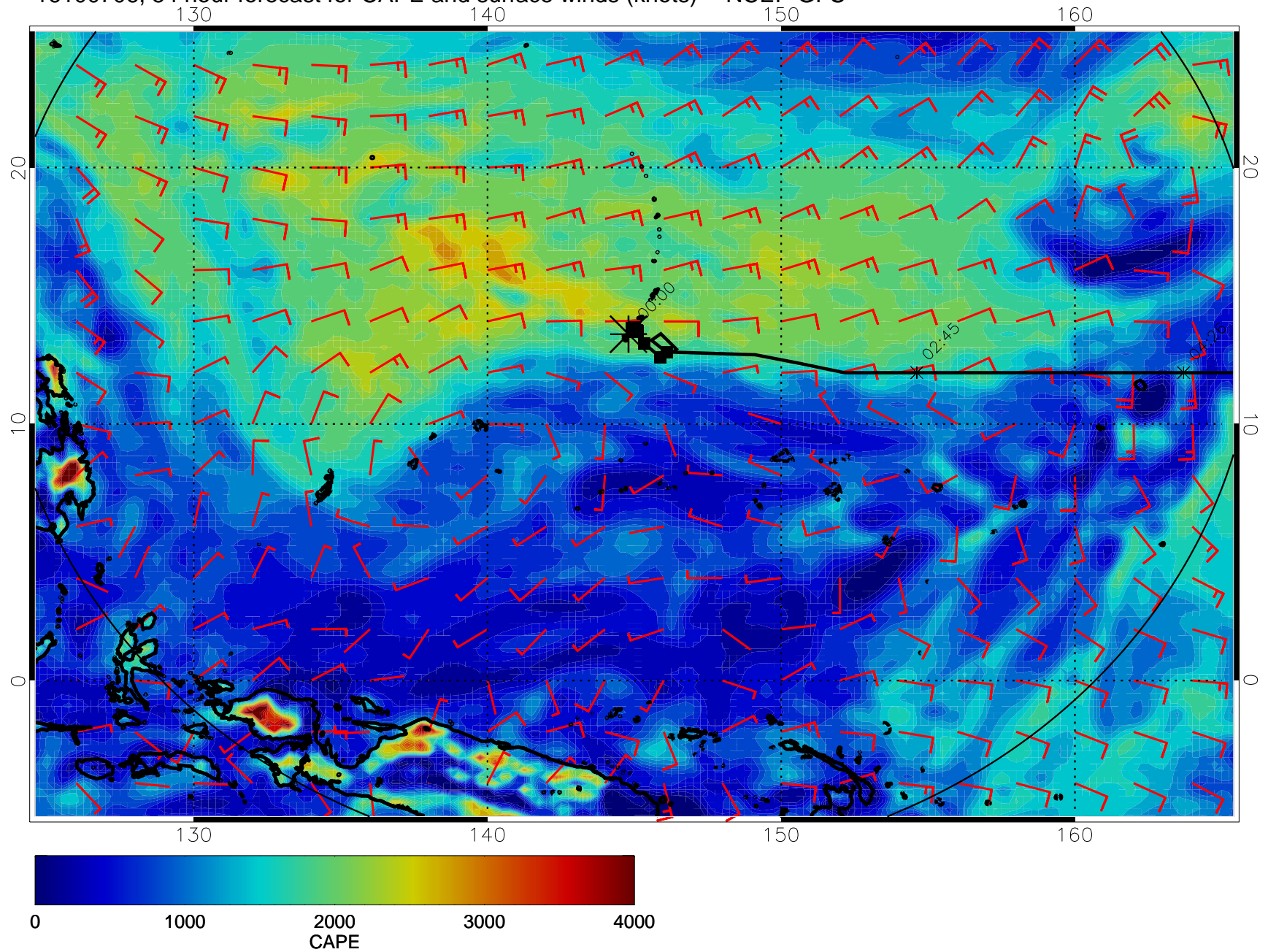




16100700, 48 hour forecast for CAPE and surface winds (knots) -- NCEP GFS

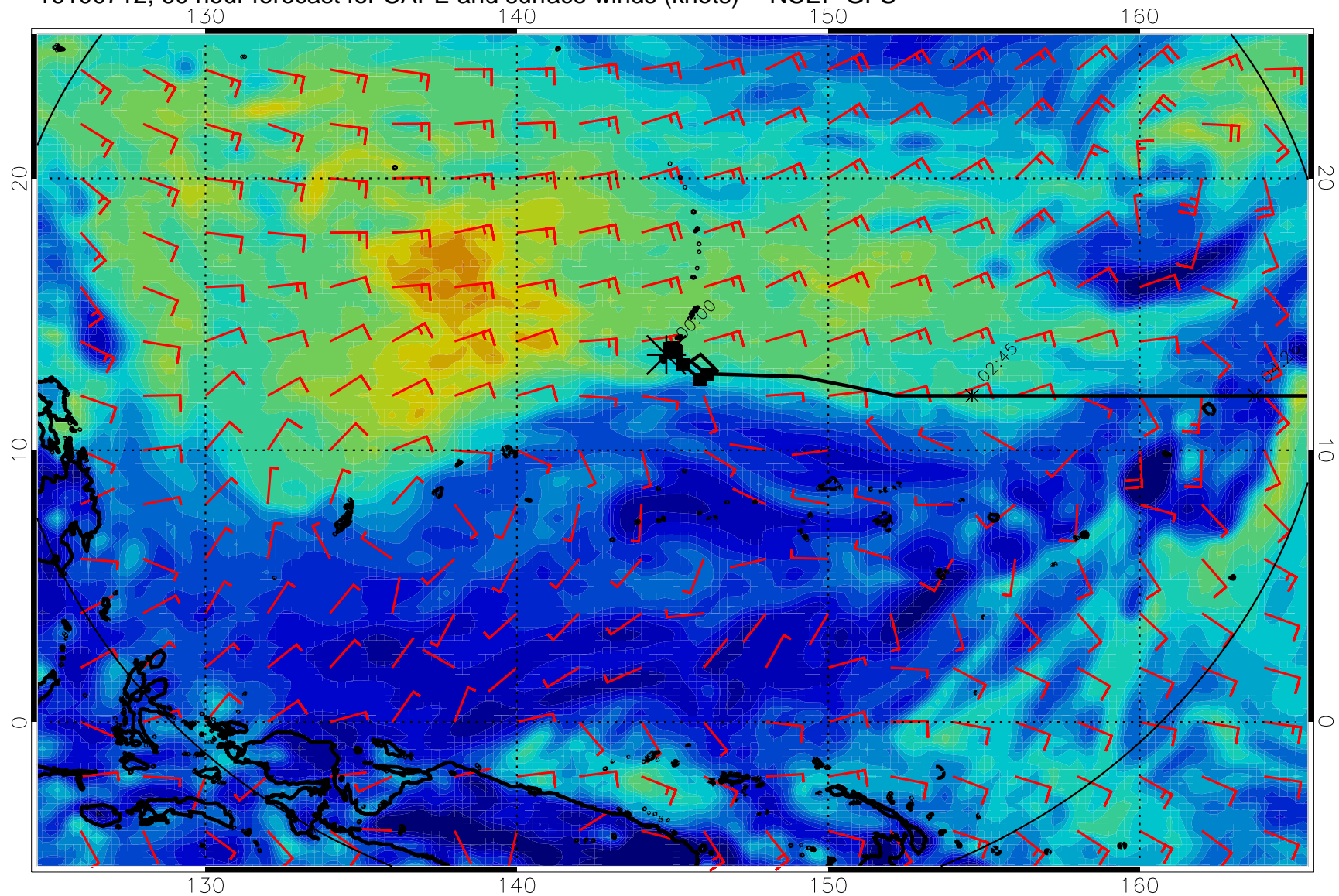


16100706, 54 hour forecast for CAPE and surface winds (knots) -- NCEP GFS



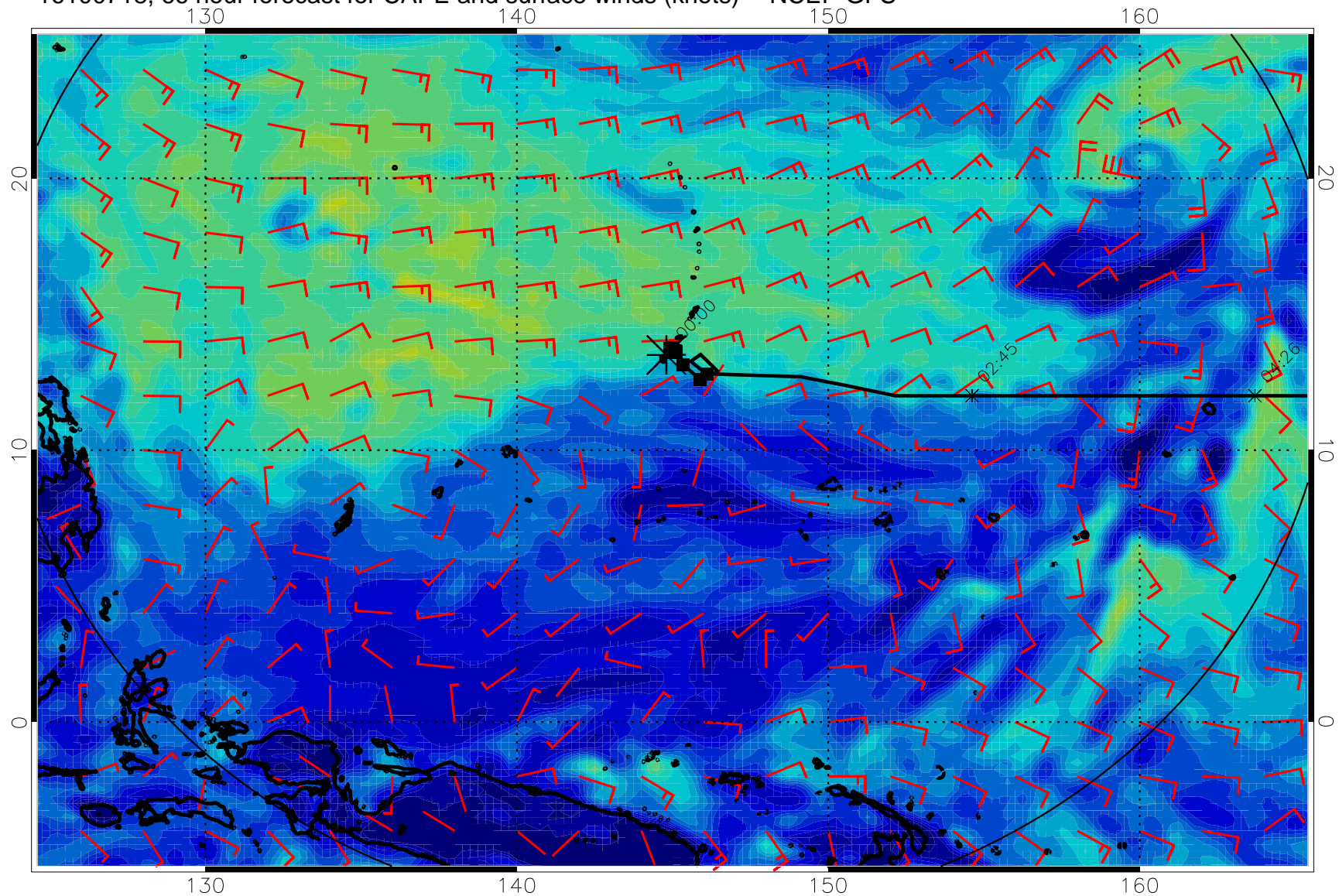


16100712, 60 hour forecast for CAPE and surface winds (knots) -- NCEP GFS

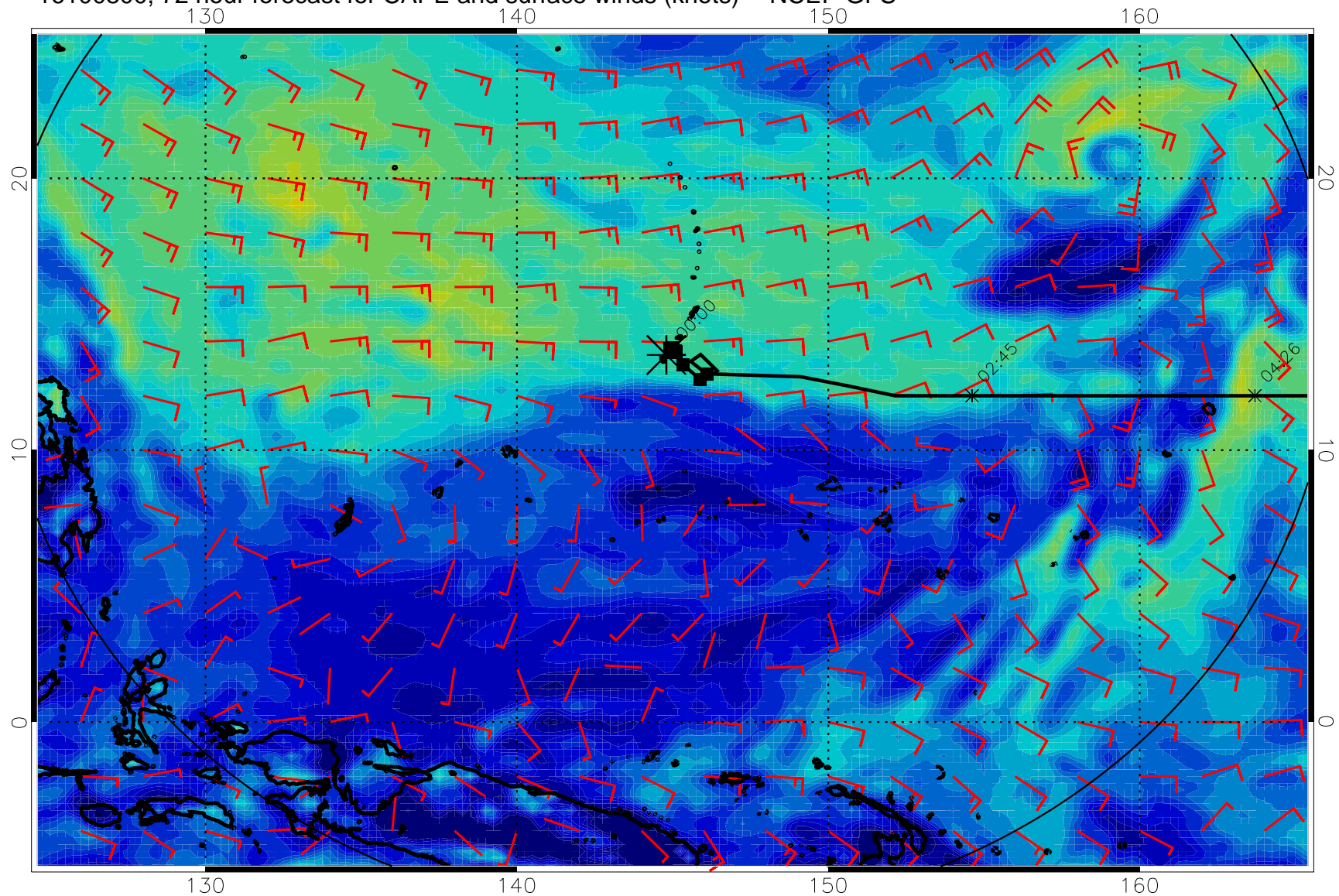




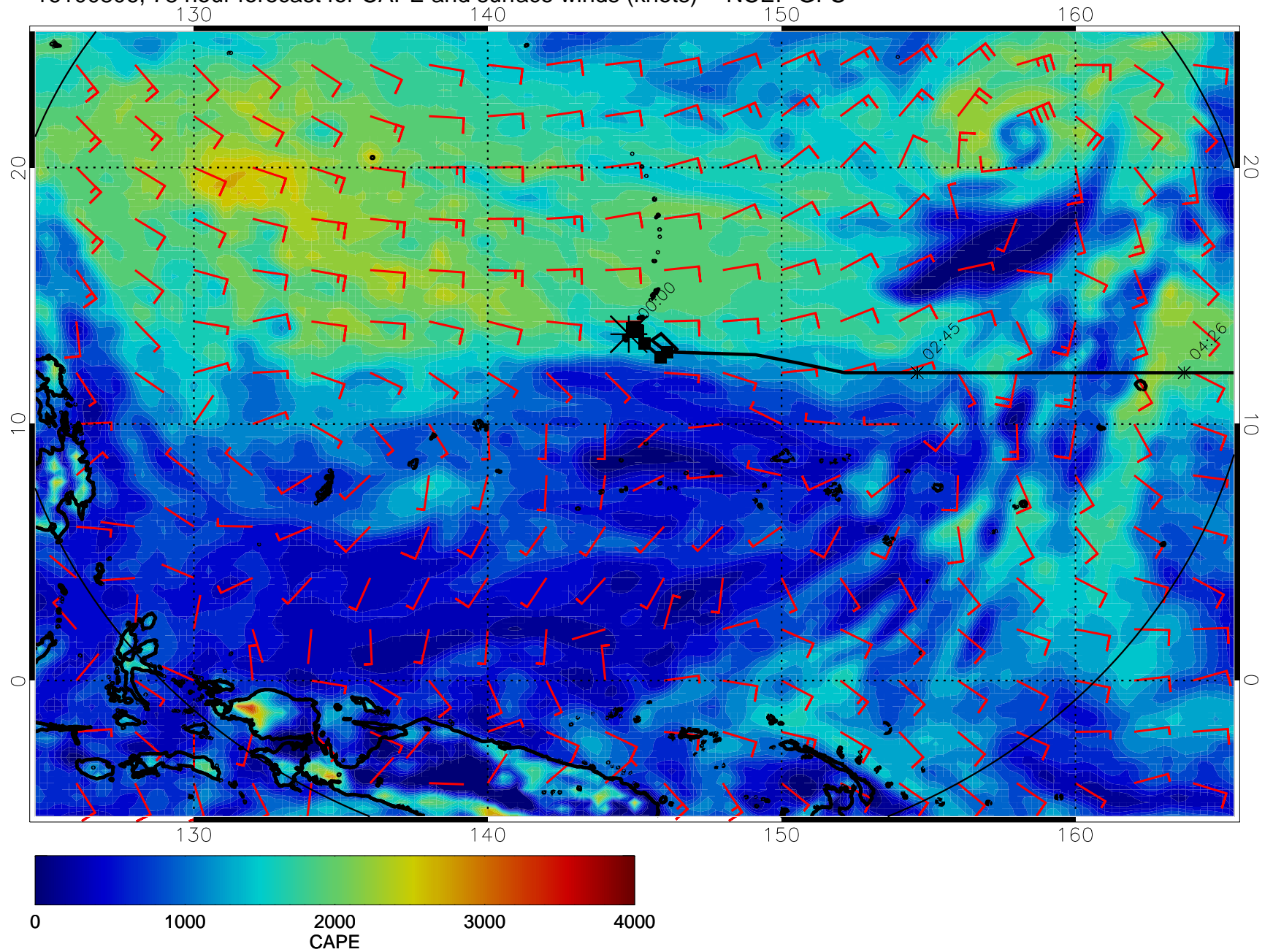
16100718, 66 hour forecast for CAPE and surface winds (knots) -- NCEP GFS



16100800, 72 hour forecast for CAPE and surface winds (knots) -- NCEP GFS

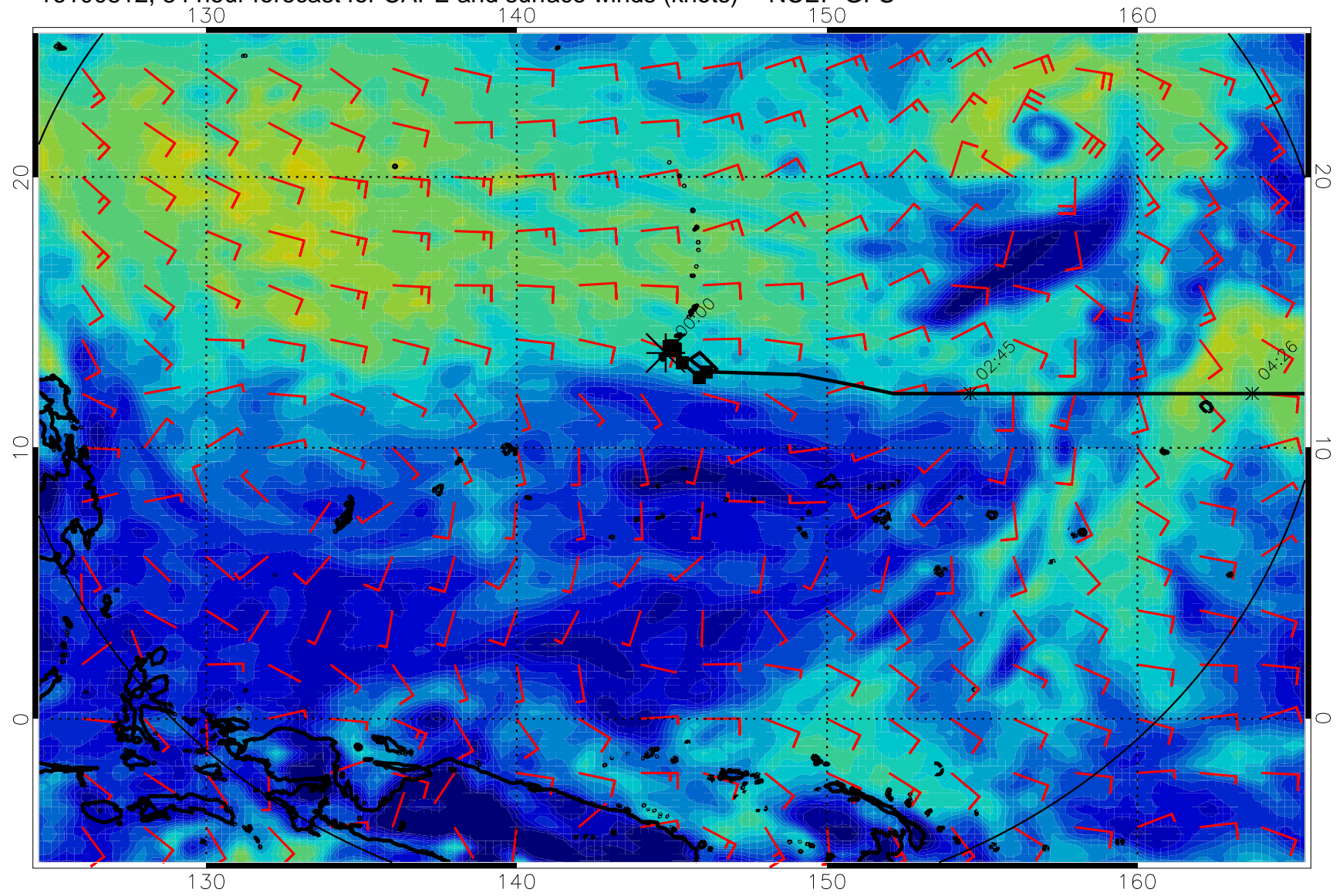


16100806, 78 hour forecast for CAPE and surface winds (knots) -- NCEP GFS

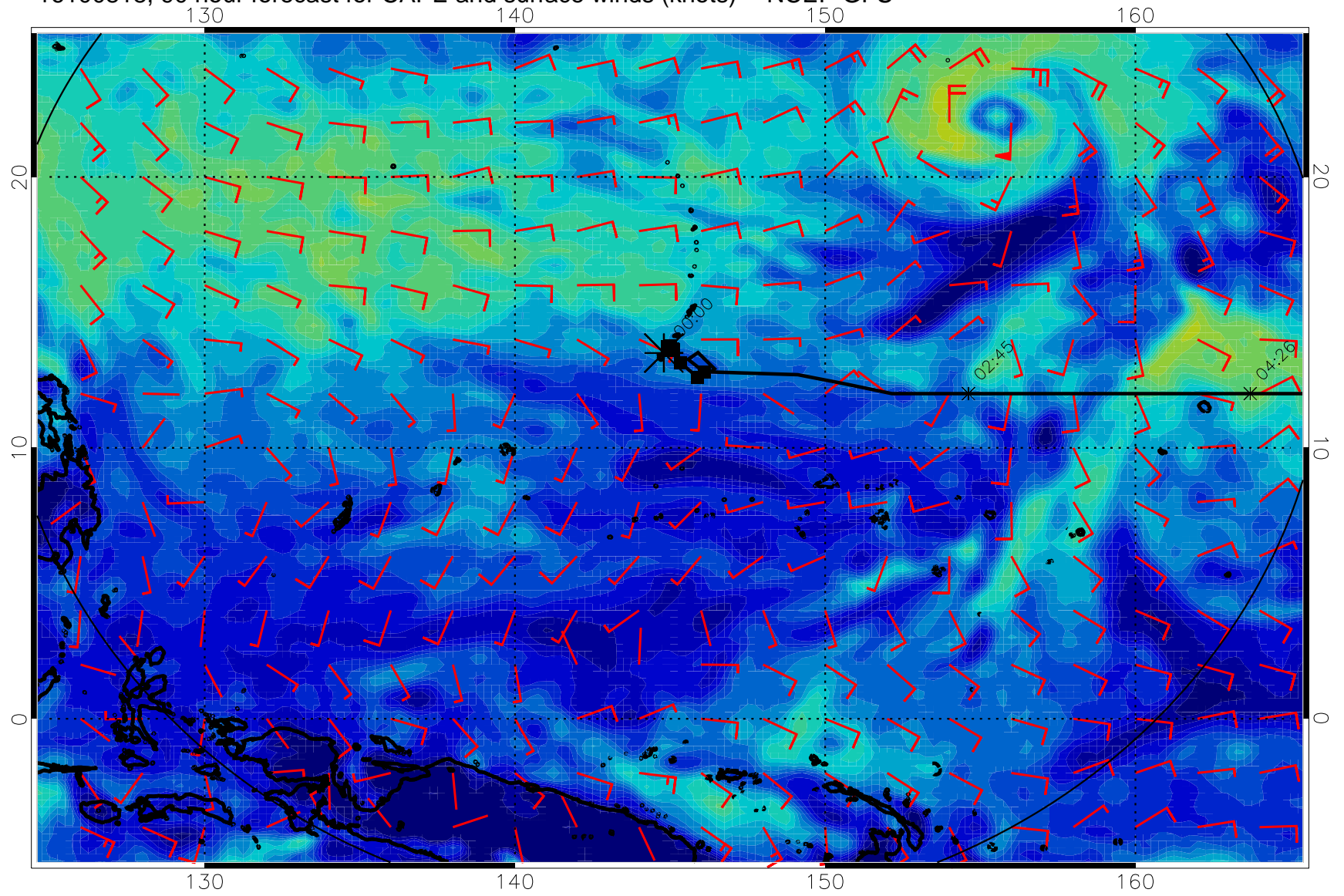




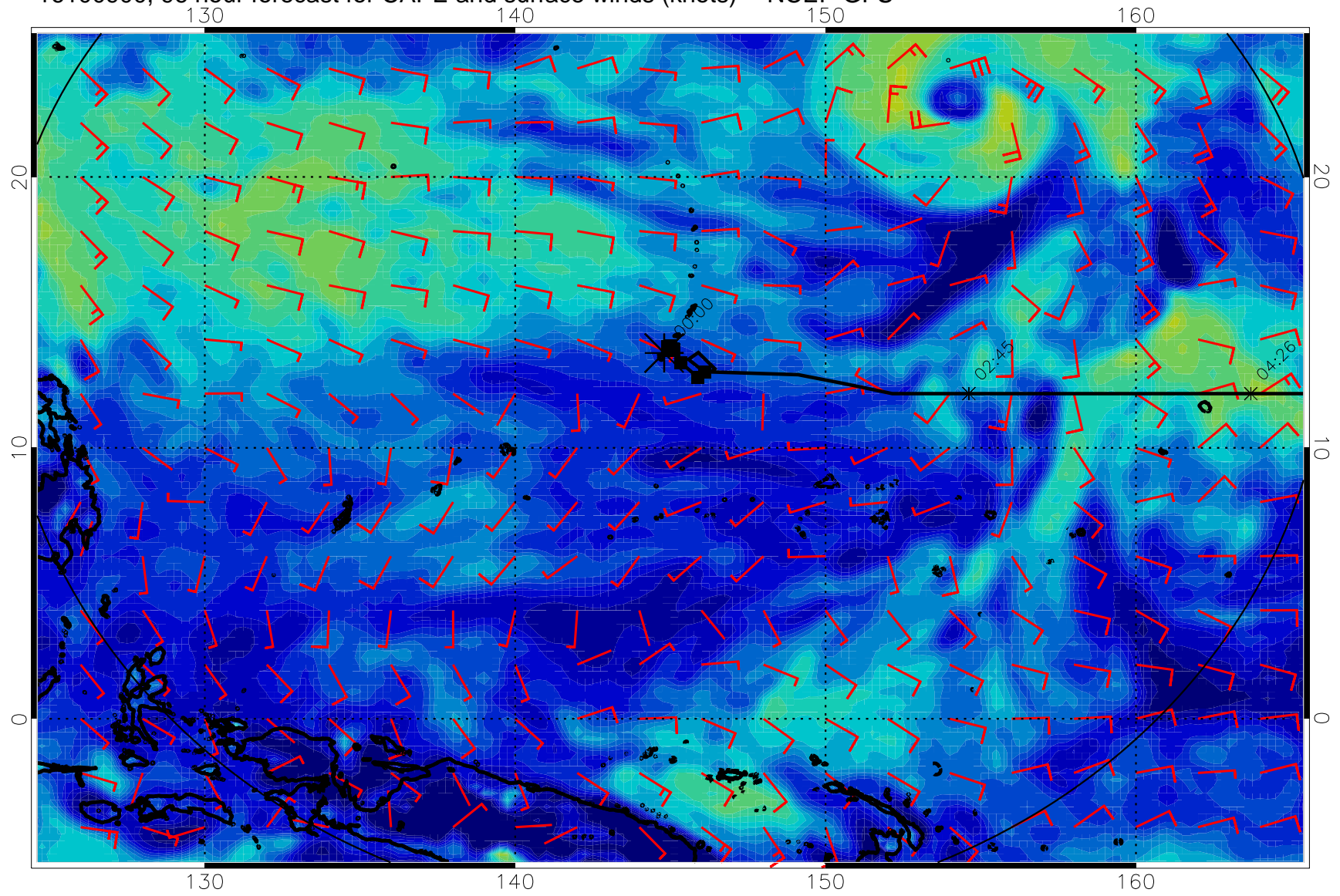
16100812, 84 hour forecast for CAPE and surface winds (knots) -- NCEP GFS



16100818, 90 hour forecast for CAPE and surface winds (knots) -- NCEP GFS

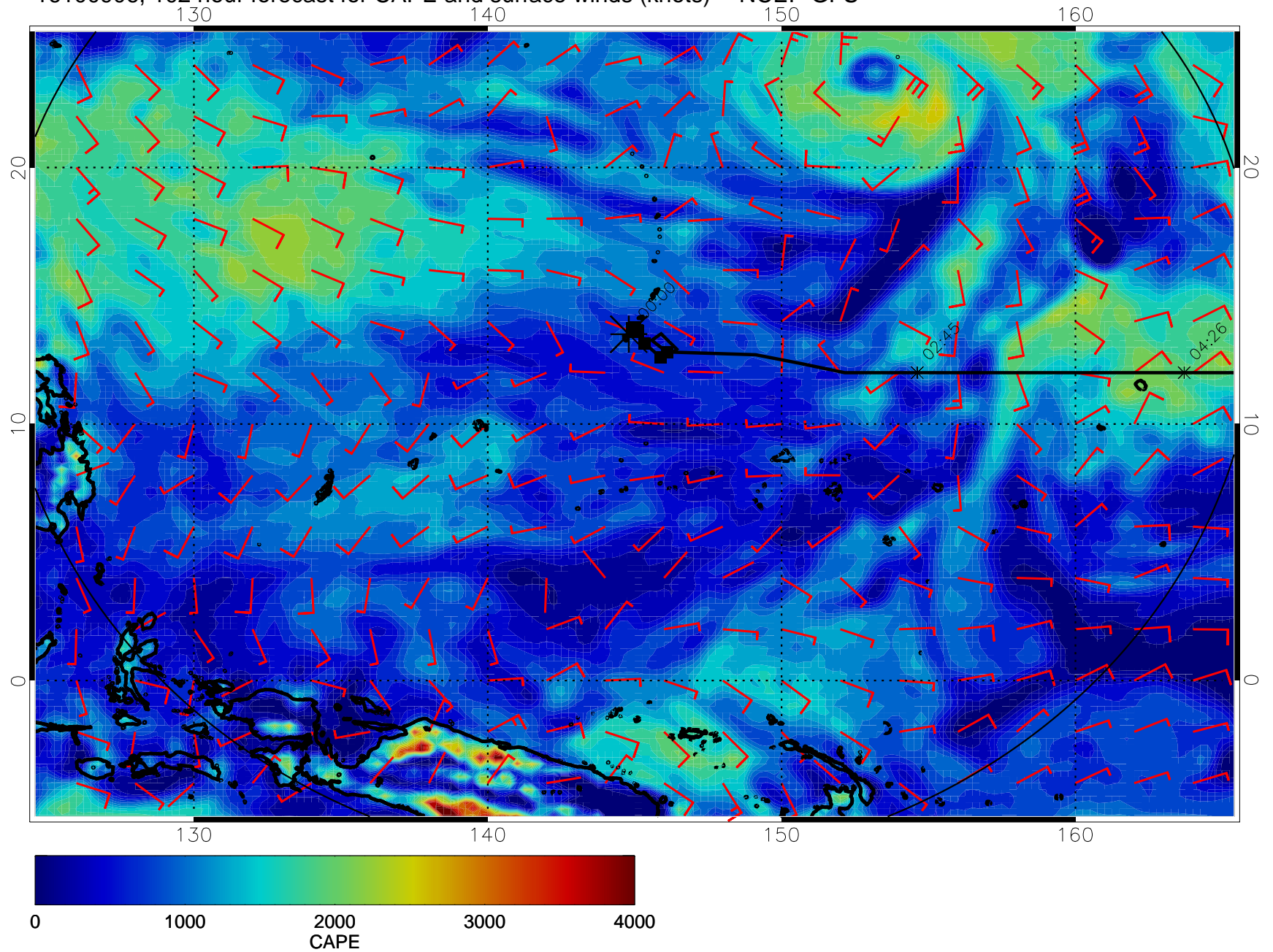


16100900, 96 hour forecast for CAPE and surface winds (knots) -- NCEP GFS

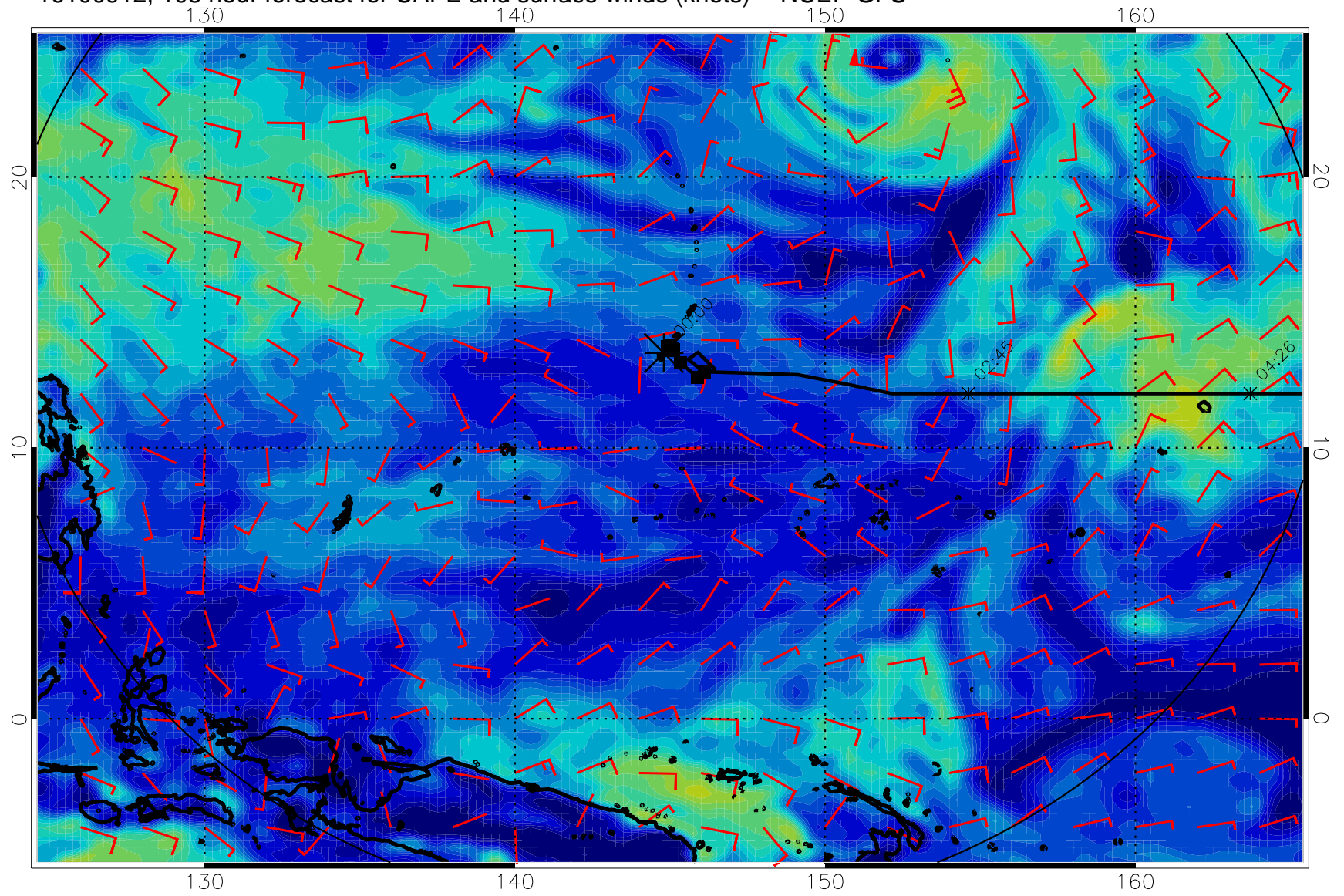




16100906, 102 hour forecast for CAPE and surface winds (knots) -- NCEP GFS

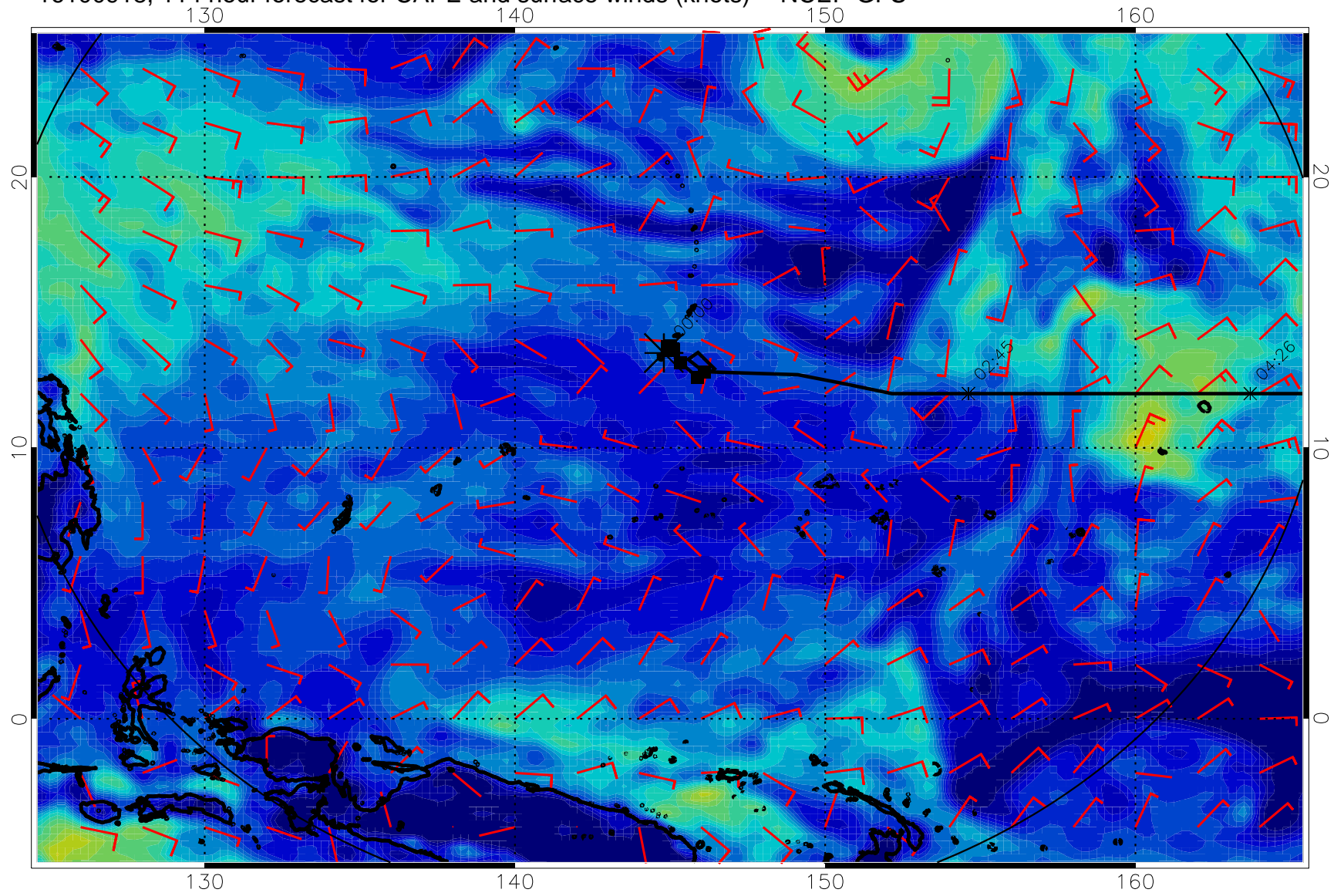


16100912, 108 hour forecast for CAPE and surface winds (knots) -- NCEP GFS





16100918, 114 hour forecast for CAPE and surface winds (knots) -- NCEP GFS





16101000, 120 hour forecast for CAPE and surface winds (knots) -- NCEP GFS

