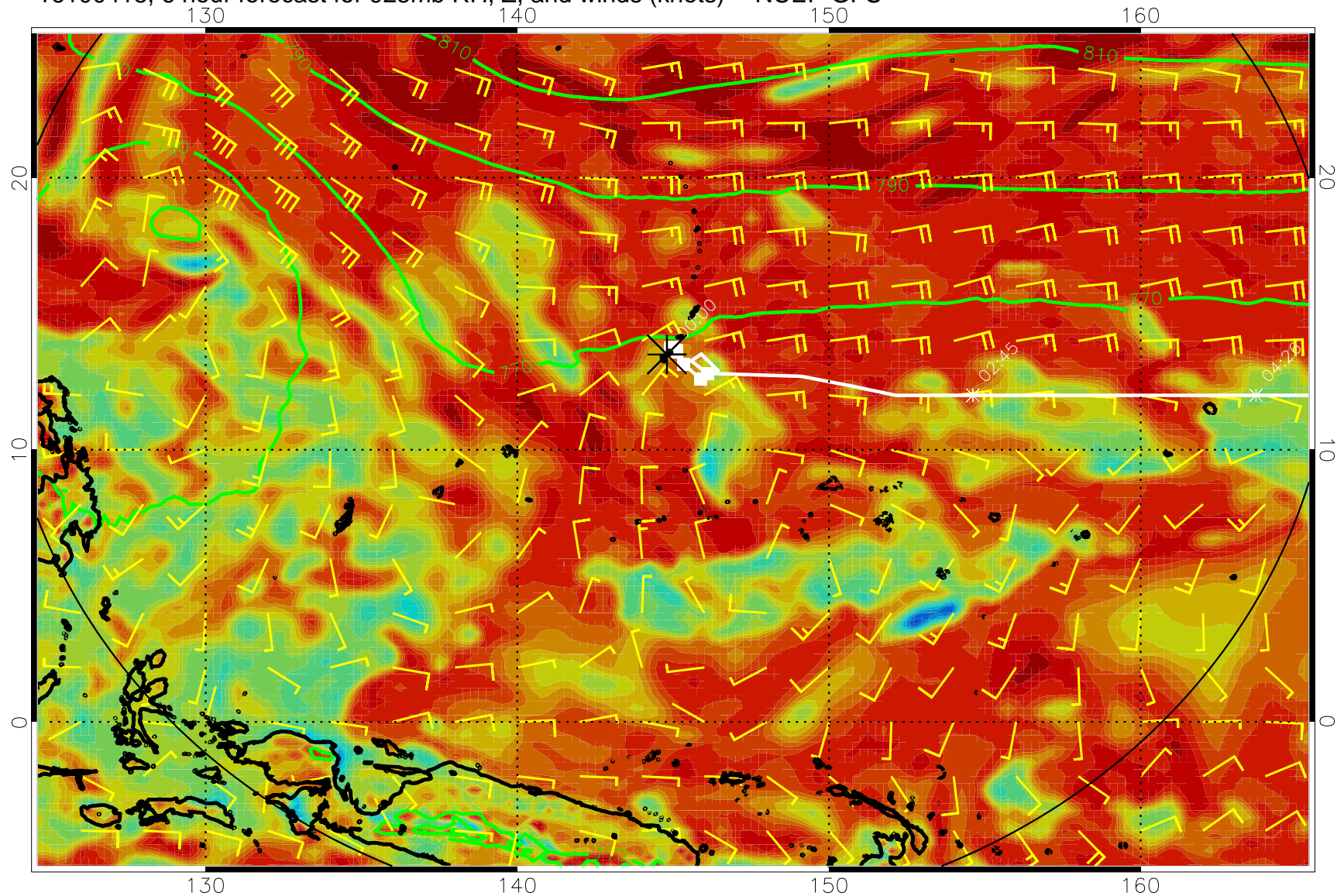
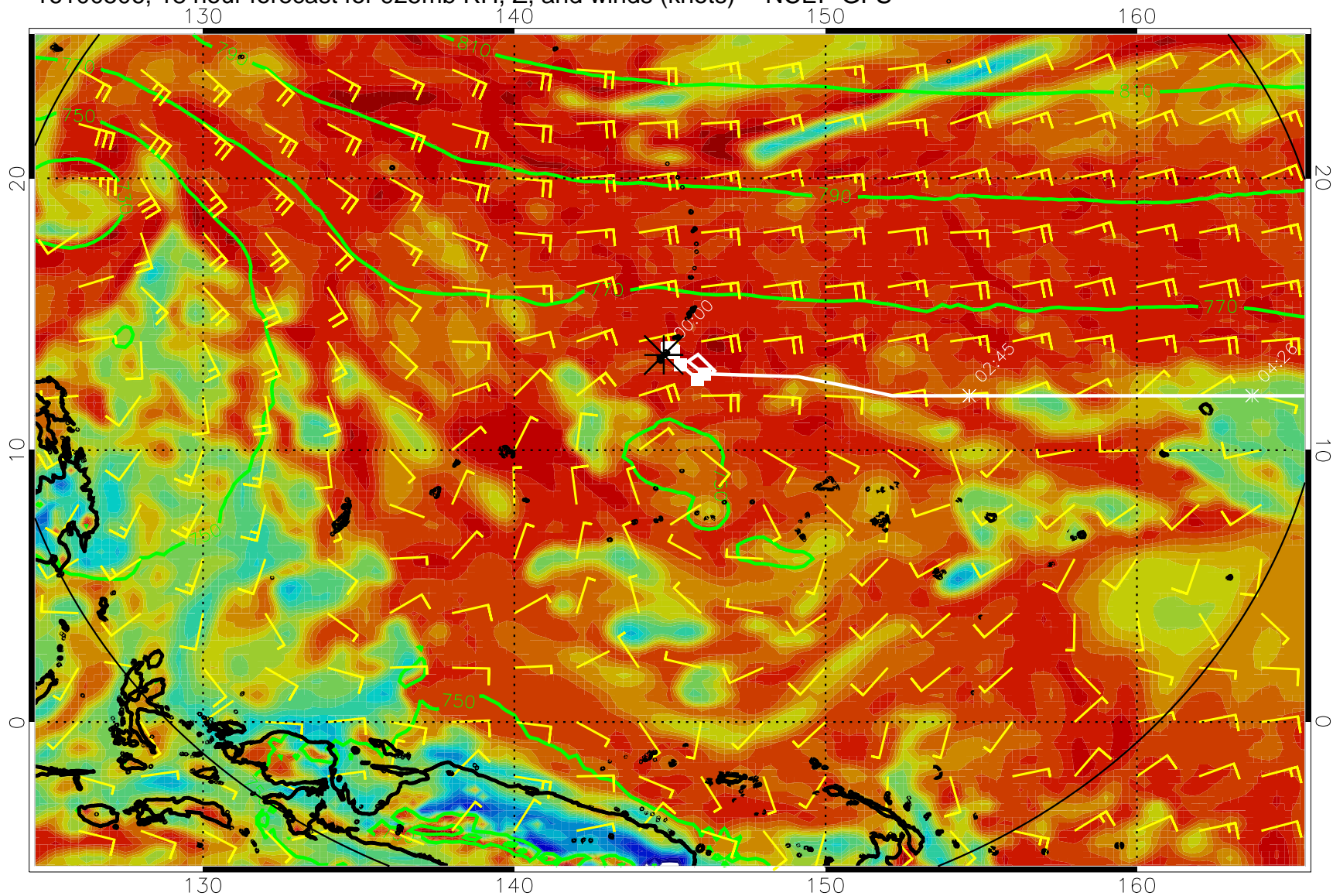


16100418, 6 hour forecast for 925mb RH, Z, and winds (knots) -- NCEP GFS

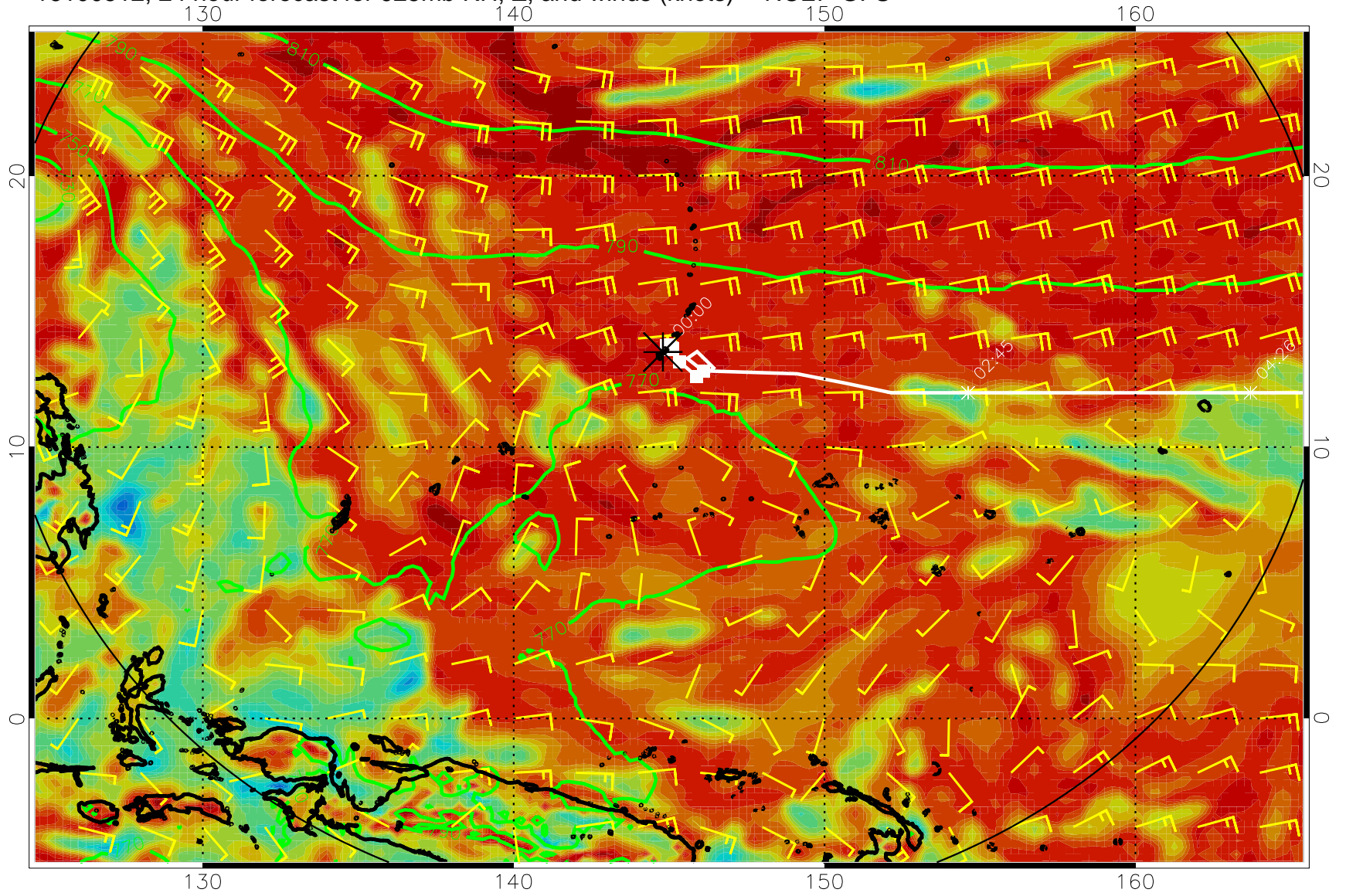




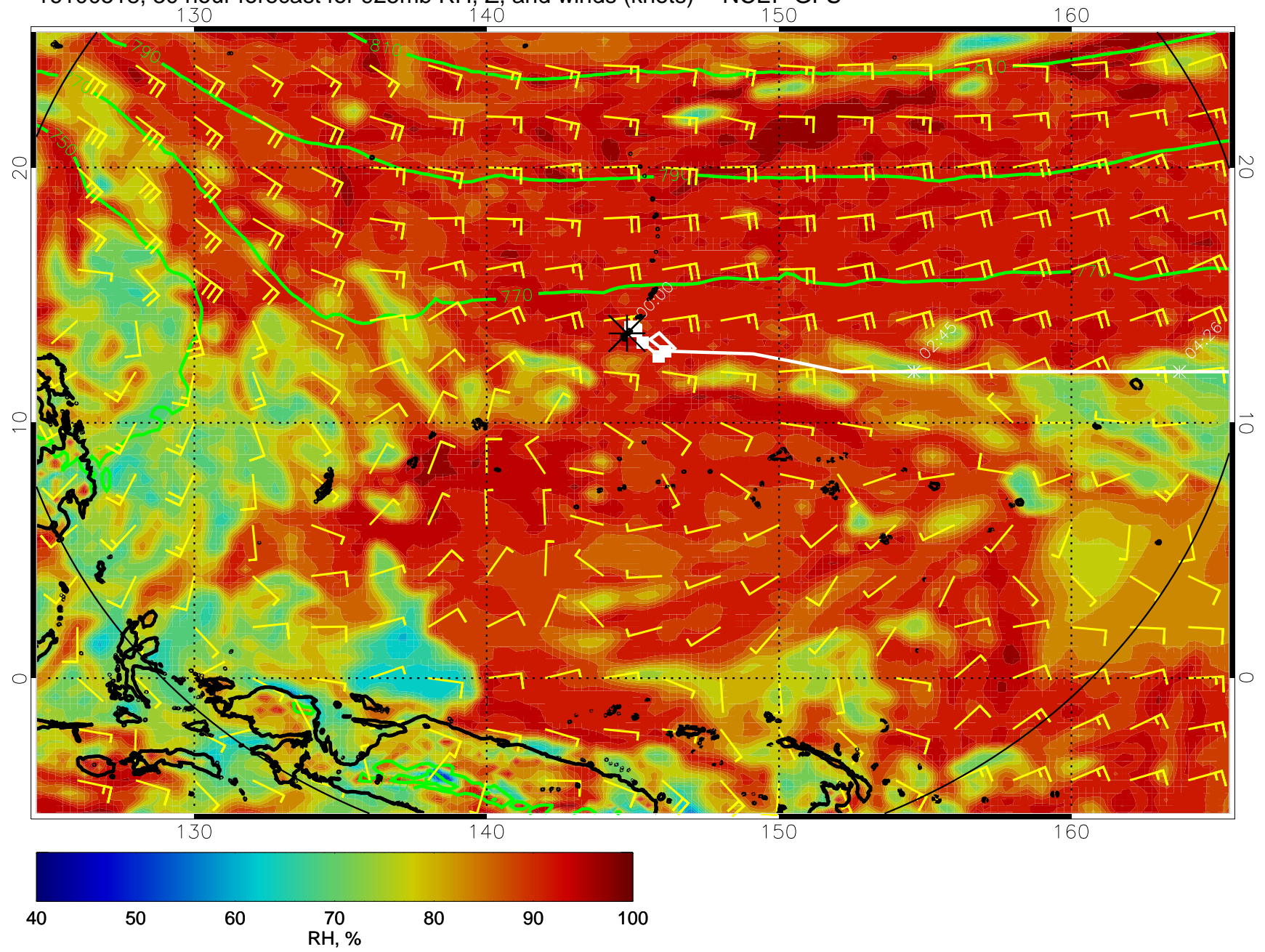
16100506, 18 hour forecast for 925mb RH, Z, and winds (knots) -- NCEP GFS



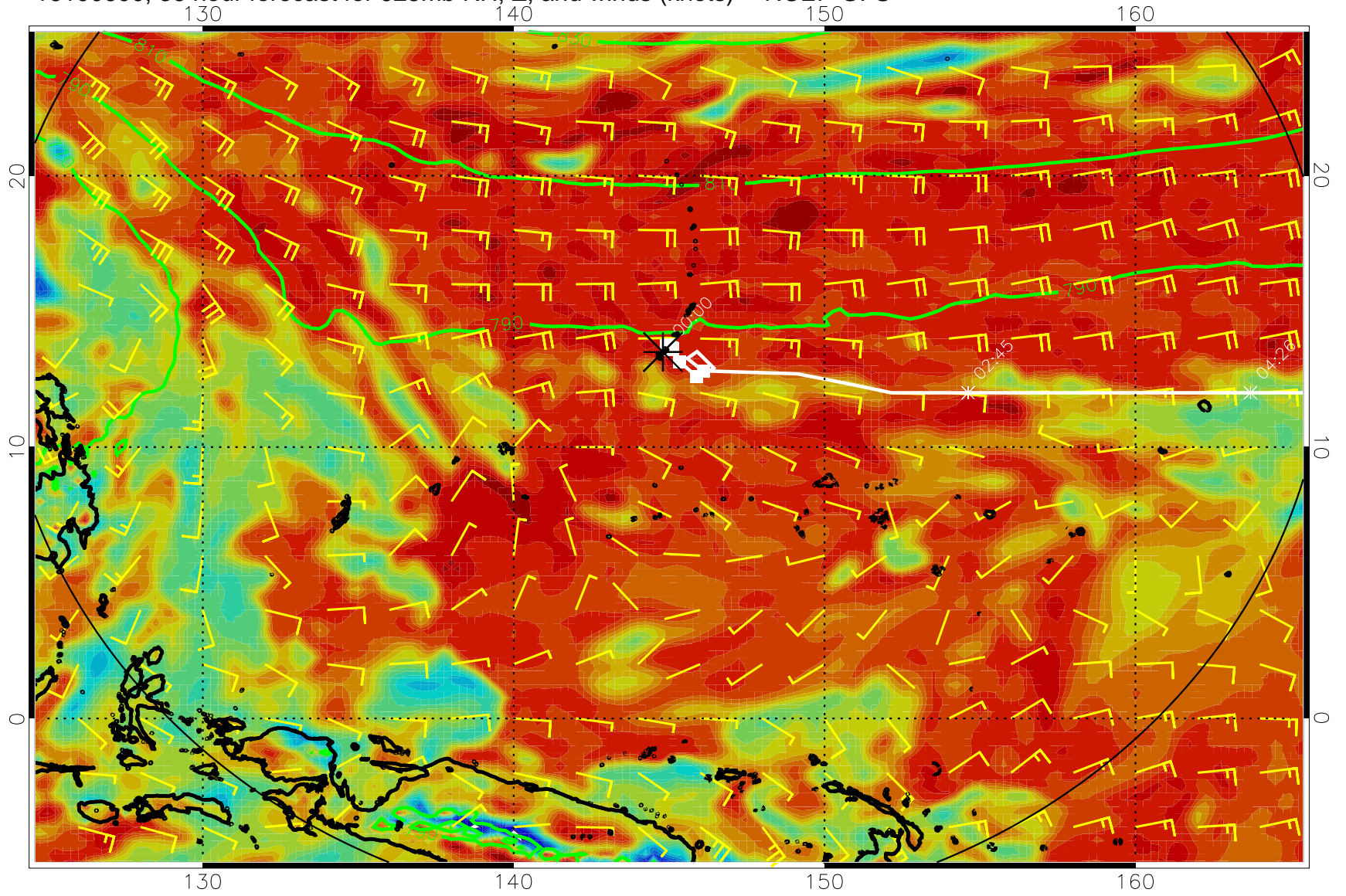
16100512, 24 hour forecast for 925mb RH, Z, and winds (knots) -- NCEP GFS



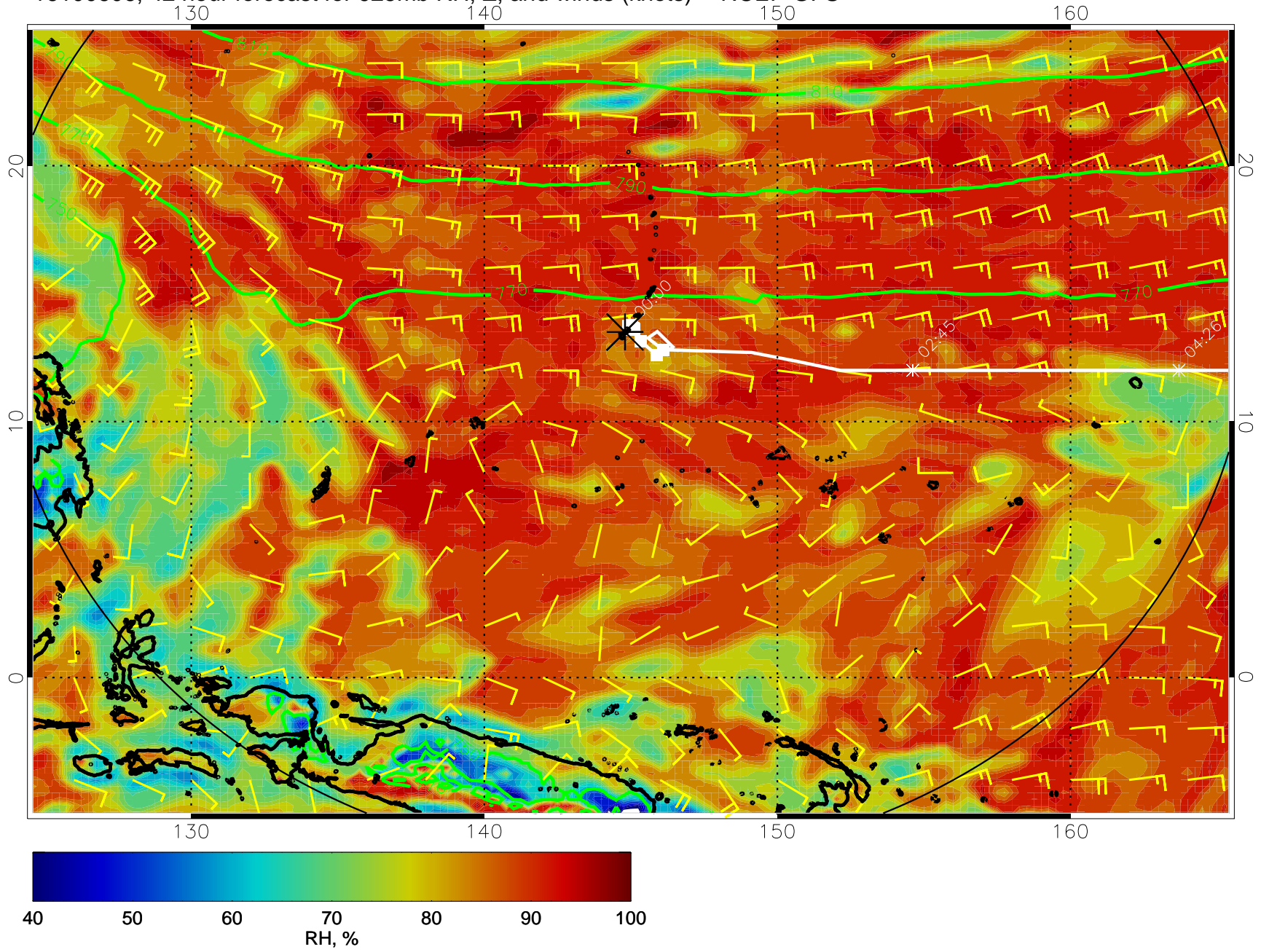
16100518, 30 hour forecast for 925mb RH, Z, and winds (knots) -- NCEP GFS



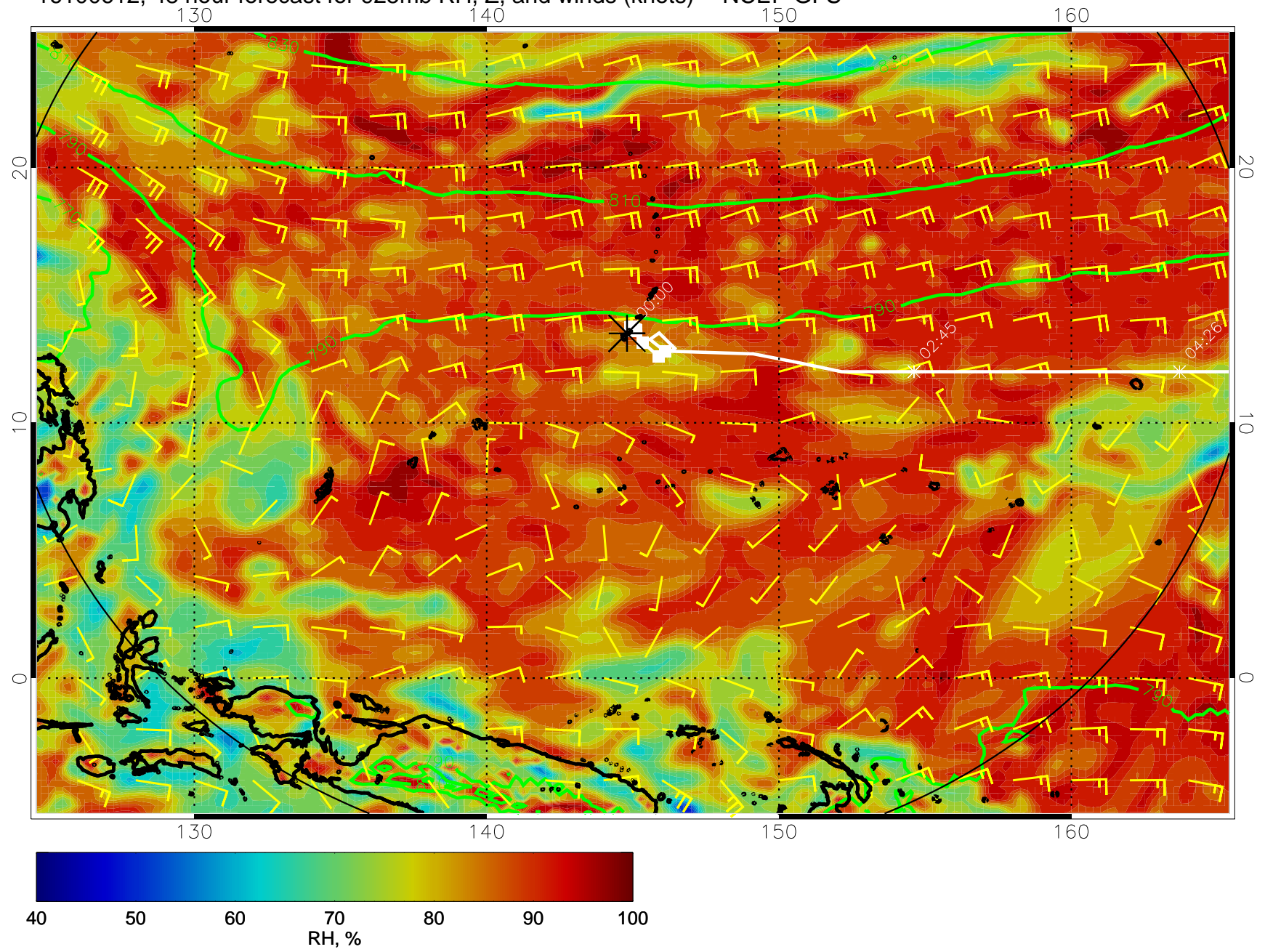
16100600, 36 hour forecast for 925mb RH, Z, and winds (knots) -- NCEP GFS



16100606, 42 hour forecast for 925mb RH, Z, and winds (knots) -- NCEP GFS

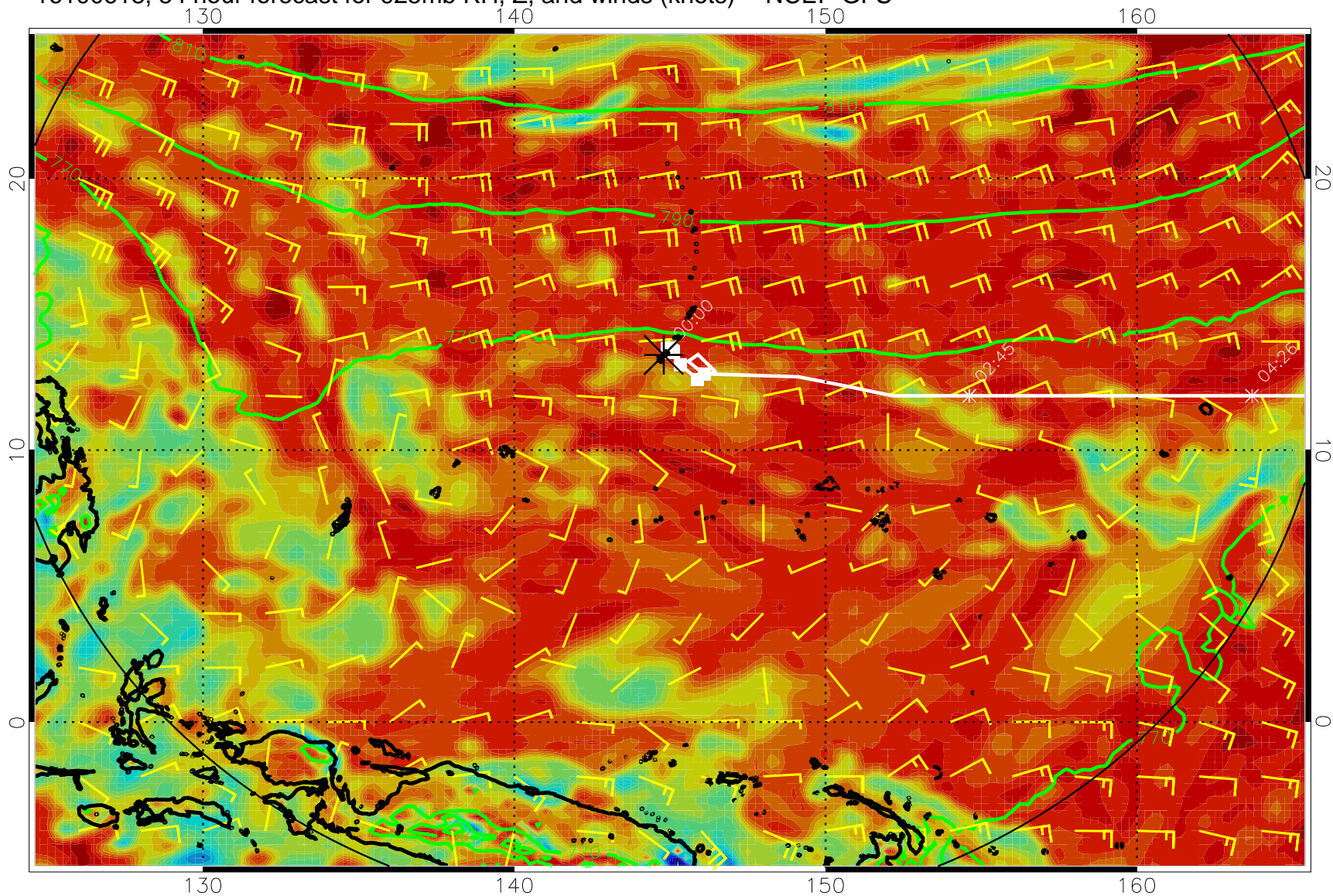


16100612, 48 hour forecast for 925mb RH, Z, and winds (knots) -- NCEP GFS

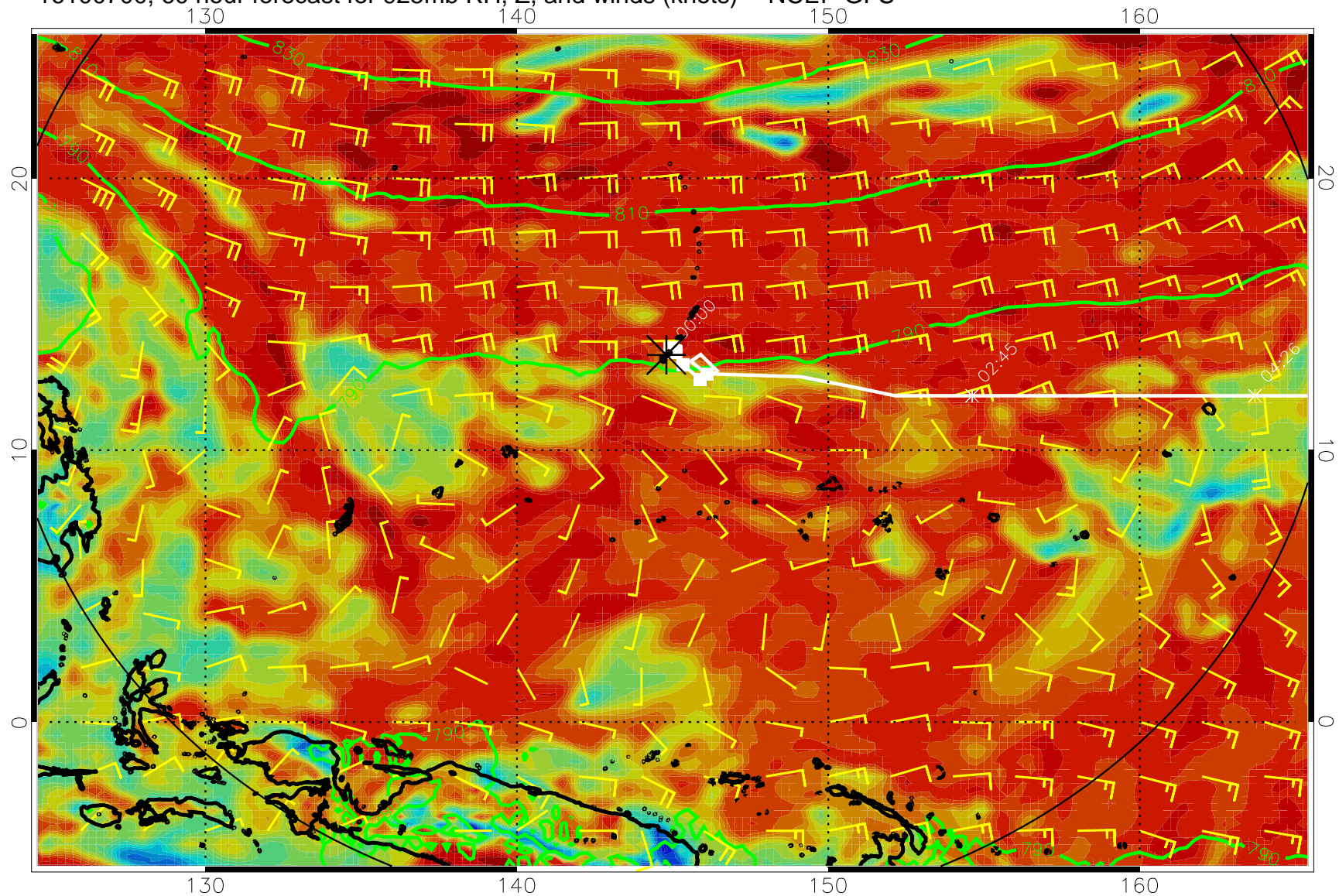




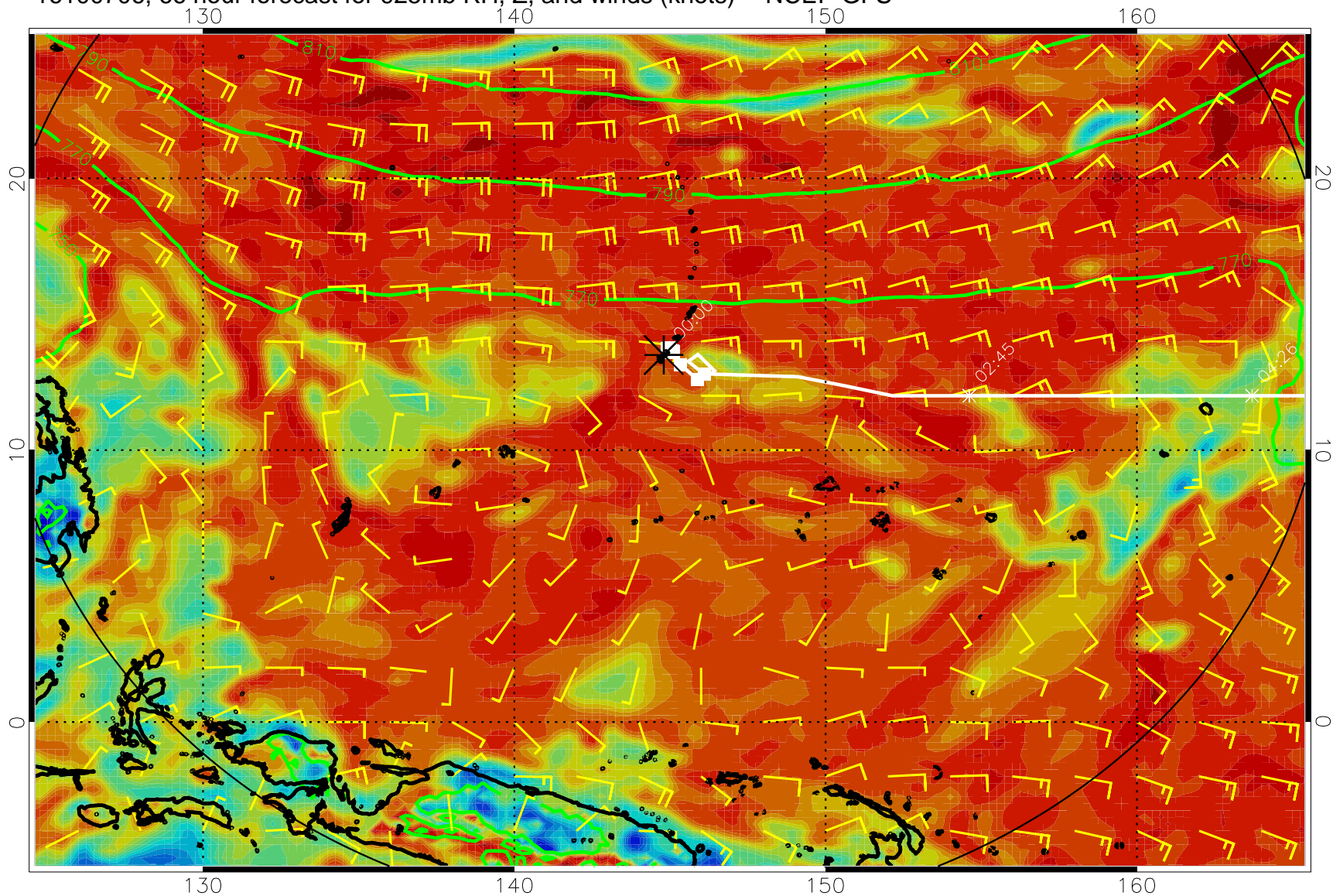
16100618, 54 hour forecast for 925mb RH, Z, and winds (knots) -- NCEP GFS



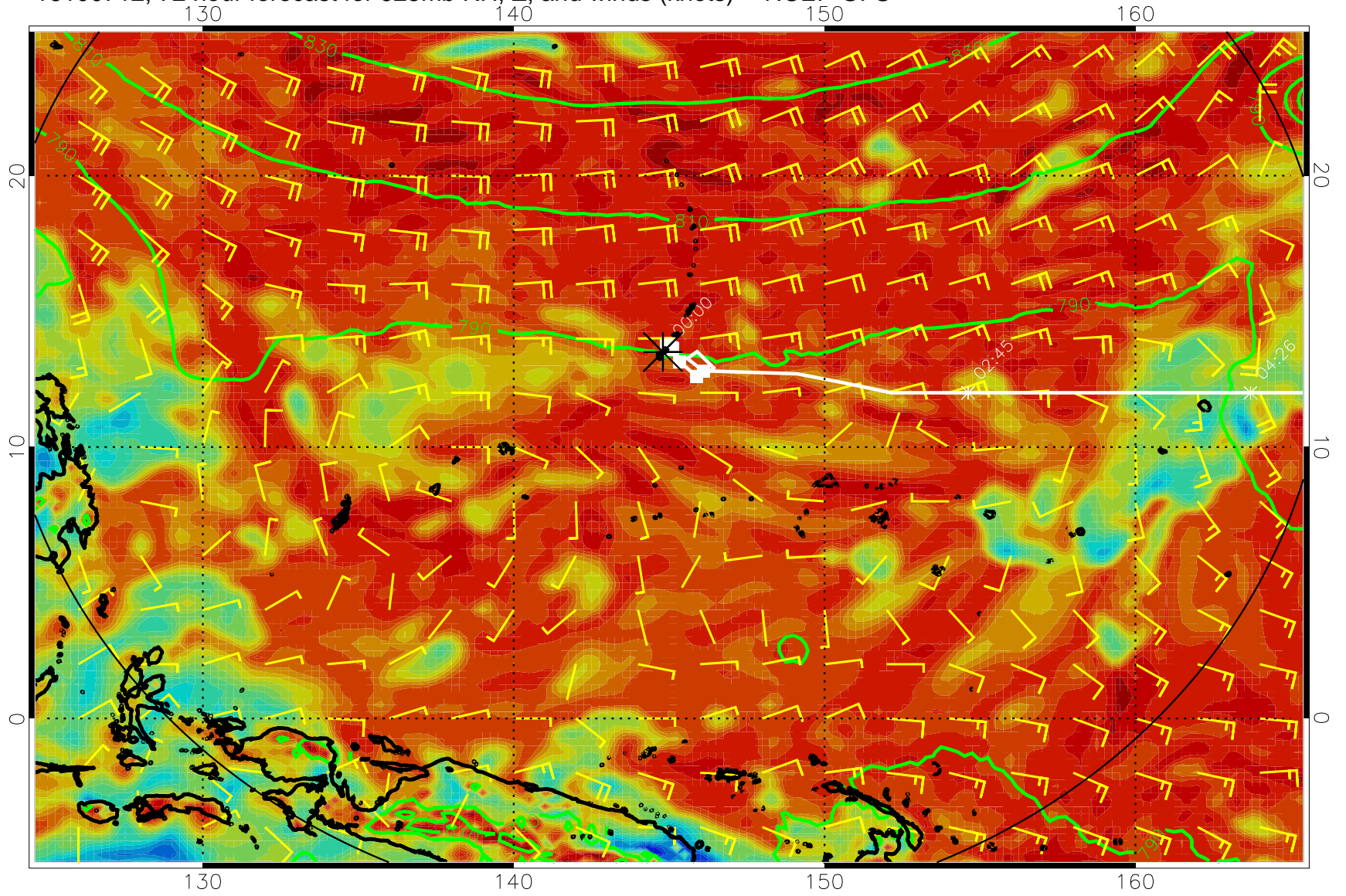
16100700, 60 hour forecast for 925mb RH, Z, and winds (knots) -- NCEP GFS



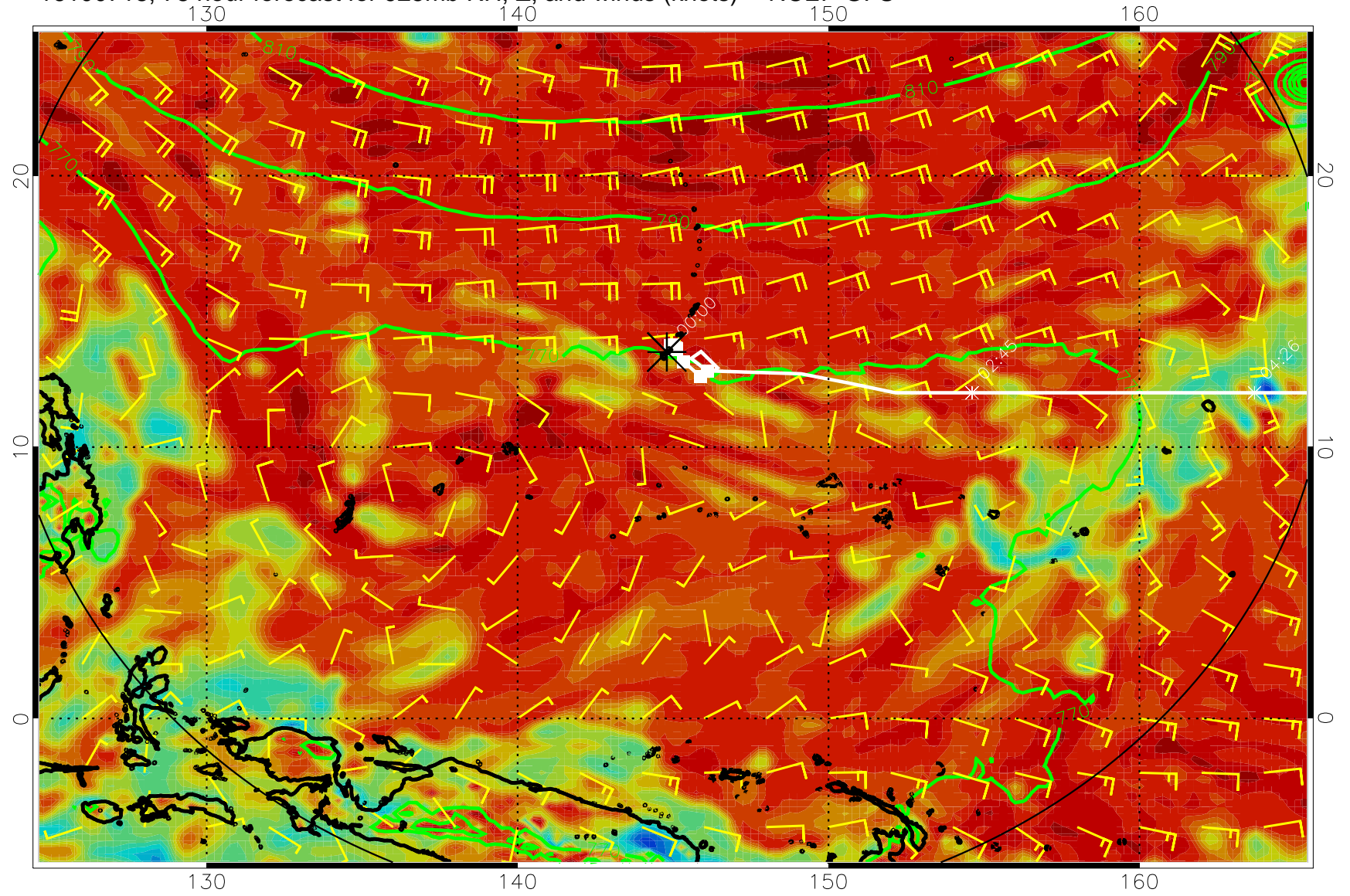
16100706, 66 hour forecast for 925mb RH, Z, and winds (knots) -- NCEP GFS



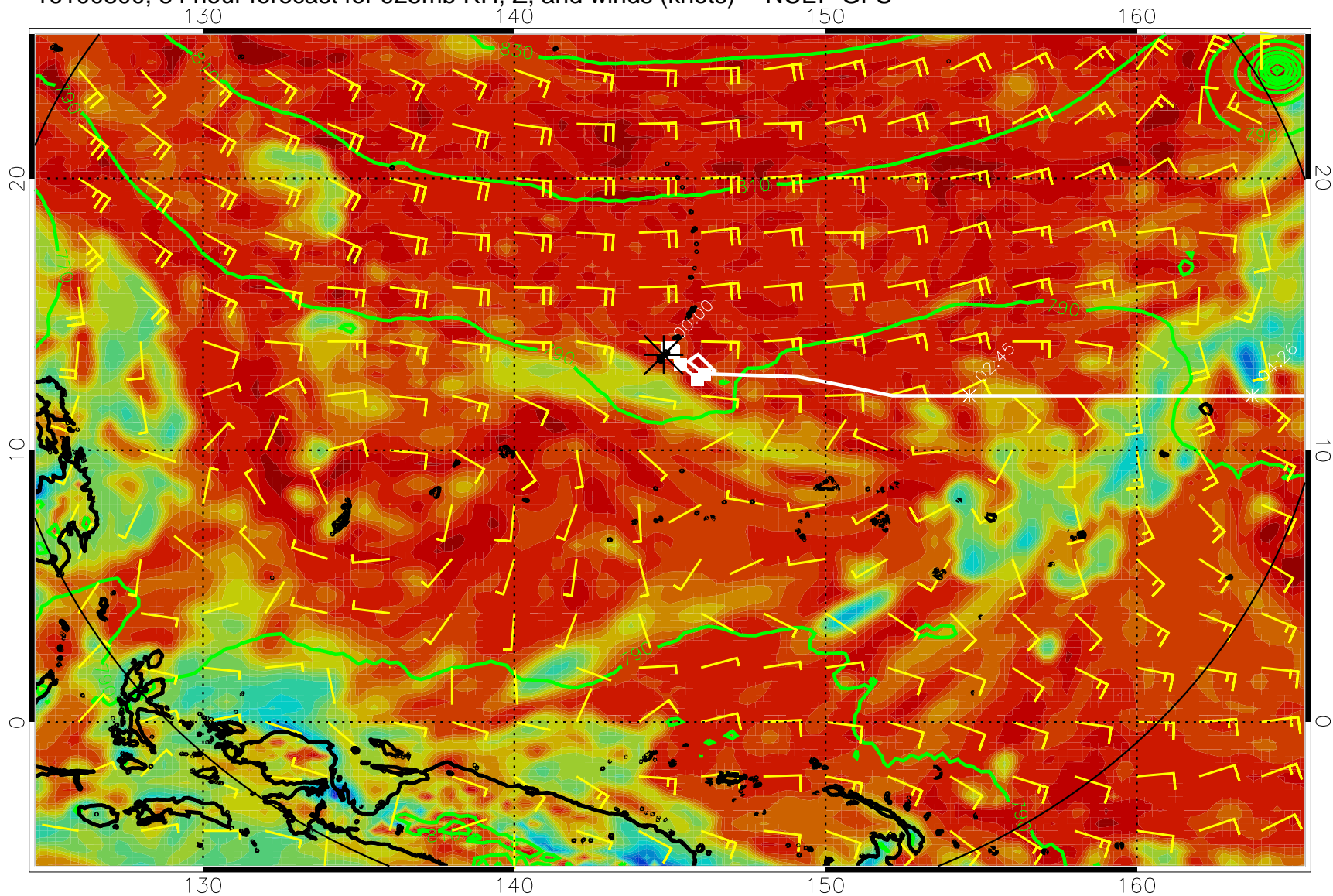
16100712, 72 hour forecast for 925mb RH, Z, and winds (knots) -- NCEP GFS



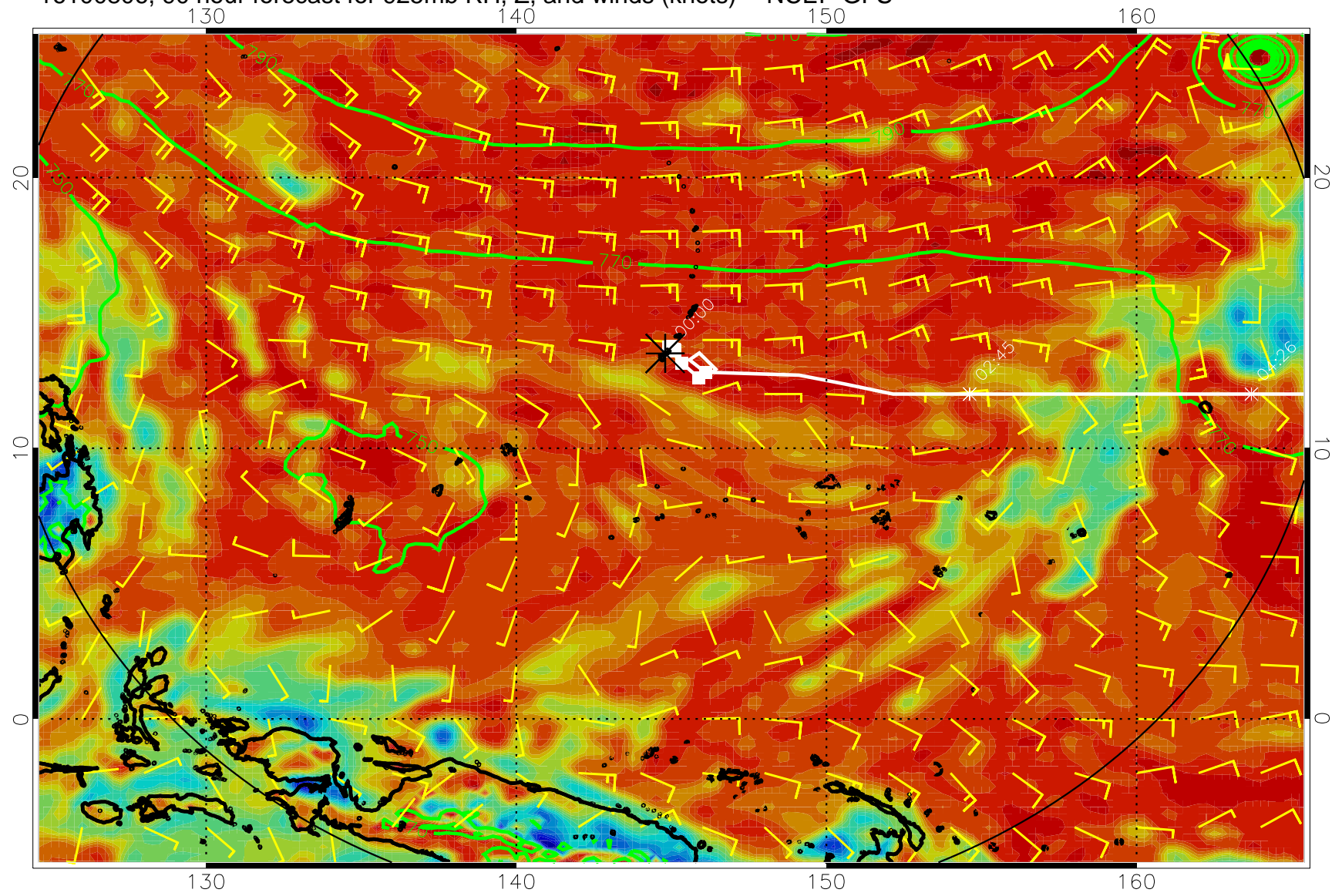
16100718, 78 hour forecast for 925mb RH, Z, and winds (knots) -- NCEP GFS



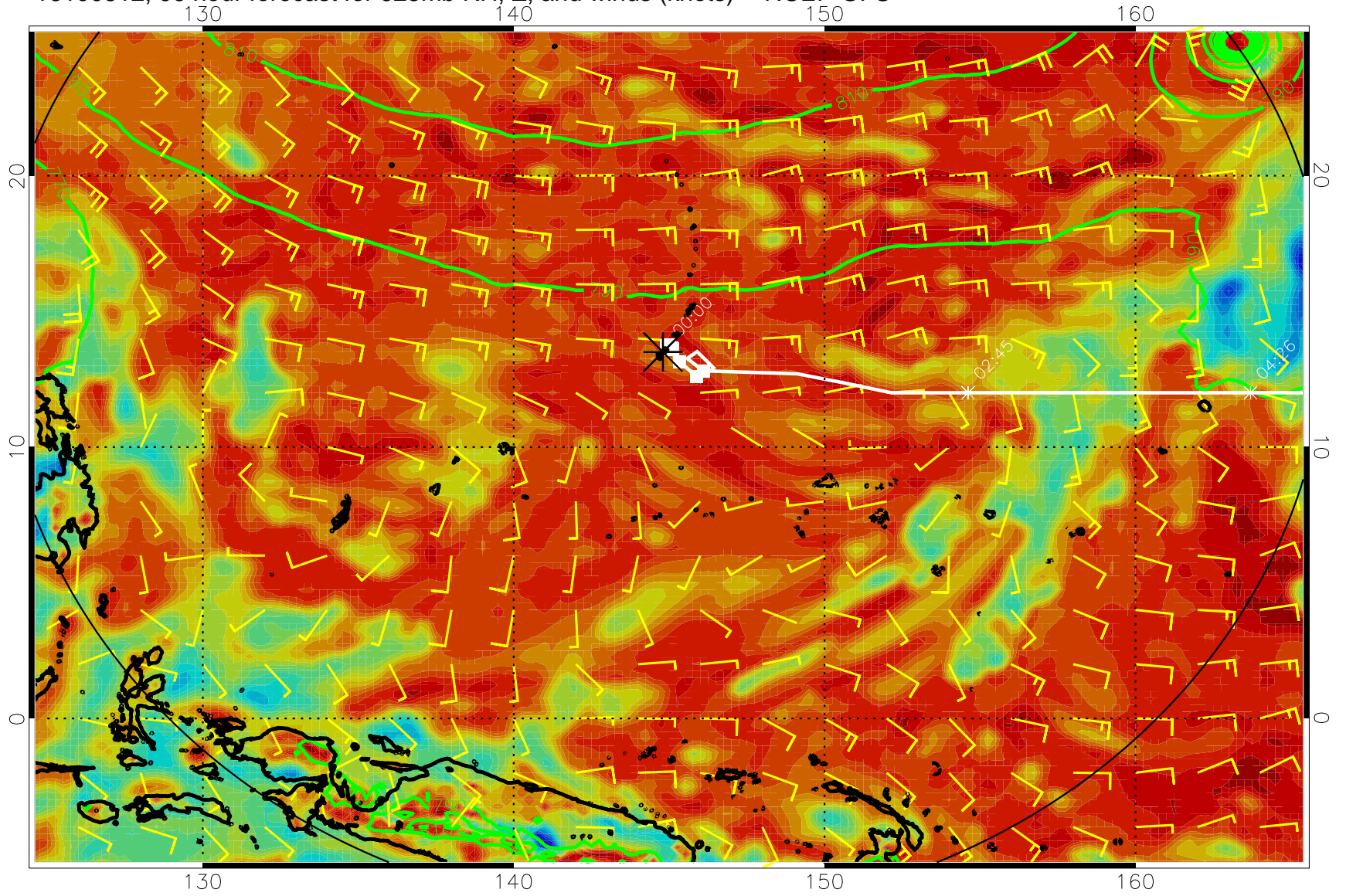
16100800, 84 hour forecast for 925mb RH, Z, and winds (knots) -- NCEP GFS



16100806, 90 hour forecast for 925mb RH, Z, and winds (knots) -- NCEP GFS

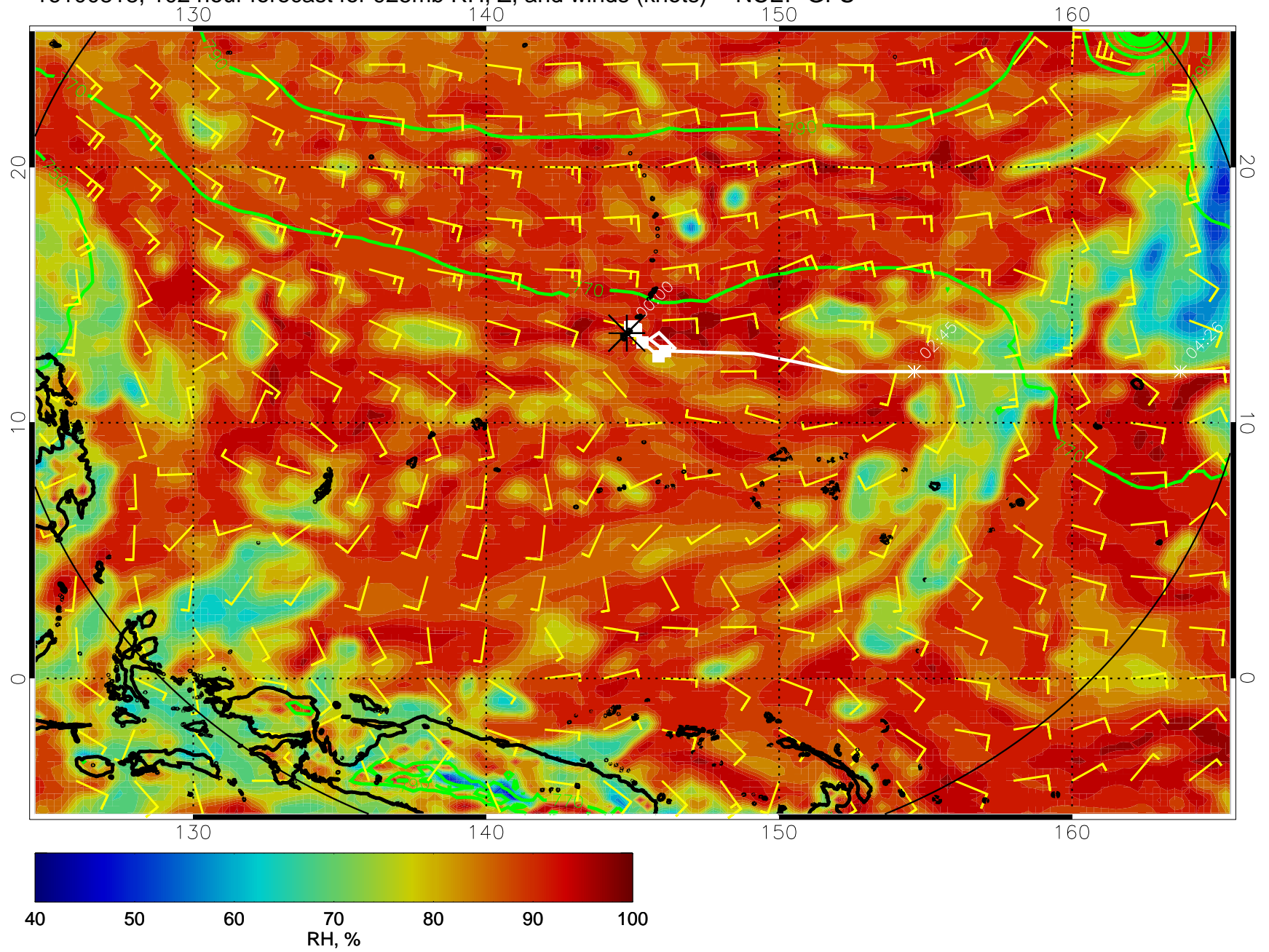


16100812, 96 hour forecast for 925mb RH, Z, and winds (knots) -- NCEP GFS

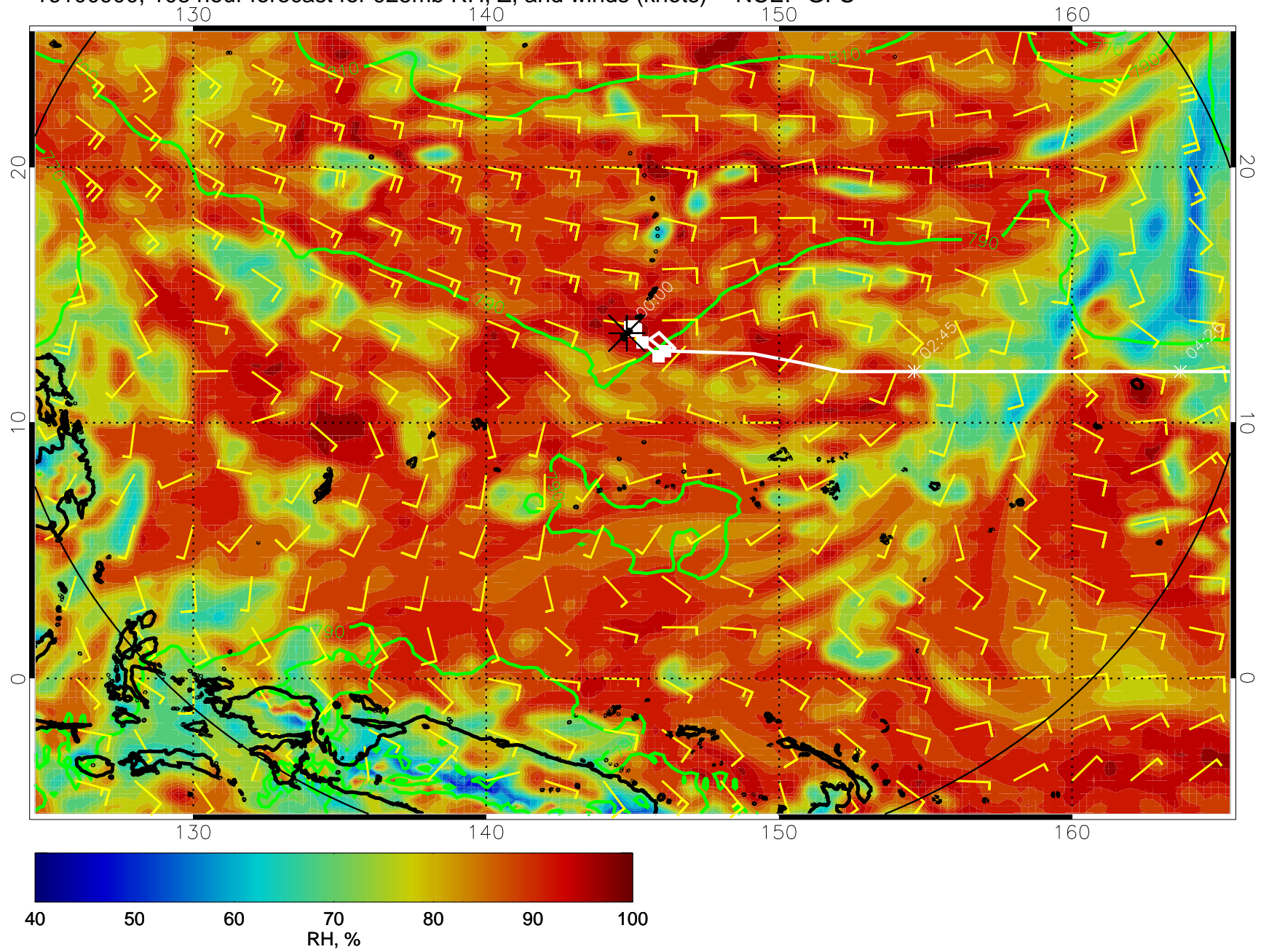




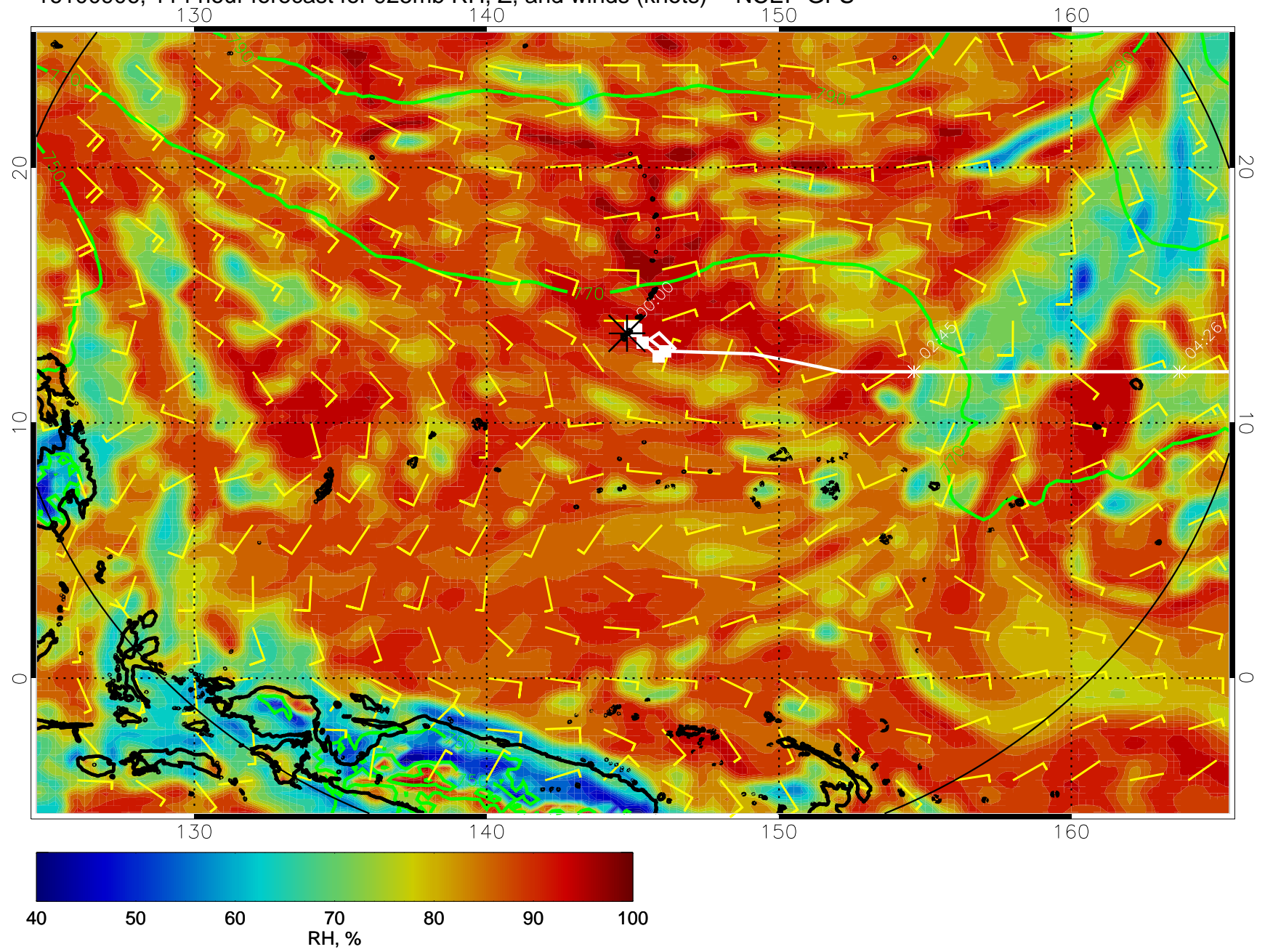
16100818, 102 hour forecast for 925mb RH, Z, and winds (knots) -- NCEP GFS



16100900, 108 hour forecast for 925mb RH, Z, and winds (knots) -- NCEP GFS



16100906, 114 hour forecast for 925mb RH, Z, and winds (knots) -- NCEP GFS



16100912, 120 hour forecast for 925mb RH, Z, and winds (knots) -- NCEP GFS

