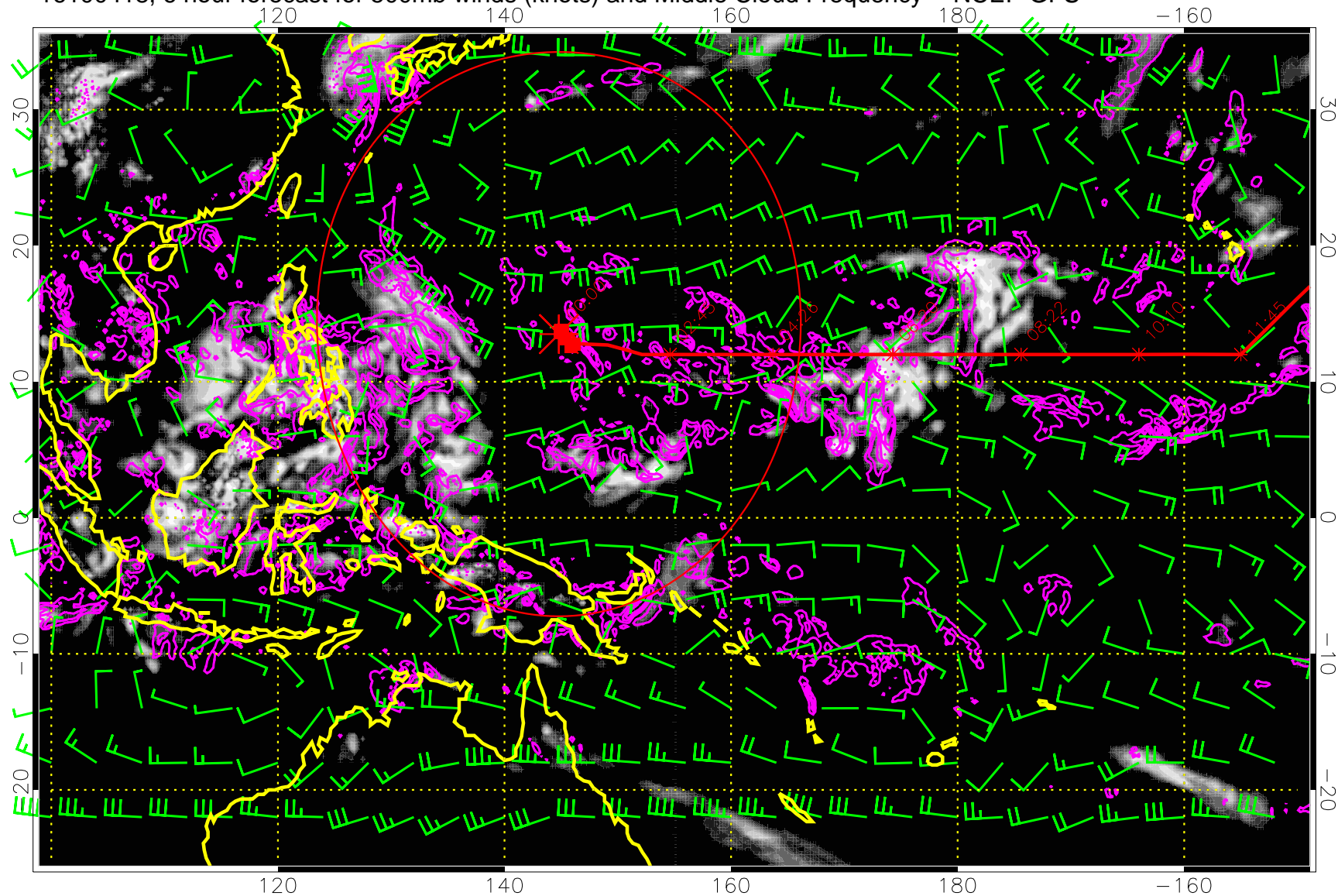
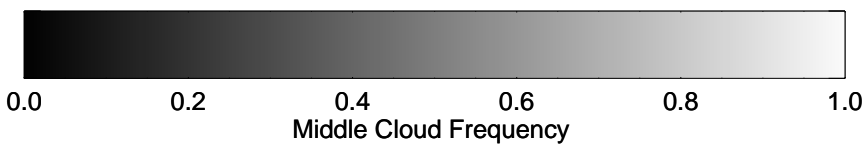


16100418, 6 hour forecast for 500mb winds (knots) and Middle Cloud Frequency -- NCEP GFS



15:53

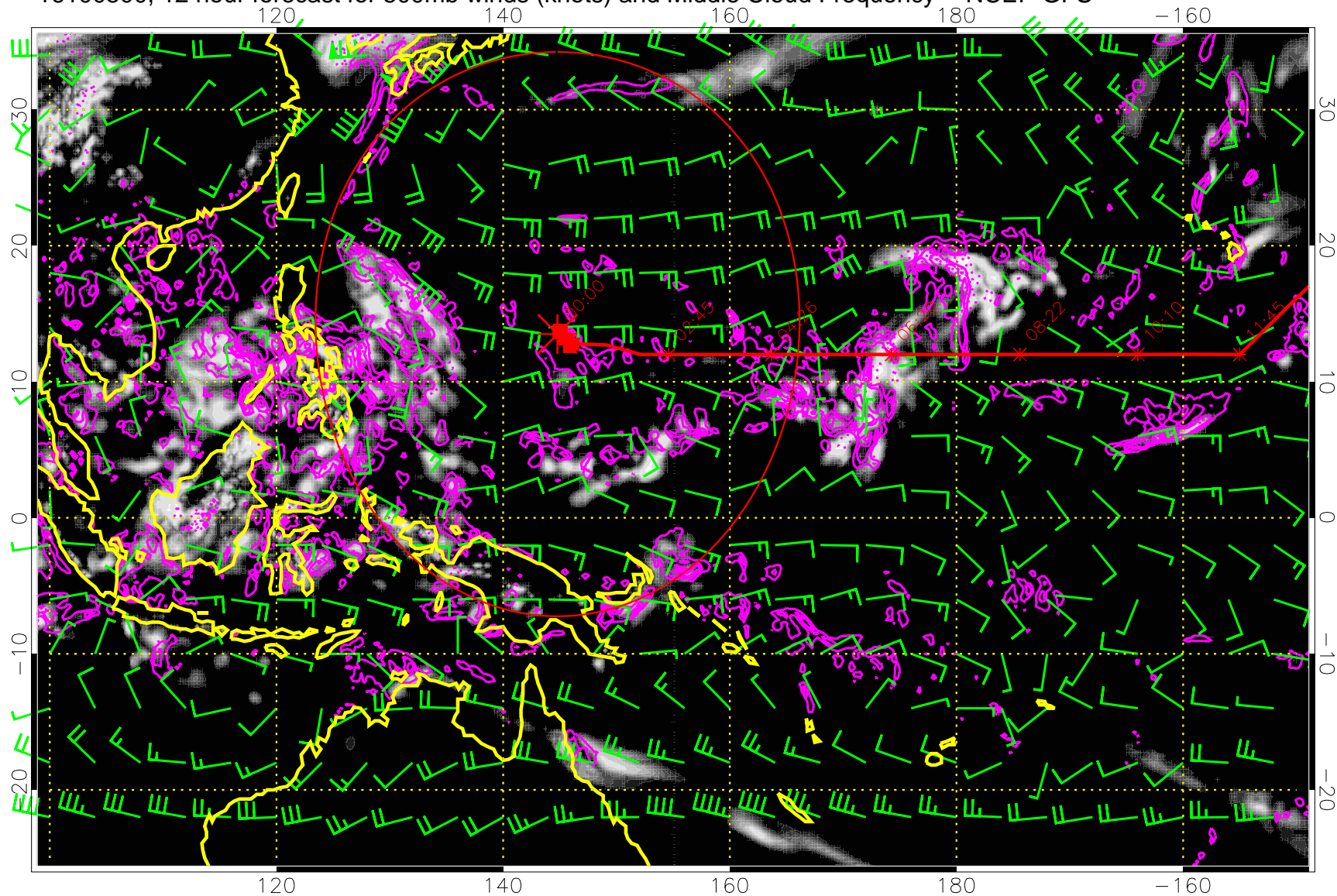
13:53



Precip (tot dot, conv sol) mm/day 40 mm/day contours, min 20

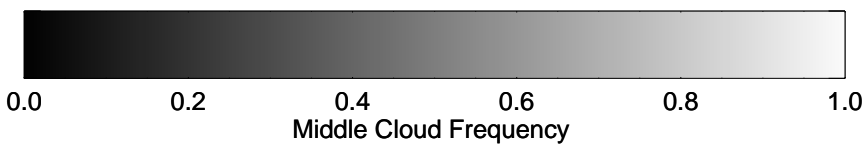
Range ring of 2304 km

16100500, 12 hour forecast for 500mb winds (knots) and Middle Cloud Frequency -- NCEP GFS



15:53

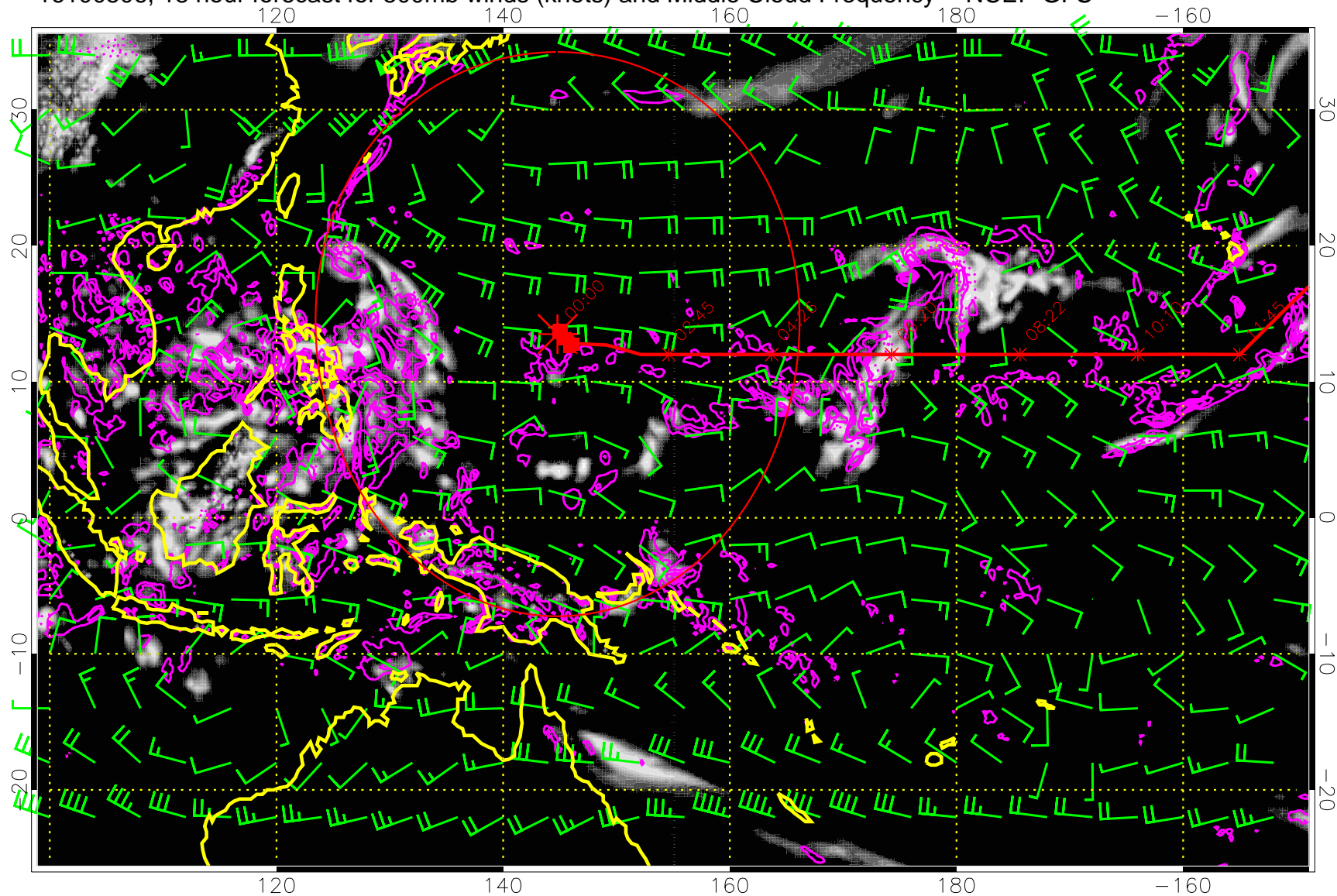
13:53



Precip (tot dot, conv sol) mm/day 40 mm/day contours, min 20

Range ring of 2304 km

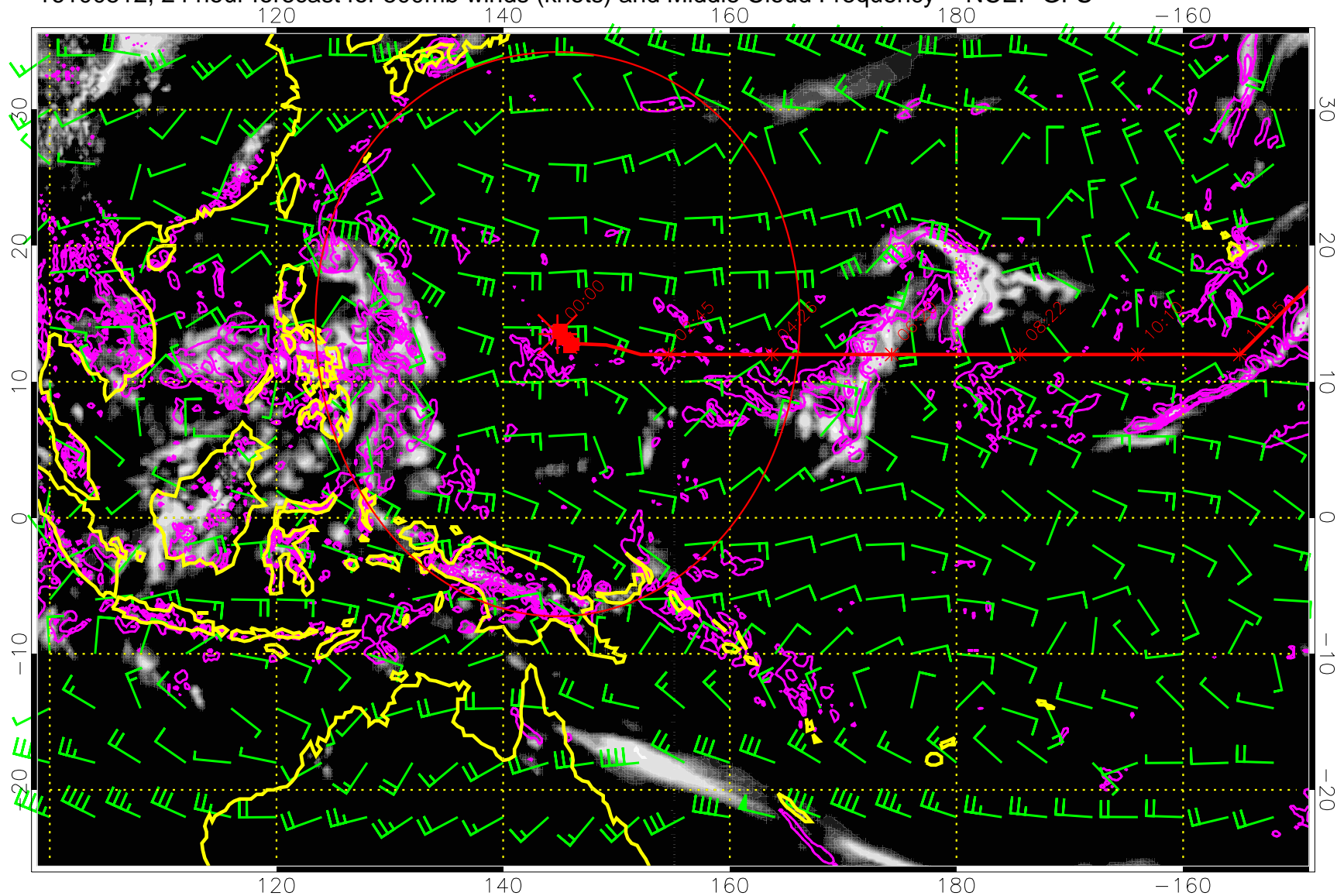
16100506, 18 hour forecast for 500mb winds (knots) and Middle Cloud Frequency -- NCEP GFS



Precip (tot dot, conv sol) mm/day 40 mm/day contours, min 20

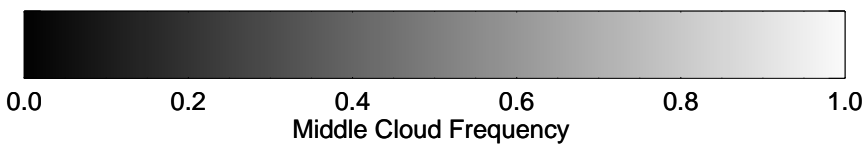
Range ring of 2304 km

16100512, 24 hour forecast for 500mb winds (knots) and Middle Cloud Frequency -- NCEP GFS



15:53

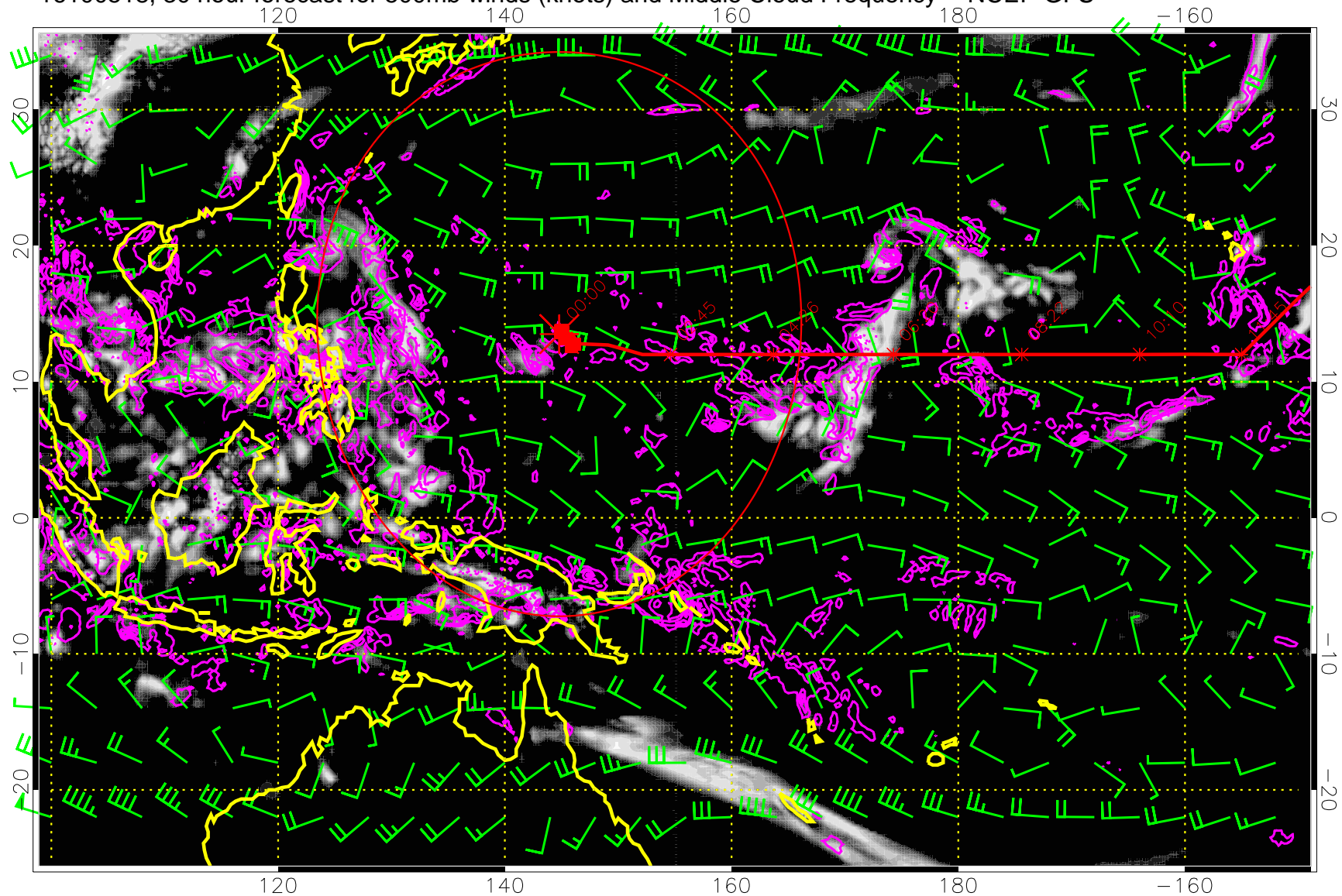
13:53



Precip (tot dot, conv sol) mm/day 40 mm/day contours, min 20

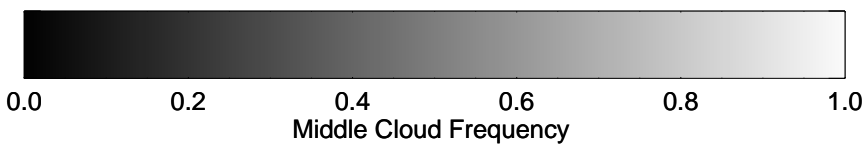
Range ring of 2304 km

16100518, 30 hour forecast for 500mb winds (knots) and Middle Cloud Frequency -- NCEP GFS



15:53

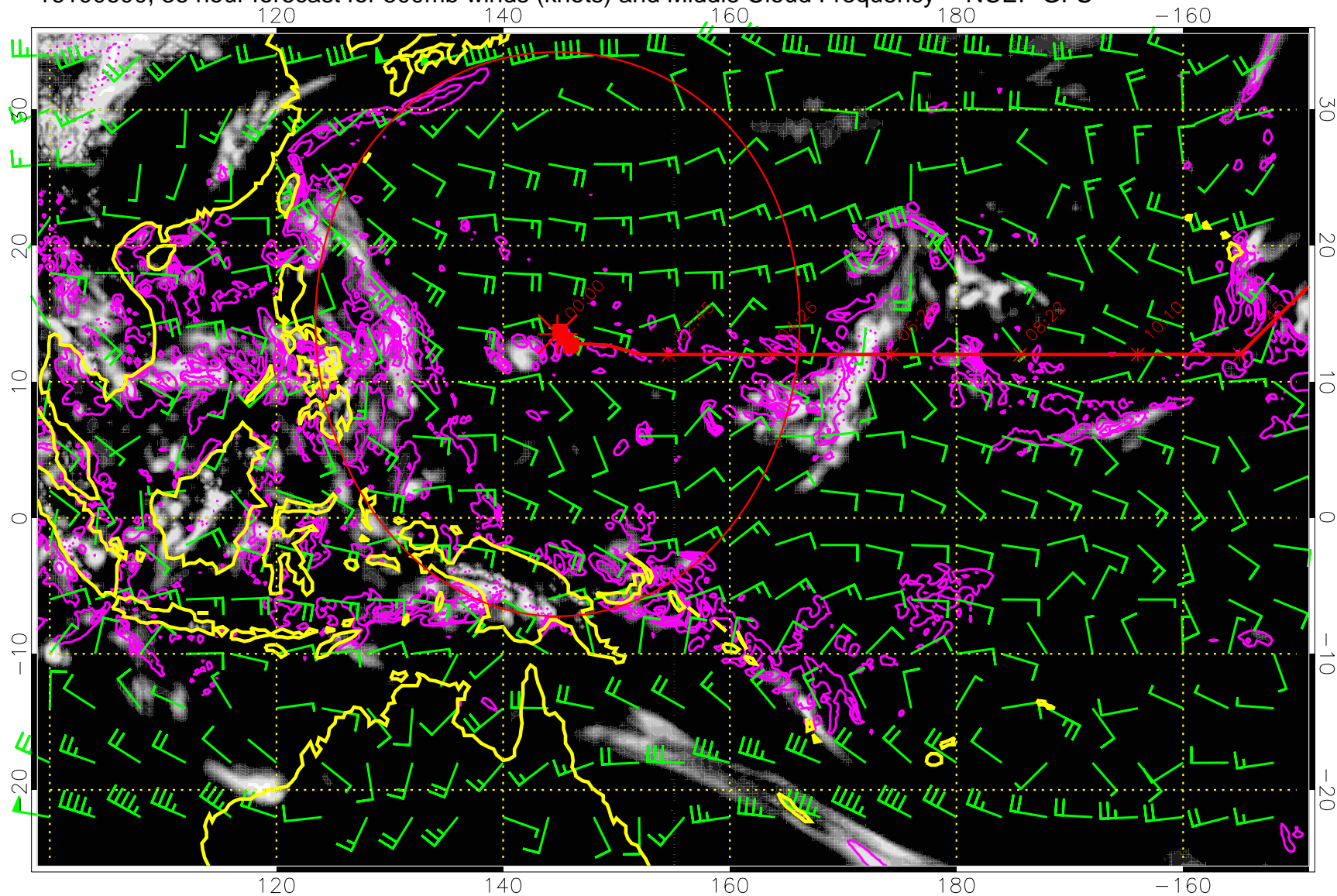
13:53



Precip (tot dot, conv sol) mm/day 40 mm/day contours, min 20

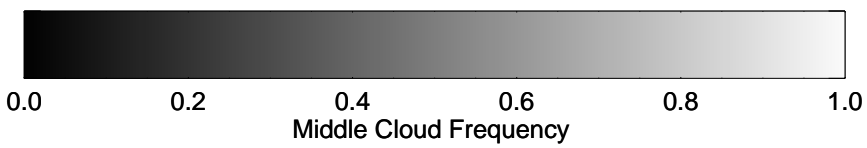
Range ring of 2304 km

16100600, 36 hour forecast for 500mb winds (knots) and Middle Cloud Frequency -- NCEP GFS



15:53

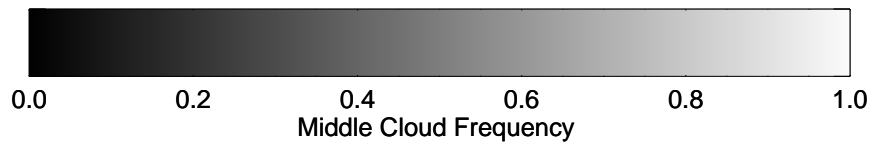
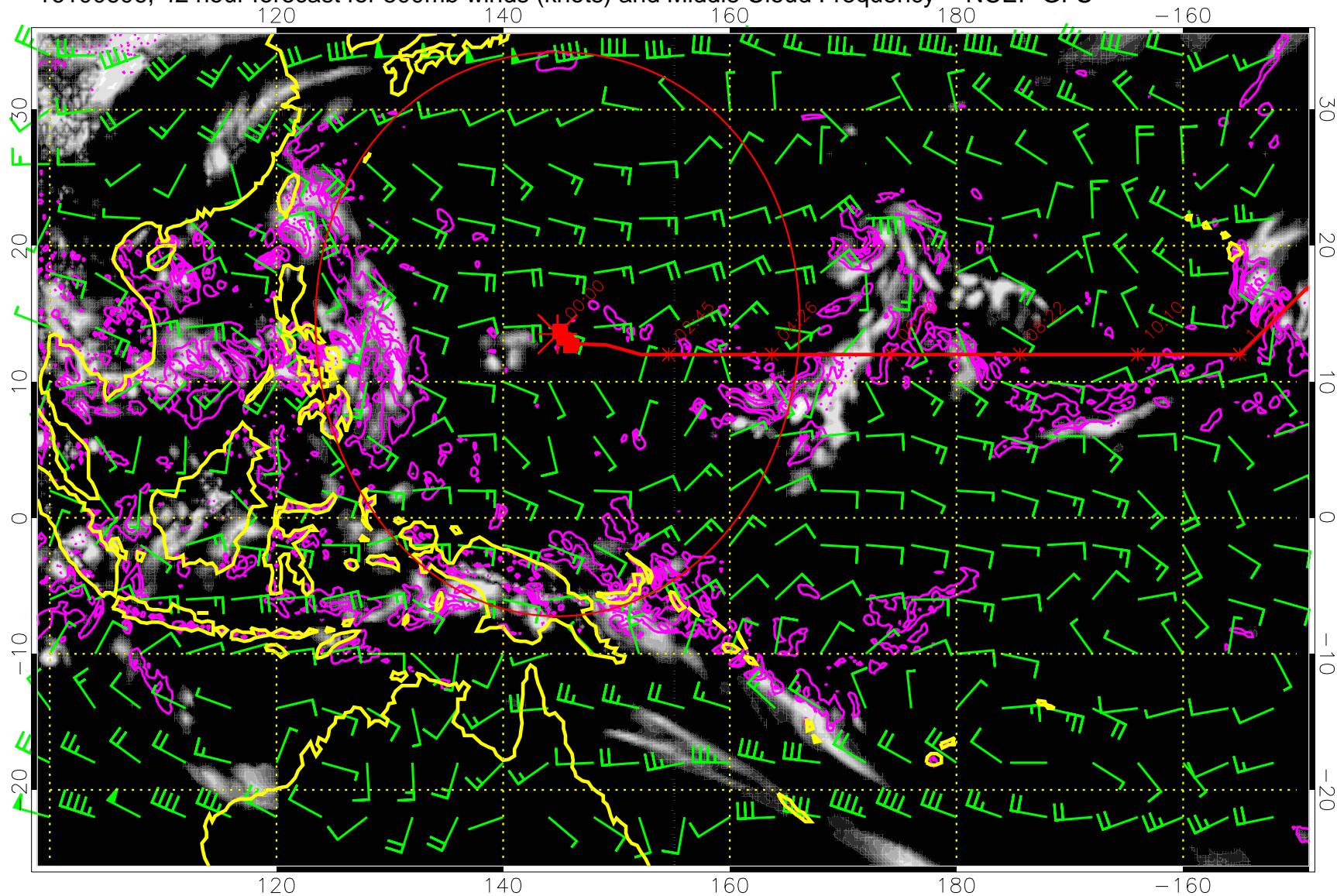
13:53



Precip (tot dot, conv sol) mm/day 40 mm/day contours, min 20

Range ring of 2304 km

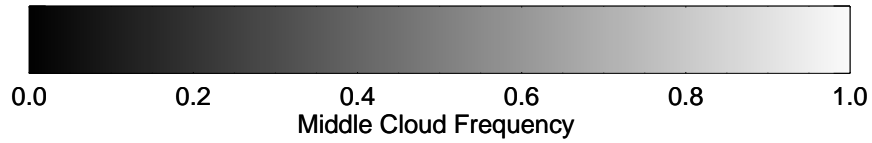
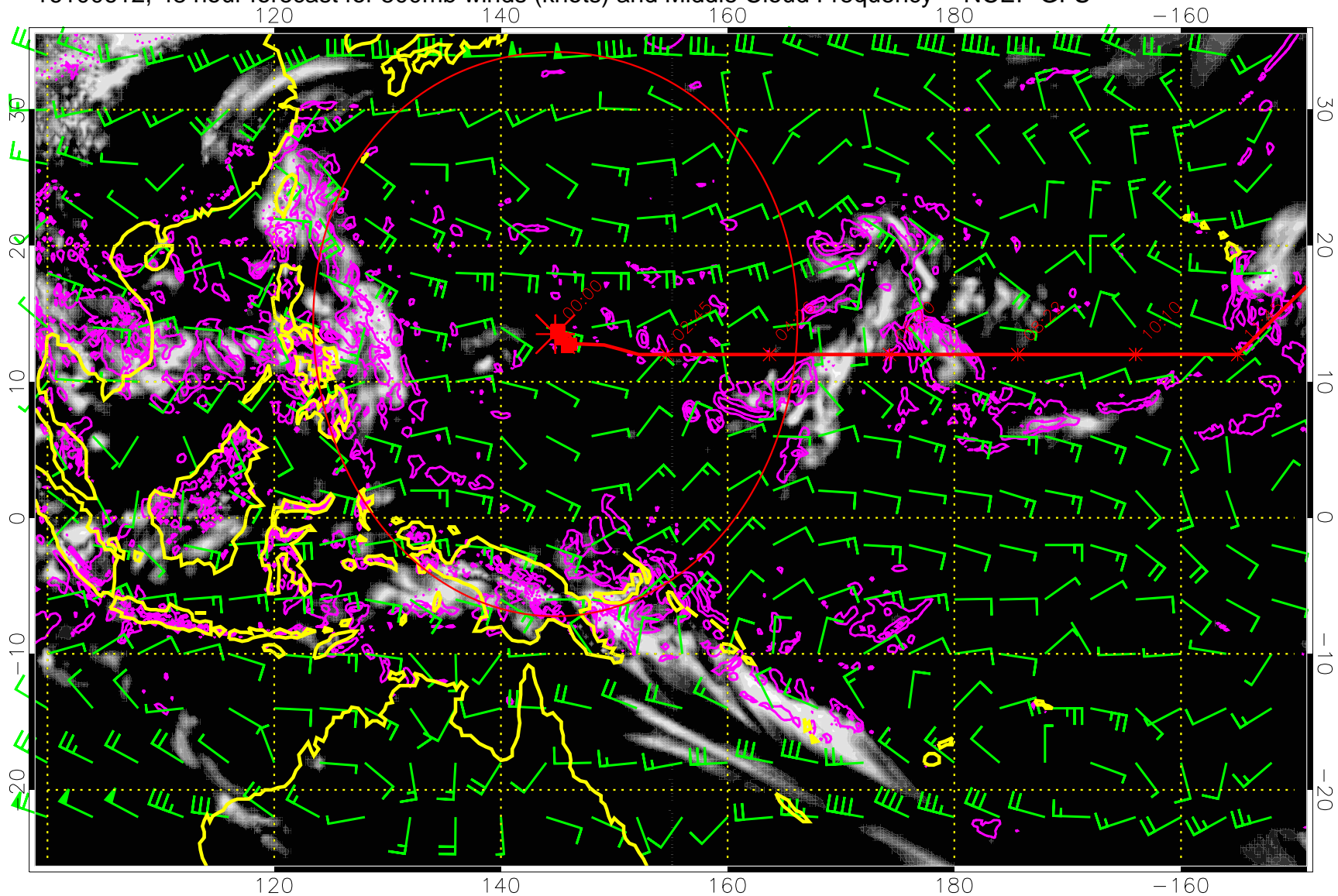
16100606, 42 hour forecast for 500mb winds (knots) and Middle Cloud Frequency -- NCEP GFS



Precip (tot dot, conv sol) mm/day 40 mm/day contours, min 20

Range ring of 2304 km

16100612, 48 hour forecast for 500mb winds (knots) and Middle Cloud Frequency -- NCEP GFS

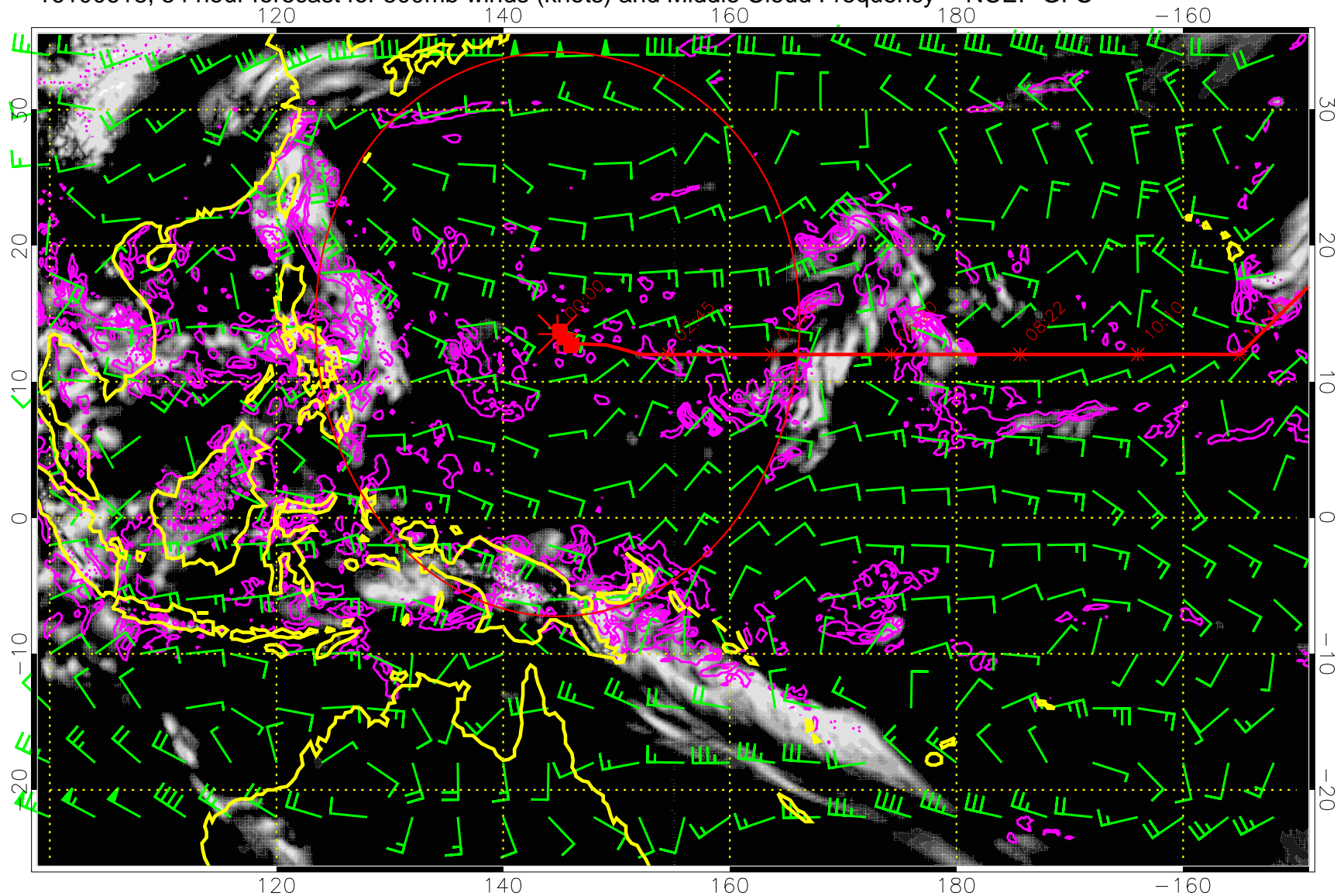


Precip (tot dot, conv sol) mm/day 40 mm/day contours, min 20

Range ring of 2304 km

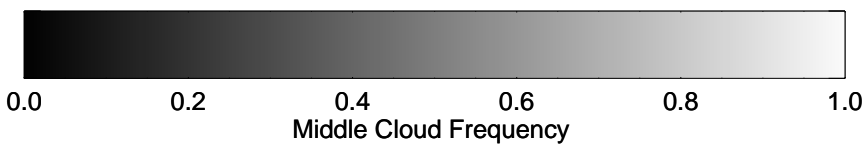


16100618, 54 hour forecast for 500mb winds (knots) and Middle Cloud Frequency -- NCEP GFS



15:53

13:53

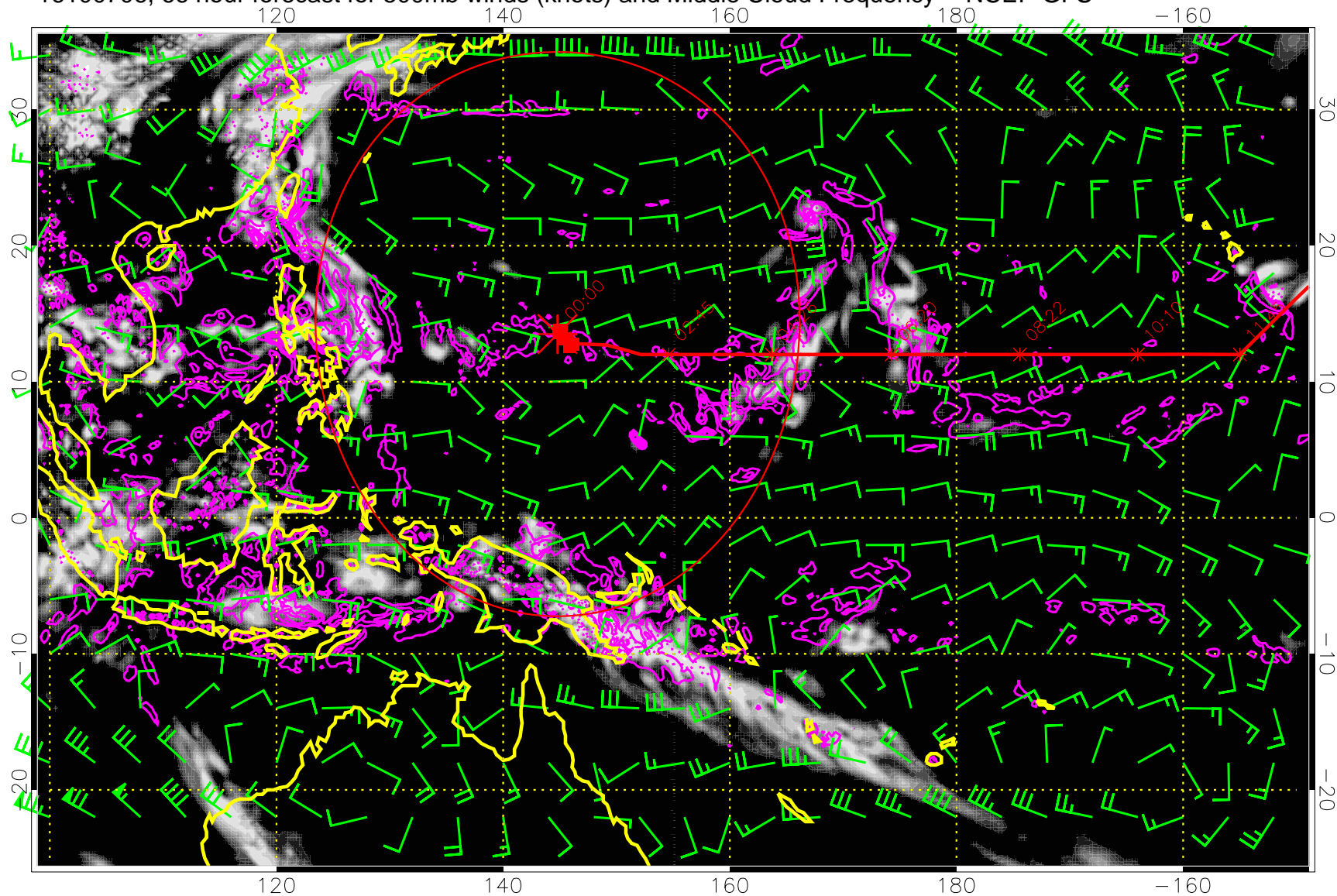


Precip (tot dot, conv sol) mm/day 40 mm/day contours, min 20

Range ring of 2304 km



16100706, 66 hour forecast for 500mb winds (knots) and Middle Cloud Frequency -- NCEP GFS



15:53

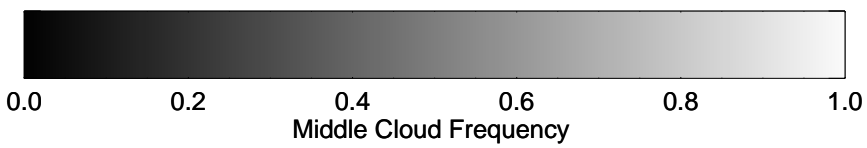
13:53

00:00

08:22

10:10

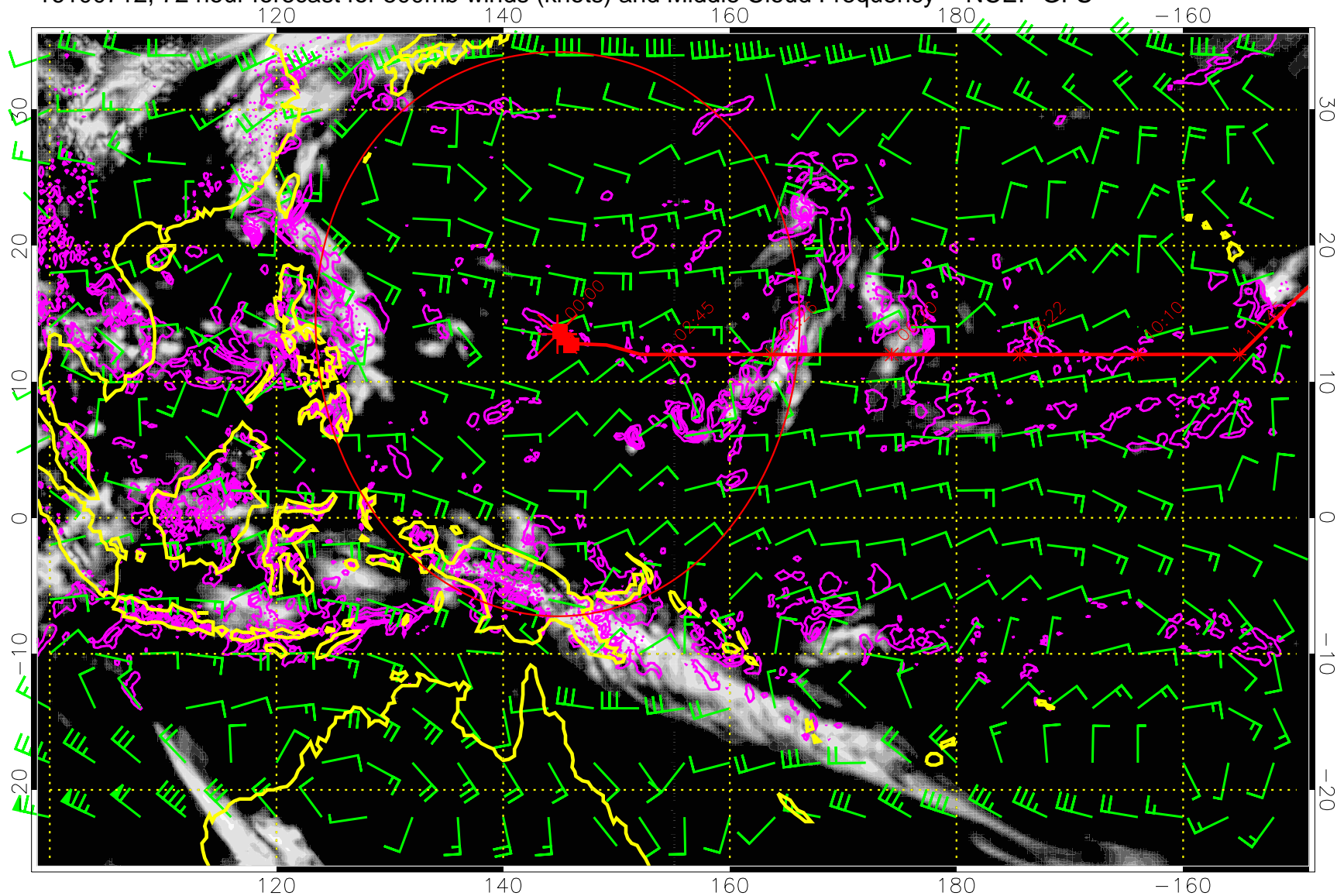
11:58



Precip (tot dot, conv sol) mm/day 40 mm/day contours, min 20

Range ring of 2304 km

16100712, 72 hour forecast for 500mb winds (knots) and Middle Cloud Frequency -- NCEP GFS

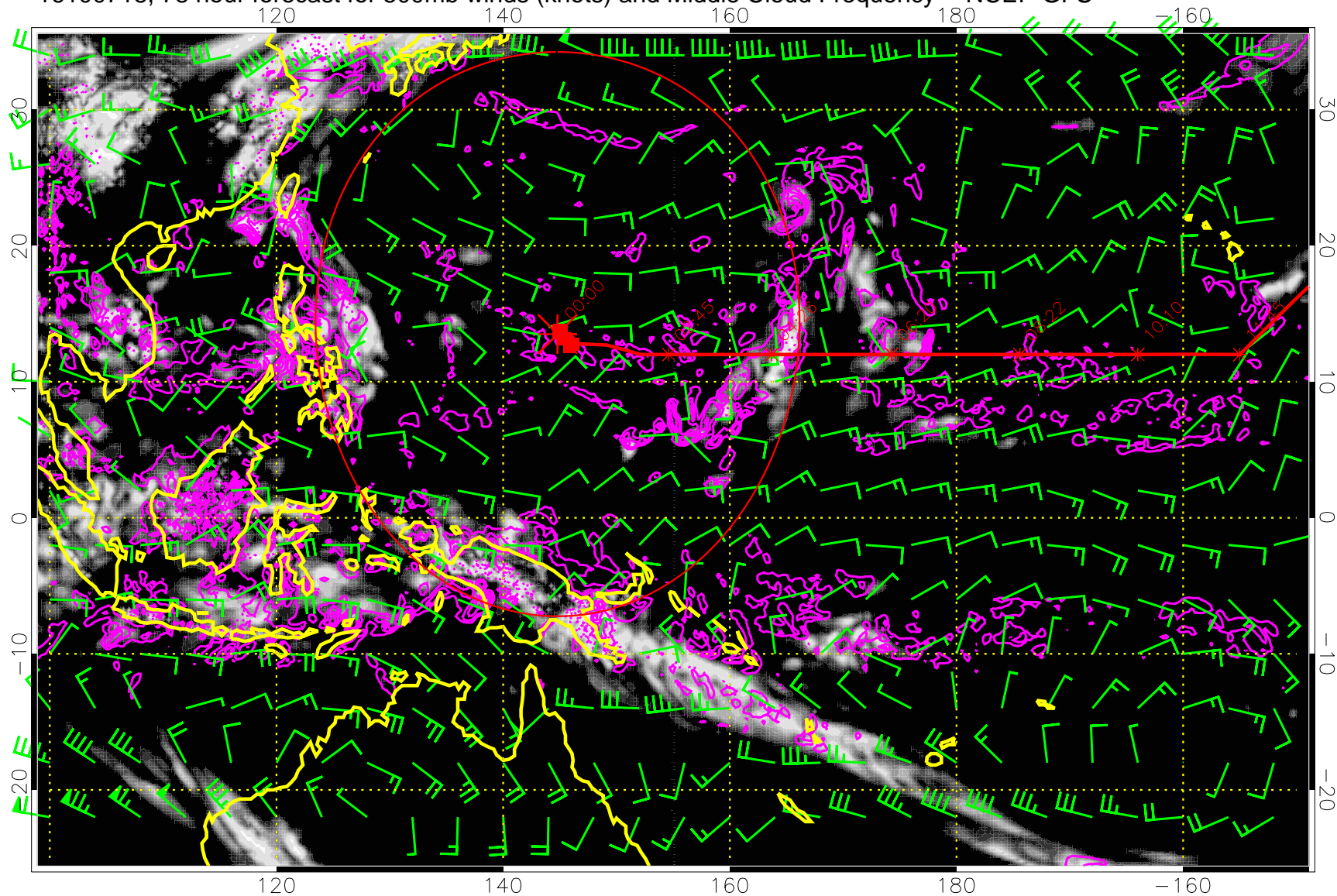


0.0 0.2 0.4 0.6 0.8 1.0  
Middle Cloud Frequency

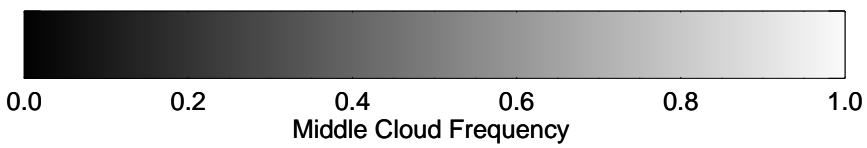
Precip (tot dot, conv sol) mm/day 40 mm/day contours, min 20

Range ring of 2304 km

16100718, 78 hour forecast for 500mb winds (knots) and Middle Cloud Frequency -- NCEP GFS



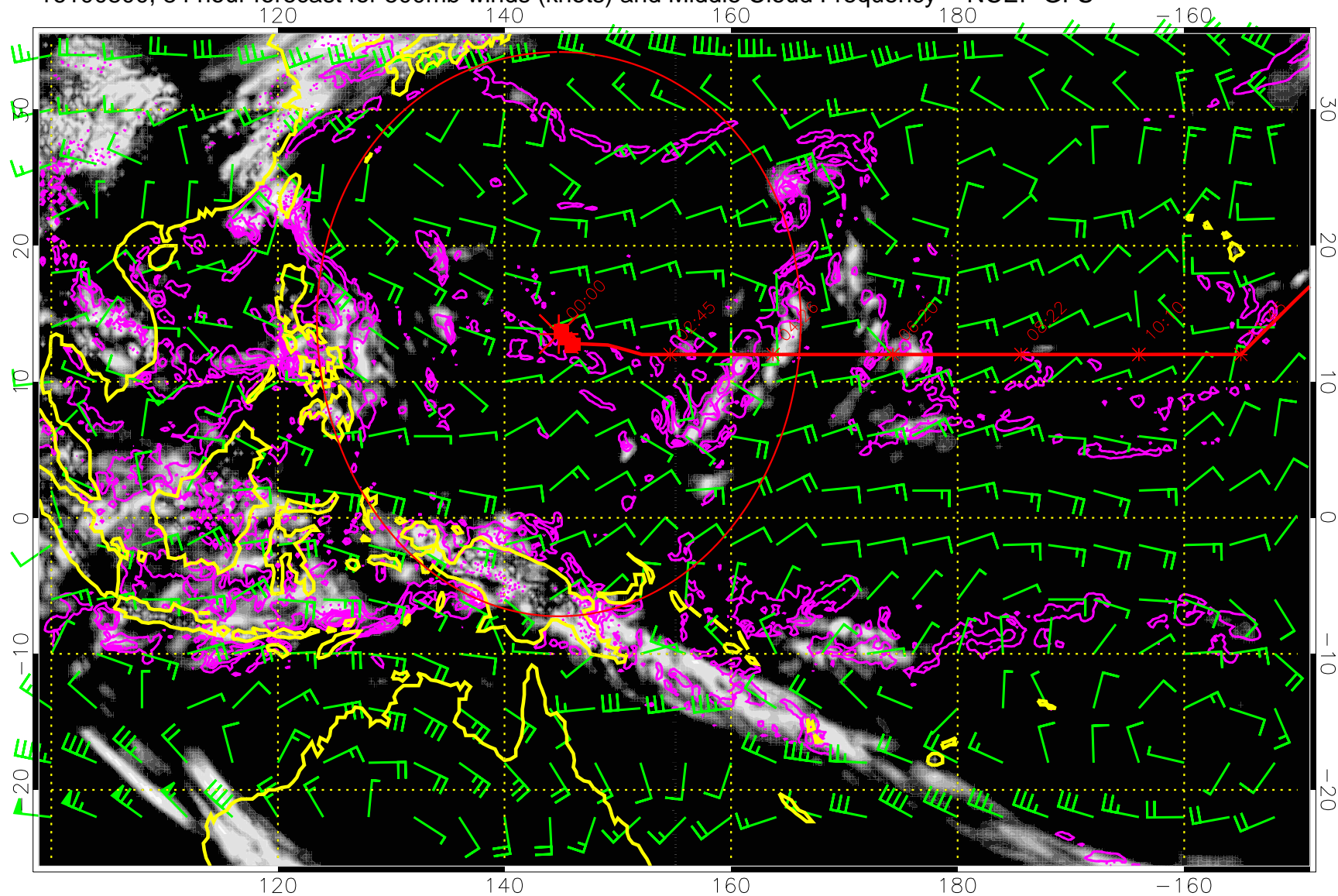
15:53  
13:53



Precip (tot dot, conv sol) mm/day 40 mm/day contours, min 20

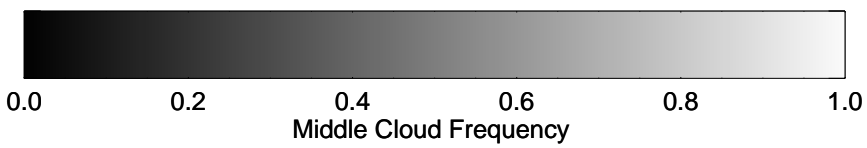
Range ring of 2304 km

16100800, 84 hour forecast for 500mb winds (knots) and Middle Cloud Frequency -- NCEP GFS



15:53

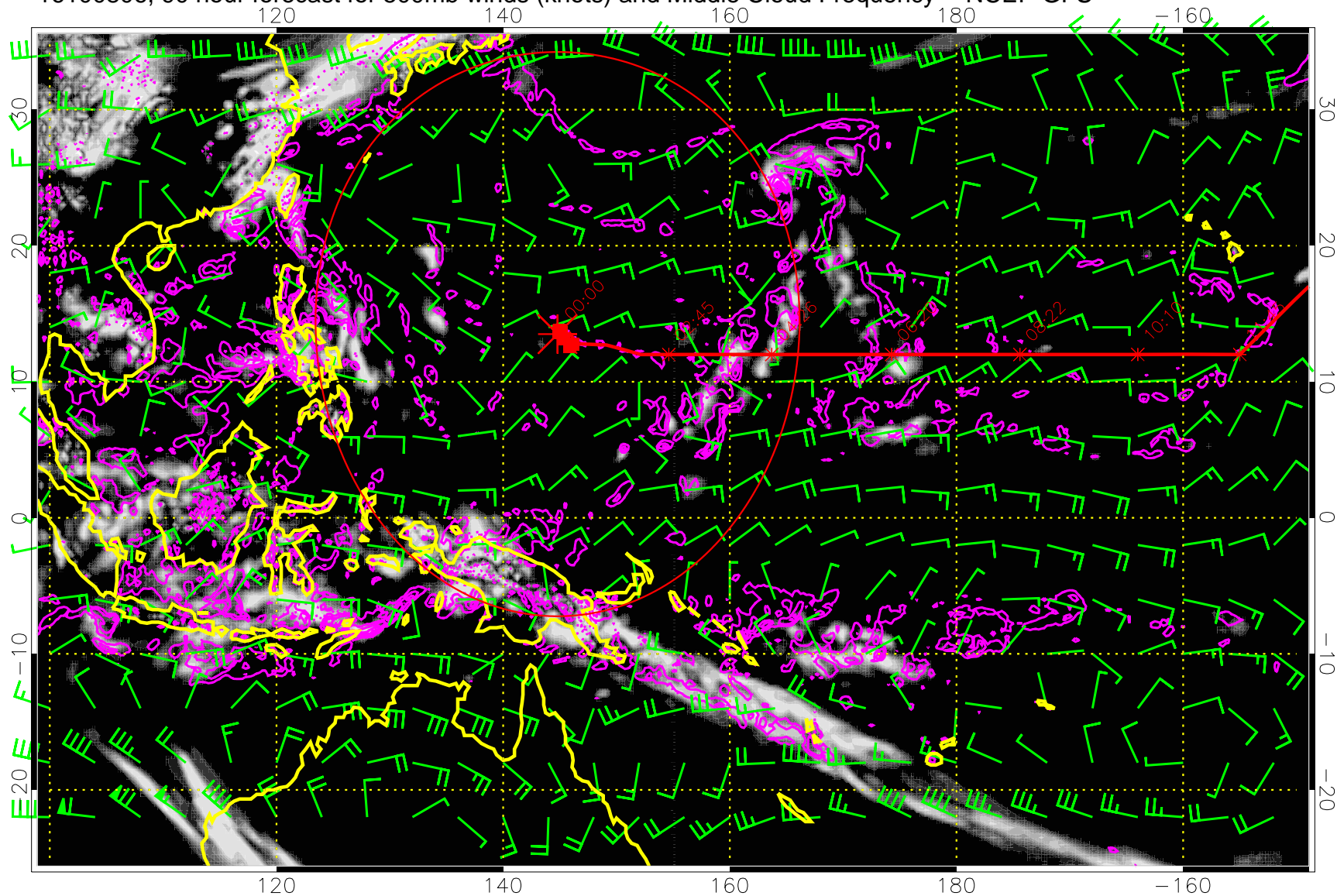
13:53



Precip (tot dot, conv sol) mm/day 40 mm/day contours, min 20

Range ring of 2304 km

16100806, 90 hour forecast for 500mb winds (knots) and Middle Cloud Frequency -- NCEP GFS

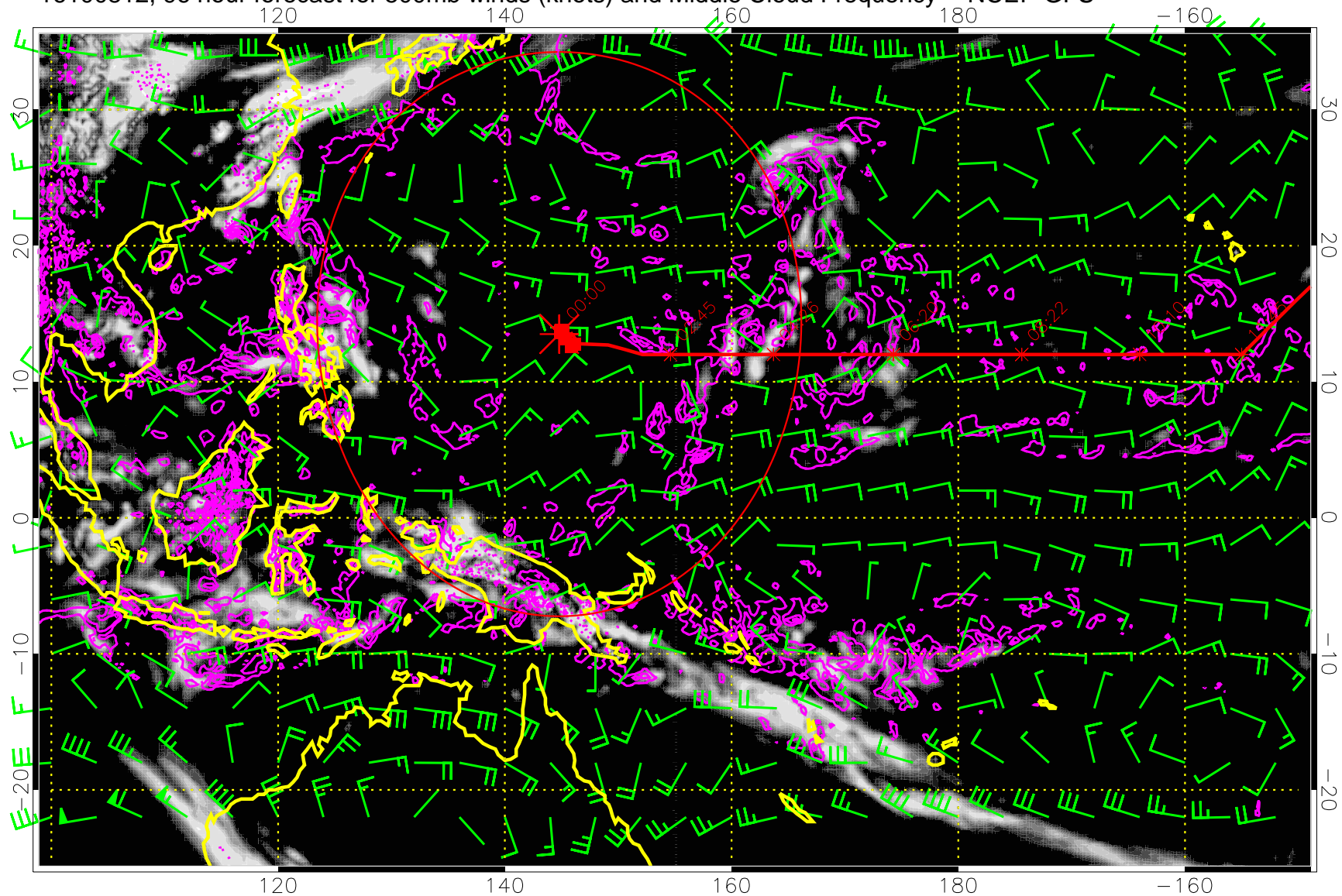


Precip (tot dot, conv sol) mm/day 40 mm/day contours, min 20

0.0 0.2 0.4 0.6 0.8 1.0  
Middle Cloud Frequency

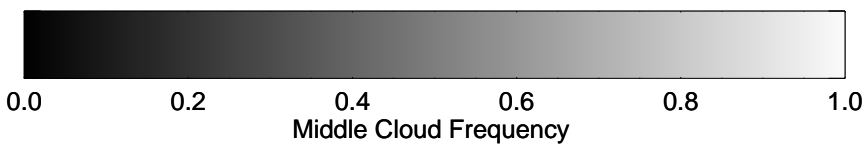
Range ring of 2304 km

16100812, 96 hour forecast for 500mb winds (knots) and Middle Cloud Frequency -- NCEP GFS



15:53

13:53

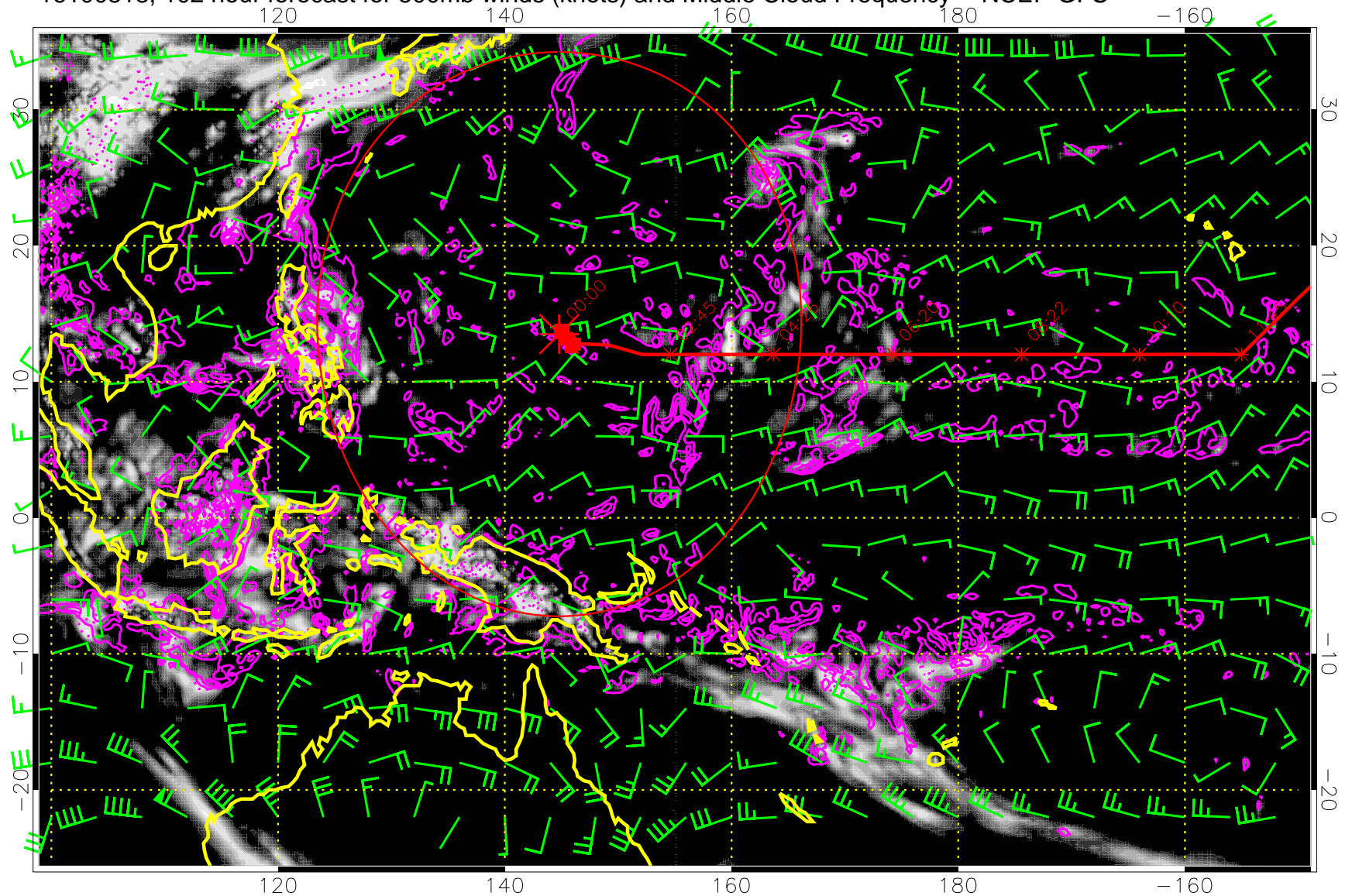


Precip (tot dot, conv sol) mm/day 40 mm/day contours, min 20

Range ring of 2304 km



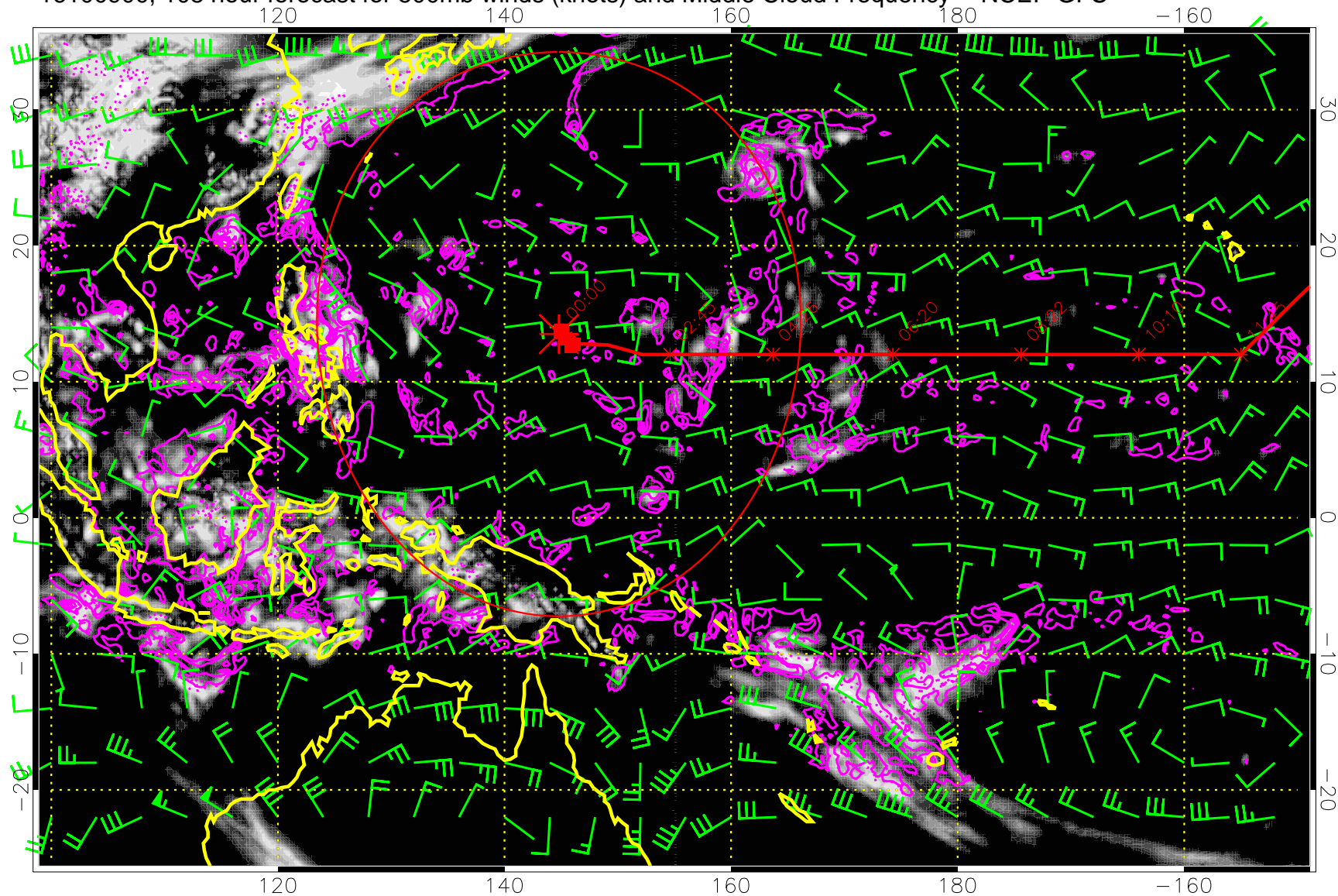
16100818, 102 hour forecast for 500mb winds (knots) and Middle Cloud Frequency -- NCEP GFS



Precip (tot dot, conv sol) mm/day 40 mm/day contours, min 20

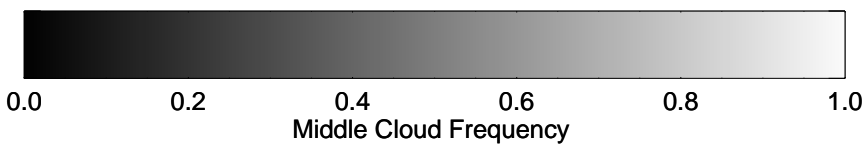
Range ring of 2304 km

16100900, 108 hour forecast for 500mb winds (knots) and Middle Cloud Frequency -- NCEP GFS



15:53

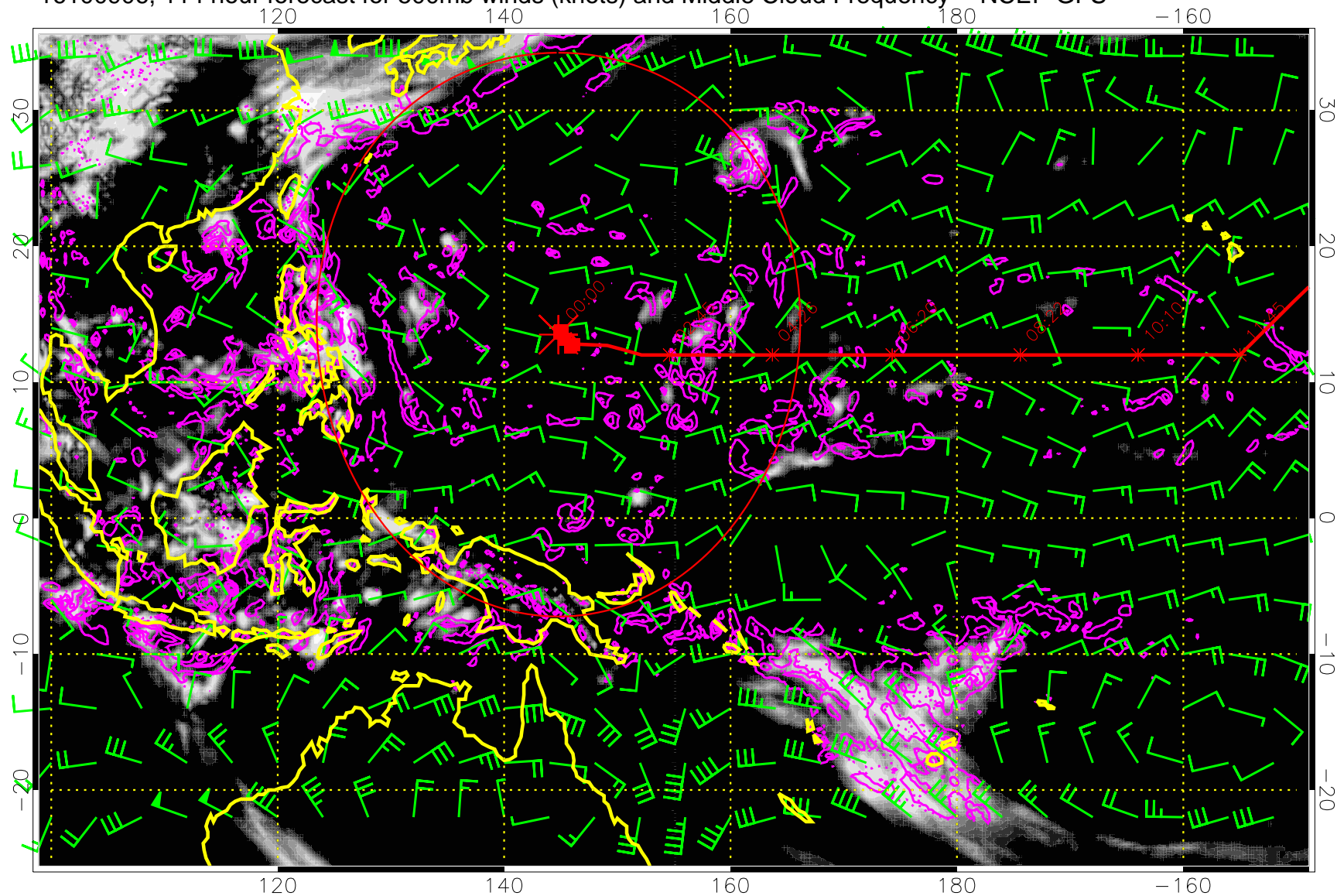
13:53



Precip (tot dot, conv sol) mm/day 40 mm/day contours, min 20

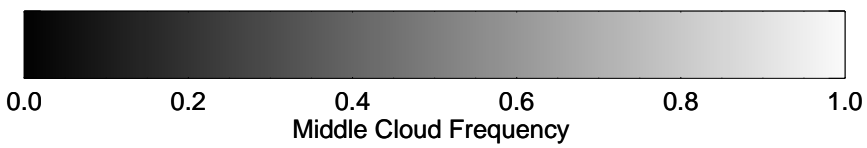
Range ring of 2304 km

16100906, 114 hour forecast for 500mb winds (knots) and Middle Cloud Frequency -- NCEP GFS



15:53

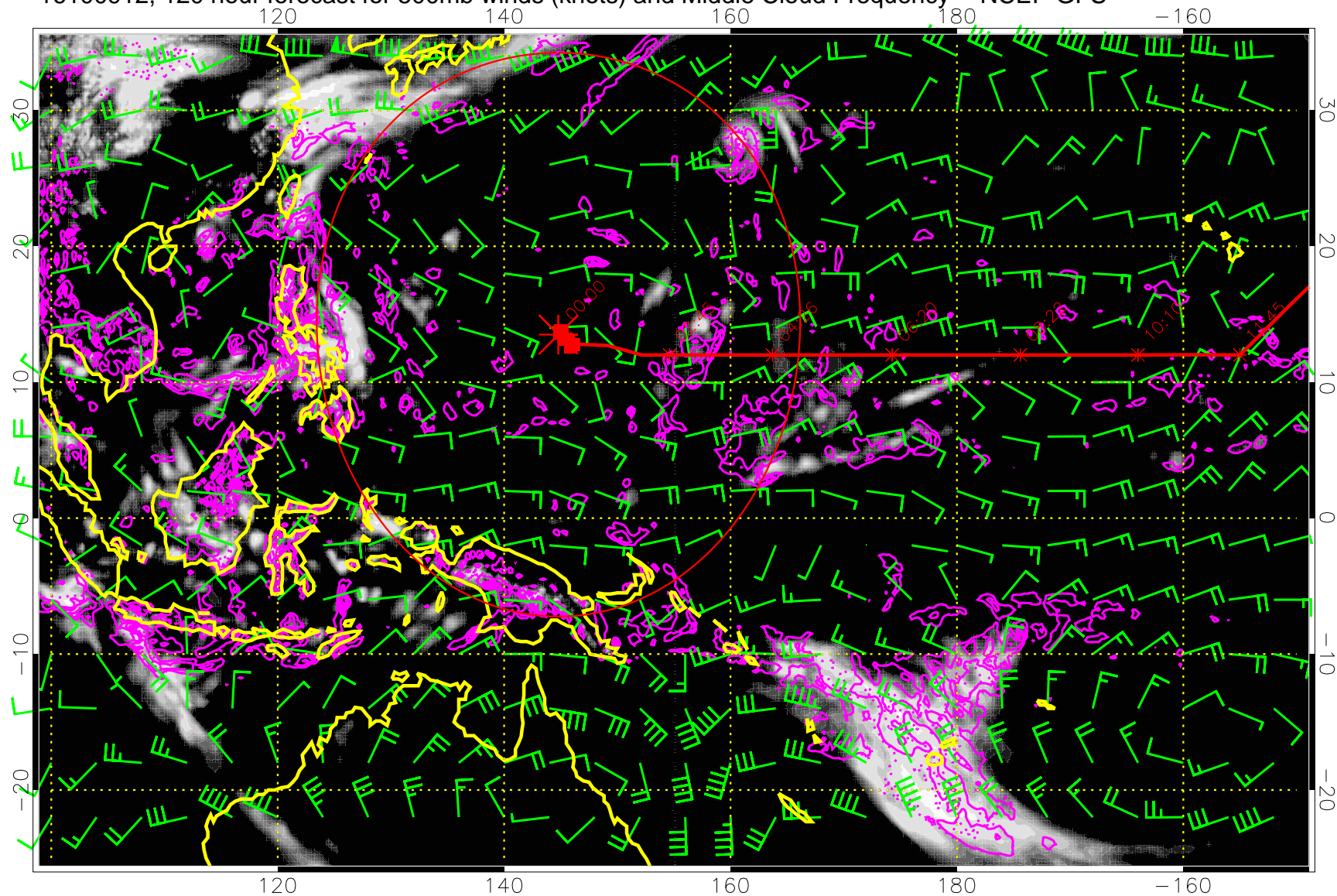
13:53



Precip (tot dot, conv sol) mm/day 40 mm/day contours, min 20

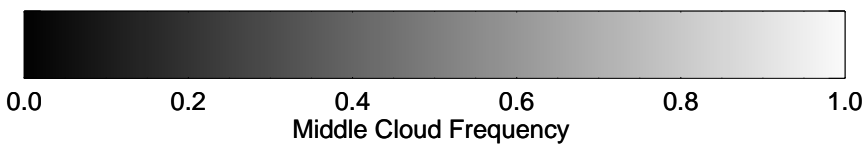
Range ring of 2304 km

16100912, 120 hour forecast for 500mb winds (knots) and Middle Cloud Frequency -- NCEP GFS



15:53

13:53



Precip (tot dot, conv sol) mm/day 40 mm/day contours, min 20

Range ring of 2304 km