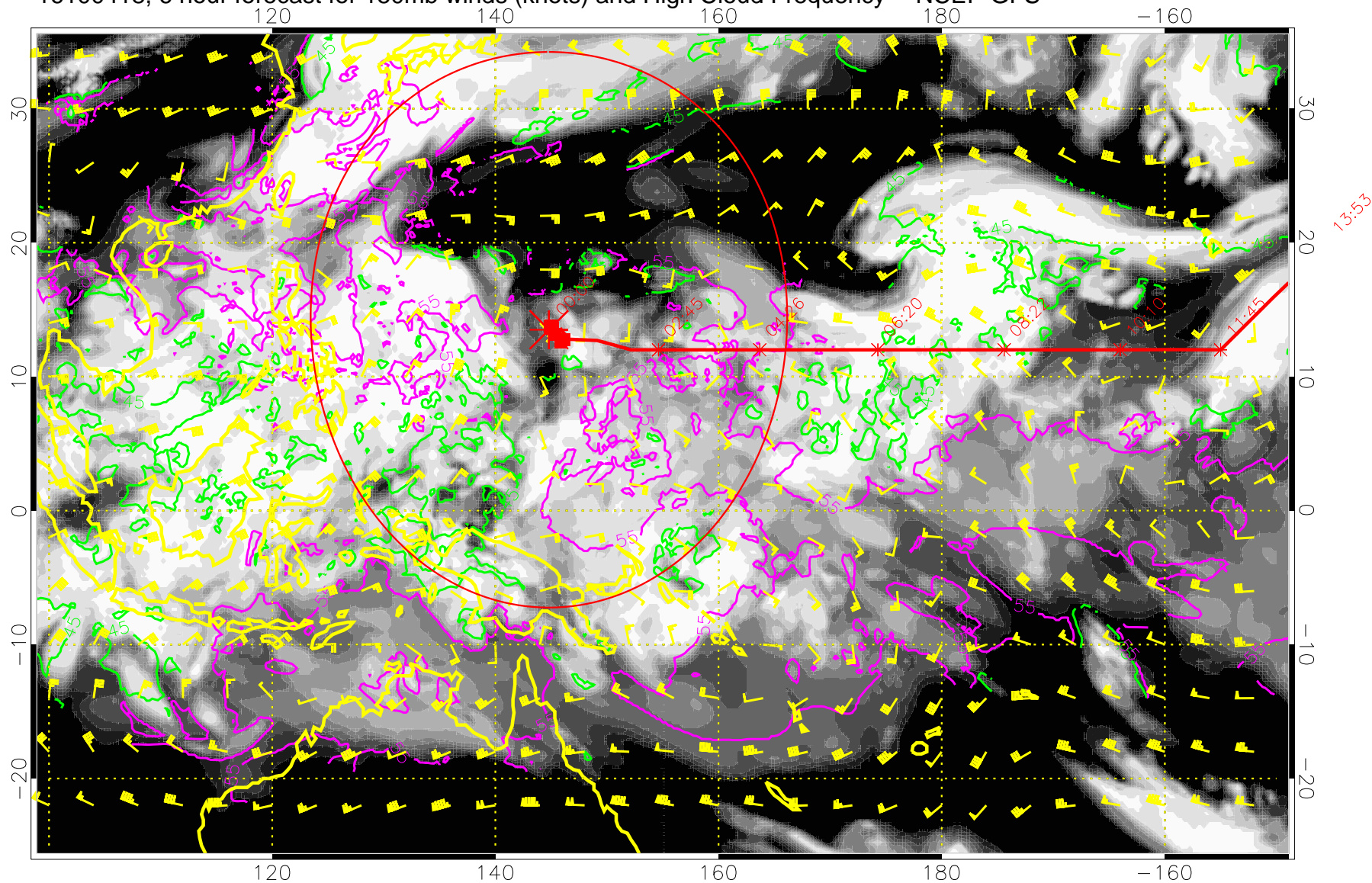


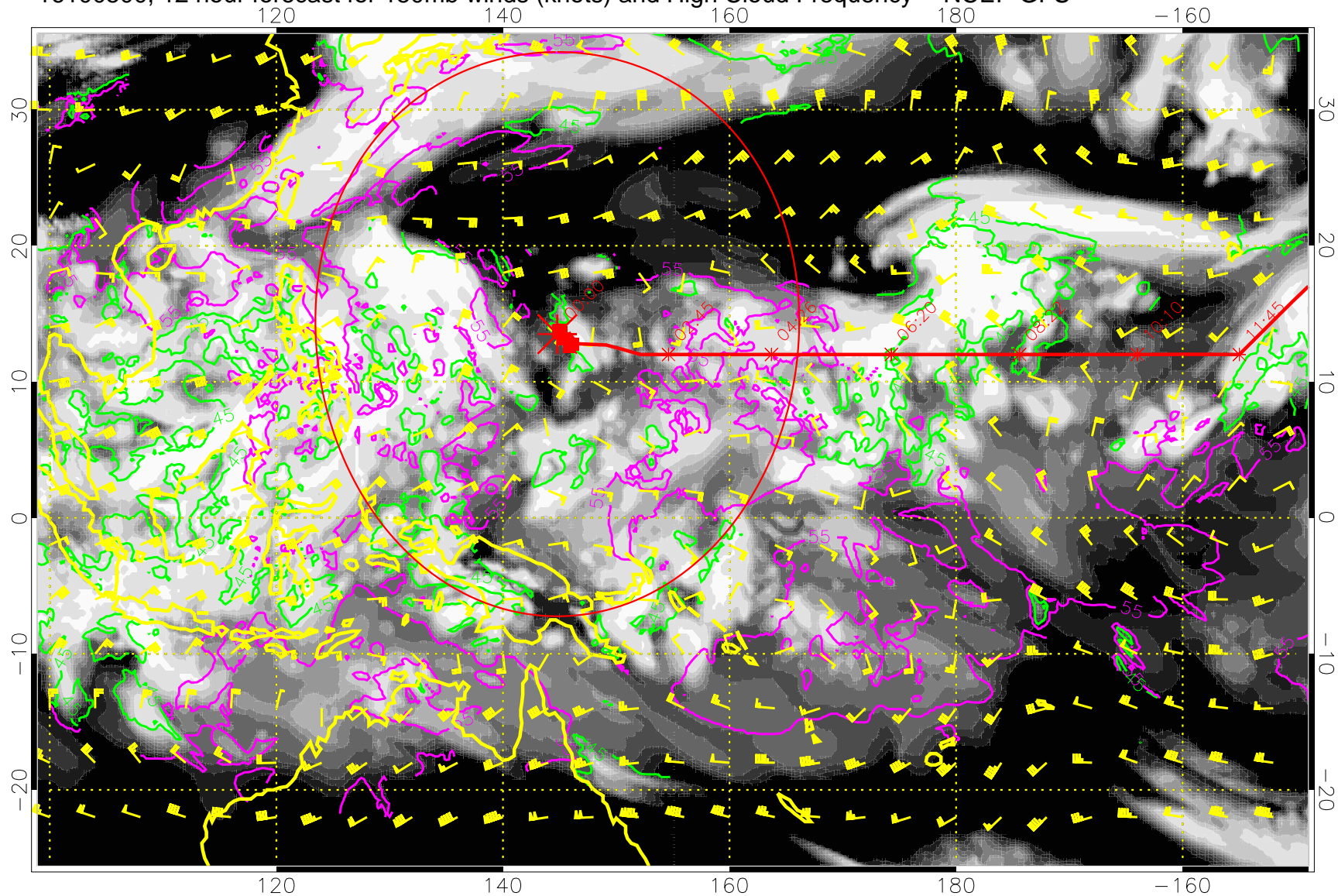
16100418, 6 hour forecast for 150mb winds (knots) and High Cloud Frequency -- NCEP GFS



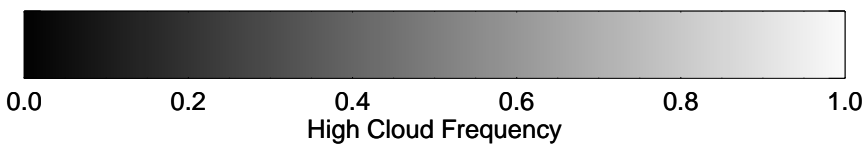
45 kft
55 kft

Range ring of 2304 km

16100500, 12 hour forecast for 150mb winds (knots) and High Cloud Frequency -- NCEP GFS



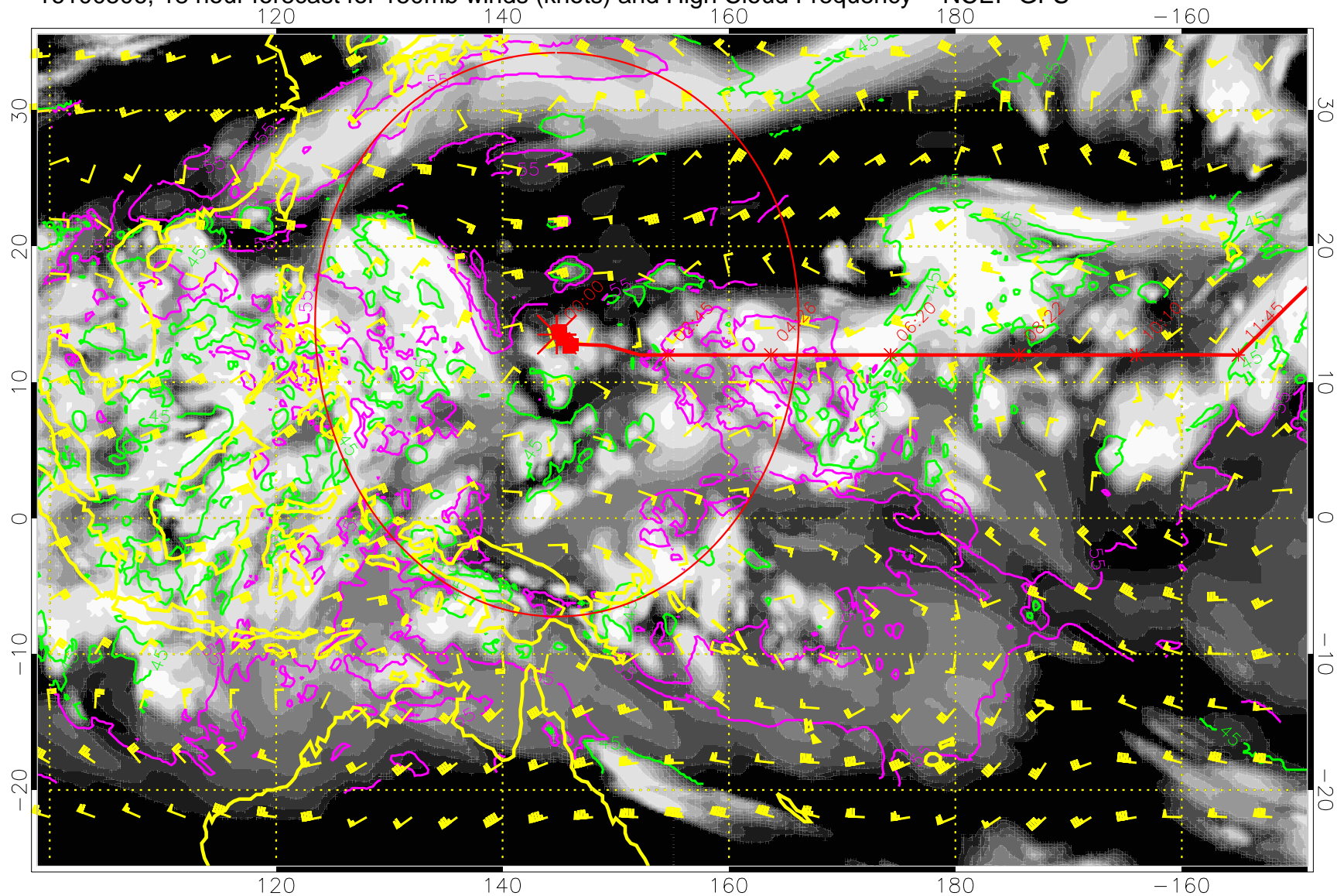
15:53
13:53



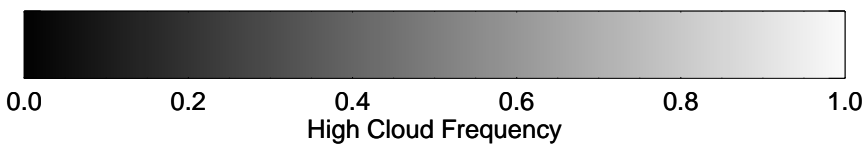
45 kft
55 kft

Range ring of 2304 km

16100506, 18 hour forecast for 150mb winds (knots) and High Cloud Frequency -- NCEP GFS



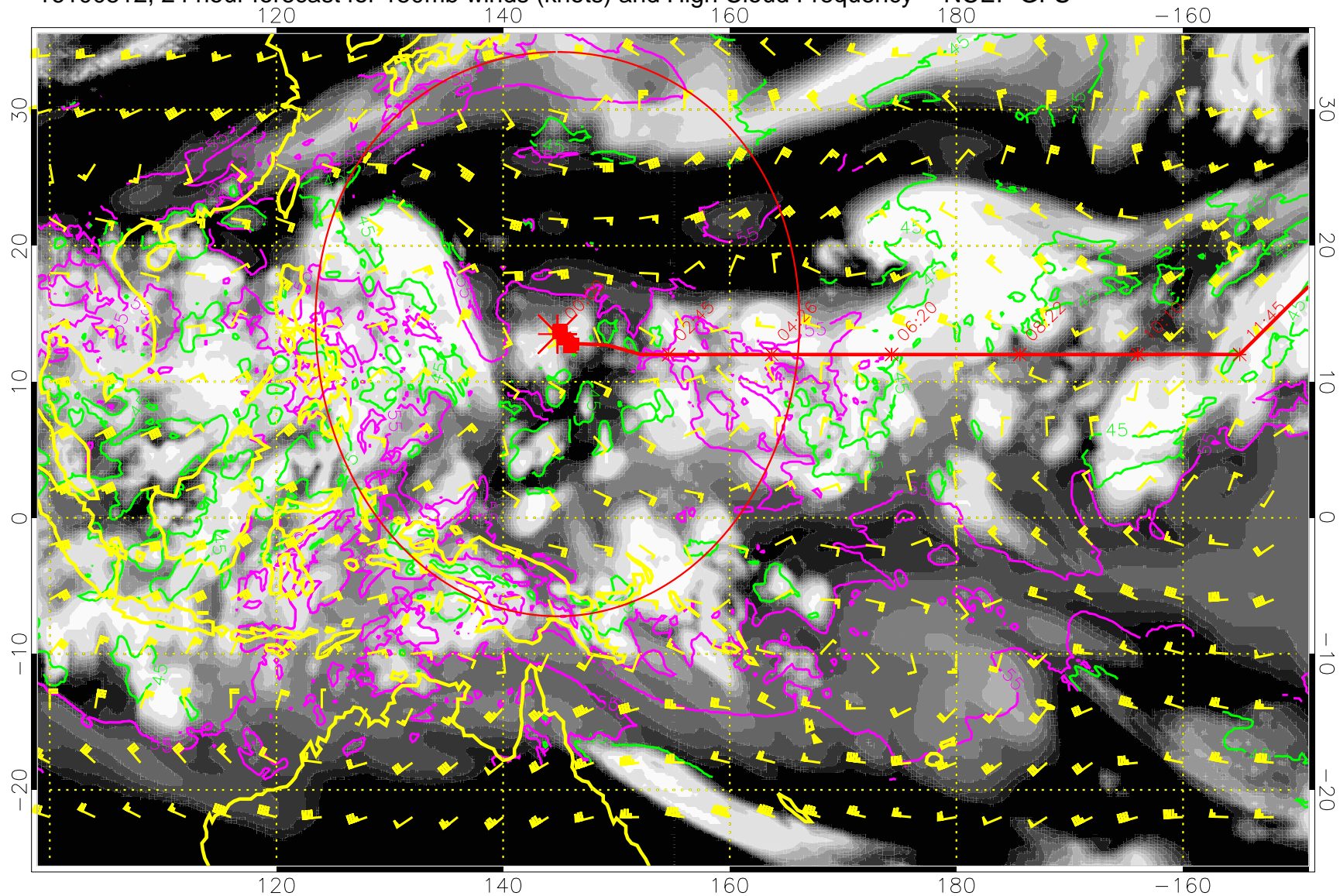
15:53
13:53



45 kft
55 kft

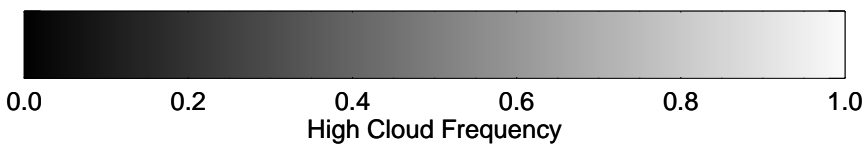
Range ring of 2304 km

16100512, 24 hour forecast for 150mb winds (knots) and High Cloud Frequency -- NCEP GFS



15:53

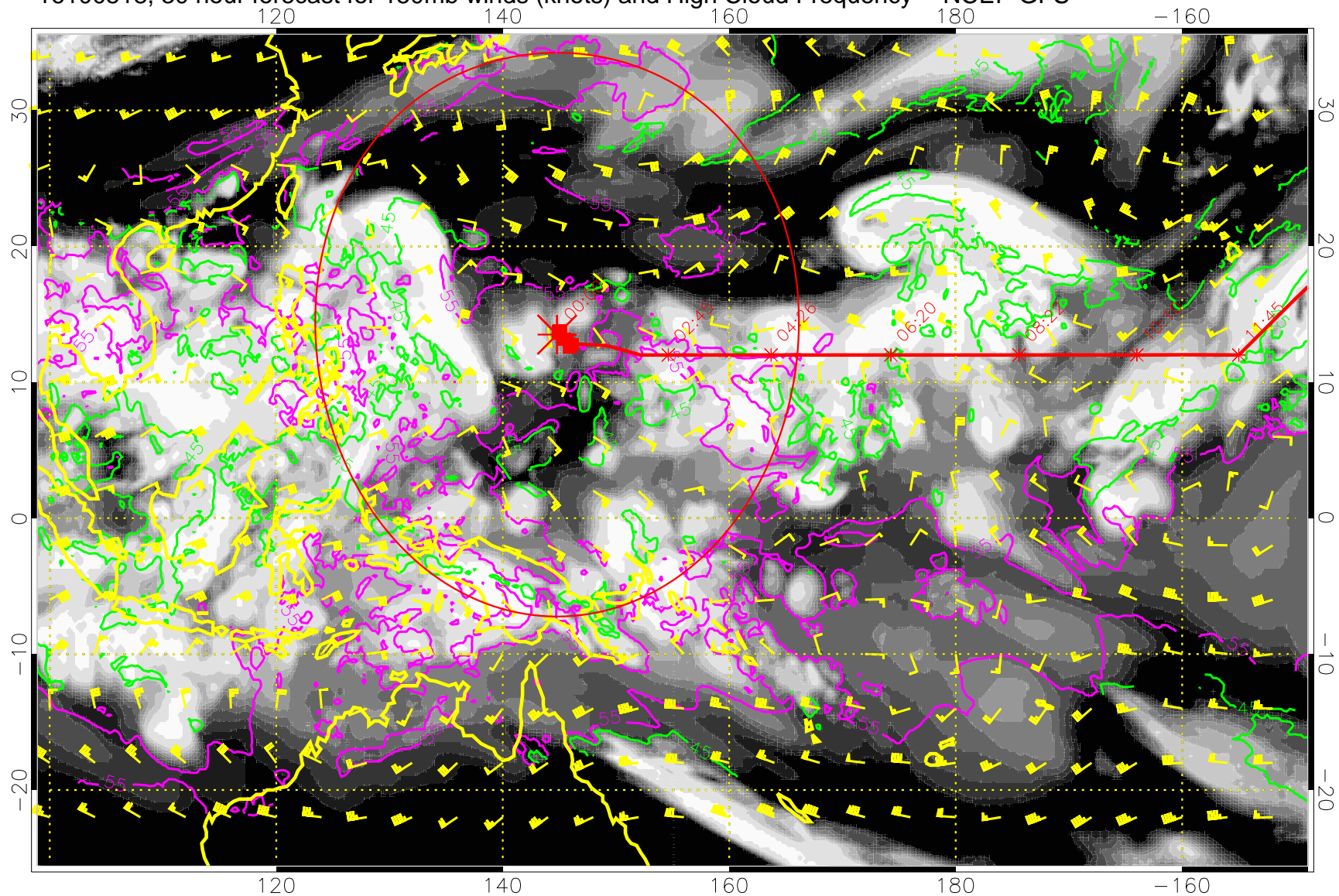
13:53



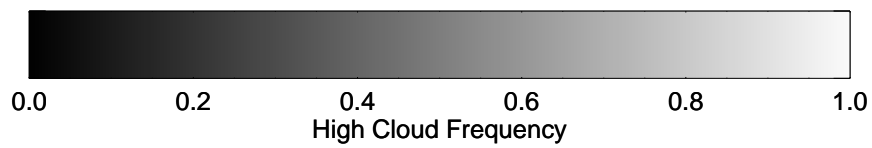
45 kft
55 kft

Range ring of 2304 km

16100518, 30 hour forecast for 150mb winds (knots) and High Cloud Frequency -- NCEP GFS



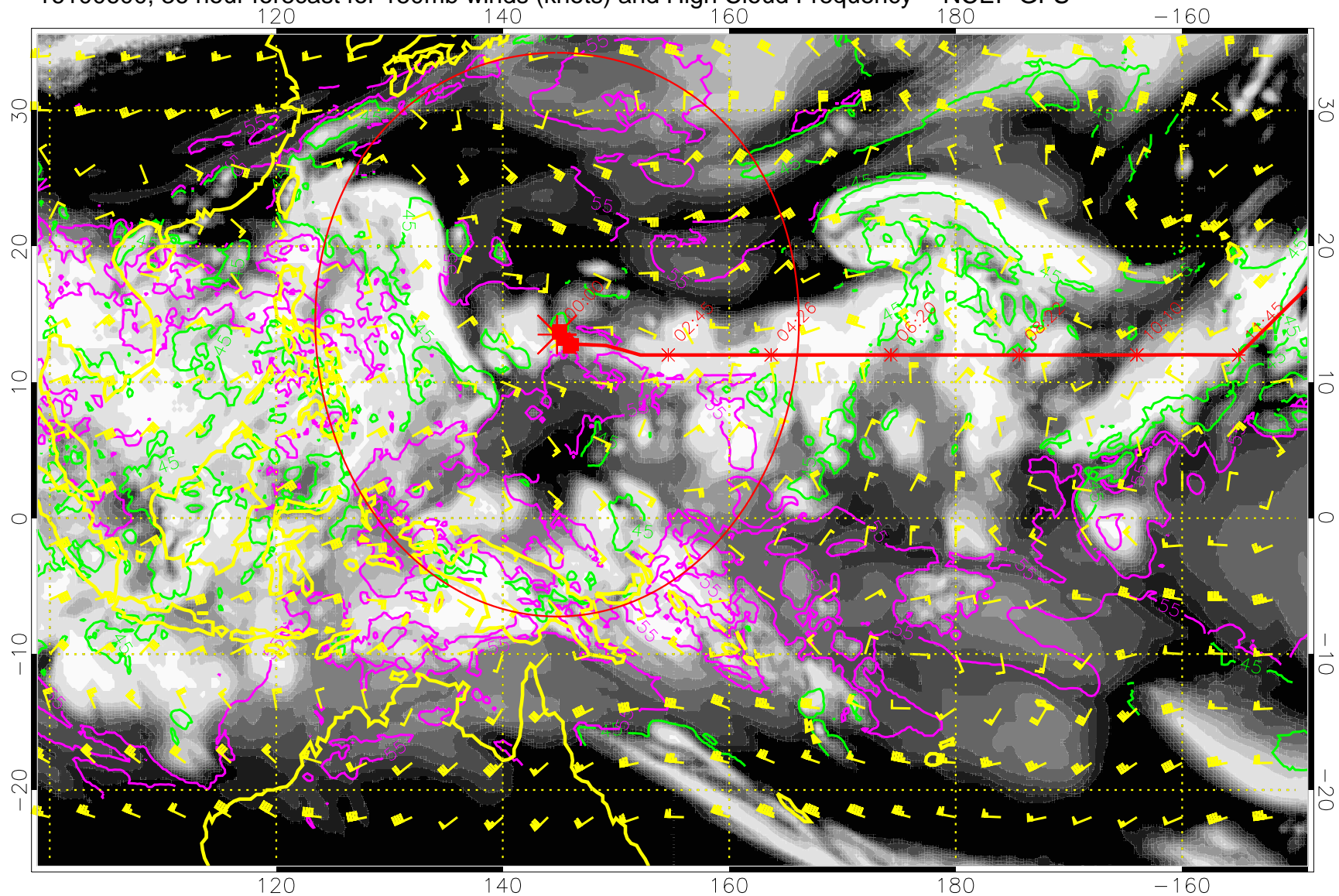
15:53
13:53



45 kft
55 kft

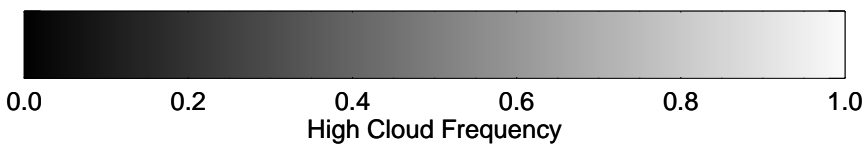
Range ring of 2304 km

16100600, 36 hour forecast for 150mb winds (knots) and High Cloud Frequency -- NCEP GFS



15:53

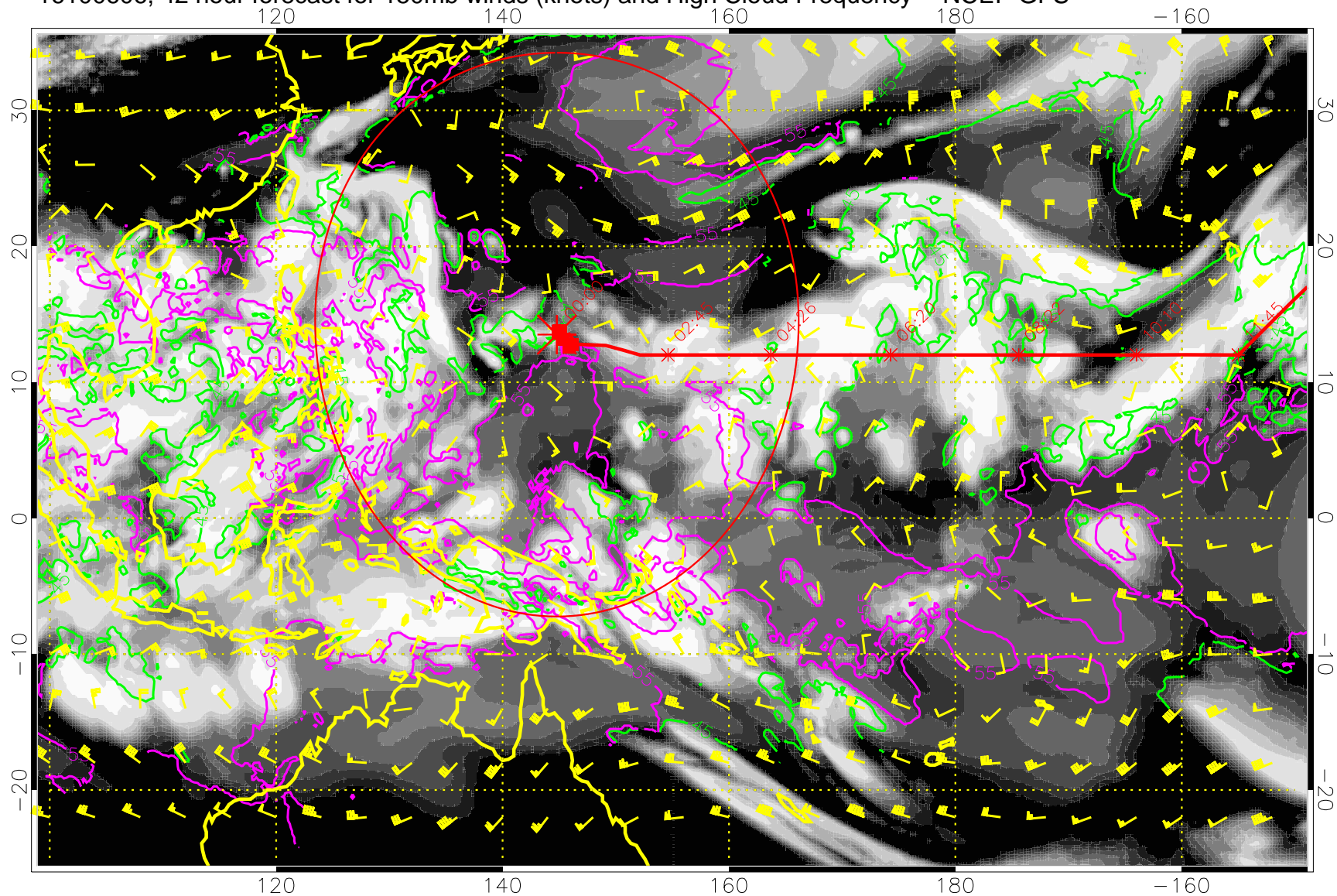
13:53



45 kft
55 kft

Range ring of 2304 km

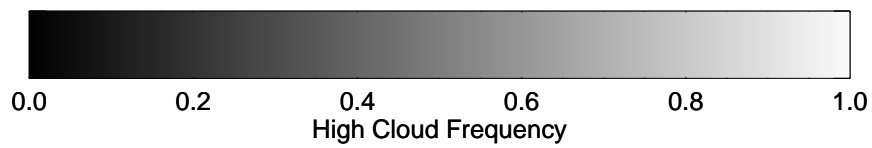
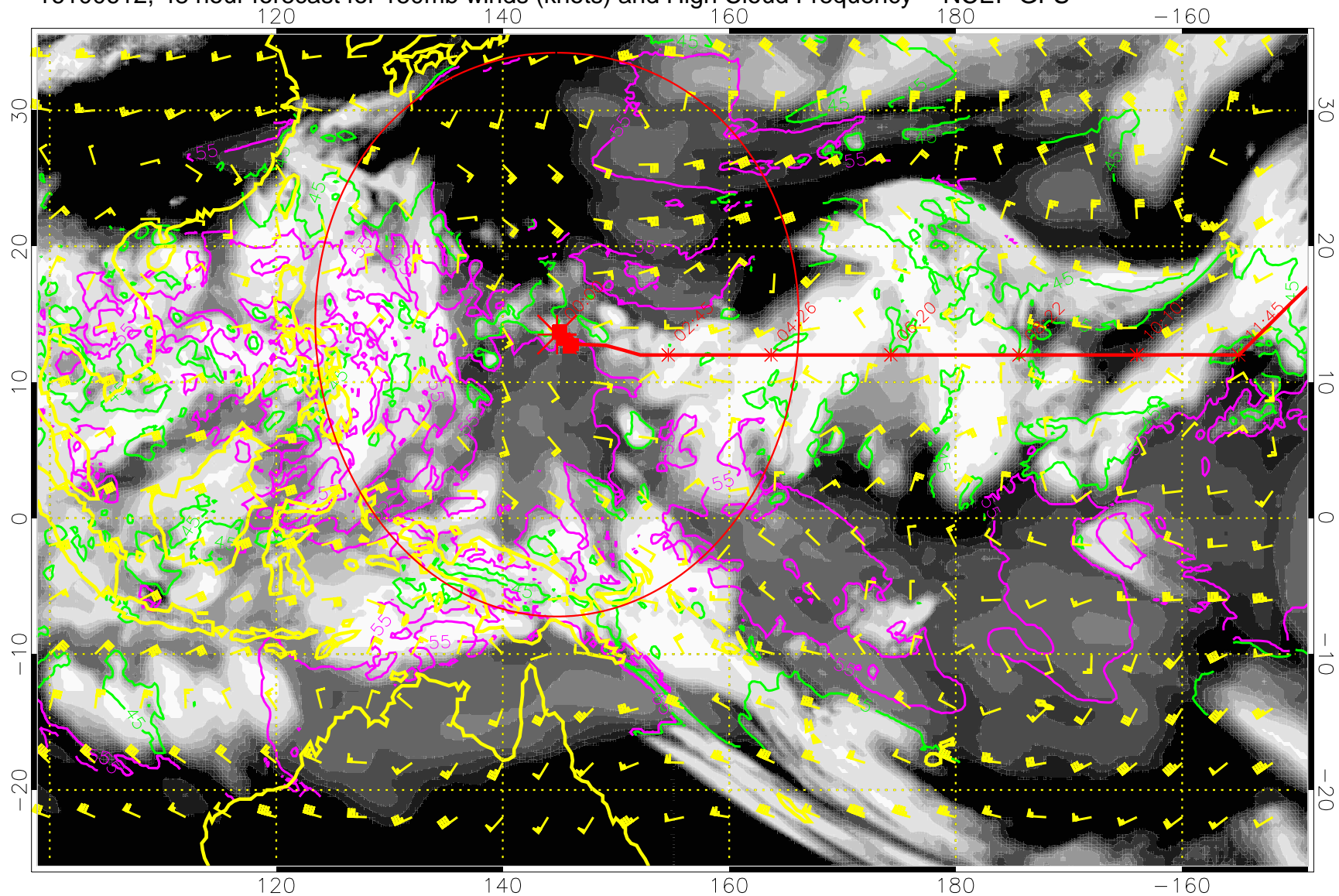
16100606, 42 hour forecast for 150mb winds (knots) and High Cloud Frequency -- NCEP GFS



45 kft
55 kft

Range ring of 2304 km

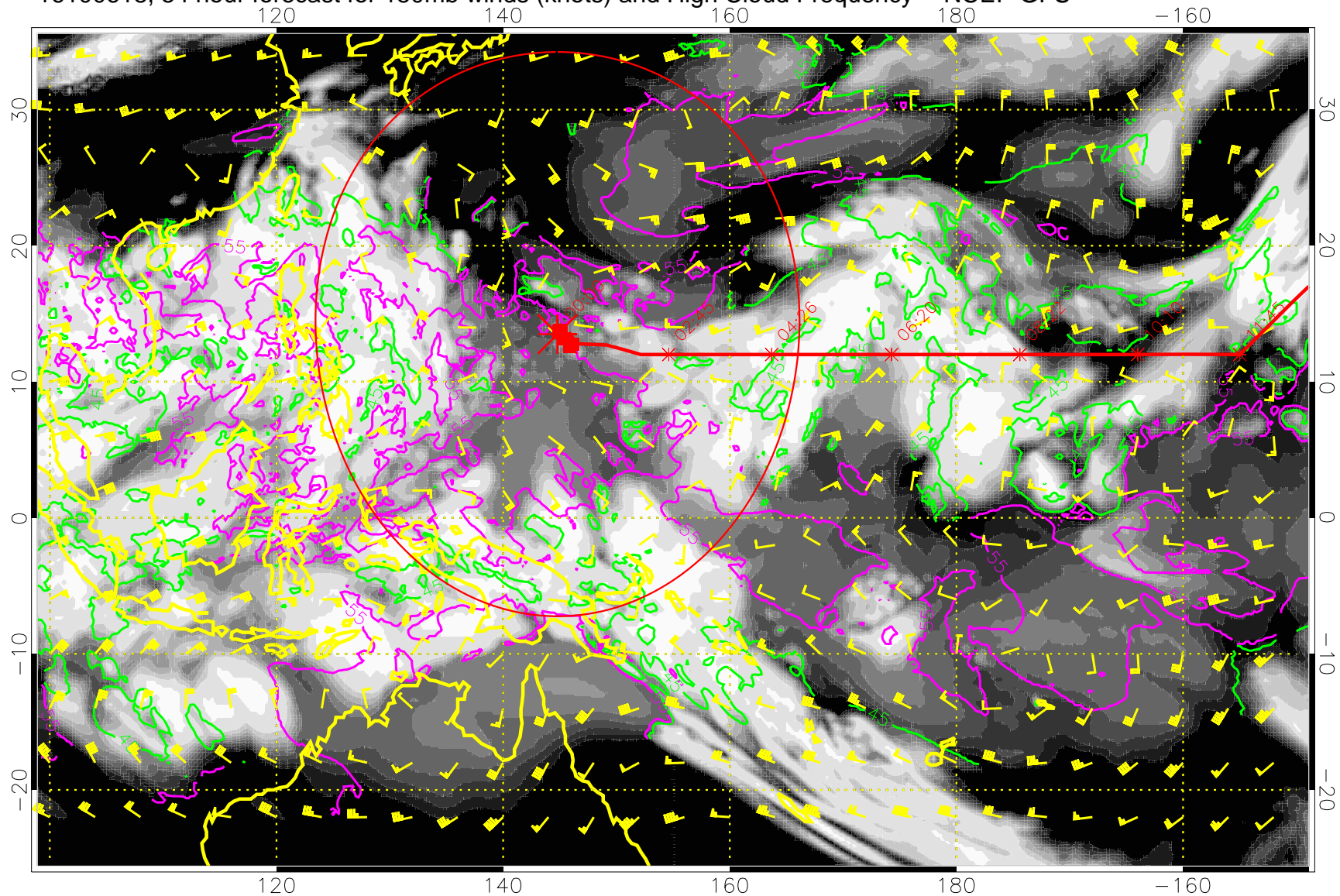
16100612, 48 hour forecast for 150mb winds (knots) and High Cloud Frequency -- NCEP GFS



45 kft
55 kft

Range ring of 2304 km

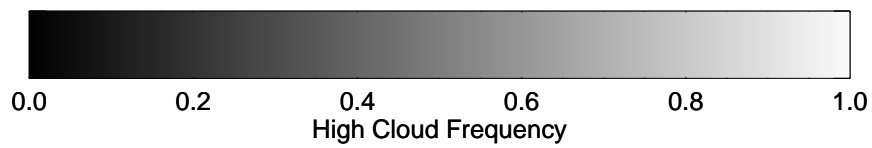
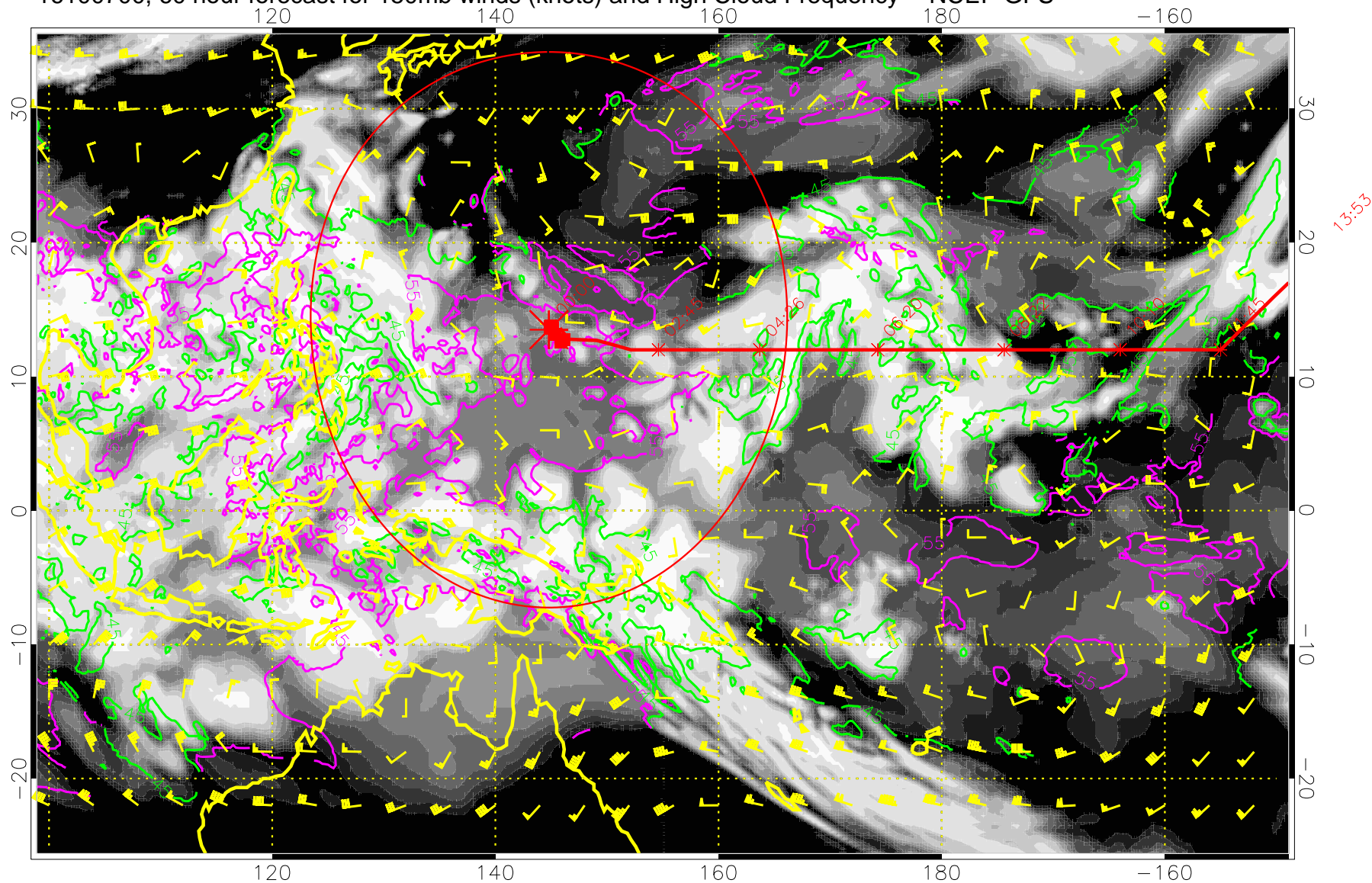
16100618, 54 hour forecast for 150mb winds (knots) and High Cloud Frequency -- NCEP GFS



45 kft
55 kft

Range ring of 2304 km

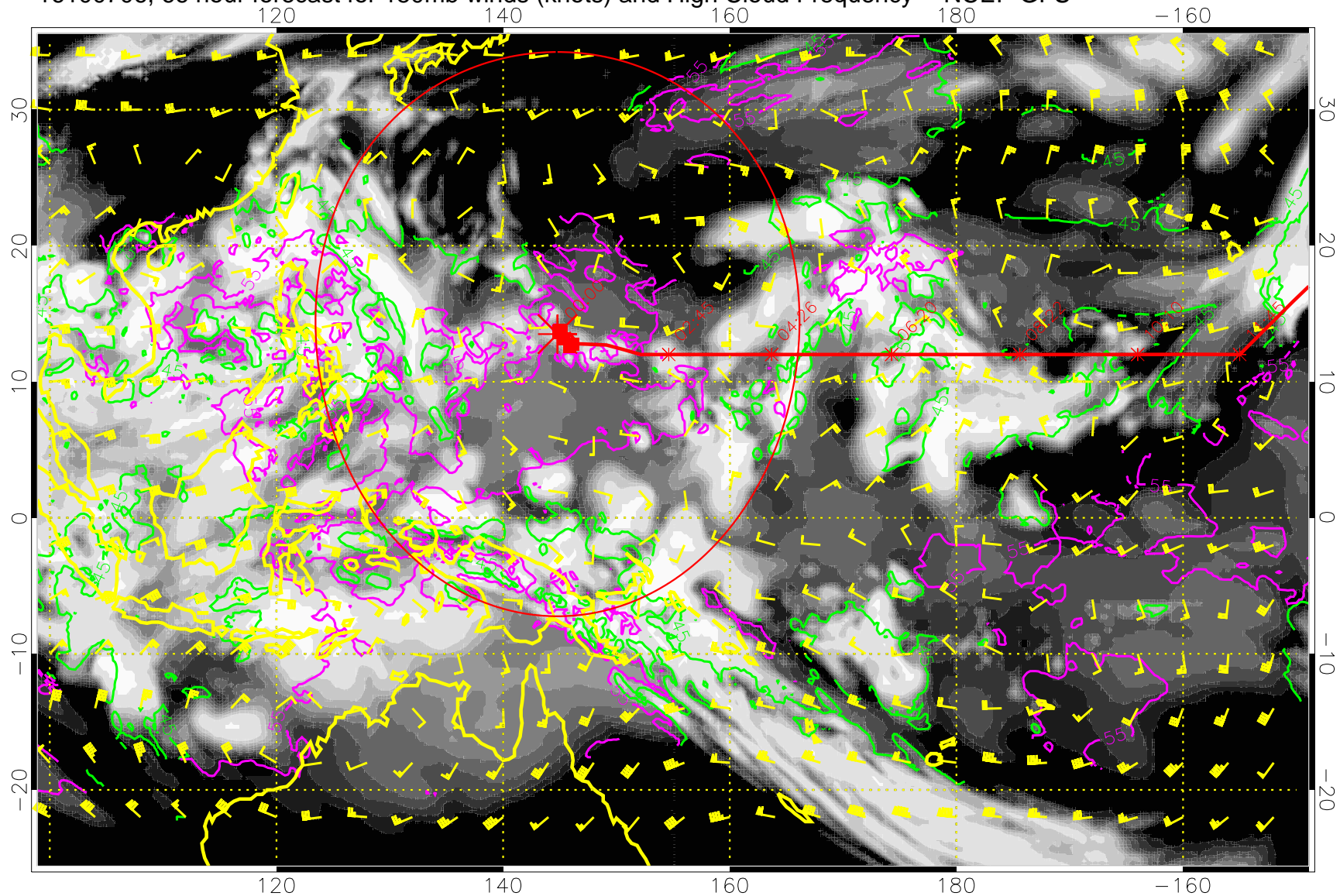
16100700, 60 hour forecast for 150mb winds (knots) and High Cloud Frequency -- NCEP GFS



45 kft
55 kft

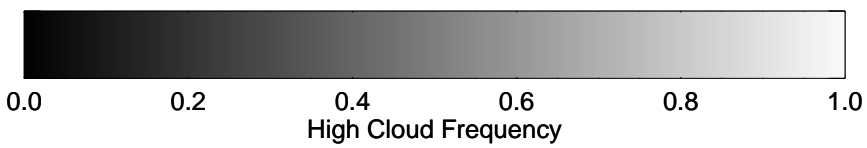
Range ring of 2304 km

16100706, 66 hour forecast for 150mb winds (knots) and High Cloud Frequency -- NCEP GFS



15:53

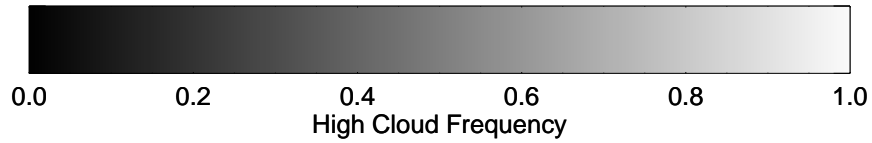
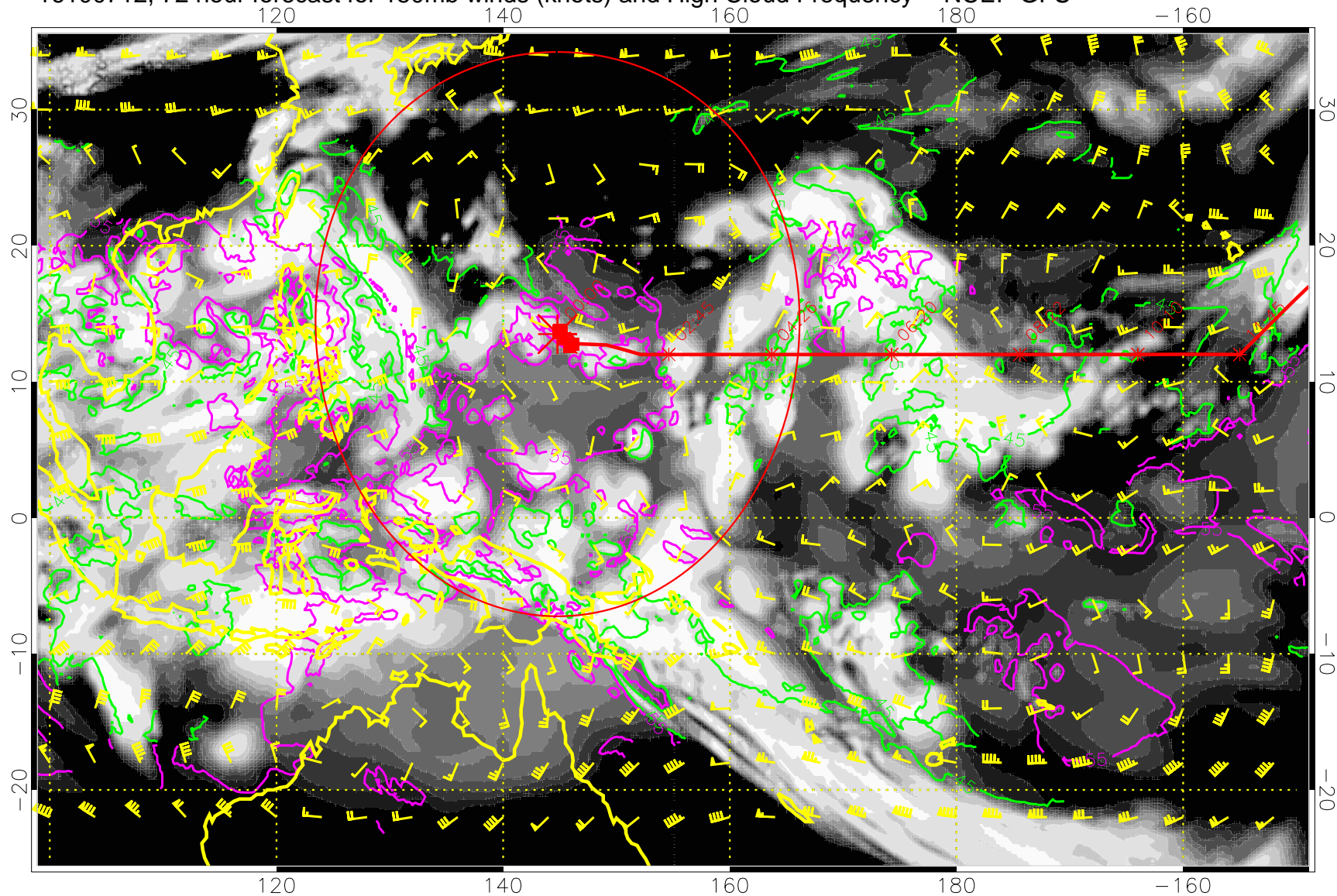
13:53



45 kft
55 kft

Range ring of 2304 km

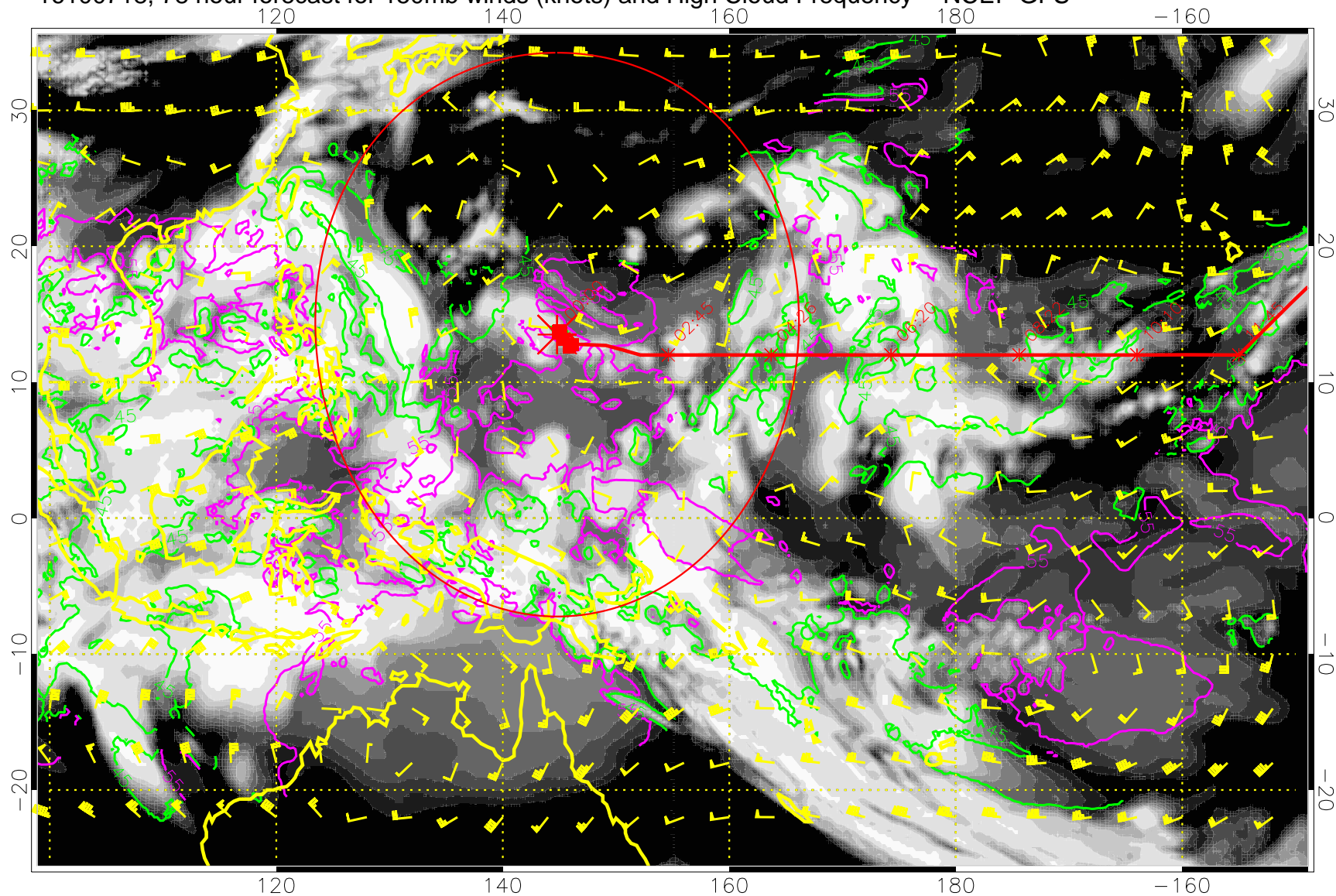
16100712, 72 hour forecast for 150mb winds (knots) and High Cloud Frequency -- NCEP GFS



45 kft
55 kft

Range ring of 2304 km

16100718, 78 hour forecast for 150mb winds (knots) and High Cloud Frequency -- NCEP GFS



15:53

13:53

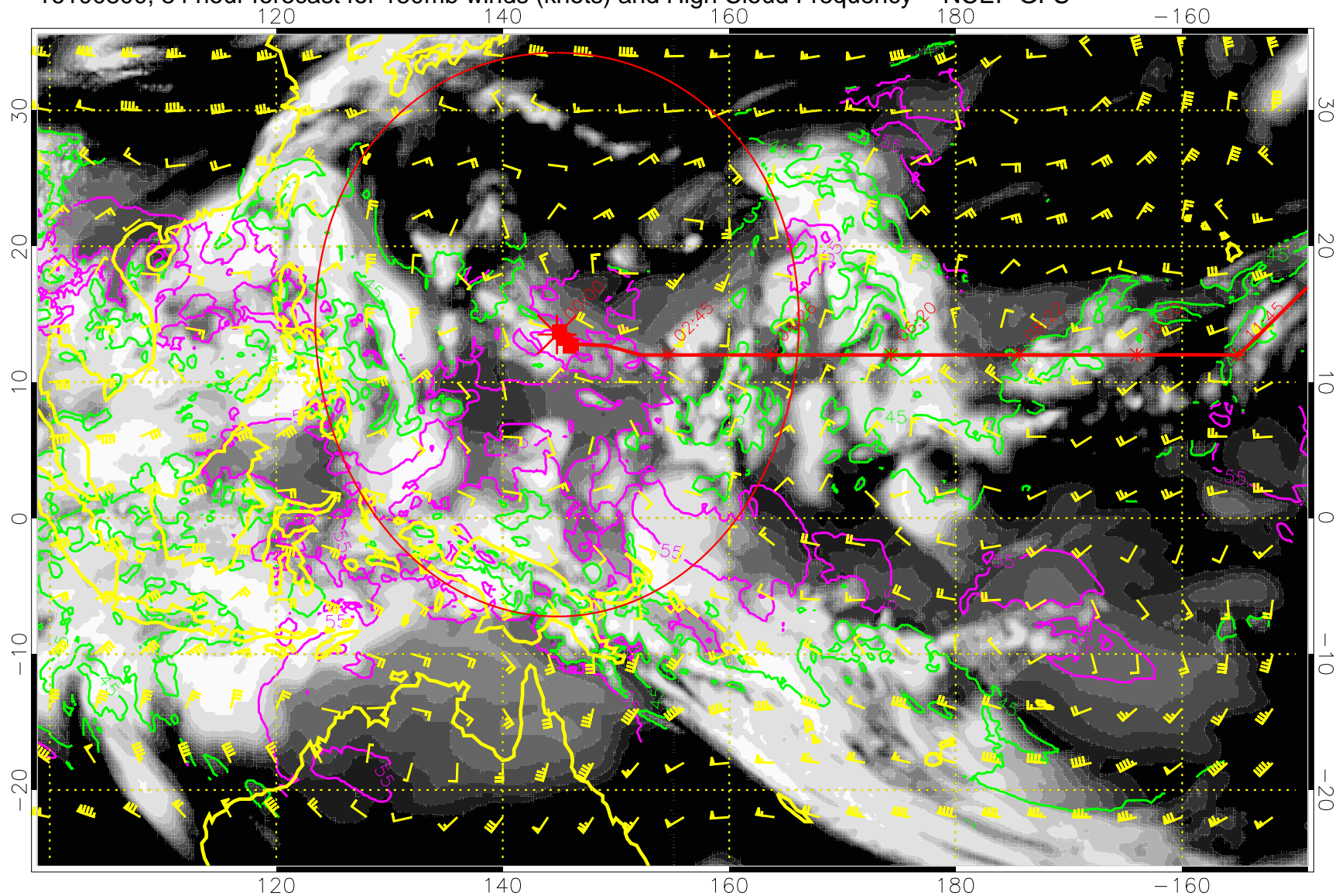


0.0 0.2 0.4 0.6 0.8 1.0
High Cloud Frequency

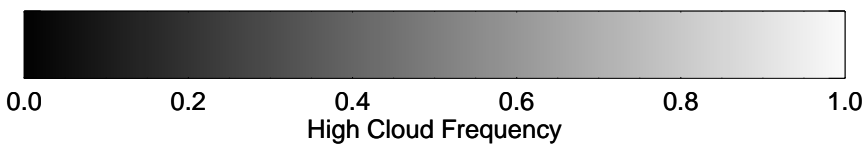
45 kft
55 kft

Range ring of 2304 km

16100800, 84 hour forecast for 150mb winds (knots) and High Cloud Frequency -- NCEP GFS



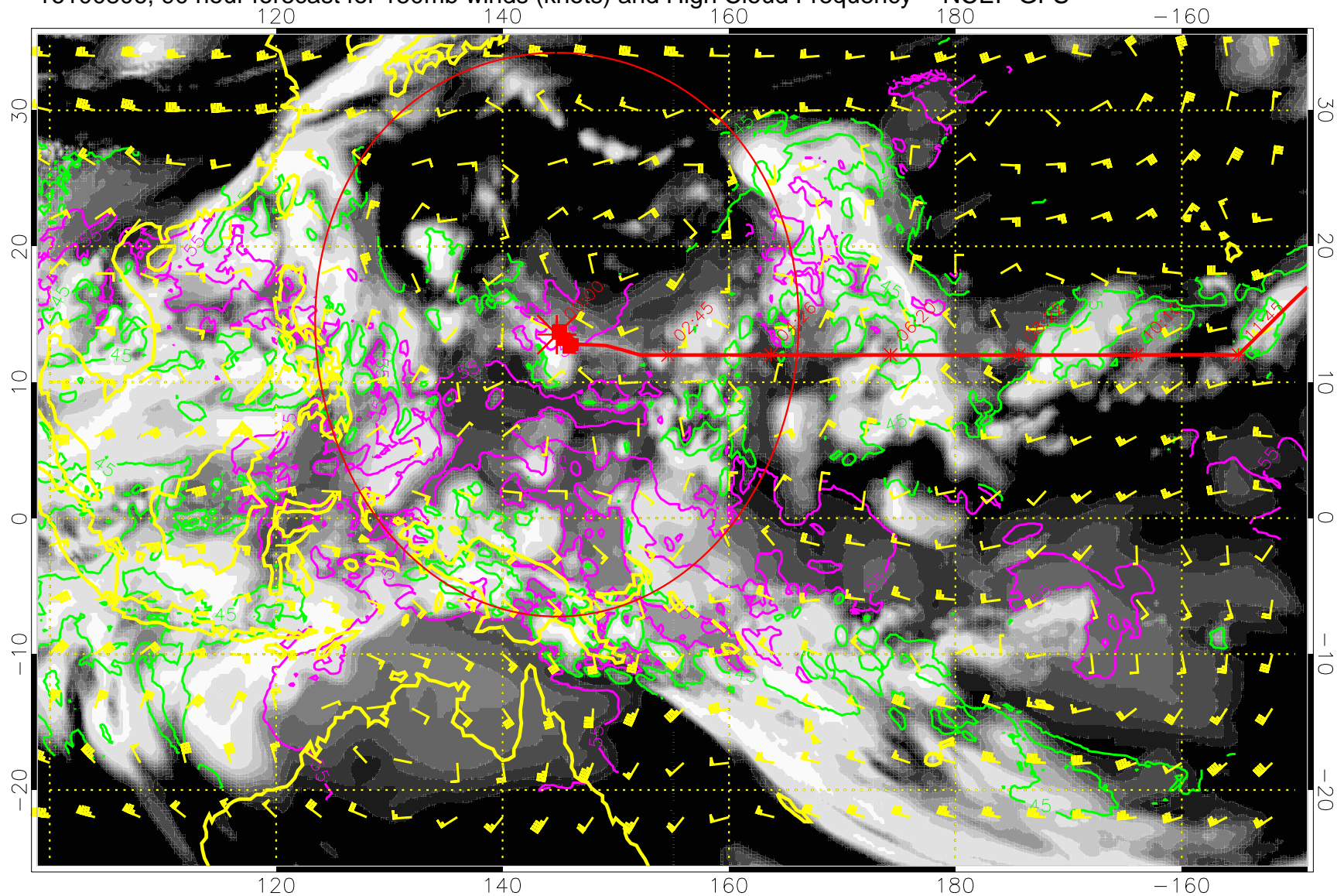
15:53
13:53



45 kft
55 kft

Range ring of 2304 km

16100806, 90 hour forecast for 150mb winds (knots) and High Cloud Frequency -- NCEP GFS

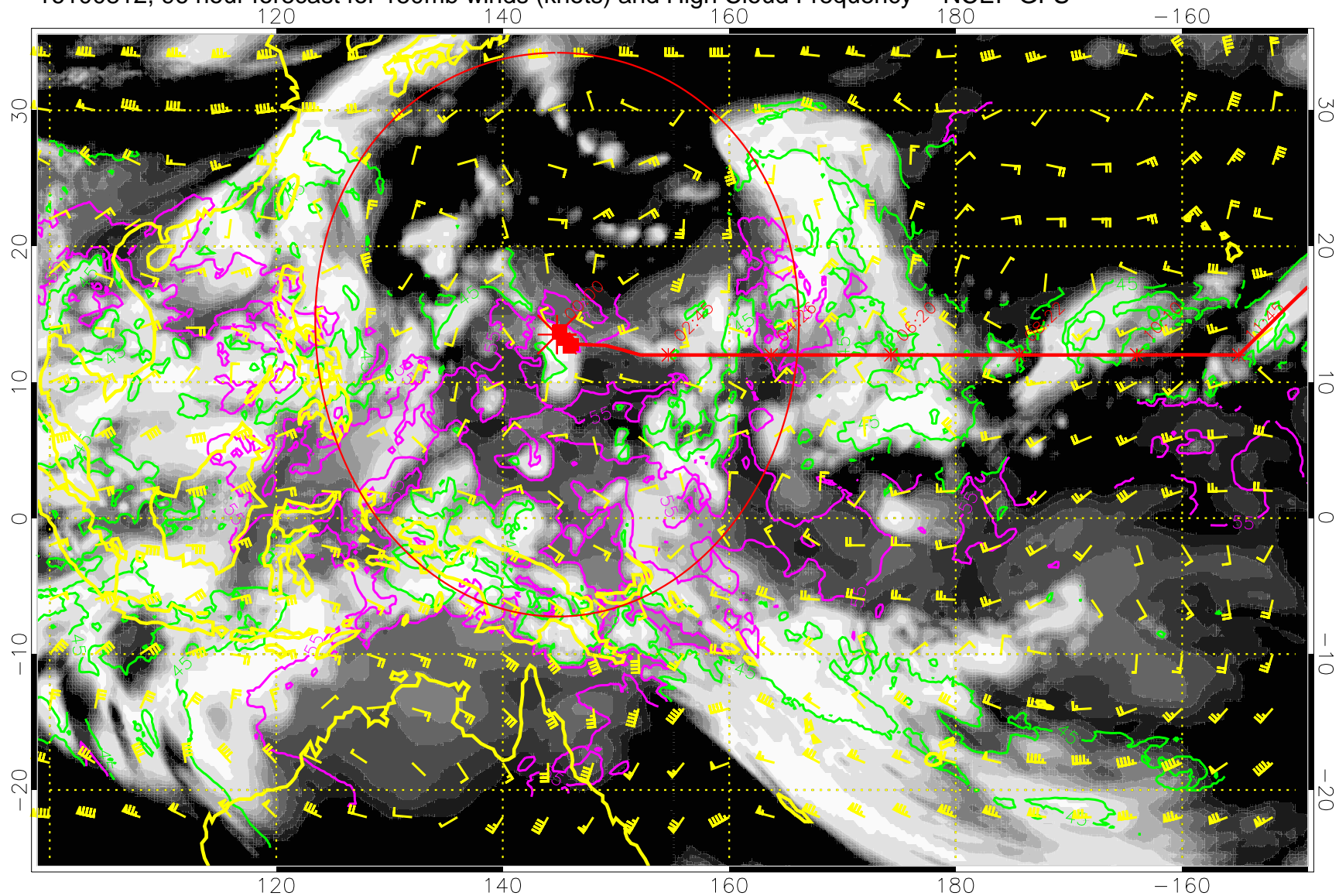


45 kft
55 kft

Range ring of 2304 km

15:53
13:53

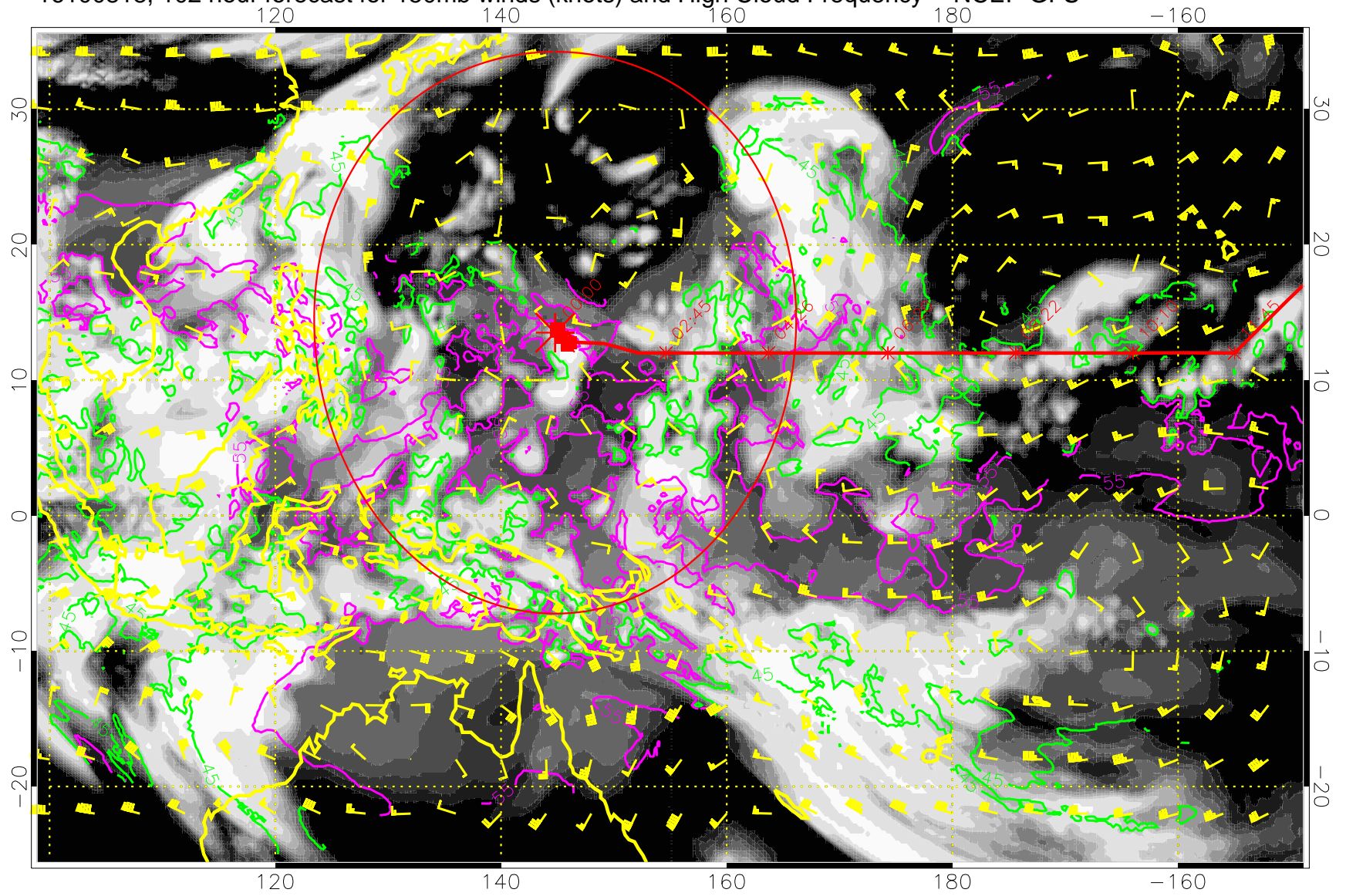
16100812, 96 hour forecast for 150mb winds (knots) and High Cloud Frequency -- NCEP GFS



45 kft
55 kft

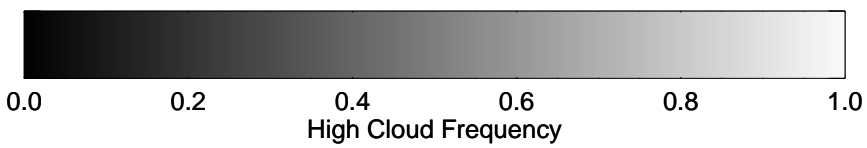
Range ring of 2304 km

16100818, 102 hour forecast for 150mb winds (knots) and High Cloud Frequency -- NCEP GFS



15:53

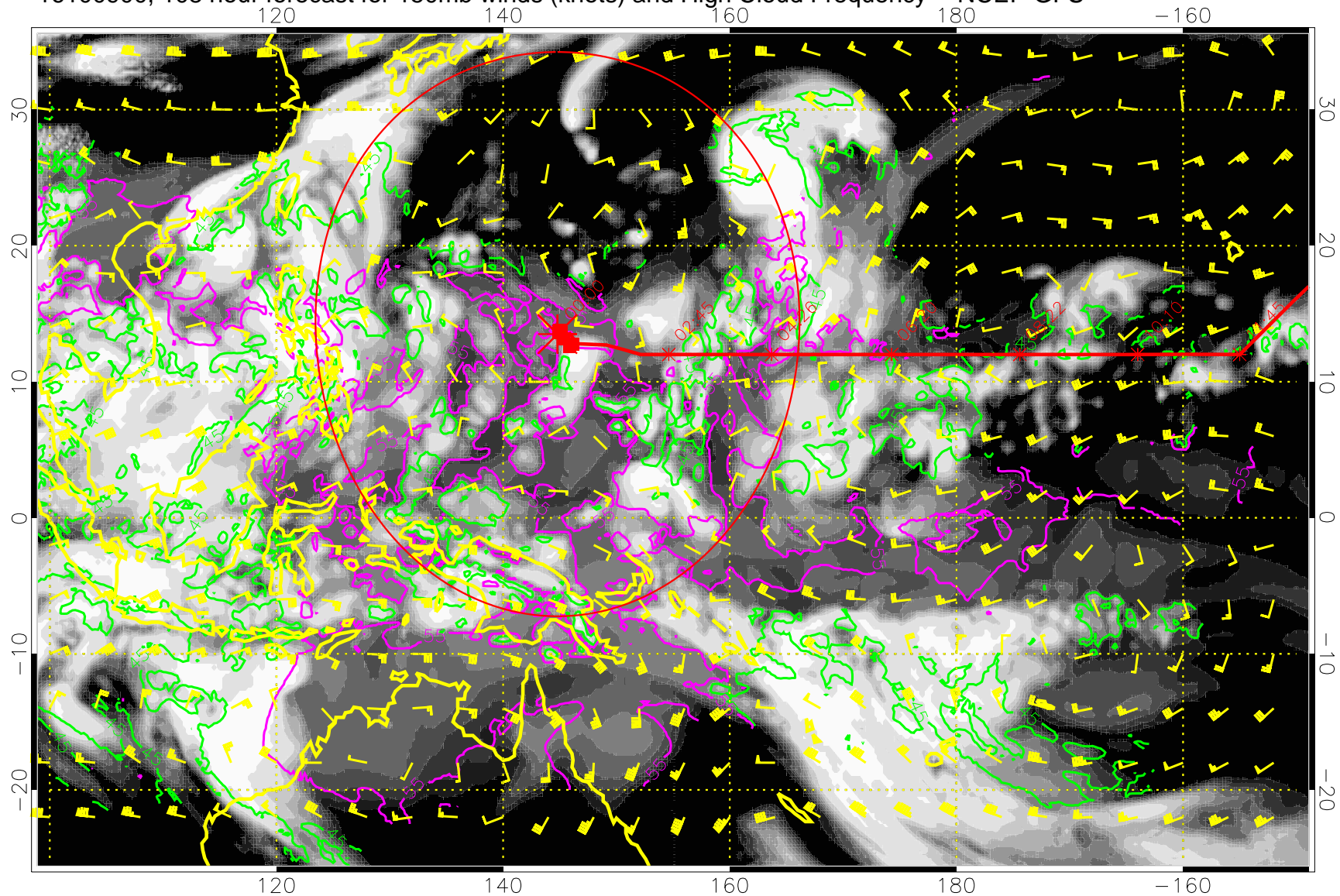
13:53



45 kft
55 kft

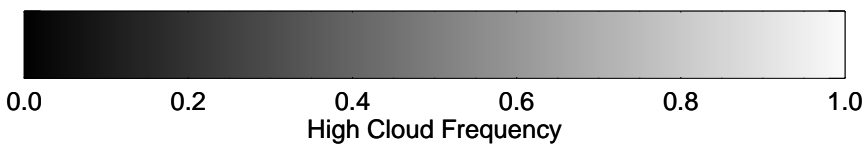
Range ring of 2304 km

16100900, 108 hour forecast for 150mb winds (knots) and High Cloud Frequency -- NCEP GFS



15:53

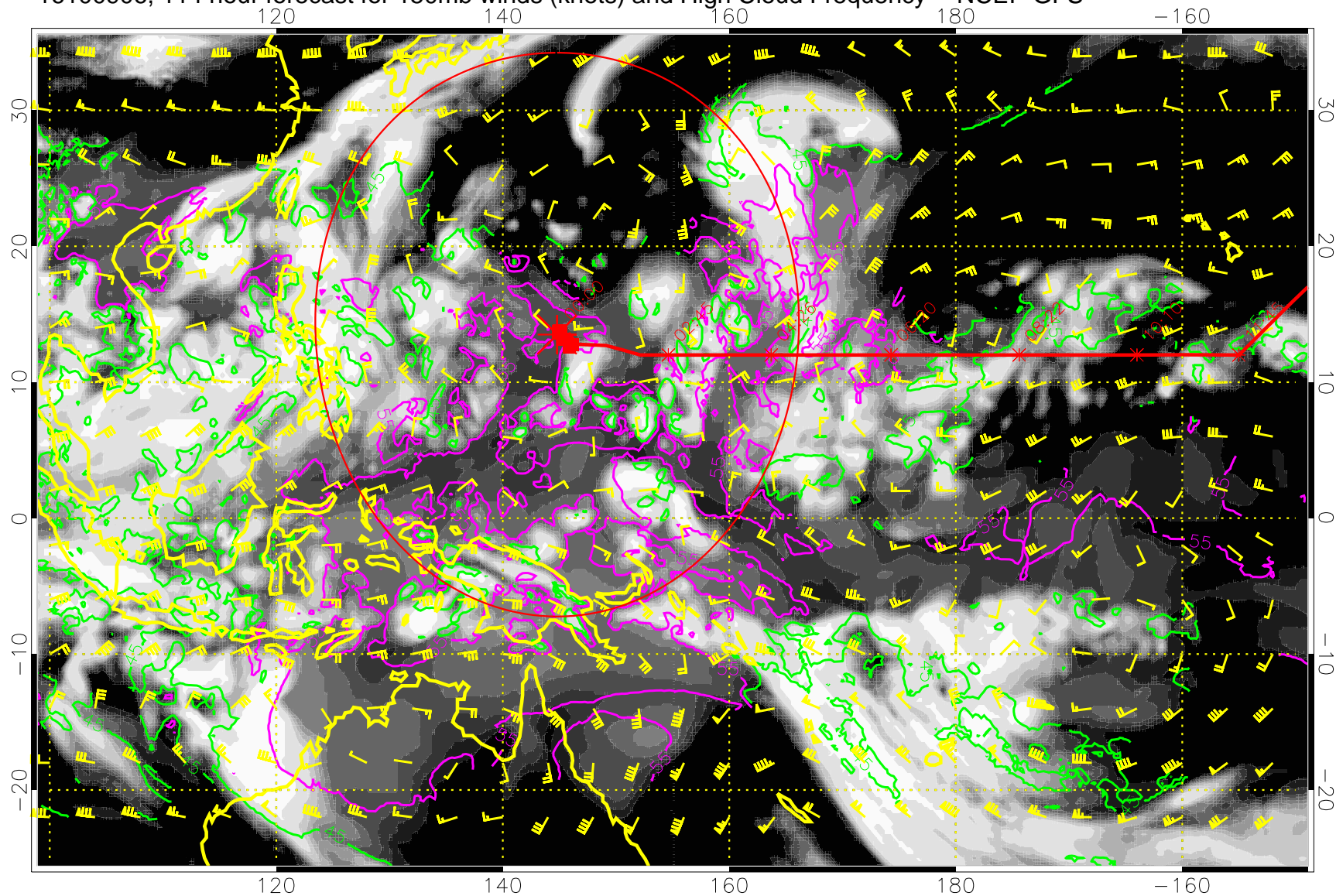
13:53



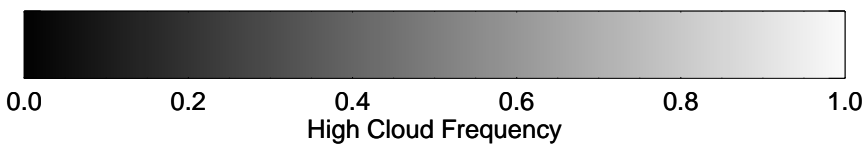
45 kft
55 kft

Range ring of 2304 km

16100906, 114 hour forecast for 150mb winds (knots) and High Cloud Frequency -- NCEP GFS



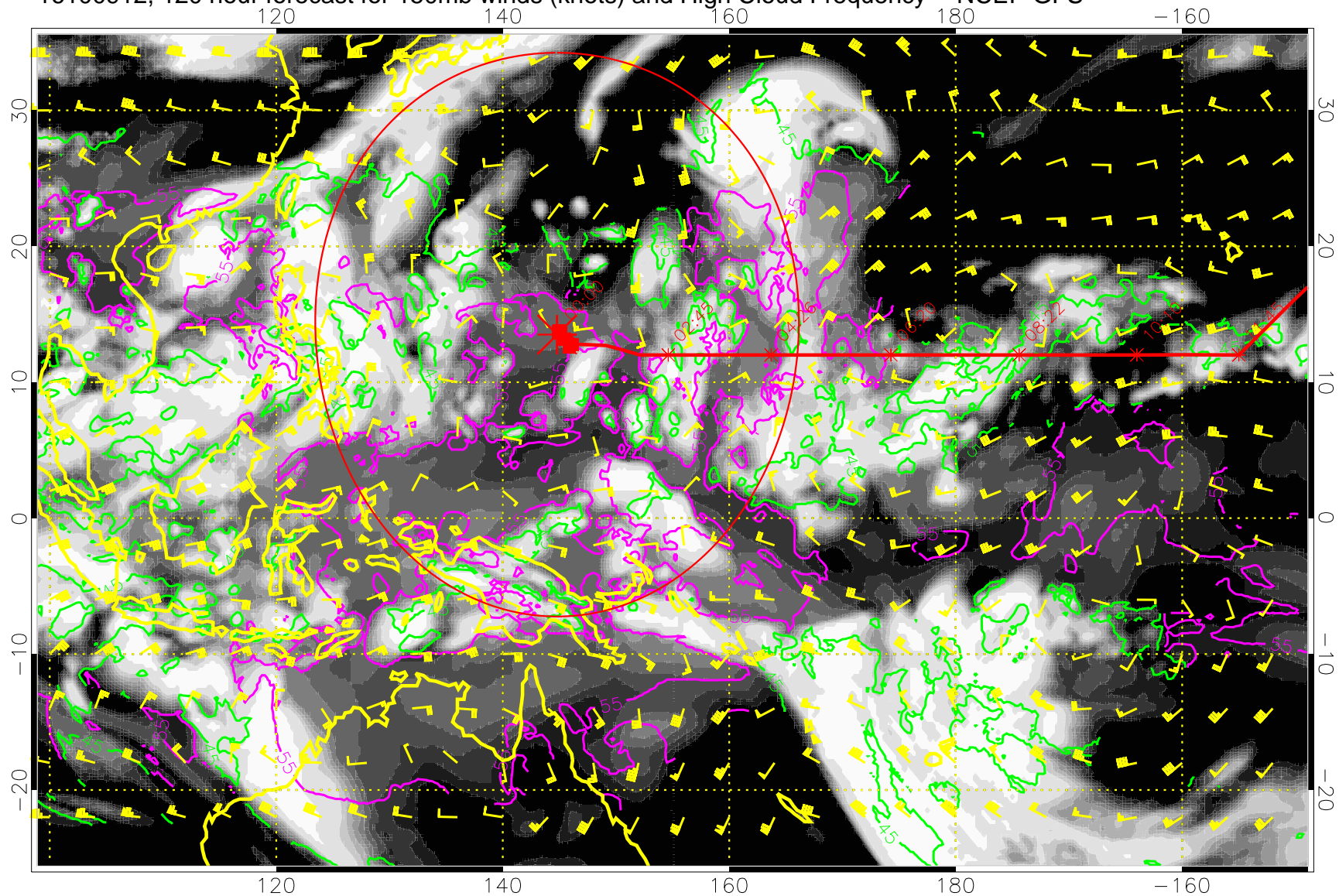
15:53
13:53



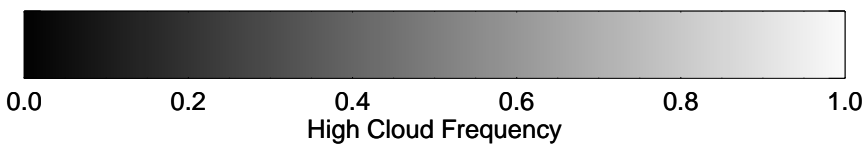
45 kft
55 kft

Range ring of 2304 km

16100912, 120 hour forecast for 150mb winds (knots) and High Cloud Frequency -- NCEP GFS



15:53
13:53



45 kft
55 kft

Range ring of 2304 km