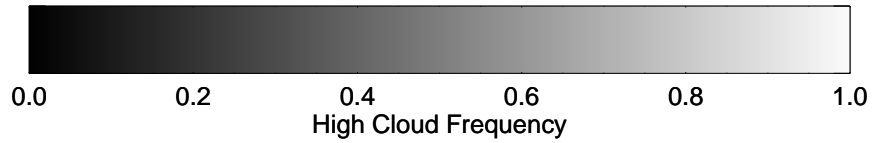
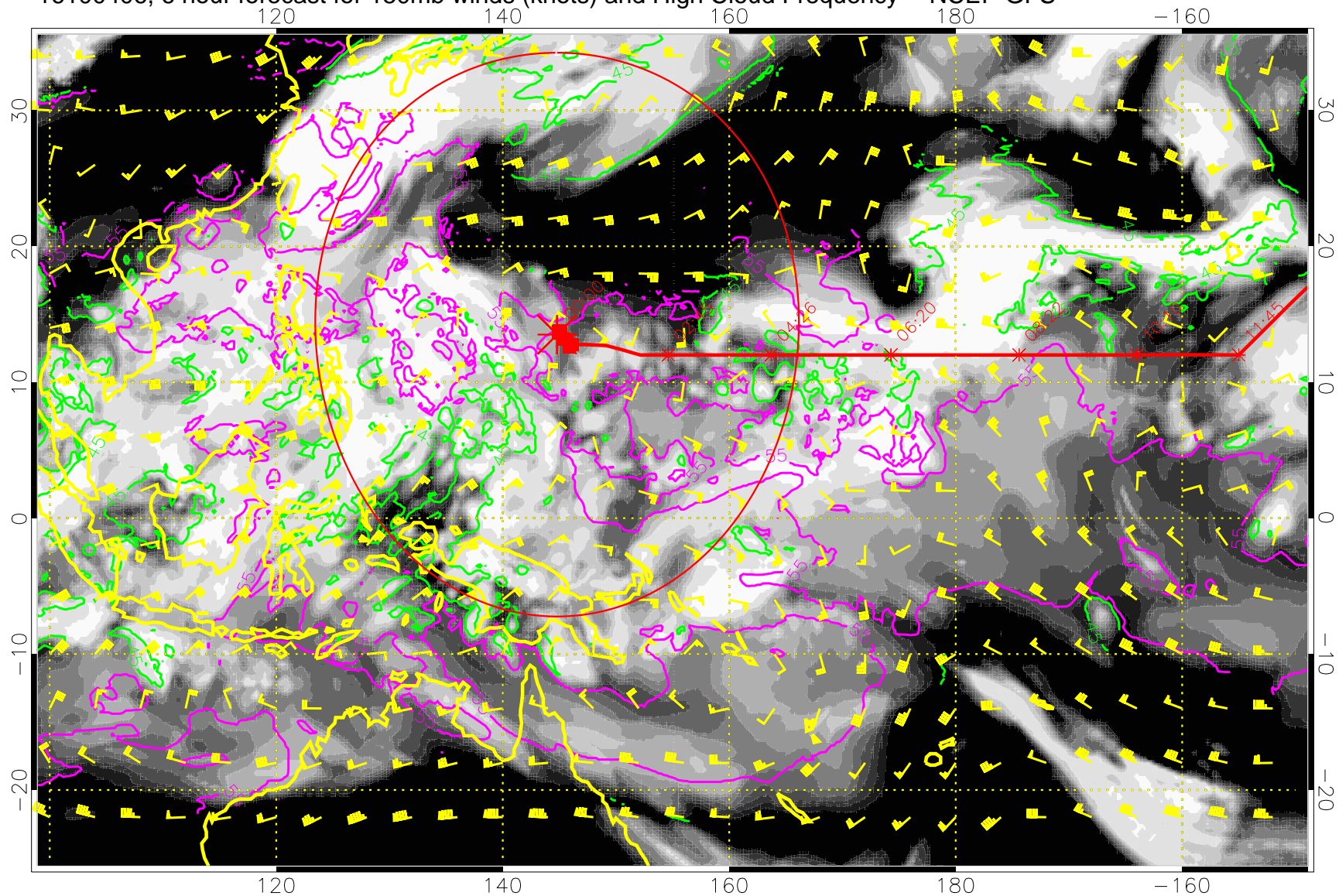


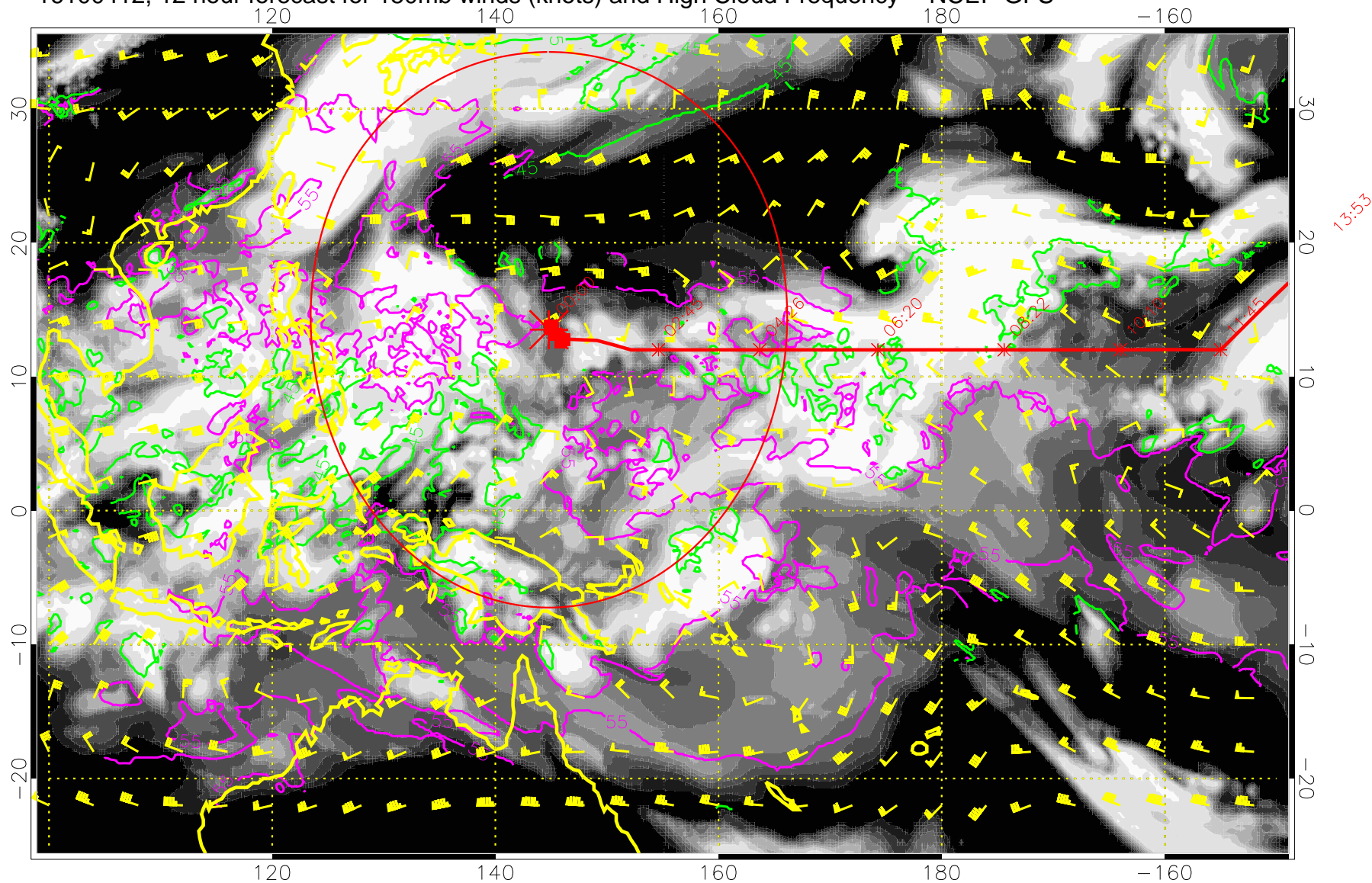
16100406, 6 hour forecast for 150mb winds (knots) and High Cloud Frequency -- NCEP GFS



45 kft
55 kft

Range ring of 2304 km

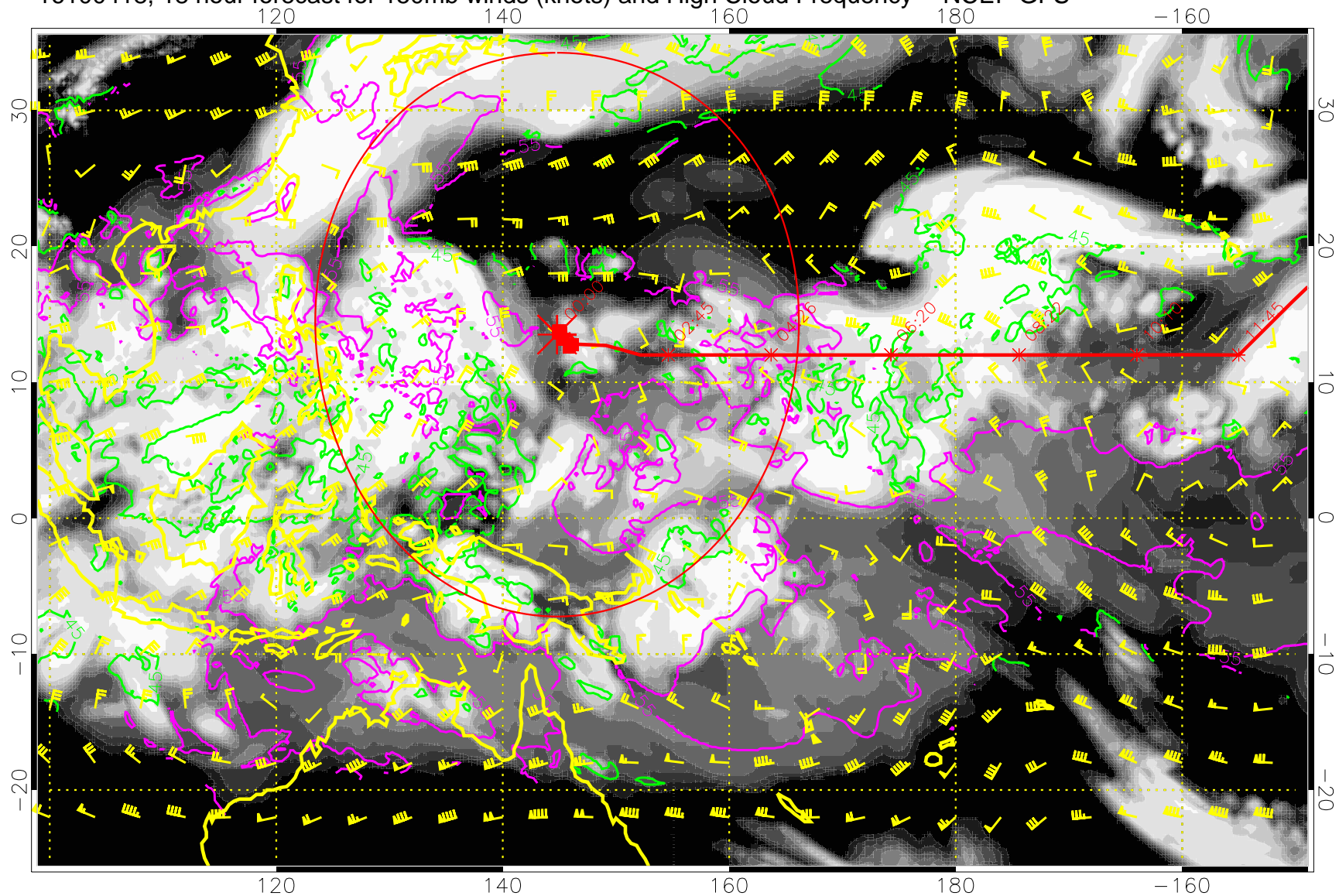
16100412, 12 hour forecast for 150mb winds (knots) and High Cloud Frequency -- NCEP GFS



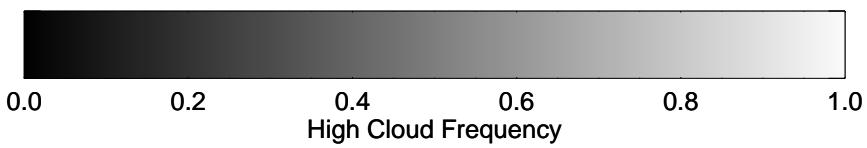
45 kft
55 kft

Range ring of 2304 km

16100418, 18 hour forecast for 150mb winds (knots) and High Cloud Frequency -- NCEP GFS



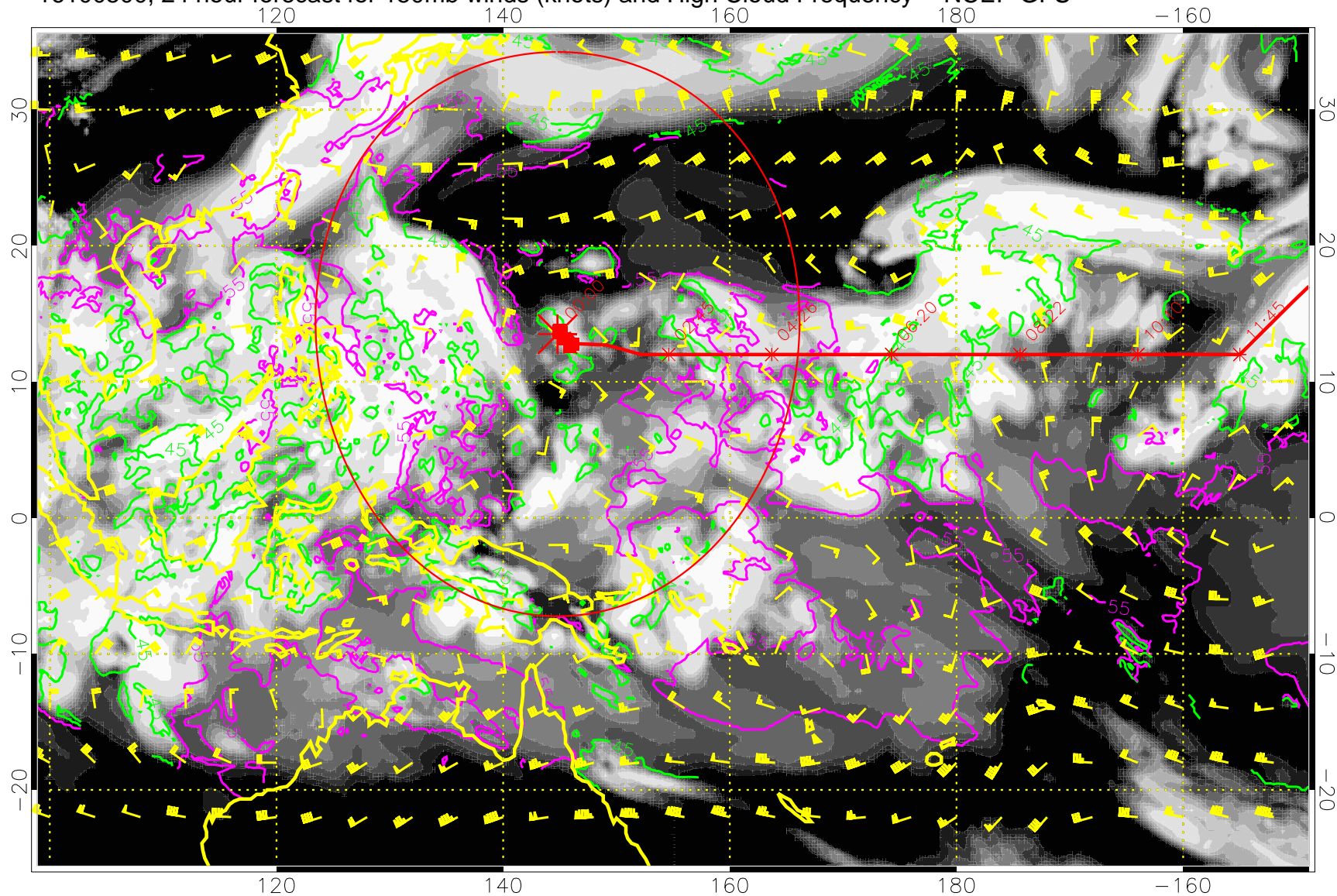
15:53
13:53



45 kft
55 kft

Range ring of 2304 km

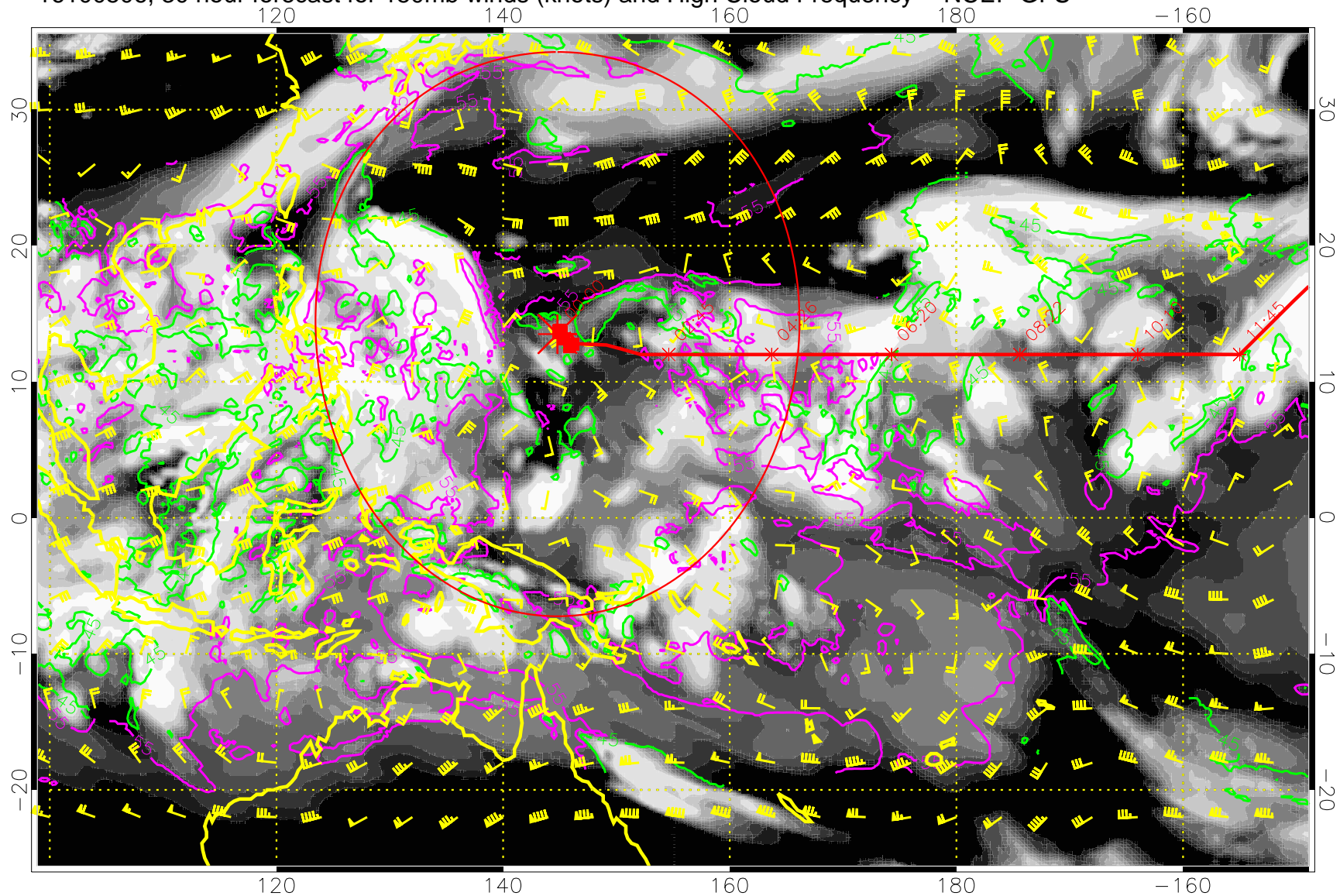
16100500, 24 hour forecast for 150mb winds (knots) and High Cloud Frequency -- NCEP GFS



45 kft
55 kft

Range ring of 2304 km

16100506, 30 hour forecast for 150mb winds (knots) and High Cloud Frequency -- NCEP GFS



15:53

13:53

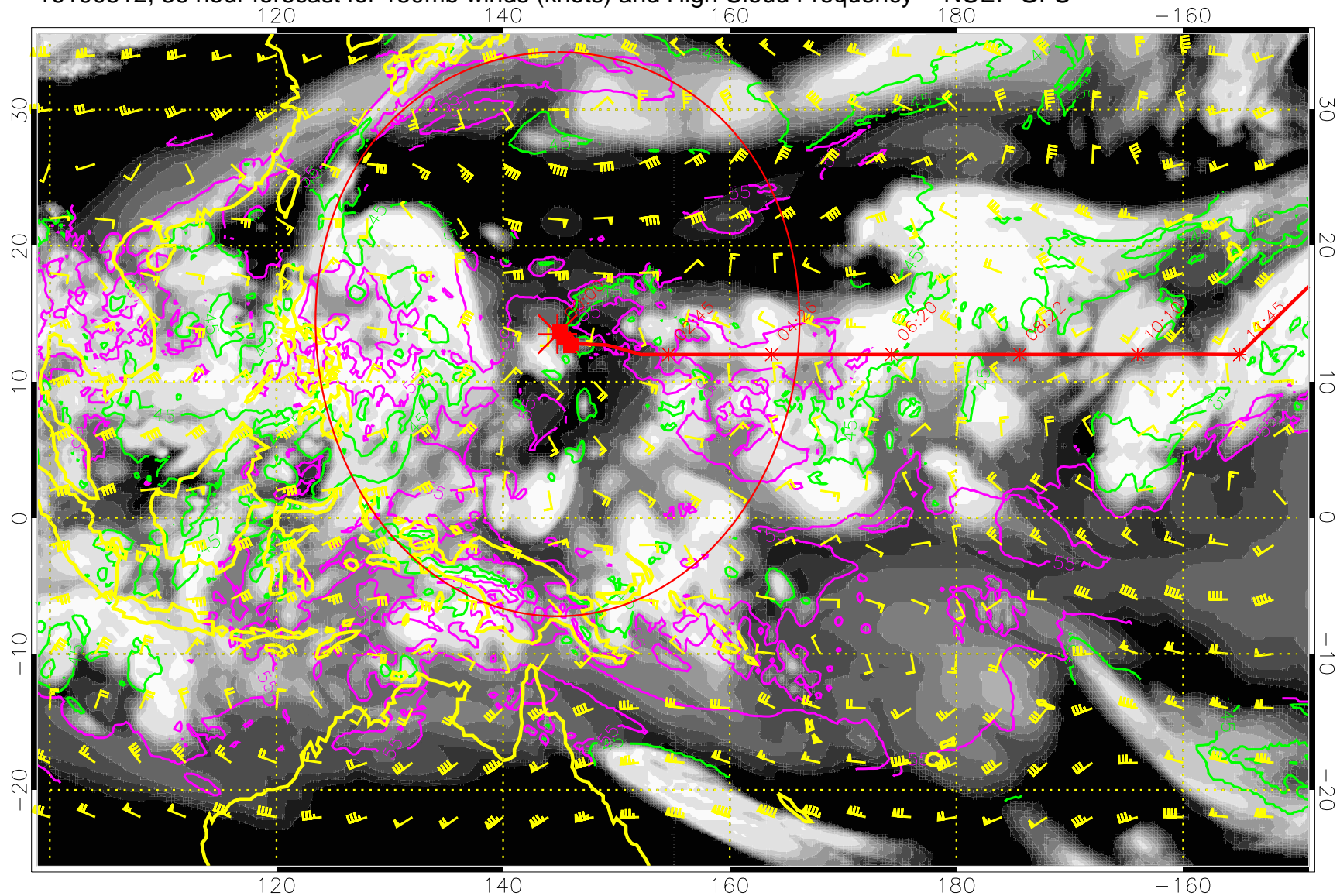


0.0 0.2 0.4 0.6 0.8 1.0
High Cloud Frequency

45 kft
55 kft

Range ring of 2304 km

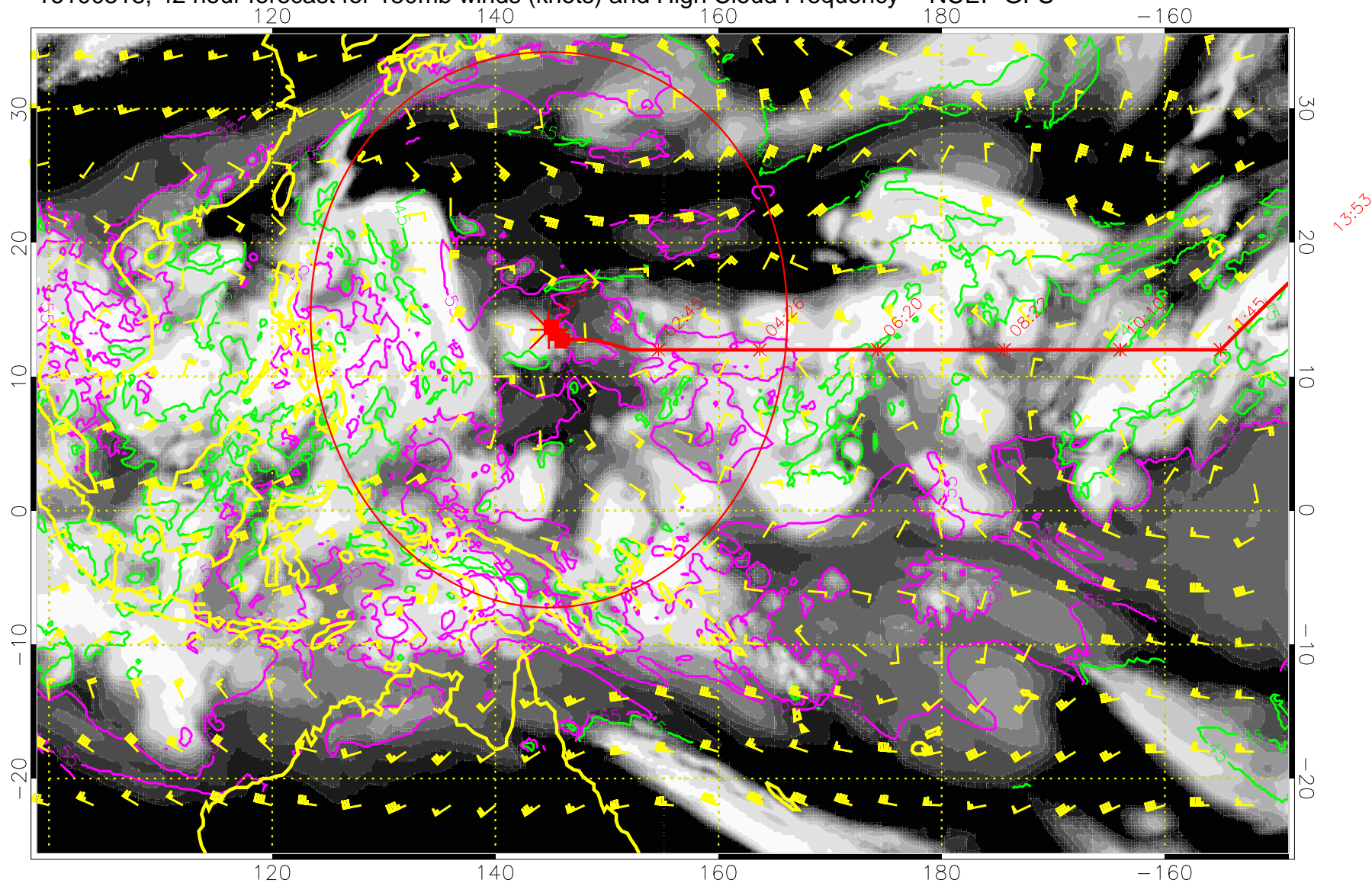
16100512, 36 hour forecast for 150mb winds (knots) and High Cloud Frequency -- NCEP GFS



45 kft
55 kft

Range ring of 2304 km

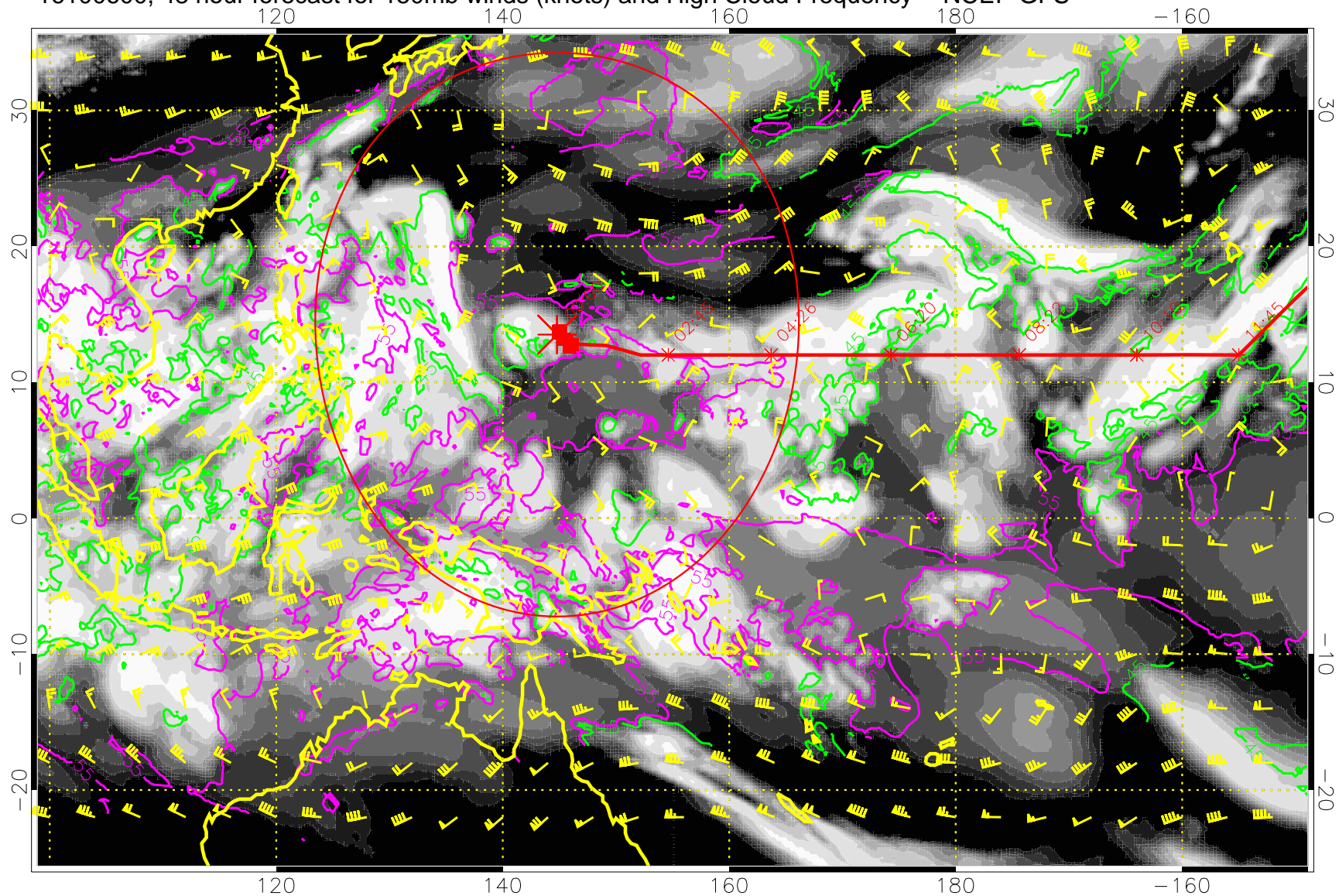
16100518, 42 hour forecast for 150mb winds (knots) and High Cloud Frequency -- NCEP GFS



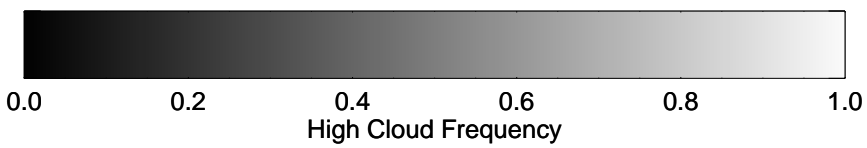
45 kft
55 kft

Range ring of 2304 km

16100600, 48 hour forecast for 150mb winds (knots) and High Cloud Frequency -- NCEP GFS



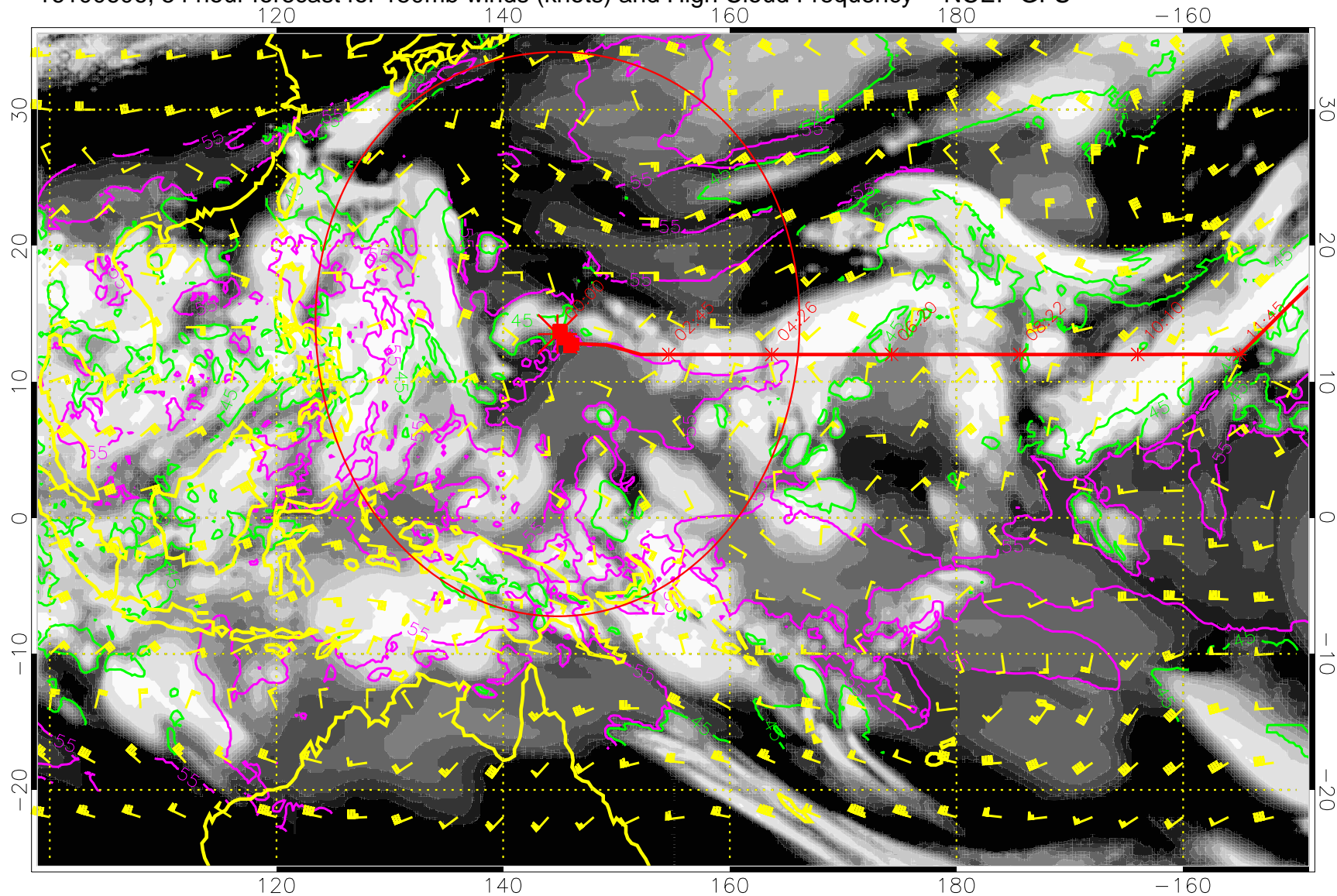
15:55
13:53



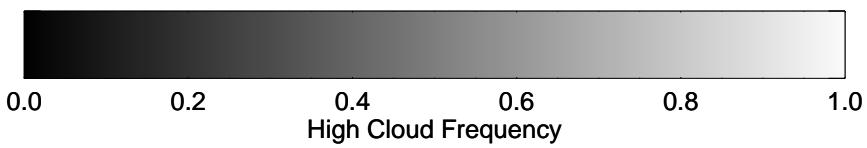
45 kft
55 kft

Range ring of 2304 km

16100606, 54 hour forecast for 150mb winds (knots) and High Cloud Frequency -- NCEP GFS



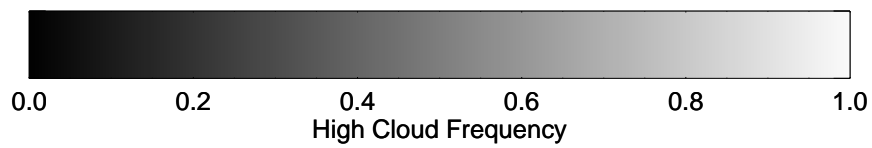
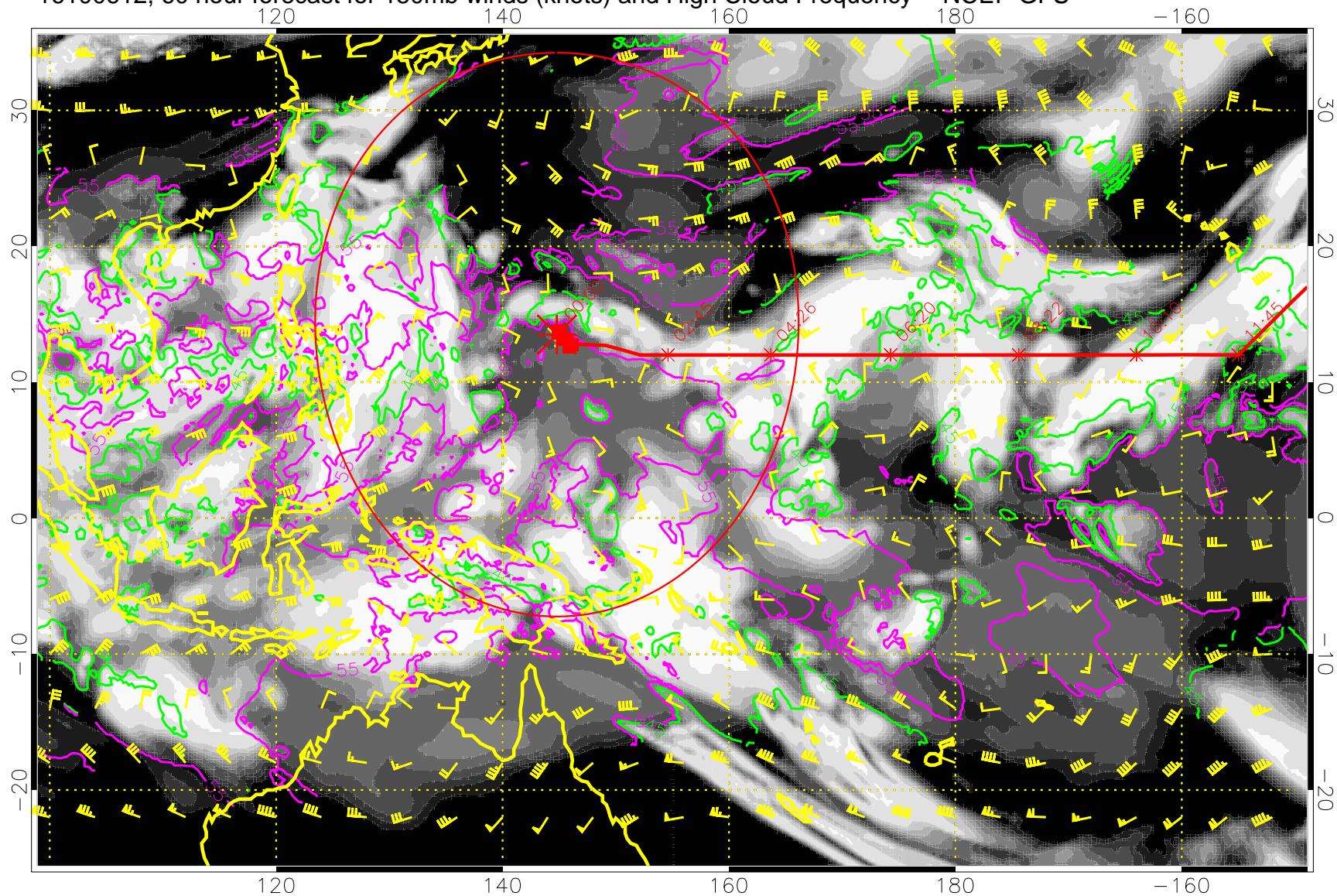
15:53
13:53



45 kft
55 kft

Range ring of 2304 km

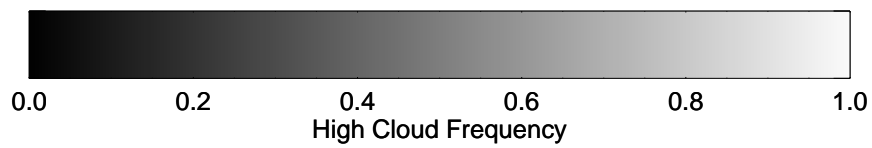
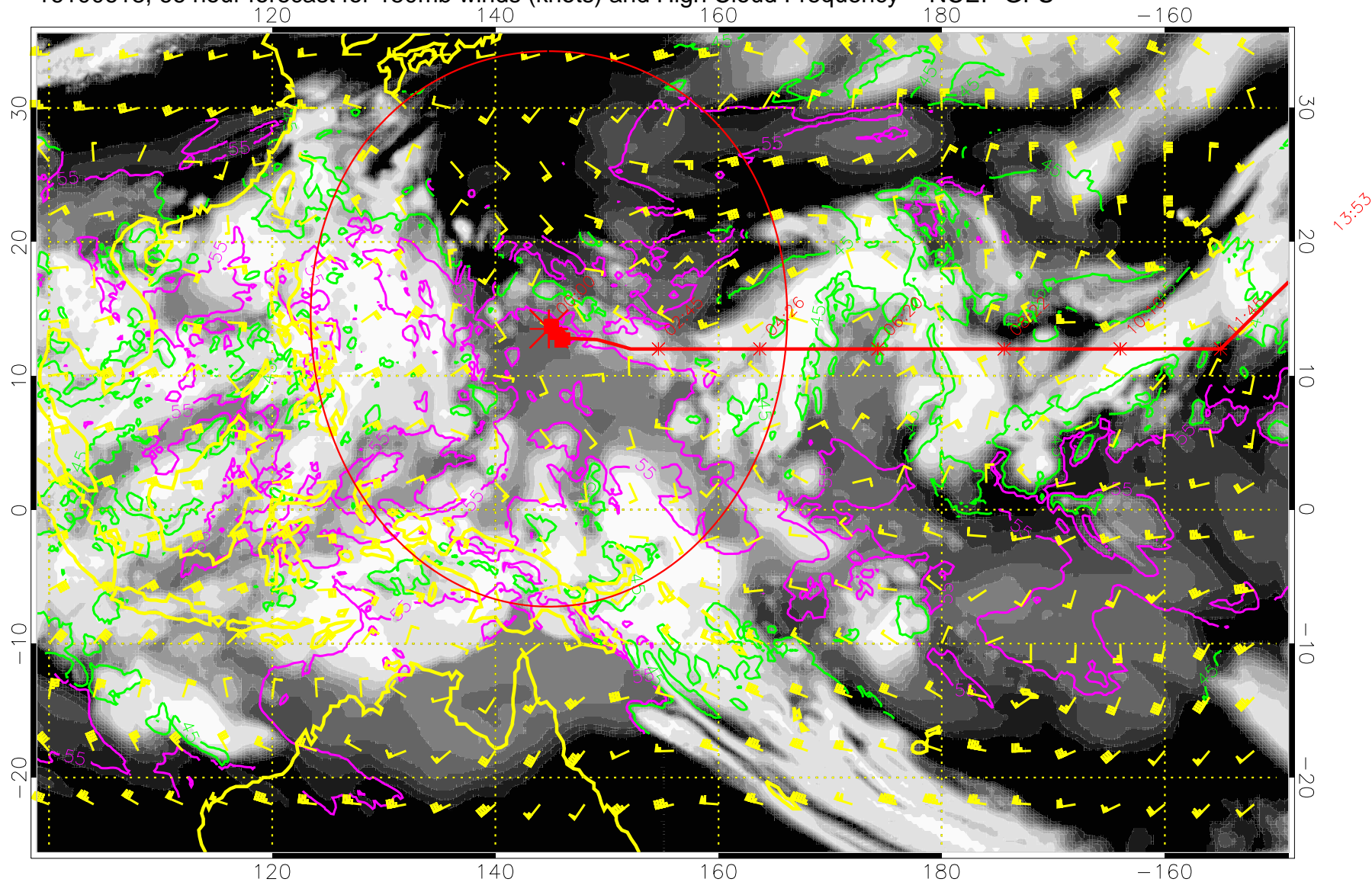
16100612, 60 hour forecast for 150mb winds (knots) and High Cloud Frequency -- NCEP GFS



45 kft
55 kft

Range ring of 2304 km

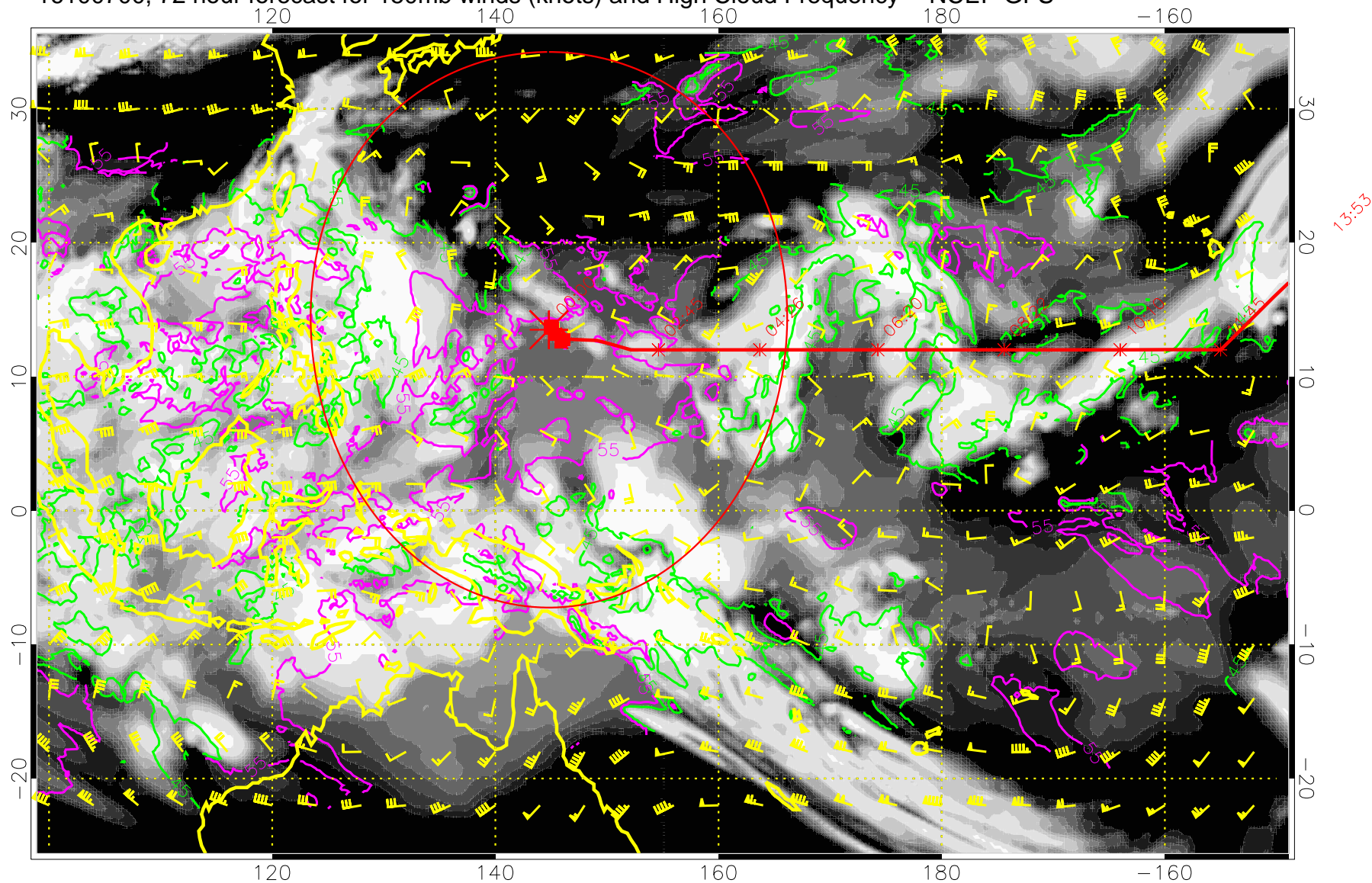
16100618, 66 hour forecast for 150mb winds (knots) and High Cloud Frequency -- NCEP GFS



45 kft
55 kft

Range ring of 2304 km

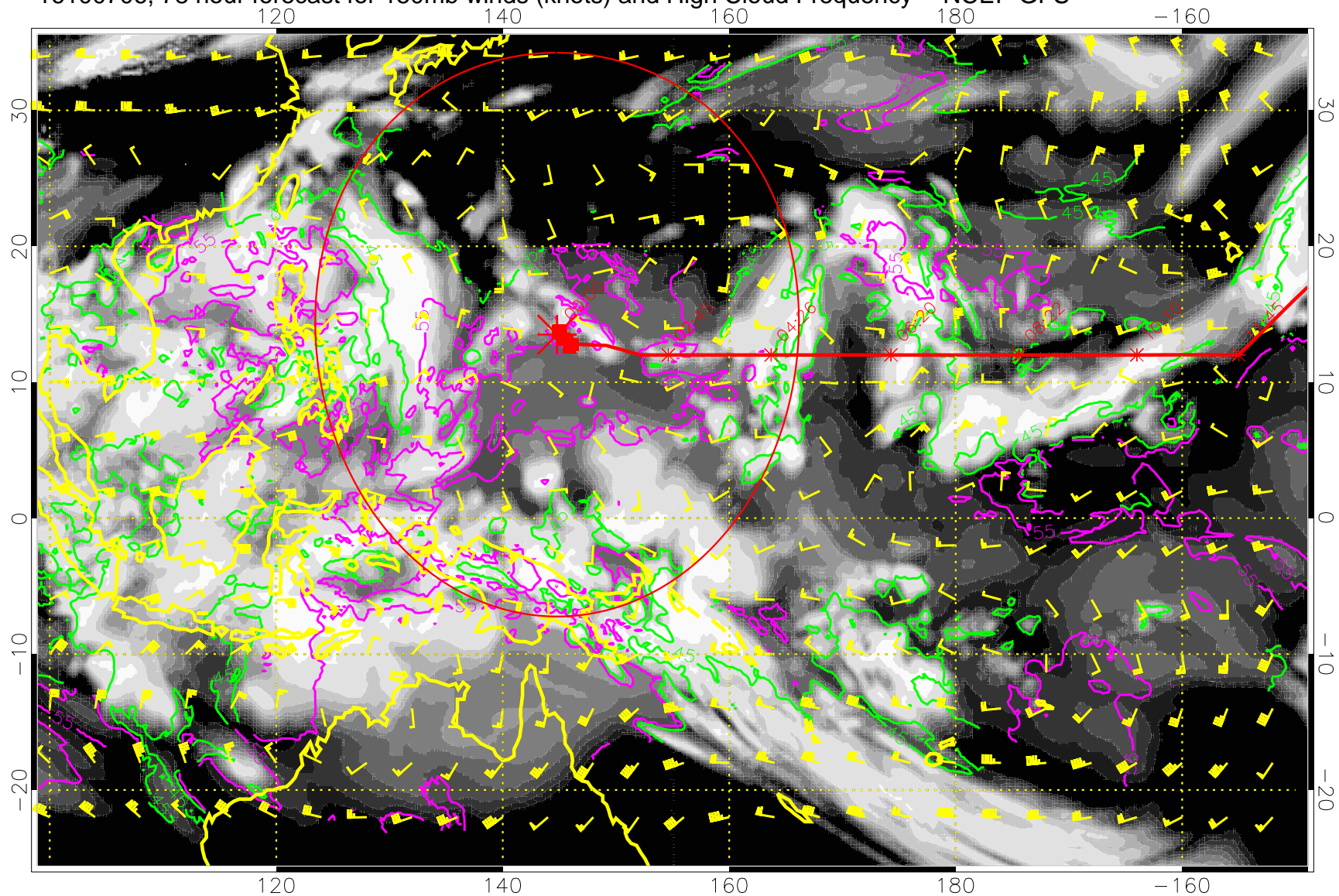
16100700, 72 hour forecast for 150mb winds (knots) and High Cloud Frequency -- NCEP GFS



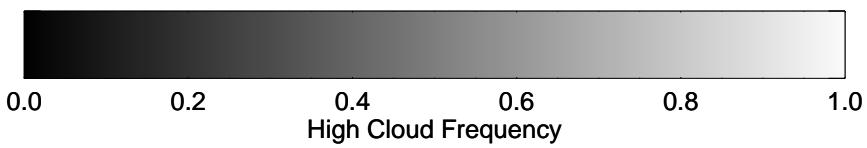
45 kft
55 kft

Range ring of 2304 km

16100706, 78 hour forecast for 150mb winds (knots) and High Cloud Frequency -- NCEP GFS



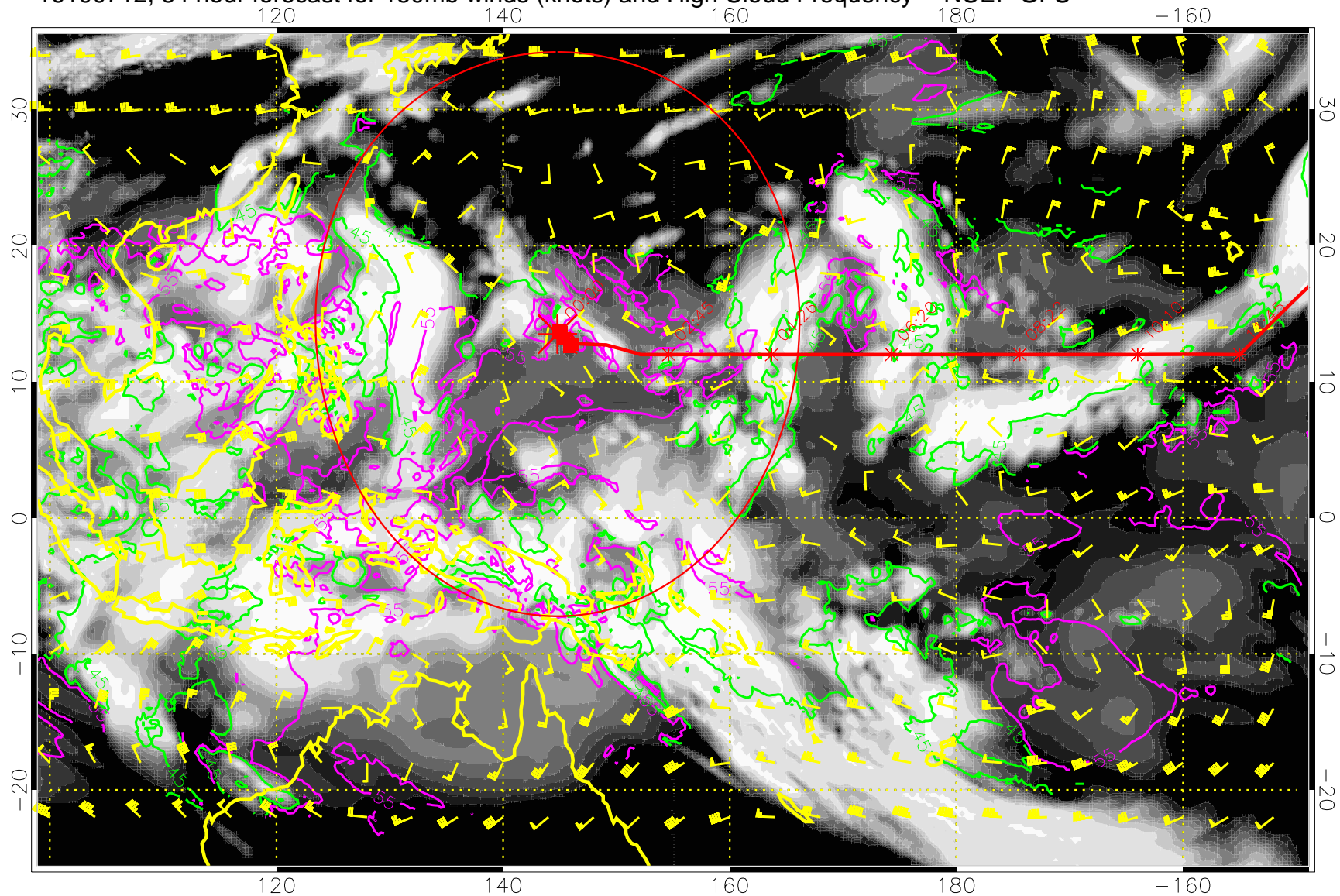
15:53
13:53



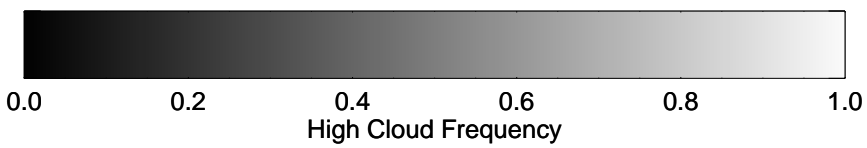
45 kft
55 kft

Range ring of 2304 km

16100712, 84 hour forecast for 150mb winds (knots) and High Cloud Frequency -- NCEP GFS



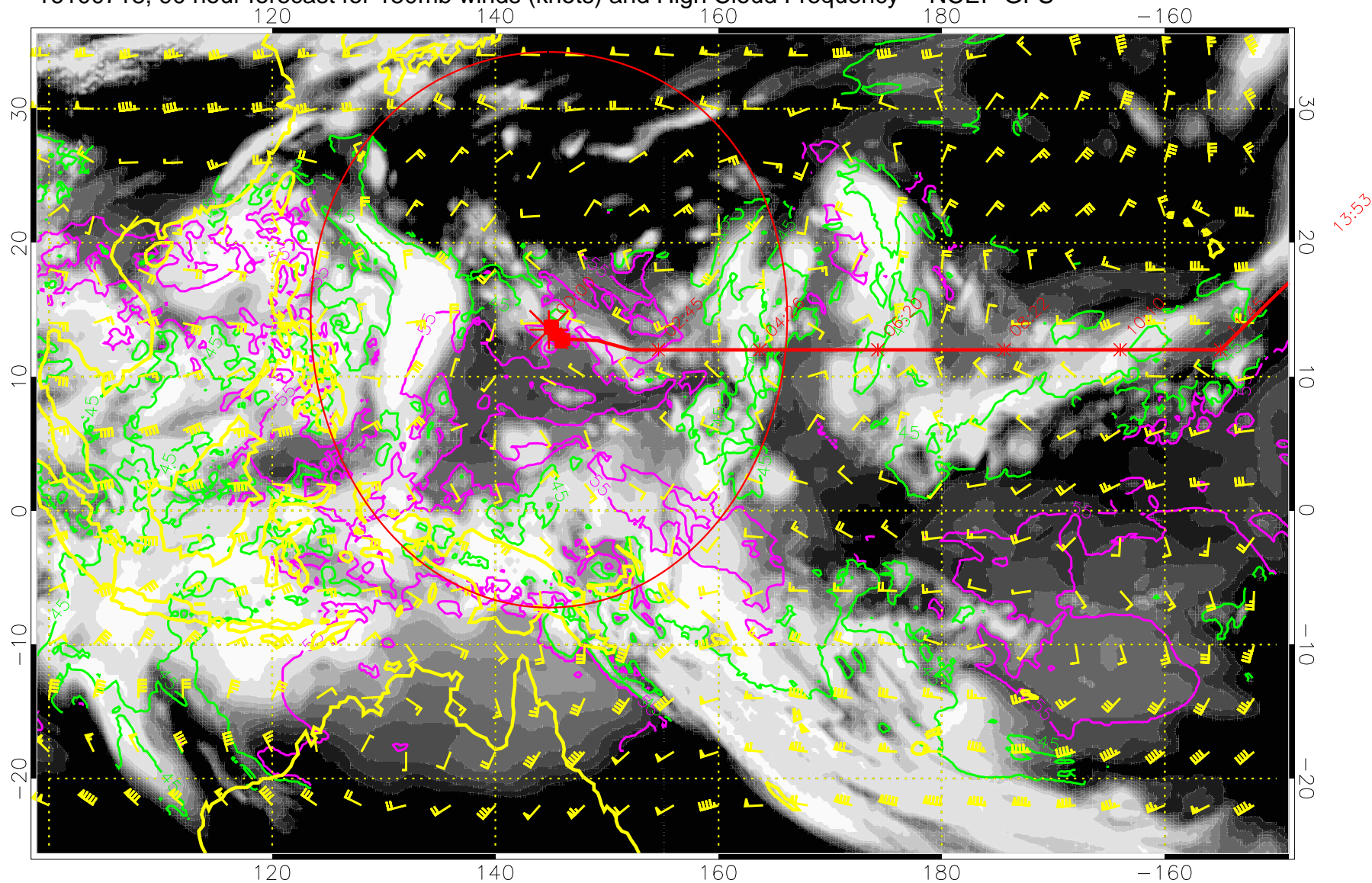
15:53
13:53



45 kft
55 kft

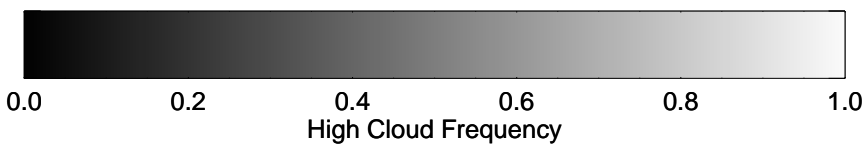
Range ring of 2304 km

16100718, 90 hour forecast for 150mb winds (knots) and High Cloud Frequency -- NCEP GFS



15:53

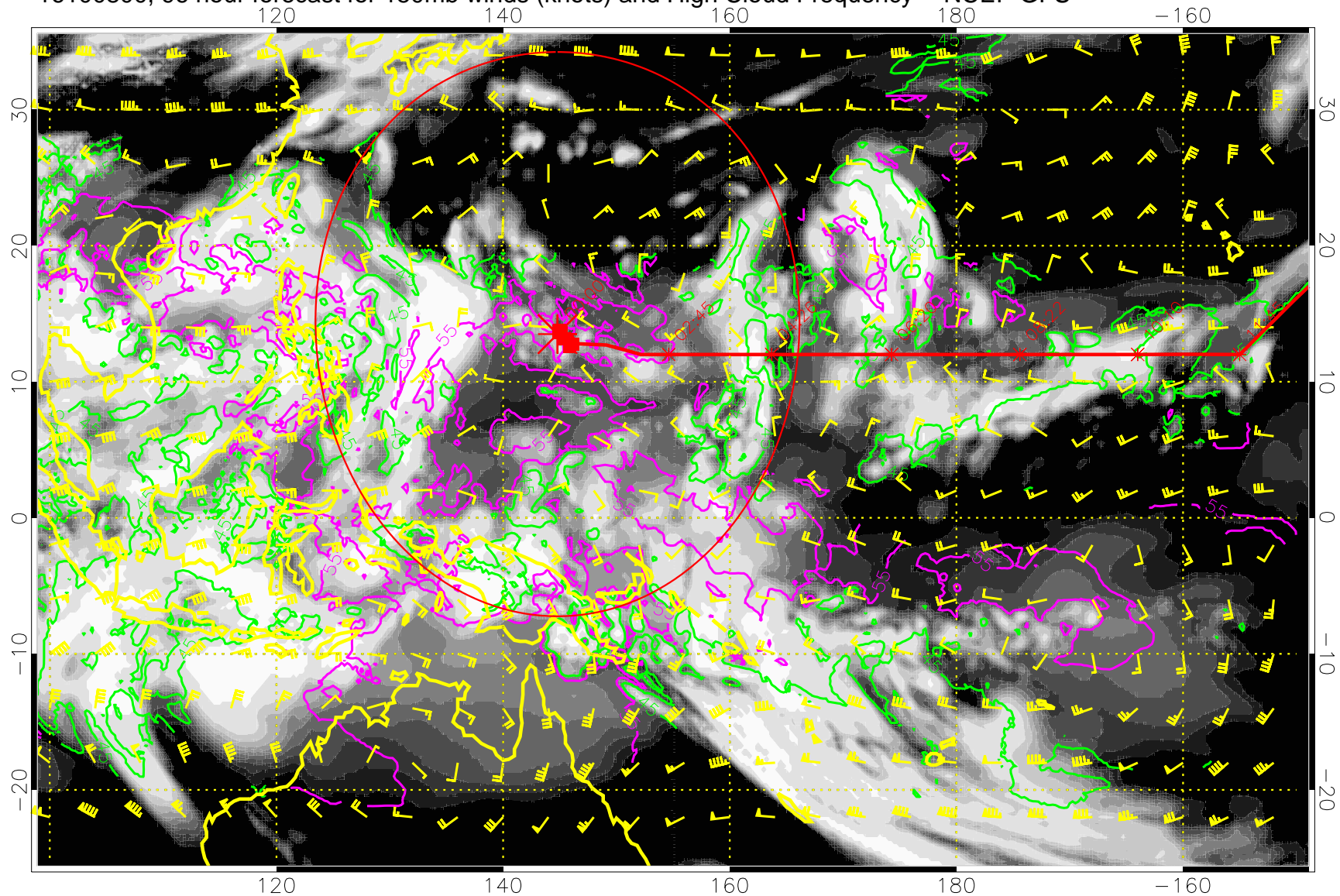
13:53



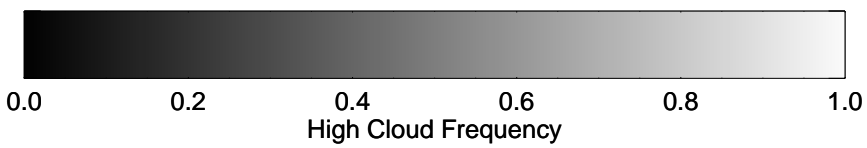
45 kft
55 kft

Range ring of 2304 km

16100800, 96 hour forecast for 150mb winds (knots) and High Cloud Frequency -- NCEP GFS



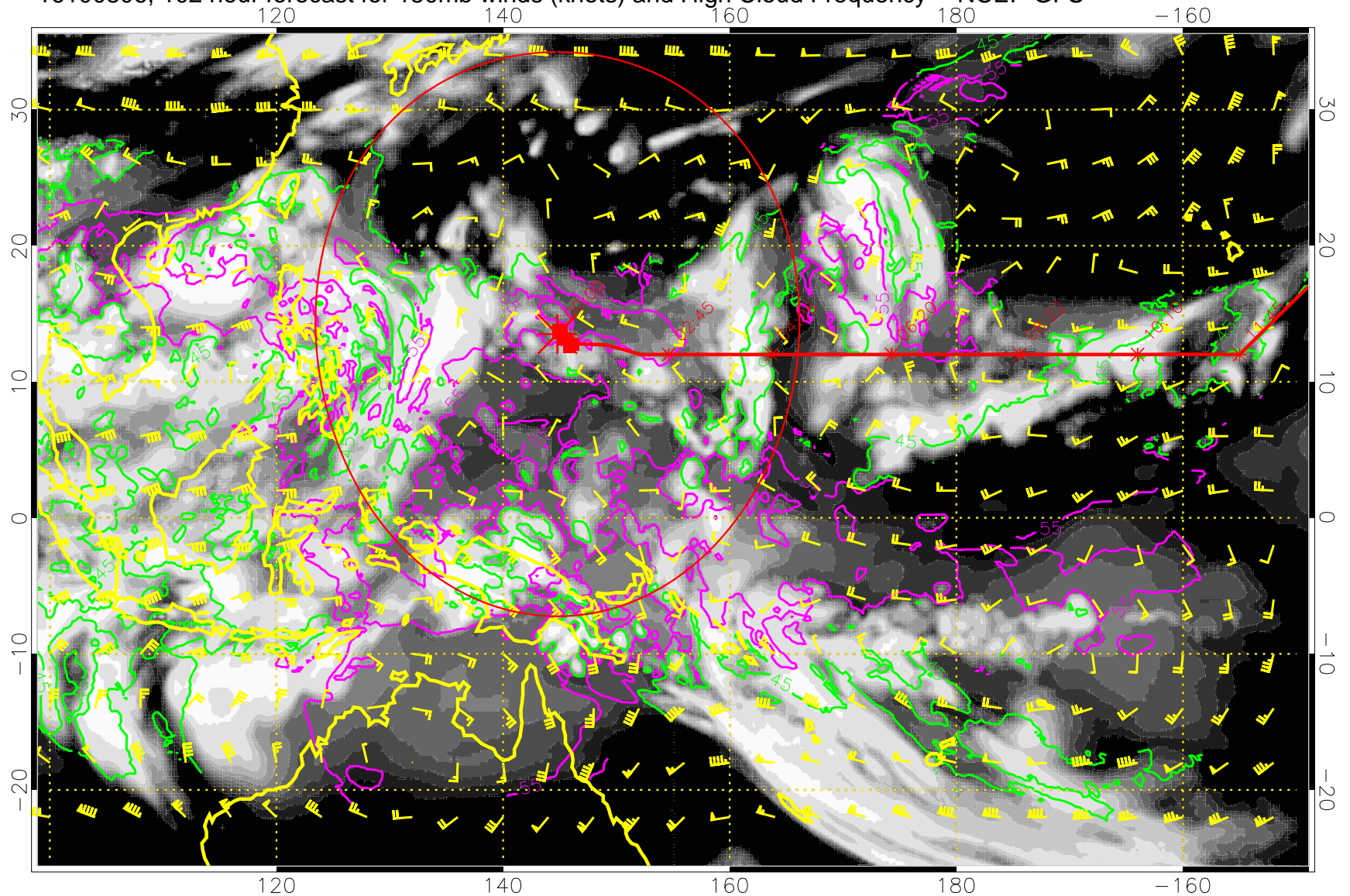
15:53
13:53



45 kft
55 kft

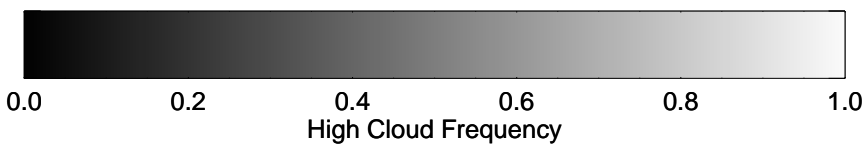
Range ring of 2304 km

16100806, 102 hour forecast for 150mb winds (knots) and High Cloud Frequency -- NCEP GFS



15:53

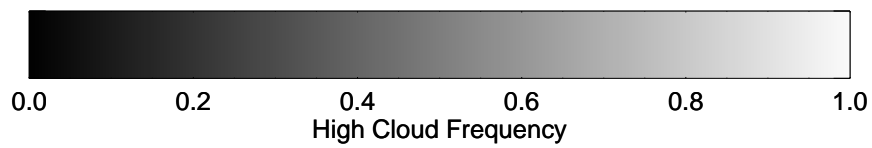
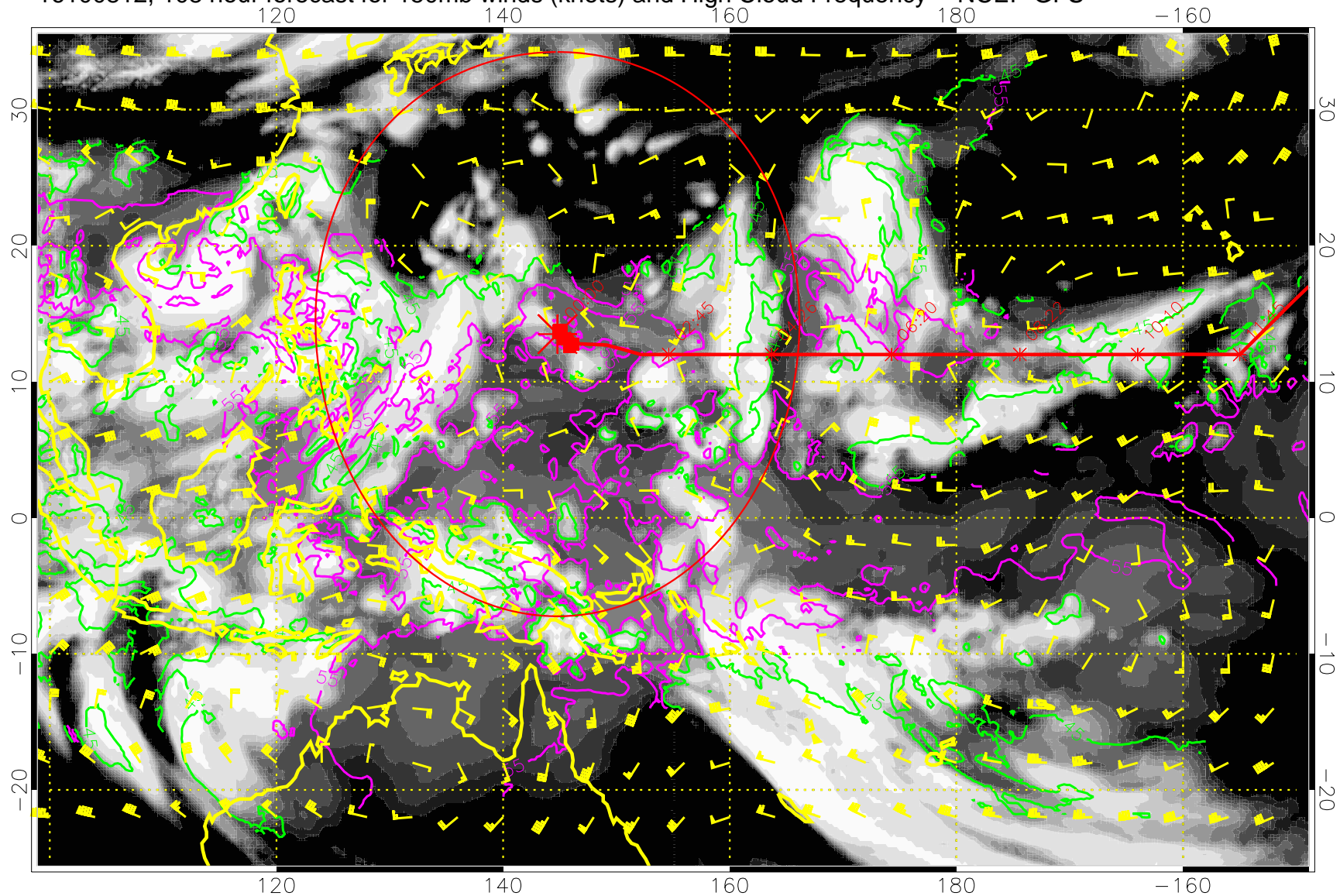
13:53



45 kft
55 kft

Range ring of 2304 km

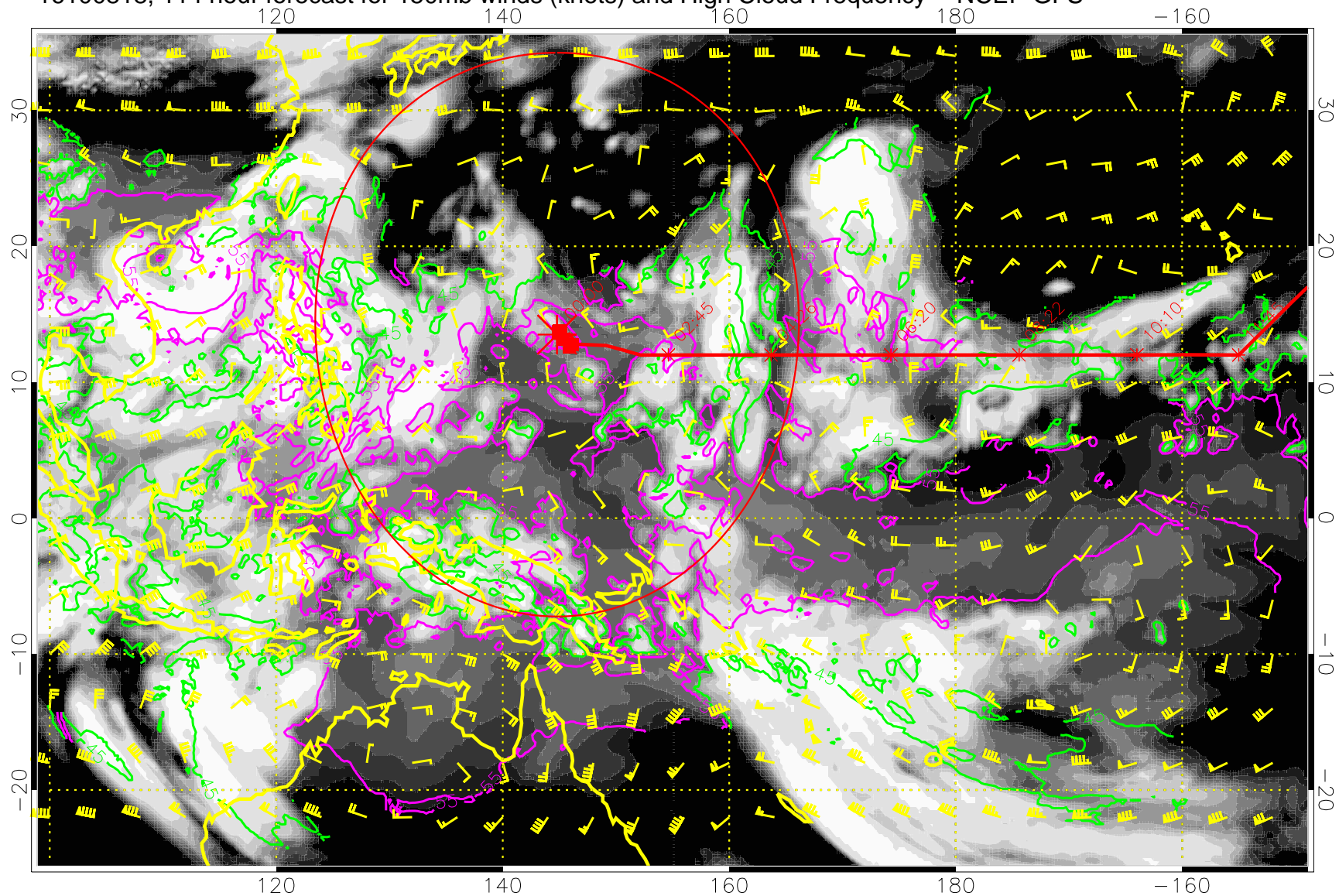
16100812, 108 hour forecast for 150mb winds (knots) and High Cloud Frequency -- NCEP GFS



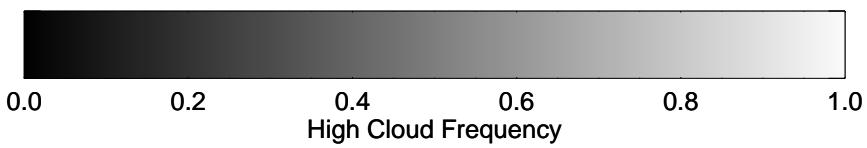
45 kft
55 kft

Range ring of 2304 km

16100818, 114 hour forecast for 150mb winds (knots) and High Cloud Frequency -- NCEP GFS



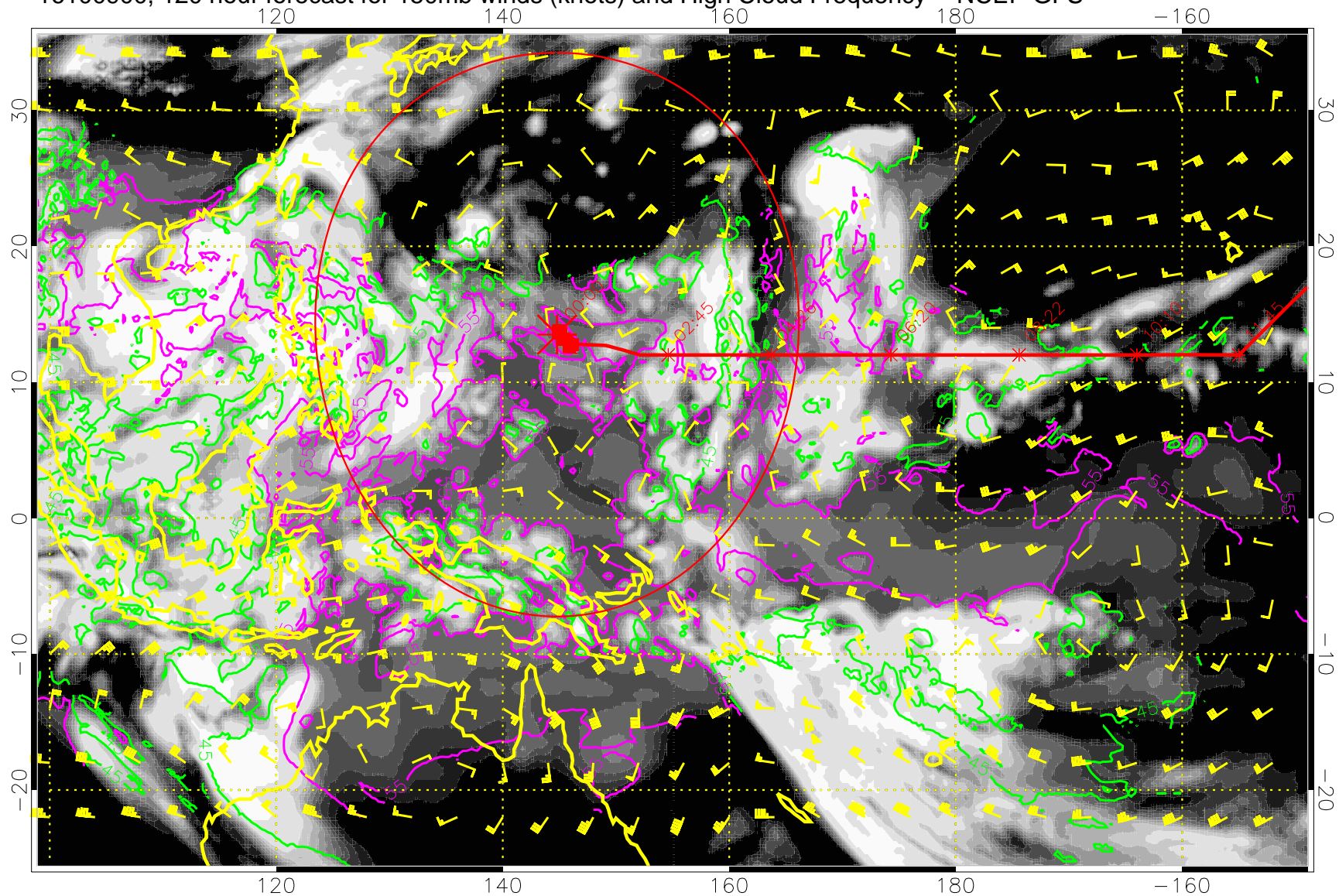
15:53
13:53



45 kft
55 kft

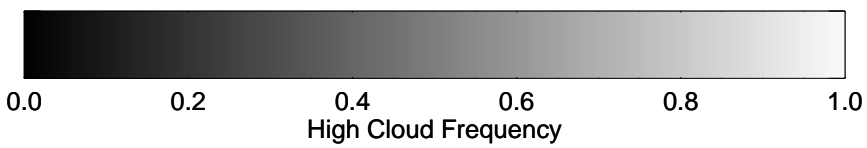
Range ring of 2304 km

16100900, 120 hour forecast for 150mb winds (knots) and High Cloud Frequency -- NCEP GFS



15:53

13:53



45 kft
55 kft

Range ring of 2304 km