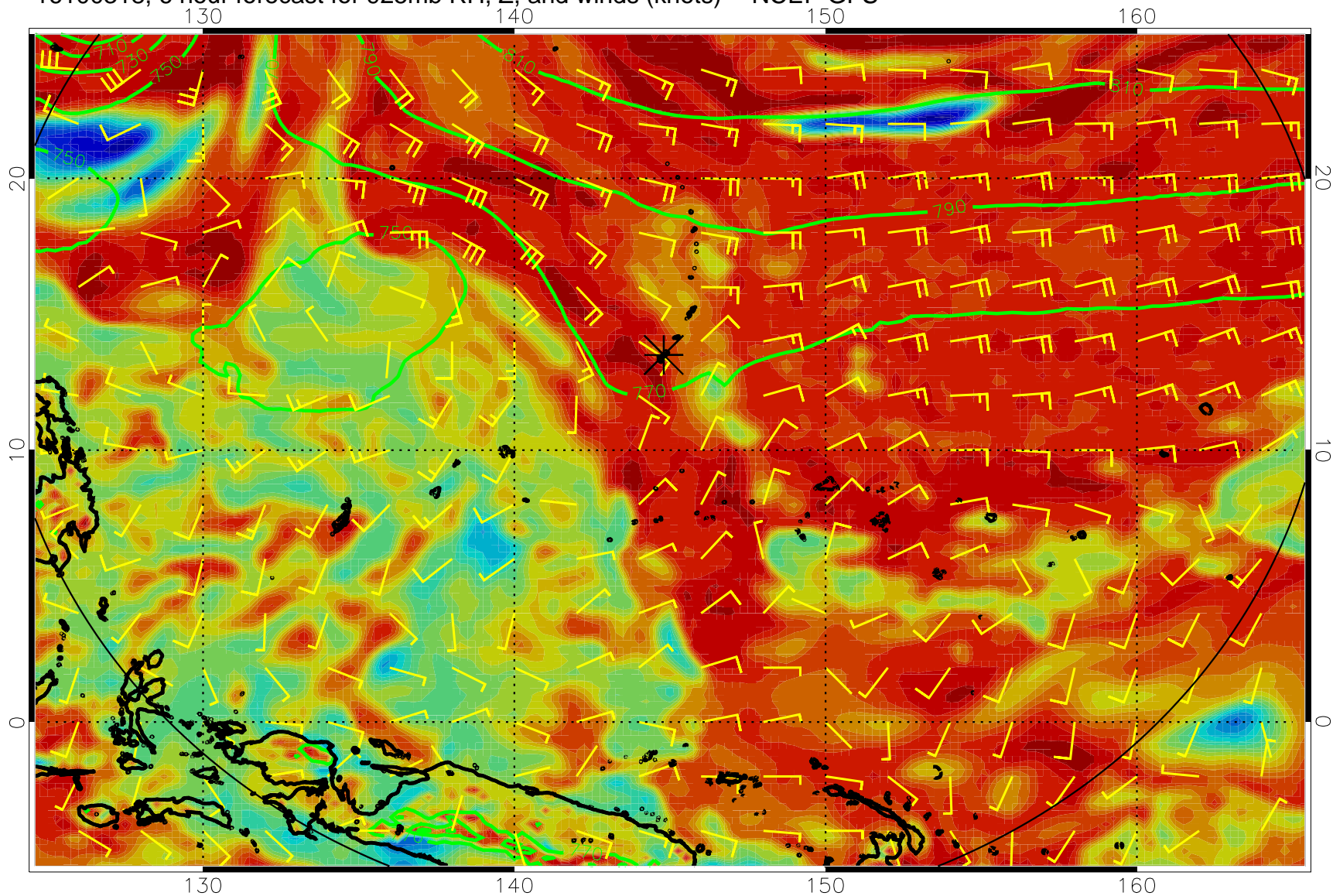
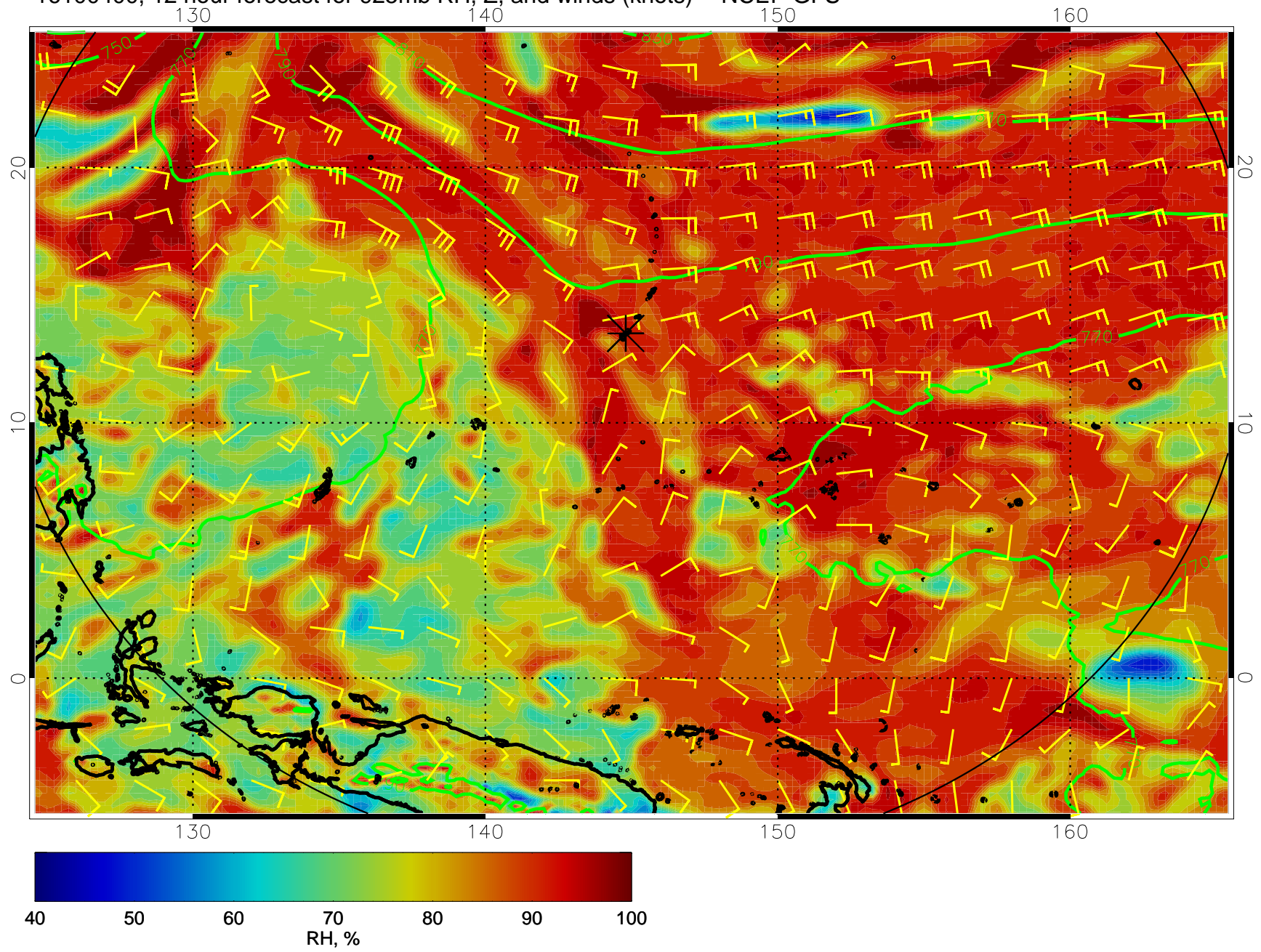


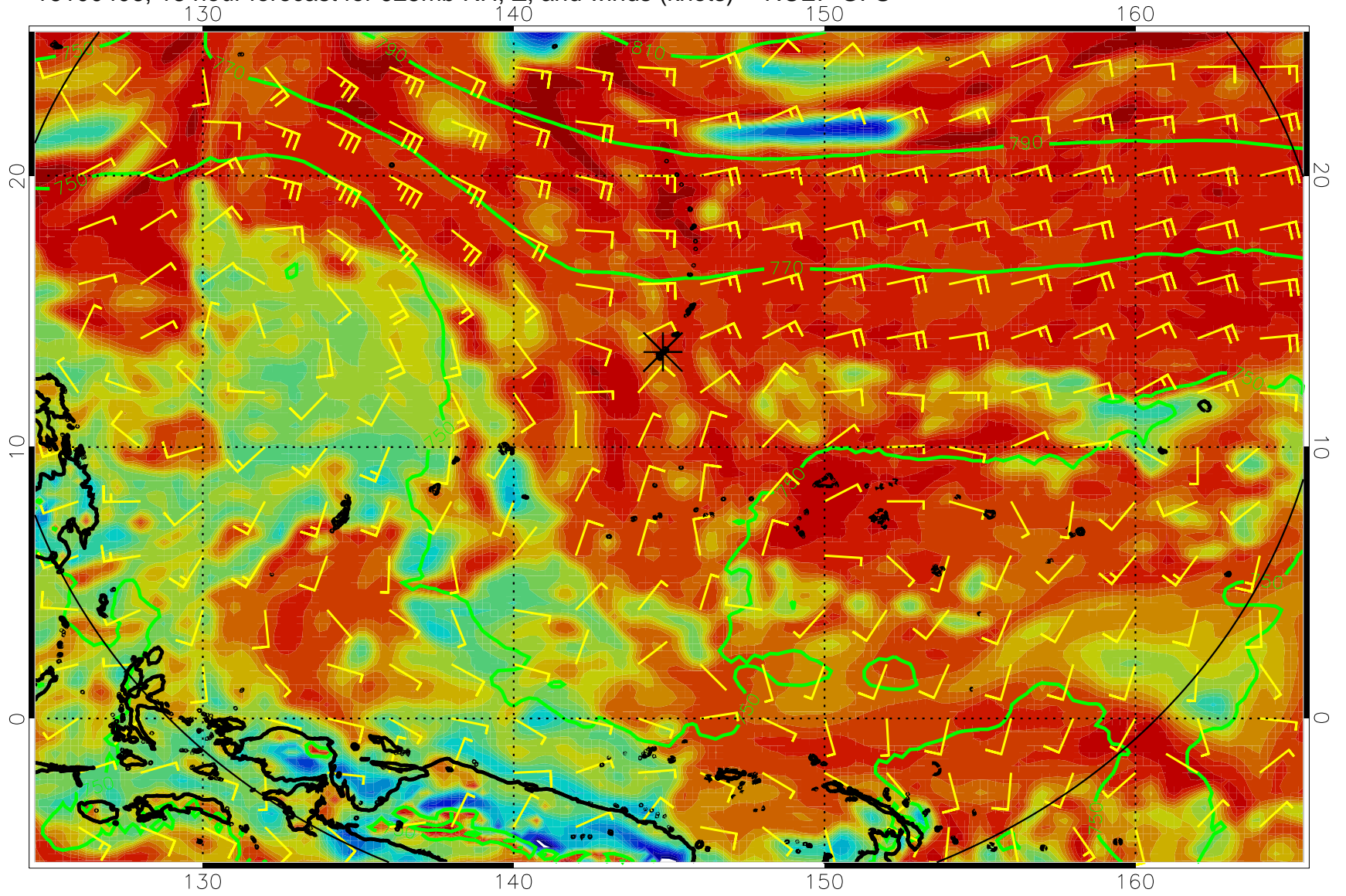
16100318, 6 hour forecast for 925mb RH, Z, and winds (knots) -- NCEP GFS



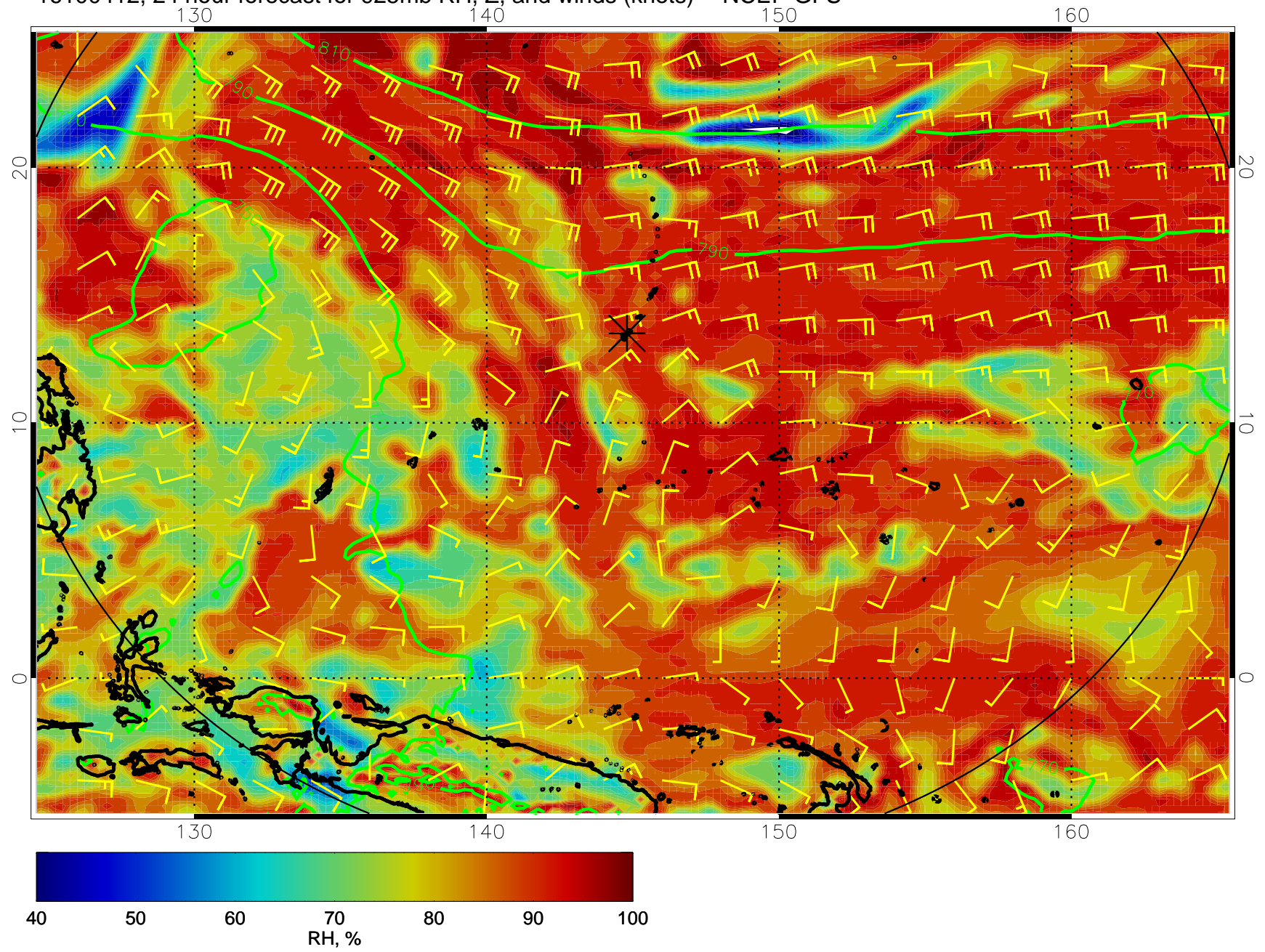
16100400, 12 hour forecast for 925mb RH, Z, and winds (knots) -- NCEP GFS



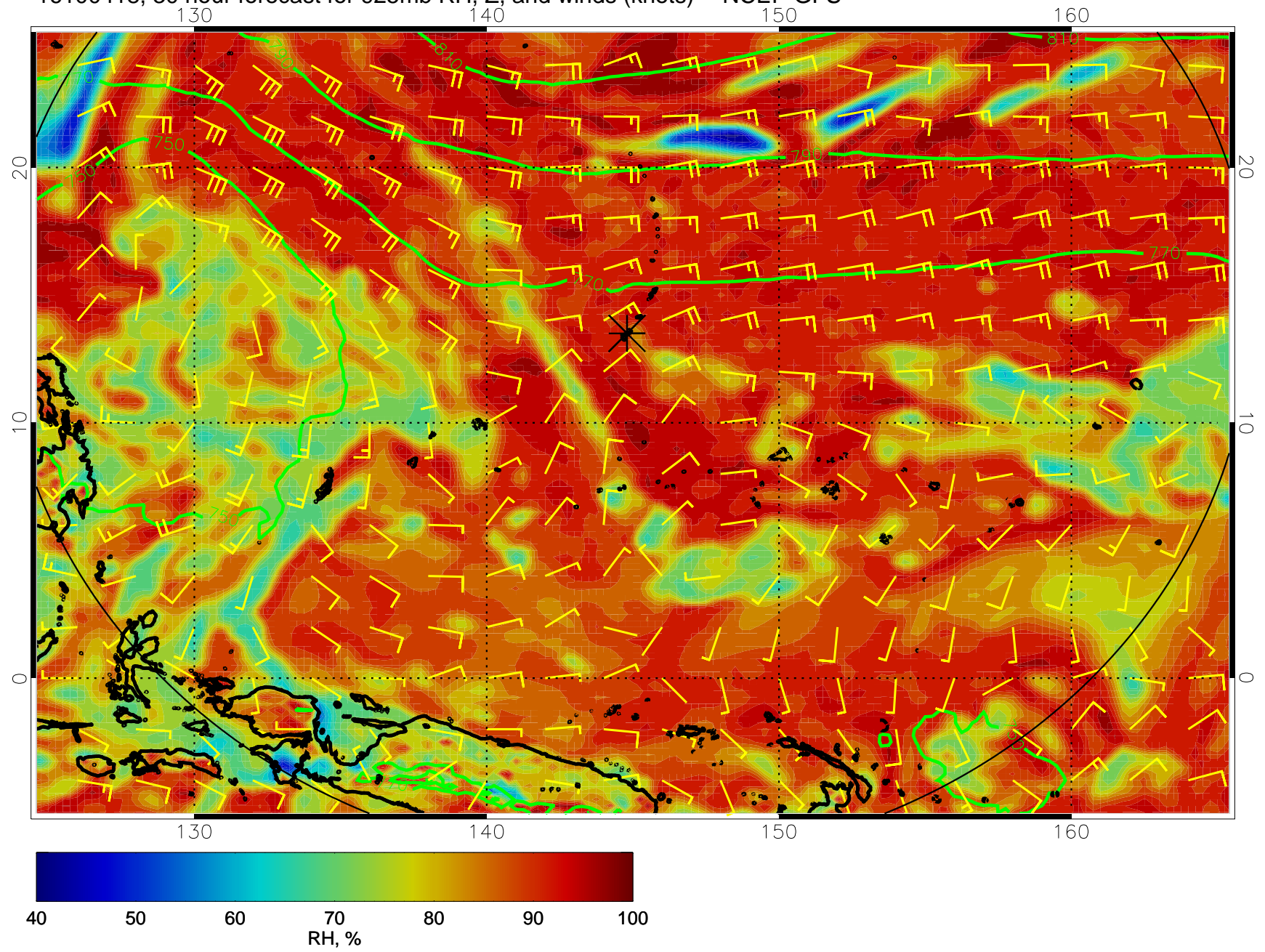
16100406, 18 hour forecast for 925mb RH, Z, and winds (knots) -- NCEP GFS



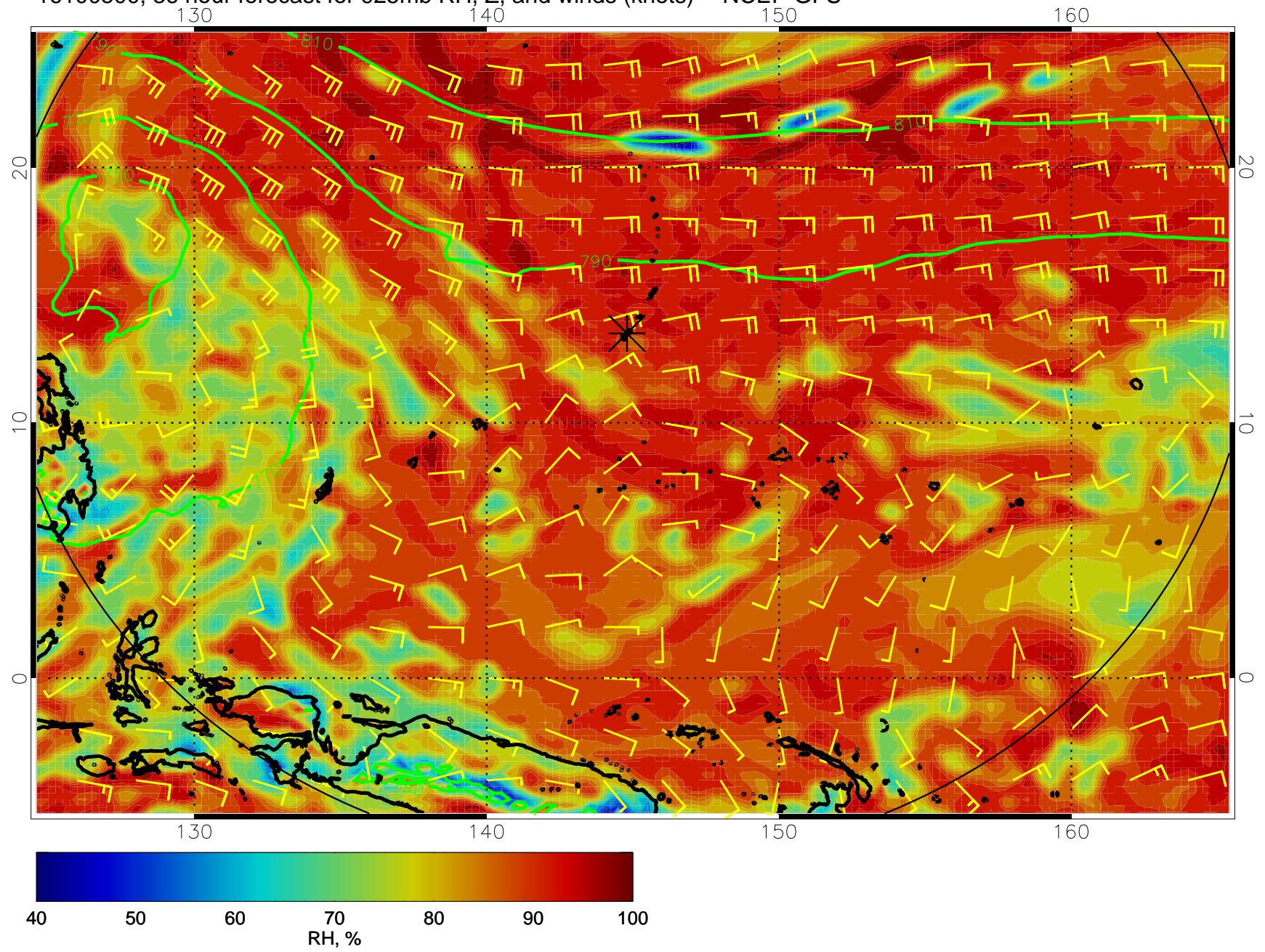
16100412, 24 hour forecast for 925mb RH, Z, and winds (knots) -- NCEP GFS



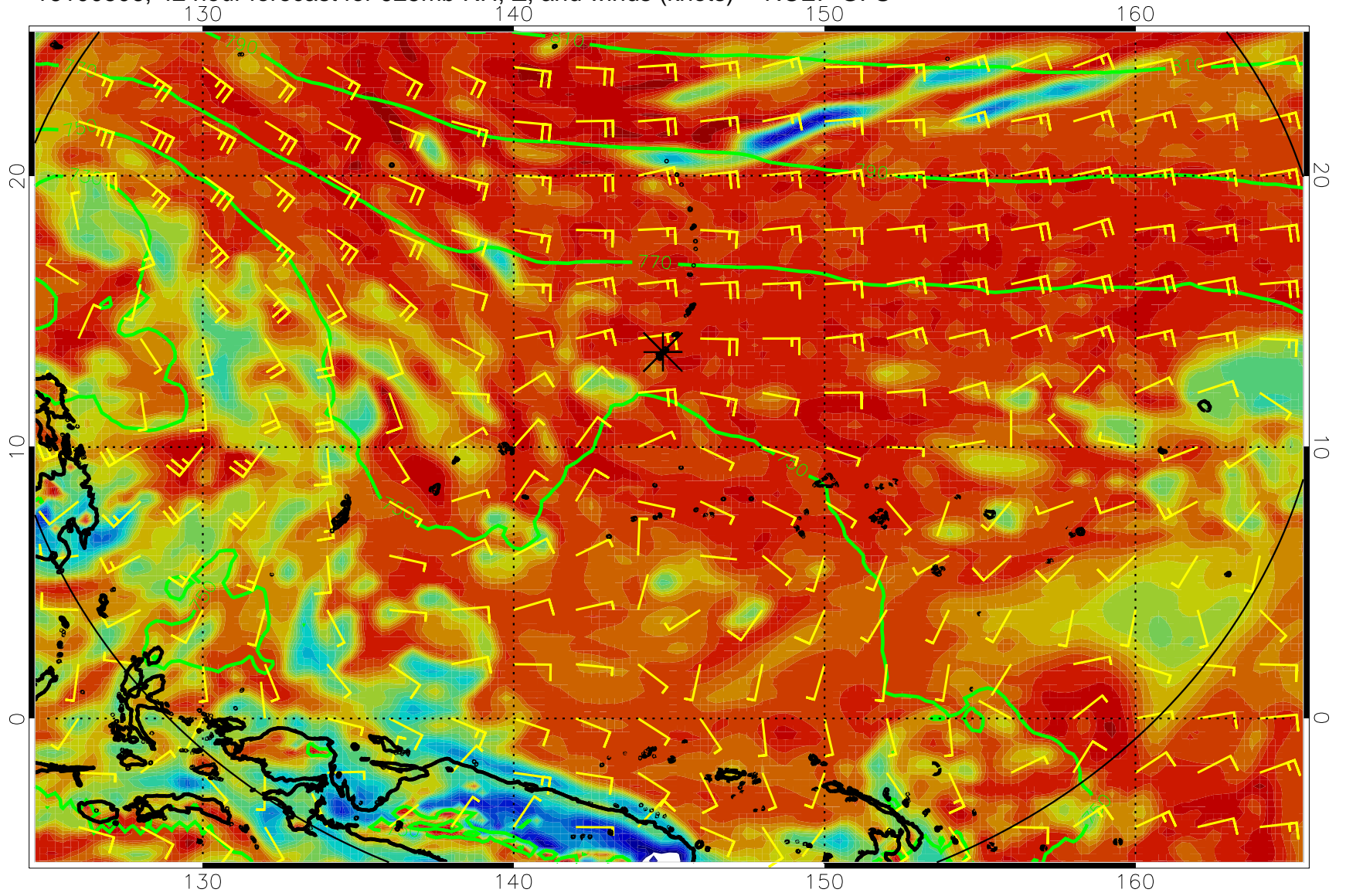
16100418, 30 hour forecast for 925mb RH, Z, and winds (knots) -- NCEP GFS



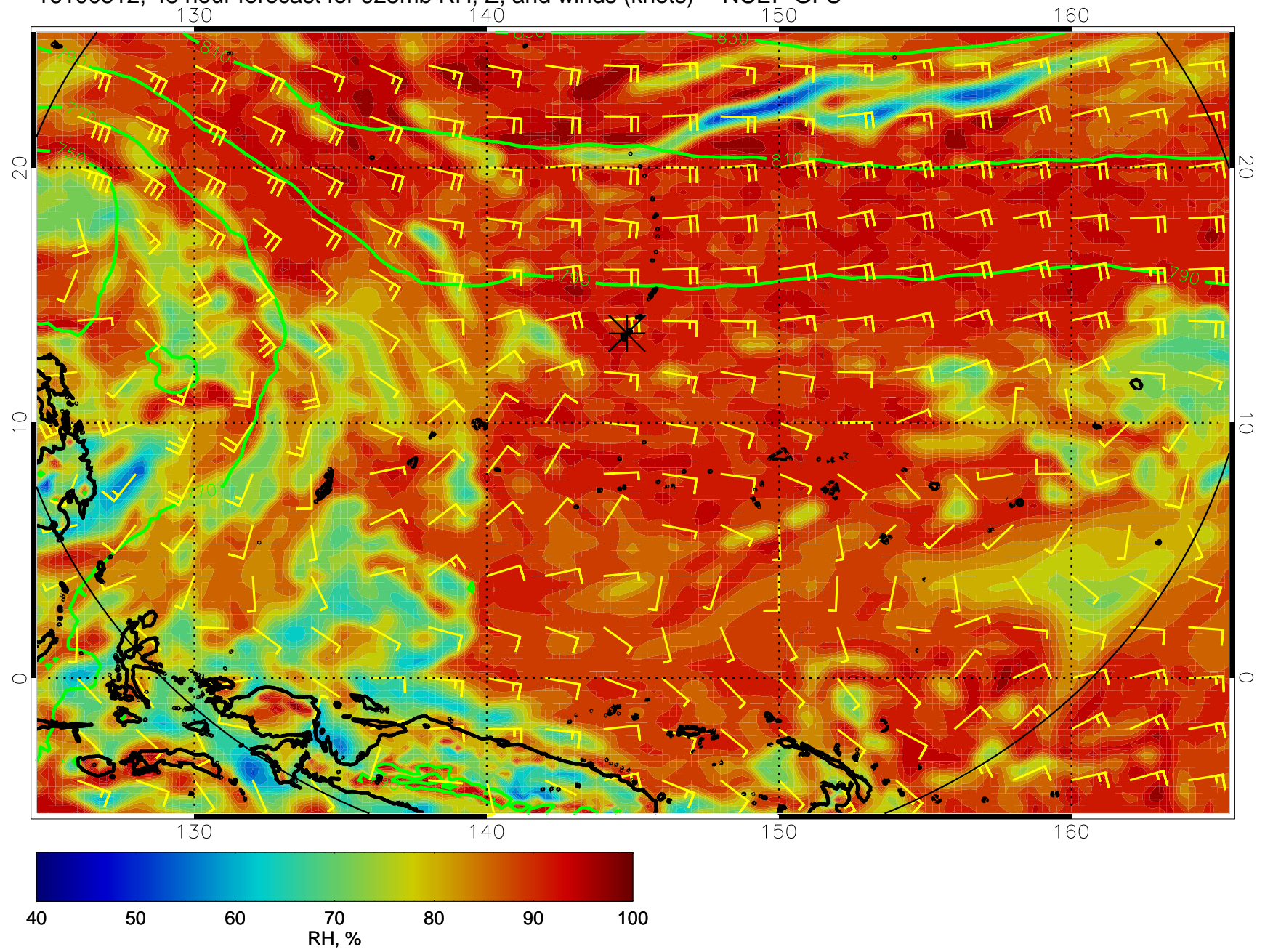
16100500, 36 hour forecast for 925mb RH, Z, and winds (knots) -- NCEP GFS



16100506, 42 hour forecast for 925mb RH, Z, and winds (knots) -- NCEP GFS

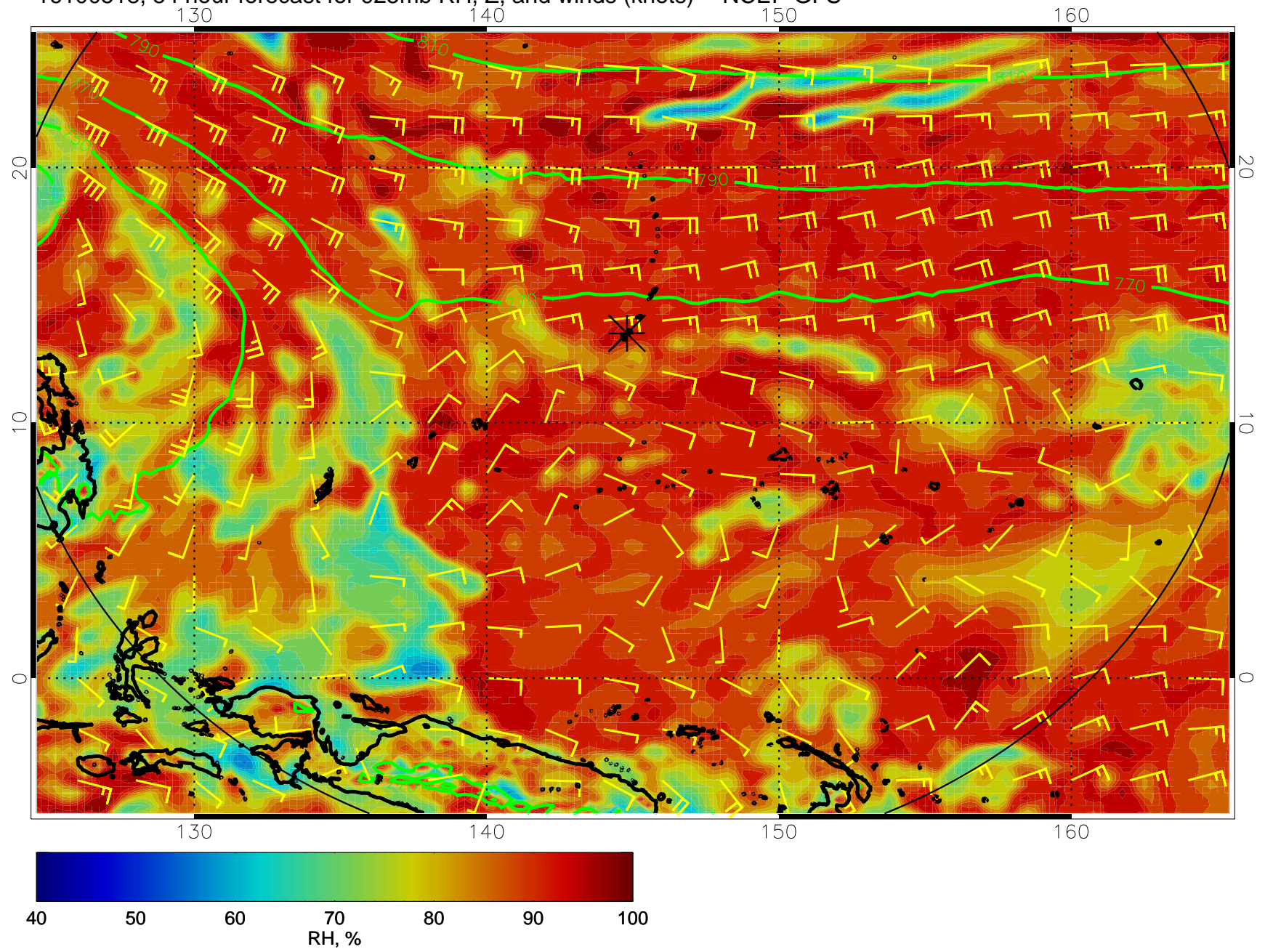


16100512, 48 hour forecast for 925mb RH, Z, and winds (knots) -- NCEP GFS

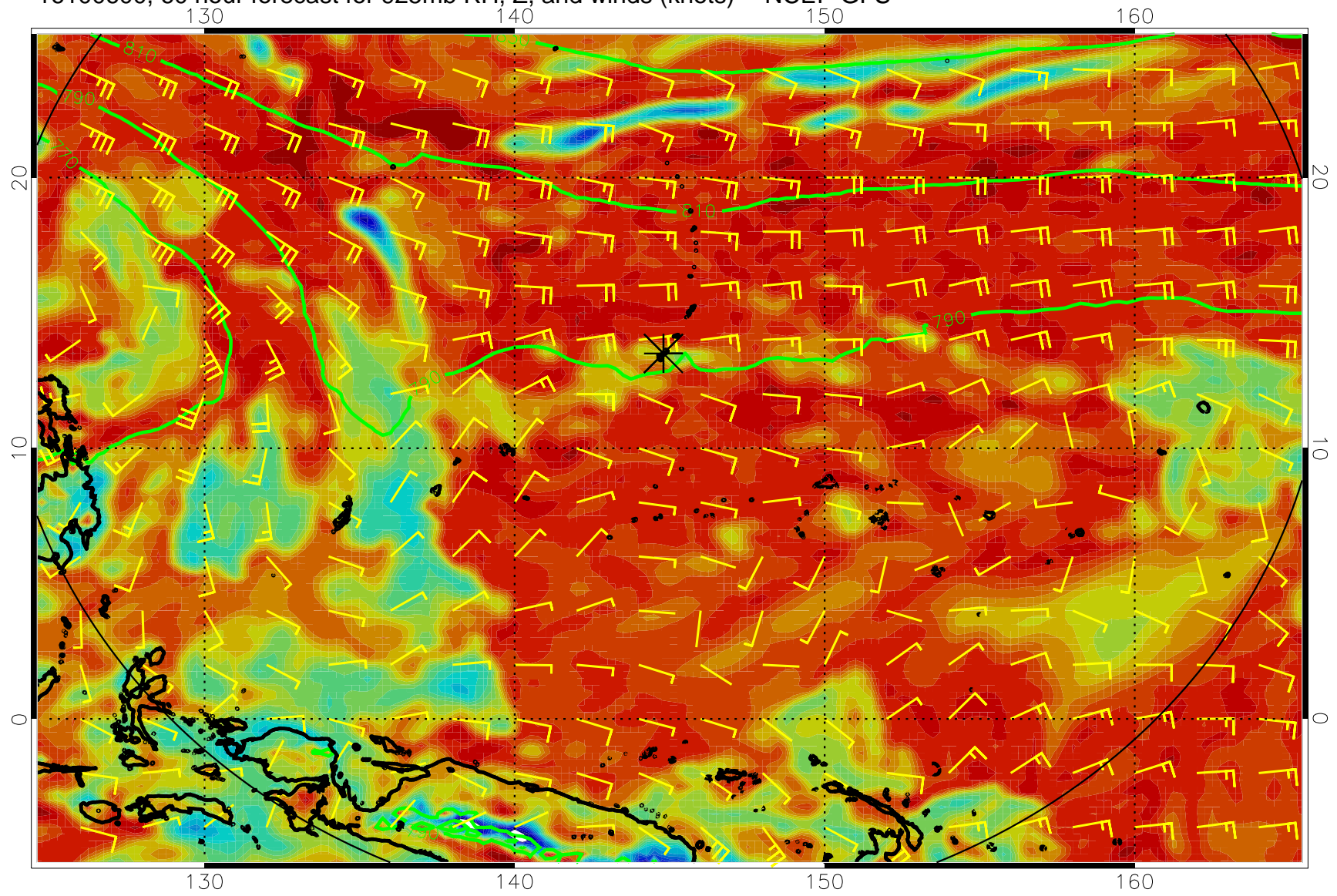




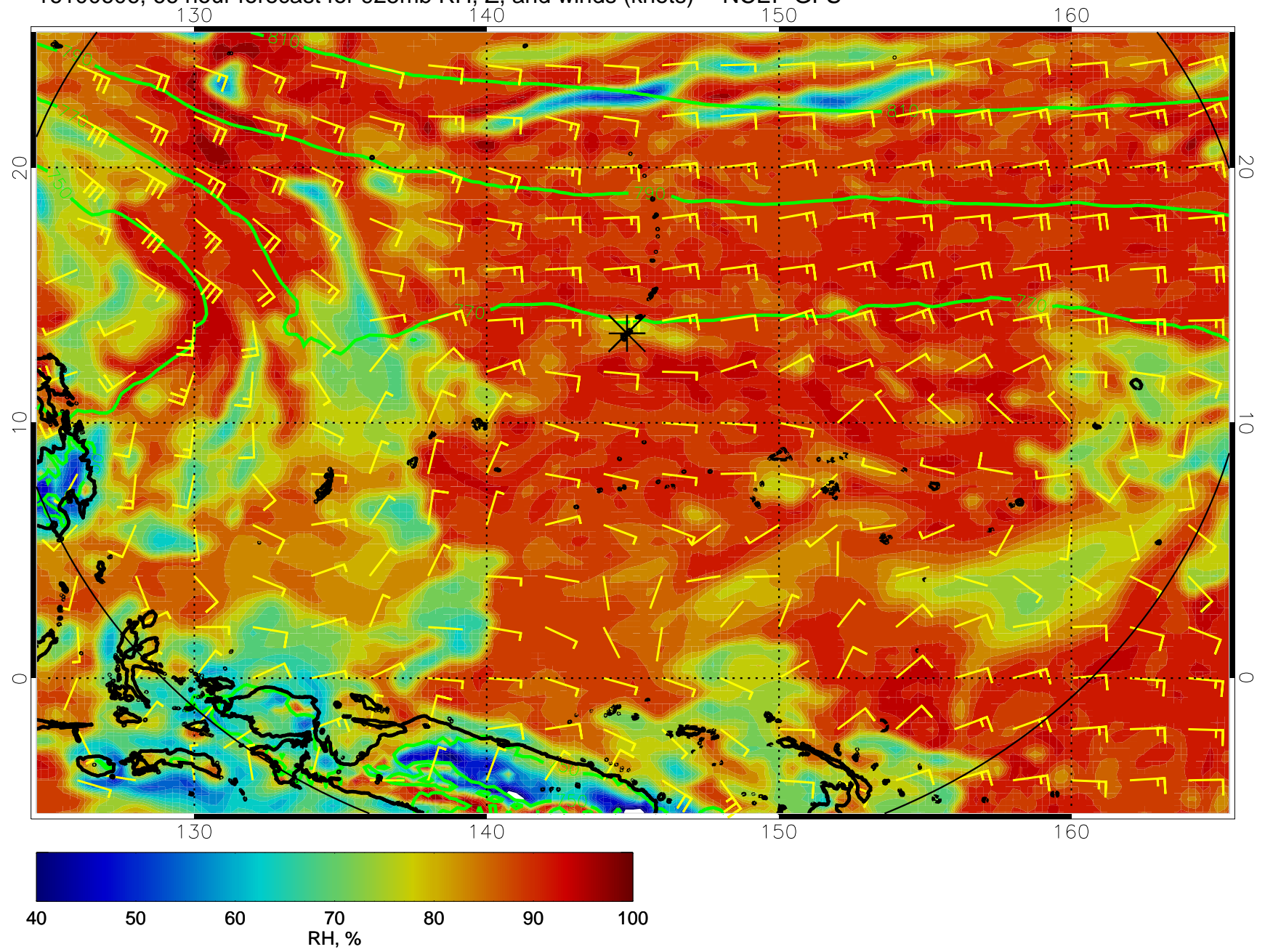
16100518, 54 hour forecast for 925mb RH, Z, and winds (knots) -- NCEP GFS



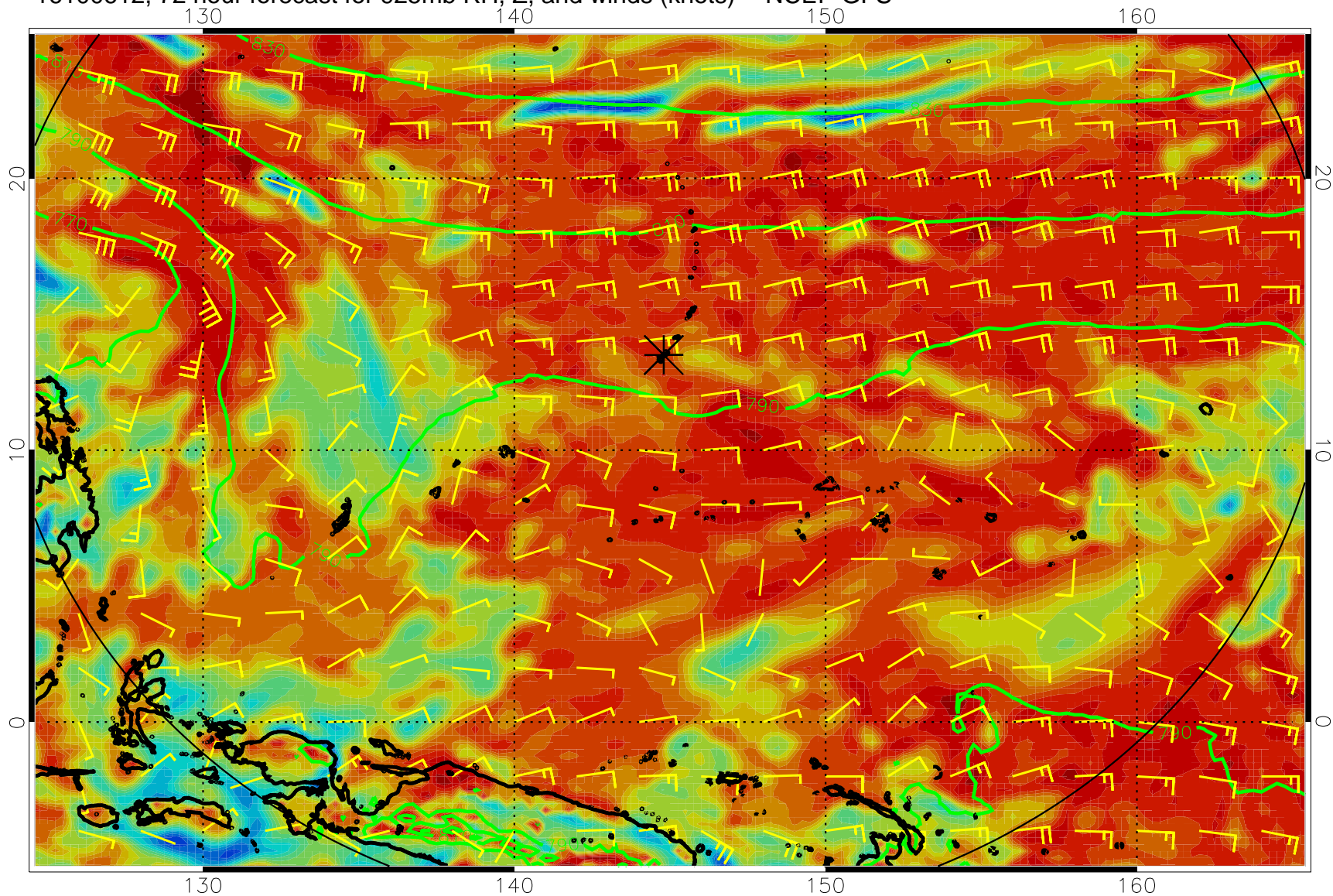
16100600, 60 hour forecast for 925mb RH, Z, and winds (knots) -- NCEP GFS



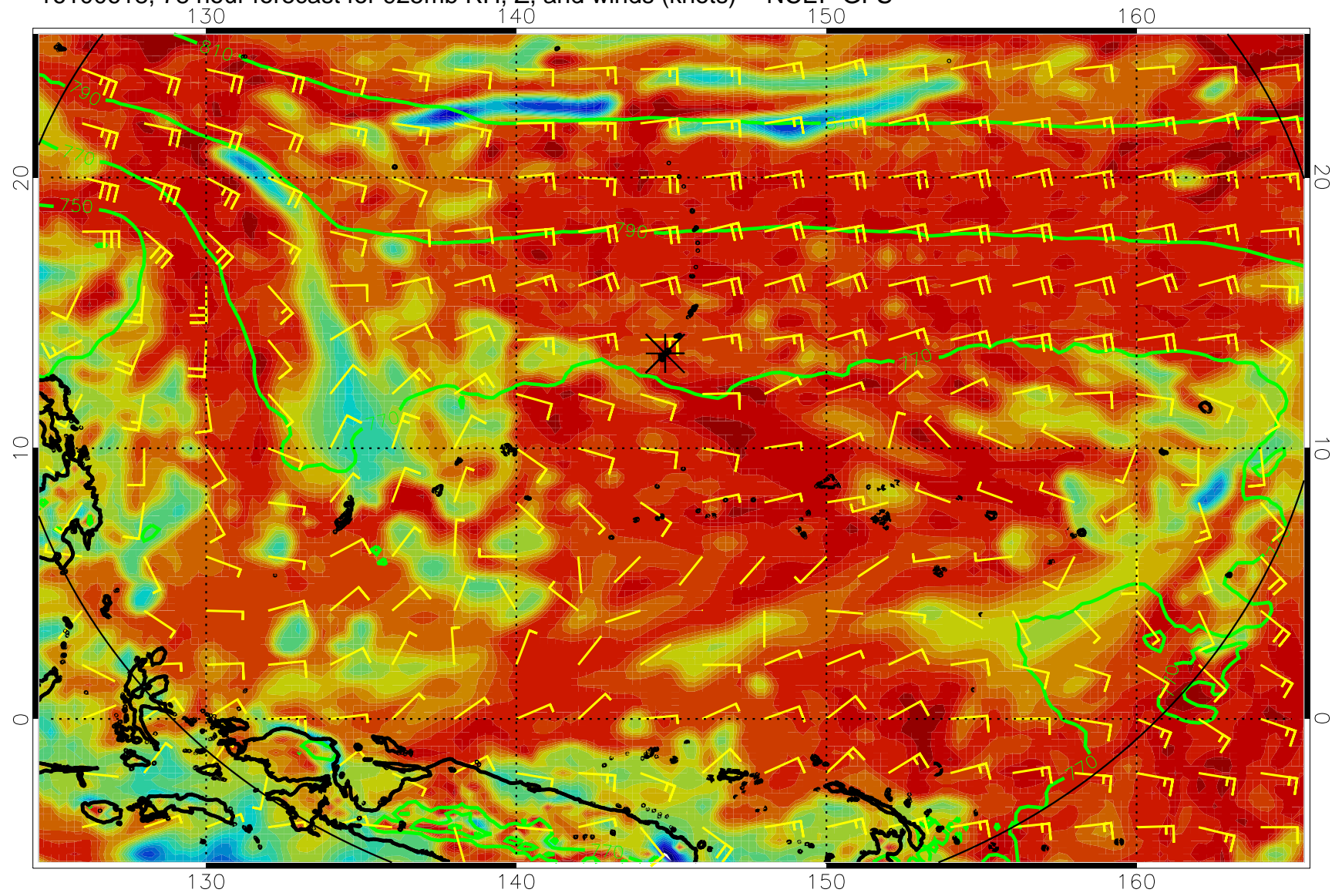
16100606, 66 hour forecast for 925mb RH, Z, and winds (knots) -- NCEP GFS



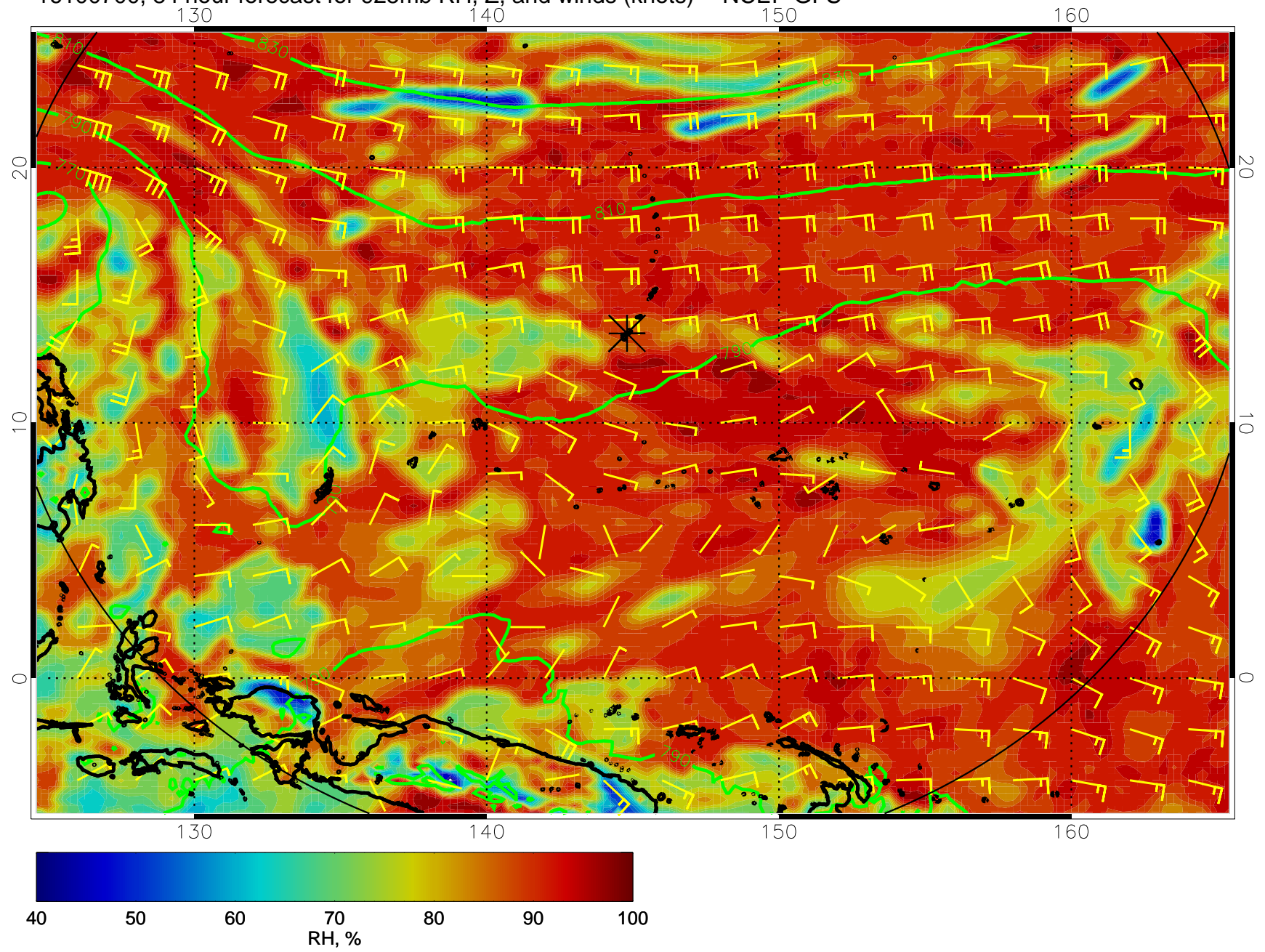
16100612, 72 hour forecast for 925mb RH, Z, and winds (knots) -- NCEP GFS



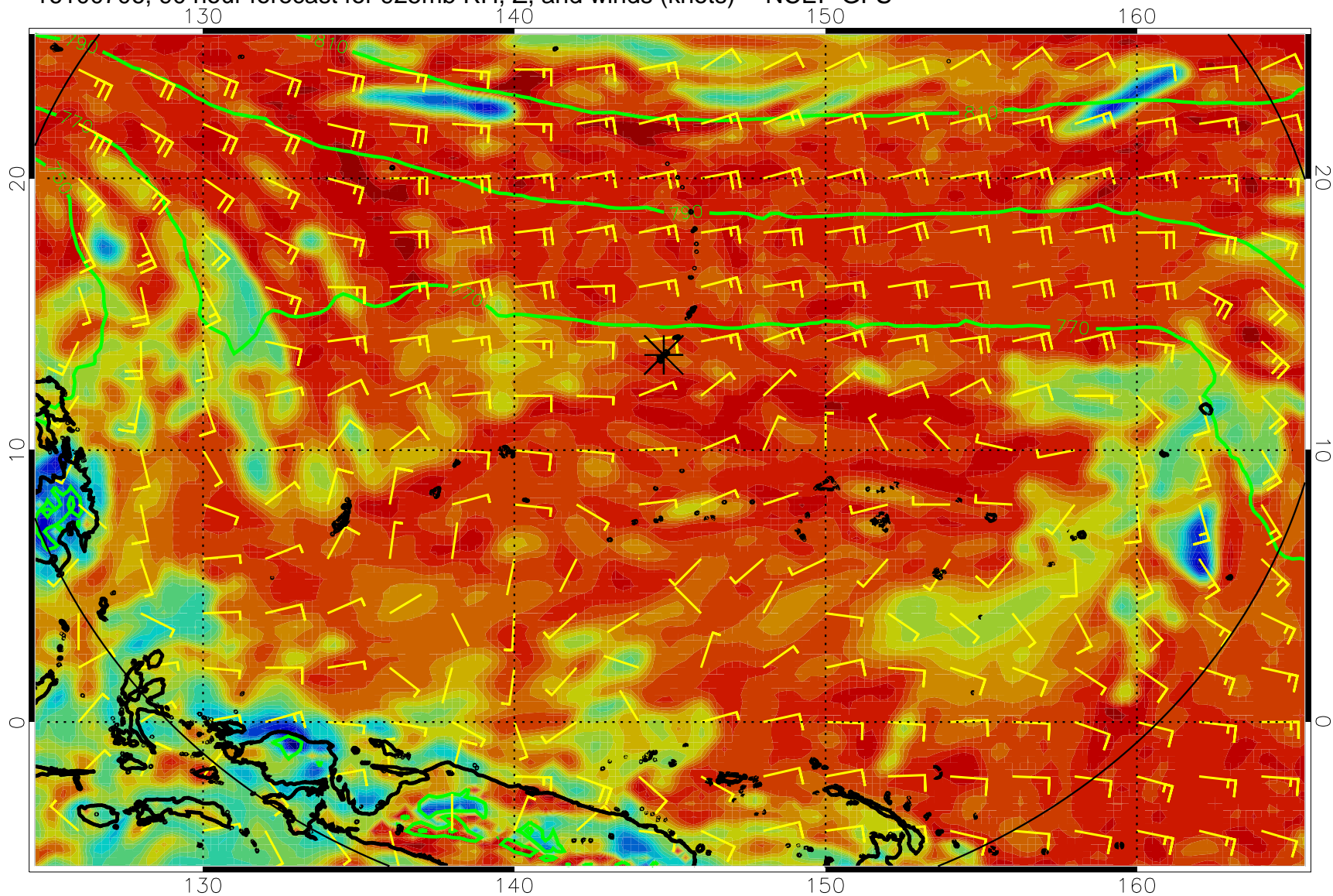
16100618, 78 hour forecast for 925mb RH, Z, and winds (knots) -- NCEP GFS



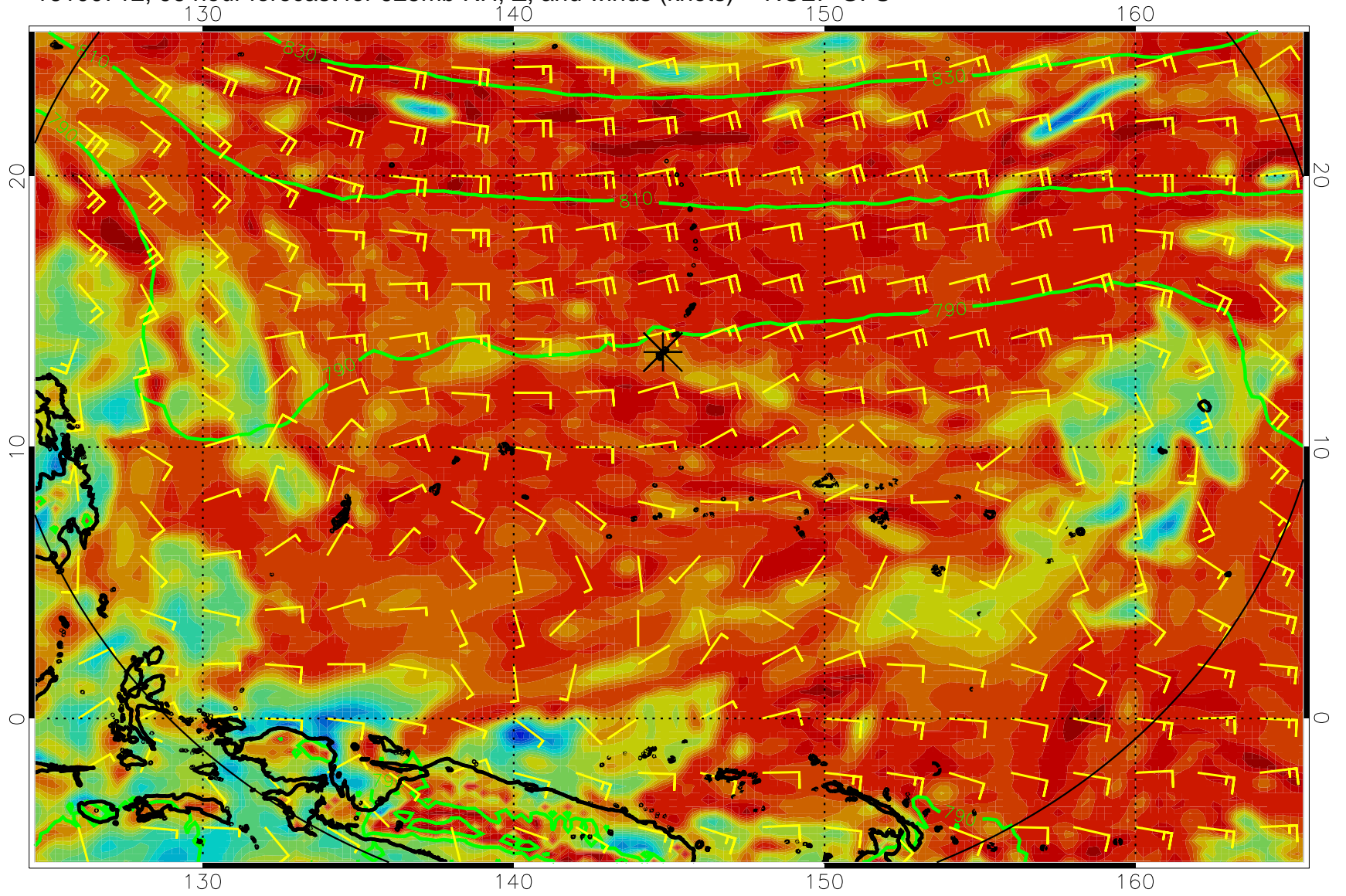
16100700, 84 hour forecast for 925mb RH, Z, and winds (knots) -- NCEP GFS



16100706, 90 hour forecast for 925mb RH, Z, and winds (knots) -- NCEP GFS

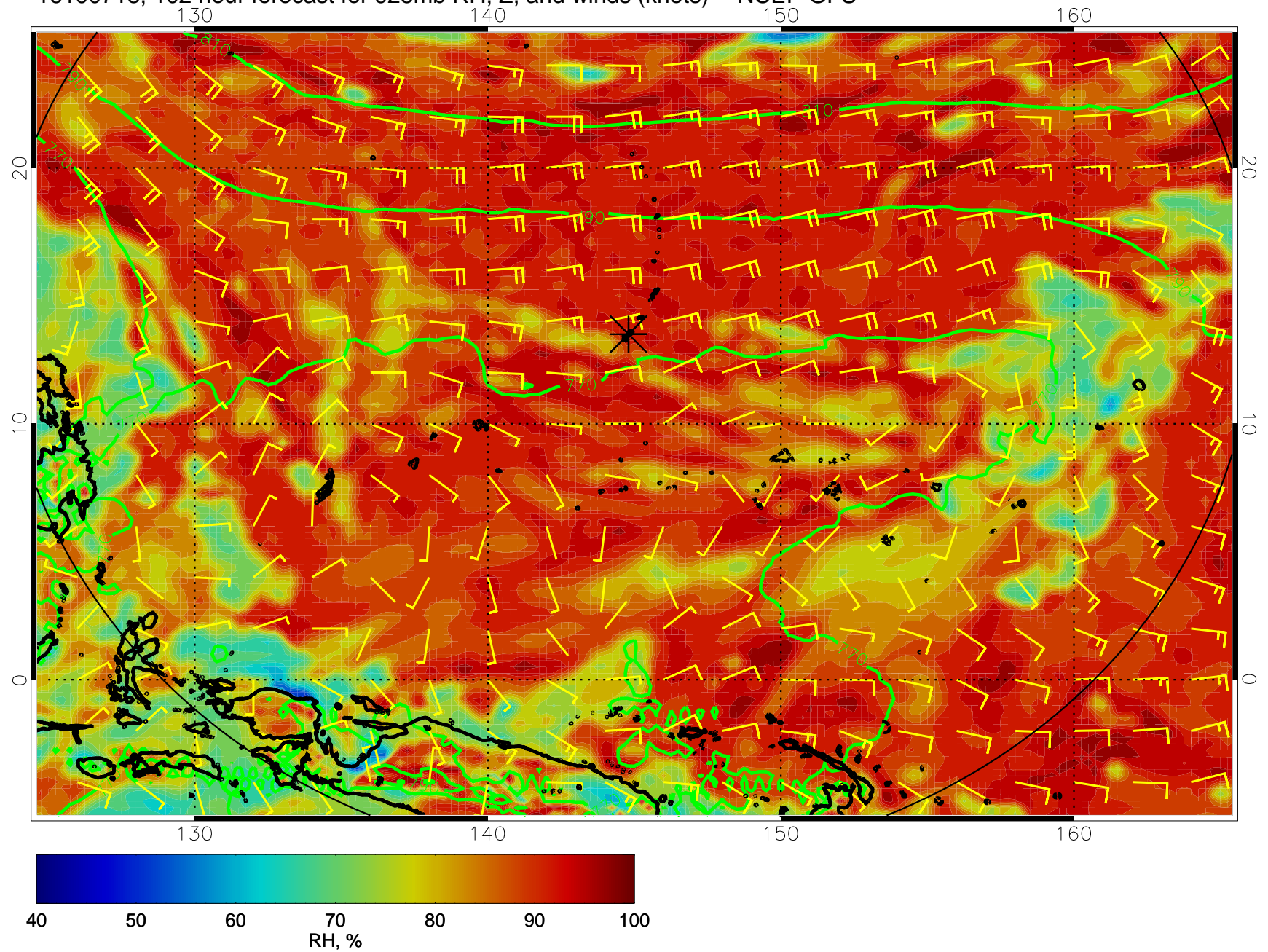


16100712, 96 hour forecast for 925mb RH, Z, and winds (knots) -- NCEP GFS

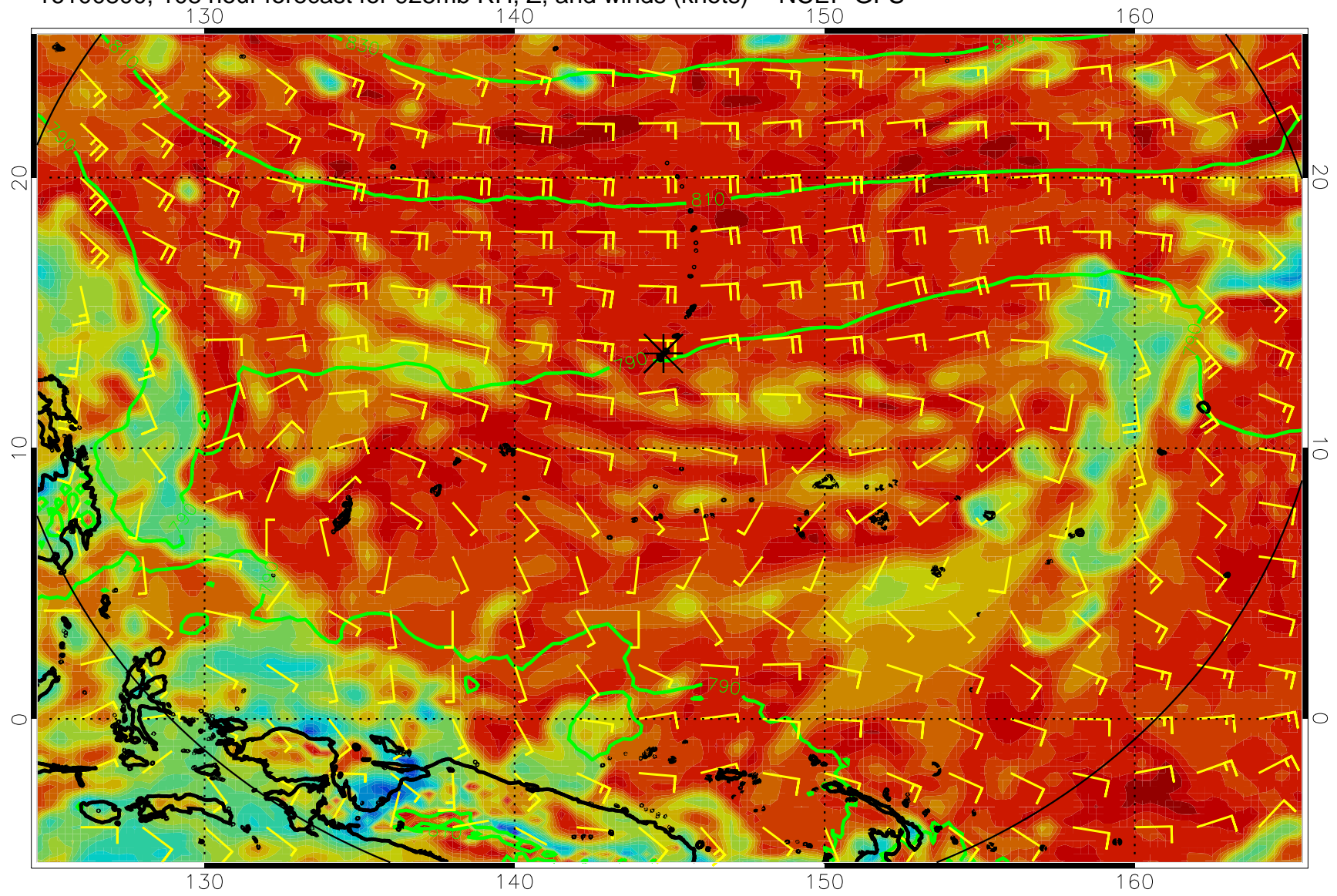




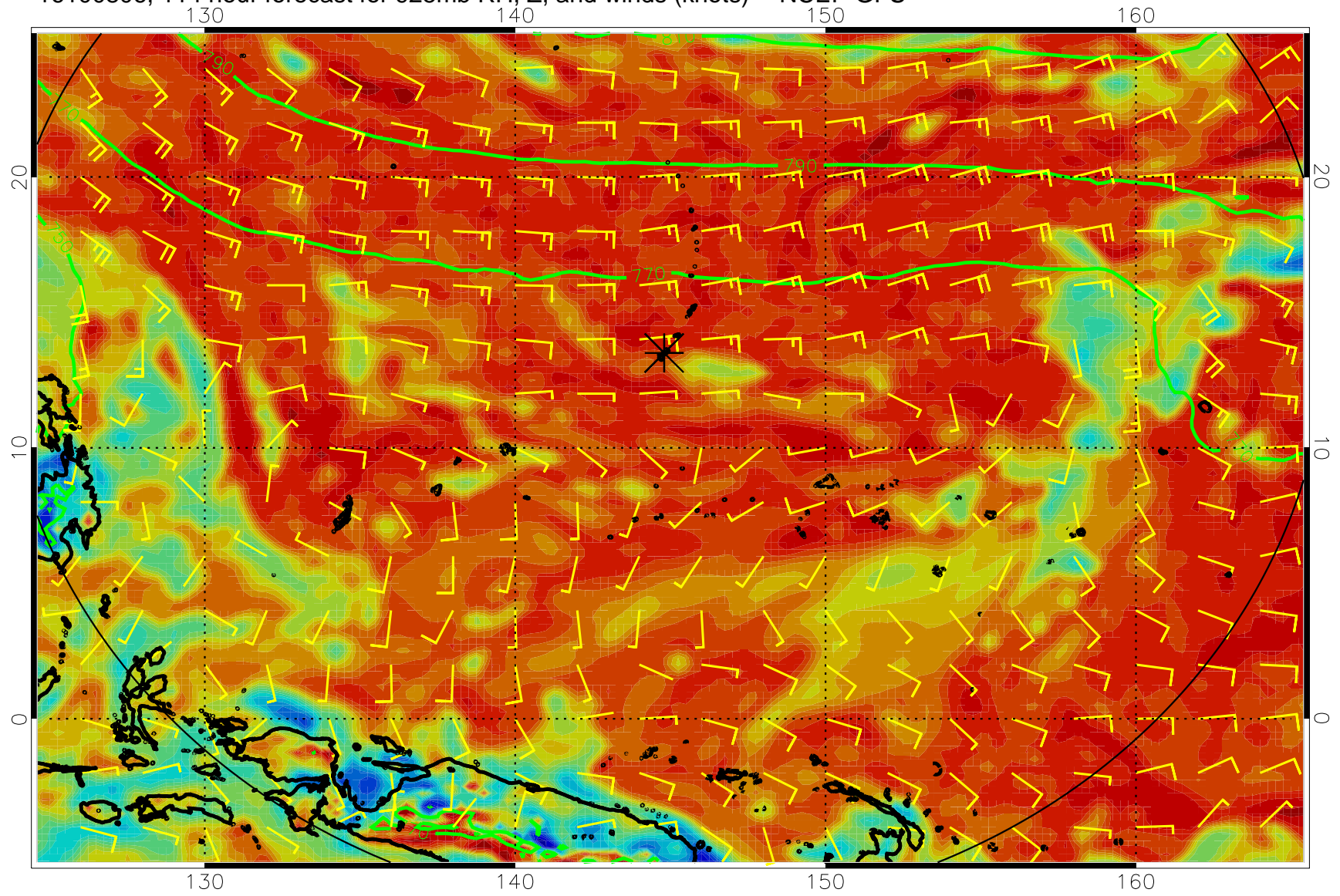
16100718, 102 hour forecast for 925mb RH, Z, and winds (knots) -- NCEP GFS



16100800, 108 hour forecast for 925mb RH, Z, and winds (knots) -- NCEP GFS



16100806, 114 hour forecast for 925mb RH, Z, and winds (knots) -- NCEP GFS



16100812, 120 hour forecast for 925mb RH, Z, and winds (knots) -- NCEP GFS

