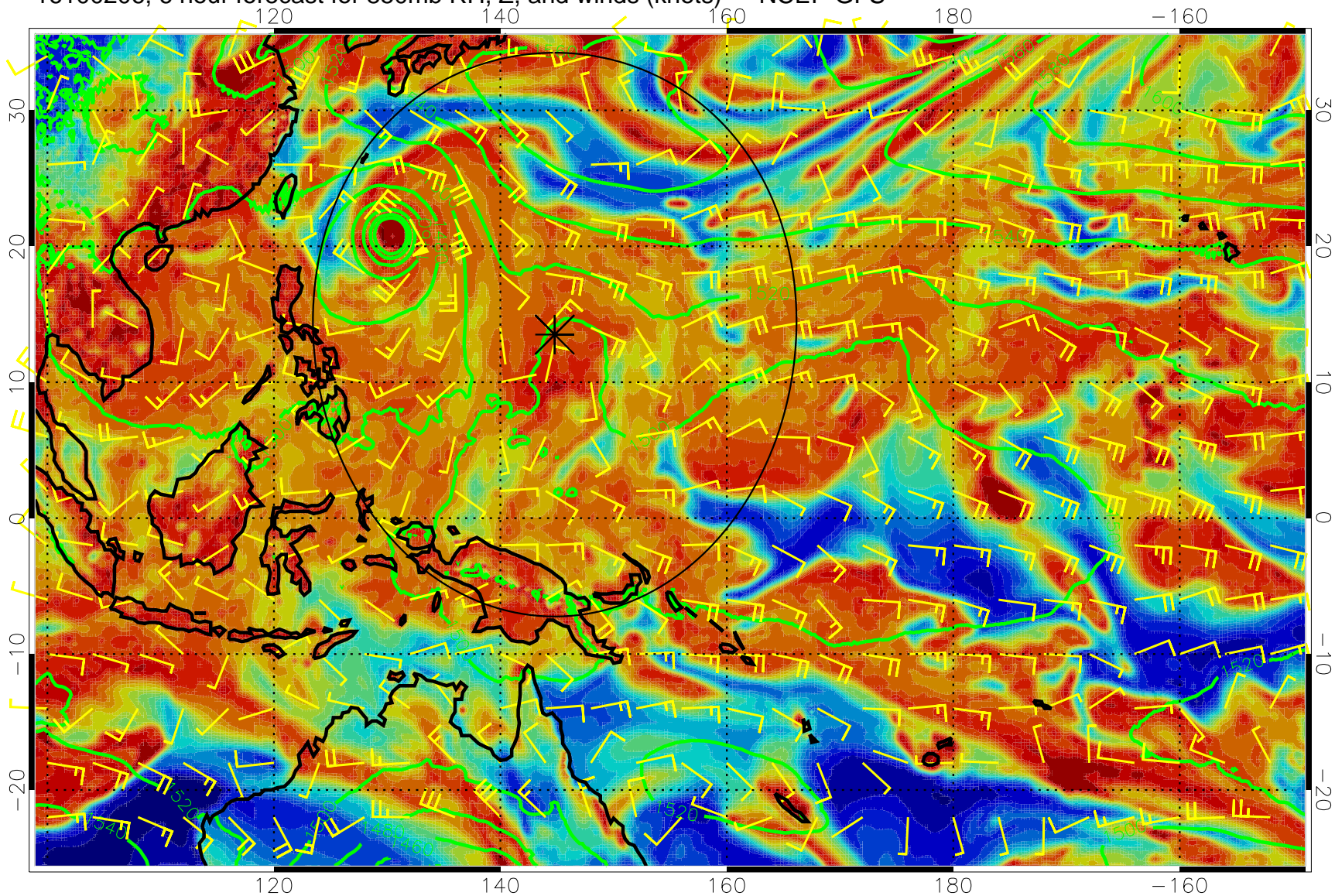
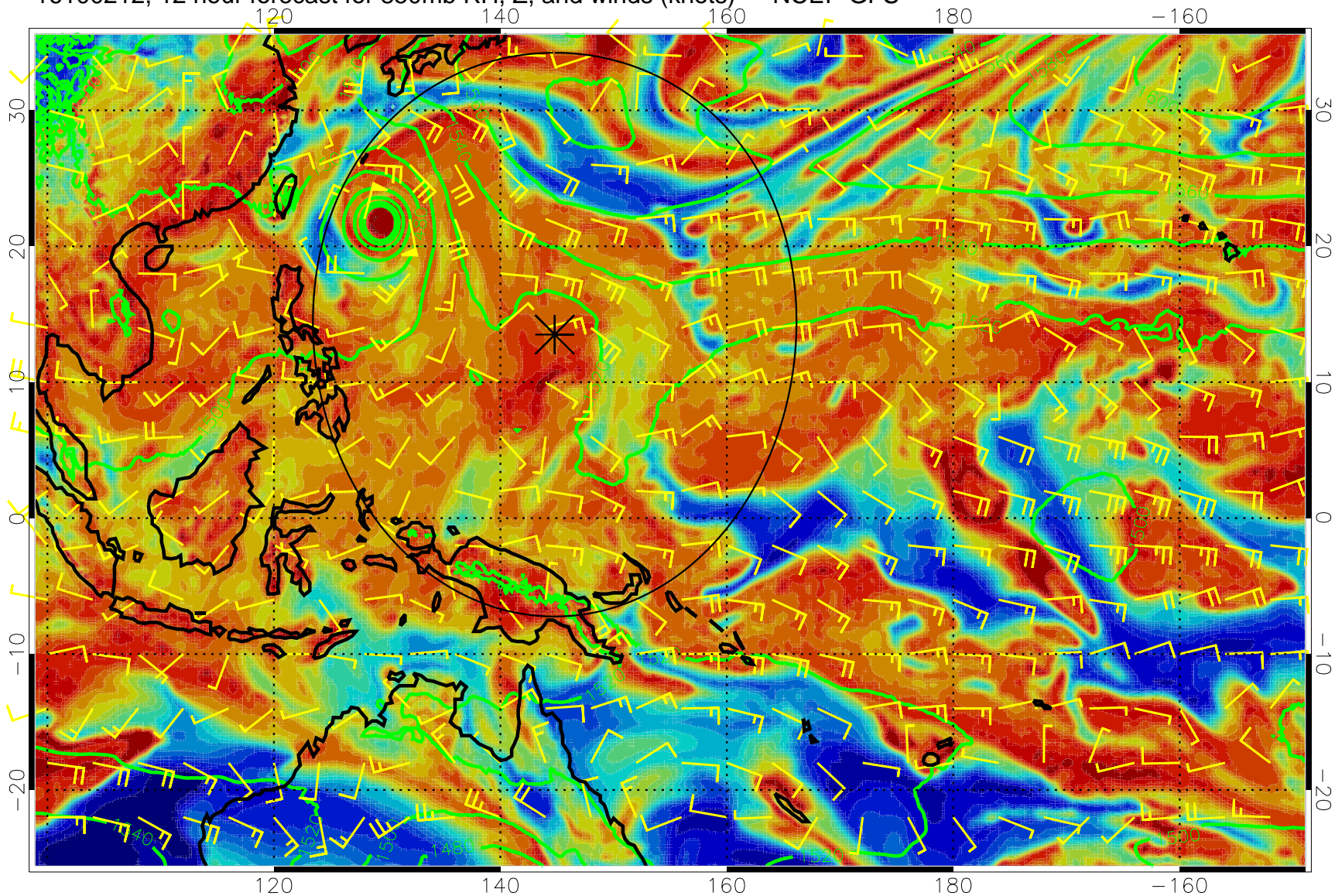


16100206, 6 hour forecast for 850mb RH, Z, and winds (knots) -- NCEP GFS



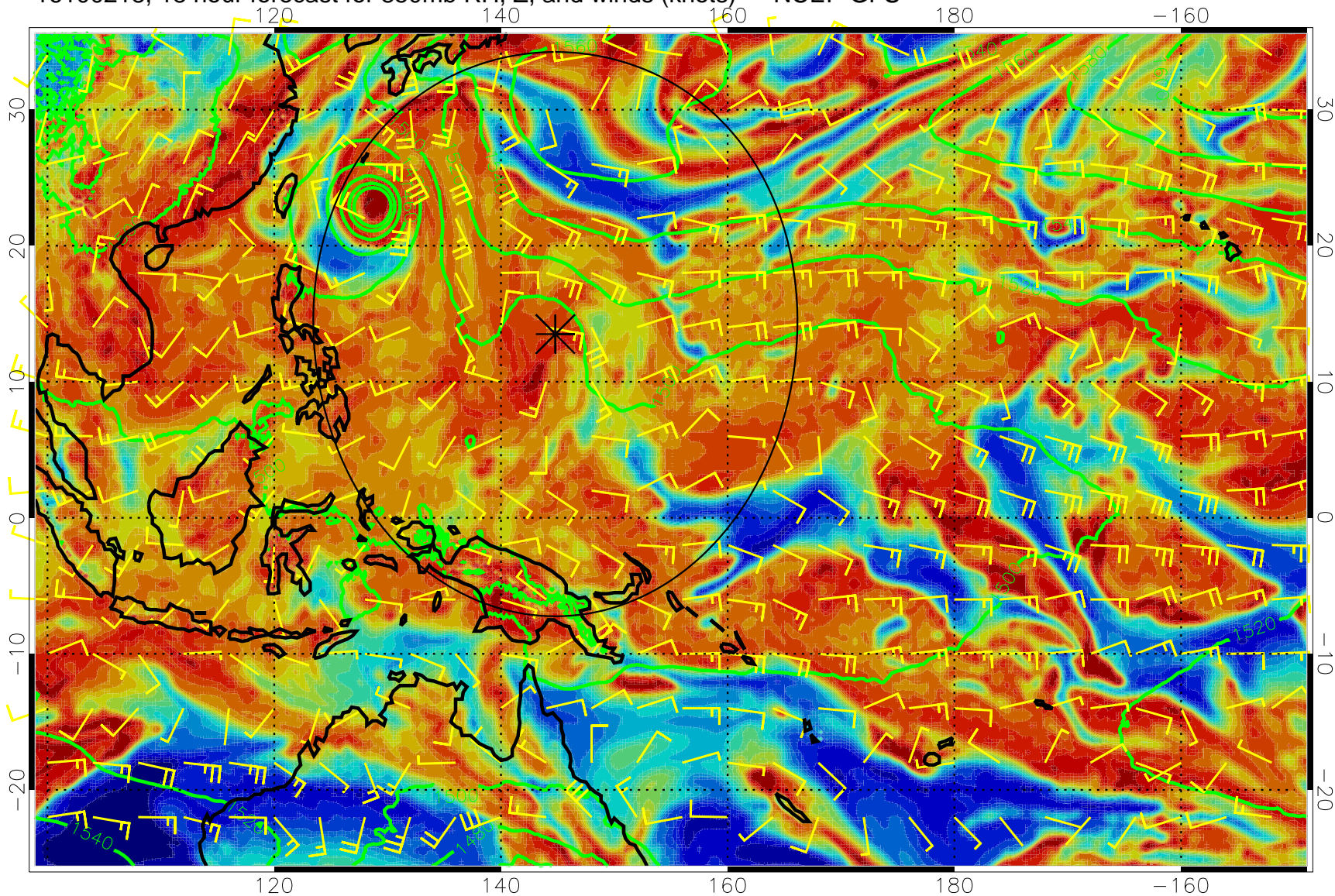
Precip (tot dot, conv sol) mm/day 40 mm/day contours, min 20

16100212, 12 hour forecast for 850mb RH, Z, and winds (knots) -- NCEP GFS



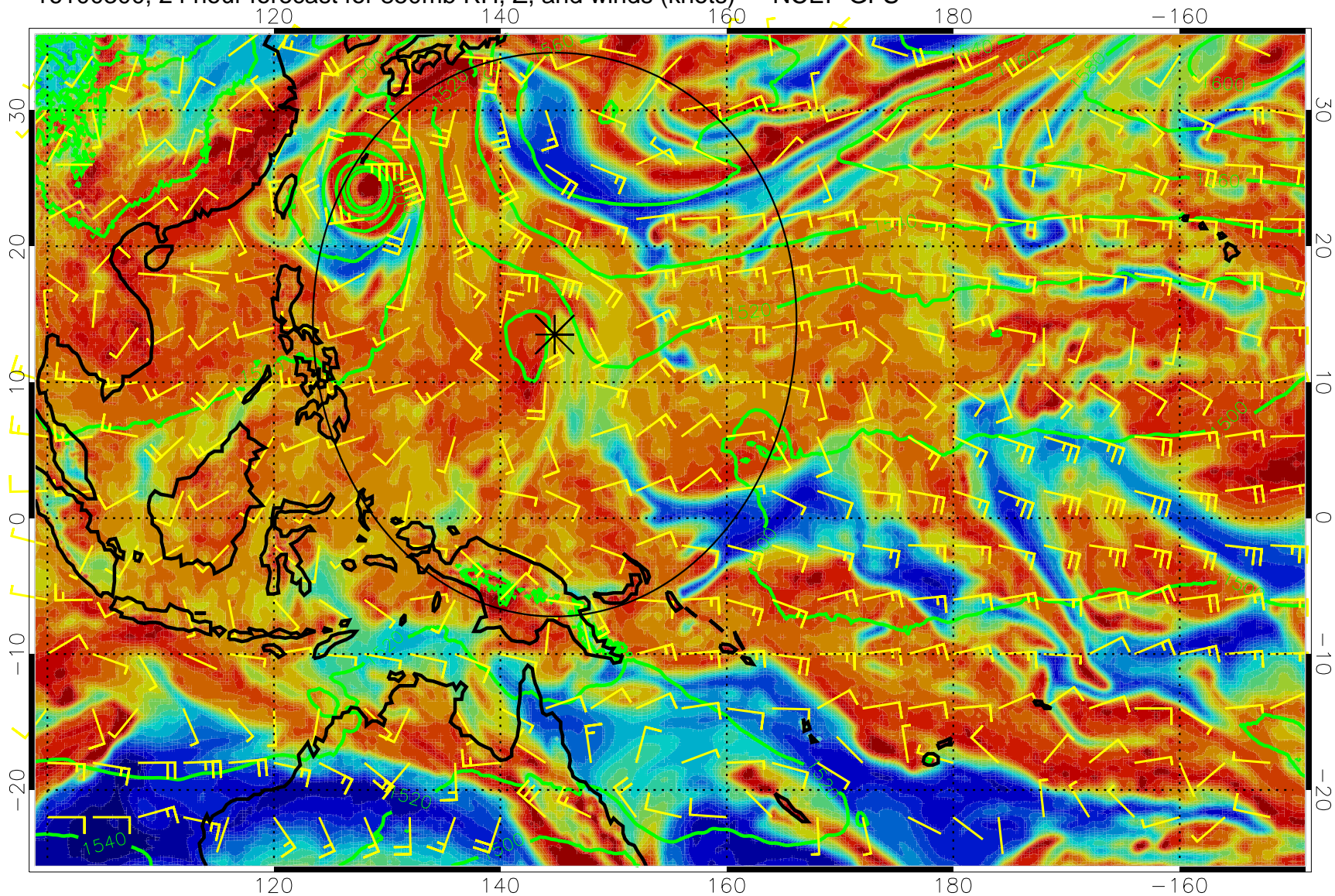
Precip (tot dot, conv sol) mm/day 40 mm/day contours, min 20

16100218, 18 hour forecast for 850mb RH, Z, and winds (knots) -- NCEP GFS

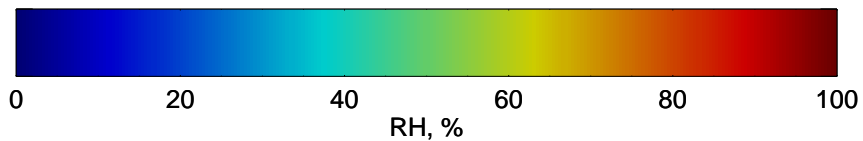


Precip (tot dot, conv sol) mm/day 40 mm/day contours, min 20

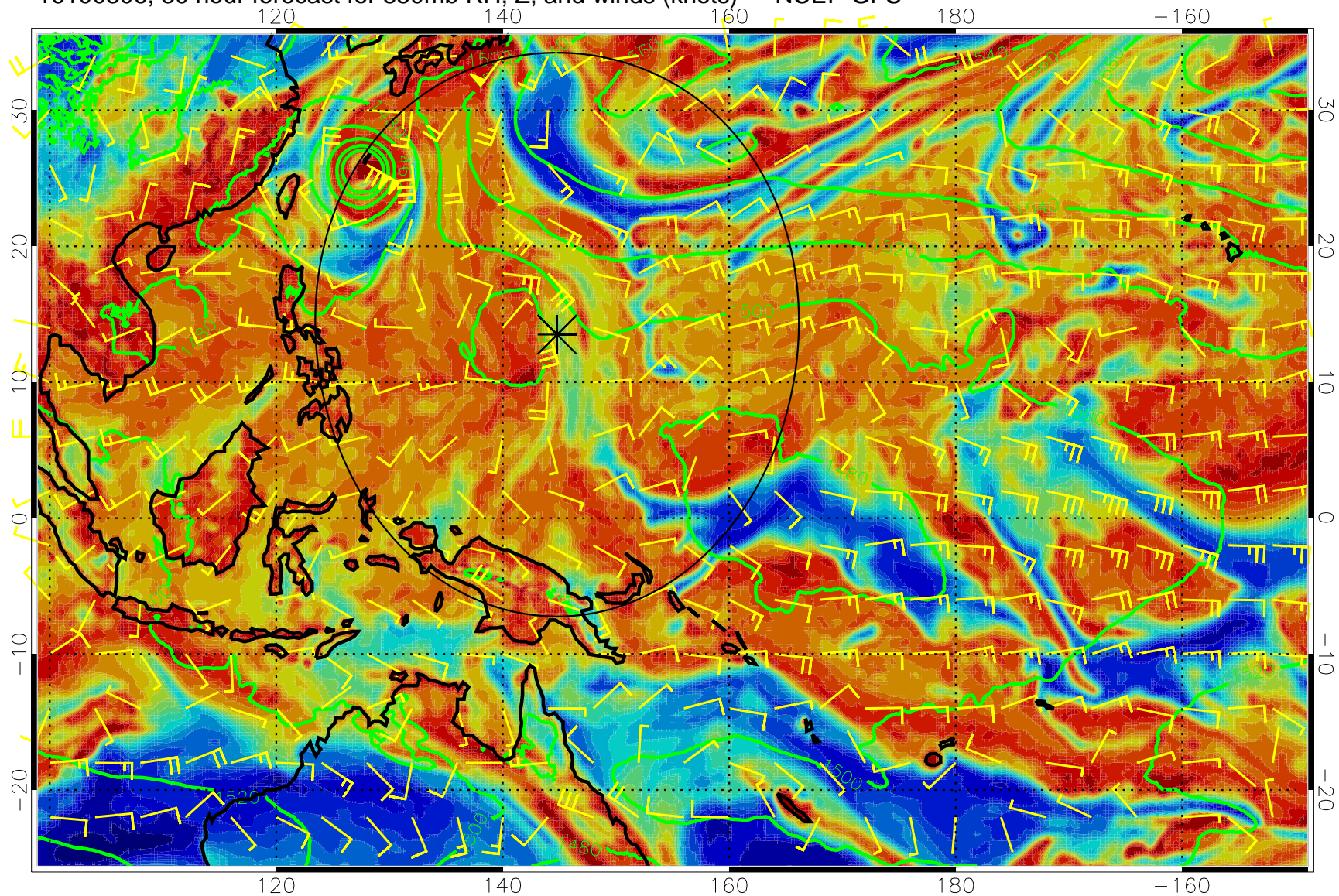
16100300, 24 hour forecast for 850mb RH, Z, and winds (knots) -- NCEP GFS



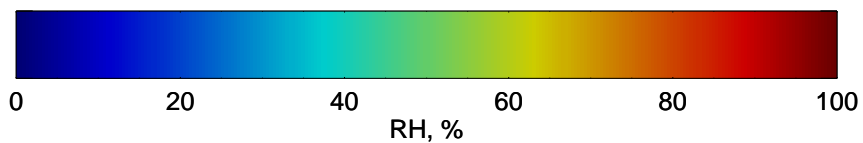
Precip (tot dot, conv sol) mm/day 40 mm/day contours, min 20



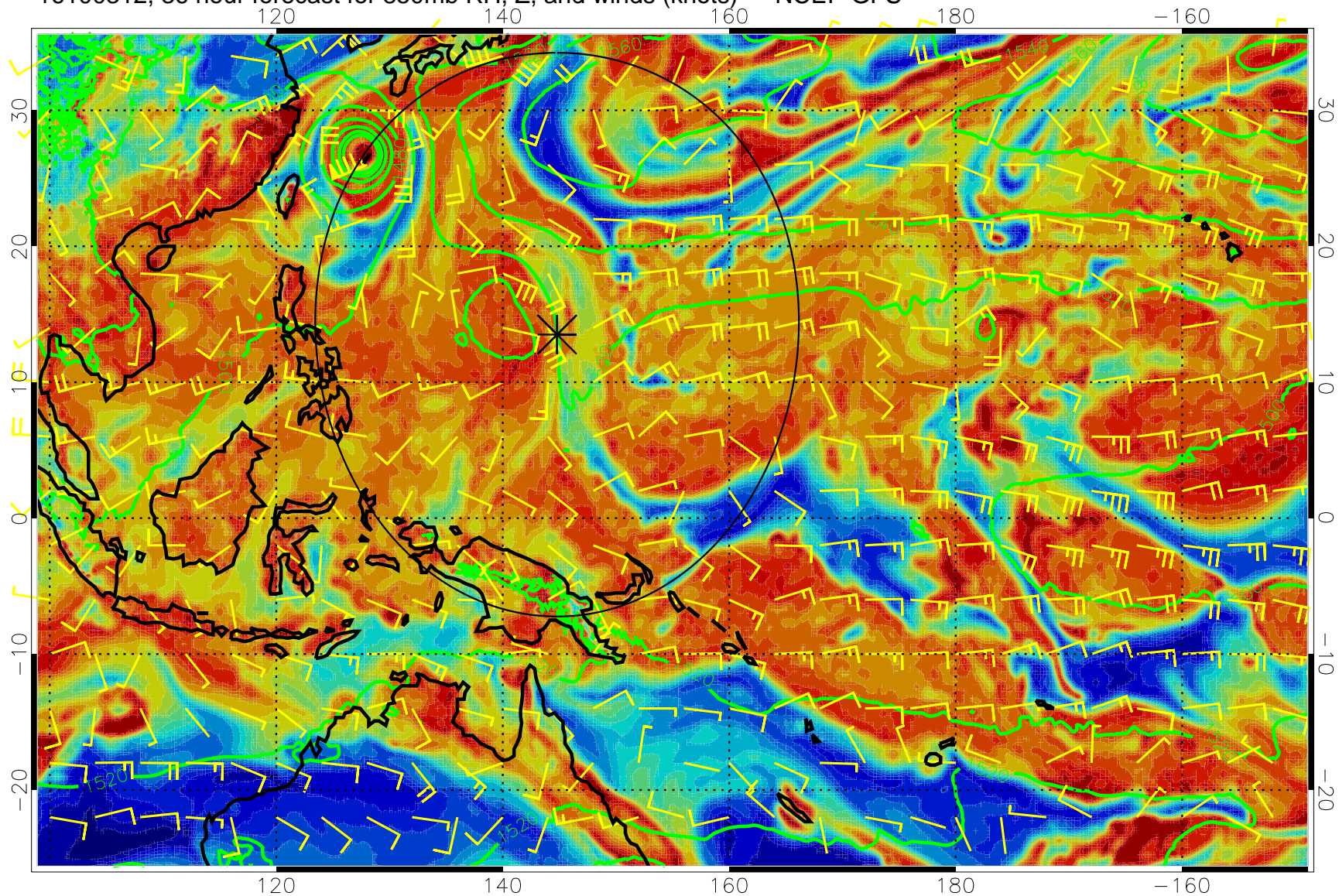
16100306, 30 hour forecast for 850mb RH, Z, and winds (knots) -- NCEP GFS



Precip (tot dot, conv sol) mm/day 40 mm/day contours, min 20

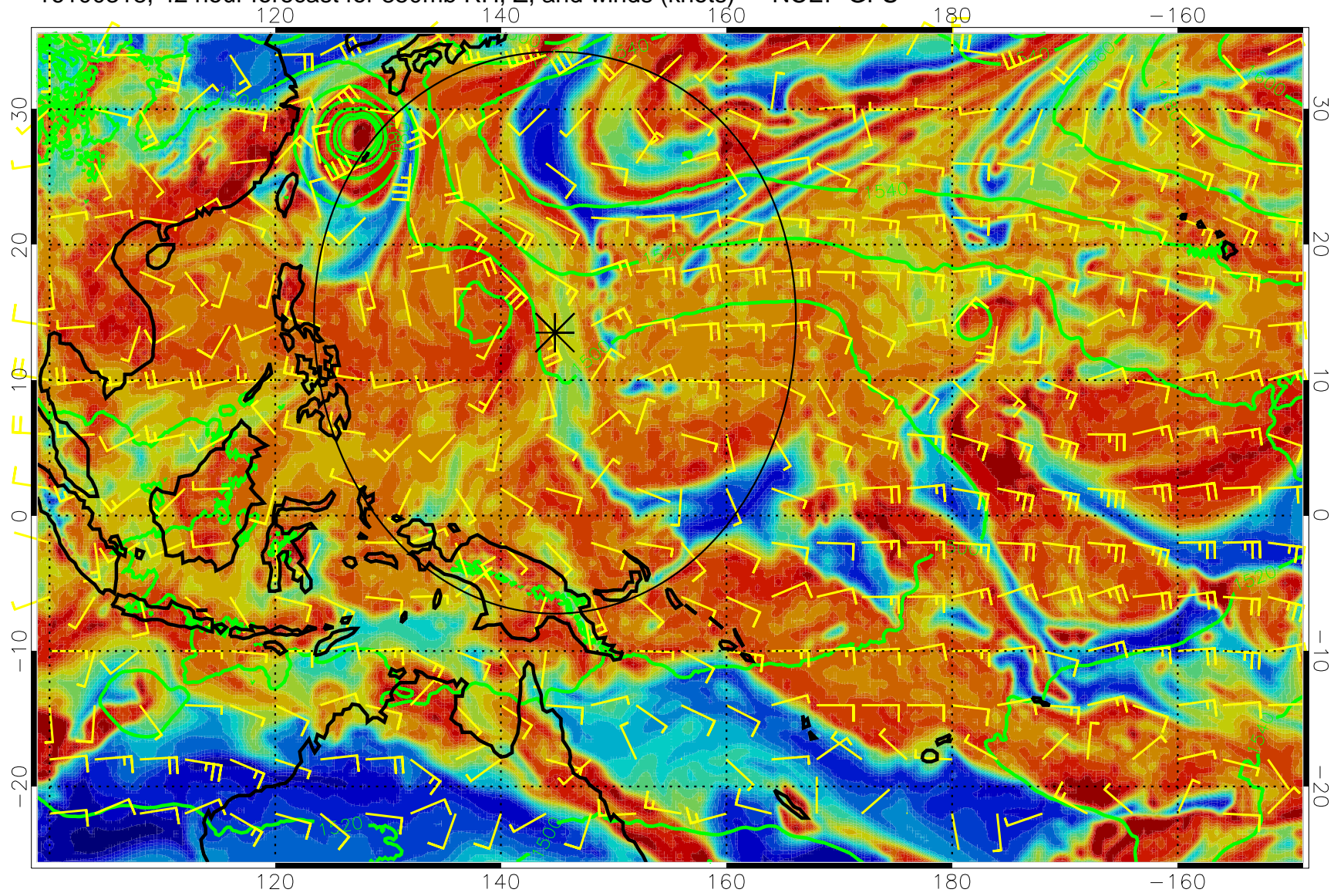


16100312, 36 hour forecast for 850mb RH, Z, and winds (knots) -- NCEP GFS



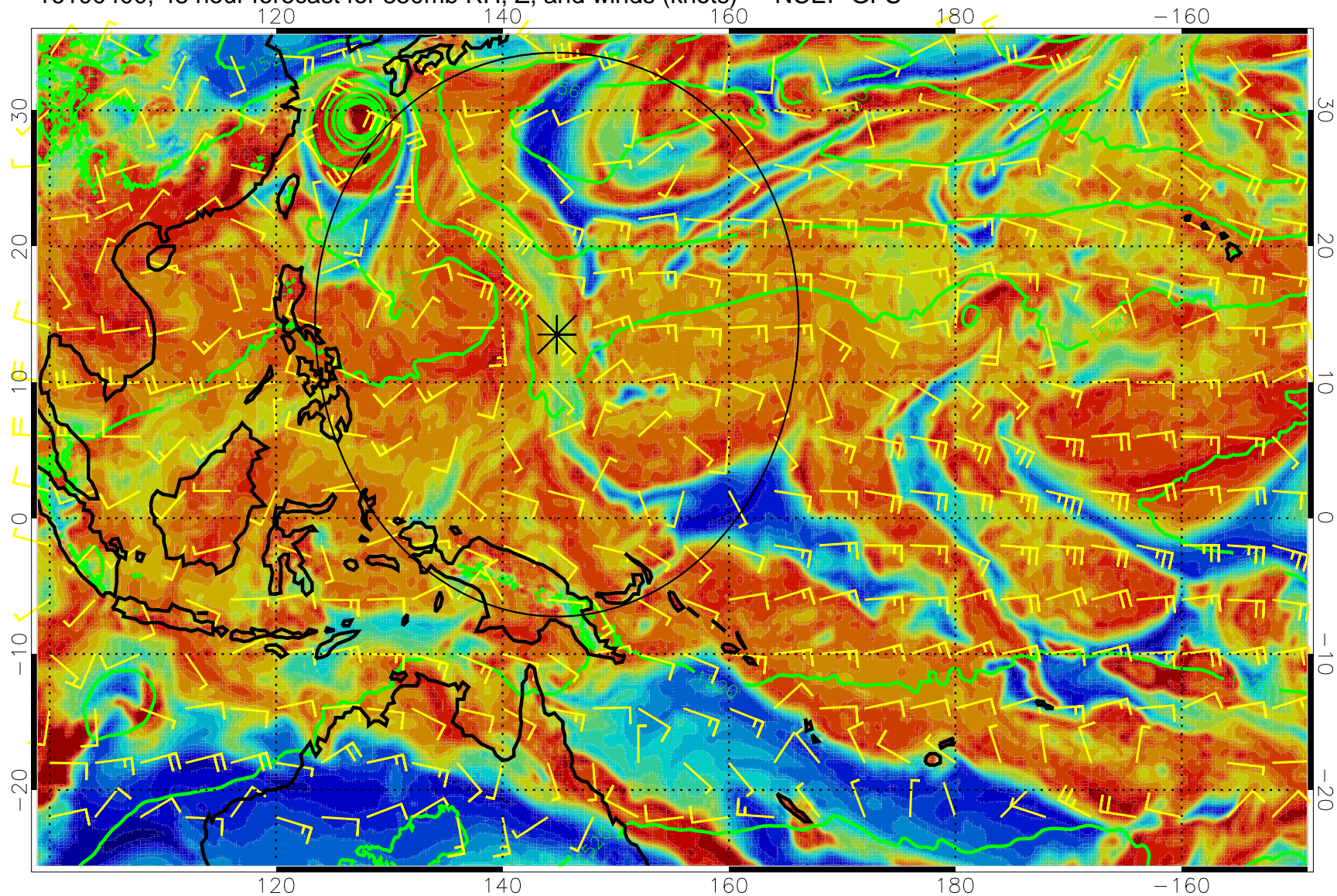
Precip (tot dot, conv sol) mm/day 40 mm/day contours, min 20

16100318, 42 hour forecast for 850mb RH, Z, and winds (knots) -- NCEP GFS



Precip (tot dot, conv sol) mm/day 40 mm/day contours, min 20

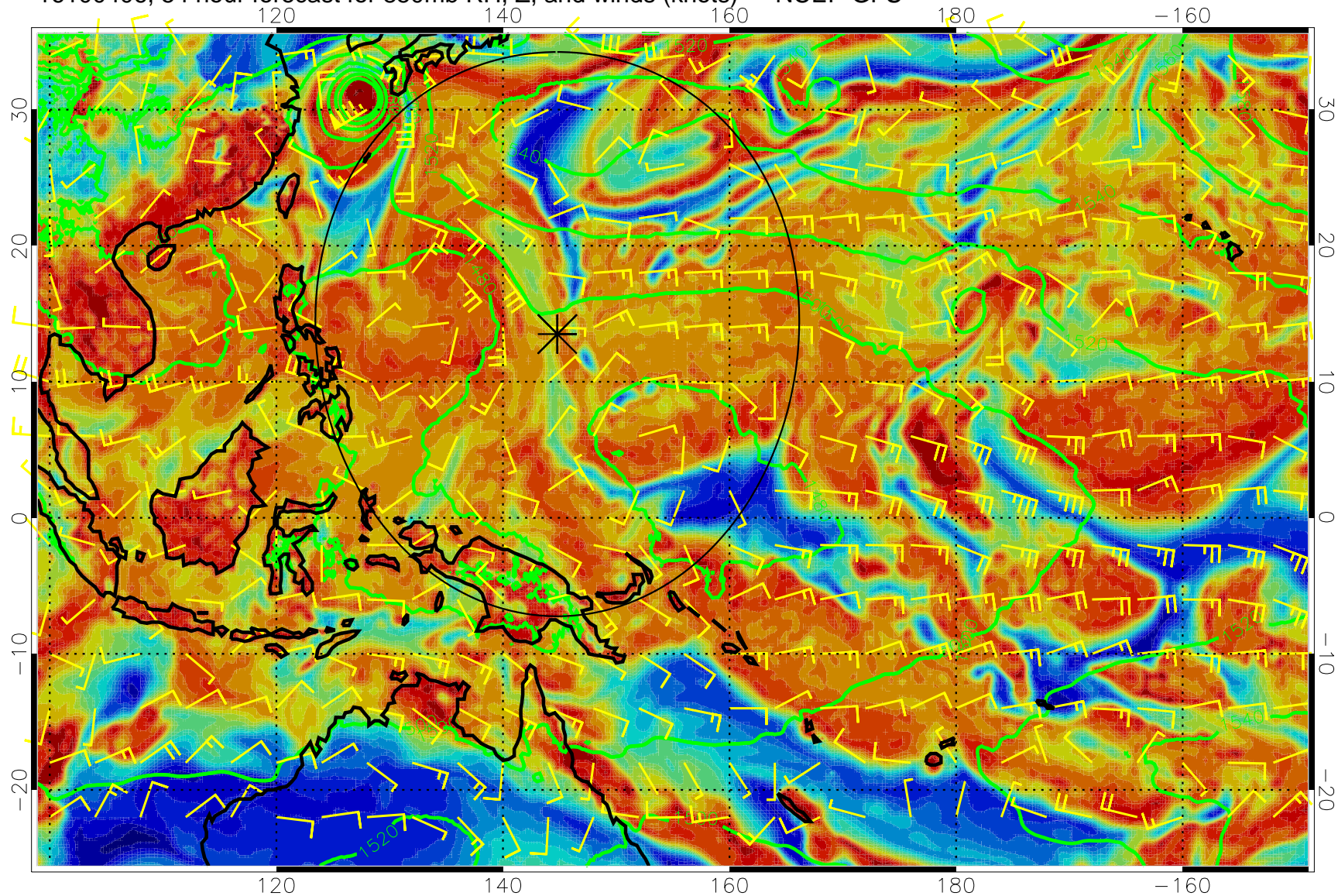
16100400, 48 hour forecast for 850mb RH, Z, and winds (knots) -- NCEP GFS



Precip (tot dot, conv sol) mm/day 40 mm/day contours, min 20

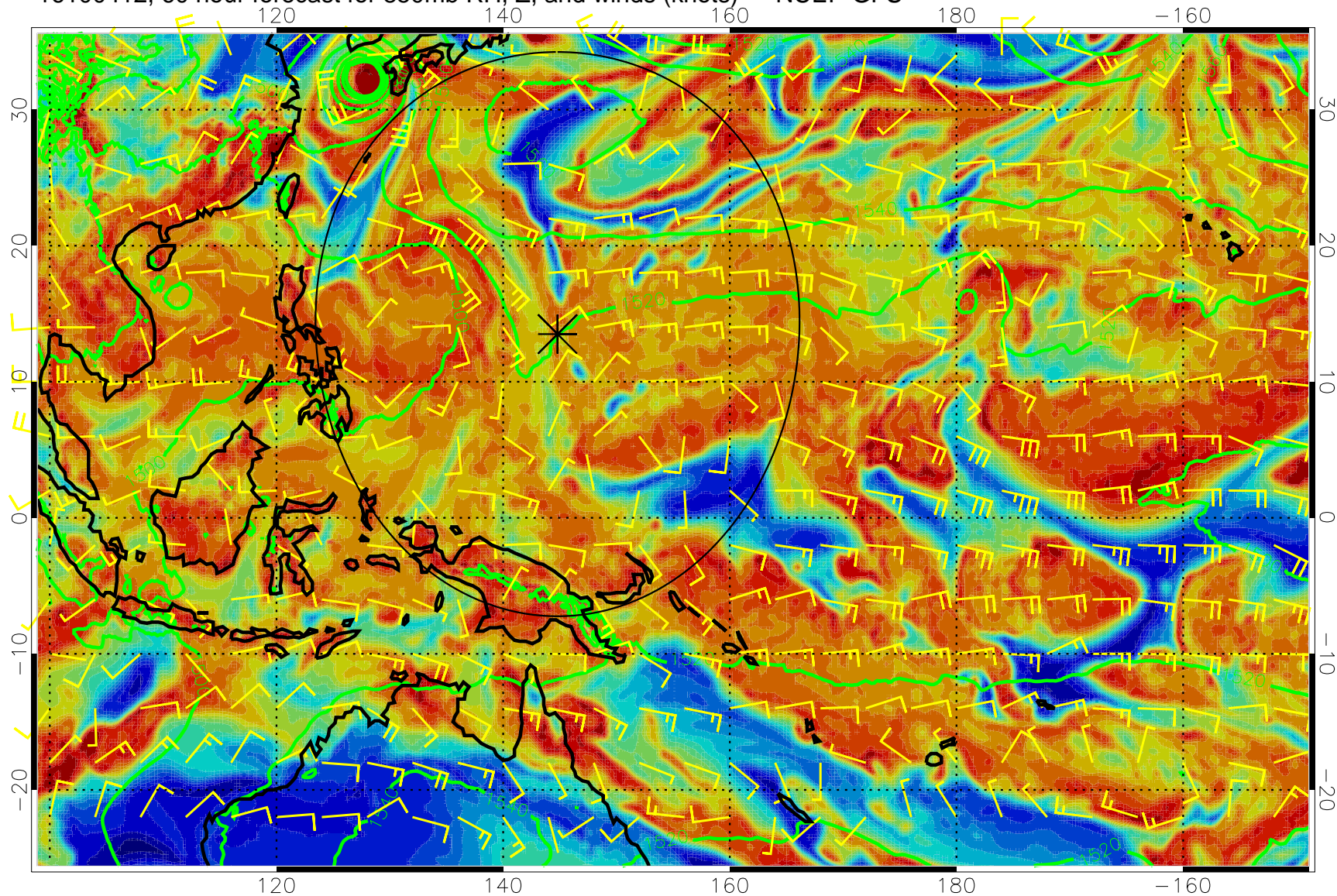


16100406, 54 hour forecast for 850mb RH, Z, and winds (knots) -- NCEP GFS



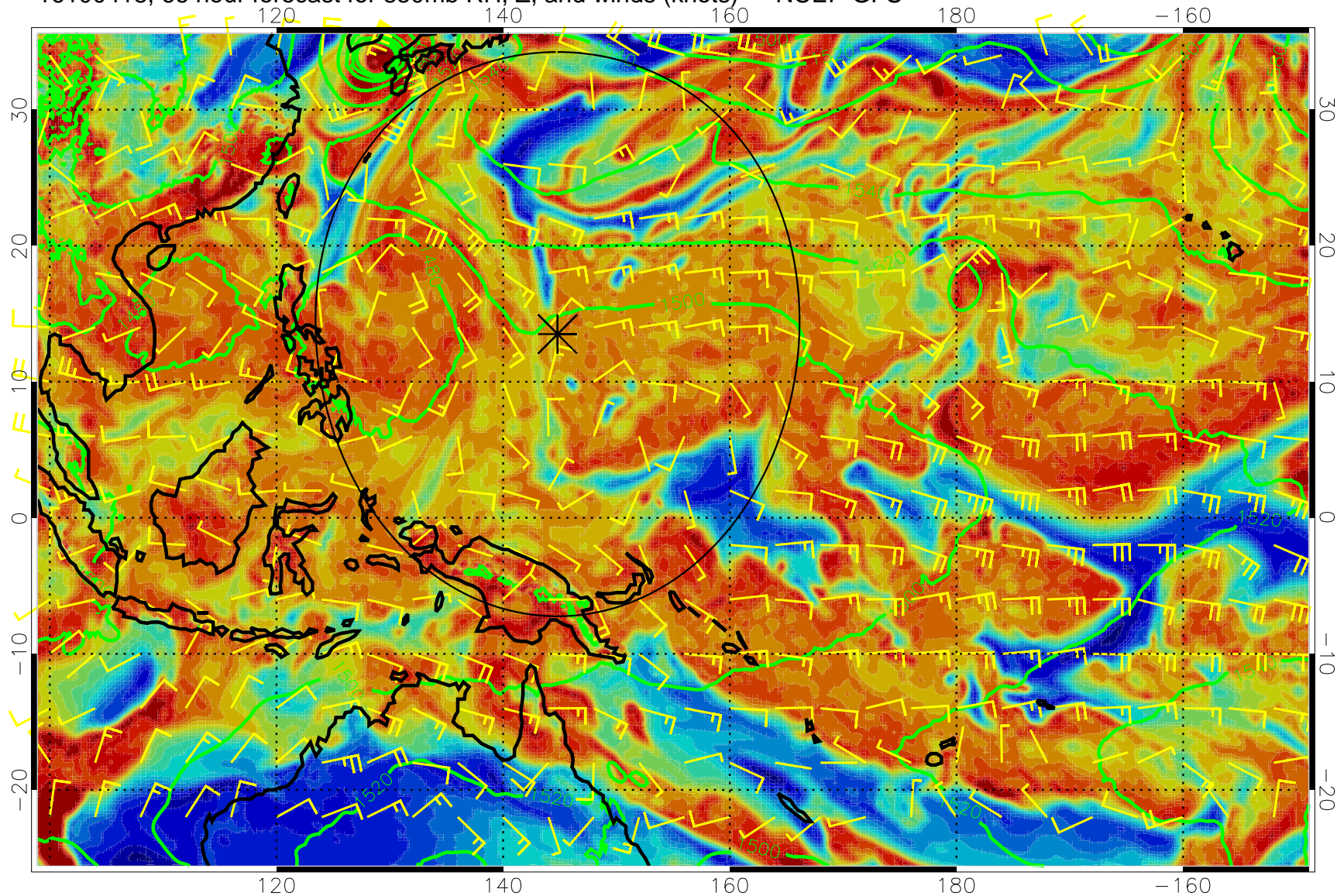
Precip (tot dot, conv sol) mm/day 40 mm/day contours, min 20

16100412, 60 hour forecast for 850mb RH, Z, and winds (knots) -- NCEP GFS



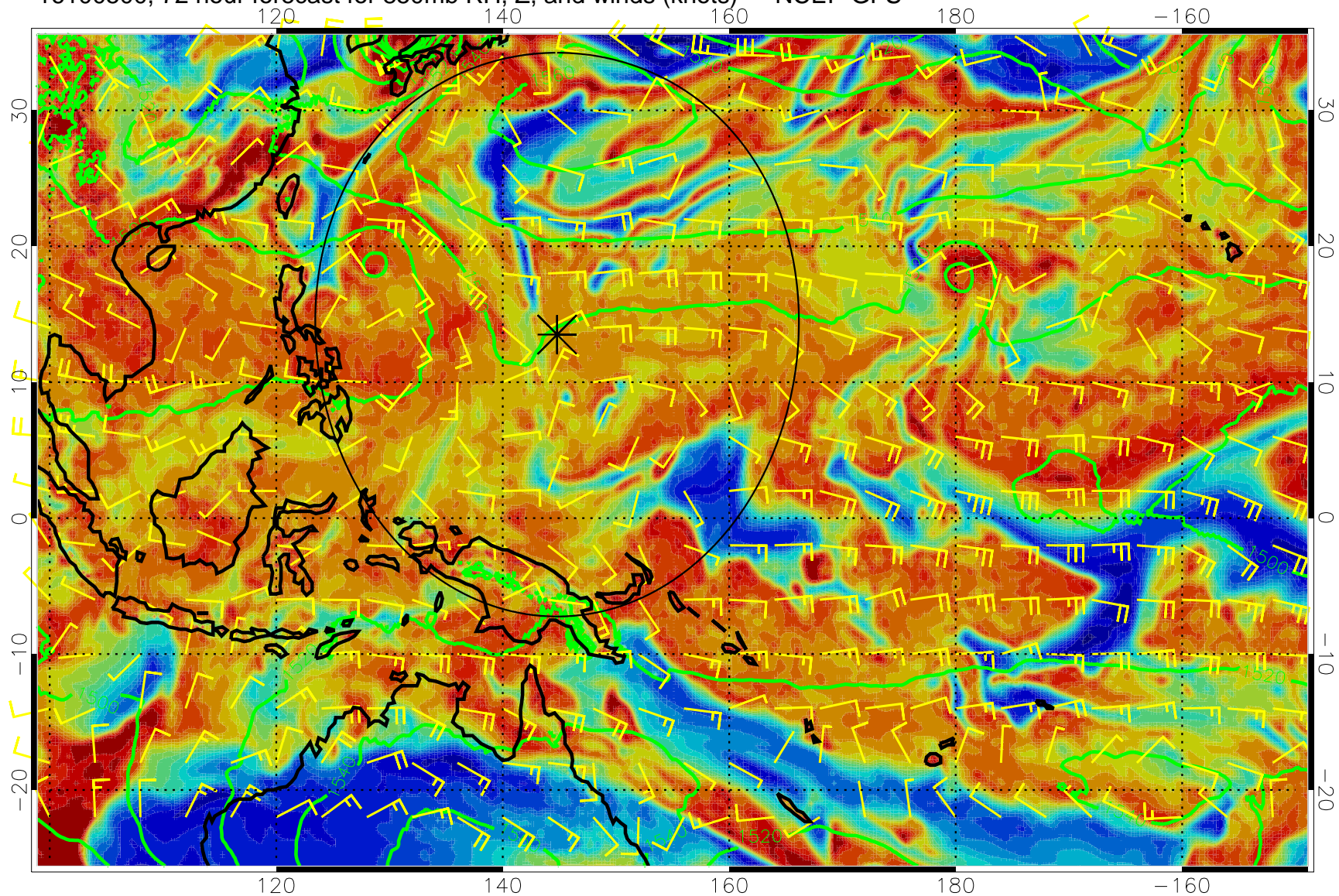
Precip (tot dot, conv sol) mm/day 40 mm/day contours, min 20

16100418, 66 hour forecast for 850mb RH, Z, and winds (knots) -- NCEP GFS



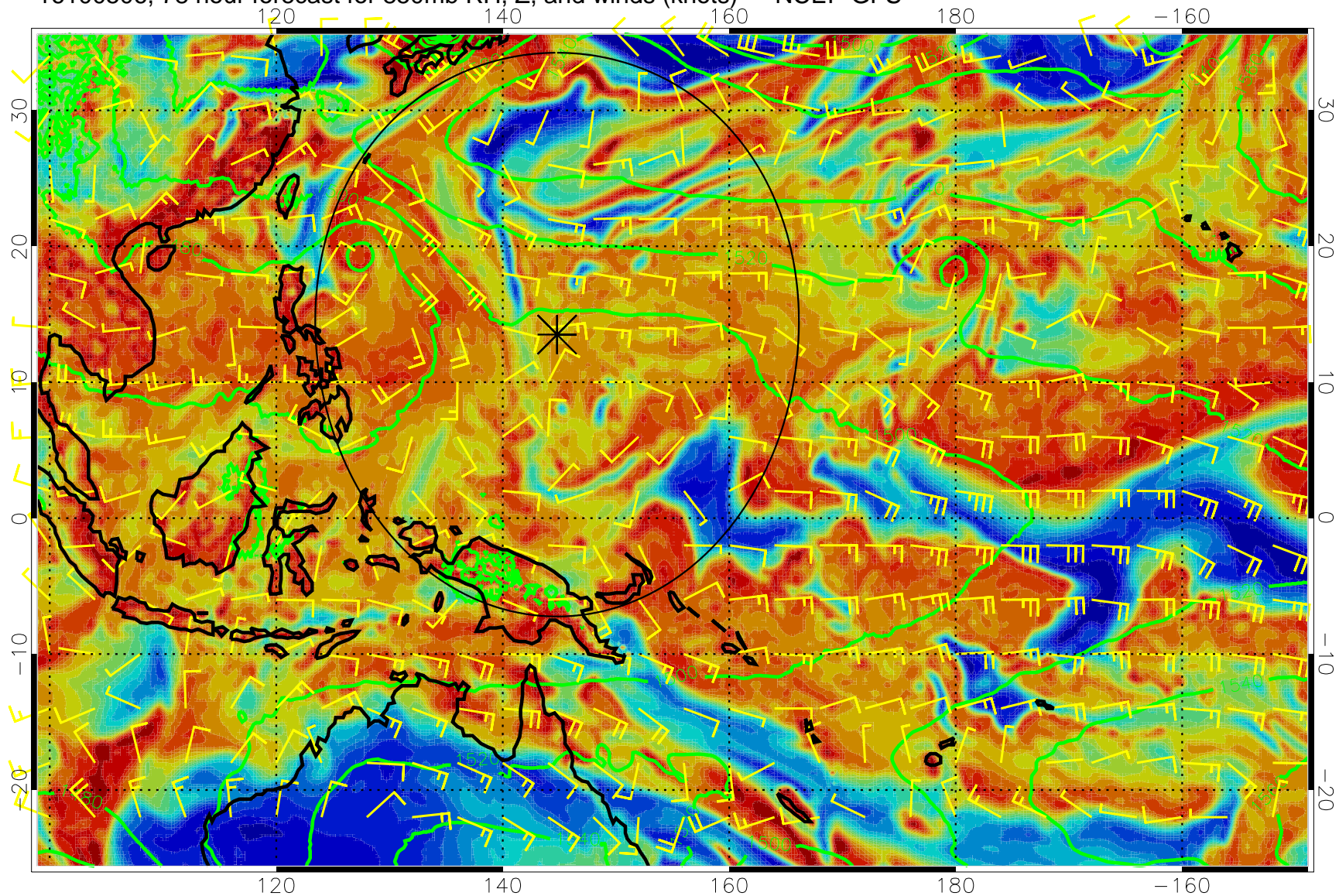
Precip (tot dot, conv sol) mm/day 40 mm/day contours, min 20

16100500, 72 hour forecast for 850mb RH, Z, and winds (knots) -- NCEP GFS



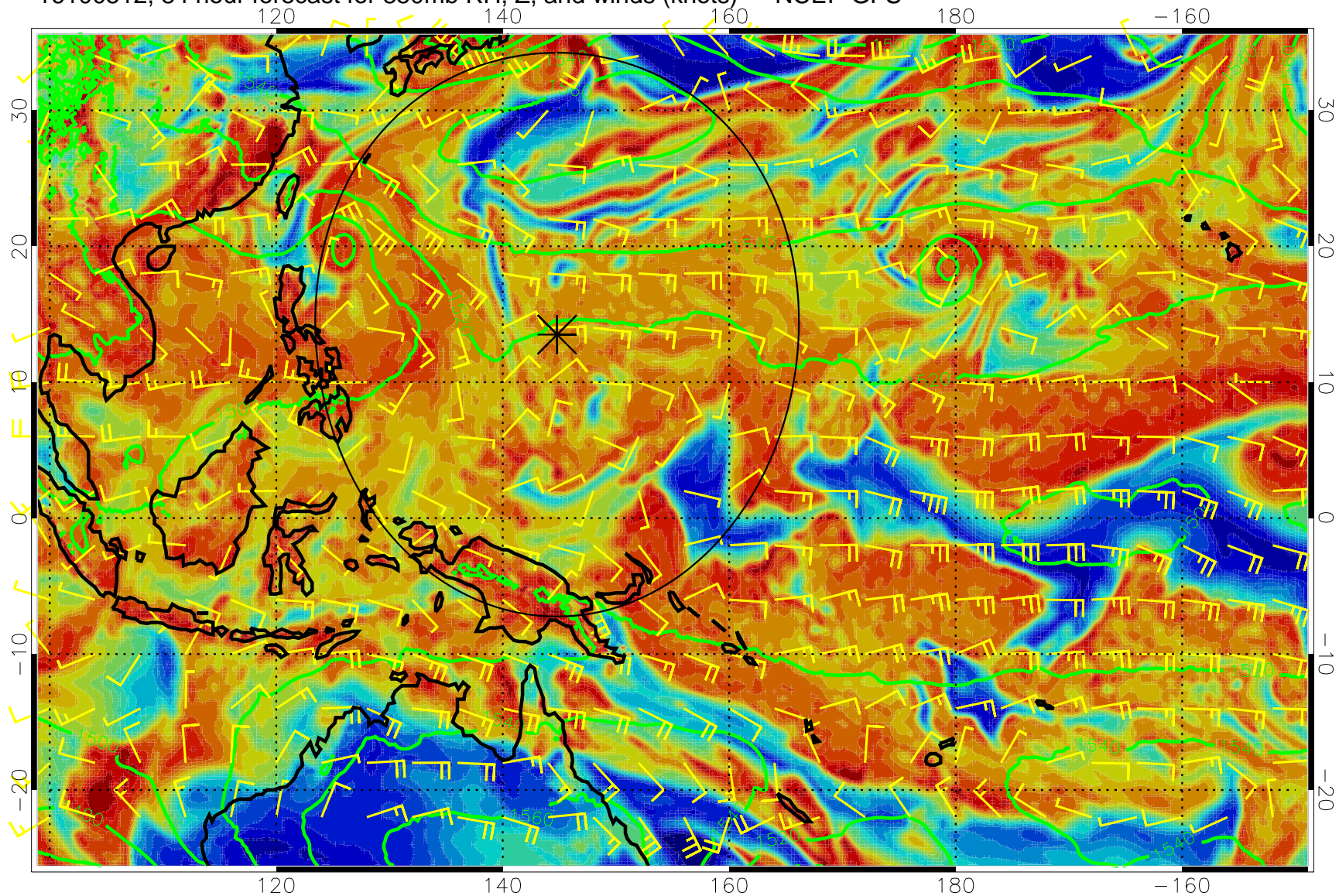
Precip (tot dot, conv sol) mm/day 40 mm/day contours, min 20

16100506, 78 hour forecast for 850mb RH, Z, and winds (knots) -- NCEP GFS



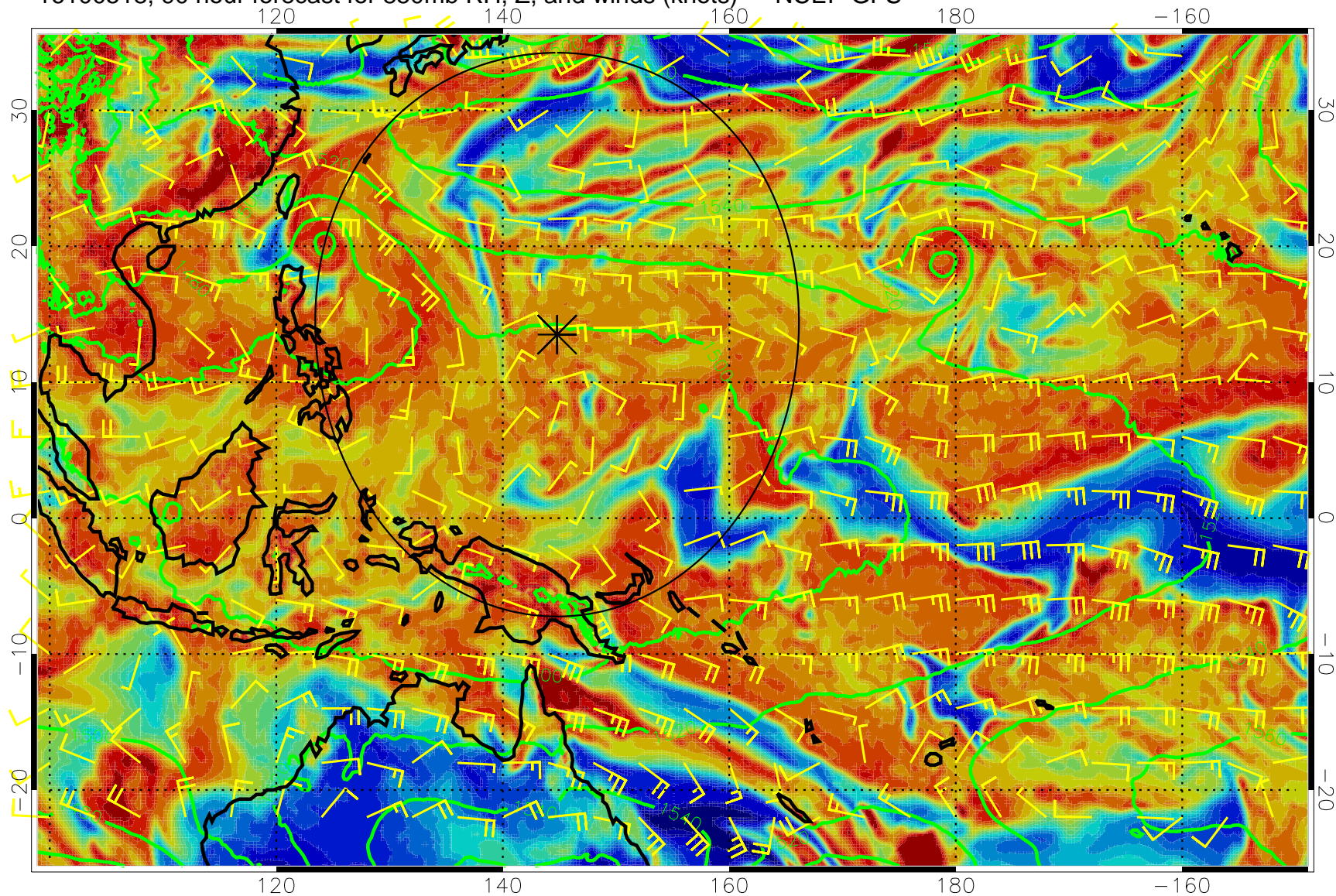
Precip (tot dot, conv sol) mm/day 40 mm/day contours, min 20

16100512, 84 hour forecast for 850mb RH, Z, and winds (knots) -- NCEP GFS



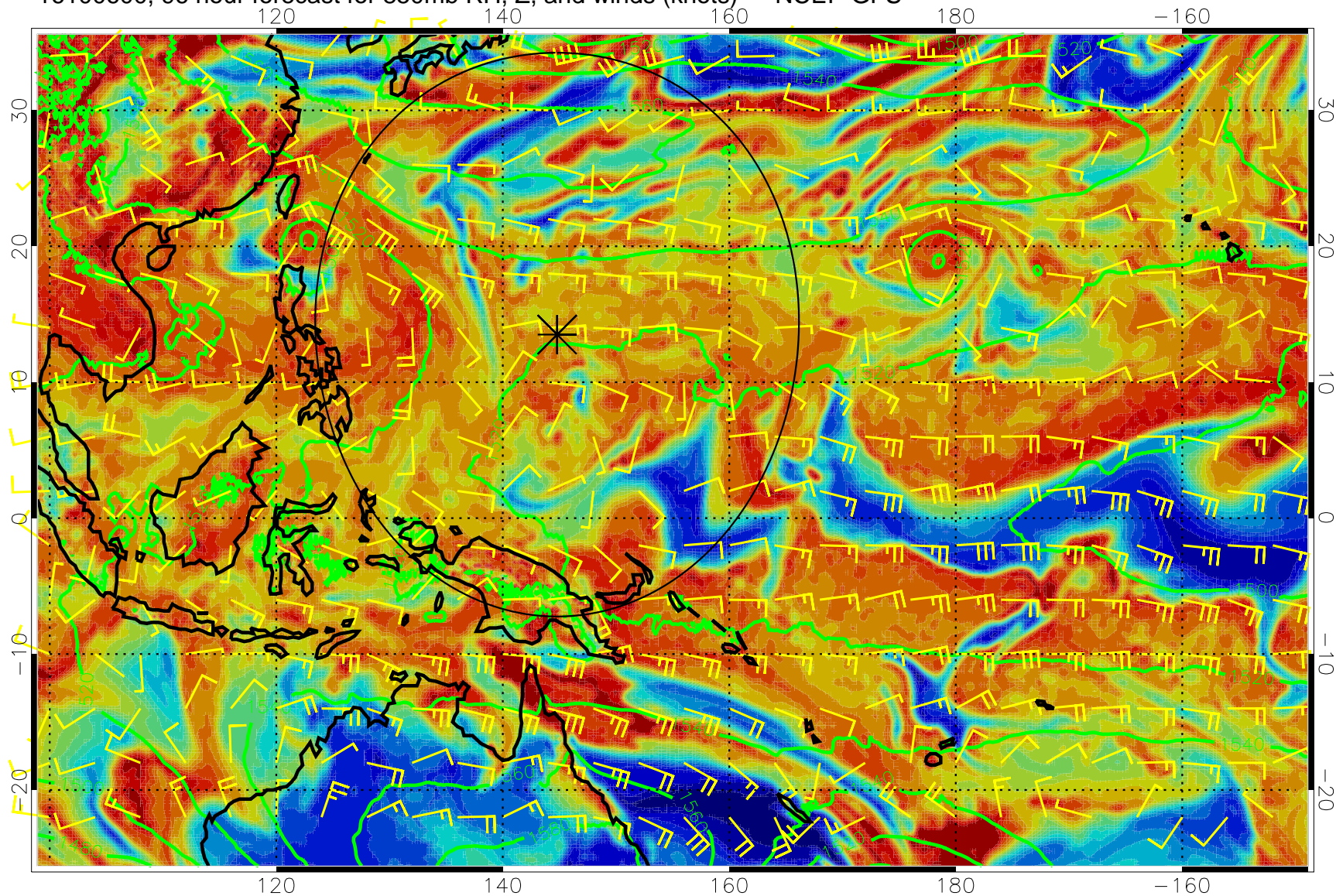
Precip (tot dot, conv sol) mm/day 40 mm/day contours, min 20

16100518, 90 hour forecast for 850mb RH, Z, and winds (knots) -- NCEP GFS



Precip (tot dot, conv sol) mm/day 40 mm/day contours, min 20

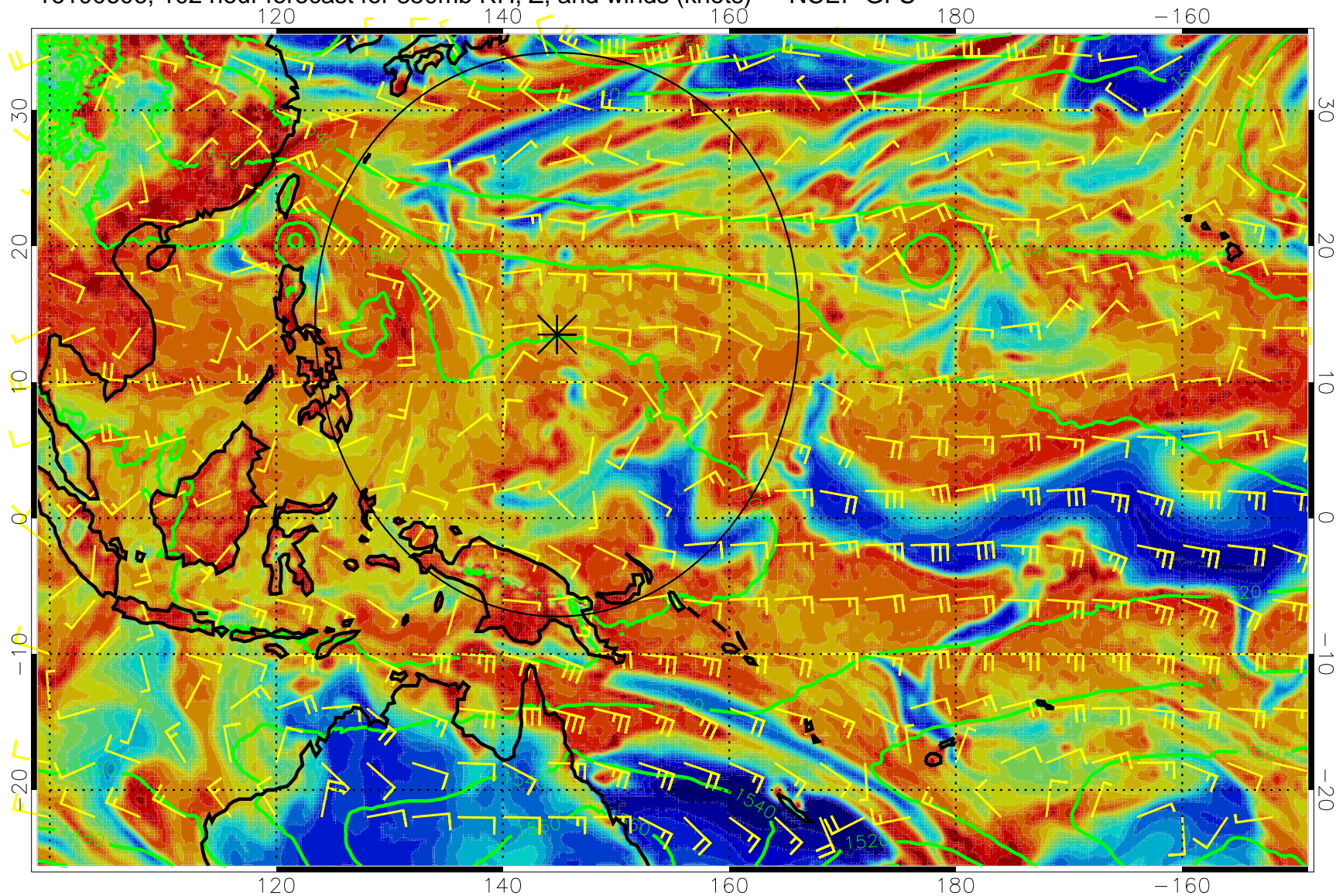
16100600, 96 hour forecast for 850mb RH, Z, and winds (knots) -- NCEP GFS



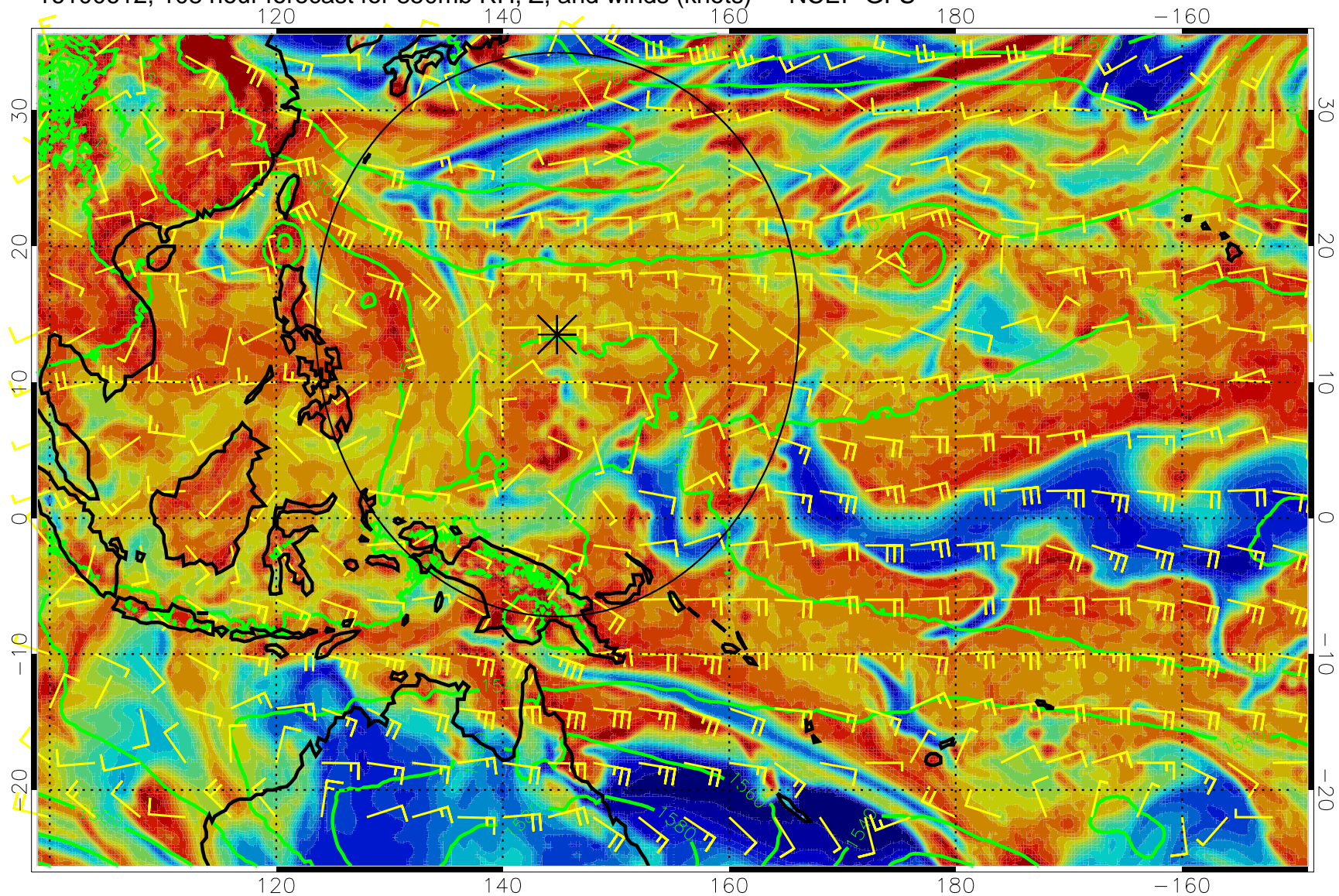
Precip (tot dot, conv sol) mm/day 40 mm/day contours, min 20



16100606, 102 hour forecast for 850mb RH, Z, and winds (knots) -- NCEP GFS

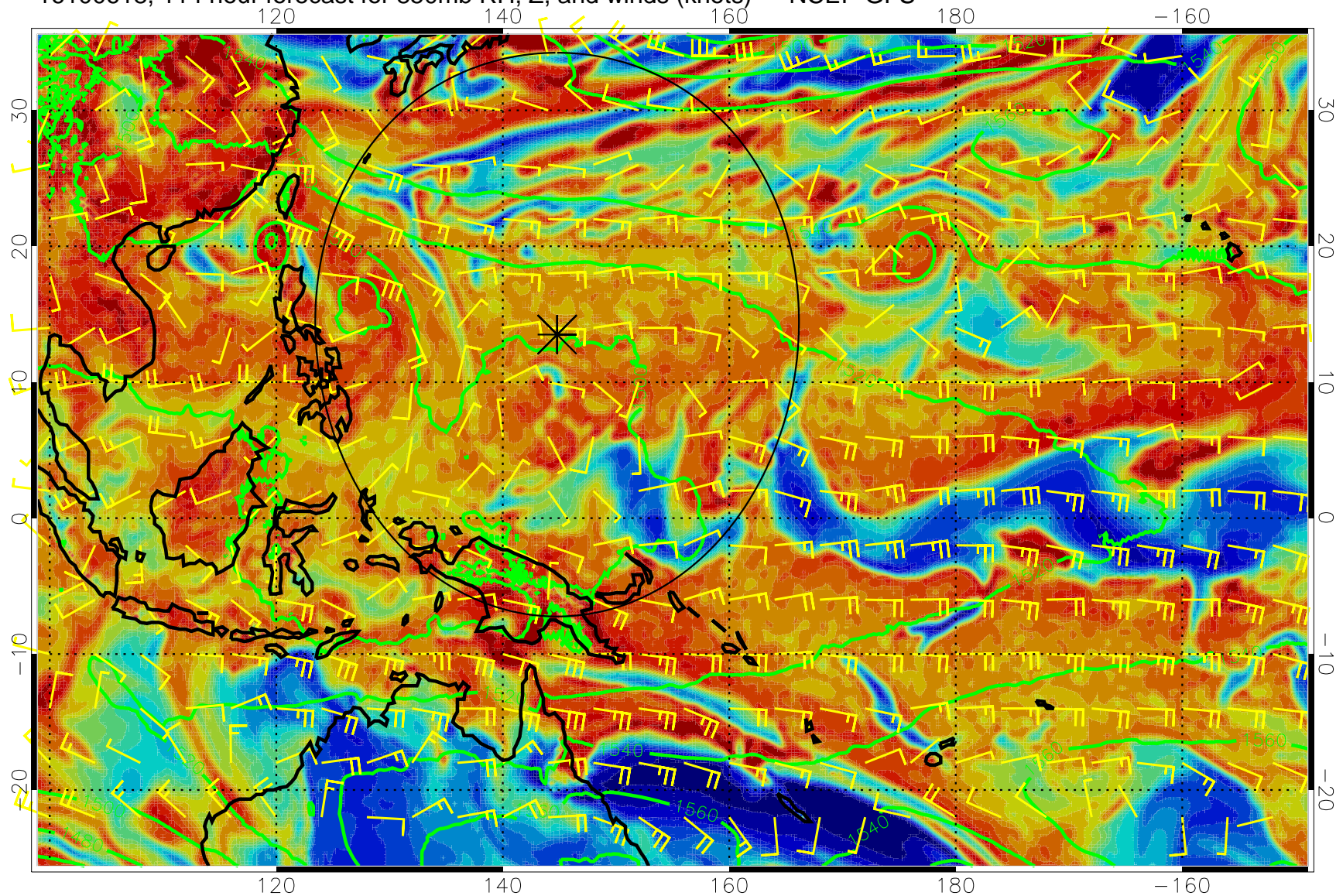


16100612, 108 hour forecast for 850mb RH, Z, and winds (knots) -- NCEP GFS



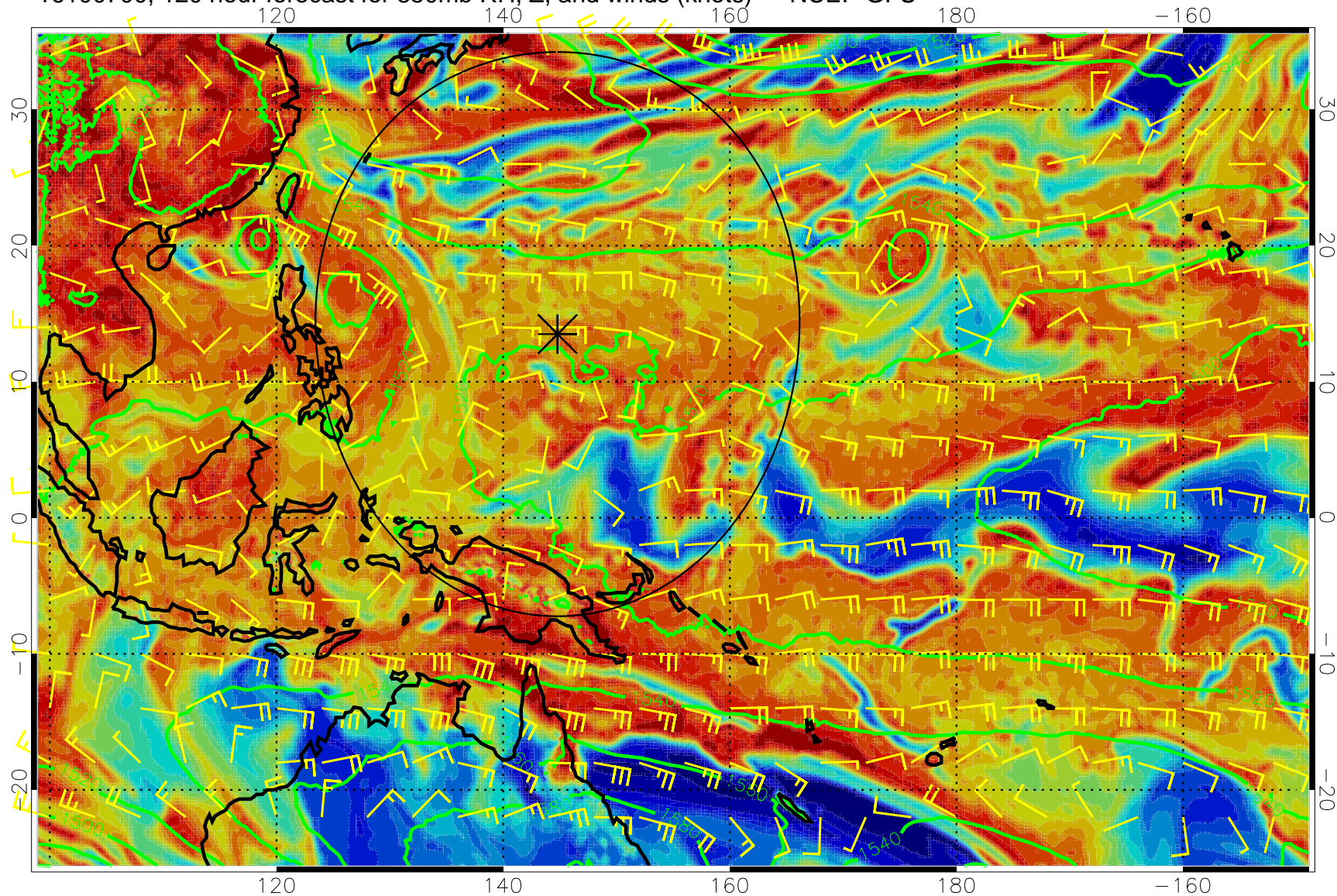
Precip (tot dot, conv sol) mm/day 40 mm/day contours, min 20

16100618, 114 hour forecast for 850mb RH, Z, and winds (knots) -- NCEP GFS



Precip (tot dot, conv sol) mm/day 40 mm/day contours, min 20

16100700, 120 hour forecast for 850mb RH, Z, and winds (knots) -- NCEP GFS



Precip (tot dot, conv sol) mm/day 40 mm/day contours, min 20