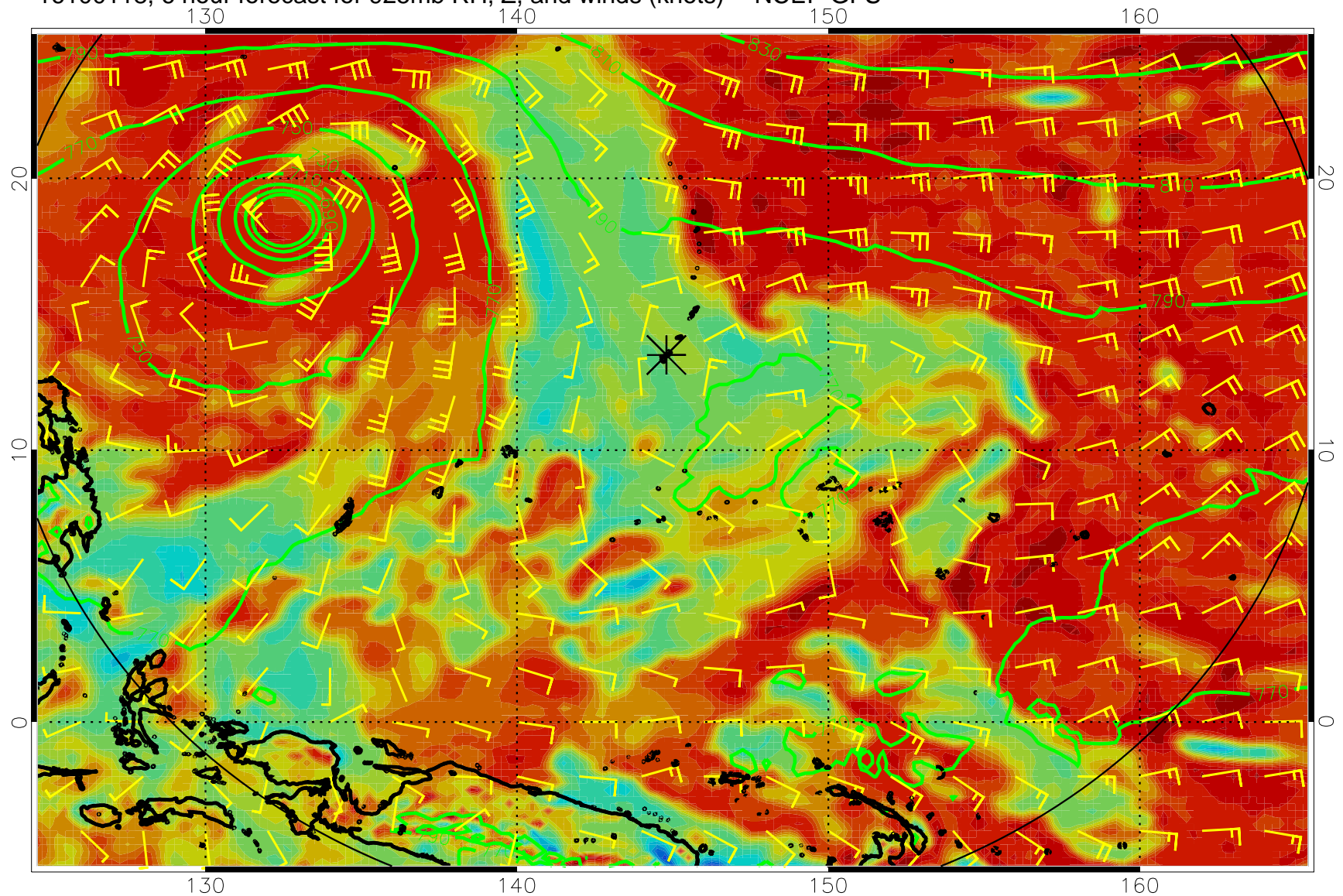
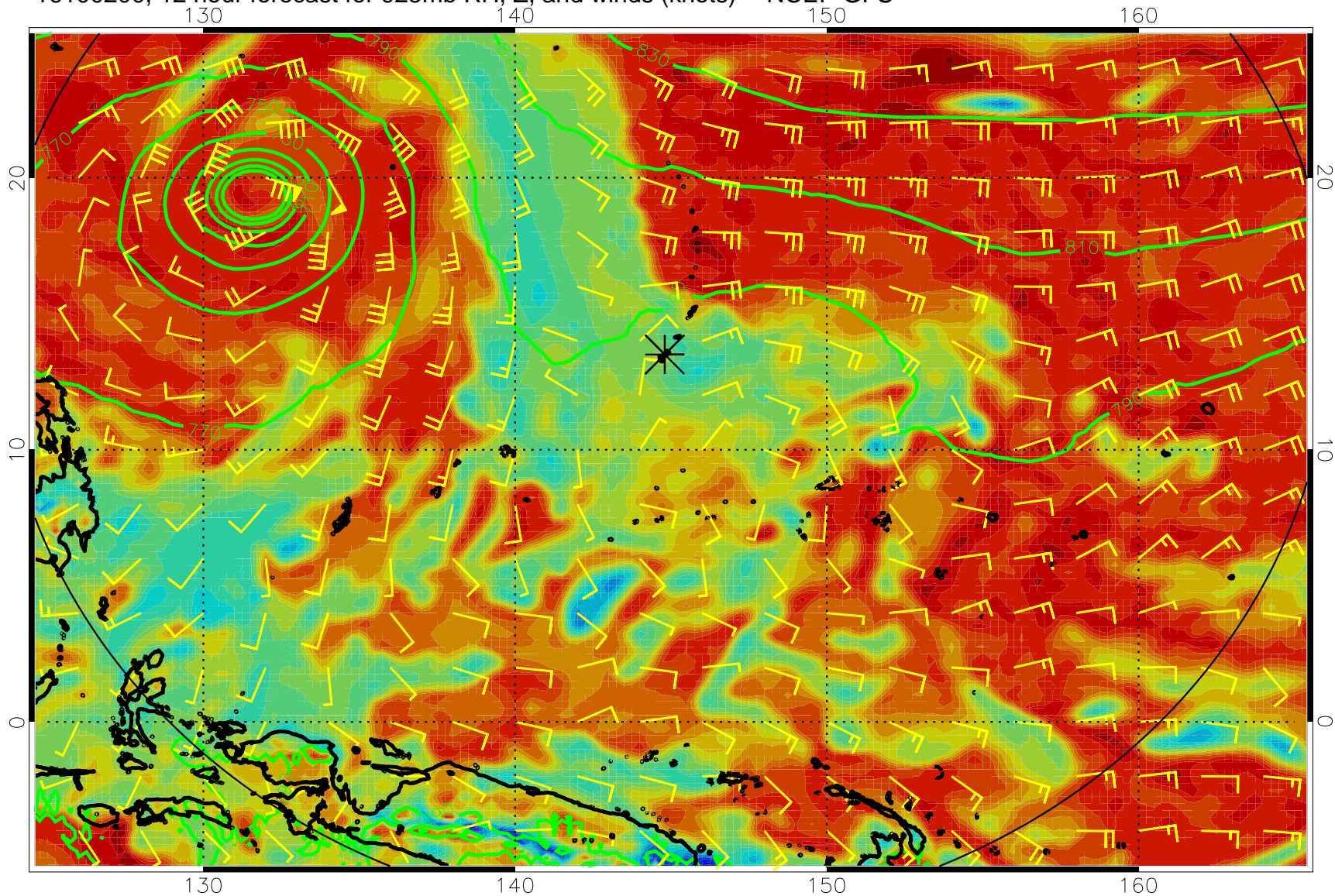


16100118, 6 hour forecast for 925mb RH, Z, and winds (knots) -- NCEP GFS

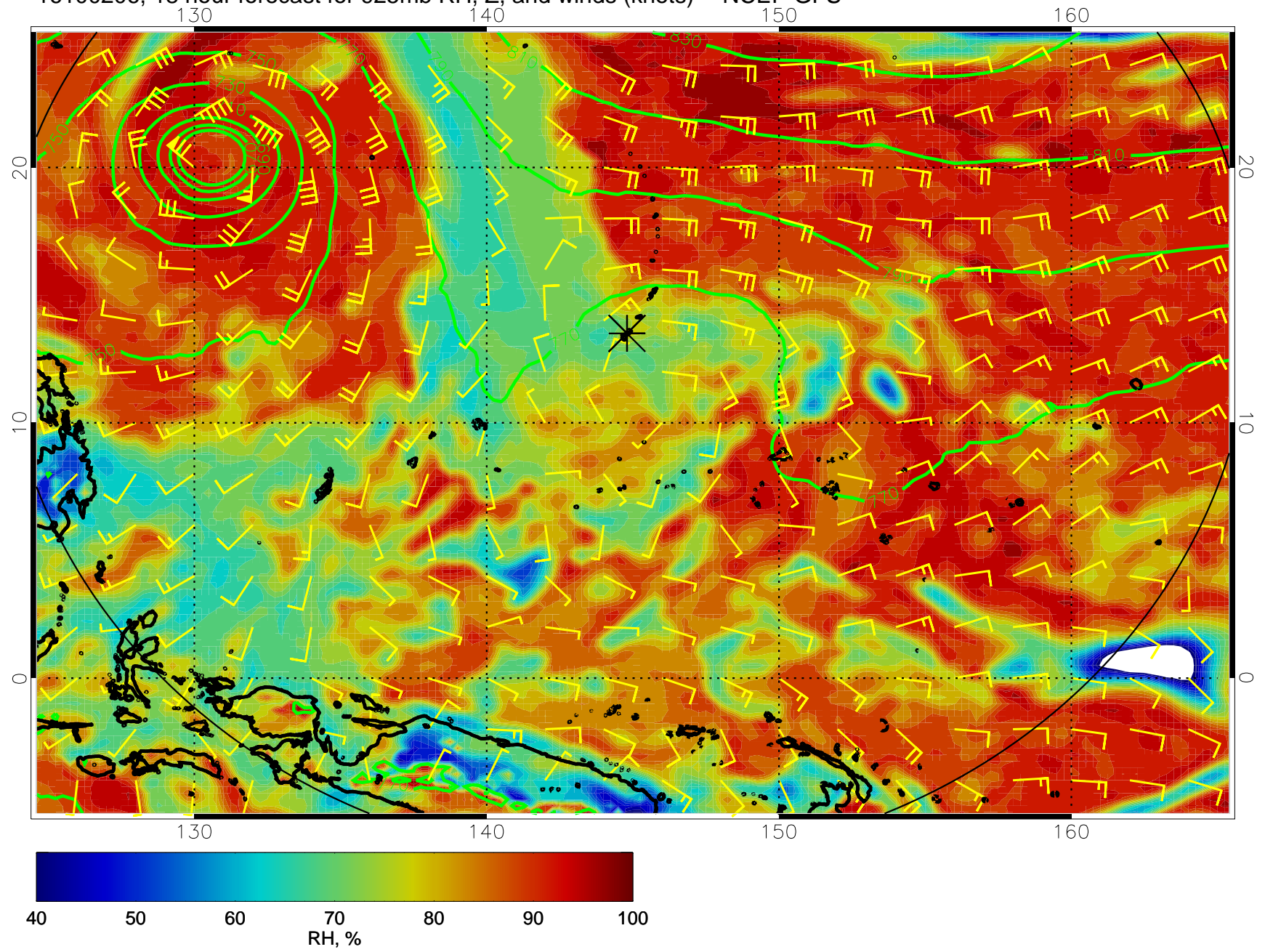


16100200, 12 hour forecast for 925mb RH, Z, and winds (knots) -- NCEP GFS

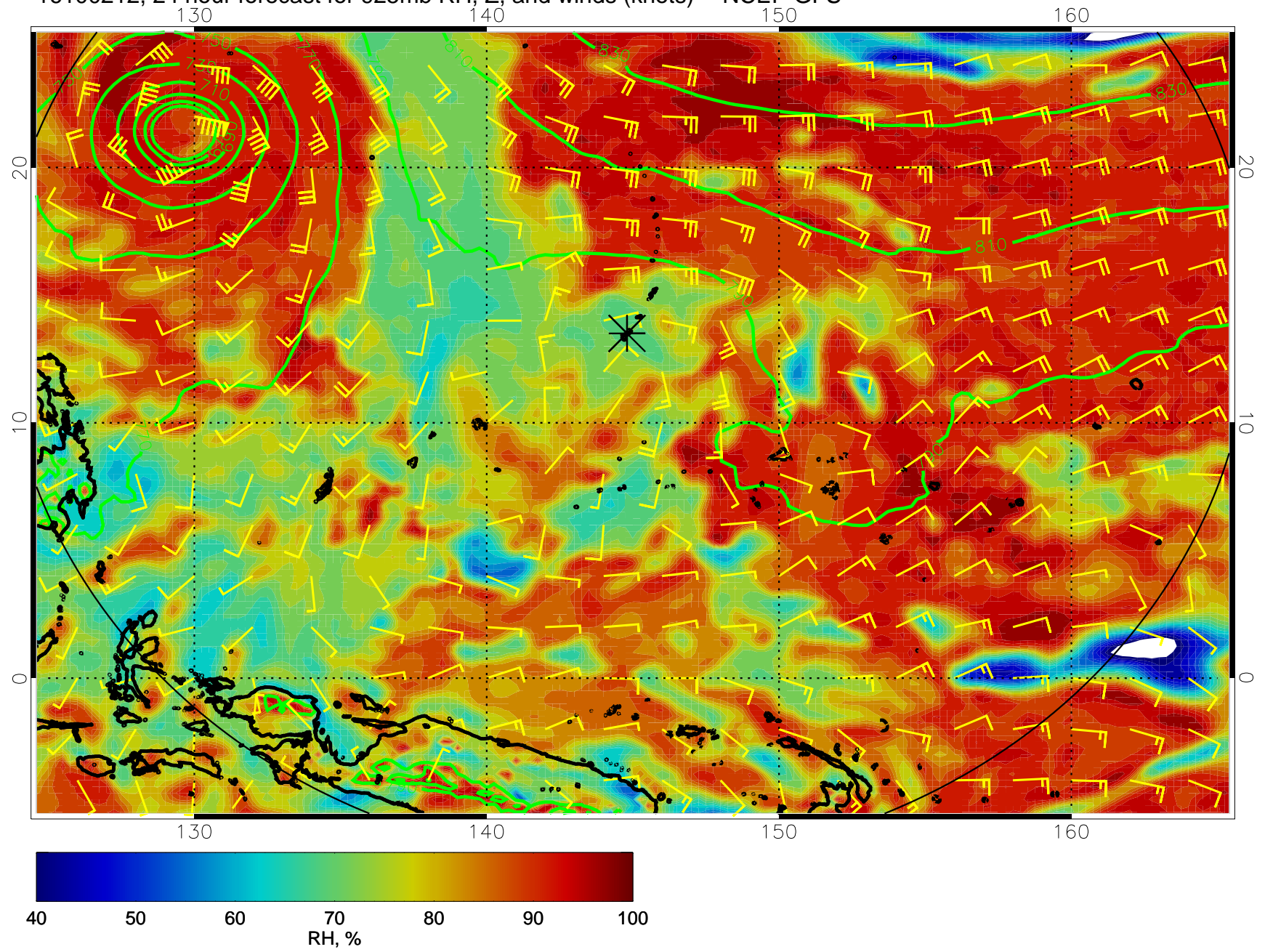




16100206, 18 hour forecast for 925mb RH, Z, and winds (knots) -- NCEP GFS

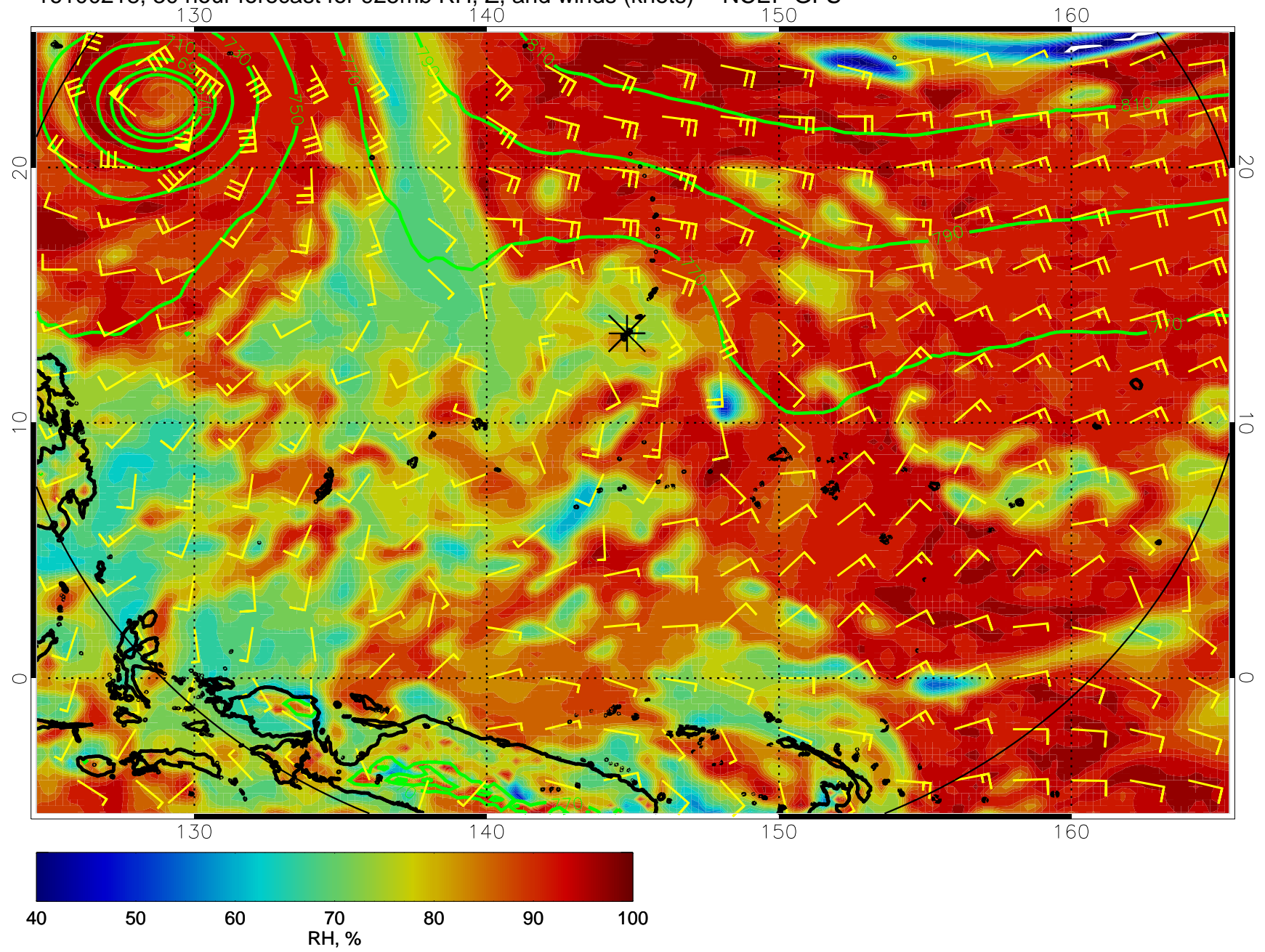


16100212, 24 hour forecast for 925mb RH, Z, and winds (knots) -- NCEP GFS

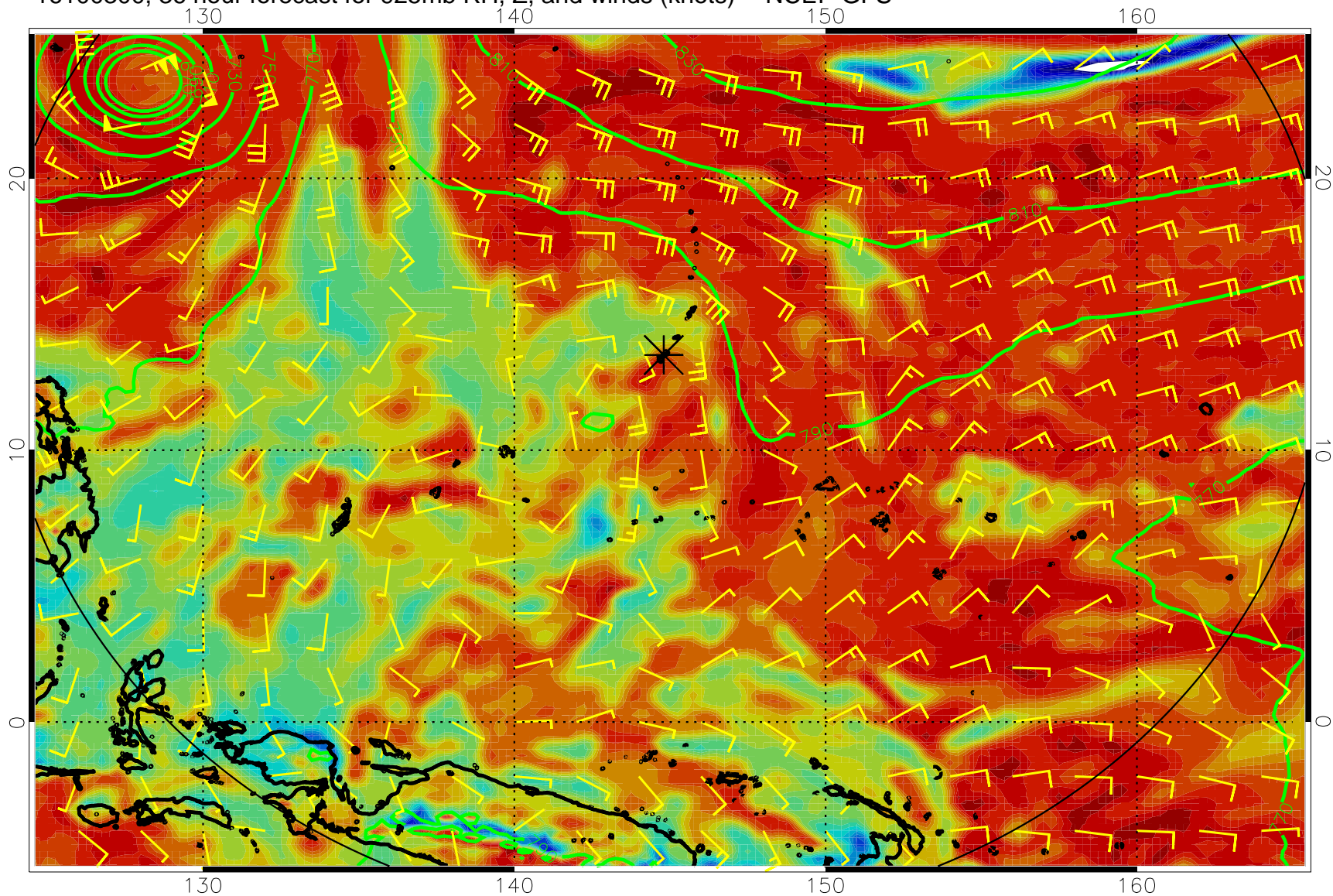




16100218, 30 hour forecast for 925mb RH, Z, and winds (knots) -- NCEP GFS

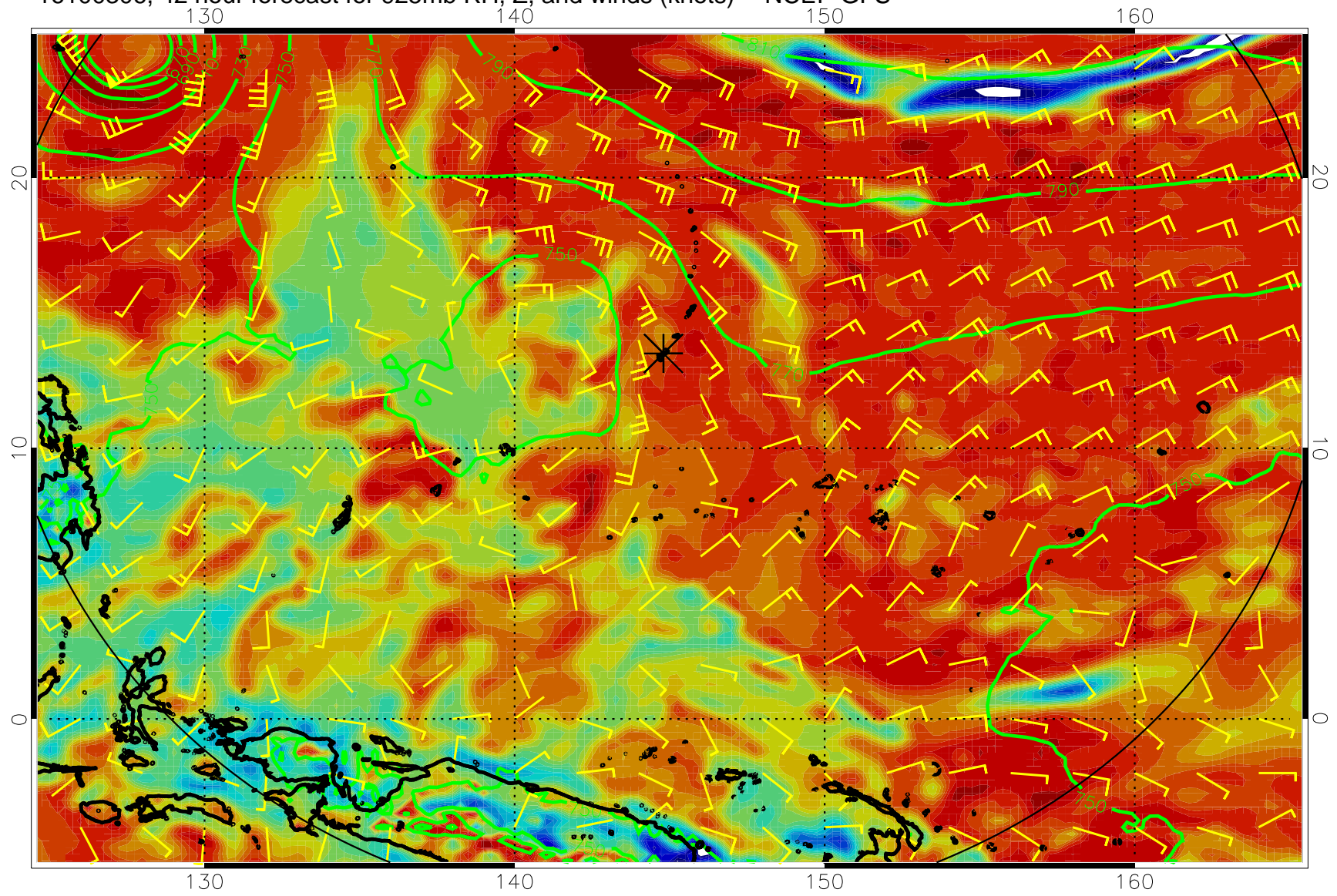


16100300, 36 hour forecast for 925mb RH, Z, and winds (knots) -- NCEP GFS

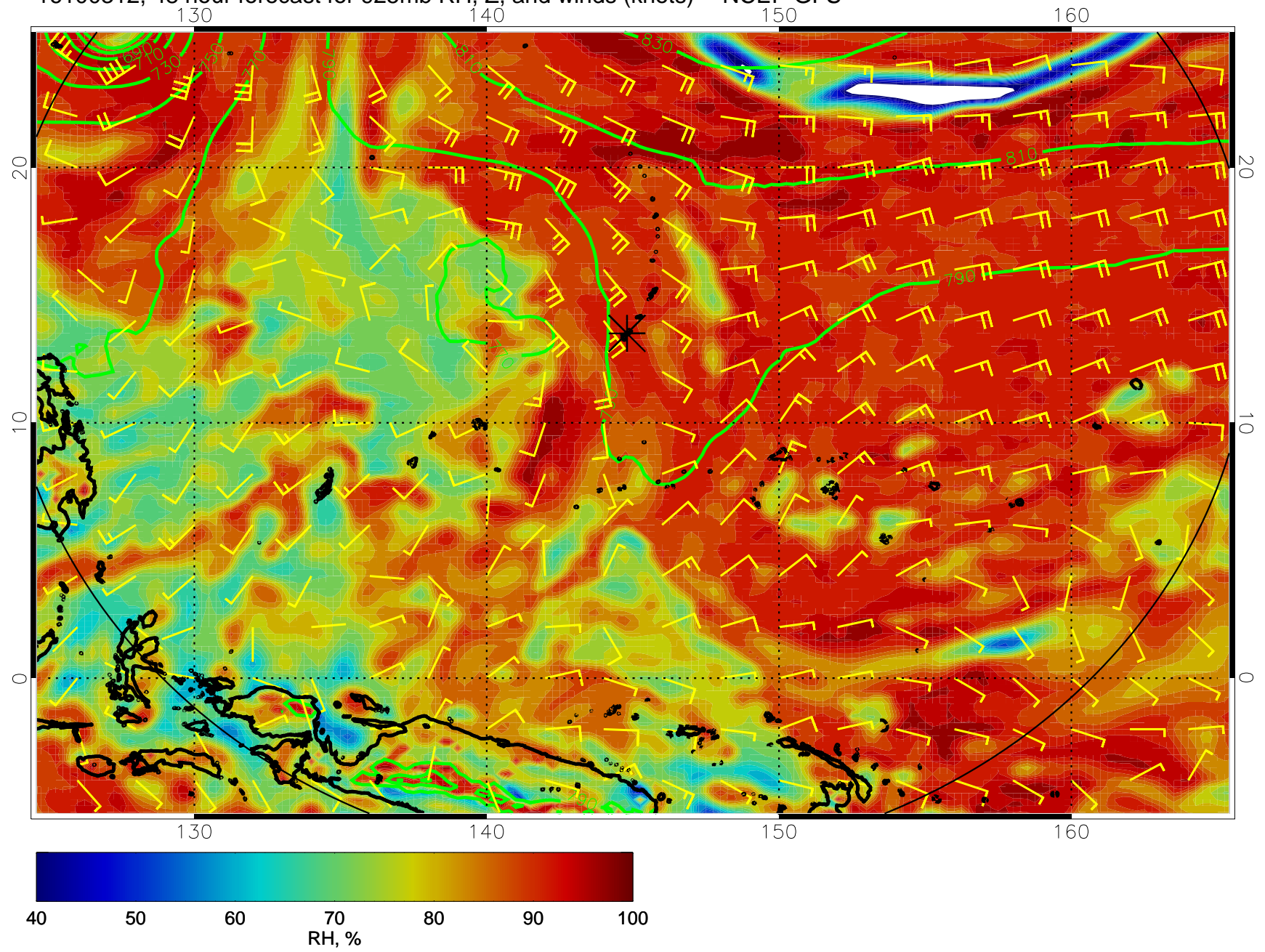




16100306, 42 hour forecast for 925mb RH, Z, and winds (knots) -- NCEP GFS

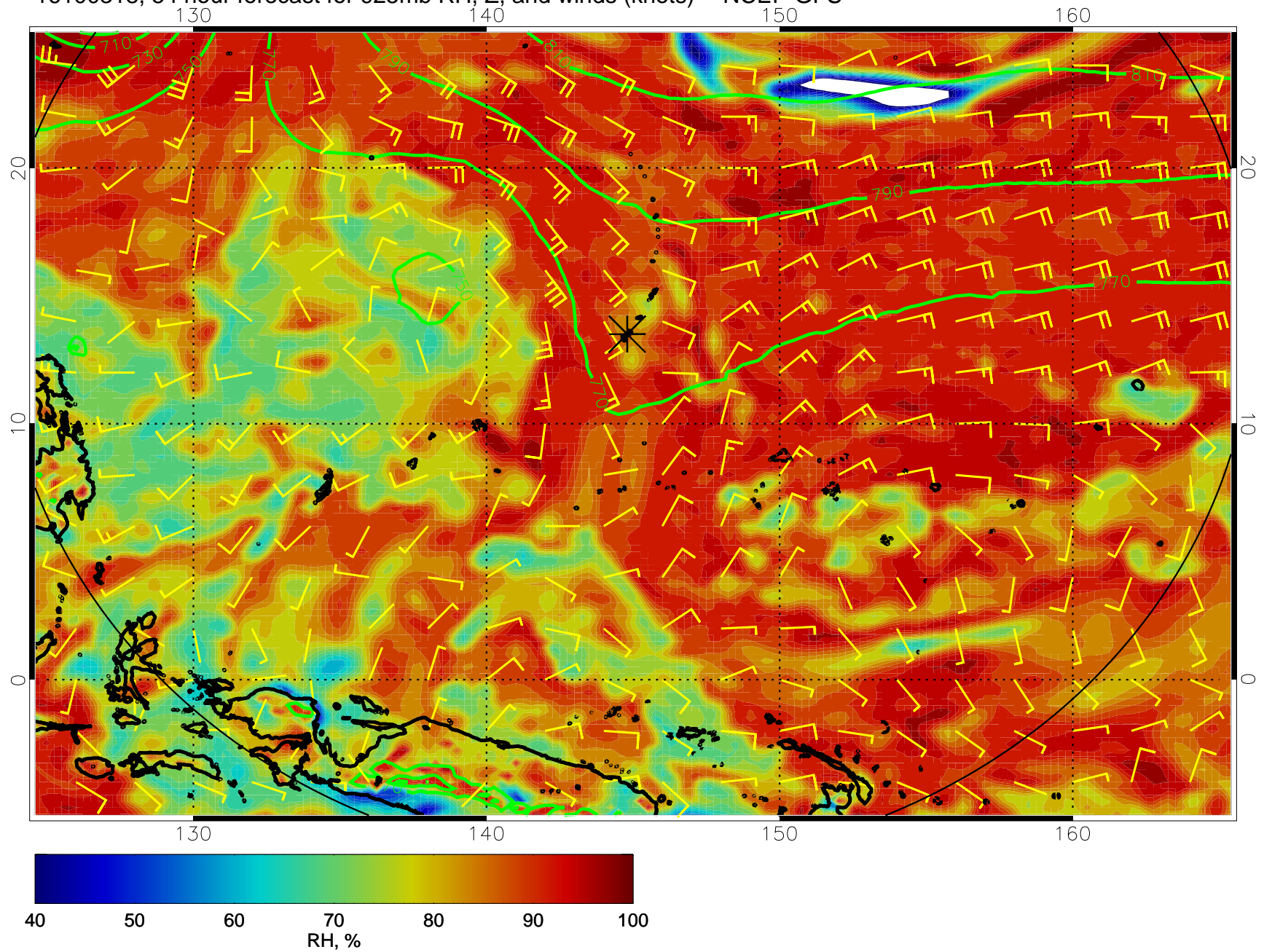


16100312, 48 hour forecast for 925mb RH, Z, and winds (knots) -- NCEP GFS

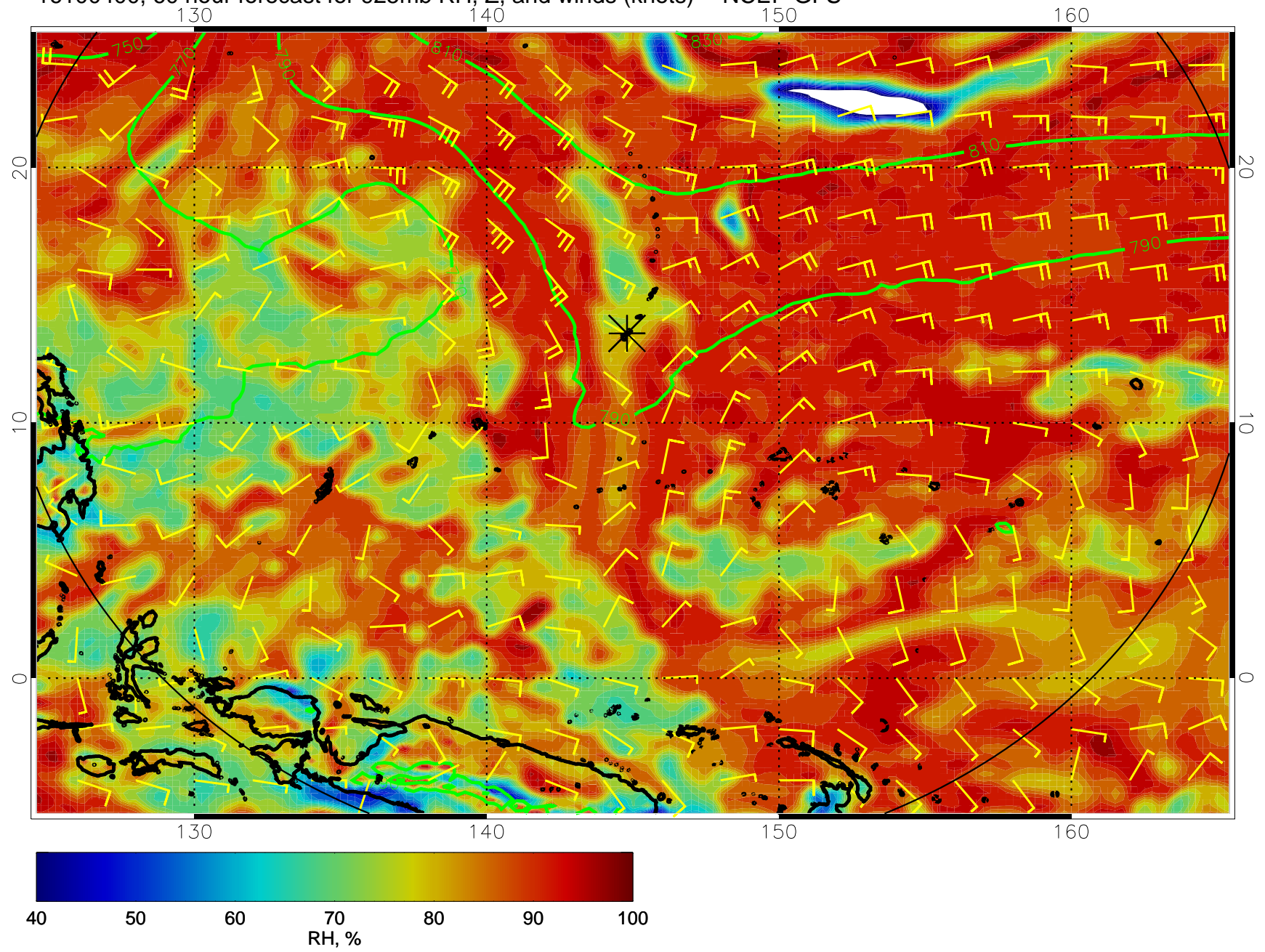




16100318, 54 hour forecast for 925mb RH, Z, and winds (knots) -- NCEP GFS

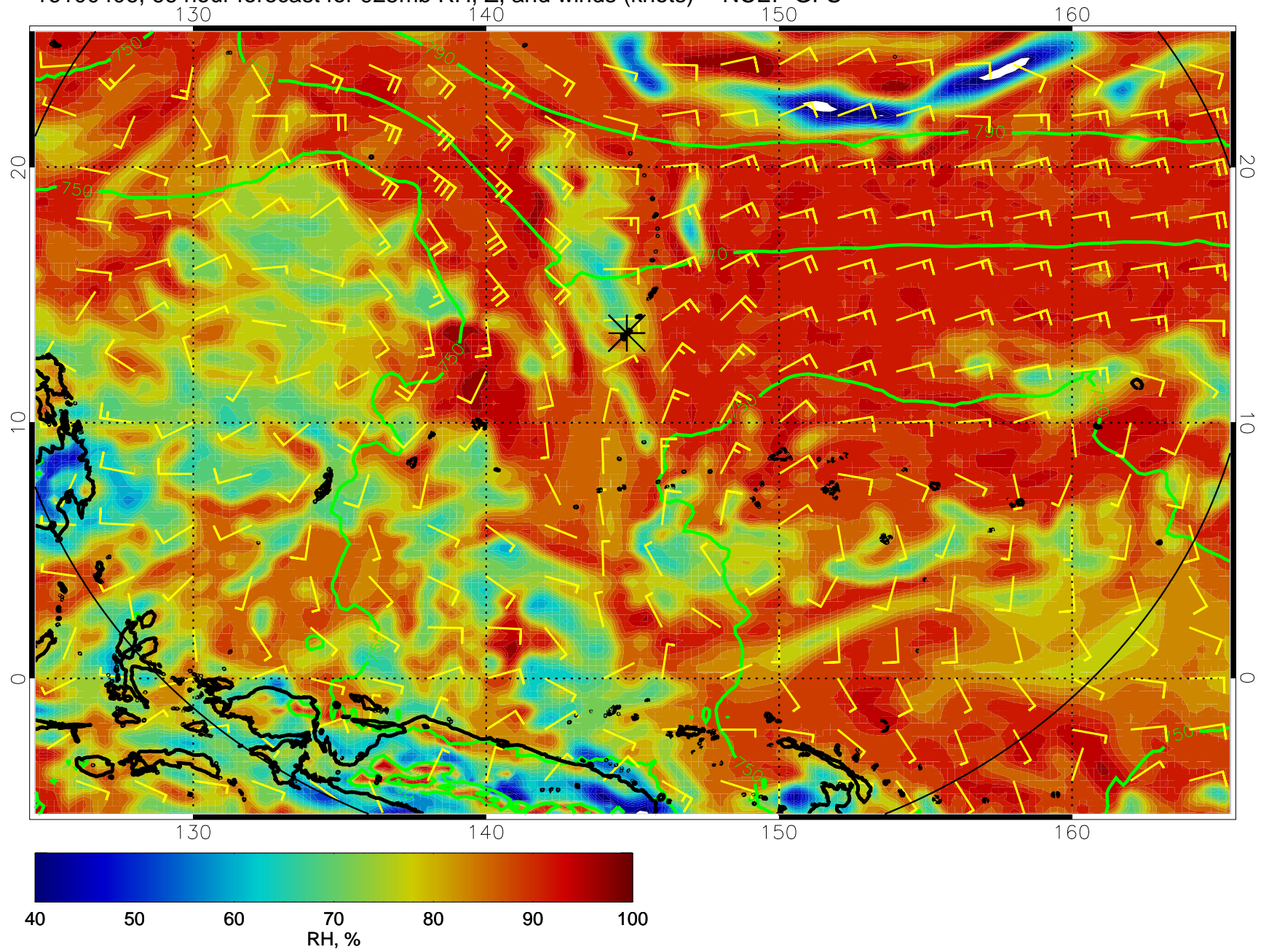


16100400, 60 hour forecast for 925mb RH, Z, and winds (knots) -- NCEP GFS

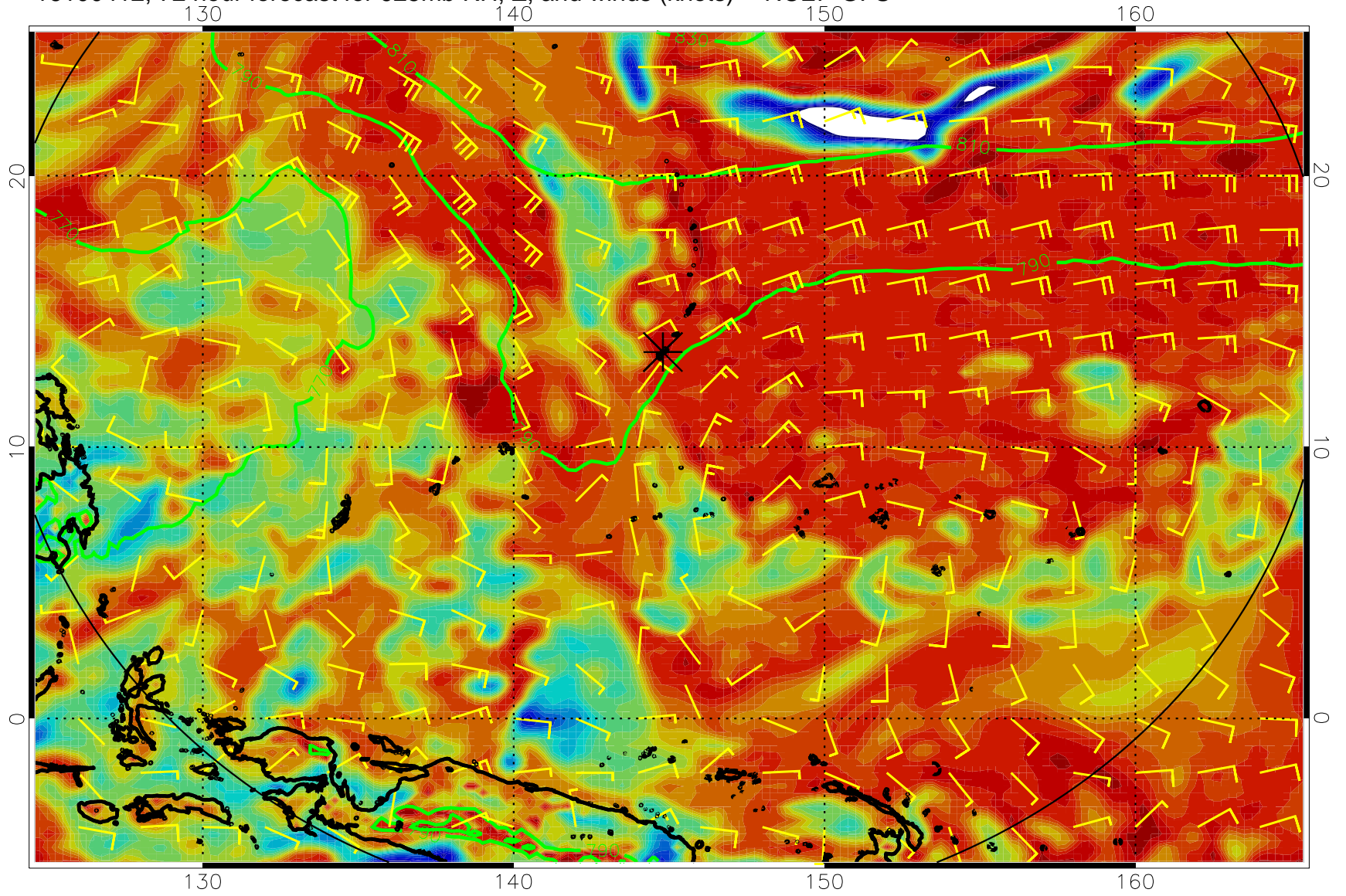




16100406, 66 hour forecast for 925mb RH, Z, and winds (knots) -- NCEP GFS

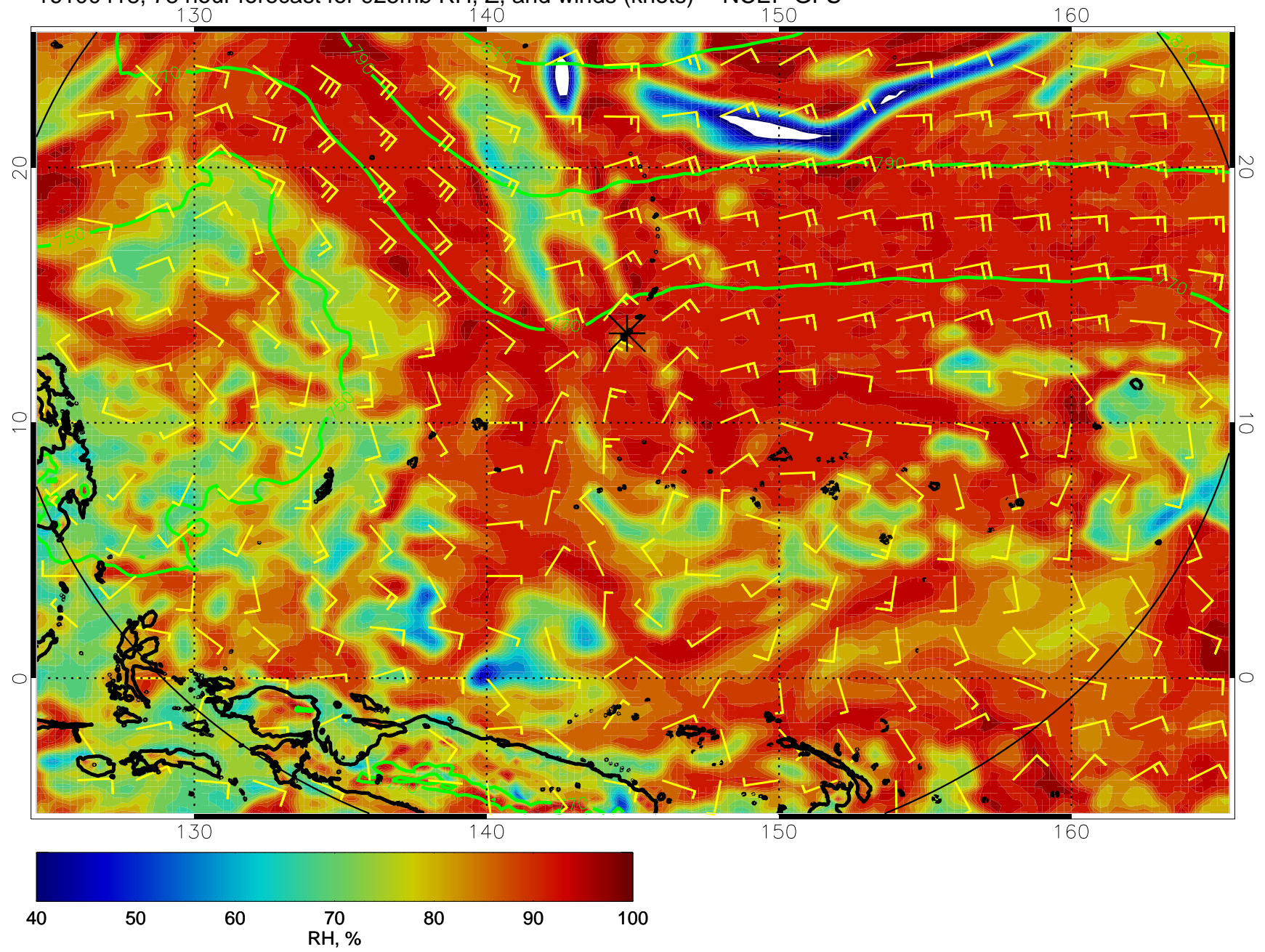


16100412, 72 hour forecast for 925mb RH, Z, and winds (knots) -- NCEP GFS

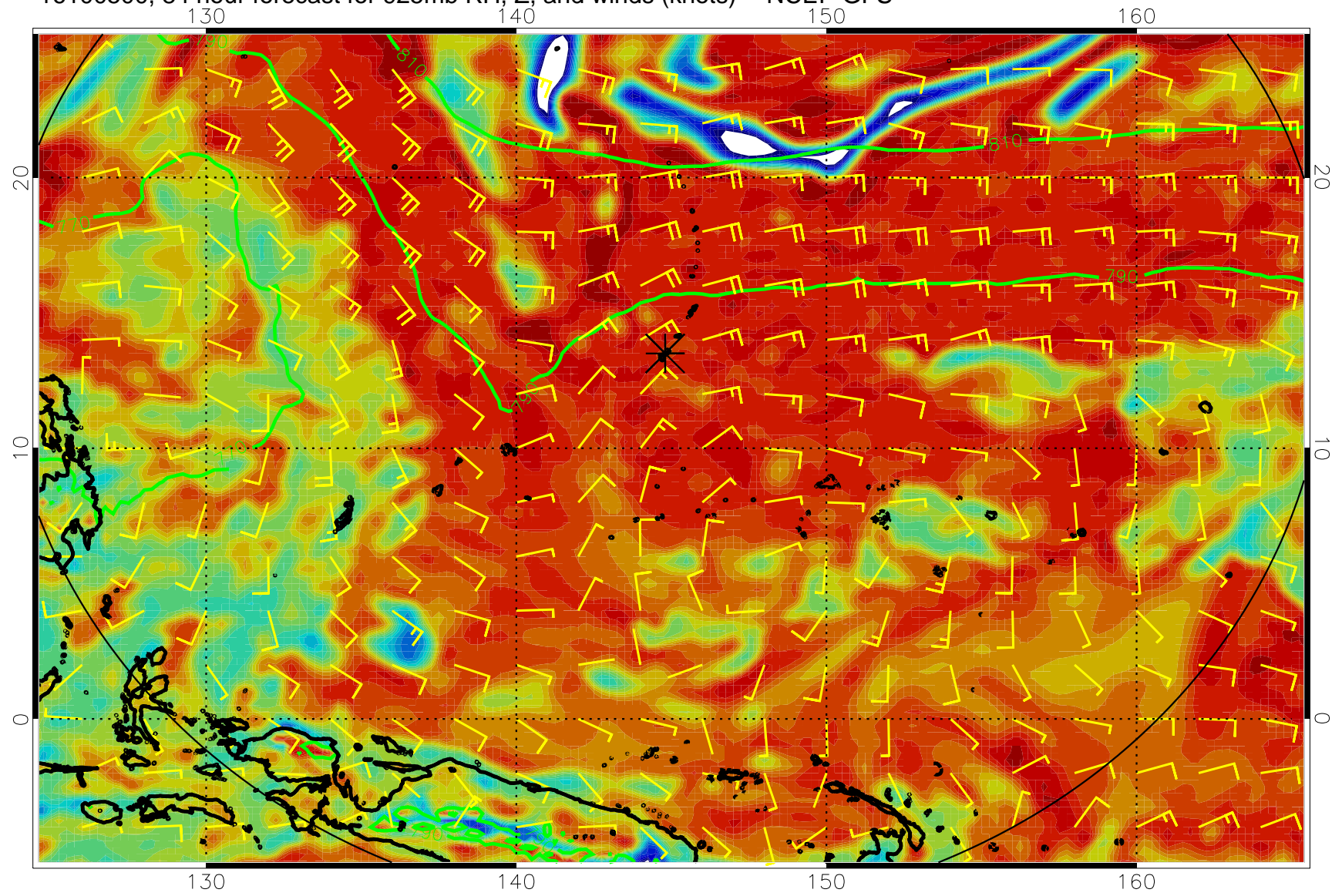




16100418, 78 hour forecast for 925mb RH, Z, and winds (knots) -- NCEP GFS

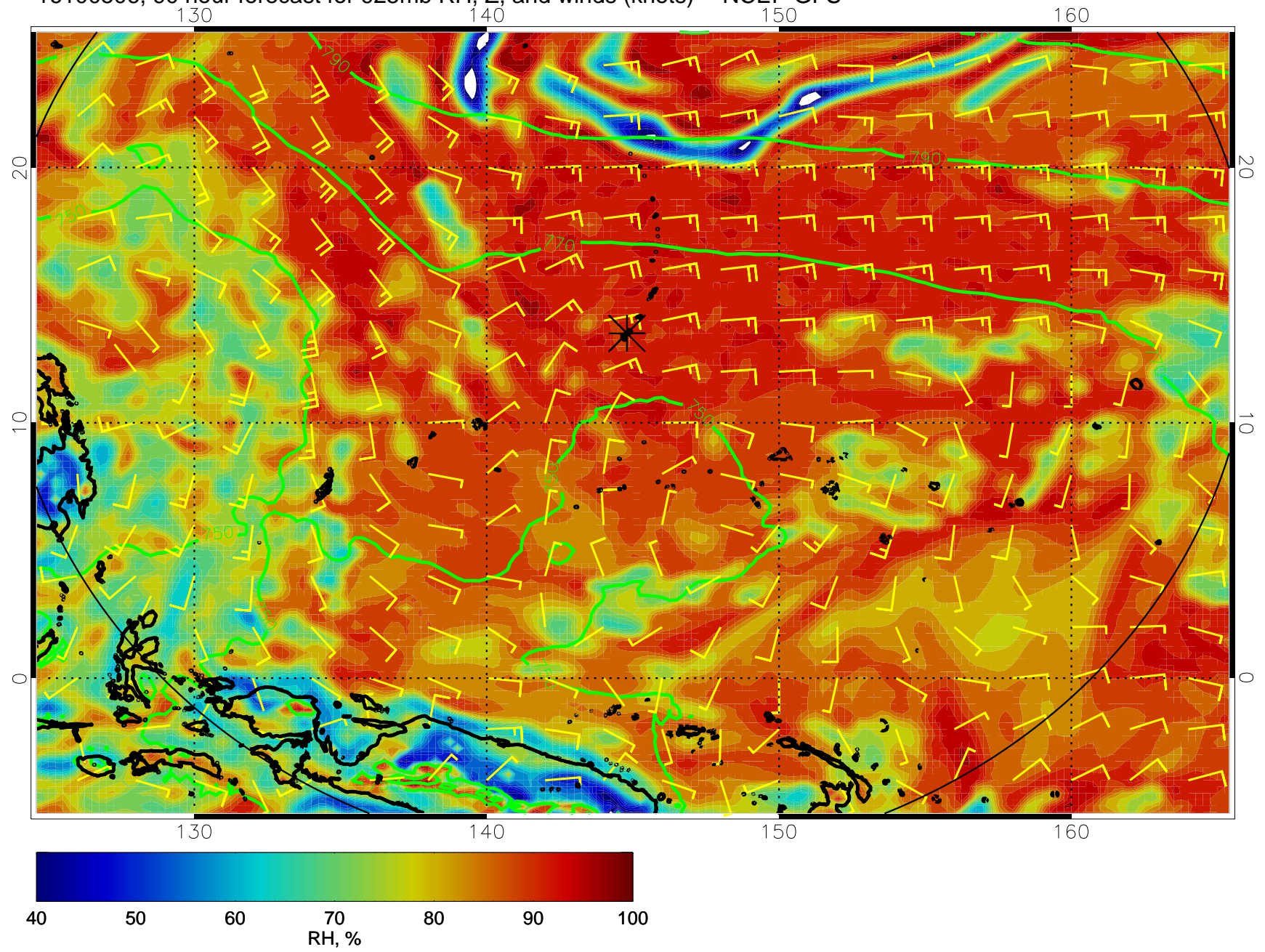


16100500, 84 hour forecast for 925mb RH, Z, and winds (knots) -- NCEP GFS

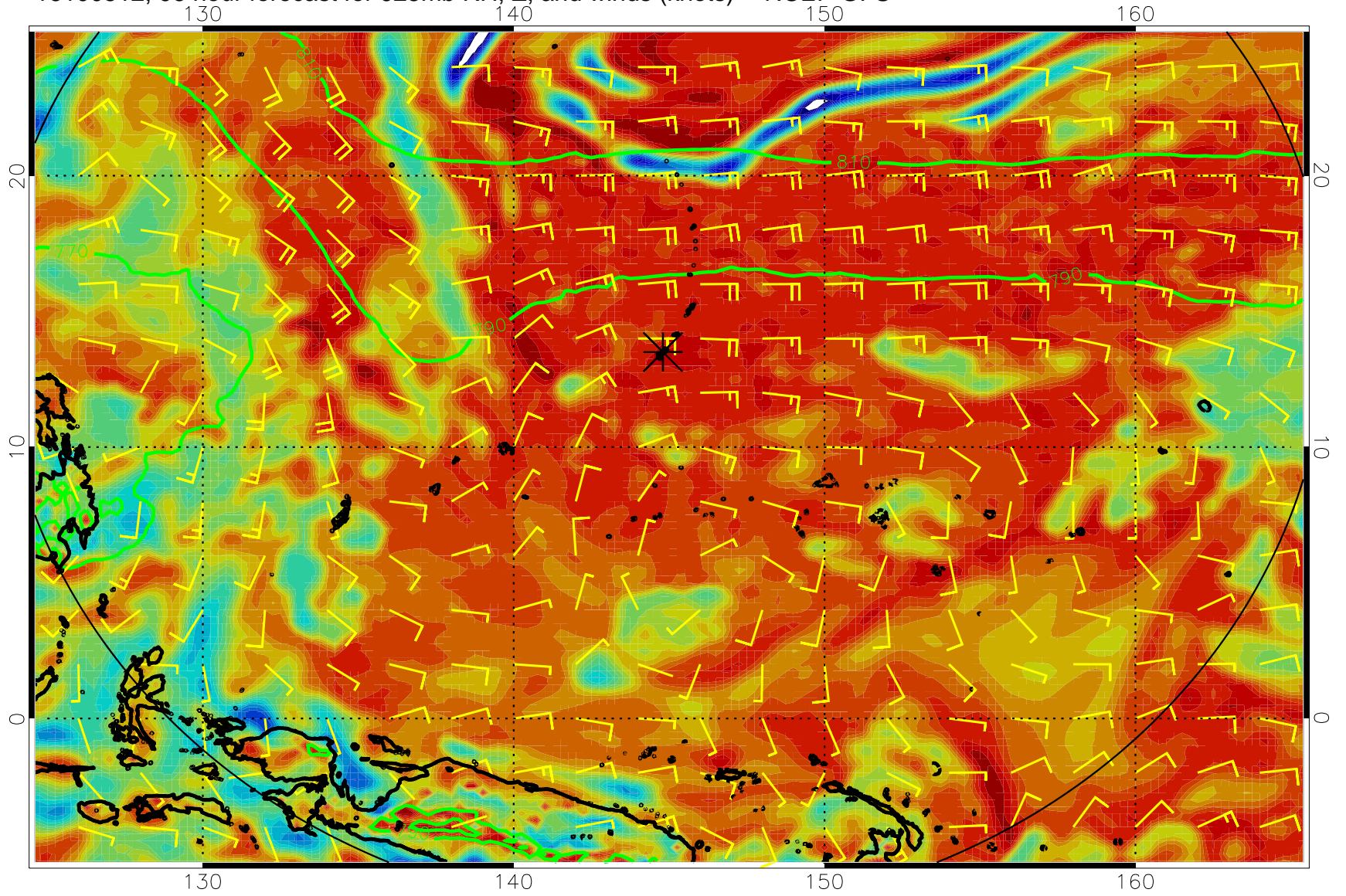




16100506, 90 hour forecast for 925mb RH, Z, and winds (knots) -- NCEP GFS

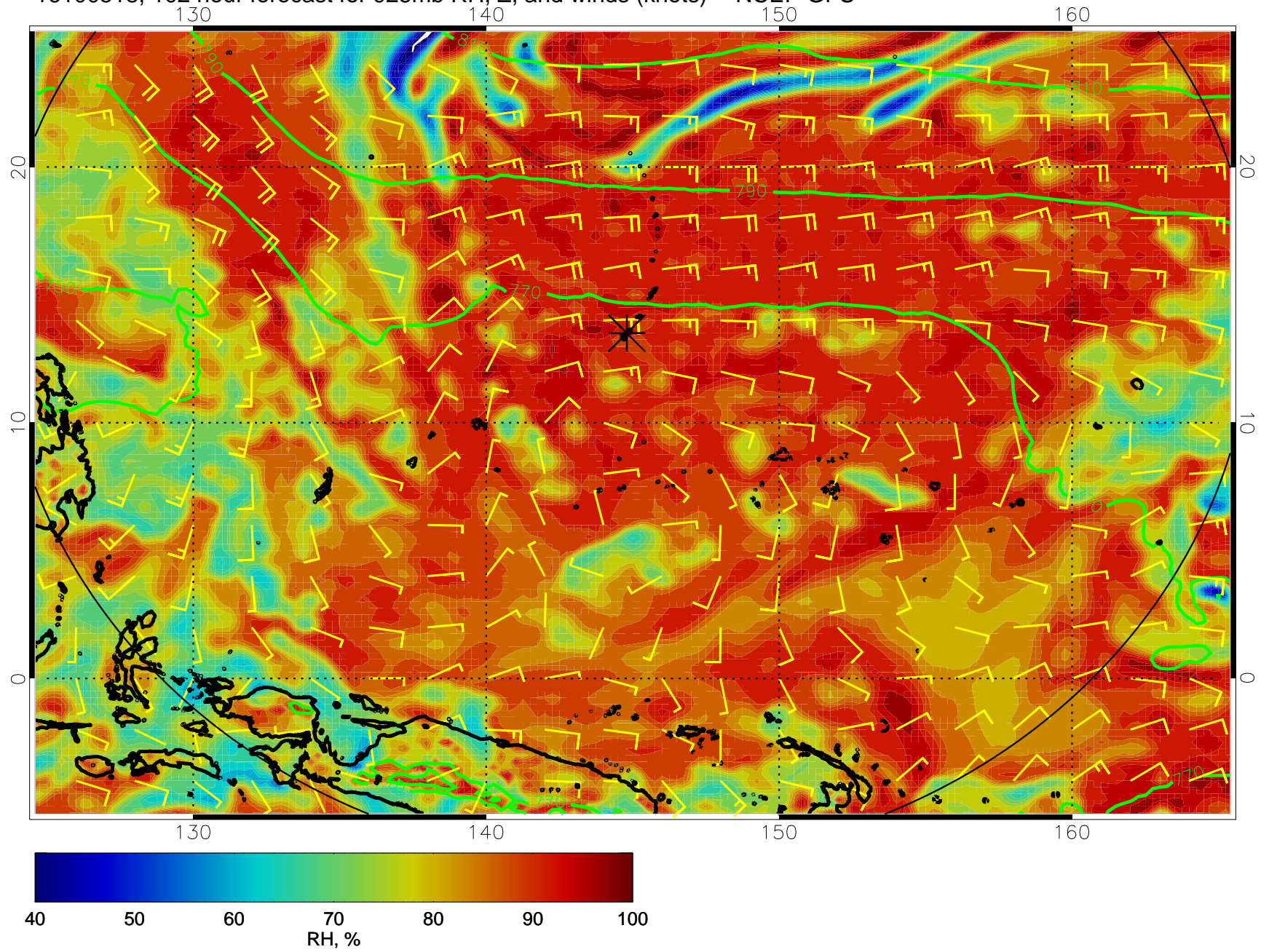


16100512, 96 hour forecast for 925mb RH, Z, and winds (knots) -- NCEP GFS

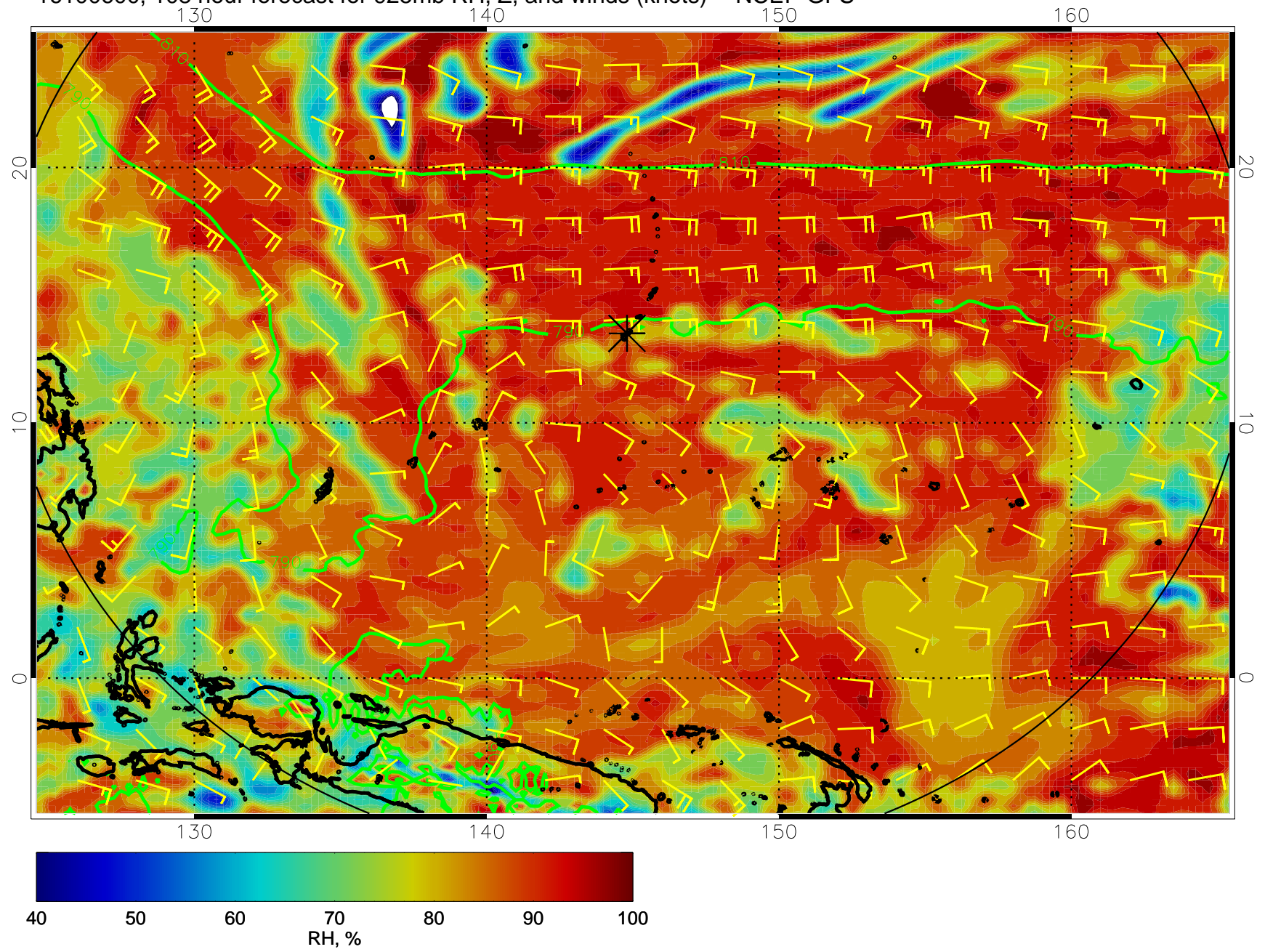




16100518, 102 hour forecast for 925mb RH, Z, and winds (knots) -- NCEP GFS

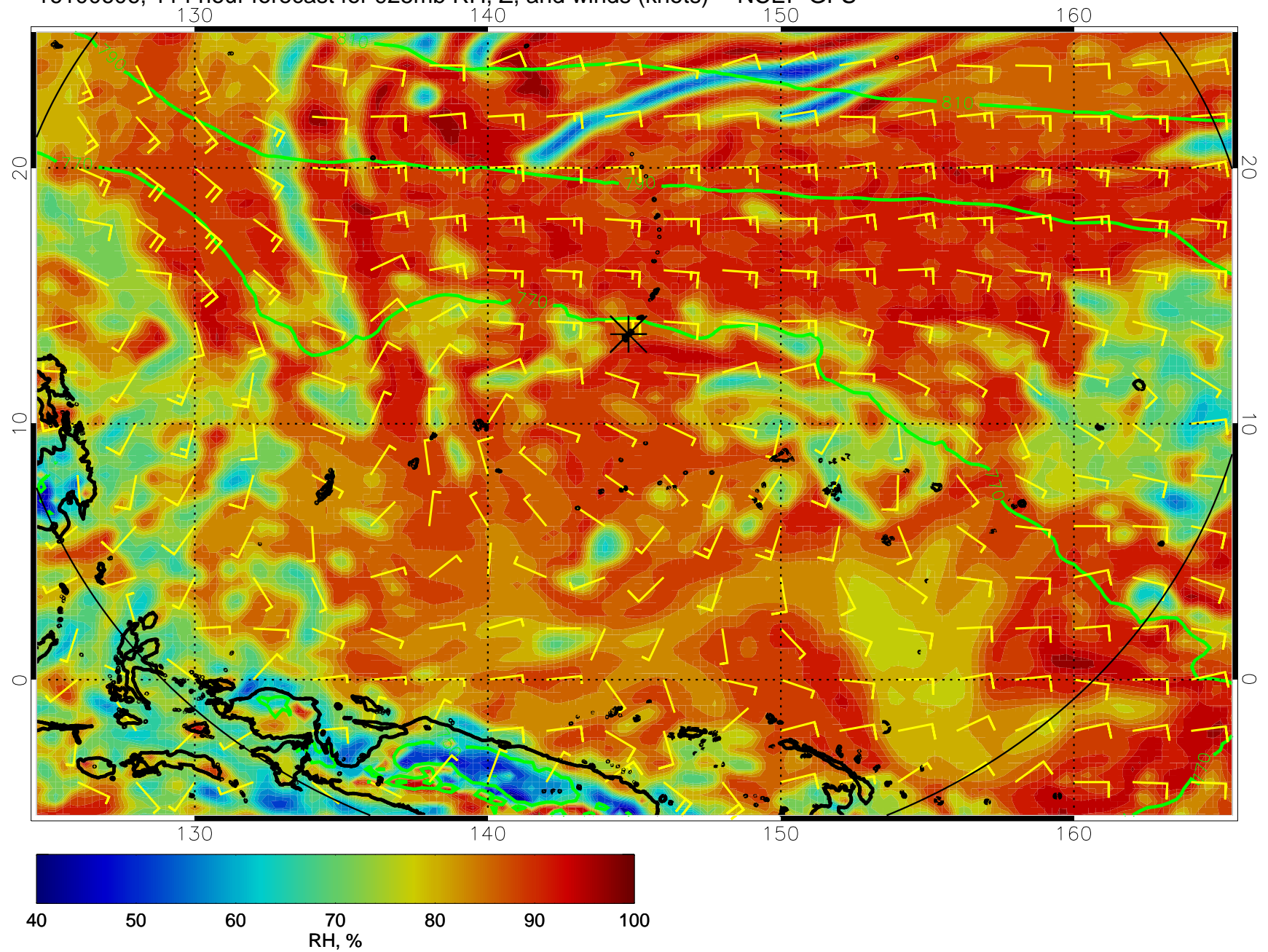


16100600, 108 hour forecast for 925mb RH, Z, and winds (knots) -- NCEP GFS





16100606, 114 hour forecast for 925mb RH, Z, and winds (knots) -- NCEP GFS



16100612, 120 hour forecast for 925mb RH, Z, and winds (knots) -- NCEP GFS

