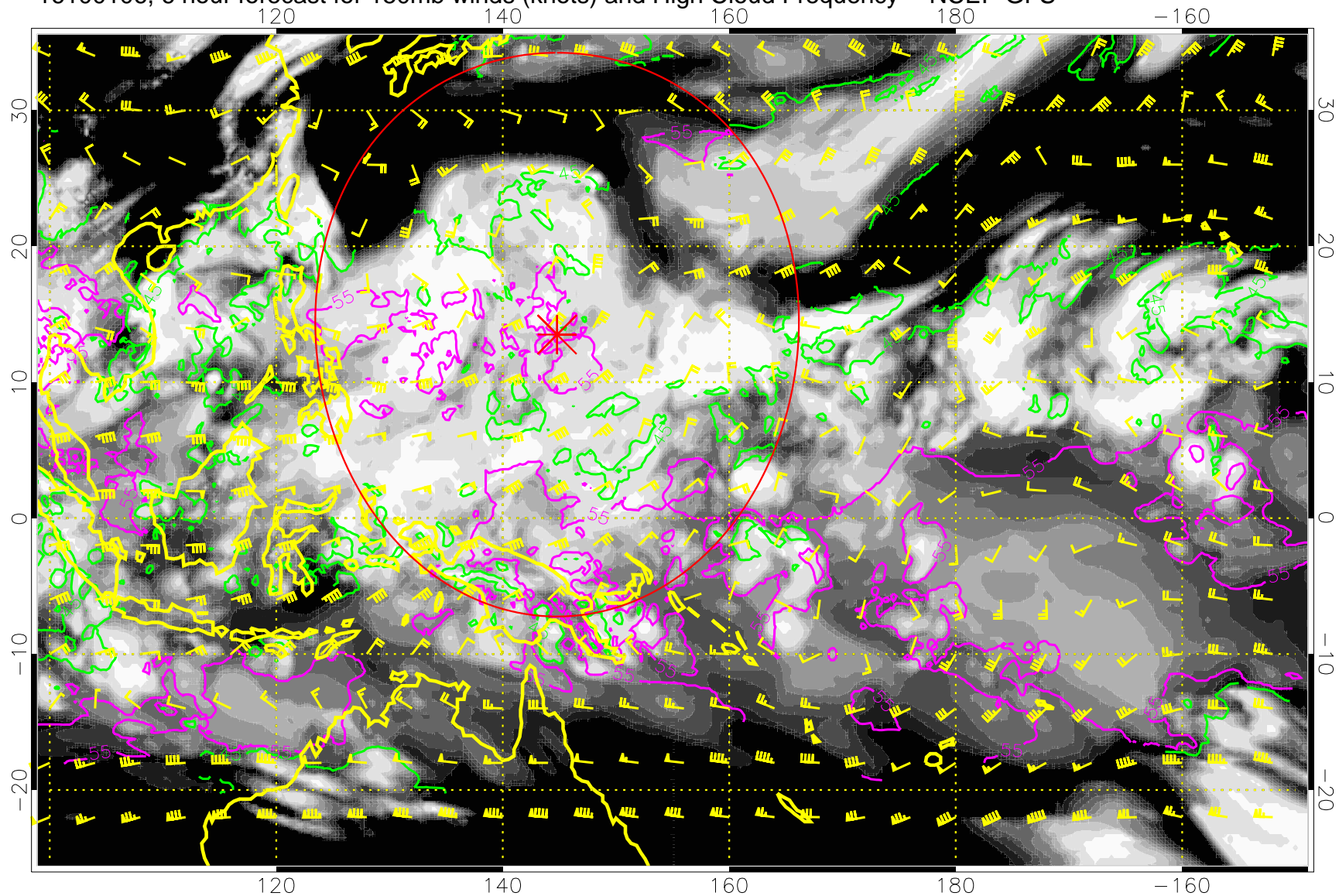


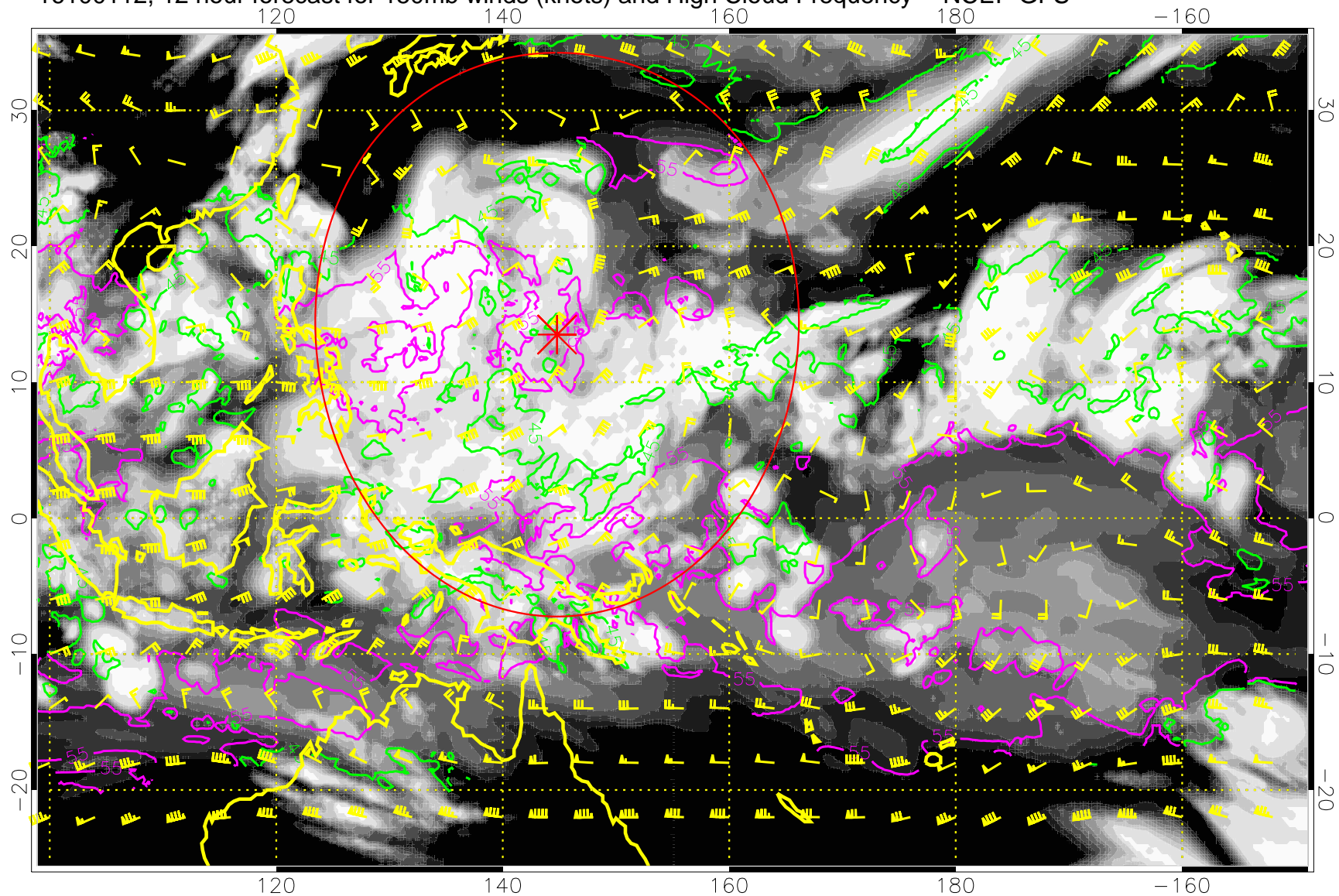
16100106, 6 hour forecast for 150mb winds (knots) and High Cloud Frequency -- NCEP GFS



45 kft
55 kft

Range ring of 2304 km

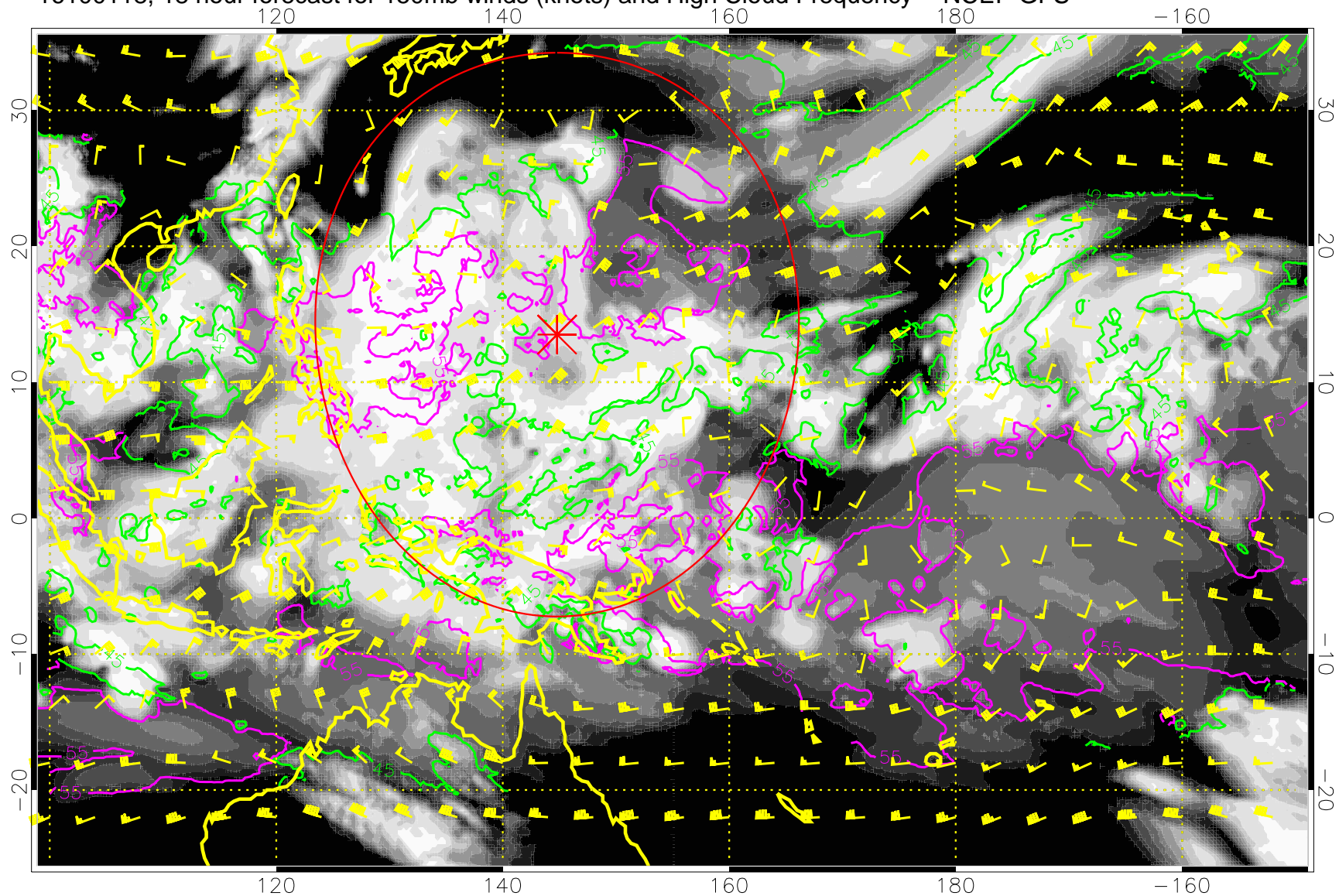
16100112, 12 hour forecast for 150mb winds (knots) and High Cloud Frequency -- NCEP GFS



45 kft
55 kft

Range ring of 2304 km

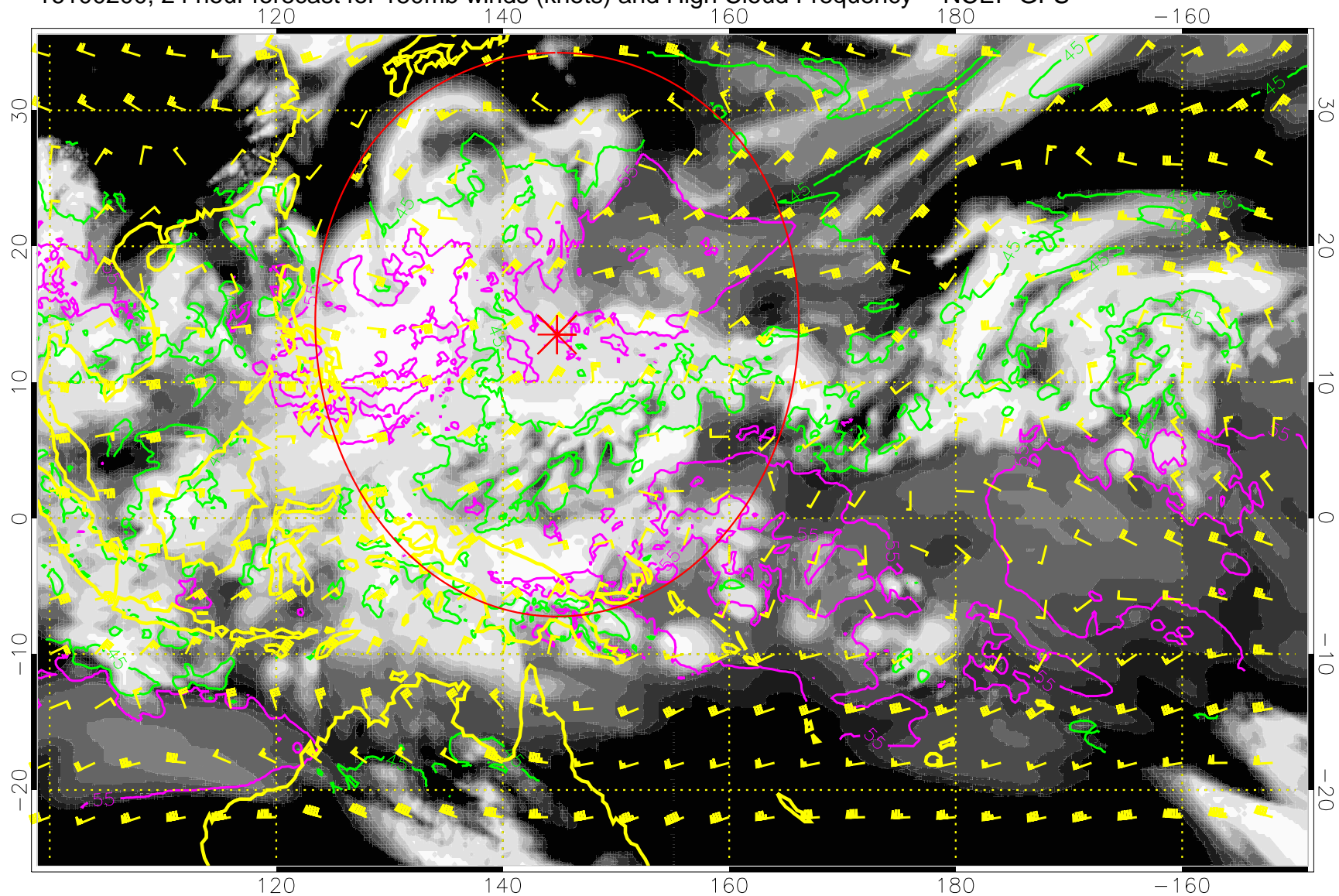
16100118, 18 hour forecast for 150mb winds (knots) and High Cloud Frequency -- NCEP GFS



45 kft
55 kft

Range ring of 2304 km

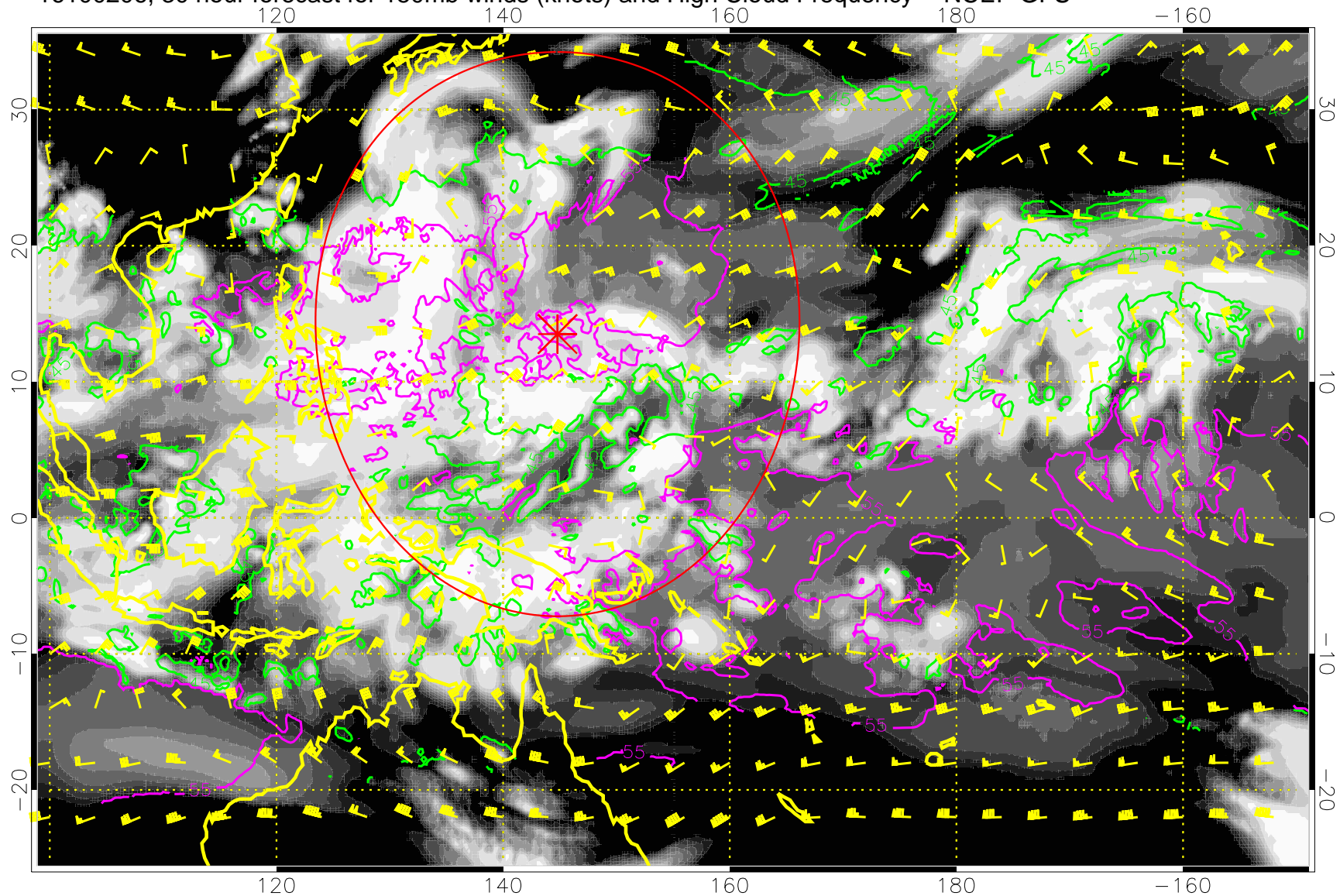
16100200, 24 hour forecast for 150mb winds (knots) and High Cloud Frequency -- NCEP GFS



45 kft
55 kft

Range ring of 2304 km

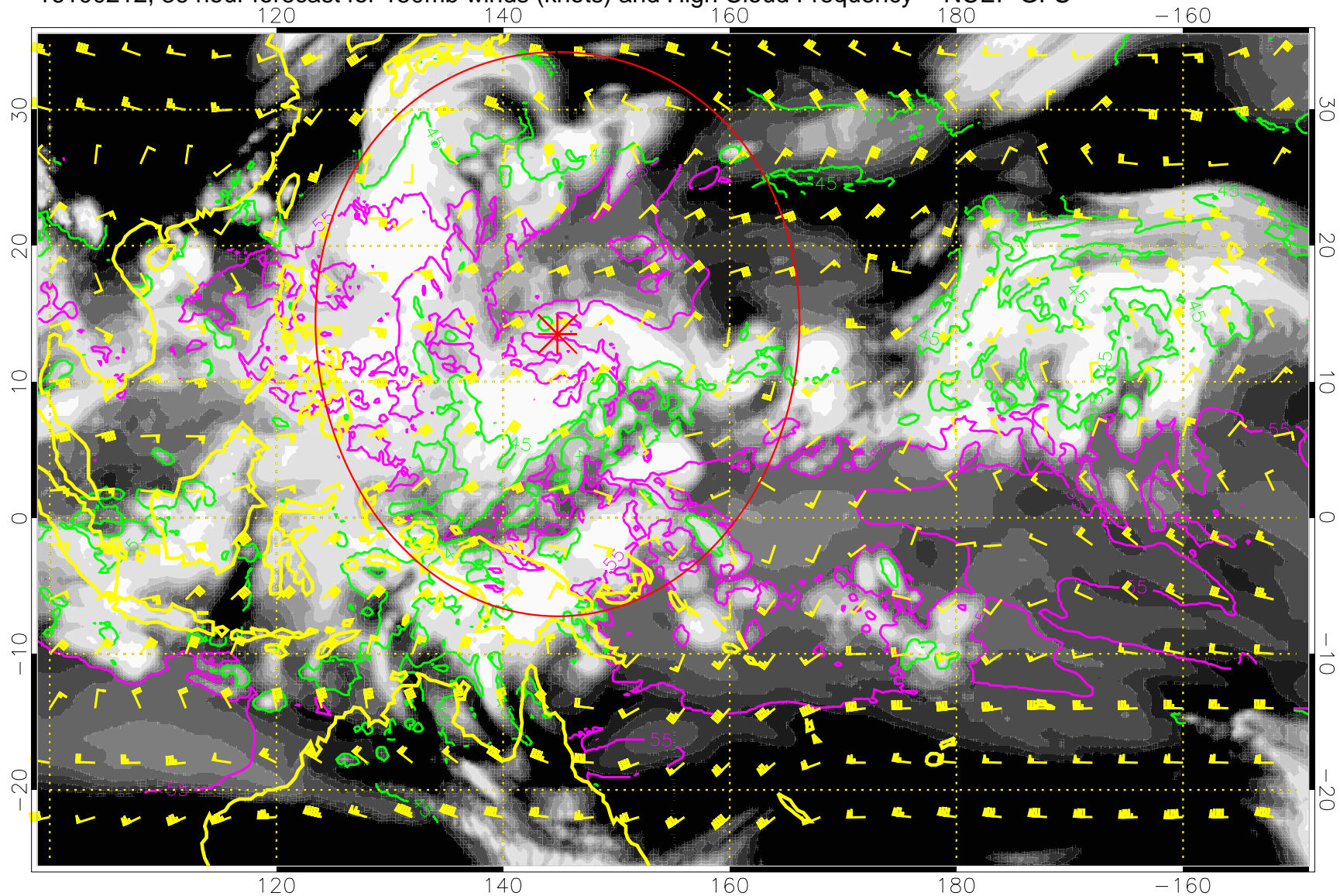
16100206, 30 hour forecast for 150mb winds (knots) and High Cloud Frequency -- NCEP GFS



45 kft
55 kft

Range ring of 2304 km

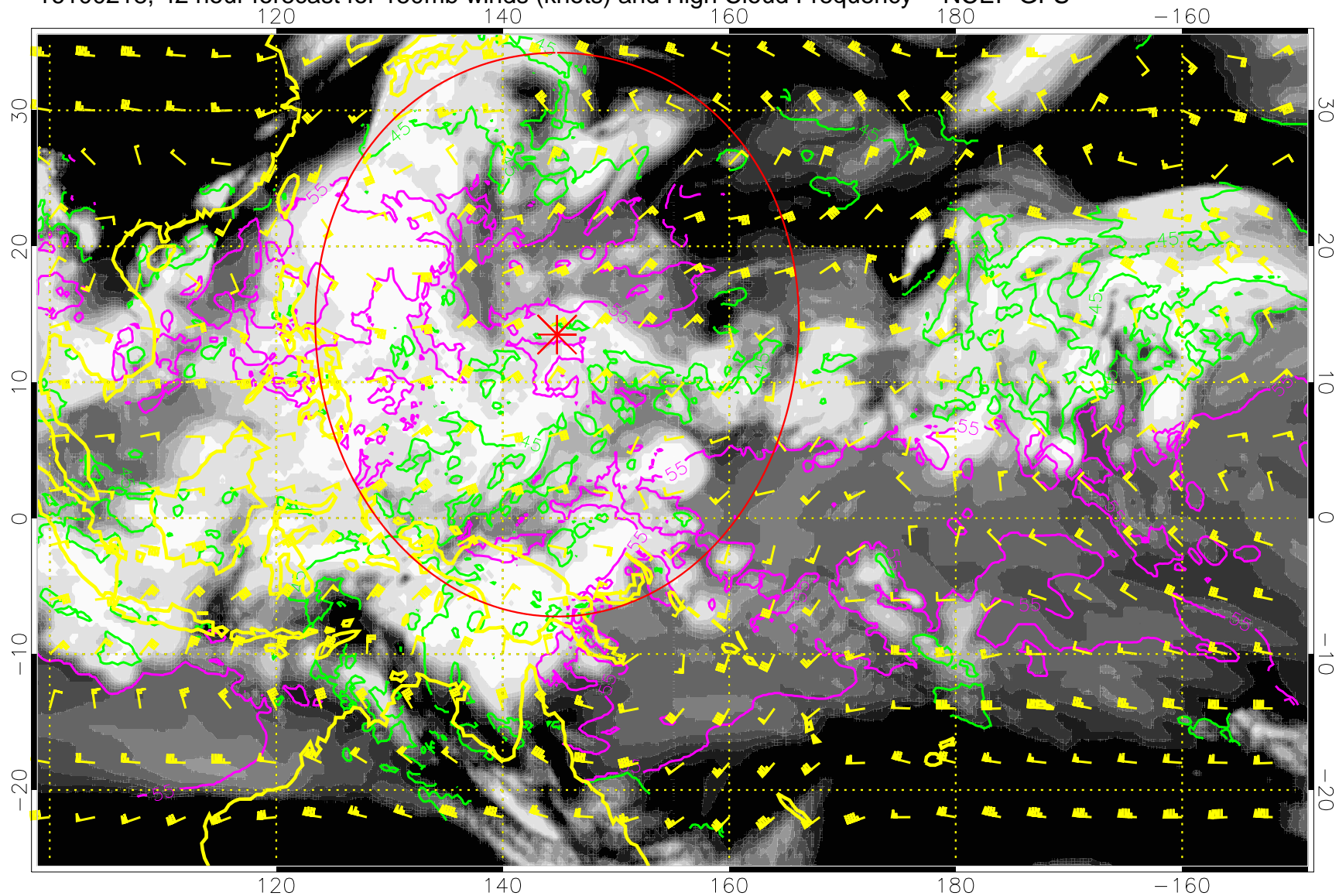
16100212, 36 hour forecast for 150mb winds (knots) and High Cloud Frequency -- NCEP GFS



45 kft
55 kft

Range ring of 2304 km

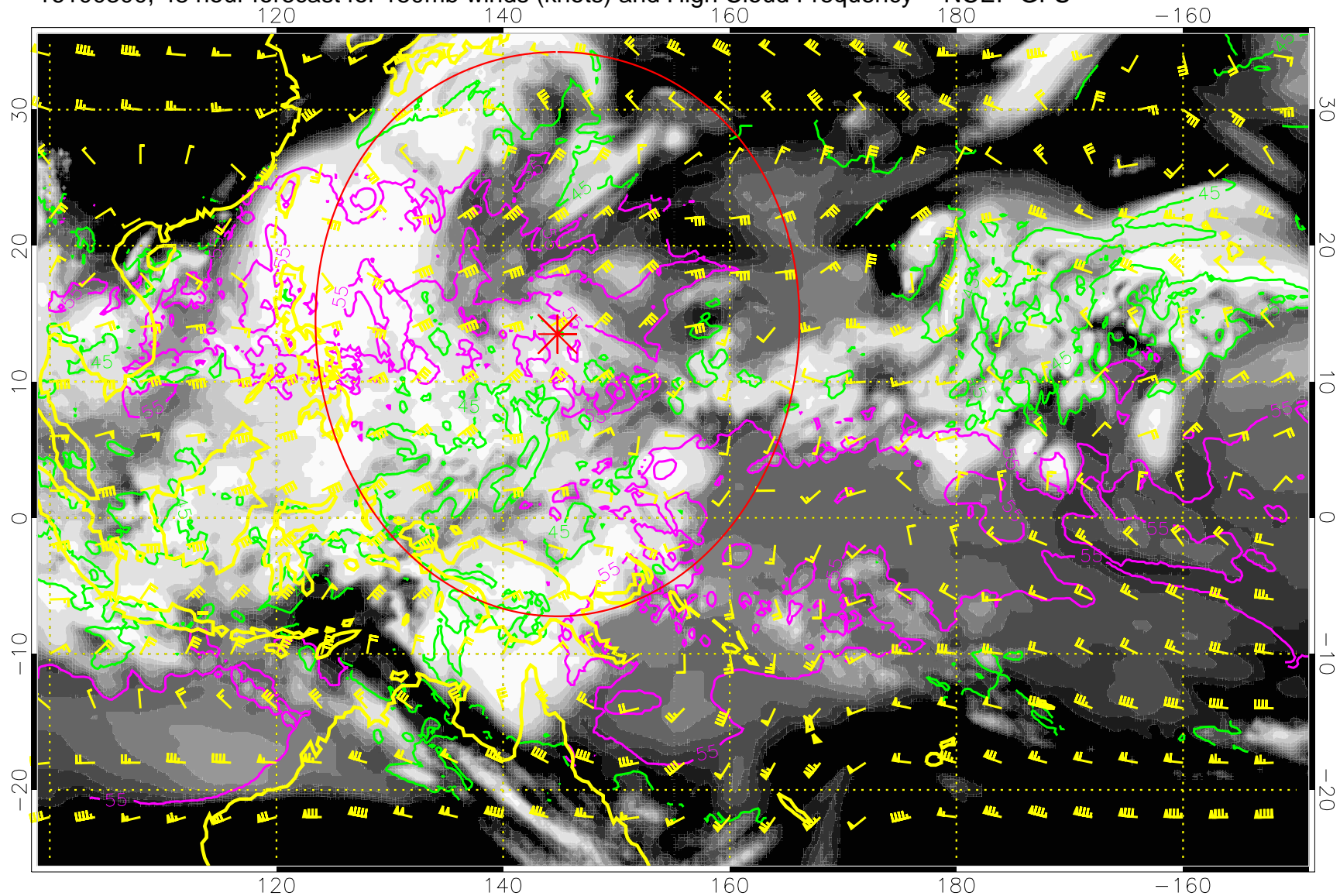
16100218, 42 hour forecast for 150mb winds (knots) and High Cloud Frequency -- NCEP GFS



45 kft
55 kft

Range ring of 2304 km

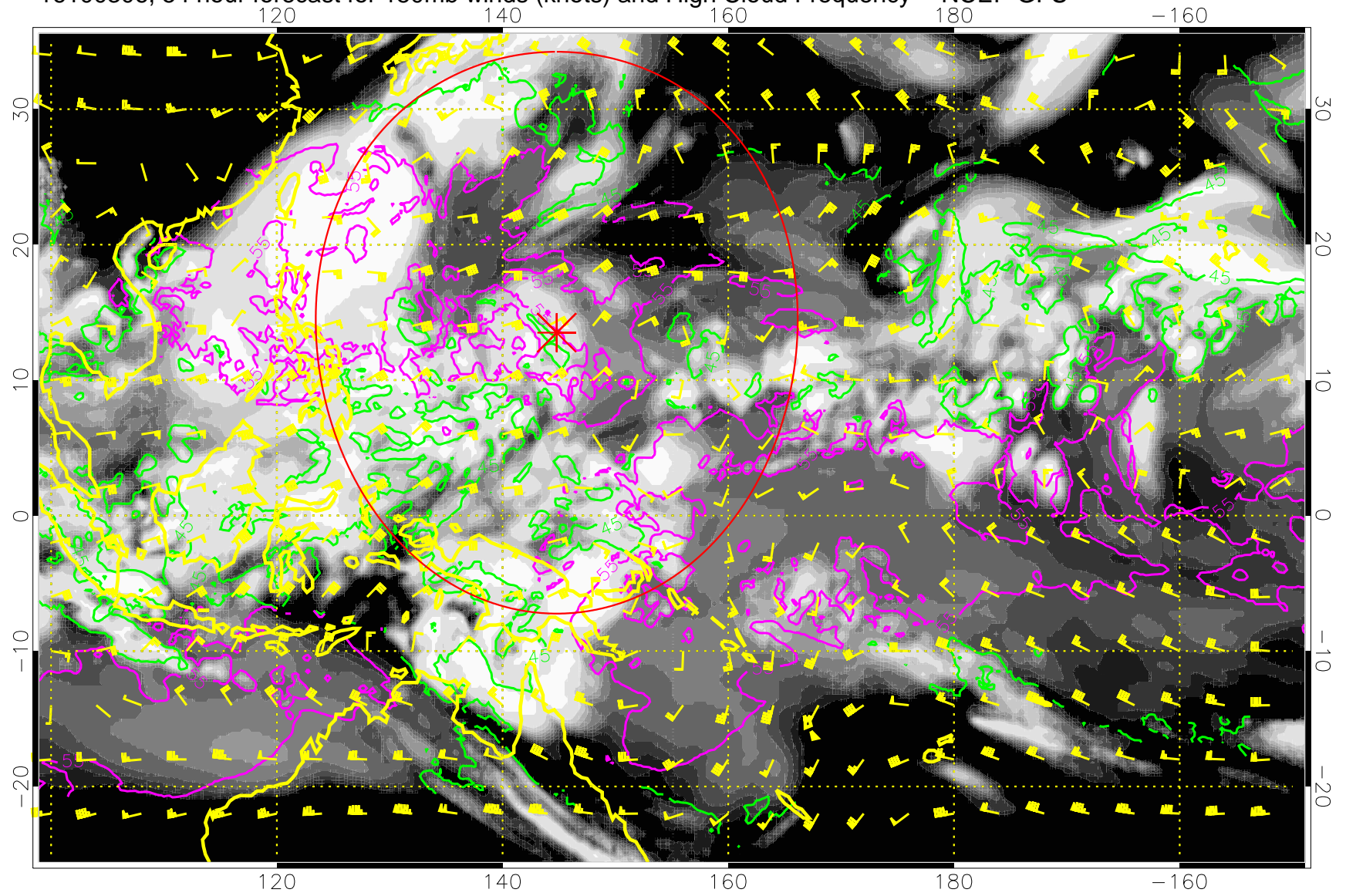
16100300, 48 hour forecast for 150mb winds (knots) and High Cloud Frequency -- NCEP GFS



45 kft
55 kft

Range ring of 2304 km

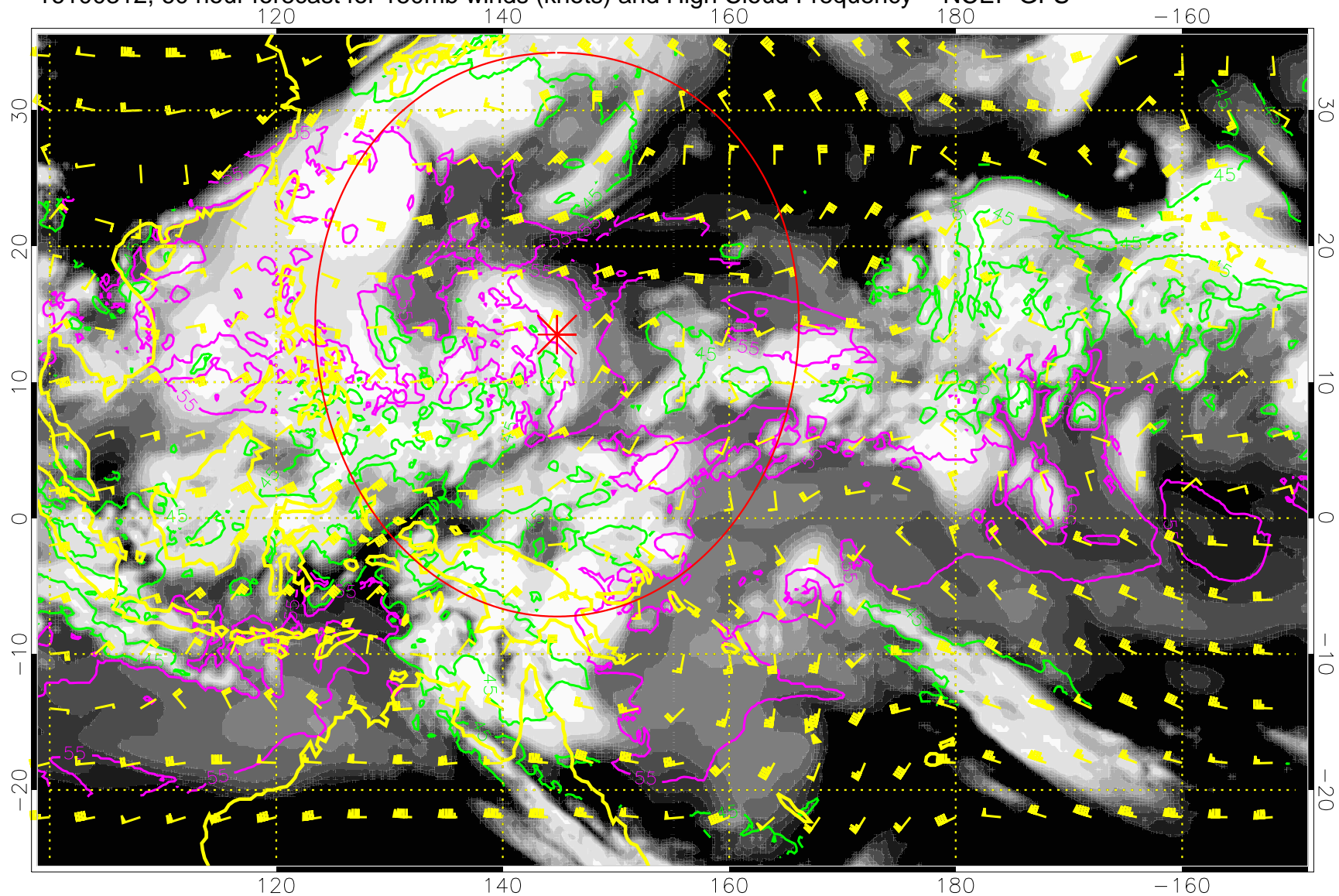
16100306, 54 hour forecast for 150mb winds (knots) and High Cloud Frequency -- NCEP GFS



45 kft
55 kft

Range ring of 2304 km

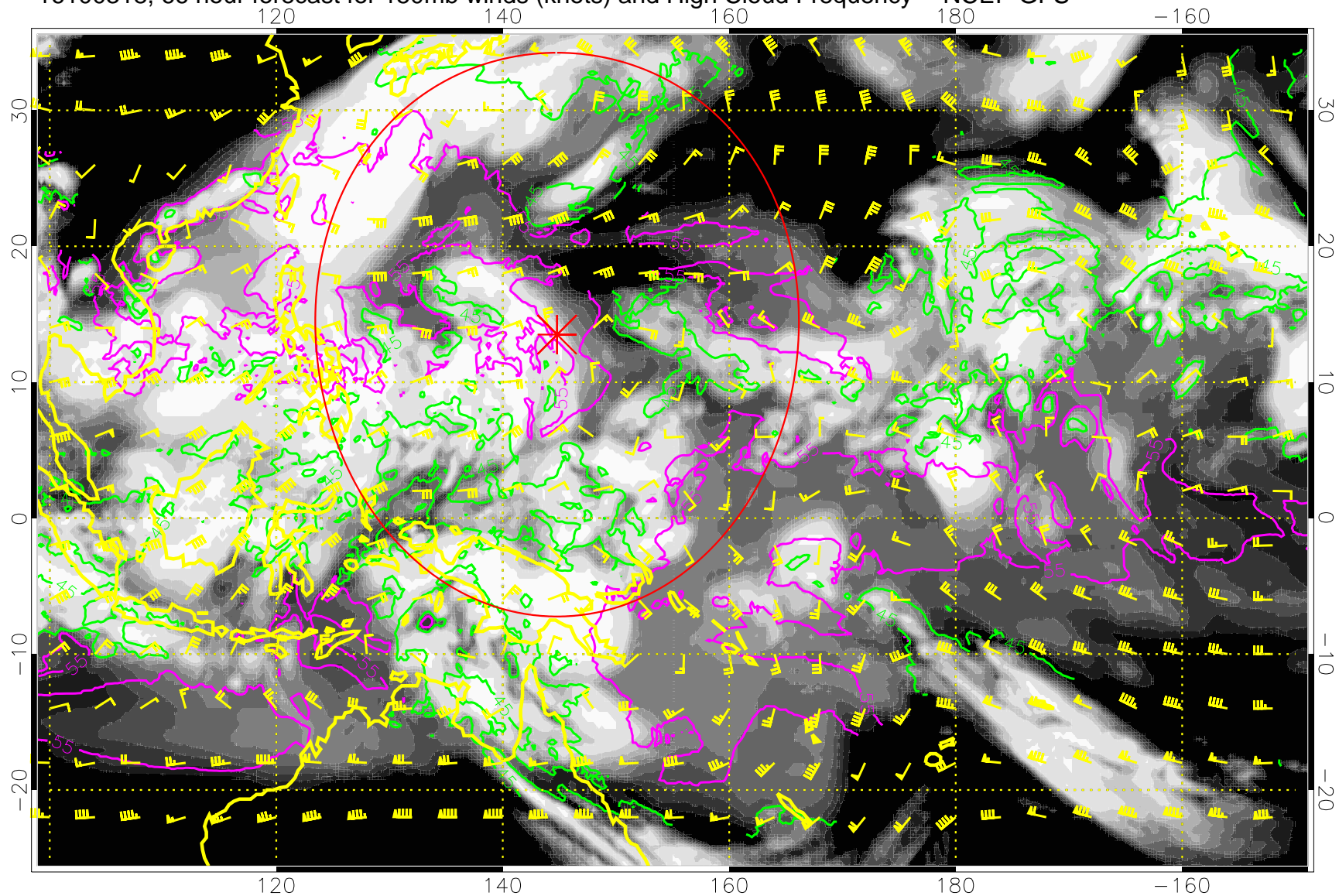
16100312, 60 hour forecast for 150mb winds (knots) and High Cloud Frequency -- NCEP GFS



45 kft
55 kft

Range ring of 2304 km

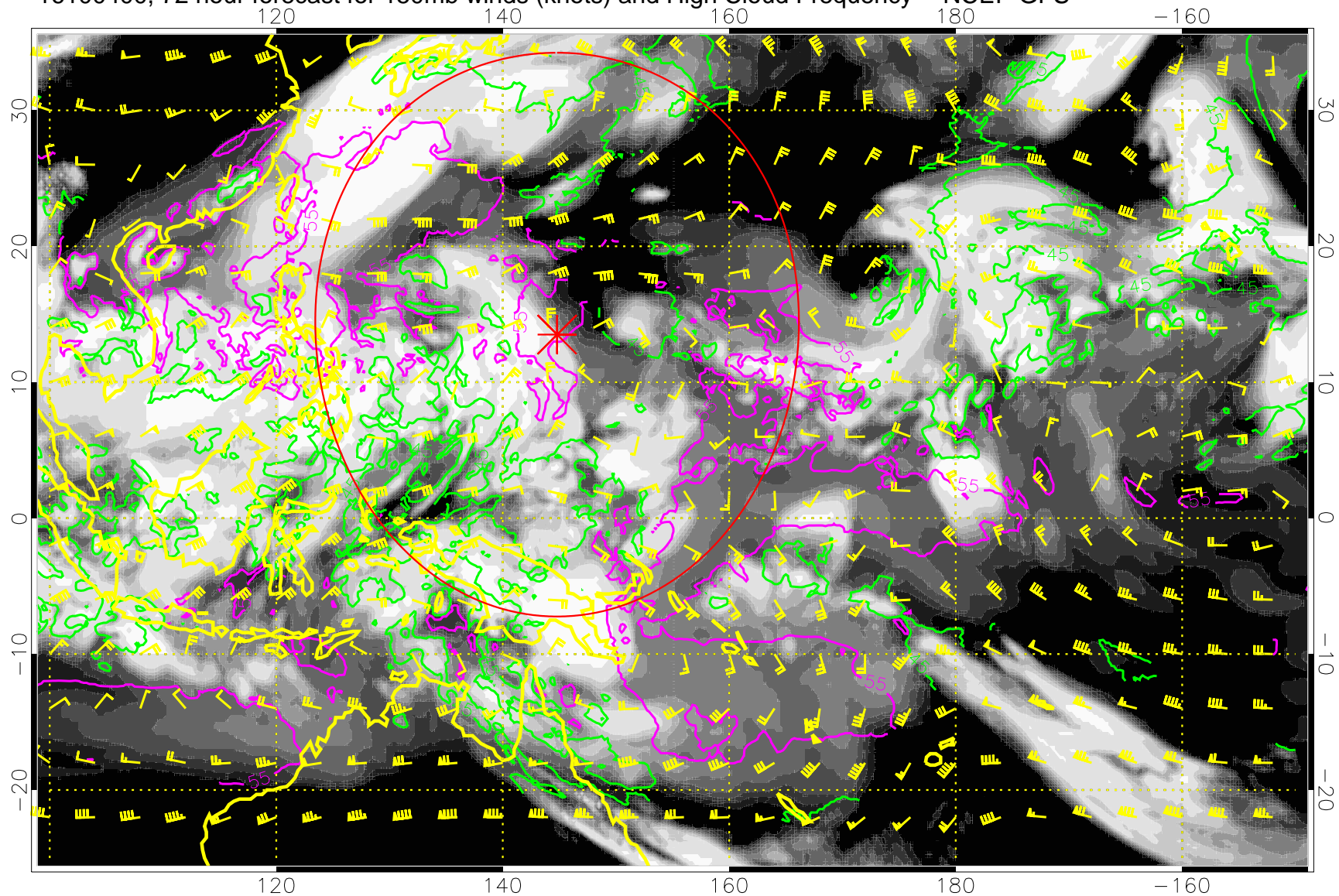
16100318, 66 hour forecast for 150mb winds (knots) and High Cloud Frequency -- NCEP GFS



45 kft
55 kft

Range ring of 2304 km

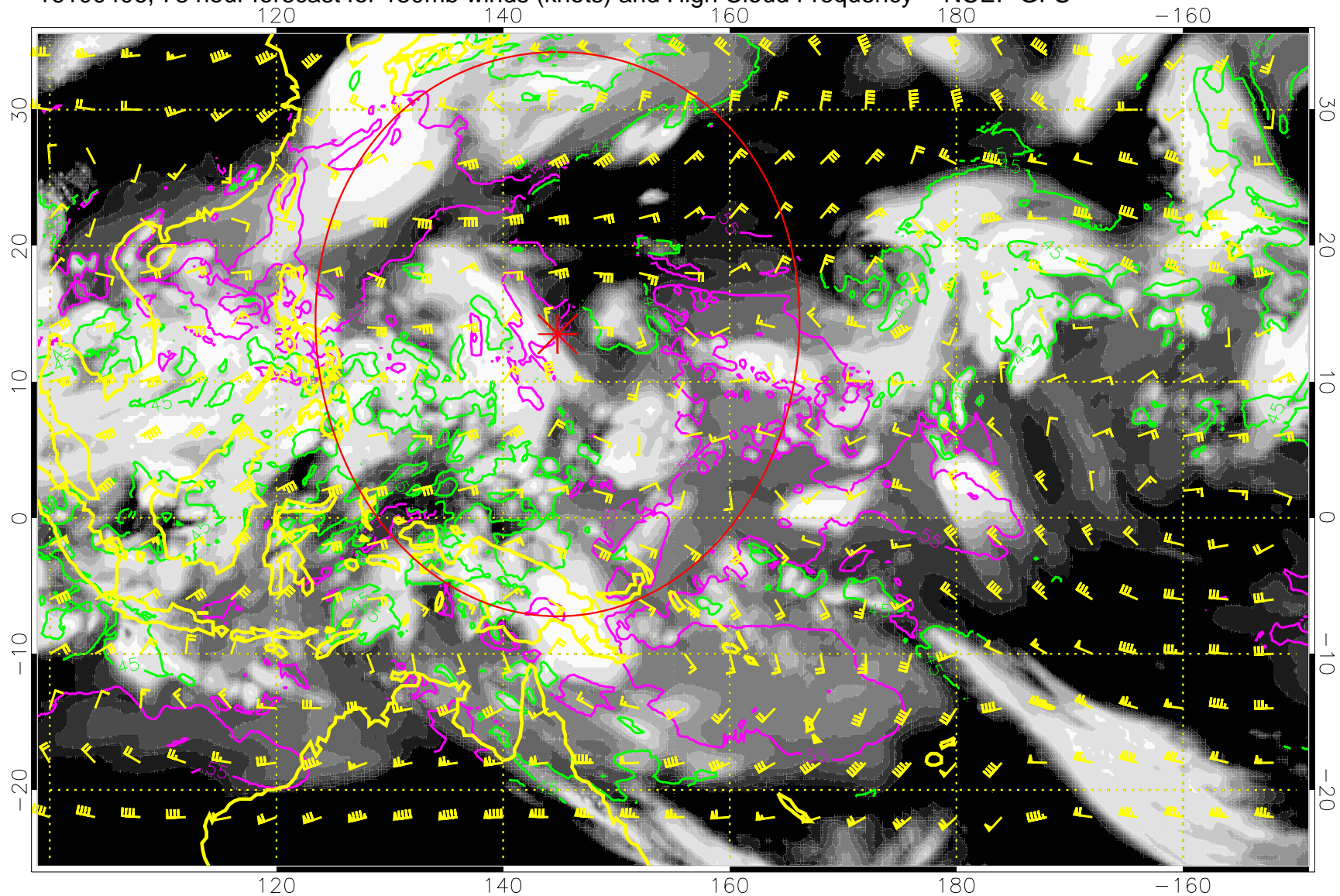
16100400, 72 hour forecast for 150mb winds (knots) and High Cloud Frequency -- NCEP GFS



45 kft
55 kft

Range ring of 2304 km

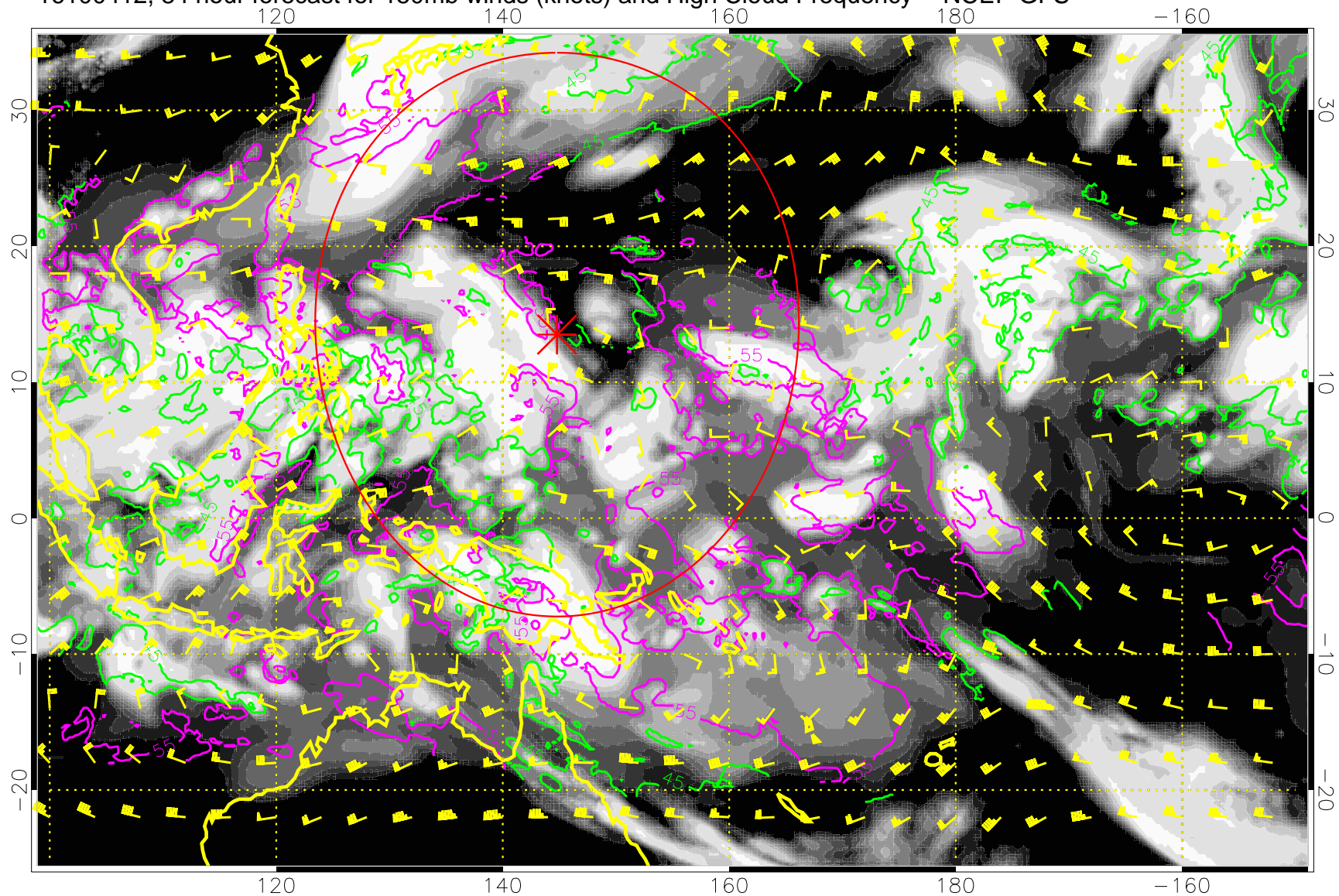
16100406, 78 hour forecast for 150mb winds (knots) and High Cloud Frequency -- NCEP GFS



45 kft
55 kft

Range ring of 2304 km

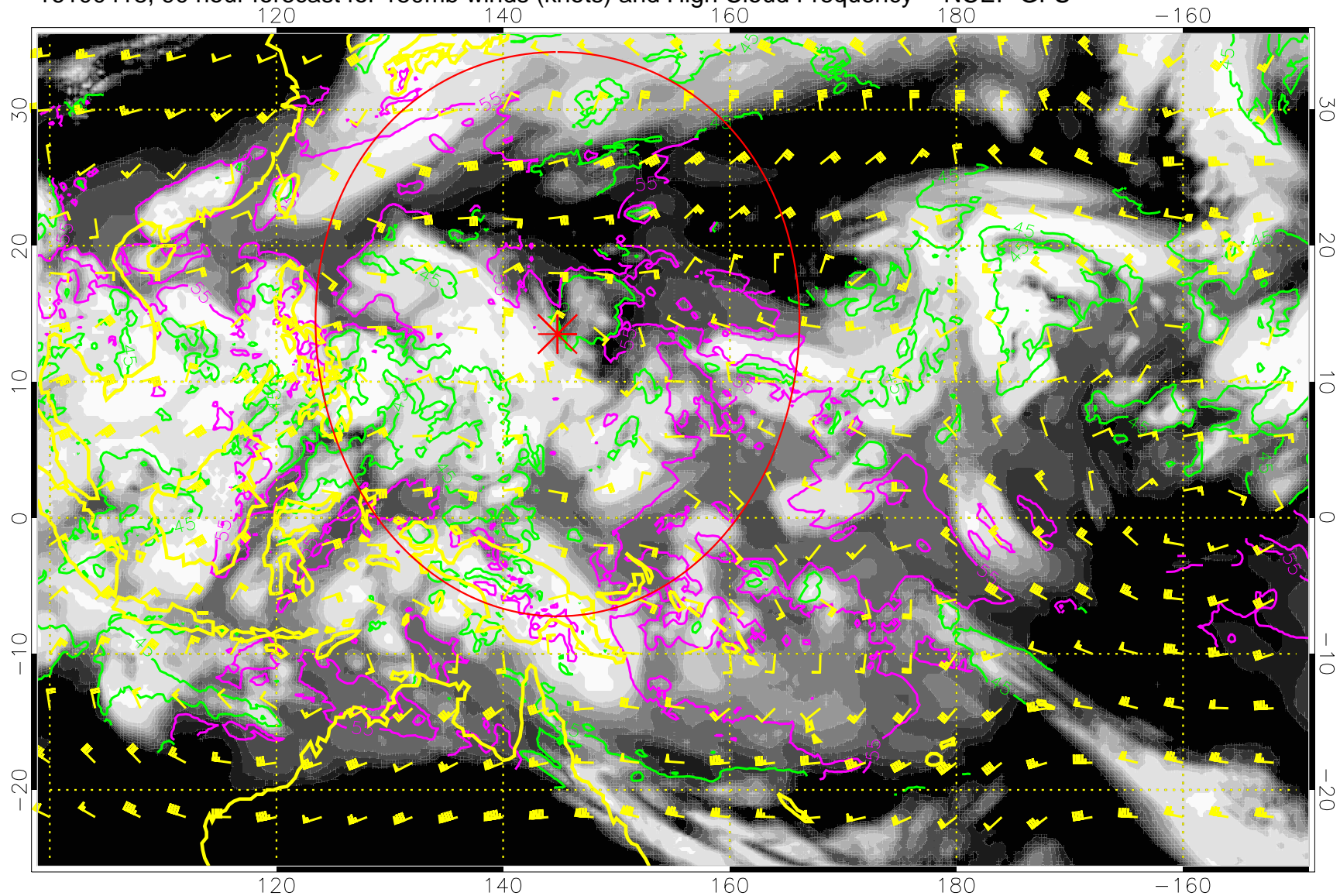
16100412, 84 hour forecast for 150mb winds (knots) and High Cloud Frequency -- NCEP GFS



45 kft
55 kft

Range ring of 2304 km

16100418, 90 hour forecast for 150mb winds (knots) and High Cloud Frequency -- NCEP GFS

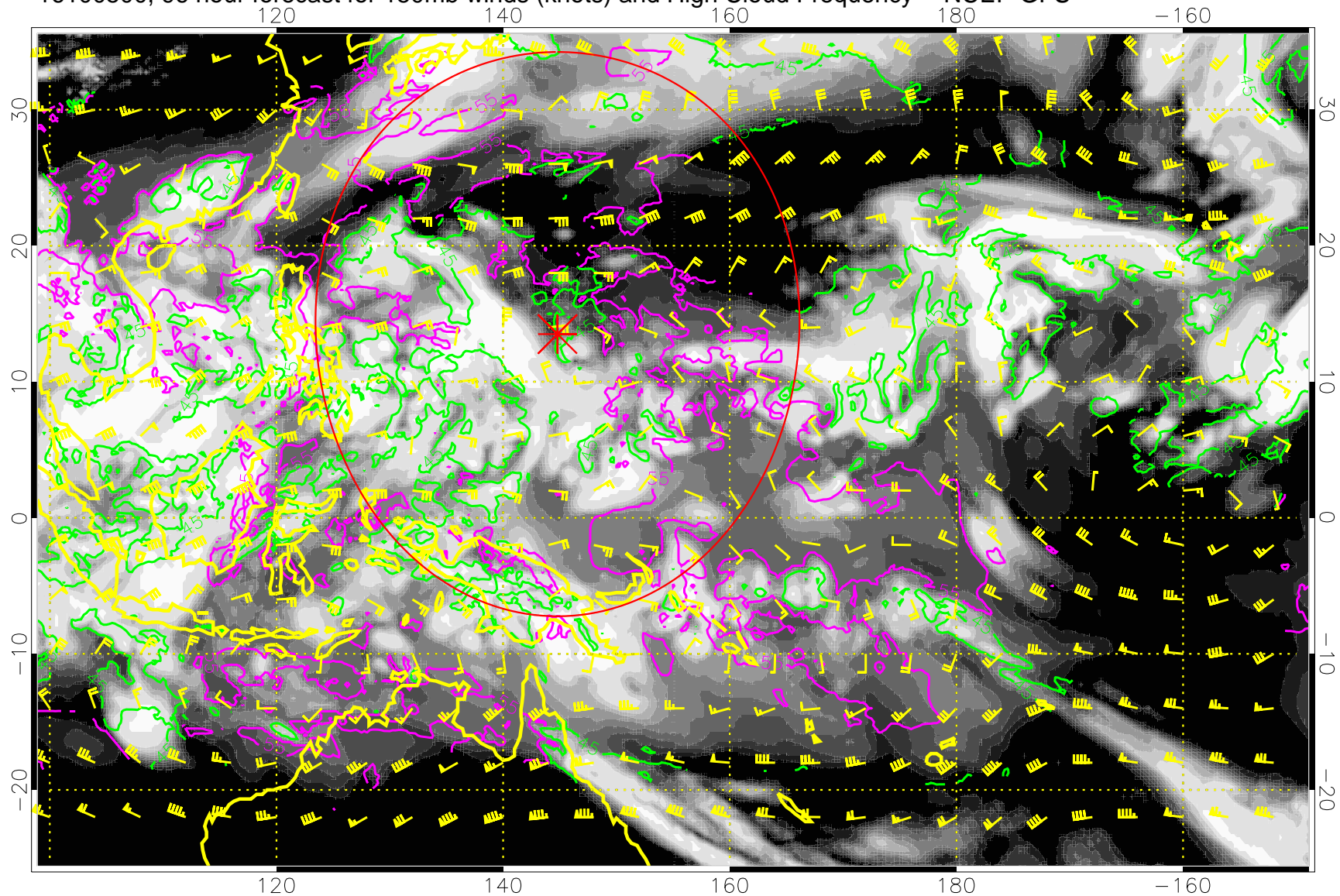


0.0 0.2 0.4 0.6 0.8 1.0
High Cloud Frequency

45 kft
55 kft

Range ring of 2304 km

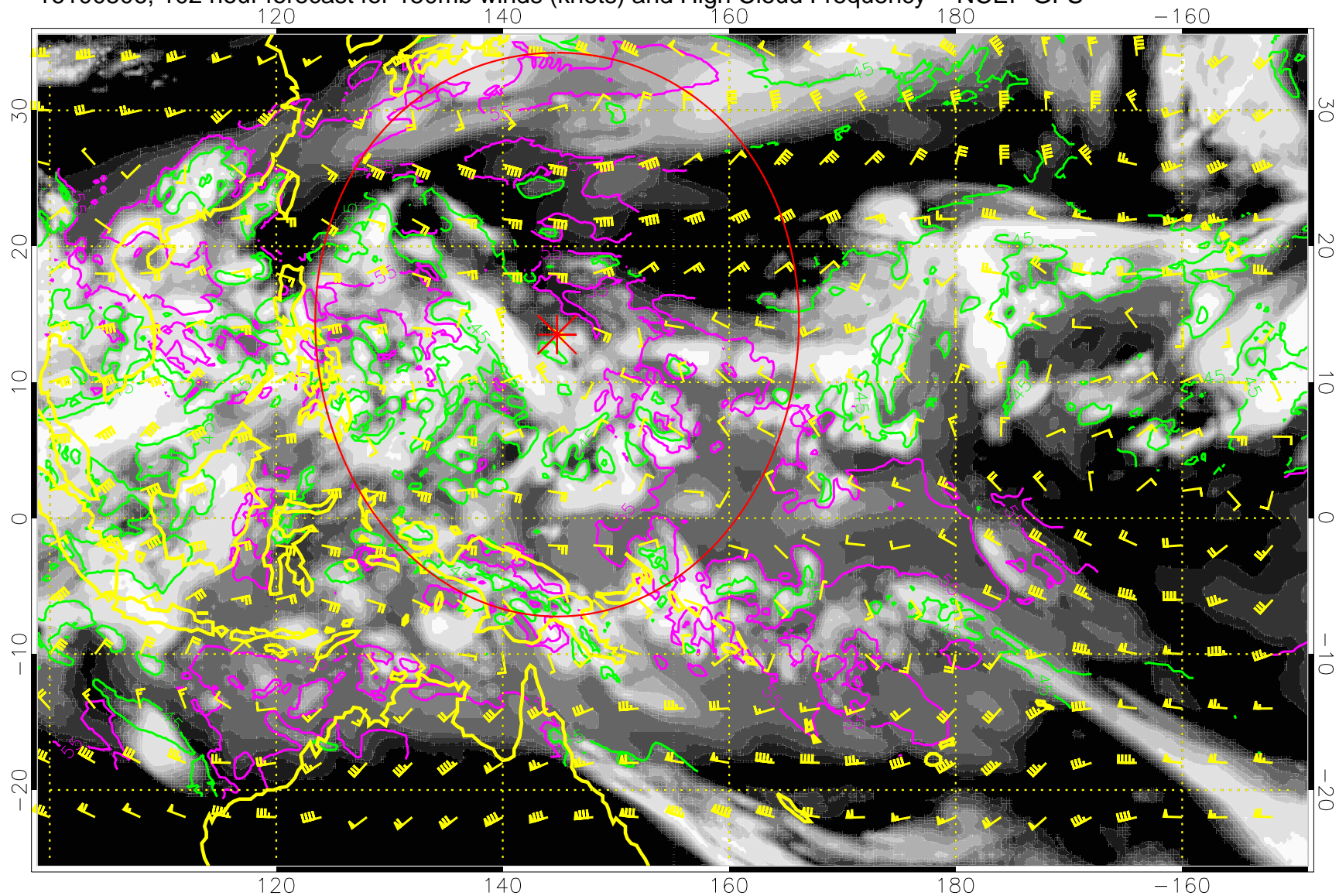
16100500, 96 hour forecast for 150mb winds (knots) and High Cloud Frequency -- NCEP GFS



45 kft
55 kft

Range ring of 2304 km

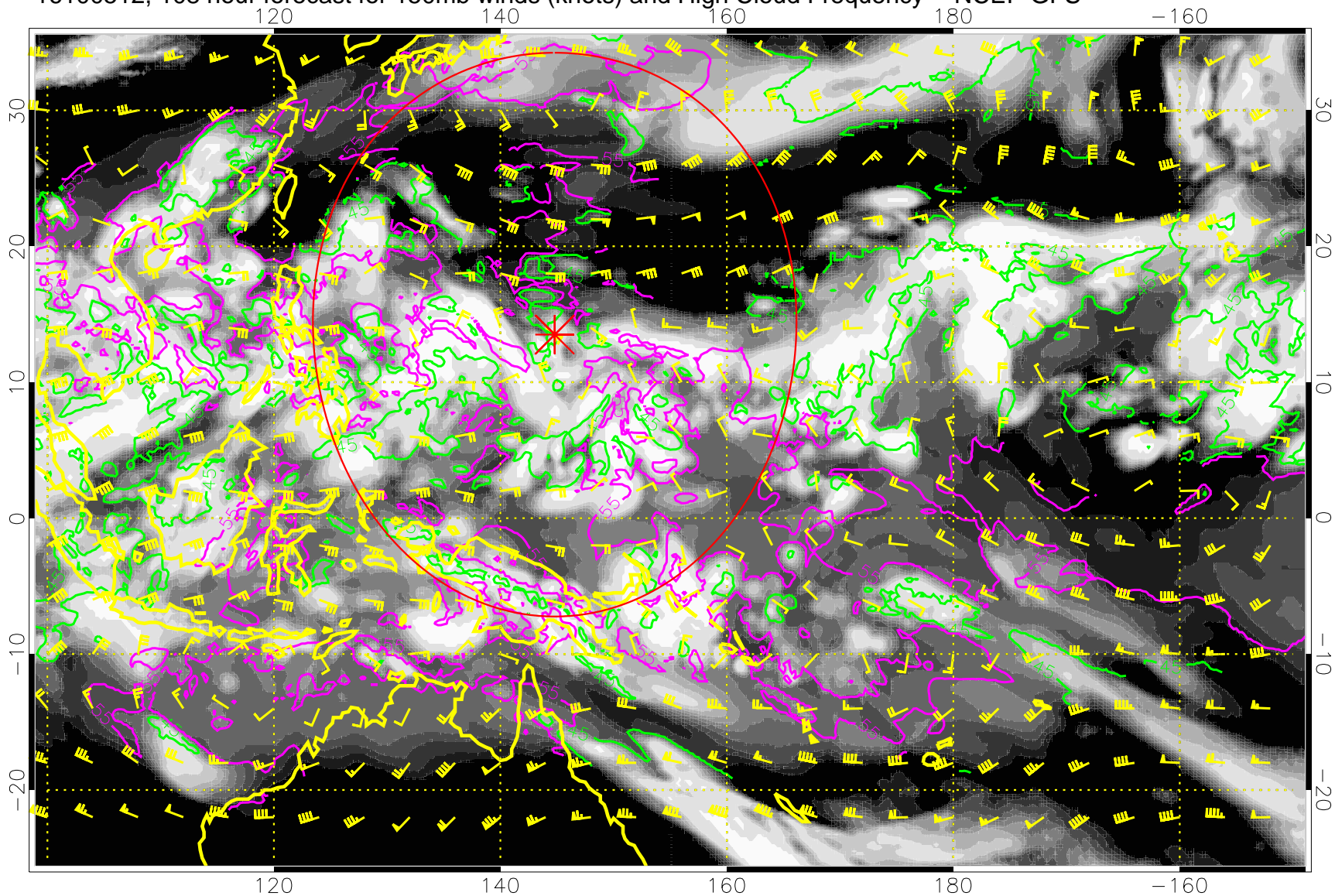
16100506, 102 hour forecast for 150mb winds (knots) and High Cloud Frequency -- NCEP GFS



45 kft
55 kft

Range ring of 2304 km

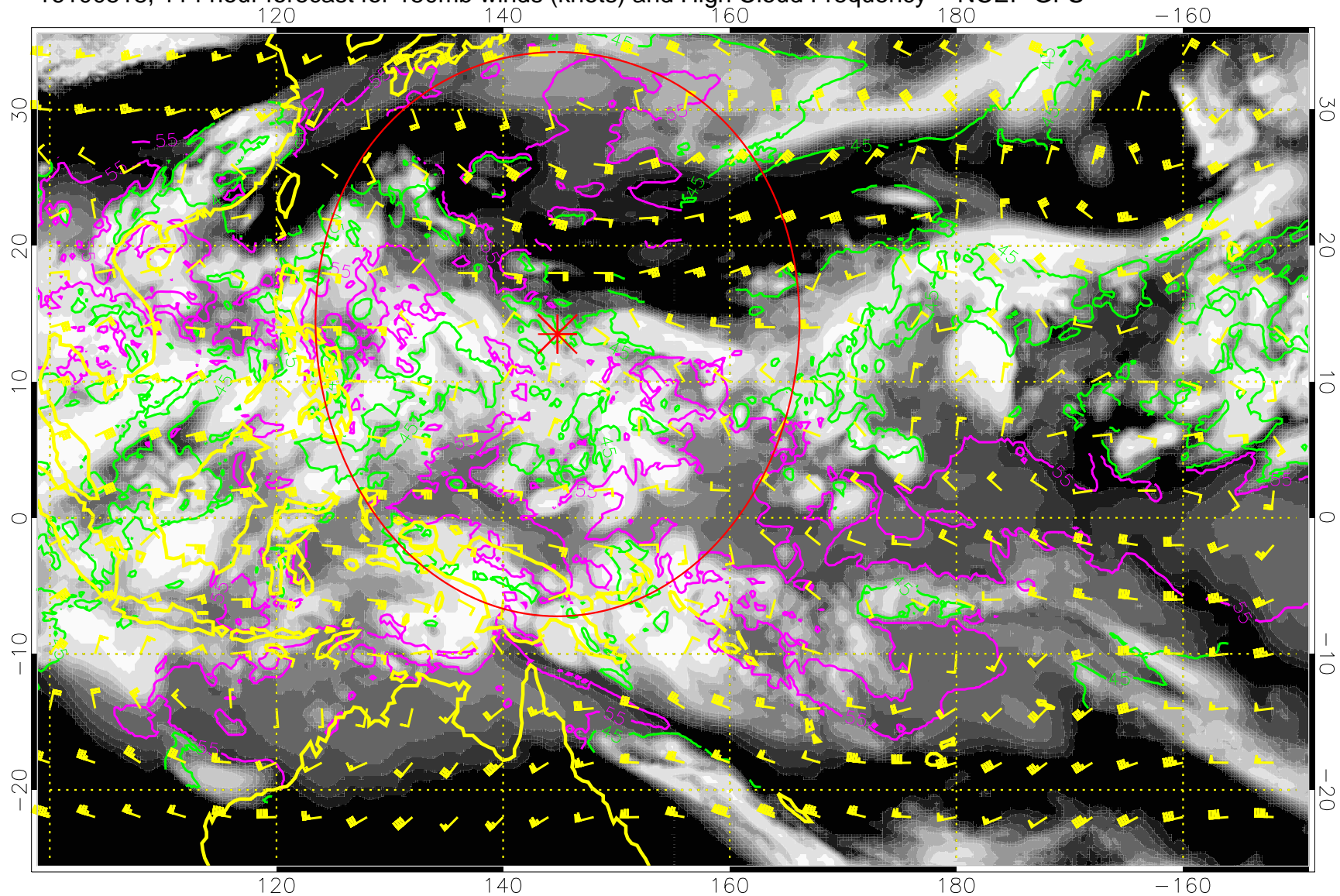
16100512, 108 hour forecast for 150mb winds (knots) and High Cloud Frequency -- NCEP GFS



45 kft
55 kft

Range ring of 2304 km

16100518, 114 hour forecast for 150mb winds (knots) and High Cloud Frequency -- NCEP GFS

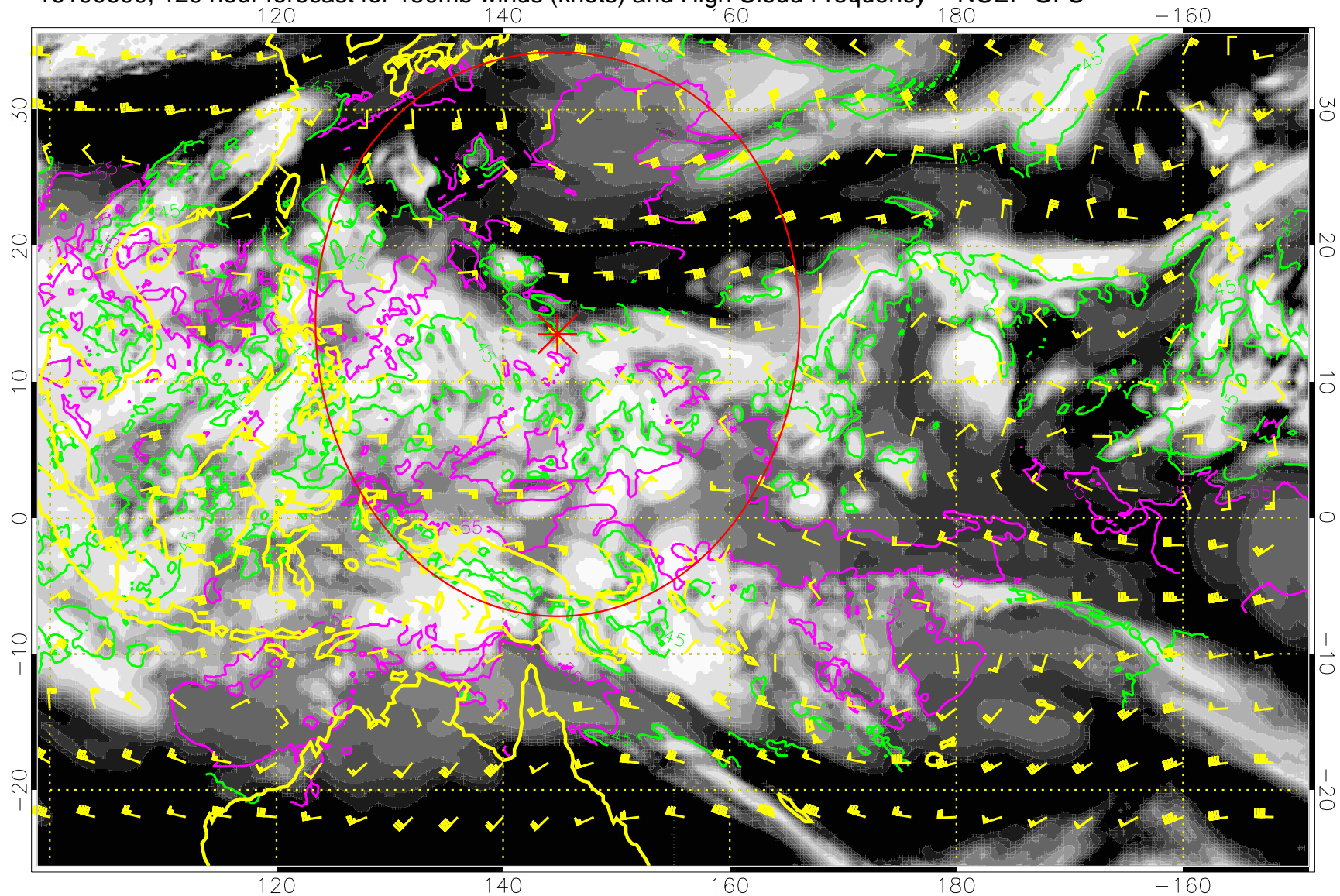


0.0 0.2 0.4 0.6 0.8 1.0
High Cloud Frequency

45 kft
55 kft

Range ring of 2304 km

16100600, 120 hour forecast for 150mb winds (knots) and High Cloud Frequency -- NCEP GFS



0.0 0.2 0.4 0.6 0.8 1.0
High Cloud Frequency

45 kft
55 kft

Range ring of 2304 km