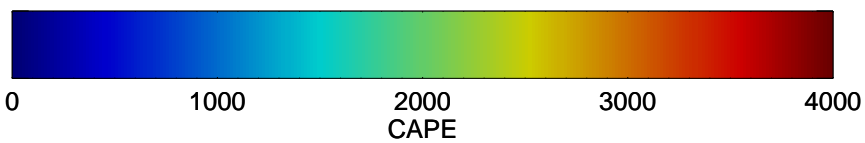
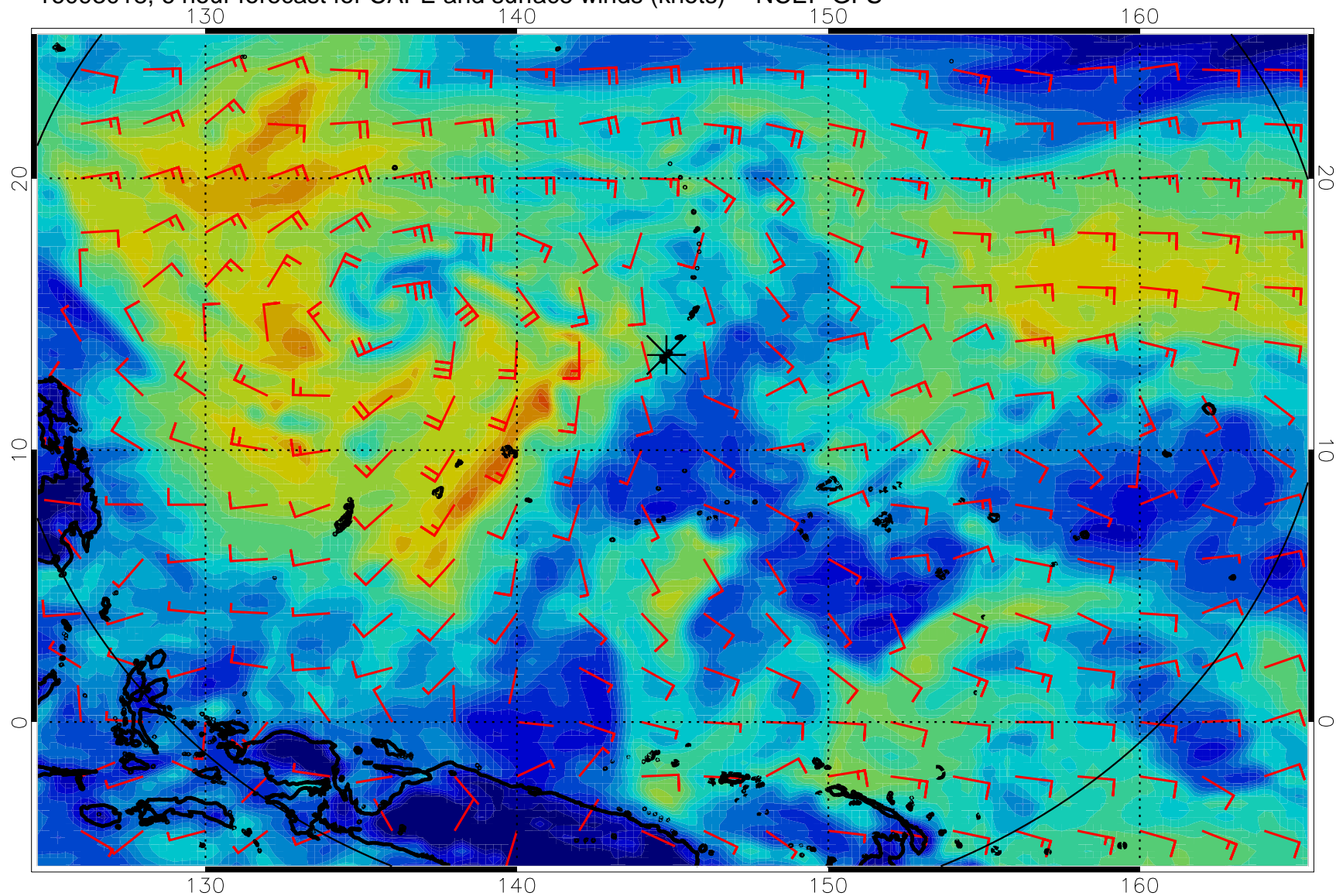
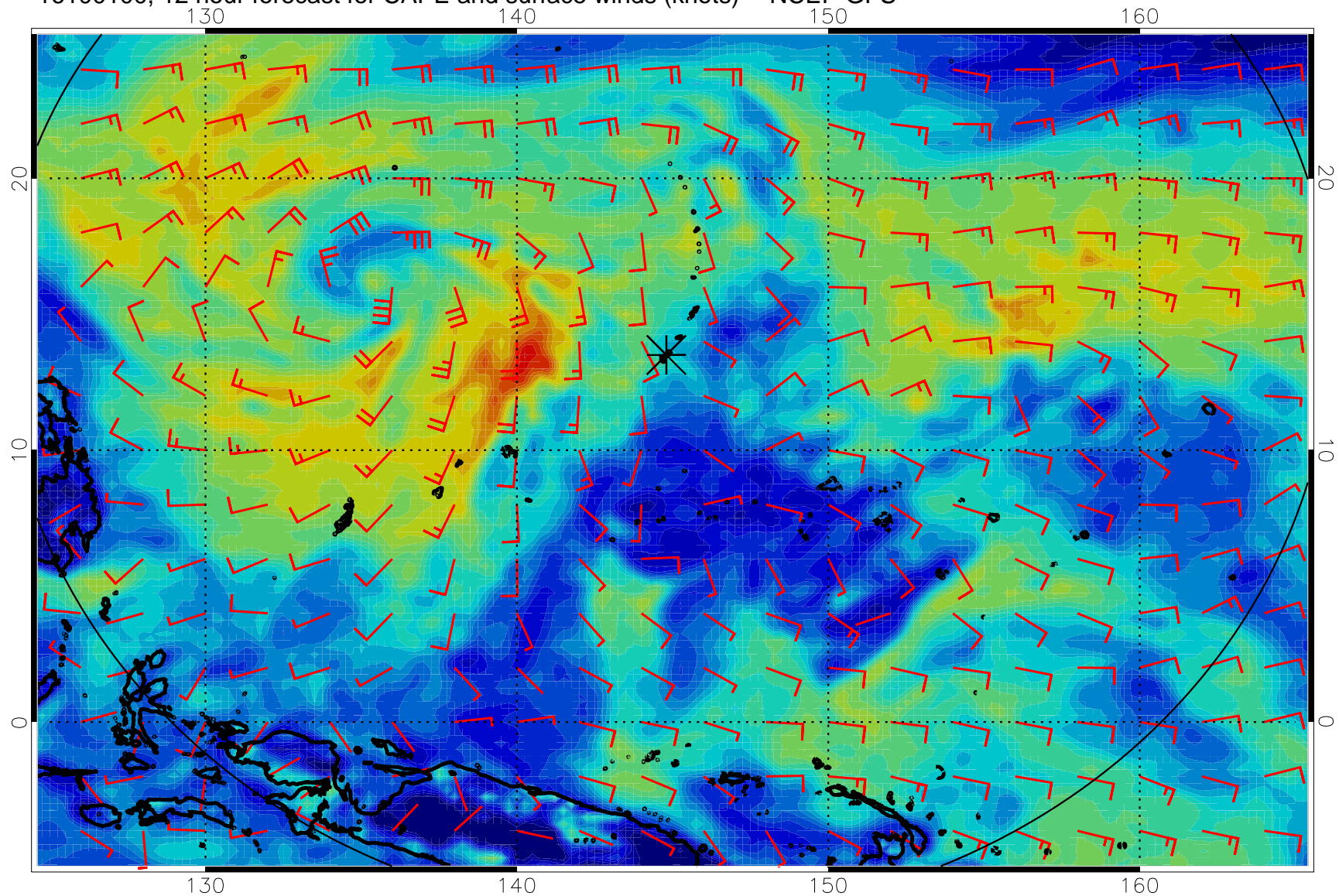


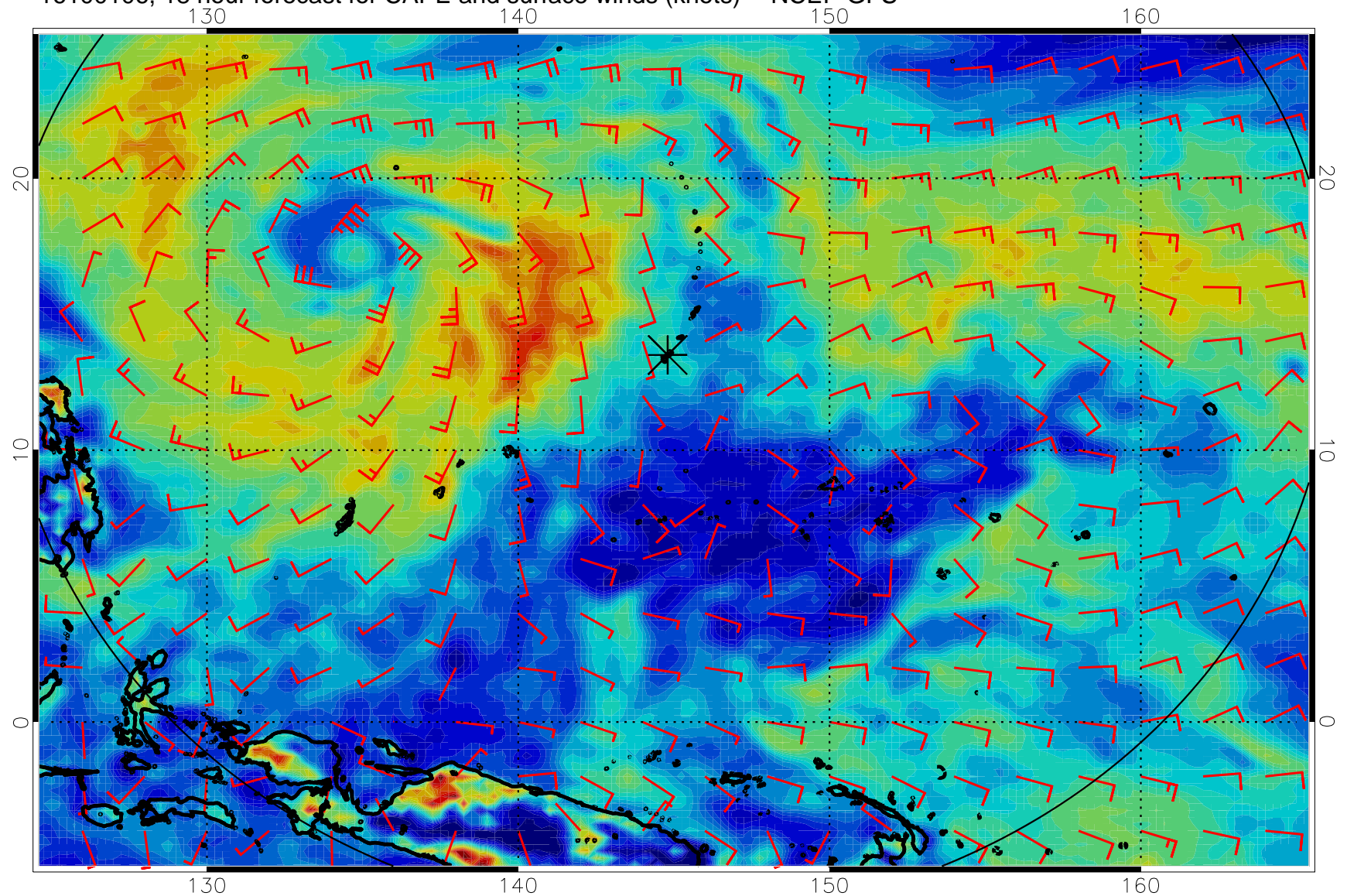
16093018, 6 hour forecast for CAPE and surface winds (knots) -- NCEP GFS



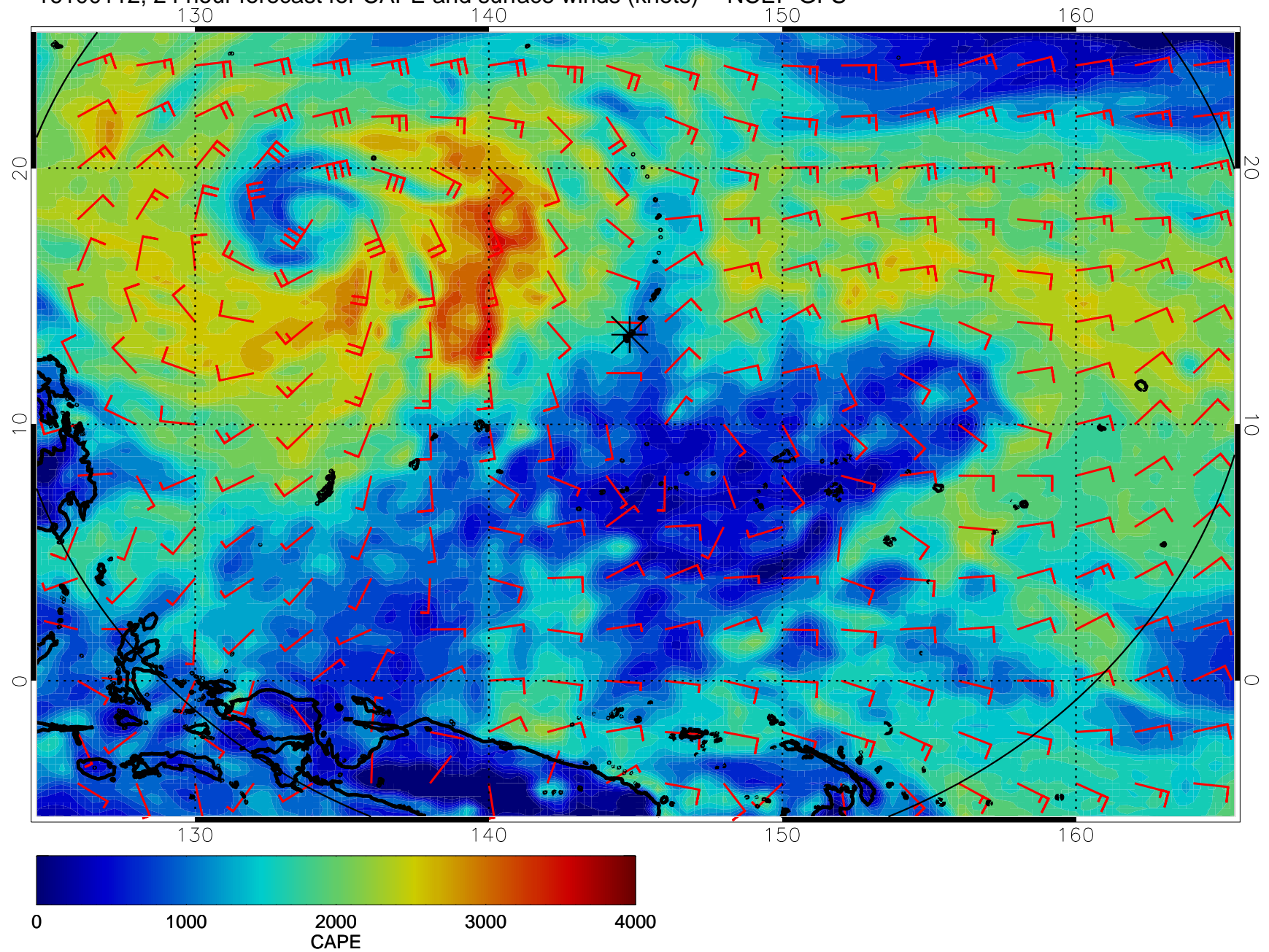
16100100, 12 hour forecast for CAPE and surface winds (knots) -- NCEP GFS



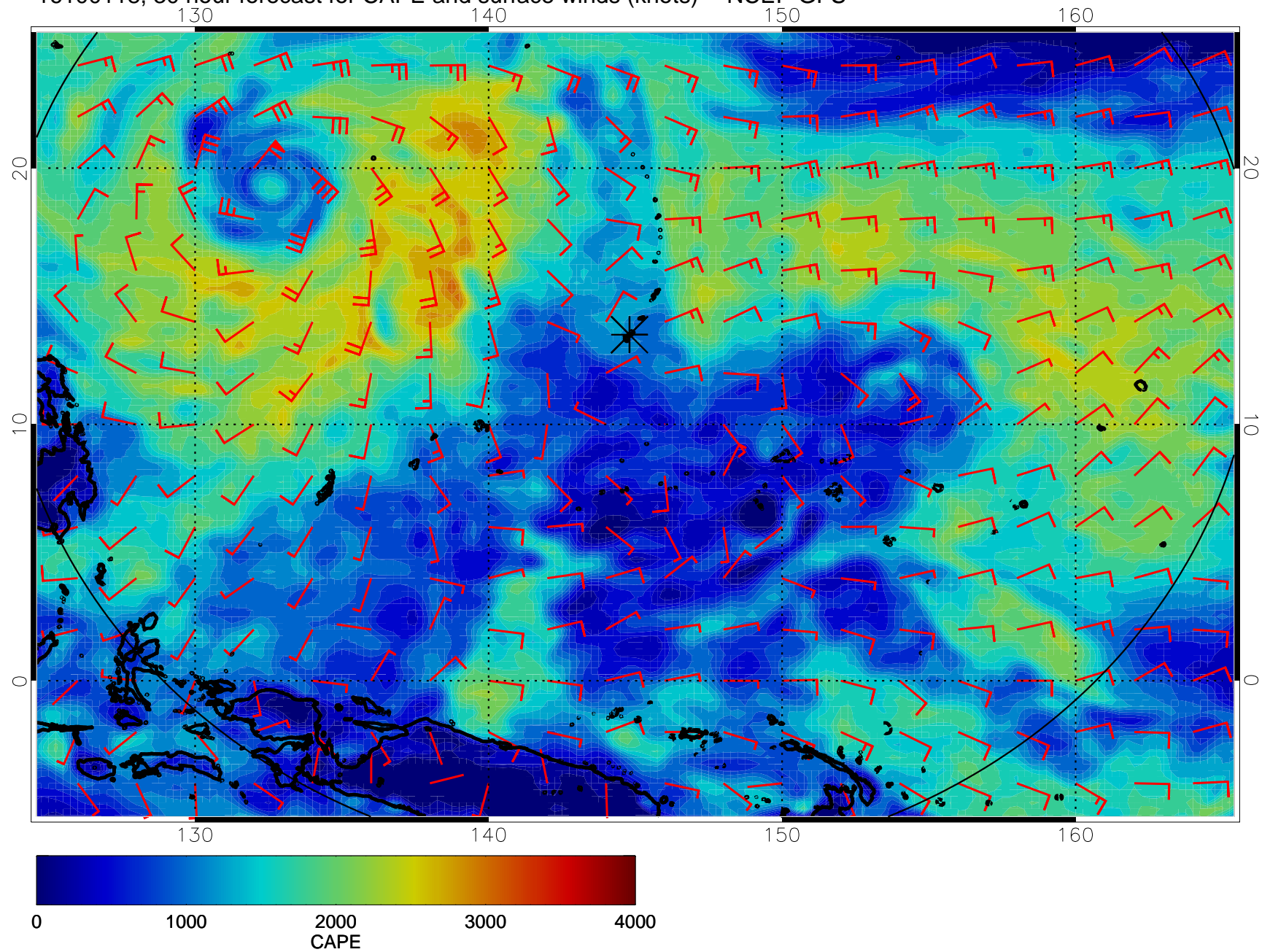
16100106, 18 hour forecast for CAPE and surface winds (knots) -- NCEP GFS



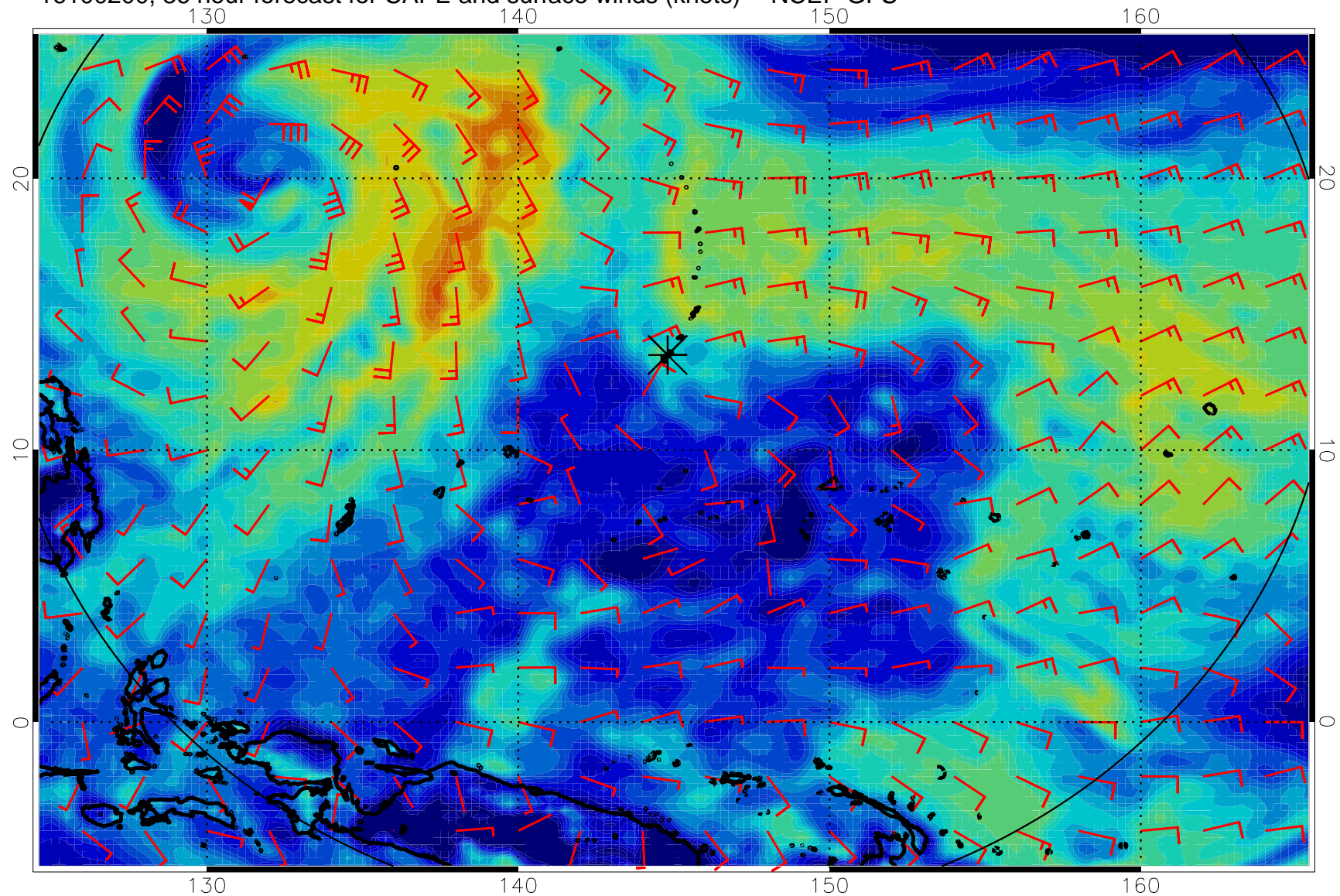
16100112, 24 hour forecast for CAPE and surface winds (knots) -- NCEP GFS



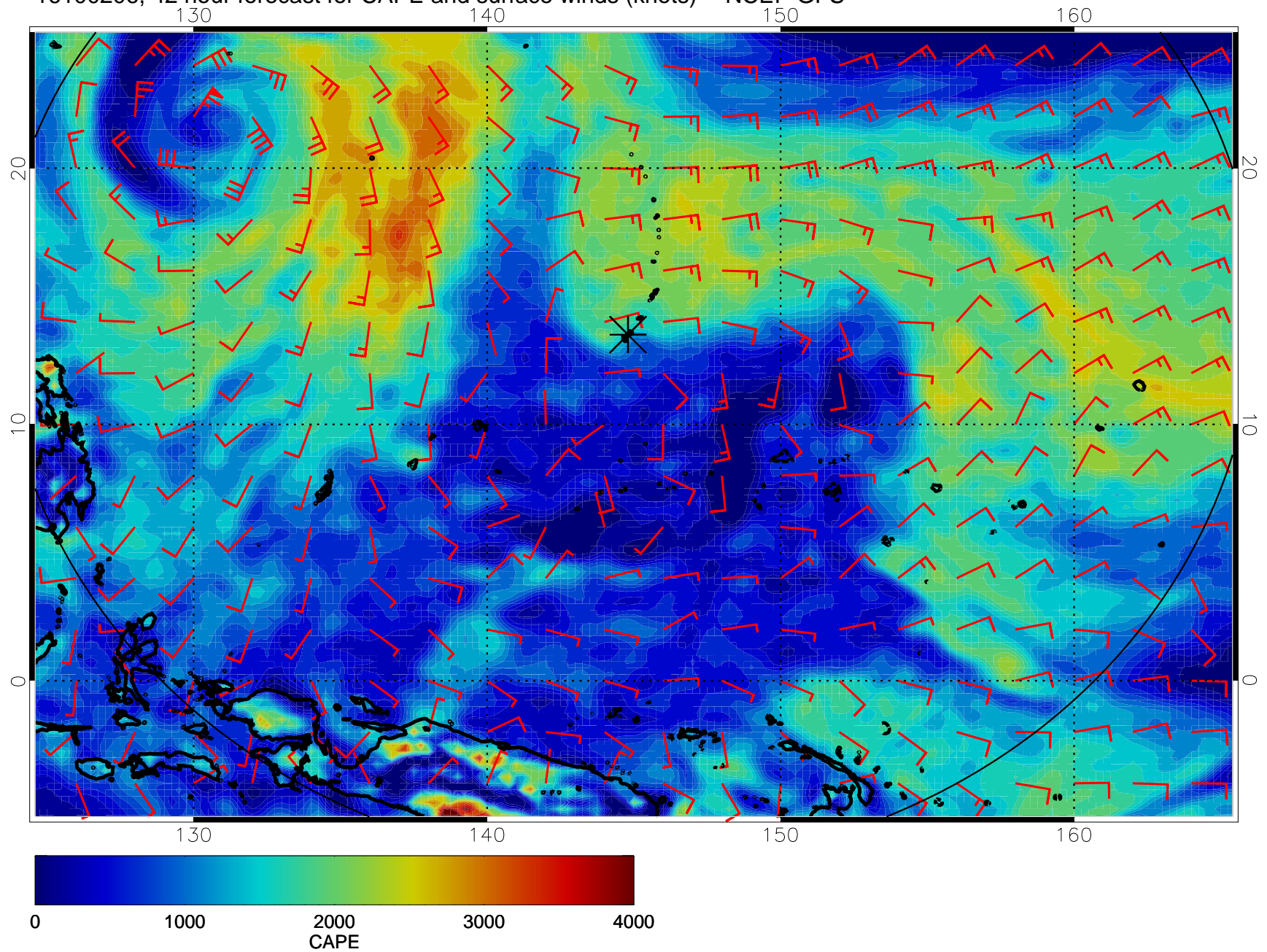
16100118, 30 hour forecast for CAPE and surface winds (knots) -- NCEP GFS



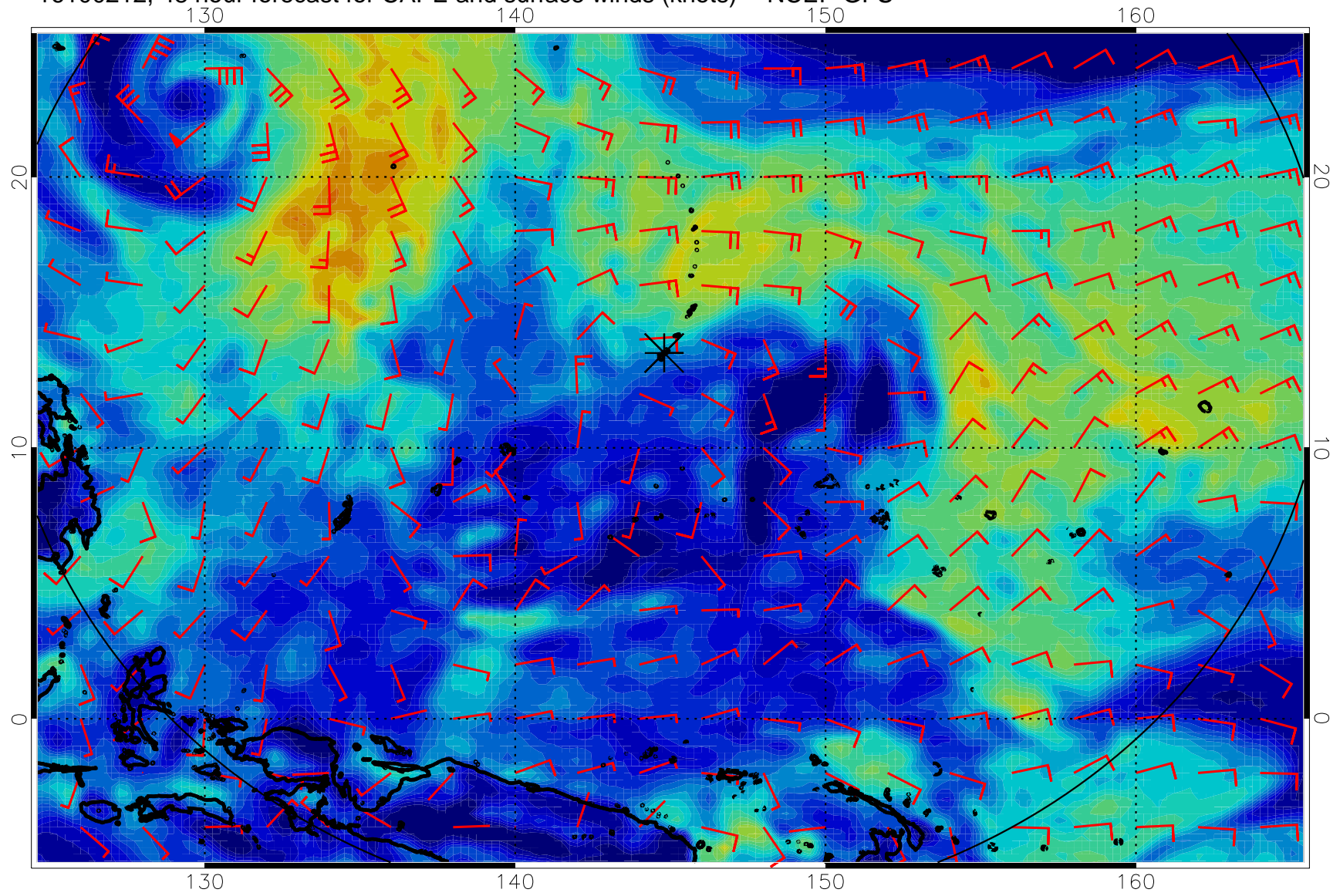
16100200, 36 hour forecast for CAPE and surface winds (knots) -- NCEP GFS



16100206, 42 hour forecast for CAPE and surface winds (knots) -- NCEP GFS

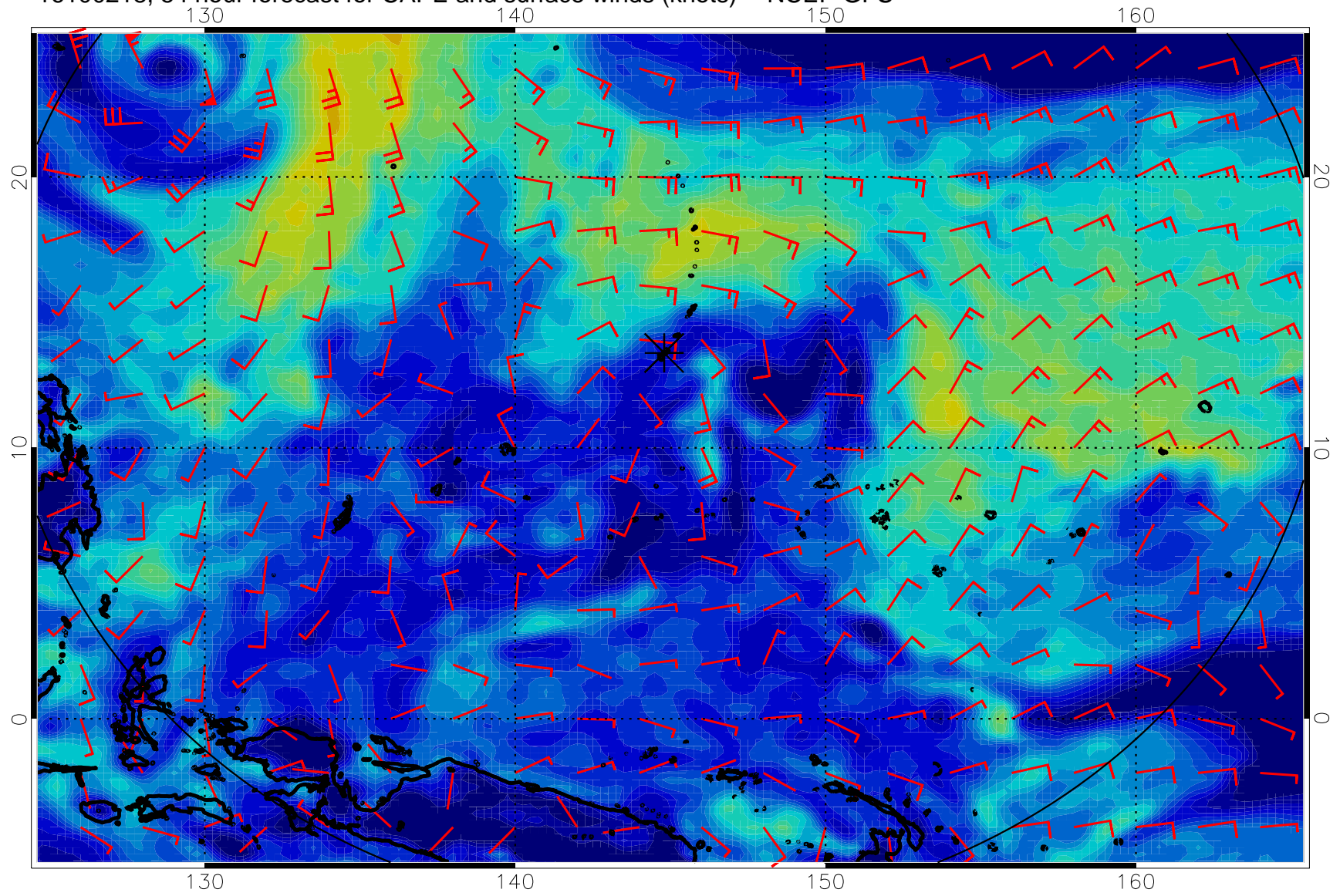


16100212, 48 hour forecast for CAPE and surface winds (knots) -- NCEP GFS

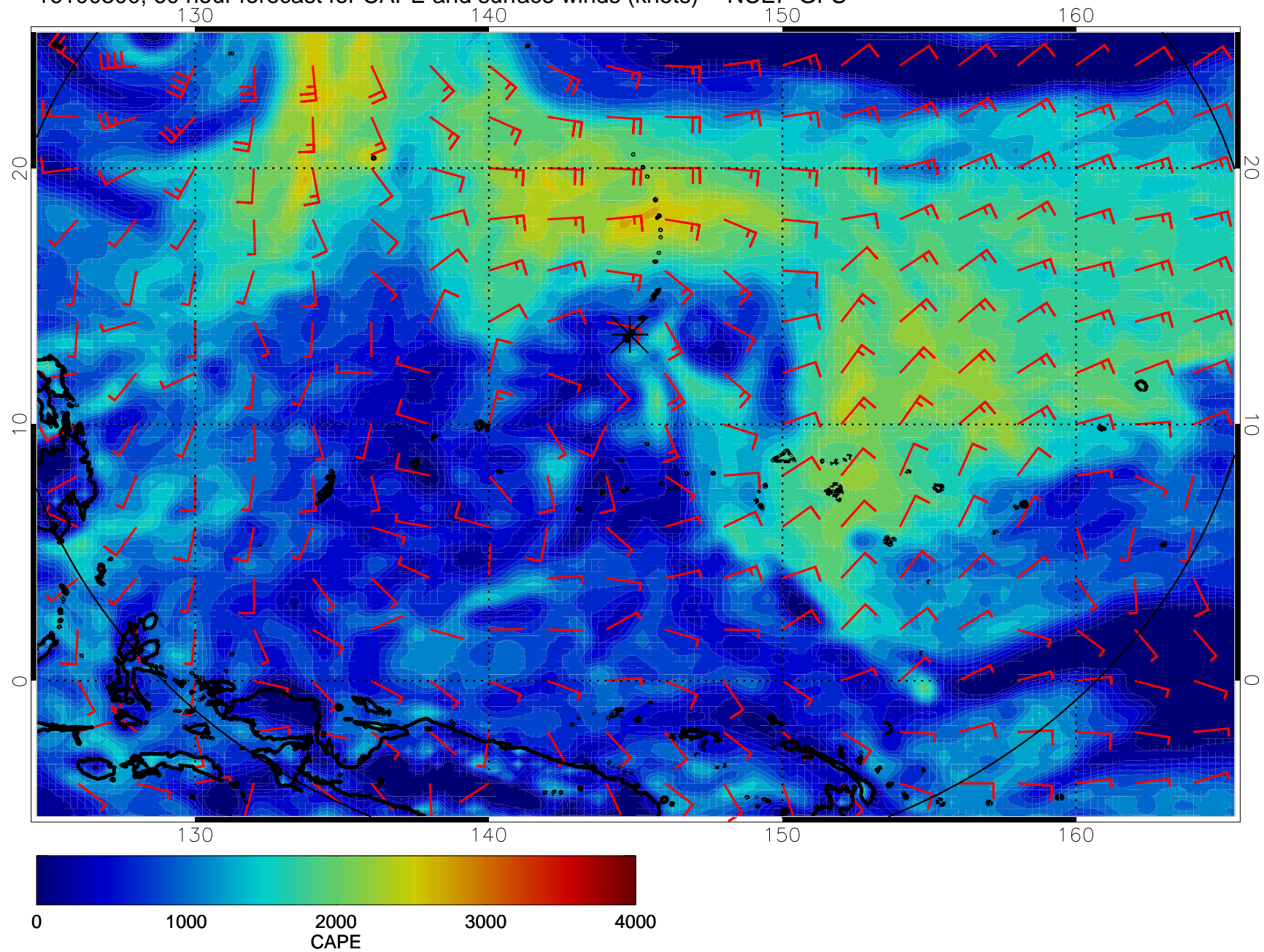




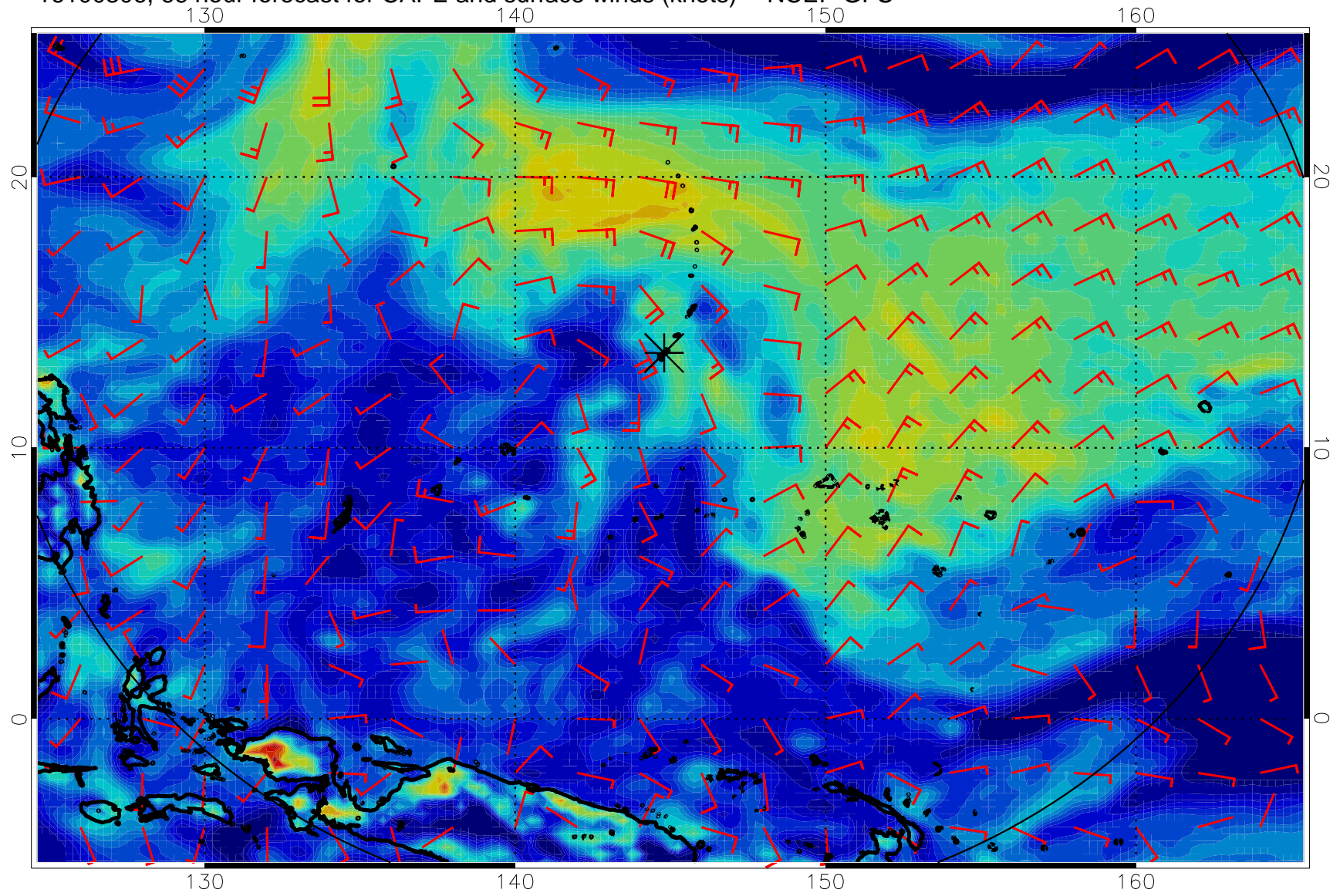
16100218, 54 hour forecast for CAPE and surface winds (knots) -- NCEP GFS



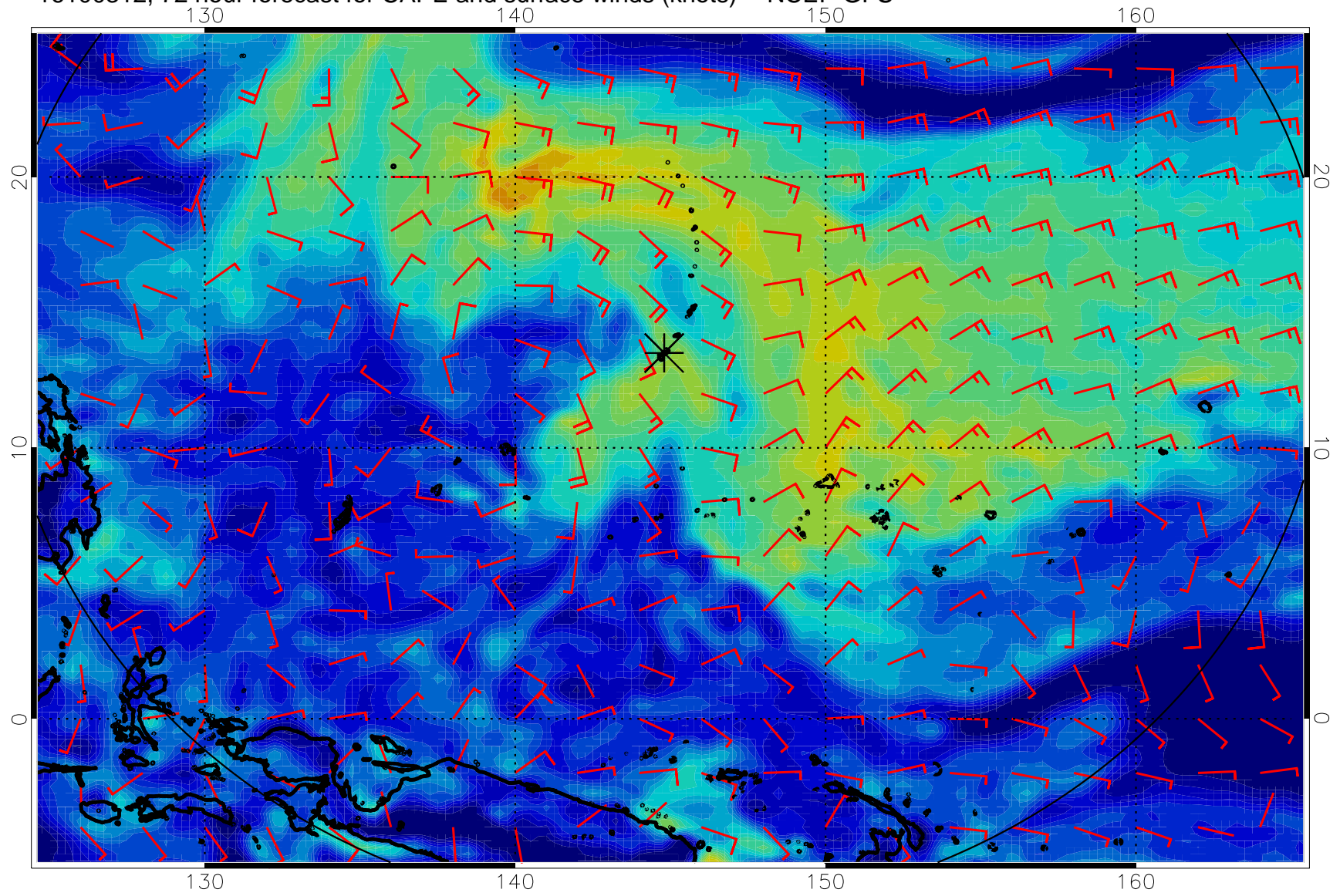
16100300, 60 hour forecast for CAPE and surface winds (knots) -- NCEP GFS



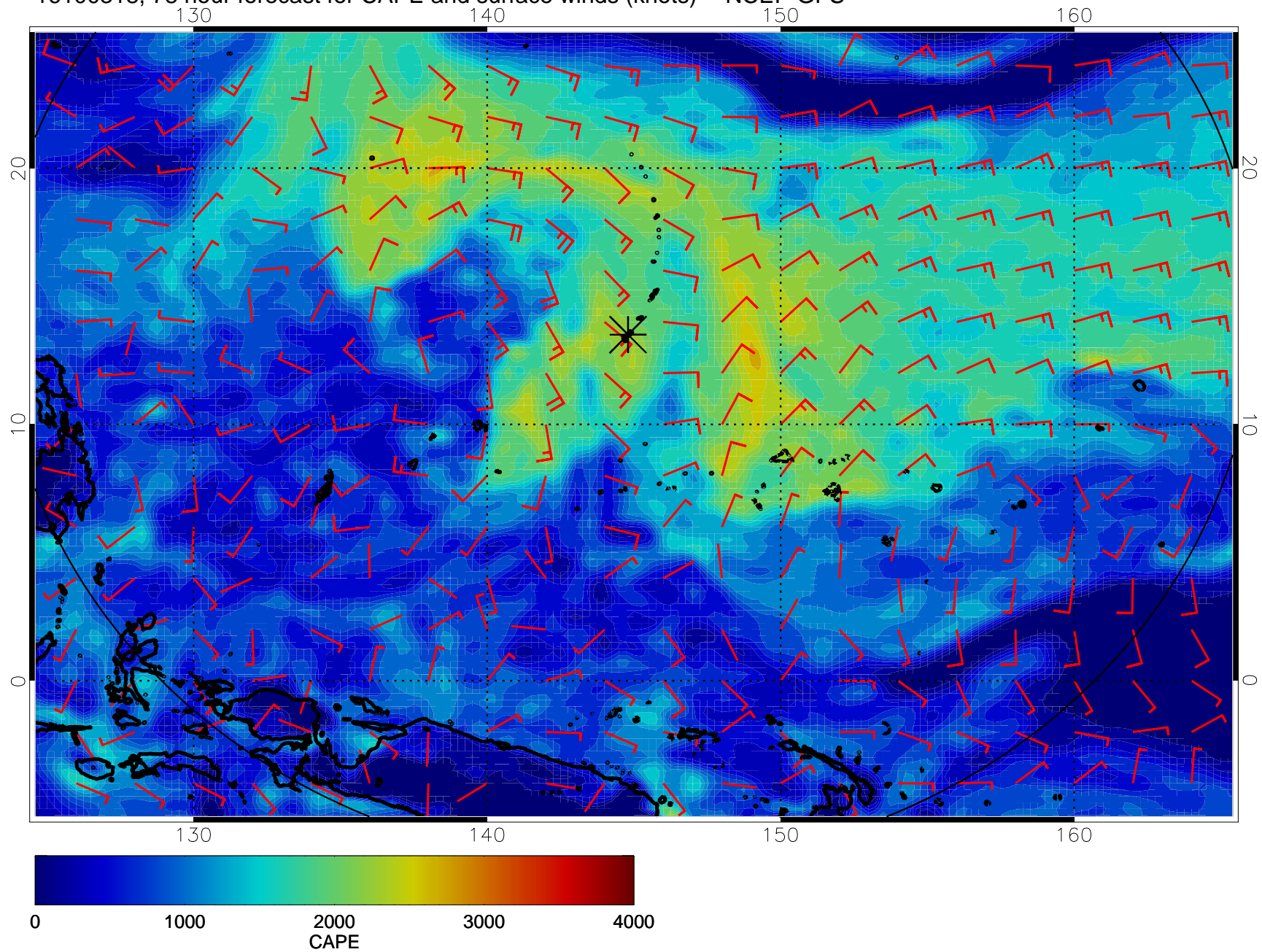
16100306, 66 hour forecast for CAPE and surface winds (knots) -- NCEP GFS



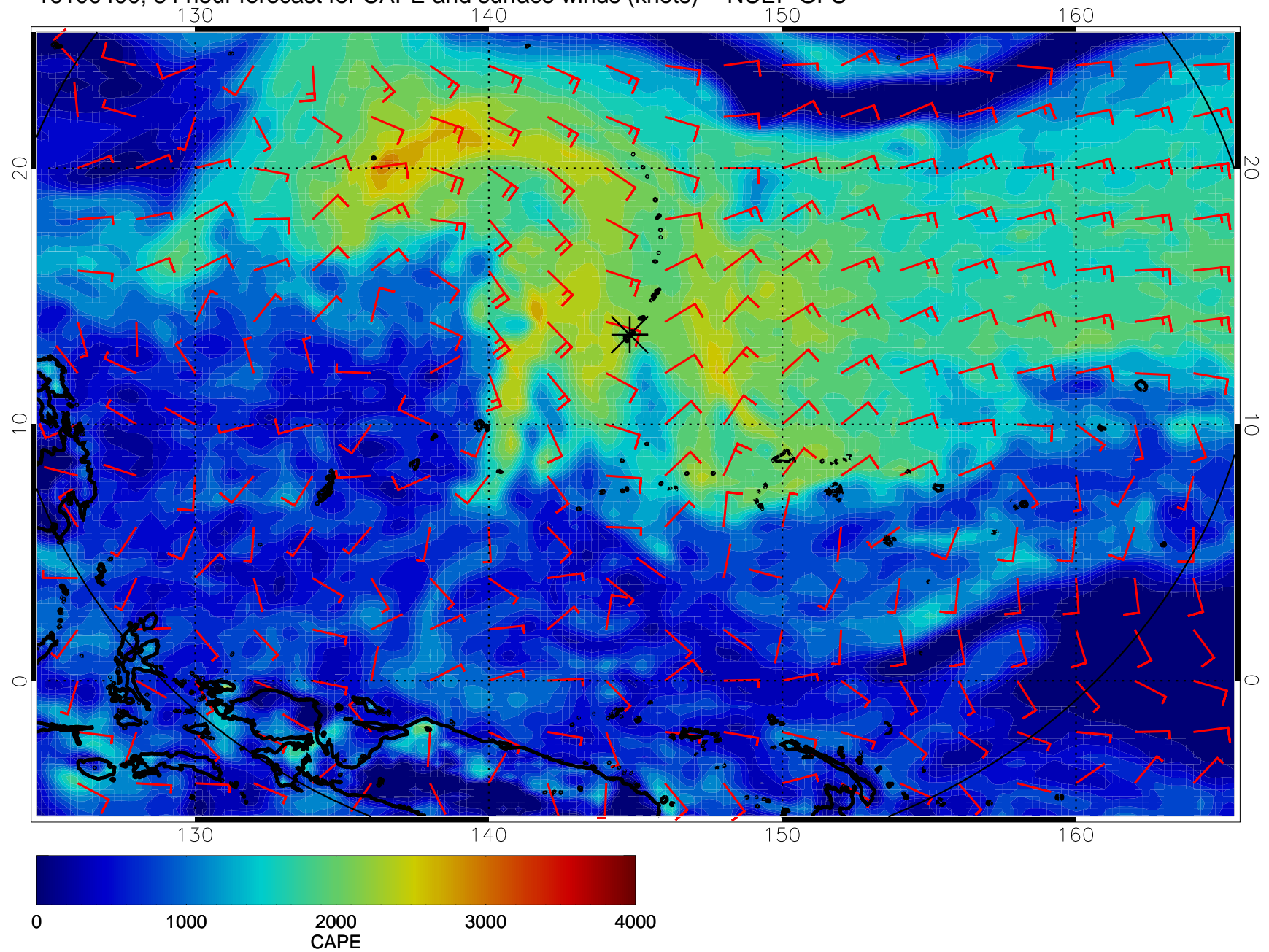
16100312, 72 hour forecast for CAPE and surface winds (knots) -- NCEP GFS



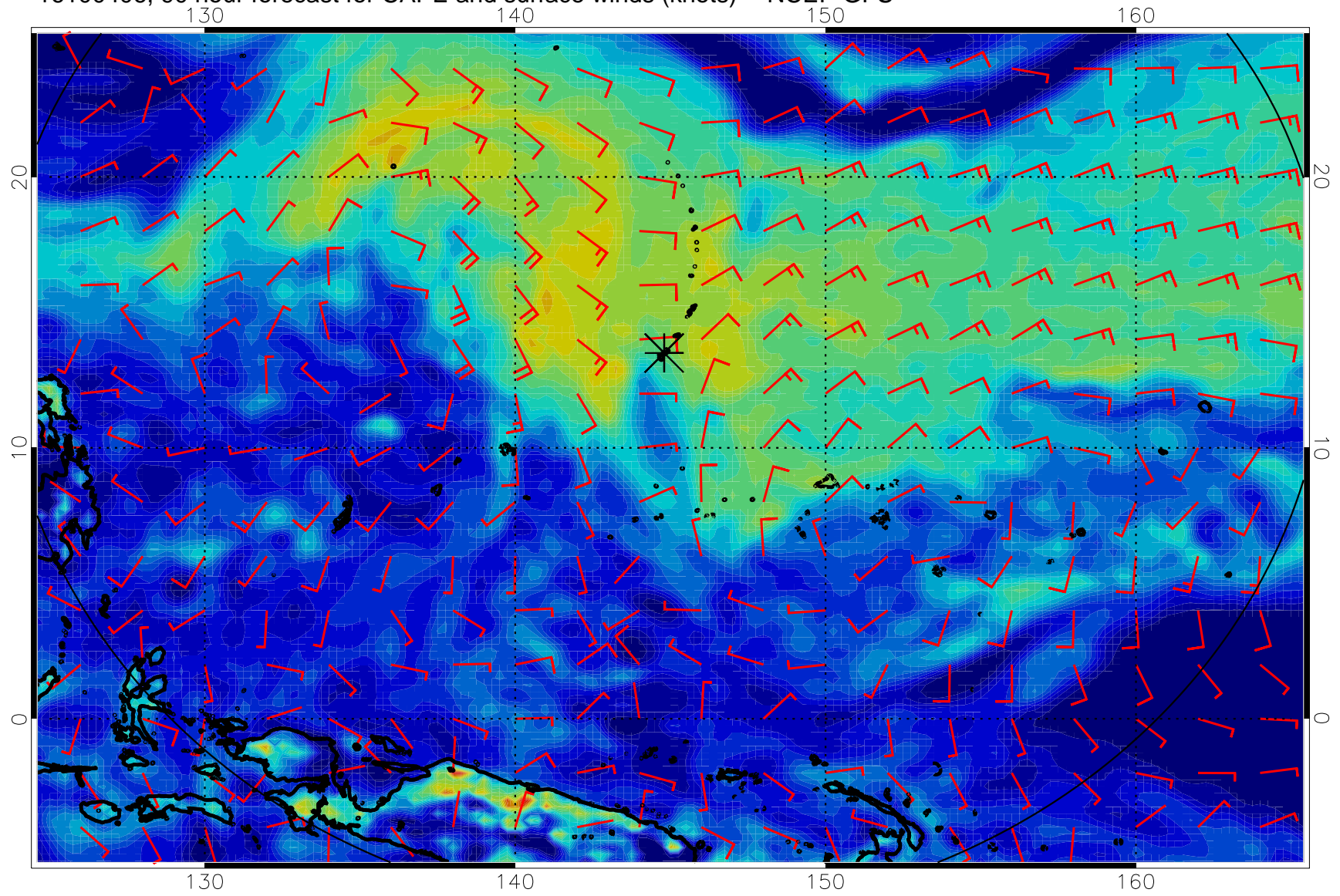
16100318, 78 hour forecast for CAPE and surface winds (knots) -- NCEP GFS



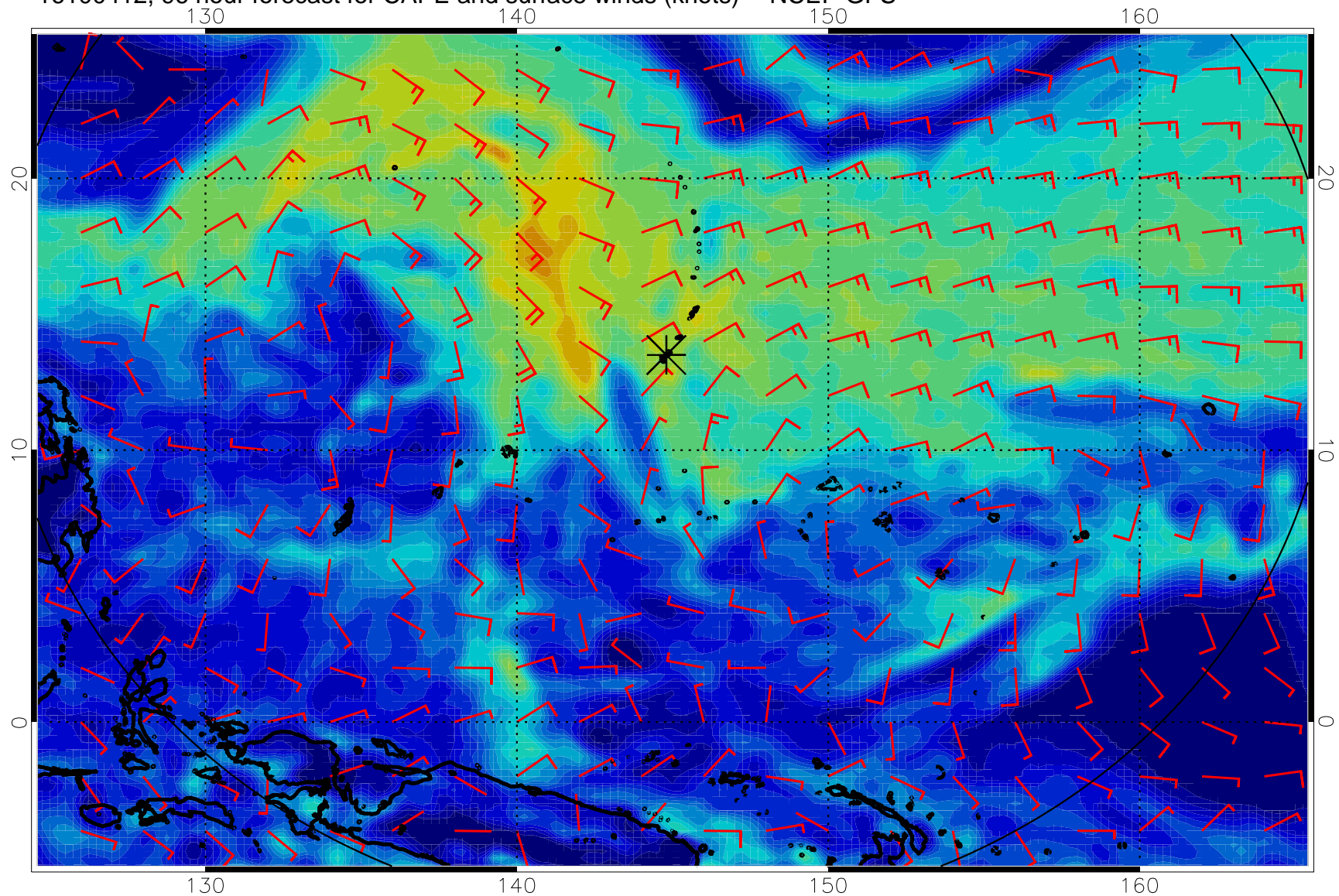
16100400, 84 hour forecast for CAPE and surface winds (knots) -- NCEP GFS



16100406, 90 hour forecast for CAPE and surface winds (knots) -- NCEP GFS

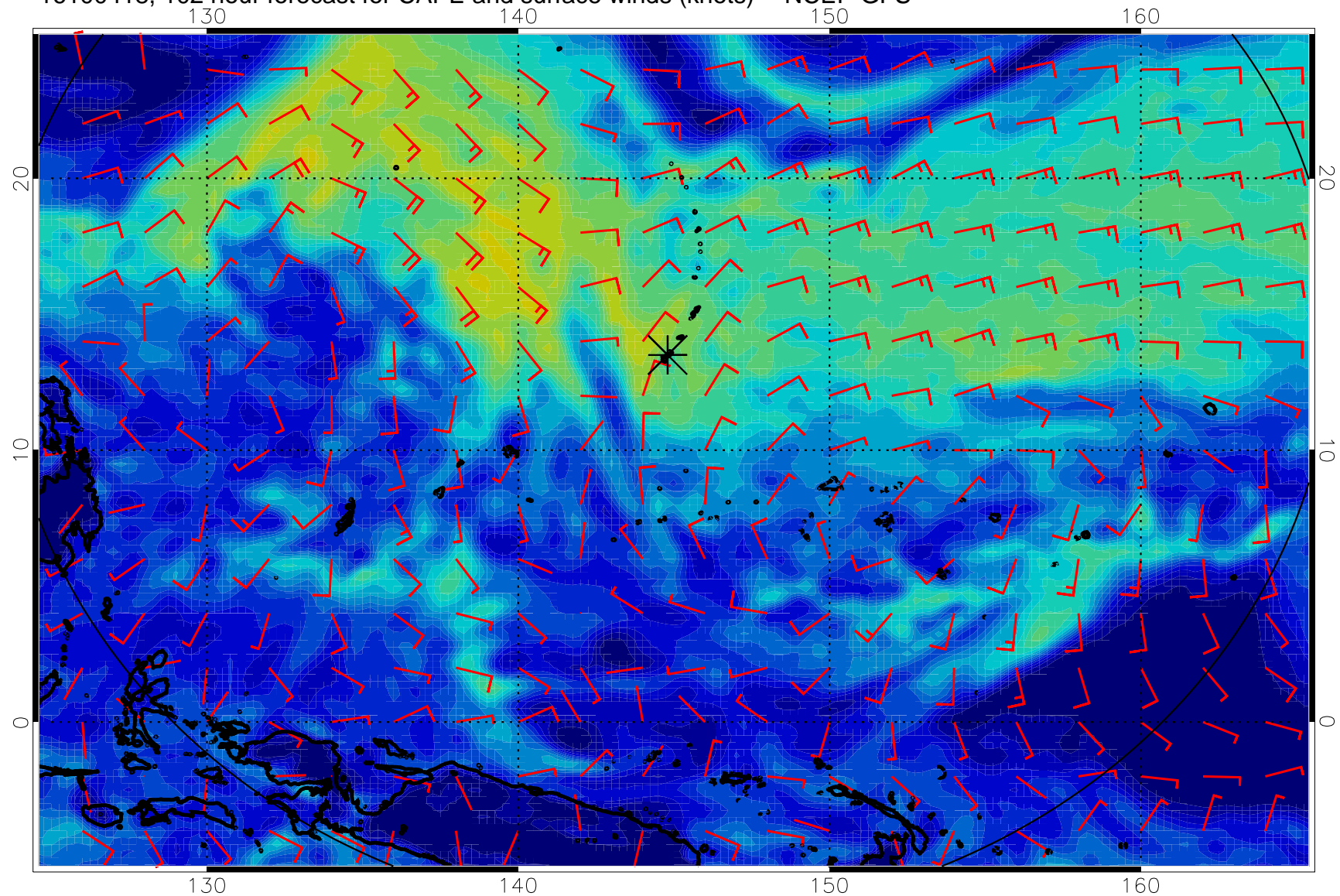


16100412, 96 hour forecast for CAPE and surface winds (knots) -- NCEP GFS

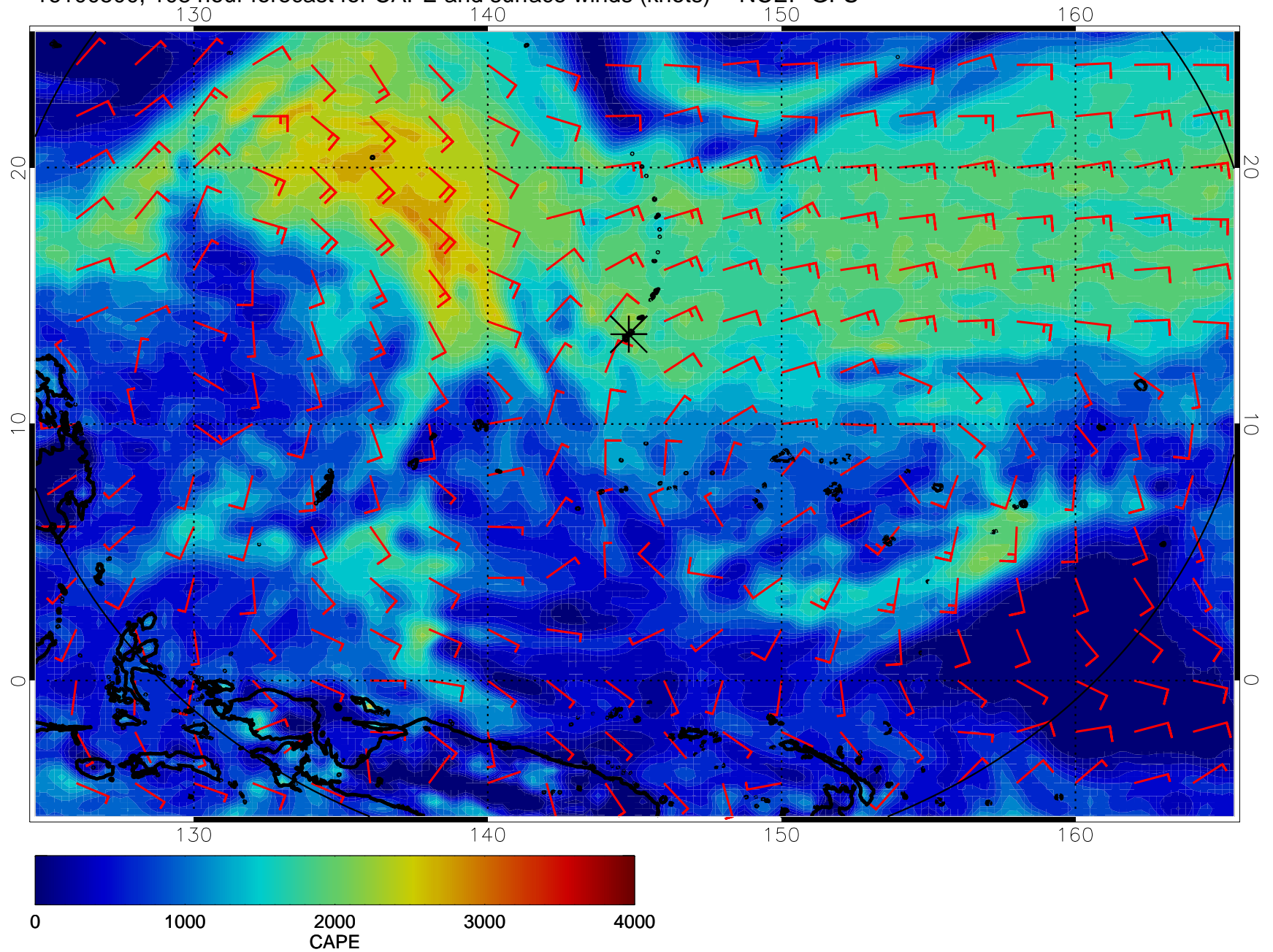




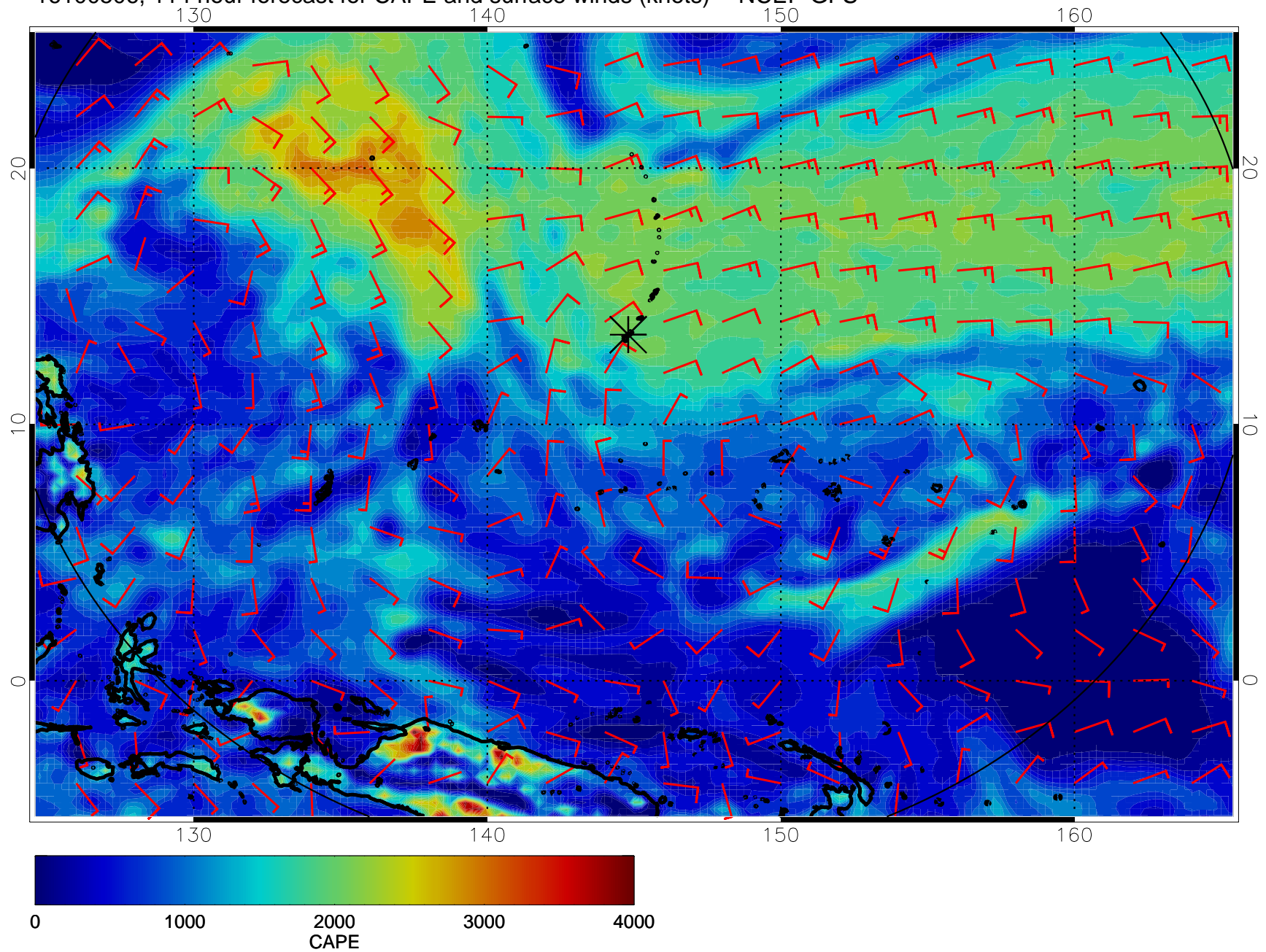
16100418, 102 hour forecast for CAPE and surface winds (knots) -- NCEP GFS



16100500, 108 hour forecast for CAPE and surface winds (knots) -- NCEP GFS



16100506, 114 hour forecast for CAPE and surface winds (knots) -- NCEP GFS



16100512, 120 hour forecast for CAPE and surface winds (knots) -- NCEP GFS

