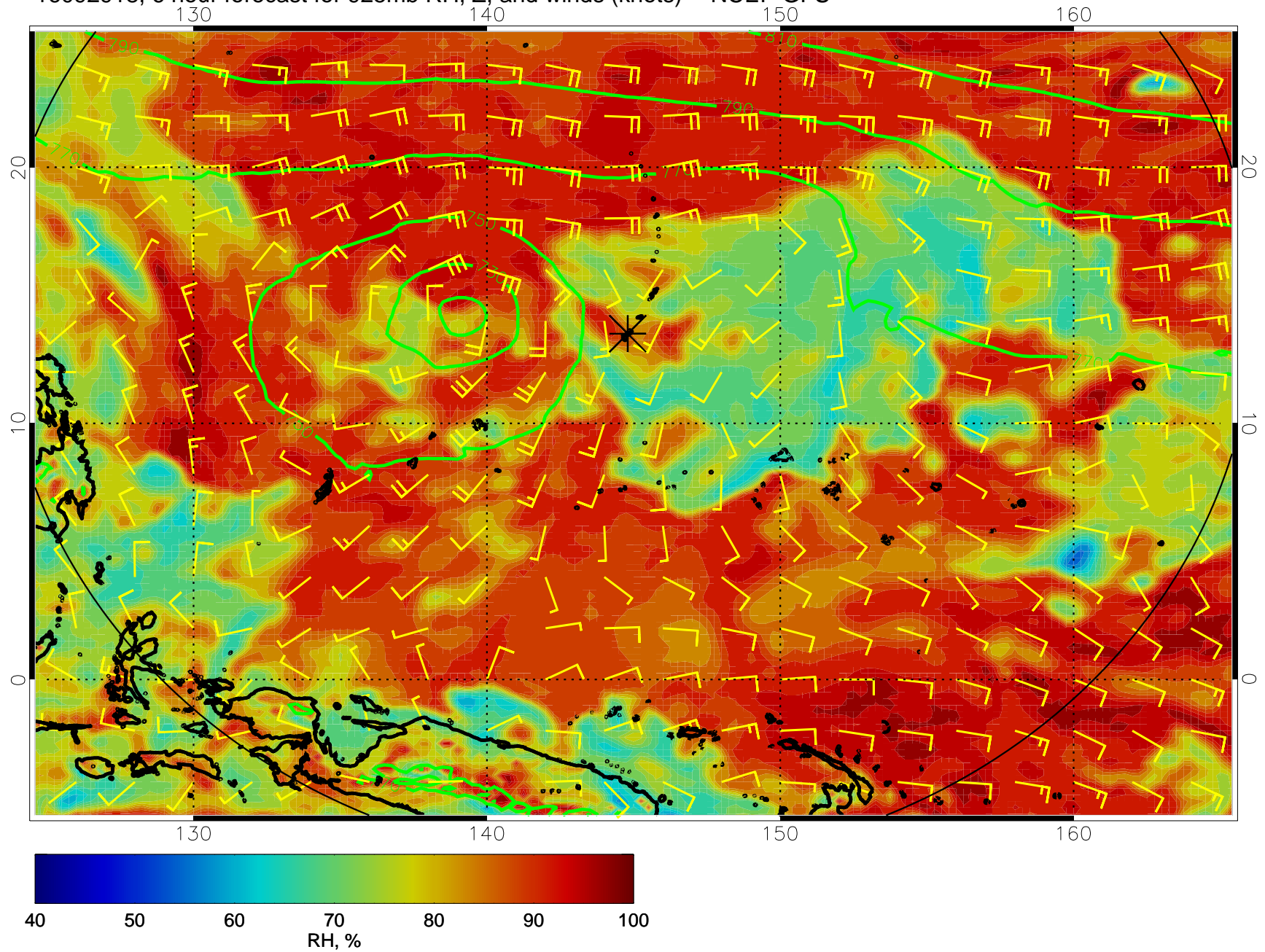
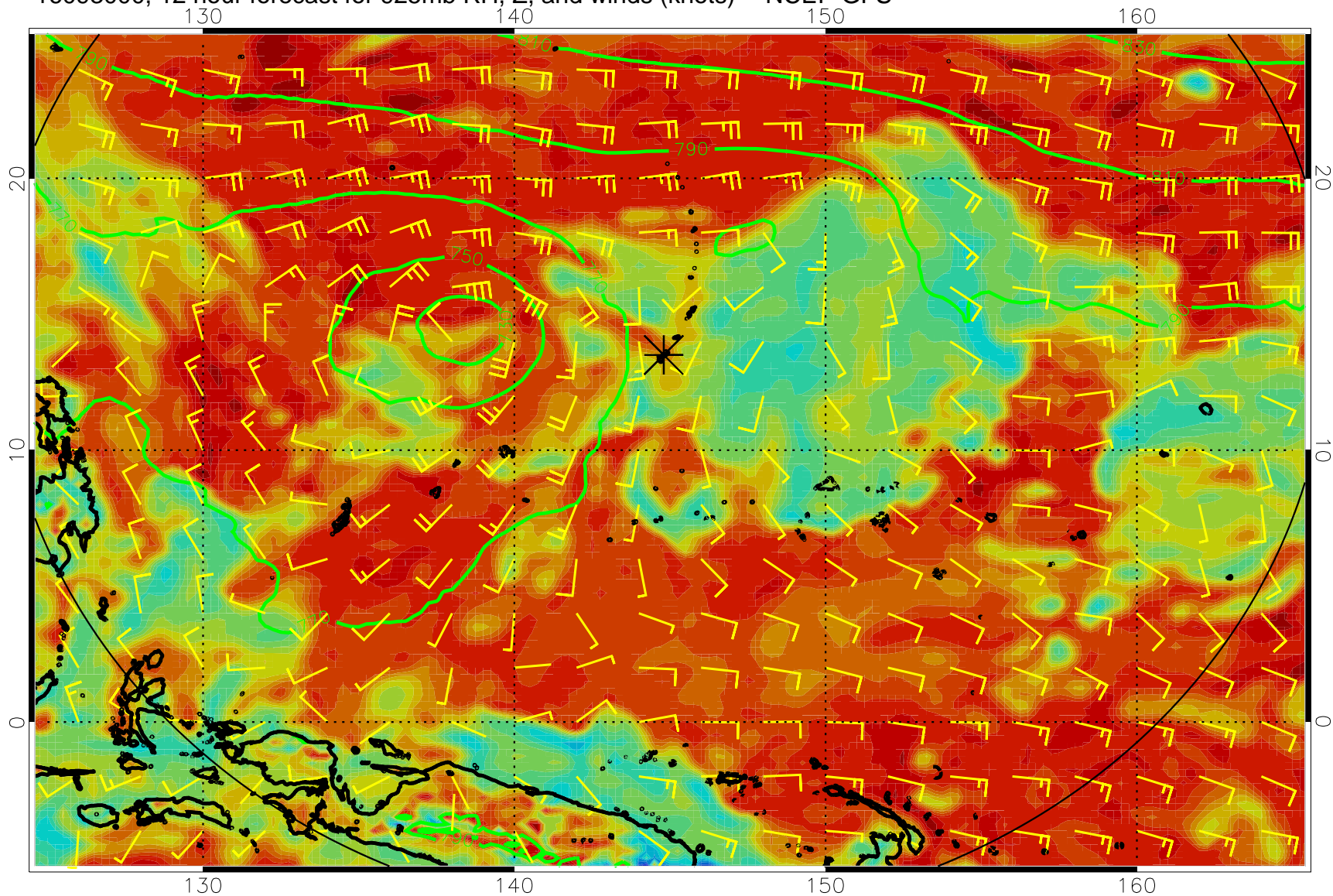


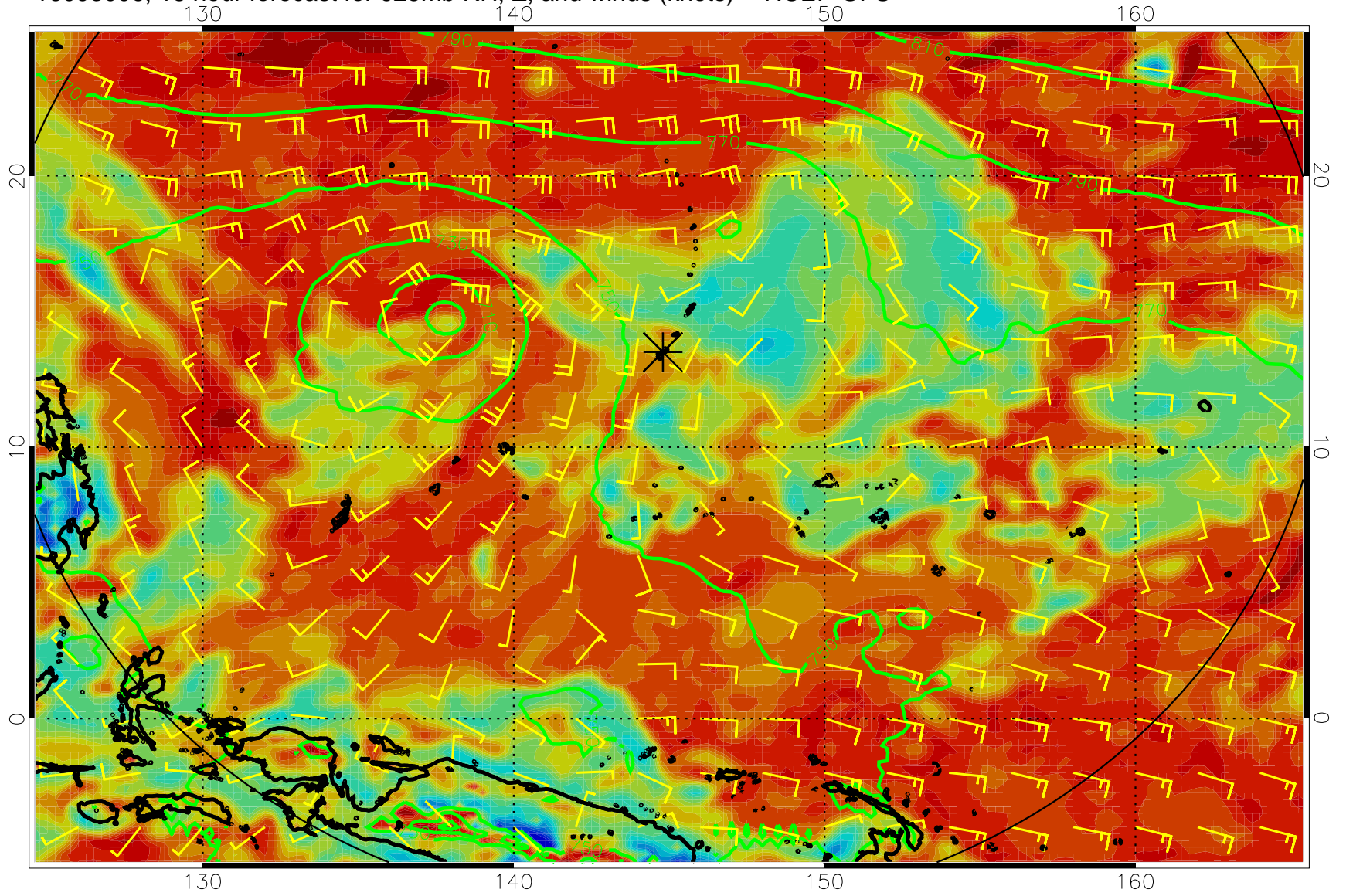
16092918, 6 hour forecast for 925mb RH, Z, and winds (knots) -- NCEP GFS



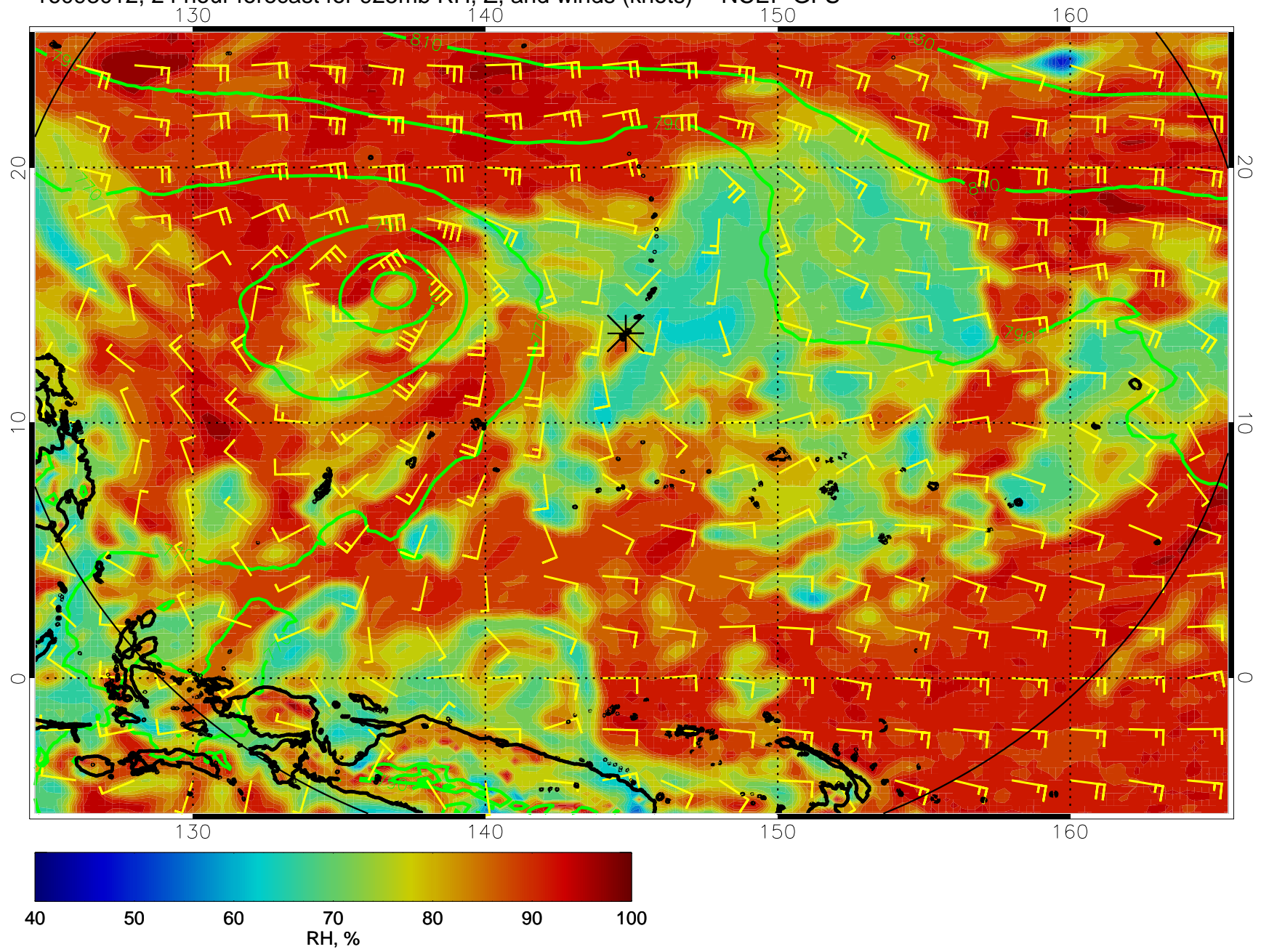
16093000, 12 hour forecast for 925mb RH, Z, and winds (knots) -- NCEP GFS



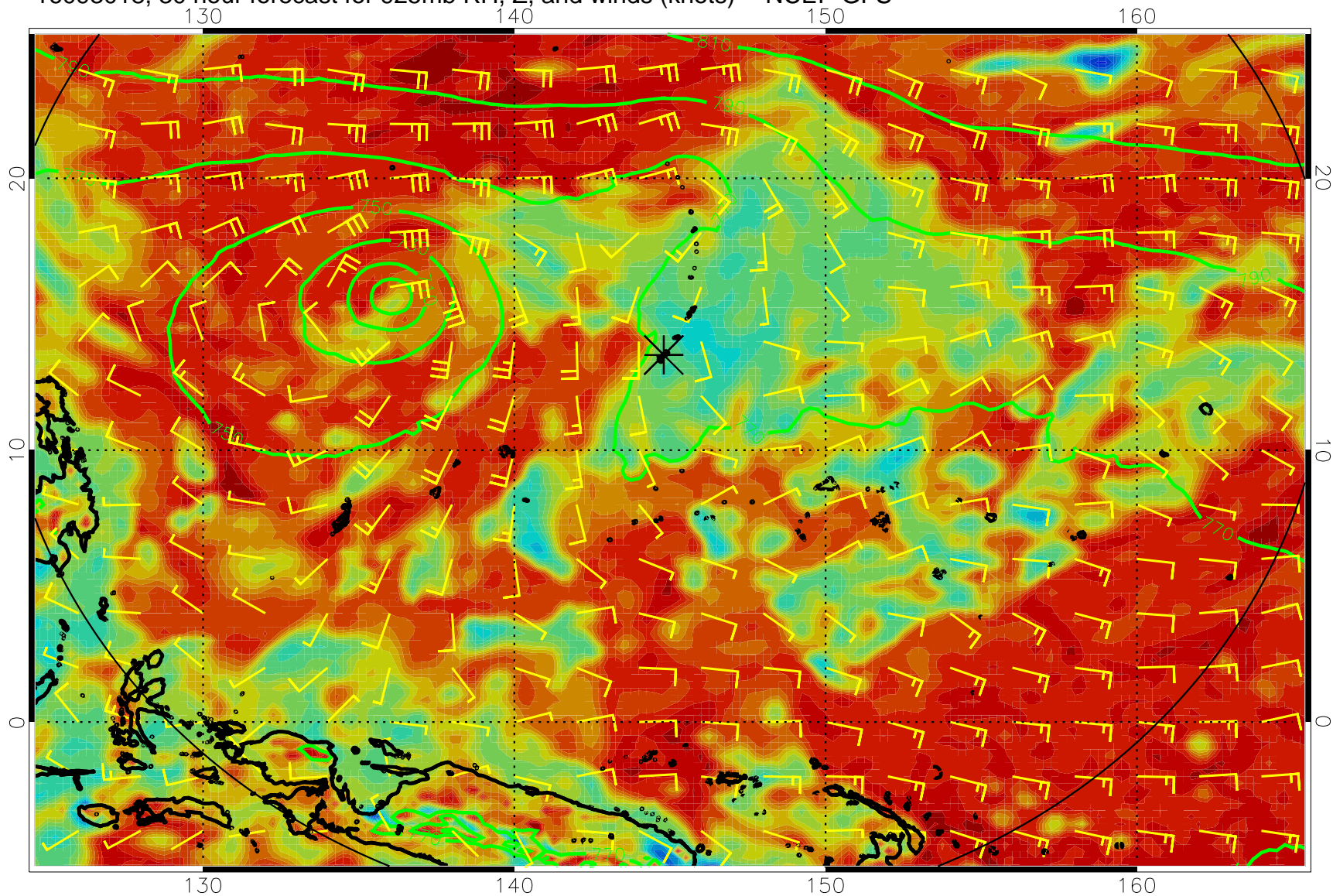
16093006, 18 hour forecast for 925mb RH, Z, and winds (knots) -- NCEP GFS



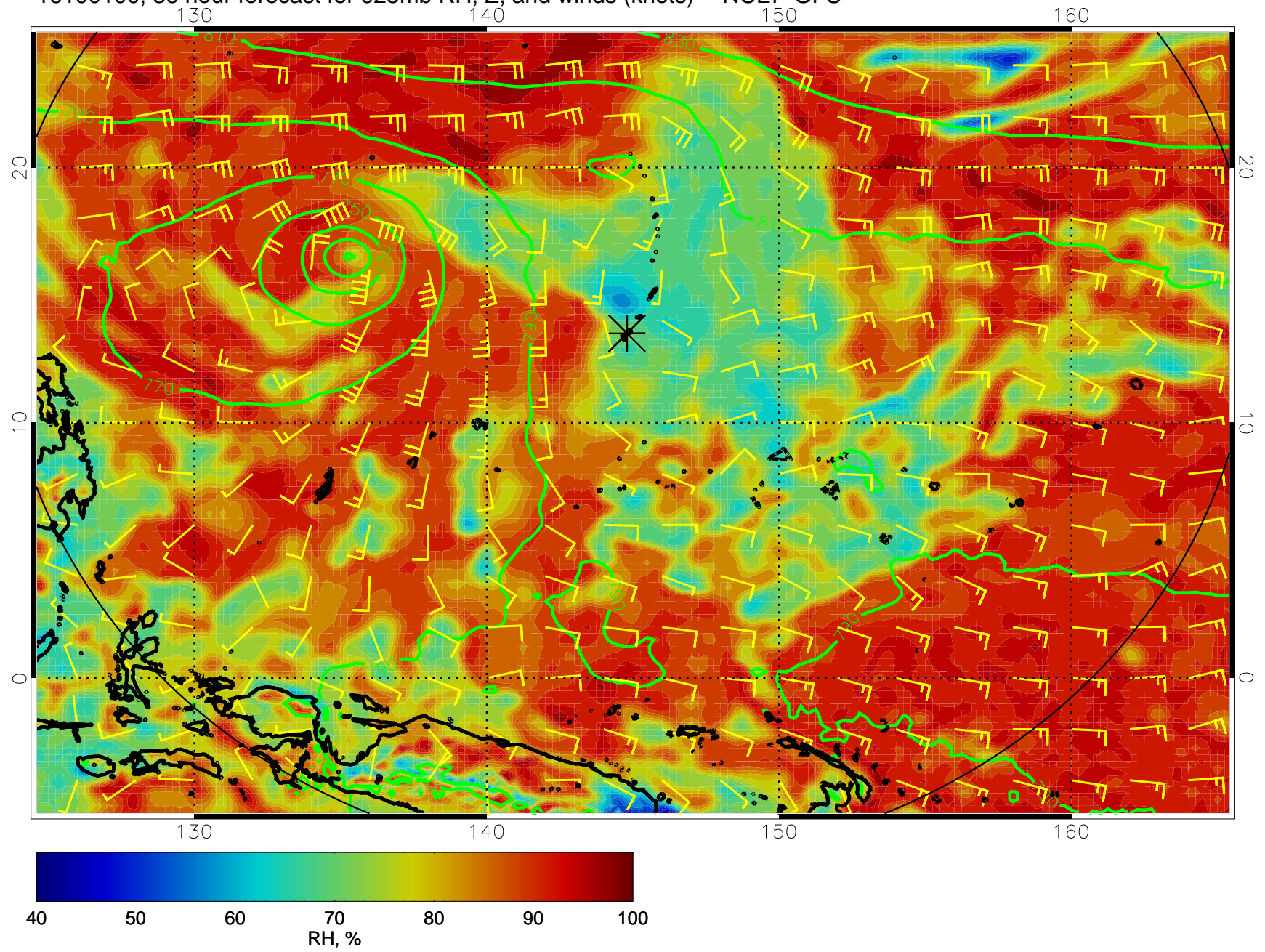
16093012, 24 hour forecast for 925mb RH, Z, and winds (knots) -- NCEP GFS



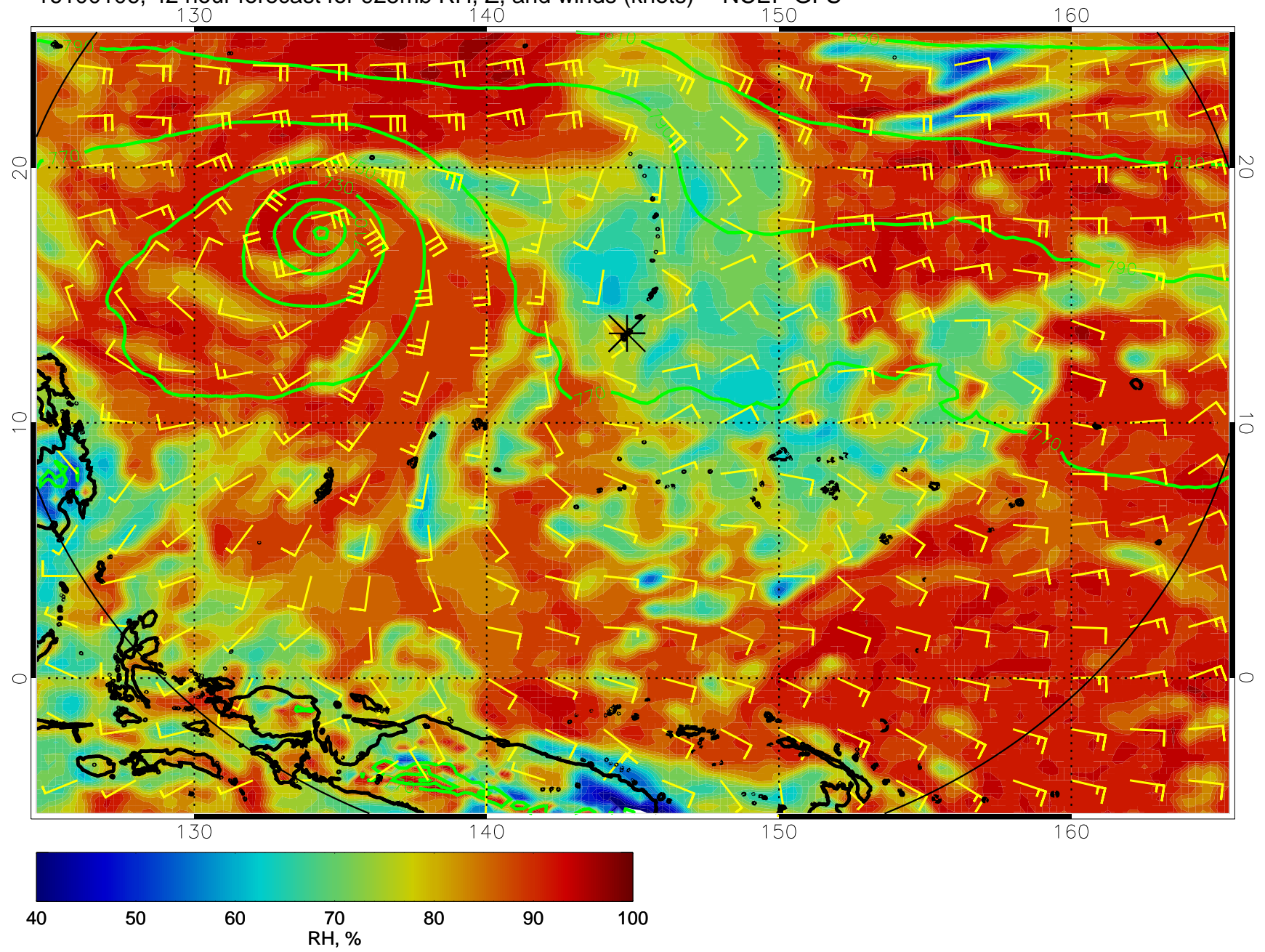
16093018, 30 hour forecast for 925mb RH, Z, and winds (knots) -- NCEP GFS



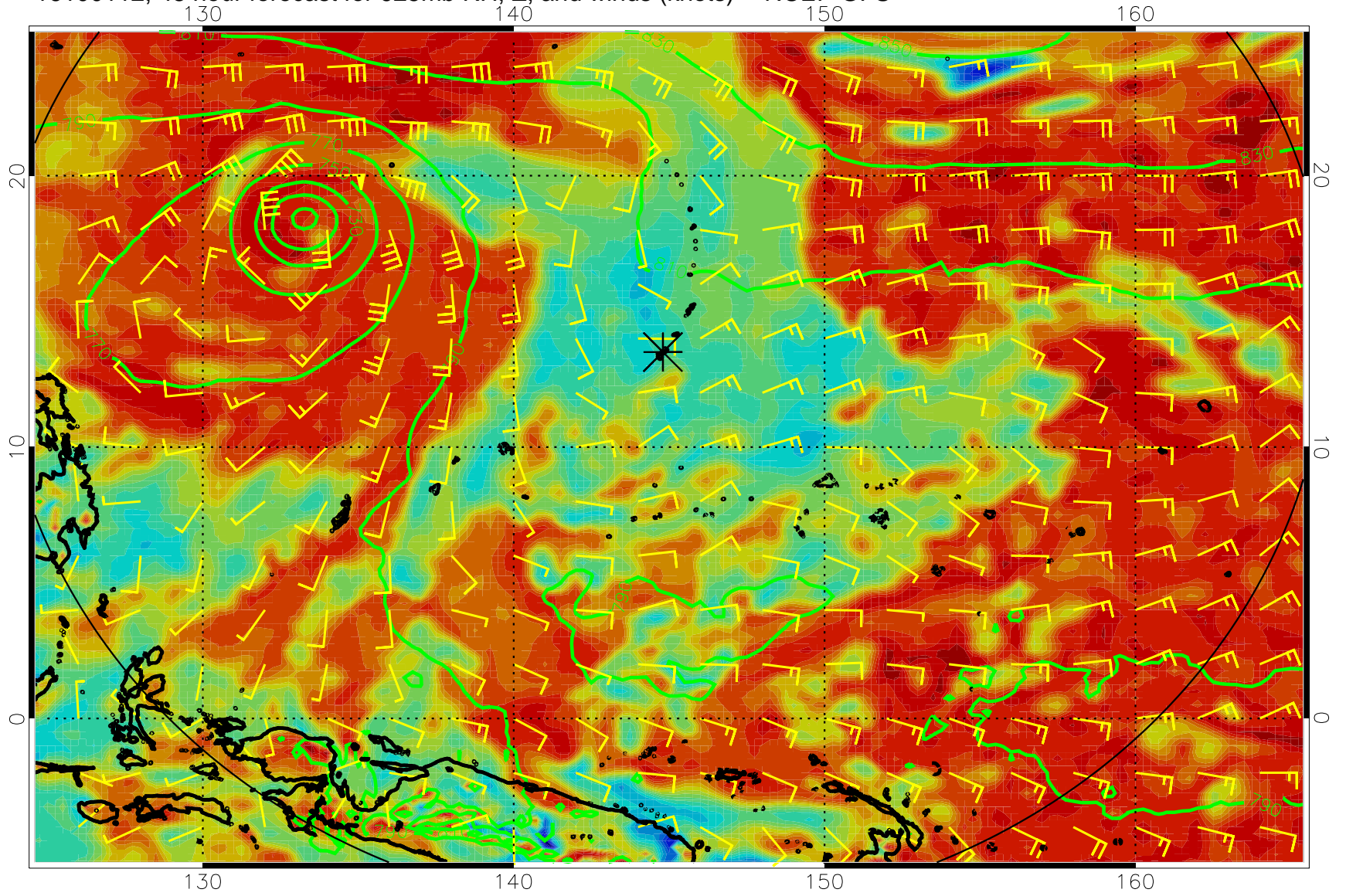
16100100, 36 hour forecast for 925mb RH, Z, and winds (knots) -- NCEP GFS



16100106, 42 hour forecast for 925mb RH, Z, and winds (knots) -- NCEP GFS

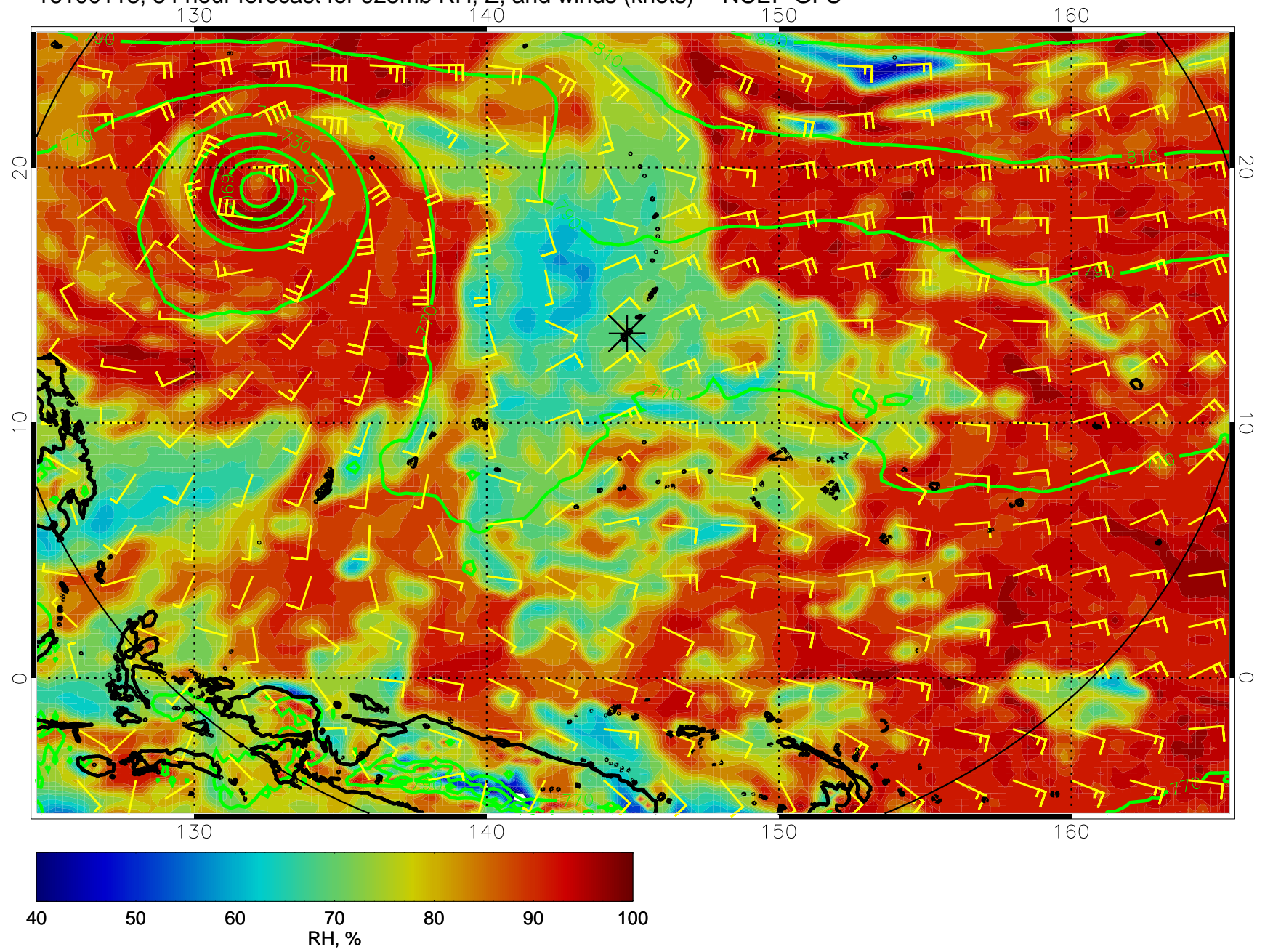


16100112, 48 hour forecast for 925mb RH, Z, and winds (knots) -- NCEP GFS

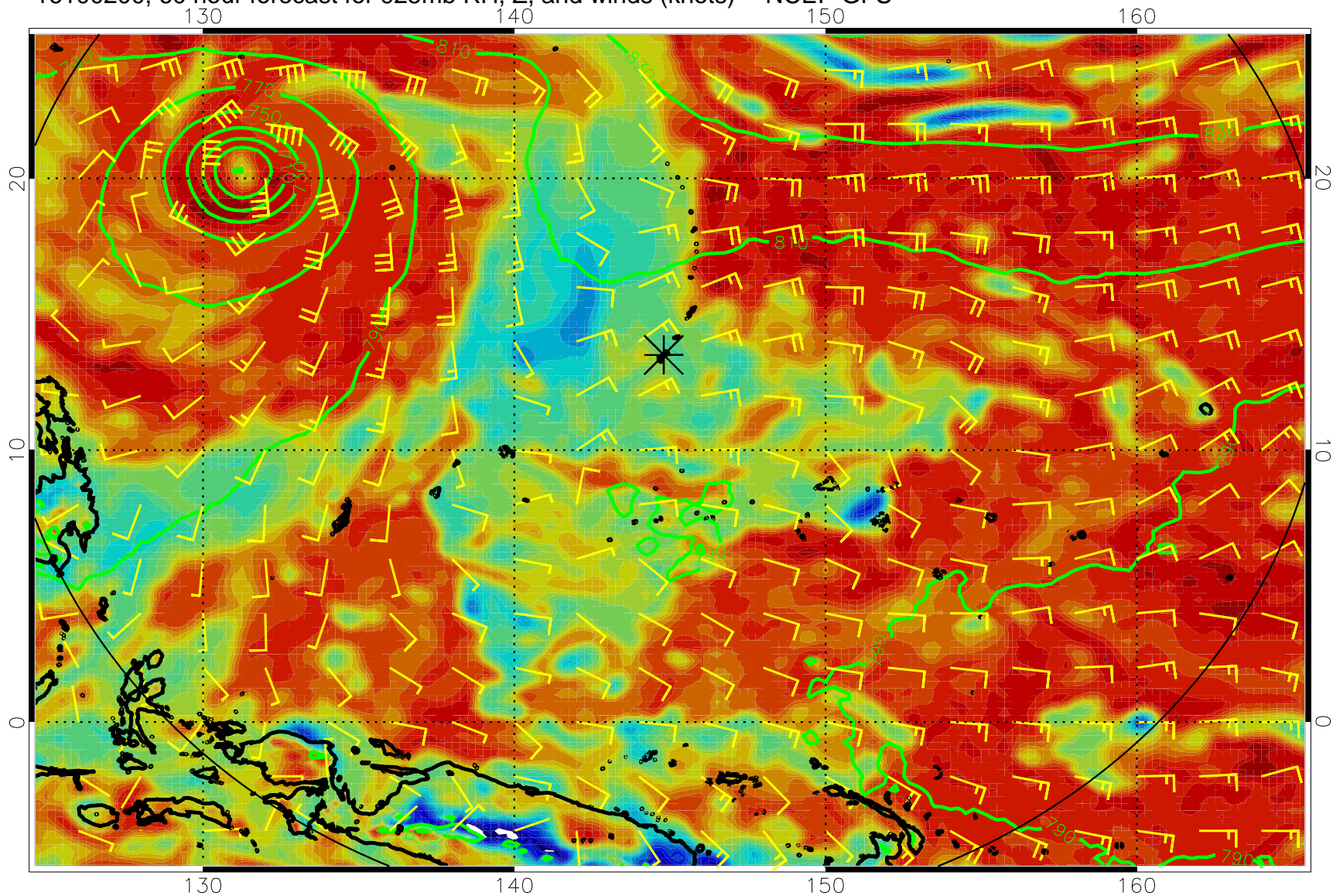




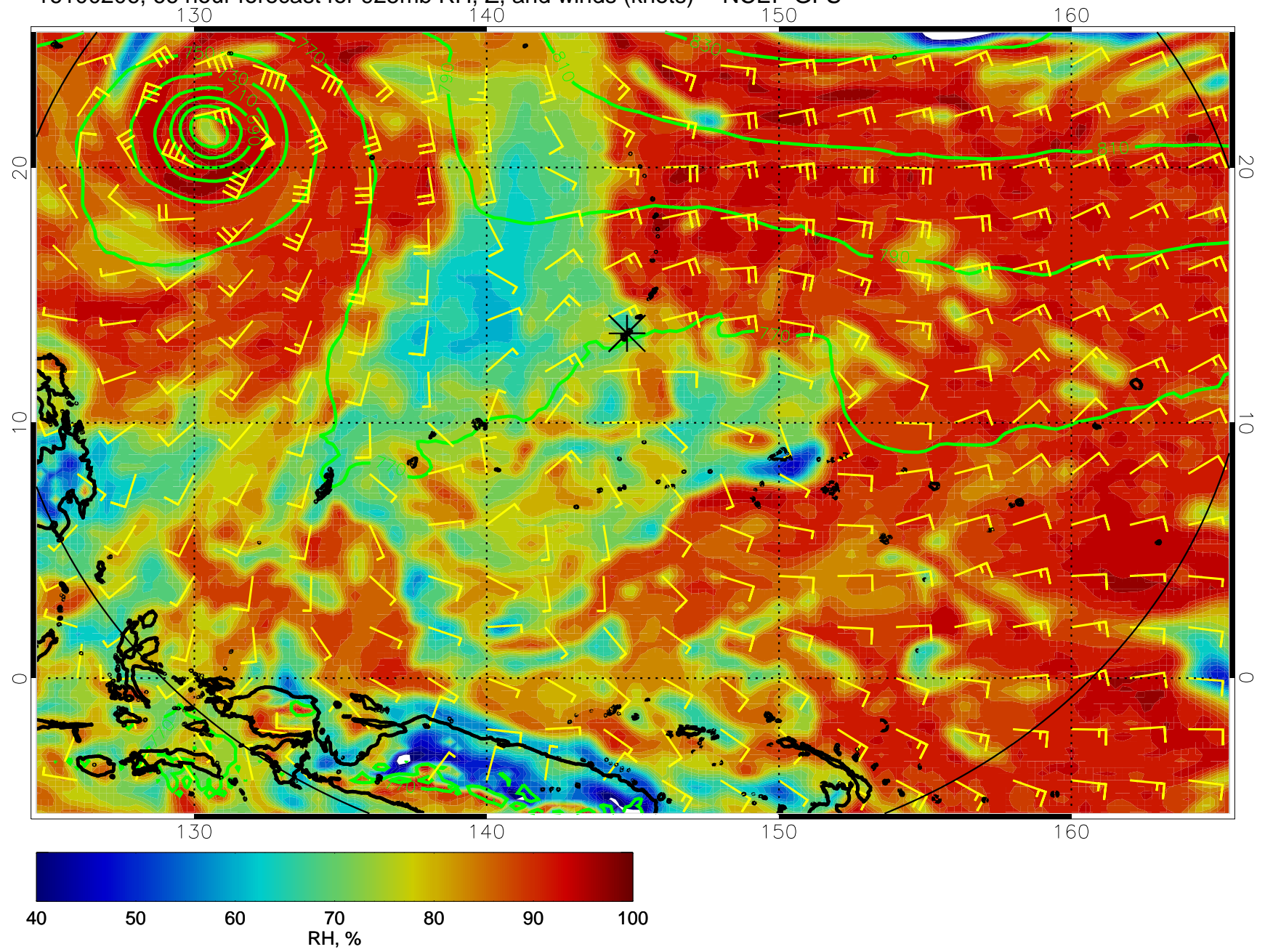
16100118, 54 hour forecast for 925mb RH, Z, and winds (knots) -- NCEP GFS



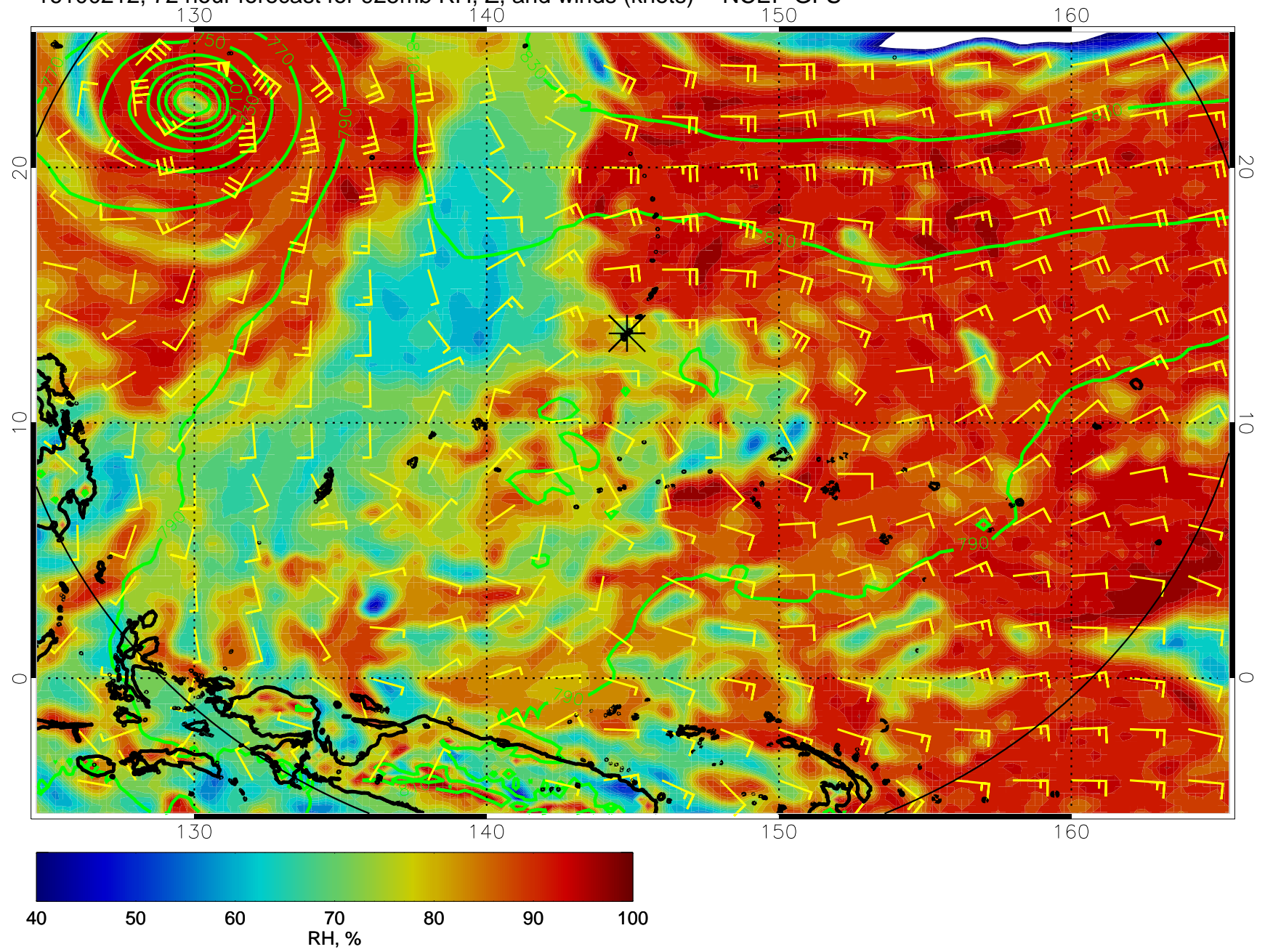
16100200, 60 hour forecast for 925mb RH, Z, and winds (knots) -- NCEP GFS



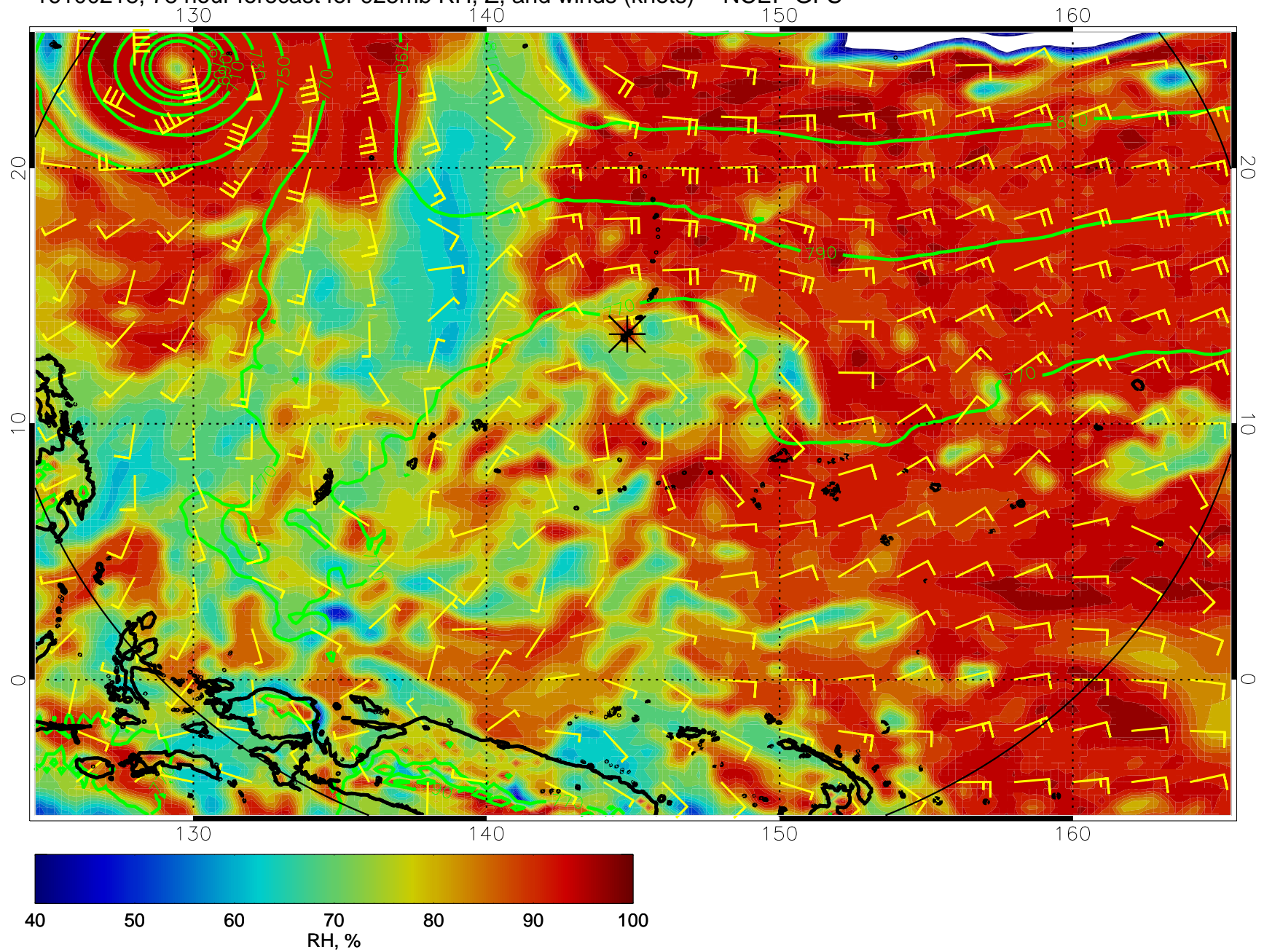
16100206, 66 hour forecast for 925mb RH, Z, and winds (knots) -- NCEP GFS



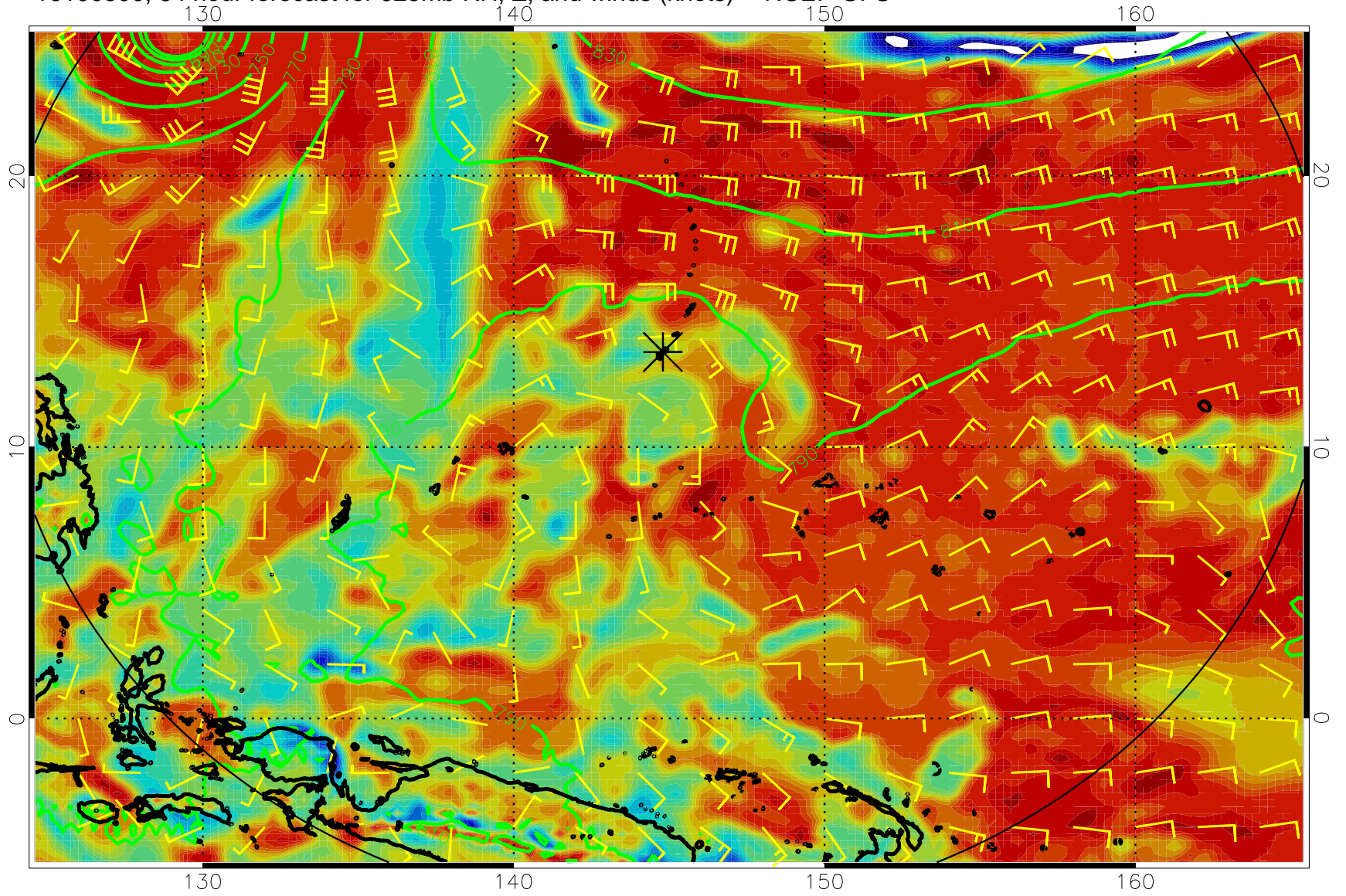
16100212, 72 hour forecast for 925mb RH, Z, and winds (knots) -- NCEP GFS



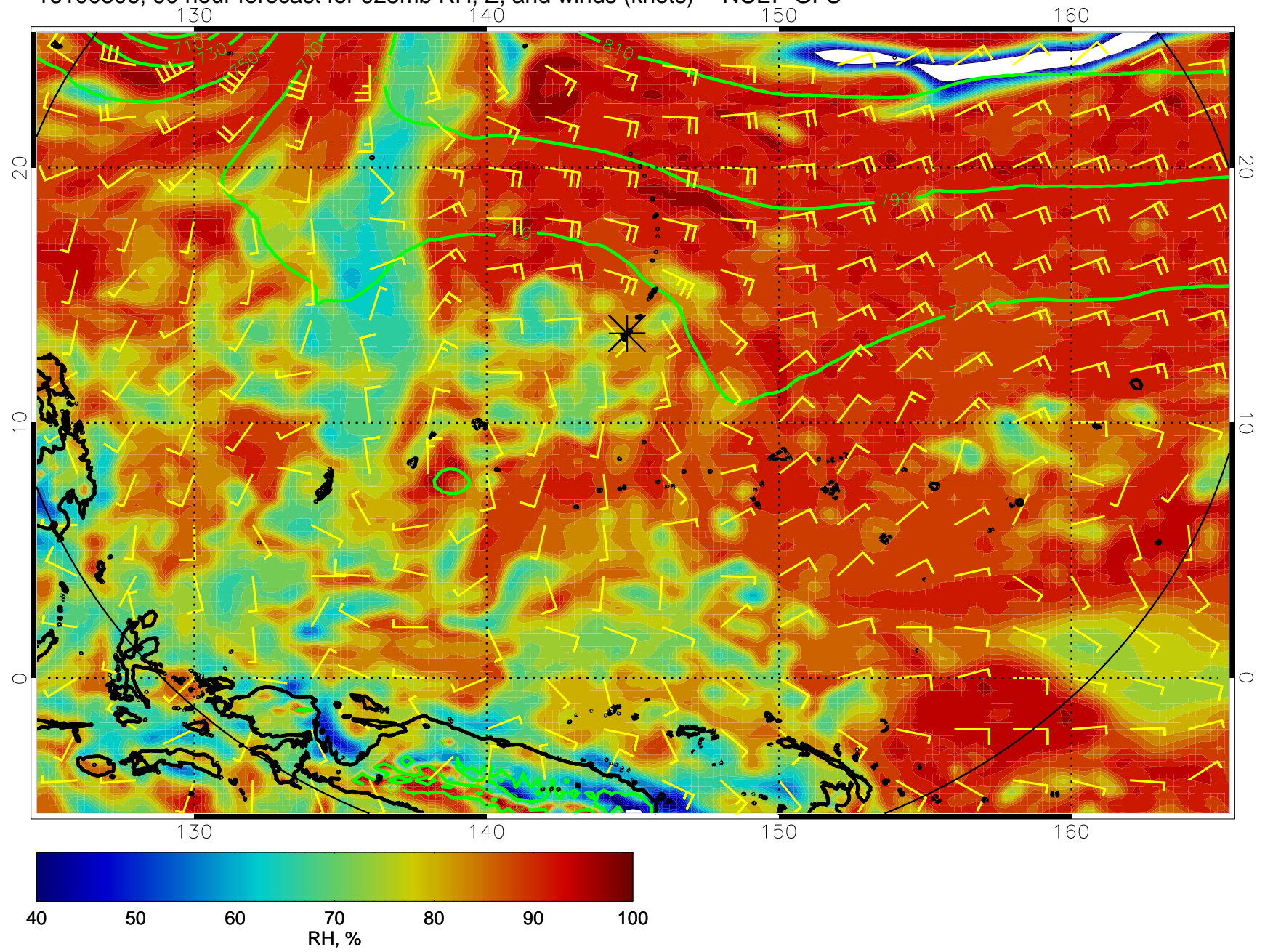
16100218, 78 hour forecast for 925mb RH, Z, and winds (knots) -- NCEP GFS



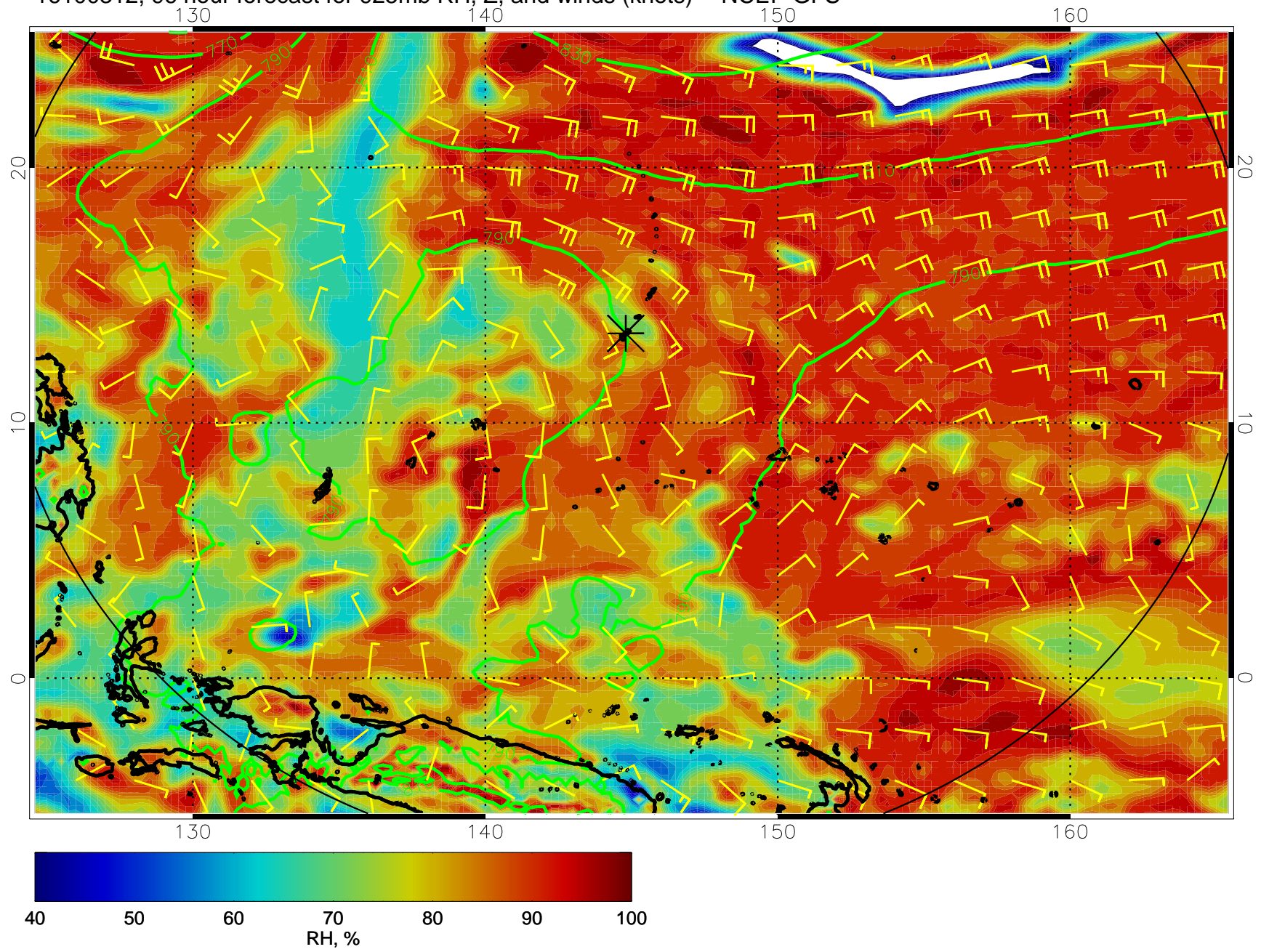
16100300, 84 hour forecast for 925mb RH, Z, and winds (knots) -- NCEP GFS



16100306, 90 hour forecast for 925mb RH, Z, and winds (knots) -- NCEP GFS

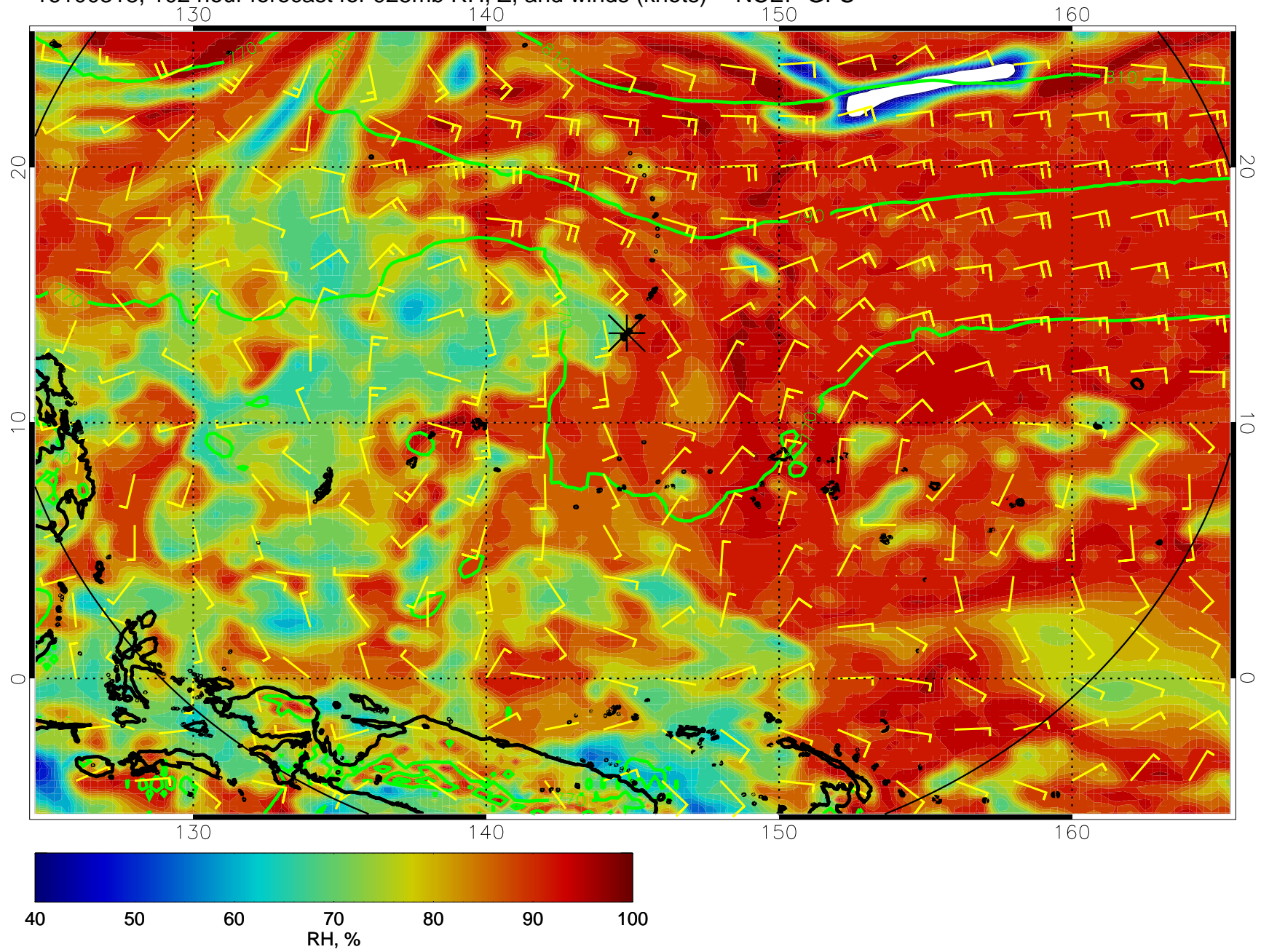


16100312, 96 hour forecast for 925mb RH, Z, and winds (knots) -- NCEP GFS

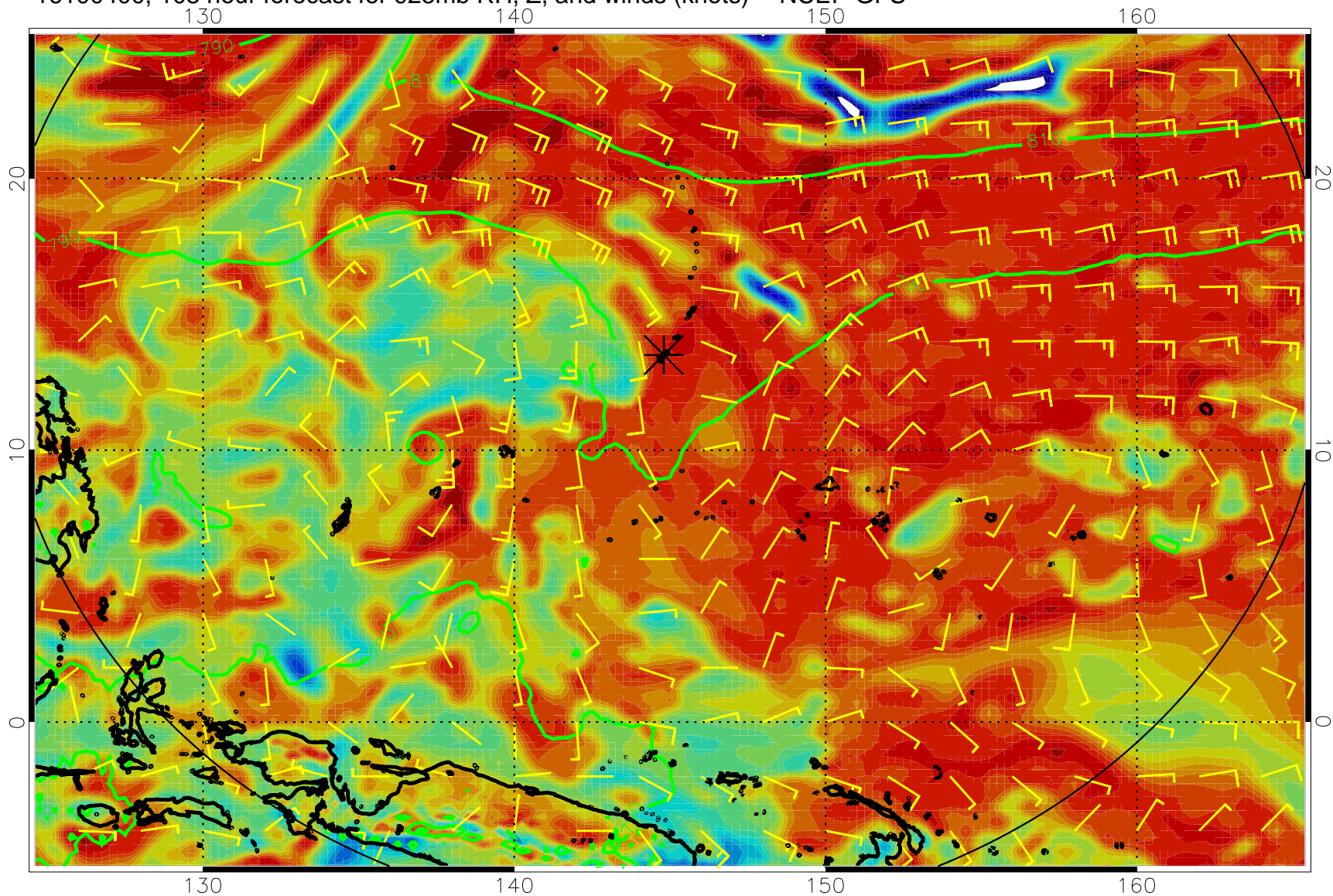




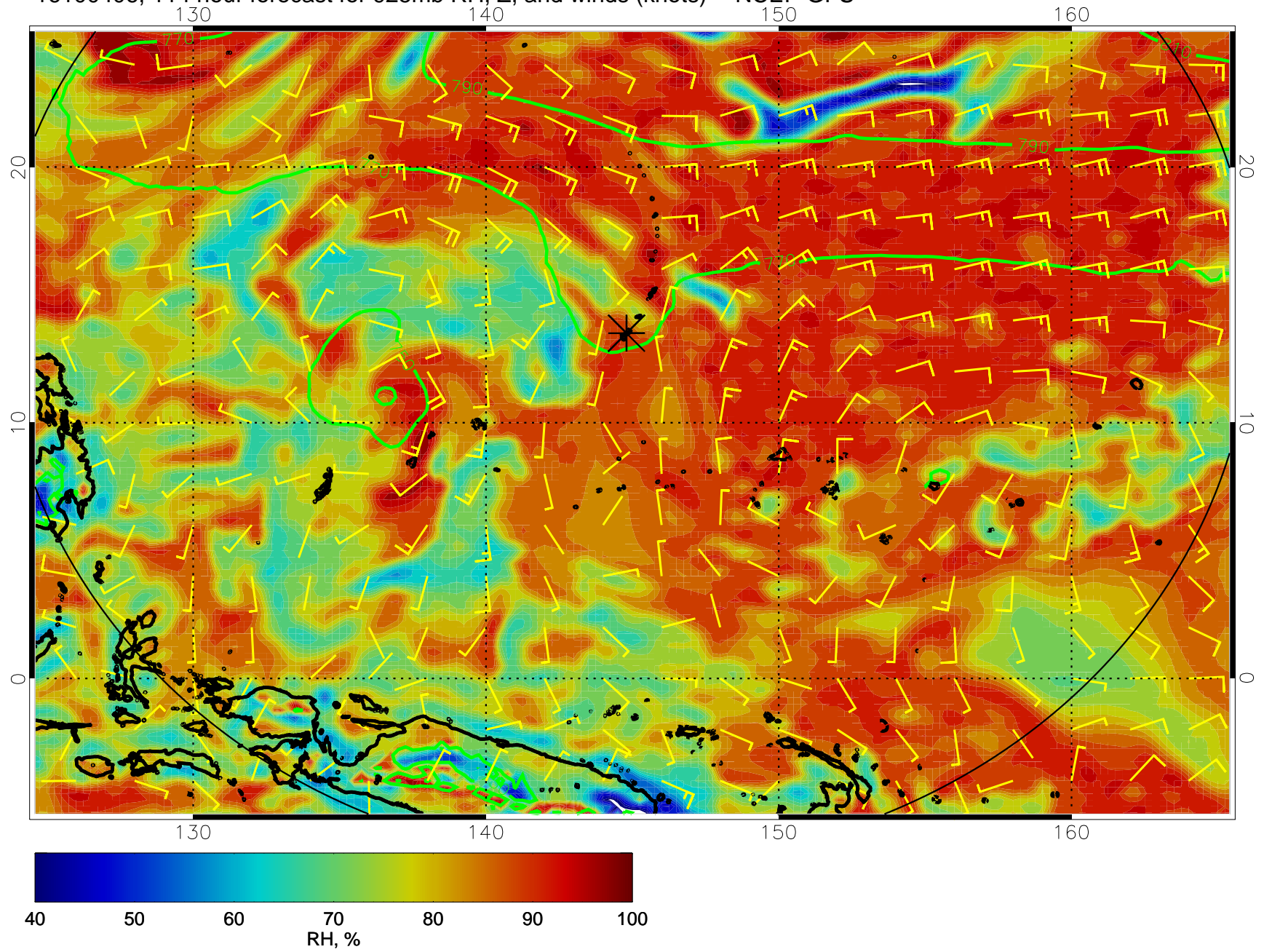
16100318, 102 hour forecast for 925mb RH, Z, and winds (knots) -- NCEP GFS



16100400, 108 hour forecast for 925mb RH, Z, and winds (knots) -- NCEP GFS



16100406, 114 hour forecast for 925mb RH, Z, and winds (knots) -- NCEP GFS



16100412, 120 hour forecast for 925mb RH, Z, and winds (knots) -- NCEP GFS

