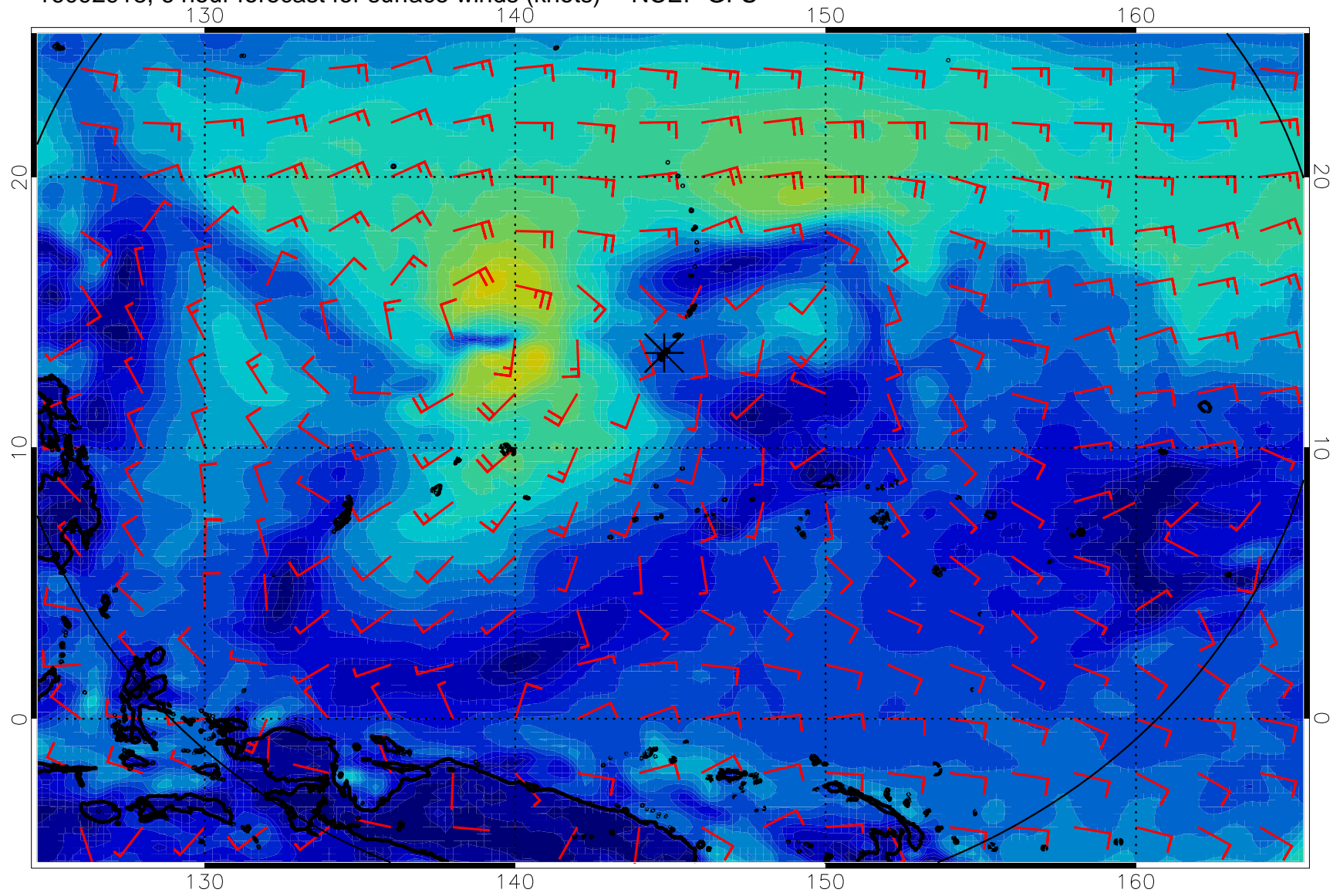
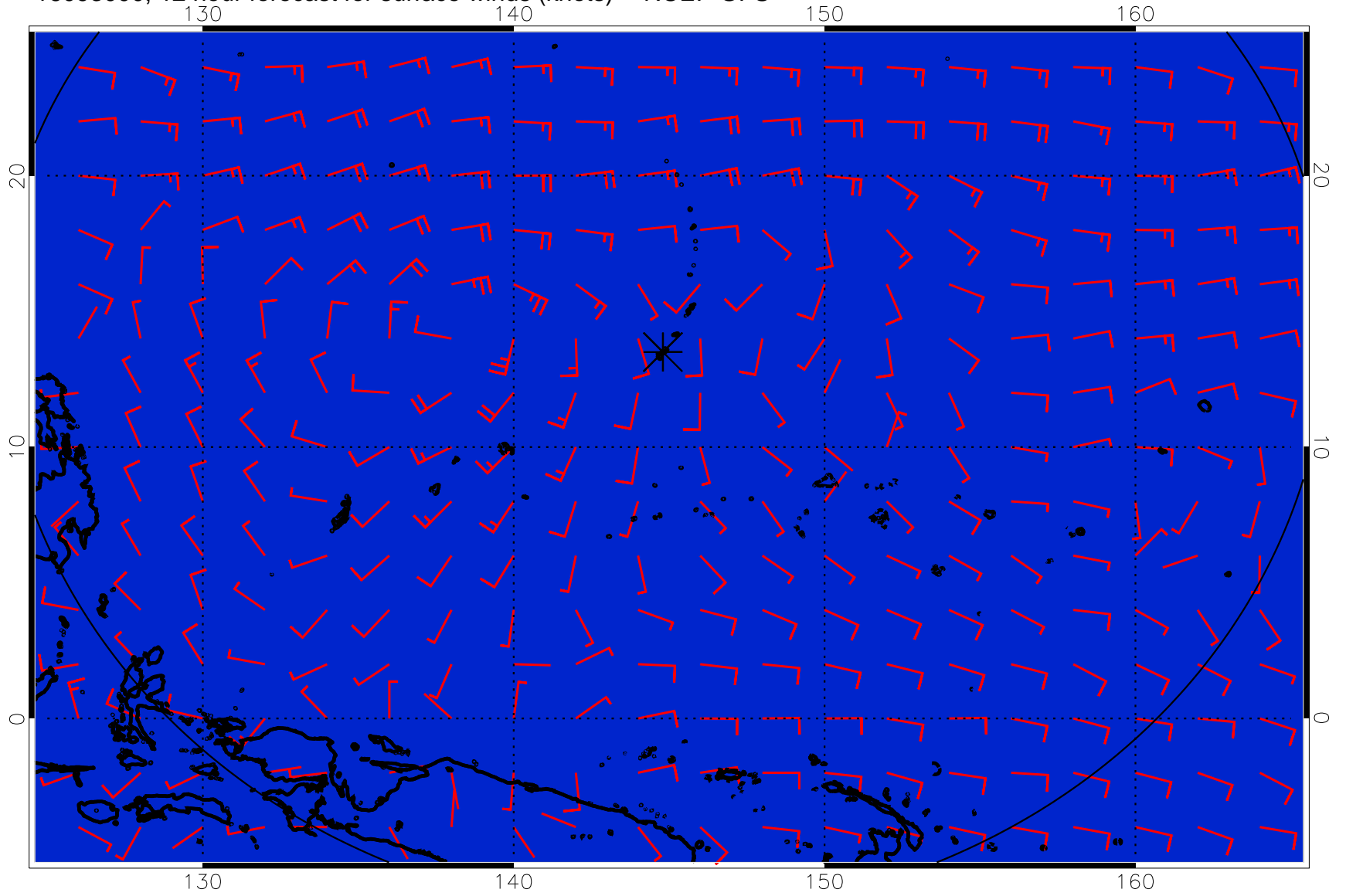


16092918, 6 hour forecast for surface winds (knots) -- NCEP GFS



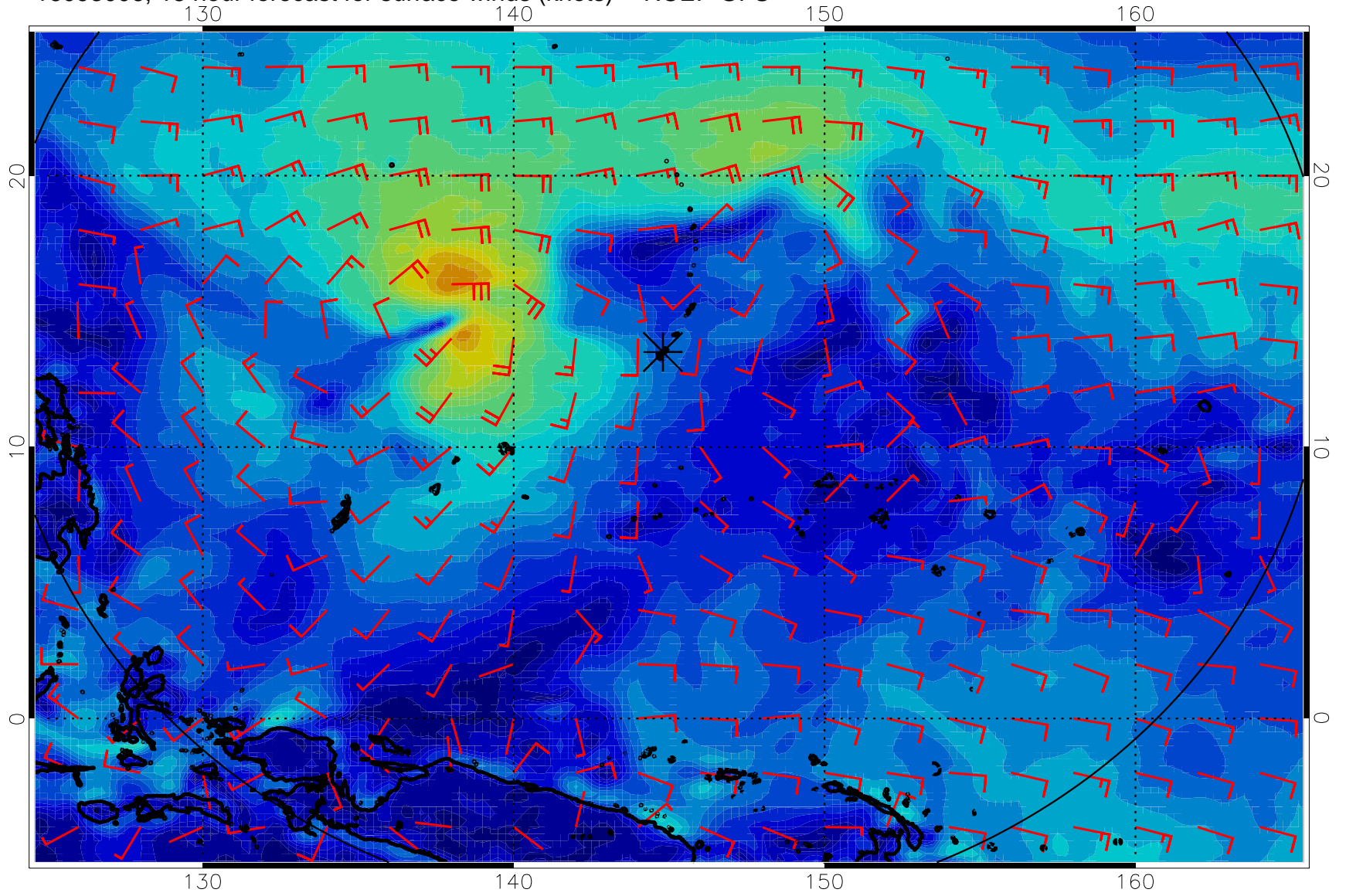
0 10 20 30  
Surface Wind Speed, knots

16093000, 12 hour forecast for surface winds (knots) -- NCEP GFS



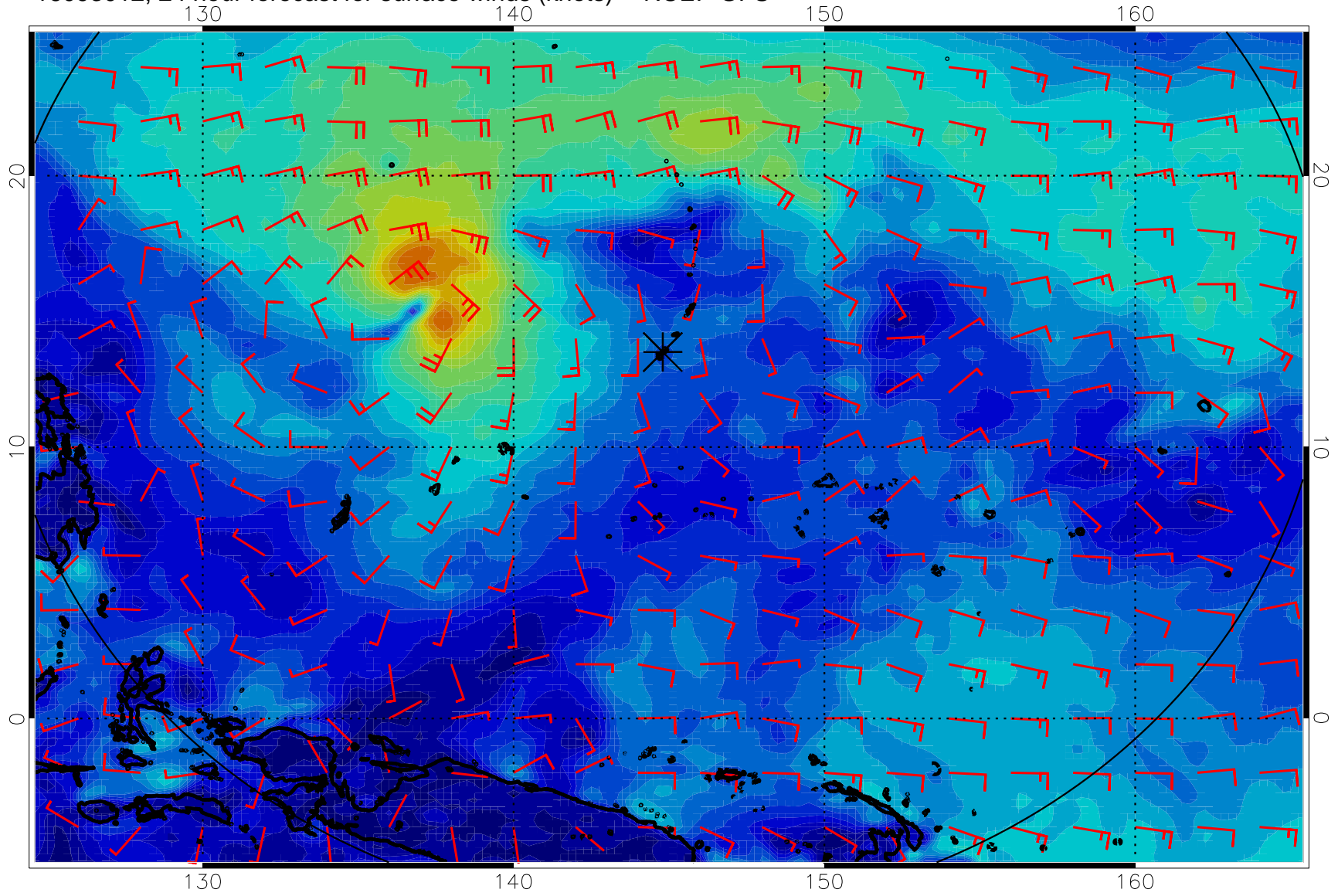
0      10      20      30  
Surface Wind Speed, knots

16093006, 18 hour forecast for surface winds (knots) -- NCEP GFS



0      10      20      30  
Surface Wind Speed, knots

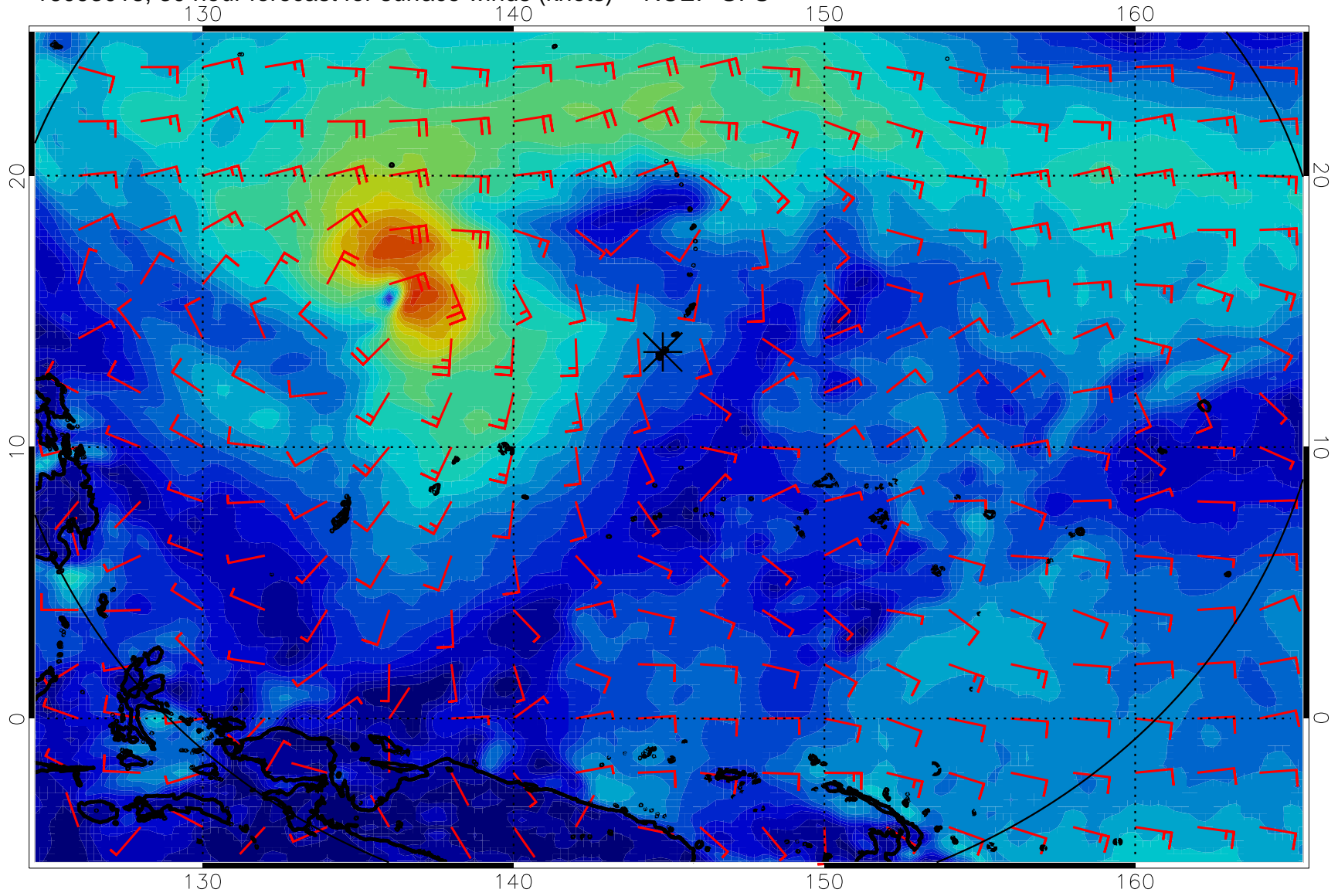
16093012, 24 hour forecast for surface winds (knots) -- NCEP GFS



0      10      20      30  
Surface Wind Speed, knots

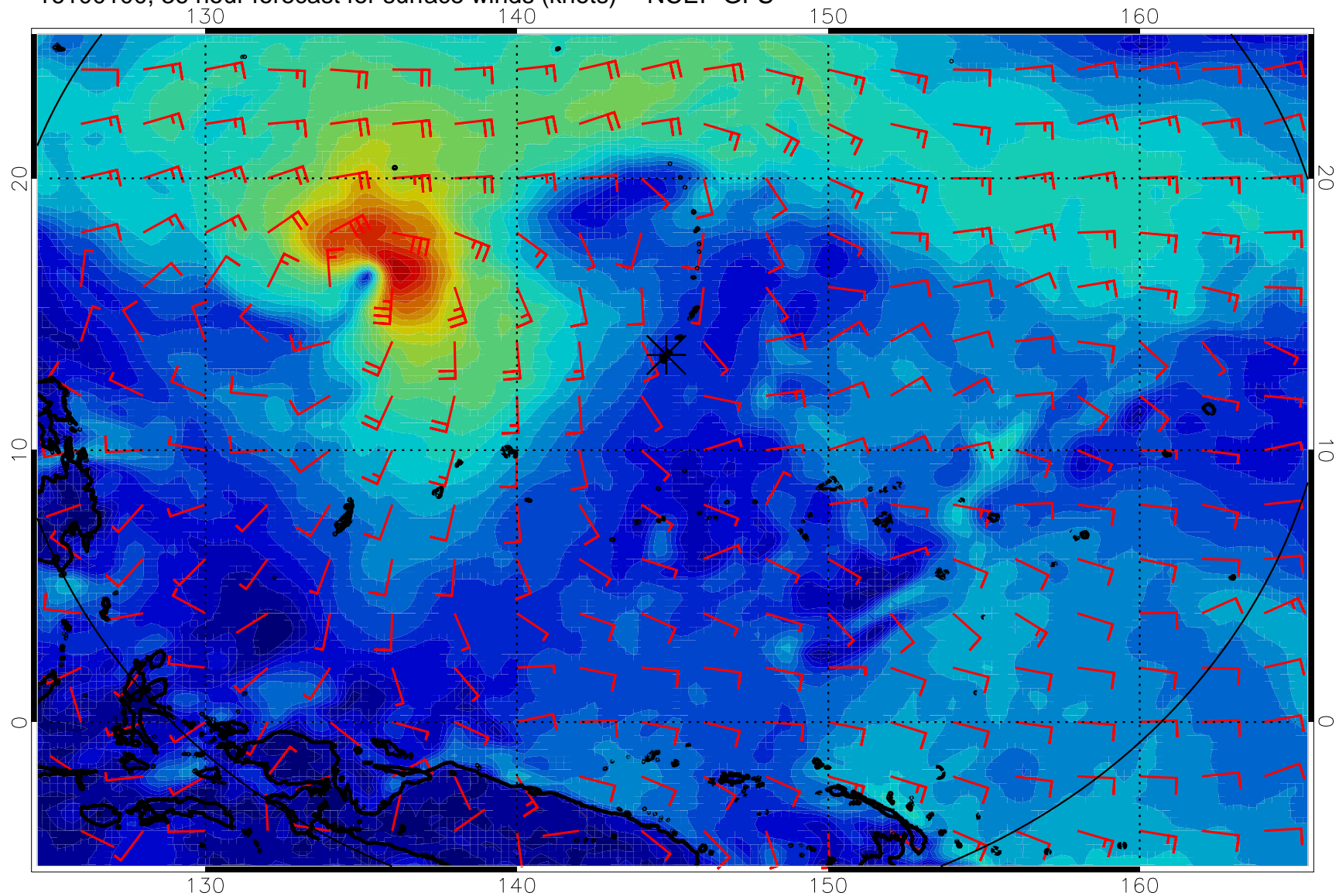


16093018, 30 hour forecast for surface winds (knots) -- NCEP GFS



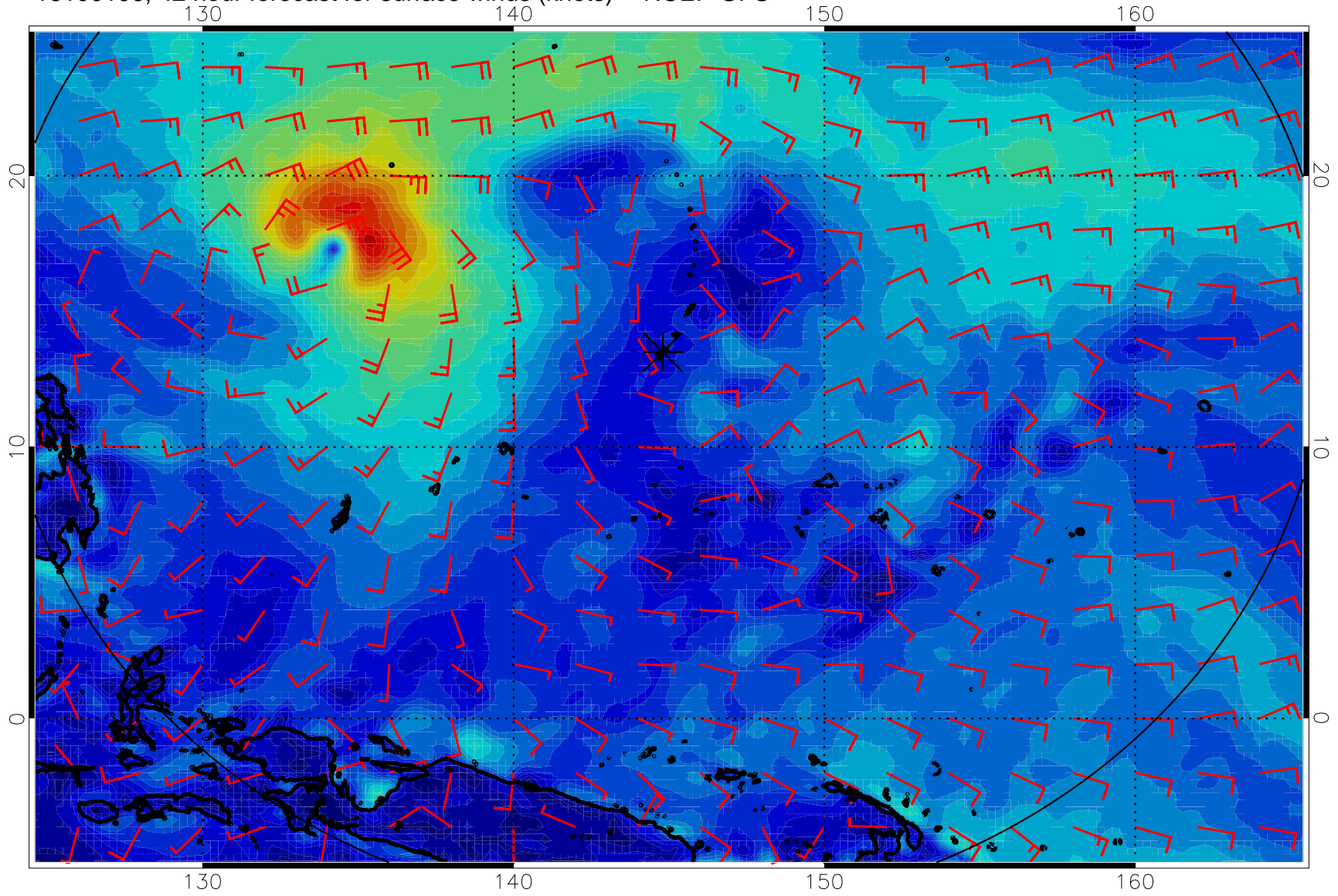
0 10 20 30  
Surface Wind Speed, knots

16100100, 36 hour forecast for surface winds (knots) -- NCEP GFS



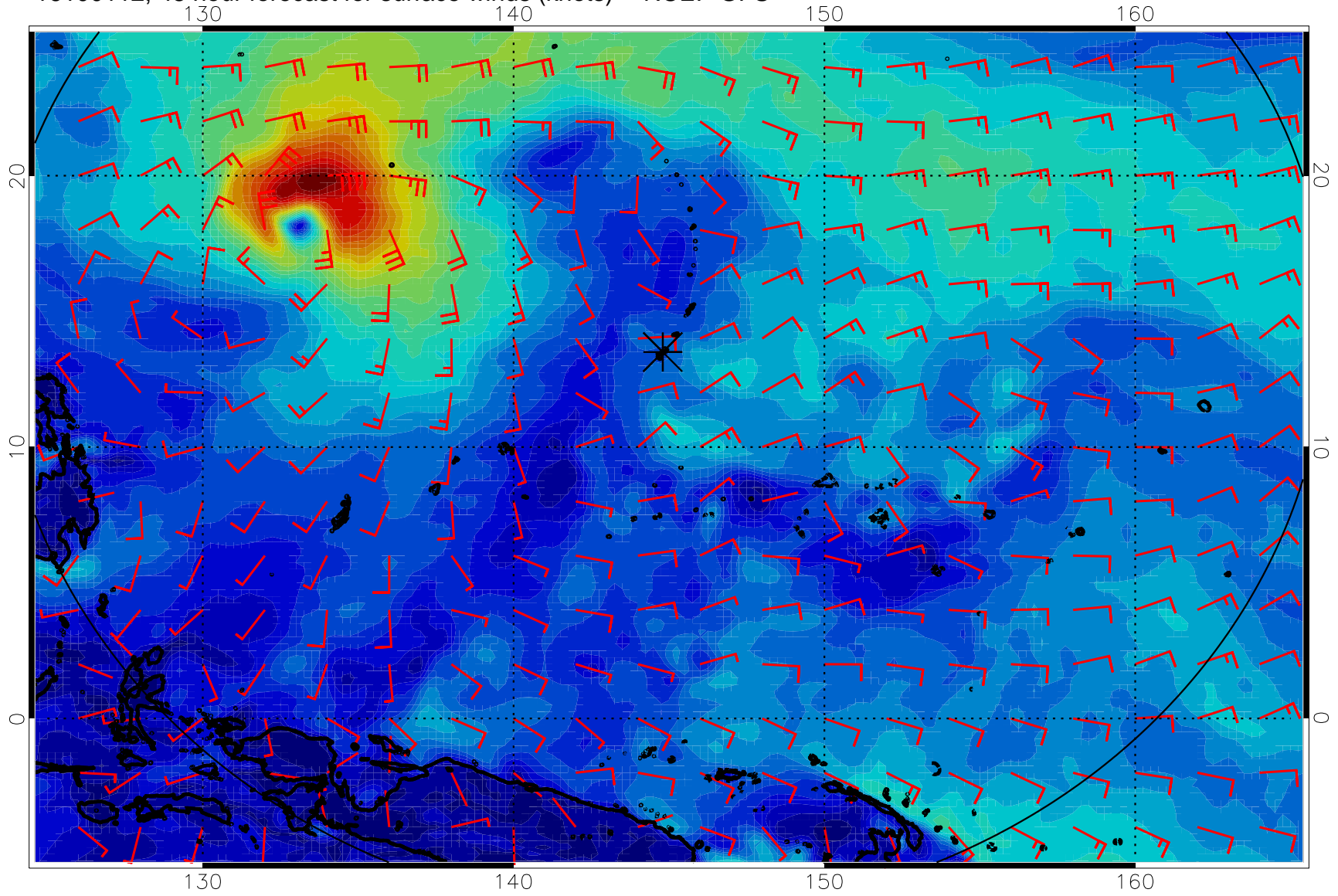
0      10      20      30  
Surface Wind Speed, knots

16100106, 42 hour forecast for surface winds (knots) -- NCEP GFS



0      10      20      30  
Surface Wind Speed, knots

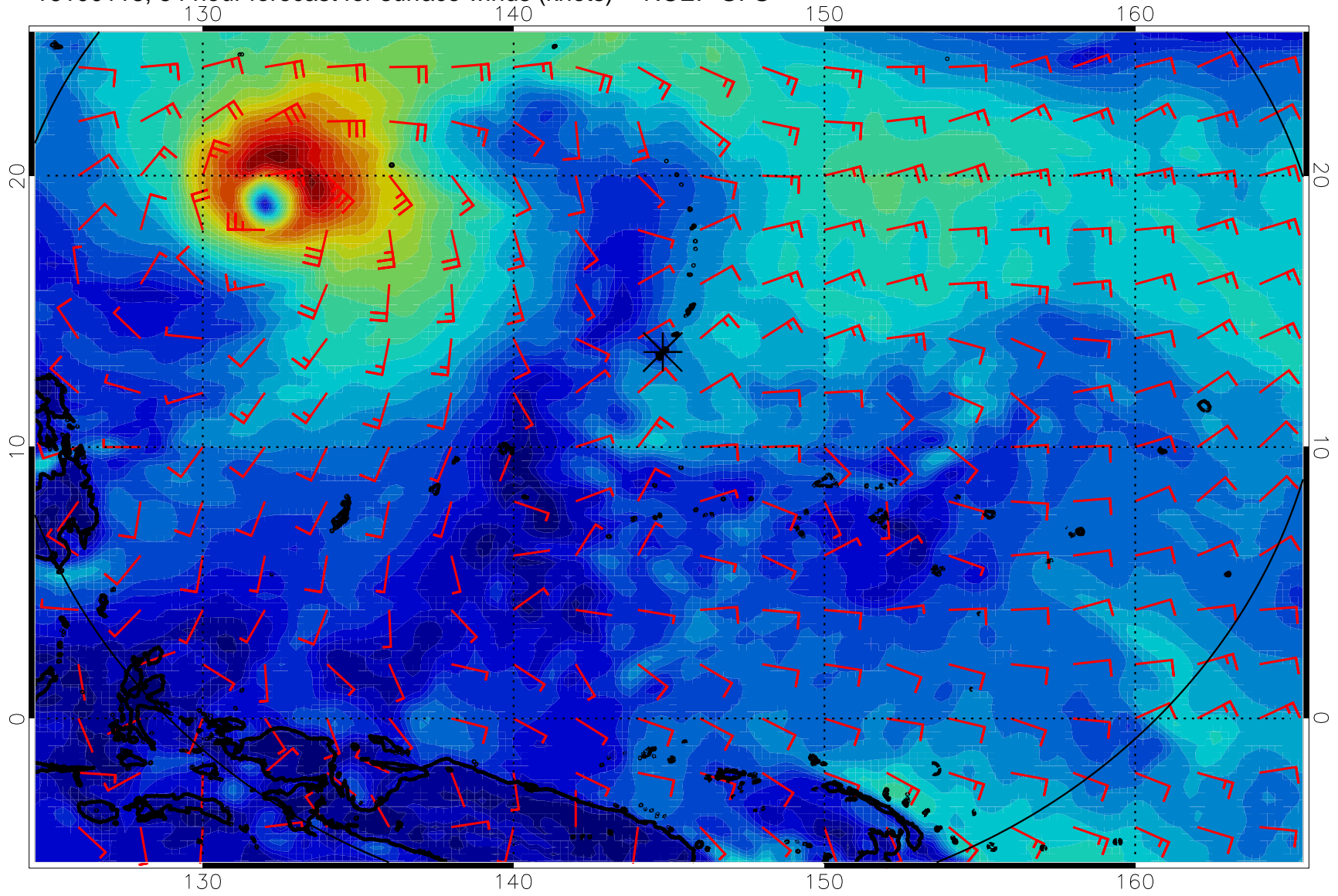
16100112, 48 hour forecast for surface winds (knots) -- NCEP GFS



0      10      20      30  
Surface Wind Speed, knots

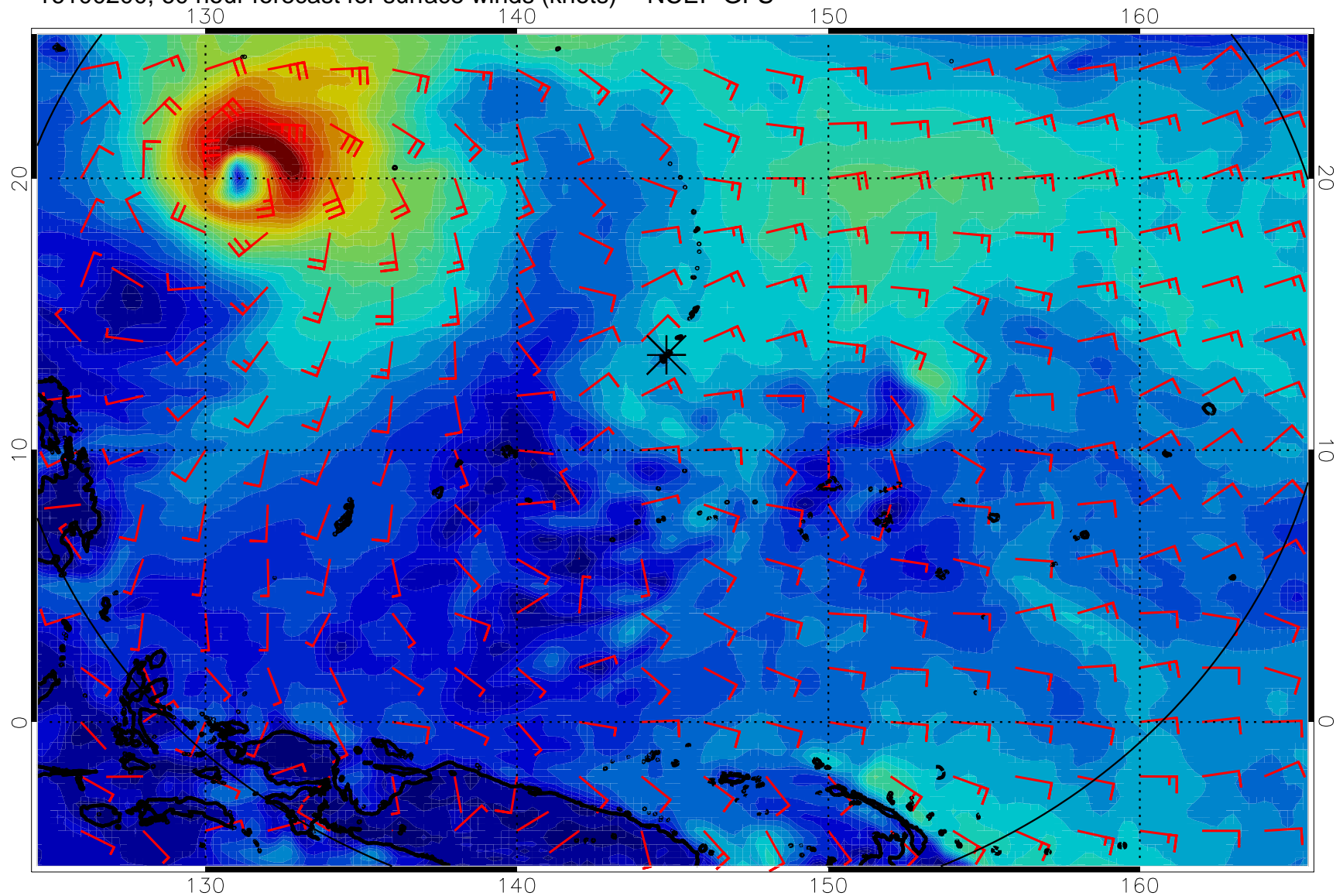


16100118, 54 hour forecast for surface winds (knots) -- NCEP GFS



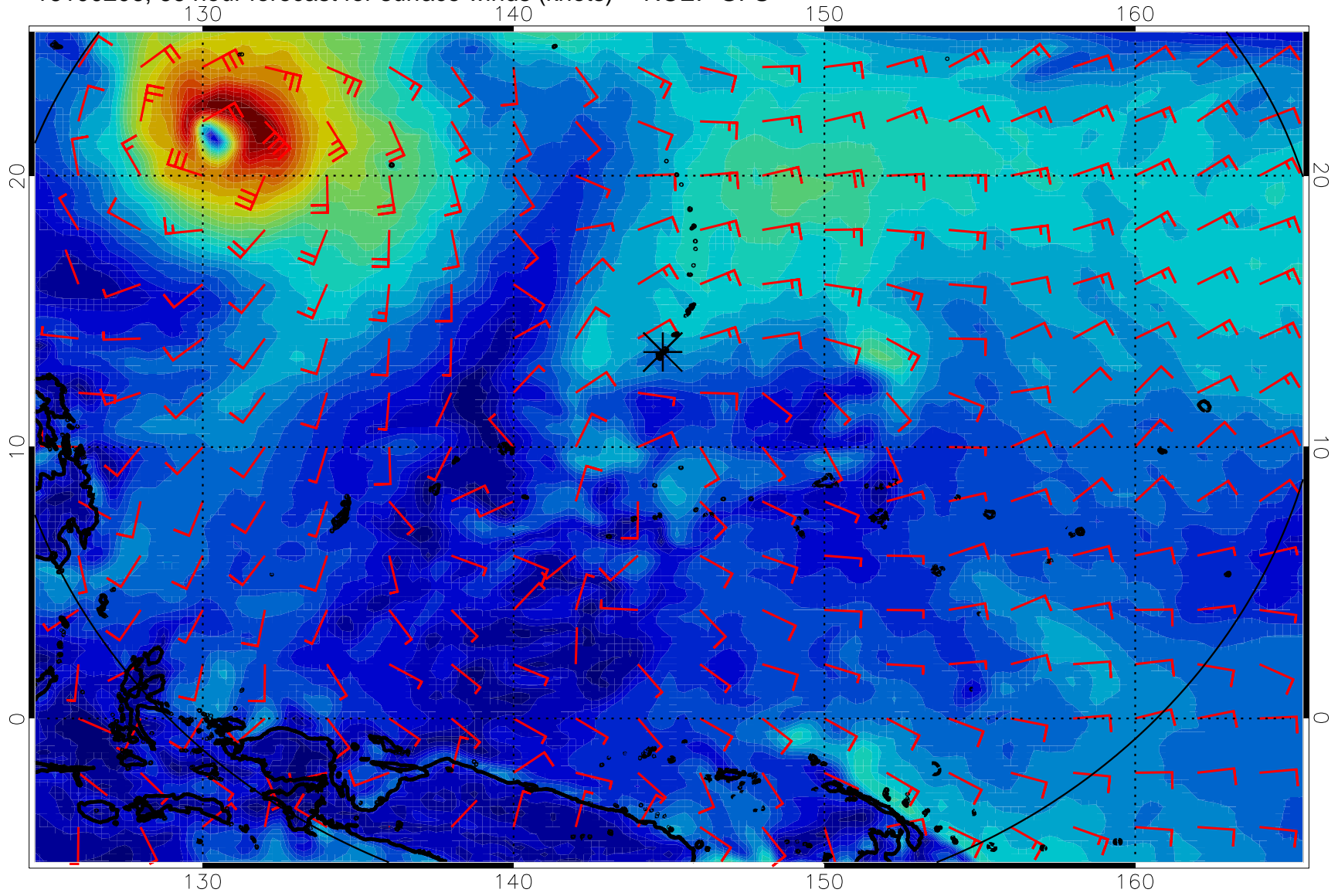
0 10 20 30  
Surface Wind Speed, knots

16100200, 60 hour forecast for surface winds (knots) -- NCEP GFS



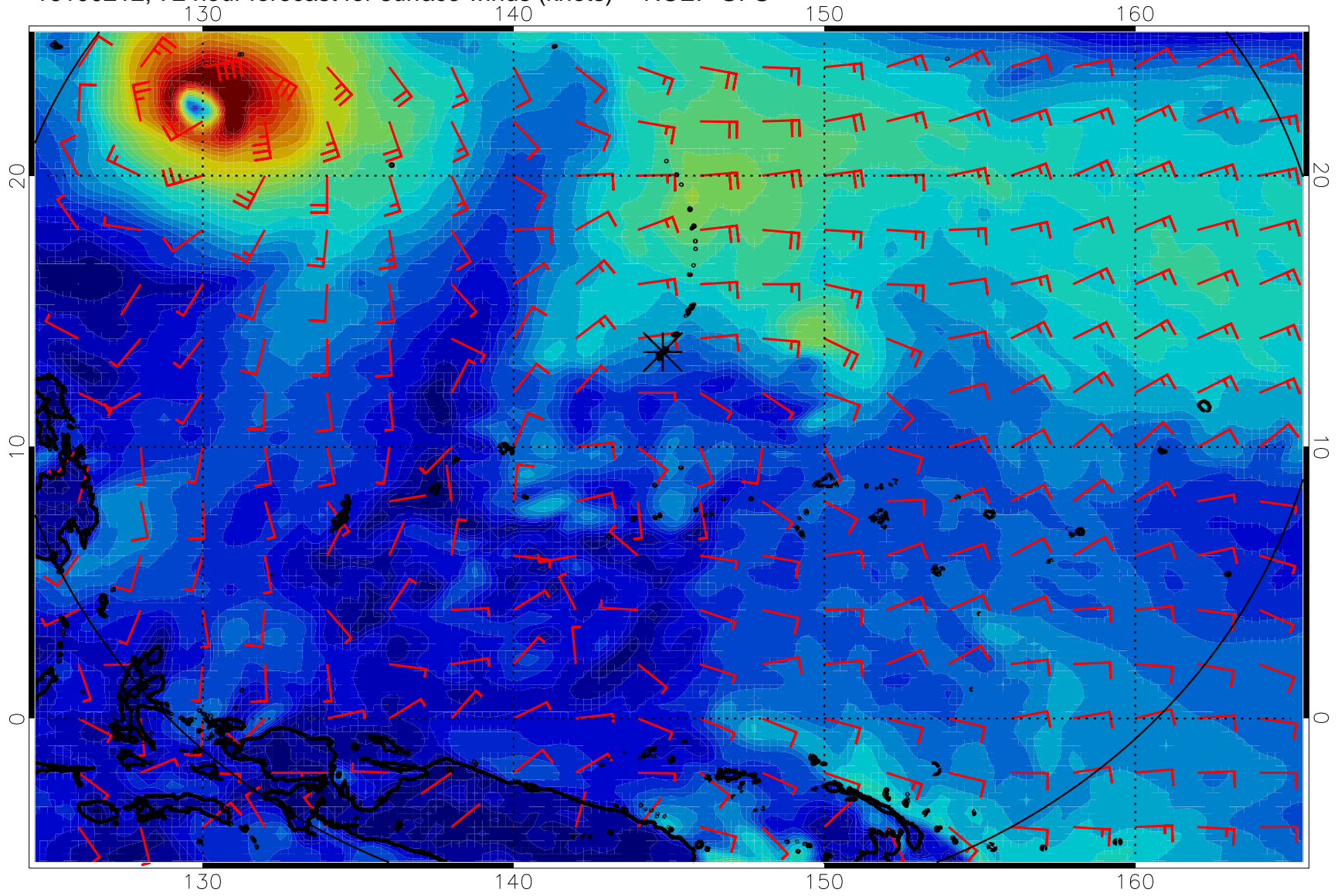
0 10 20 30  
Surface Wind Speed, knots

16100206, 66 hour forecast for surface winds (knots) -- NCEP GFS



0 10 20 30  
Surface Wind Speed, knots

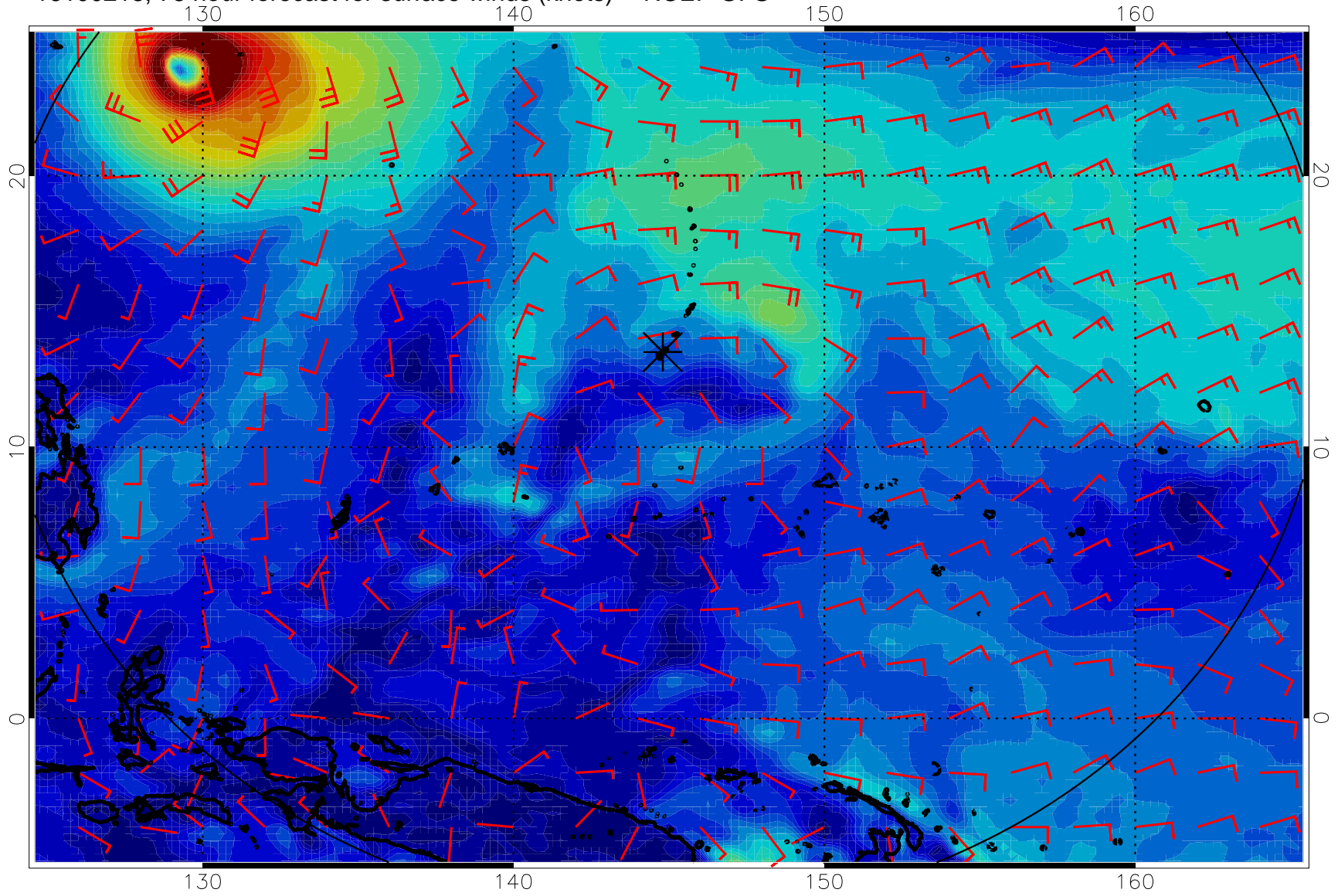
16100212, 72 hour forecast for surface winds (knots) -- NCEP GFS



0      10      20      30  
Surface Wind Speed, knots

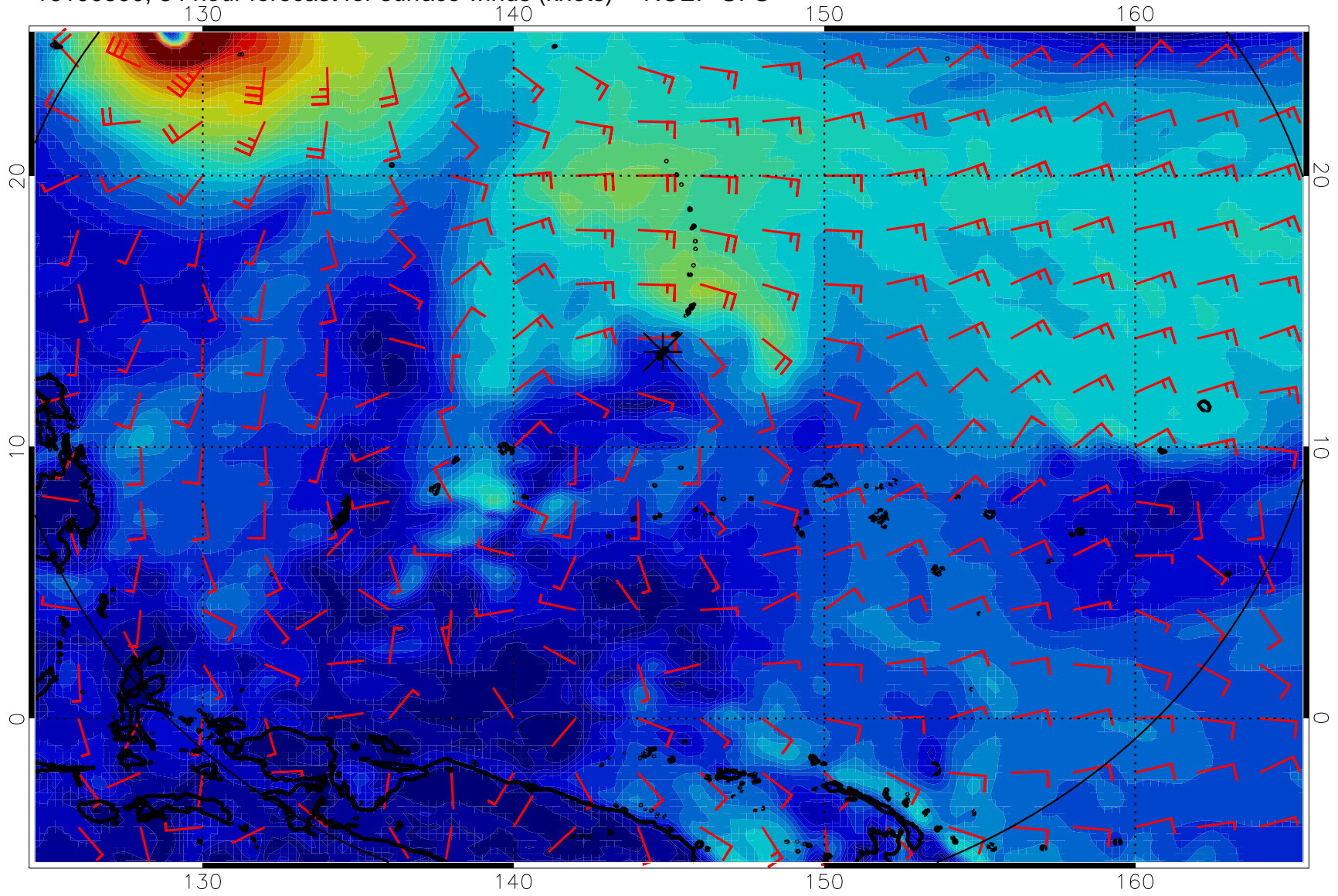


16100218, 78 hour forecast for surface winds (knots) -- NCEP GFS



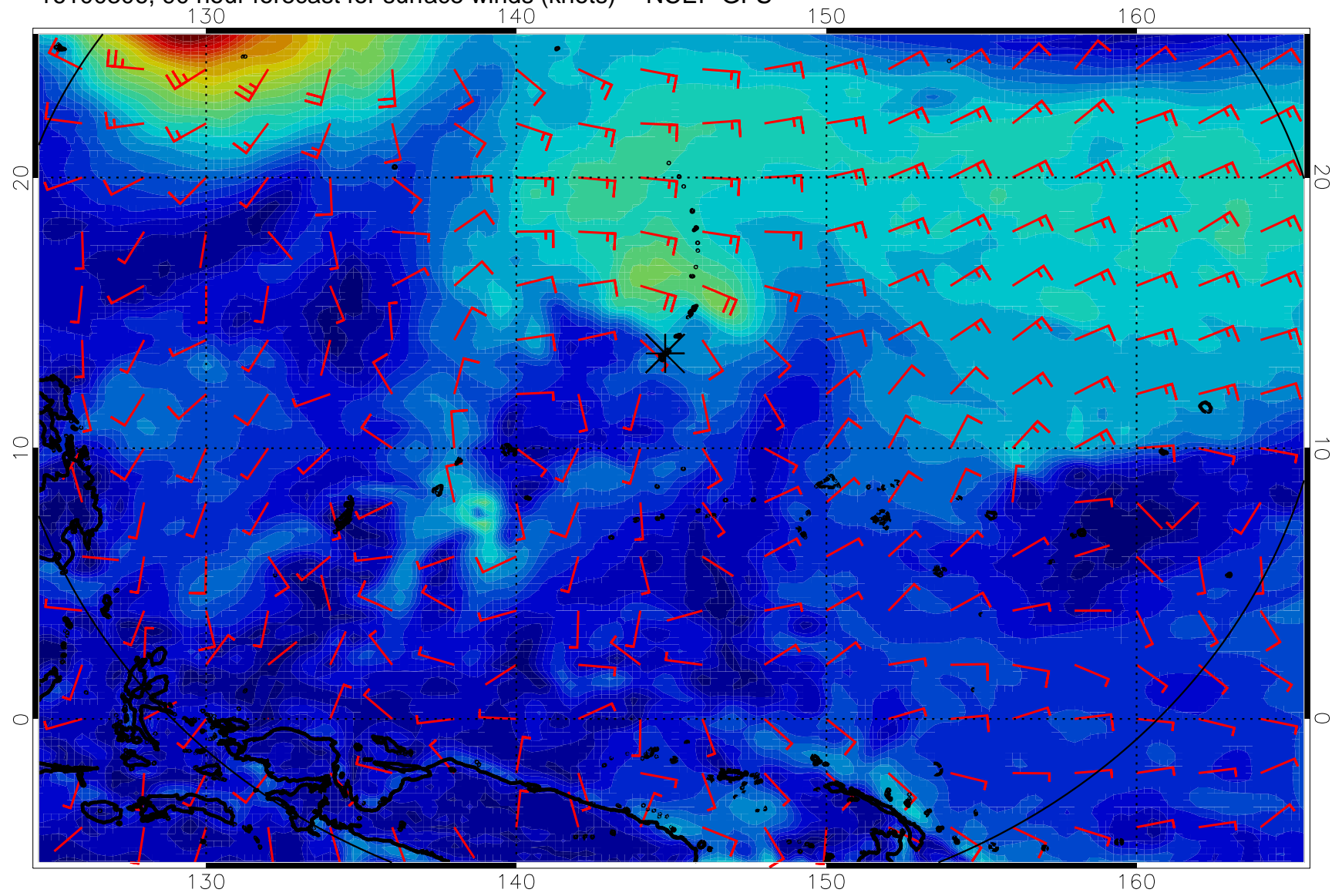
0      10      20      30  
Surface Wind Speed, knots

16100300, 84 hour forecast for surface winds (knots) -- NCEP GFS



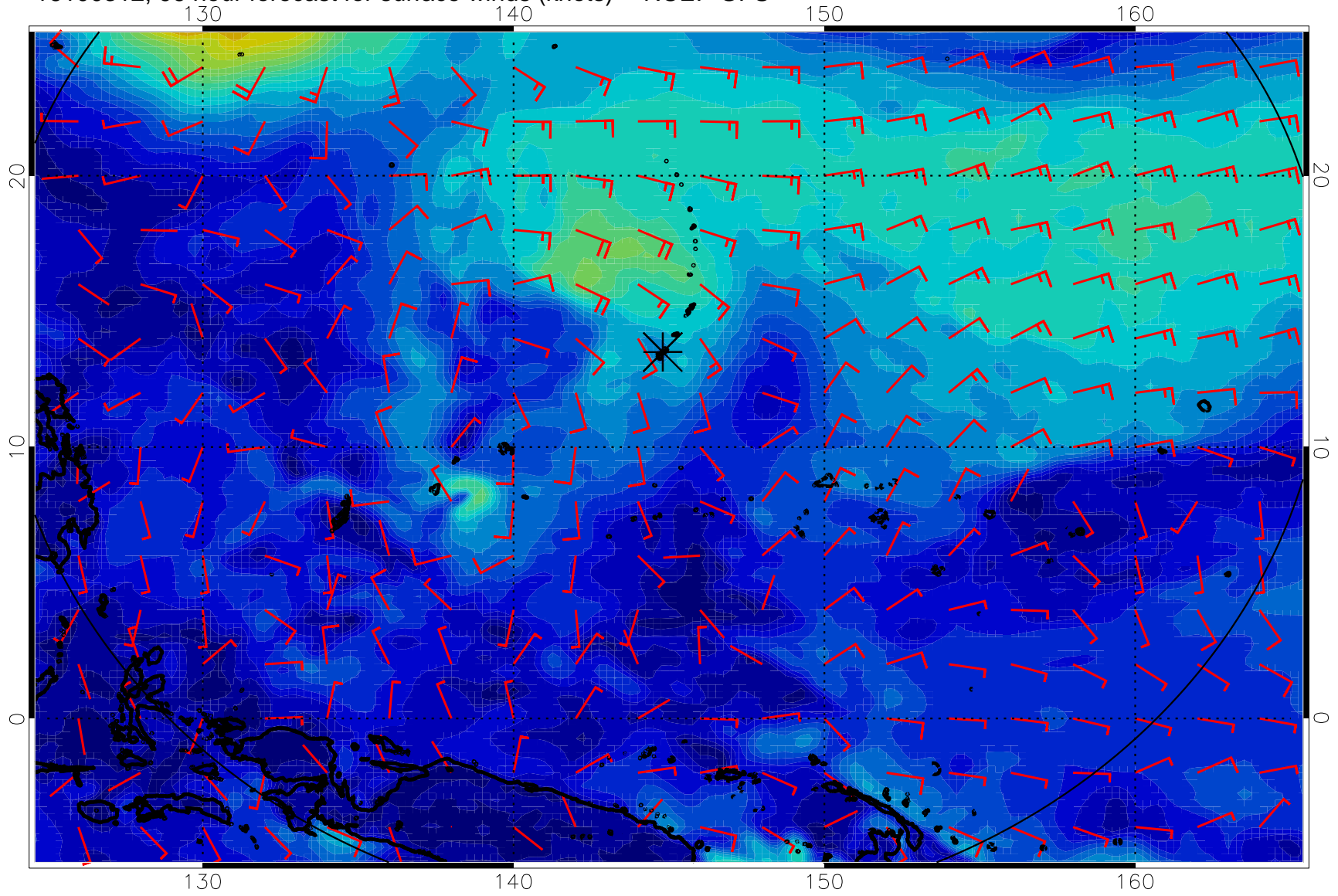
0      10      20      30  
Surface Wind Speed, knots

16100306, 90 hour forecast for surface winds (knots) -- NCEP GFS



0      10      20      30  
Surface Wind Speed, knots

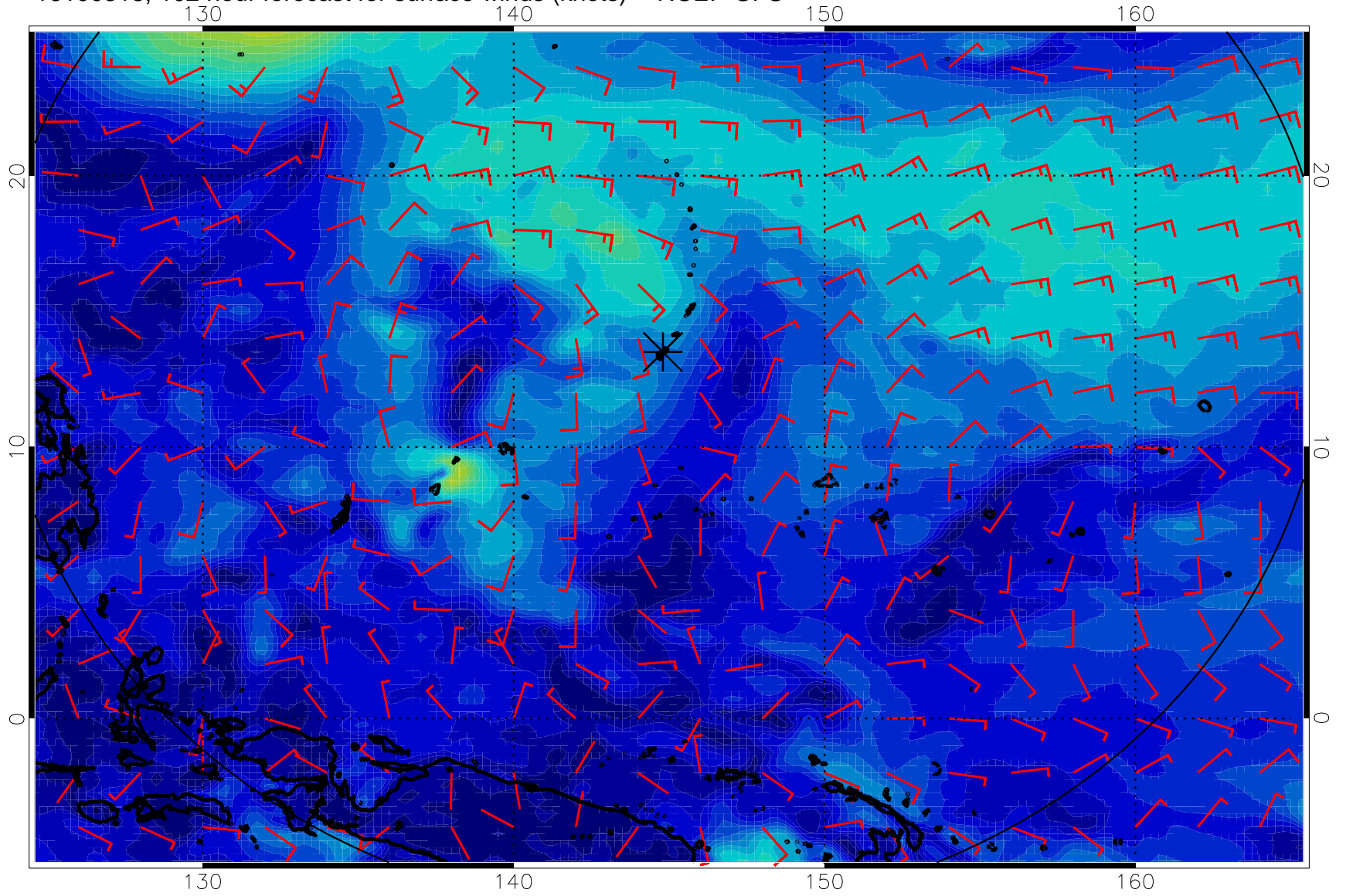
16100312, 96 hour forecast for surface winds (knots) -- NCEP GFS



0      10      20      30  
Surface Wind Speed, knots

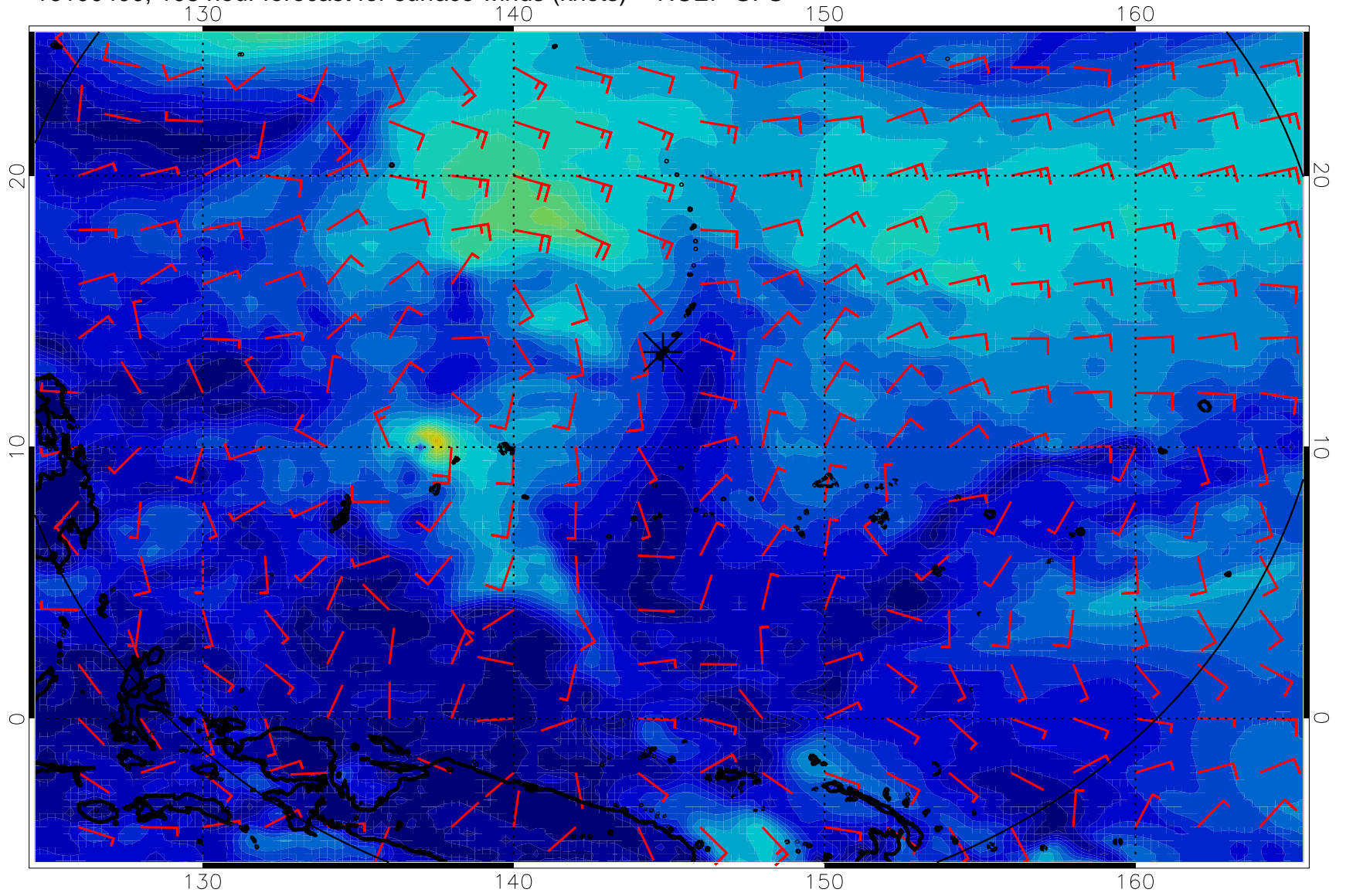


16100318, 102 hour forecast for surface winds (knots) -- NCEP GFS



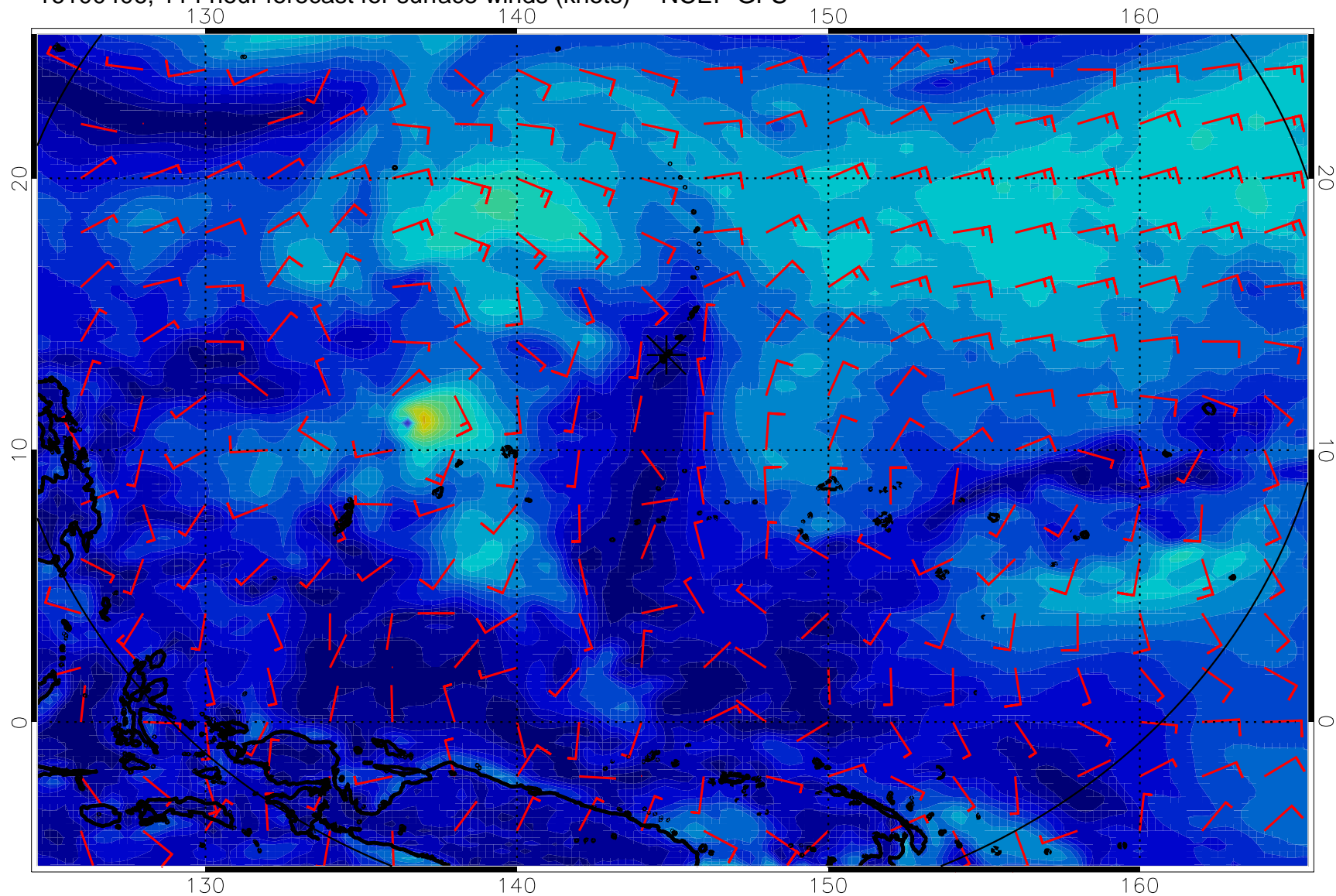
0      10      20      30  
Surface Wind Speed, knots

16100400, 108 hour forecast for surface winds (knots) -- NCEP GFS



0      10      20      30  
Surface Wind Speed, knots

16100406, 114 hour forecast for surface winds (knots) -- NCEP GFS



0      10      20      30  
Surface Wind Speed, knots

16100412, 120 hour forecast for surface winds (knots) -- NCEP GFS

