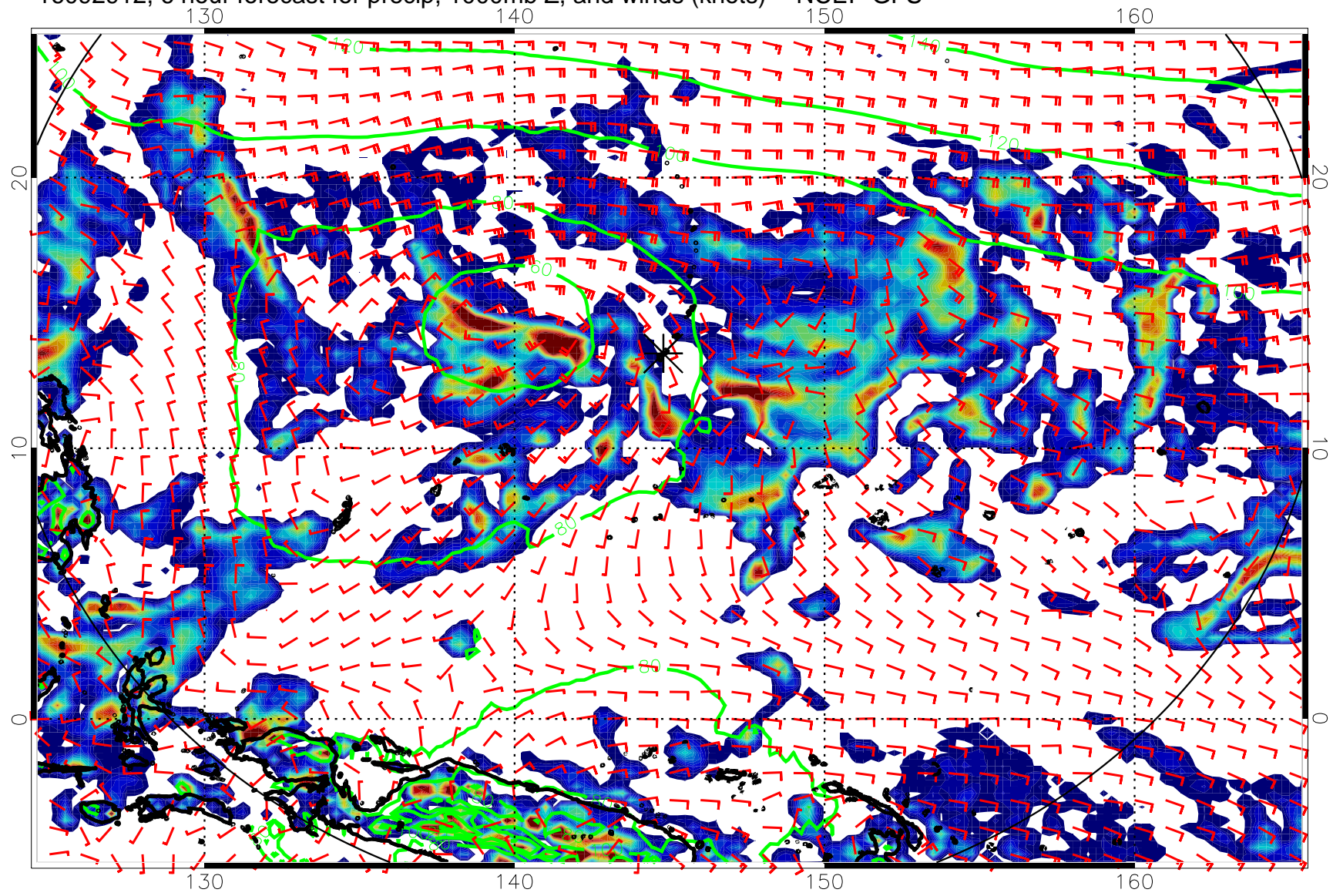
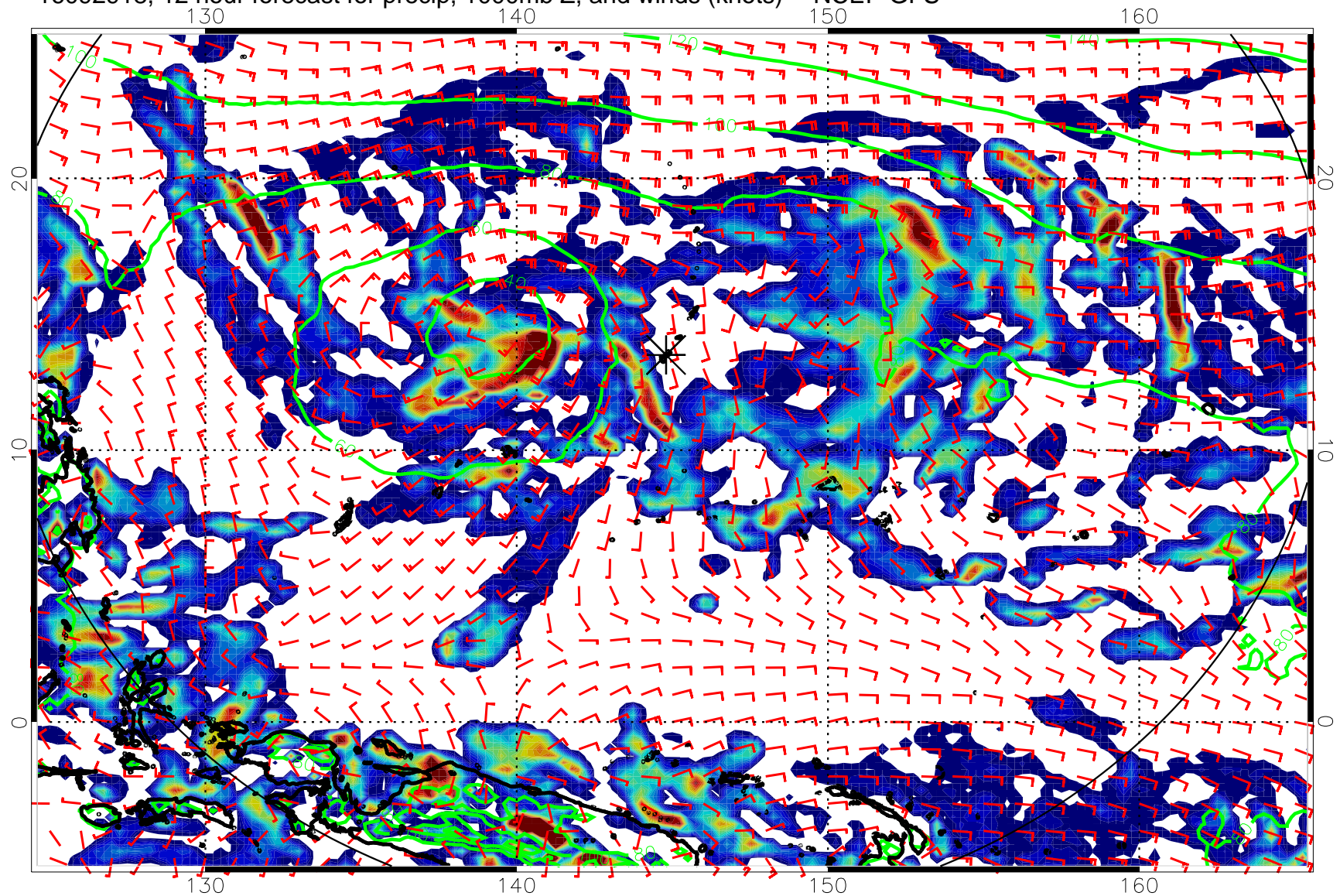


16092912, 6 hour forecast for precip, 1000mb Z, and winds (knots) -- NCEP GFS



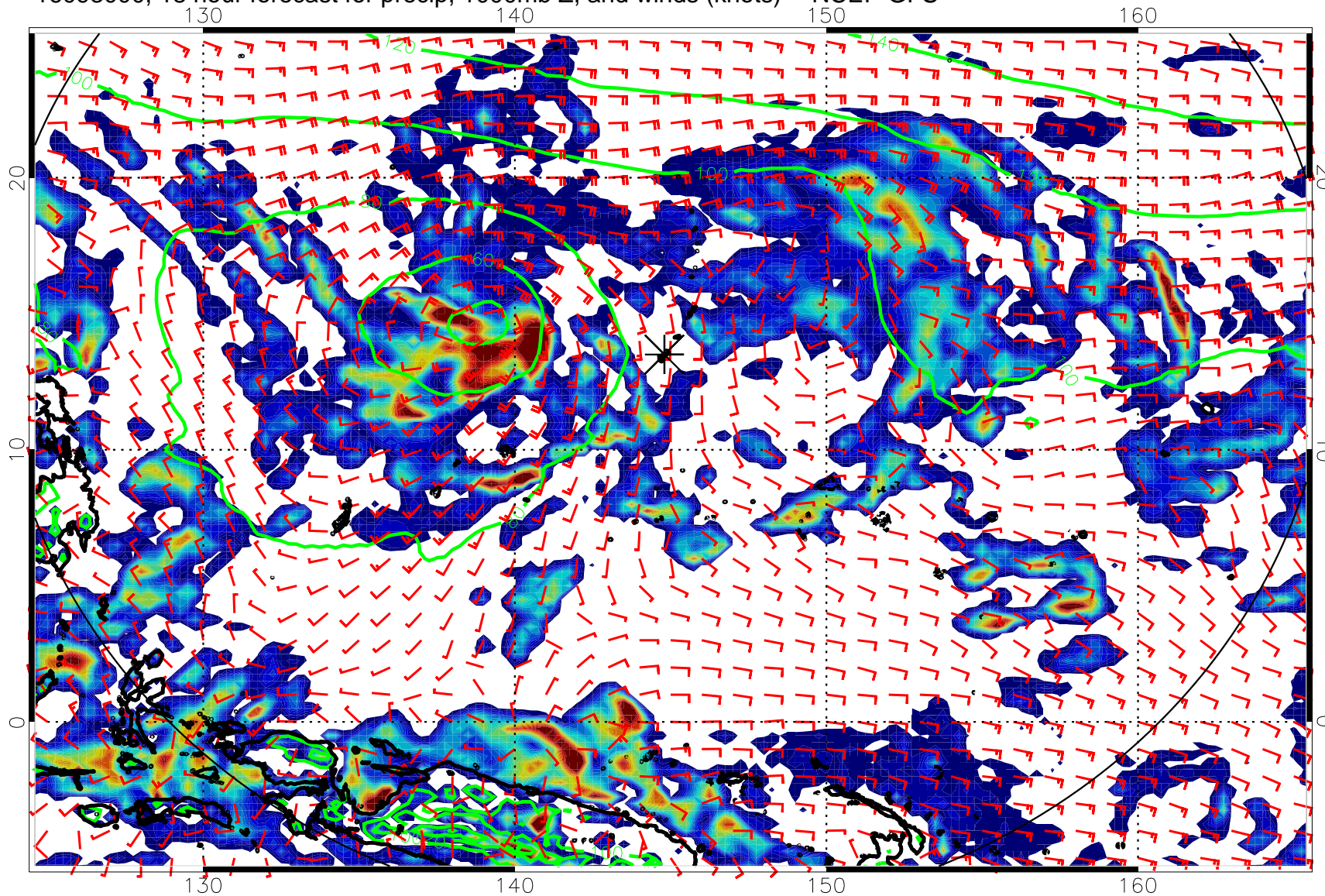
20      40      60      80  
Precipitation, mm/day

16092918, 12 hour forecast for precip, 1000mb Z, and winds (knots) -- NCEP GFS



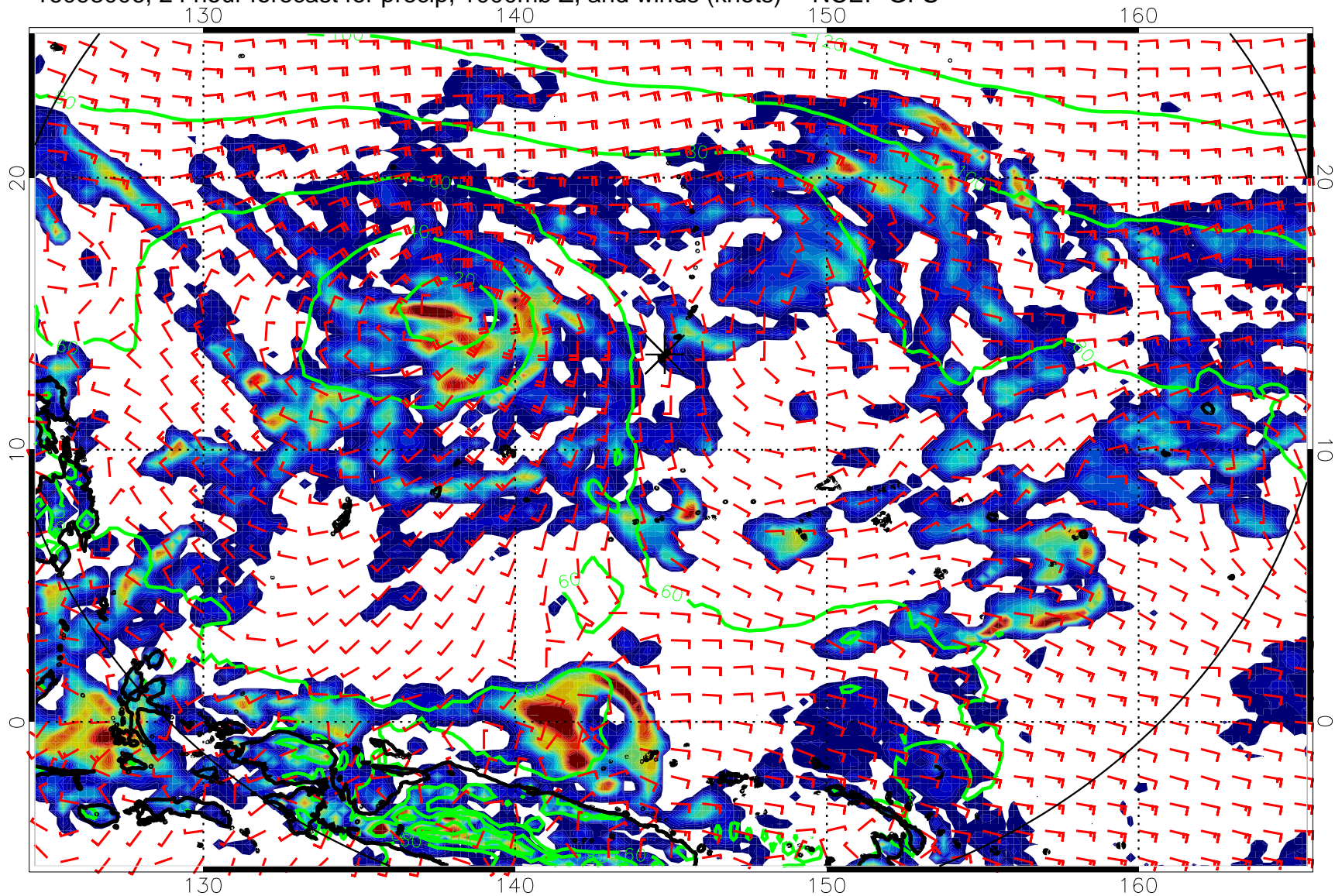
20      40      60      80  
Precipitation, mm/day

16093000, 18 hour forecast for precip, 1000mb Z, and winds (knots) -- NCEP GFS



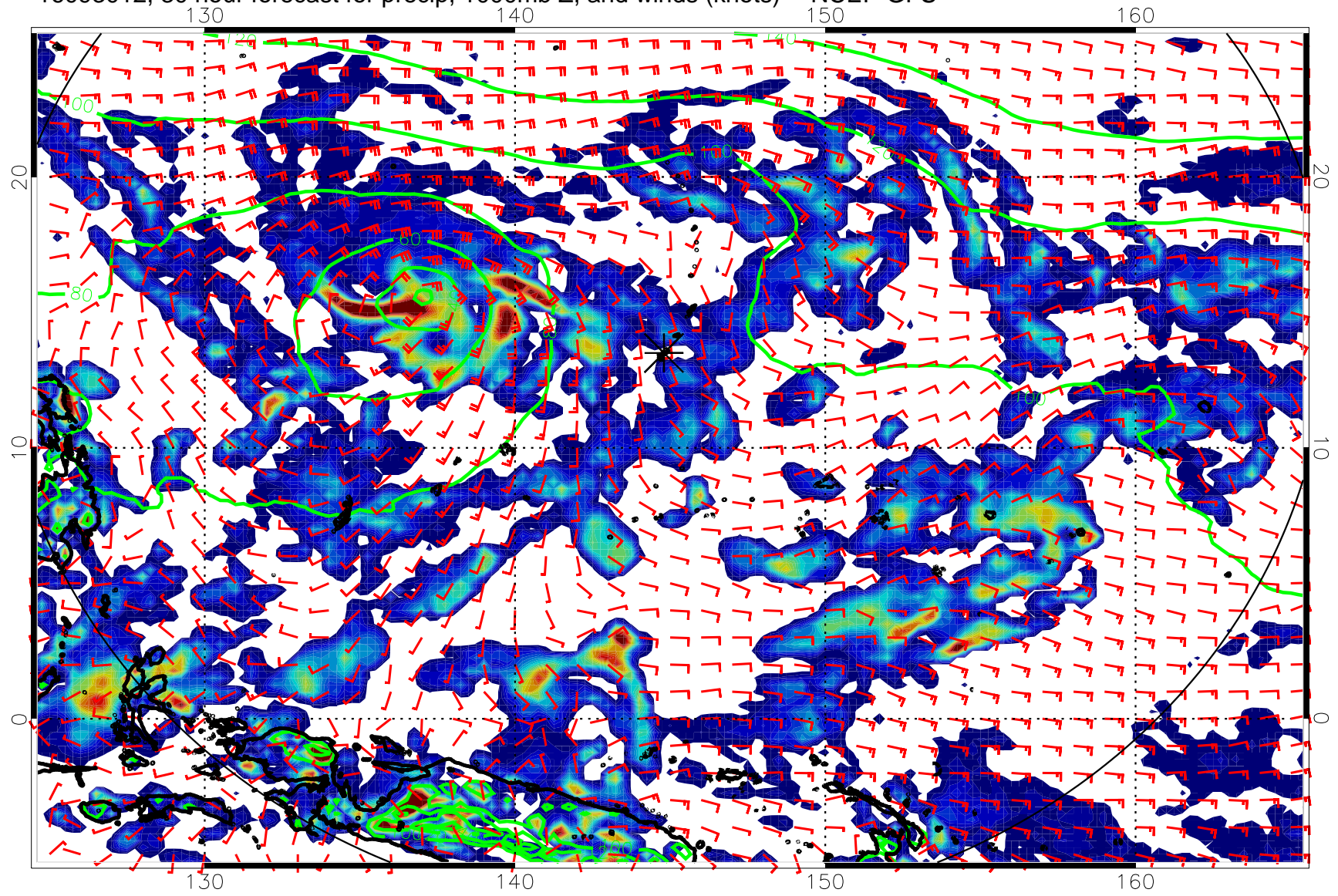
20 40 60 80  
Precipitation, mm/day

16093006, 24 hour forecast for precip, 1000mb Z, and winds (knots) -- NCEP GFS



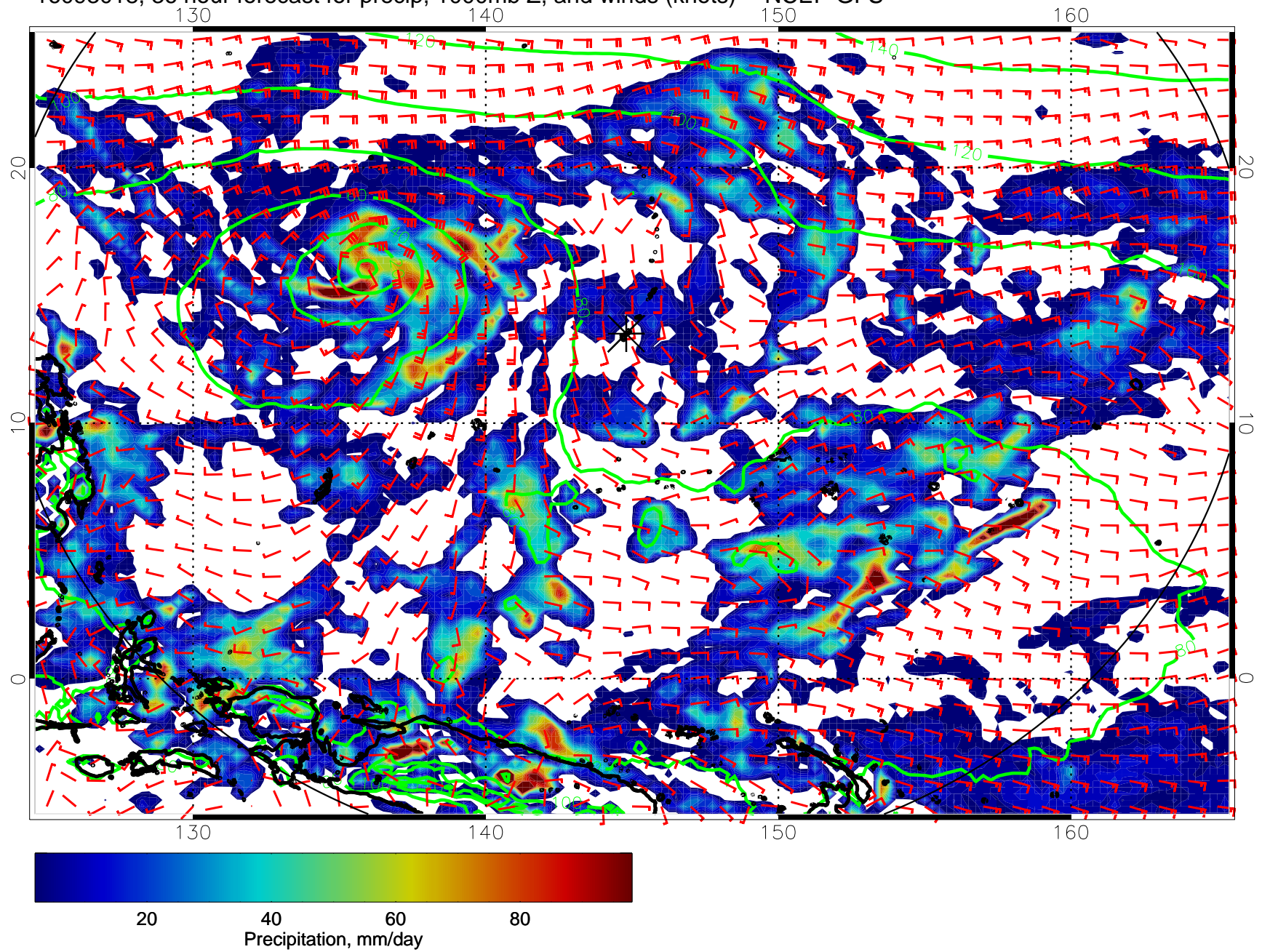
20      40      60      80  
Precipitation, mm/day

16093012, 30 hour forecast for precip, 1000mb Z, and winds (knots) -- NCEP GFS

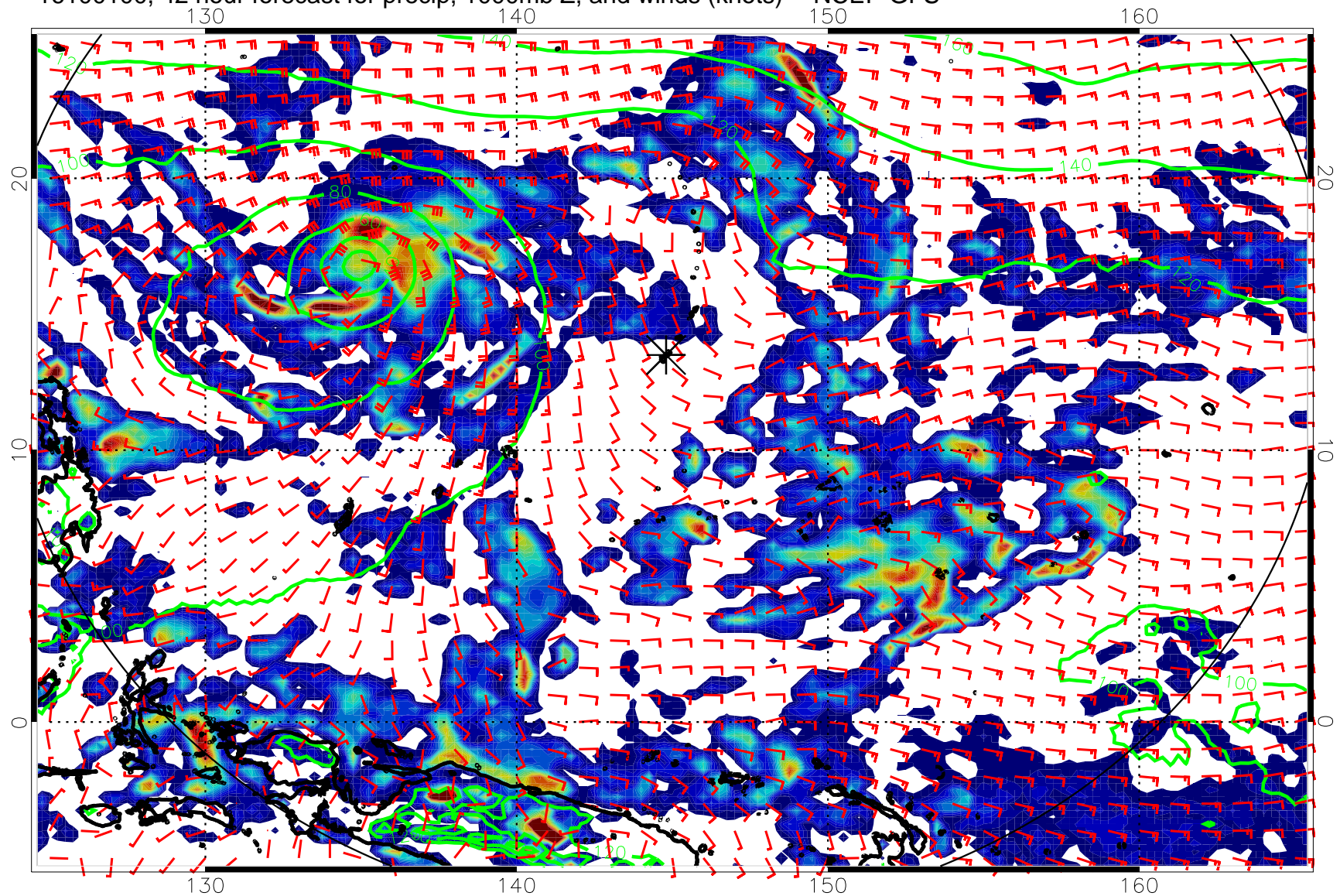


20      40      60      80  
Precipitation, mm/day

16093018, 36 hour forecast for precip, 1000mb Z, and winds (knots) -- NCEP GFS

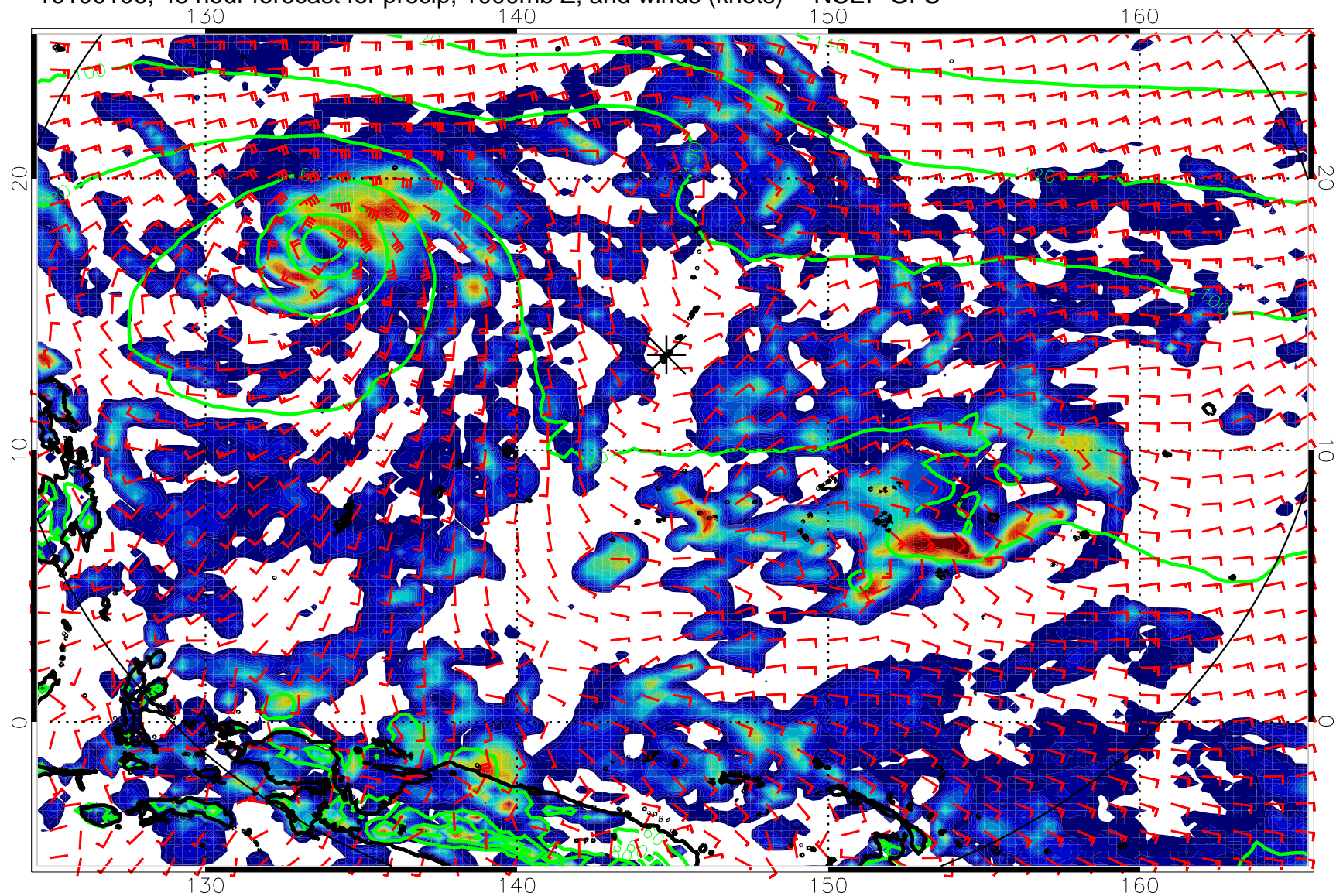


16100100, 42 hour forecast for precip, 1000mb Z, and winds (knots) -- NCEP GFS



20      40      60      80  
Precipitation, mm/day

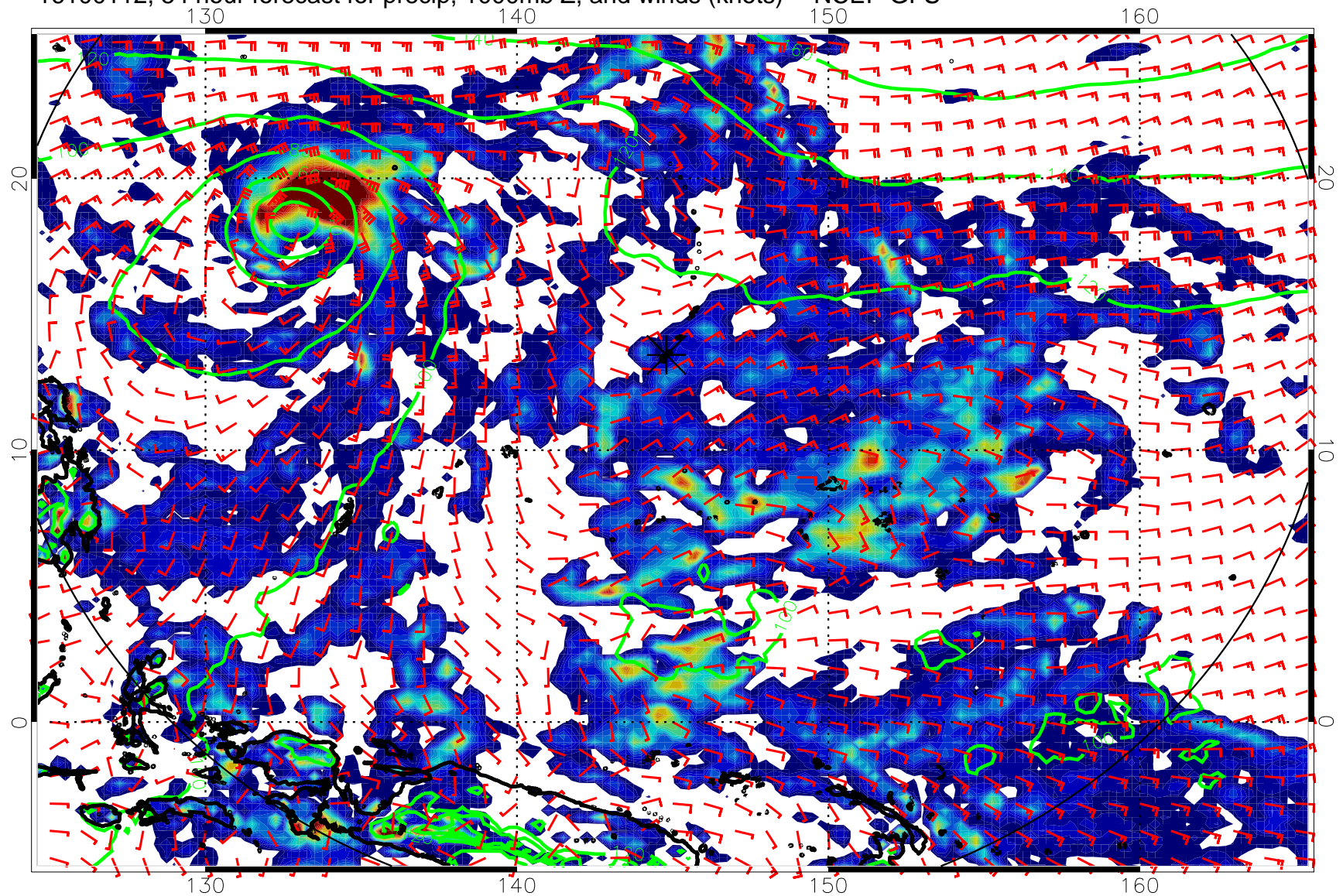
16100106, 48 hour forecast for precip, 1000mb Z, and winds (knots) -- NCEP GFS



20 40 60 80  
Precipitation, mm/day

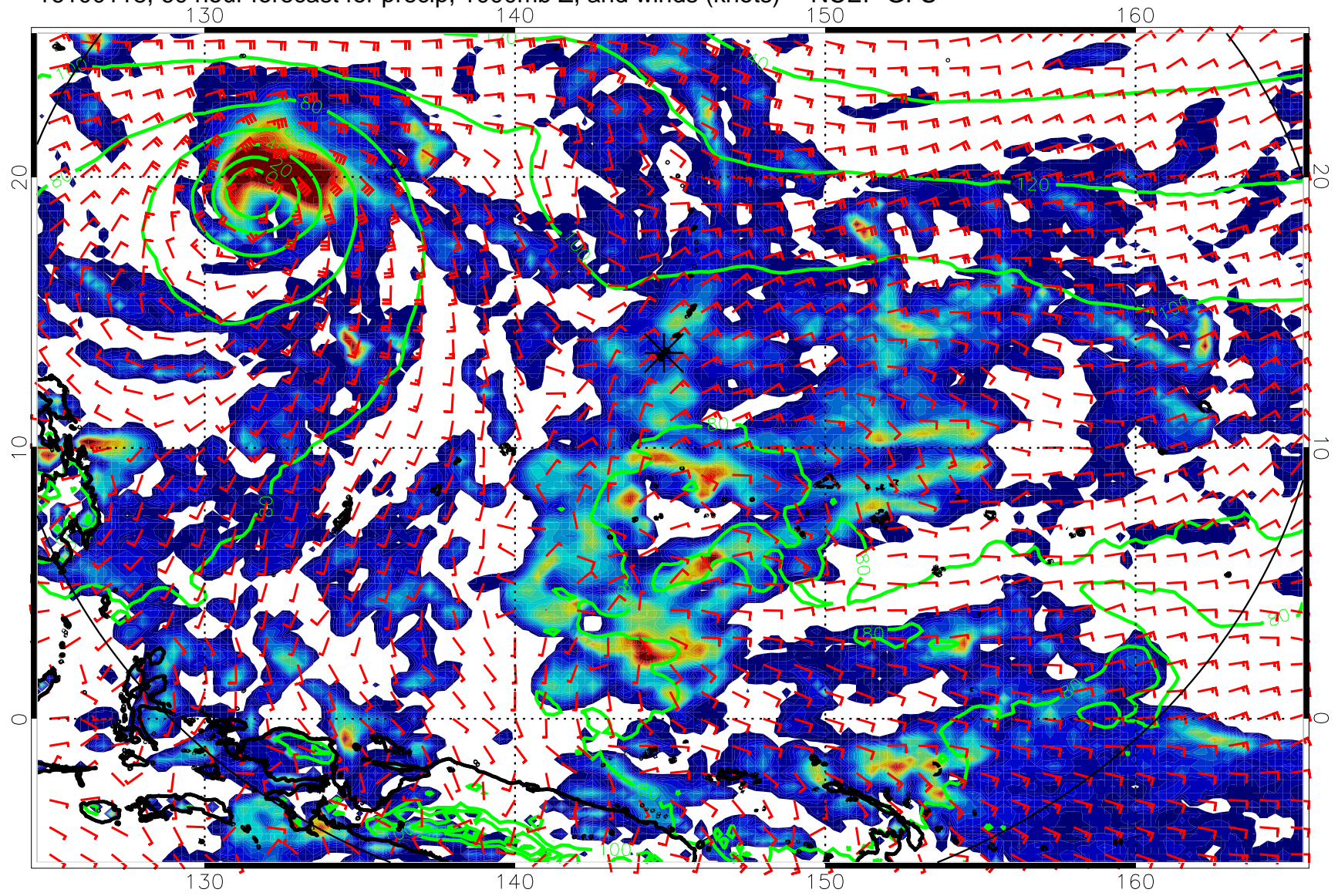


16100112, 54 hour forecast for precip, 1000mb Z, and winds (knots) -- NCEP GFS



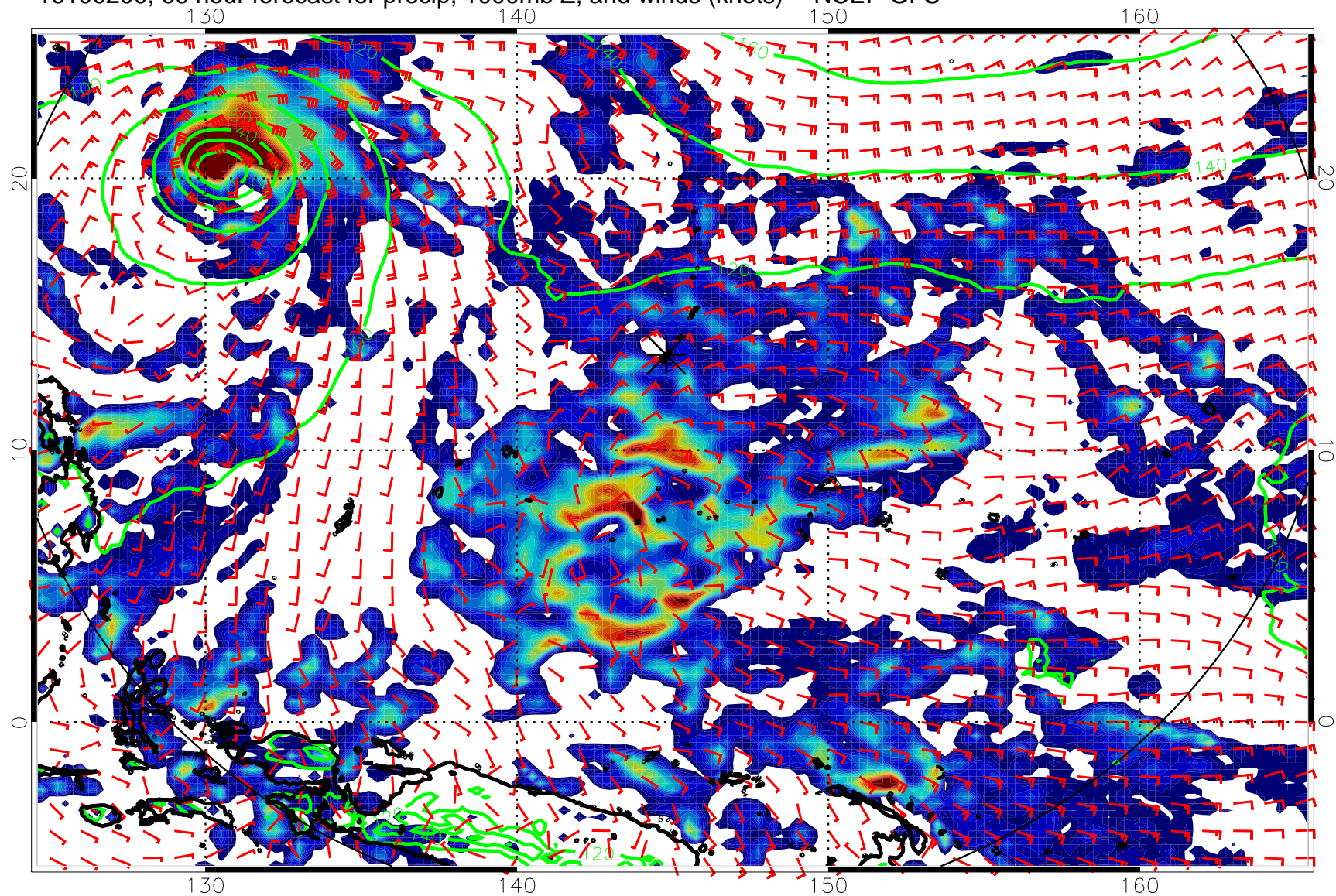
20      40      60      80  
Precipitation, mm/day

16100118, 60 hour forecast for precip, 1000mb Z, and winds (knots) -- NCEP GFS



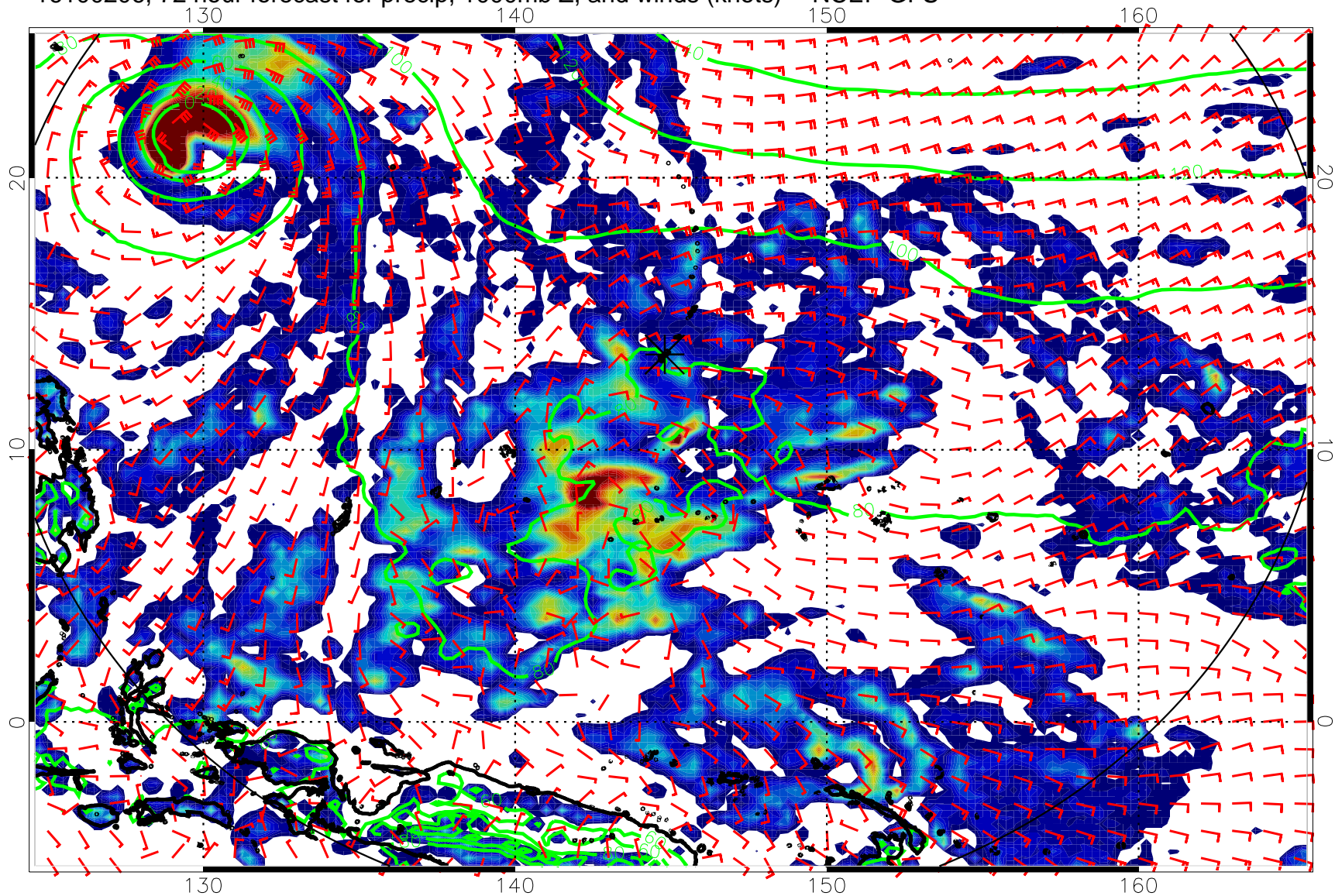
20      40      60      80  
Precipitation, mm/day

16100200, 66 hour forecast for precip, 1000mb Z, and winds (knots) -- NCEP GFS



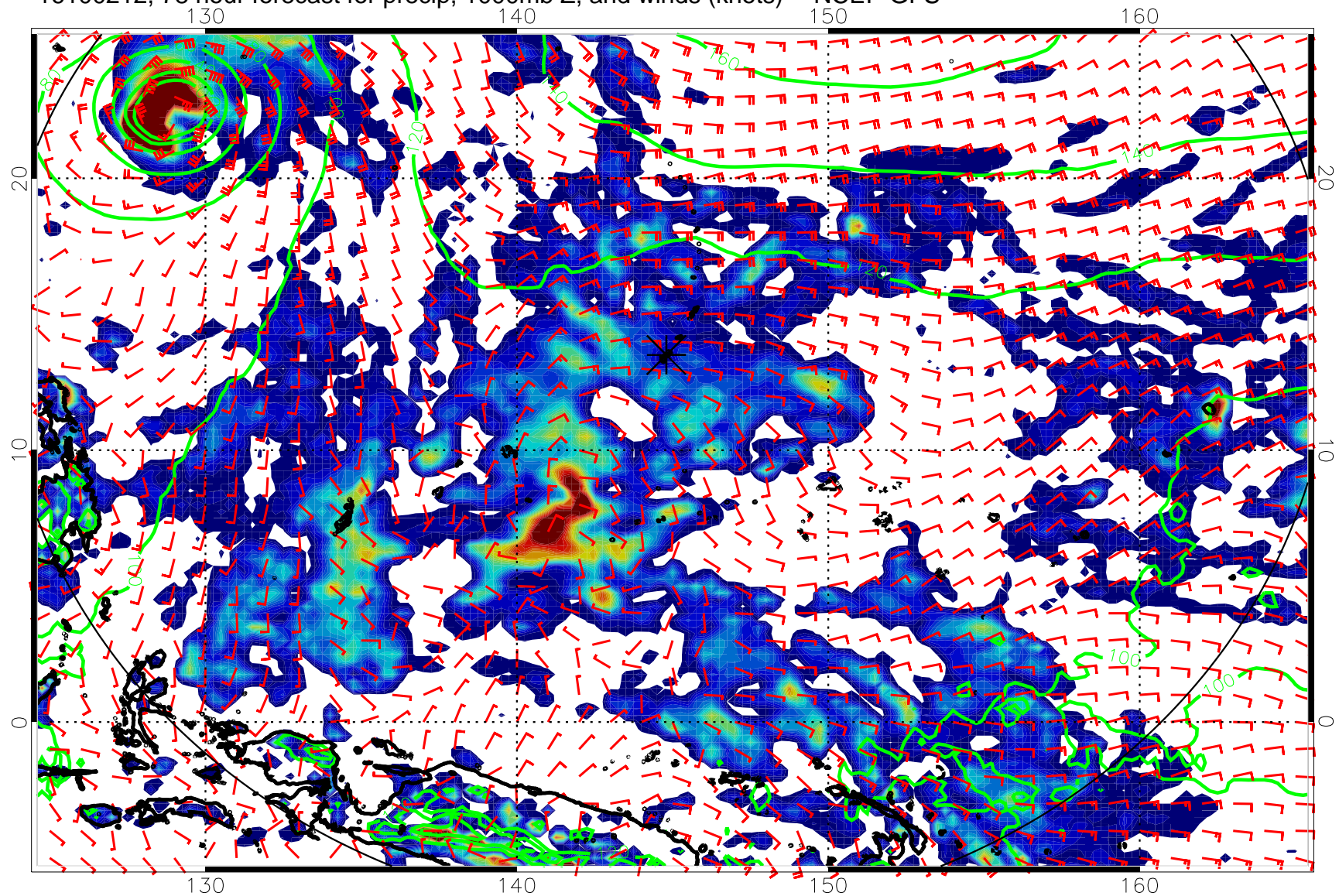
20      40      60      80  
Precipitation, mm/day

16100206, 72 hour forecast for precip, 1000mb Z, and winds (knots) -- NCEP GFS



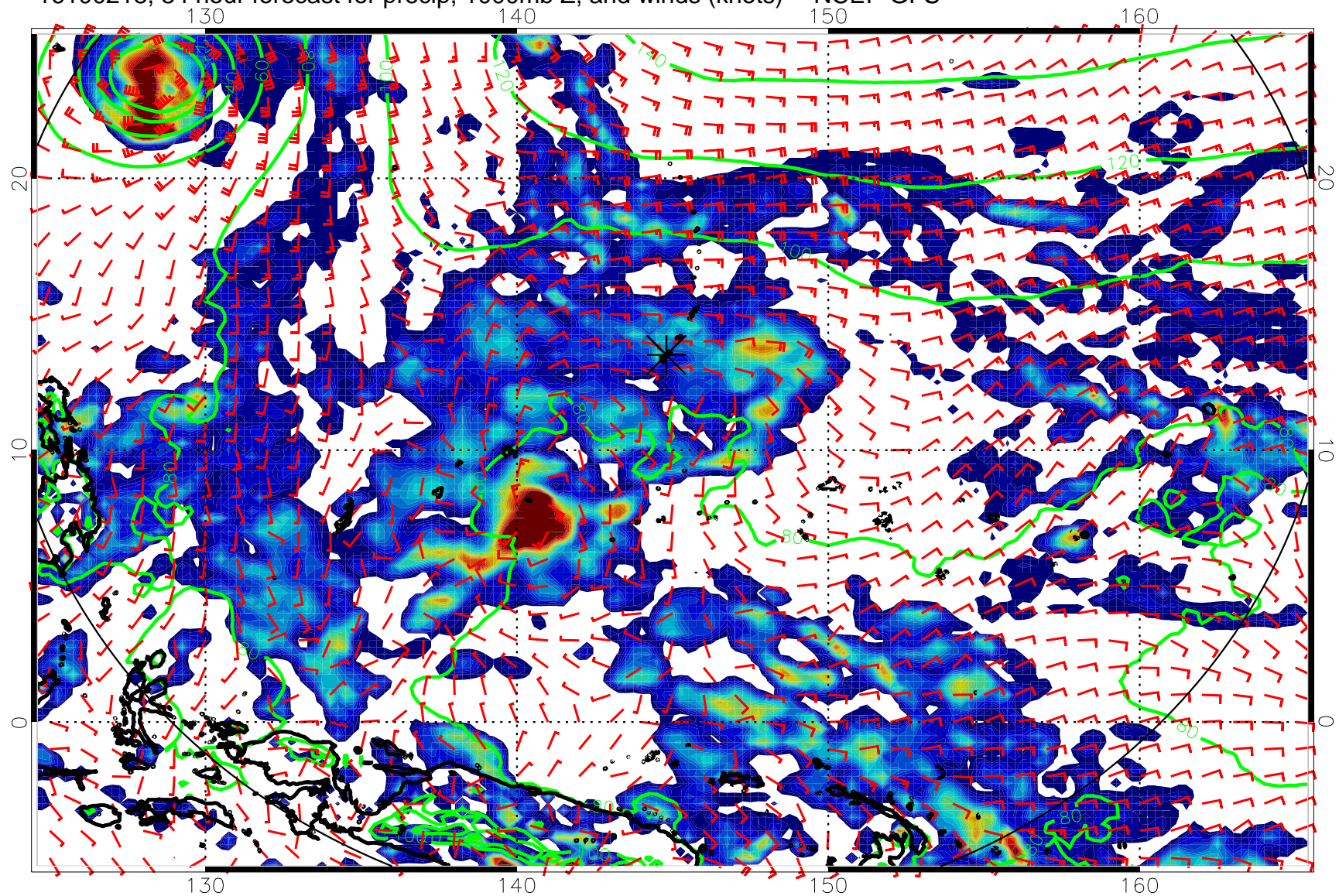
20 40 60 80  
Precipitation, mm/day

16100212, 78 hour forecast for precip, 1000mb Z, and winds (knots) -- NCEP GFS



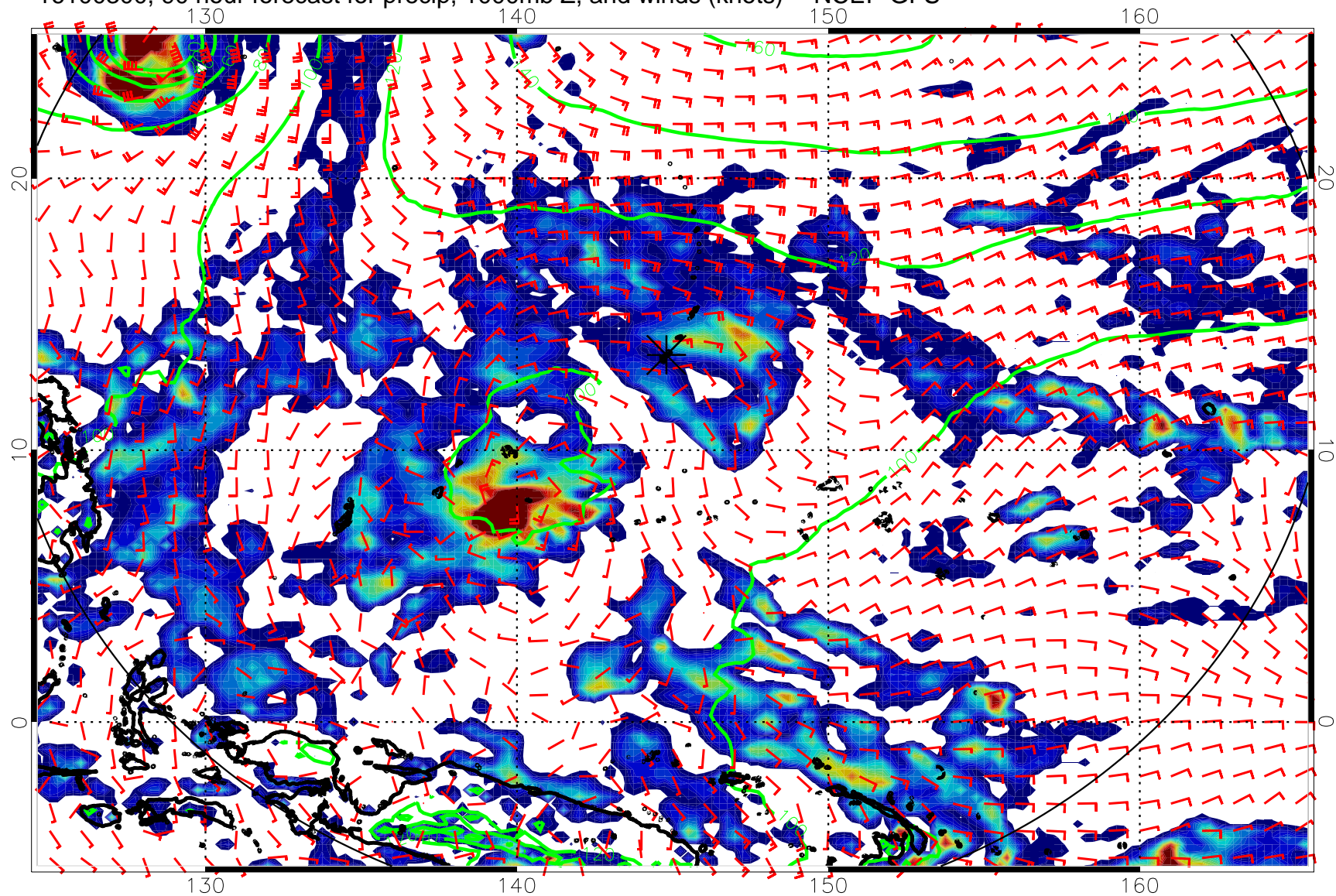
20      40      60      80  
Precipitation, mm/day

16100218, 84 hour forecast for precip, 1000mb Z, and winds (knots) -- NCEP GFS



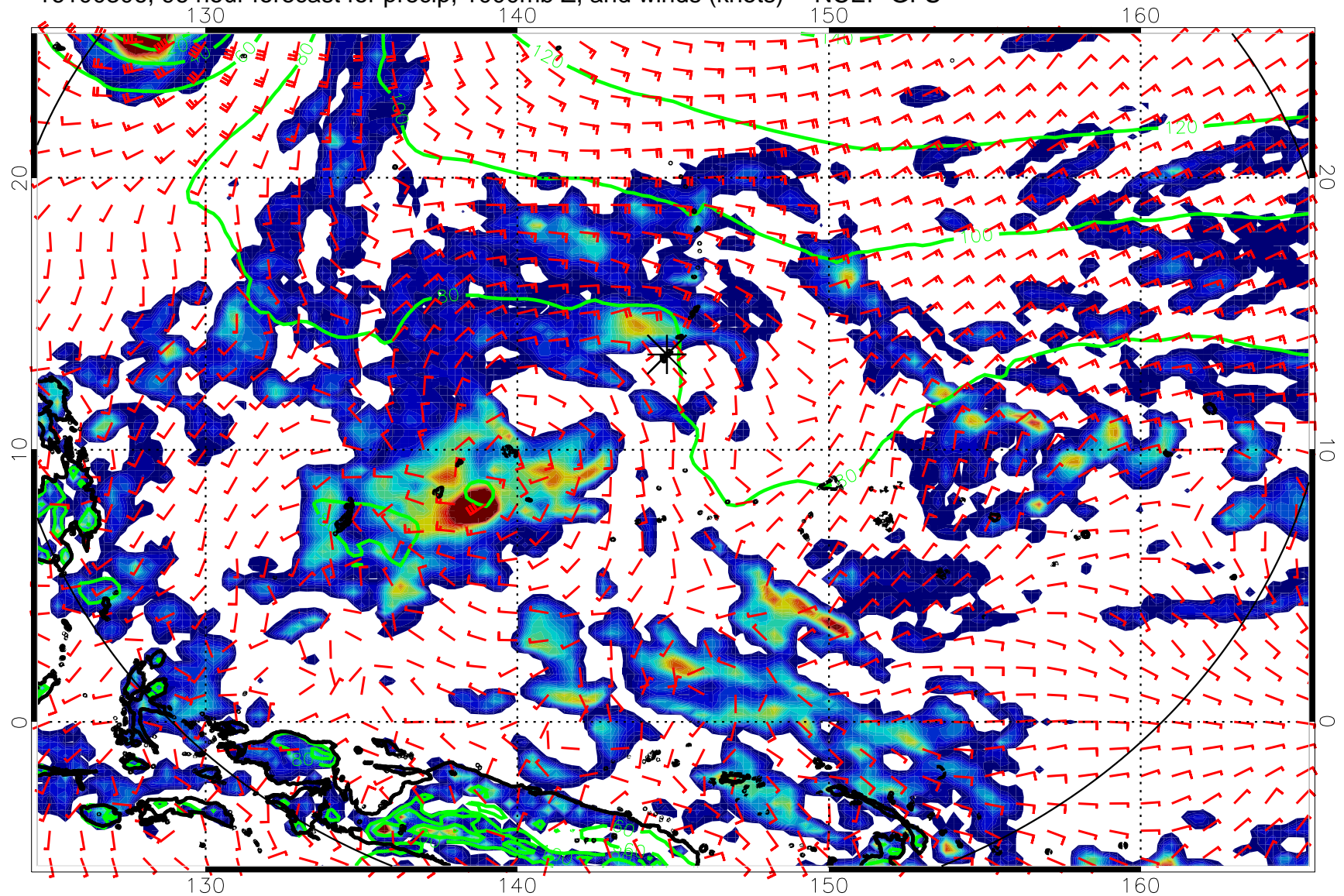
20      40      60      80  
Precipitation, mm/day

16100300, 90 hour forecast for precip, 1000mb Z, and winds (knots) -- NCEP GFS



20 40 60 80  
Precipitation, mm/day

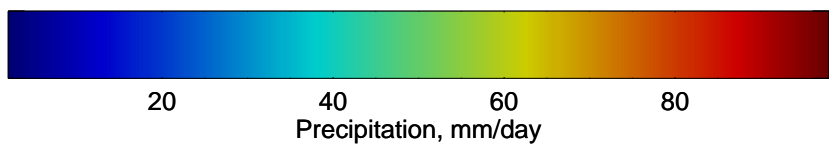
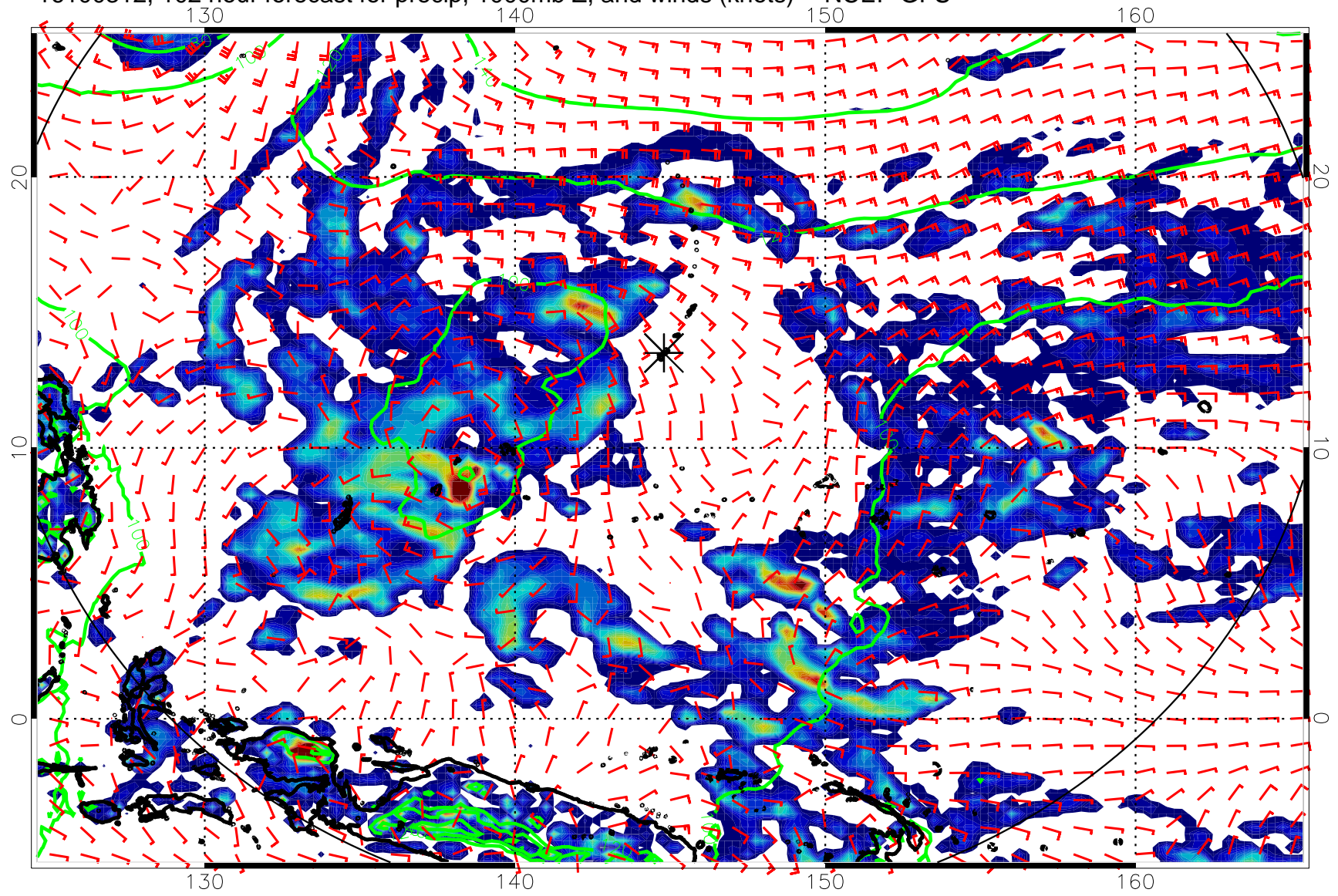
16100306, 96 hour forecast for precip, 1000mb Z, and winds (knots) -- NCEP GFS



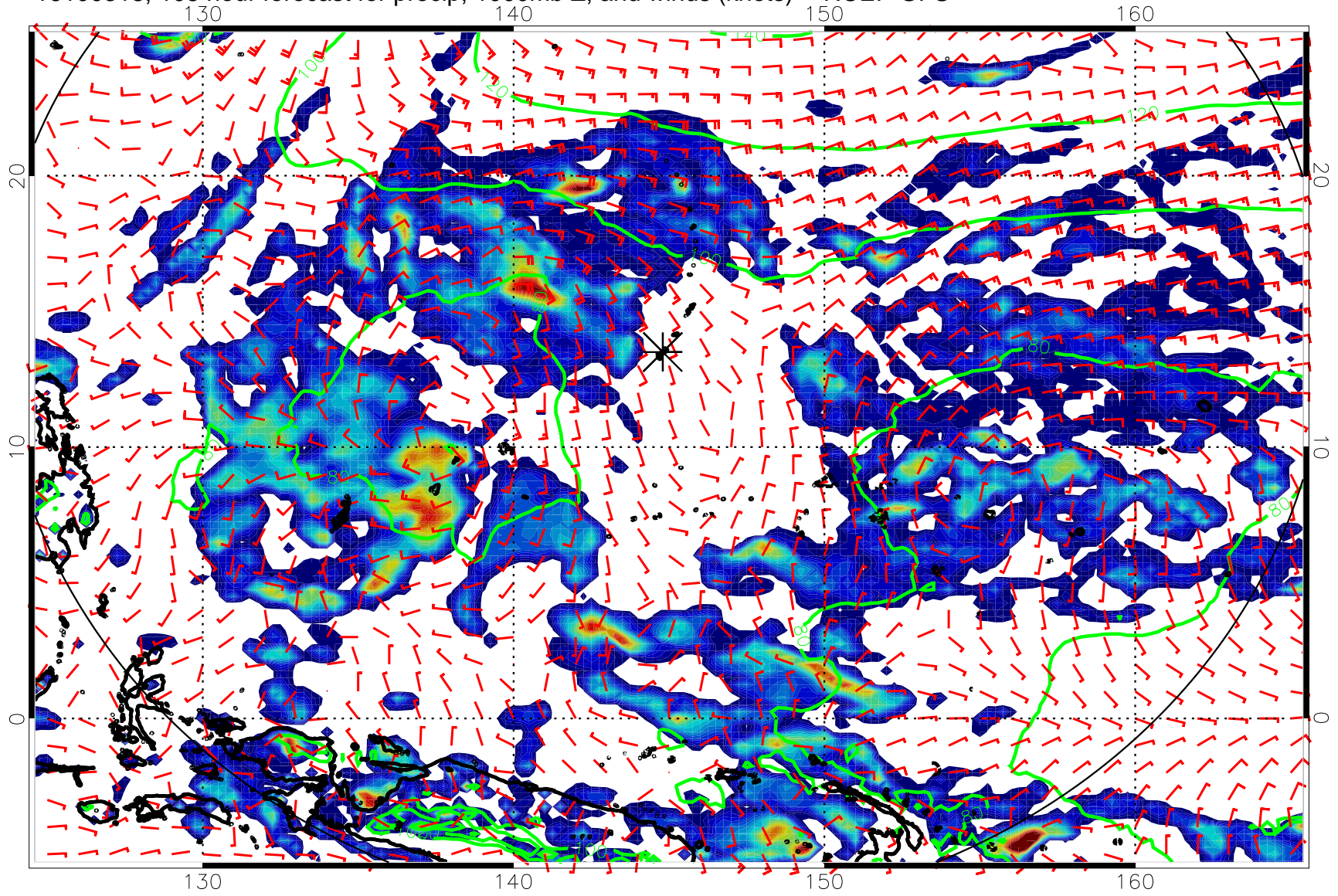
20 40 60 80  
Precipitation, mm/day



16100312, 102 hour forecast for precip, 1000mb Z, and winds (knots) -- NCEP GFS

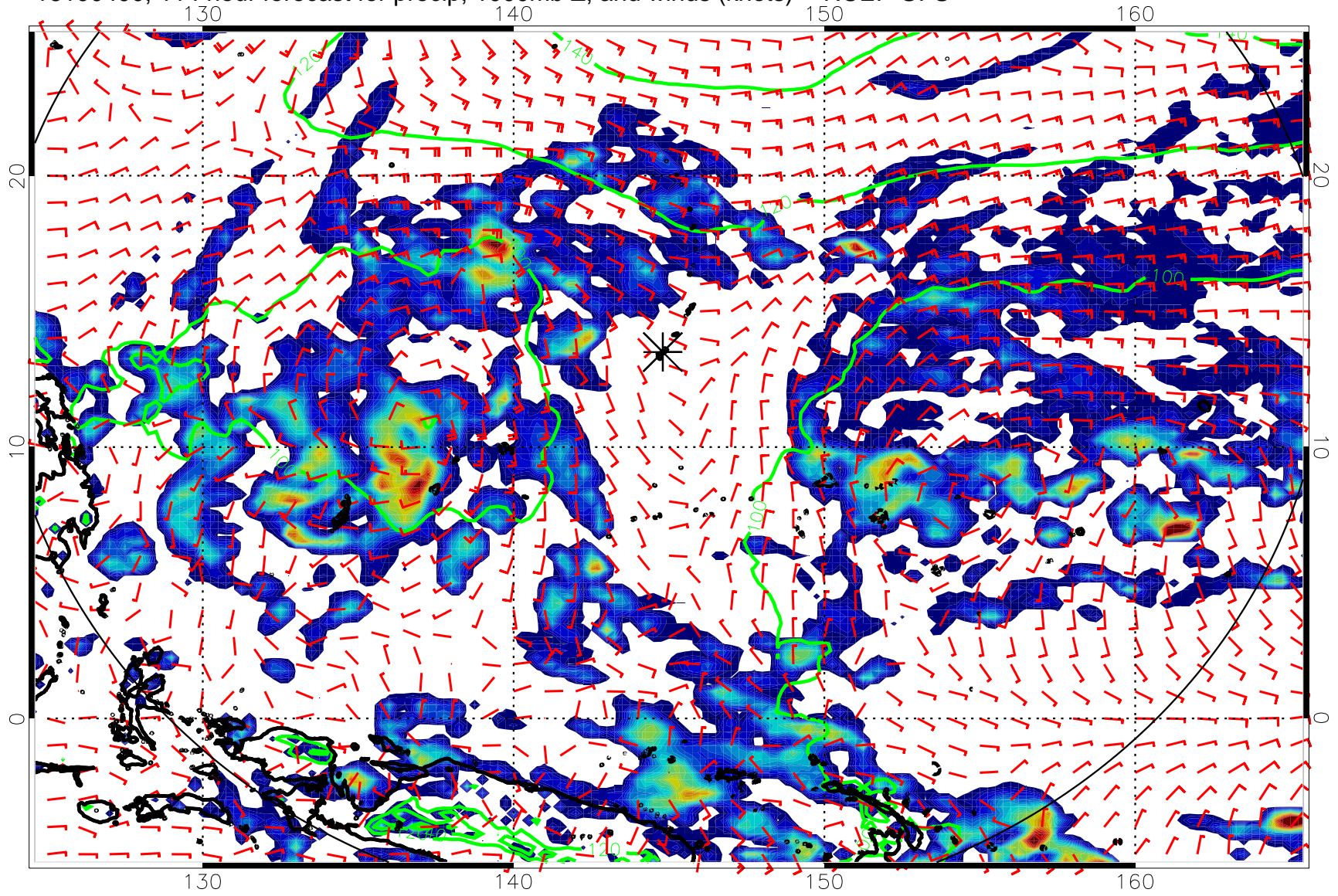


16100318, 108 hour forecast for precip, 1000mb Z, and winds (knots) -- NCEP GFS



20      40      60      80  
Precipitation, mm/day

16100400, 114 hour forecast for precip, 1000mb Z, and winds (knots) -- NCEP GFS



20      40      60      80  
Precipitation, mm/day

16100406, 120 hour forecast for precip, 1000mb Z, and winds (knots) -- NCEP GFS

