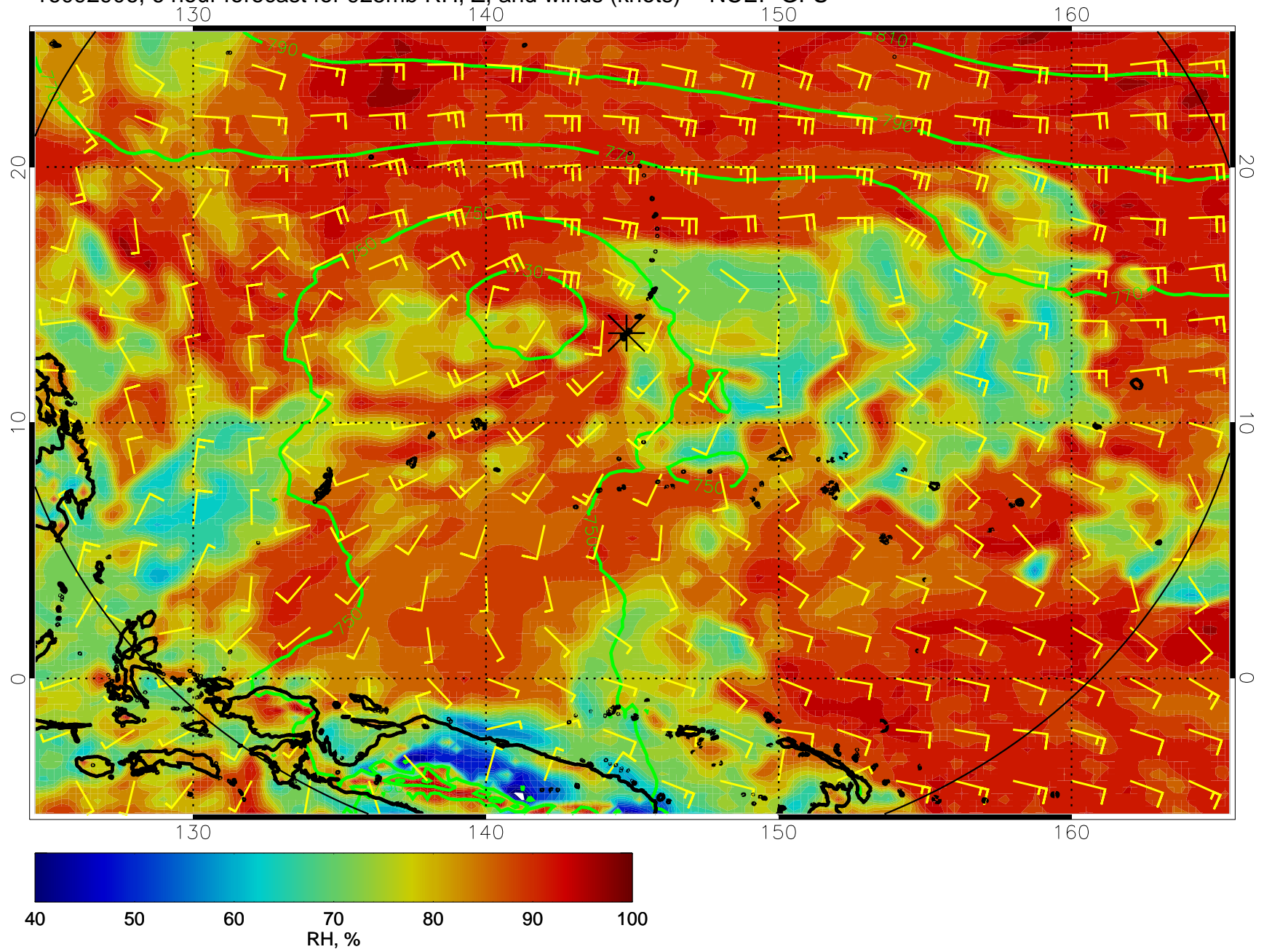
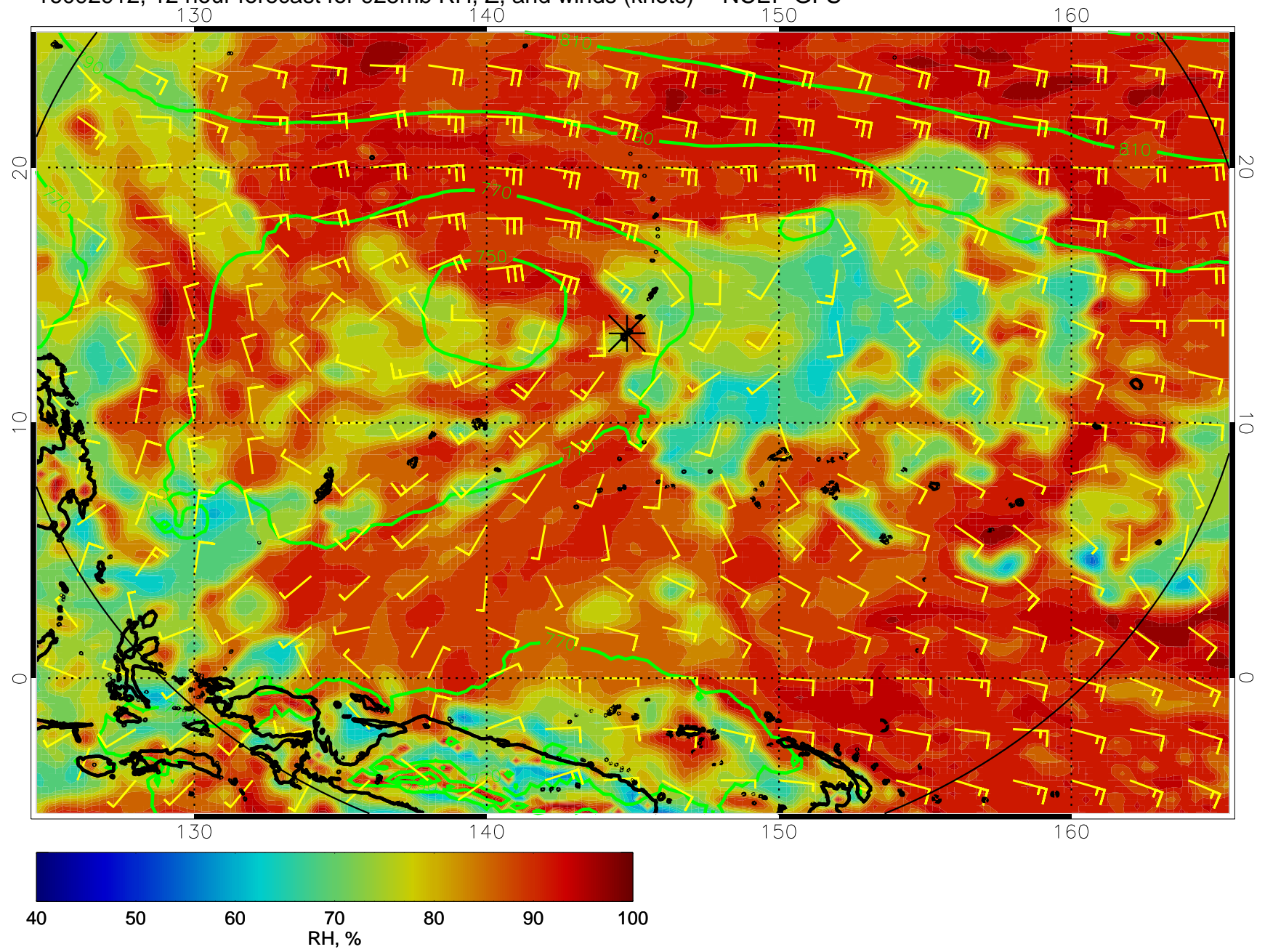


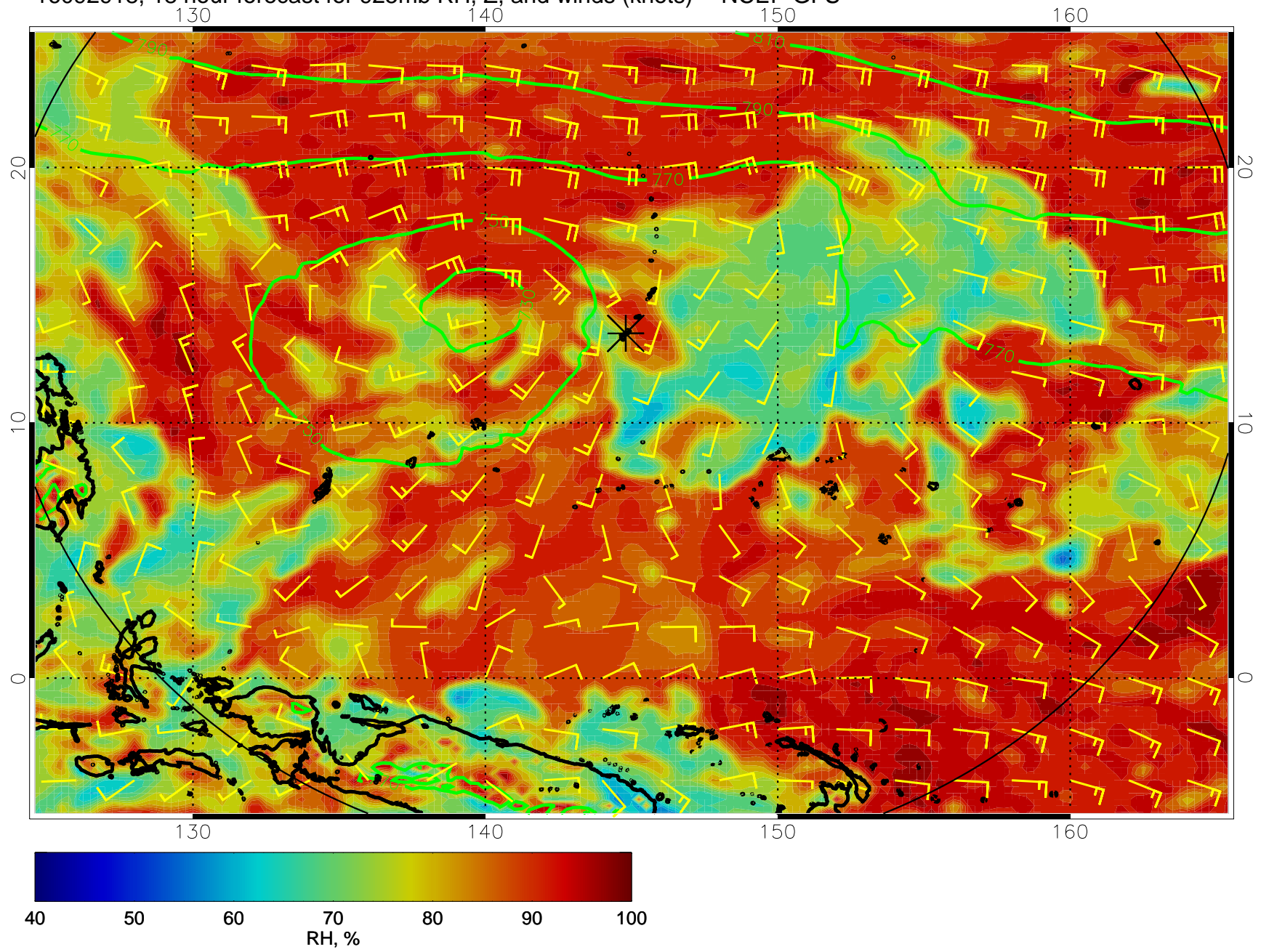
16092906, 6 hour forecast for 925mb RH, Z, and winds (knots) -- NCEP GFS



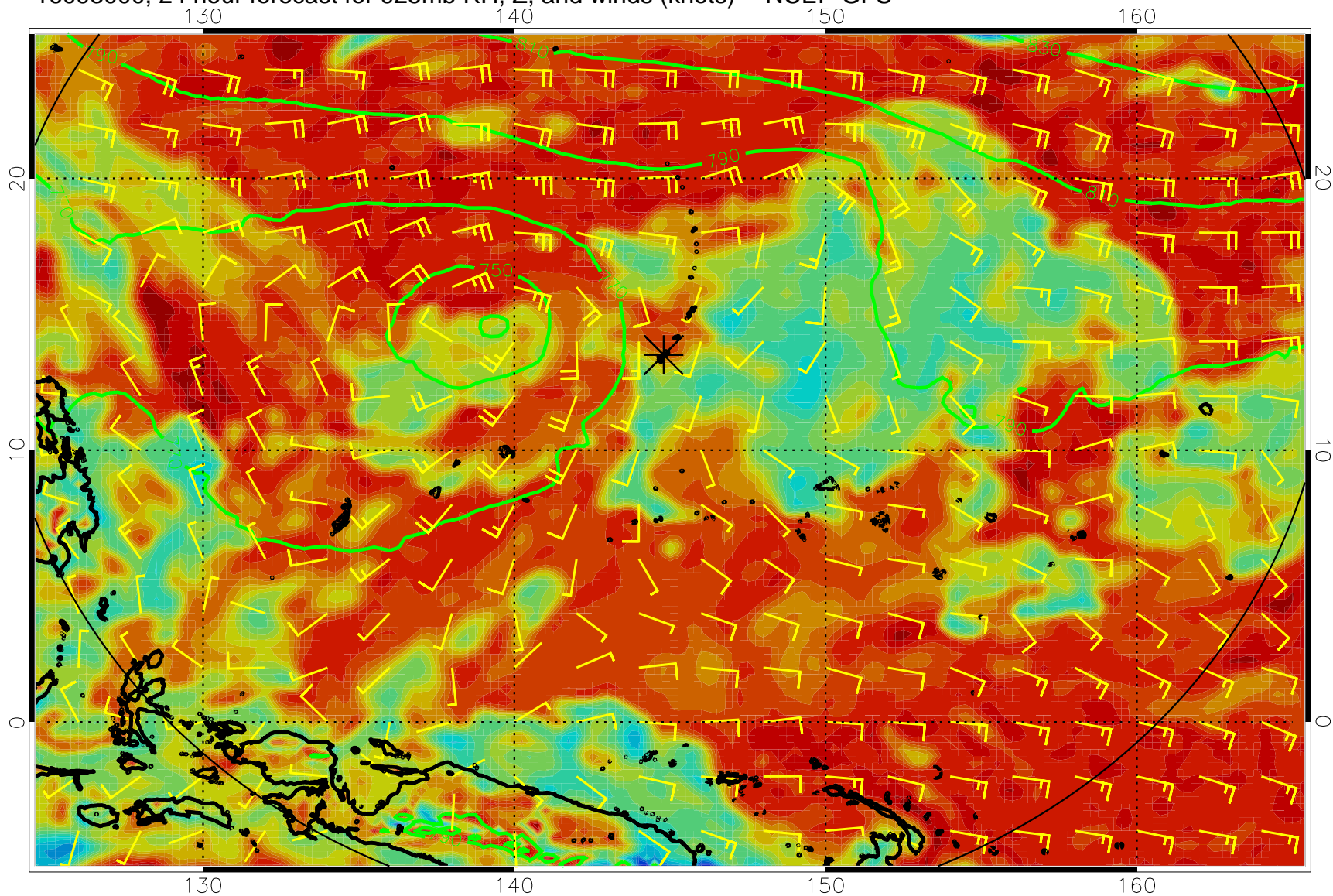
16092912, 12 hour forecast for 925mb RH, Z, and winds (knots) -- NCEP GFS



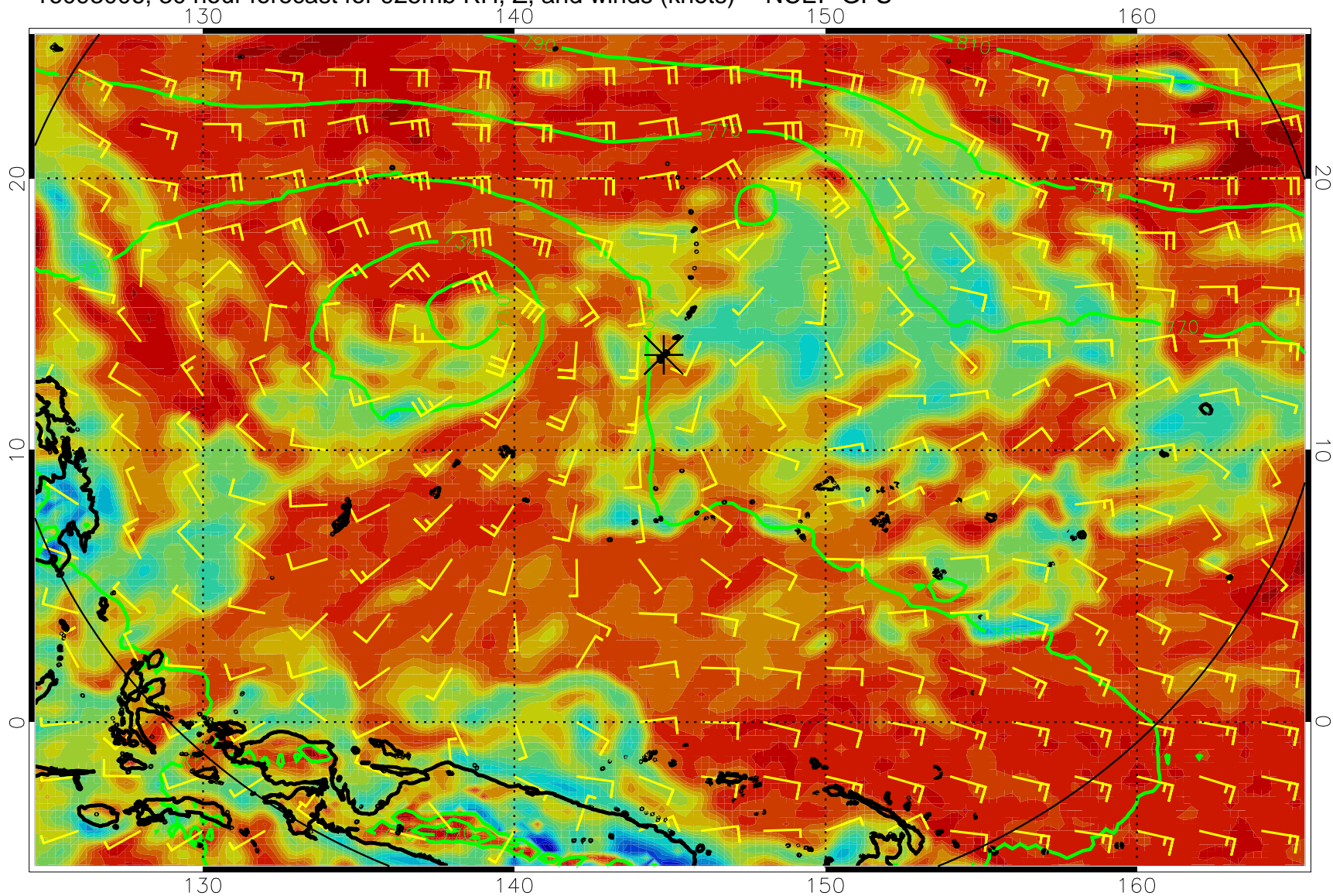
16092918, 18 hour forecast for 925mb RH, Z, and winds (knots) -- NCEP GFS



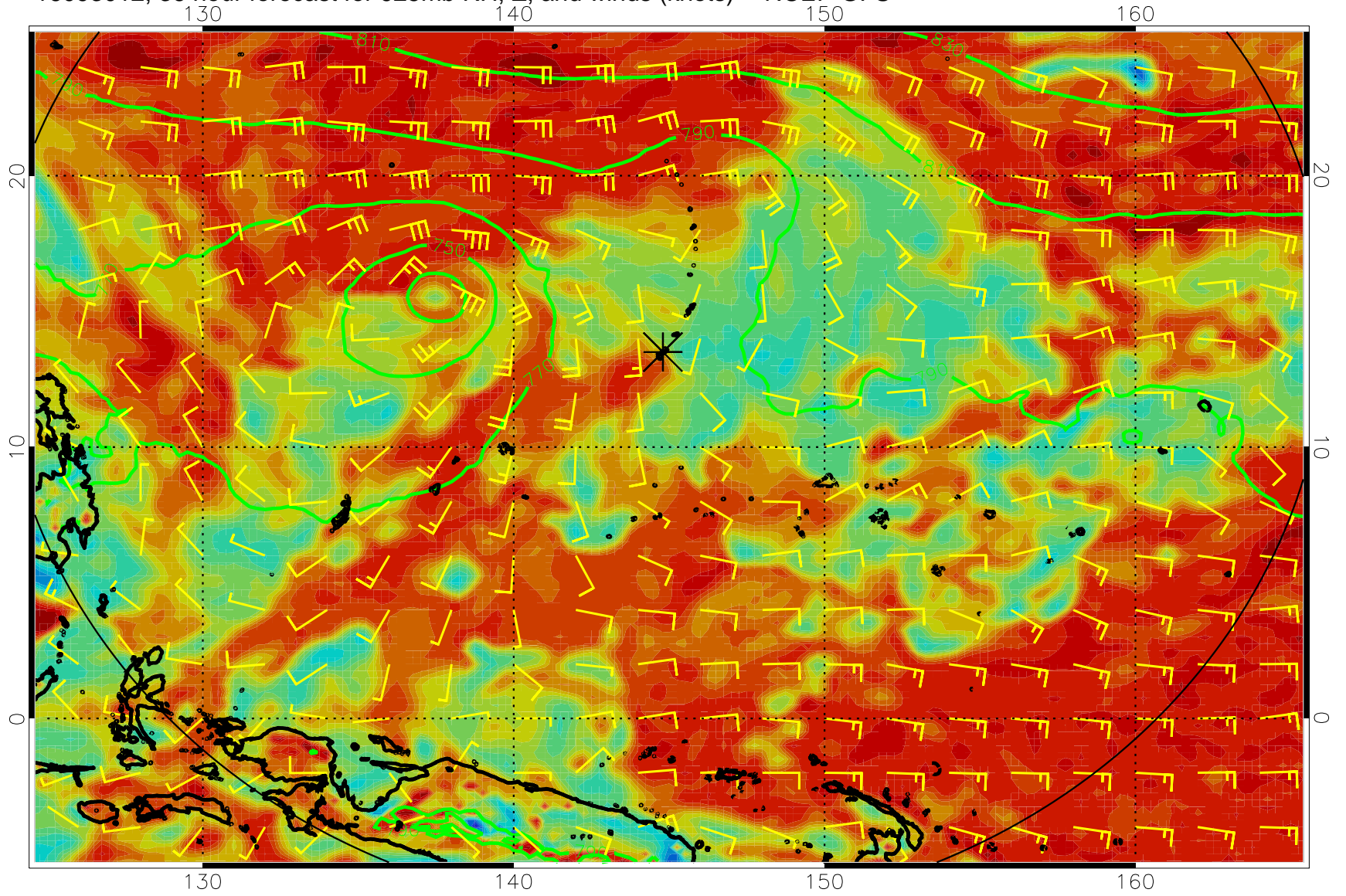
16093000, 24 hour forecast for 925mb RH, Z, and winds (knots) -- NCEP GFS



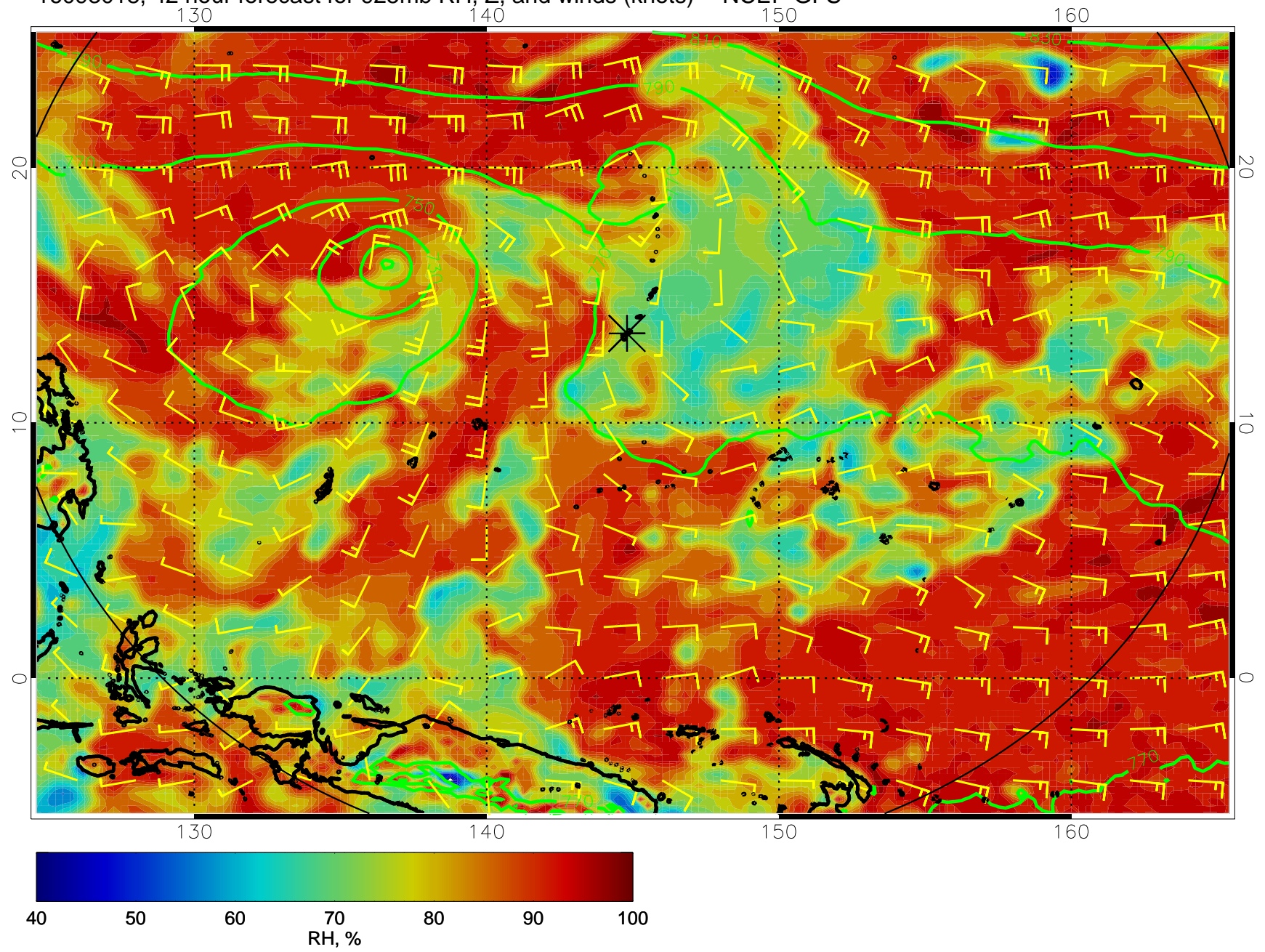
16093006, 30 hour forecast for 925mb RH, Z, and winds (knots) -- NCEP GFS



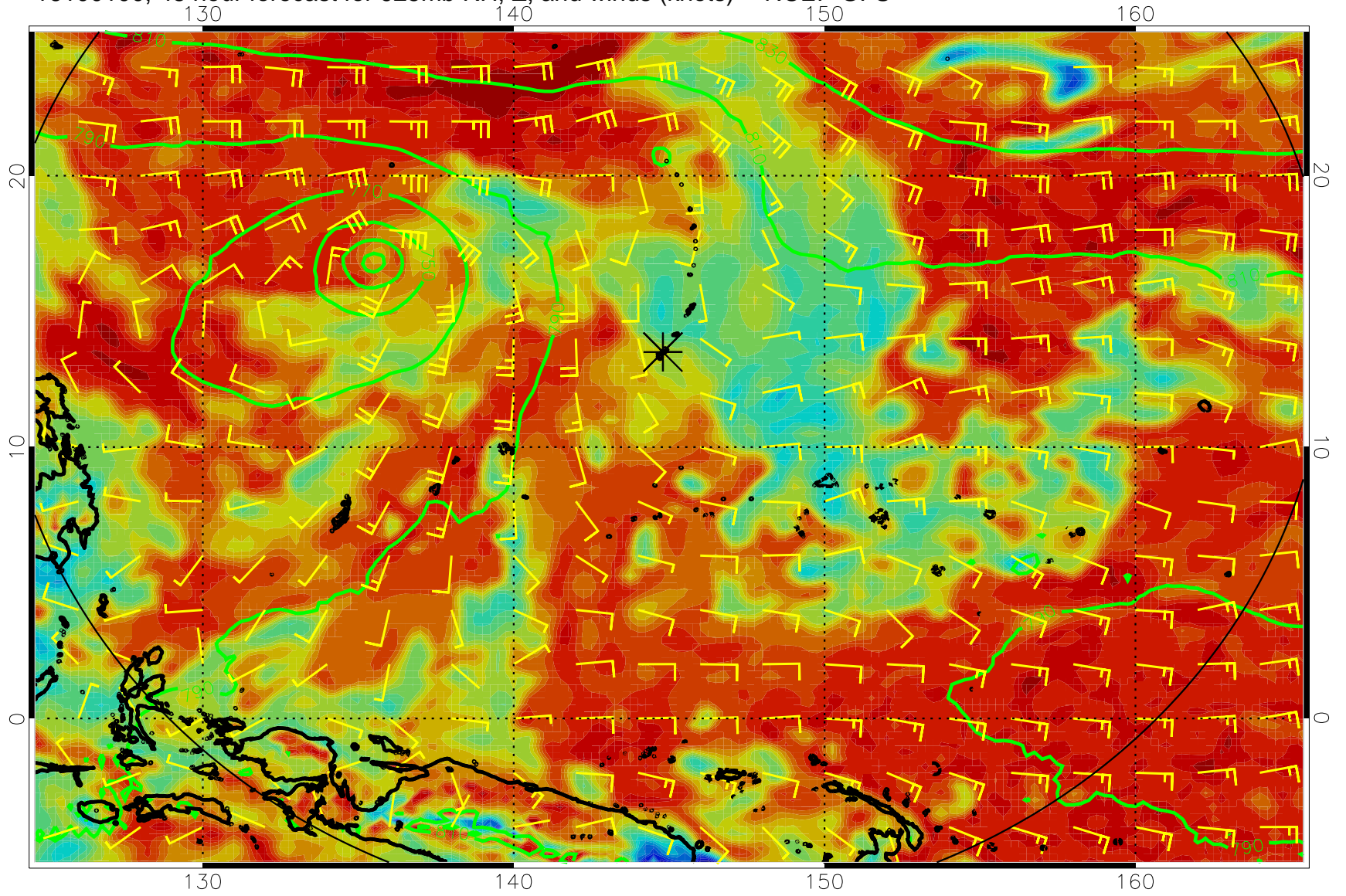
16093012, 36 hour forecast for 925mb RH, Z, and winds (knots) -- NCEP GFS



16093018, 42 hour forecast for 925mb RH, Z, and winds (knots) -- NCEP GFS

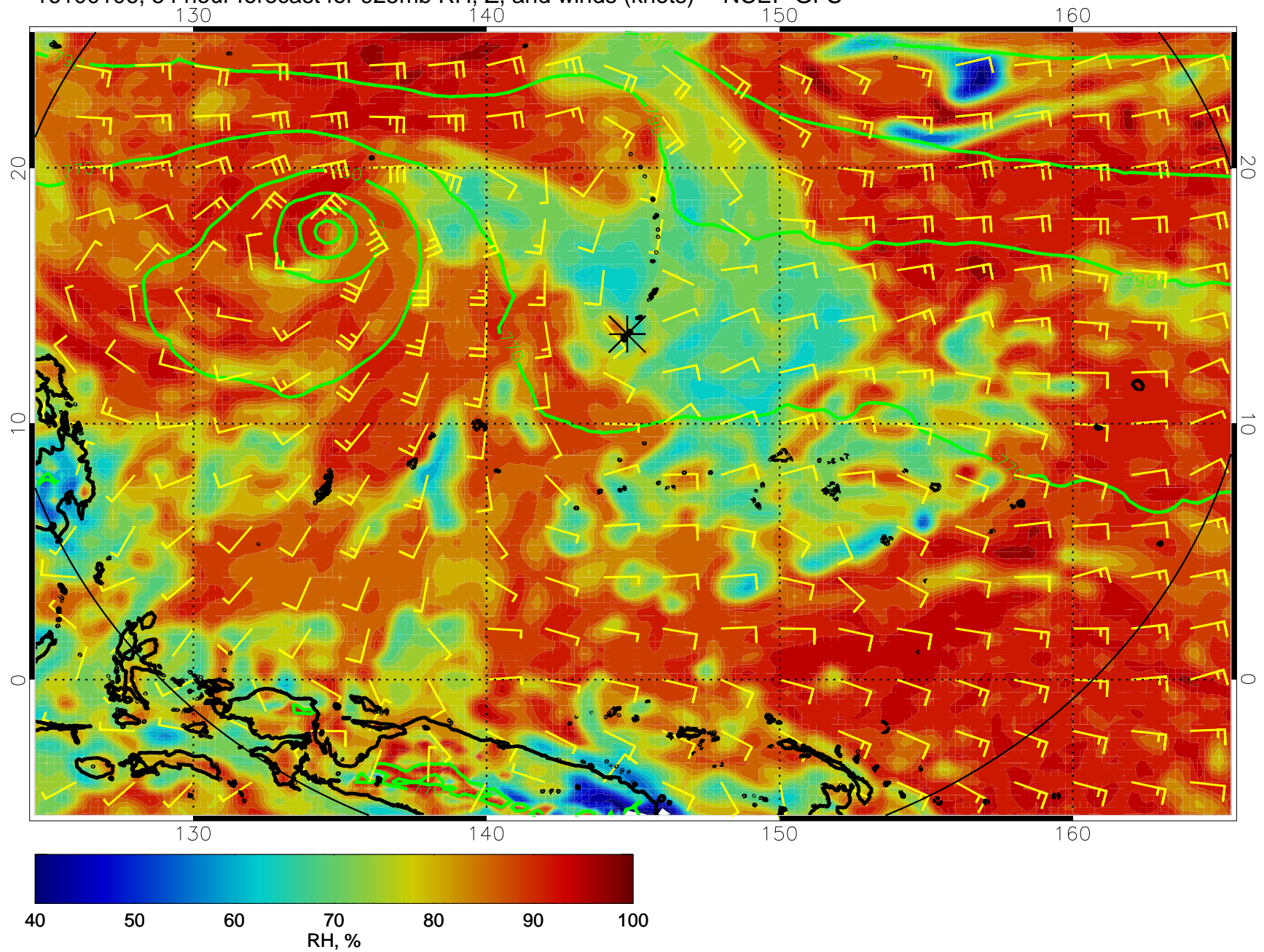


16100100, 48 hour forecast for 925mb RH, Z, and winds (knots) -- NCEP GFS

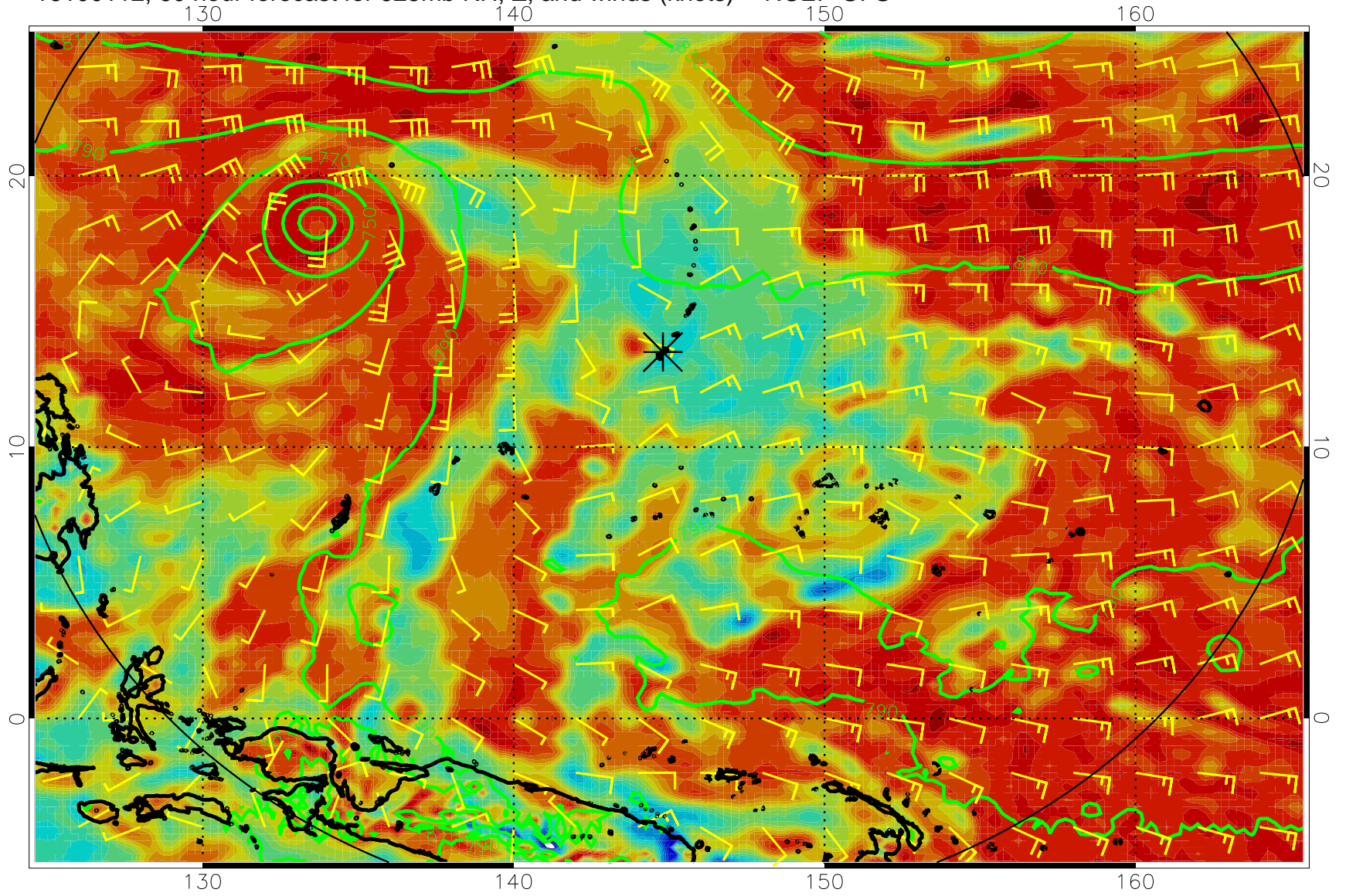




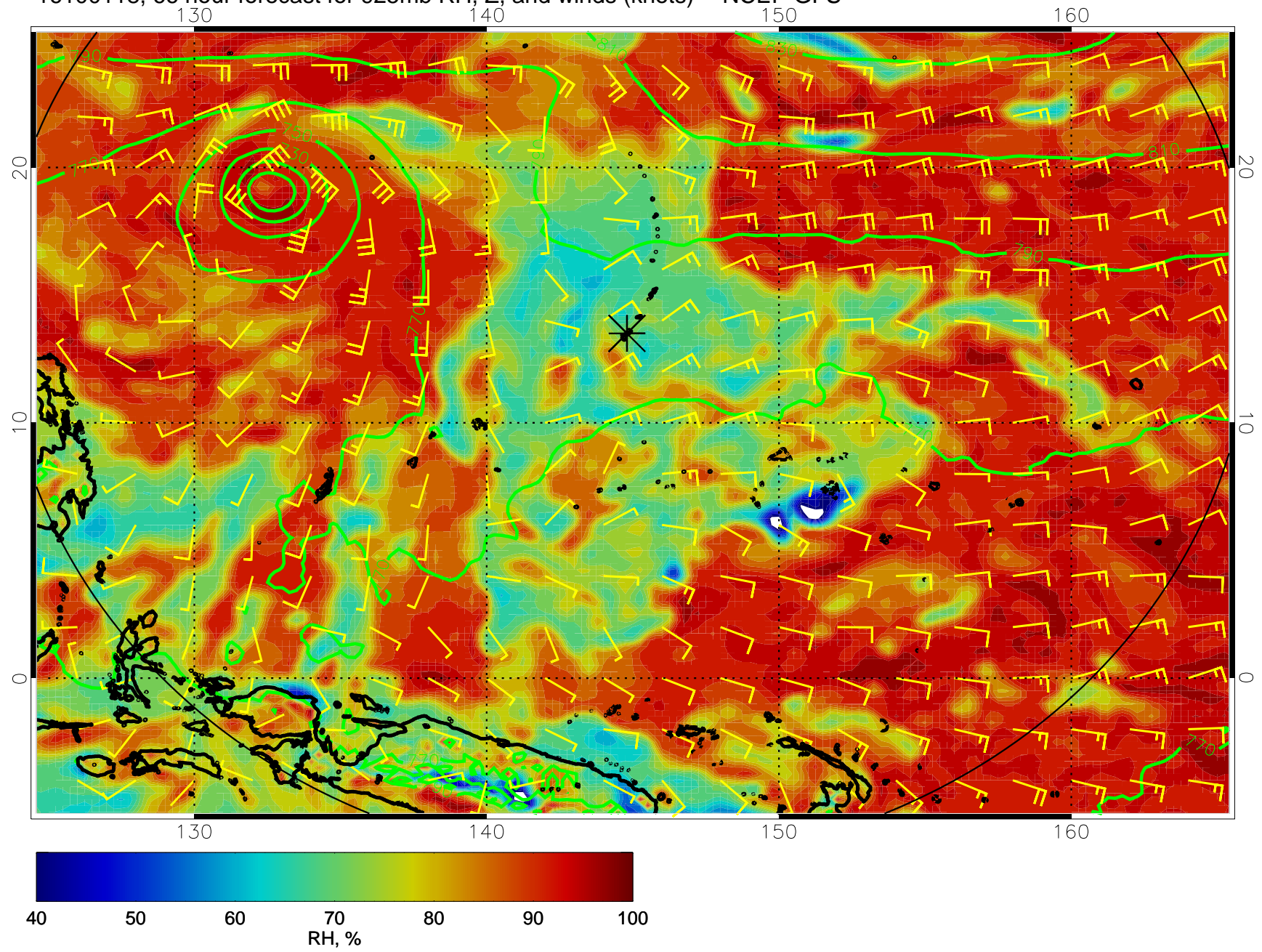
16100106, 54 hour forecast for 925mb RH, Z, and winds (knots) -- NCEP GFS



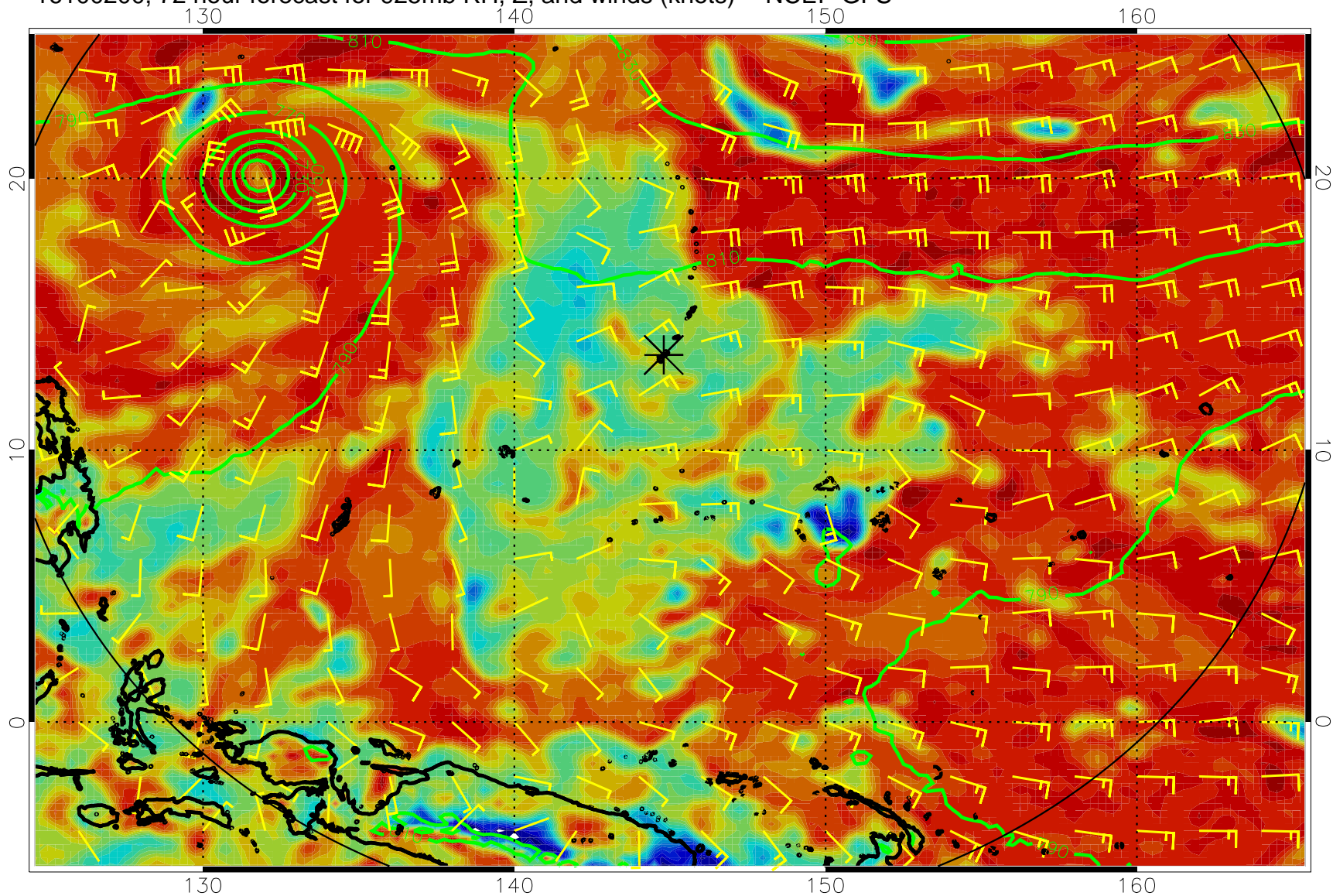
16100112, 60 hour forecast for 925mb RH, Z, and winds (knots) -- NCEP GFS



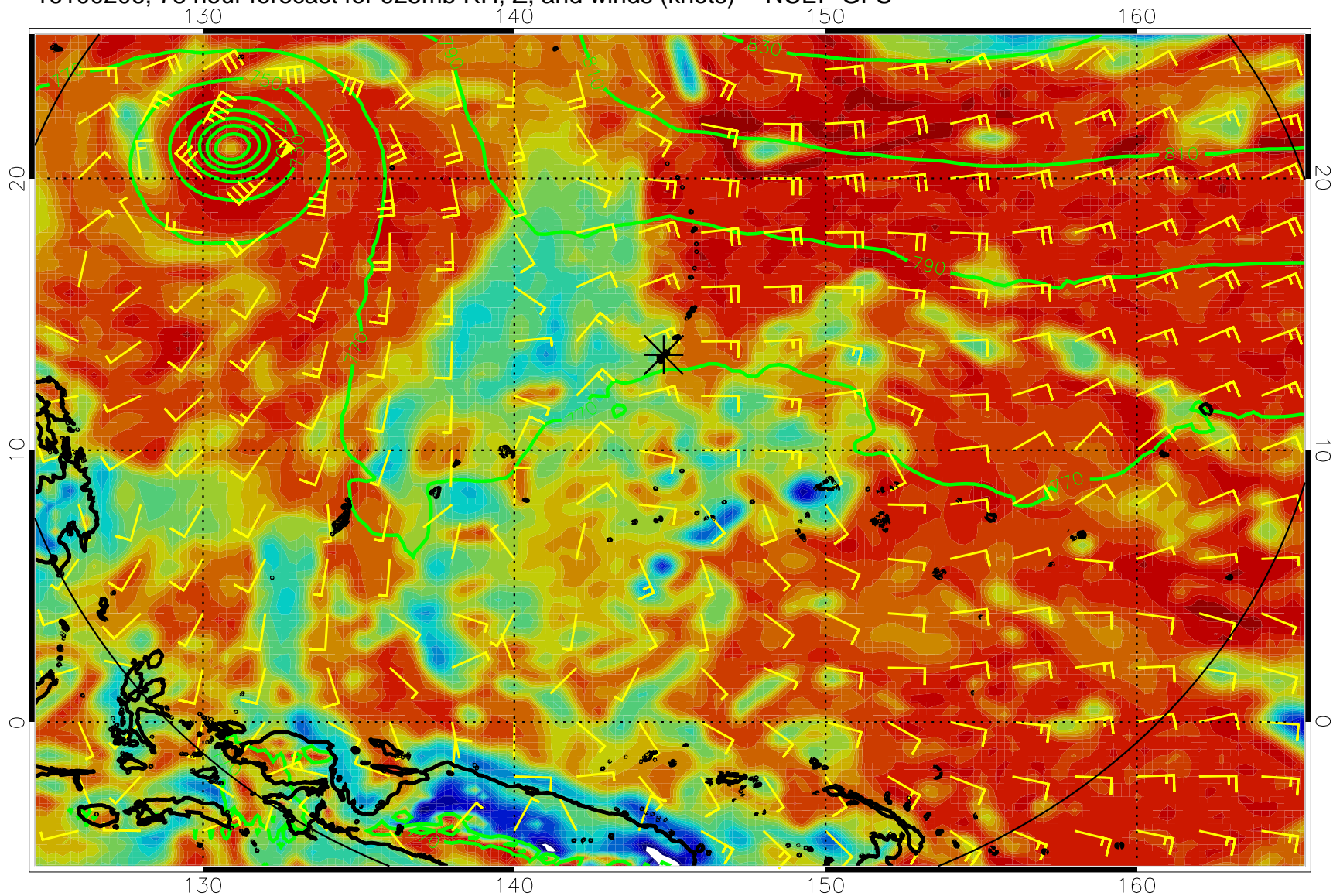
16100118, 66 hour forecast for 925mb RH, Z, and winds (knots) -- NCEP GFS



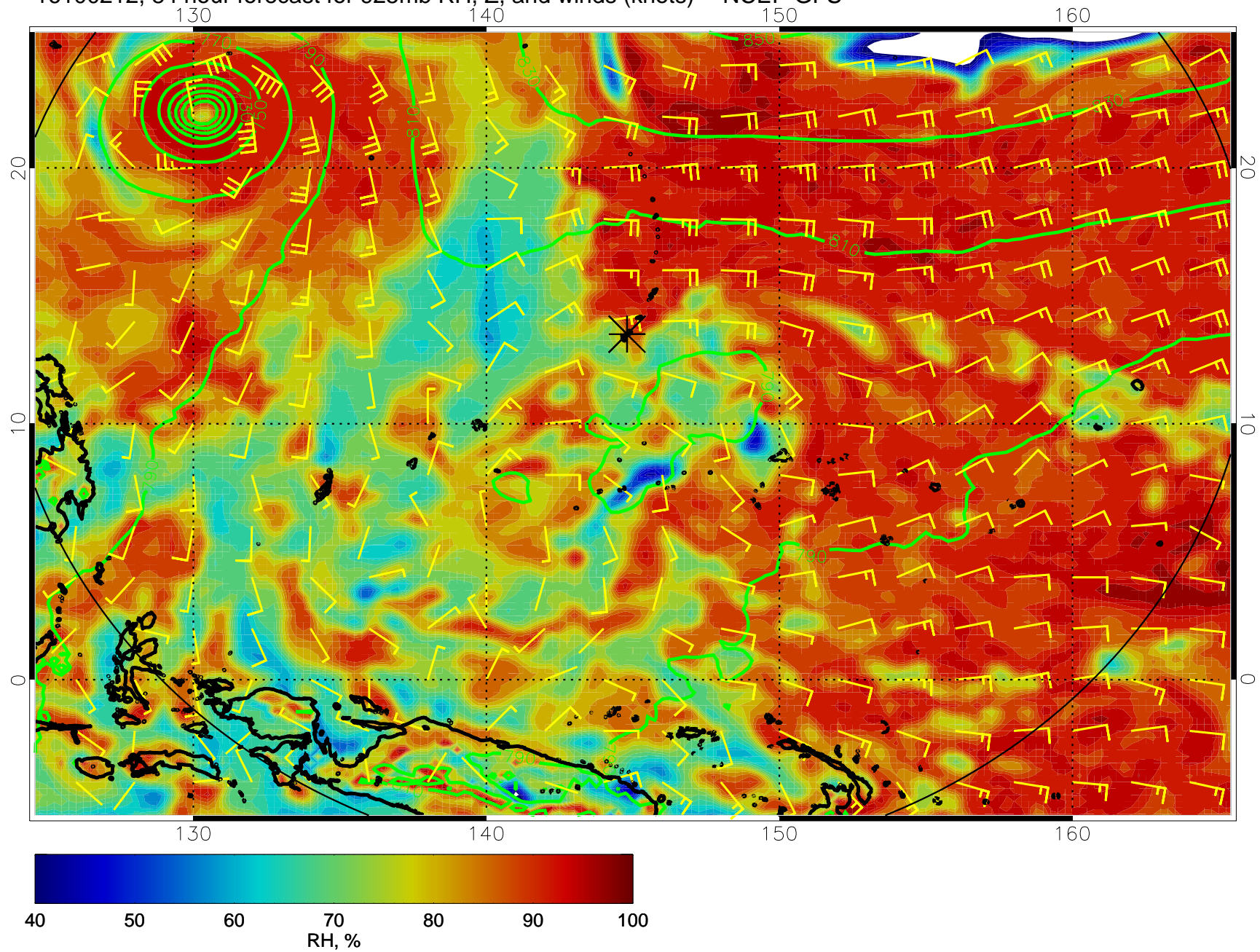
16100200, 72 hour forecast for 925mb RH, Z, and winds (knots) -- NCEP GFS



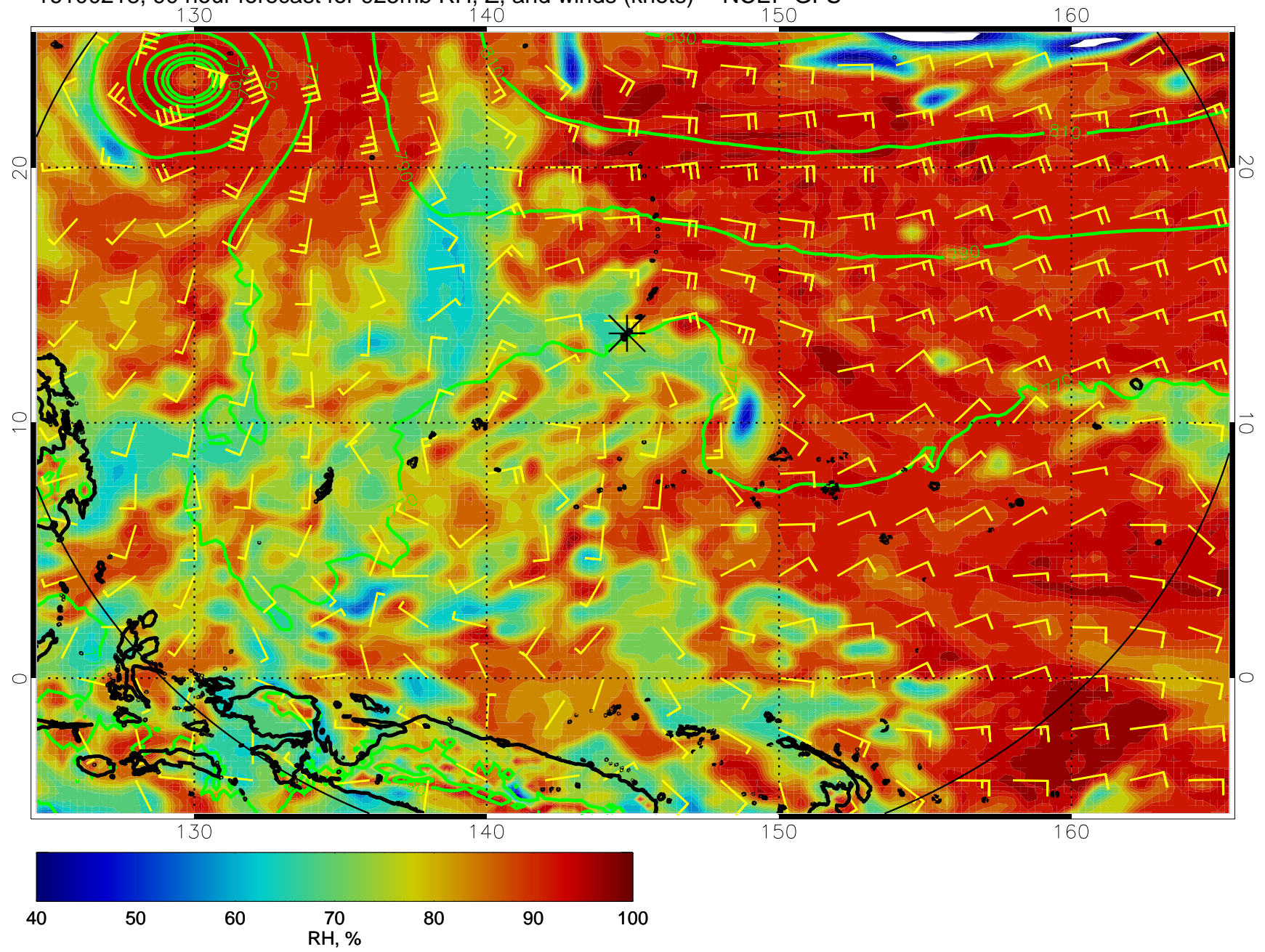
16100206, 78 hour forecast for 925mb RH, Z, and winds (knots) -- NCEP GFS



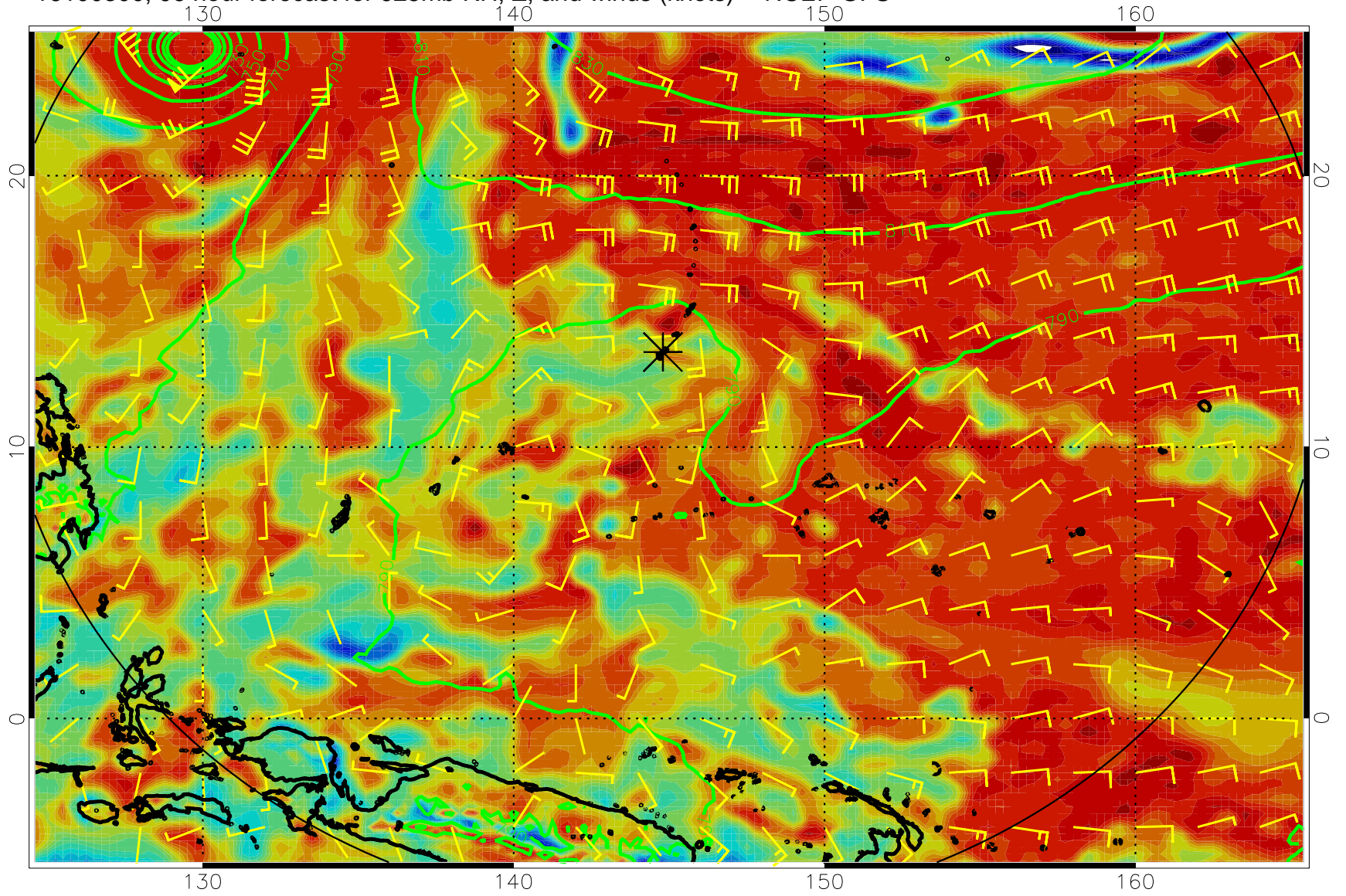
16100212, 84 hour forecast for 925mb RH, Z, and winds (knots) -- NCEP GFS



16100218, 90 hour forecast for 925mb RH, Z, and winds (knots) -- NCEP GFS

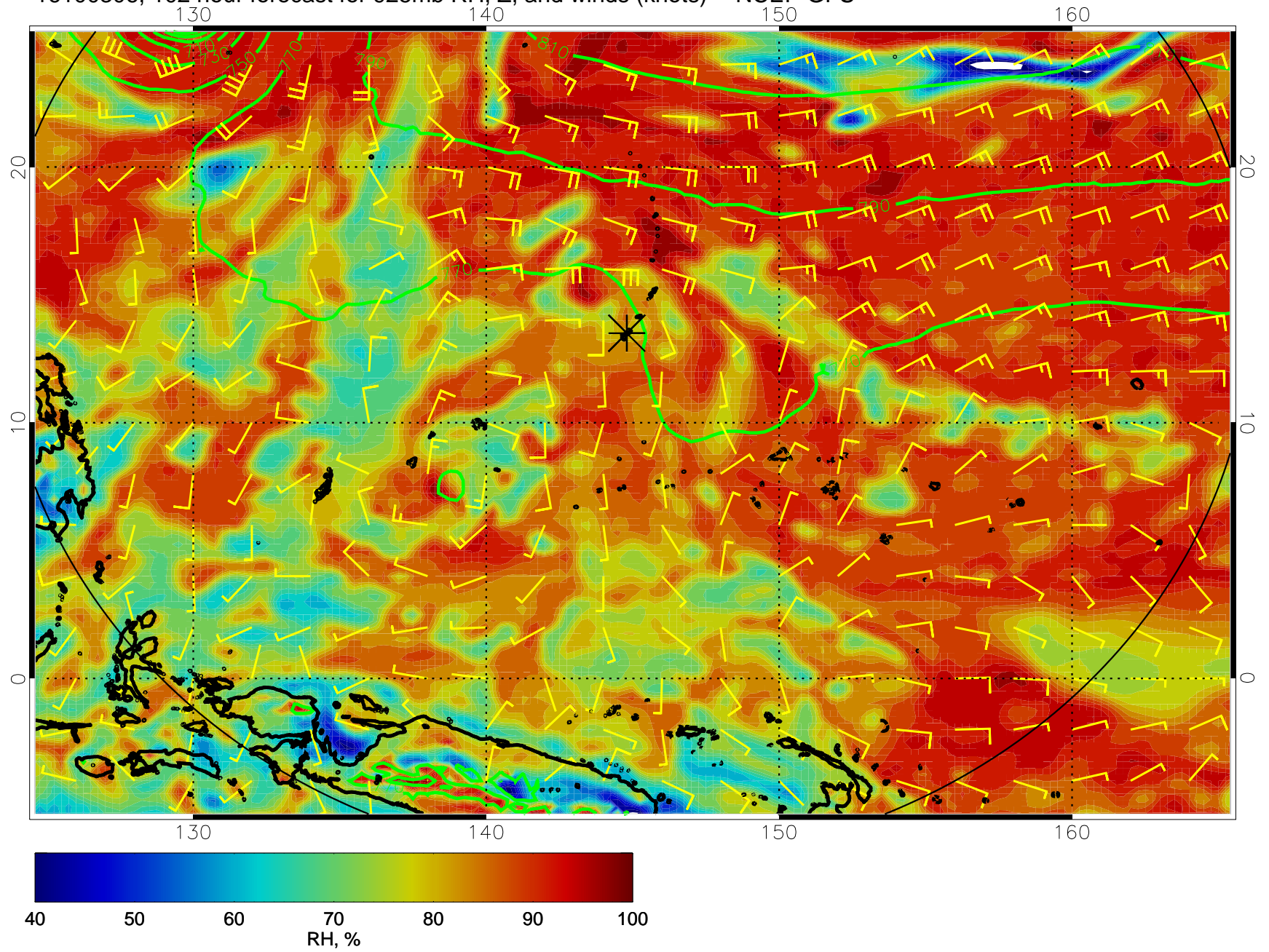


16100300, 96 hour forecast for 925mb RH, Z, and winds (knots) -- NCEP GFS

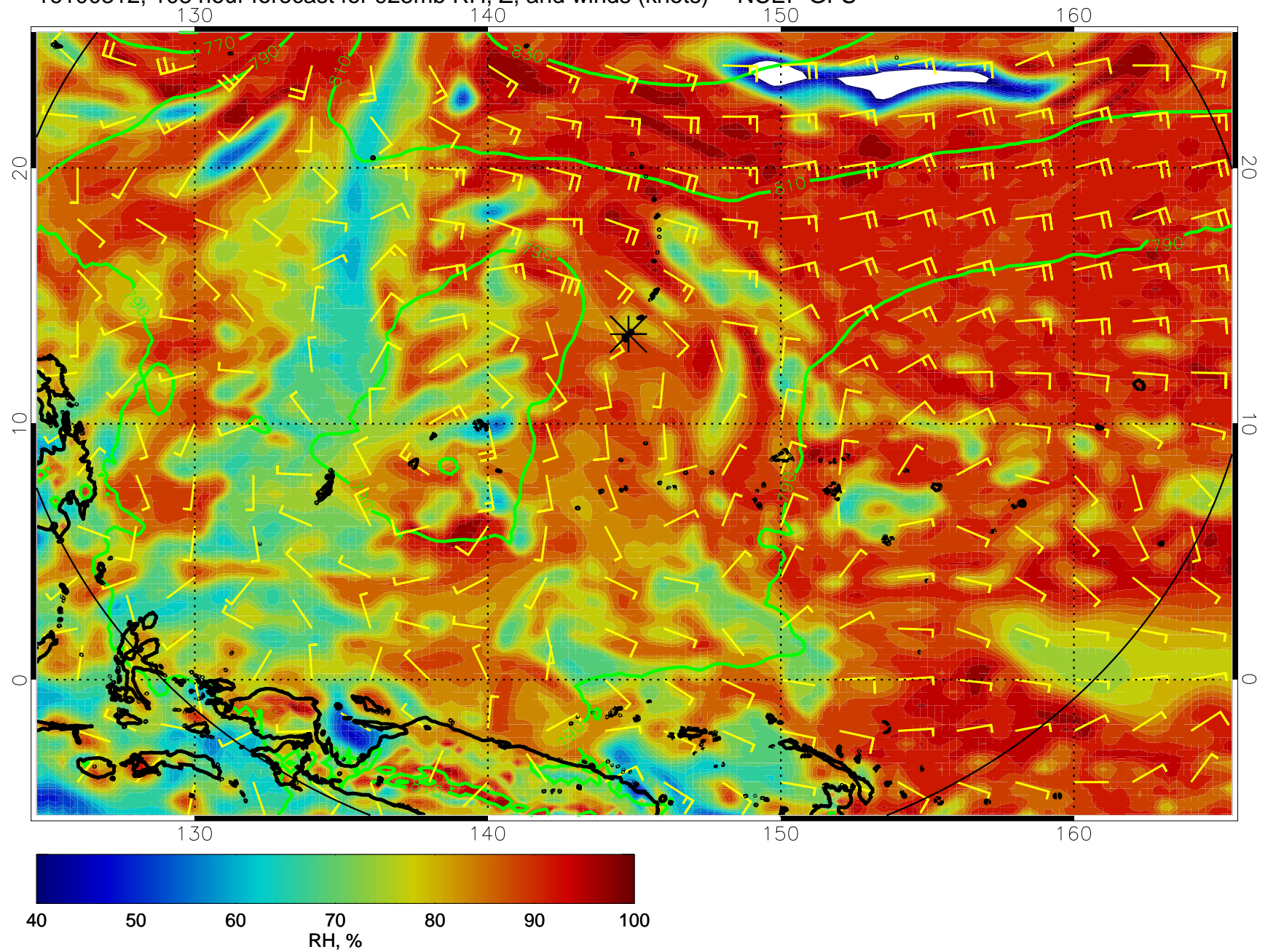




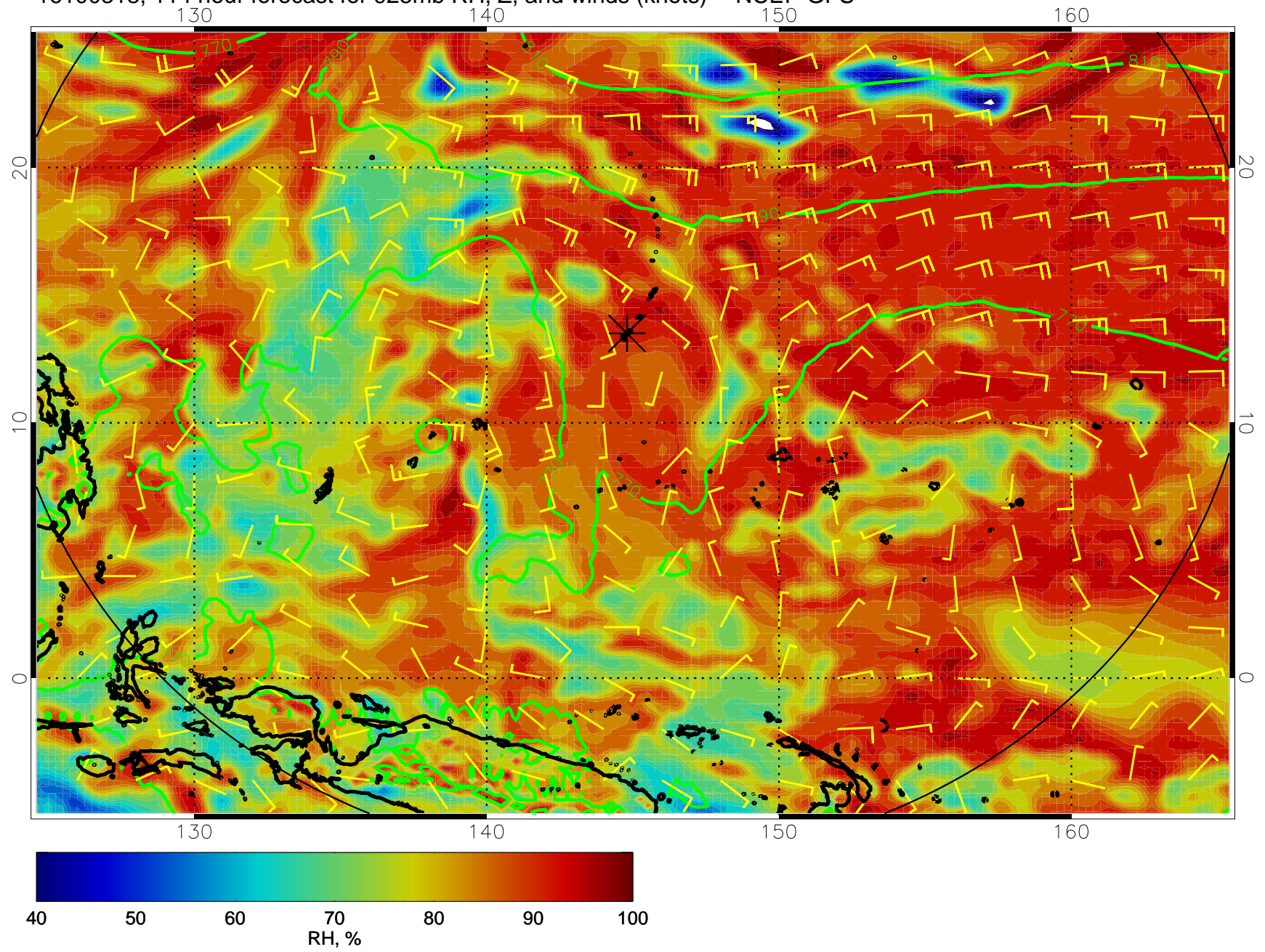
16100306, 102 hour forecast for 925mb RH, Z, and winds (knots) -- NCEP GFS



16100312, 108 hour forecast for 925mb RH, Z, and winds (knots) -- NCEP GFS



16100318, 114 hour forecast for 925mb RH, Z, and winds (knots) -- NCEP GFS



16100400, 120 hour forecast for 925mb RH, Z, and winds (knots) -- NCEP GFS

