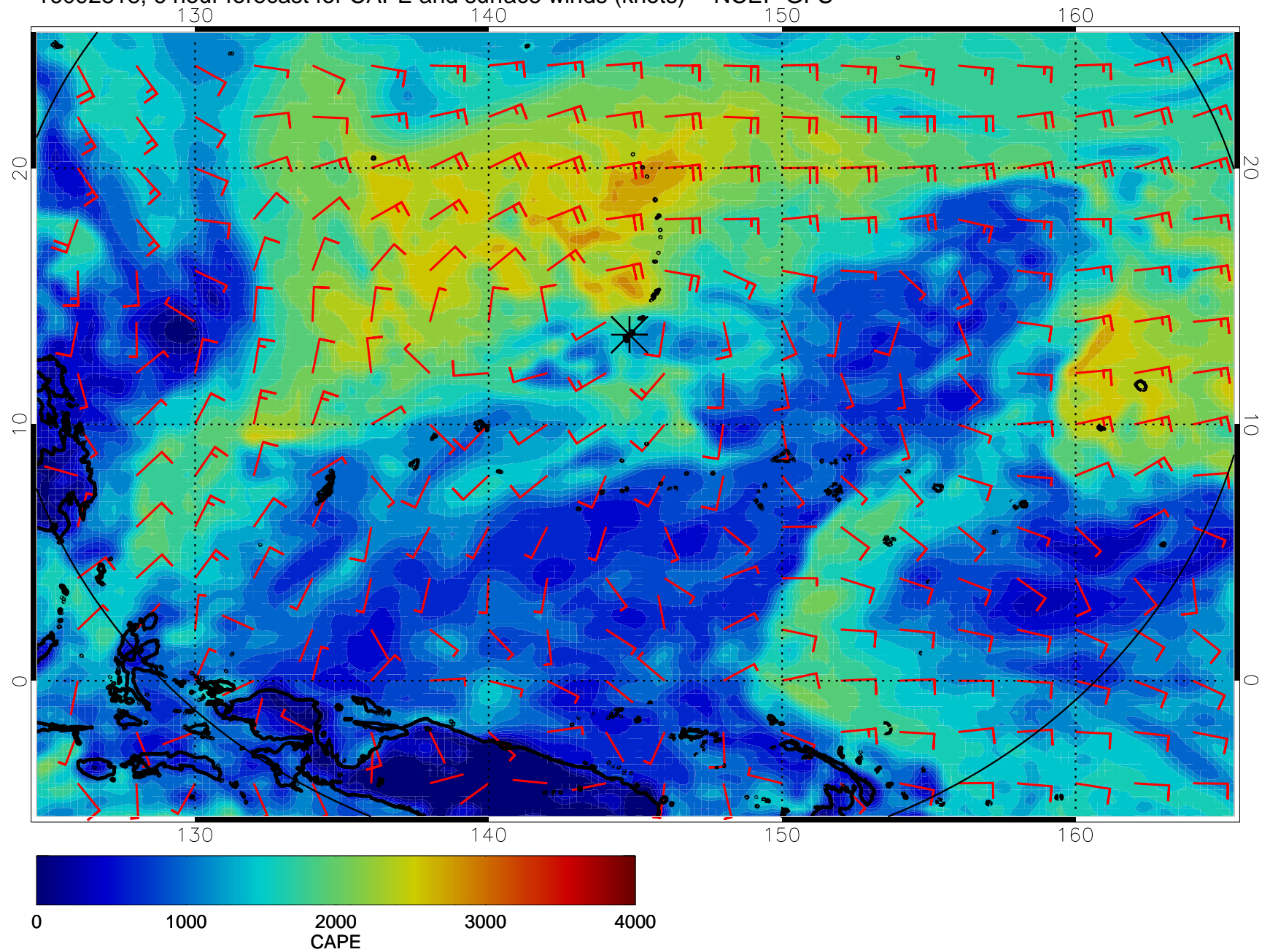
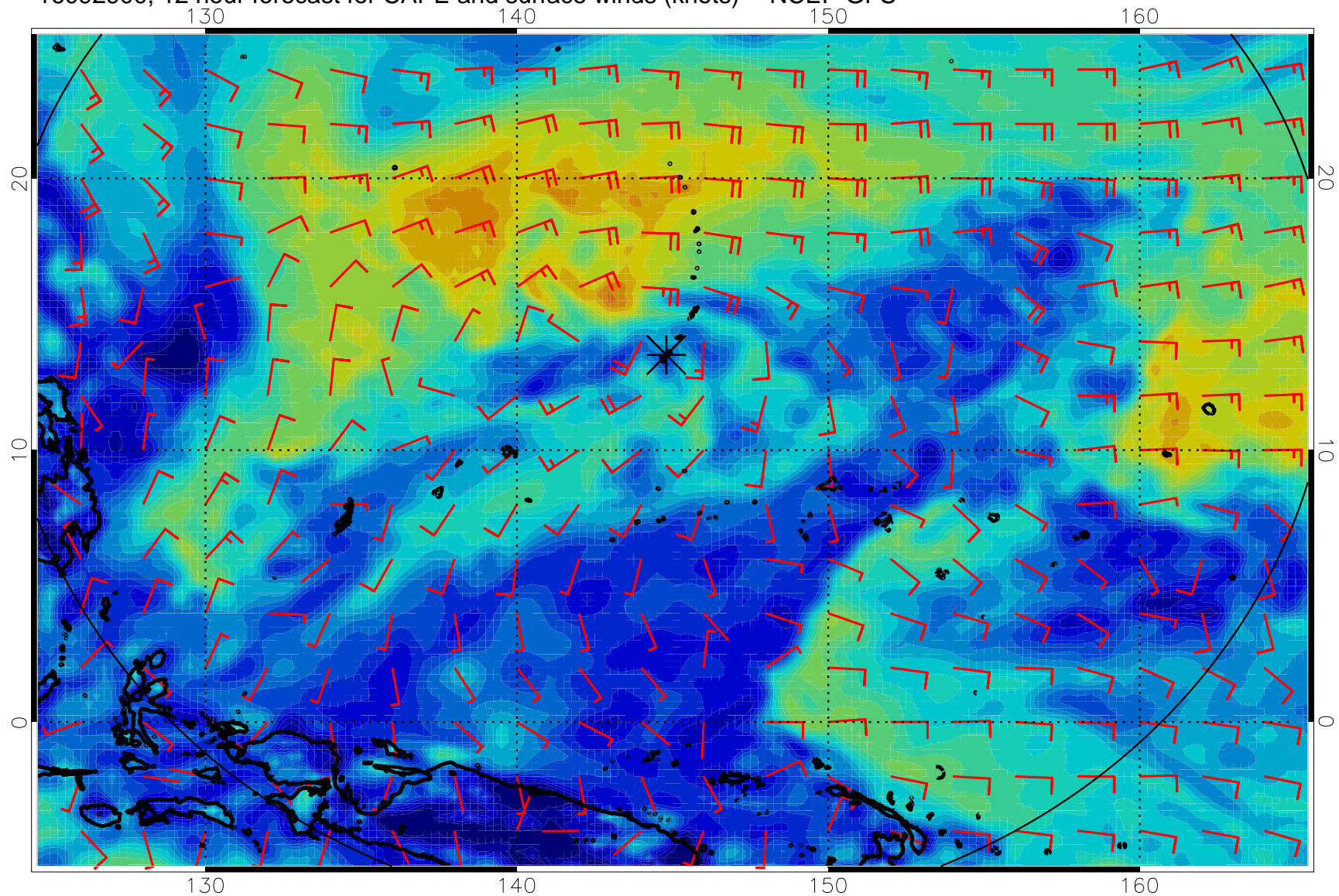


16092818, 6 hour forecast for CAPE and surface winds (knots) -- NCEP GFS

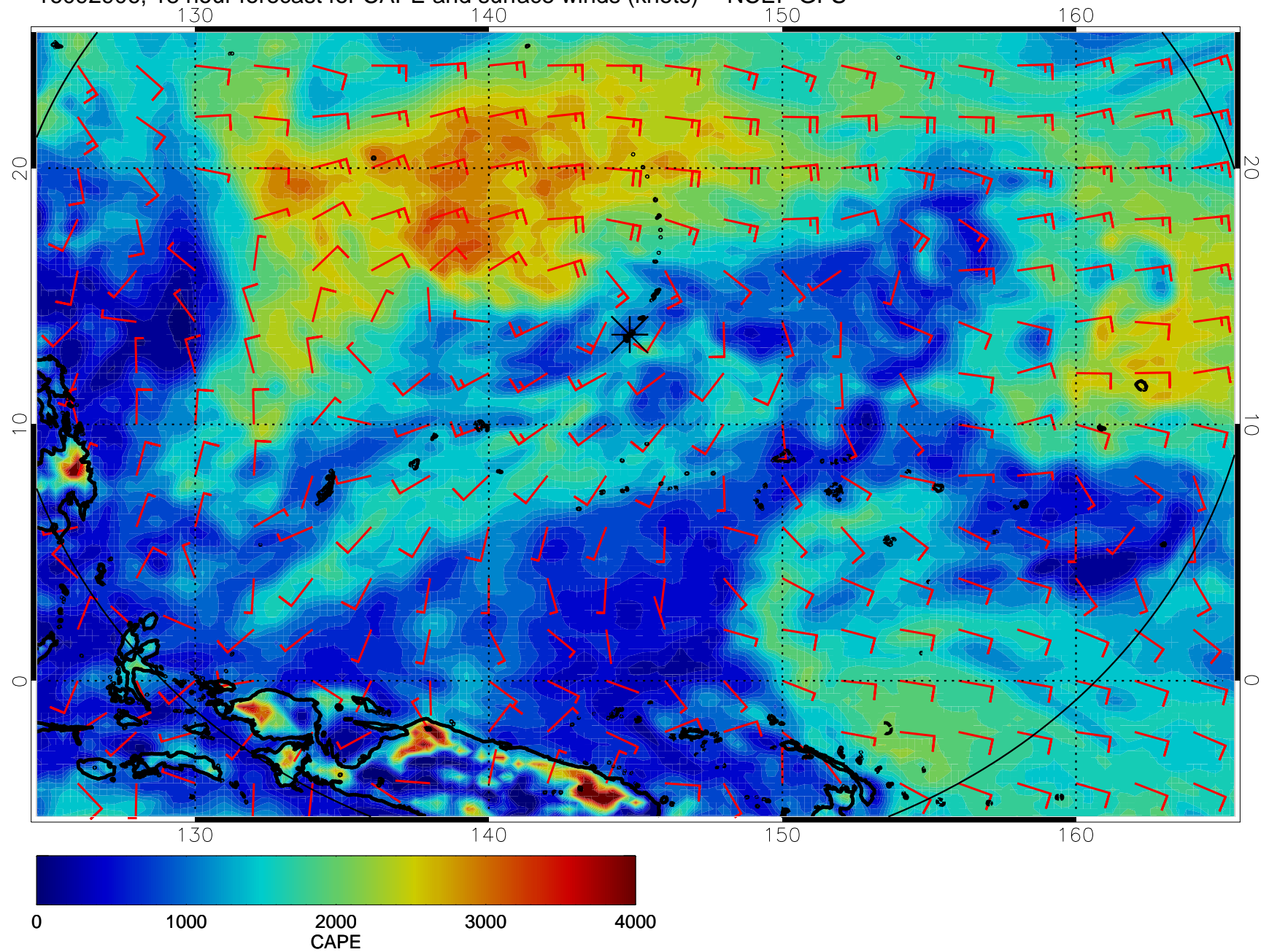


16092900, 12 hour forecast for CAPE and surface winds (knots) -- NCEP GFS

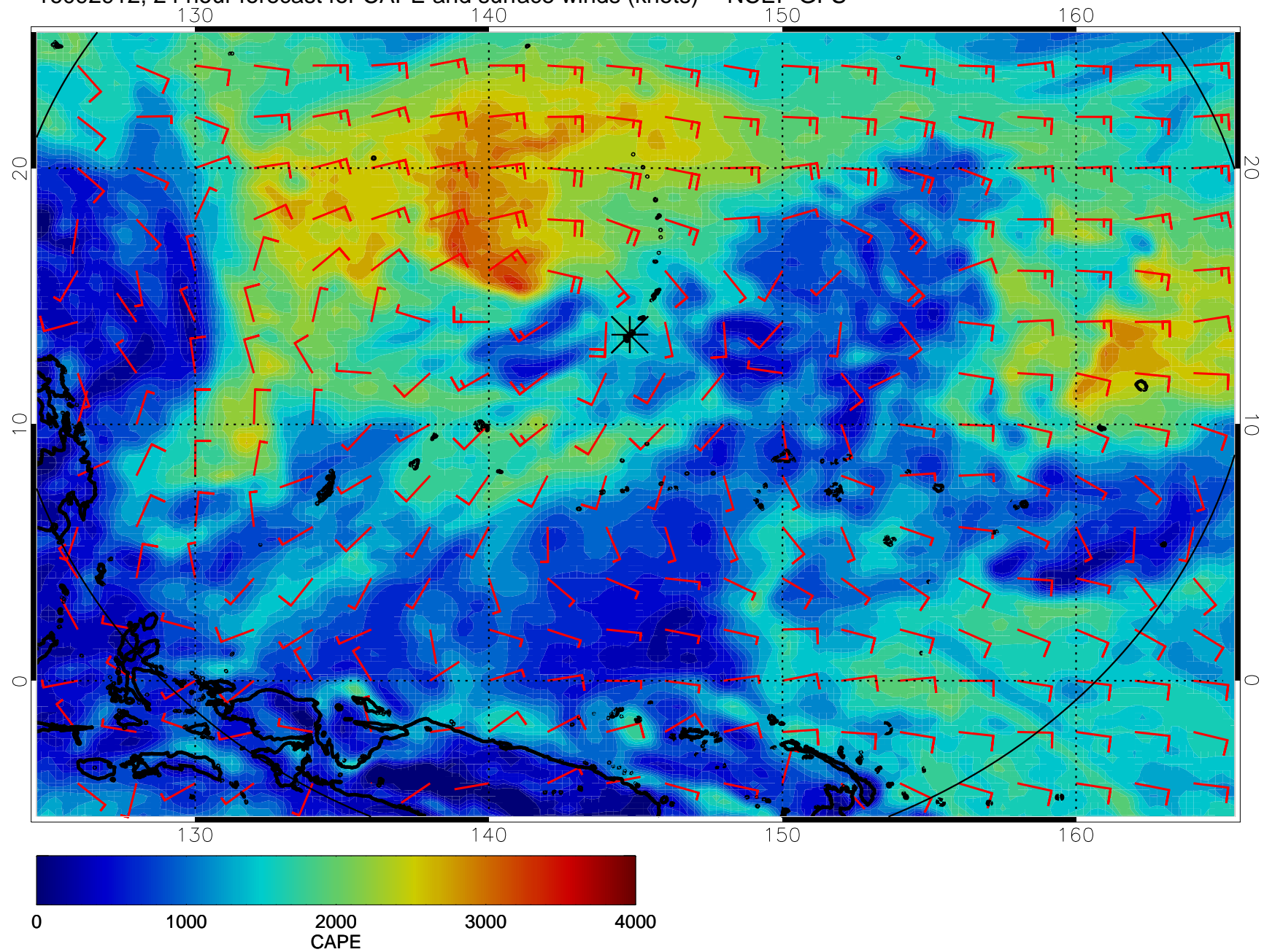




16092906, 18 hour forecast for CAPE and surface winds (knots) -- NCEP GFS

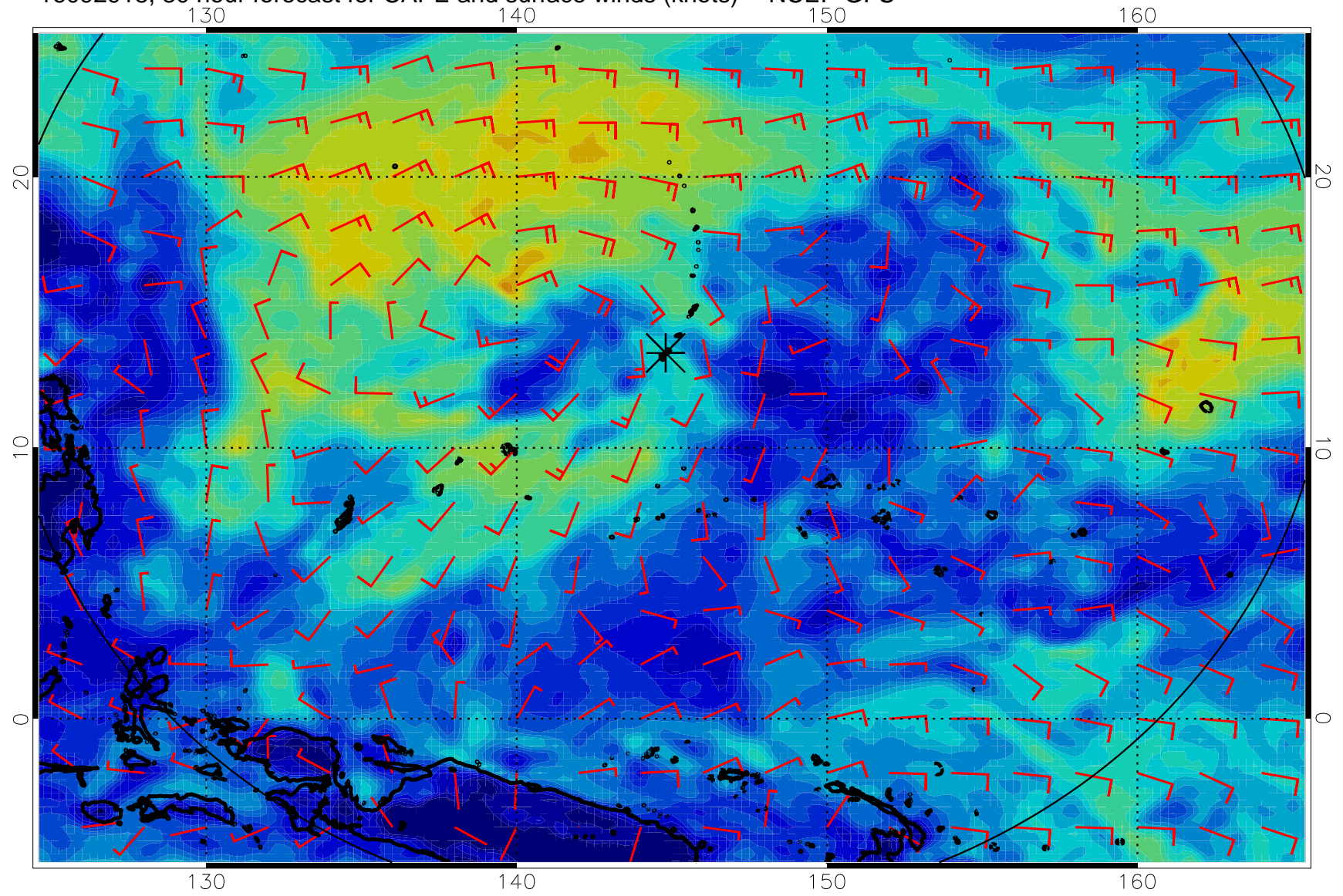


16092912, 24 hour forecast for CAPE and surface winds (knots) -- NCEP GFS

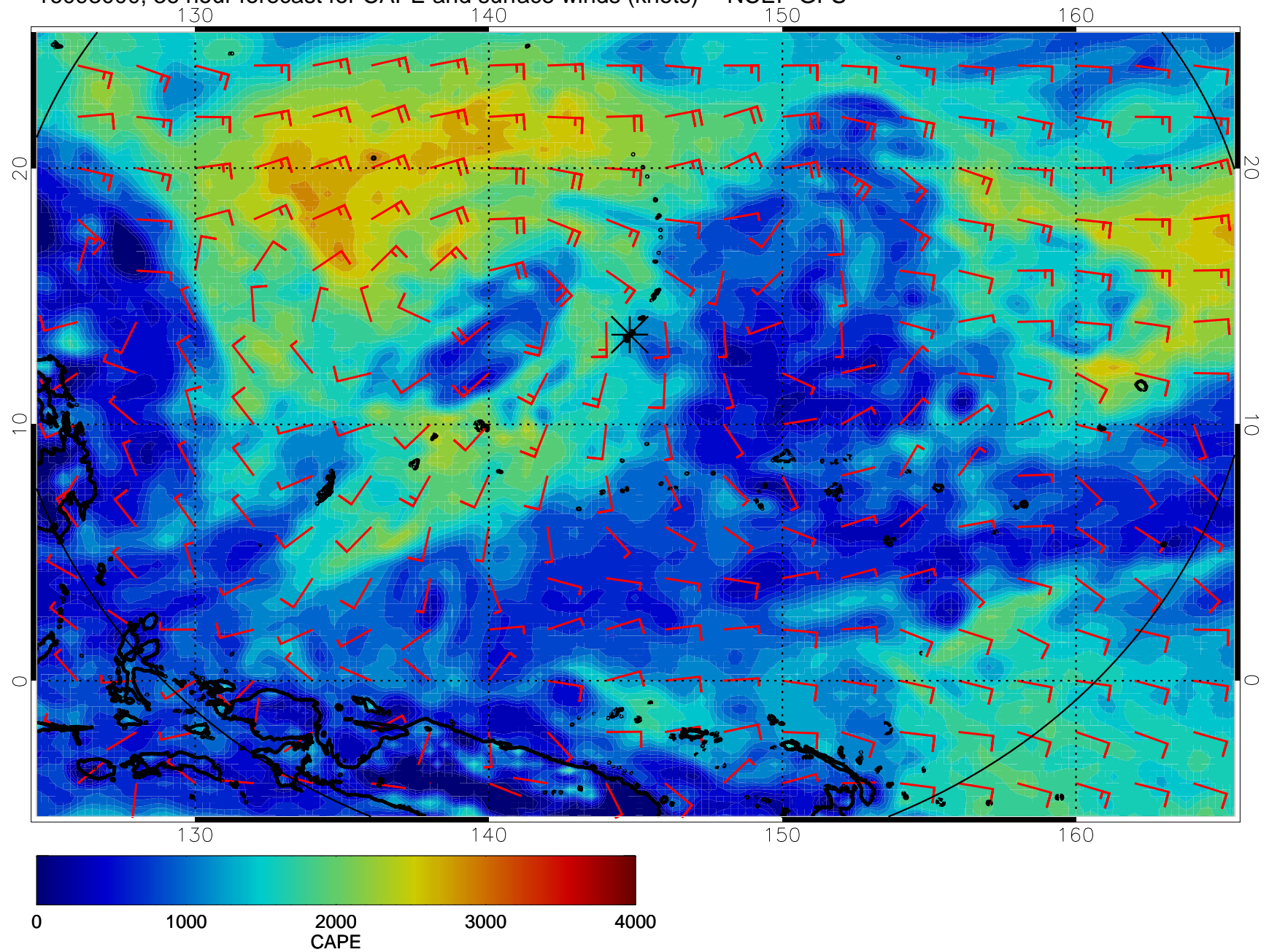




16092918, 30 hour forecast for CAPE and surface winds (knots) -- NCEP GFS

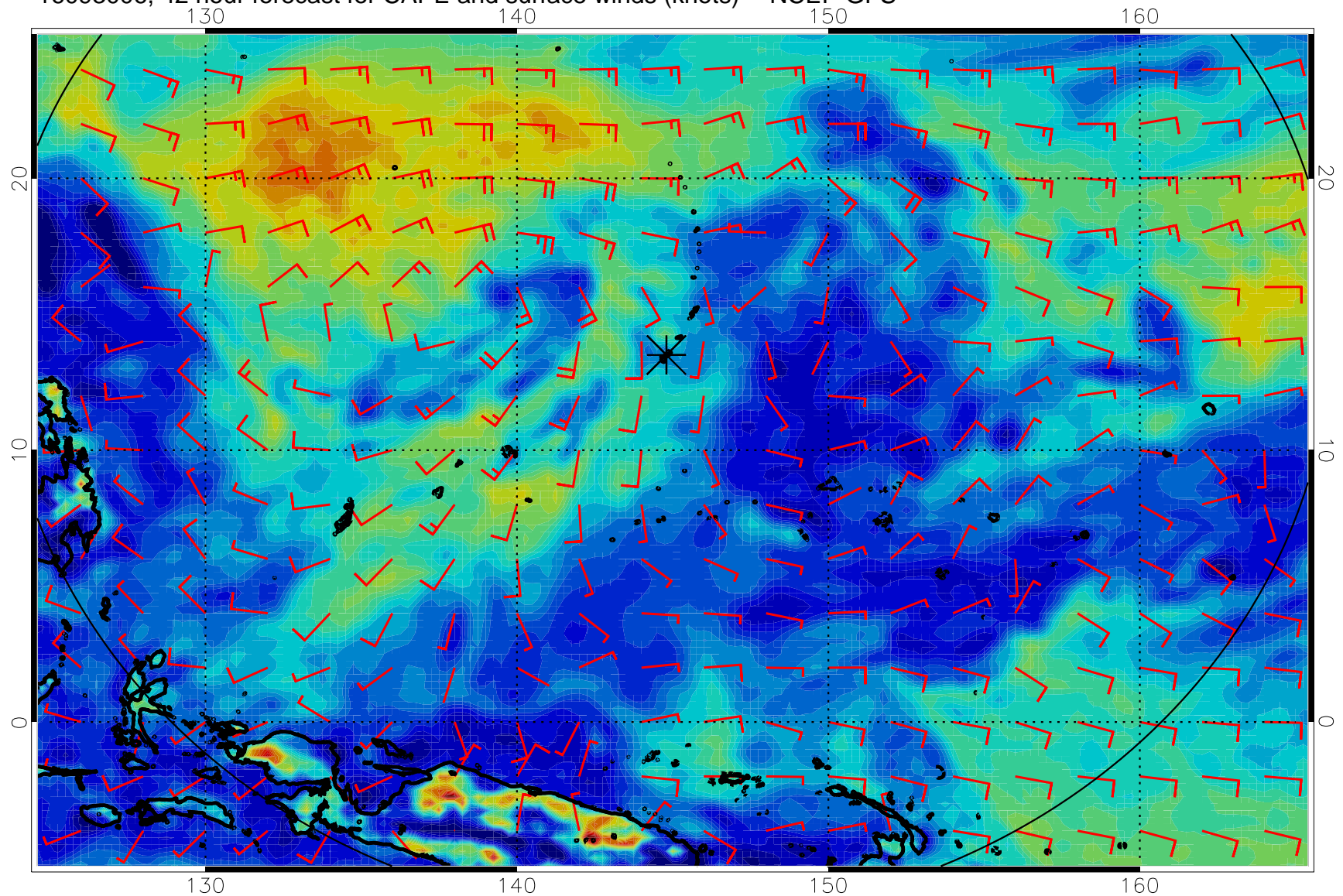


16093000, 36 hour forecast for CAPE and surface winds (knots) -- NCEP GFS

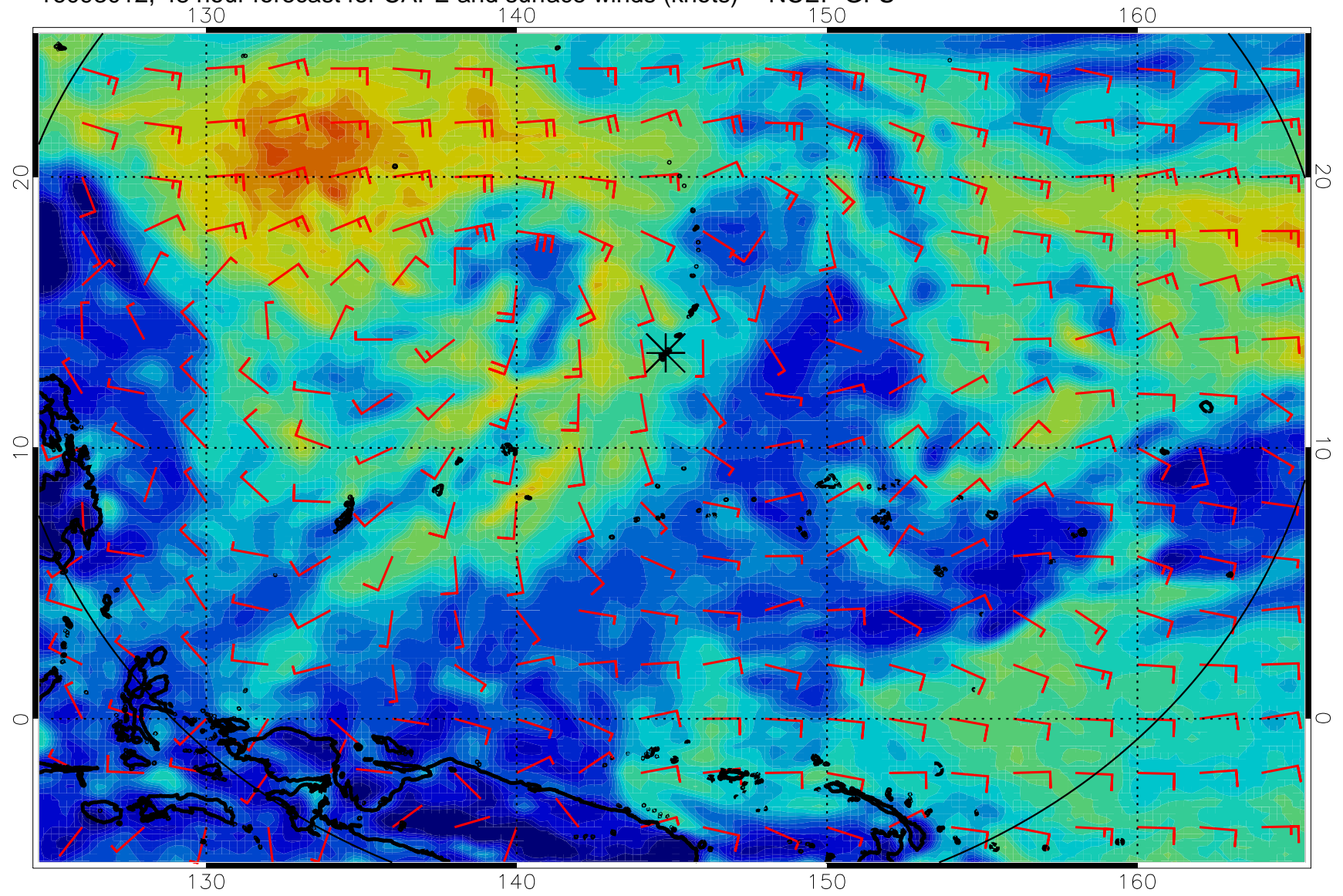




16093006, 42 hour forecast for CAPE and surface winds (knots) -- NCEP GFS

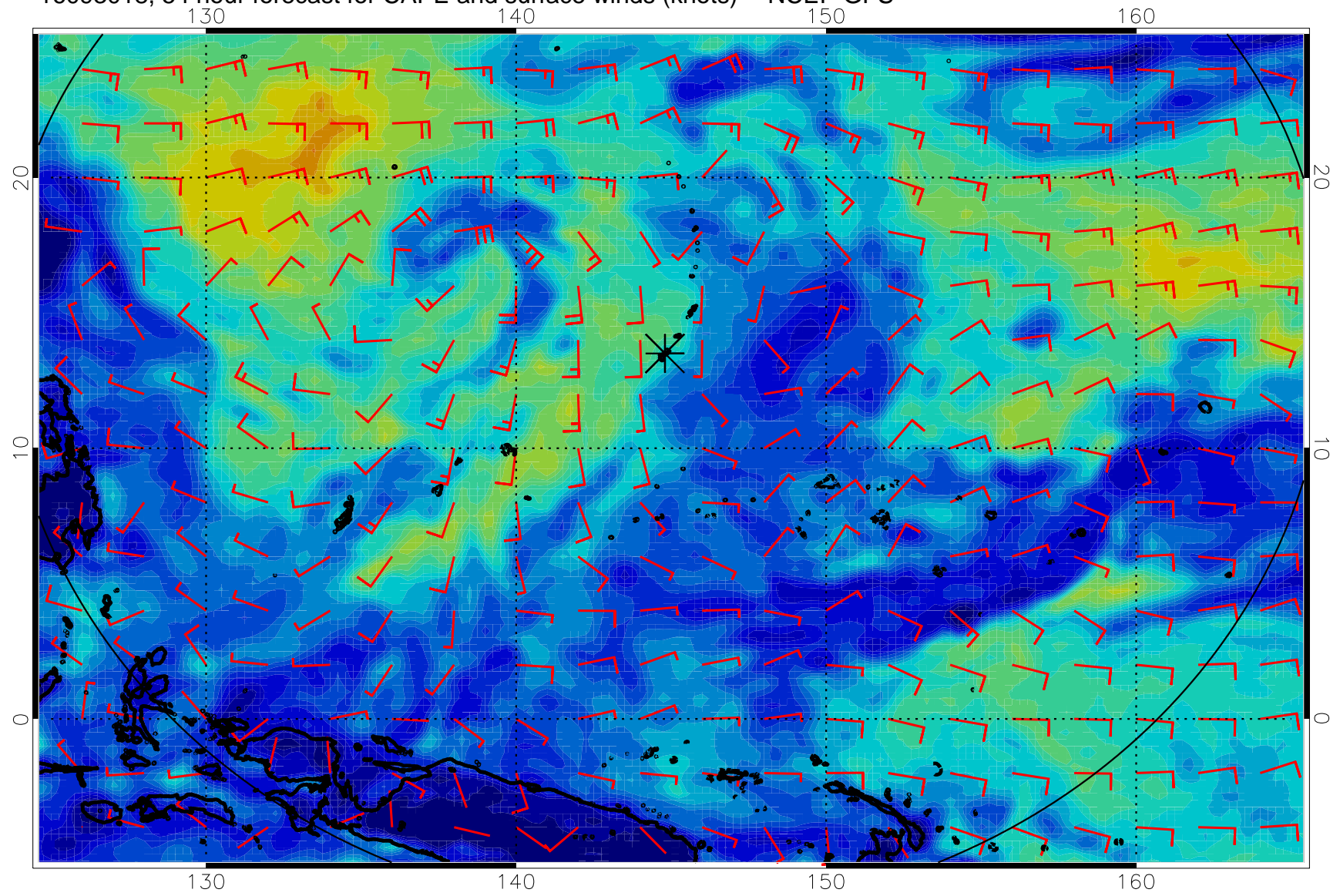


16093012, 48 hour forecast for CAPE and surface winds (knots) -- NCEP GFS

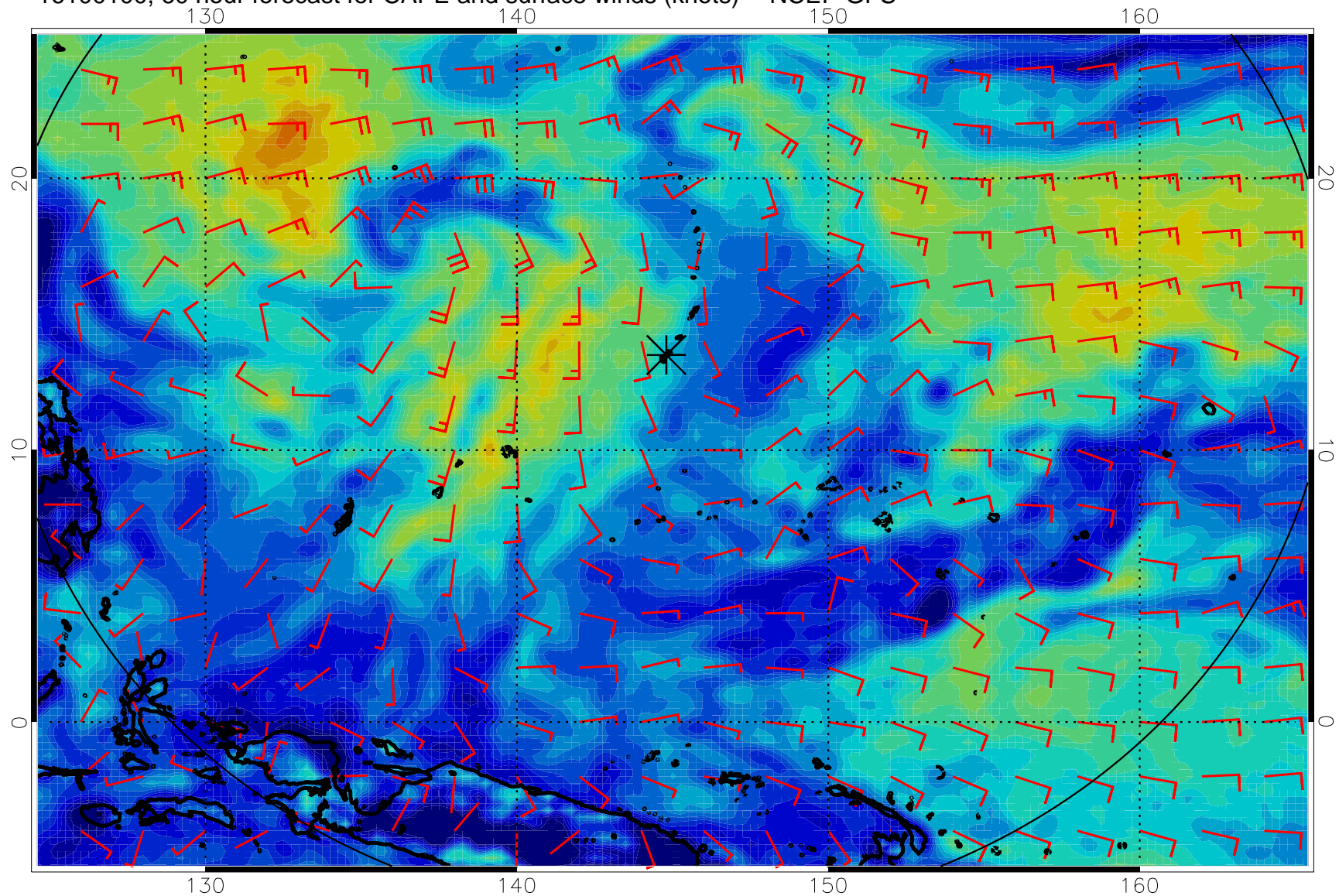




16093018, 54 hour forecast for CAPE and surface winds (knots) -- NCEP GFS

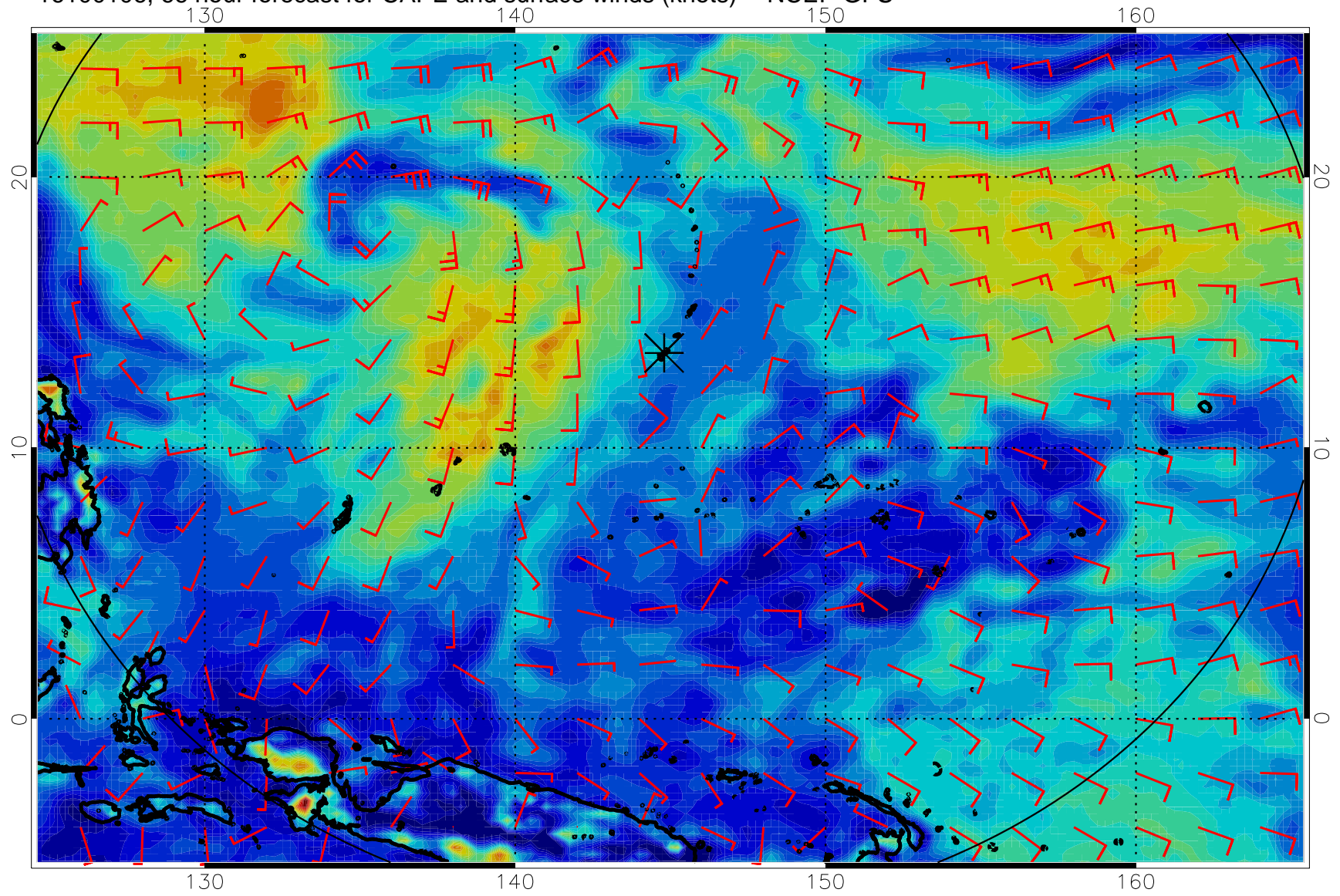


16100100, 60 hour forecast for CAPE and surface winds (knots) -- NCEP GFS

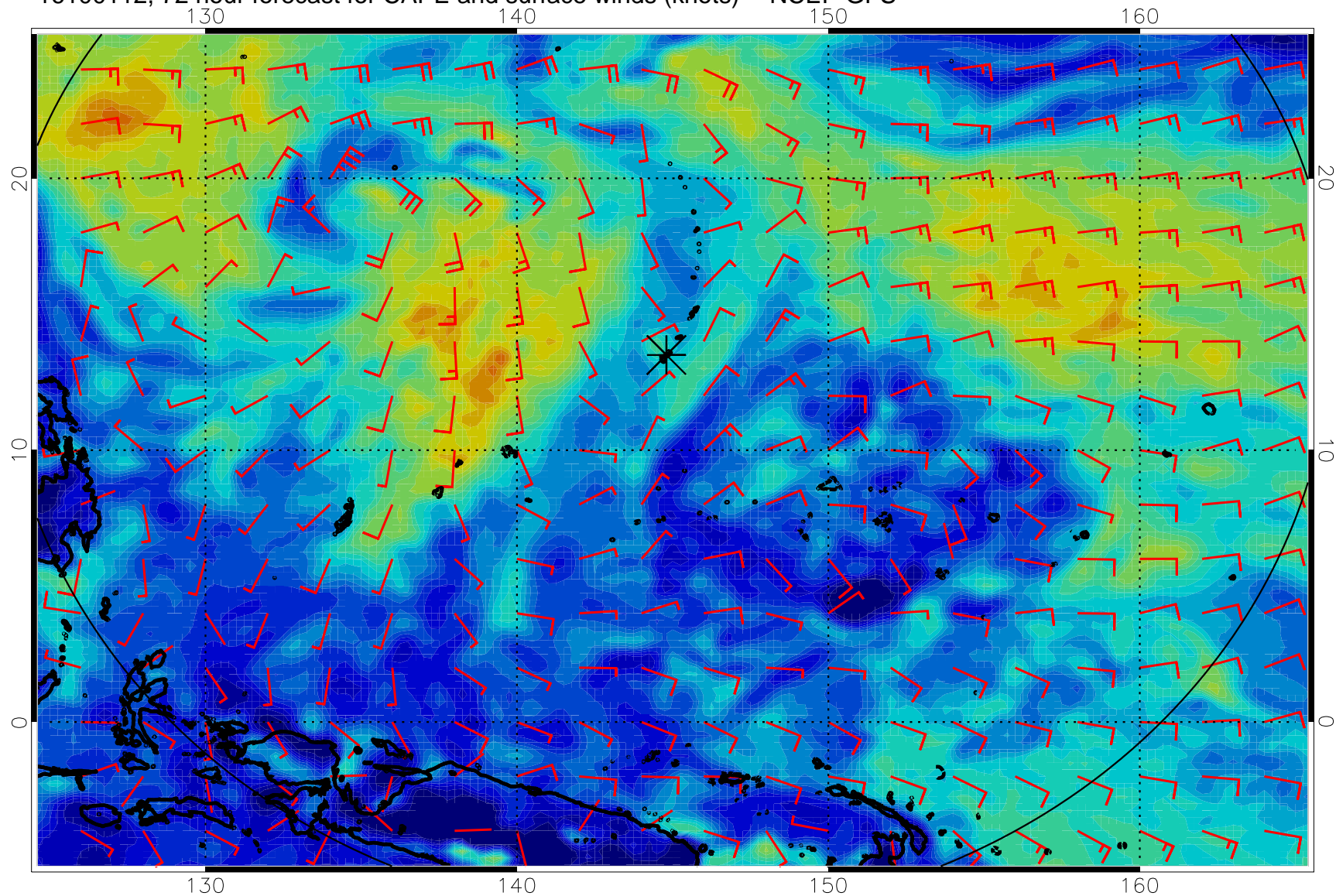




16100106, 66 hour forecast for CAPE and surface winds (knots) -- NCEP GFS

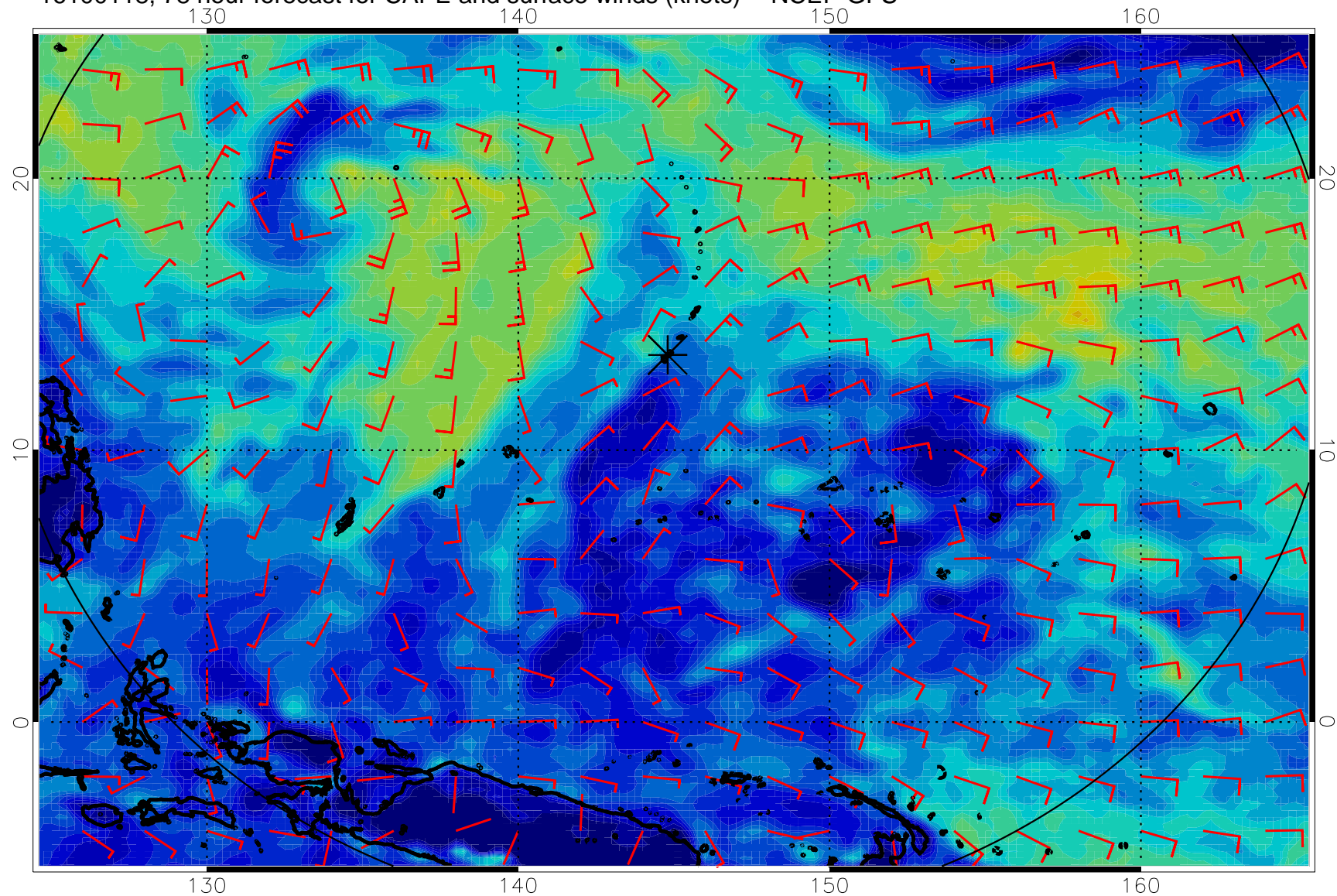


16100112, 72 hour forecast for CAPE and surface winds (knots) -- NCEP GFS

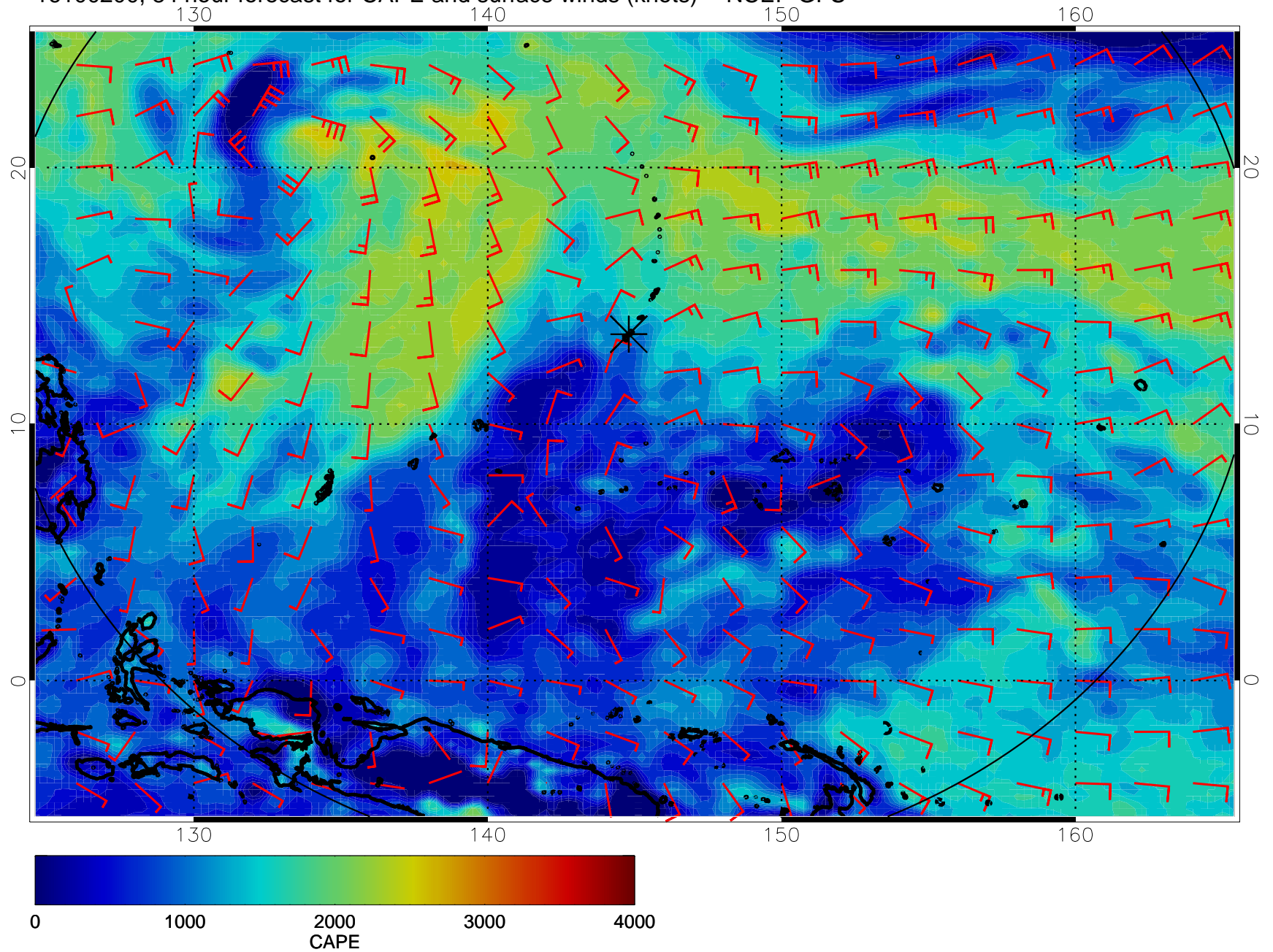




16100118, 78 hour forecast for CAPE and surface winds (knots) -- NCEP GFS

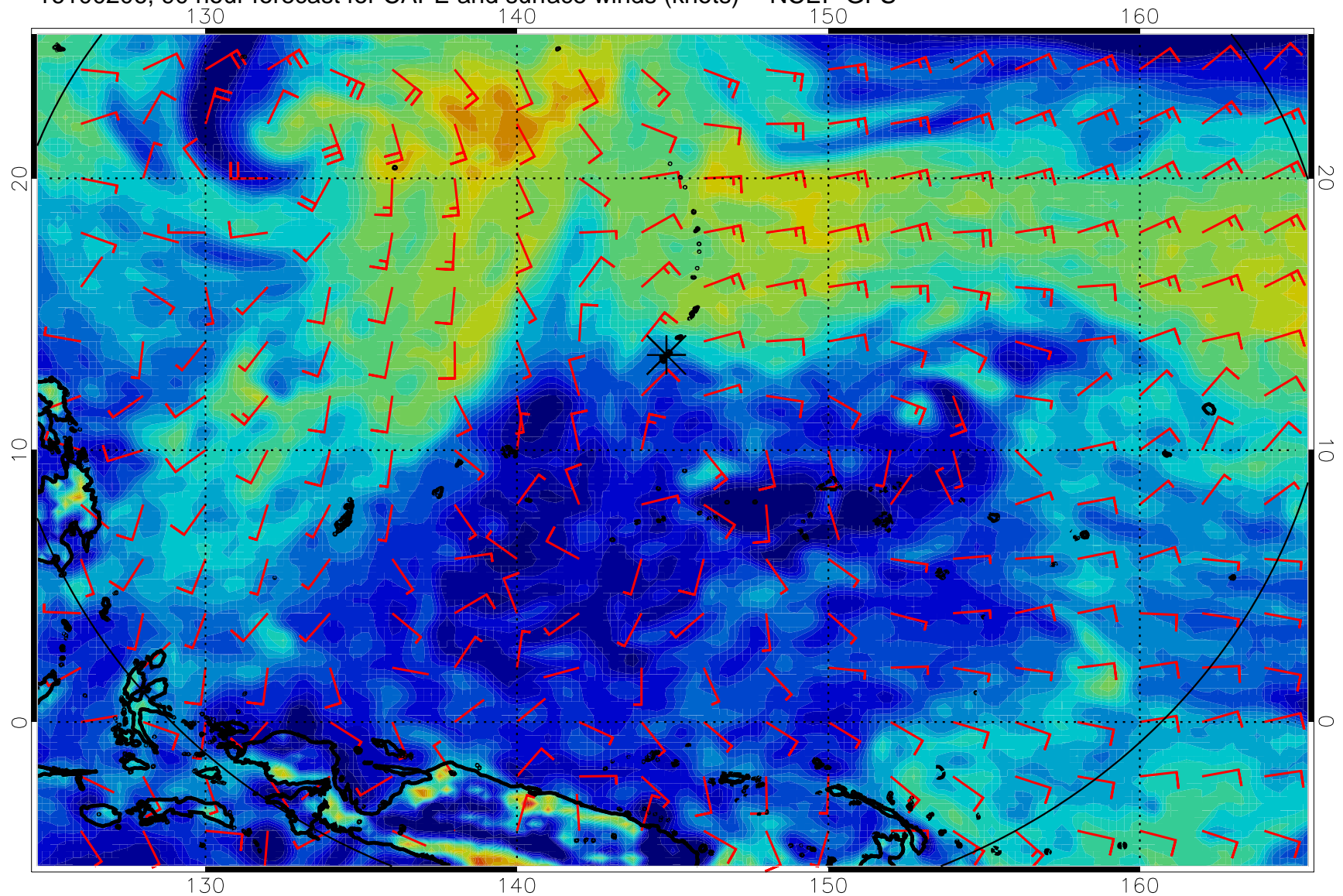


16100200, 84 hour forecast for CAPE and surface winds (knots) -- NCEP GFS

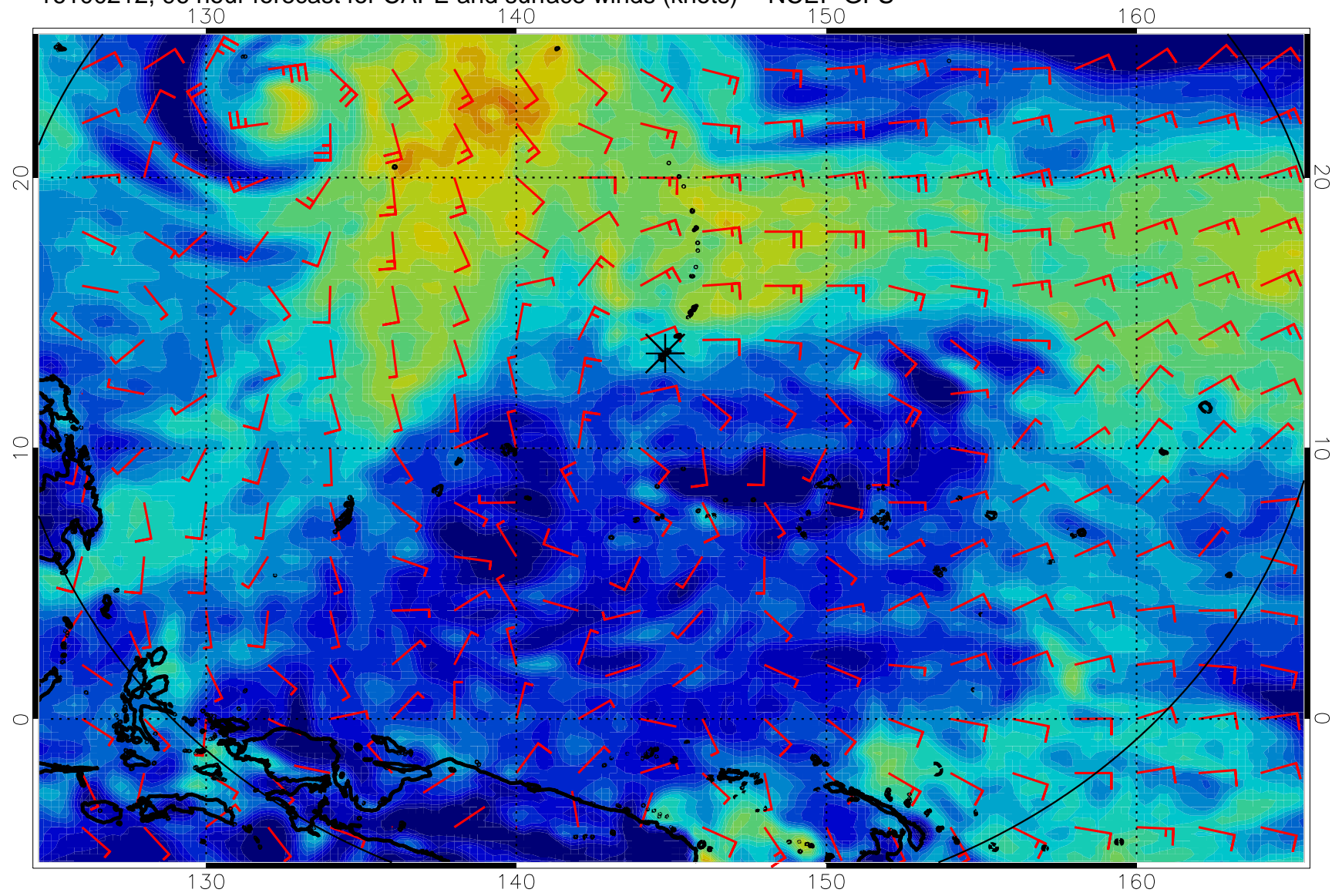




16100206, 90 hour forecast for CAPE and surface winds (knots) -- NCEP GFS

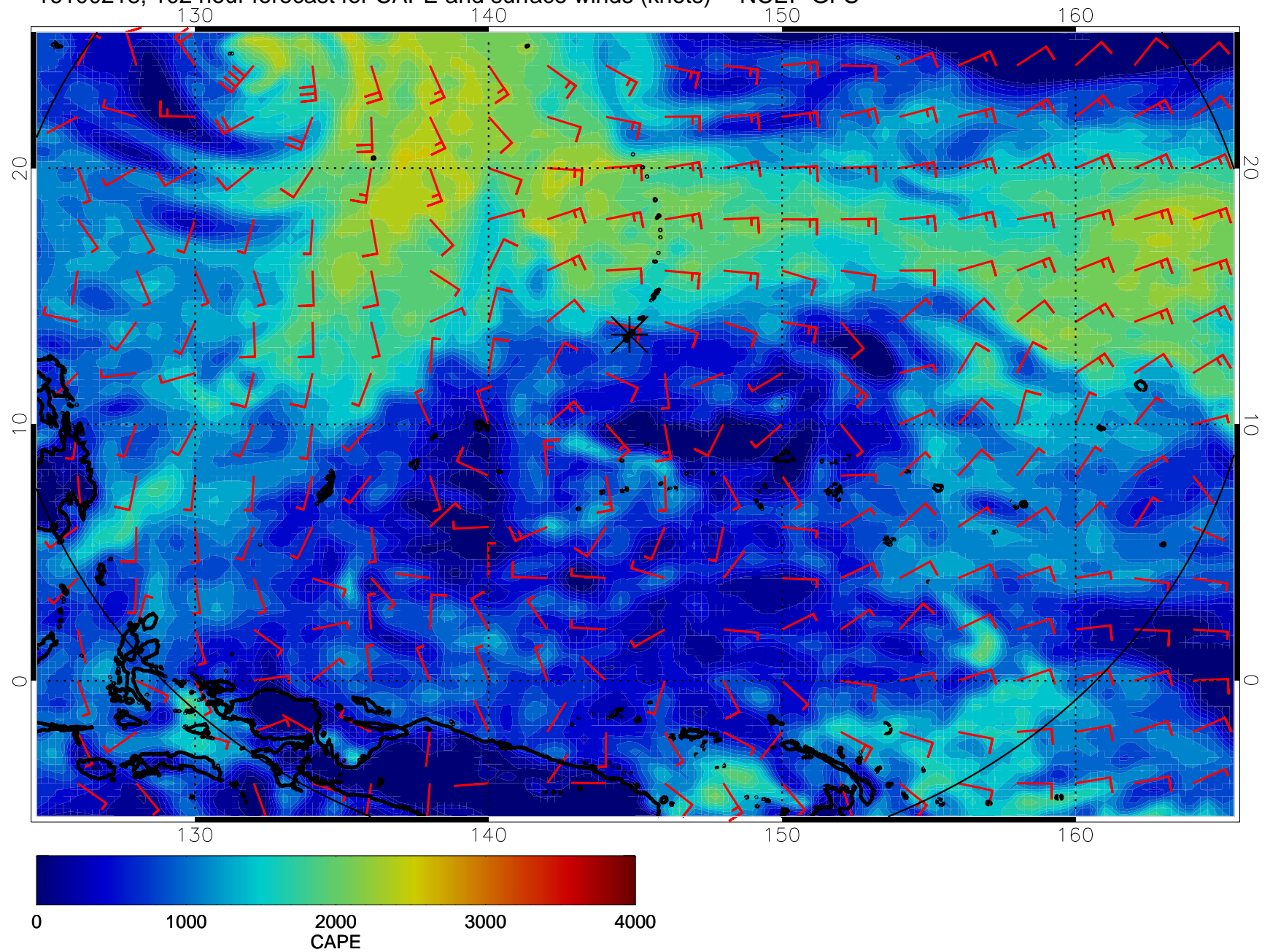


16100212, 96 hour forecast for CAPE and surface winds (knots) -- NCEP GFS

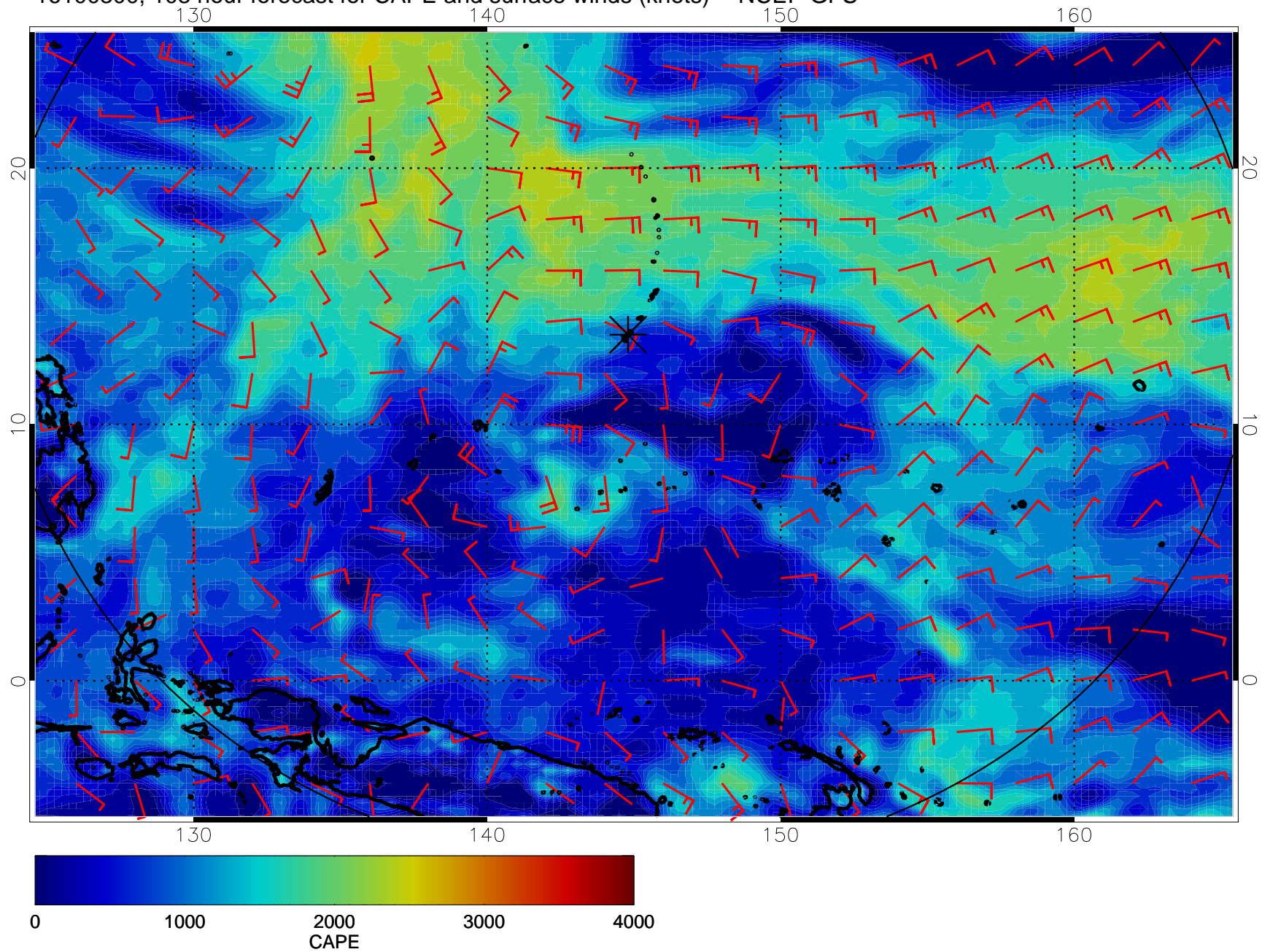




16100218, 102 hour forecast for CAPE and surface winds (knots) -- NCEP GFS

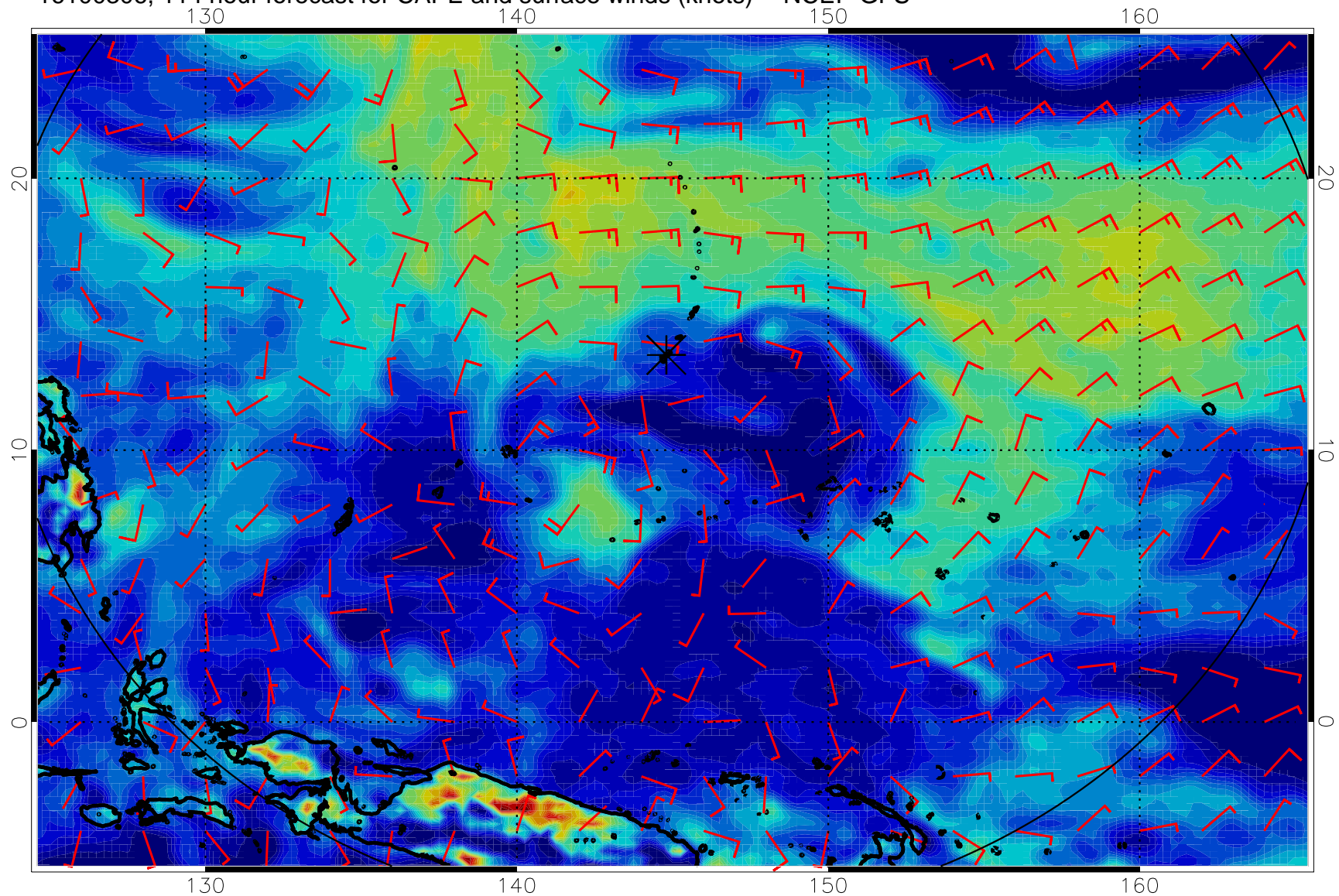


16100300, 108 hour forecast for CAPE and surface winds (knots) -- NCEP GFS





16100306, 114 hour forecast for CAPE and surface winds (knots) -- NCEP GFS



16100312, 120 hour forecast for CAPE and surface winds (knots) -- NCEP GFS

