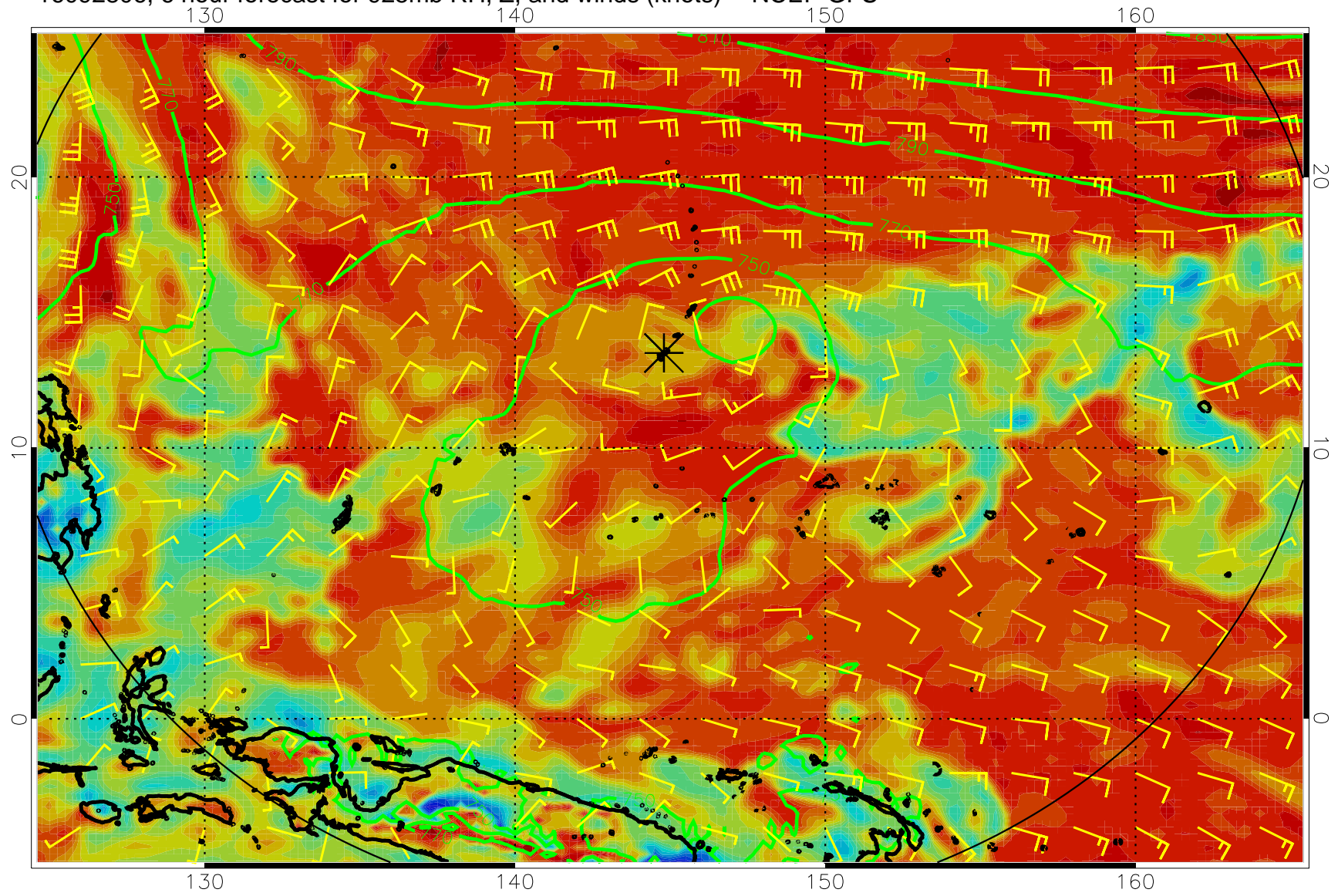
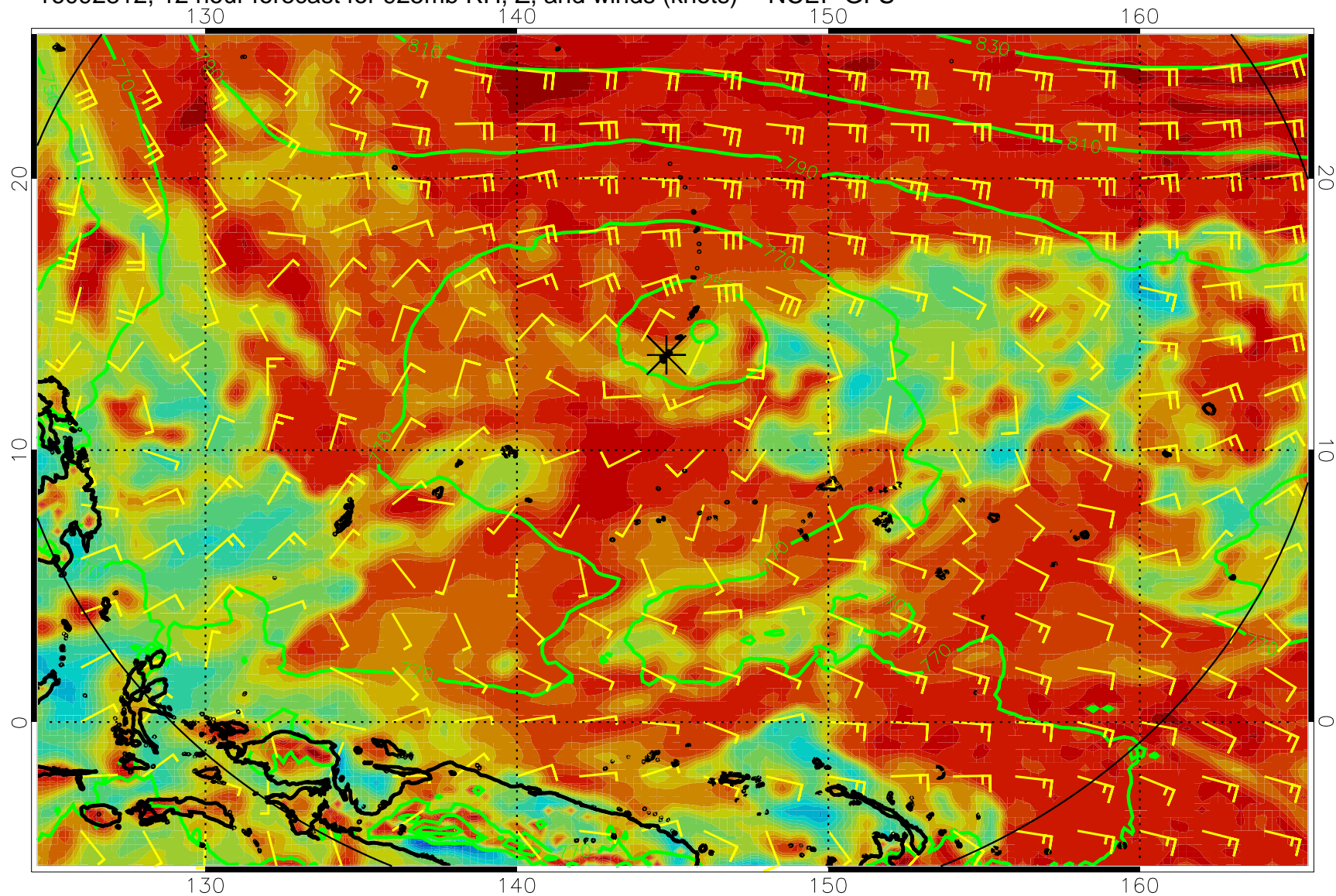


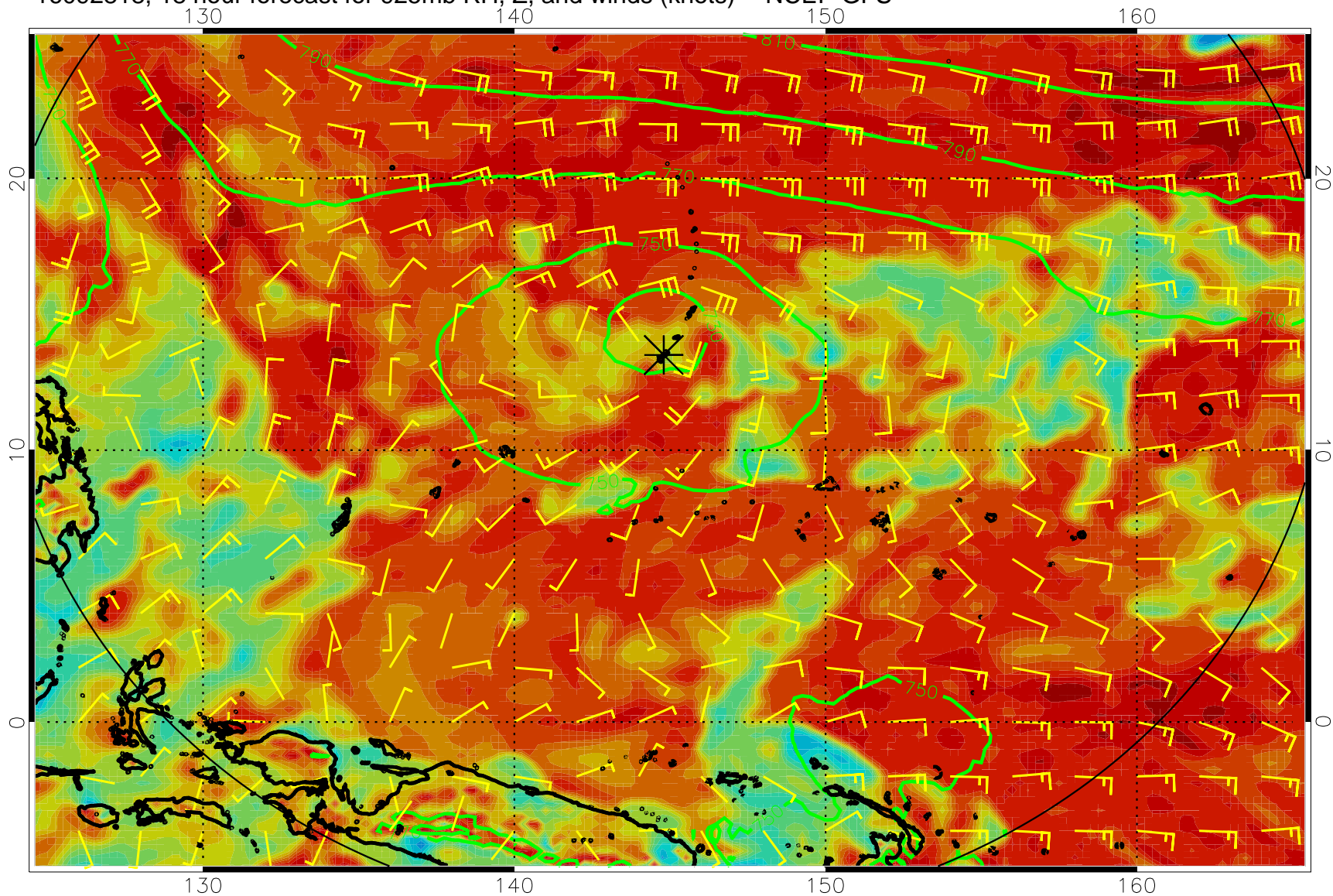
16092806, 6 hour forecast for 925mb RH, Z, and winds (knots) -- NCEP GFS



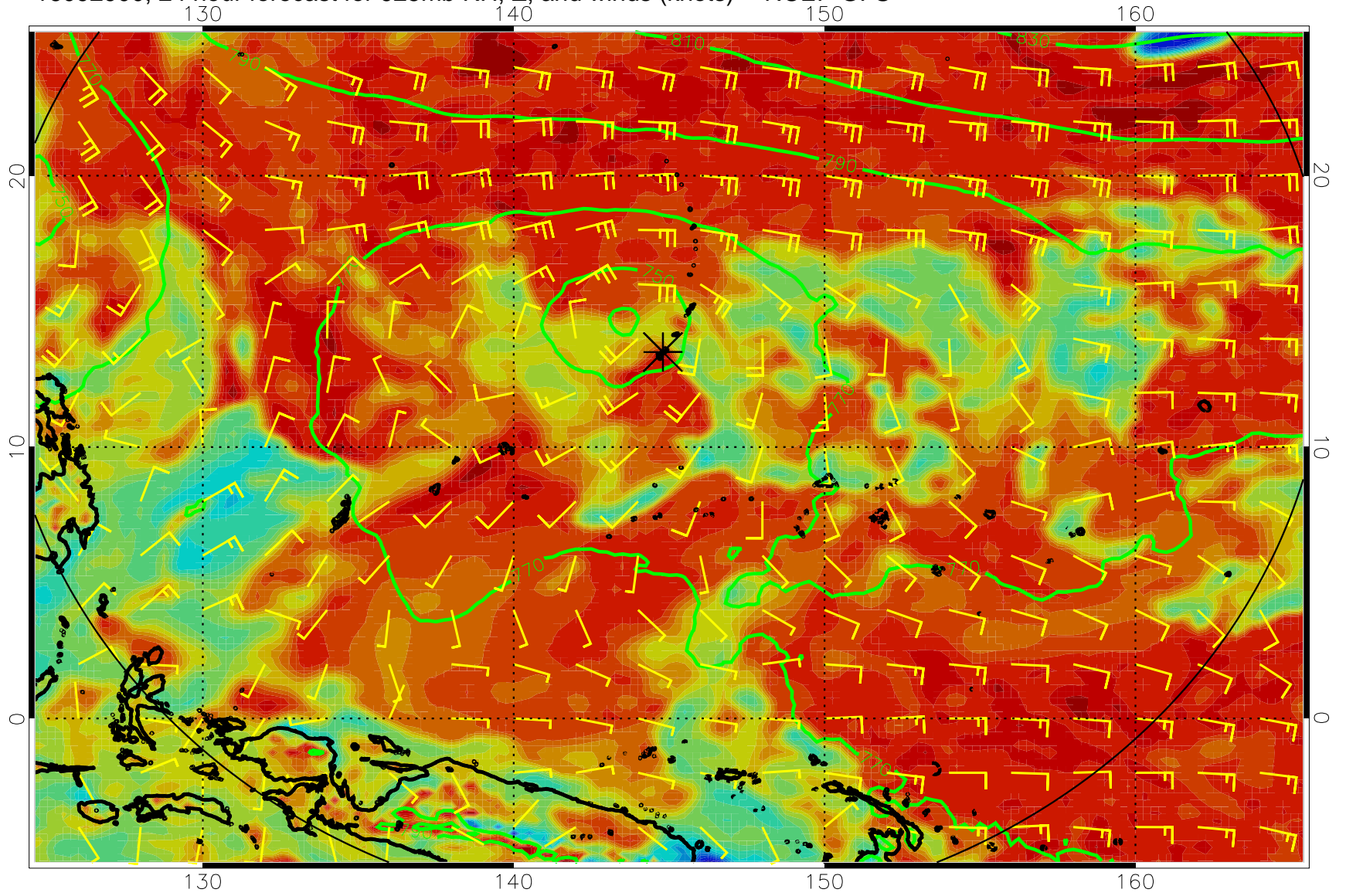
16092812, 12 hour forecast for 925mb RH, Z, and winds (knots) -- NCEP GFS



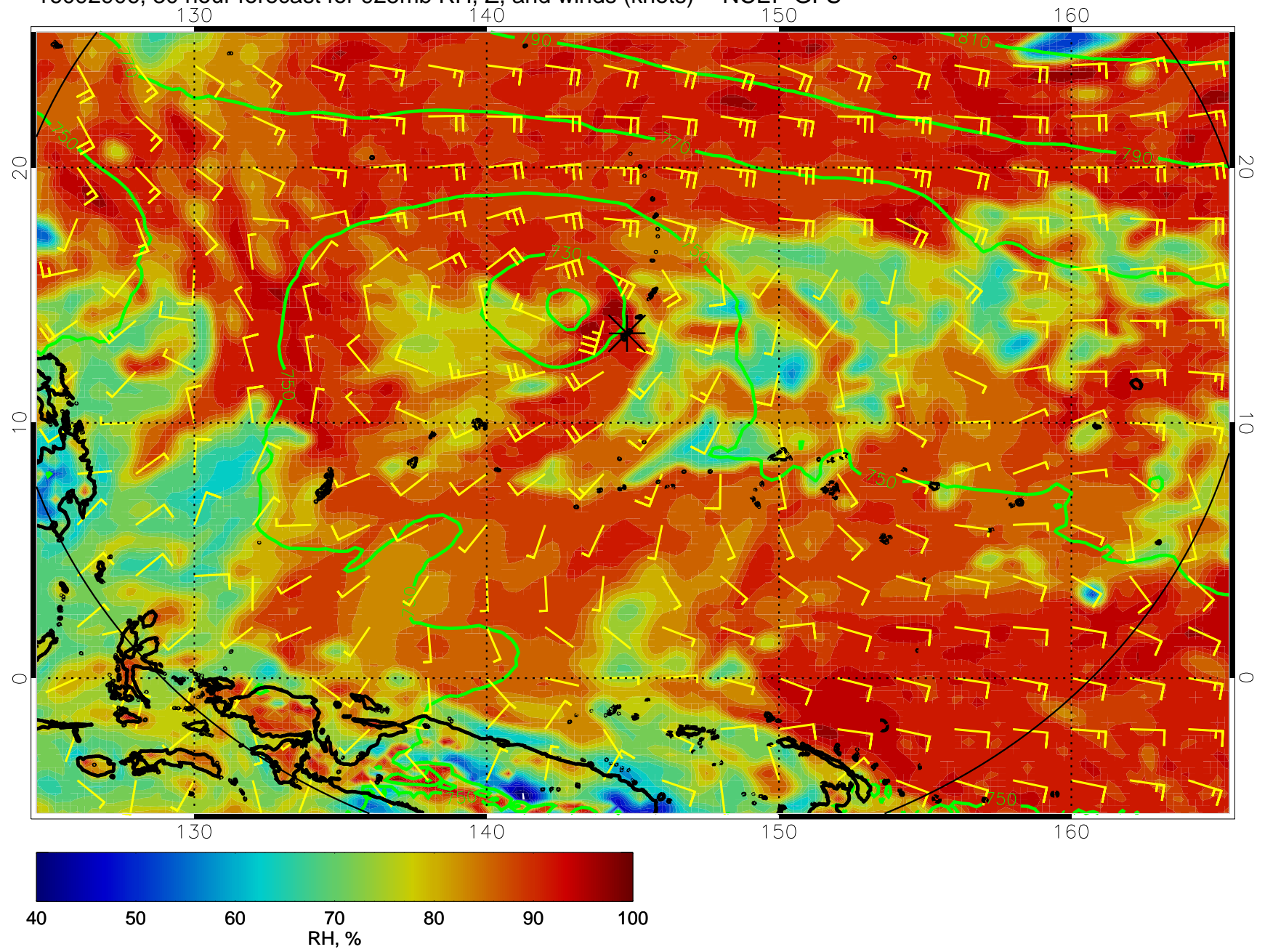
16092818, 18 hour forecast for 925mb RH, Z, and winds (knots) -- NCEP GFS



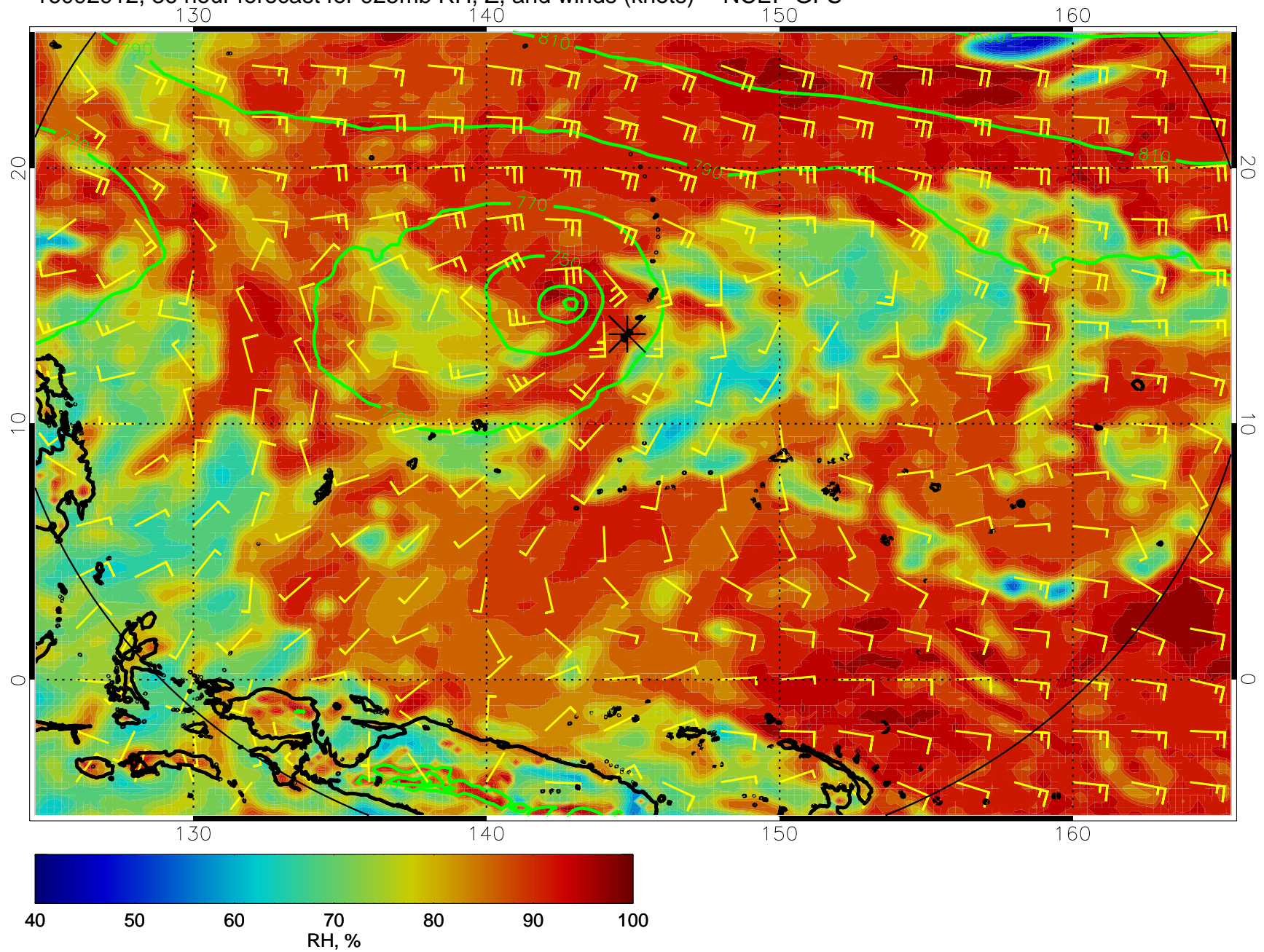
16092900, 24 hour forecast for 925mb RH, Z, and winds (knots) -- NCEP GFS



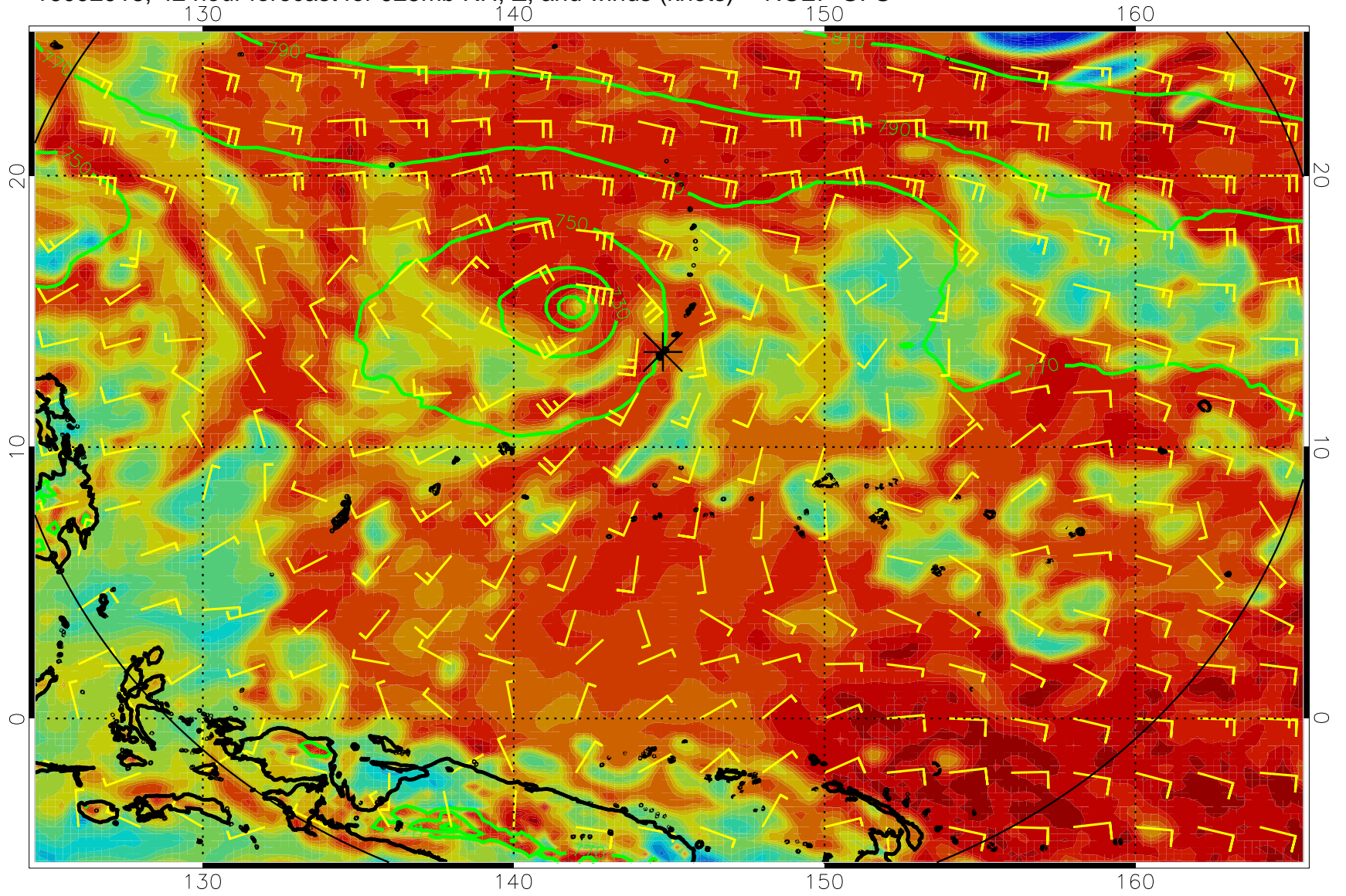
16092906, 30 hour forecast for 925mb RH, Z, and winds (knots) -- NCEP GFS



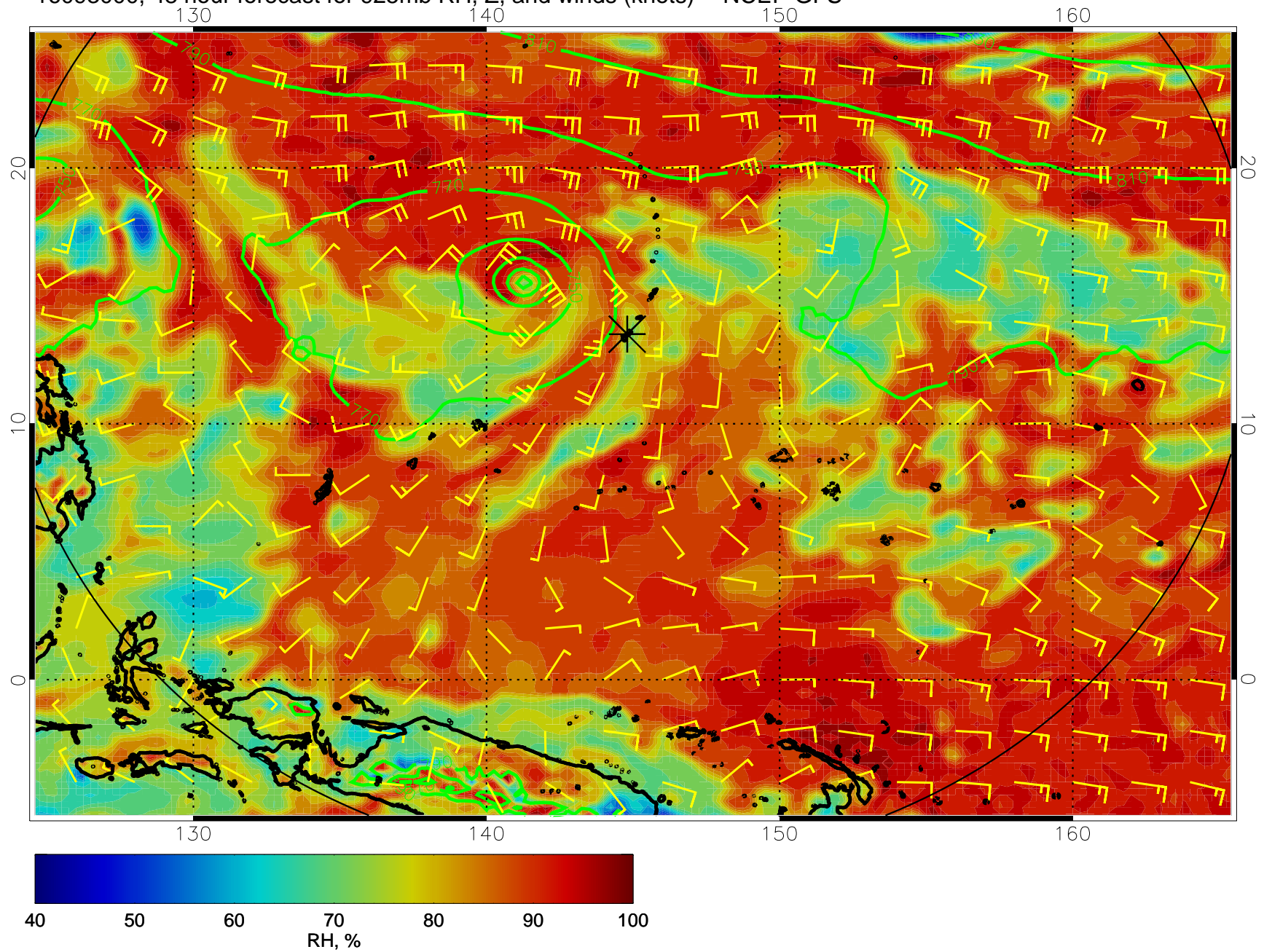
16092912, 36 hour forecast for 925mb RH, Z, and winds (knots) -- NCEP GFS



16092918, 42 hour forecast for 925mb RH, Z, and winds (knots) -- NCEP GFS

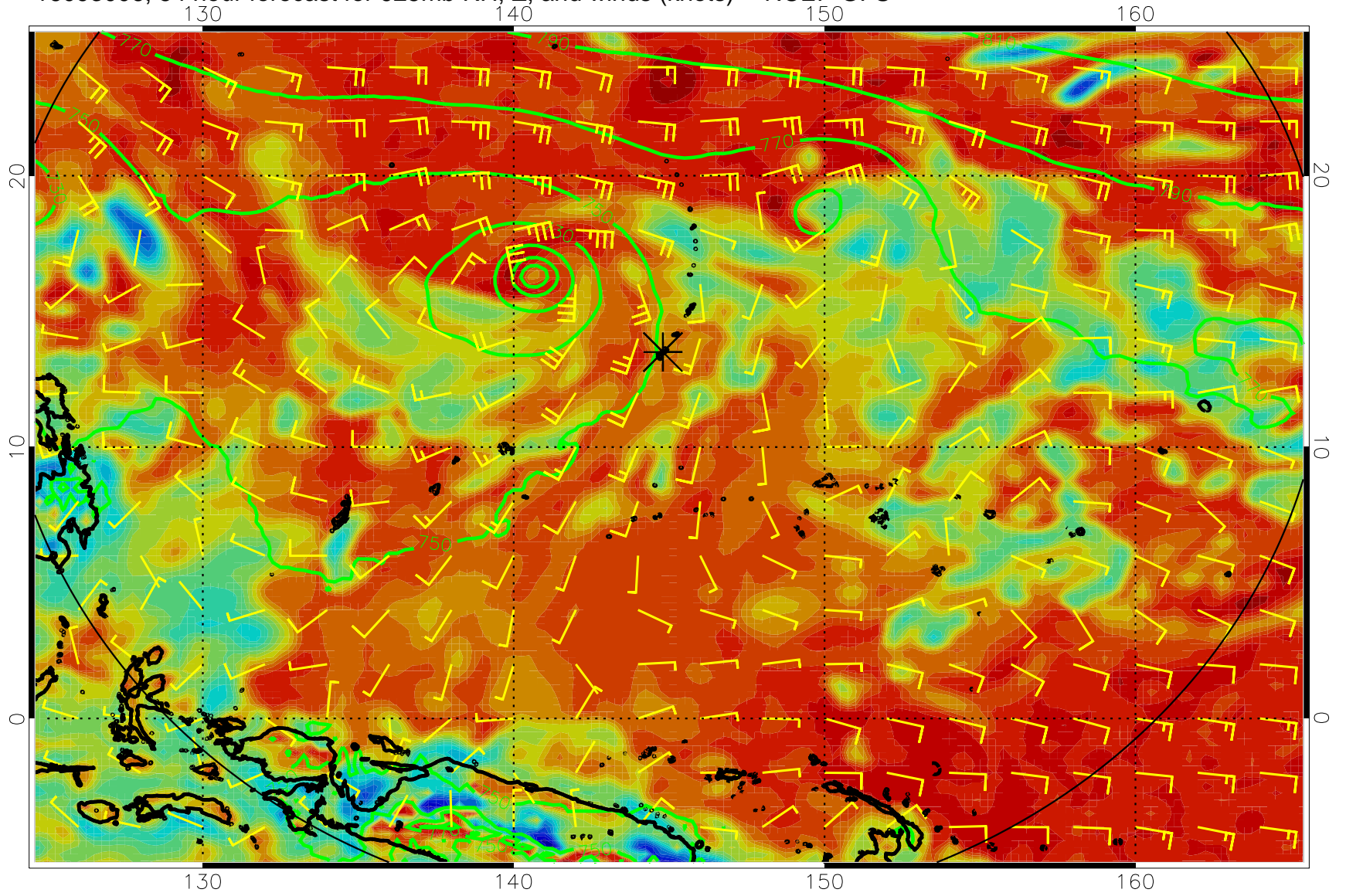


16093000, 48 hour forecast for 925mb RH, Z, and winds (knots) -- NCEP GFS

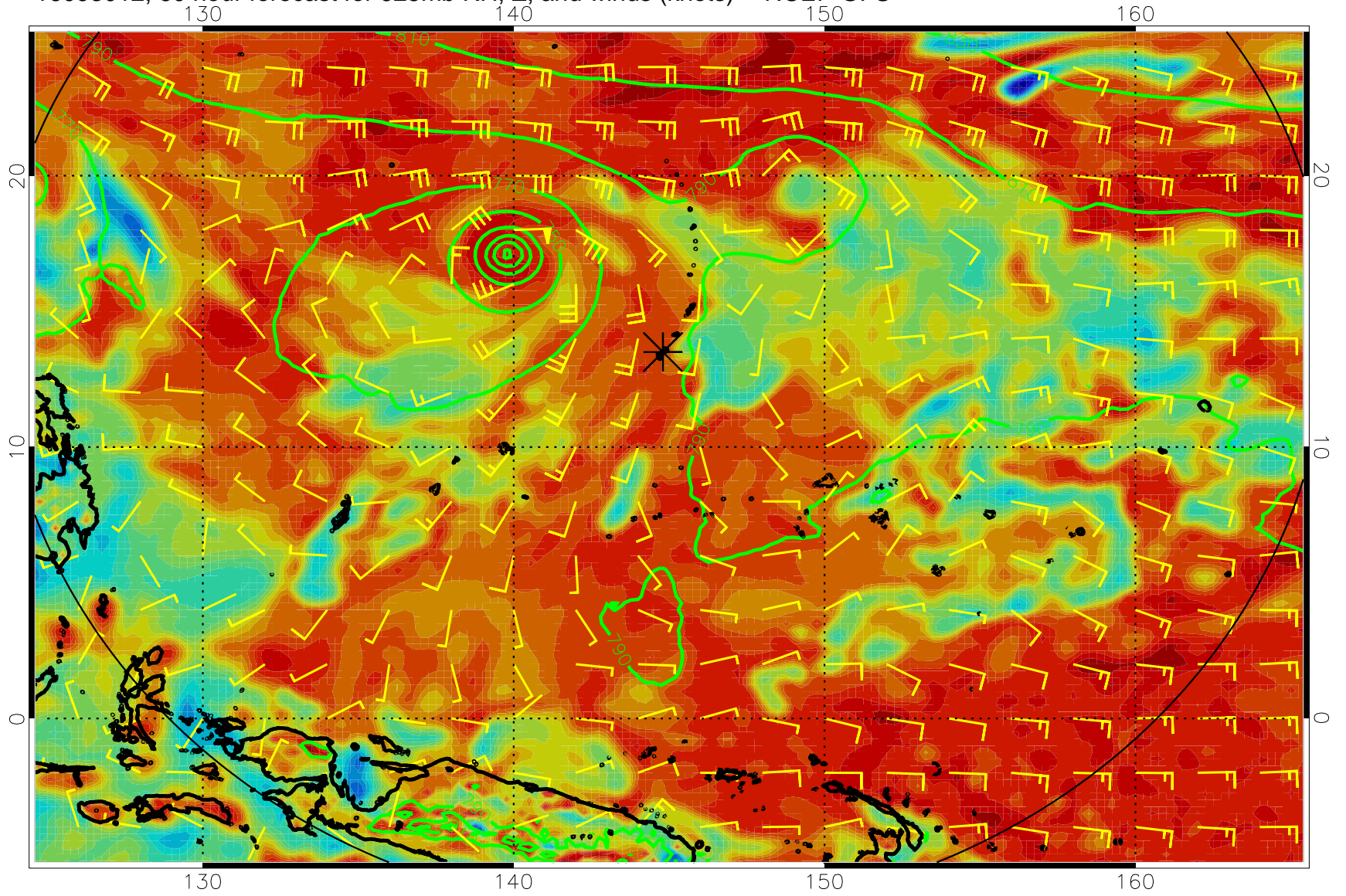




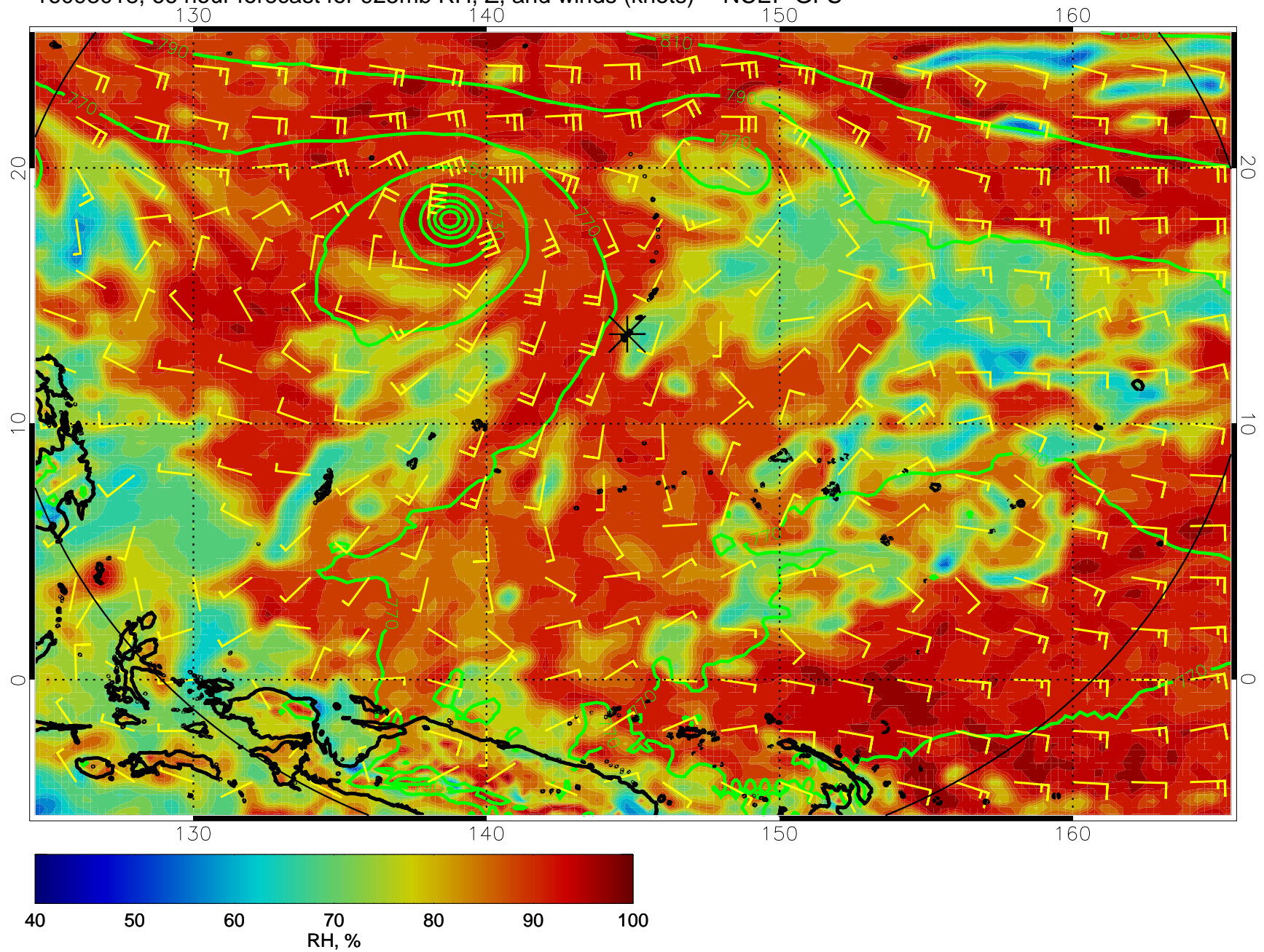
16093006, 54 hour forecast for 925mb RH, Z, and winds (knots) -- NCEP GFS



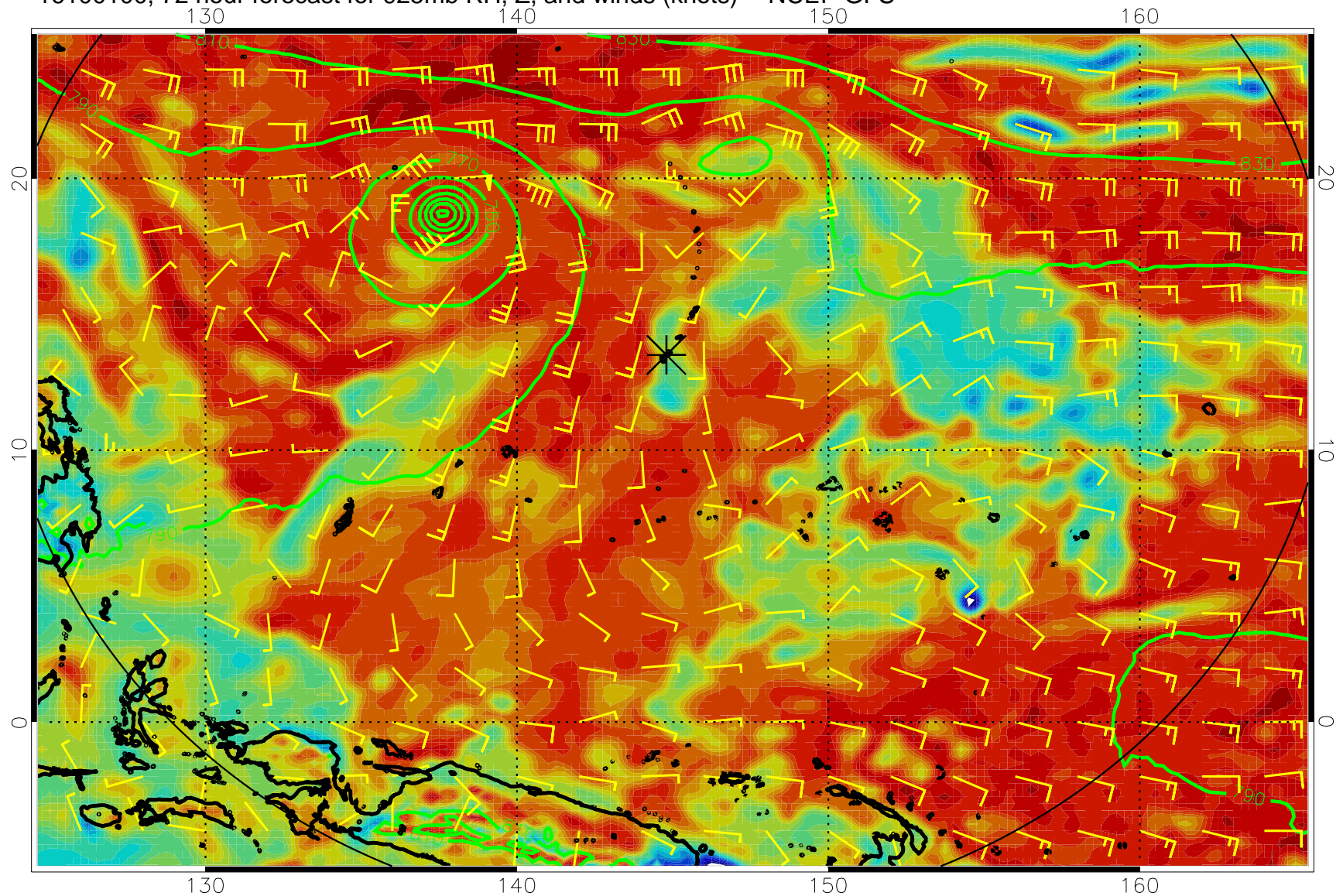
16093012, 60 hour forecast for 925mb RH, Z, and winds (knots) -- NCEP GFS



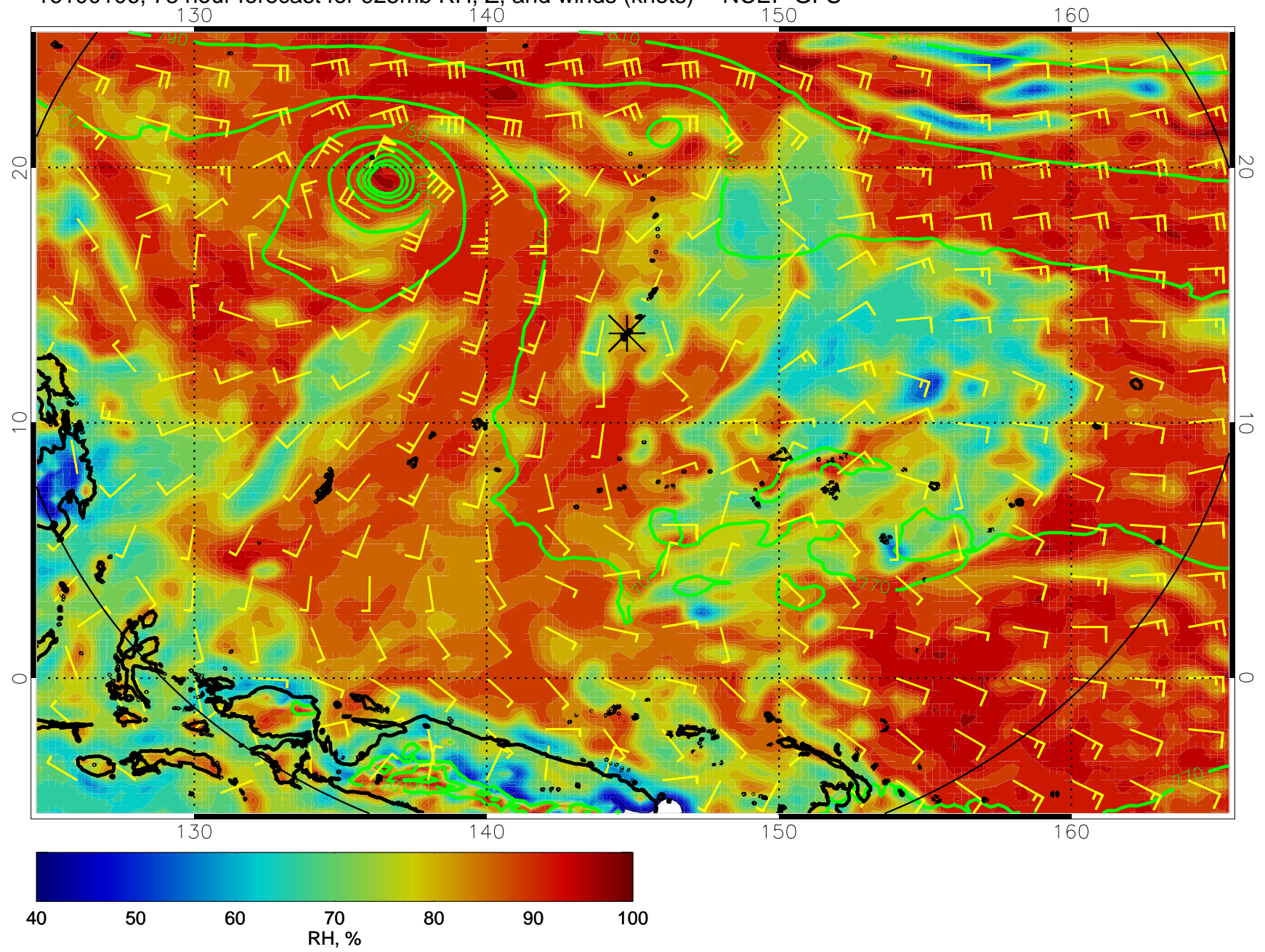
16093018, 66 hour forecast for 925mb RH, Z, and winds (knots) -- NCEP GFS



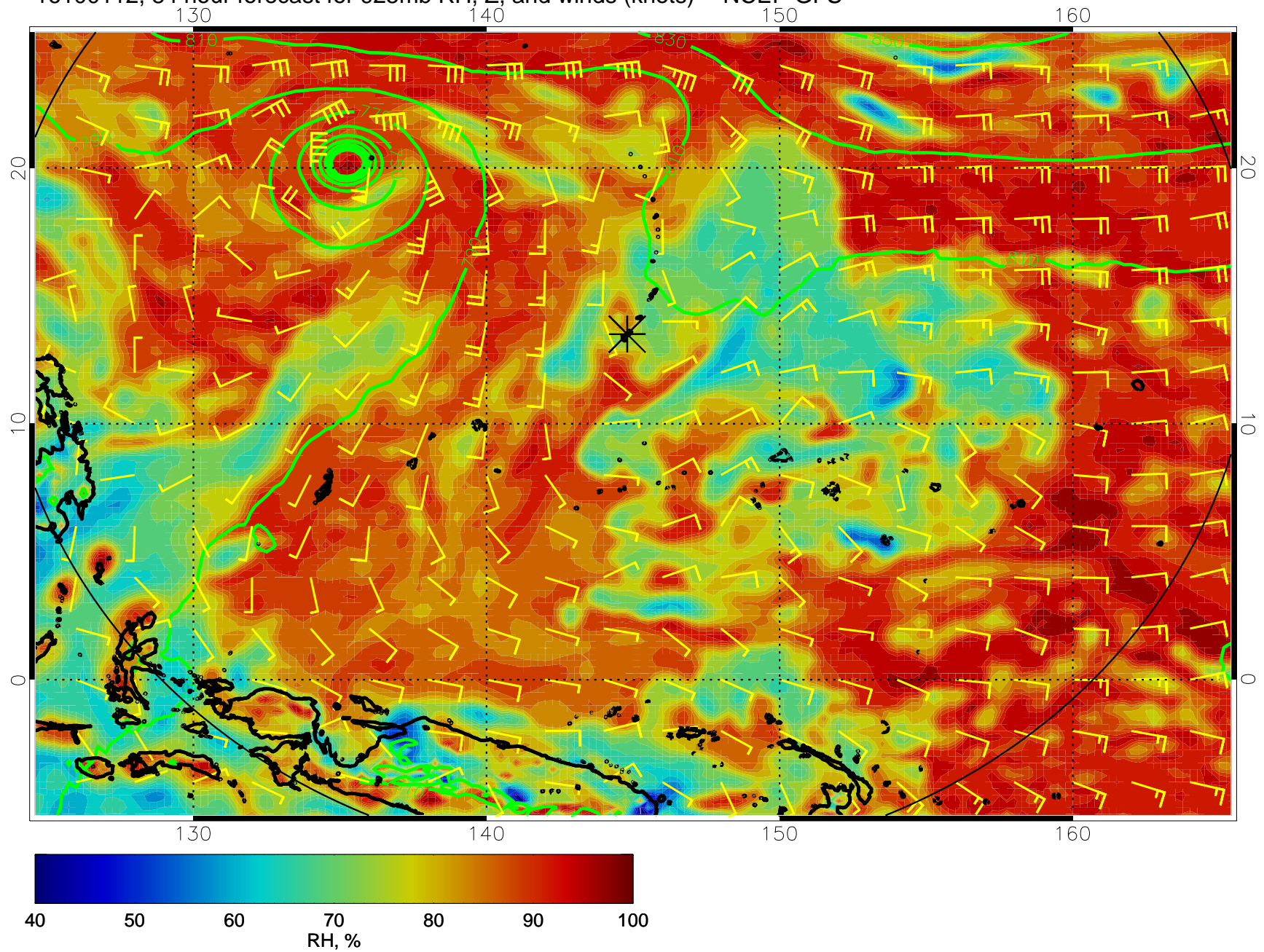
16100100, 72 hour forecast for 925mb RH, Z, and winds (knots) -- NCEP GFS



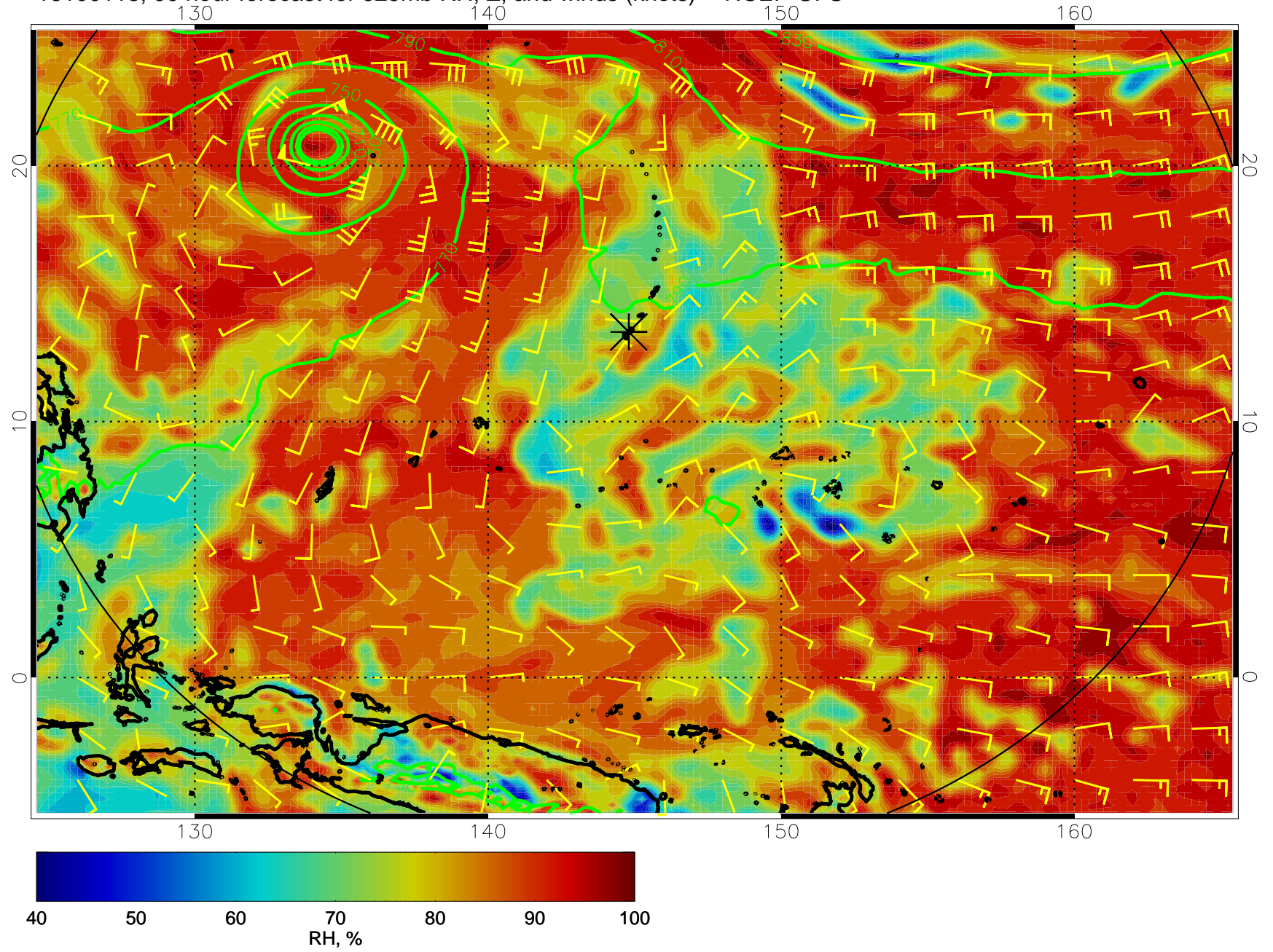
16100106, 78 hour forecast for 925mb RH, Z, and winds (knots) -- NCEP GFS



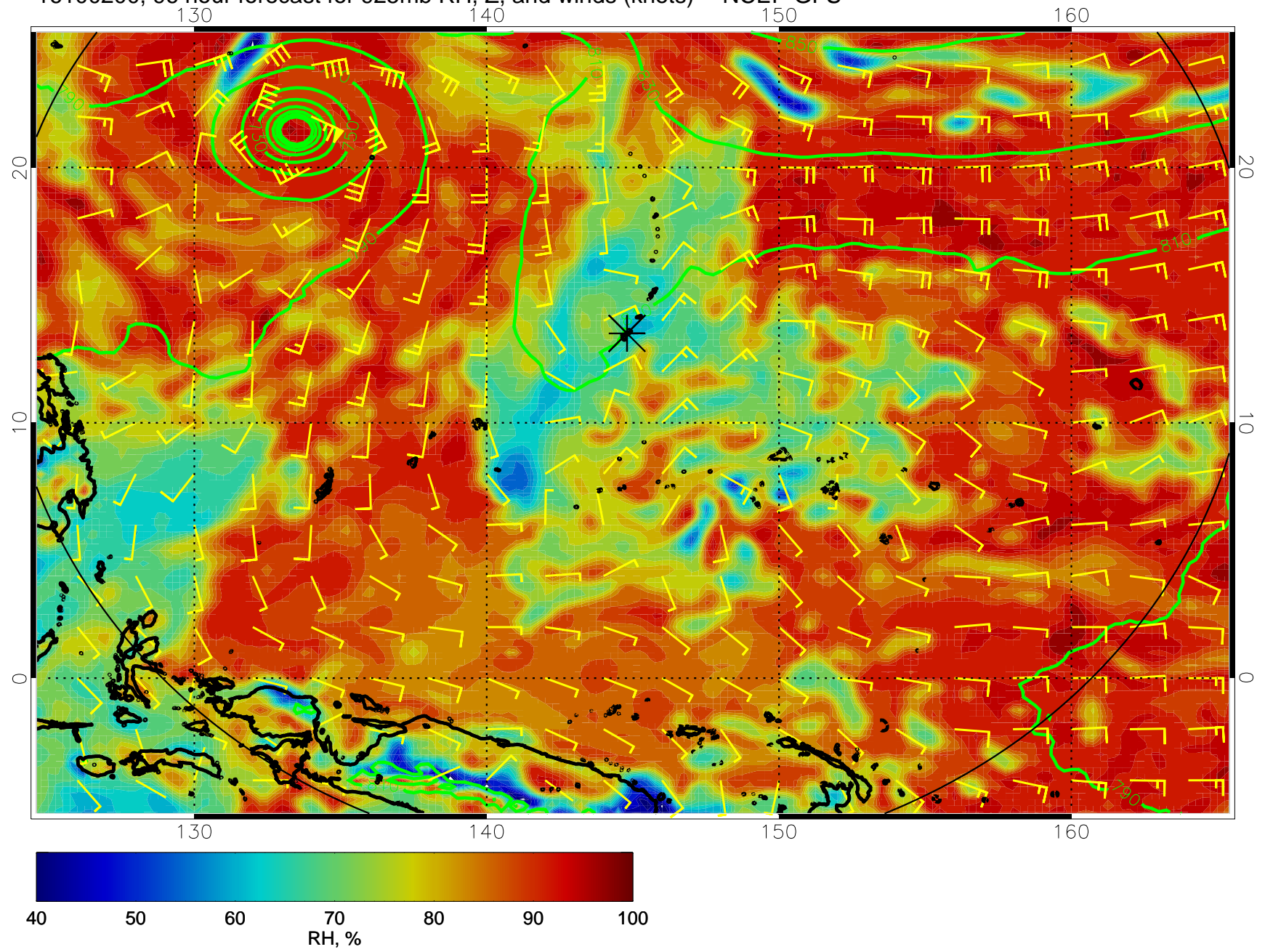
16100112, 84 hour forecast for 925mb RH, Z, and winds (knots) -- NCEP GFS



16100118, 90 hour forecast for 925mb RH, Z, and winds (knots) -- NCEP GFS

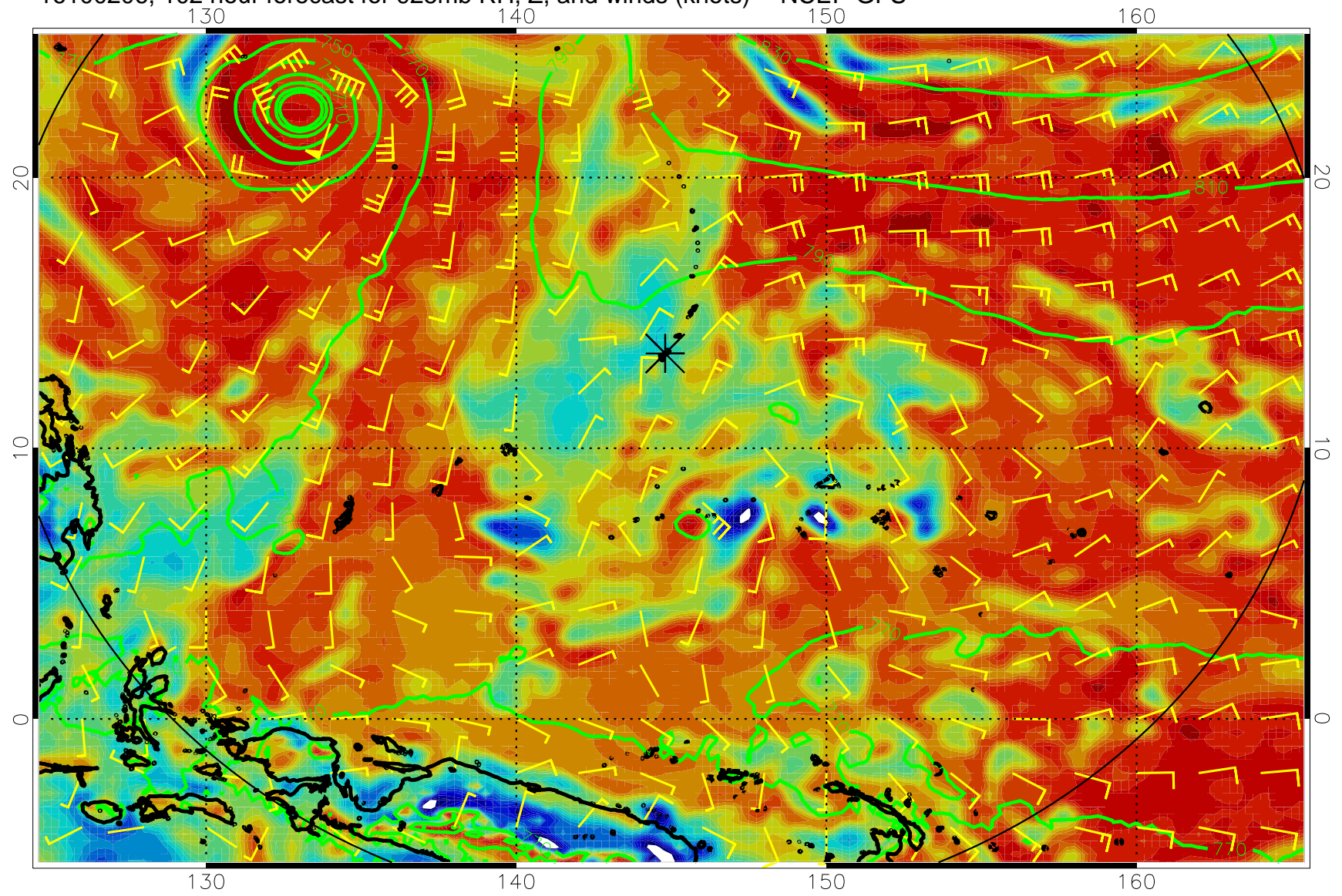


16100200, 96 hour forecast for 925mb RH, Z, and winds (knots) -- NCEP GFS

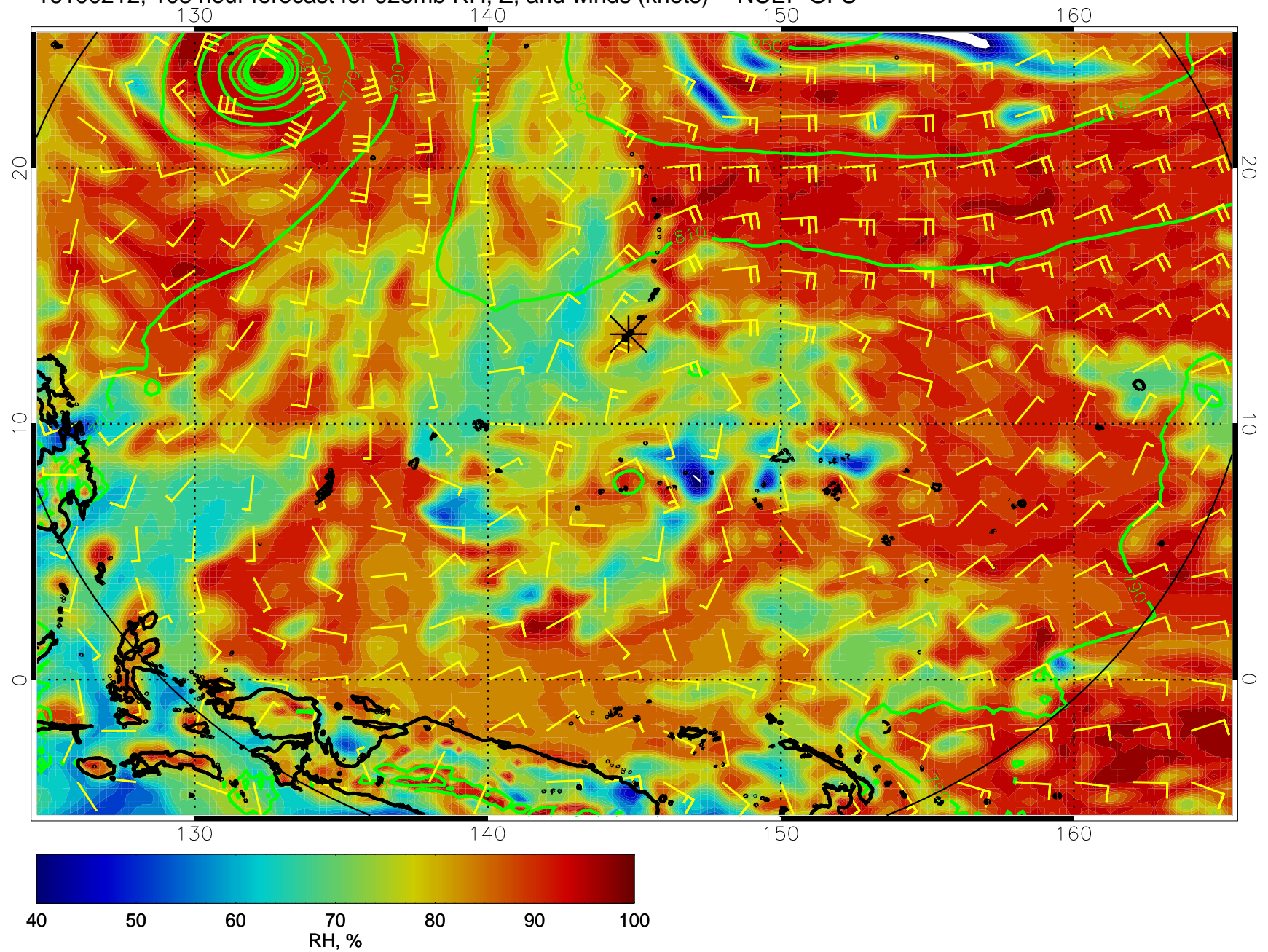




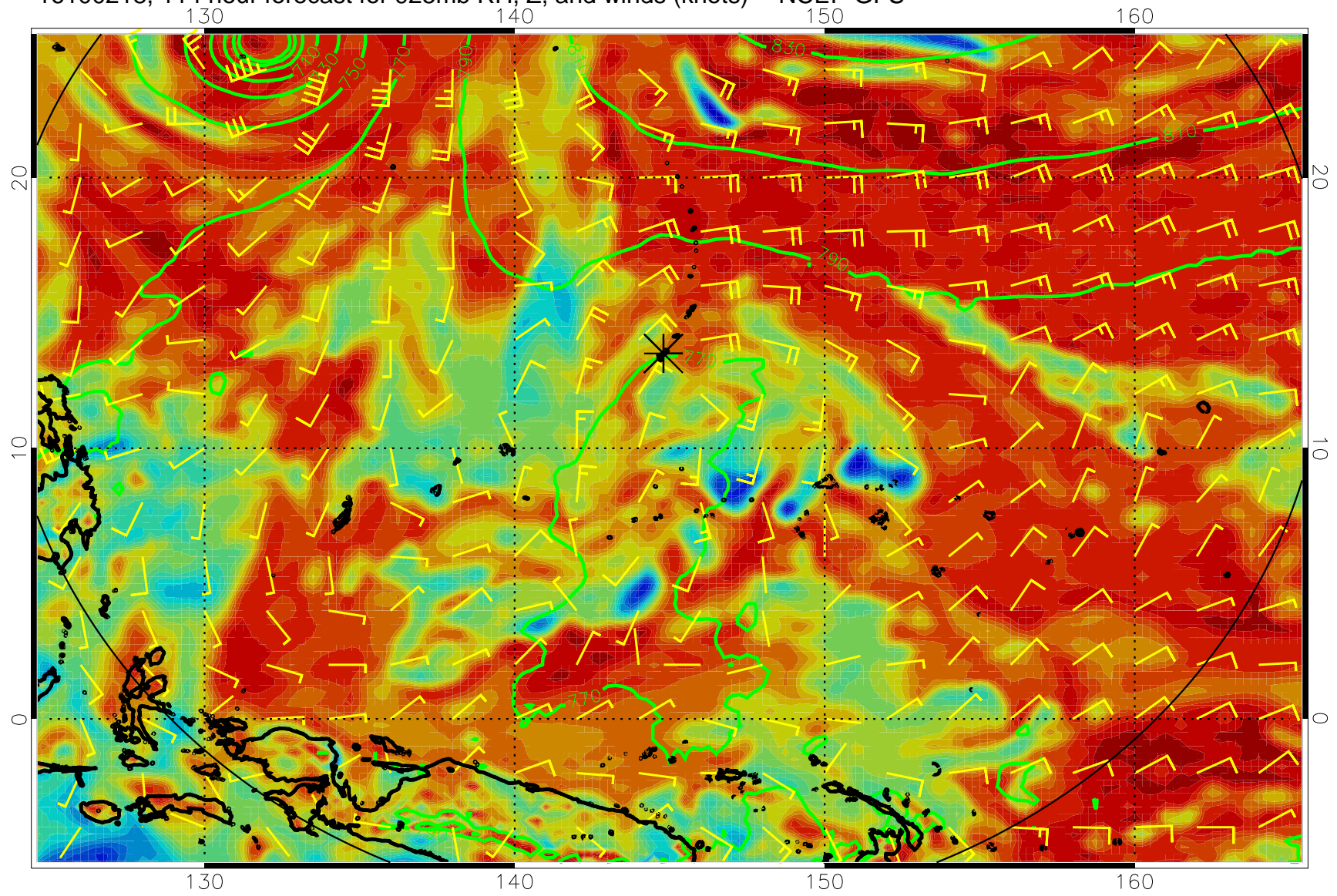
16100206, 102 hour forecast for 925mb RH, Z, and winds (knots) -- NCEP GFS



16100212, 108 hour forecast for 925mb RH, Z, and winds (knots) -- NCEP GFS



16100218, 114 hour forecast for 925mb RH, Z, and winds (knots) -- NCEP GFS



16100300, 120 hour forecast for 925mb RH, Z, and winds (knots) -- NCEP GFS

