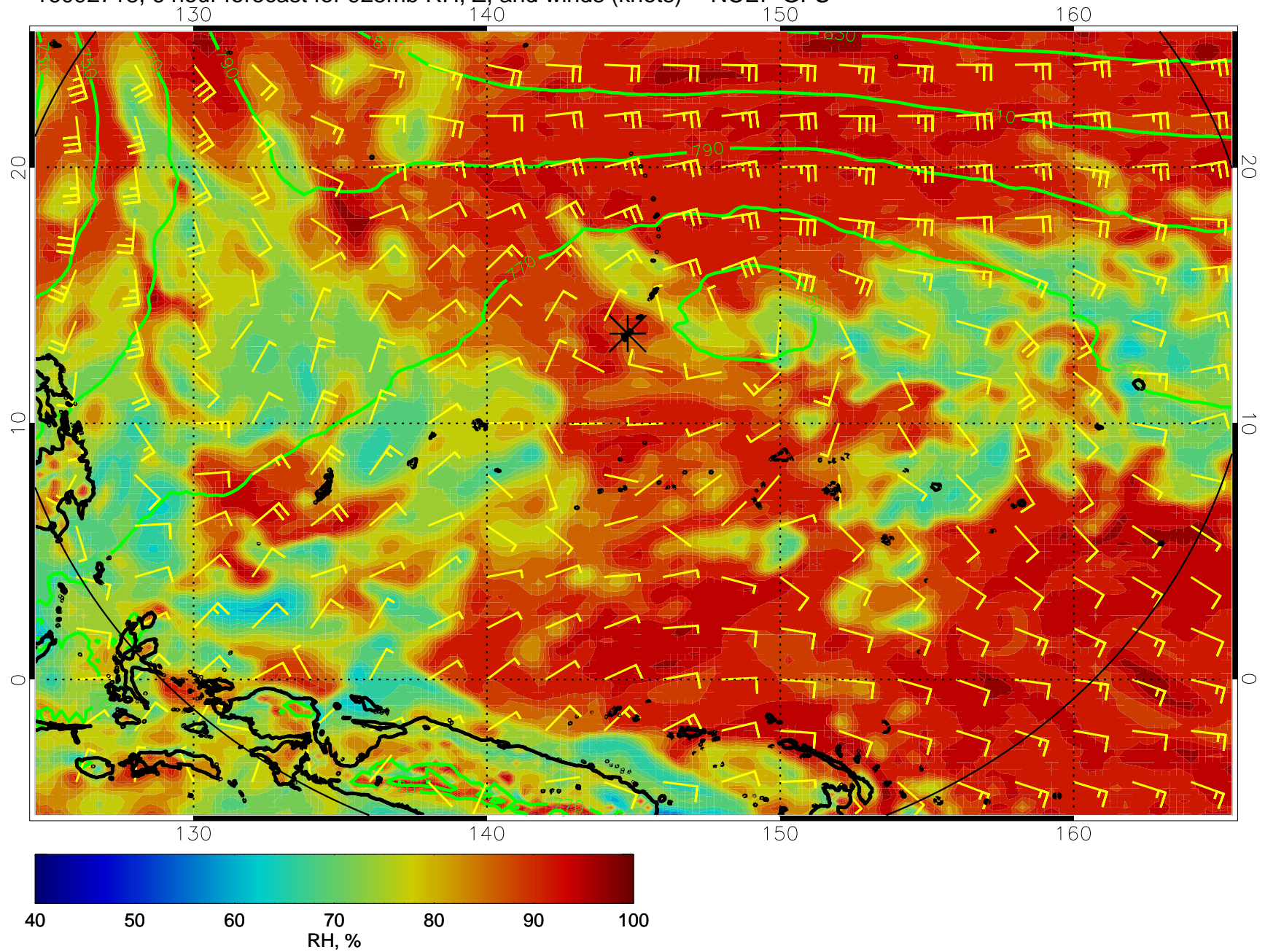
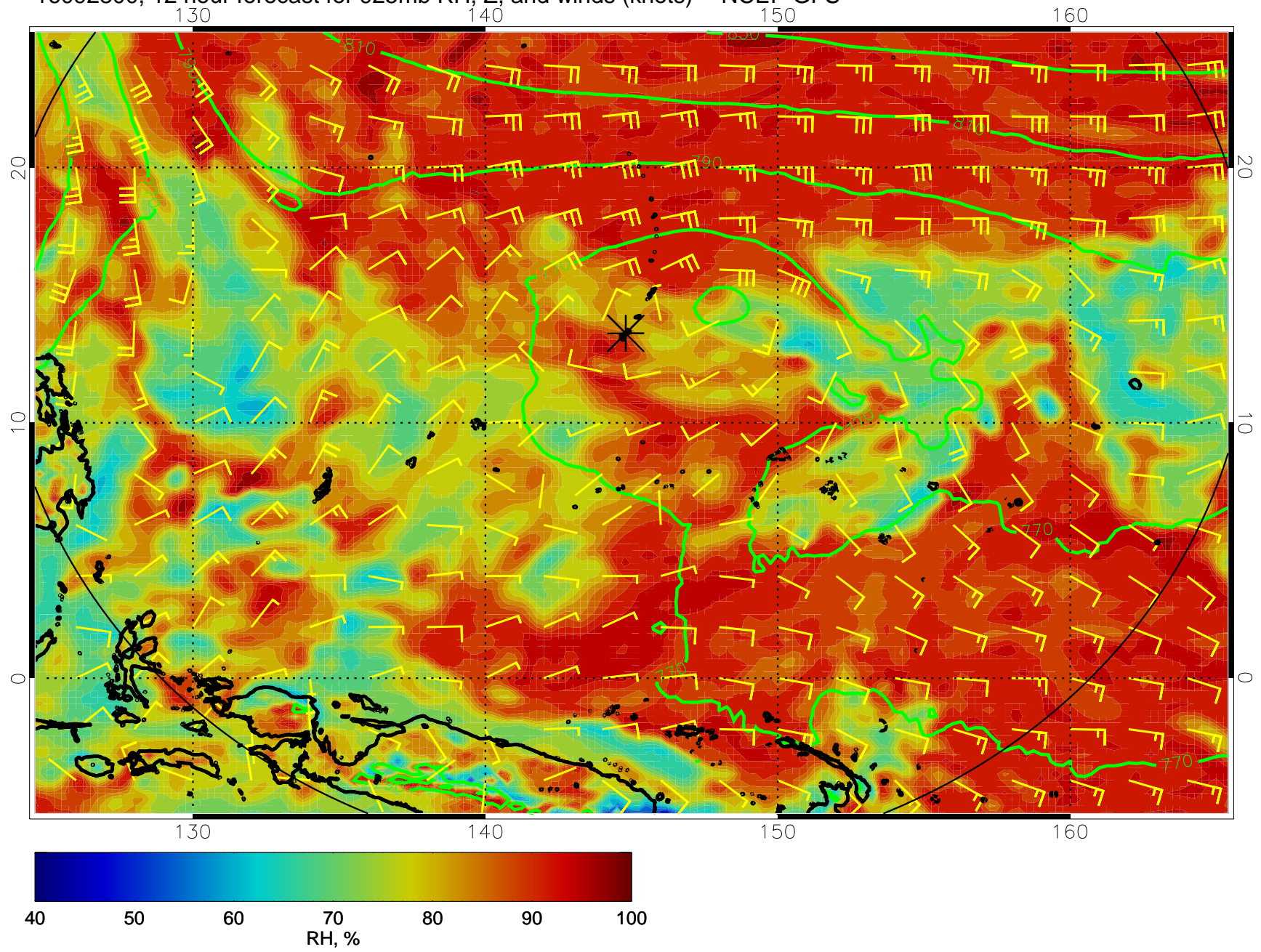


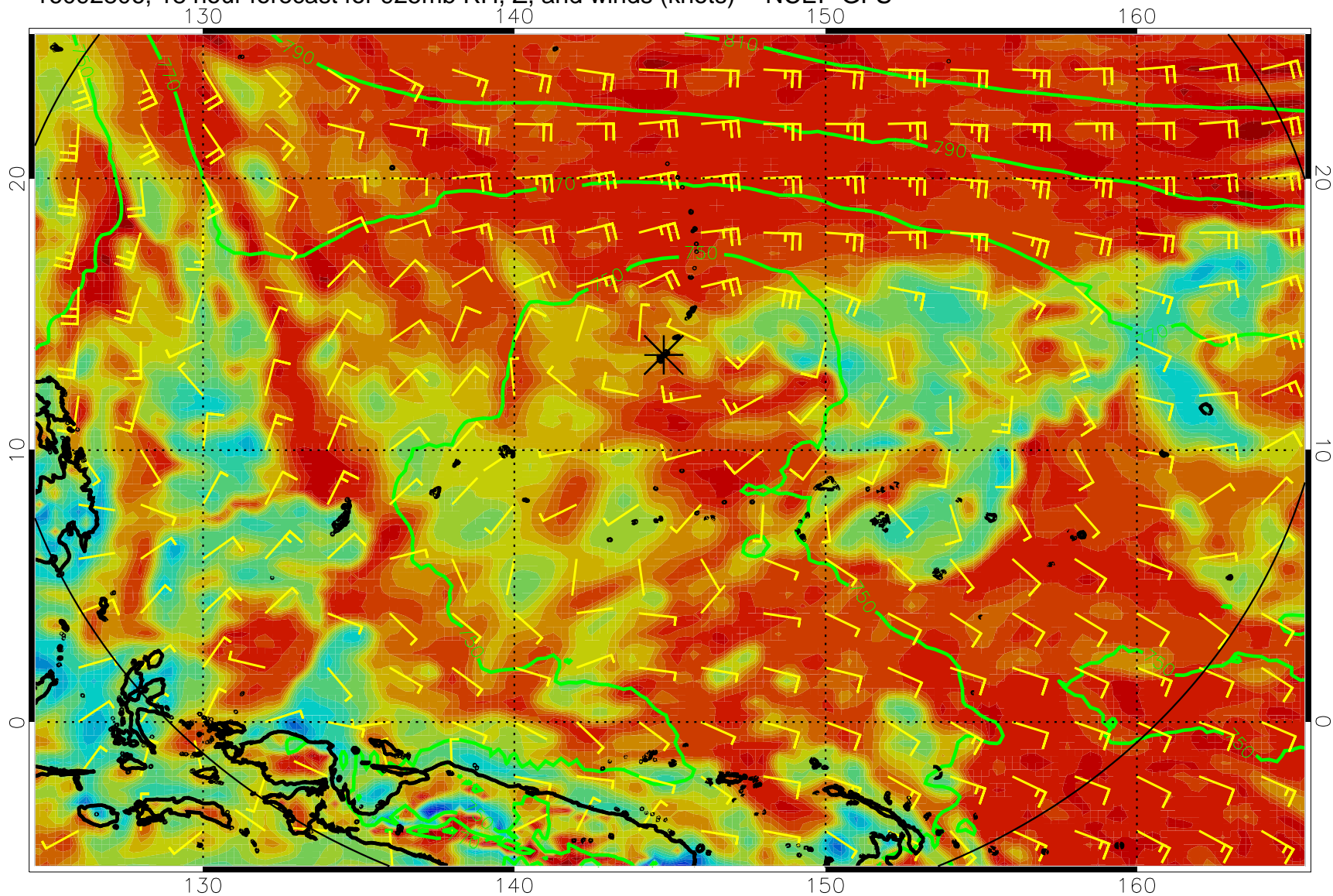
16092718, 6 hour forecast for 925mb RH, Z, and winds (knots) -- NCEP GFS



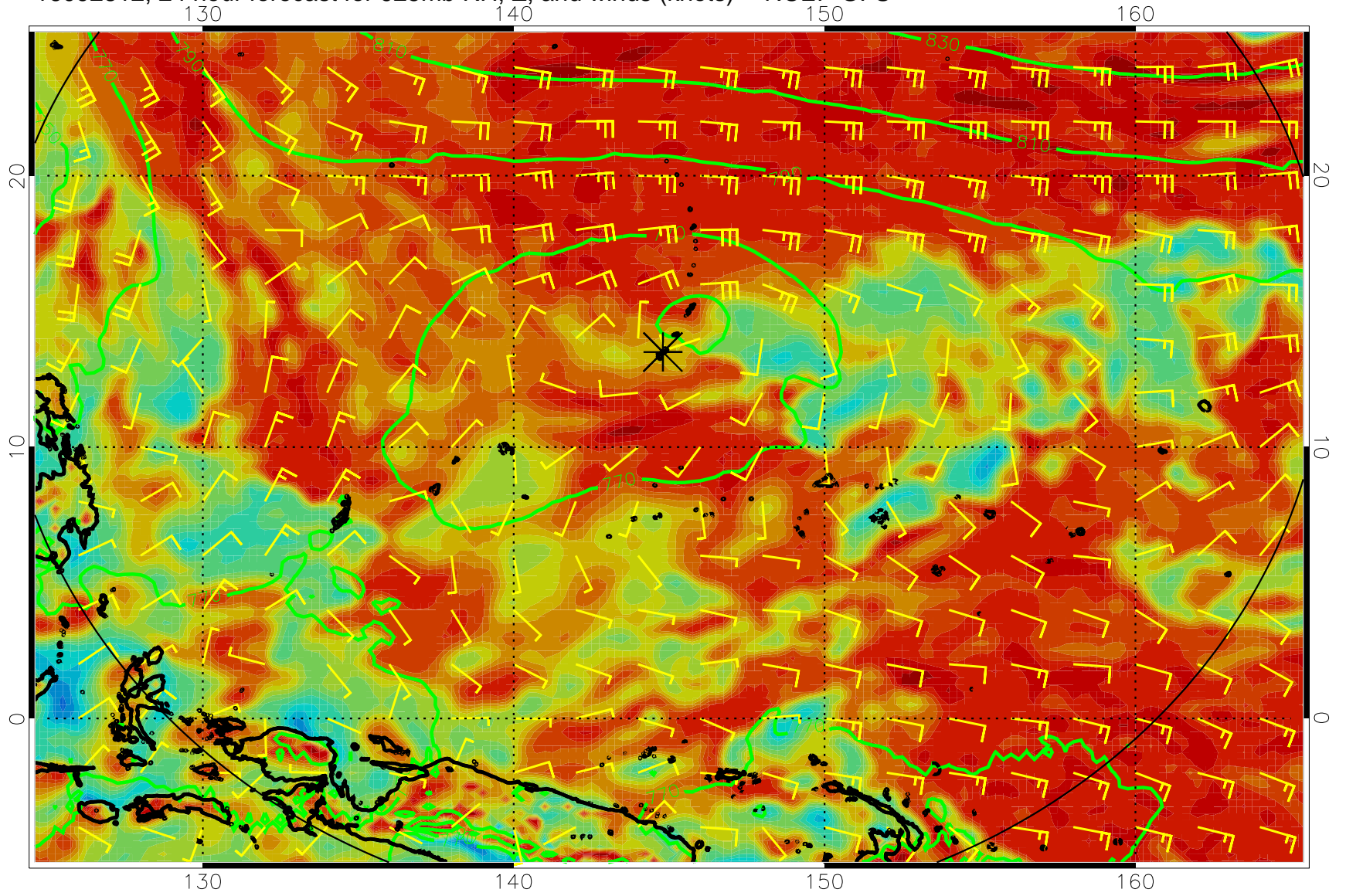
16092800, 12 hour forecast for 925mb RH, Z, and winds (knots) -- NCEP GFS



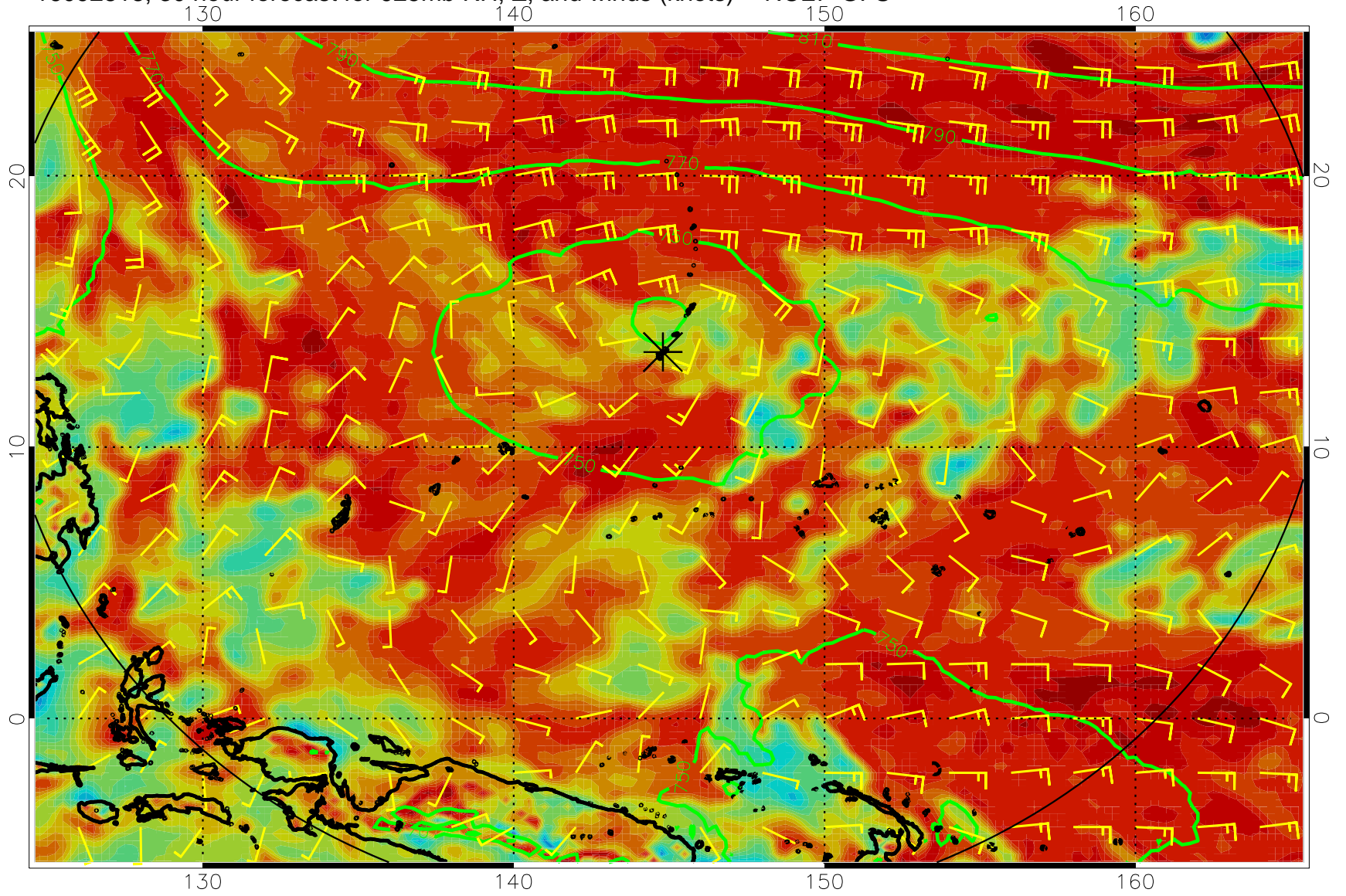
16092806, 18 hour forecast for 925mb RH, Z, and winds (knots) -- NCEP GFS



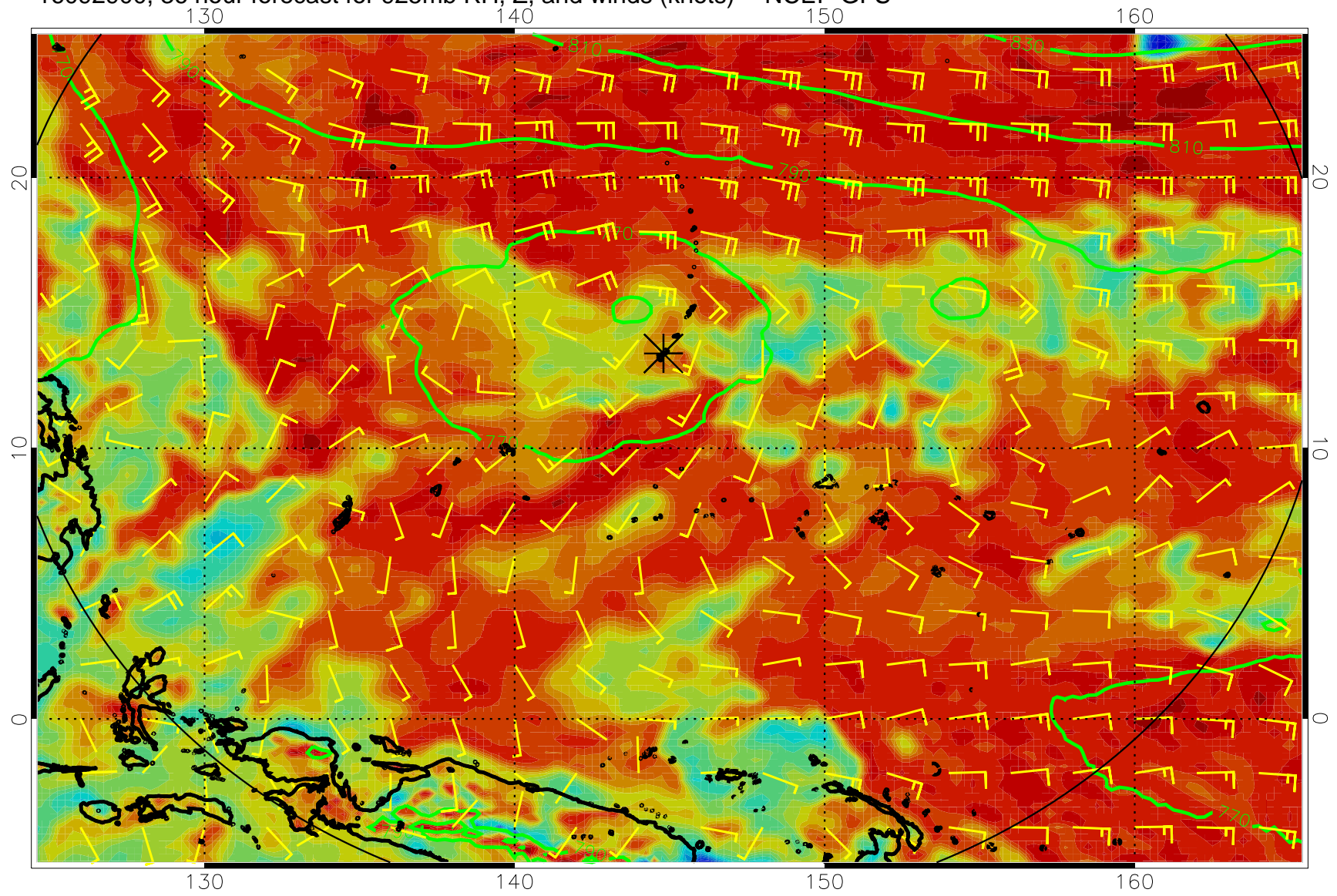
16092812, 24 hour forecast for 925mb RH, Z, and winds (knots) -- NCEP GFS



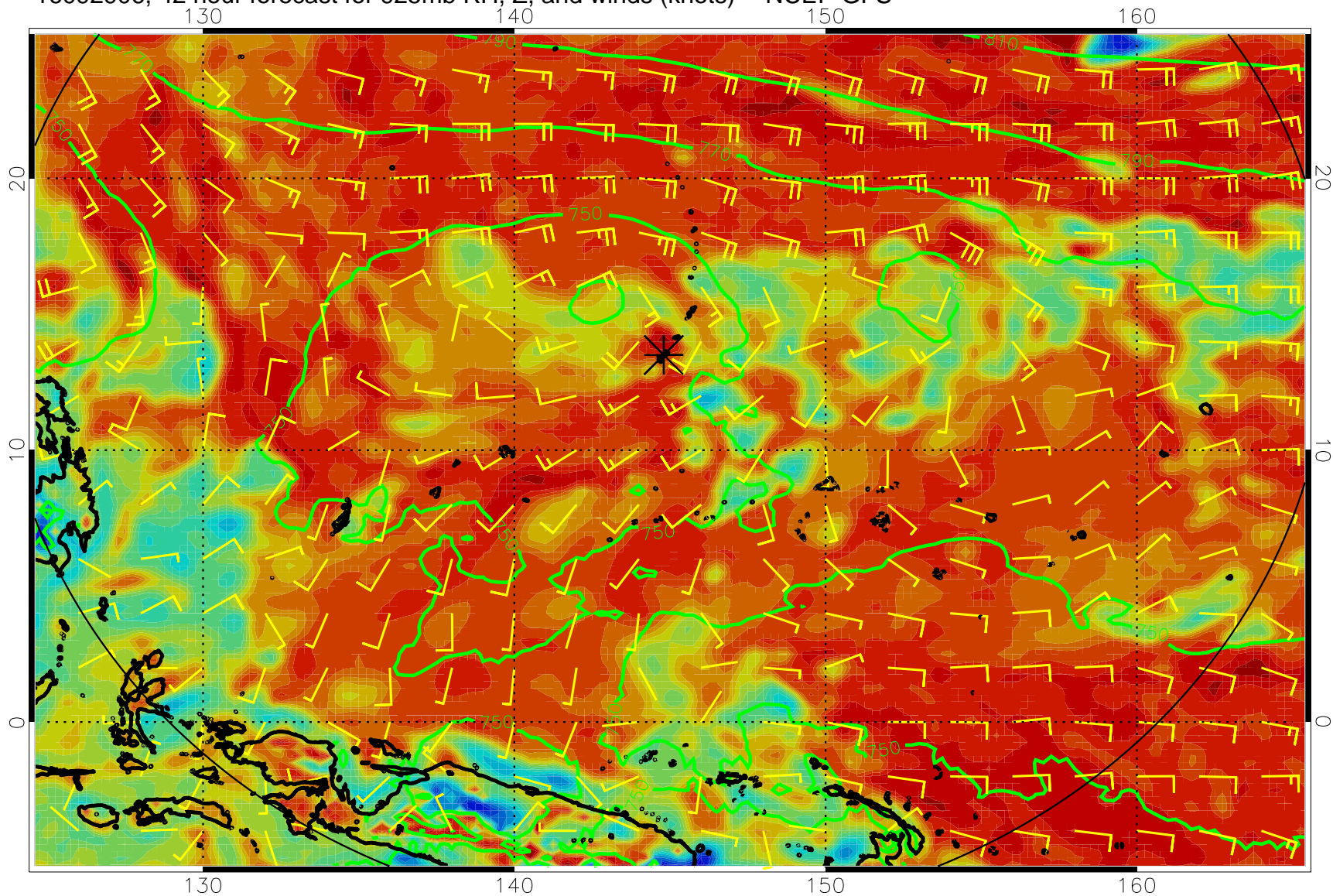
16092818, 30 hour forecast for 925mb RH, Z, and winds (knots) -- NCEP GFS



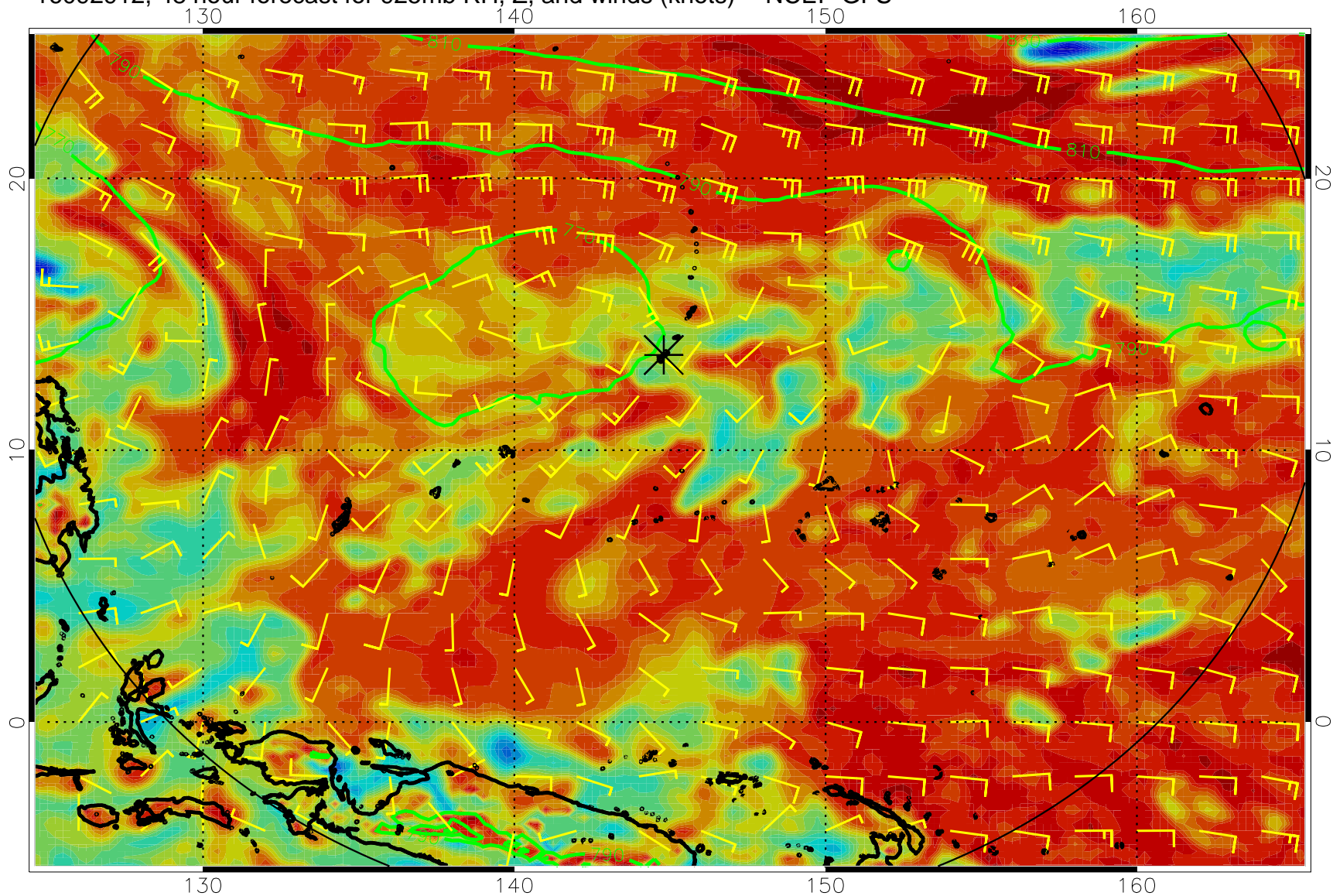
16092900, 36 hour forecast for 925mb RH, Z, and winds (knots) -- NCEP GFS



16092906, 42 hour forecast for 925mb RH, Z, and winds (knots) -- NCEP GFS

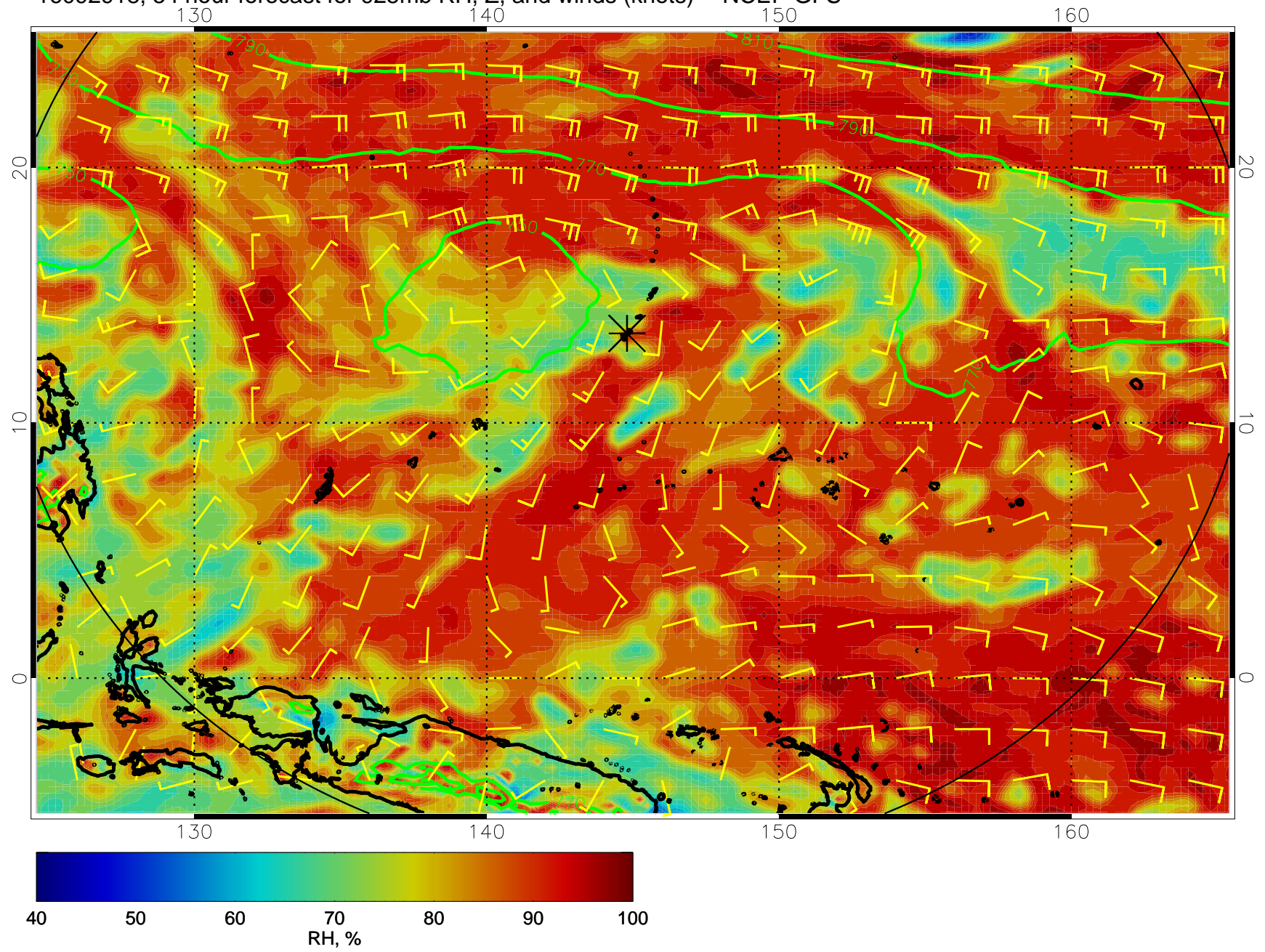


16092912, 48 hour forecast for 925mb RH, Z, and winds (knots) -- NCEP GFS

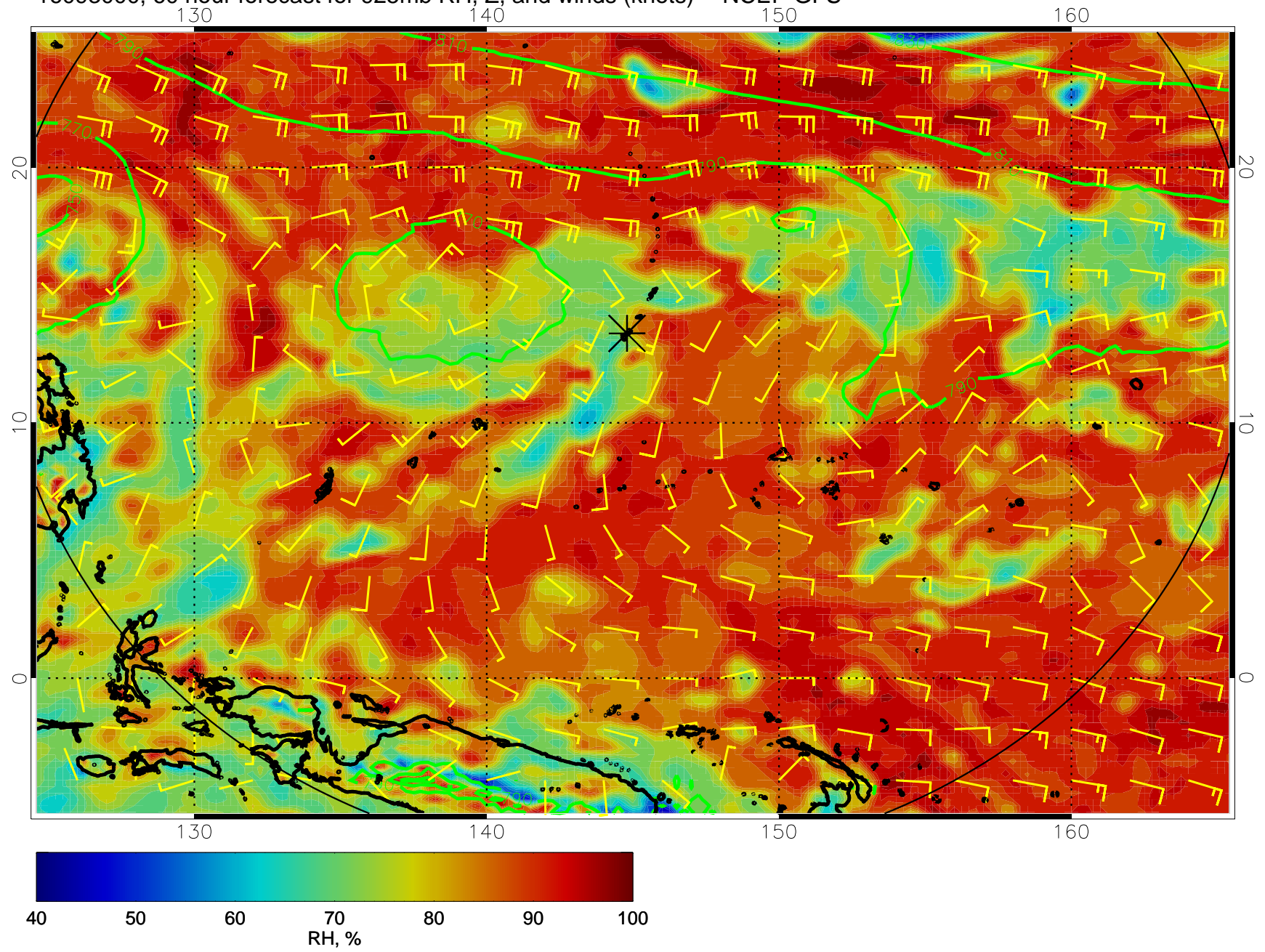




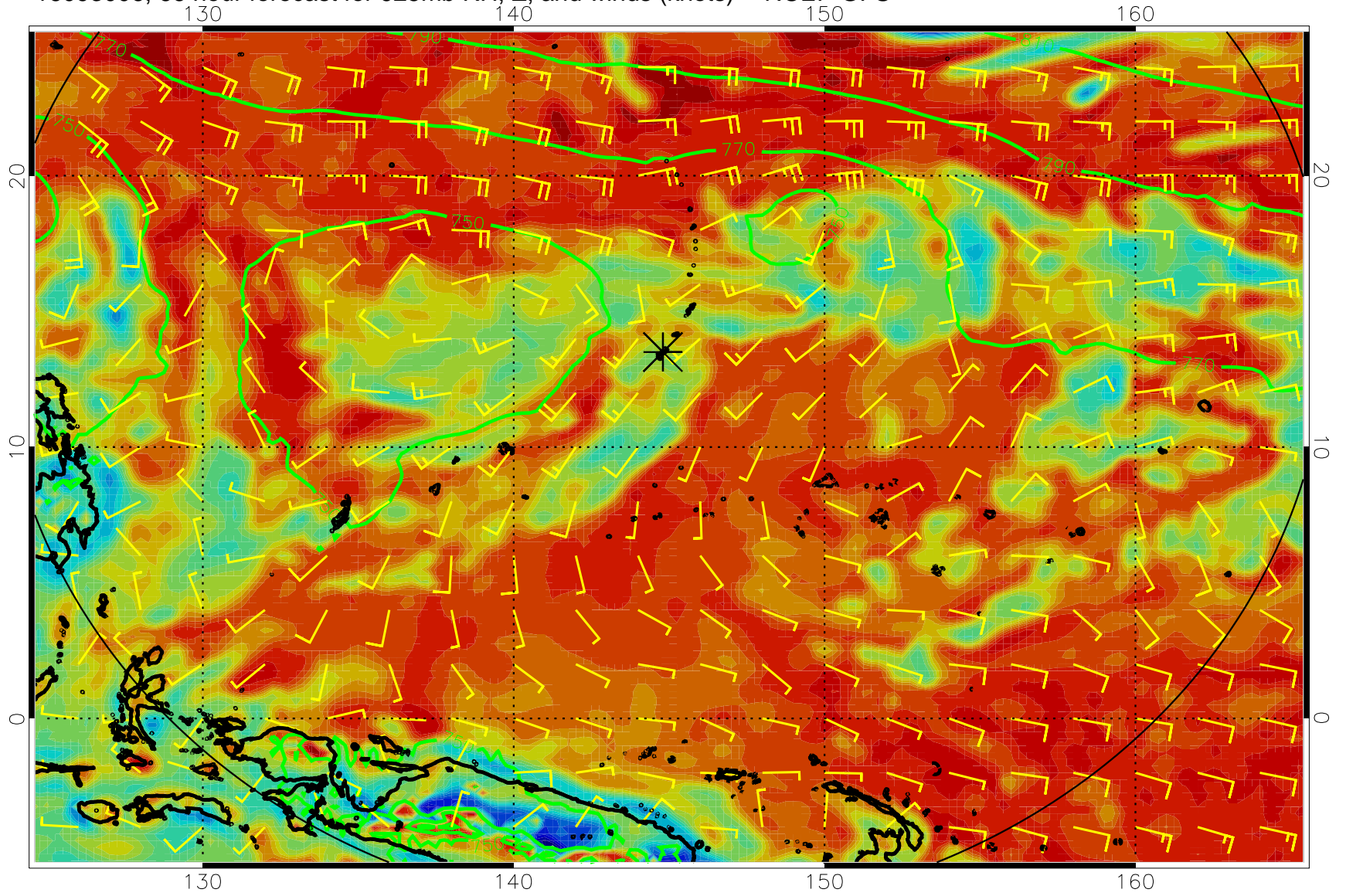
16092918, 54 hour forecast for 925mb RH, Z, and winds (knots) -- NCEP GFS



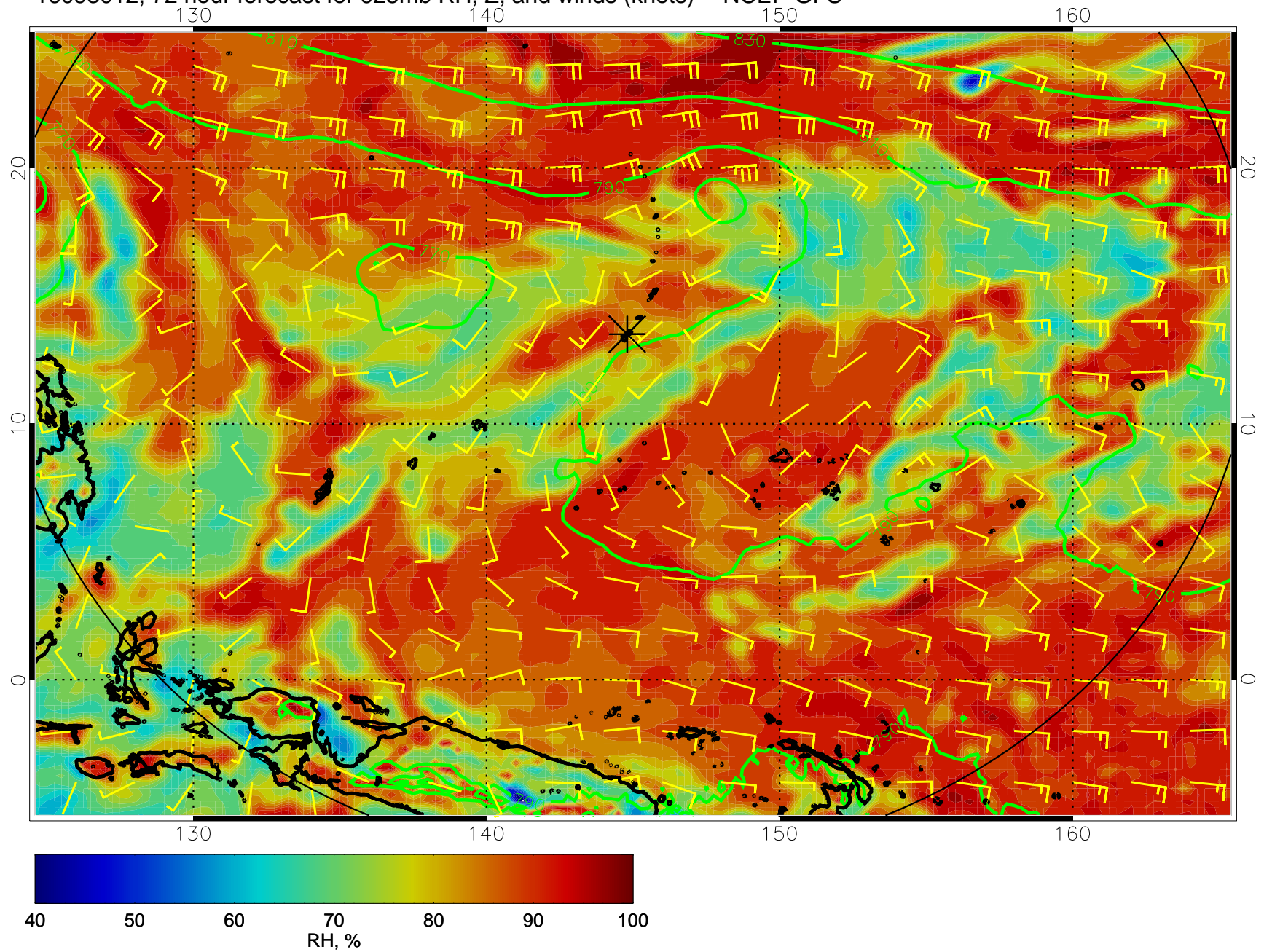
16093000, 60 hour forecast for 925mb RH, Z, and winds (knots) -- NCEP GFS



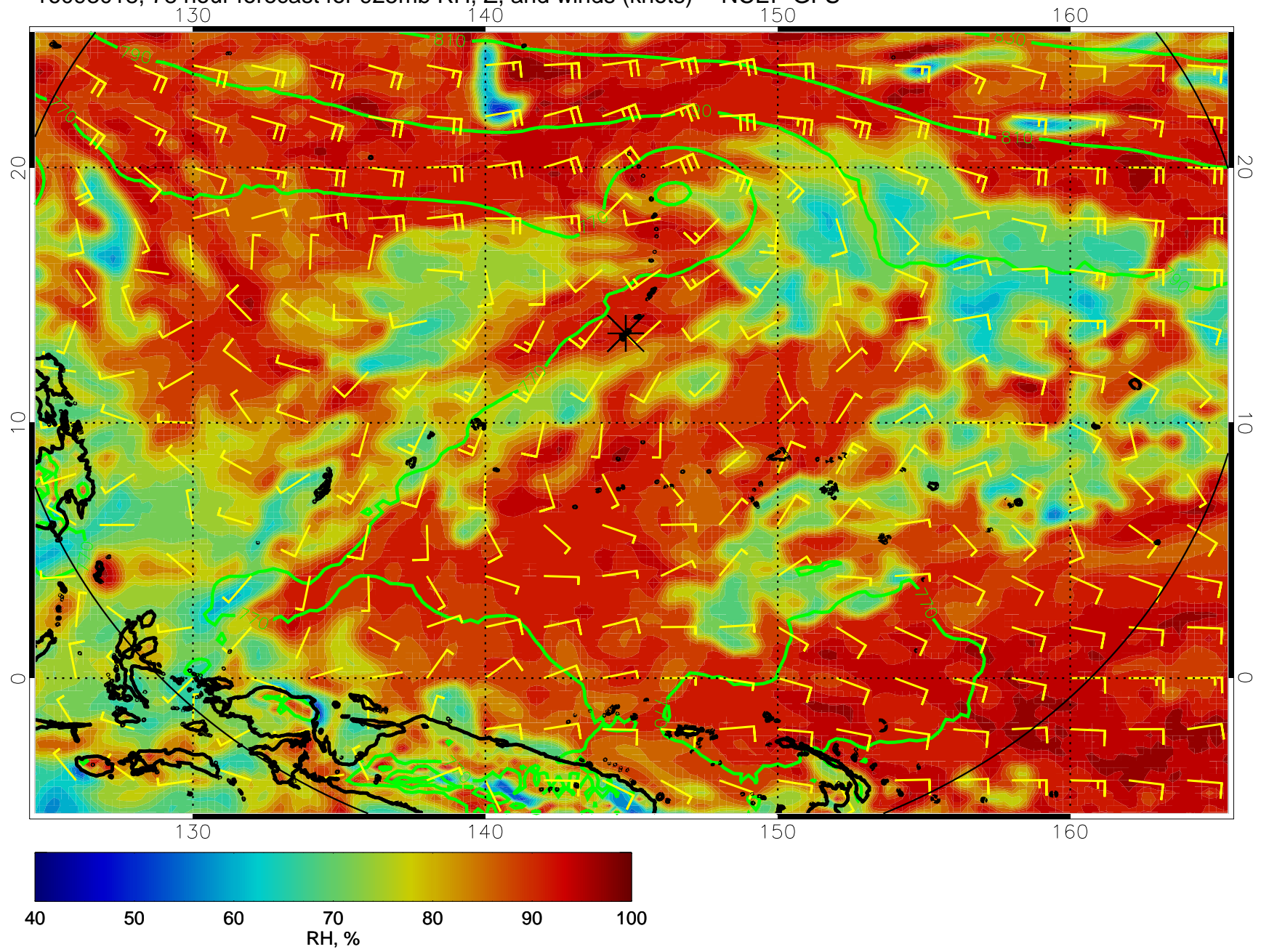
16093006, 66 hour forecast for 925mb RH, Z, and winds (knots) -- NCEP GFS



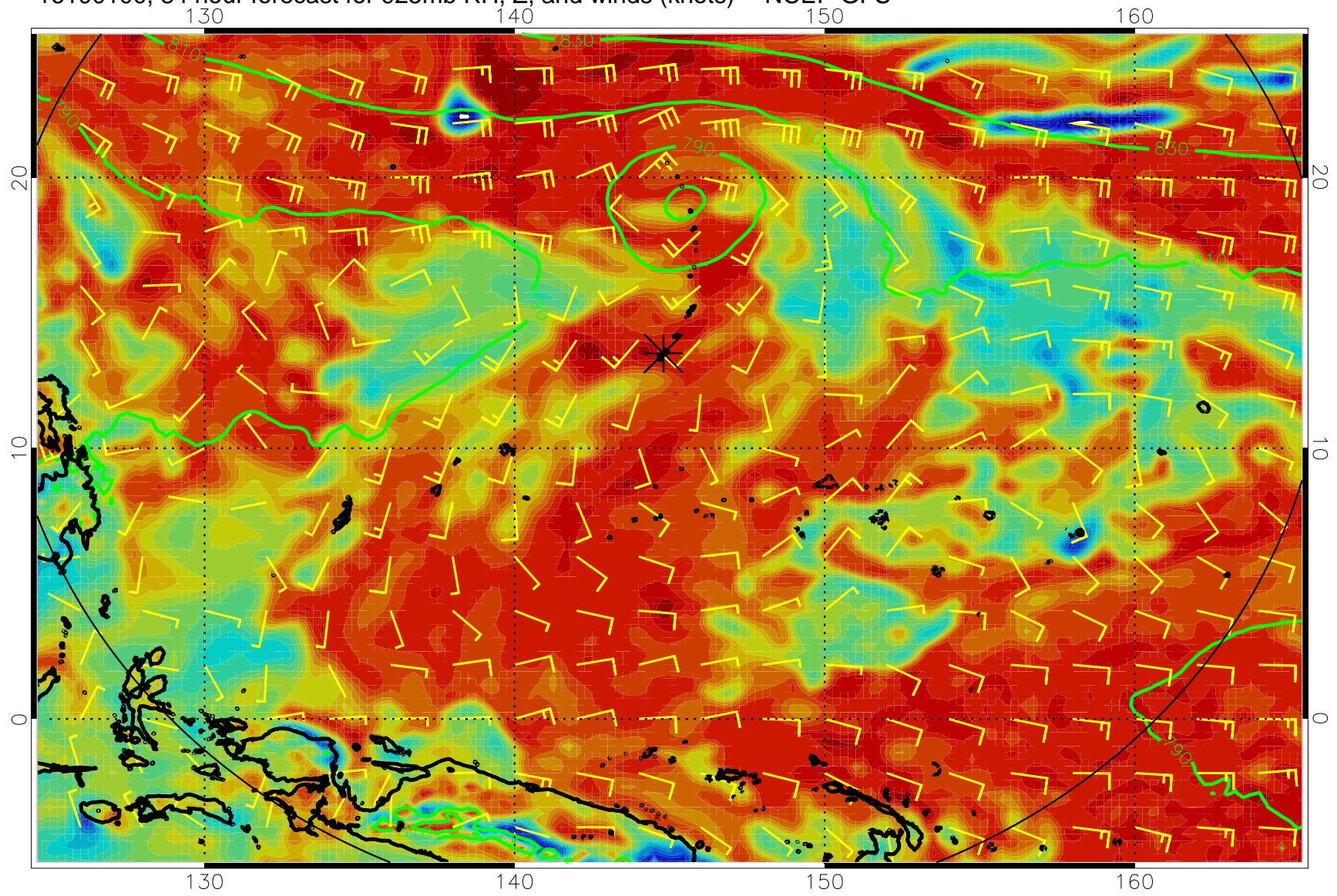
16093012, 72 hour forecast for 925mb RH, Z, and winds (knots) -- NCEP GFS



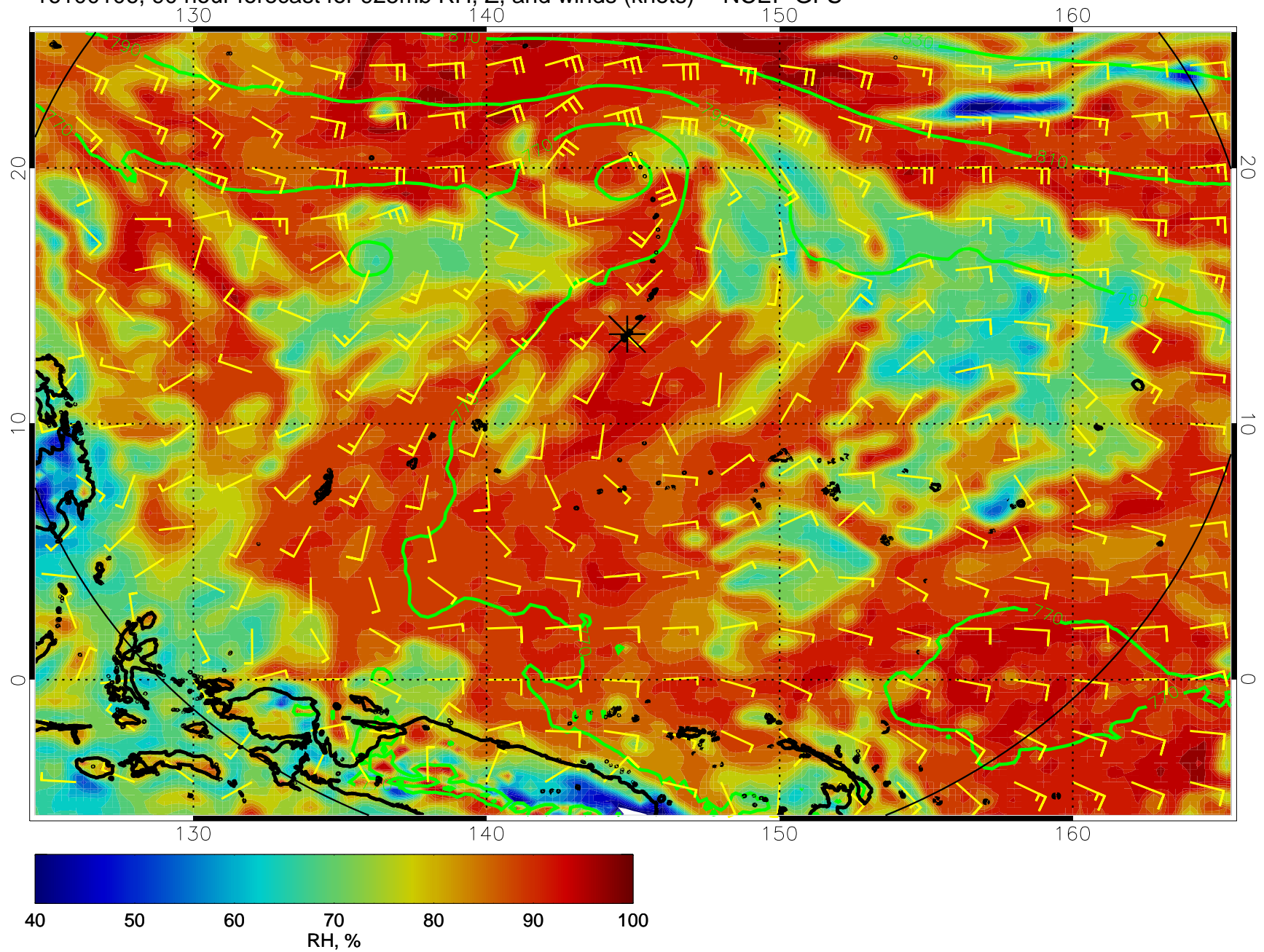
16093018, 78 hour forecast for 925mb RH, Z, and winds (knots) -- NCEP GFS



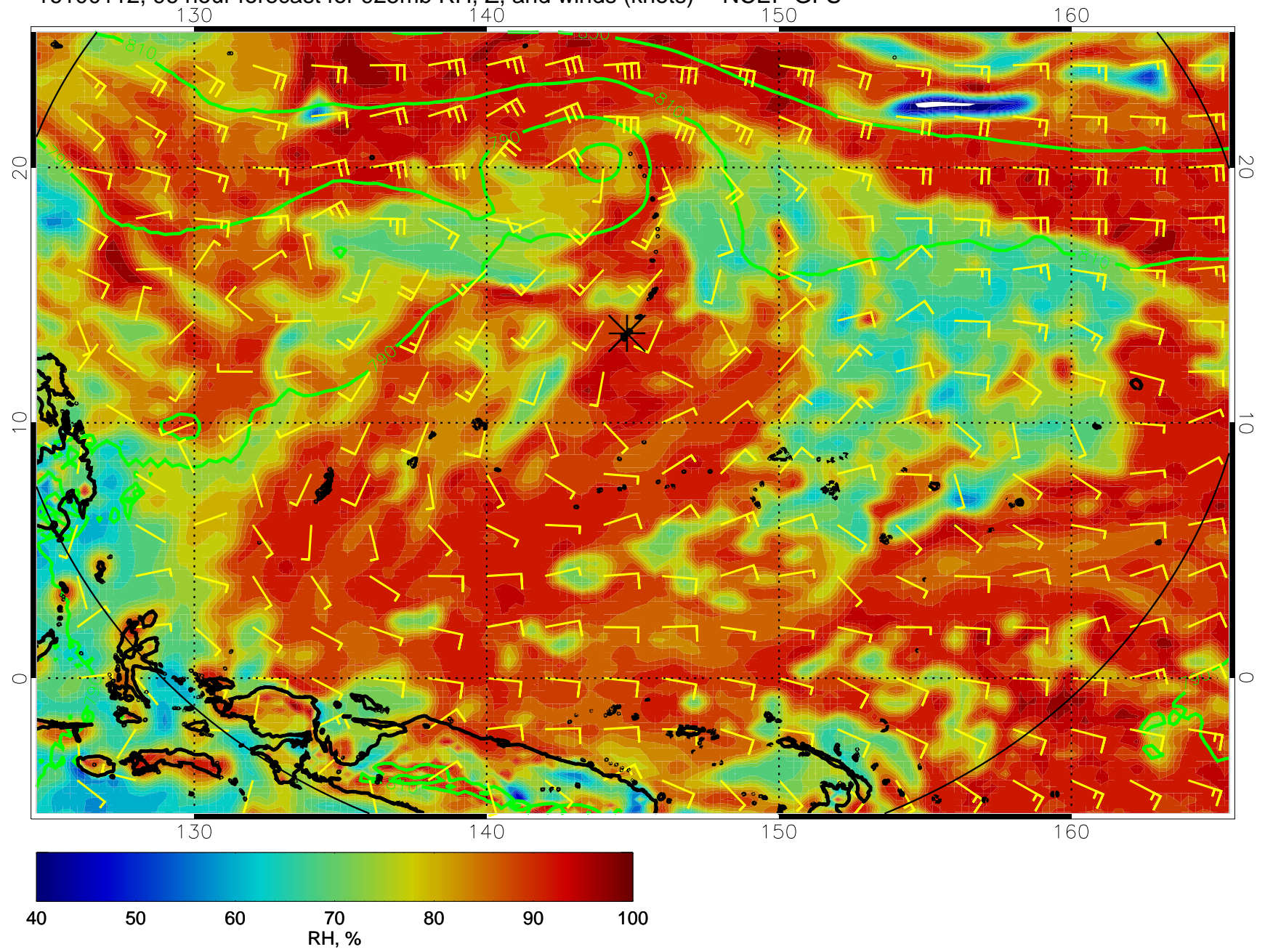
16100100, 84 hour forecast for 925mb RH, Z, and winds (knots) -- NCEP GFS



16100106, 90 hour forecast for 925mb RH, Z, and winds (knots) -- NCEP GFS

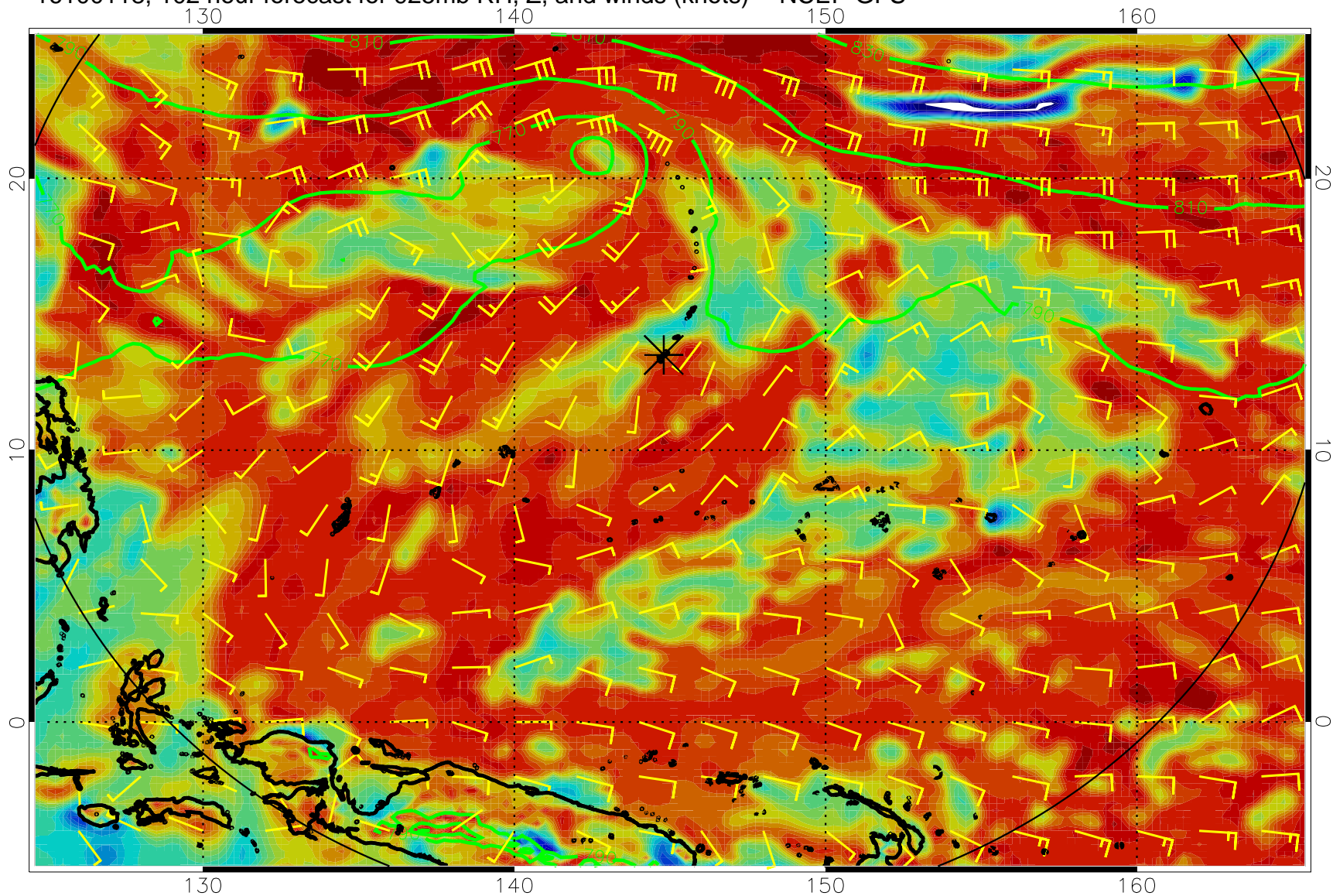


16100112, 96 hour forecast for 925mb RH, Z, and winds (knots) -- NCEP GFS

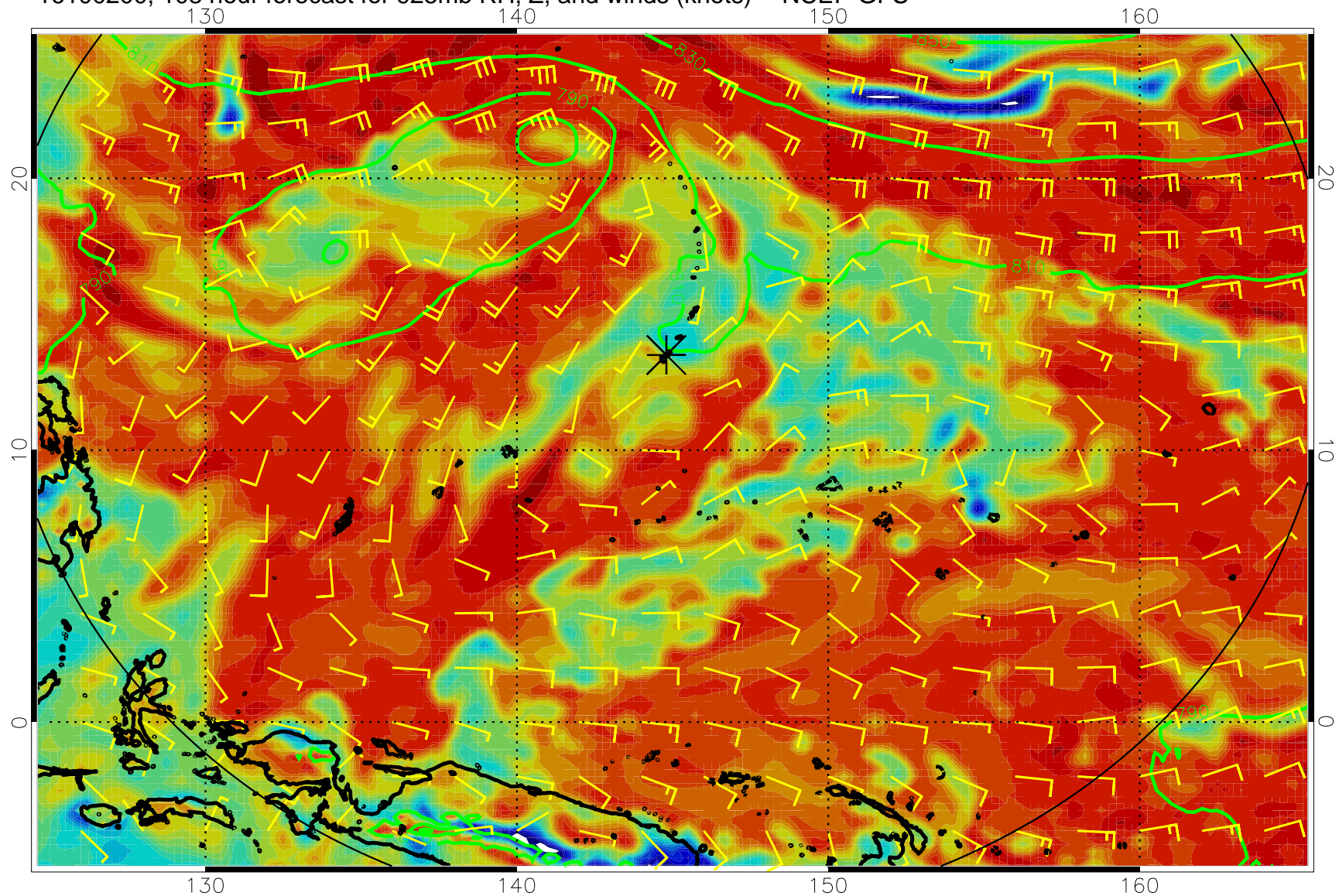




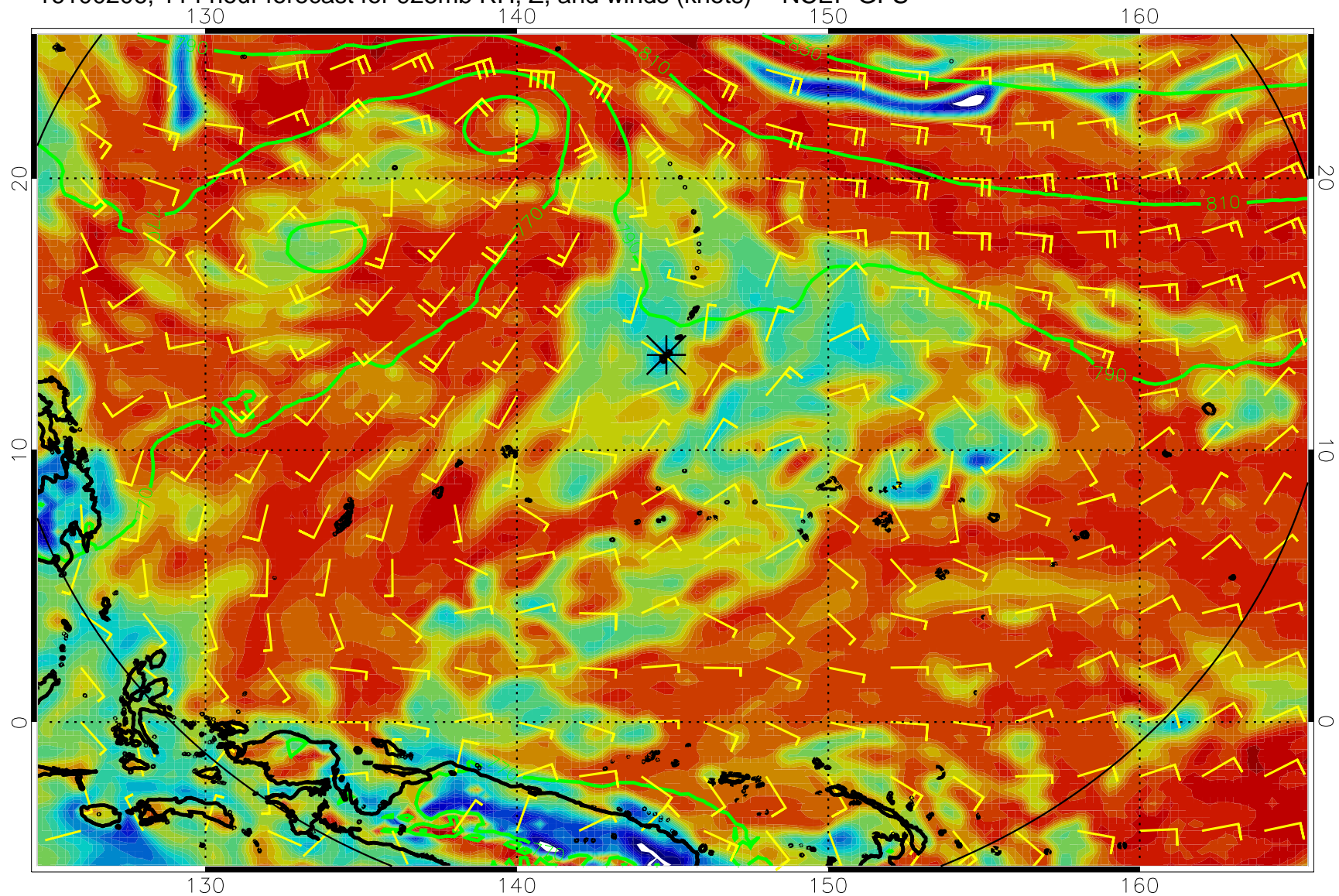
16100118, 102 hour forecast for 925mb RH, Z, and winds (knots) -- NCEP GFS



16100200, 108 hour forecast for 925mb RH, Z, and winds (knots) -- NCEP GFS



16100206, 114 hour forecast for 925mb RH, Z, and winds (knots) -- NCEP GFS



16100212, 120 hour forecast for 925mb RH, Z, and winds (knots) -- NCEP GFS

