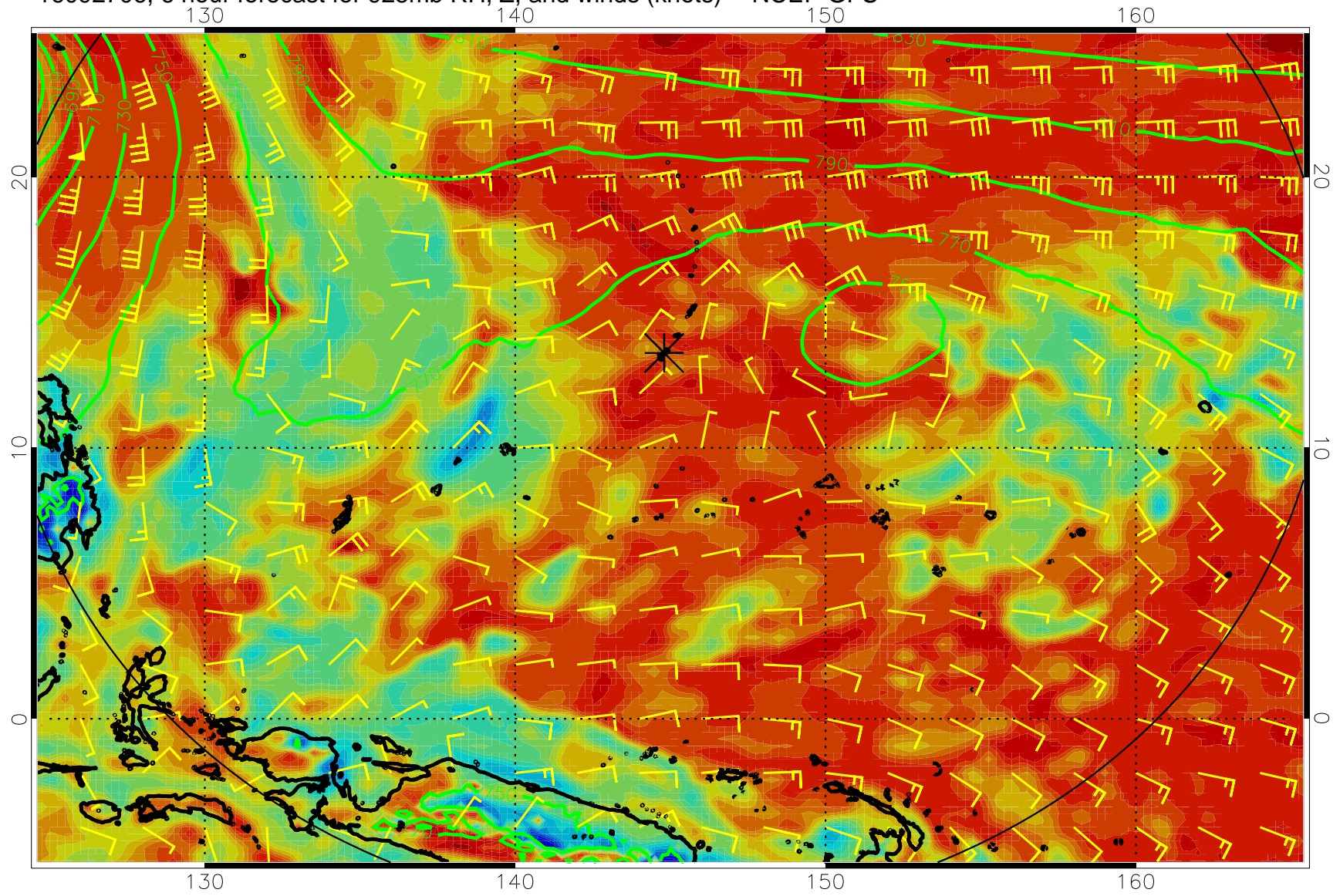
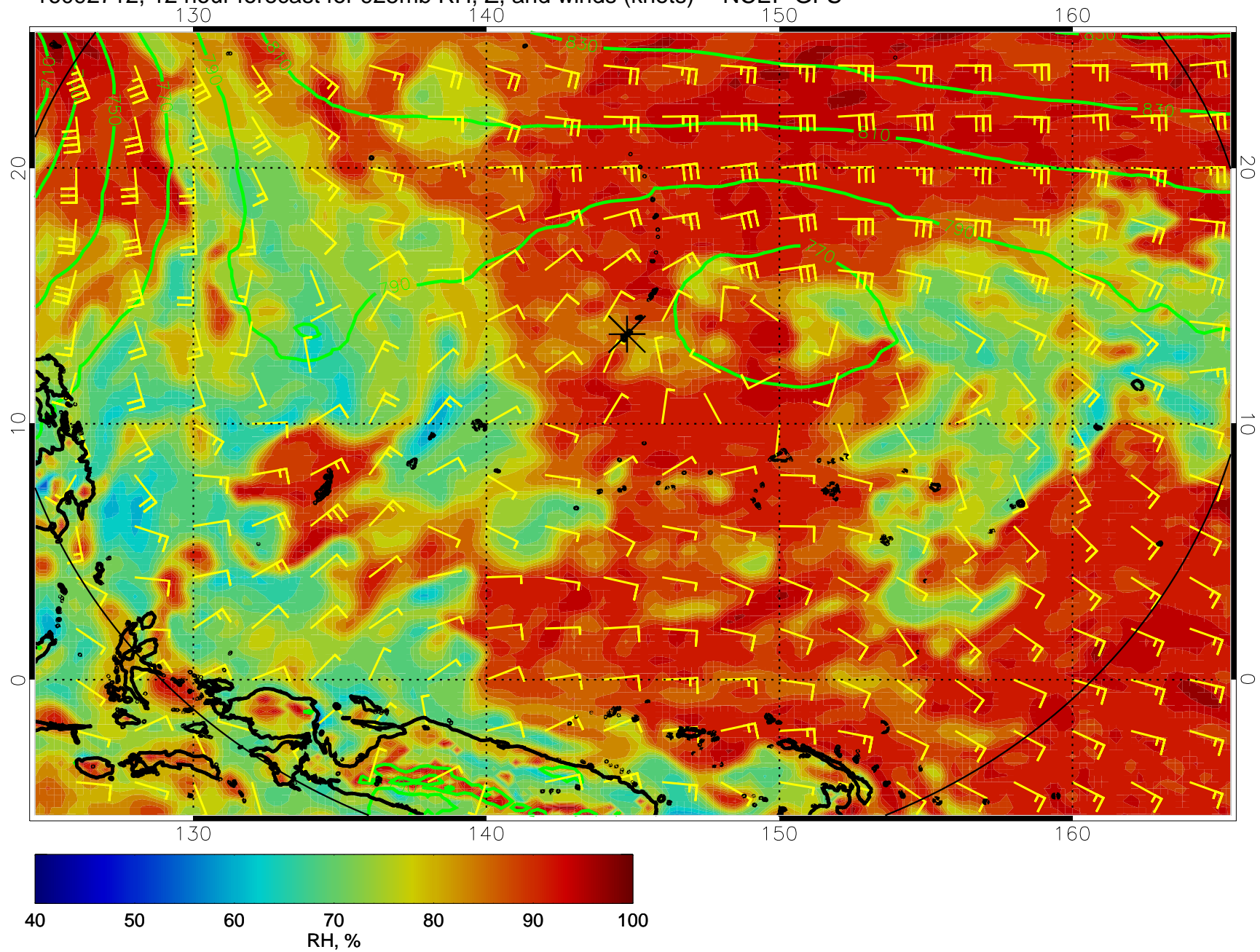


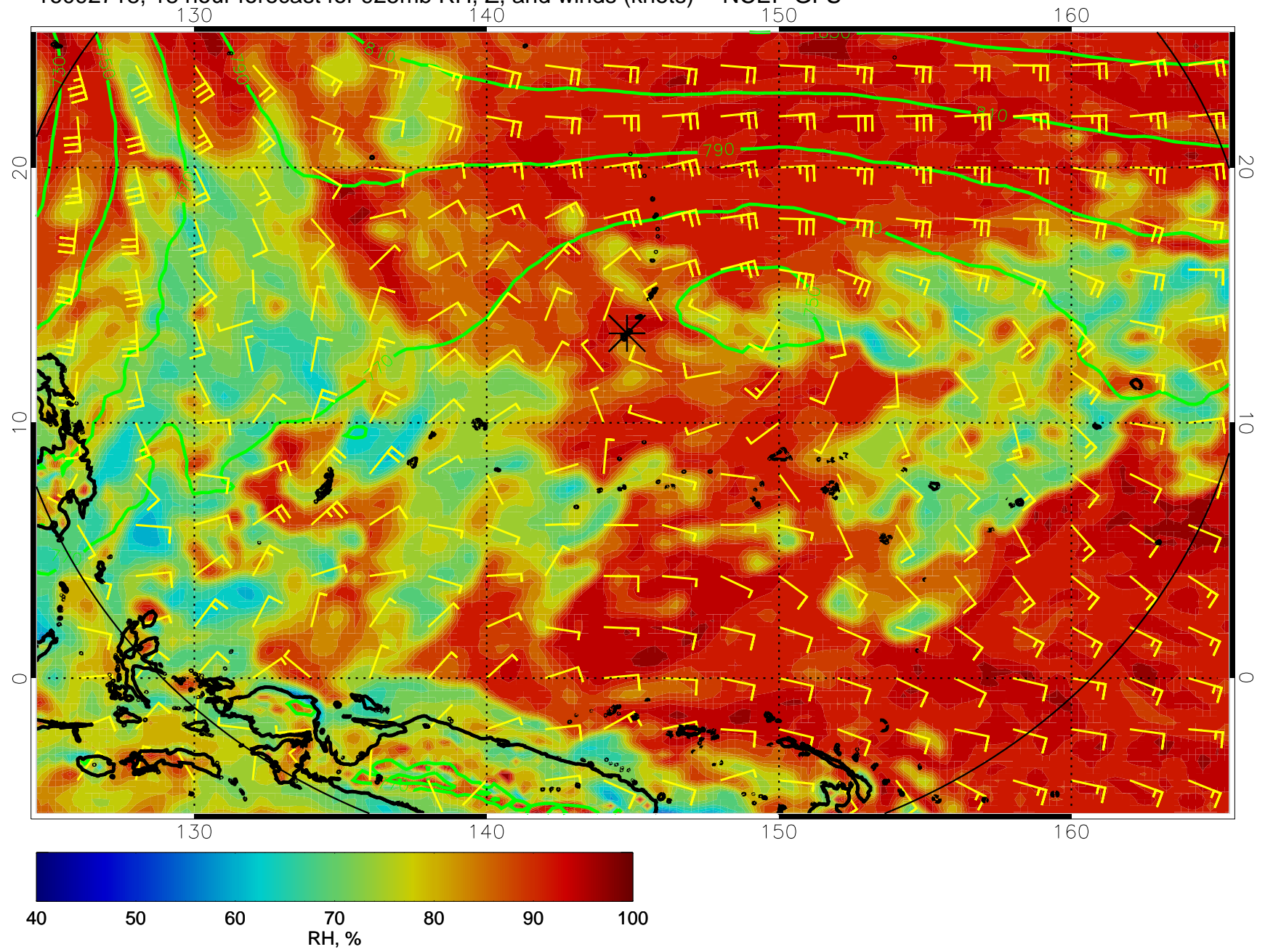
16092706, 6 hour forecast for 925mb RH, Z, and winds (knots) -- NCEP GFS



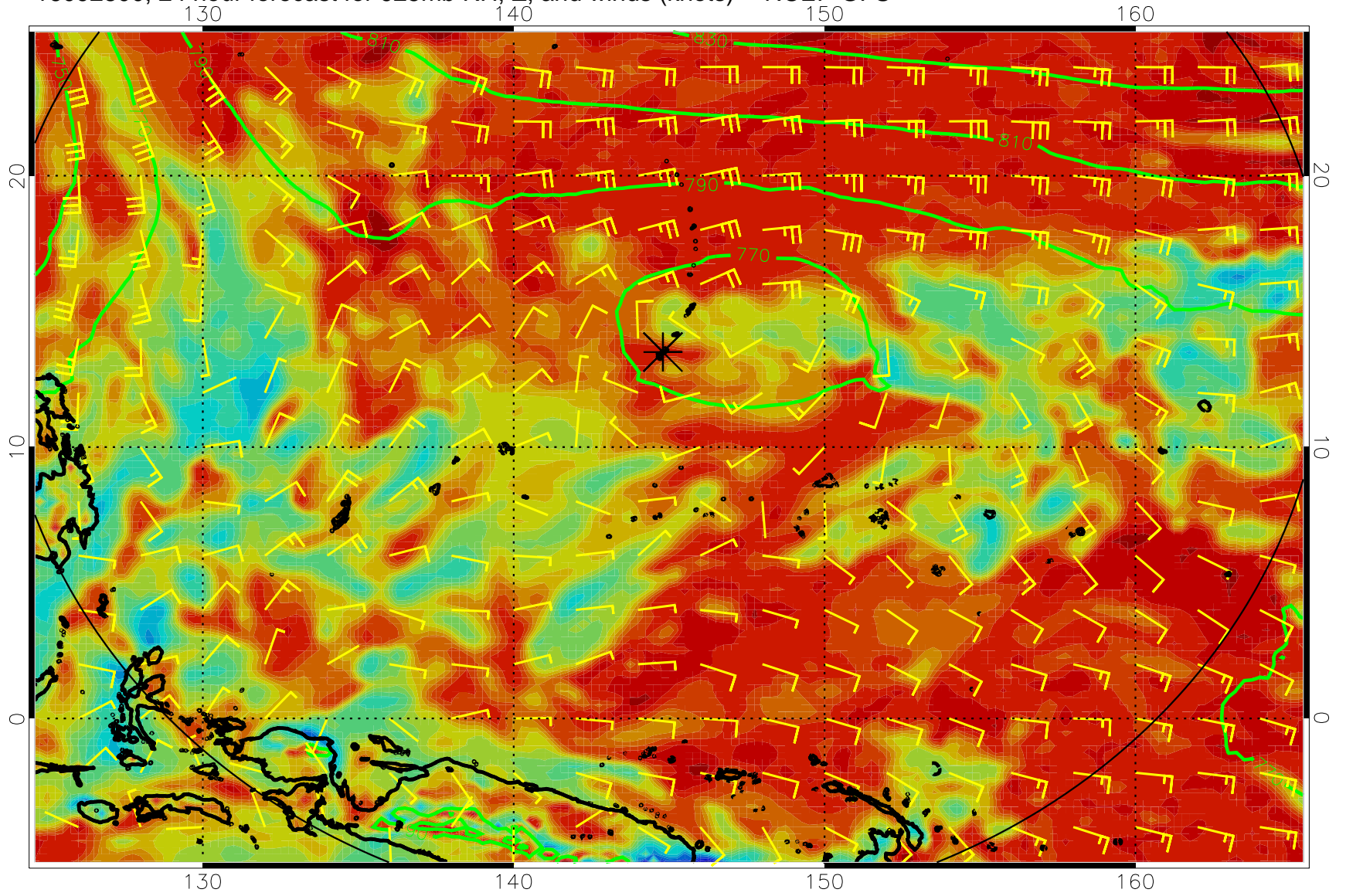
16092712, 12 hour forecast for 925mb RH, Z, and winds (knots) -- NCEP GFS



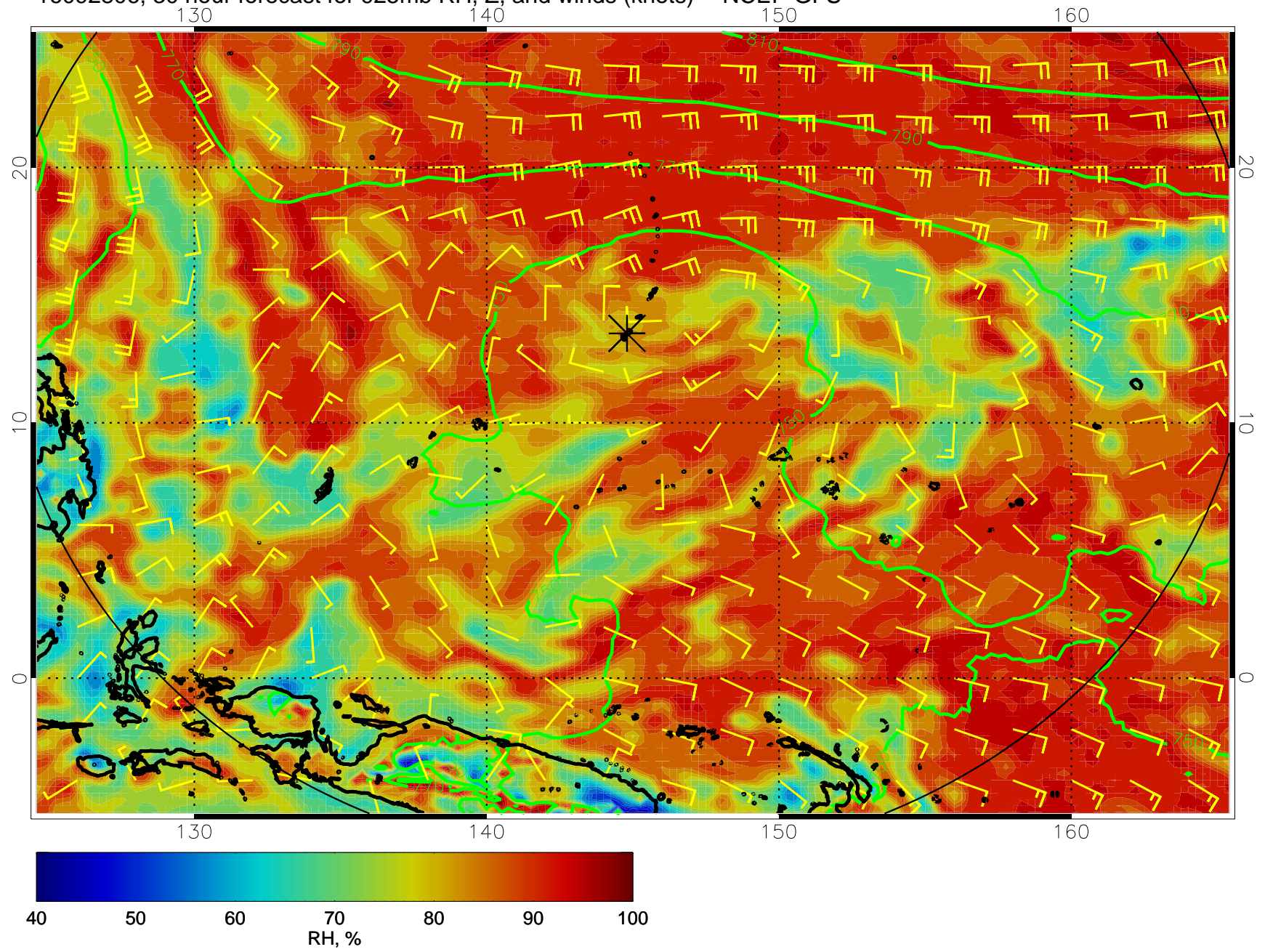
16092718, 18 hour forecast for 925mb RH, Z, and winds (knots) -- NCEP GFS



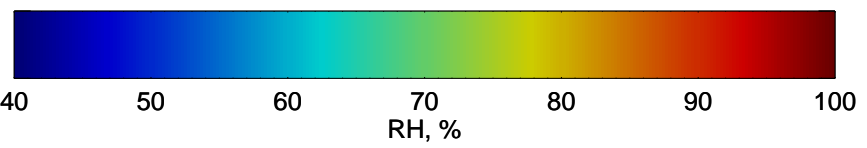
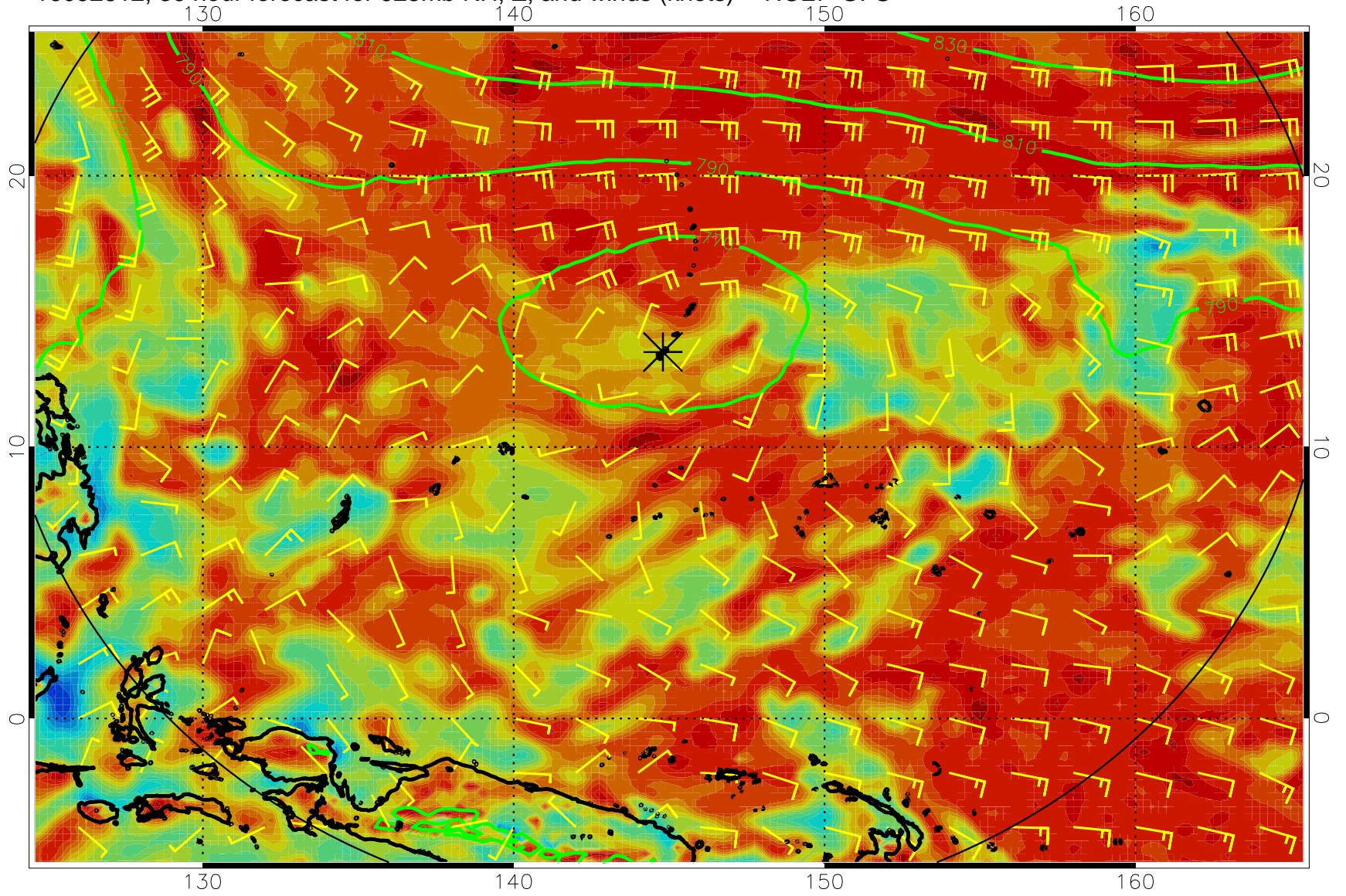
16092800, 24 hour forecast for 925mb RH, Z, and winds (knots) -- NCEP GFS



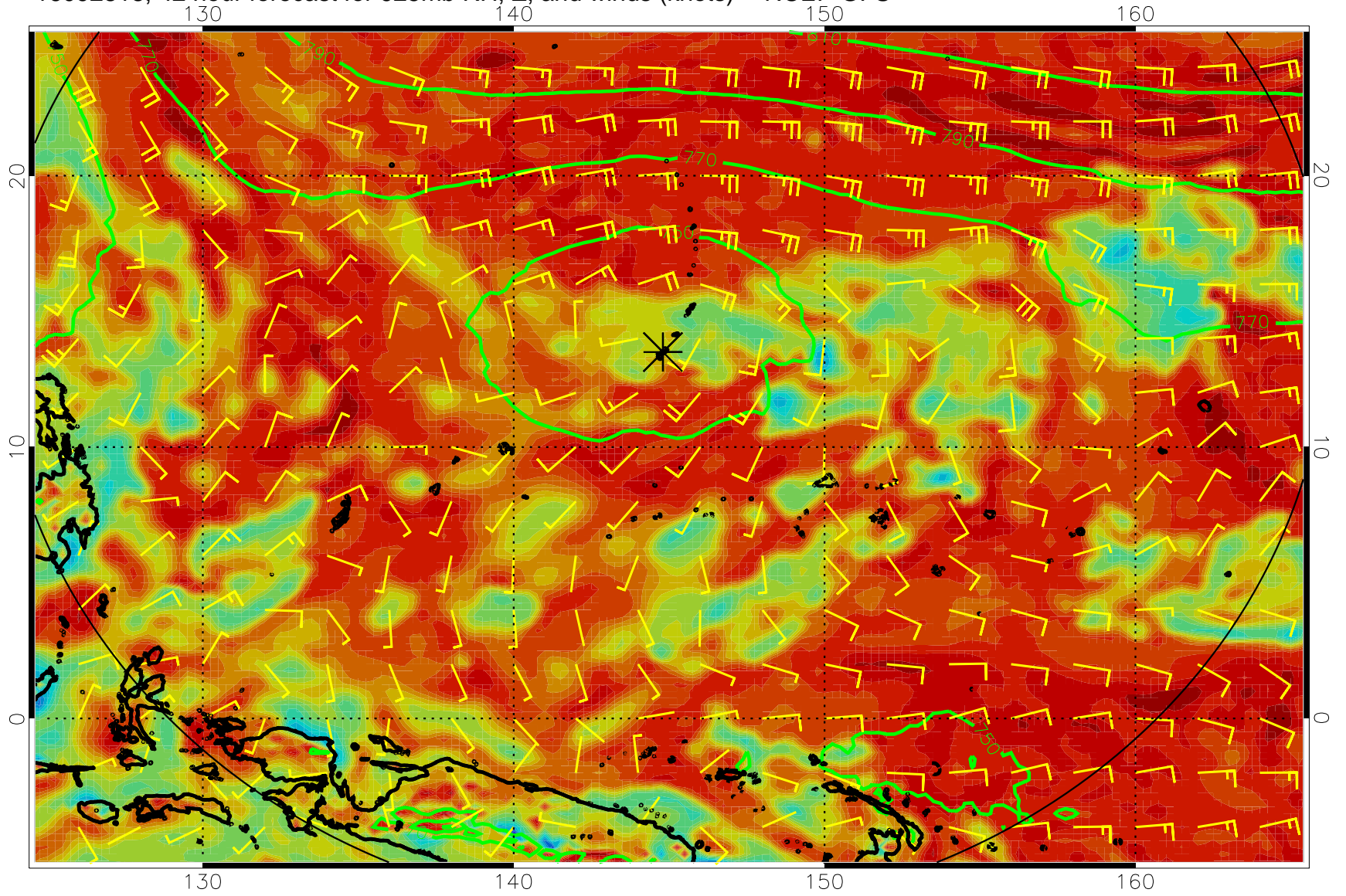
16092806, 30 hour forecast for 925mb RH, Z, and winds (knots) -- NCEP GFS



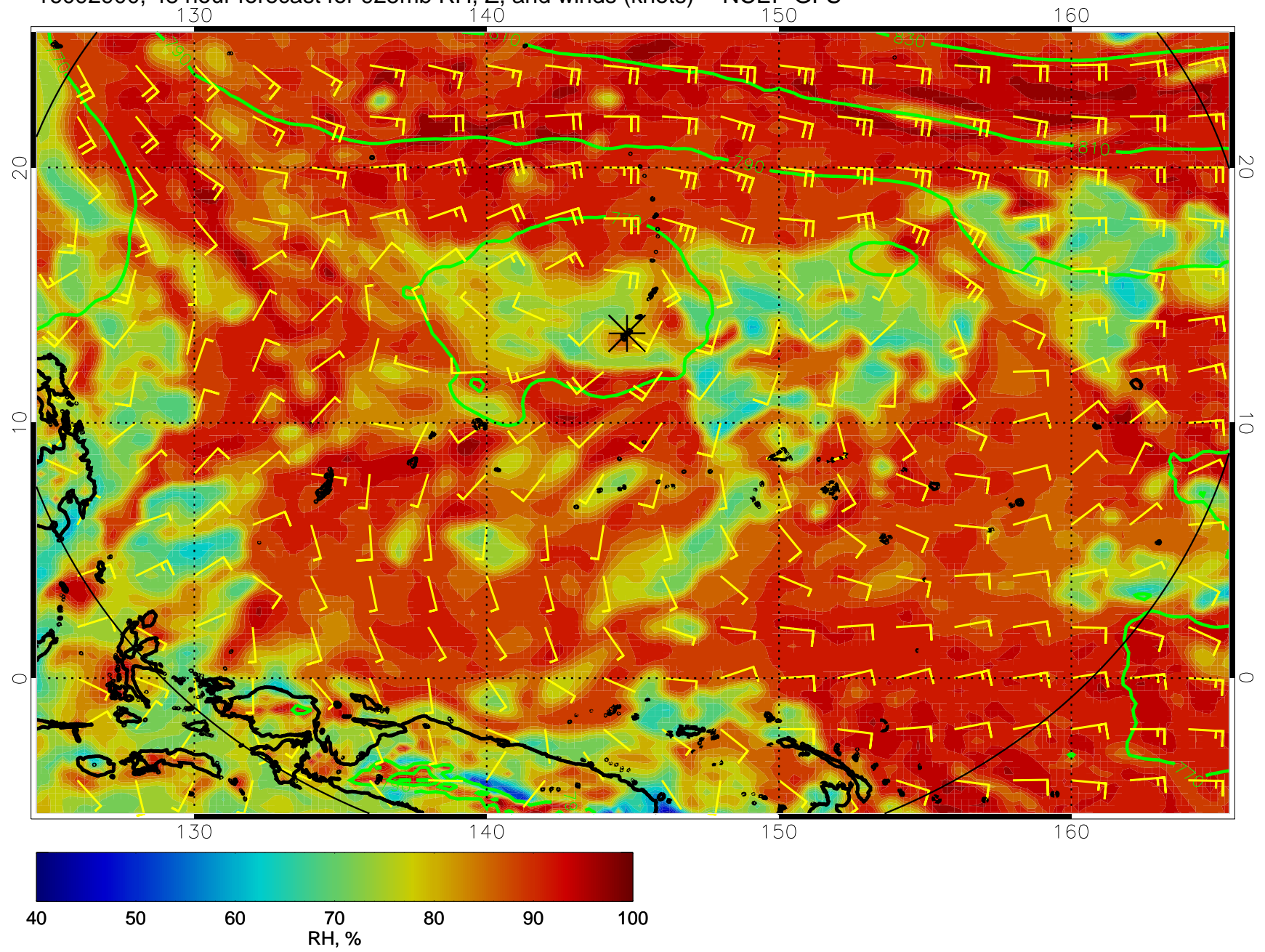
16092812, 36 hour forecast for 925mb RH, Z, and winds (knots) -- NCEP GFS



16092818, 42 hour forecast for 925mb RH, Z, and winds (knots) -- NCEP GFS

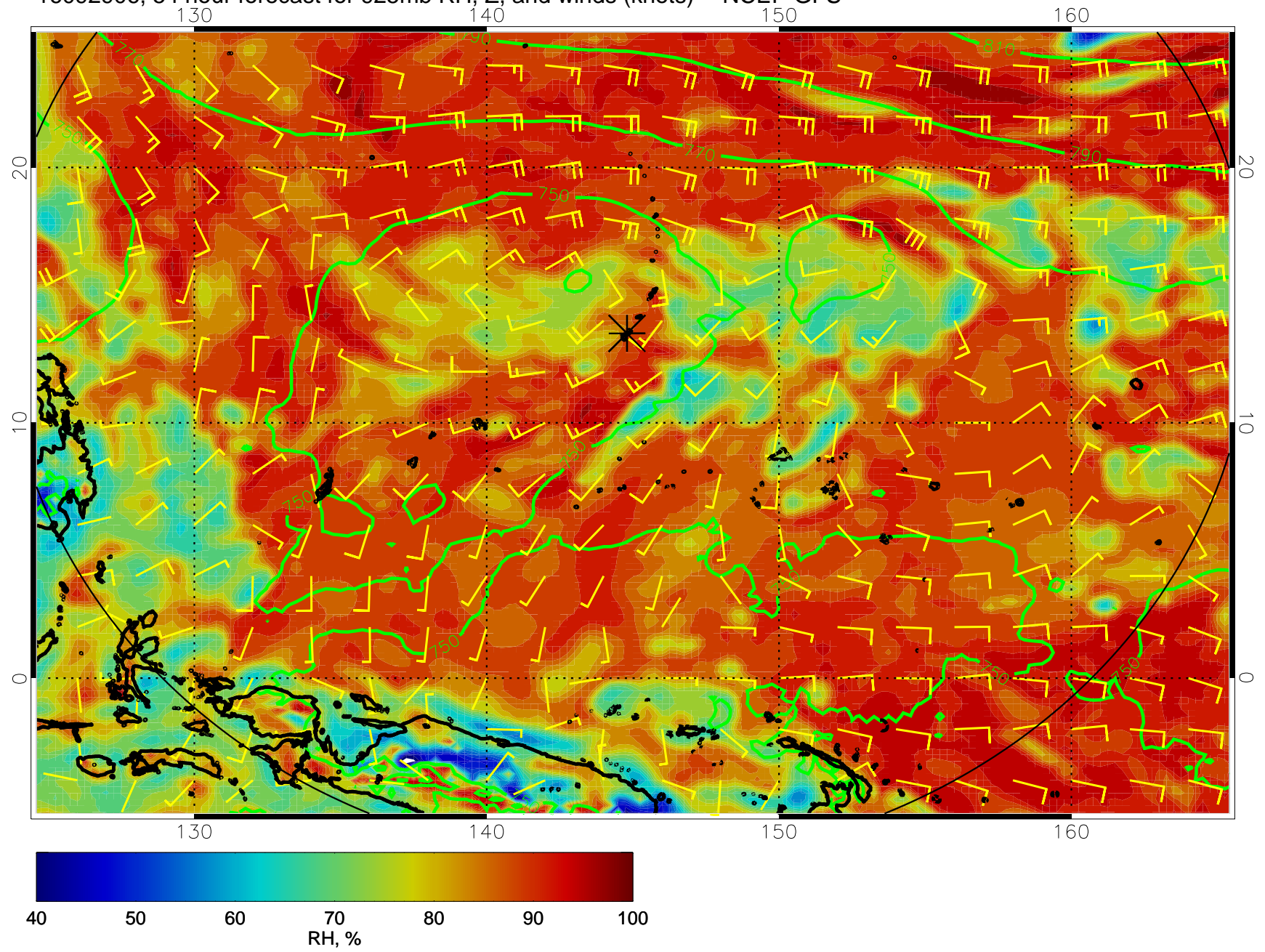


16092900, 48 hour forecast for 925mb RH, Z, and winds (knots) -- NCEP GFS

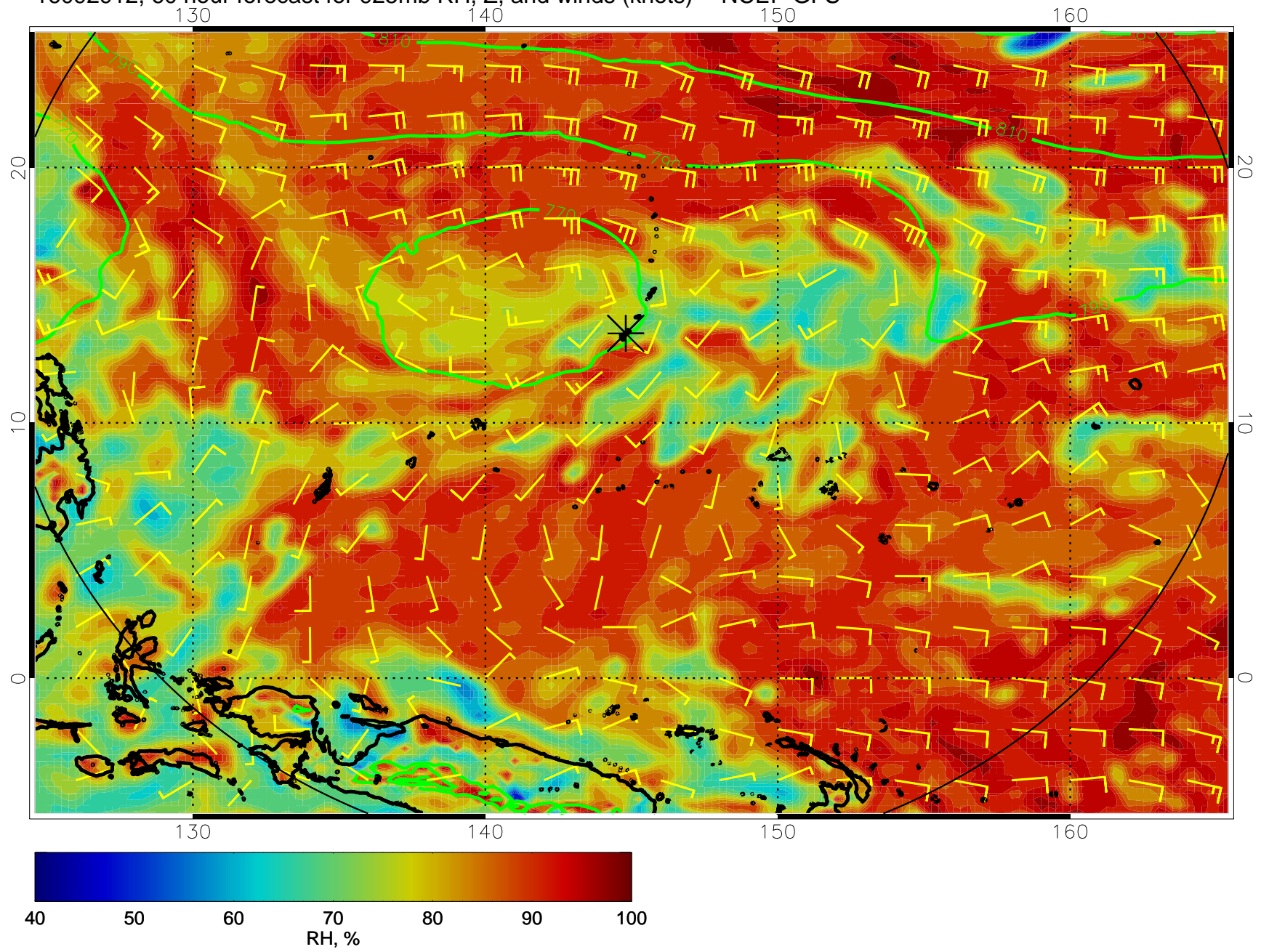




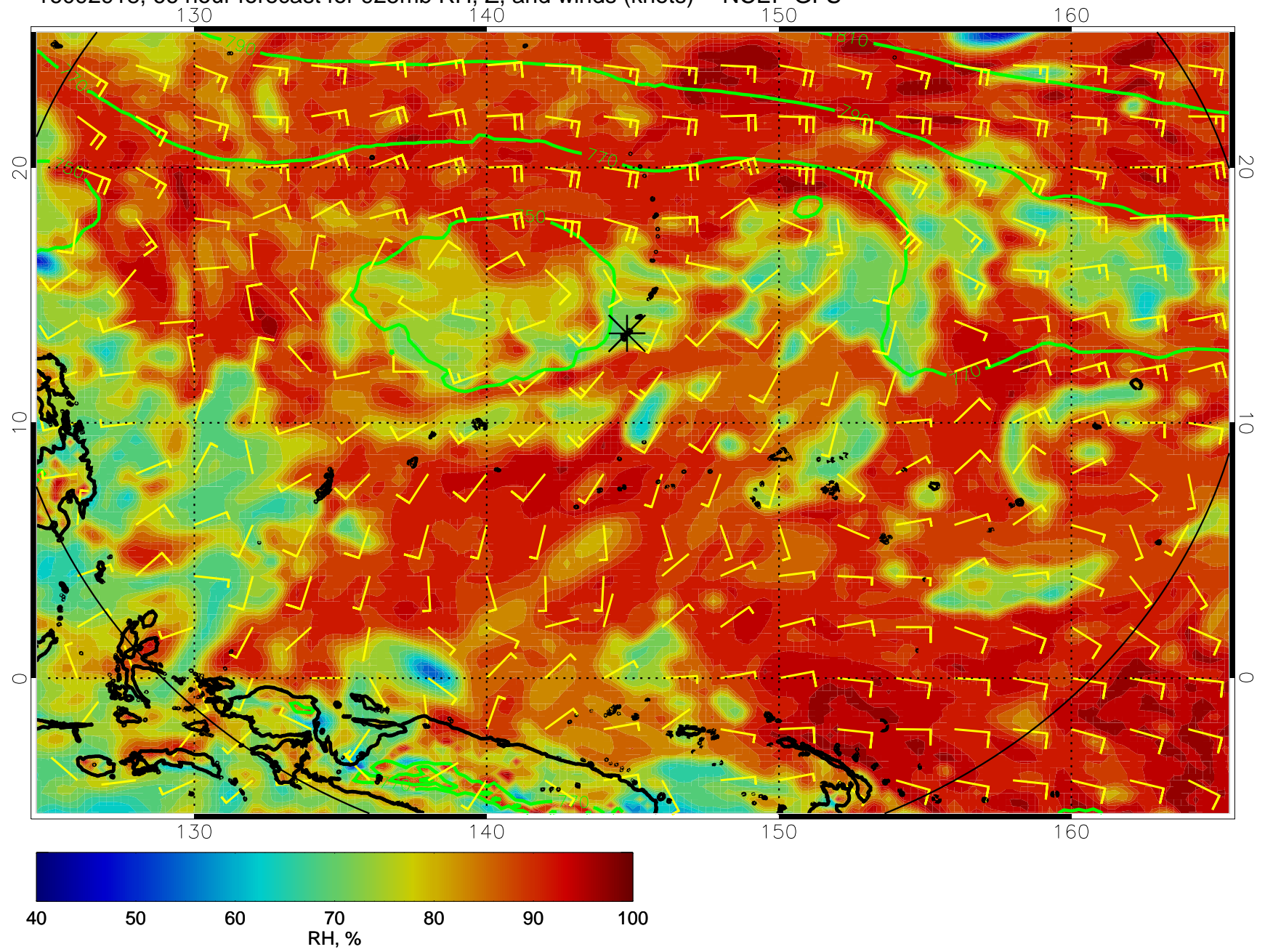
16092906, 54 hour forecast for 925mb RH, Z, and winds (knots) -- NCEP GFS



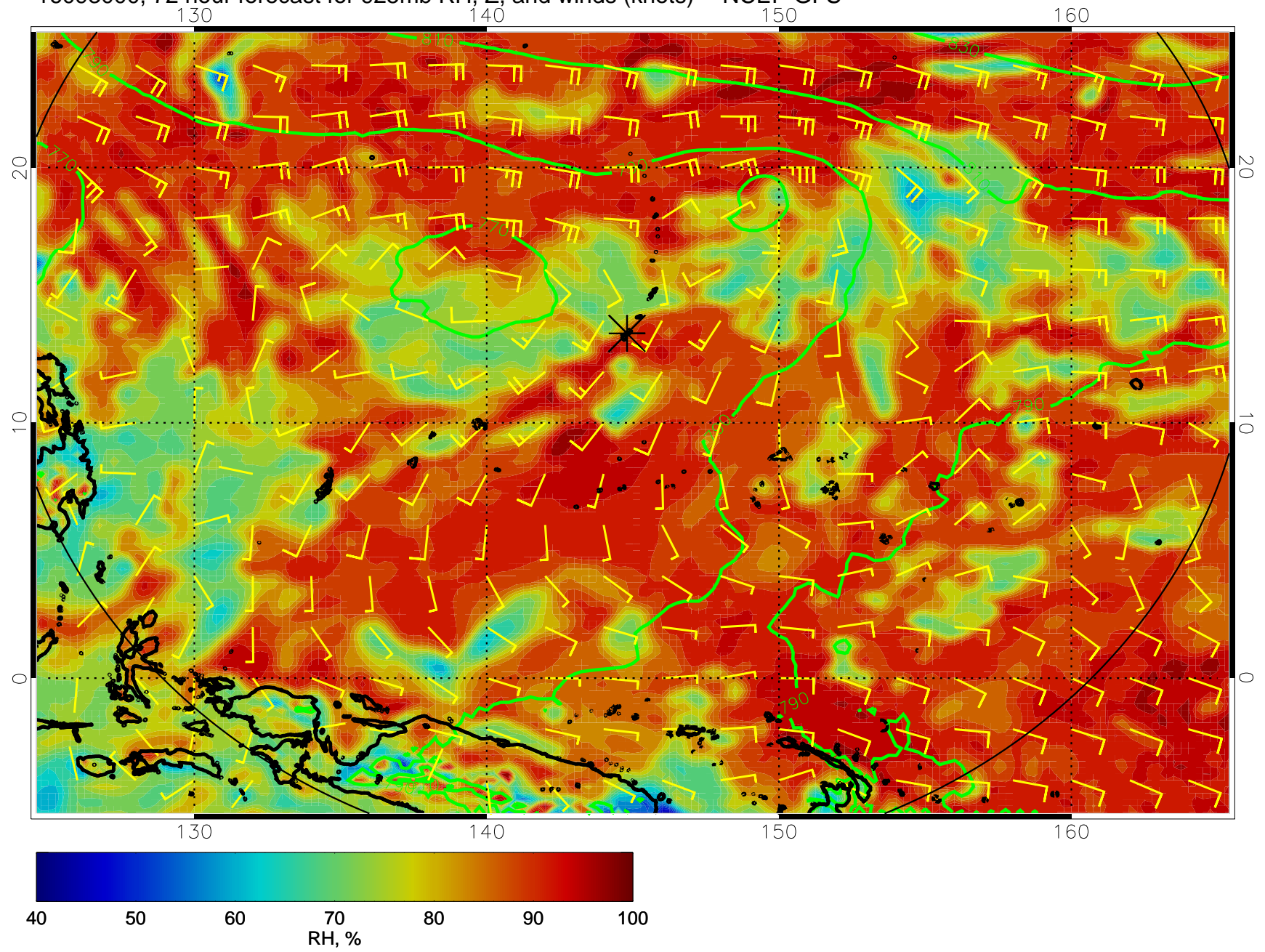
16092912, 60 hour forecast for 925mb RH, Z, and winds (knots) -- NCEP GFS



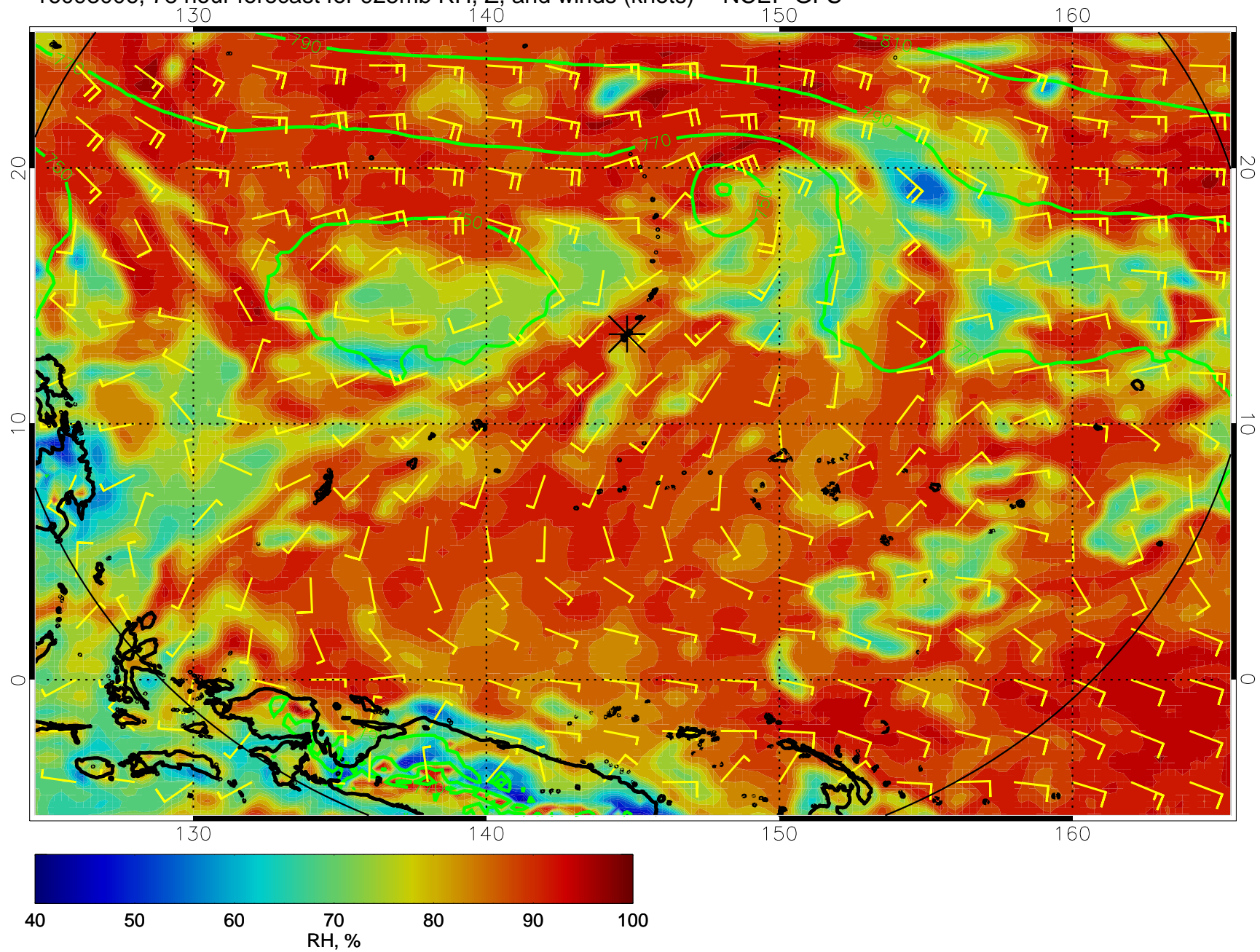
16092918, 66 hour forecast for 925mb RH, Z, and winds (knots) -- NCEP GFS



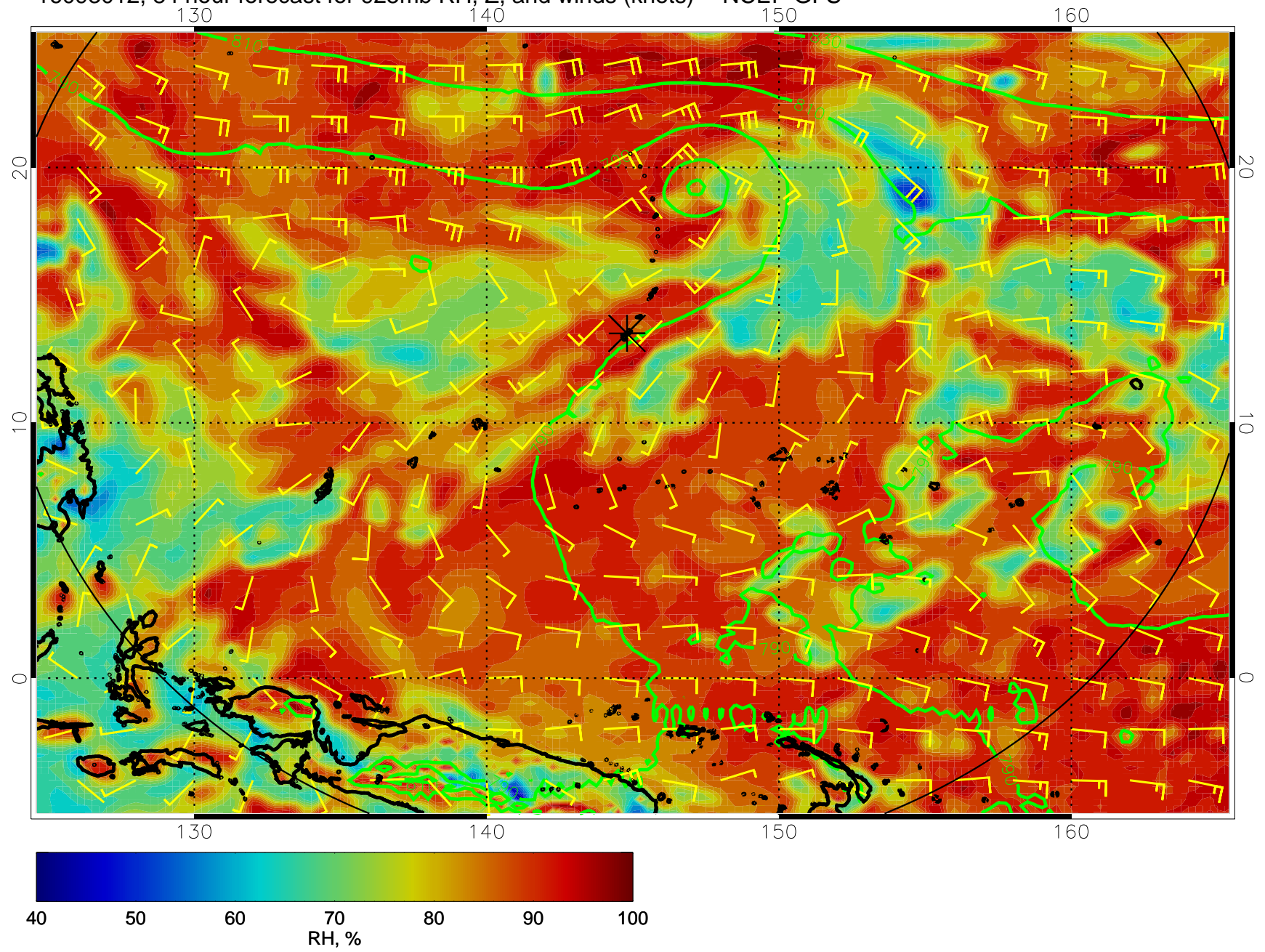
16093000, 72 hour forecast for 925mb RH, Z, and winds (knots) -- NCEP GFS



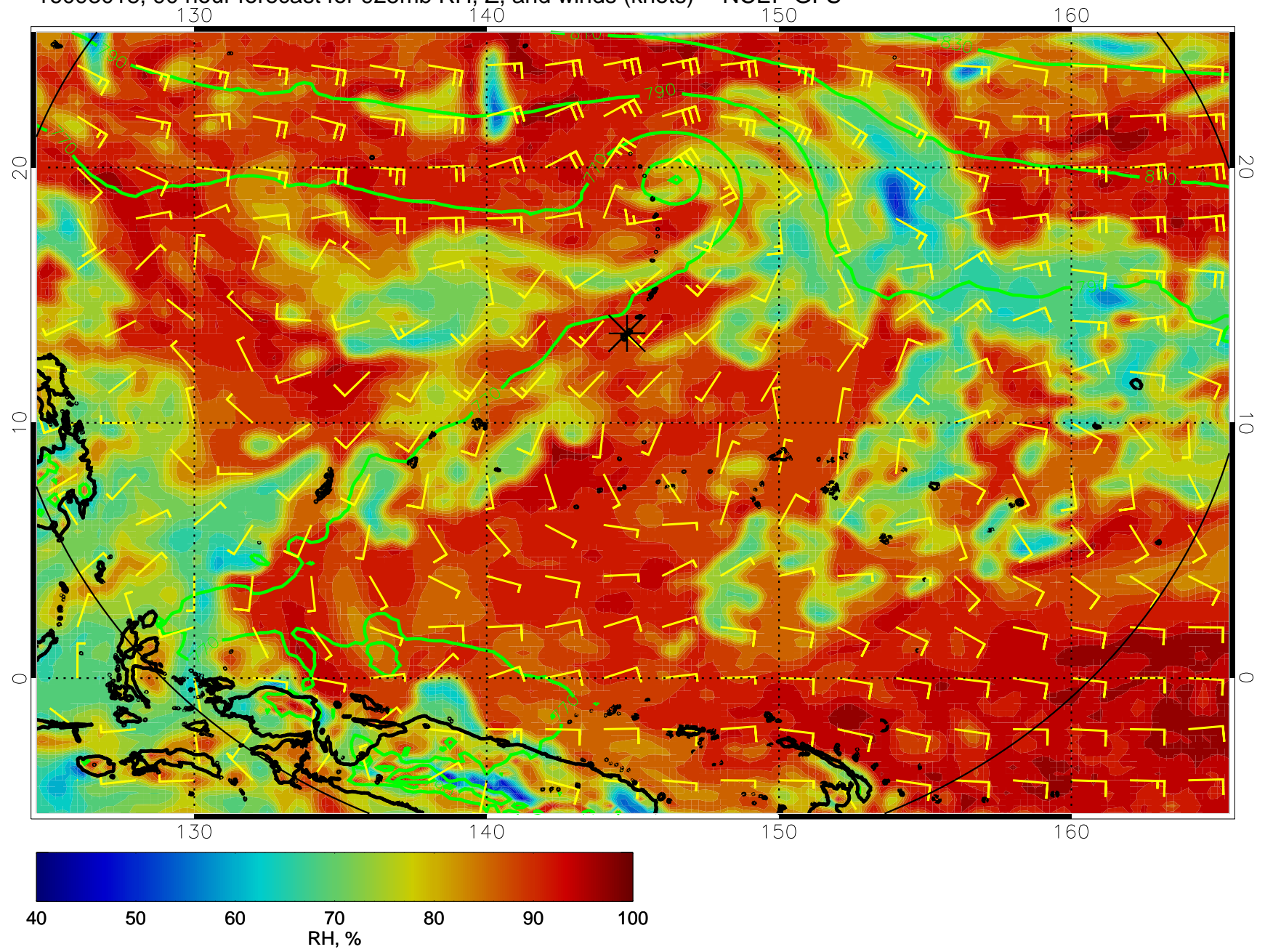
16093006, 78 hour forecast for 925mb RH, Z, and winds (knots) -- NCEP GFS



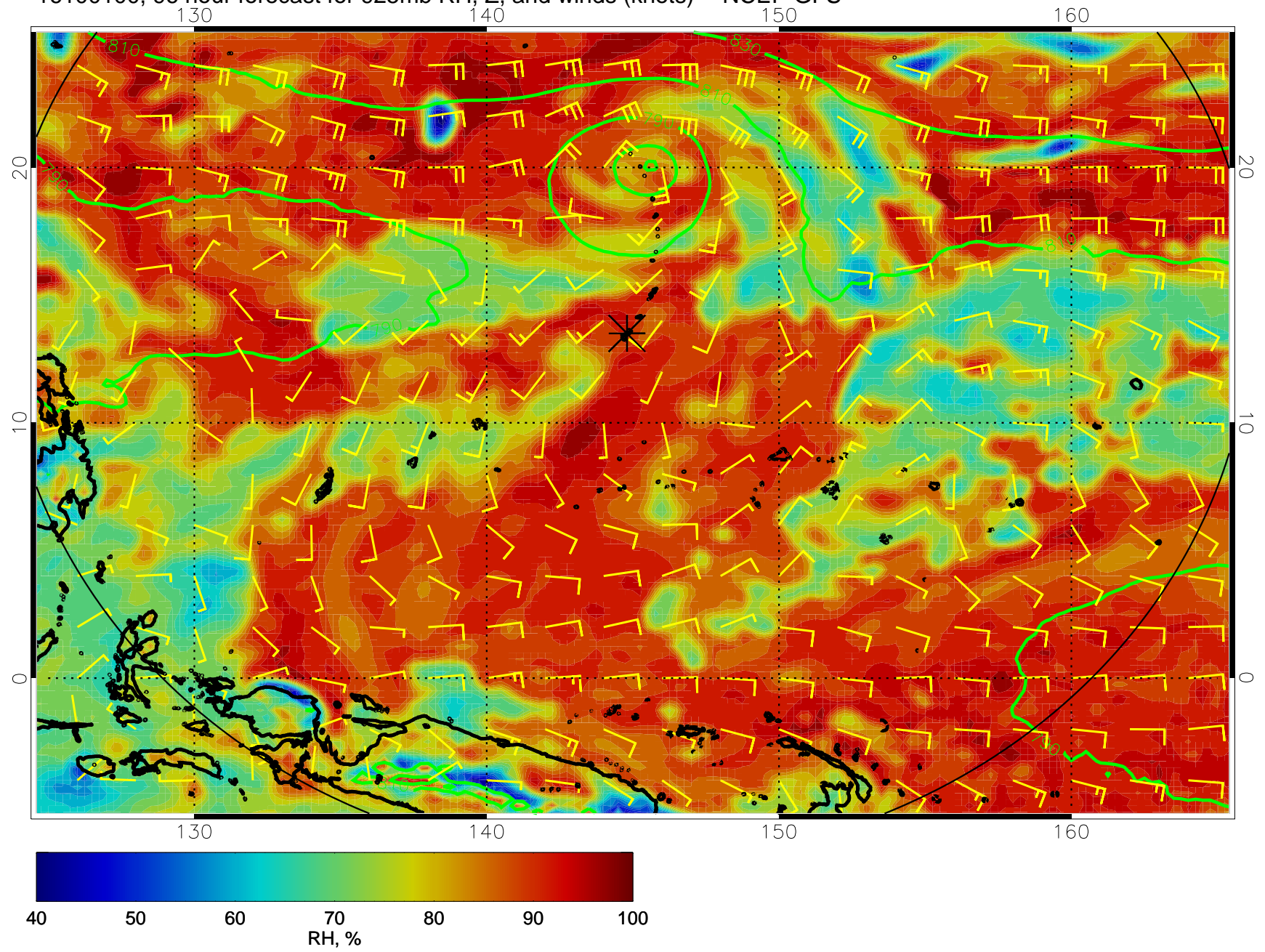
16093012, 84 hour forecast for 925mb RH, Z, and winds (knots) -- NCEP GFS



16093018, 90 hour forecast for 925mb RH, Z, and winds (knots) -- NCEP GFS

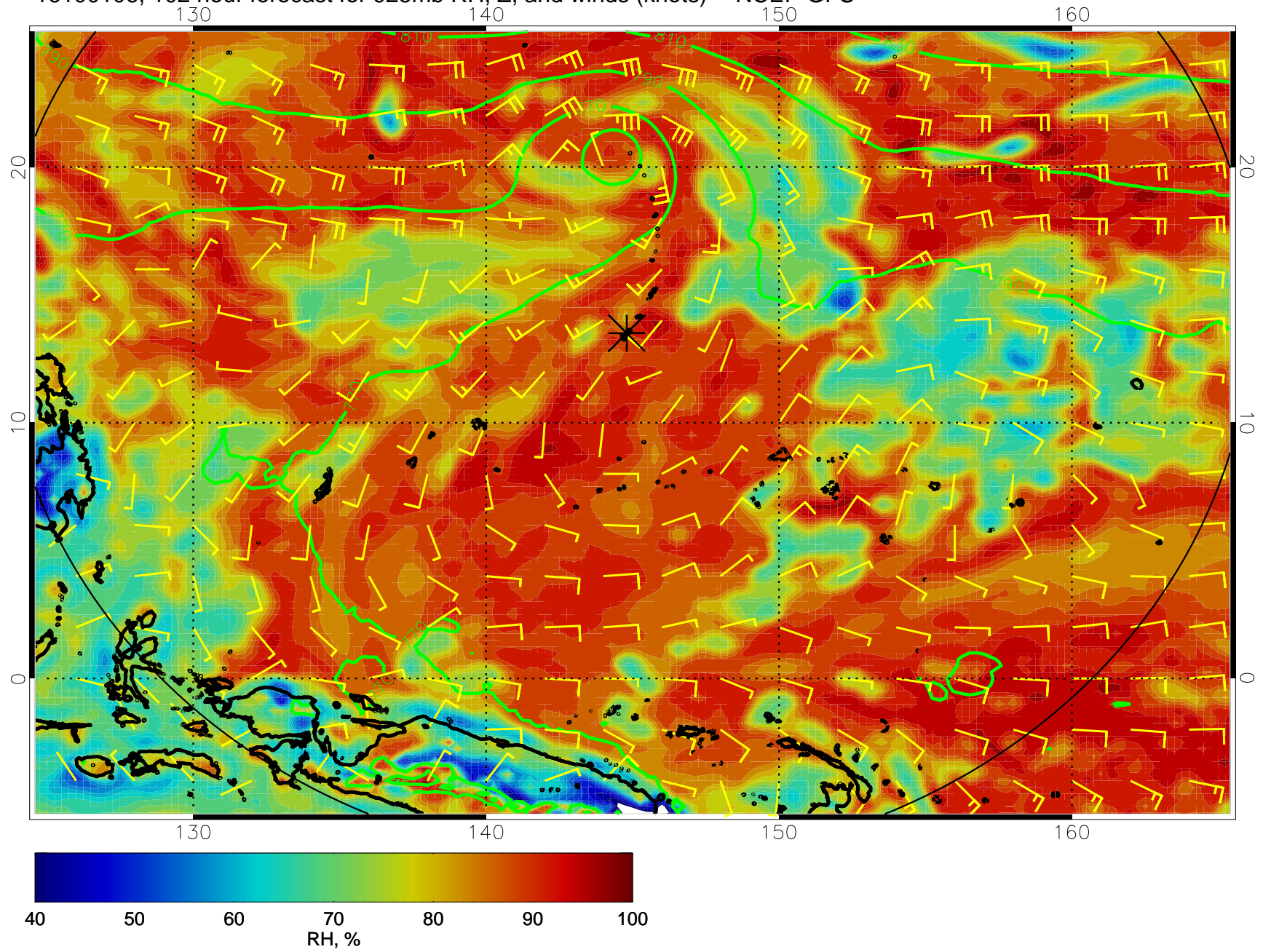


16100100, 96 hour forecast for 925mb RH, Z, and winds (knots) -- NCEP GFS

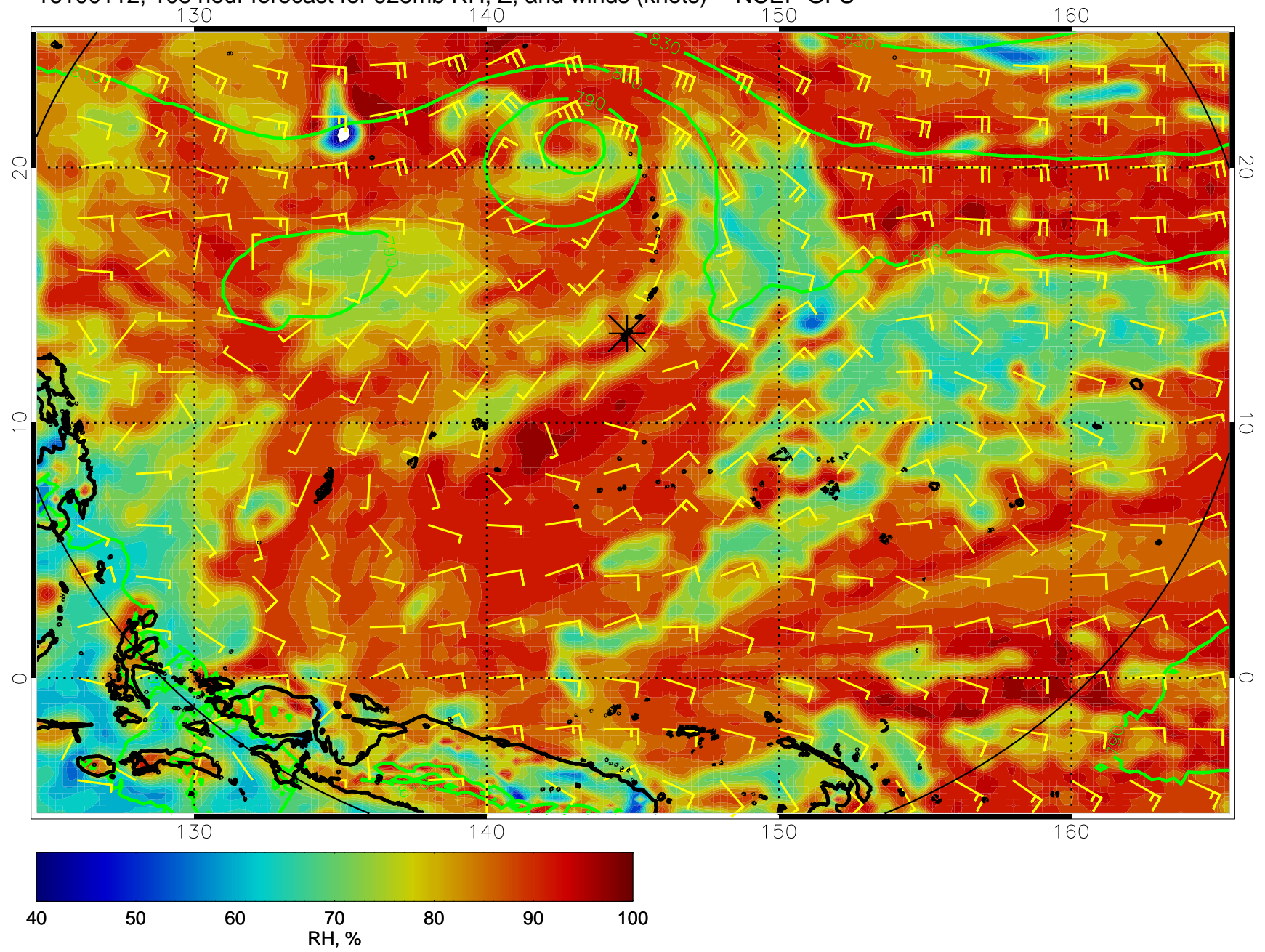




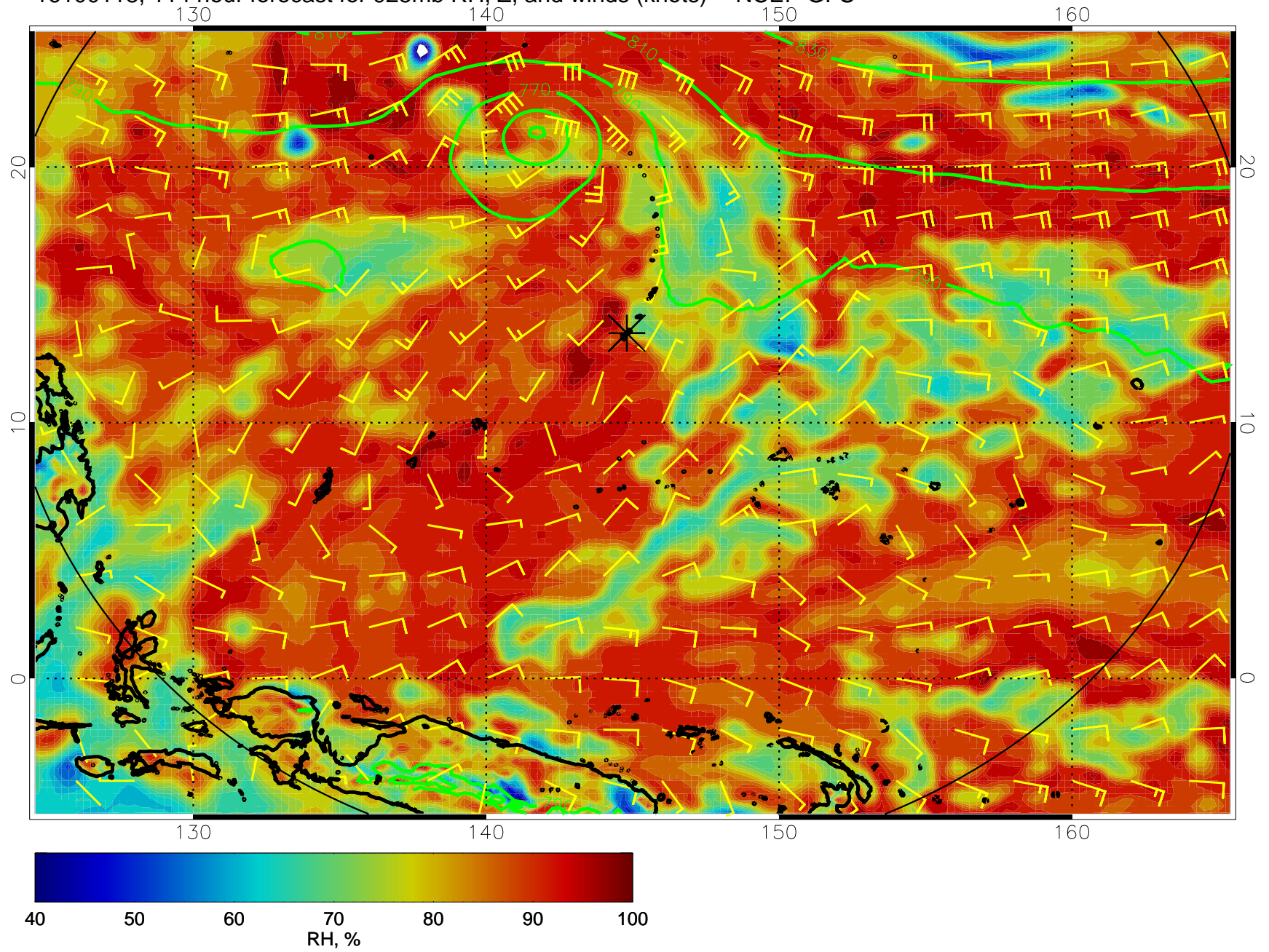
16100106, 102 hour forecast for 925mb RH, Z, and winds (knots) -- NCEP GFS



16100112, 108 hour forecast for 925mb RH, Z, and winds (knots) -- NCEP GFS



16100118, 114 hour forecast for 925mb RH, Z, and winds (knots) -- NCEP GFS



16100200, 120 hour forecast for 925mb RH, Z, and winds (knots) -- NCEP GFS

