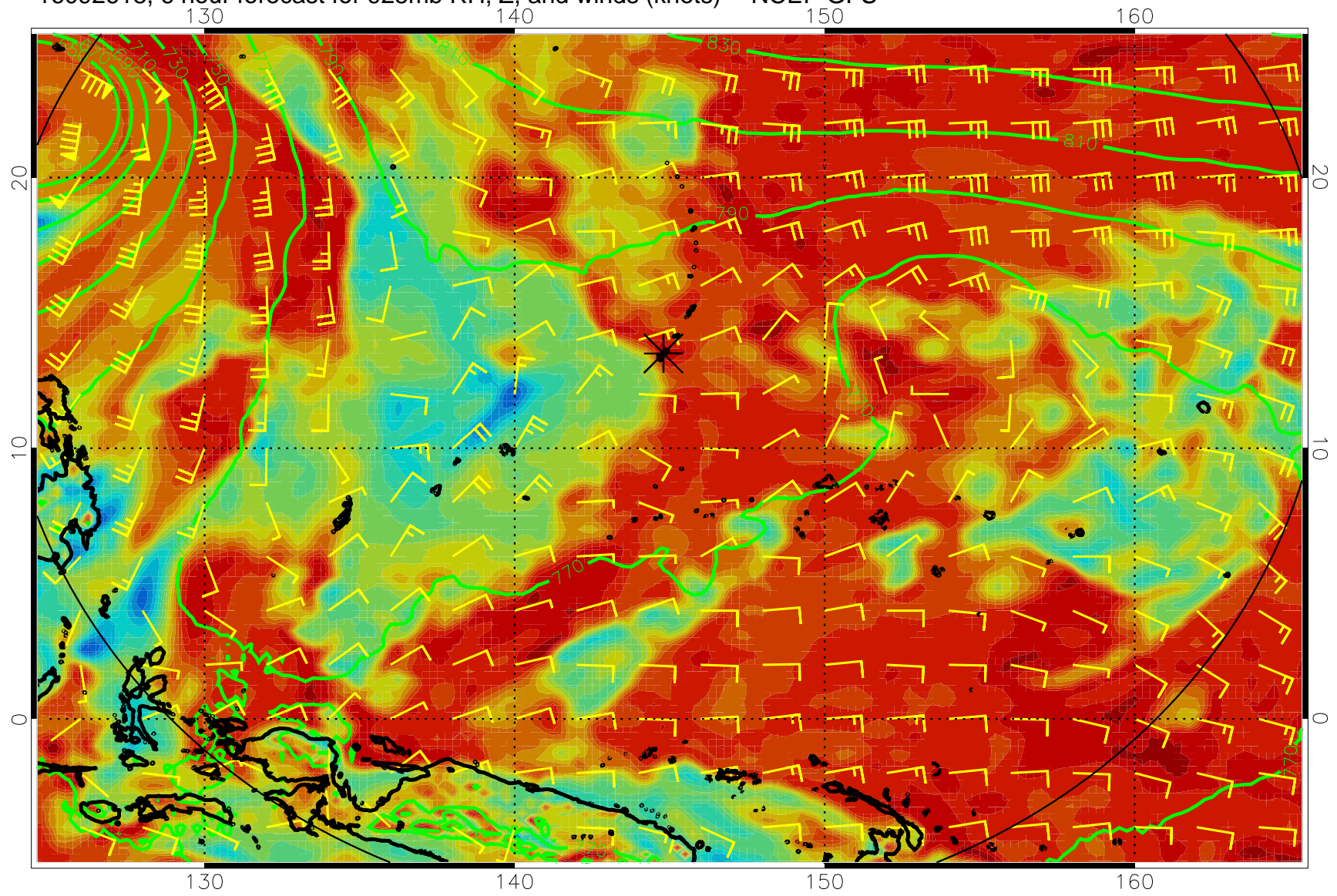
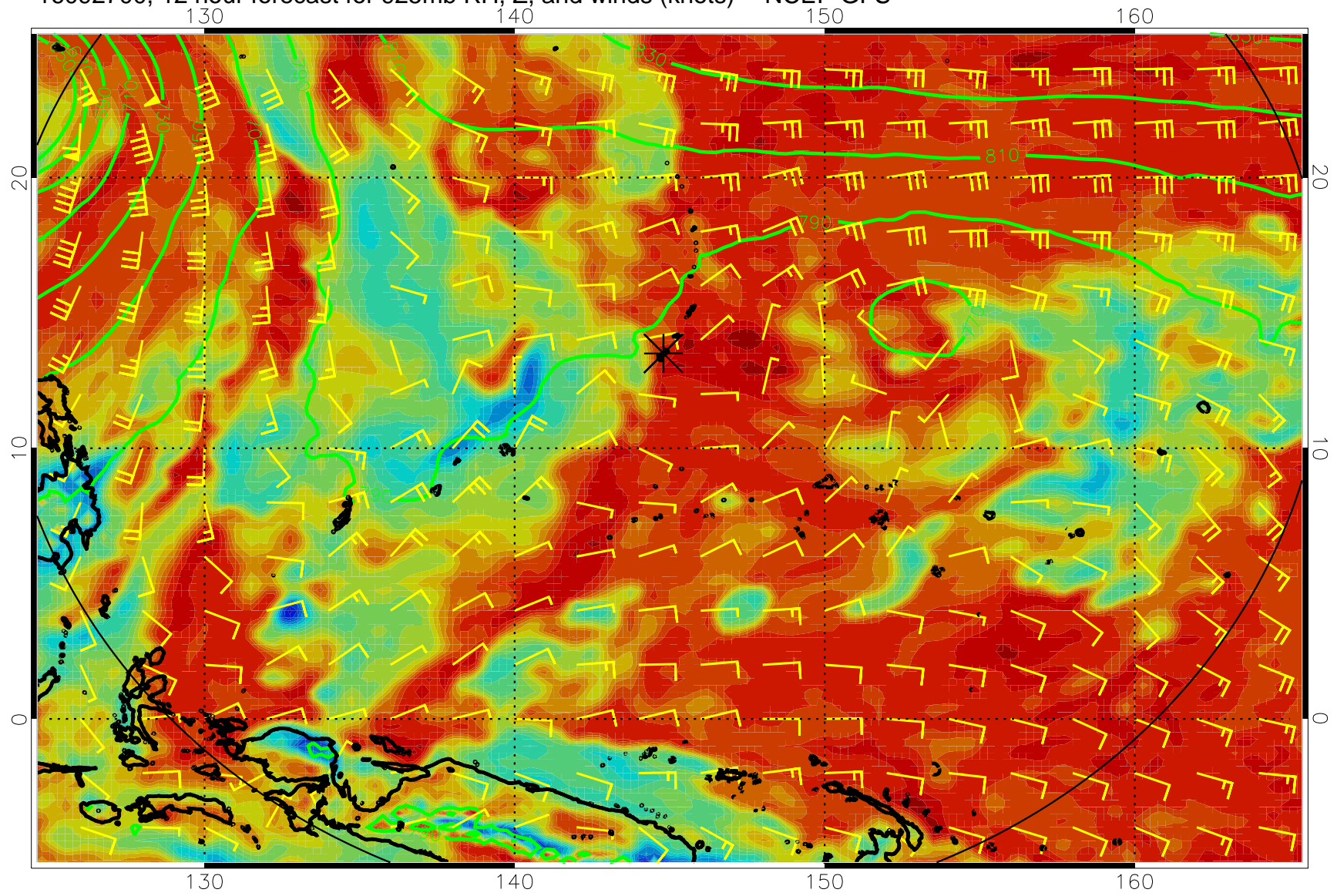


16092618, 6 hour forecast for 925mb RH, Z, and winds (knots) -- NCEP GFS

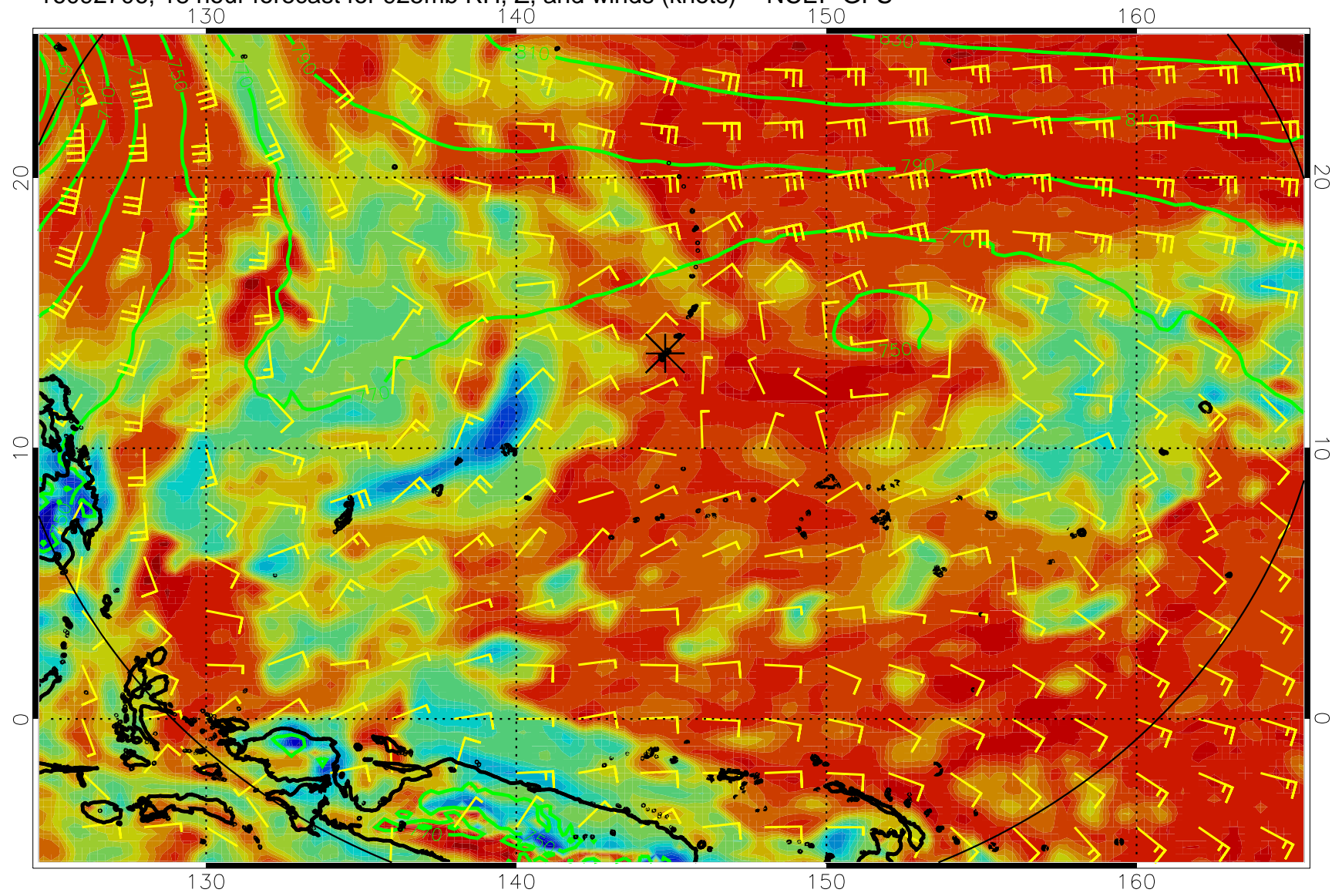


16092700, 12 hour forecast for 925mb RH, Z, and winds (knots) -- NCEP GFS

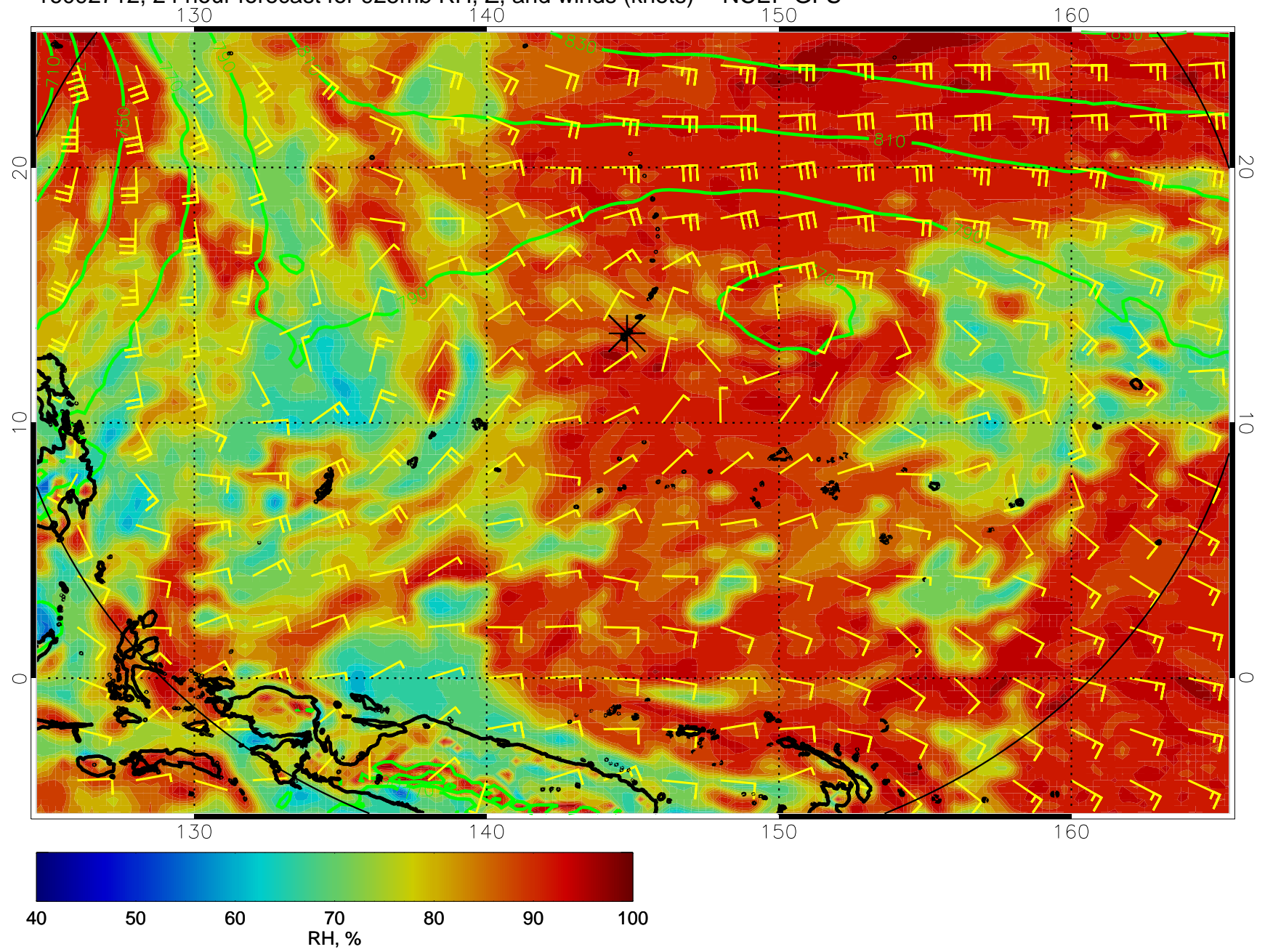




16092706, 18 hour forecast for 925mb RH, Z, and winds (knots) -- NCEP GFS

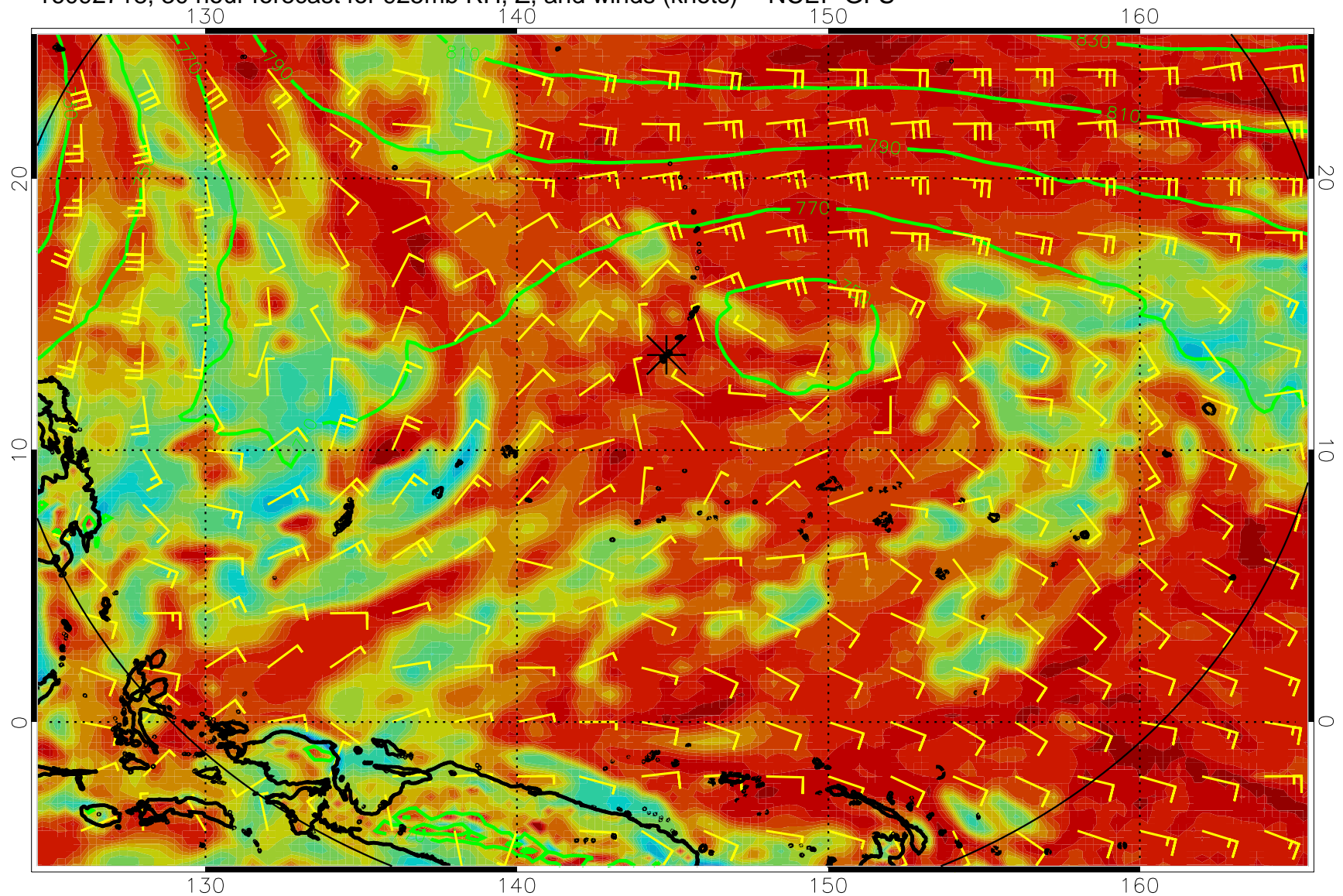


16092712, 24 hour forecast for 925mb RH, Z, and winds (knots) -- NCEP GFS

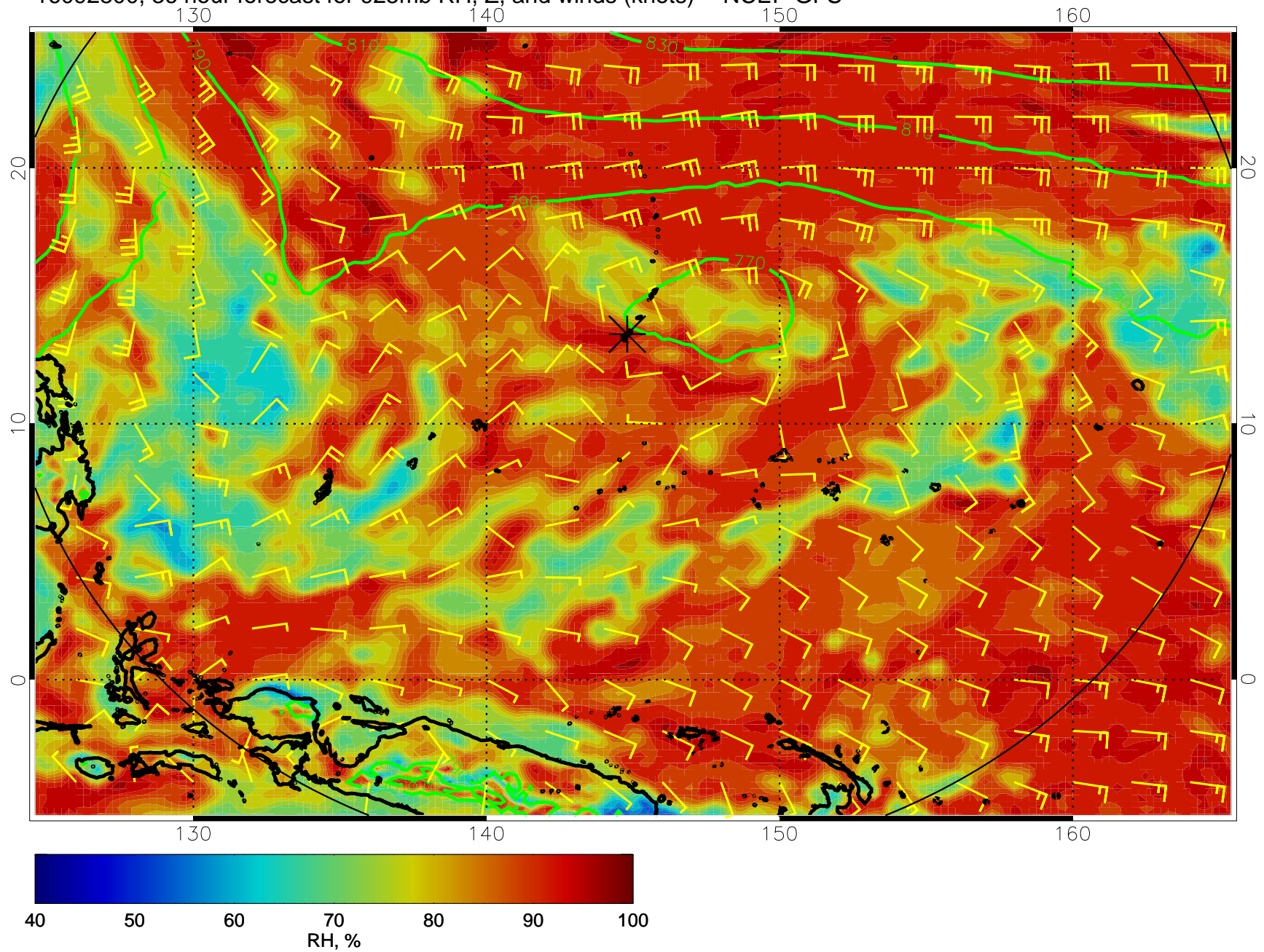




16092718, 30 hour forecast for 925mb RH, Z, and winds (knots) -- NCEP GFS

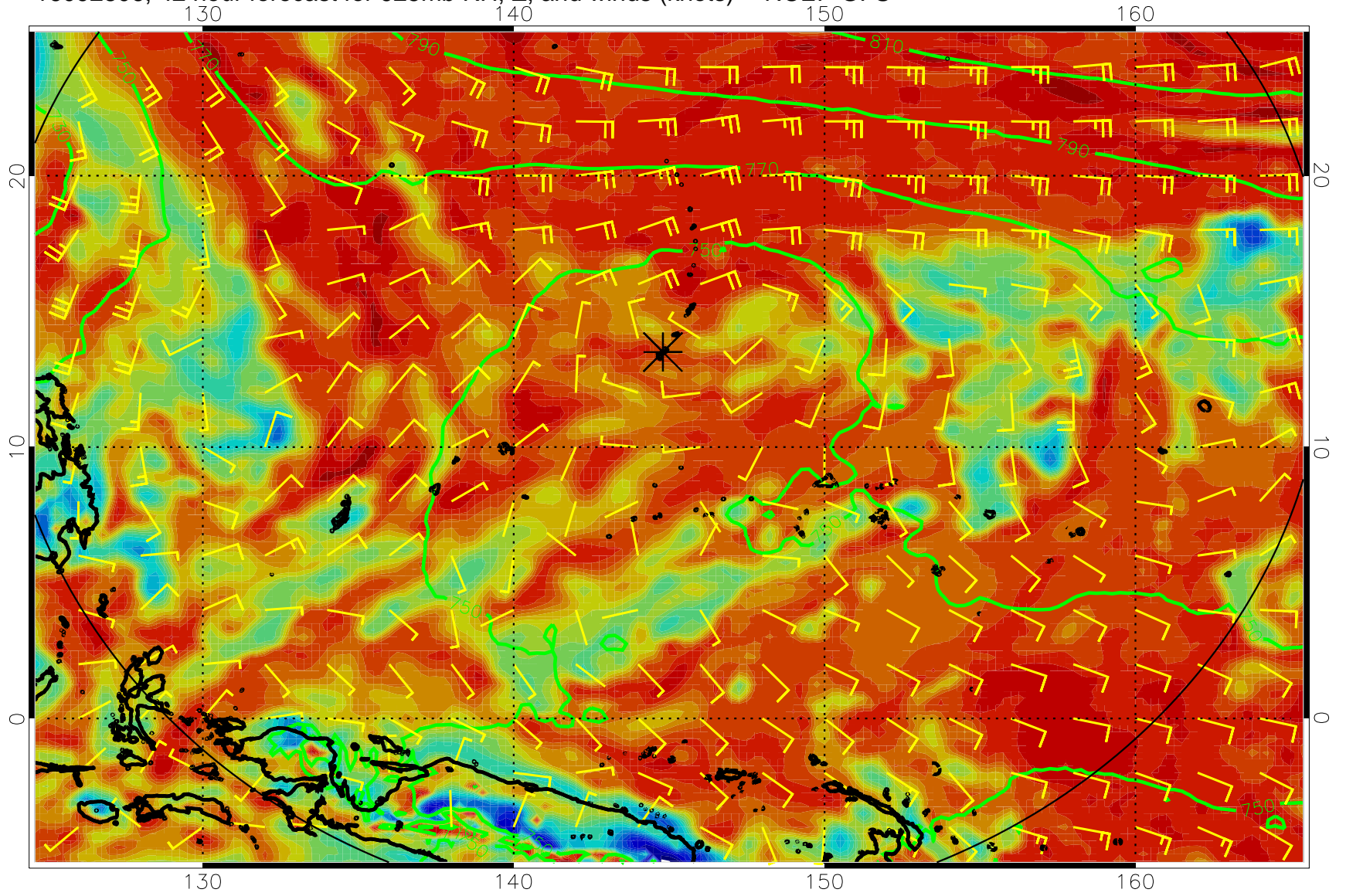


16092800, 36 hour forecast for 925mb RH, Z, and winds (knots) -- NCEP GFS

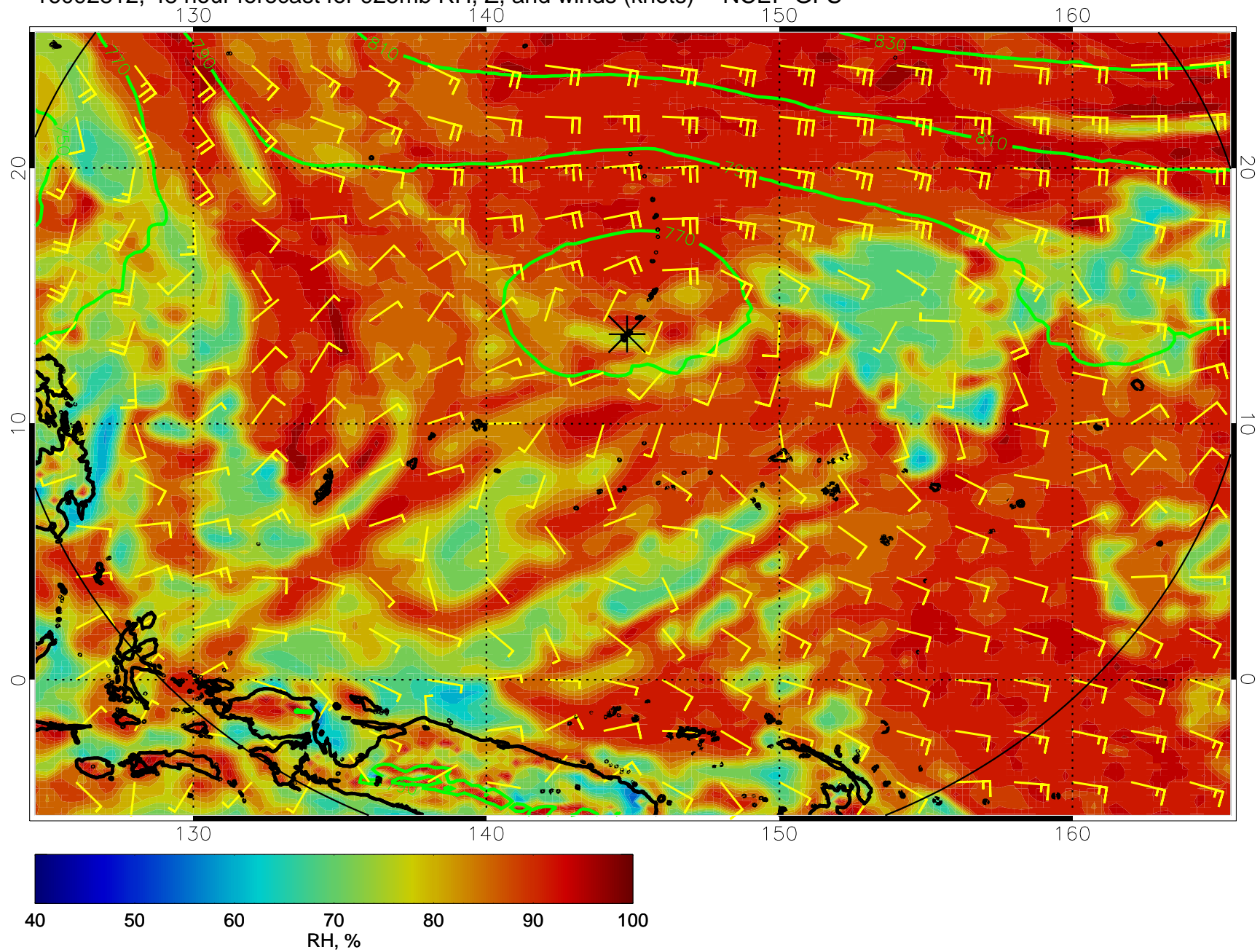




16092806, 42 hour forecast for 925mb RH, Z, and winds (knots) -- NCEP GFS

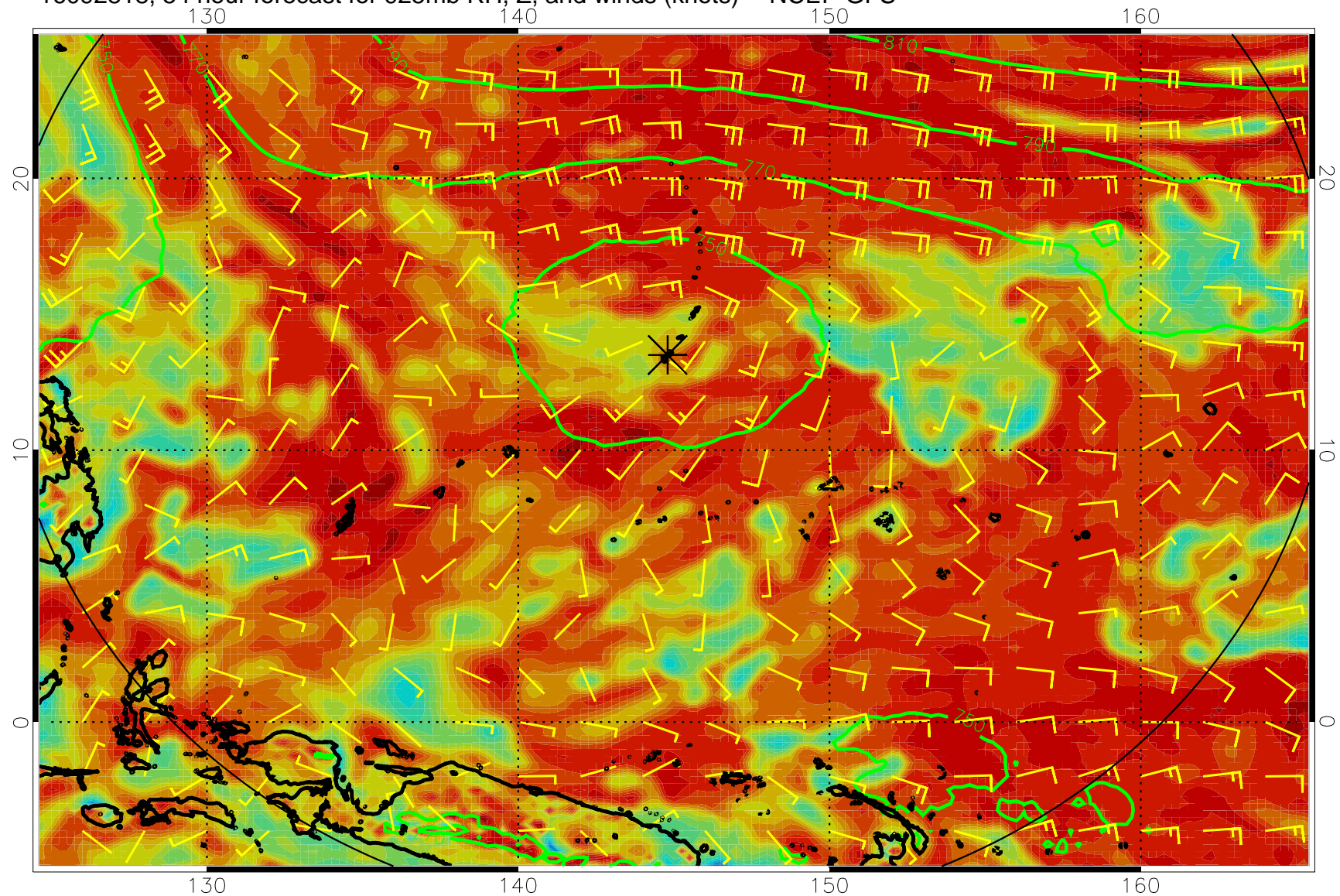


16092812, 48 hour forecast for 925mb RH, Z, and winds (knots) -- NCEP GFS

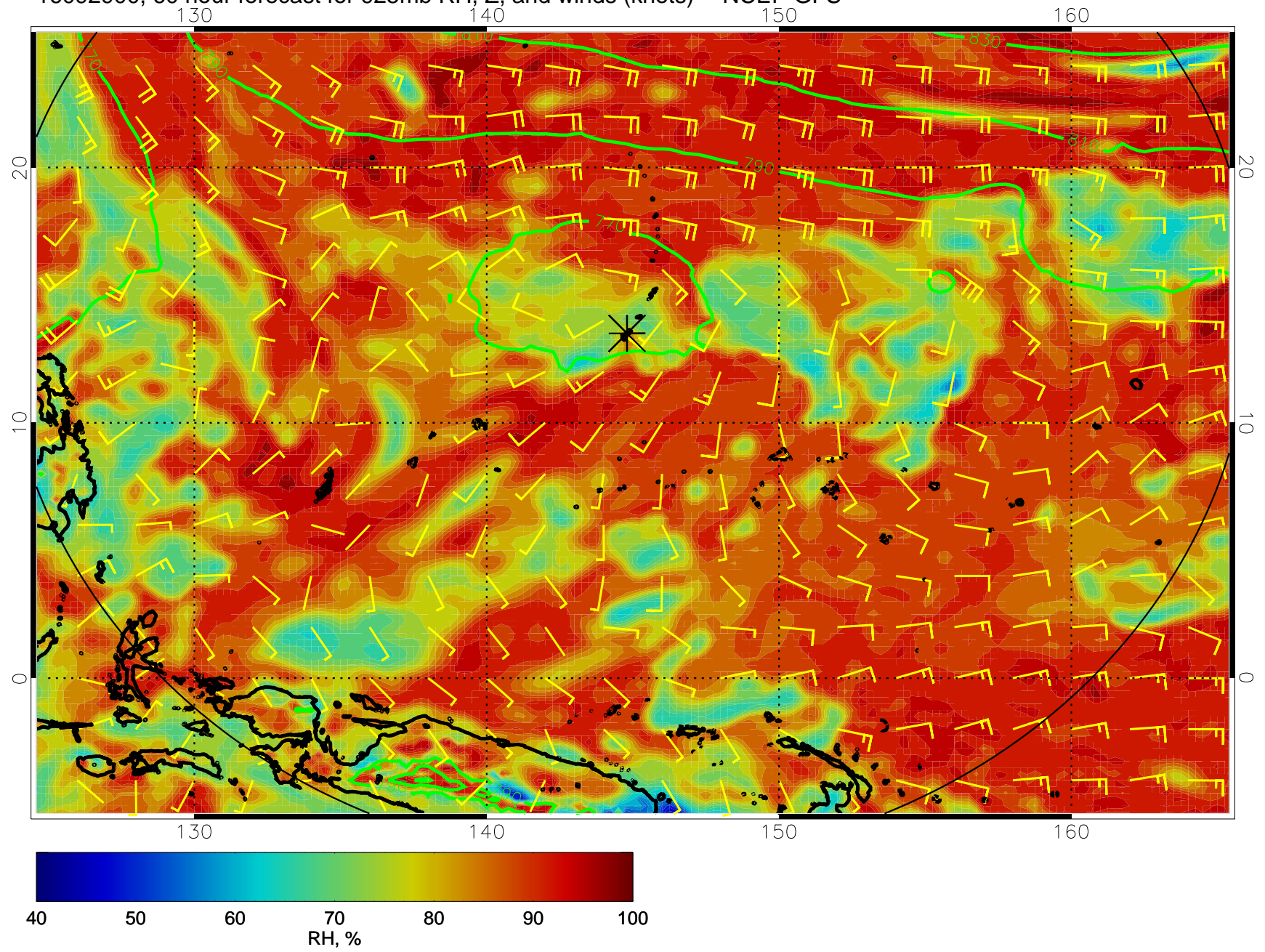




16092818, 54 hour forecast for 925mb RH, Z, and winds (knots) -- NCEP GFS

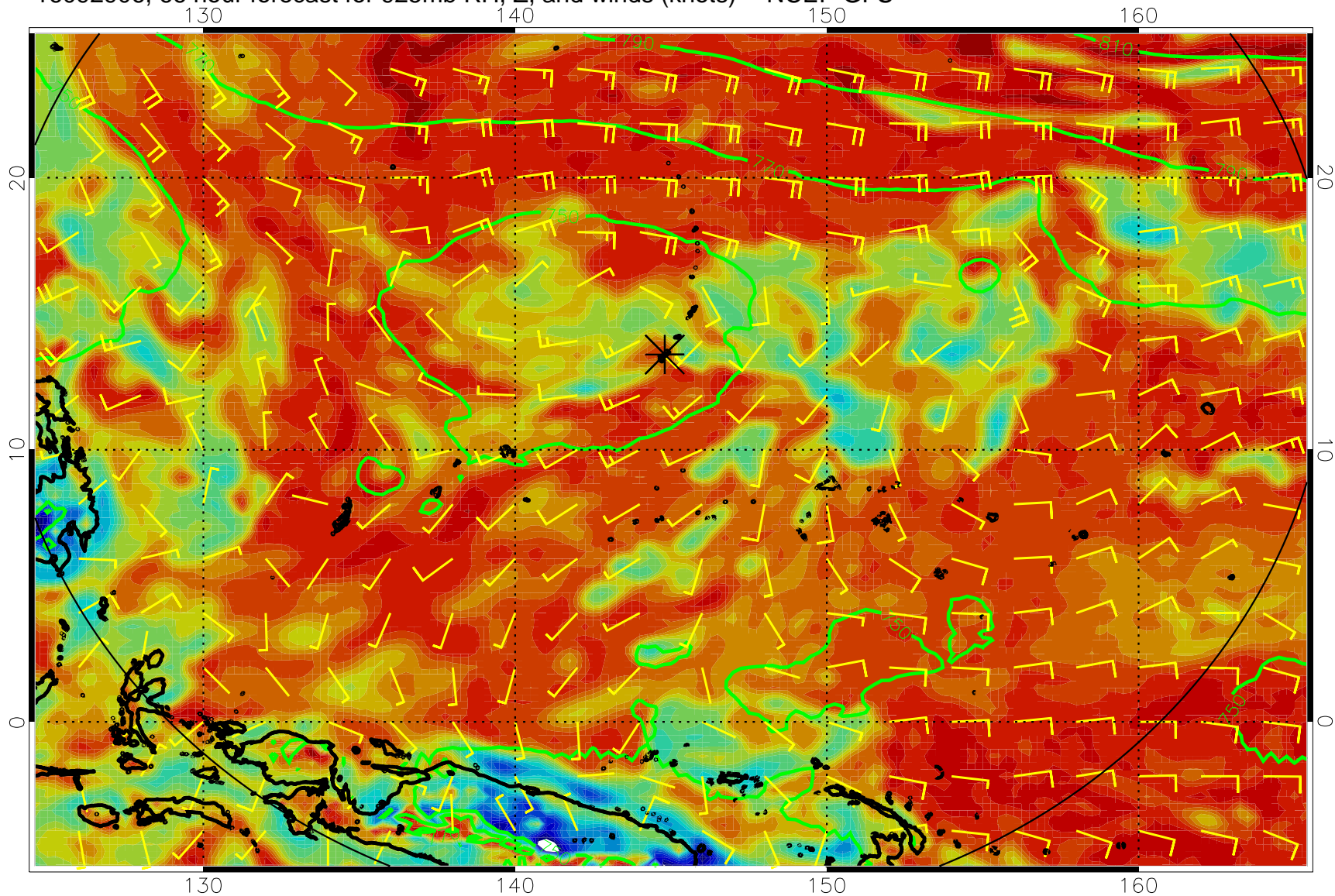


16092900, 60 hour forecast for 925mb RH, Z, and winds (knots) -- NCEP GFS

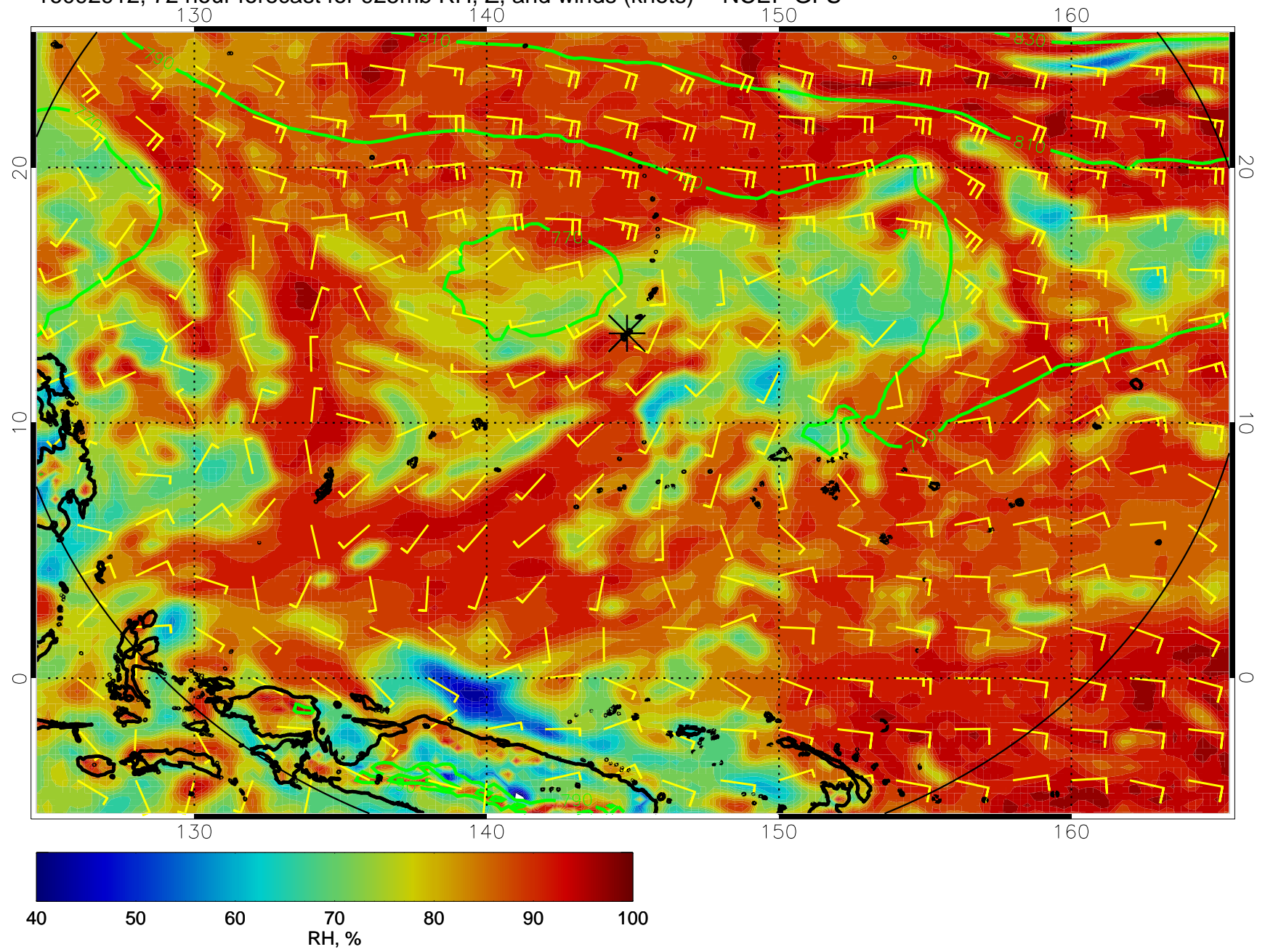




16092906, 66 hour forecast for 925mb RH, Z, and winds (knots) -- NCEP GFS

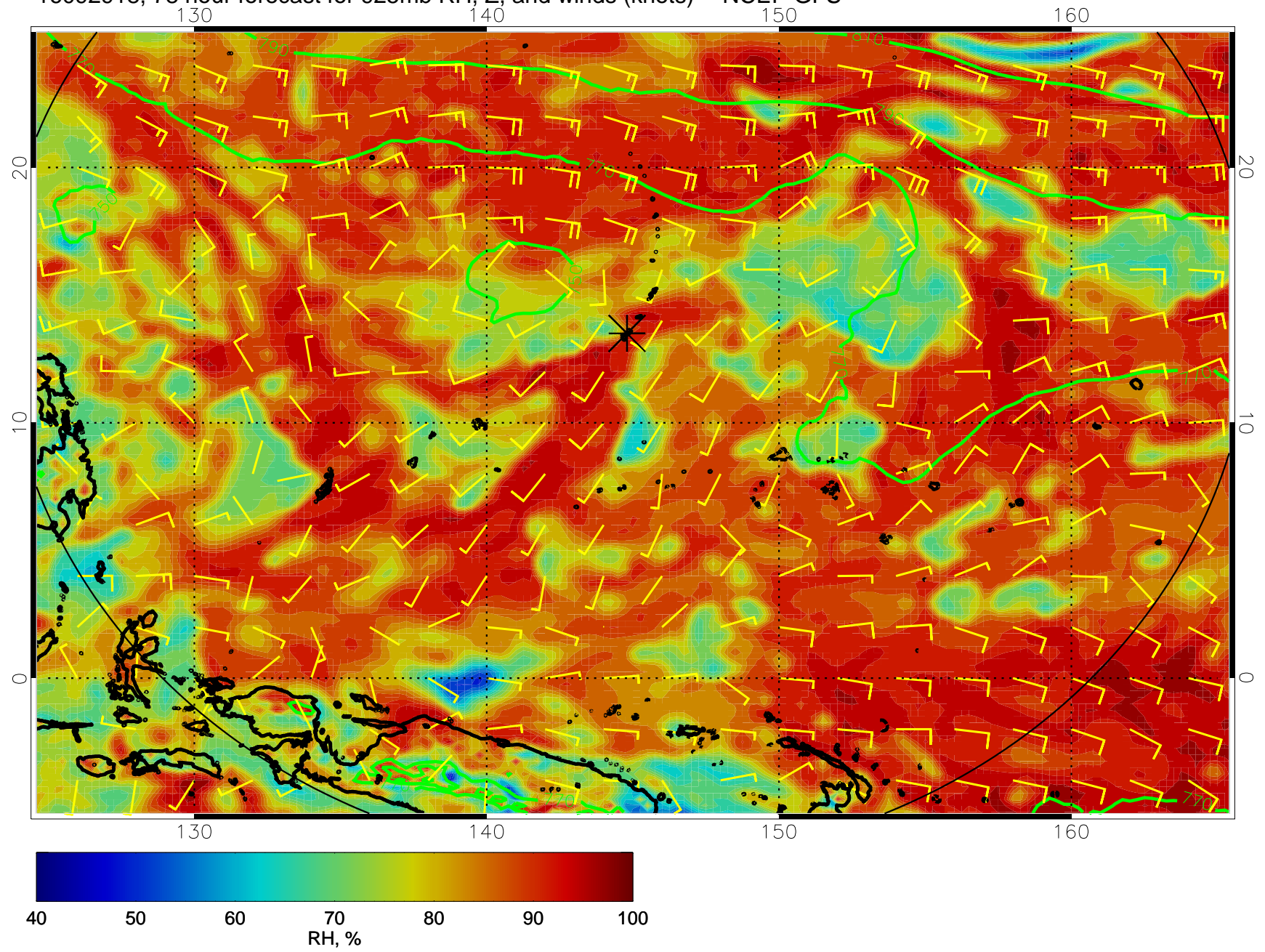


16092912, 72 hour forecast for 925mb RH, Z, and winds (knots) -- NCEP GFS

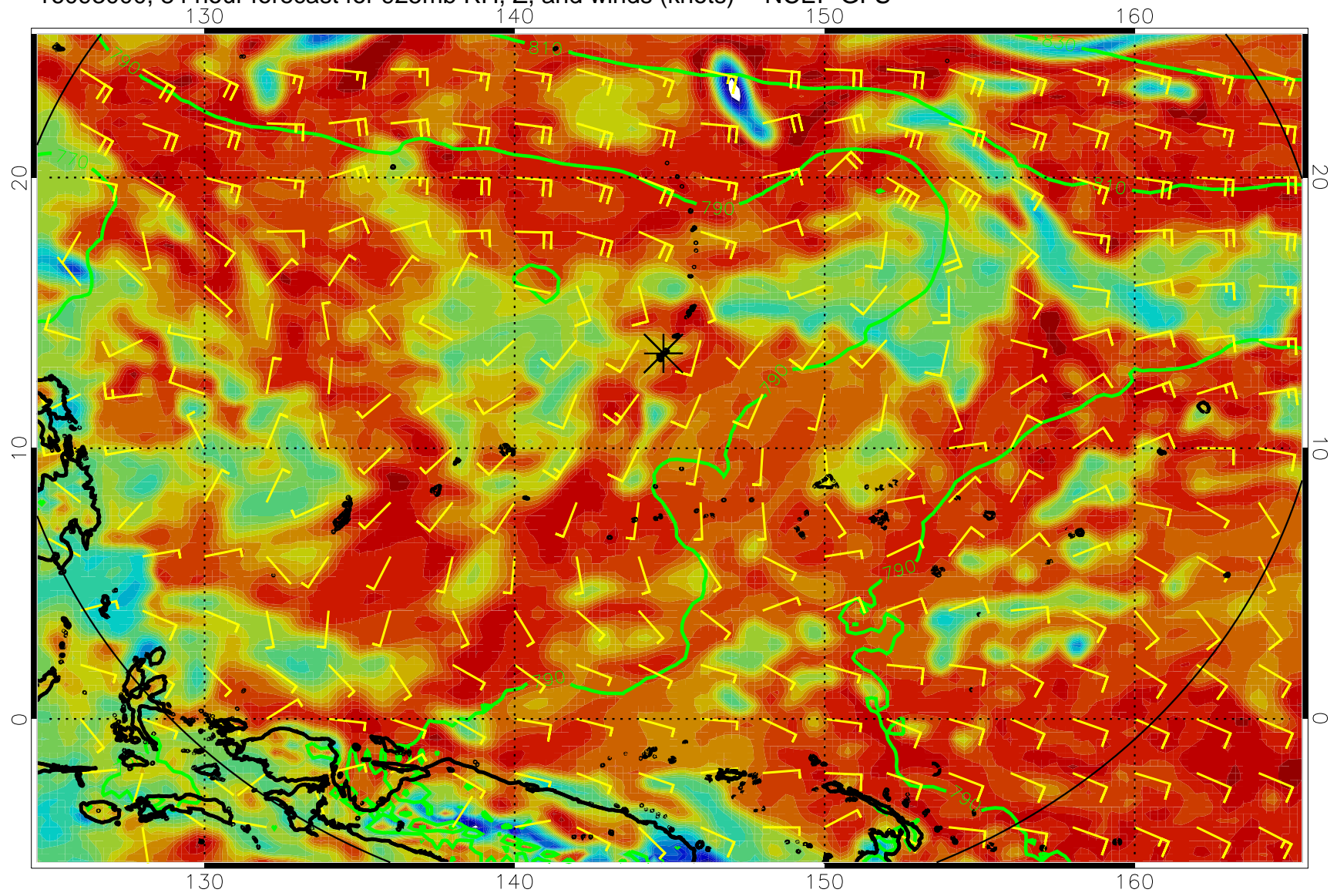




16092918, 78 hour forecast for 925mb RH, Z, and winds (knots) -- NCEP GFS

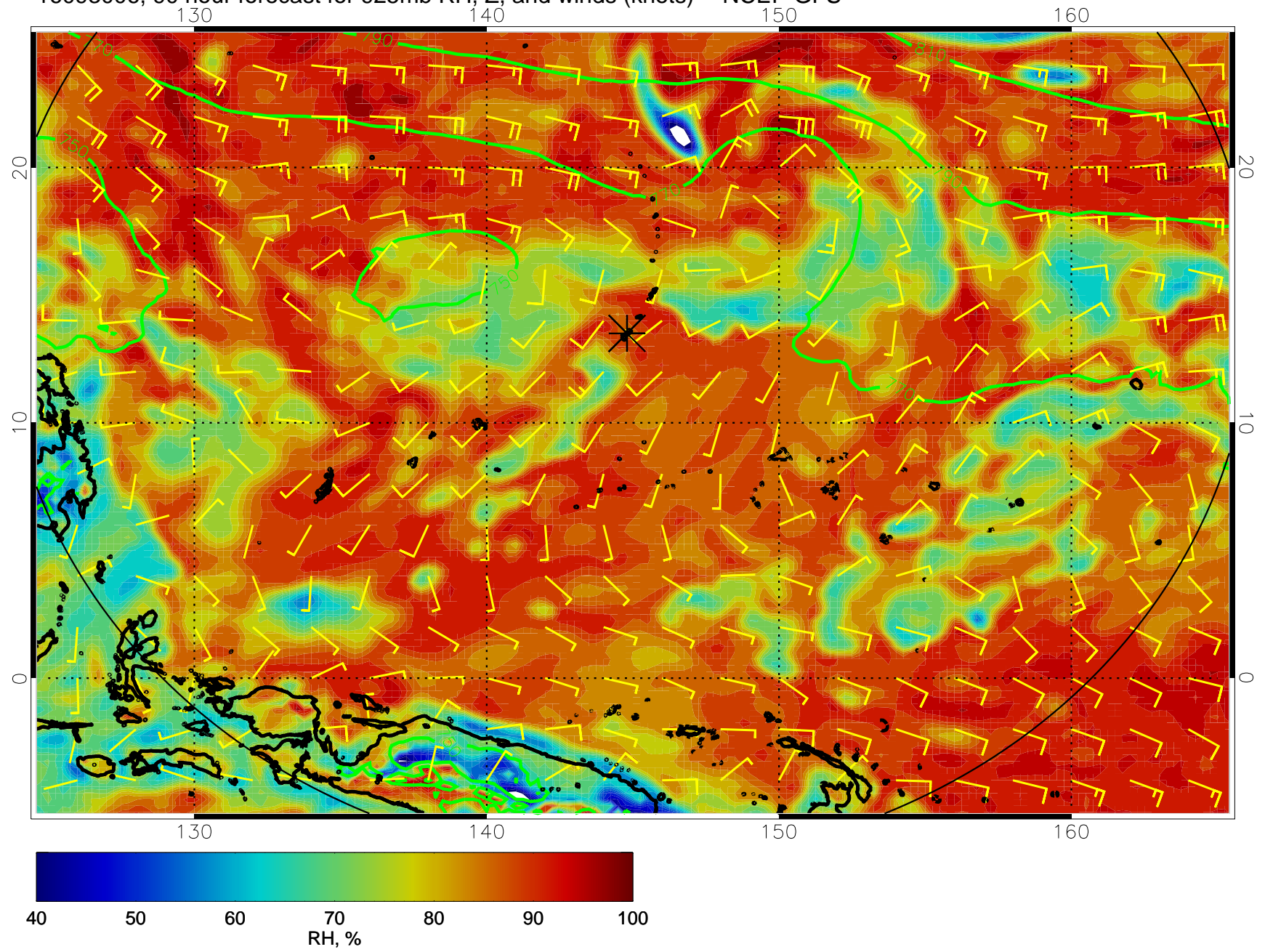


16093000, 84 hour forecast for 925mb RH, Z, and winds (knots) -- NCEP GFS

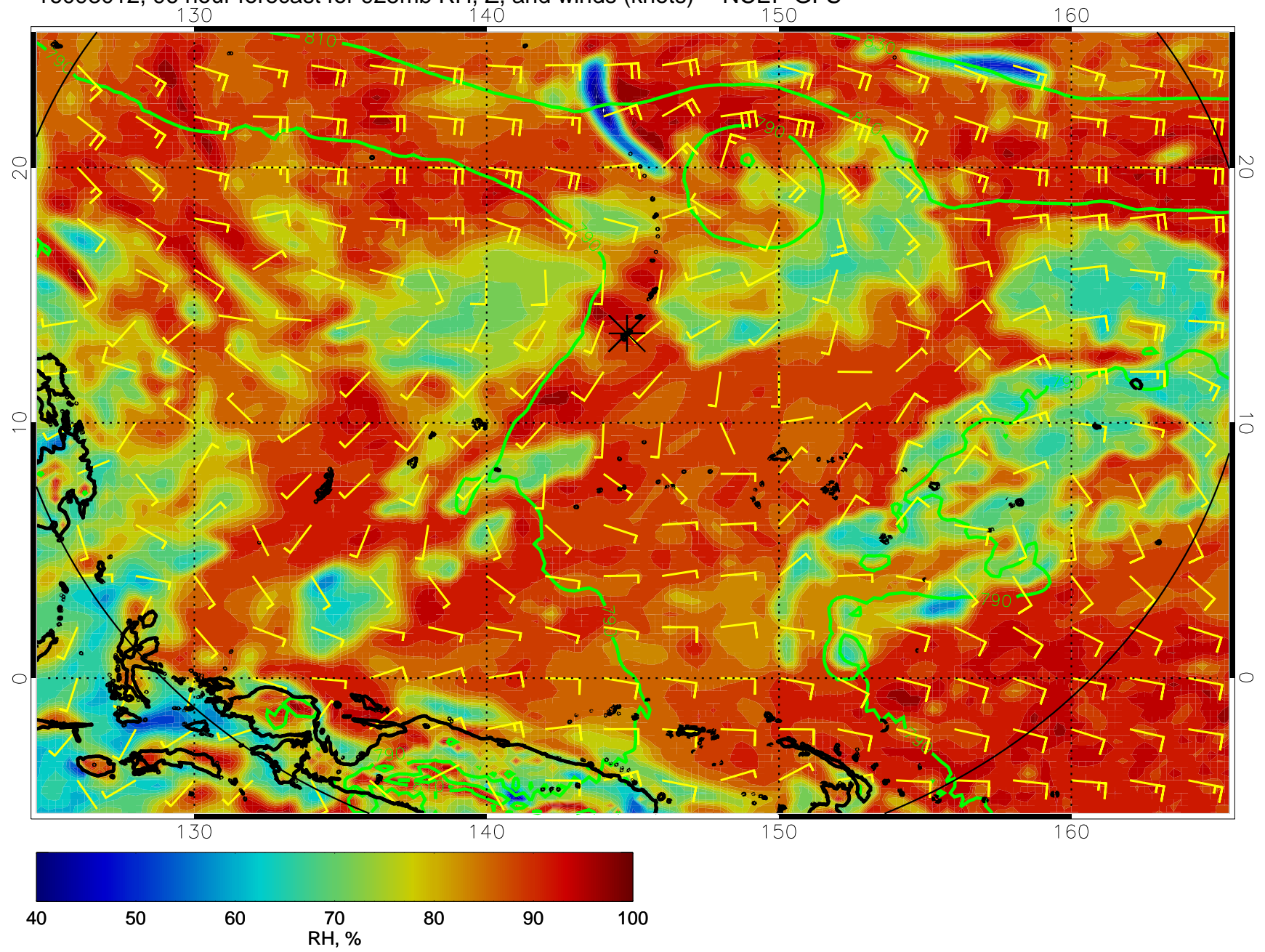




16093006, 90 hour forecast for 925mb RH, Z, and winds (knots) -- NCEP GFS

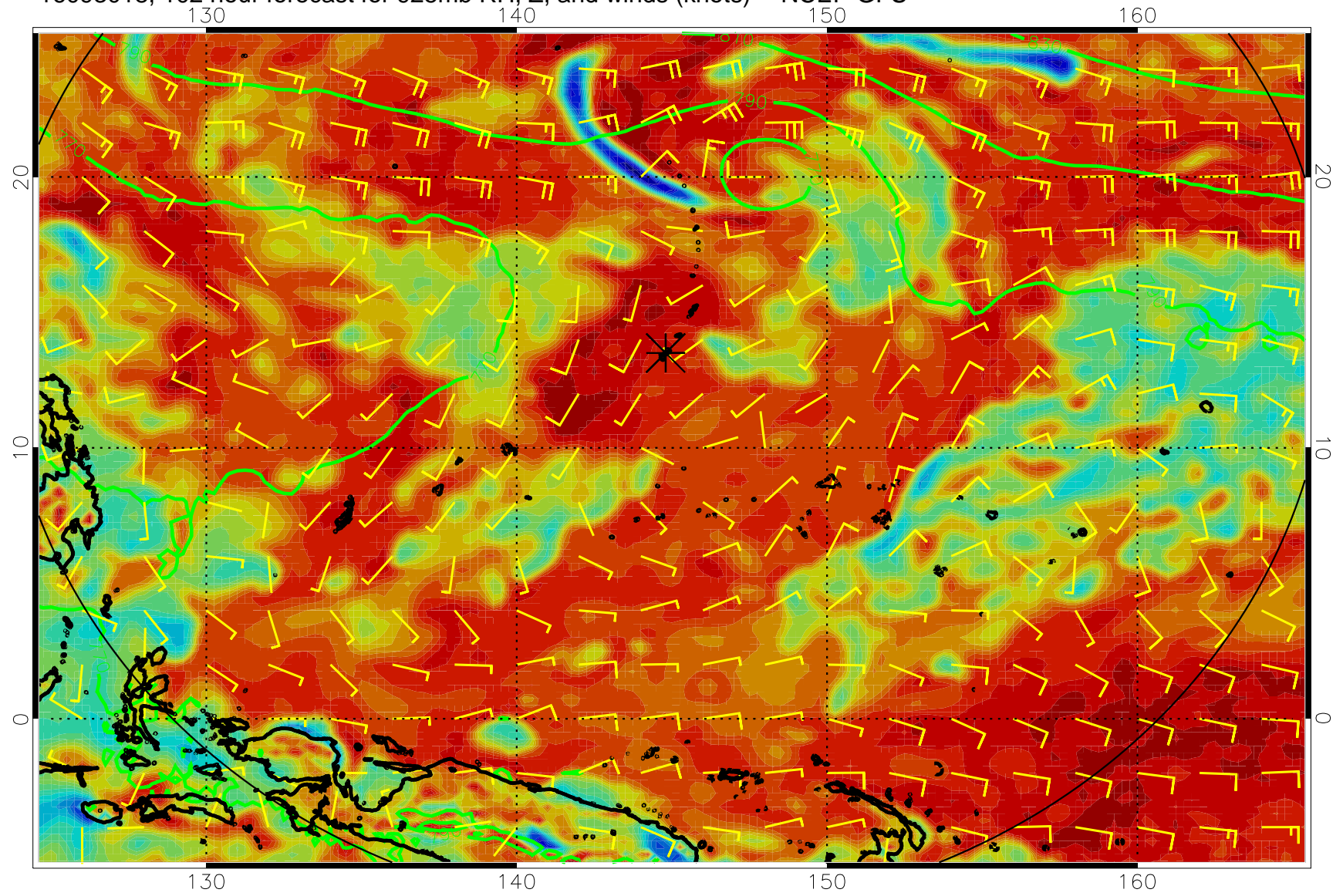


16093012, 96 hour forecast for 925mb RH, Z, and winds (knots) -- NCEP GFS

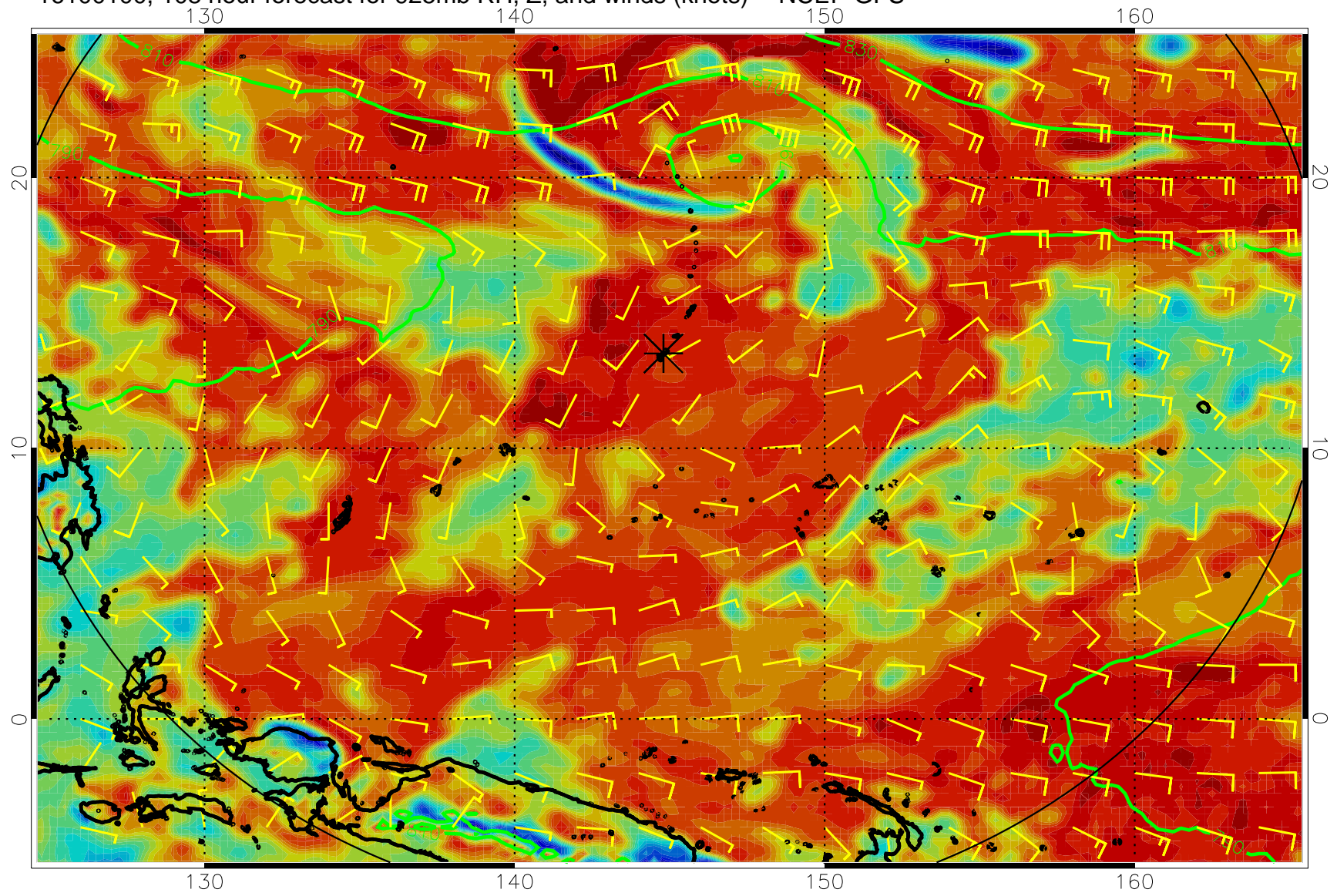




16093018, 102 hour forecast for 925mb RH, Z, and winds (knots) -- NCEP GFS

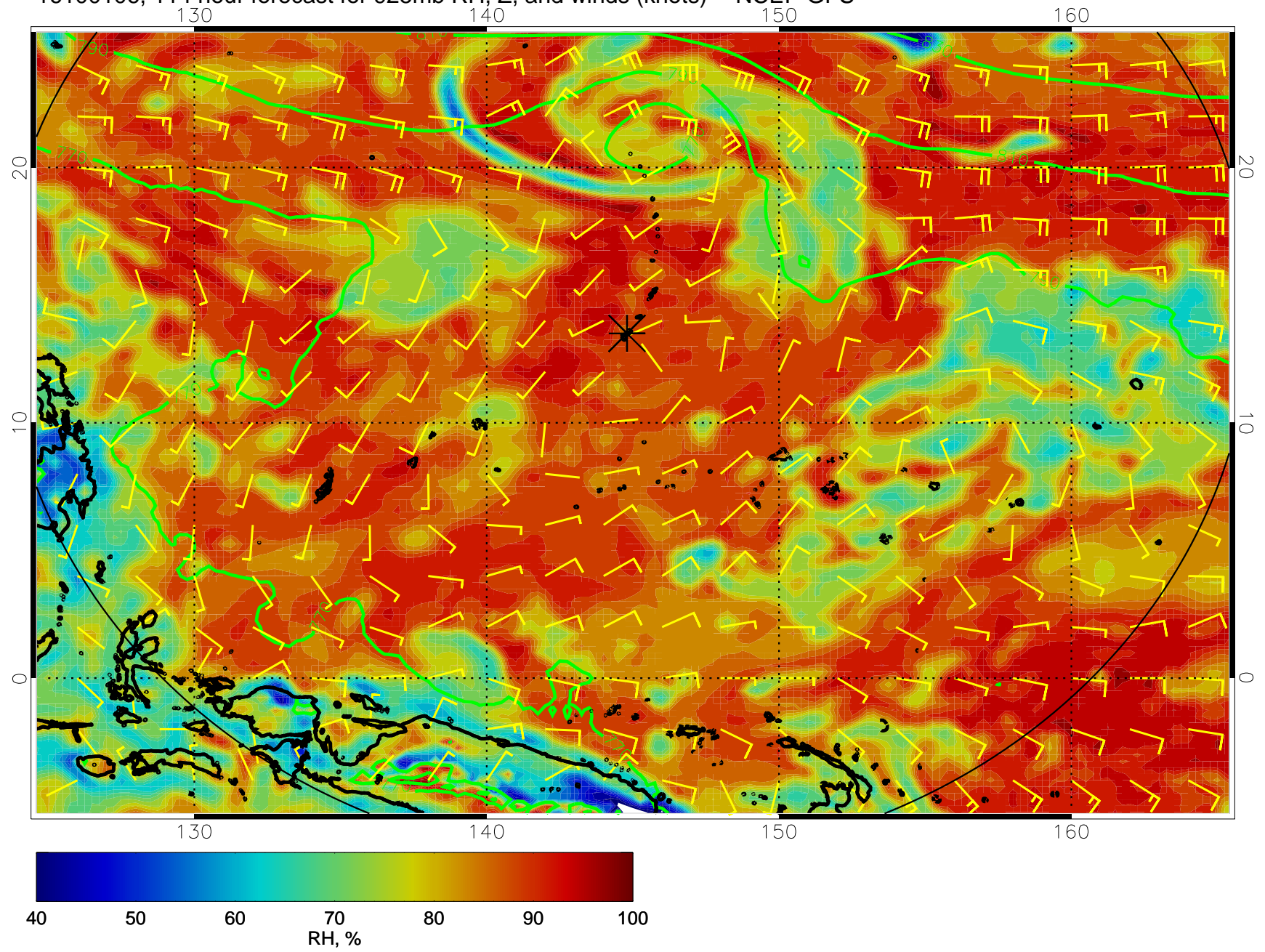


16100100, 108 hour forecast for 925mb RH, Z, and winds (knots) -- NCEP GFS





16100106, 114 hour forecast for 925mb RH, Z, and winds (knots) -- NCEP GFS



16100112, 120 hour forecast for 925mb RH, Z, and winds (knots) -- NCEP GFS

