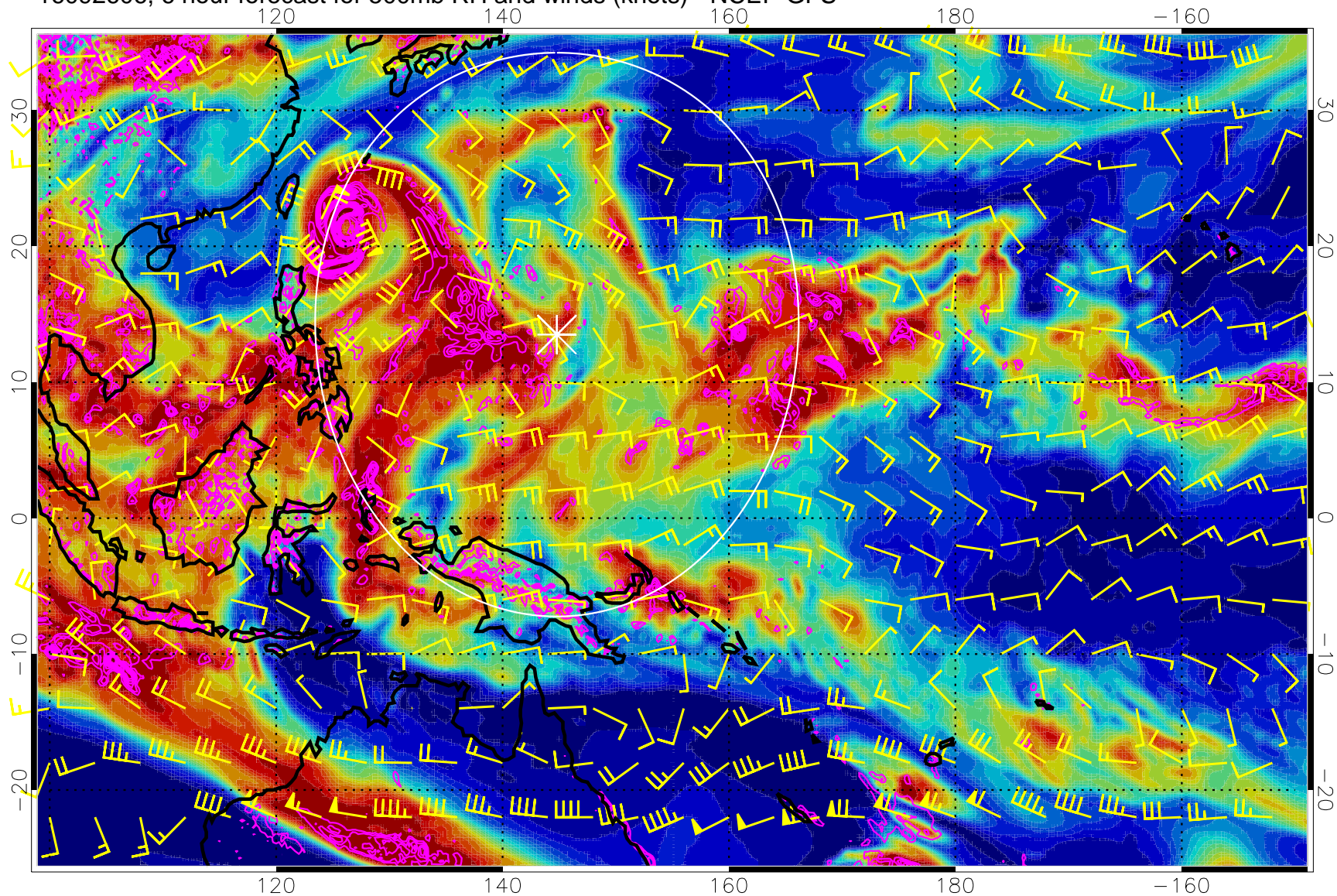


16092606, 6 hour forecast for 500mb RH and winds (knots) - NCEP GFS

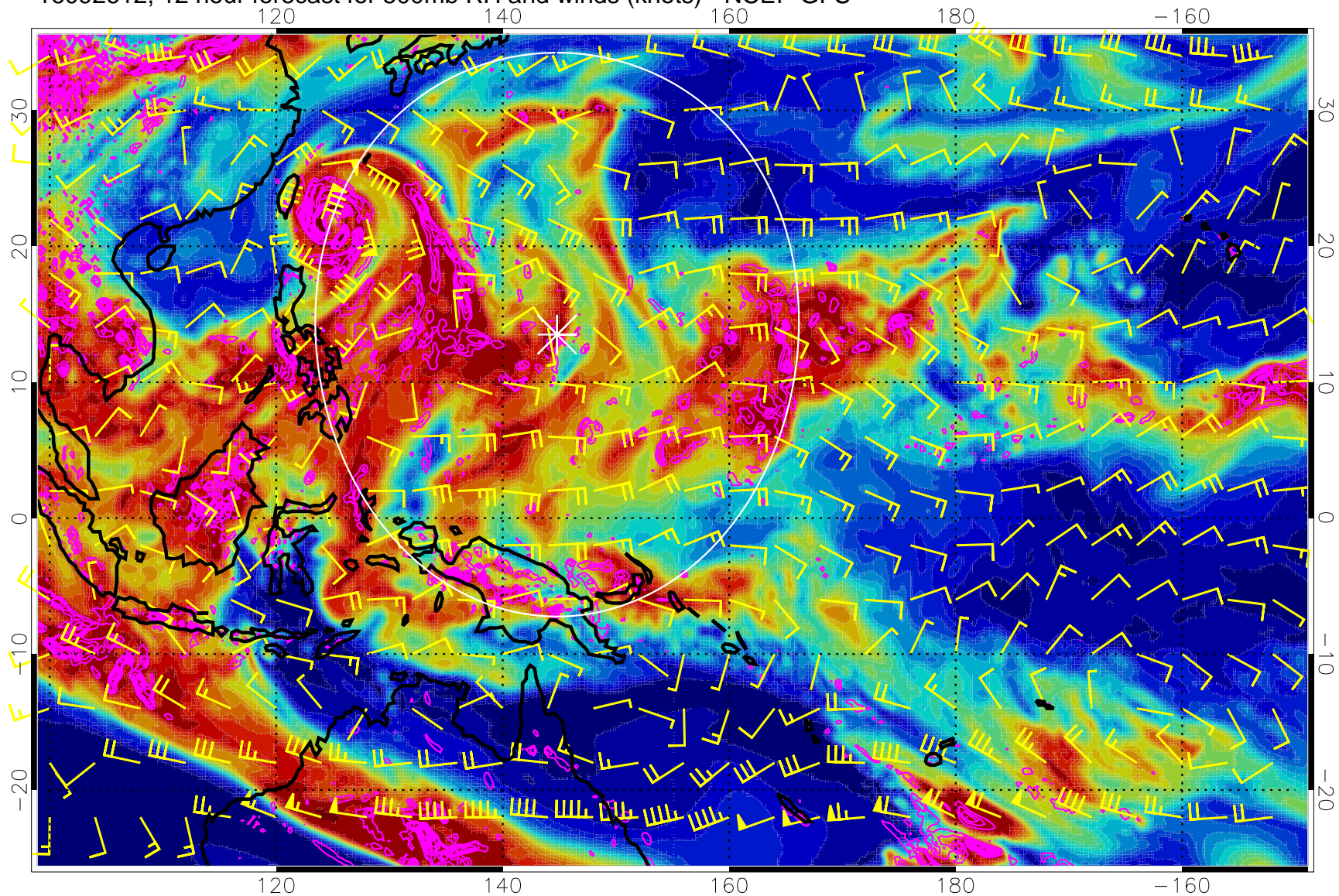


Negative Omegas less than  $-0.3$ , contours of  $0.3$  Pa/s

Range ring of 2304 km



16092612, 12 hour forecast for 500mb RH and winds (knots) - NCEP GFS



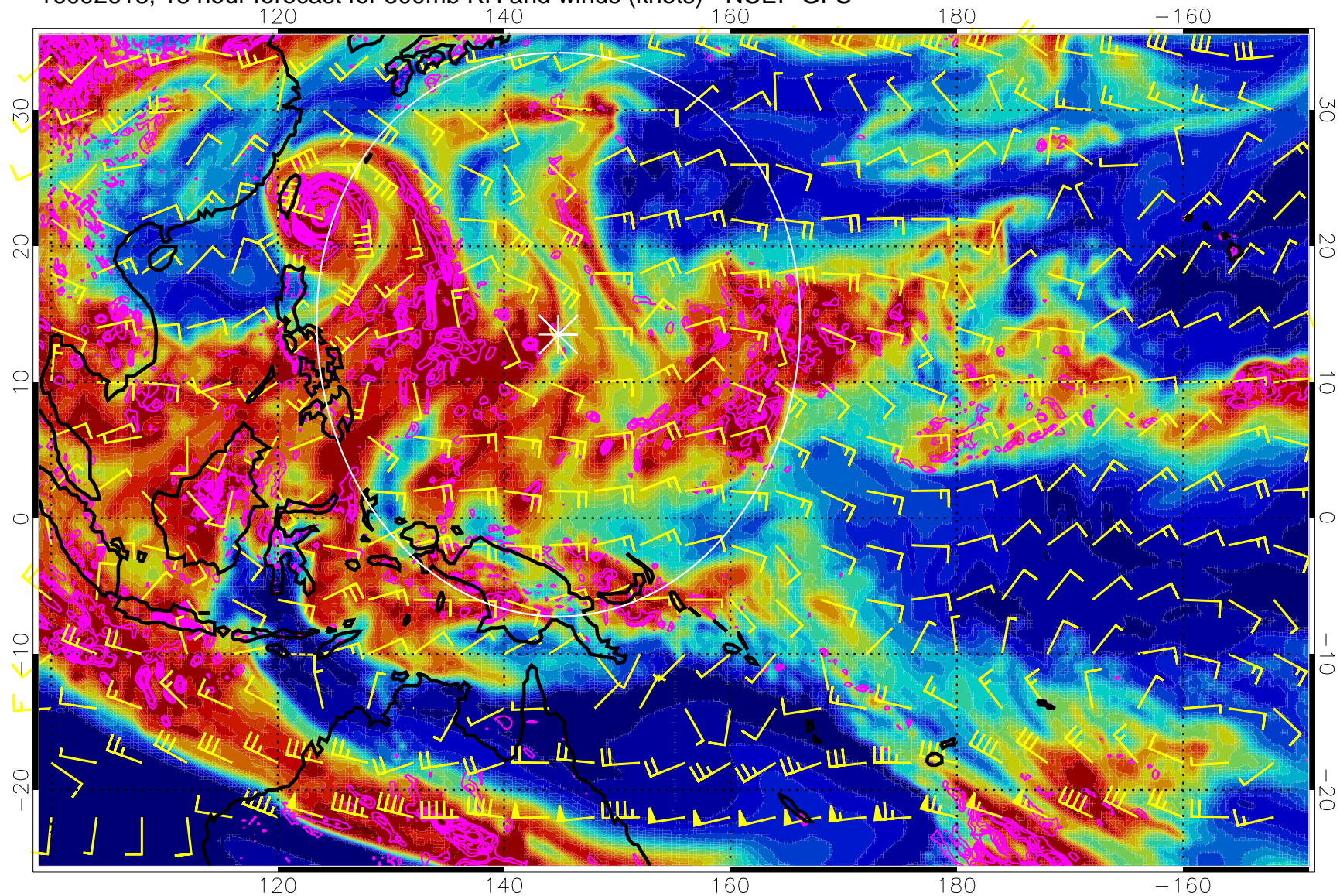
0 20 40 60 80 100  
RH, %

Negative Omegas less than  $-0.3$ , contours of  $0.3$  Pa/s

Range ring of 2304 km



16092618, 18 hour forecast for 500mb RH and winds (knots) - NCEP GFS

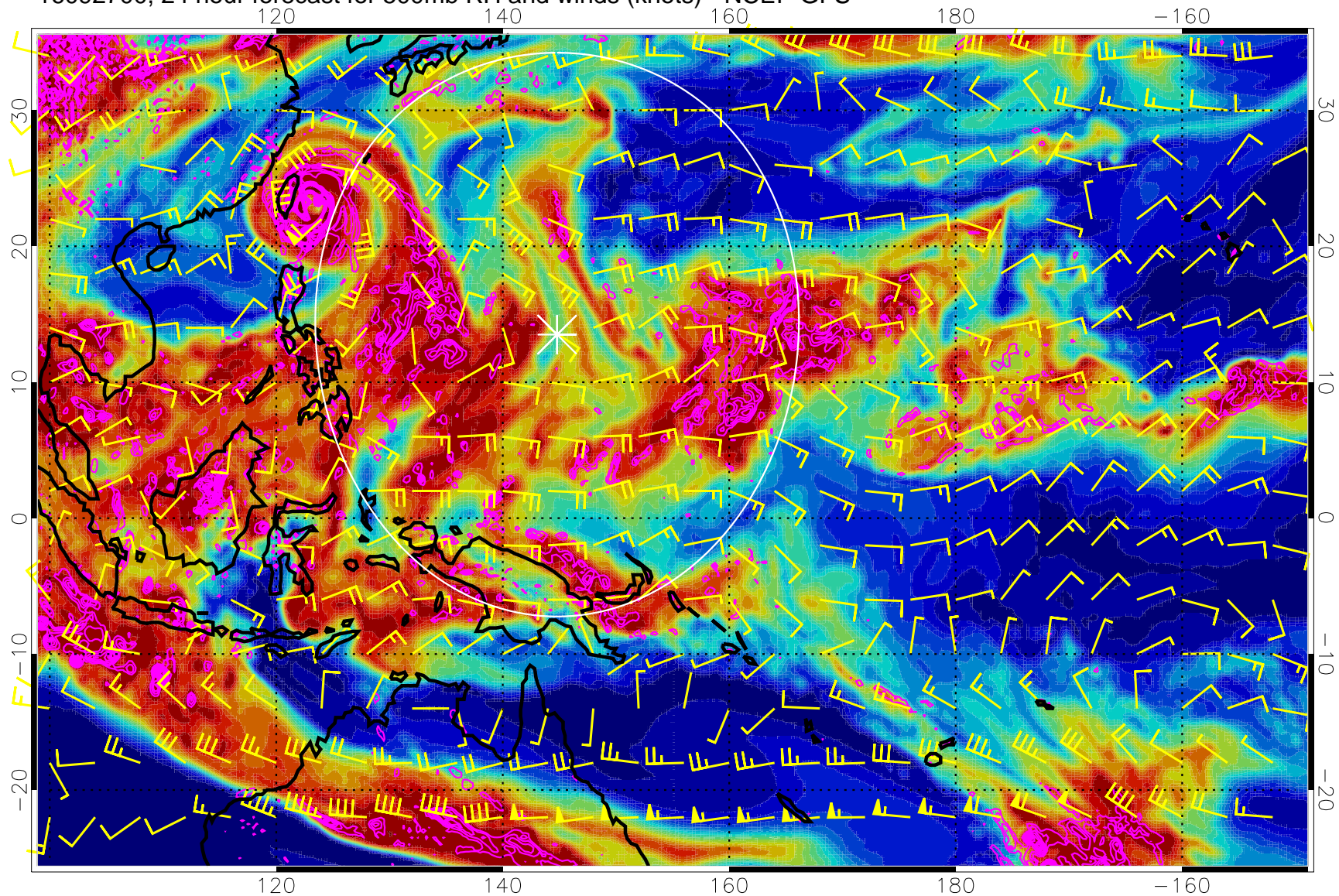


Negative Omegas less than  $-0.3$ , contours of  $0.3$  Pa/s

Range ring of 2304 km



16092700, 24 hour forecast for 500mb RH and winds (knots) - NCEP GFS

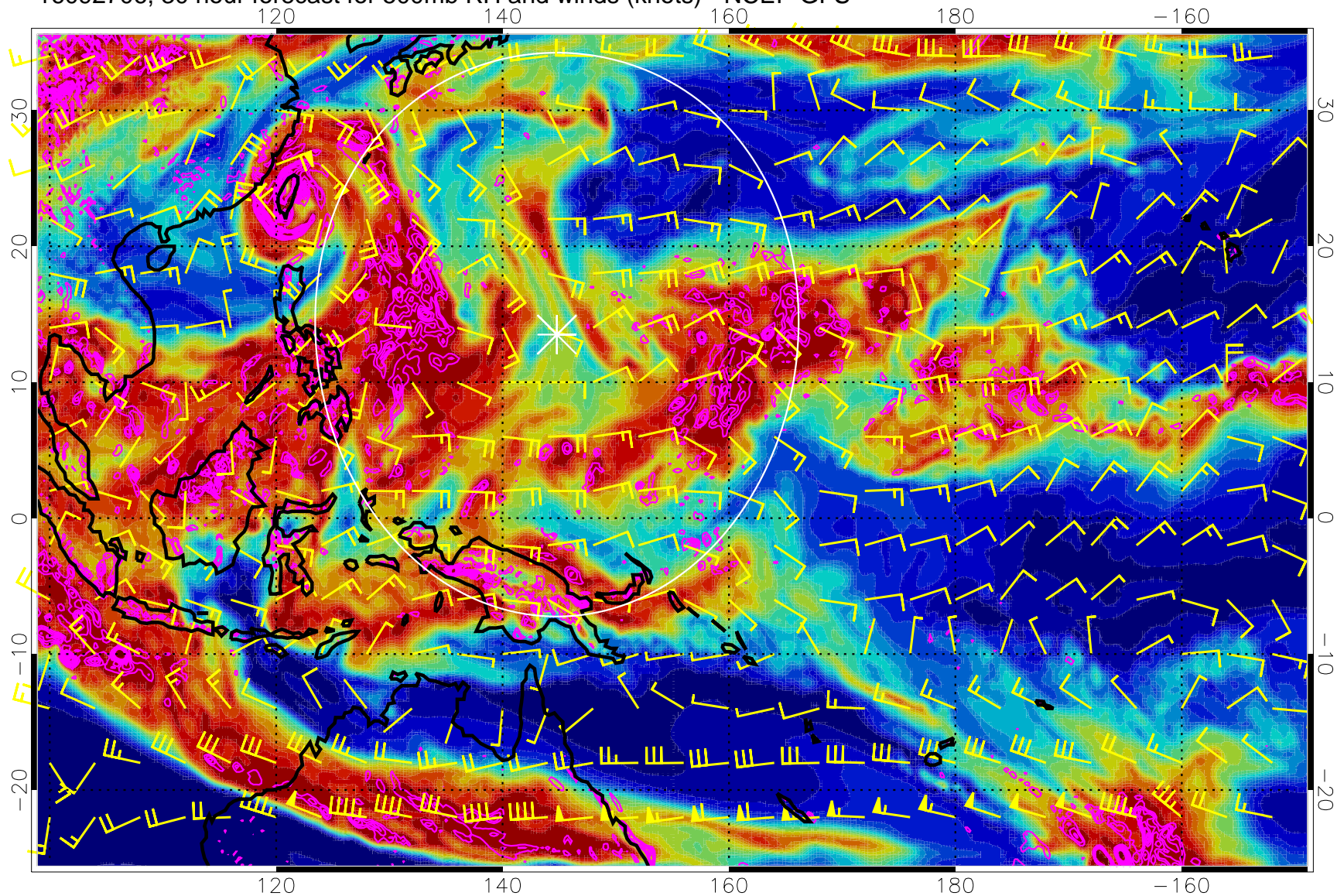


Negative Omegas less than  $-0.3$ , contours of  $0.3$  Pa/s

Range ring of 2304 km



16092706, 30 hour forecast for 500mb RH and winds (knots) - NCEP GFS



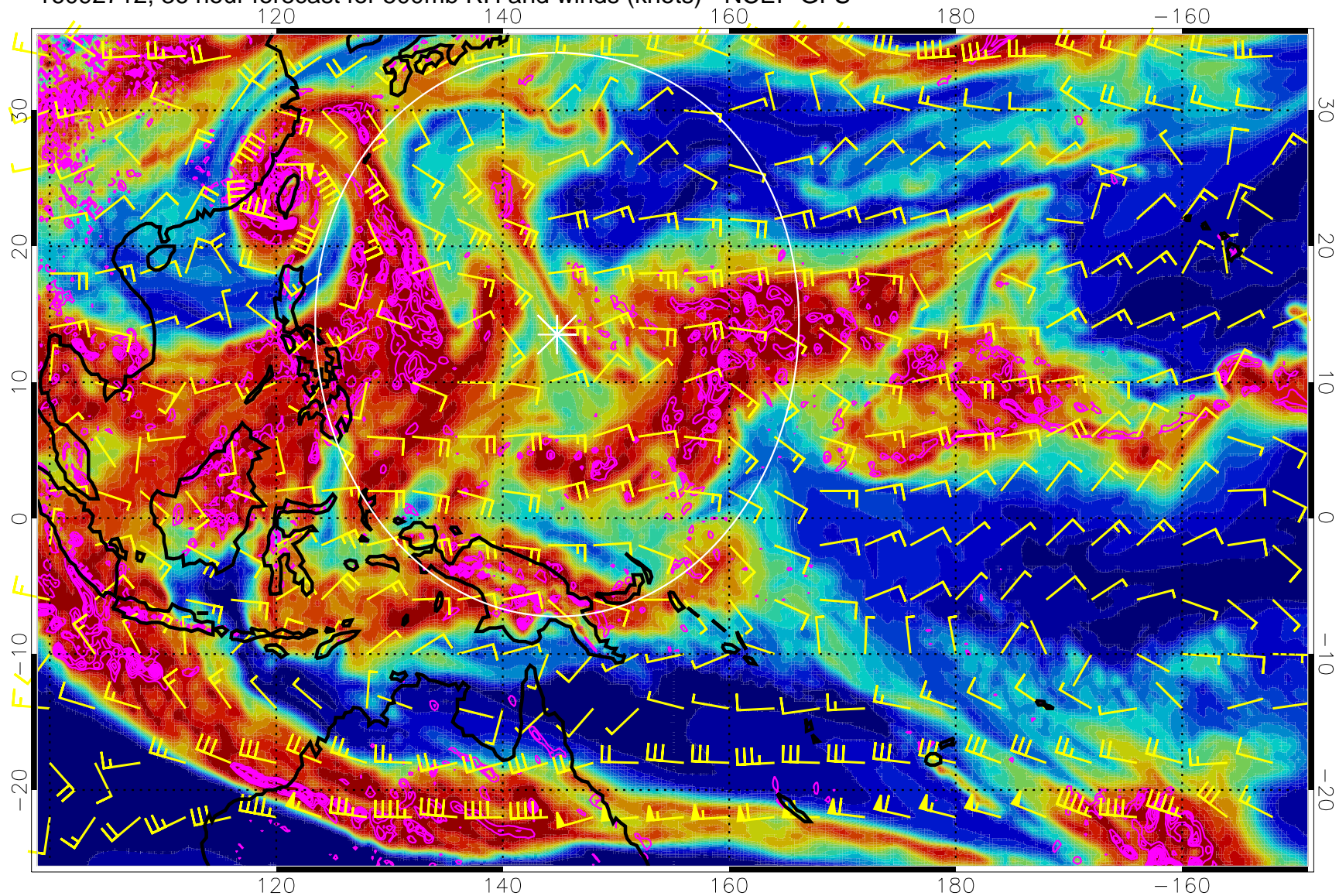
0 20 40 60 80 100  
RH, %

Negative Omegas less than  $-0.3$ , contours of  $0.3$  Pa/s

Range ring of 2304 km



16092712, 36 hour forecast for 500mb RH and winds (knots) - NCEP GFS

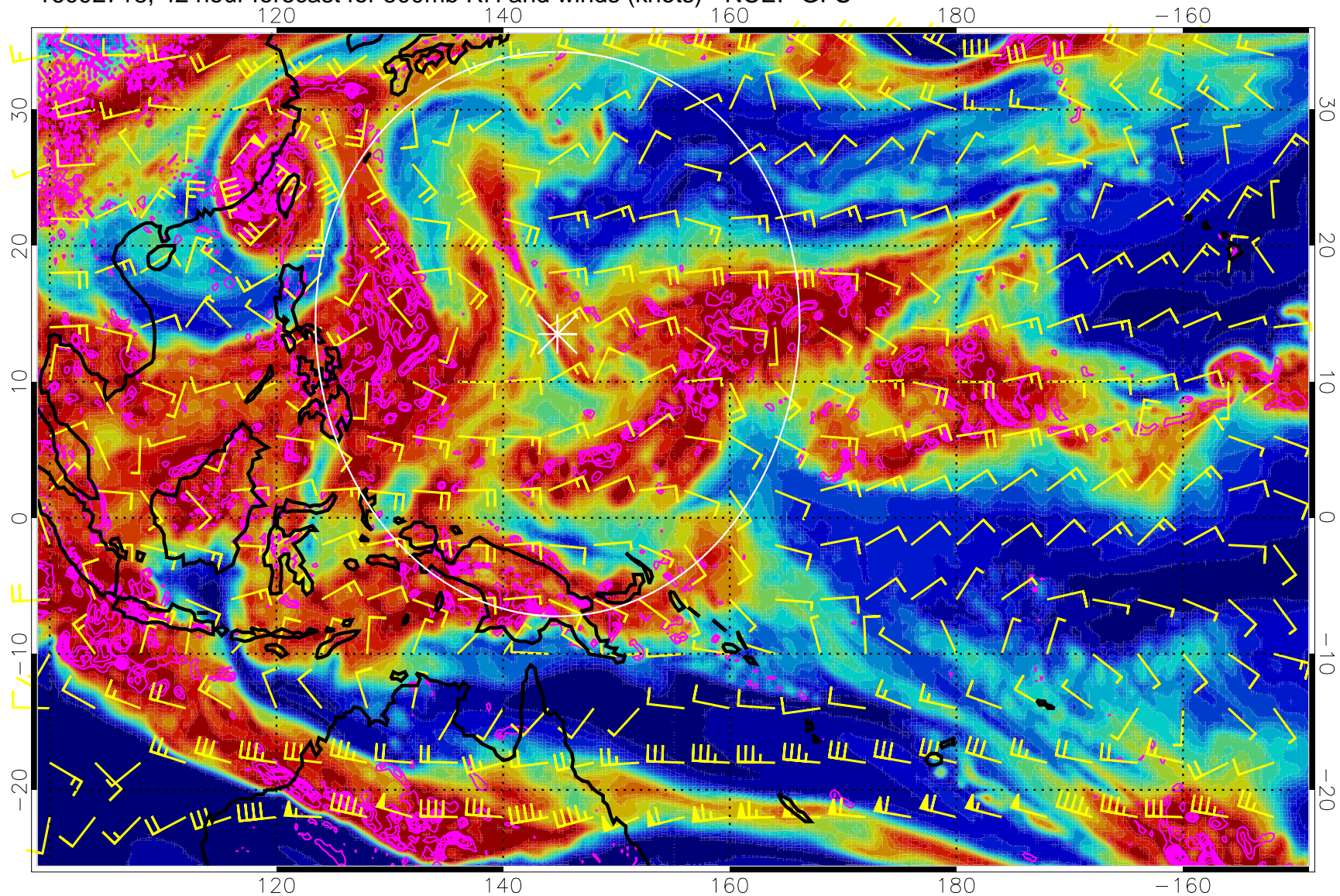


Negative Omegas less than  $-0.3$ , contours of  $0.3$  Pa/s

Range ring of 2304 km



16092718, 42 hour forecast for 500mb RH and winds (knots) - NCEP GFS

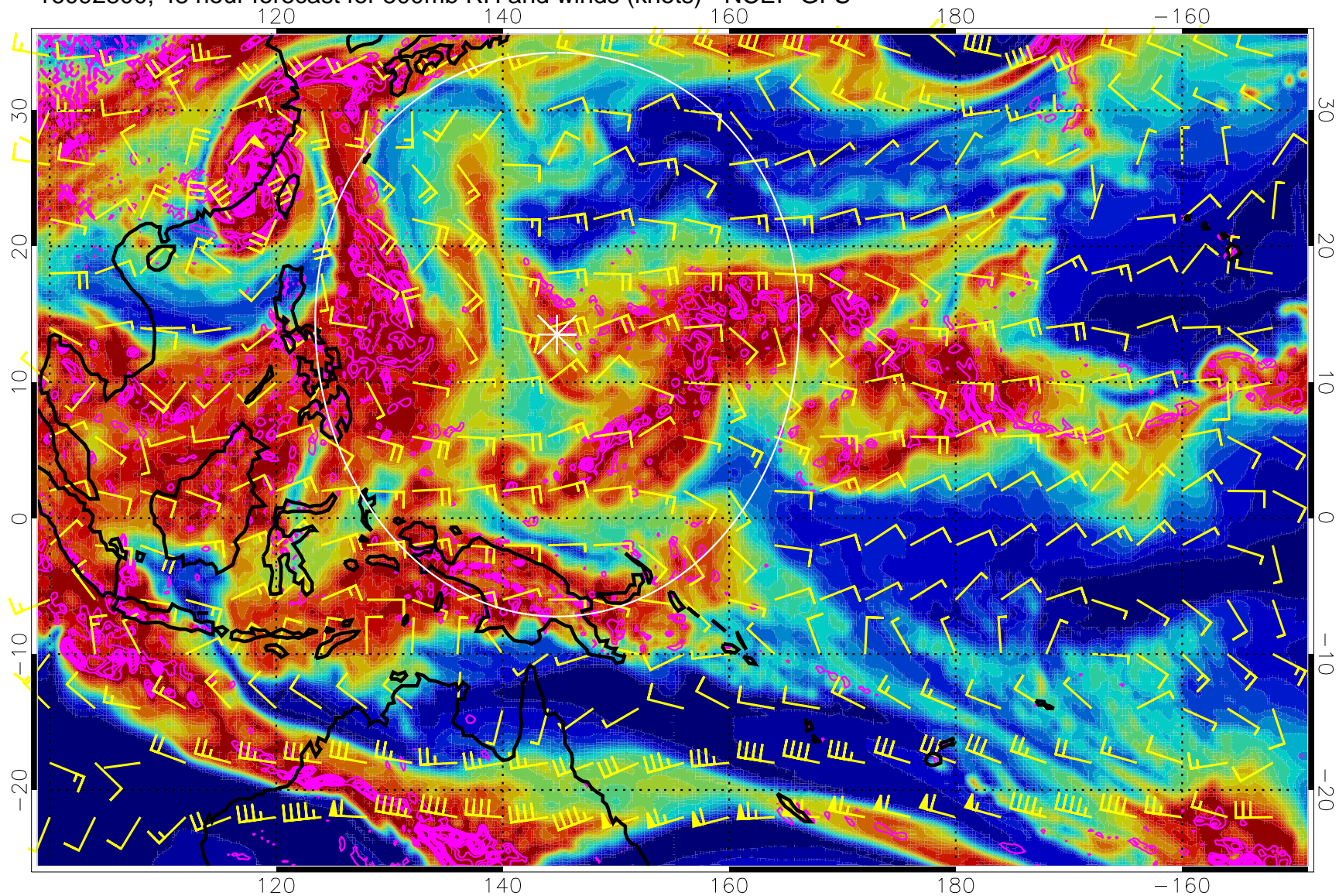


Negative Omegas less than  $-0.3$ , contours of  $0.3$  Pa/s

Range ring of 2304 km



16092800, 48 hour forecast for 500mb RH and winds (knots) - NCEP GFS

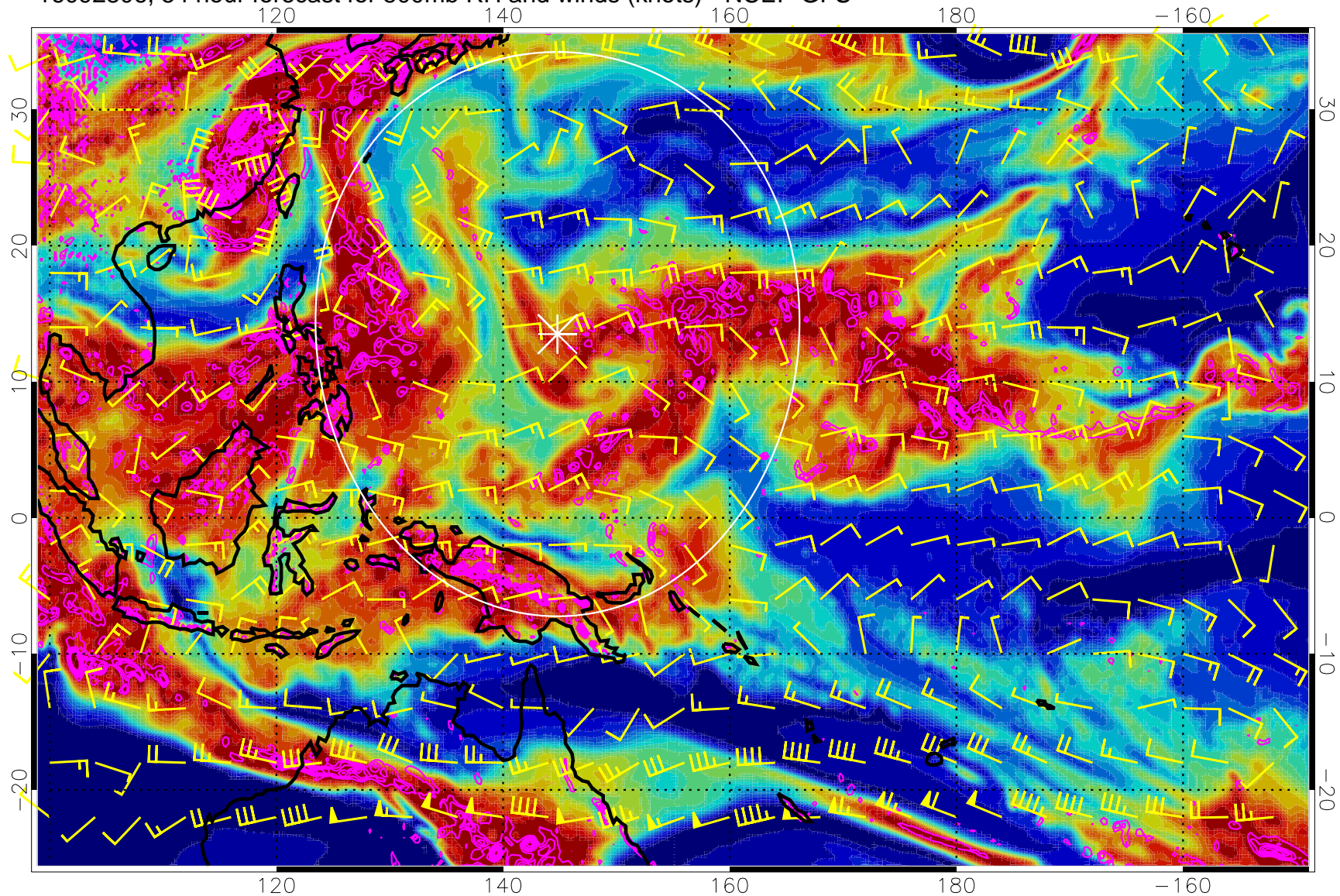


Negative Omegas less than  $-0.3$ , contours of  $0.3$  Pa/s

Range ring of 2304 km



16092806, 54 hour forecast for 500mb RH and winds (knots) - NCEP GFS



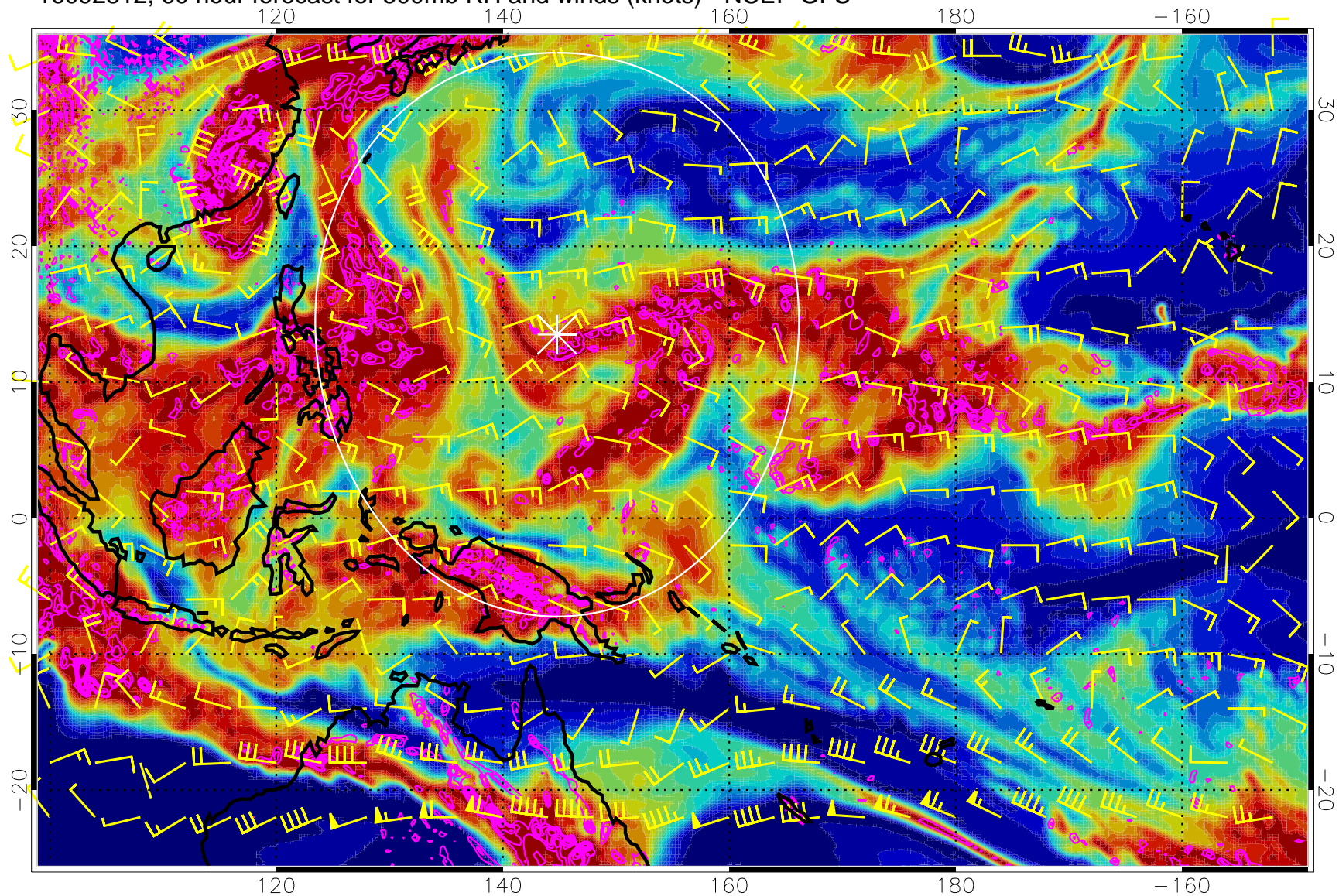
0 20 40 60 80 100  
RH, %

Negative Omegas less than  $-0.3$ , contours of  $0.3$  Pa/s

Range ring of 2304 km



16092812, 60 hour forecast for 500mb RH and winds (knots) - NCEP GFS

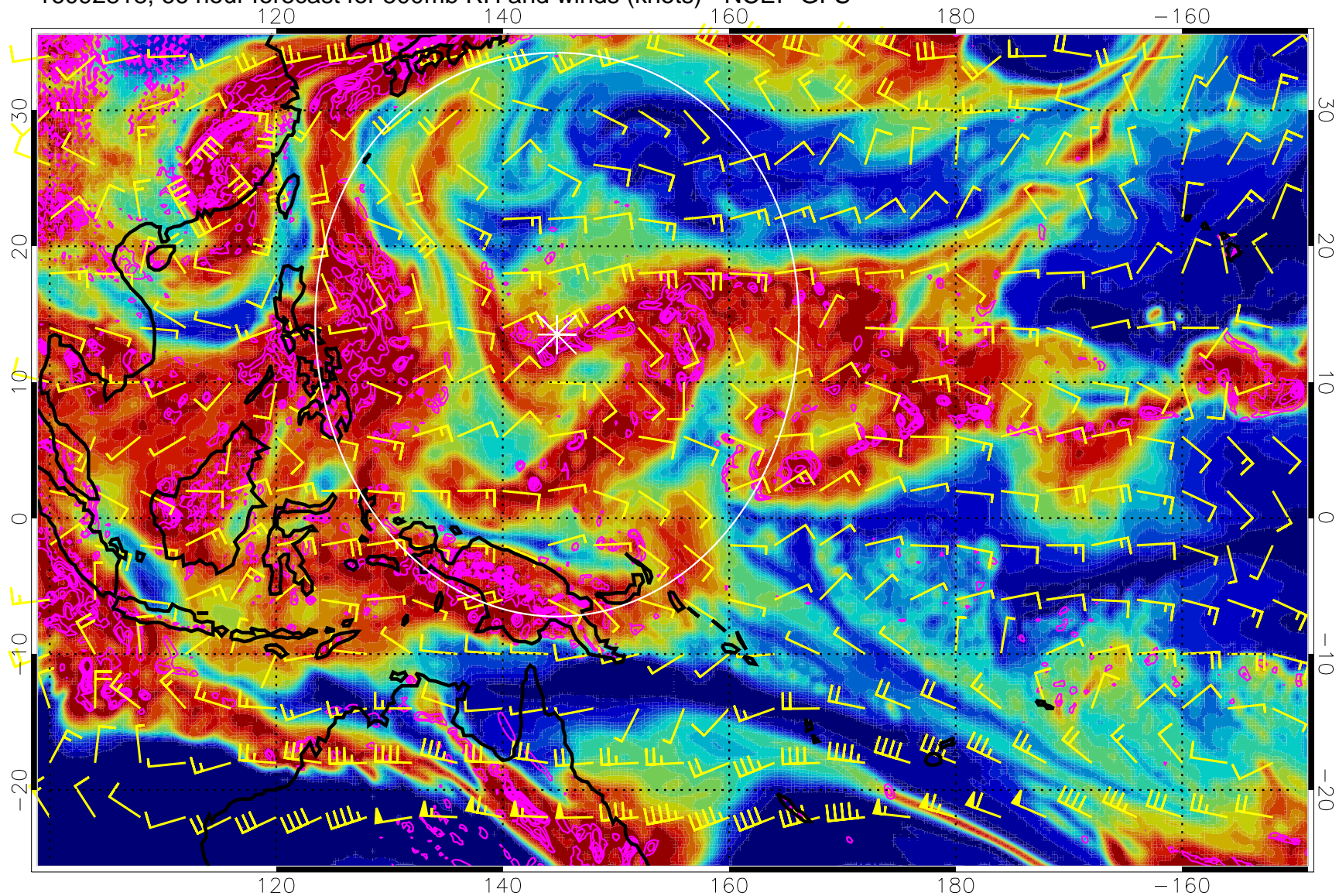


Negative Omegas less than  $-0.3$ , contours of  $0.3$  Pa/s

Range ring of 2304 km



16092818, 66 hour forecast for 500mb RH and winds (knots) - NCEP GFS

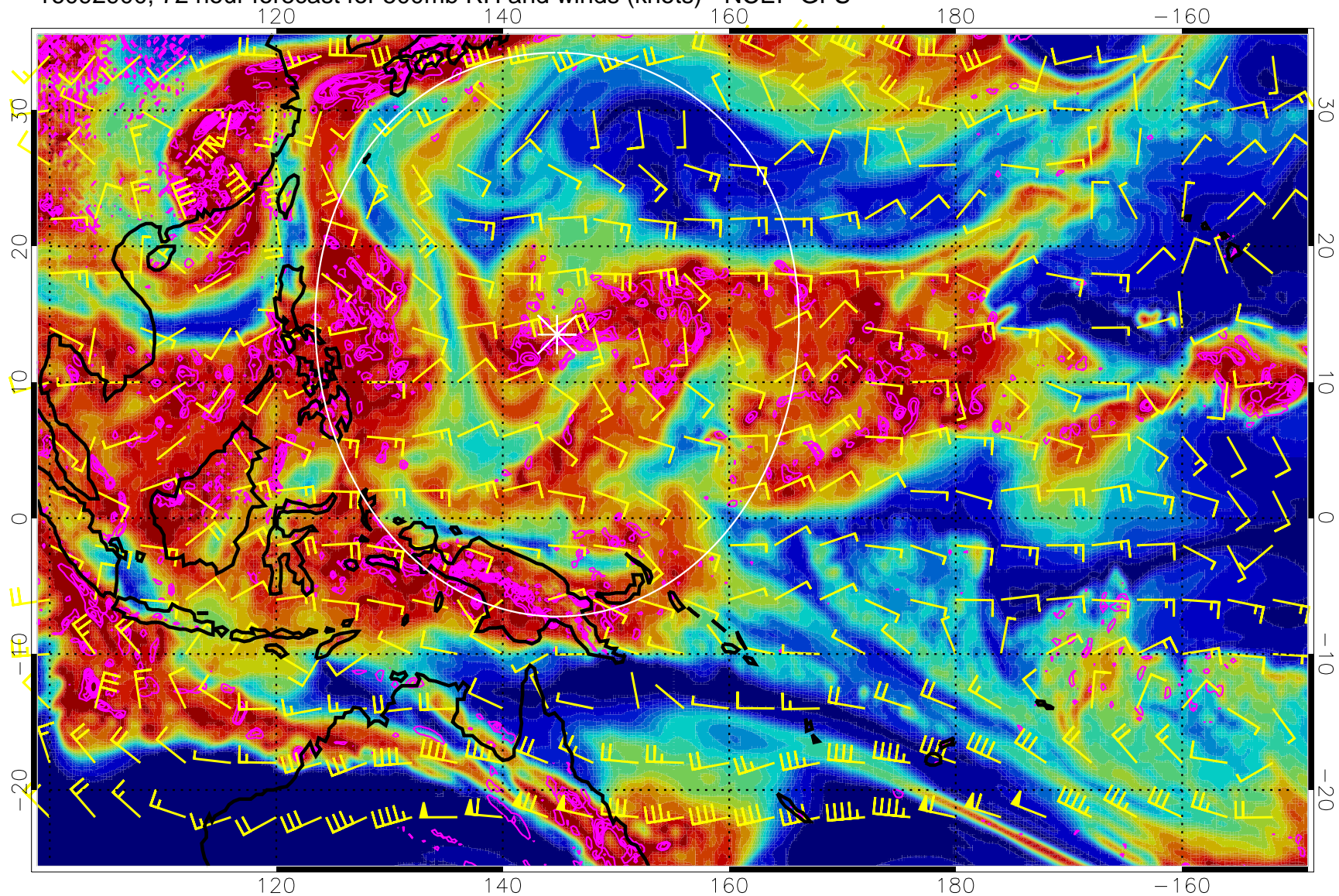


Negative Omegas less than  $-0.3$ , contours of  $0.3$  Pa/s

Range ring of 2304 km



16092900, 72 hour forecast for 500mb RH and winds (knots) - NCEP GFS

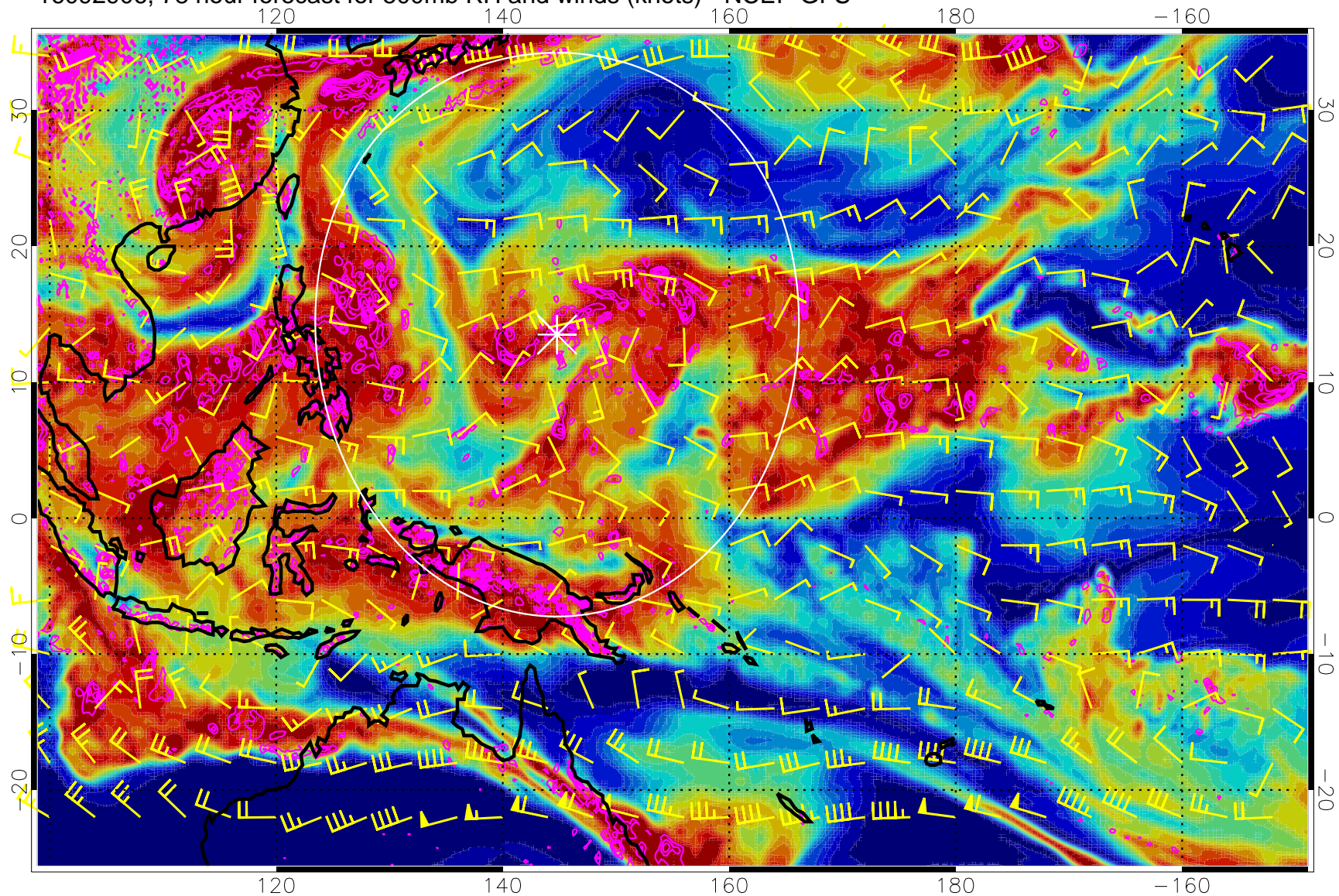


Negative Omegas less than  $-0.3$ , contours of  $0.3$  Pa/s

Range ring of 2304 km



16092906, 78 hour forecast for 500mb RH and winds (knots) - NCEP GFS

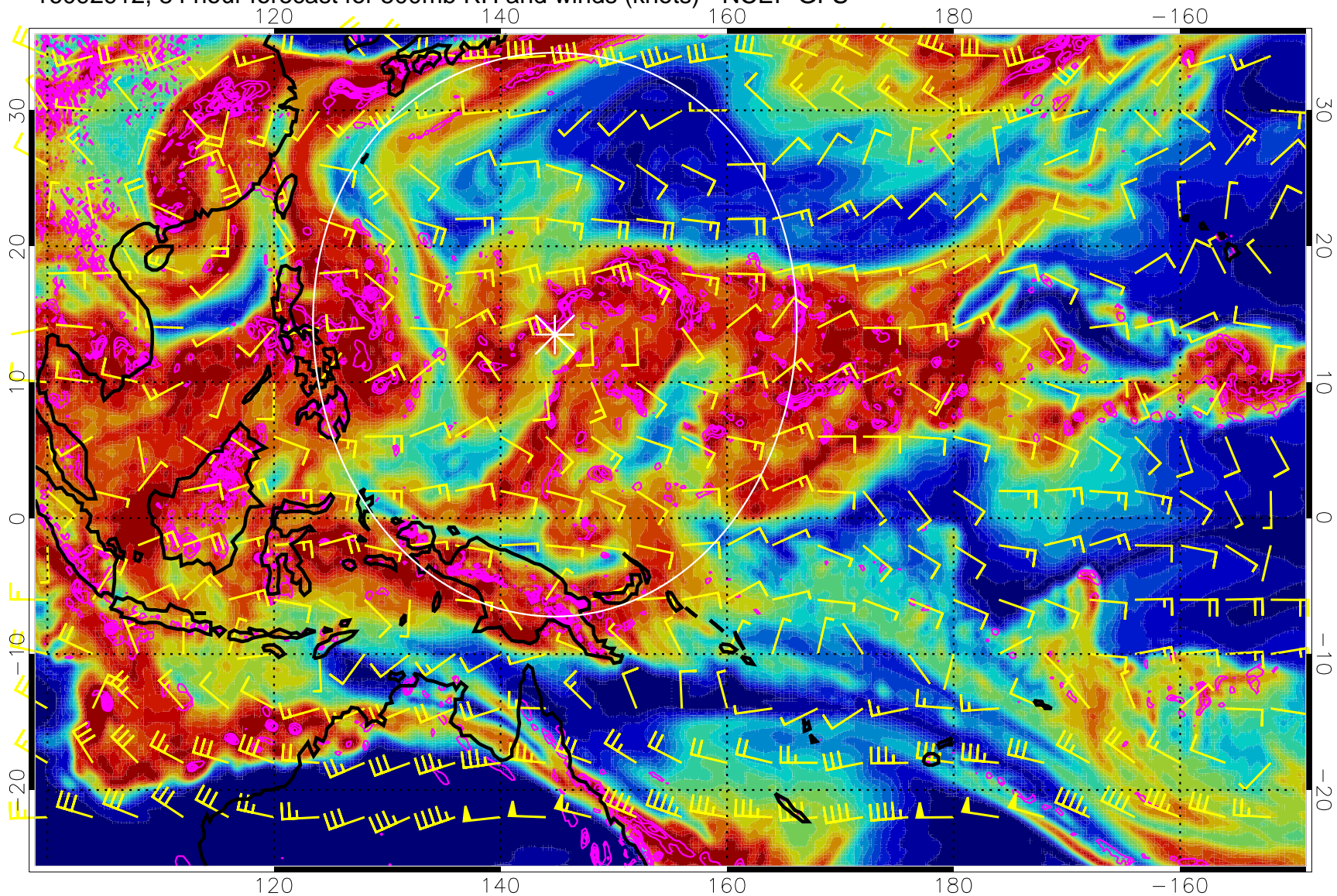


Negative Omegas less than  $-0.3$ , contours of  $0.3$  Pa/s

Range ring of 2304 km



16092912, 84 hour forecast for 500mb RH and winds (knots) - NCEP GFS

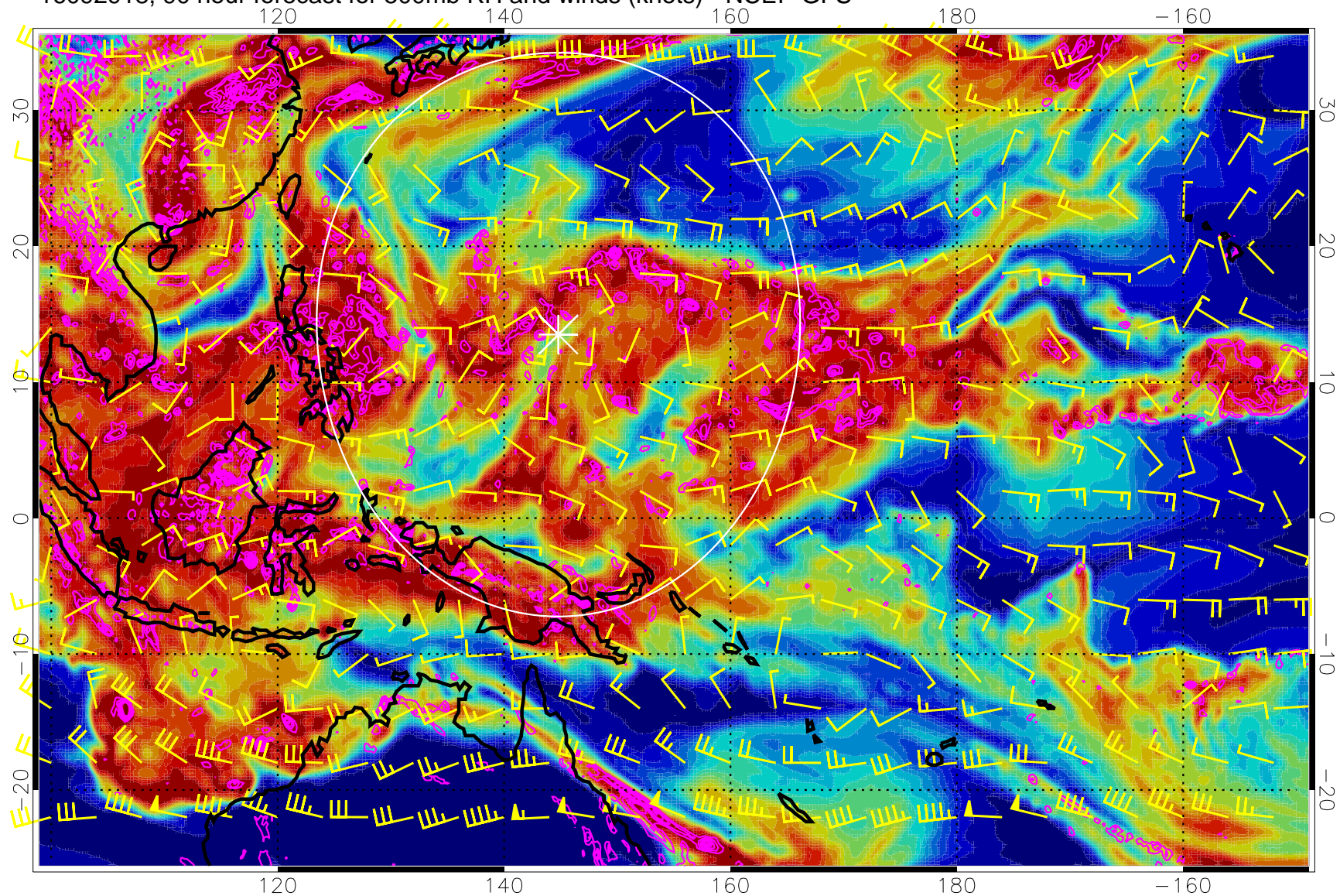


Negative Omegas less than  $-0.3$ , contours of  $0.3$  Pa/s

Range ring of 2304 km



16092918, 90 hour forecast for 500mb RH and winds (knots) - NCEP GFS

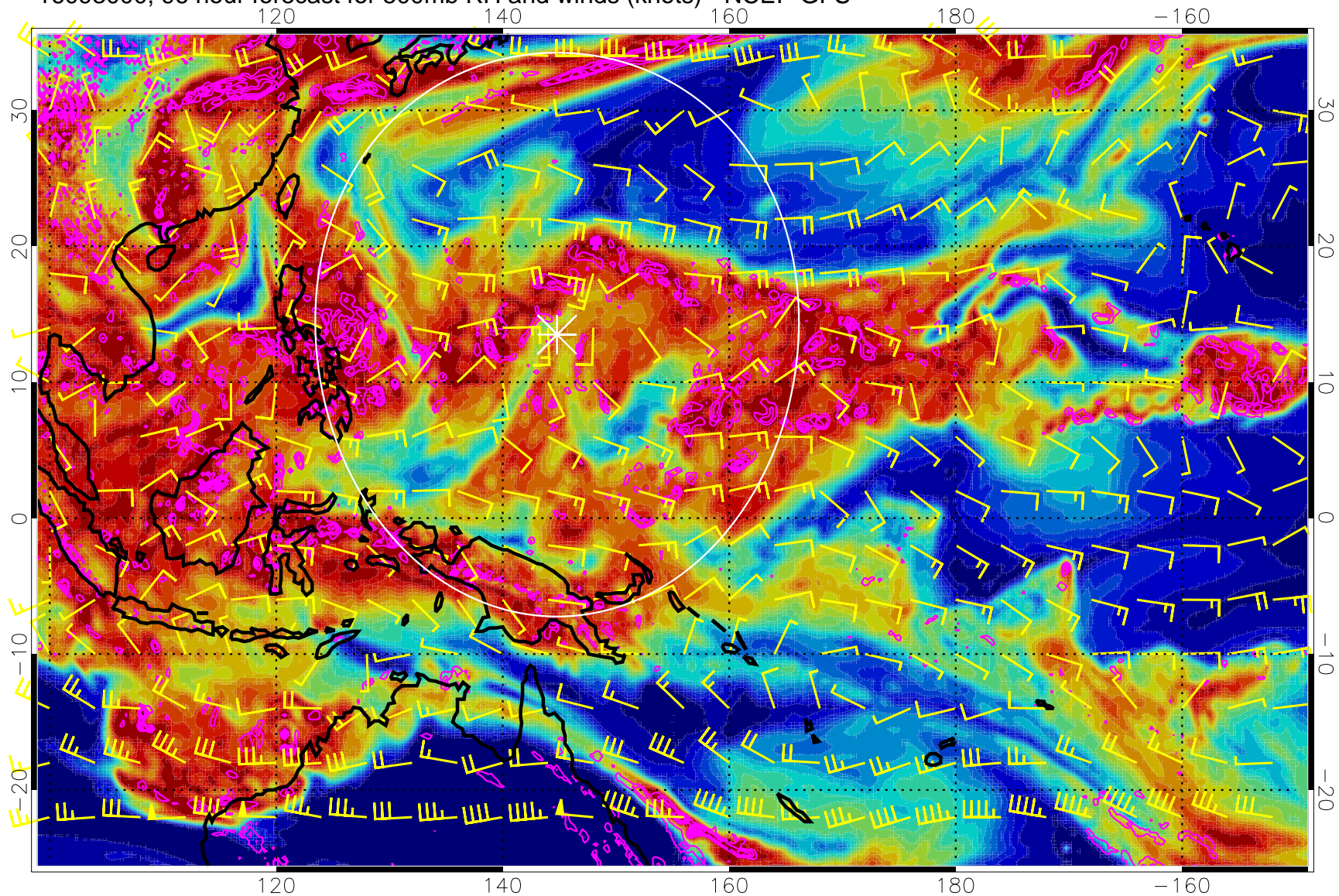


Negative Omegas less than  $-0.3$ , contours of  $0.3$  Pa/s

Range ring of 2304 km



16093000, 96 hour forecast for 500mb RH and winds (knots) - NCEP GFS

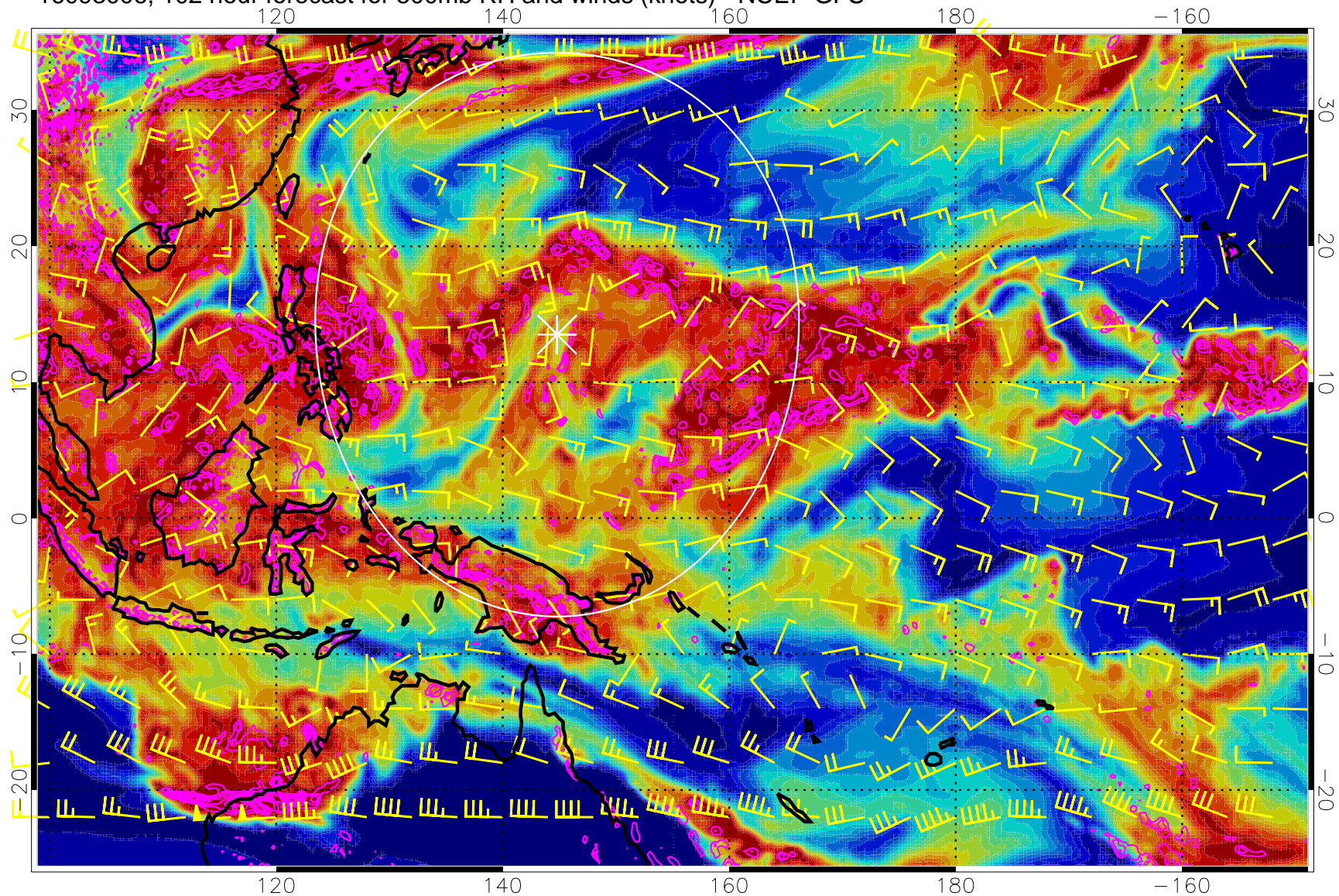


Negative Omegas less than  $-0.3$ , contours of  $0.3$  Pa/s

Range ring of 2304 km



16093006, 102 hour forecast for 500mb RH and winds (knots) - NCEP GFS

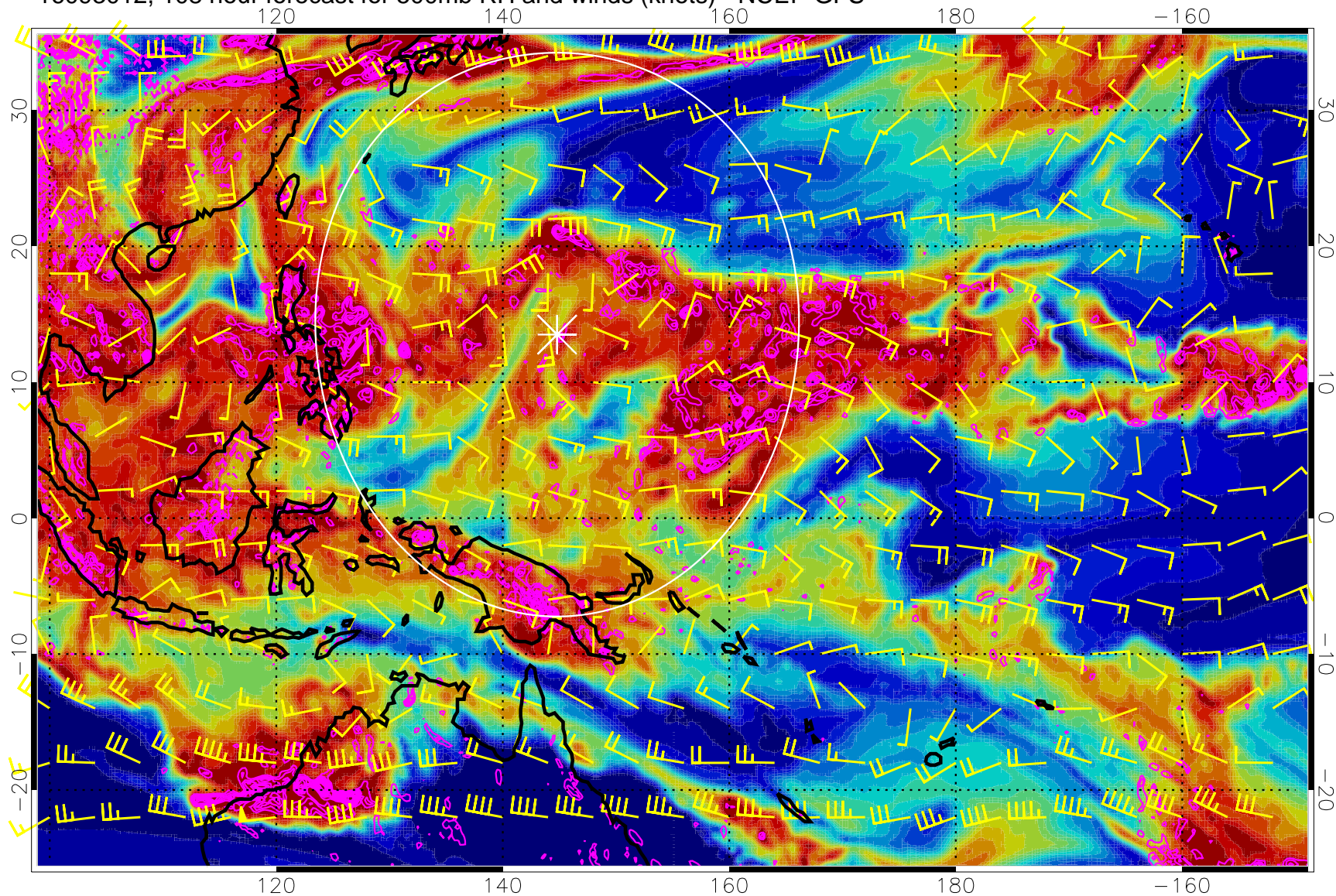


Negative Omegas less than  $-.3$ , contours of  $.3$  Pa/s

Range ring of 2304 km



16093012, 108 hour forecast for 500mb RH and winds (knots) - NCEP GFS

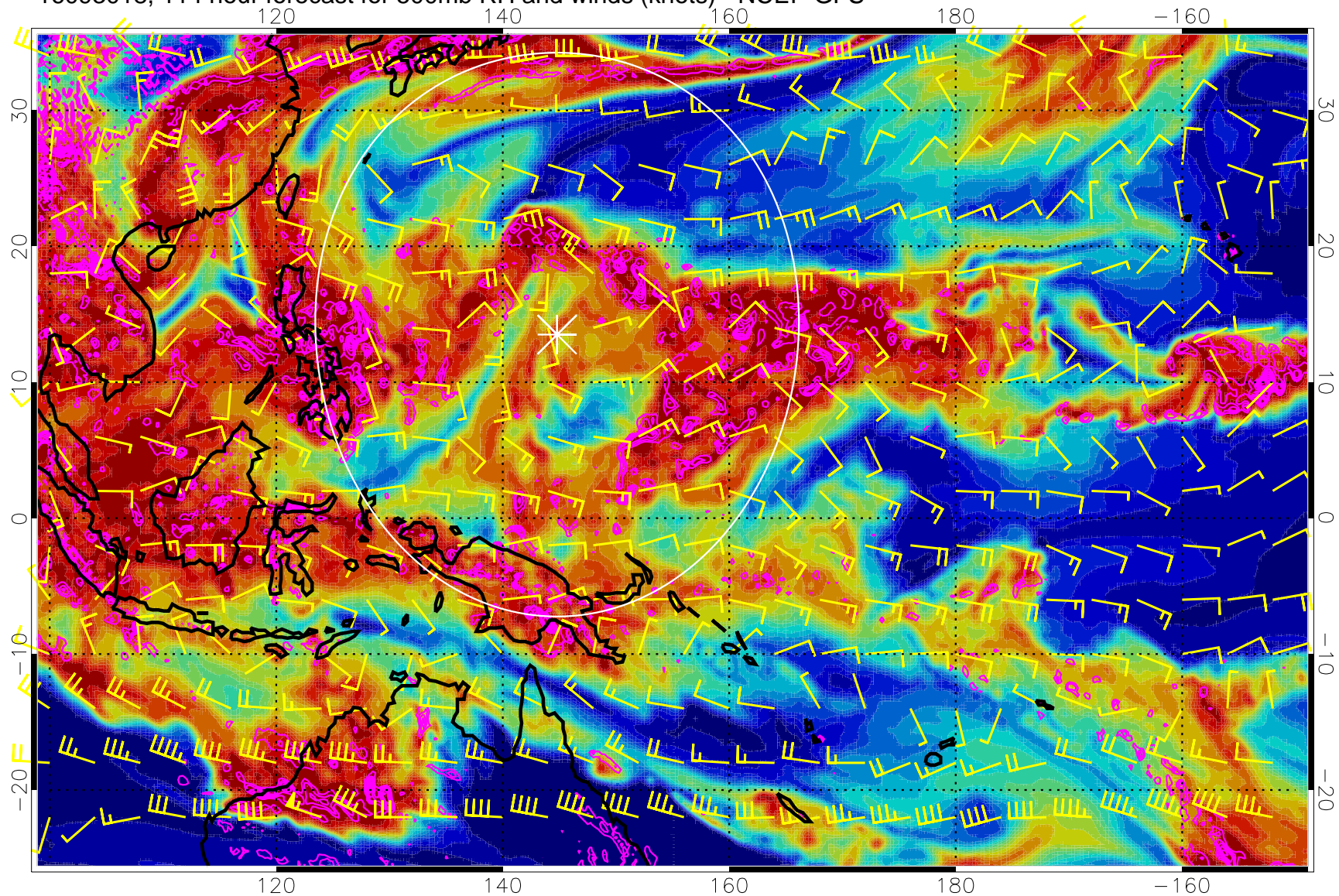


Negative Omegas less than  $-0.3$ , contours of  $0.3$  Pa/s

Range ring of 2304 km



16093018, 114 hour forecast for 500mb RH and winds (knots) - NCEP GFS

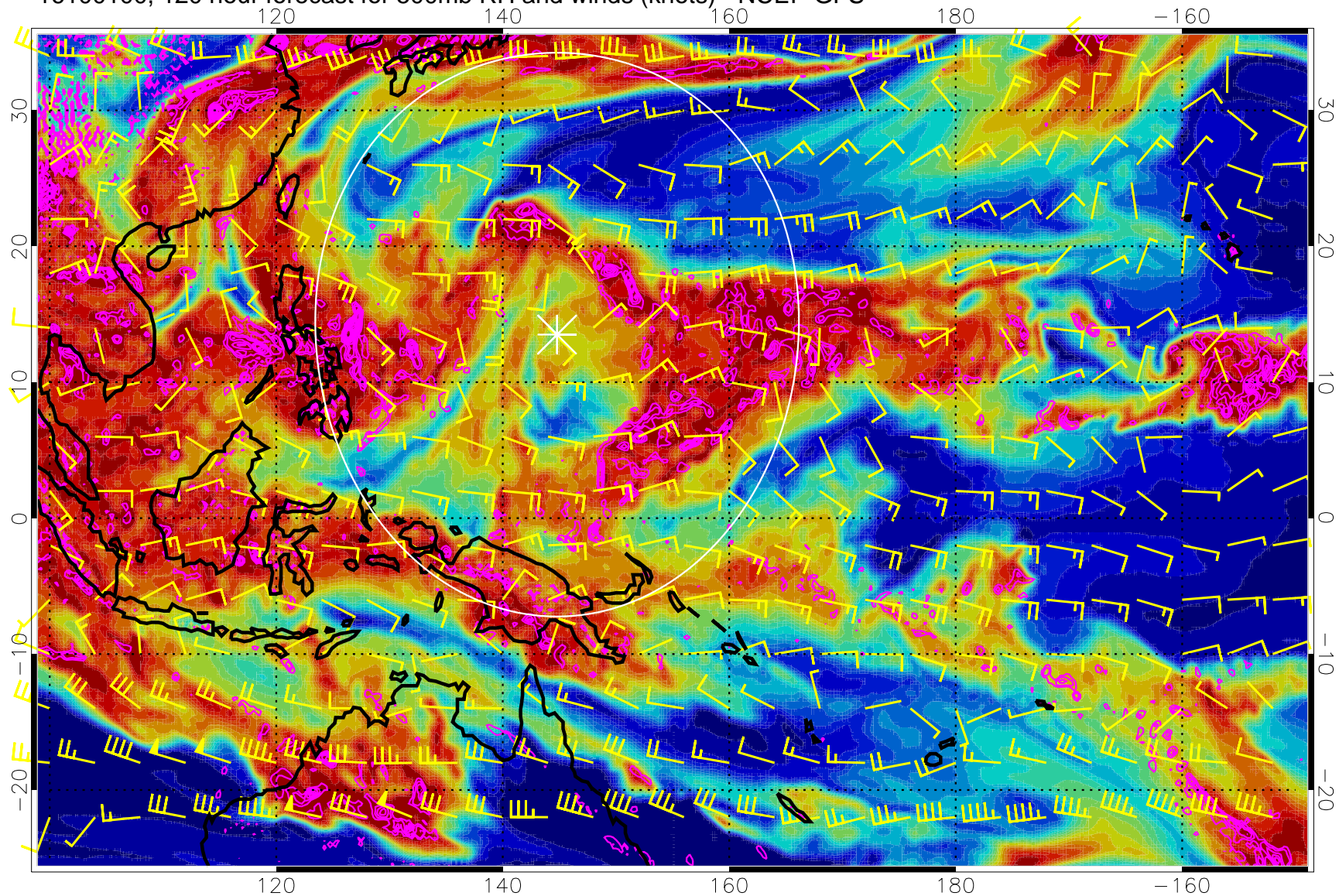


Negative Omegas less than  $-0.3$ , contours of  $0.3$  Pa/s

Range ring of 2304 km



16100100, 120 hour forecast for 500mb RH and winds (knots) - NCEP GFS



Negative Omegas less than  $-0.3$ , contours of  $0.3$  Pa/s

Range ring of 2304 km