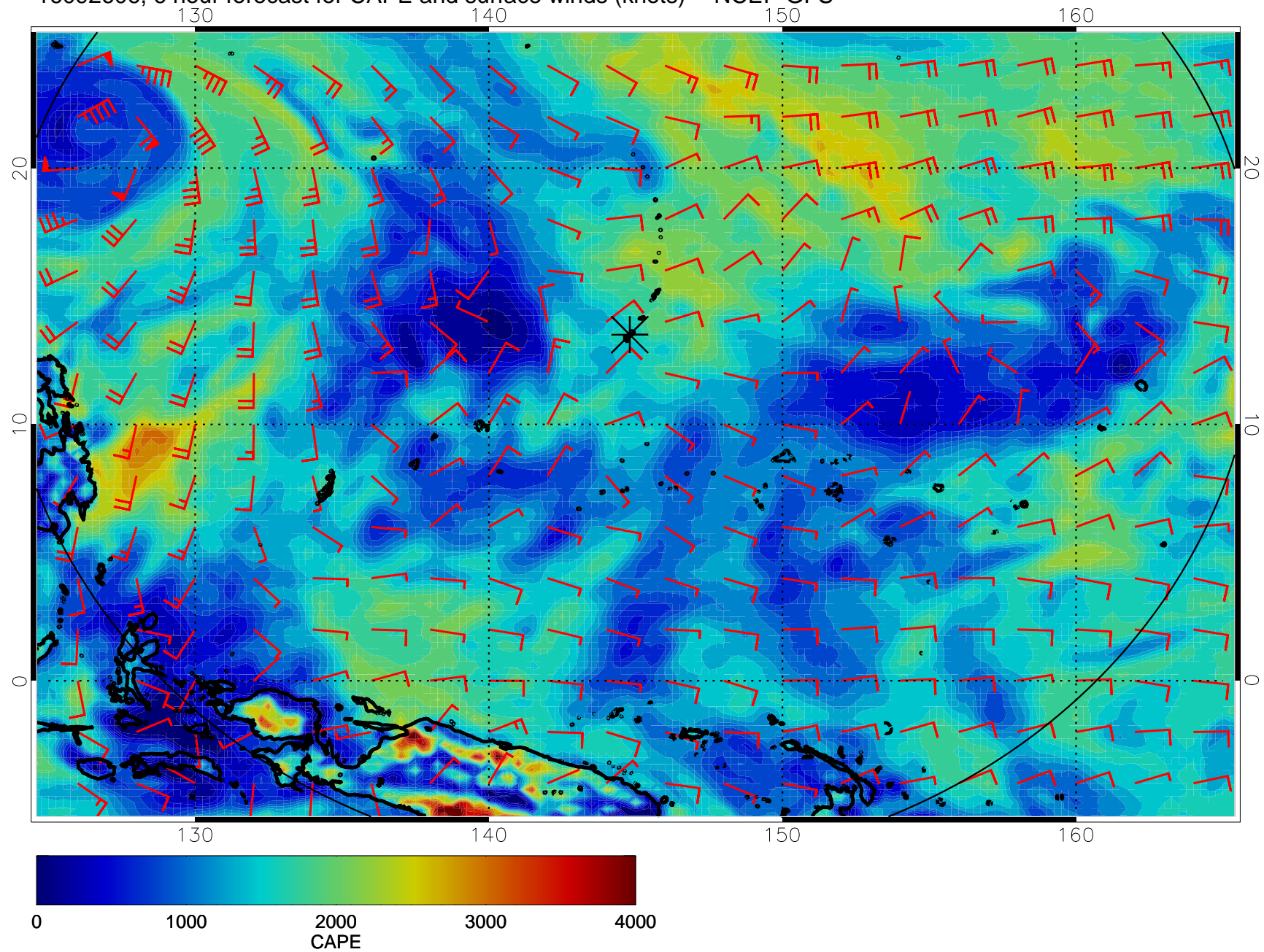
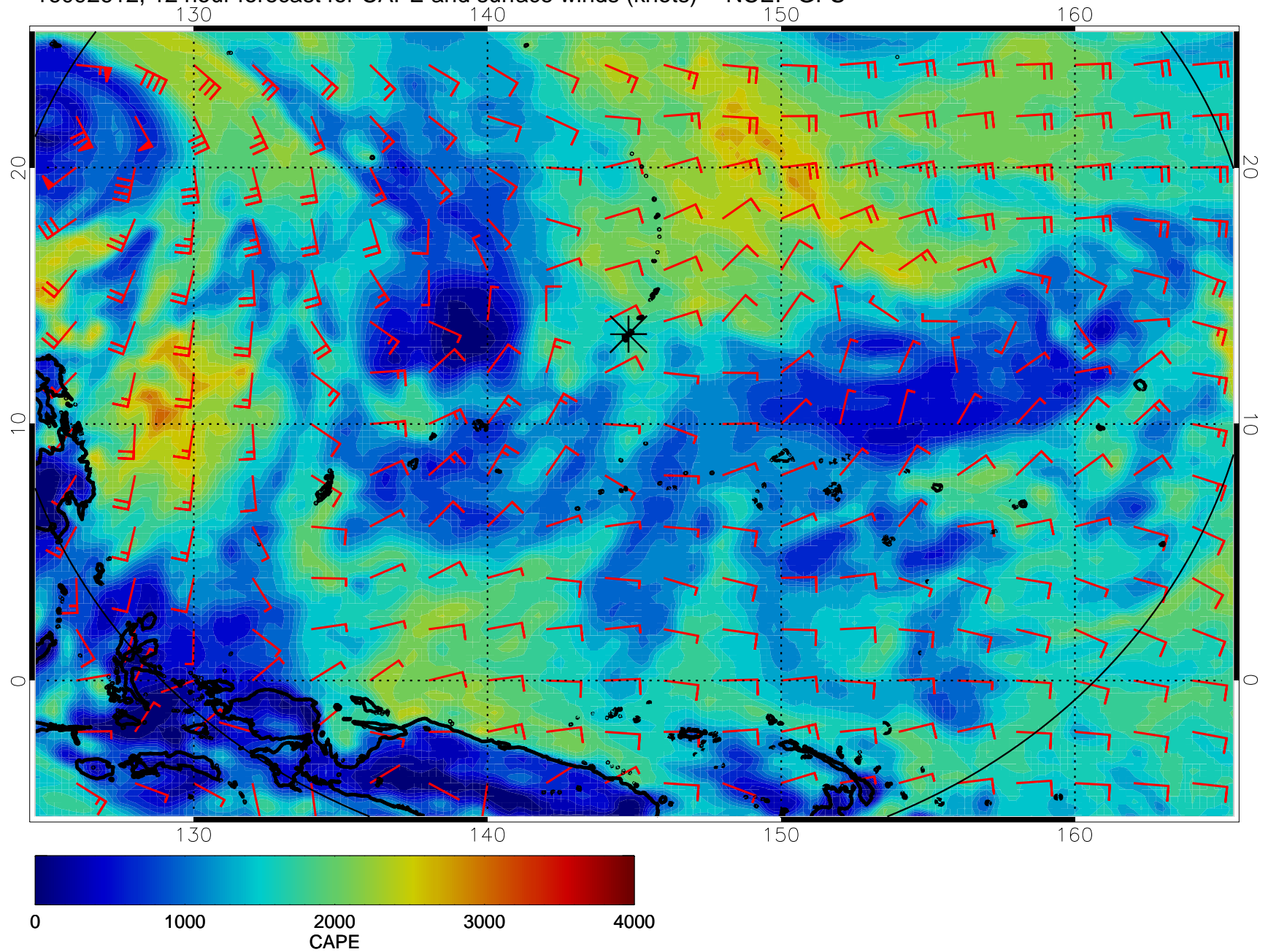


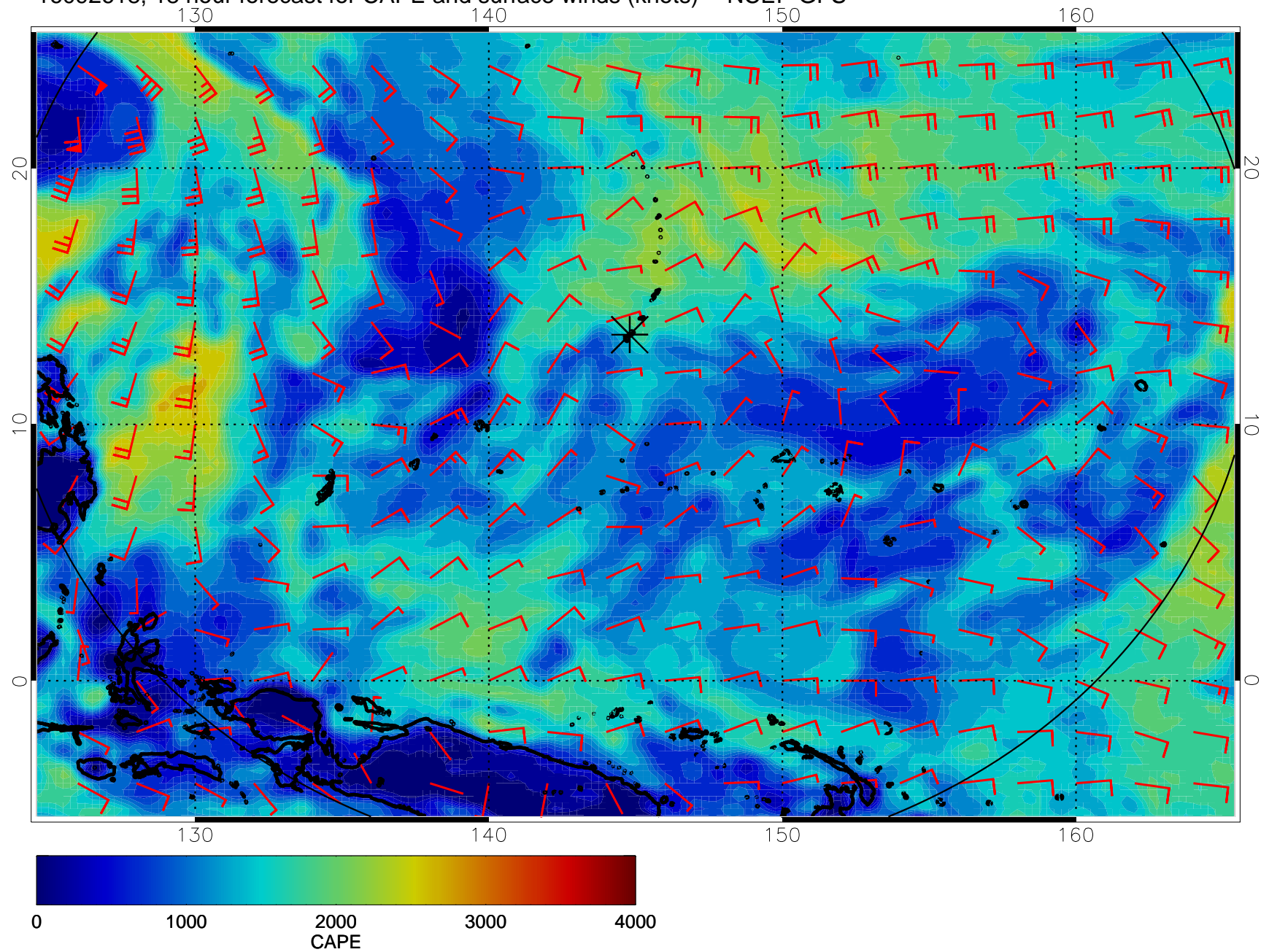
16092606, 6 hour forecast for CAPE and surface winds (knots) -- NCEP GFS



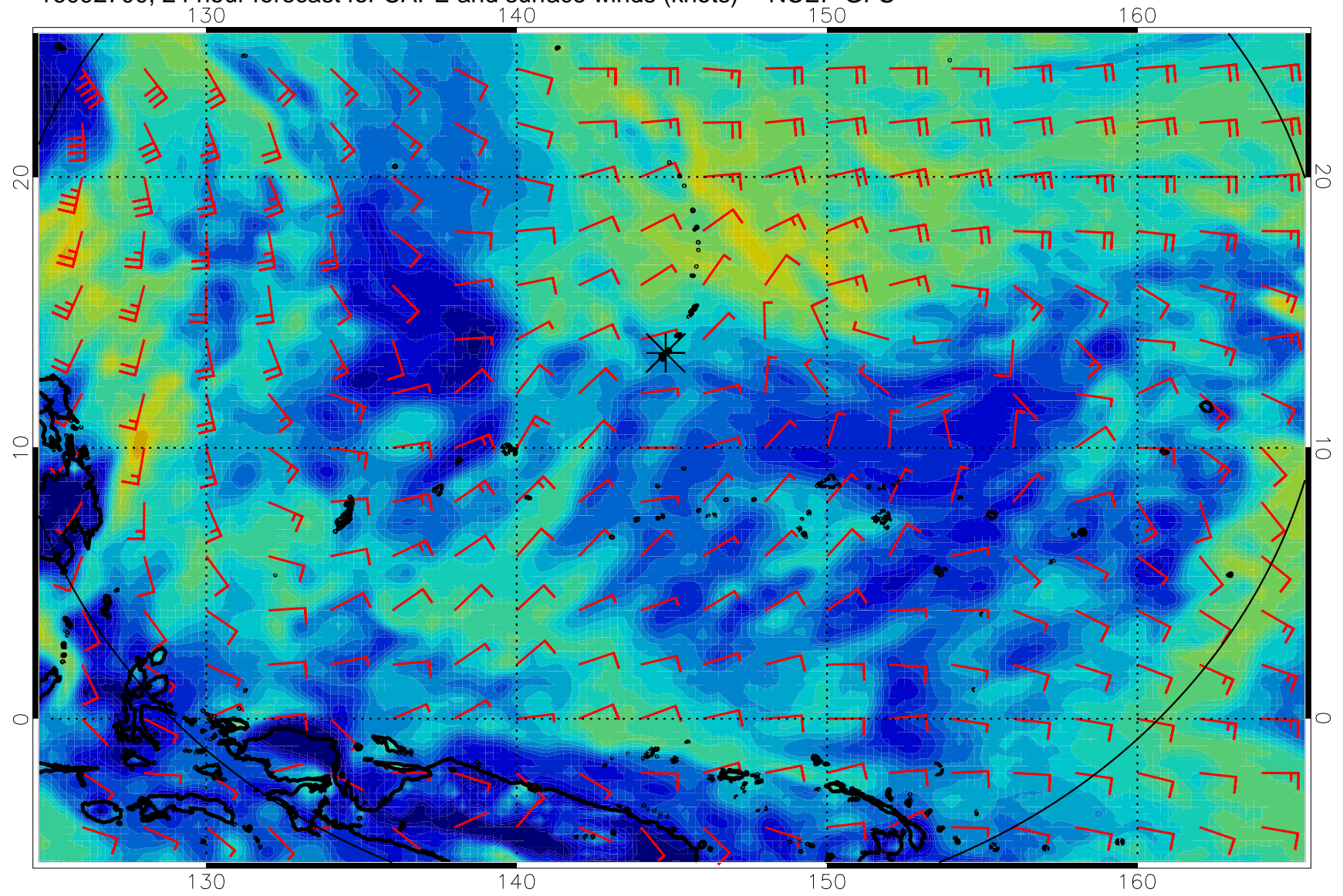
16092612, 12 hour forecast for CAPE and surface winds (knots) -- NCEP GFS



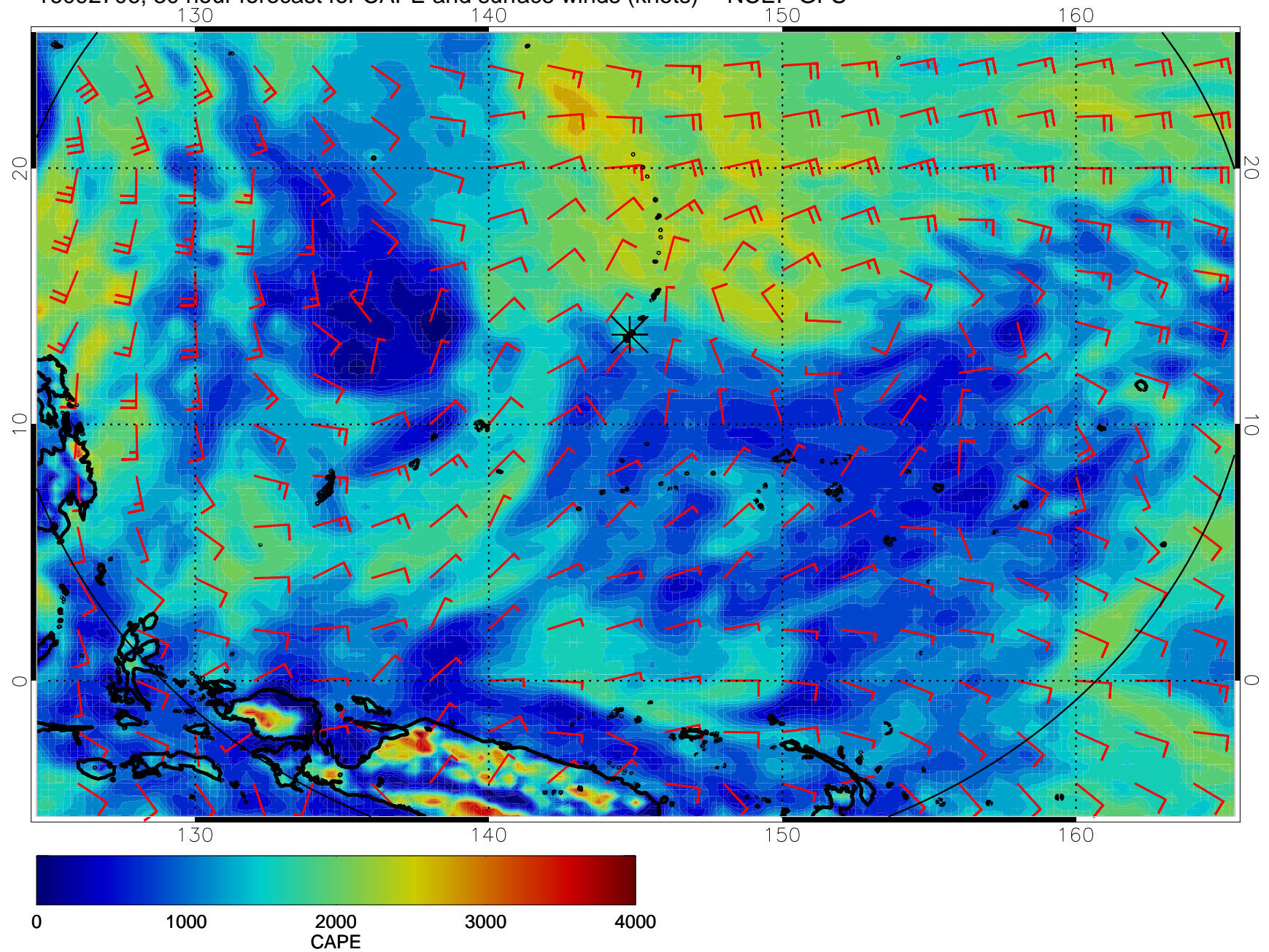
16092618, 18 hour forecast for CAPE and surface winds (knots) -- NCEP GFS



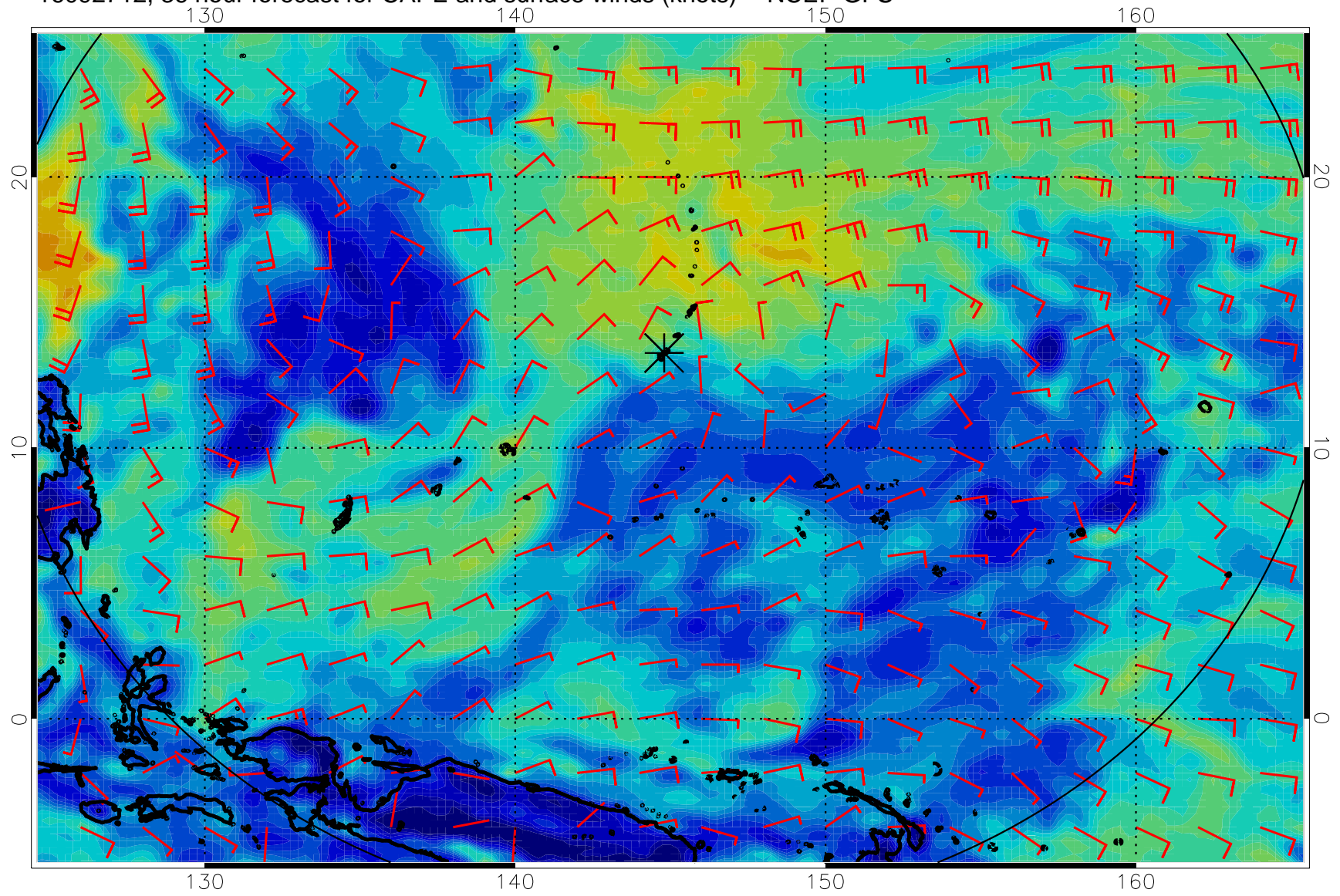
16092700, 24 hour forecast for CAPE and surface winds (knots) -- NCEP GFS



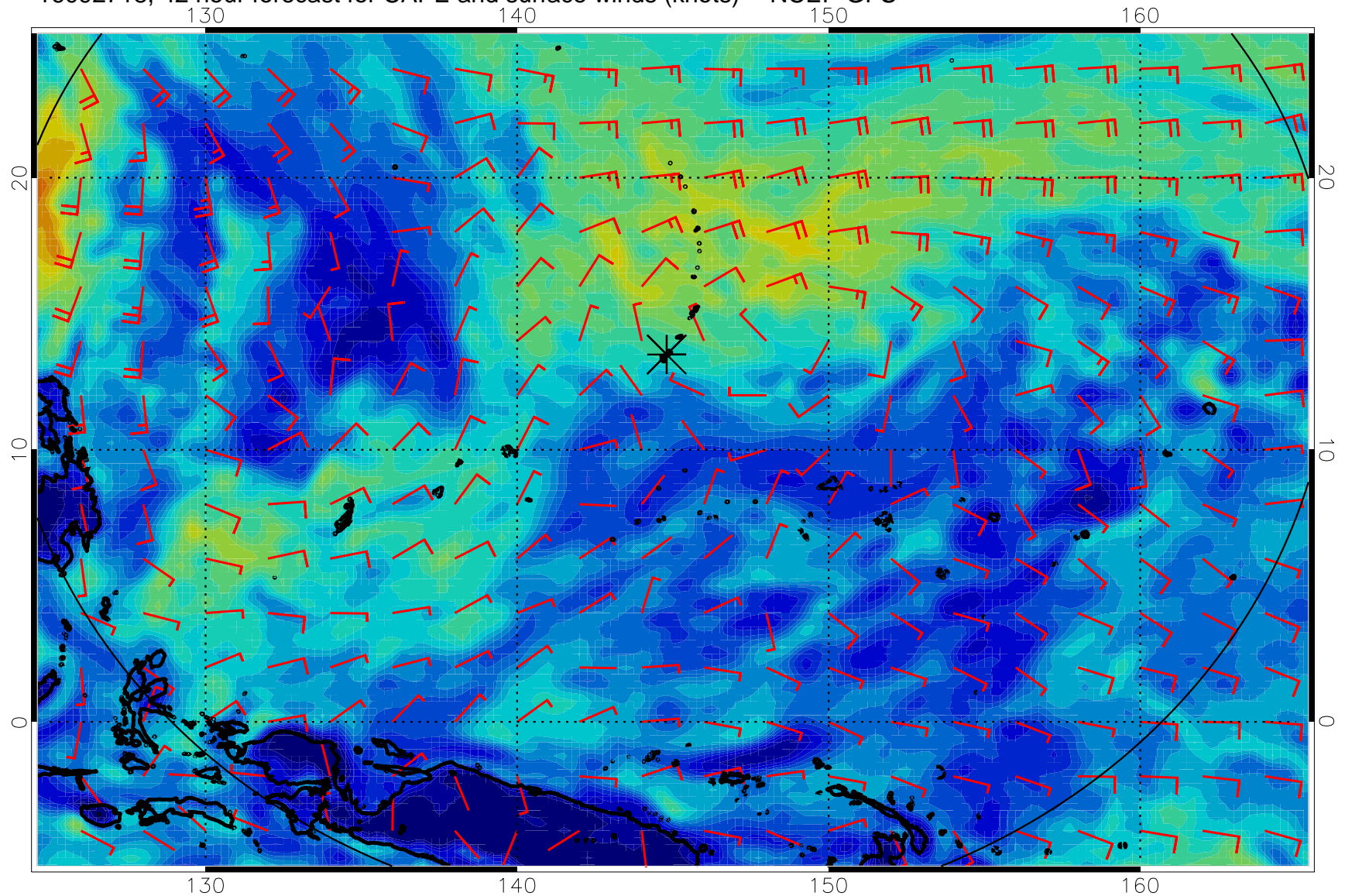
16092706, 30 hour forecast for CAPE and surface winds (knots) -- NCEP GFS



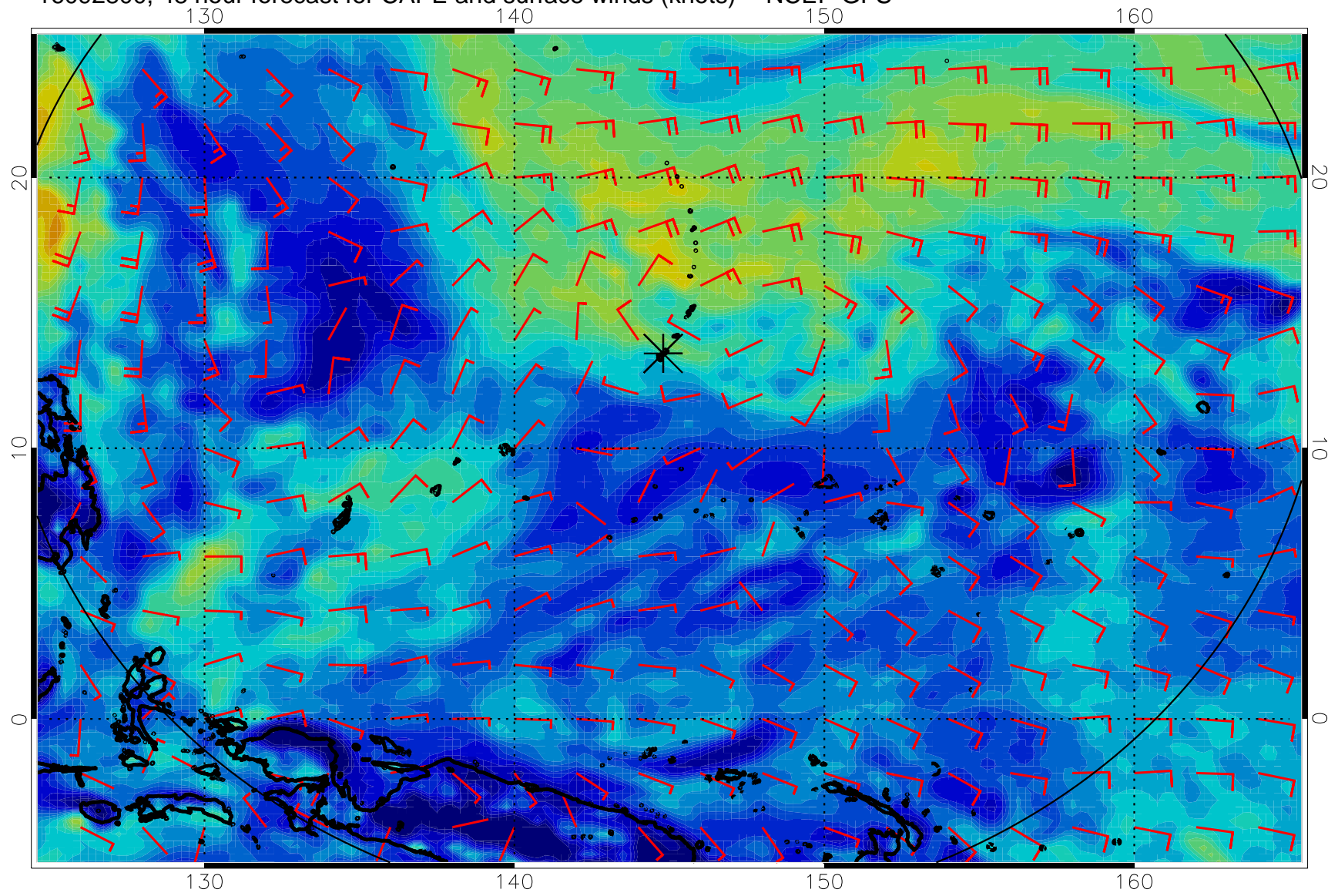
16092712, 36 hour forecast for CAPE and surface winds (knots) -- NCEP GFS



16092718, 42 hour forecast for CAPE and surface winds (knots) -- NCEP GFS

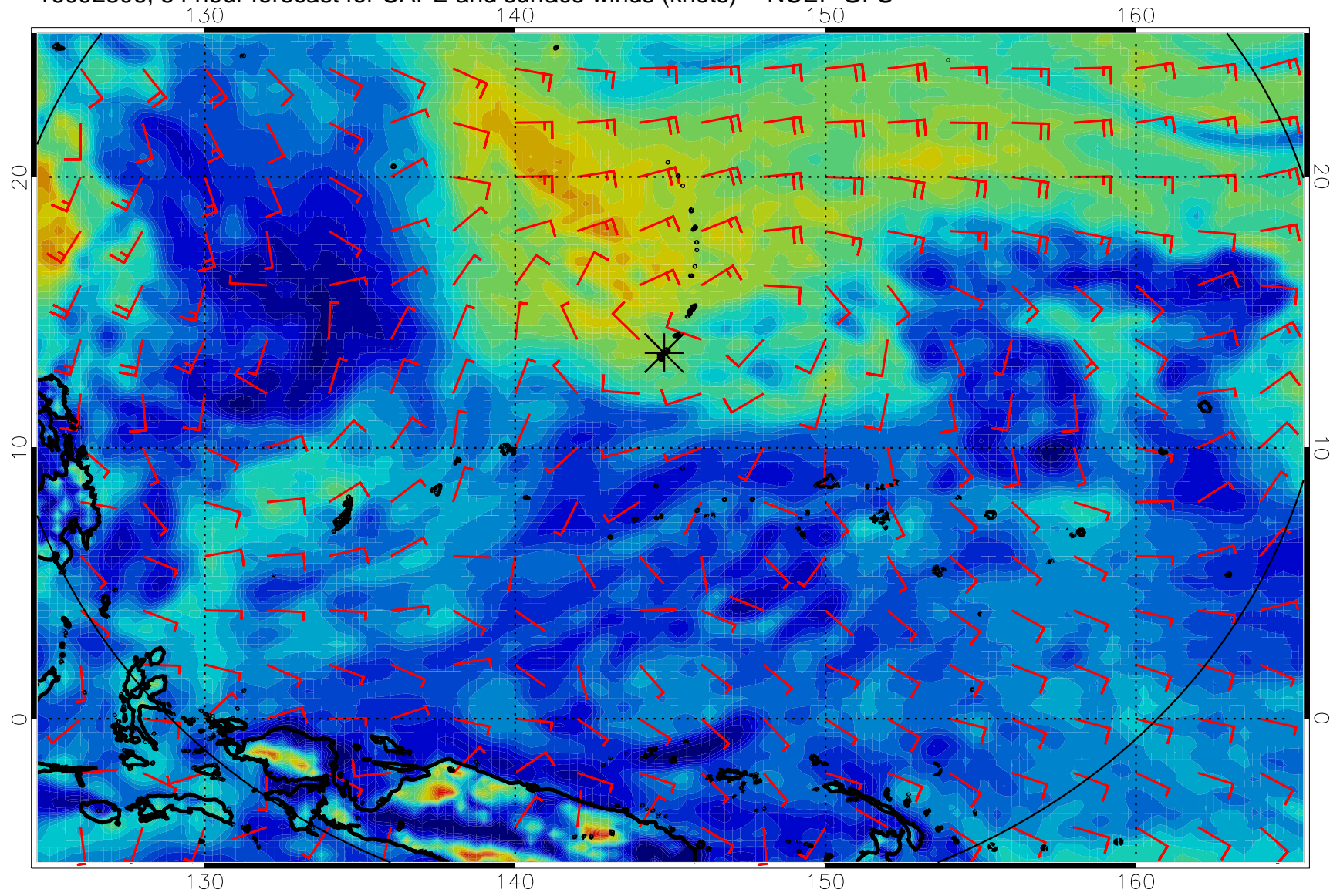


16092800, 48 hour forecast for CAPE and surface winds (knots) -- NCEP GFS

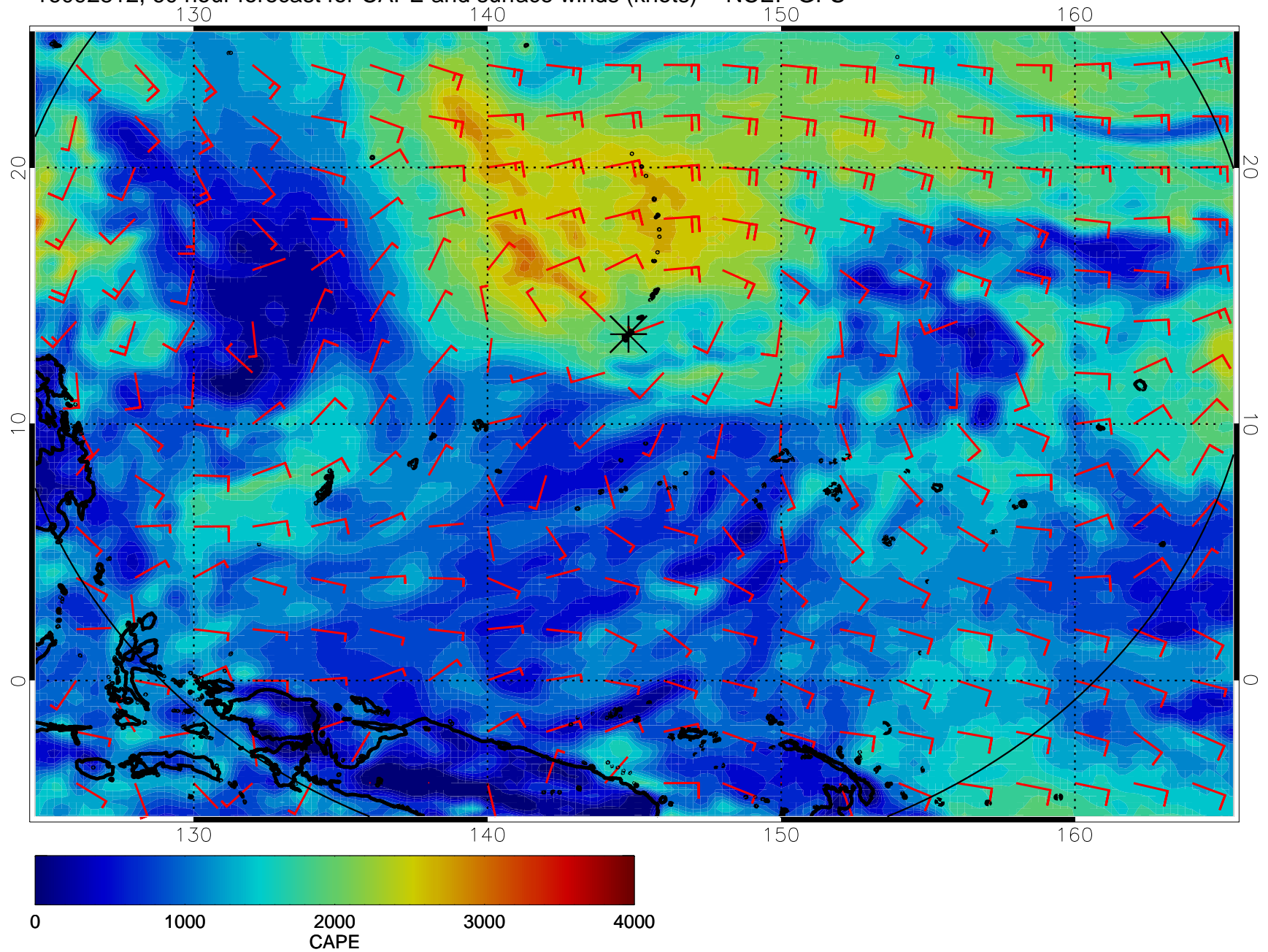




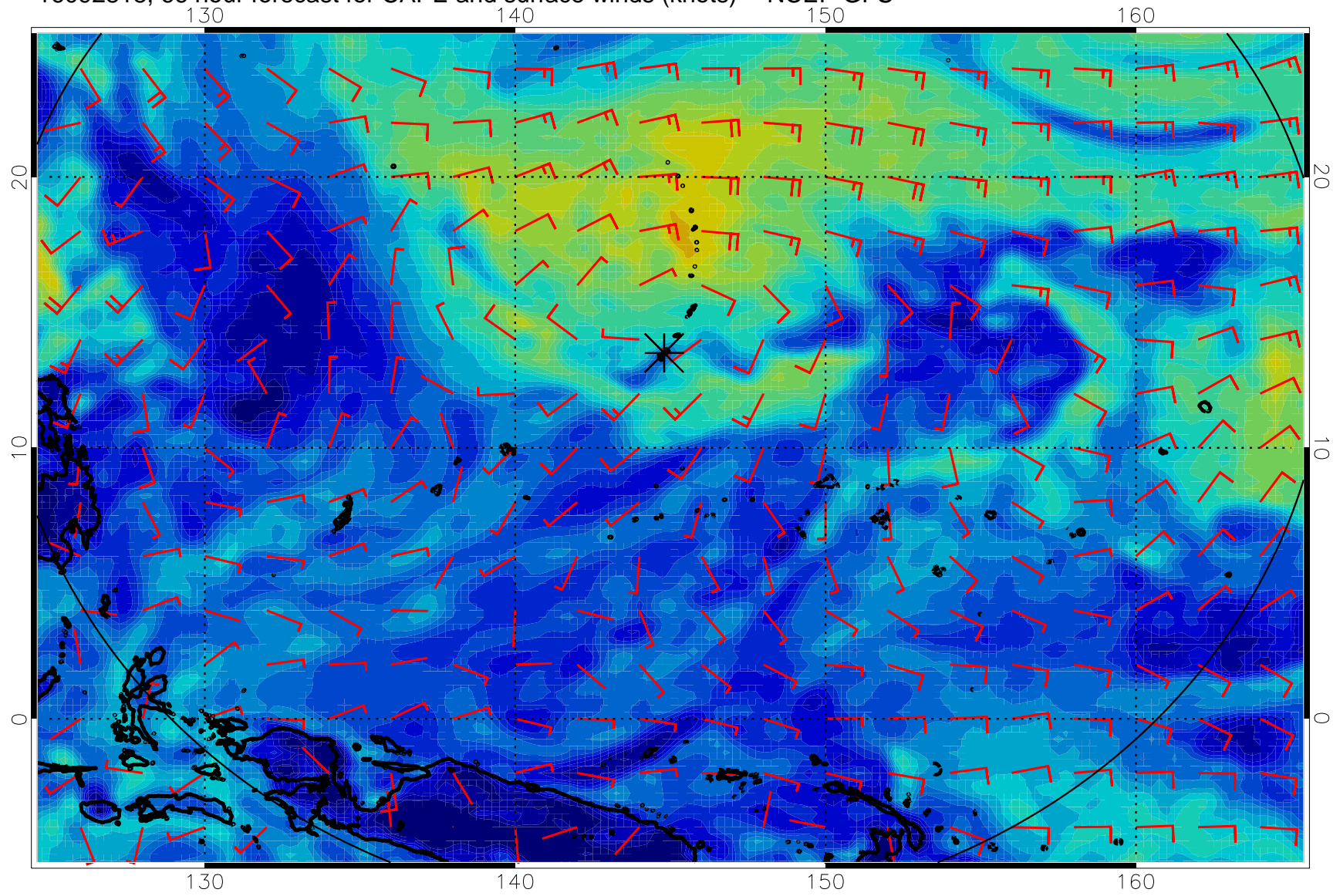
16092806, 54 hour forecast for CAPE and surface winds (knots) -- NCEP GFS



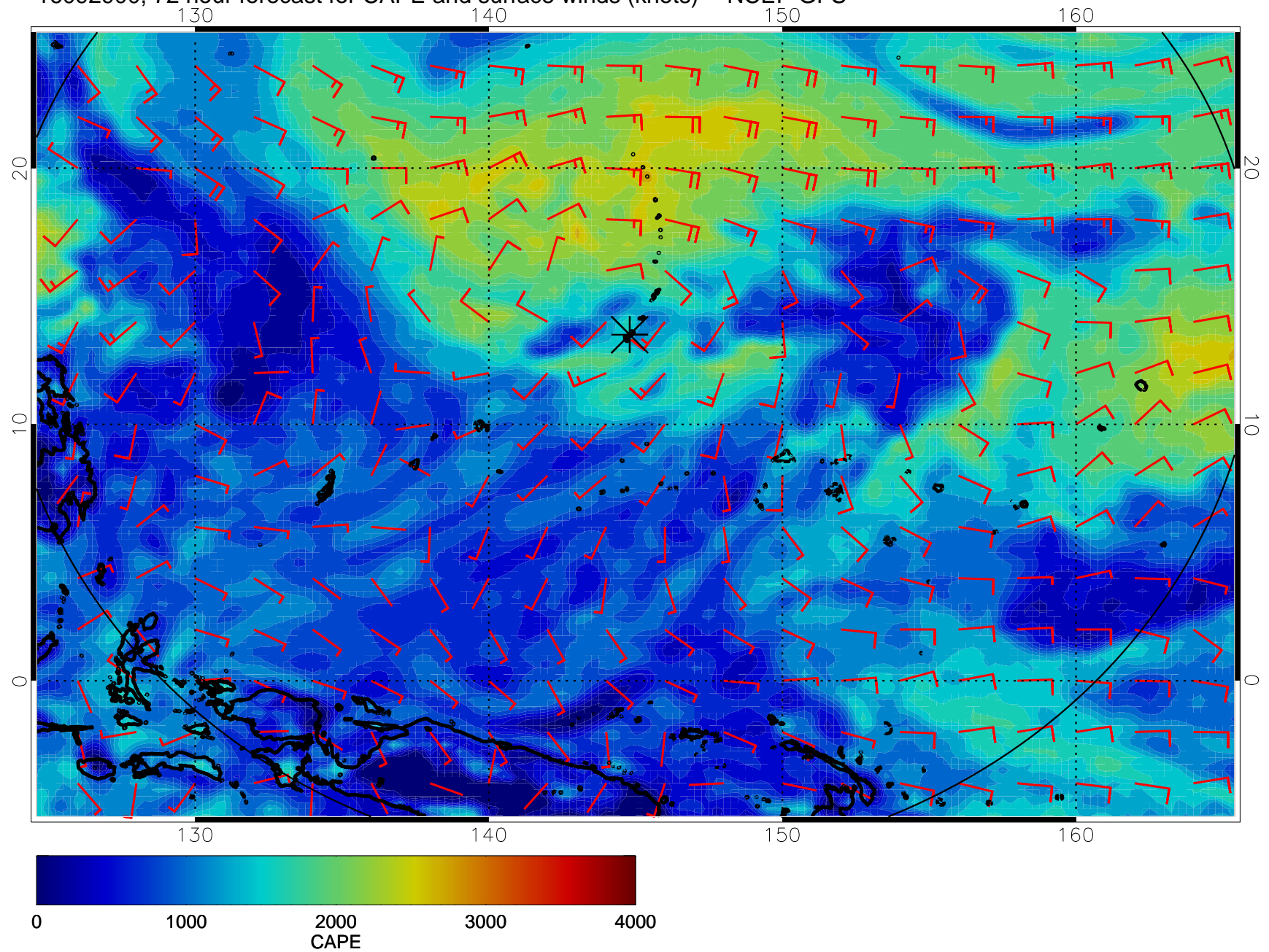
16092812, 60 hour forecast for CAPE and surface winds (knots) -- NCEP GFS



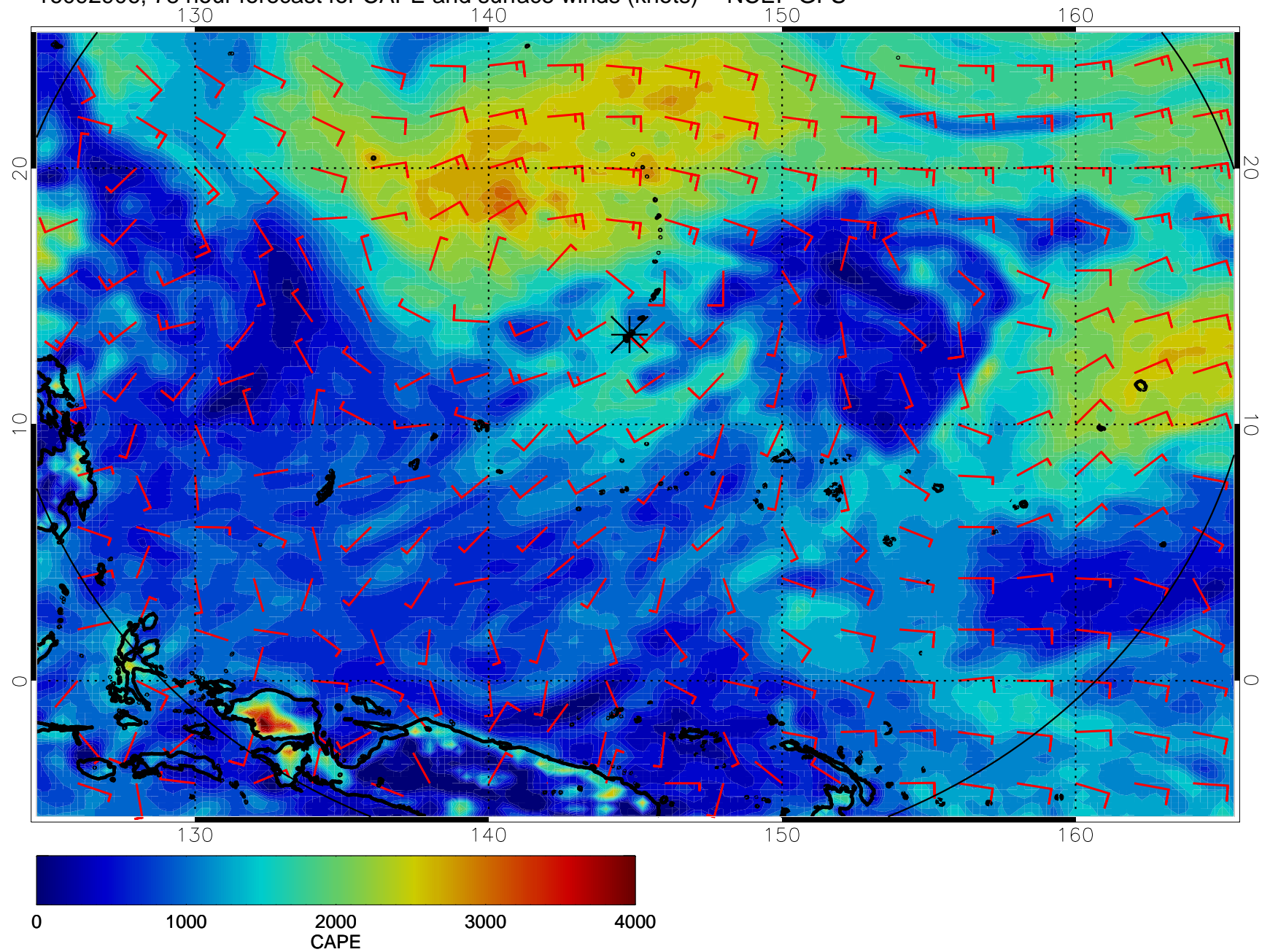
16092818, 66 hour forecast for CAPE and surface winds (knots) -- NCEP GFS



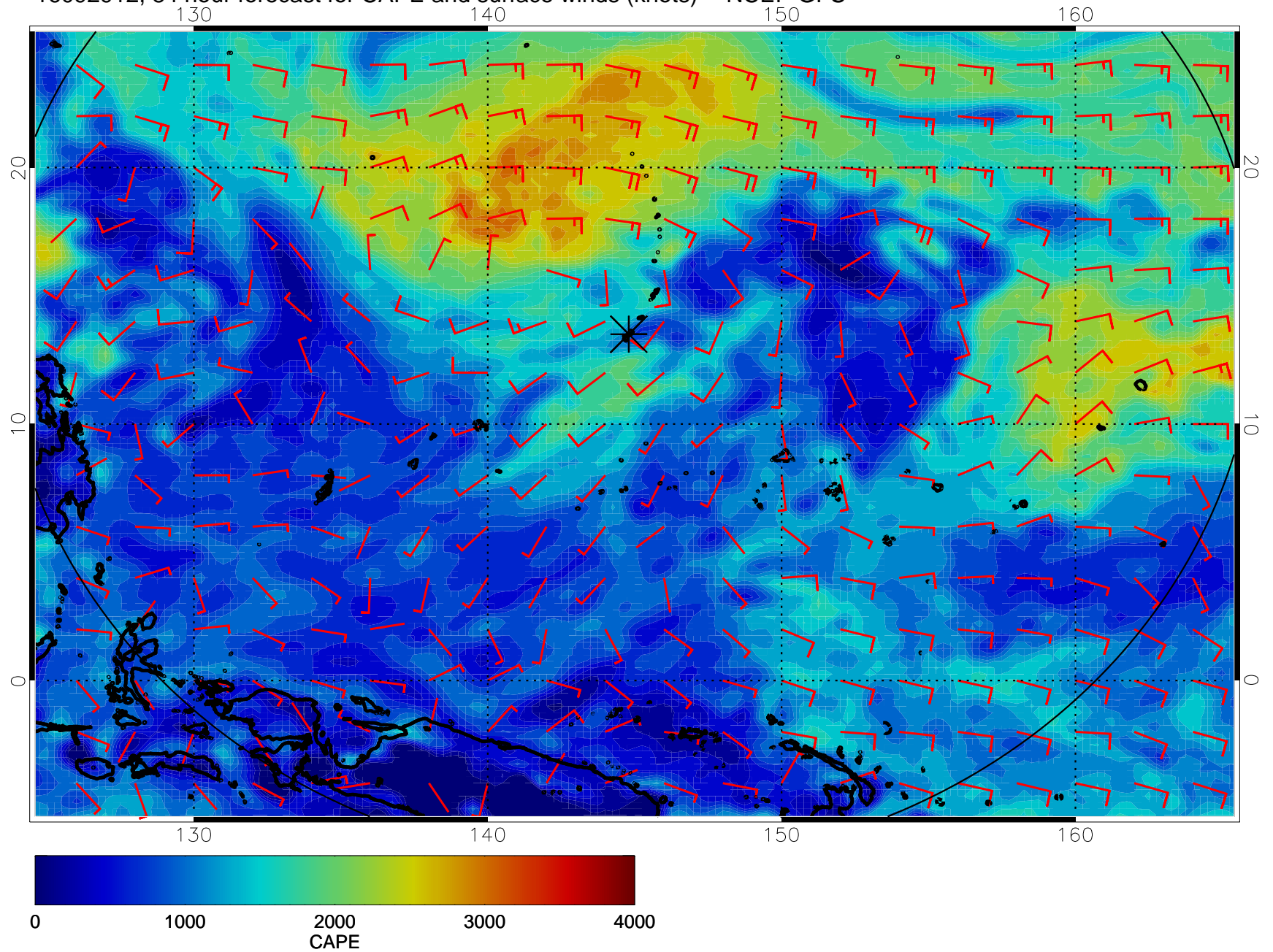
16092900, 72 hour forecast for CAPE and surface winds (knots) -- NCEP GFS



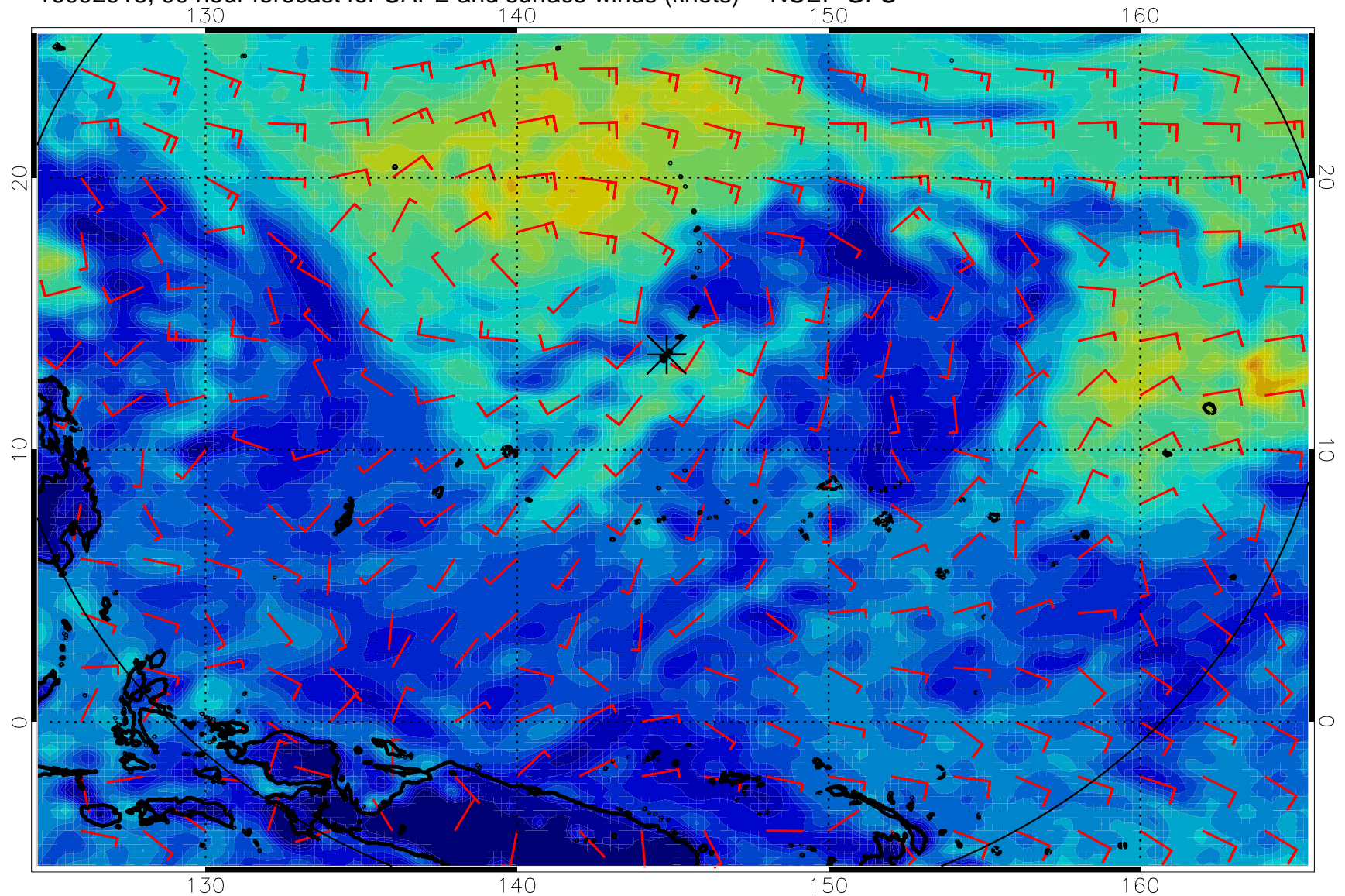
16092906, 78 hour forecast for CAPE and surface winds (knots) -- NCEP GFS



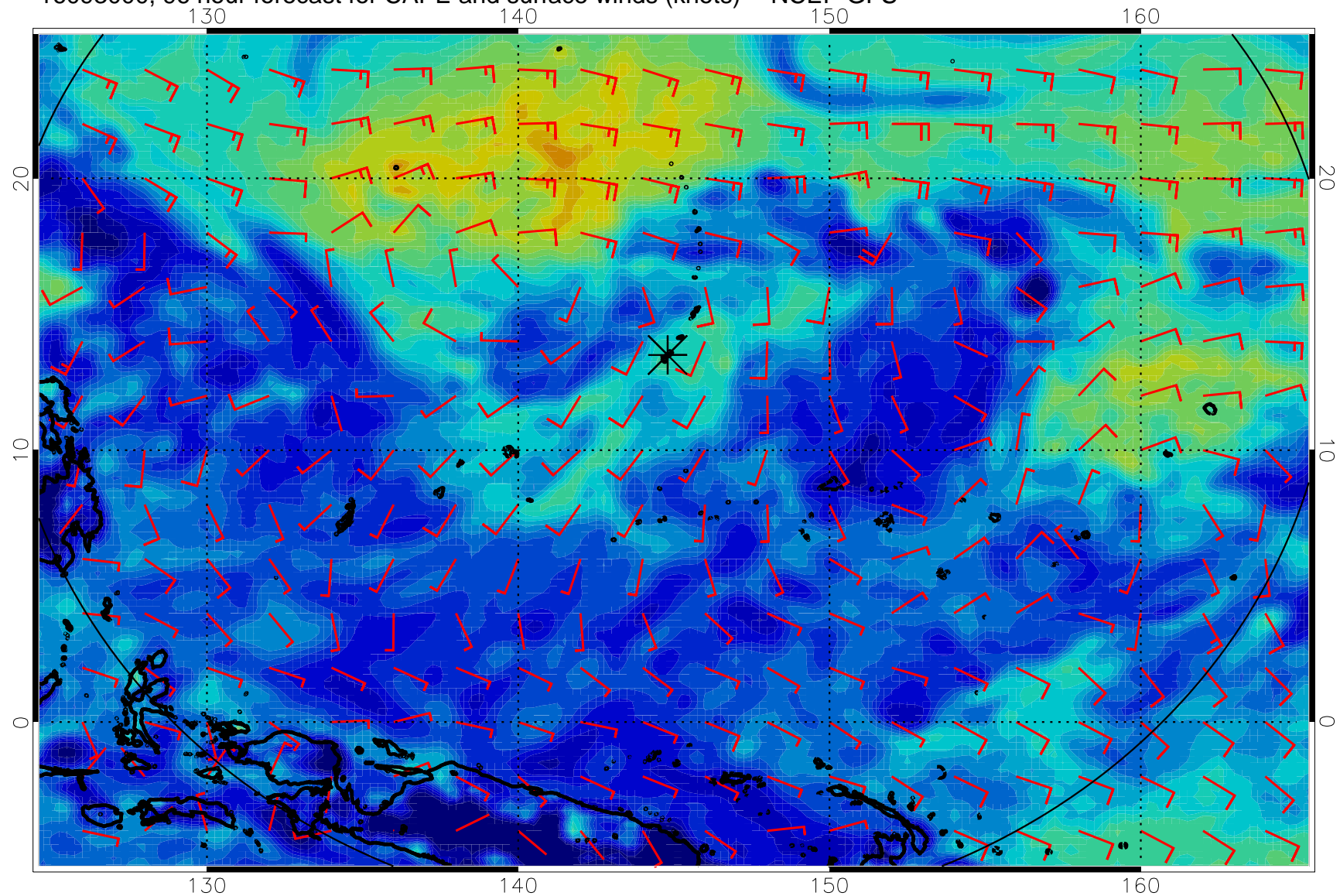
16092912, 84 hour forecast for CAPE and surface winds (knots) -- NCEP GFS



16092918, 90 hour forecast for CAPE and surface winds (knots) -- NCEP GFS

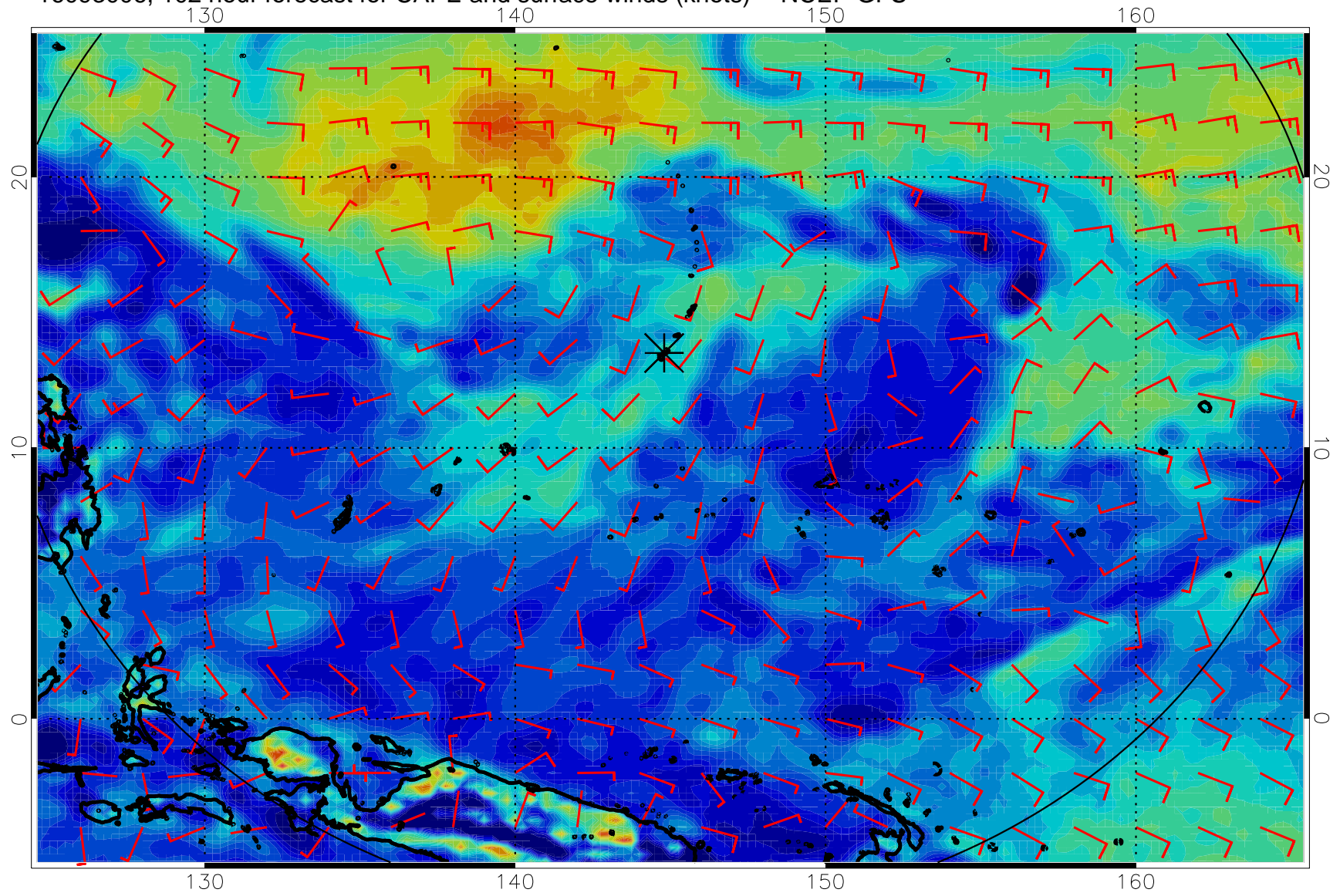


16093000, 96 hour forecast for CAPE and surface winds (knots) -- NCEP GFS

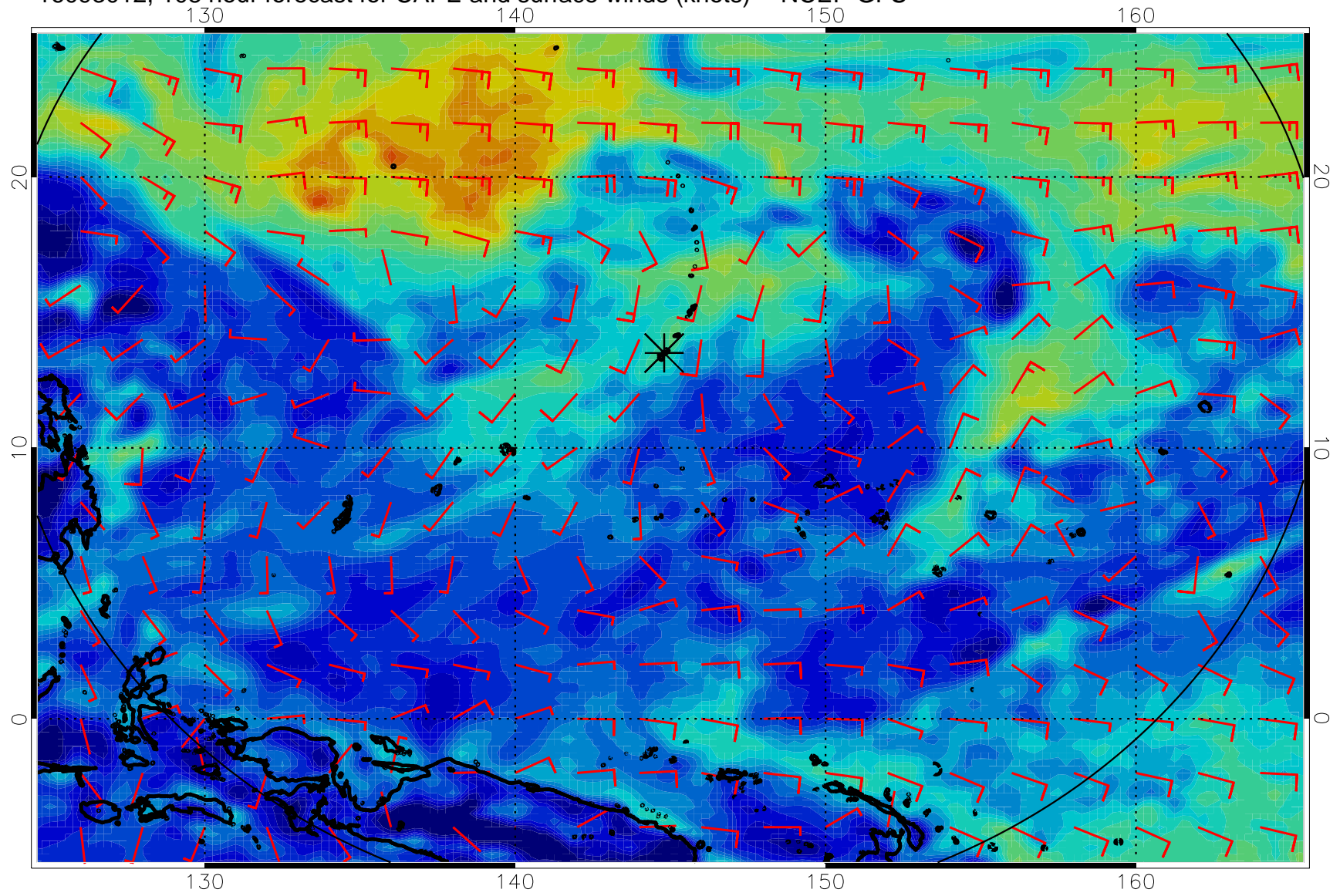




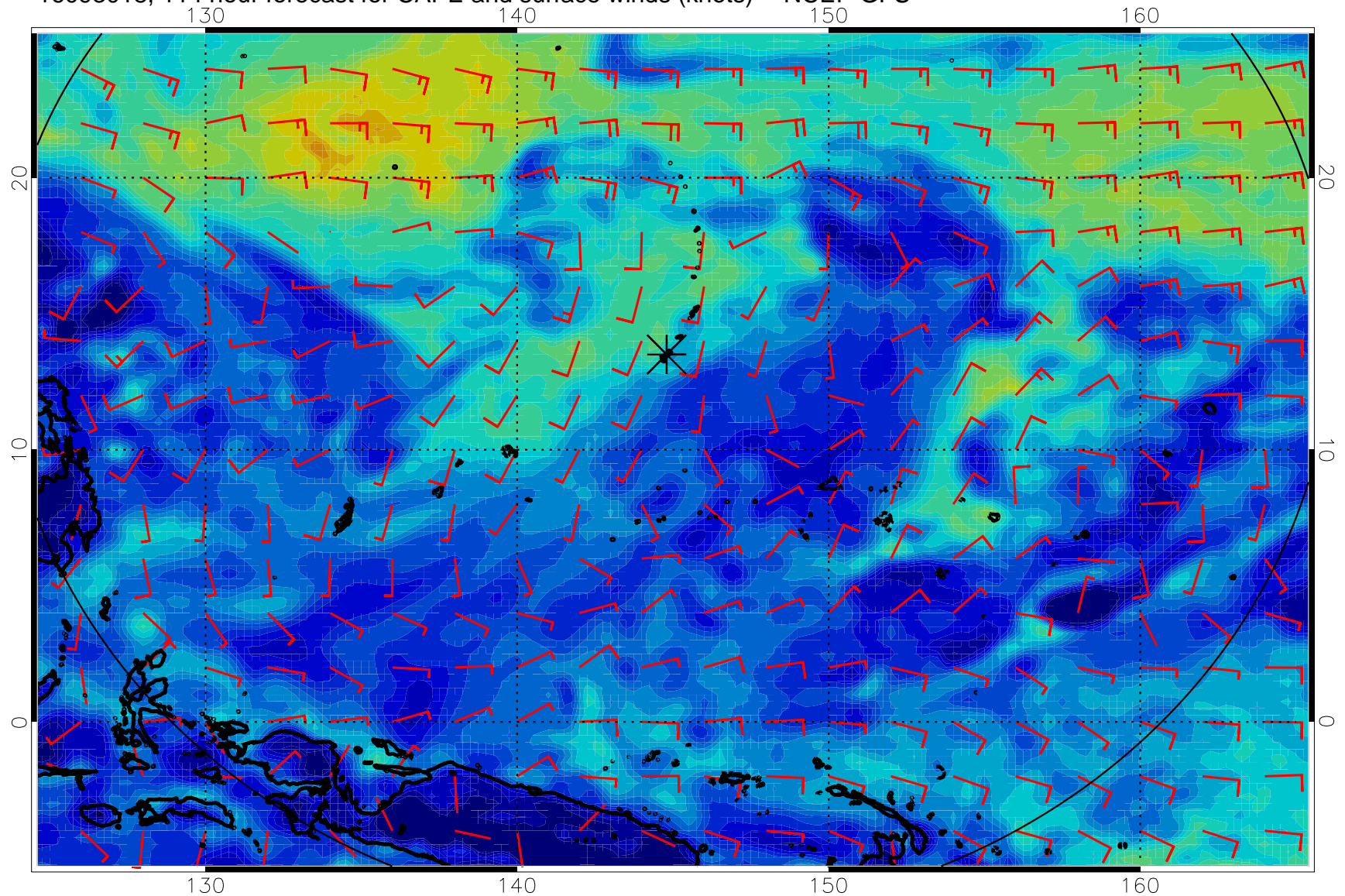
16093006, 102 hour forecast for CAPE and surface winds (knots) -- NCEP GFS



16093012, 108 hour forecast for CAPE and surface winds (knots) -- NCEP GFS



16093018, 114 hour forecast for CAPE and surface winds (knots) -- NCEP GFS



16100100, 120 hour forecast for CAPE and surface winds (knots) -- NCEP GFS

