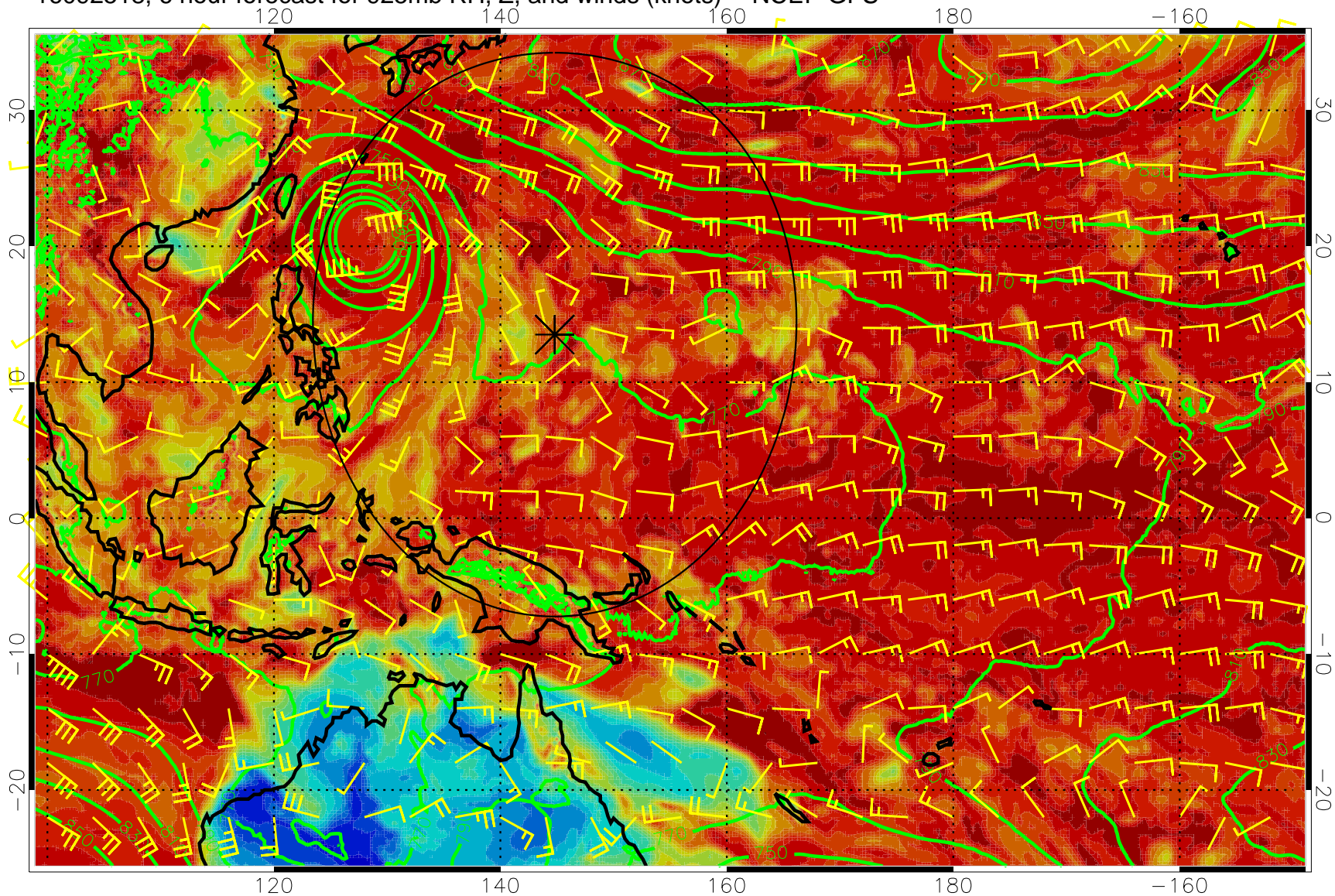
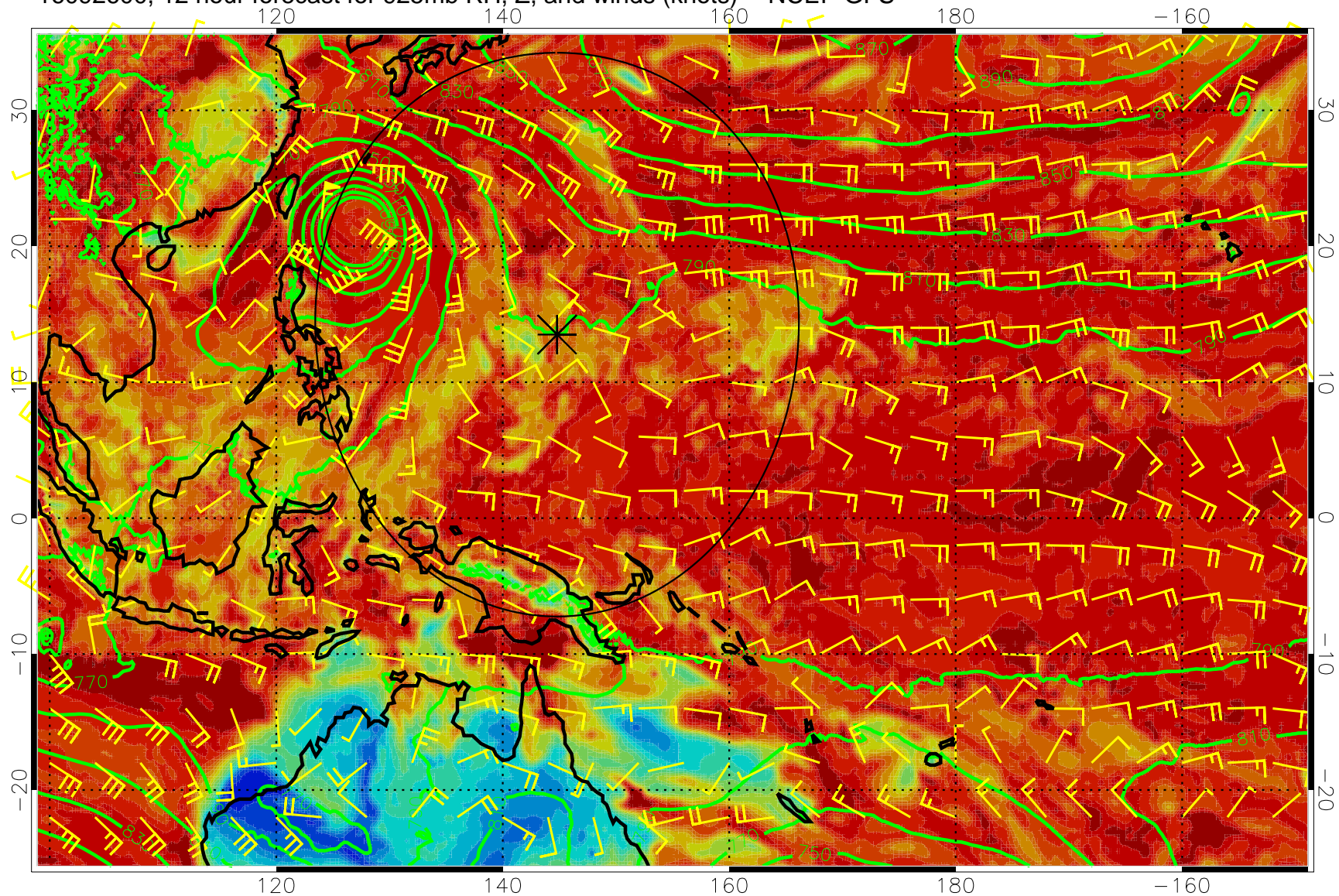


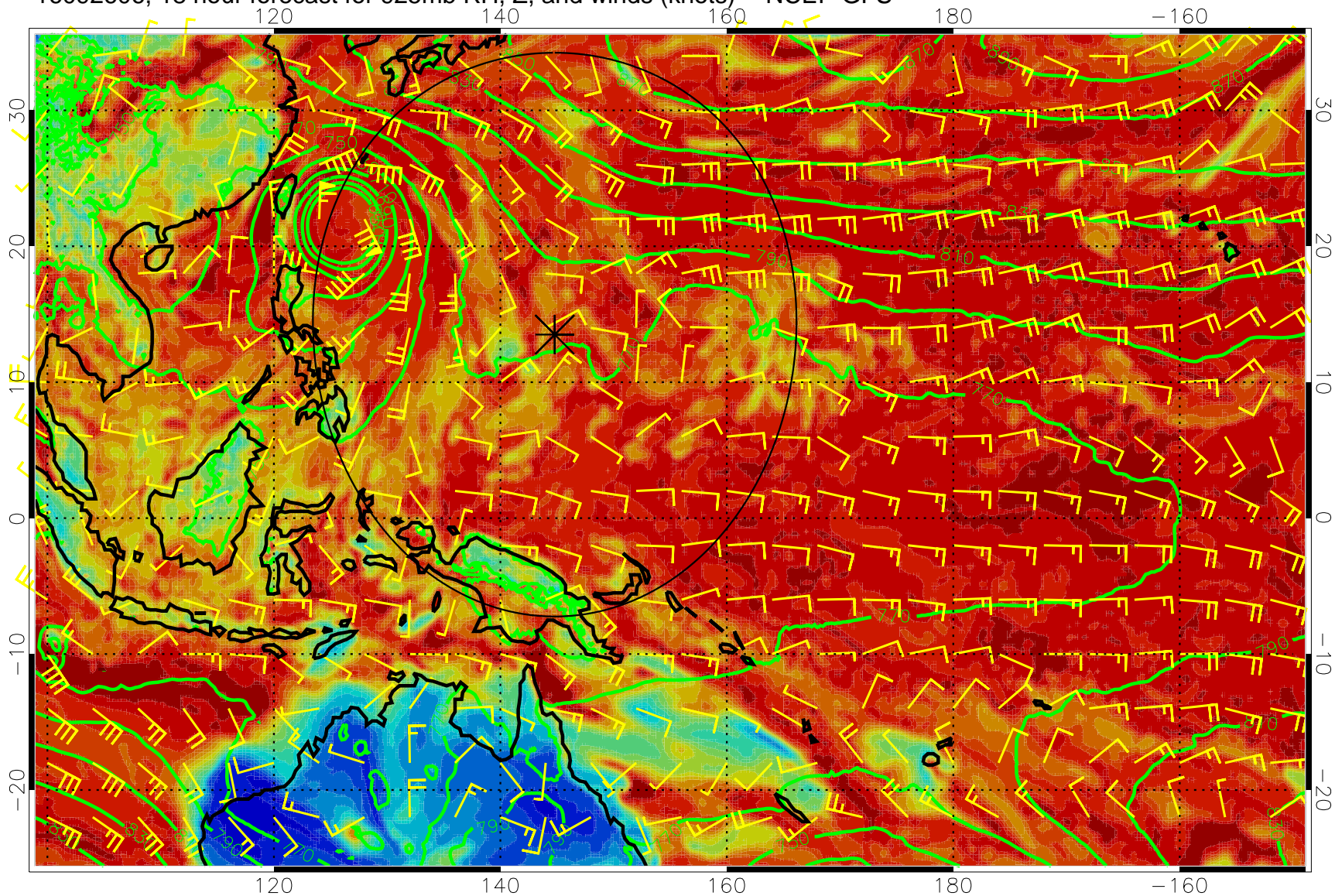
16092518, 6 hour forecast for 925mb RH, Z, and winds (knots) -- NCEP GFS



16092600, 12 hour forecast for 925mb RH, Z, and winds (knots) -- NCEP GFS

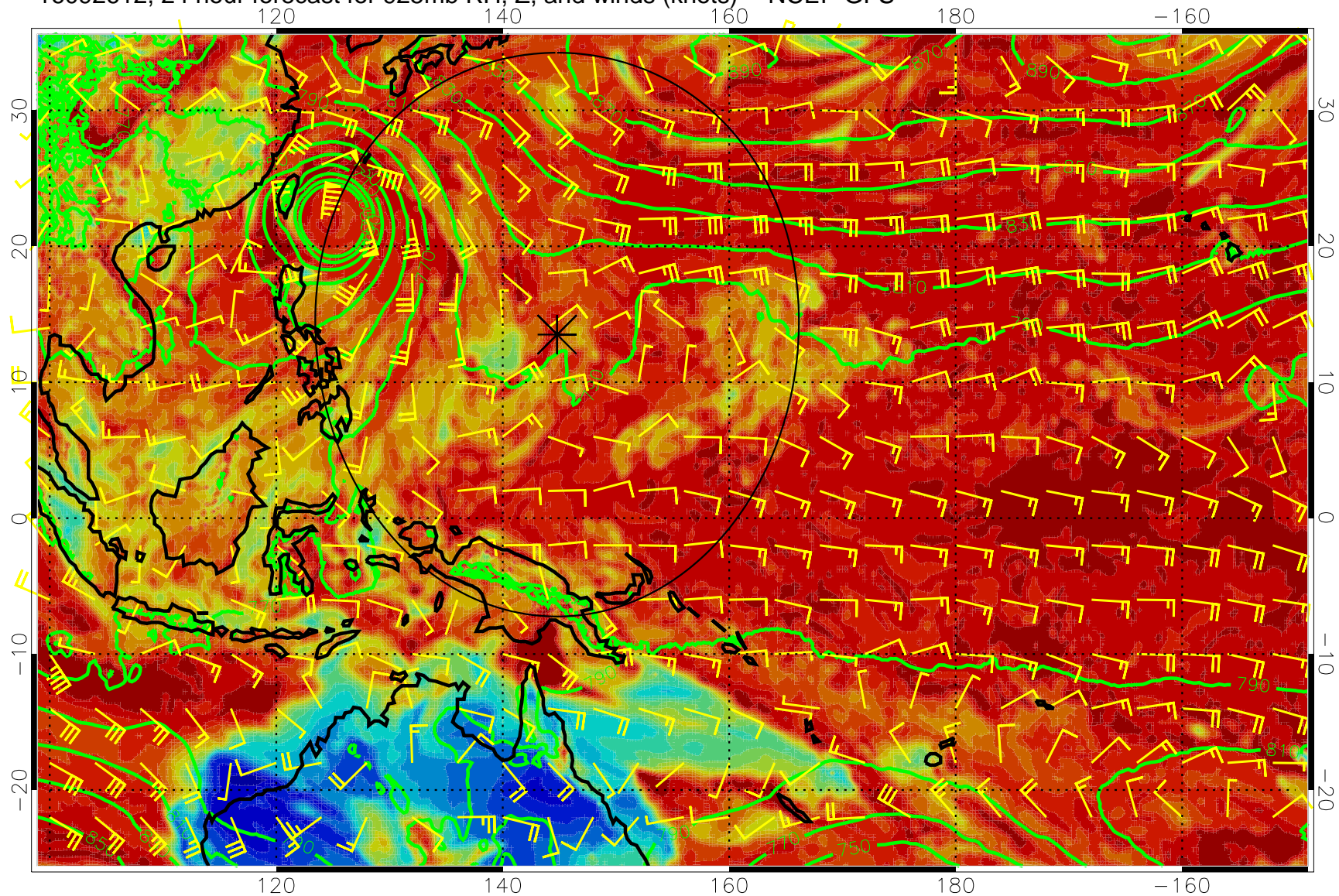


16092606, 18 hour forecast for 925mb RH, Z, and winds (knots) -- NCEP GFS

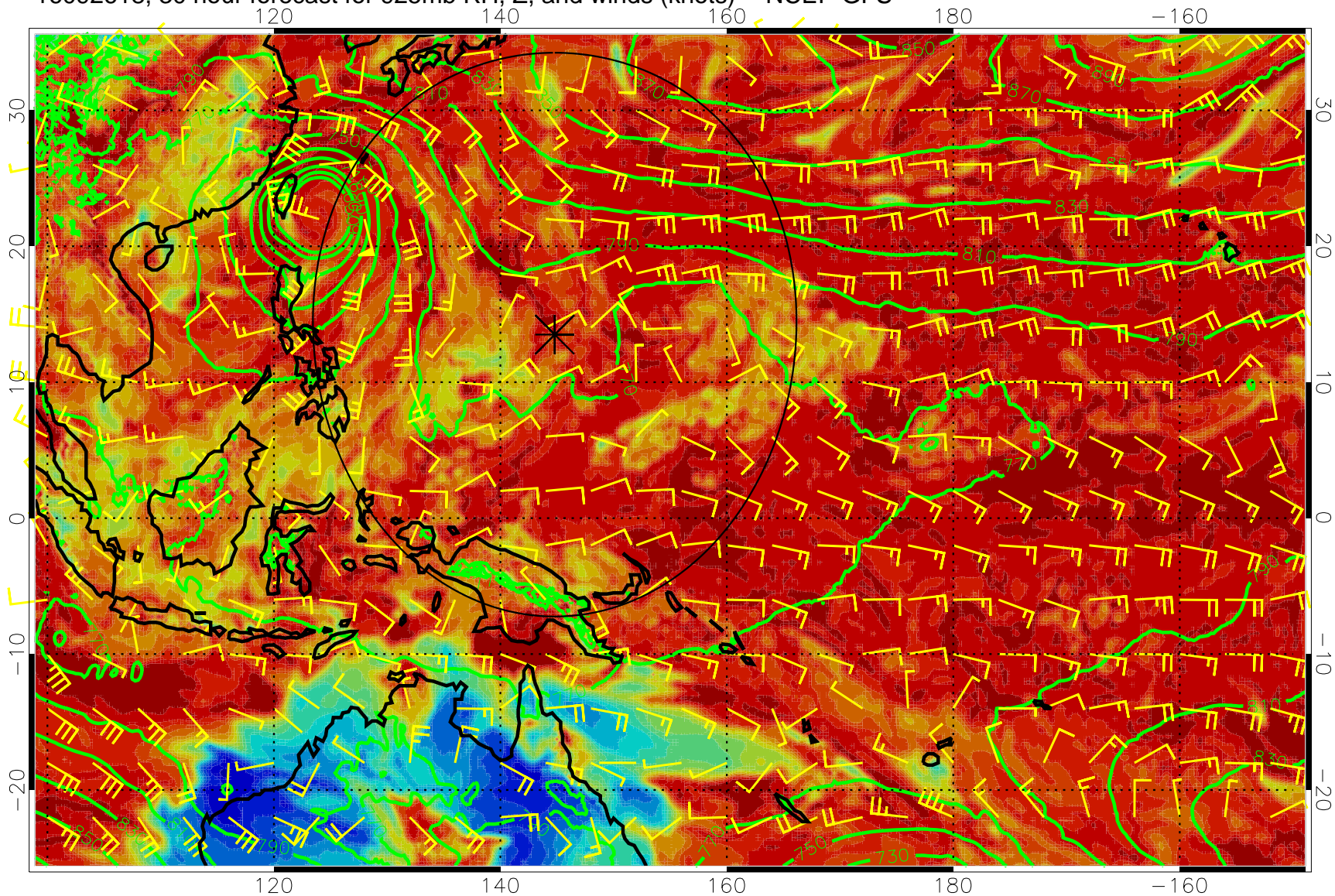


0 20 40 60 80 100
RH, %

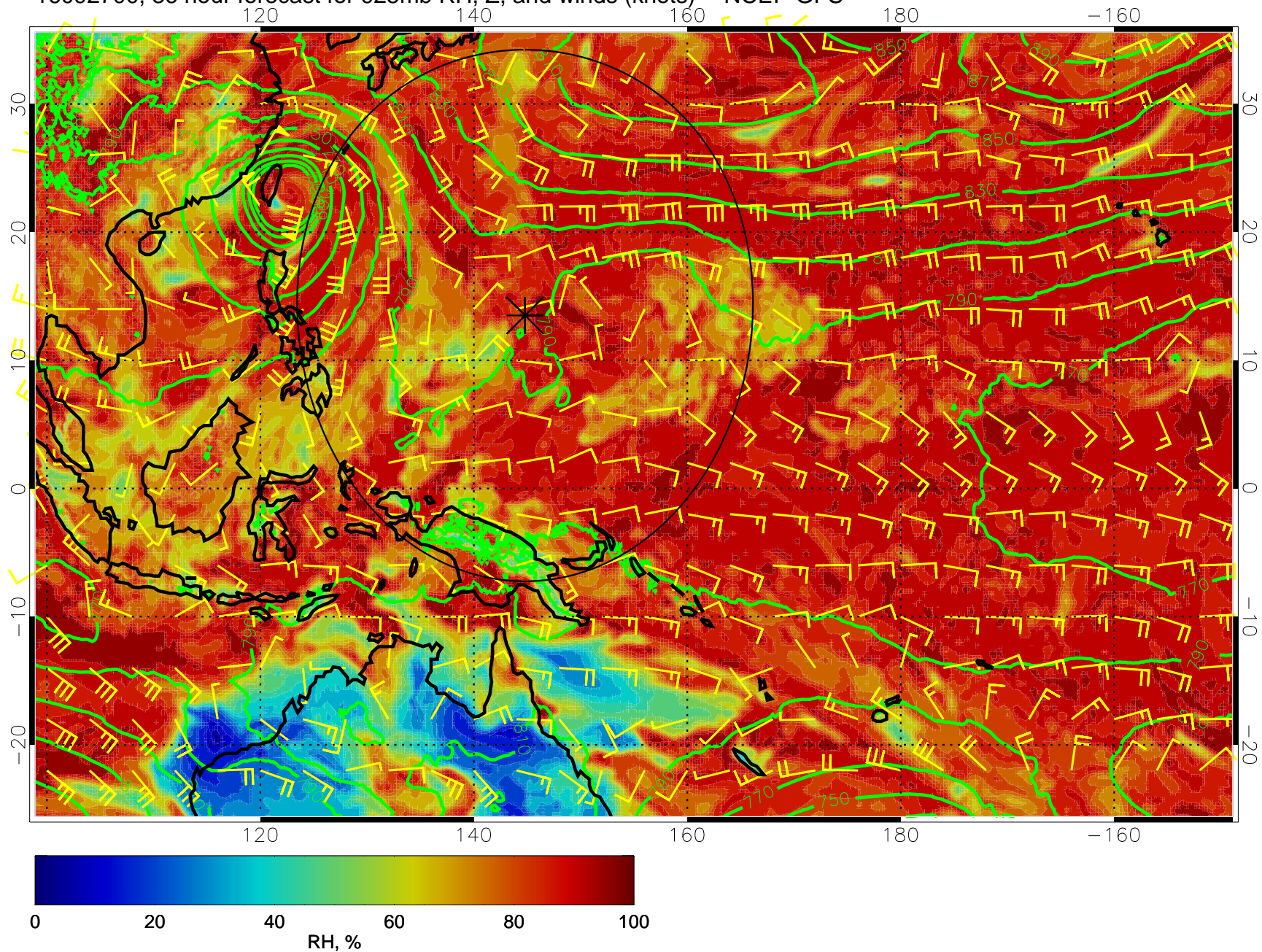
16092612, 24 hour forecast for 925mb RH, Z, and winds (knots) -- NCEP GFS



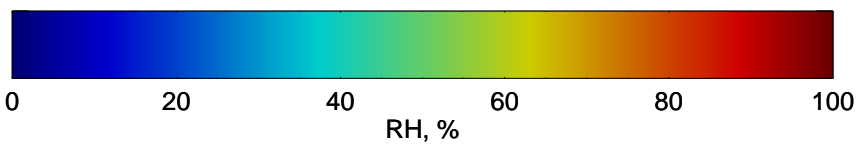
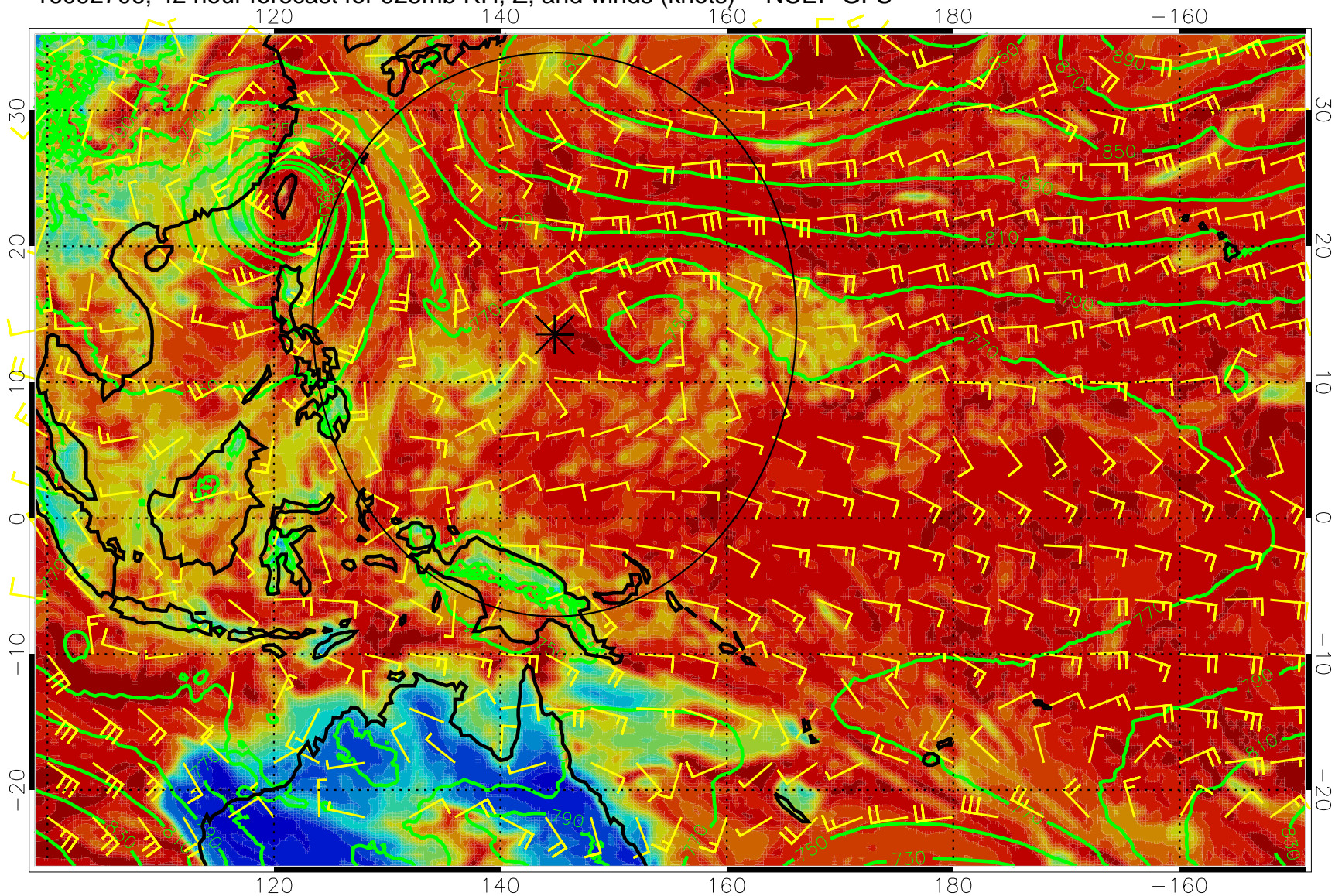
16092618, 30 hour forecast for 925mb RH, Z, and winds (knots) -- NCEP GFS



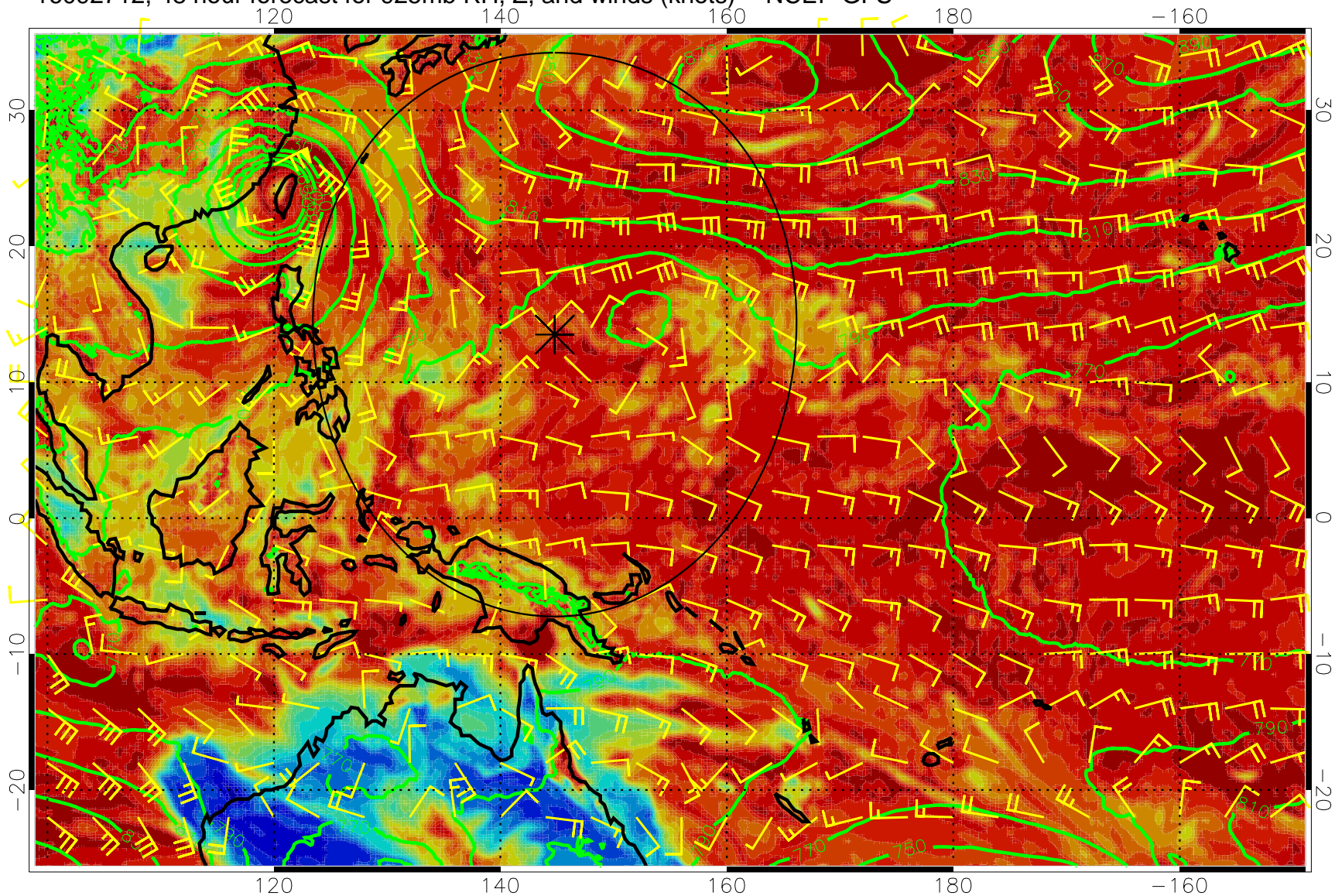
16092700, 36 hour forecast for 925mb RH, Z, and winds (knots) -- NCEP GFS



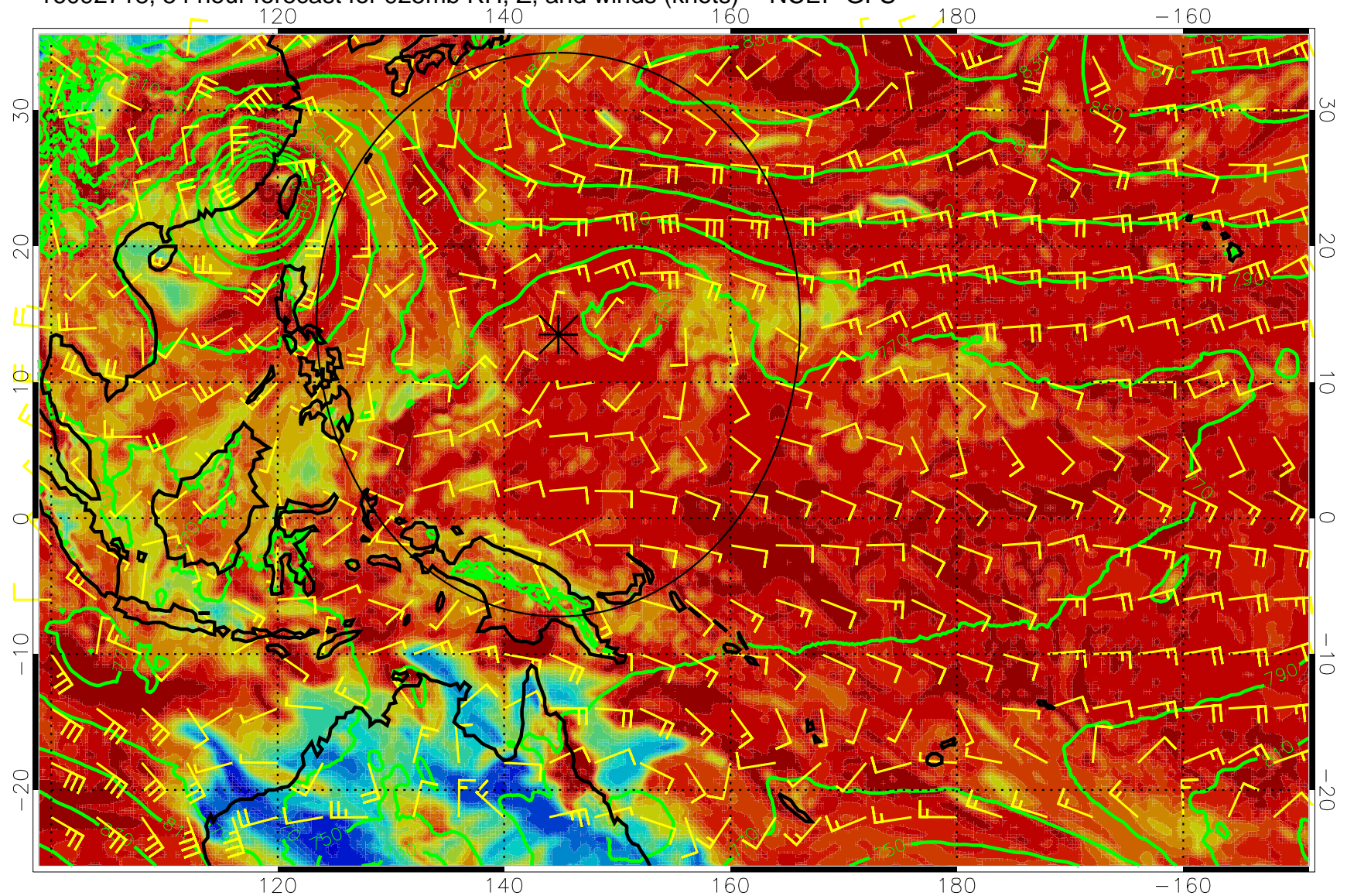
16092706, 42 hour forecast for 925mb RH, Z, and winds (knots) -- NCEP GFS



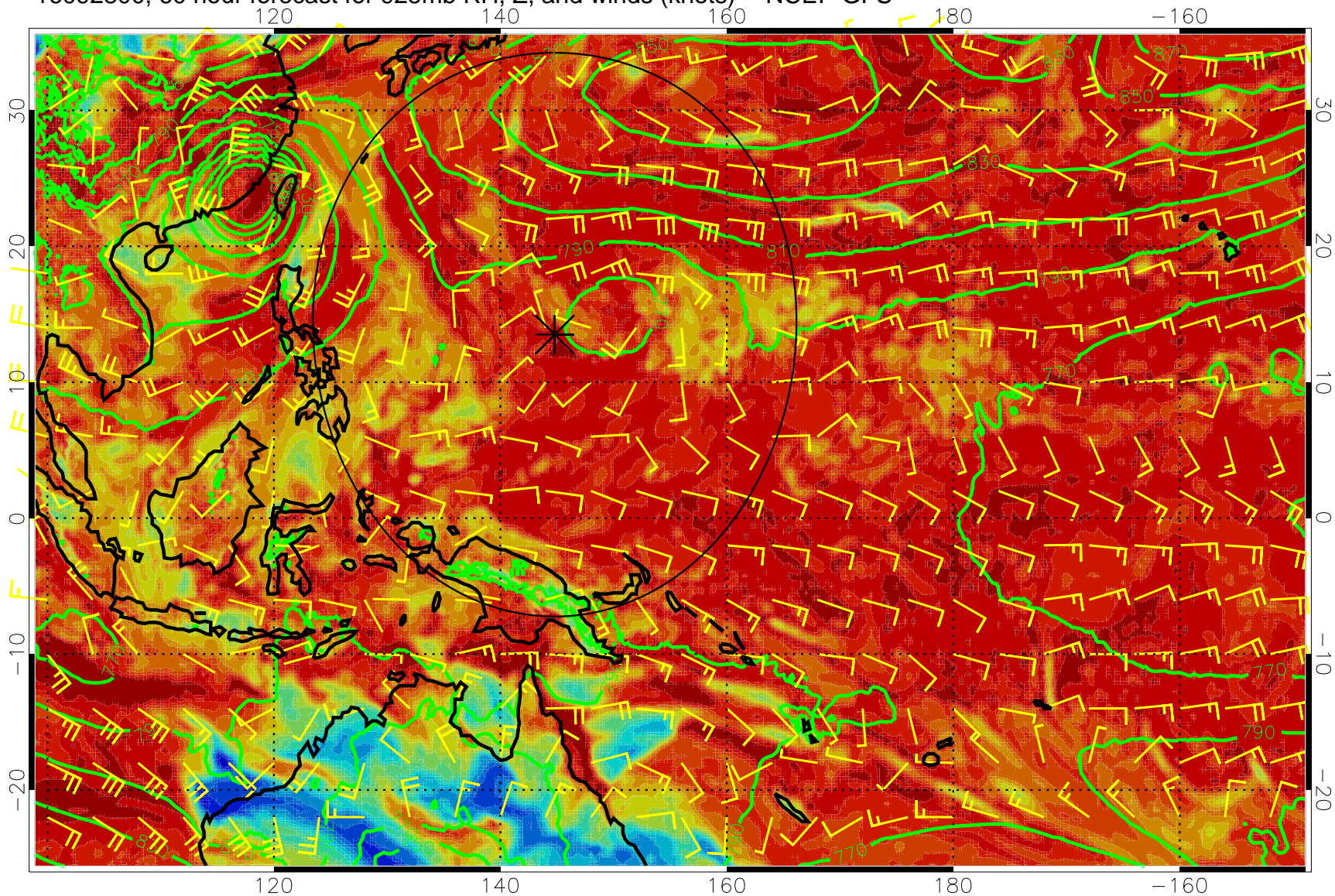
16092712, 48 hour forecast for 925mb RH, Z, and winds (knots) -- NCEP GFS



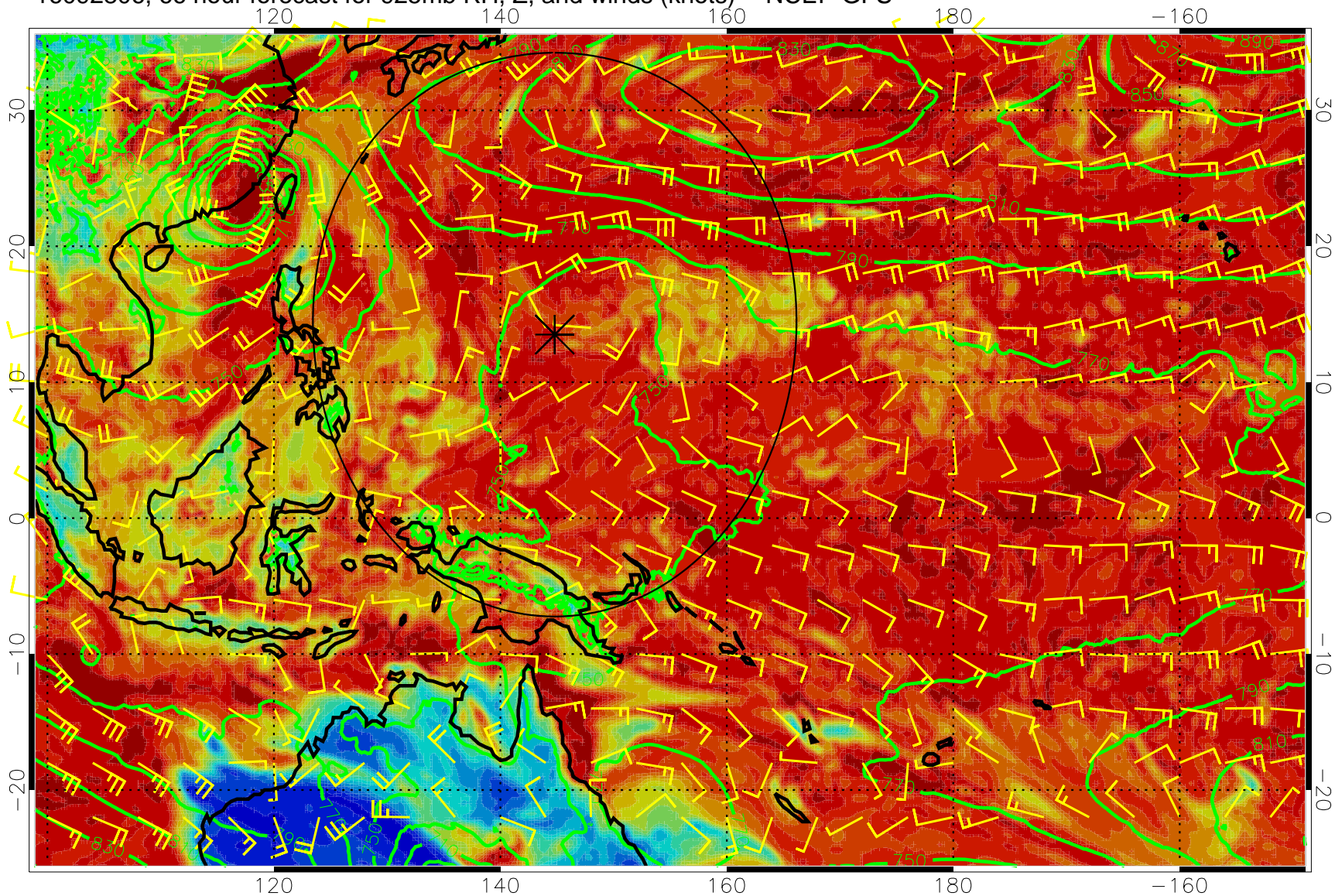
16092718, 54 hour forecast for 925mb RH, Z, and winds (knots) -- NCEP GFS



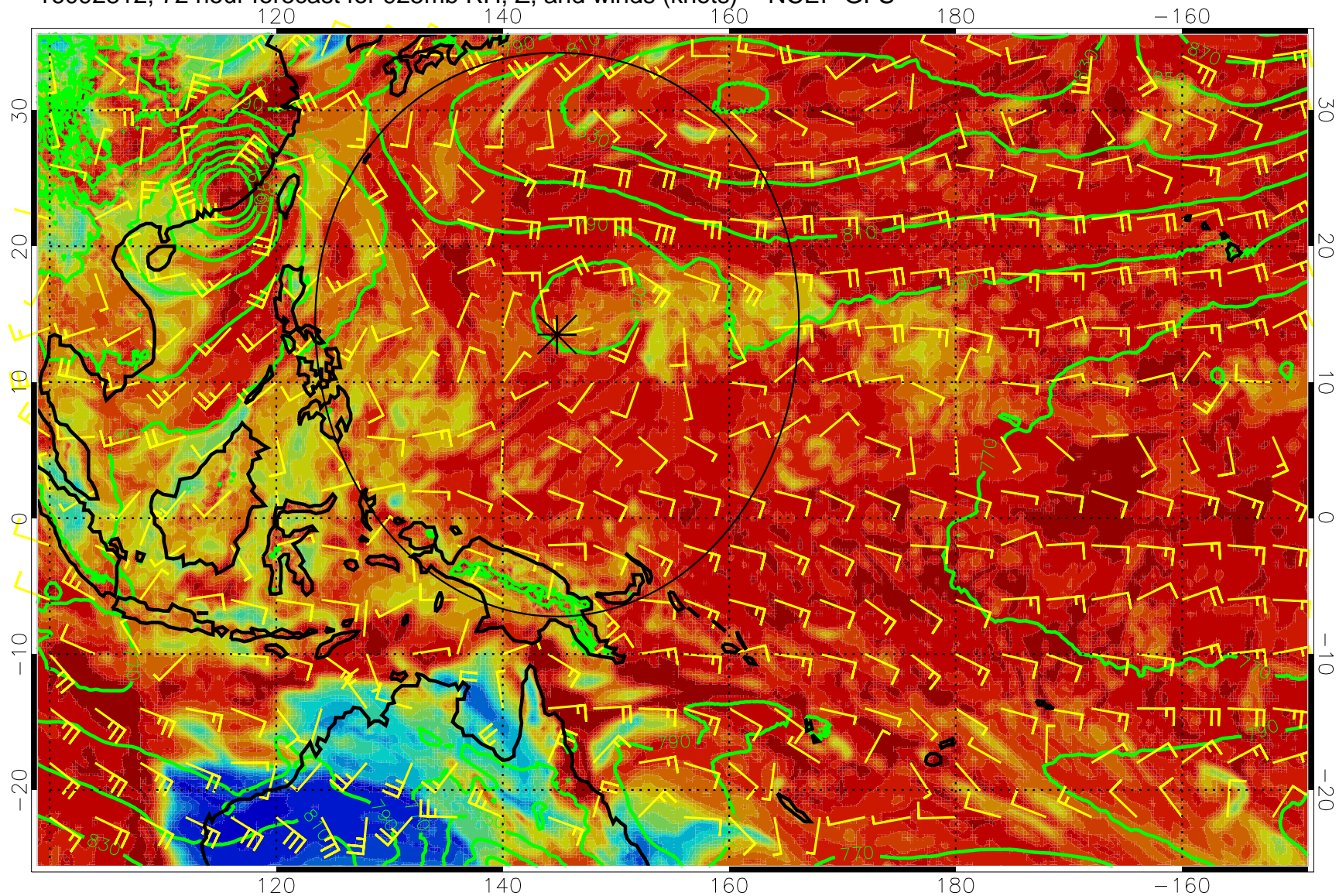
16092800, 60 hour forecast for 925mb RH, Z, and winds (knots) -- NCEP GFS



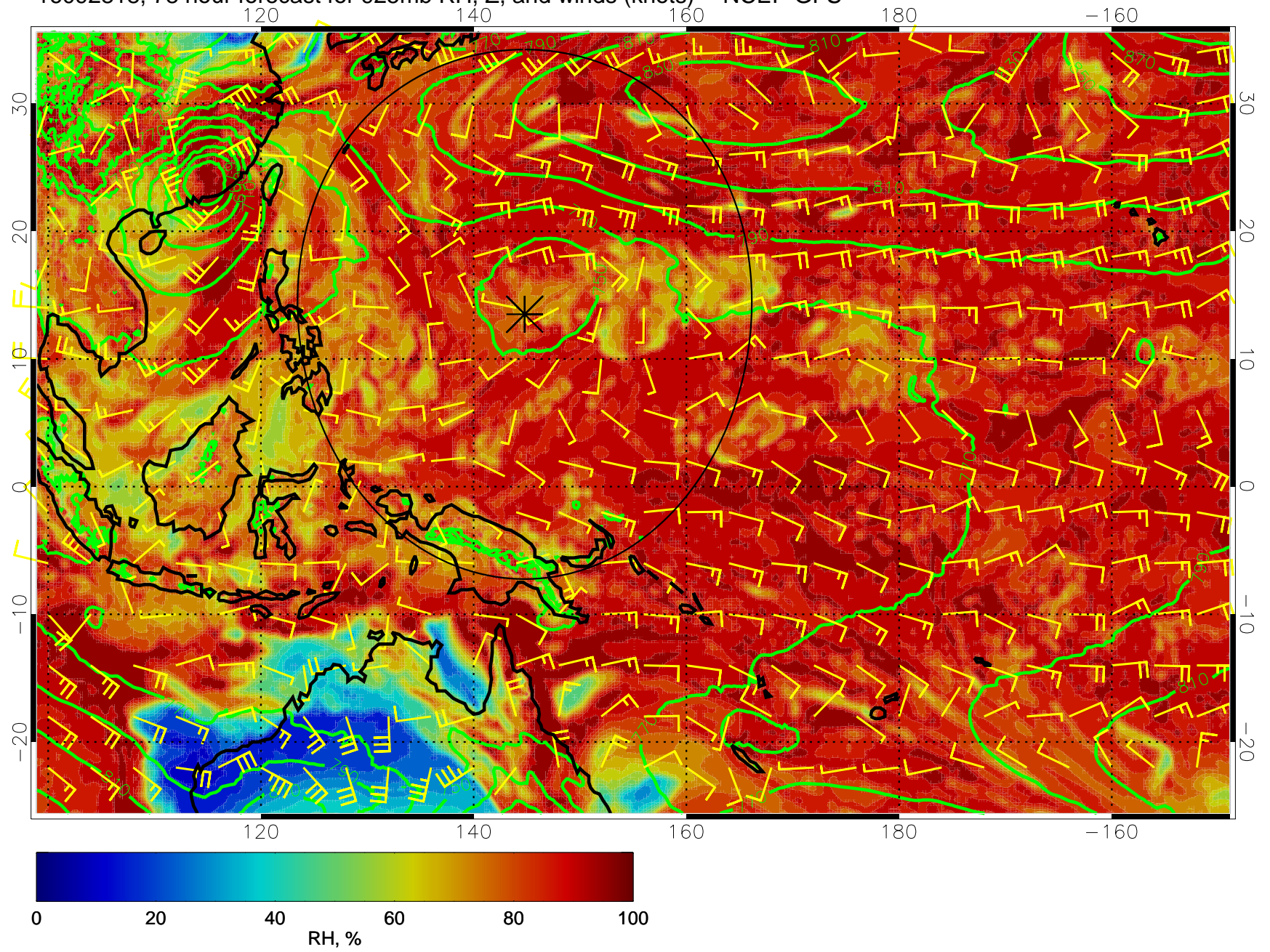
16092806, 66 hour forecast for 925mb RH, Z, and winds (knots) -- NCEP GFS



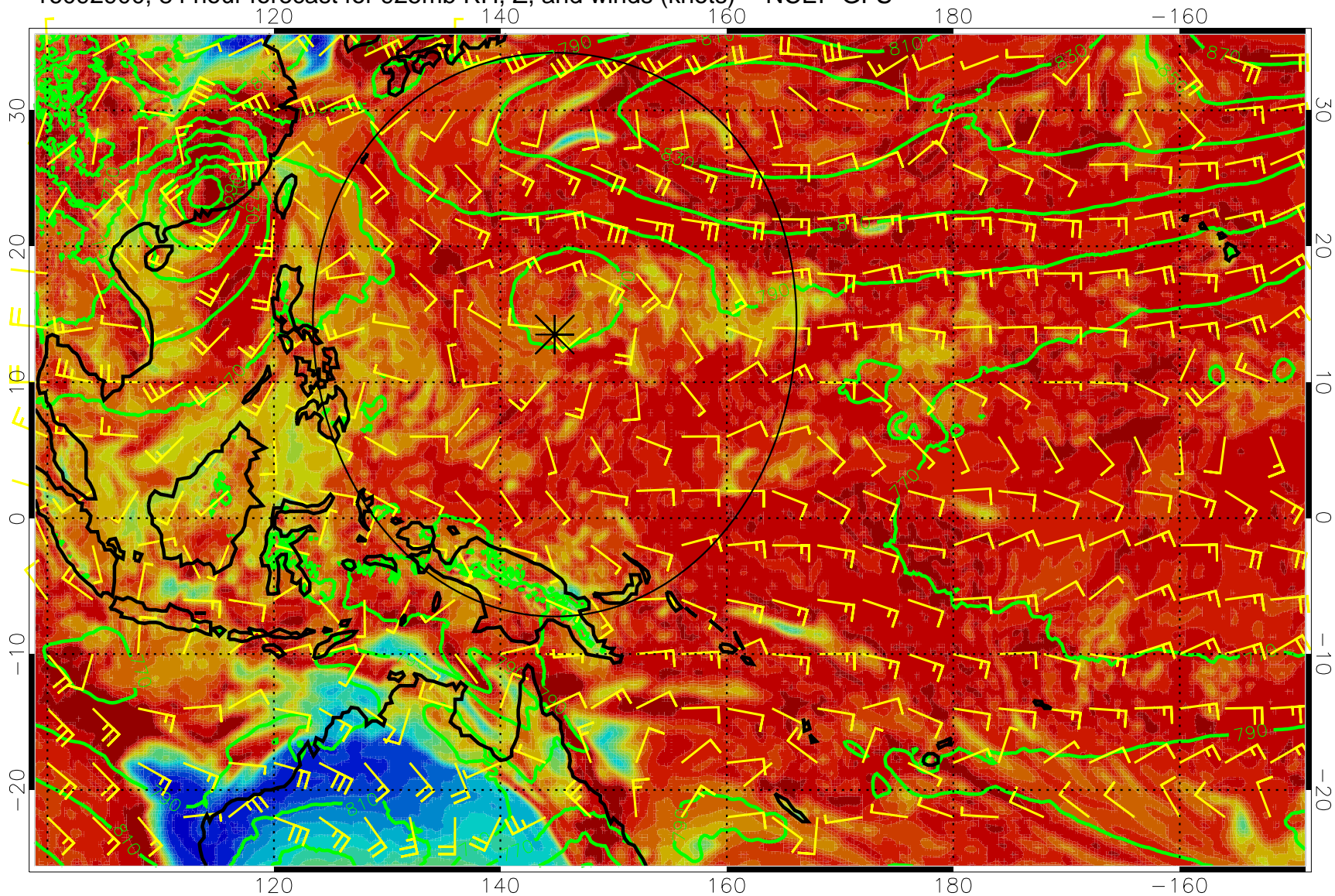
16092812, 72 hour forecast for 925mb RH, Z, and winds (knots) -- NCEP GFS



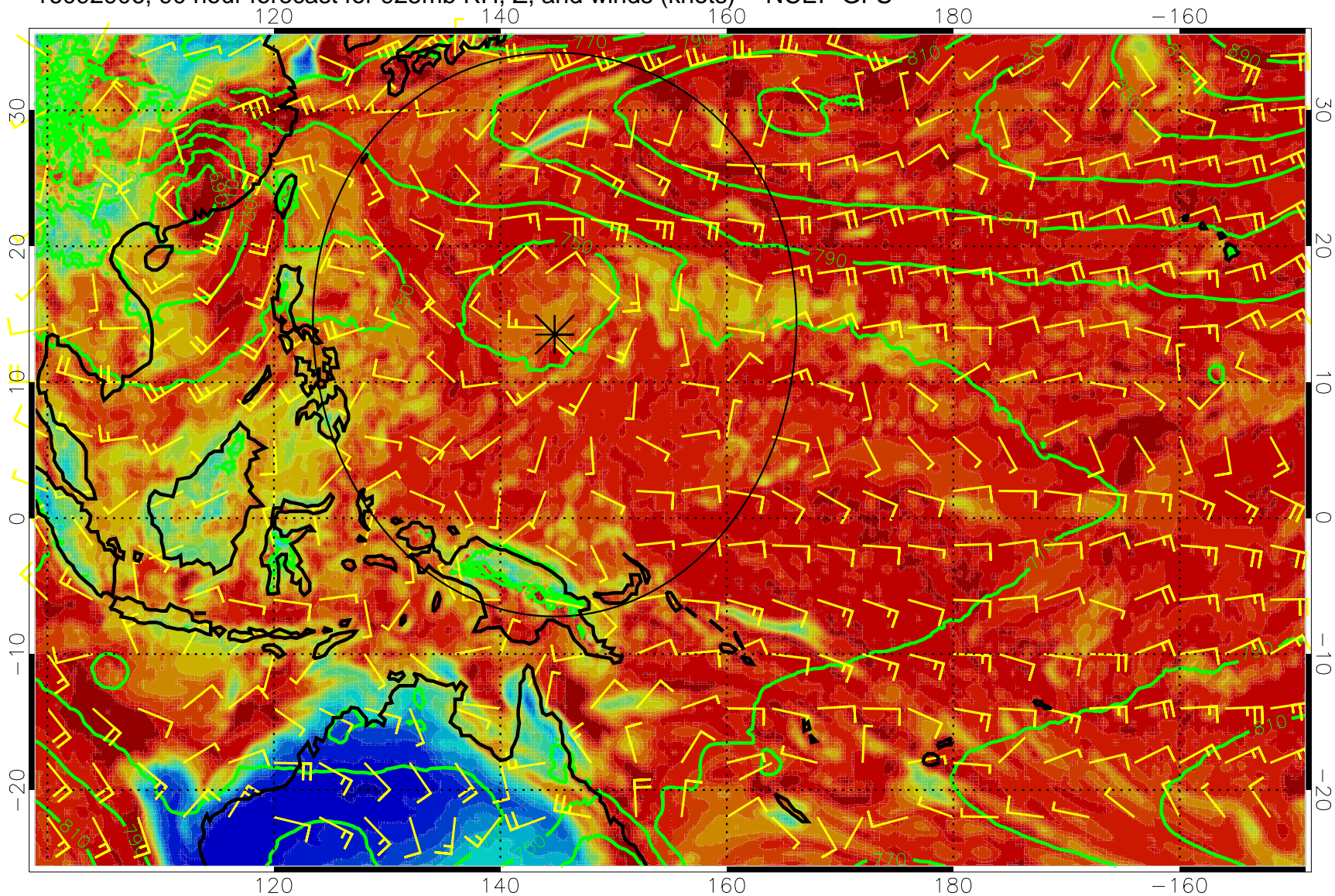
16092818, 78 hour forecast for 925mb RH, Z, and winds (knots) -- NCEP GFS



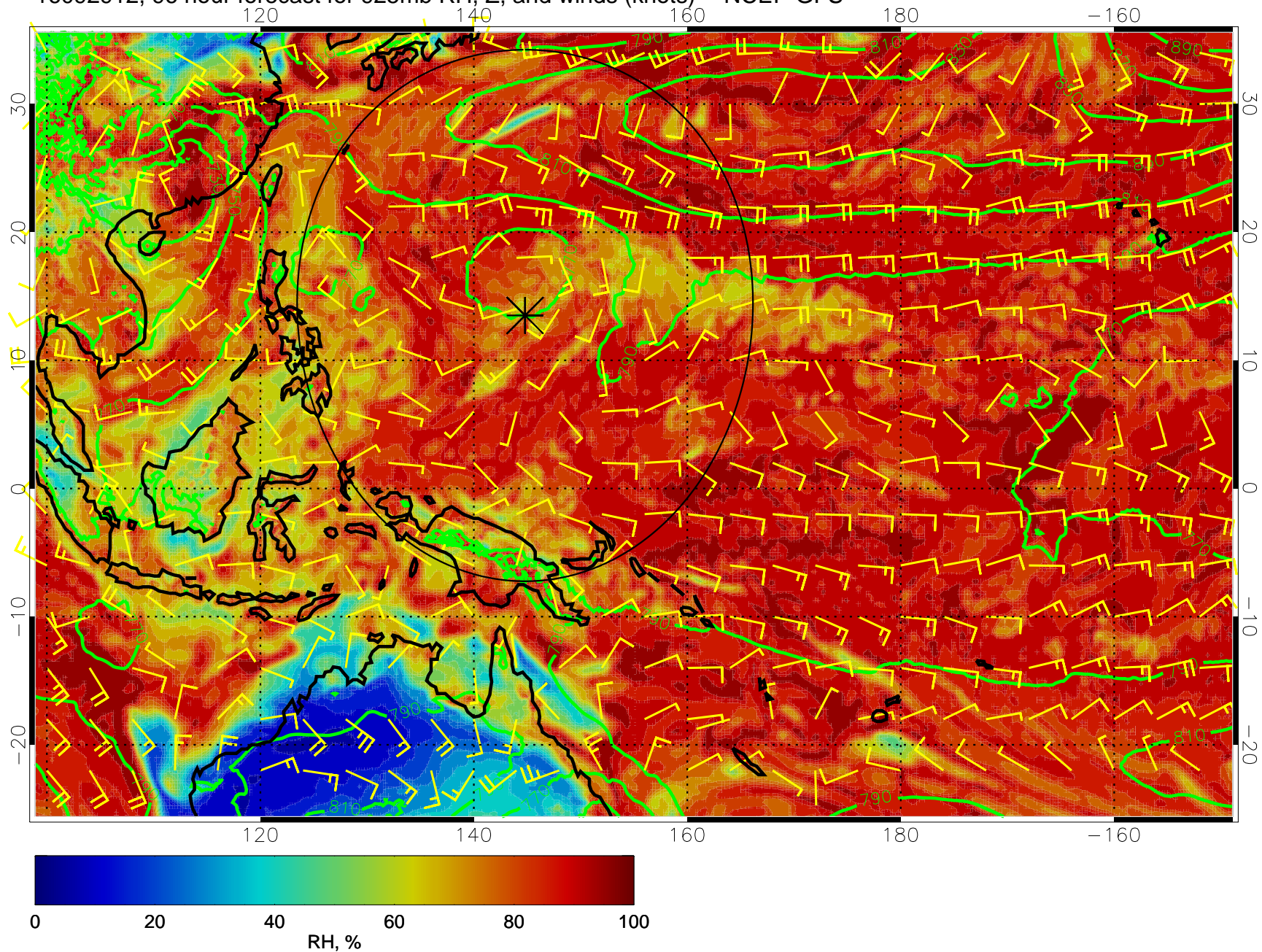
16092900, 84 hour forecast for 925mb RH, Z, and winds (knots) -- NCEP GFS



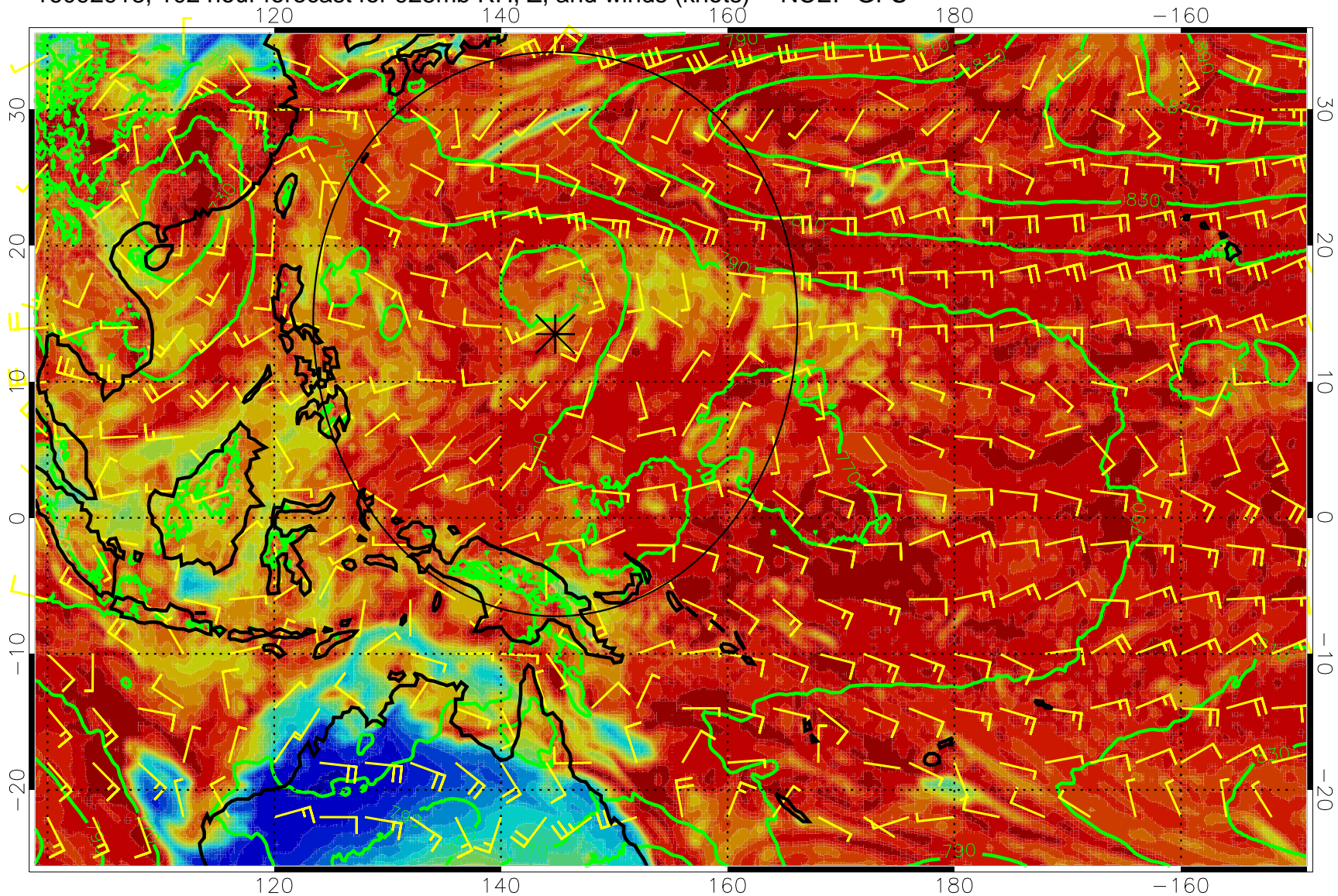
16092906, 90 hour forecast for 925mb RH, Z, and winds (knots) -- NCEP GFS



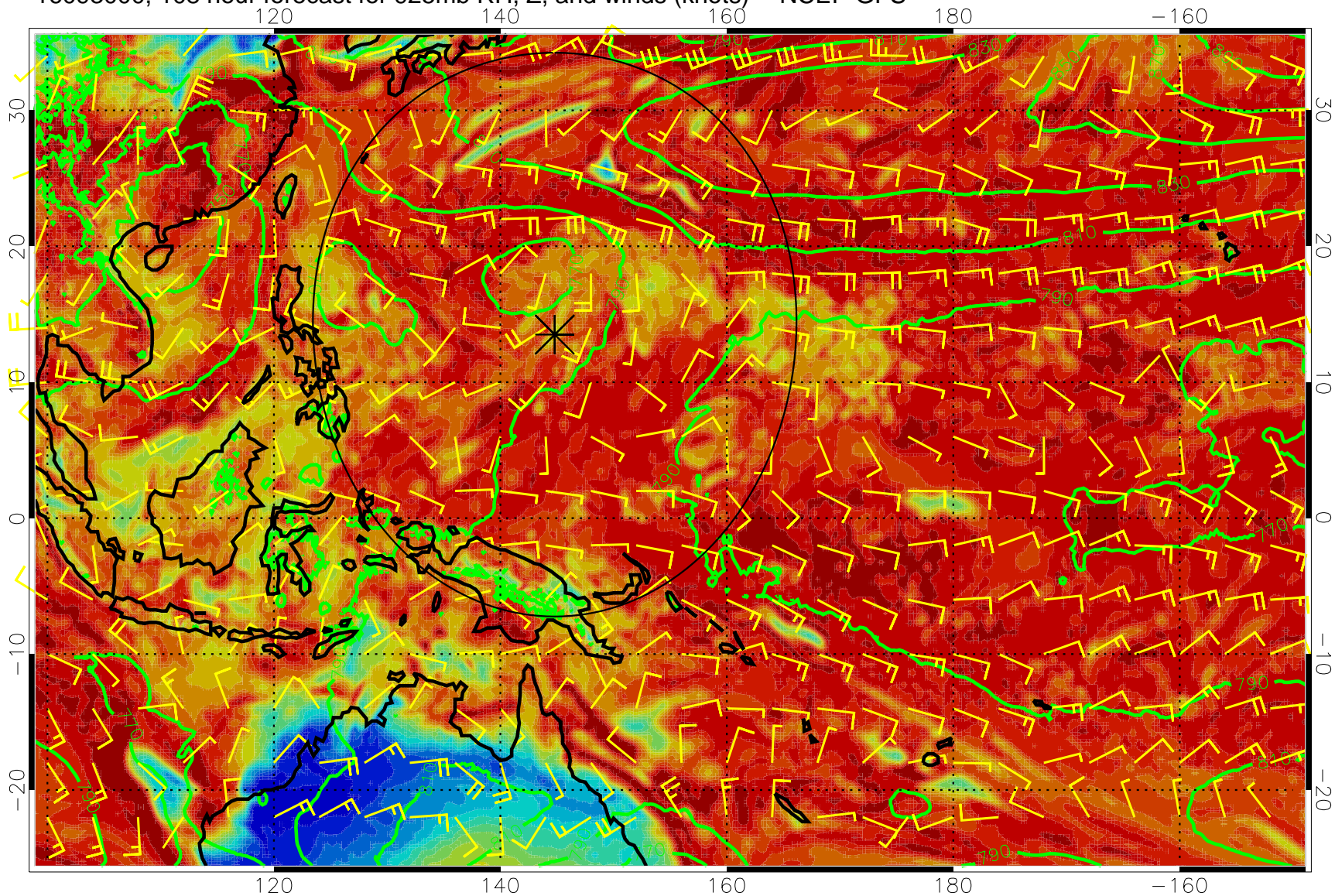
16092912, 96 hour forecast for 925mb RH, Z, and winds (knots) -- NCEP GFS



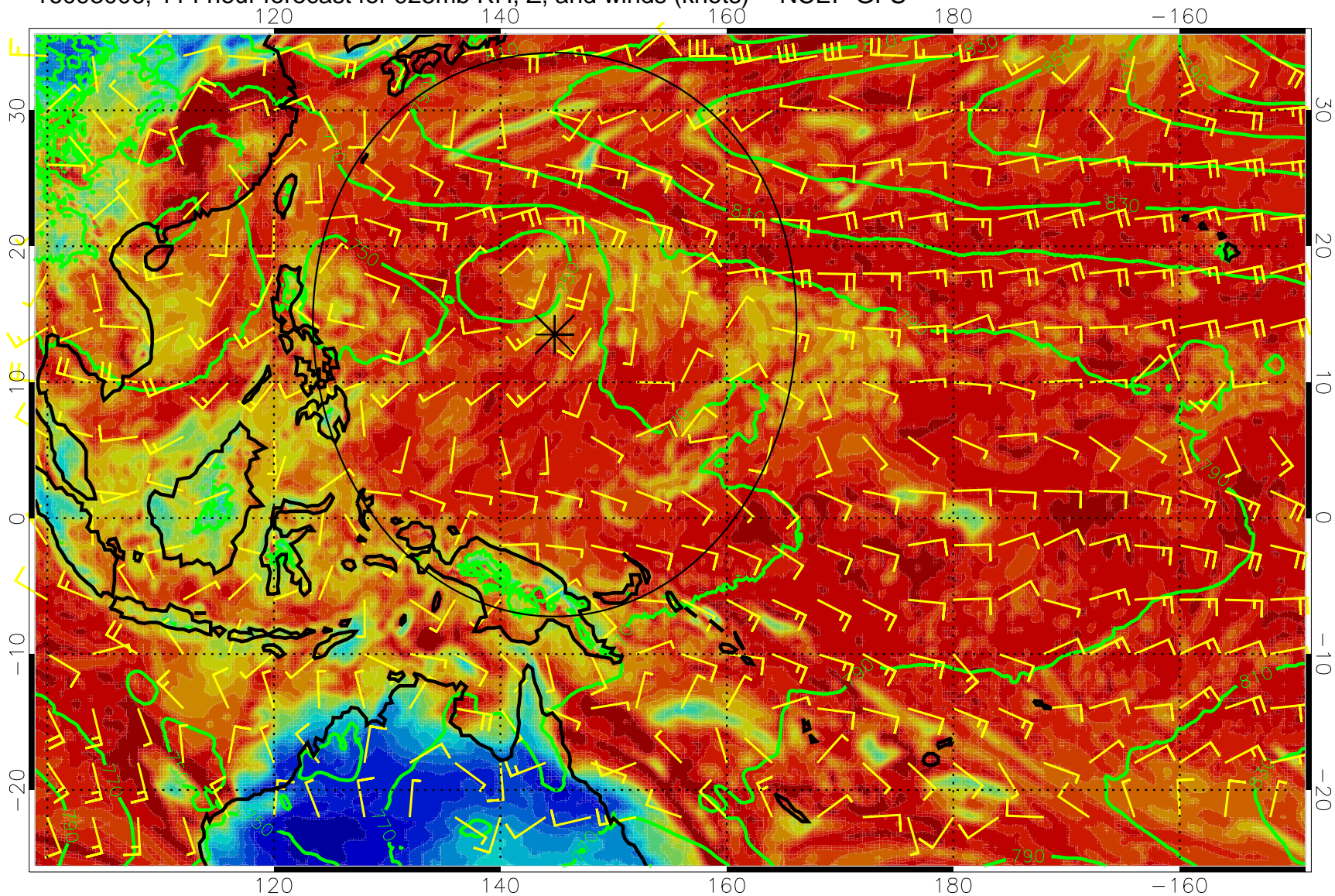
16092918, 102 hour forecast for 925mb RH, Z, and winds (knots) -- NCEP GFS



16093000, 108 hour forecast for 925mb RH, Z, and winds (knots) -- NCEP GFS



16093006, 114 hour forecast for 925mb RH, Z, and winds (knots) -- NCEP GFS



16093012, 120 hour forecast for 925mb RH, Z, and winds (knots) -- NCEP GFS

