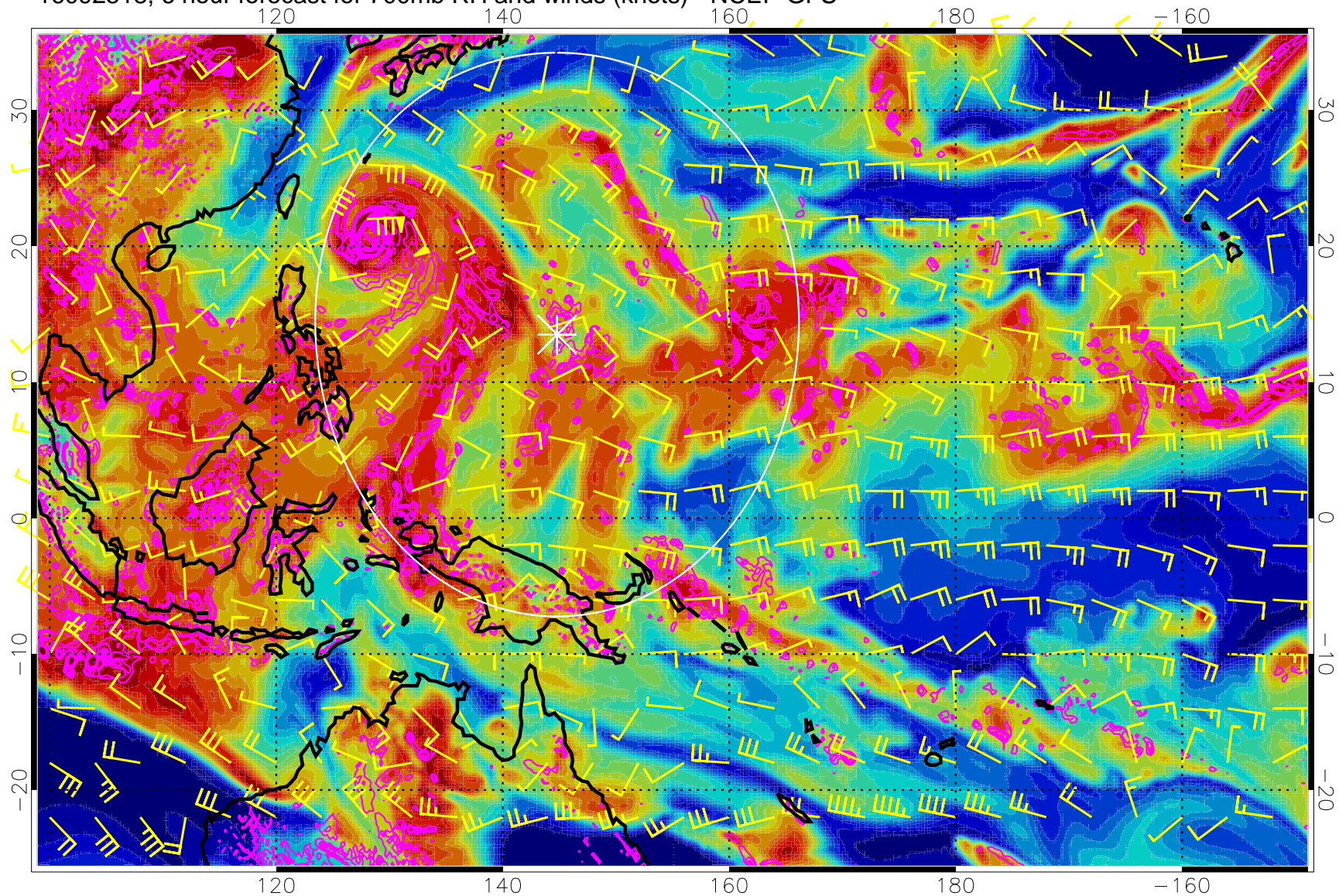


16092518, 6 hour forecast for 700mb RH and winds (knots) - NCEP GFS

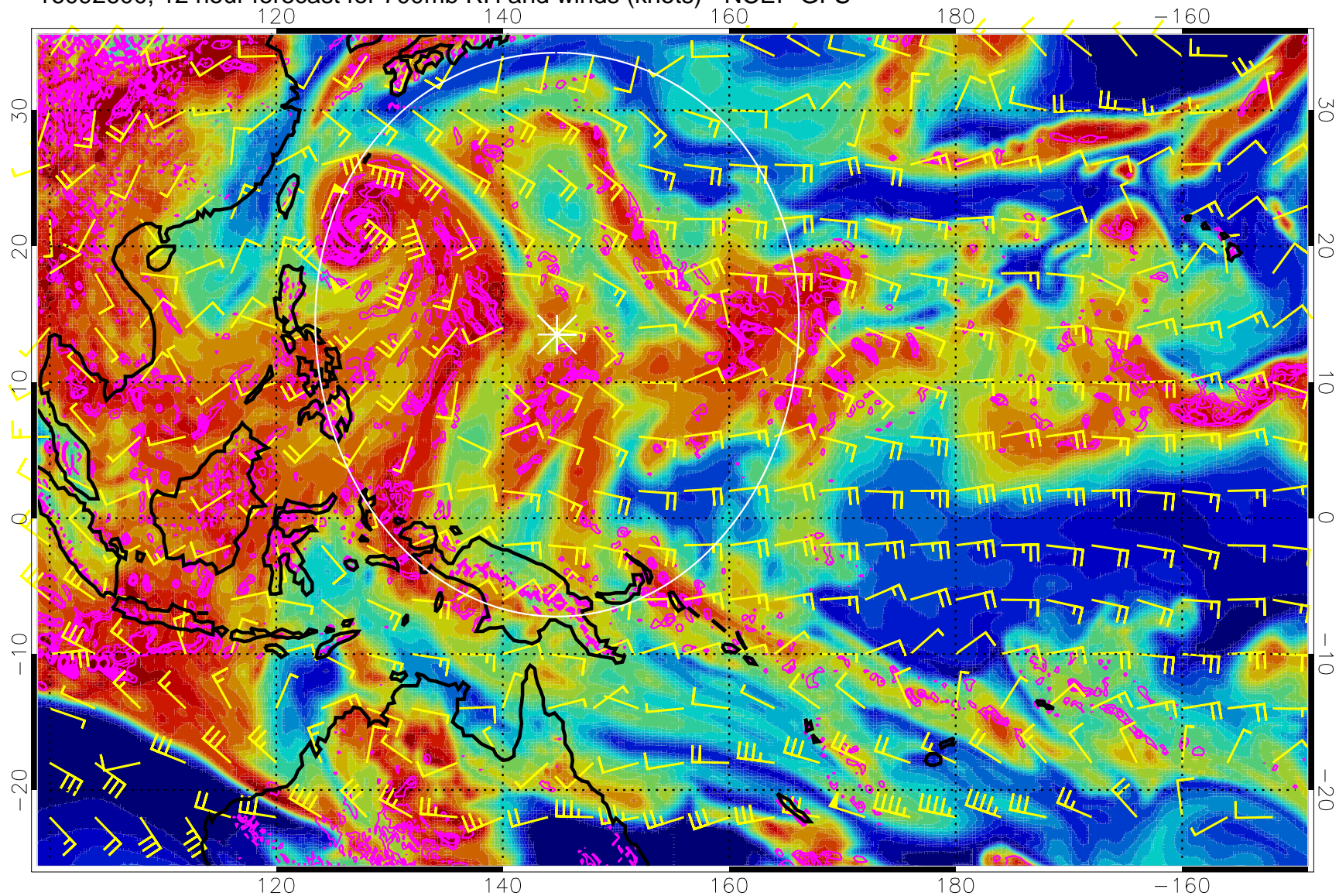


0 20 40 60 80 100  
RH, %

Negative Omegas less than  $-0.3$ , contours of  $0.3$  Pa/s

Range ring of 2304 km

16092600, 12 hour forecast for 700mb RH and winds (knots) - NCEP GFS

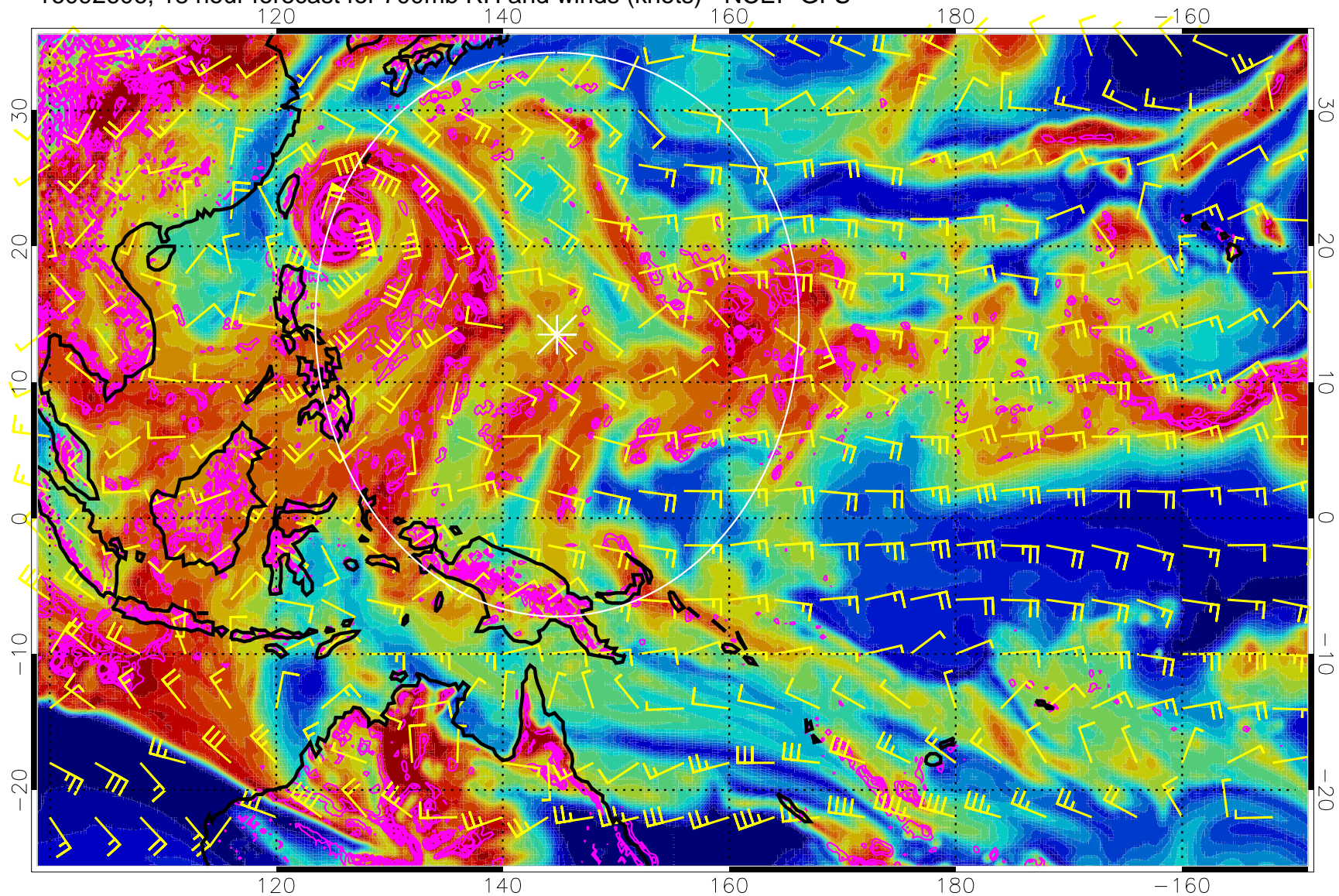


0 20 40 60 80 100  
RH, %

Negative Omegas less than  $-0.3$ , contours of  $0.3$  Pa/s

Range ring of 2304 km

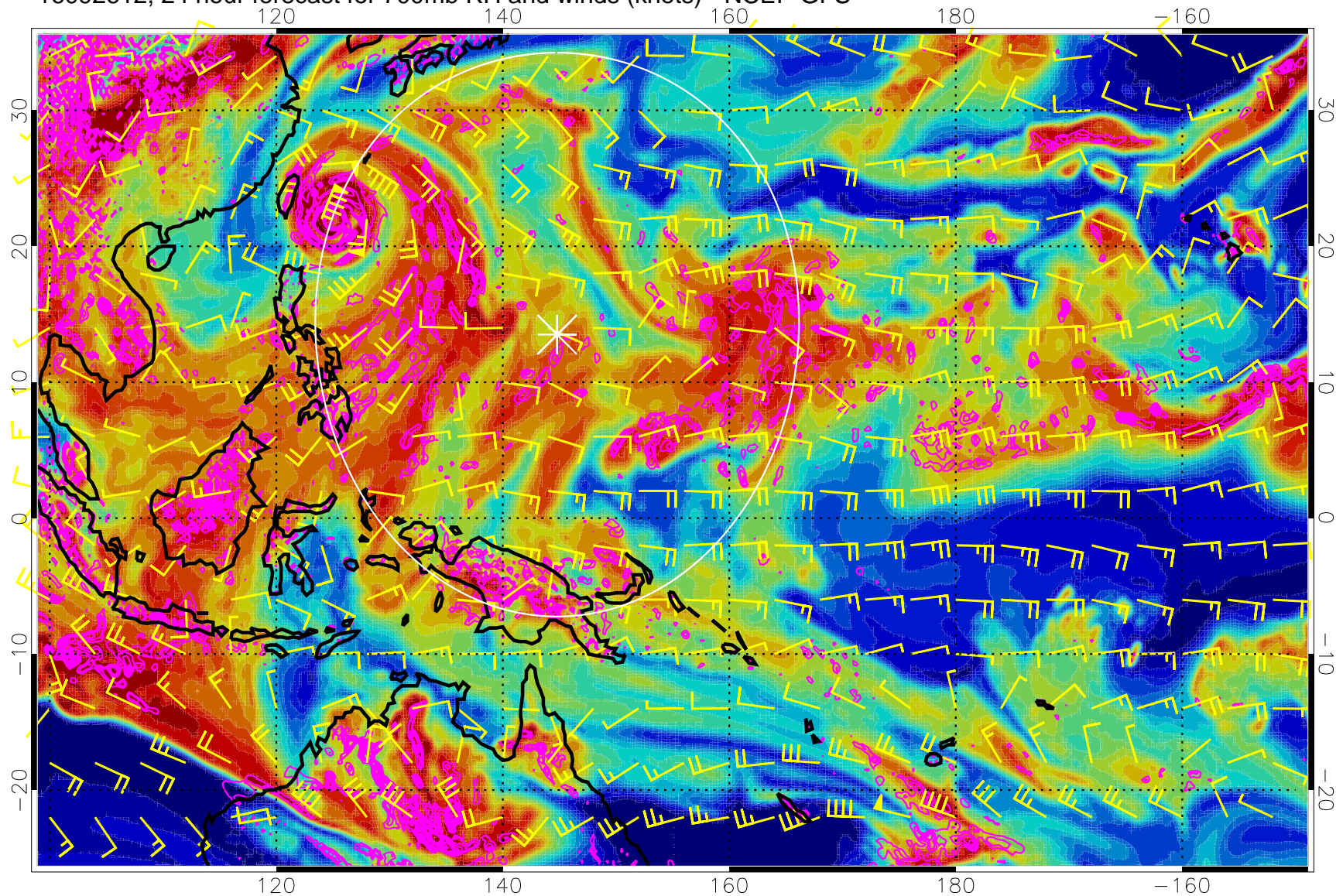
16092606, 18 hour forecast for 700mb RH and winds (knots) - NCEP GFS



Negative Omegas less than  $-0.3$ , contours of  $0.3$  Pa/s

Range ring of 2304 km

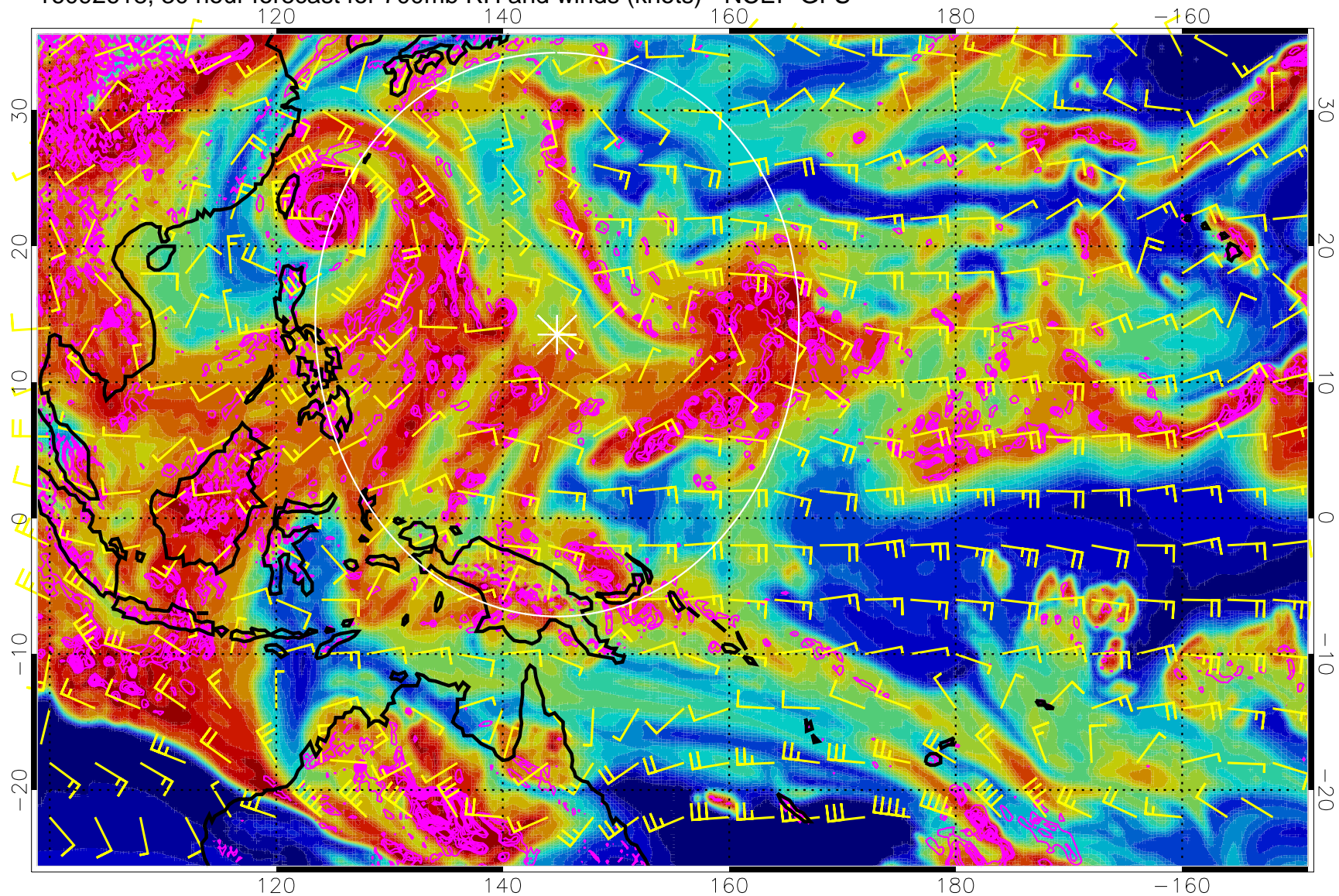
16092612, 24 hour forecast for 700mb RH and winds (knots) - NCEP GFS



Negative Omegas less than  $-0.3$ , contours of  $0.3$  Pa/s

Range ring of 2304 km

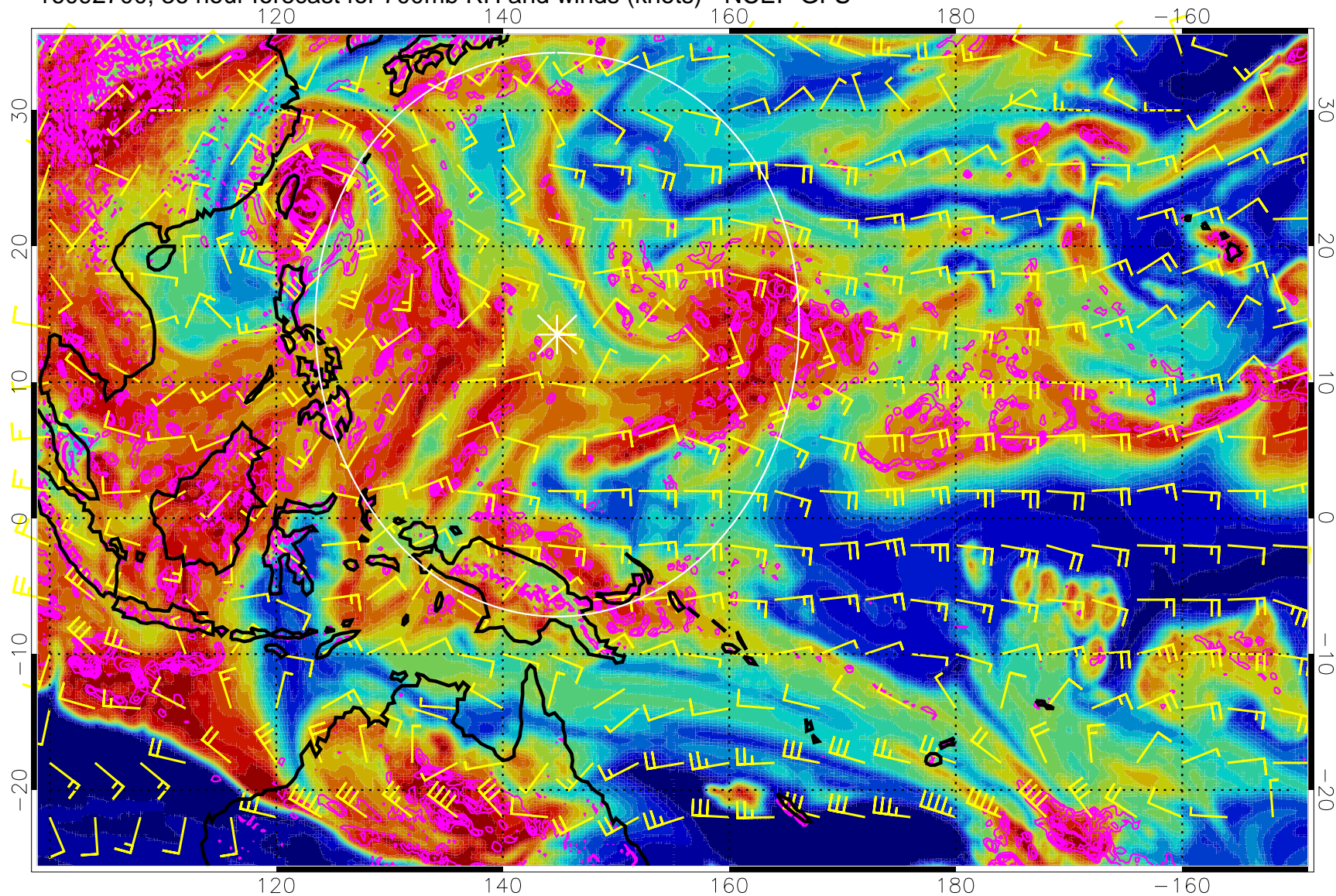
16092618, 30 hour forecast for 700mb RH and winds (knots) - NCEP GFS



Negative Omegas less than  $-0.3$ , contours of  $0.3$  Pa/s

Range ring of 2304 km

16092700, 36 hour forecast for 700mb RH and winds (knots) - NCEP GFS

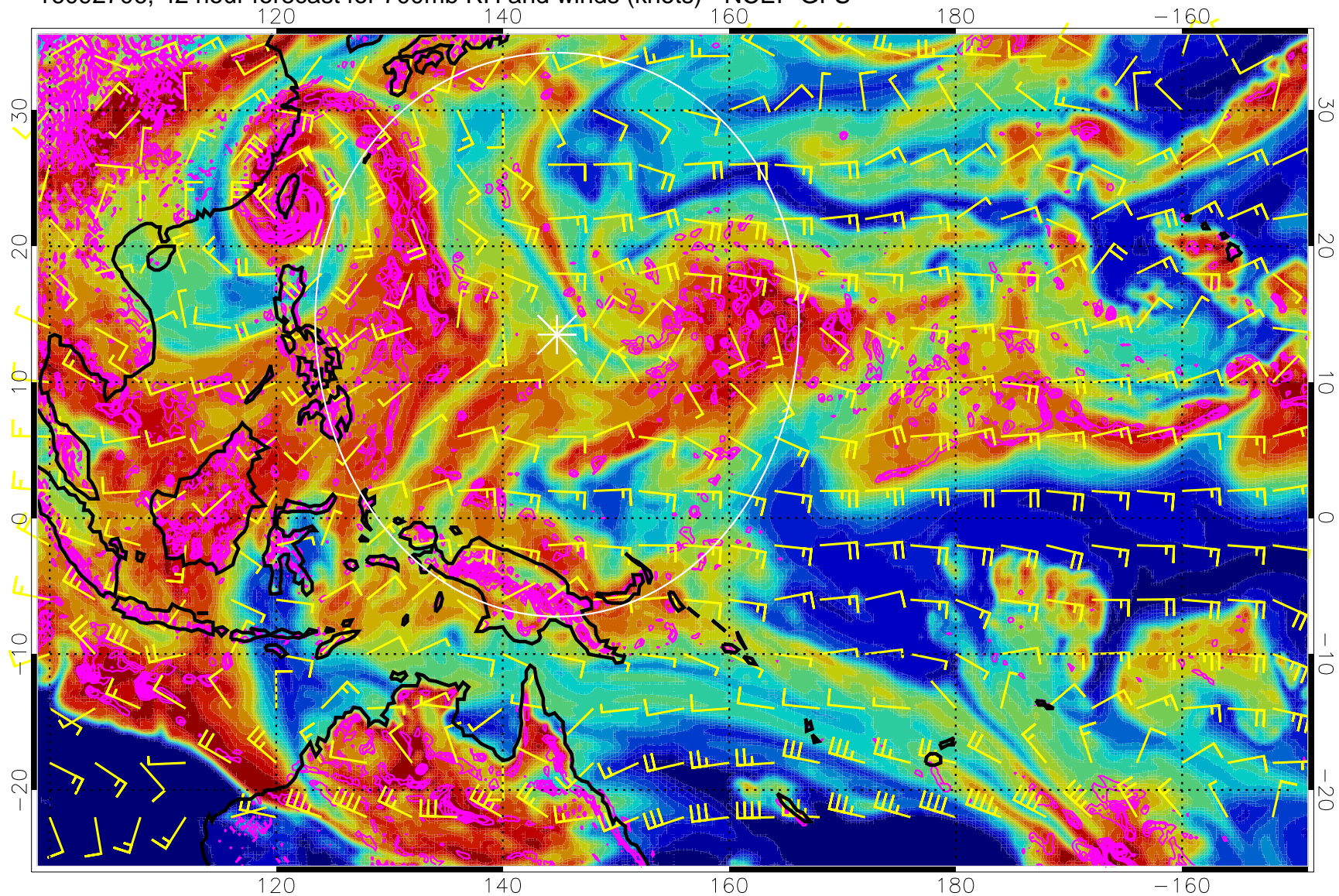


0 20 40 60 80 100  
RH, %

Negative Omegas less than  $-0.3$ , contours of  $0.3$  Pa/s

Range ring of 2304 km

16092706, 42 hour forecast for 700mb RH and winds (knots) - NCEP GFS

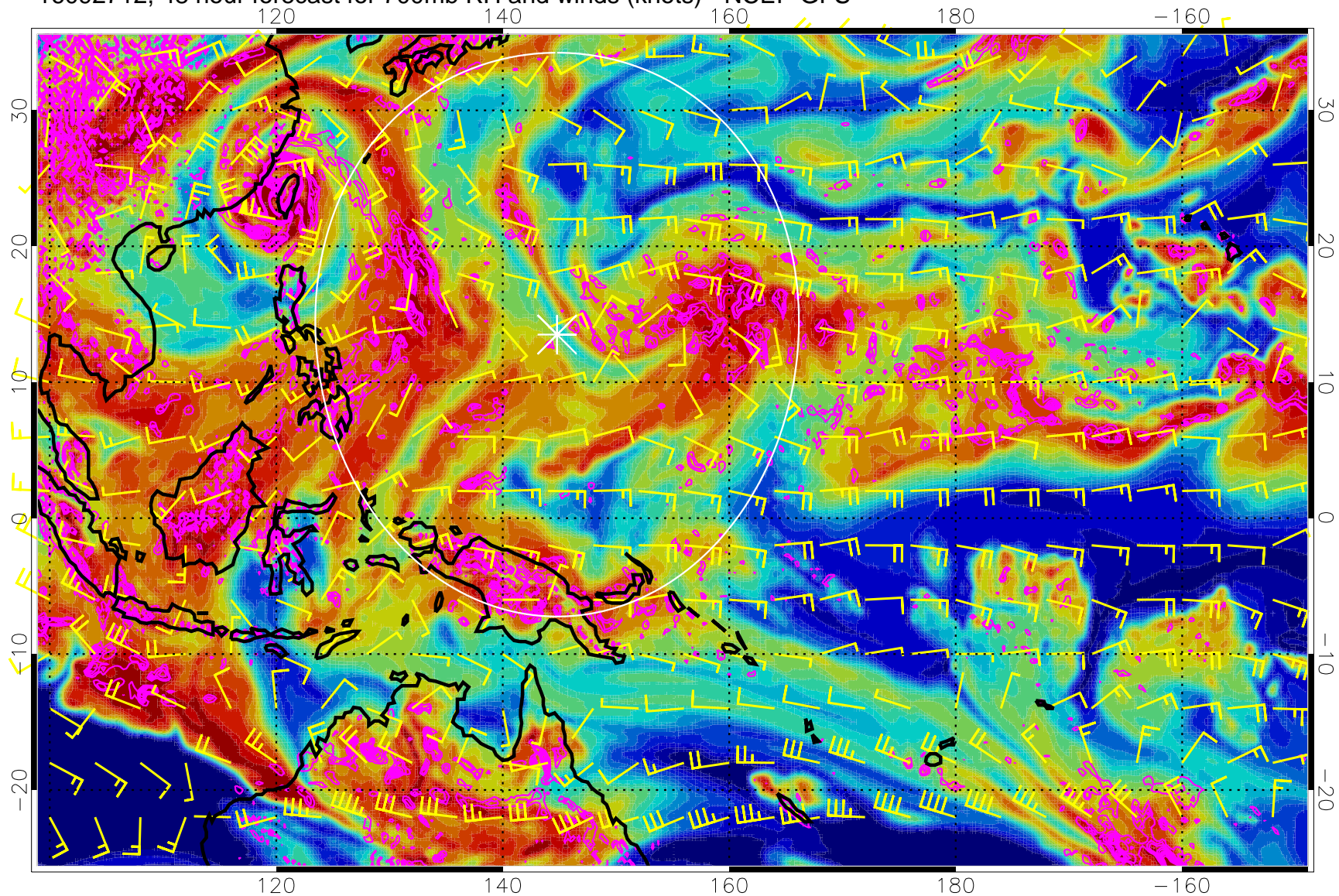


0 20 40 60 80 100  
RH, %

Negative Omegas less than  $-0.3$ , contours of  $0.3$  Pa/s

Range ring of 2304 km

16092712, 48 hour forecast for 700mb RH and winds (knots) - NCEP GFS

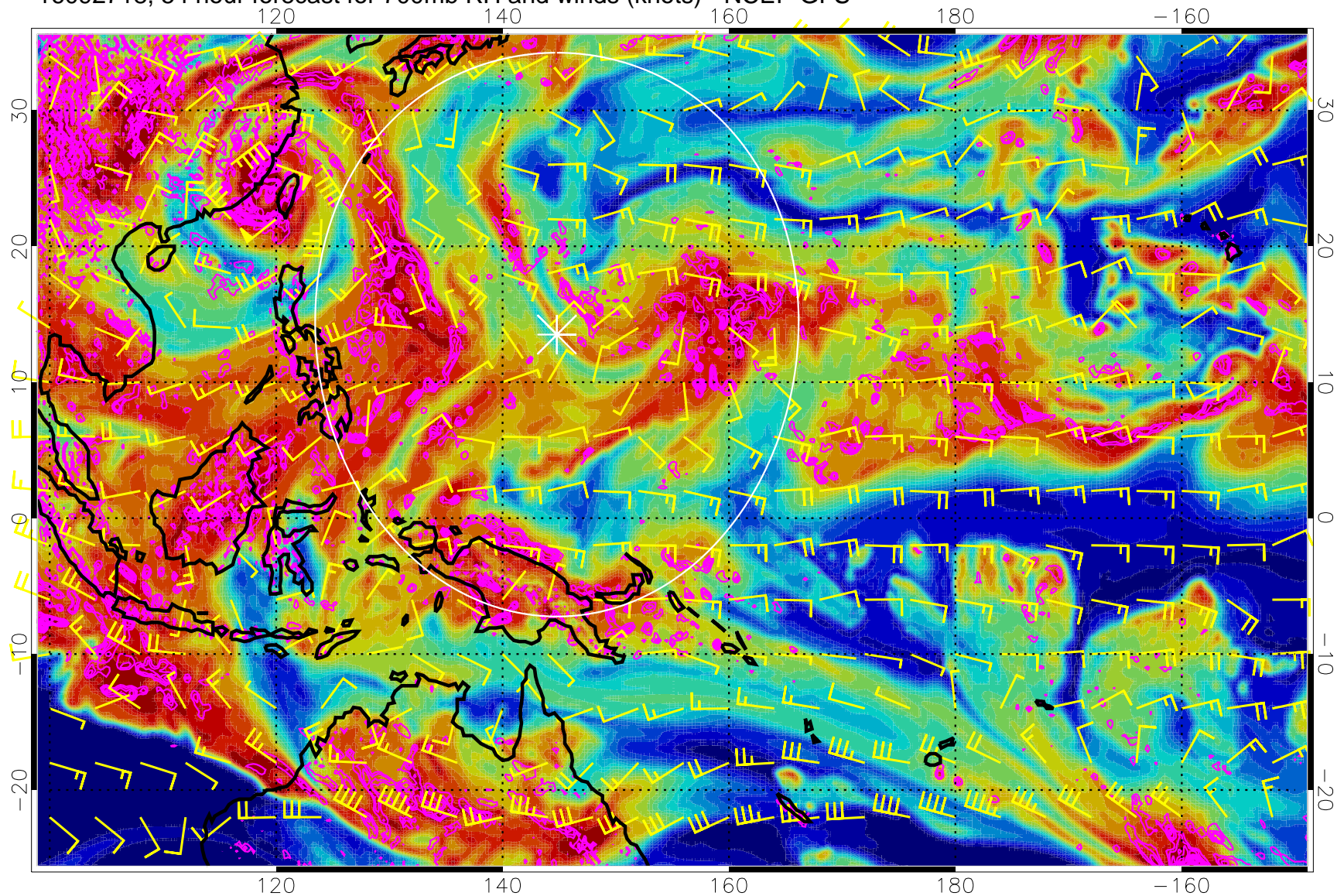


Negative Omegas less than  $-0.3$ , contours of  $0.3$  Pa/s

Range ring of 2304 km



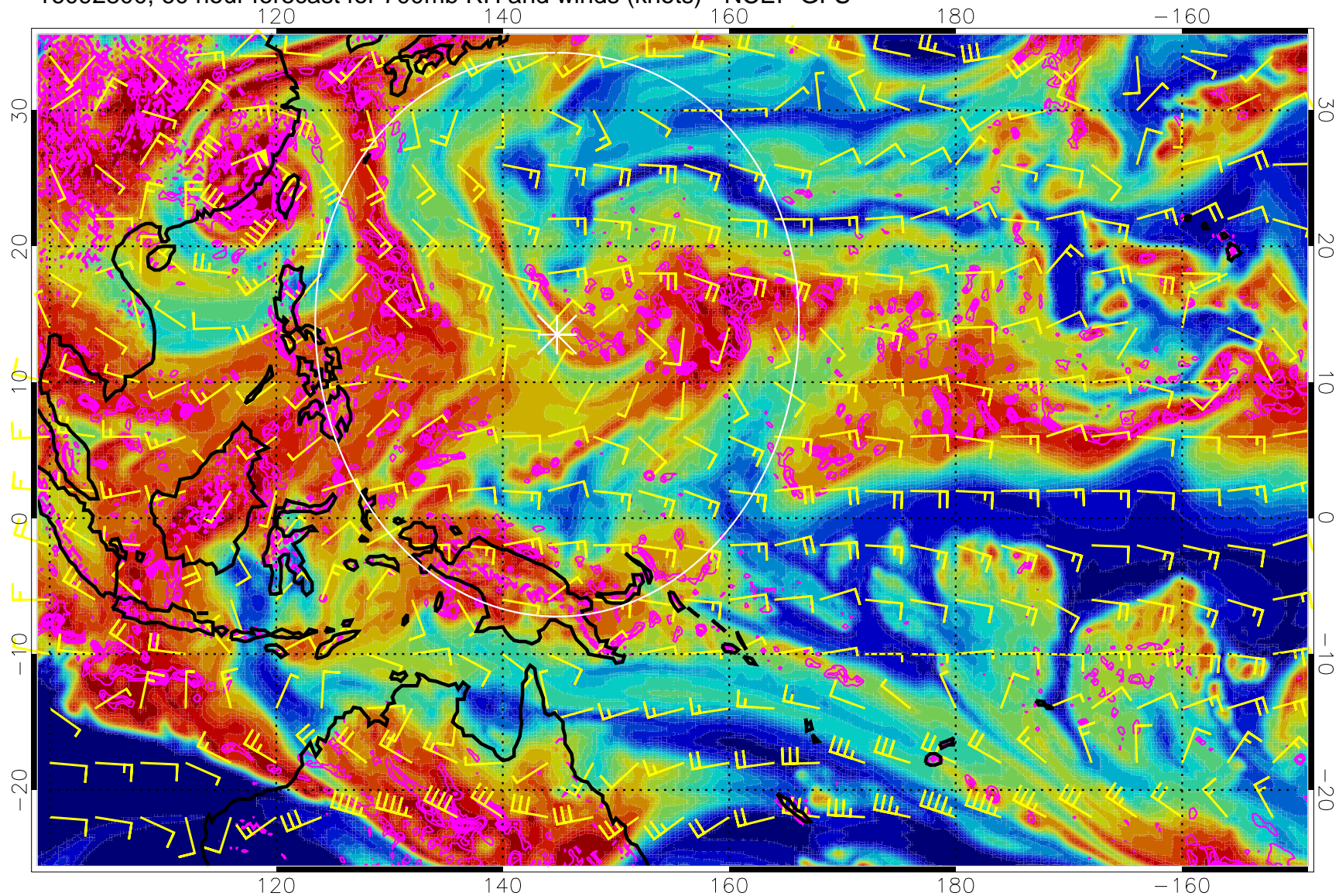
16092718, 54 hour forecast for 700mb RH and winds (knots) - NCEP GFS



Negative Omegas less than  $-0.3$ , contours of  $0.3$  Pa/s

Range ring of 2304 km

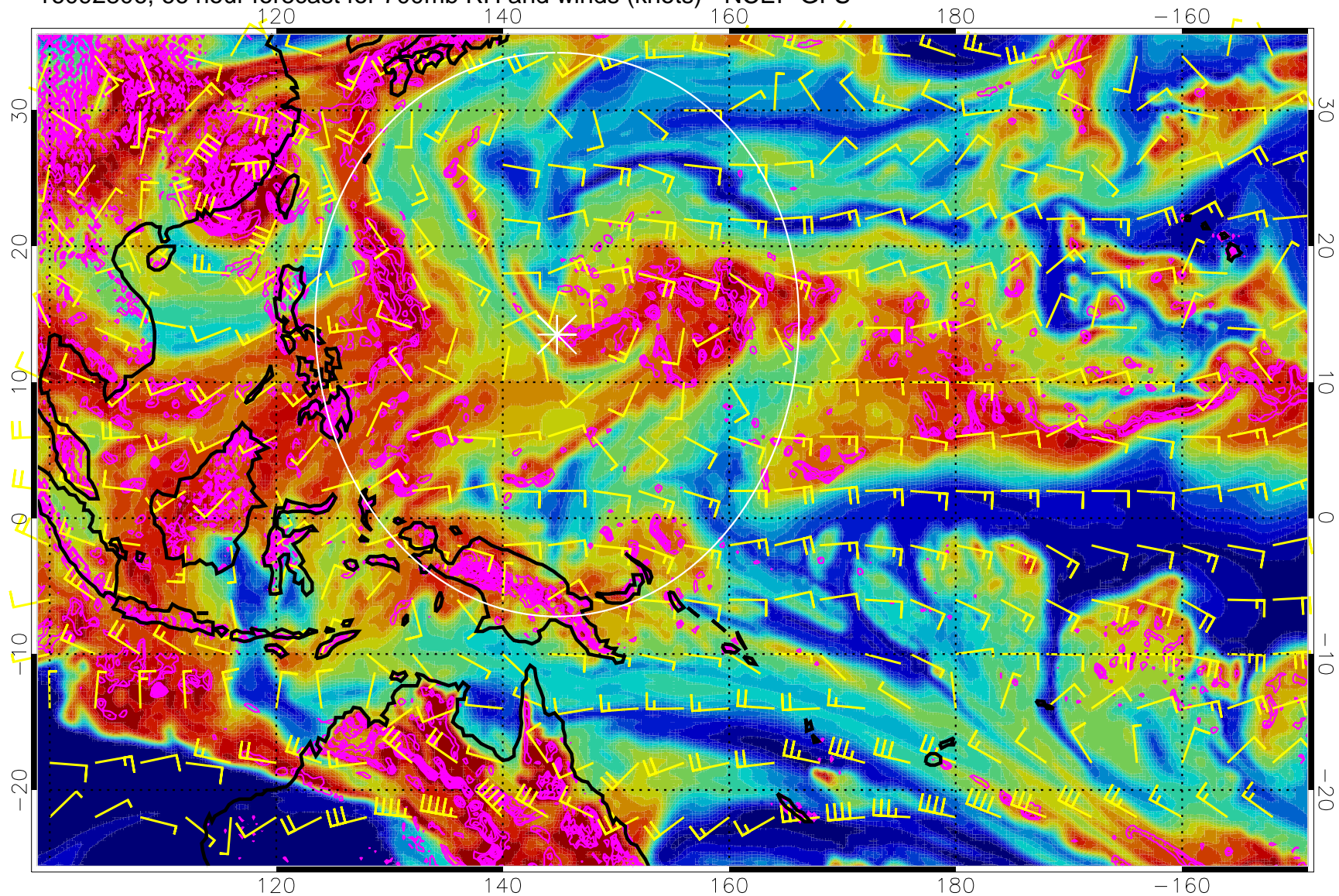
16092800, 60 hour forecast for 700mb RH and winds (knots) - NCEP GFS



Negative Omegas less than  $-0.3$ , contours of  $0.3$  Pa/s

Range ring of 2304 km

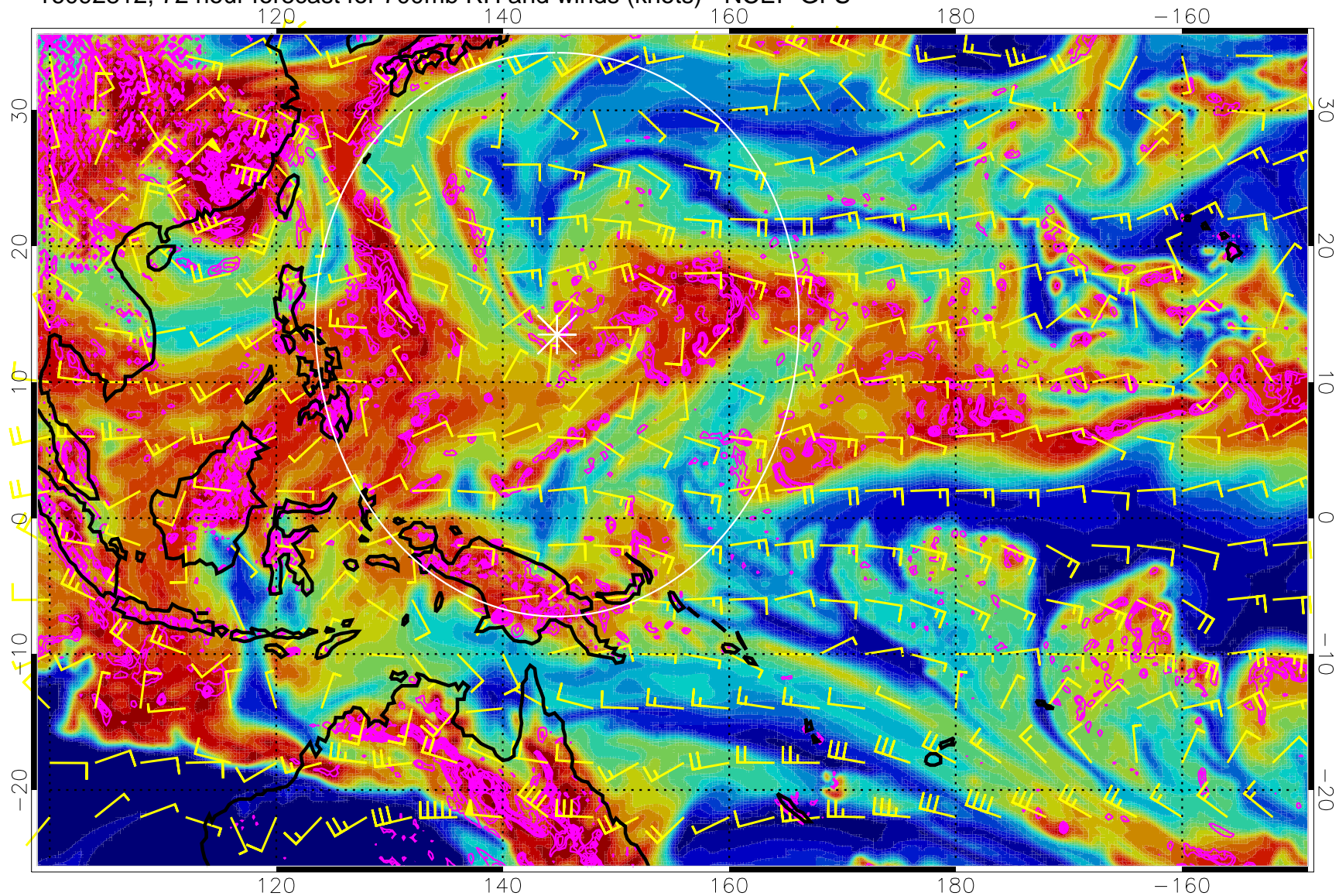
16092806, 66 hour forecast for 700mb RH and winds (knots) - NCEP GFS



Negative Omegas less than  $-0.3$ , contours of  $0.3$  Pa/s

Range ring of 2304 km

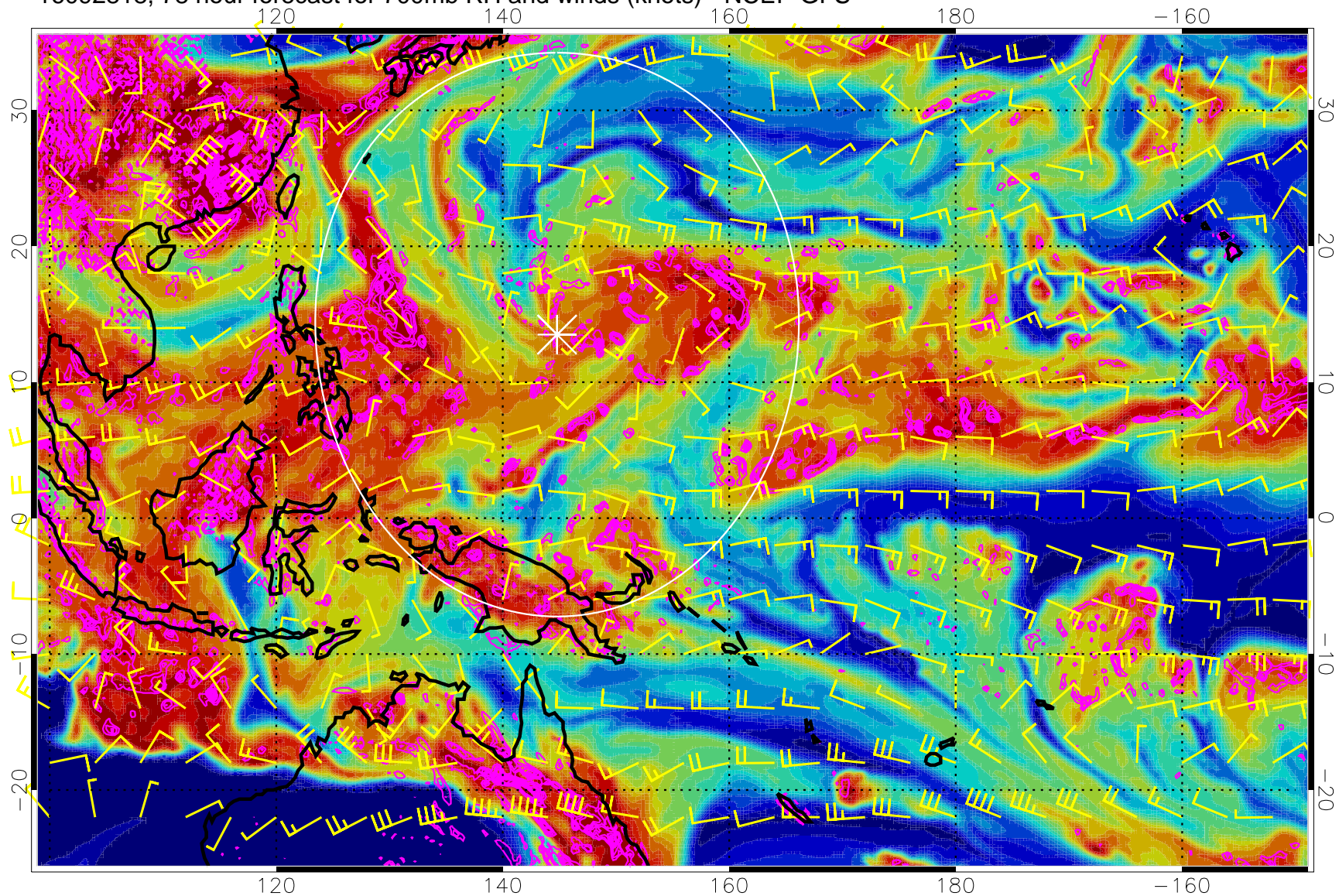
16092812, 72 hour forecast for 700mb RH and winds (knots) - NCEP GFS



Negative Omegas less than  $-0.3$ , contours of  $.3$  Pa/s

Range ring of 2304 km

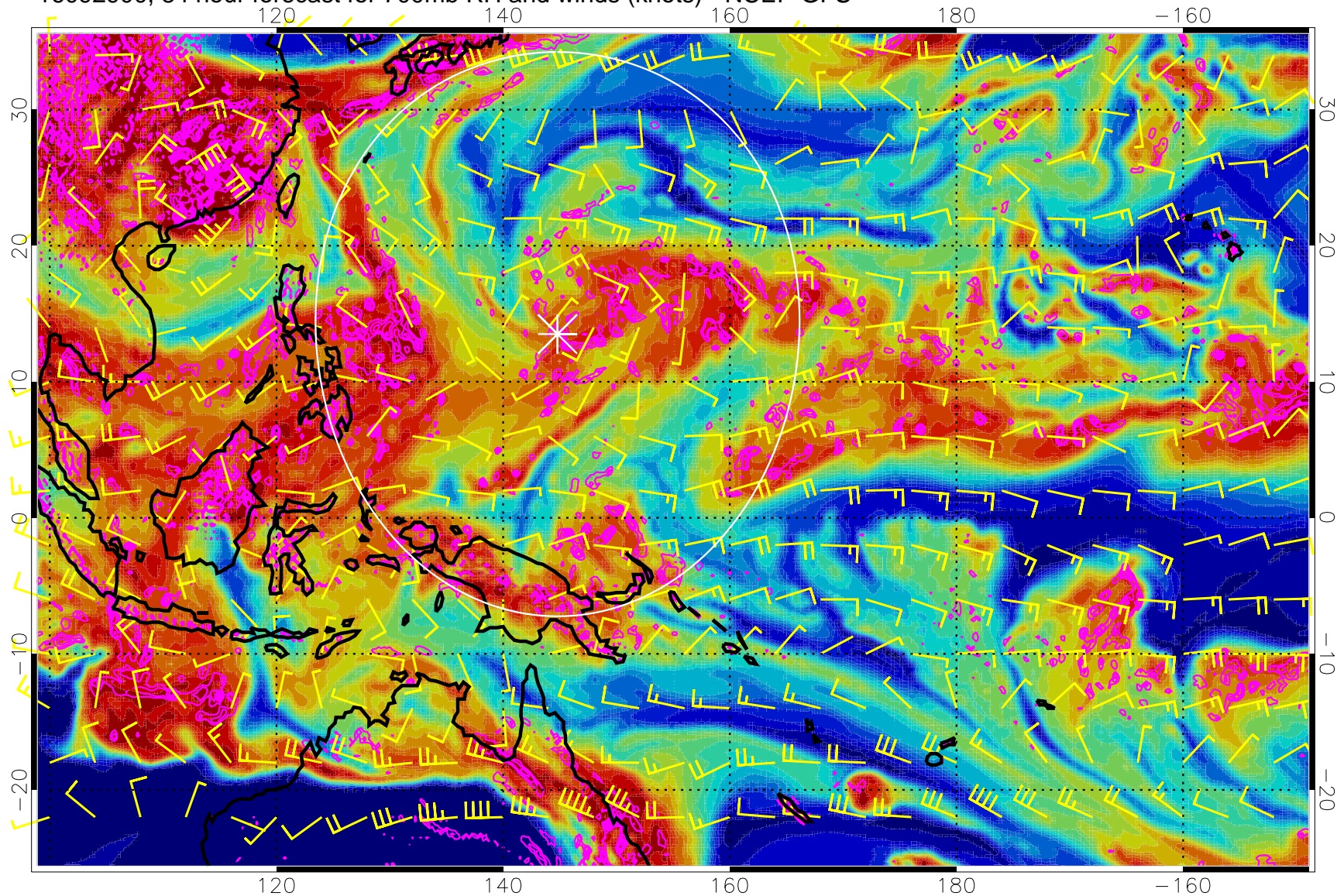
16092818, 78 hour forecast for 700mb RH and winds (knots) - NCEP GFS



Negative Omegas less than  $-0.3$ , contours of  $0.3$  Pa/s

Range ring of 2304 km

16092900, 84 hour forecast for 700mb RH and winds (knots) - NCEP GFS



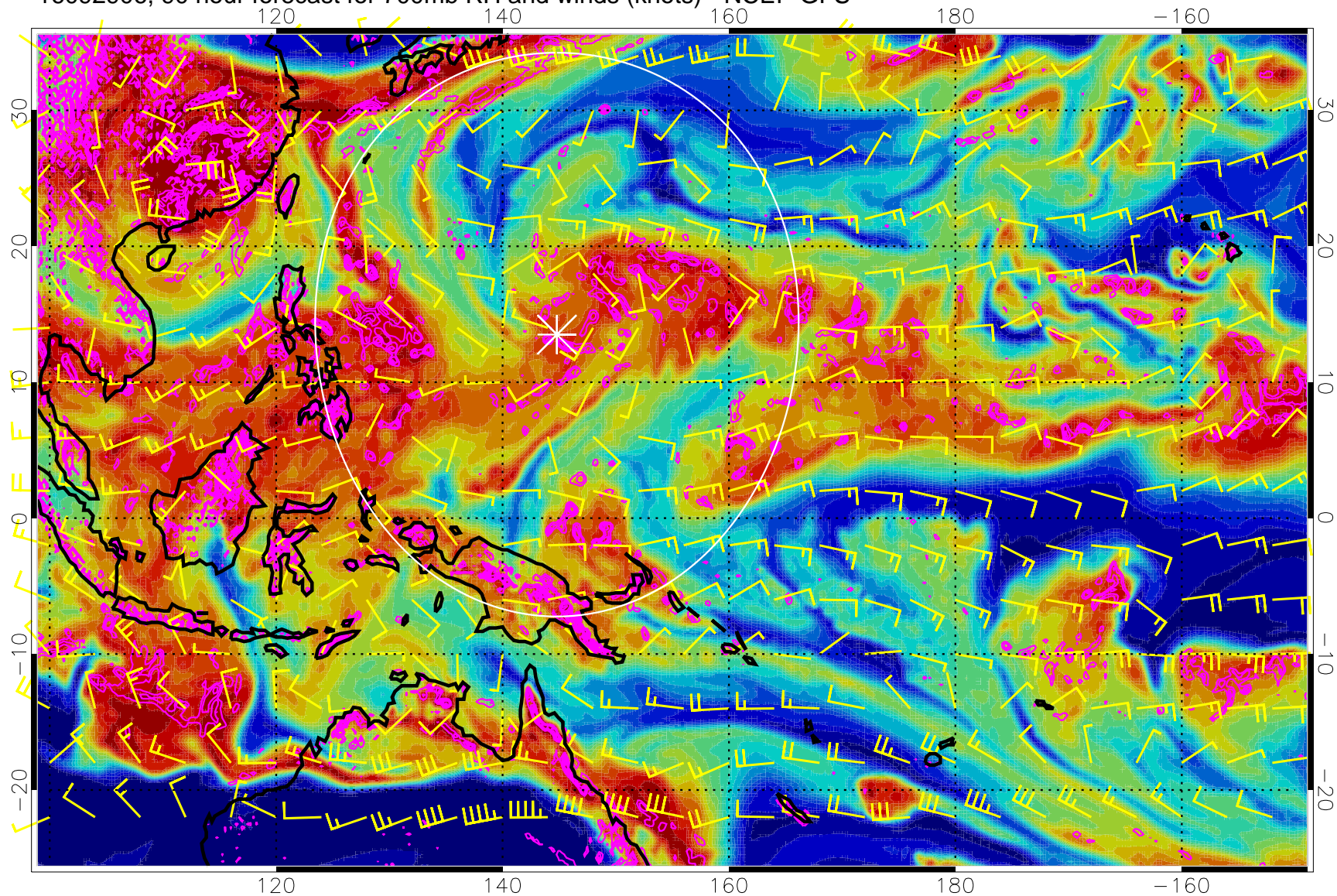
Negative Omegas less than  $-0.3$ , contours of  $0.3$  Pa/s



0 20 40 60 80 100  
RH, %

Range ring of 2304 km

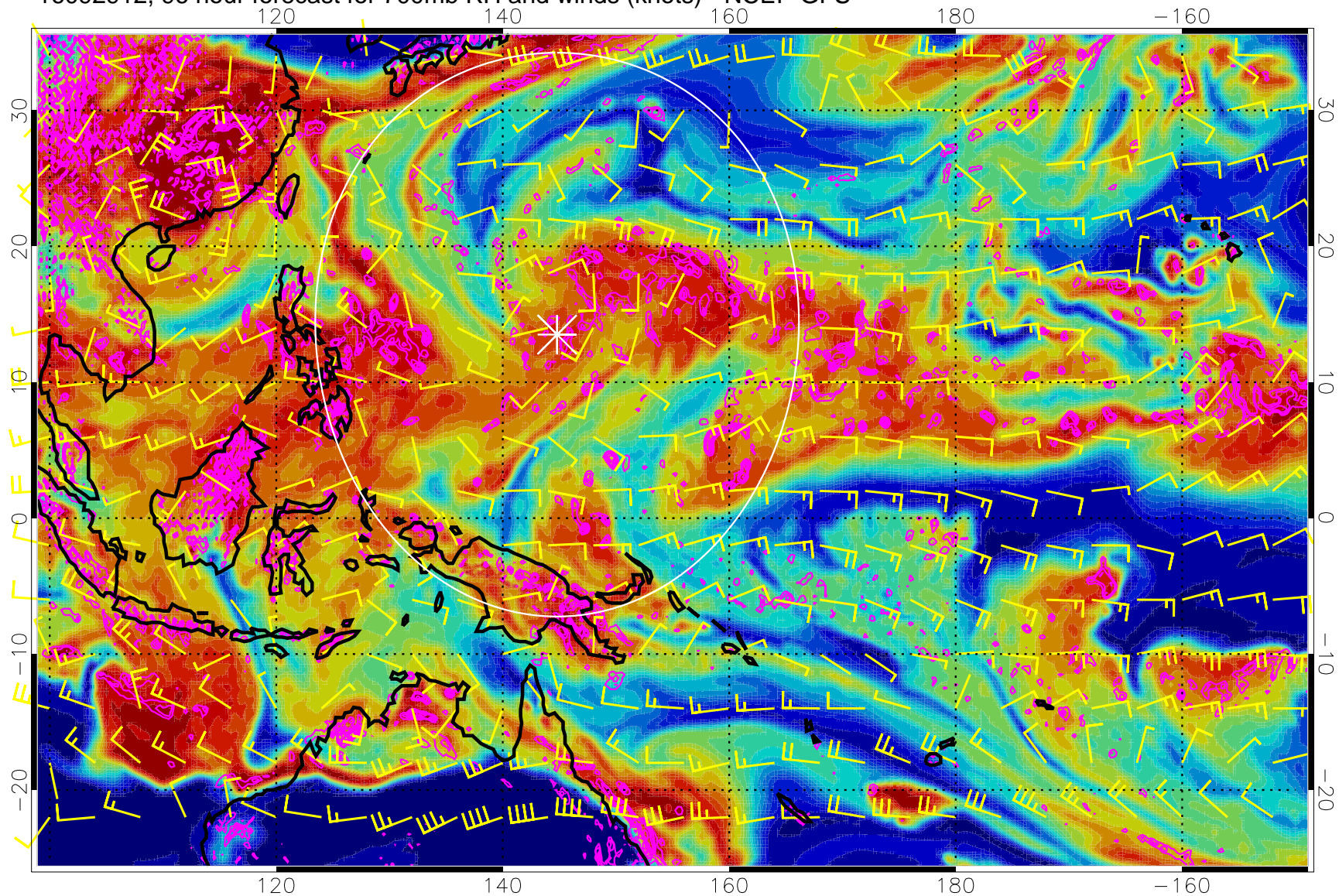
16092906, 90 hour forecast for 700mb RH and winds (knots) - NCEP GFS



Negative Omegas less than  $-0.3$ , contours of  $0.3$  Pa/s

Range ring of 2304 km

16092912, 96 hour forecast for 700mb RH and winds (knots) - NCEP GFS

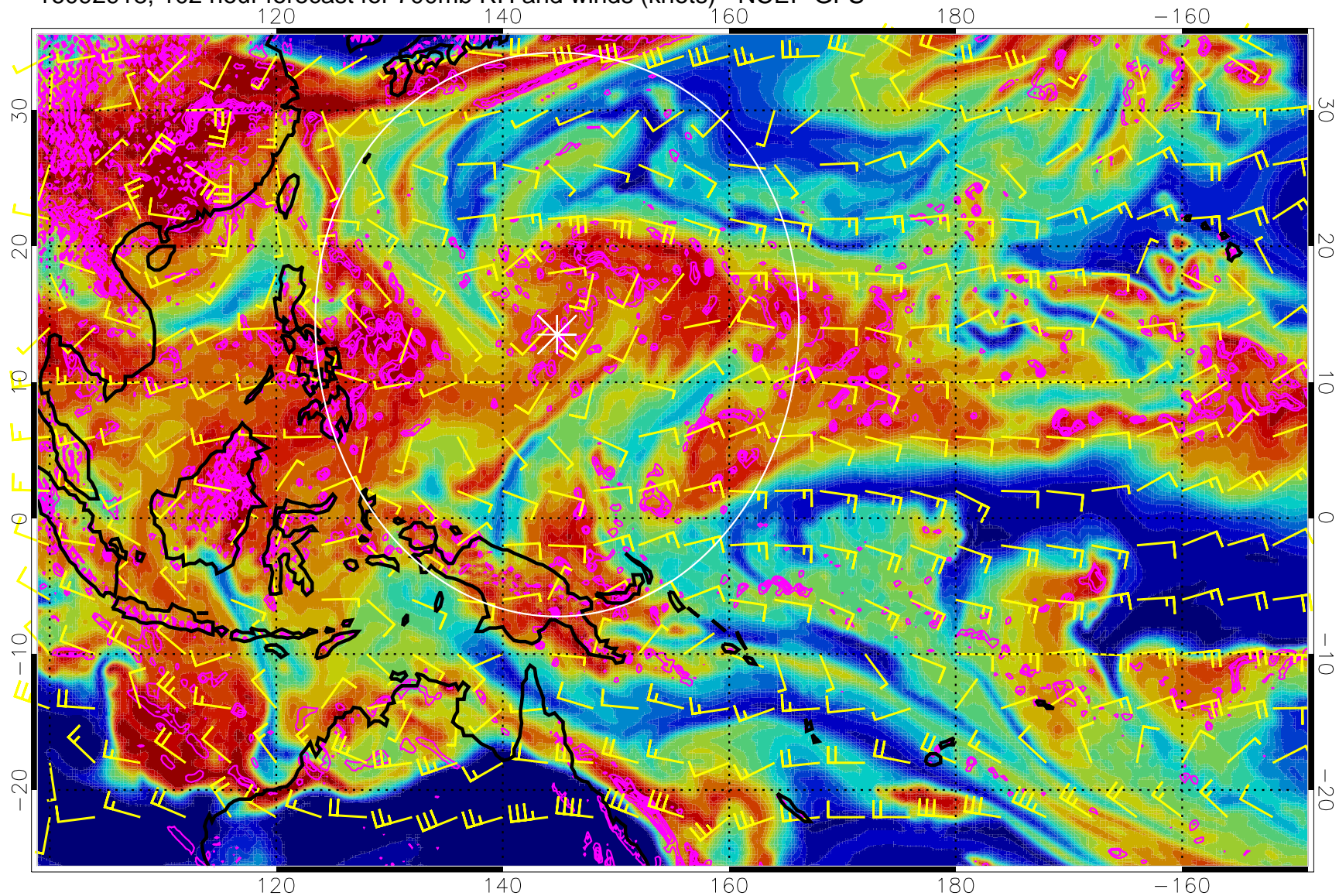


Negative Omegas less than  $-0.3$ , contours of  $.3$  Pa/s

Range ring of 2304 km



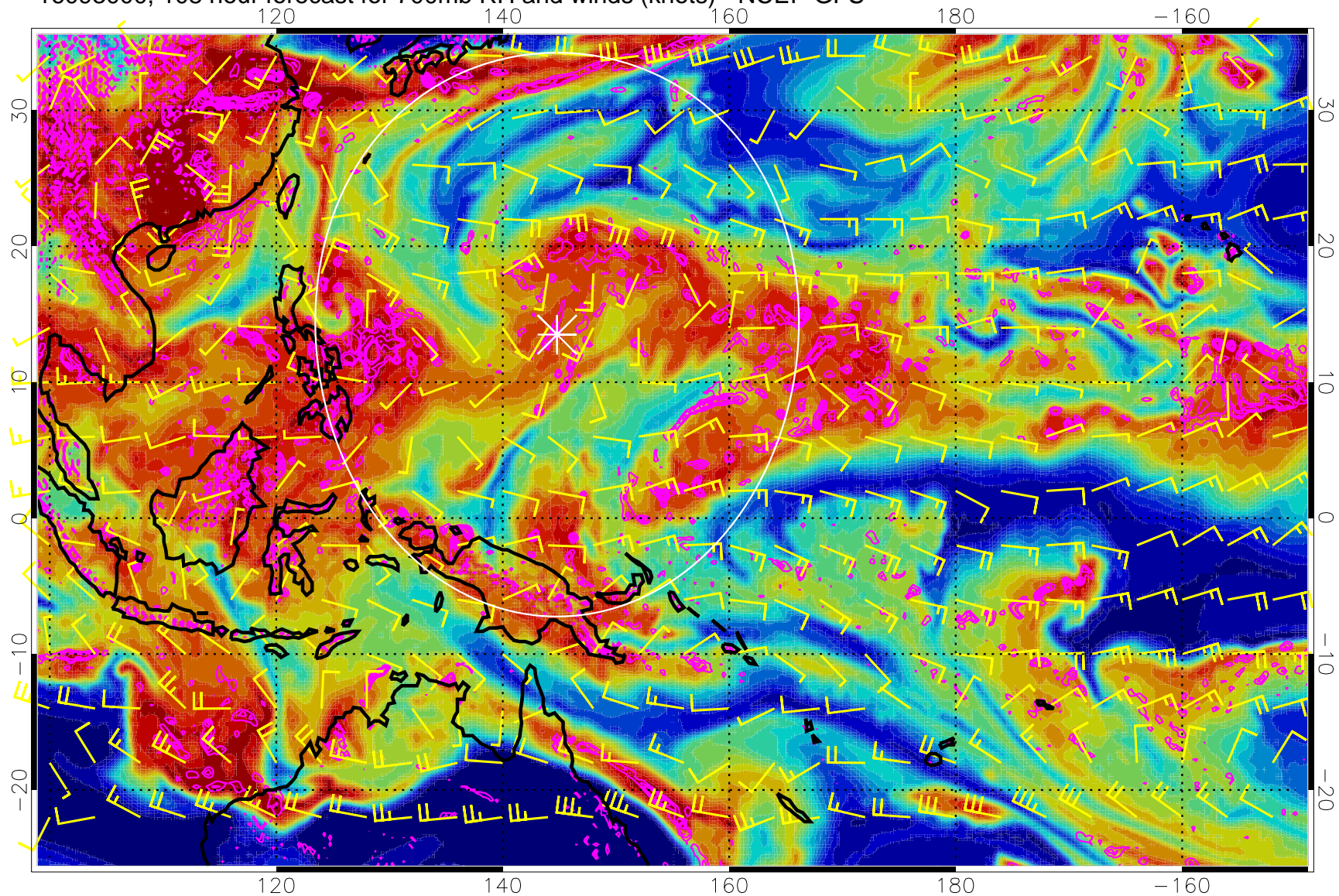
16092918, 102 hour forecast for 700mb RH and winds (knots) - NCEP GFS



Negative Omegas less than  $-0.3$ , contours of  $0.3$  Pa/s

Range ring of 2304 km

16093000, 108 hour forecast for 700mb RH and winds (knots) - NCEP GFS

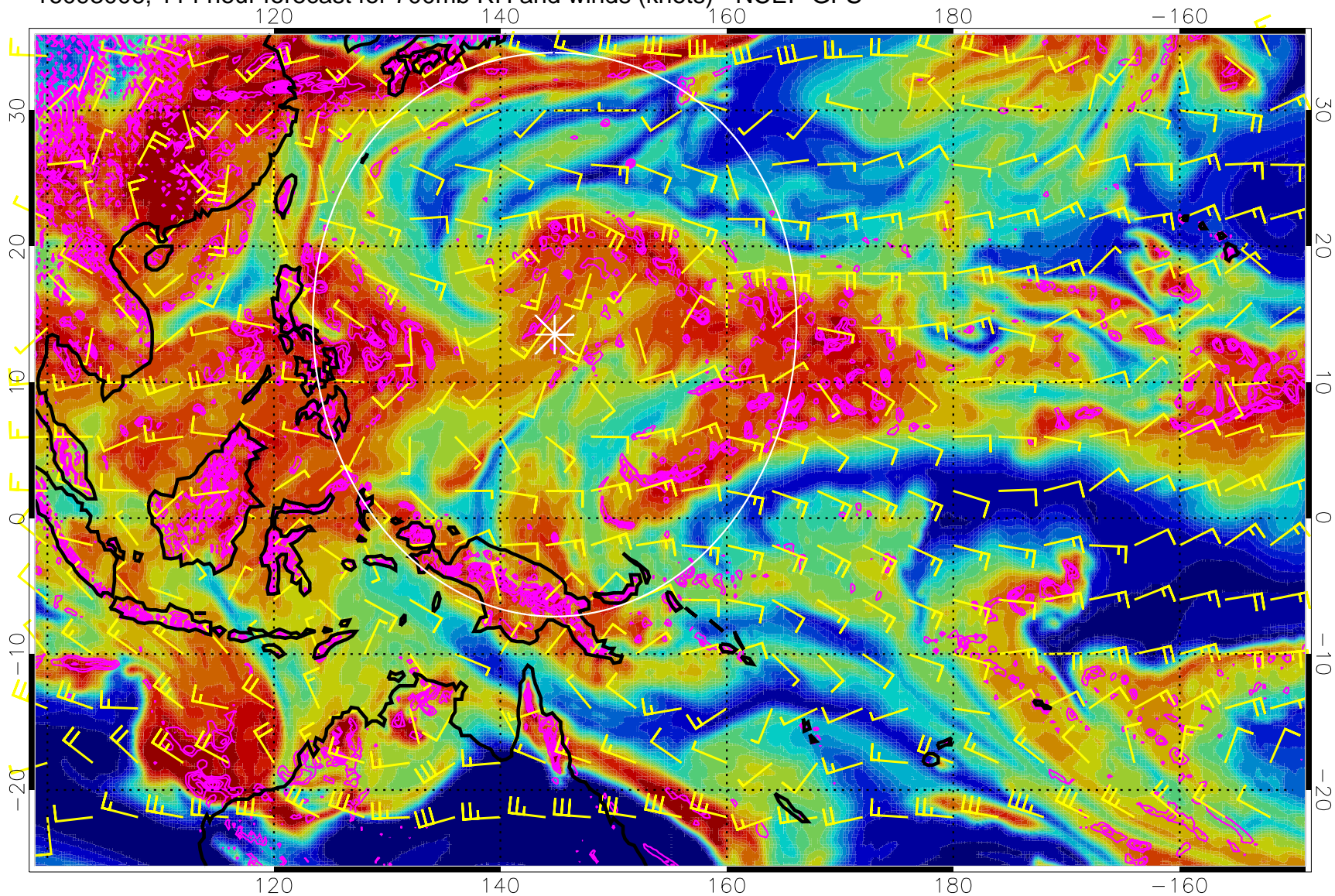


0 20 40 60 80 100  
RH, %

Negative Omegas less than  $-0.3$ , contours of  $0.3$  Pa/s

Range ring of 2304 km

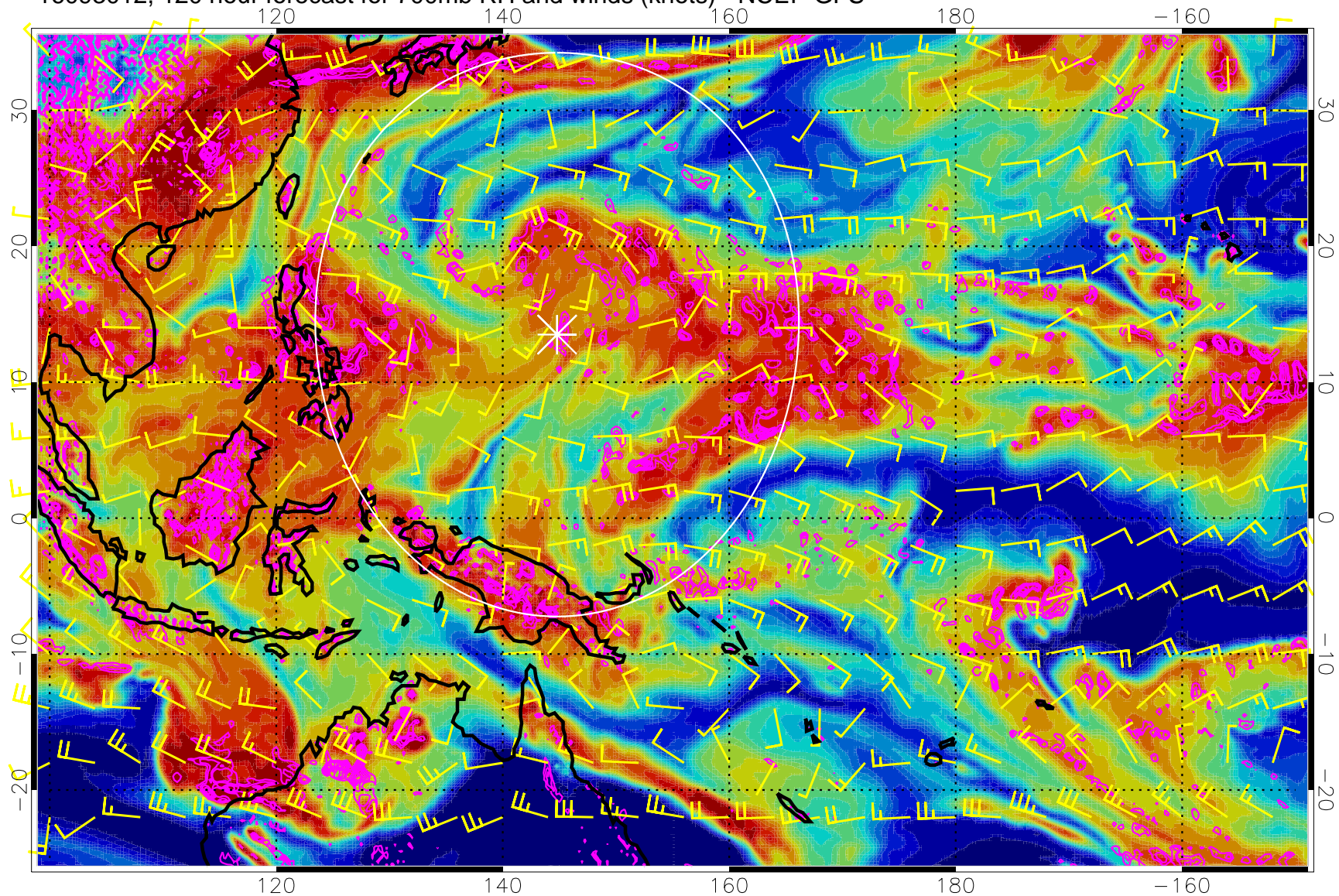
16093006, 114 hour forecast for 700mb RH and winds (knots) - NCEP GFS



Negative Omegas less than  $-0.3$ , contours of  $0.3$  Pa/s

Range ring of 2304 km

16093012, 120 hour forecast for 700mb RH and winds (knots) - NCEP GFS



0 20 40 60 80 100  
RH, %

Negative Omegas less than  $-0.3$ , contours of  $0.3$  Pa/s

Range ring of 2304 km