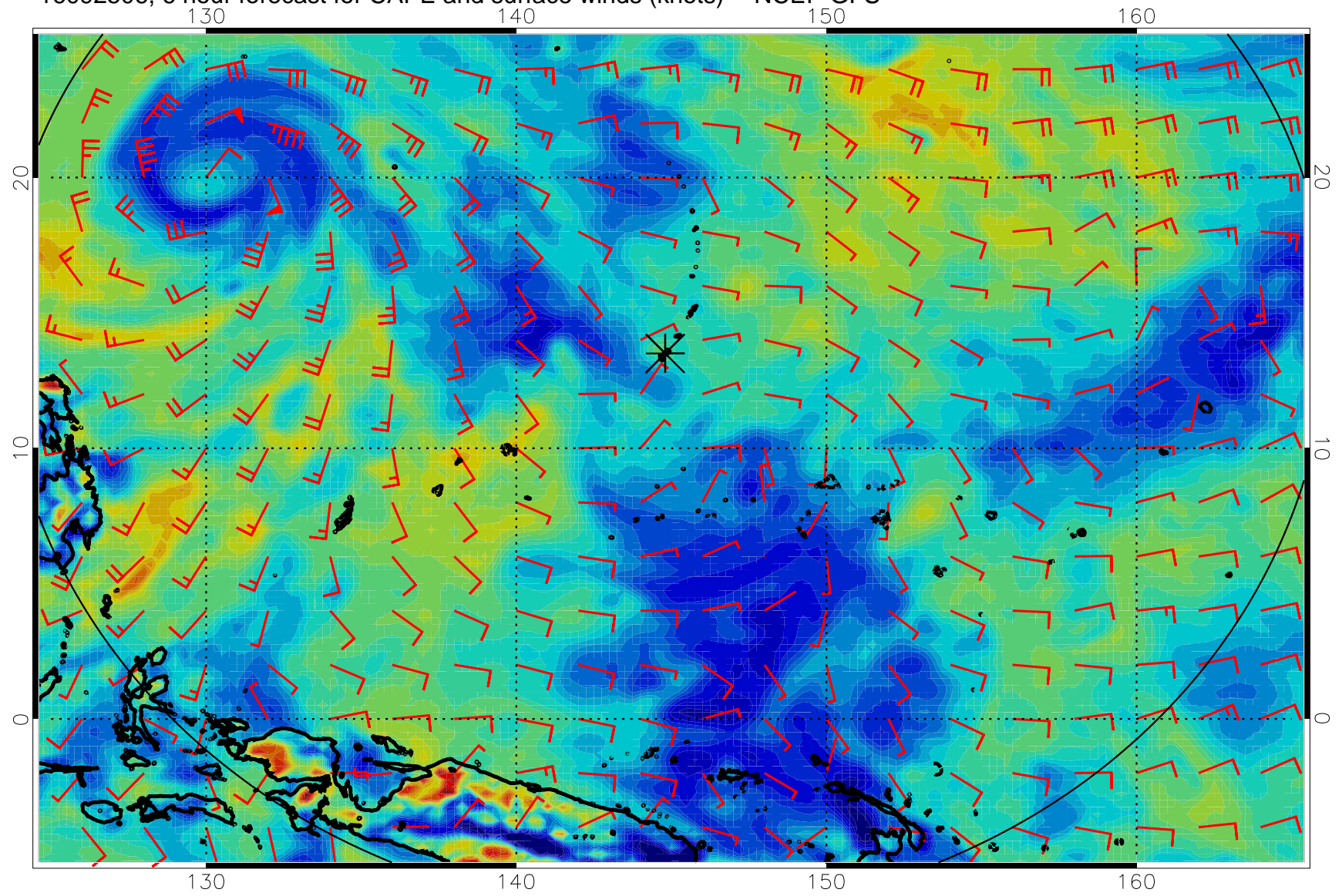
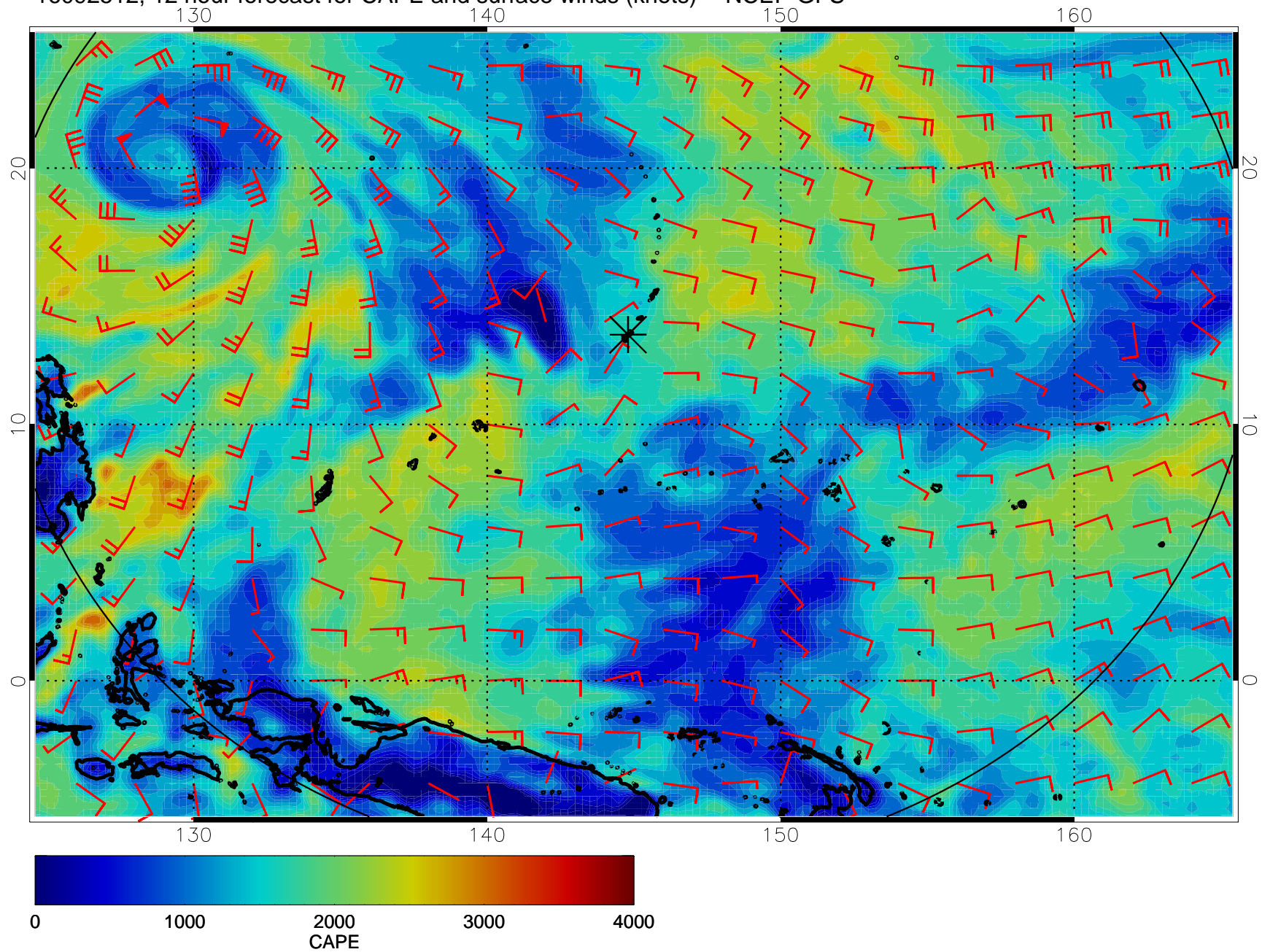


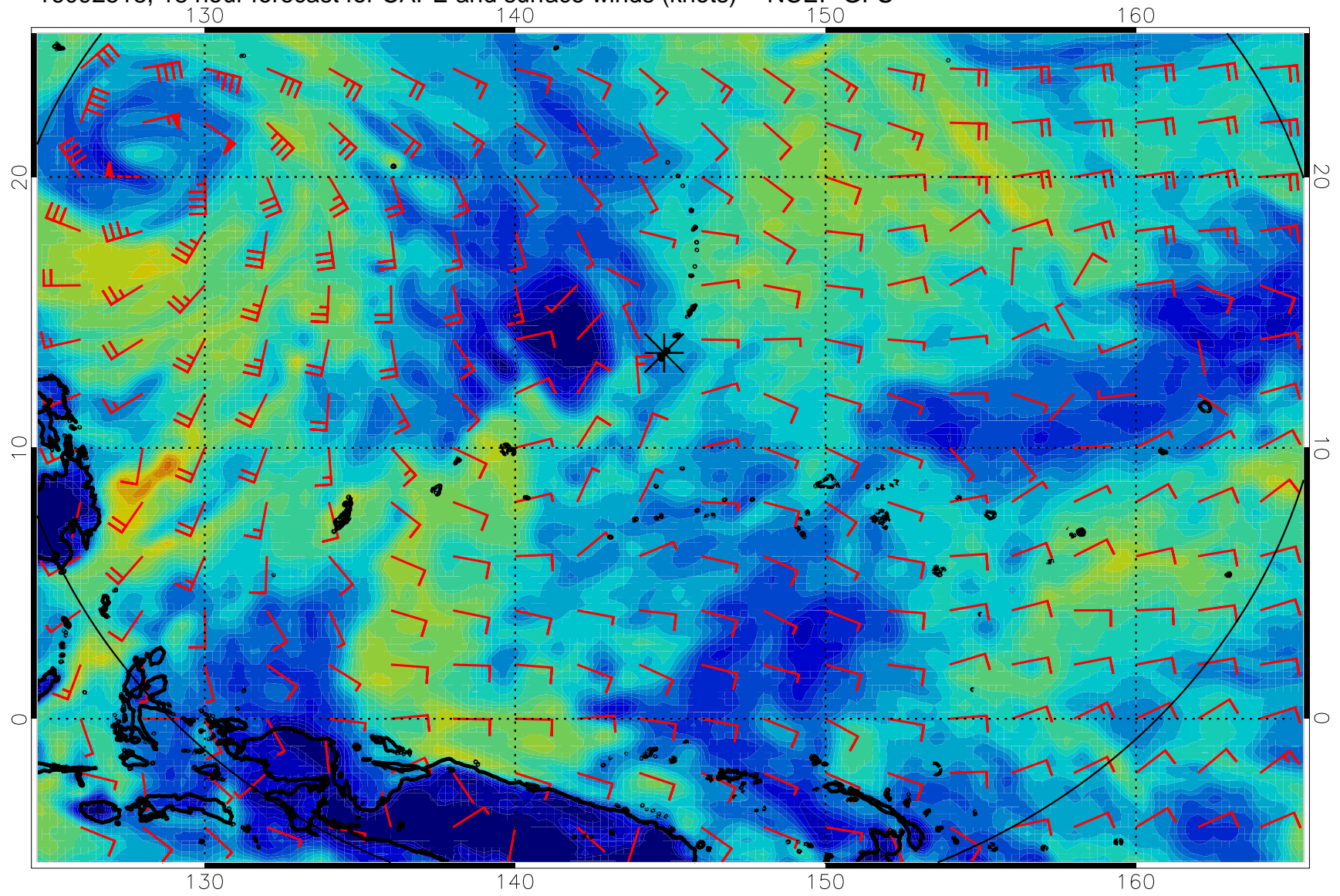
16092506, 6 hour forecast for CAPE and surface winds (knots) -- NCEP GFS



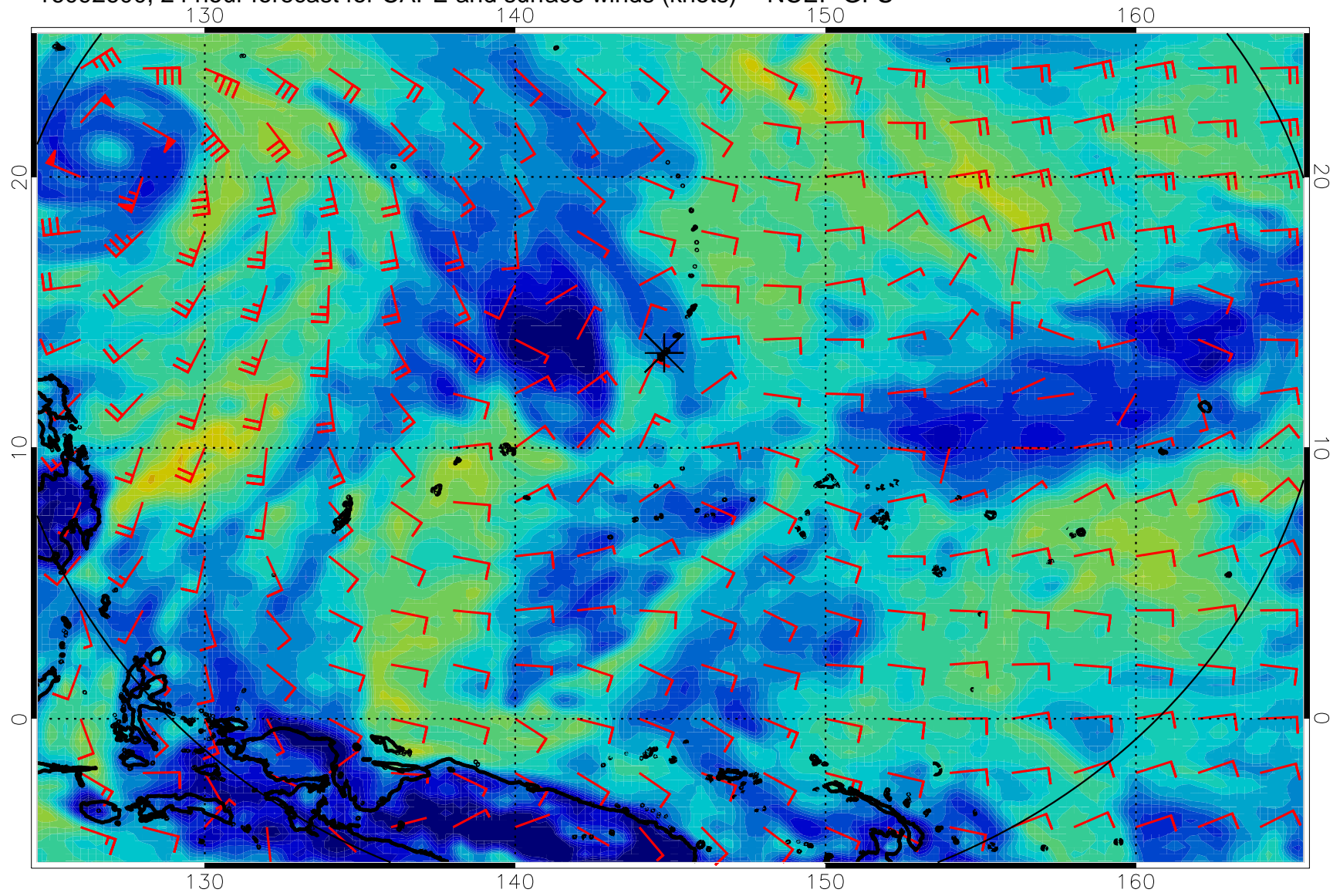
16092512, 12 hour forecast for CAPE and surface winds (knots) -- NCEP GFS



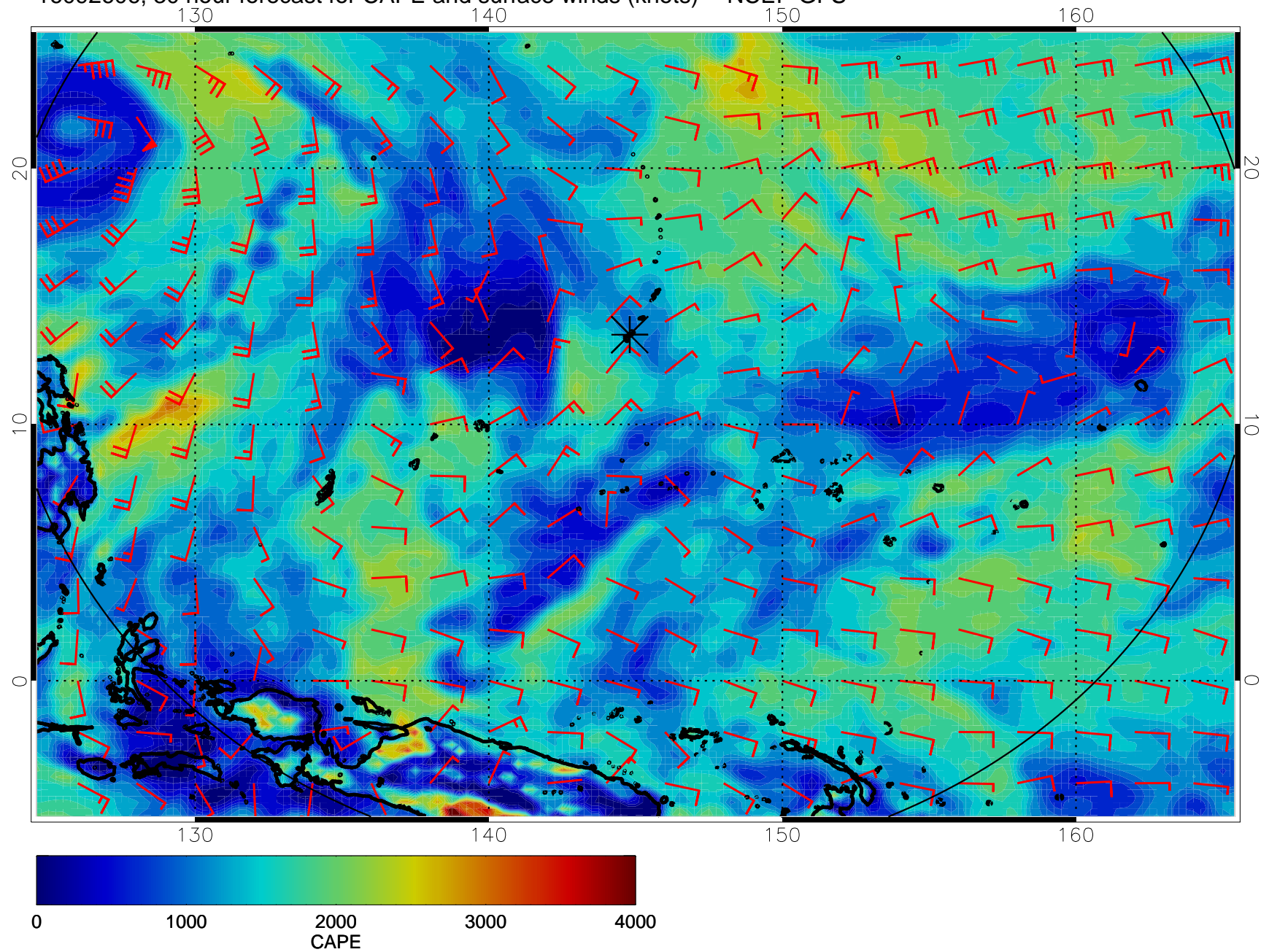
16092518, 18 hour forecast for CAPE and surface winds (knots) -- NCEP GFS



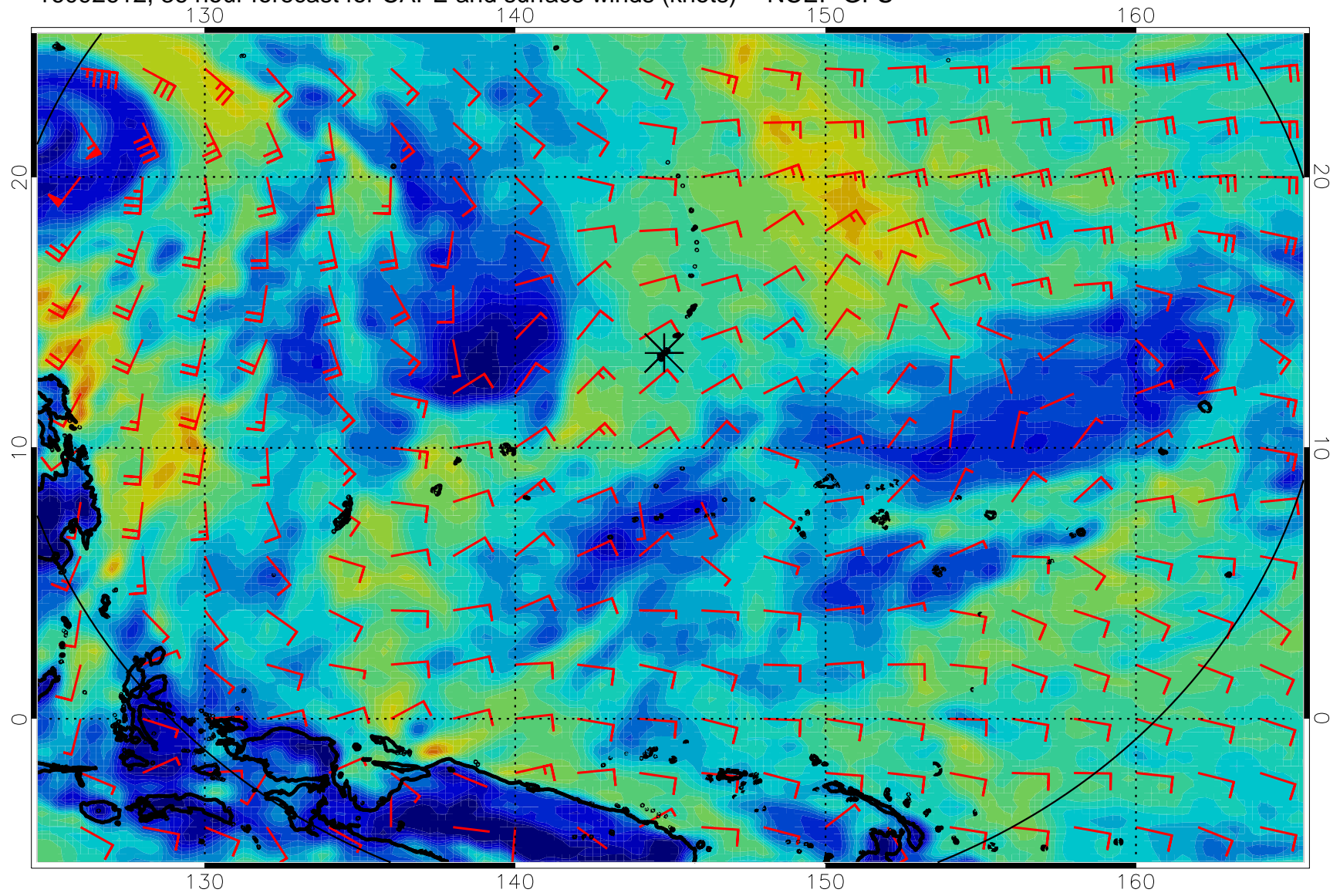
16092600, 24 hour forecast for CAPE and surface winds (knots) -- NCEP GFS



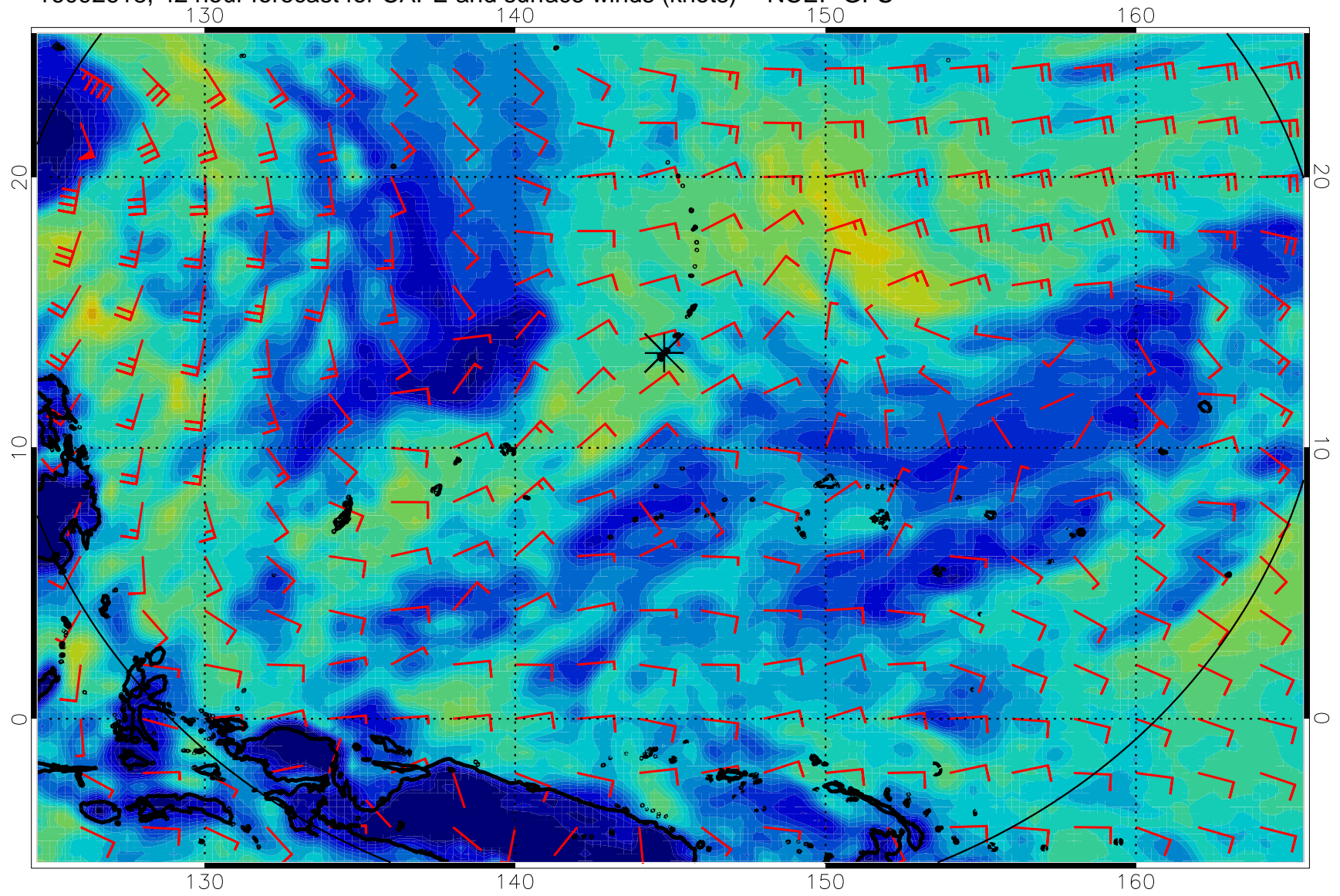
16092606, 30 hour forecast for CAPE and surface winds (knots) -- NCEP GFS



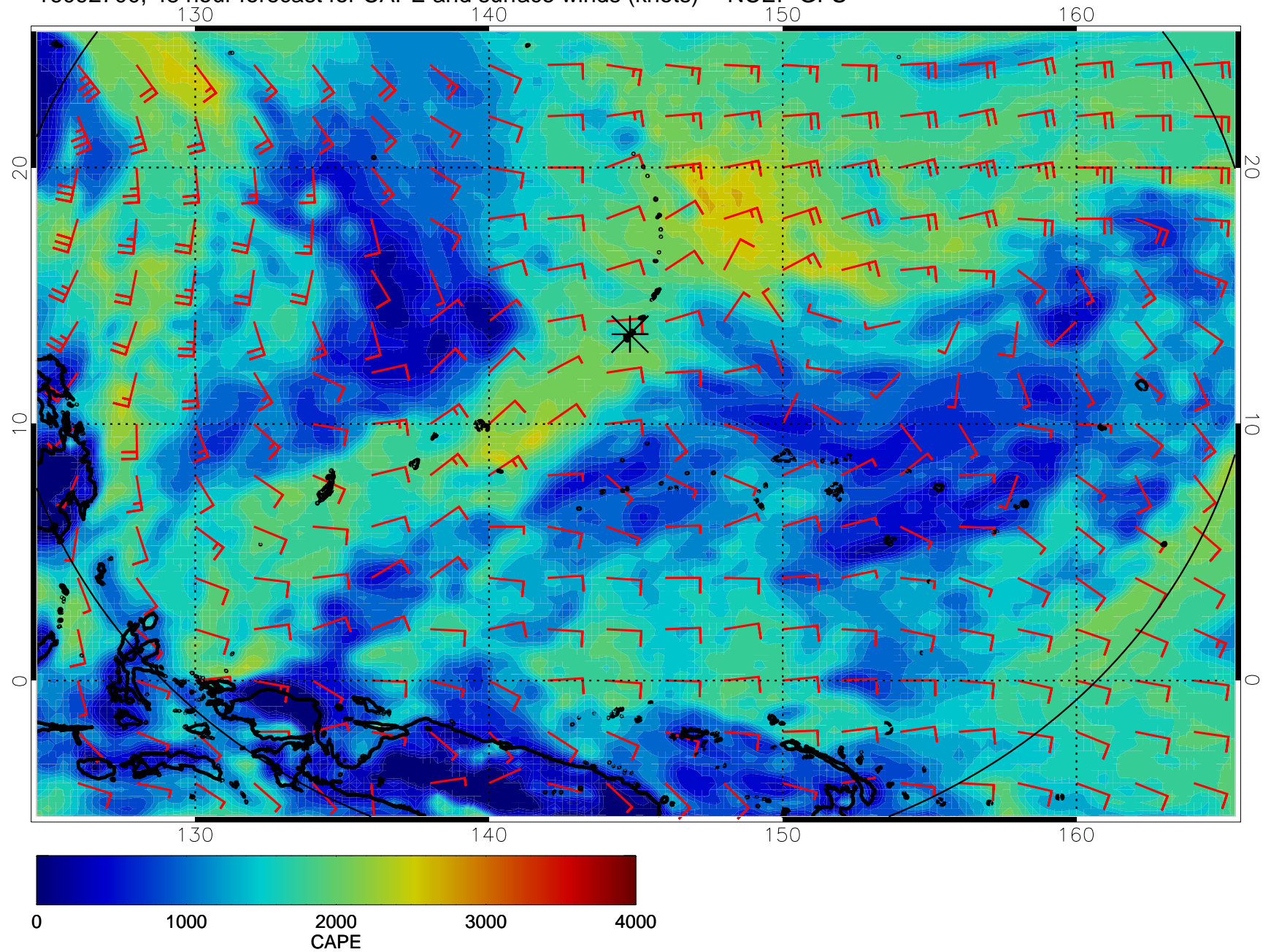
16092612, 36 hour forecast for CAPE and surface winds (knots) -- NCEP GFS



16092618, 42 hour forecast for CAPE and surface winds (knots) -- NCEP GFS

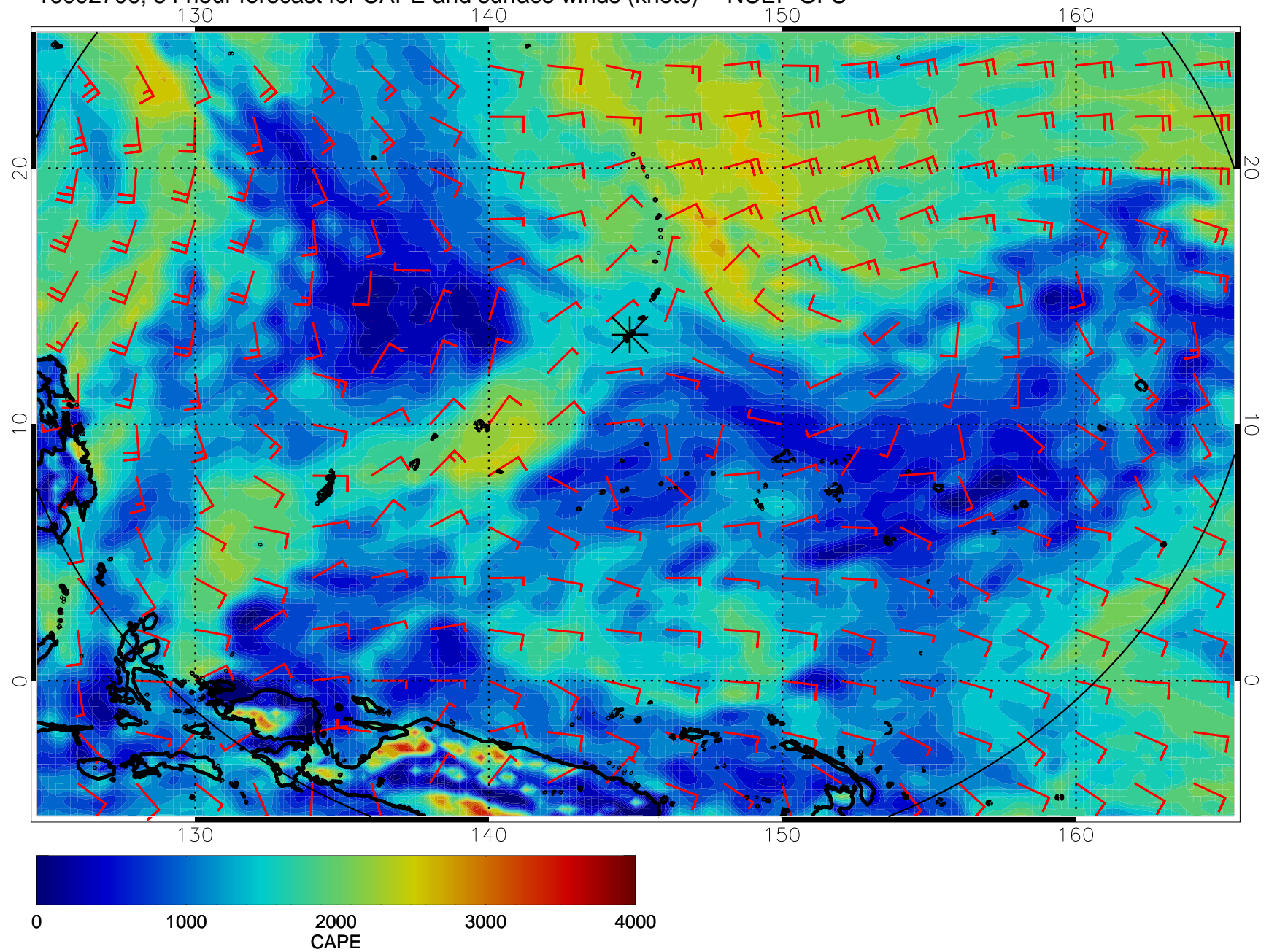


16092700, 48 hour forecast for CAPE and surface winds (knots) -- NCEP GFS

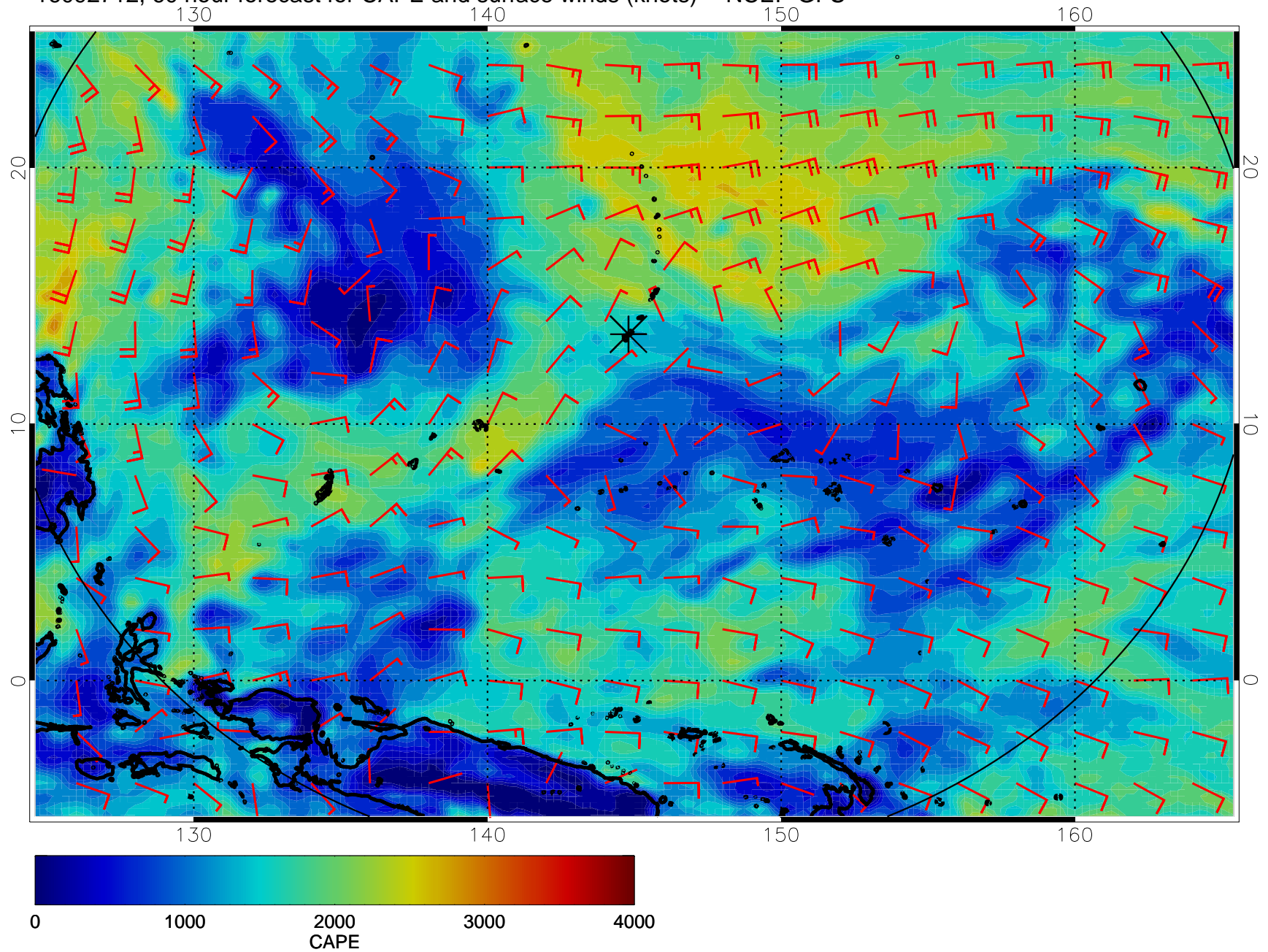




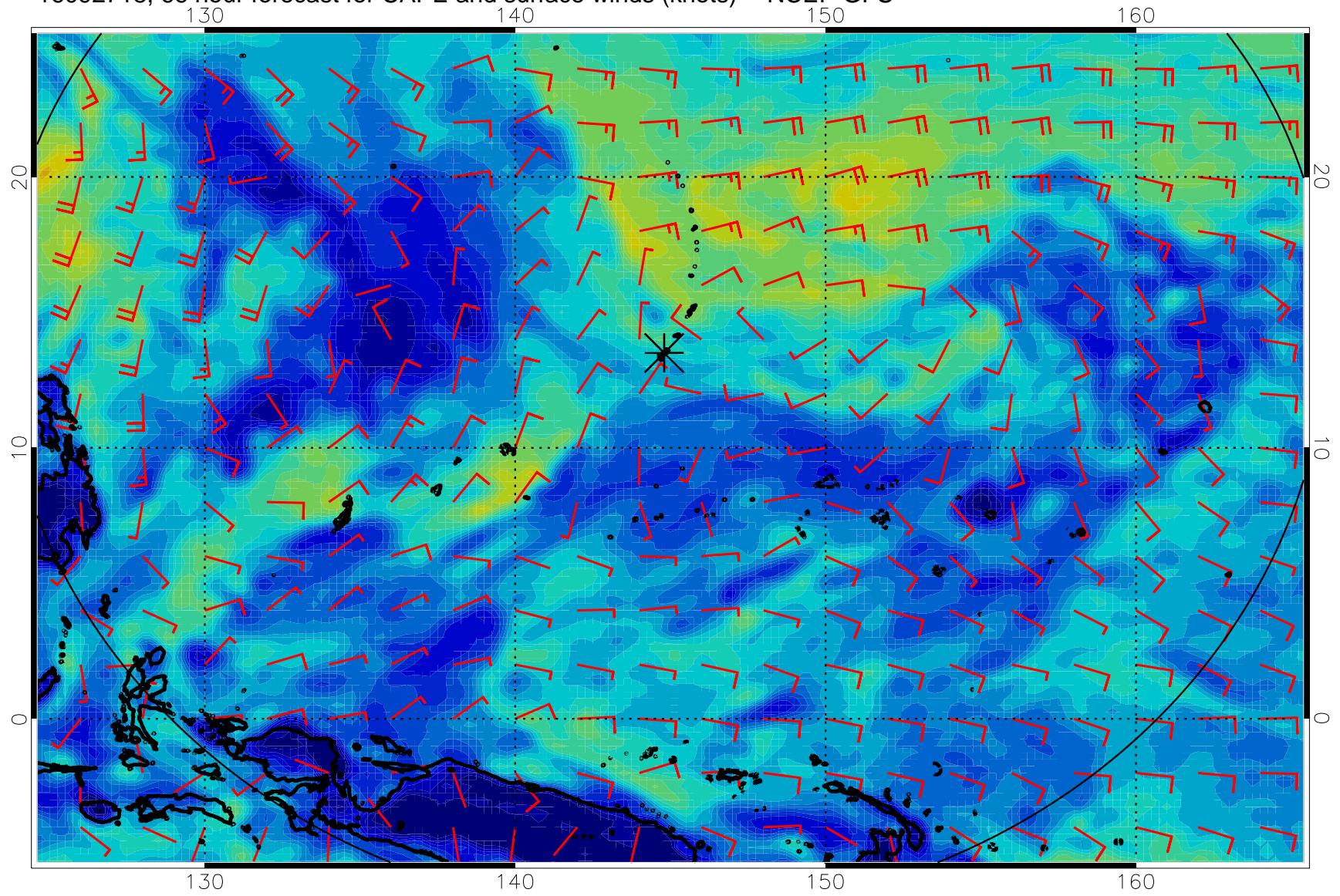
16092706, 54 hour forecast for CAPE and surface winds (knots) -- NCEP GFS



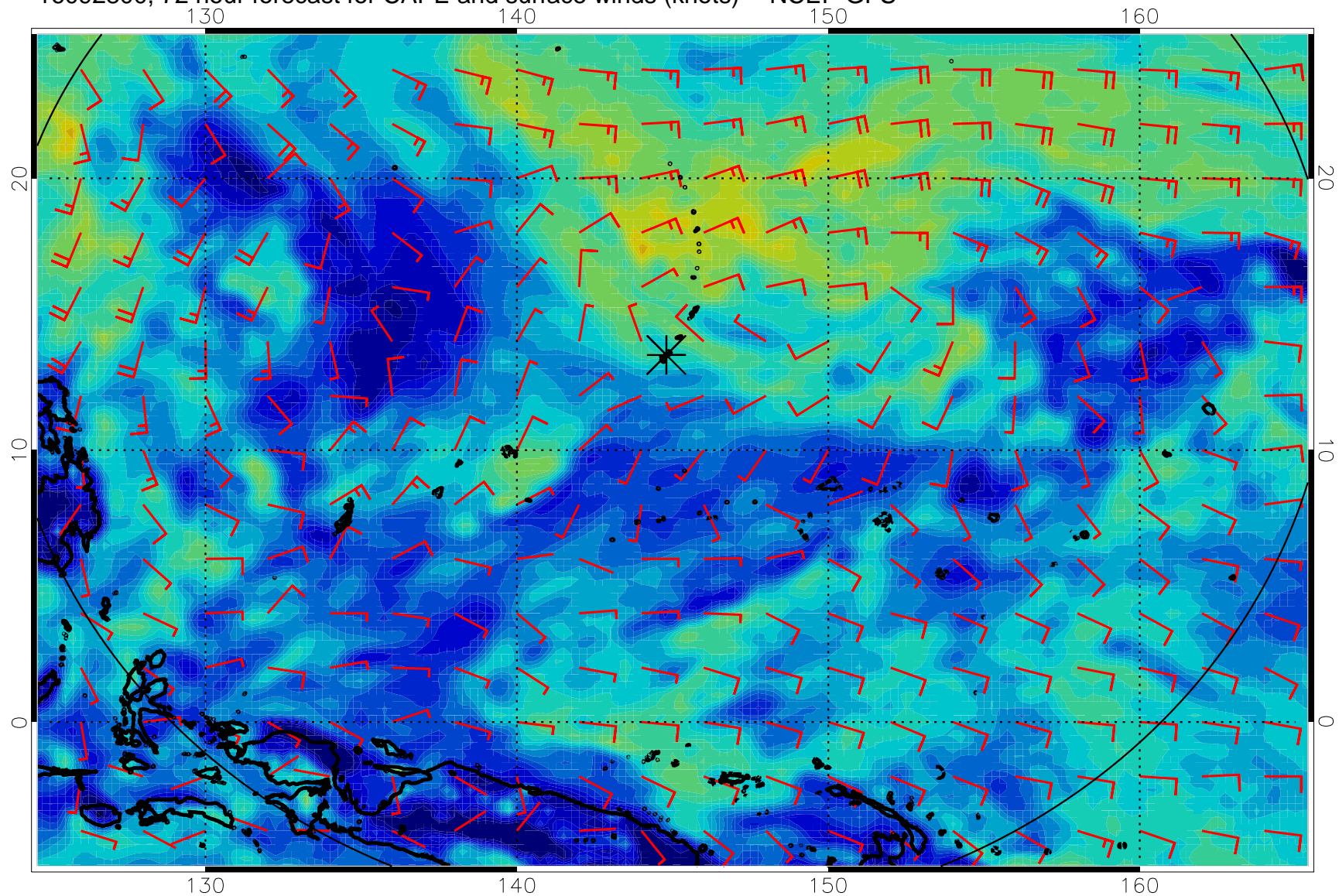
16092712, 60 hour forecast for CAPE and surface winds (knots) -- NCEP GFS



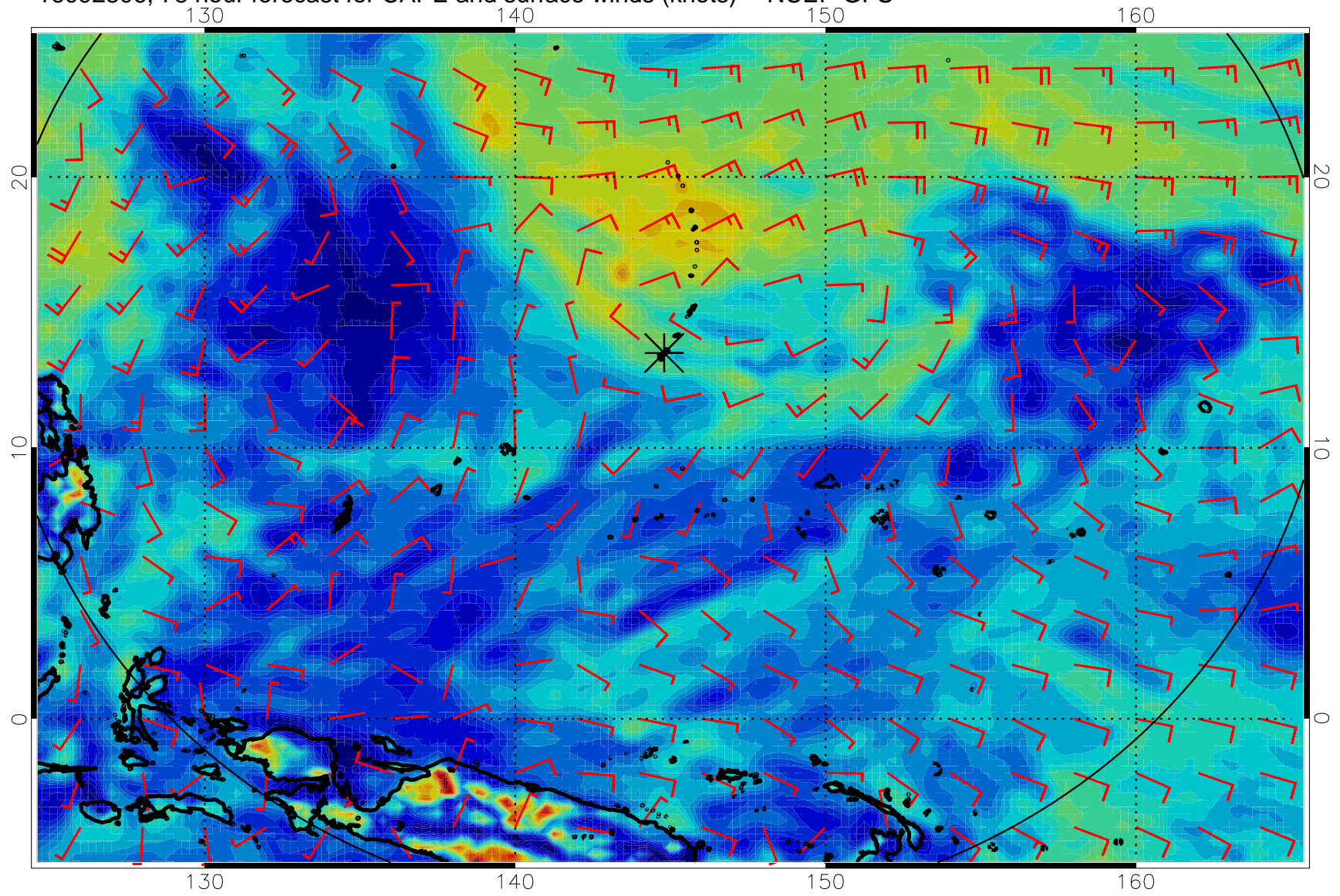
16092718, 66 hour forecast for CAPE and surface winds (knots) -- NCEP GFS



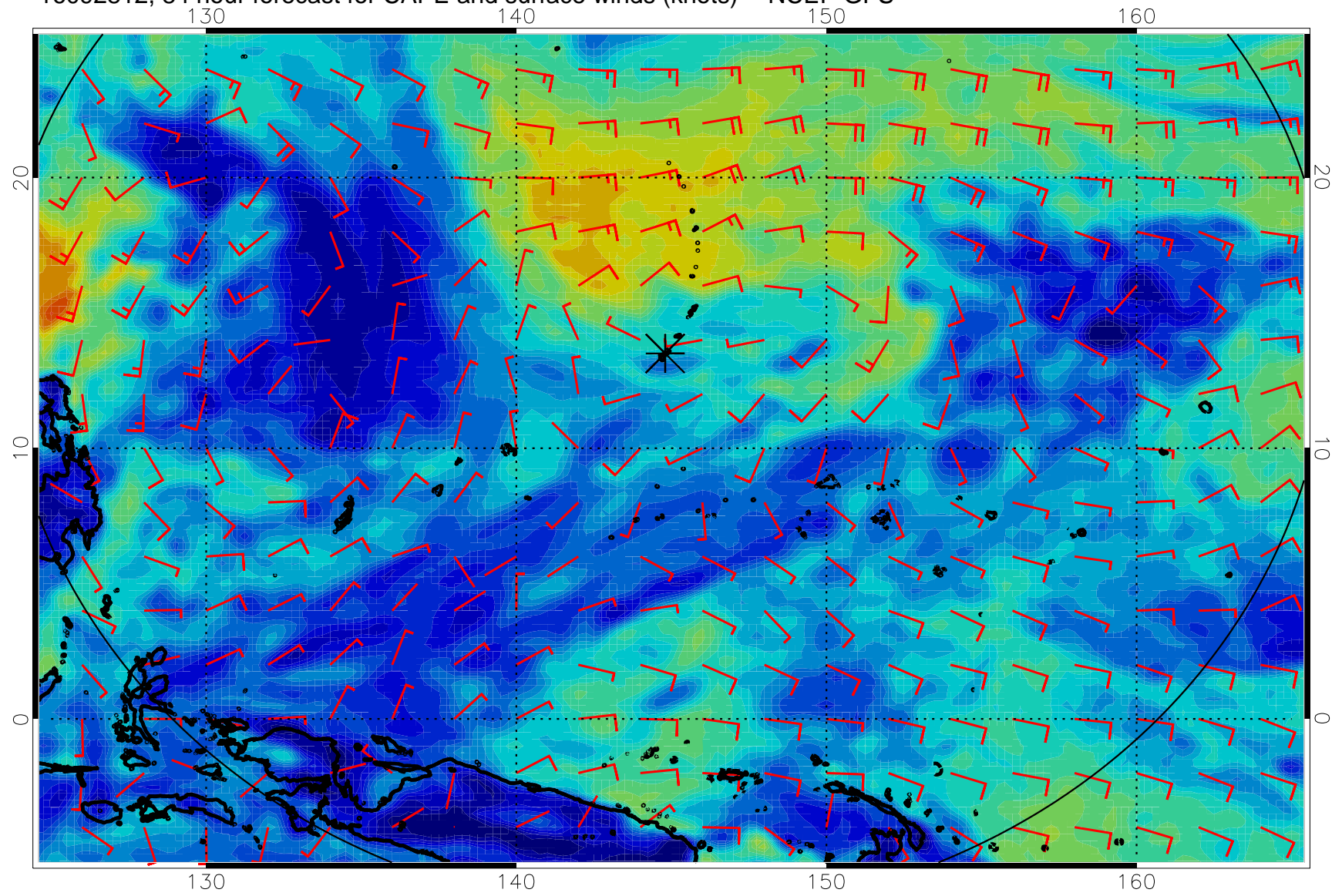
16092800, 72 hour forecast for CAPE and surface winds (knots) -- NCEP GFS



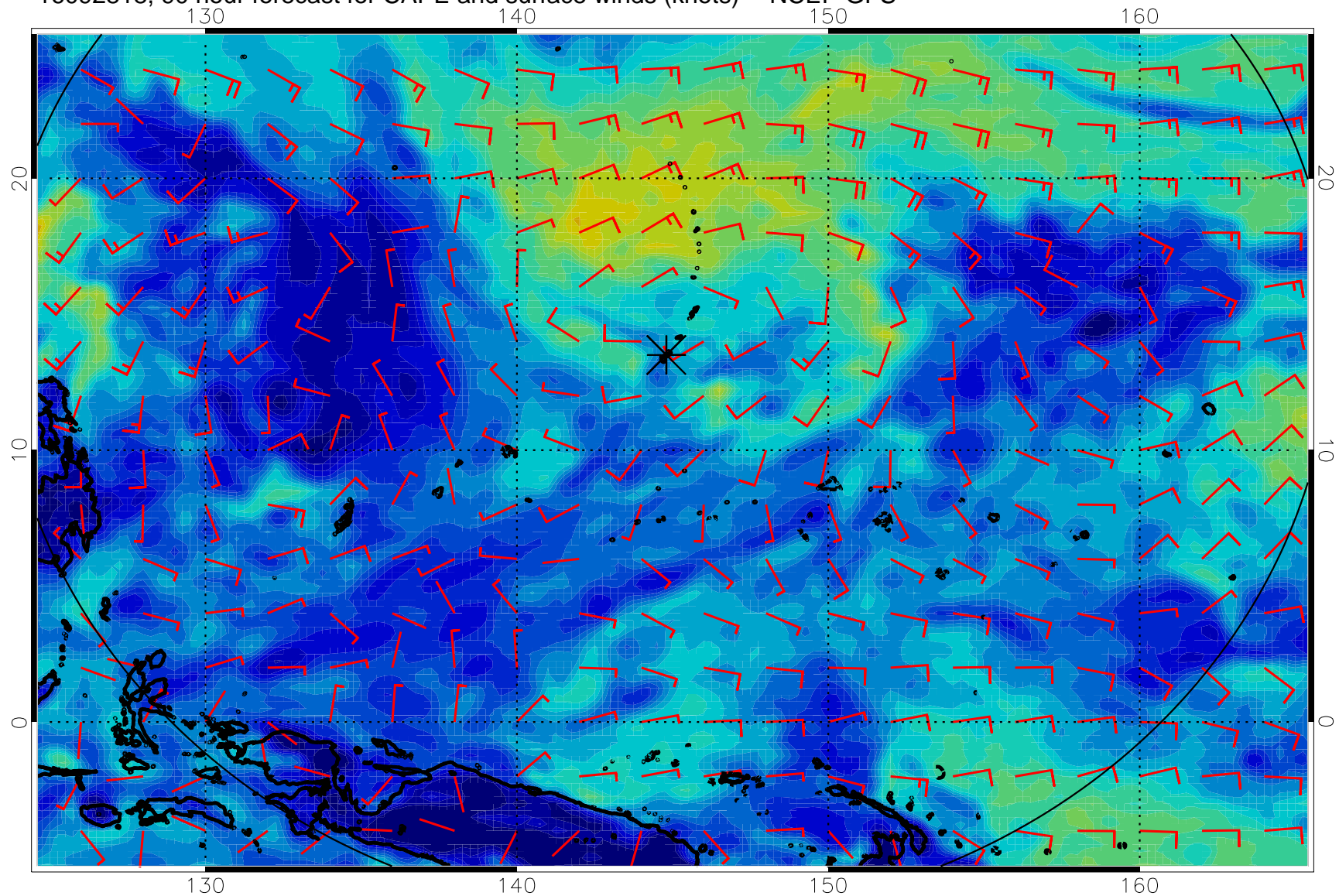
16092806, 78 hour forecast for CAPE and surface winds (knots) -- NCEP GFS



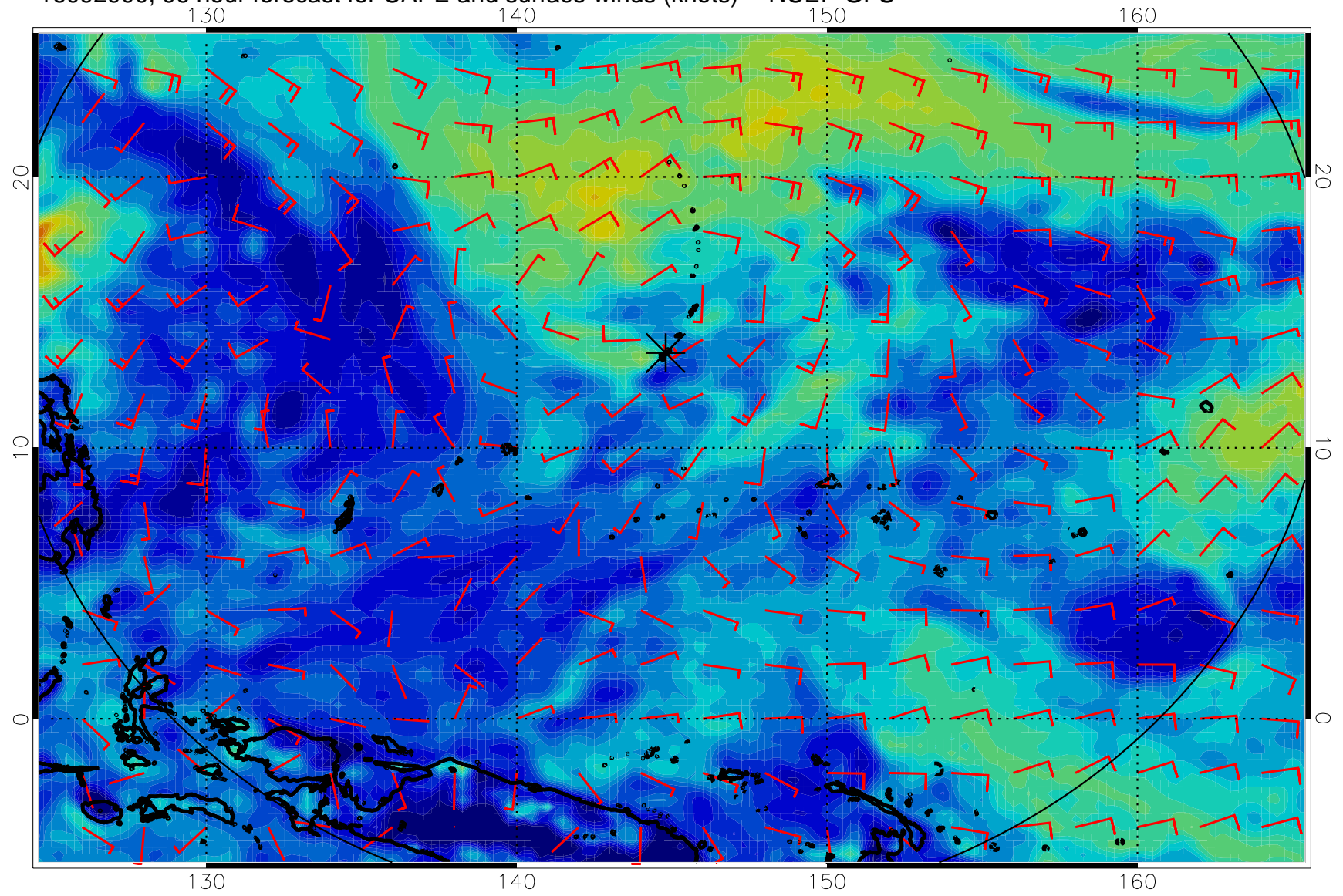
16092812, 84 hour forecast for CAPE and surface winds (knots) -- NCEP GFS



16092818, 90 hour forecast for CAPE and surface winds (knots) -- NCEP GFS

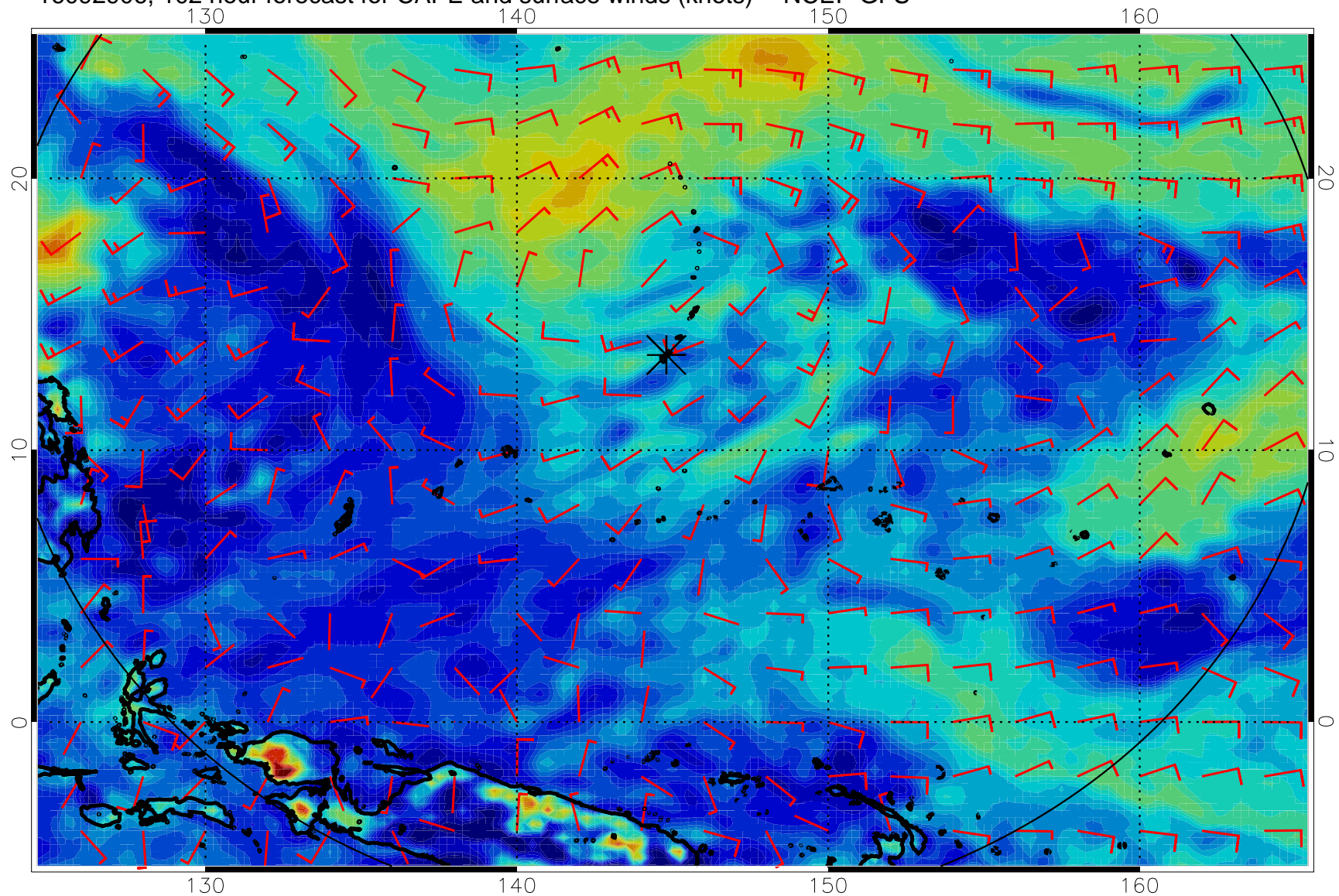


16092900, 96 hour forecast for CAPE and surface winds (knots) -- NCEP GFS

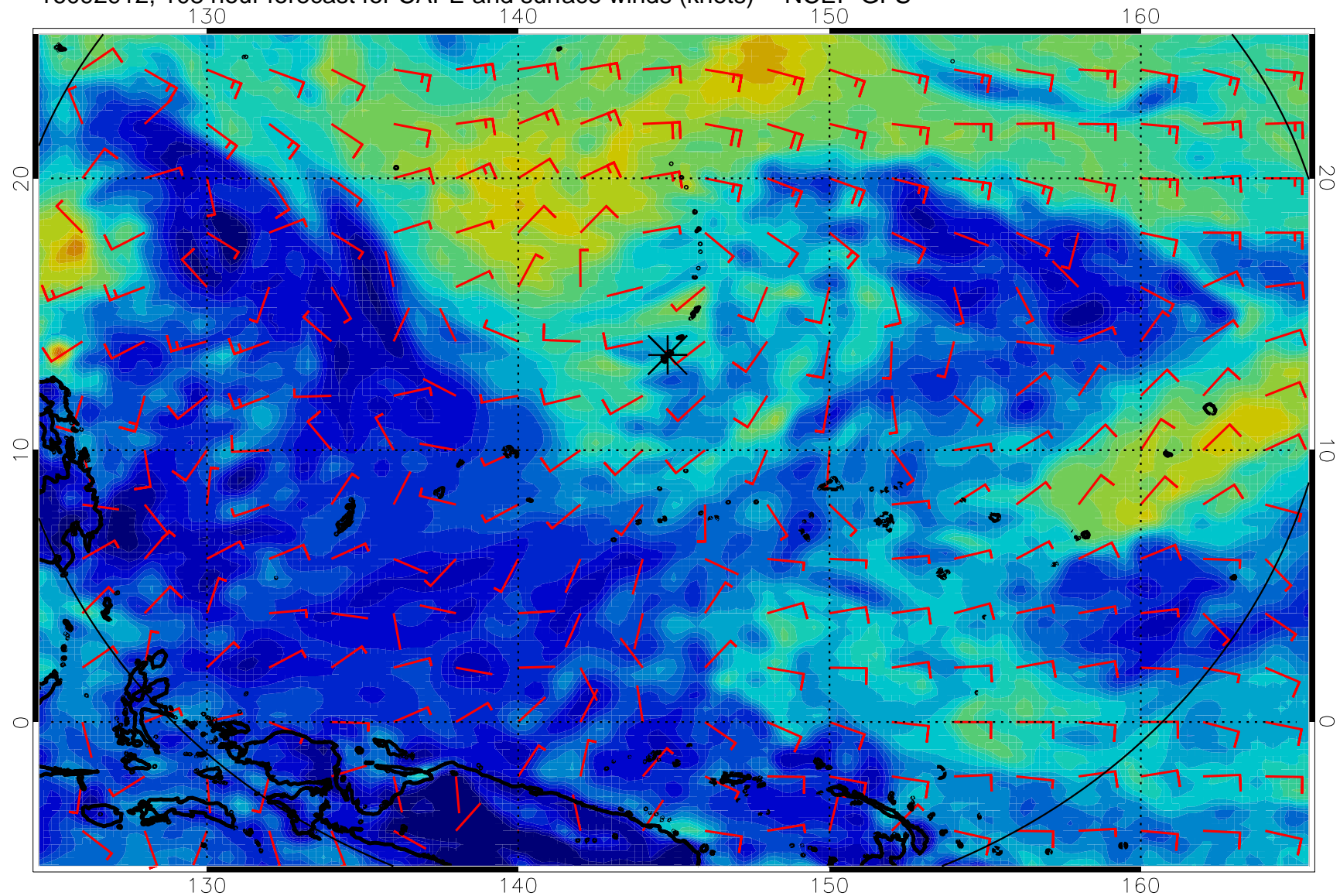




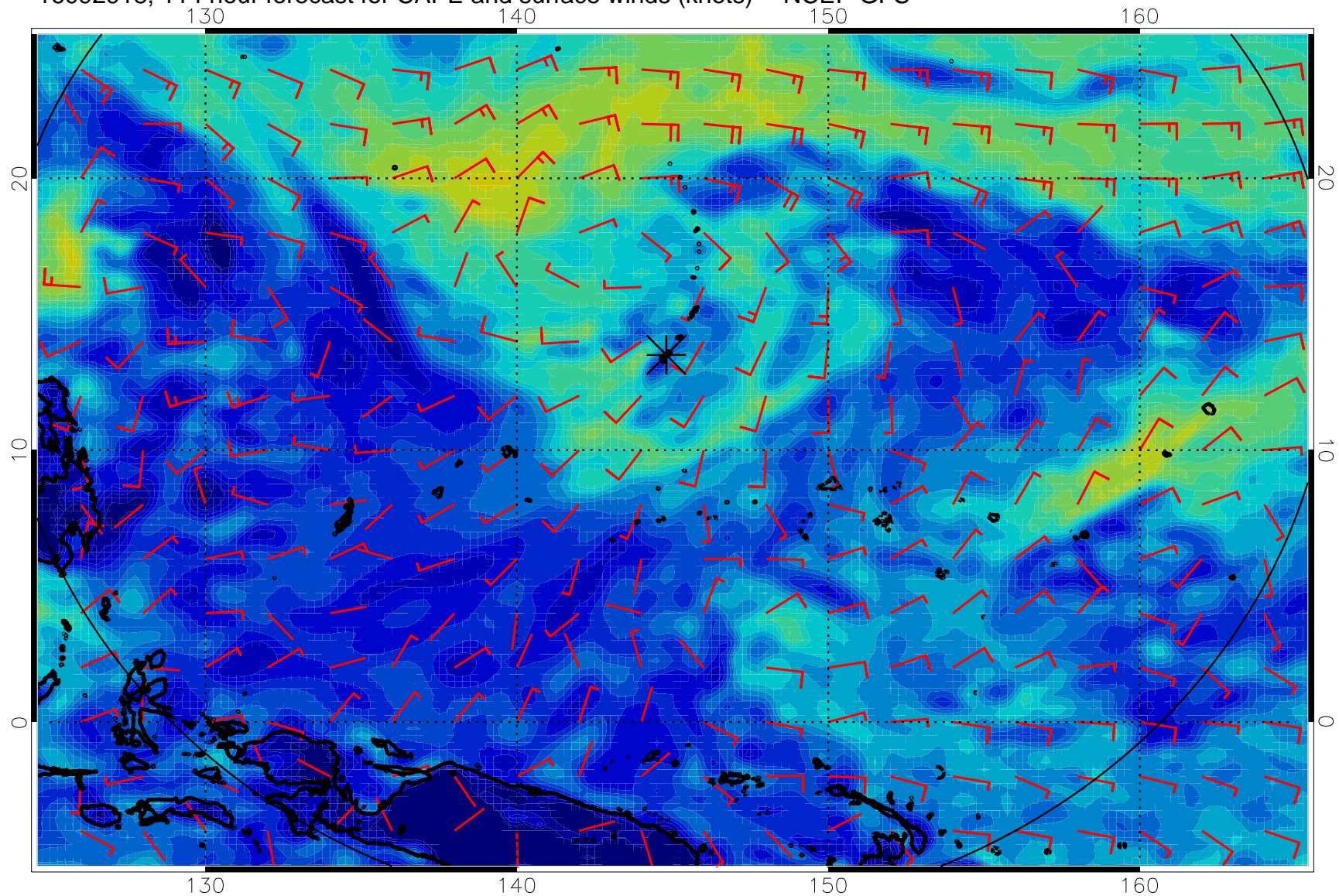
16092906, 102 hour forecast for CAPE and surface winds (knots) -- NCEP GFS



16092912, 108 hour forecast for CAPE and surface winds (knots) -- NCEP GFS



16092918, 114 hour forecast for CAPE and surface winds (knots) -- NCEP GFS



16093000, 120 hour forecast for CAPE and surface winds (knots) -- NCEP GFS

