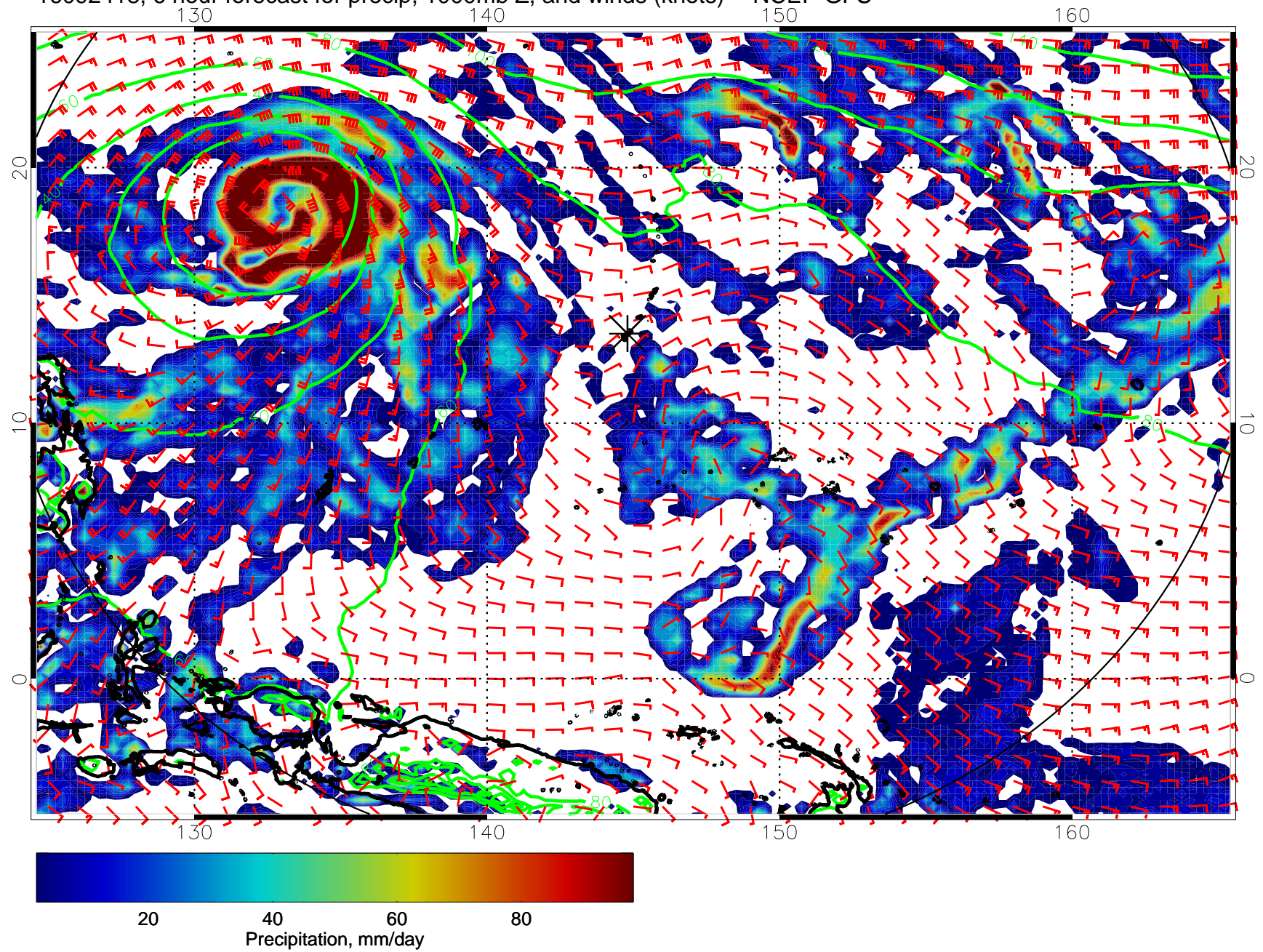
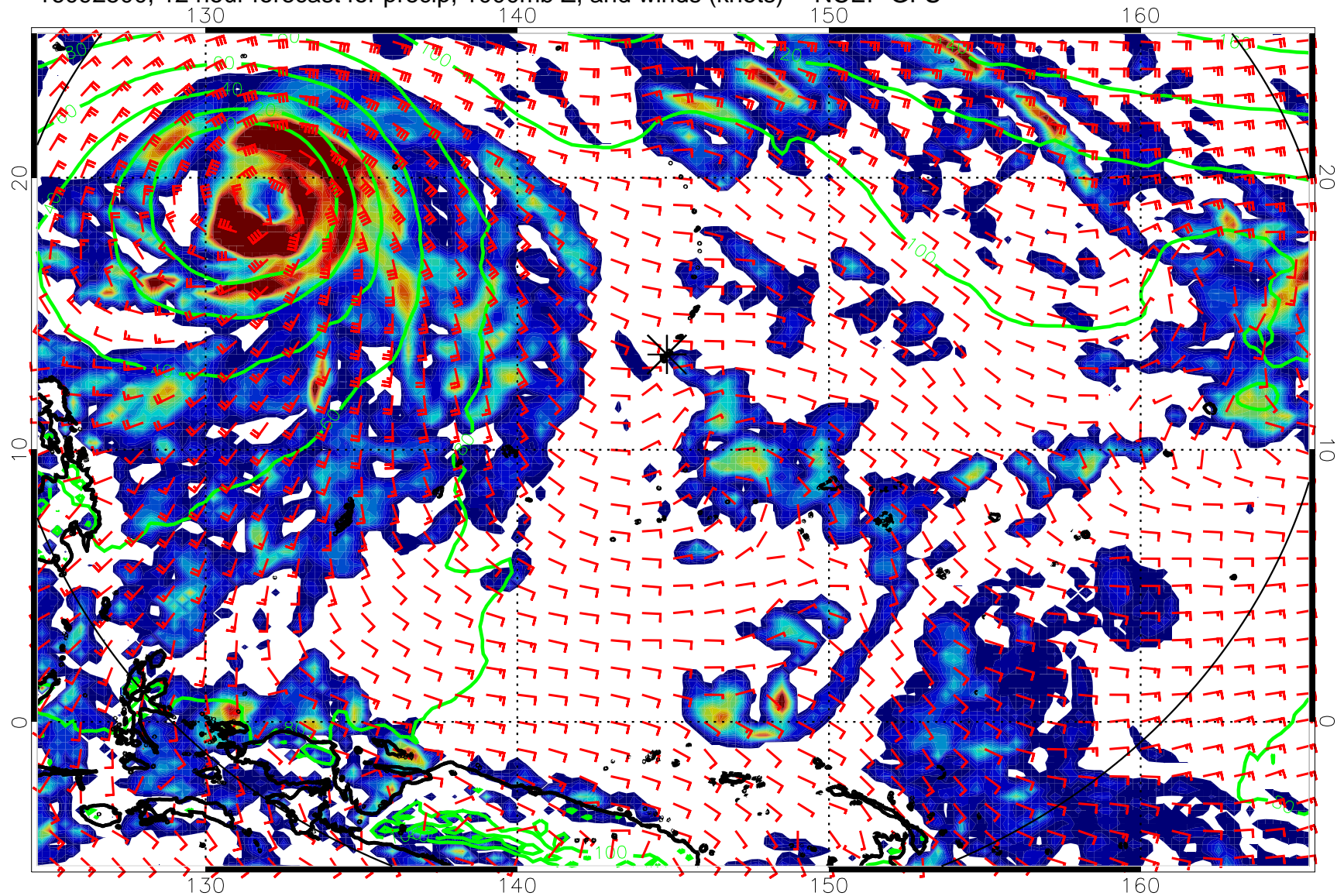


16092418, 6 hour forecast for precip, 1000mb Z, and winds (knots) -- NCEP GFS

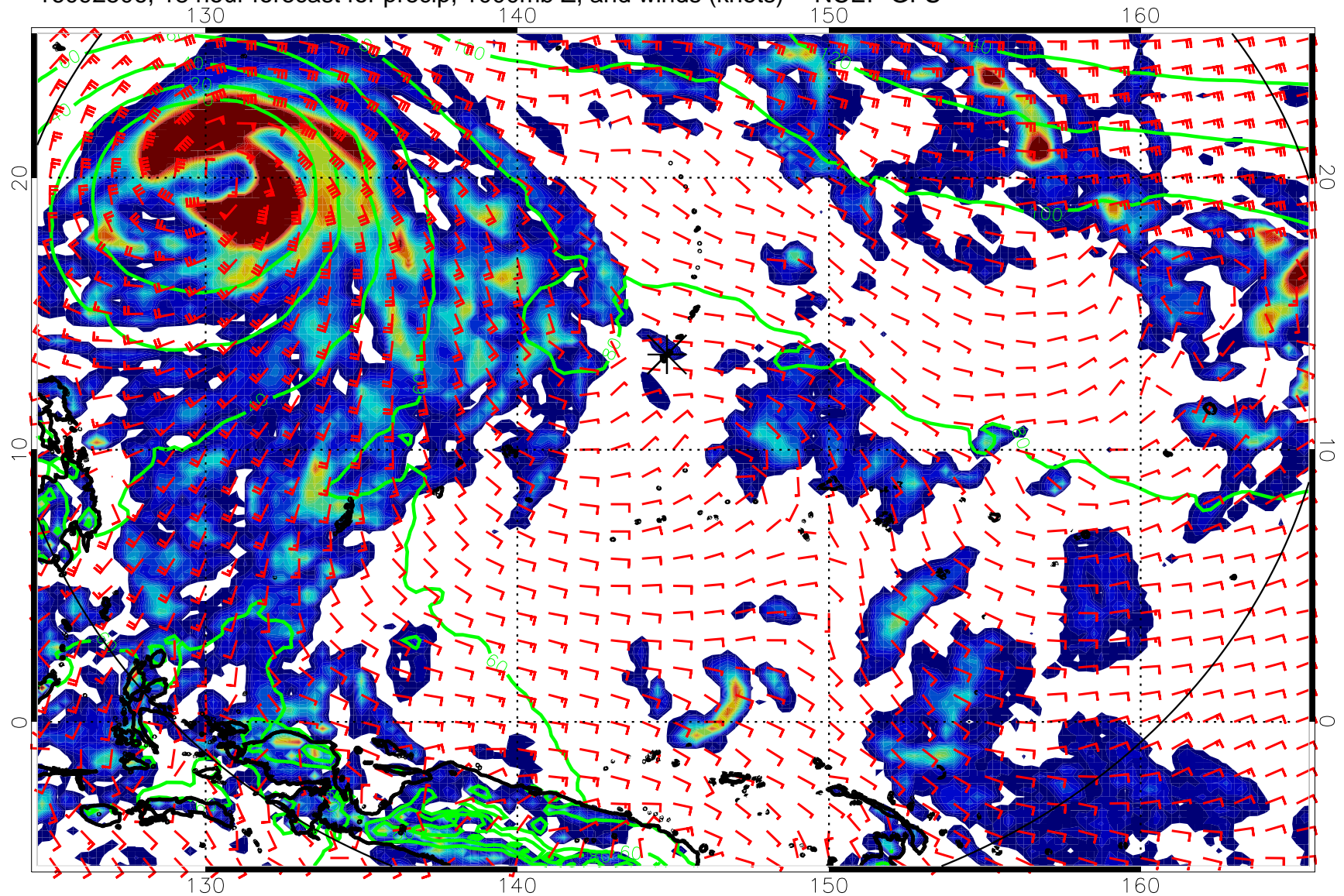


16092500, 12 hour forecast for precip, 1000mb Z, and winds (knots) -- NCEP GFS



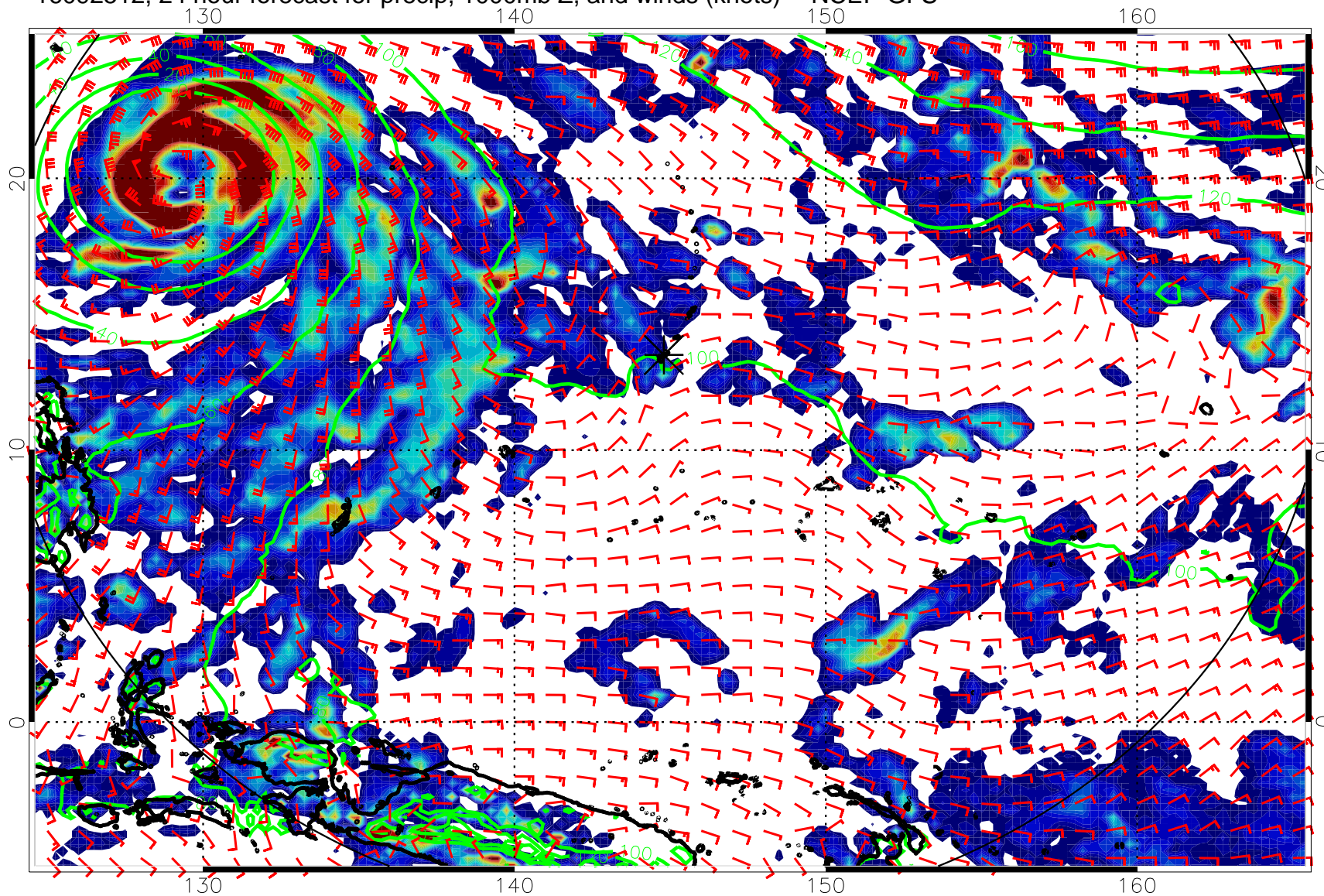
20 40 60 80
Precipitation, mm/day

16092506, 18 hour forecast for precip, 1000mb Z, and winds (knots) -- NCEP GFS



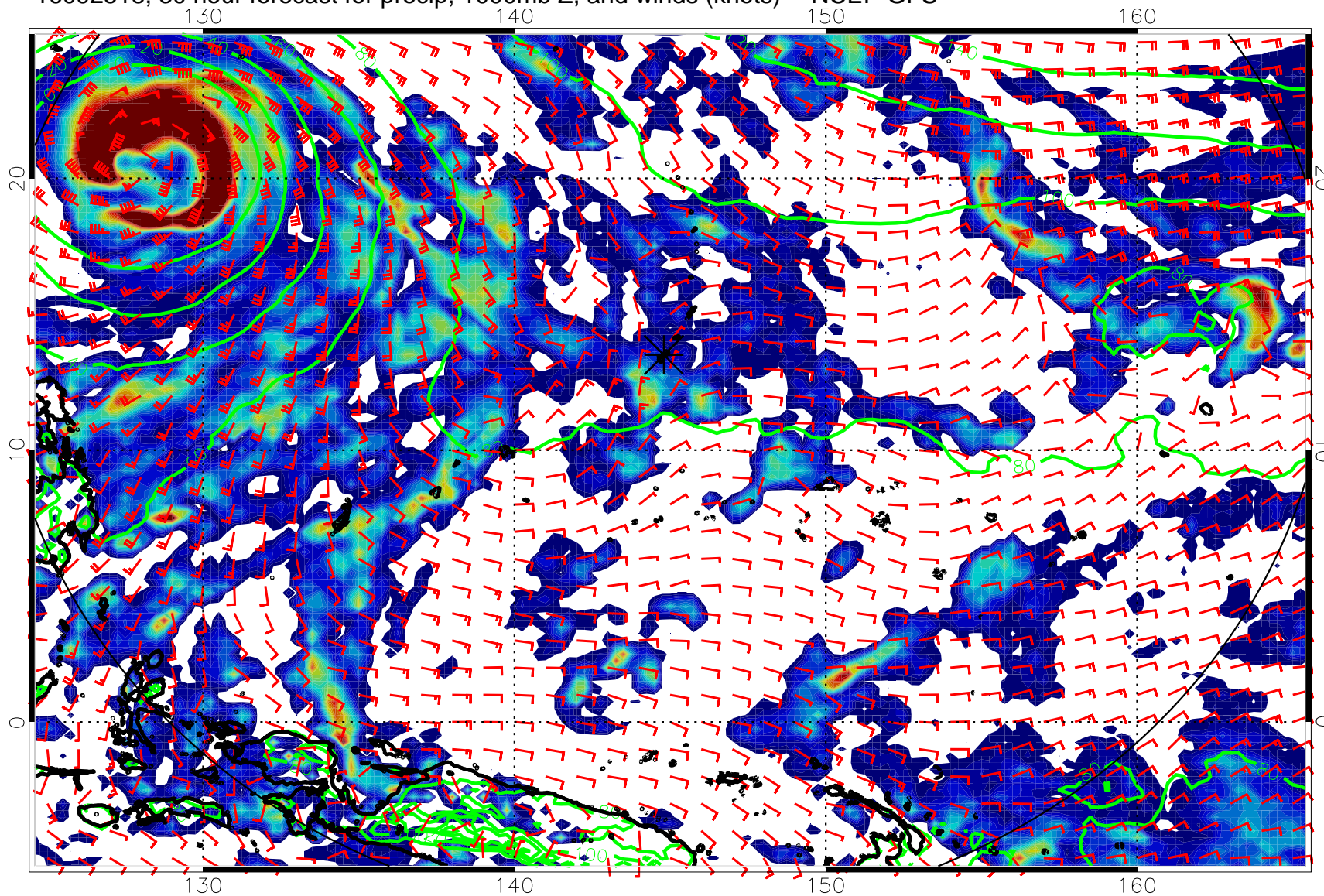
20 40 60 80
Precipitation, mm/day

16092512, 24 hour forecast for precip, 1000mb Z, and winds (knots) -- NCEP GFS



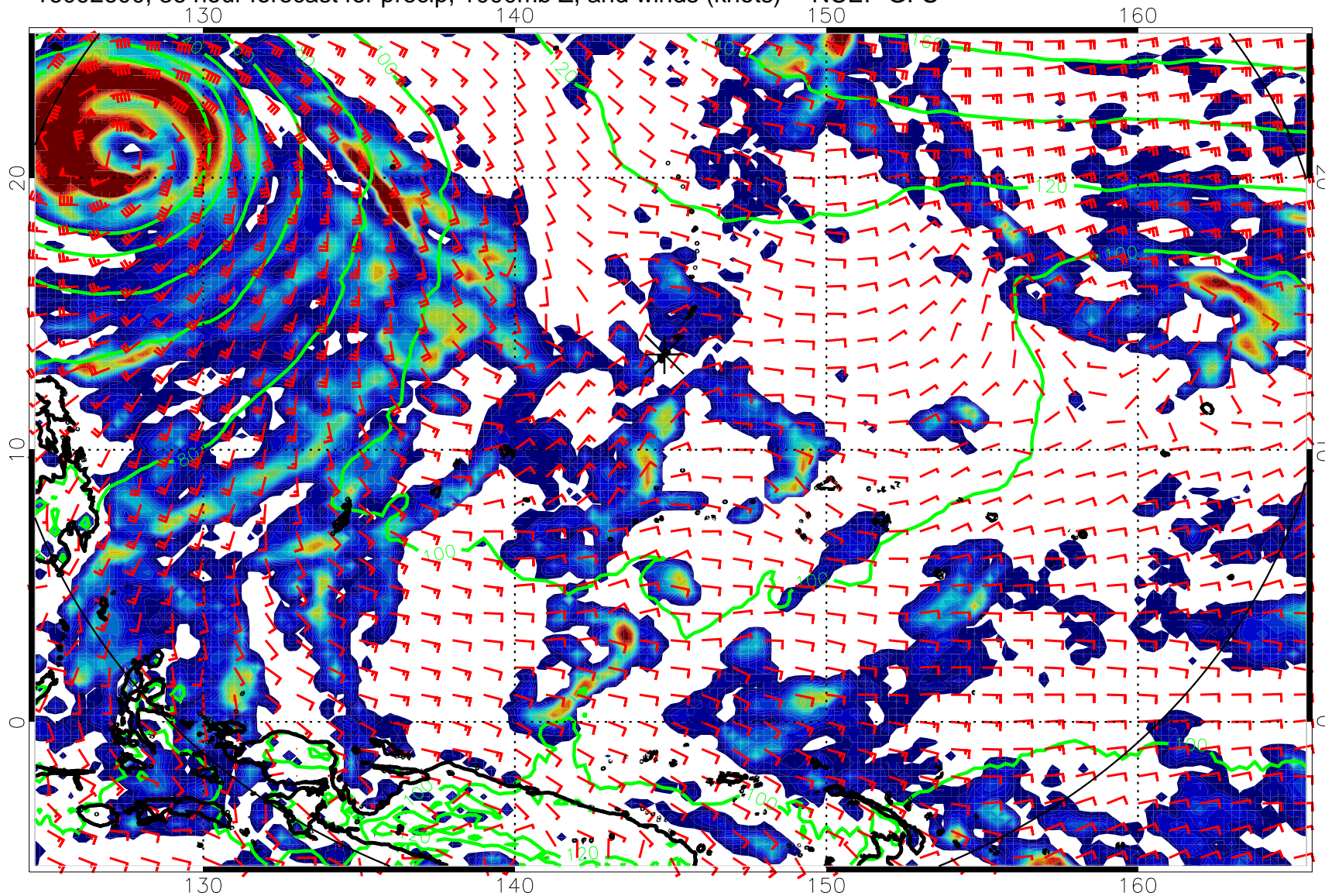
20 40 60 80
Precipitation, mm/day

16092518, 30 hour forecast for precip, 1000mb Z, and winds (knots) -- NCEP GFS



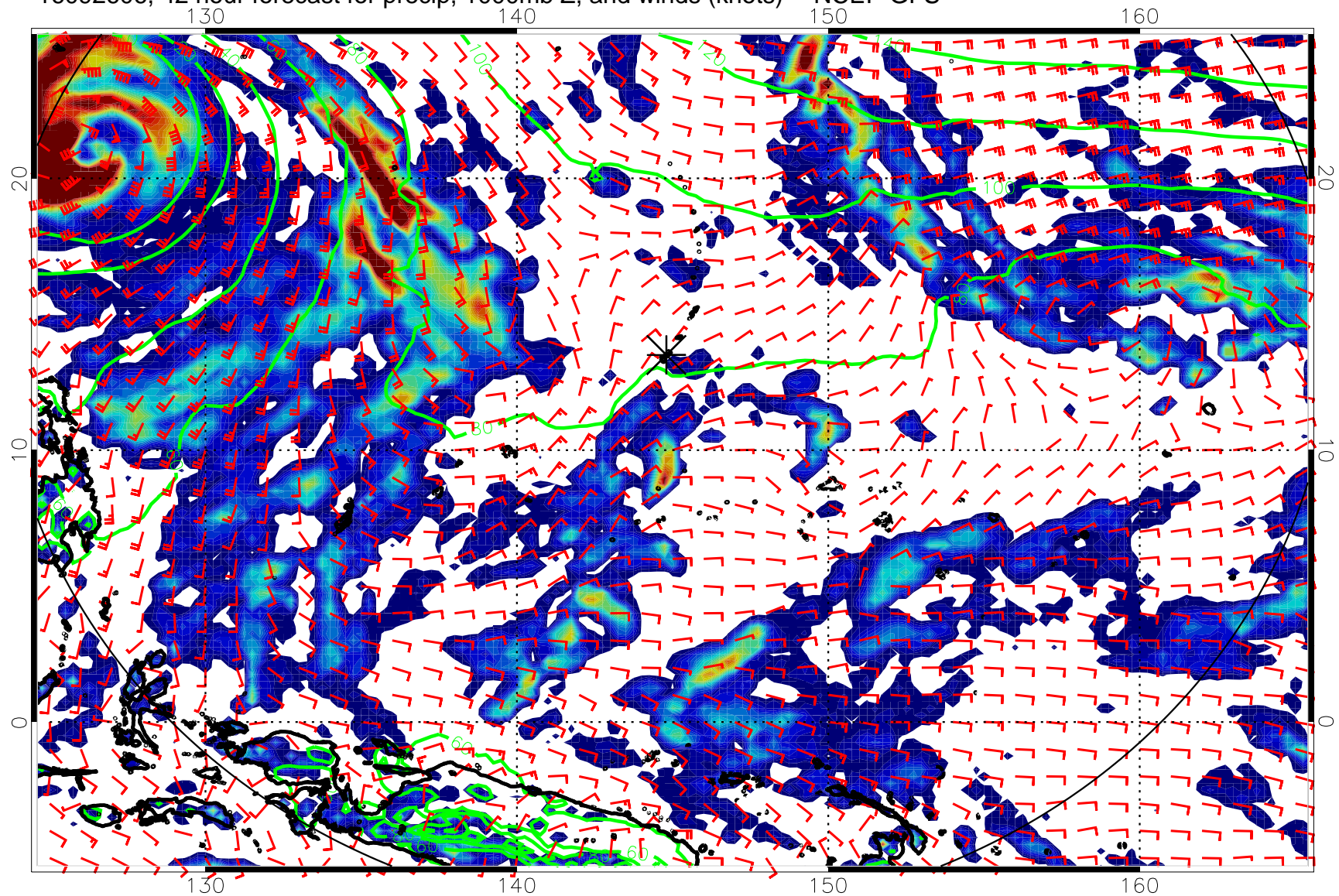
20 40 60 80
Precipitation, mm/day

16092600, 36 hour forecast for precip, 1000mb Z, and winds (knots) -- NCEP GFS



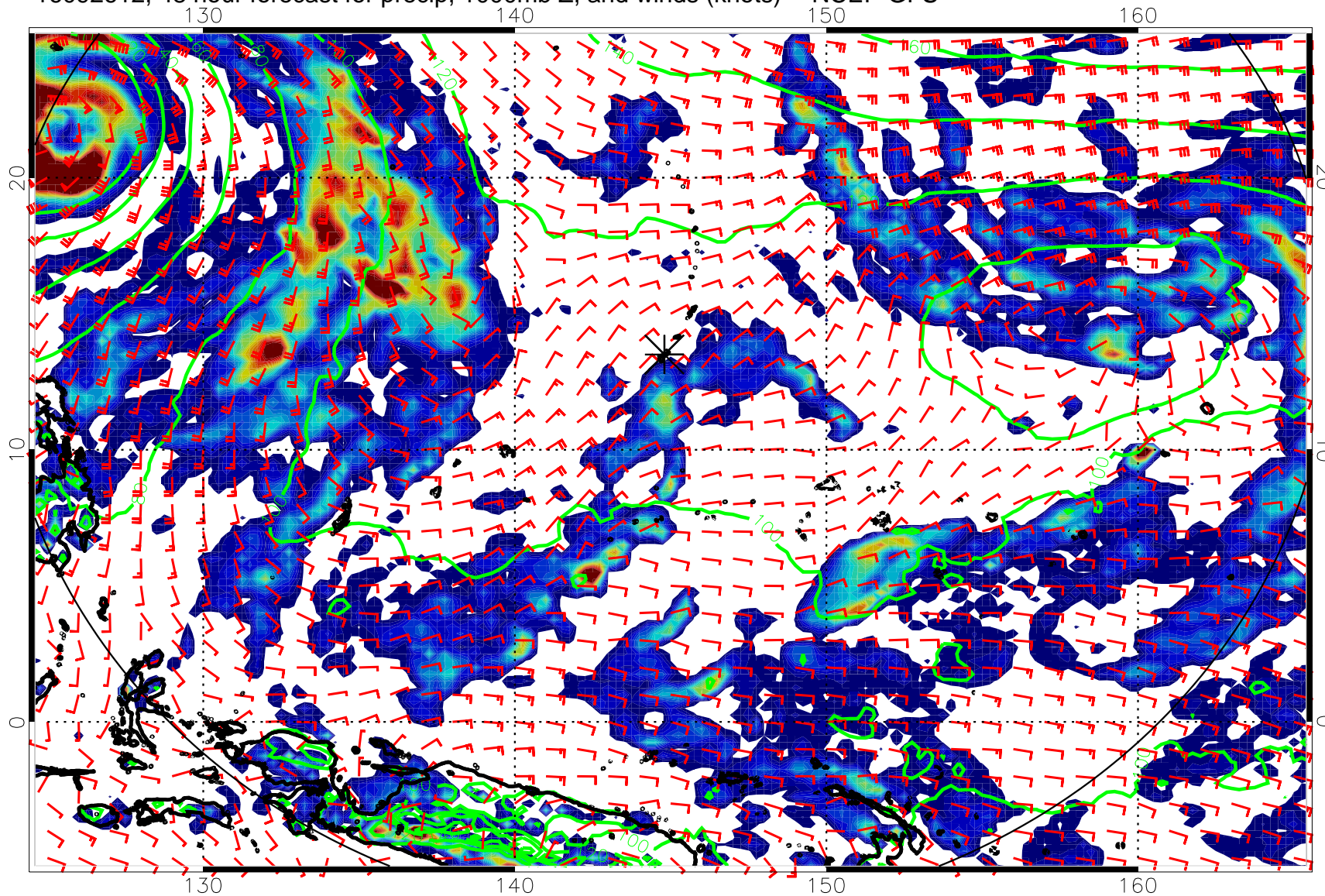
20 40 60 80
Precipitation, mm/day

16092606, 42 hour forecast for precip, 1000mb Z, and winds (knots) -- NCEP GFS



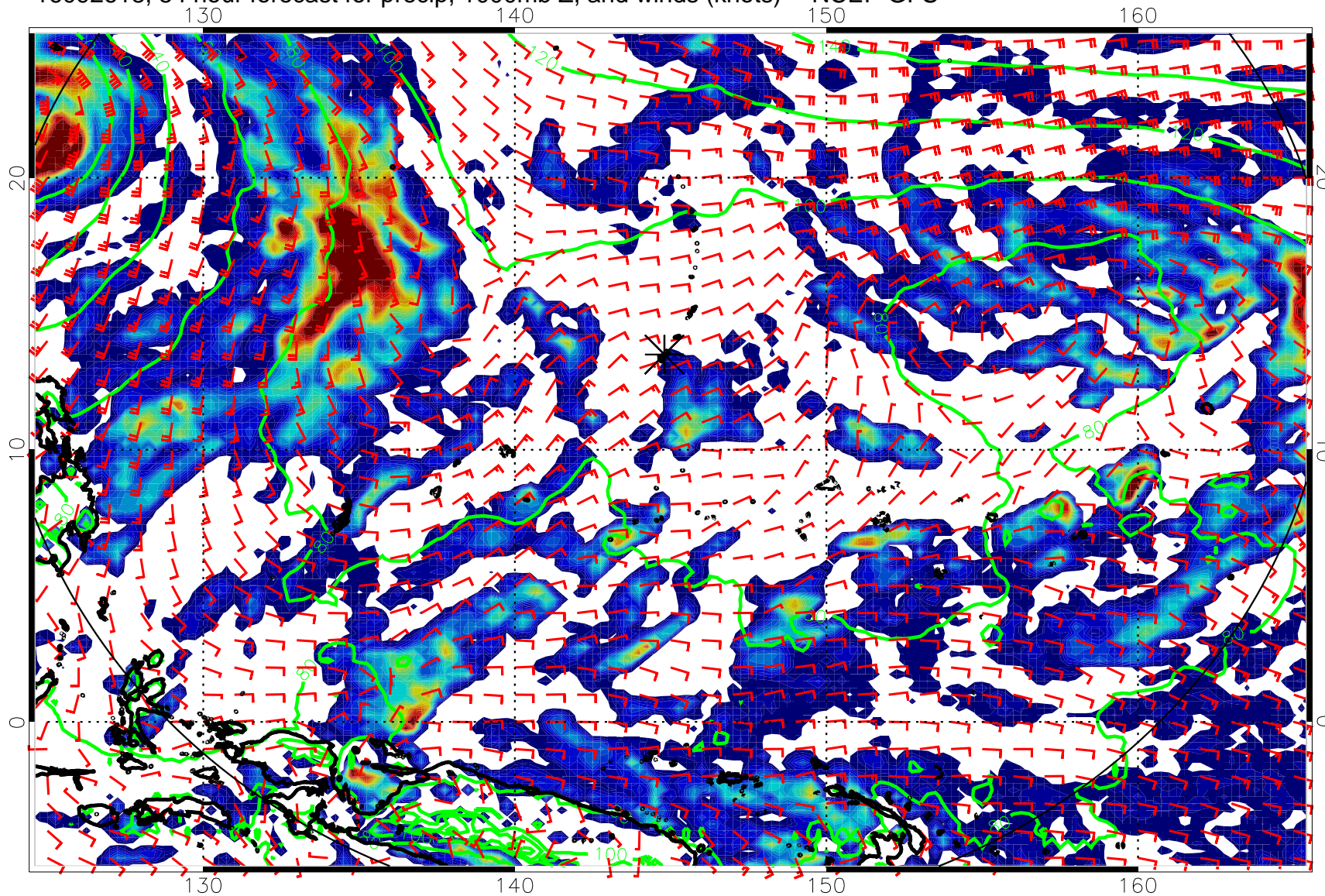
20 40 60 80
Precipitation, mm/day

16092612, 48 hour forecast for precip, 1000mb Z, and winds (knots) -- NCEP GFS



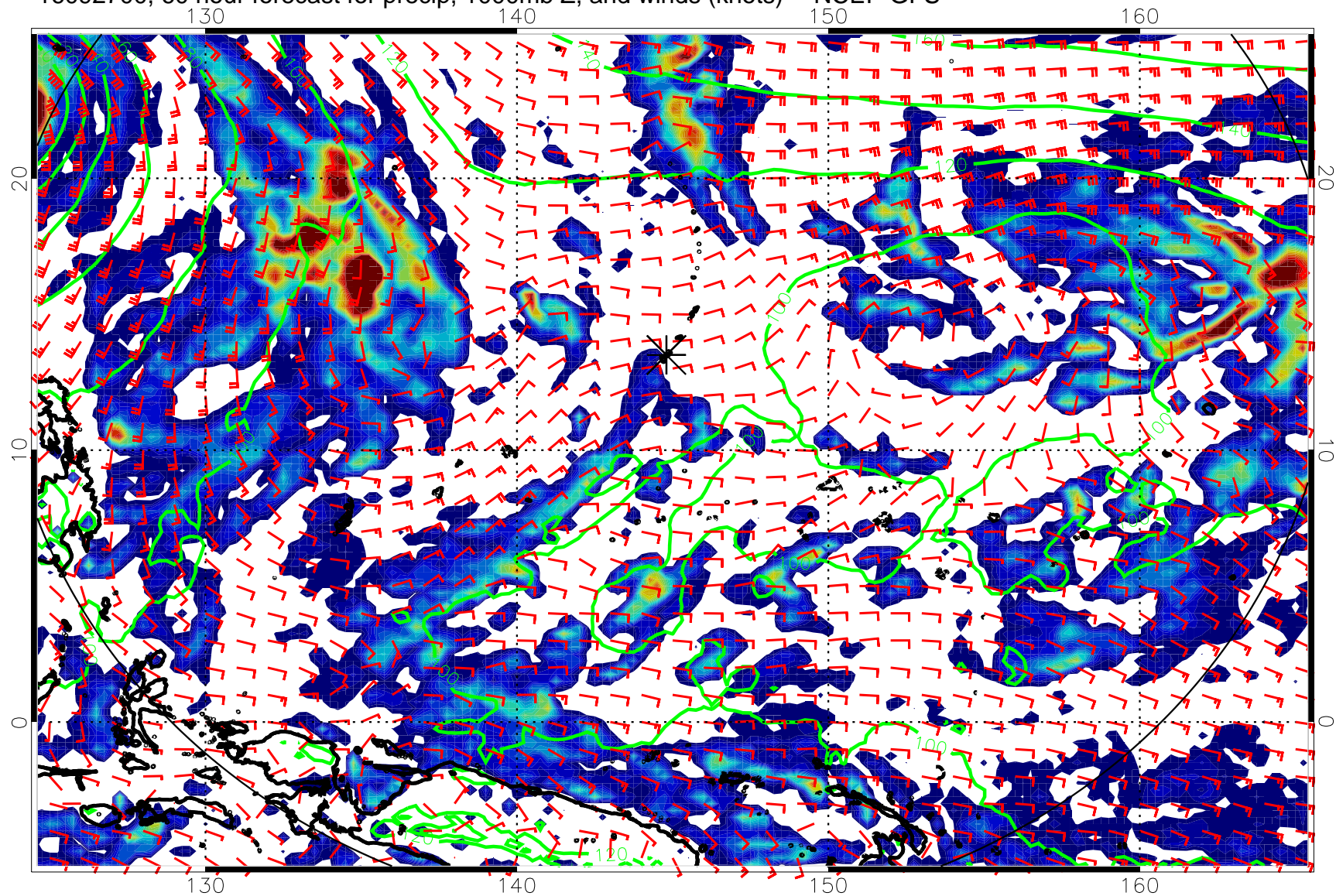
20 40 60 80
Precipitation, mm/day

16092618, 54 hour forecast for precip, 1000mb Z, and winds (knots) -- NCEP GFS



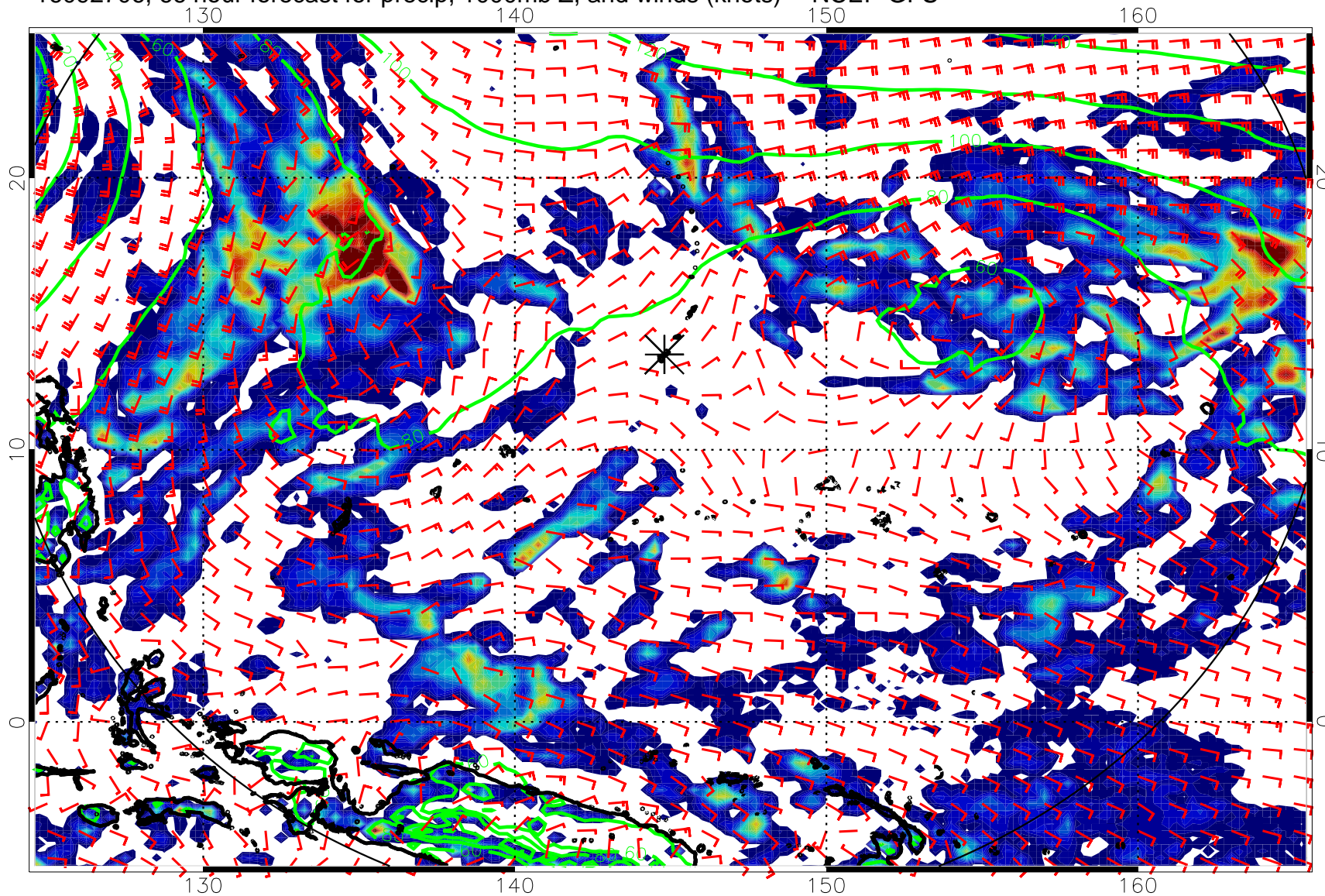
20 40 60 80
Precipitation, mm/day

16092700, 60 hour forecast for precip, 1000mb Z, and winds (knots) -- NCEP GFS



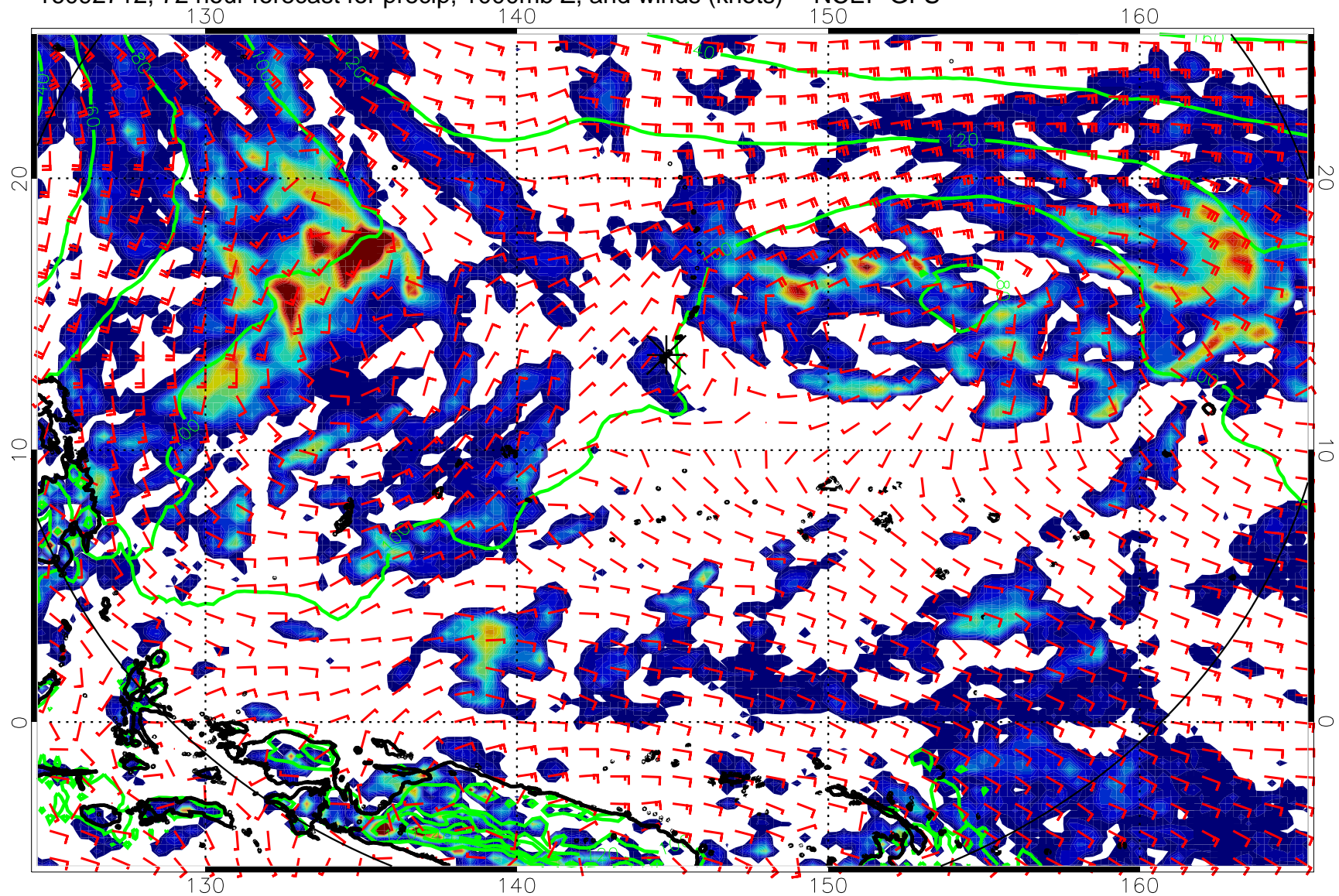
20 40 60 80
Precipitation, mm/day

16092706, 66 hour forecast for precip, 1000mb Z, and winds (knots) -- NCEP GFS



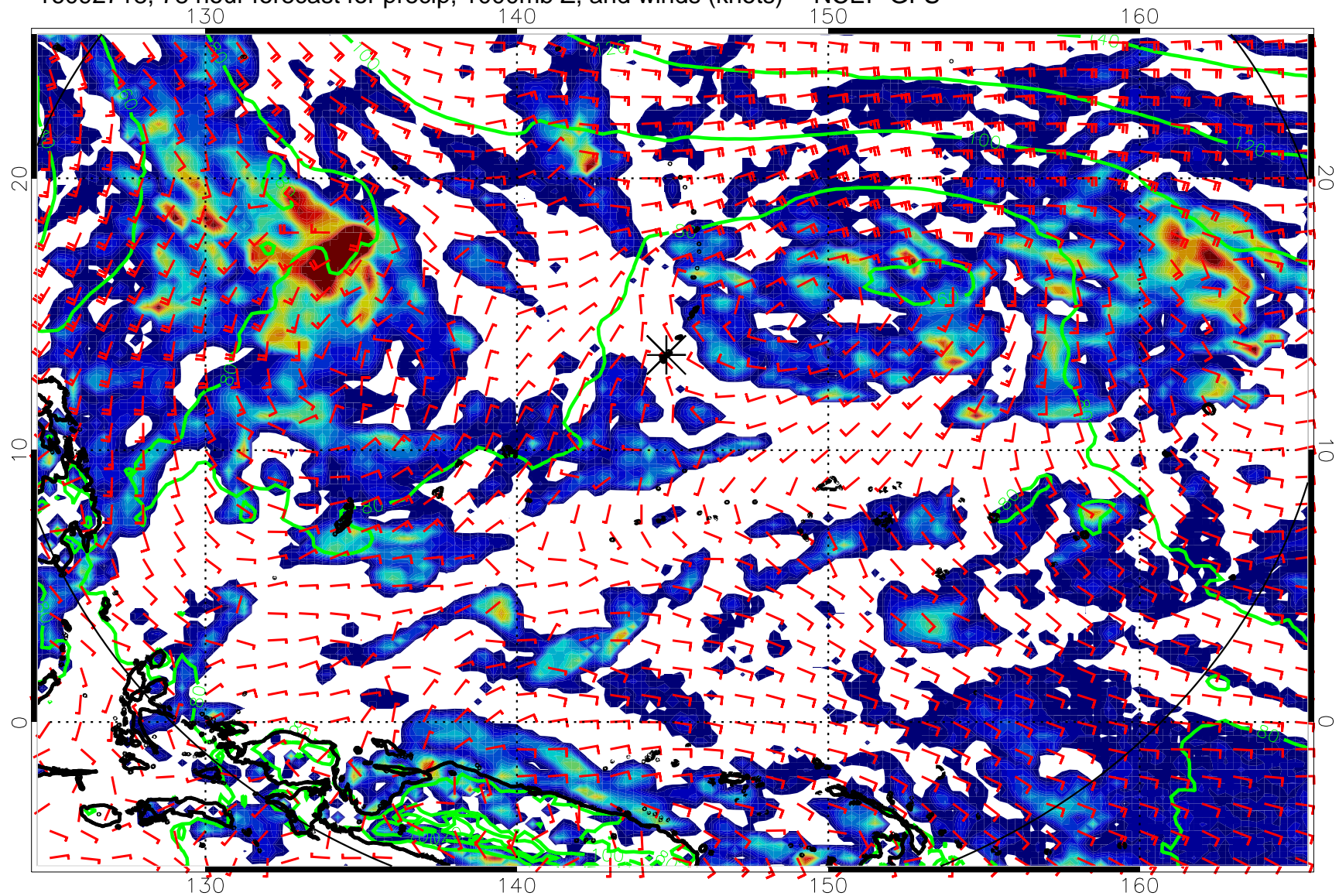
20 40 60 80
Precipitation, mm/day

16092712, 72 hour forecast for precip, 1000mb Z, and winds (knots) -- NCEP GFS



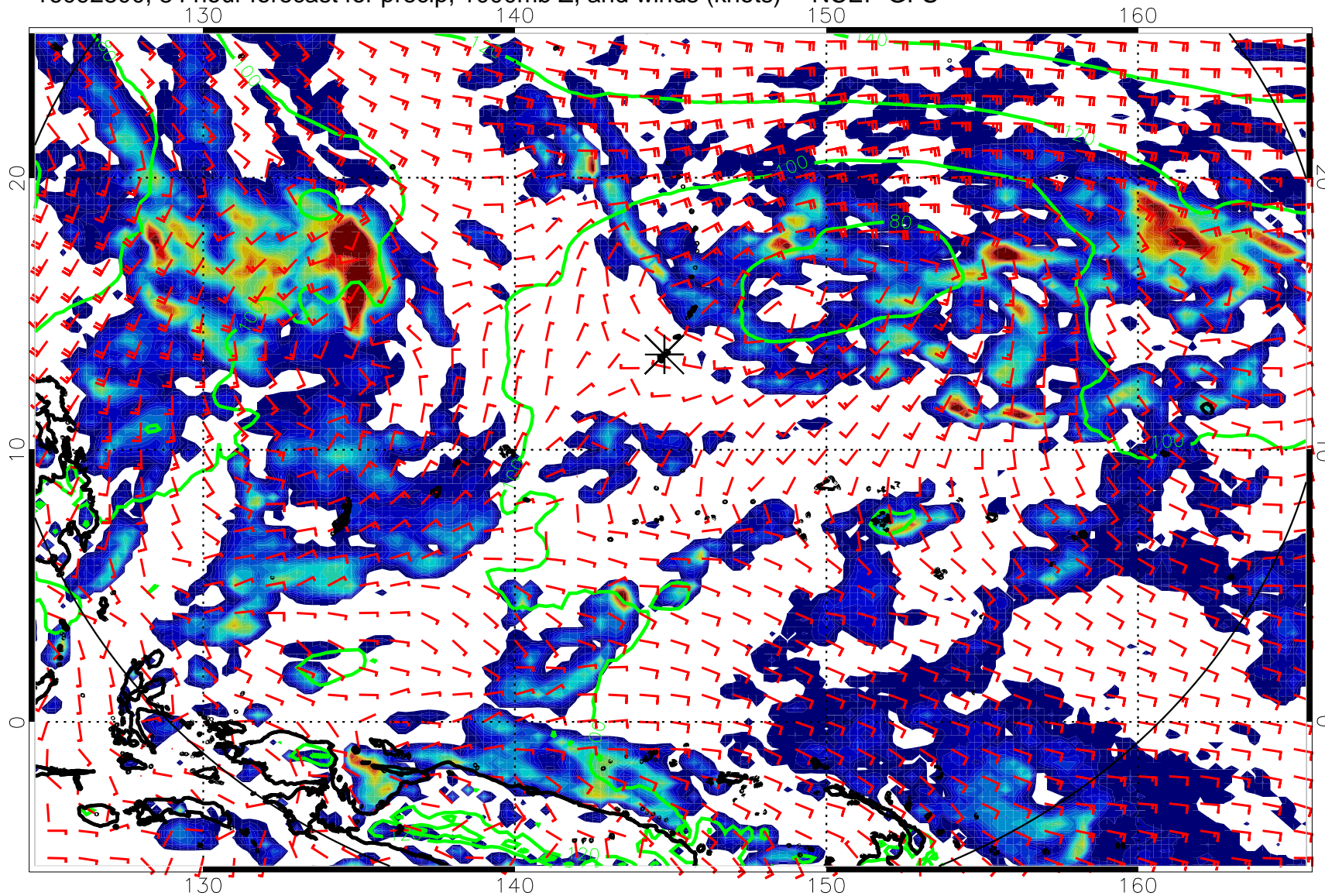
20 40 60 80
Precipitation, mm/day

16092718, 78 hour forecast for precip, 1000mb Z, and winds (knots) -- NCEP GFS



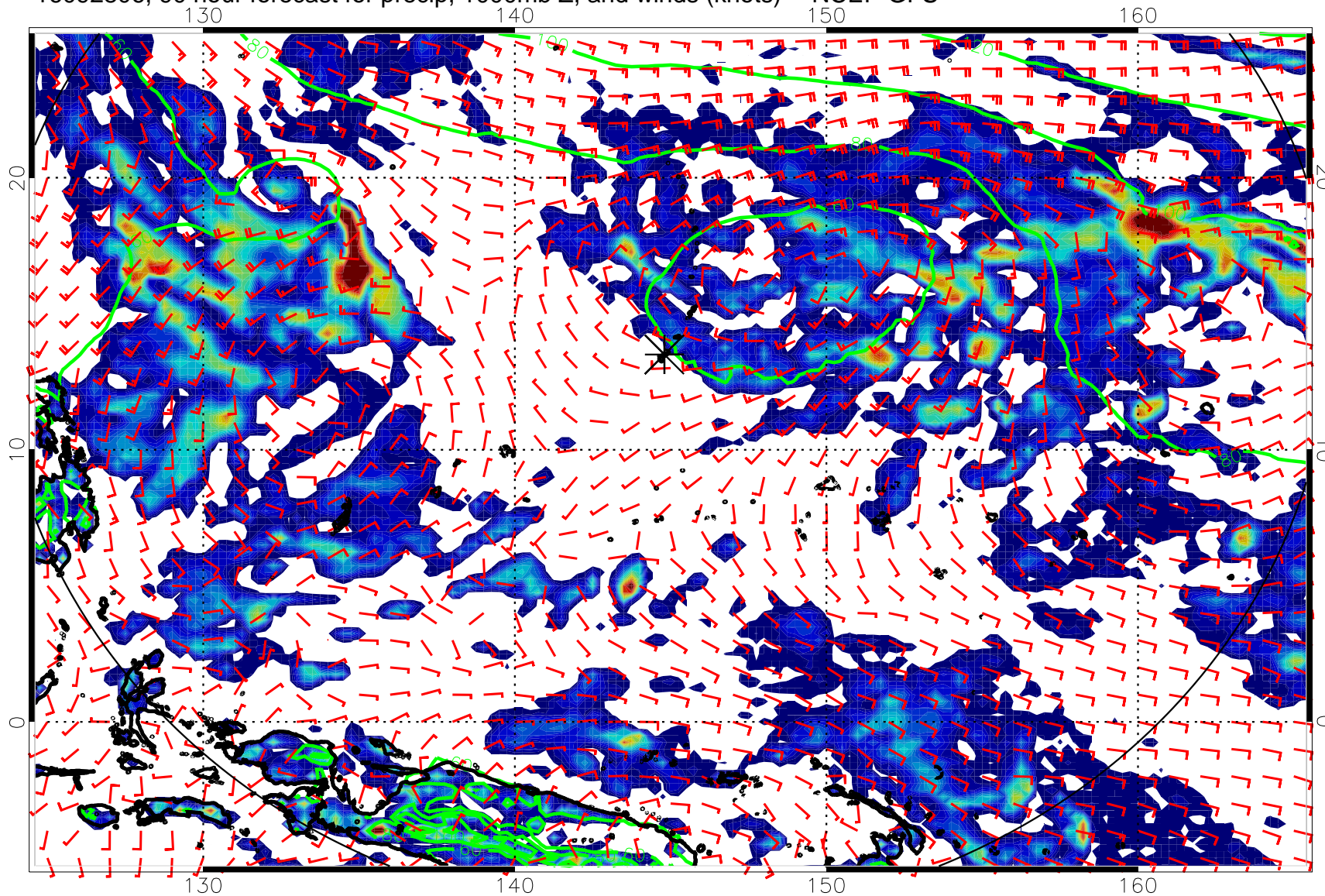
20 40 60 80
Precipitation, mm/day

16092800, 84 hour forecast for precip, 1000mb Z, and winds (knots) -- NCEP GFS



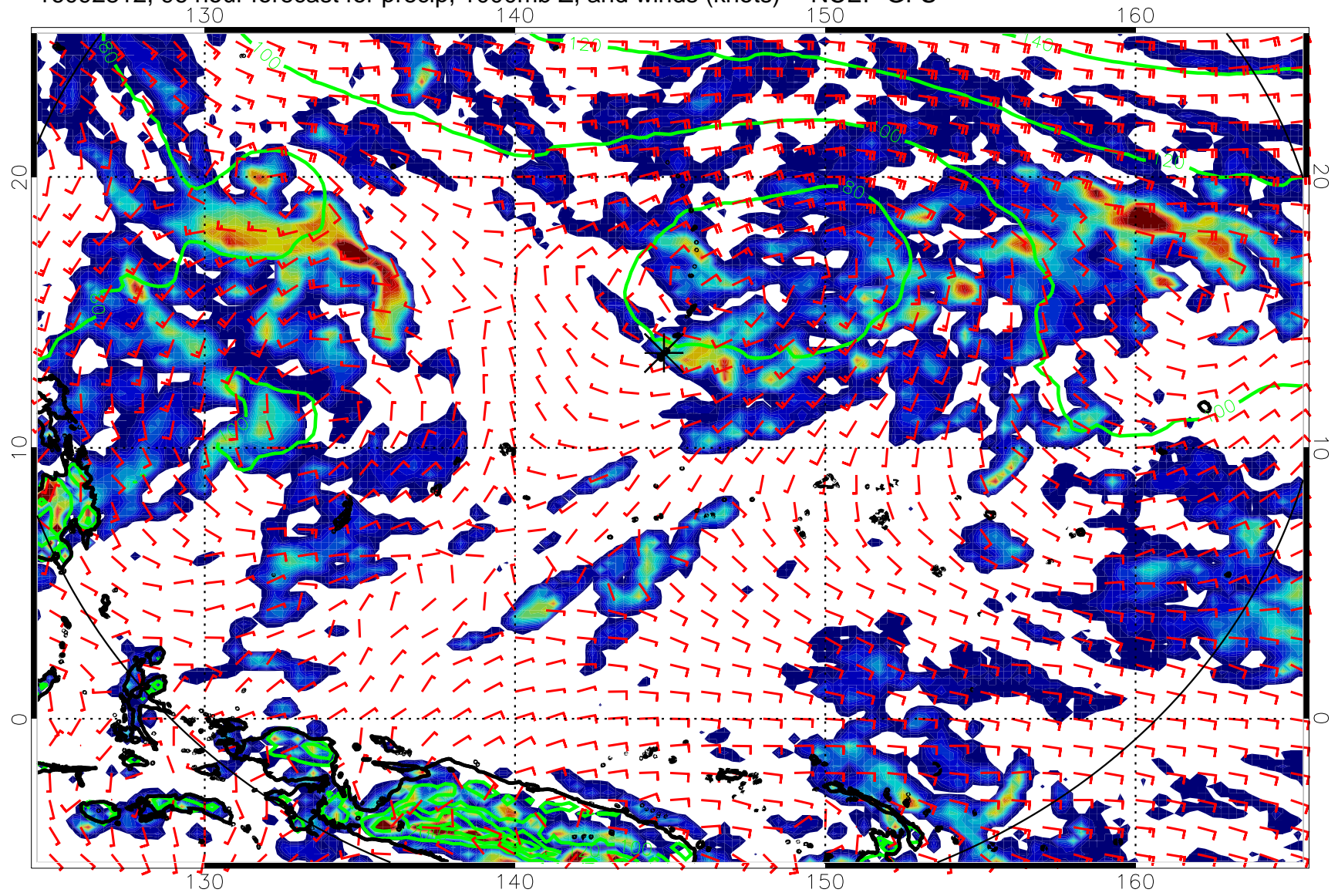
20 40 60 80
Precipitation, mm/day

16092806, 90 hour forecast for precip, 1000mb Z, and winds (knots) -- NCEP GFS



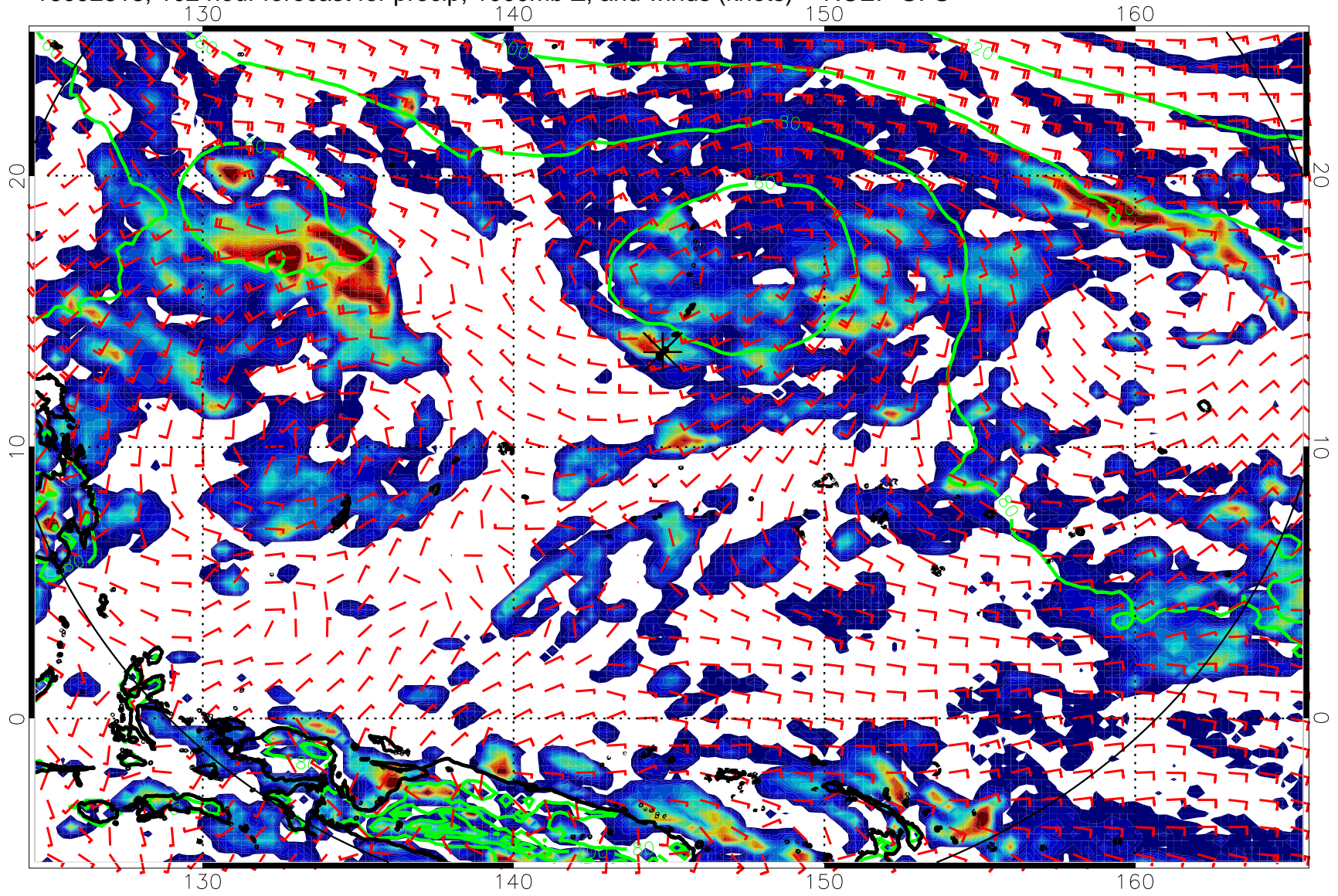
20 40 60 80
Precipitation, mm/day

16092812, 96 hour forecast for precip, 1000mb Z, and winds (knots) -- NCEP GFS



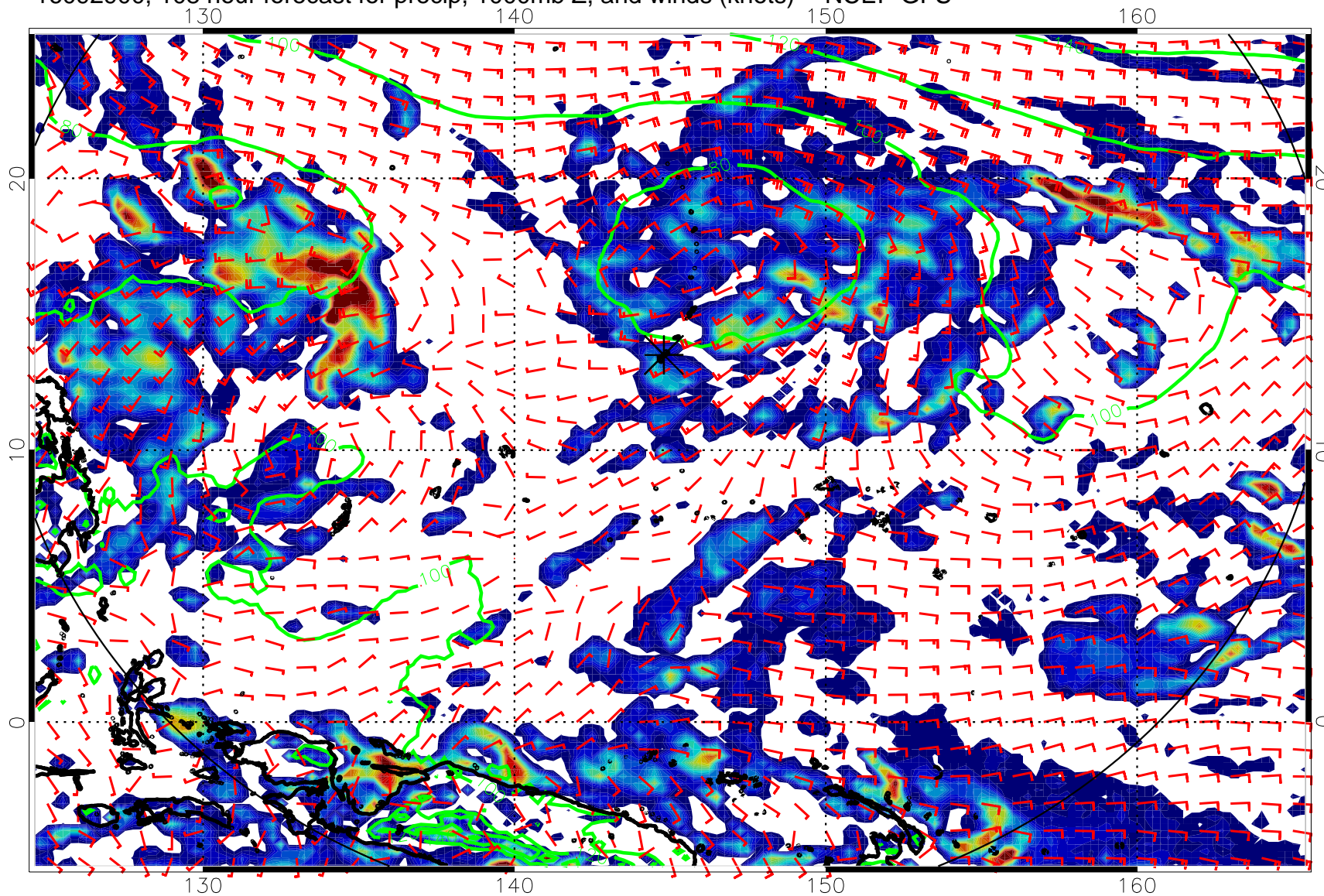
20 40 60 80
Precipitation, mm/day

16092818, 102 hour forecast for precip, 1000mb Z, and winds (knots) -- NCEP GFS



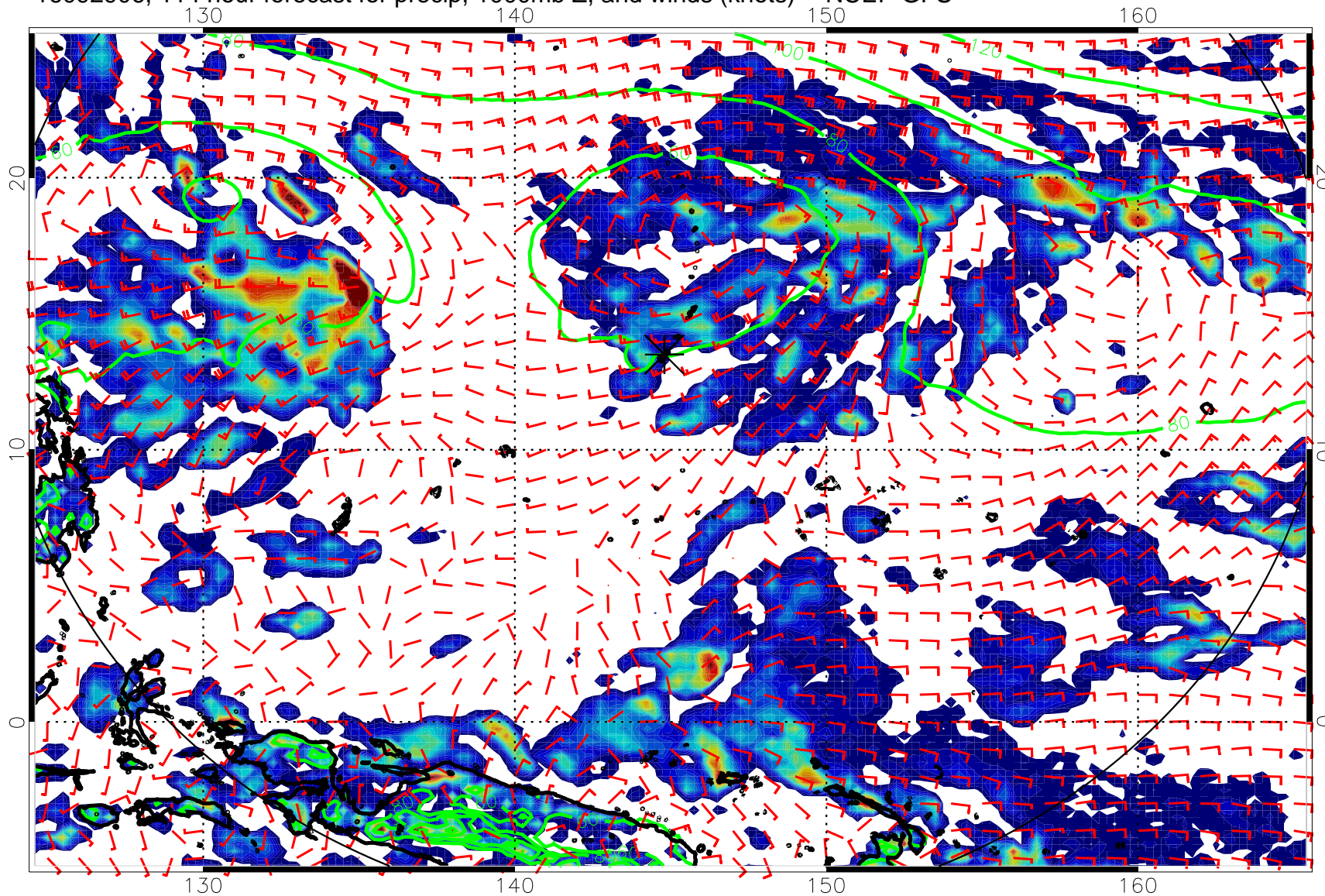
20 40 60 80
Precipitation, mm/day

16092900, 108 hour forecast for precip, 1000mb Z, and winds (knots) -- NCEP GFS



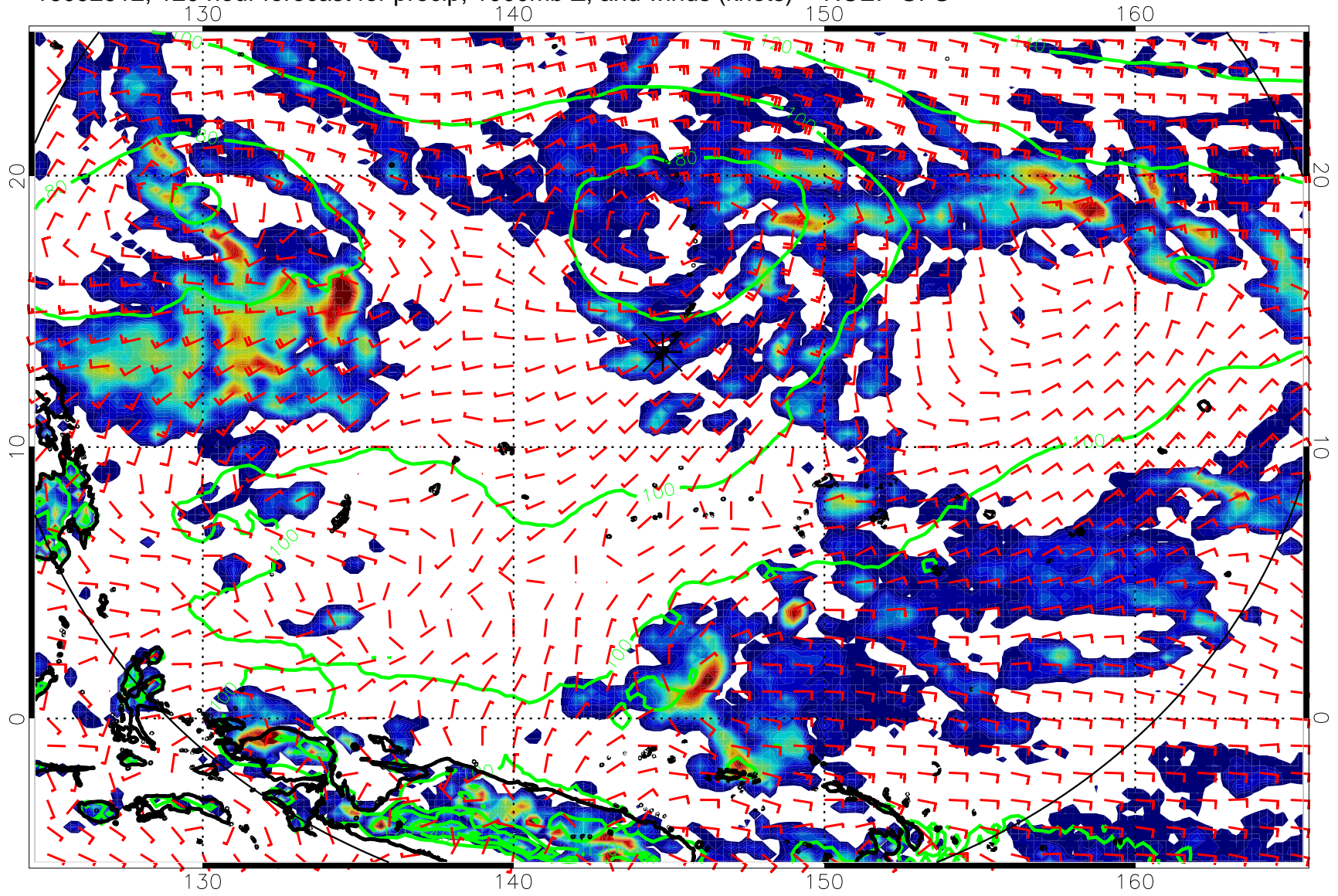
20 40 60 80
Precipitation, mm/day

16092906, 114 hour forecast for precip, 1000mb Z, and winds (knots) -- NCEP GFS



20 40 60 80
Precipitation, mm/day

16092912, 120 hour forecast for precip, 1000mb Z, and winds (knots) -- NCEP GFS



20 40 60 80
Precipitation, mm/day