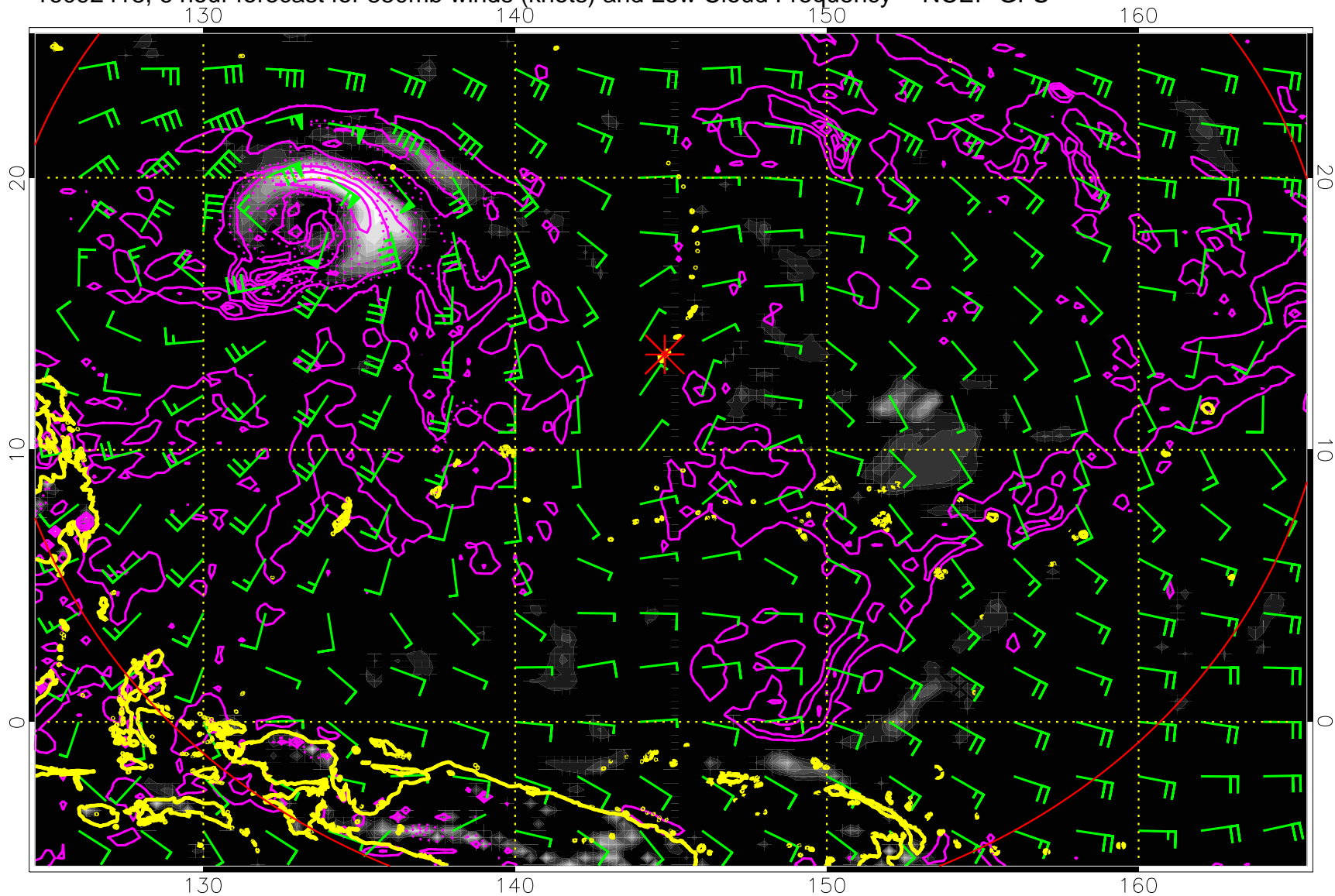


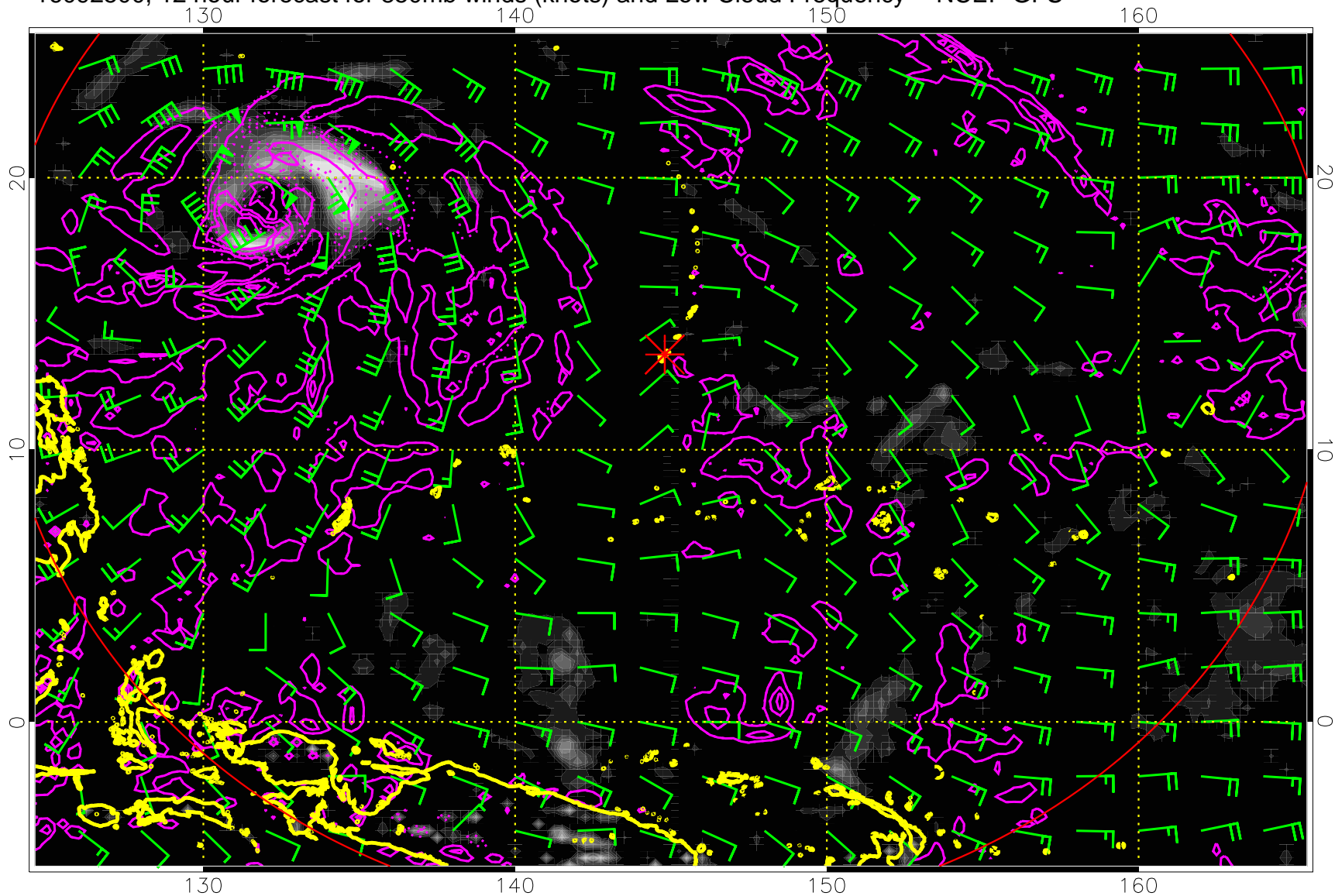
16092418, 6 hour forecast for 850mb winds (knots) and Low Cloud Frequency -- NCEP GFS



0.0 0.2 0.4 0.6 0.8 1.0
Low Cloud Frequency

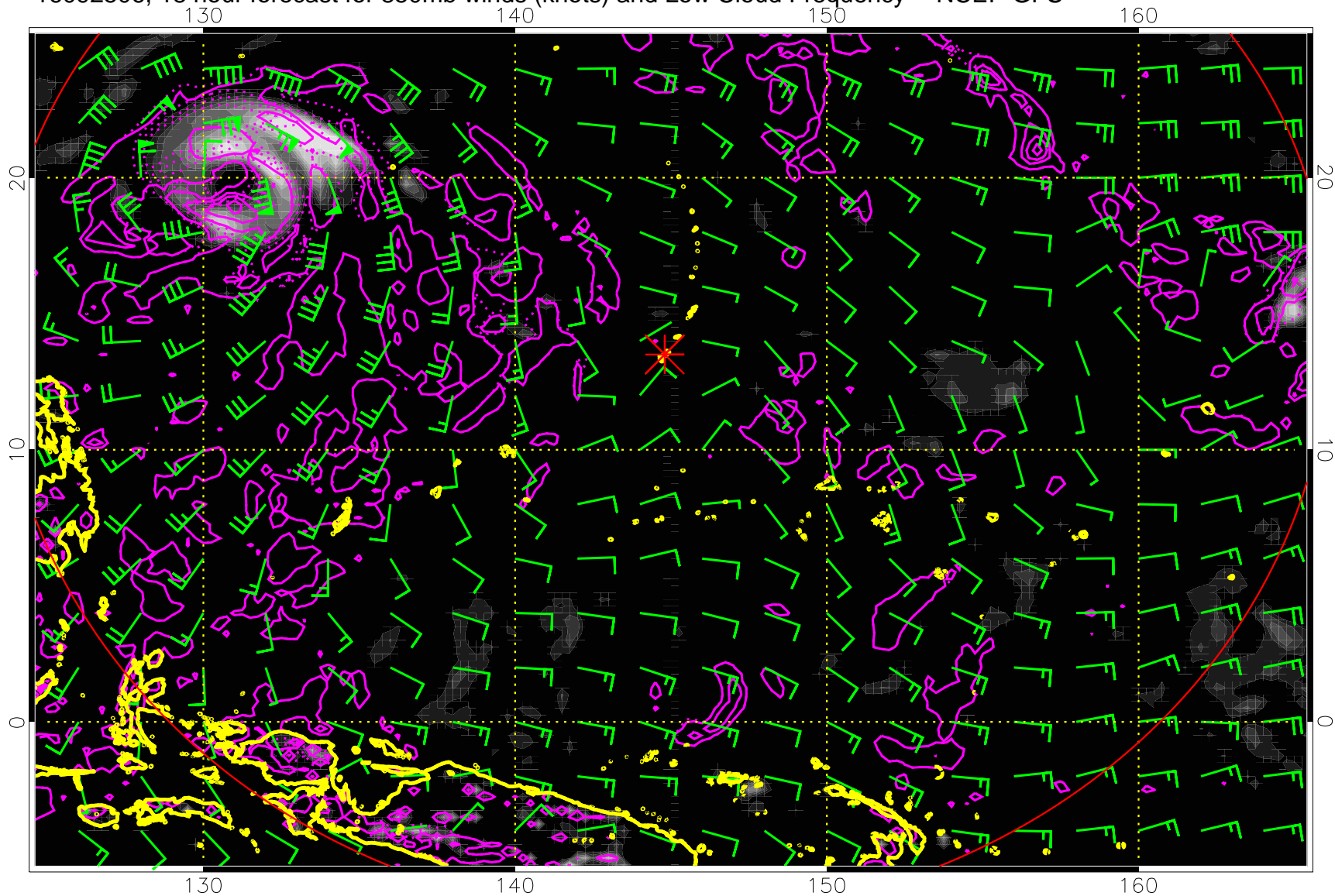
Precip (tot dot, conv sol) mm/day 40 mm/day contours, min 20

16092500, 12 hour forecast for 850mb winds (knots) and Low Cloud Frequency -- NCEP GFS



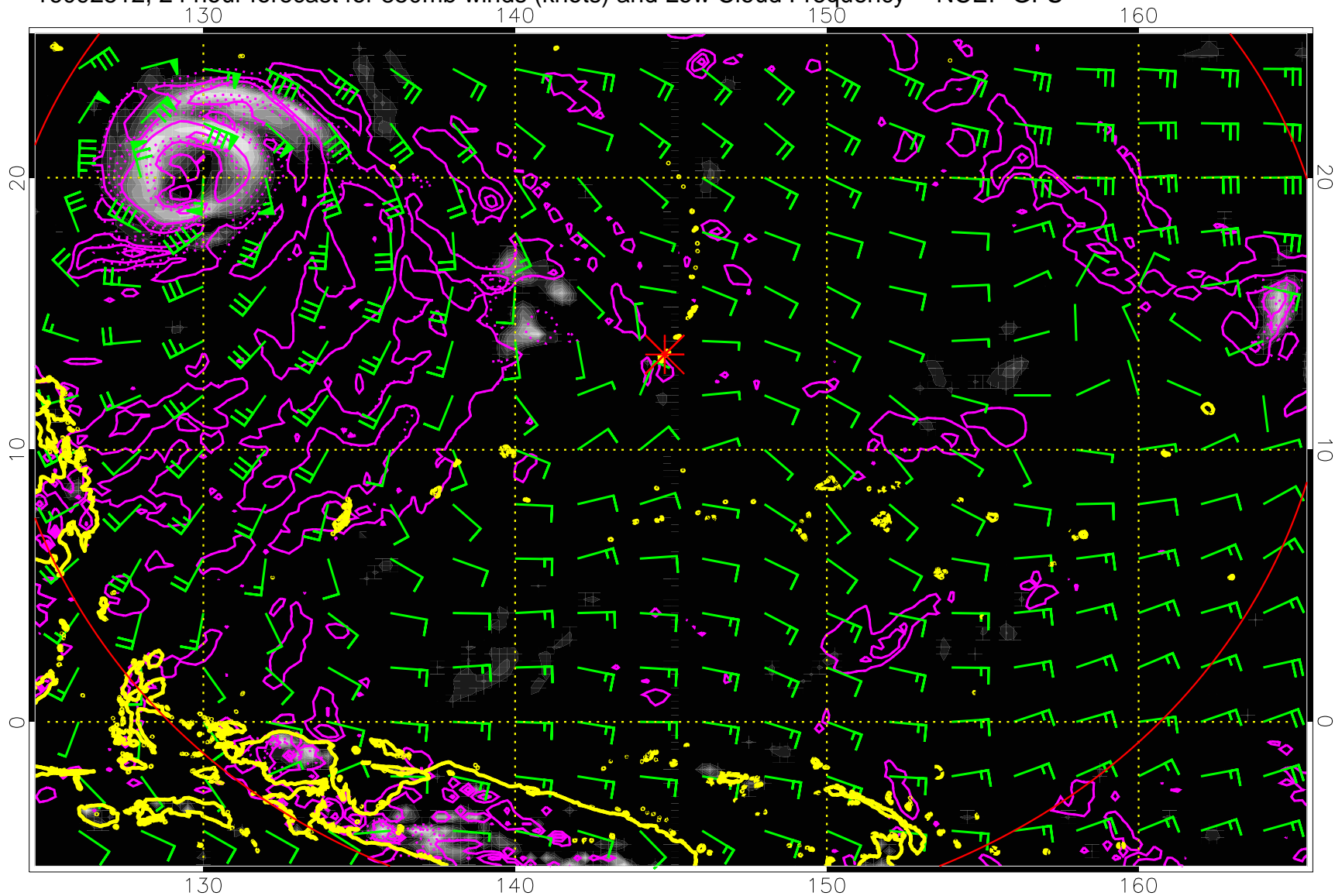
Precip (tot dot, conv sol) mm/day 40 mm/day contours, min 20

16092506, 18 hour forecast for 850mb winds (knots) and Low Cloud Frequency -- NCEP GFS



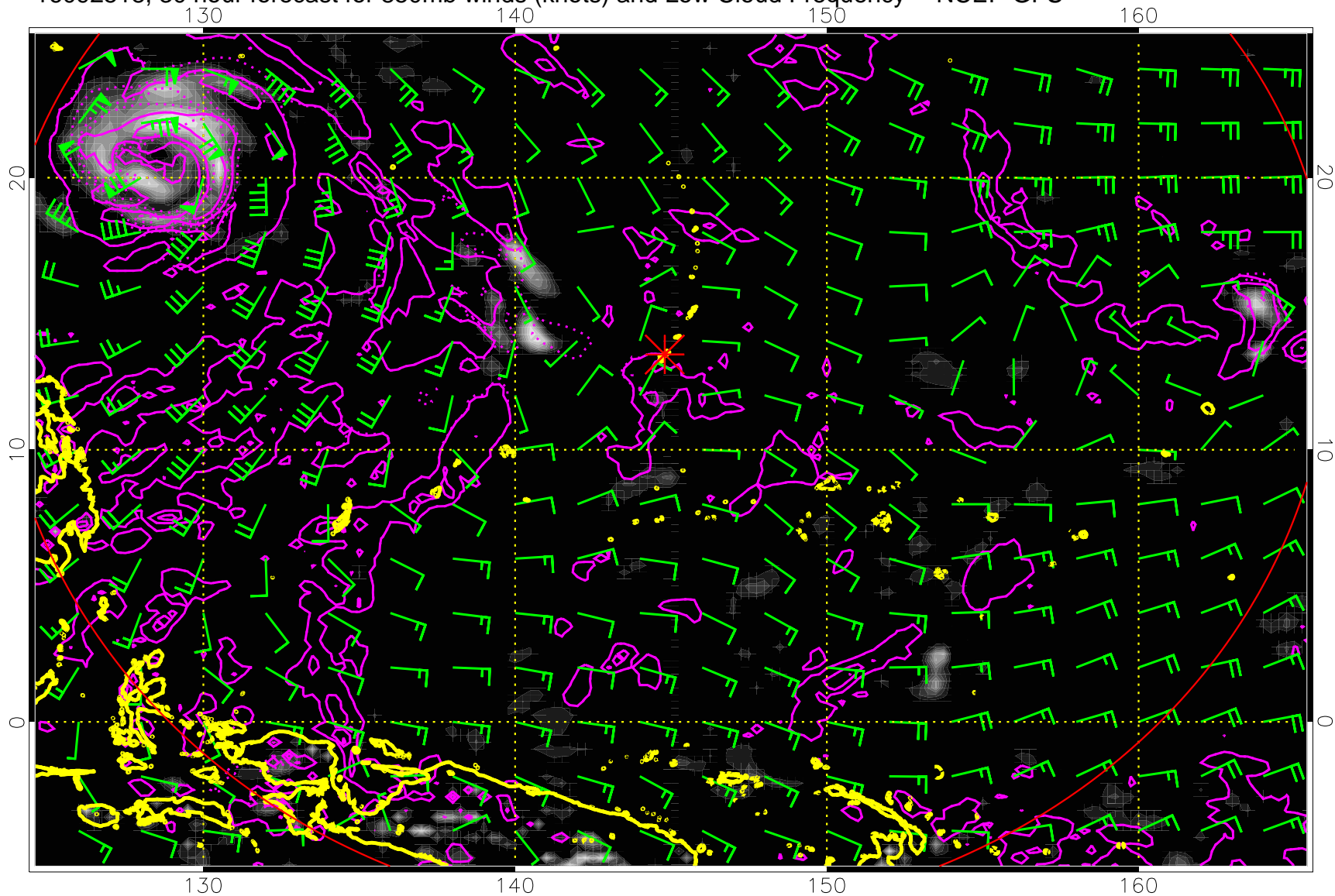
Precip (tot dot, conv sol) mm/day 40 mm/day contours, min 20

16092512, 24 hour forecast for 850mb winds (knots) and Low Cloud Frequency -- NCEP GFS



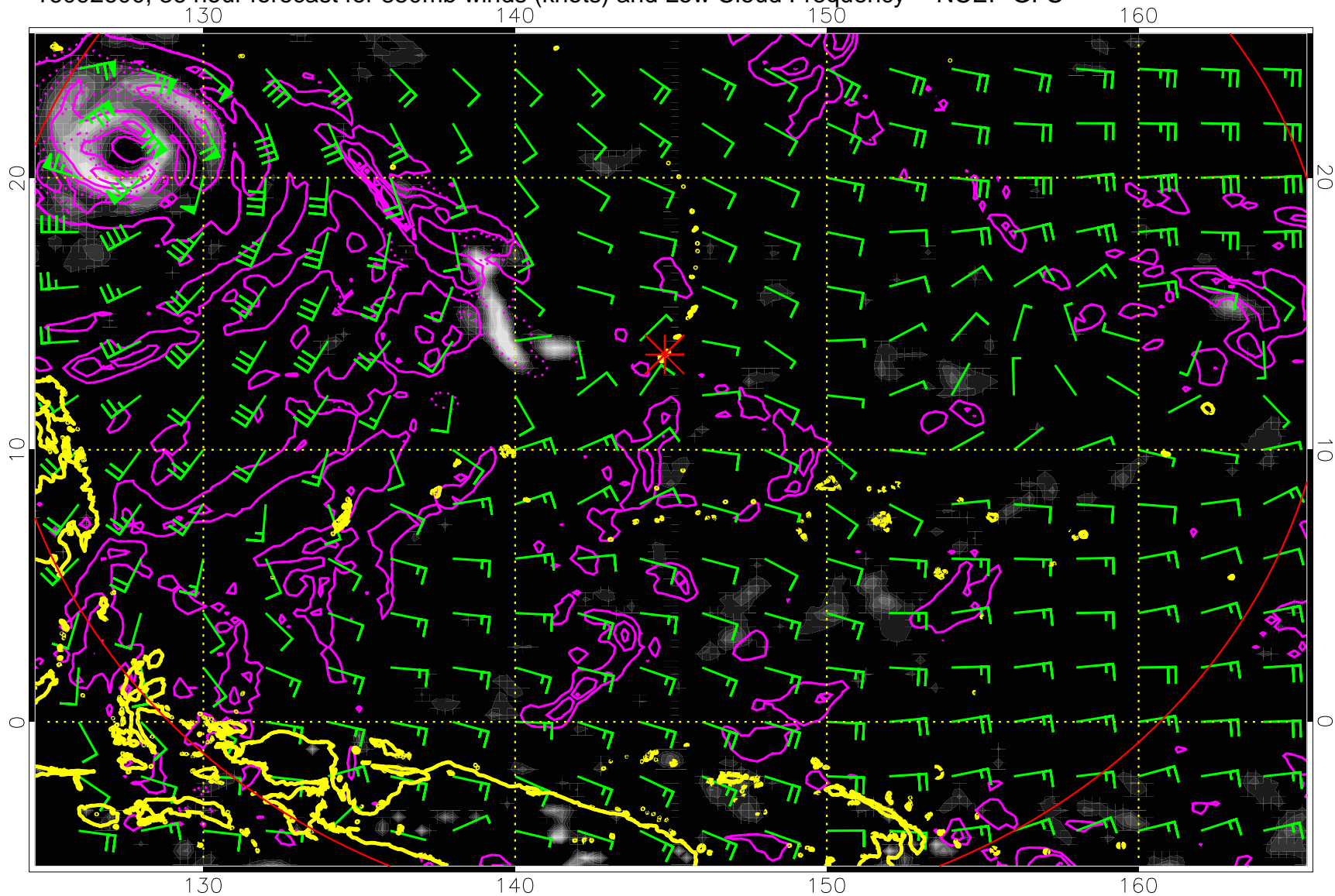
Precip (tot dot, conv sol) mm/day 40 mm/day contours, min 20

16092518, 30 hour forecast for 850mb winds (knots) and Low Cloud Frequency -- NCEP GFS



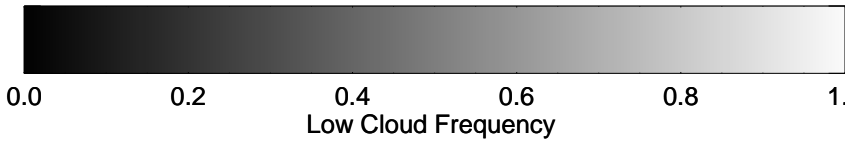
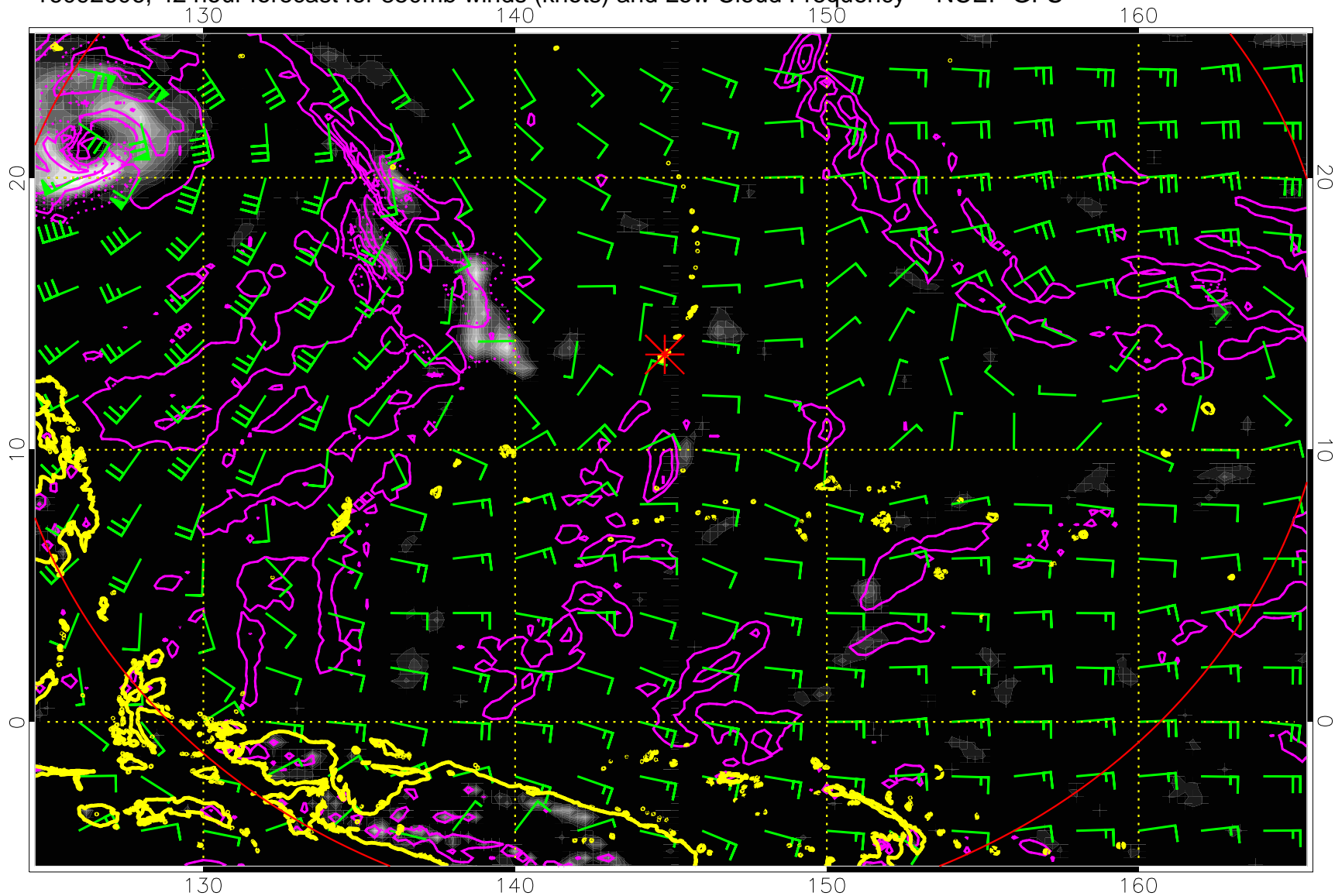
Precip (tot dot, conv sol) mm/day 40 mm/day contours, min 20

16092600, 36 hour forecast for 850mb winds (knots) and Low Cloud Frequency -- NCEP GFS



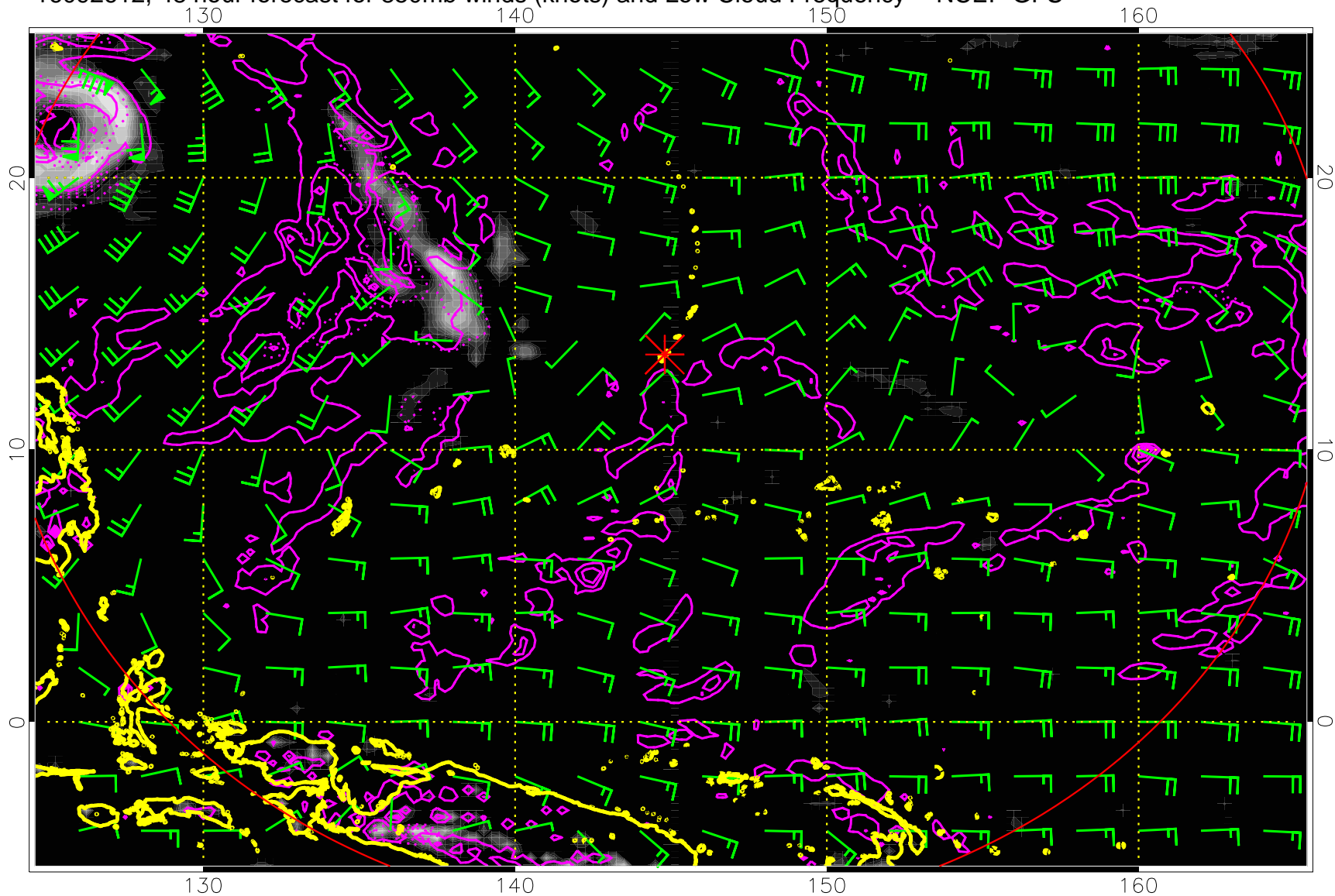
Precip (tot dot, conv sol) mm/day 40 mm/day contours, min 20

16092606, 42 hour forecast for 850mb winds (knots) and Low Cloud Frequency -- NCEP GFS



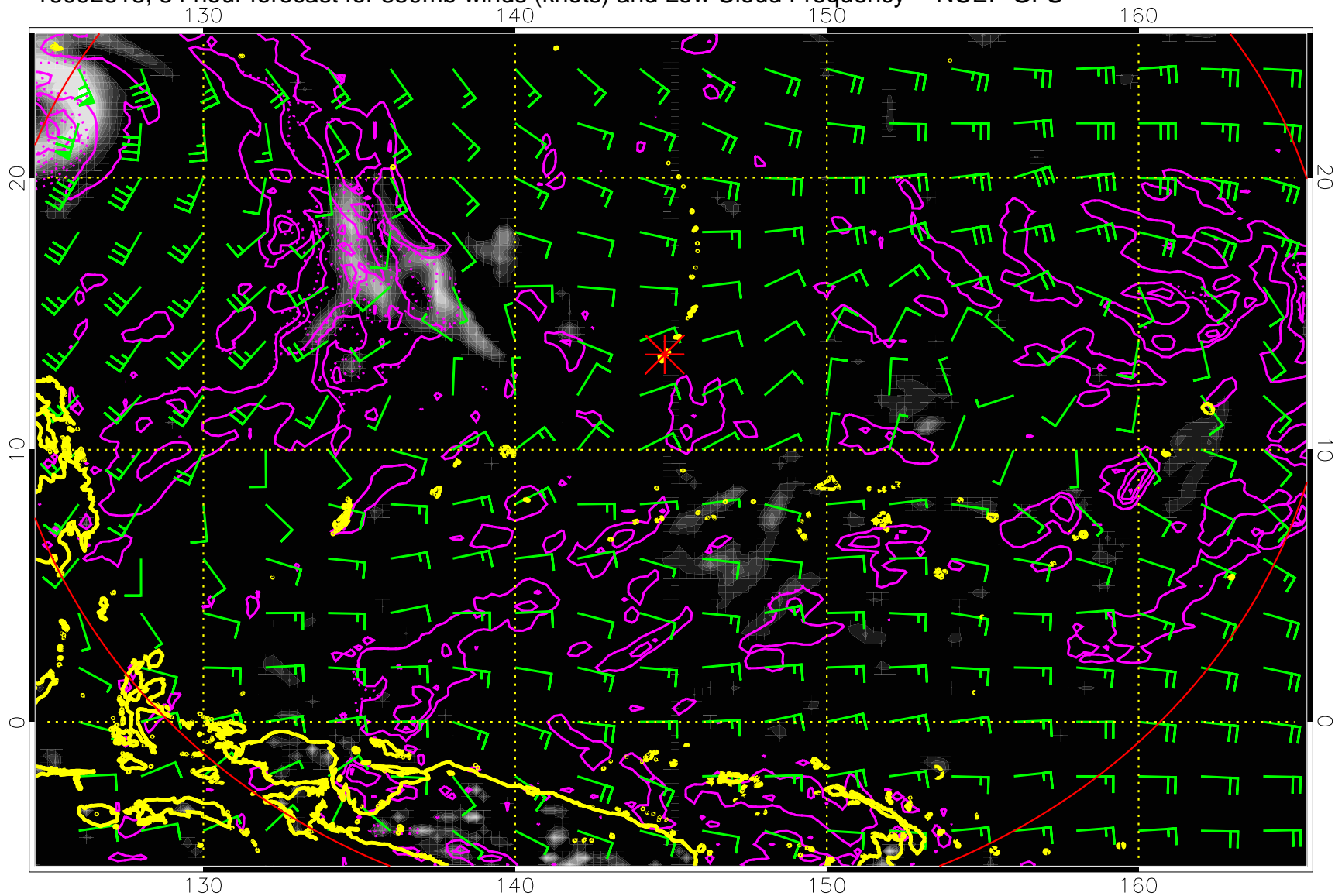
Precip (tot dot, conv sol) mm/day 40 mm/day contours, min 20

16092612, 48 hour forecast for 850mb winds (knots) and Low Cloud Frequency -- NCEP GFS



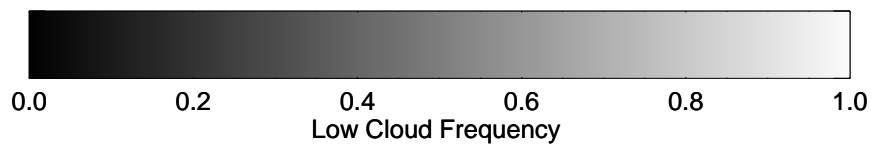
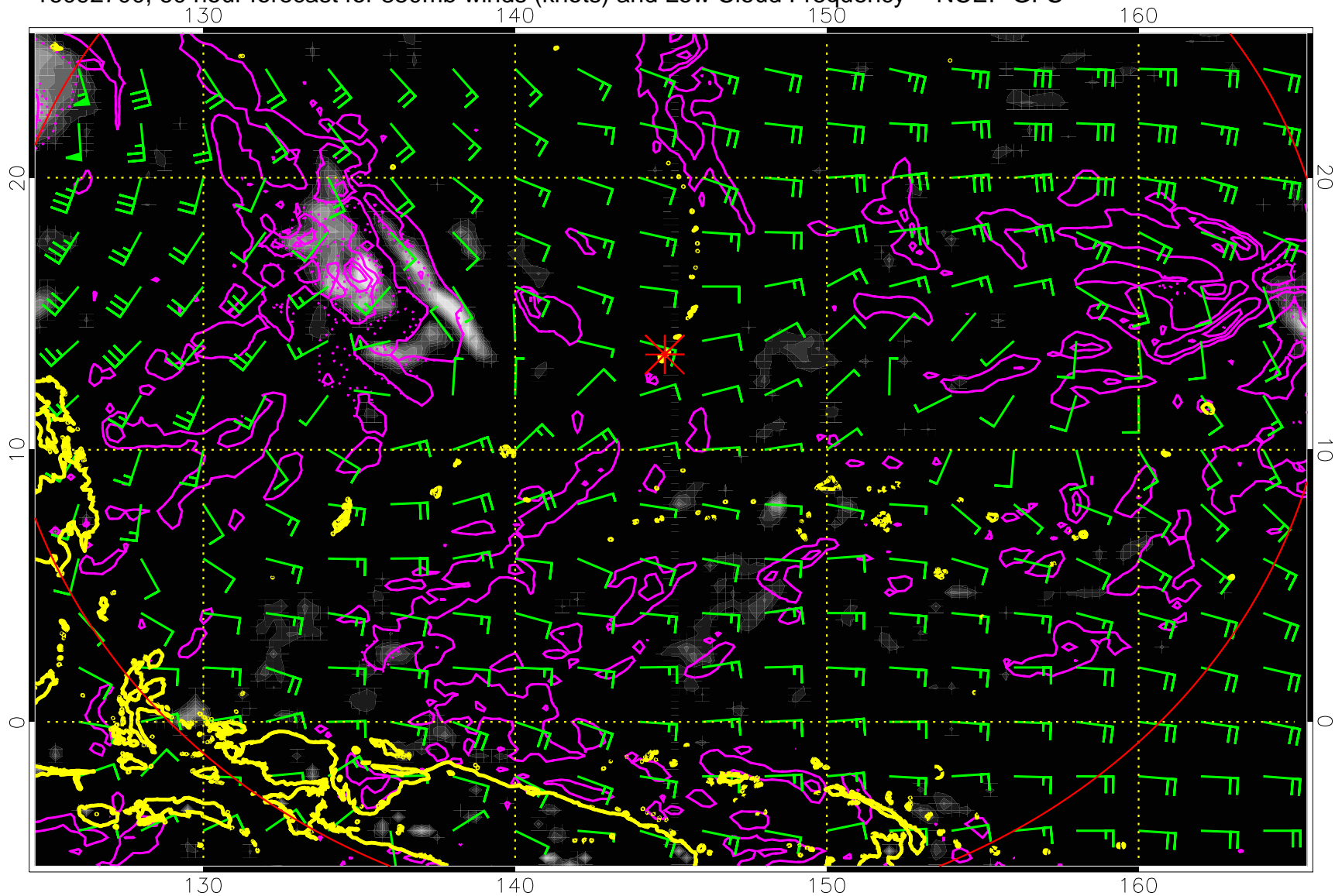
Precip (tot dot, conv sol) mm/day 40 mm/day contours, min 20

16092618, 54 hour forecast for 850mb winds (knots) and Low Cloud Frequency -- NCEP GFS



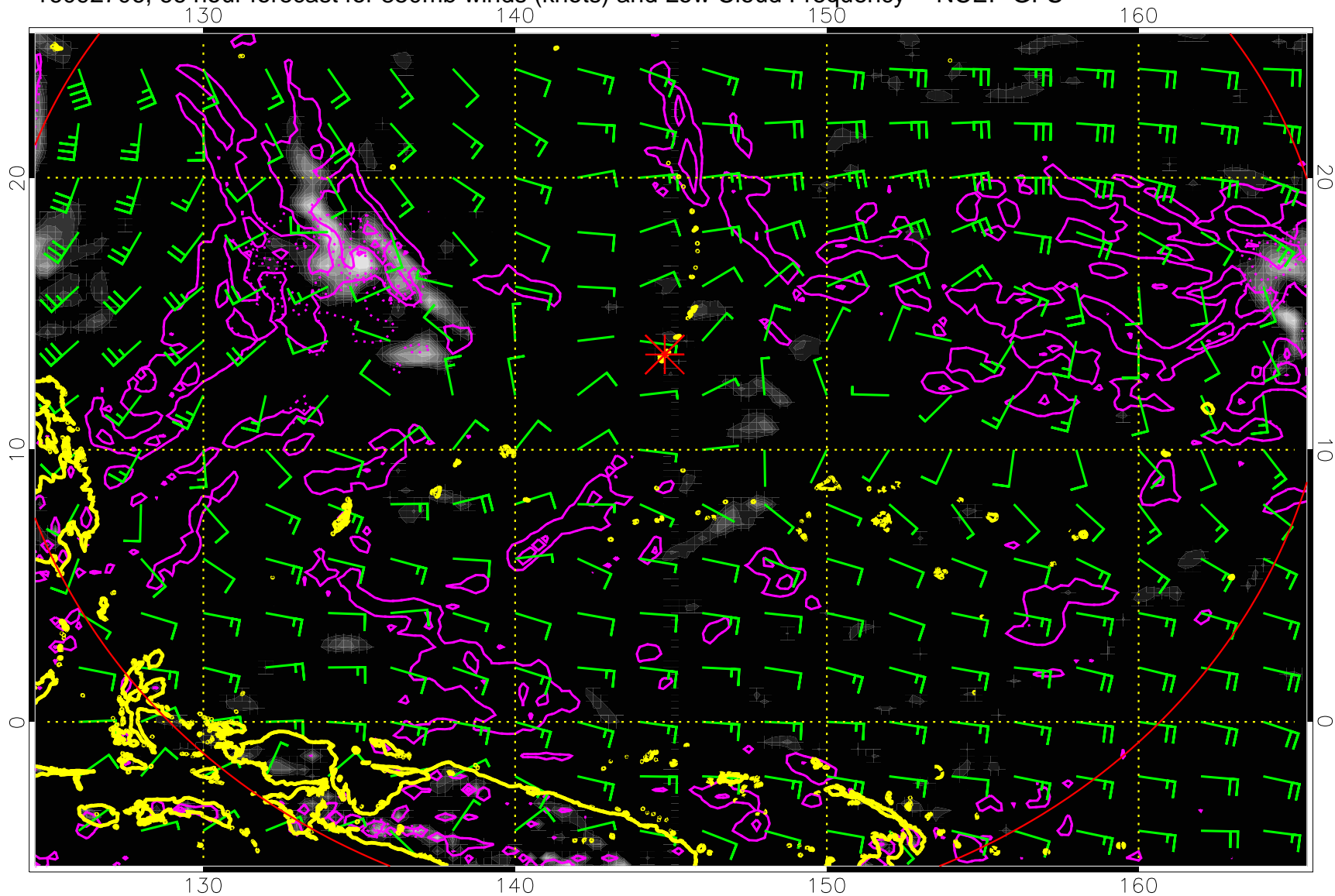
Precip (tot dot, conv sol) mm/day 40 mm/day contours, min 20

16092700, 60 hour forecast for 850mb winds (knots) and Low Cloud Frequency -- NCEP GFS



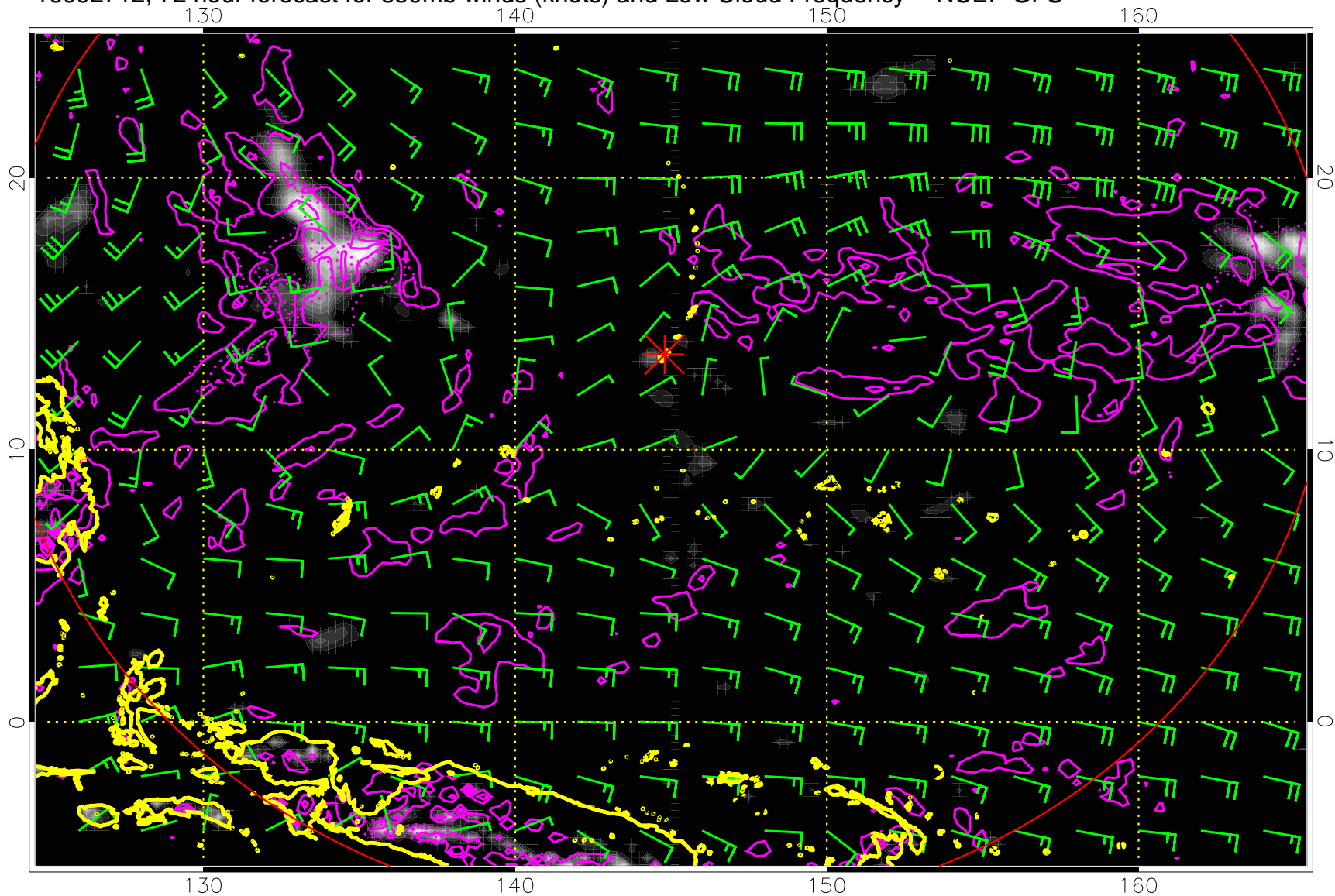
Precip (tot dot, conv sol) mm/day 40 mm/day contours, min 20

16092706, 66 hour forecast for 850mb winds (knots) and Low Cloud Frequency -- NCEP GFS



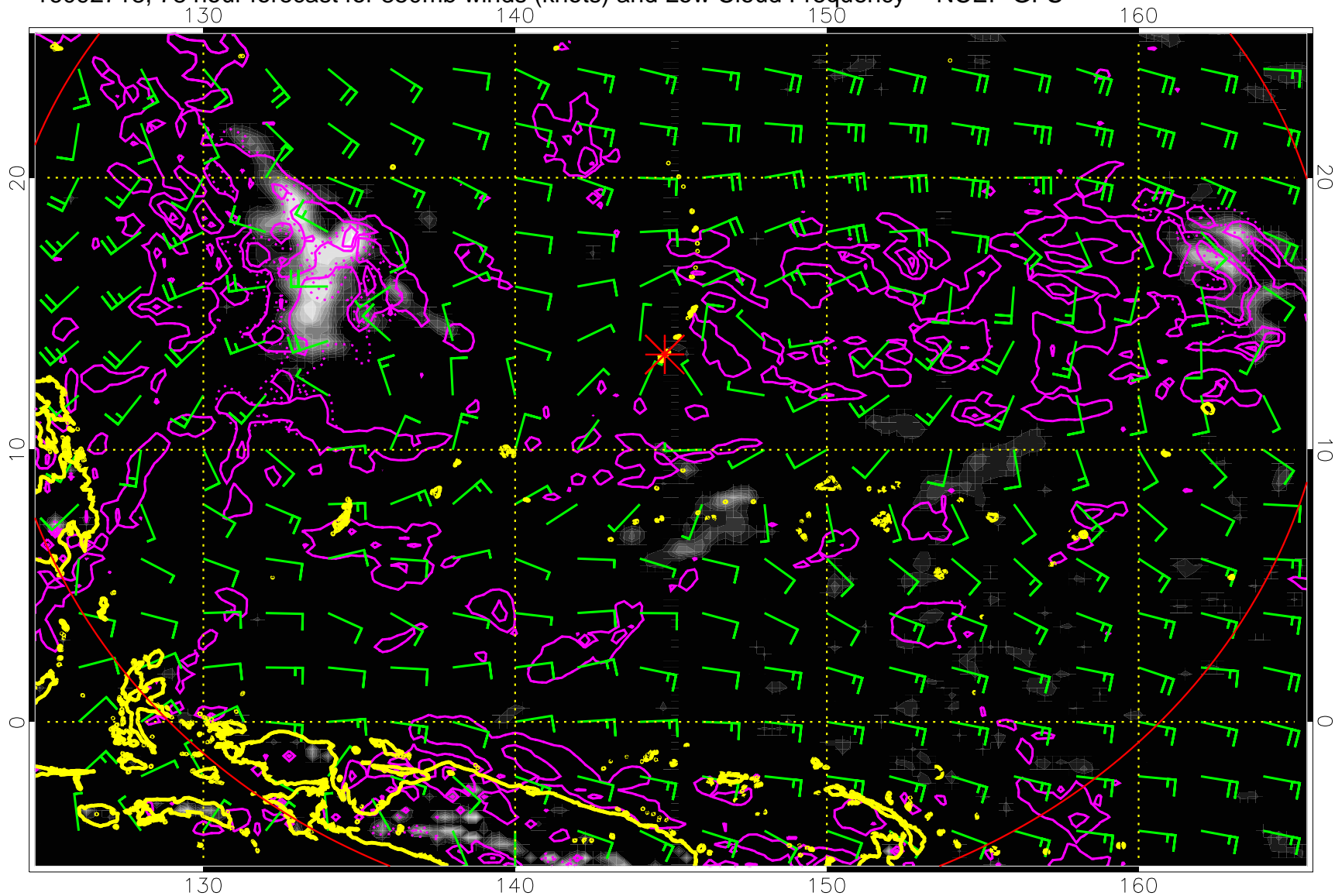
Precip (tot dot, conv sol) mm/day 40 mm/day contours, min 20

16092712, 72 hour forecast for 850mb winds (knots) and Low Cloud Frequency -- NCEP GFS



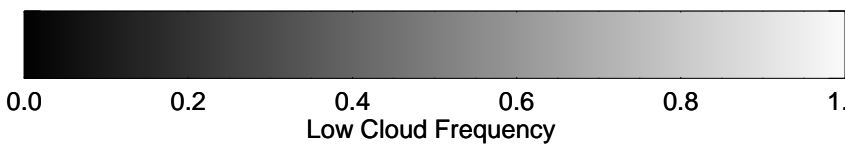
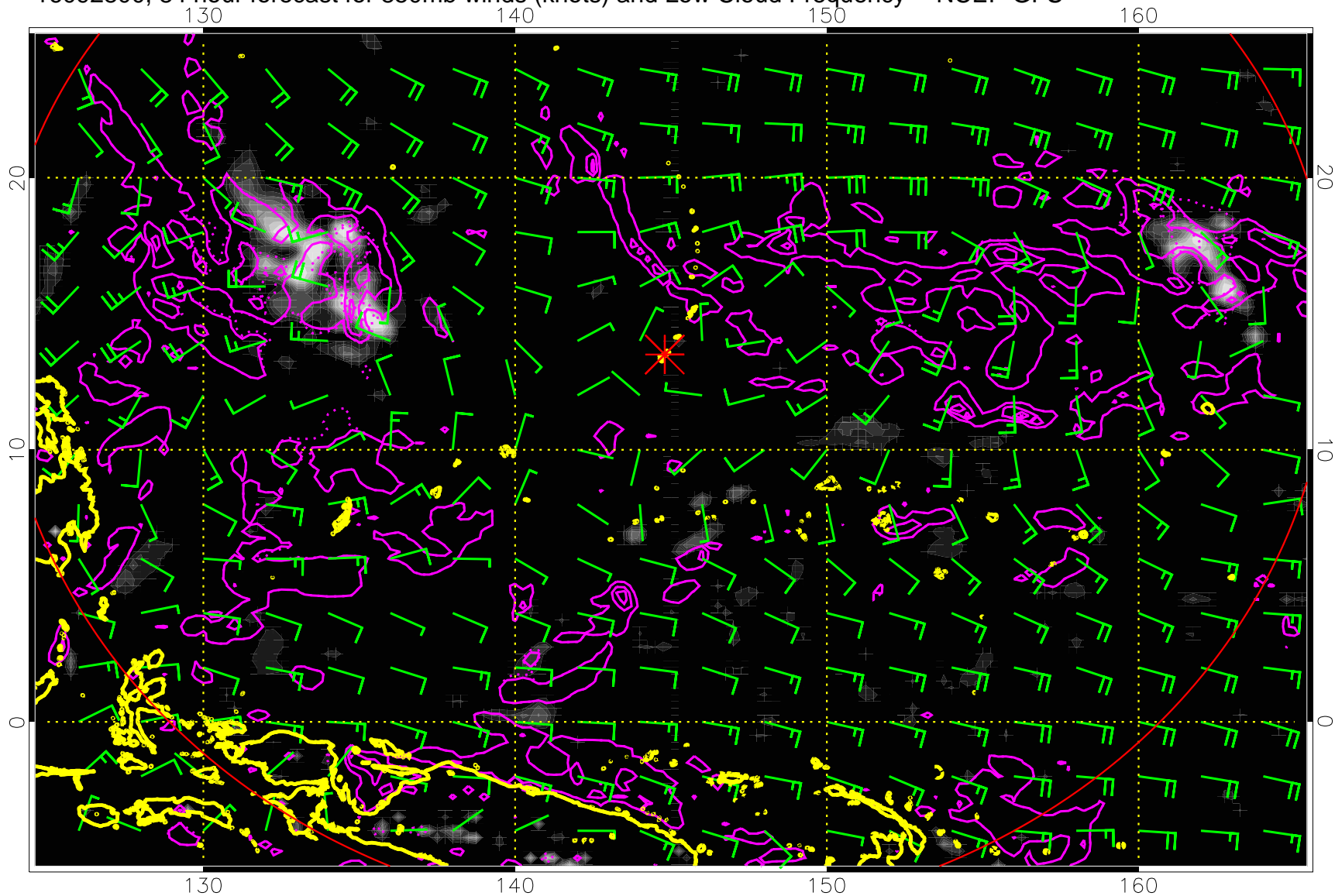
Precip (tot dot, conv sol) mm/day 40 mm/day contours, min 20

16092718, 78 hour forecast for 850mb winds (knots) and Low Cloud Frequency -- NCEP GFS



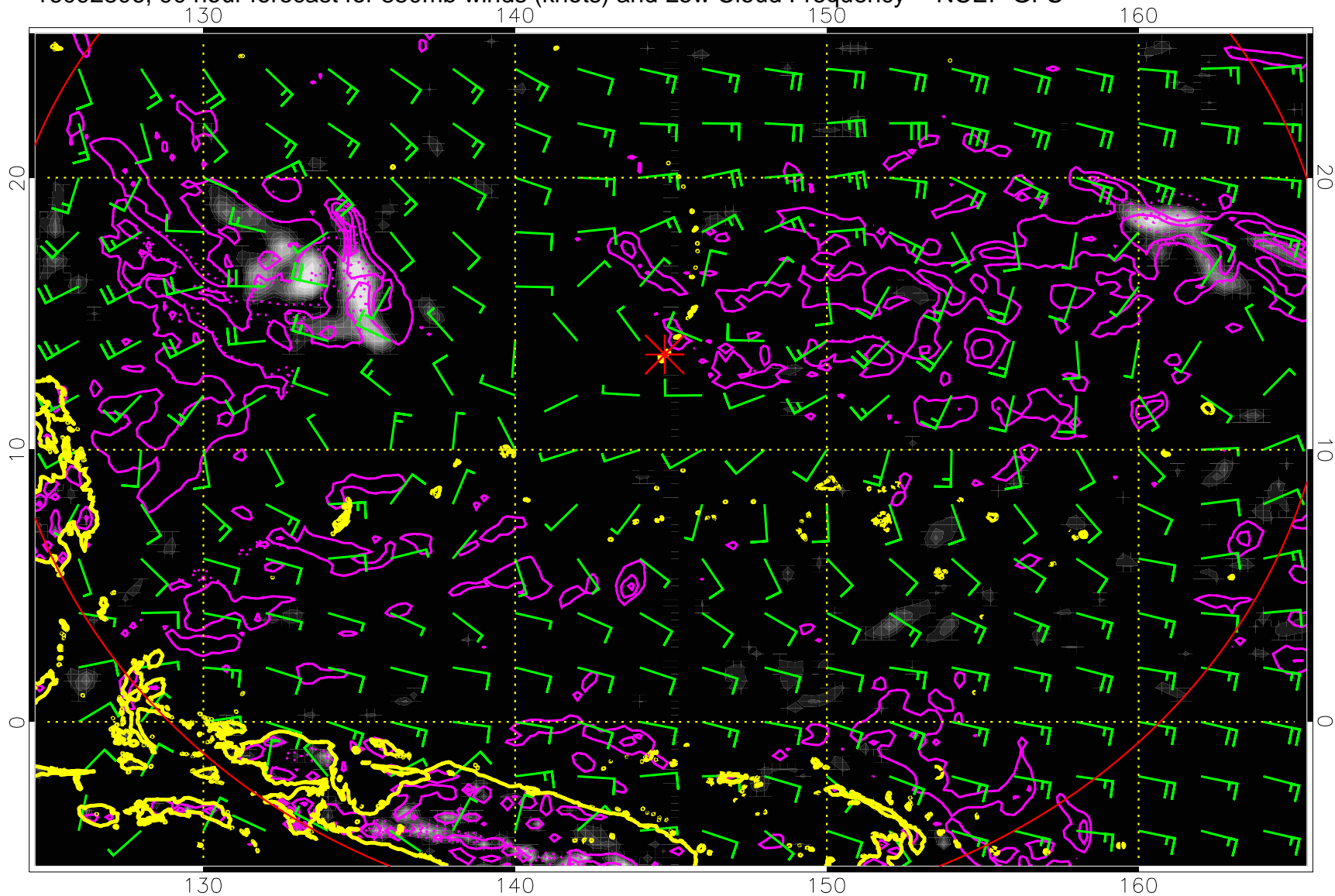
Precip (tot dot, conv sol) mm/day 40 mm/day contours, min 20

16092800, 84 hour forecast for 850mb winds (knots) and Low Cloud Frequency -- NCEP GFS



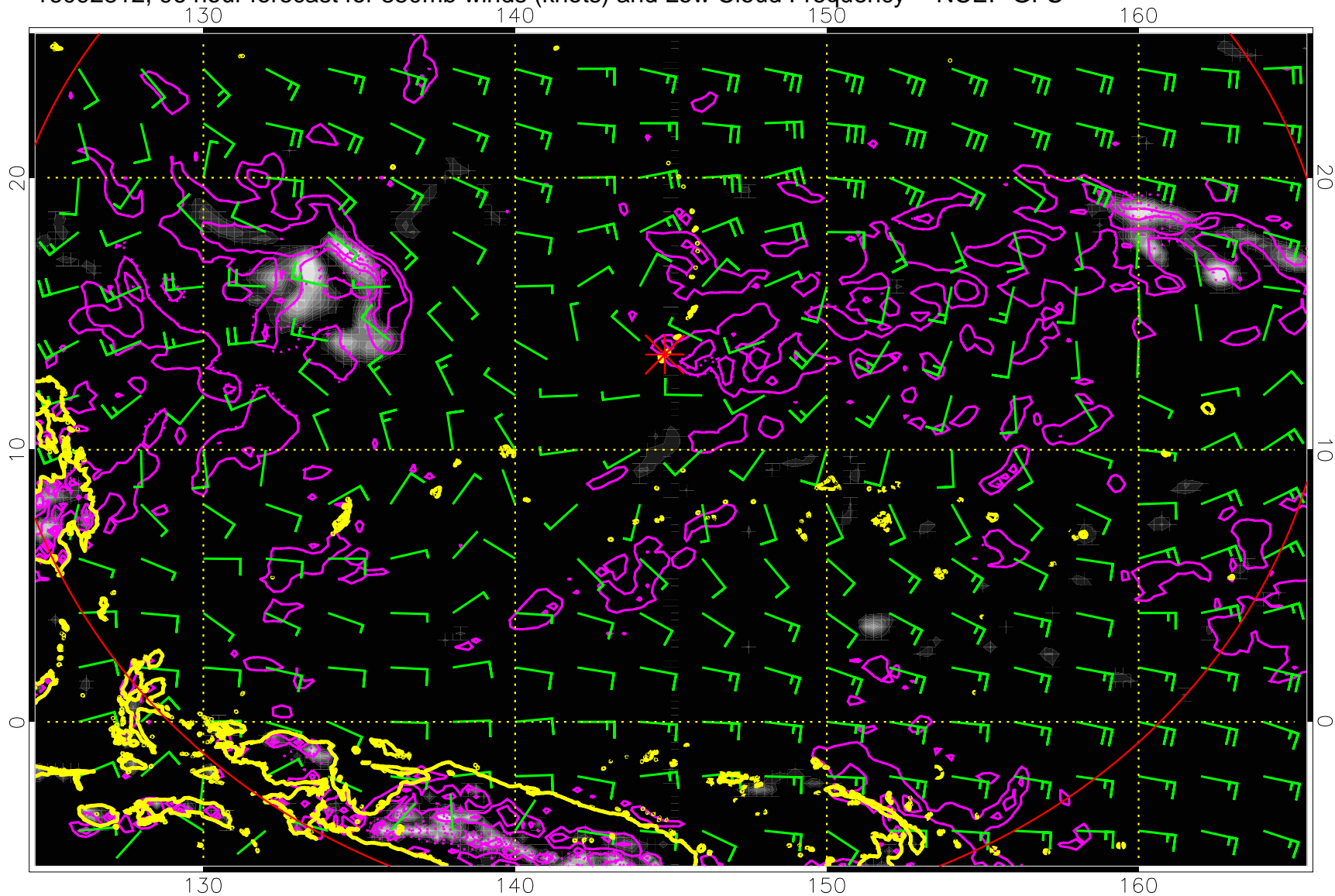
Precip (tot dot, conv sol) mm/day 40 mm/day contours, min 20

16092806, 90 hour forecast for 850mb winds (knots) and Low Cloud Frequency -- NCEP GFS



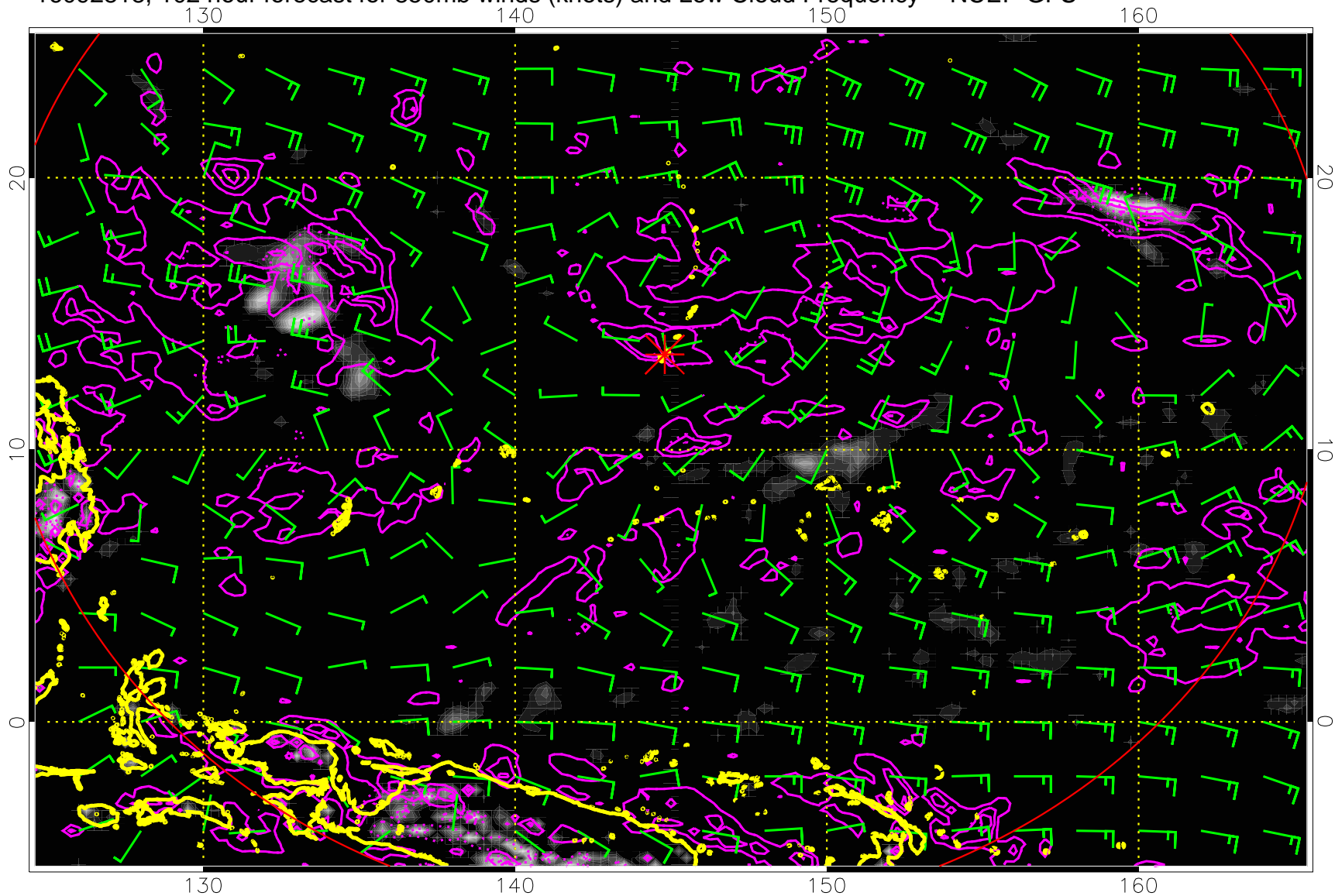
Precip (tot dot, conv sol) mm/day 40 mm/day contours, min 20

16092812, 96 hour forecast for 850mb winds (knots) and Low Cloud Frequency -- NCEP GFS



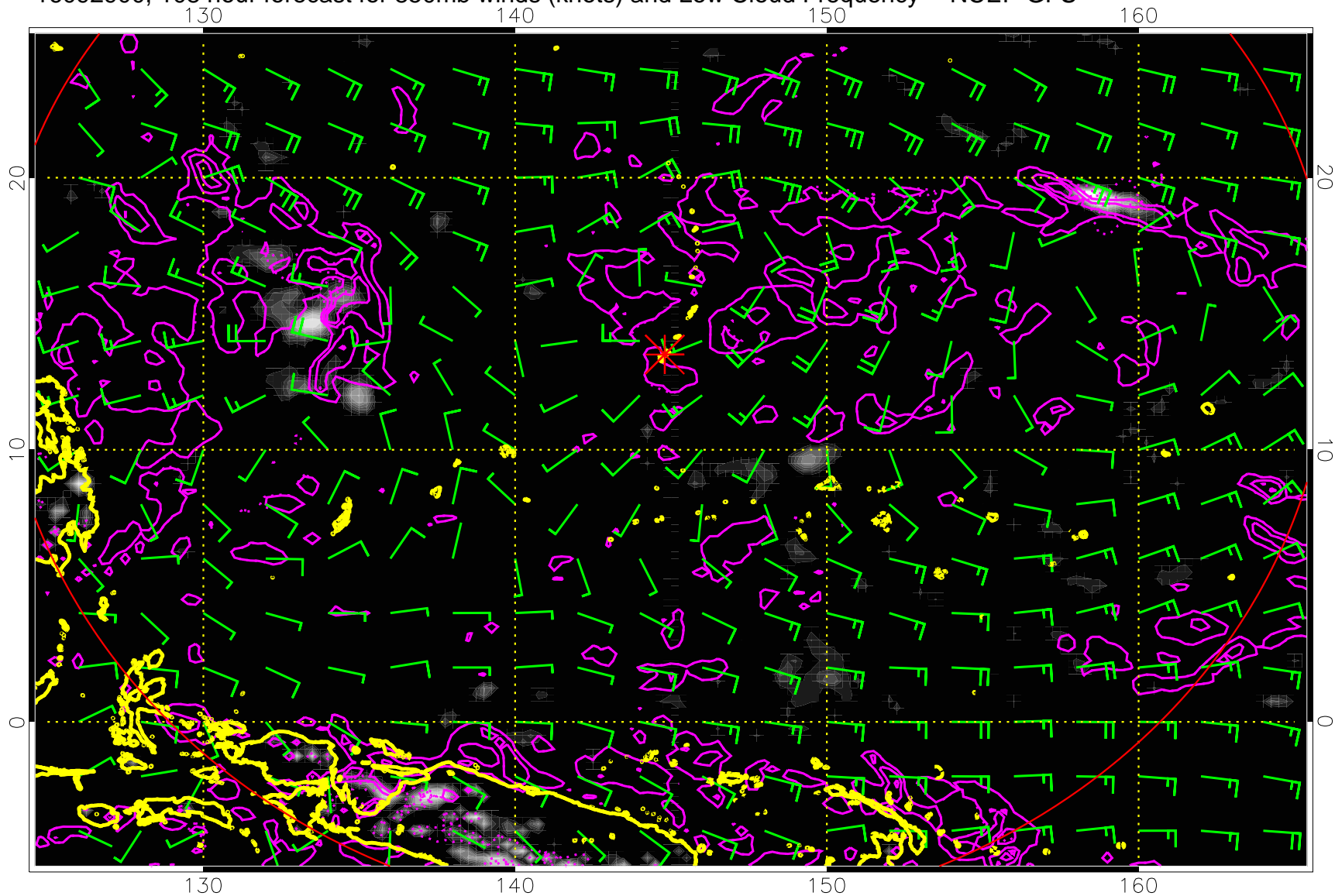
Precip (tot dot, conv sol) mm/day 40 mm/day contours, min 20

16092818, 102 hour forecast for 850mb winds (knots) and Low Cloud Frequency -- NCEP GFS



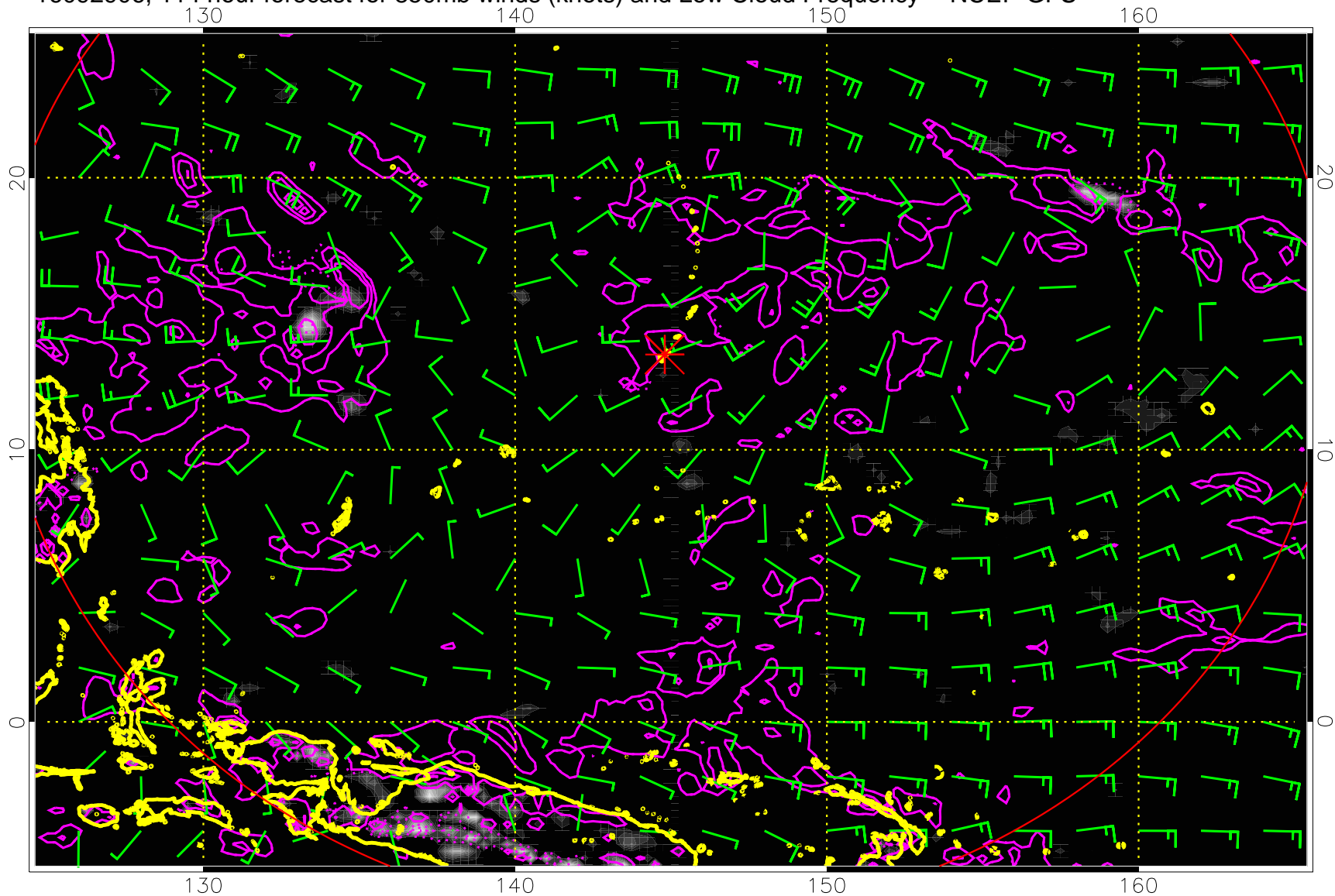
Precip (tot dot, conv sol) mm/day 40 mm/day contours, min 20

16092900, 108 hour forecast for 850mb winds (knots) and Low Cloud Frequency -- NCEP GFS



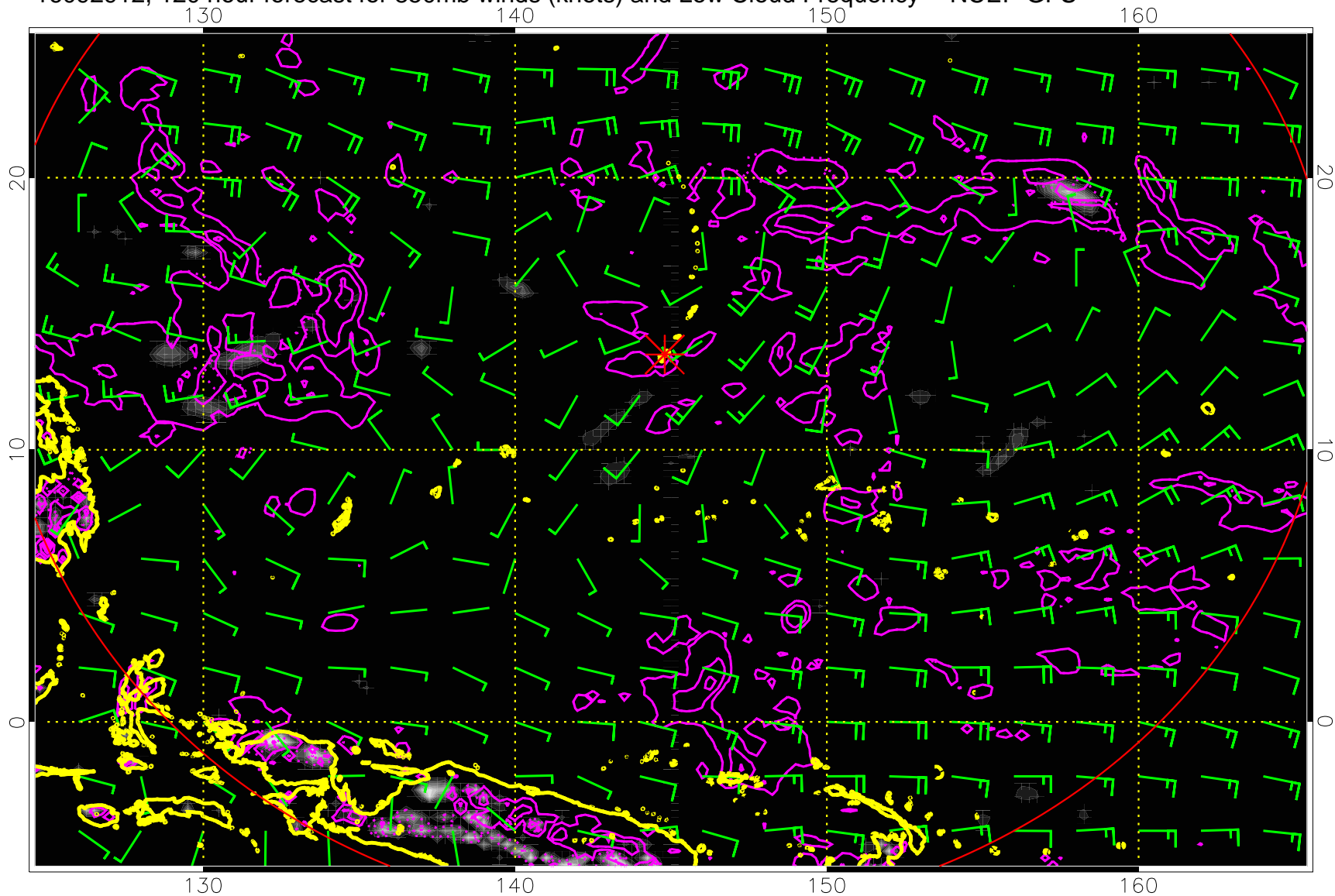
Precip (tot dot, conv sol) mm/day 40 mm/day contours, min 20

16092906, 114 hour forecast for 850mb winds (knots) and Low Cloud Frequency -- NCEP GFS



Precip (tot dot, conv sol) mm/day 40 mm/day contours, min 20

16092912, 120 hour forecast for 850mb winds (knots) and Low Cloud Frequency -- NCEP GFS



Precip (tot dot, conv sol) mm/day 40 mm/day contours, min 20