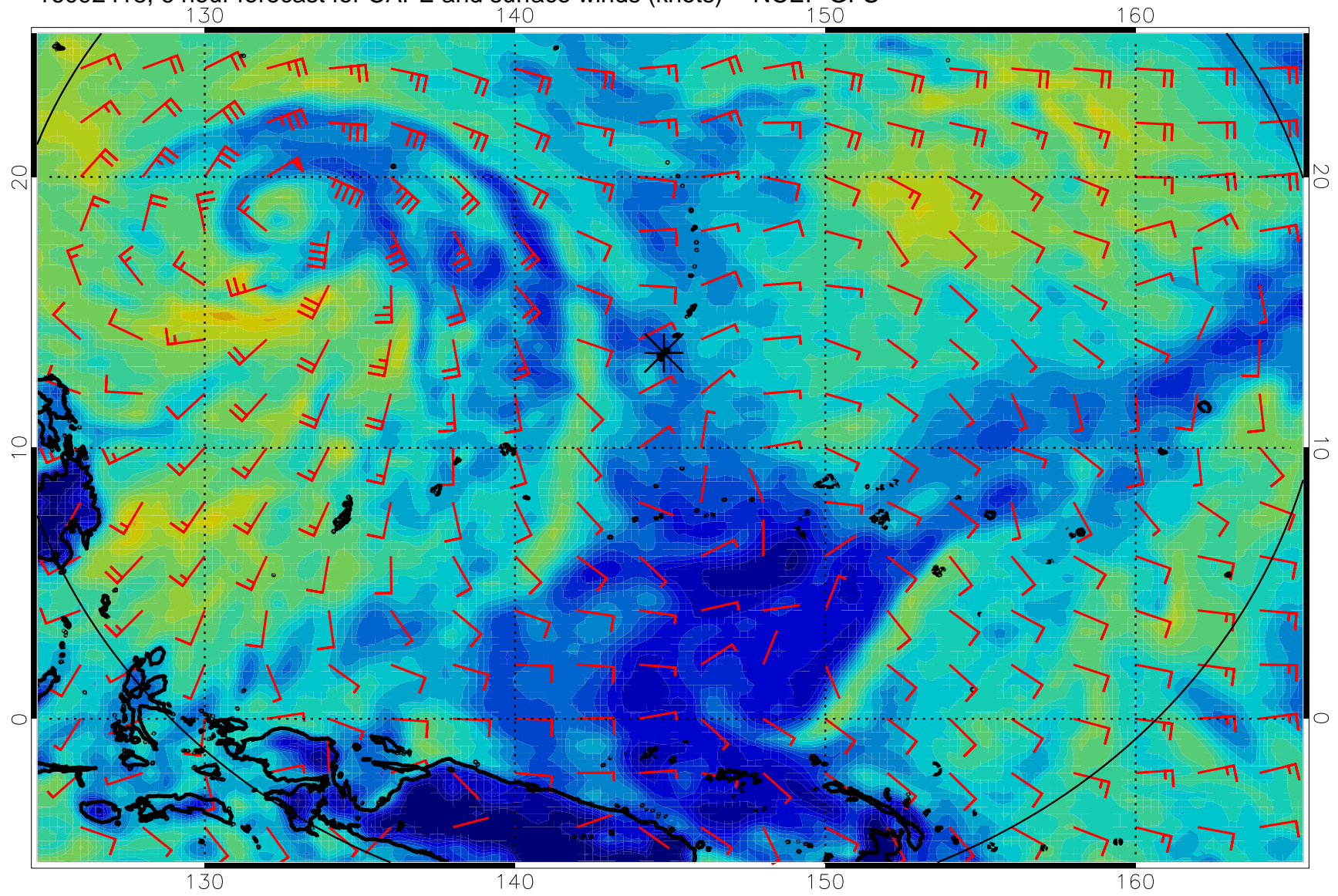
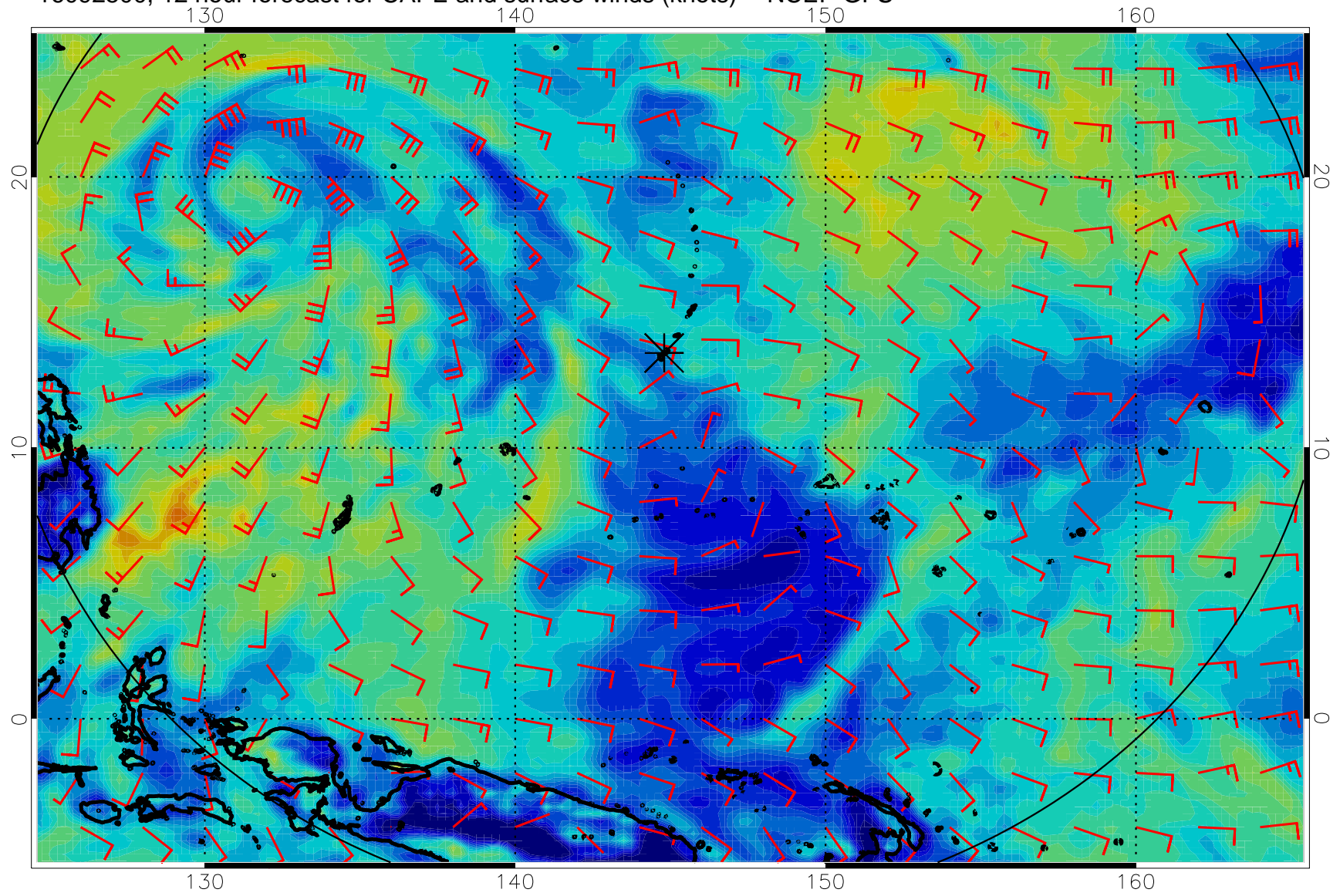


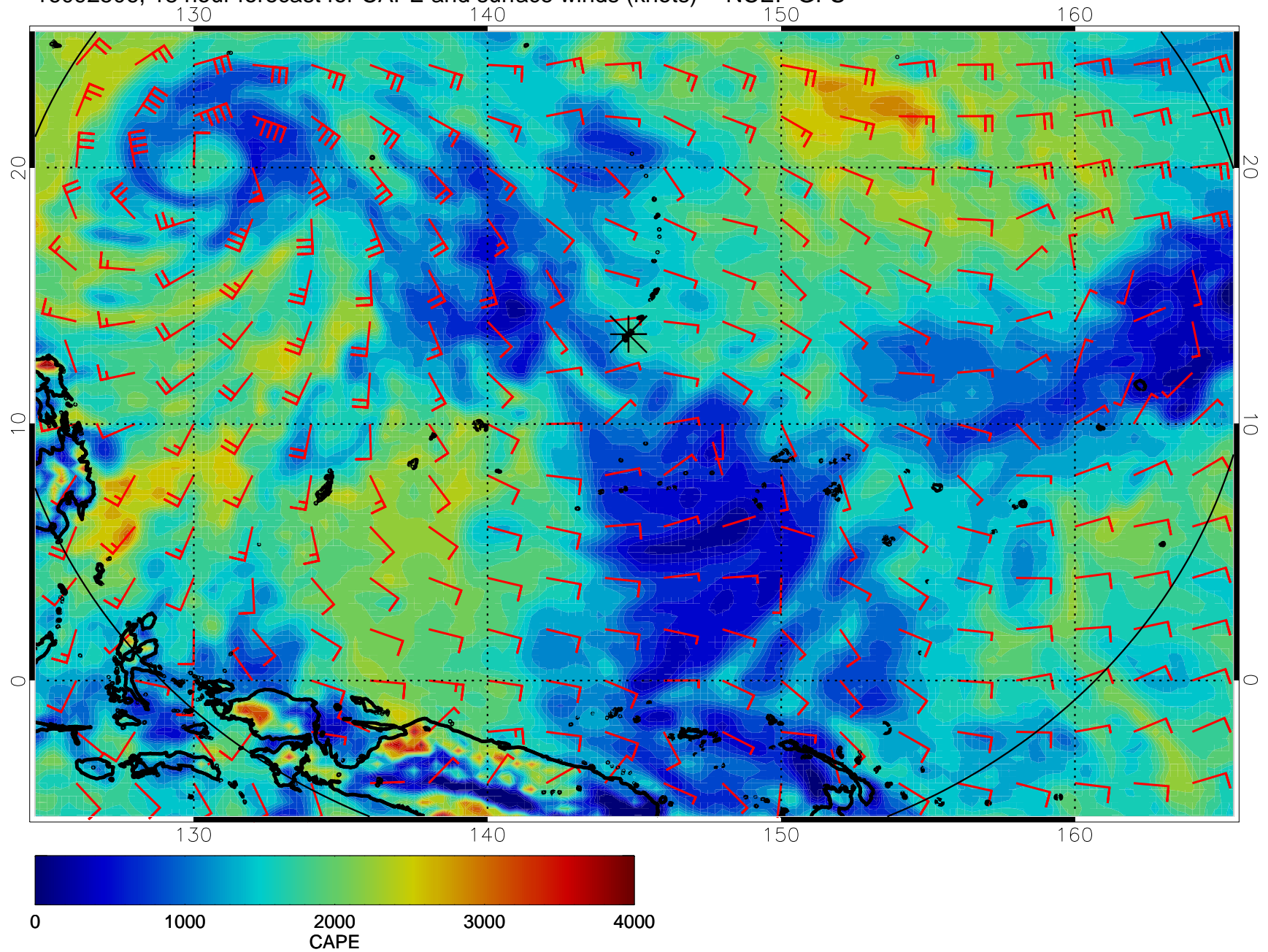
16092418, 6 hour forecast for CAPE and surface winds (knots) -- NCEP GFS



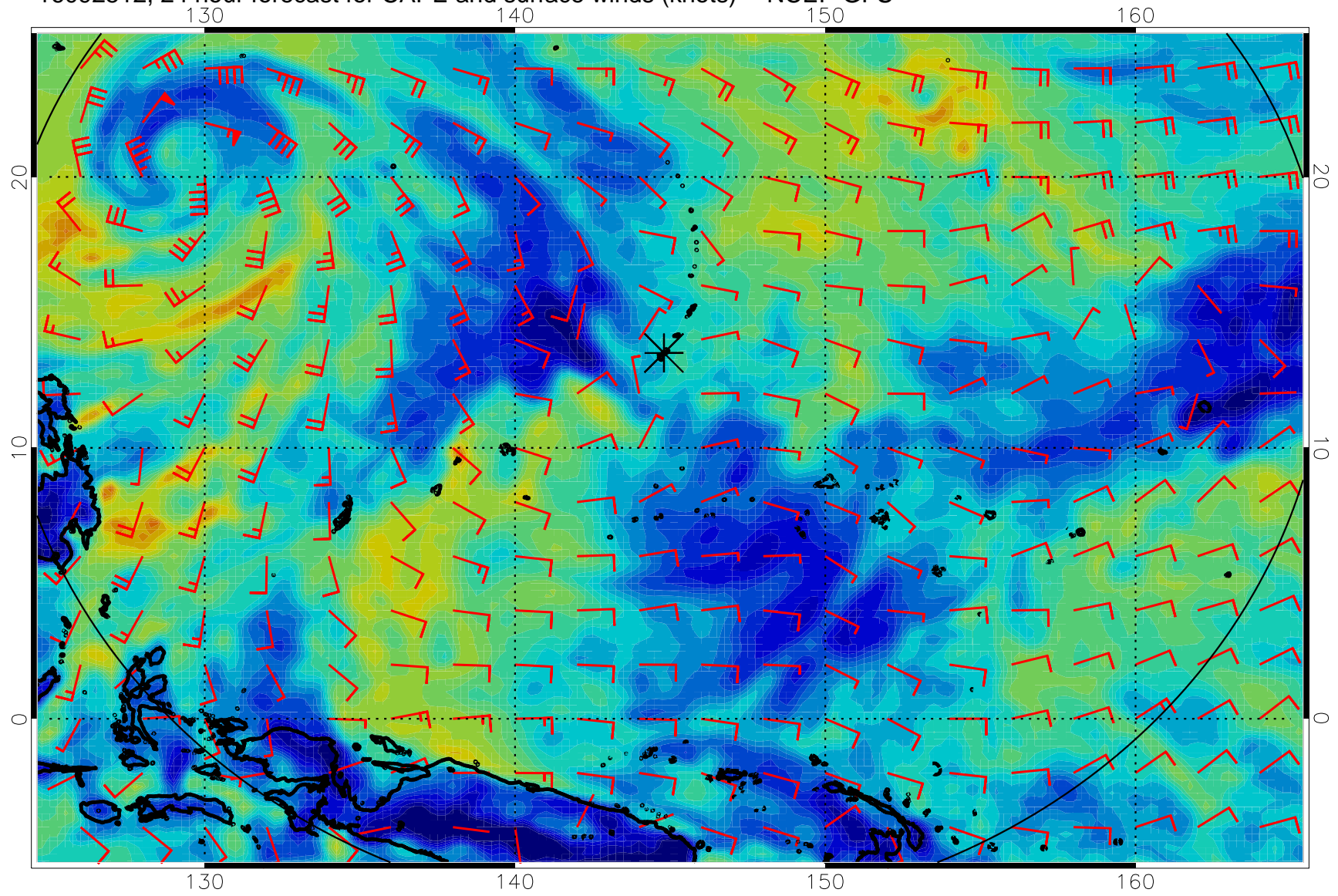
16092500, 12 hour forecast for CAPE and surface winds (knots) -- NCEP GFS



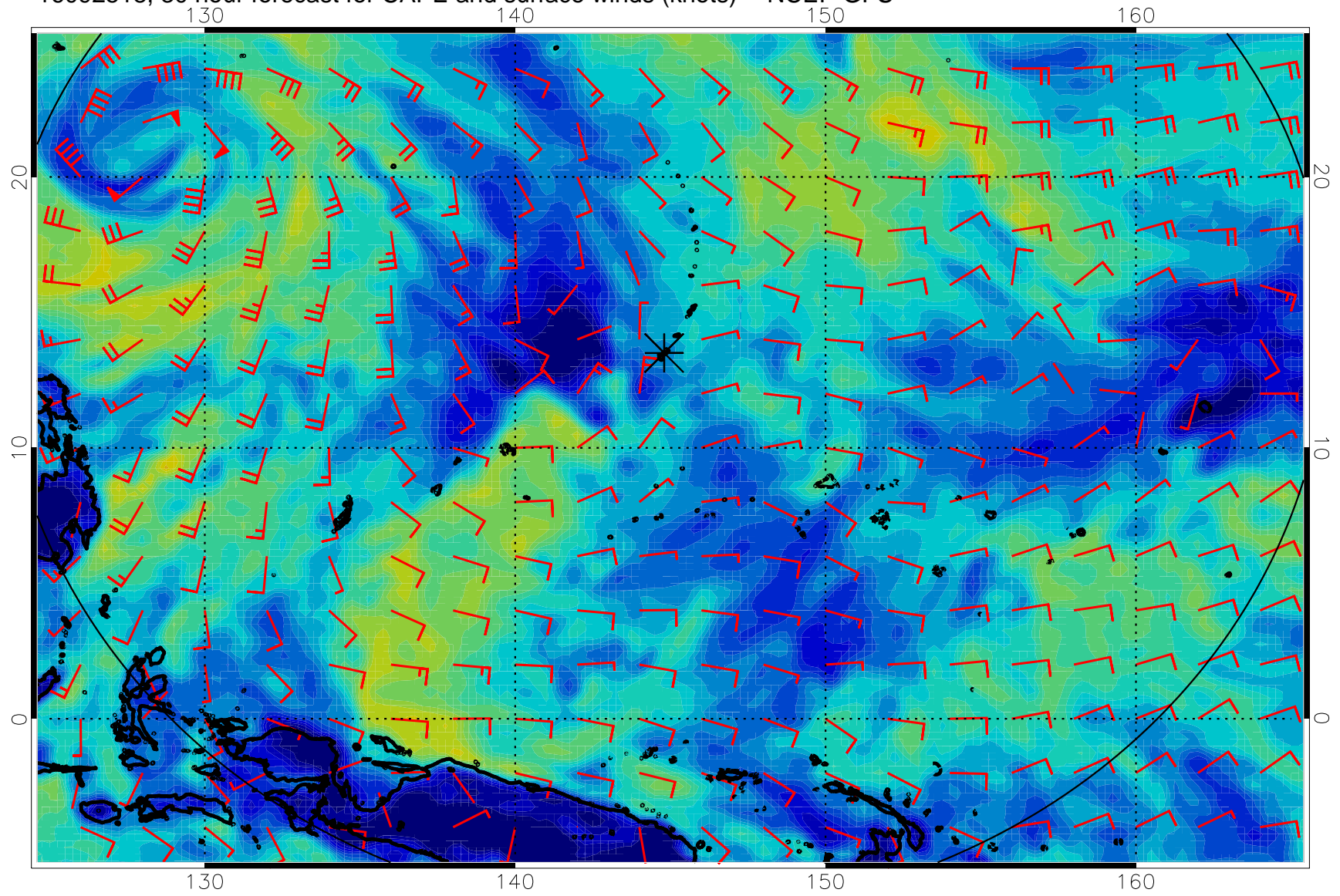
16092506, 18 hour forecast for CAPE and surface winds (knots) -- NCEP GFS



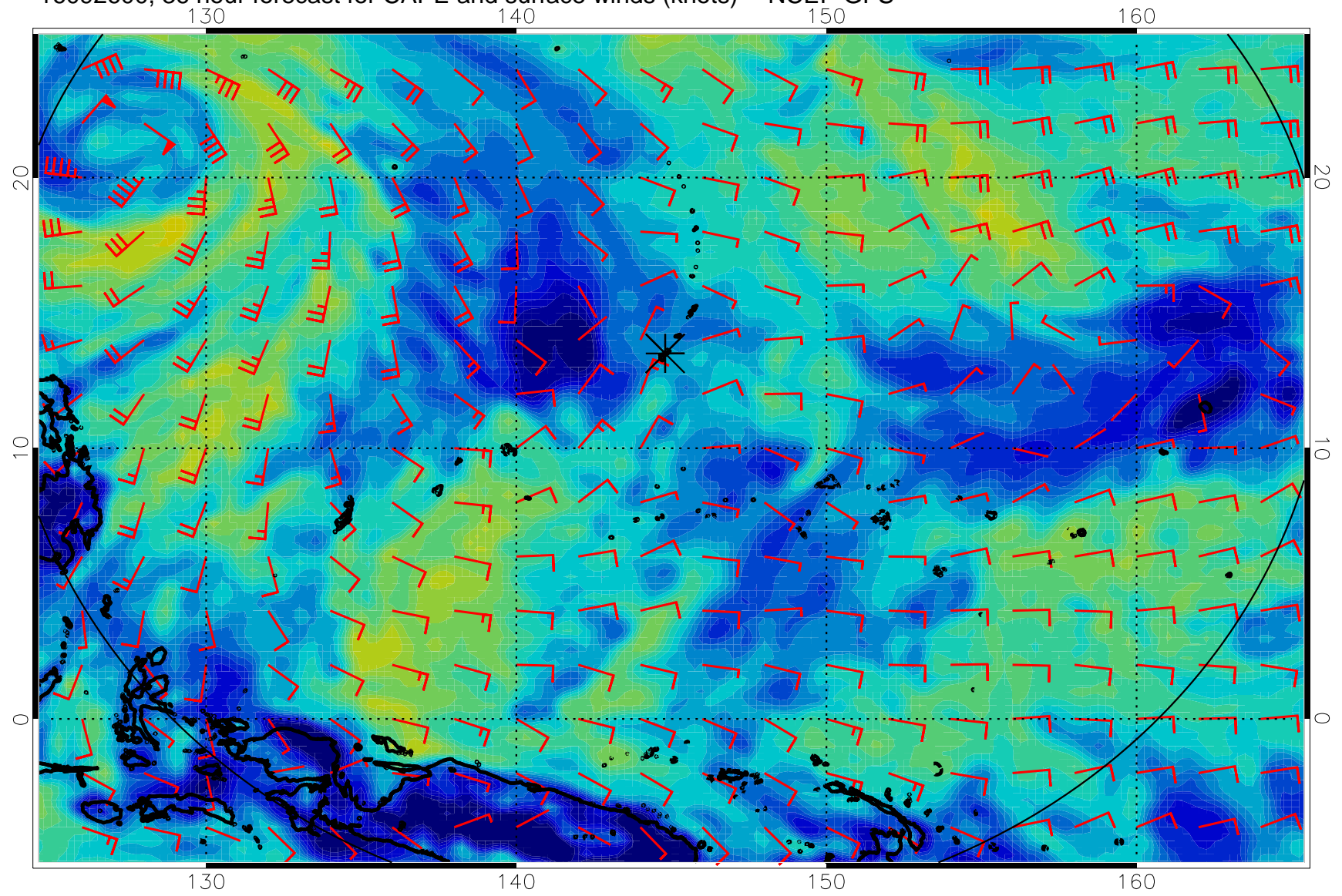
16092512, 24 hour forecast for CAPE and surface winds (knots) -- NCEP GFS



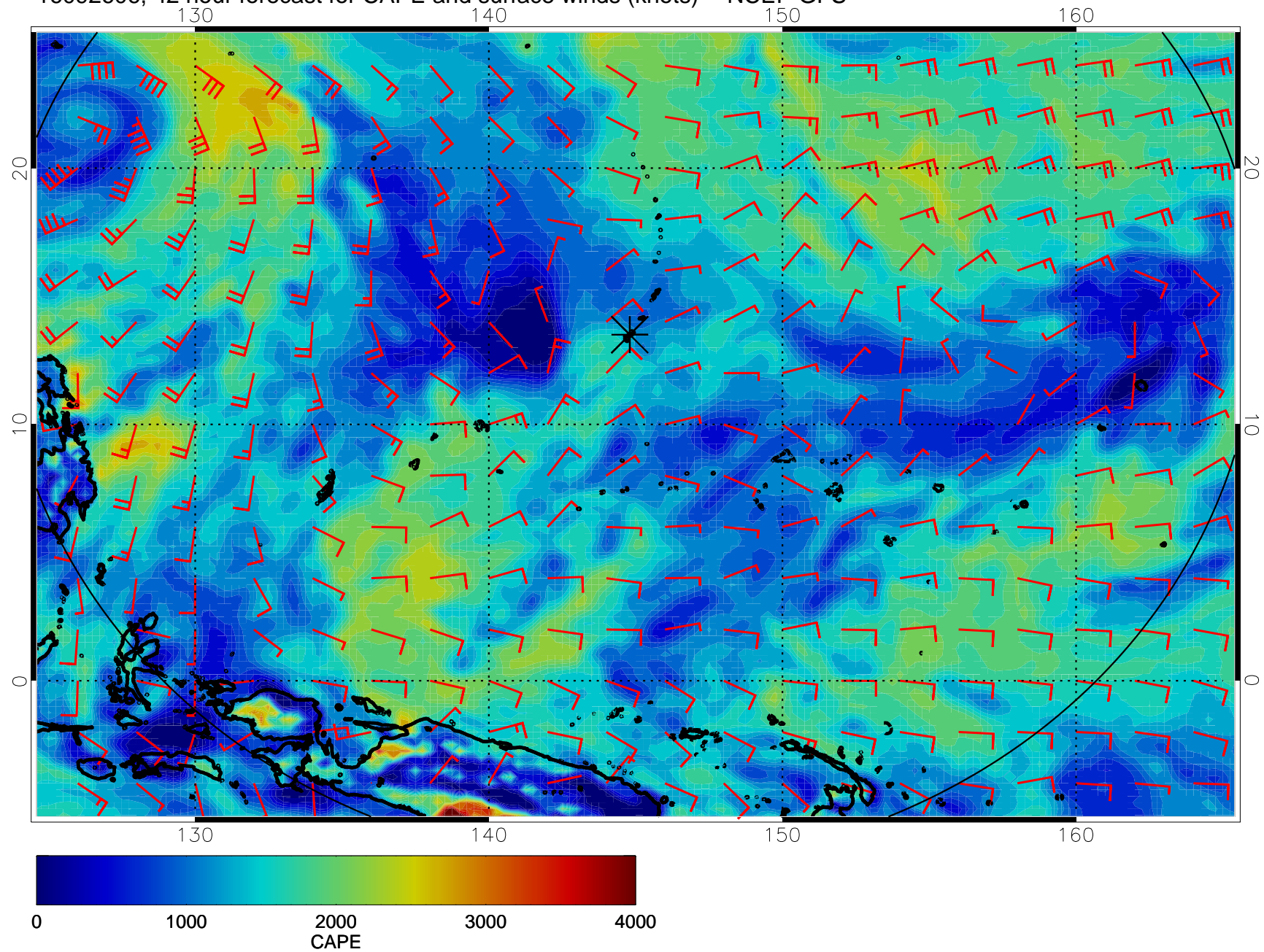
16092518, 30 hour forecast for CAPE and surface winds (knots) -- NCEP GFS



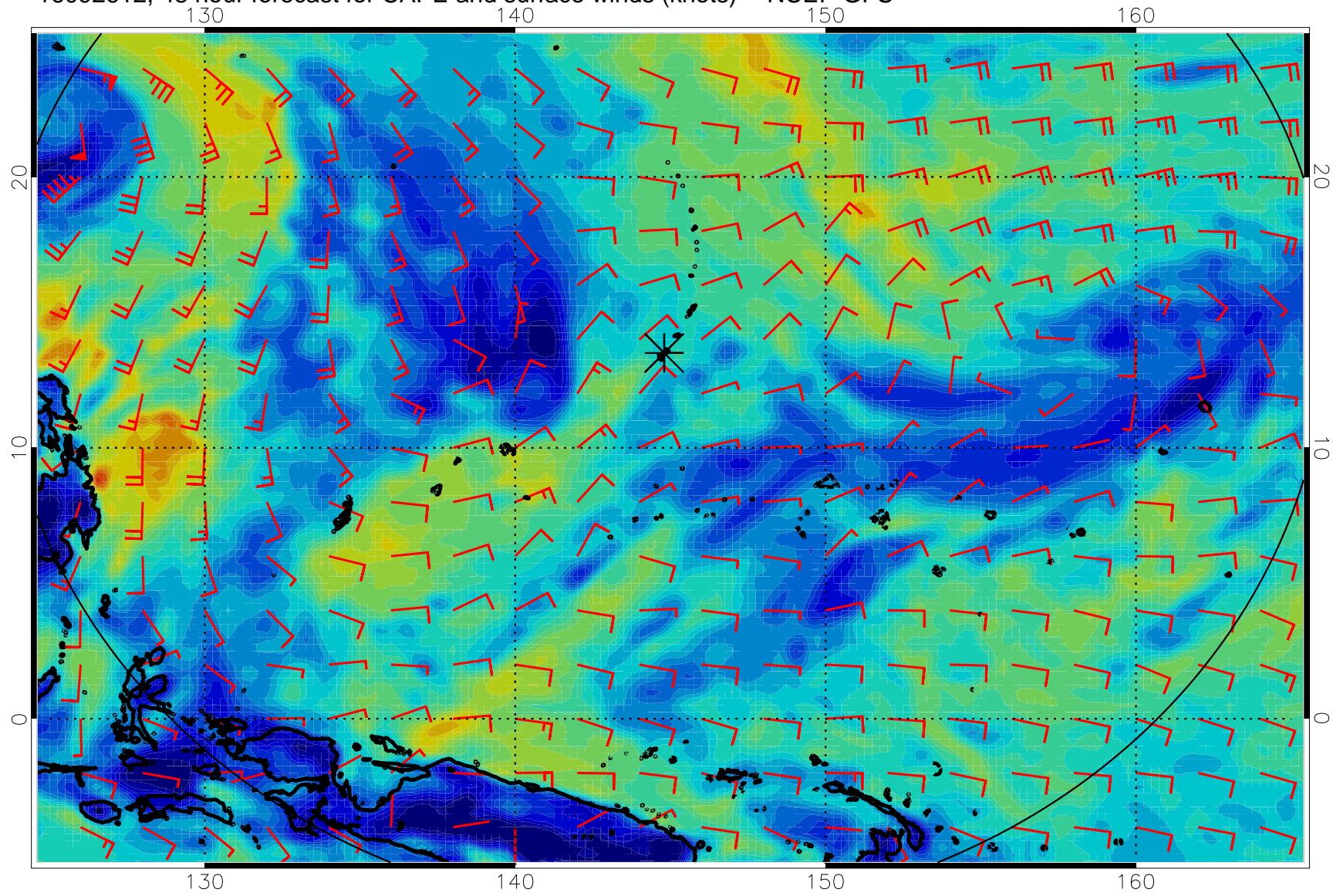
16092600, 36 hour forecast for CAPE and surface winds (knots) -- NCEP GFS



16092606, 42 hour forecast for CAPE and surface winds (knots) -- NCEP GFS

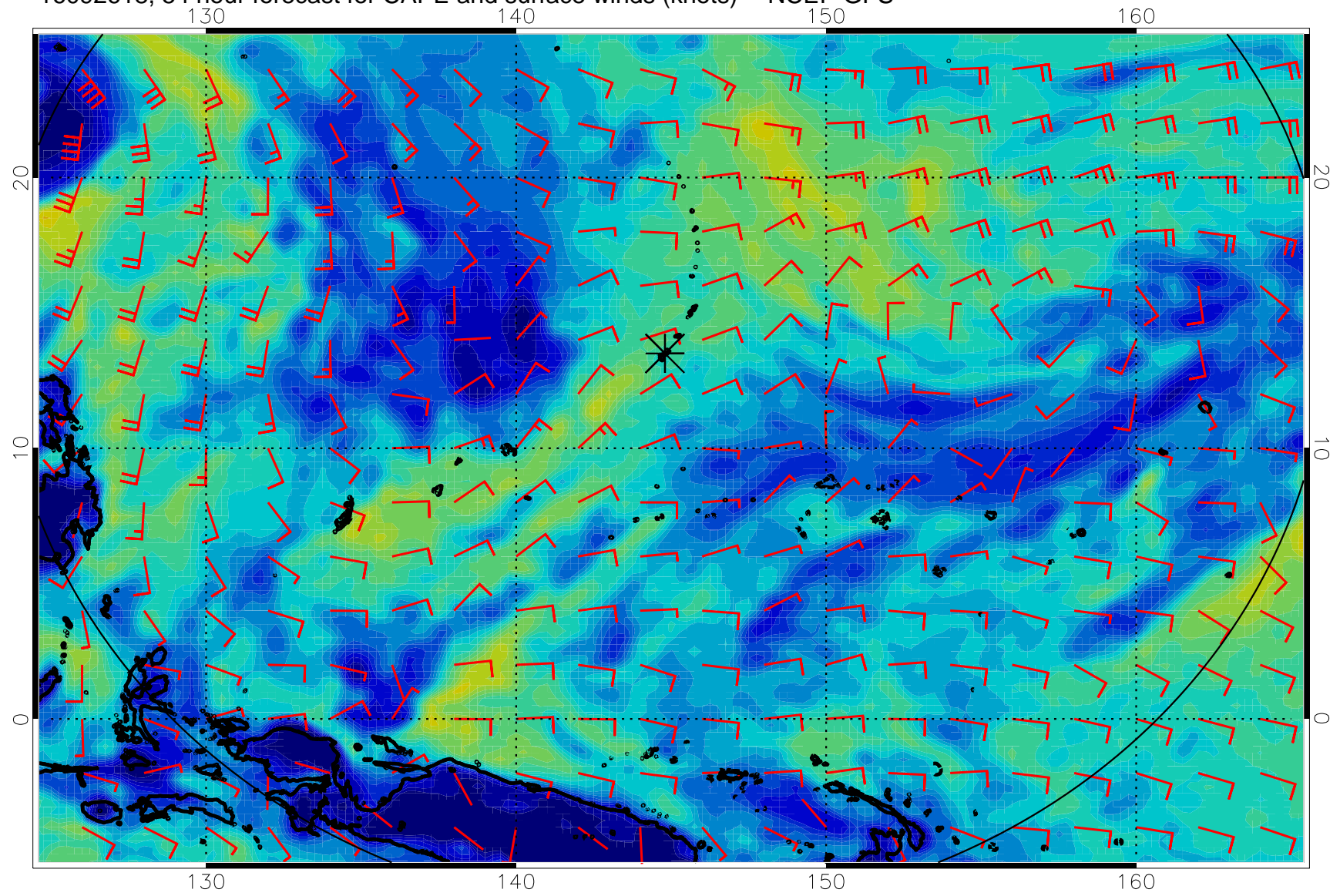


16092612, 48 hour forecast for CAPE and surface winds (knots) -- NCEP GFS

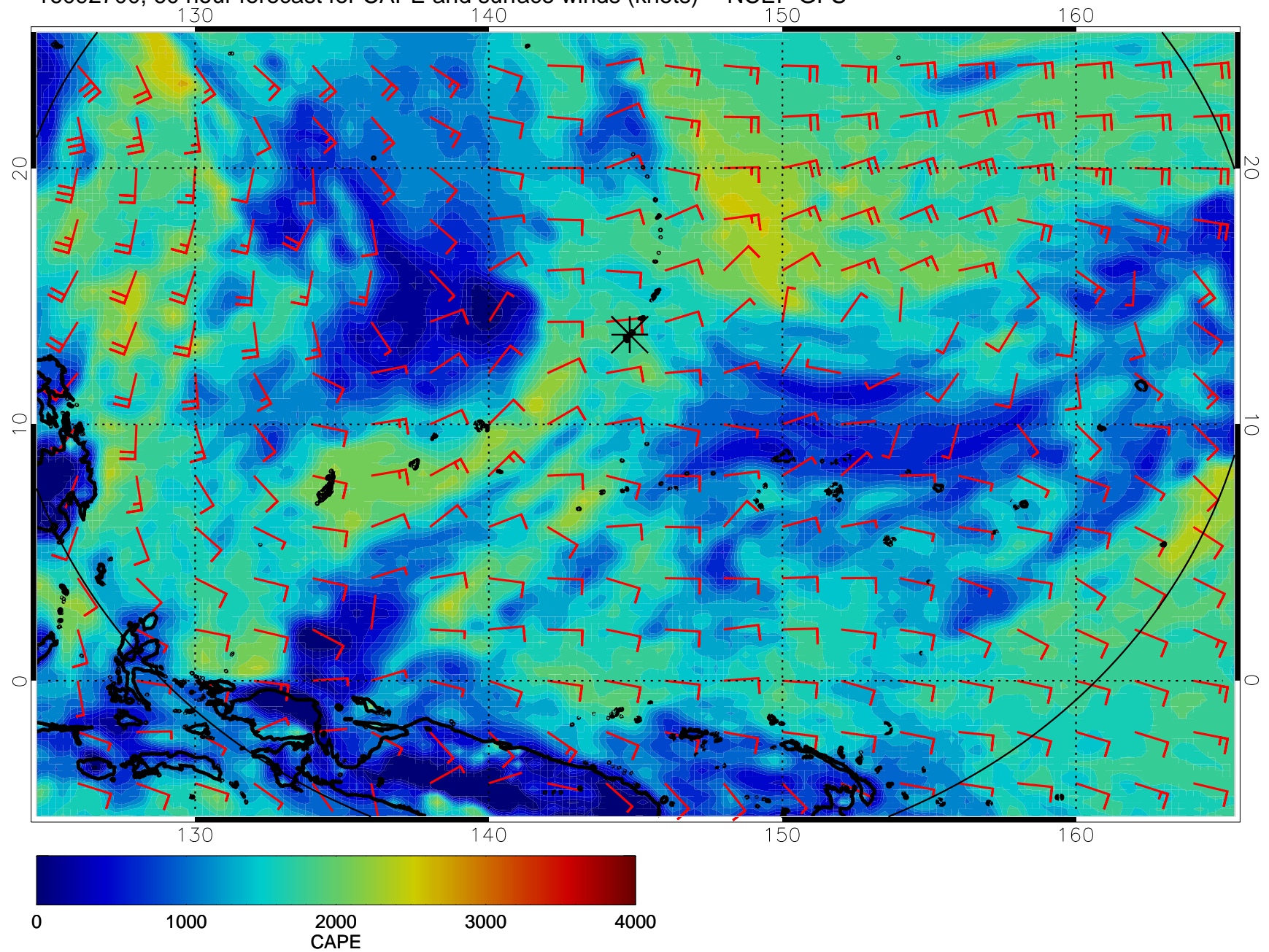




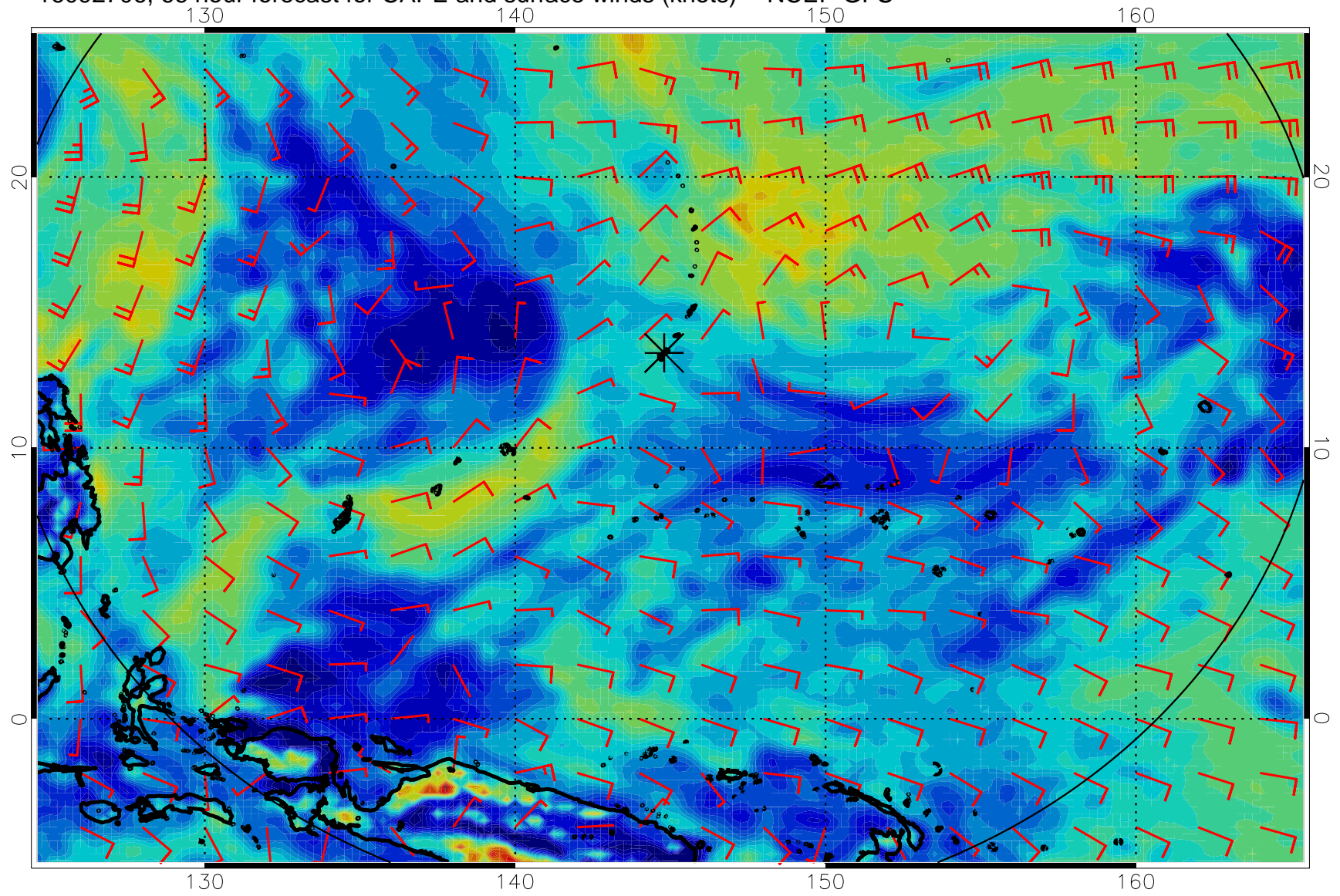
16092618, 54 hour forecast for CAPE and surface winds (knots) -- NCEP GFS



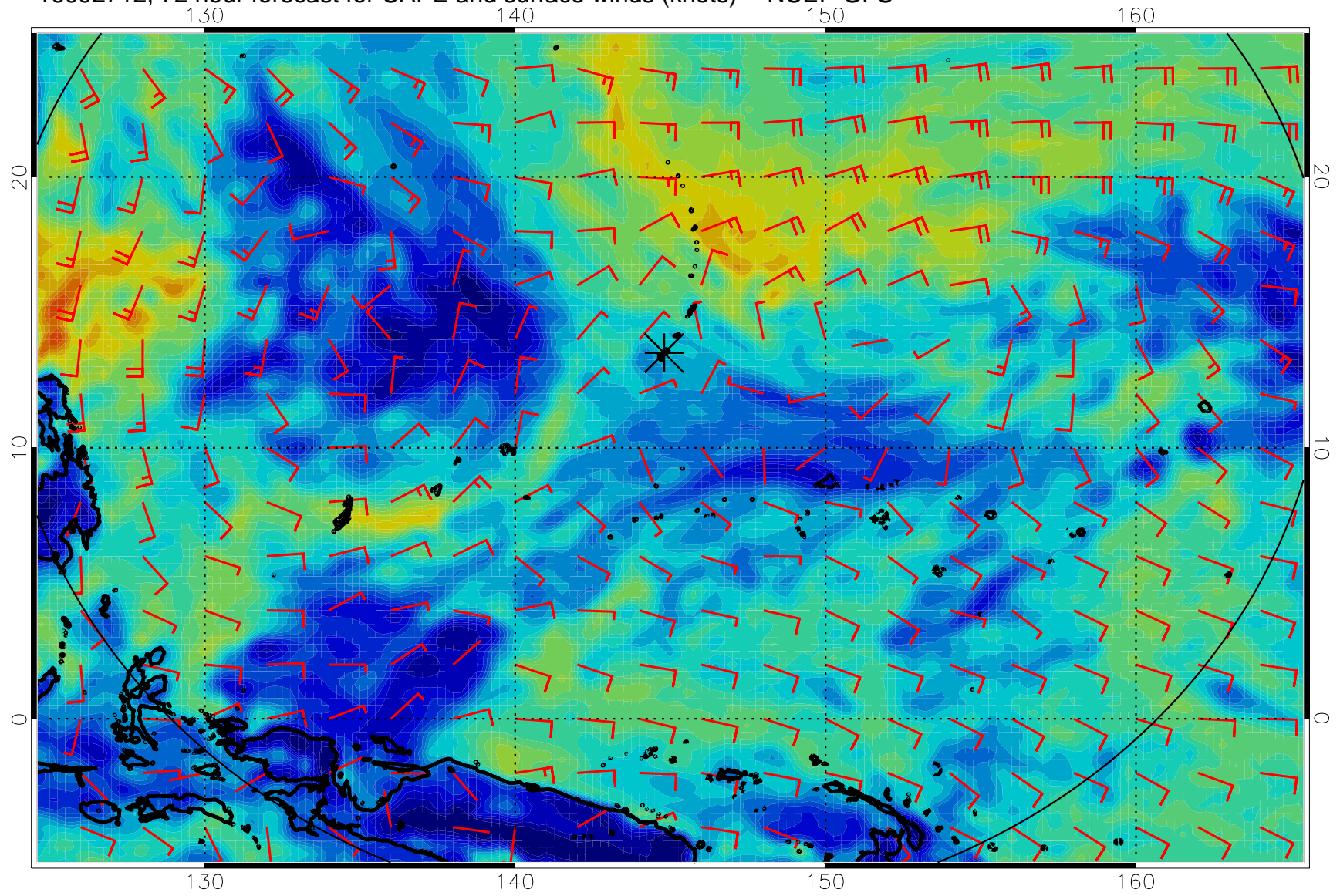
16092700, 60 hour forecast for CAPE and surface winds (knots) -- NCEP GFS



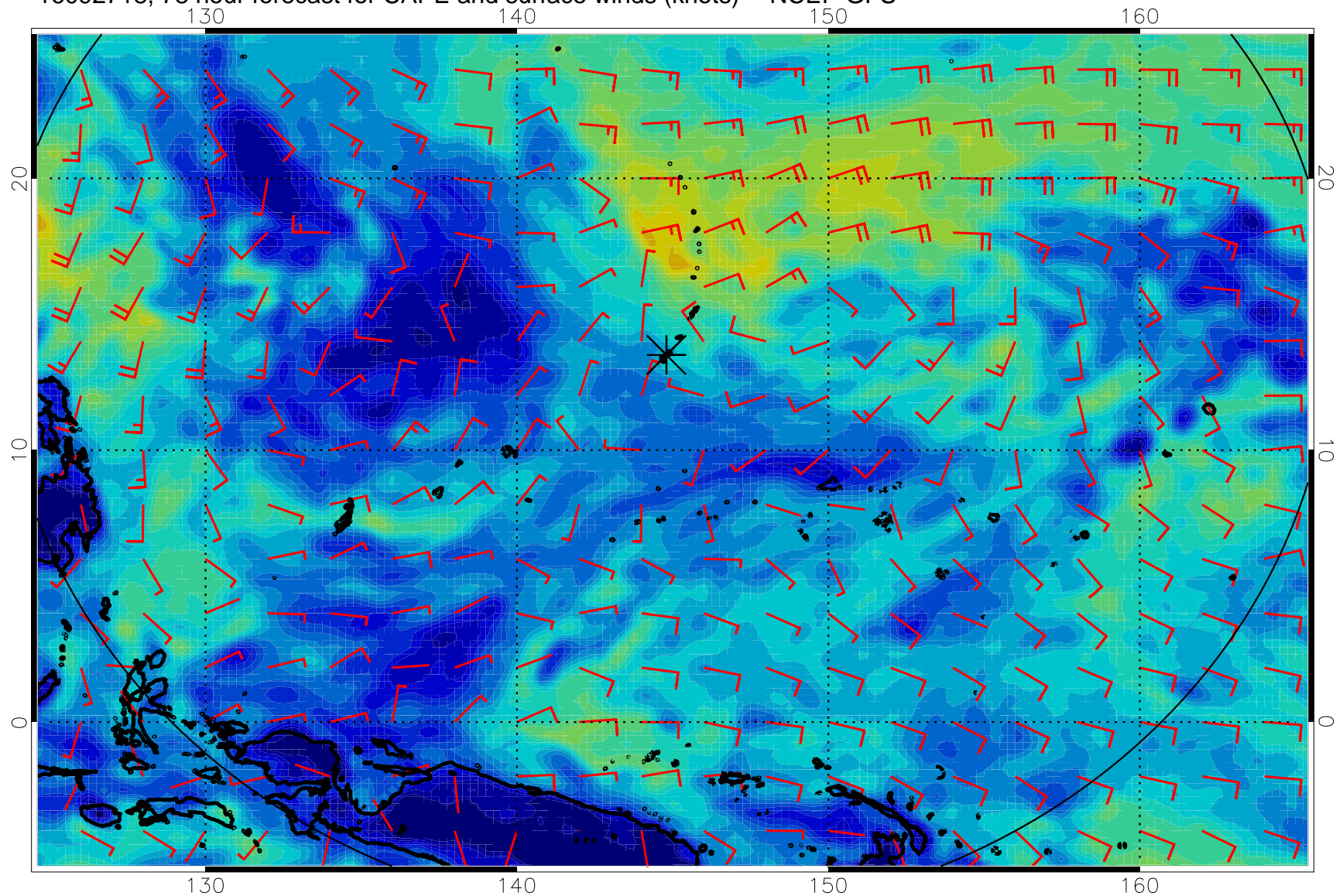
16092706, 66 hour forecast for CAPE and surface winds (knots) -- NCEP GFS



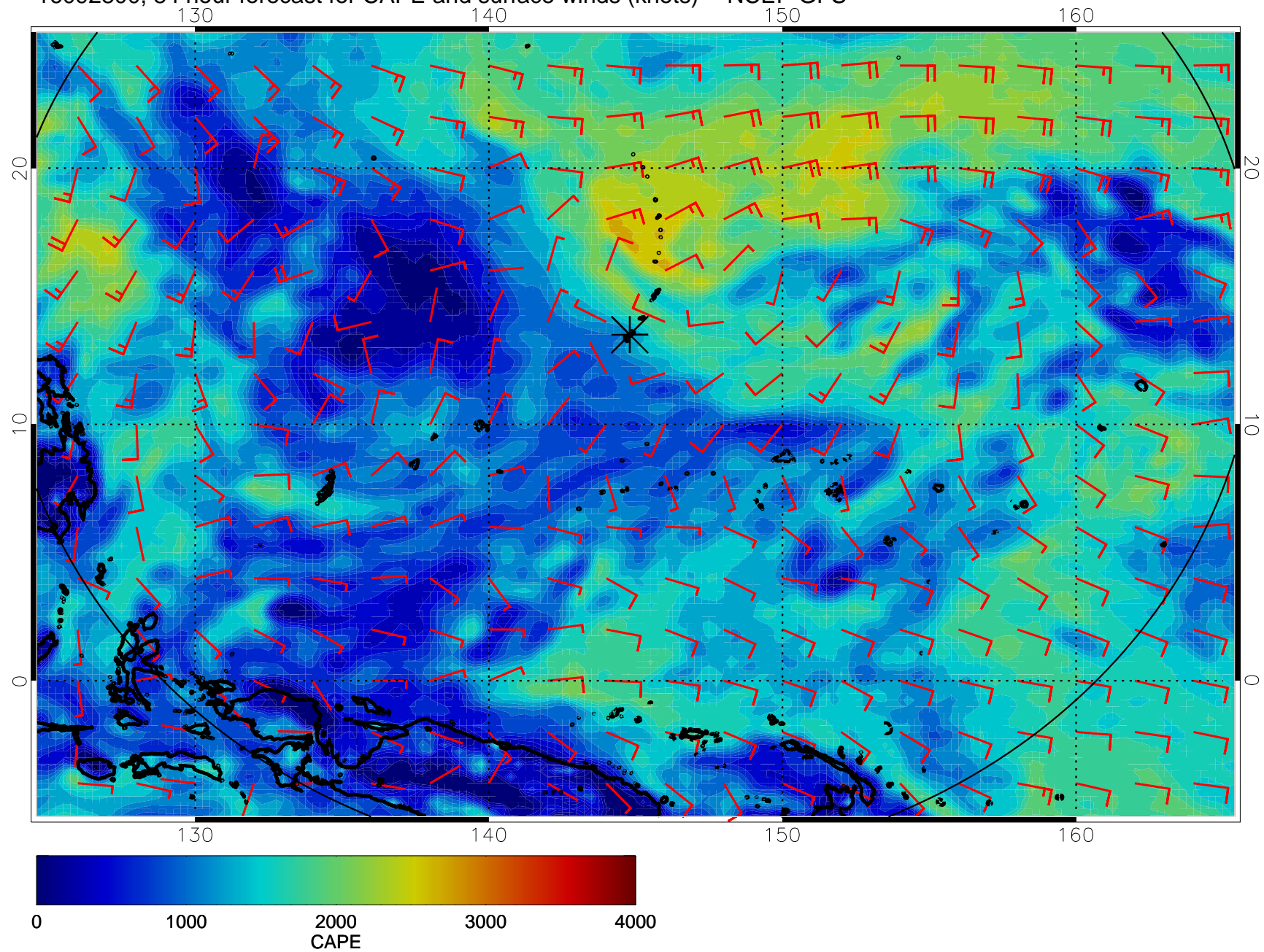
16092712, 72 hour forecast for CAPE and surface winds (knots) -- NCEP GFS



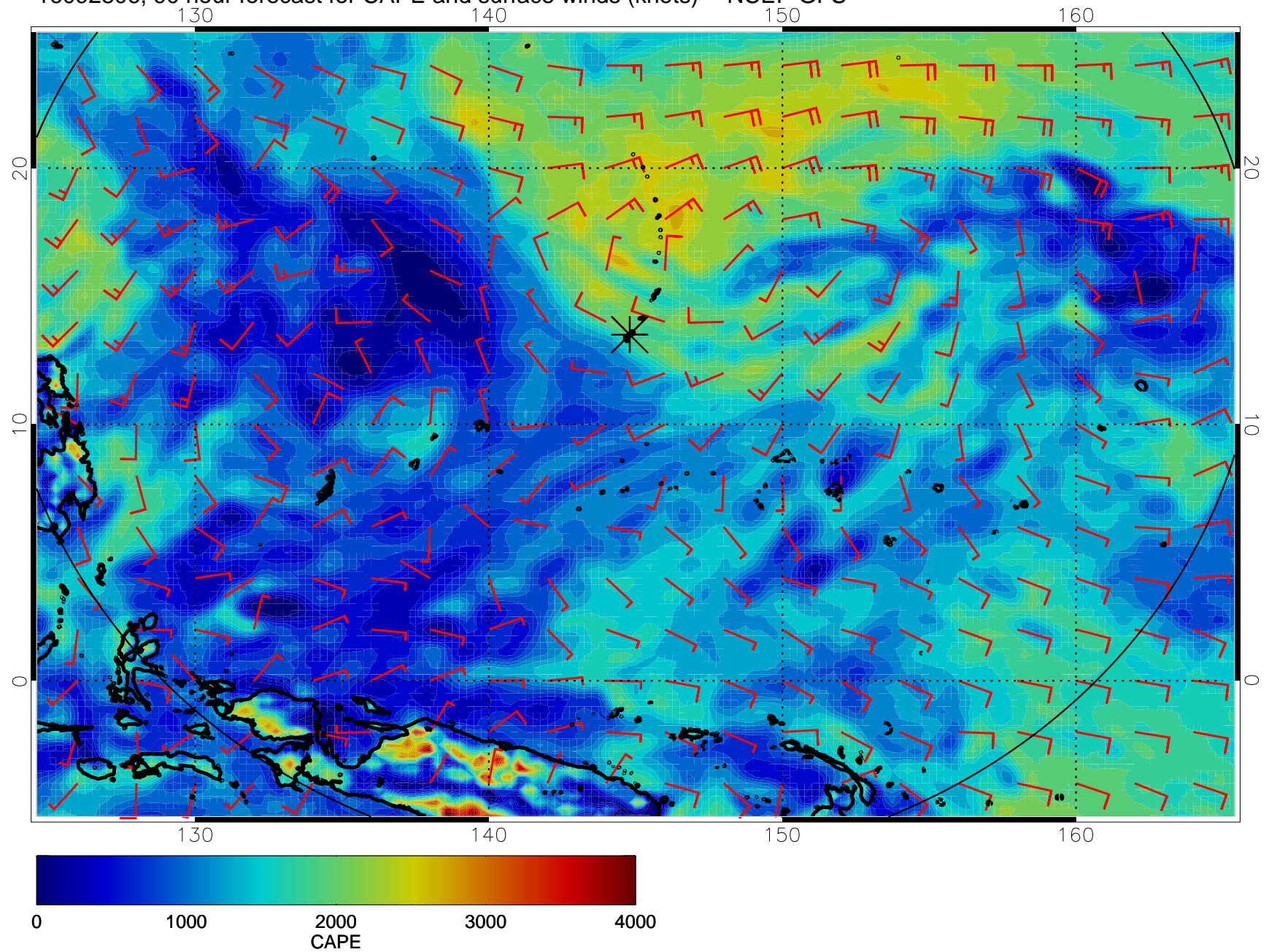
16092718, 78 hour forecast for CAPE and surface winds (knots) -- NCEP GFS



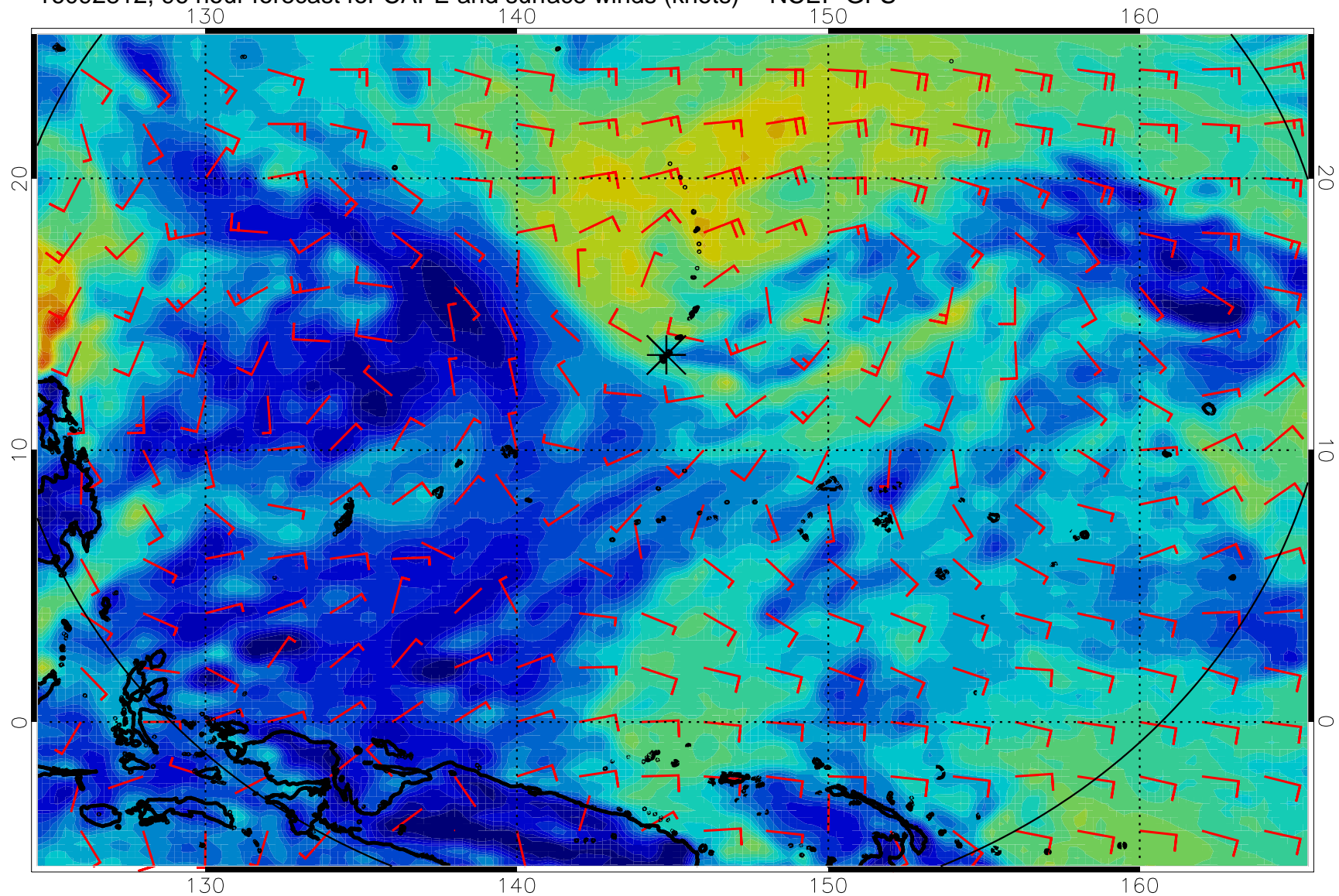
16092800, 84 hour forecast for CAPE and surface winds (knots) -- NCEP GFS



16092806, 90 hour forecast for CAPE and surface winds (knots) -- NCEP GFS

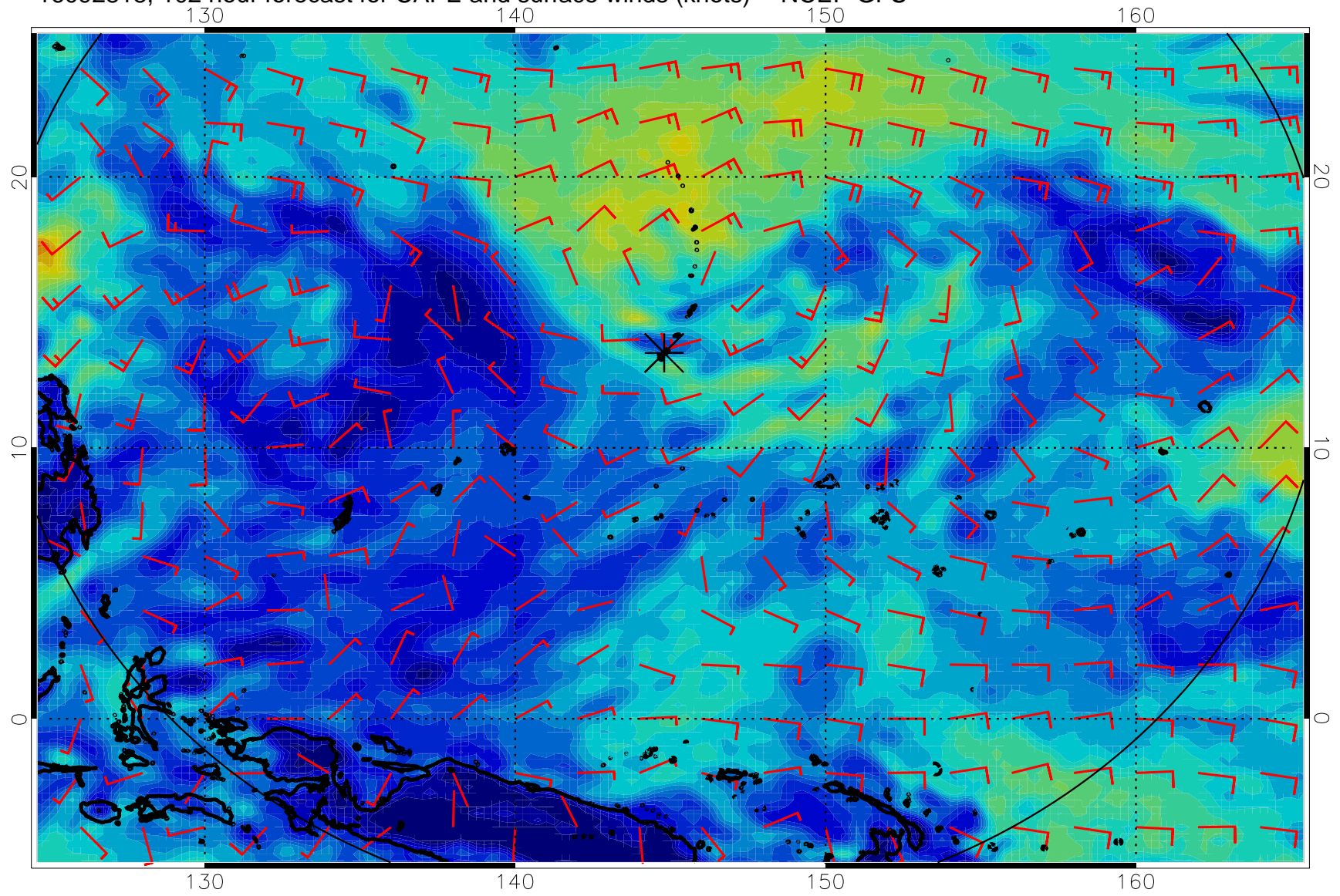


16092812, 96 hour forecast for CAPE and surface winds (knots) -- NCEP GFS

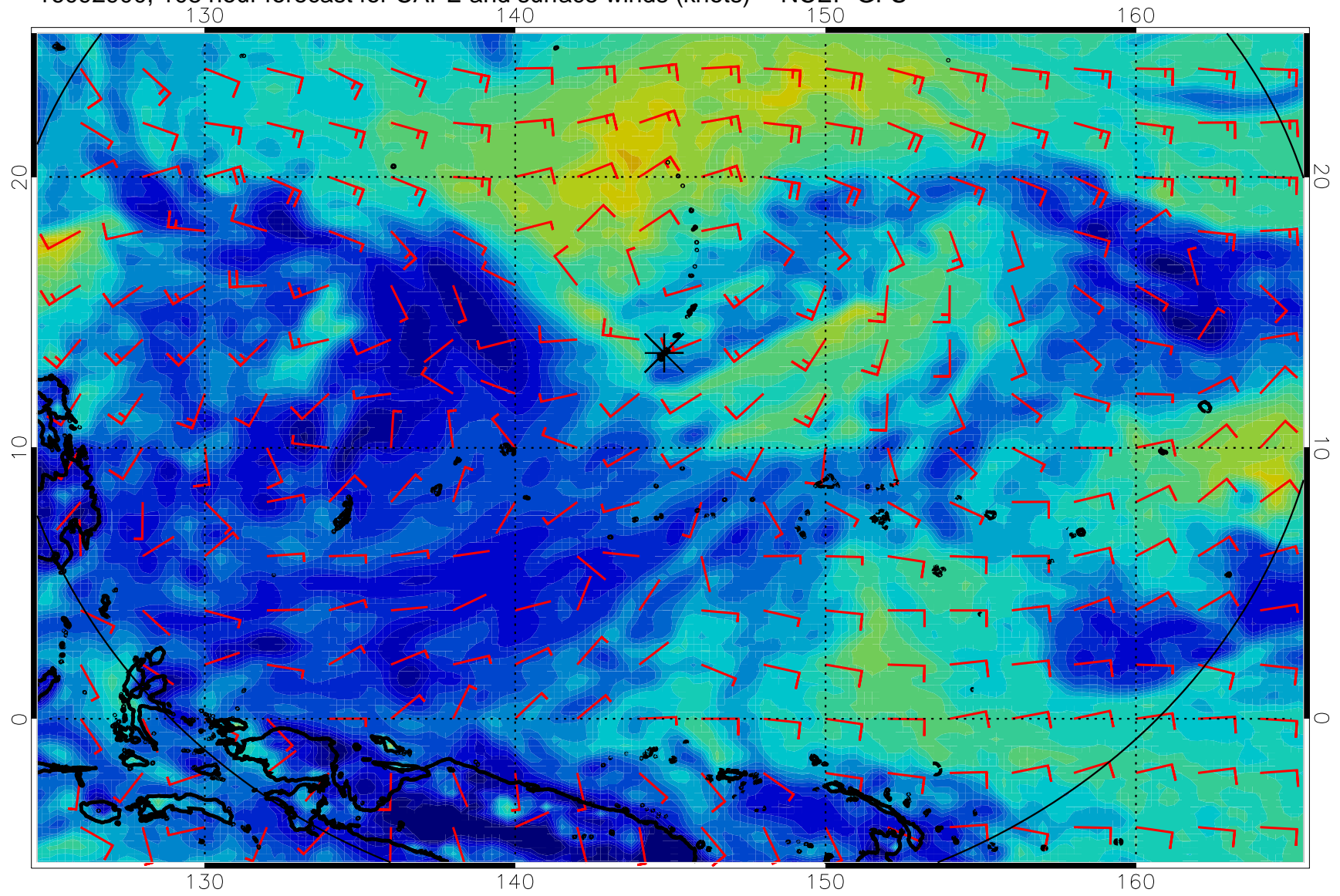




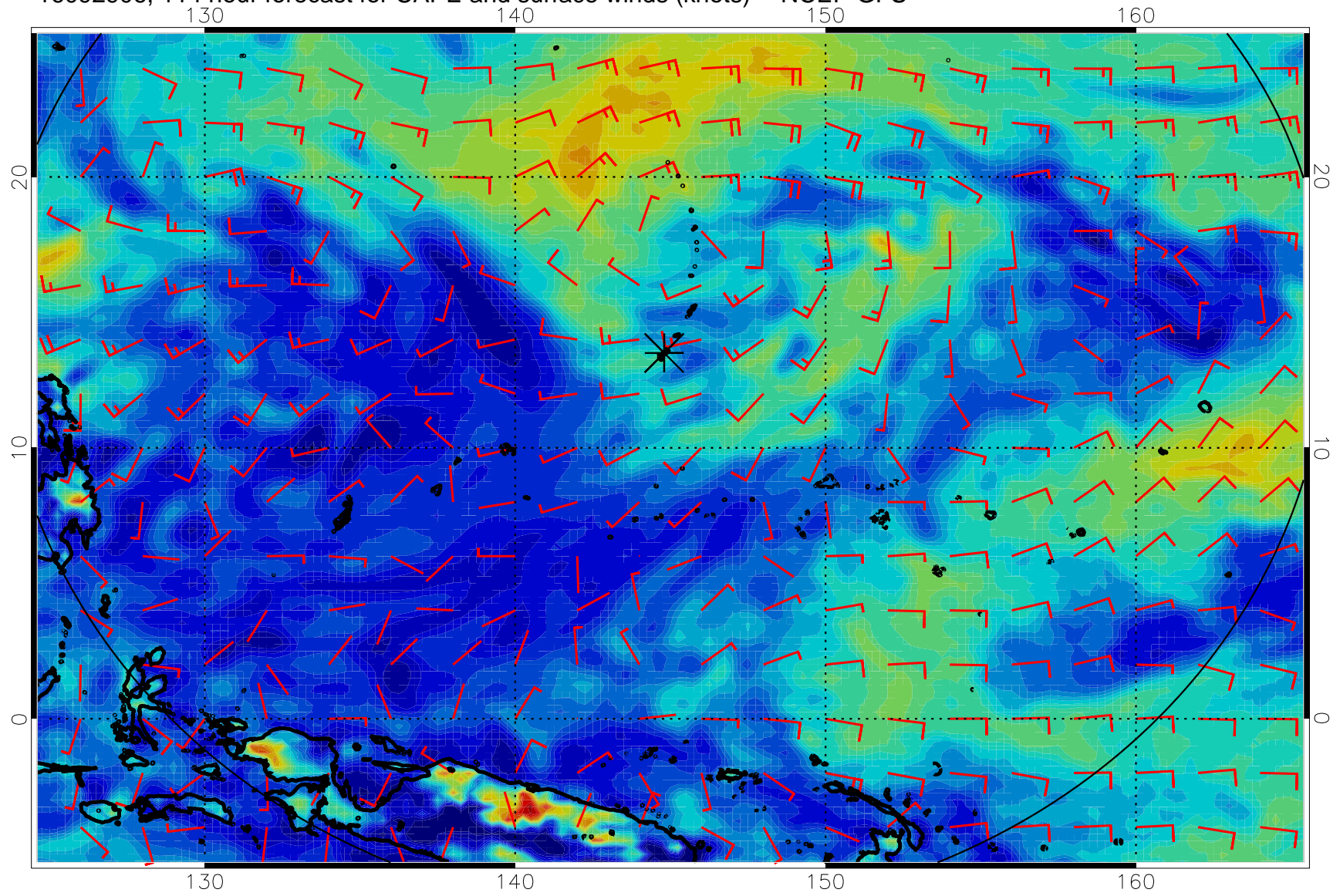
16092818, 102 hour forecast for CAPE and surface winds (knots) -- NCEP GFS



16092900, 108 hour forecast for CAPE and surface winds (knots) -- NCEP GFS



16092906, 114 hour forecast for CAPE and surface winds (knots) -- NCEP GFS



16092912, 120 hour forecast for CAPE and surface winds (knots) -- NCEP GFS

