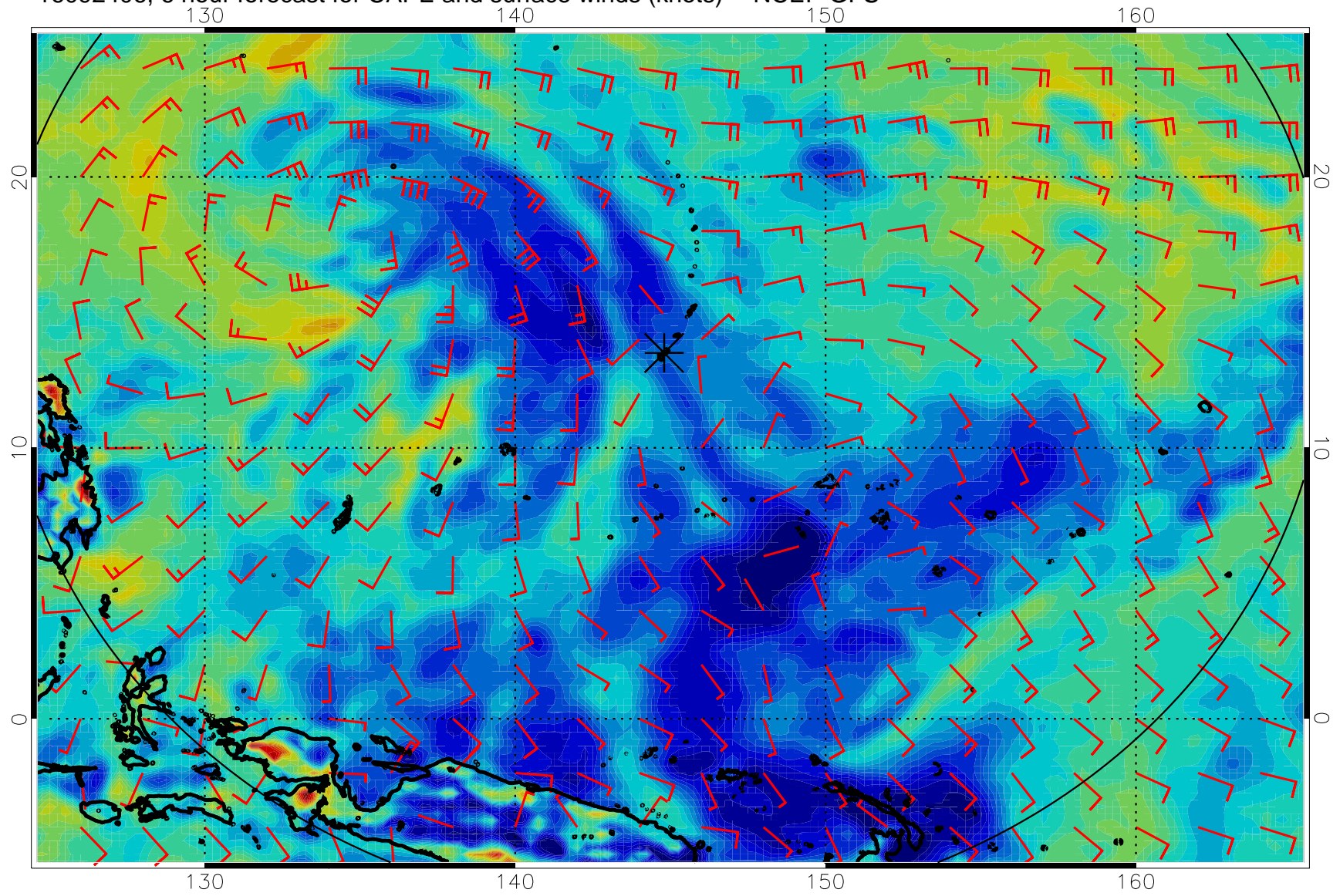
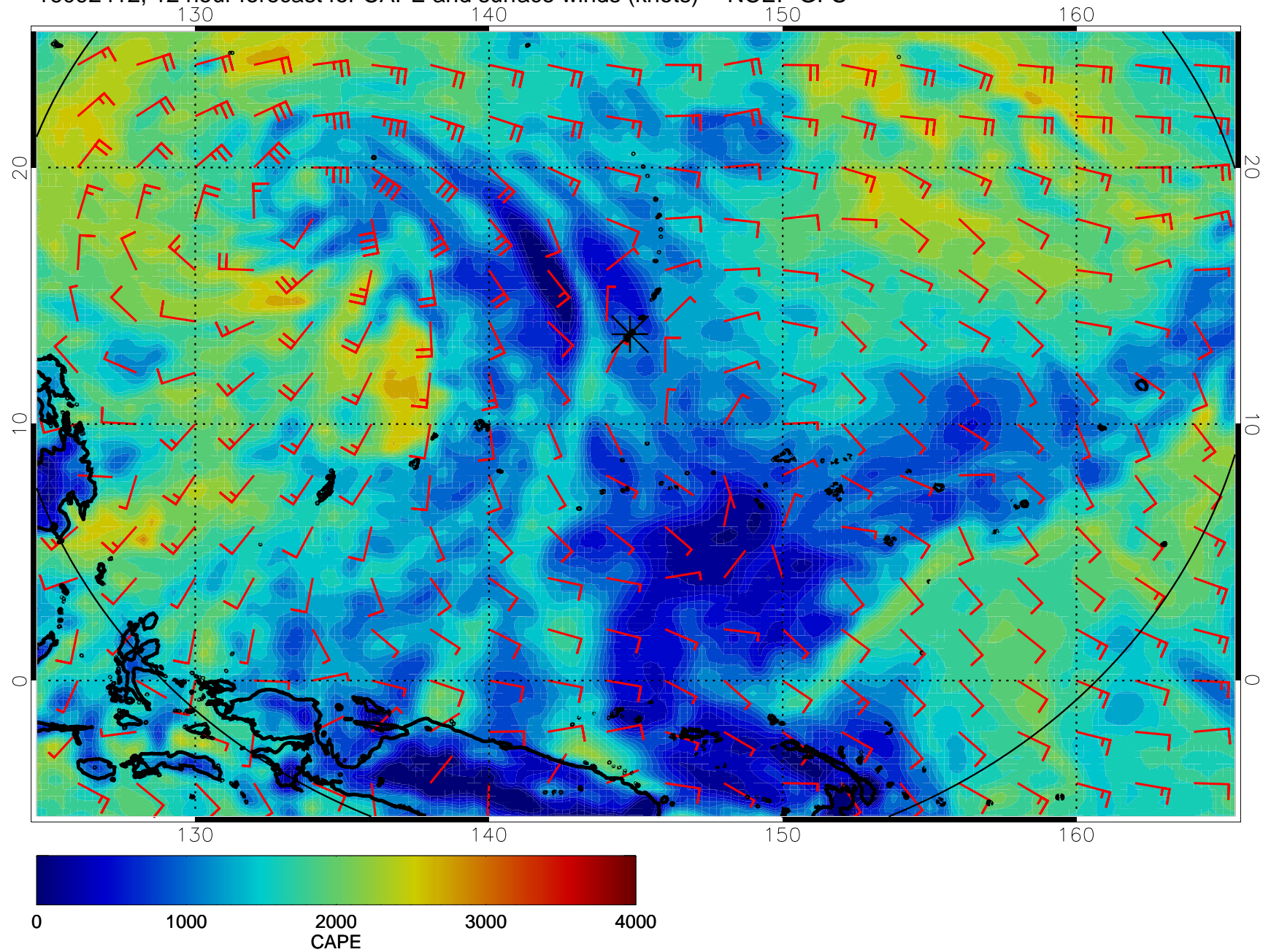


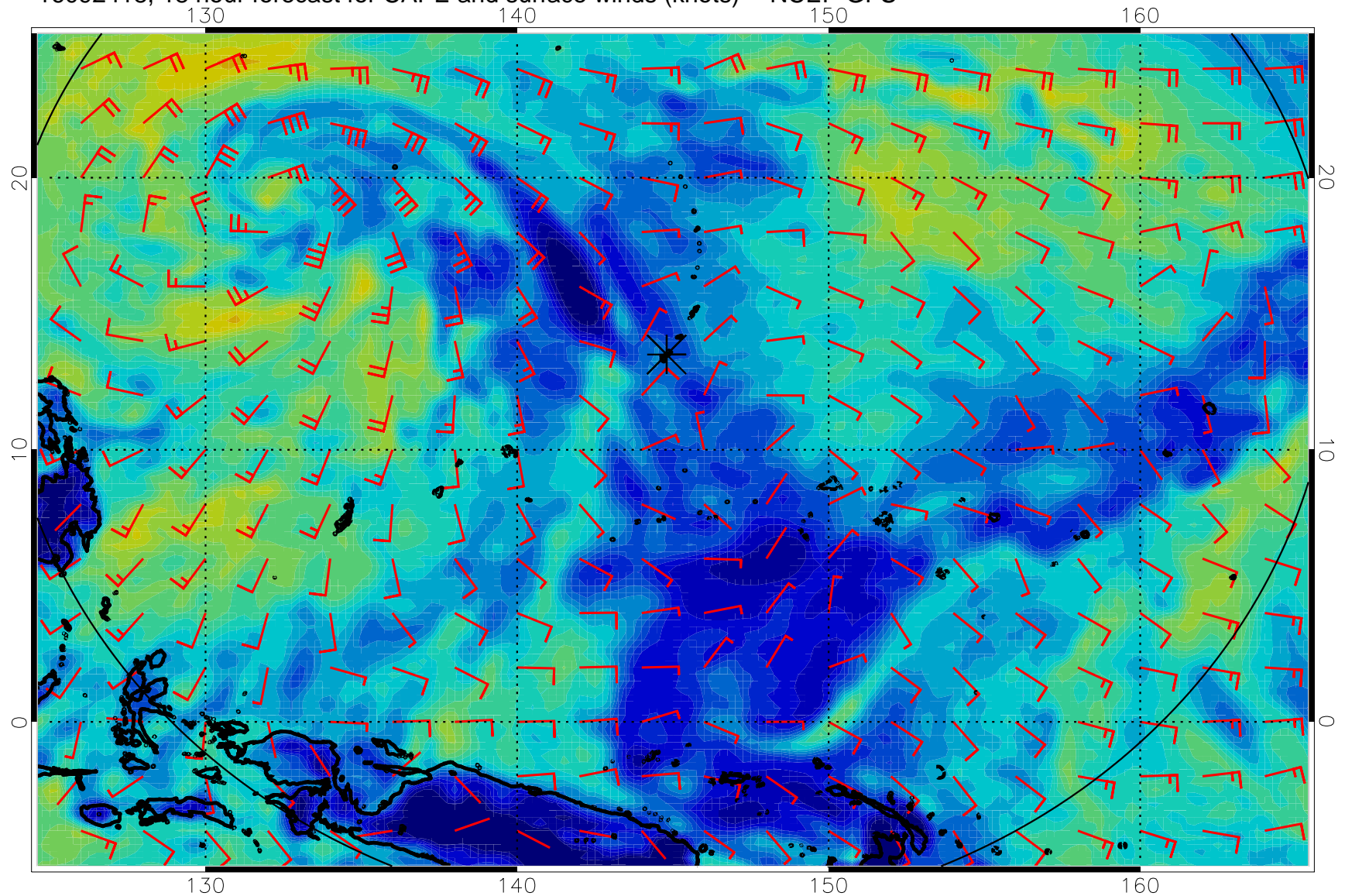
16092406, 6 hour forecast for CAPE and surface winds (knots) -- NCEP GFS



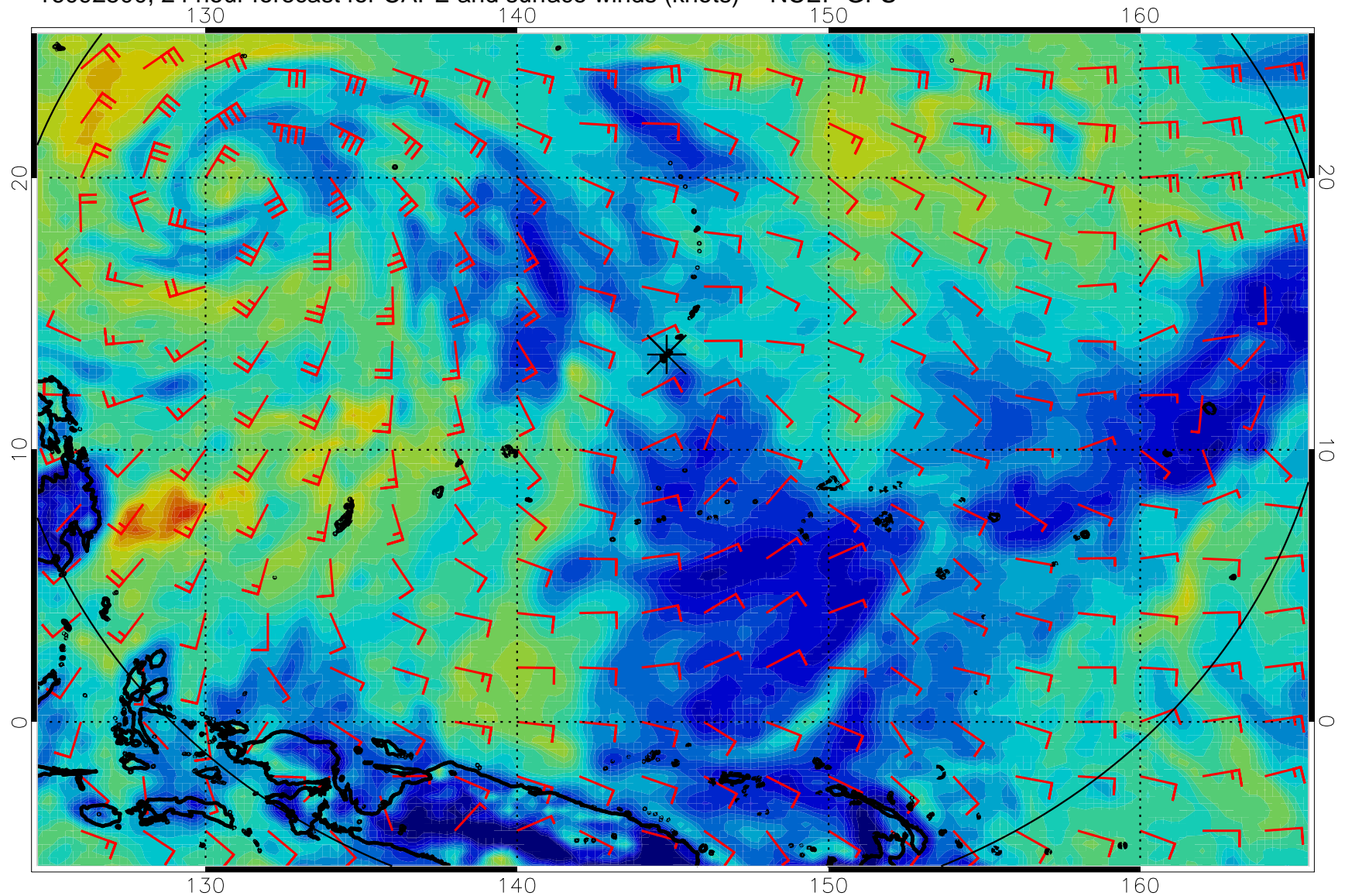
16092412, 12 hour forecast for CAPE and surface winds (knots) -- NCEP GFS



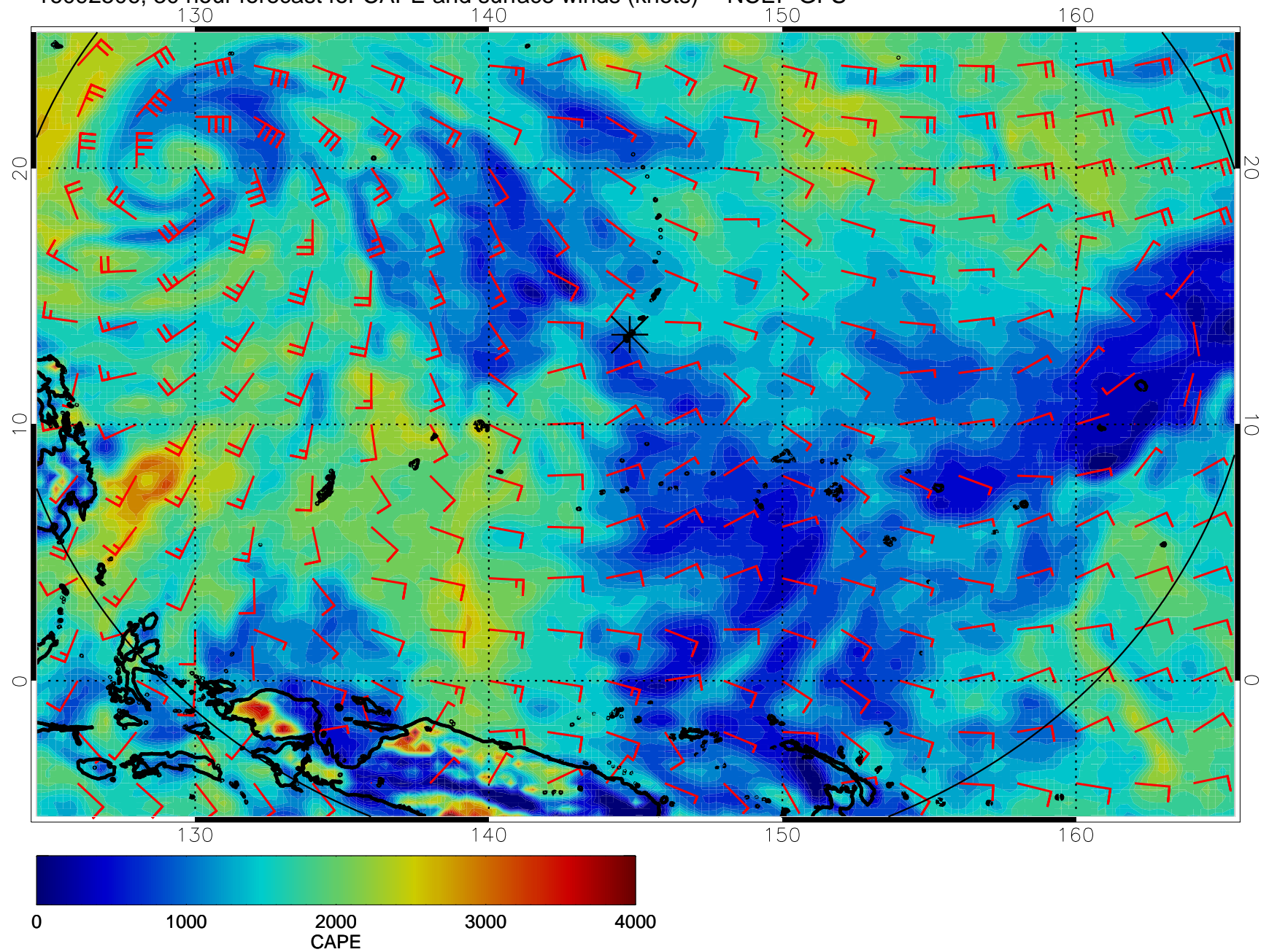
16092418, 18 hour forecast for CAPE and surface winds (knots) -- NCEP GFS



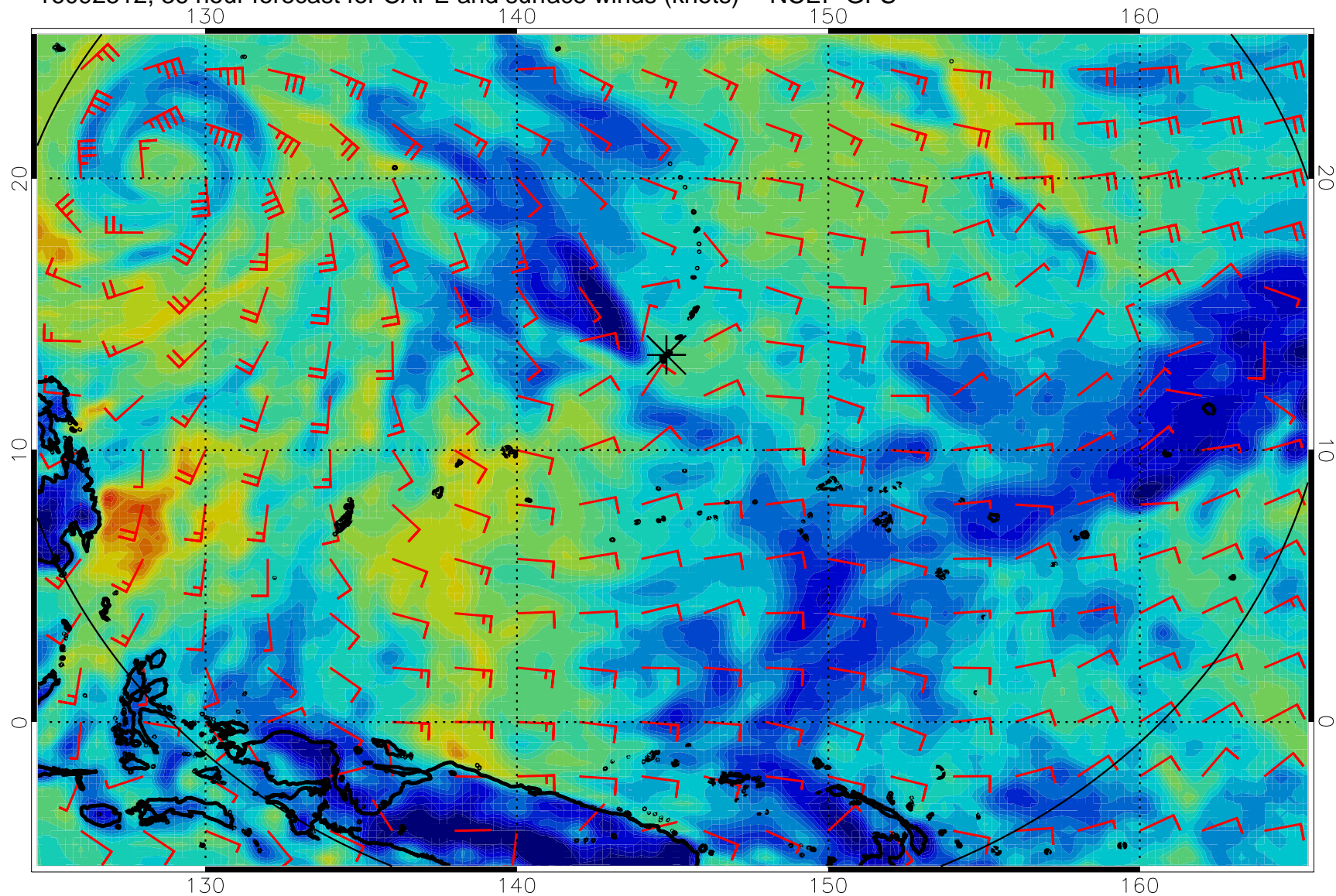
16092500, 24 hour forecast for CAPE and surface winds (knots) -- NCEP GFS



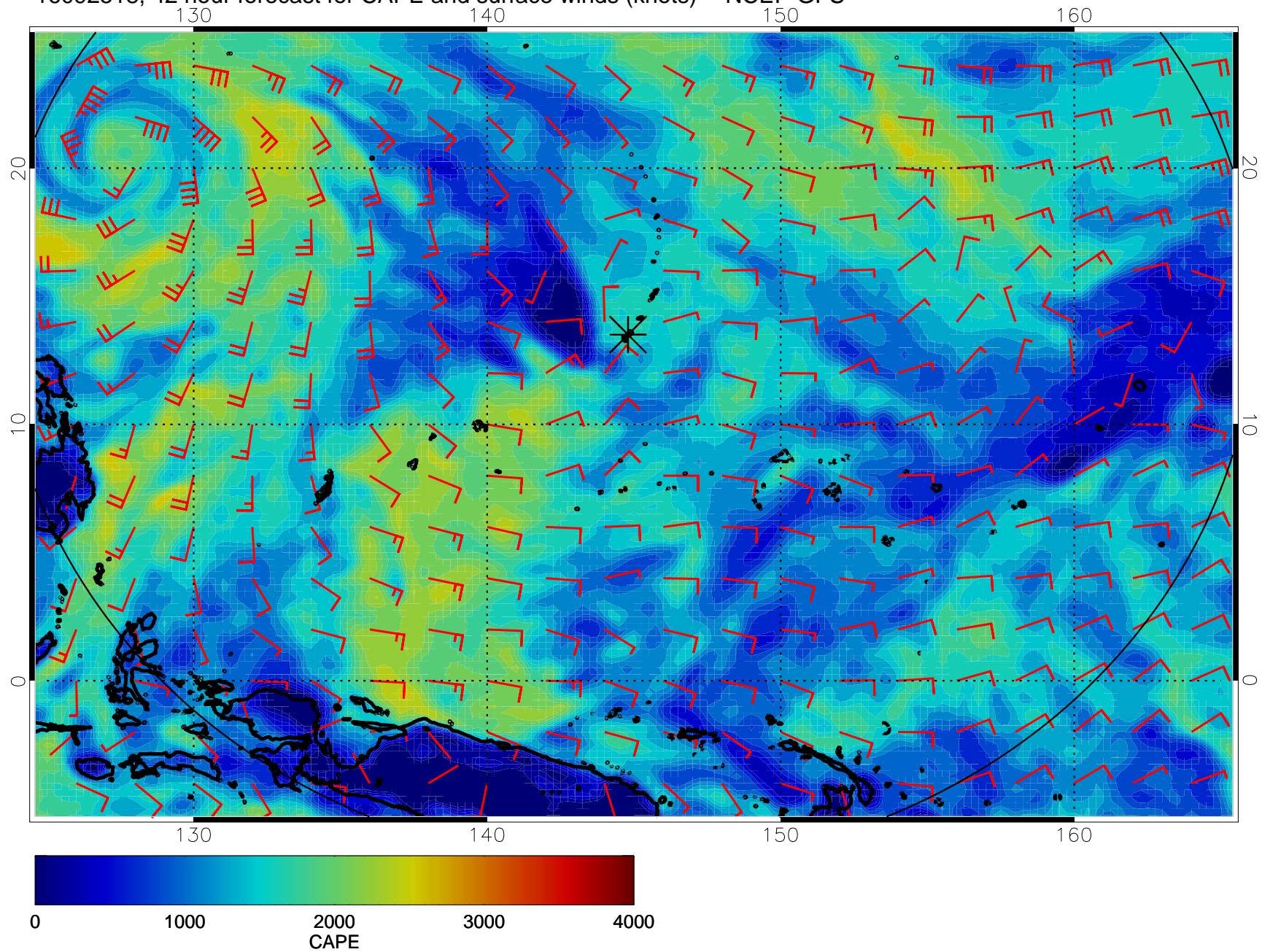
16092506, 30 hour forecast for CAPE and surface winds (knots) -- NCEP GFS



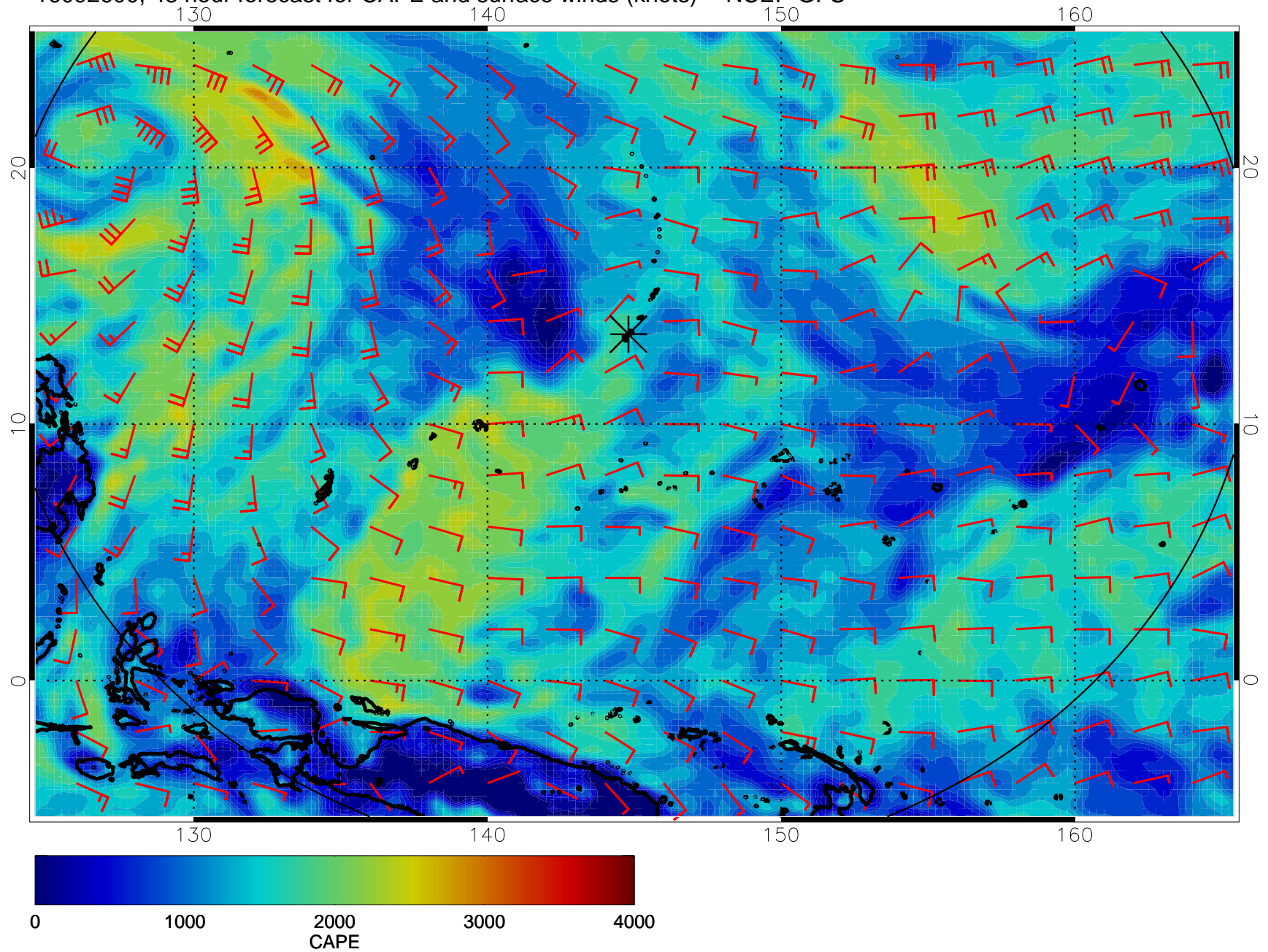
16092512, 36 hour forecast for CAPE and surface winds (knots) -- NCEP GFS



16092518, 42 hour forecast for CAPE and surface winds (knots) -- NCEP GFS

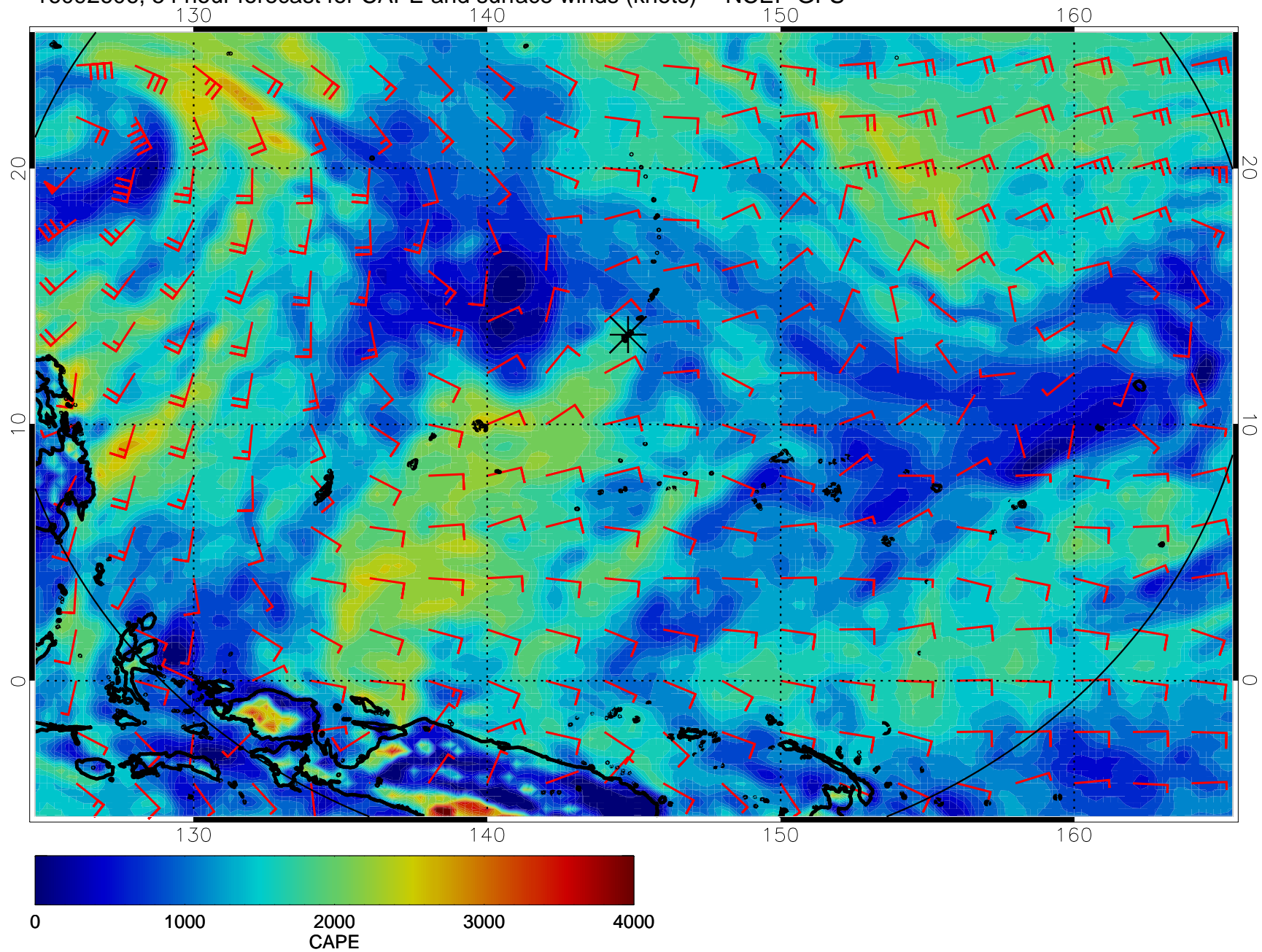


16092600, 48 hour forecast for CAPE and surface winds (knots) -- NCEP GFS

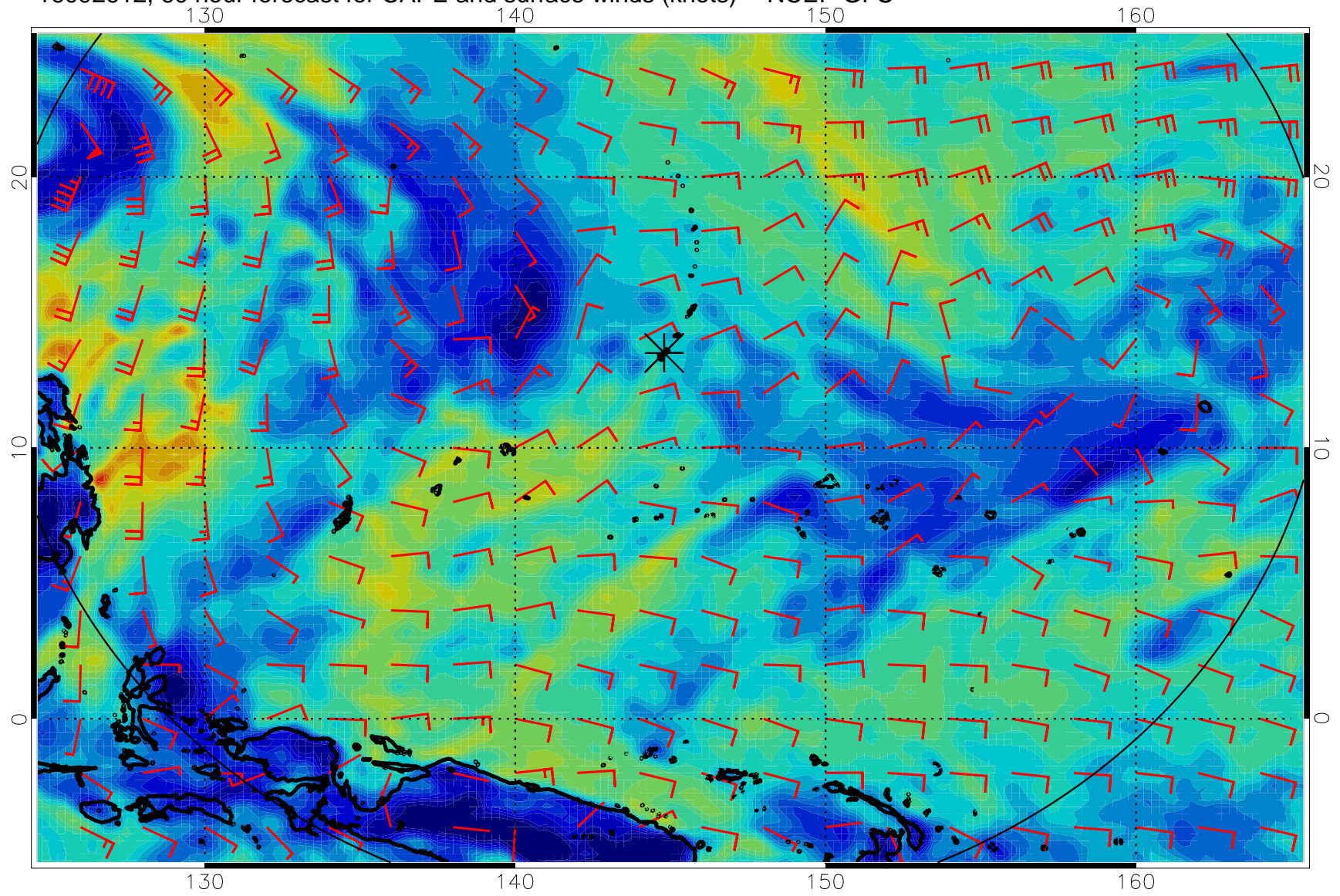




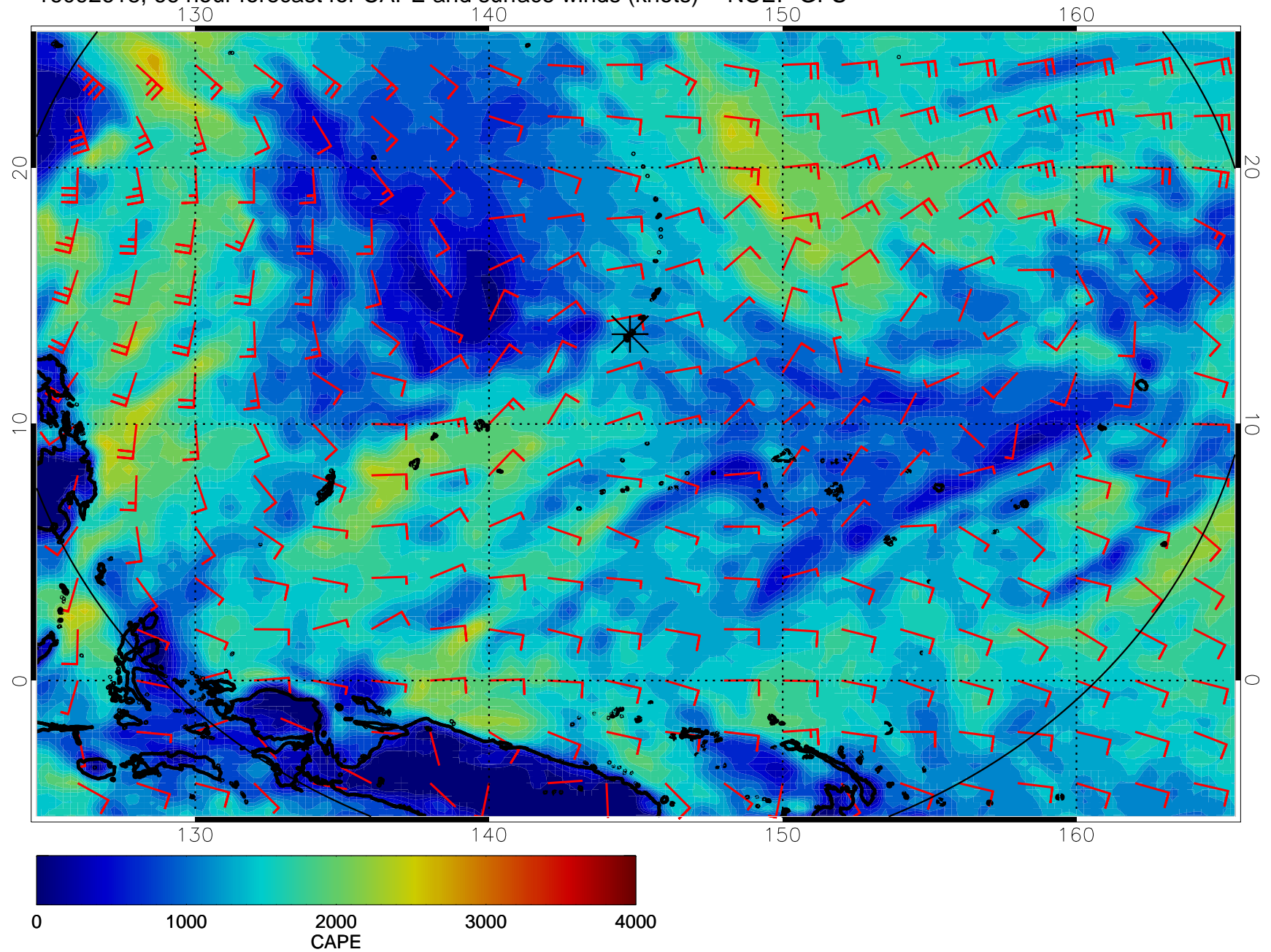
16092606, 54 hour forecast for CAPE and surface winds (knots) -- NCEP GFS



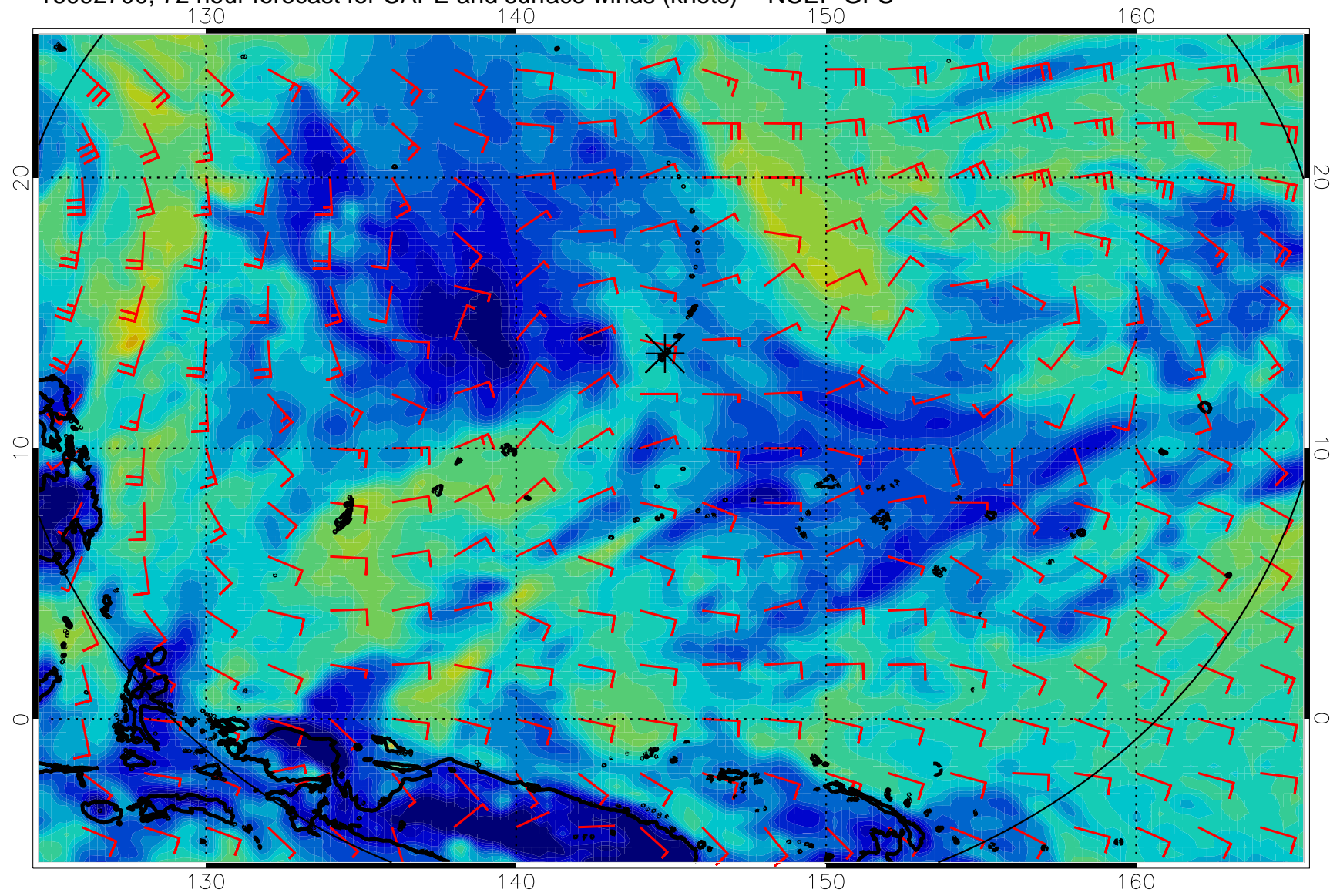
16092612, 60 hour forecast for CAPE and surface winds (knots) -- NCEP GFS



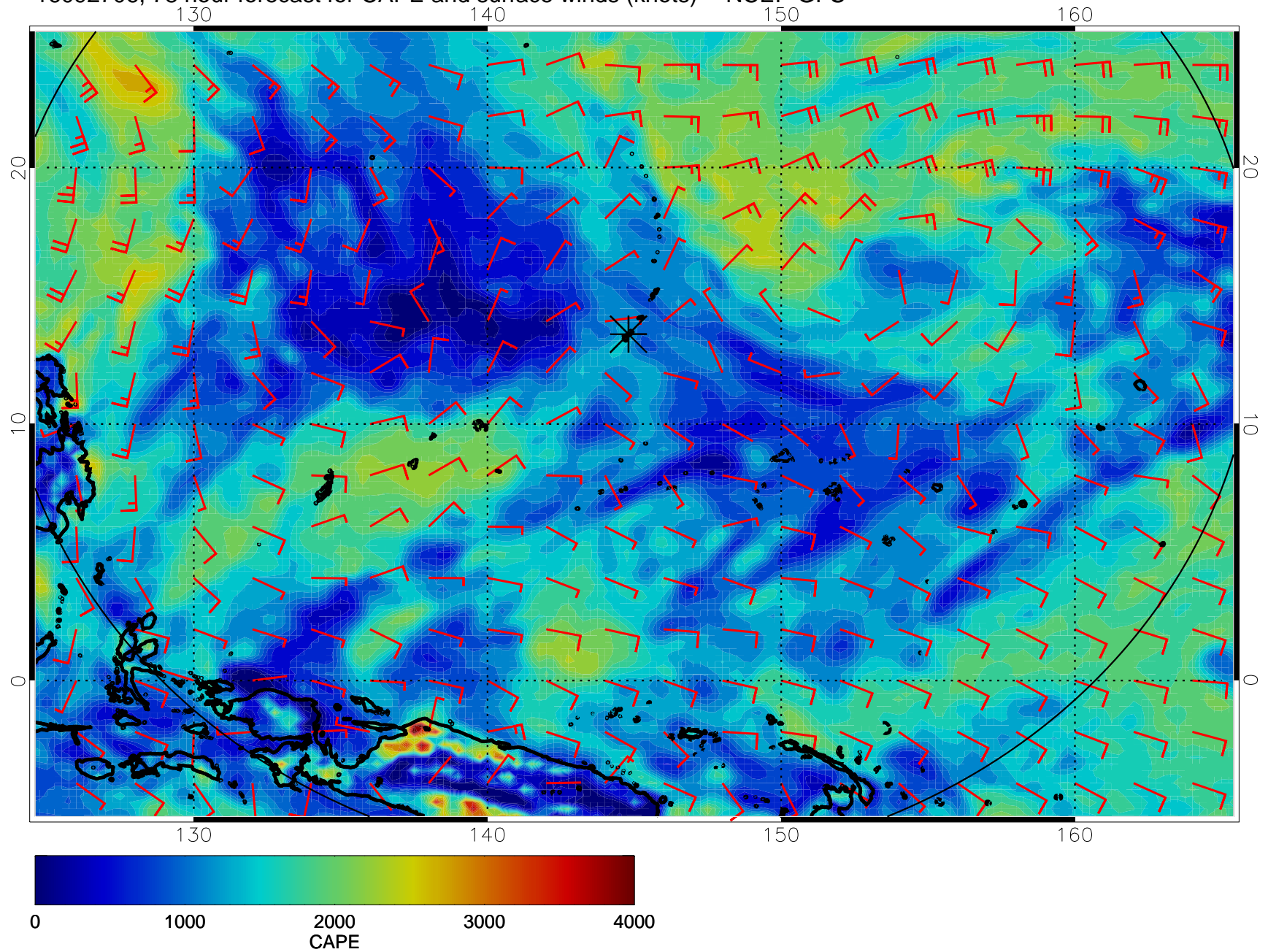
16092618, 66 hour forecast for CAPE and surface winds (knots) -- NCEP GFS



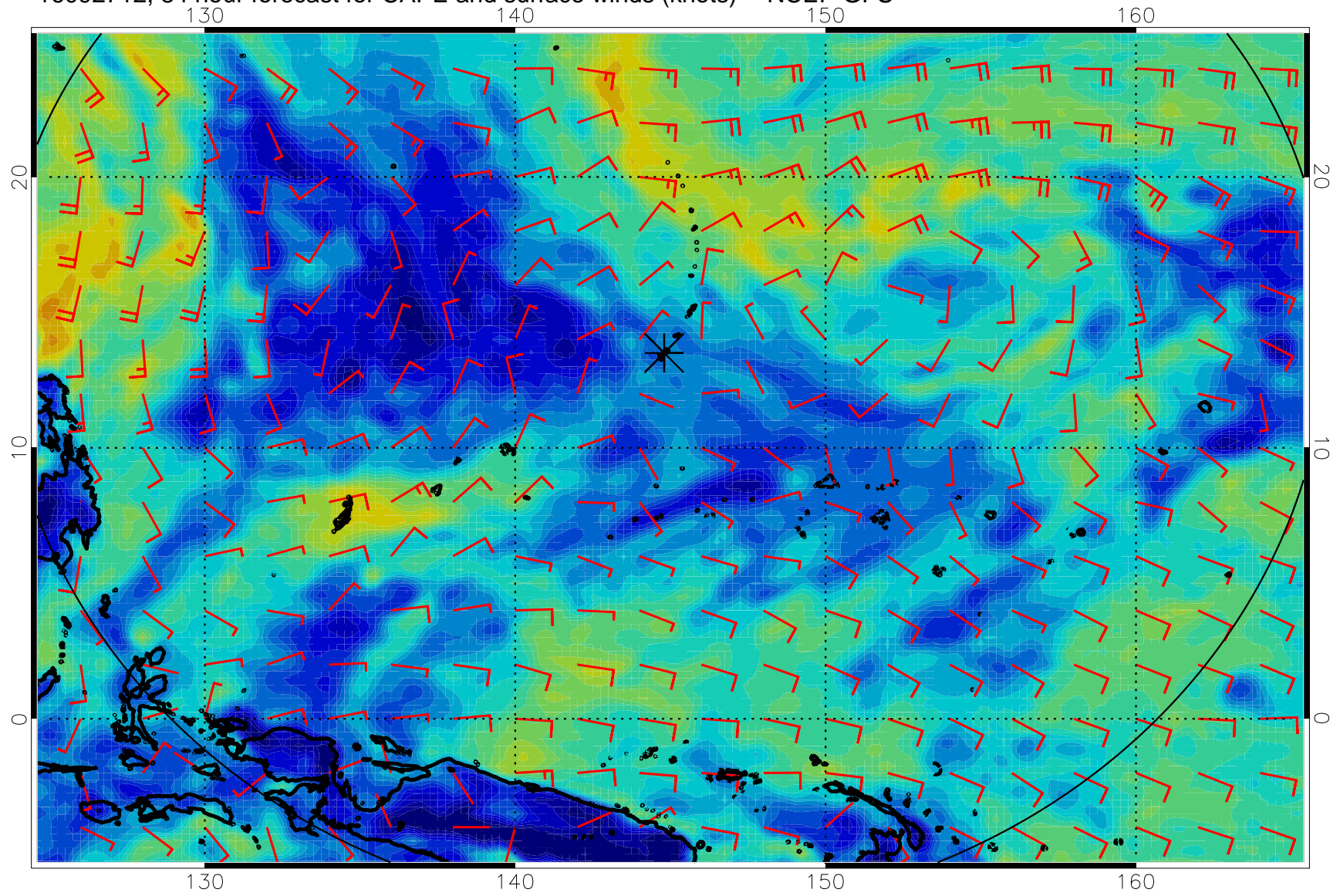
16092700, 72 hour forecast for CAPE and surface winds (knots) -- NCEP GFS



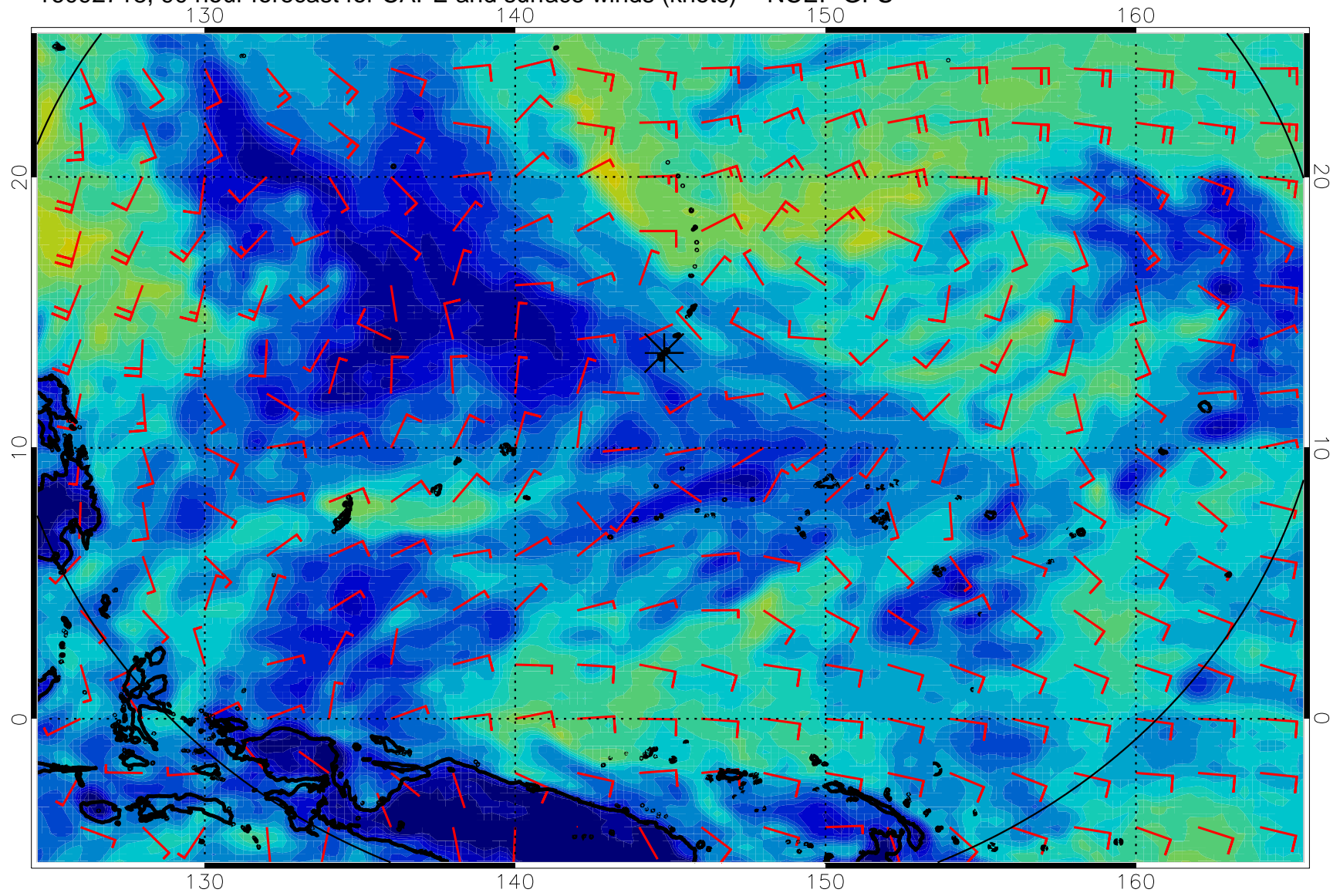
16092706, 78 hour forecast for CAPE and surface winds (knots) -- NCEP GFS



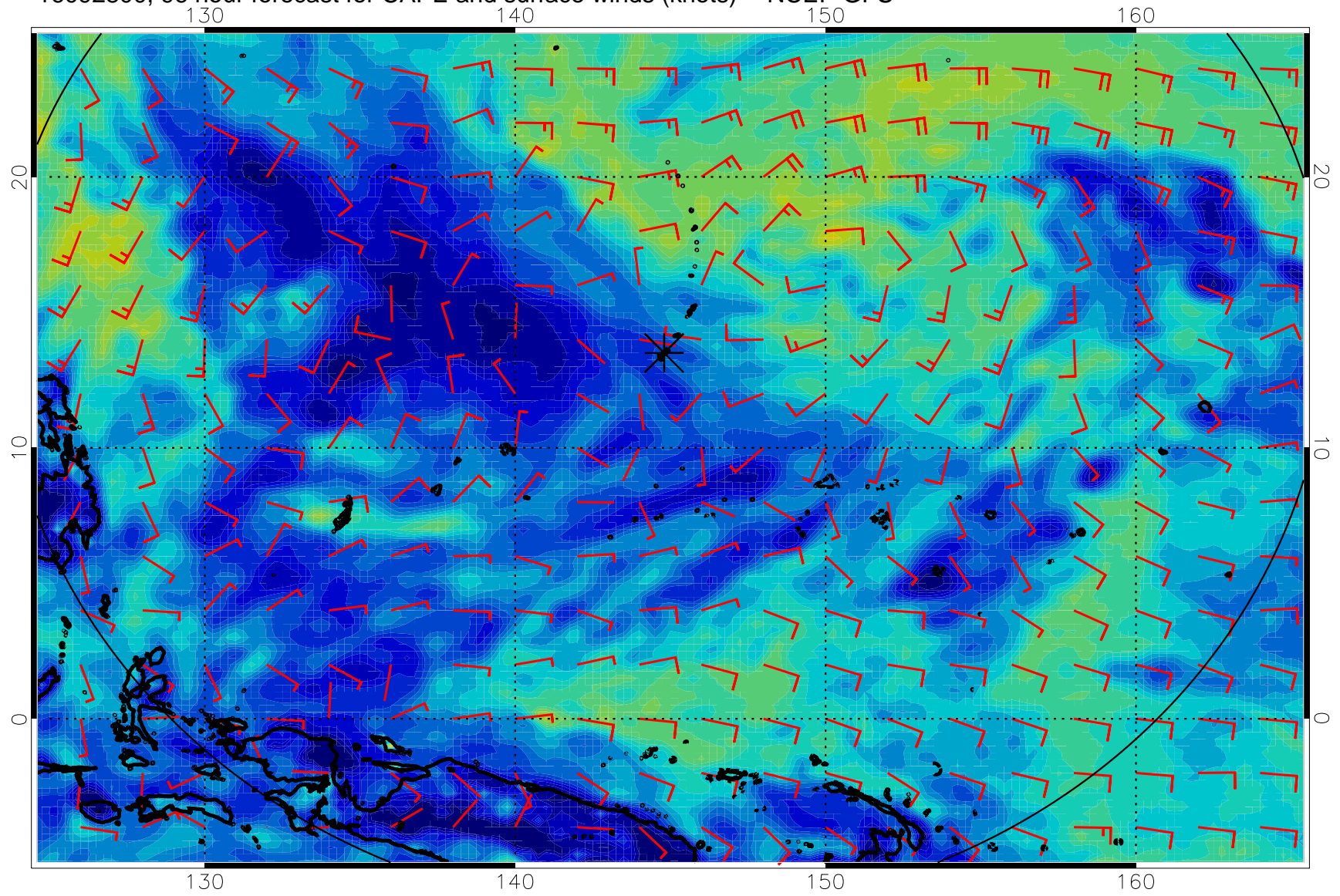
16092712, 84 hour forecast for CAPE and surface winds (knots) -- NCEP GFS



16092718, 90 hour forecast for CAPE and surface winds (knots) -- NCEP GFS

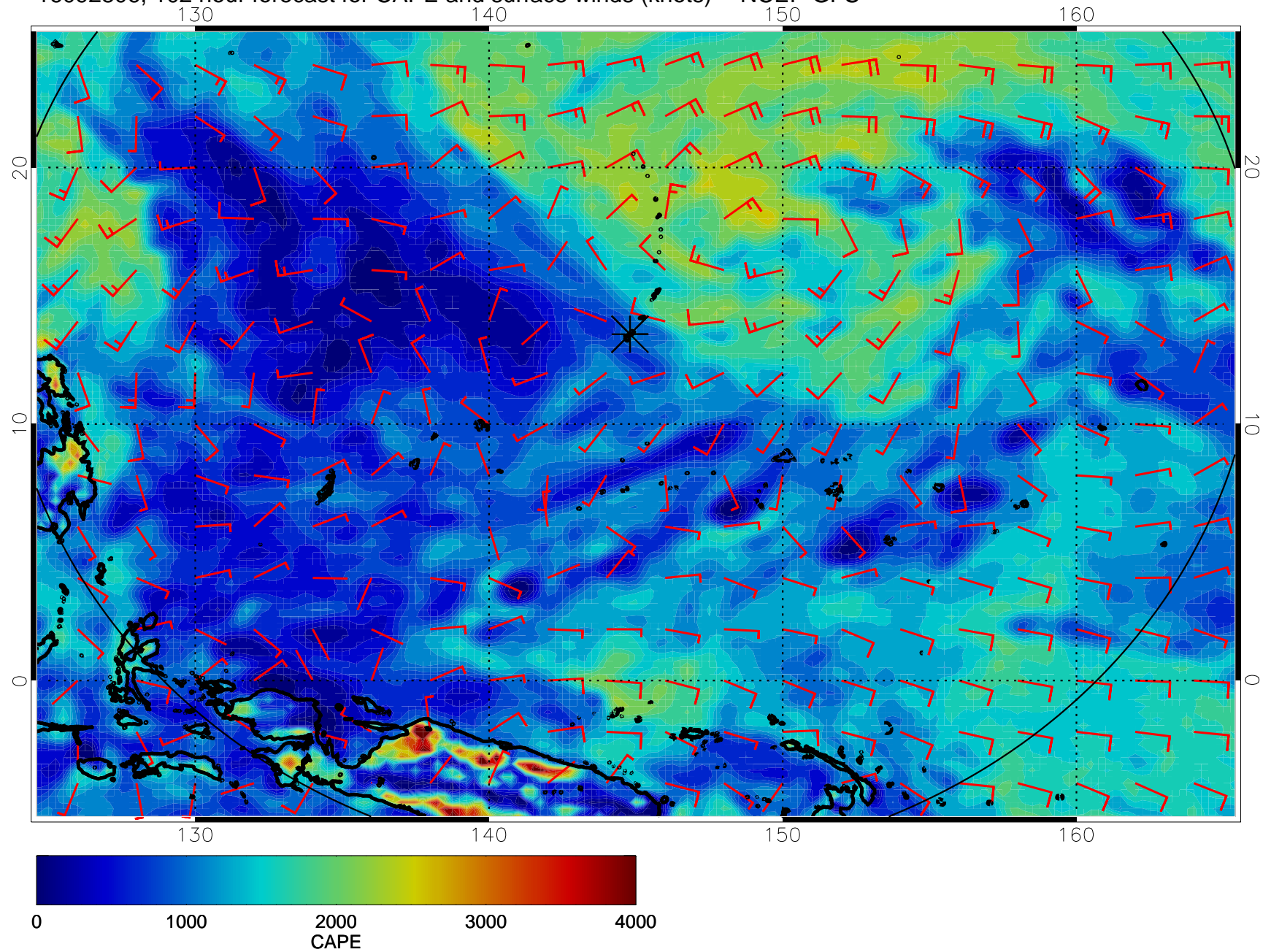


16092800, 96 hour forecast for CAPE and surface winds (knots) -- NCEP GFS

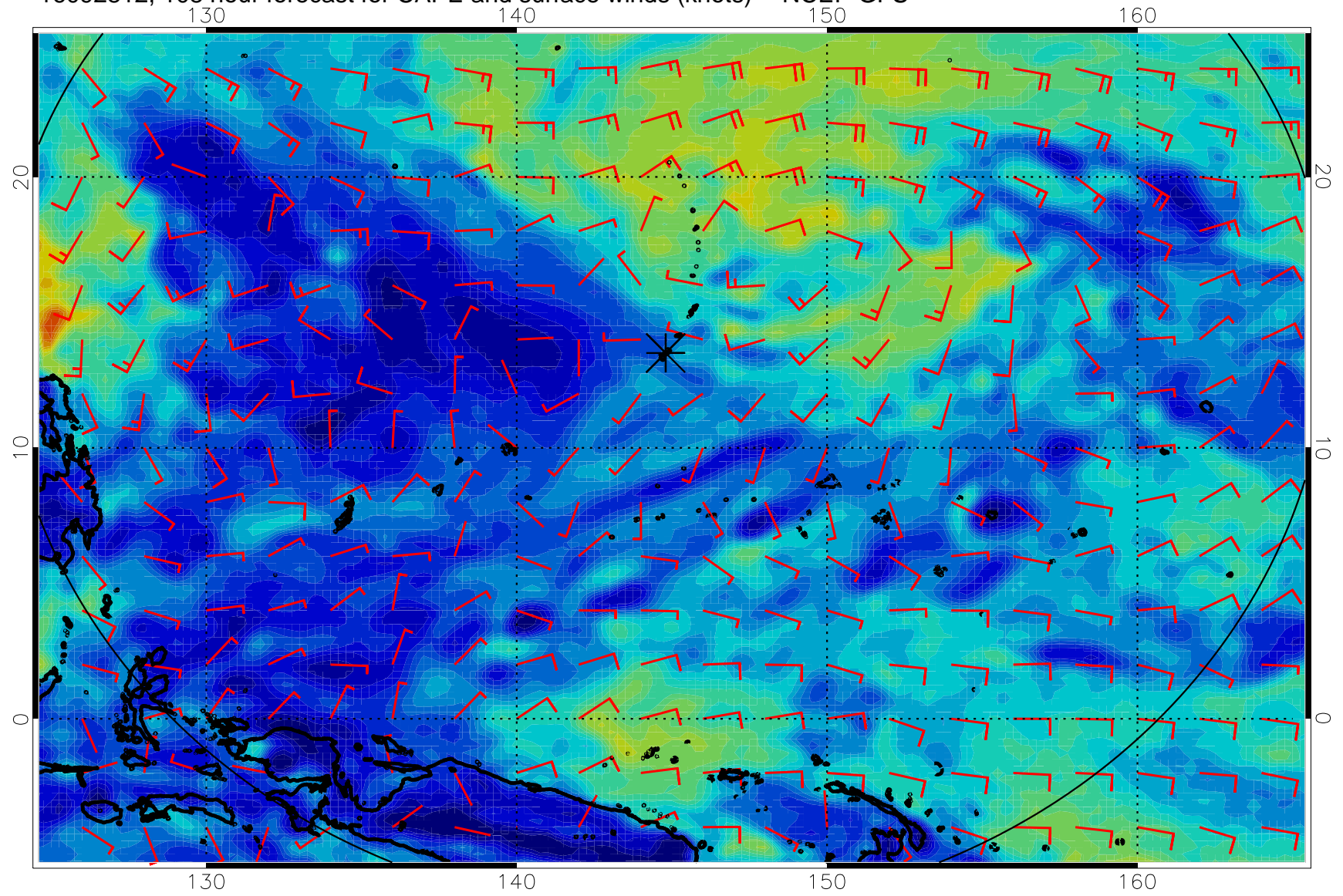




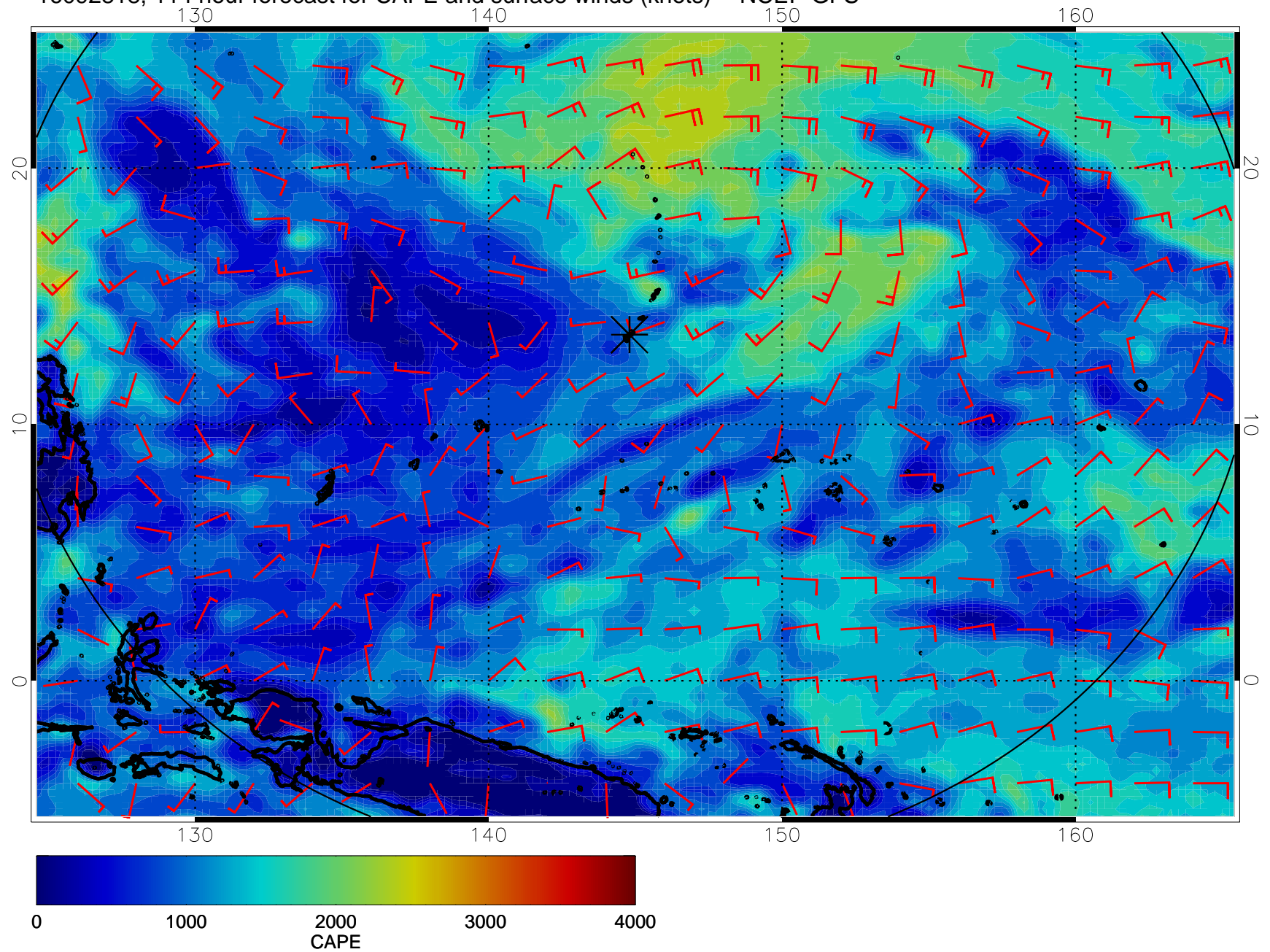
16092806, 102 hour forecast for CAPE and surface winds (knots) -- NCEP GFS



16092812, 108 hour forecast for CAPE and surface winds (knots) -- NCEP GFS



16092818, 114 hour forecast for CAPE and surface winds (knots) -- NCEP GFS



16092900, 120 hour forecast for CAPE and surface winds (knots) -- NCEP GFS

