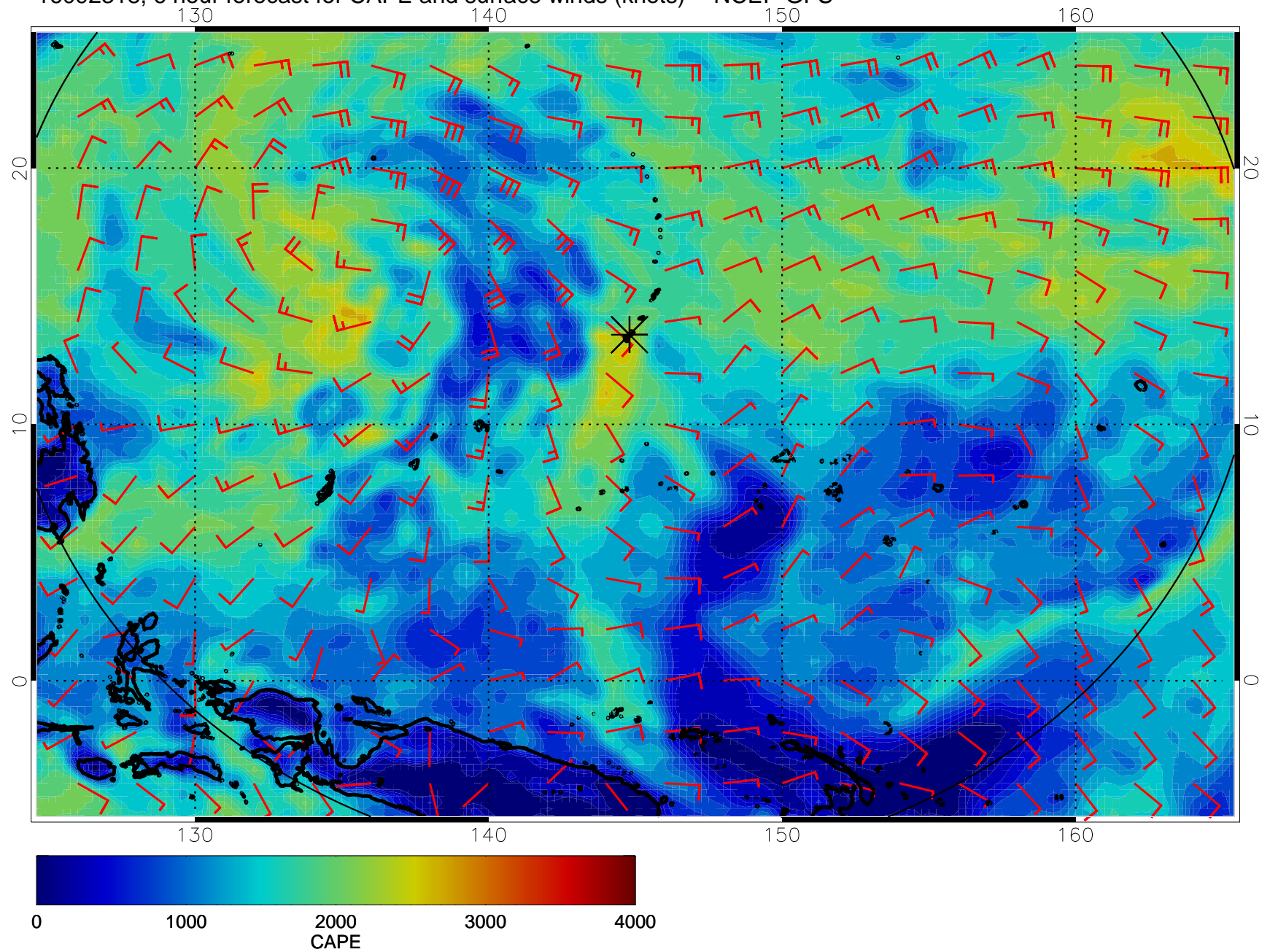
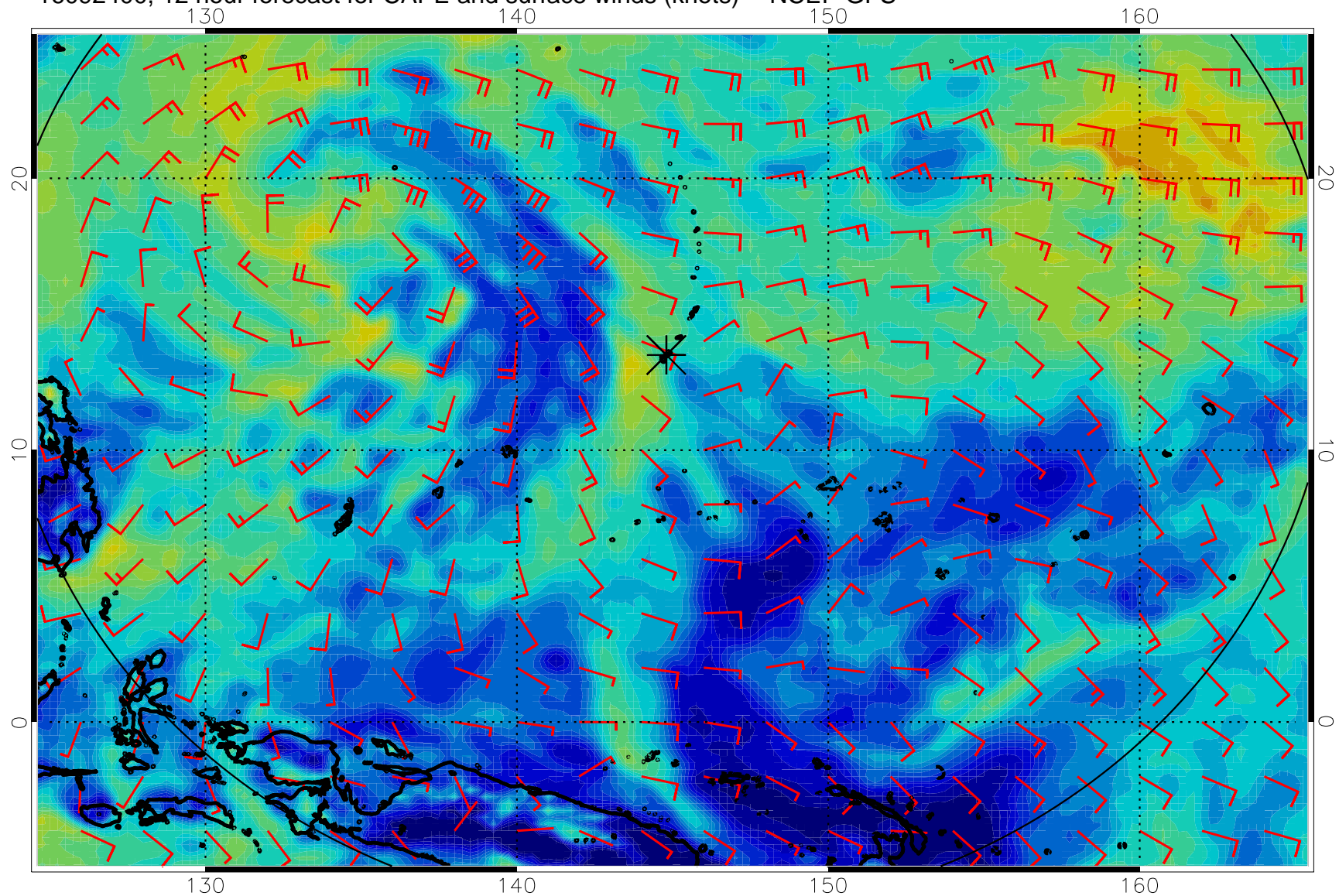


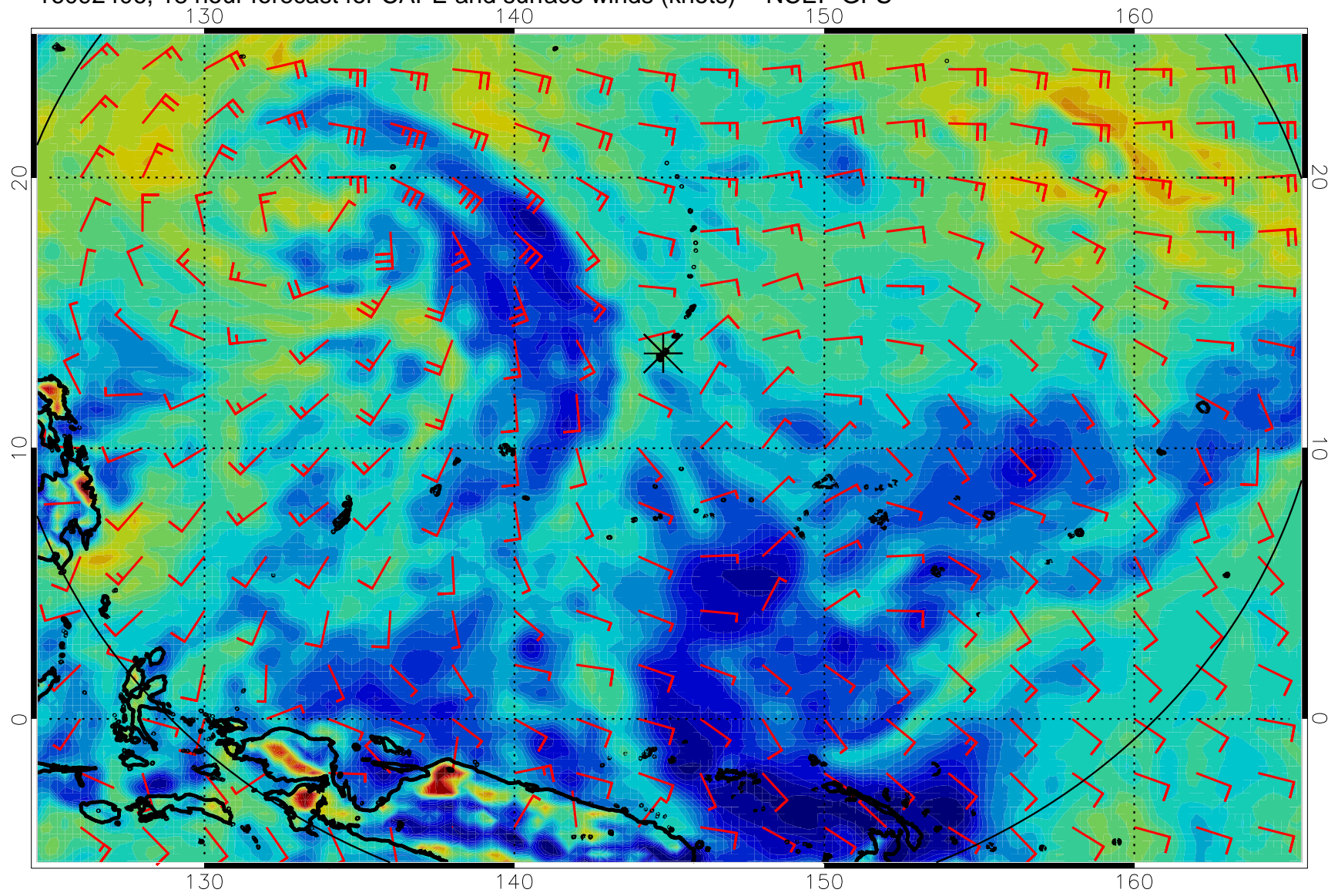
16092318, 6 hour forecast for CAPE and surface winds (knots) -- NCEP GFS



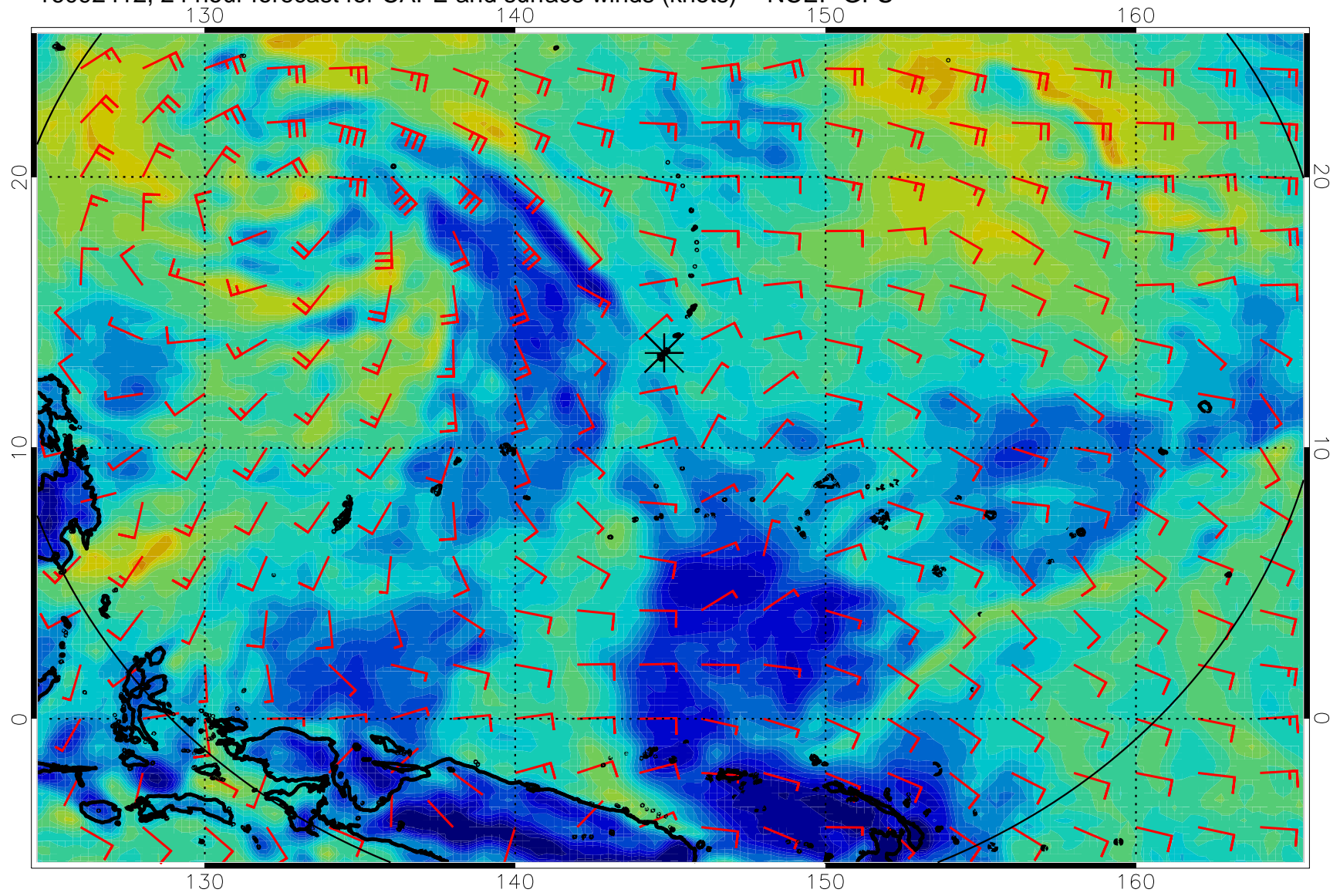
16092400, 12 hour forecast for CAPE and surface winds (knots) -- NCEP GFS



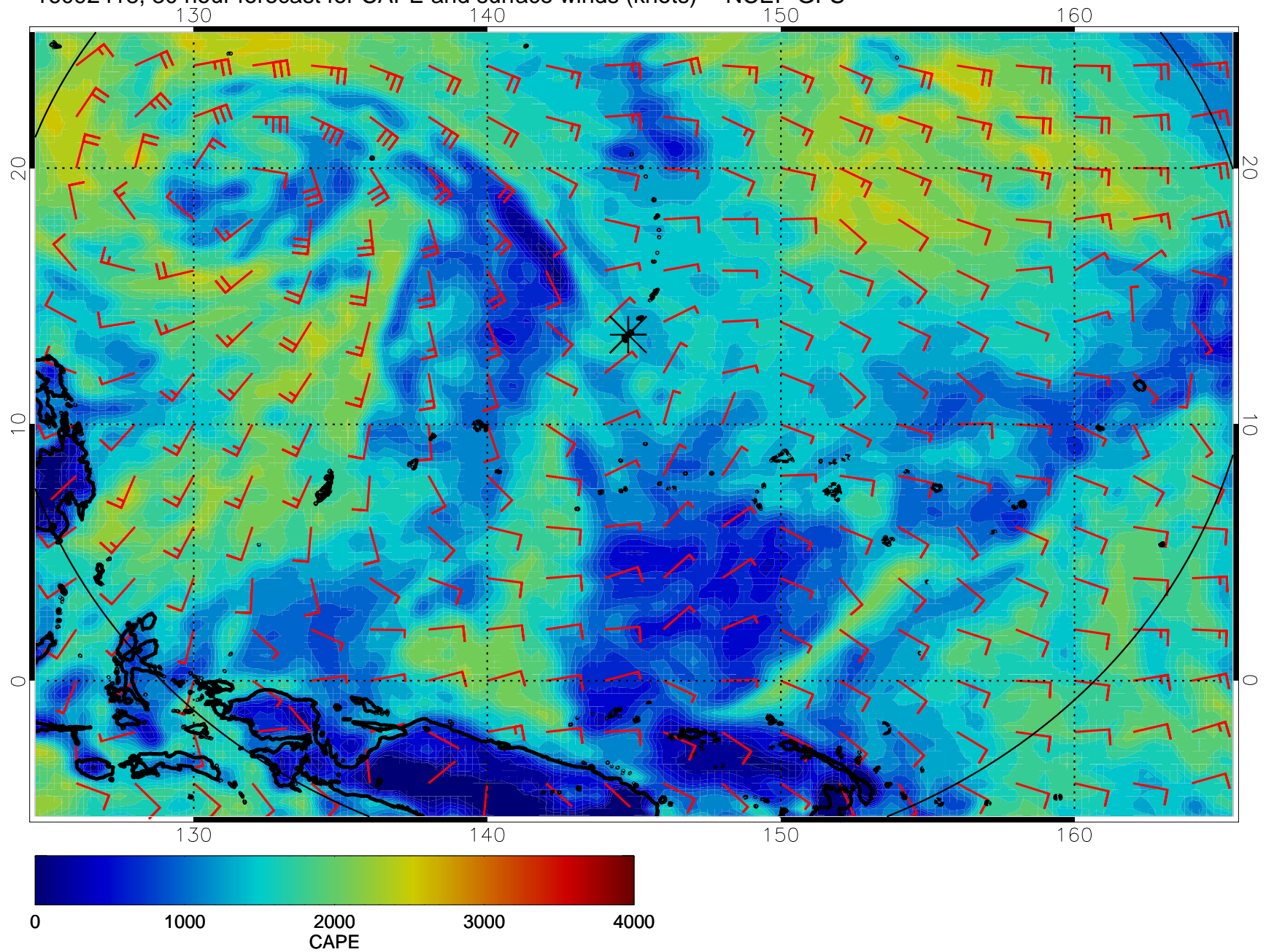
16092406, 18 hour forecast for CAPE and surface winds (knots) -- NCEP GFS



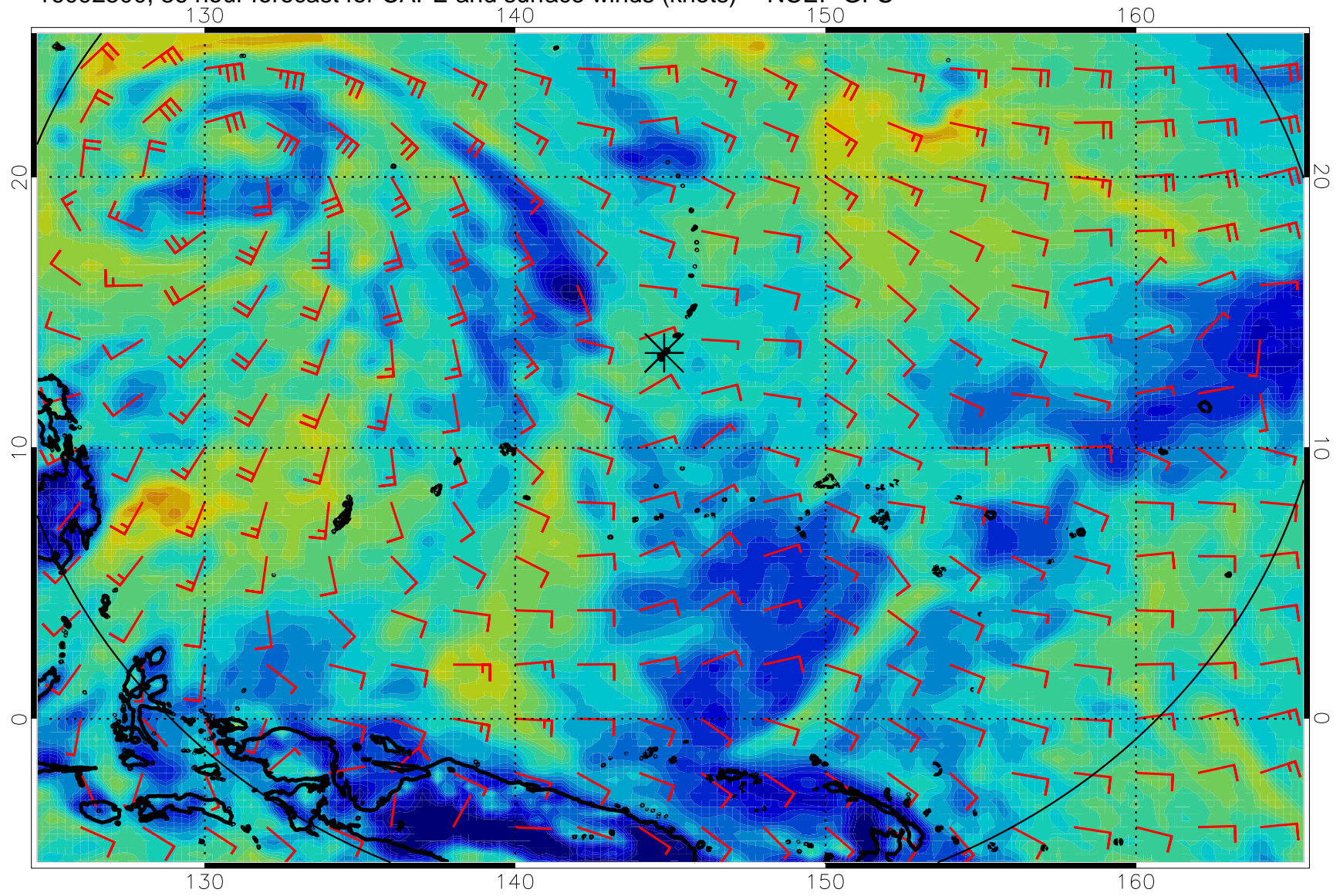
16092412, 24 hour forecast for CAPE and surface winds (knots) -- NCEP GFS



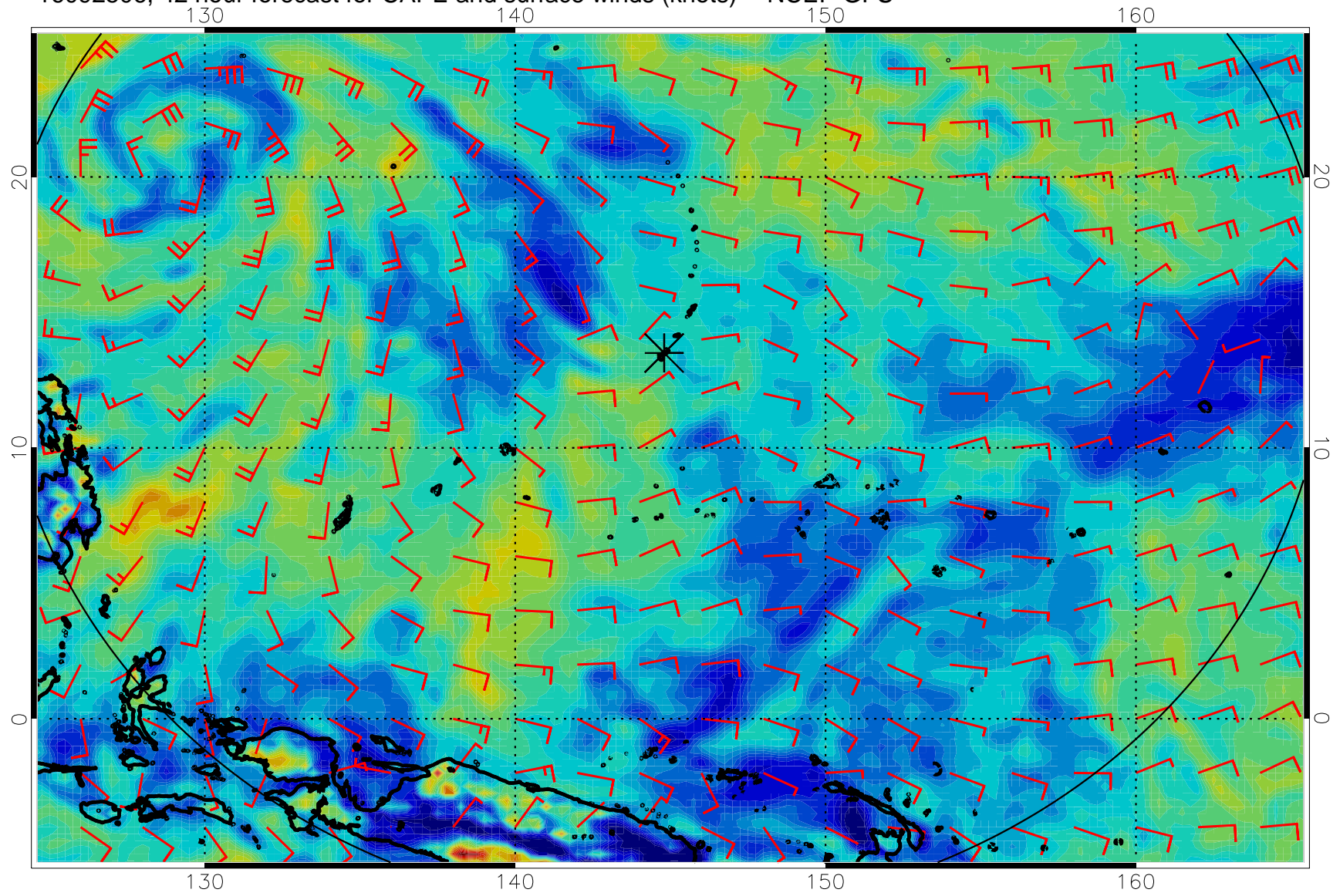
16092418, 30 hour forecast for CAPE and surface winds (knots) -- NCEP GFS



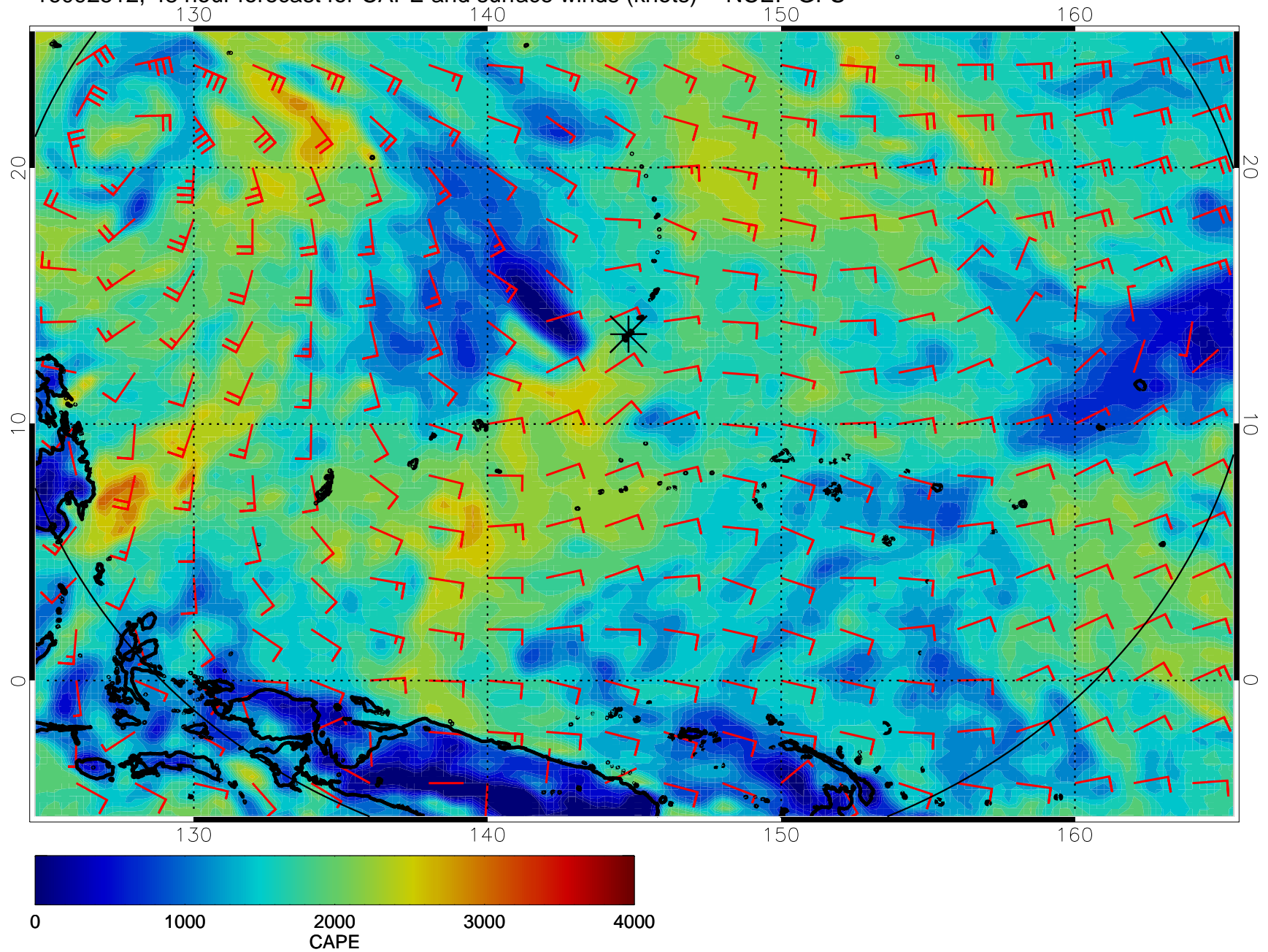
16092500, 36 hour forecast for CAPE and surface winds (knots) -- NCEP GFS



16092506, 42 hour forecast for CAPE and surface winds (knots) -- NCEP GFS

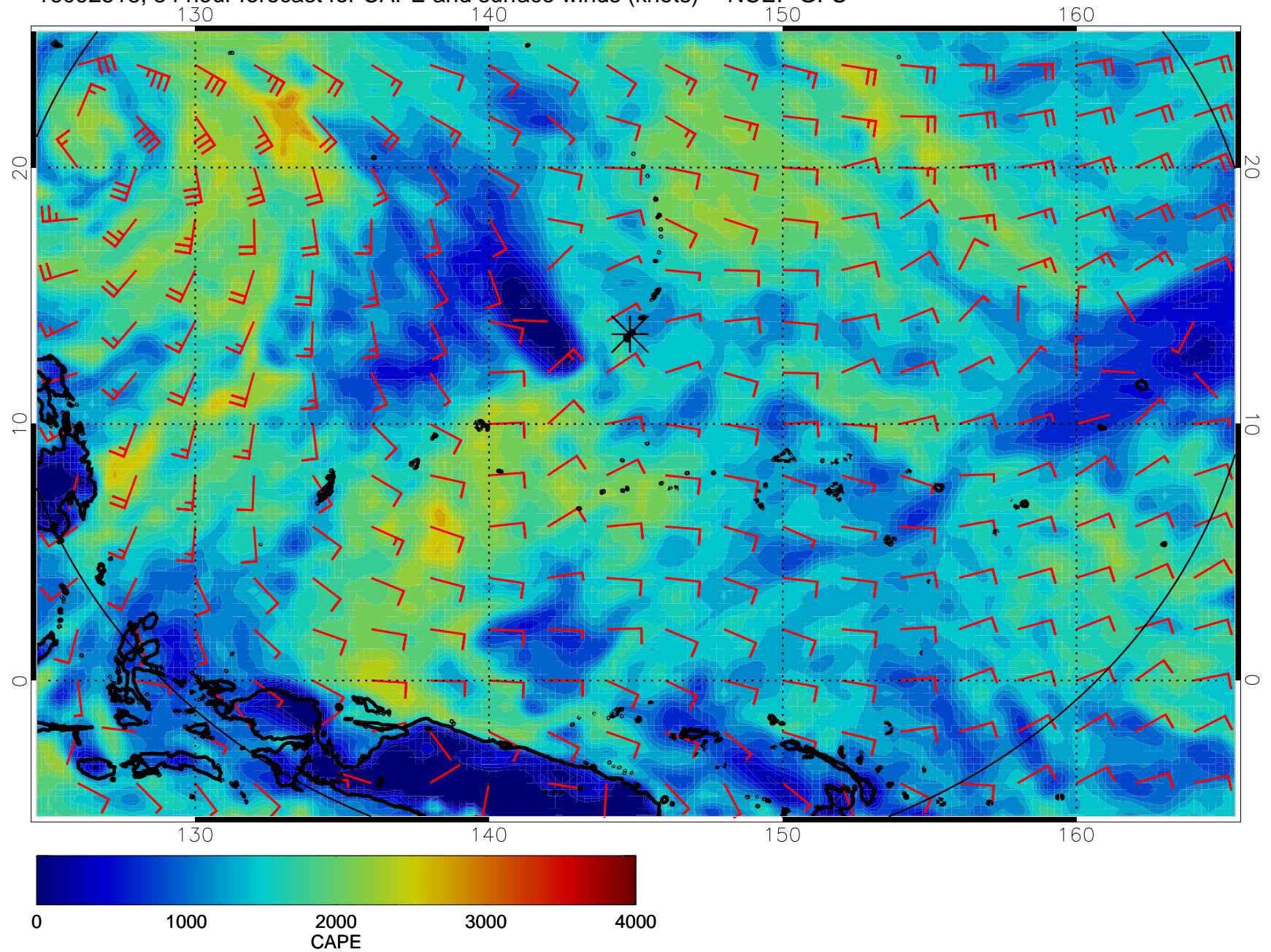


16092512, 48 hour forecast for CAPE and surface winds (knots) -- NCEP GFS

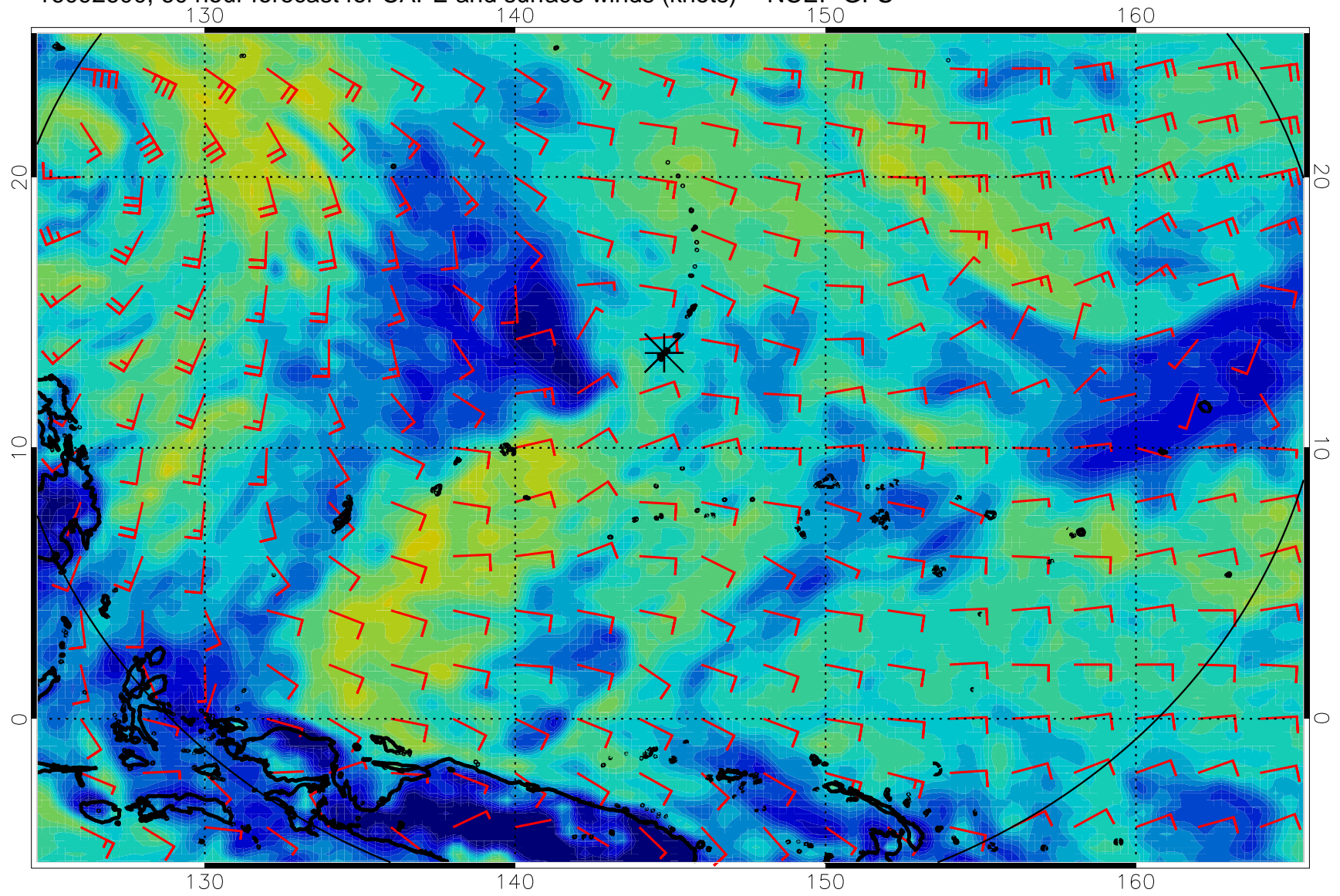




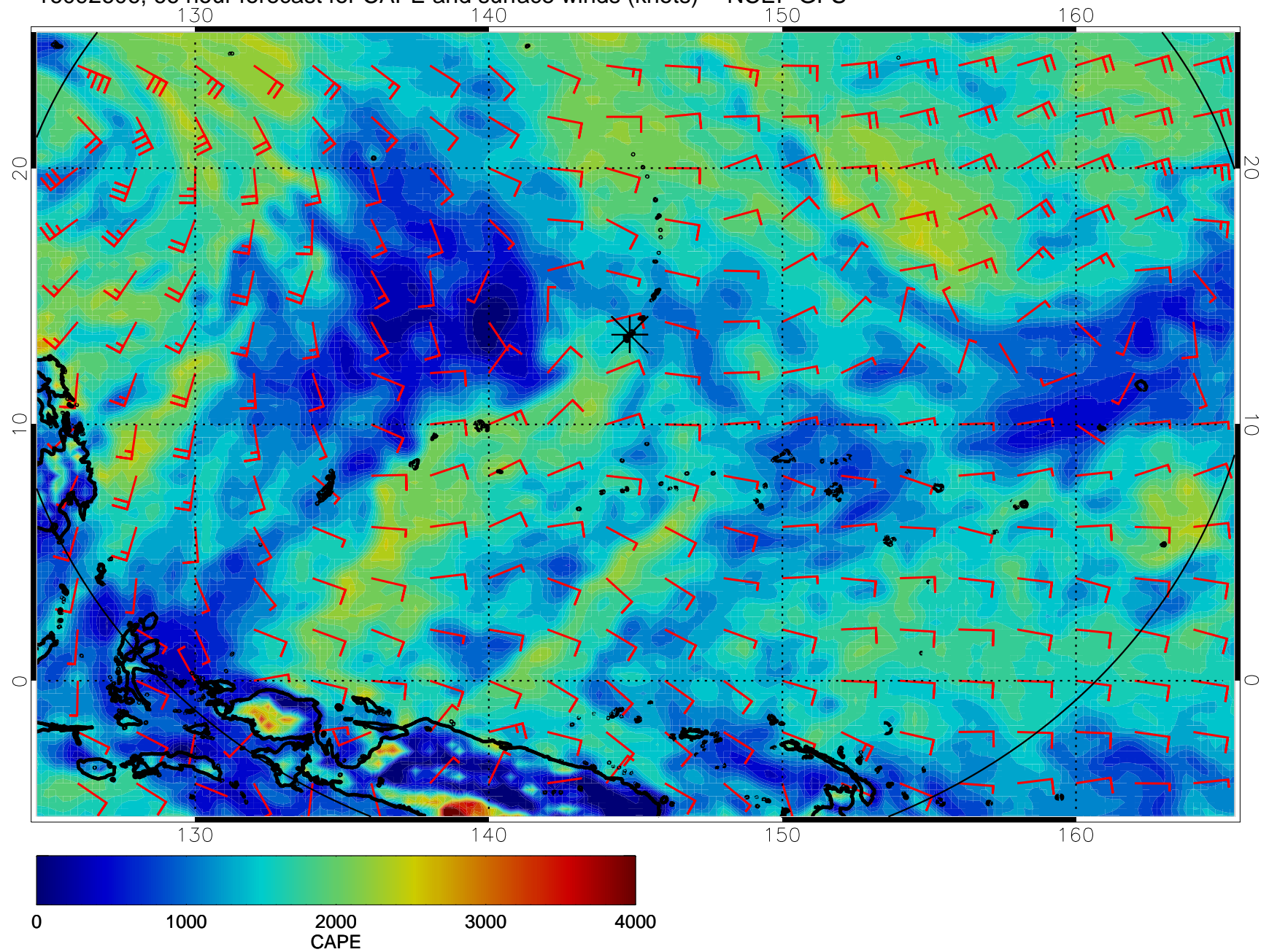
16092518, 54 hour forecast for CAPE and surface winds (knots) -- NCEP GFS



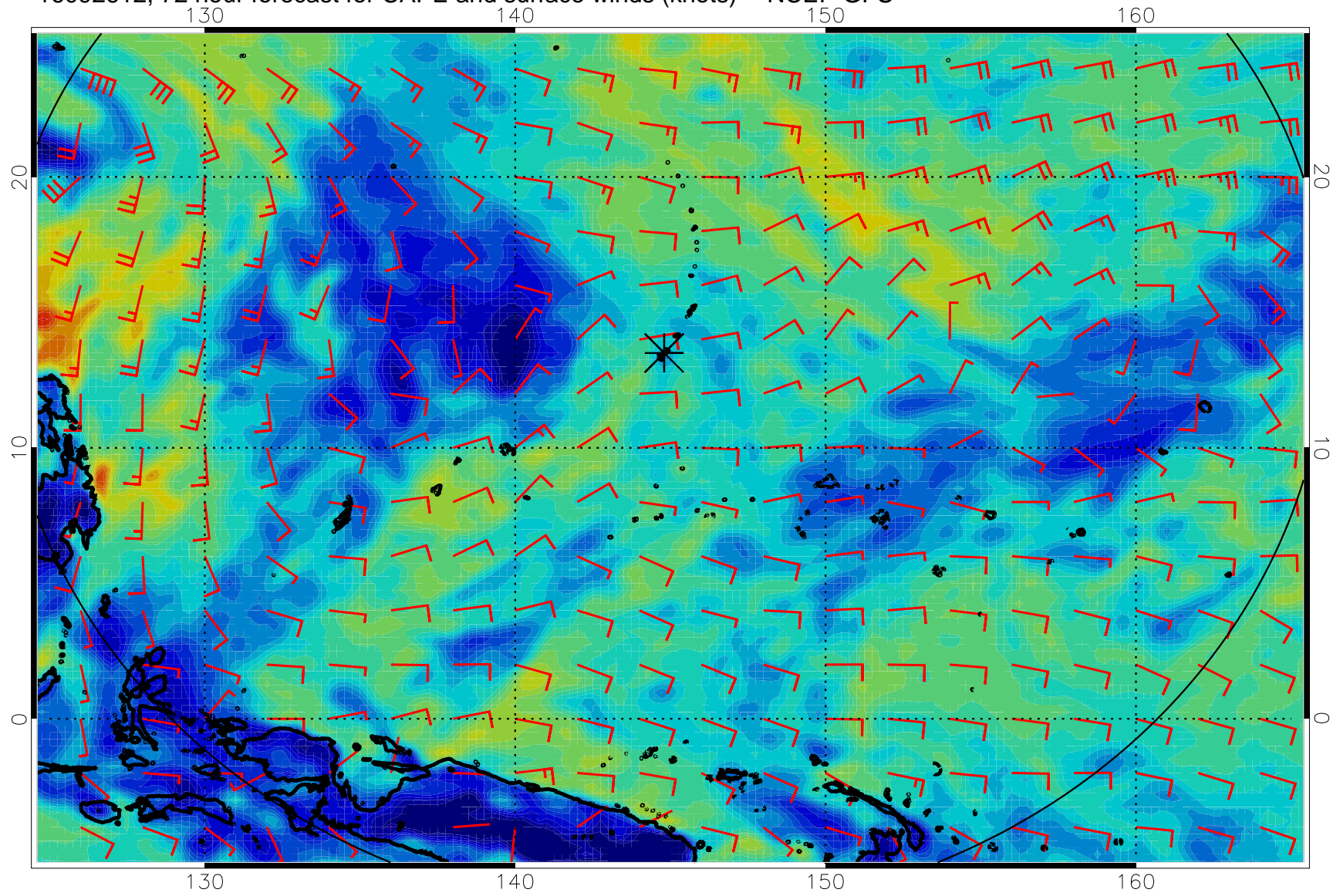
16092600, 60 hour forecast for CAPE and surface winds (knots) -- NCEP GFS



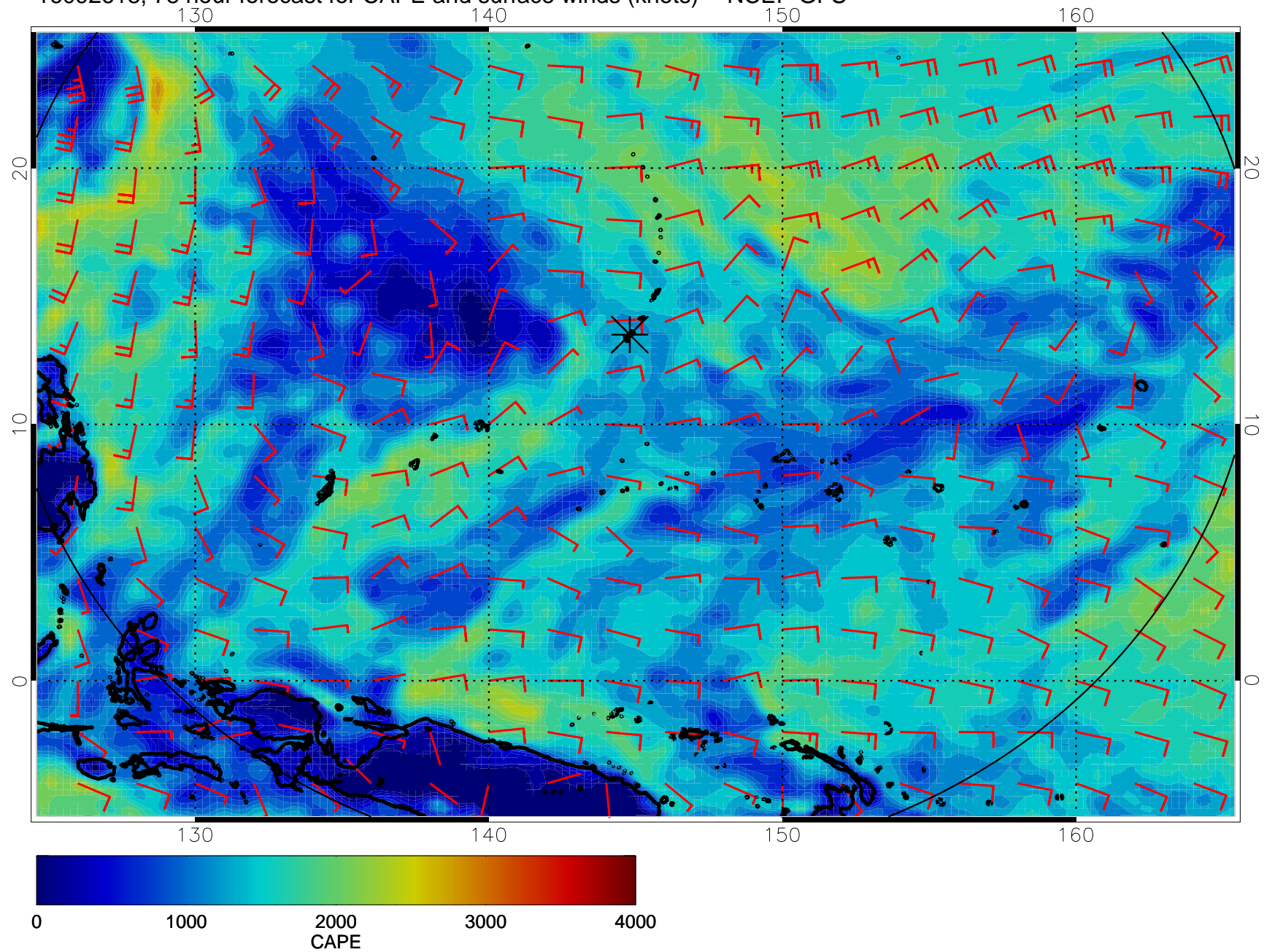
16092606, 66 hour forecast for CAPE and surface winds (knots) -- NCEP GFS



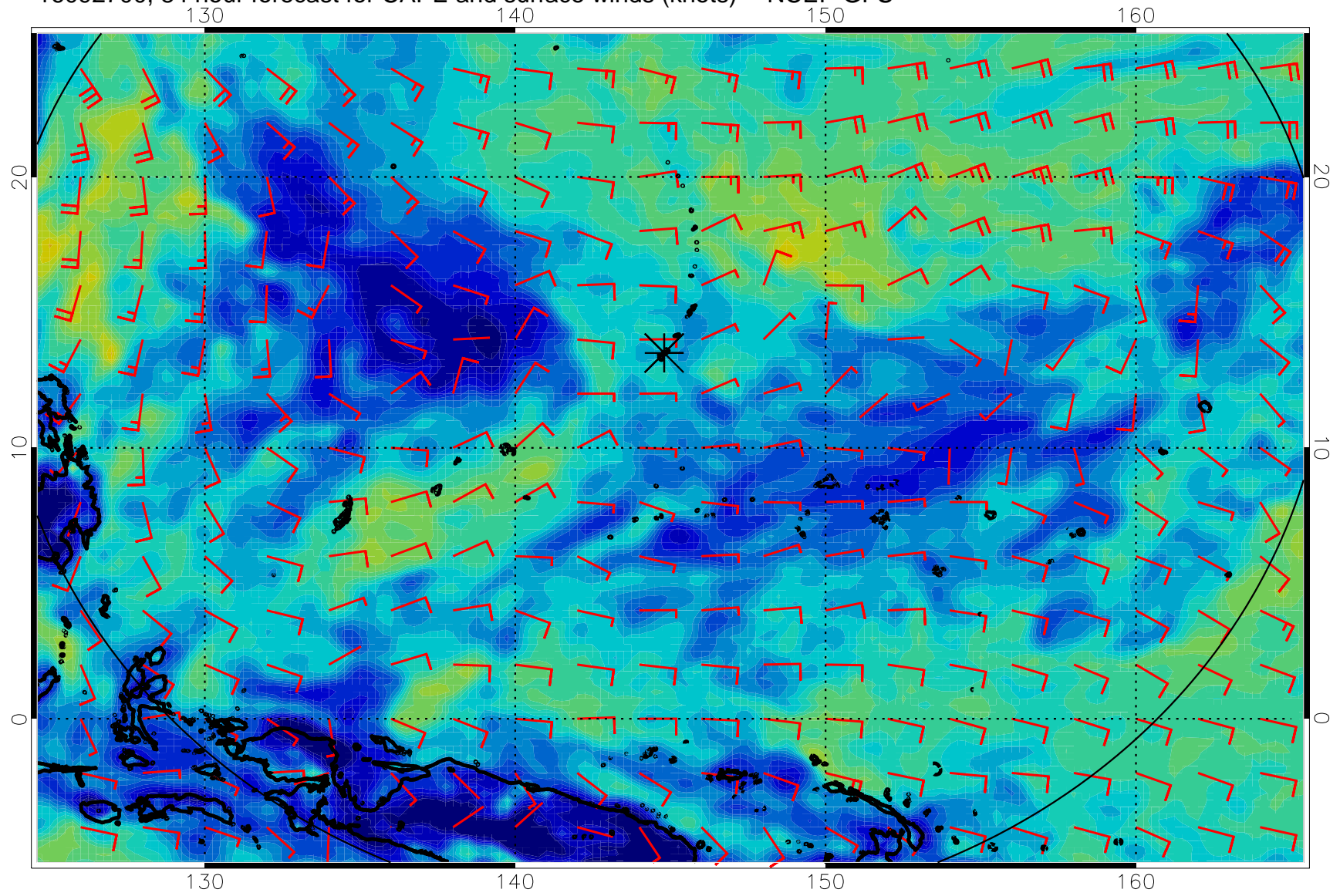
16092612, 72 hour forecast for CAPE and surface winds (knots) -- NCEP GFS



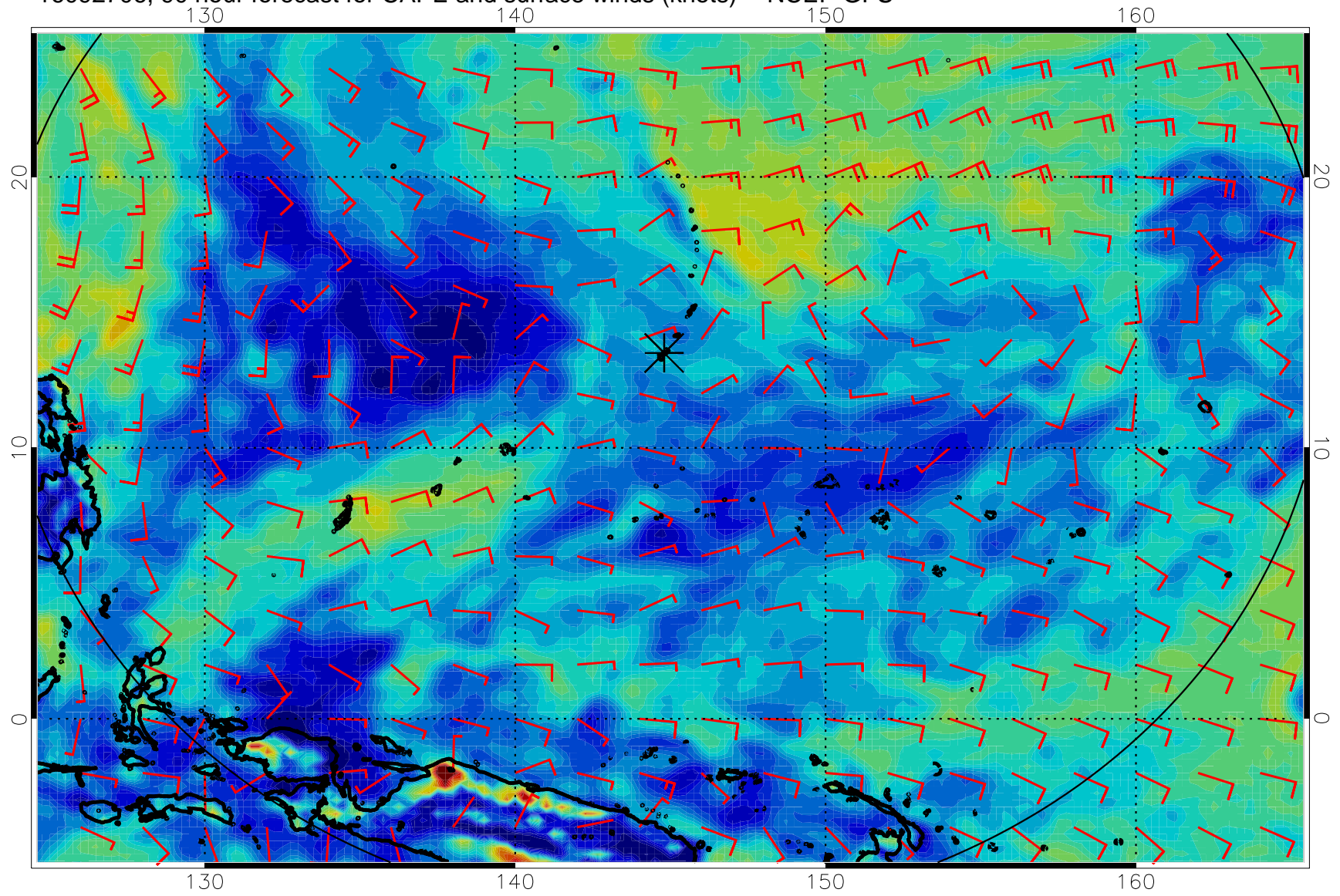
16092618, 78 hour forecast for CAPE and surface winds (knots) -- NCEP GFS



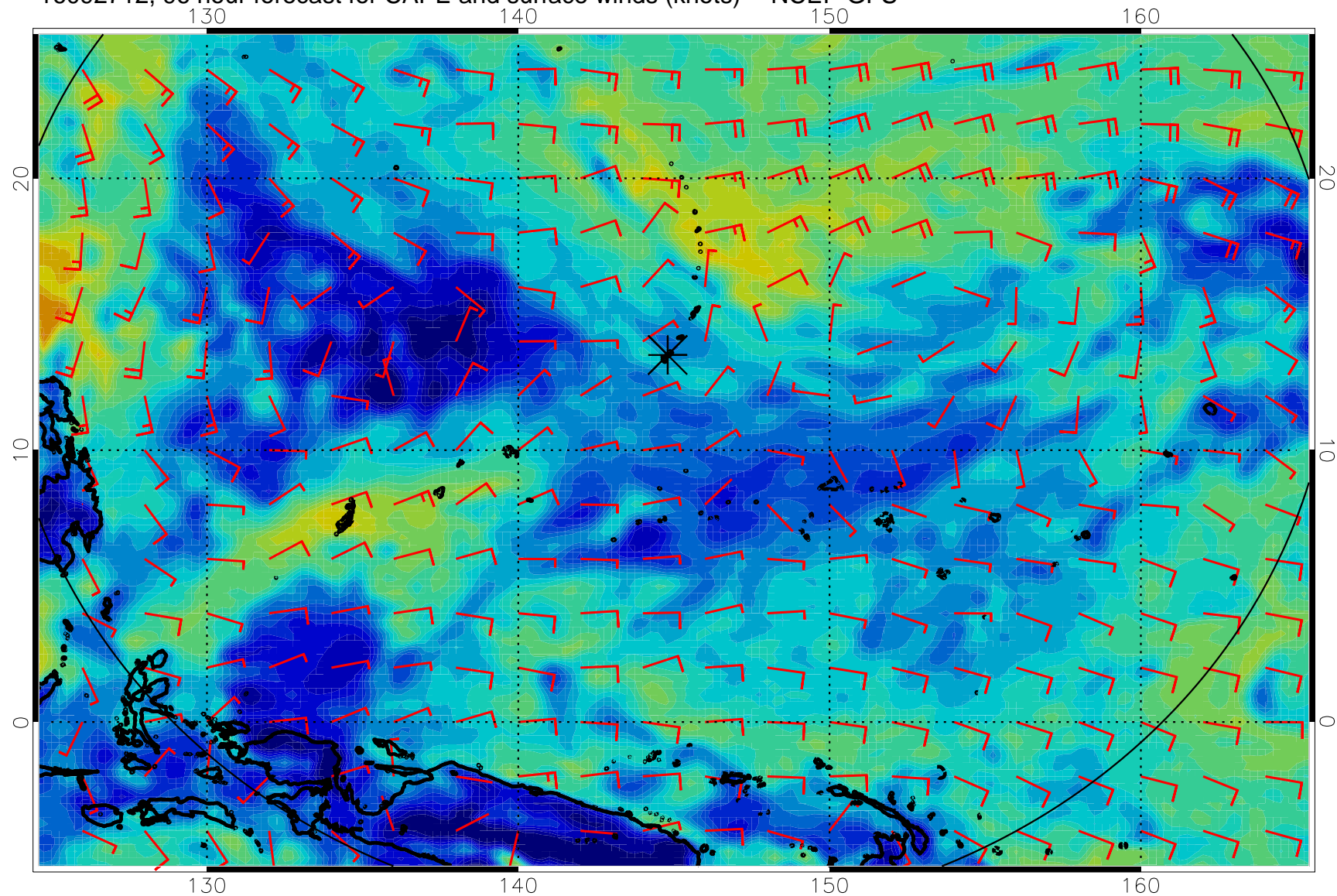
16092700, 84 hour forecast for CAPE and surface winds (knots) -- NCEP GFS



16092706, 90 hour forecast for CAPE and surface winds (knots) -- NCEP GFS

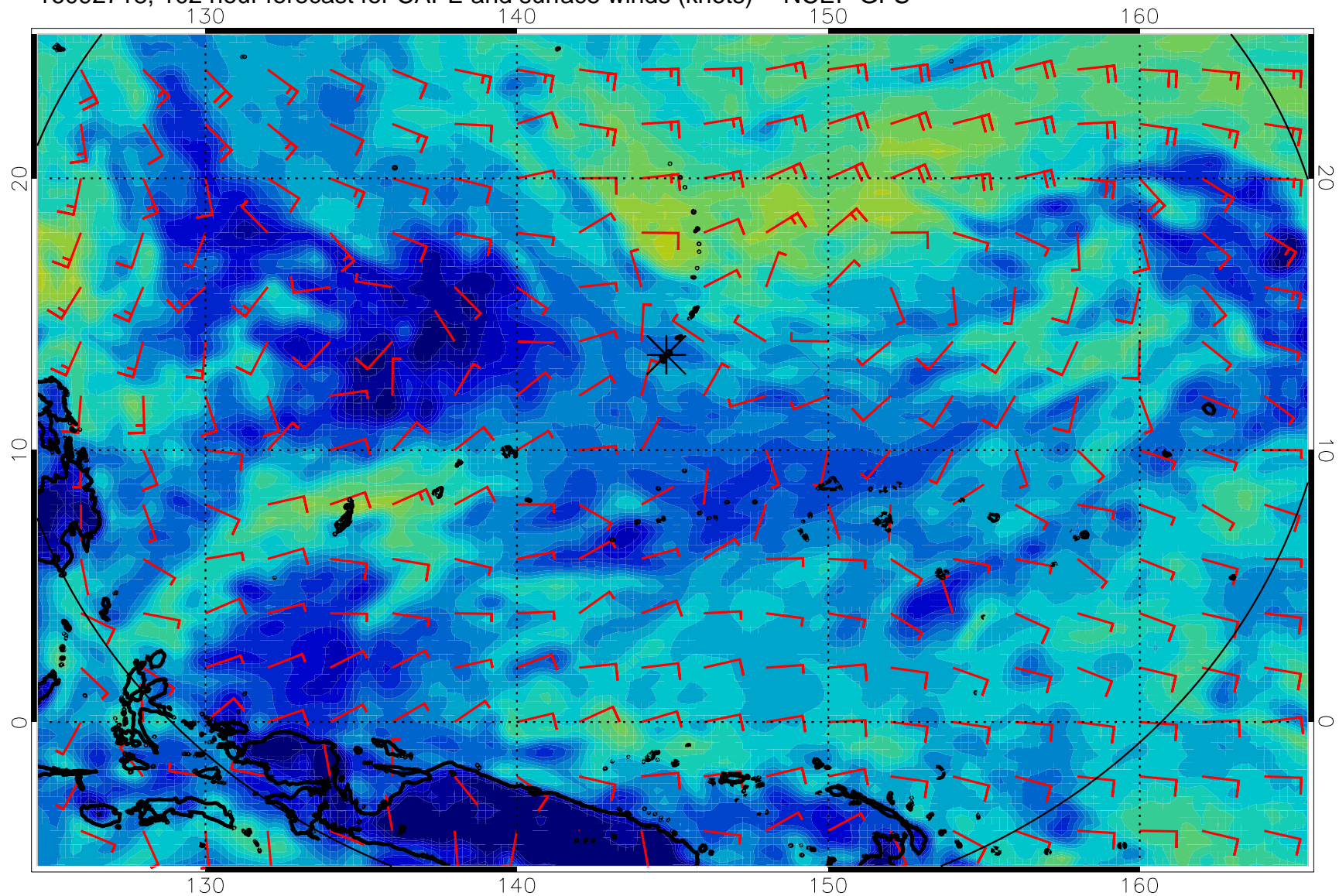


16092712, 96 hour forecast for CAPE and surface winds (knots) -- NCEP GFS

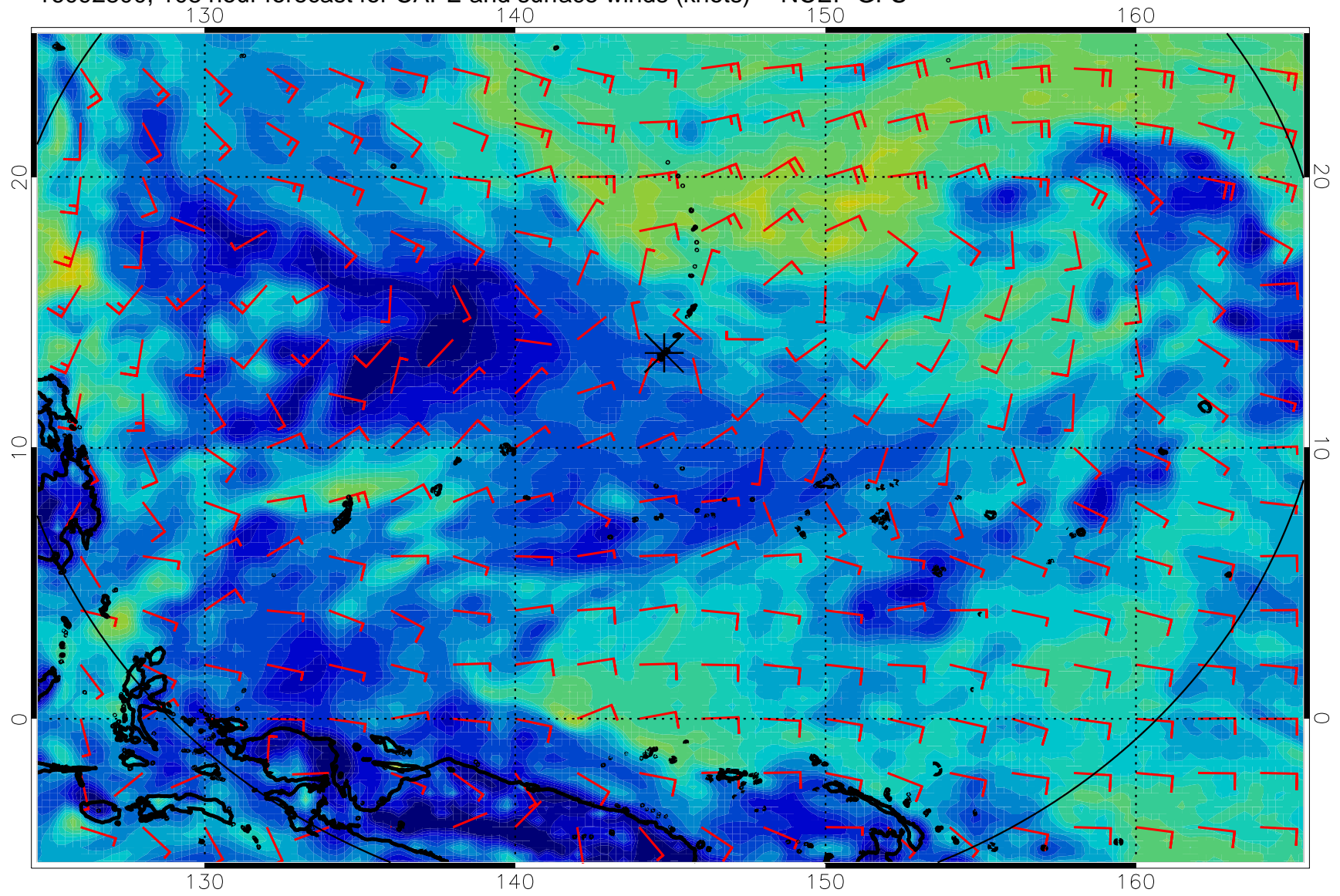




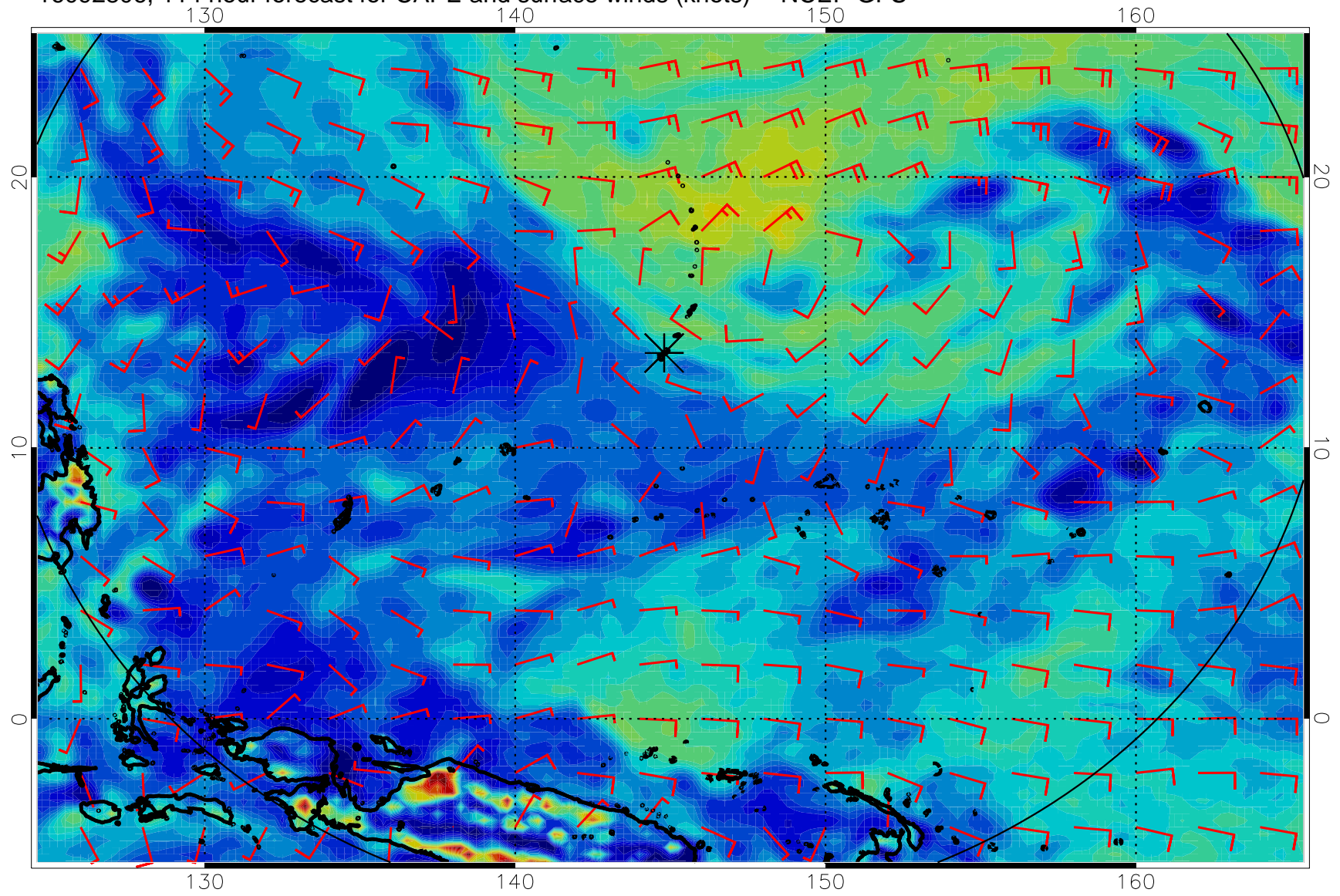
16092718, 102 hour forecast for CAPE and surface winds (knots) -- NCEP GFS



16092800, 108 hour forecast for CAPE and surface winds (knots) -- NCEP GFS



16092806, 114 hour forecast for CAPE and surface winds (knots) -- NCEP GFS



16092812, 120 hour forecast for CAPE and surface winds (knots) -- NCEP GFS

