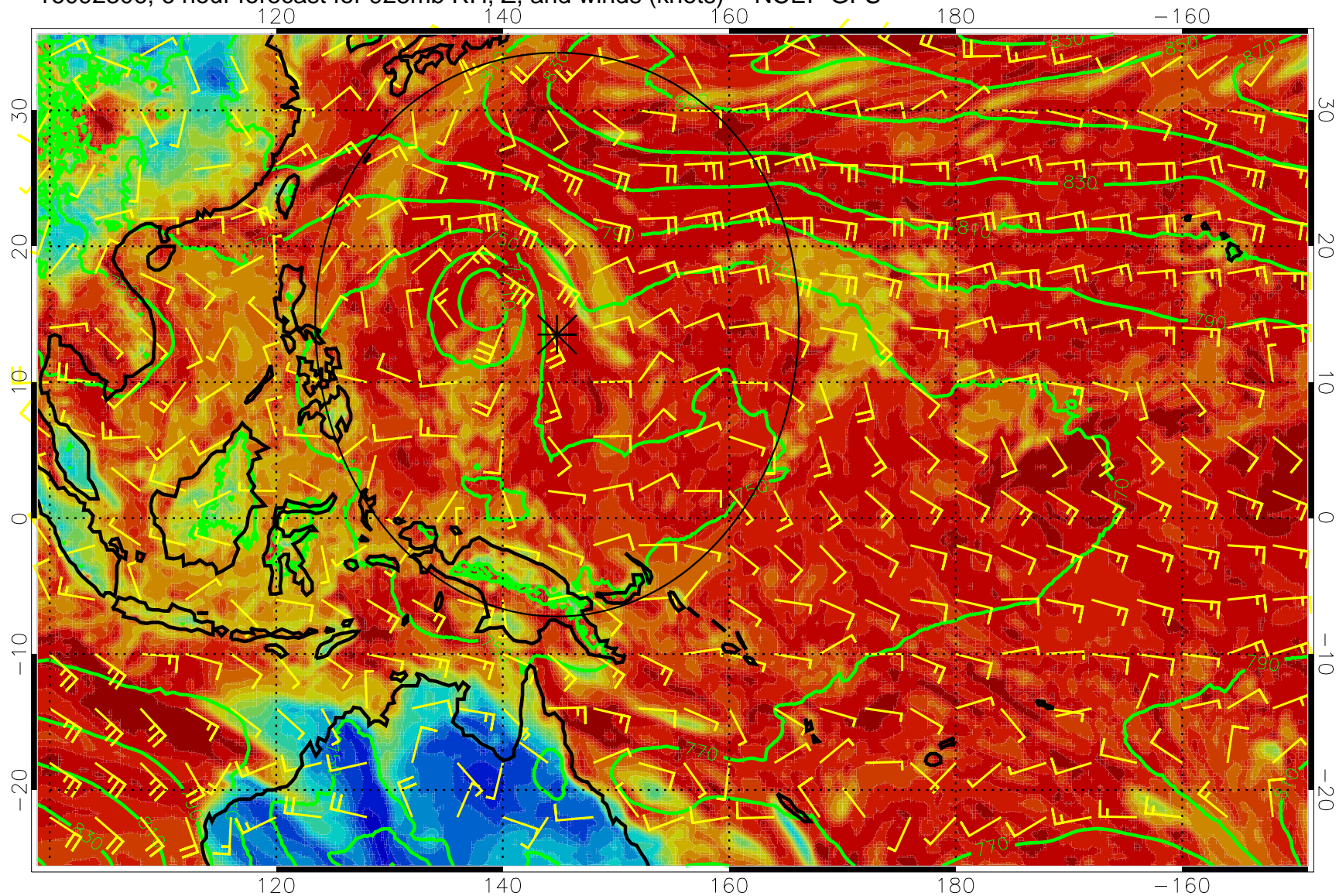
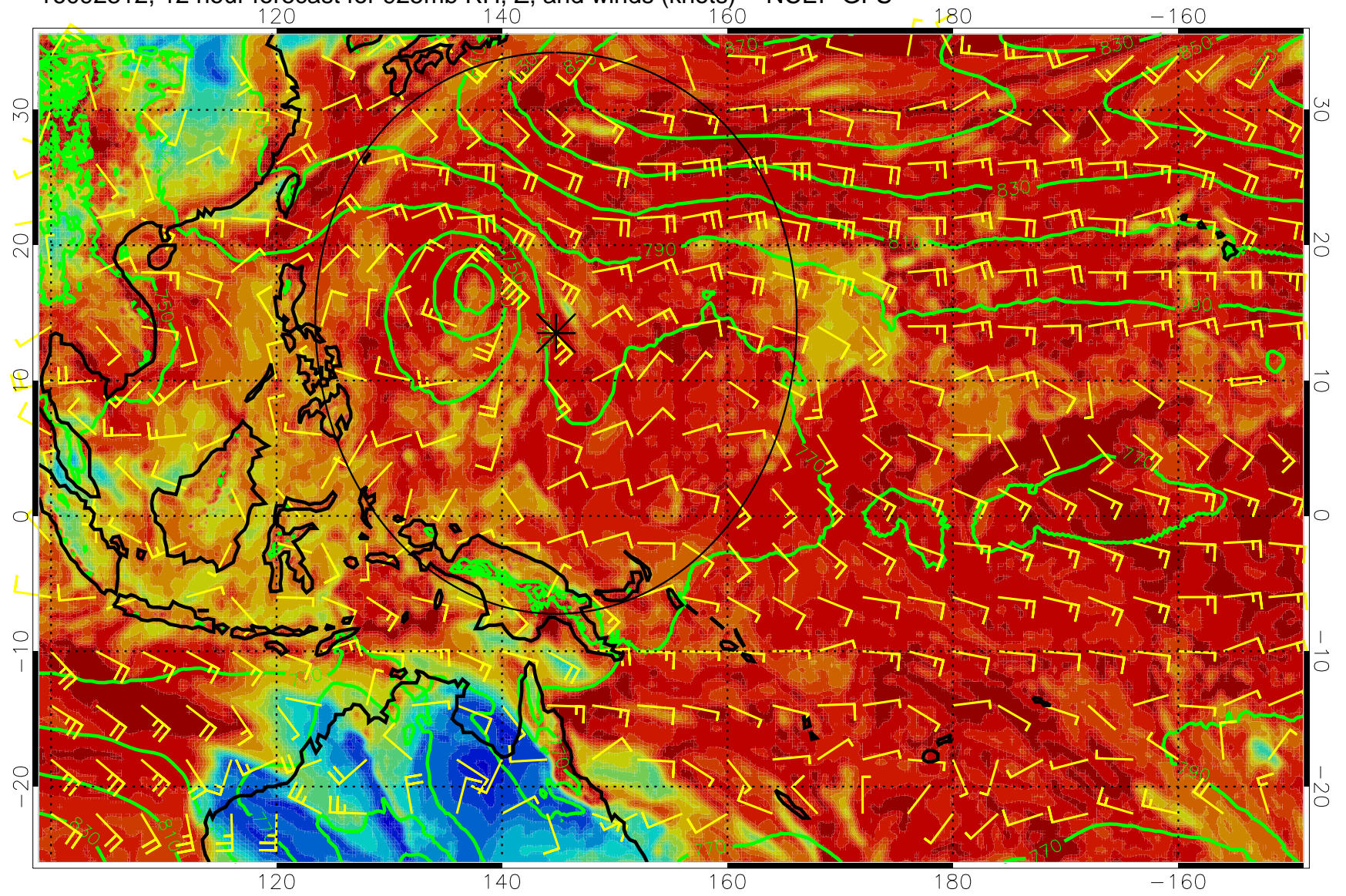


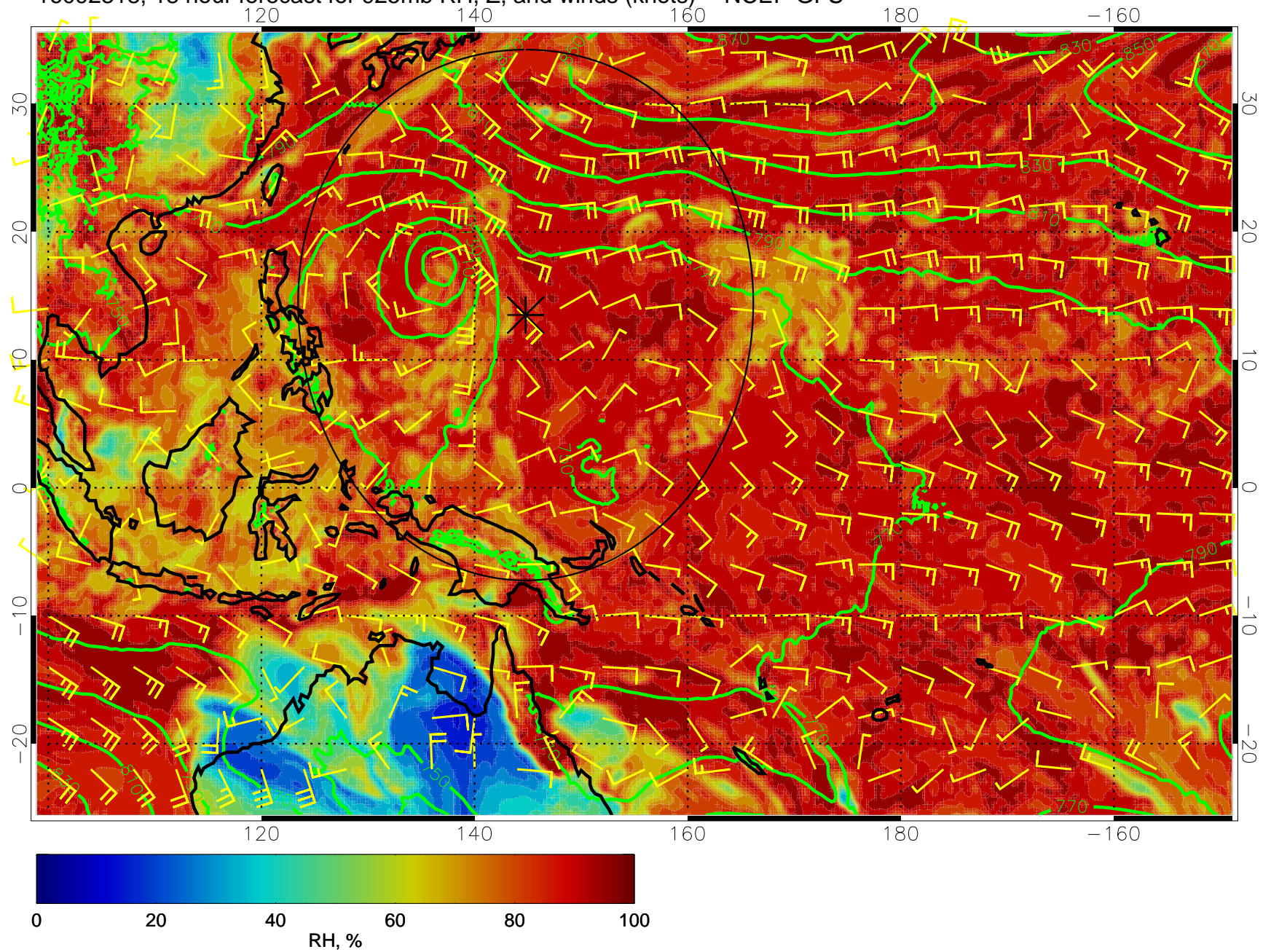
16092306, 6 hour forecast for 925mb RH, Z, and winds (knots) -- NCEP GFS



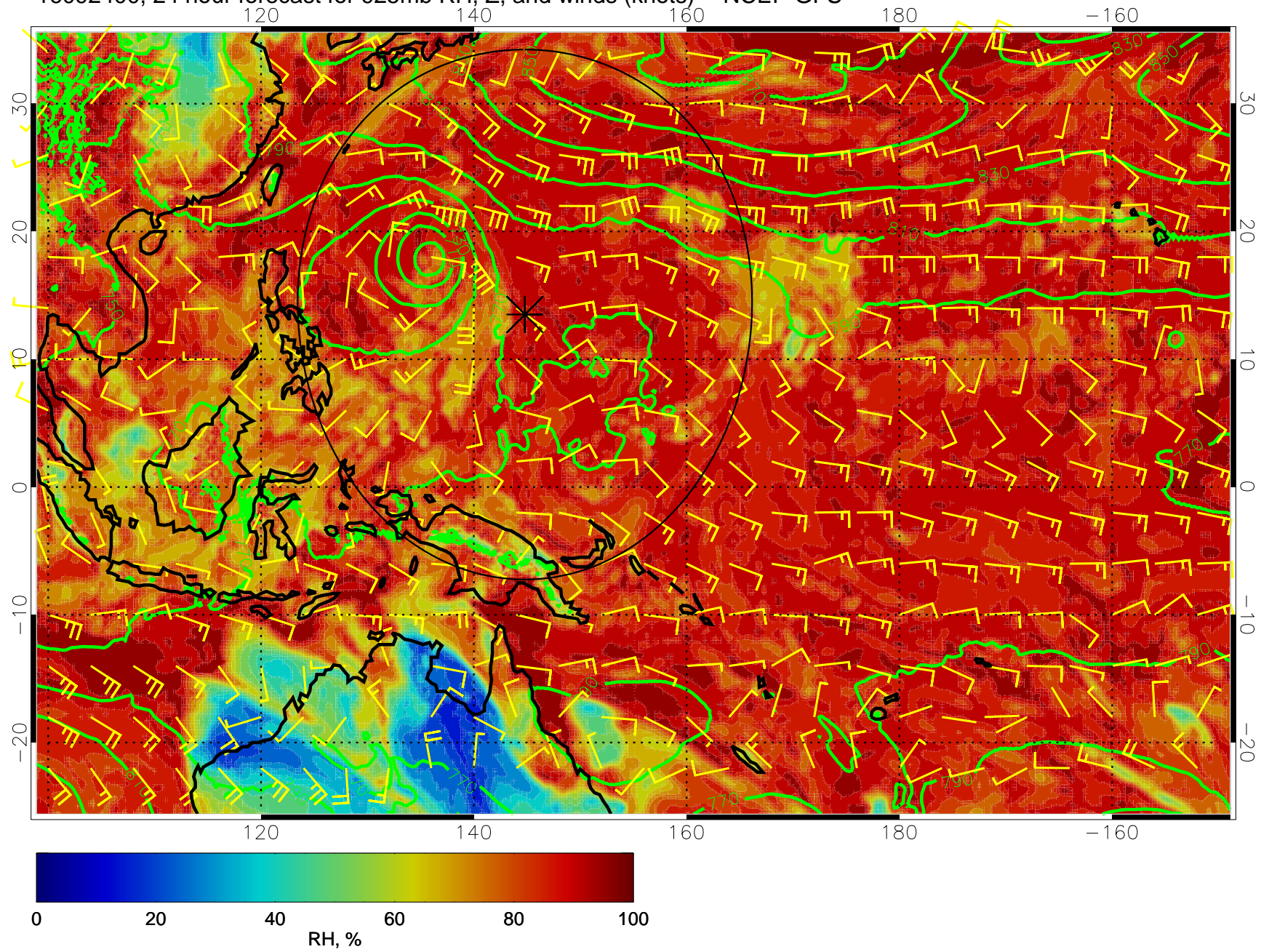
16092312, 12 hour forecast for 925mb RH, Z, and winds (knots) -- NCEP GFS



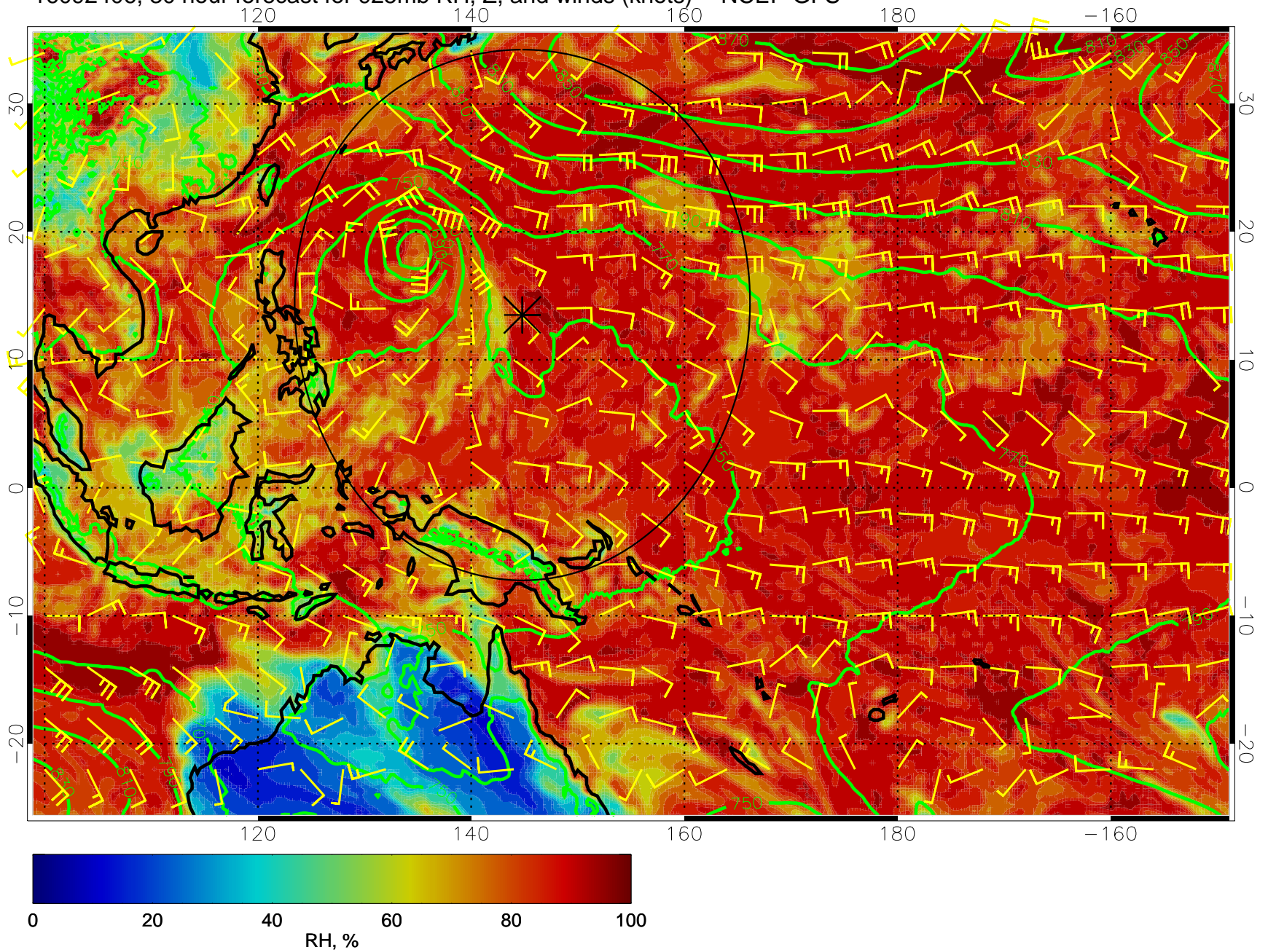
16092318, 18 hour forecast for 925mb RH, Z, and winds (knots) -- NCEP GFS



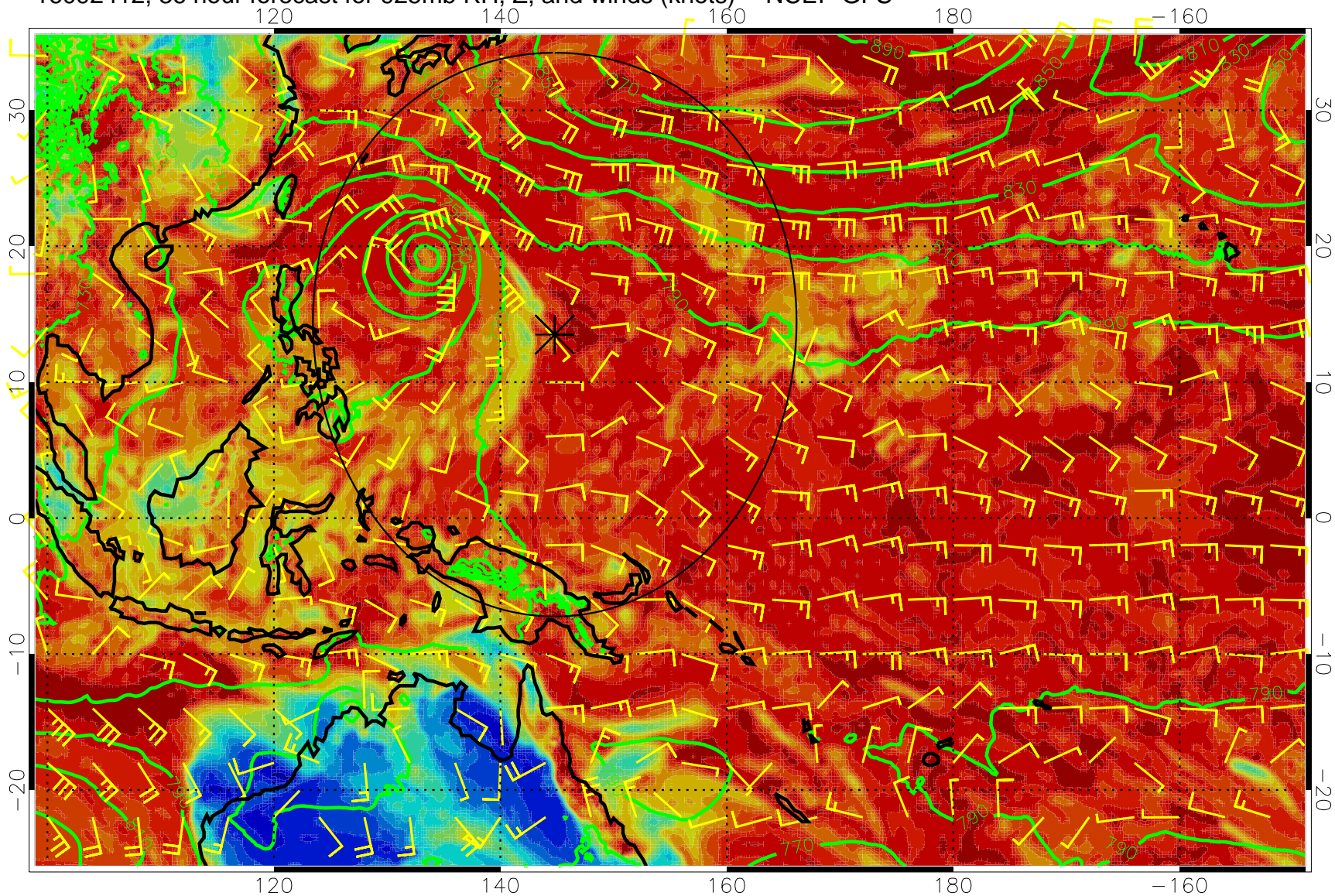
16092400, 24 hour forecast for 925mb RH, Z, and winds (knots) -- NCEP GFS



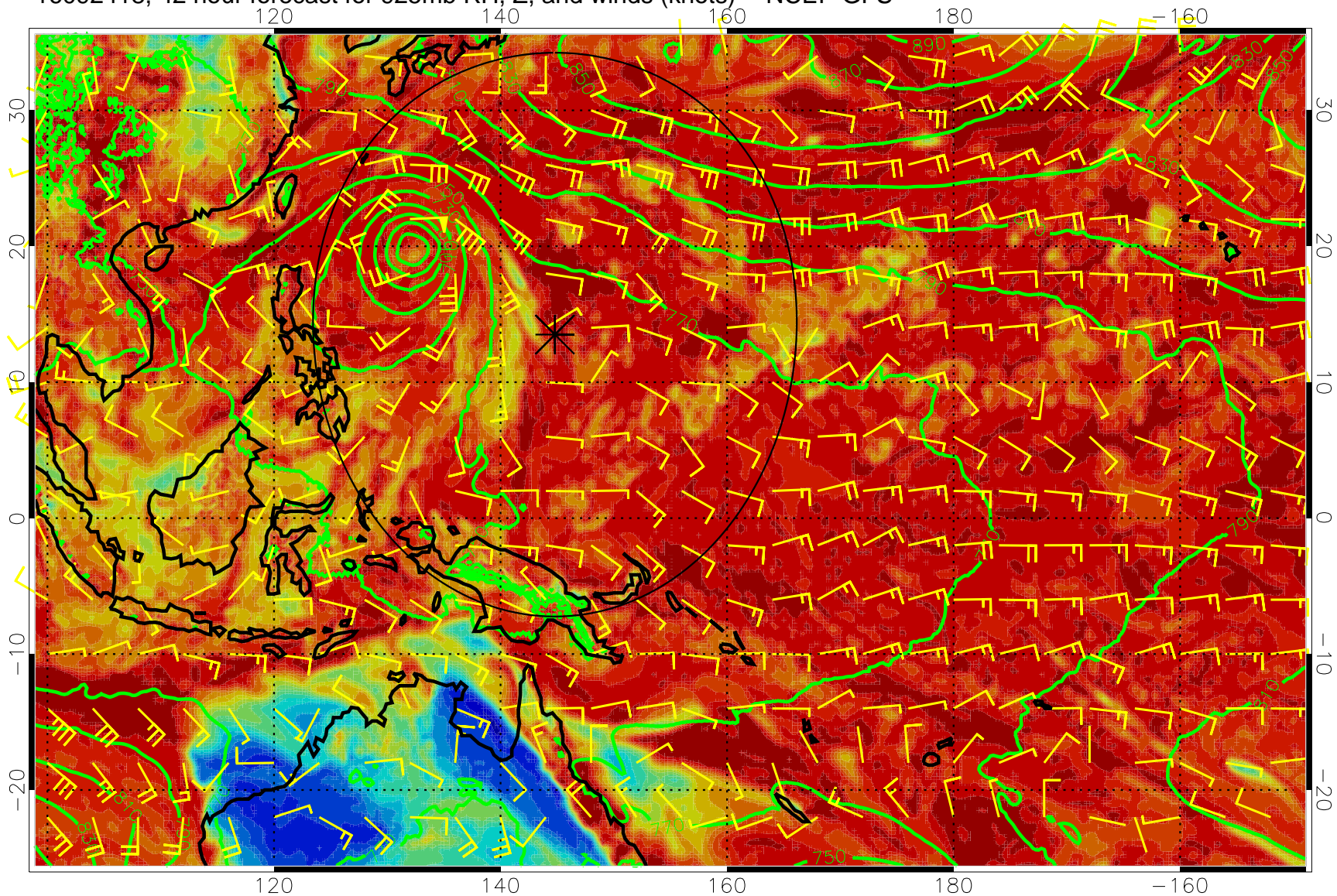
16092406, 30 hour forecast for 925mb RH, Z, and winds (knots) -- NCEP GFS



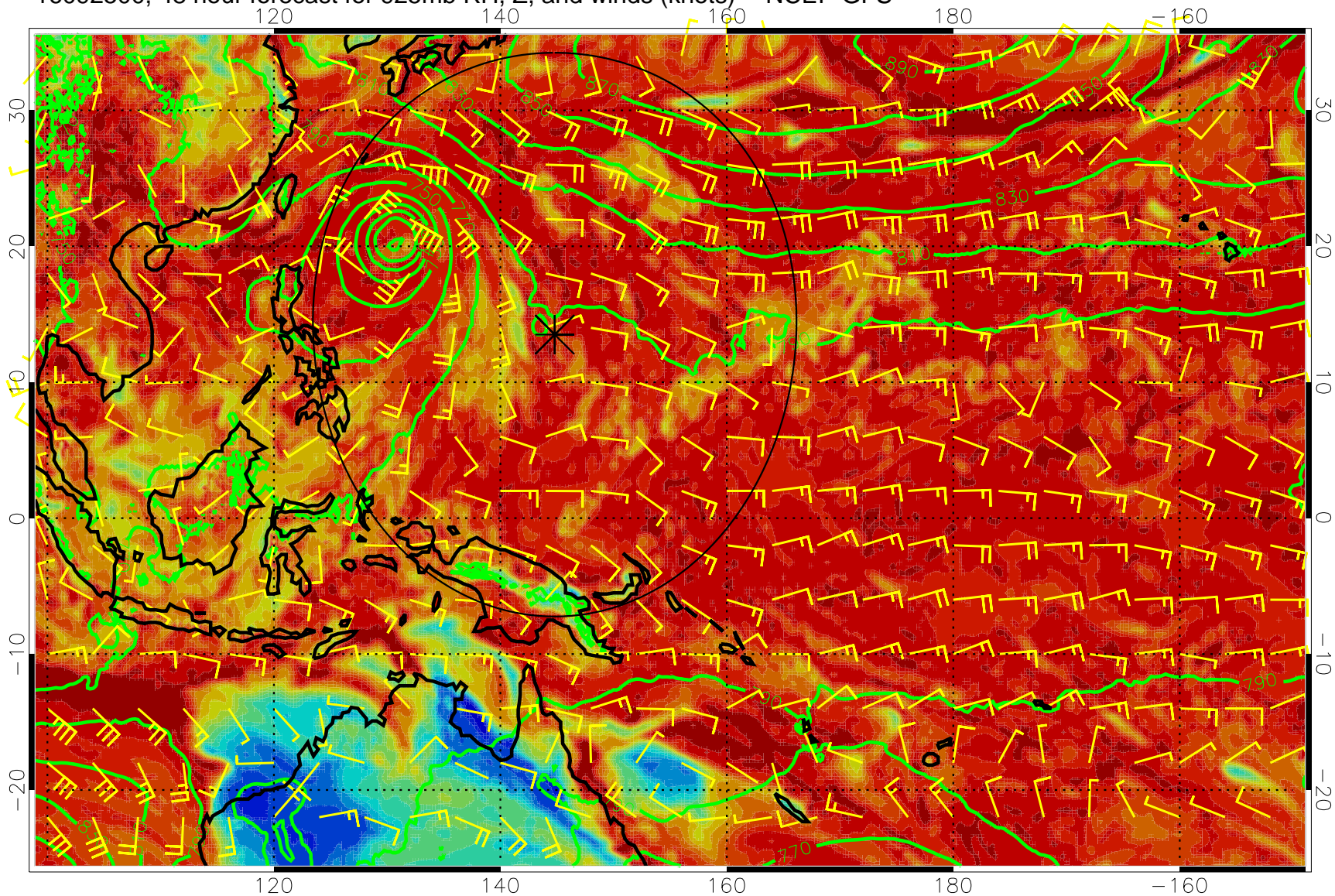
16092412, 36 hour forecast for 925mb RH, Z, and winds (knots) -- NCEP GFS



16092418, 42 hour forecast for 925mb RH, Z, and winds (knots) -- NCEP GFS

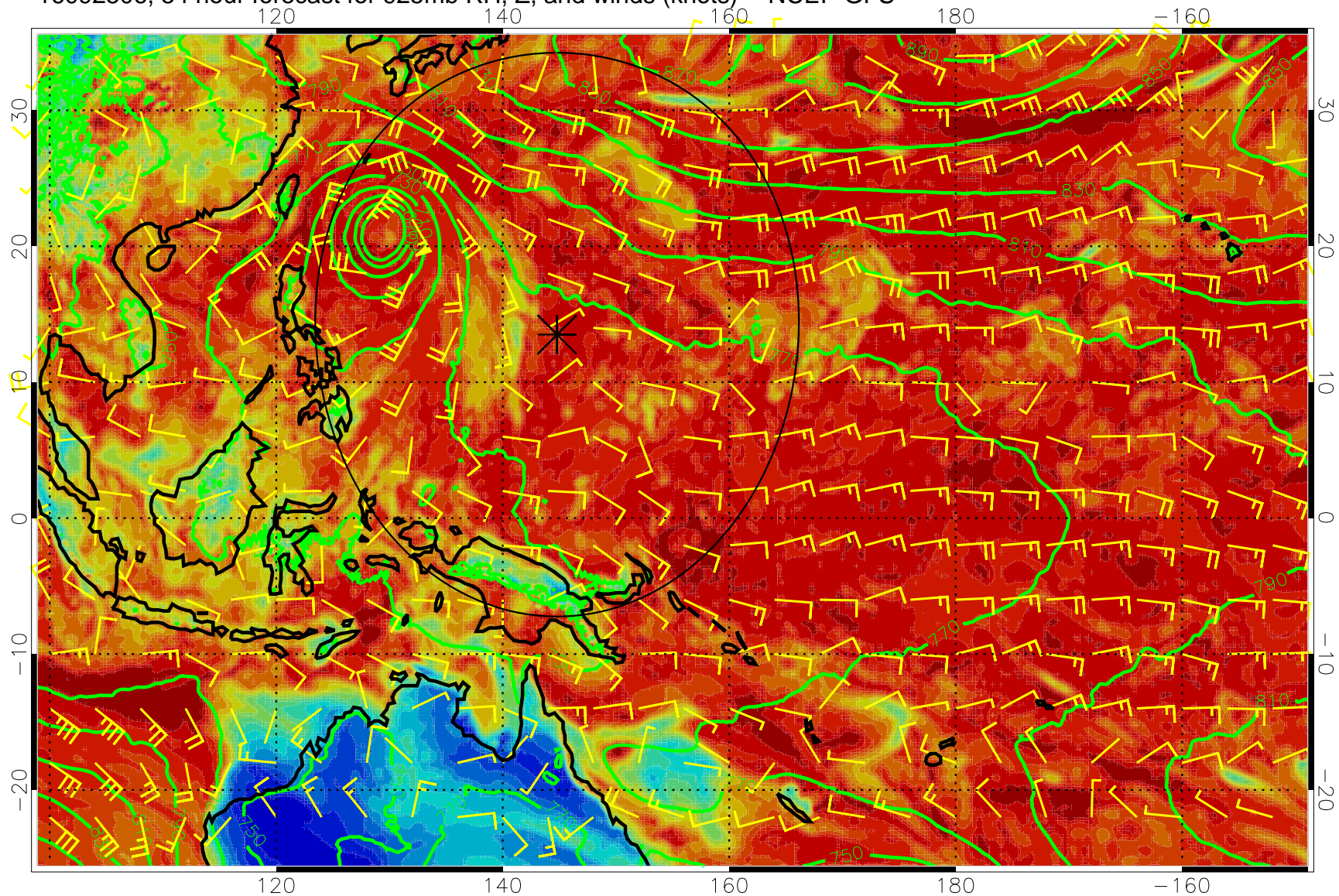


16092500, 48 hour forecast for 925mb RH, Z, and winds (knots) -- NCEP GFS

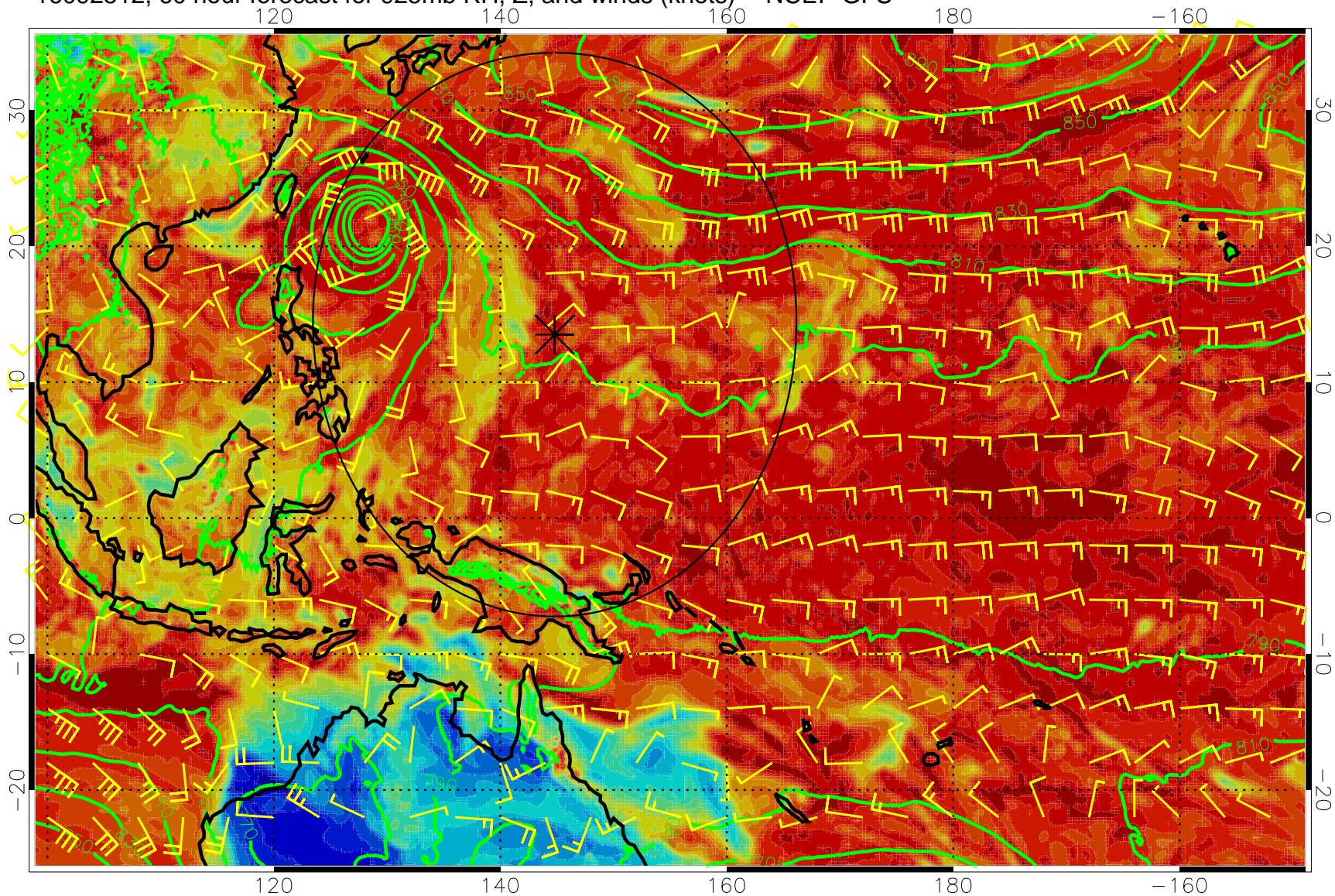




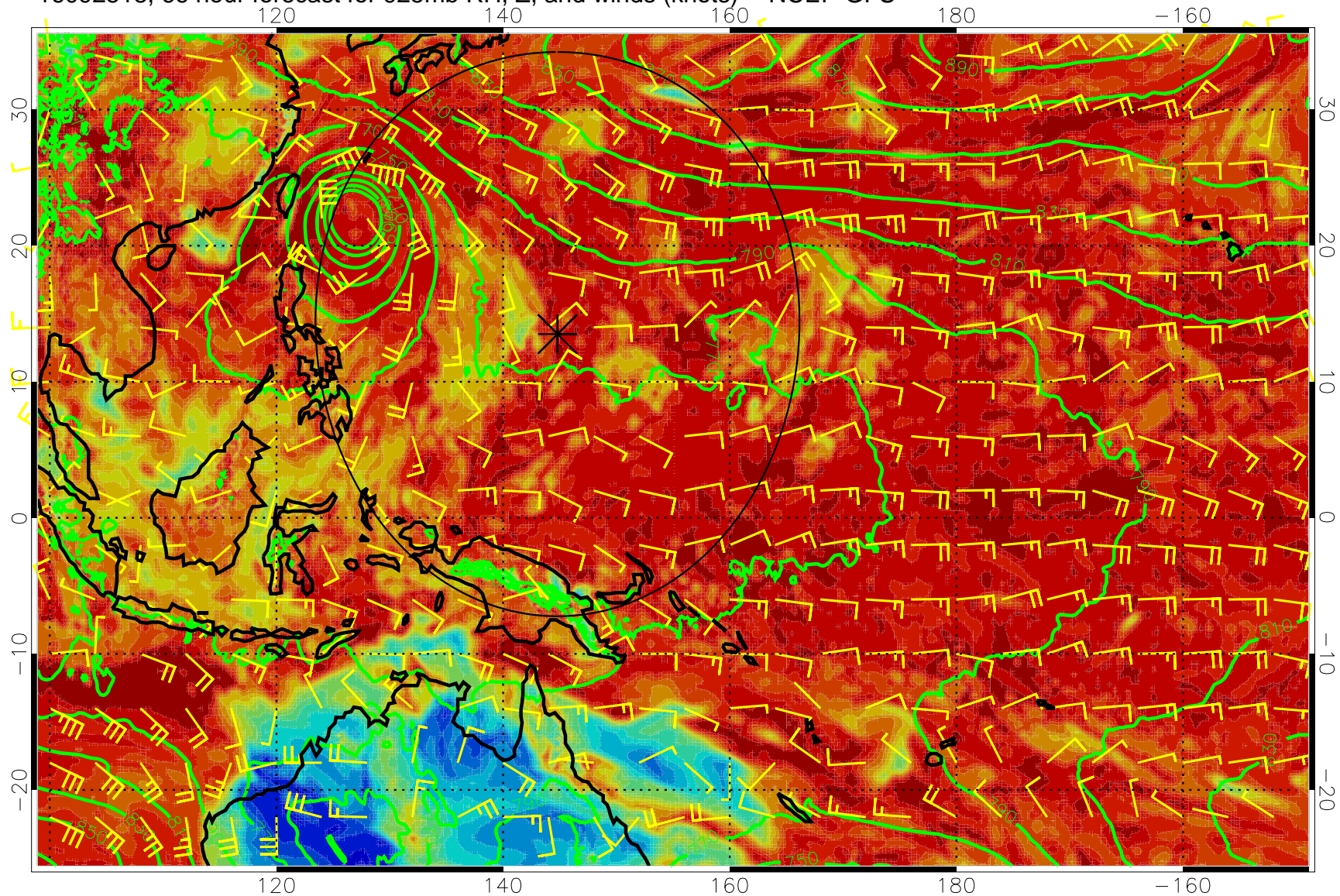
16092506, 54 hour forecast for 925mb RH, Z, and winds (knots) -- NCEP GFS



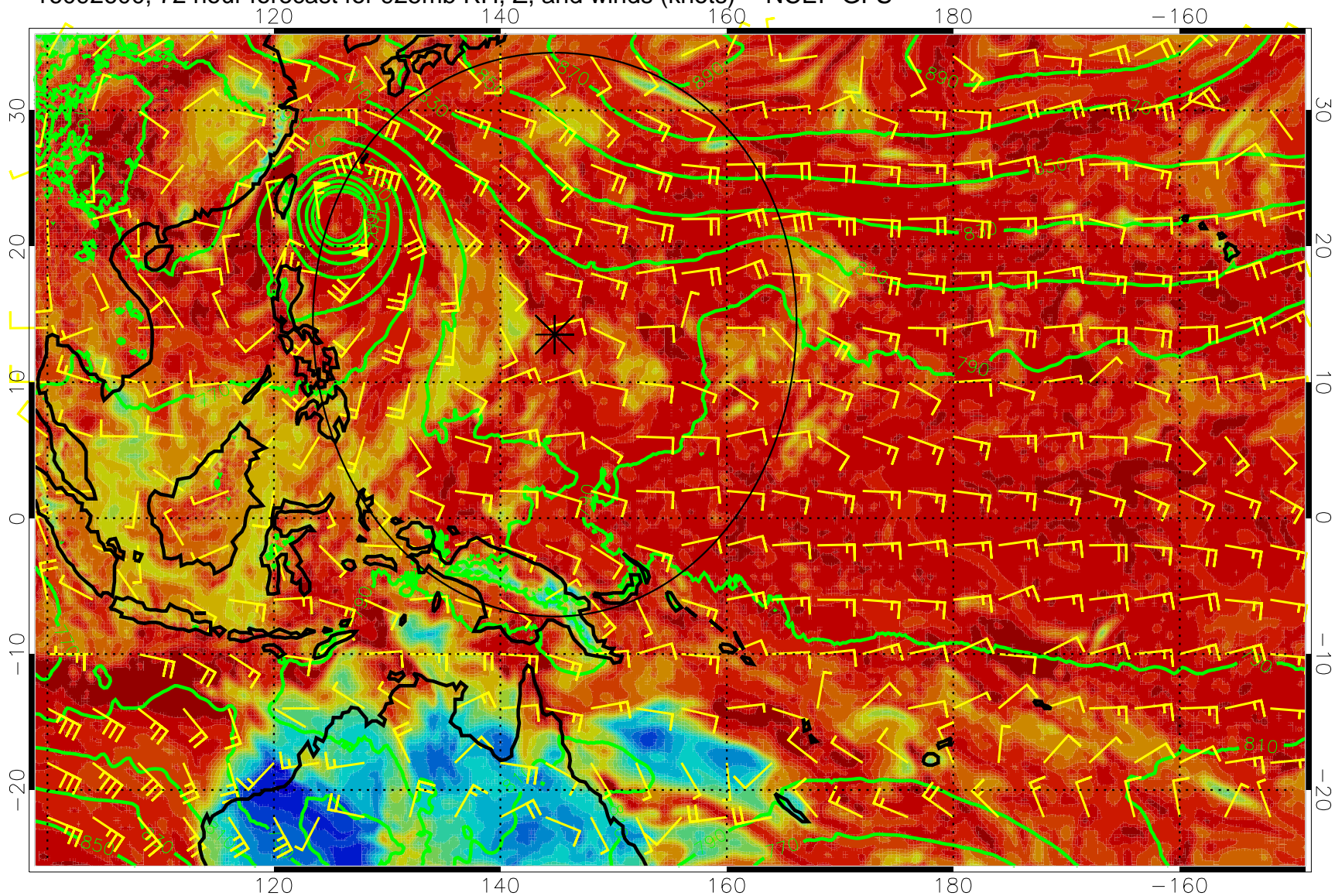
16092512, 60 hour forecast for 925mb RH, Z, and winds (knots) -- NCEP GFS



16092518, 66 hour forecast for 925mb RH, Z, and winds (knots) -- NCEP GFS

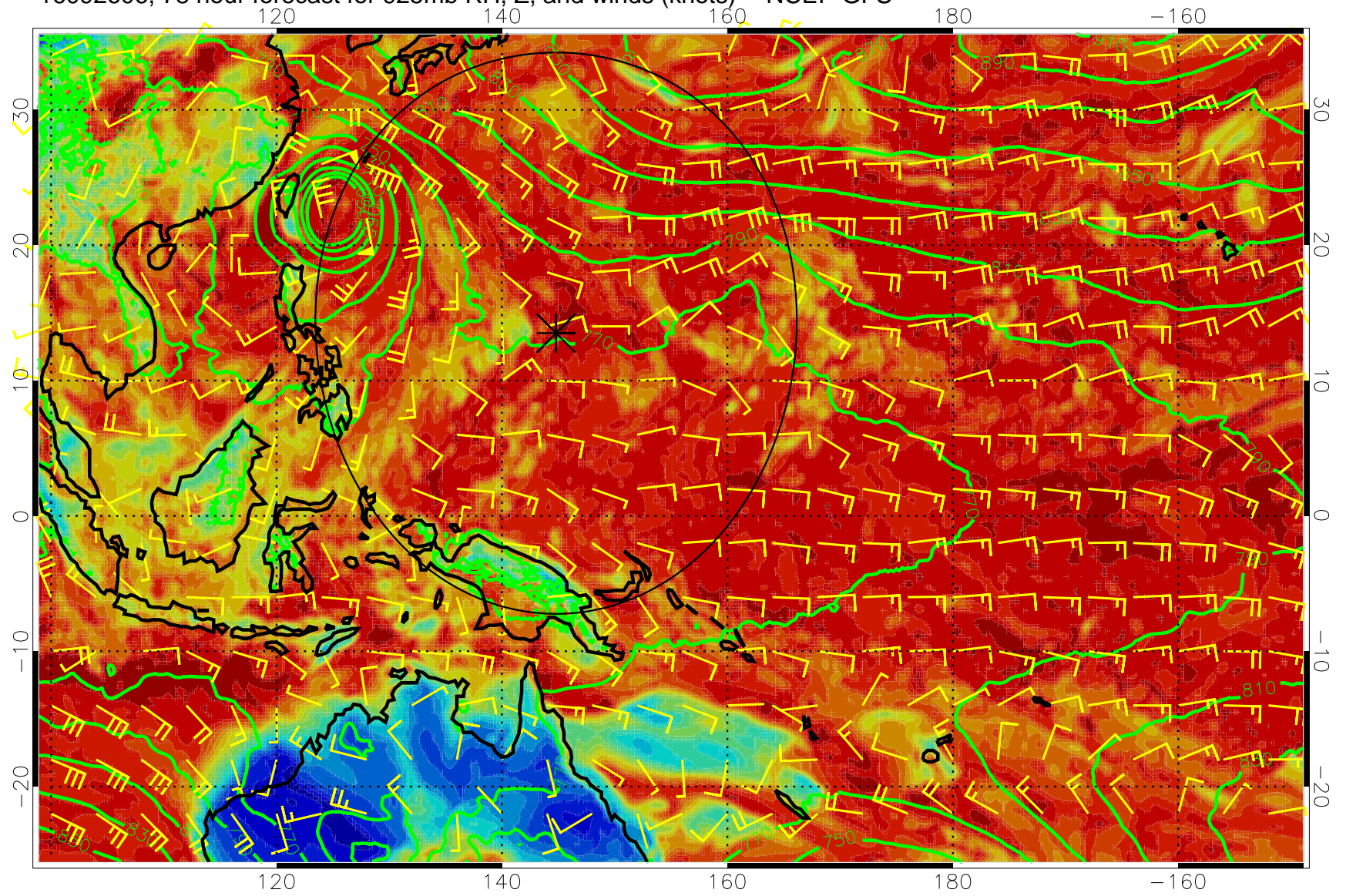


16092600, 72 hour forecast for 925mb RH, Z, and winds (knots) -- NCEP GFS

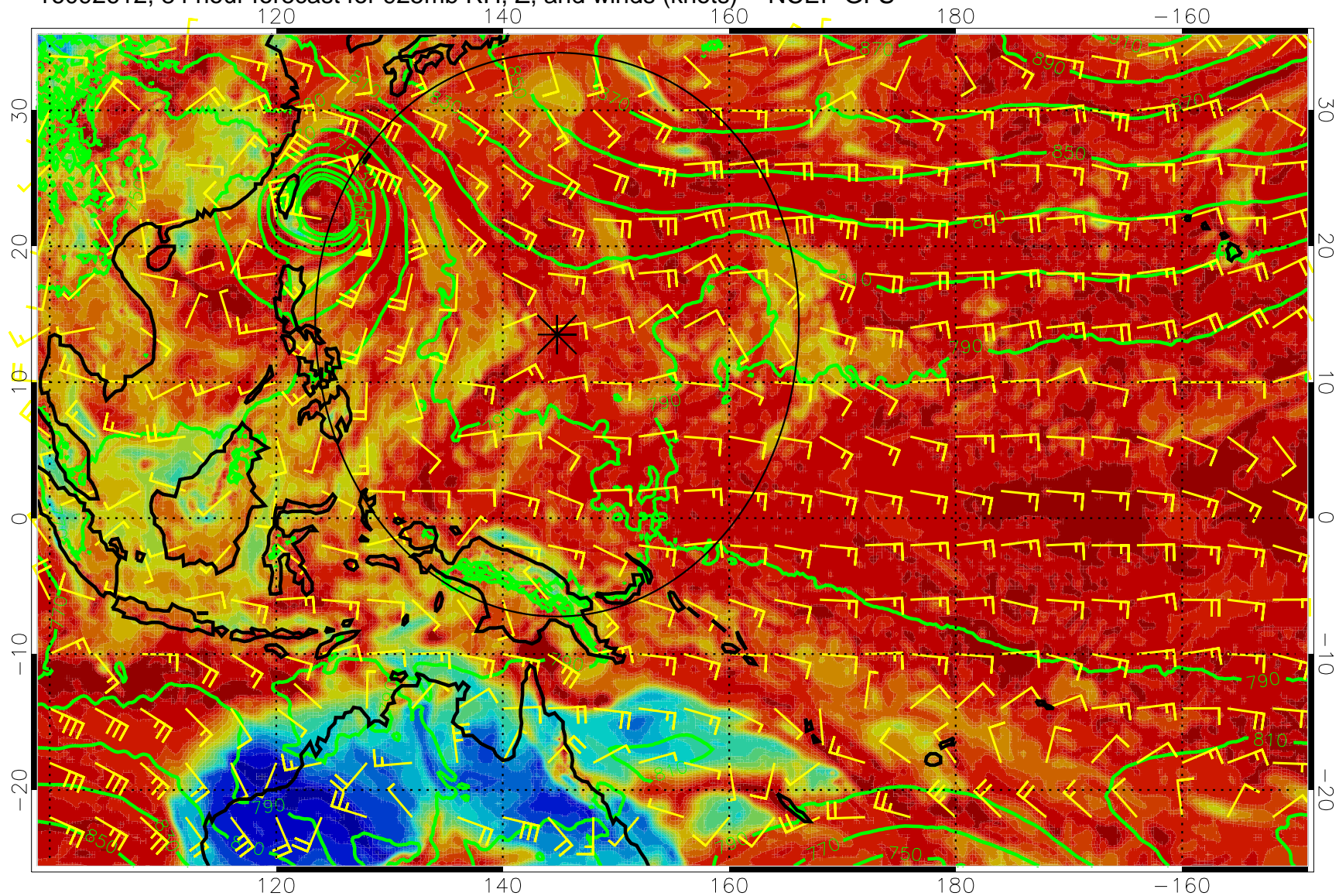


0 20 40 60 80 100  
RH, %

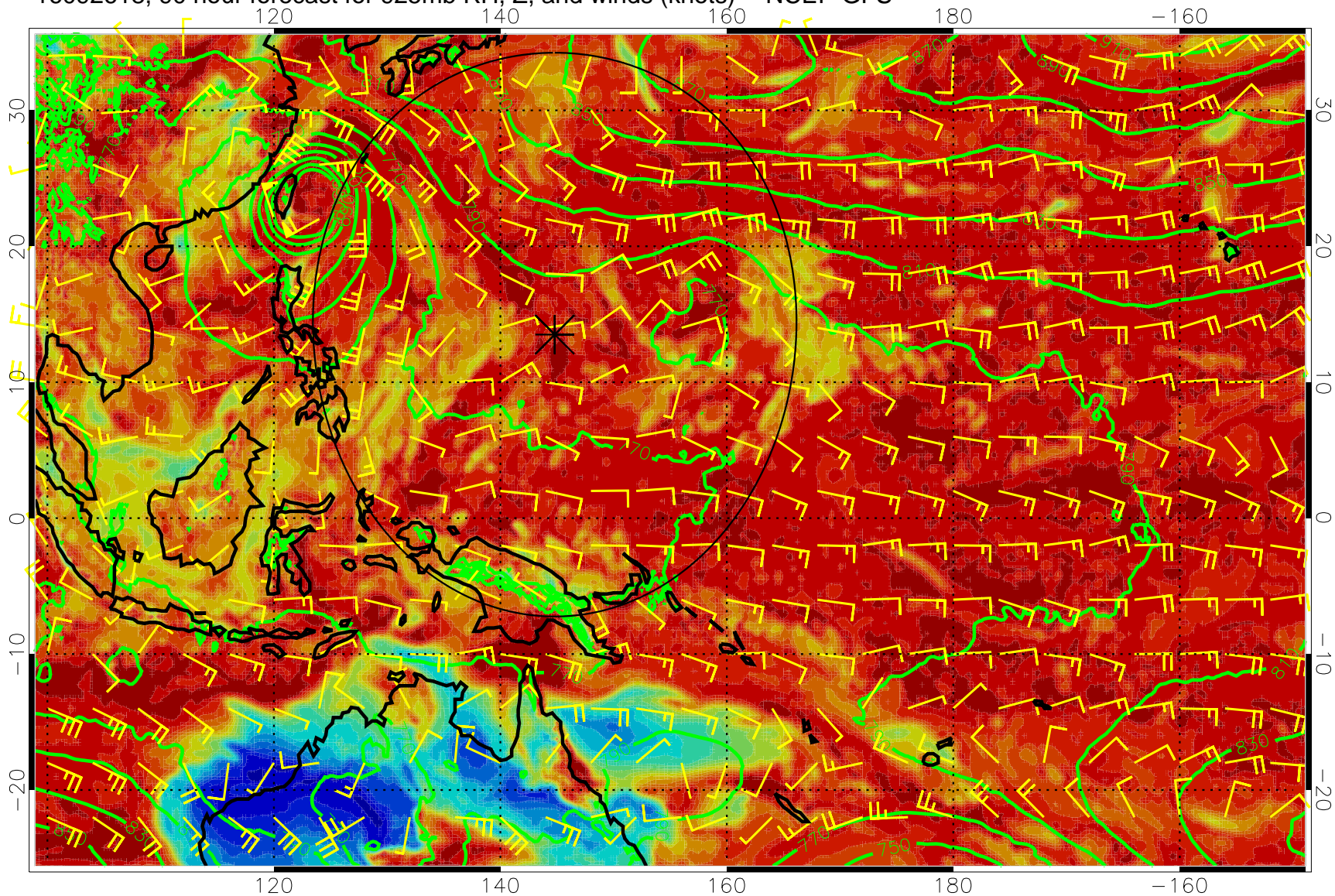
16092606, 78 hour forecast for 925mb RH, Z, and winds (knots) -- NCEP GFS



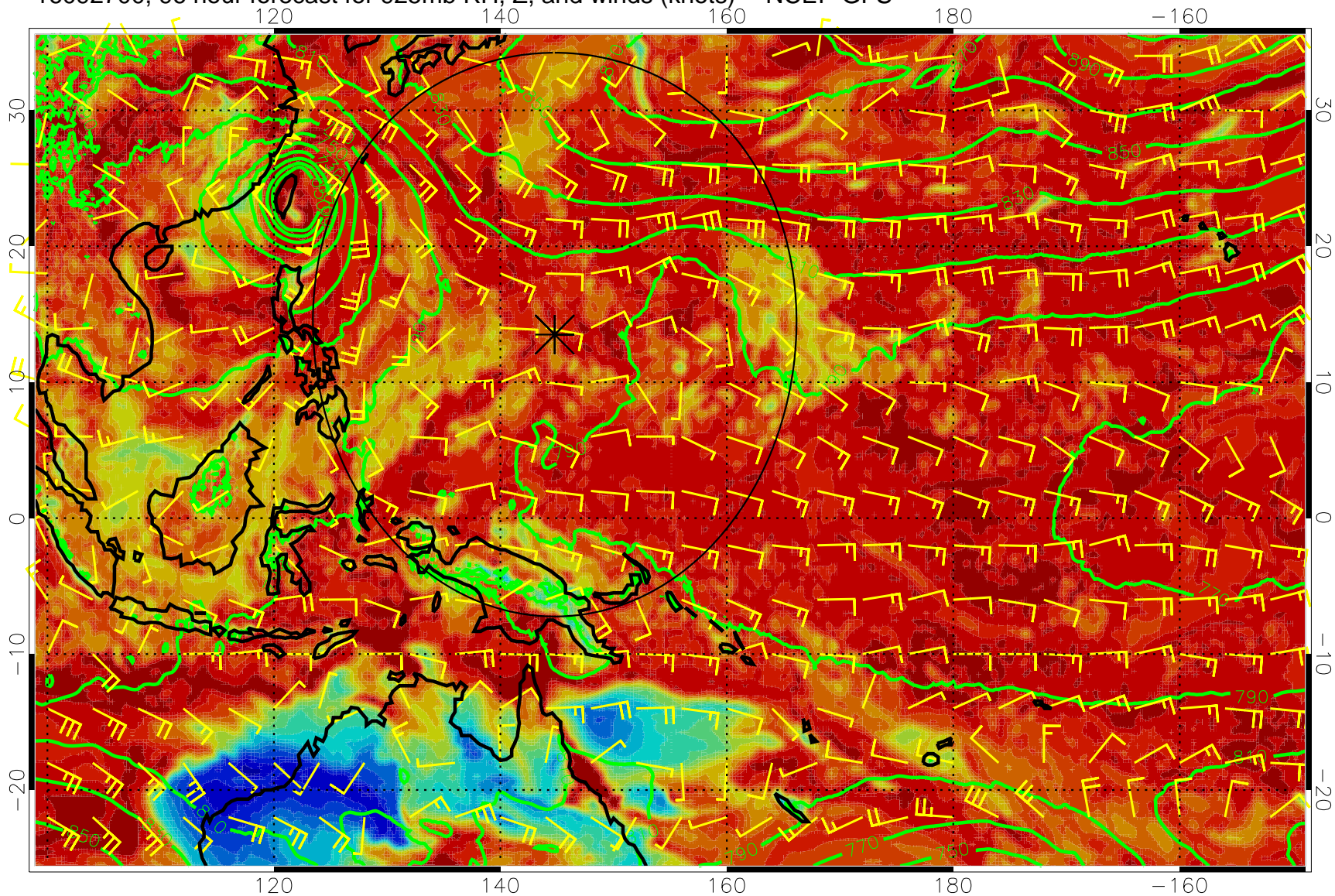
16092612, 84 hour forecast for 925mb RH, Z, and winds (knots) -- NCEP GFS



16092618, 90 hour forecast for 925mb RH, Z, and winds (knots) -- NCEP GFS



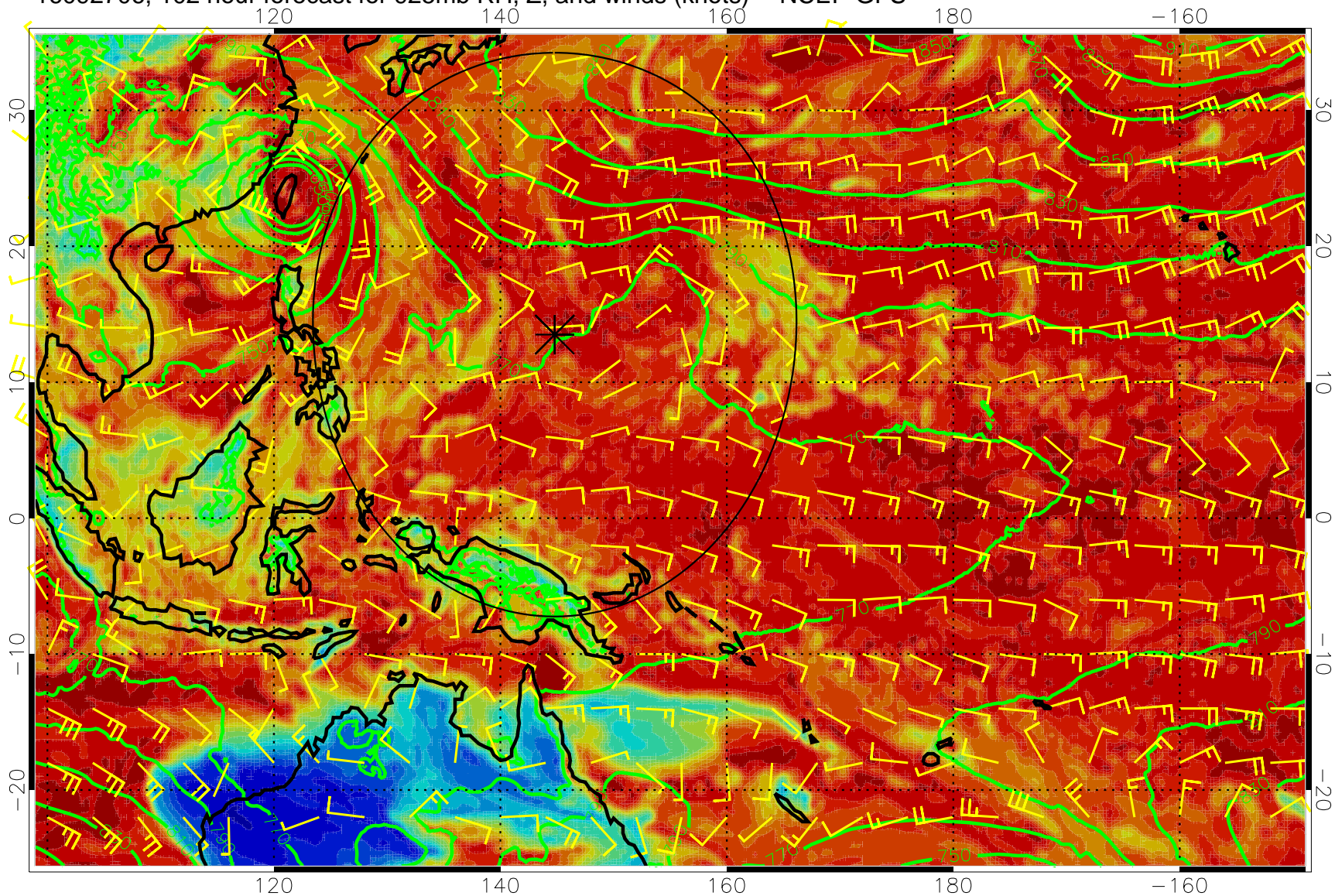
16092700, 96 hour forecast for 925mb RH, Z, and winds (knots) -- NCEP GFS



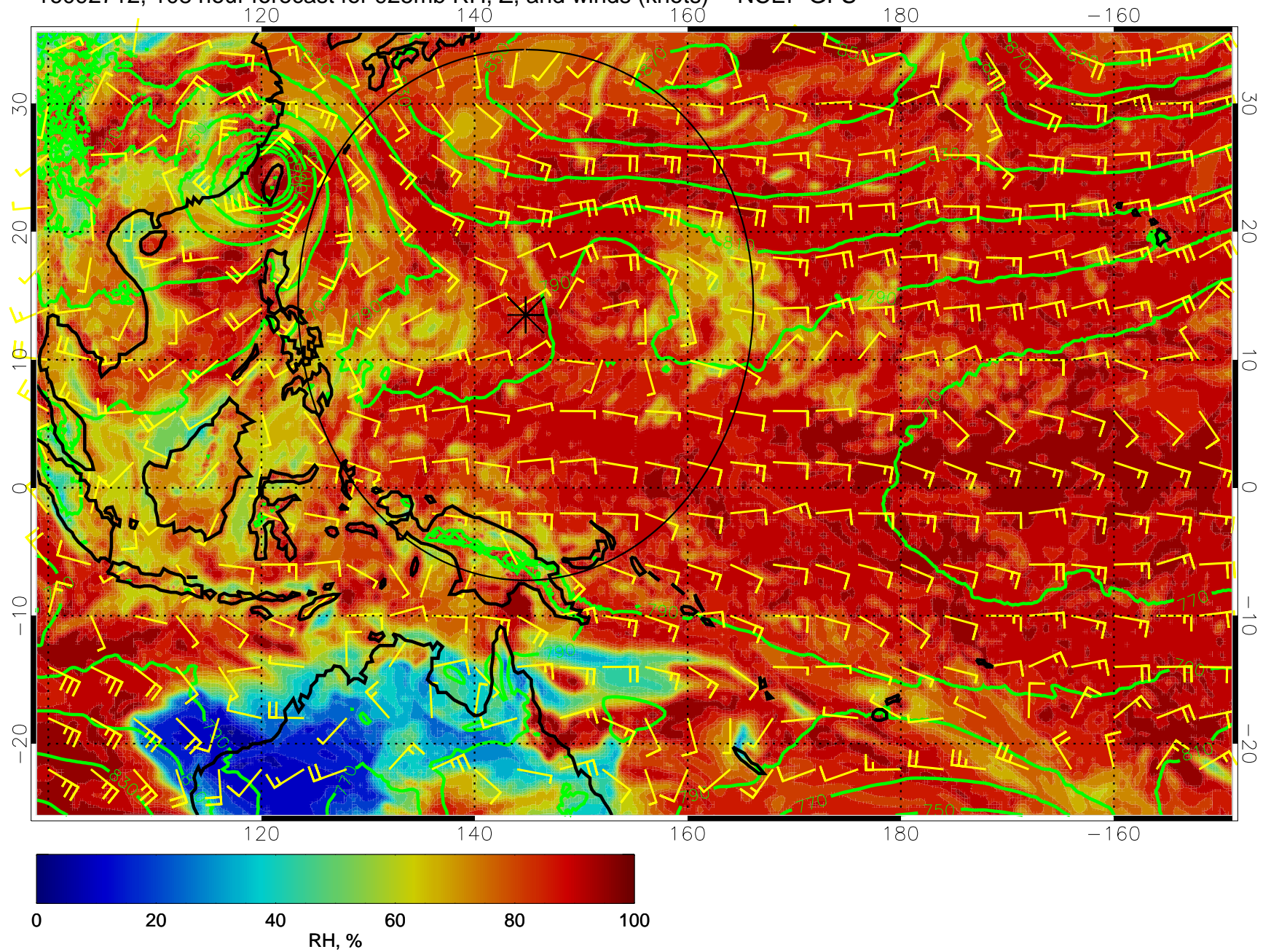
0 20 40 60 80 100  
RH, %



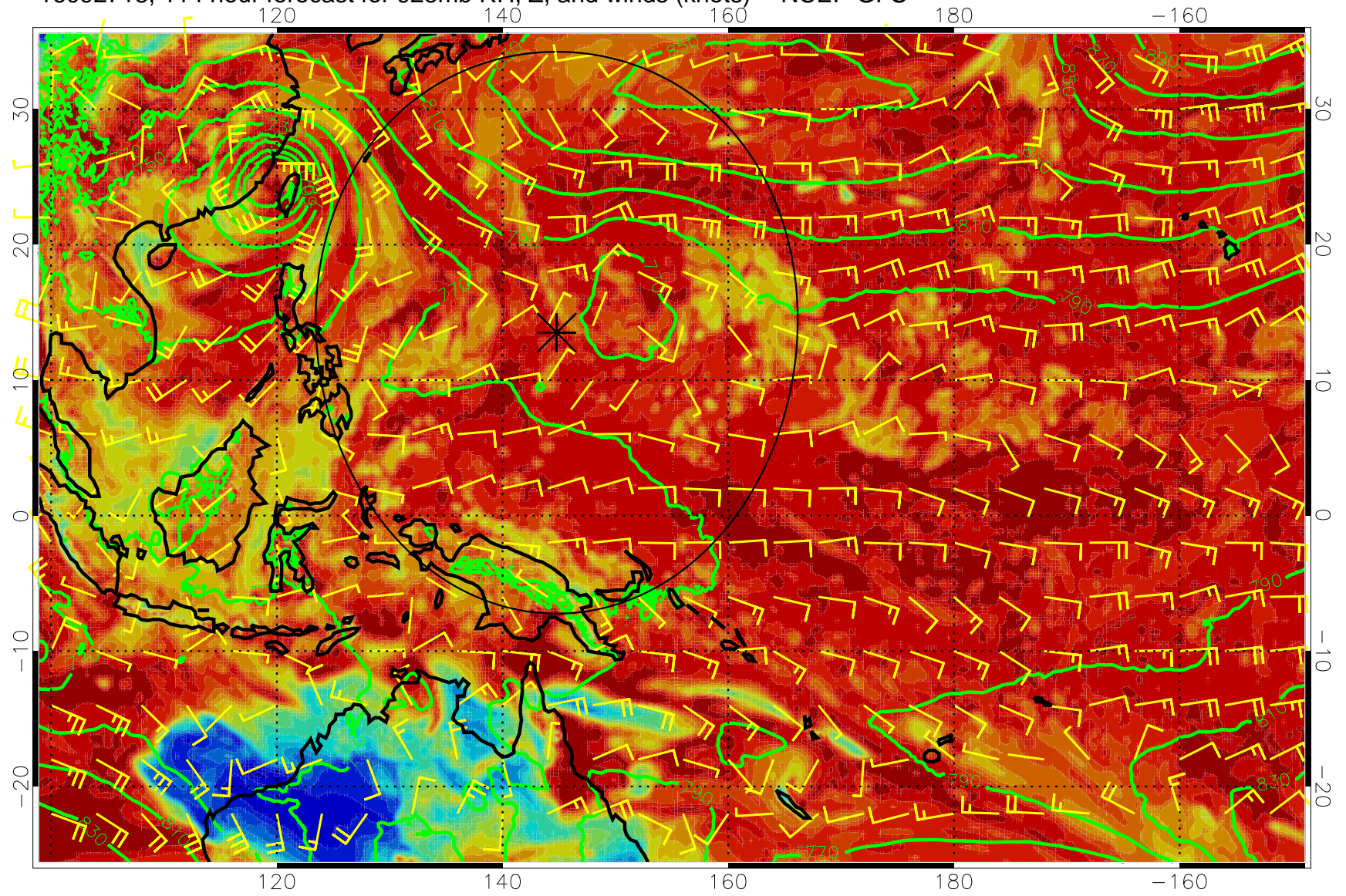
16092706, 102 hour forecast for 925mb RH, Z, and winds (knots) -- NCEP GFS



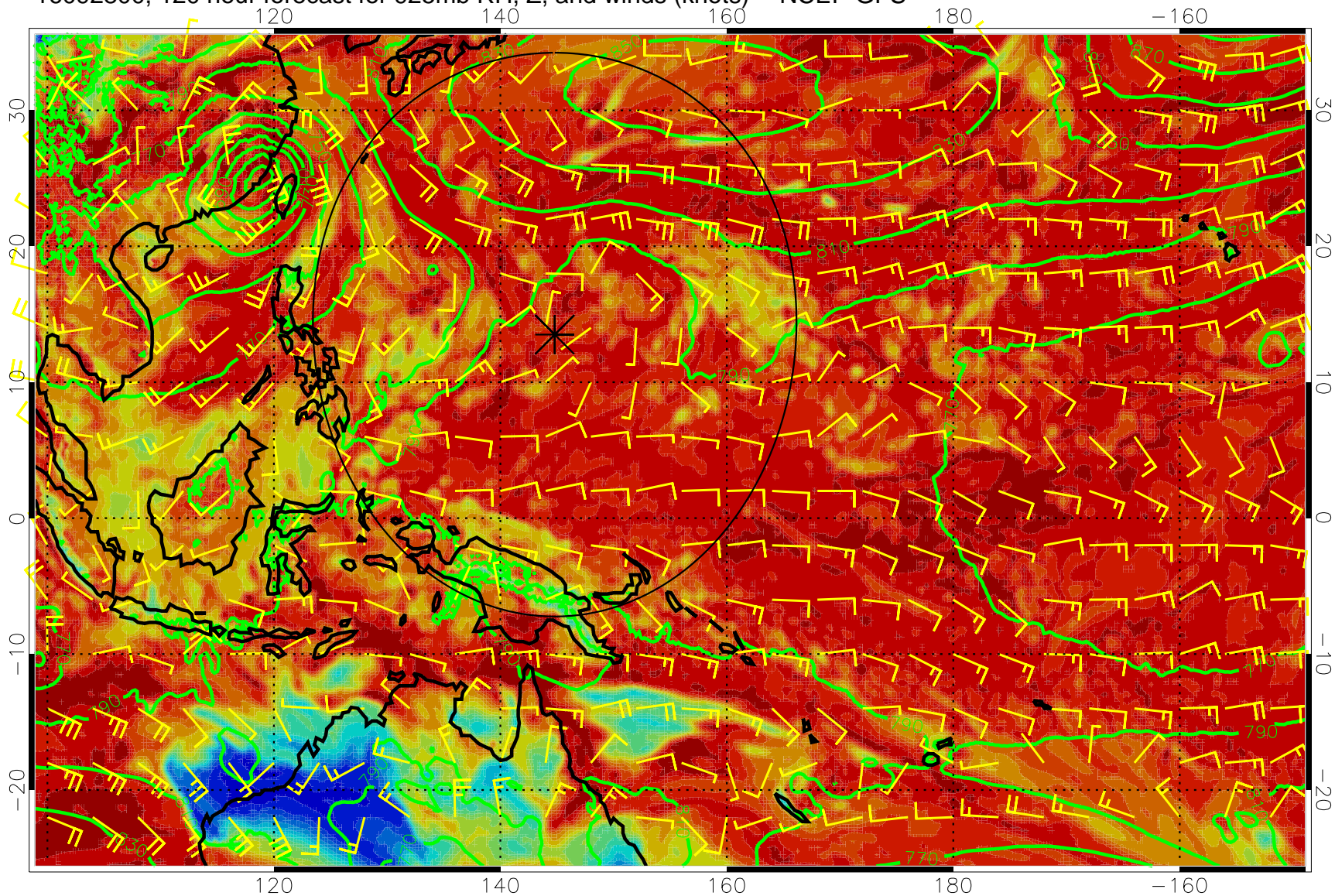
16092712, 108 hour forecast for 925mb RH, Z, and winds (knots) -- NCEP GFS



16092718, 114 hour forecast for 925mb RH, Z, and winds (knots) -- NCEP GFS



16092800, 120 hour forecast for 925mb RH, Z, and winds (knots) -- NCEP GFS



0 20 40 60 80 100  
RH, %